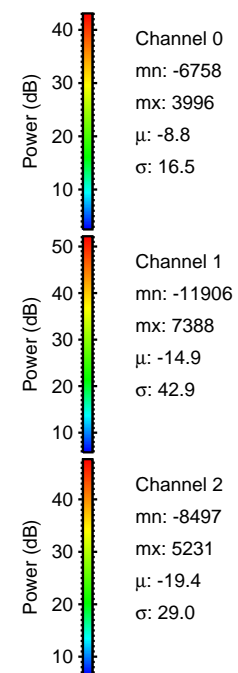
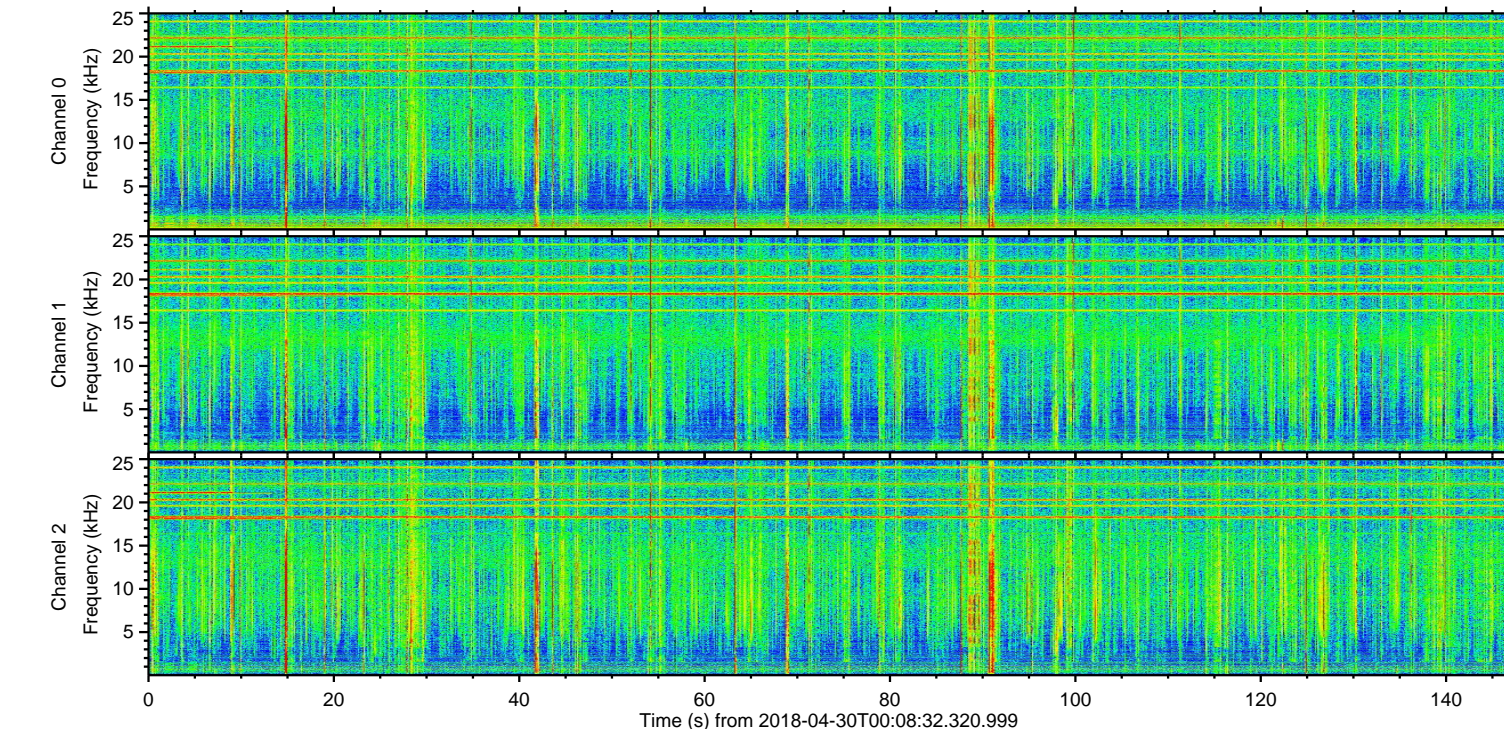
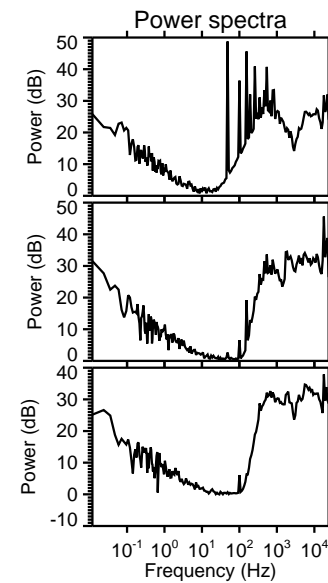
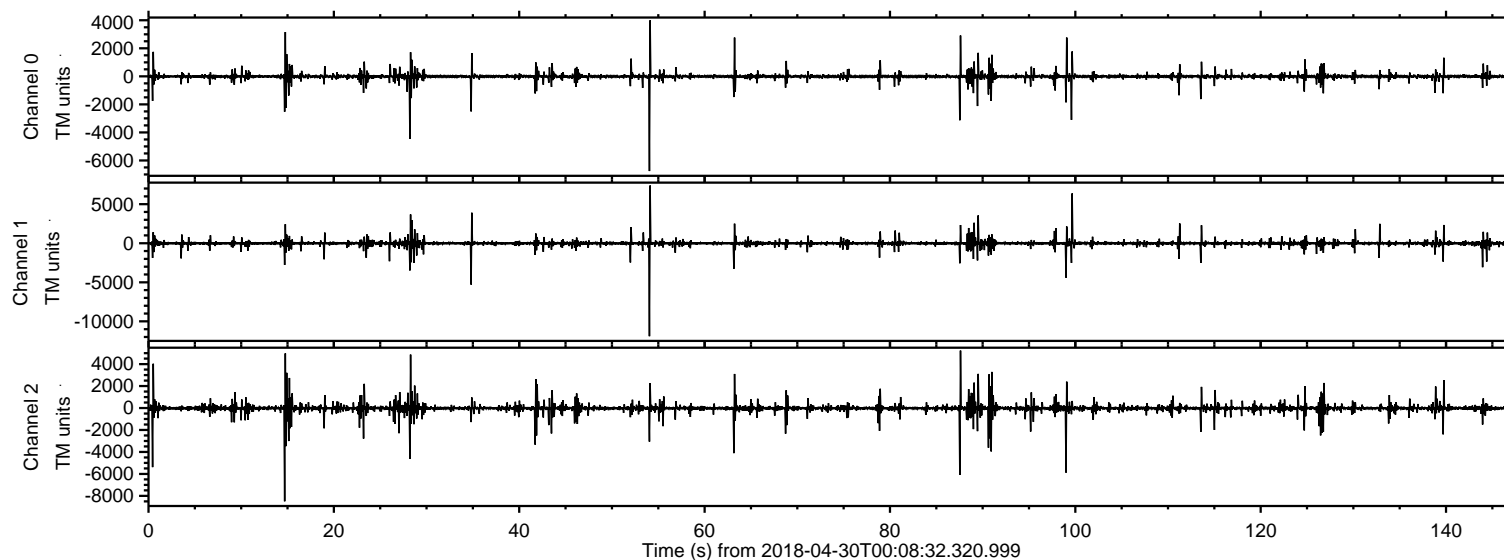
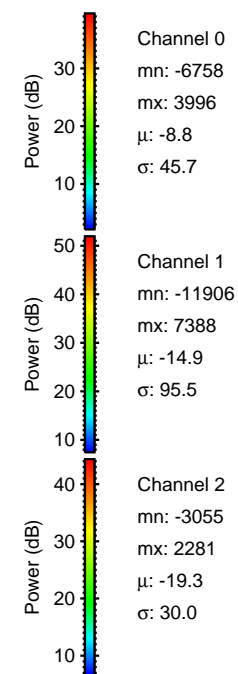
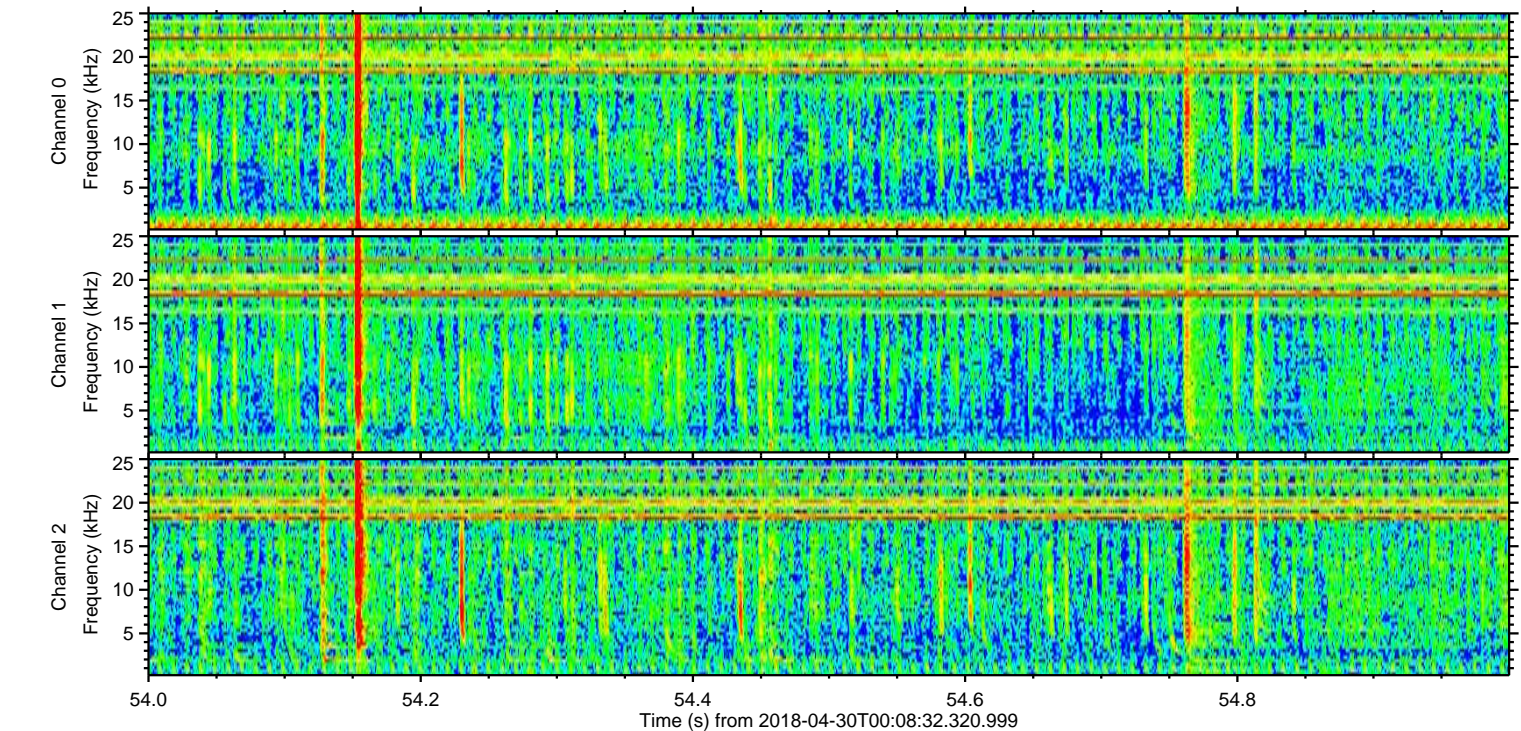
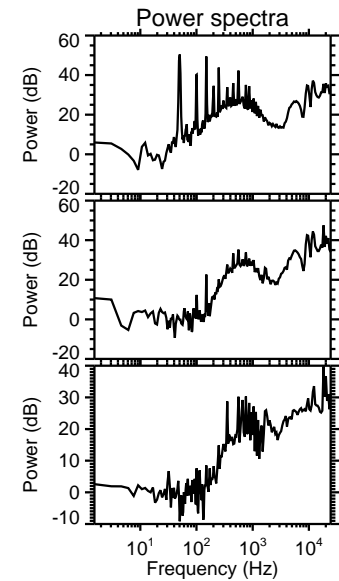
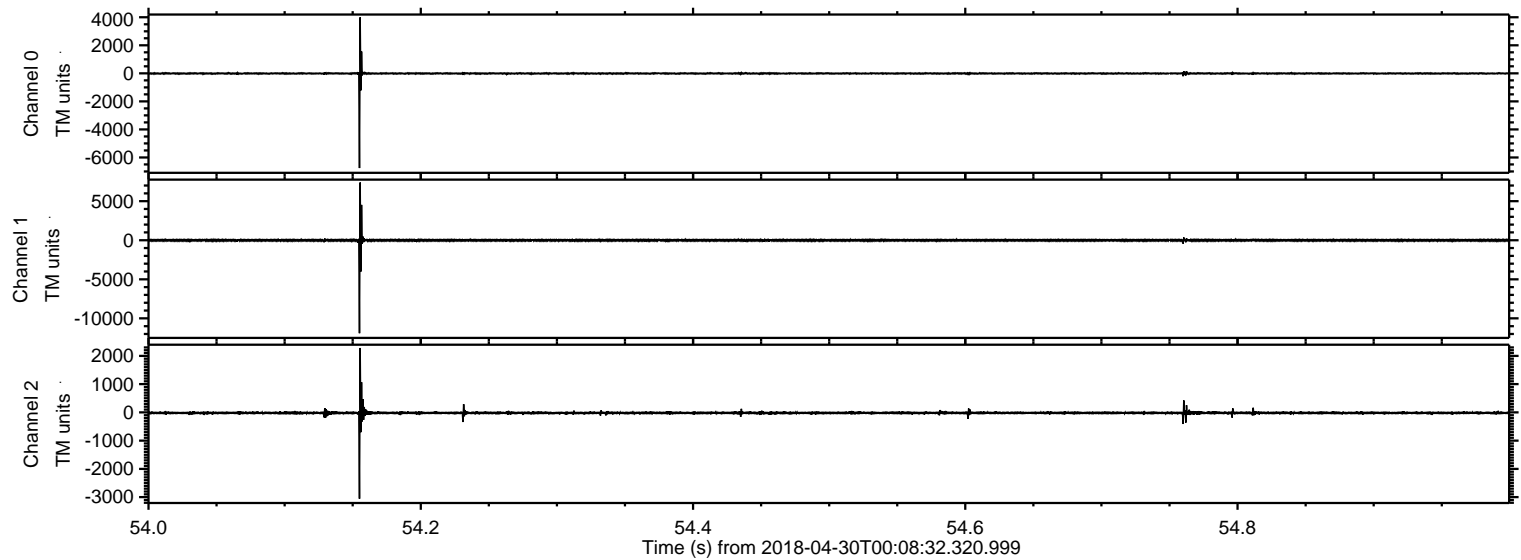


ELMAVAN 3D WAVEFORMS (Measured data sampled at 50 kHz) 51000 packets of 144 samples from 2018-04-30T00:08:32.320.999.

Processed Mon Apr 30 02:17:03 2018 by ELM ver.2012-10-06 from 001__elm20180430_000831__dat00.bin

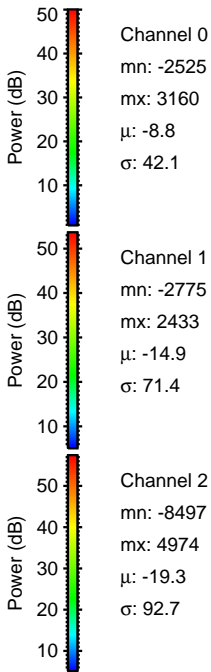
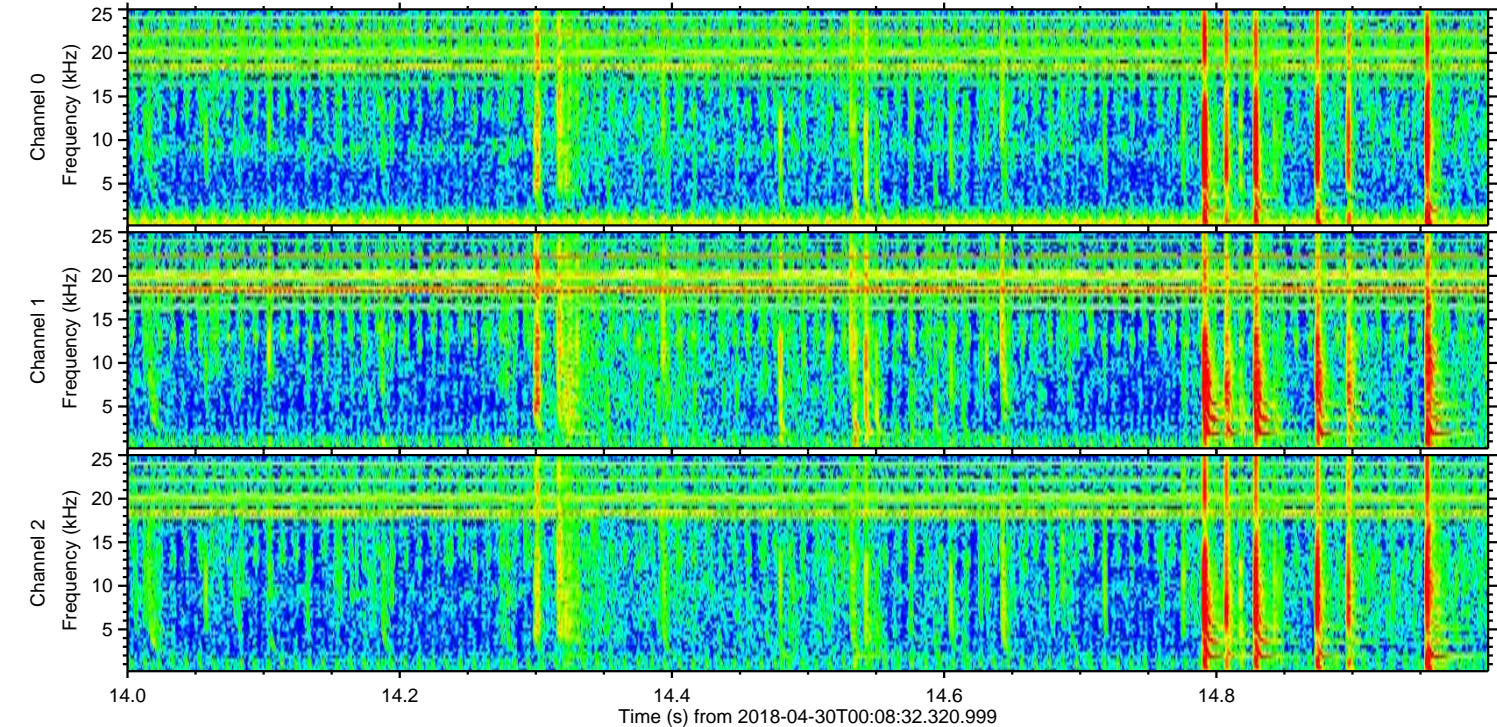
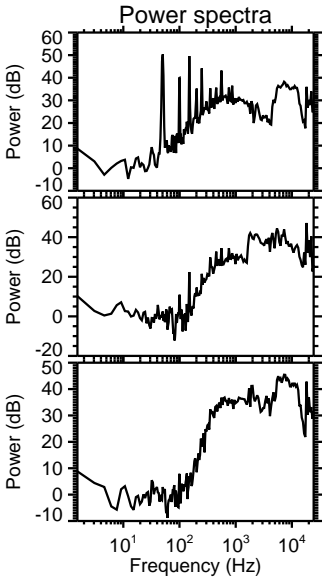
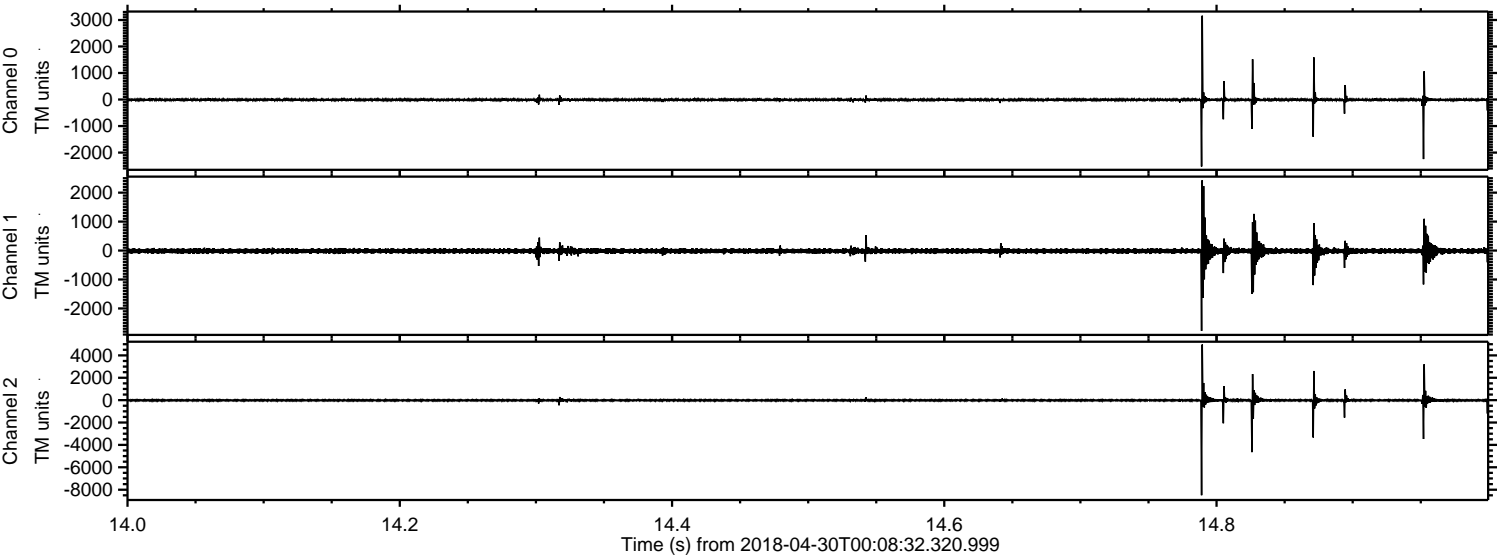


Processed Mon Apr 30 02:17:09 2018 by ELM ver.2012-10-06 from 001__elm20180430_000831__dat00.bin



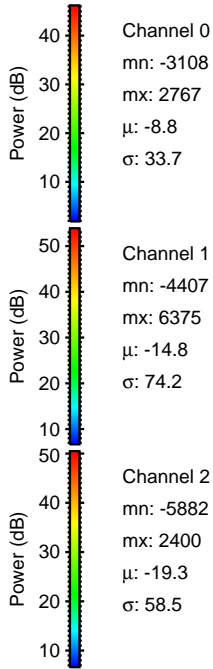
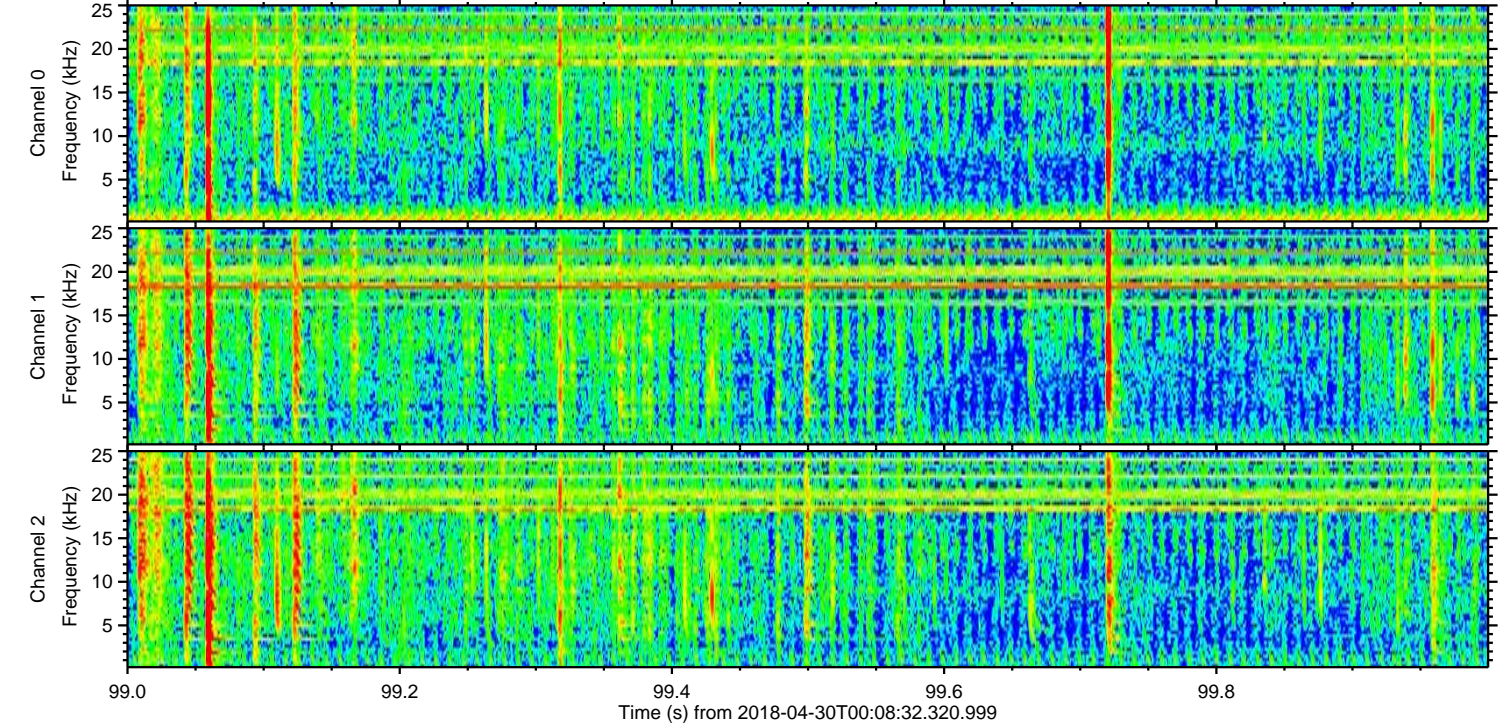
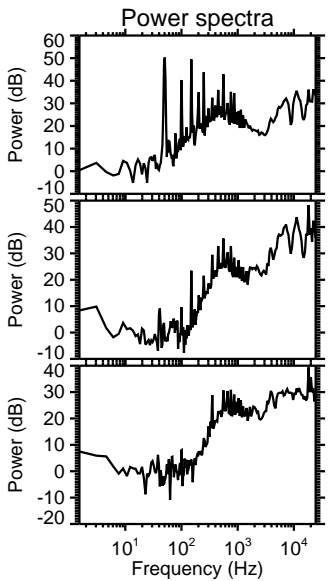
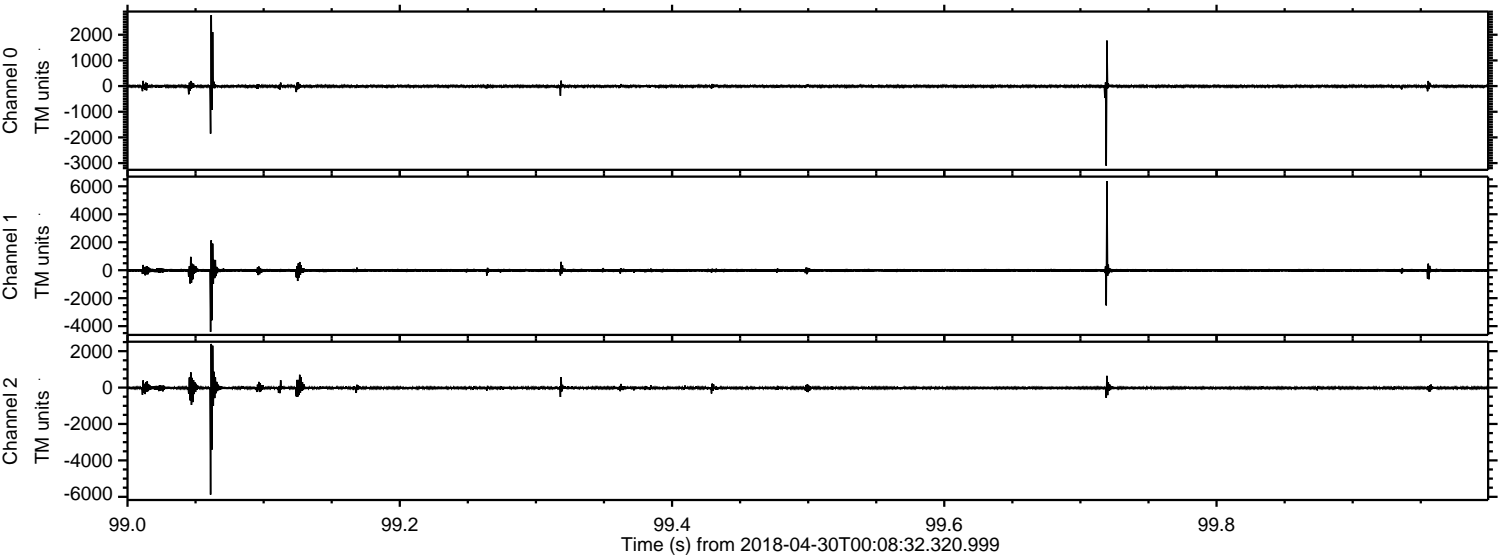
ELMAVAN 3D WAVEFORMS (Measured data sampled at 50 kHz) 51000 packets of 144 samples from 2018-04-30T00:08:32.320.999. Part 15/147

Processed Mon Apr 30 02:17:10 2018 by ELM ver.2012-10-06 from 001__elm20180430_000831__dat00.bin

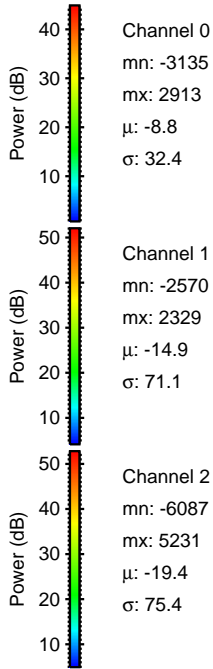
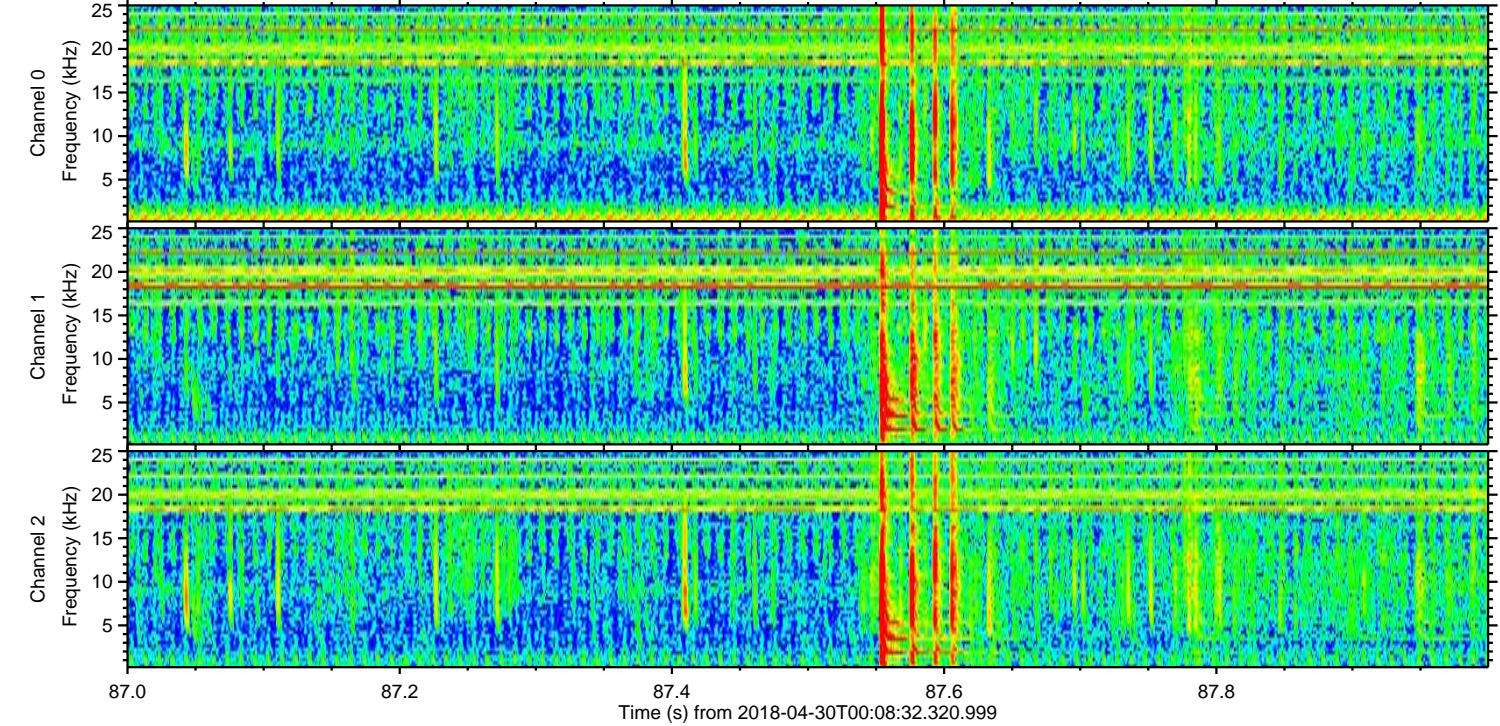
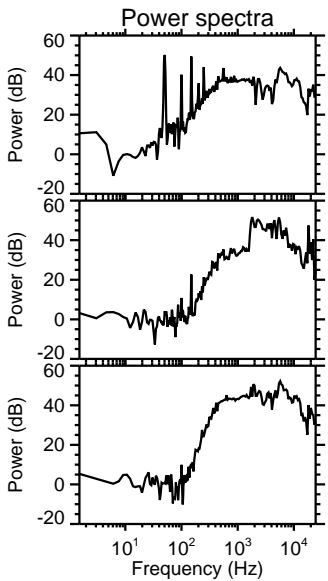
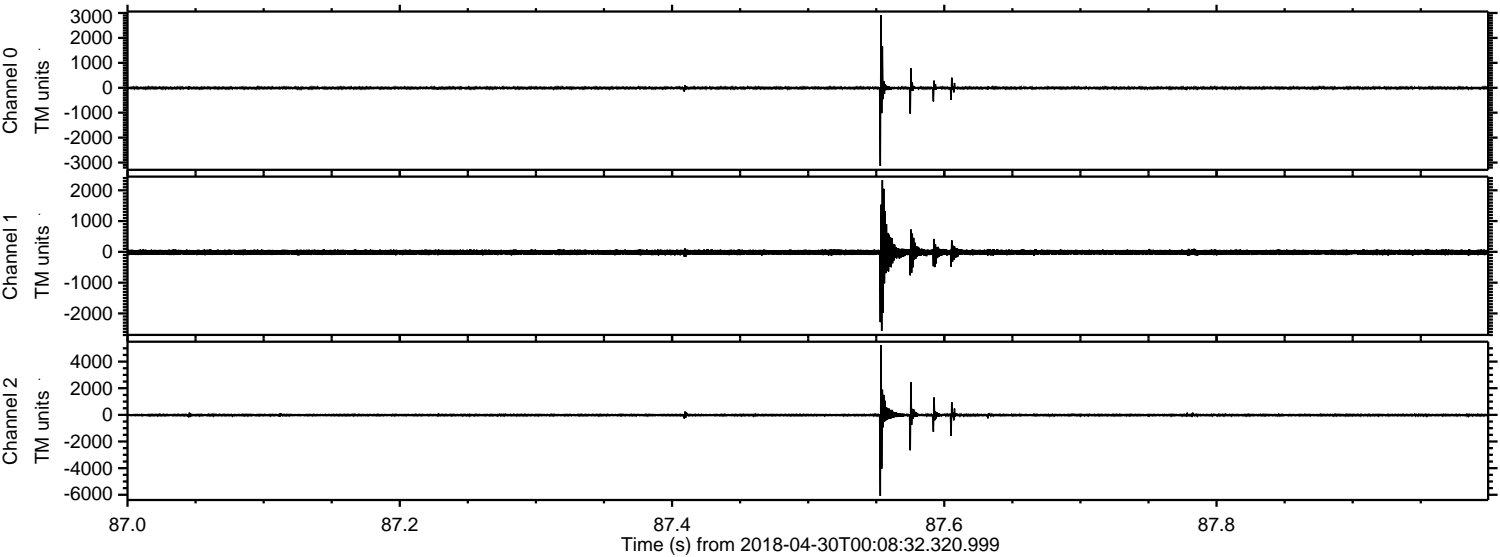


ELMAVAN 3D WAVEFORMS (Measured data sampled at 50 kHz) 51000 packets of 144 samples from 2018-04-30T00:08:32.320.999. Part 100/147

Processed Mon Apr 30 02:17:11 2018 by ELM ver.2012-10-06 from 001__elm20180430_000831__dat00.bin

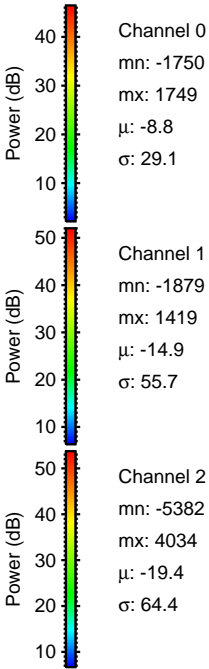
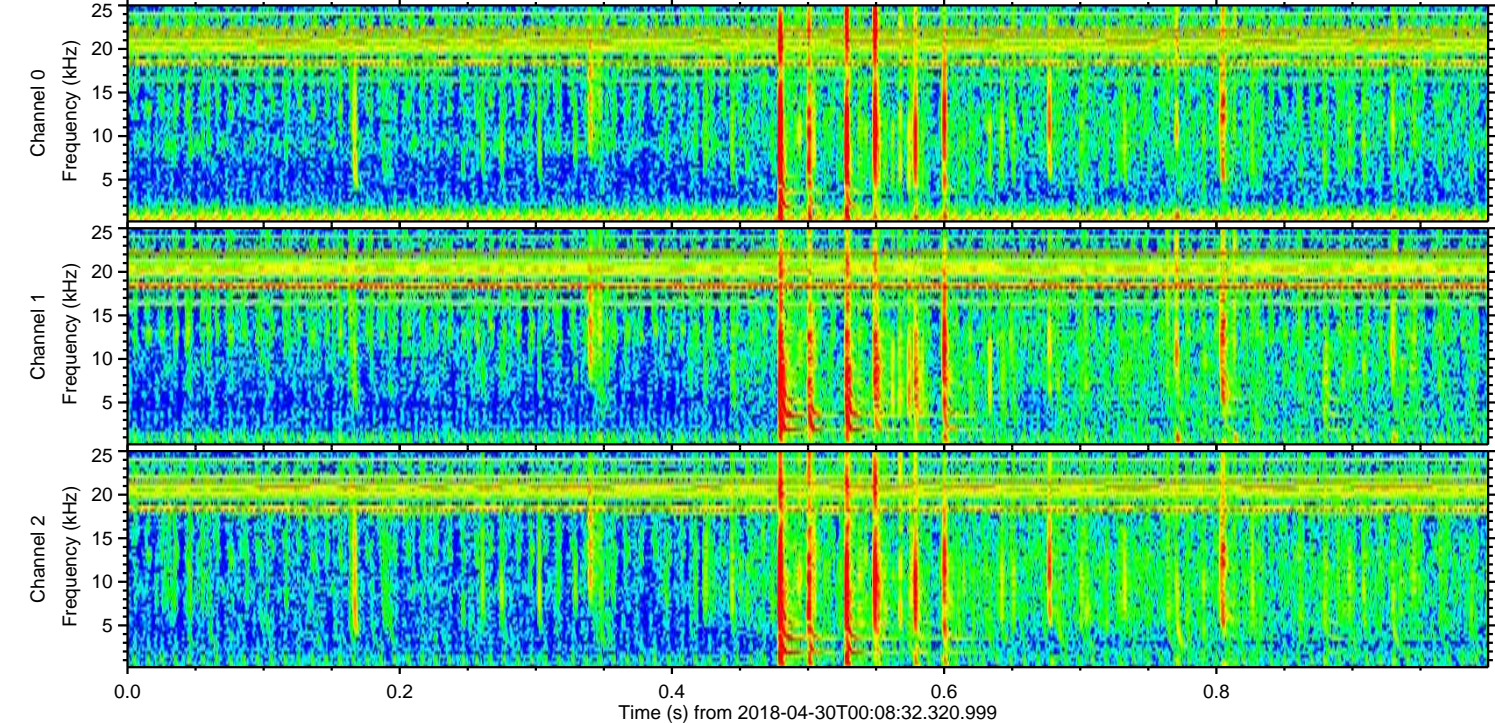
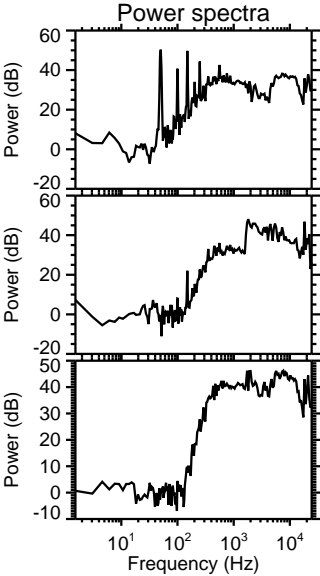
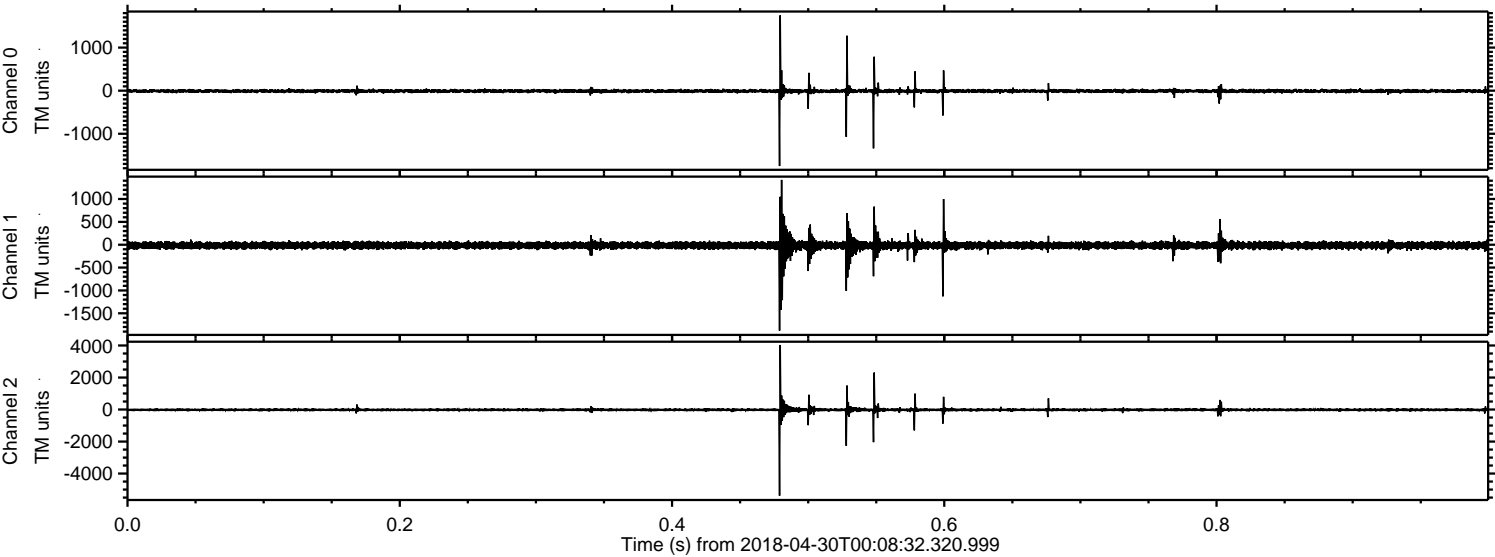


Processed Mon Apr 30 02:17:12 2018 by ELM ver.2012-10-06 from 001__elm20180430_000831__dat00.bin

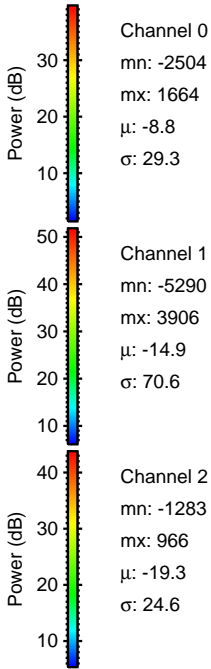
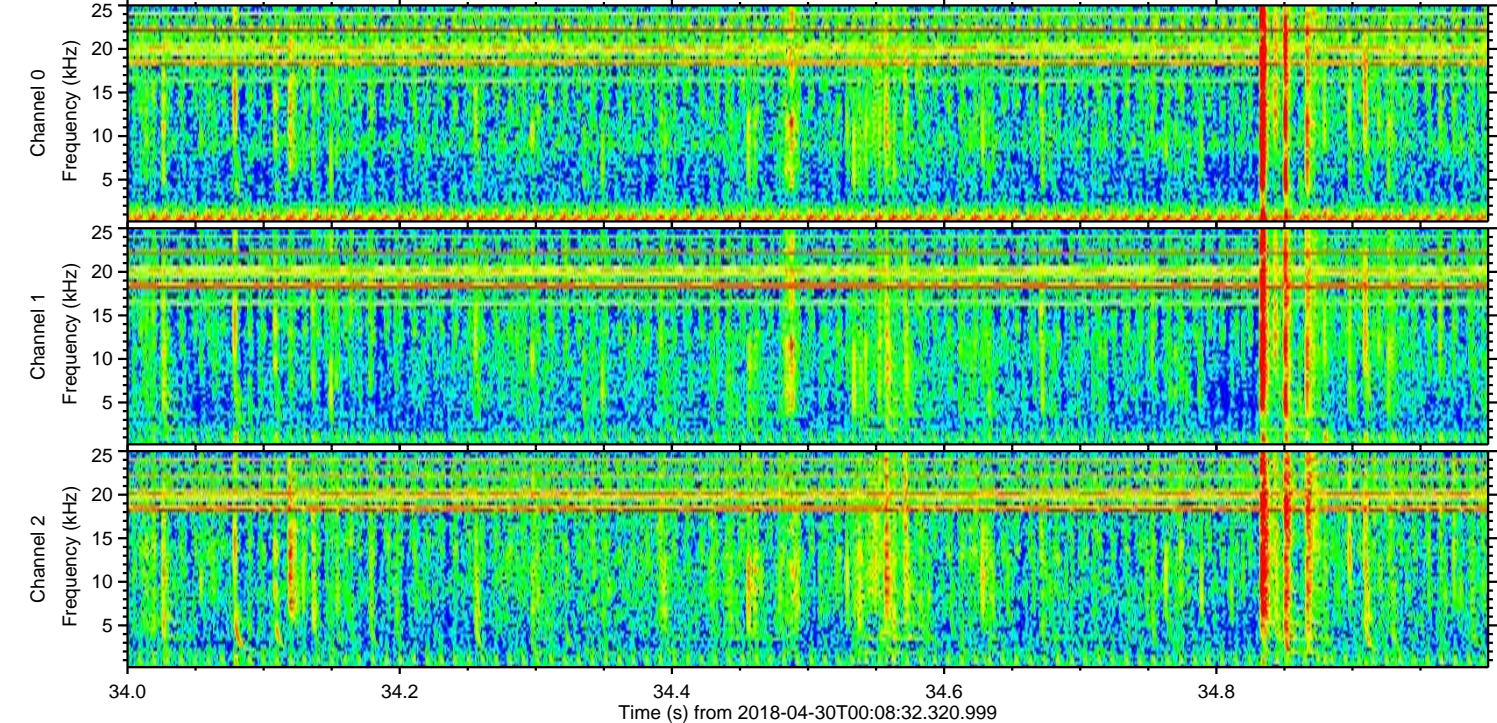
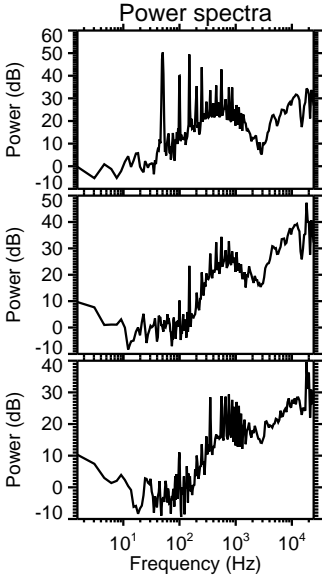
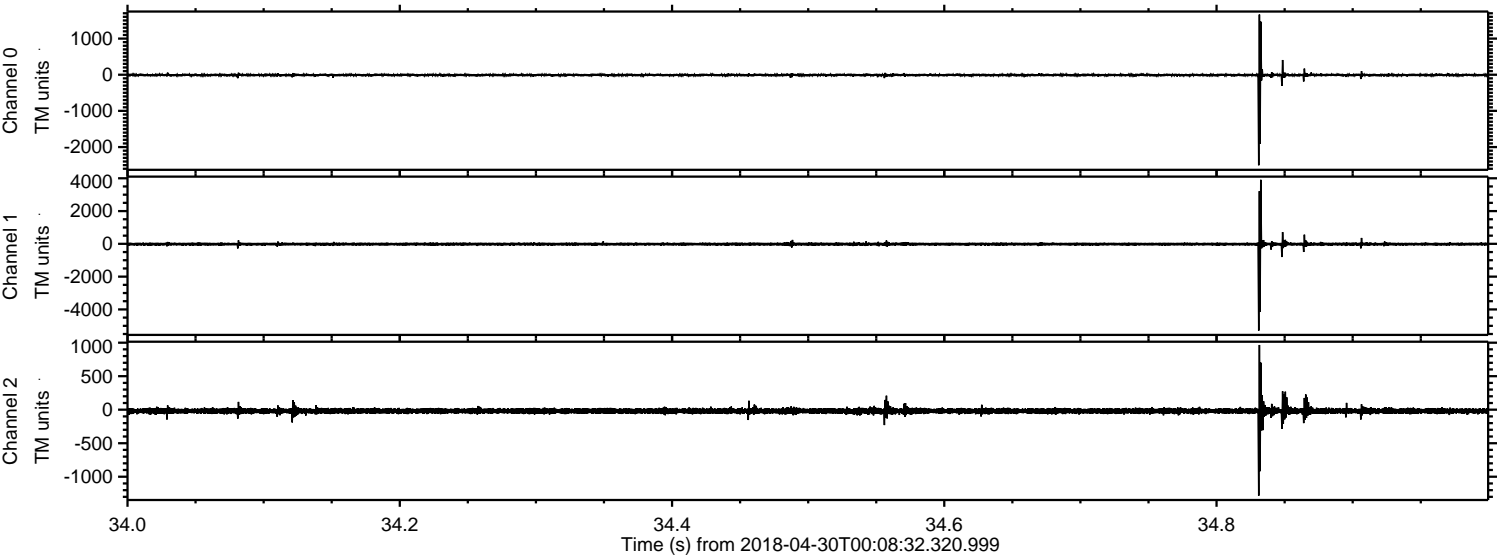


ELMAVAN 3D WAVEFORMS (Measured data sampled at 50 kHz) 51000 packets of 144 samples from 2018-04-30T00:08:32.320.999. Part 1/147

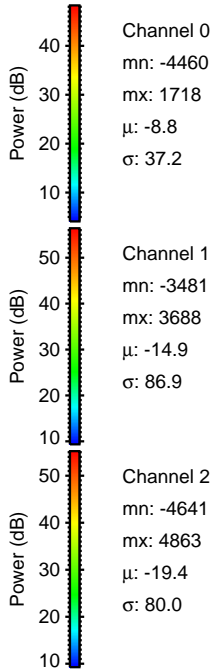
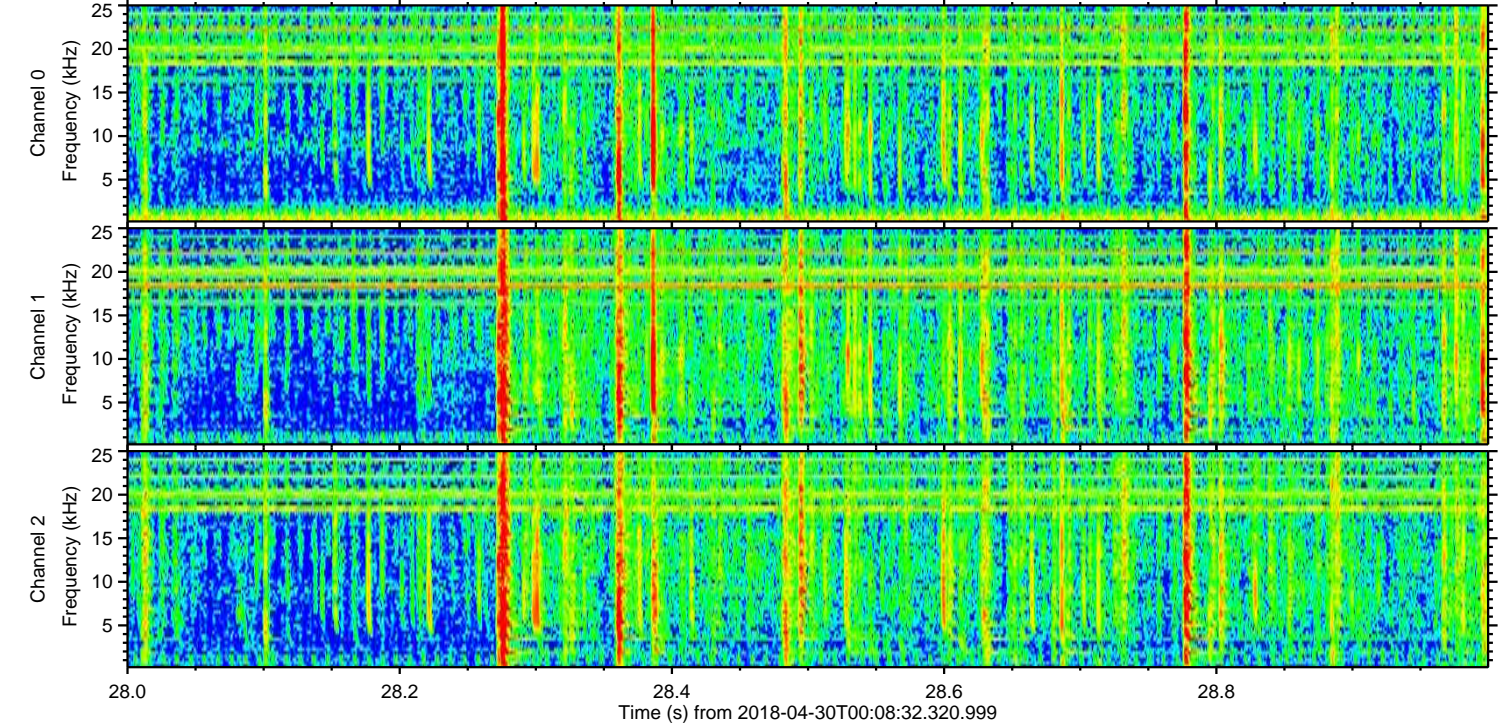
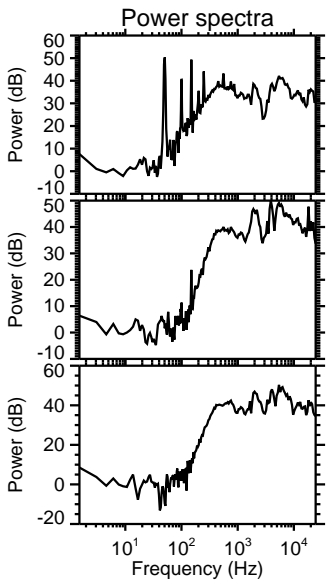
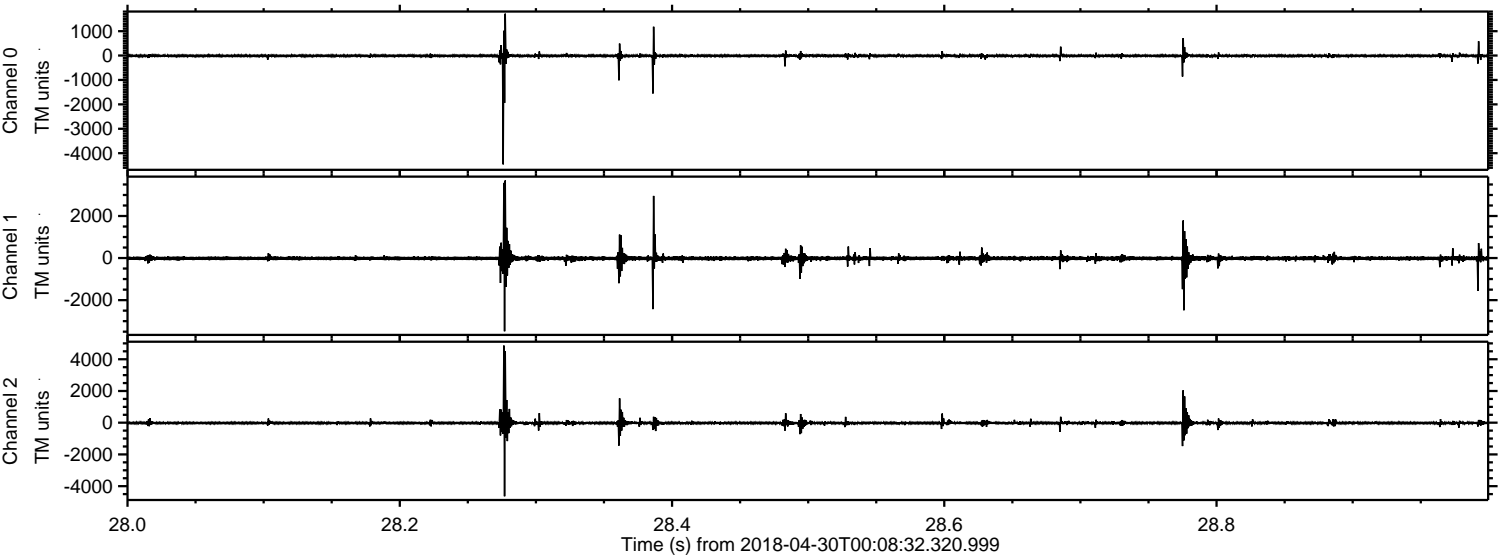
Processed Mon Apr 30 02:17:12 2018 by ELM ver.2012-10-06 from 001__elm20180430_000831__dat00.bin



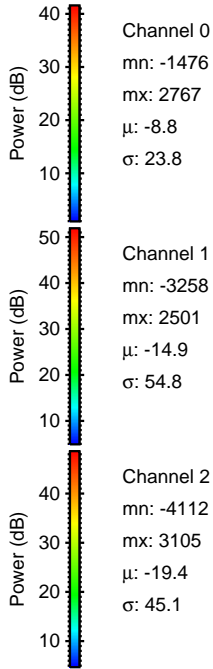
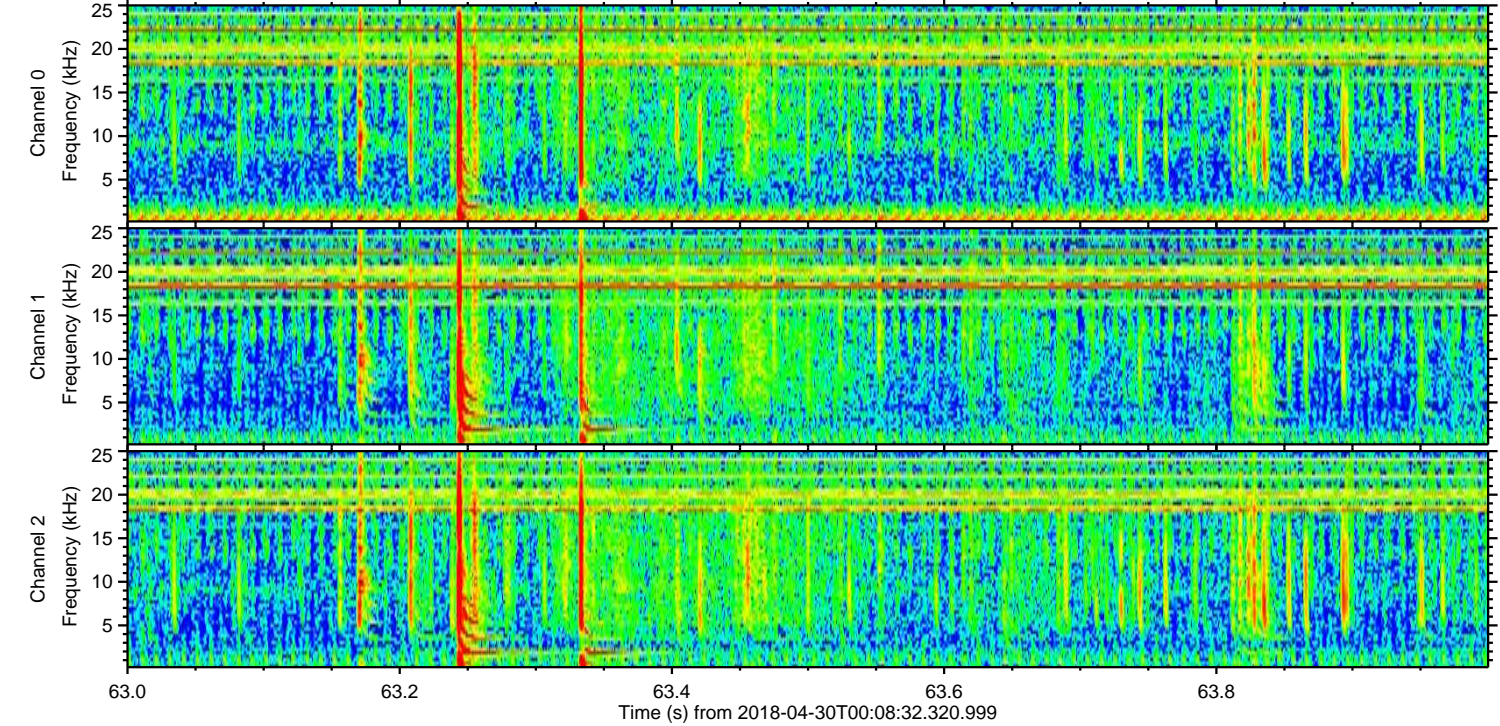
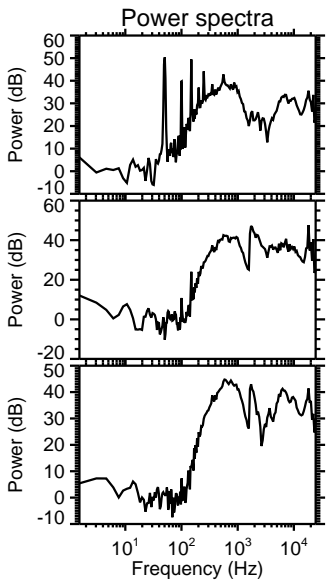
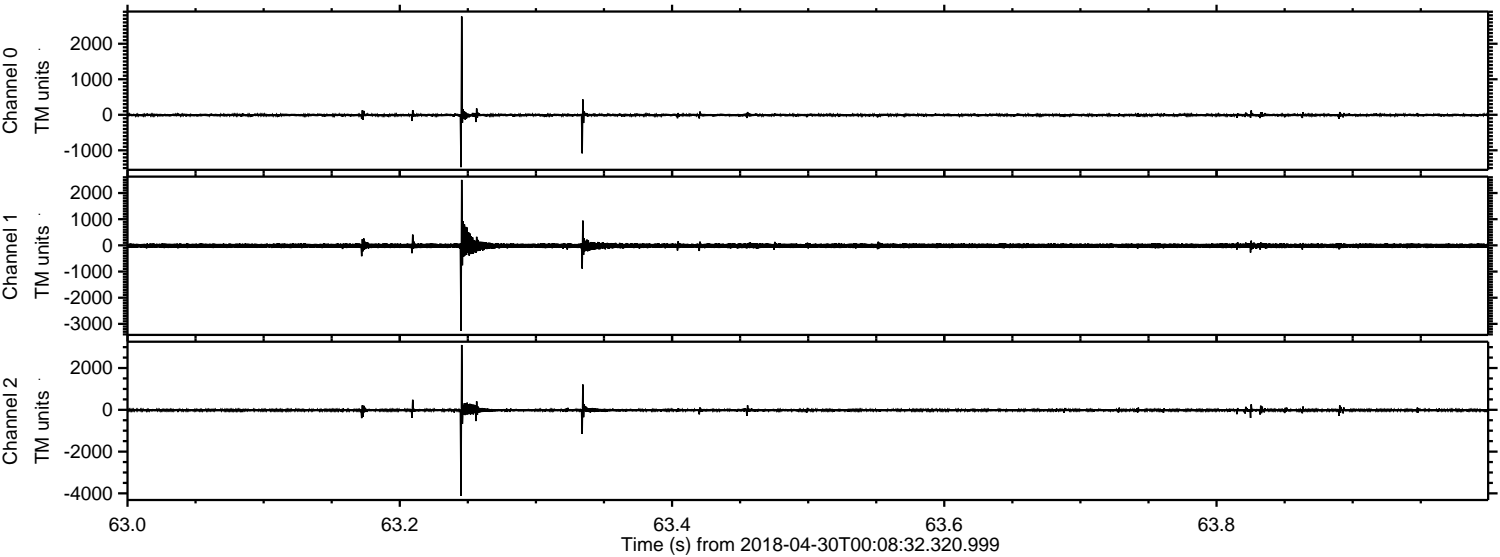
Processed Mon Apr 30 02:17:13 2018 by ELM ver.2012-10-06 from 001__elm20180430_000831__dat00.bin



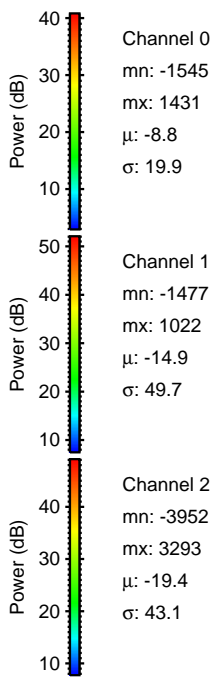
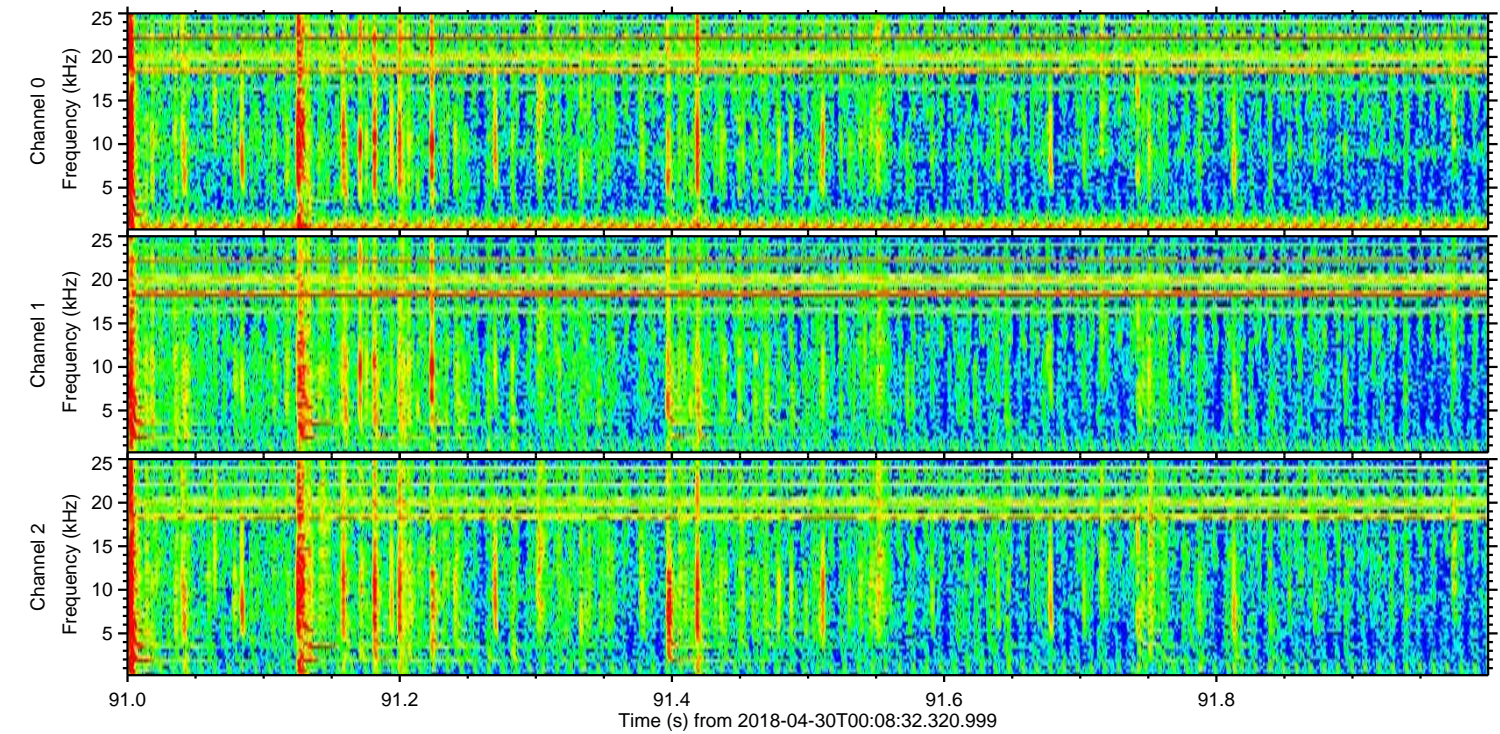
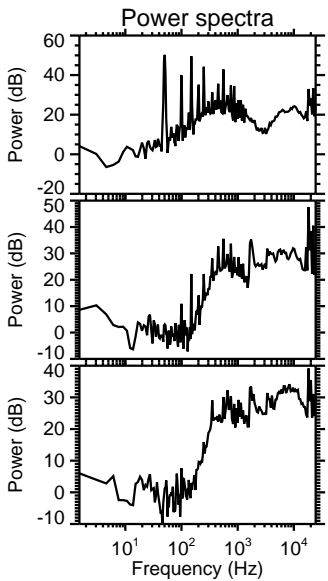
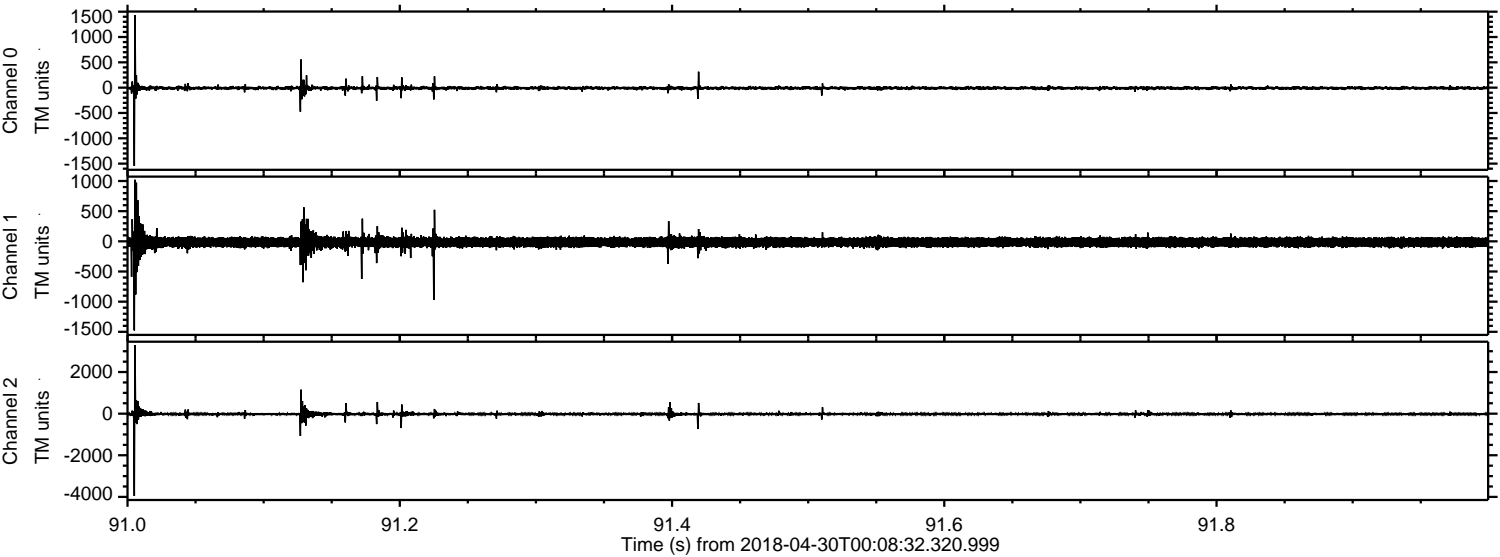
Processed Mon Apr 30 02:17:14 2018 by ELM ver.2012-10-06 from 001__elm20180430_000831__dat00.bin



Processed Mon Apr 30 02:17:14 2018 by ELM ver.2012-10-06 from 001__elm20180430_000831__dat00.bin



Processed Mon Apr 30 02:17:15 2018 by ELM ver.2012-10-06 from 001__elm20180430_000831__dat00.bin



Channel 0
mn: -1545
mx: 1431
 μ : -8.8
 σ : 19.9

Channel 1
mn: -1477
mx: 1022
 μ : -14.9
 σ : 49.7

Channel 2
mn: -3952
mx: 3293
 μ : -19.4
 σ : 43.1

Processed Mon Apr 30 02:17:16 2018 by ELM ver.2012-10-06 from 001__elm20180430_000831__dat00.bin

