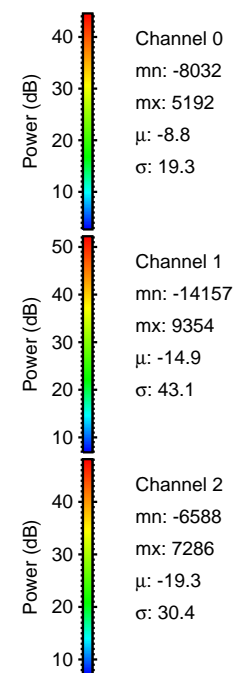
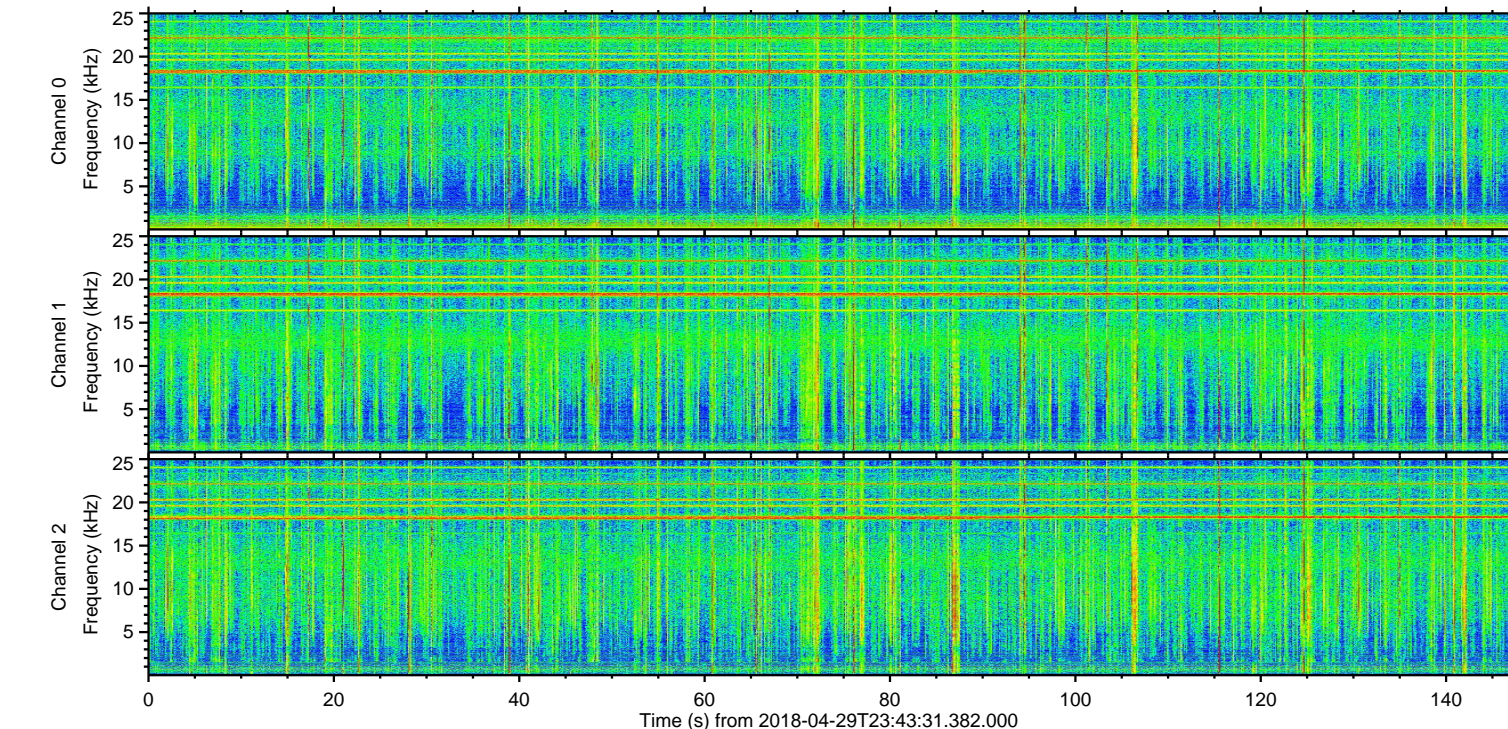
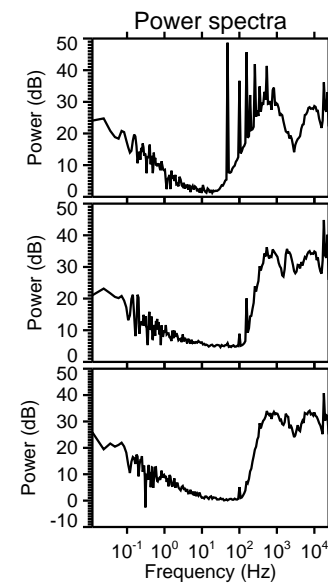
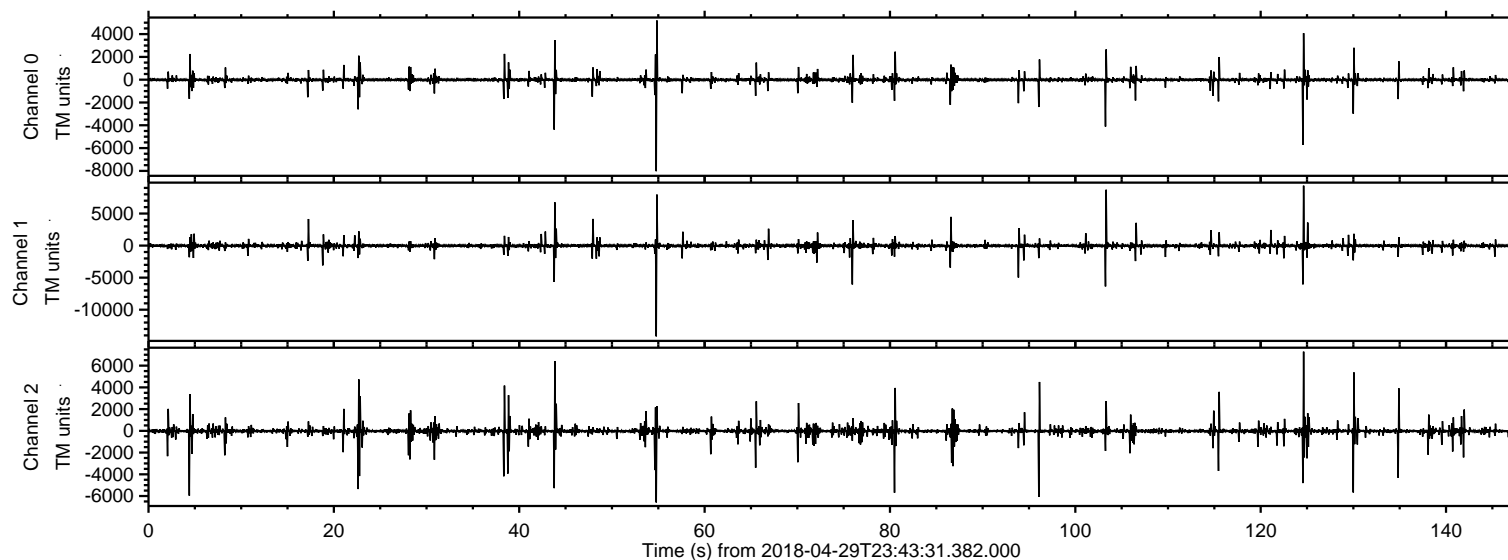
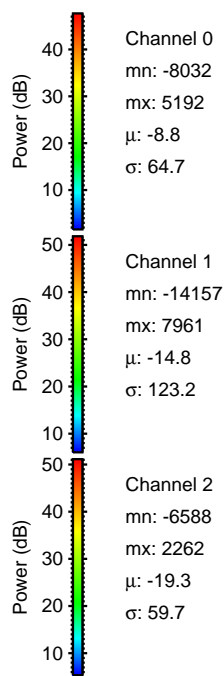
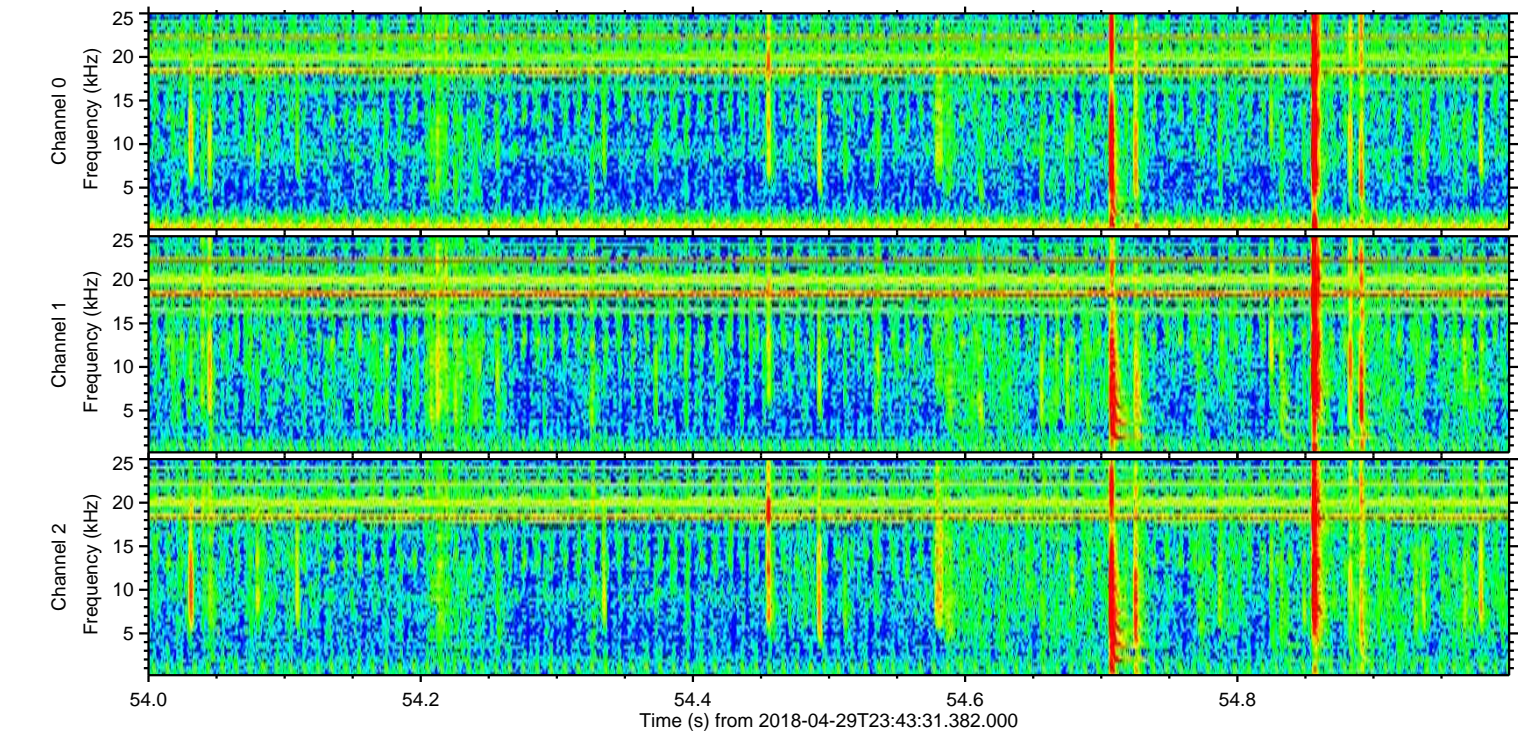
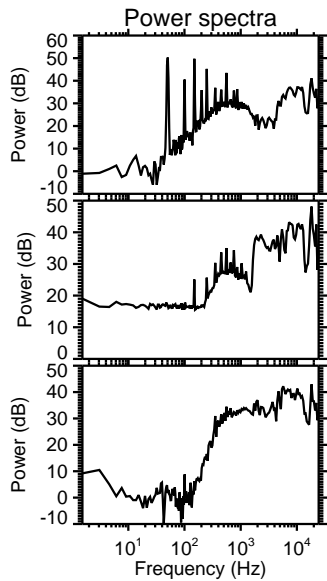
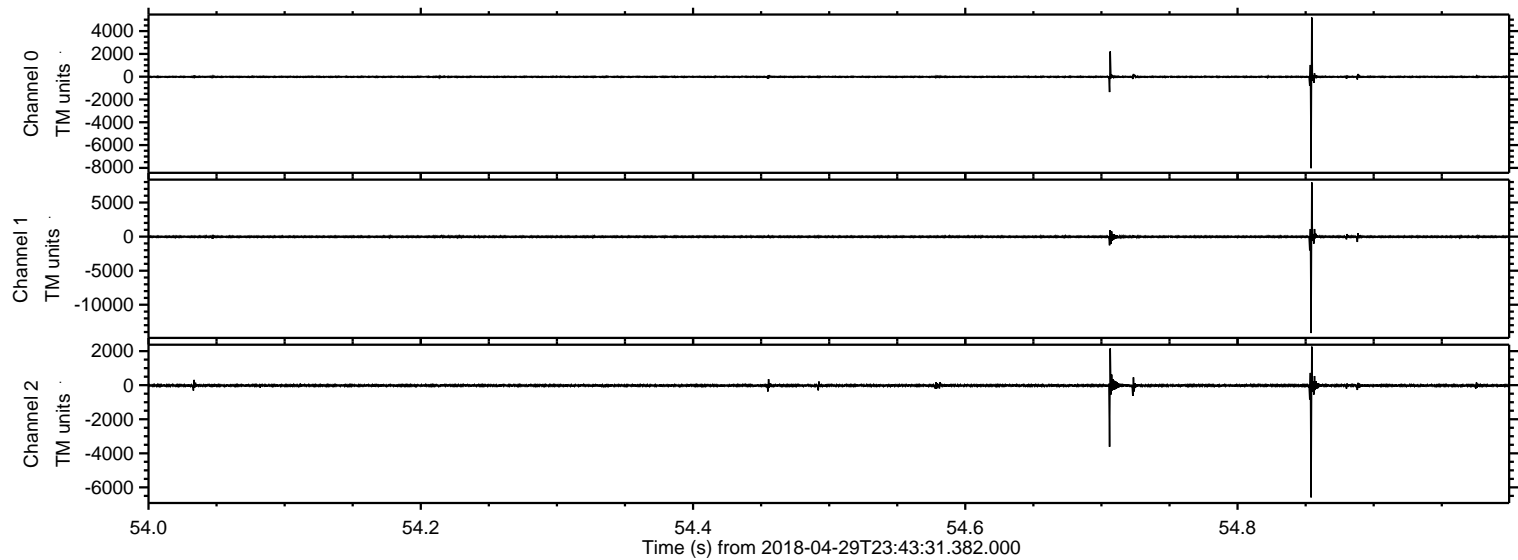


ELMAVAN 3D WAVEFORMS (Measured data sampled at 50 kHz) 51000 packets of 144 samples from 2018-04-29T23:43:31.382.000.

Processed Mon Apr 30 01:52:00 2018 by ELM ver.2012-10-06 from 001__elm20180429_234330__dat00.bin

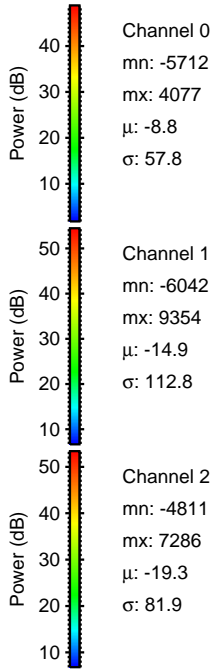
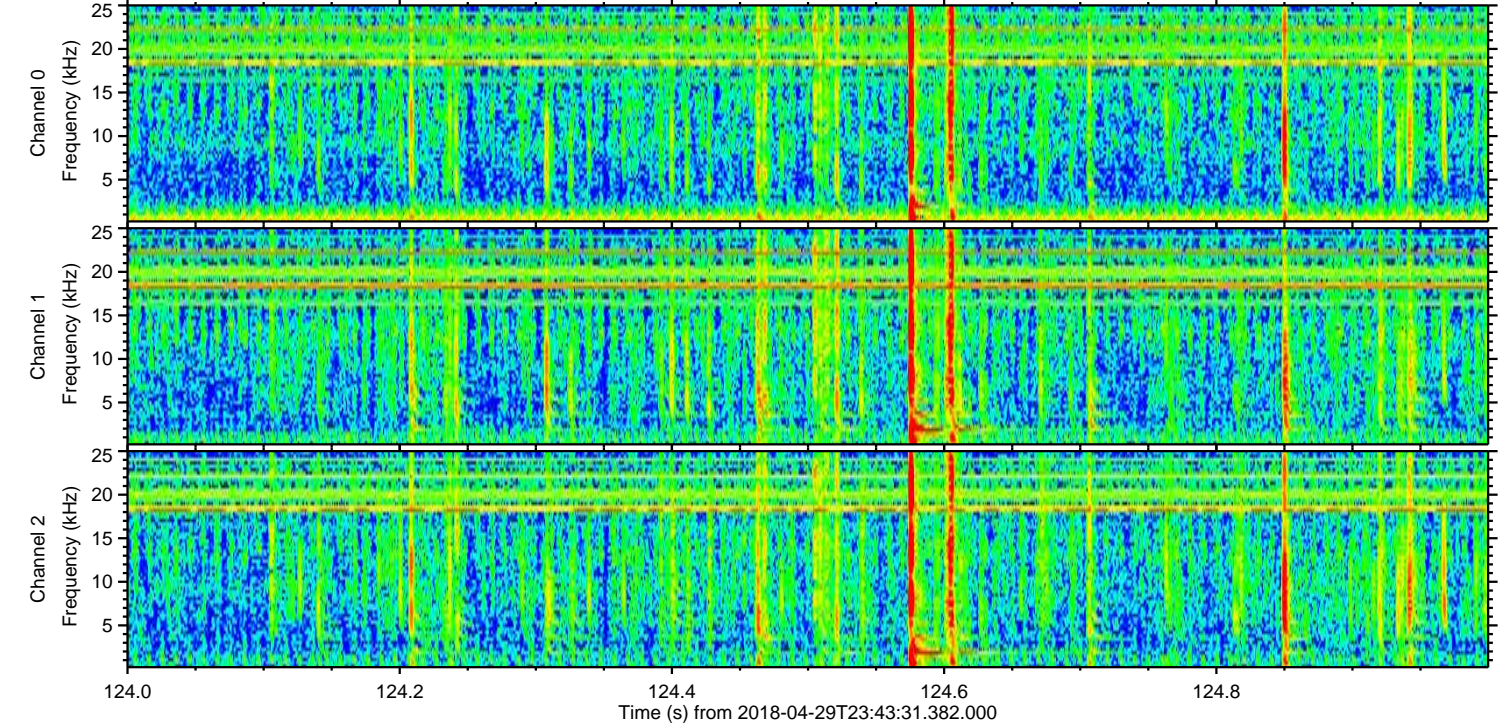
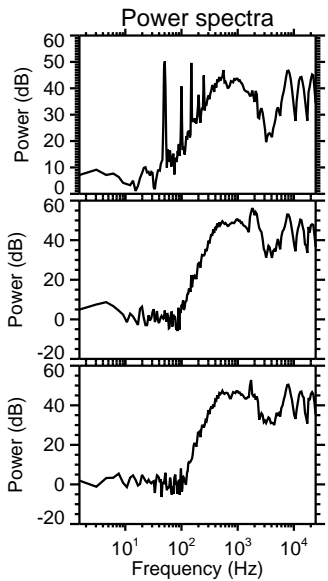
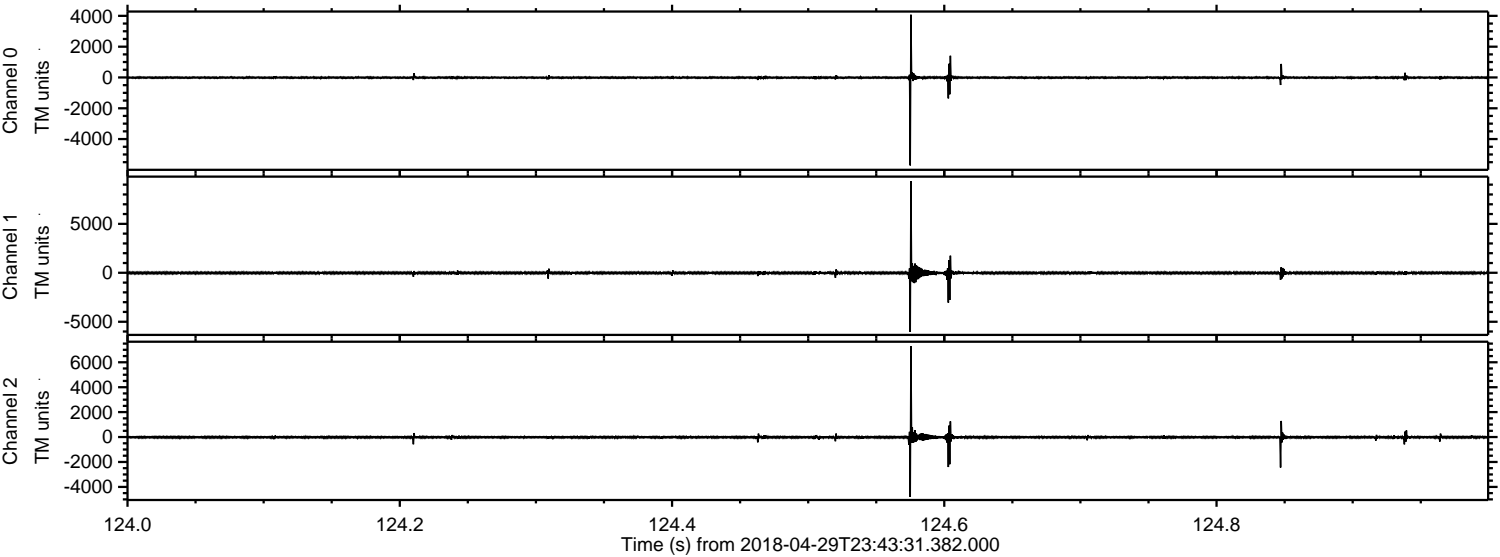


Processed Mon Apr 30 01:52:06 2018 by ELM ver.2012-10-06 from 001__elm20180429_234330__dat00.bin



ELMAVAN 3D WAVEFORMS (Measured data sampled at 50 kHz) 51000 packets of 144 samples from 2018-04-29T23:43:31.382.000. Part 125/147

Processed Mon Apr 30 01:52:07 2018 by ELM ver.2012-10-06 from 001__elm20180429_234330__dat00.bin



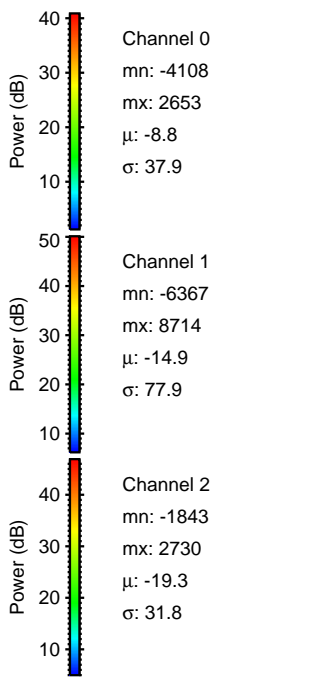
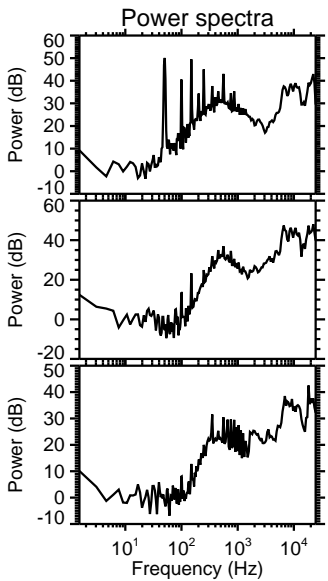
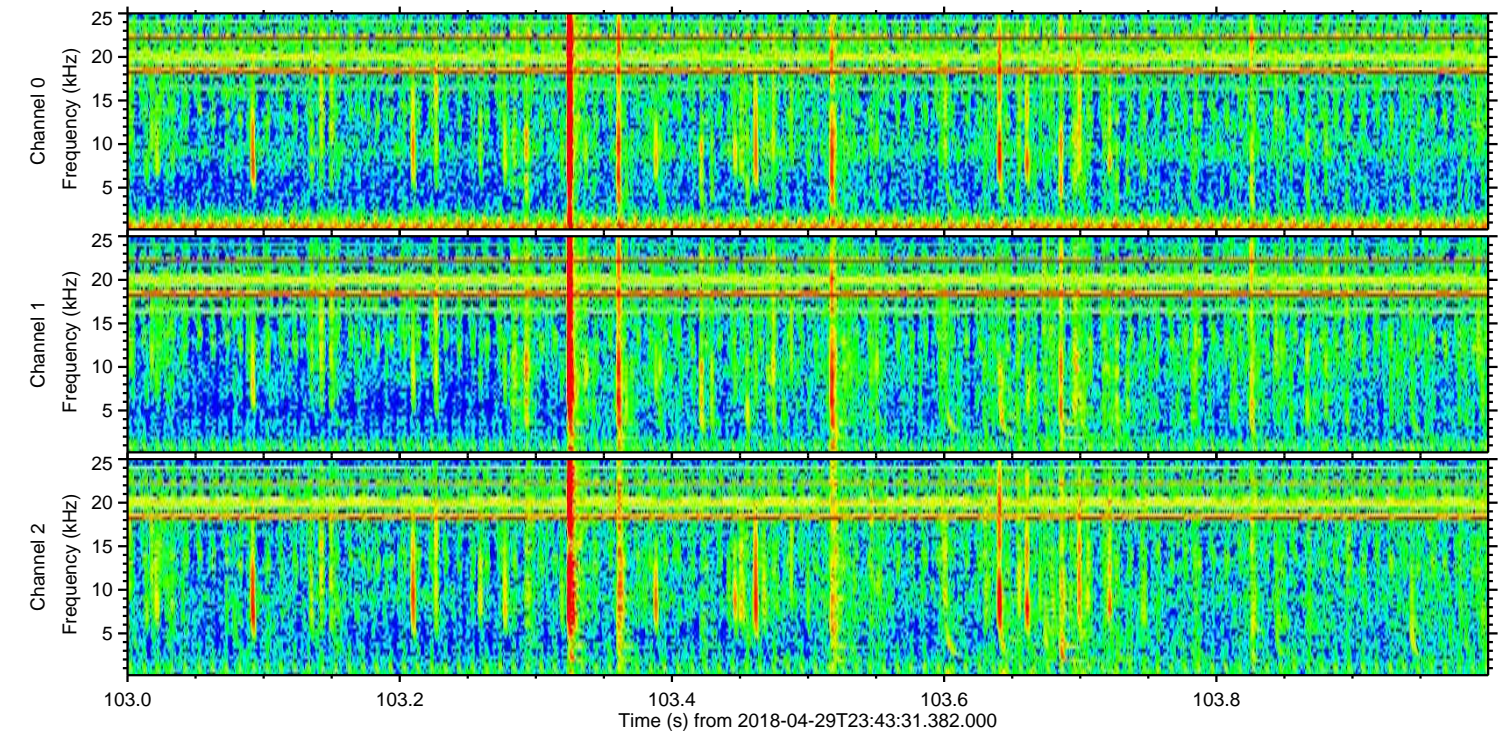
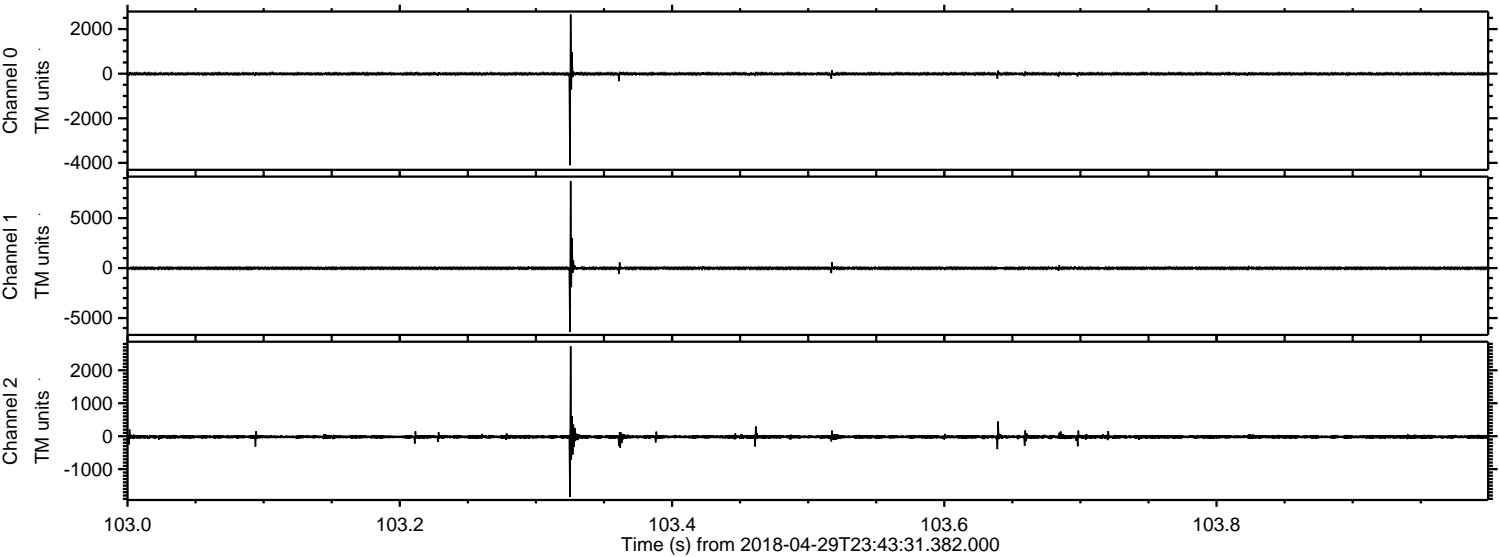
Channel 0
mn: -5712
mx: 4077
 μ : -8.8
 σ : 57.8

Channel 1
mn: -6042
mx: 9354
 μ : -14.9
 σ : 112.8

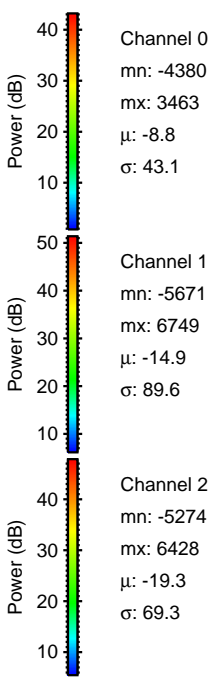
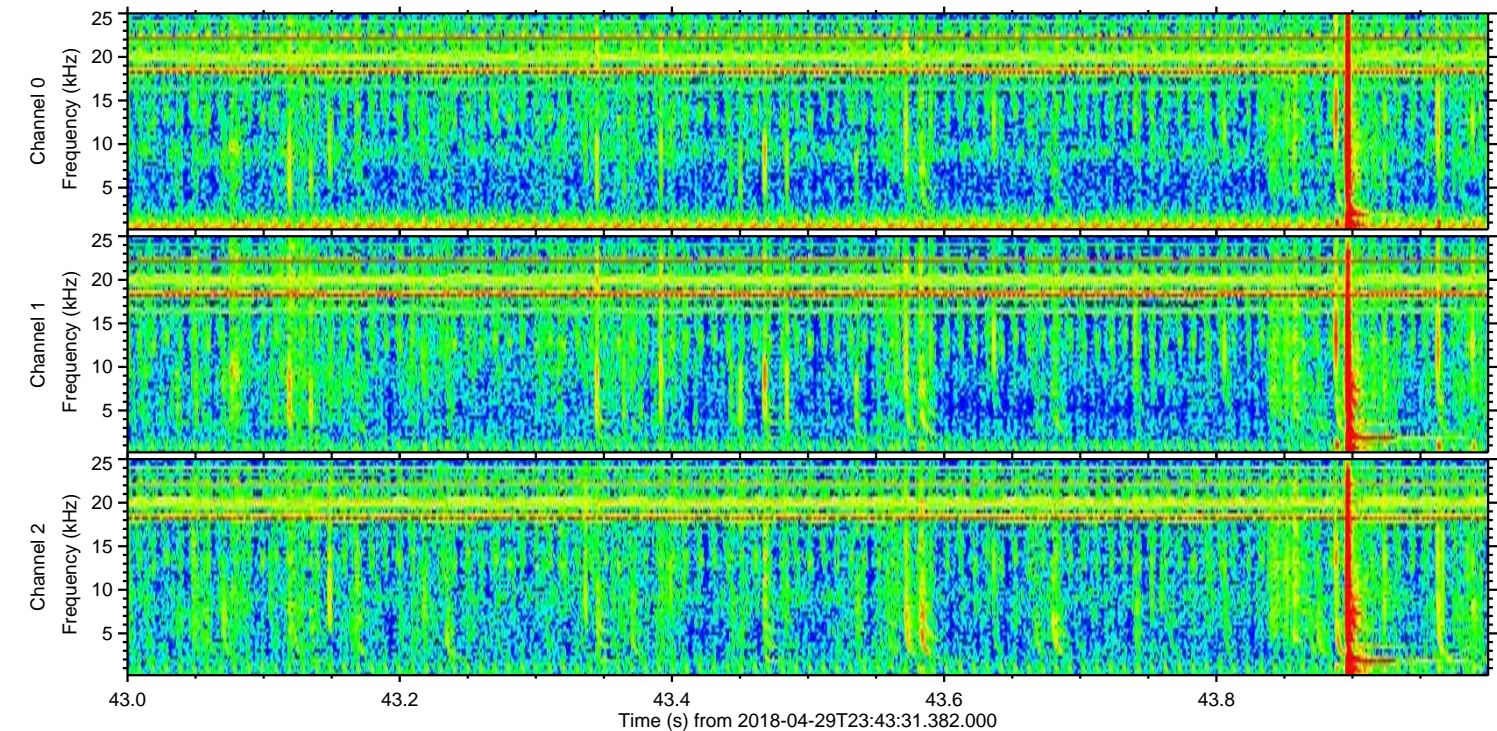
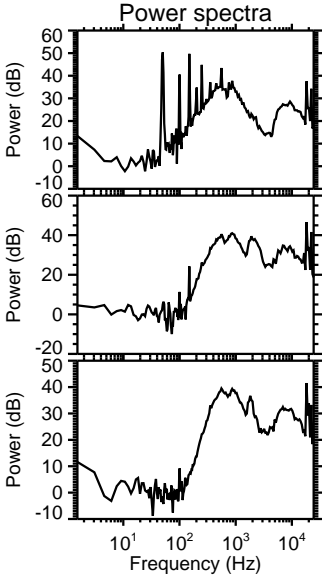
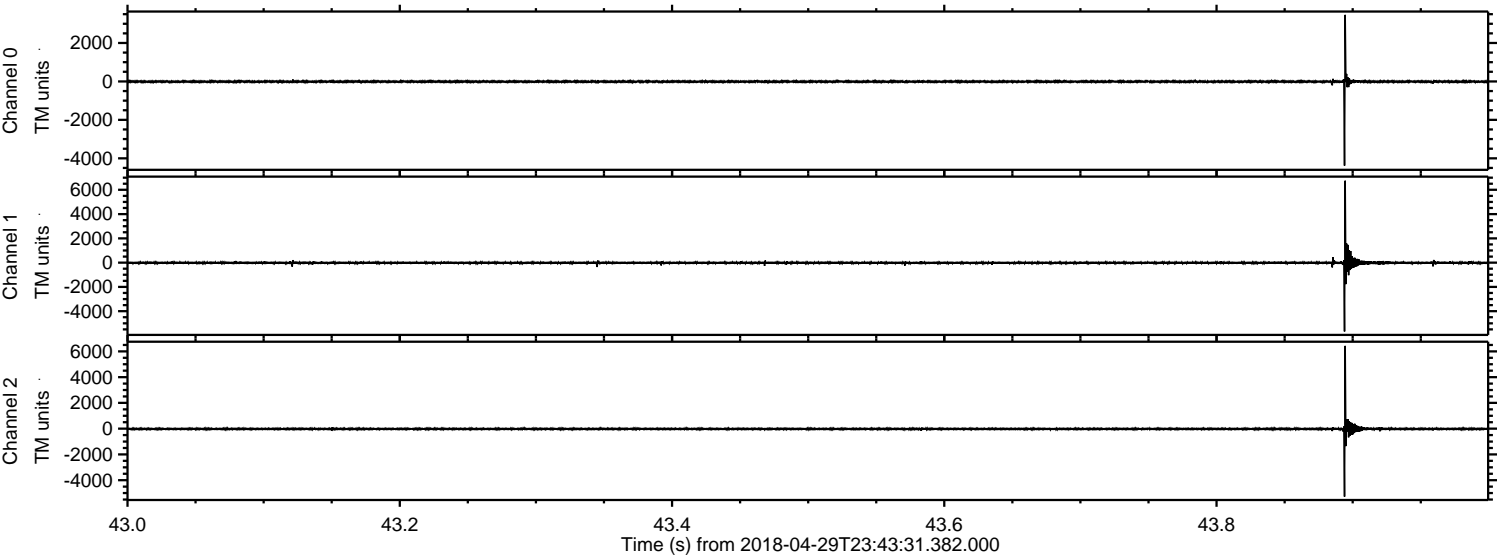
Channel 2
mn: -4811
mx: 7286
 μ : -19.3
 σ : 81.9

ELMAVAN 3D WAVEFORMS (Measured data sampled at 50 kHz) 51000 packets of 144 samples from 2018-04-29T23:43:31.382.000. Part 104/147

Processed Mon Apr 30 01:52:07 2018 by ELM ver.2012-10-06 from 001__elm20180429_234330__dat00.bin



Processed Mon Apr 30 01:52:08 2018 by ELM ver.2012-10-06 from 001__elm20180429_234330__dat00.bin

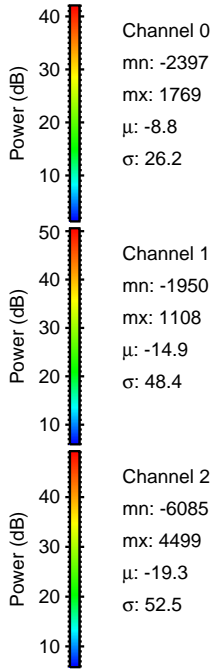
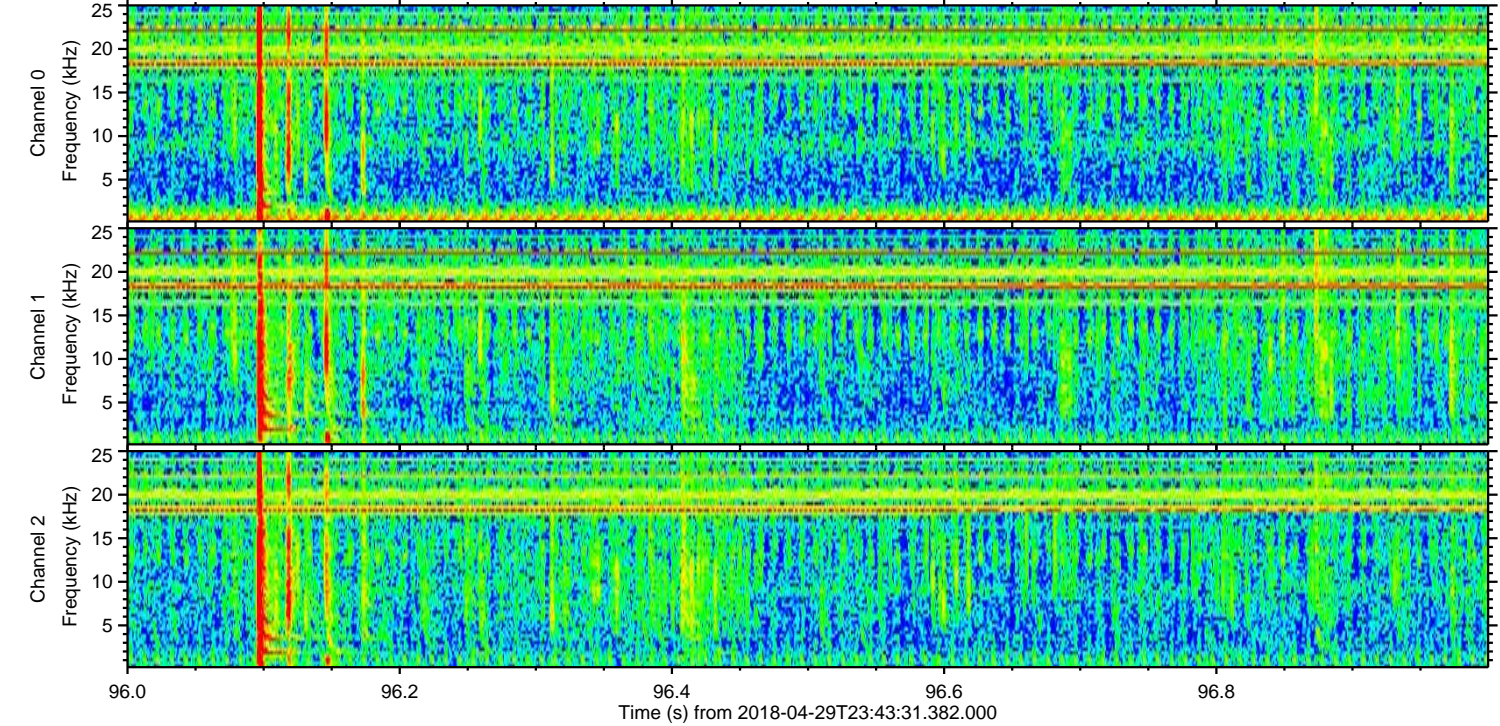
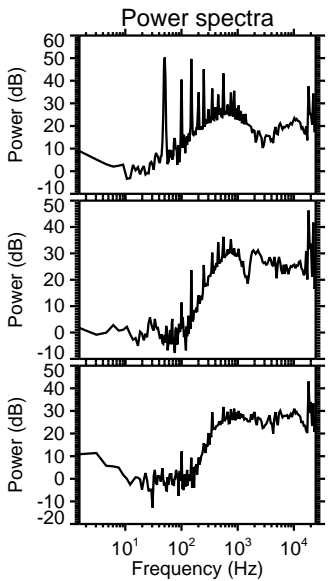
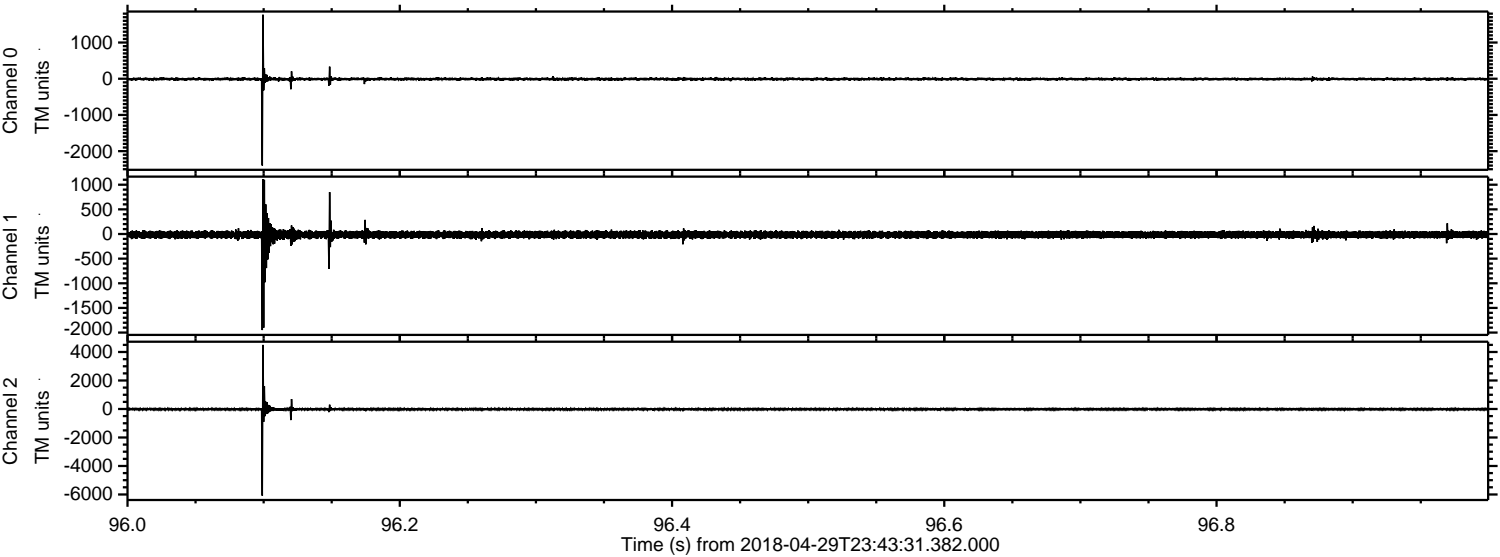


Channel 0
mn: -4380
mx: 3463
 μ : -8.8
 σ : 43.1

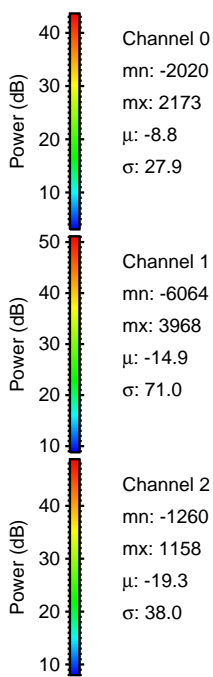
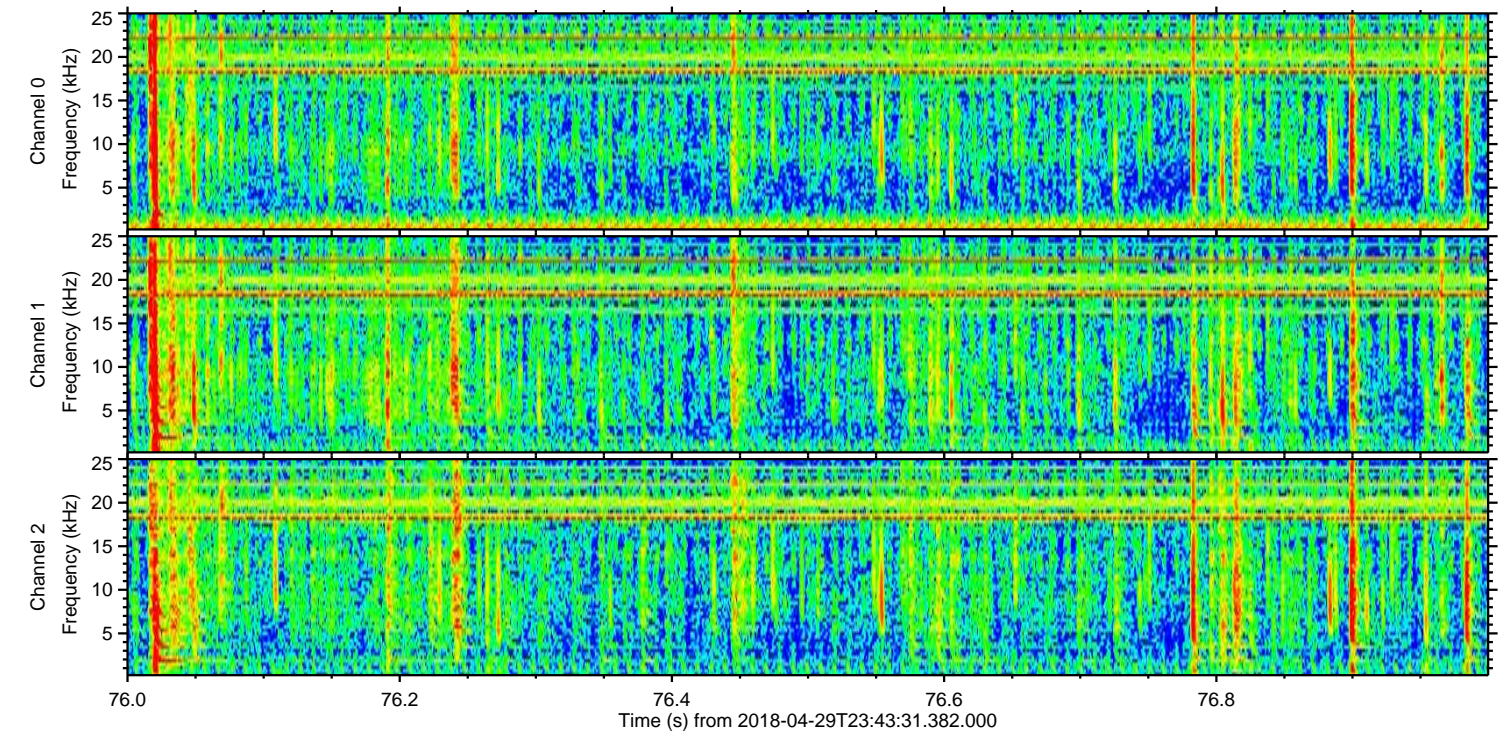
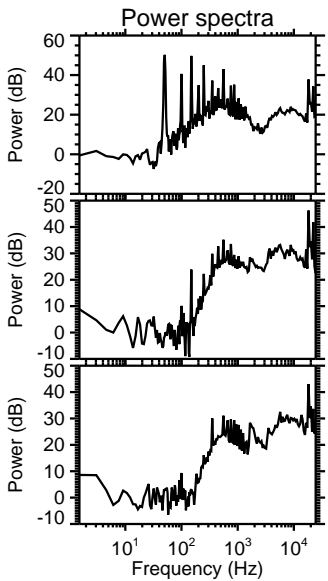
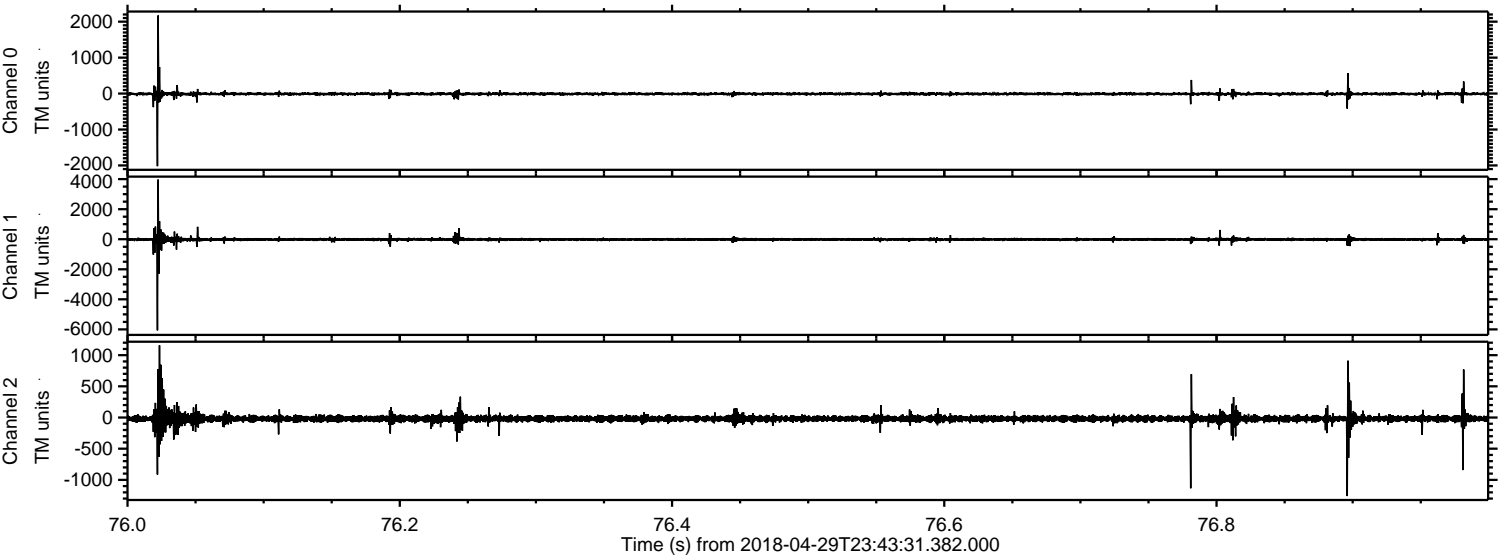
Channel 1
mn: -5671
mx: 6749
 μ : -14.9
 σ : 89.6

Channel 2
mn: -5274
mx: 6428
 μ : -19.3
 σ : 69.3

Processed Mon Apr 30 01:52:09 2018 by ELM ver.2012-10-06 from 001__elm20180429_234330__dat00.bin



Processed Mon Apr 30 01:52:09 2018 by ELM ver.2012-10-06 from 001__elm20180429_234330__dat00.bin

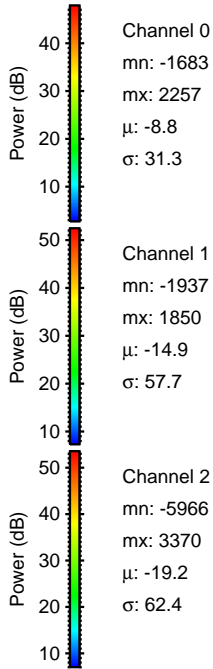
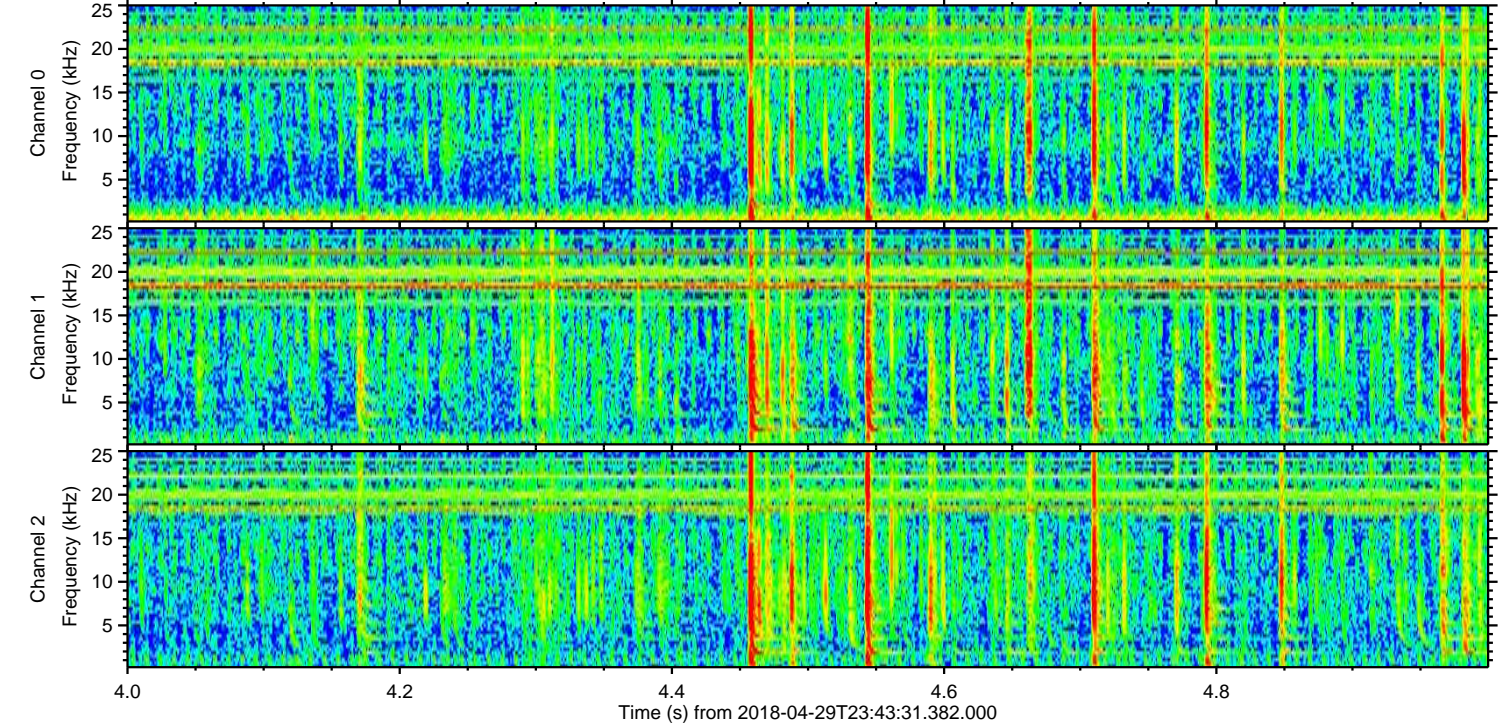
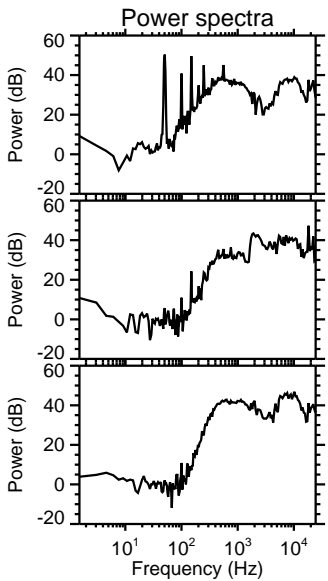
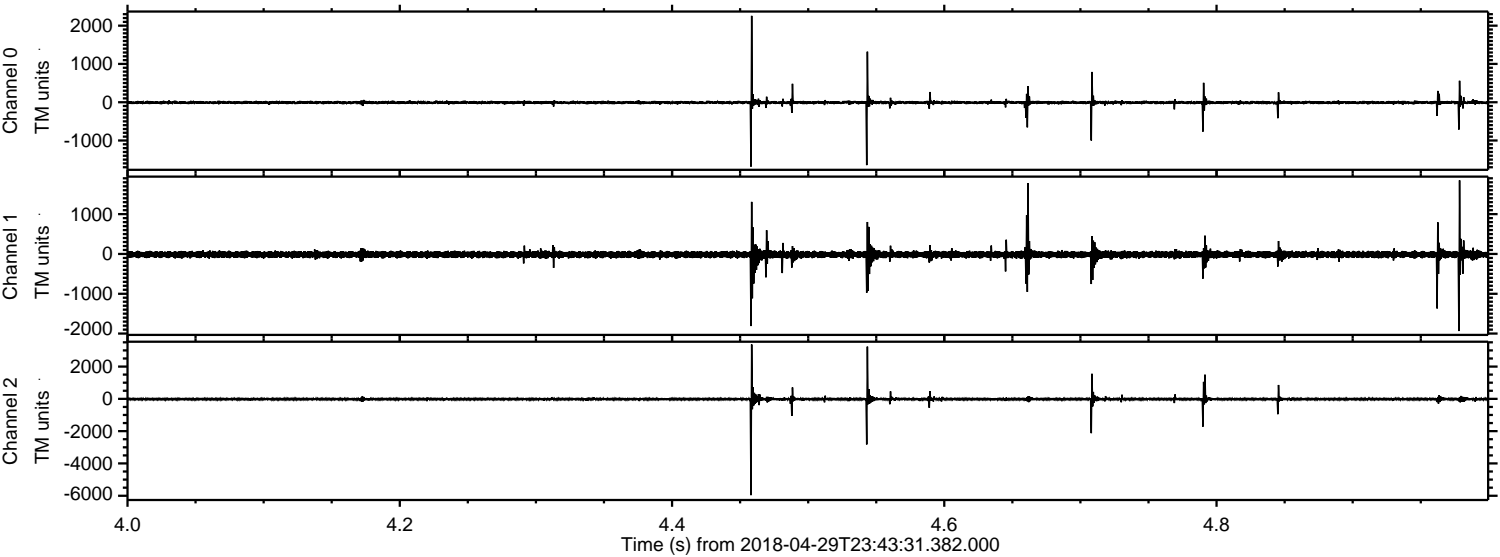


Channel 0
mn: -2020
mx: 2173
 μ : -8.8
 σ : 27.9

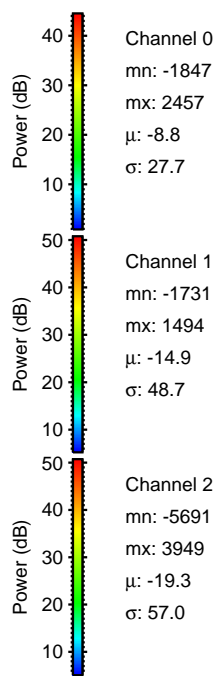
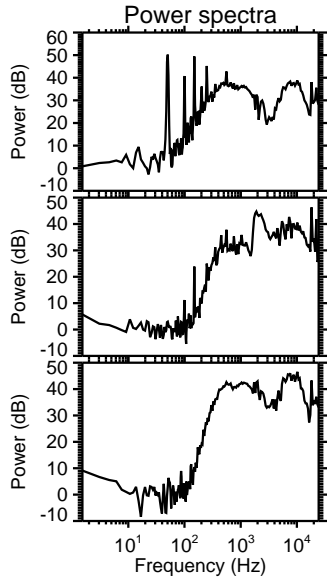
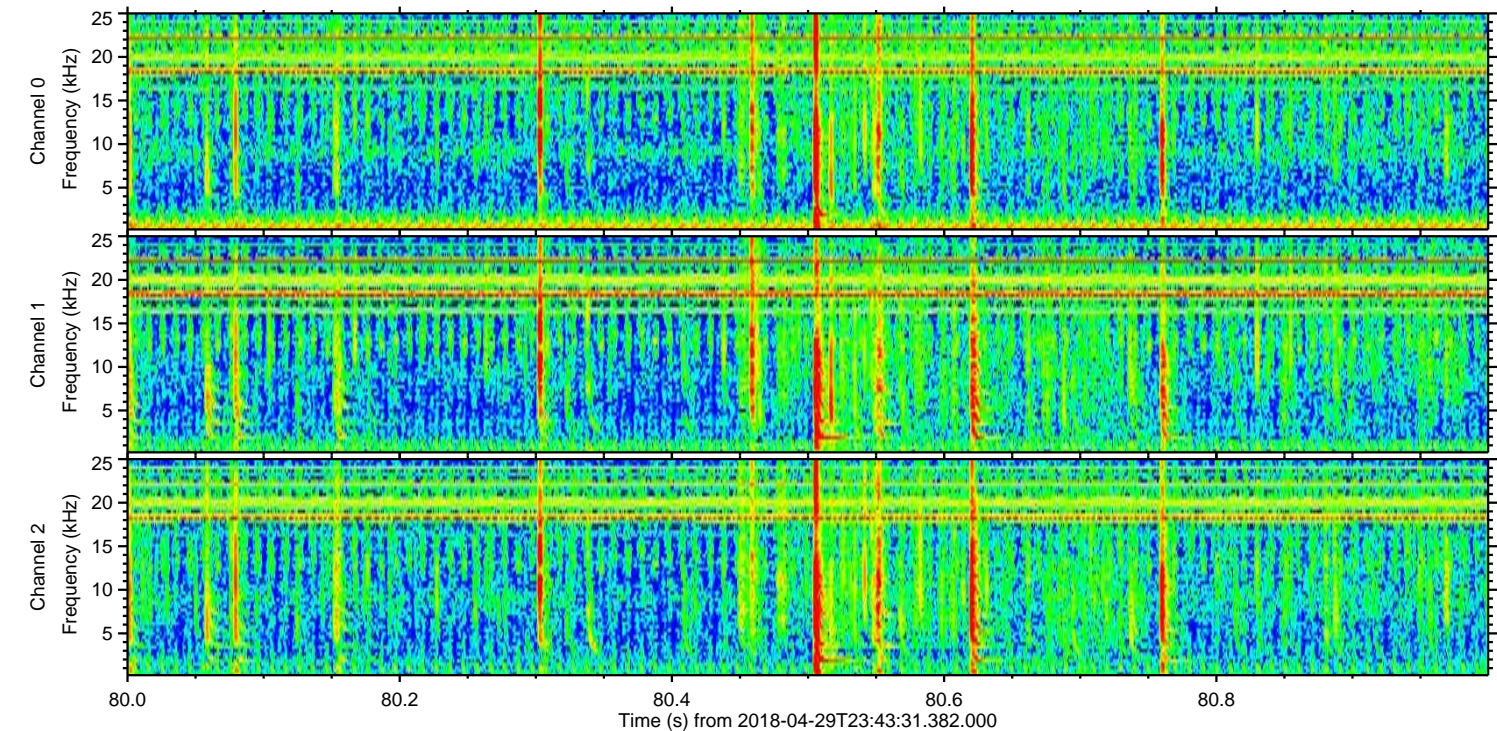
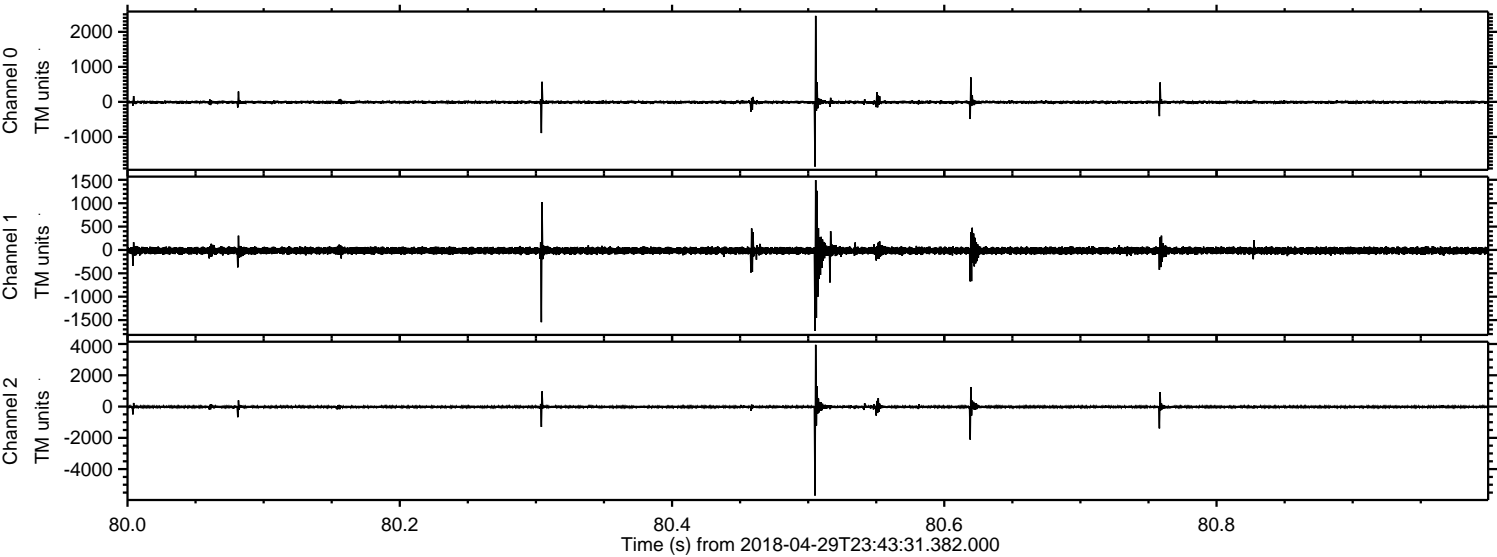
Channel 1
mn: -6064
mx: 3968
 μ : -14.9
 σ : 71.0

Channel 2
mn: -1260
mx: 1158
 μ : -19.3
 σ : 38.0

Processed Mon Apr 30 01:52:10 2018 by ELM ver.2012-10-06 from 001__elm20180429_234330__dat00.bin



Processed Mon Apr 30 01:52:11 2018 by ELM ver.2012-10-06 from 001__elm20180429_234330__dat00.bin



ELMAVAN 3D WAVEFORMS (Measured data sampled at 50 kHz) 51000 packets of 144 samples from 2018-04-29T23:43:31.382.000. Part 131/147

Processed Mon Apr 30 01:52:11 2018 by ELM ver.2012-10-06 from 001__elm20180429_234330__dat00.bin

