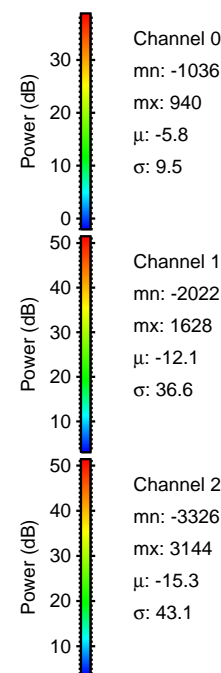
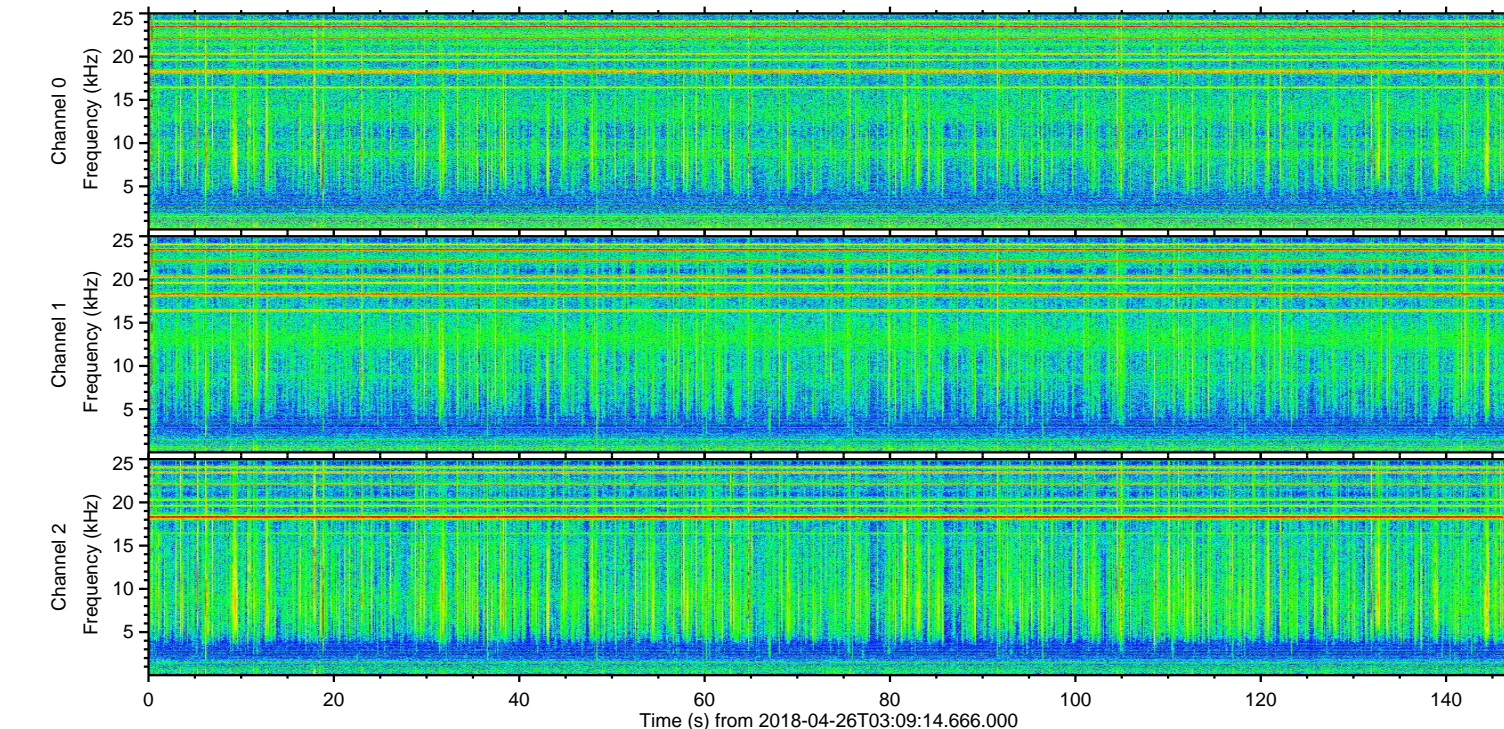
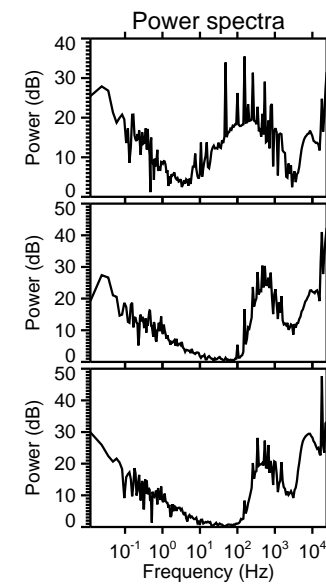
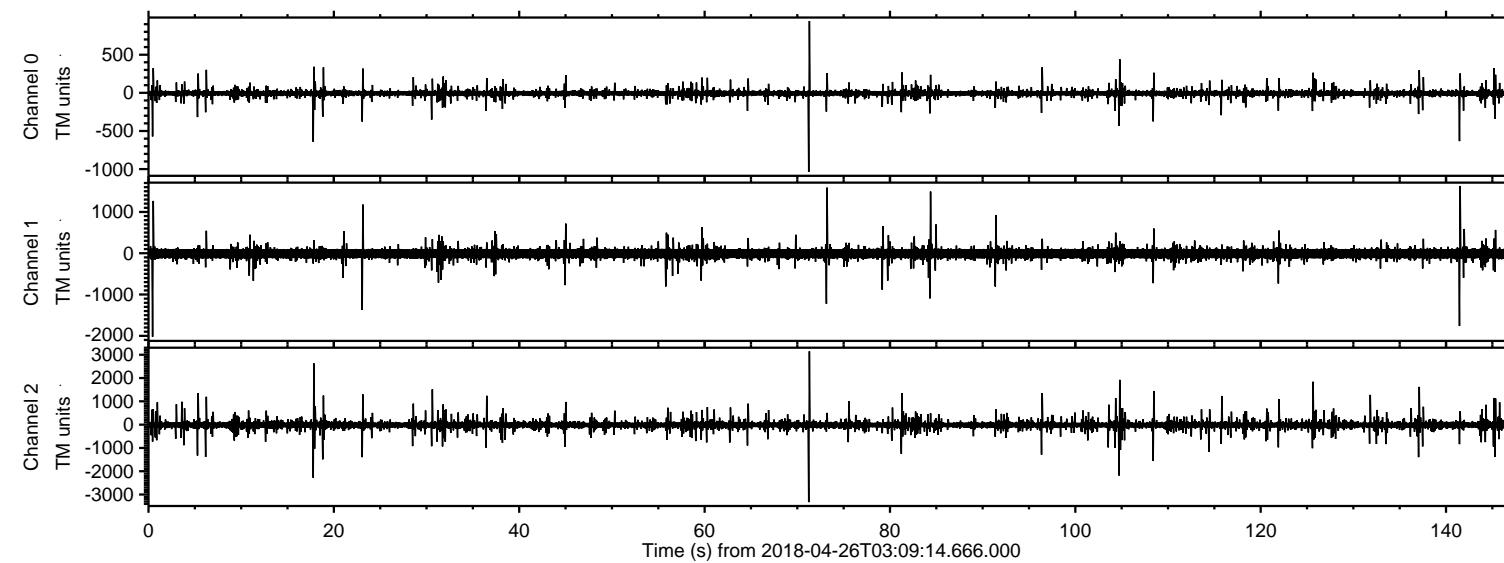
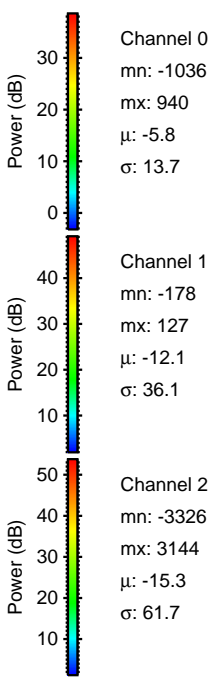
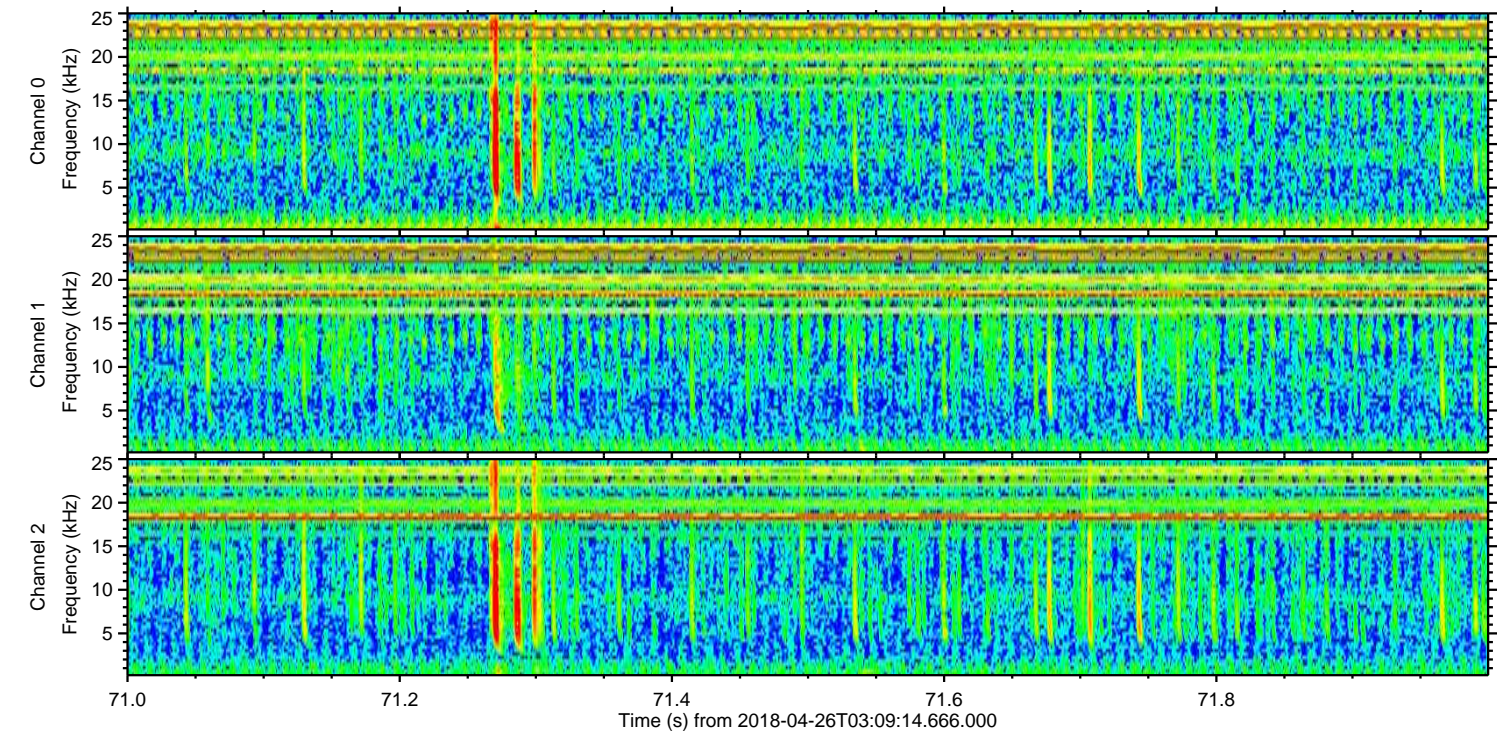
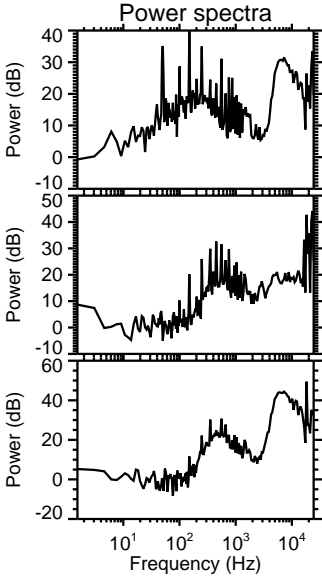
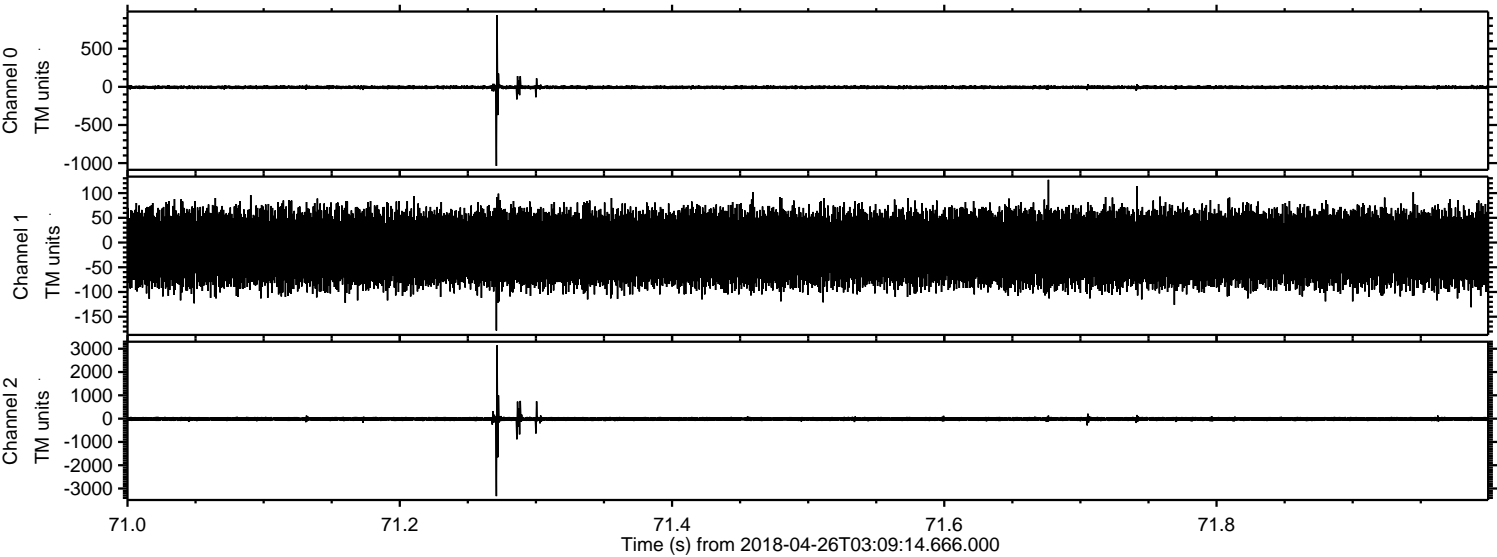


ELMAVAN 3D WAVEFORMS (Measured data sampled at 50 kHz) 51000 packets of 144 samples from 2018-04-26T03:09:14.666.000.

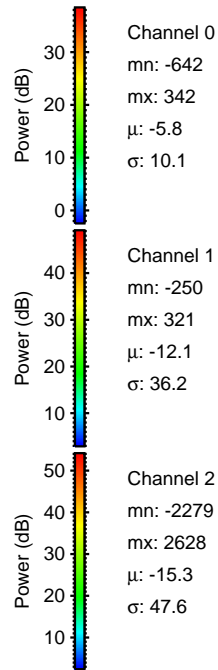
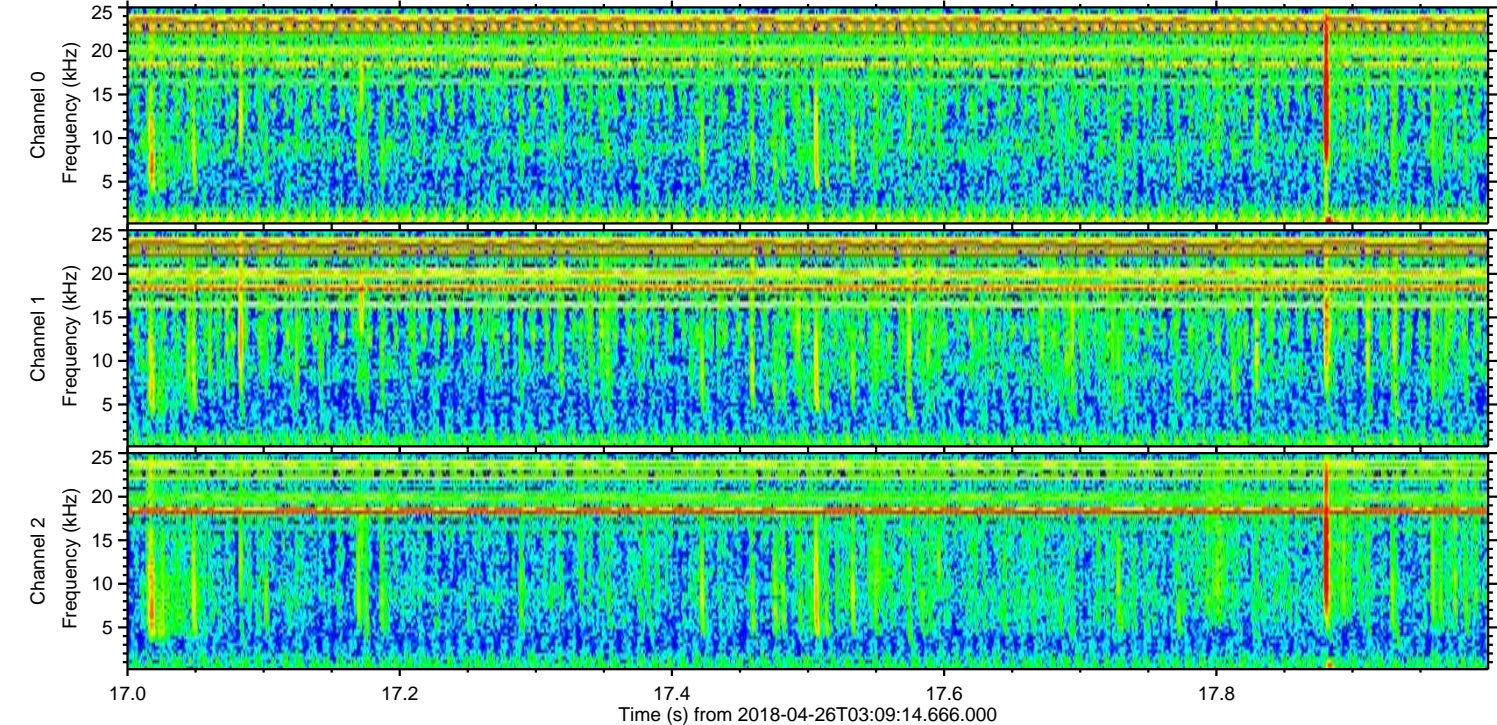
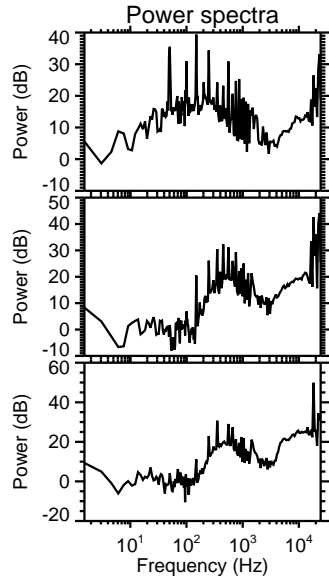
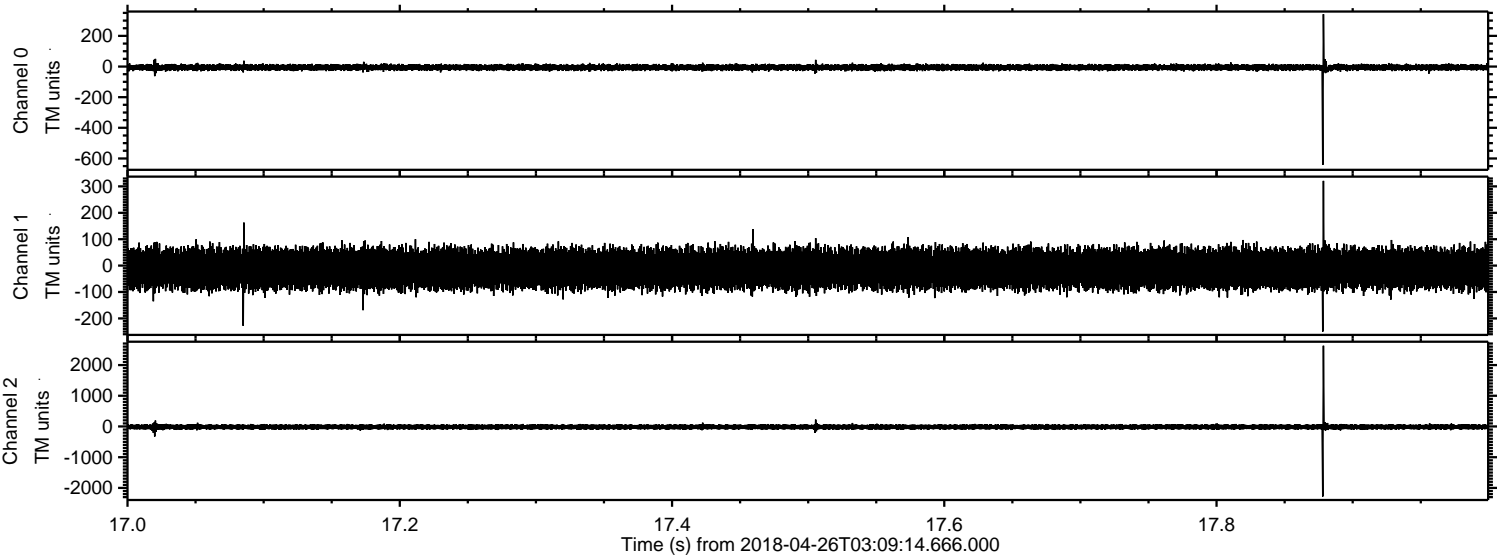
Processed Thu Apr 26 05:16:54 2018 by ELM ver.2012-10-06 from 001__elm20180426_030913__dat00.bin



Processed Thu Apr 26 05:17:00 2018 by ELM ver.2012-10-06 from 001__elm20180426_030913__dat00.bin

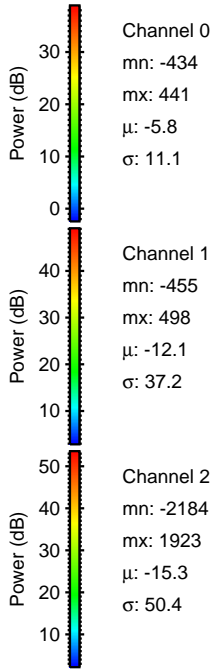
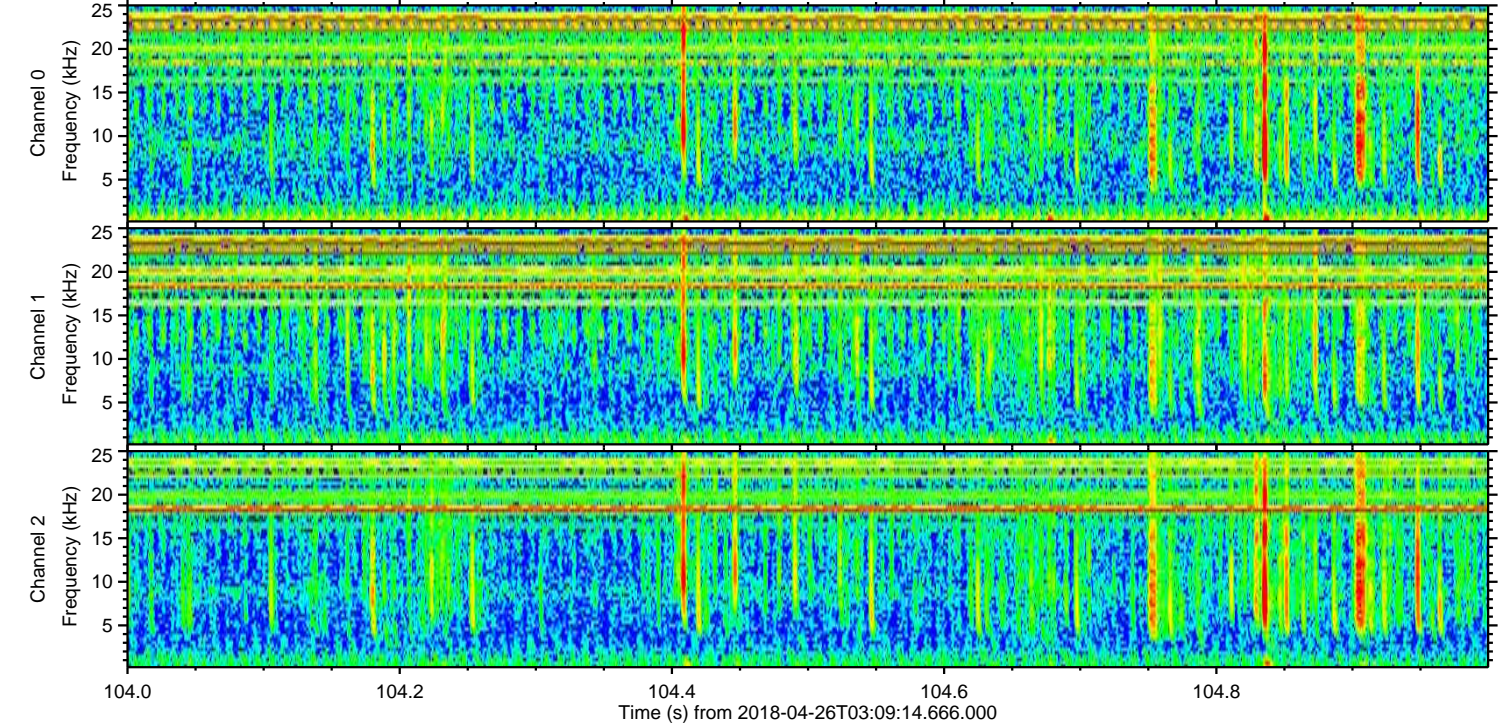
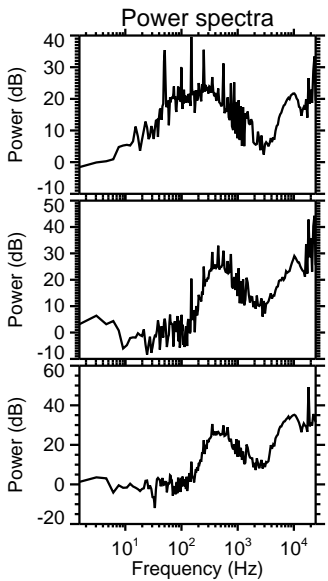
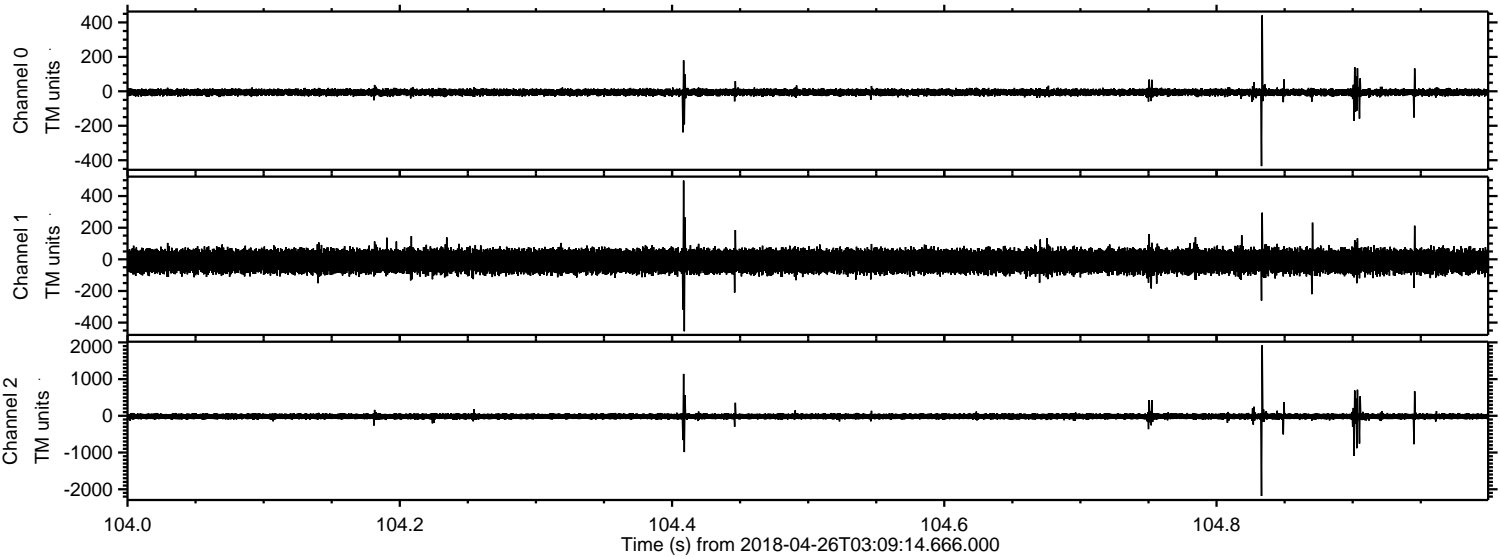


Processed Thu Apr 26 05:17:01 2018 by ELM ver.2012-10-06 from 001__elm20180426_030913__dat00.bin

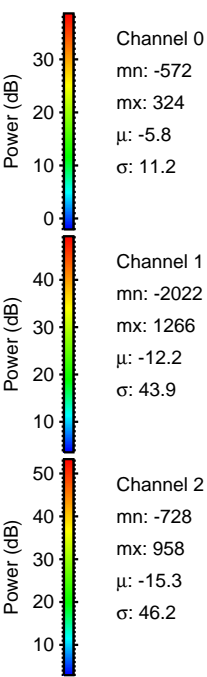
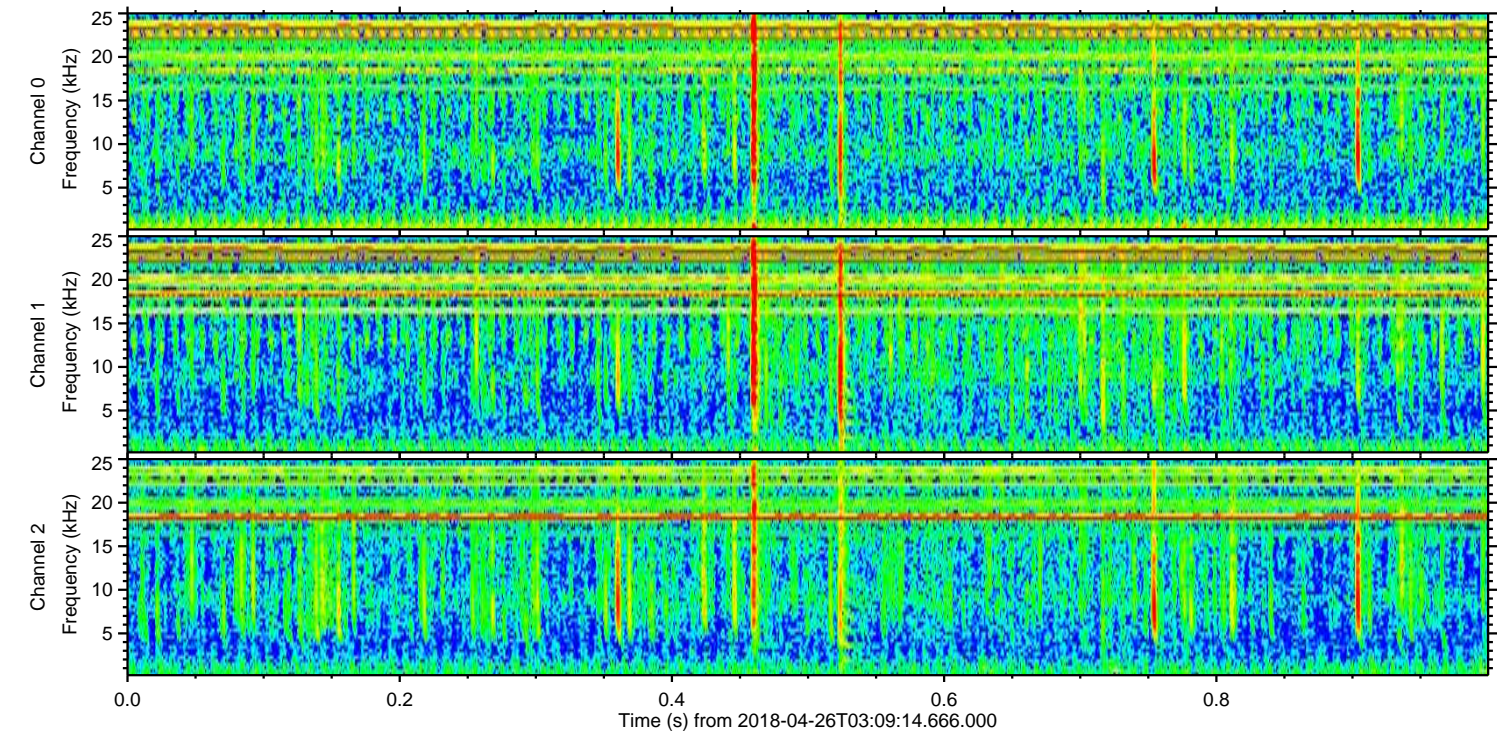
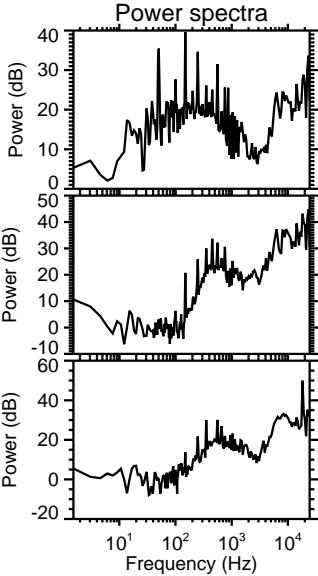
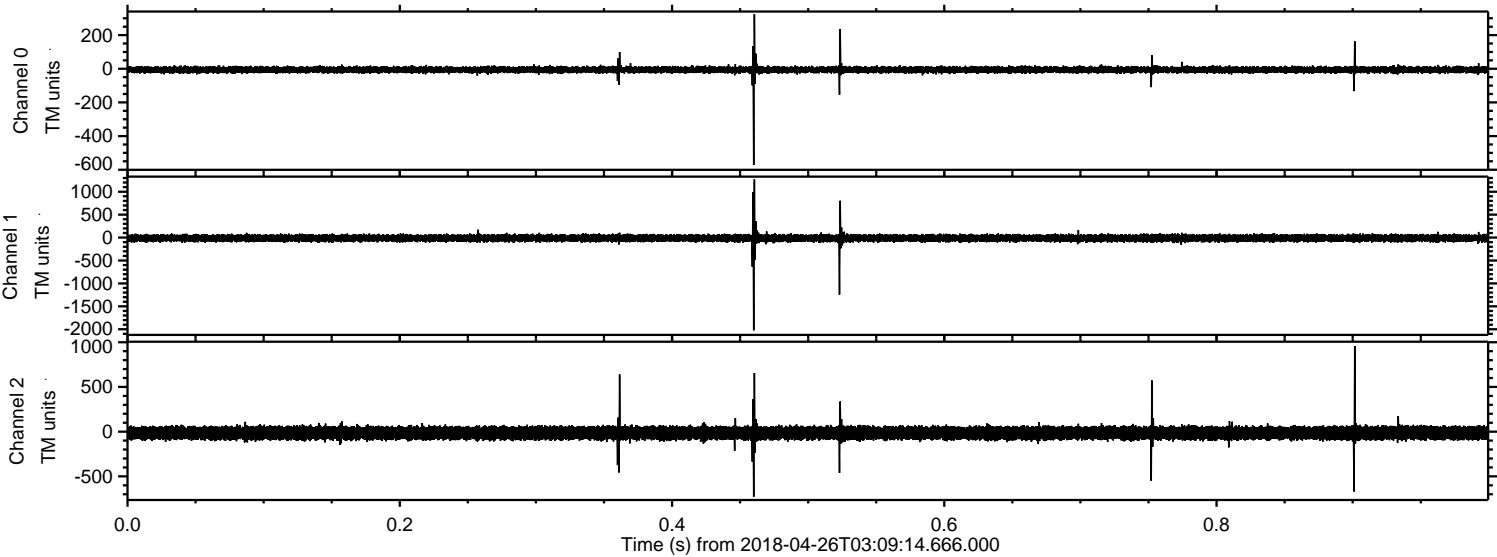


ELMAVAN 3D WAVEFORMS (Measured data sampled at 50 kHz) 51000 packets of 144 samples from 2018-04-26T03:09:14.666.000. Part 105/147

Processed Thu Apr 26 05:17:02 2018 by ELM ver.2012-10-06 from 001__elm20180426_030913__dat00.bin

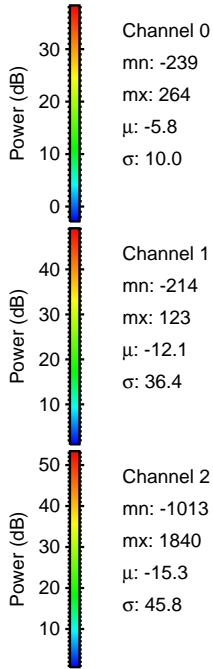
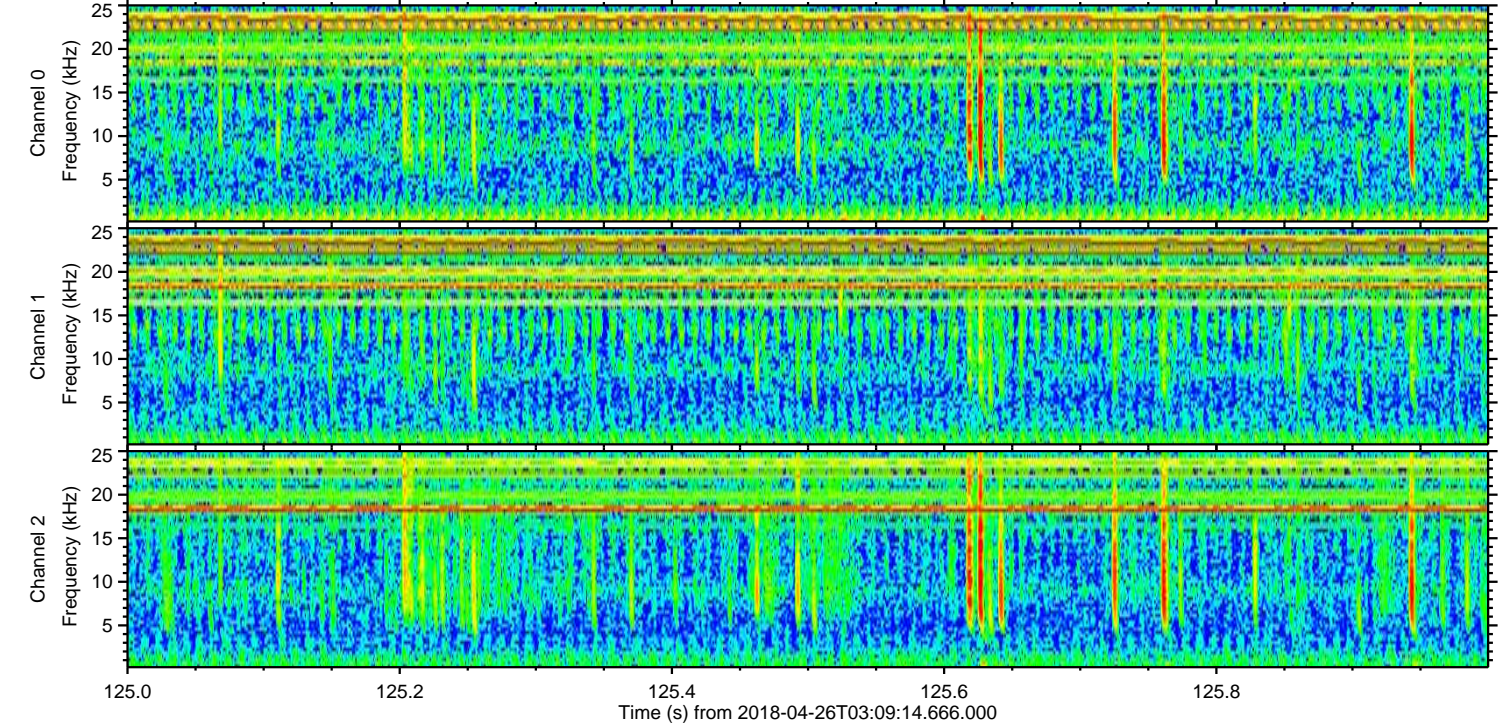
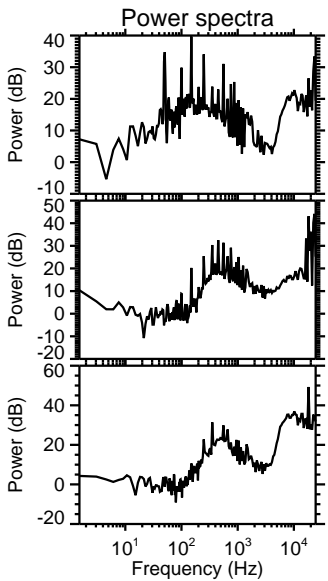
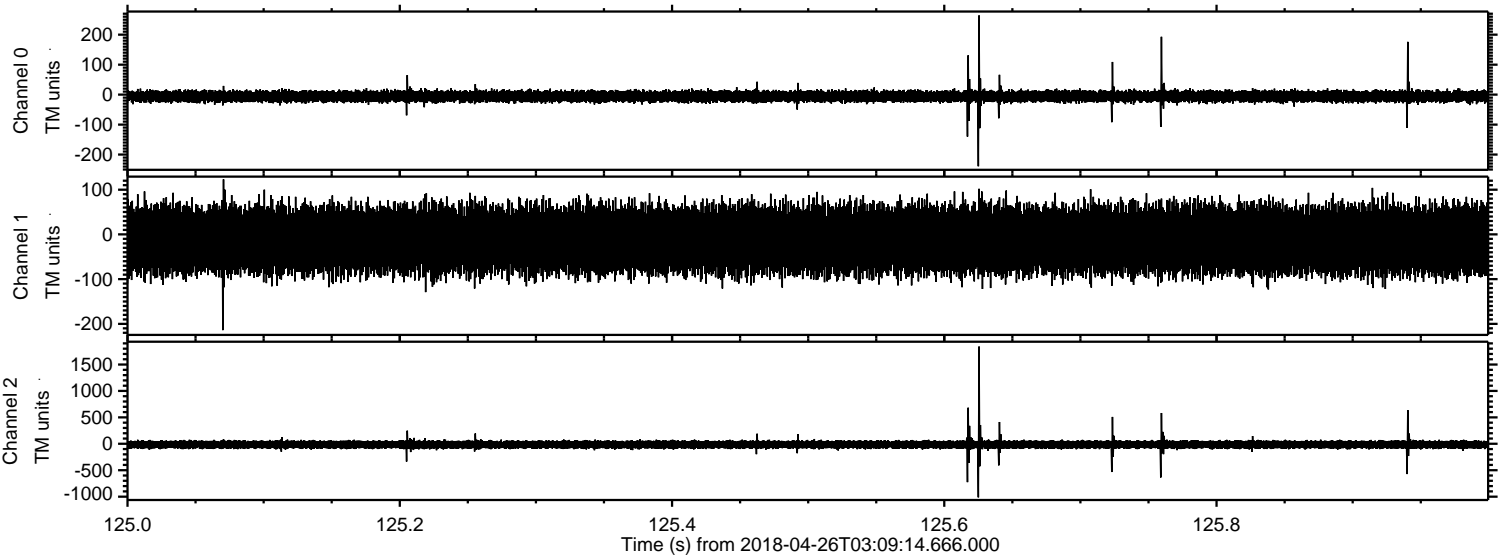


Processed Thu Apr 26 05:17:03 2018 by ELM ver.2012-10-06 from 001__elm20180426_030913__dat00.bin



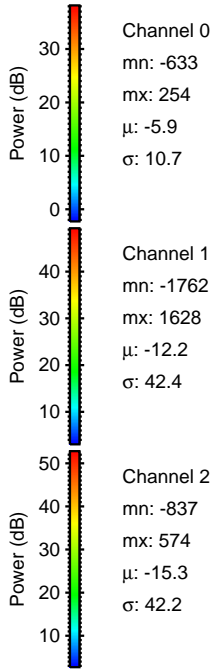
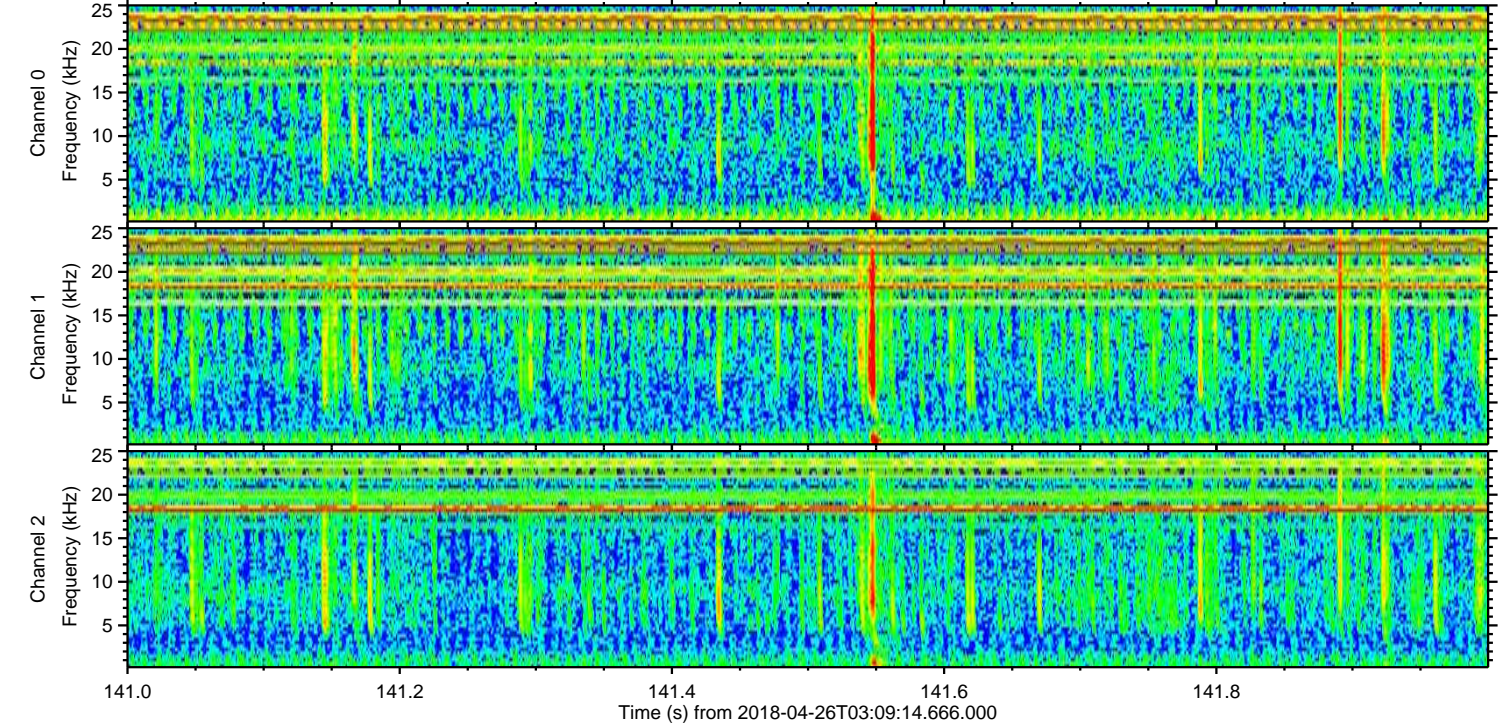
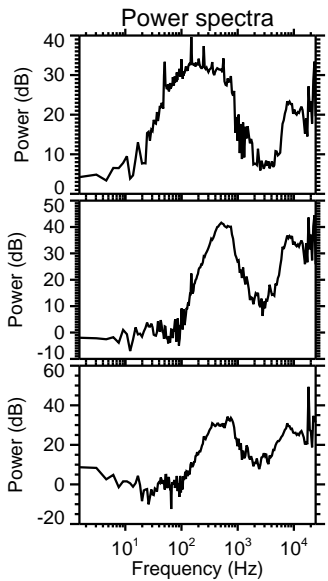
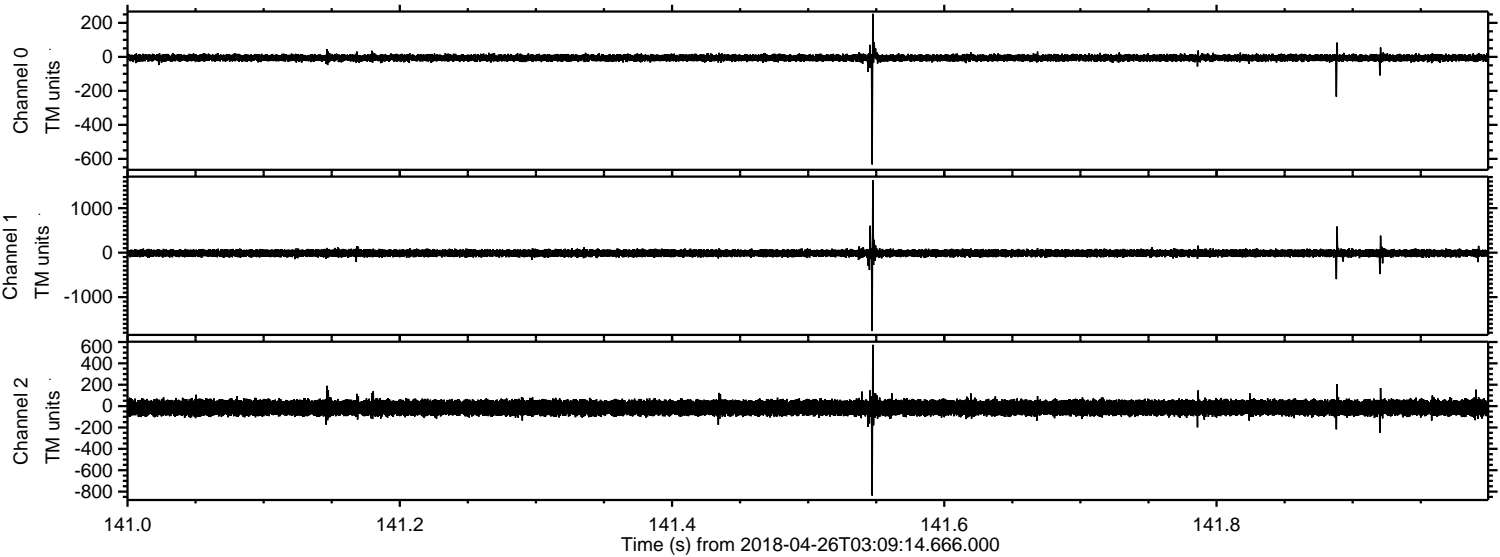
ELMAVAN 3D WAVEFORMS (Measured data sampled at 50 kHz) 51000 packets of 144 samples from 2018-04-26T03:09:14.666.000. Part 126/147

Processed Thu Apr 26 05:17:03 2018 by ELM ver.2012-10-06 from 001__elm20180426_030913__dat00.bin



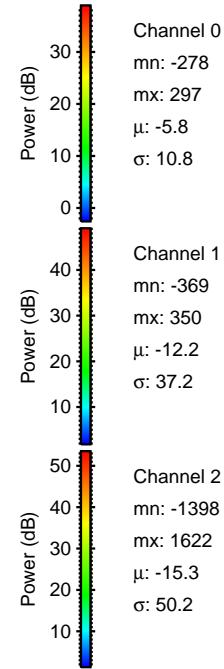
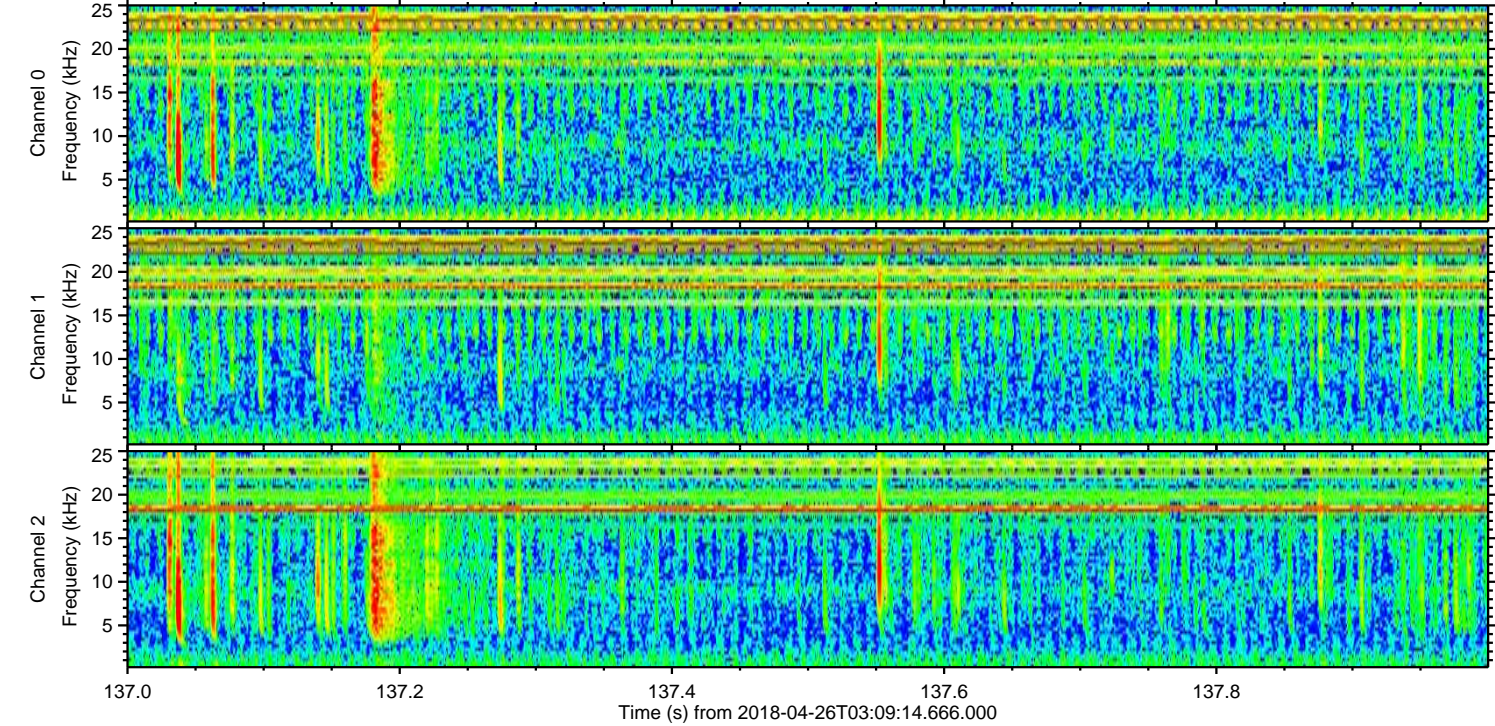
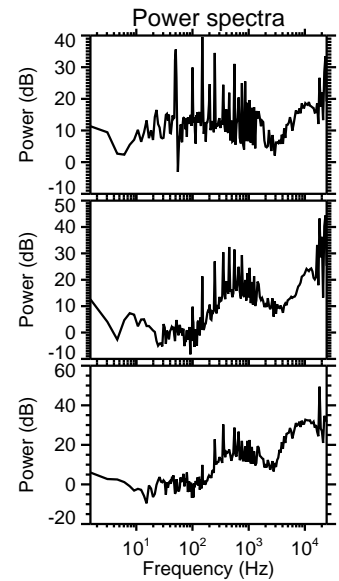
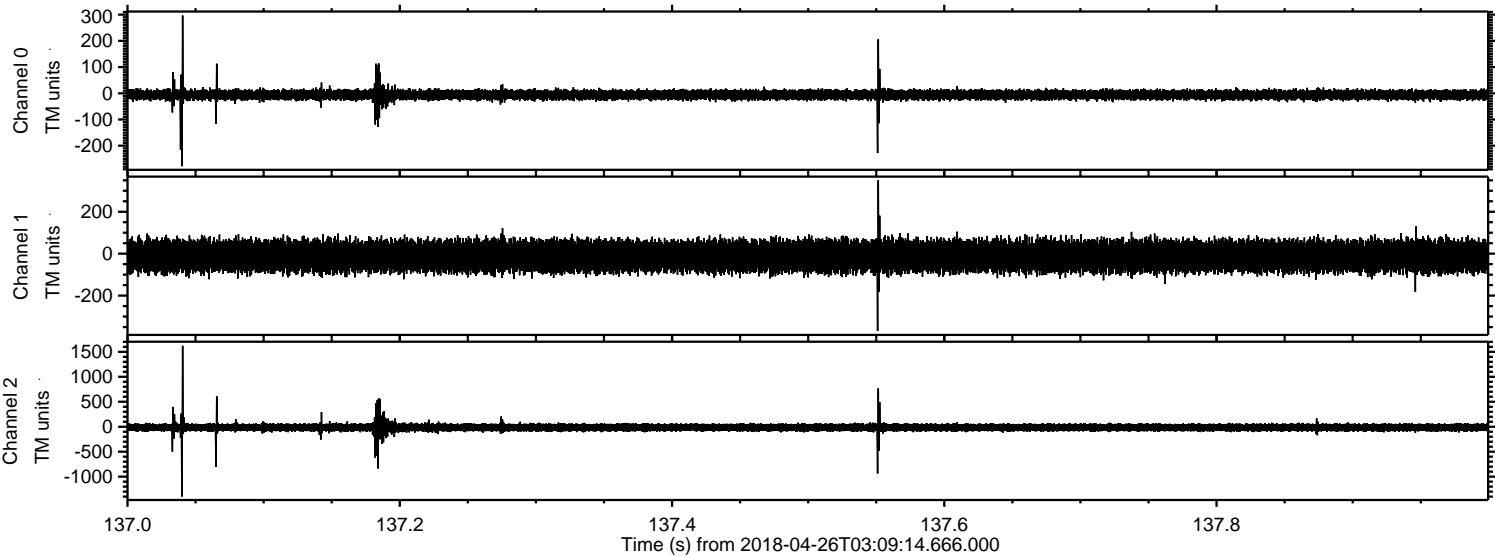
ELMAVAN 3D WAVEFORMS (Measured data sampled at 50 kHz) 51000 packets of 144 samples from 2018-04-26T03:09:14.666.000. Part 142/147

Processed Thu Apr 26 05:17:04 2018 by ELM ver.2012-10-06 from 001__elm20180426_030913__dat00.bin

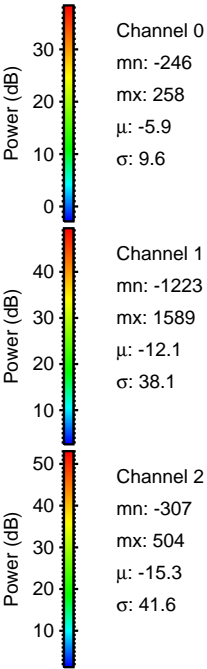
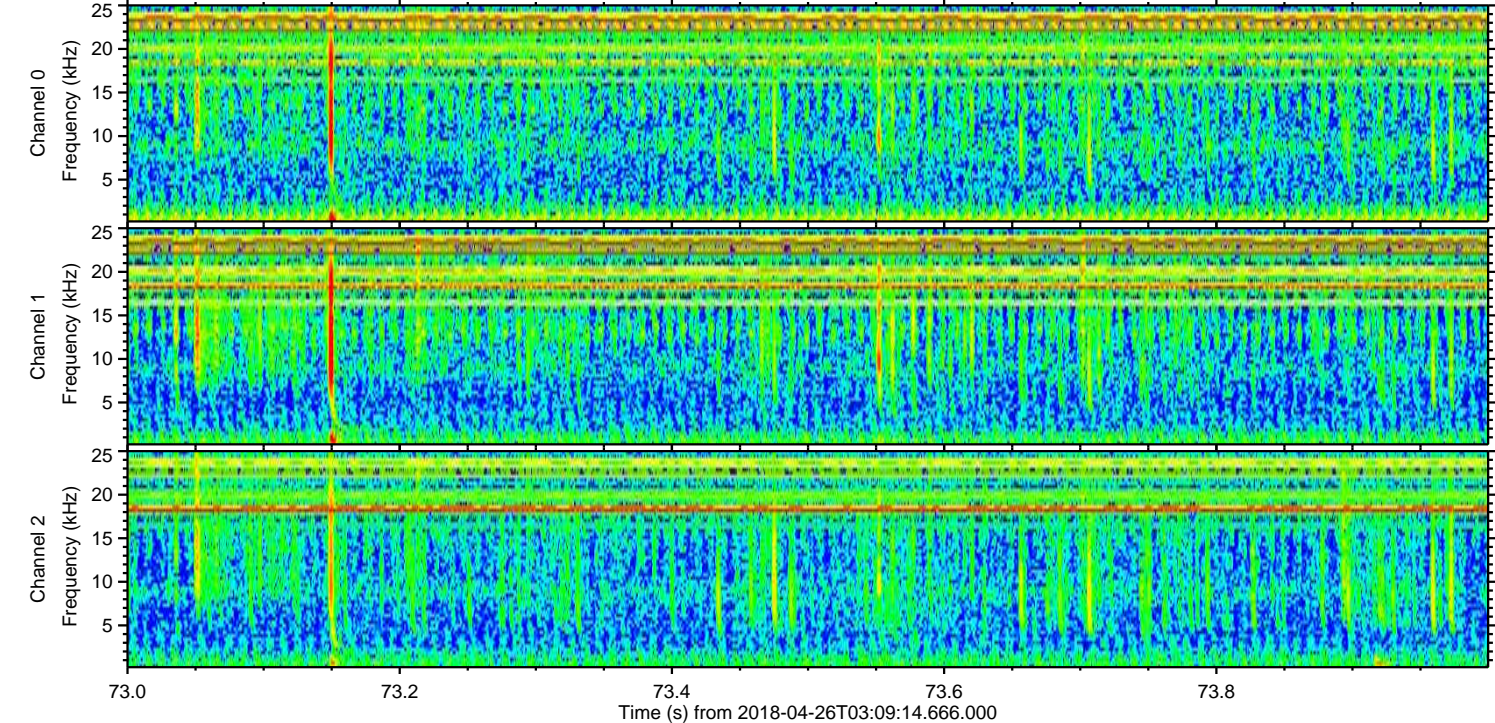
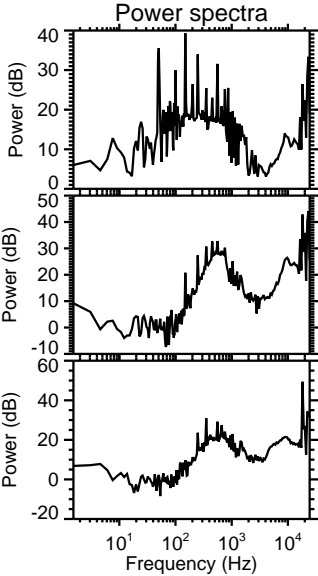
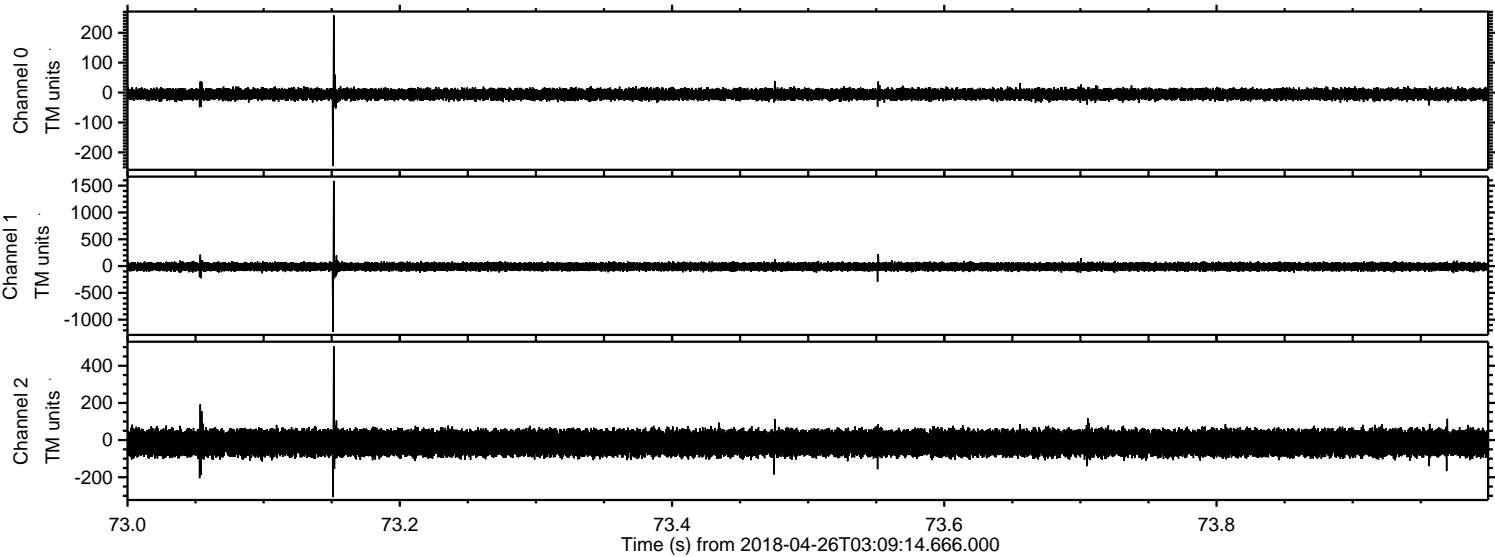


ELMAVAN 3D WAVEFORMS (Measured data sampled at 50 kHz) 51000 packets of 144 samples from 2018-04-26T03:09:14.666.000. Part 138/147

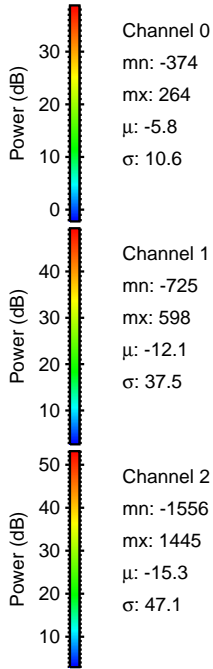
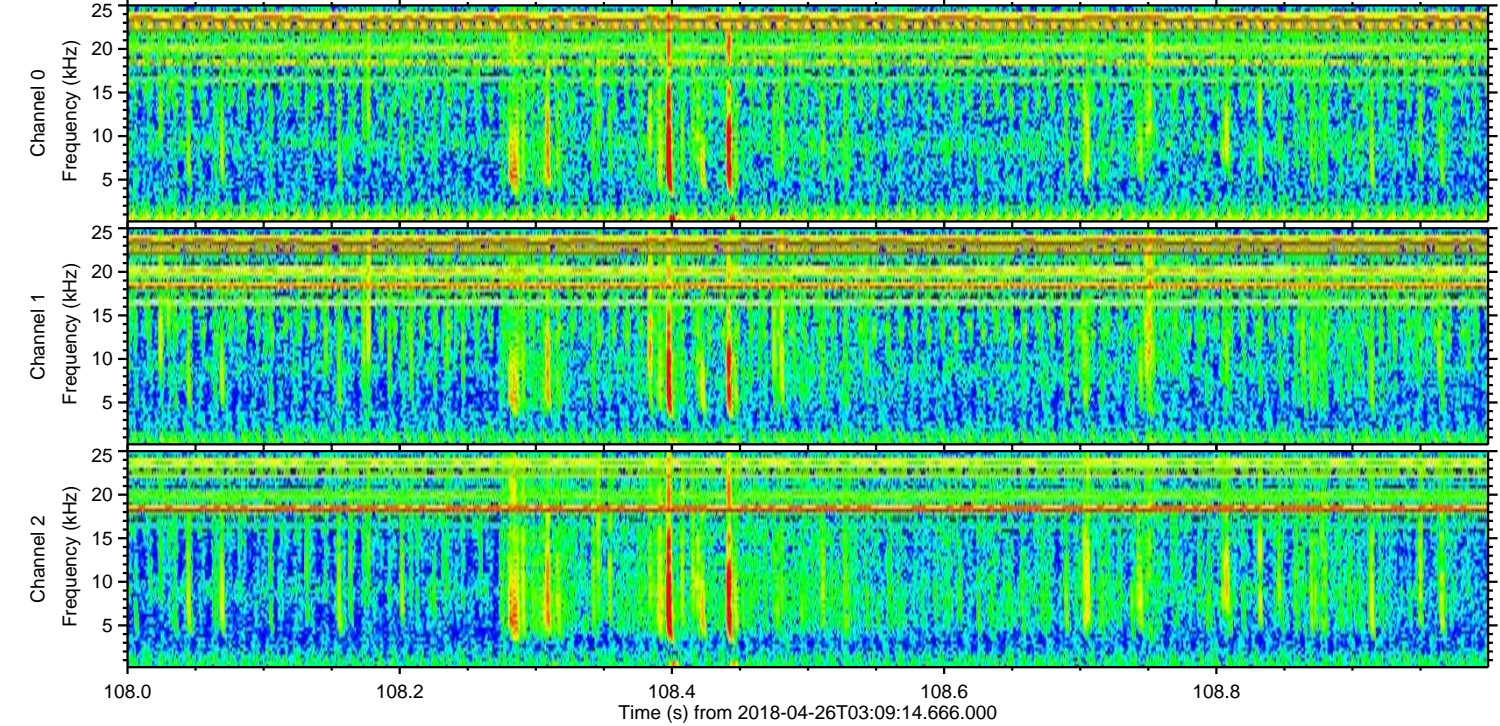
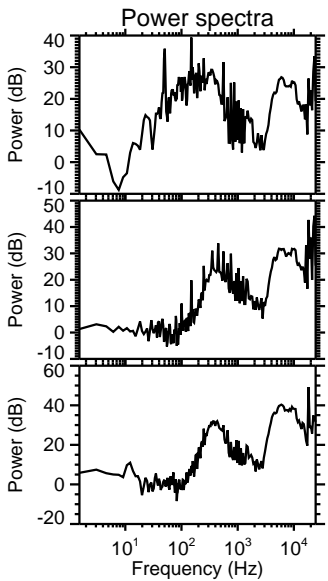
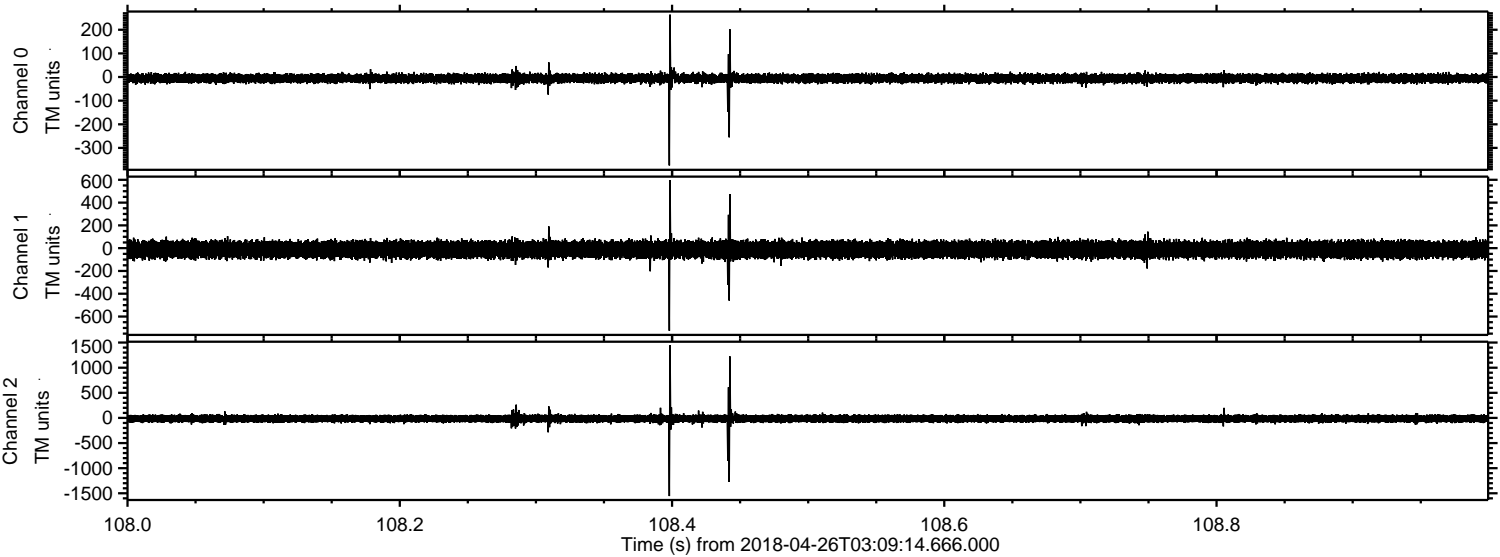
Processed Thu Apr 26 05:17:05 2018 by ELM ver.2012-10-06 from 001__elm20180426_030913__dat00.bin



Processed Thu Apr 26 05:17:06 2018 by ELM ver.2012-10-06 from 001__elm20180426_030913__dat00.bin



Processed Thu Apr 26 05:17:07 2018 by ELM ver.2012-10-06 from 001__elm20180426_030913__dat00.bin



Channel 0
mn: -374
mx: 264
 μ : -5.8
 σ : 10.6

Channel 1
mn: -725
mx: 598
 μ : -12.1
 σ : 37.5

Channel 2
mn: -1556
mx: 1445
 μ : -15.3
 σ : 47.1

Processed Thu Apr 26 05:17:07 2018 by ELM ver.2012-10-06 from 001__elm20180426_030913__dat00.bin

