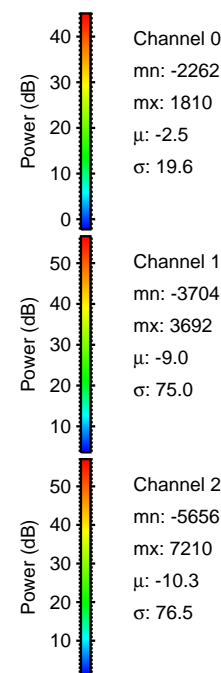
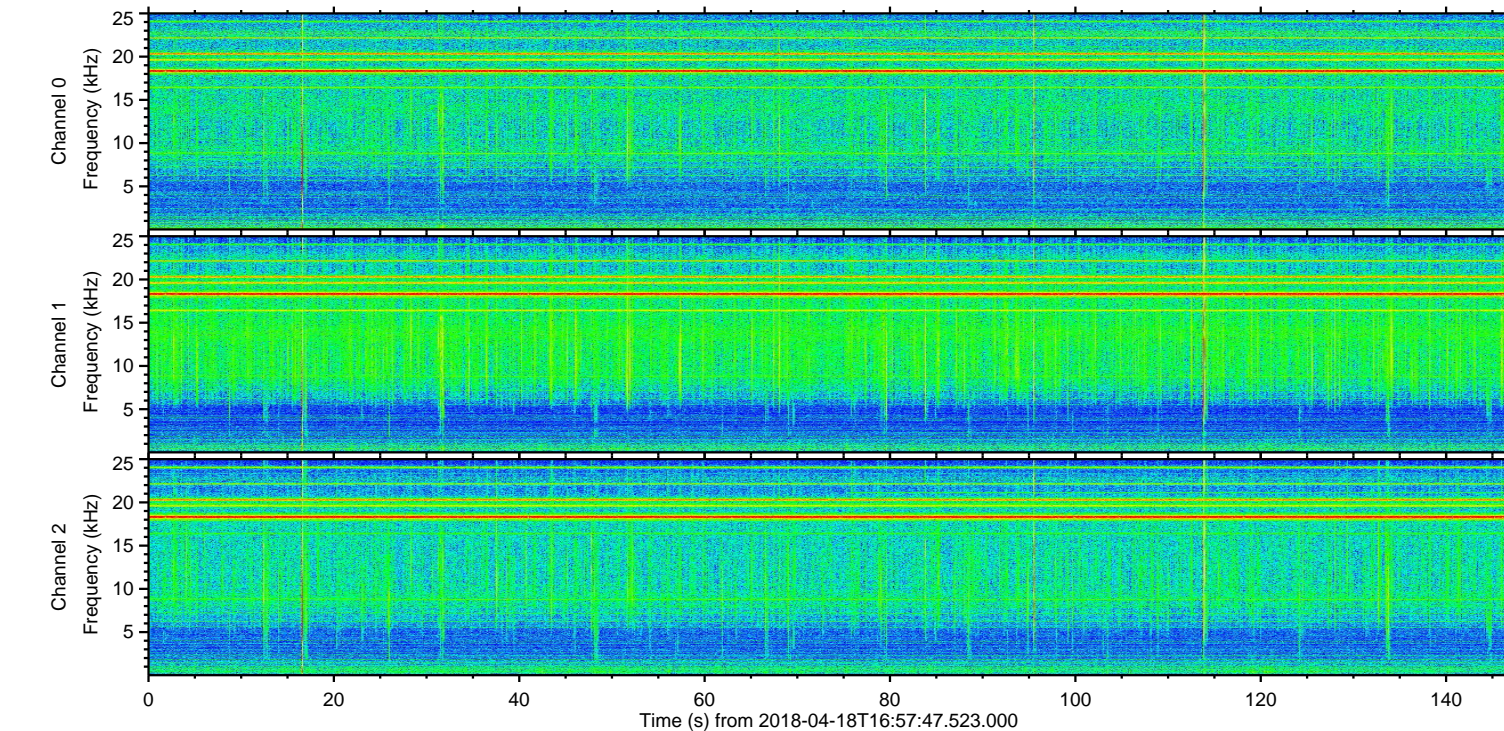
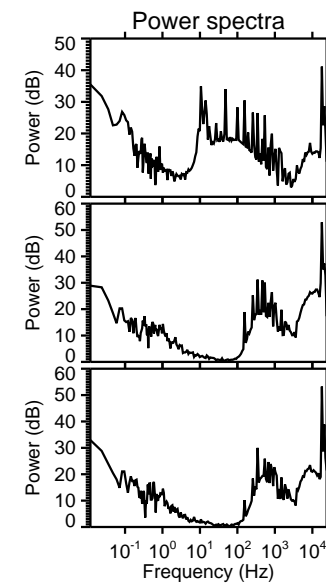
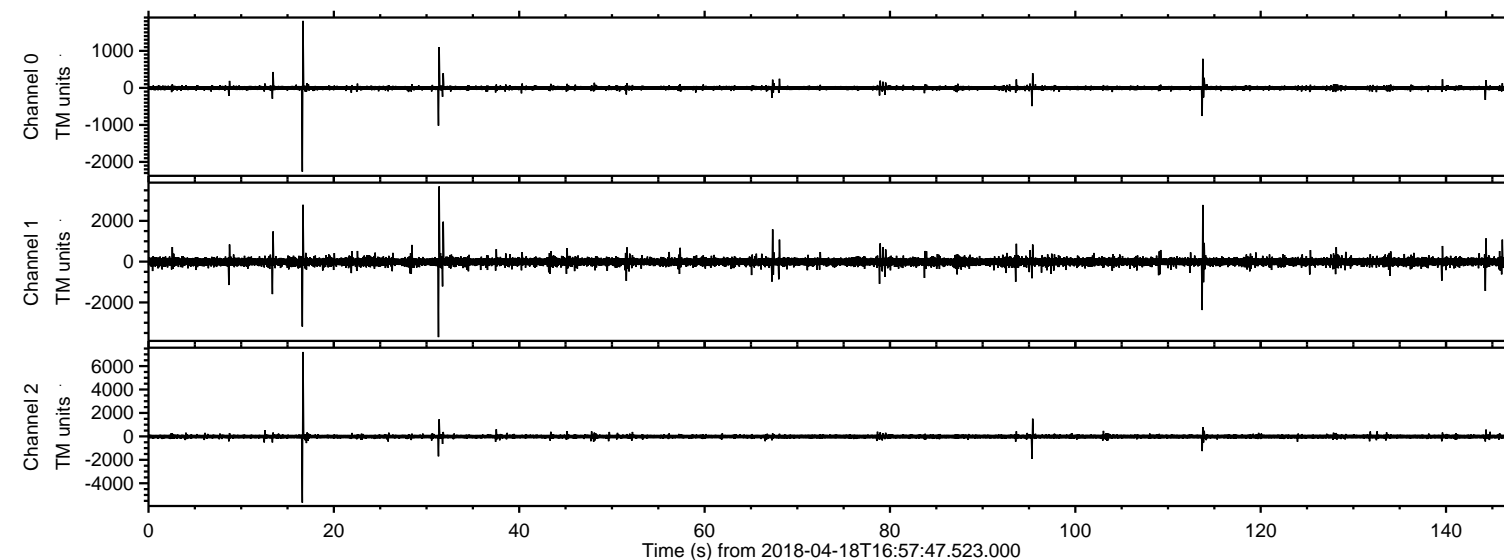


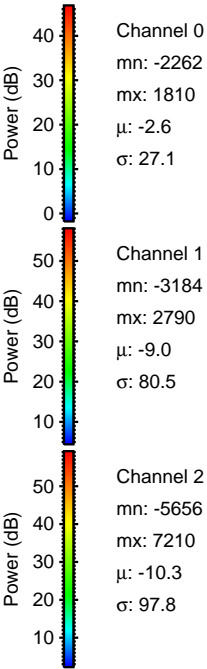
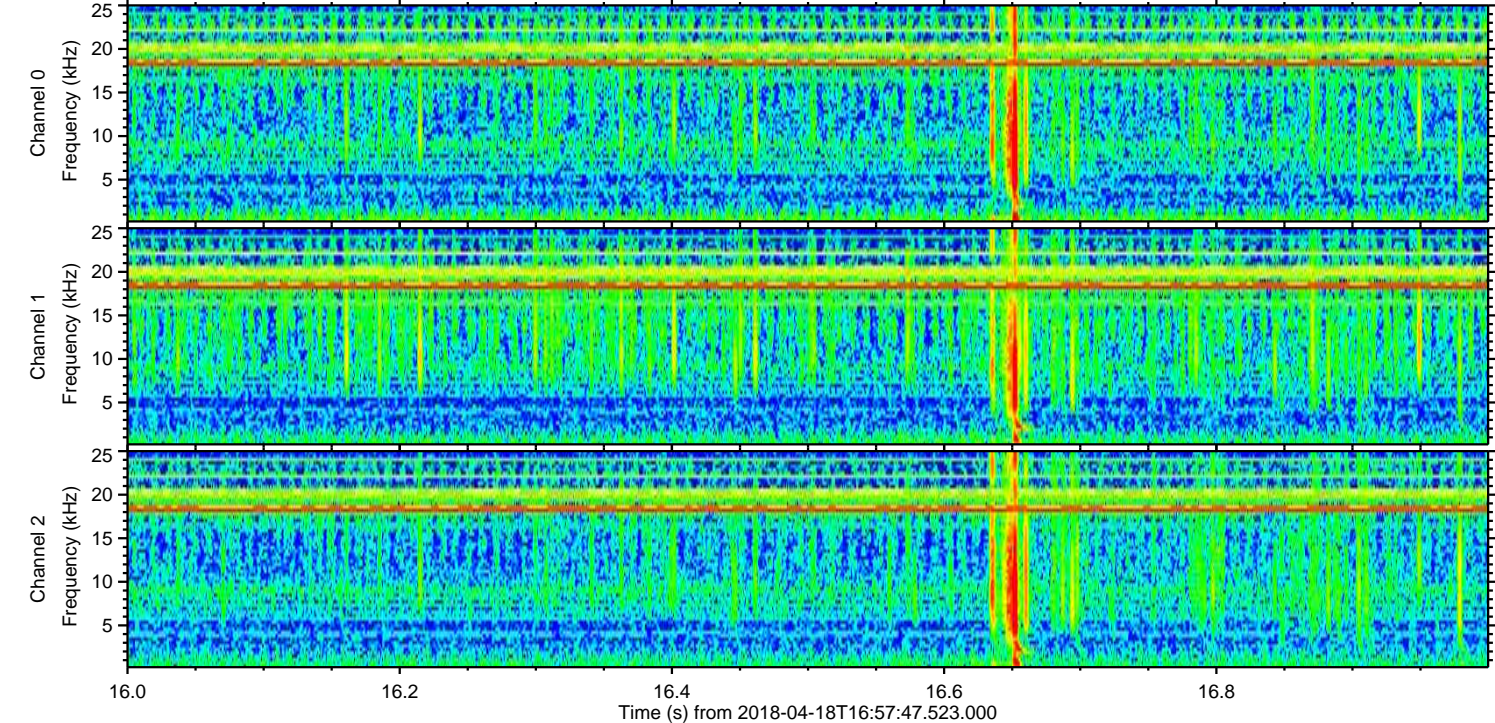
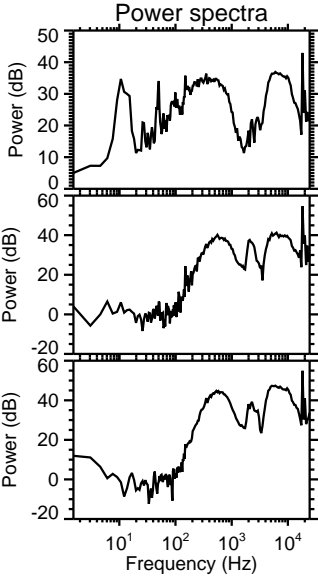
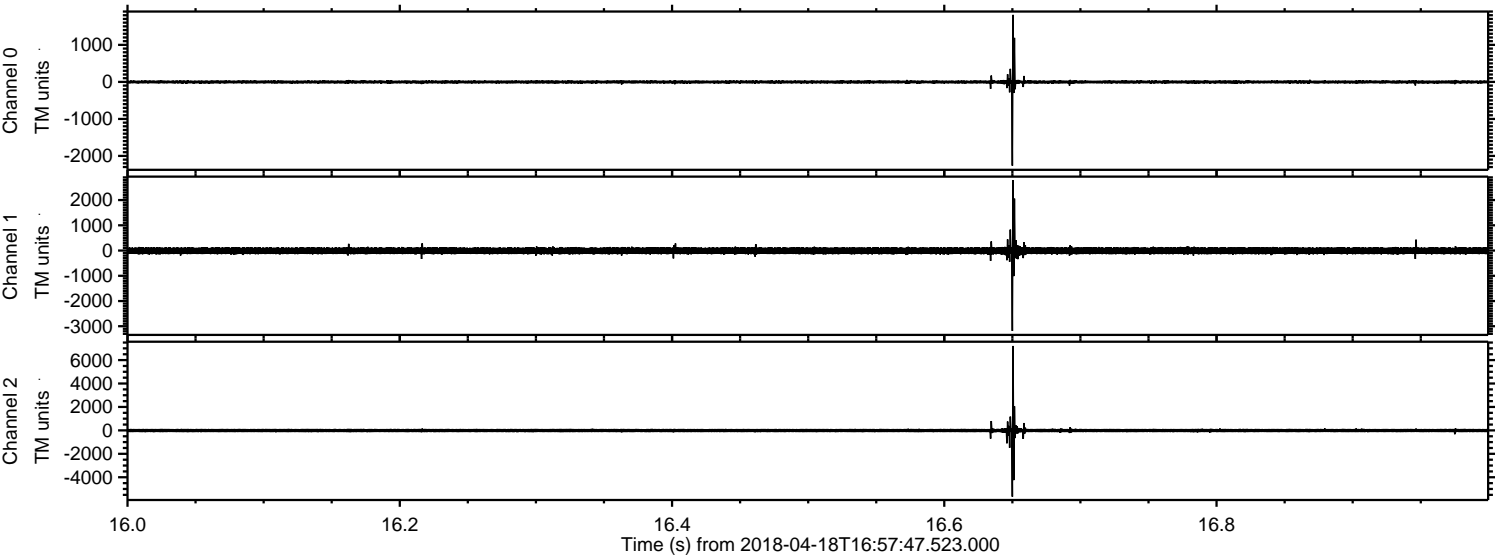
ELMAVAN 3D WAVEFORMS (Measured data sampled at 50 kHz) 51000 packets of 144 samples from 2018-04-18T16:57:47.523.000.

Processed Tue Apr 24 09:33:49 2018 by ELM ver.2012-10-06 from 001__elm20180418_165746__dat00.bin

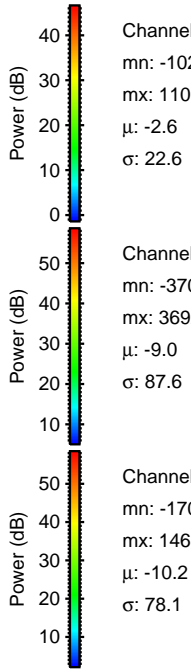
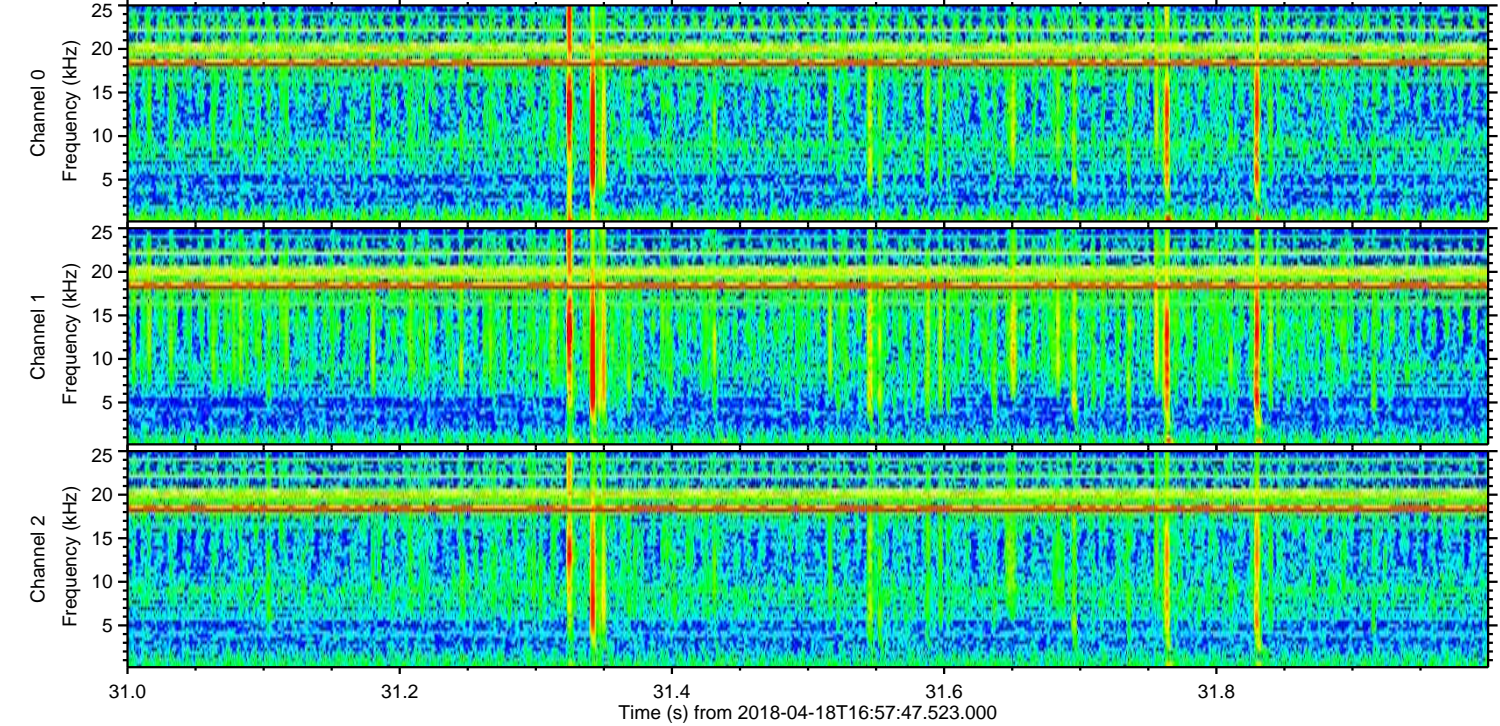
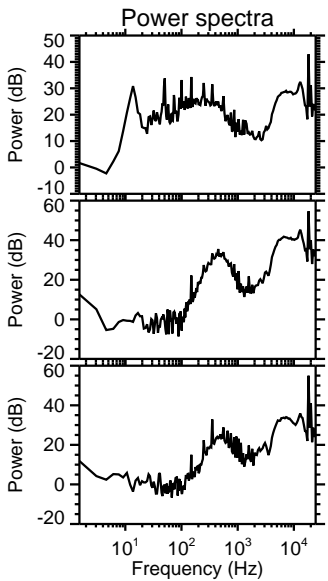
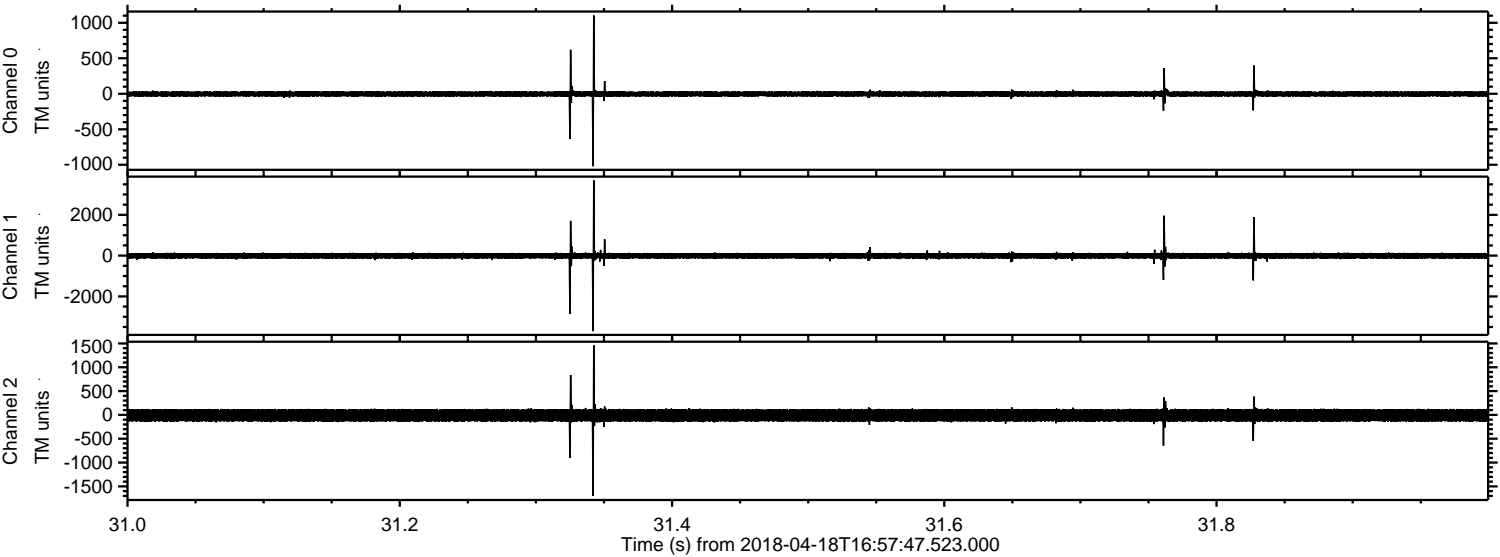


ELMAVAN 3D WAVEFORMS (Measured data sampled at 50 kHz) 51000 packets of 144 samples from 2018-04-18T16:57:47.523.000. Part 17/147

Processed Tue Apr 24 09:34:00 2018 by ELM ver.2012-10-06 from 001__elm20180418_165746__dat00.bin

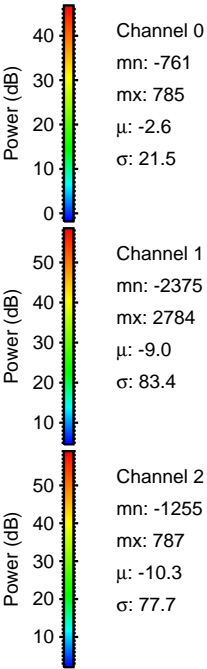
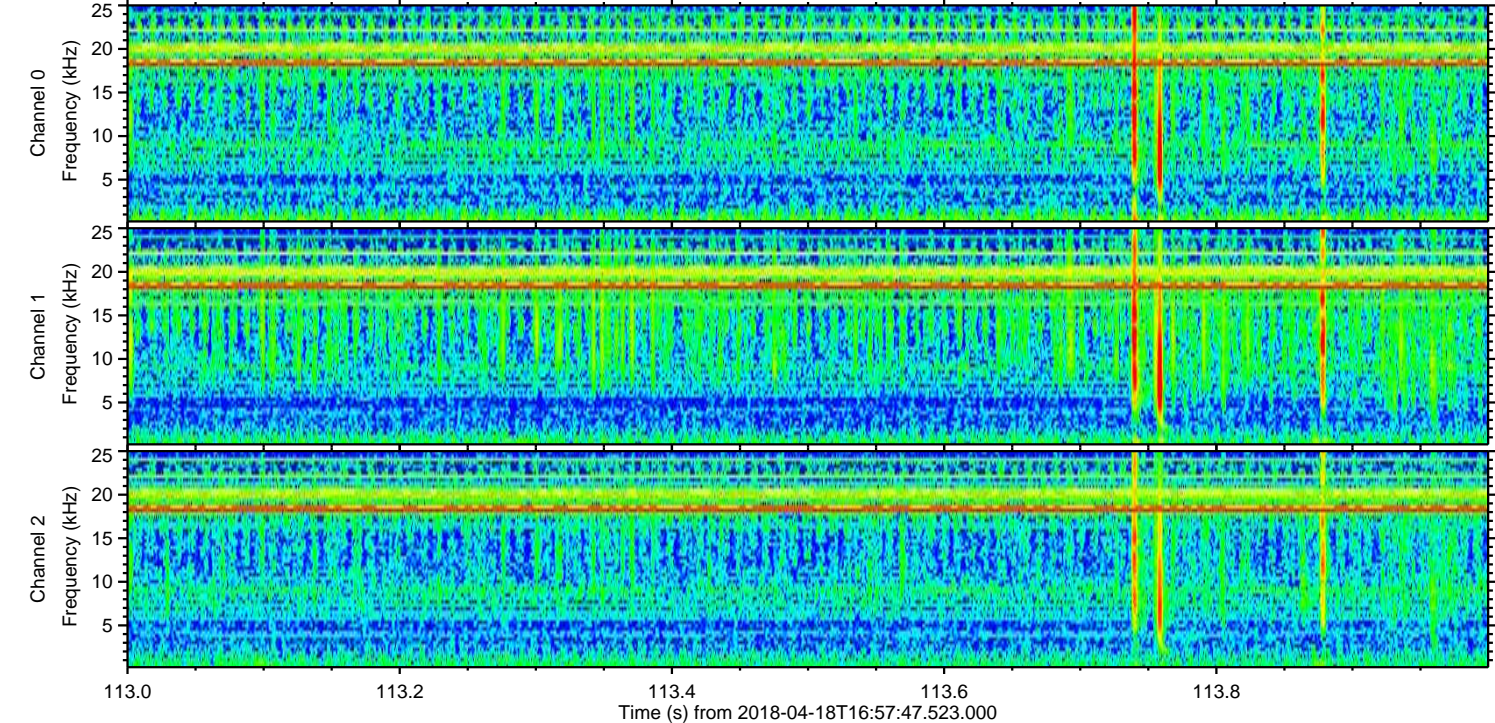
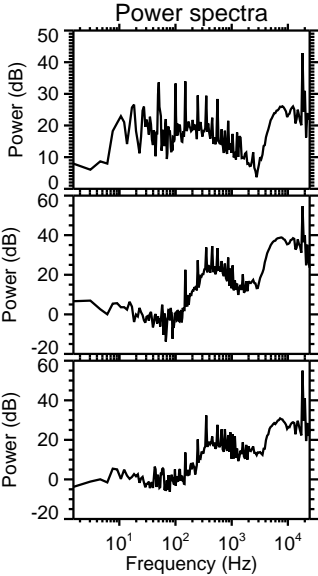
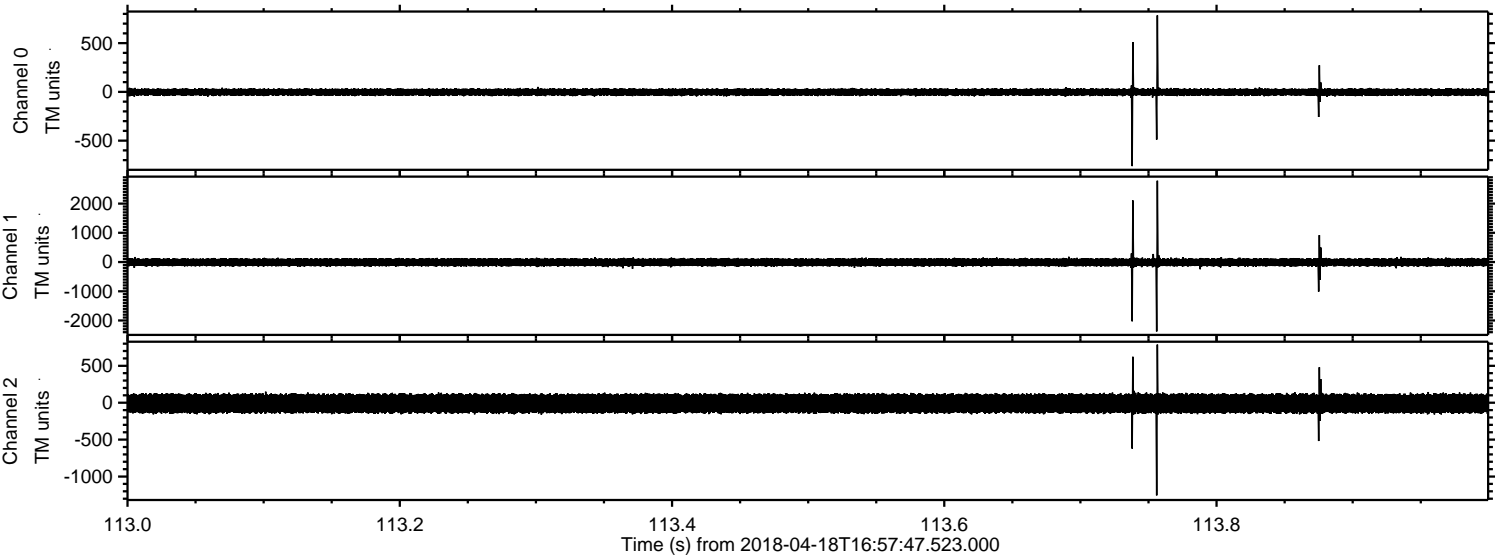


Processed Tue Apr 24 09:34:01 2018 by ELM ver.2012-10-06 from 001__elm20180418_165746__dat00.bin

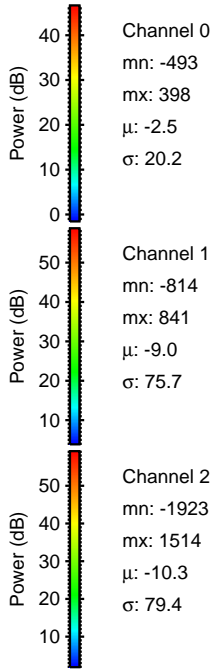
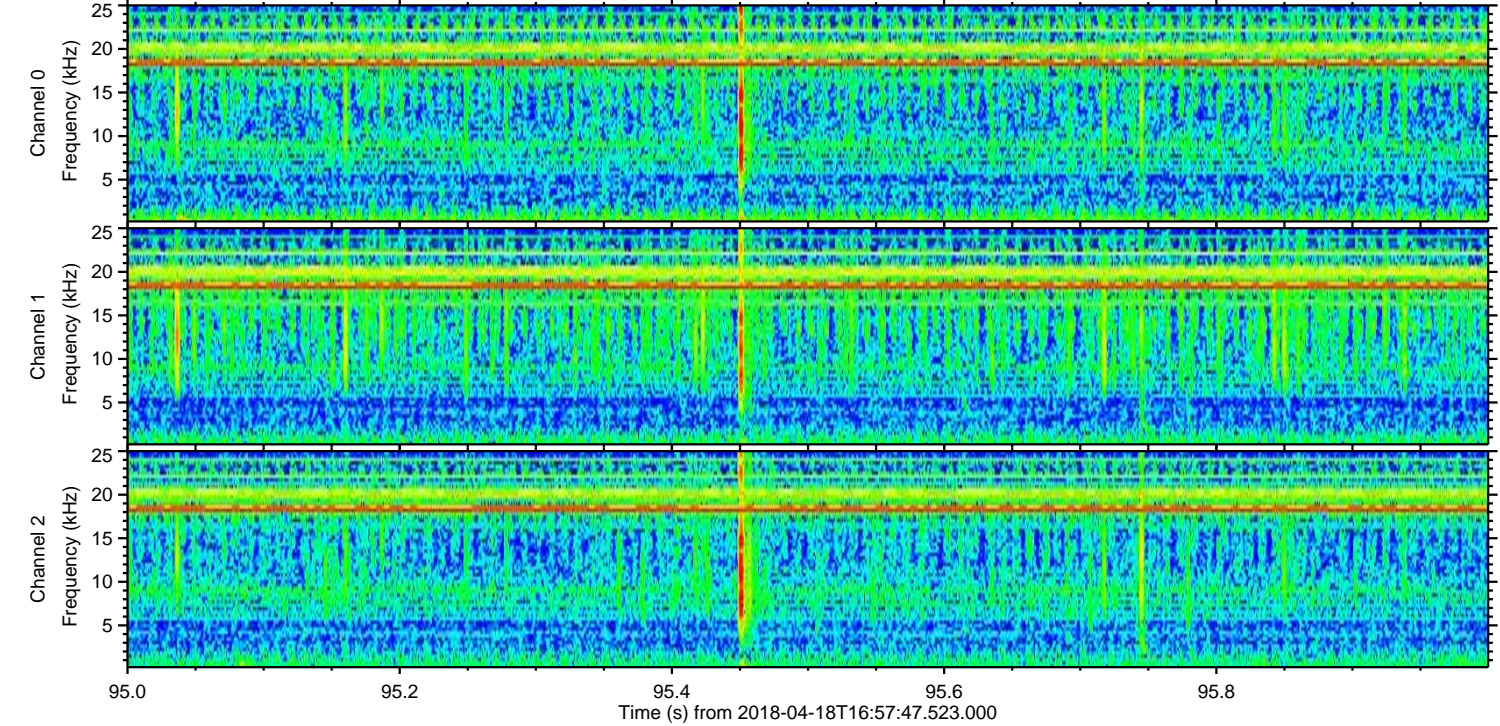
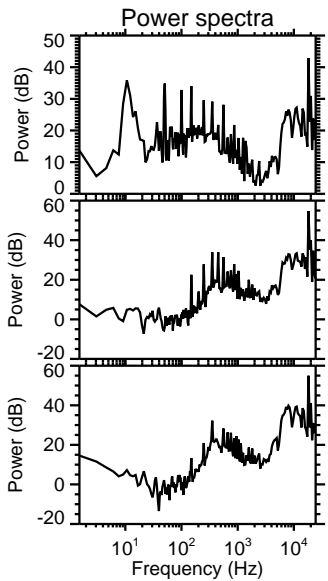
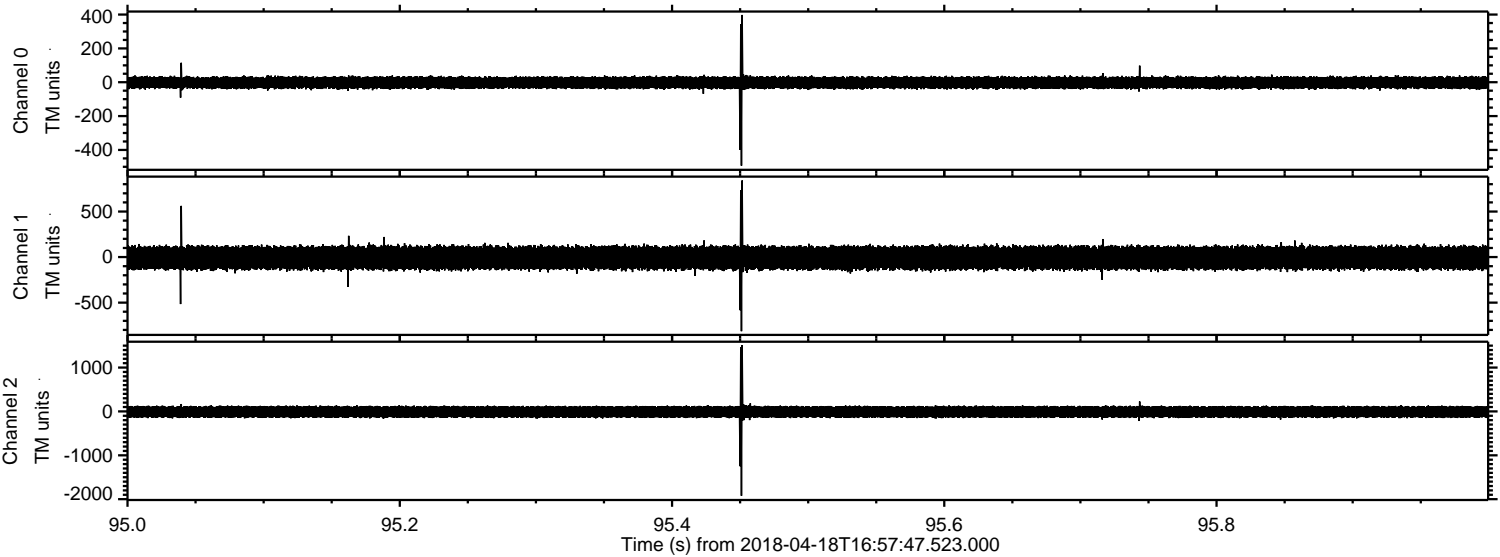


ELMAVAN 3D WAVEFORMS (Measured data sampled at 50 kHz) 51000 packets of 144 samples from 2018-04-18T16:57:47.523.000. Part 114/147

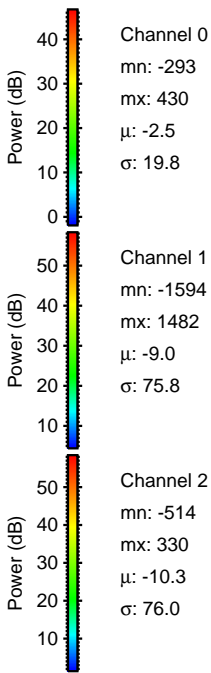
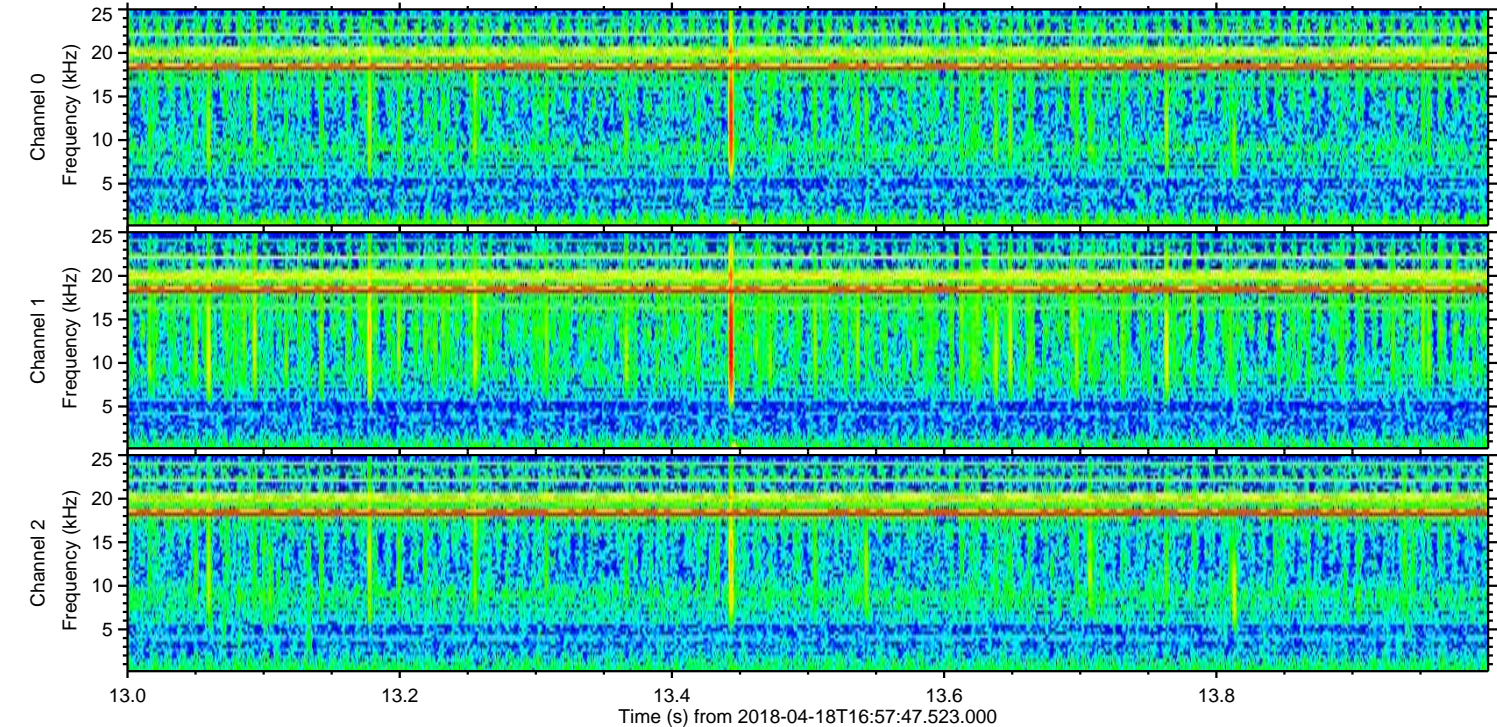
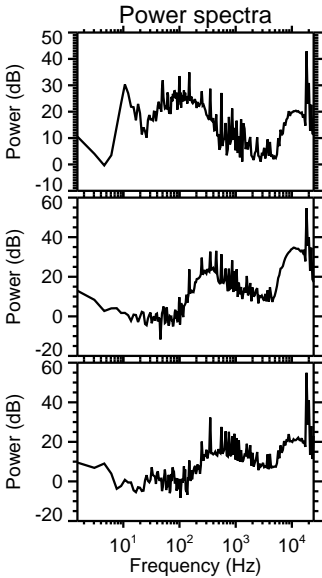
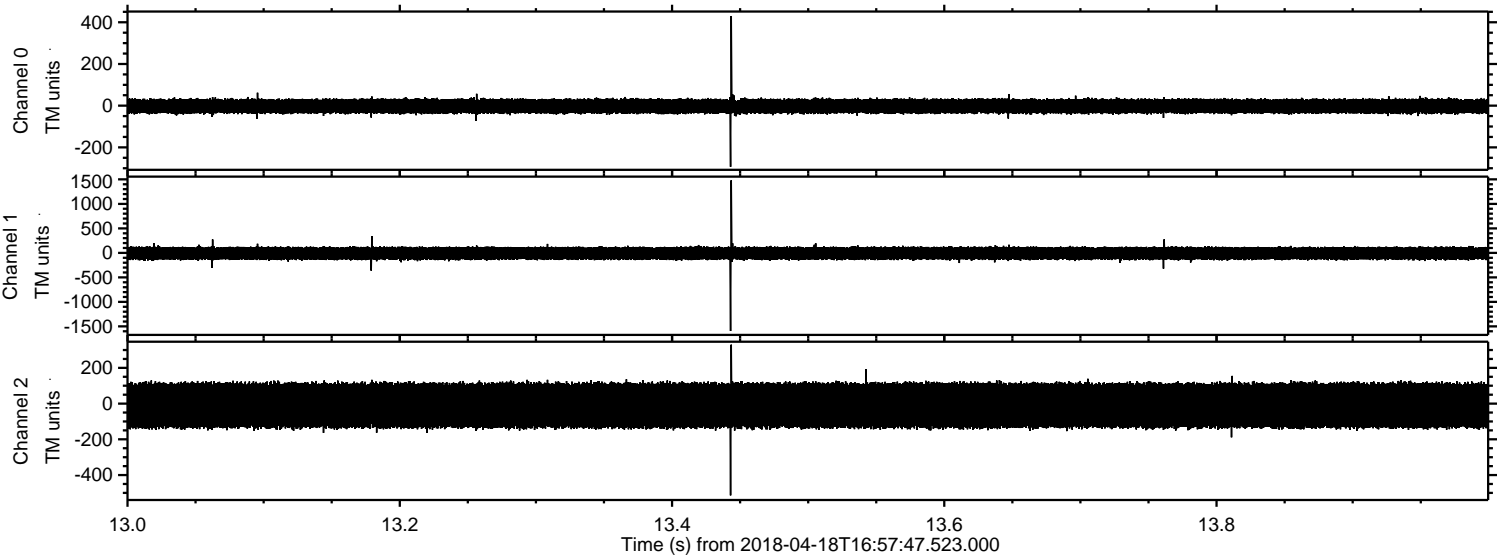
Processed Tue Apr 24 09:34:02 2018 by ELM ver.2012-10-06 from 001__elm20180418_165746__dat00.bin



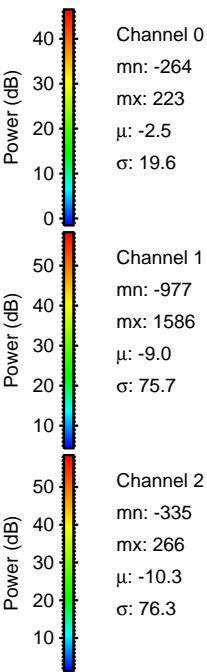
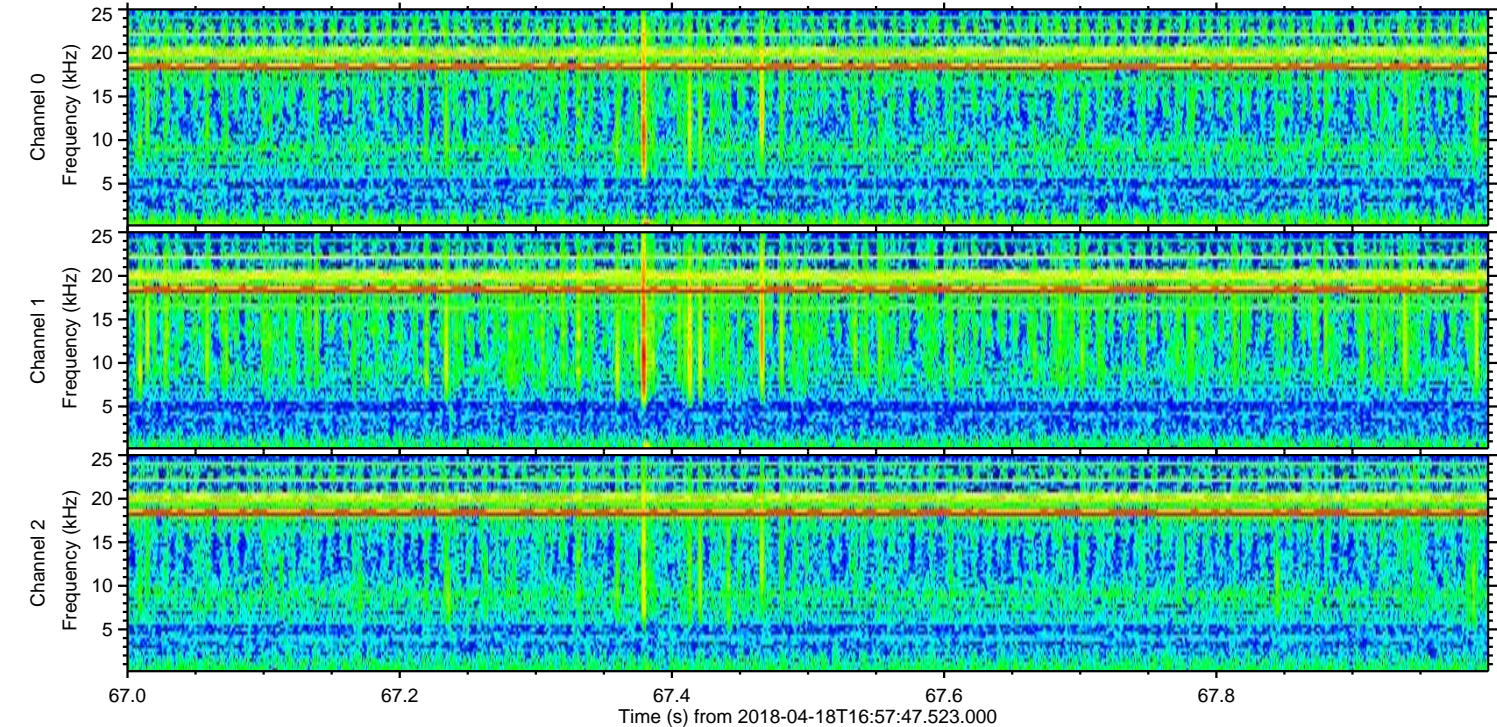
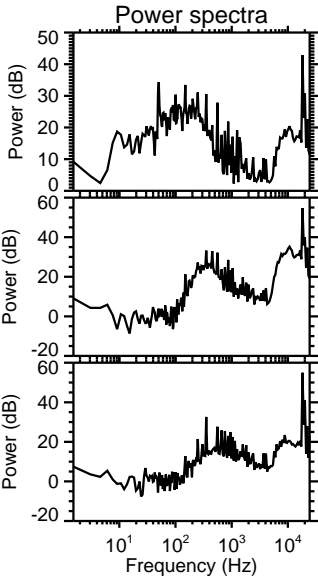
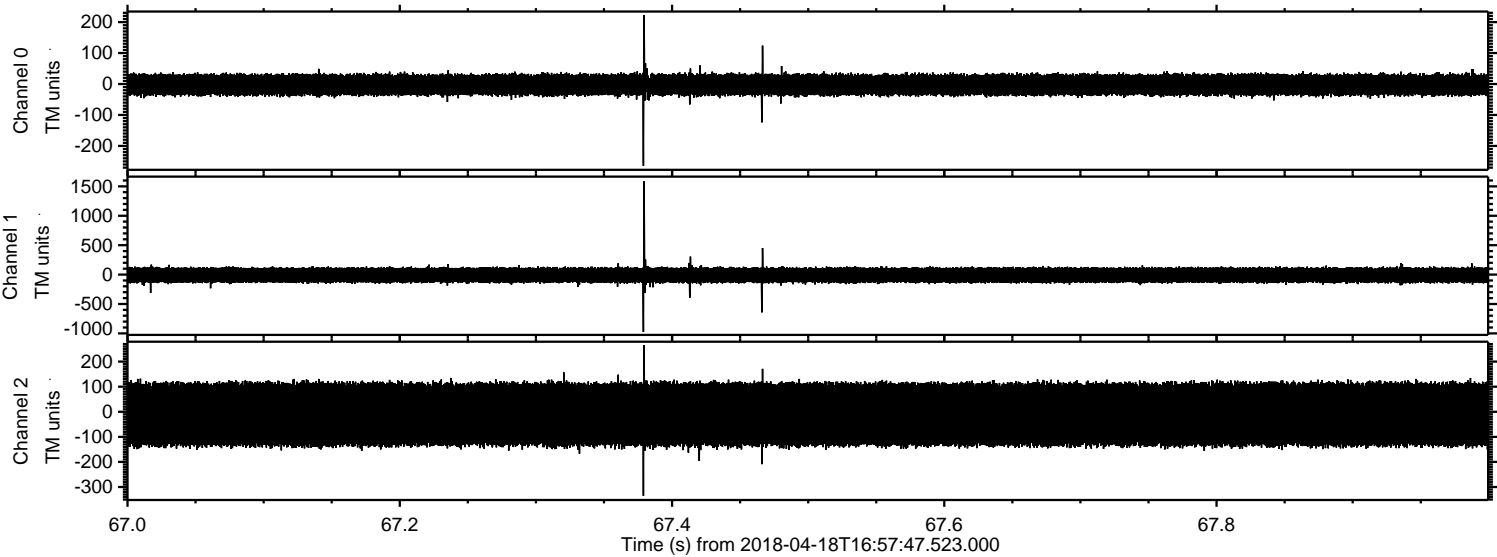
Processed Tue Apr 24 09:34:03 2018 by ELM ver.2012-10-06 from 001__elm20180418_165746__dat00.bin



Processed Tue Apr 24 09:34:04 2018 by ELM ver.2012-10-06 from 001__elm20180418_165746__dat00.bin

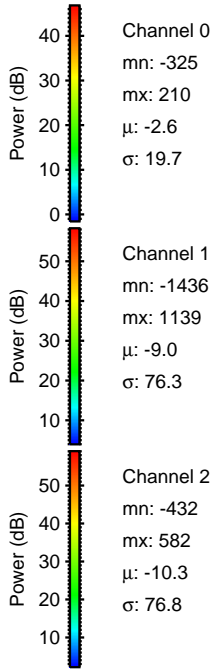
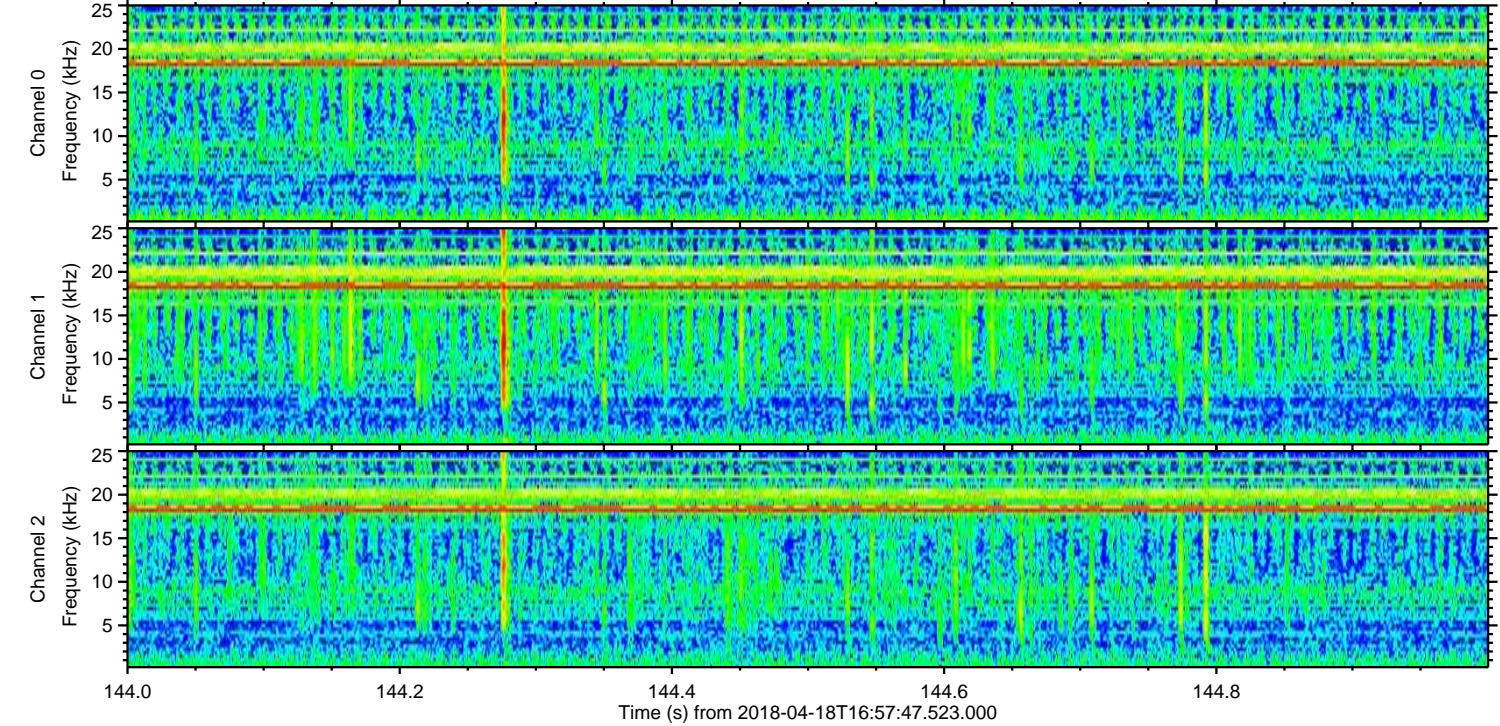
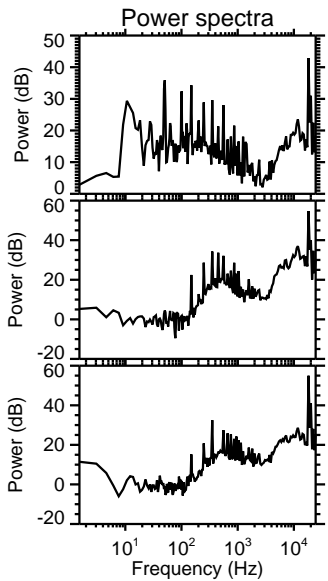
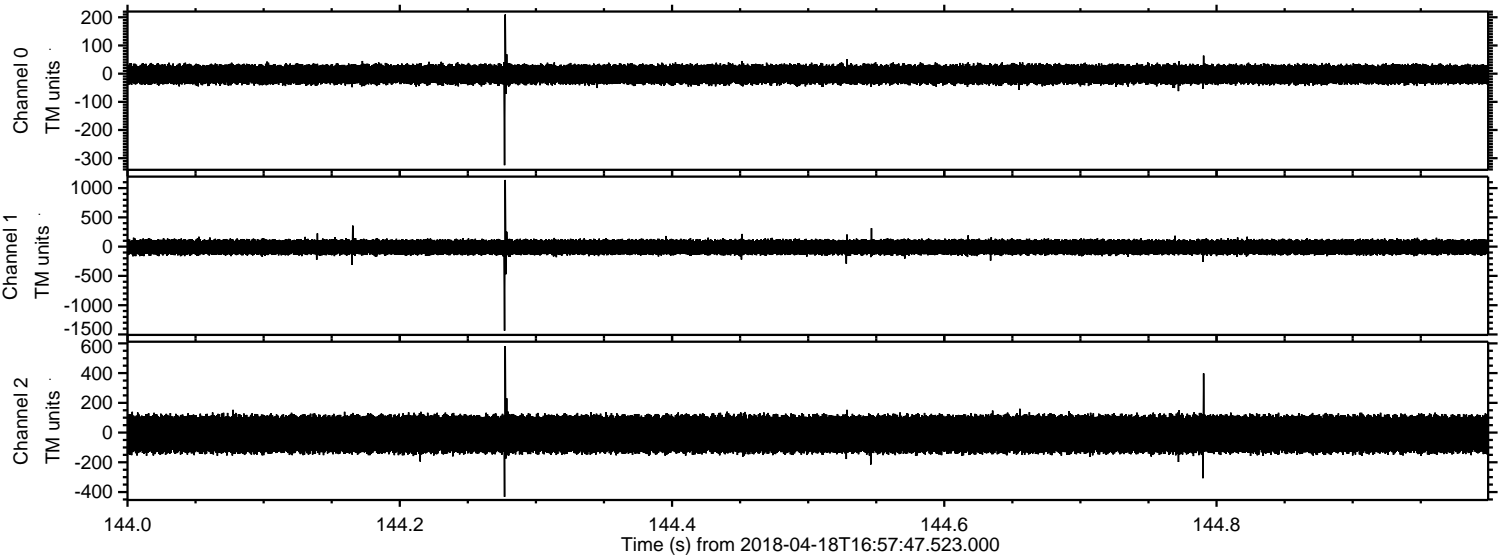


Processed Tue Apr 24 09:34:05 2018 by ELM ver.2012-10-06 from 001__elm20180418_165746__dat00.bin



ELMAVAN 3D WAVEFORMS (Measured data sampled at 50 kHz) 51000 packets of 144 samples from 2018-04-18T16:57:47.523.000. Part 145/147

Processed Tue Apr 24 09:34:05 2018 by ELM ver.2012-10-06 from 001__elm20180418_165746__dat00.bin

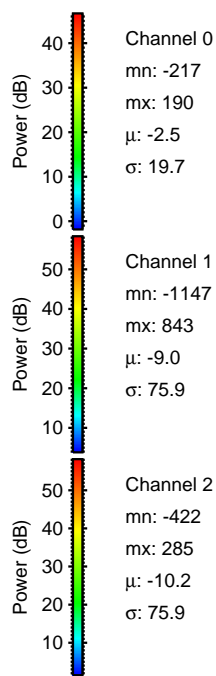
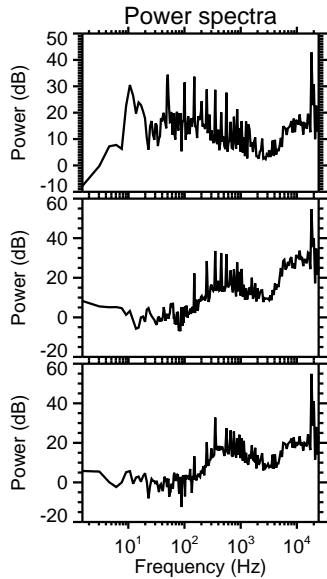
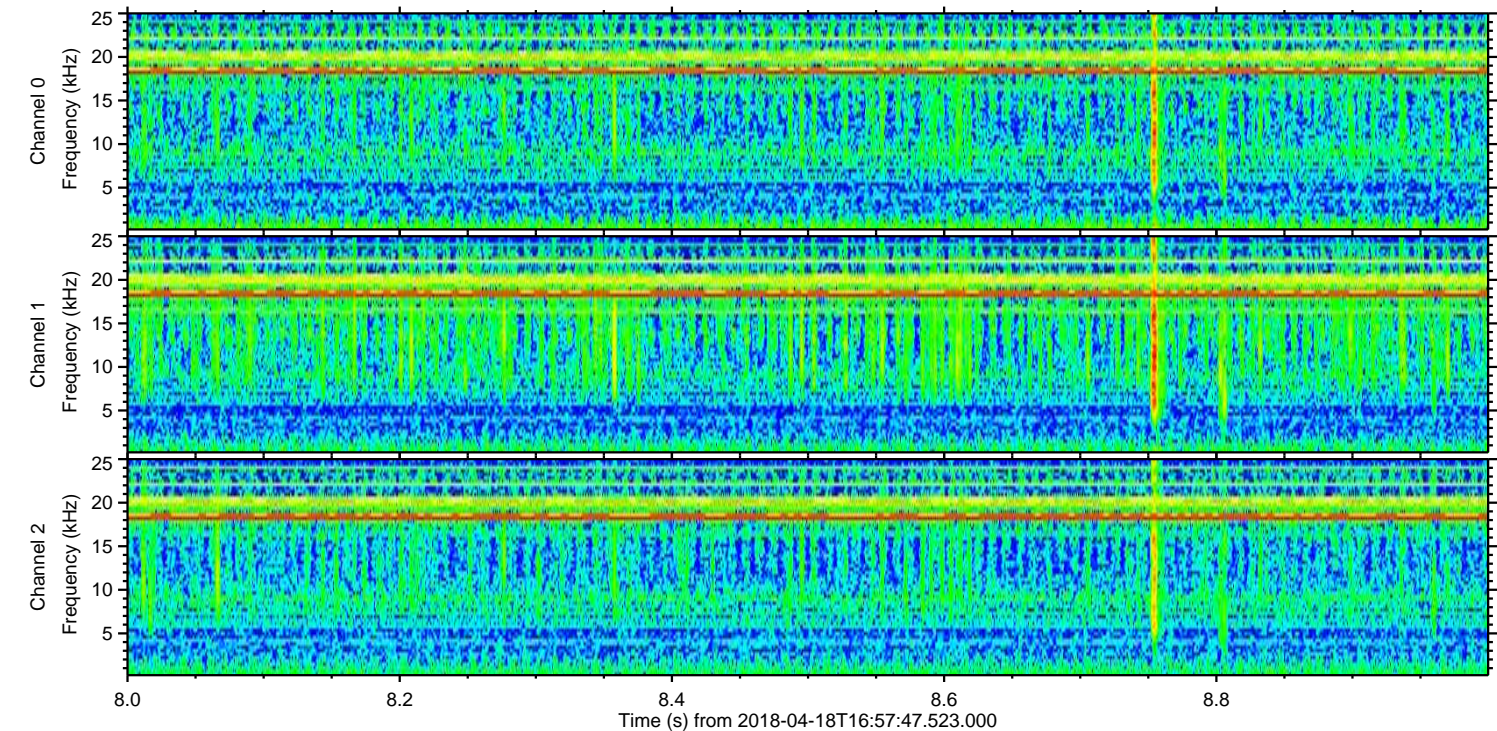
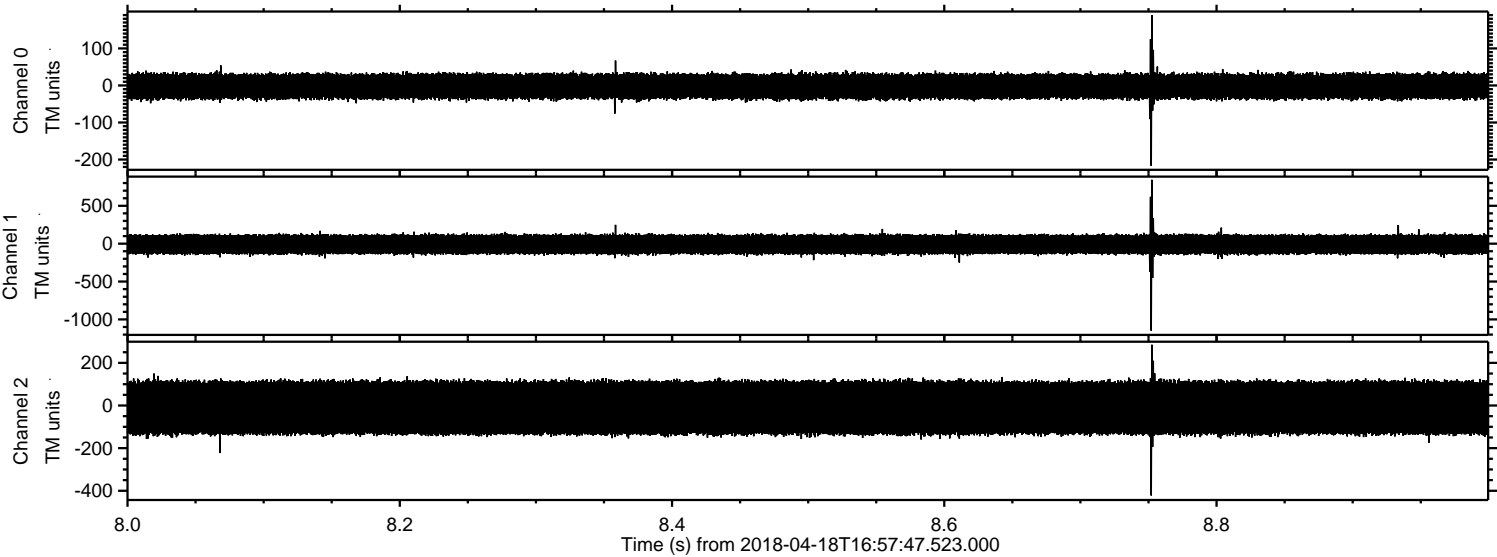


Channel 0
mn: -325
mx: 210
 μ : -2.6
 σ : 19.7

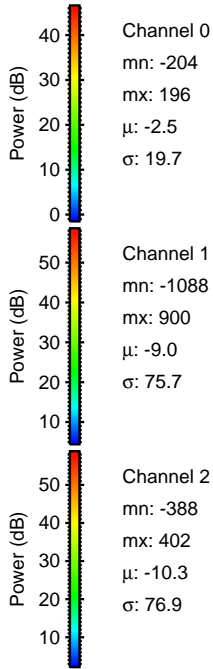
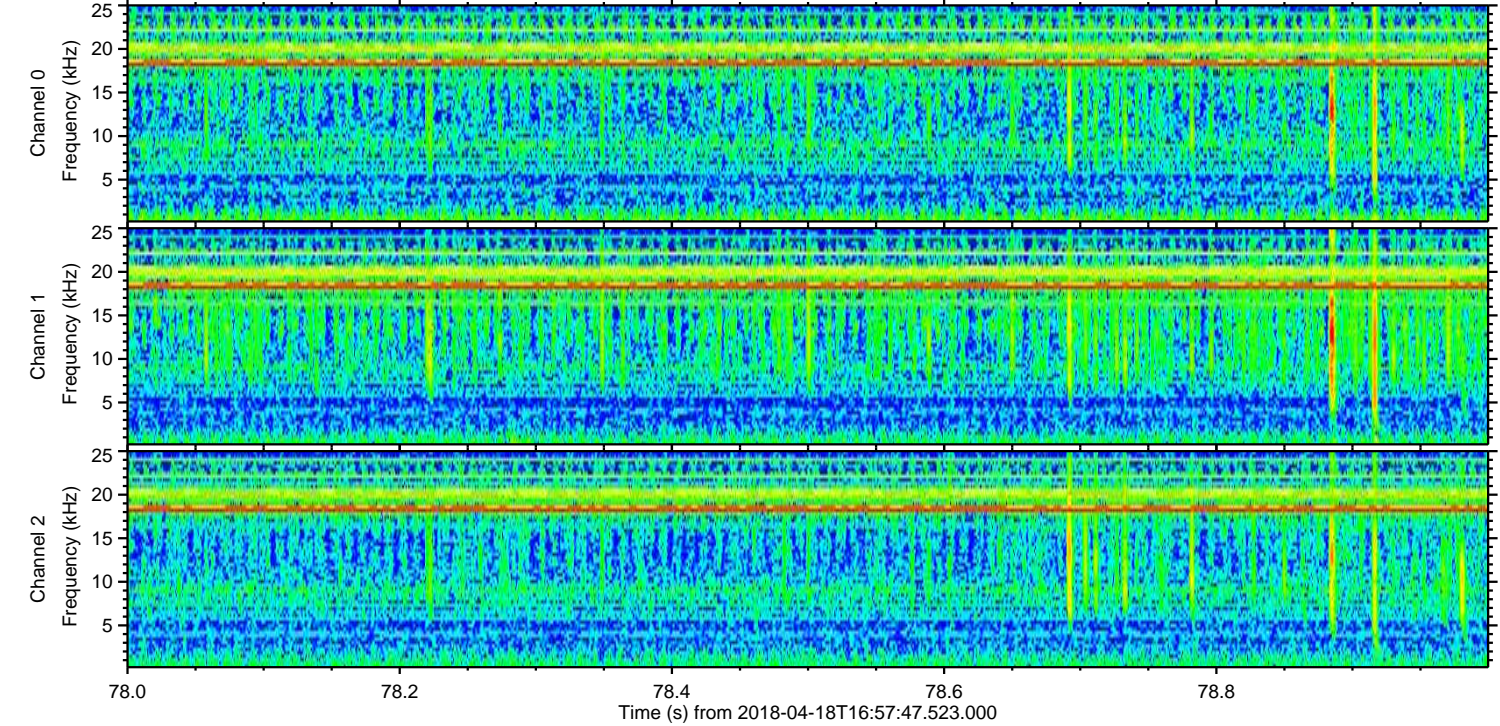
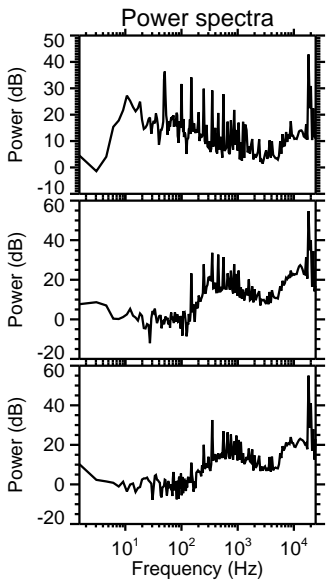
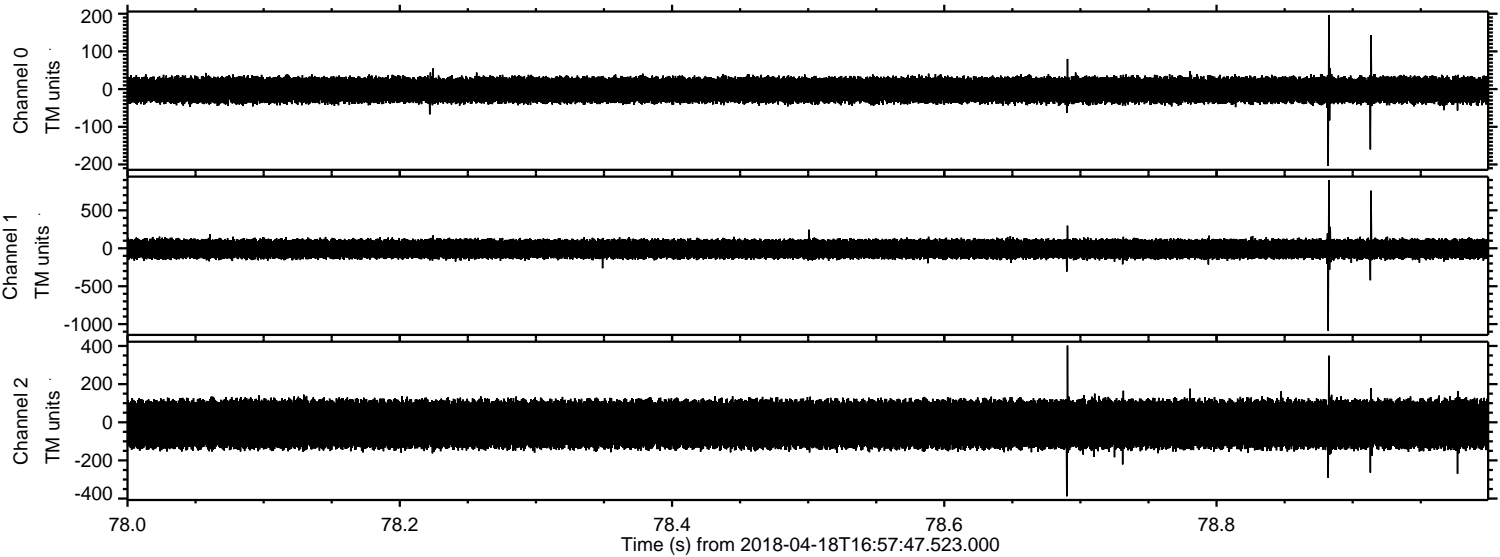
Channel 1
mn: -1436
mx: 1139
 μ : -9.0
 σ : 76.3

Channel 2
mn: -432
mx: 582
 μ : -10.3
 σ : 76.8

Processed Tue Apr 24 09:34:06 2018 by ELM ver.2012-10-06 from 001__elm20180418_165746__dat00.bin



Processed Tue Apr 24 09:34:07 2018 by ELM ver.2012-10-06 from 001__elm20180418_165746__dat00.bin



Processed Tue Apr 24 09:34:08 2018 by ELM ver.2012-10-06 from 001__elm20180418_165746__dat00.bin

