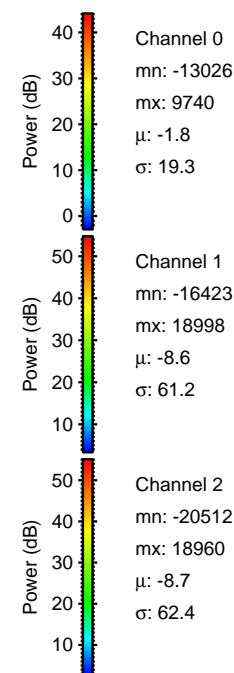
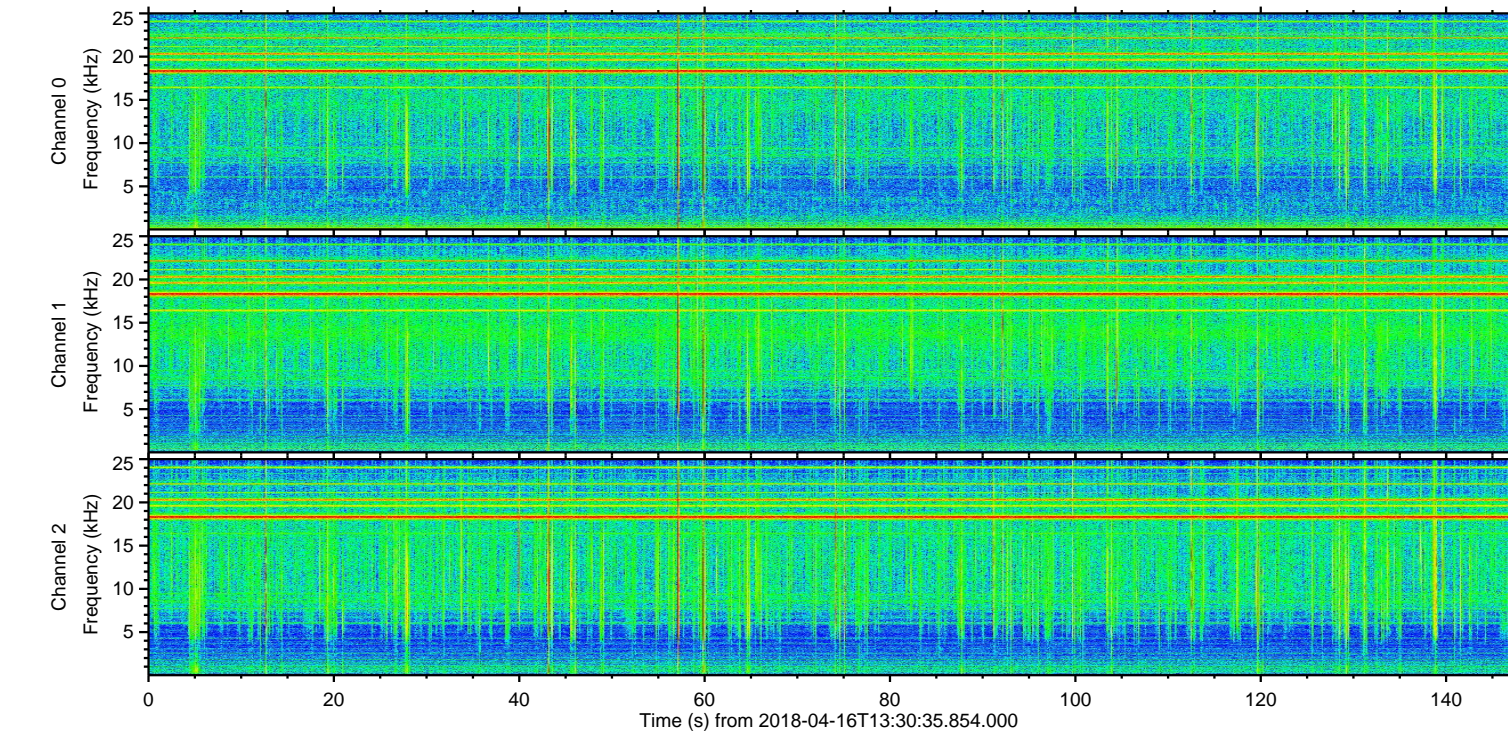
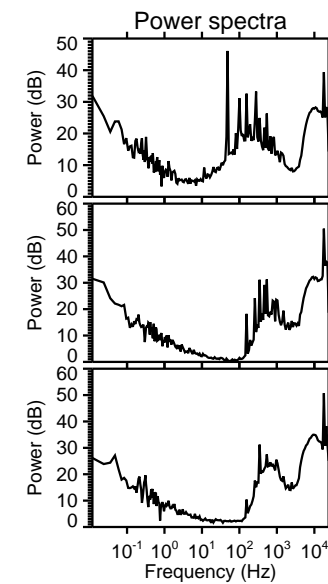
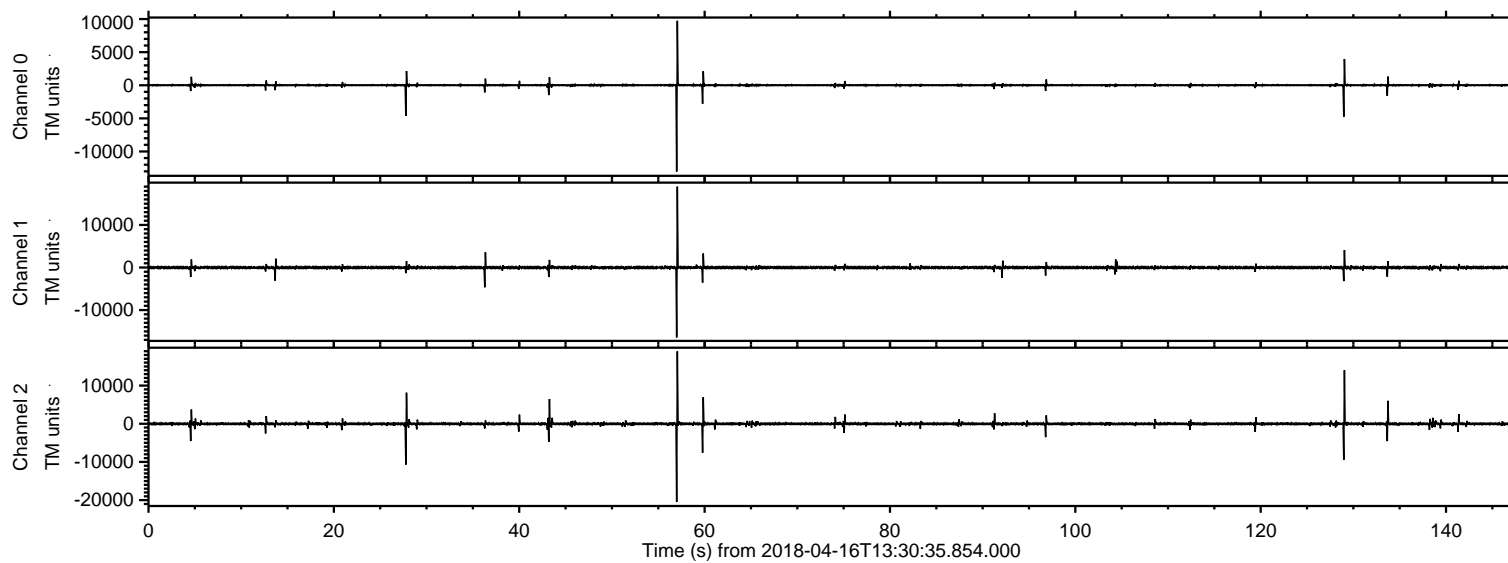
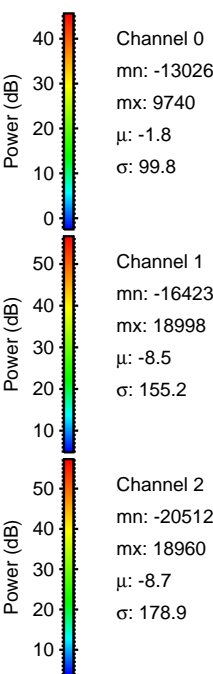
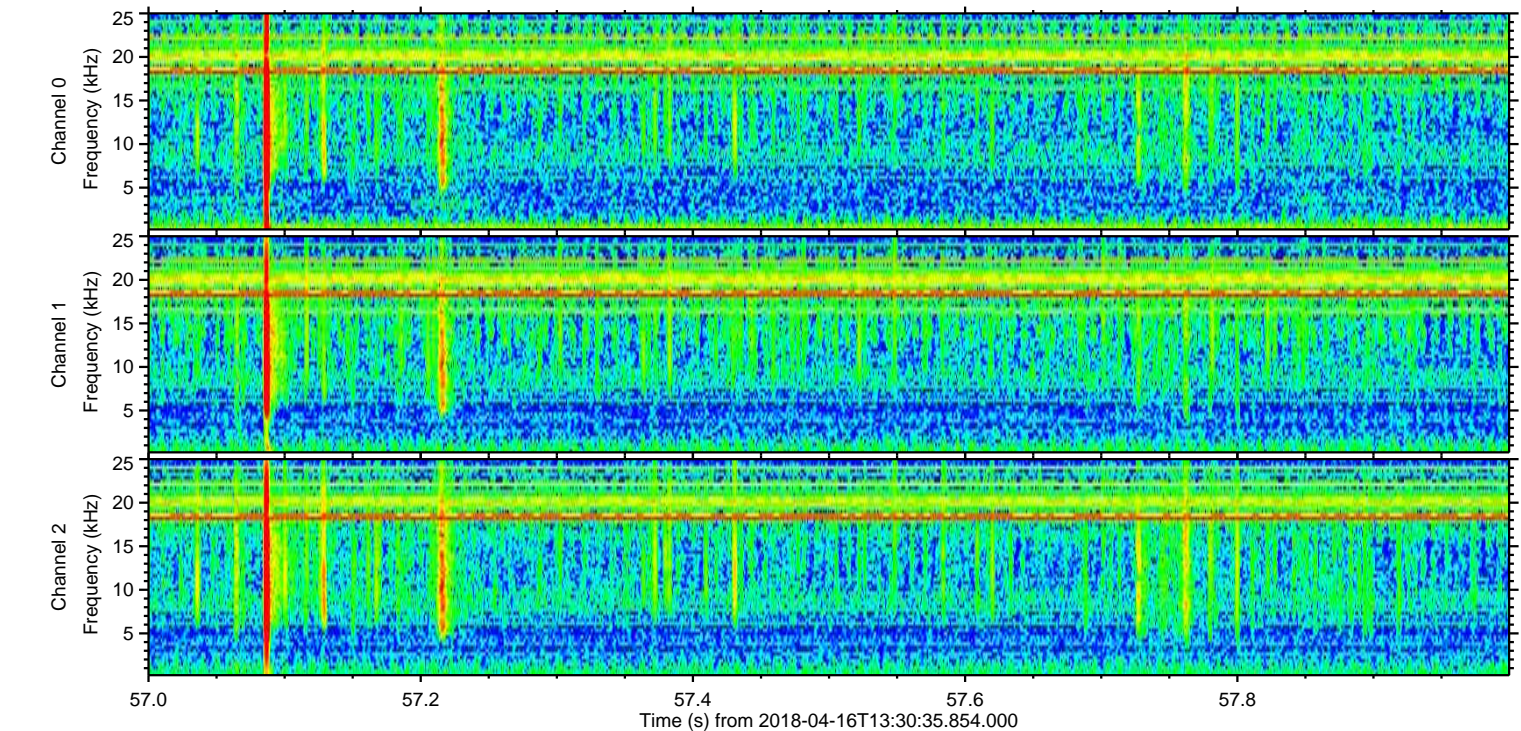
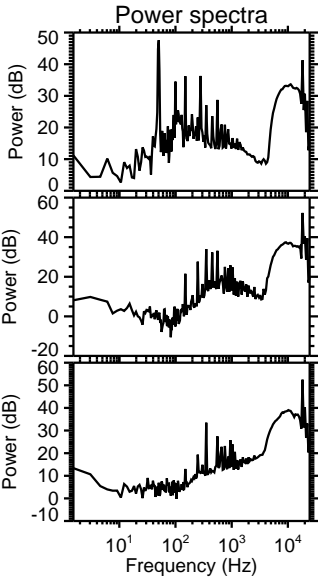
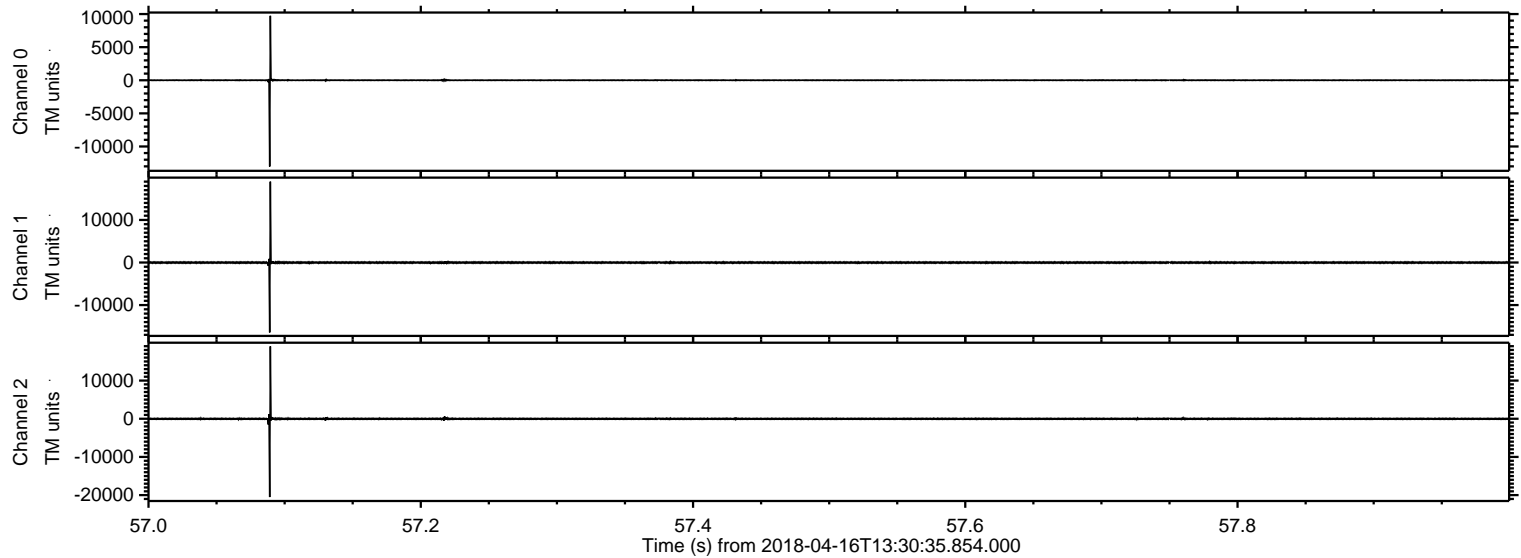


ELMAVAN 3D WAVEFORMS (Measured data sampled at 50 kHz) 51000 packets of 144 samples from 2018-04-16T13:30:35.854.000.

Processed Mon Apr 16 15:37:55 2018 by ELM ver.2012-10-06 from 001__elm20180416_133034__dat00.bin

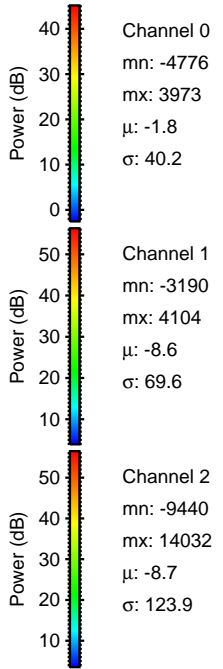
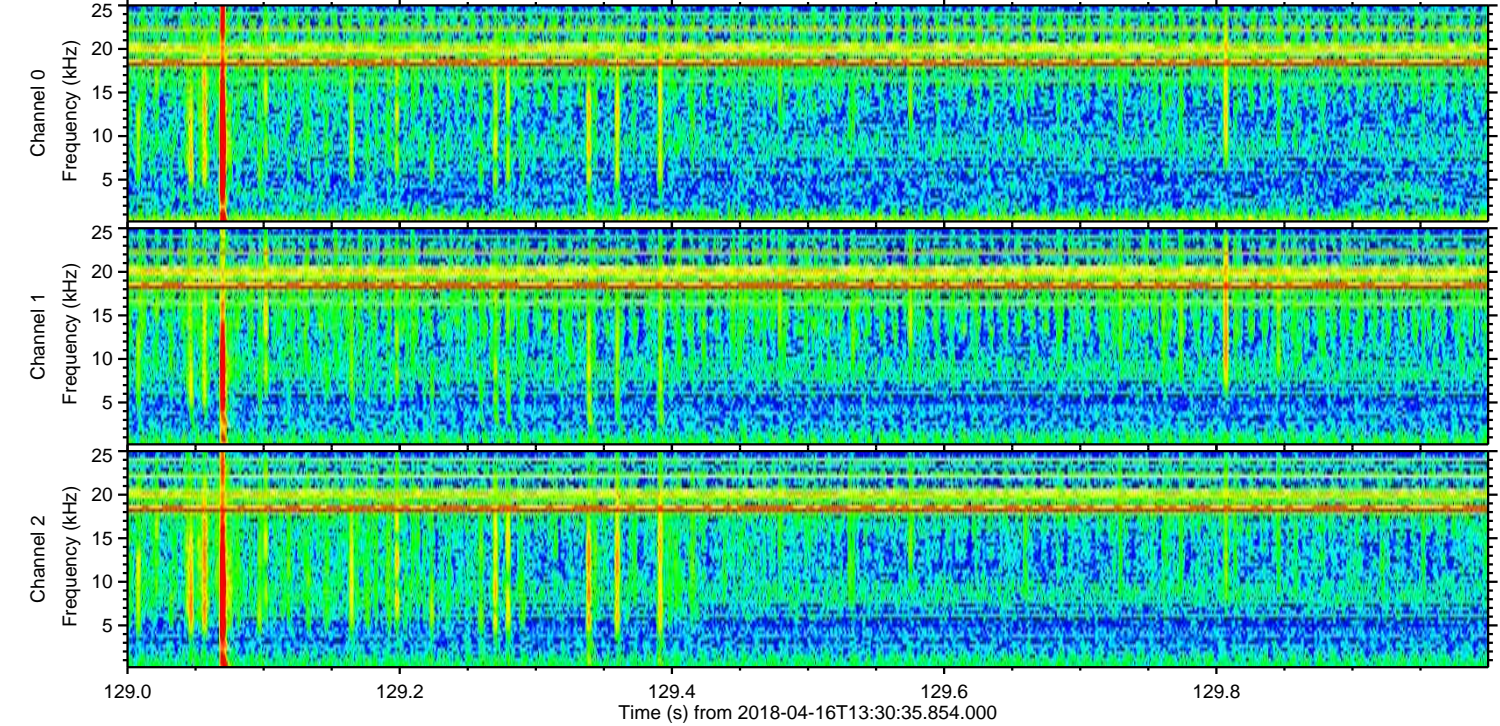
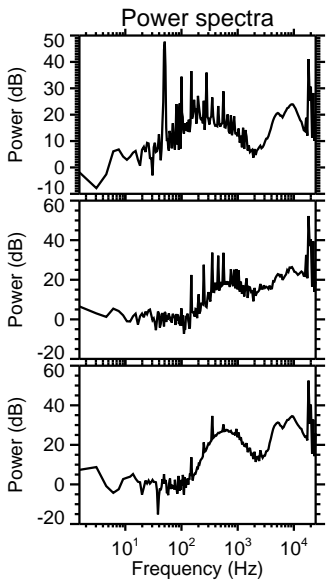
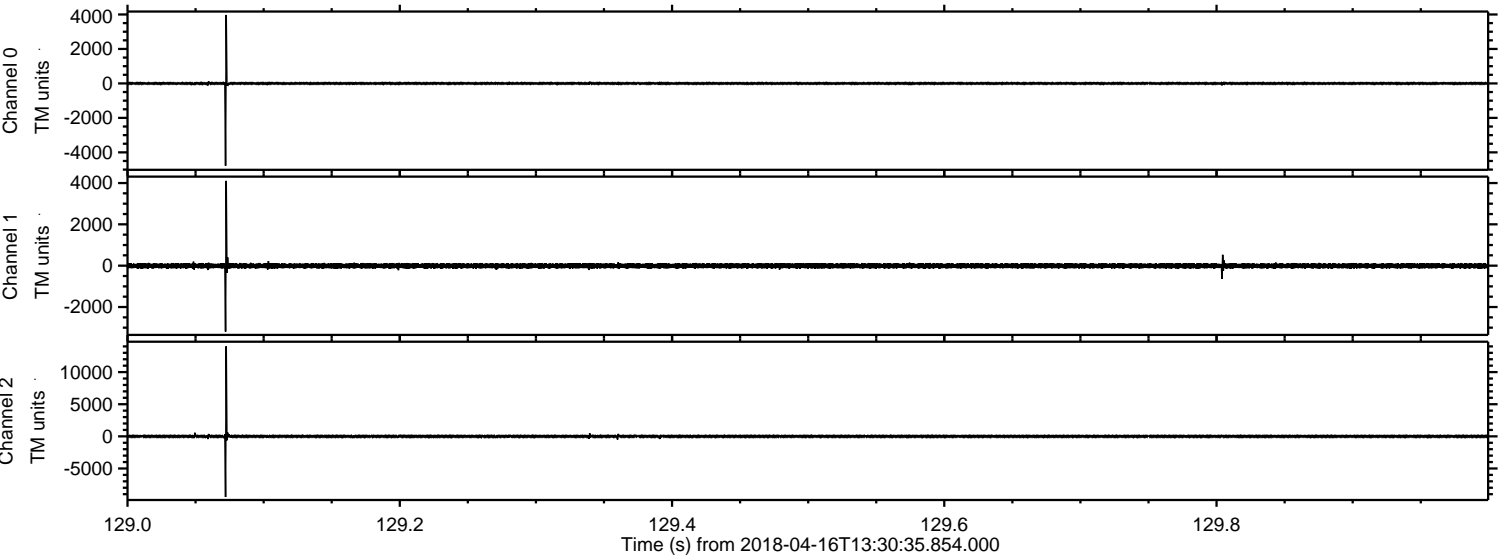


Processed Mon Apr 16 15:38:01 2018 by ELM ver.2012-10-06 from 001__elm20180416_133034__dat00.bin

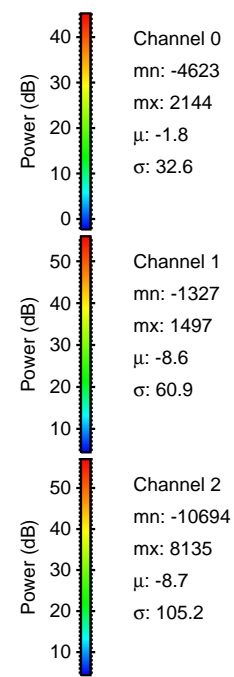
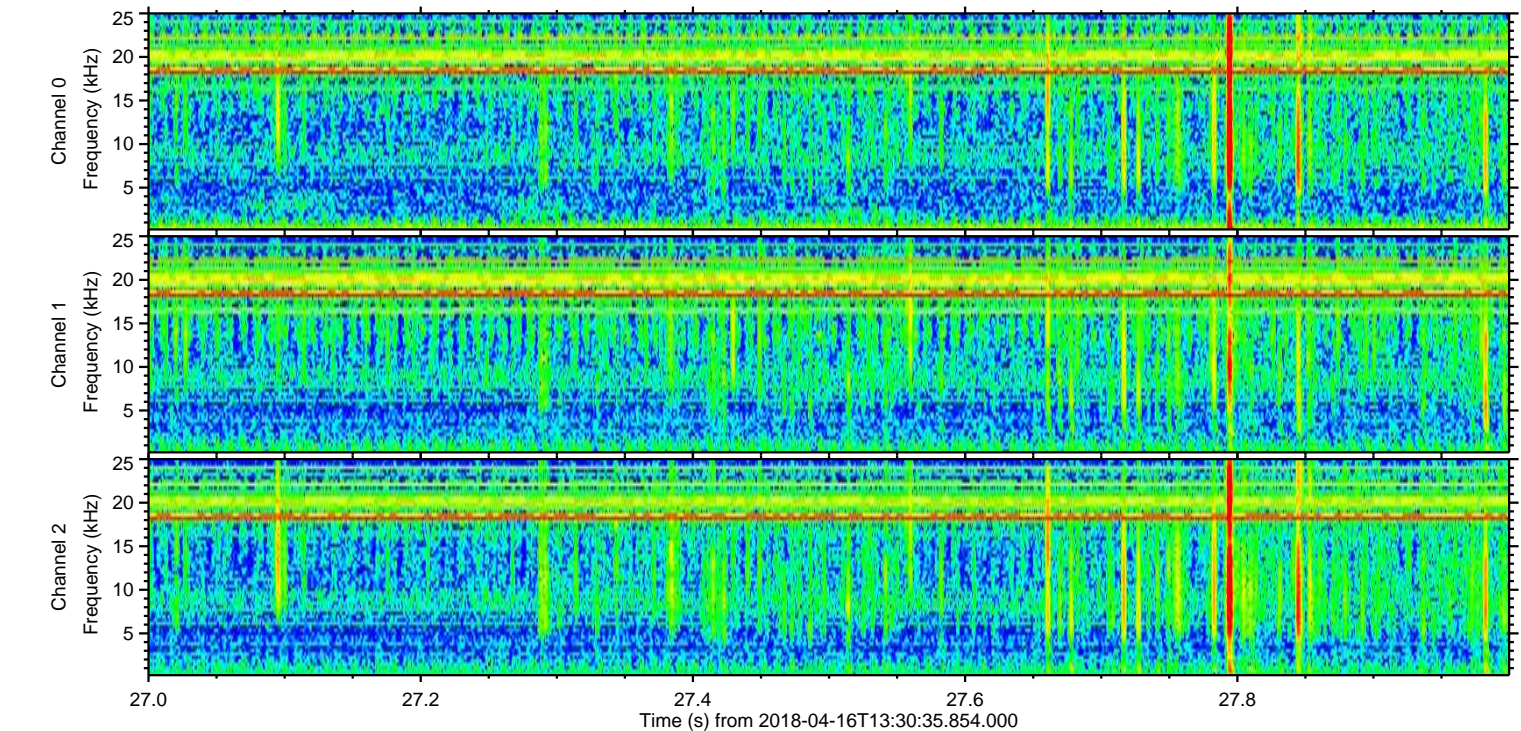
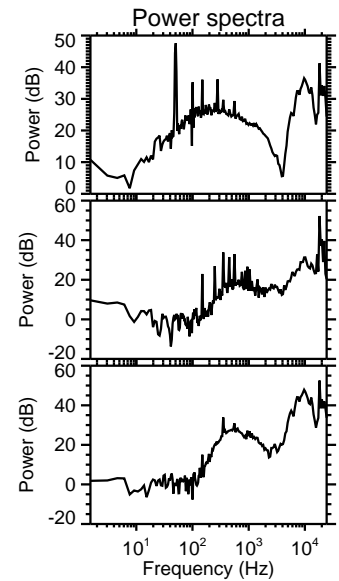
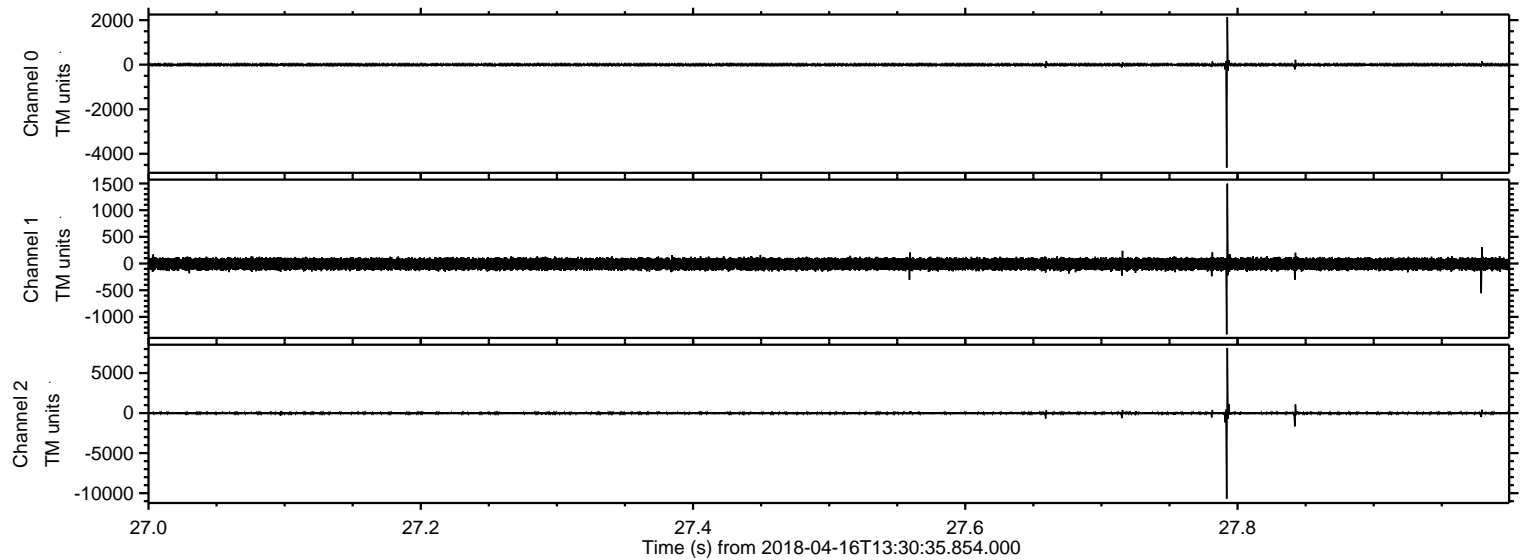


ELMAVAN 3D WAVEFORMS (Measured data sampled at 50 kHz) 51000 packets of 144 samples from 2018-04-16T13:30:35.854.000. Part 130/147

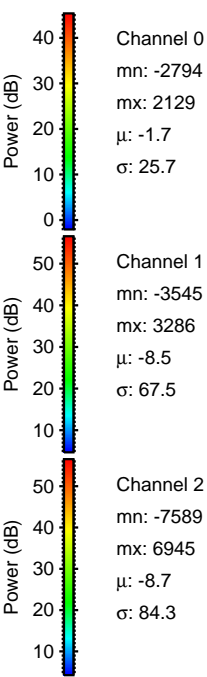
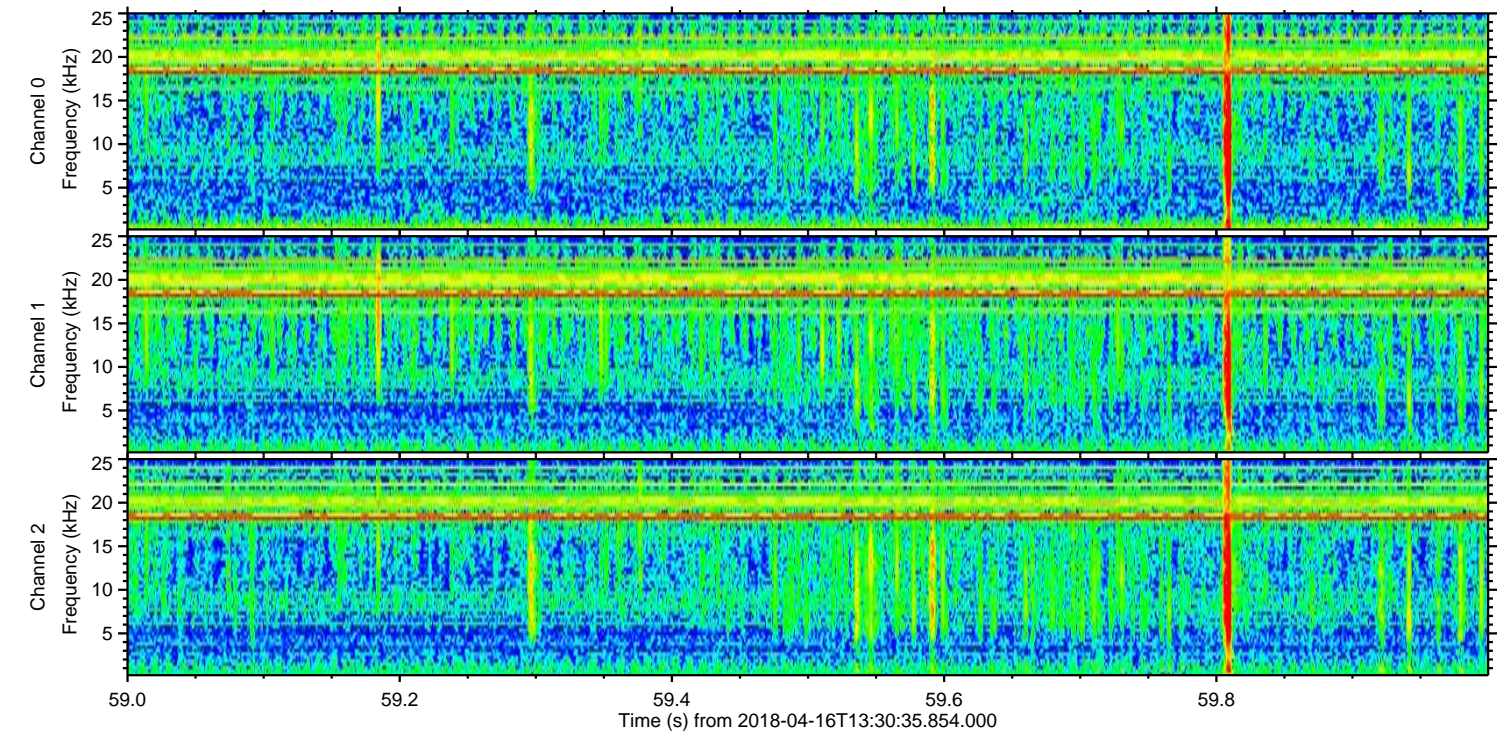
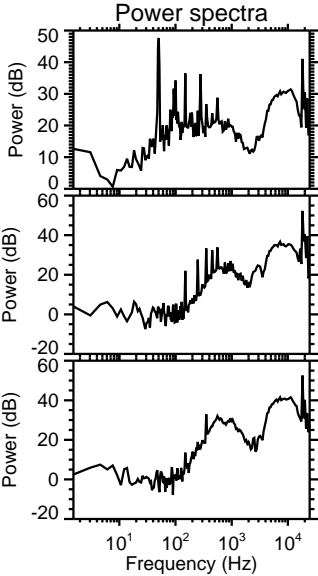
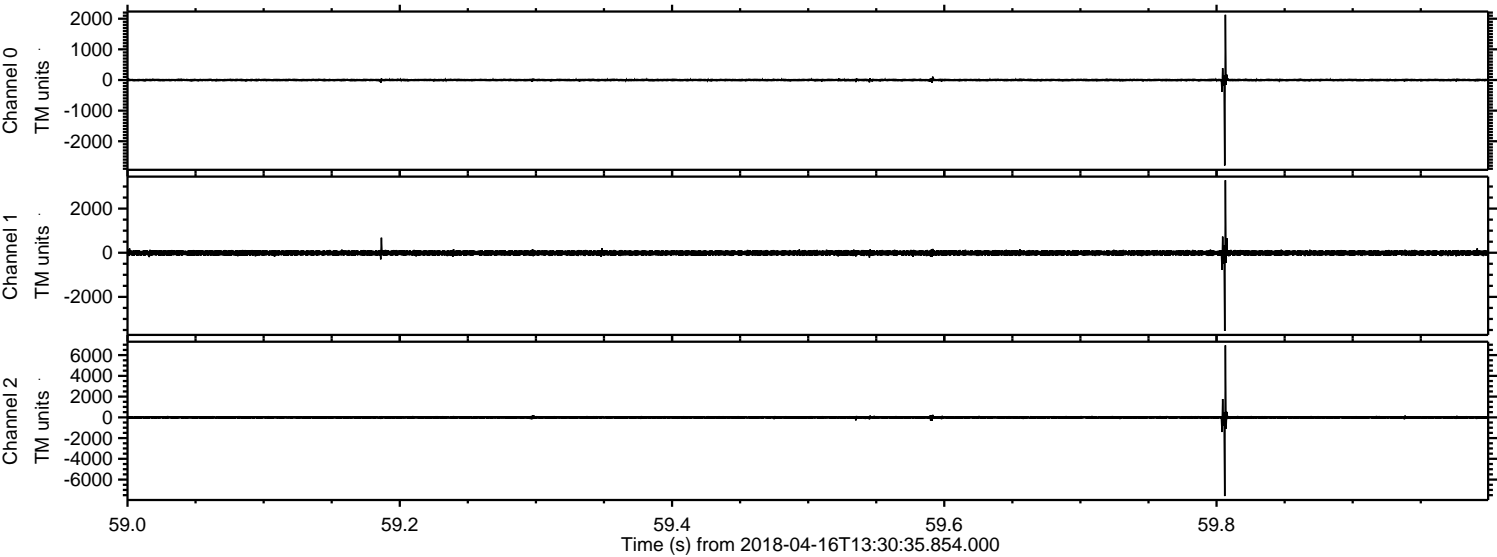
Processed Mon Apr 16 15:38:02 2018 by ELM ver.2012-10-06 from 001__elm20180416_133034__dat00.bin



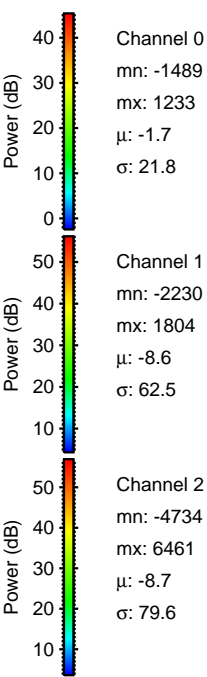
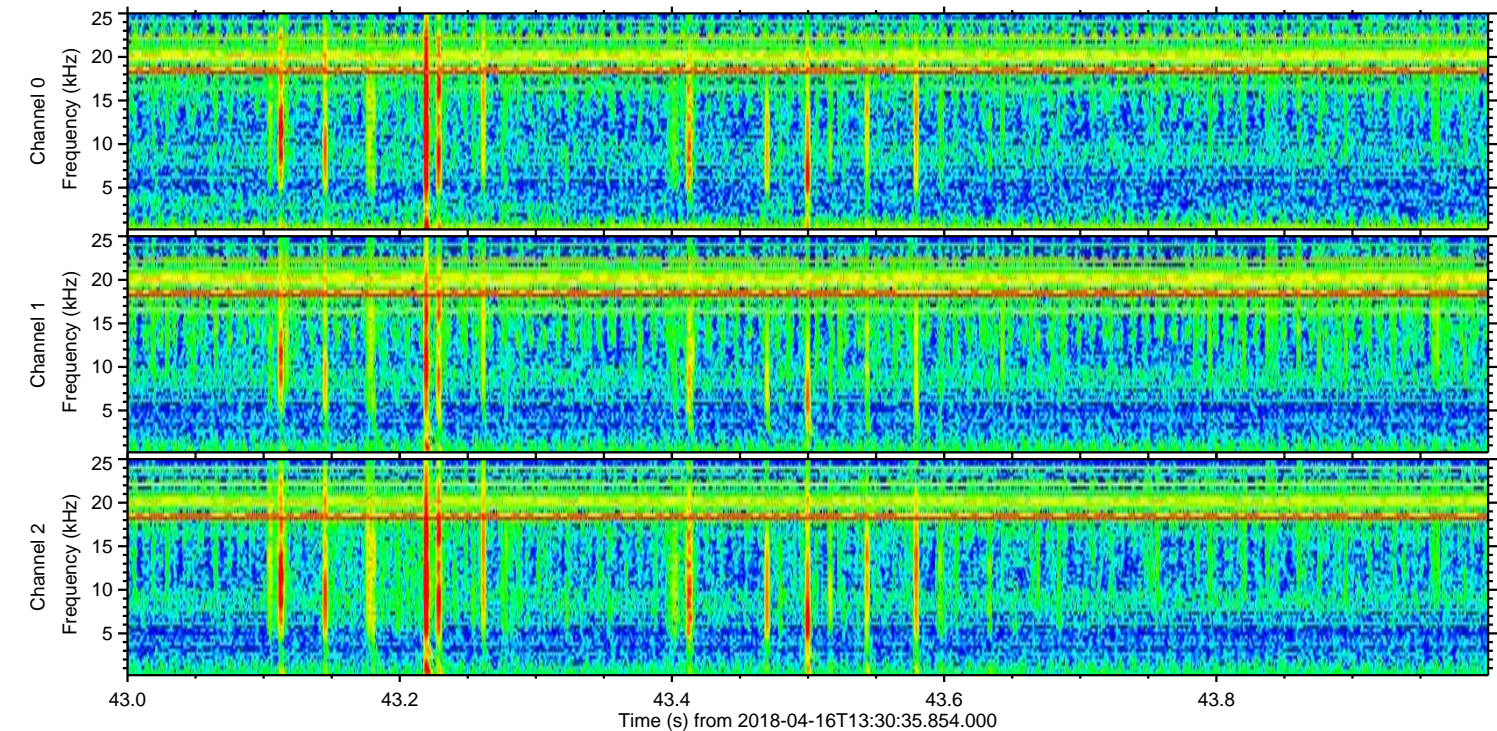
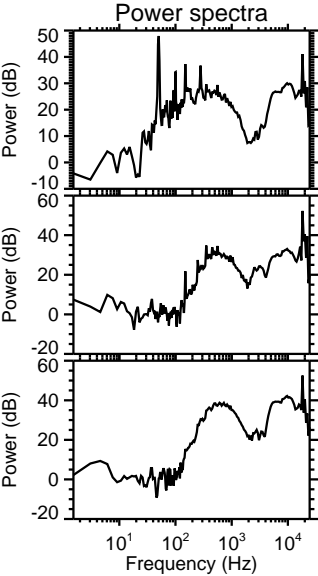
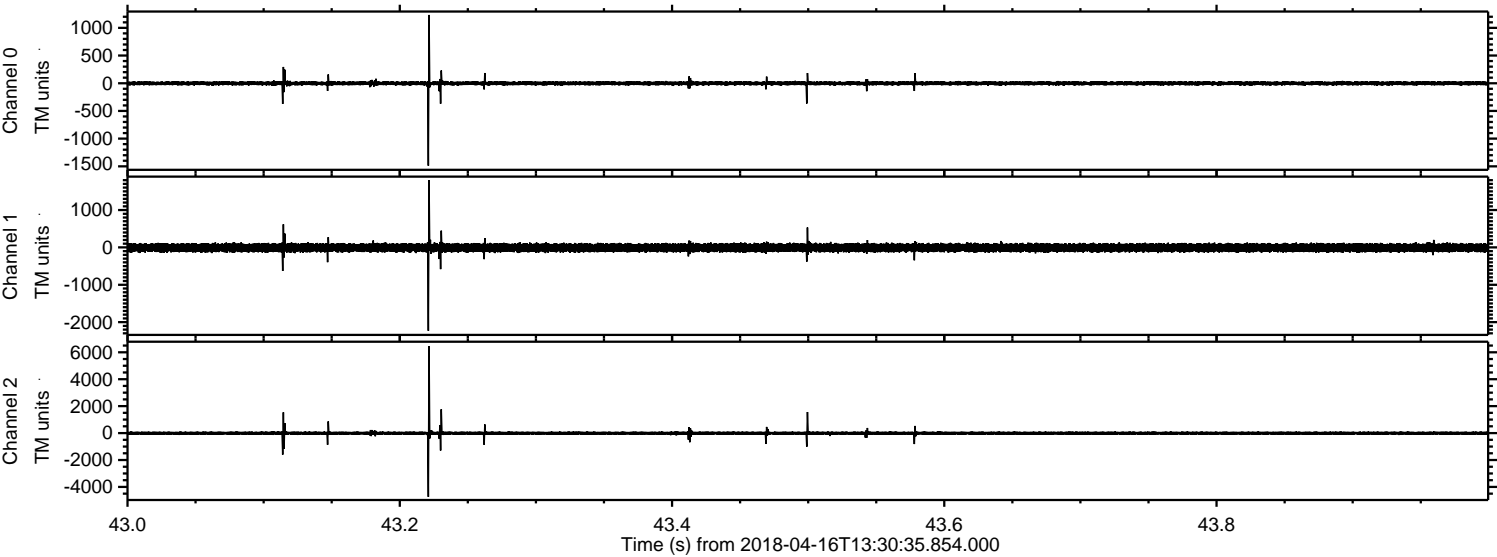
Processed Mon Apr 16 15:38:03 2018 by ELM ver.2012-10-06 from 001__elm20180416_133034__dat00.bin



Processed Mon Apr 16 15:38:04 2018 by ELM ver.2012-10-06 from 001__elm20180416_133034__dat00.bin



Processed Mon Apr 16 15:38:05 2018 by ELM ver.2012-10-06 from 001__elm20180416_133034__dat00.bin



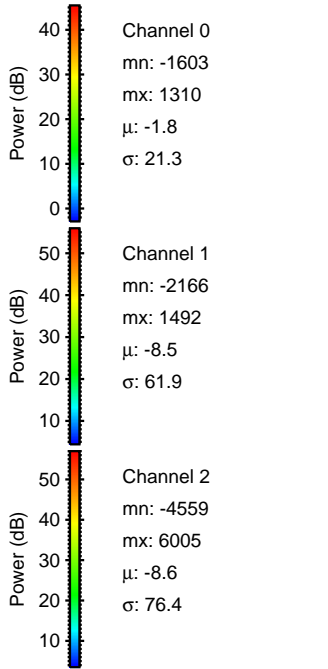
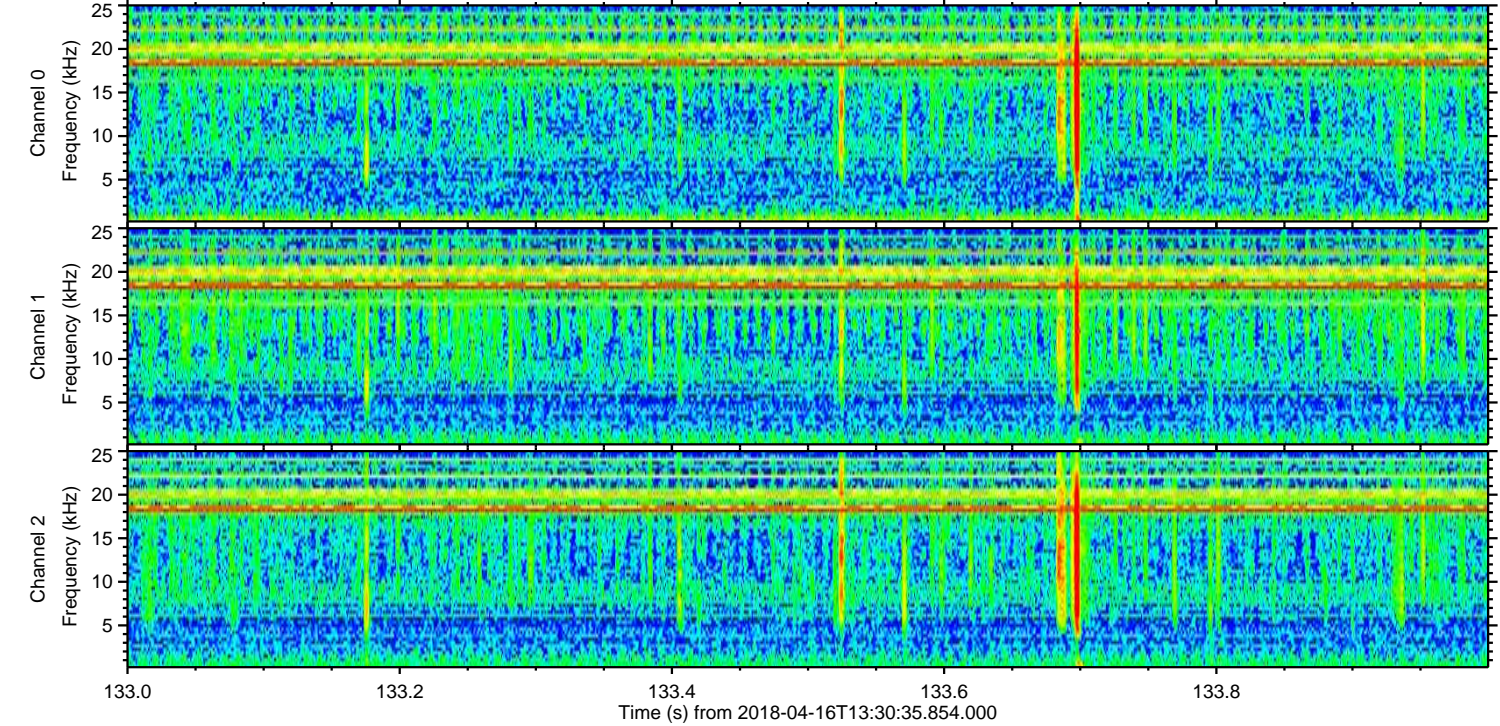
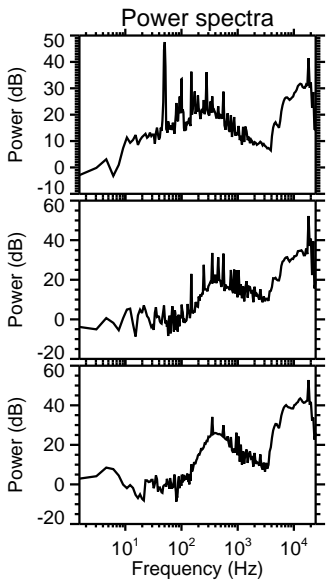
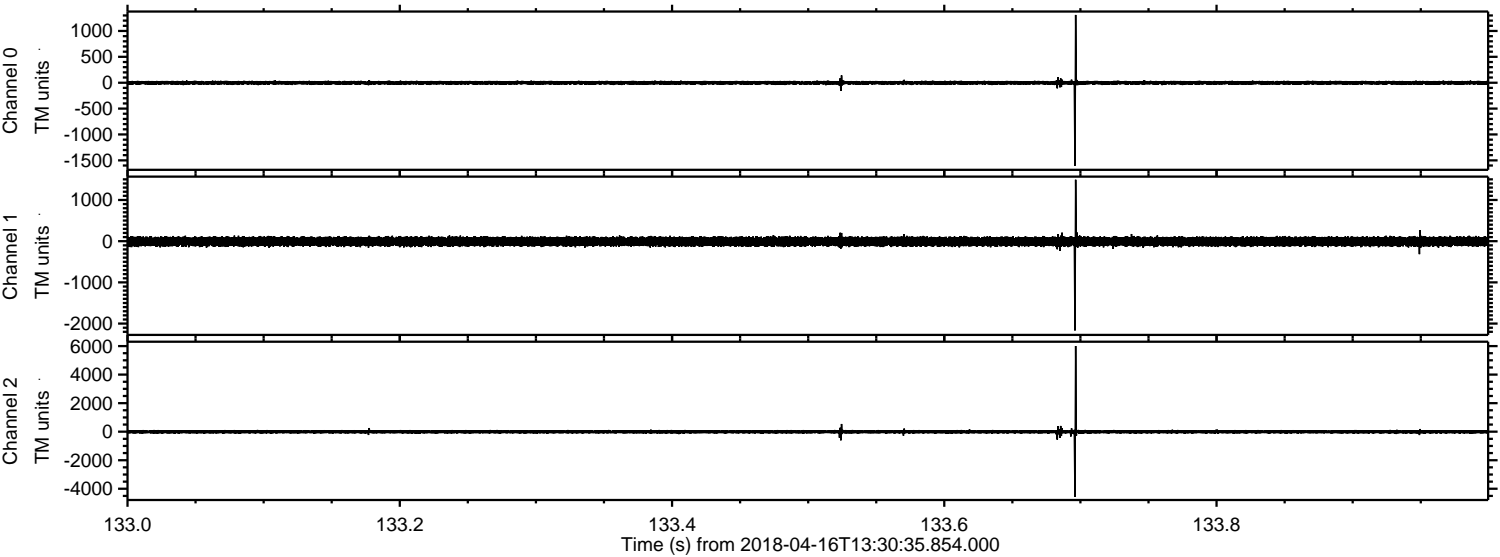
Channel 0
mn: -1489
mx: 1233
 μ : -1.7
 σ : 21.8

Channel 1
mn: -2230
mx: 1804
 μ : -8.6
 σ : 62.5

Channel 2
mn: -4734
mx: 6461
 μ : -8.7
 σ : 79.6

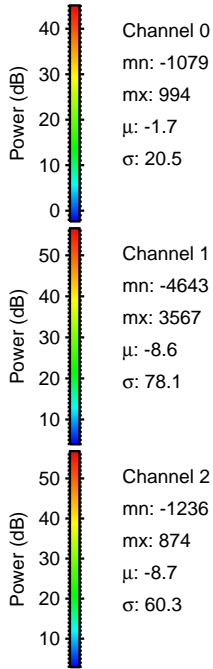
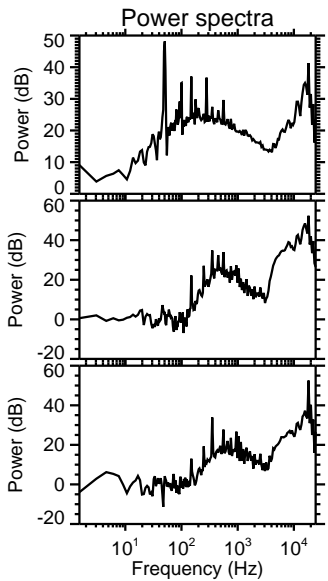
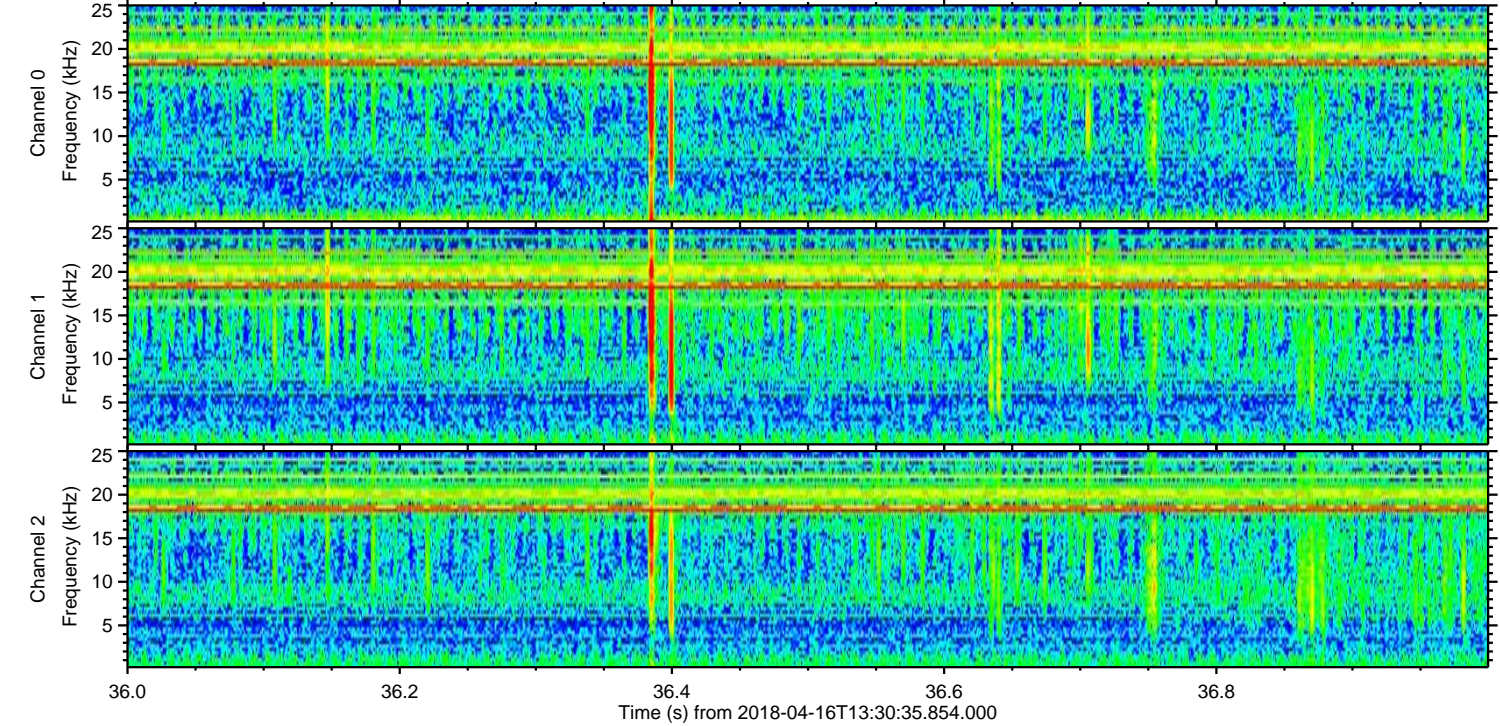
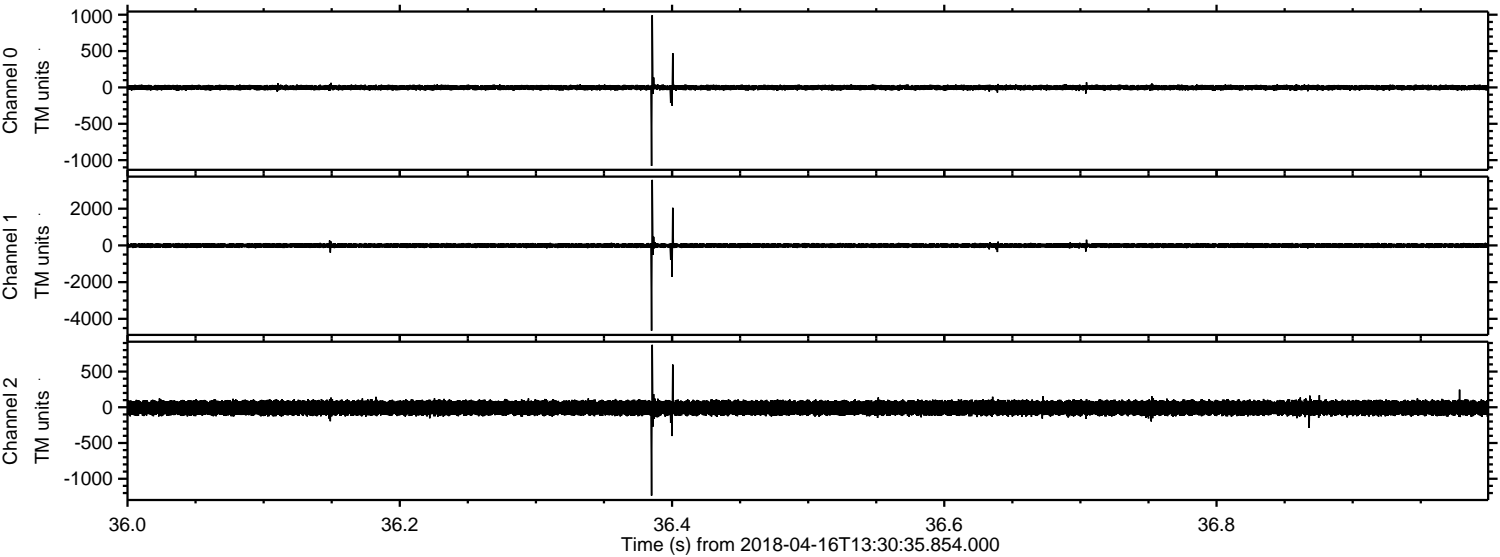
ELMAVAN 3D WAVEFORMS (Measured data sampled at 50 kHz) 51000 packets of 144 samples from 2018-04-16T13:30:35.854.000. Part 134/147

Processed Mon Apr 16 15:38:05 2018 by ELM ver.2012-10-06 from 001__elm20180416_133034__dat00.bin

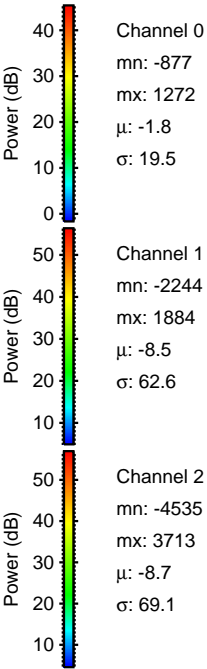
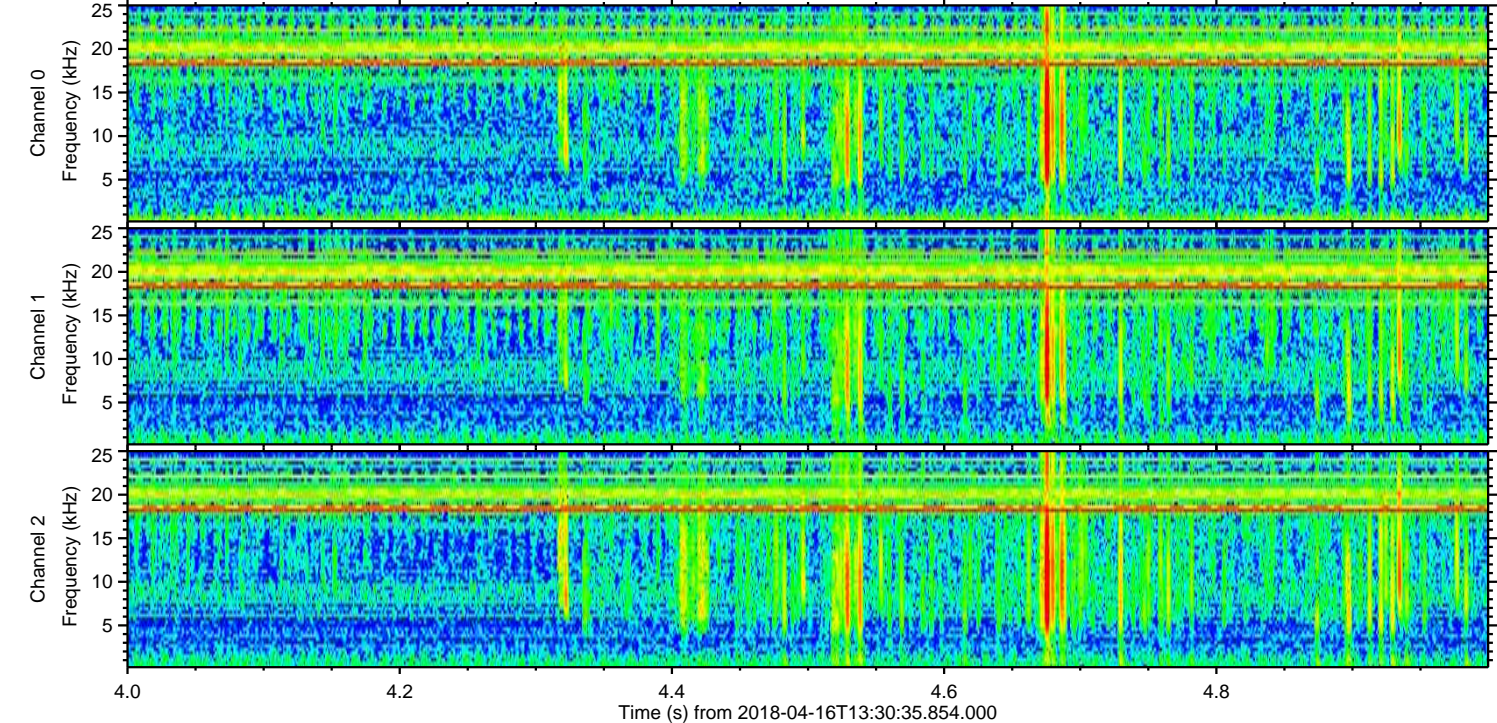
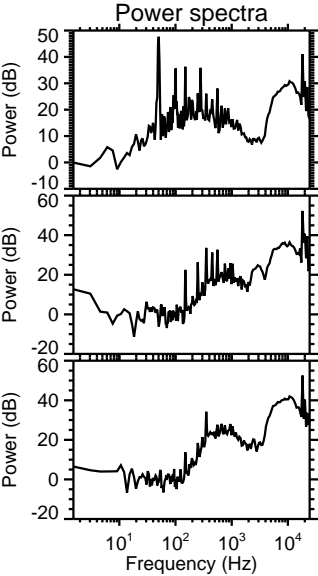
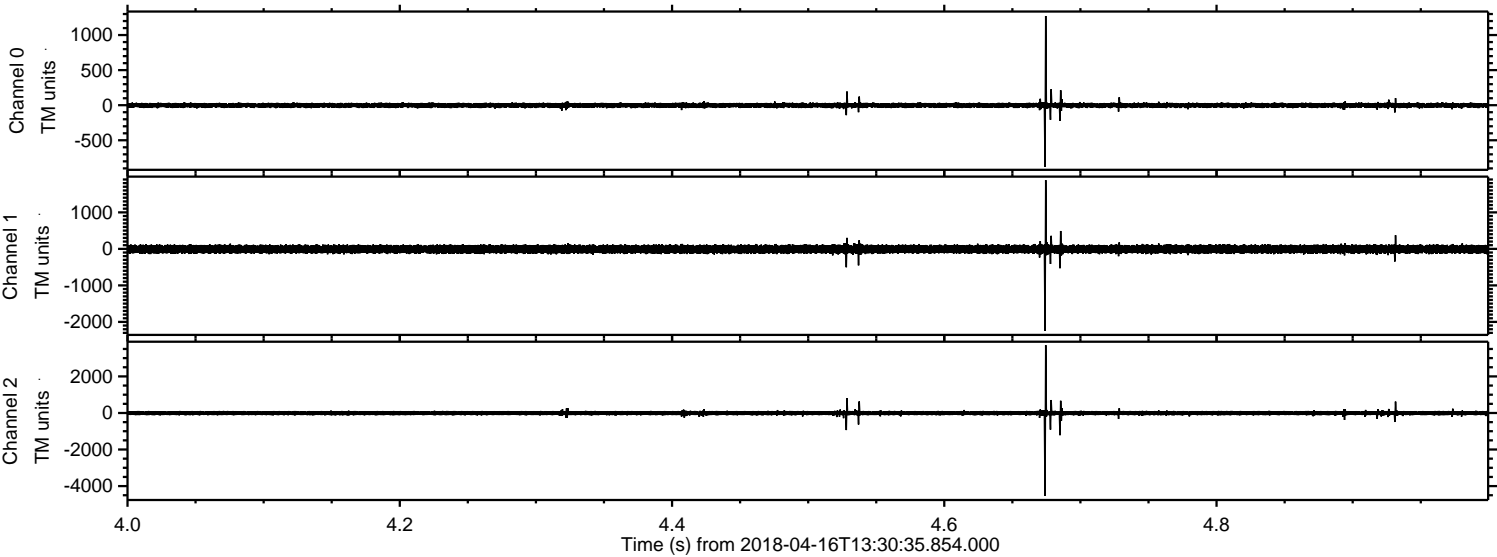


ELMAVAN 3D WAVEFORMS (Measured data sampled at 50 kHz) 51000 packets of 144 samples from 2018-04-16T13:30:35.854.000. Part 37/147

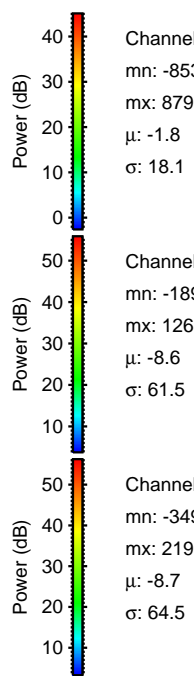
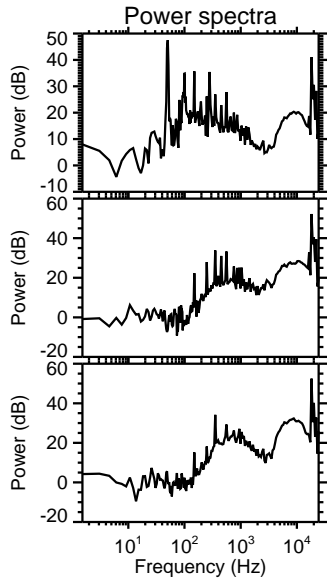
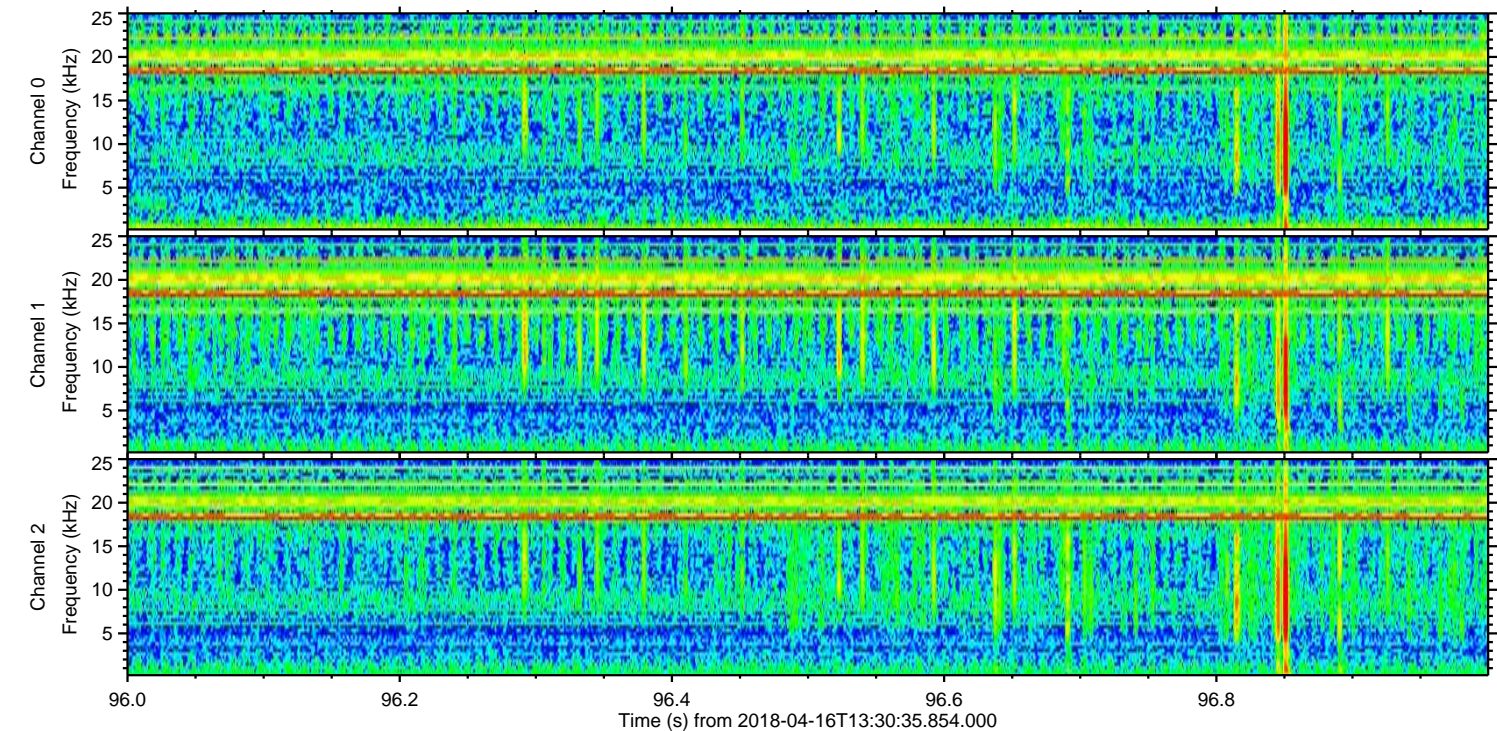
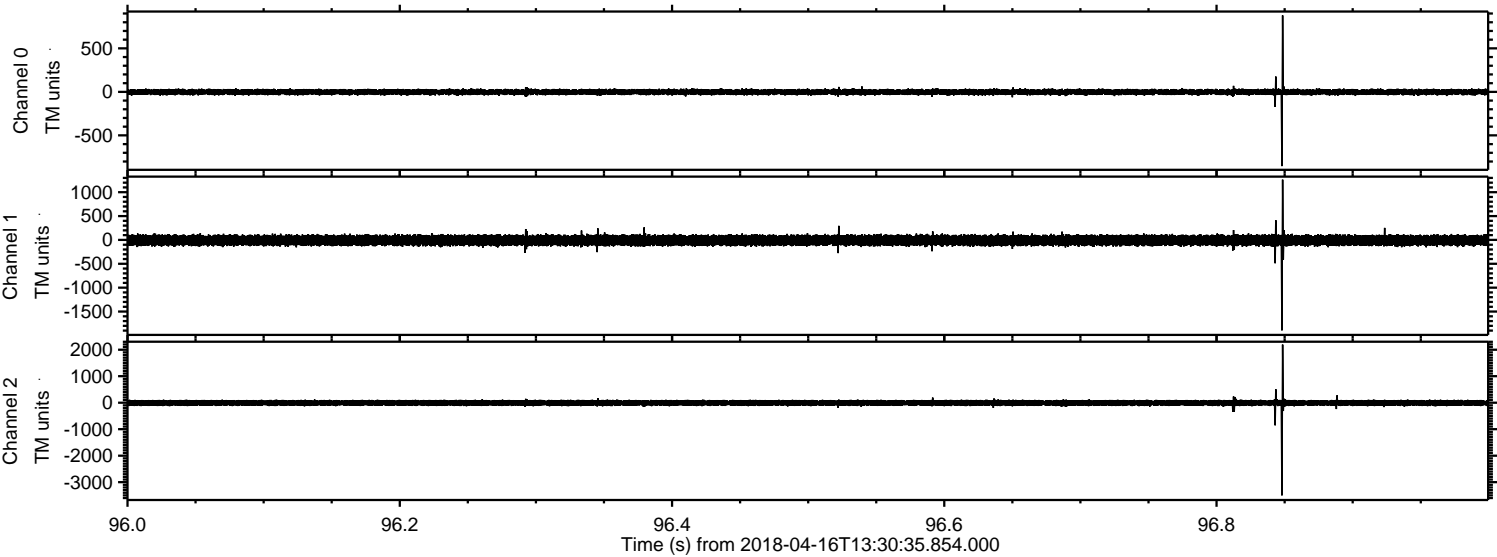
Processed Mon Apr 16 15:38:06 2018 by ELM ver.2012-10-06 from 001__elm20180416_133034__dat00.bin



Processed Mon Apr 16 15:38:07 2018 by ELM ver.2012-10-06 from 001__elm20180416_133034__dat00.bin



Processed Mon Apr 16 15:38:08 2018 by ELM ver.2012-10-06 from 001__elm20180416_133034__dat00.bin



Channel 0
mn: -853
mx: 879
 μ : -1.8
 σ : 18.1

Channel 1
mn: -1895
mx: 1263
 μ : -8.6
 σ : 61.5

Channel 2
mn: -3499
mx: 2193
 μ : -8.7
 σ : 64.5

