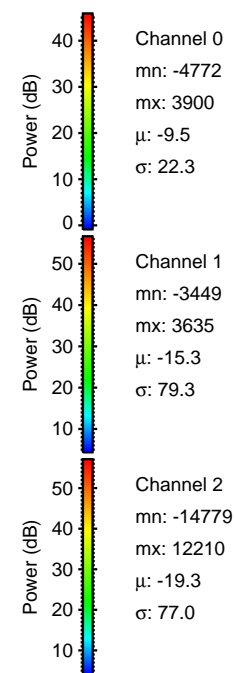
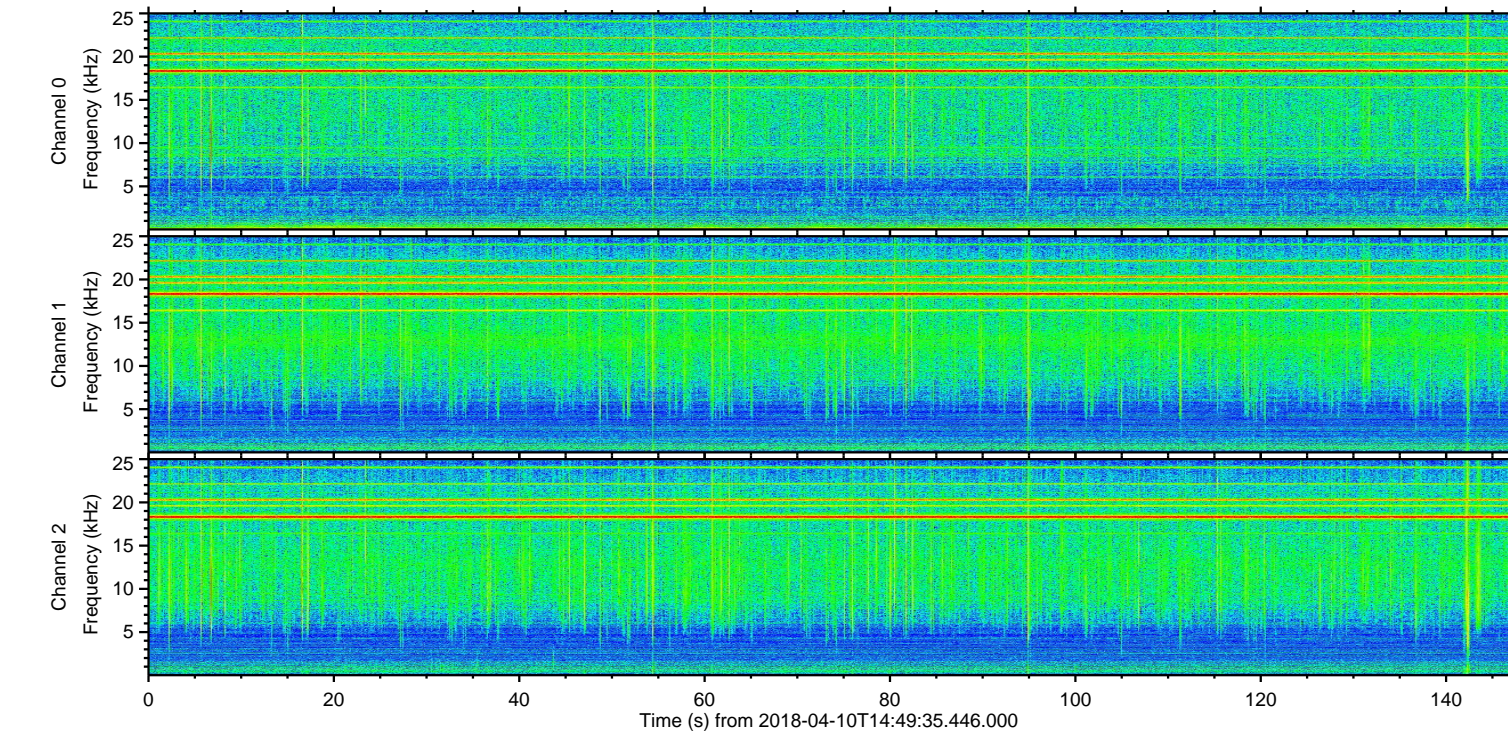
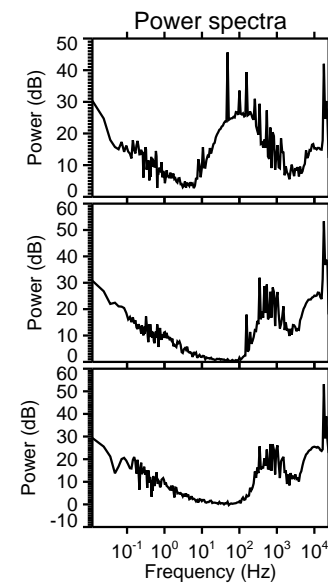
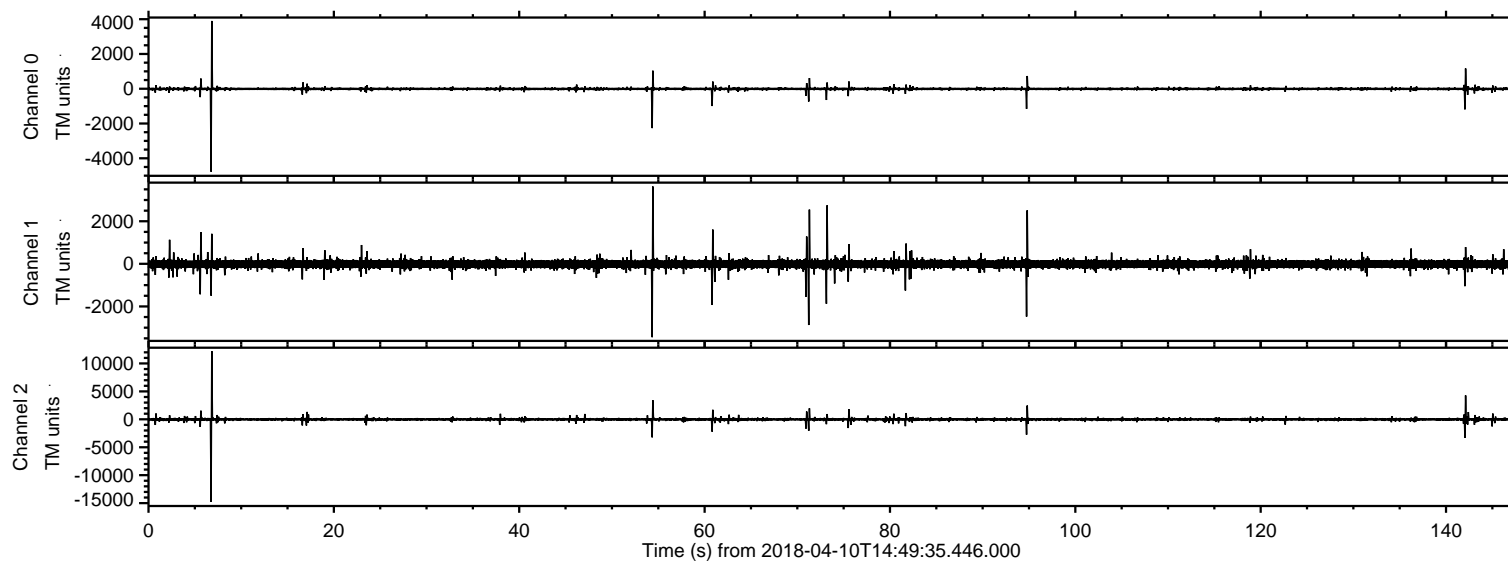
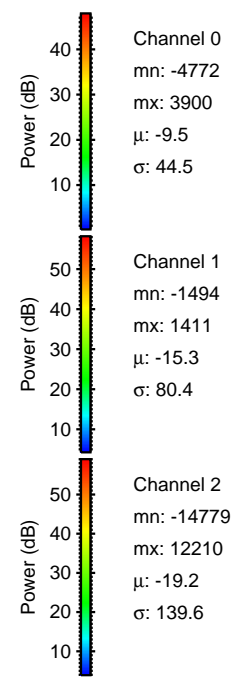
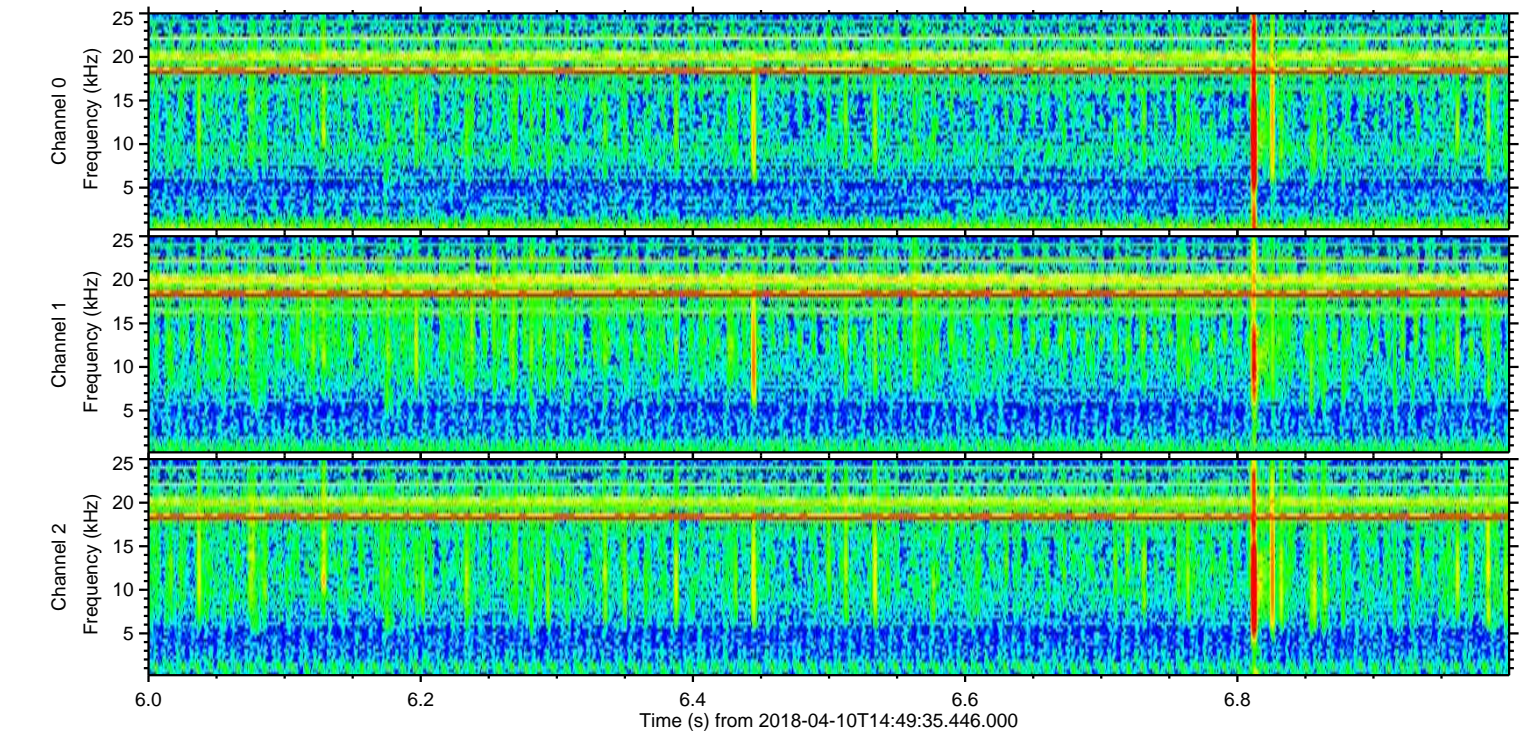
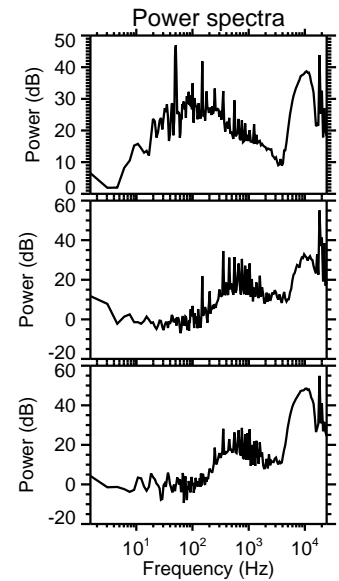
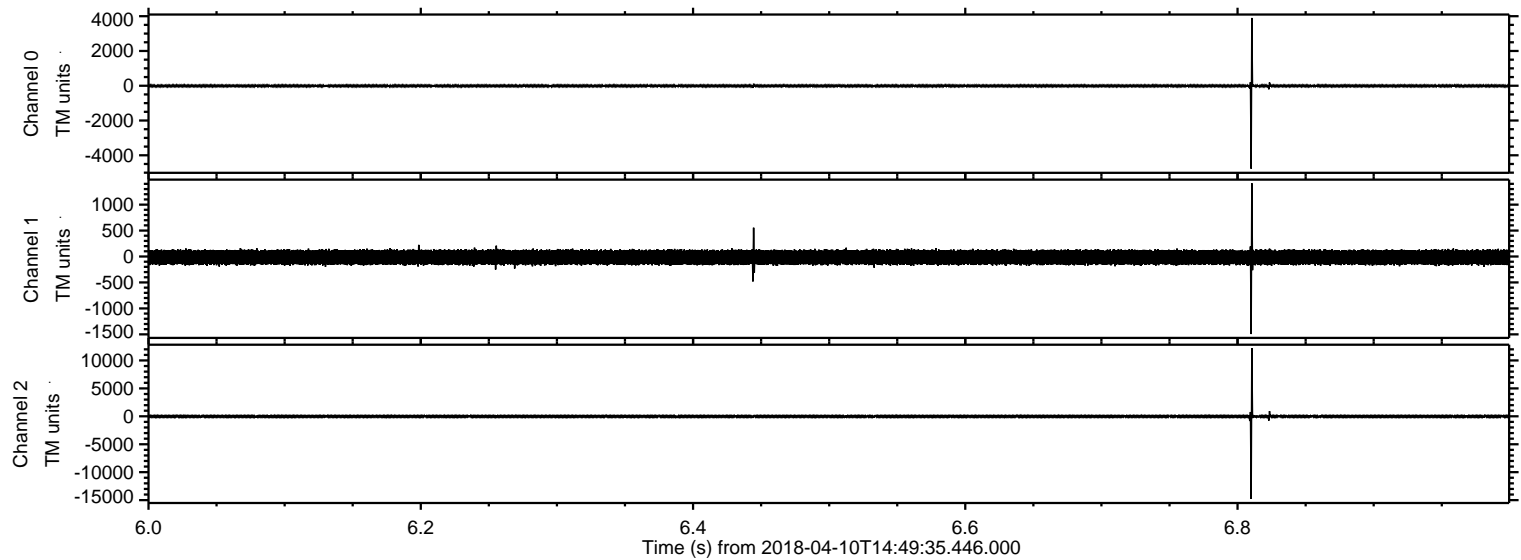


ELMAVAN 3D WAVEFORMS (Measured data sampled at 50 kHz) 51000 packets of 144 samples from 2018-04-10T14:49:35.446.000.

Processed Tue Apr 10 16:57:12 2018 by ELM ver.2012-10-06 from 001__elm20180410_144934__dat00.bin

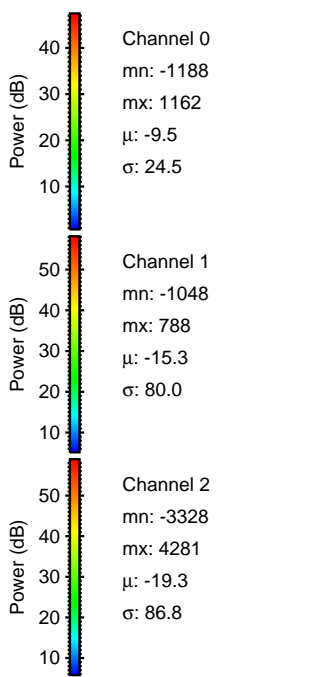
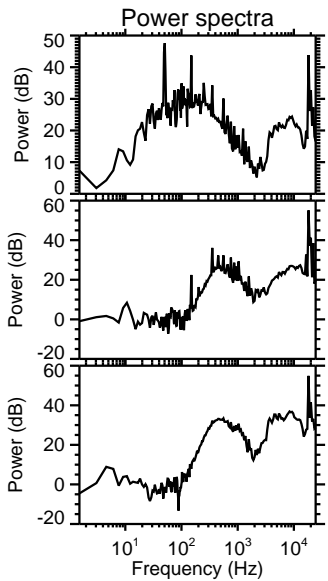
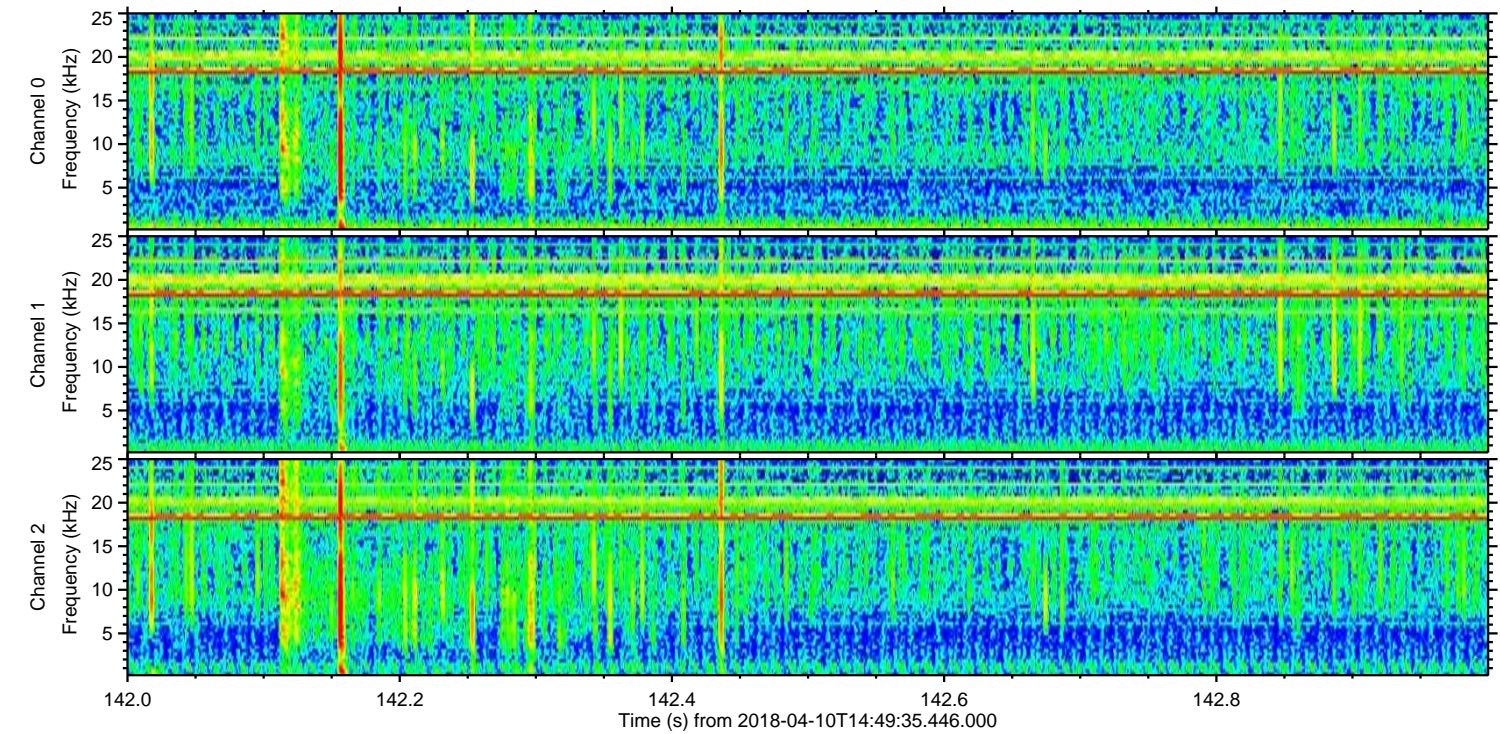
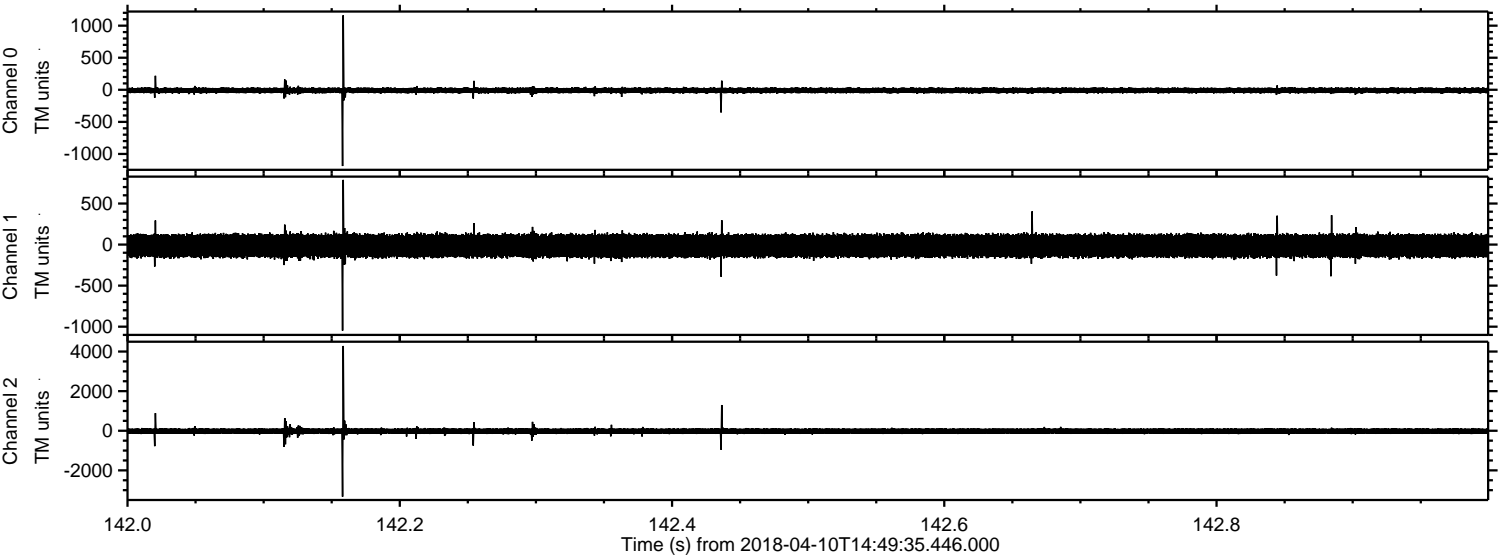


Processed Tue Apr 10 16:57:18 2018 by ELM ver.2012-10-06 from 001__elm20180410_144934__dat00.bin

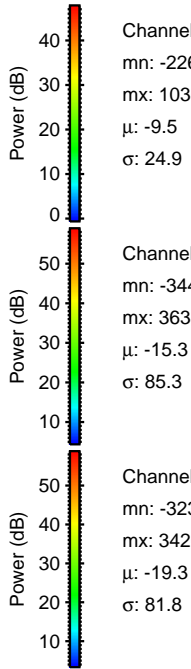
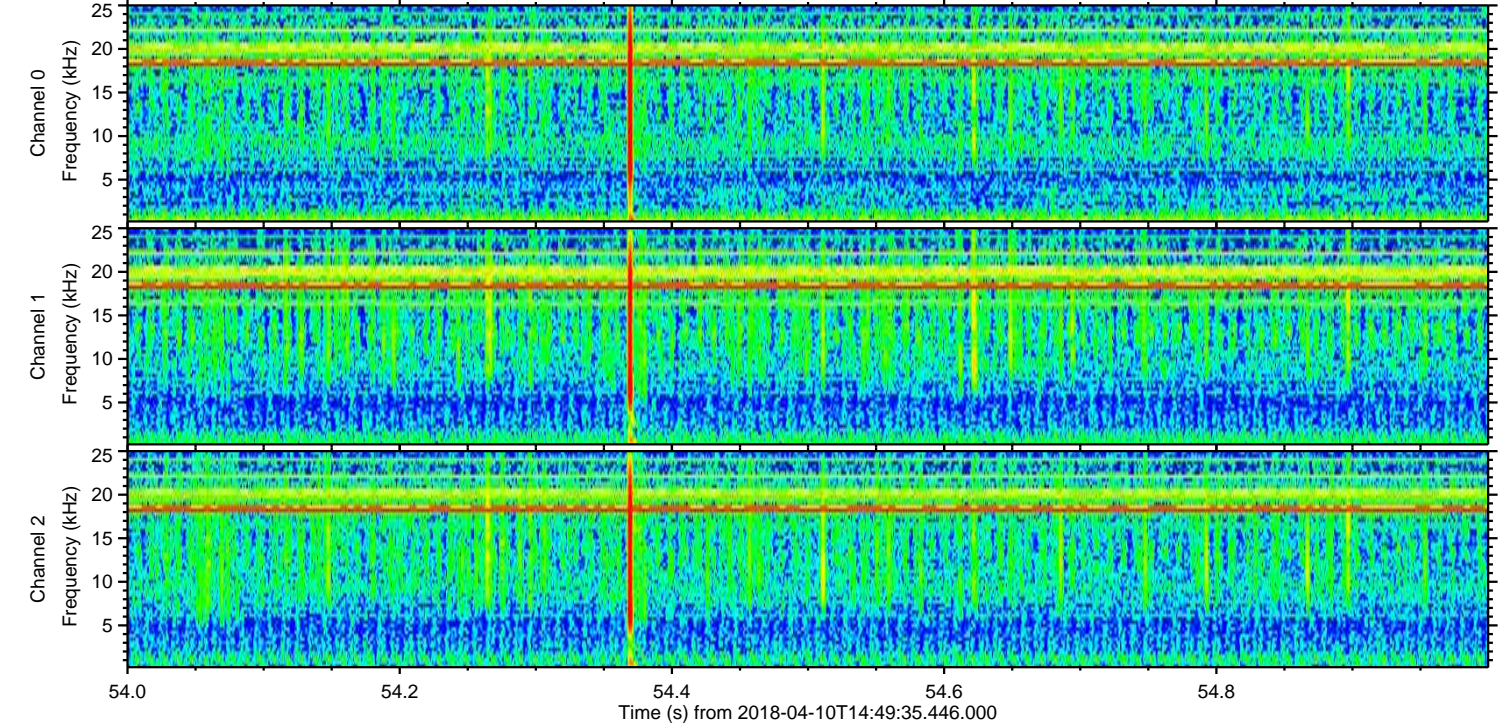
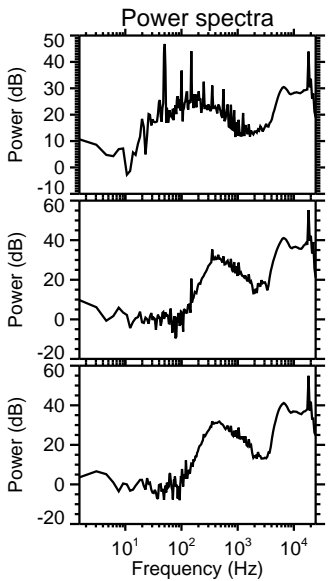
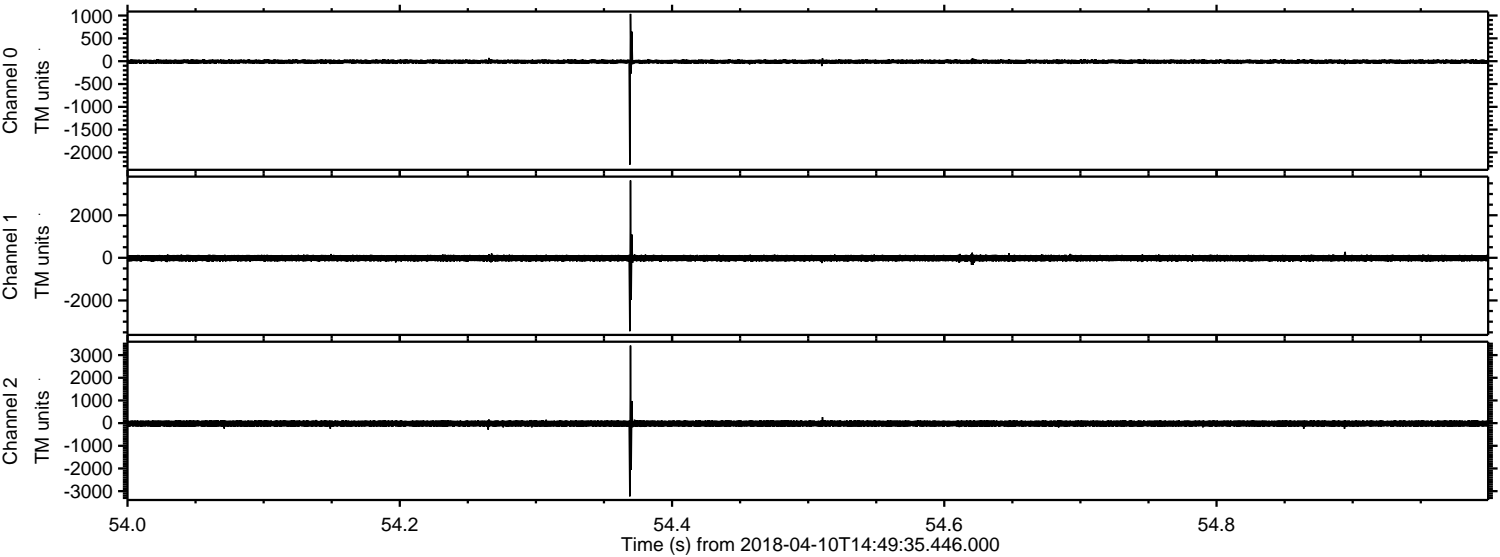


ELMAVAN 3D WAVEFORMS (Measured data sampled at 50 kHz) 51000 packets of 144 samples from 2018-04-10T14:49:35.446.000. Part 143/147

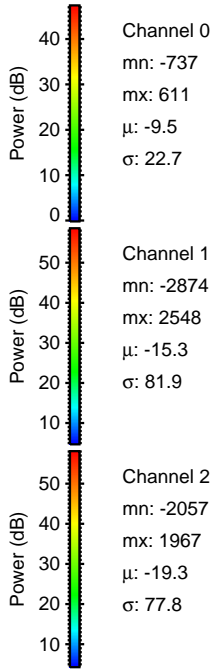
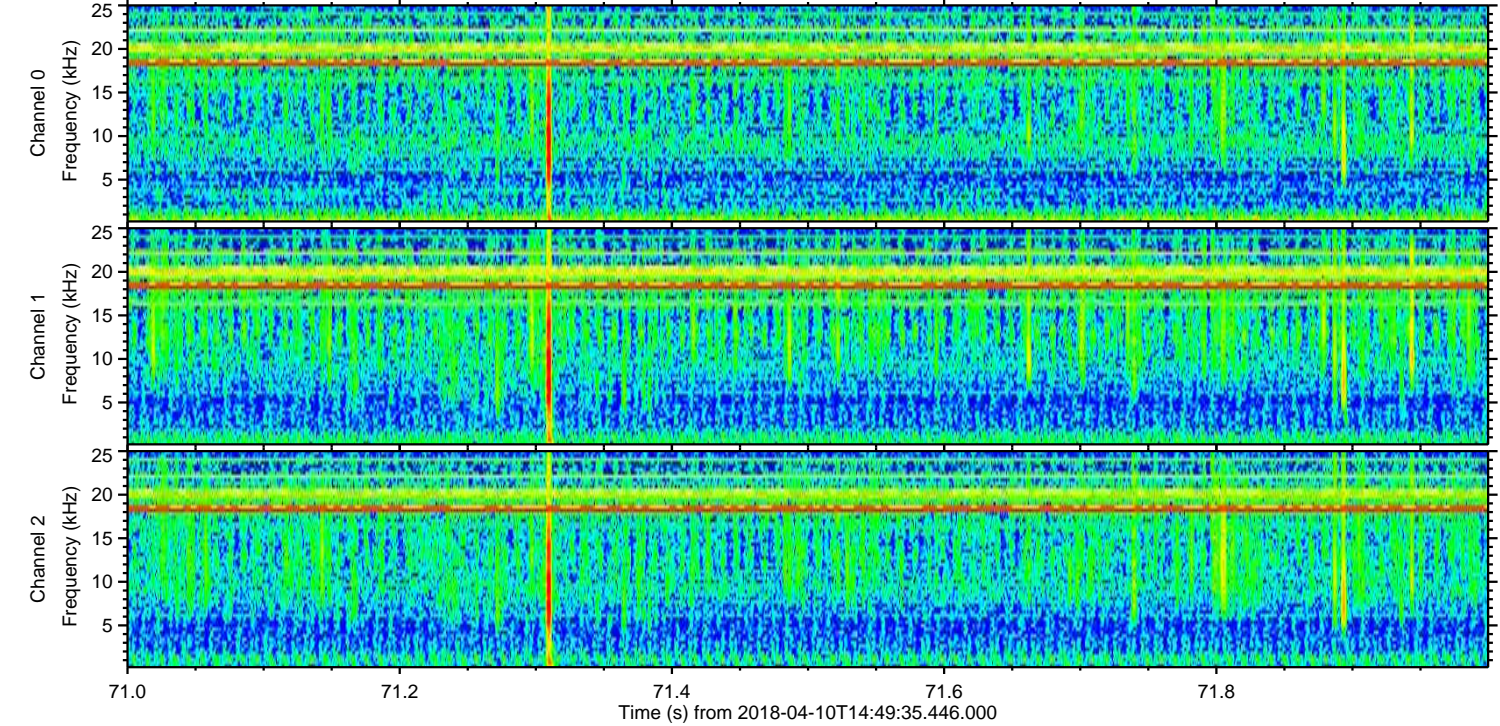
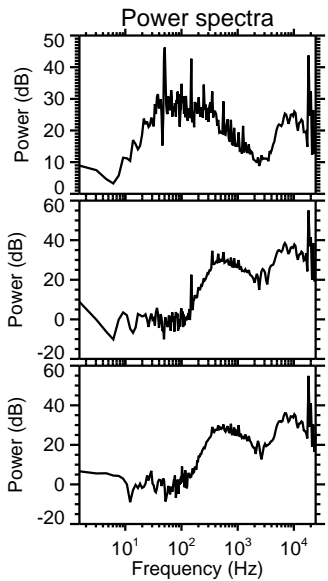
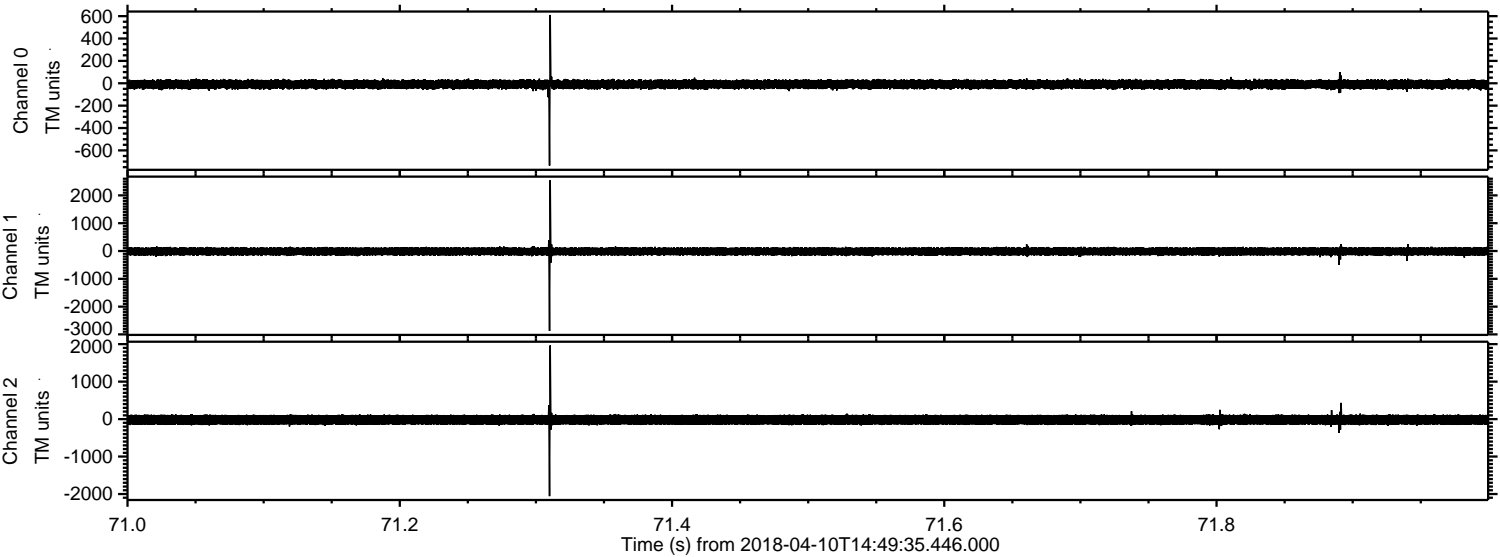
Processed Tue Apr 10 16:57:19 2018 by ELM ver.2012-10-06 from 001__elm20180410_144934__dat00.bin



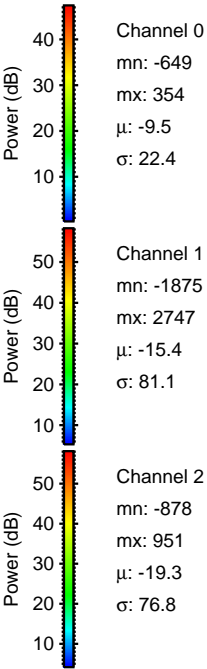
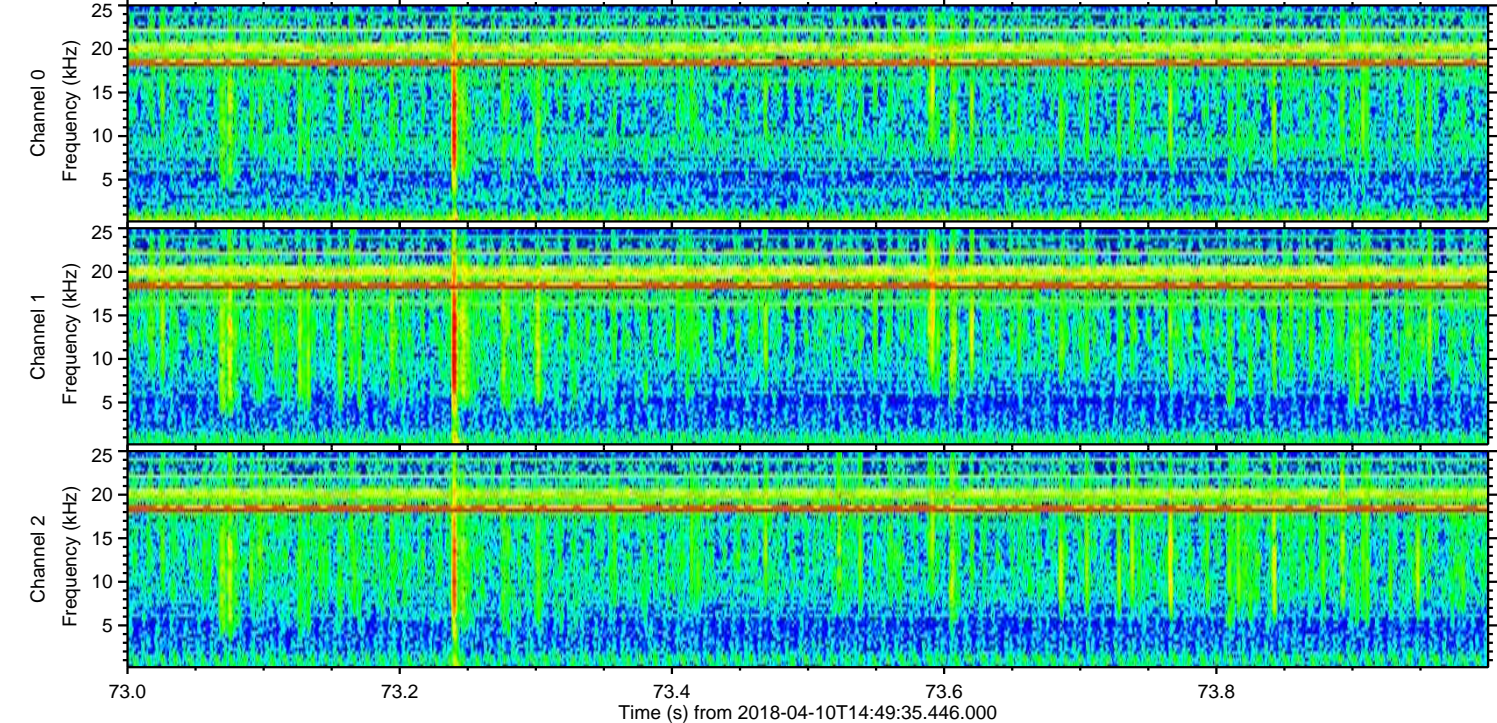
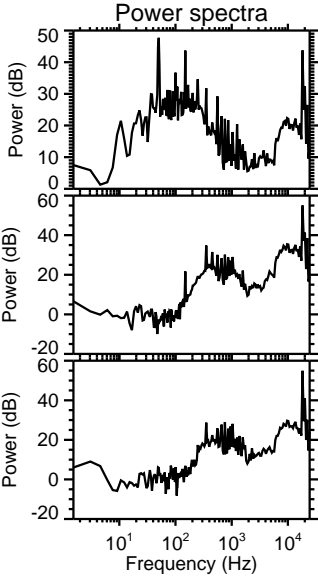
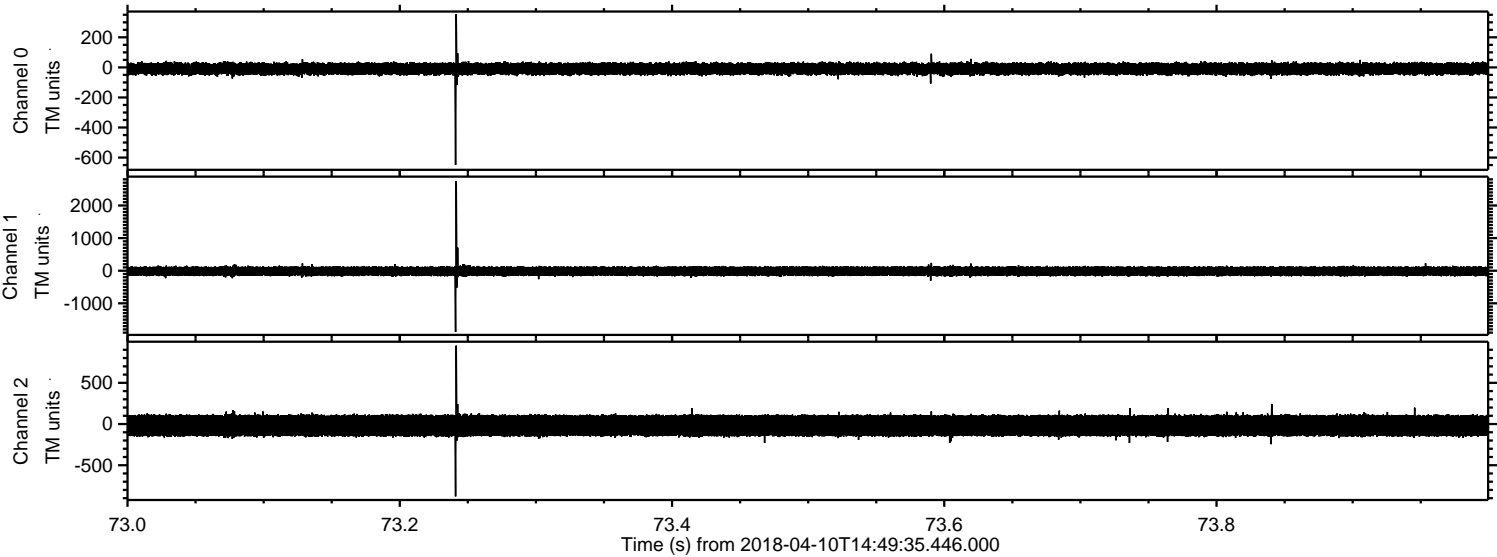
Processed Tue Apr 10 16:57:19 2018 by ELM ver.2012-10-06 from 001__elm20180410_144934__dat00.bin



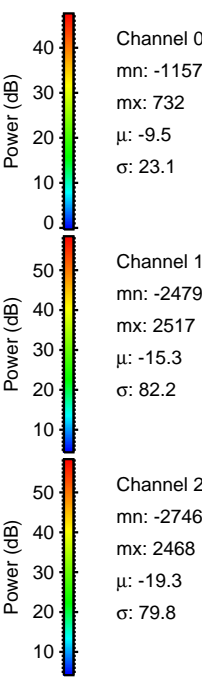
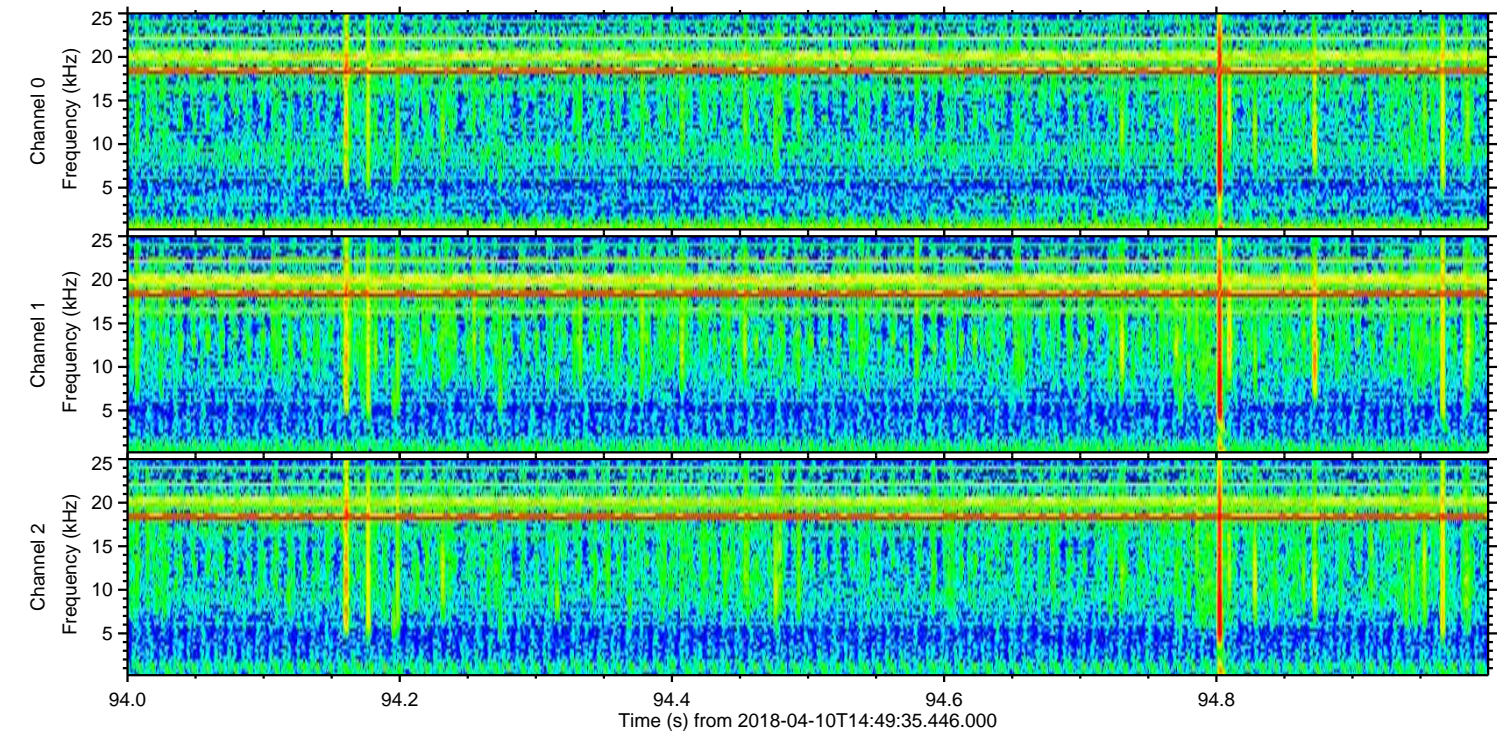
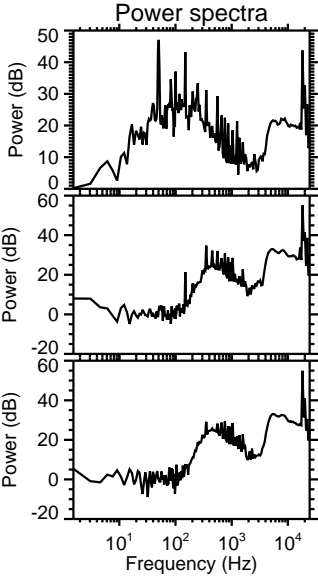
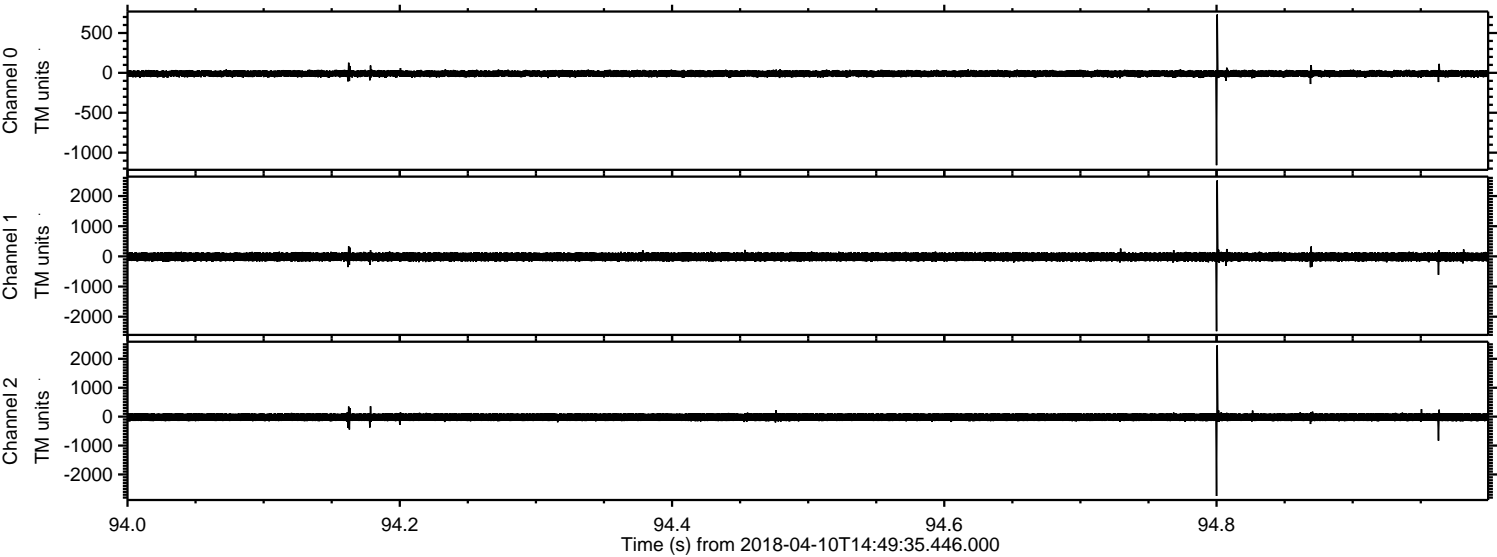
Processed Tue Apr 10 16:57:20 2018 by ELM ver.2012-10-06 from 001__elm20180410_144934__dat00.bin



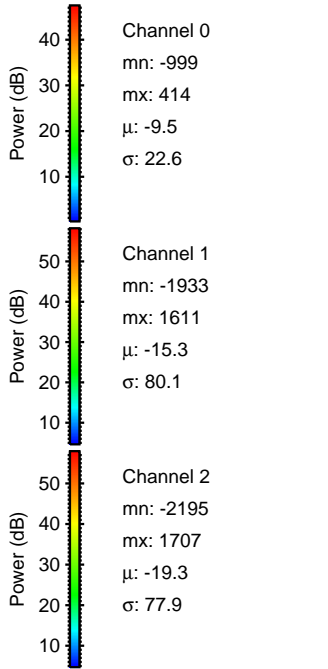
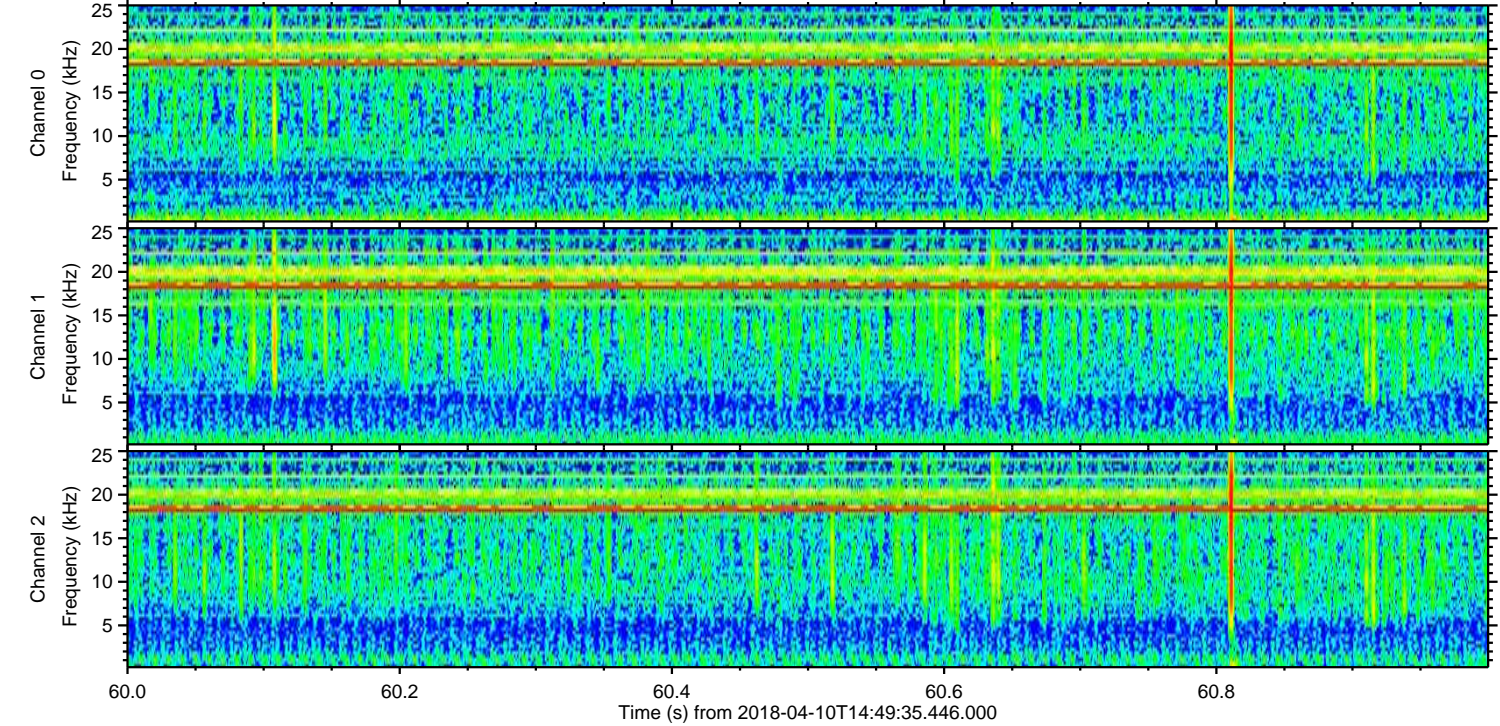
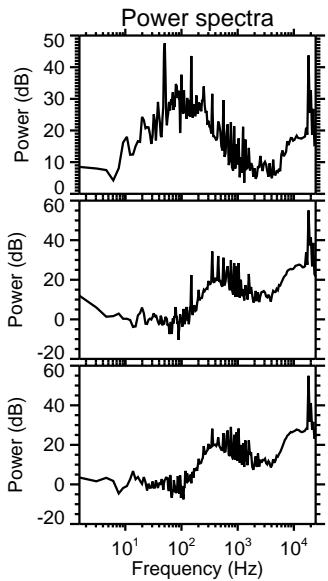
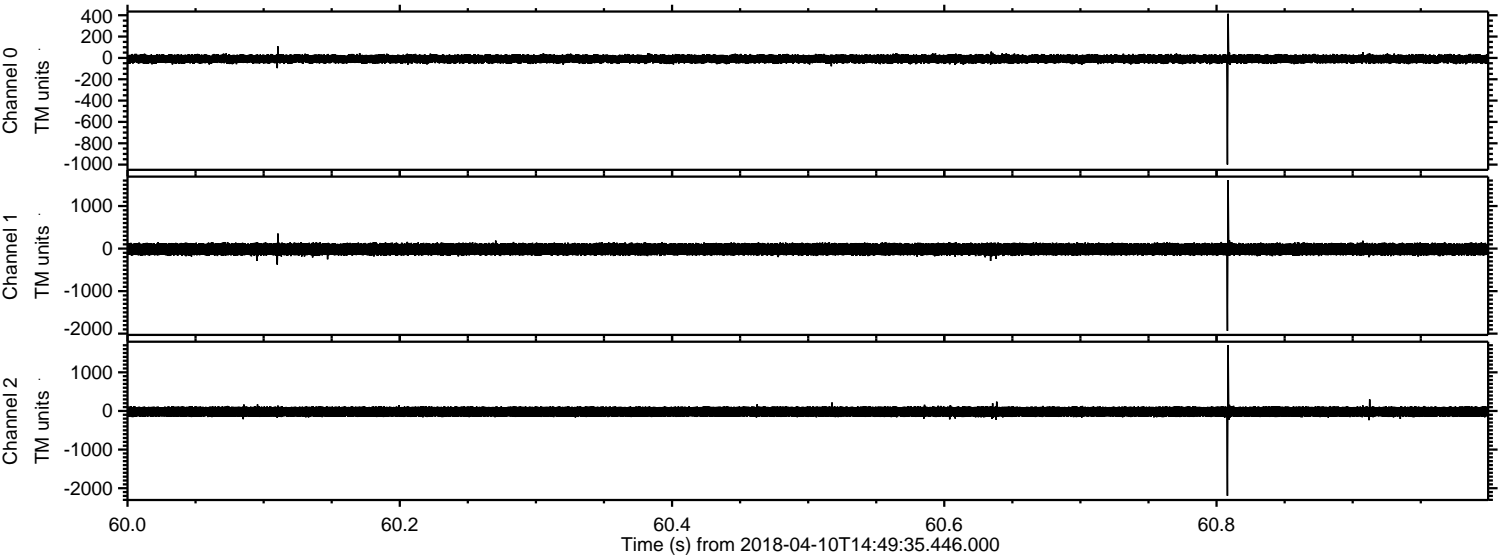
Processed Tue Apr 10 16:57:21 2018 by ELM ver.2012-10-06 from 001__elm20180410_144934__dat00.bin



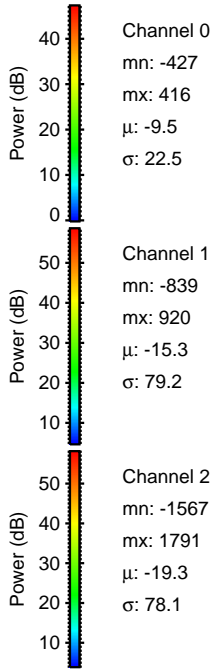
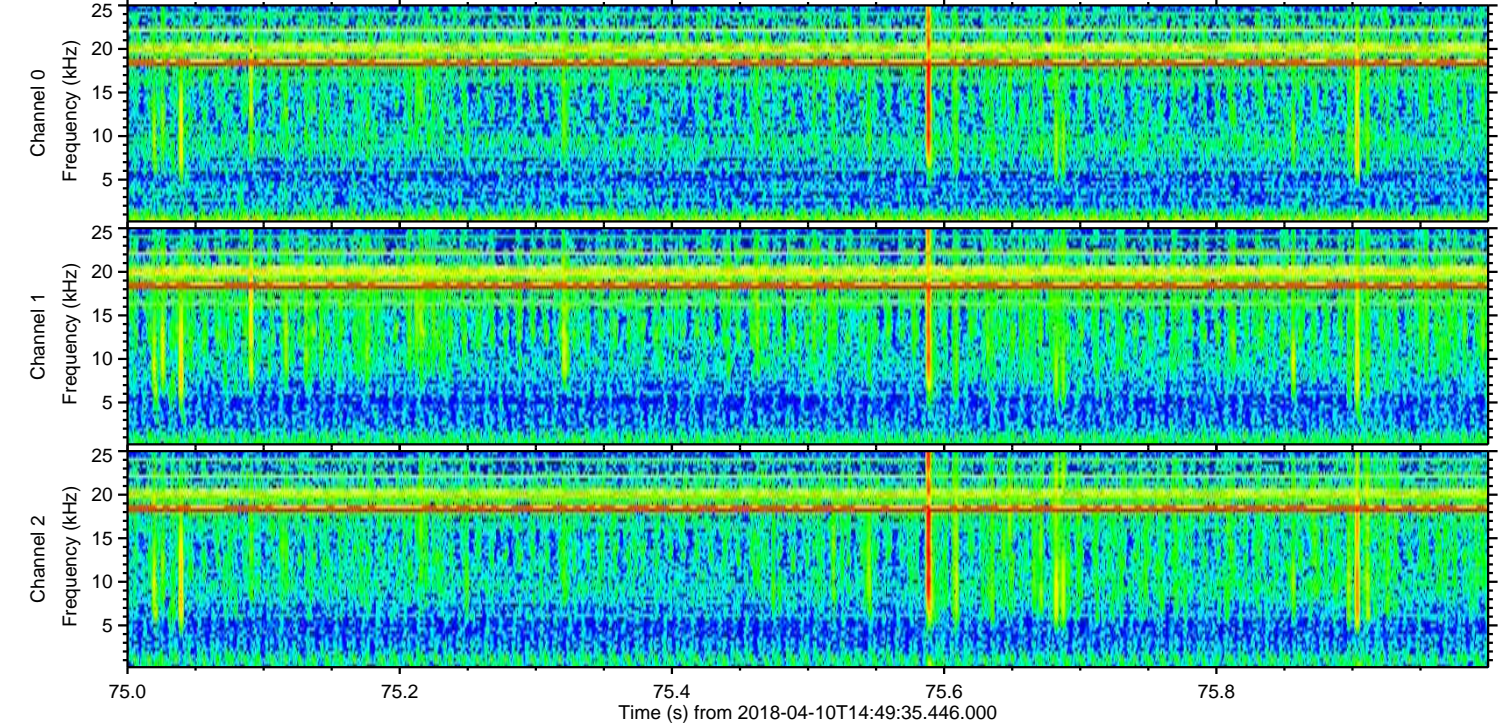
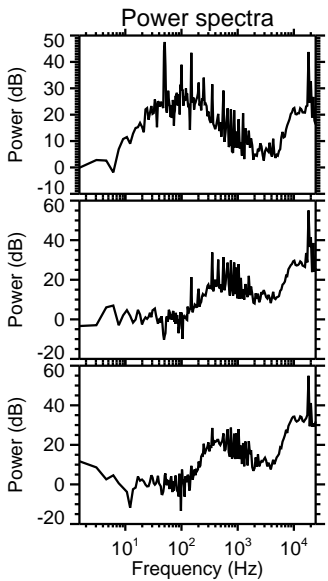
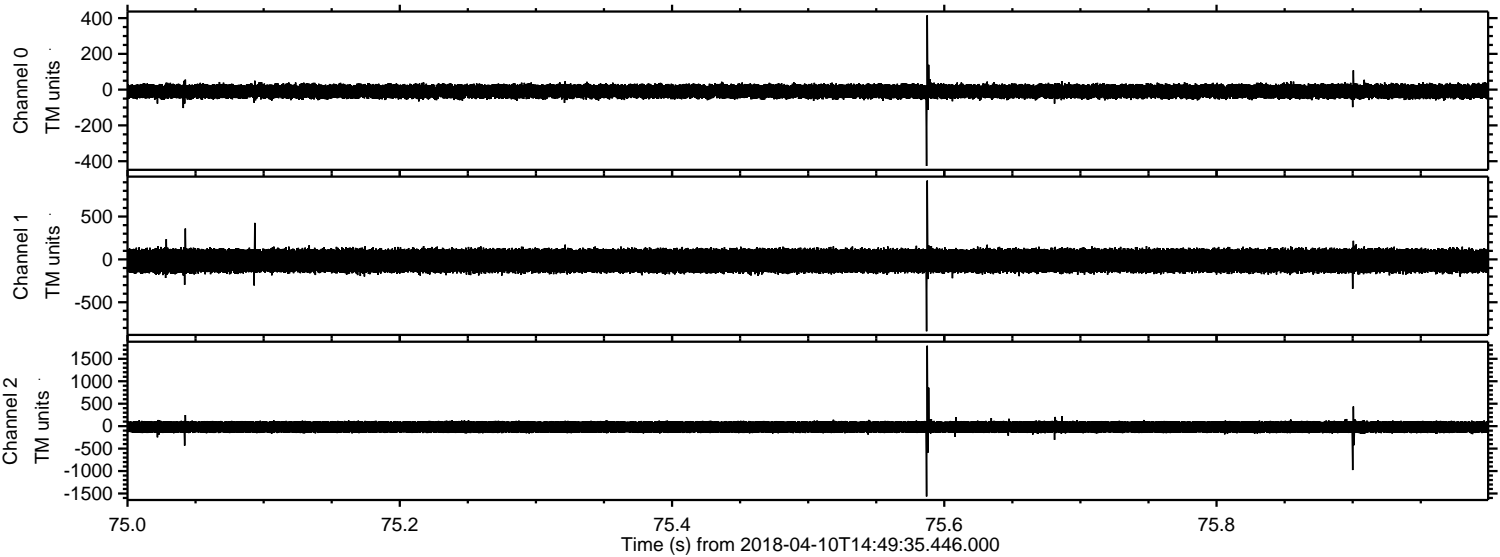
Processed Tue Apr 10 16:57:21 2018 by ELM ver.2012-10-06 from 001__elm20180410_144934__dat00.bin



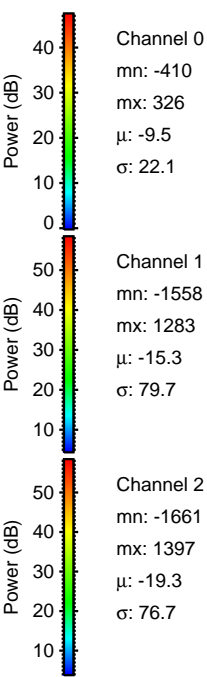
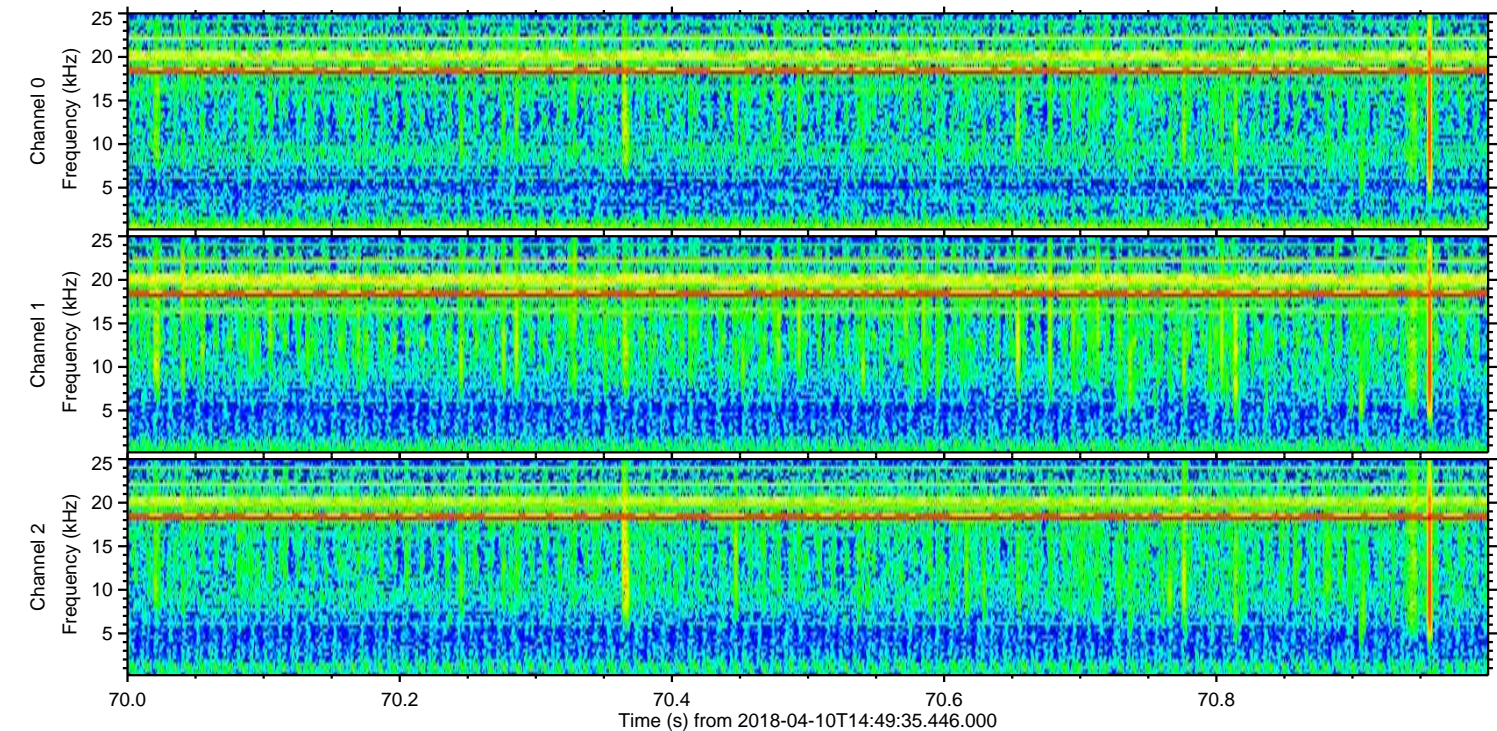
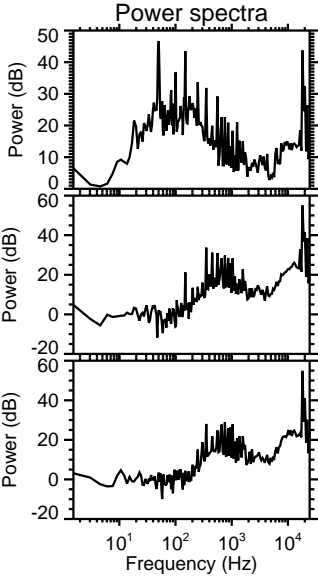
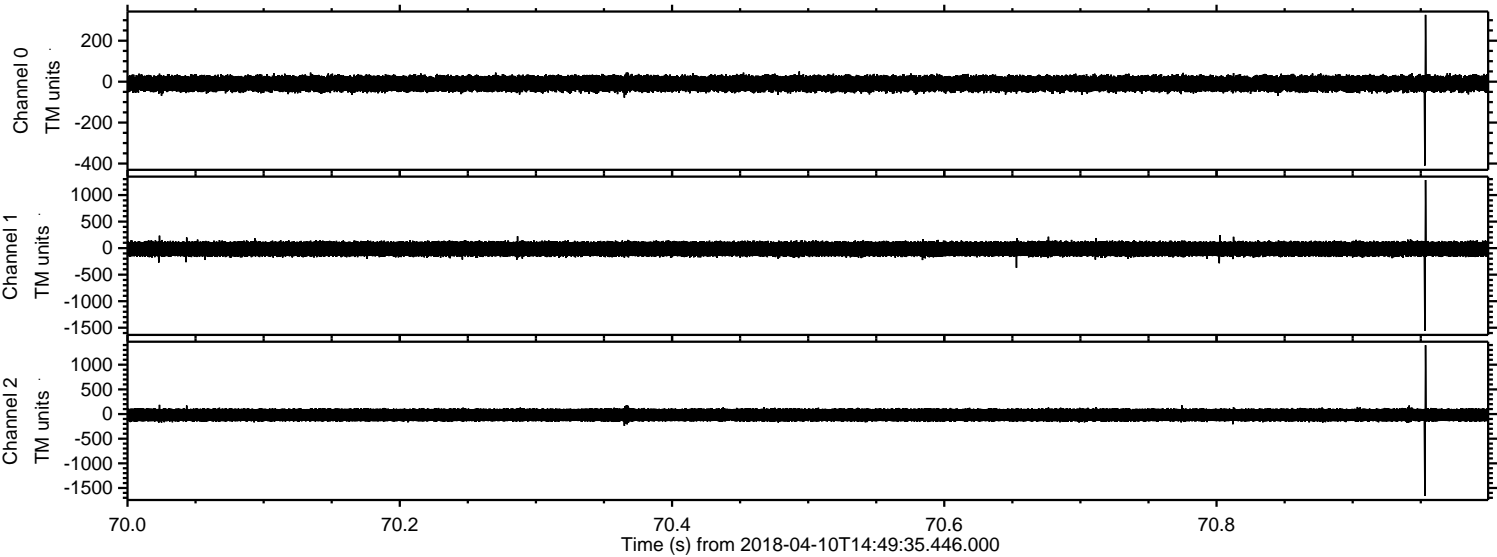
Processed Tue Apr 10 16:57:22 2018 by ELM ver.2012-10-06 from 001__elm20180410_144934__dat00.bin



Processed Tue Apr 10 16:57:22 2018 by ELM ver.2012-10-06 from 001__elm20180410_144934__dat00.bin



Processed Tue Apr 10 16:57:23 2018 by ELM ver.2012-10-06 from 001__elm20180410_144934__dat00.bin



Channel 0
mn: -410
mx: 326
 μ : -9.5
 σ : 22.1

Channel 1
mn: -1558
mx: 1283
 μ : -15.3
 σ : 79.7

Channel 2
mn: -1661
mx: 1397
 μ : -19.3
 σ : 76.7

