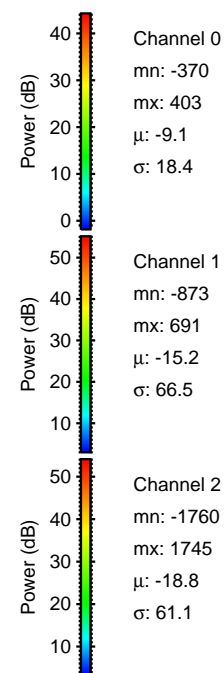
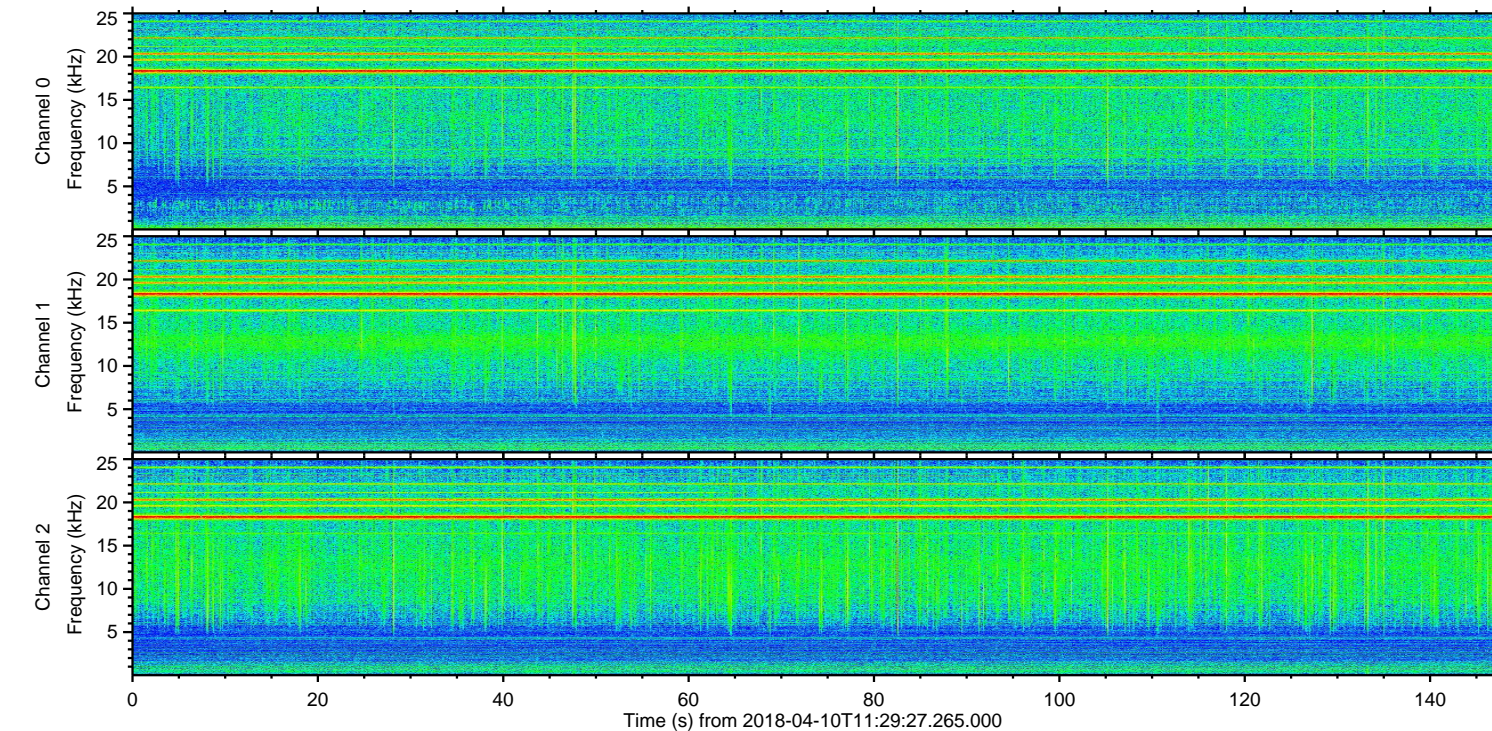
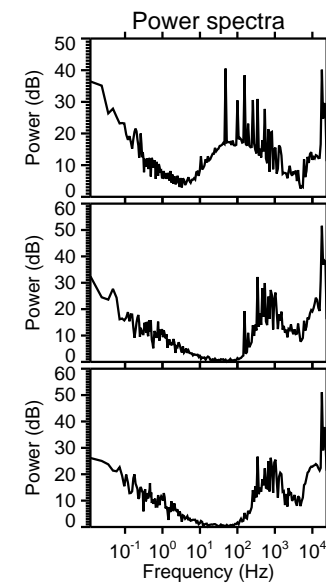
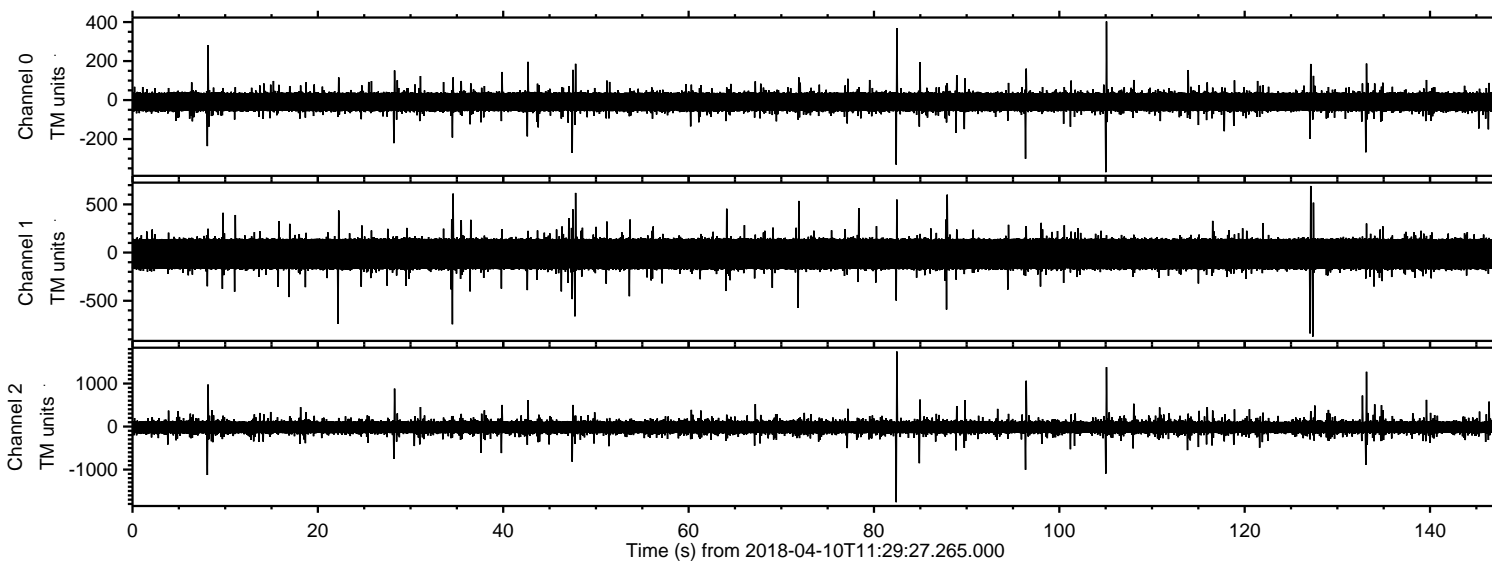
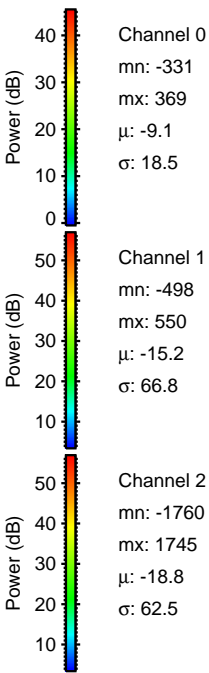
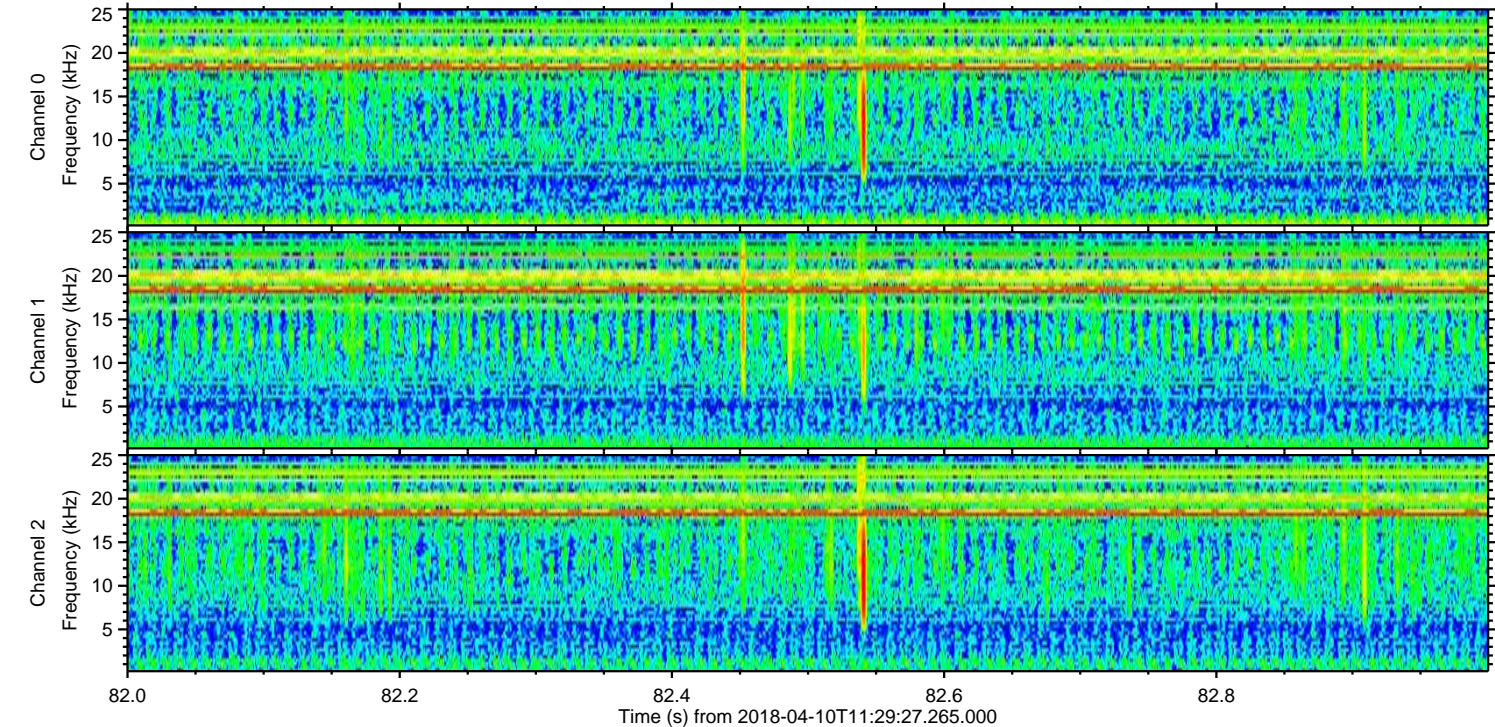
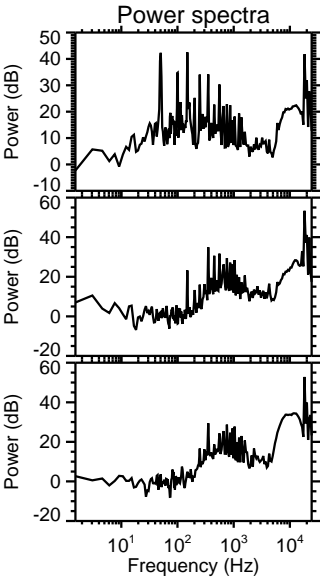
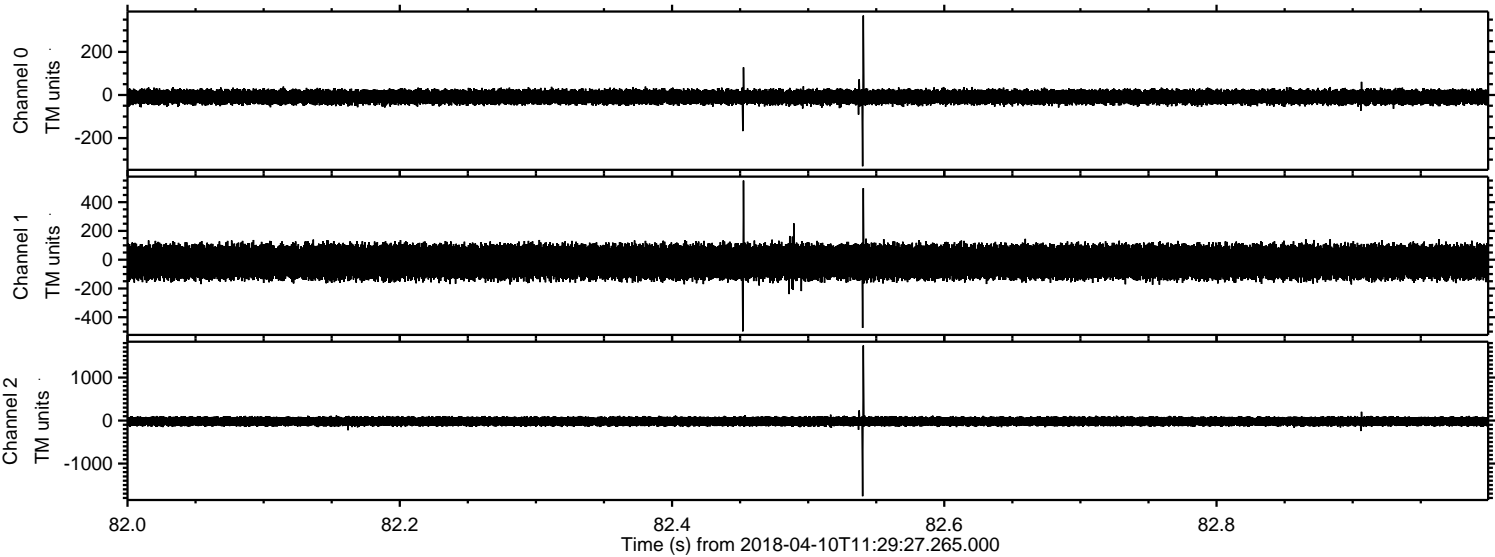


ELMAVAN 3D WAVEFORMS (Measured data sampled at 50 kHz) 51000 packets of 144 samples from 2018-04-10T11:29:27.265.000.

Processed Tue Apr 10 13:37:37 2018 by ELM ver.2012-10-06 from 001__elm20180410_112926__dat00.bin

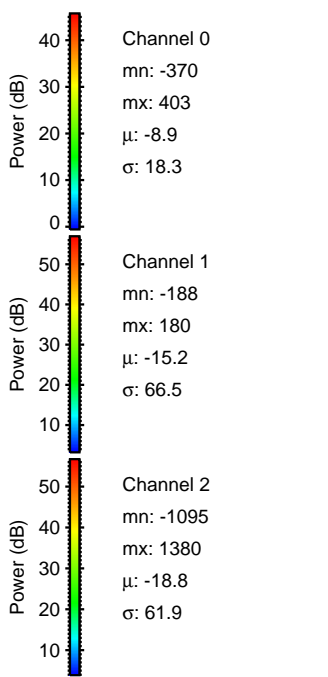
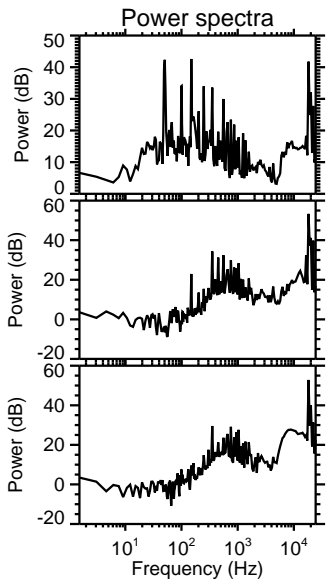
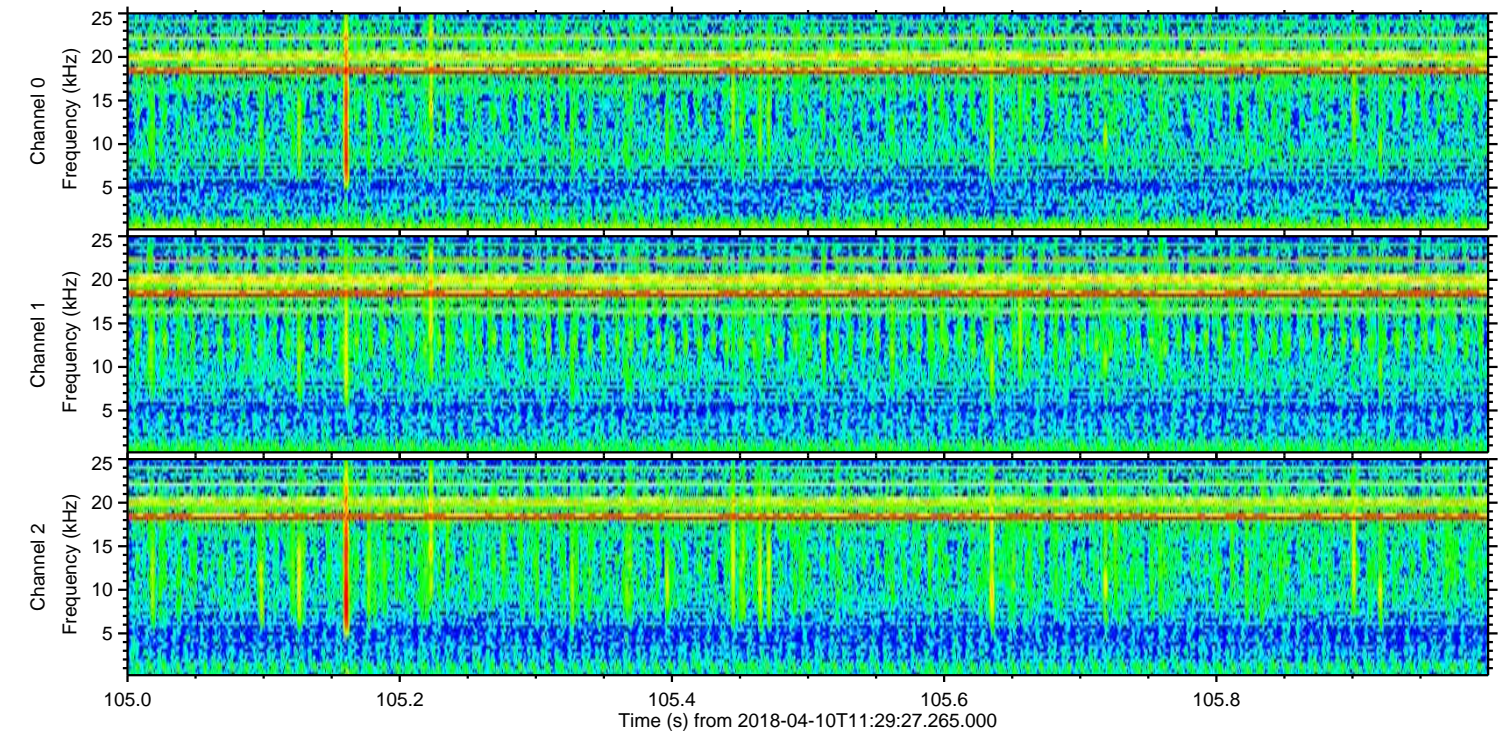
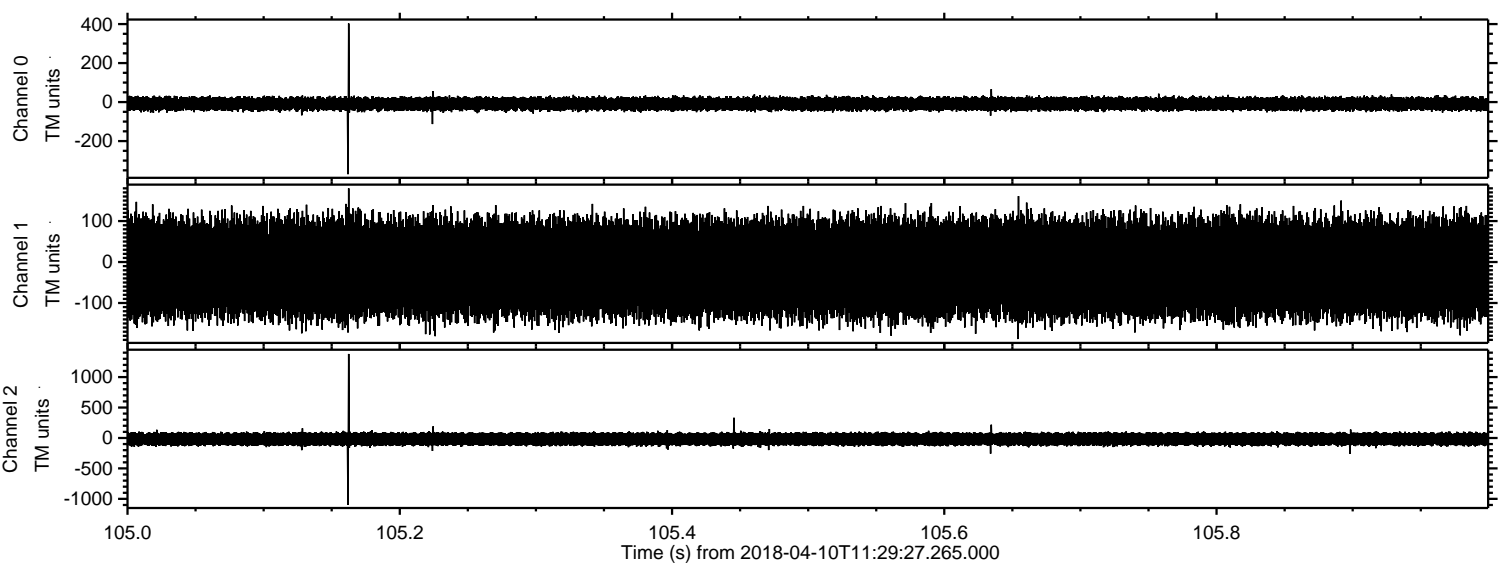


Processed Tue Apr 10 13:37:43 2018 by ELM ver.2012-10-06 from 001__elm20180410_112926__dat00.bin



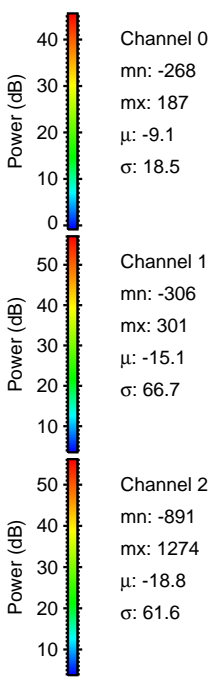
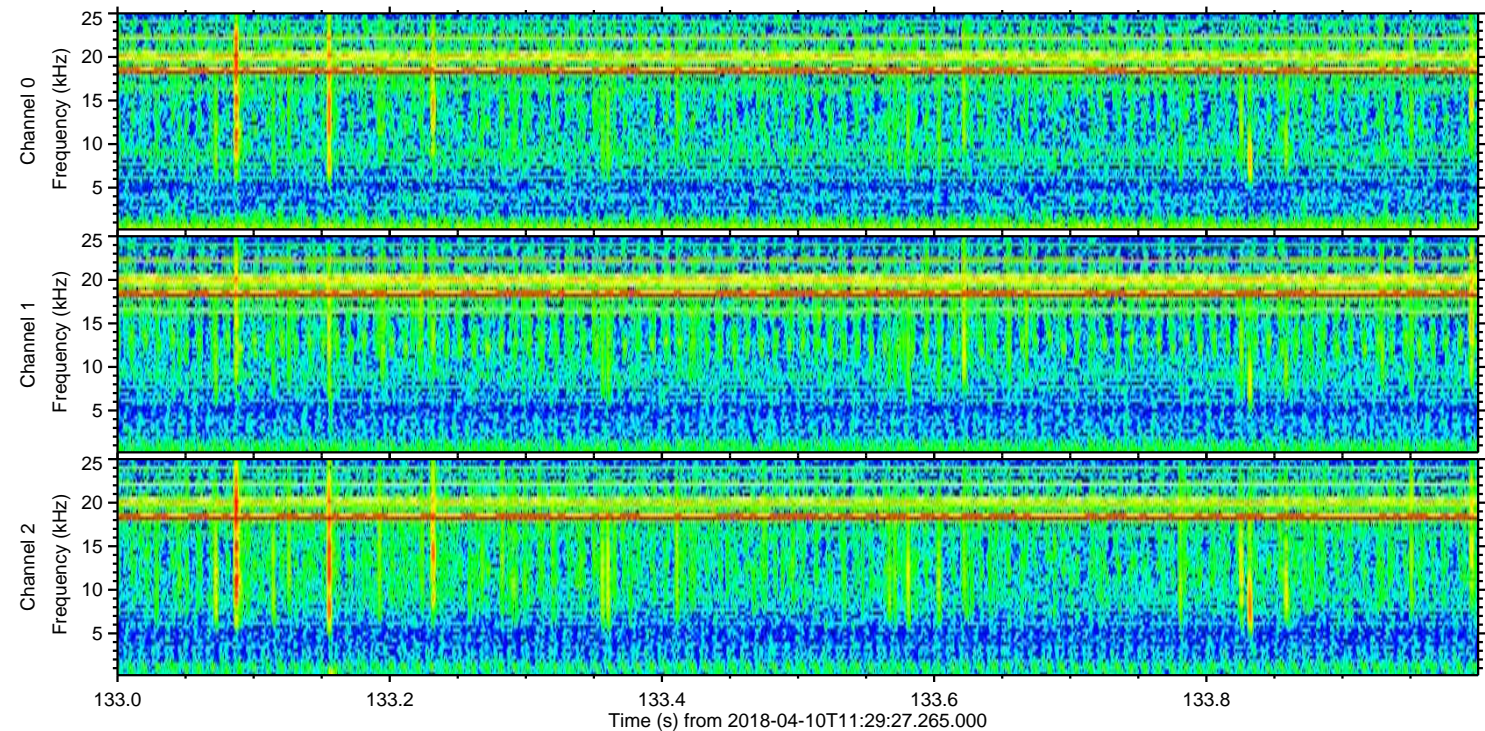
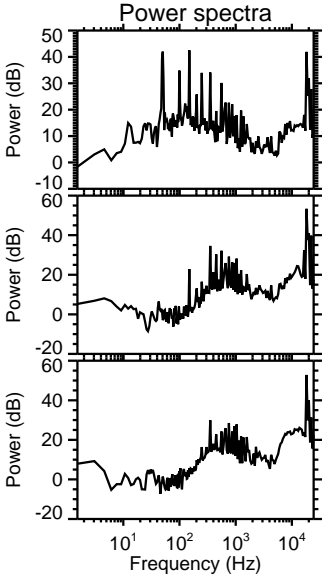
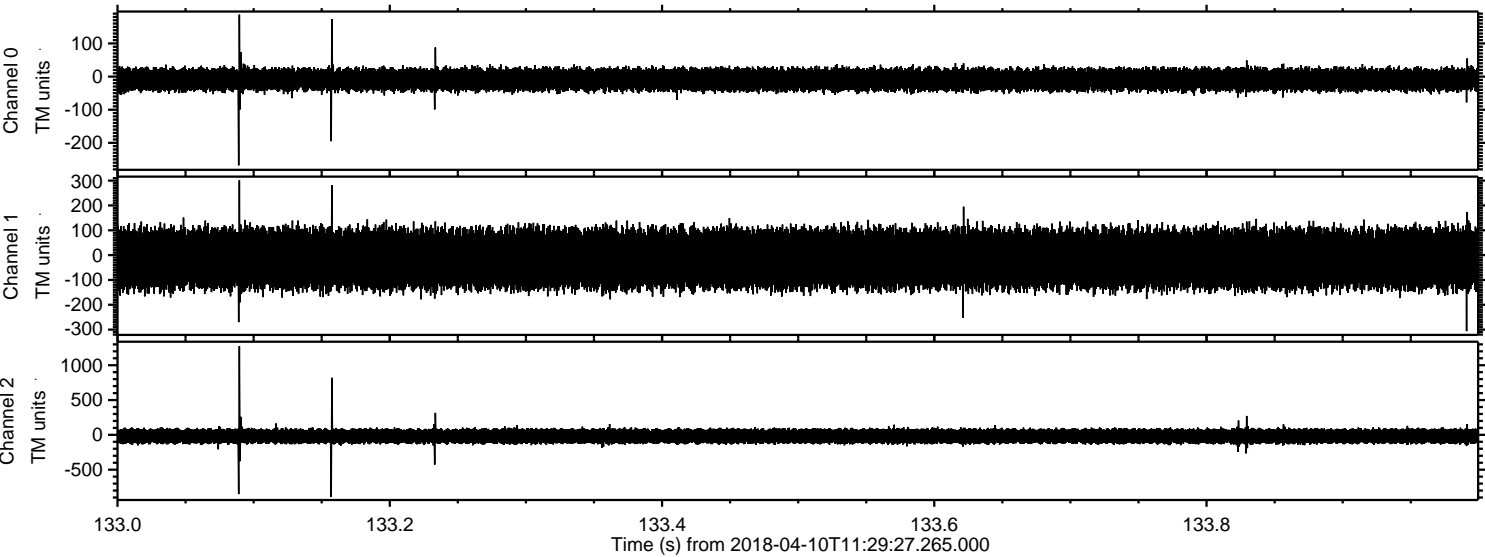
ELMAVAN 3D WAVEFORMS (Measured data sampled at 50 kHz) 51000 packets of 144 samples from 2018-04-10T11:29:27.265.000. Part 106/147

Processed Tue Apr 10 13:37:43 2018 by ELM ver.2012-10-06 from 001__elm20180410_112926__dat00.bin

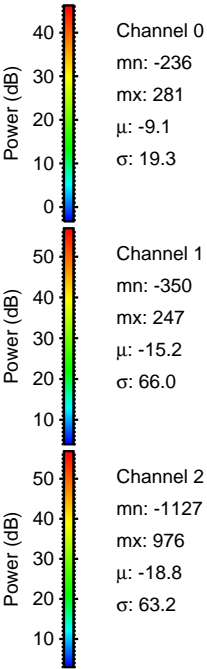
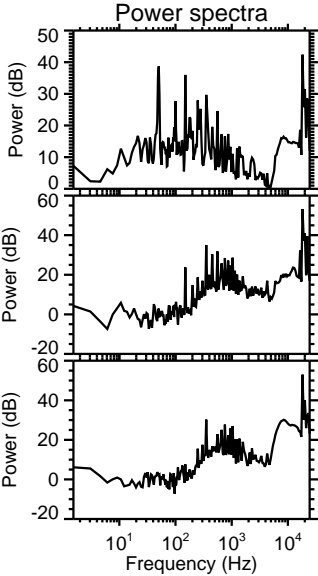
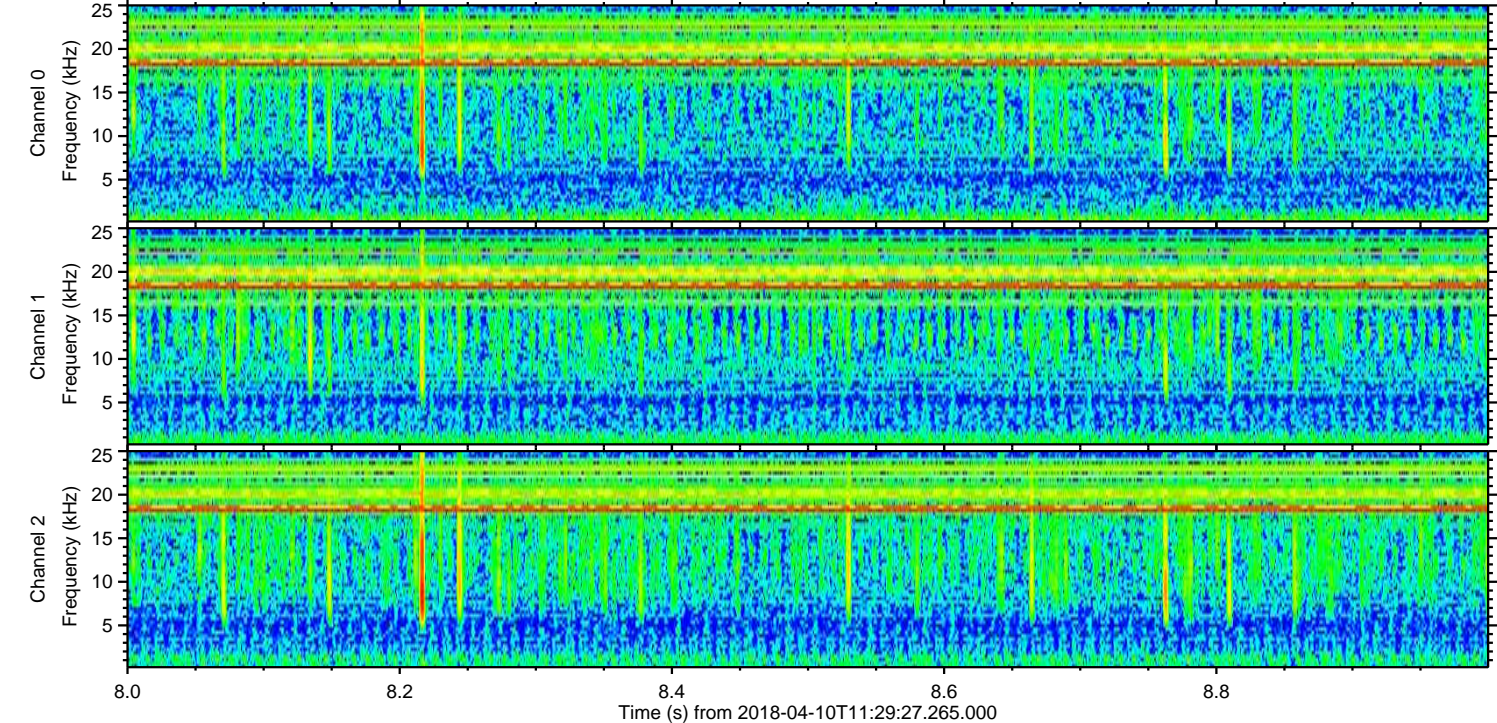
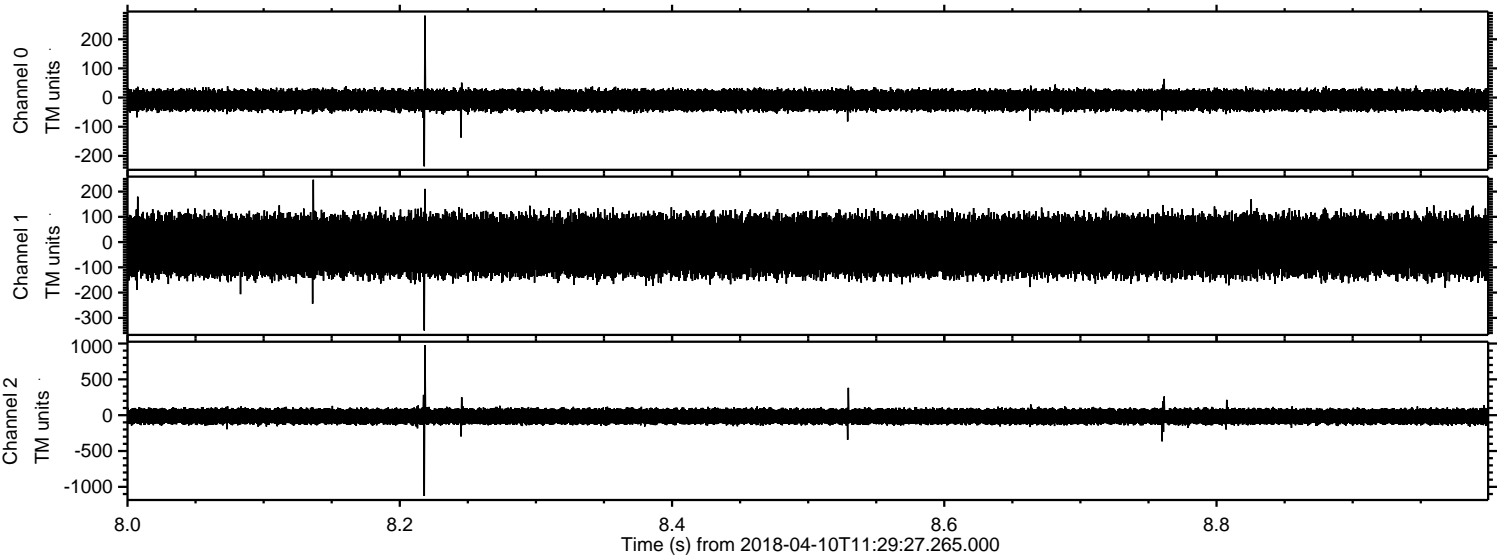


ELMAVAN 3D WAVEFORMS (Measured data sampled at 50 kHz) 51000 packets of 144 samples from 2018-04-10T11:29:27.265.000. Part 134/147

Processed Tue Apr 10 13:37:44 2018 by ELM ver.2012-10-06 from 001__elm20180410_112926__dat00.bin



Processed Tue Apr 10 13:37:45 2018 by ELM ver.2012-10-06 from 001__elm20180410_112926__dat00.bin

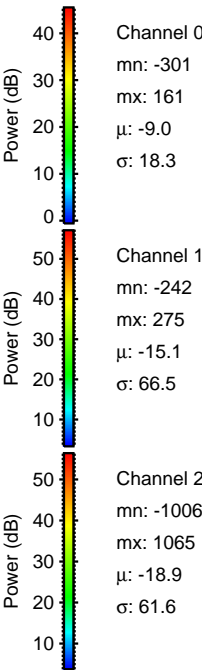
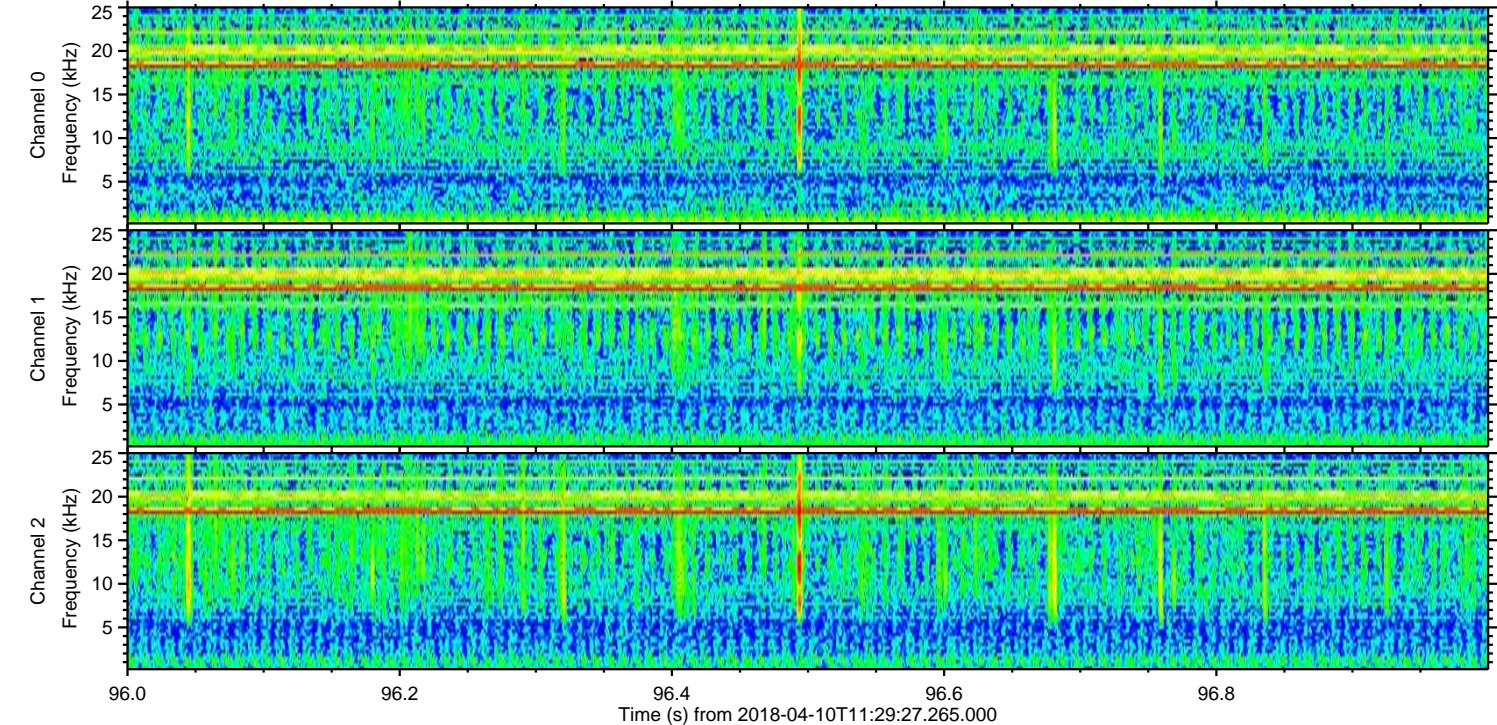
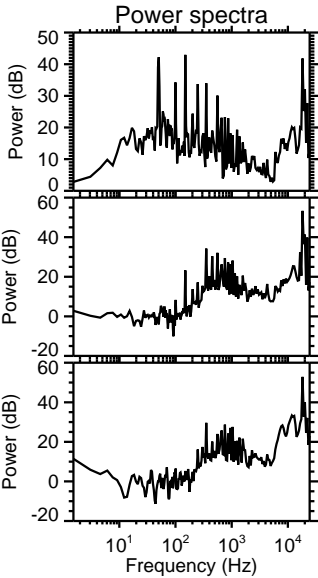
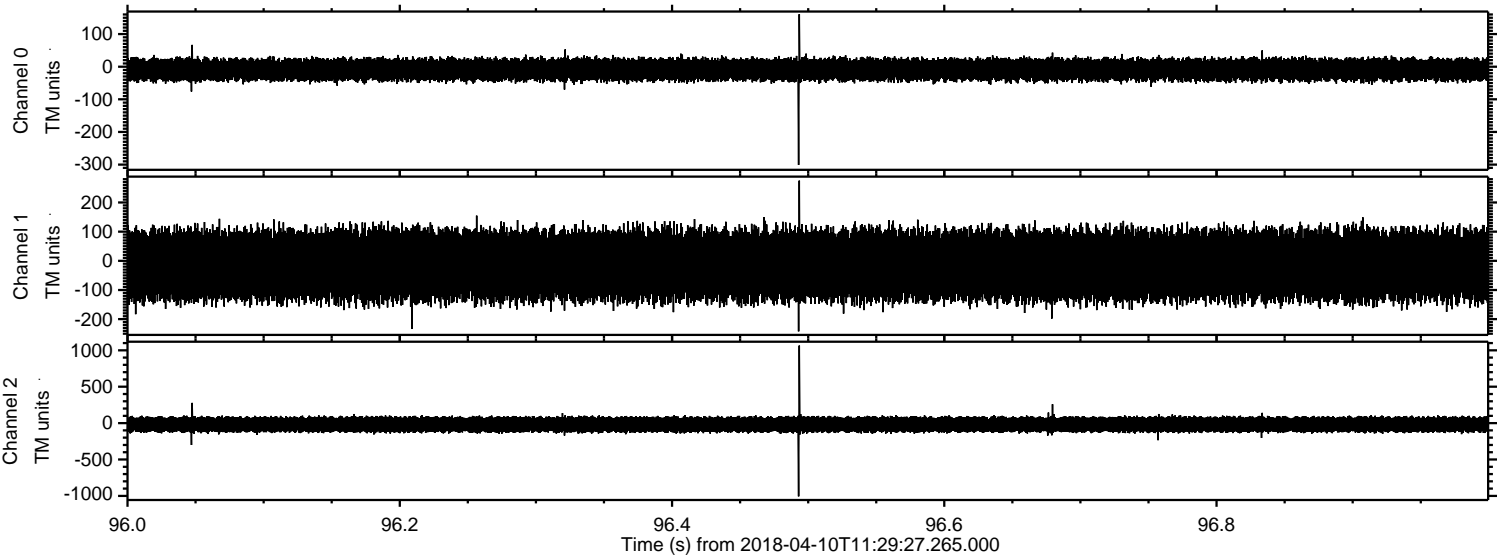


Channel 0
mn: -236
mx: 281
 μ : -9.1
 σ : 19.3

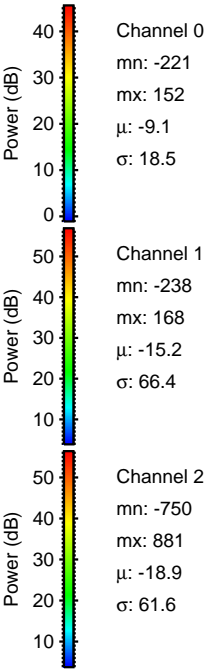
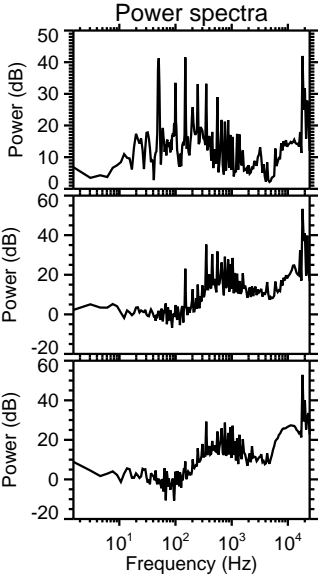
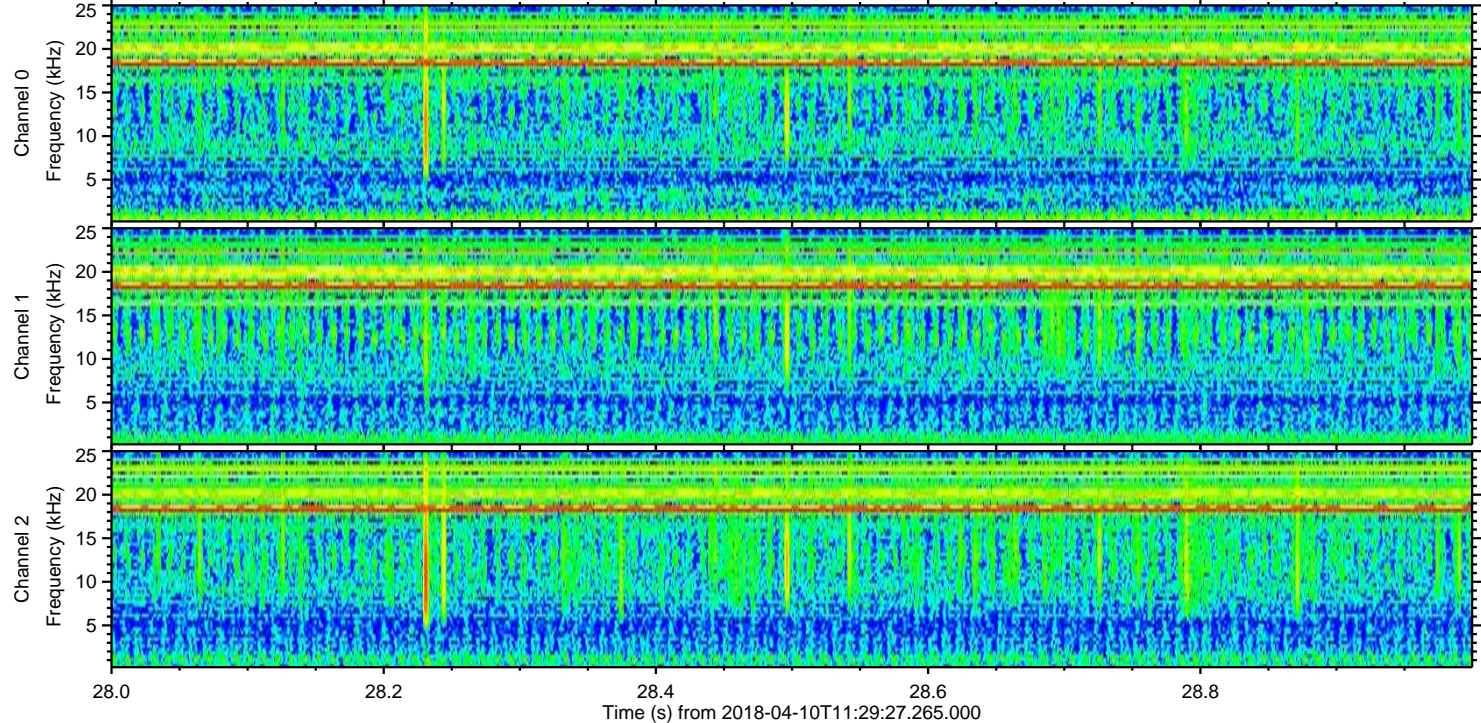
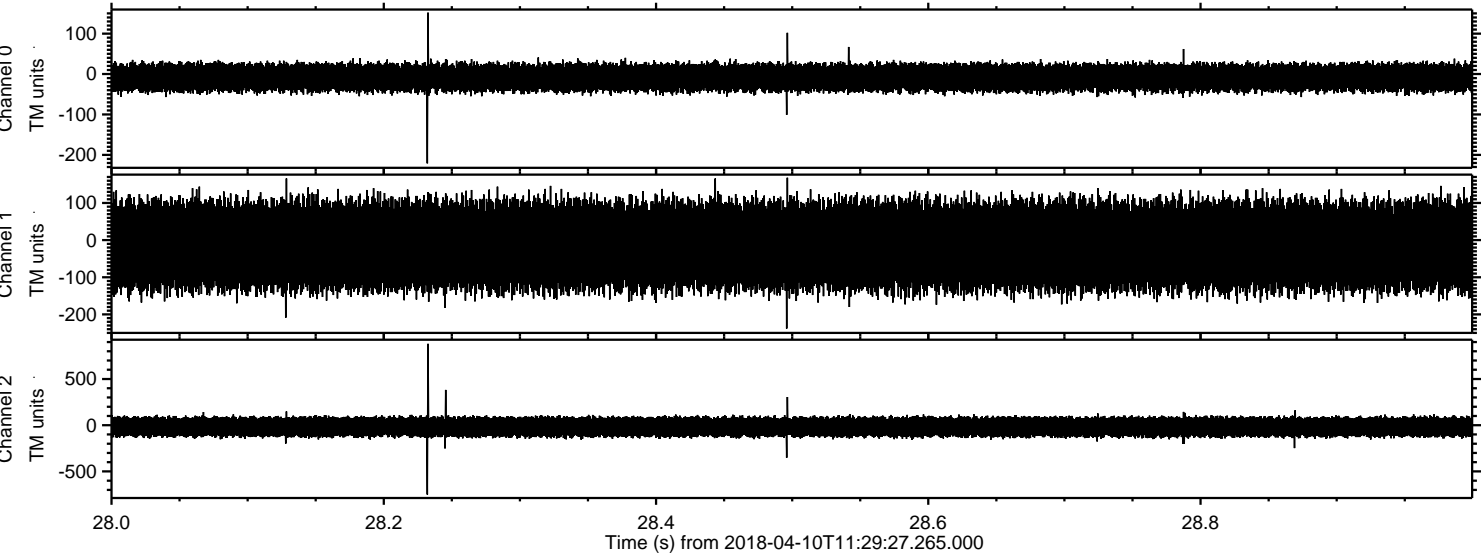
Channel 1
mn: -350
mx: 247
 μ : -15.2
 σ : 66.0

Channel 2
mn: -1127
mx: 976
 μ : -18.8
 σ : 63.2

Processed Tue Apr 10 13:37:45 2018 by ELM ver.2012-10-06 from 001__elm20180410_112926__dat00.bin

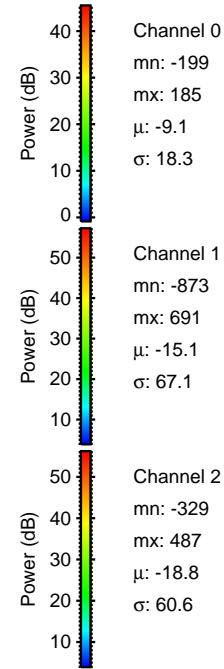
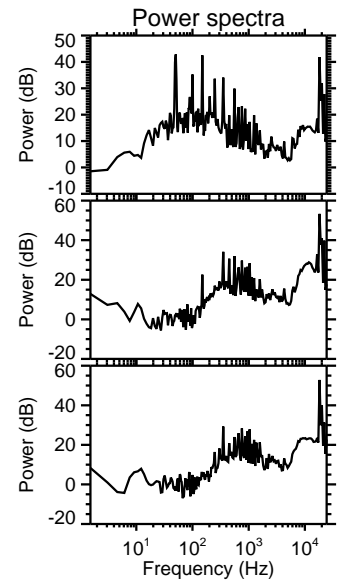
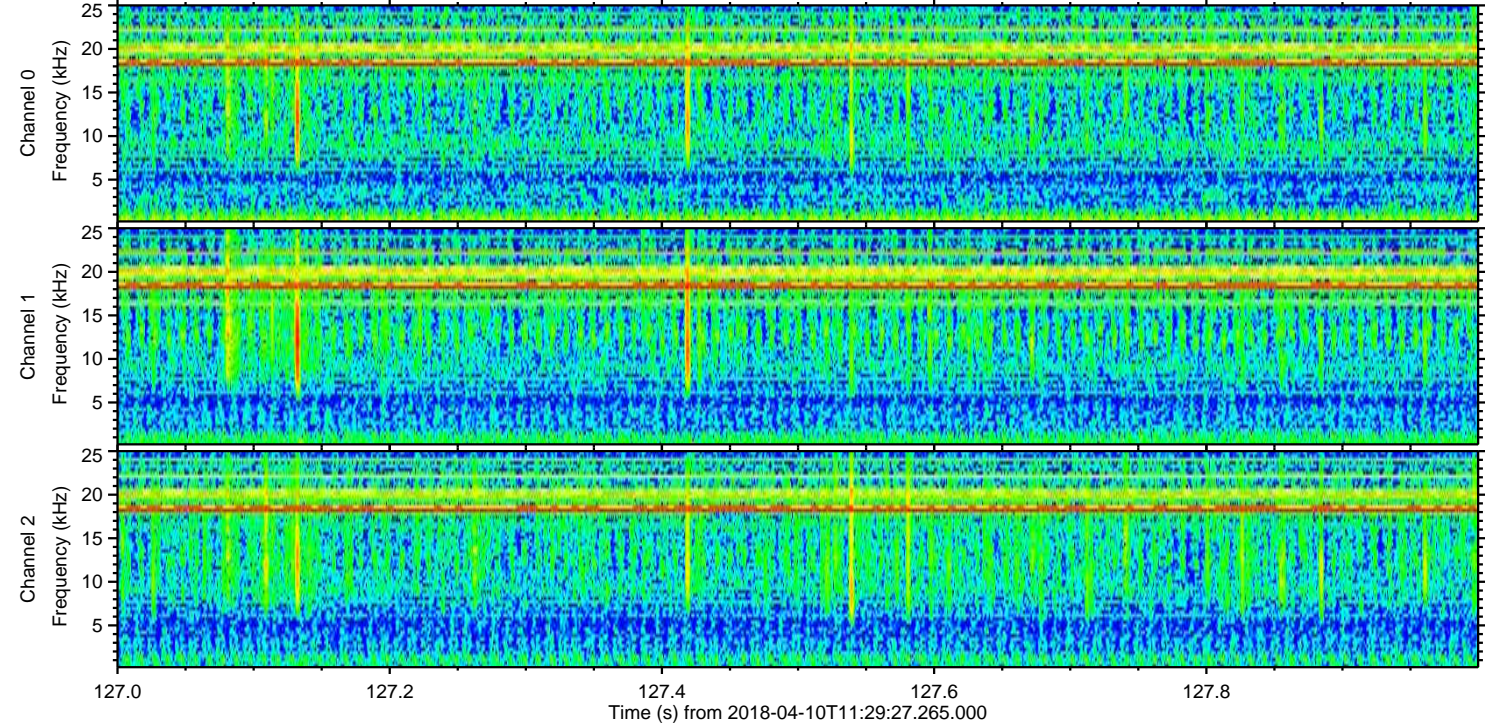
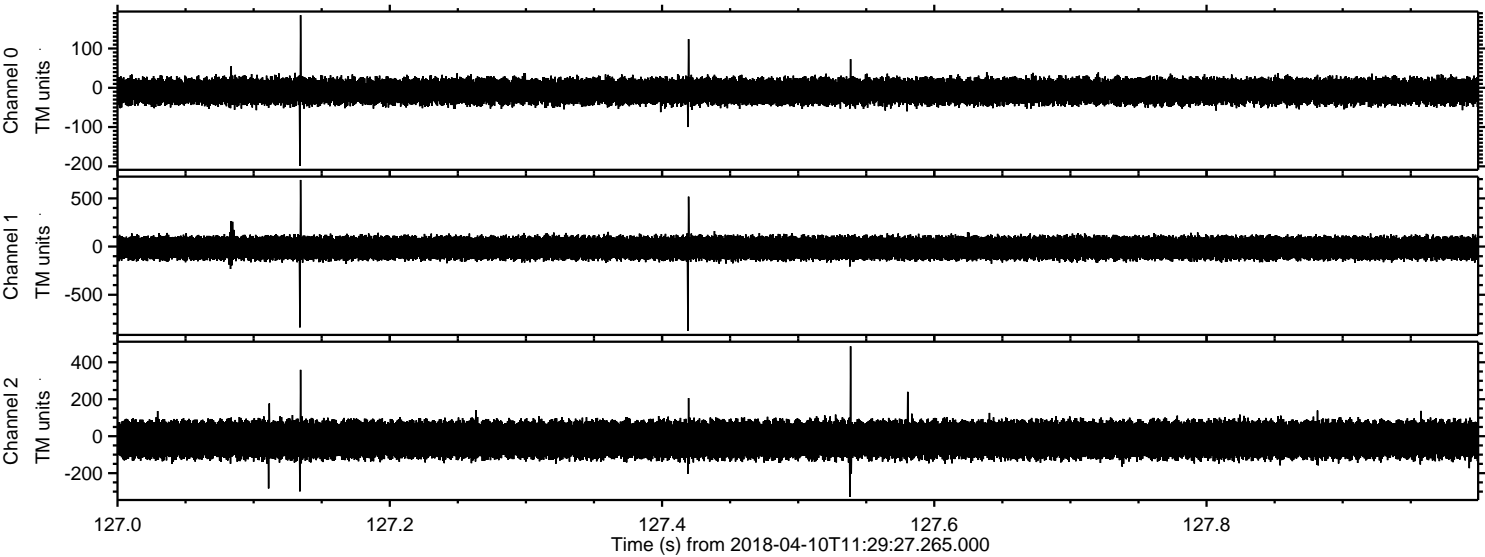


Processed Tue Apr 10 13:37:46 2018 by ELM ver.2012-10-06 from 001__elm20180410_112926__dat00.bin



ELMAVAN 3D WAVEFORMS (Measured data sampled at 50 kHz) 51000 packets of 144 samples from 2018-04-10T11:29:27.265.000. Part 128/147

Processed Tue Apr 10 13:37:47 2018 by ELM ver.2012-10-06 from 001__elm20180410_112926__dat00.bin

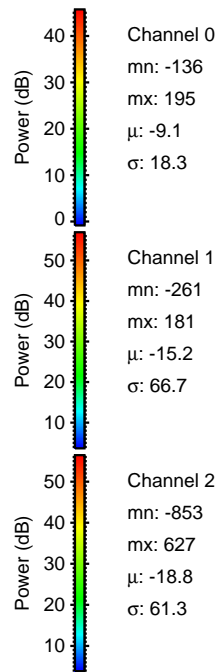
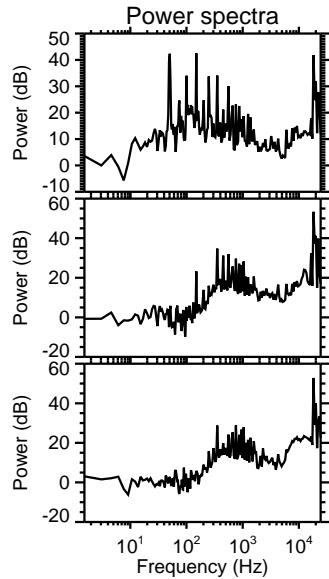
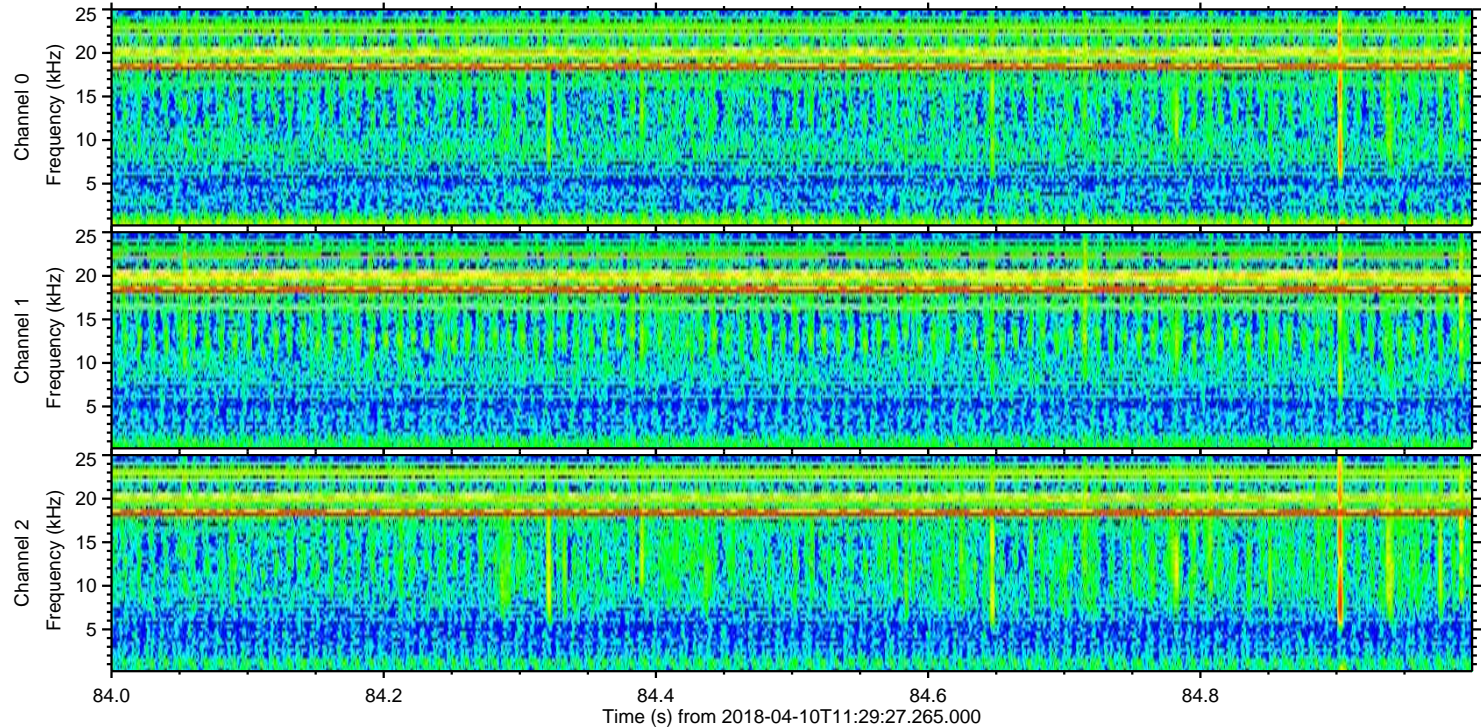
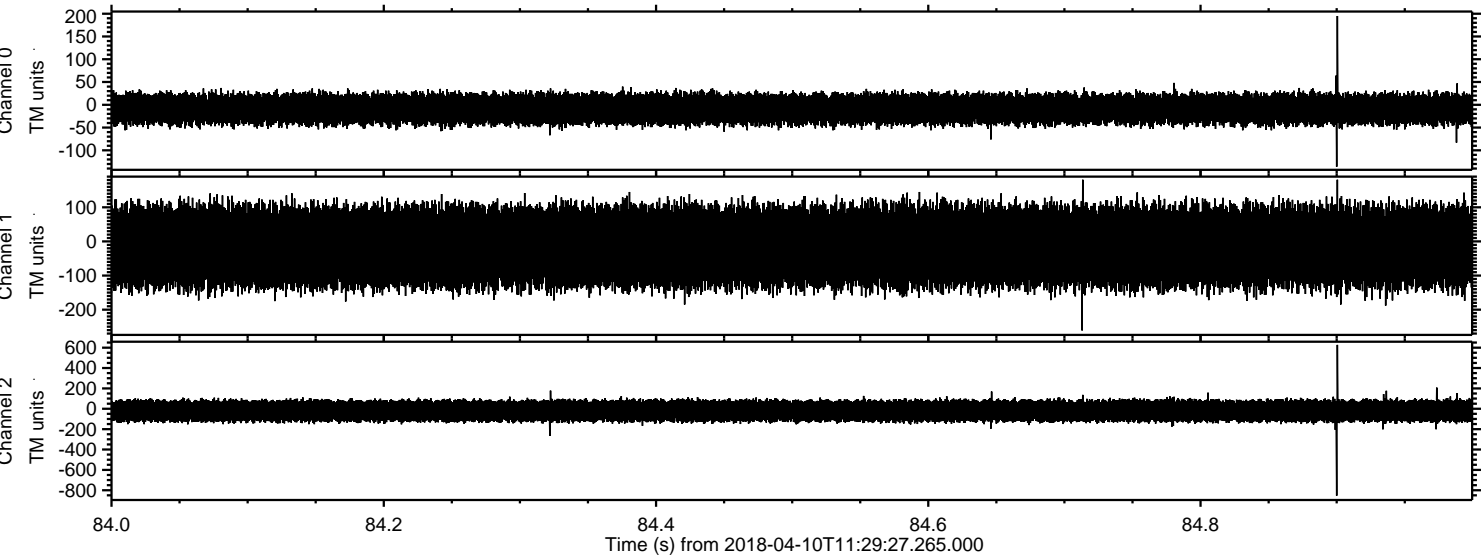


Channel 0
mn: -199
mx: 185
 μ : -9.1
 σ : 18.3

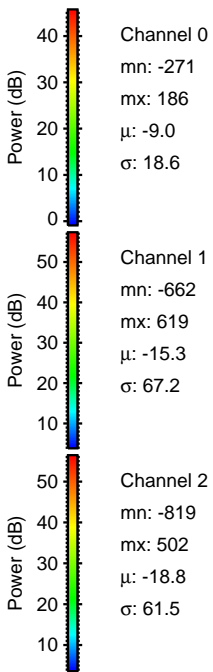
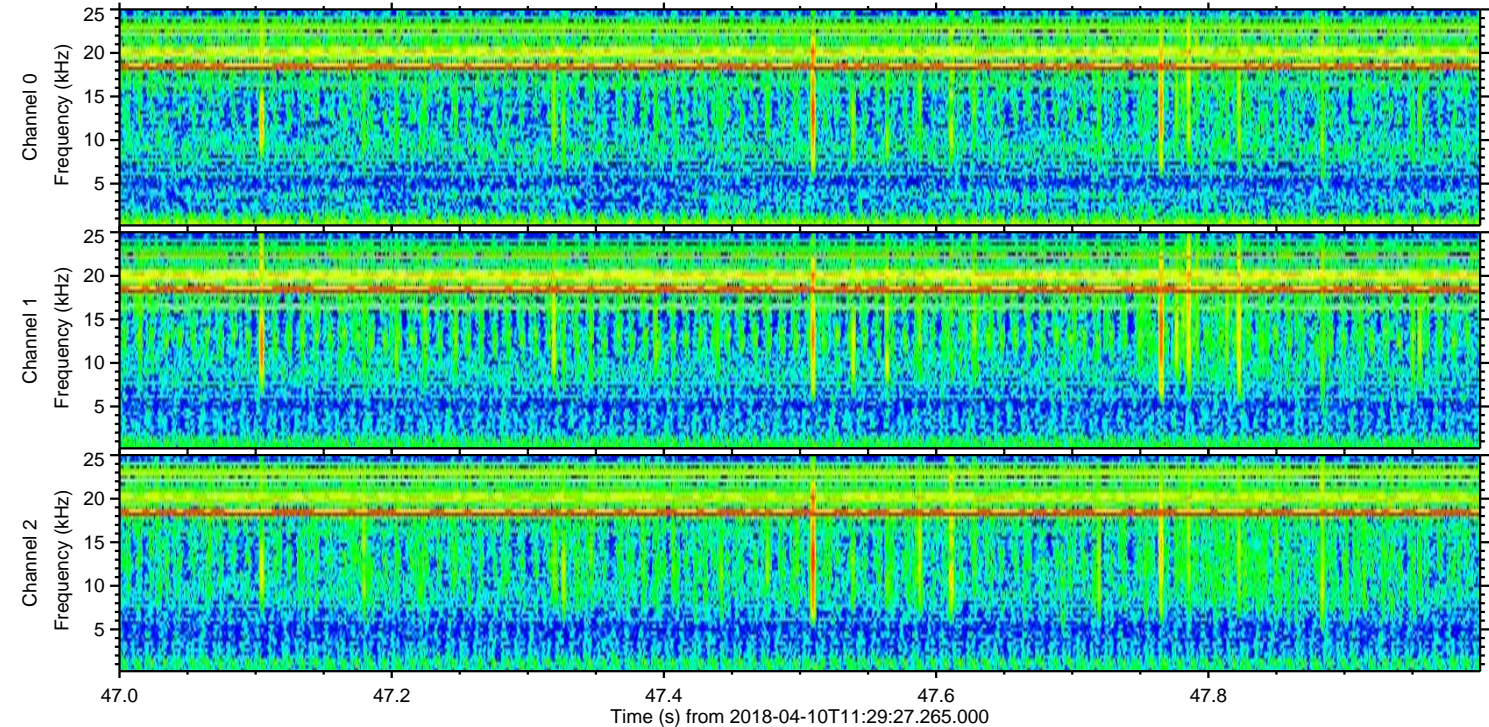
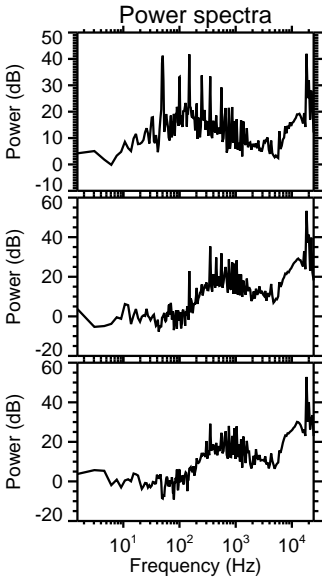
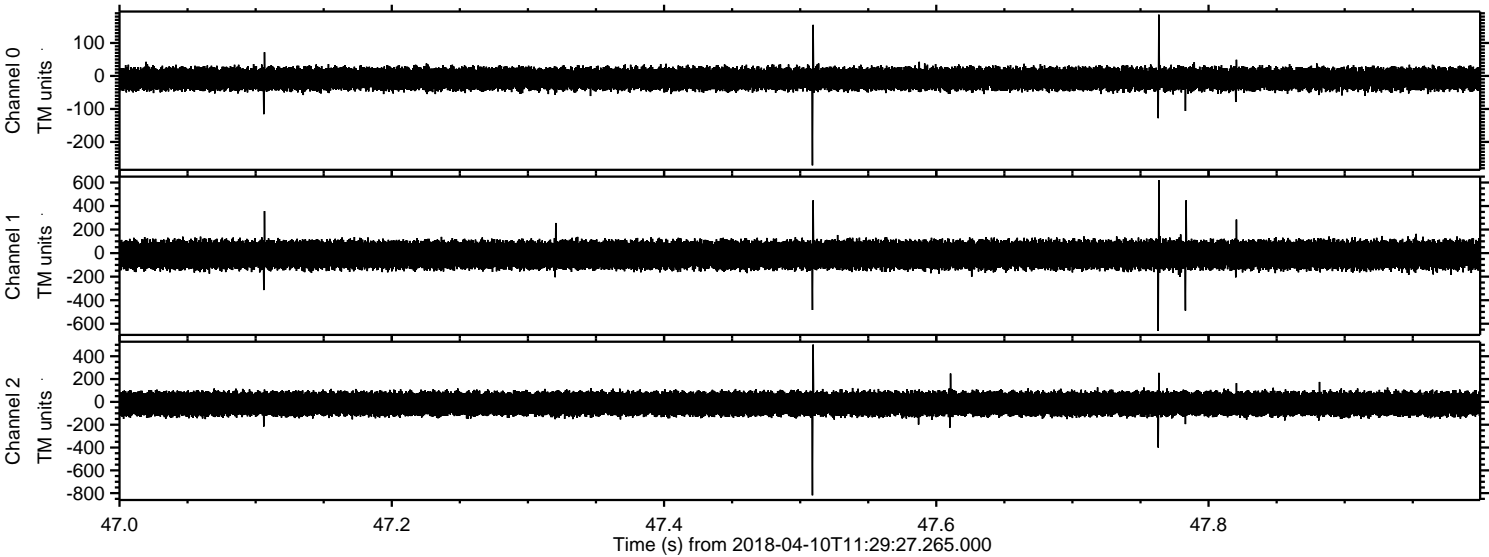
Channel 1
mn: -873
mx: 691
 μ : -15.1
 σ : 67.1

Channel 2
mn: -329
mx: 487
 μ : -18.8
 σ : 60.6

Processed Tue Apr 10 13:37:47 2018 by ELM ver.2012-10-06 from 001__elm20180410_112926__dat00.bin



Processed Tue Apr 10 13:37:48 2018 by ELM ver.2012-10-06 from 001__elm20180410_112926__dat00.bin



Processed Tue Apr 10 13:37:49 2018 by ELM ver.2012-10-06 from 001__elm20180410_112926__dat00.bin

