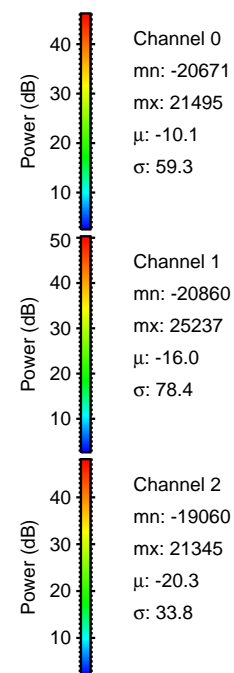
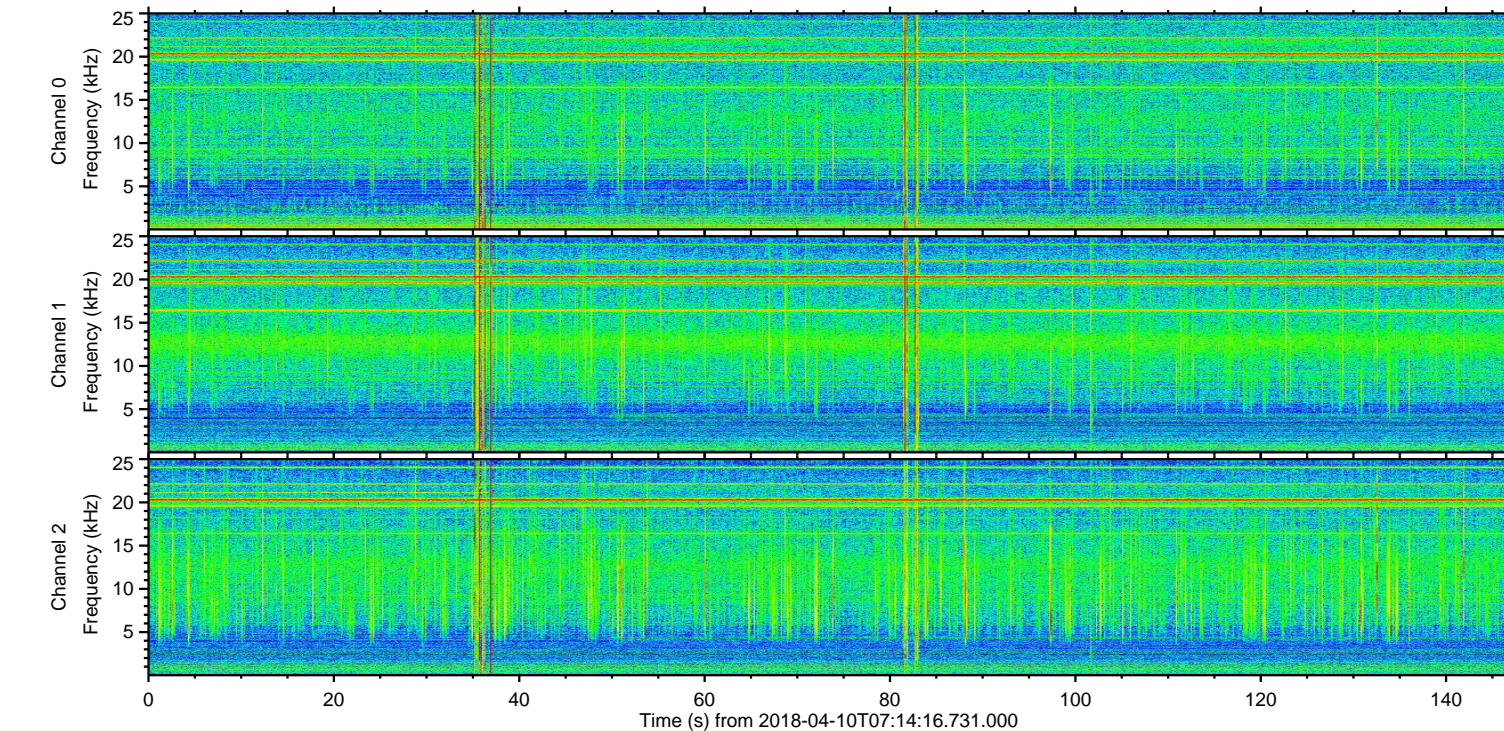
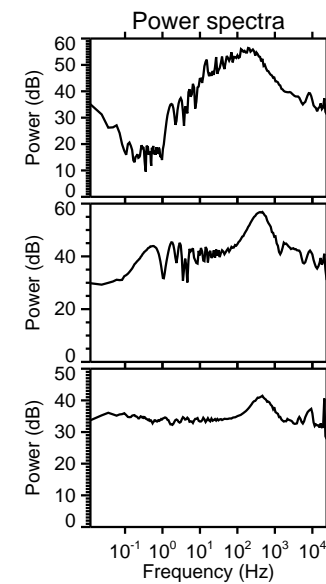
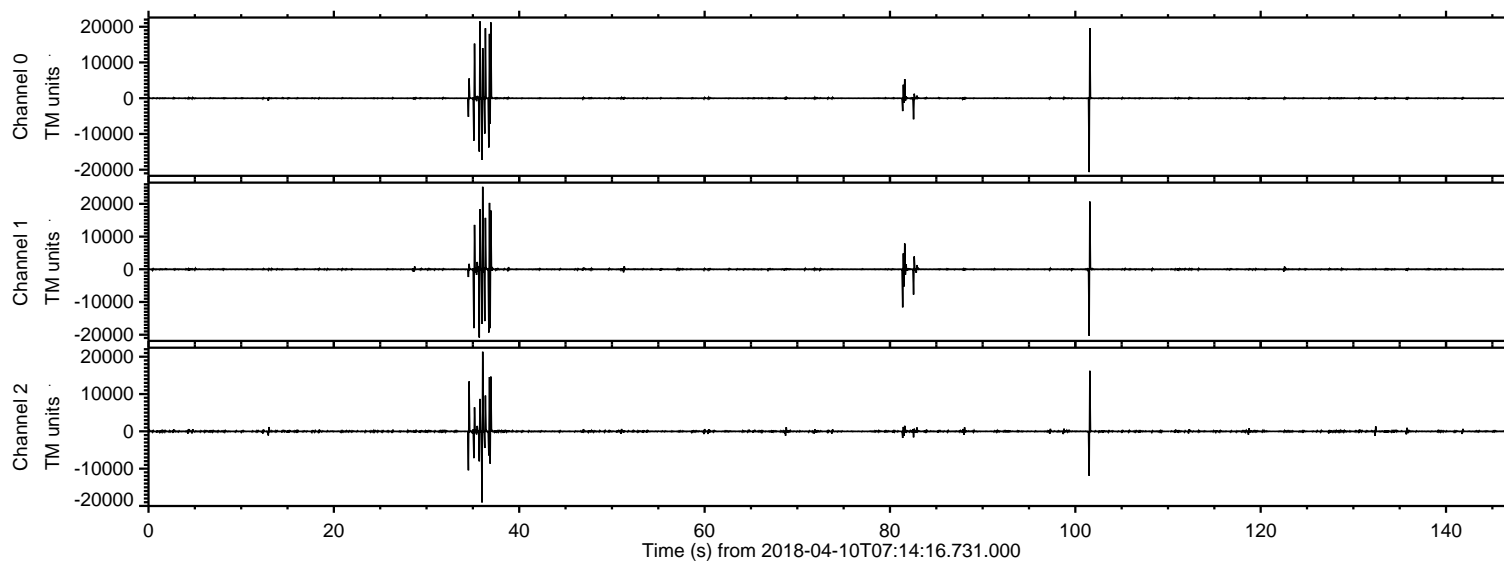


# ELMAVAN 3D WAVEFORMS (Measured data sampled at 50 kHz) 51000 packets of 144 samples from 2018-04-10T07:14:16.731.000.

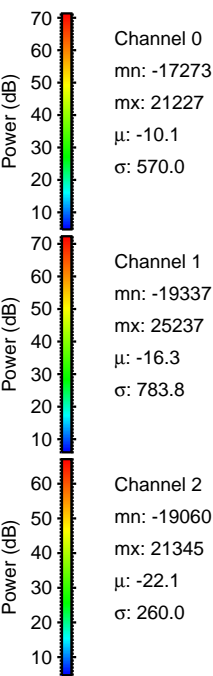
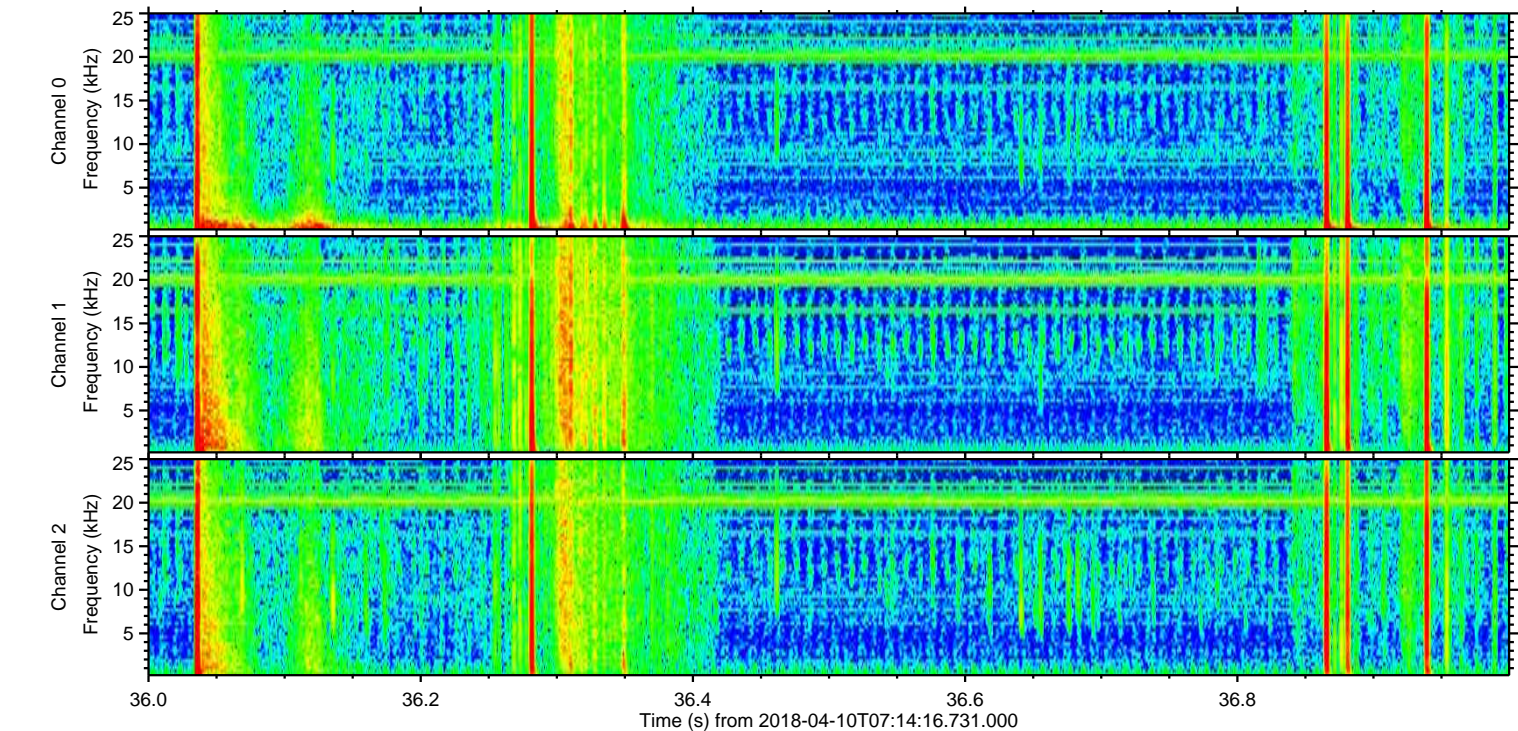
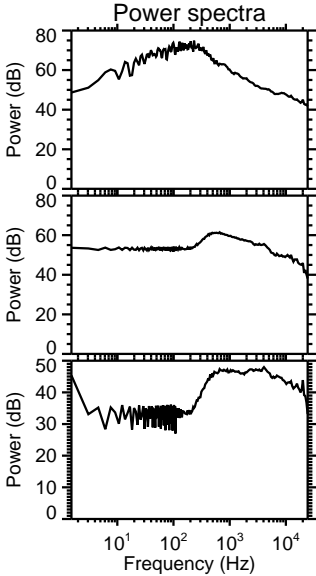
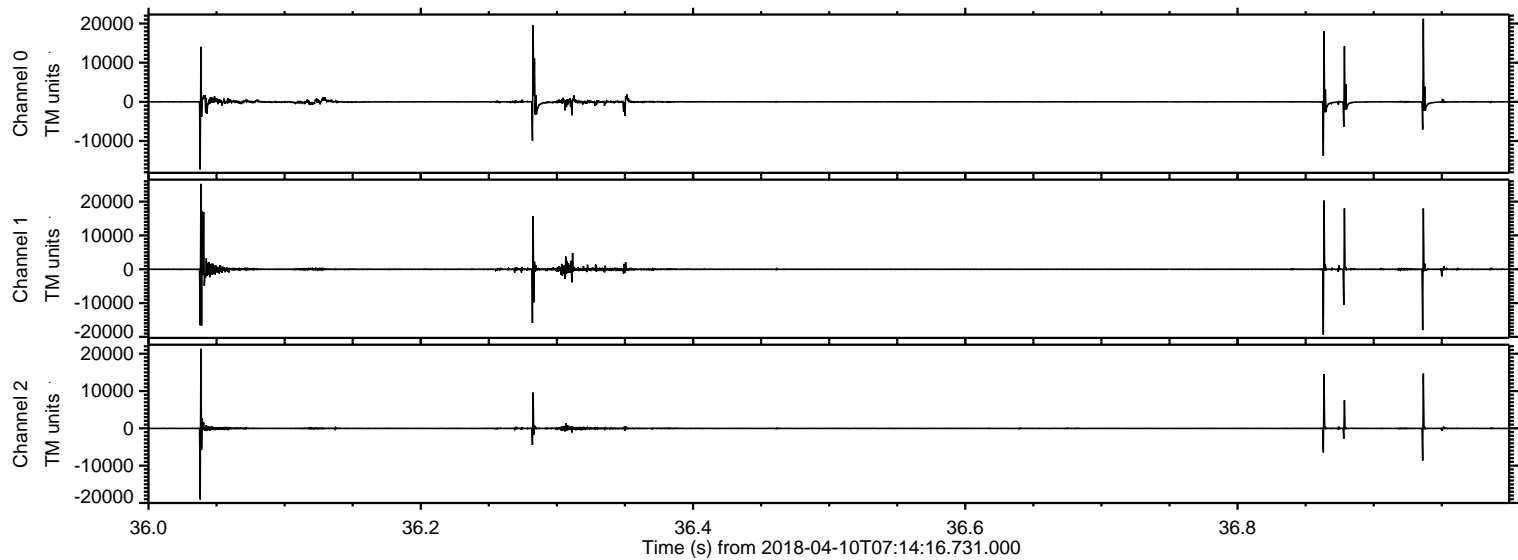
Processed Tue Apr 10 09:22:26 2018 by ELM ver.2012-10-06 from 001\_\_elm20180410\_071415\_\_dat00.bin



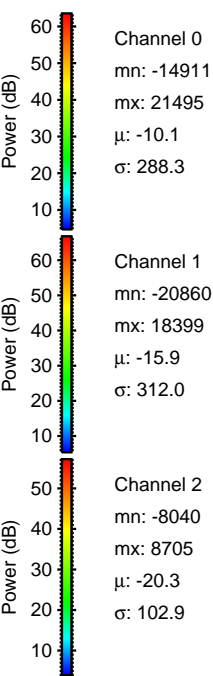
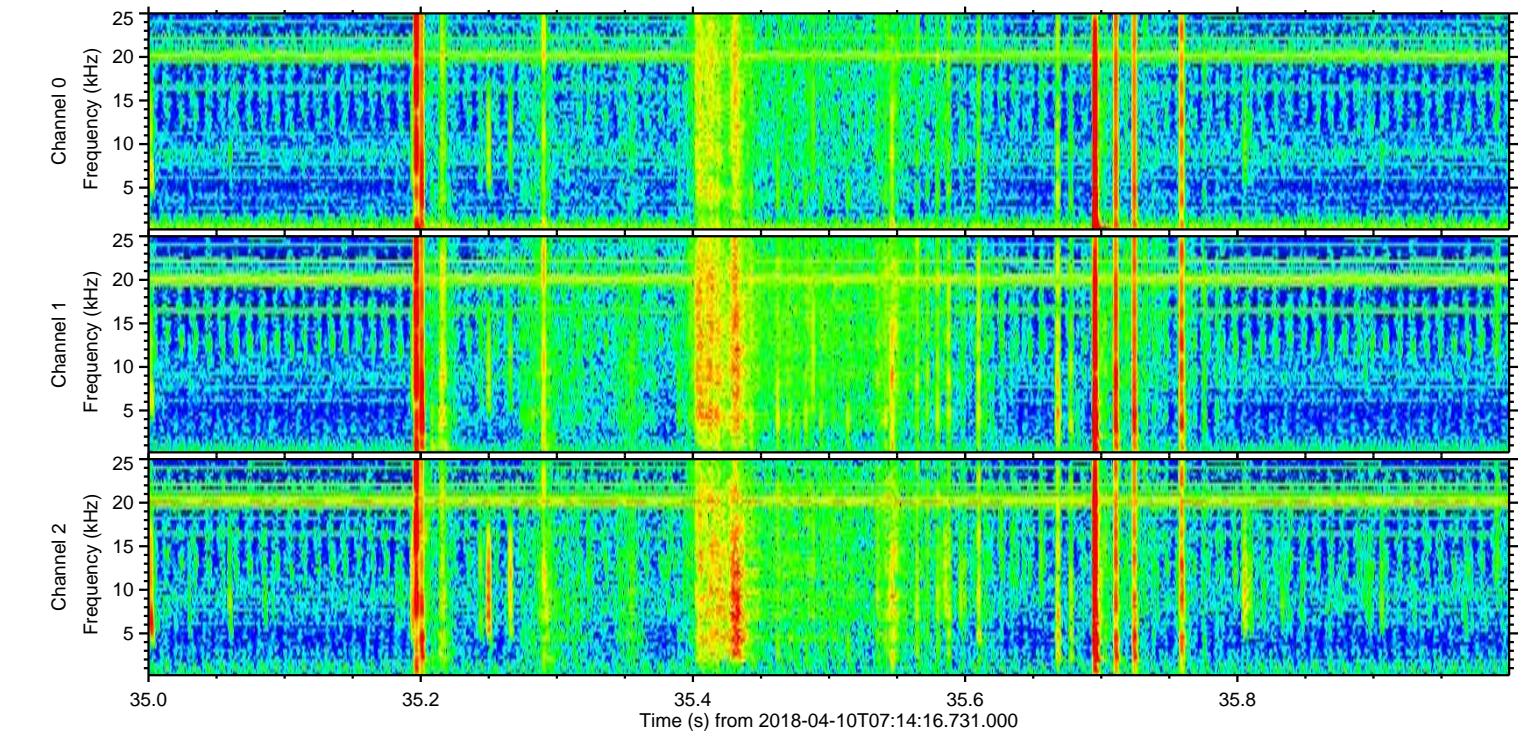
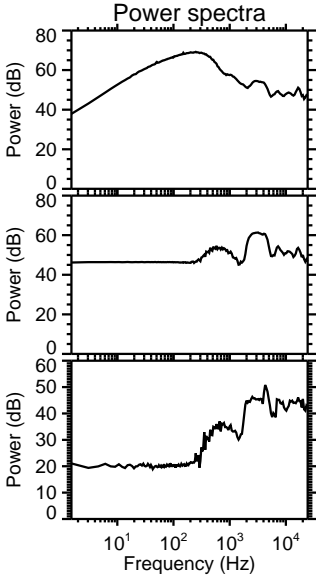
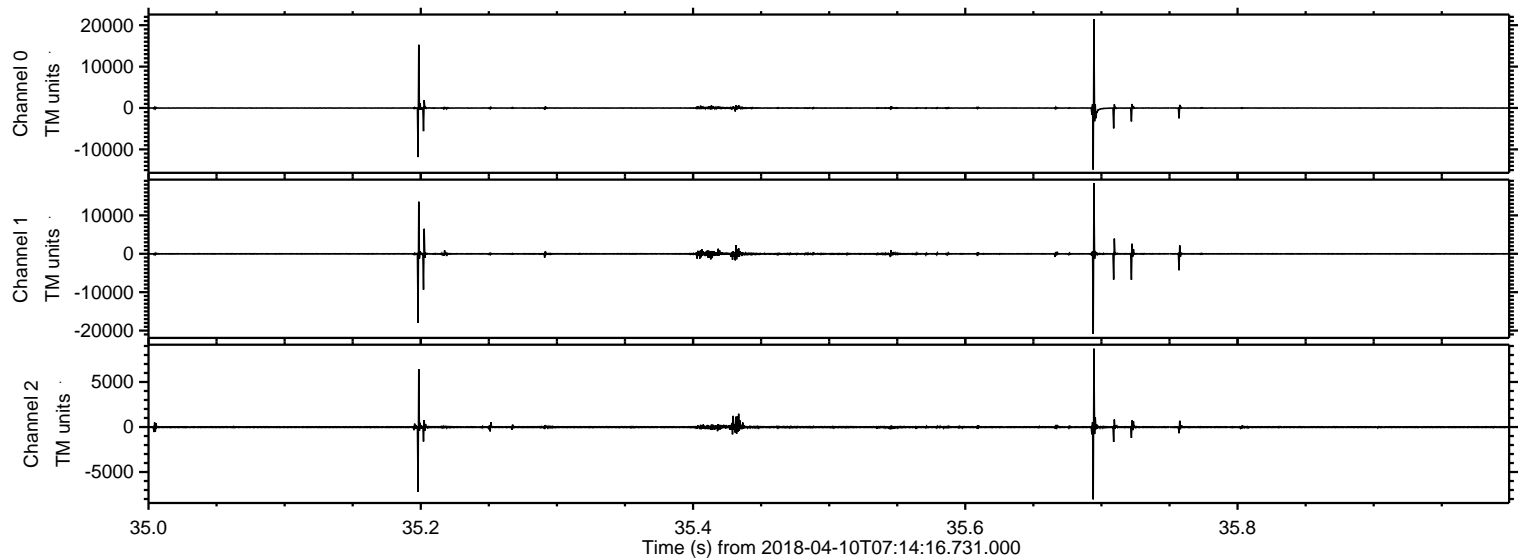


ELMAVAN 3D WAVEFORMS (Measured data sampled at 50 kHz) 51000 packets of 144 samples from 2018-04-10T07:14:16.731.000. Part 37/147

Processed Tue Apr 10 09:22:32 2018 by ELM ver.2012-10-06 from 001\_\_elm20180410\_071415\_\_dat00.bin



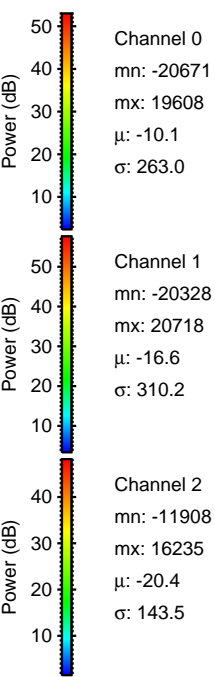
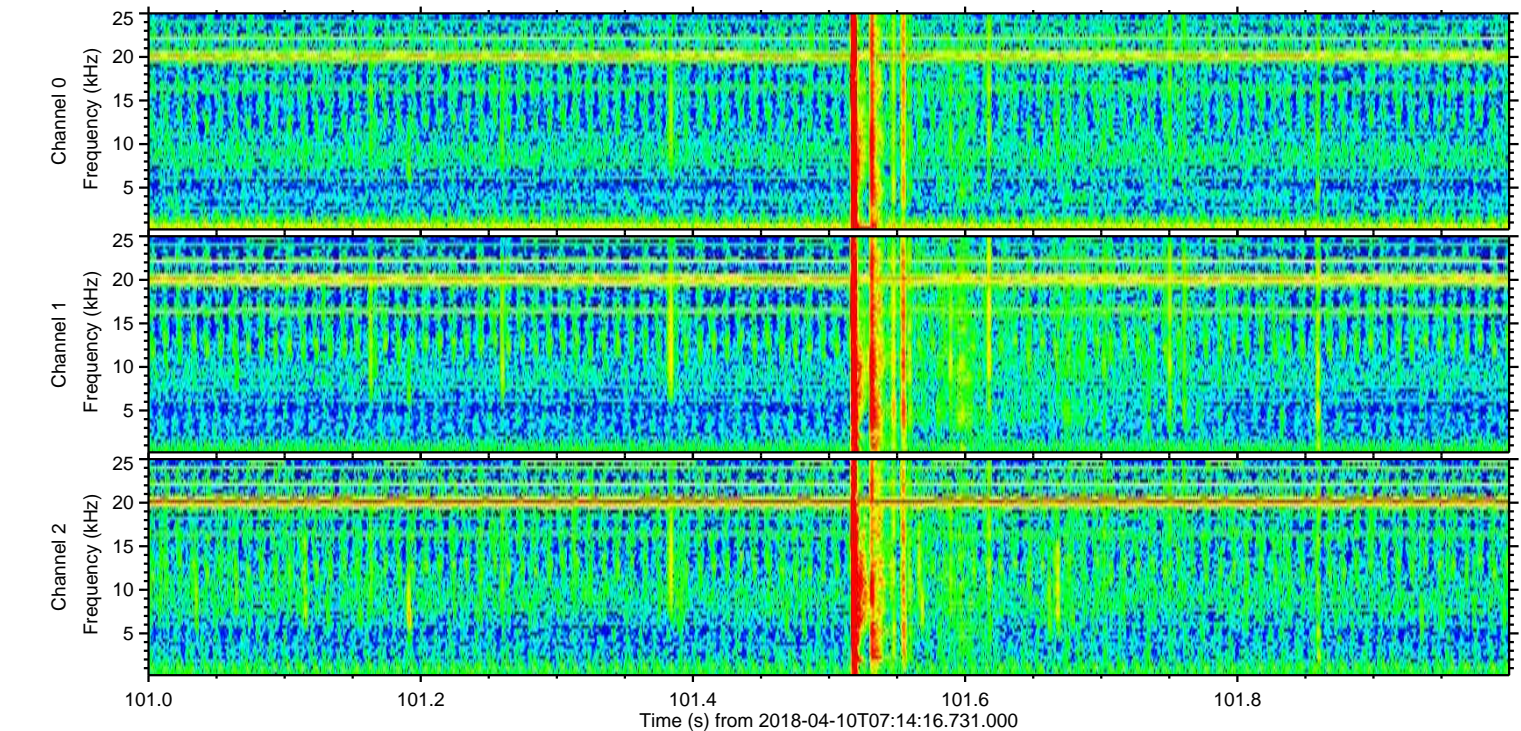
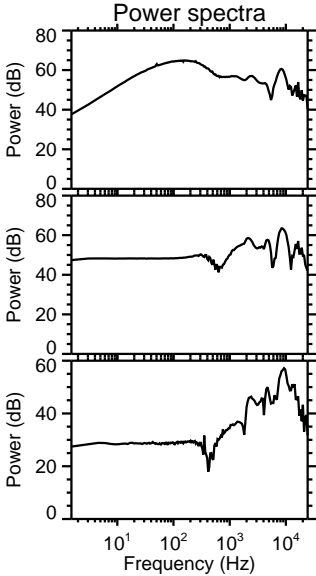
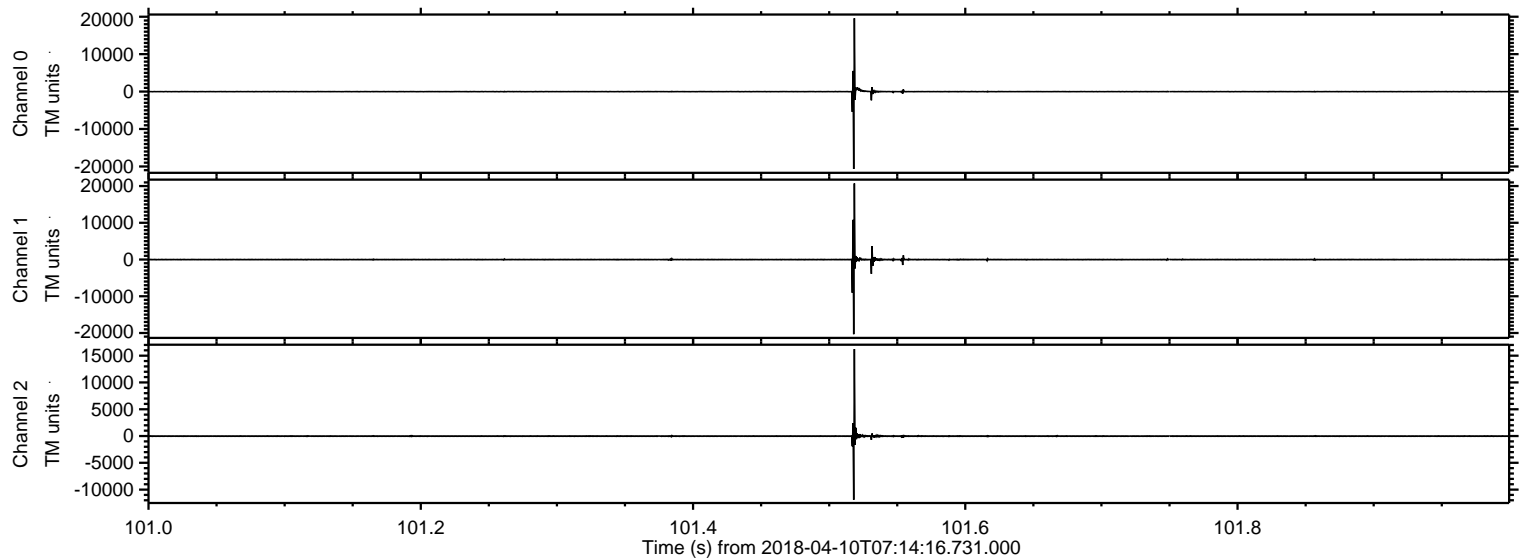
Processed Tue Apr 10 09:22:32 2018 by ELM ver.2012-10-06 from 001\_\_elm20180410\_071415\_\_dat00.bin





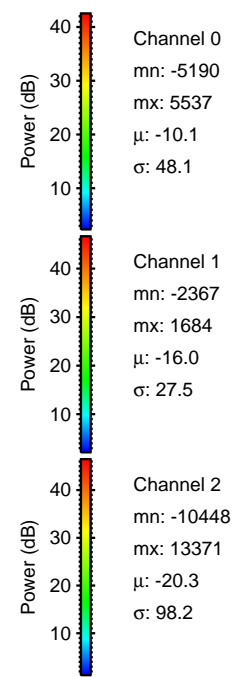
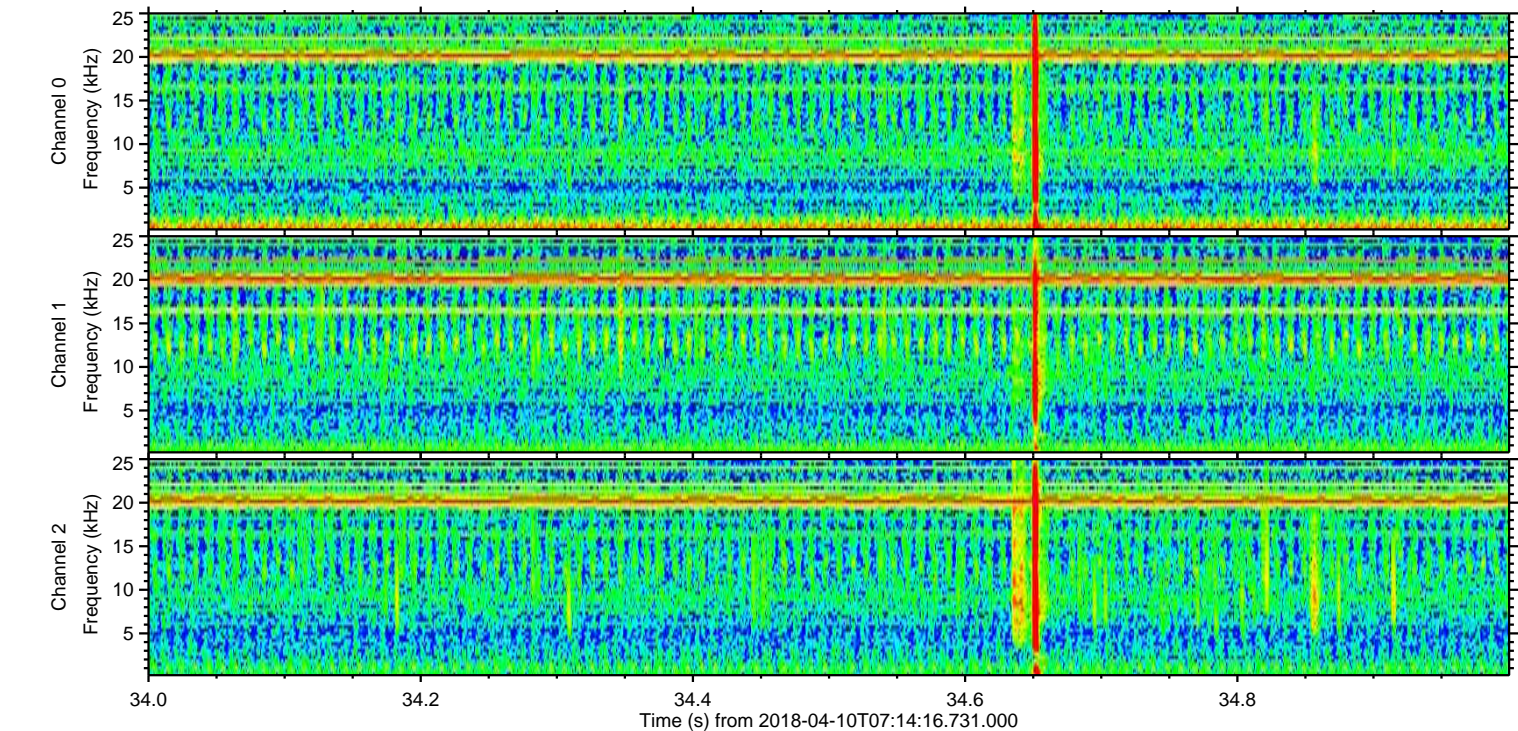
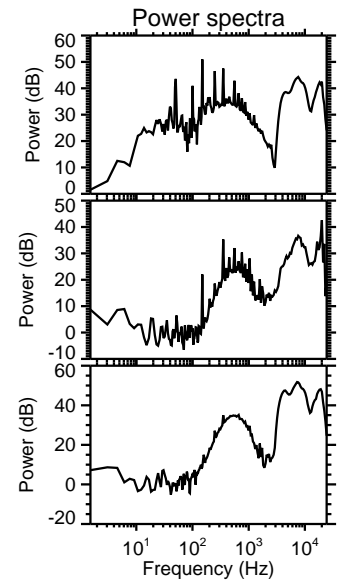
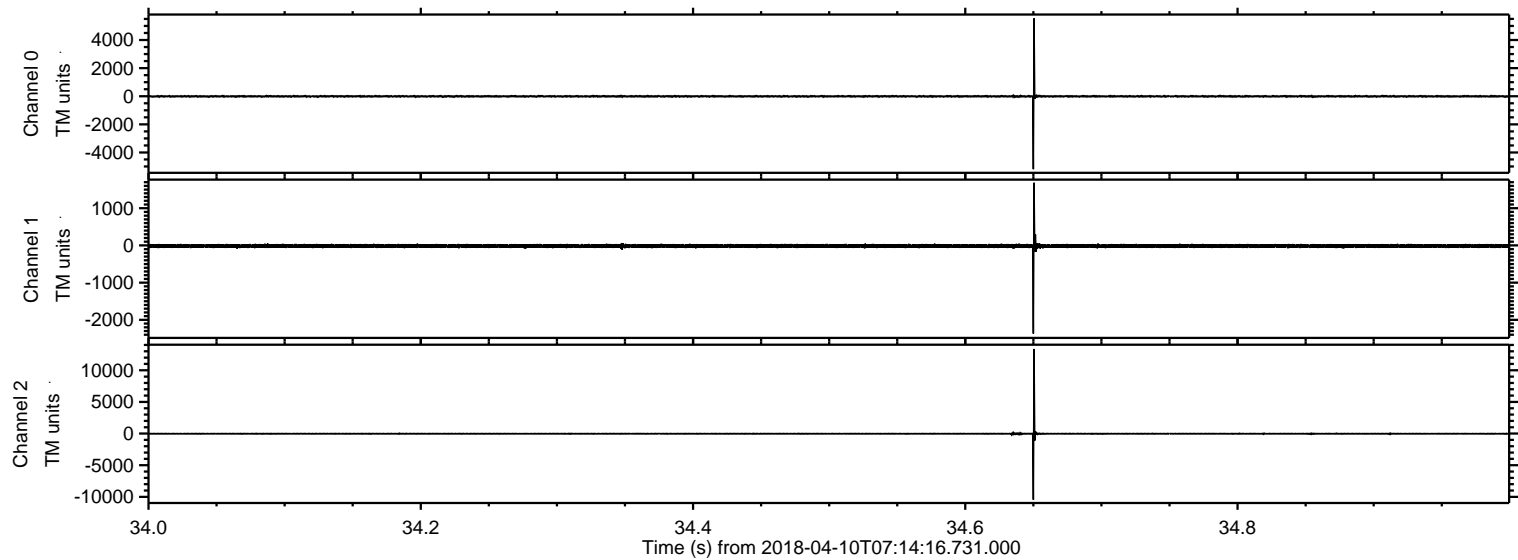
ELMAVAN 3D WAVEFORMS (Measured data sampled at 50 kHz) 51000 packets of 144 samples from 2018-04-10T07:14:16.731.000. Part 102/147

Processed Tue Apr 10 09:22:33 2018 by ELM ver.2012-10-06 from 001\_\_elm20180410\_071415\_\_dat00.bin



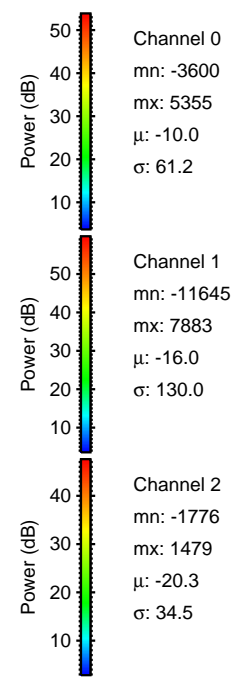
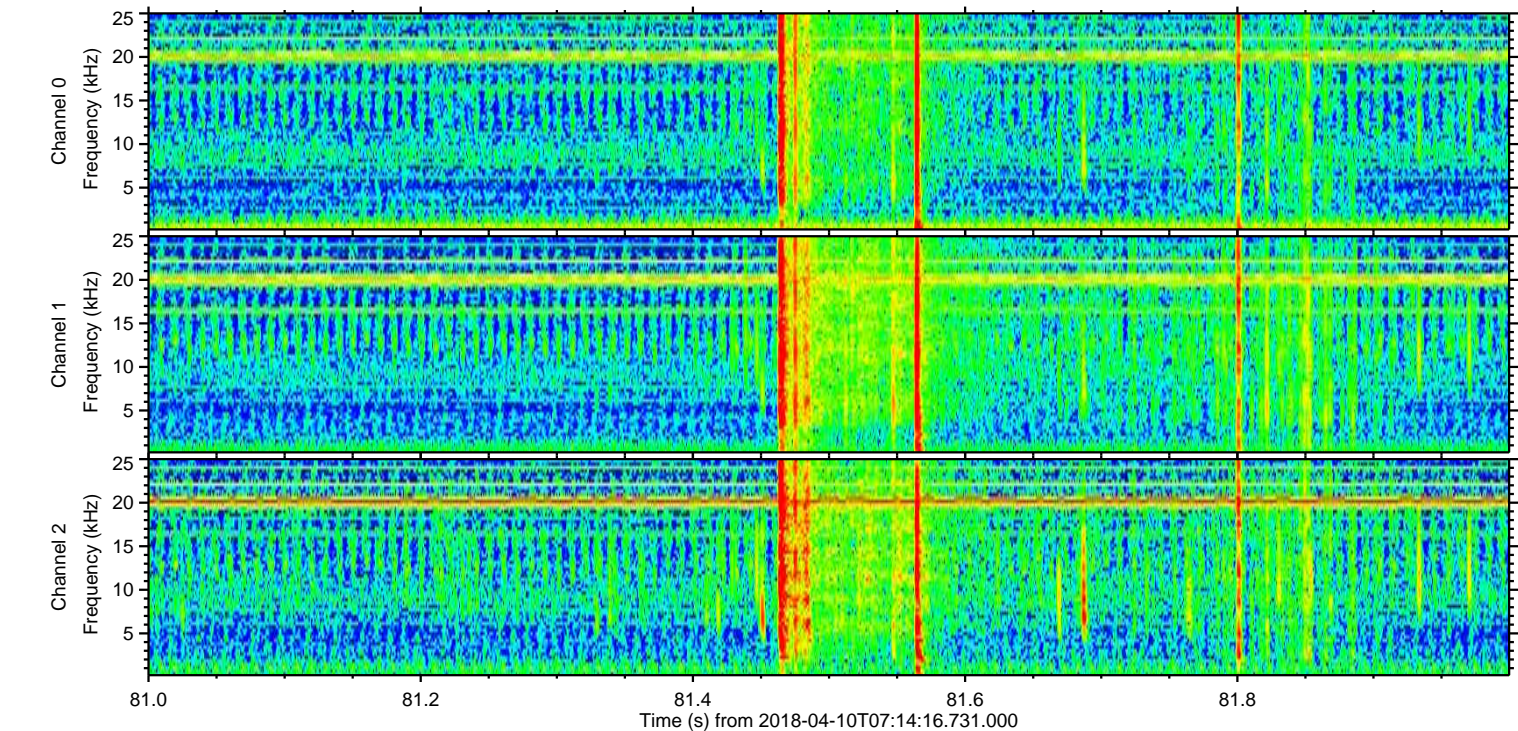
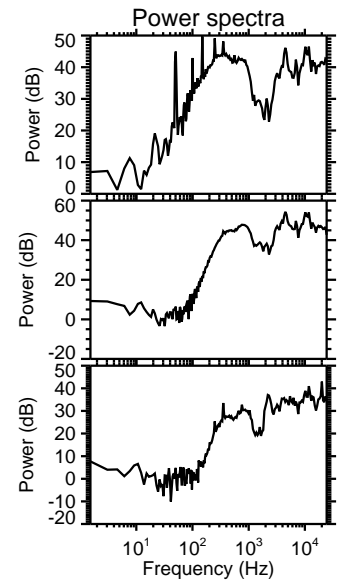
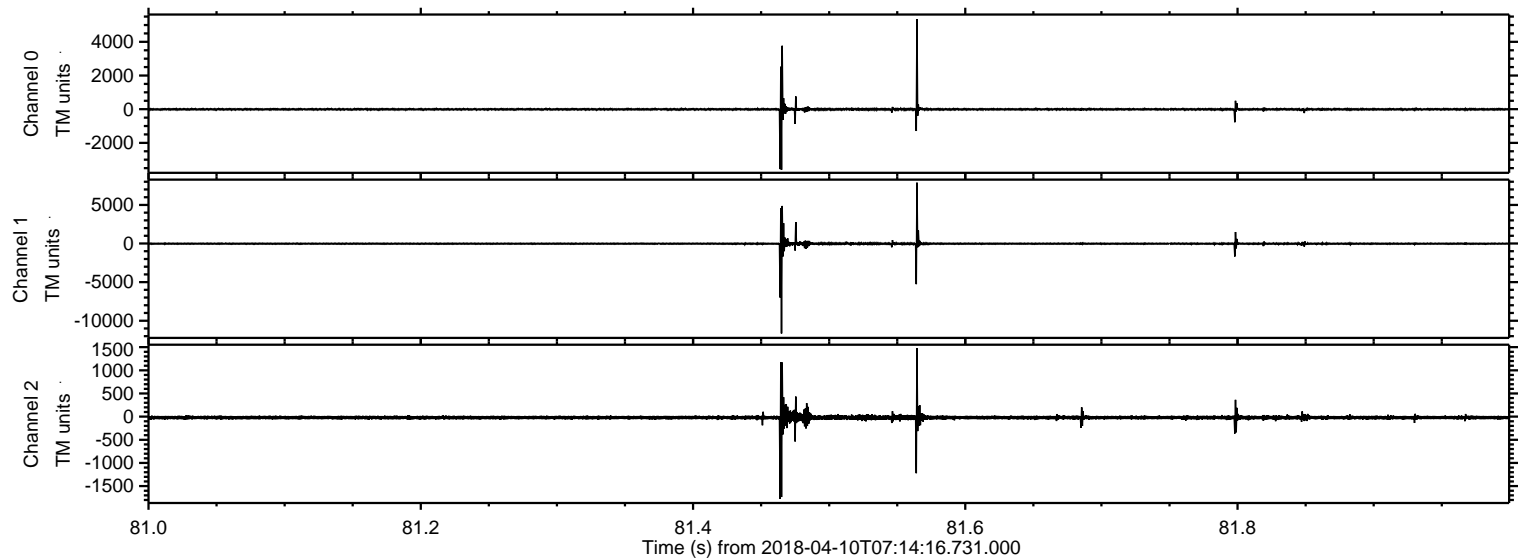


Processed Tue Apr 10 09:22:34 2018 by ELM ver.2012-10-06 from 001\_\_elm20180410\_071415\_\_dat00.bin



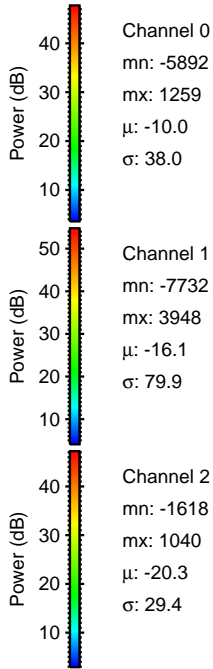
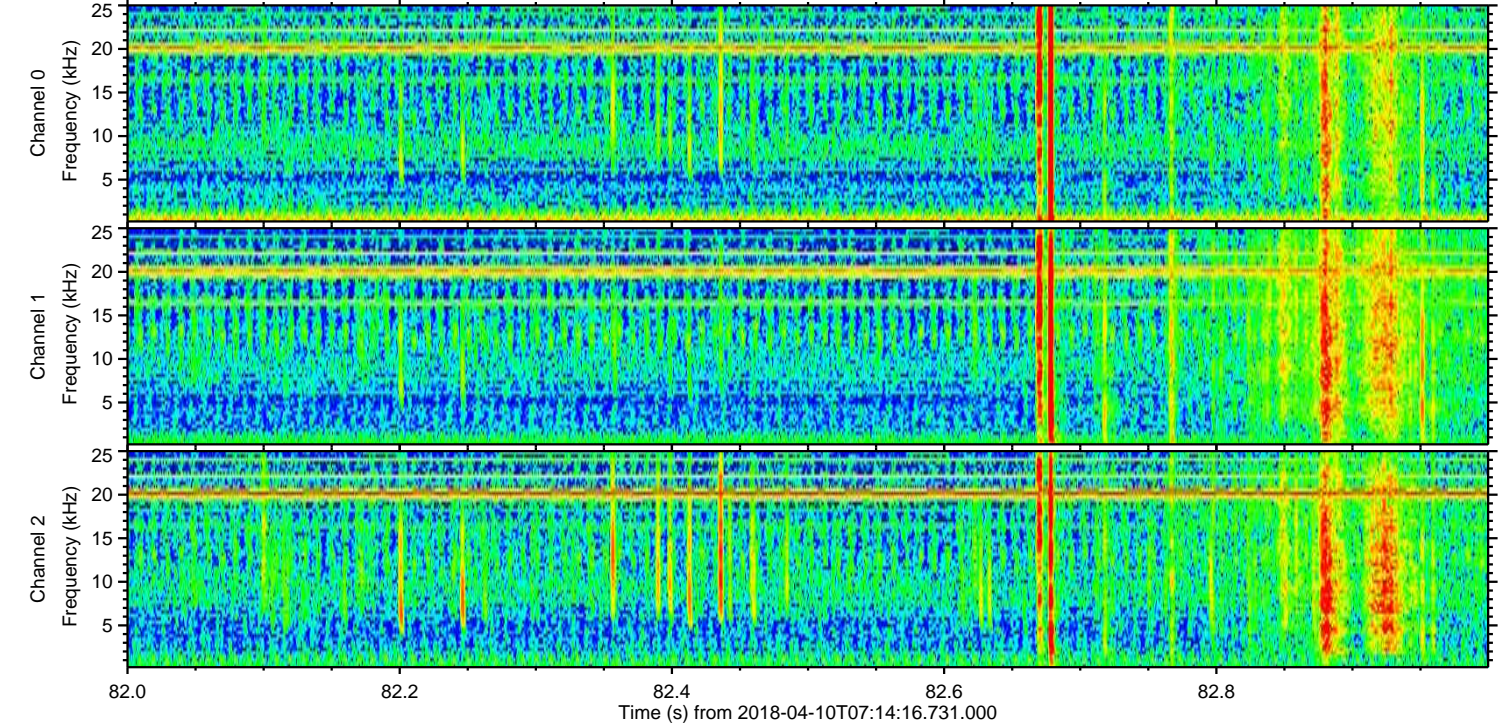
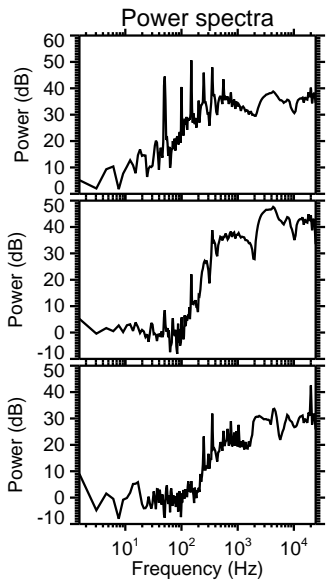
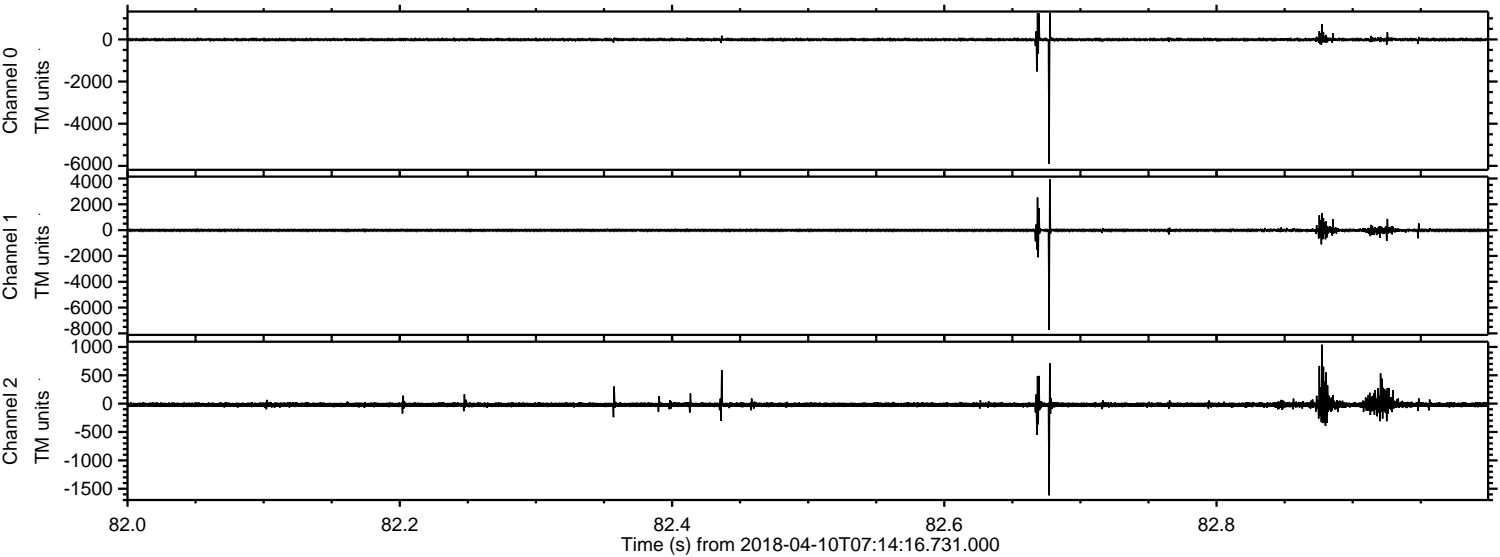


Processed Tue Apr 10 09:22:34 2018 by ELM ver.2012-10-06 from 001\_\_elm20180410\_071415\_\_dat00.bin





Processed Tue Apr 10 09:22:35 2018 by ELM ver.2012-10-06 from 001\_\_elm20180410\_071415\_\_dat00.bin



Channel 0  
mn: -5892  
mx: 1259  
 $\mu$ : -10.0  
 $\sigma$ : 38.0

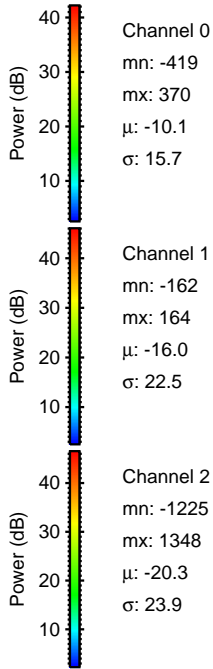
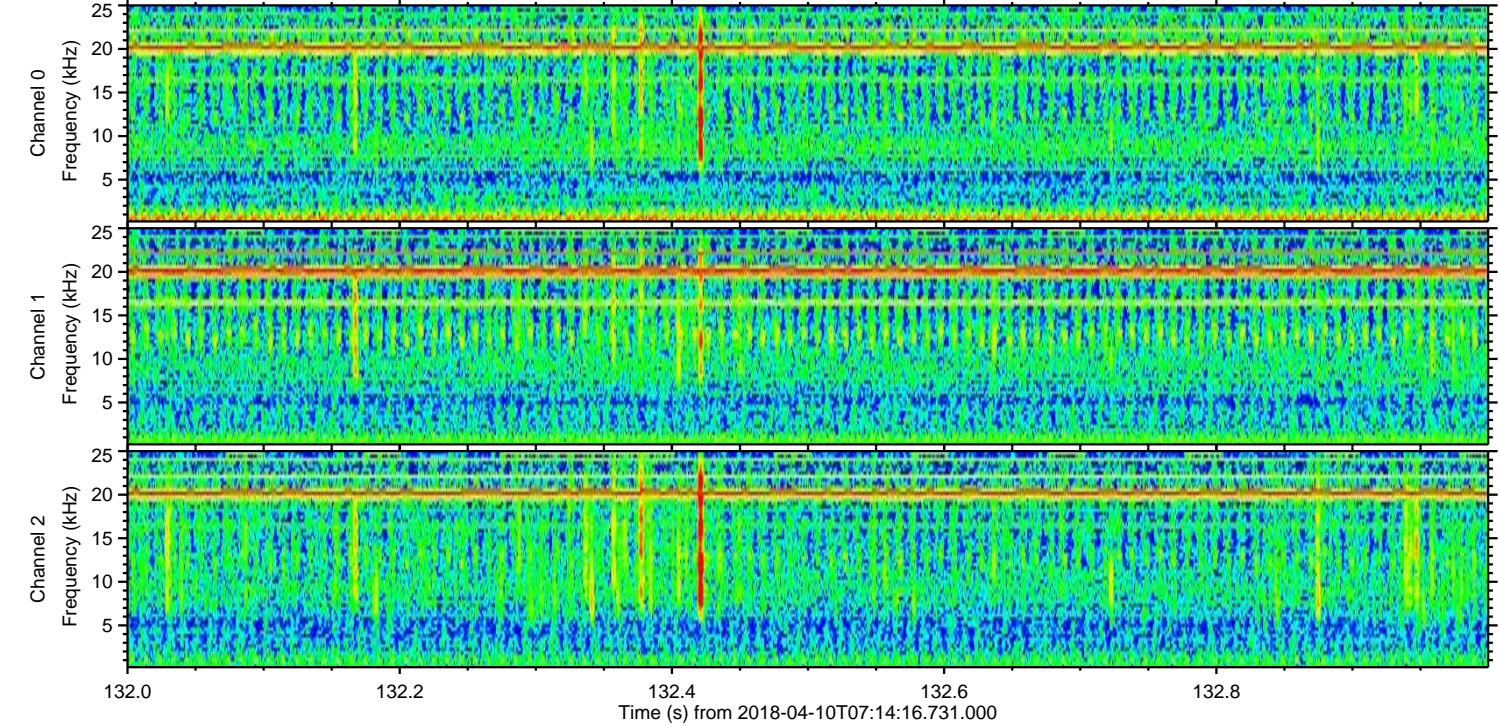
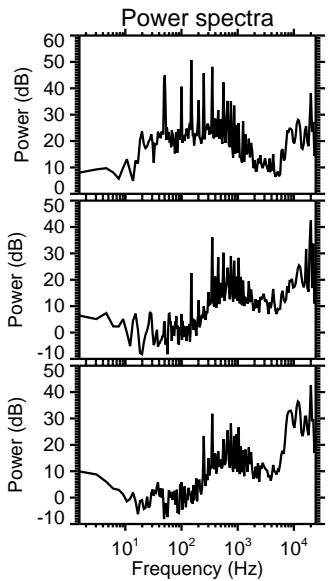
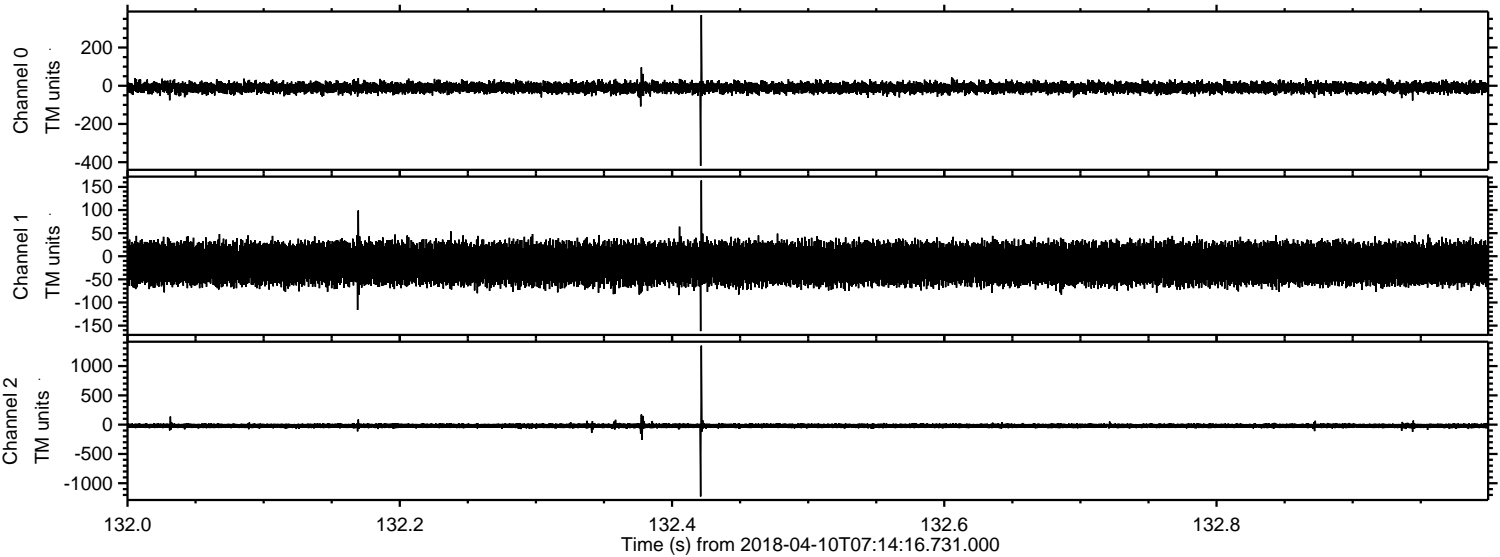
Channel 1  
mn: -7732  
mx: 3948  
 $\mu$ : -16.1  
 $\sigma$ : 79.9

Channel 2  
mn: -1618  
mx: 1040  
 $\mu$ : -20.3  
 $\sigma$ : 29.4



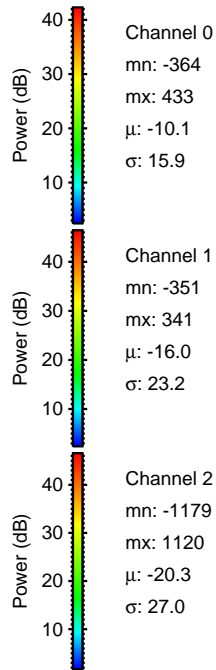
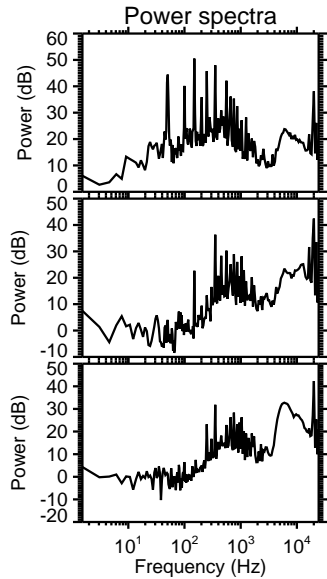
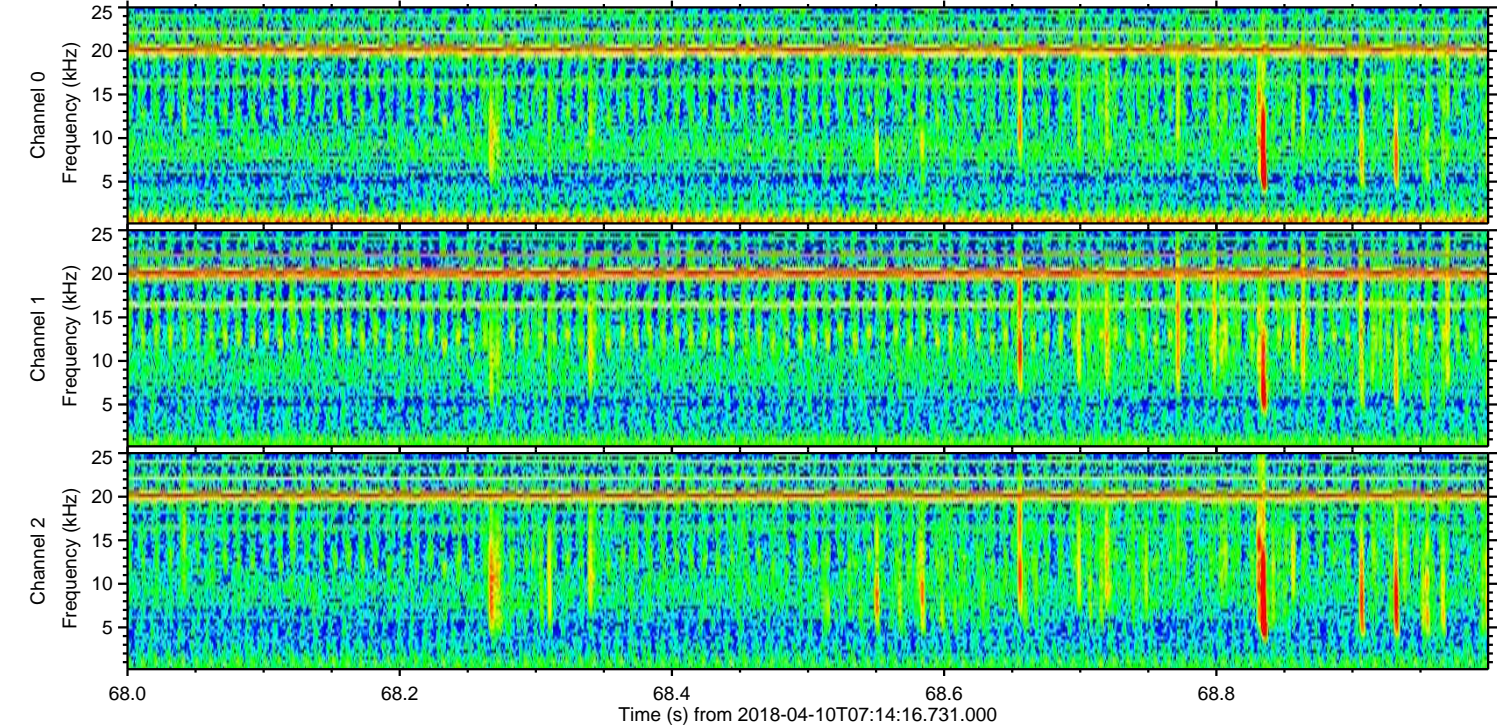
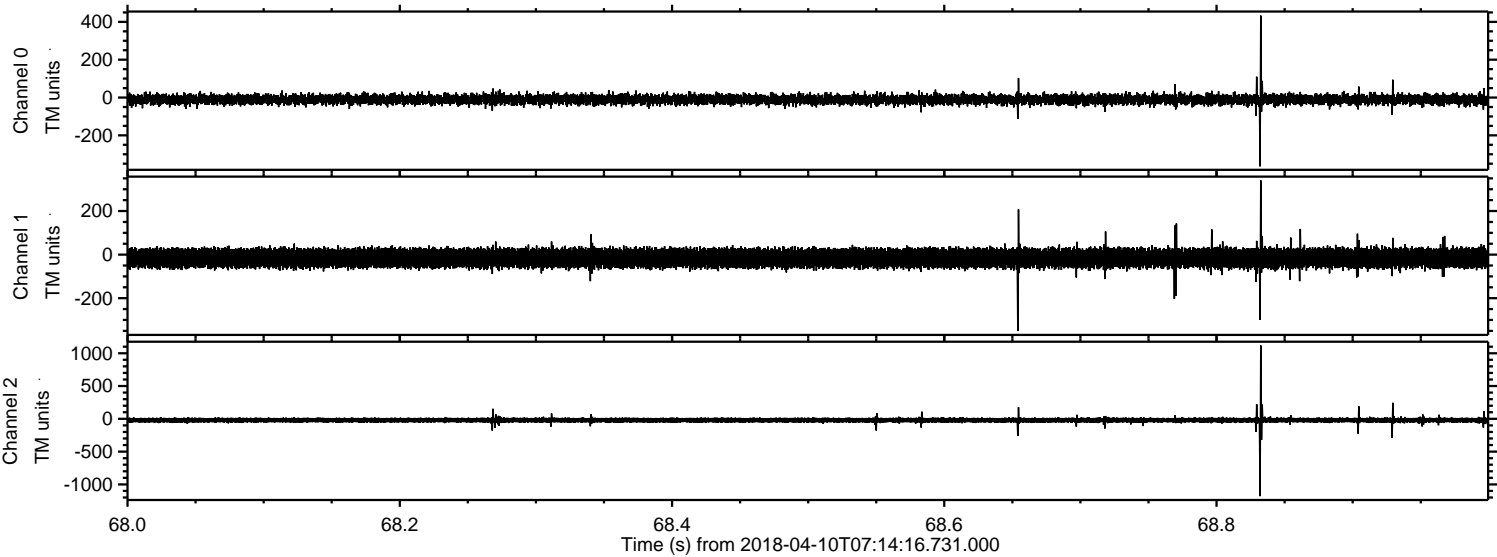
ELMAVAN 3D WAVEFORMS (Measured data sampled at 50 kHz) 51000 packets of 144 samples from 2018-04-10T07:14:16.731.000. Part 133/147

Processed Tue Apr 10 09:22:35 2018 by ELM ver.2012-10-06 from 001\_\_elm20180410\_071415\_\_dat00.bin



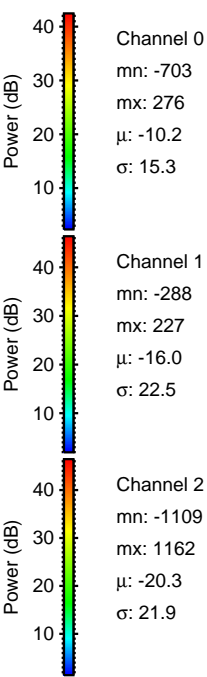
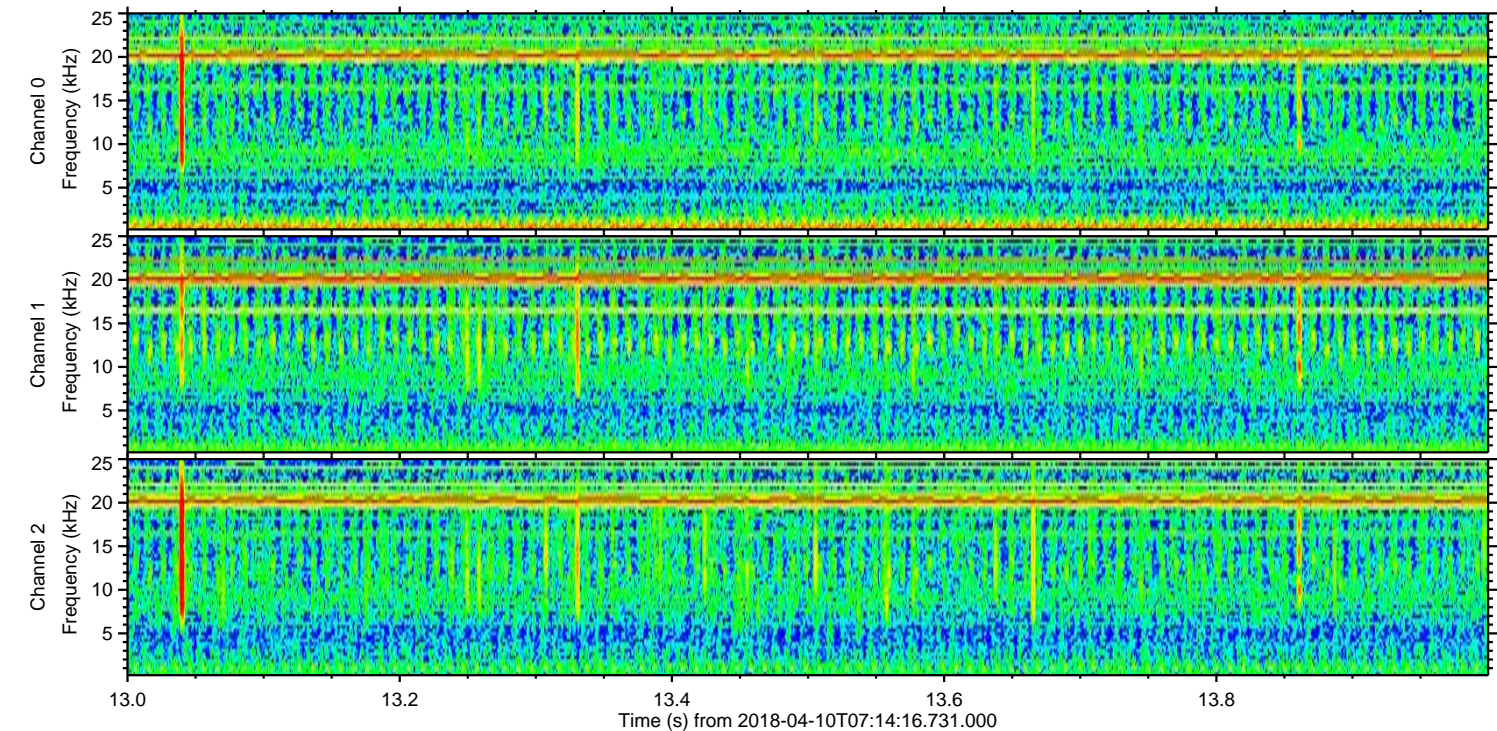
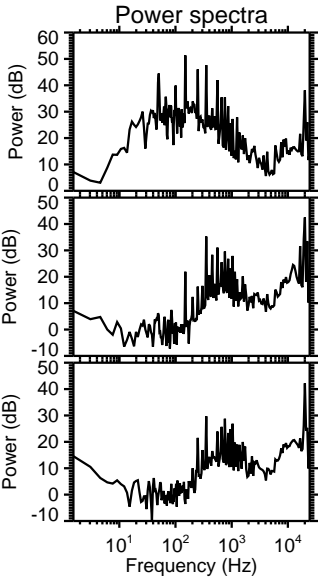
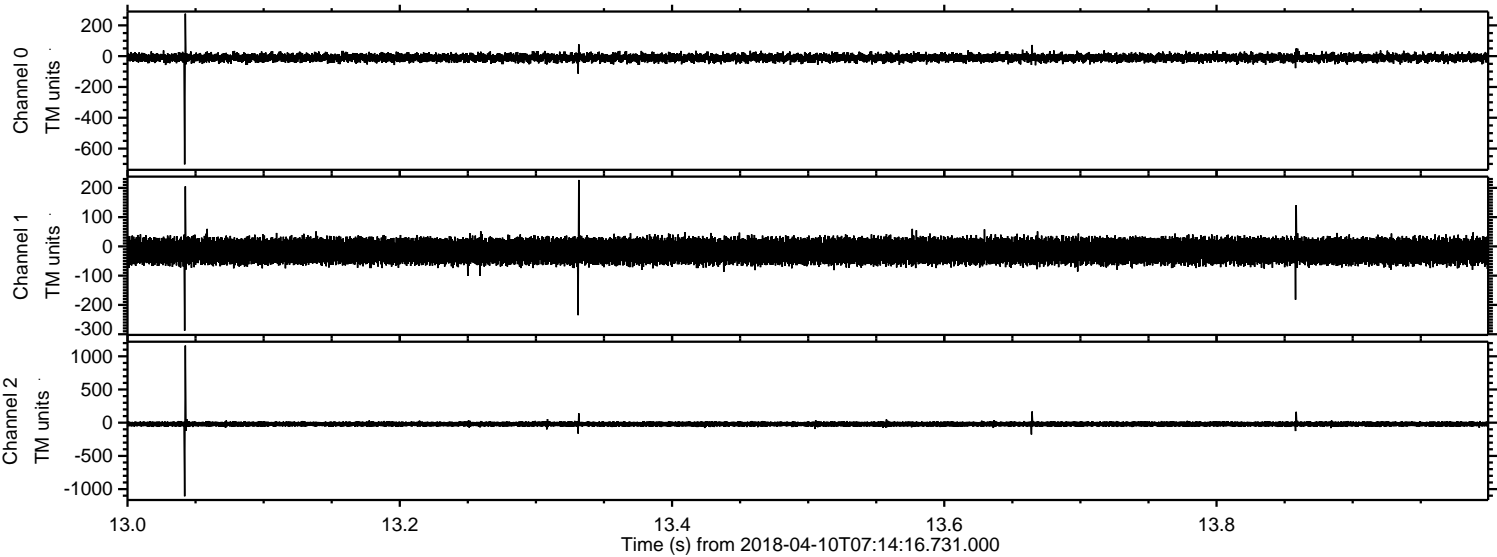


Processed Tue Apr 10 09:22:36 2018 by ELM ver.2012-10-06 from 001\_\_elm20180410\_071415\_\_dat00.bin



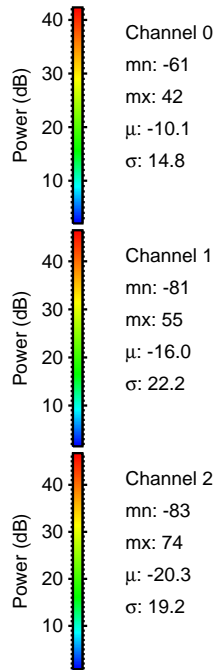
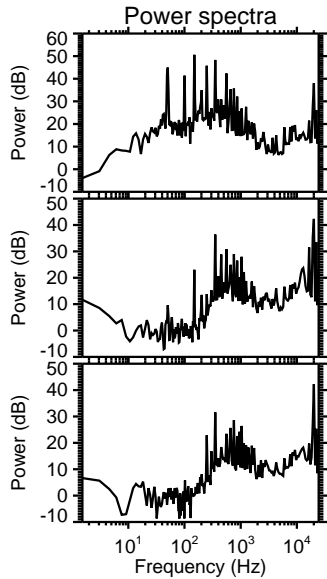
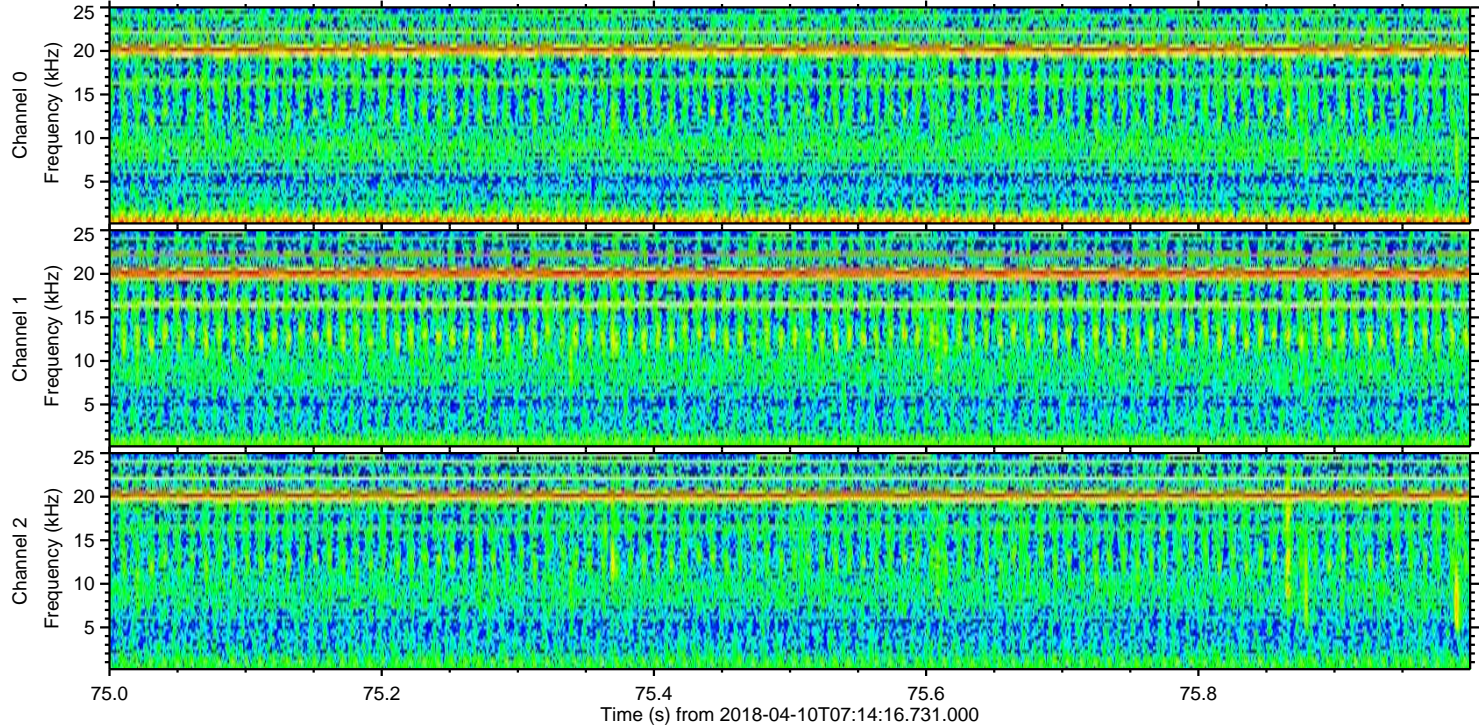
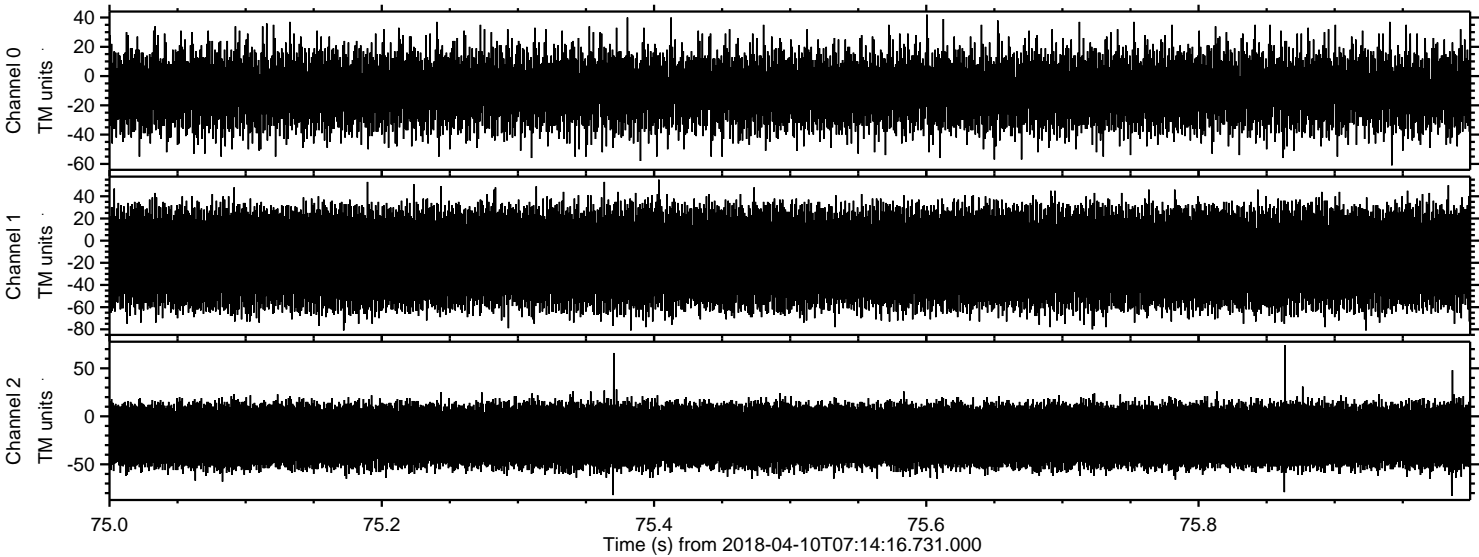


Processed Tue Apr 10 09:22:37 2018 by ELM ver.2012-10-06 from 001\_\_elm20180410\_071415\_\_dat00.bin





Processed Tue Apr 10 09:22:37 2018 by ELM ver.2012-10-06 from 001\_\_elm20180410\_071415\_\_dat00.bin



Power spectra

Channel 0

mn: -61  
mx: 42  
 $\mu$ : -10.1  
 $\sigma$ : 14.8

Channel 1

mn: -81  
mx: 55  
 $\mu$ : -16.0  
 $\sigma$ : 22.2

Channel 2

mn: -83  
mx: 74  
 $\mu$ : -20.3  
 $\sigma$ : 19.2