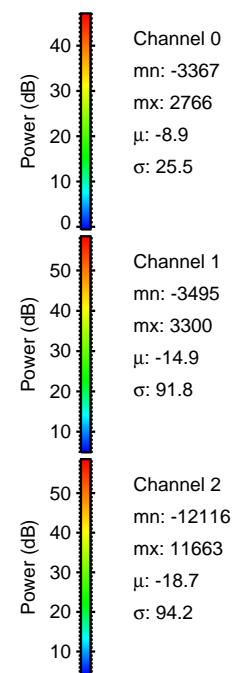
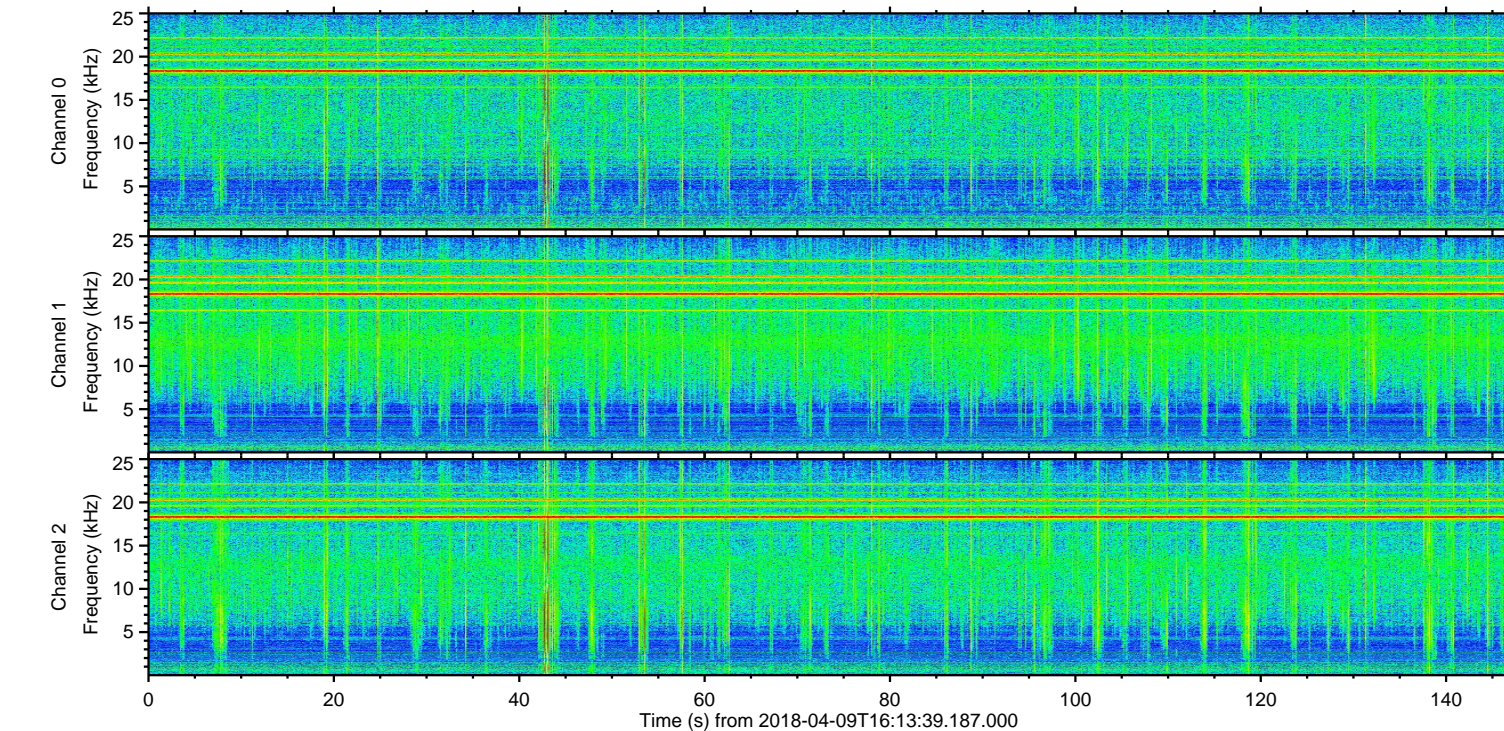
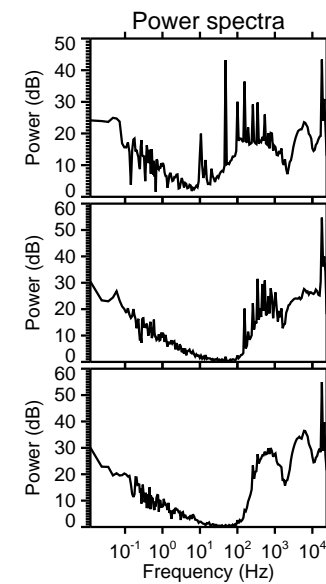
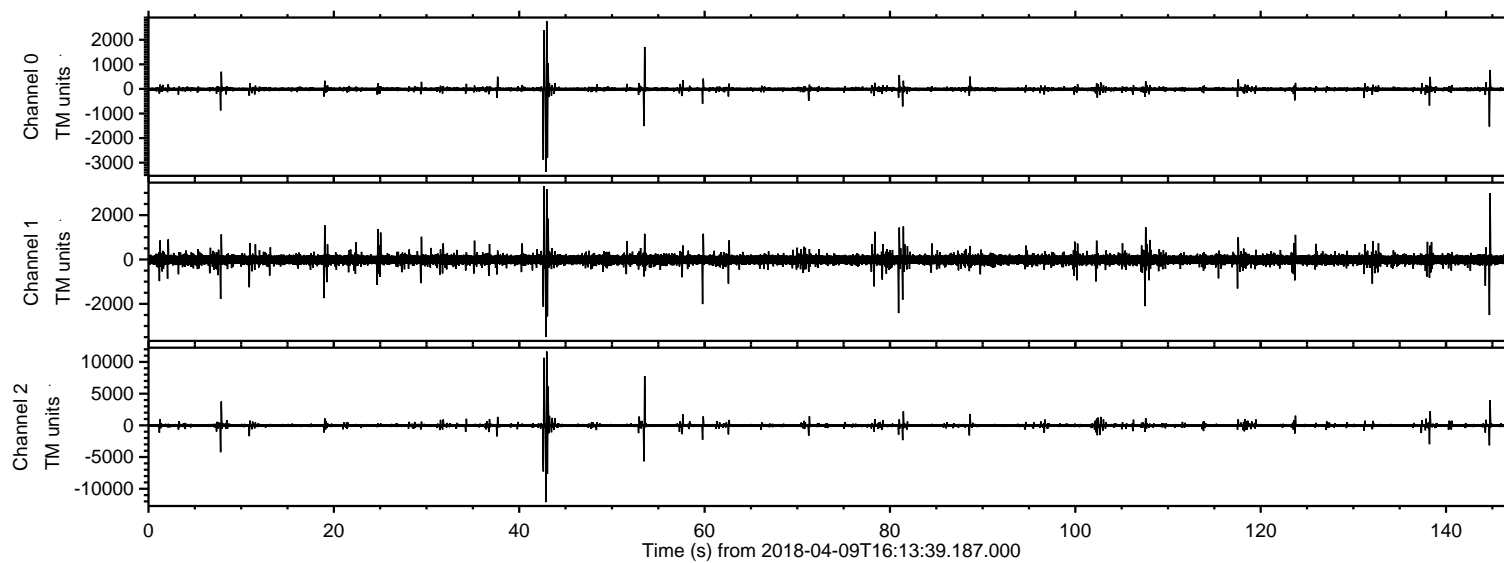
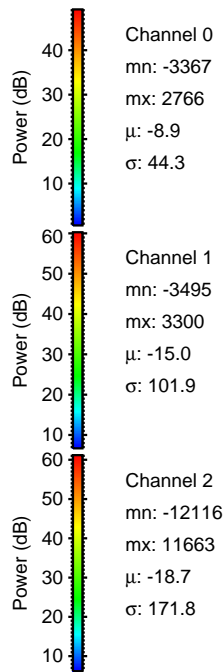
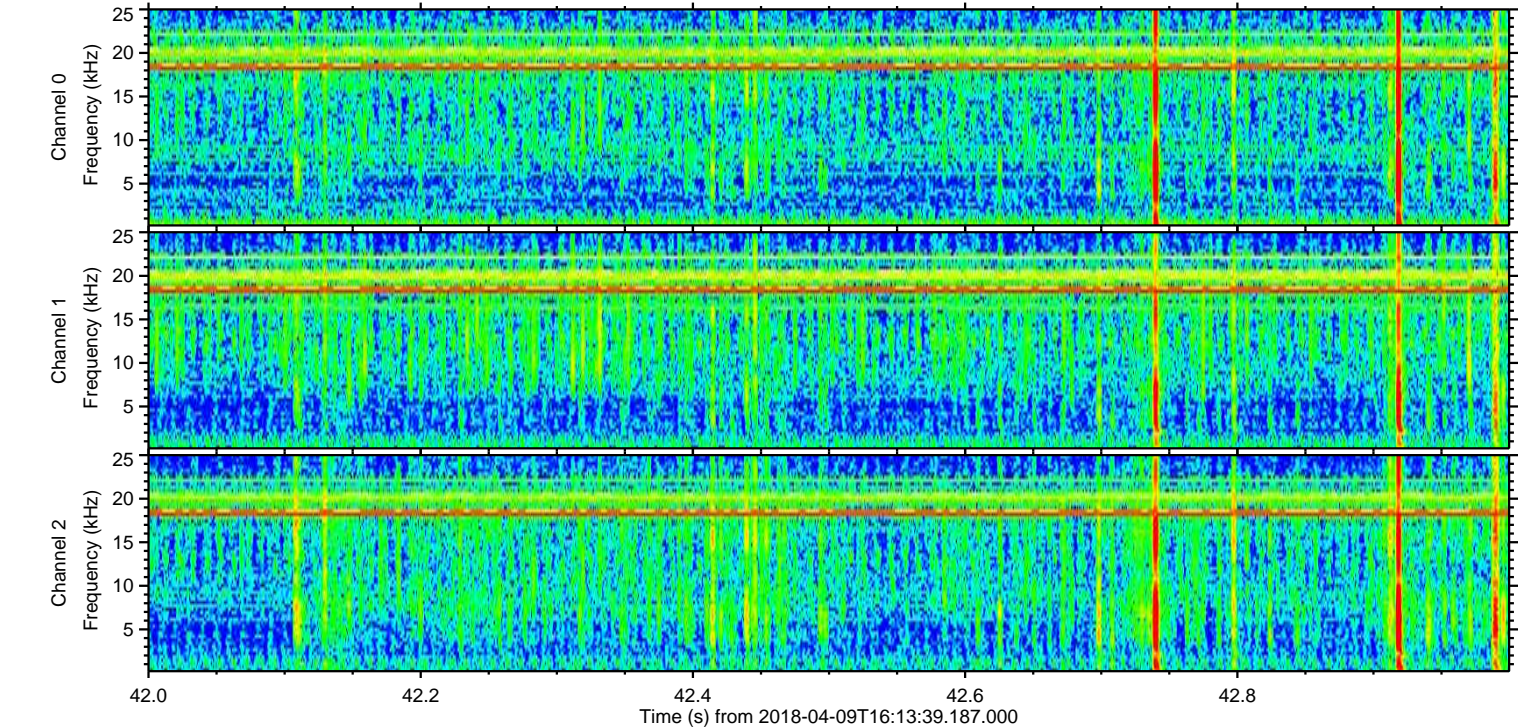
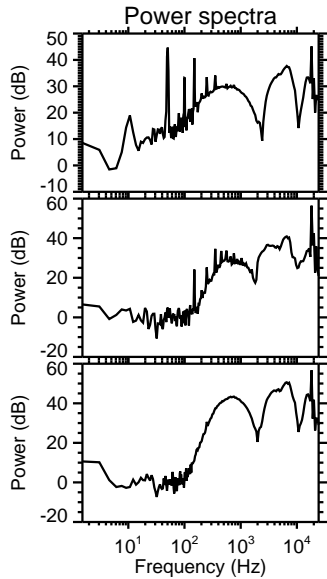
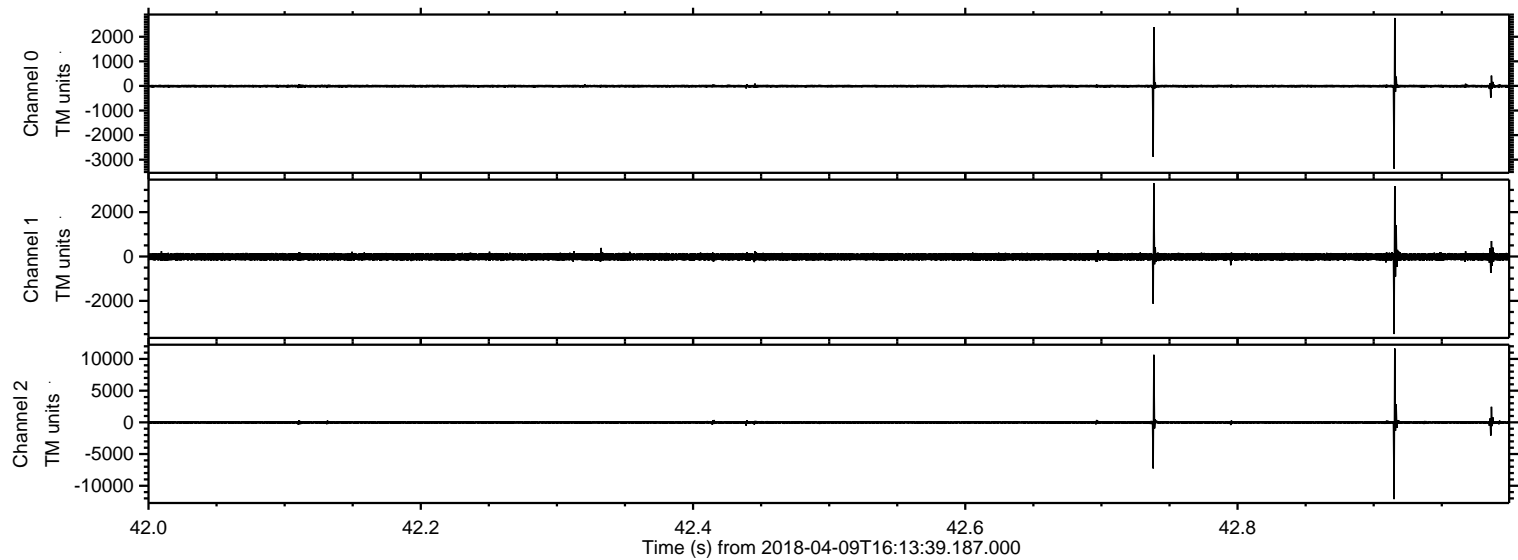


ELMAVAN 3D WAVEFORMS (Measured data sampled at 50 kHz) 51000 packets of 144 samples from 2018-04-09T16:13:39.187.000.

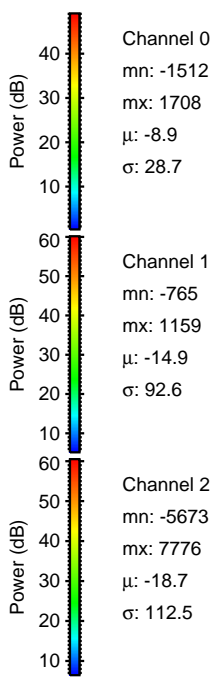
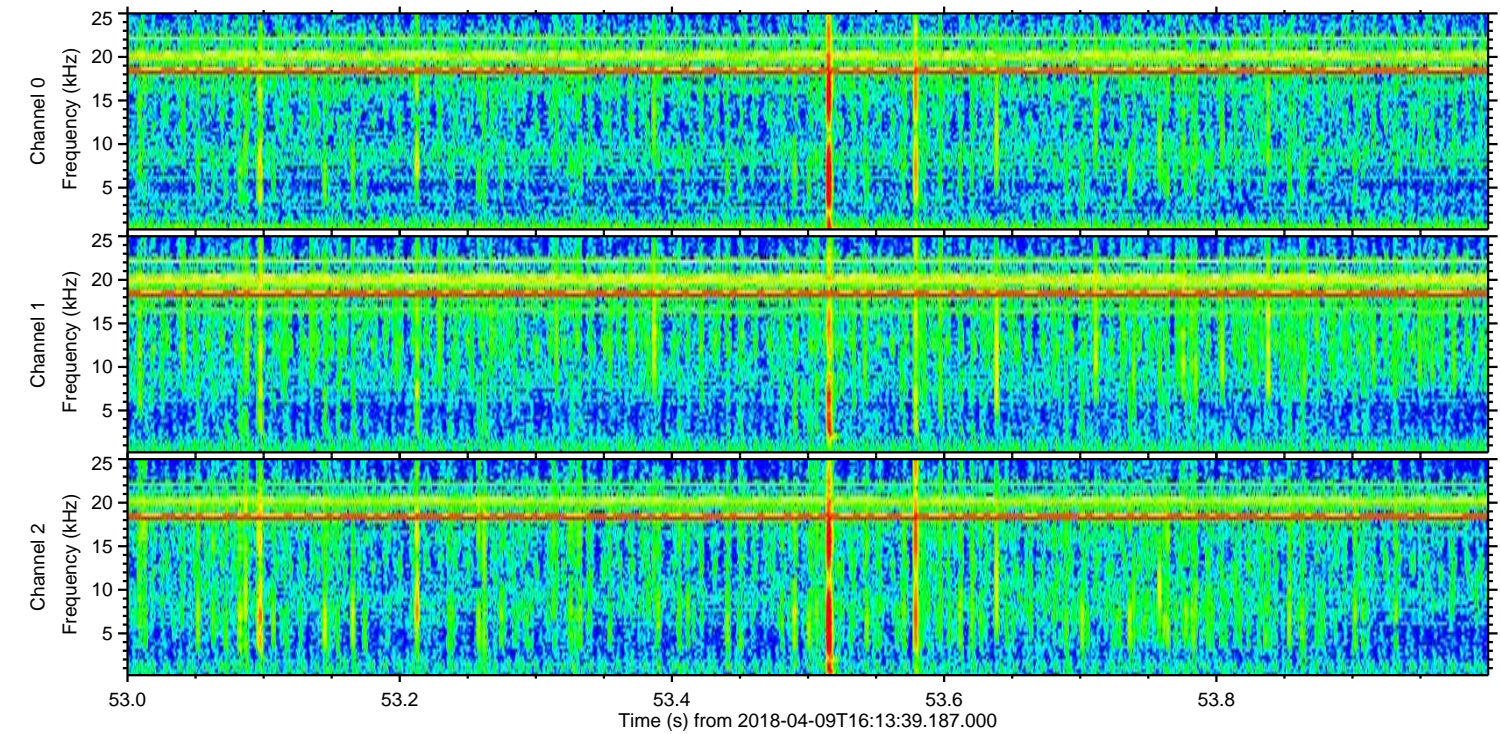
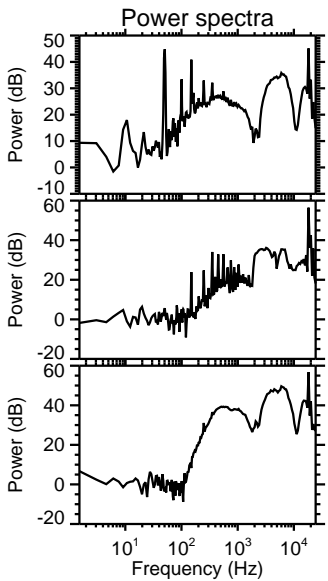
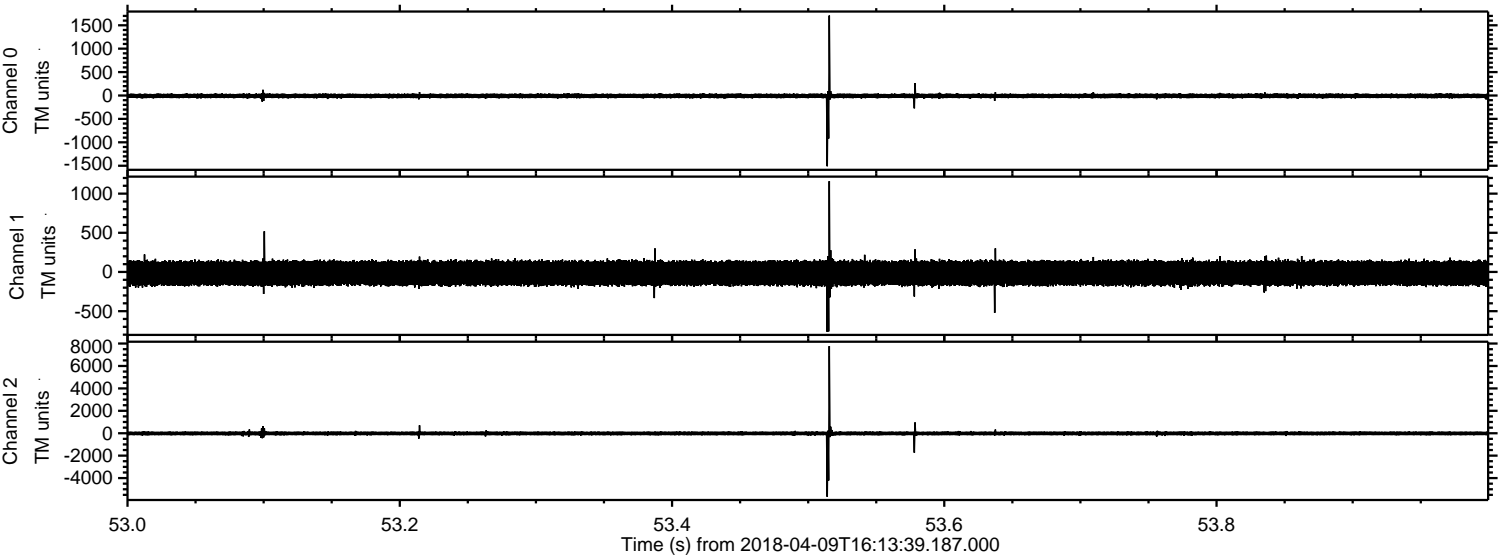
Processed Mon Apr 9 18:21:16 2018 by ELM ver.2012-10-06 from 001__elm20180409_161338__dat00.bin



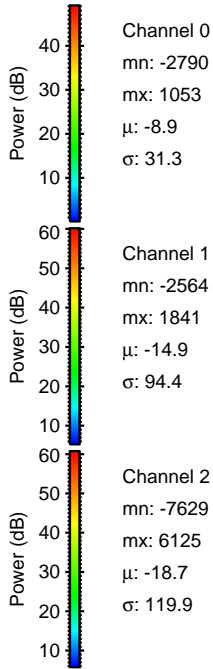
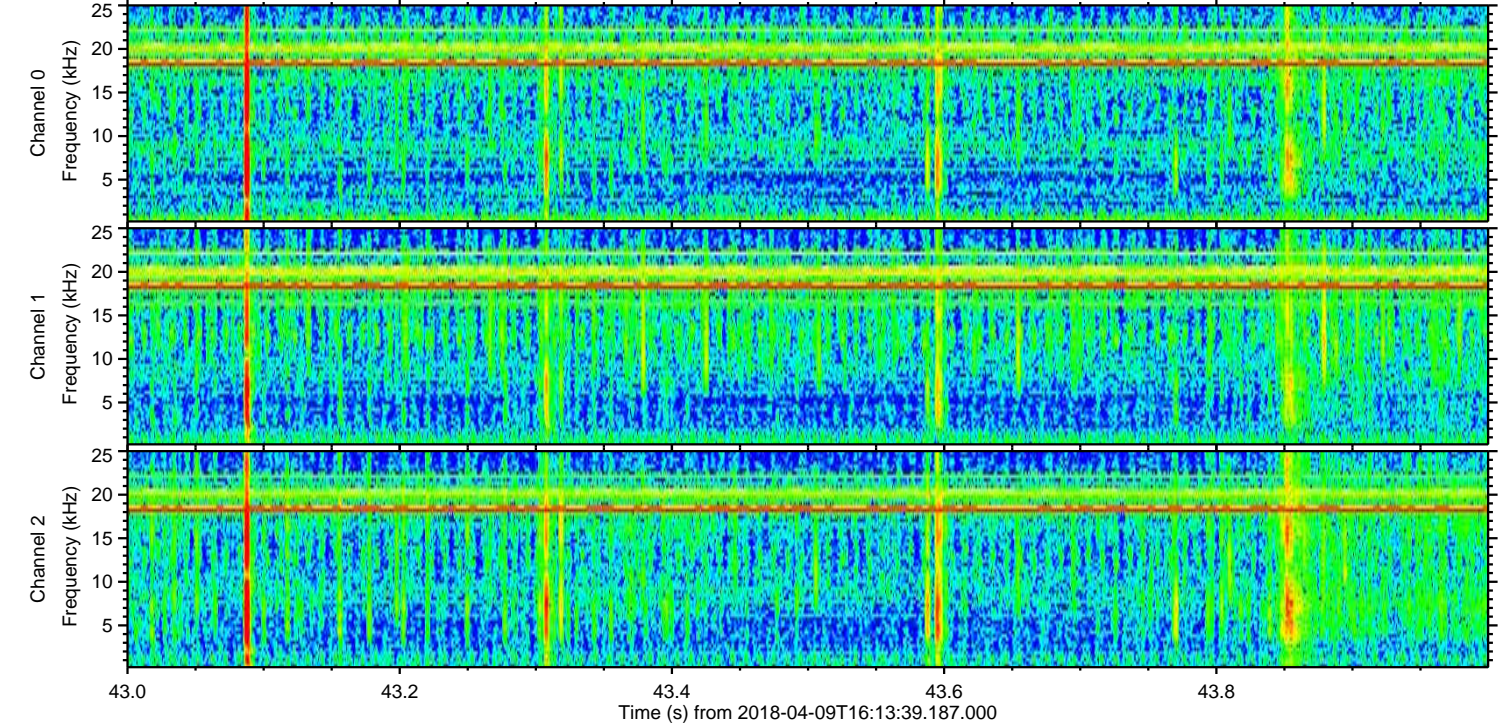
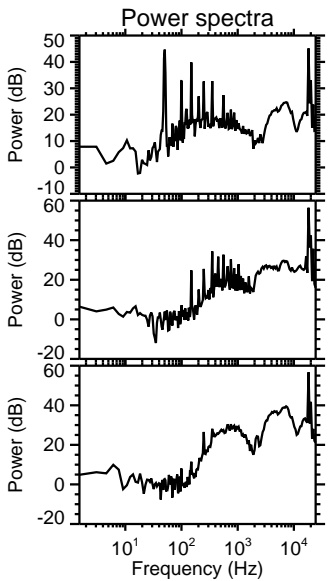
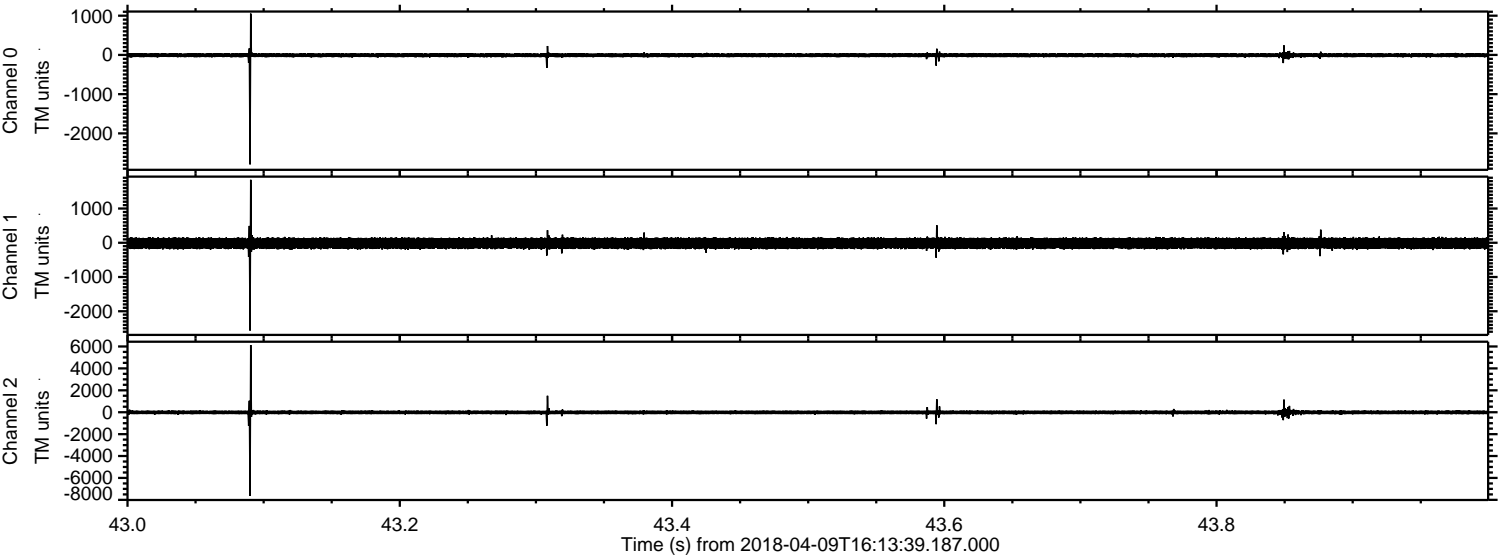
Processed Mon Apr 9 18:21:21 2018 by ELM ver.2012-10-06 from 001__elm20180409_161338__dat00.bin



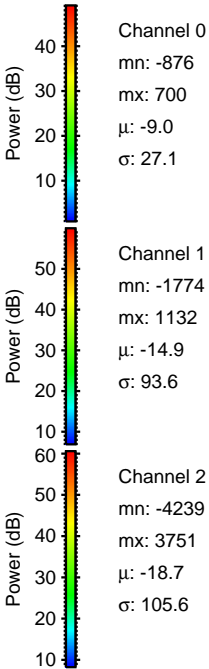
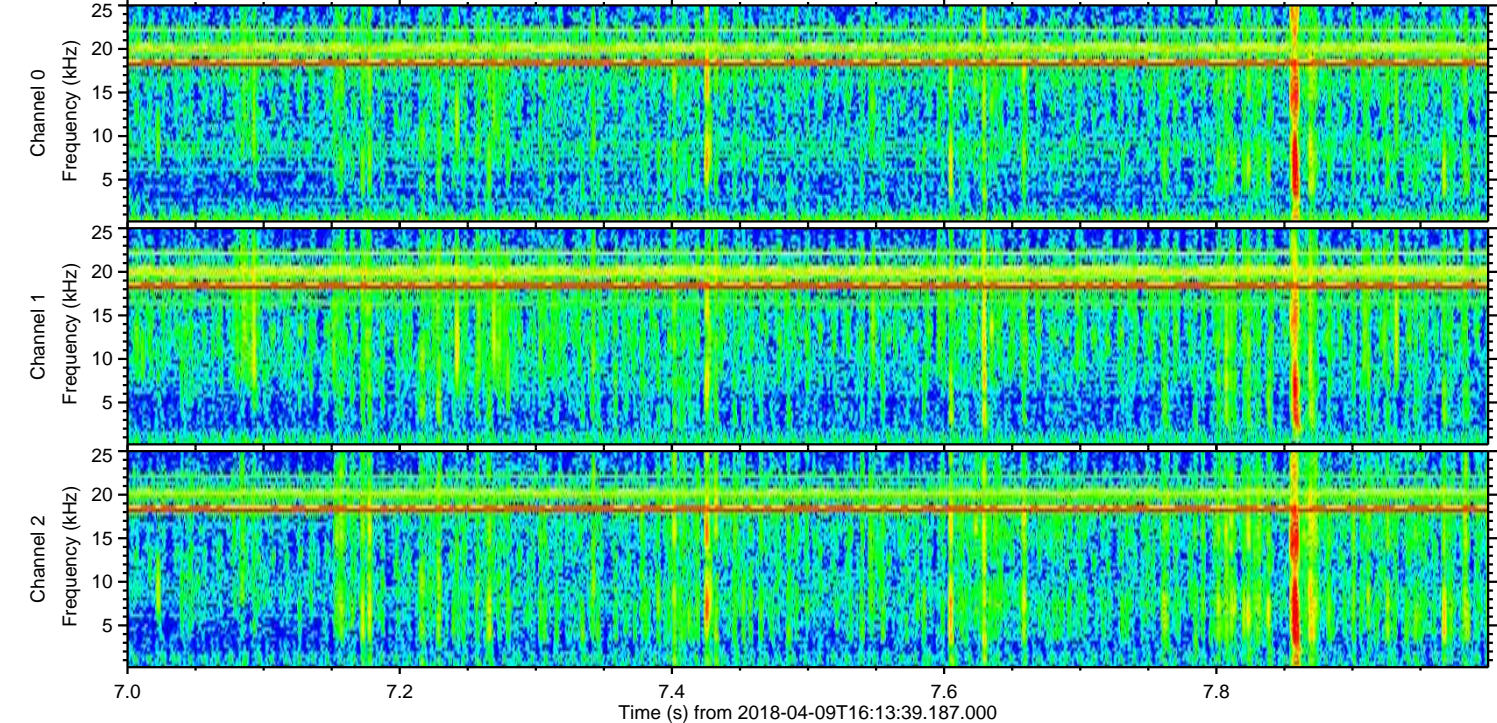
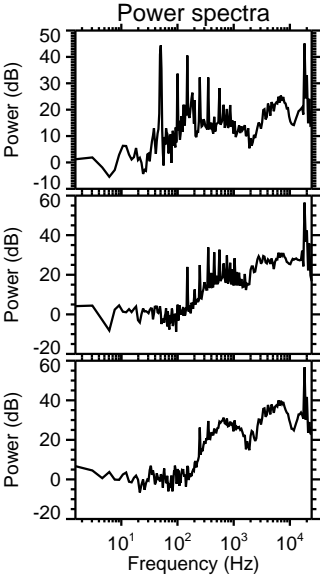
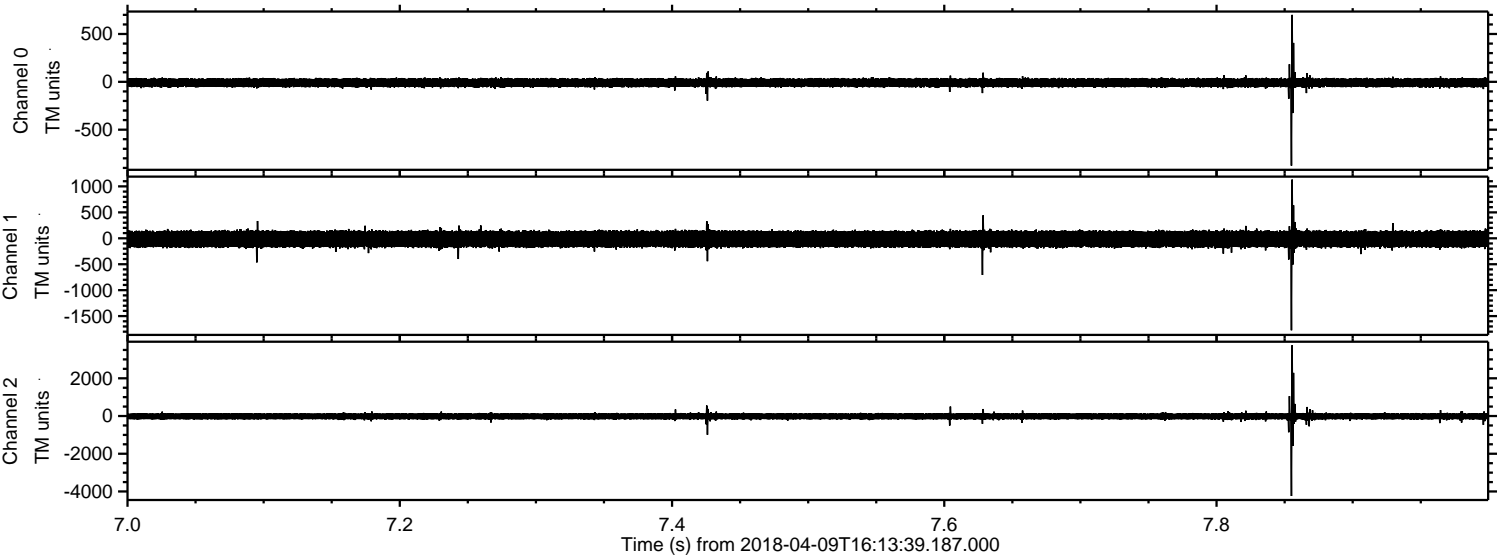
Processed Mon Apr 9 18:21:22 2018 by ELM ver.2012-10-06 from 001__elm20180409_161338__dat00.bin



Processed Mon Apr 9 18:21:23 2018 by ELM ver.2012-10-06 from 001__elm20180409_161338__dat00.bin

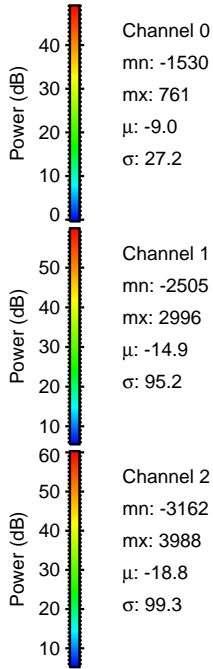
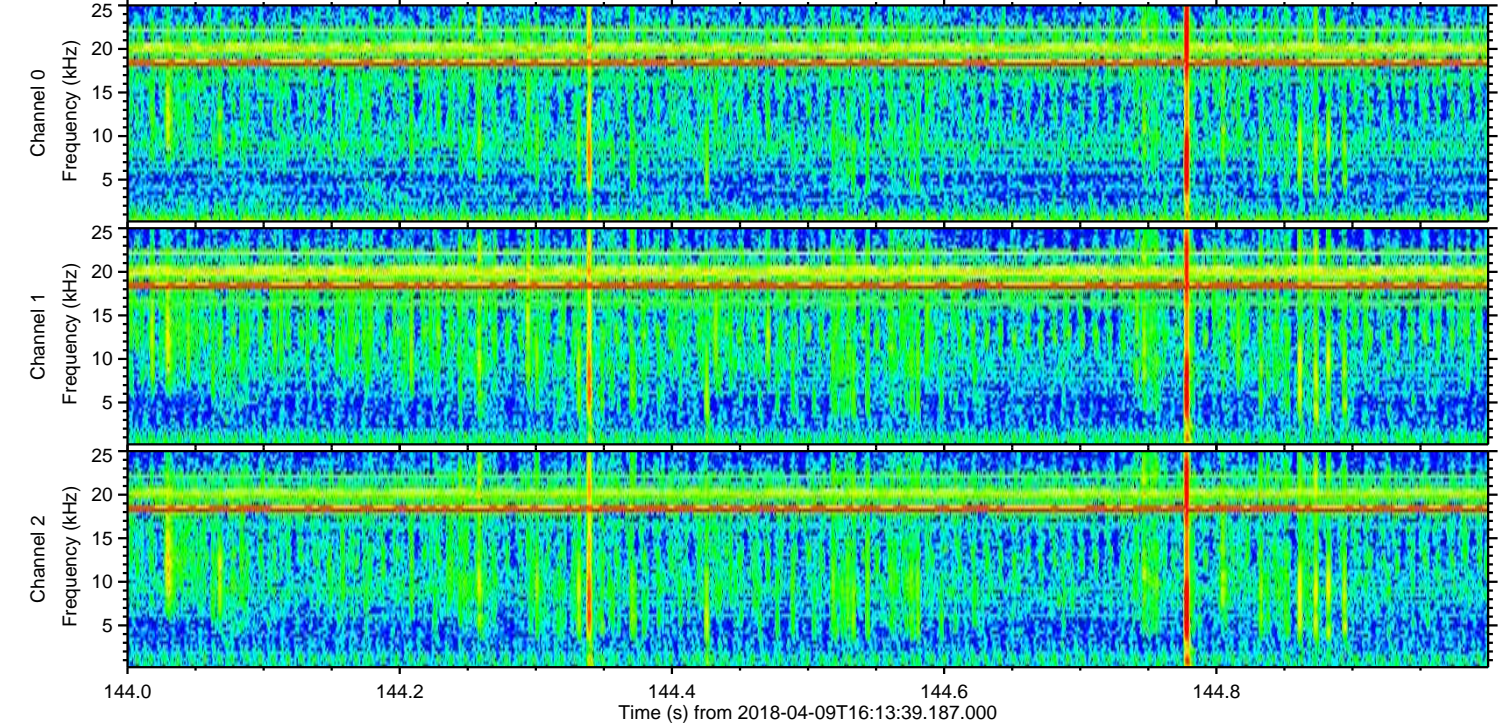
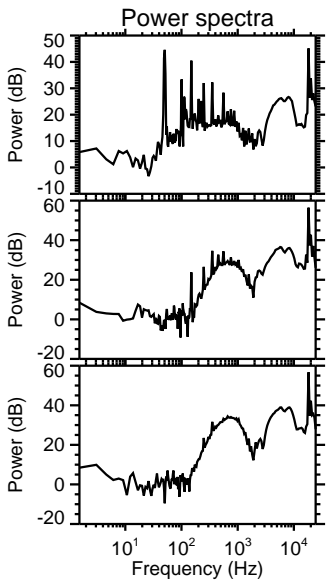
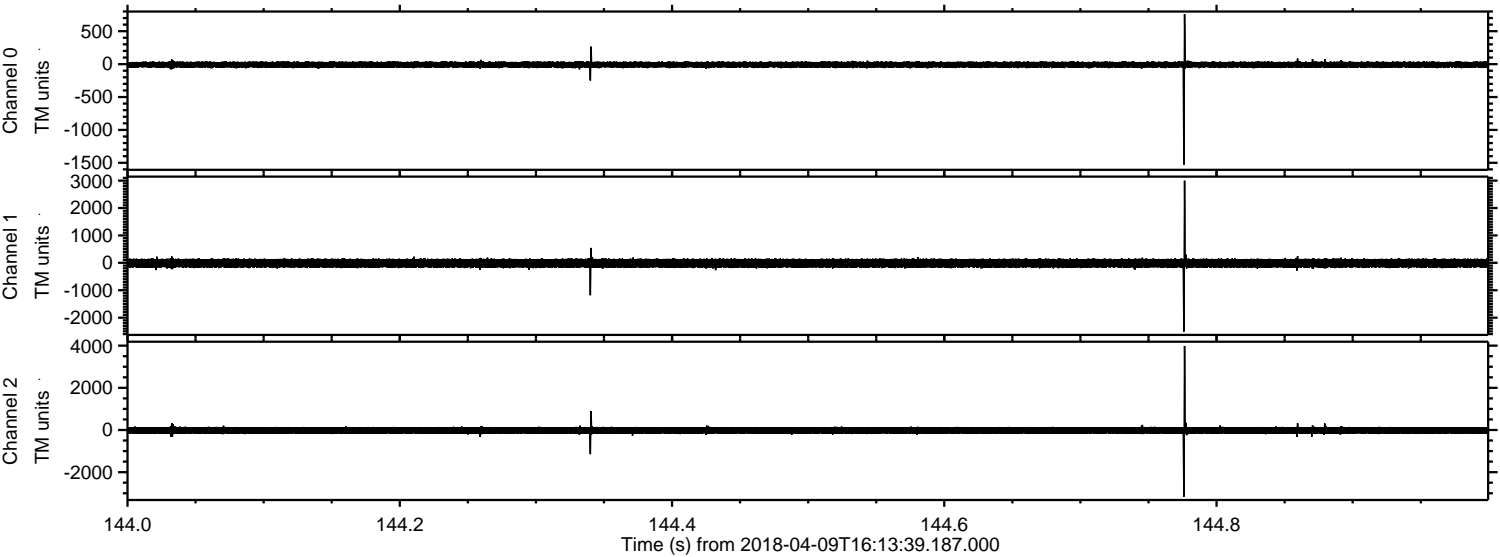


Processed Mon Apr 9 18:21:24 2018 by ELM ver.2012-10-06 from 001__elm20180409_161338__dat00.bin



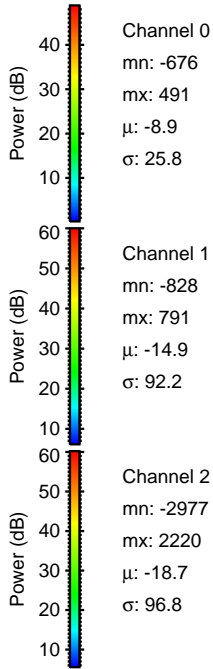
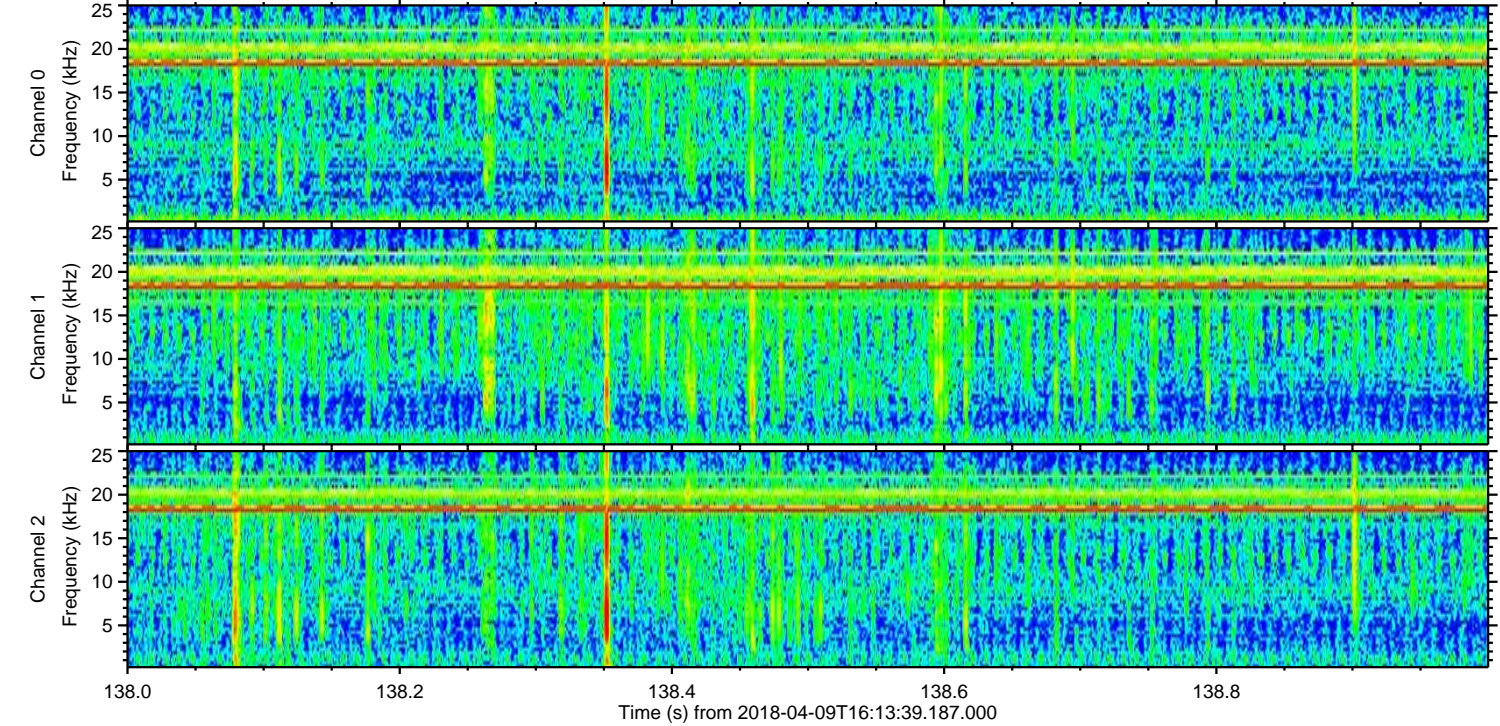
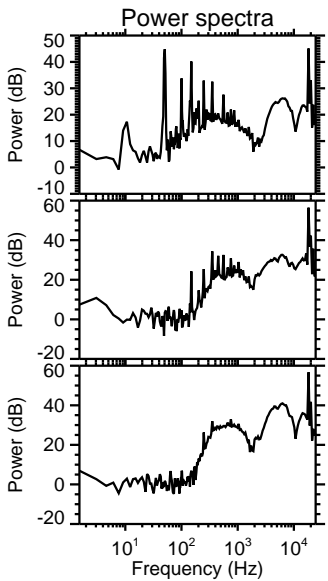
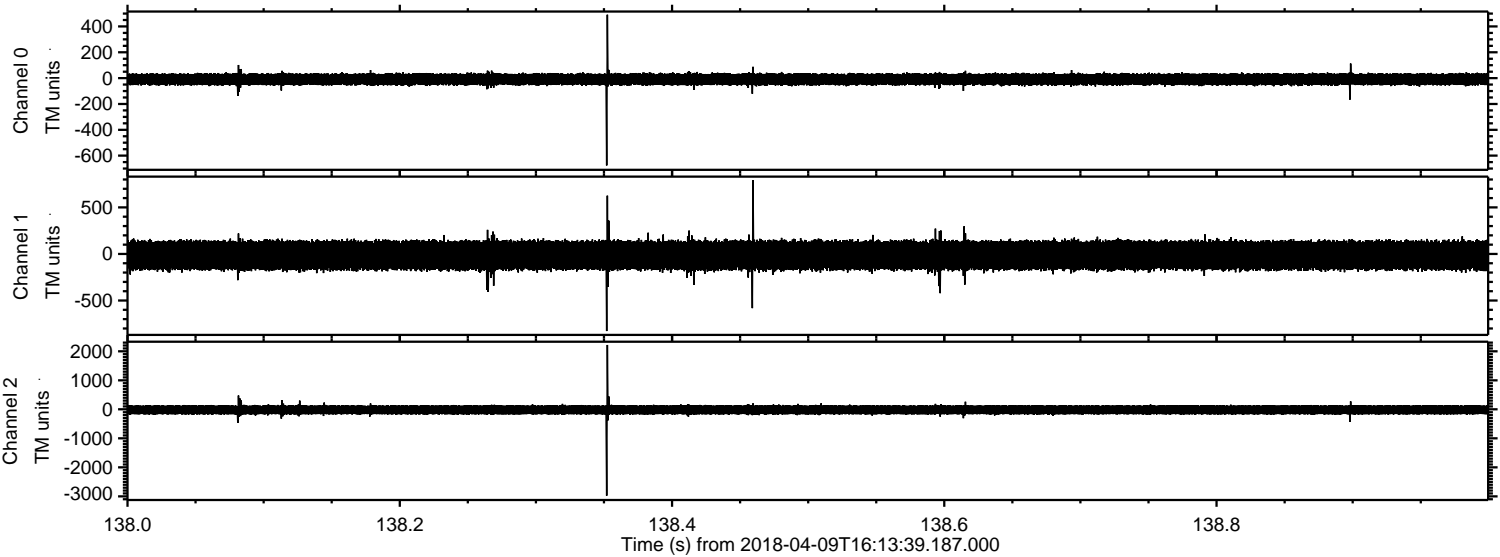
ELMAVAN 3D WAVEFORMS (Measured data sampled at 50 kHz) 51000 packets of 144 samples from 2018-04-09T16:13:39.187.000. Part 145/147

Processed Mon Apr 9 18:21:24 2018 by ELM ver.2012-10-06 from 001__elm20180409_161338__dat00.bin

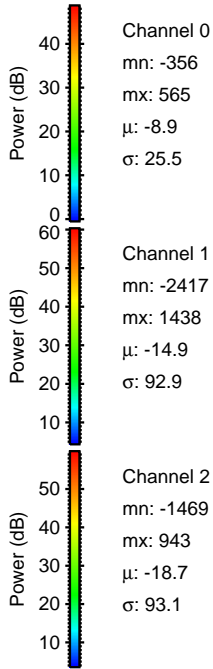
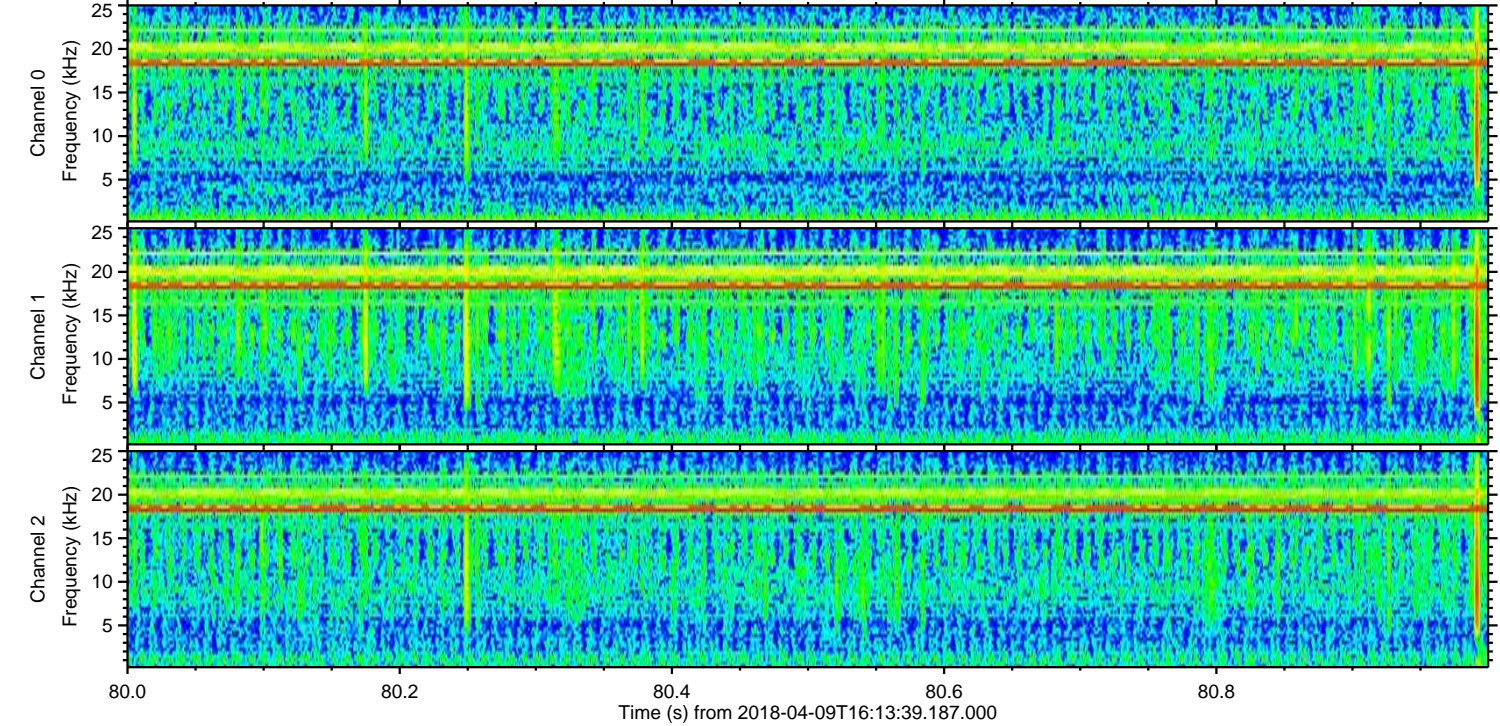
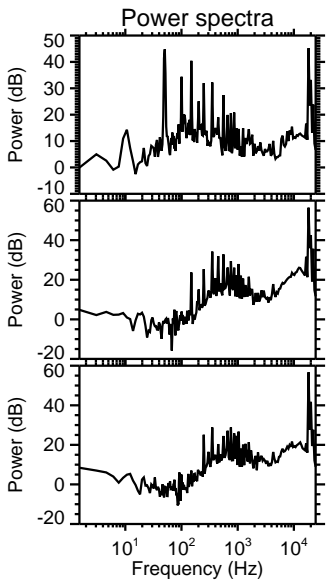
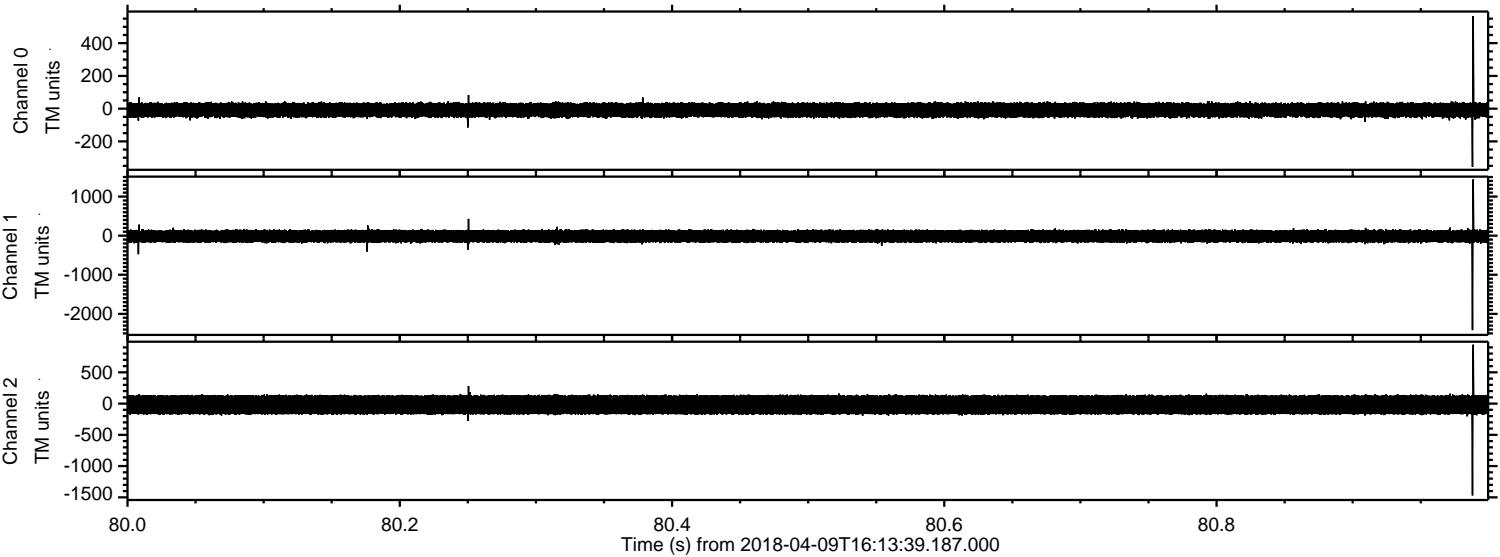


ELMAVAN 3D WAVEFORMS (Measured data sampled at 50 kHz) 51000 packets of 144 samples from 2018-04-09T16:13:39.187.000. Part 139/147

Processed Mon Apr 9 18:21:25 2018 by ELM ver.2012-10-06 from 001__elm20180409_161338__dat00.bin



Processed Mon Apr 9 18:21:26 2018 by ELM ver.2012-10-06 from 001__elm20180409_161338__dat00.bin

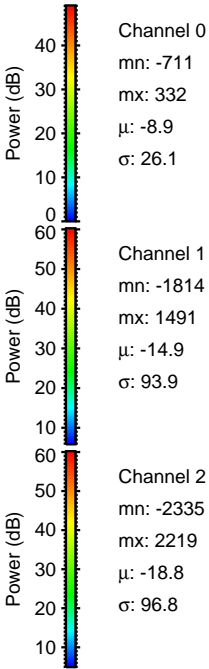
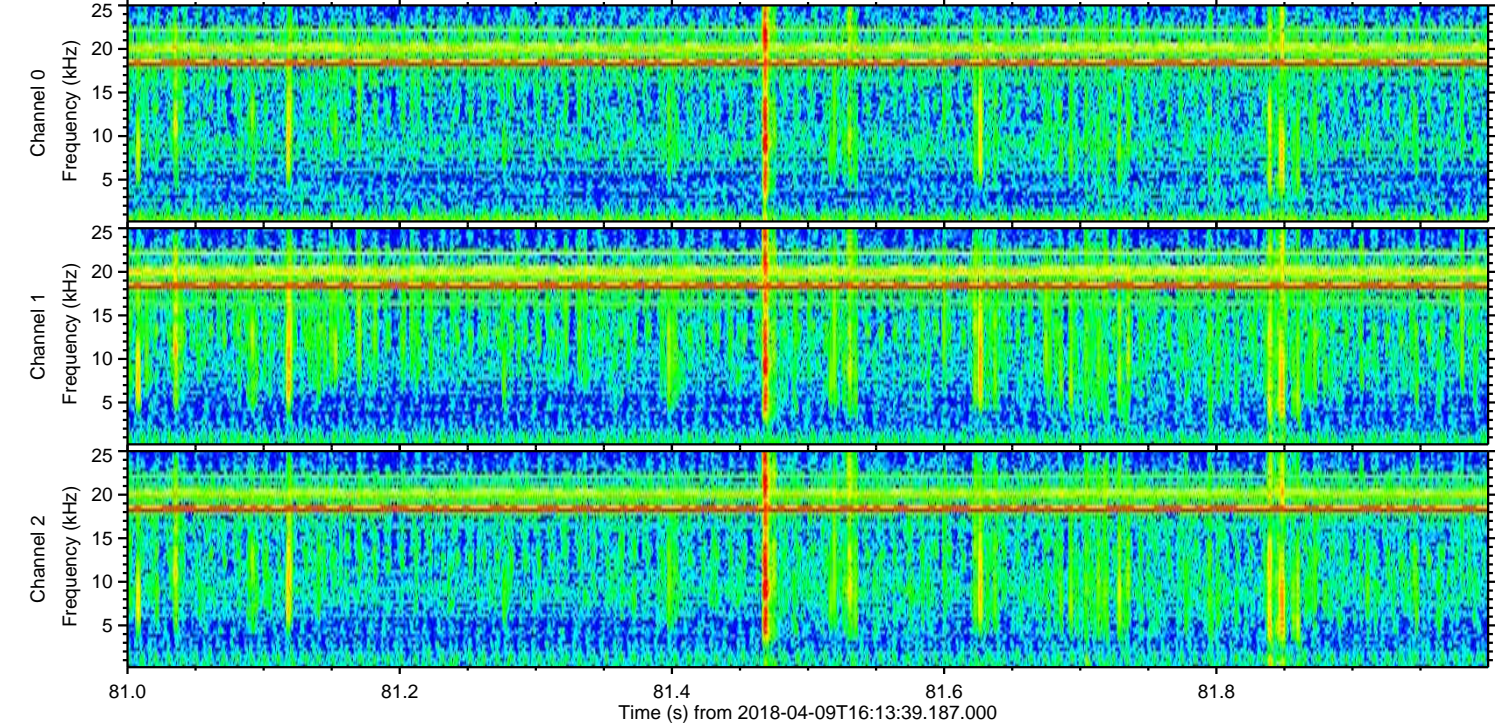
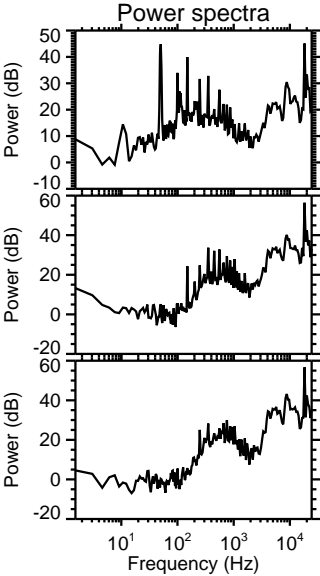
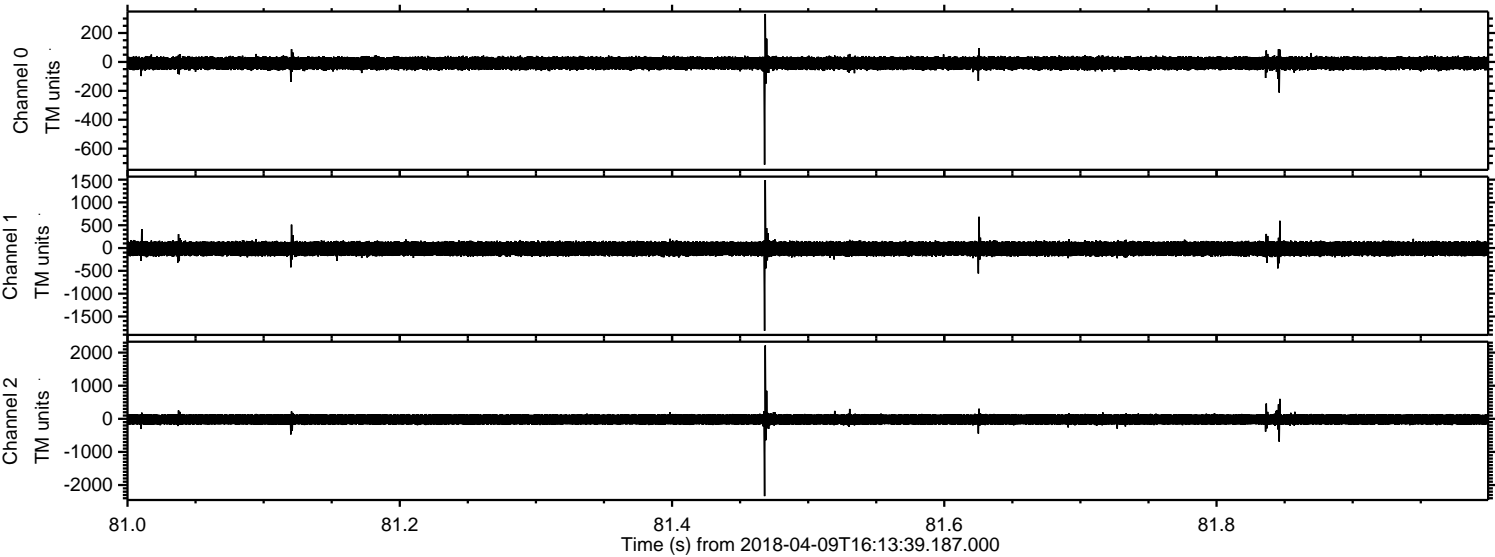


Channel 0
mn: -356
mx: 565
 μ : -8.9
 σ : 25.5

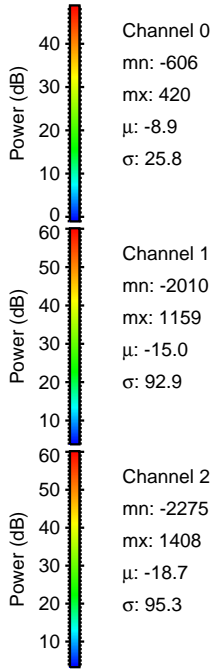
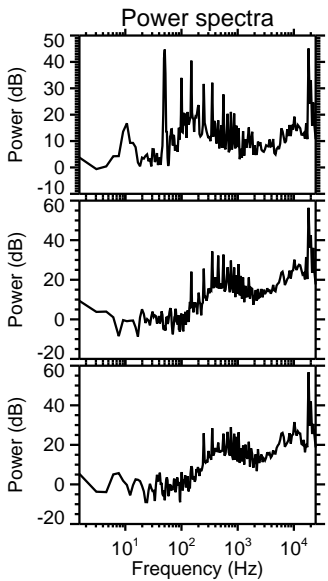
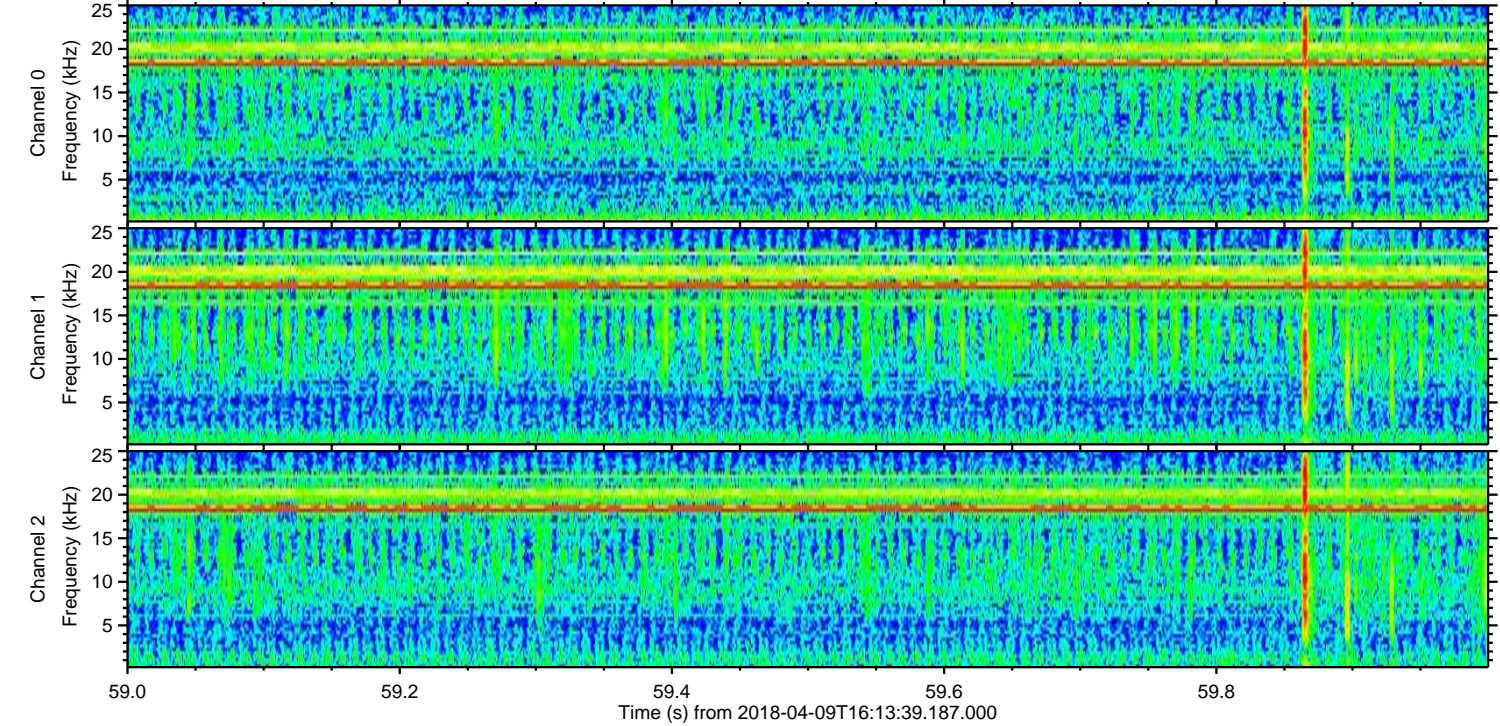
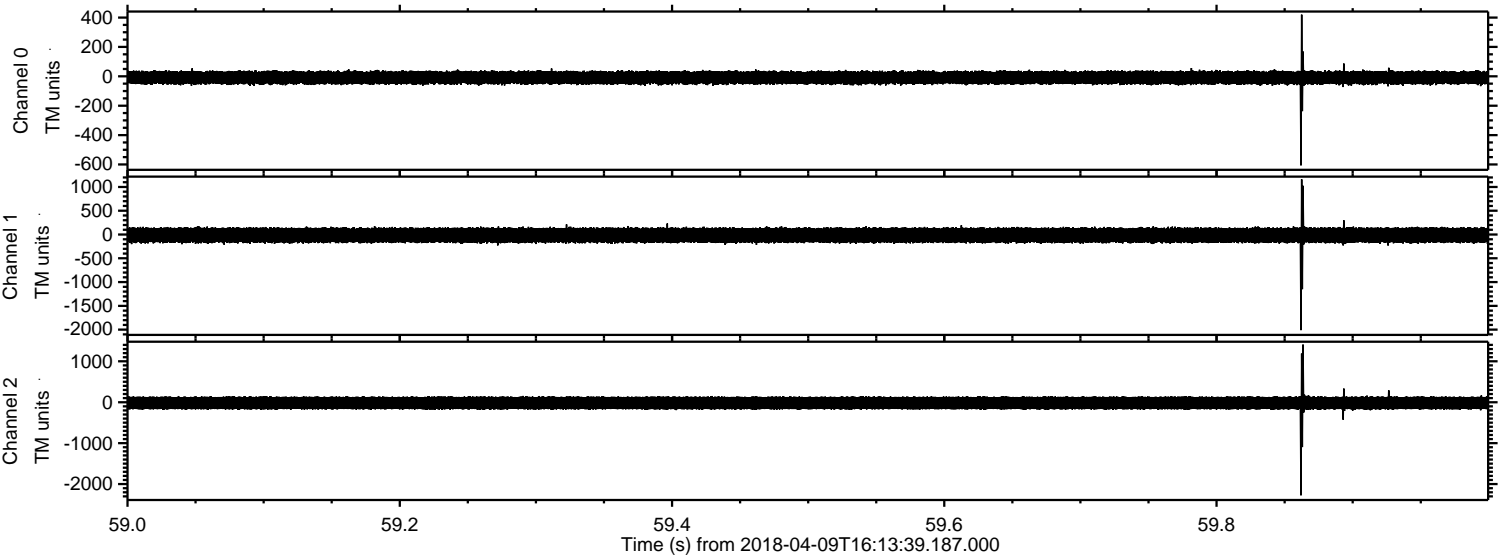
Channel 1
mn: -2417
mx: 1438
 μ : -14.9
 σ : 92.9

Channel 2
mn: -1469
mx: 943
 μ : -18.7
 σ : 93.1

Processed Mon Apr 9 18:21:26 2018 by ELM ver.2012-10-06 from 001__elm20180409_161338__dat00.bin



Processed Mon Apr 9 18:21:27 2018 by ELM ver.2012-10-06 from 001__elm20180409_161338__dat00.bin



Channel 0
mn: -606
mx: 420
 μ : -8.9
 σ : 25.8

Channel 1
mn: -2010
mx: 1159
 μ : -15.0
 σ : 92.9

Channel 2
mn: -2275
mx: 1408
 μ : -18.7
 σ : 95.3

Processed Mon Apr 9 18:21:28 2018 by ELM ver.2012-10-06 from 001__elm20180409_161338__dat00.bin

