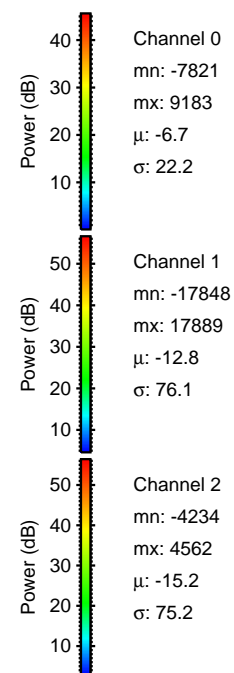
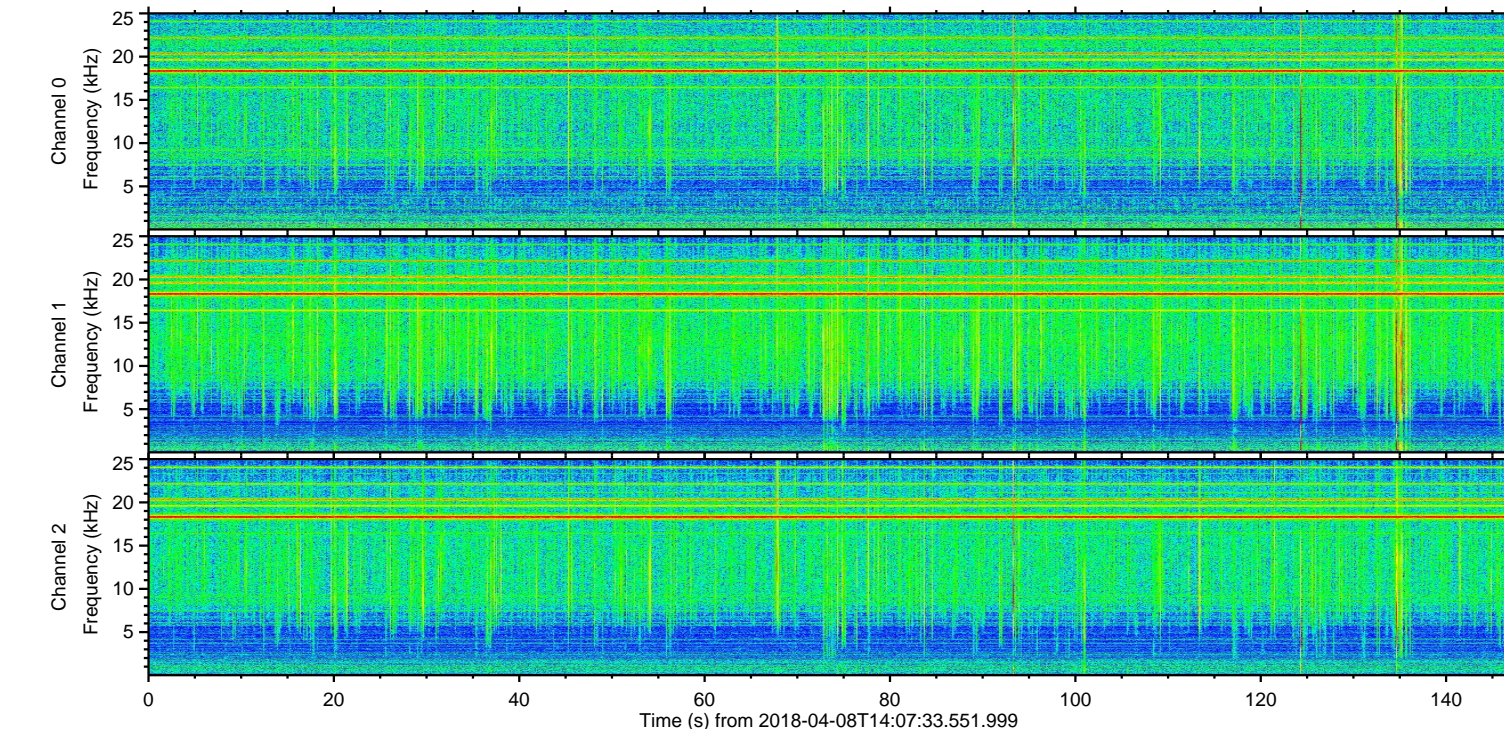
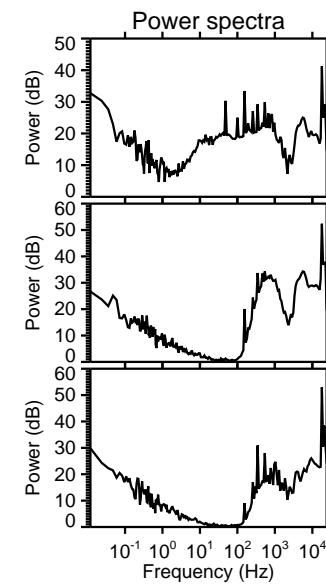
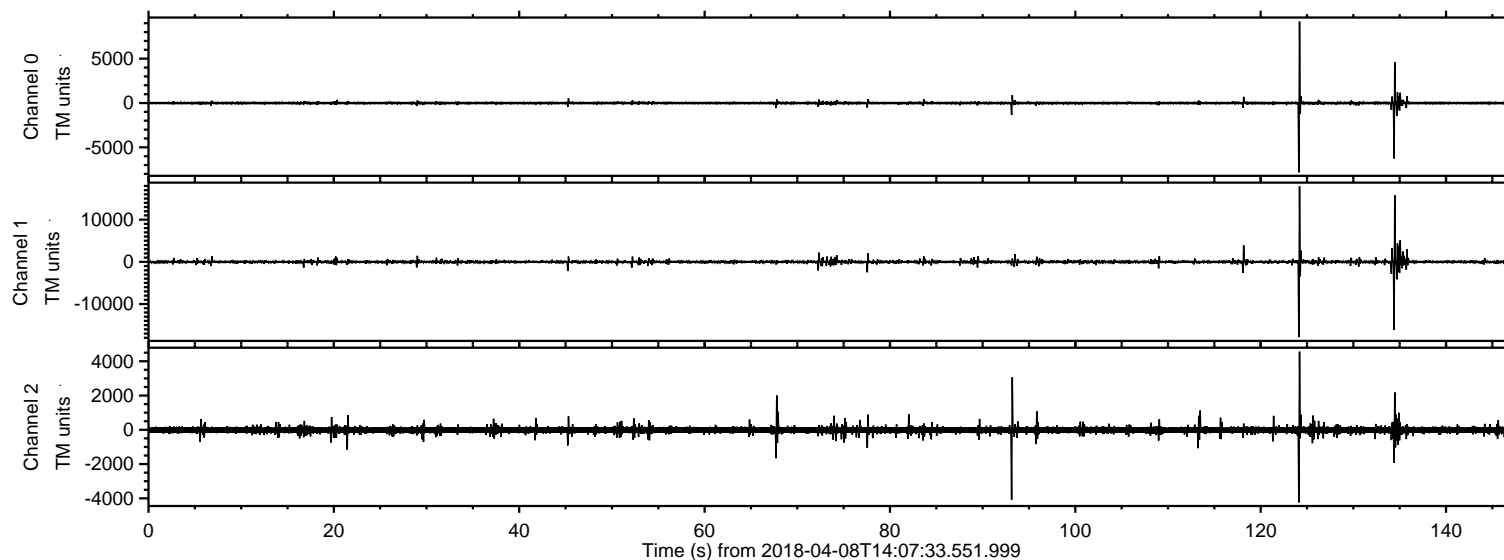


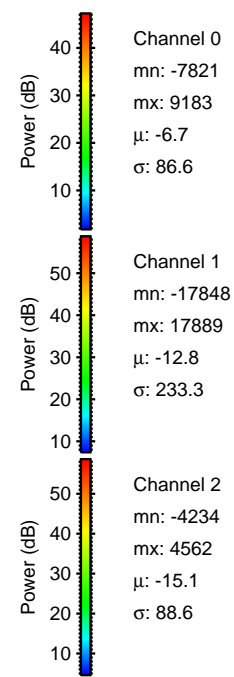
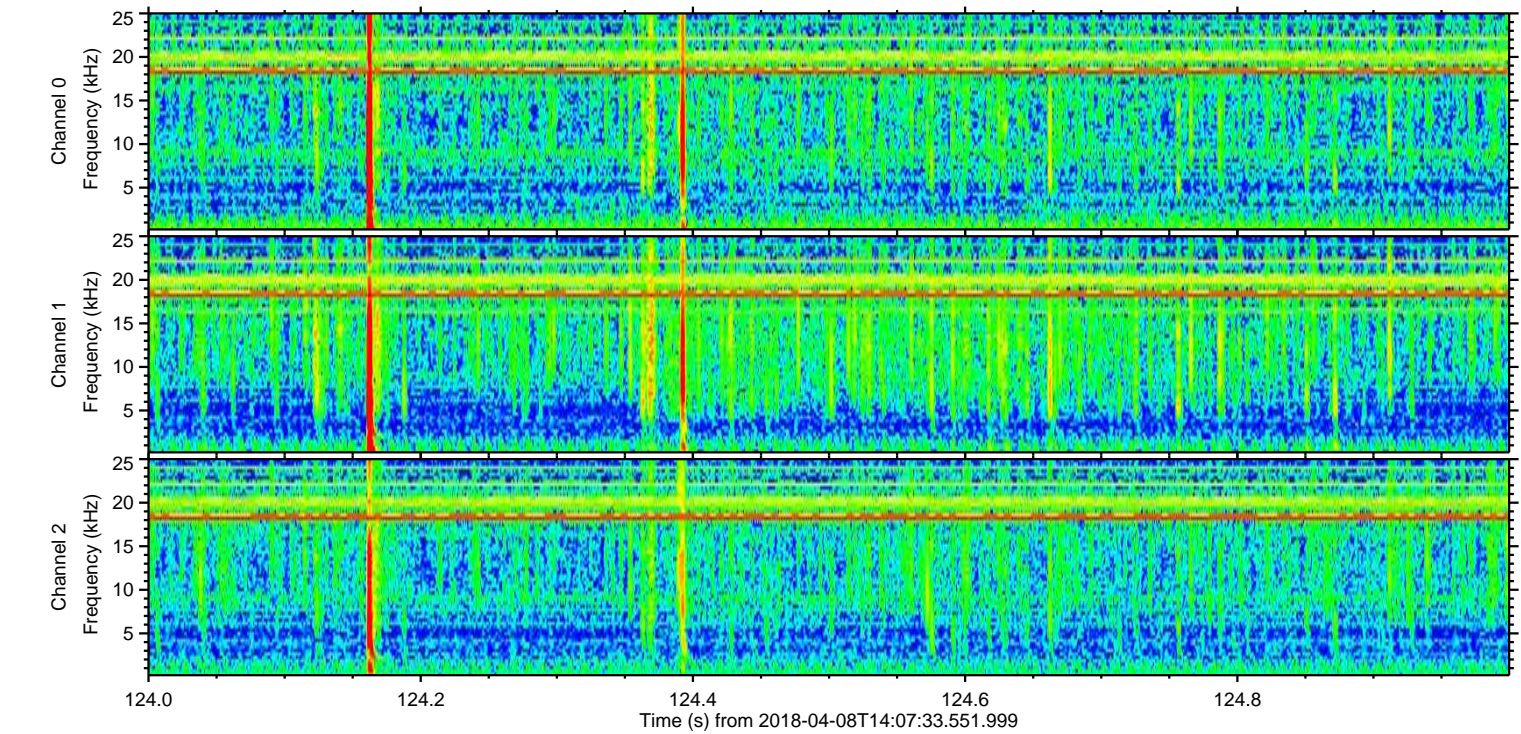
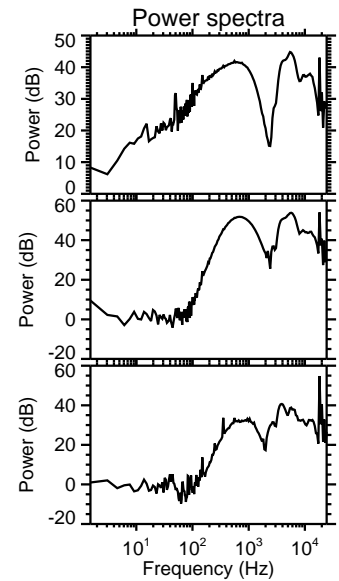
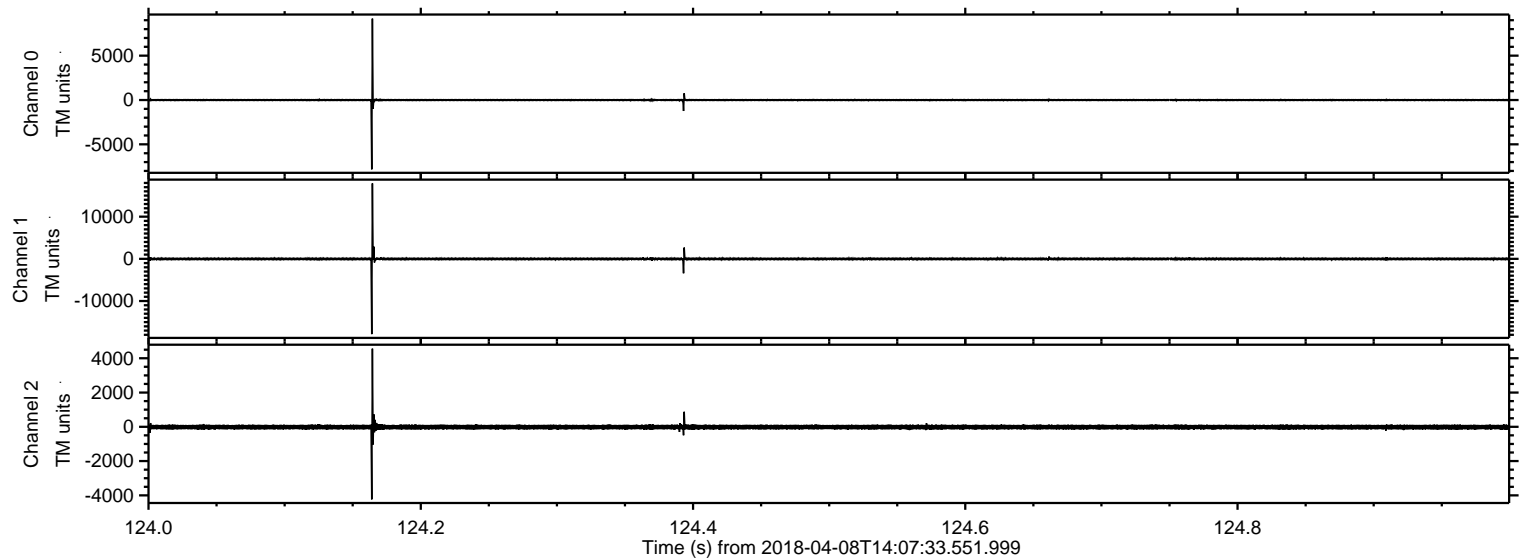
ELMAVAN 3D WAVEFORMS (Measured data sampled at 50 kHz) 51000 packets of 144 samples from 2018-04-08T14:07:33.551.999.

Processed Sun Apr 8 16:15:01 2018 by ELM ver.2012-10-06 from 001__elm20180408_140732__dat00.bin



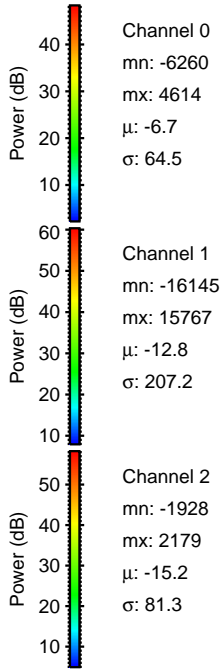
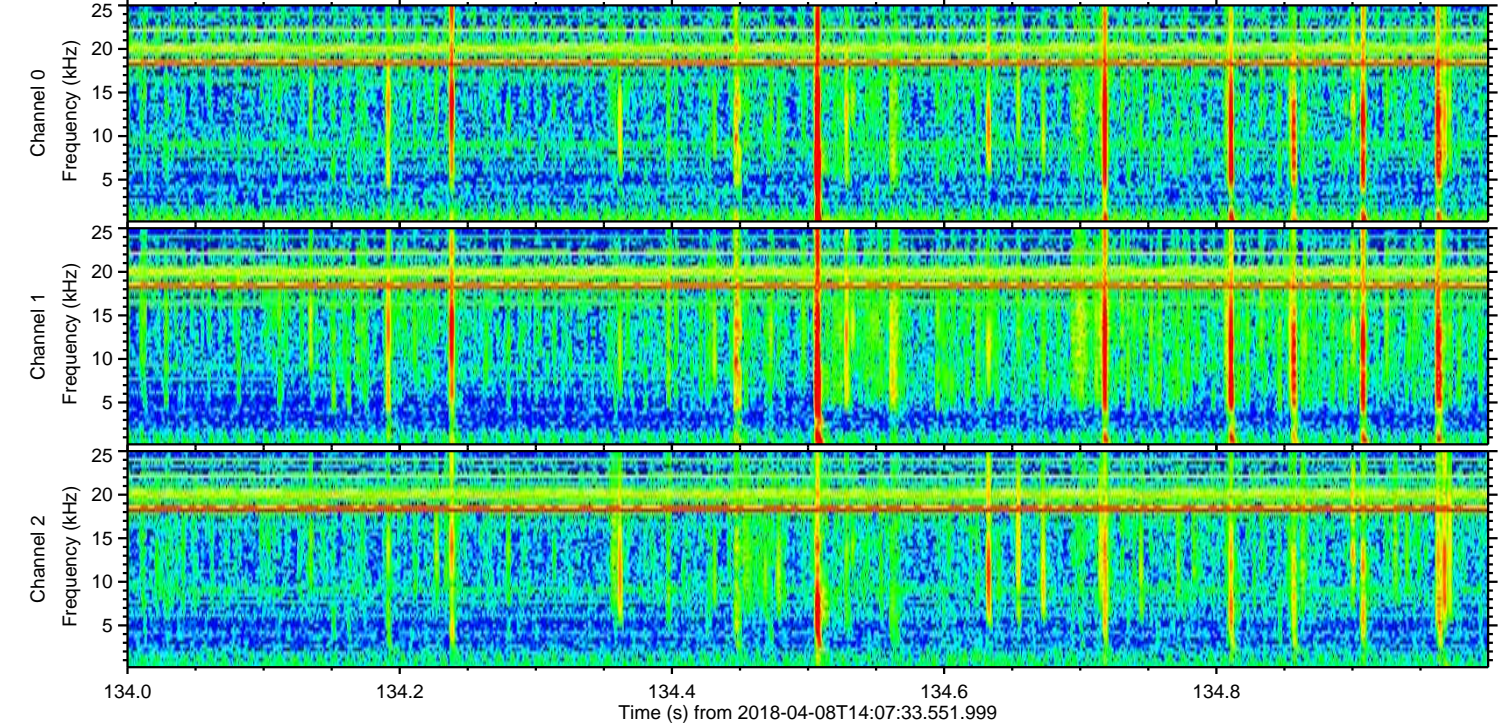
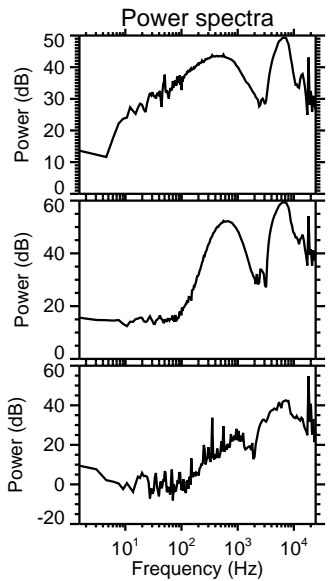
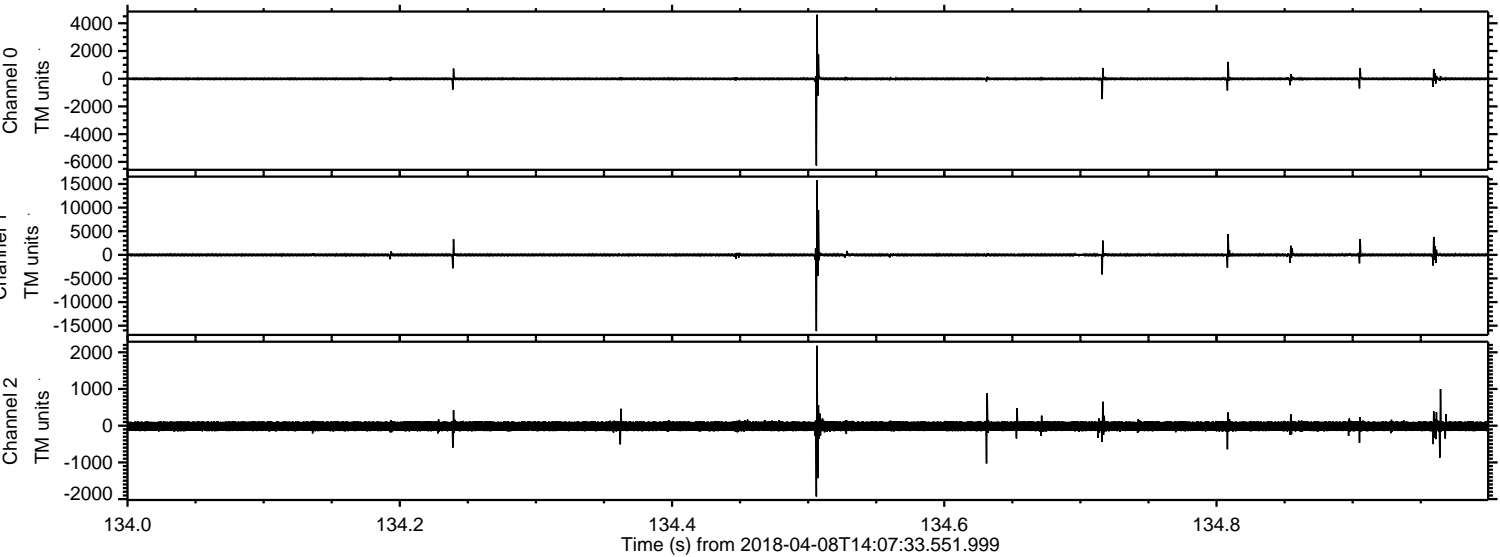
ELMAVAN 3D WAVEFORMS (Measured data sampled at 50 kHz) 51000 packets of 144 samples from 2018-04-08T14:07:33.551.999. Part 125/147

Processed Sun Apr 8 16:15:08 2018 by ELM ver.2012-10-06 from 001__elm20180408_140732__dat00.bin



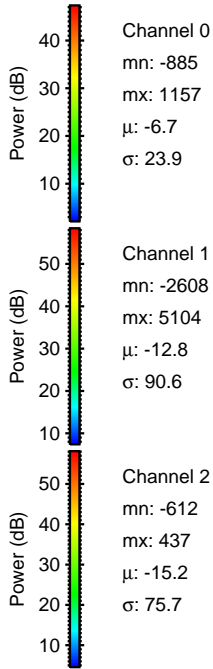
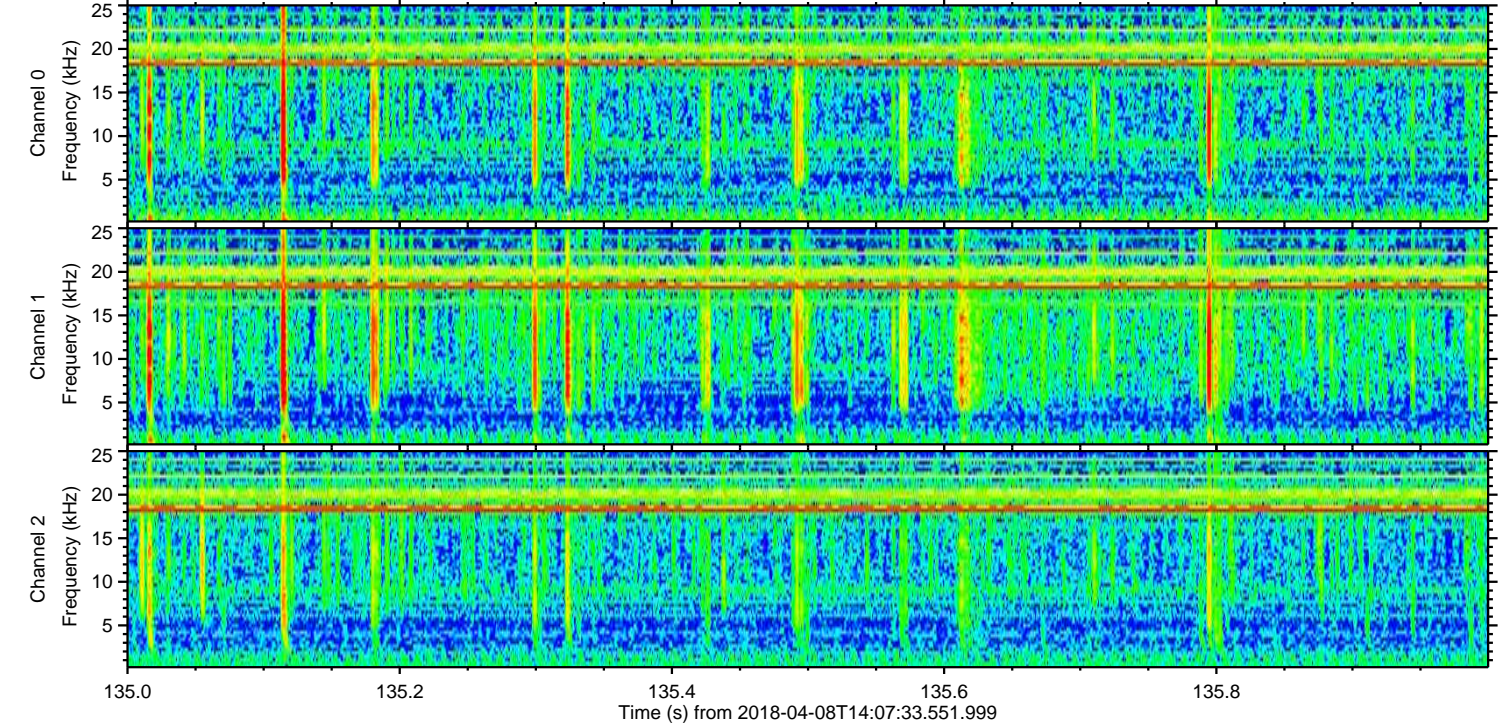
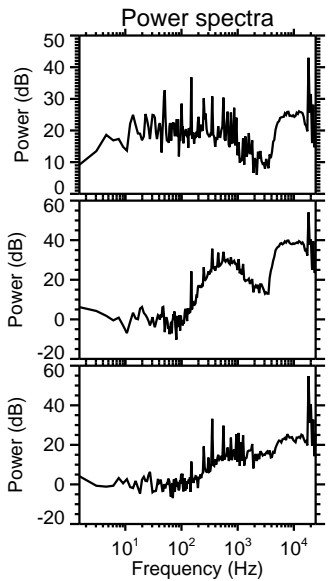
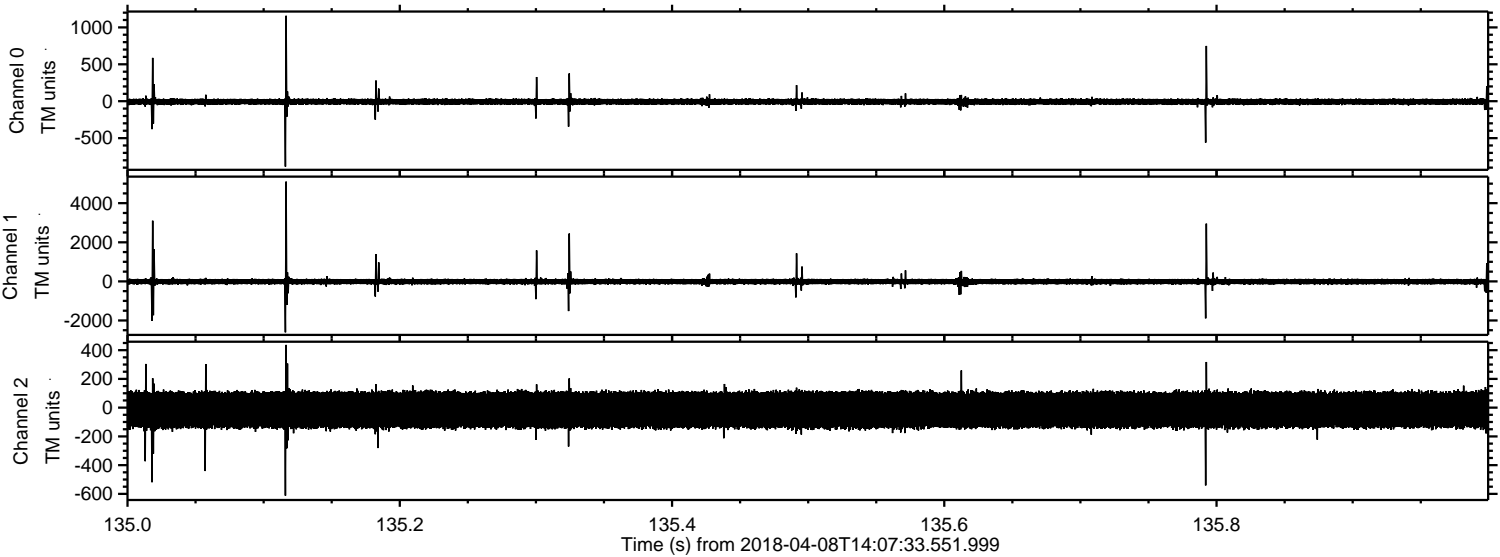
ELMAVAN 3D WAVEFORMS (Measured data sampled at 50 kHz) 51000 packets of 144 samples from 2018-04-08T14:07:33.551.999. Part 135/147

Processed Sun Apr 8 16:15:08 2018 by ELM ver.2012-10-06 from 001__elm20180408_140732__dat00.bin

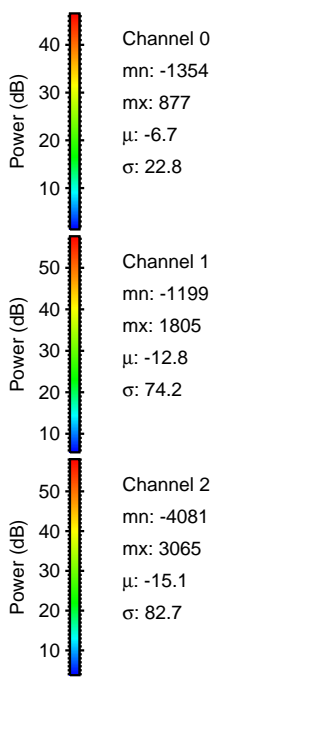
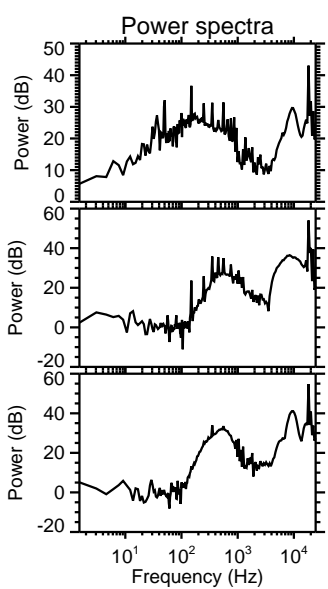
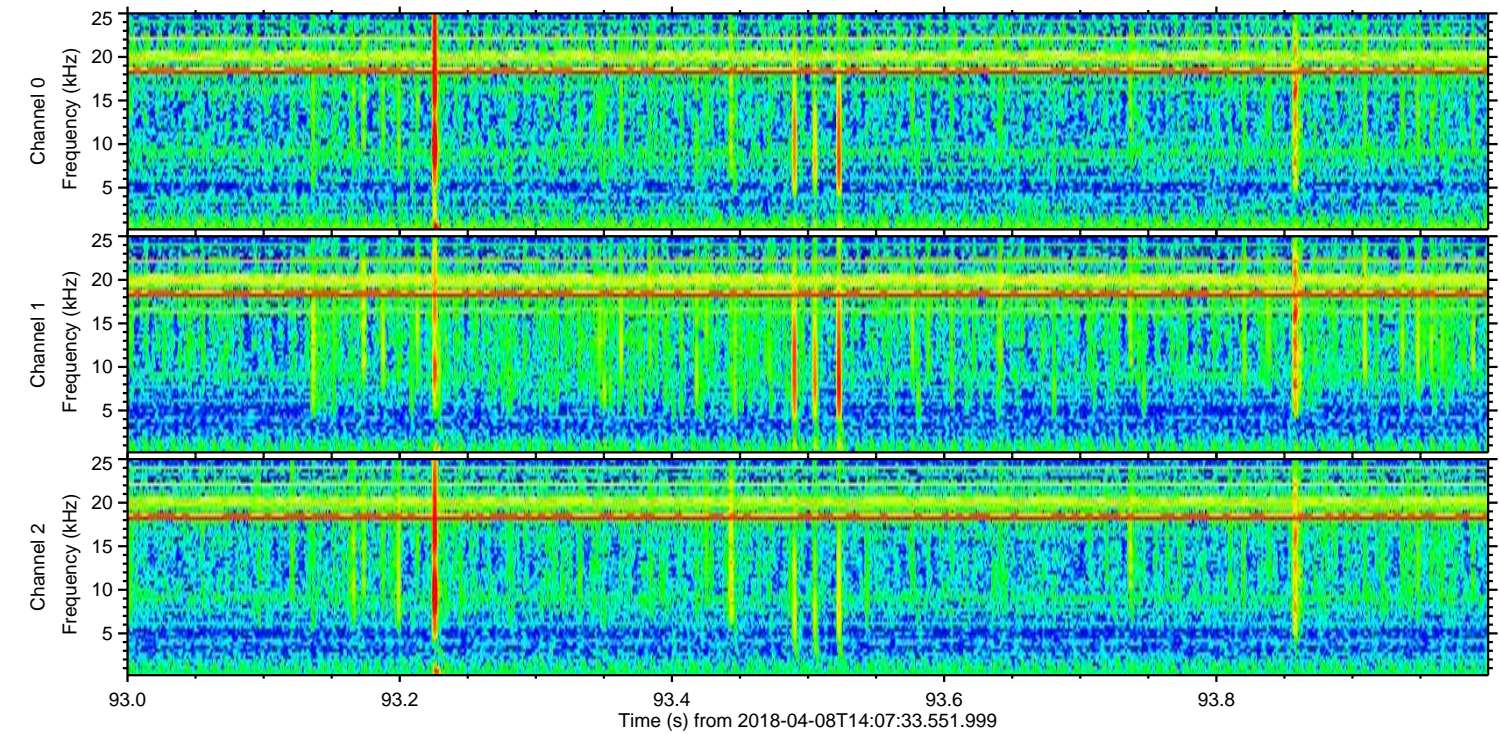
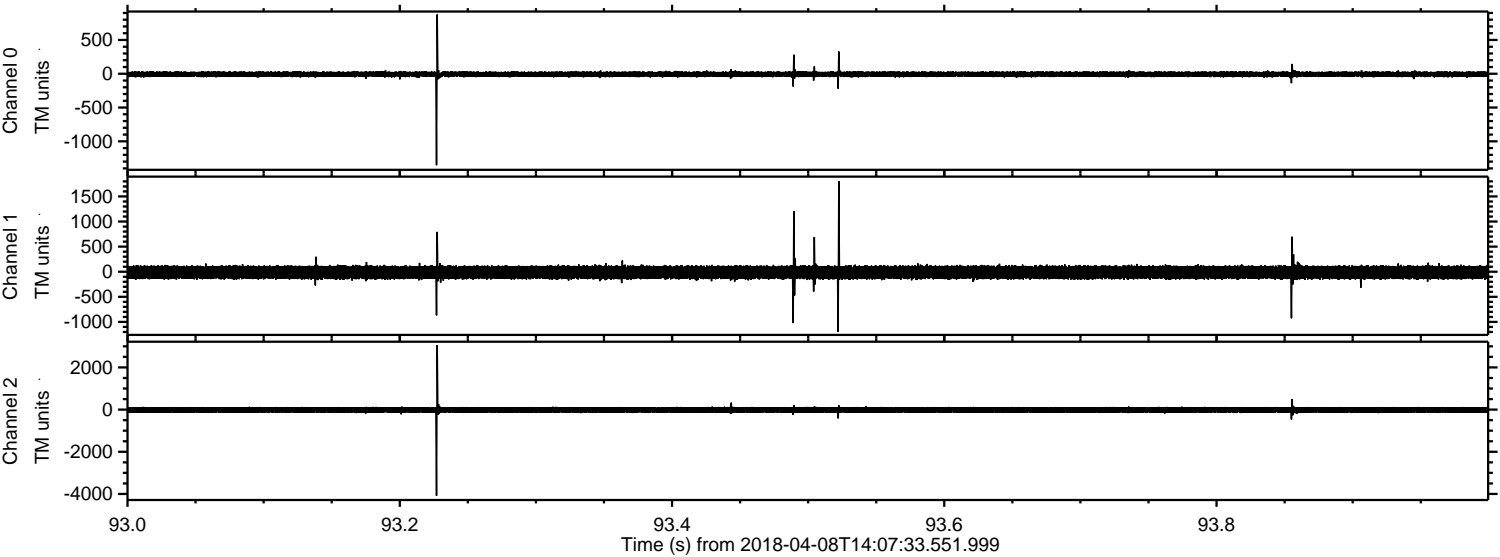


ELMAVAN 3D WAVEFORMS (Measured data sampled at 50 kHz) 51000 packets of 144 samples from 2018-04-08T14:07:33.551.999. Part 136/147

Processed Sun Apr 8 16:15:09 2018 by ELM ver.2012-10-06 from 001__elm20180408_140732__dat00.bin

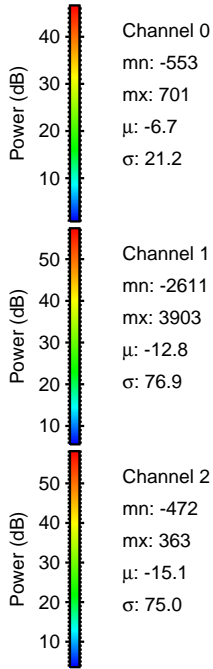
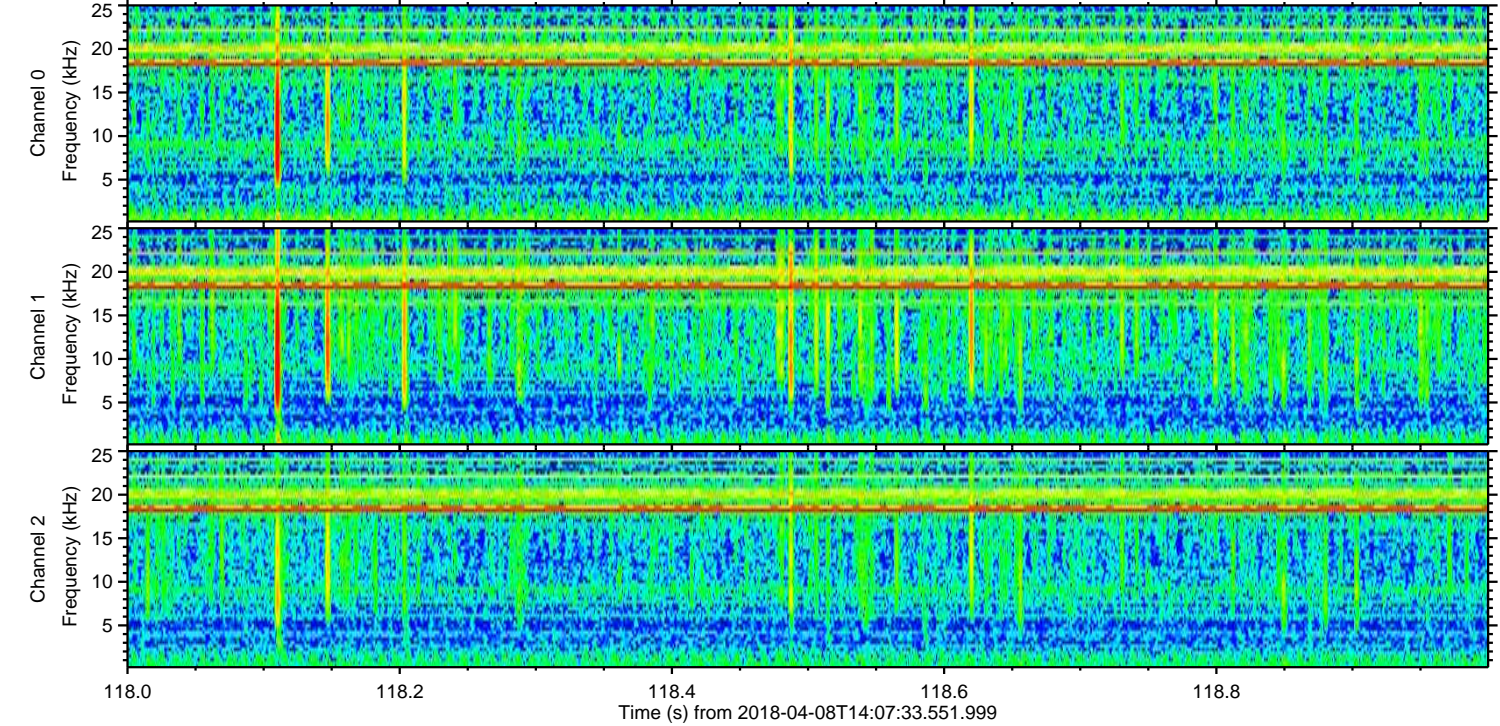
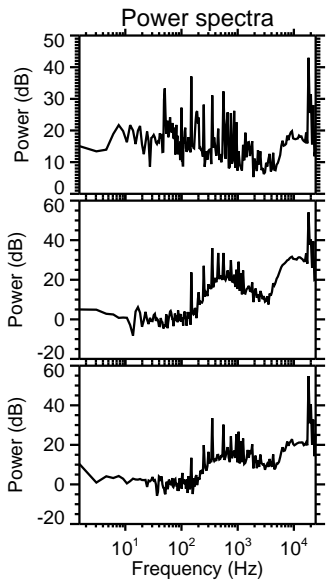
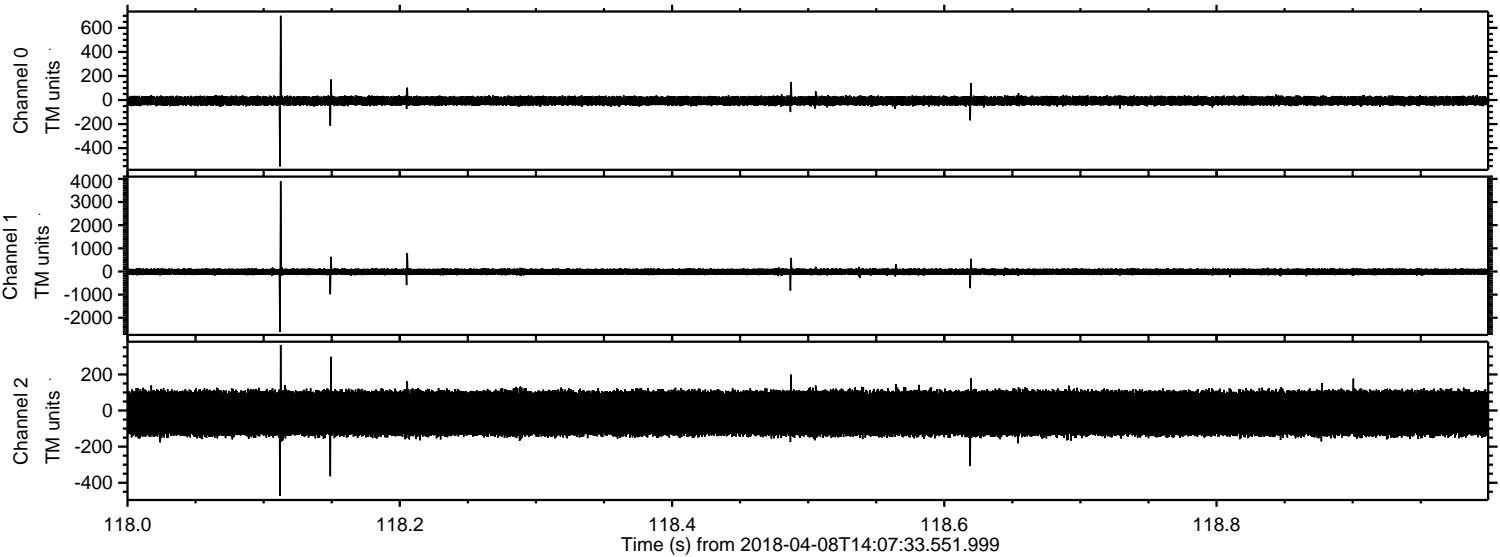


Processed Sun Apr 8 16:15:10 2018 by ELM ver.2012-10-06 from 001__elm20180408_140732__dat00.bin

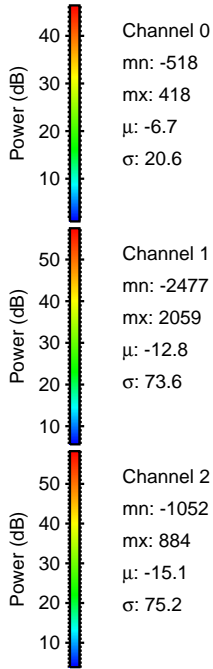
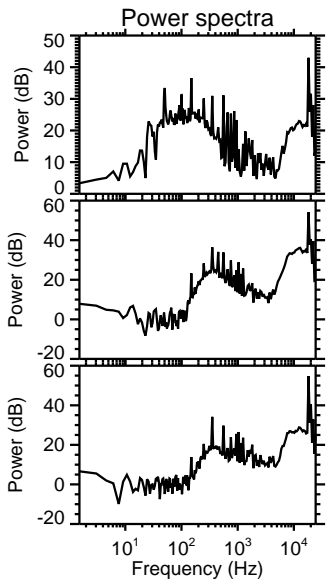
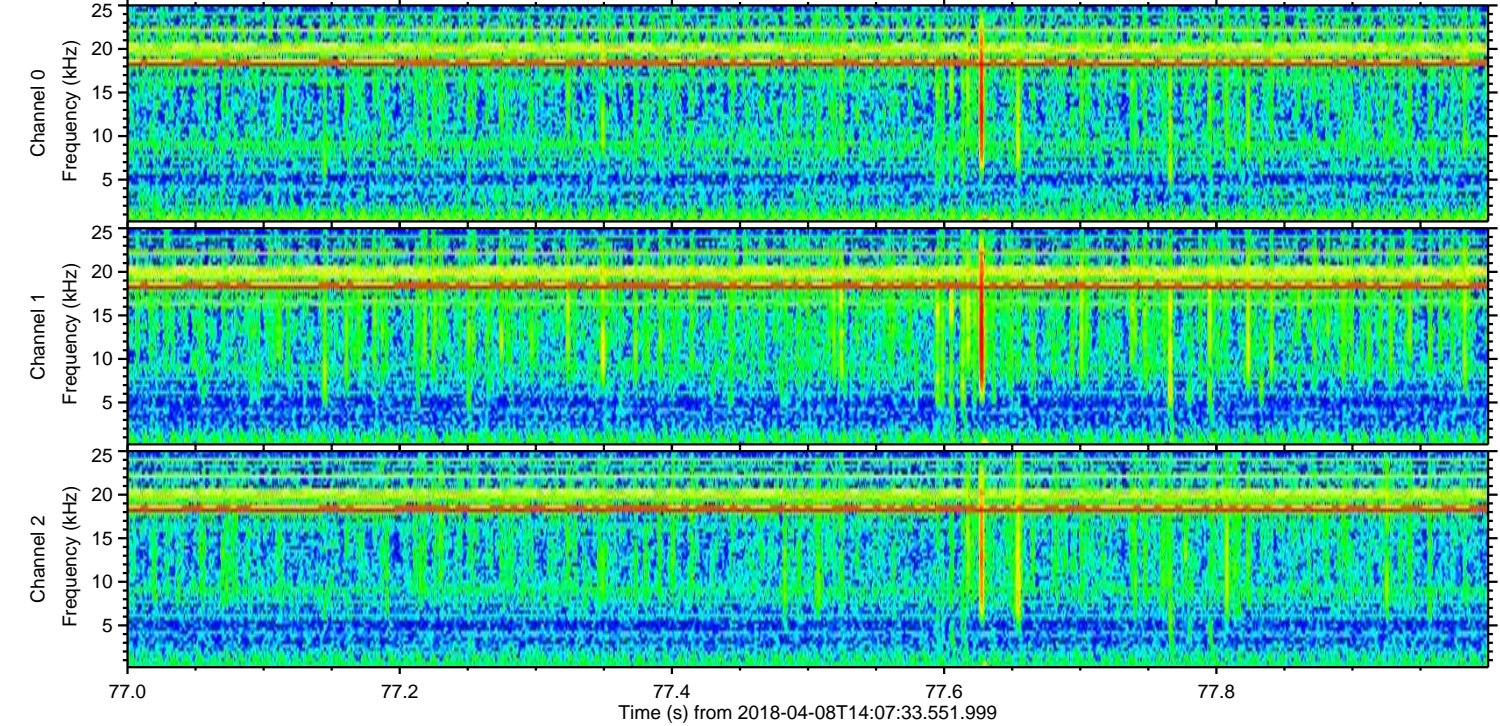
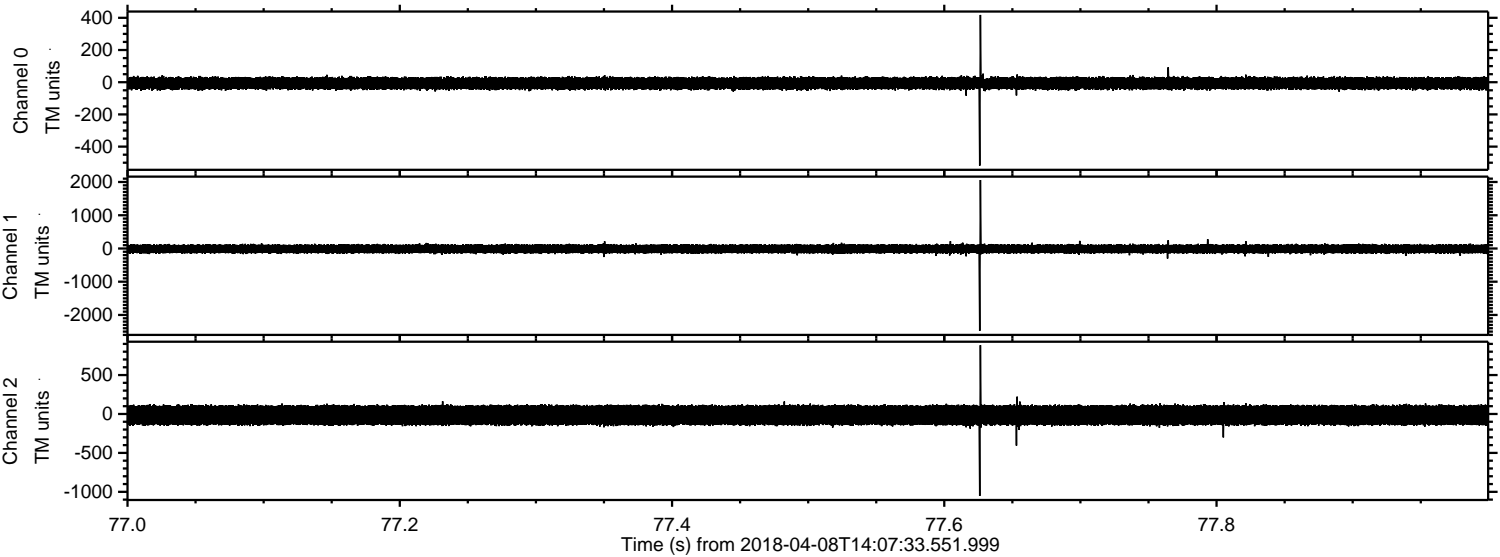


ELMAVAN 3D WAVEFORMS (Measured data sampled at 50 kHz) 51000 packets of 144 samples from 2018-04-08T14:07:33.551.999. Part 119/147

Processed Sun Apr 8 16:15:10 2018 by ELM ver.2012-10-06 from 001__elm20180408_140732__dat00.bin



Processed Sun Apr 8 16:15:11 2018 by ELM ver.2012-10-06 from 001__elm20180408_140732__dat00.bin

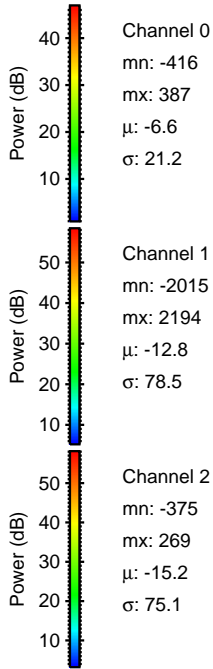
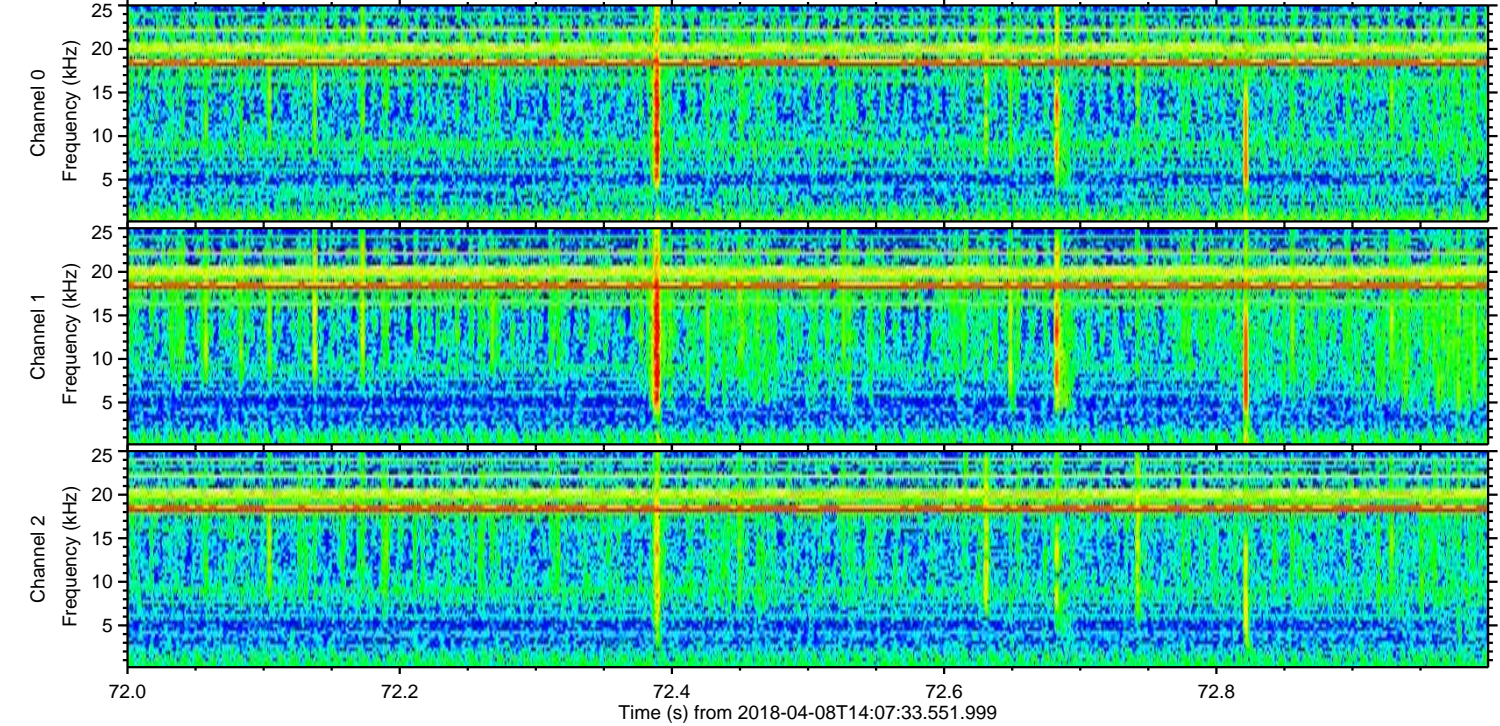
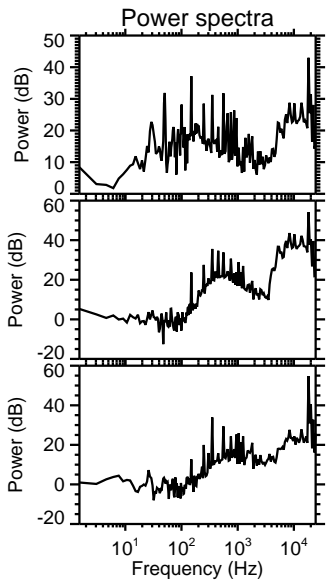
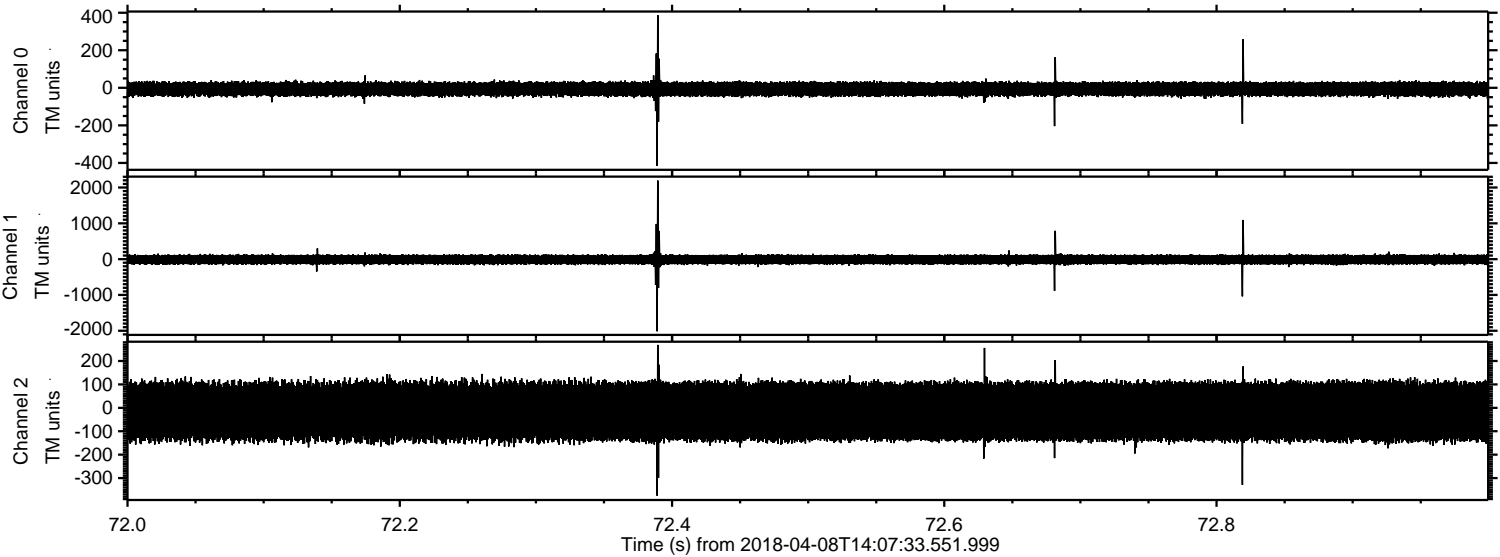


Channel 0
mn: -518
mx: 418
 μ : -6.7
 σ : 20.6

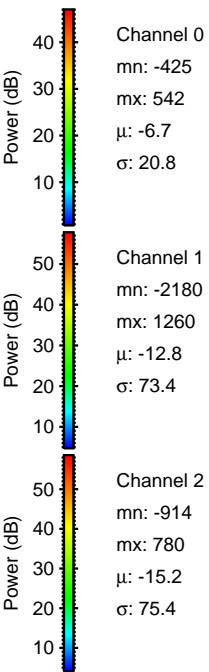
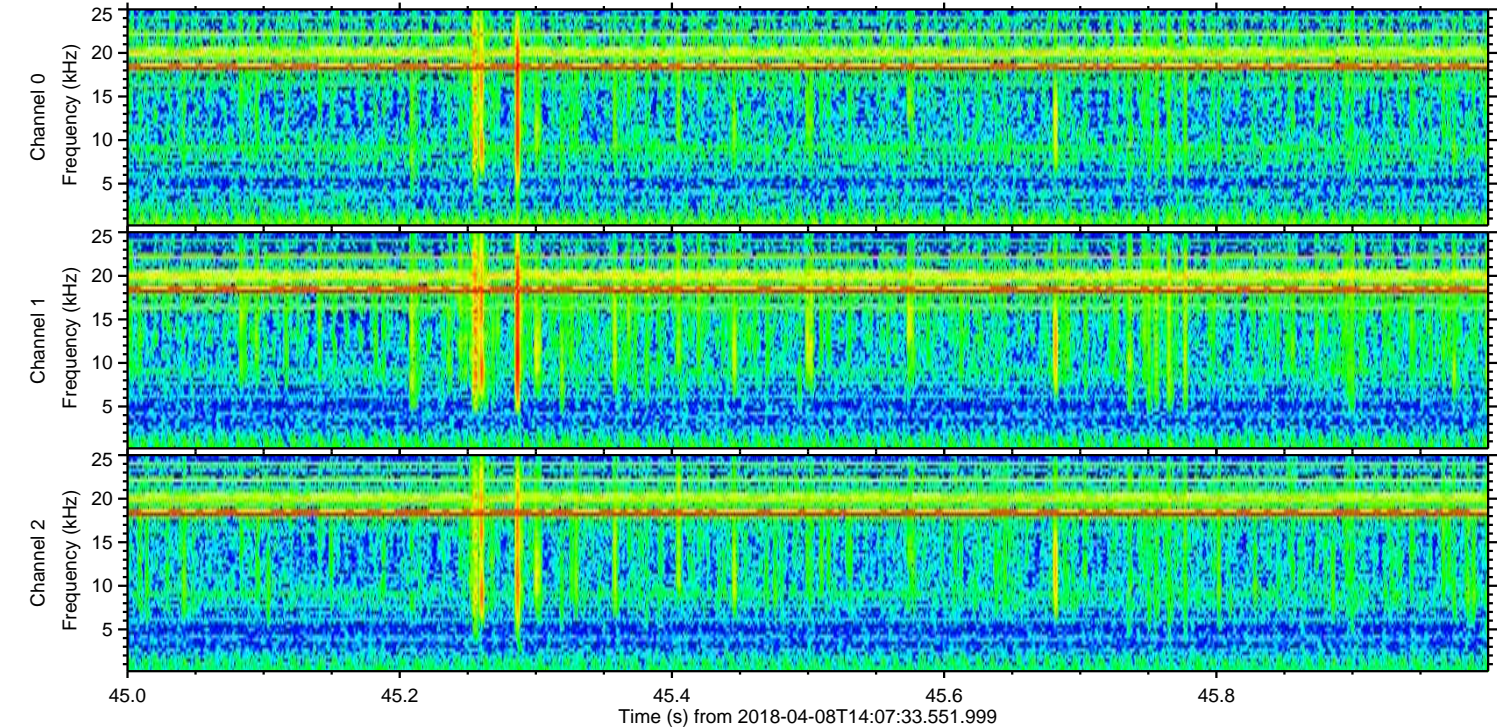
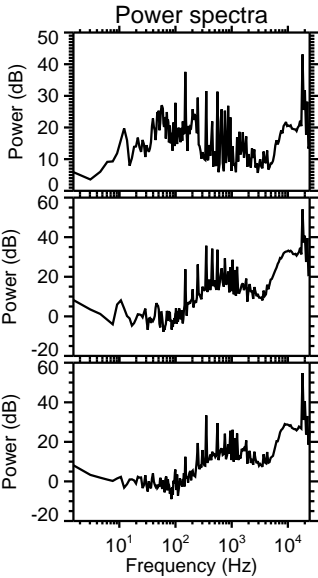
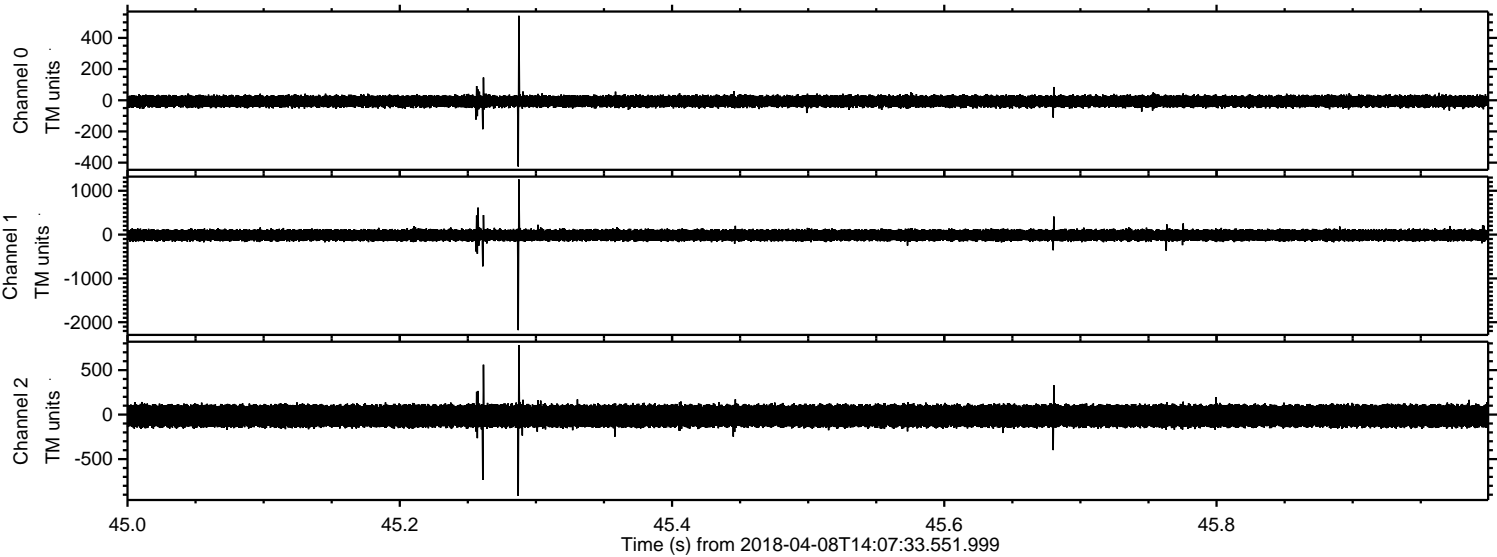
Channel 1
mn: -2477
mx: 2059
 μ : -12.8
 σ : 73.6

Channel 2
mn: -1052
mx: 884
 μ : -15.1
 σ : 75.2

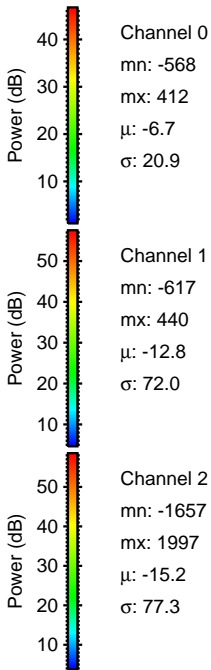
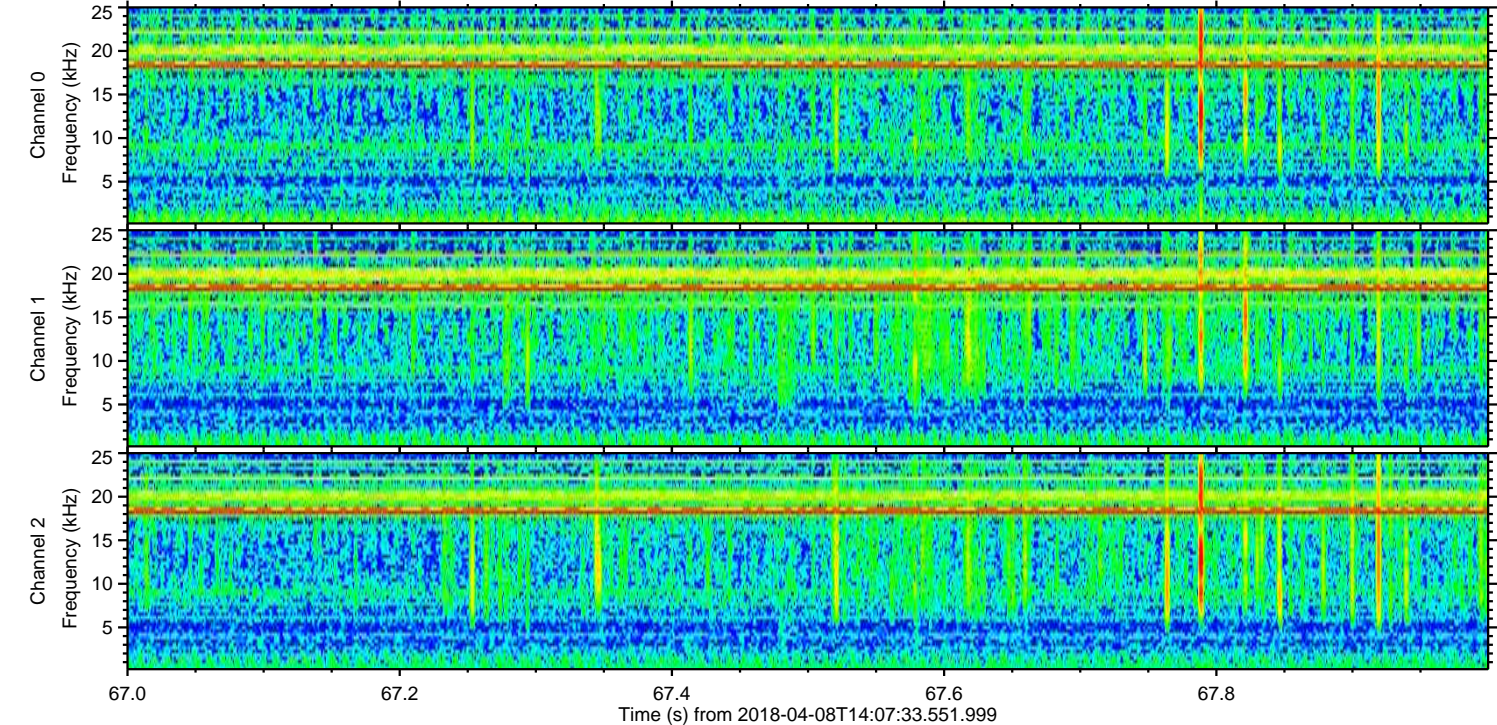
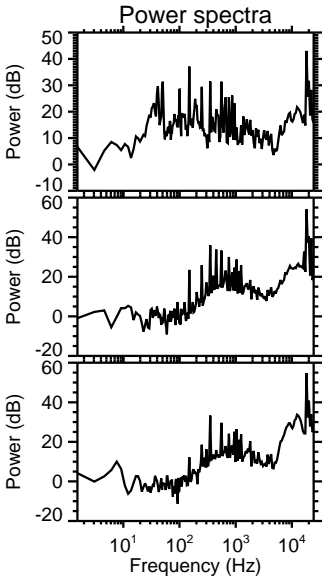
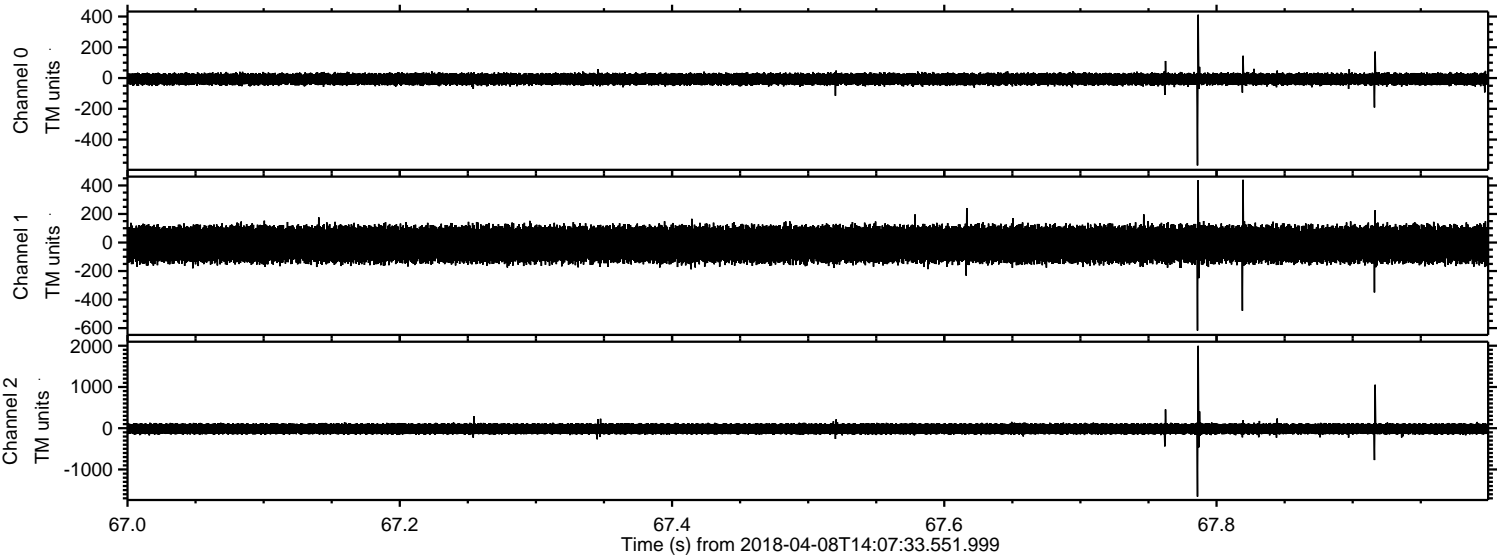
Processed Sun Apr 8 16:15:11 2018 by ELM ver.2012-10-06 from 001__elm20180408_140732__dat00.bin



Processed Sun Apr 8 16:15:12 2018 by ELM ver.2012-10-06 from 001__elm20180408_140732__dat00.bin



Processed Sun Apr 8 16:15:13 2018 by ELM ver.2012-10-06 from 001__elm20180408_140732__dat00.bin



Processed Sun Apr 8 16:15:13 2018 by ELM ver.2012-10-06 from 001__elm20180408_140732__dat00.bin

