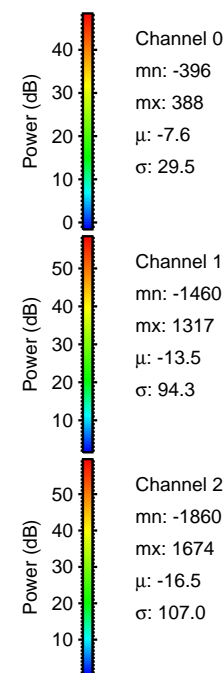
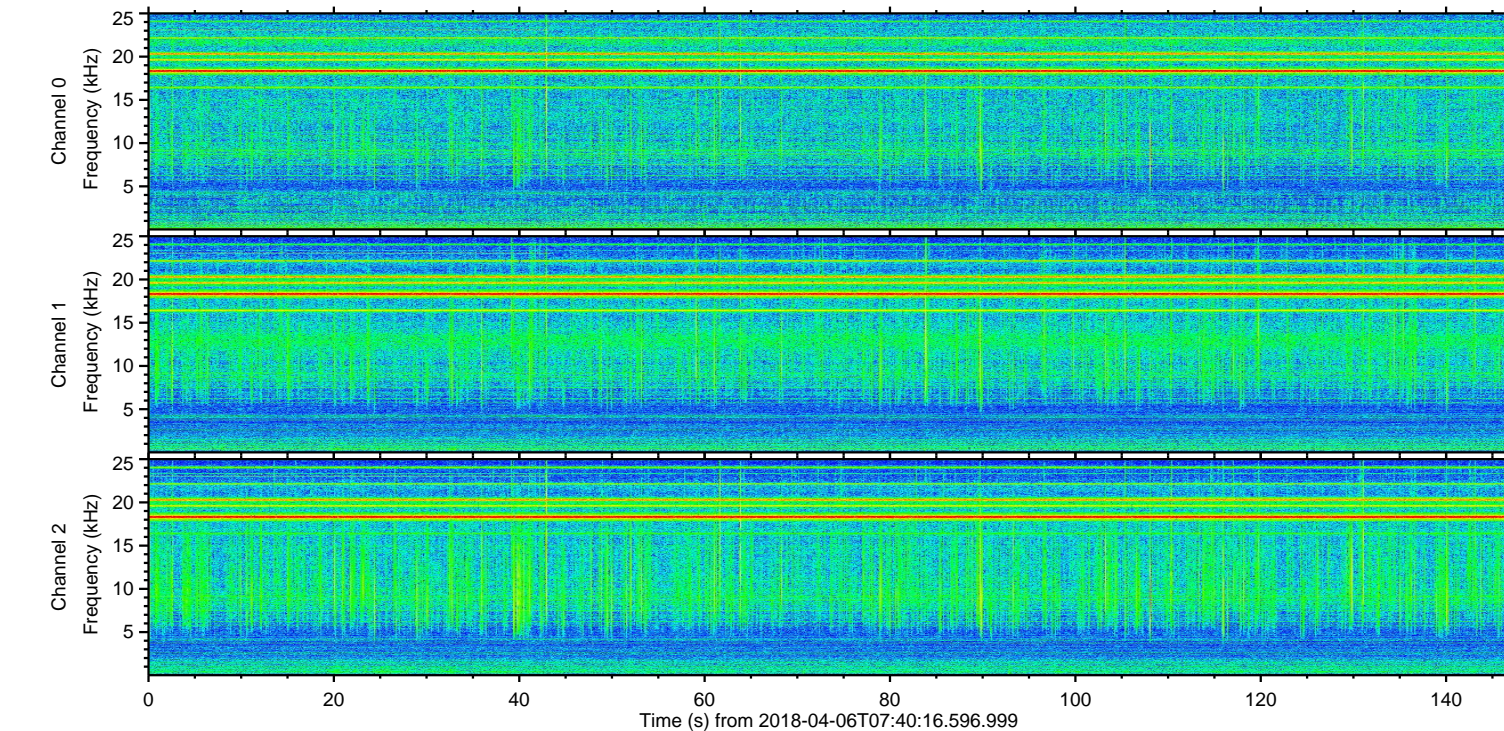
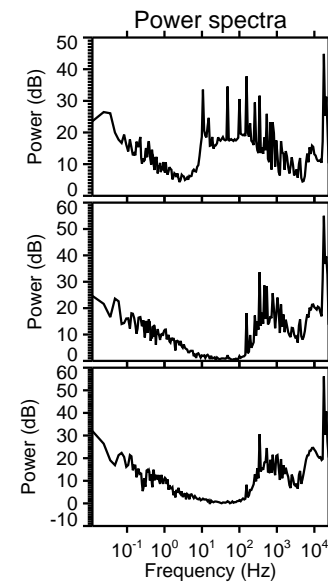
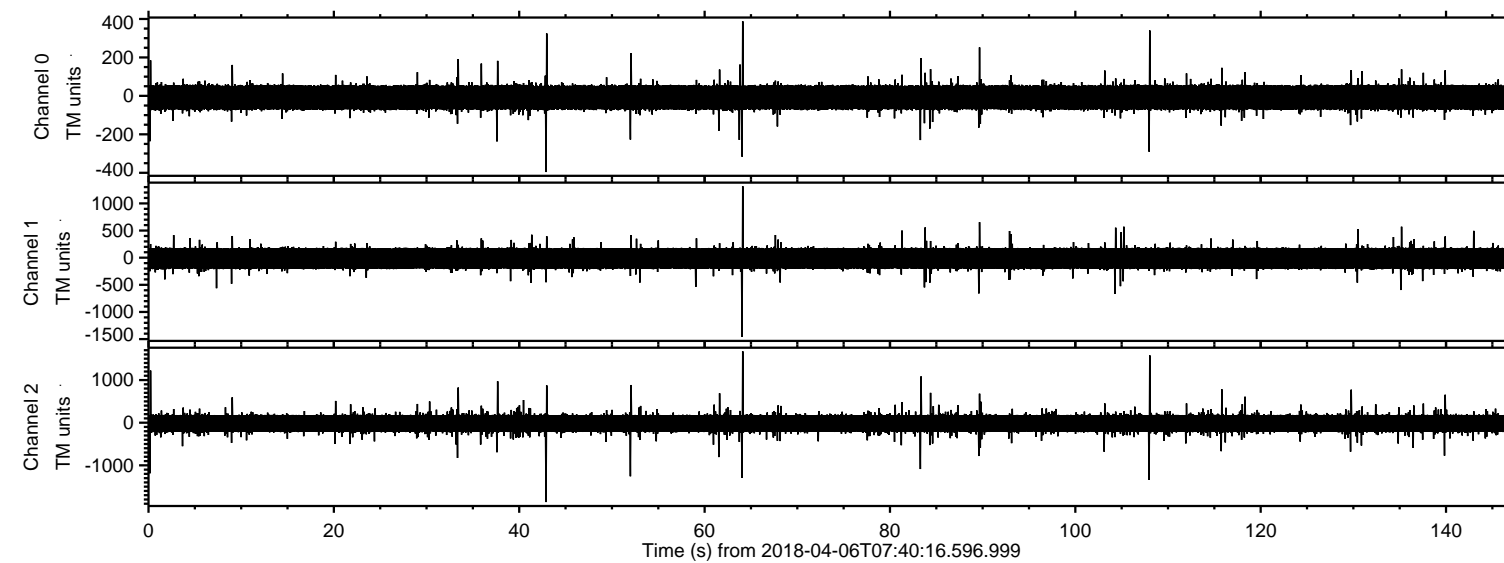
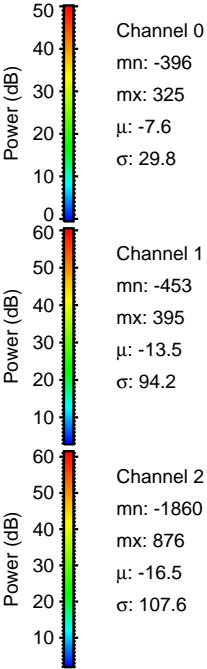
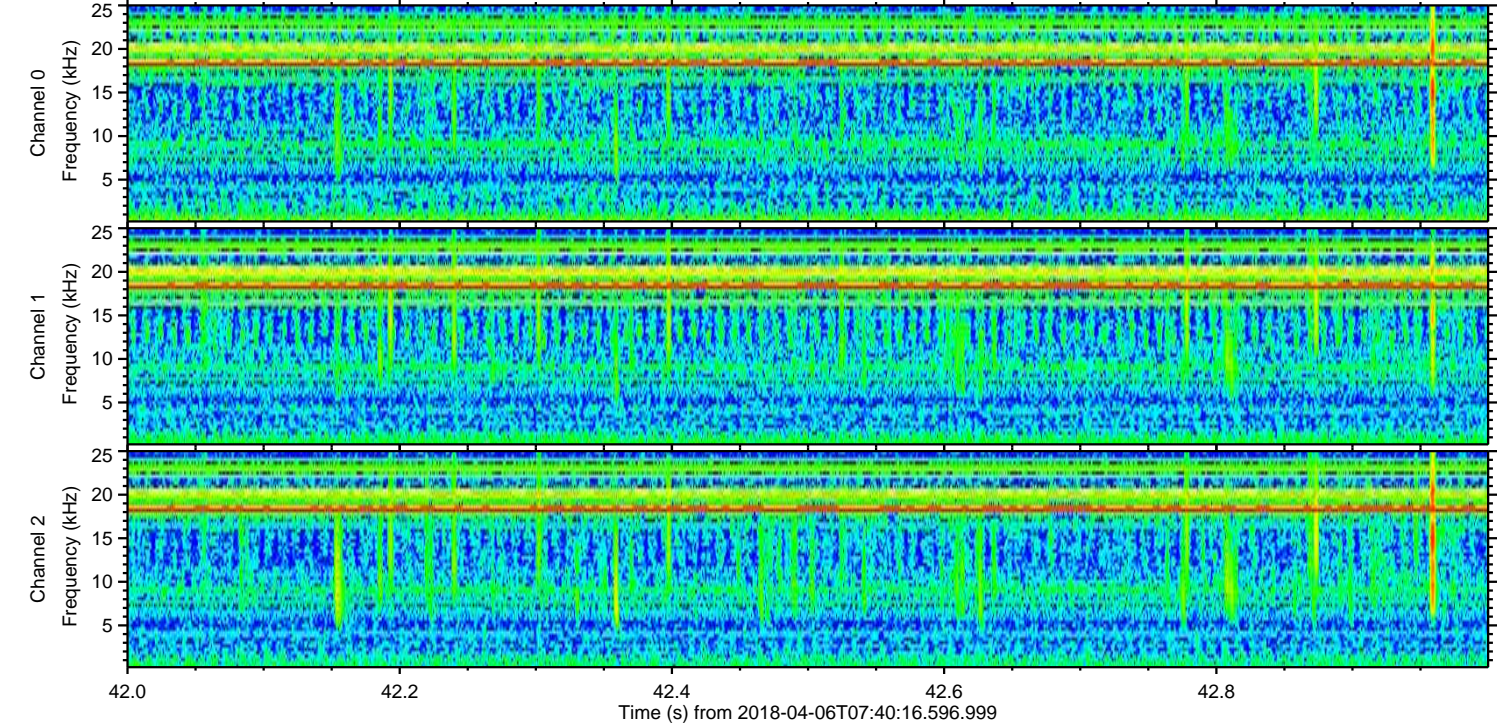
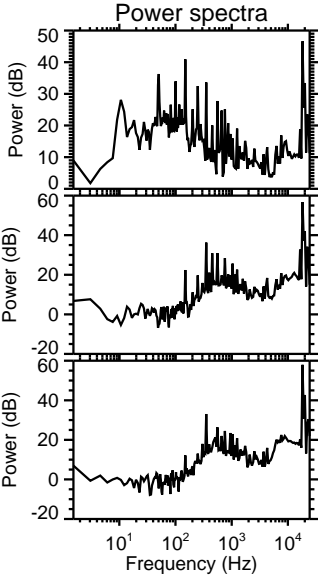
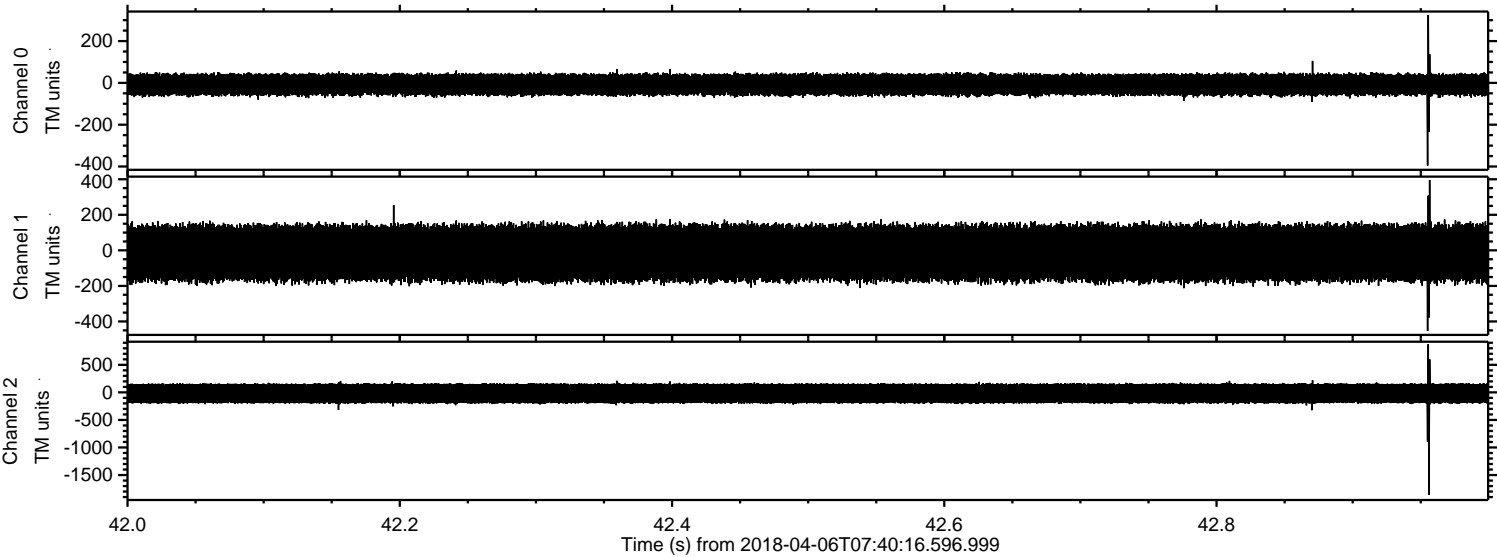


ELMAVAN 3D WAVEFORMS (Measured data sampled at 50 kHz) 51000 packets of 144 samples from 2018-04-06T07:40:16.596.999.

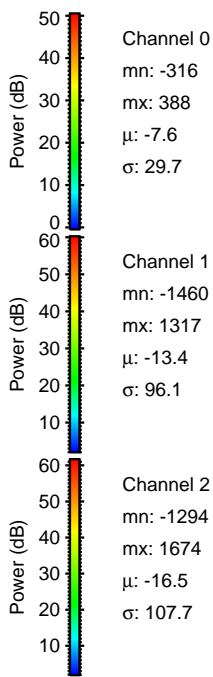
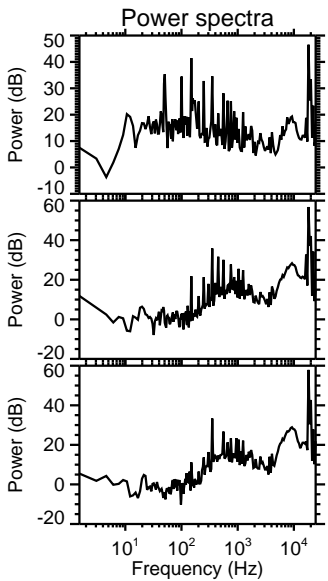
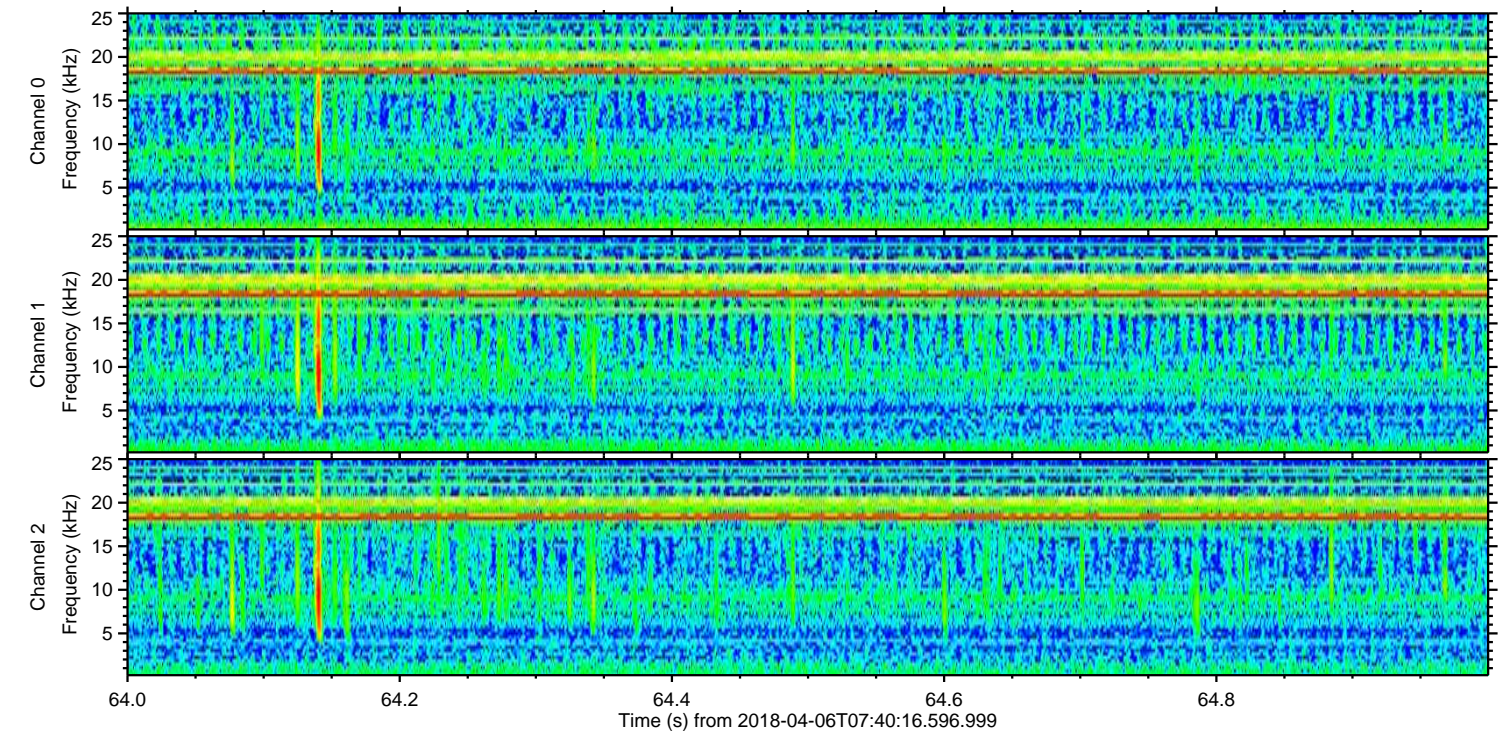
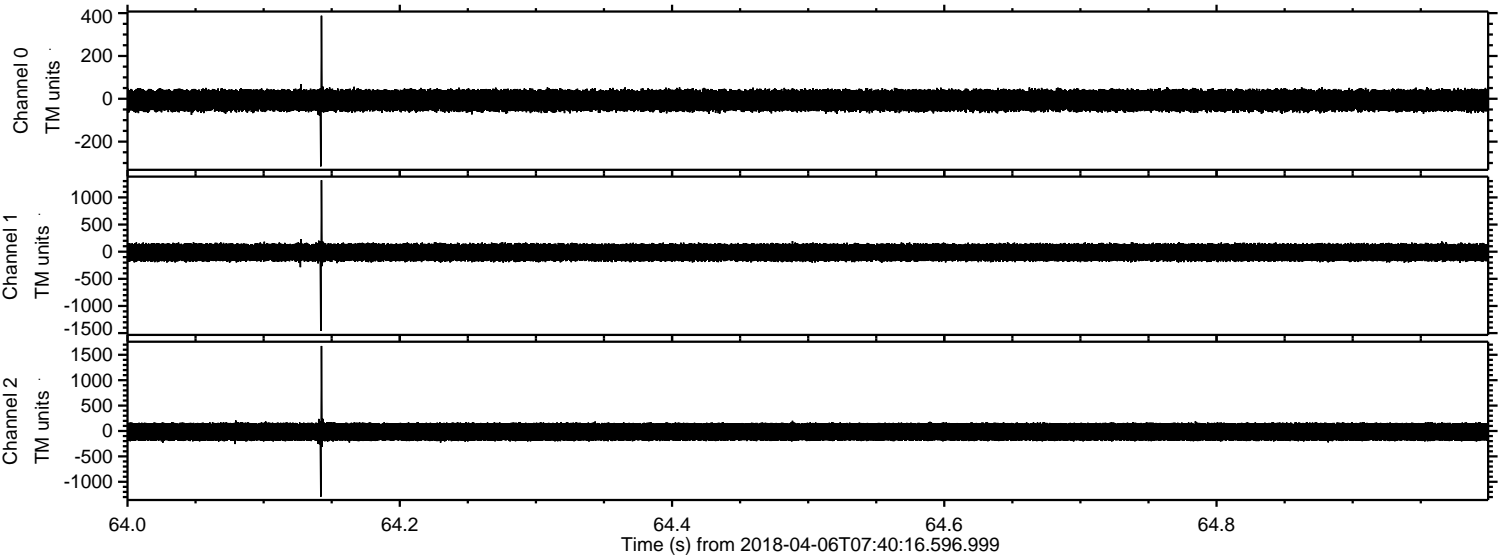
Processed Fri Apr 6 09:48:23 2018 by ELM ver.2012-10-06 from 001__elm20180406_074015__dat00.bin



Processed Fri Apr 6 09:48:31 2018 by ELM ver.2012-10-06 from 001__elm20180406_074015__dat00.bin

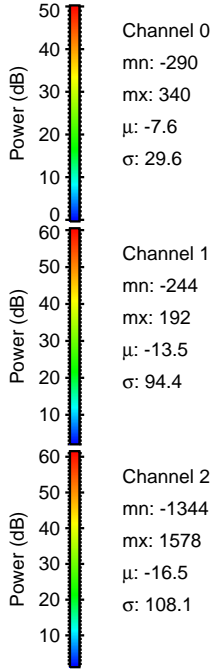
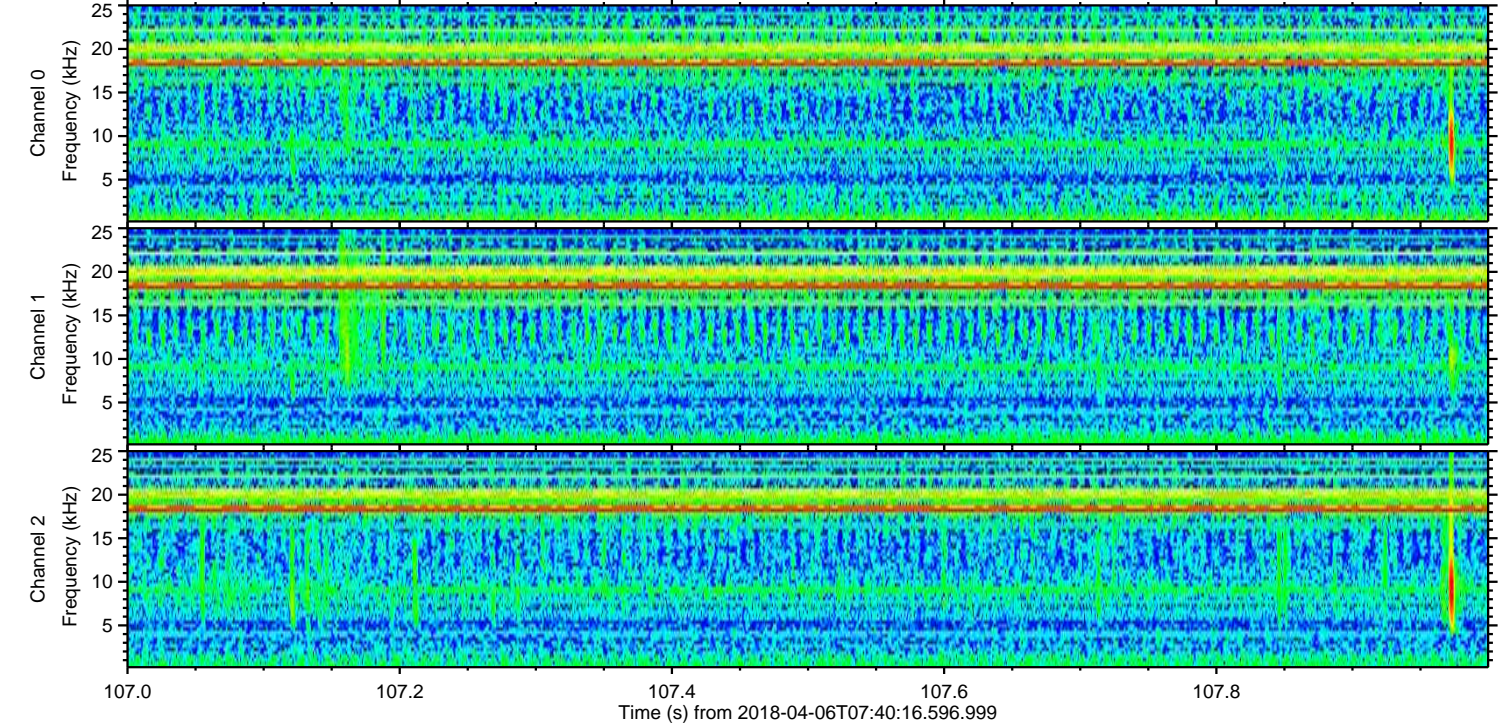
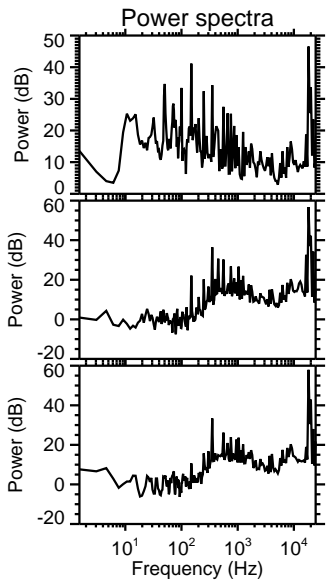
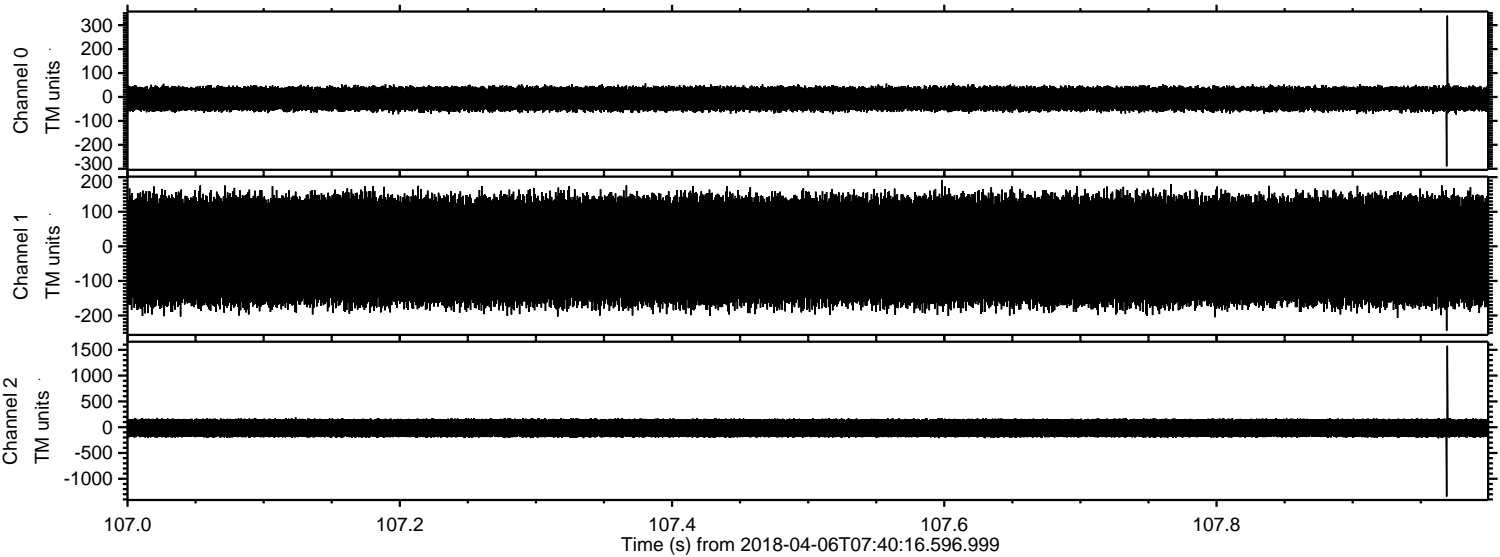


Processed Fri Apr 6 09:48:31 2018 by ELM ver.2012-10-06 from 001__elm20180406_074015__dat00.bin

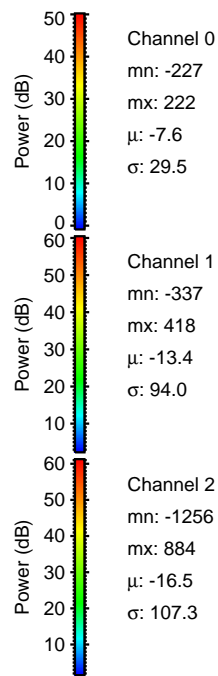
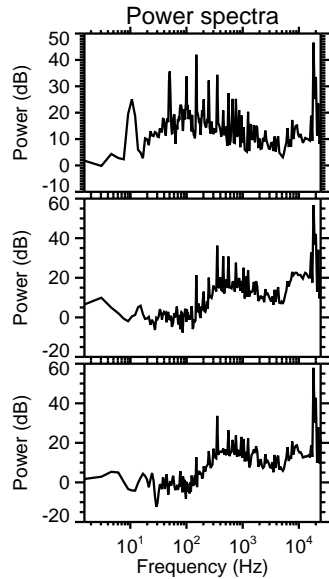
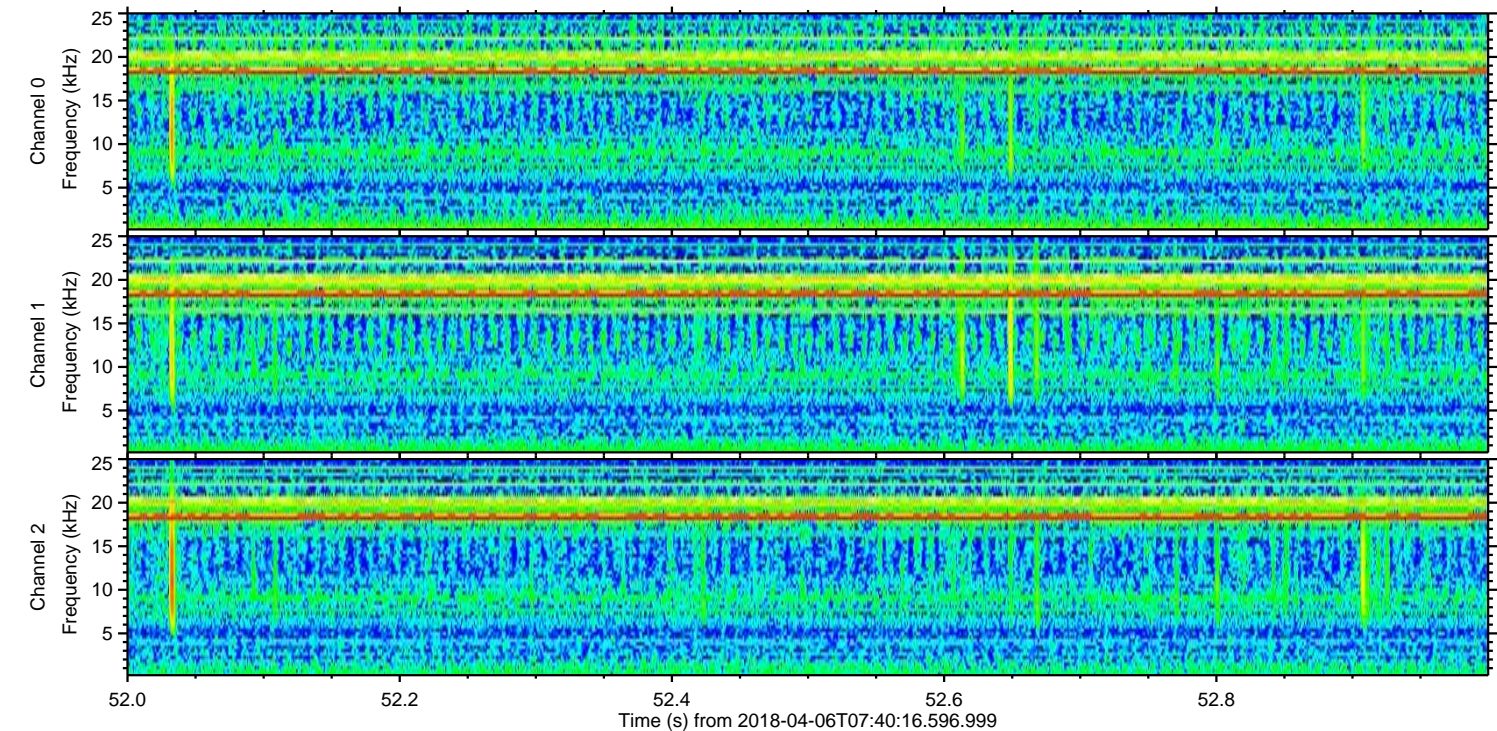
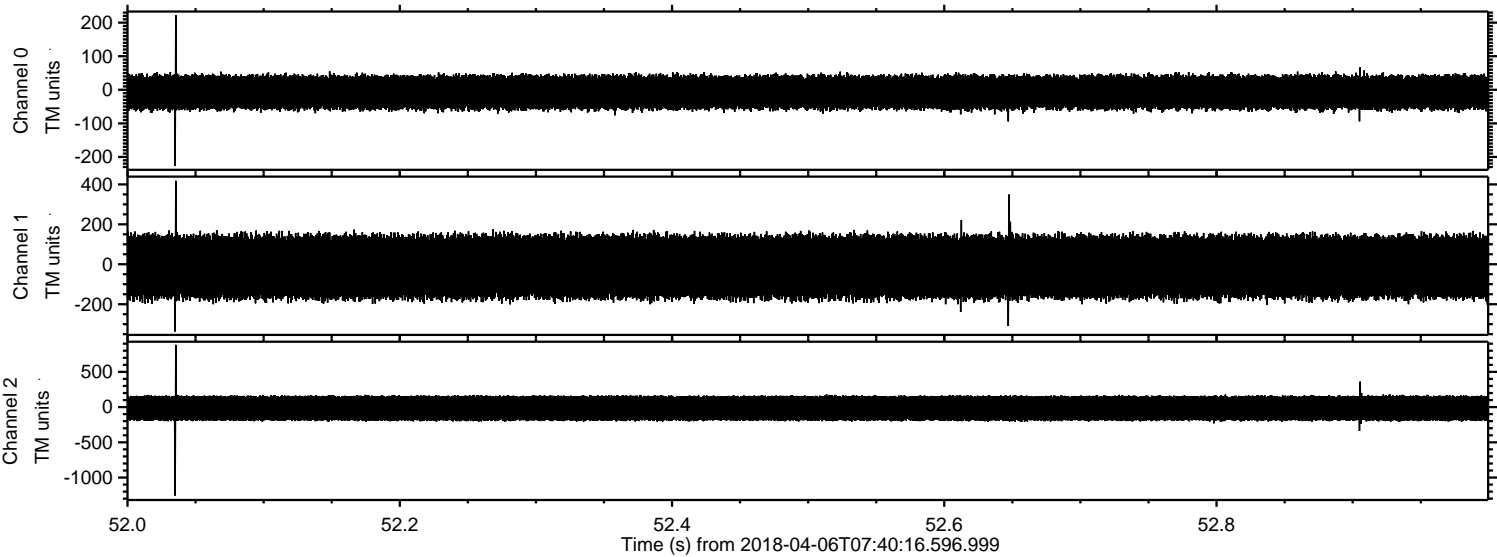


ELMAVAN 3D WAVEFORMS (Measured data sampled at 50 kHz) 51000 packets of 144 samples from 2018-04-06T07:40:16.596.999. Part 108/147

Processed Fri Apr 6 09:48:32 2018 by ELM ver.2012-10-06 from 001__elm20180406_074015__dat00.bin

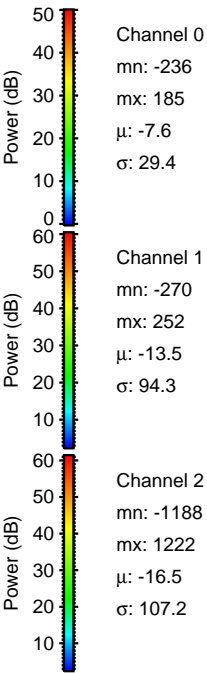
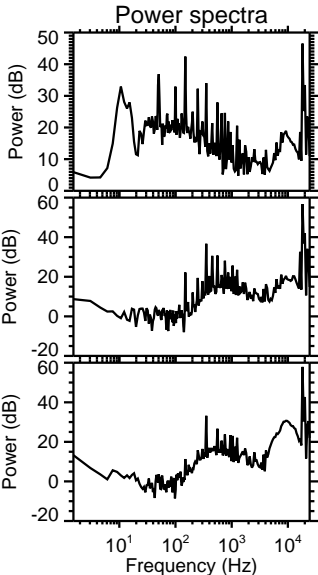
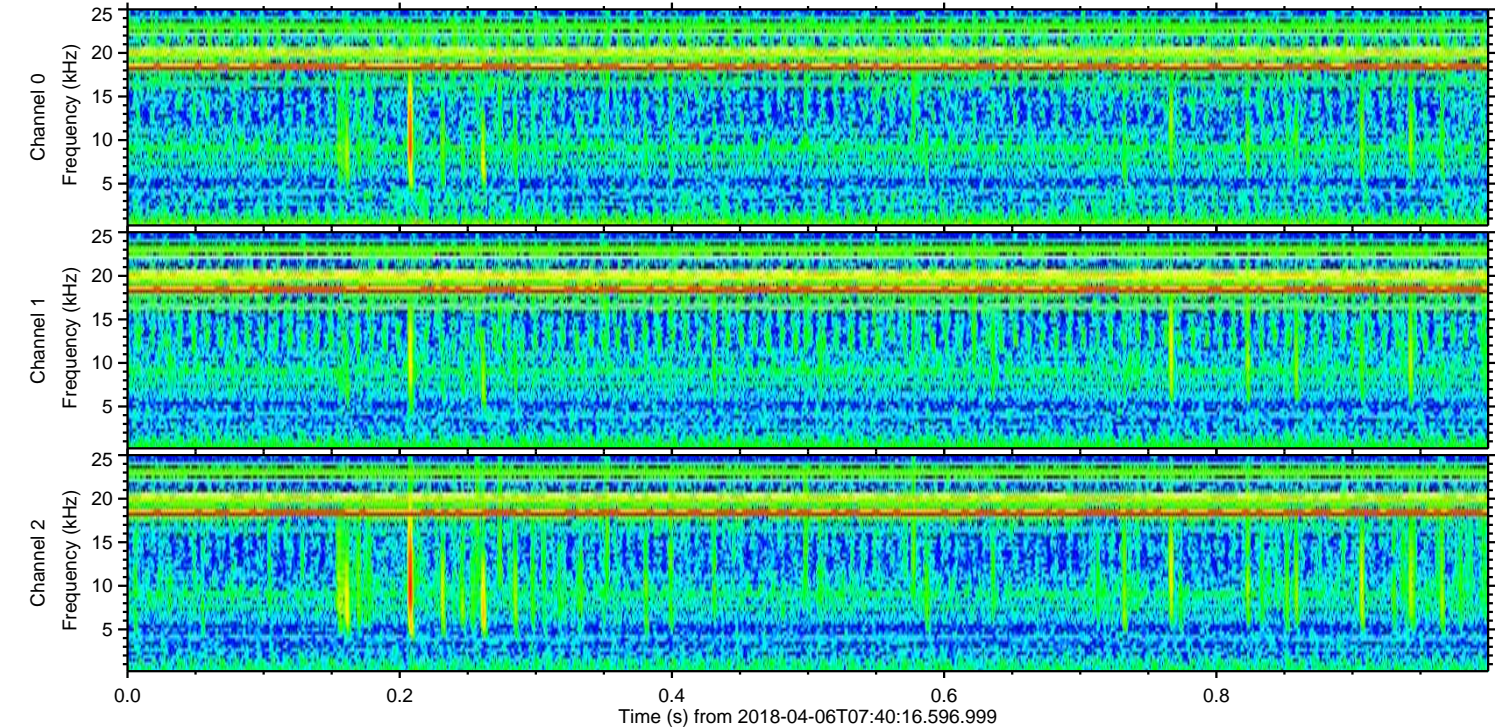
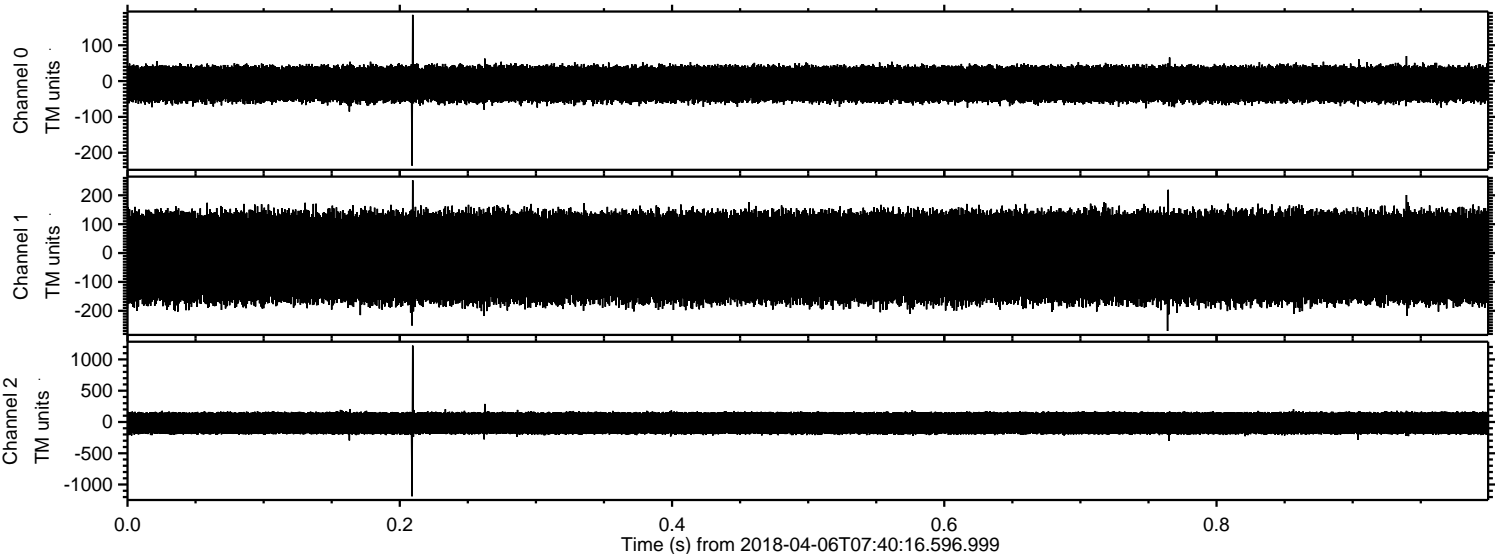


Processed Fri Apr 6 09:48:33 2018 by ELM ver.2012-10-06 from 001__elm20180406_074015__dat00.bin



ELMAVAN 3D WAVEFORMS (Measured data sampled at 50 kHz) 51000 packets of 144 samples from 2018-04-06T07:40:16.596.999. Part 1/147

Processed Fri Apr 6 09:48:34 2018 by ELM ver.2012-10-06 from 001__elm20180406_074015__dat00.bin

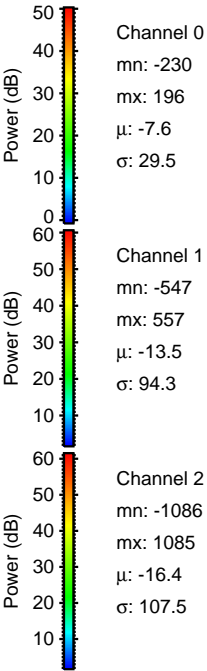
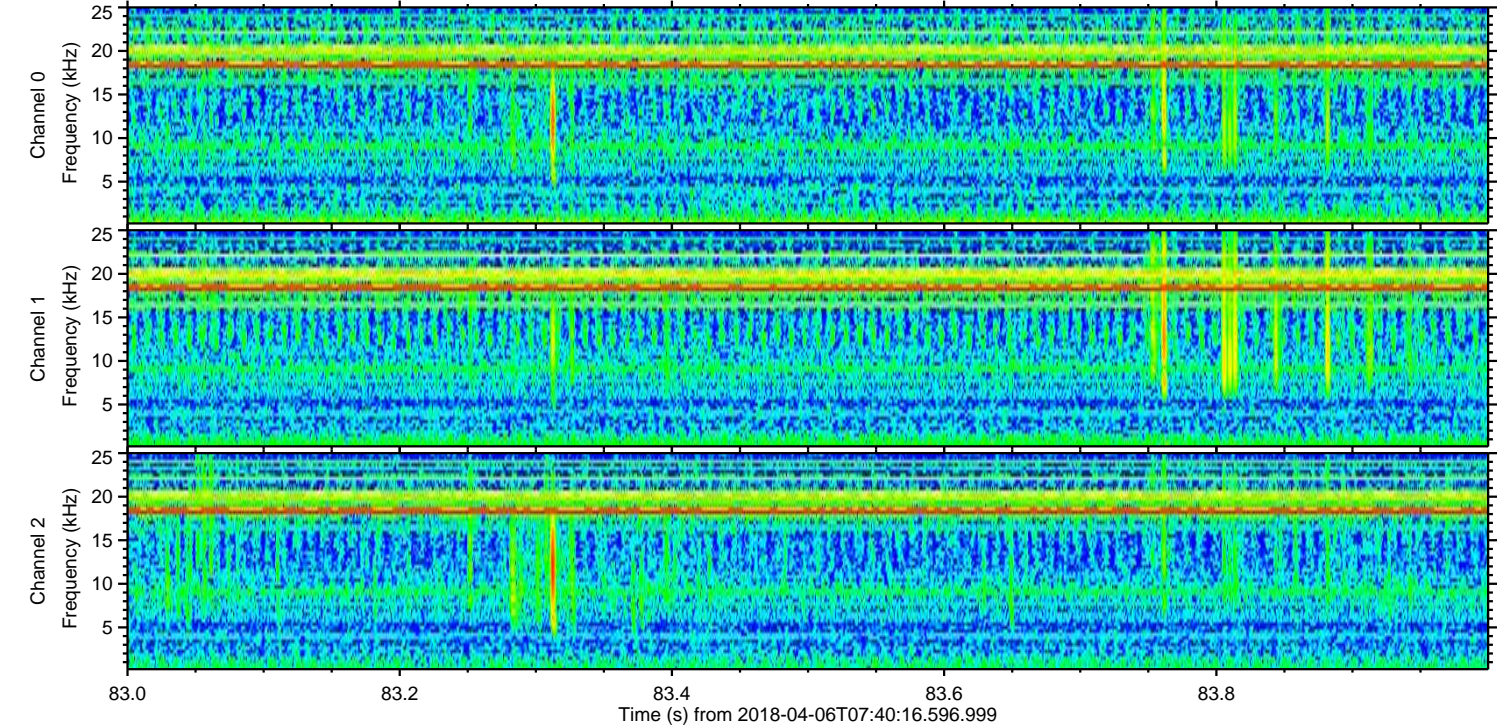
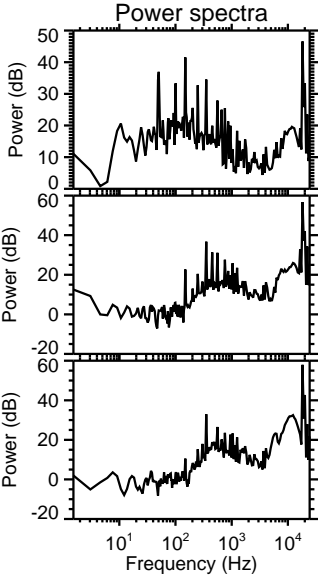
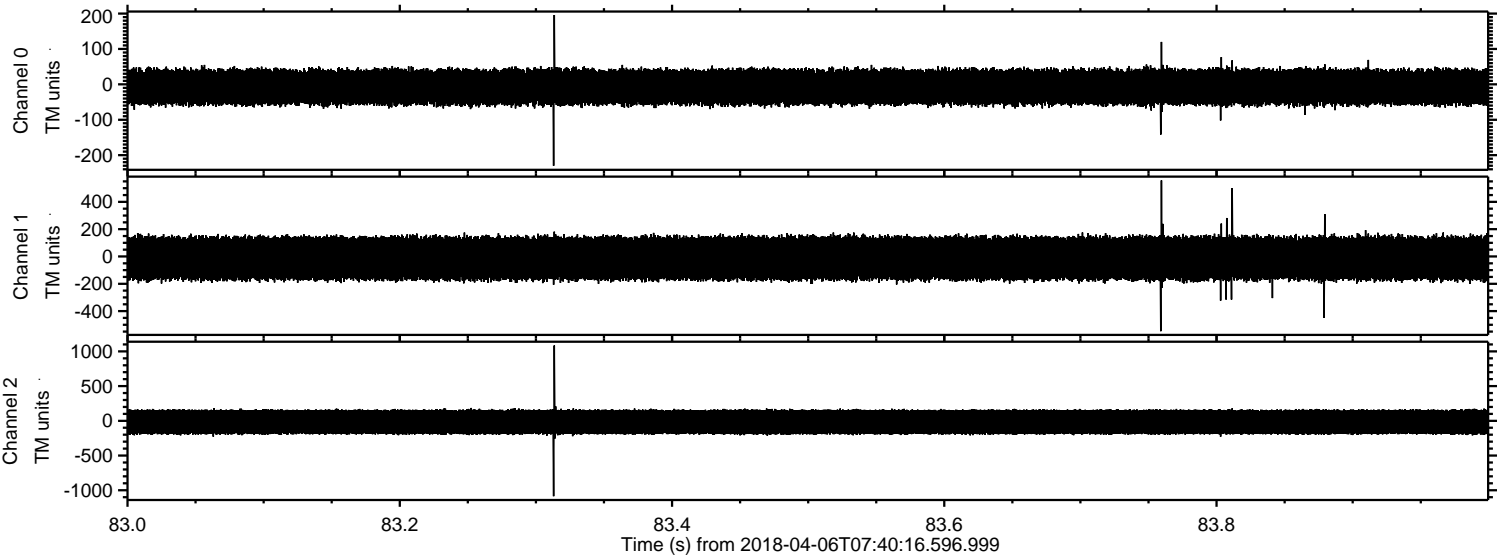


Channel 0
mn: -236
mx: 185
 μ : -7.6
 σ : 29.4

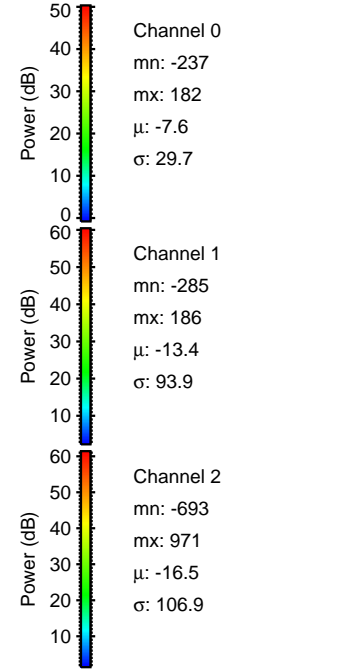
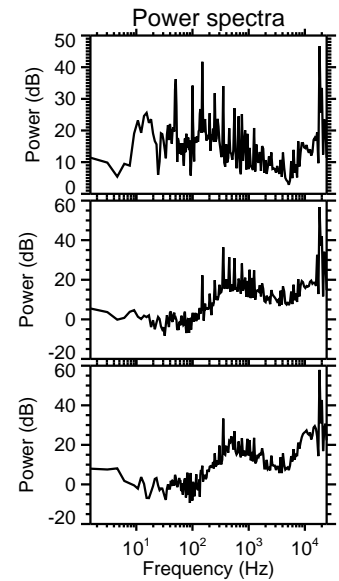
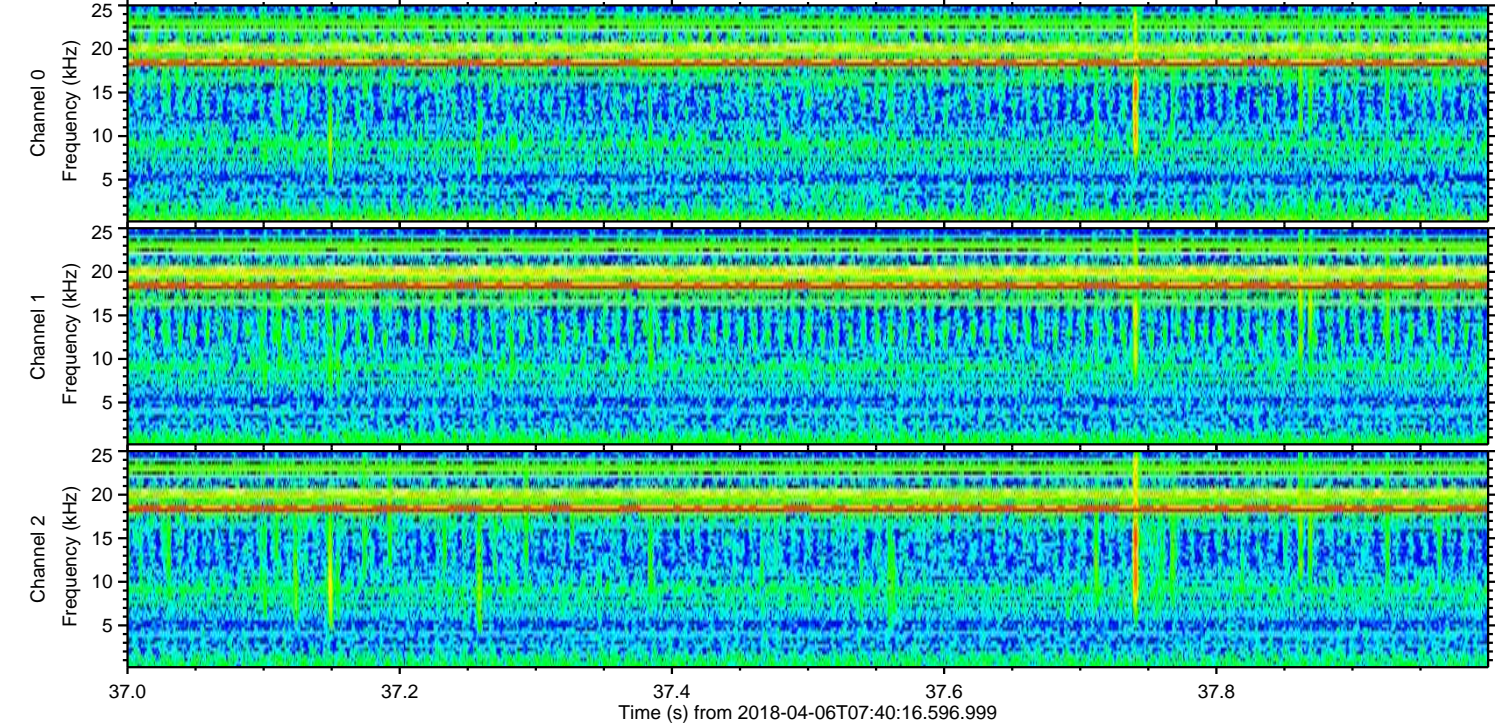
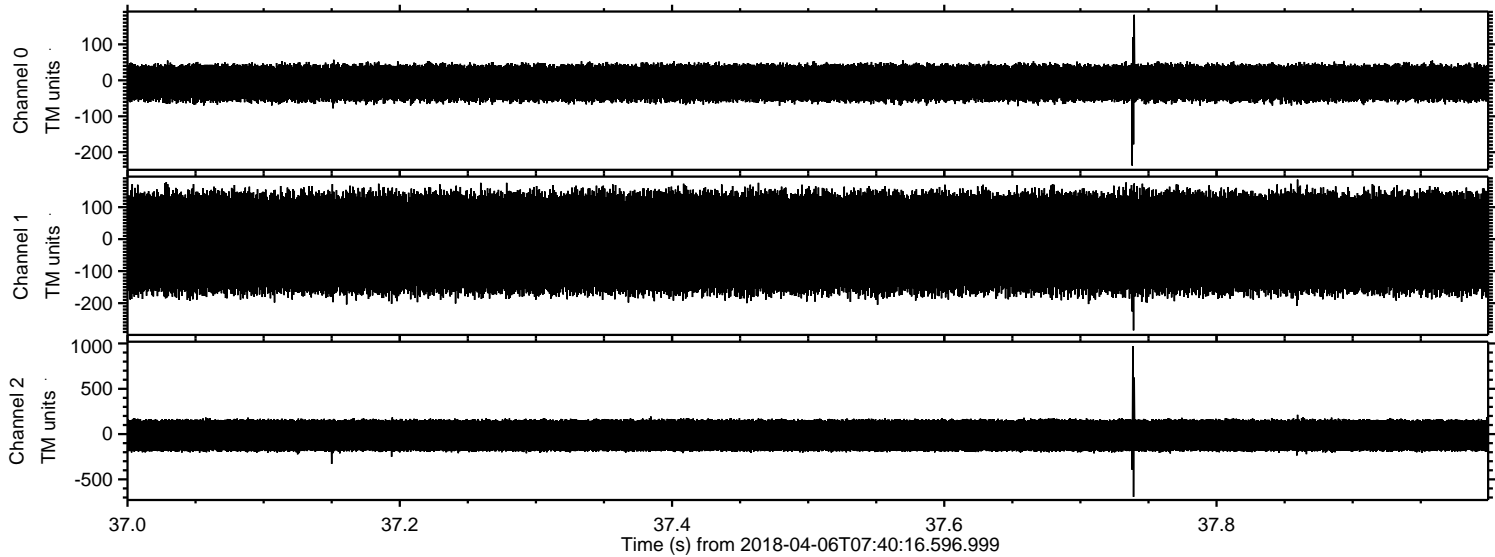
Channel 1
mn: -270
mx: 252
 μ : -13.5
 σ : 94.3

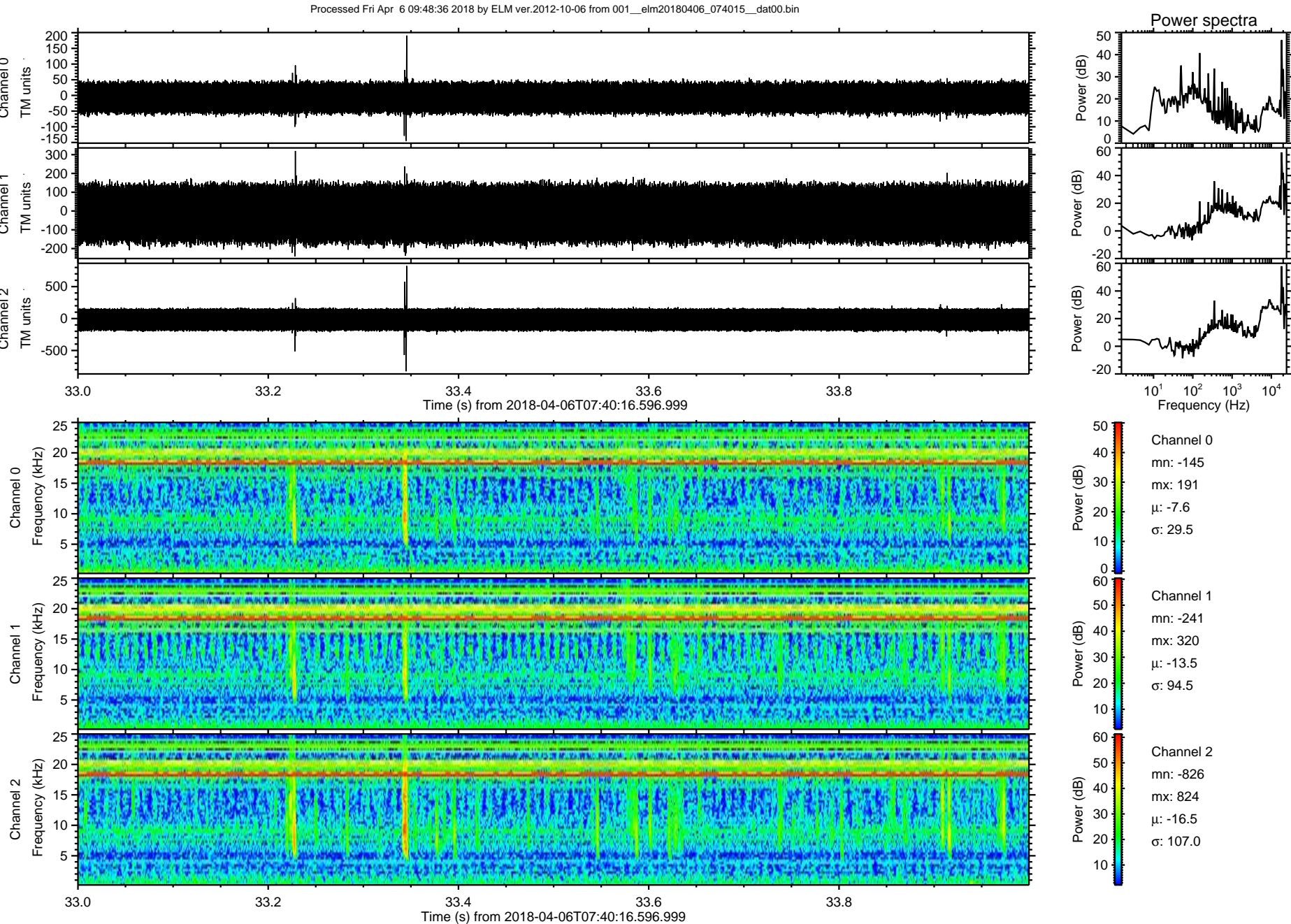
Channel 2
mn: -1188
mx: 1222
 μ : -16.5
 σ : 107.2

Processed Fri Apr 6 09:48:34 2018 by ELM ver.2012-10-06 from 001__elm20180406_074015__dat00.bin

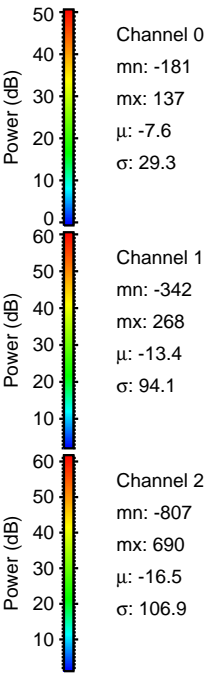
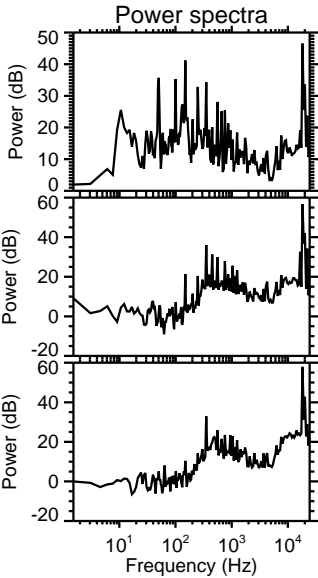
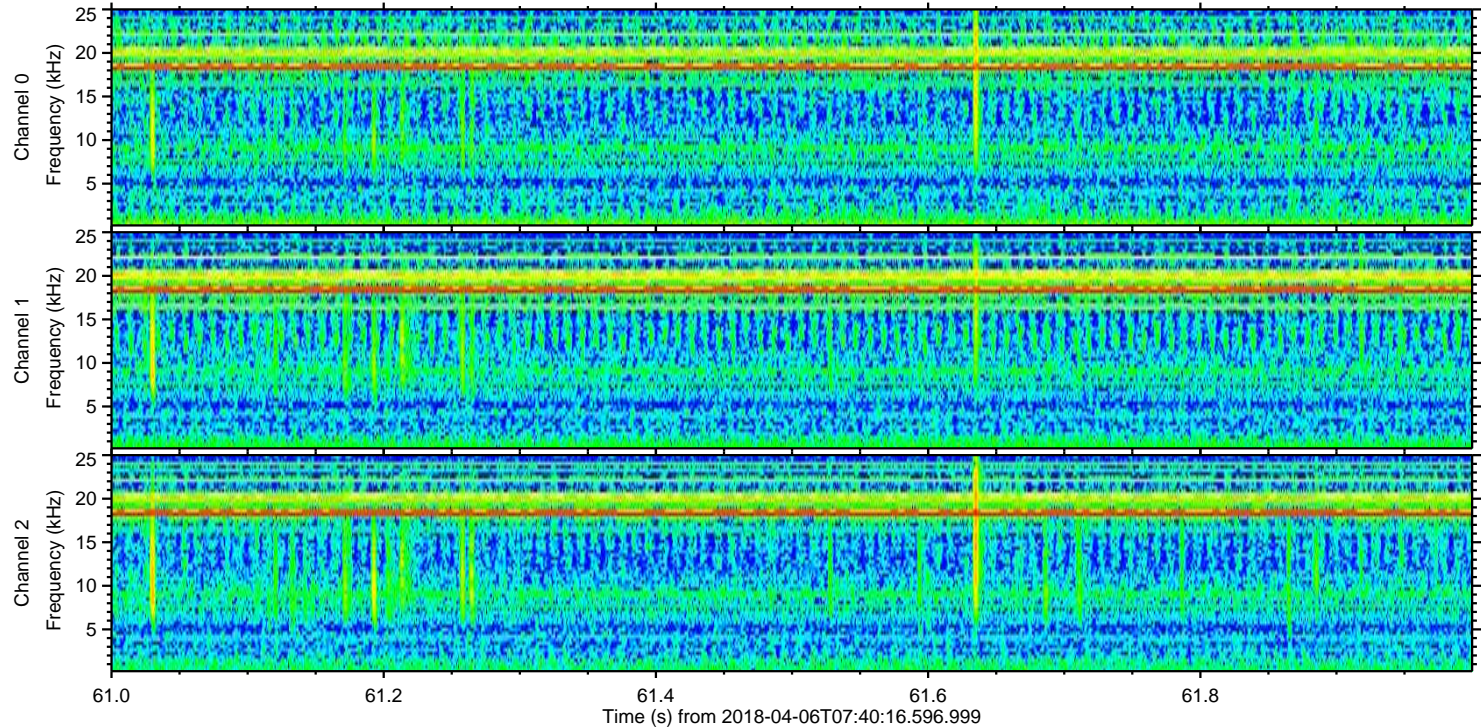
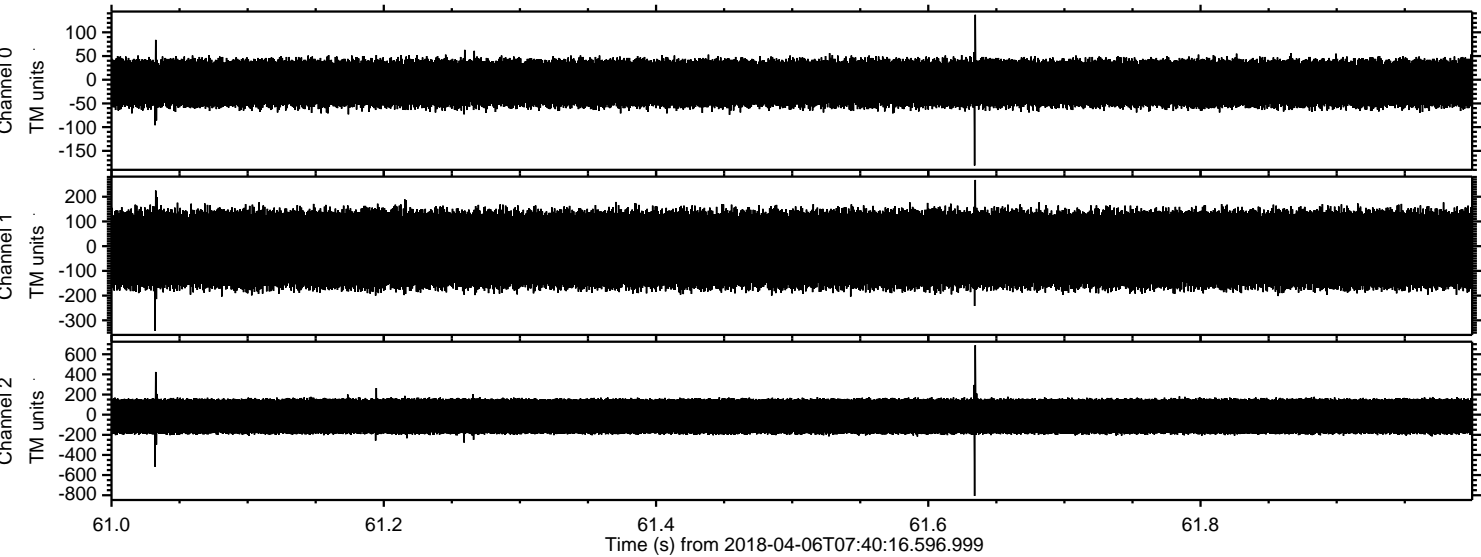


Processed Fri Apr 6 09:48:35 2018 by ELM ver.2012-10-06 from 001__elm20180406_074015__dat00.bin





Processed Fri Apr 6 09:48:37 2018 by ELM ver.2012-10-06 from 001__elm20180406_074015__dat00.bin



Channel 0
mn: -181
mx: 137
 μ : -7.6
 σ : 29.3

Channel 1
mn: -342
mx: 268
 μ : -13.4
 σ : 94.1

Channel 2
mn: -807
mx: 690
 μ : -16.5
 σ : 106.9

