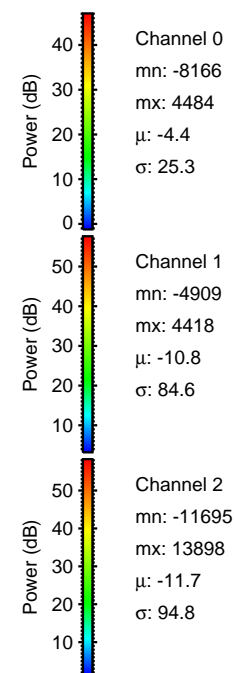
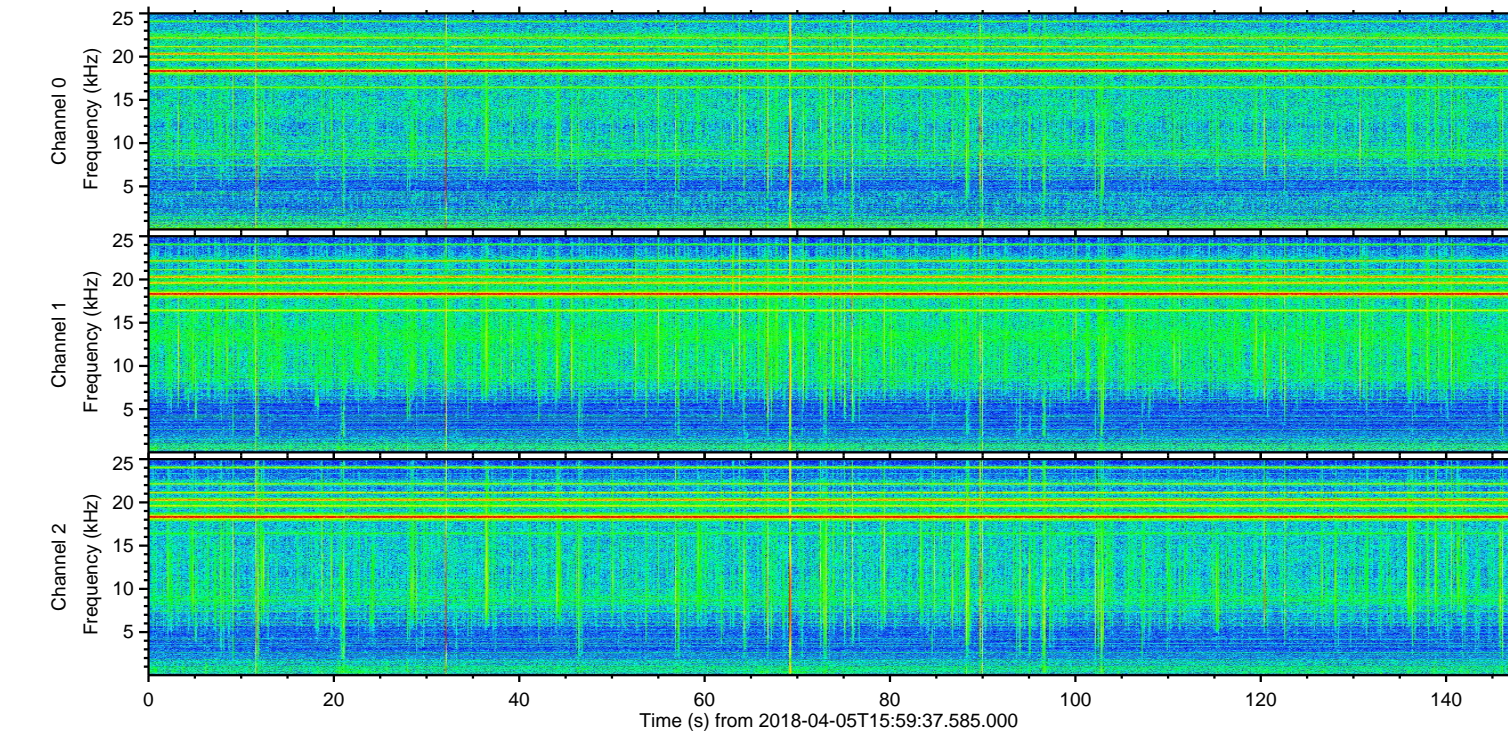
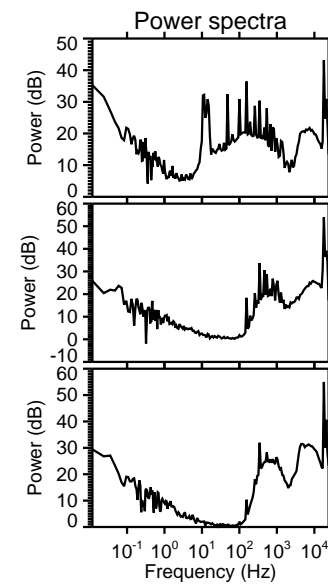
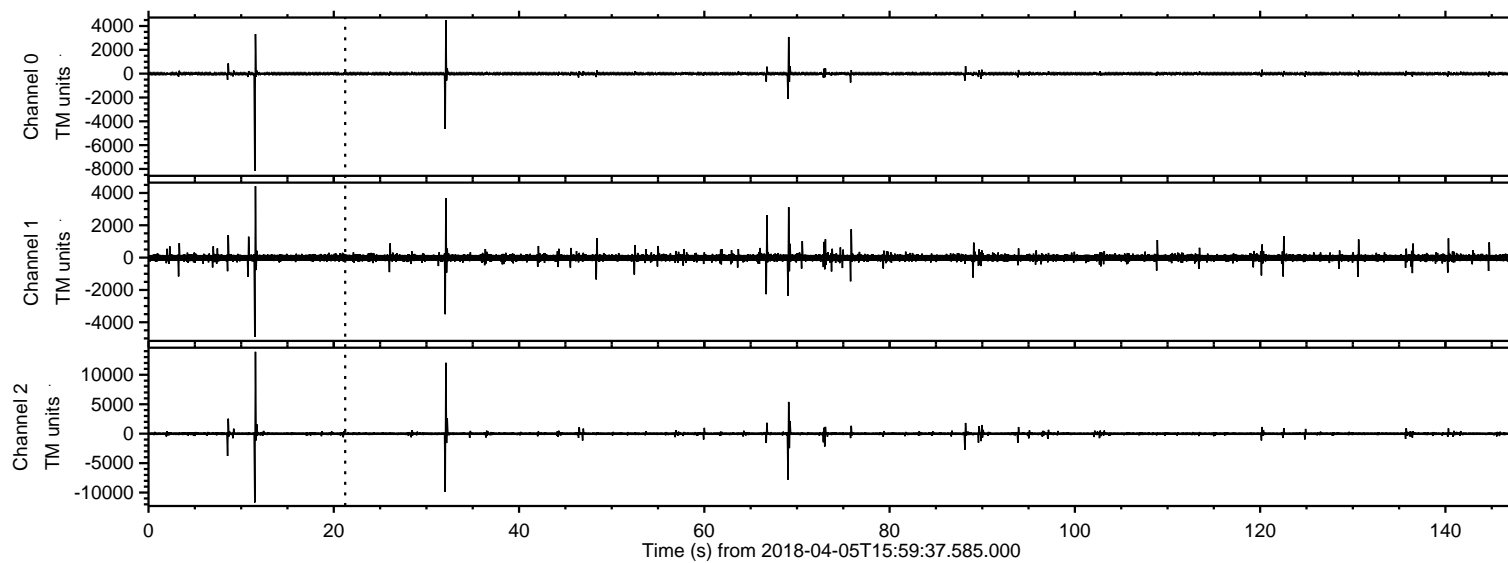
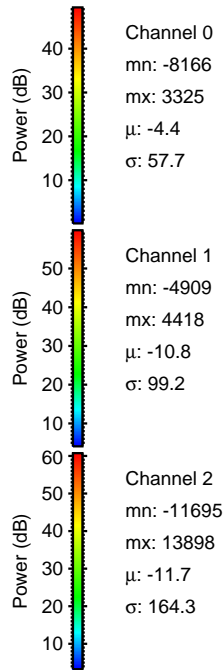
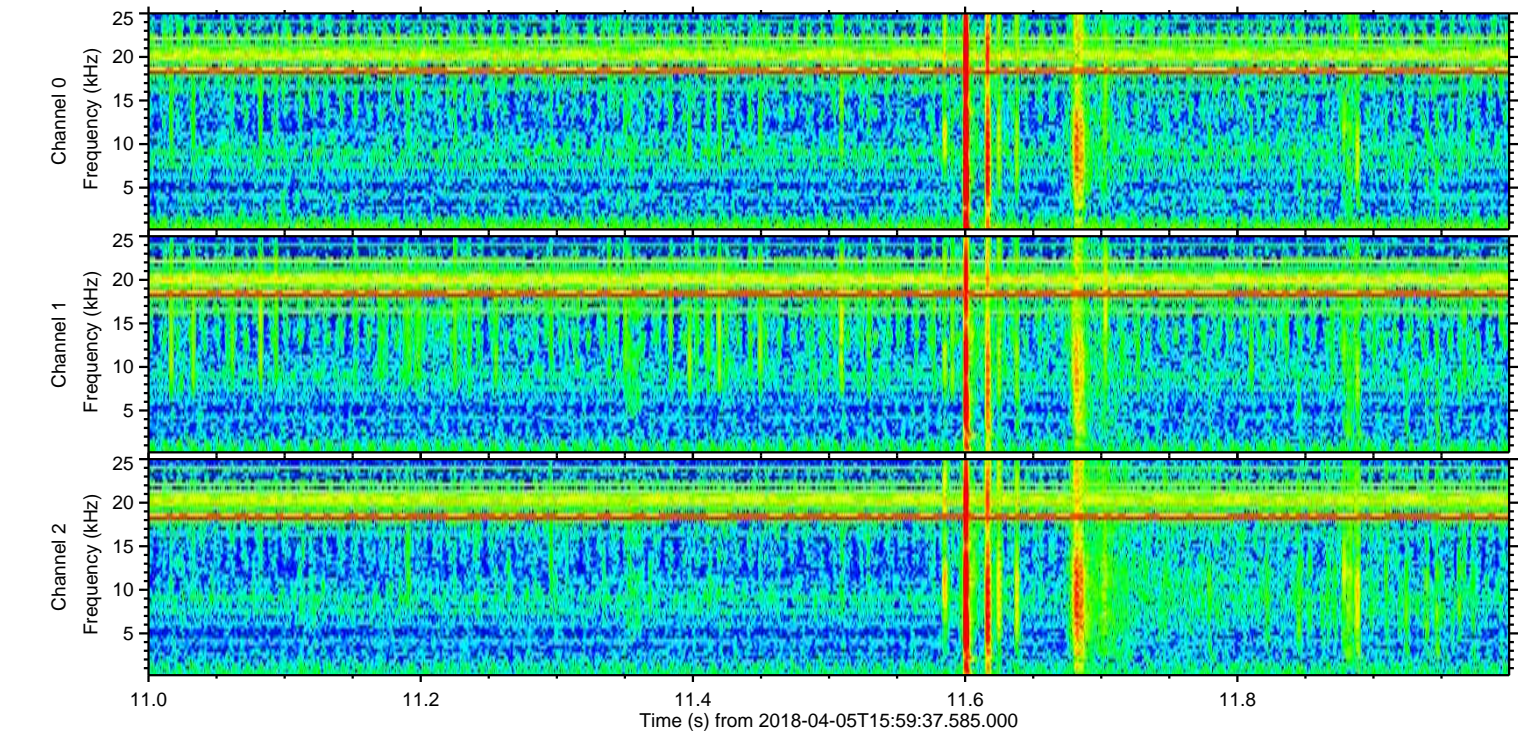
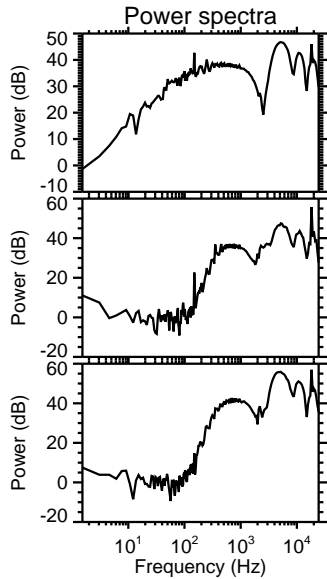
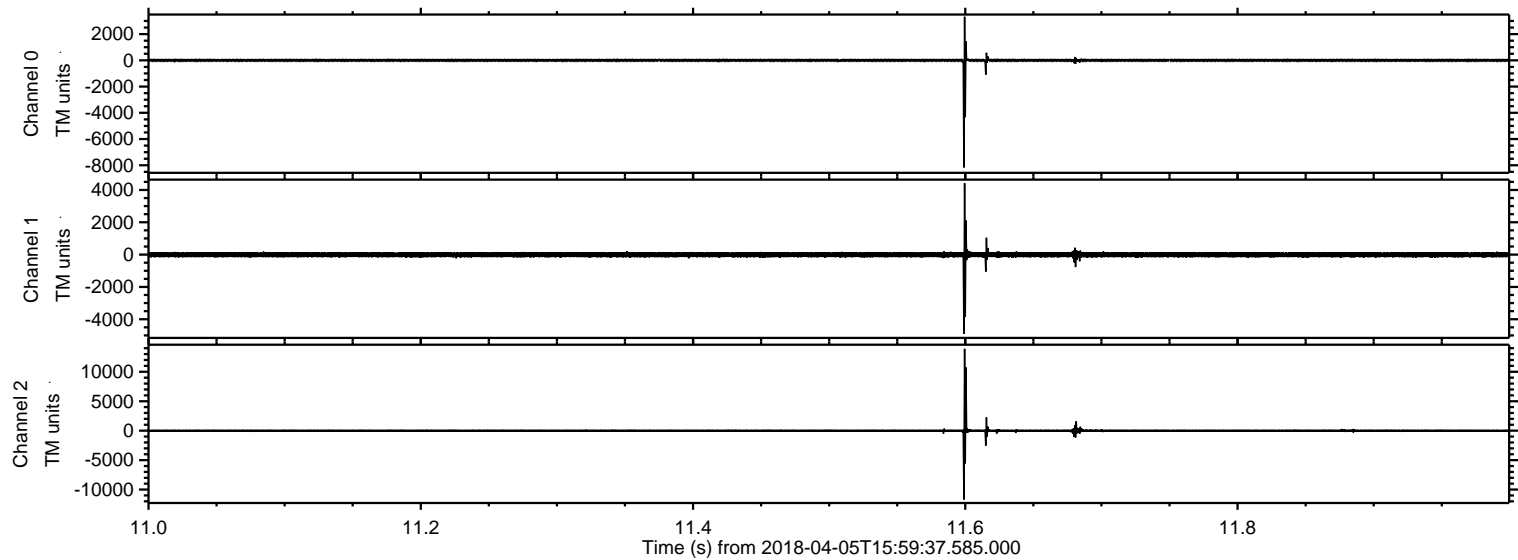


ELMAVAN 3D WAVEFORMS (Measured data sampled at 50 kHz) 50999 packets of 144 samples from 2018-04-05T15:59:37.585.000.

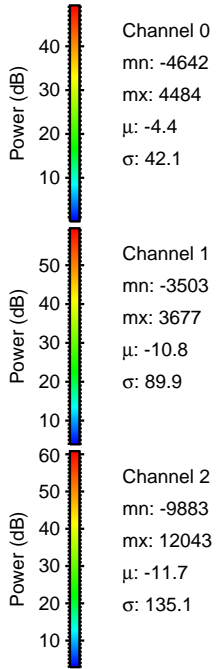
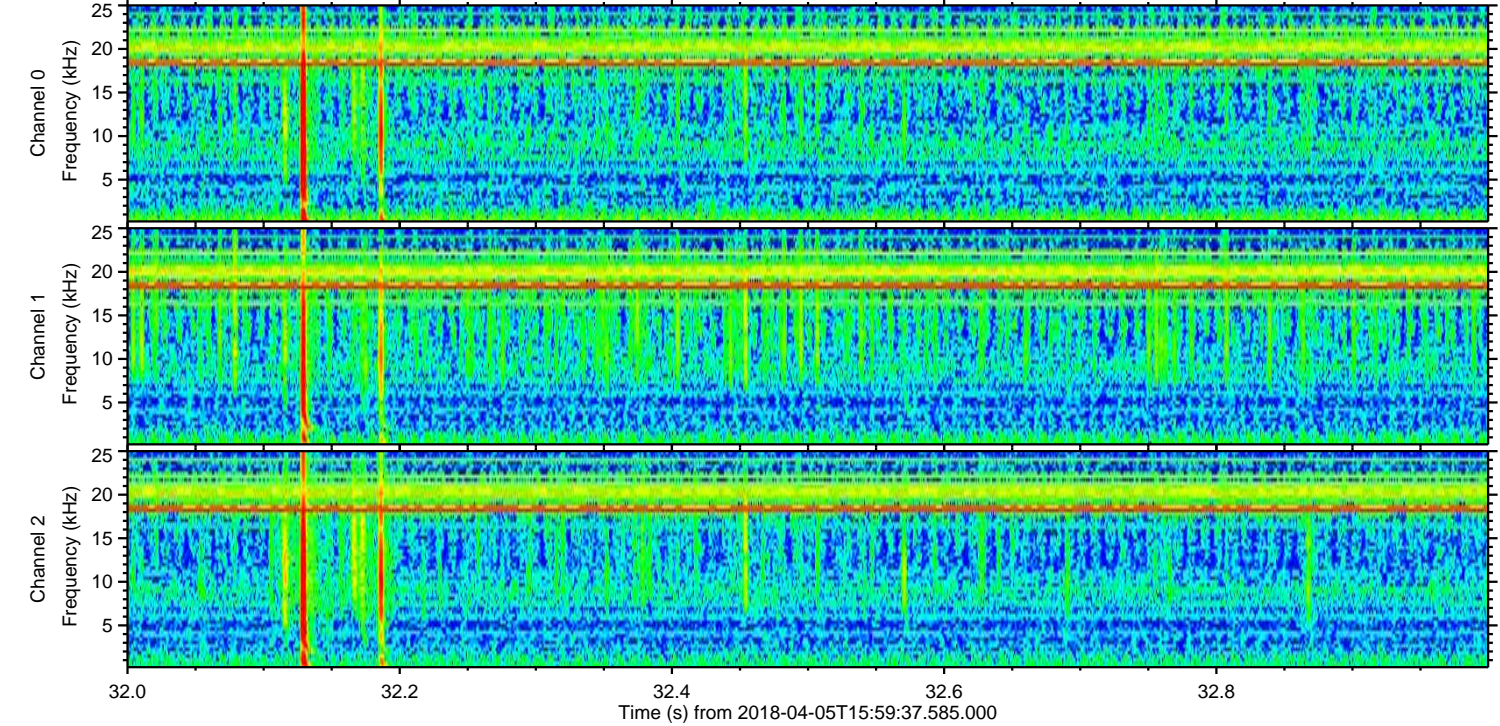
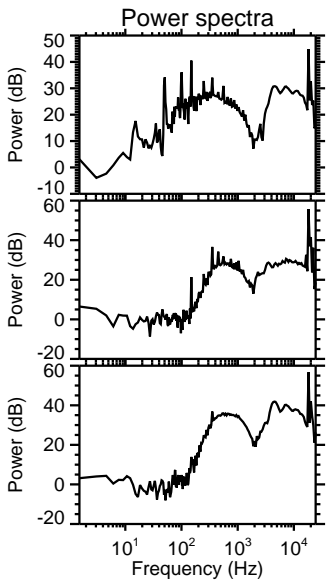
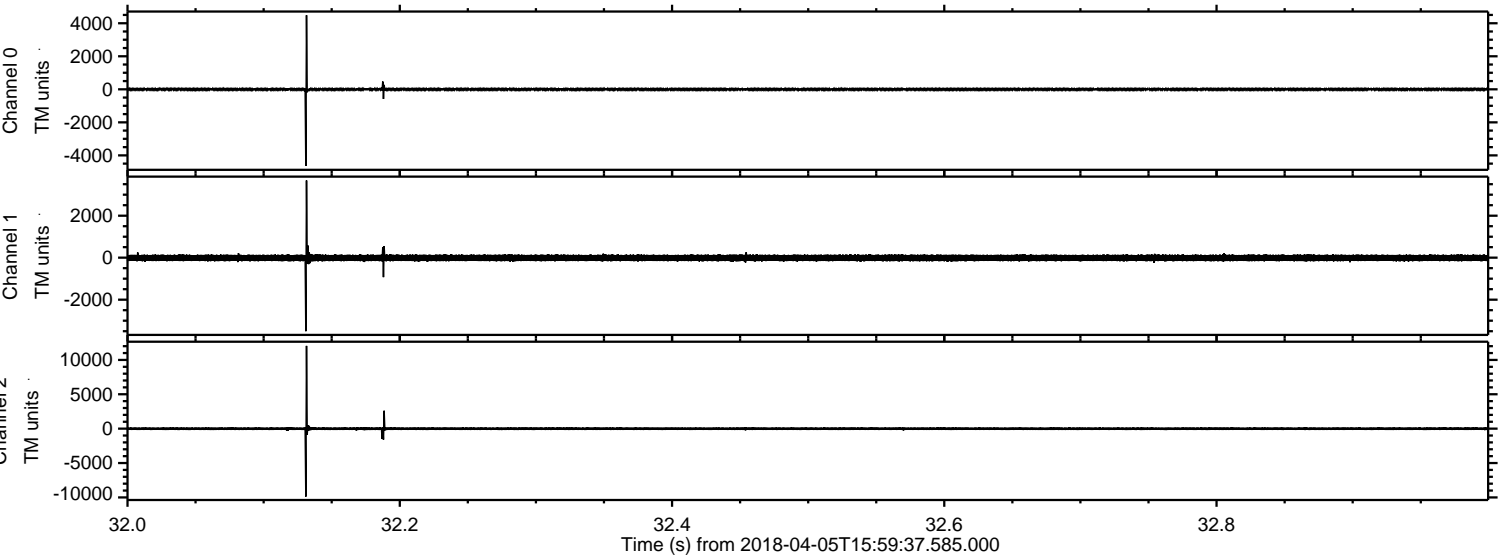
Processed Thu Apr 5 18:07:34 2018 by ELM ver.2012-10-06 from 001__elm20180405_155936__dat00.bin



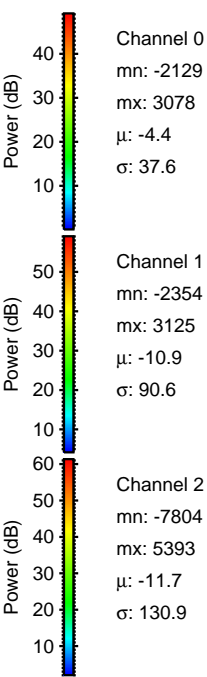
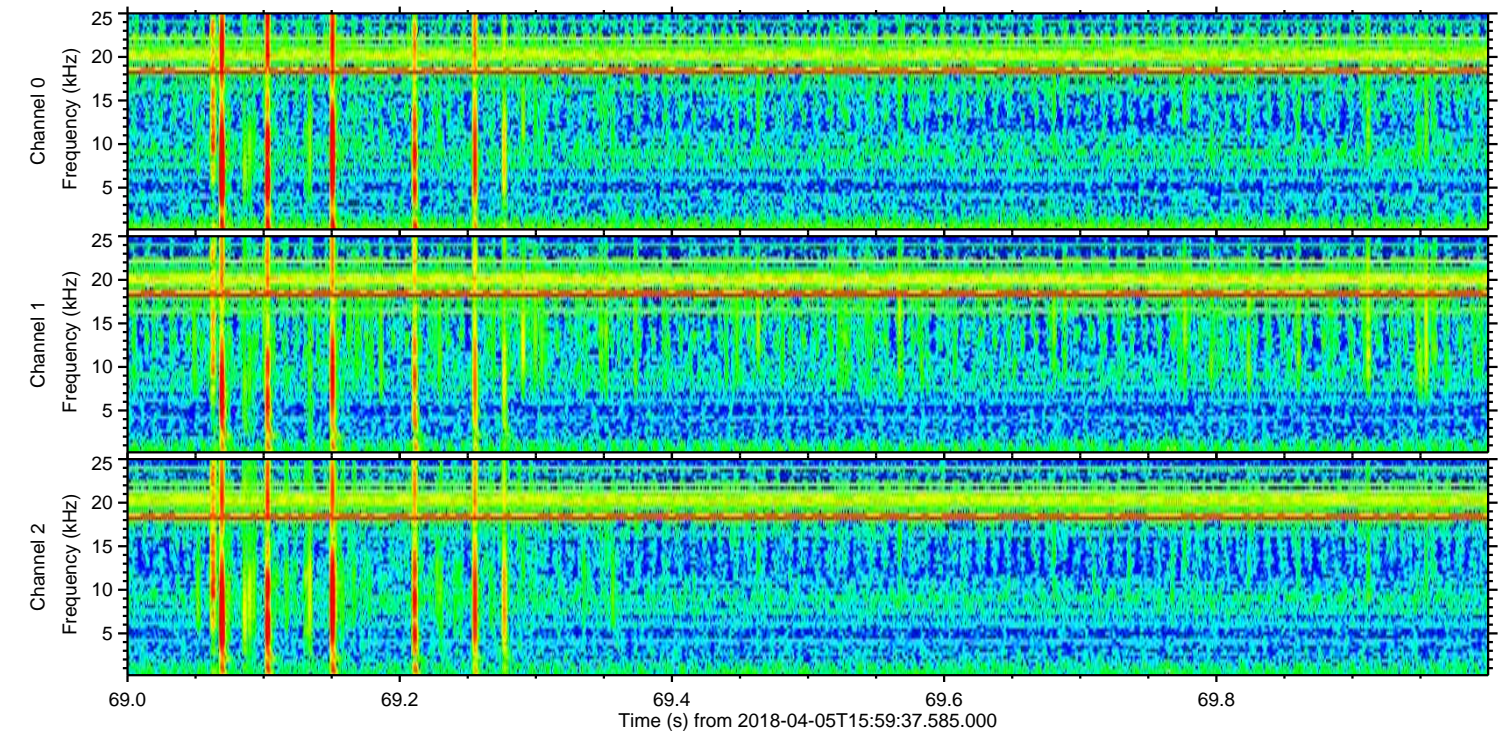
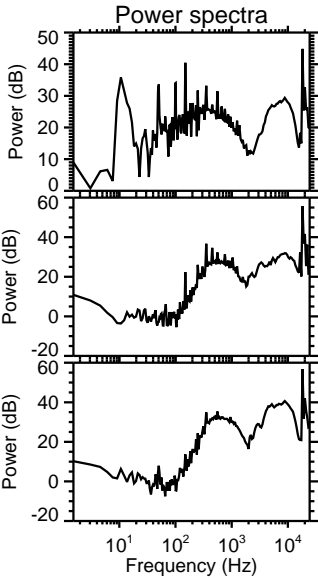
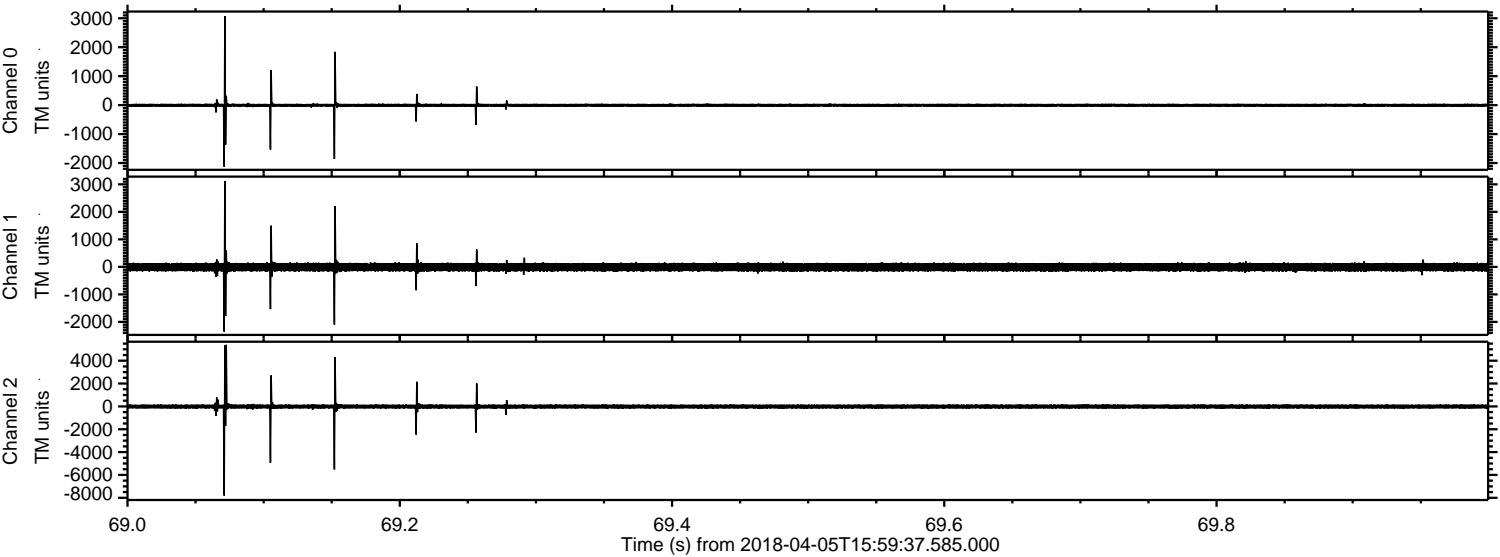
Processed Thu Apr 5 18:07:43 2018 by ELM ver.2012-10-06 from 001__elm20180405_155936__dat00.bin



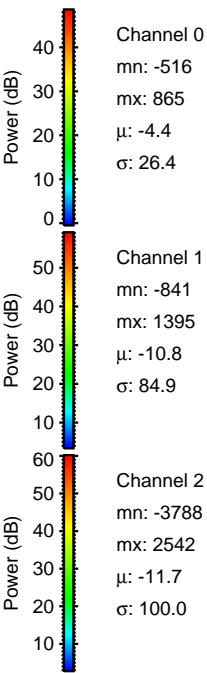
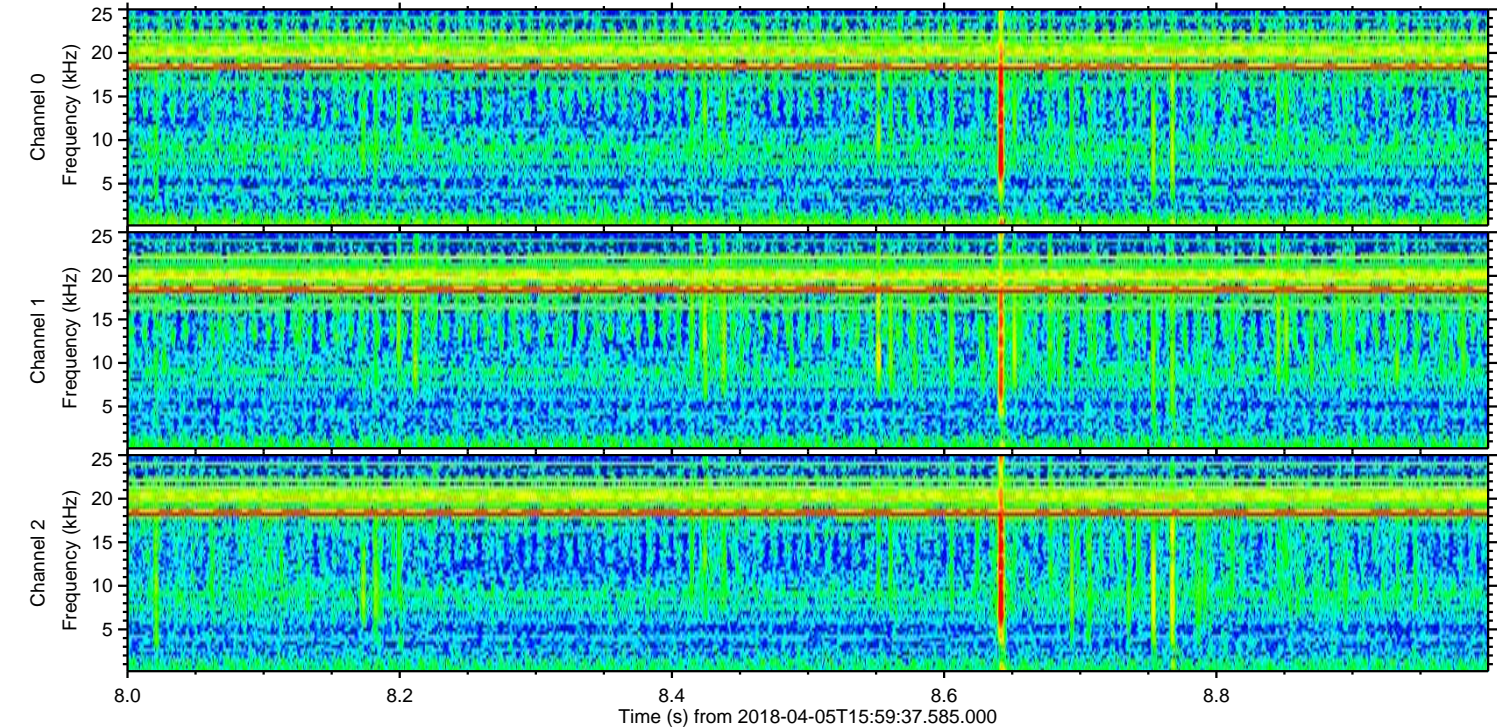
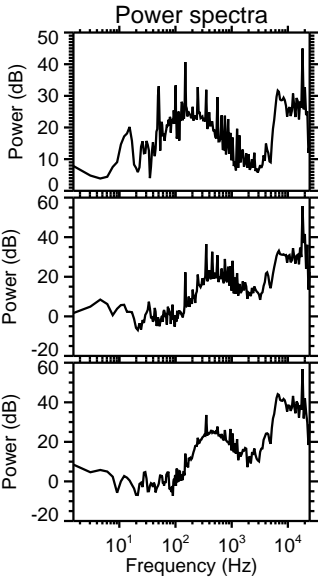
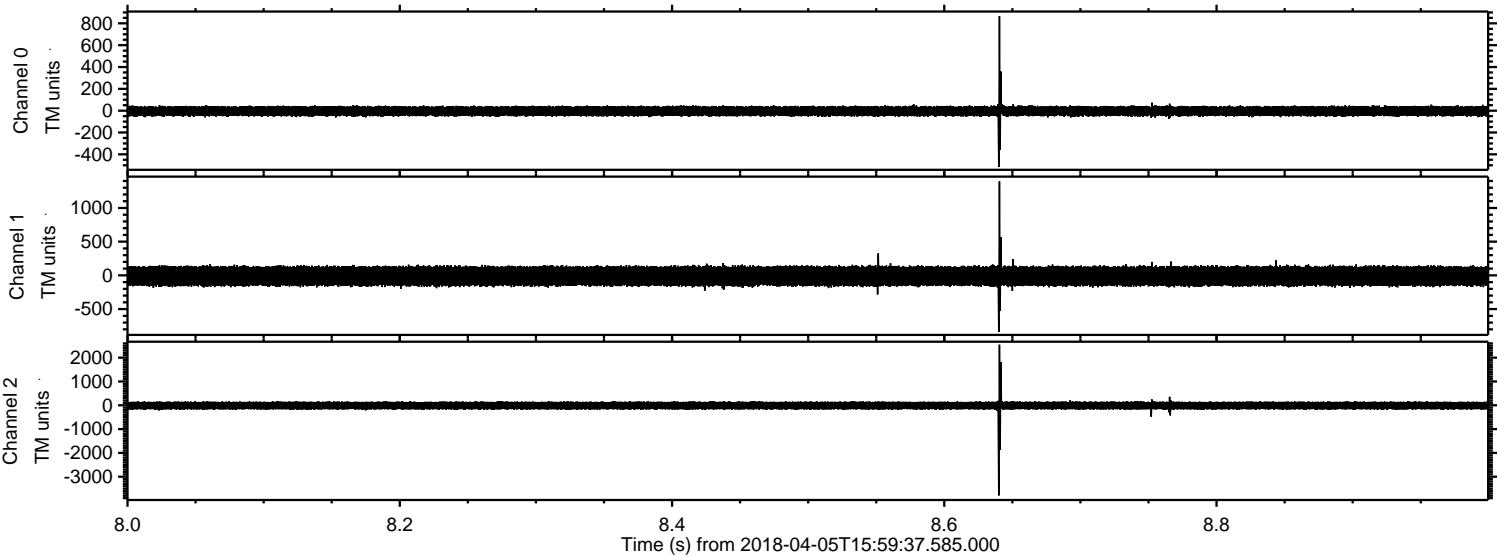
Processed Thu Apr 5 18:07:44 2018 by ELM ver.2012-10-06 from 001__elm20180405_155936__dat00.bin



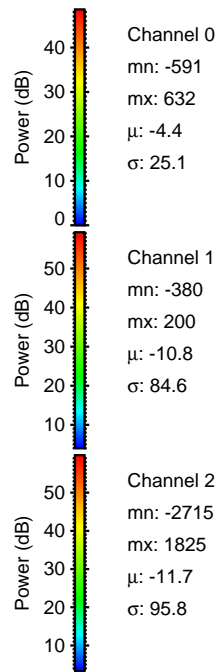
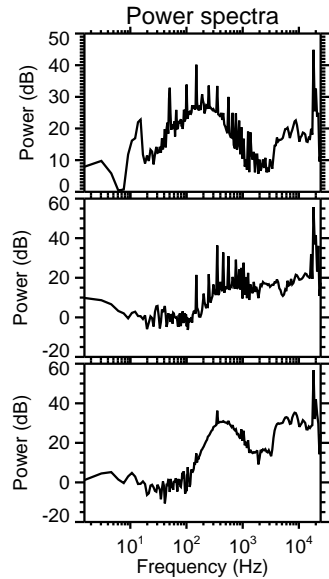
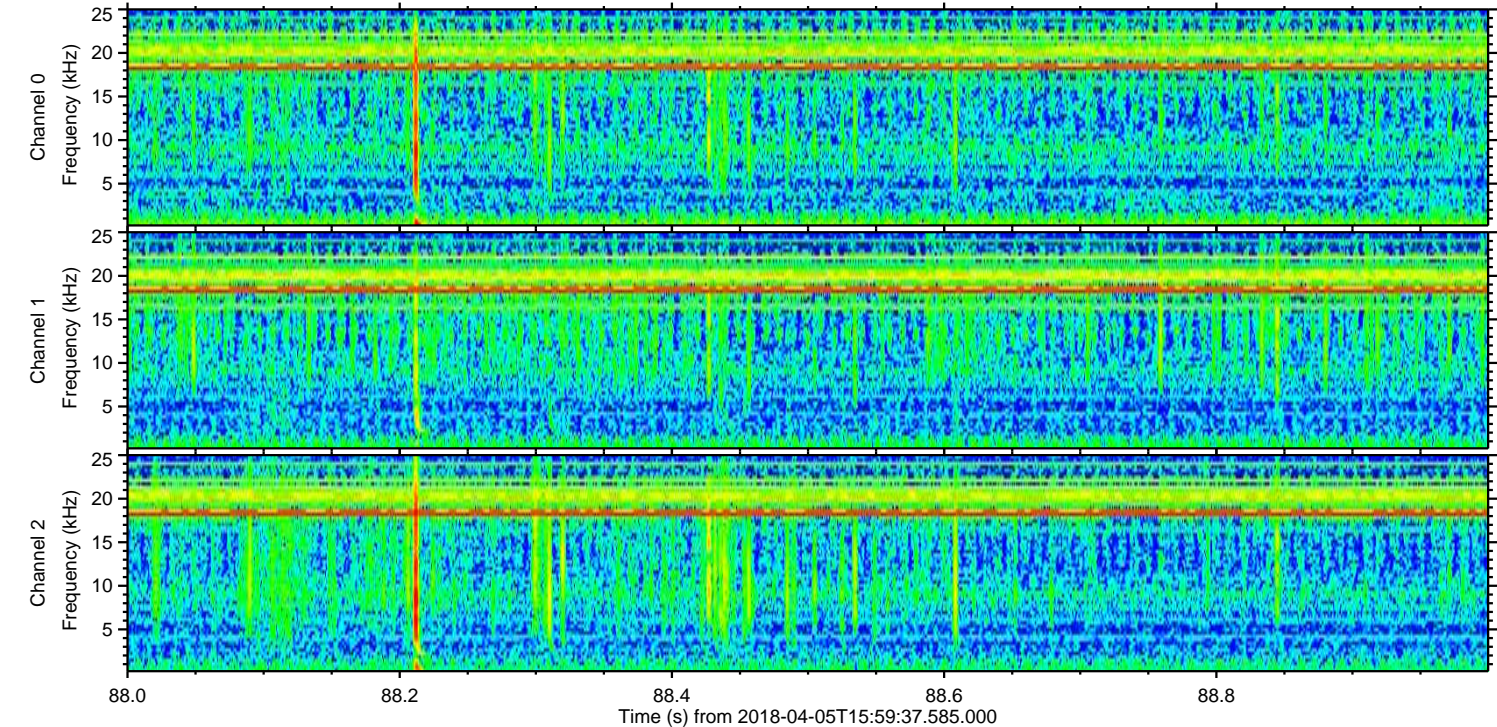
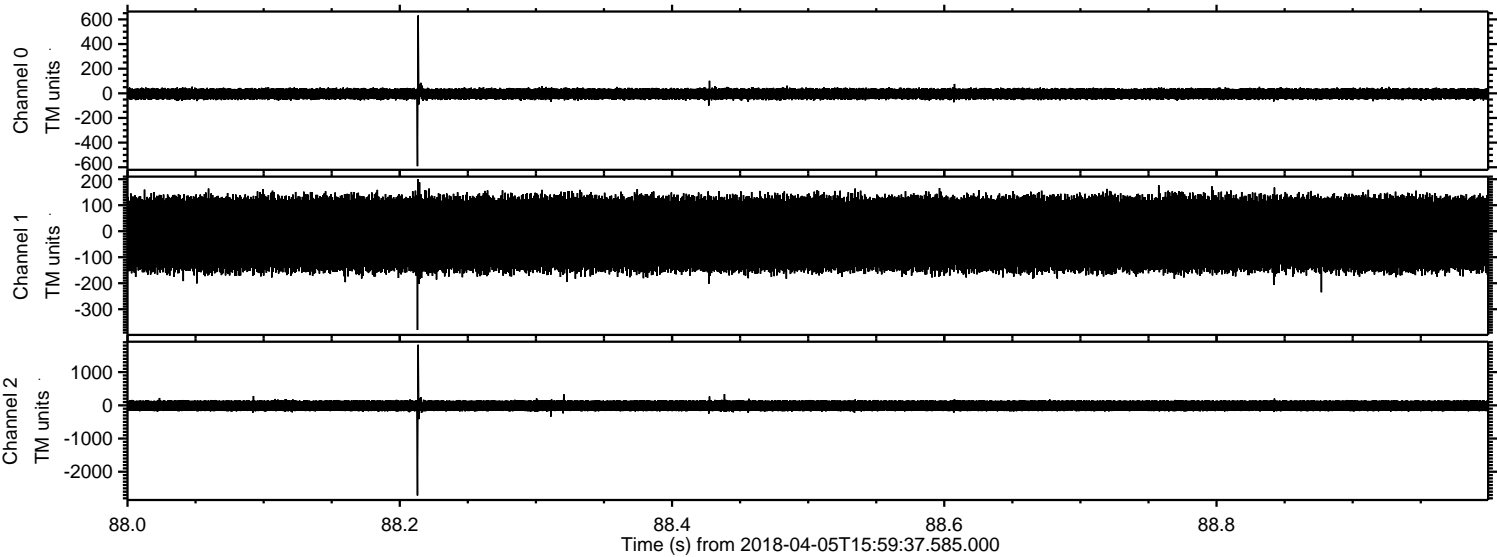
Processed Thu Apr 5 18:07:45 2018 by ELM ver.2012-10-06 from 001__elm20180405_155936__dat00.bin



Processed Thu Apr 5 18:07:46 2018 by ELM ver.2012-10-06 from 001__elm20180405_155936__dat00.bin



Processed Thu Apr 5 18:07:47 2018 by ELM ver.2012-10-06 from 001__elm20180405_155936__dat00.bin

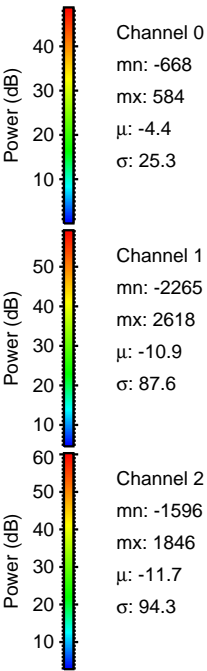
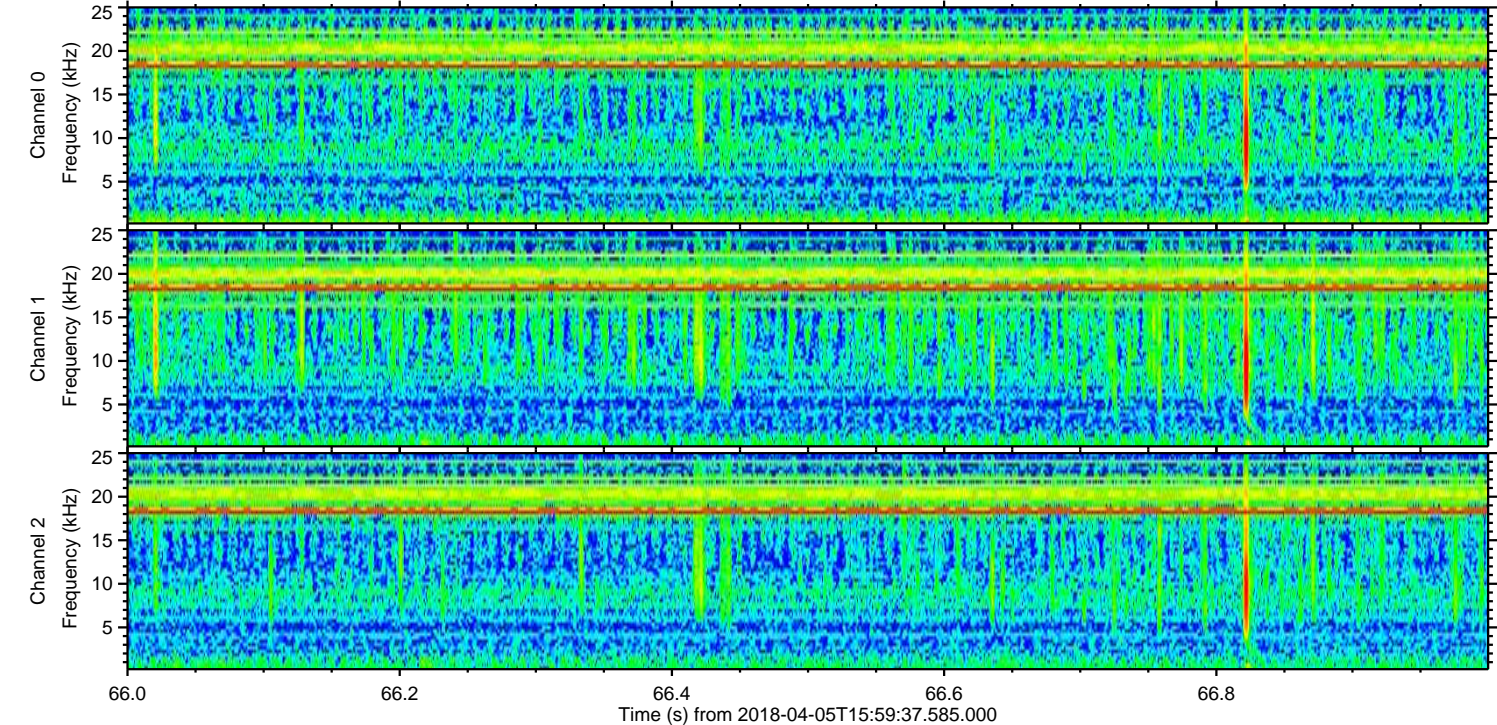
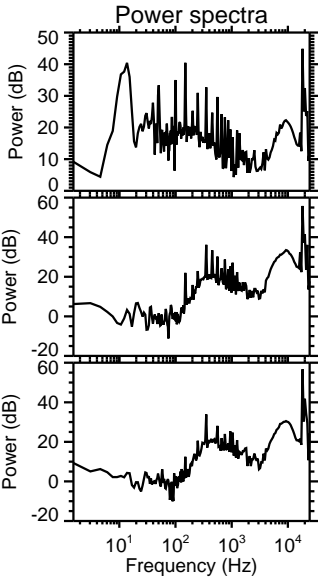
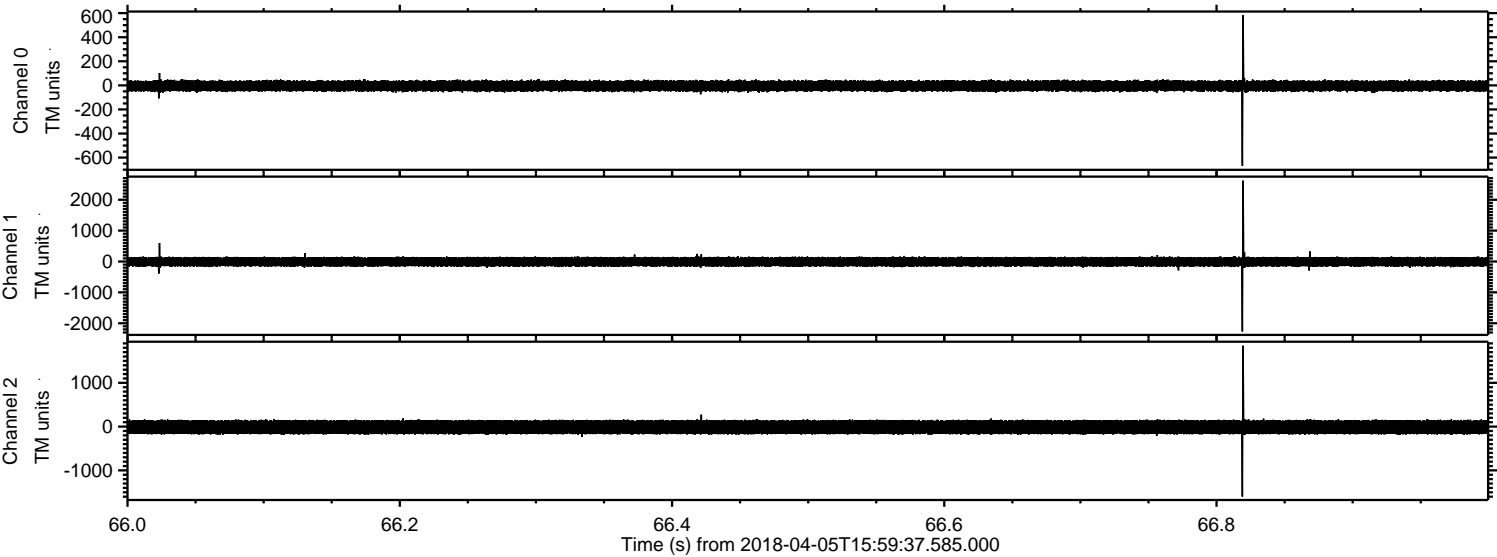


Channel 0
mn: -591
mx: 632
 μ : -4.4
 σ : 25.1

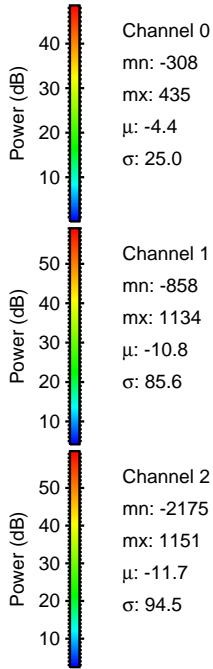
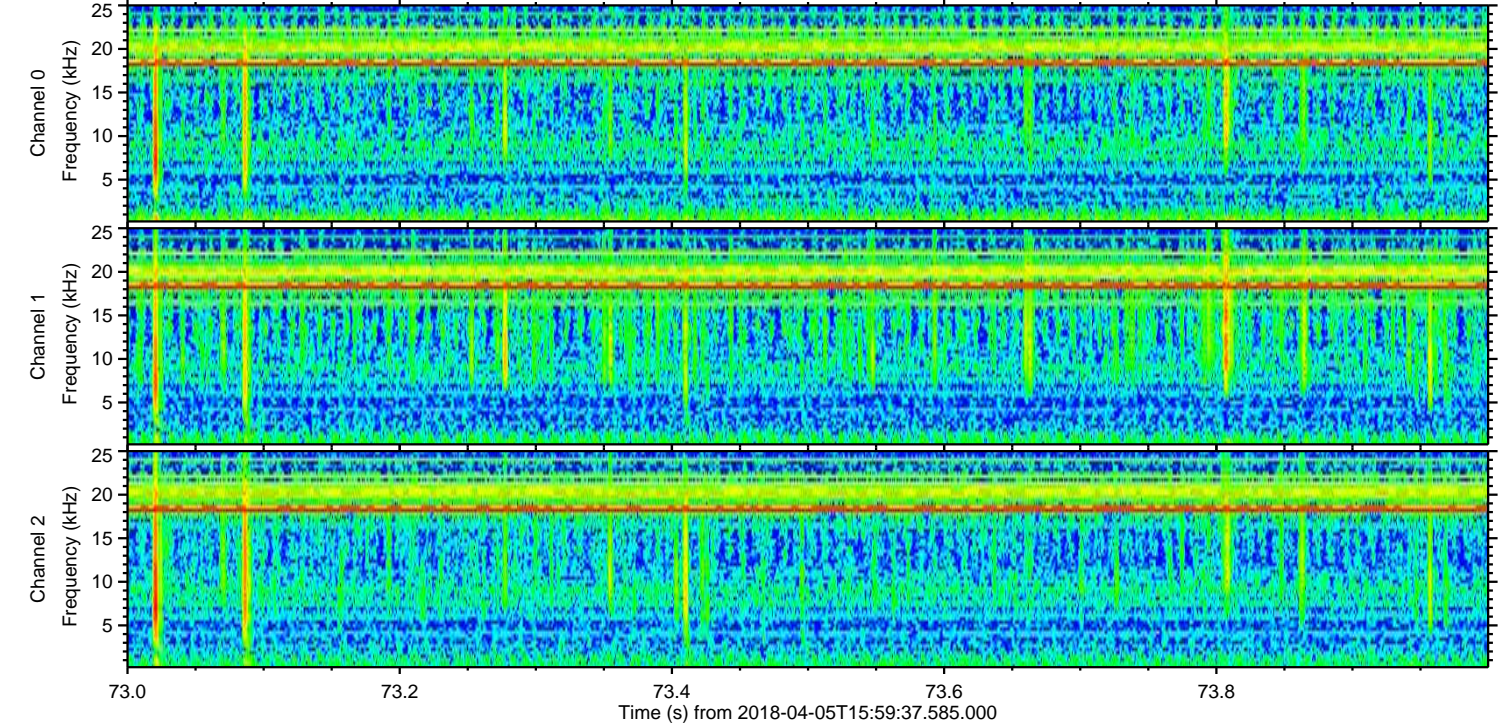
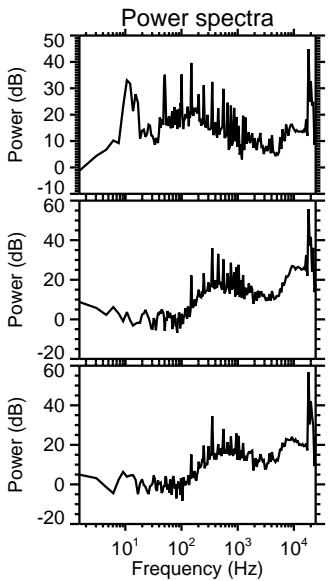
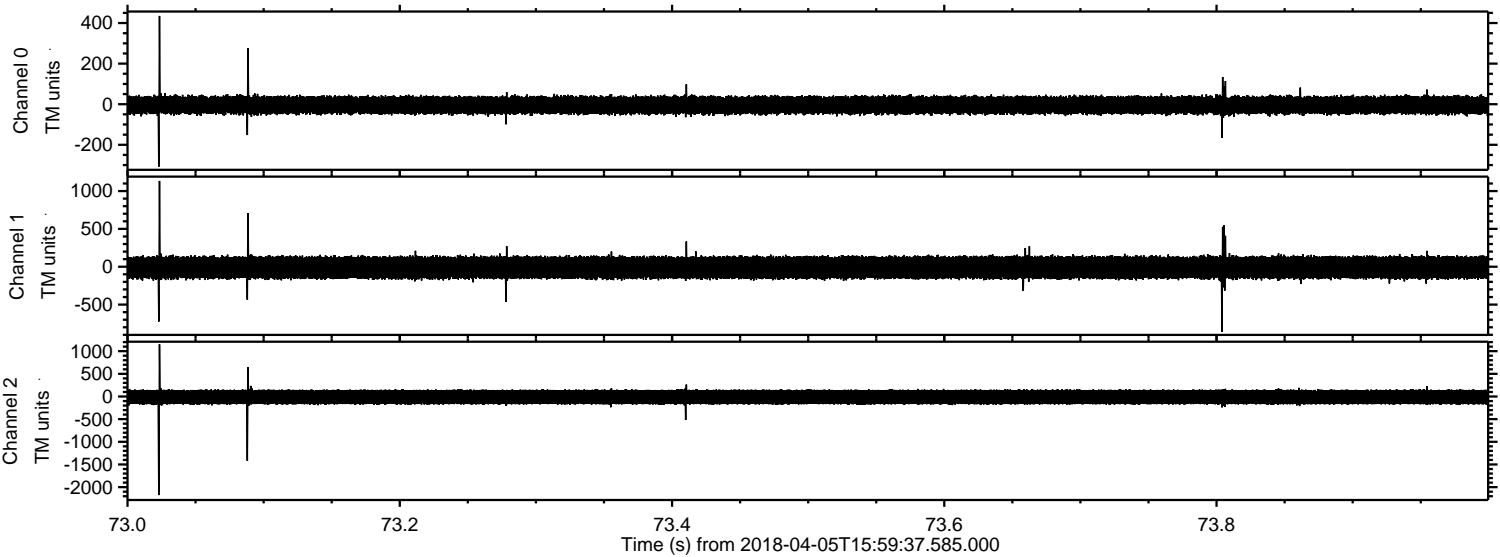
Channel 1
mn: -380
mx: 200
 μ : -10.8
 σ : 84.6

Channel 2
mn: -2715
mx: 1825
 μ : -11.7
 σ : 95.8

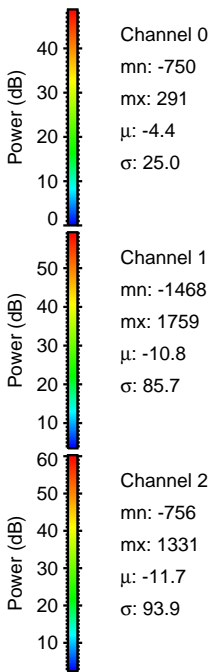
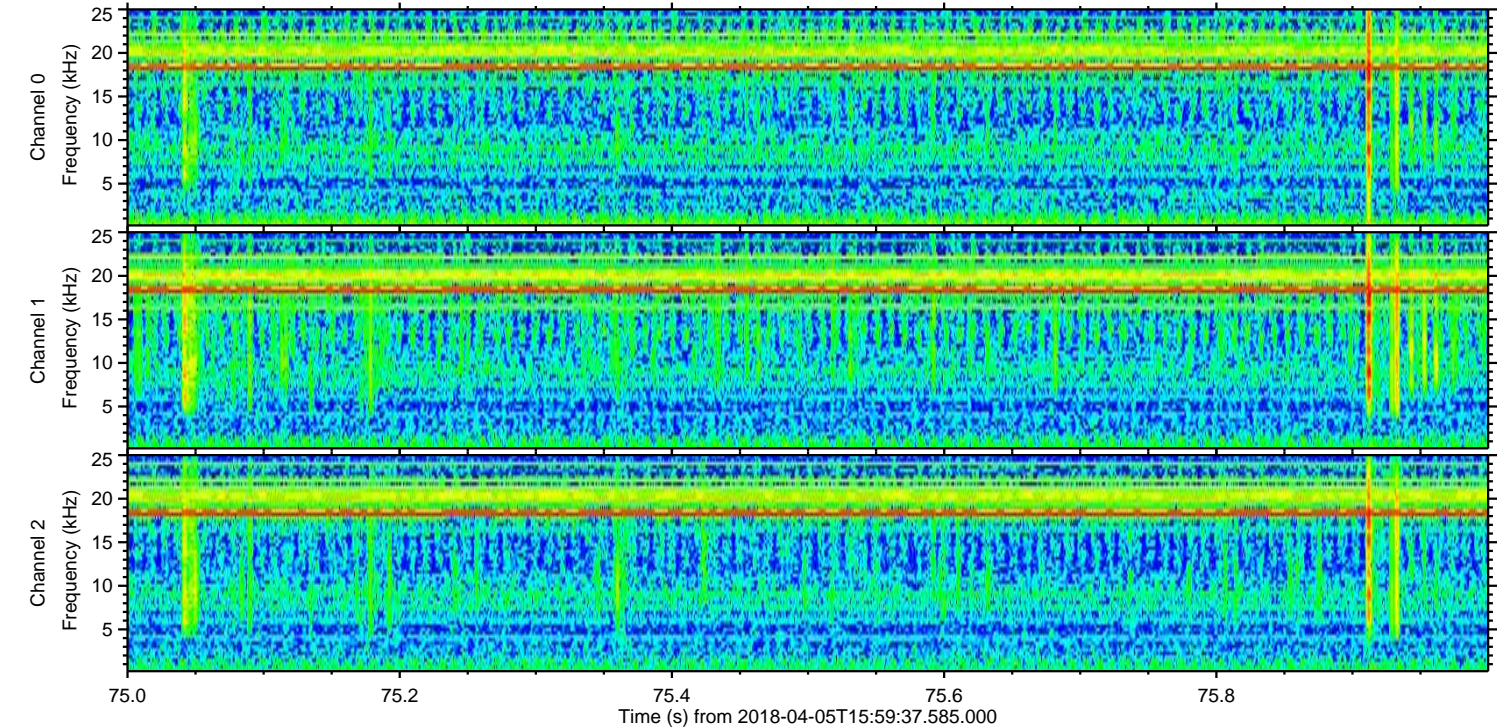
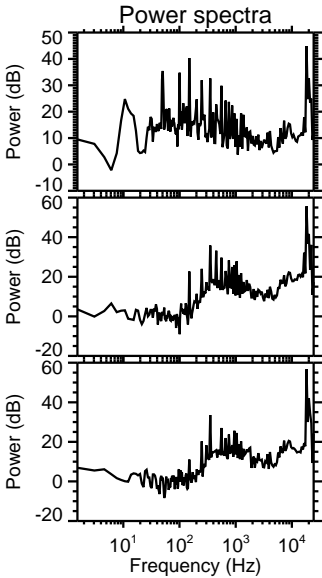
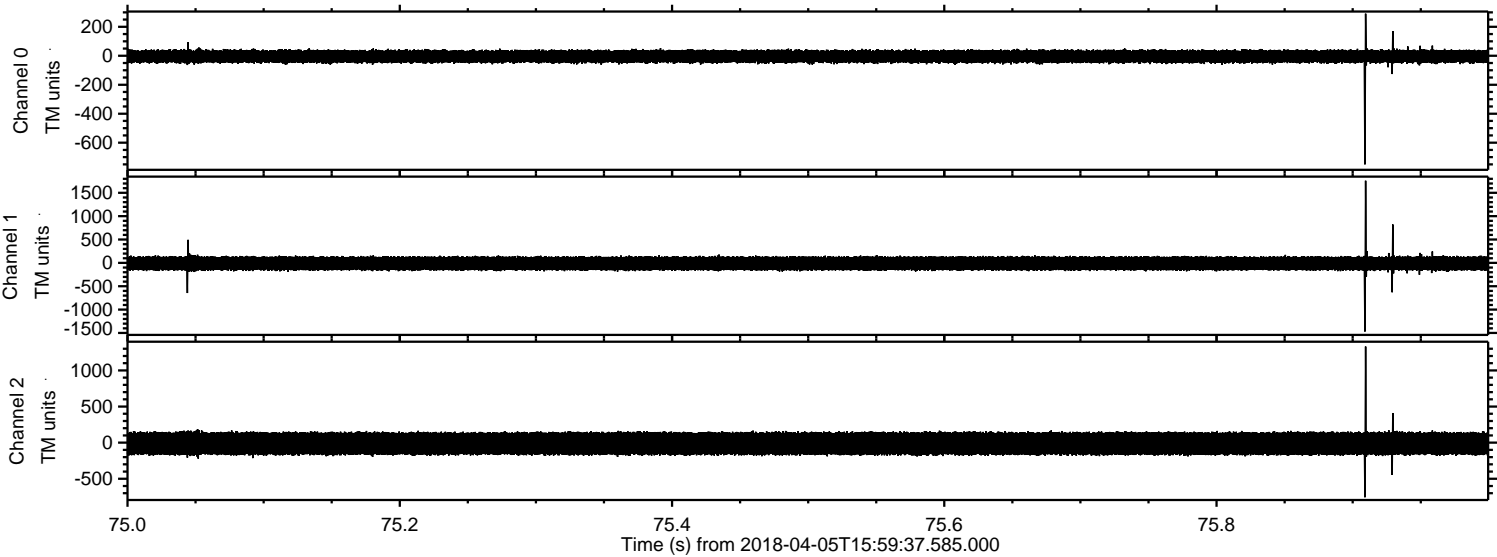
Processed Thu Apr 5 18:07:47 2018 by ELM ver.2012-10-06 from 001__elm20180405_155936__dat00.bin



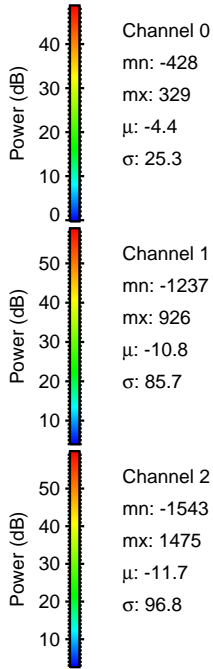
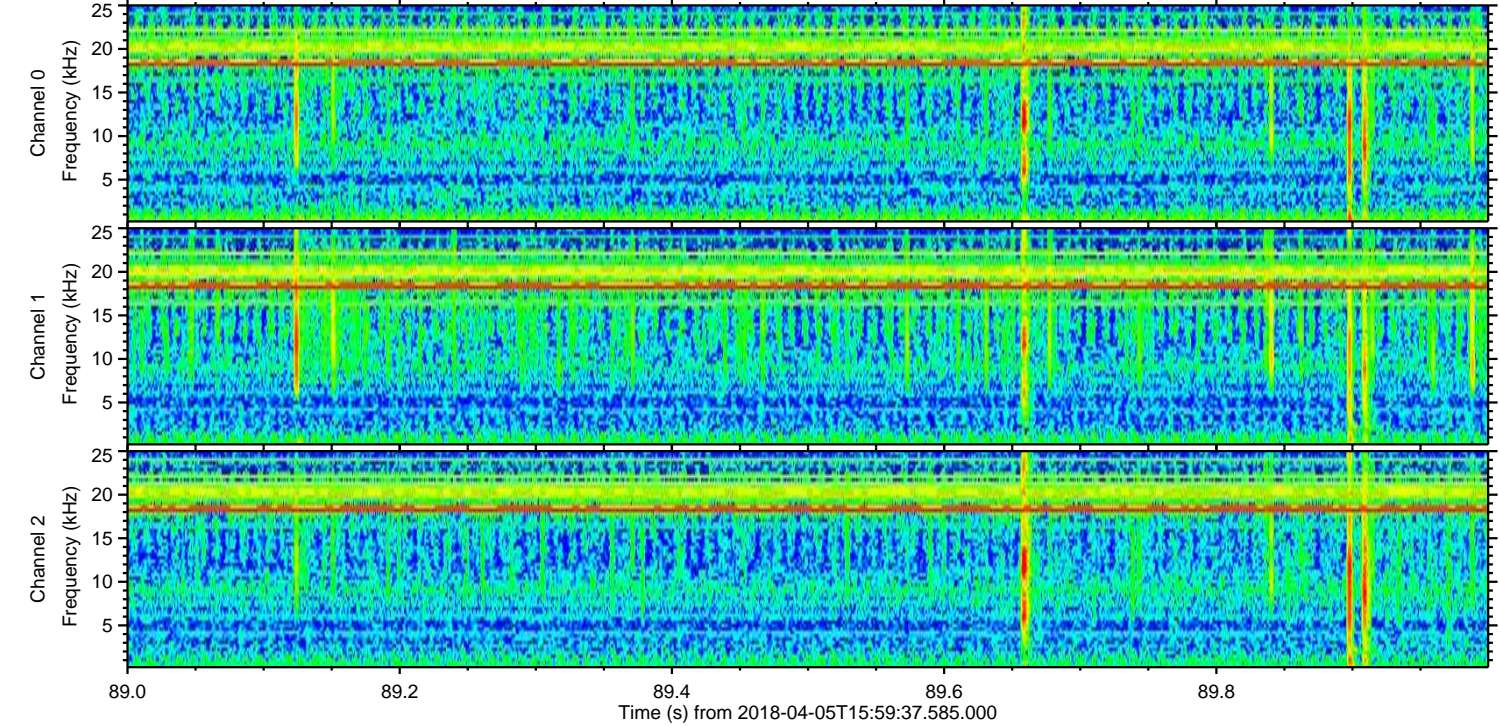
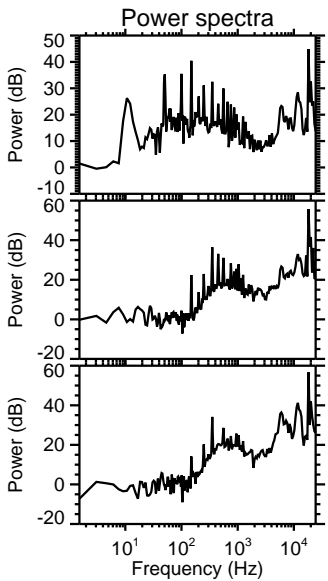
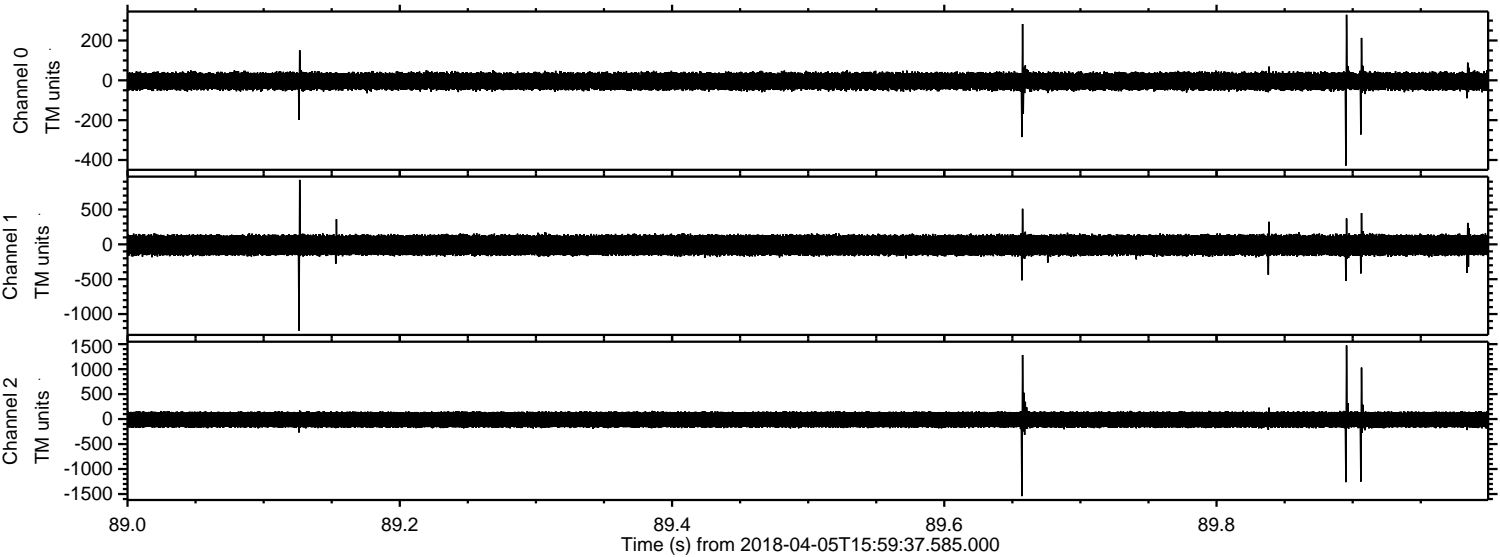
Processed Thu Apr 5 18:07:48 2018 by ELM ver.2012-10-06 from 001__elm20180405_155936__dat00.bin



Processed Thu Apr 5 18:07:49 2018 by ELM ver.2012-10-06 from 001__elm20180405_155936__dat00.bin



Processed Thu Apr 5 18:07:50 2018 by ELM ver.2012-10-06 from 001__elm20180405_155936__dat00.bin



ELMAVAN 3D WAVEFORMS (Measured data sampled at 50 kHz) 50999 packets of 144 samples from 2018-04-05T15:59:37.585.000. Part 135/147

