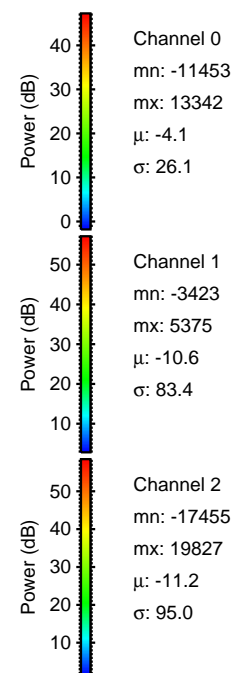
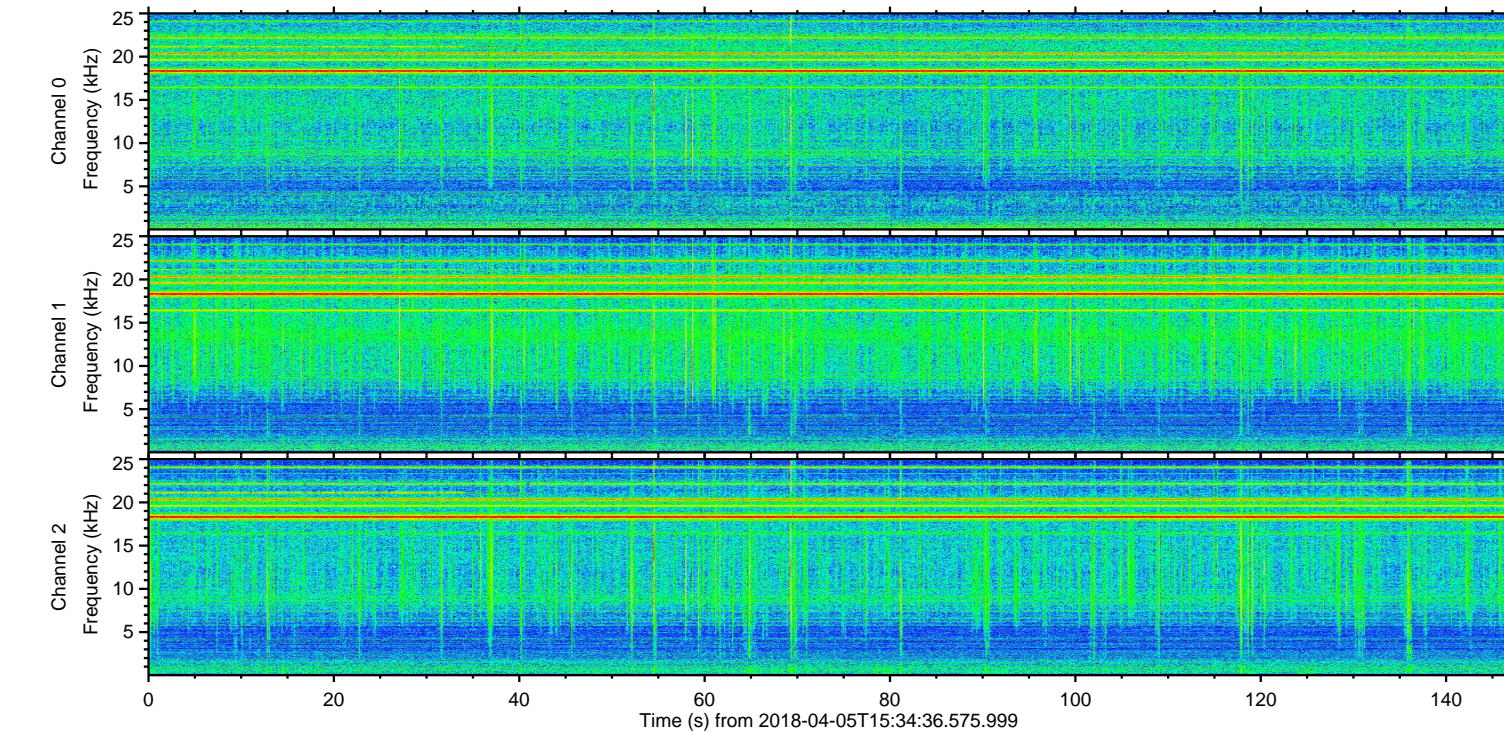
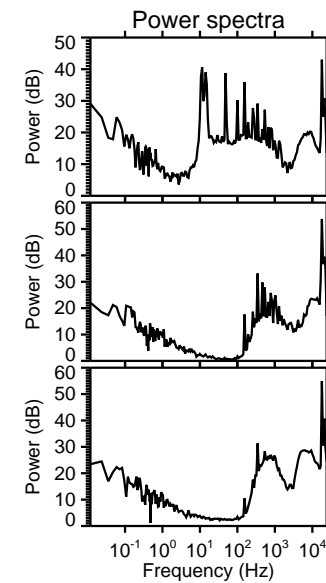
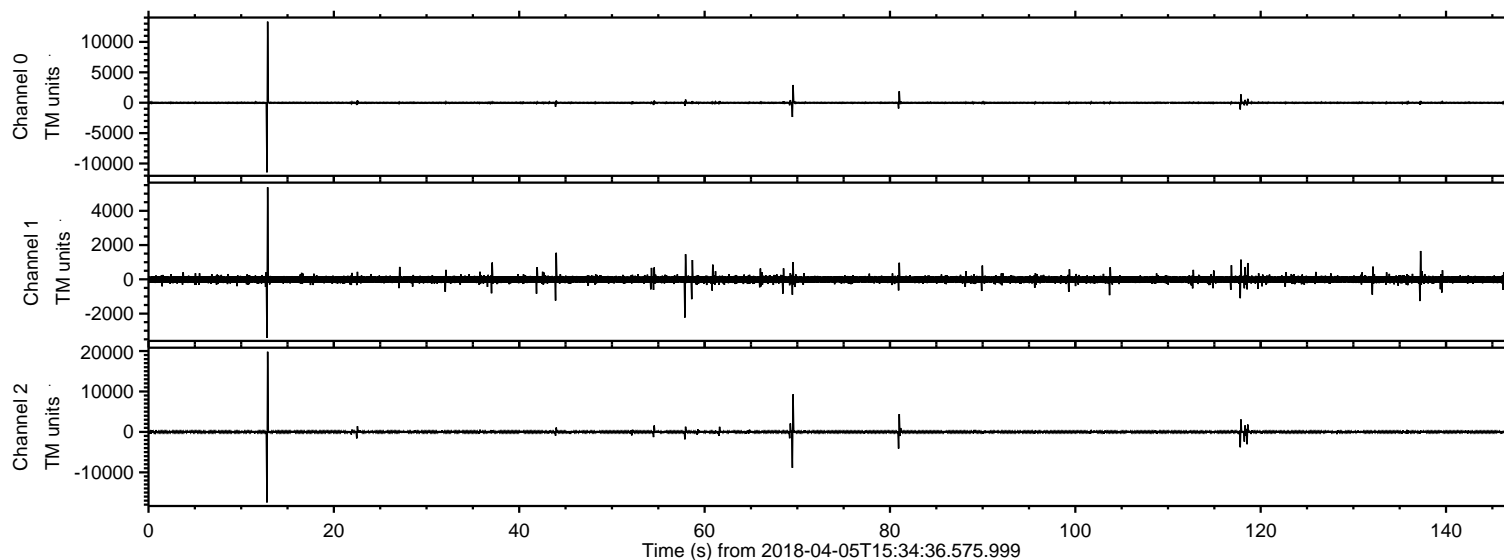
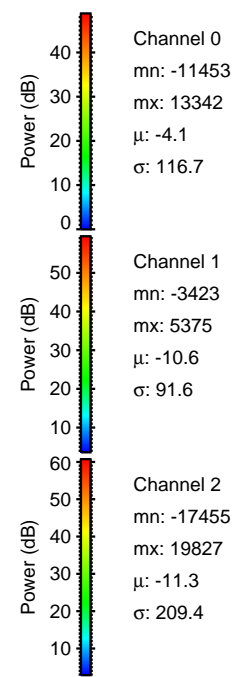
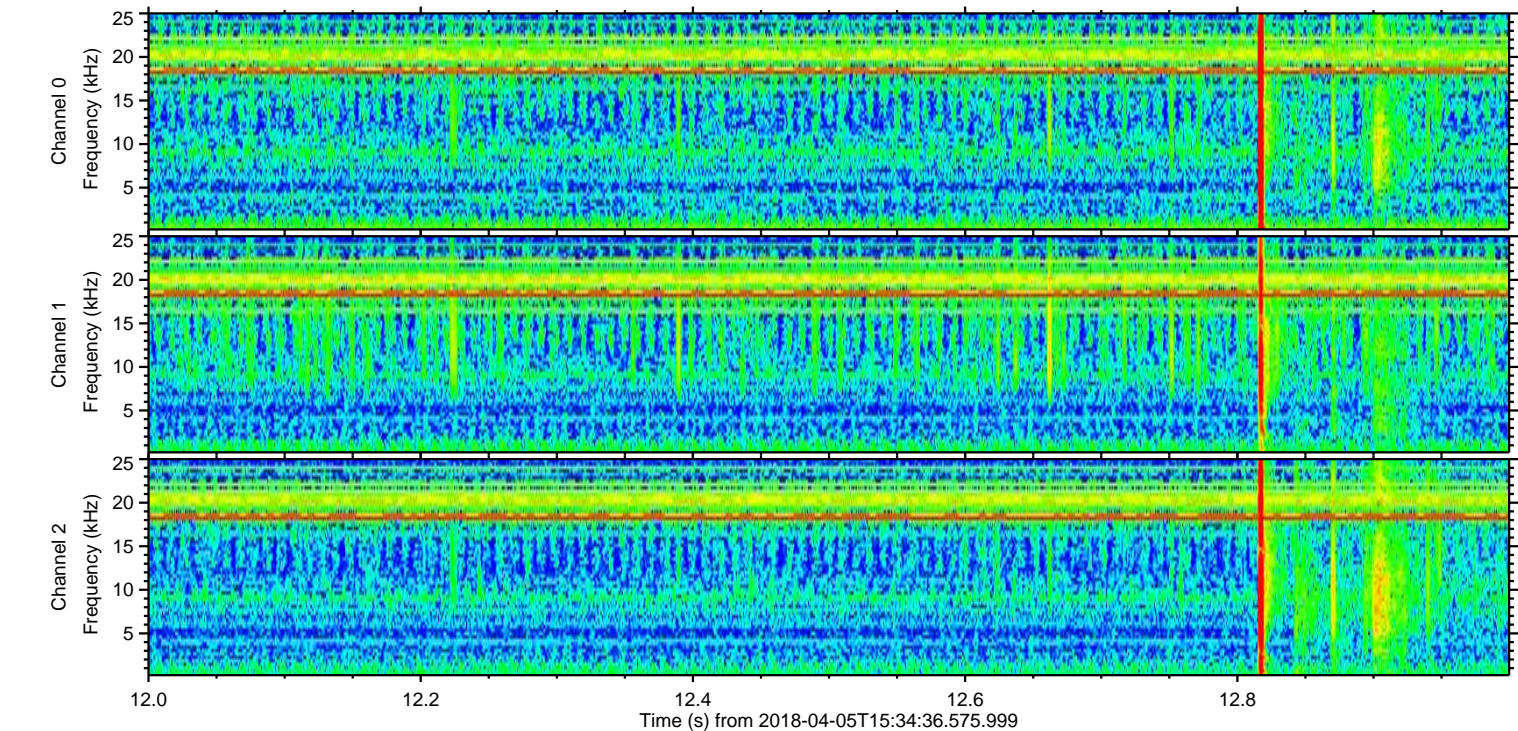
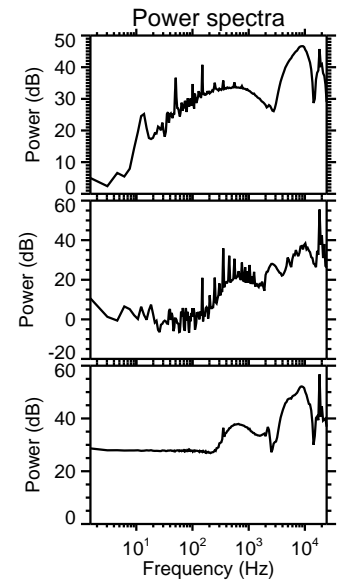
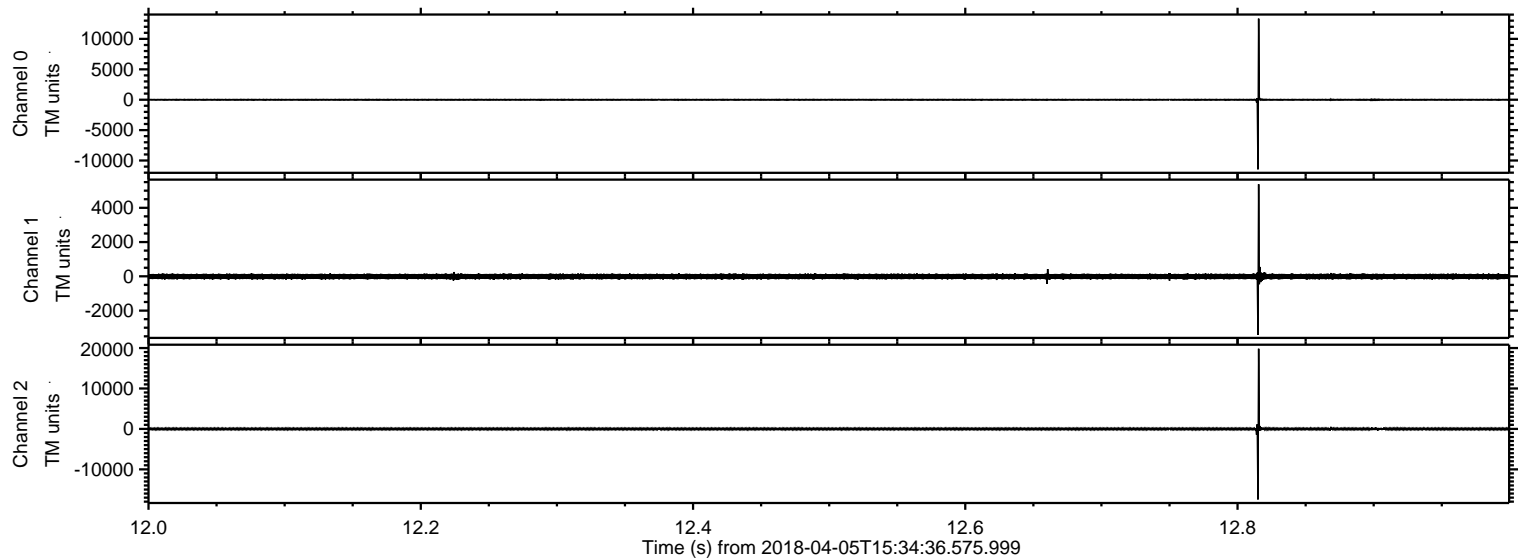


# ELMAVAN 3D WAVEFORMS (Measured data sampled at 50 kHz) 51000 packets of 144 samples from 2018-04-05T15:34:36.575.999.

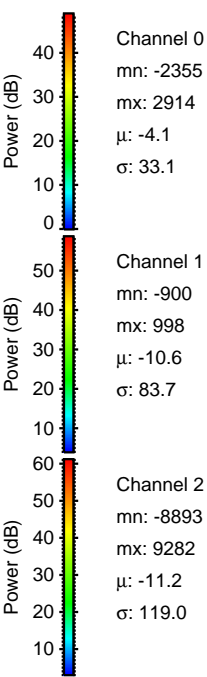
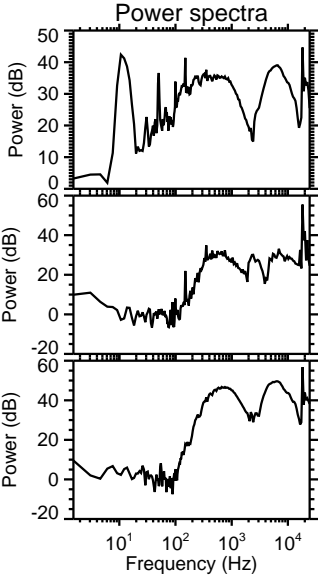
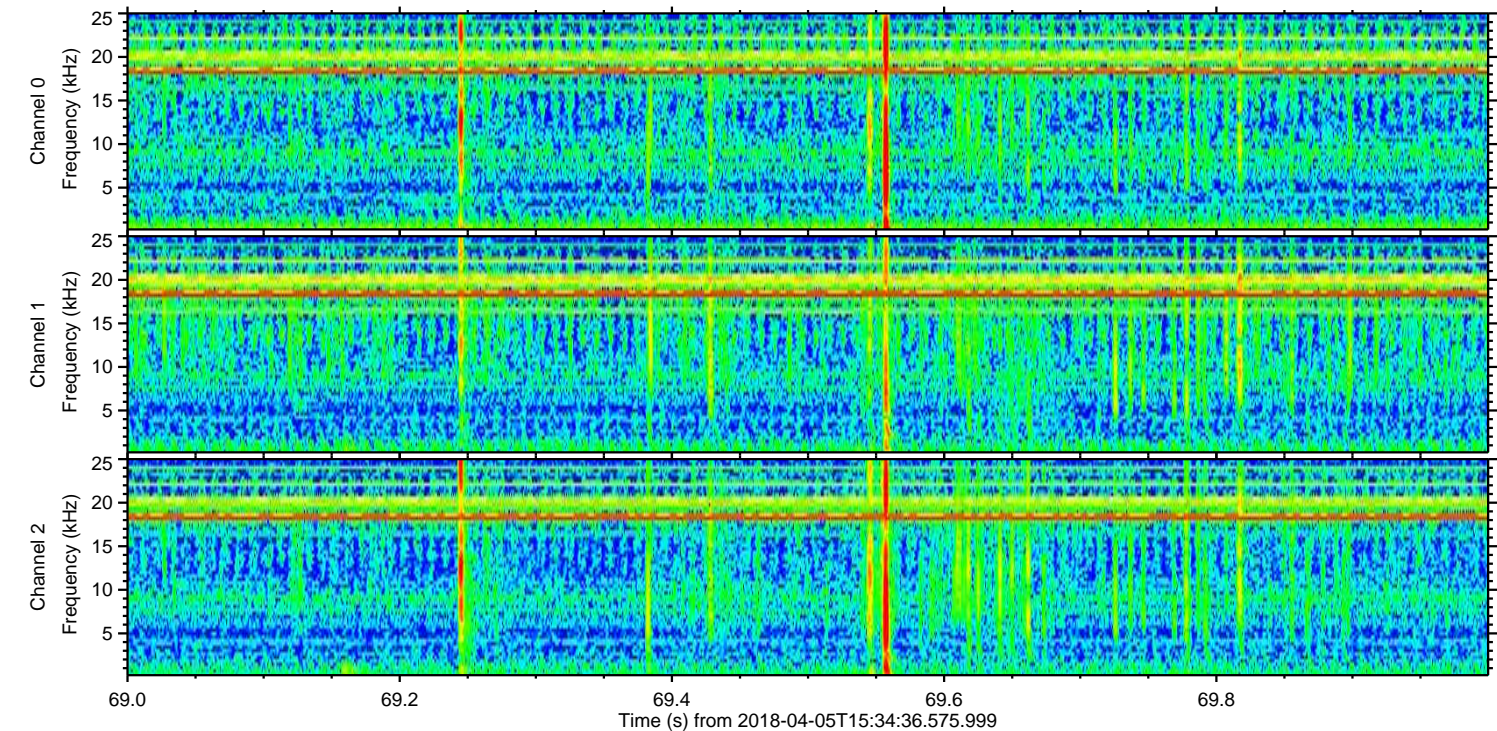
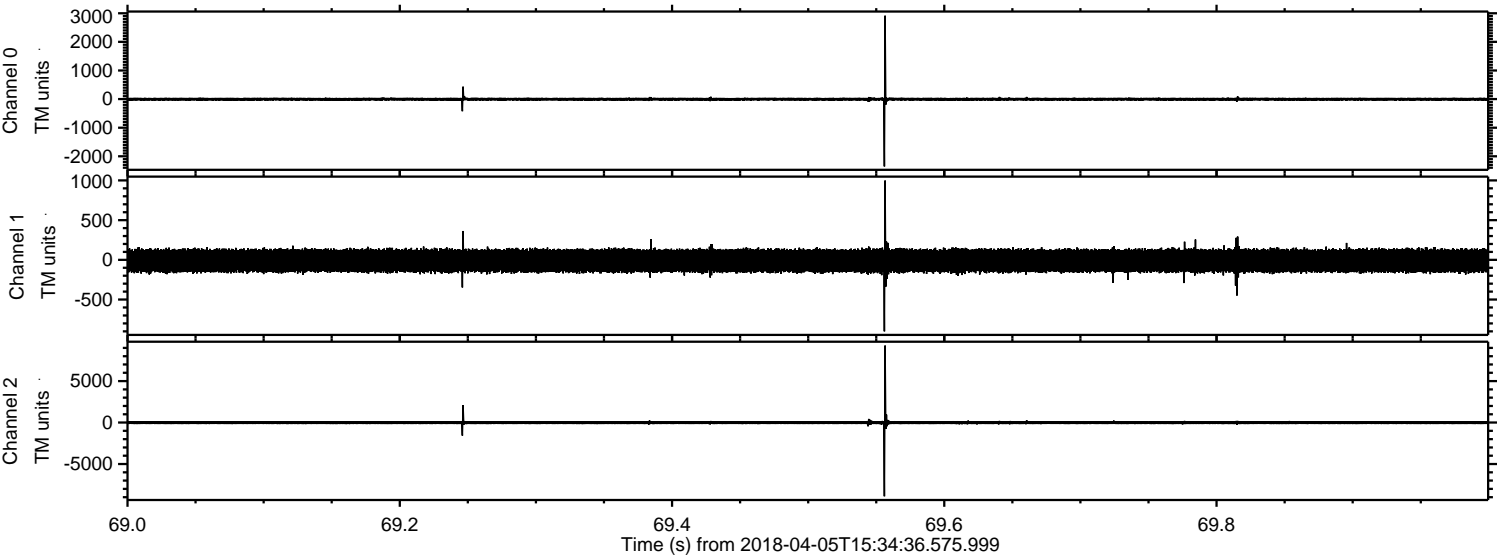
Processed Thu Apr 5 17:42:24 2018 by ELM ver.2012-10-06 from 001\_\_elm20180405\_153435\_\_dat00.bin



Processed Thu Apr 5 17:42:31 2018 by ELM ver.2012-10-06 from 001\_\_elm20180405\_153435\_\_dat00.bin



Processed Thu Apr 5 17:42:32 2018 by ELM ver.2012-10-06 from 001\_\_elm20180405\_153435\_\_dat00.bin

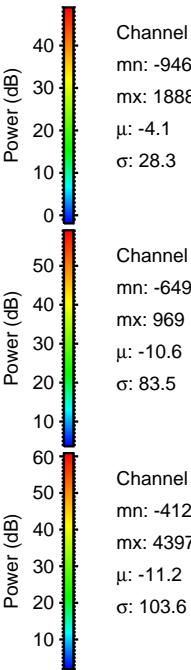
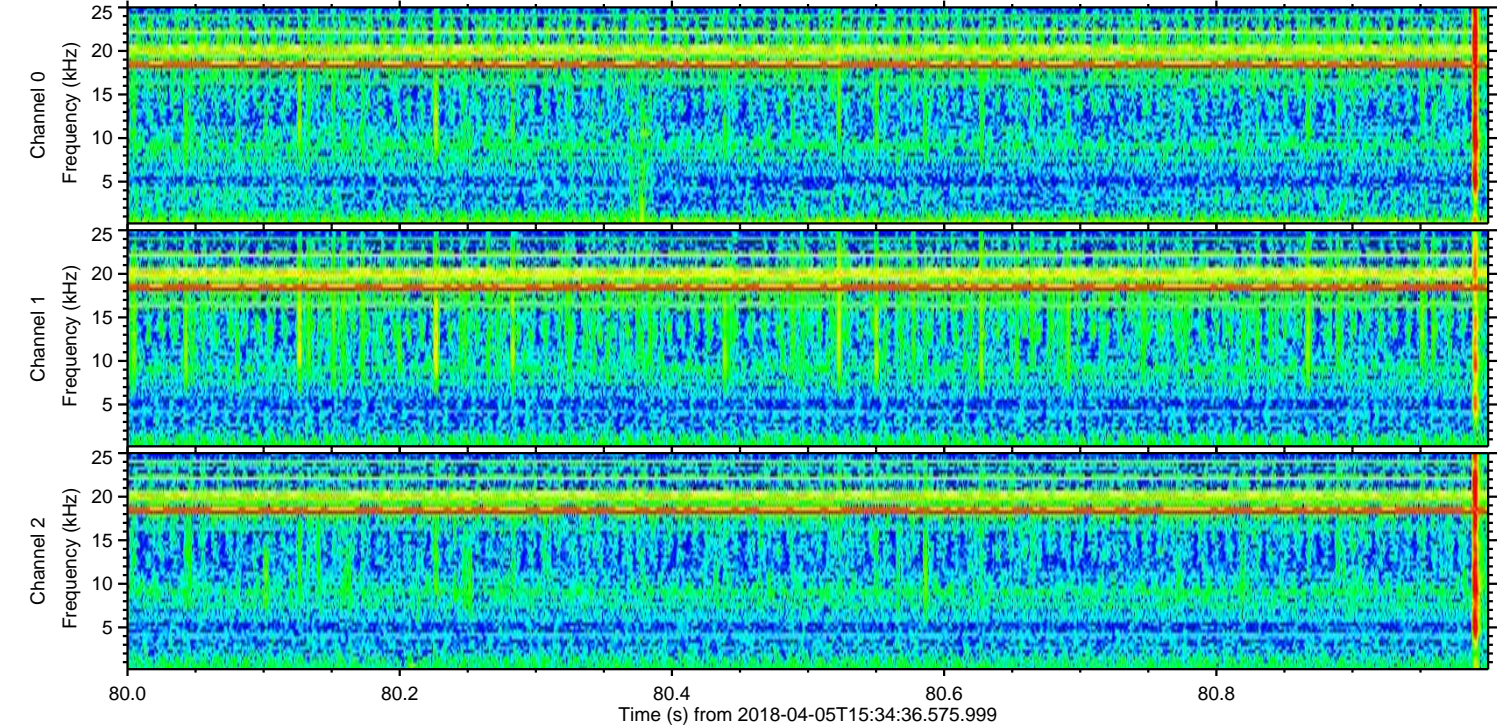
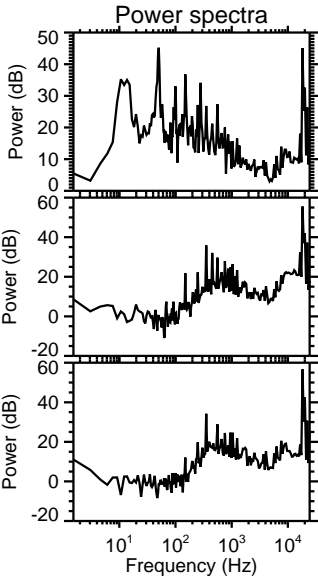
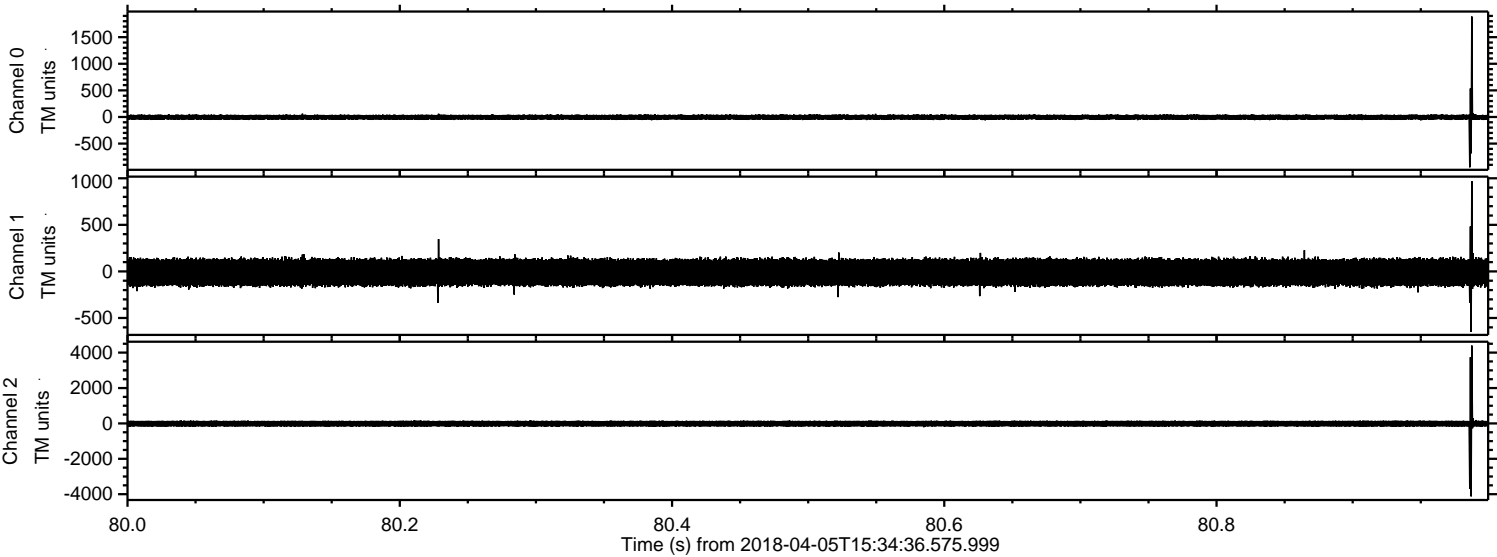


Channel 0  
mn: -2355  
mx: 2914  
 $\mu$ : -4.1  
 $\sigma$ : 33.1

Channel 1  
mn: -900  
mx: 998  
 $\mu$ : -10.6  
 $\sigma$ : 83.7

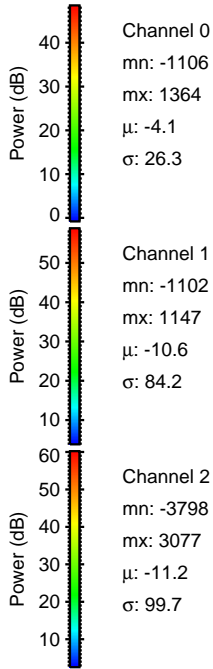
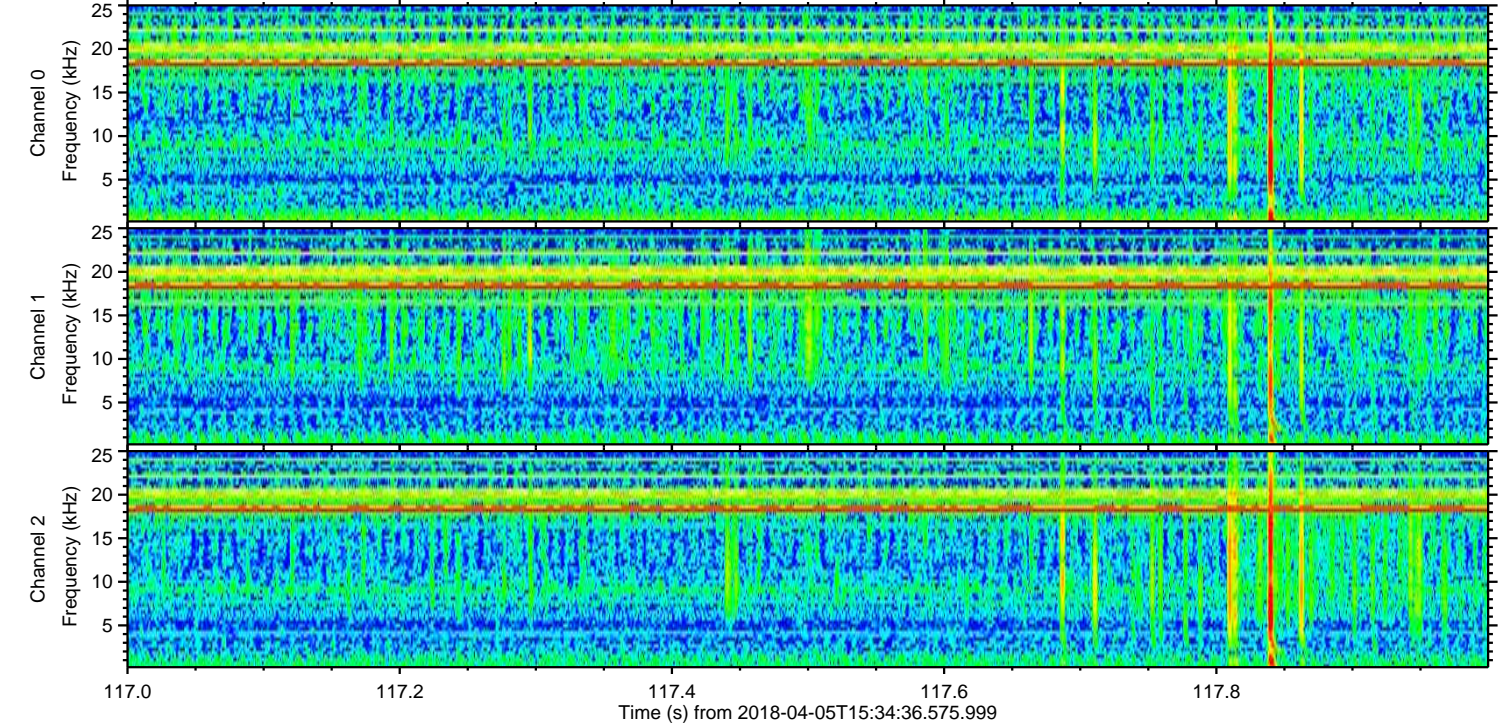
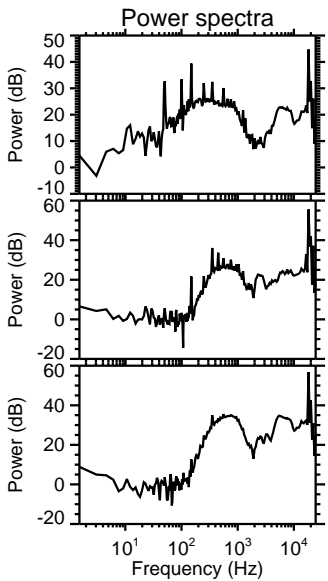
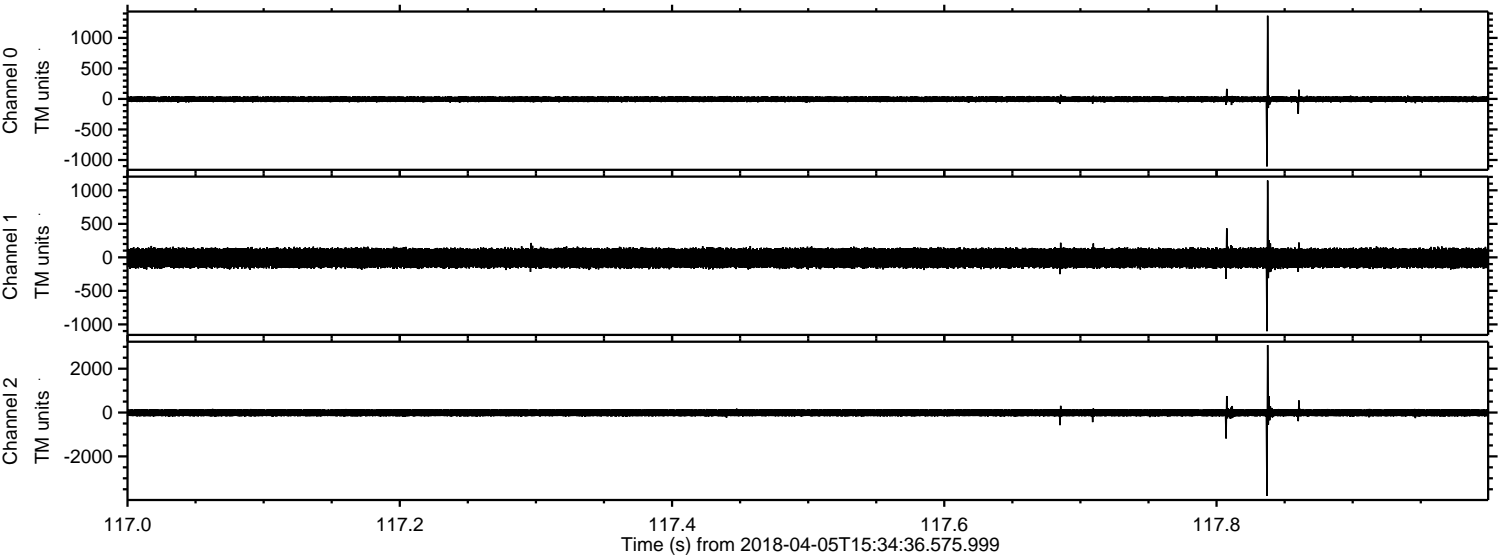
Channel 2  
mn: -8893  
mx: 9282  
 $\mu$ : -11.2  
 $\sigma$ : 119.0

Processed Thu Apr 5 17:42:33 2018 by ELM ver.2012-10-06 from 001\_\_elm20180405\_153435\_\_dat00.bin



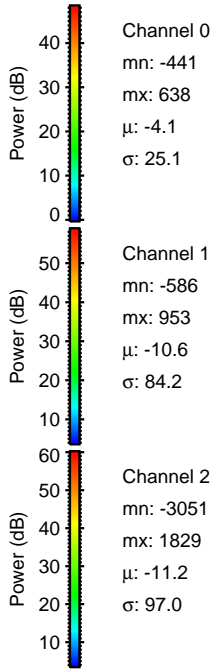
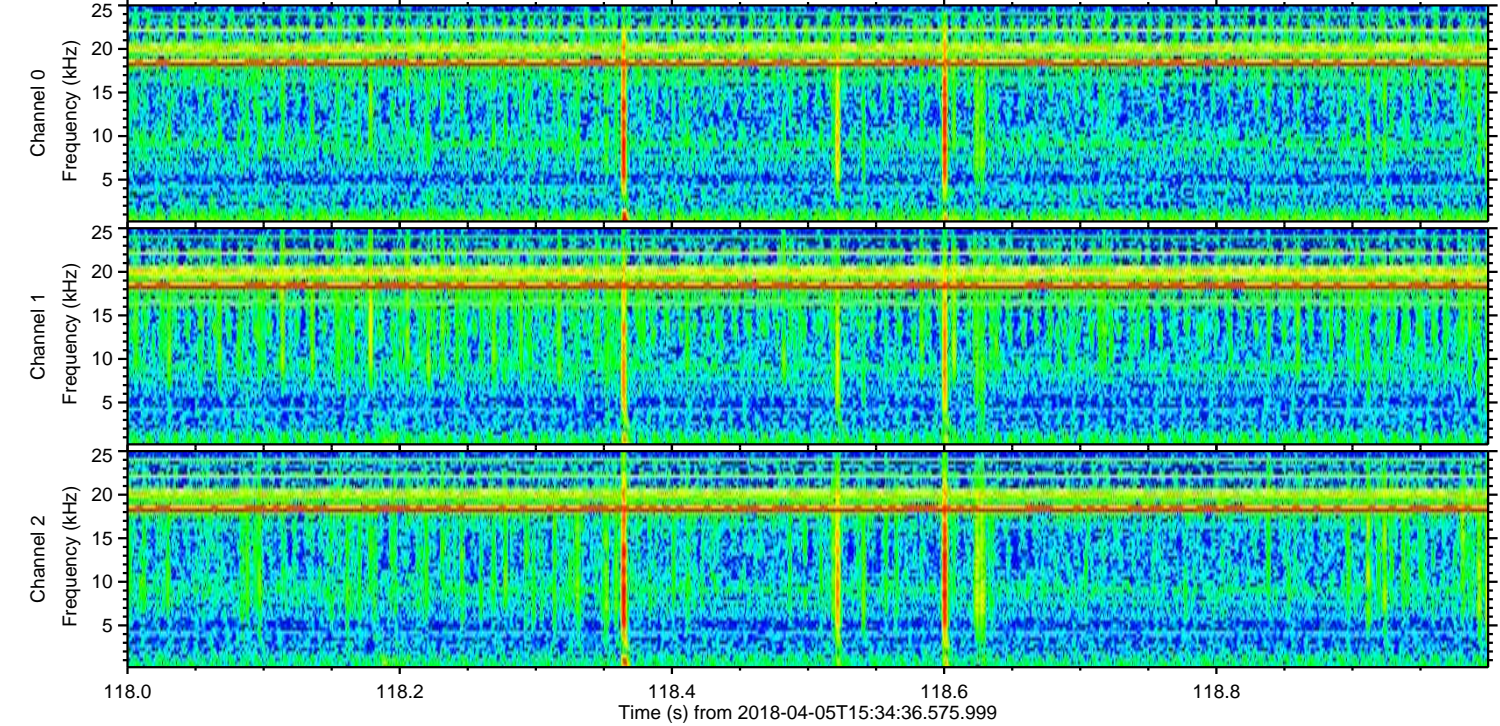
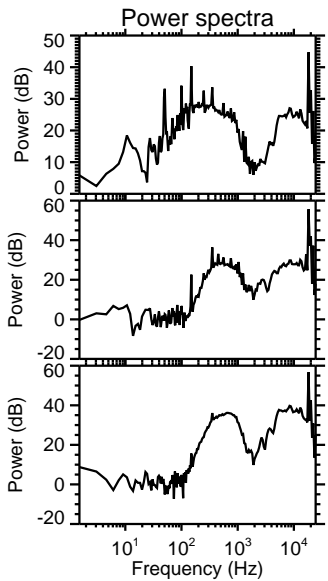
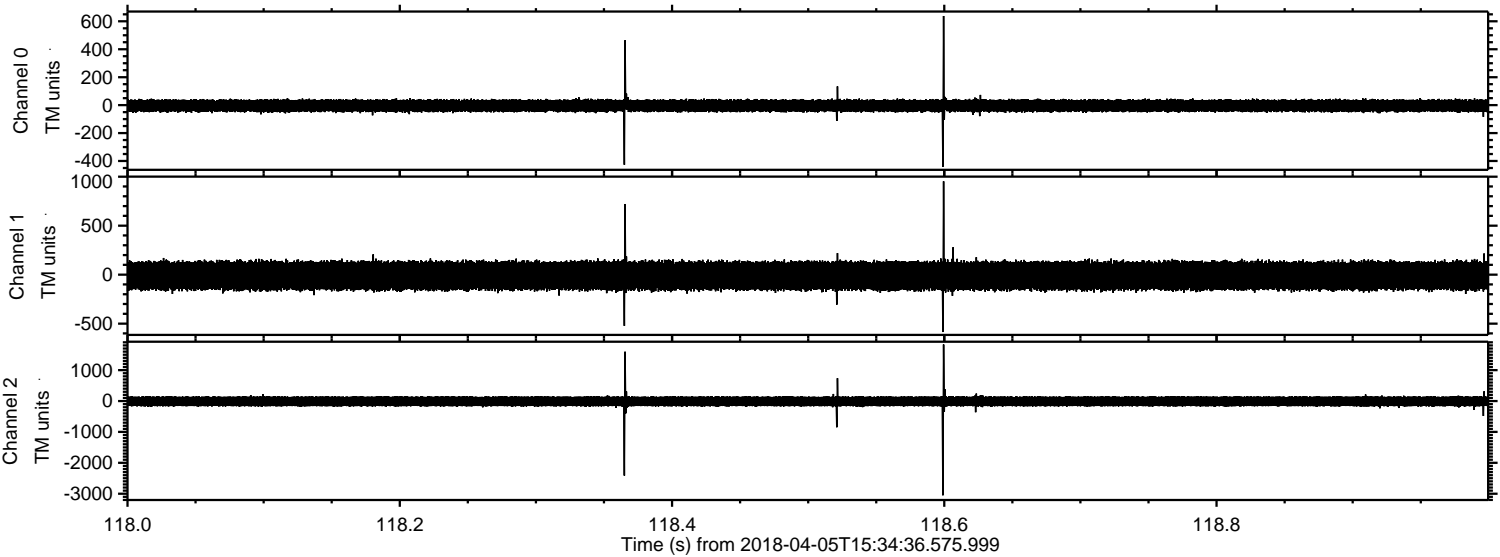
ELMAVAN 3D WAVEFORMS (Measured data sampled at 50 kHz) 51000 packets of 144 samples from 2018-04-05T15:34:36.575.999. Part 118/147

Processed Thu Apr 5 17:42:34 2018 by ELM ver.2012-10-06 from 001\_\_elm20180405\_153435\_\_dat00.bin

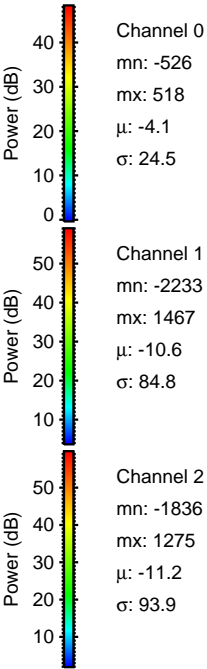
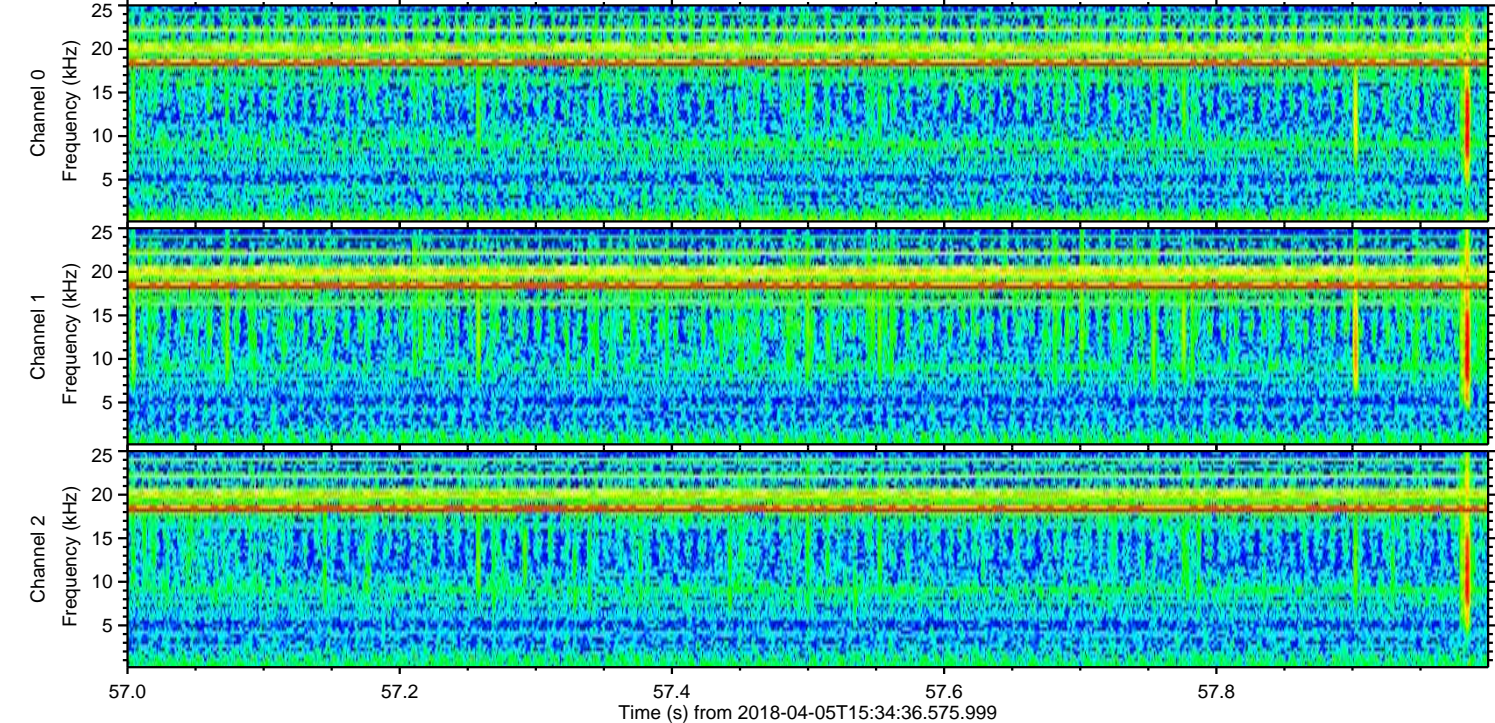
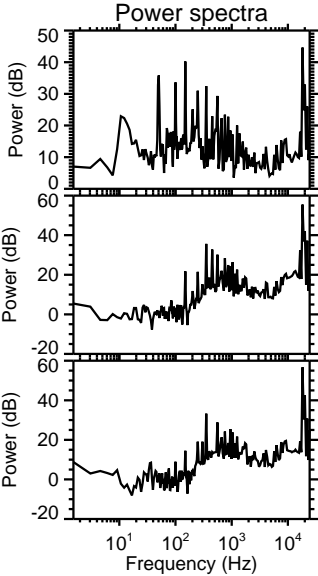
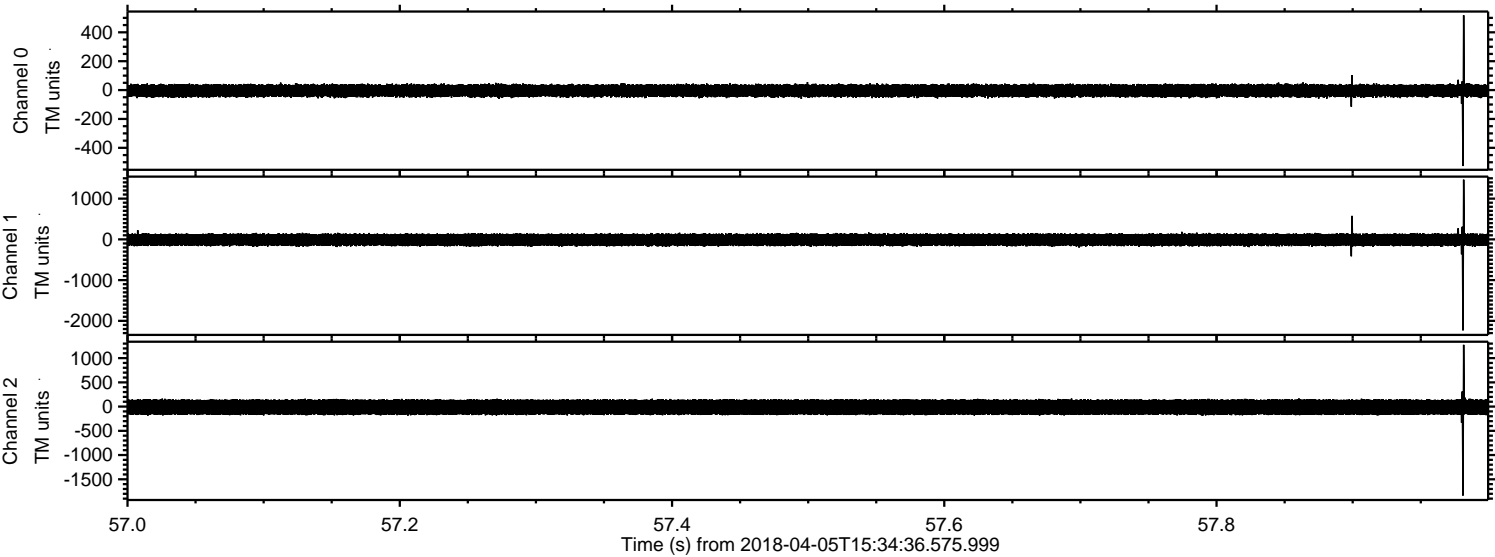


ELMAVAN 3D WAVEFORMS (Measured data sampled at 50 kHz) 51000 packets of 144 samples from 2018-04-05T15:34:36.575.999. Part 119/147

Processed Thu Apr 5 17:42:34 2018 by ELM ver.2012-10-06 from 001\_\_elm20180405\_153435\_\_dat00.bin

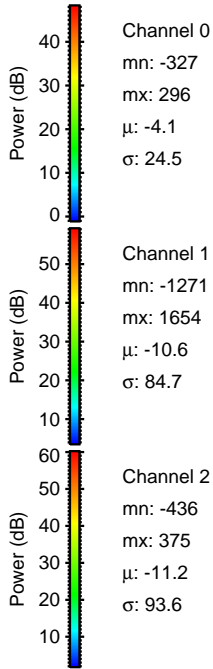
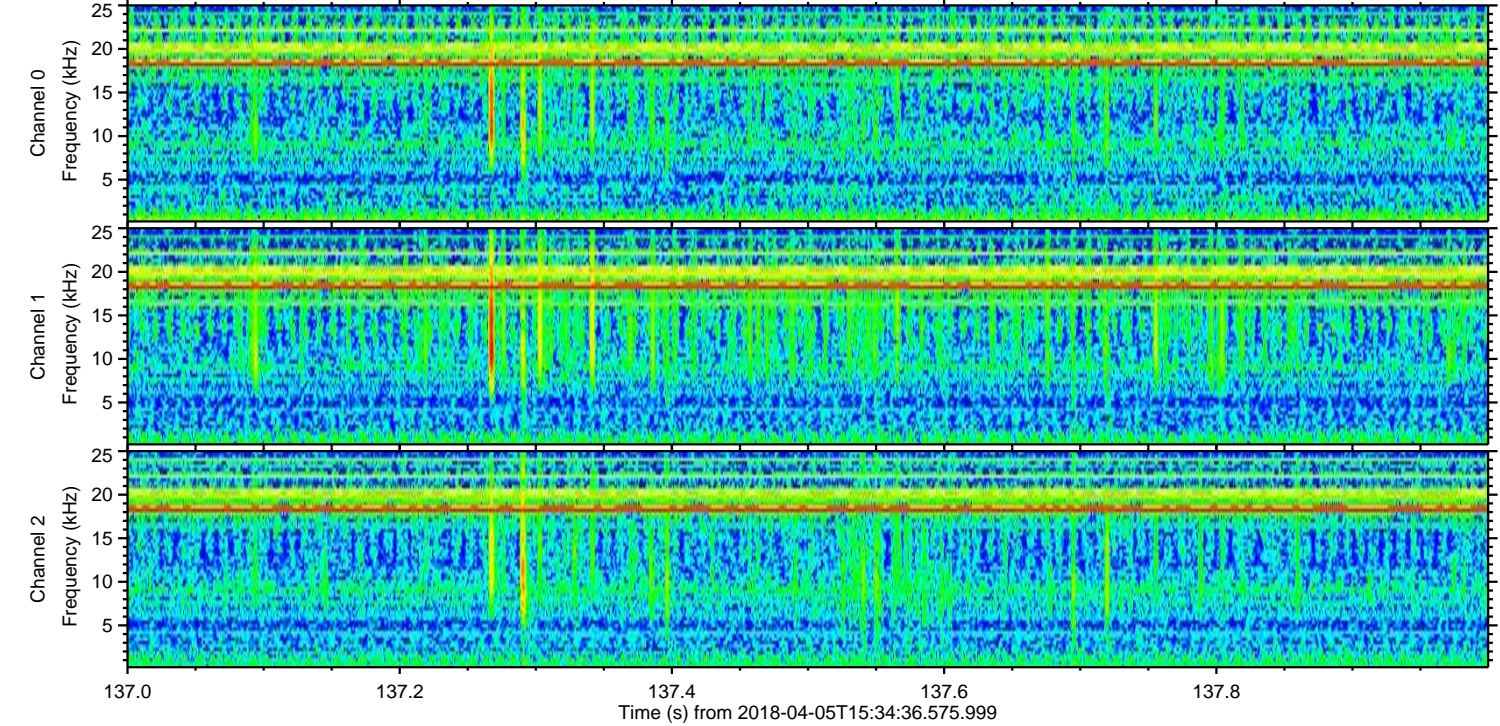
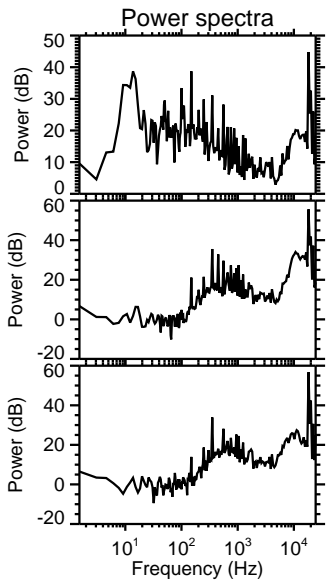
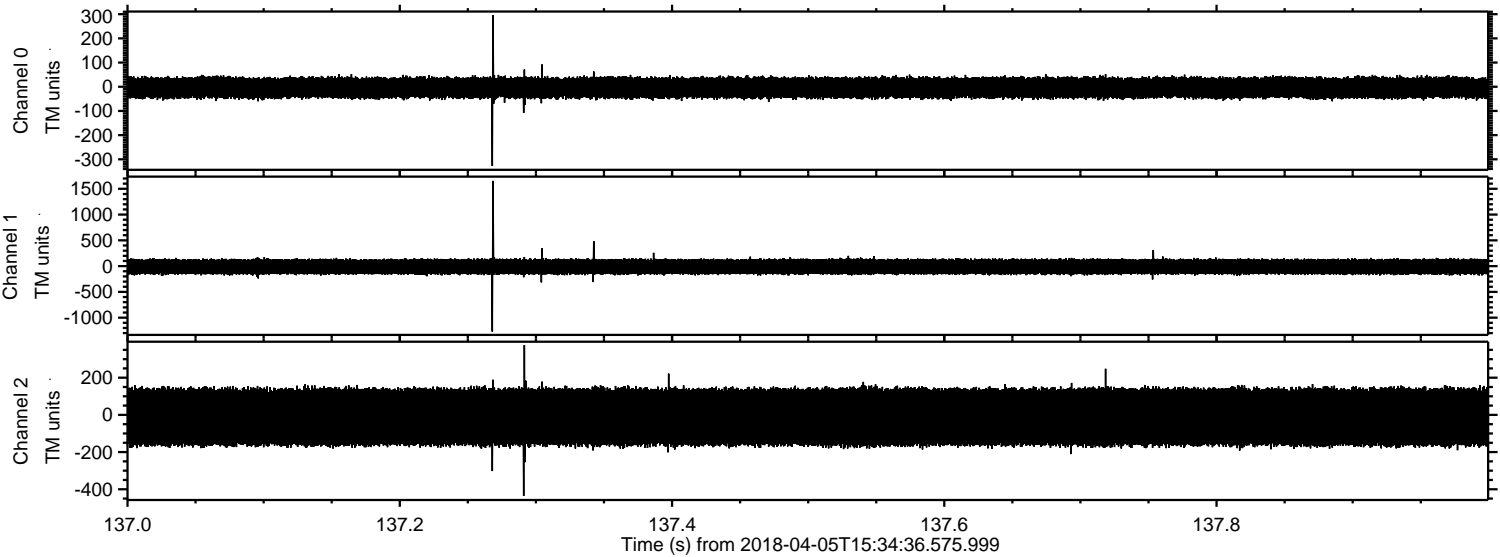


Processed Thu Apr 5 17:42:35 2018 by ELM ver.2012-10-06 from 001\_\_elm20180405\_153435\_\_dat00.bin

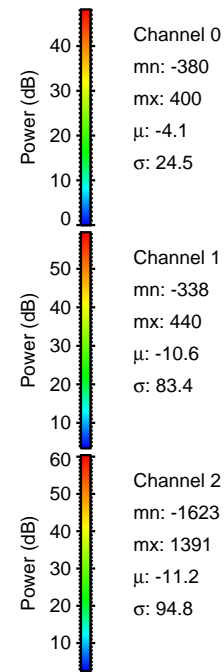
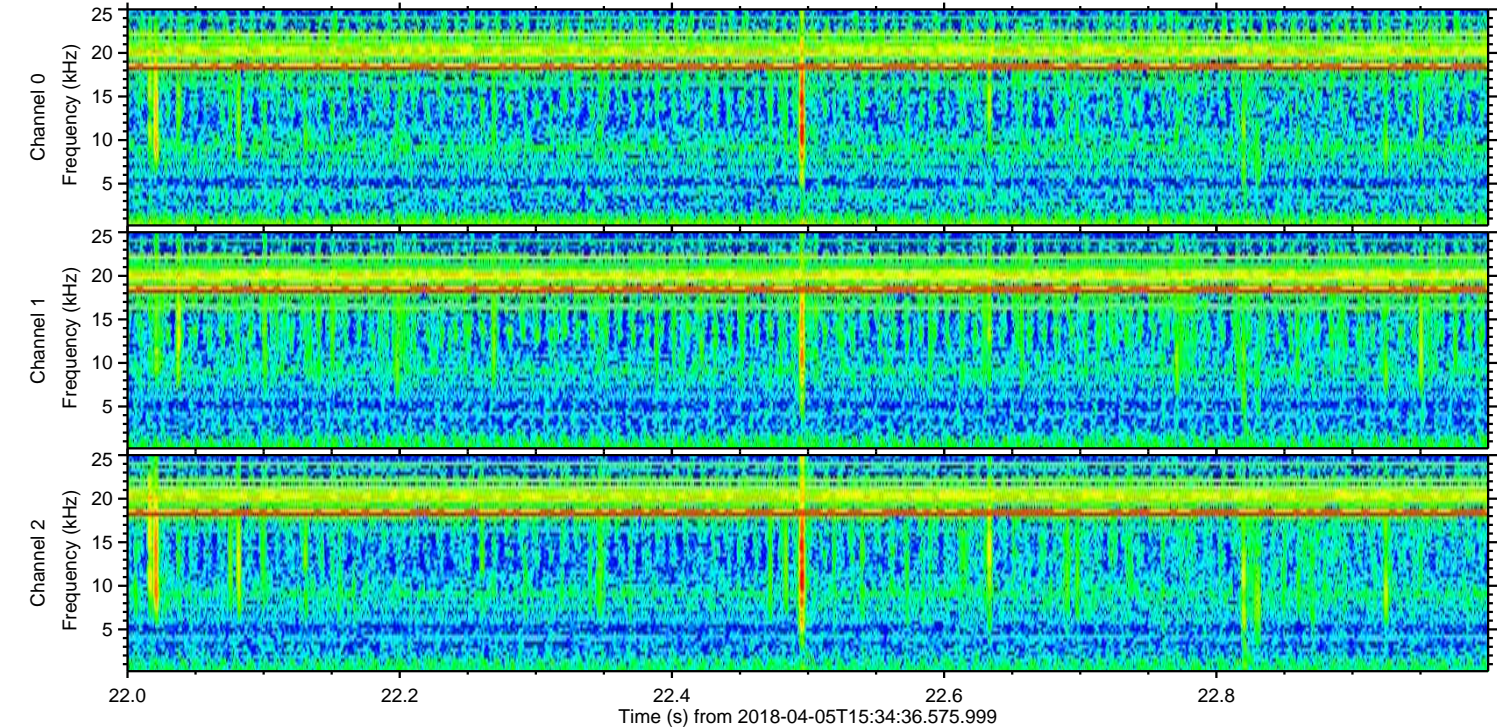
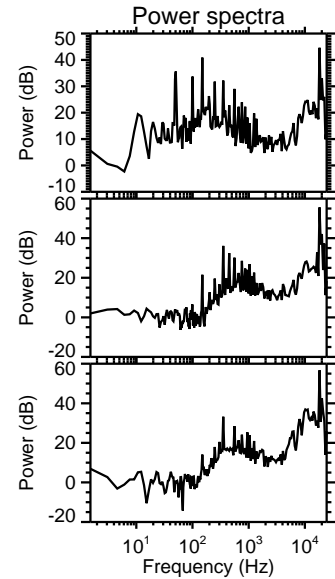
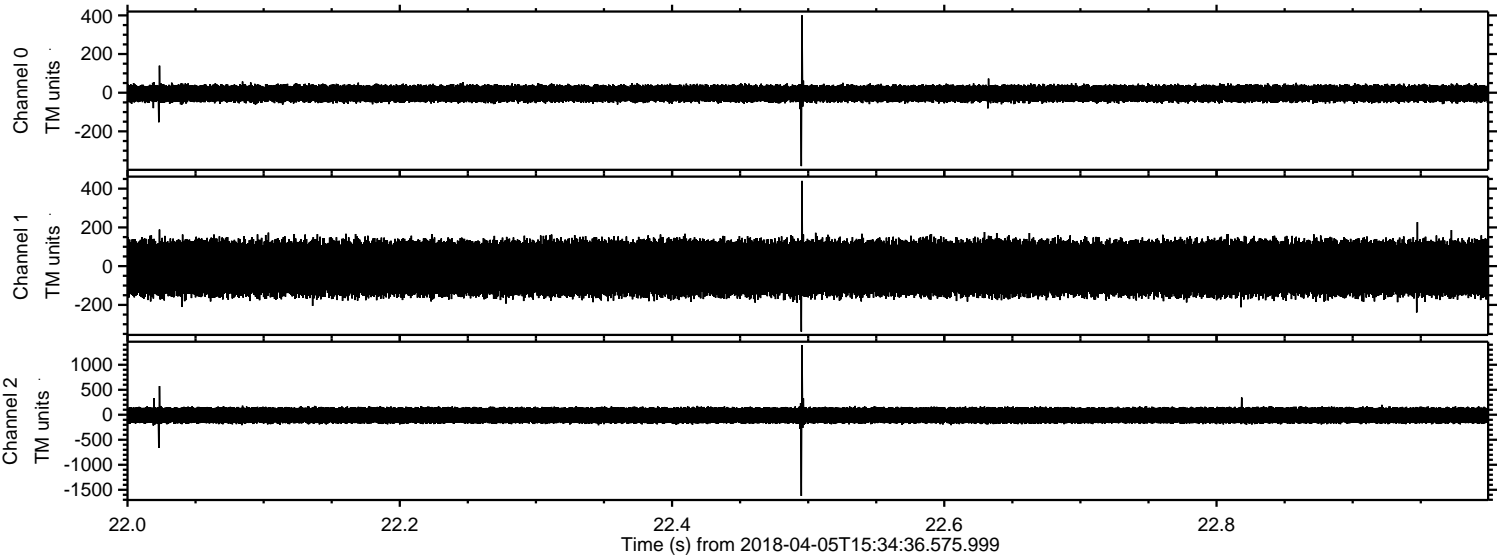


ELMAVAN 3D WAVEFORMS (Measured data sampled at 50 kHz) 51000 packets of 144 samples from 2018-04-05T15:34:36.575.999. Part 138/147

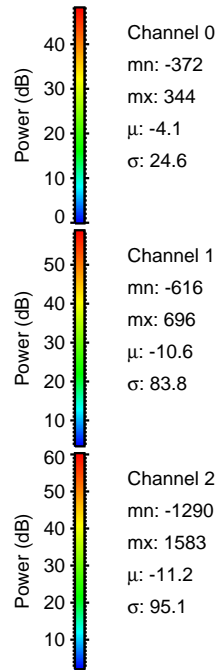
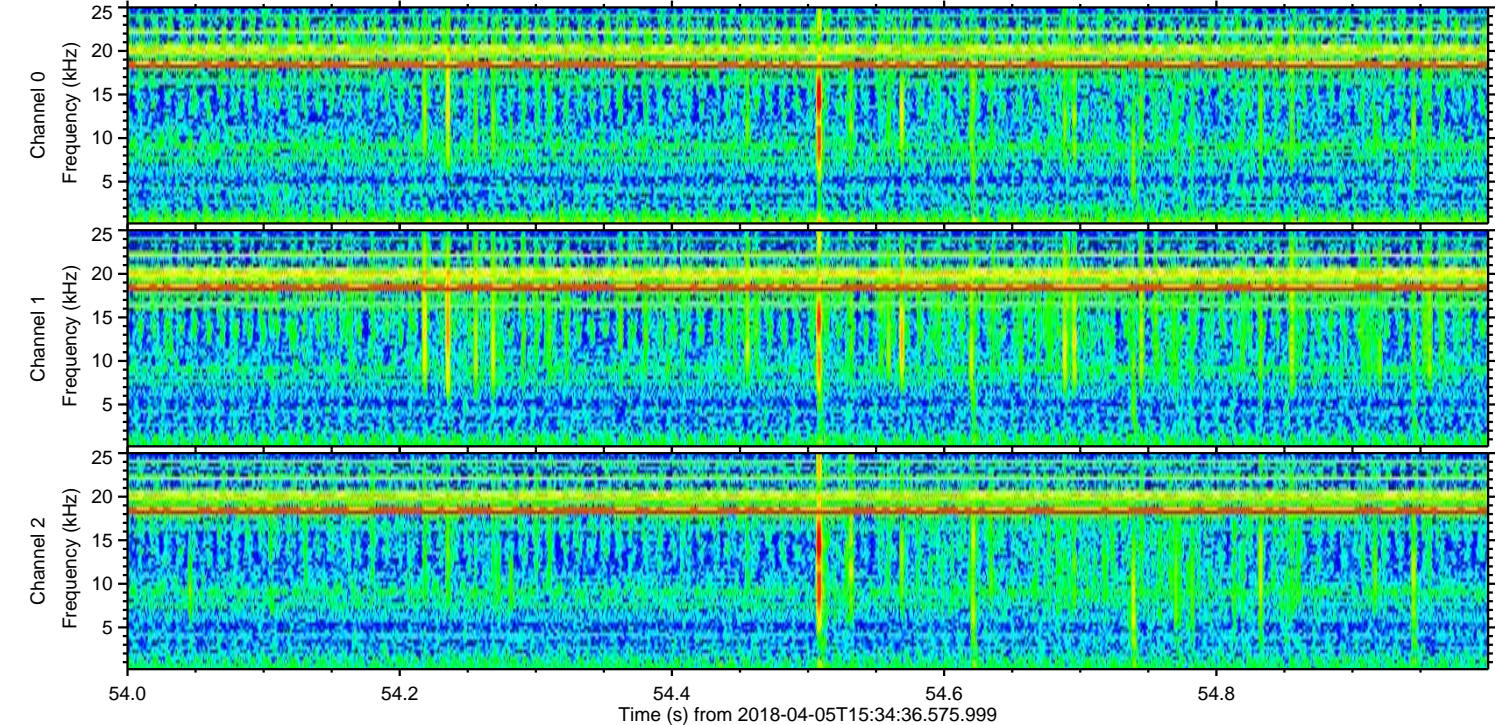
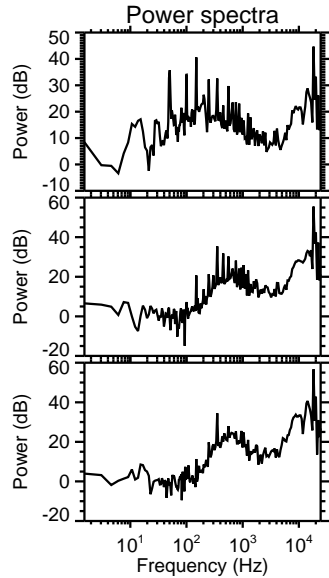
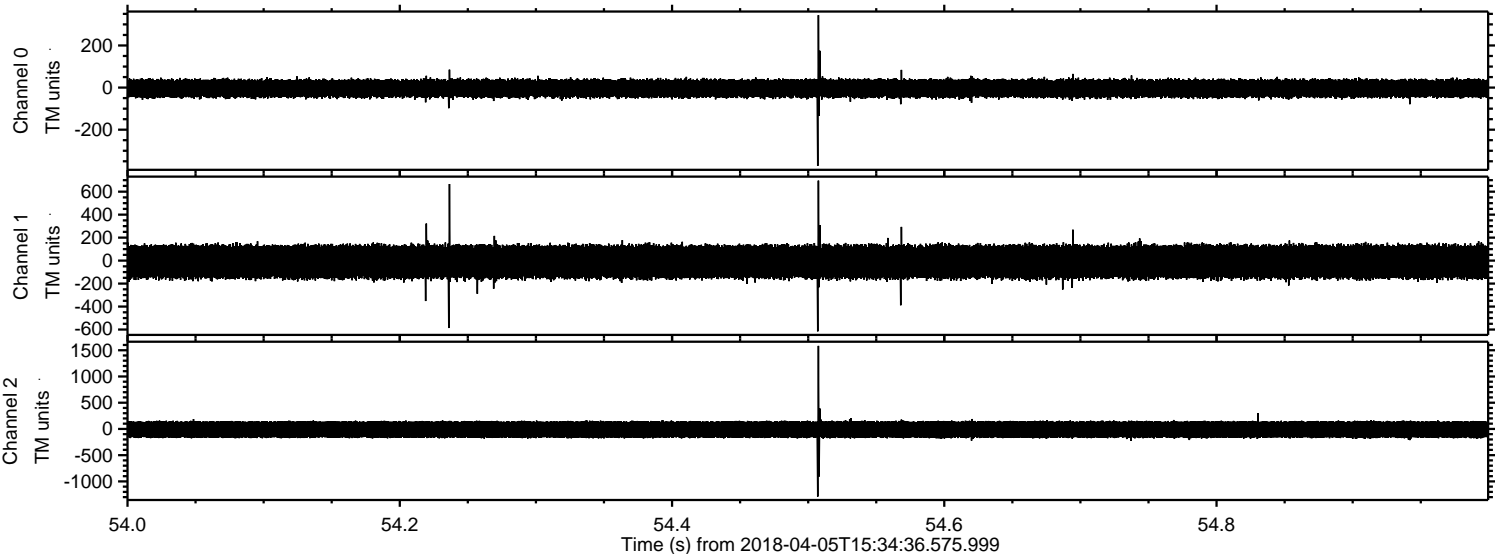
Processed Thu Apr 5 17:42:36 2018 by ELM ver.2012-10-06 from 001\_\_elm20180405\_153435\_\_dat00.bin



Processed Thu Apr 5 17:42:37 2018 by ELM ver.2012-10-06 from 001\_\_elm20180405\_153435\_\_dat00.bin



Processed Thu Apr 5 17:42:38 2018 by ELM ver.2012-10-06 from 001\_\_elm20180405\_153435\_\_dat00.bin



Channel 0  
mn: -372  
mx: 344  
 $\mu$ : -4.1  
 $\sigma$ : 24.6

Channel 1  
mn: -616  
mx: 696  
 $\mu$ : -10.6  
 $\sigma$ : 83.8

Channel 2  
mn: -1290  
mx: 1583  
 $\mu$ : -11.2  
 $\sigma$ : 95.1

ELMAVAN 3D WAVEFORMS (Measured data sampled at 50 kHz) 51000 packets of 144 samples from 2018-04-05T15:34:36.575.999. Part 144/147

