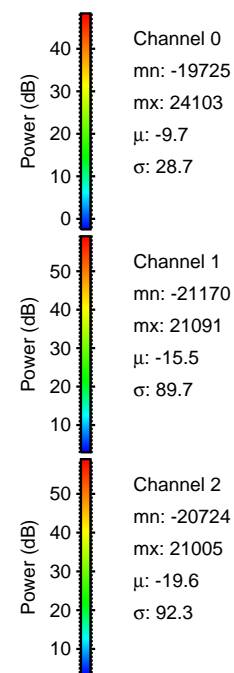
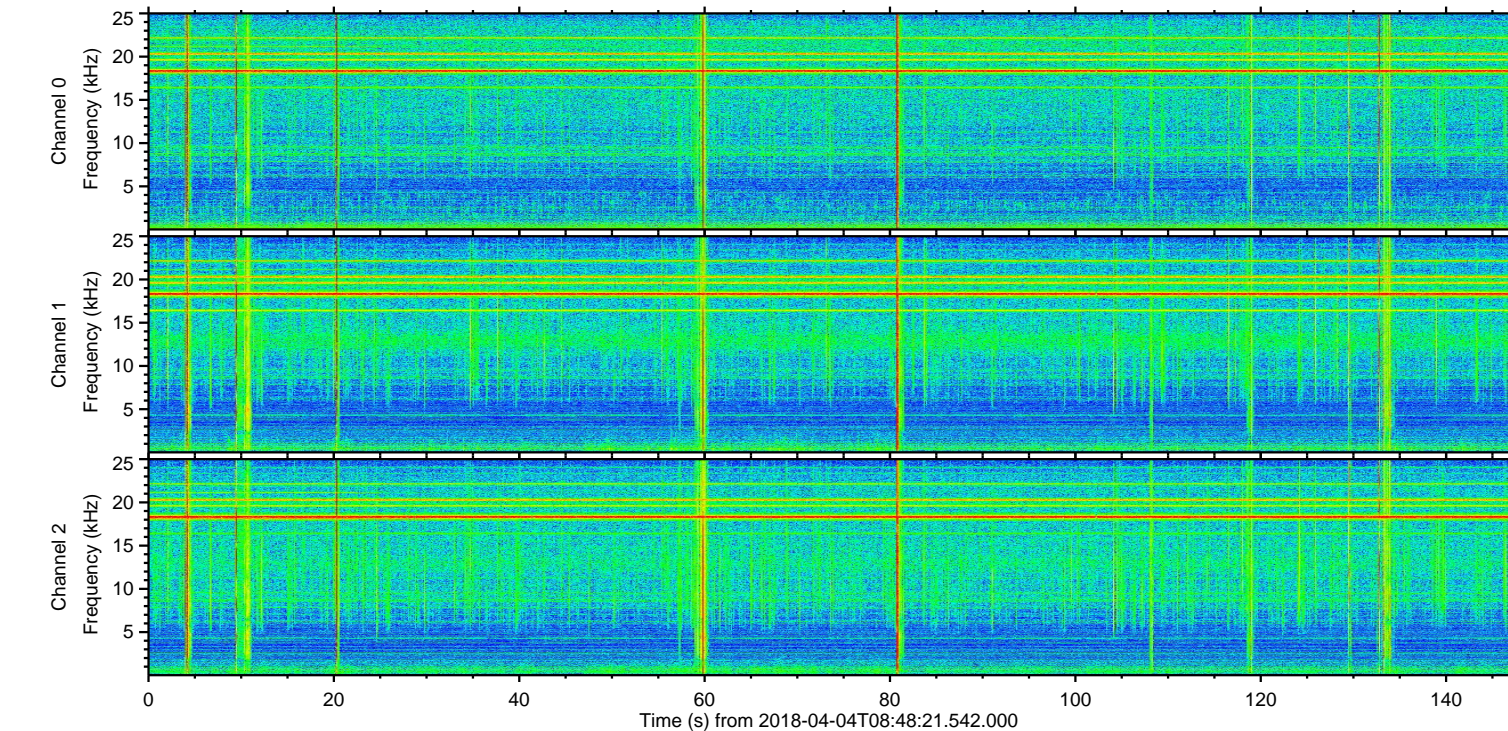
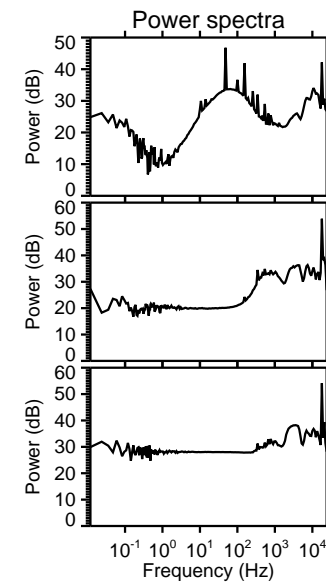
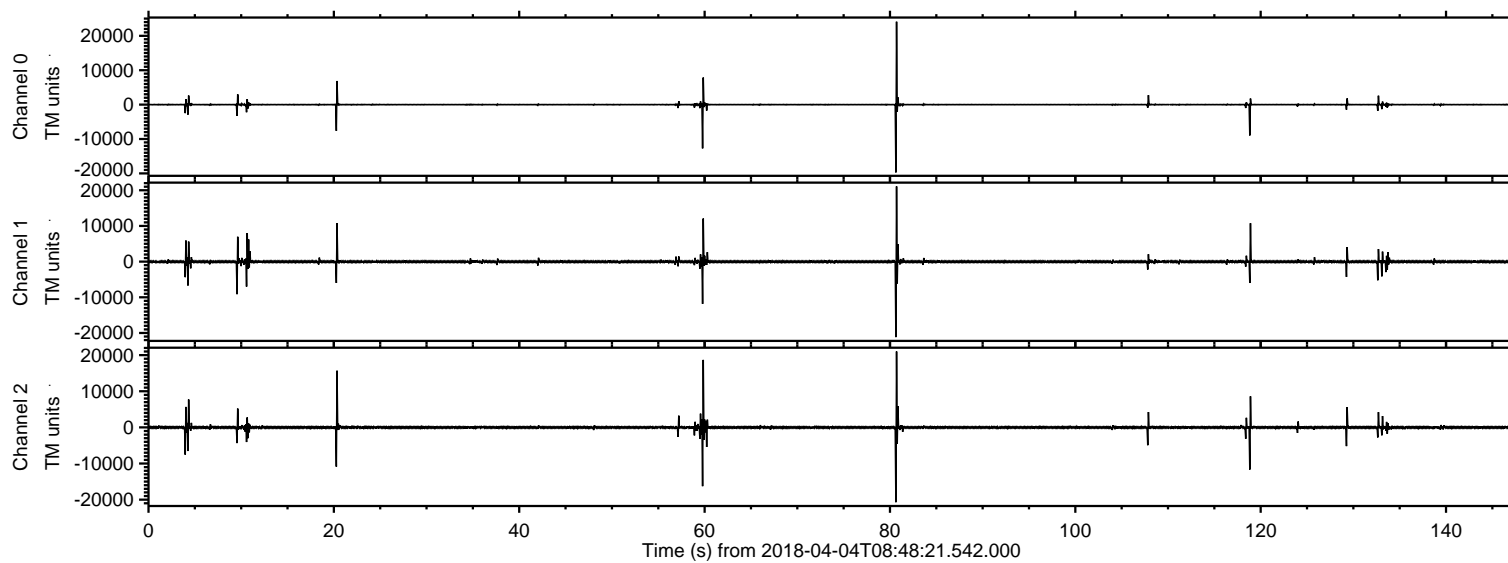
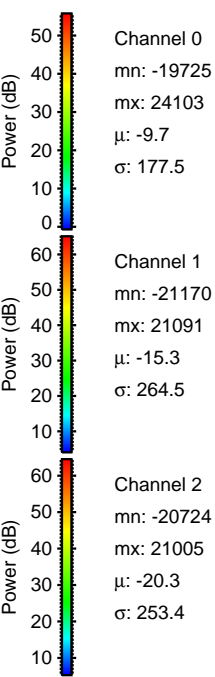
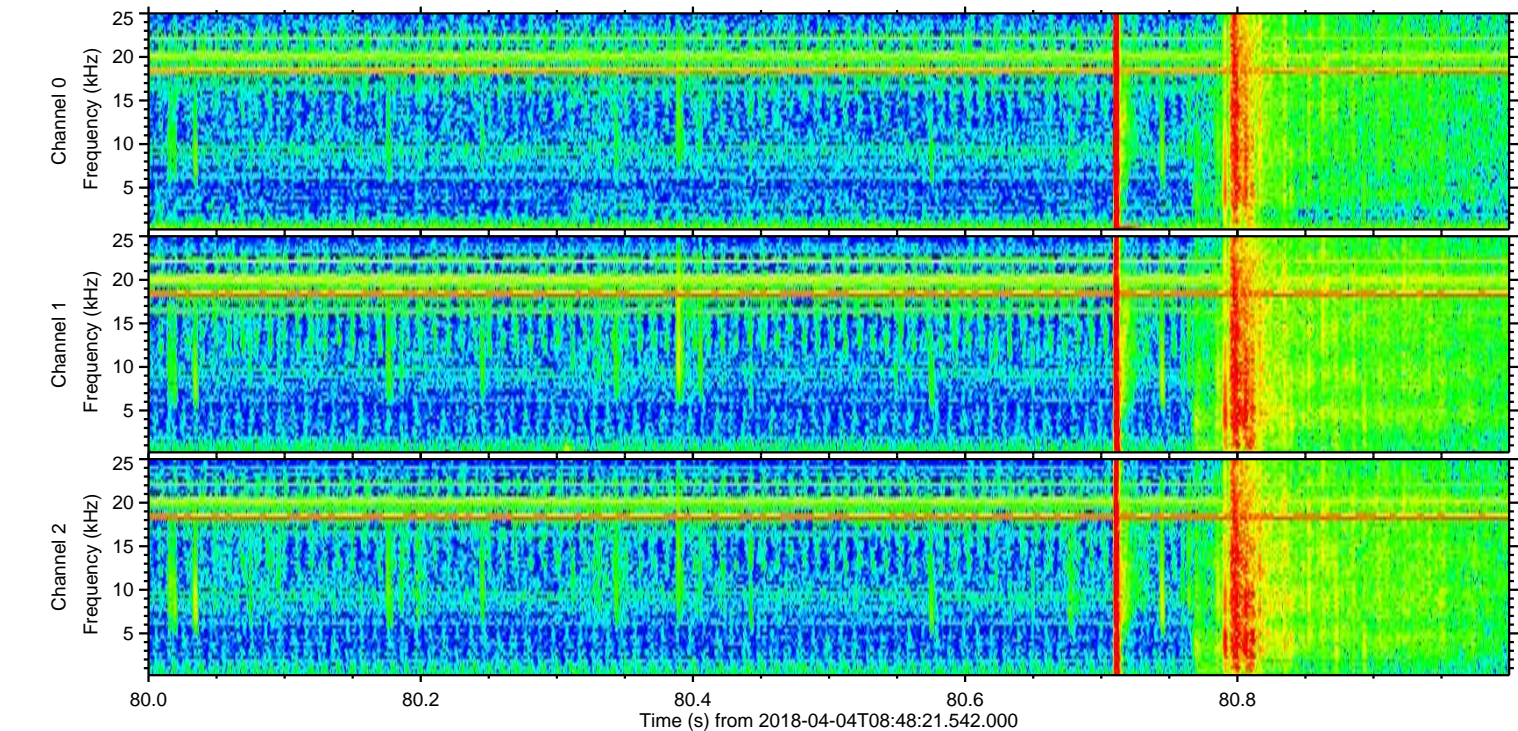
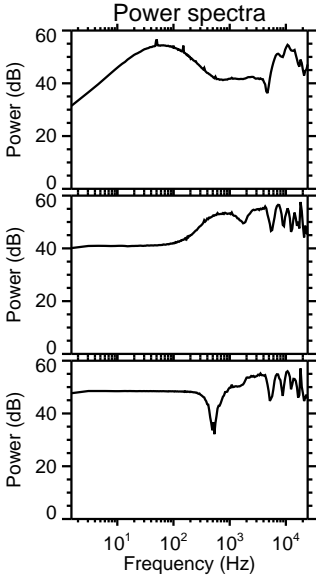
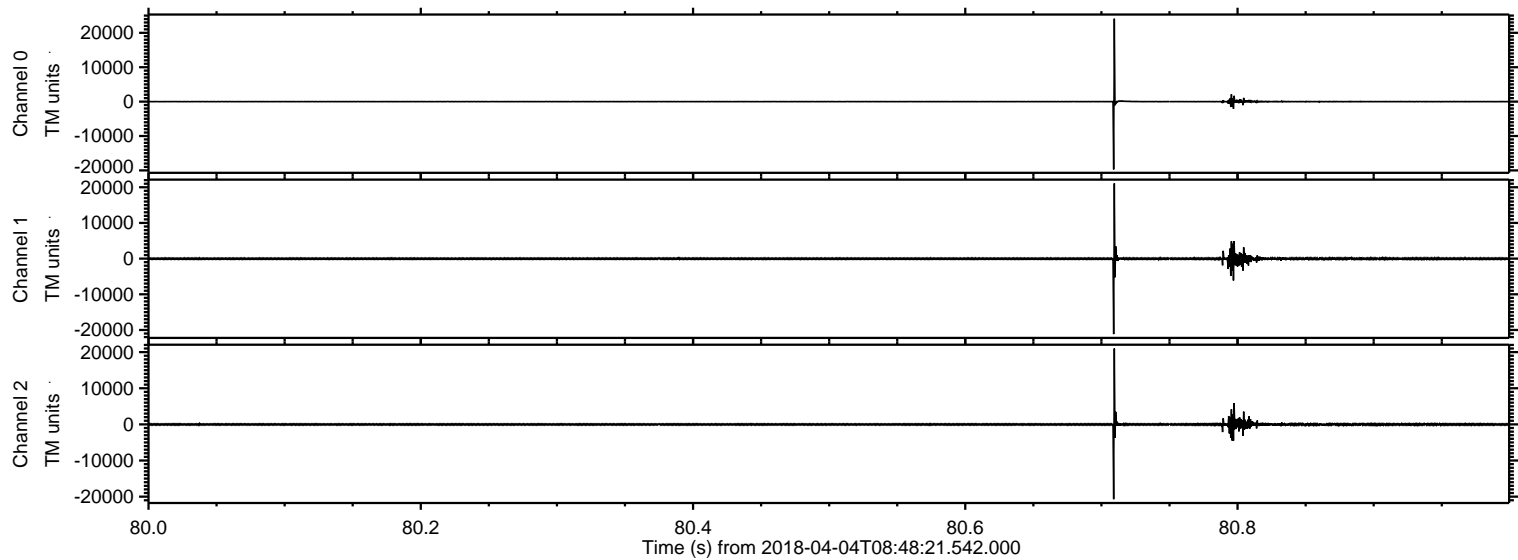


ELMAVAN 3D WAVEFORMS (Measured data sampled at 50 kHz) 51000 packets of 144 samples from 2018-04-04T08:48:21.542.000.

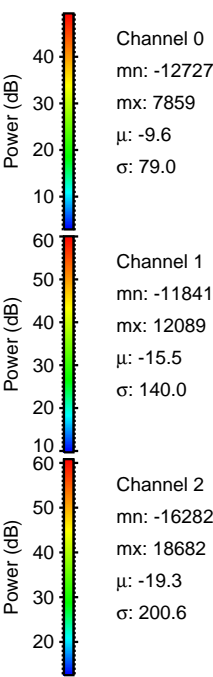
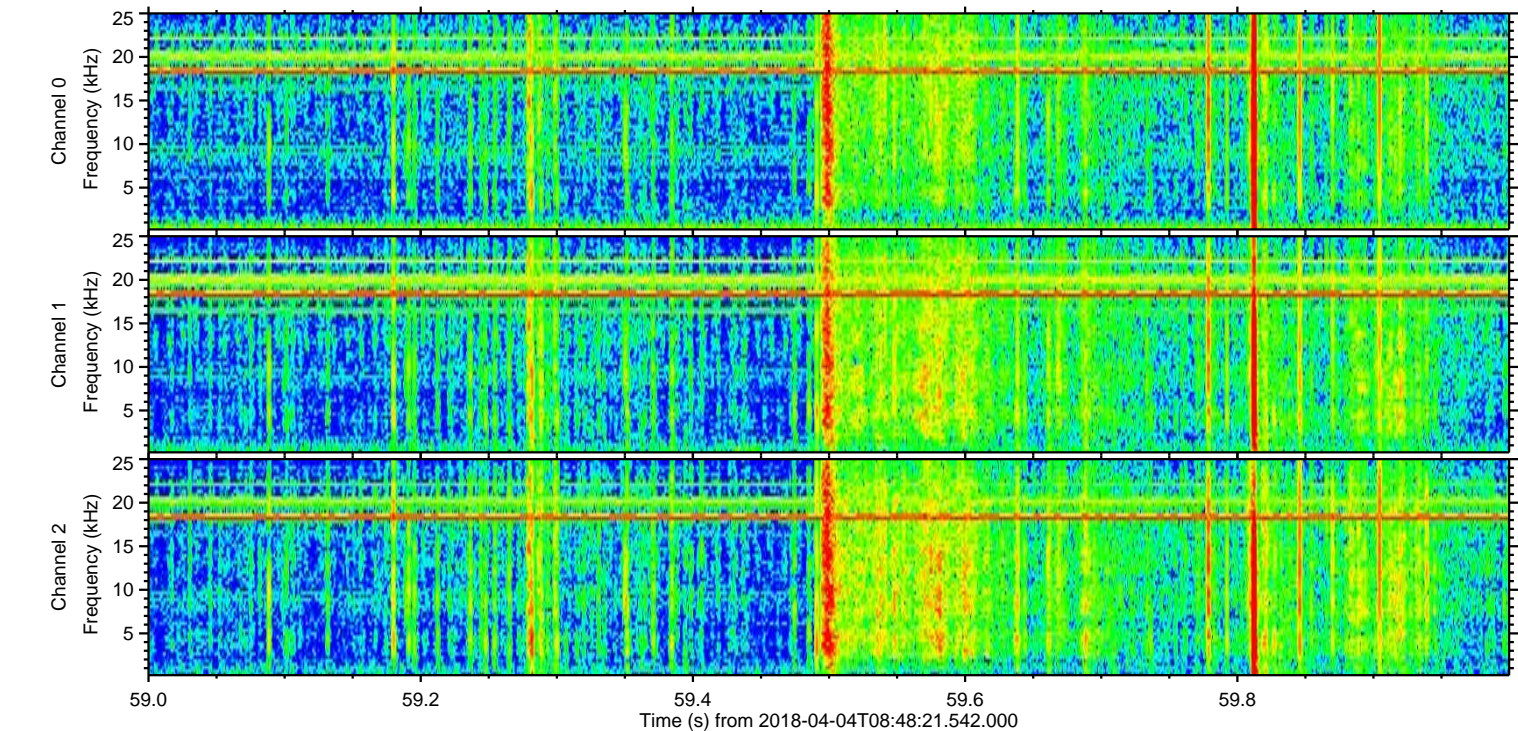
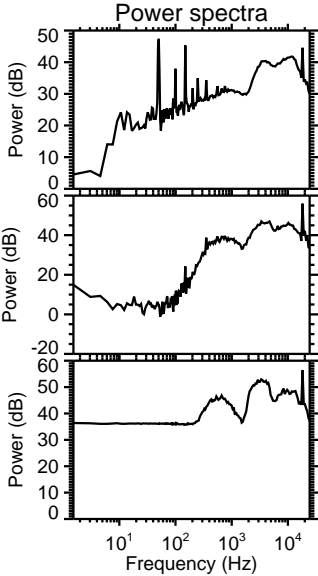
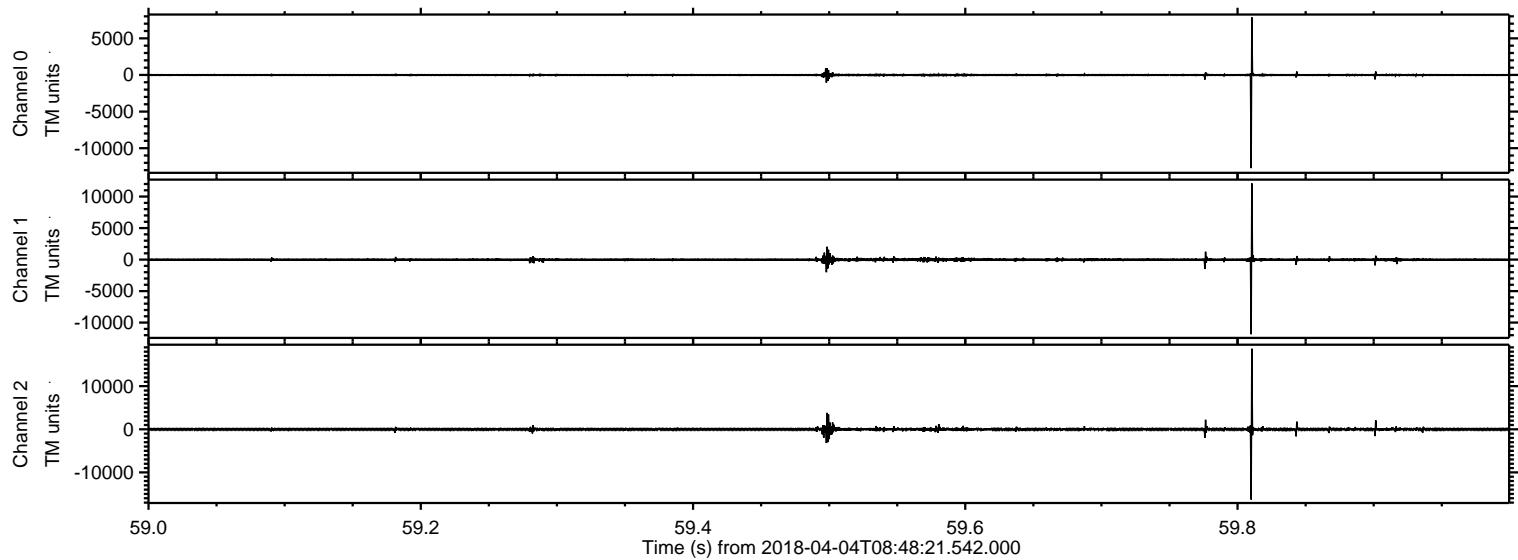
Processed Wed Apr 4 10:56:34 2018 by ELM ver.2012-10-06 from 001__elm20180404_084820__dat00.bin



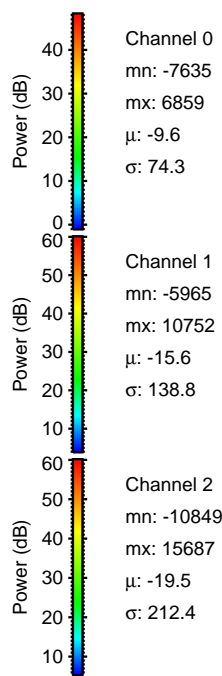
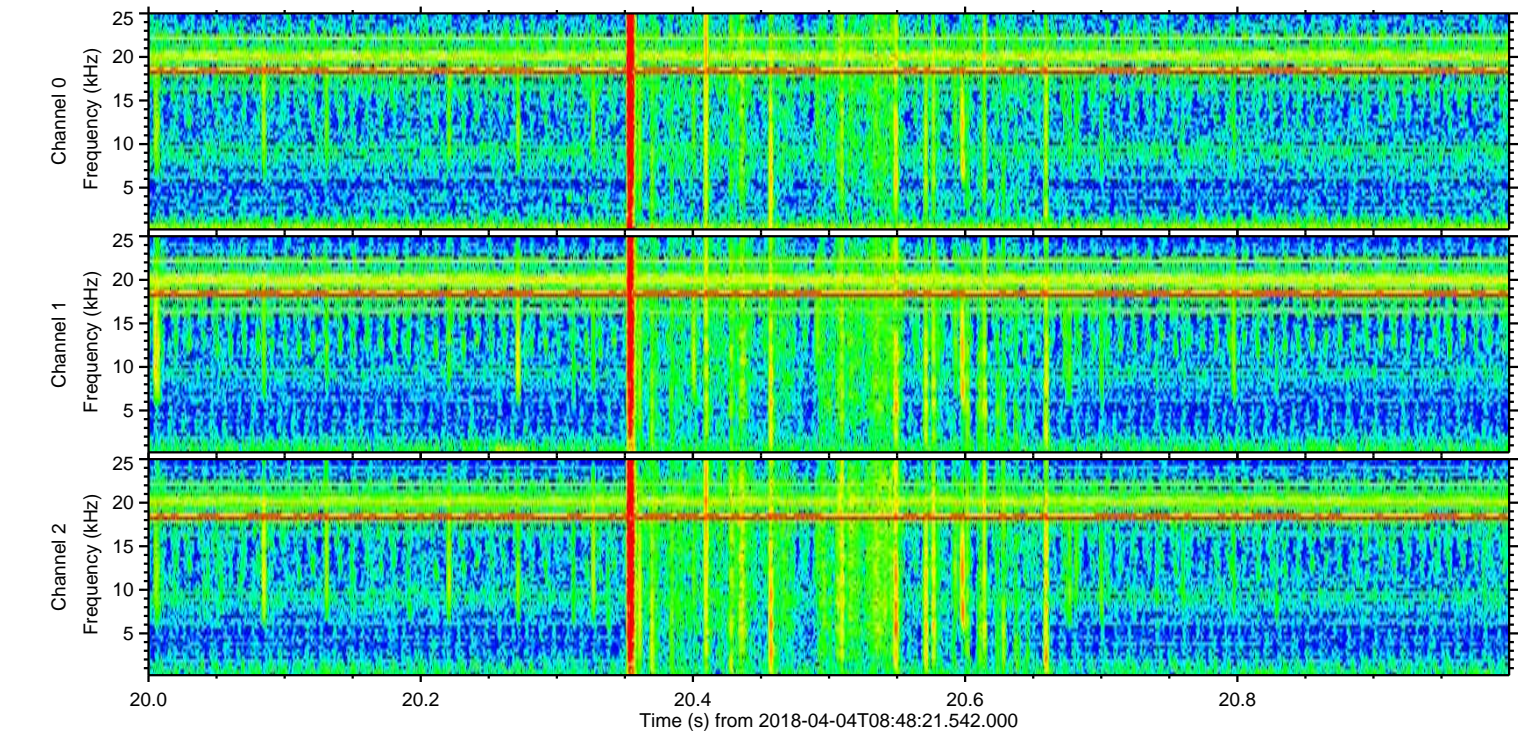
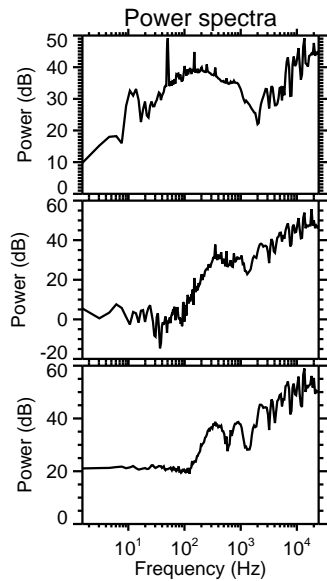
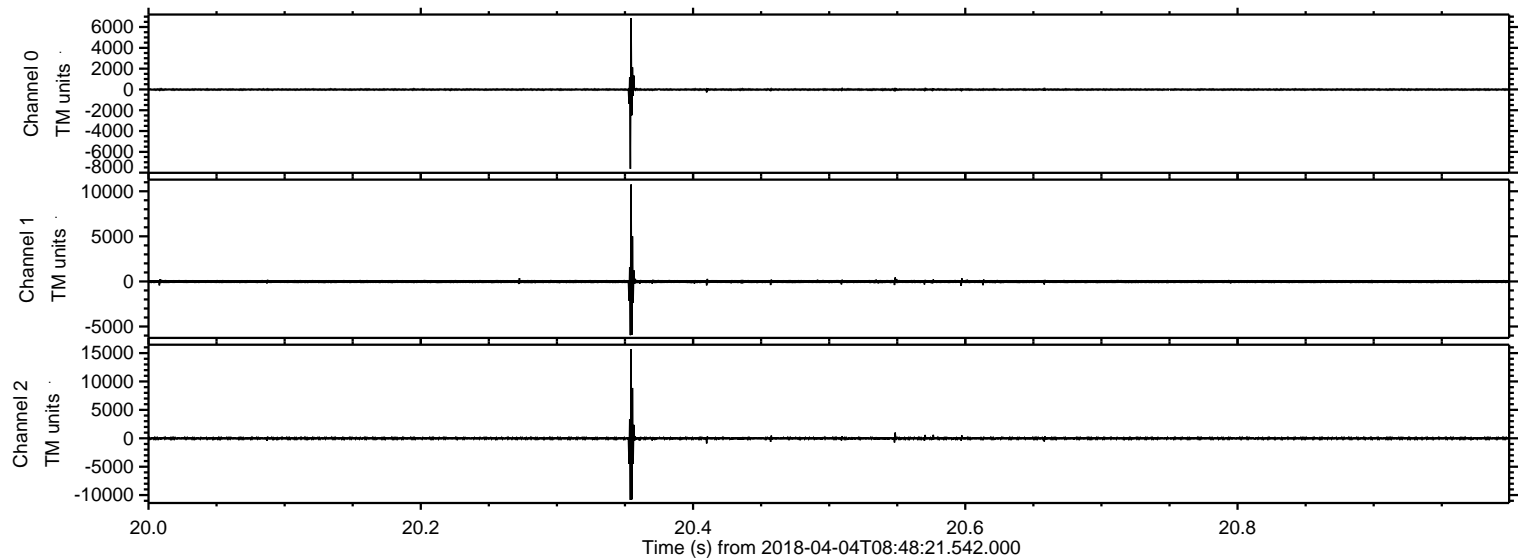
Processed Wed Apr 4 10:56:42 2018 by ELM ver.2012-10-06 from 001__elm20180404_084820__dat00.bin



Processed Wed Apr 4 10:56:43 2018 by ELM ver.2012-10-06 from 001__elm20180404_084820__dat00.bin

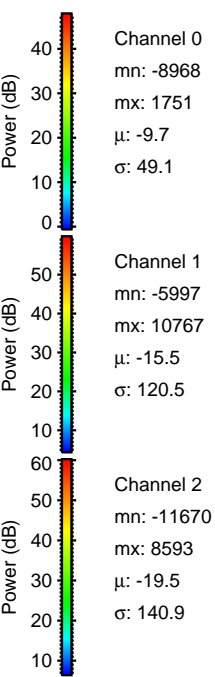
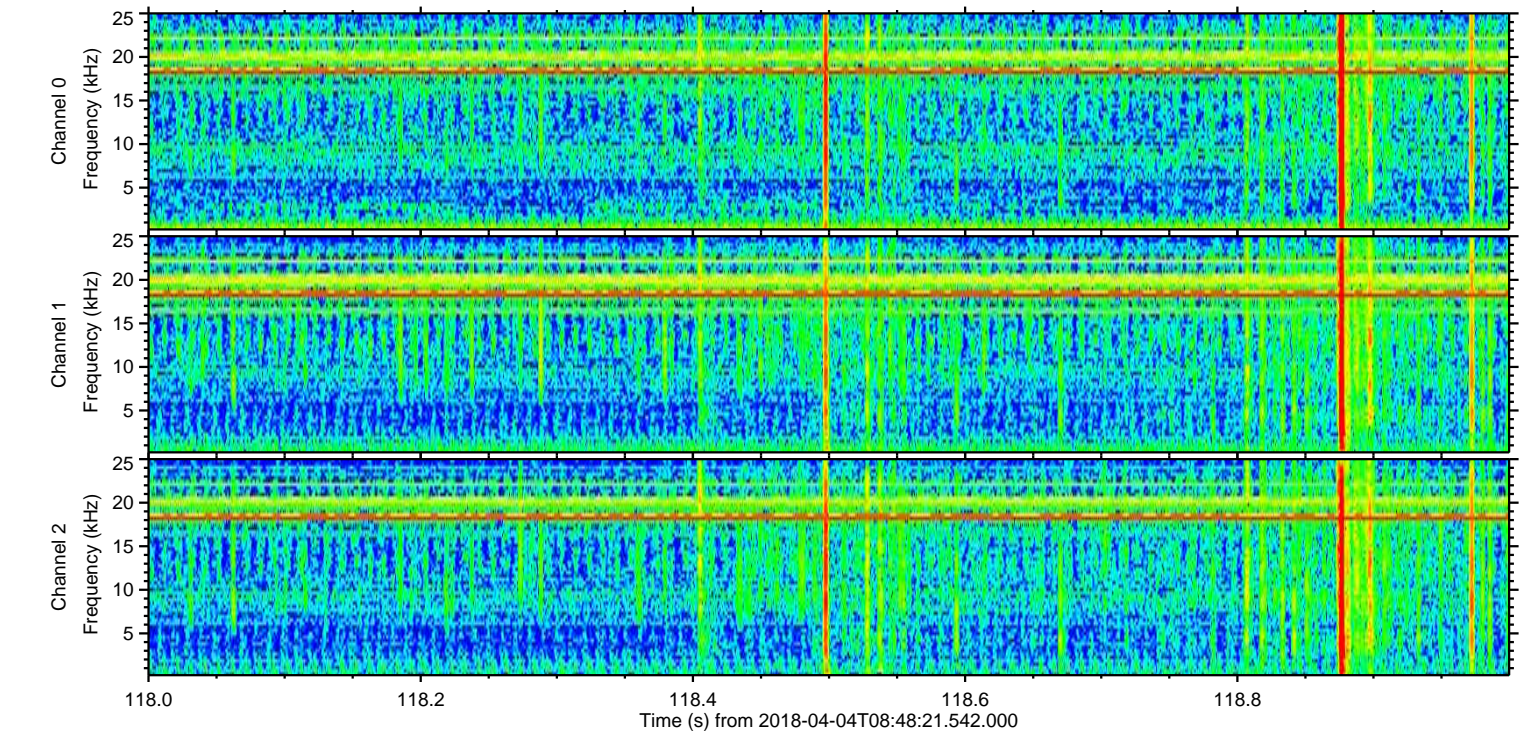
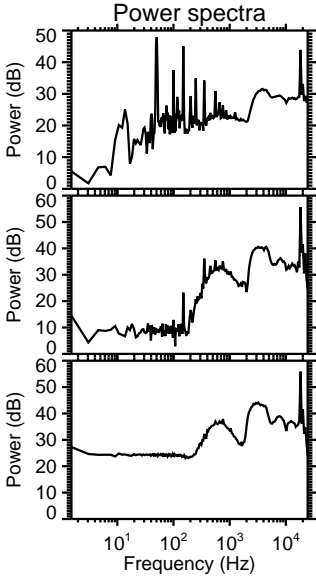
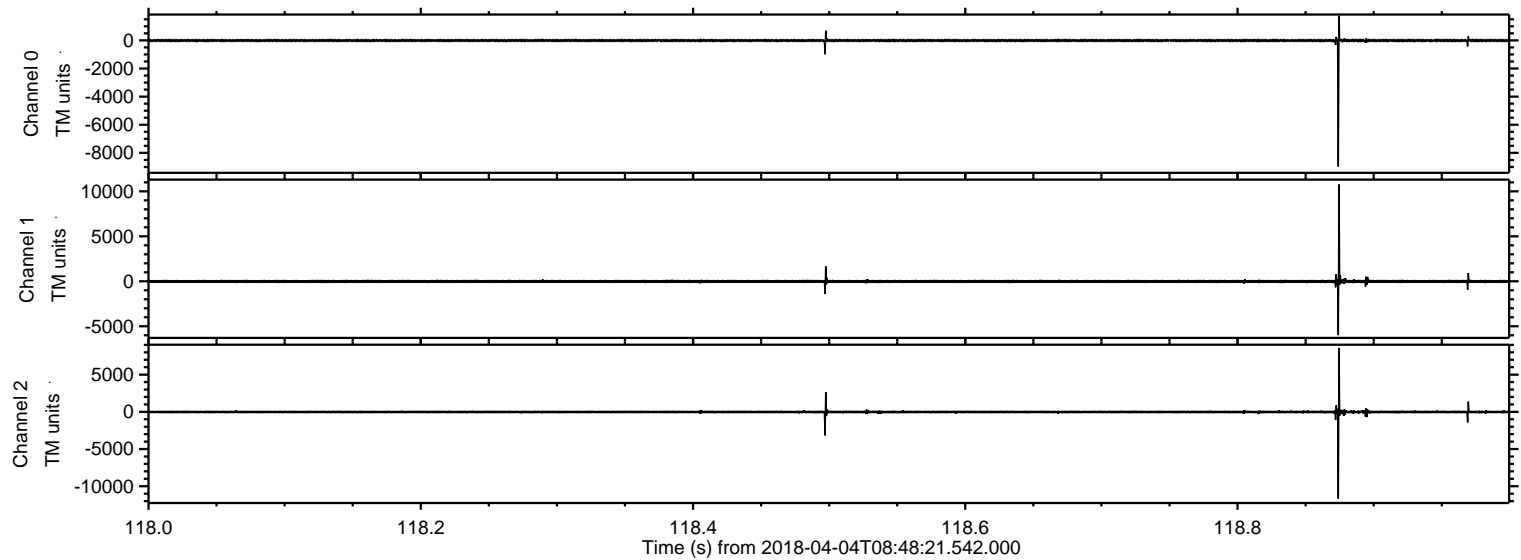


Processed Wed Apr 4 10:56:44 2018 by ELM ver.2012-10-06 from 001__elm20180404_084820__dat00.bin

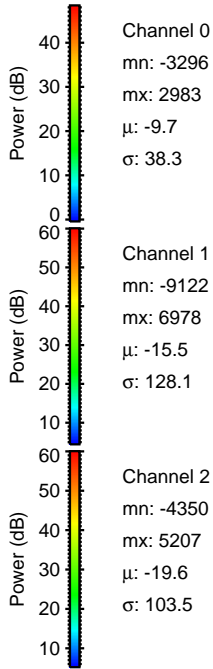
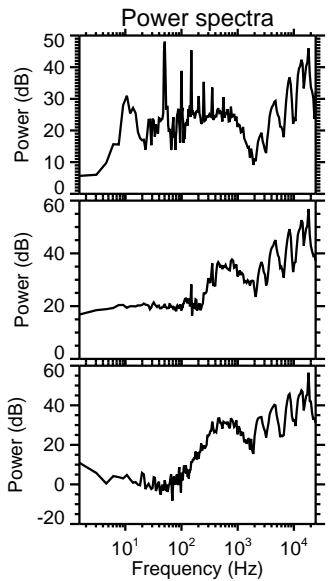
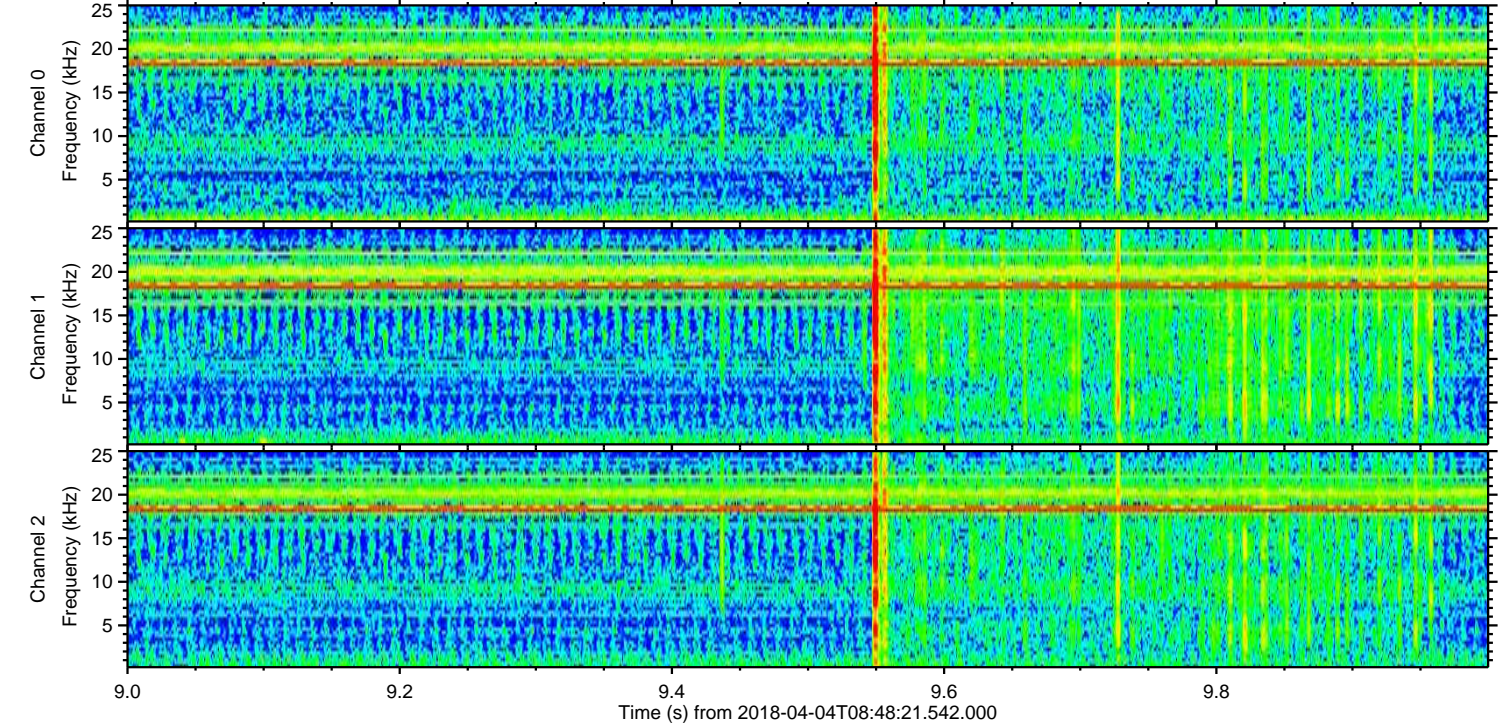
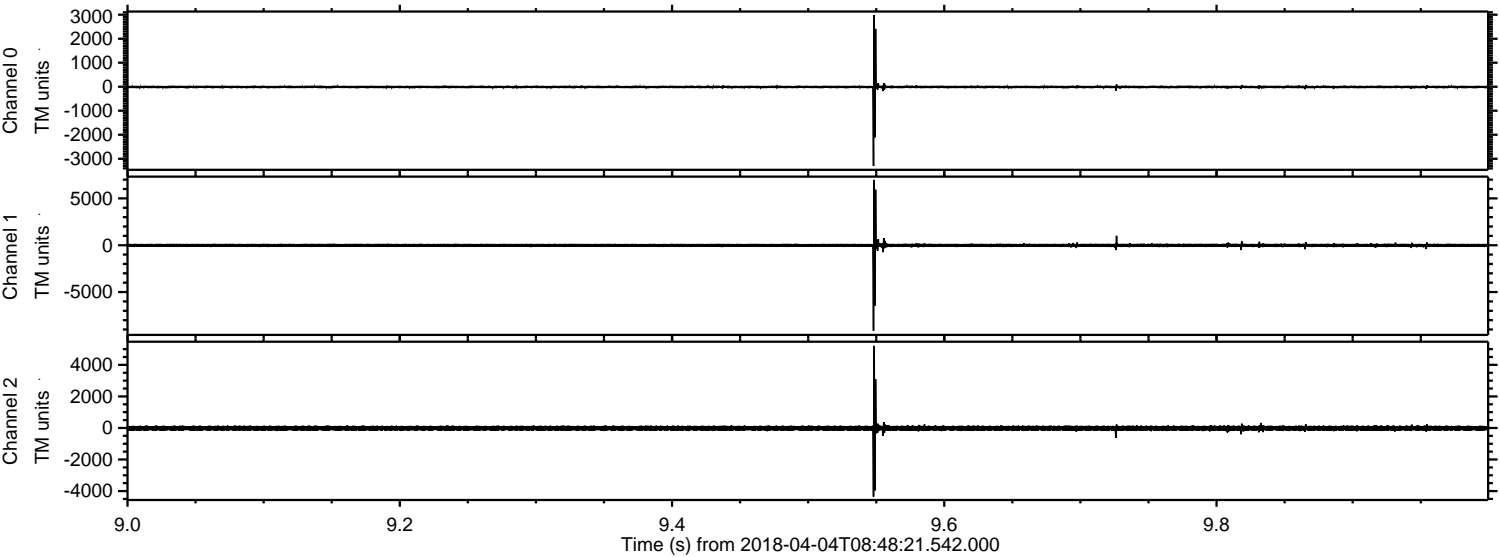


ELMAVAN 3D WAVEFORMS (Measured data sampled at 50 kHz) 51000 packets of 144 samples from 2018-04-04T08:48:21.542.000. Part 119/147

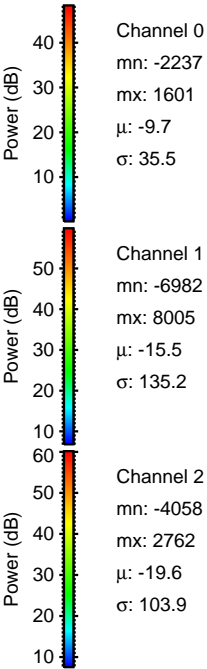
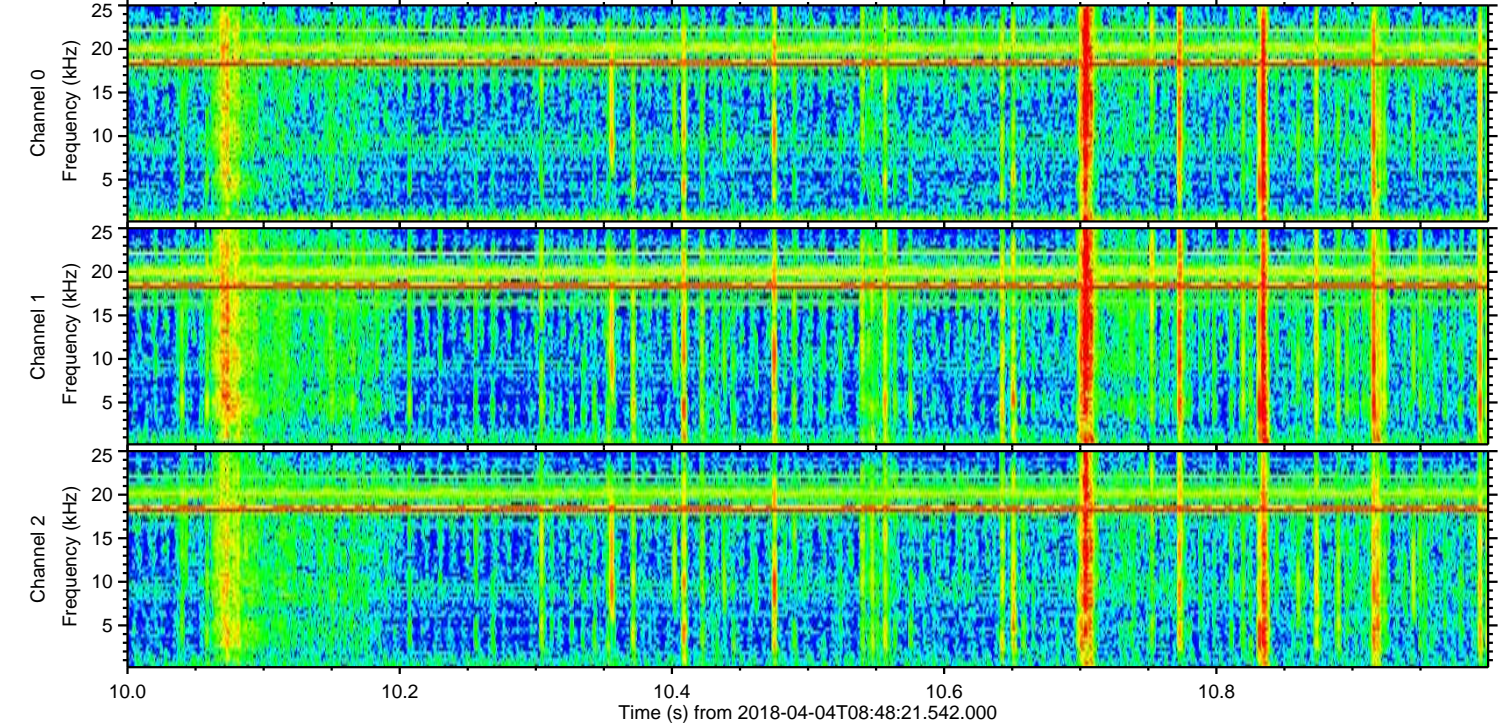
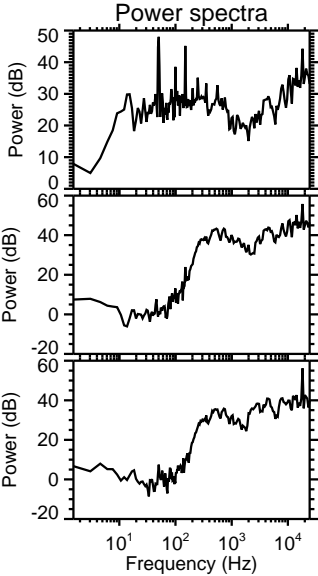
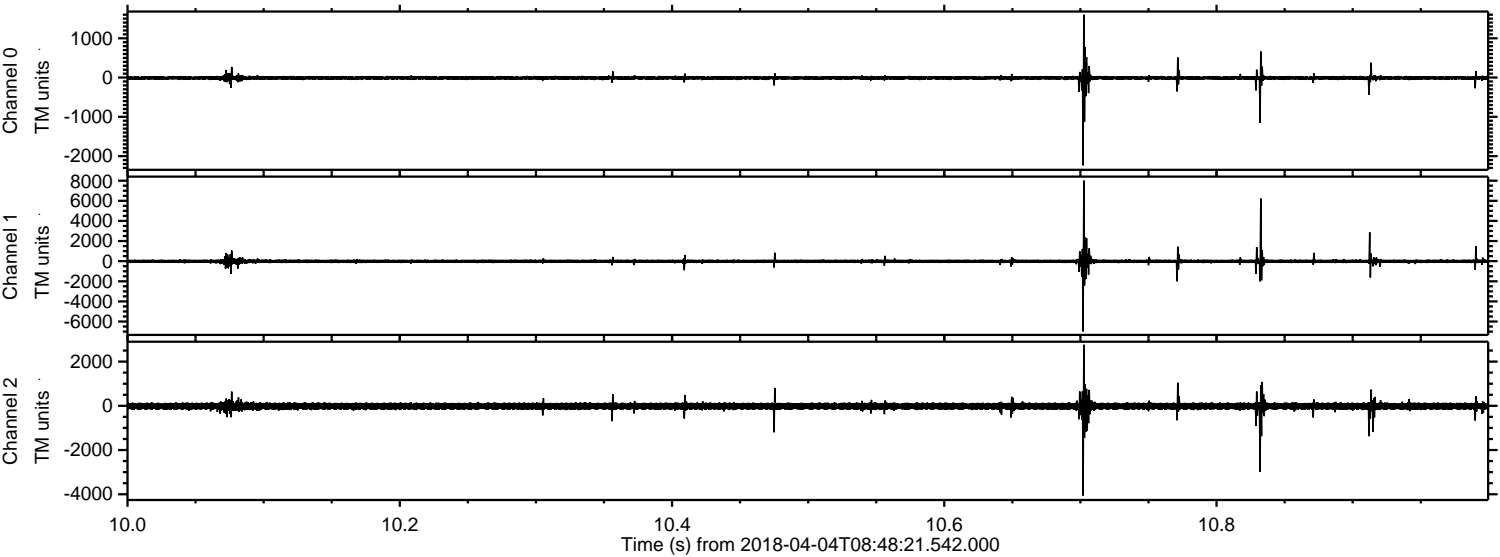
Processed Wed Apr 4 10:56:44 2018 by ELM ver.2012-10-06 from 001__elm20180404_084820__dat00.bin



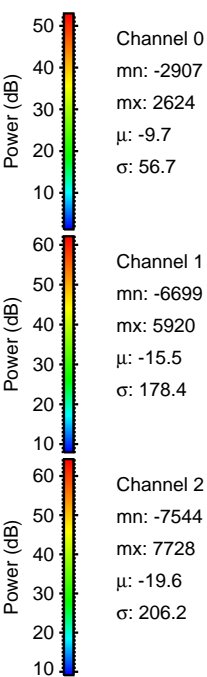
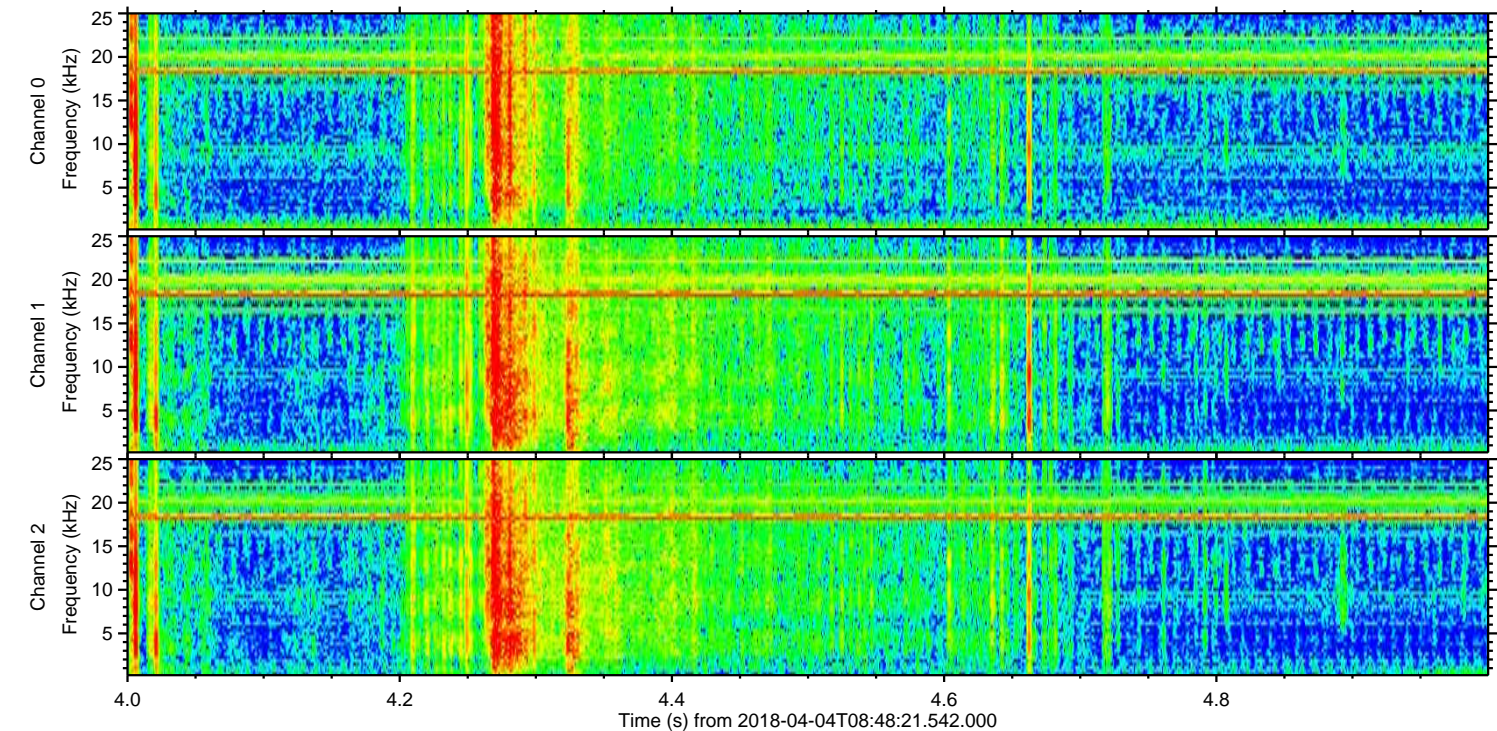
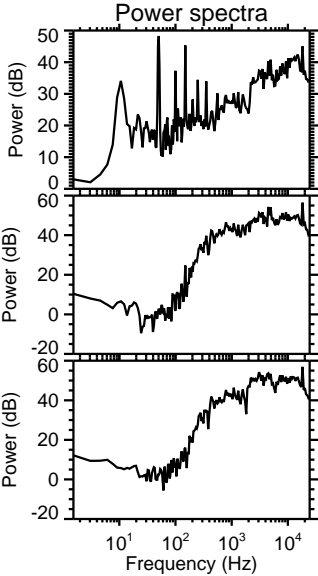
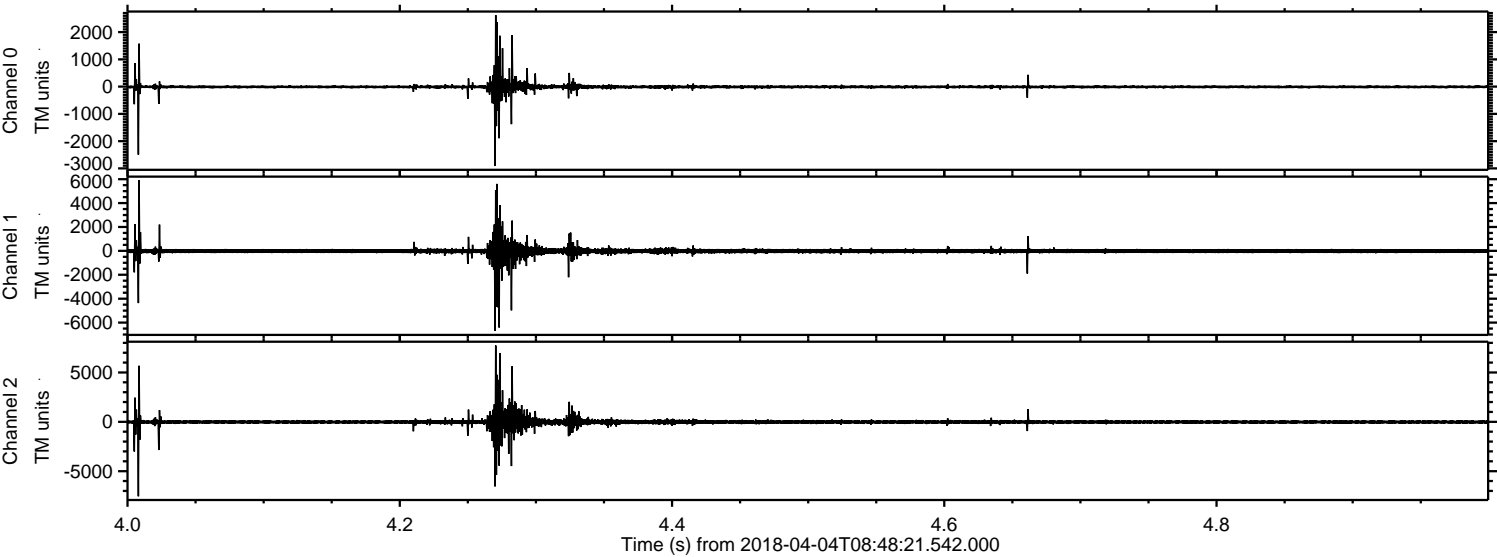
Processed Wed Apr 4 10:56:45 2018 by ELM ver.2012-10-06 from 001__elm20180404_084820__dat00.bin



Processed Wed Apr 4 10:56:46 2018 by ELM ver.2012-10-06 from 001__elm20180404_084820__dat00.bin

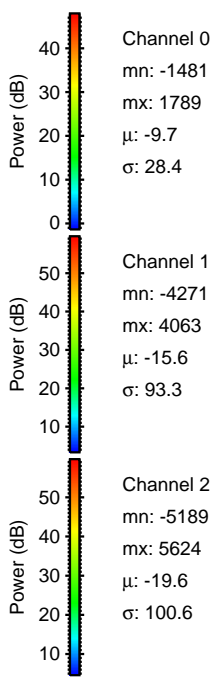
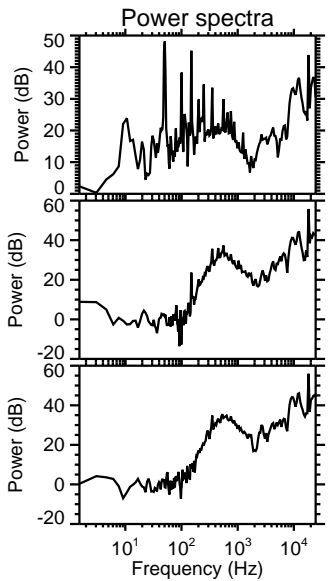
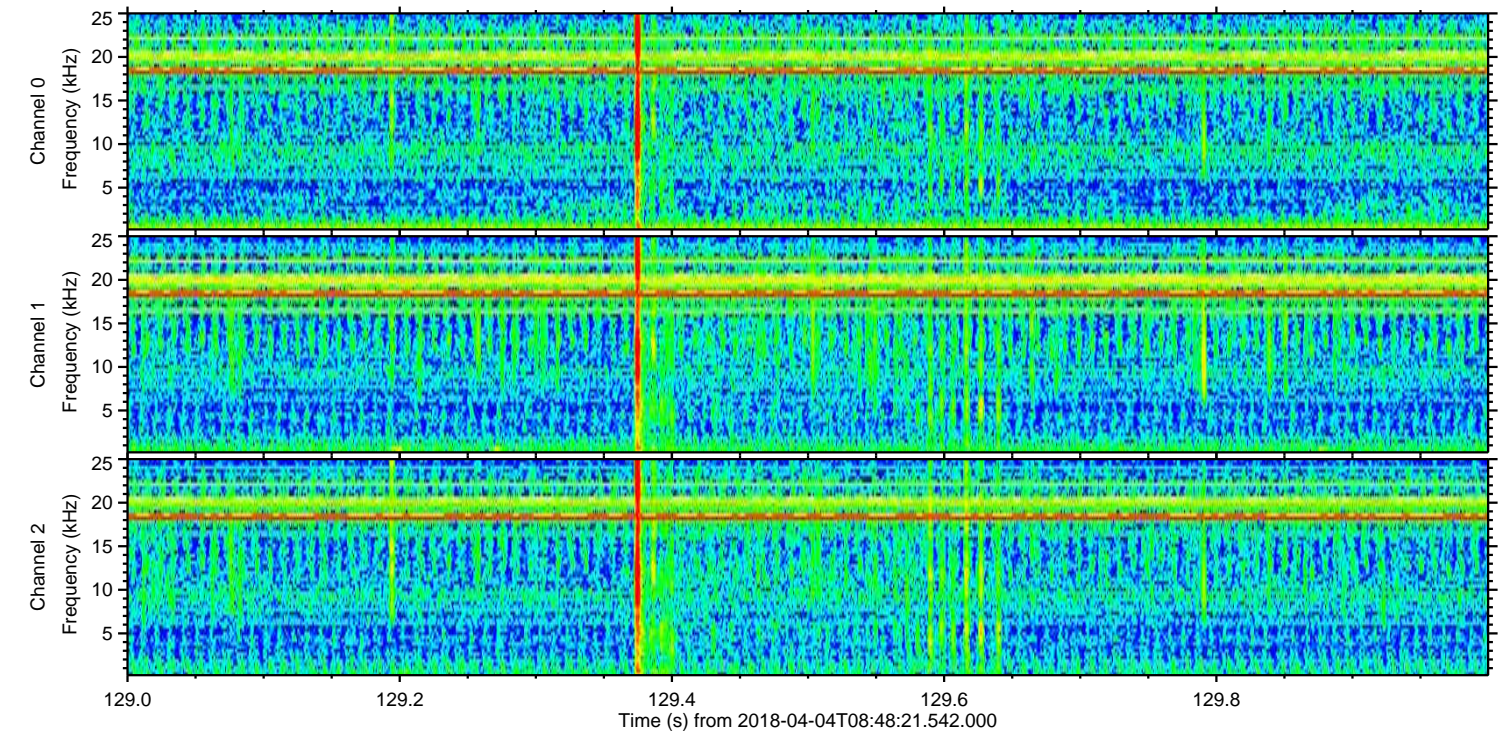
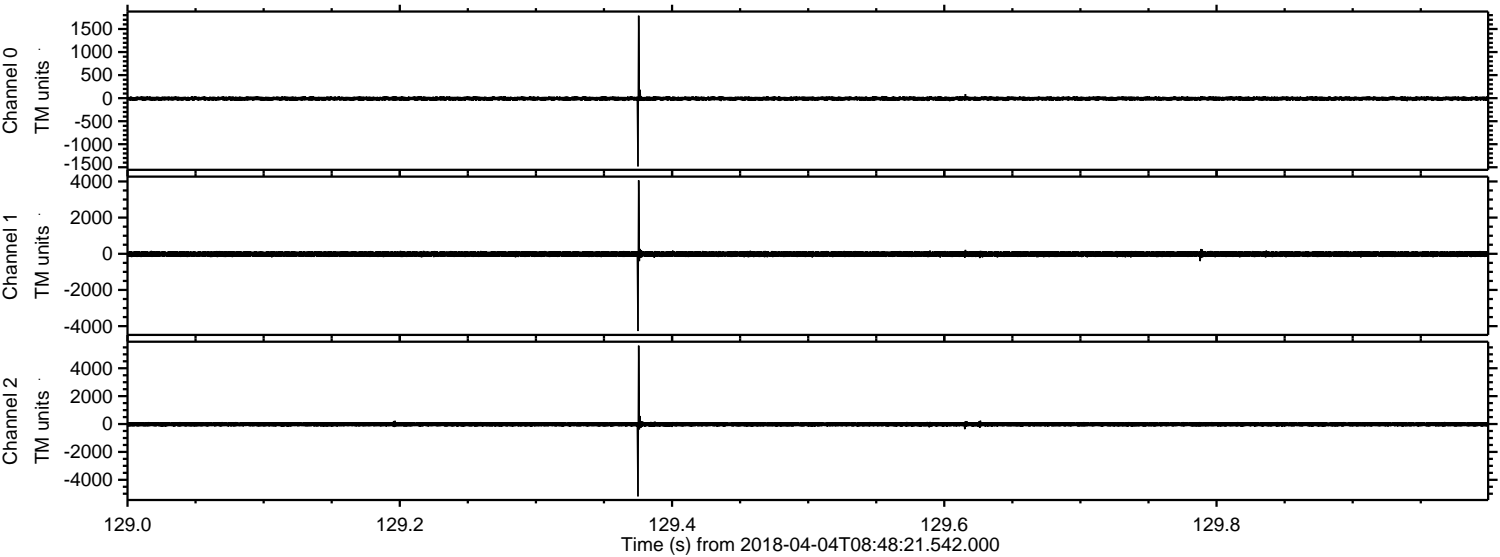


Processed Wed Apr 4 10:56:47 2018 by ELM ver.2012-10-06 from 001__elm20180404_084820__dat00.bin



ELMAVAN 3D WAVEFORMS (Measured data sampled at 50 kHz) 51000 packets of 144 samples from 2018-04-04T08:48:21.542.000. Part 130/147

Processed Wed Apr 4 10:56:48 2018 by ELM ver.2012-10-06 from 001__elm20180404_084820__dat00.bin

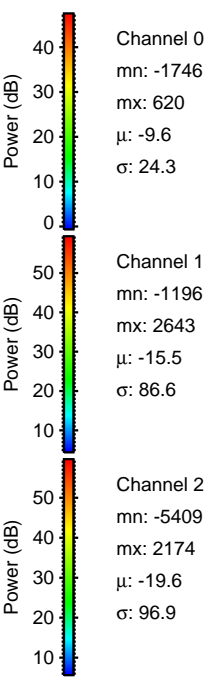
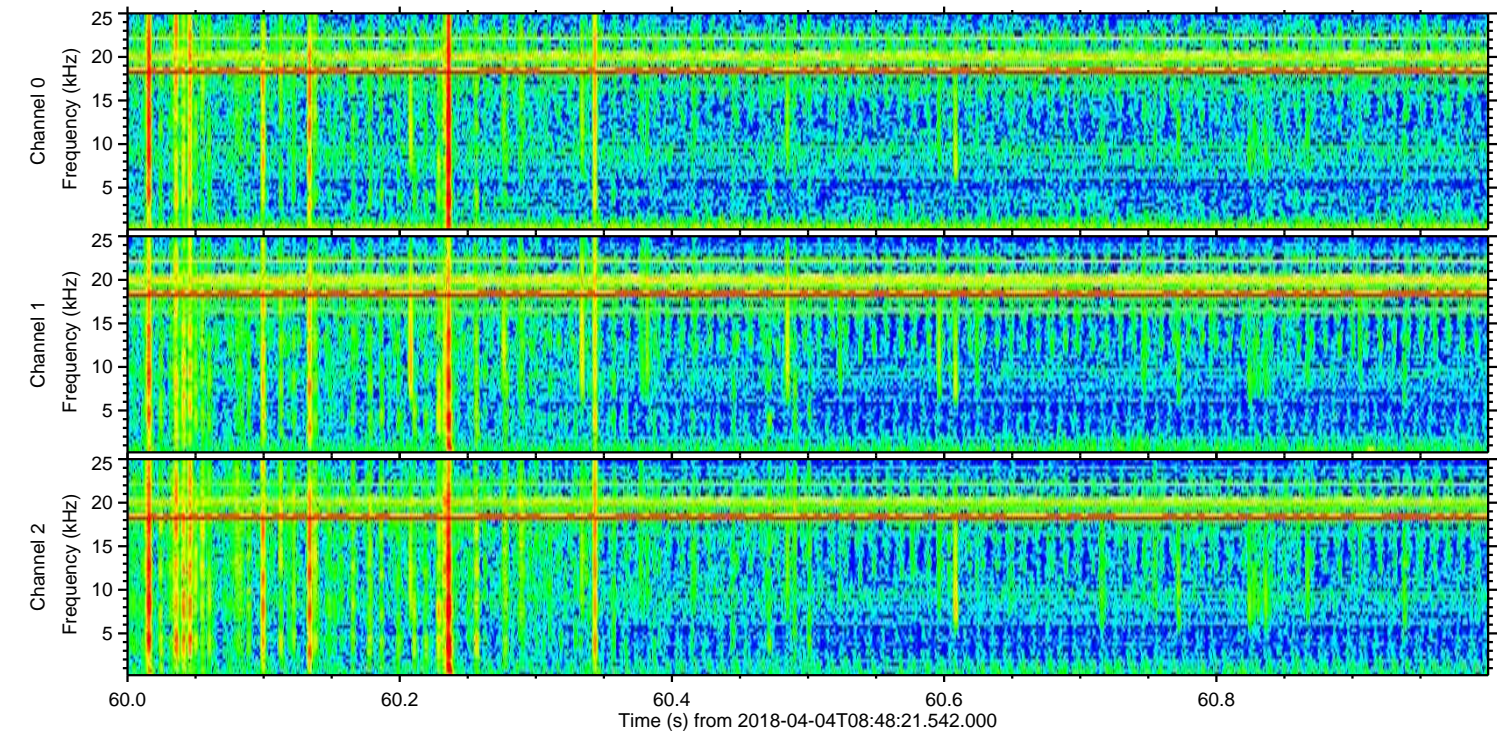
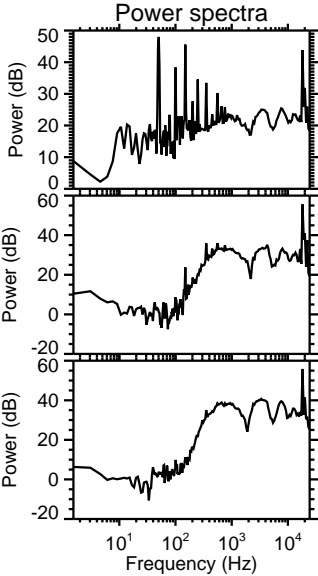
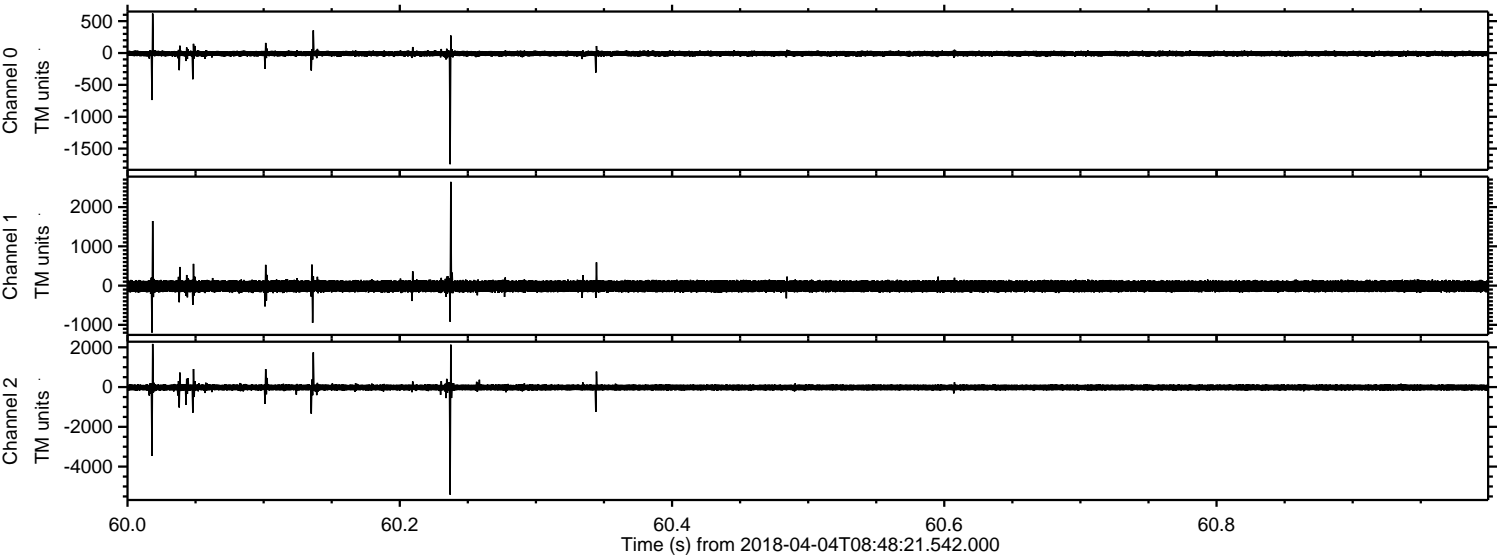


Channel 0
mn: -1481
mx: 1789
 μ : -9.7
 σ : 28.4

Channel 1
mn: -4271
mx: 4063
 μ : -15.6
 σ : 93.3

Channel 2
mn: -5189
mx: 5624
 μ : -19.6
 σ : 100.6

Processed Wed Apr 4 10:56:48 2018 by ELM ver.2012-10-06 from 001__elm20180404_084820__dat00.bin



Channel 0
mn: -1746
mx: 620
 μ : -9.6
 σ : 24.3

Channel 1
mn: -1196
mx: 2643
 μ : -15.5
 σ : 86.6

Channel 2
mn: -5409
mx: 2174
 μ : -19.6
 σ : 96.9

