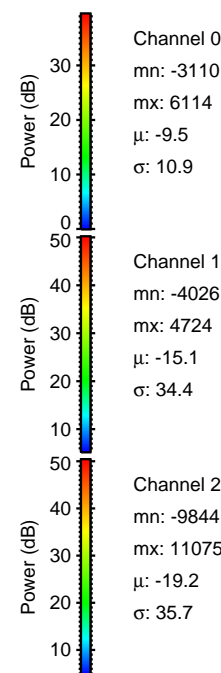
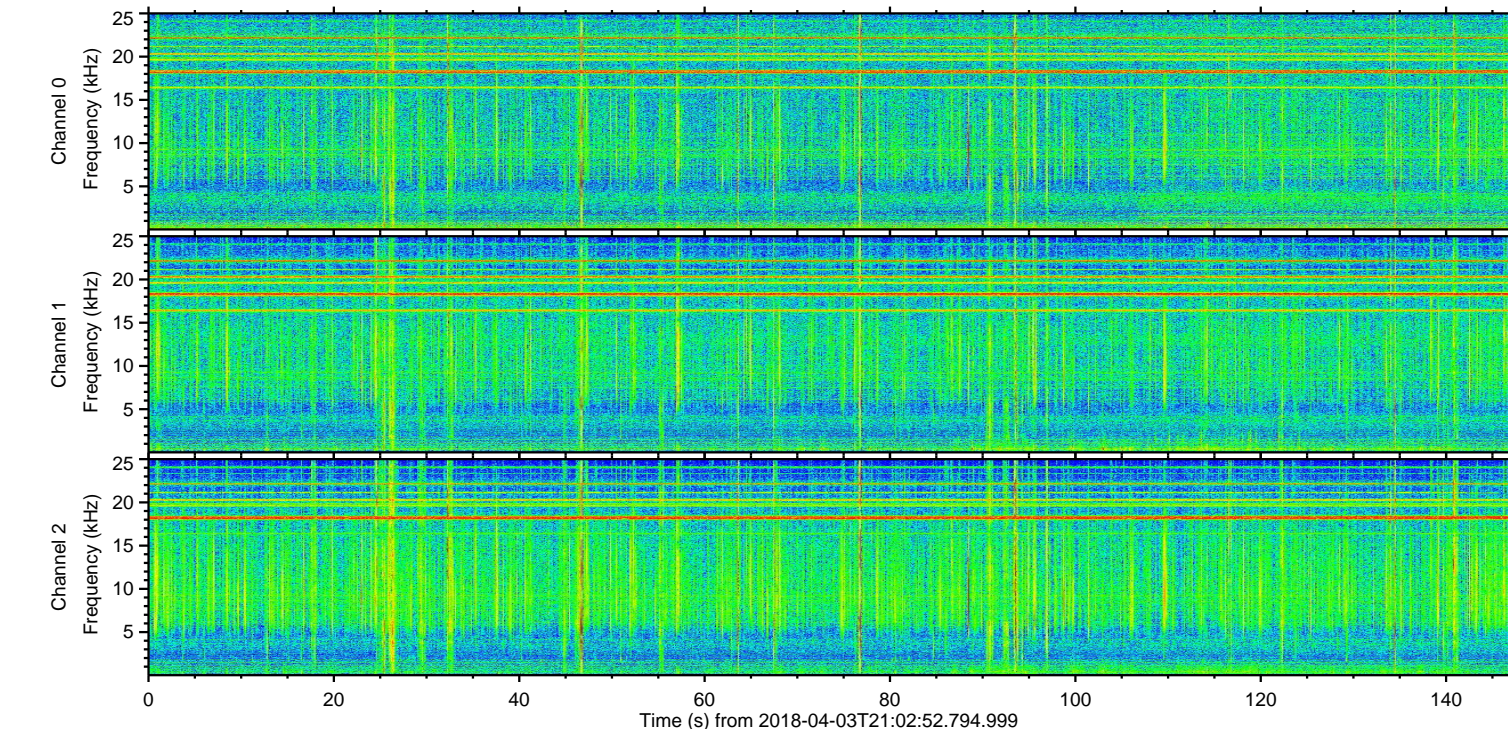
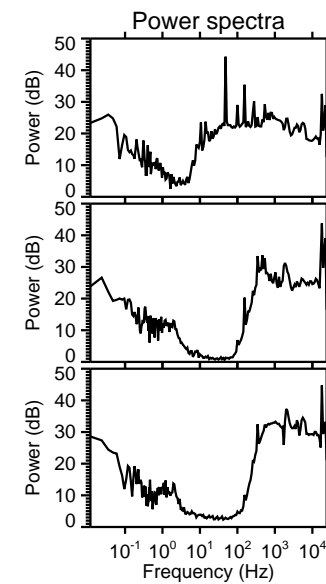
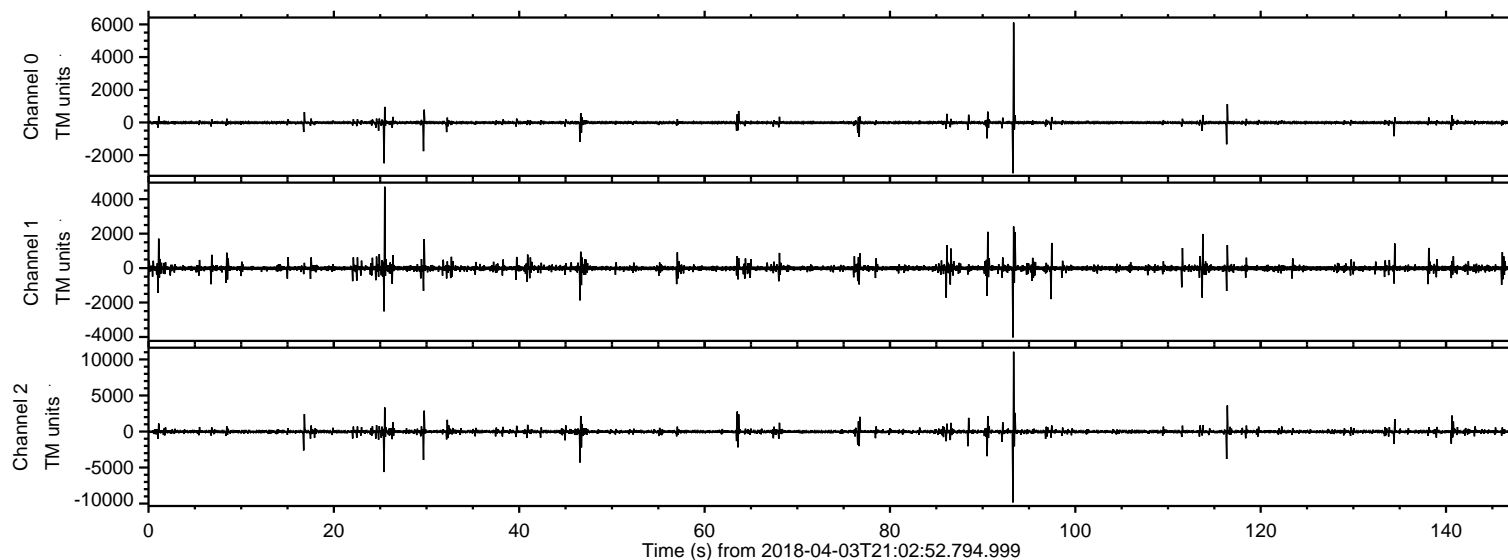
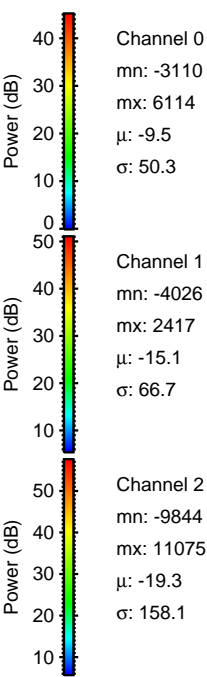
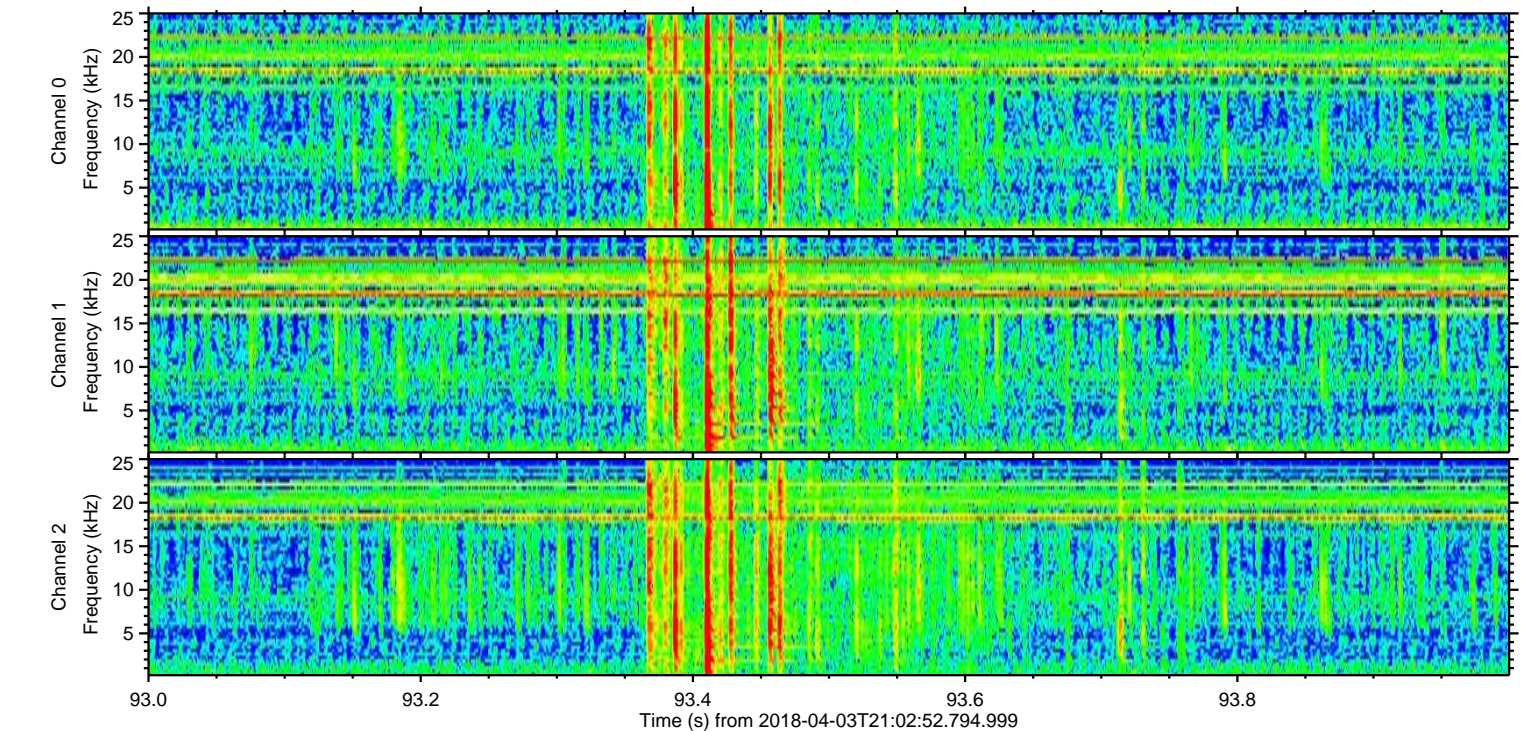
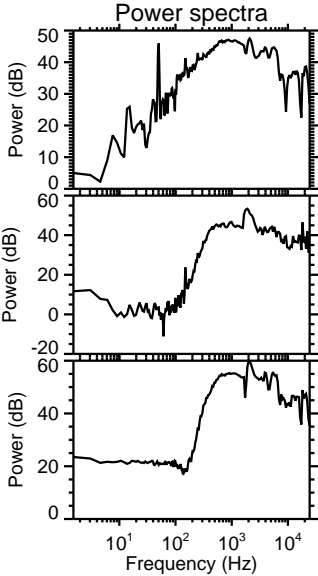
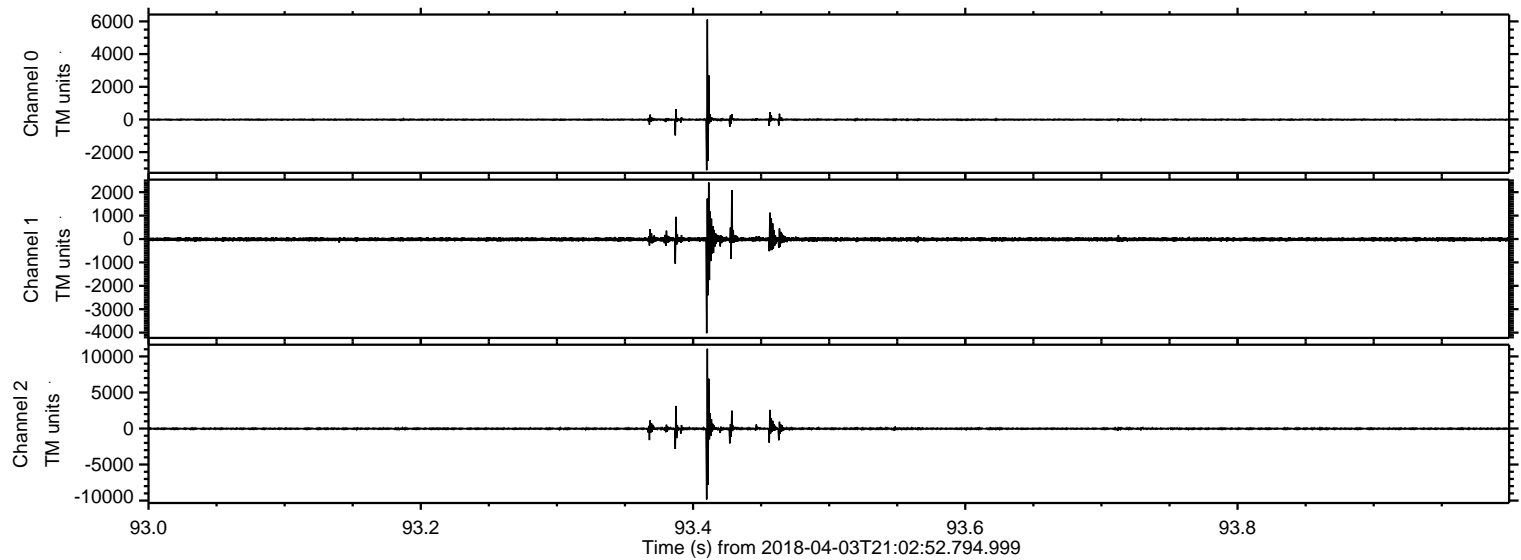


ELMAVAN 3D WAVEFORMS (Measured data sampled at 50 kHz) 51000 packets of 144 samples from 2018-04-03T21:02:52.794.999.

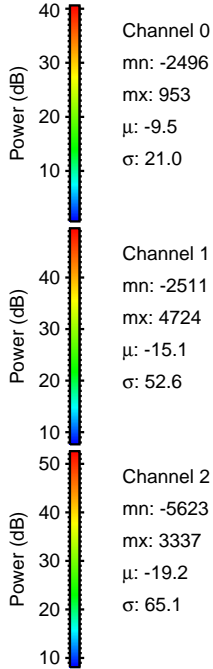
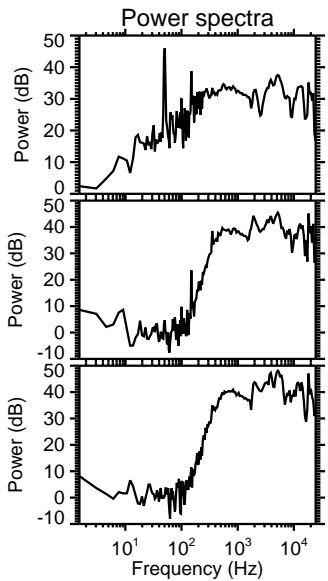
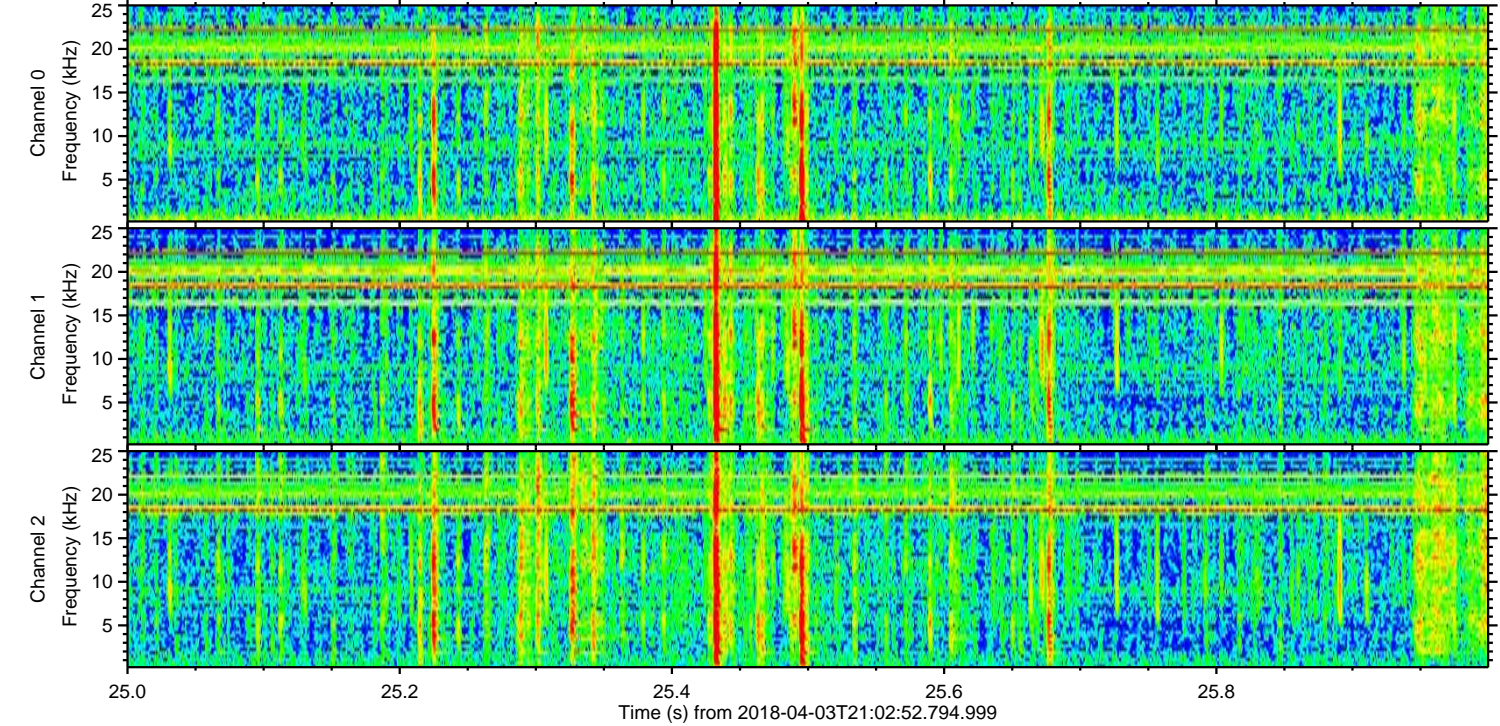
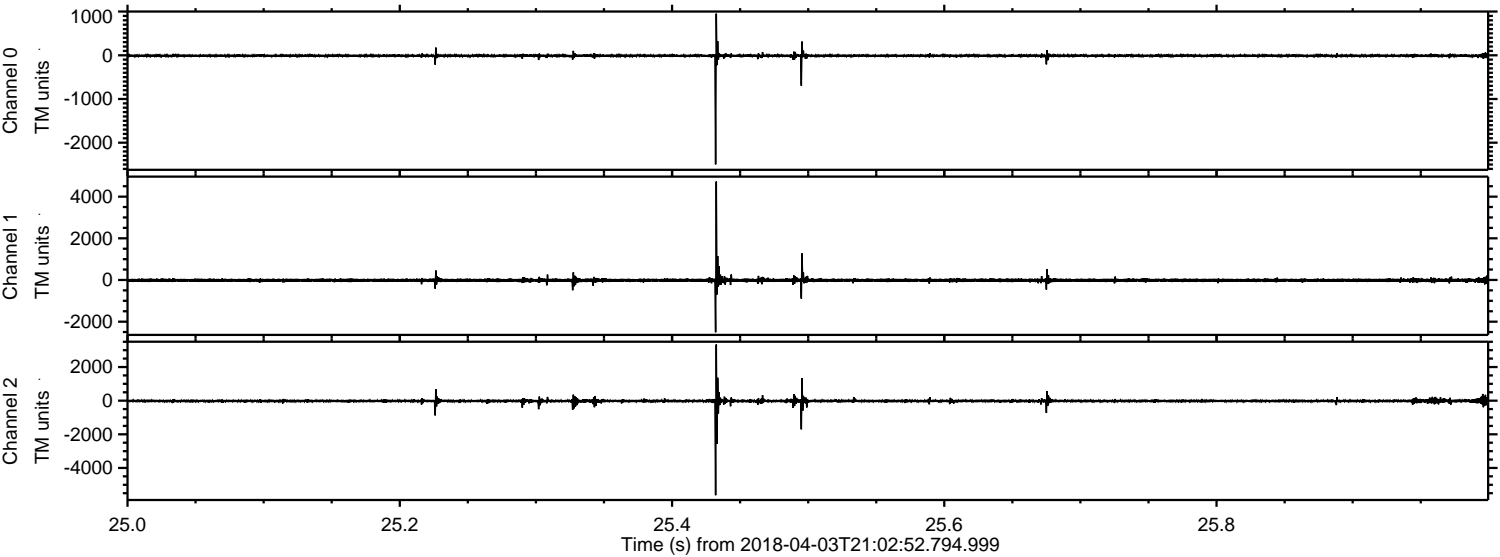
Processed Tue Apr 3 23:11:15 2018 by ELM ver.2012-10-06 from 001__elm20180403_210251__dat00.bin



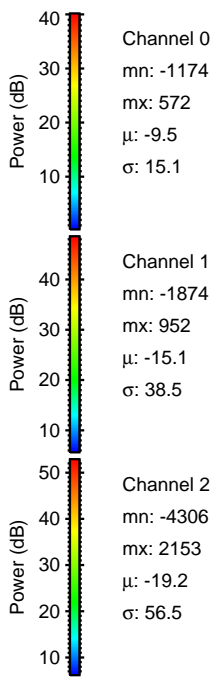
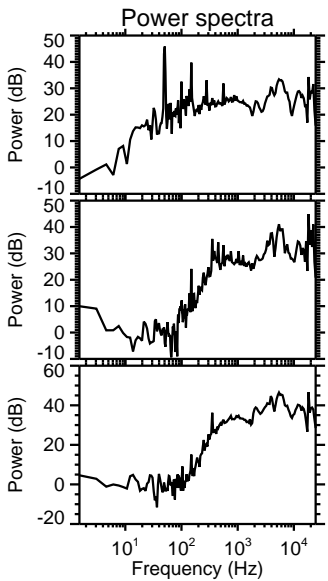
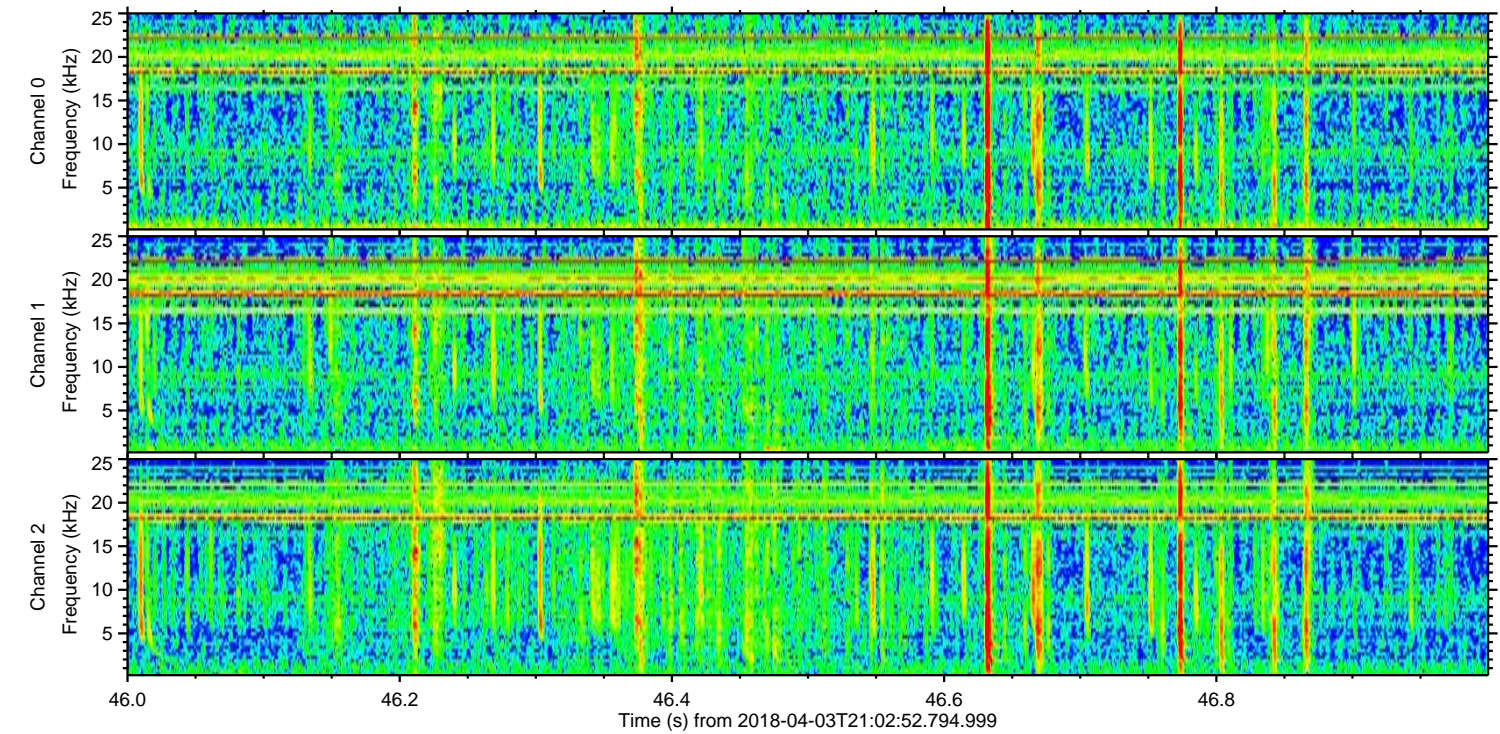
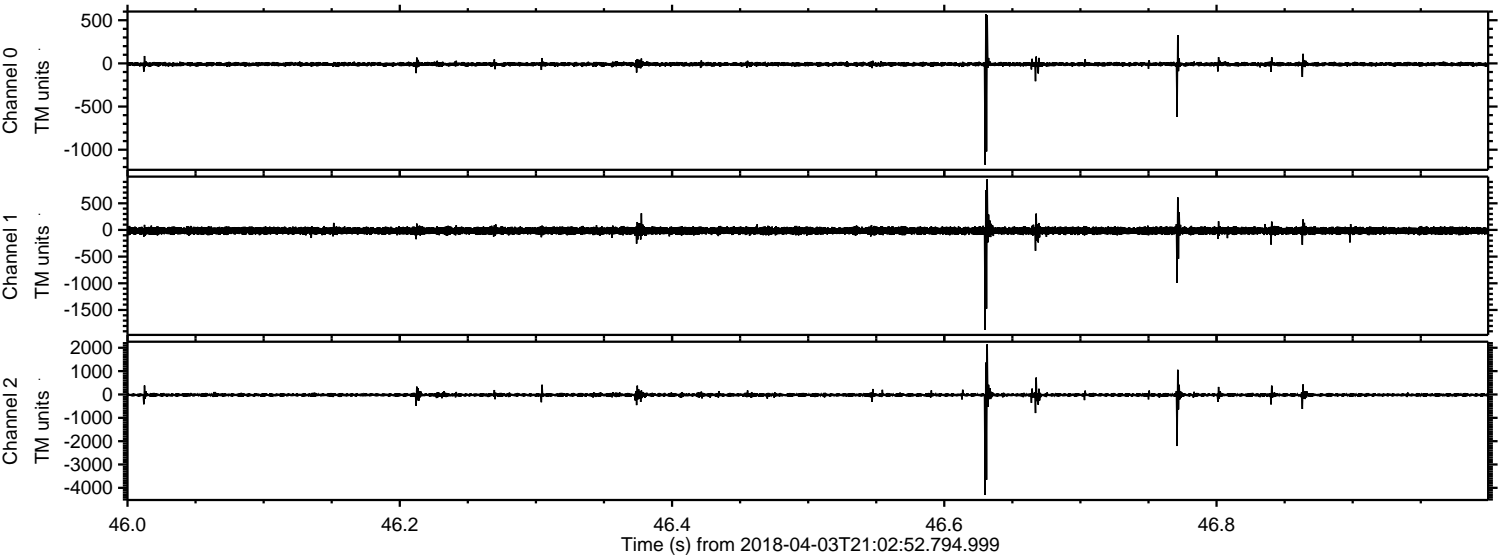
Processed Tue Apr 3 23:11:24 2018 by ELM ver.2012-10-06 from 001__elm20180403_210251__dat00.bin



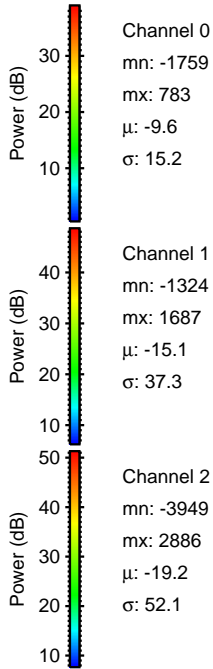
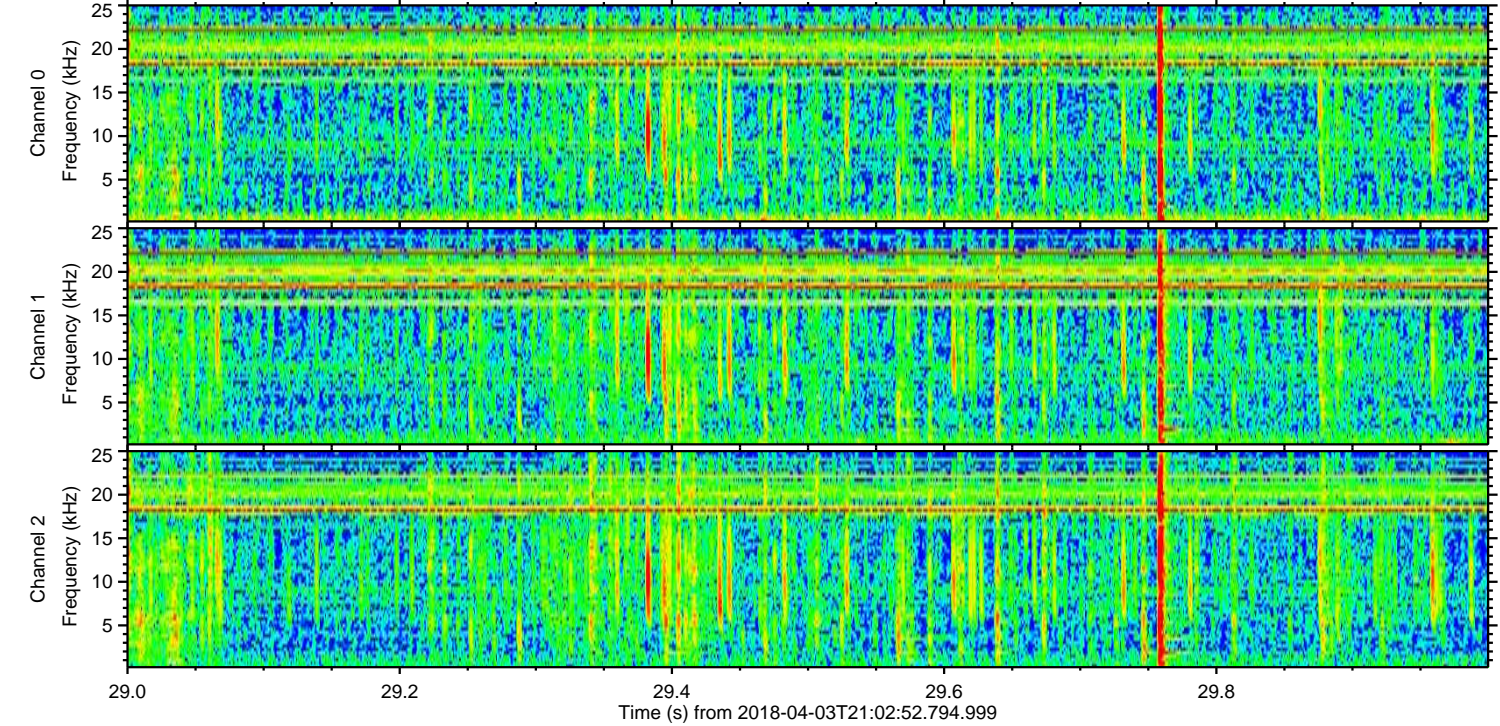
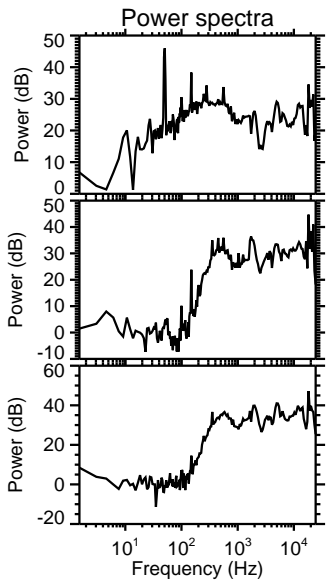
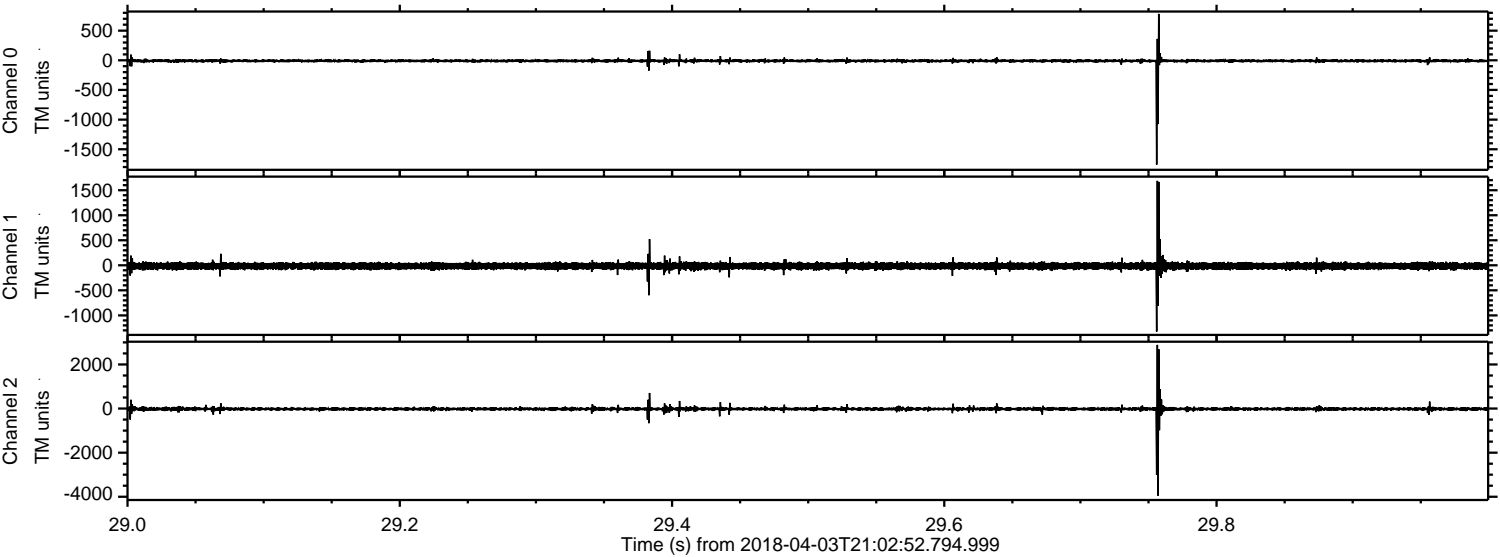
Processed Tue Apr 3 23:11:24 2018 by ELM ver.2012-10-06 from 001__elm20180403_210251__dat00.bin



Processed Tue Apr 3 23:11:25 2018 by ELM ver.2012-10-06 from 001__elm20180403_210251__dat00.bin

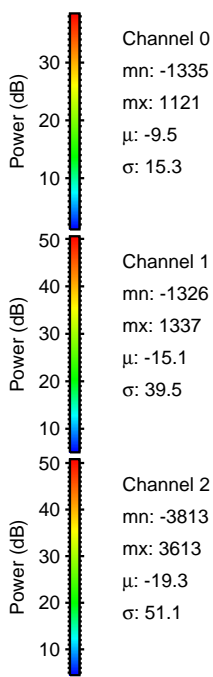
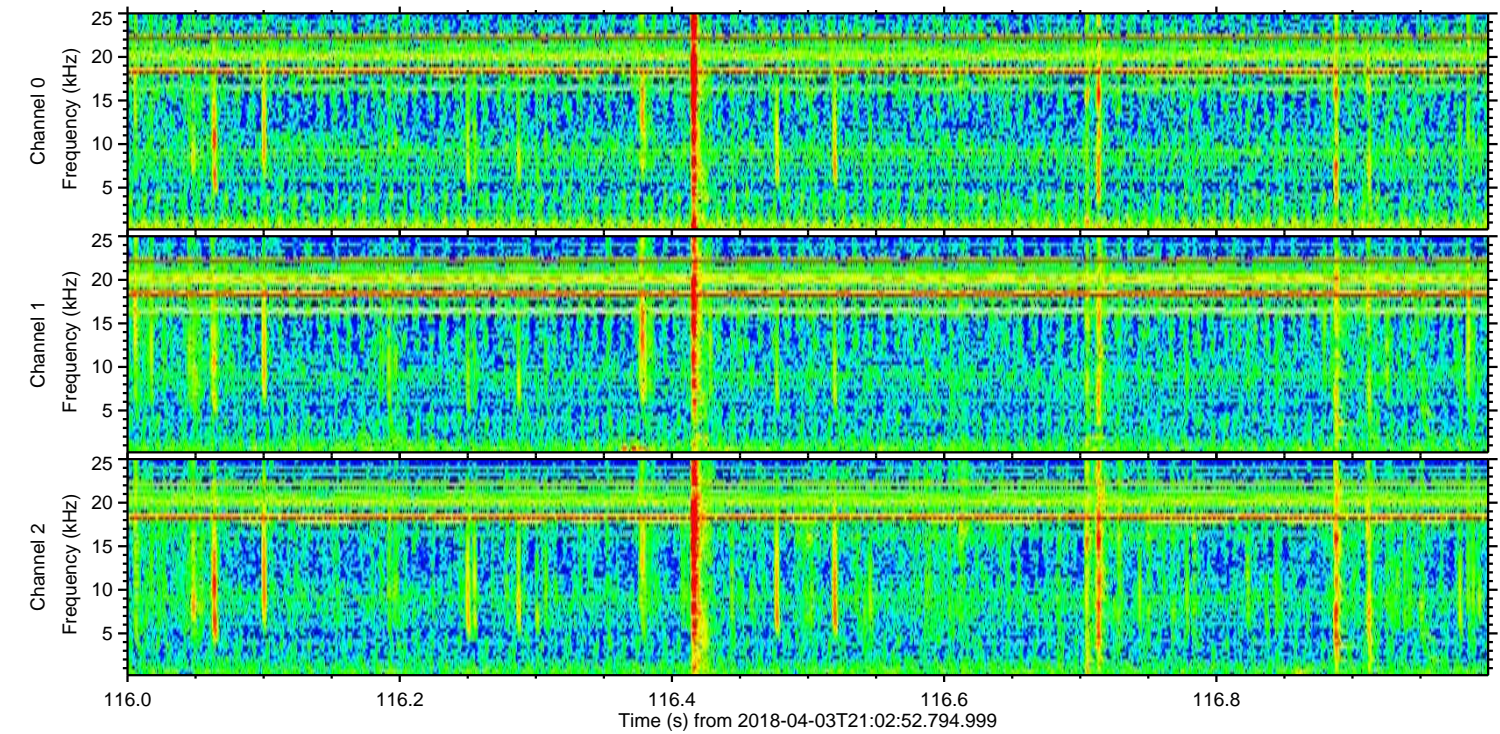
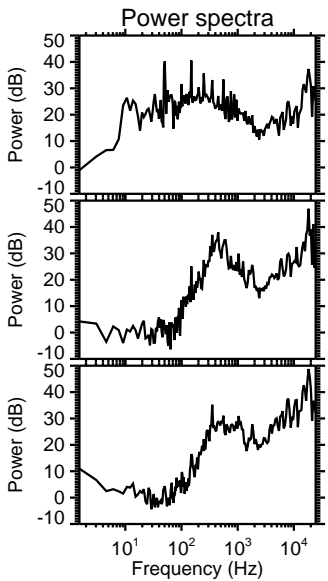
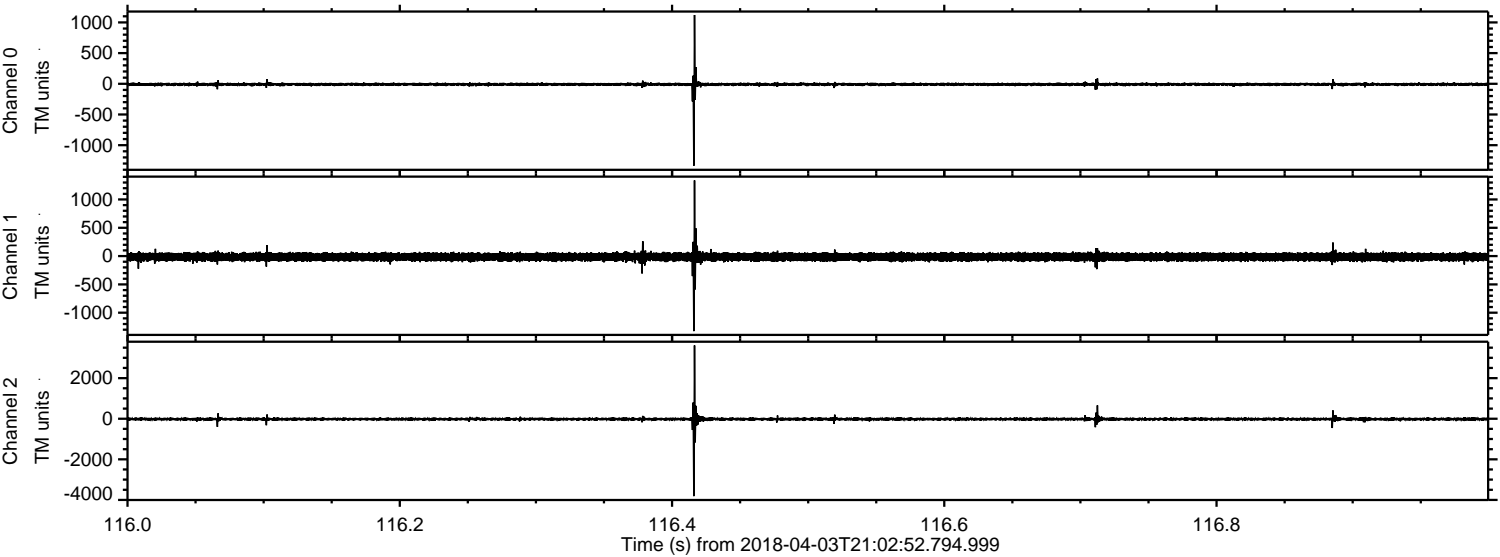


Processed Tue Apr 3 23:11:26 2018 by ELM ver.2012-10-06 from 001__elm20180403_210251__dat00.bin

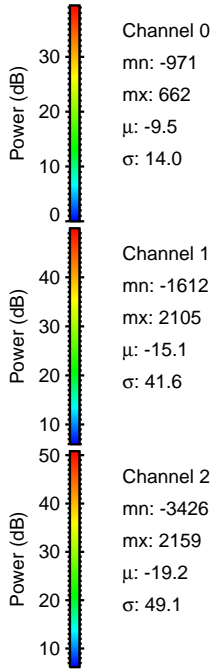
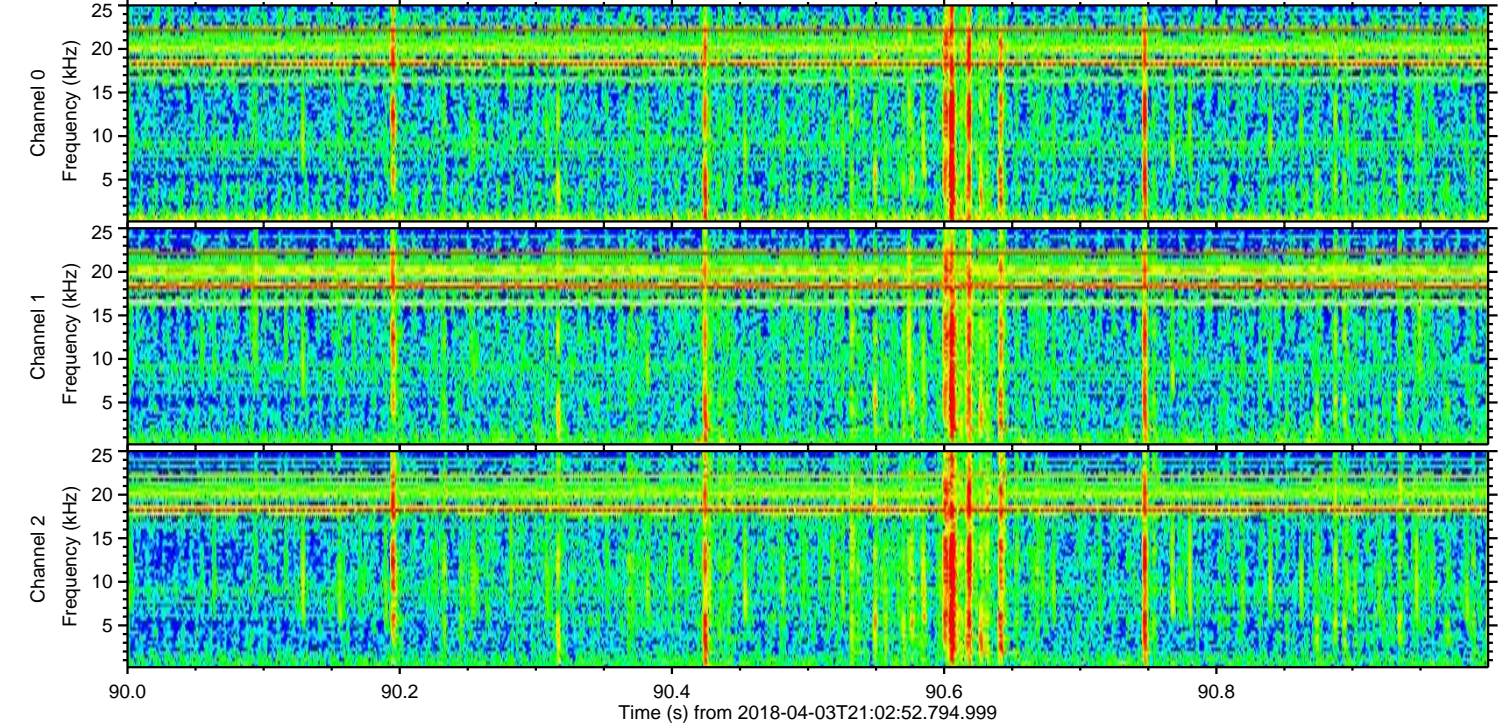
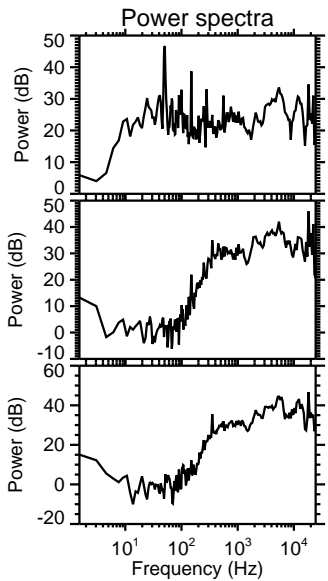
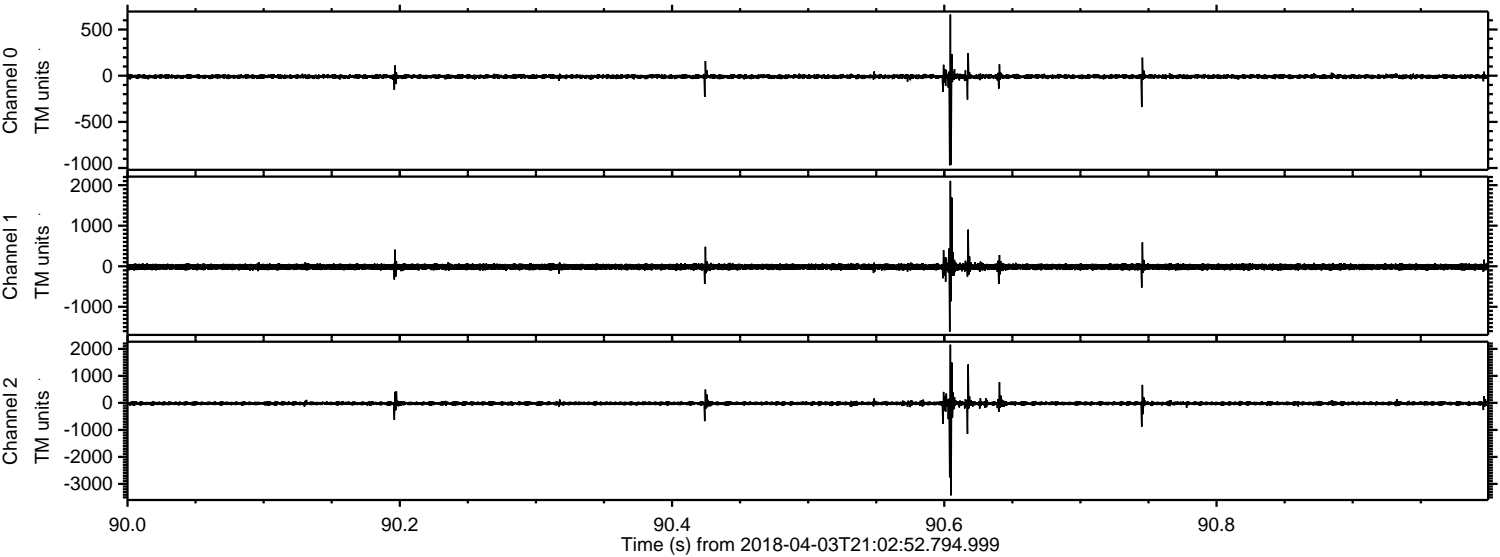


ELMAVAN 3D WAVEFORMS (Measured data sampled at 50 kHz) 51000 packets of 144 samples from 2018-04-03T21:02:52.794.999. Part 117/147

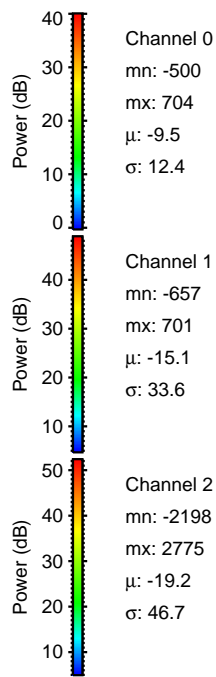
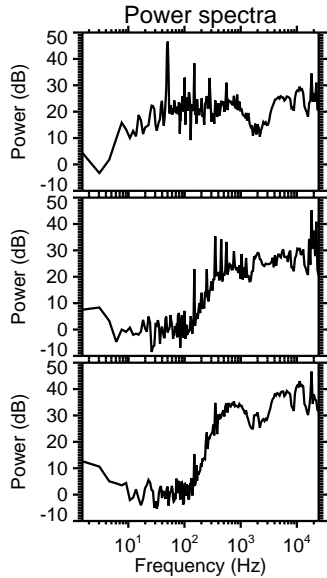
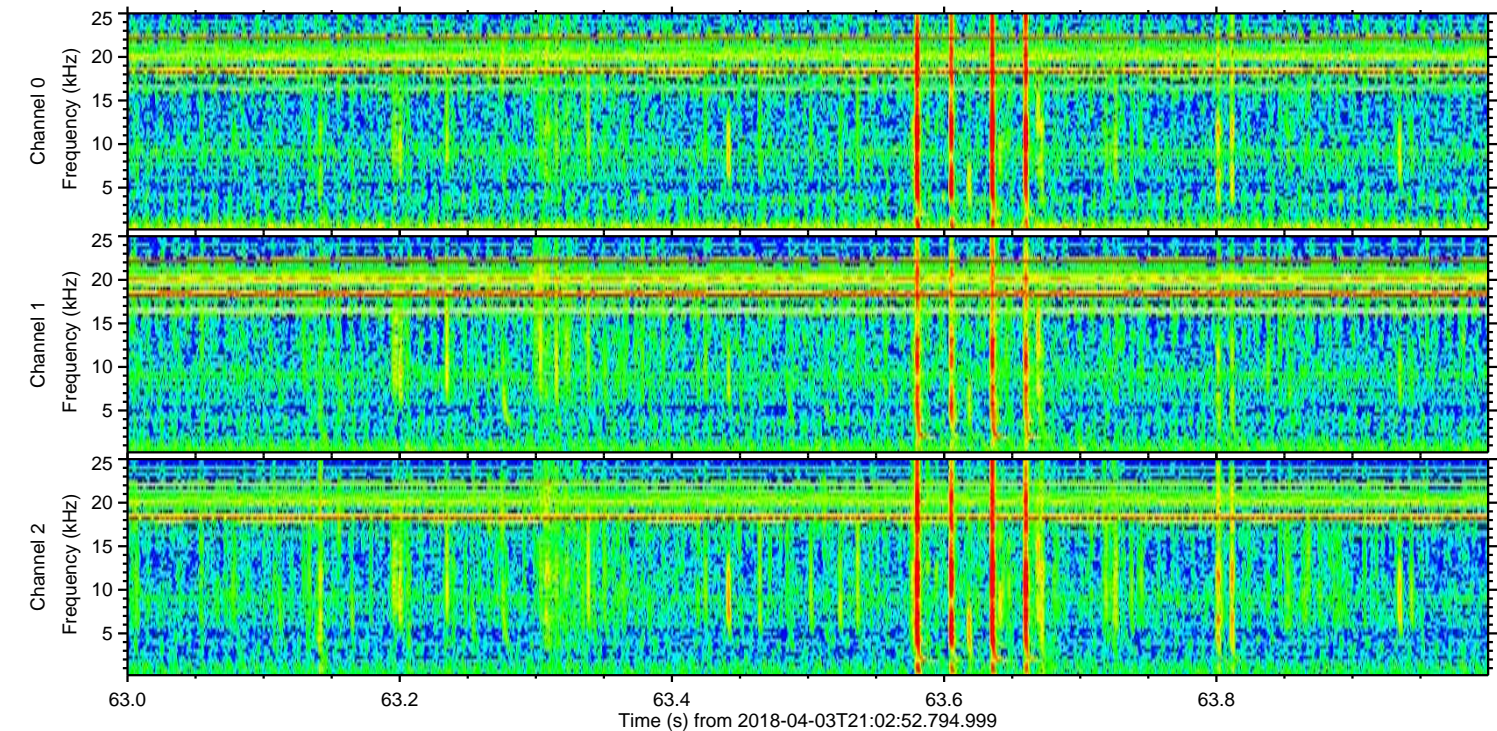
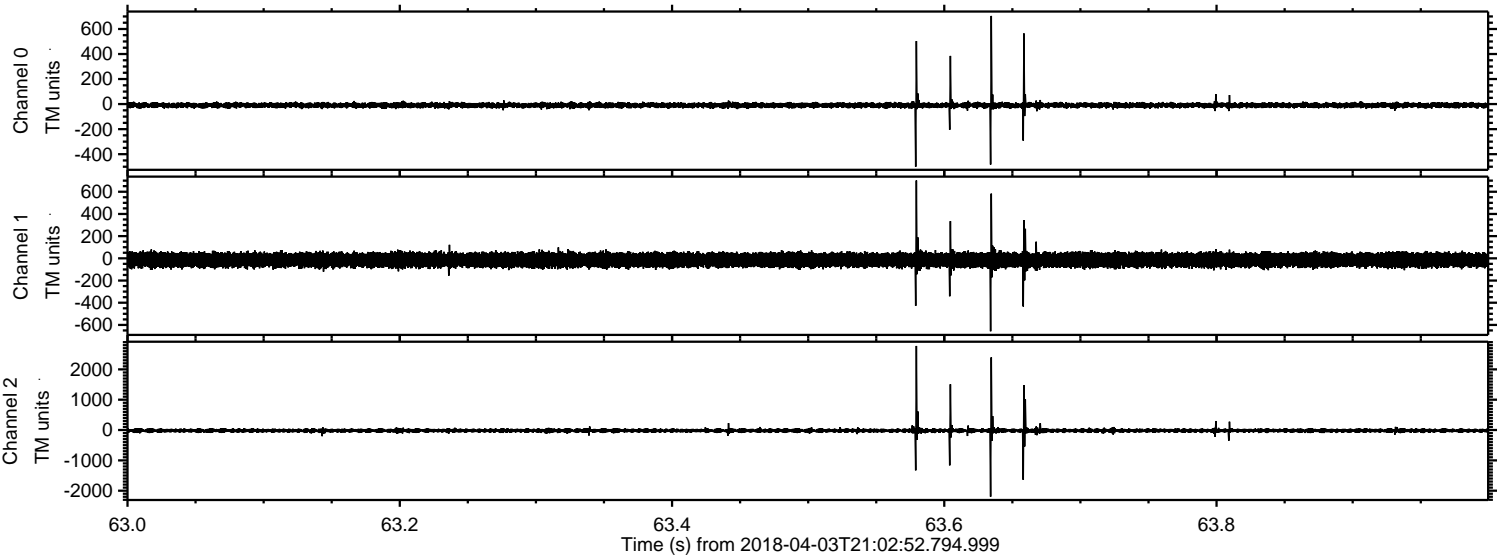
Processed Tue Apr 3 23:11:27 2018 by ELM ver.2012-10-06 from 001__elm20180403_210251__dat00.bin



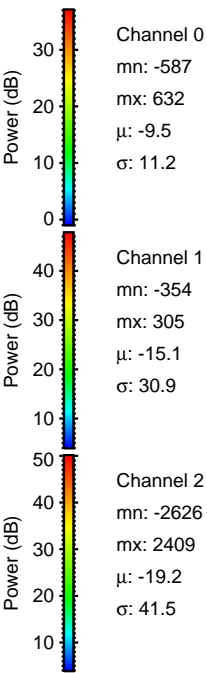
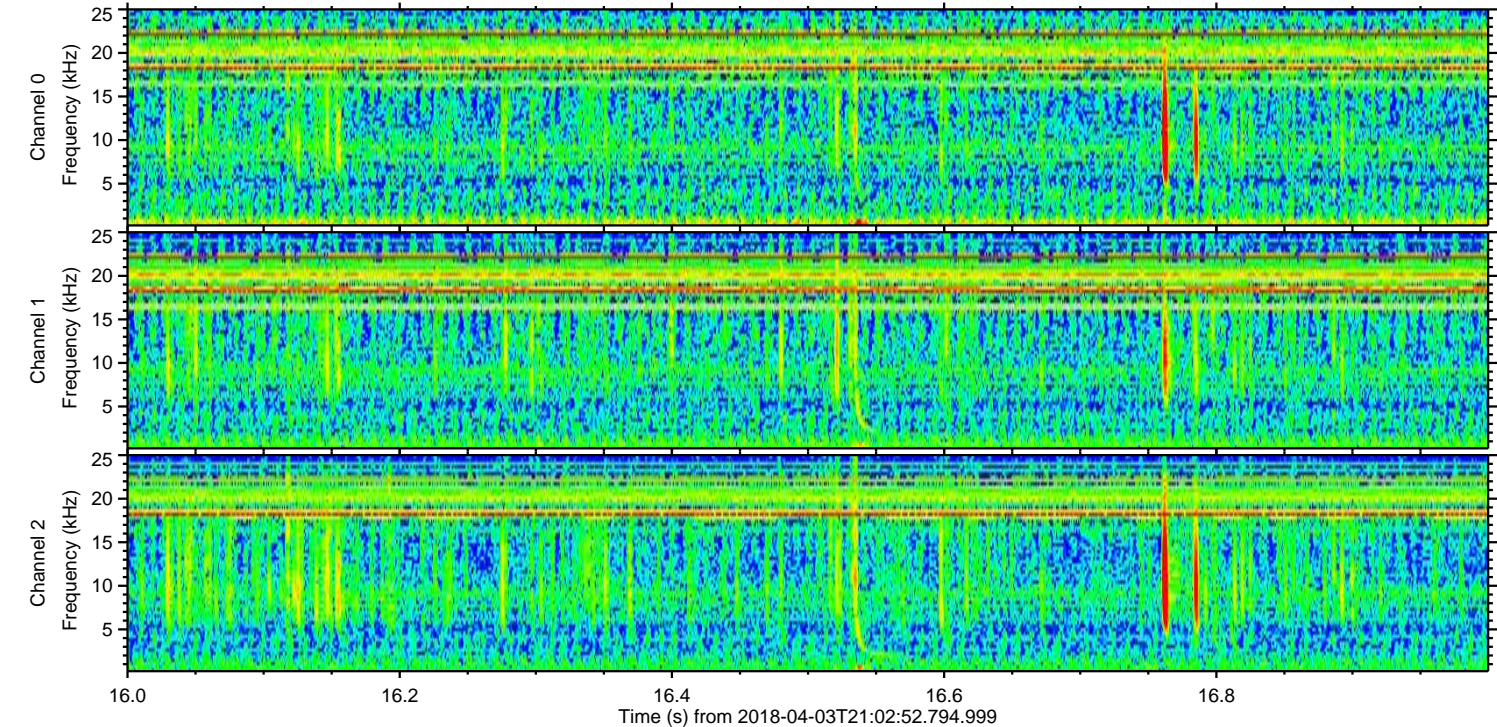
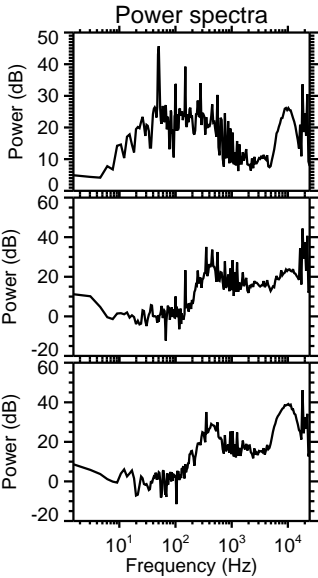
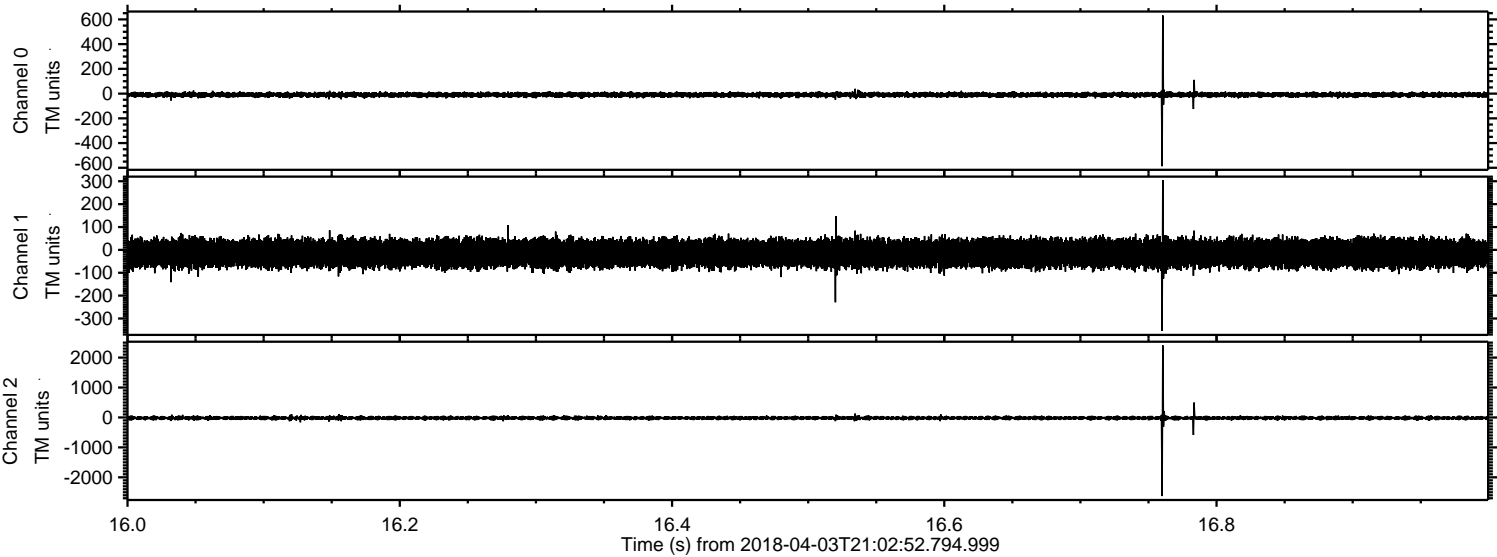
Processed Tue Apr 3 23:11:28 2018 by ELM ver.2012-10-06 from 001__elm20180403_210251__dat00.bin



Processed Tue Apr 3 23:11:28 2018 by ELM ver.2012-10-06 from 001__elm20180403_210251__dat00.bin

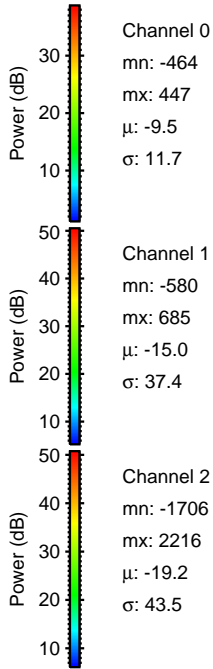
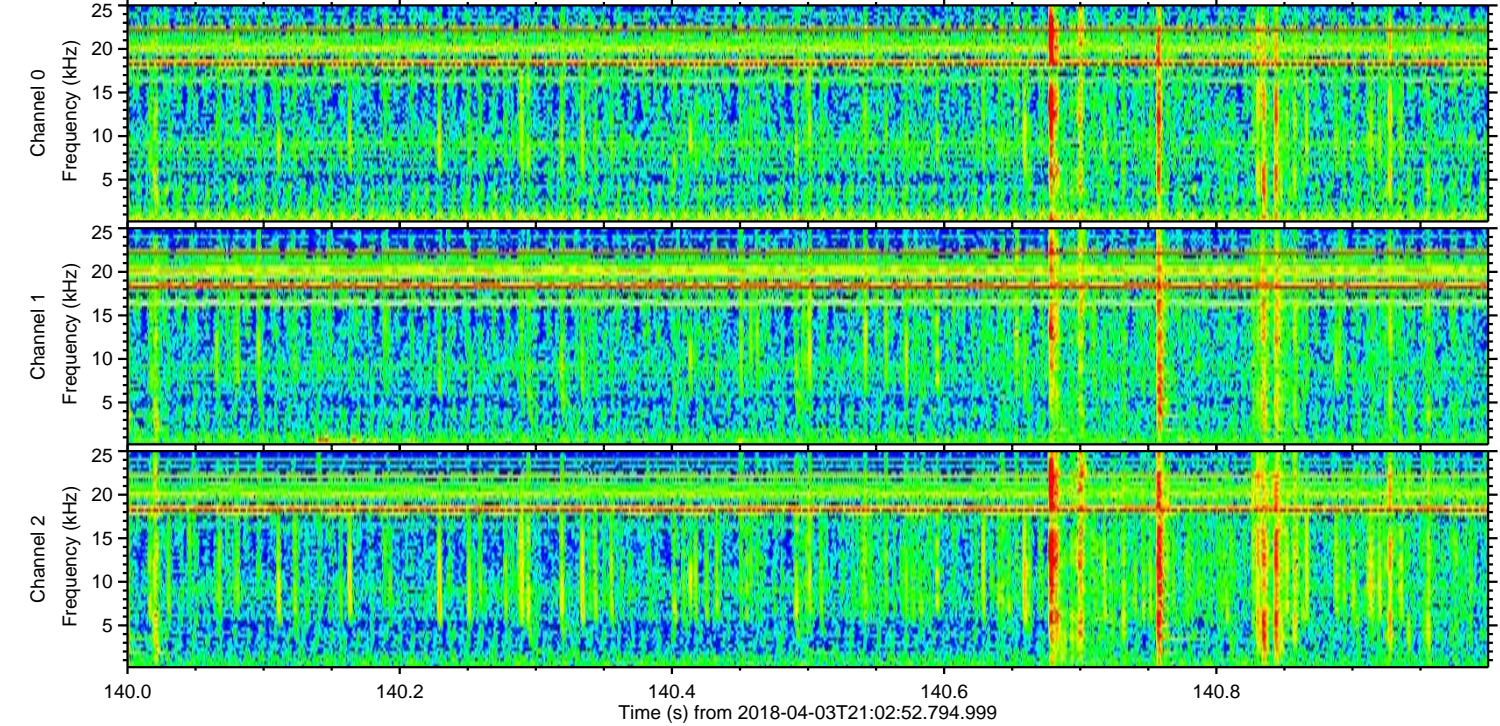
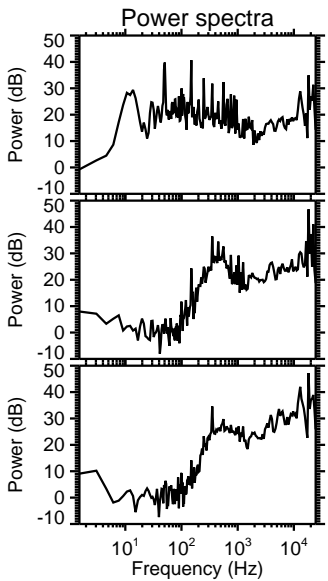
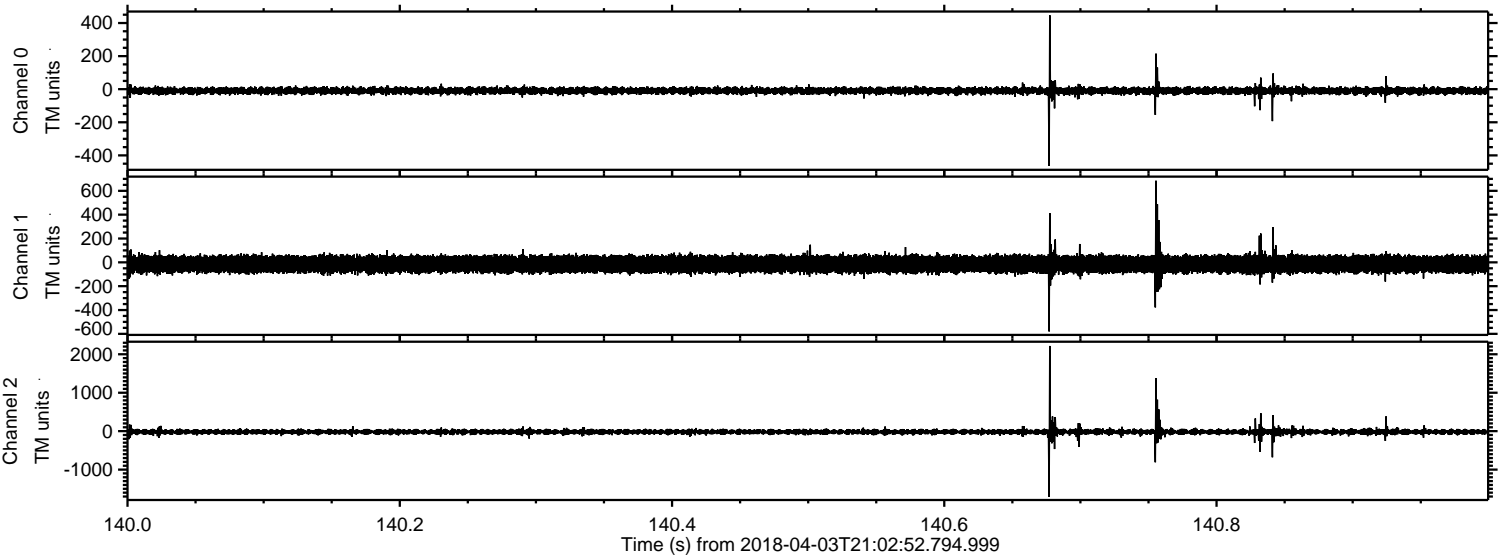


Processed Tue Apr 3 23:11:29 2018 by ELM ver.2012-10-06 from 001__elm20180403_210251__dat00.bin



ELMAVAN 3D WAVEFORMS (Measured data sampled at 50 kHz) 51000 packets of 144 samples from 2018-04-03T21:02:52.794.999. Part 141/147

Processed Tue Apr 3 23:11:30 2018 by ELM ver.2012-10-06 from 001__elm20180403_210251__dat00.bin



Channel 0
mn: -464
mx: 447
 μ : -9.5
 σ : 11.7

Channel 1
mn: -580
mx: 685
 μ : -15.0
 σ : 37.4

Channel 2
mn: -1706
mx: 2216
 μ : -19.2
 σ : 43.5

Processed Tue Apr 3 23:11:31 2018 by ELM ver.2012-10-06 from 001__elm20180403_210251__dat00.bin

