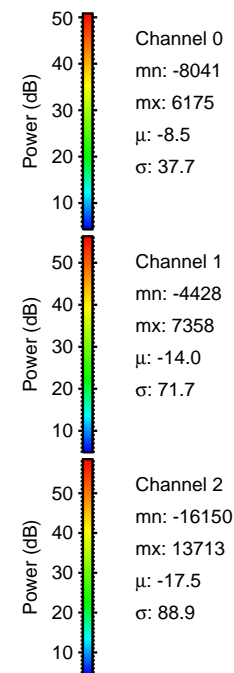
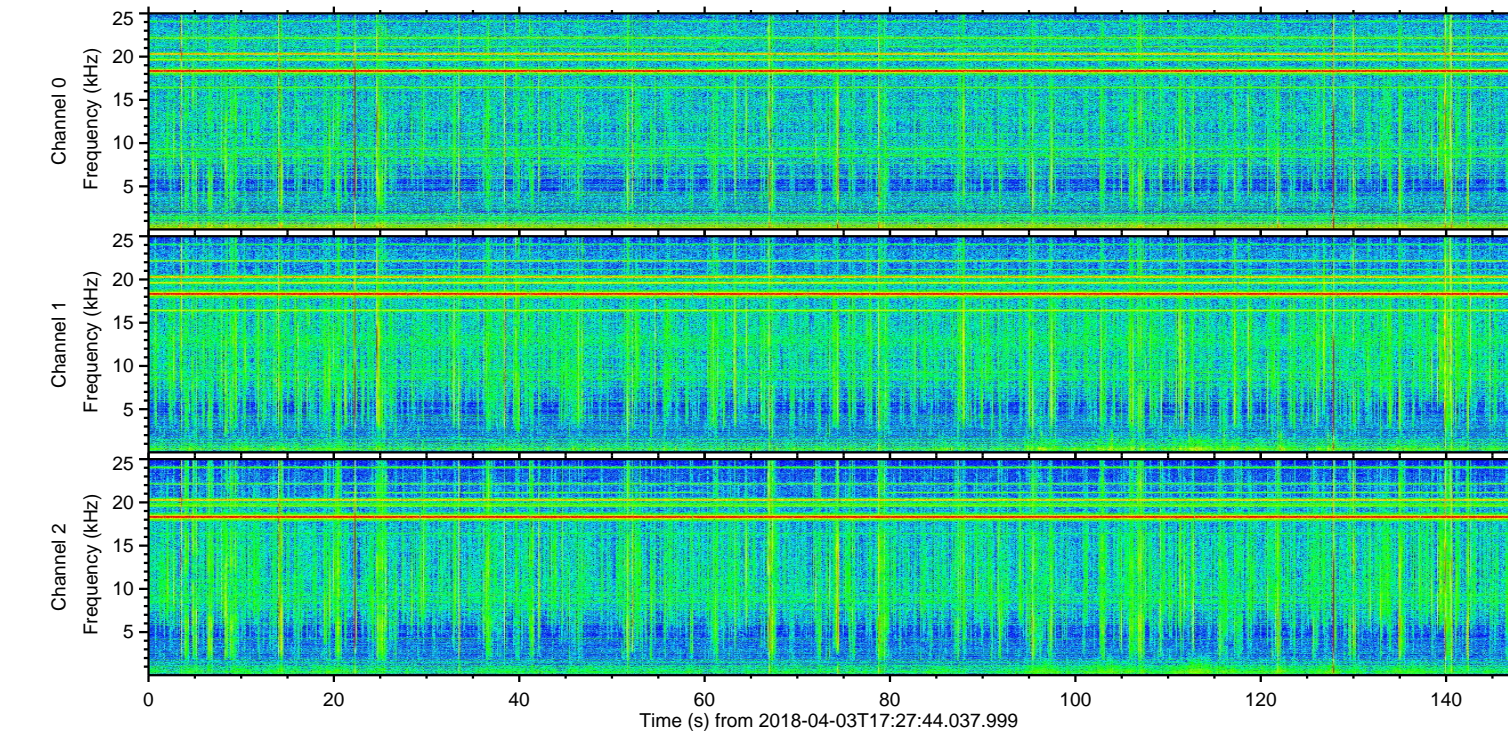
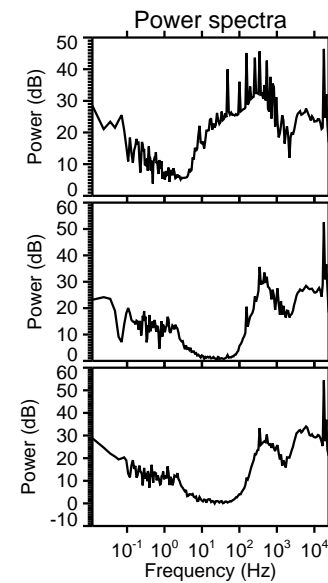
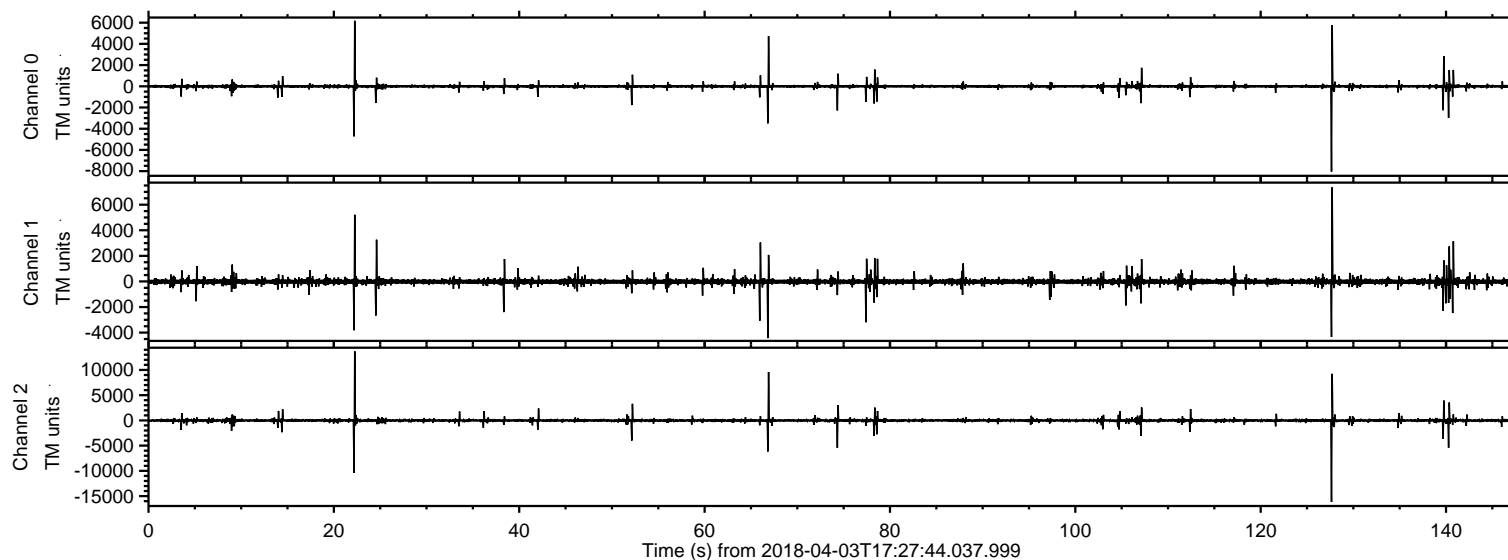


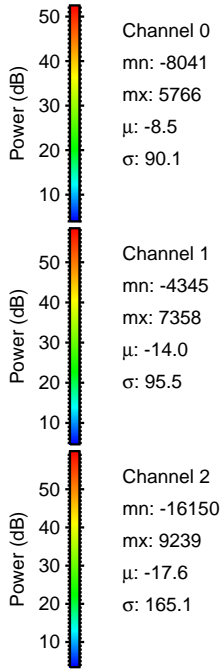
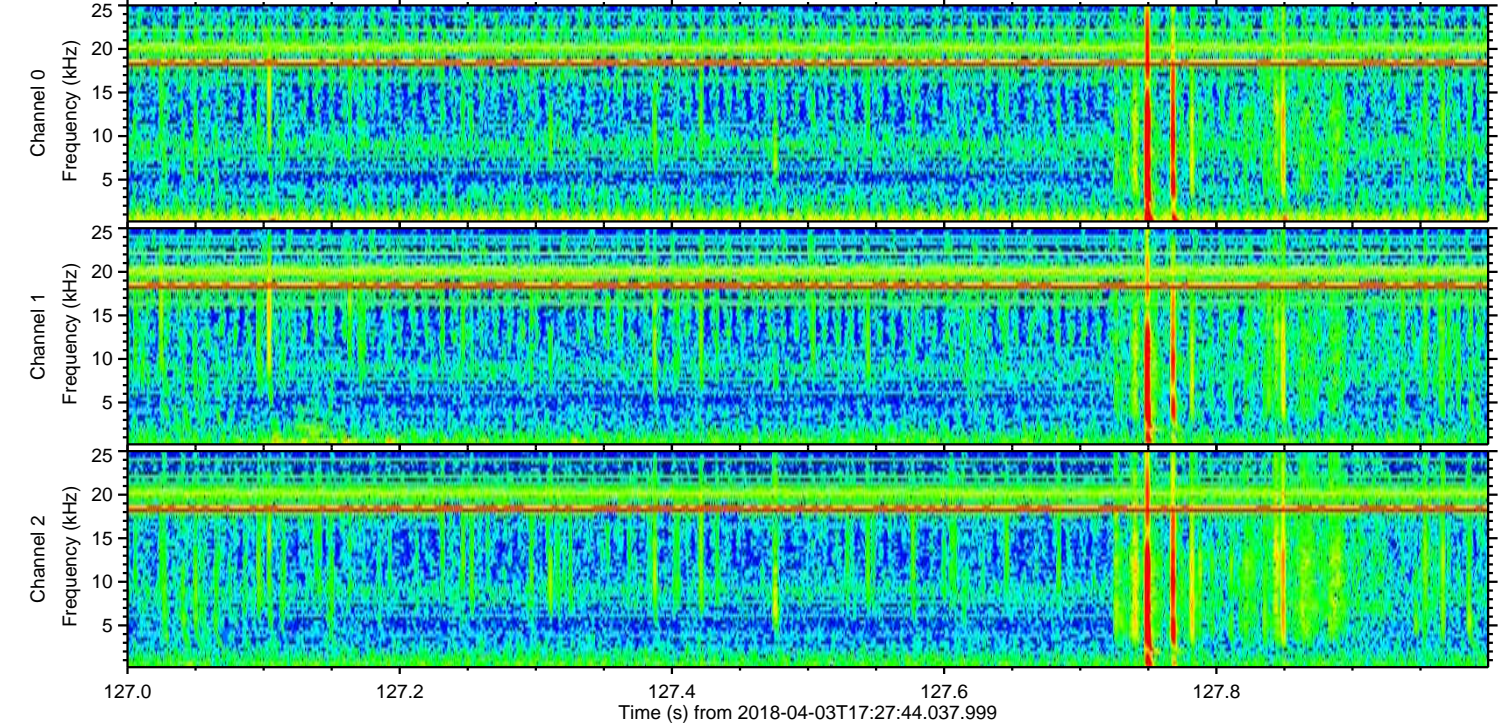
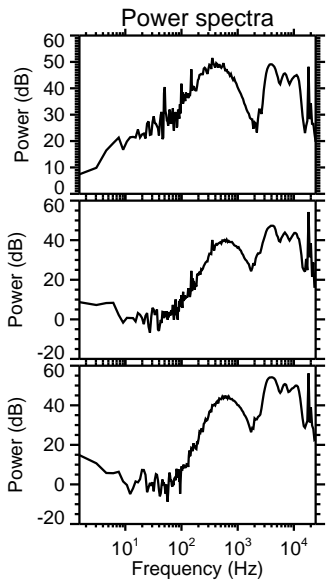
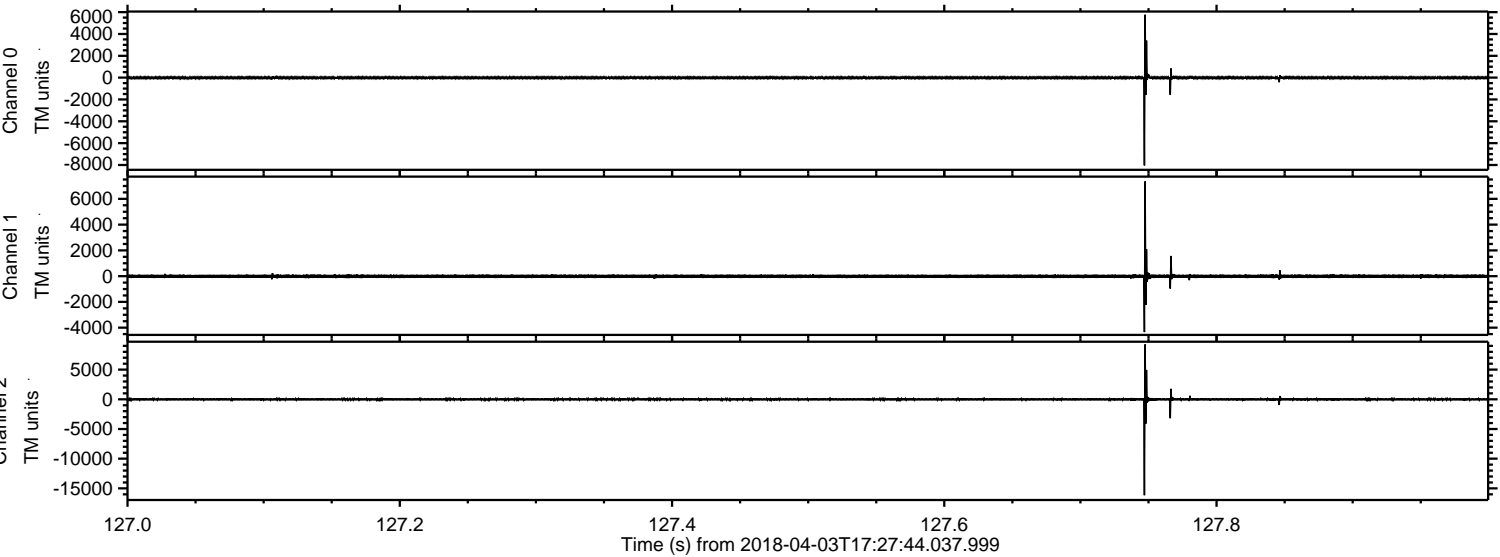
ELMAVAN 3D WAVEFORMS (Measured data sampled at 50 kHz) 51000 packets of 144 samples from 2018-04-03T17:27:44.037.999.

Processed Tue Apr 3 19:35:47 2018 by ELM ver.2012-10-06 from 001__elm20180403_172743__dat00.bin



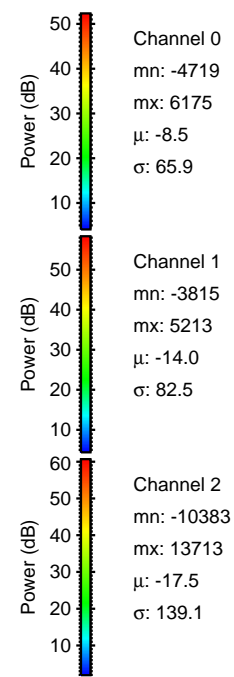
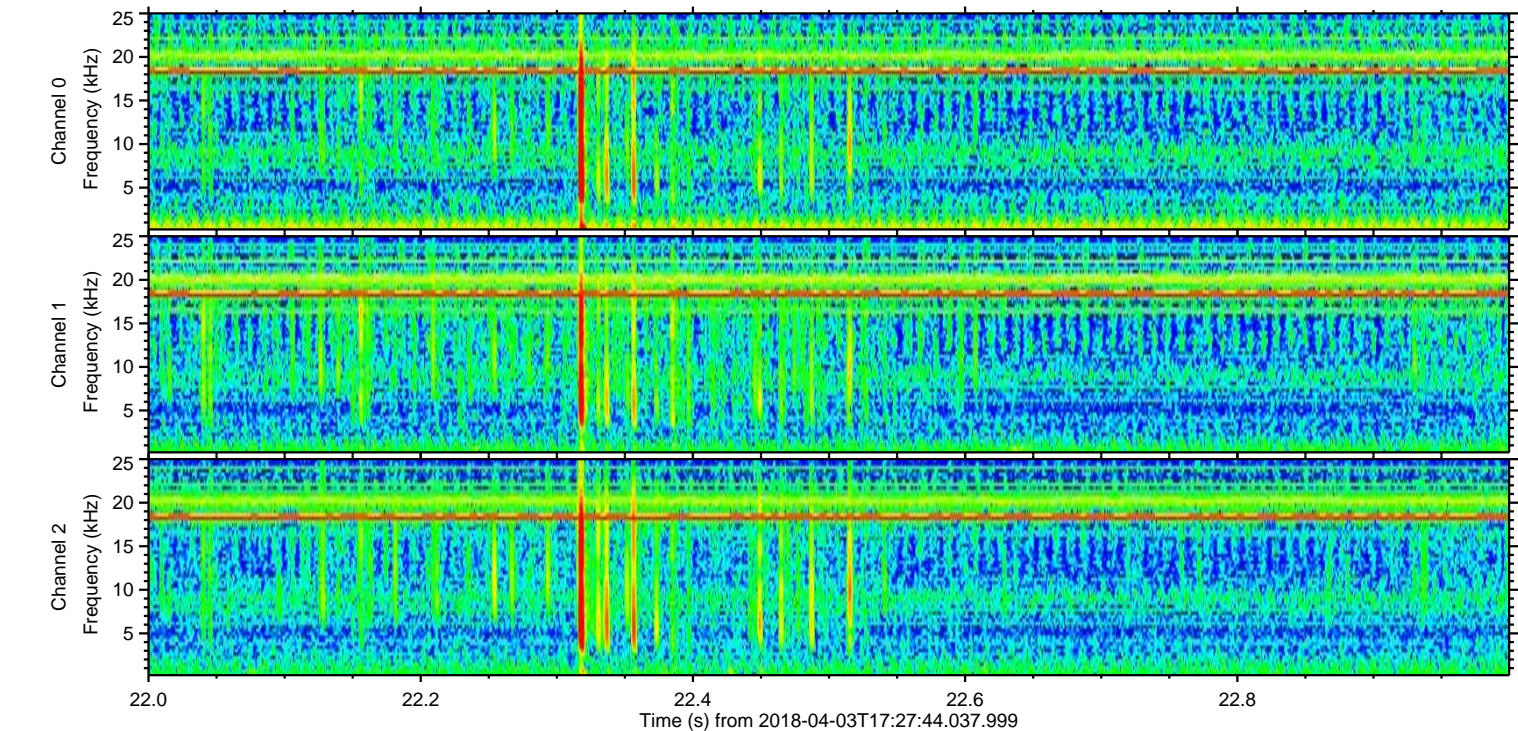
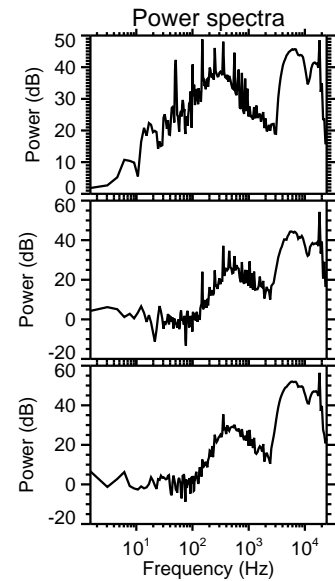
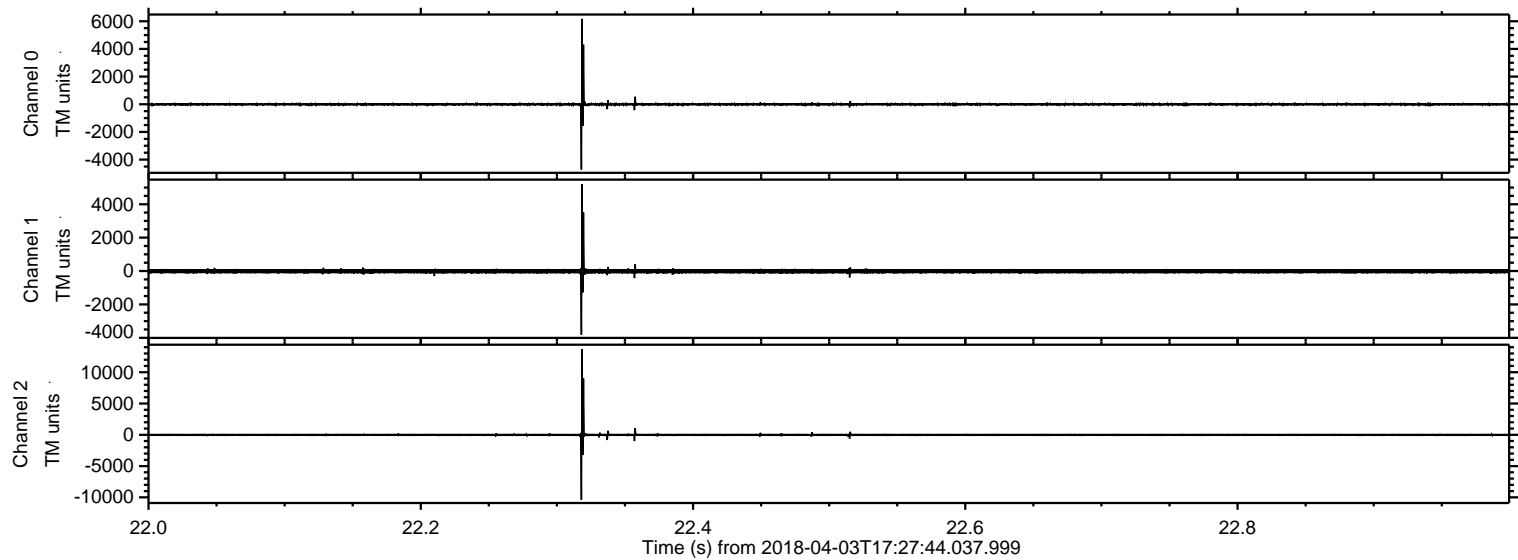
ELMAVAN 3D WAVEFORMS (Measured data sampled at 50 kHz) 51000 packets of 144 samples from 2018-04-03T17:27:44.037.999. Part 128/147

Processed Tue Apr 3 19:35:55 2018 by ELM ver.2012-10-06 from 001__elm20180403_172743__dat00.bin

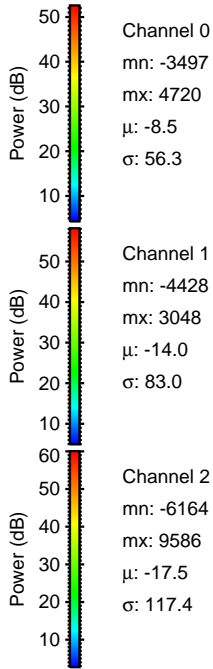
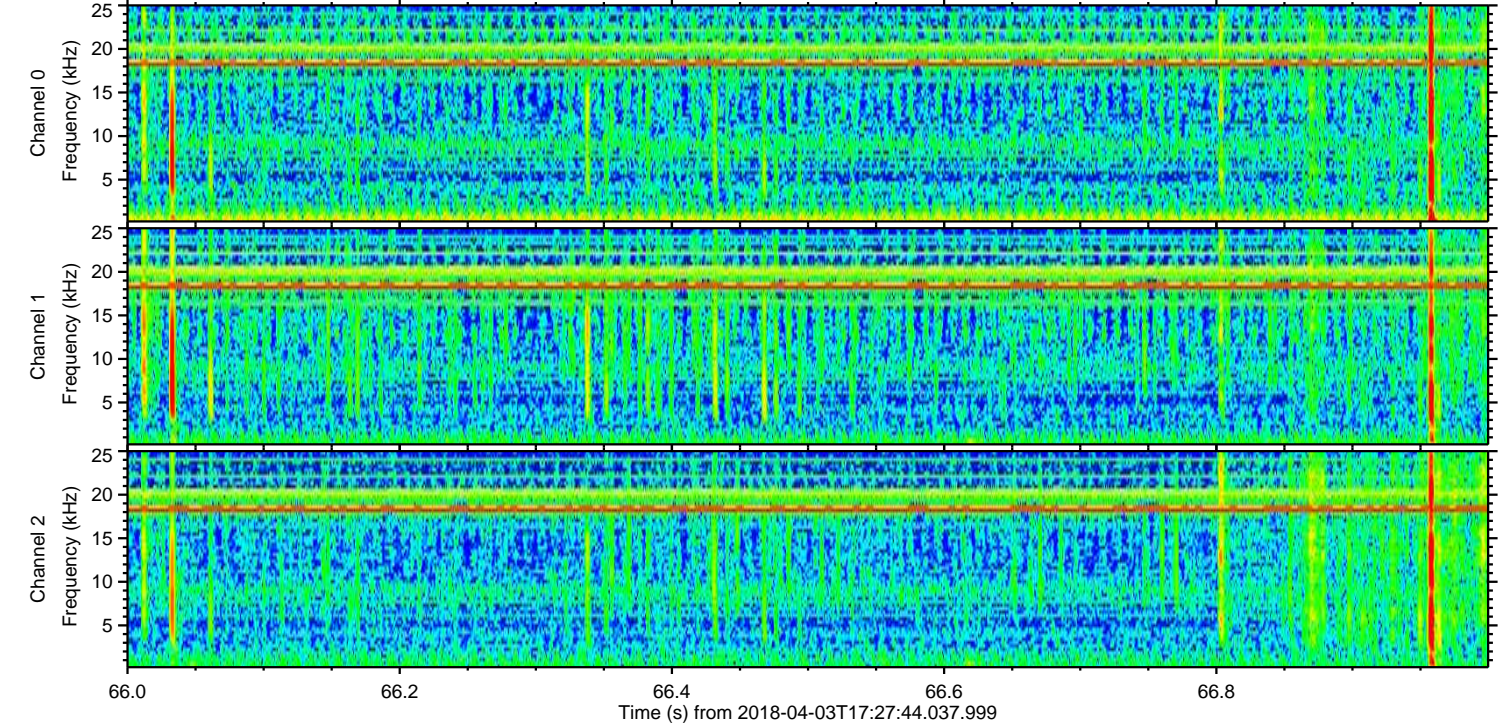
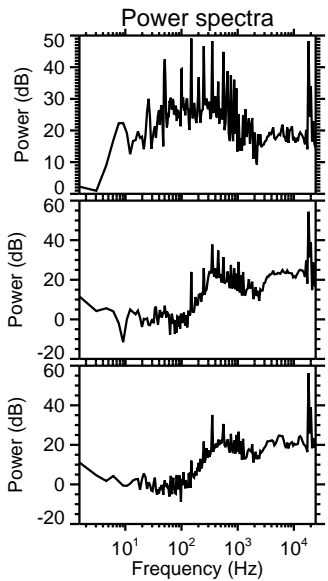
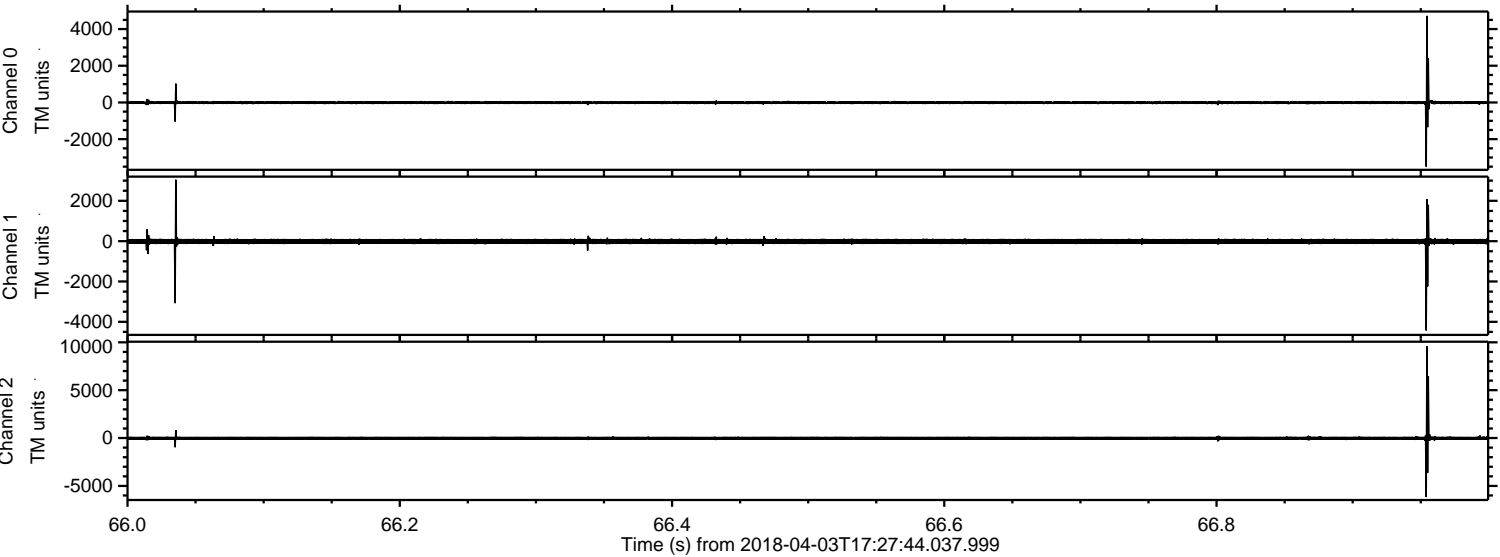


ELMAVAN 3D WAVEFORMS (Measured data sampled at 50 kHz) 51000 packets of 144 samples from 2018-04-03T17:27:44.037.999. Part 23/147

Processed Tue Apr 3 19:35:56 2018 by ELM ver.2012-10-06 from 001__elm20180403_172743__dat00.bin

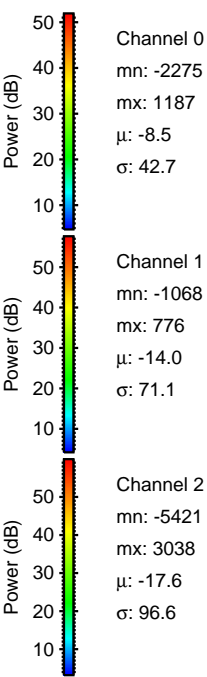
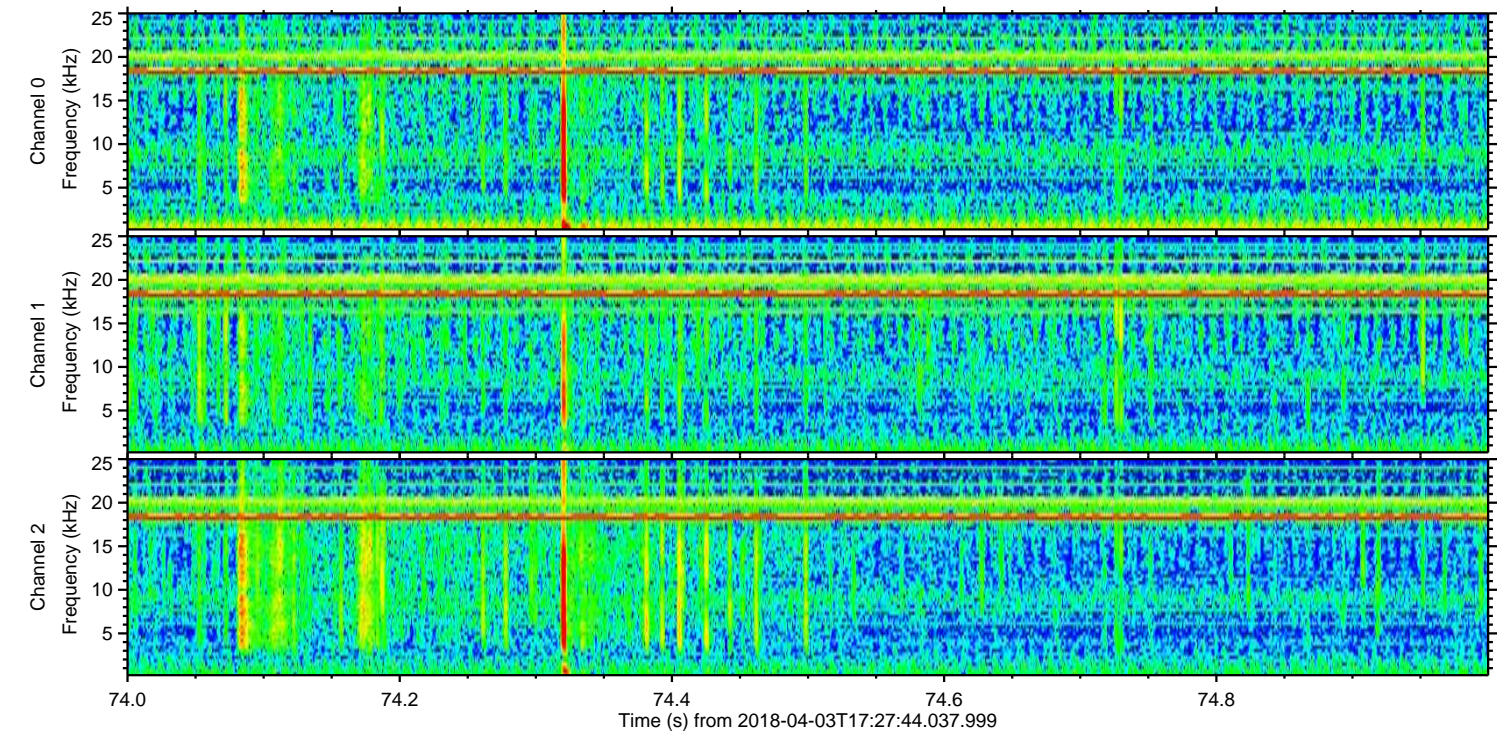
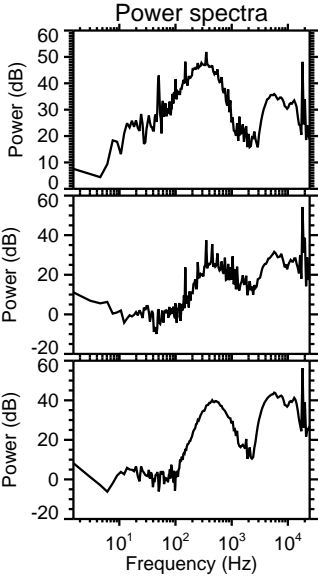
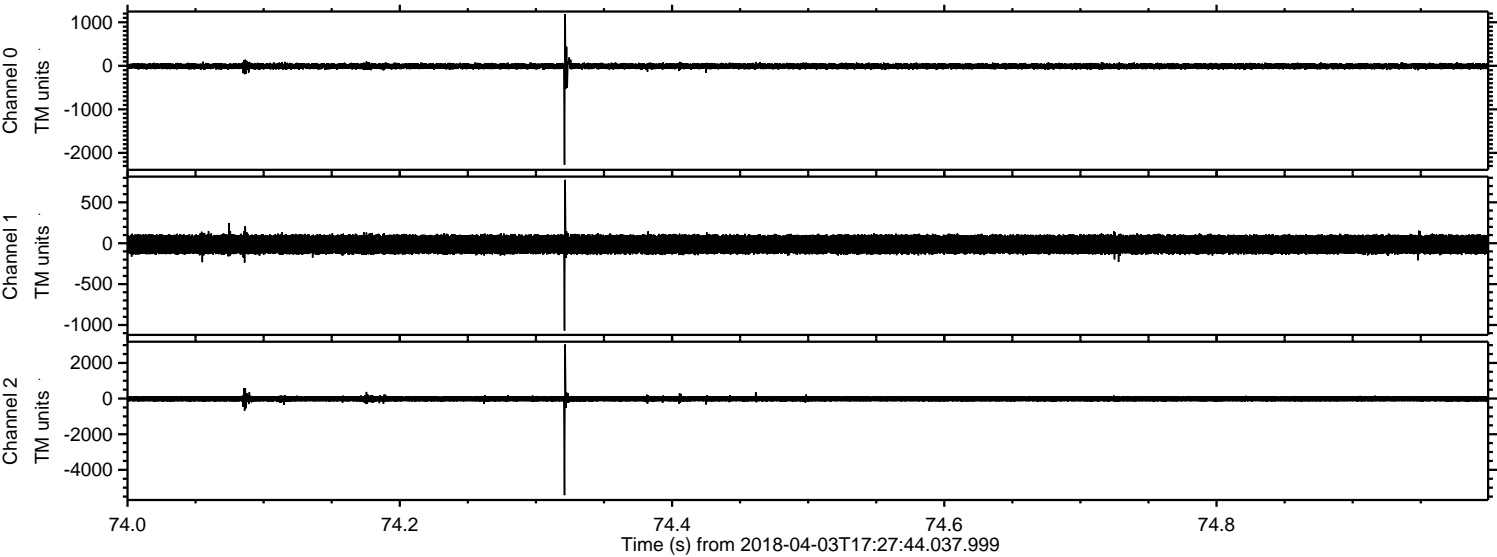


Processed Tue Apr 3 19:35:57 2018 by ELM ver.2012-10-06 from 001__elm20180403_172743__dat00.bin



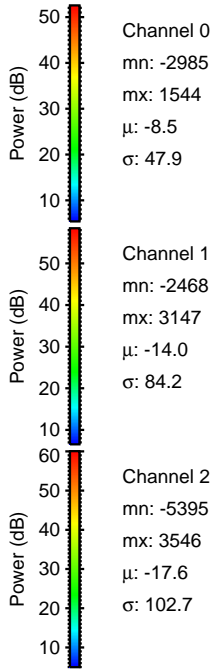
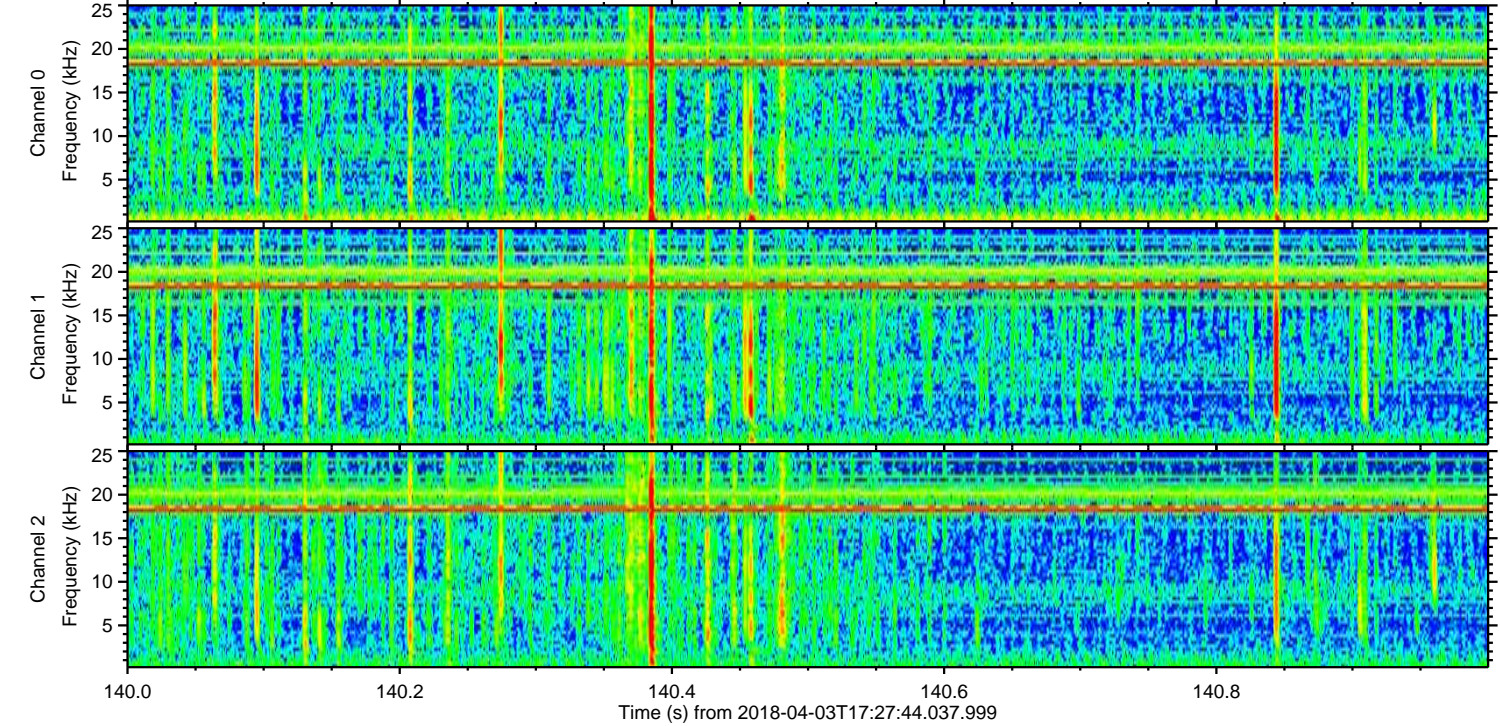
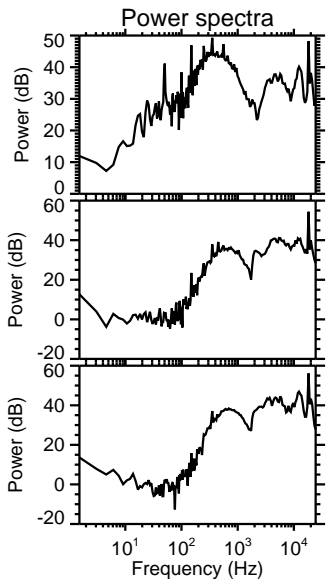
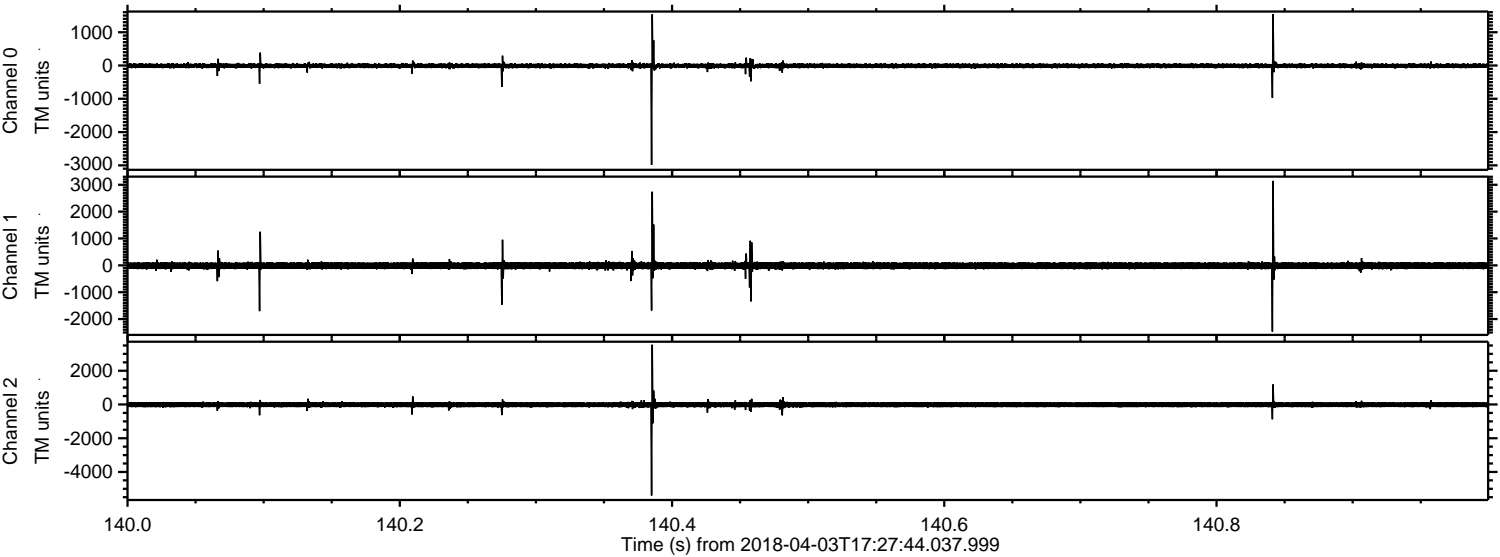
ELMAVAN 3D WAVEFORMS (Measured data sampled at 50 kHz) 51000 packets of 144 samples from 2018-04-03T17:27:44.037.999. Part 75/147

Processed Tue Apr 3 19:35:58 2018 by ELM ver.2012-10-06 from 001__elm20180403_172743__dat00.bin

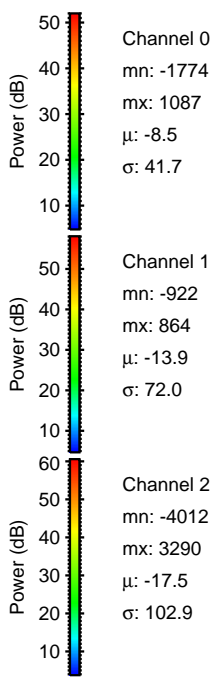
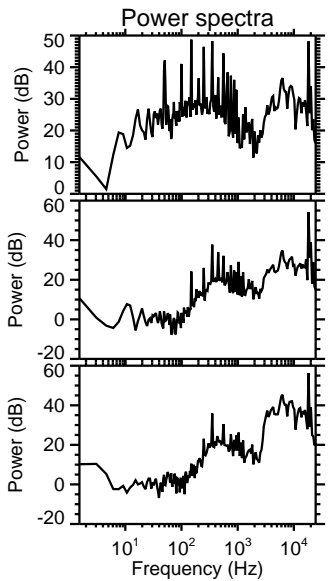
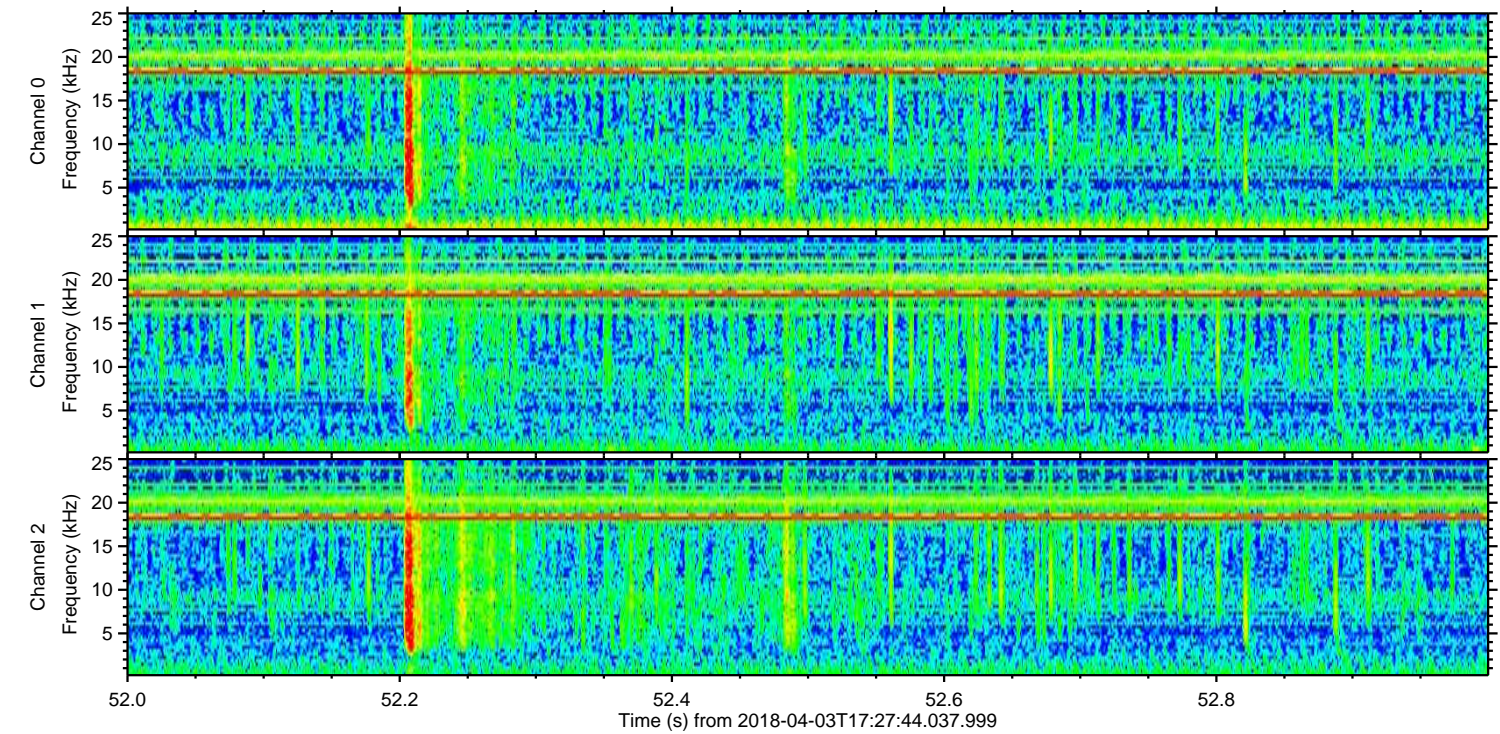
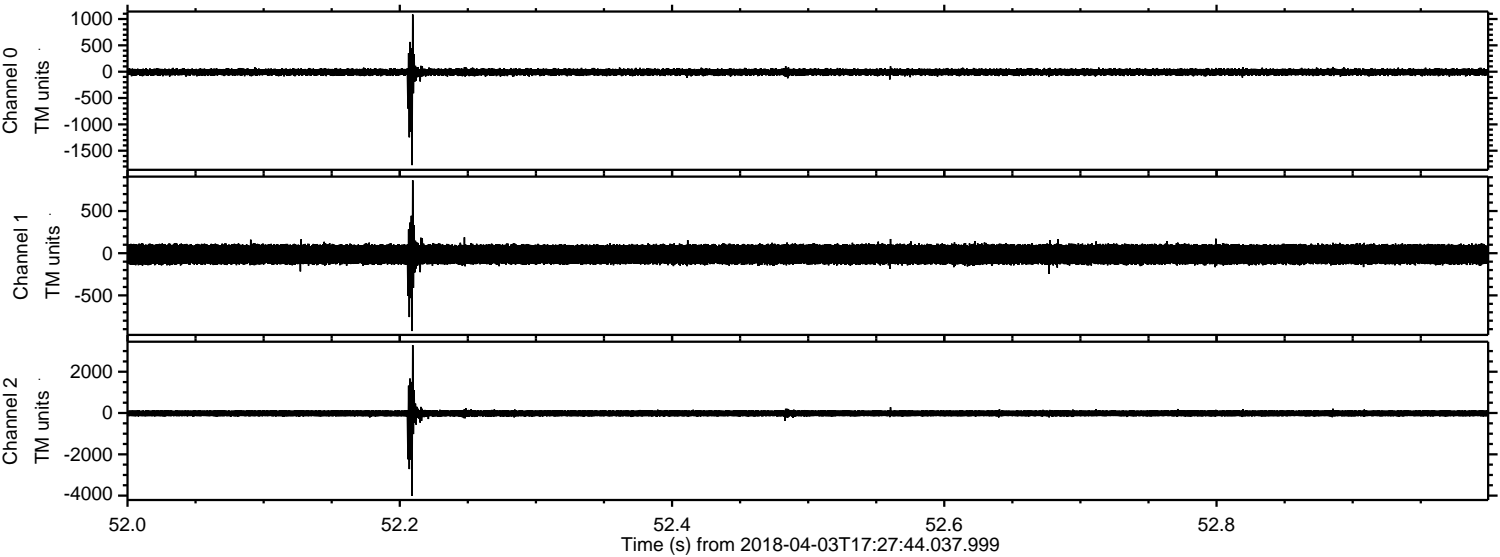


ELMAVAN 3D WAVEFORMS (Measured data sampled at 50 kHz) 51000 packets of 144 samples from 2018-04-03T17:27:44.037.999. Part 141/147

Processed Tue Apr 3 19:35:59 2018 by ELM ver.2012-10-06 from 001__elm20180403_172743__dat00.bin

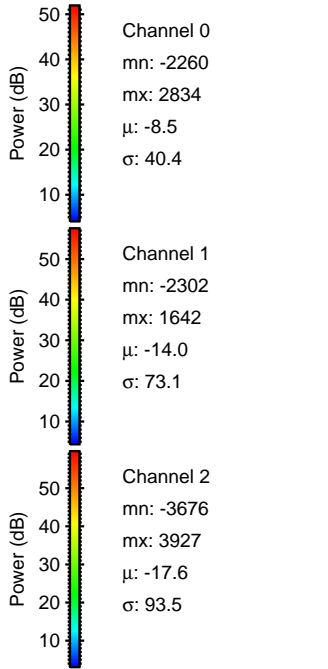
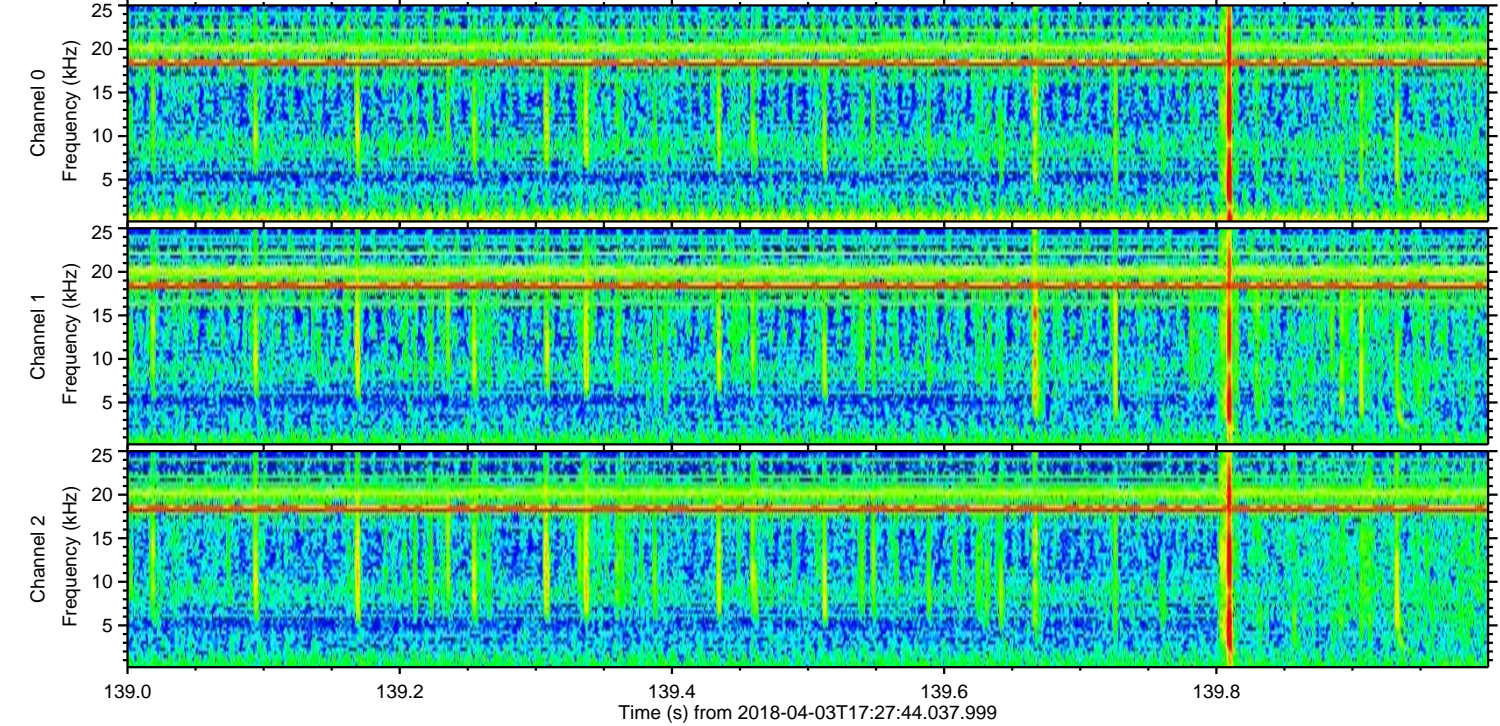
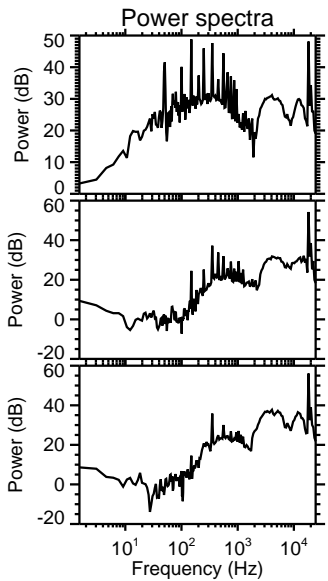
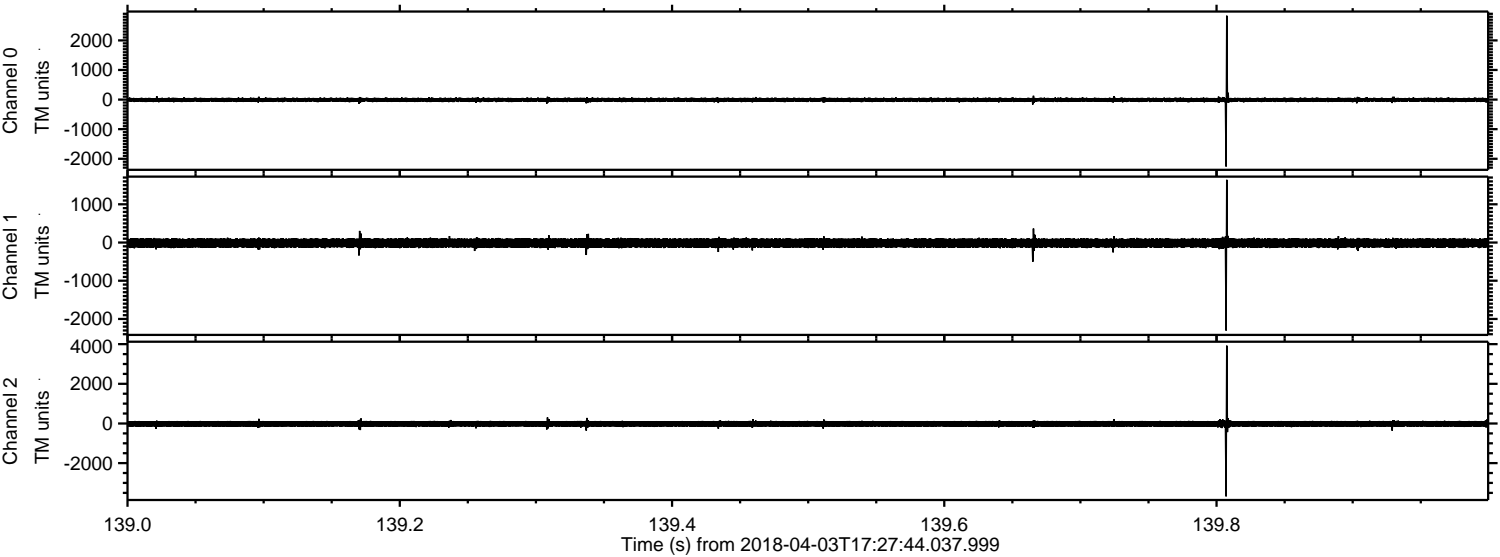


Processed Tue Apr 3 19:35:59 2018 by ELM ver.2012-10-06 from 001__elm20180403_172743__dat00.bin

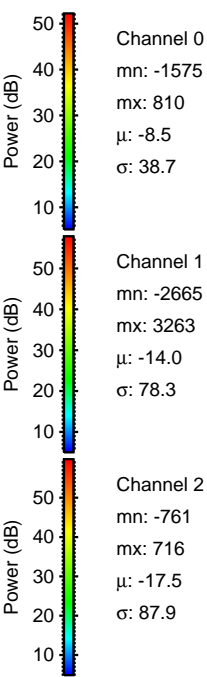
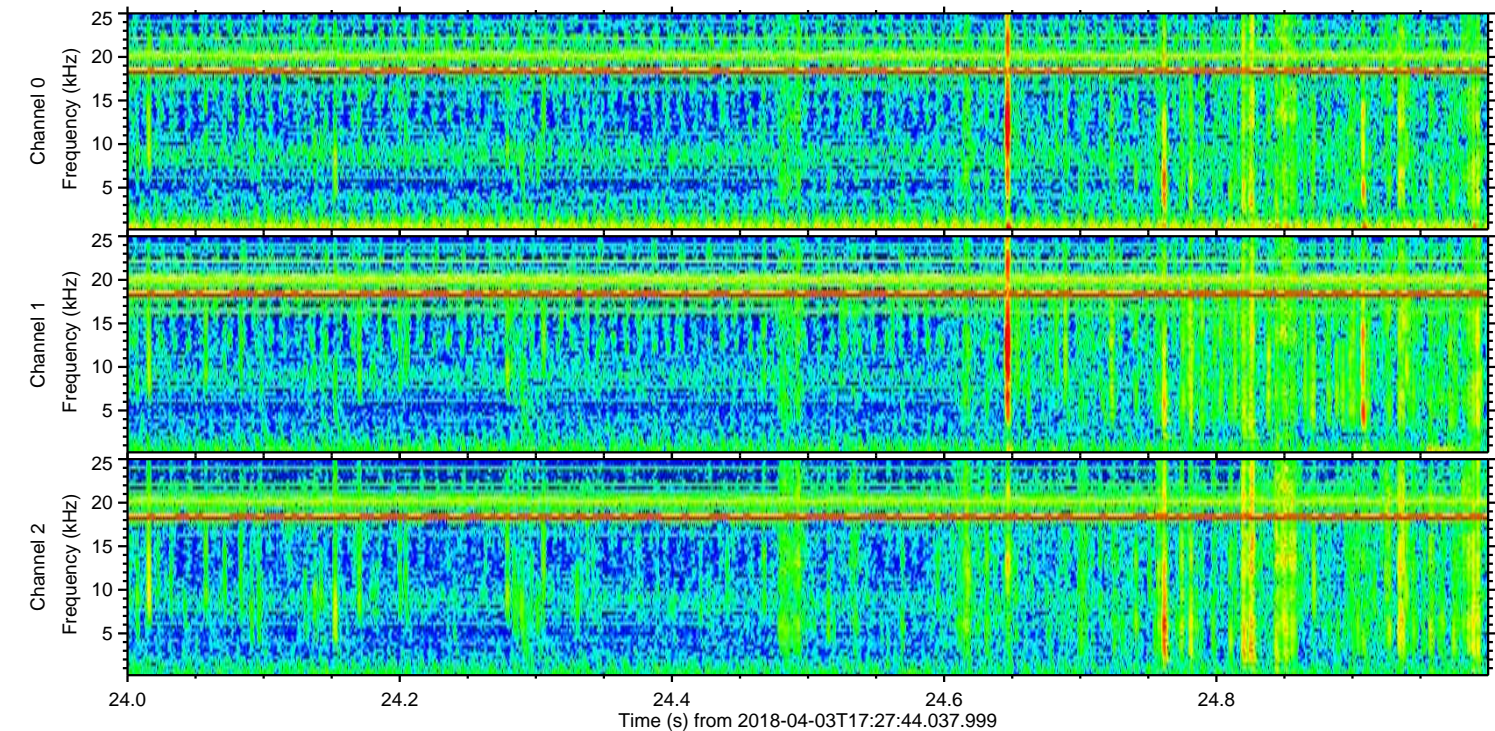
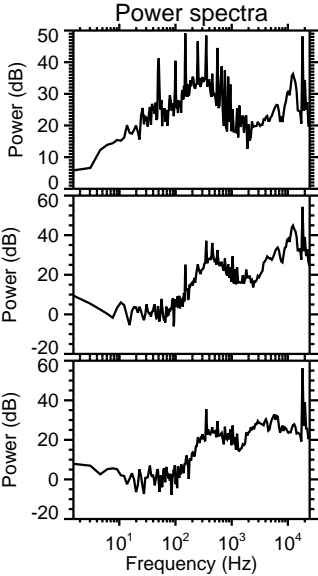
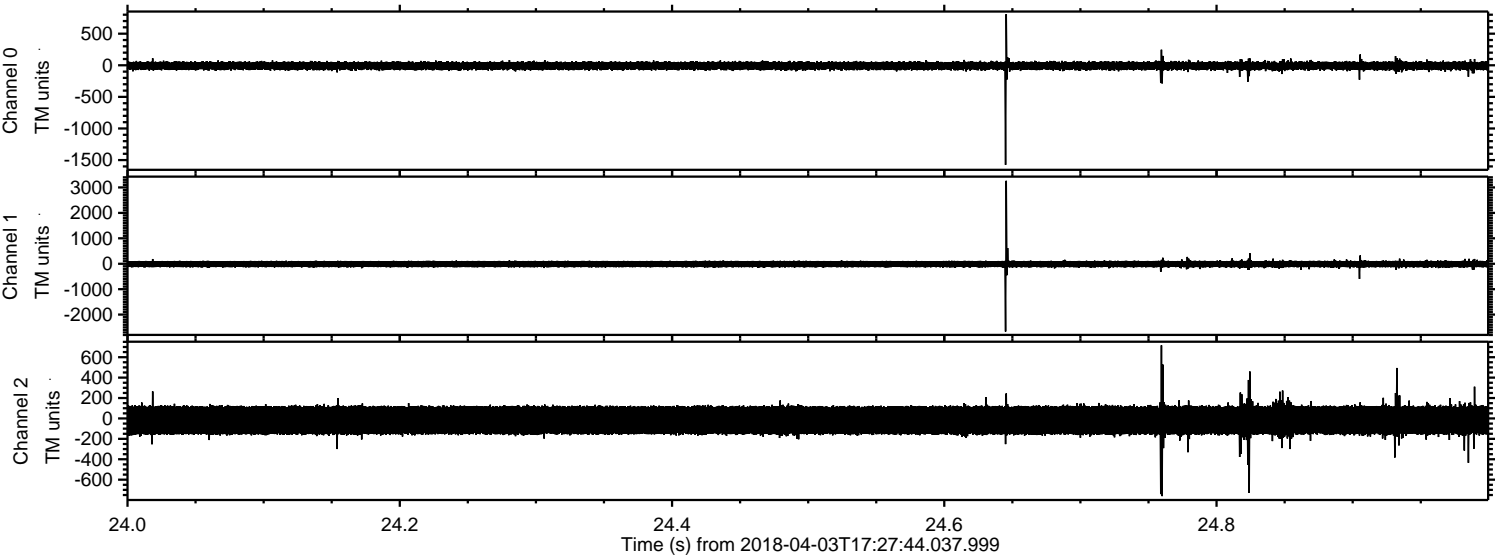


ELMAVAN 3D WAVEFORMS (Measured data sampled at 50 kHz) 51000 packets of 144 samples from 2018-04-03T17:27:44.037.999. Part 140/147

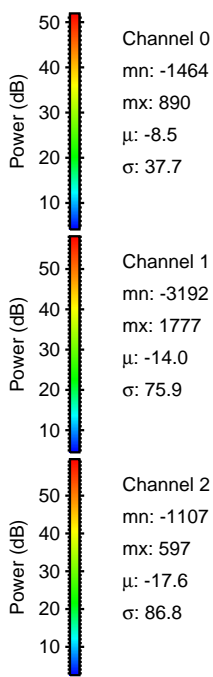
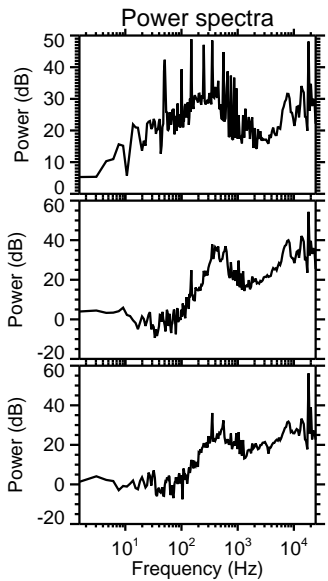
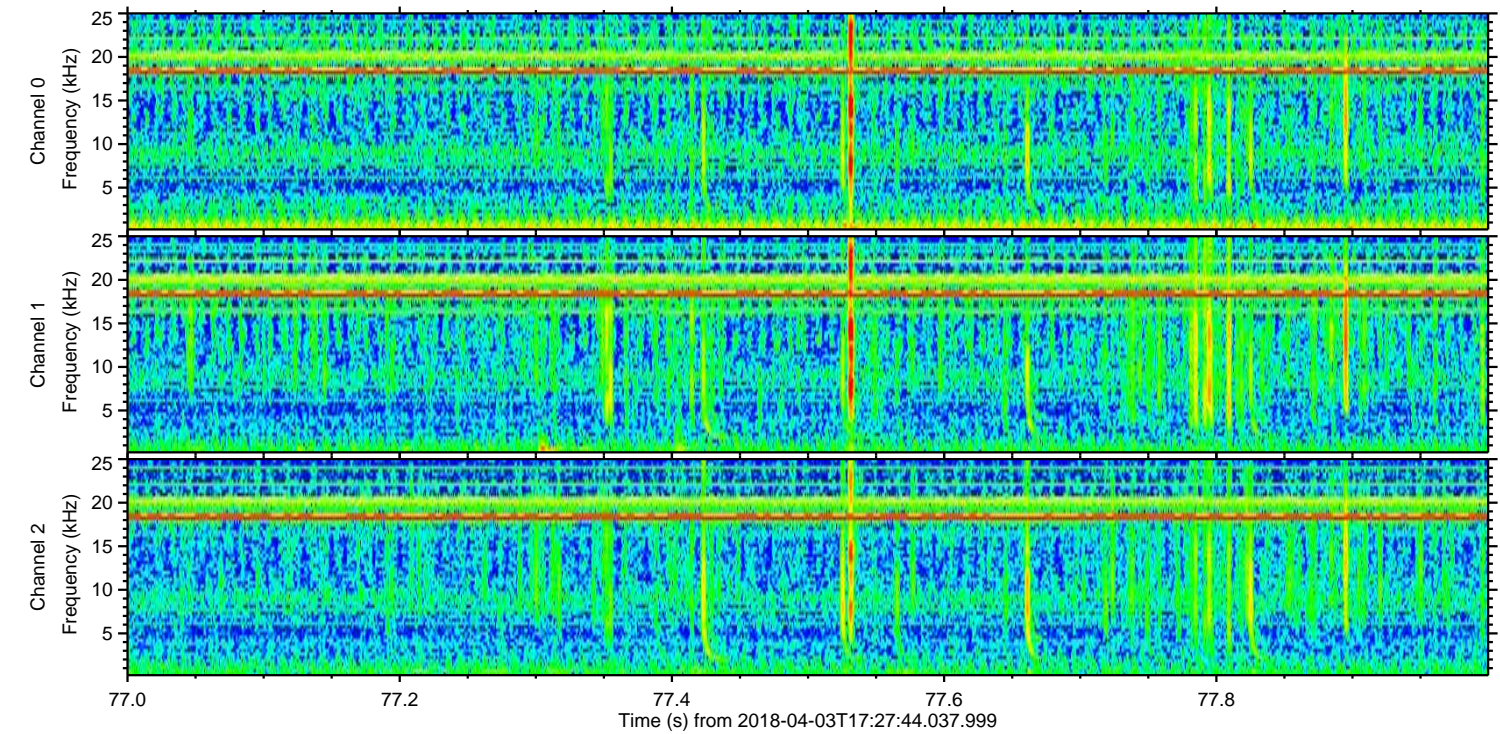
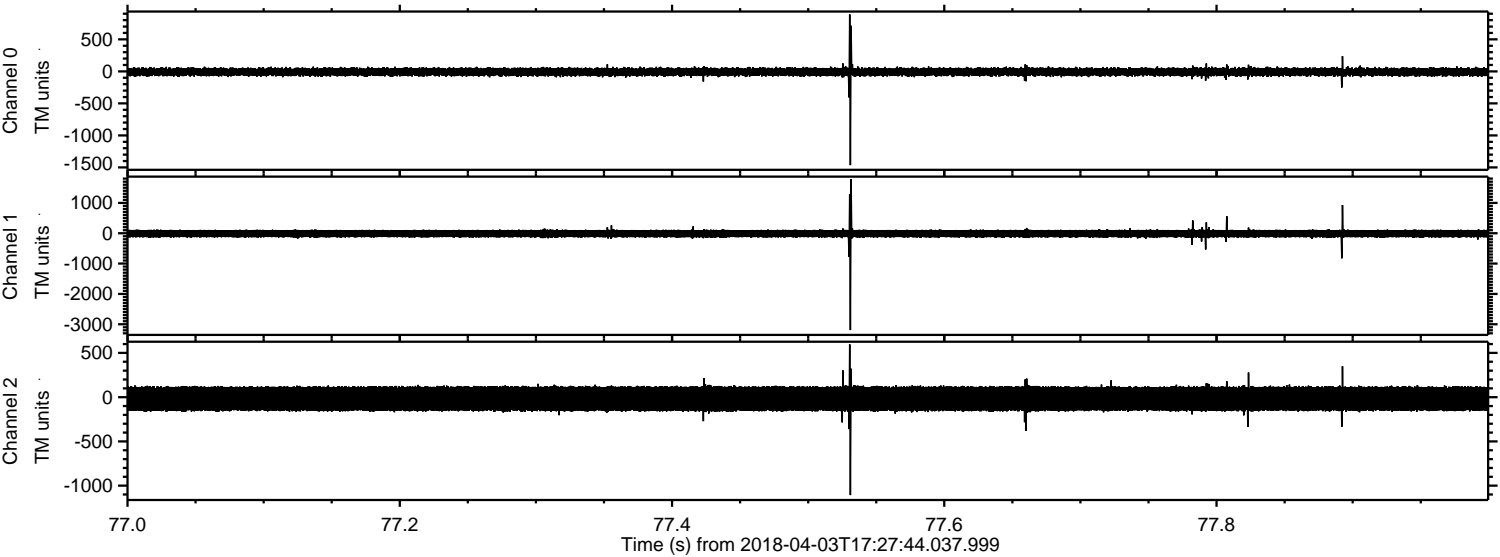
Processed Tue Apr 3 19:36:00 2018 by ELM ver.2012-10-06 from 001__elm20180403_172743__dat00.bin



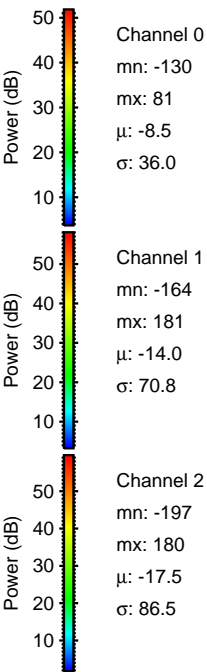
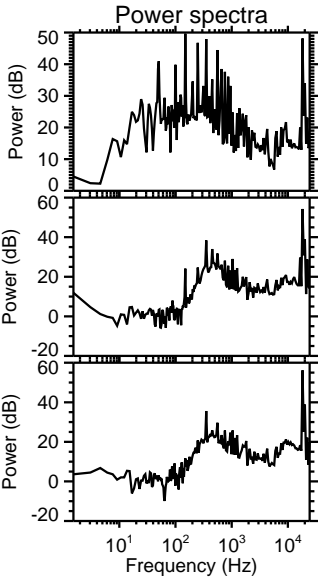
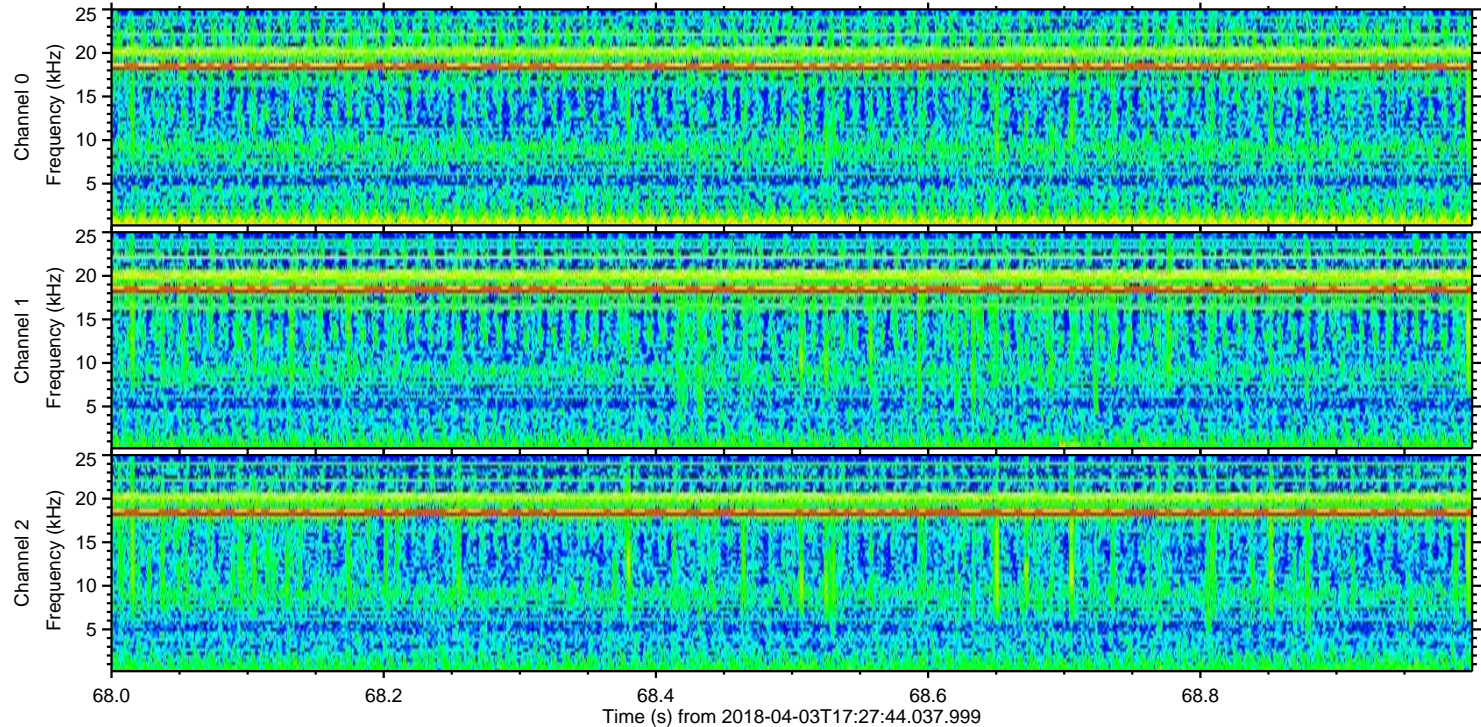
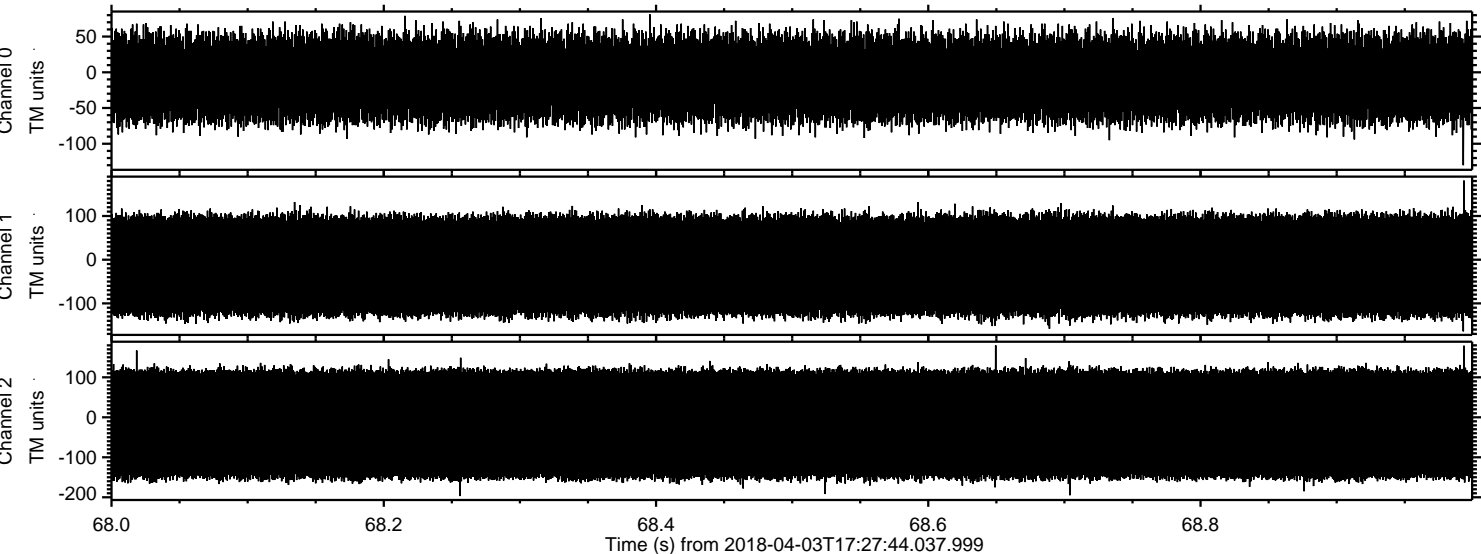
Processed Tue Apr 3 19:36:01 2018 by ELM ver.2012-10-06 from 001__elm20180403_172743__dat00.bin



Processed Tue Apr 3 19:36:02 2018 by ELM ver.2012-10-06 from 001__elm20180403_172743__dat00.bin



Processed Tue Apr 3 19:36:03 2018 by ELM ver.2012-10-06 from 001__elm20180403_172743__dat00.bin



Channel 0
mn: -130
mx: 81
 μ : -8.5
 σ : 36.0

Channel 1
mn: -164
mx: 181
 μ : -14.0
 σ : 70.8

Channel 2
mn: -197
mx: 180
 μ : -17.5
 σ : 86.5