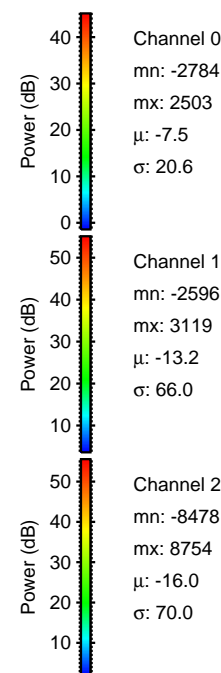
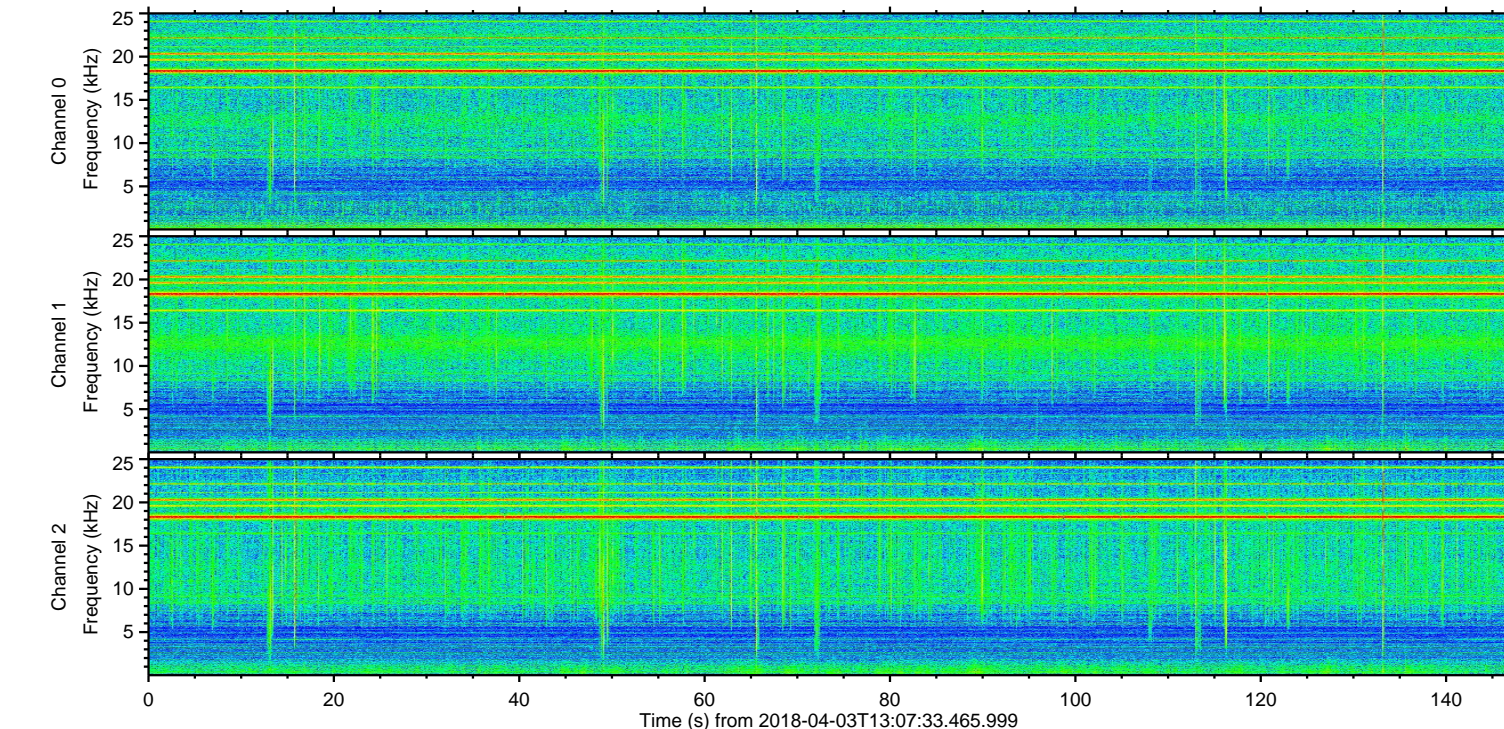
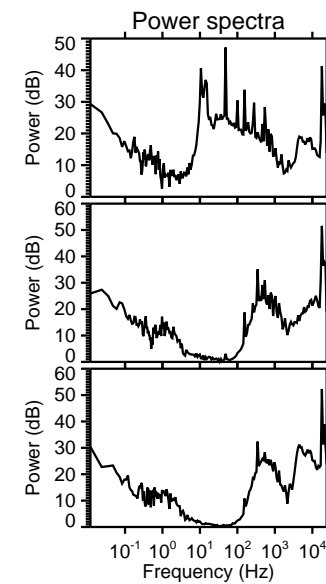
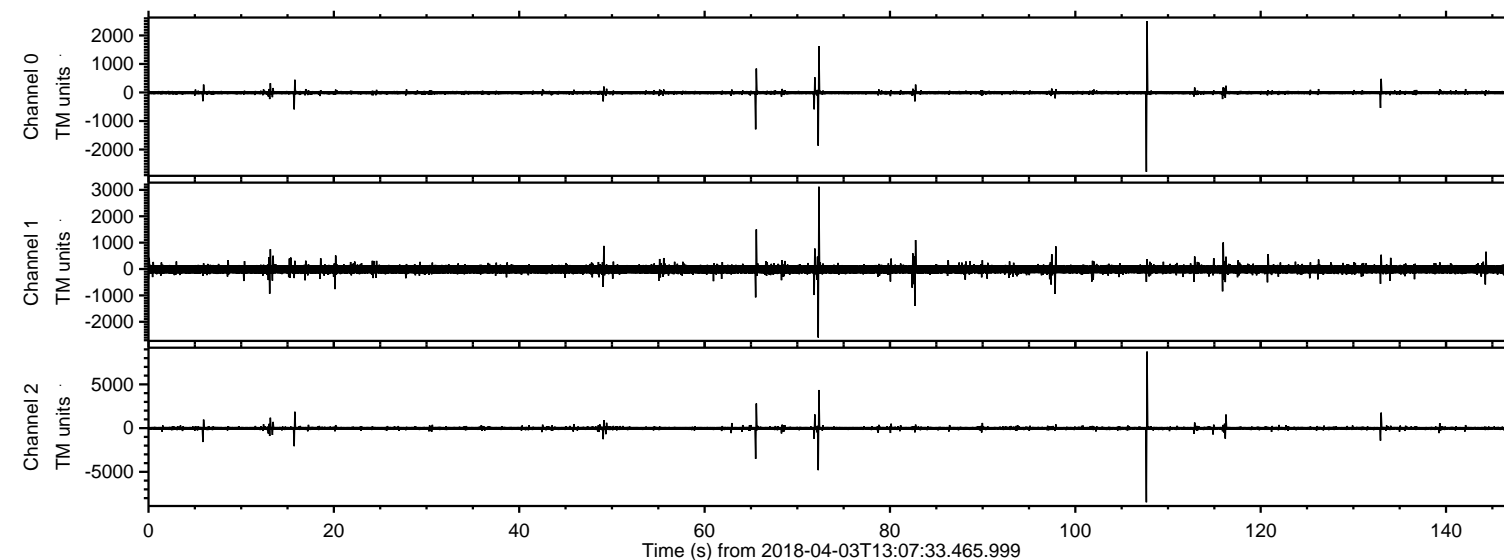


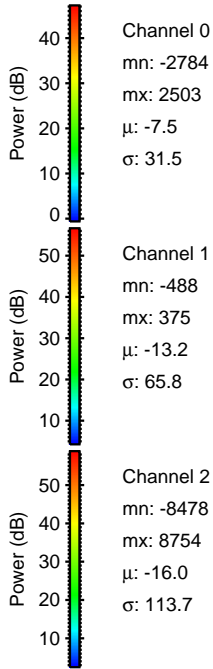
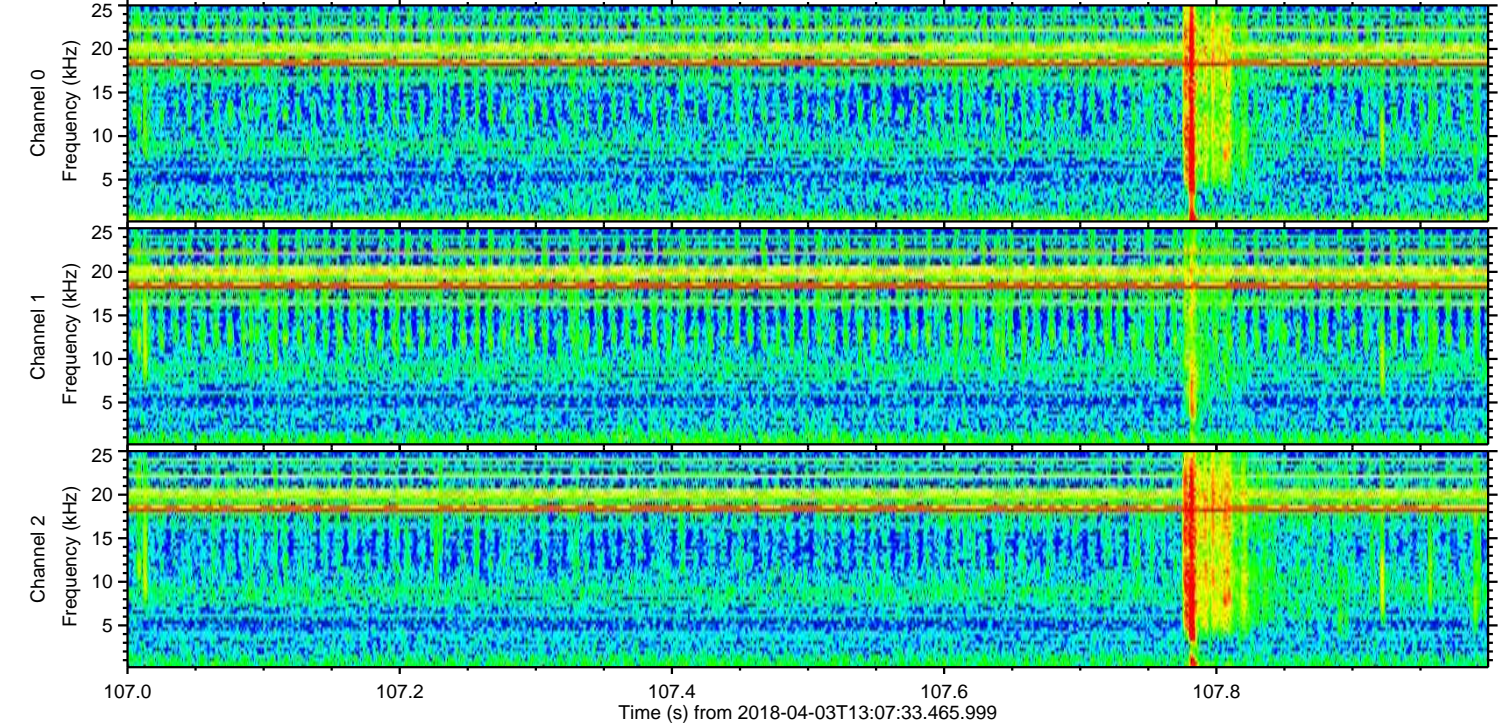
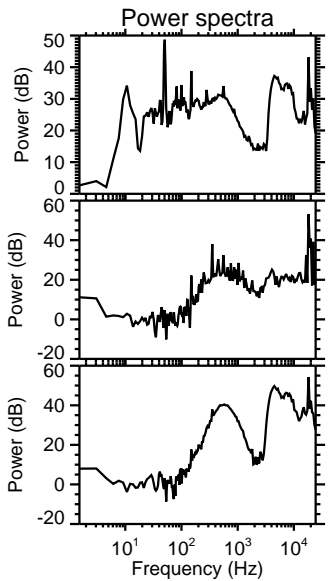
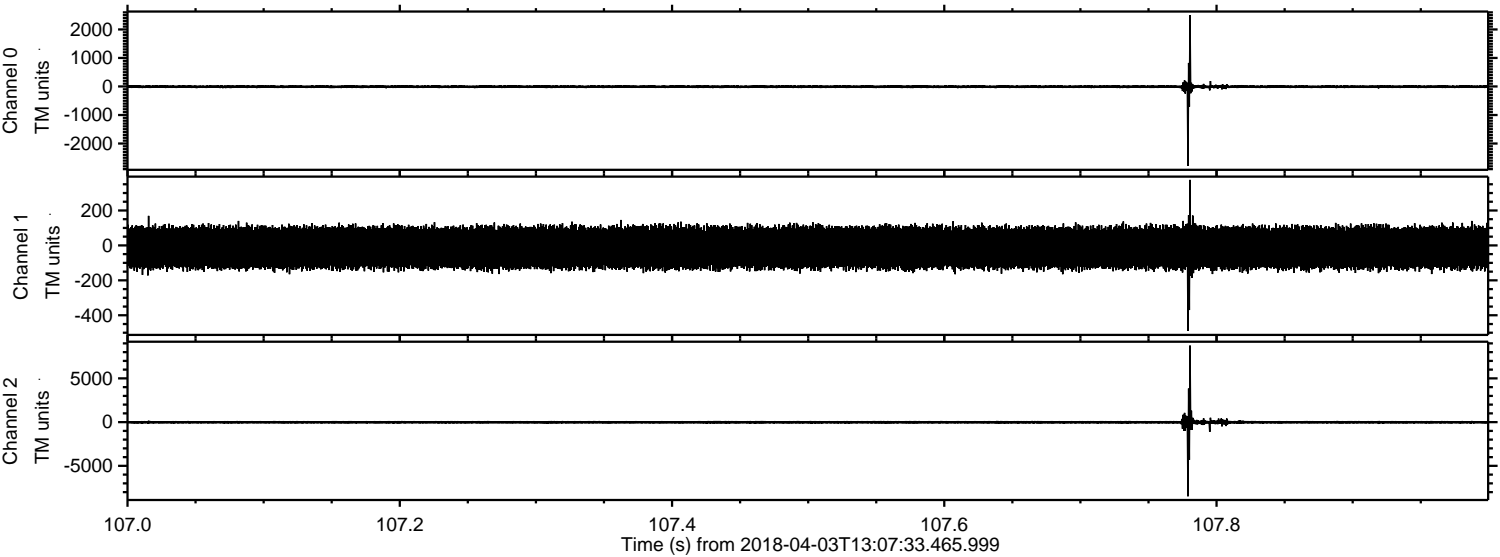
ELMAVAN 3D WAVEFORMS (Measured data sampled at 50 kHz) 51000 packets of 144 samples from 2018-04-03T13:07:33.465.999.

Processed Tue Apr 3 15:15:38 2018 by ELM ver.2012-10-06 from 001__elm20180403_130732__dat00.bin

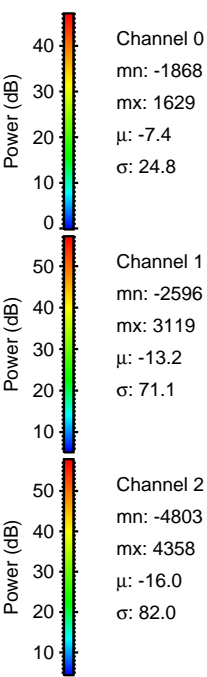
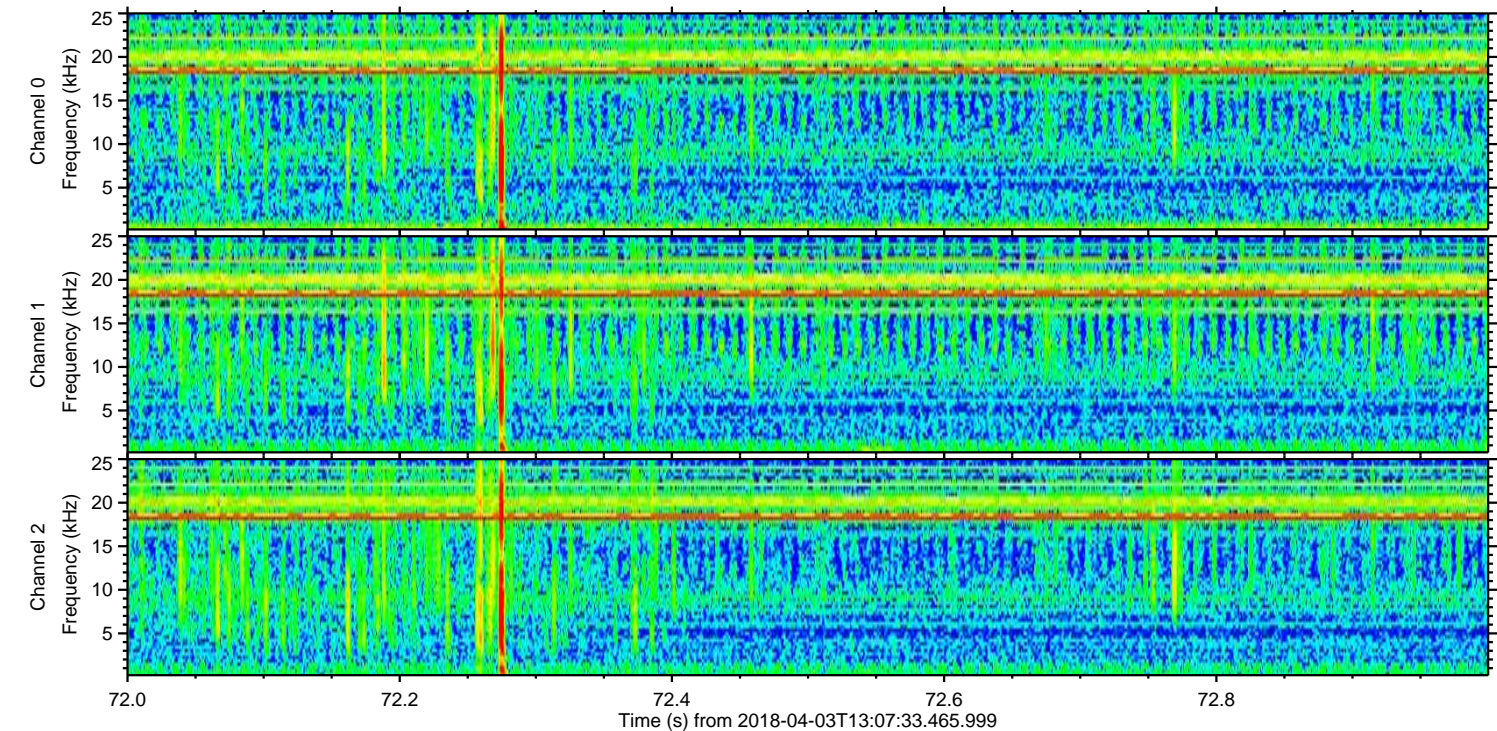
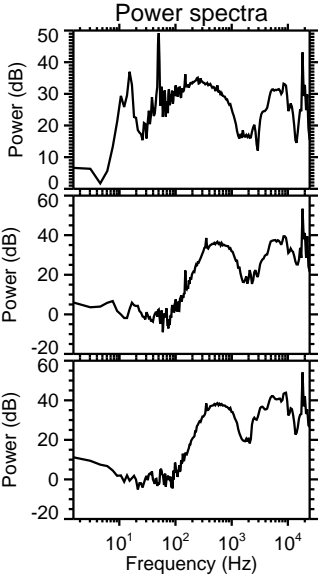
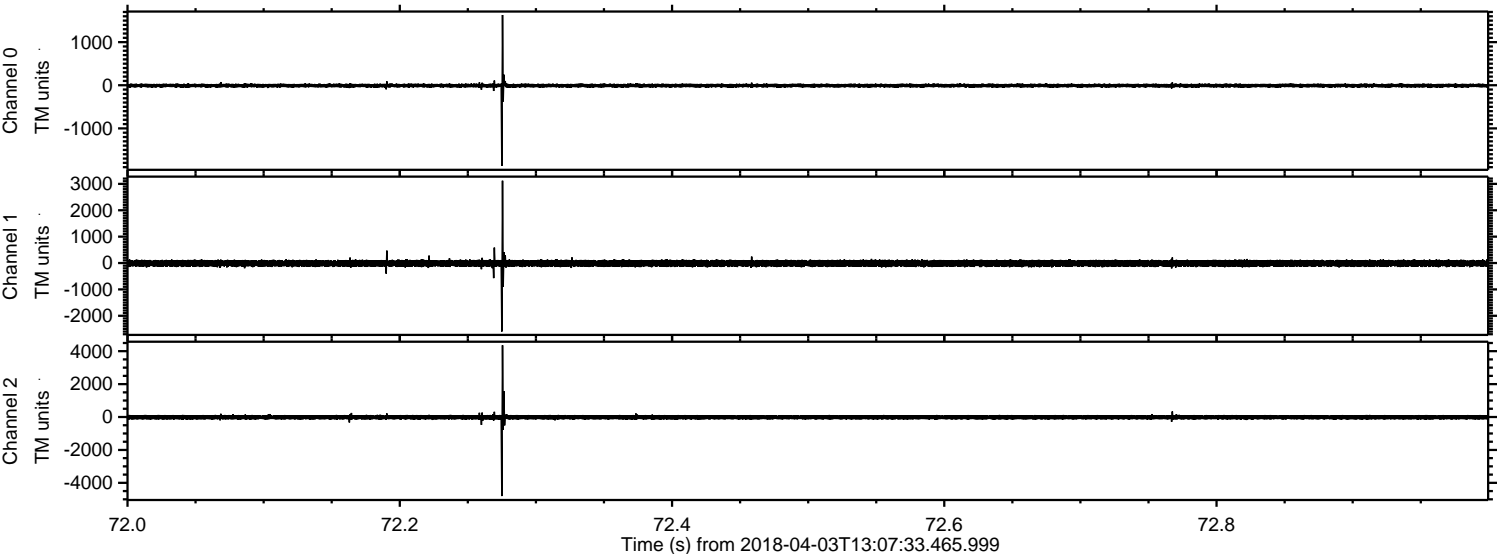


ELMAVAN 3D WAVEFORMS (Measured data sampled at 50 kHz) 51000 packets of 144 samples from 2018-04-03T13:07:33.465.999. Part 108/147

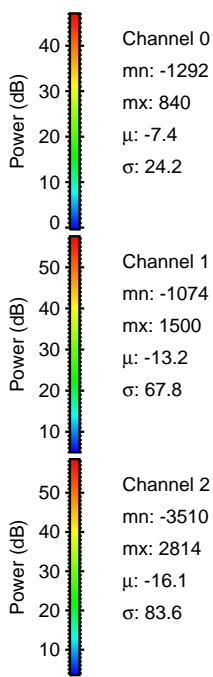
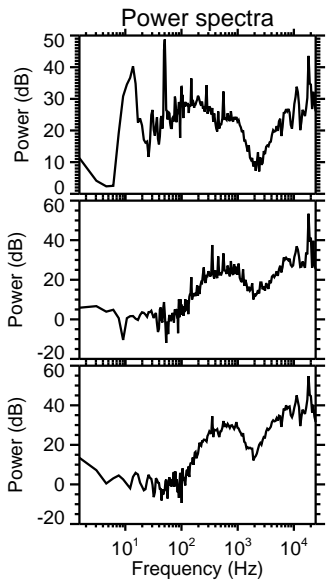
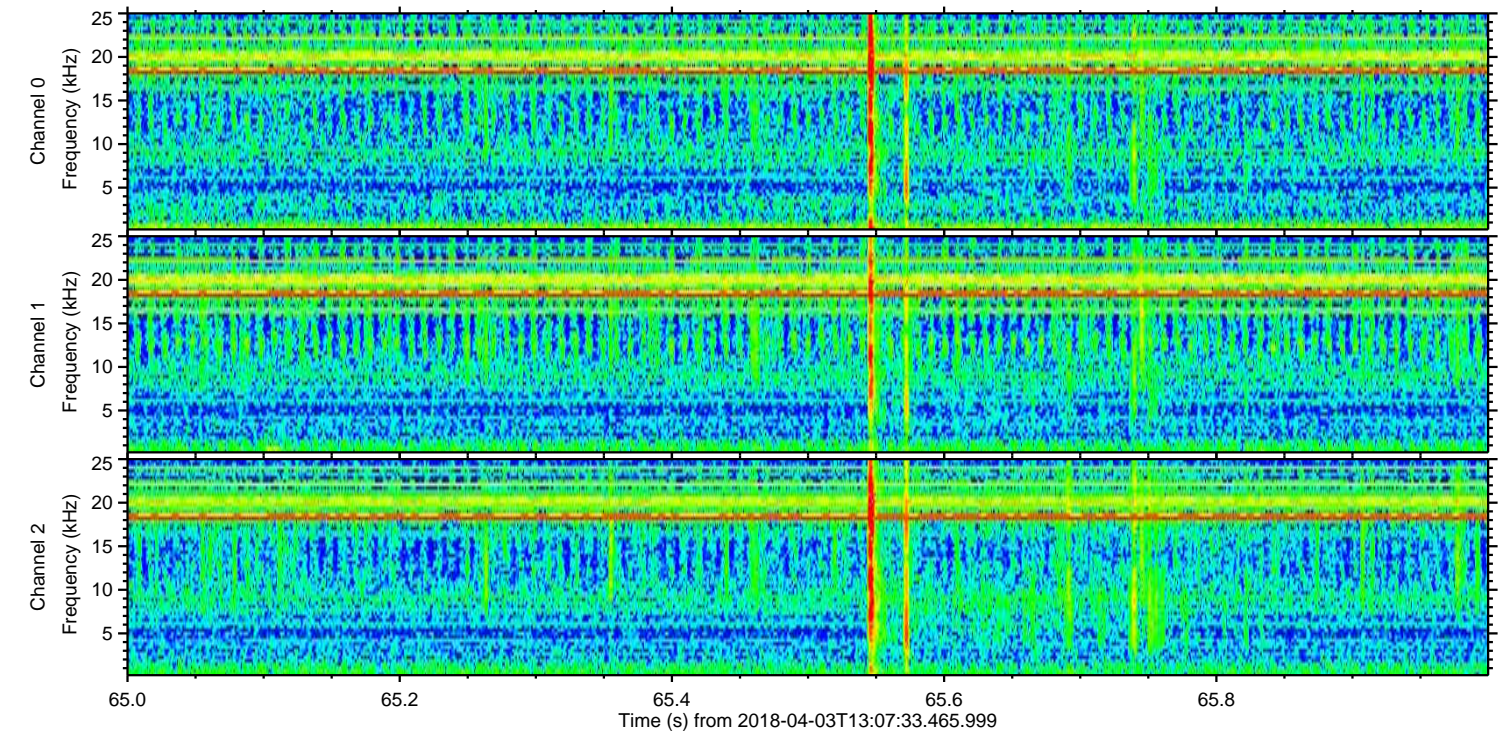
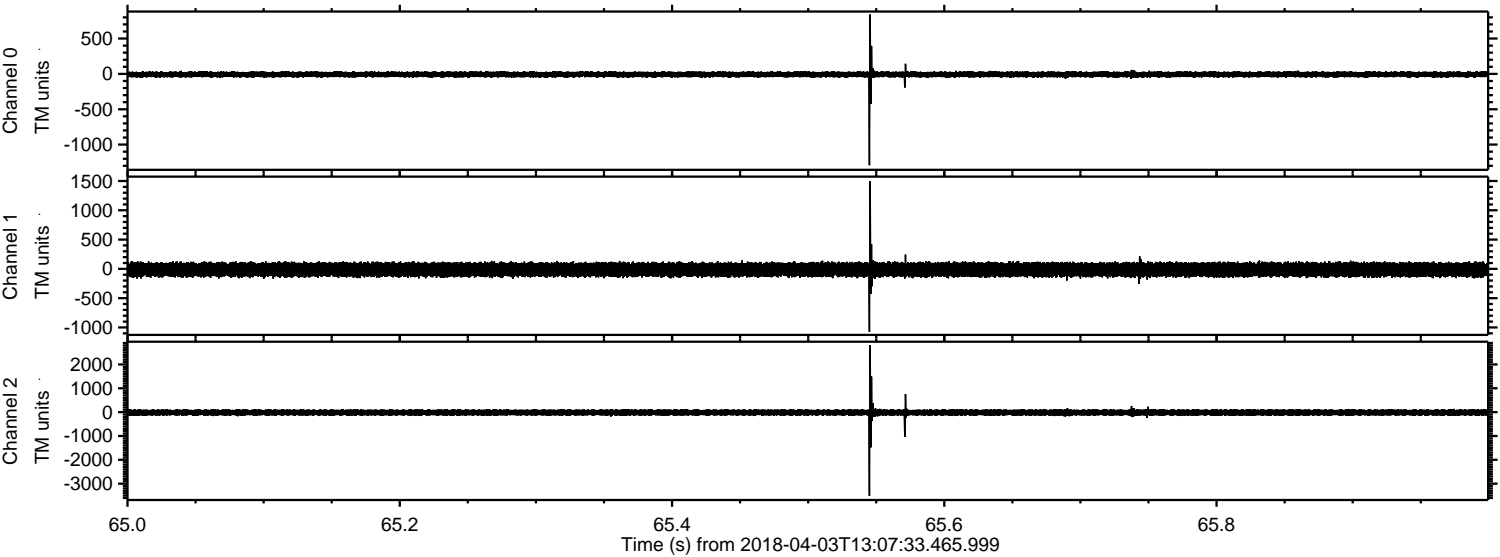
Processed Tue Apr 3 15:15:46 2018 by ELM ver.2012-10-06 from 001__elm20180403_130732__dat00.bin



Processed Tue Apr 3 15:15:47 2018 by ELM ver.2012-10-06 from 001__elm20180403_130732__dat00.bin



Processed Tue Apr 3 15:15:48 2018 by ELM ver.2012-10-06 from 001__elm20180403_130732__dat00.bin



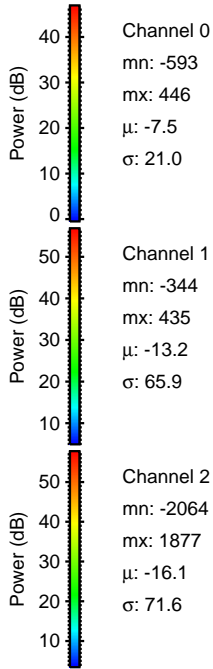
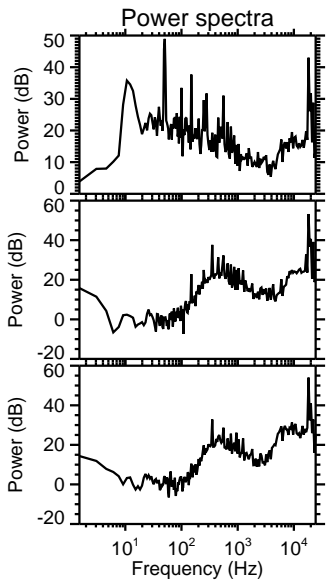
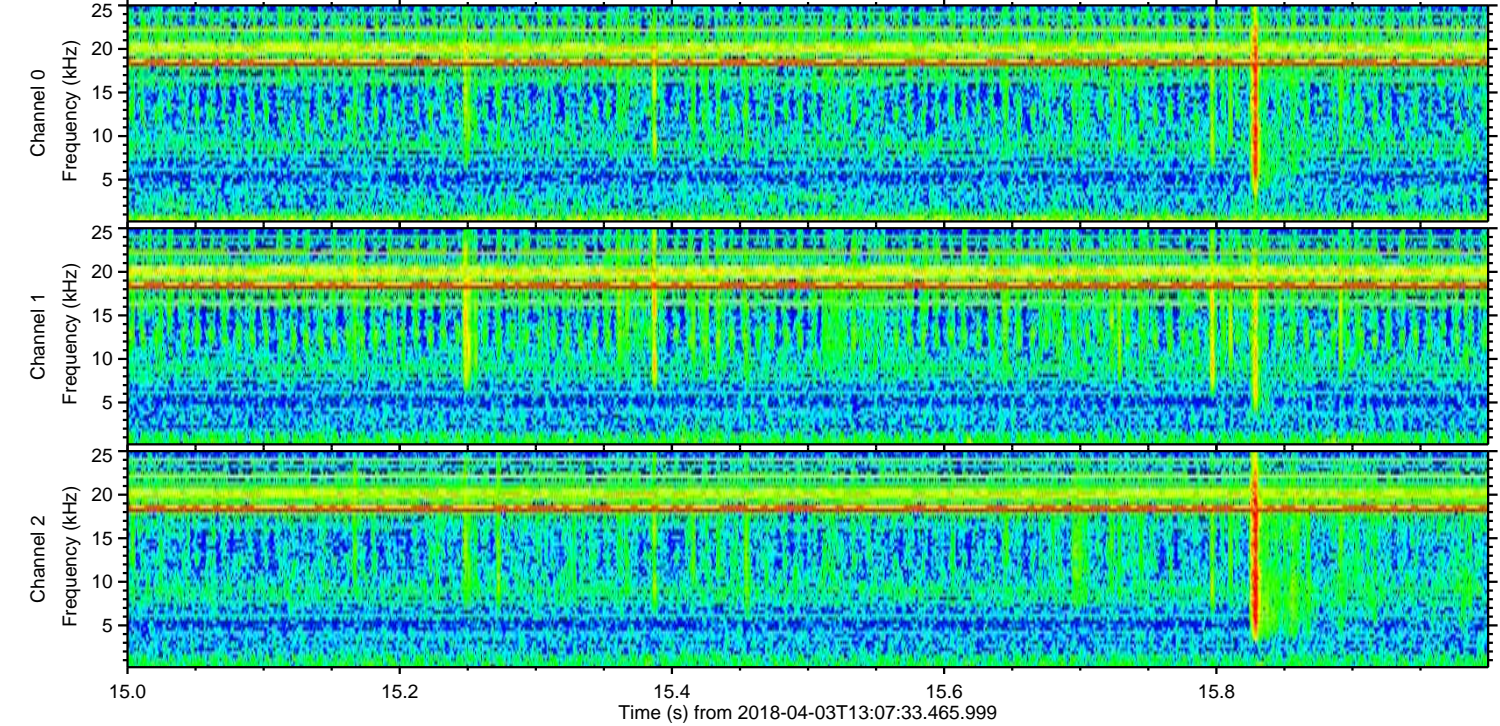
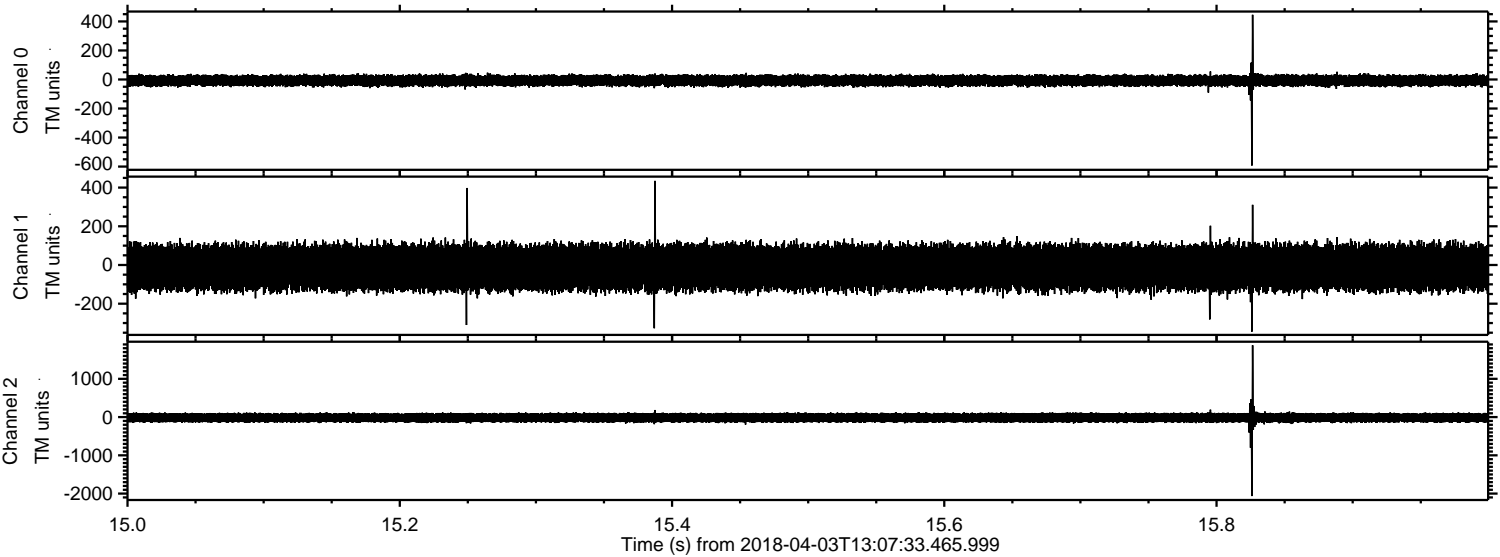
Channel 0
mn: -1292
mx: 840
 μ : -7.4
 σ : 24.2

Channel 1
mn: -1074
mx: 1500
 μ : -13.2
 σ : 67.8

Channel 2
mn: -3510
mx: 2814
 μ : -16.1
 σ : 83.6

ELMAVAN 3D WAVEFORMS (Measured data sampled at 50 kHz) 51000 packets of 144 samples from 2018-04-03T13:07:33.465.999. Part 16/147

Processed Tue Apr 3 15:15:49 2018 by ELM ver.2012-10-06 from 001__elm20180403_130732__dat00.bin



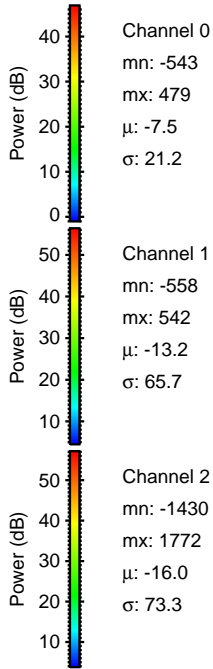
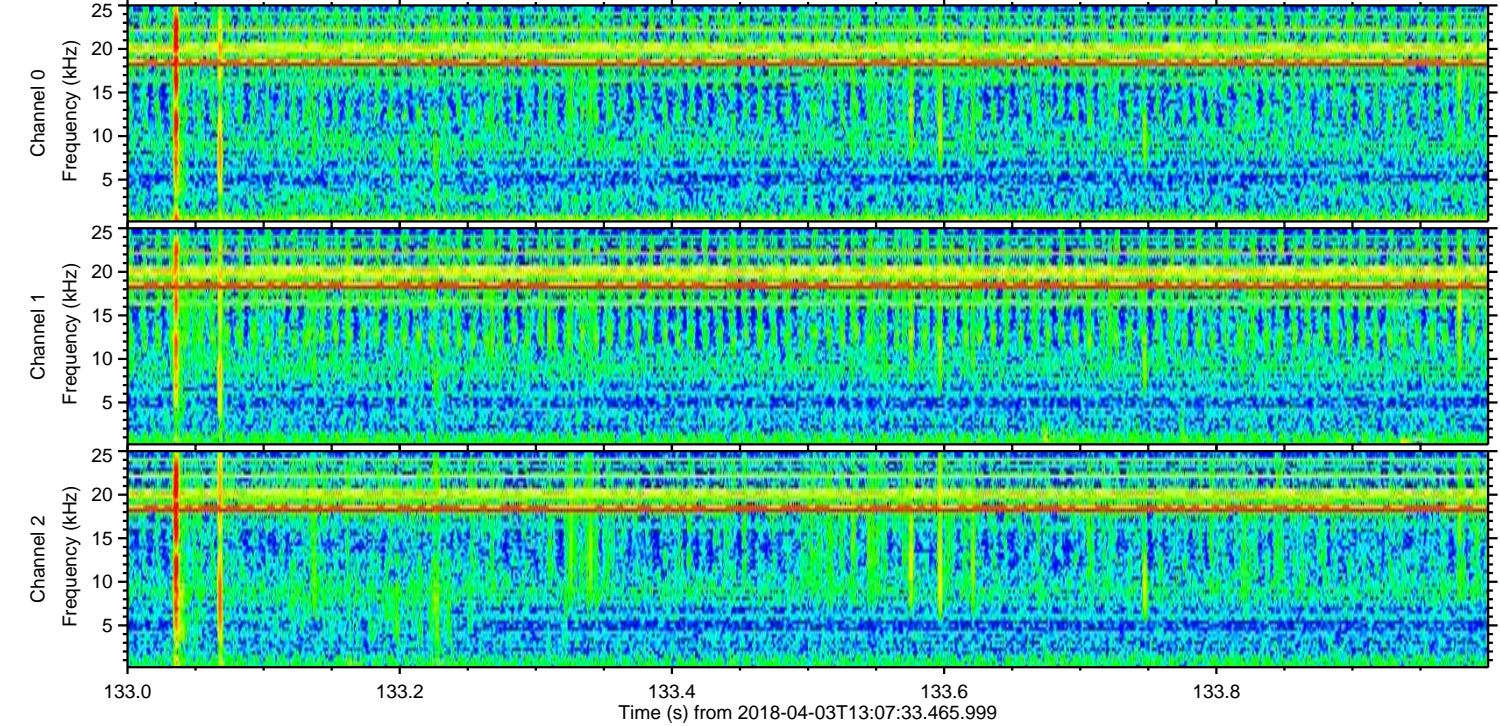
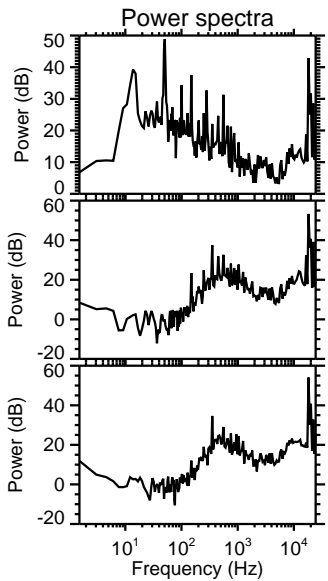
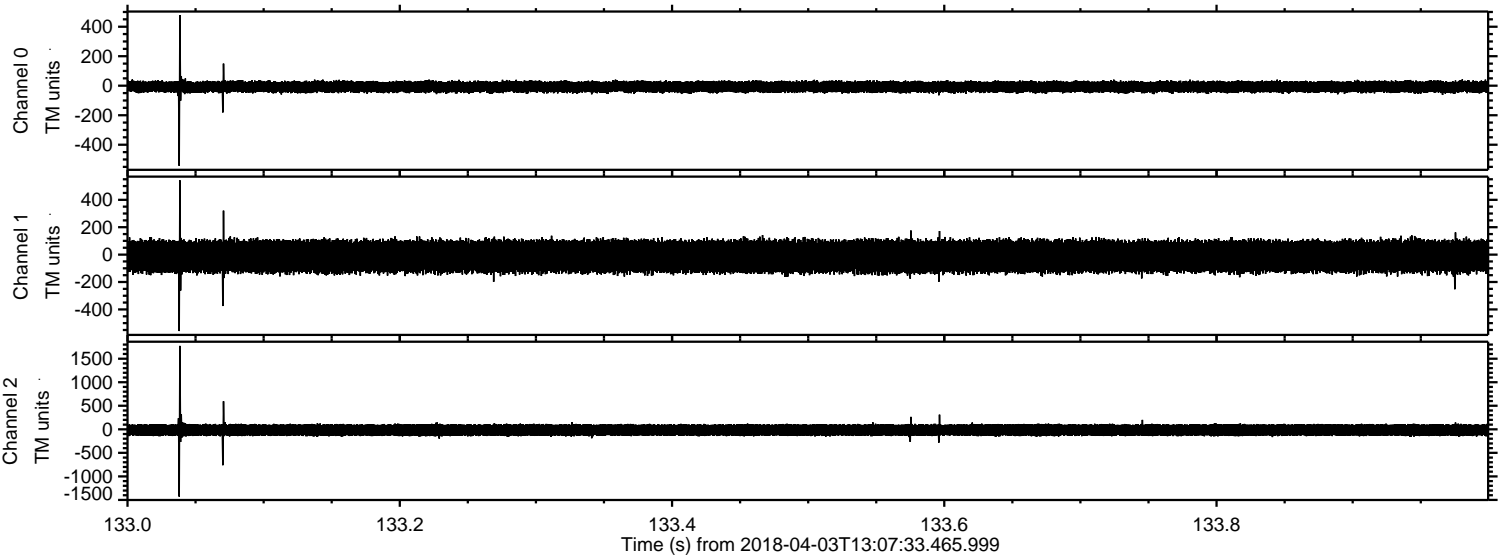
Channel 0
mn: -593
mx: 446
 μ : -7.5
 σ : 21.0

Channel 1
mn: -344
mx: 435
 μ : -13.2
 σ : 65.9

Channel 2
mn: -2064
mx: 1877
 μ : -16.1
 σ : 71.6

ELMAVAN 3D WAVEFORMS (Measured data sampled at 50 kHz) 51000 packets of 144 samples from 2018-04-03T13:07:33.465.999. Part 134/147

Processed Tue Apr 3 15:15:50 2018 by ELM ver.2012-10-06 from 001__elm20180403_130732__dat00.bin

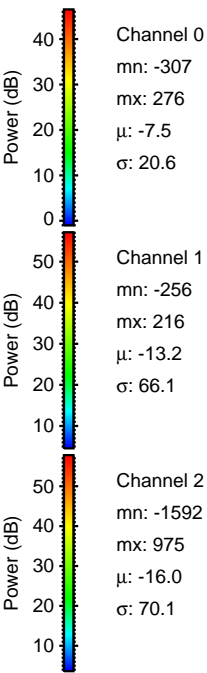
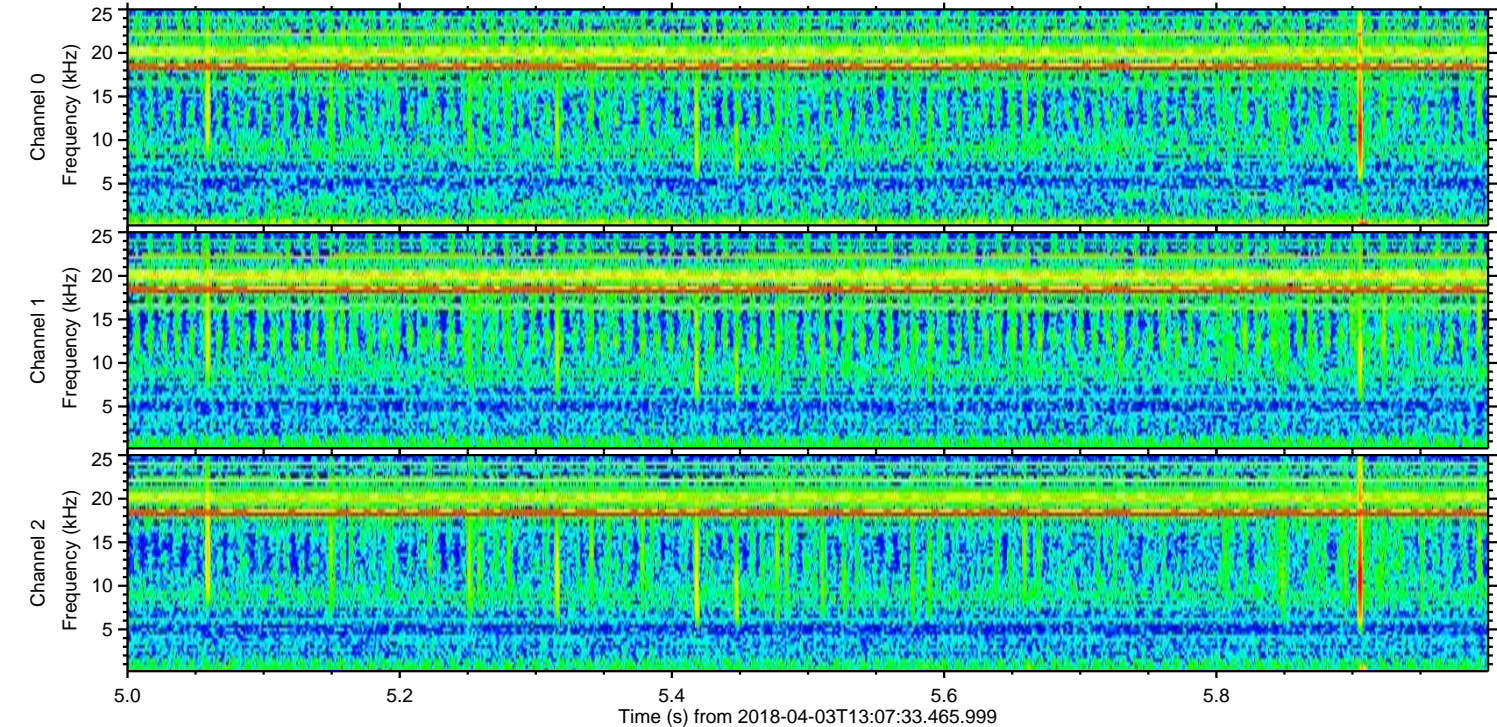
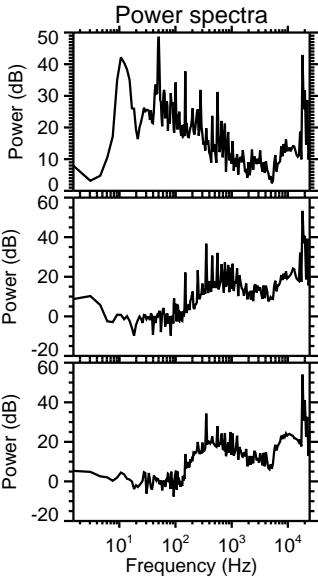
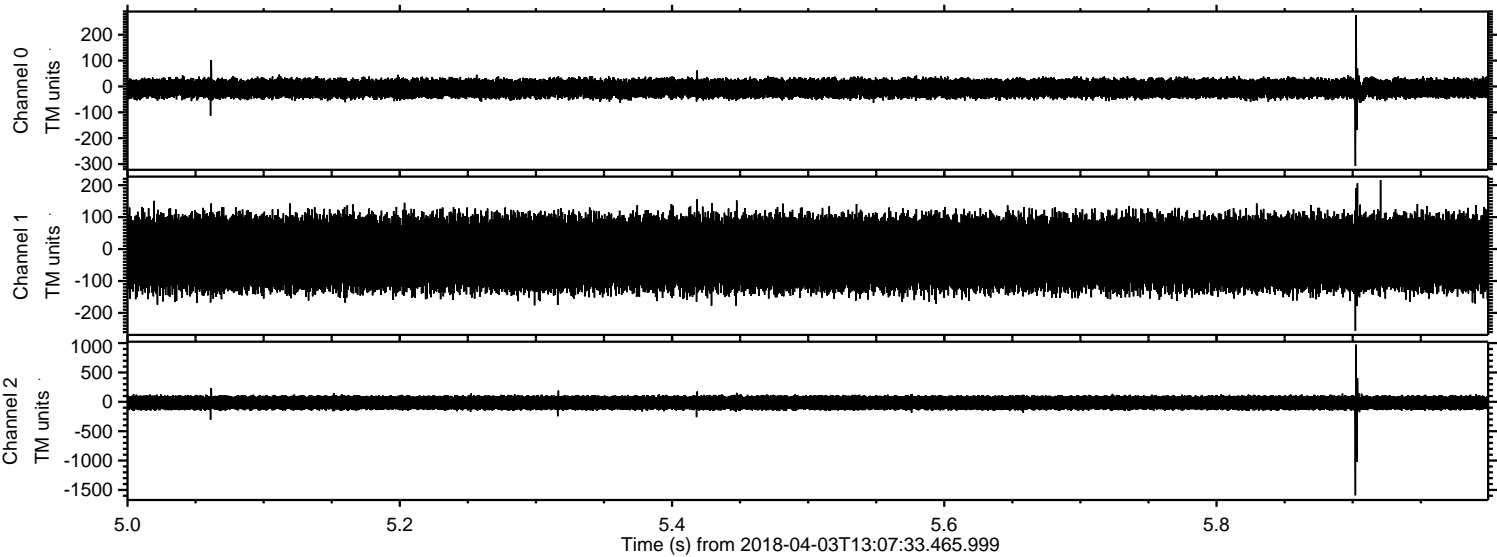


Channel 0
mn: -543
mx: 479
 μ : -7.5
 σ : 21.2

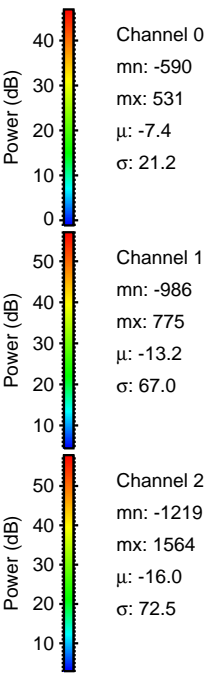
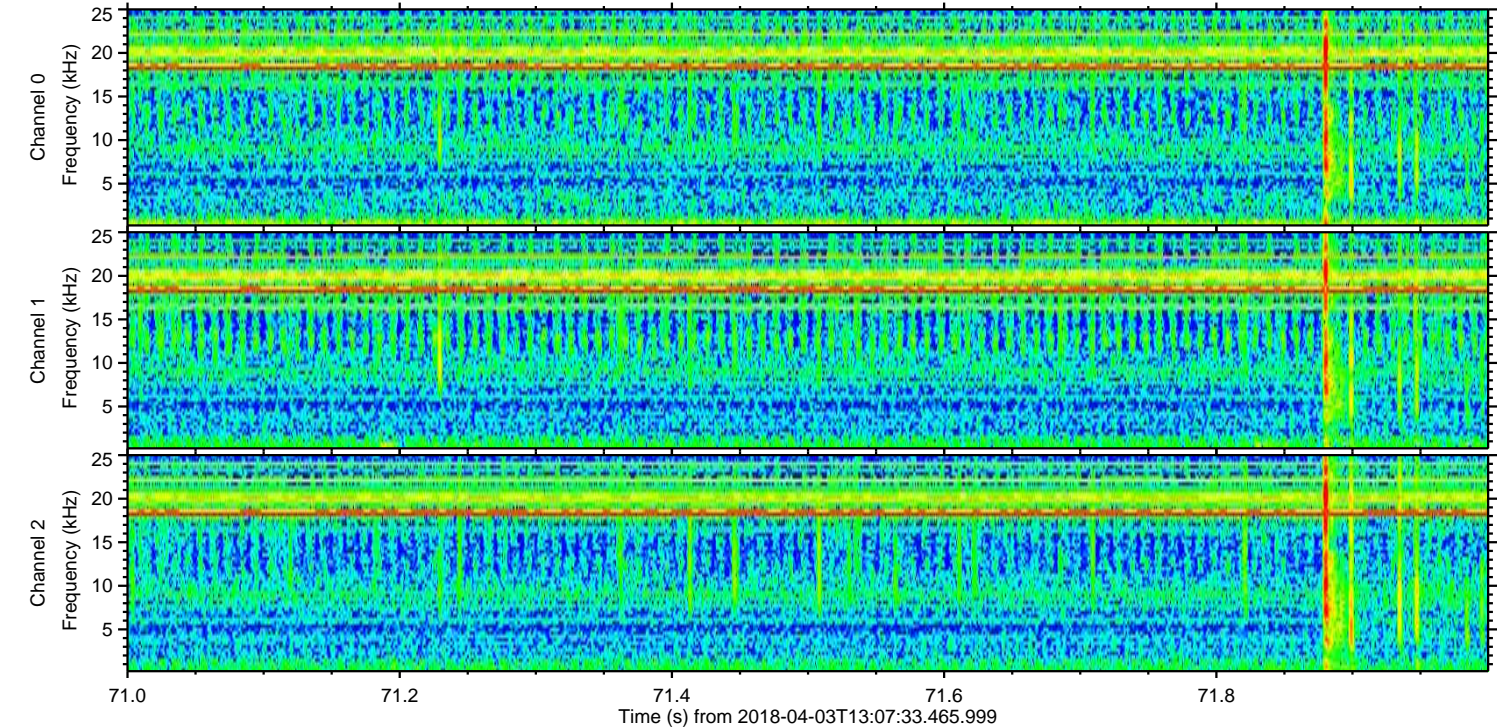
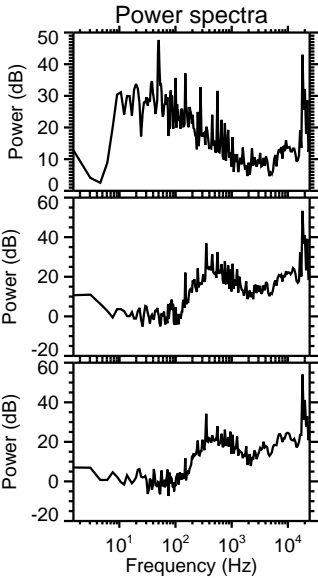
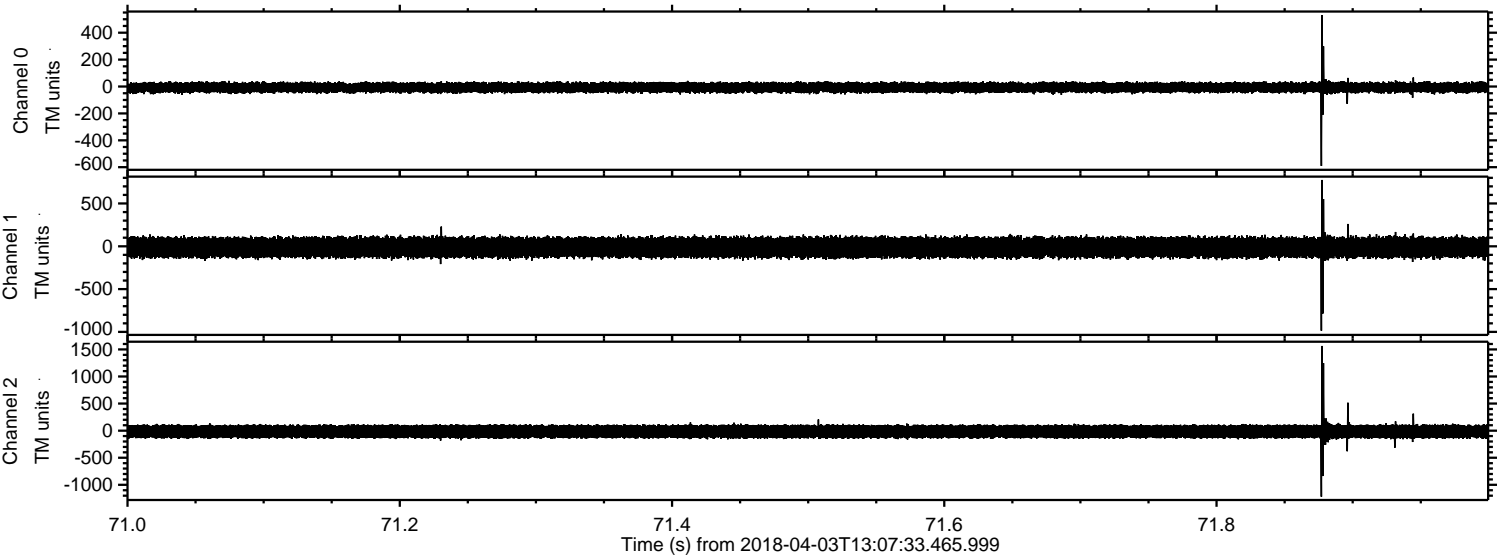
Channel 1
mn: -558
mx: 542
 μ : -13.2
 σ : 65.7

Channel 2
mn: -1430
mx: 1772
 μ : -16.0
 σ : 73.3

Processed Tue Apr 3 15:15:50 2018 by ELM ver.2012-10-06 from 001__elm20180403_130732__dat00.bin

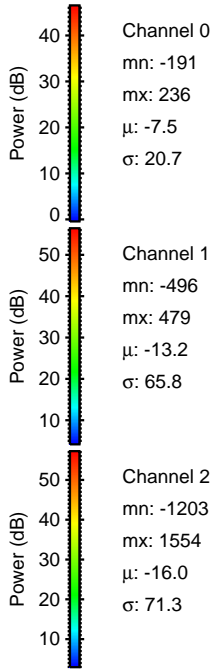
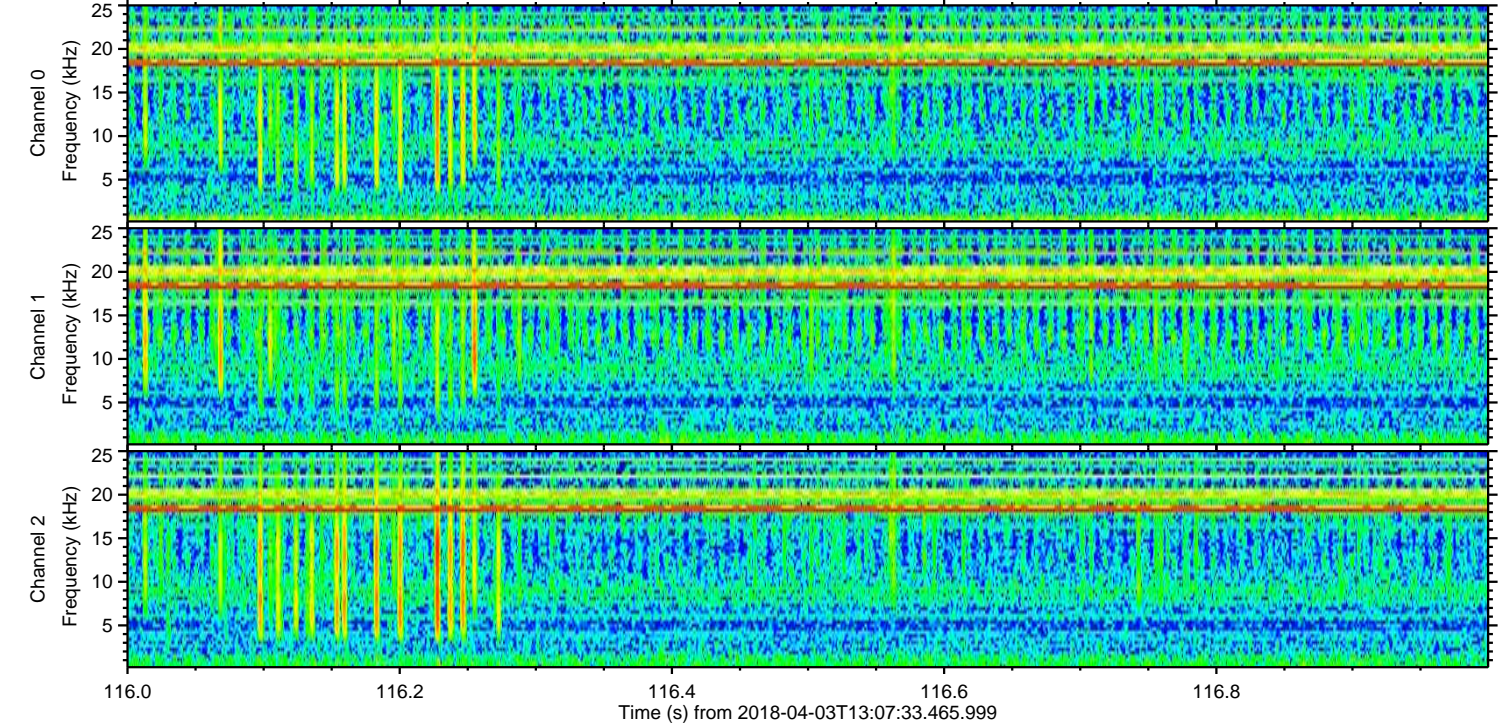
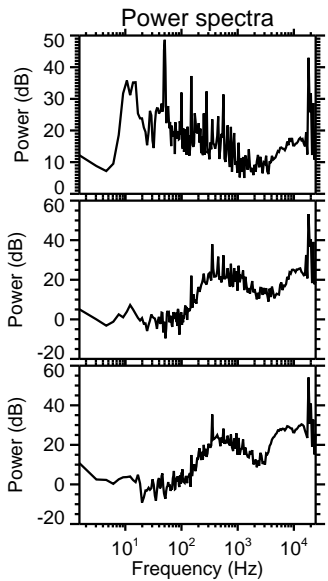
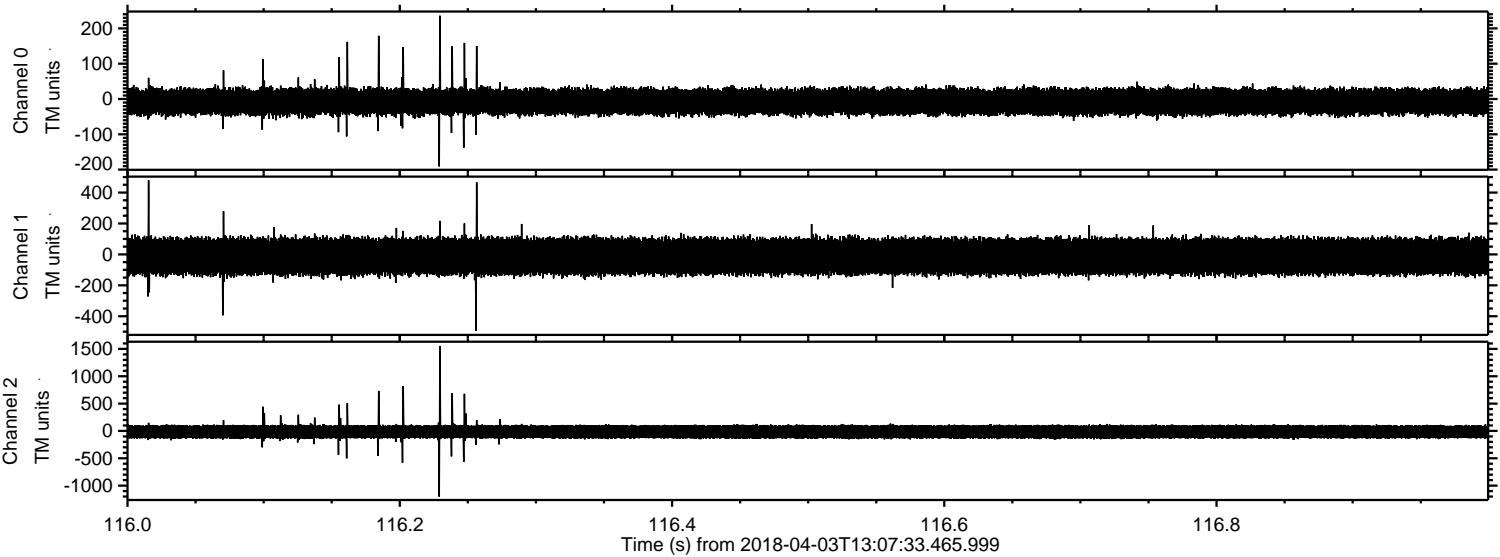


Processed Tue Apr 3 15:15:51 2018 by ELM ver.2012-10-06 from 001__elm20180403_130732__dat00.bin

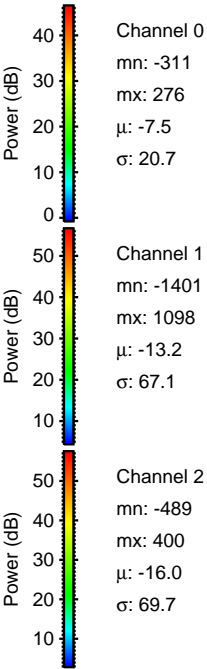
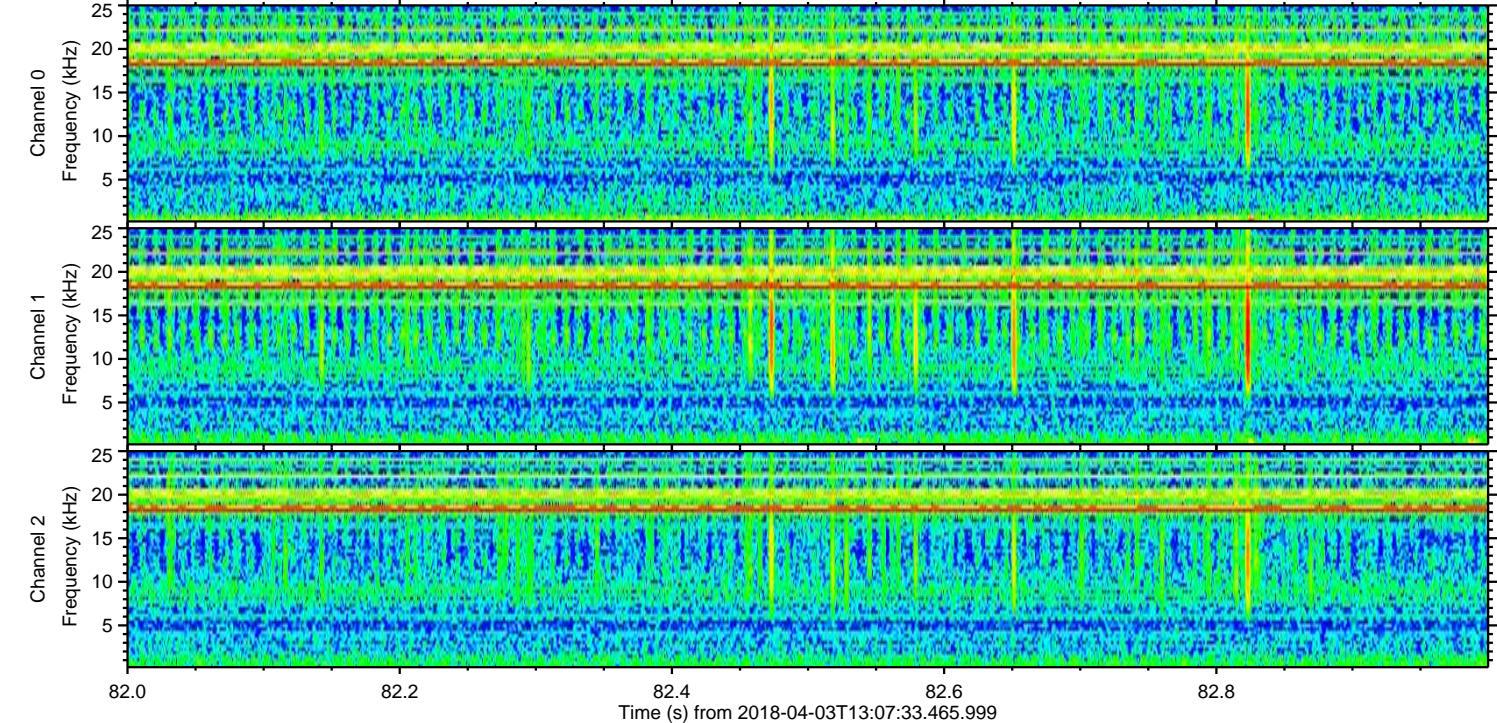
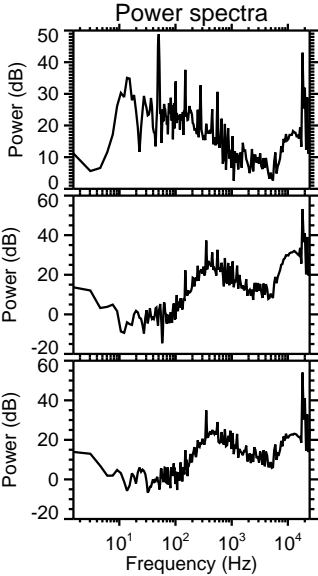
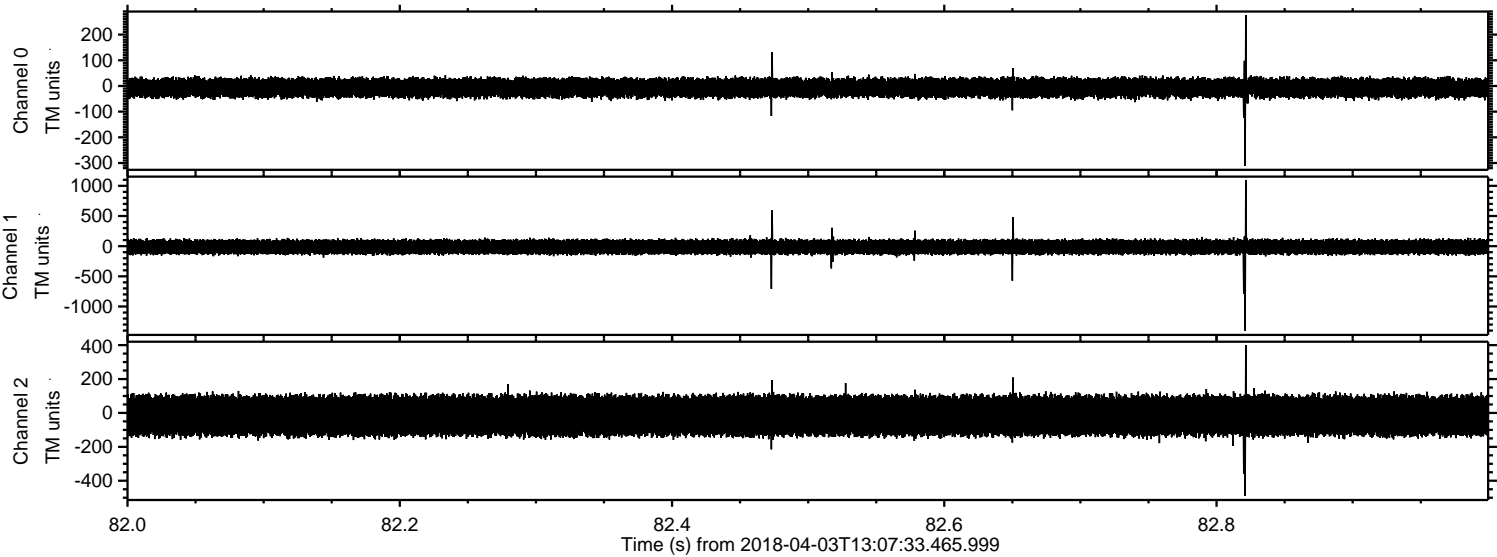


ELMAVAN 3D WAVEFORMS (Measured data sampled at 50 kHz) 51000 packets of 144 samples from 2018-04-03T13:07:33.465.999. Part 117/147

Processed Tue Apr 3 15:15:52 2018 by ELM ver.2012-10-06 from 001__elm20180403_130732__dat00.bin



Processed Tue Apr 3 15:15:53 2018 by ELM ver.2012-10-06 from 001__elm20180403_130732__dat00.bin

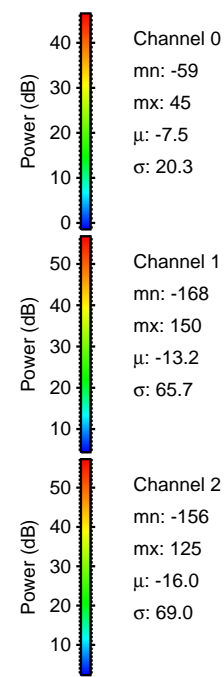
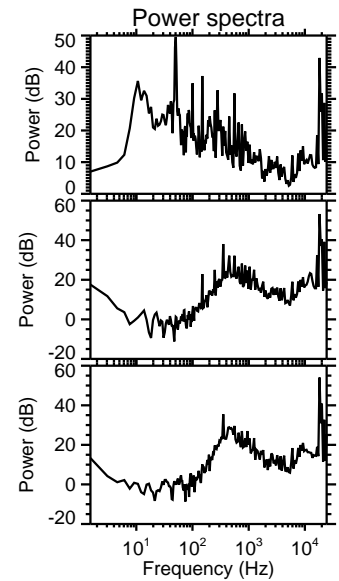
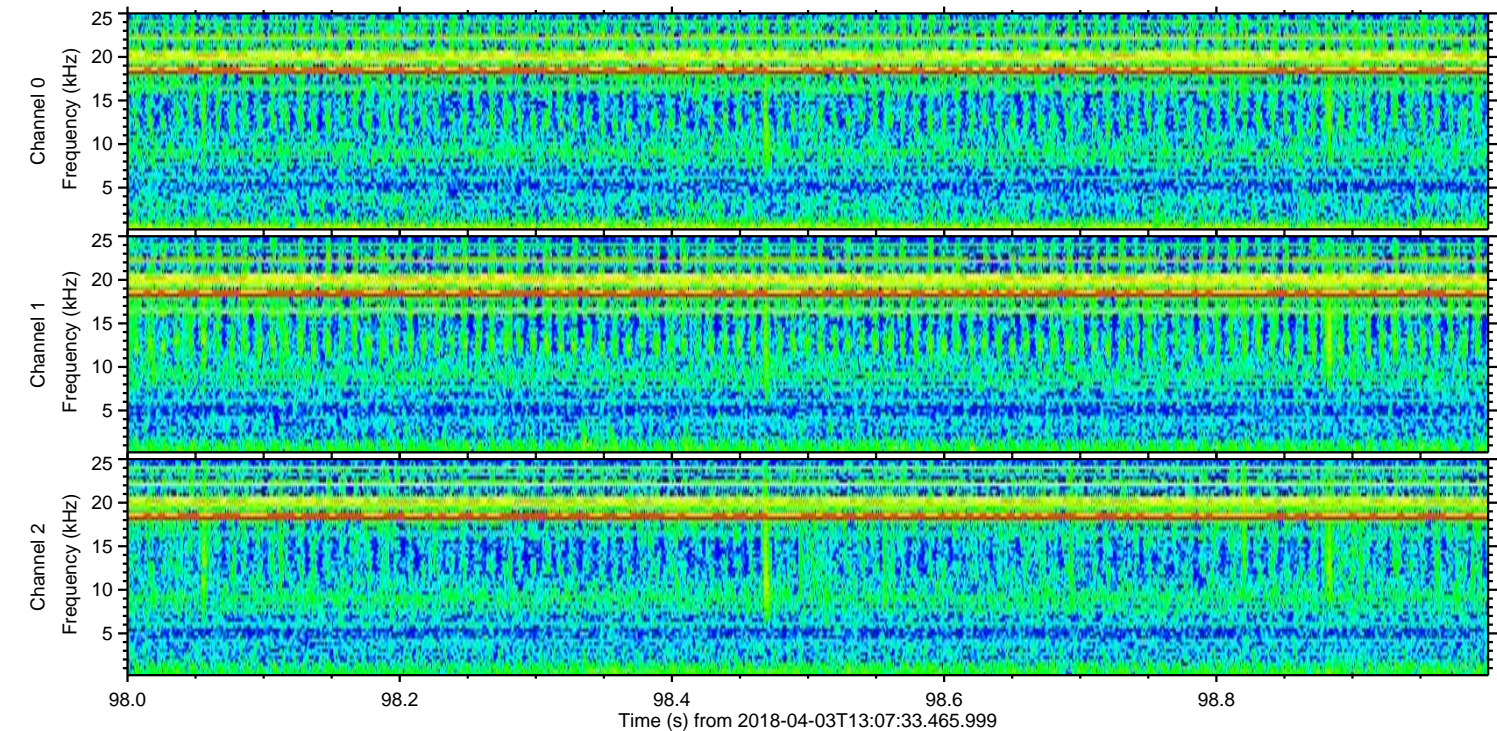
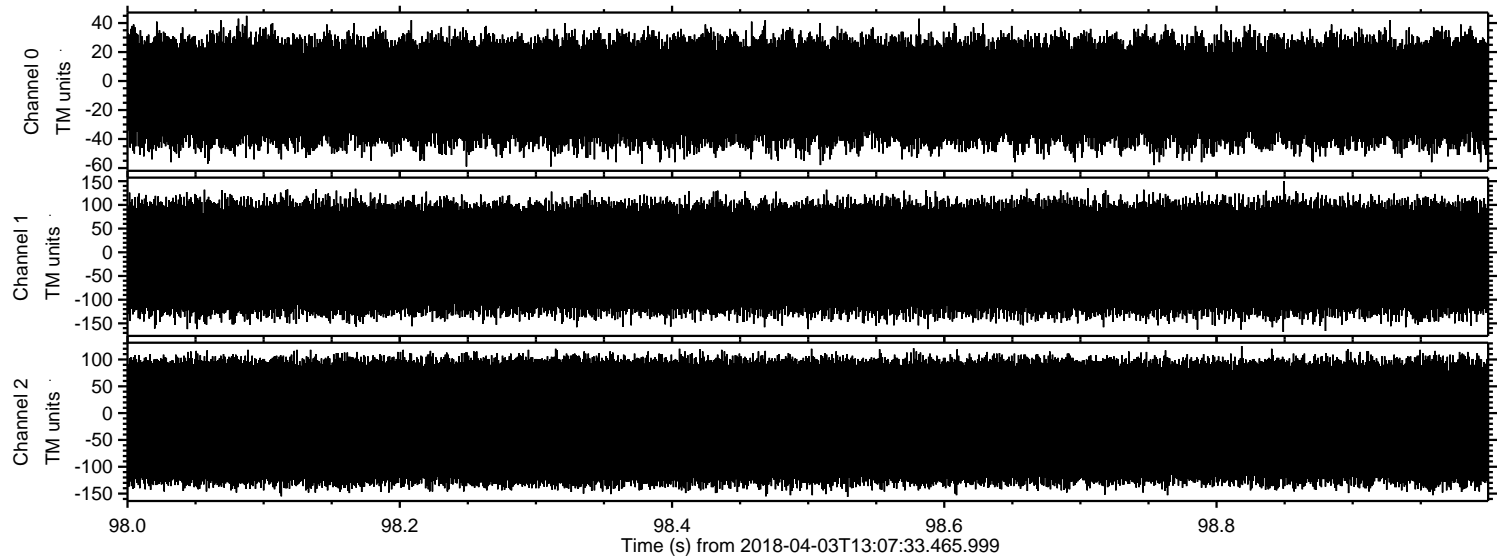


Channel 0
mn: -311
mx: 276
 μ : -7.5
 σ : 20.7

Channel 1
mn: -1401
mx: 1098
 μ : -13.2
 σ : 67.1

Channel 2
mn: -489
mx: 400
 μ : -16.0
 σ : 69.7

Processed Tue Apr 3 15:15:54 2018 by ELM ver.2012-10-06 from 001__elm20180403_130732__dat00.bin



Channel 0
mn: -59
mx: 45
 μ : -7.5
 σ : 20.3

Channel 1
mn: -168
mx: 150
 μ : -13.2
 σ : 65.7

Channel 2
mn: -156
mx: 125
 μ : -16.0
 σ : 69.0