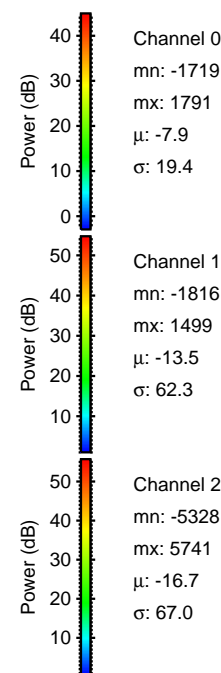
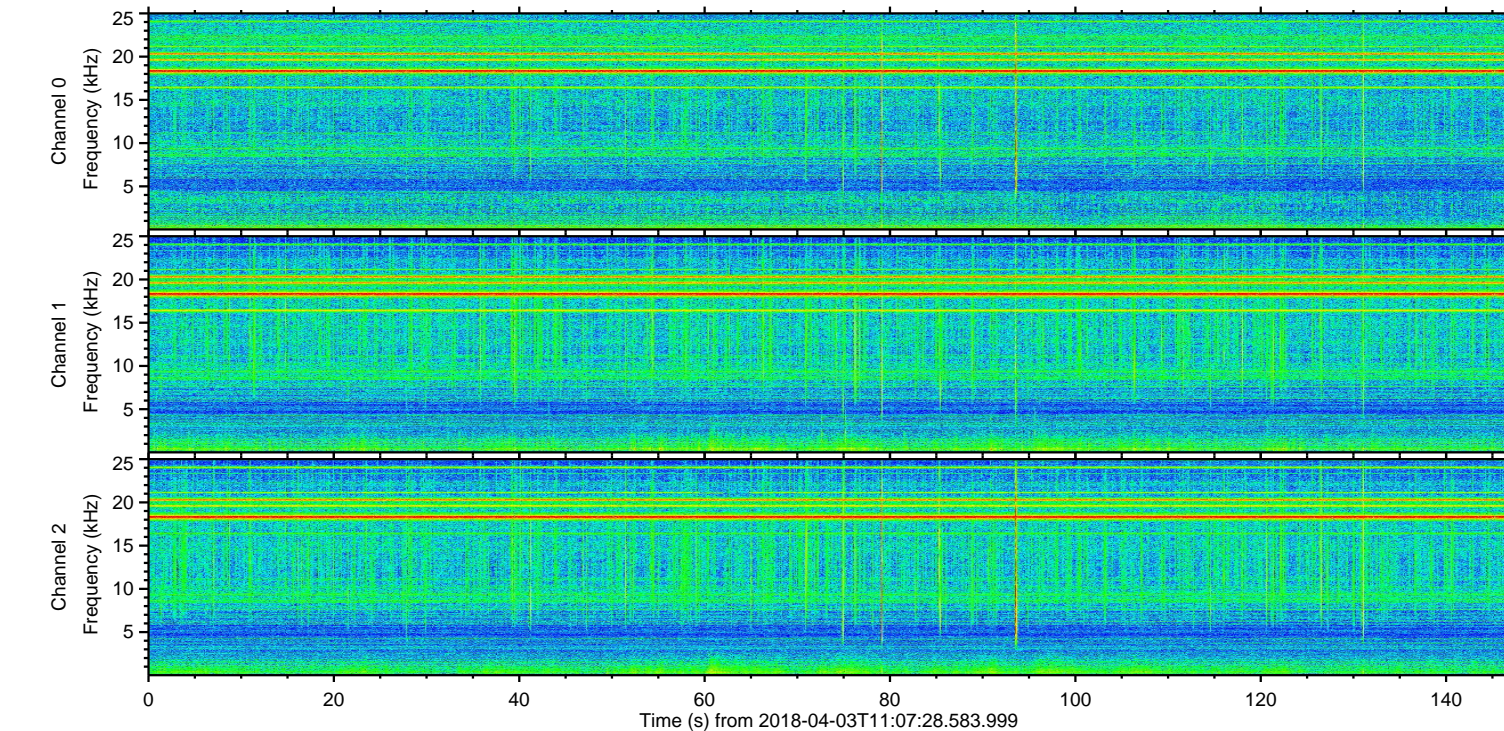
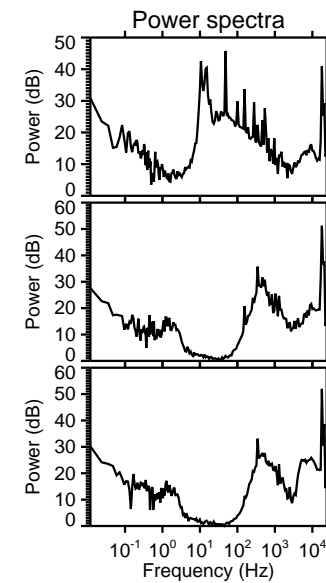
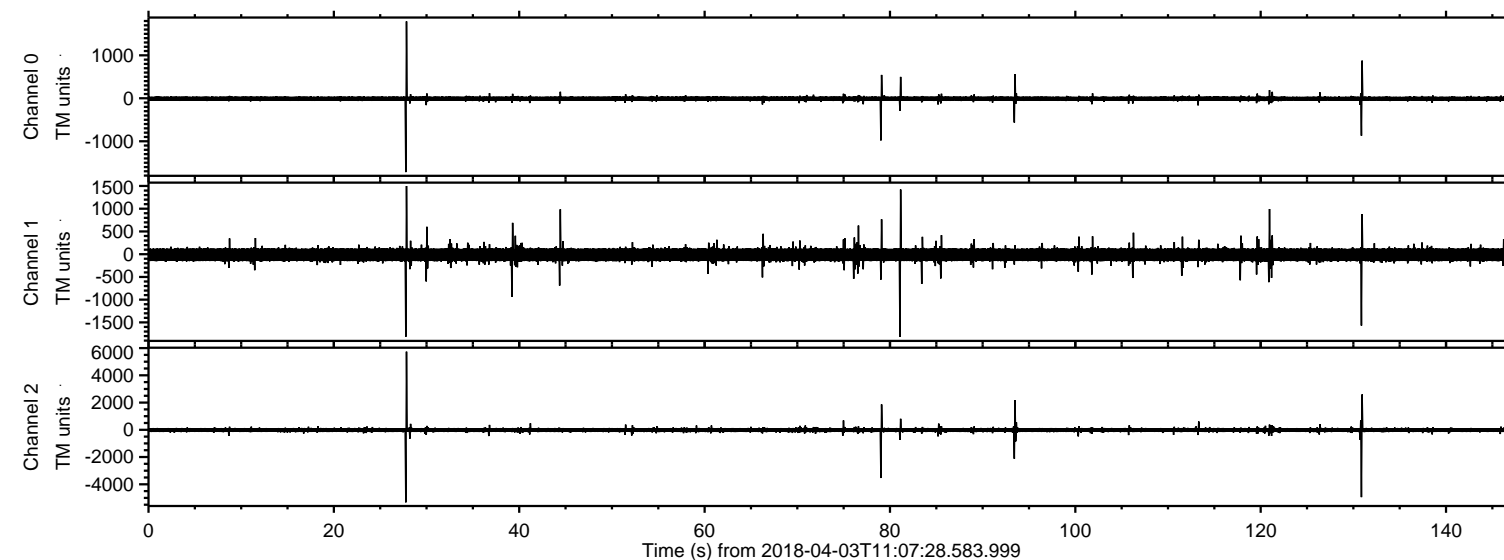


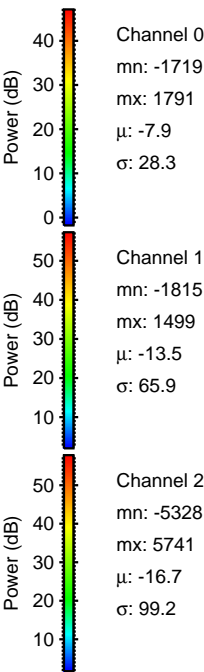
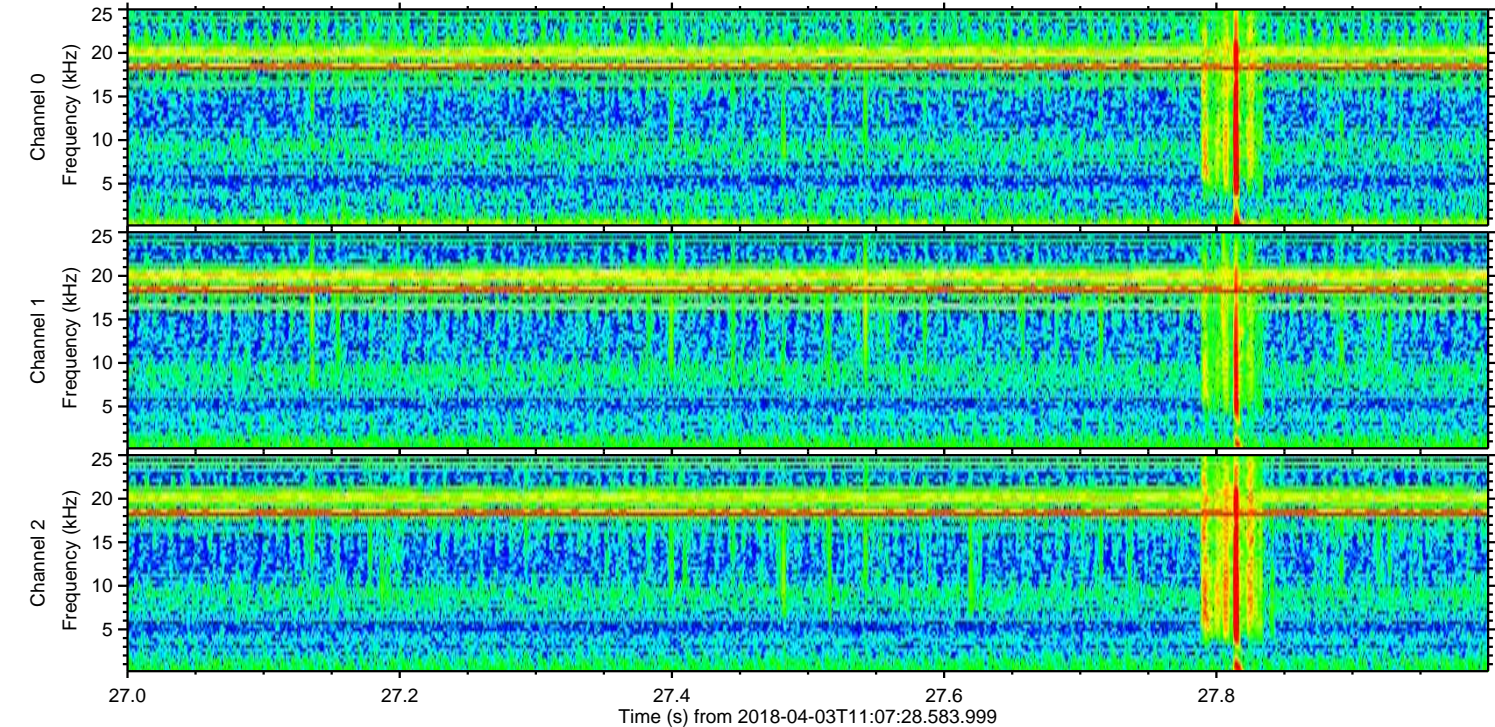
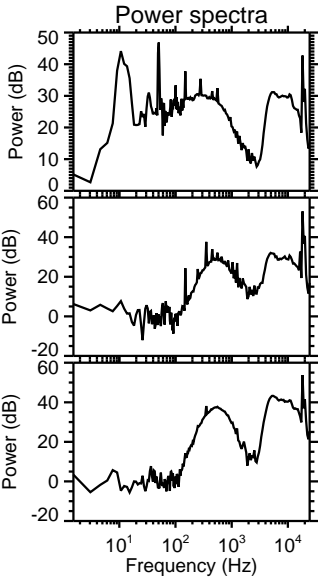
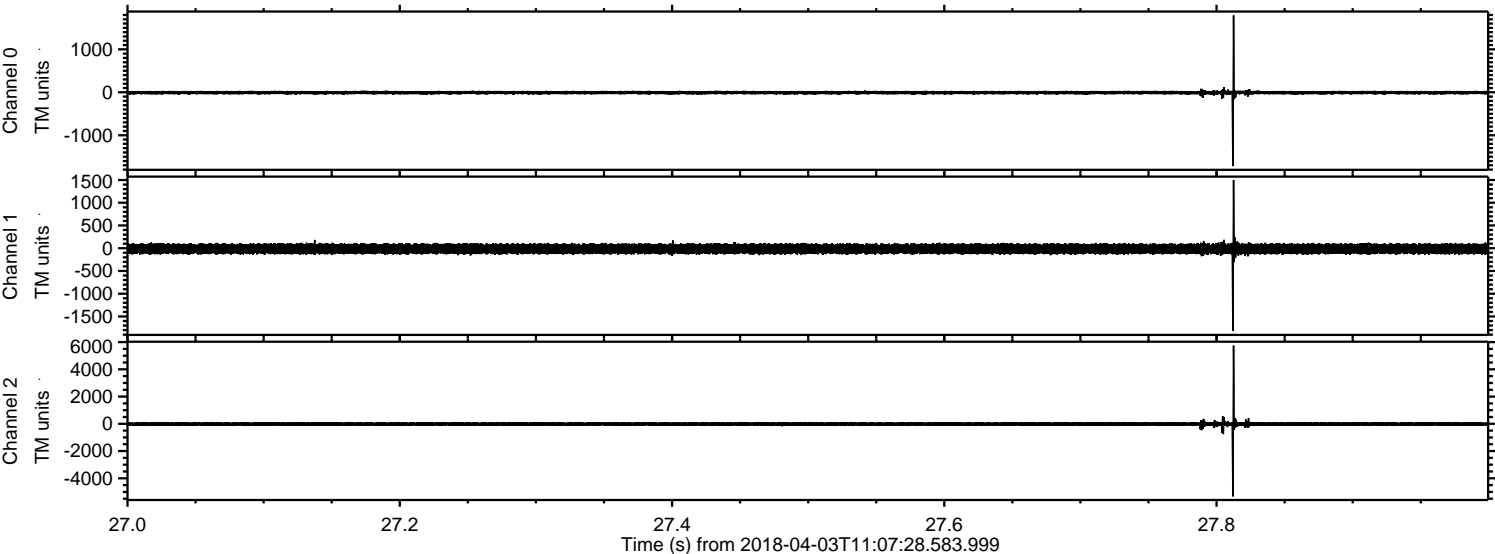
# ELMAVAN 3D WAVEFORMS (Measured data sampled at 50 kHz) 51000 packets of 144 samples from 2018-04-03T11:07:28.583.999.

Processed Tue Apr 3 13:15:52 2018 by ELM ver.2012-10-06 from 001\_\_elm20180403\_110727\_\_dat00.bin





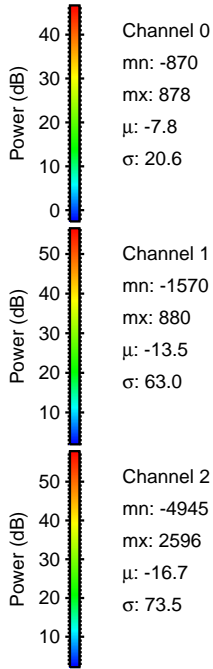
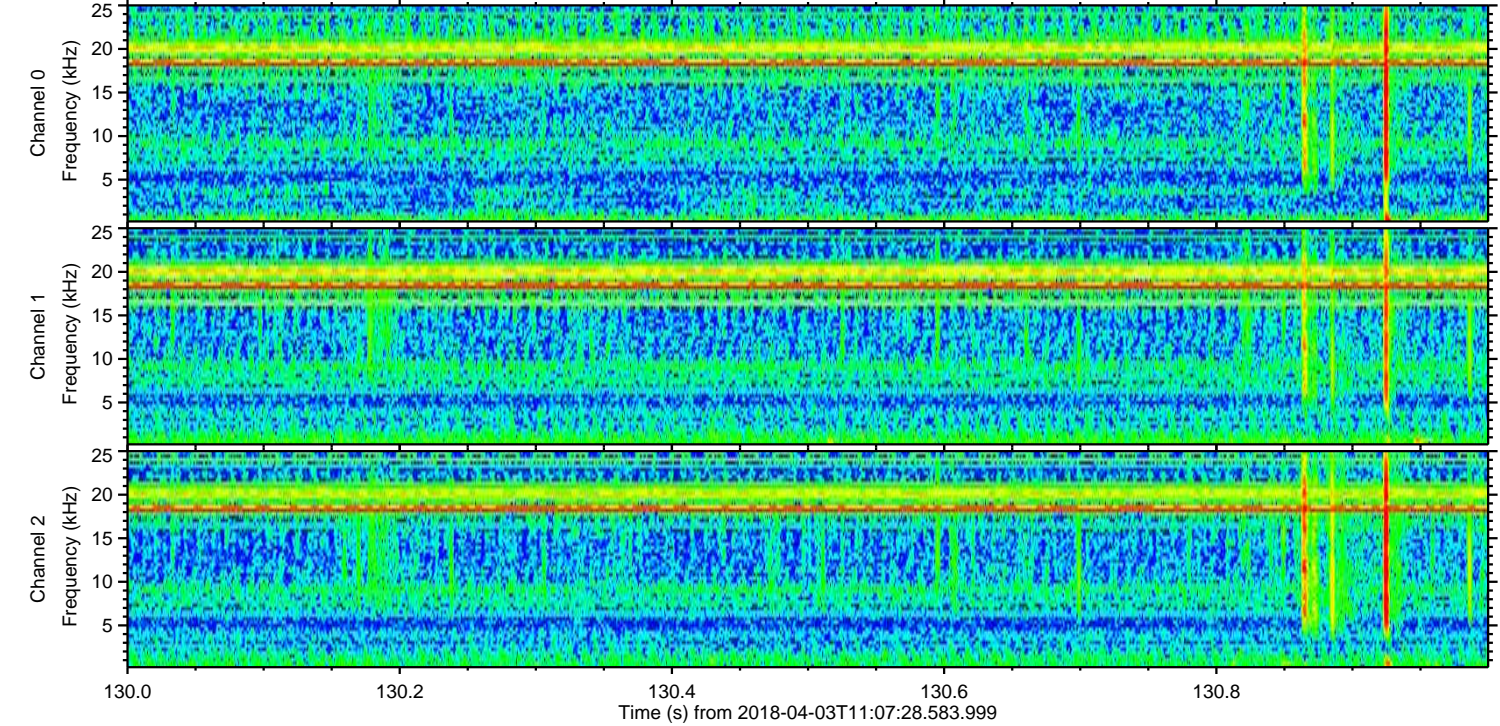
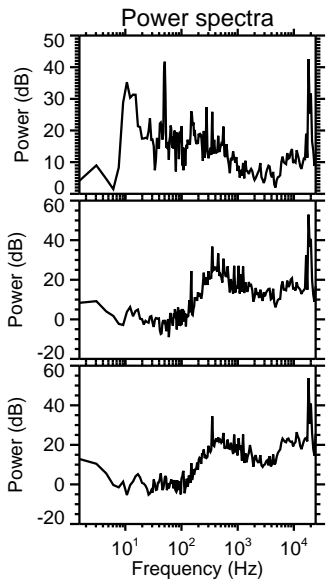
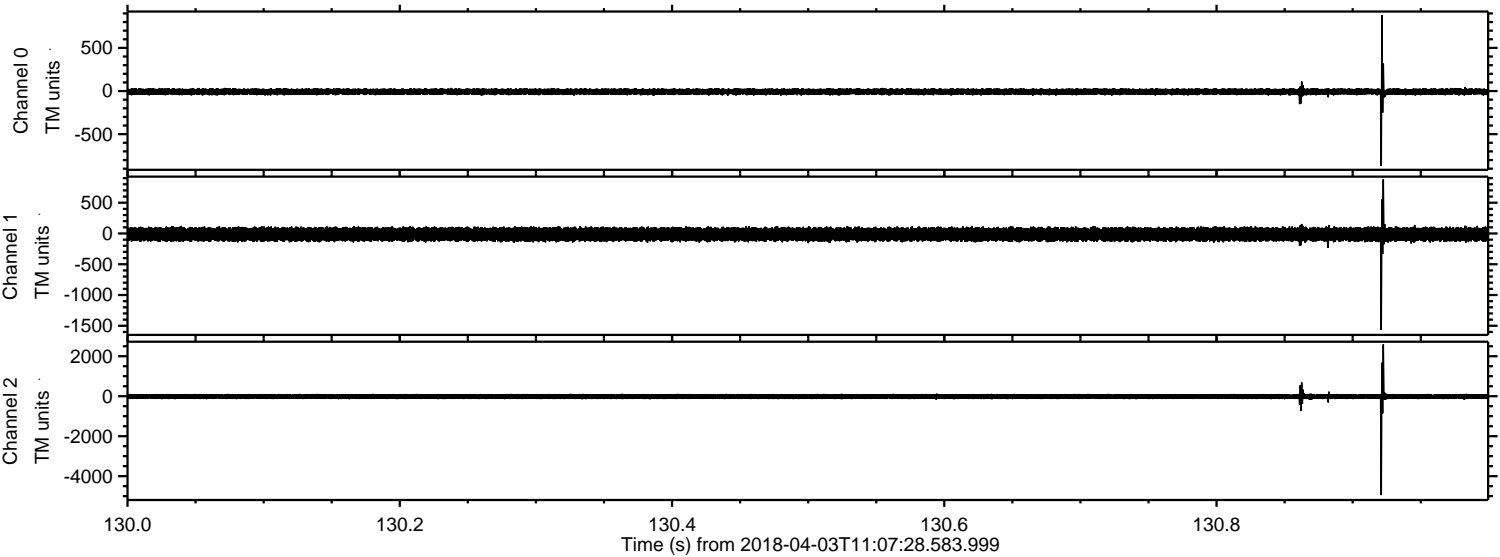
Processed Tue Apr 3 13:16:00 2018 by ELM ver.2012-10-06 from 001\_\_elm20180403\_110727\_\_dat00.bin





ELMAVAN 3D WAVEFORMS (Measured data sampled at 50 kHz) 51000 packets of 144 samples from 2018-04-03T11:07:28.583.999. Part 131/147

Processed Tue Apr 3 13:16:01 2018 by ELM ver.2012-10-06 from 001\_\_elm20180403\_110727\_\_dat00.bin



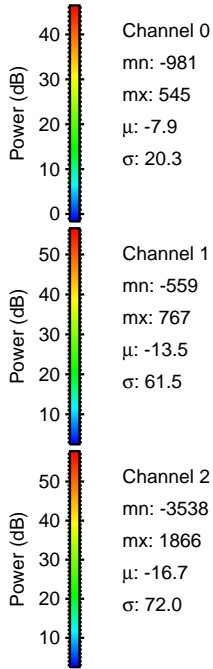
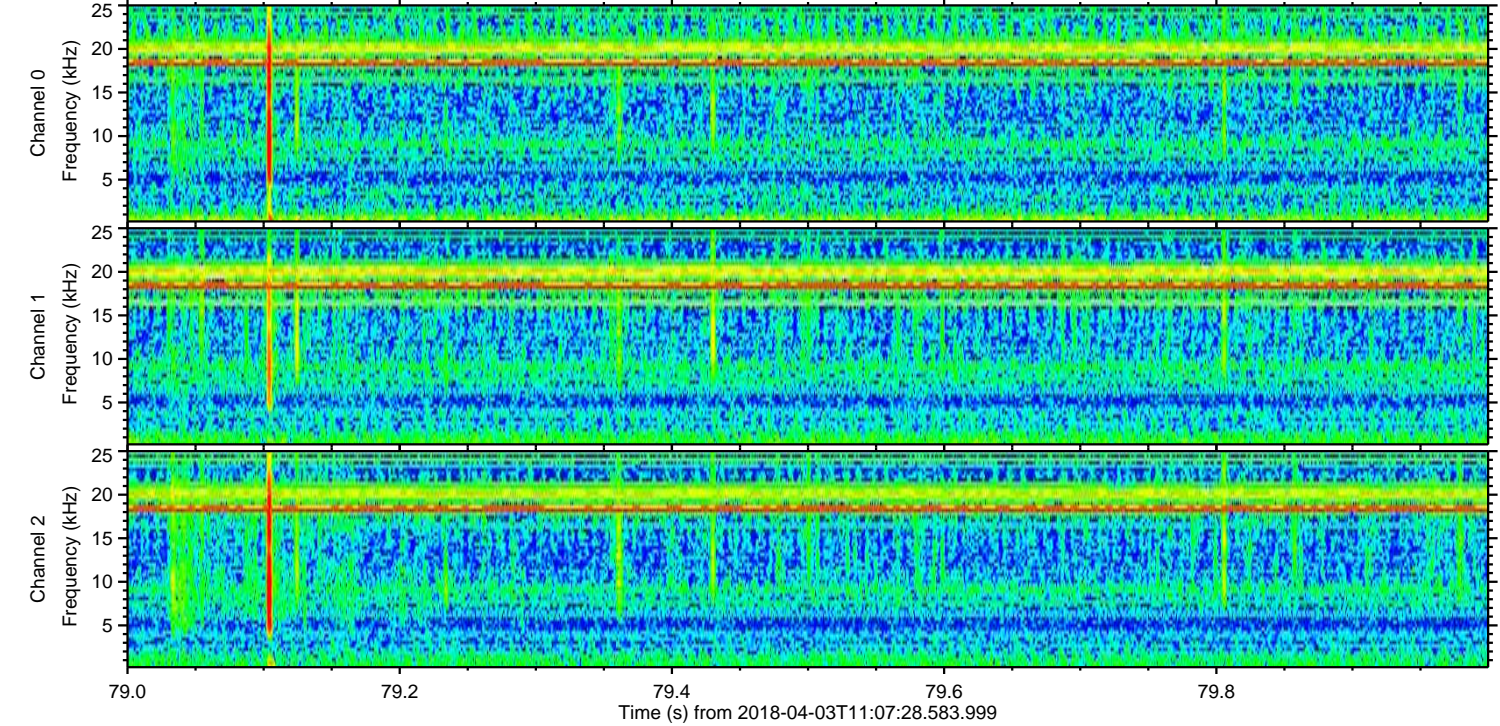
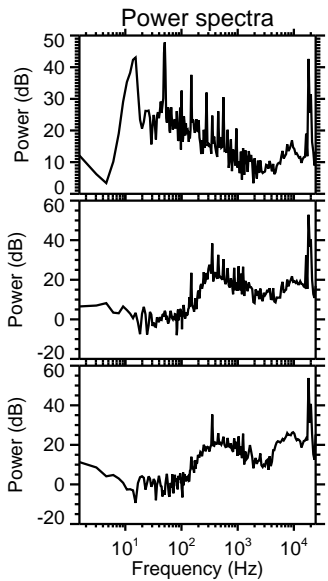
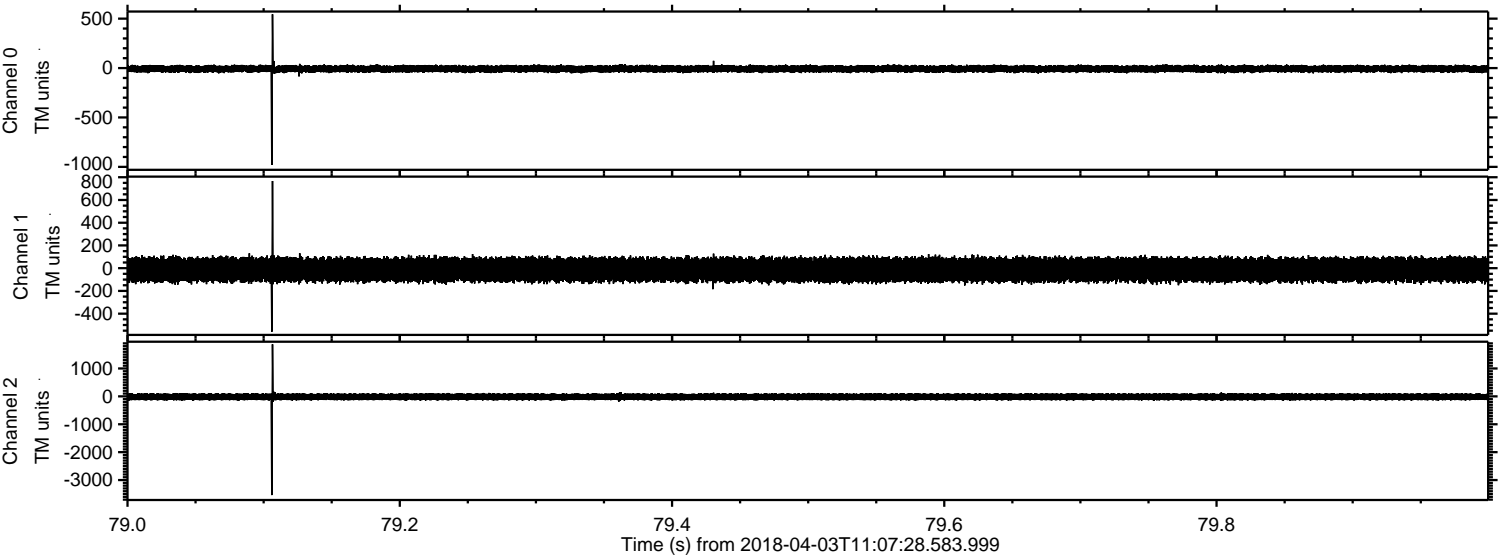
Channel 0  
mn: -870  
mx: 878  
 $\mu$ : -7.8  
 $\sigma$ : 20.6

Channel 1  
mn: -1570  
mx: 880  
 $\mu$ : -13.5  
 $\sigma$ : 63.0

Channel 2  
mn: -4945  
mx: 2596  
 $\mu$ : -16.7  
 $\sigma$ : 73.5



Processed Tue Apr 3 13:16:01 2018 by ELM ver.2012-10-06 from 001\_\_elm20180403\_110727\_\_dat00.bin



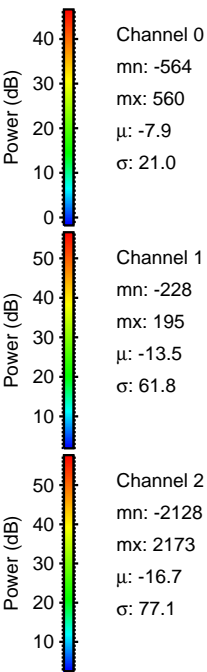
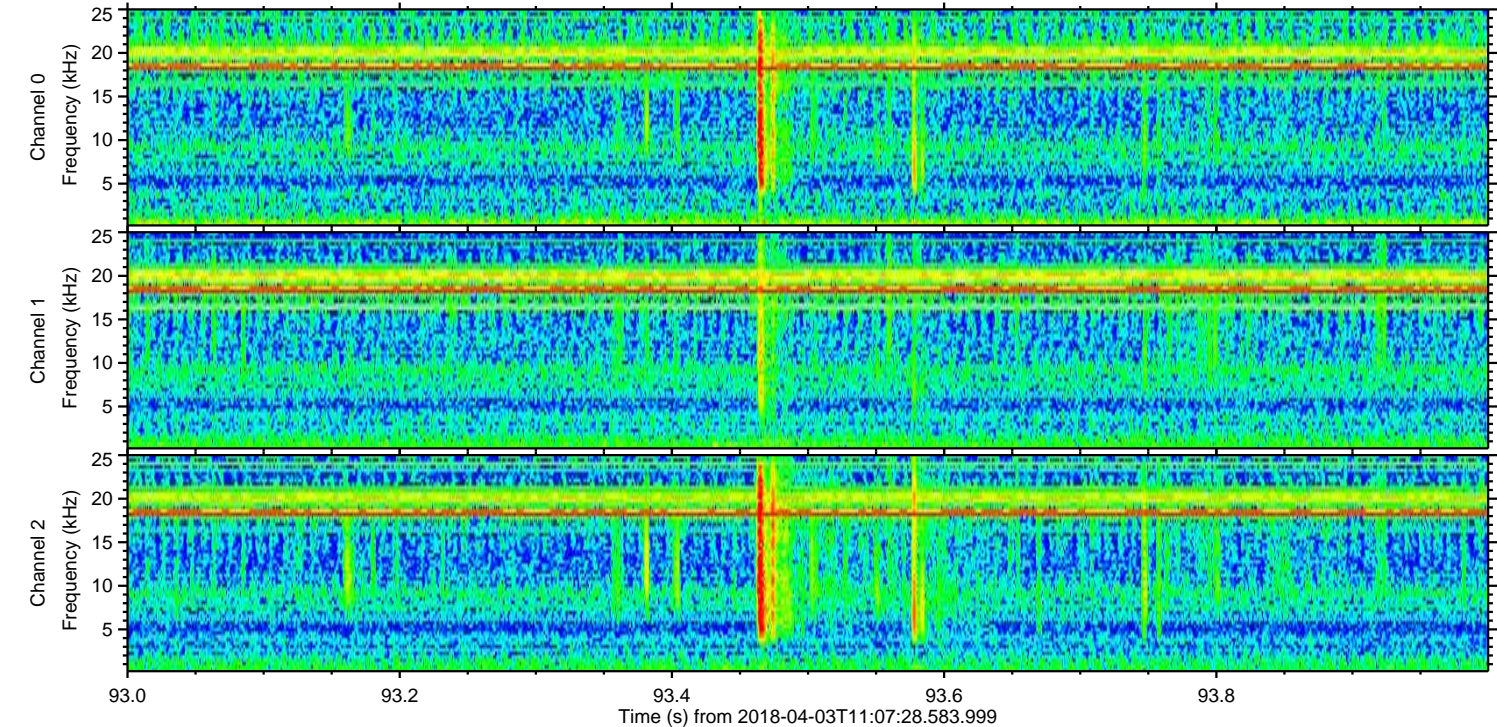
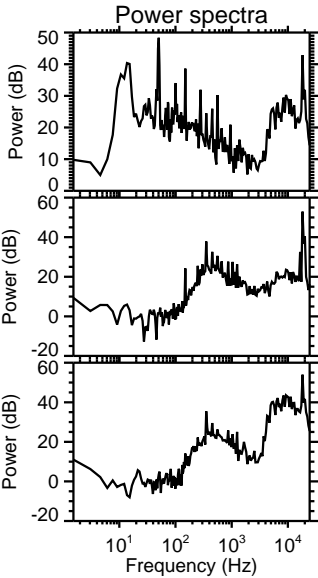
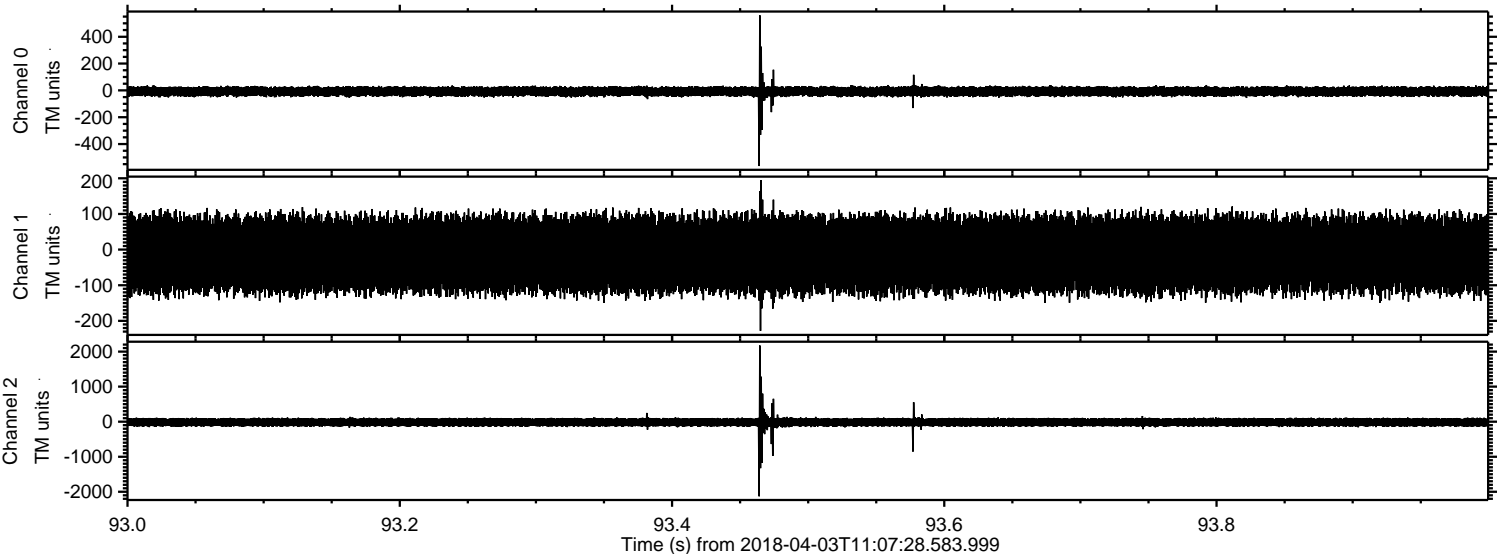
Channel 0  
mn: -981  
mx: 545  
 $\mu$ : -7.9  
 $\sigma$ : 20.3

Channel 1  
mn: -559  
mx: 767  
 $\mu$ : -13.5  
 $\sigma$ : 61.5

Channel 2  
mn: -3538  
mx: 1866  
 $\mu$ : -16.7  
 $\sigma$ : 72.0

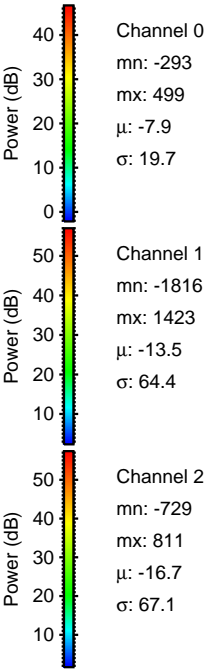
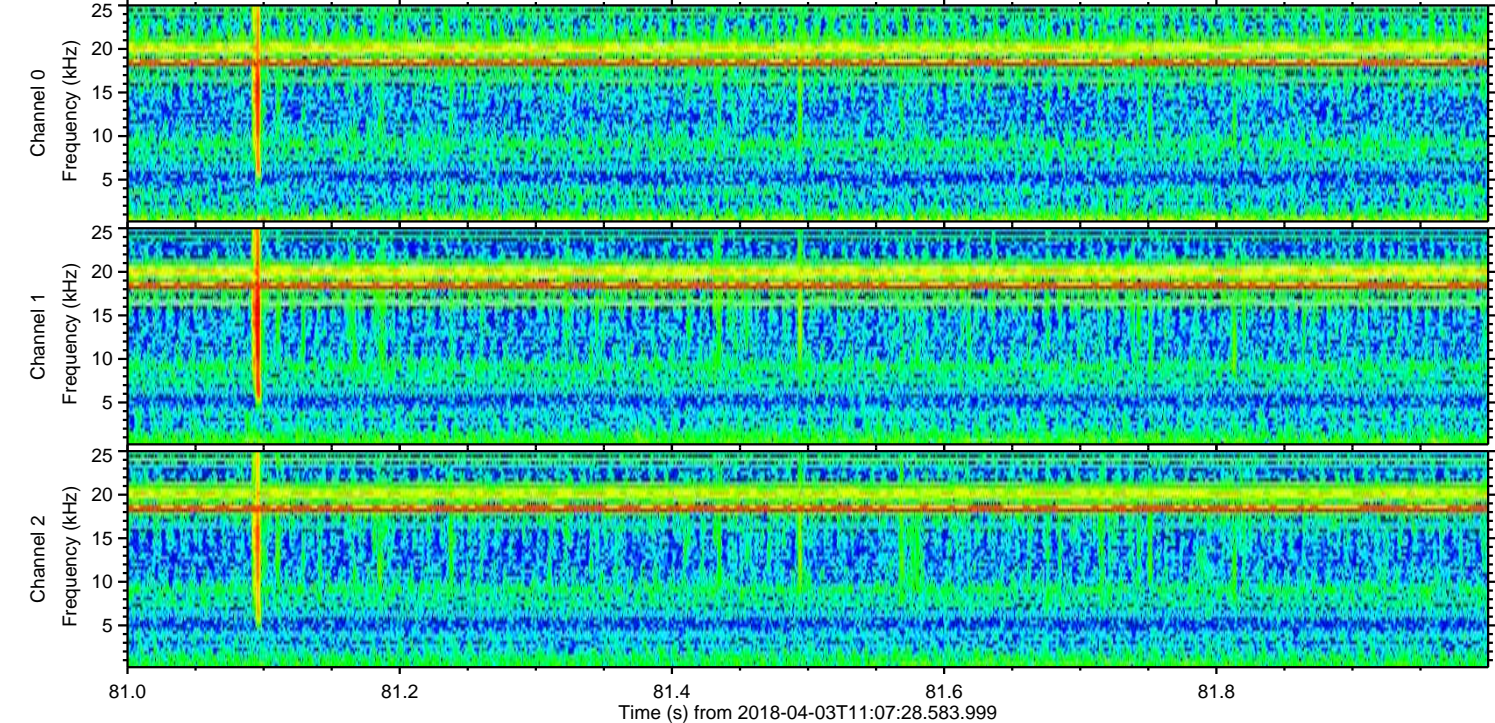
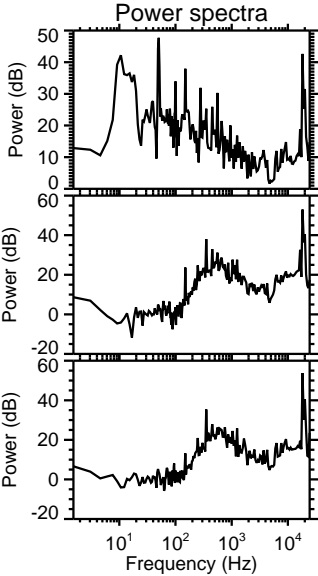
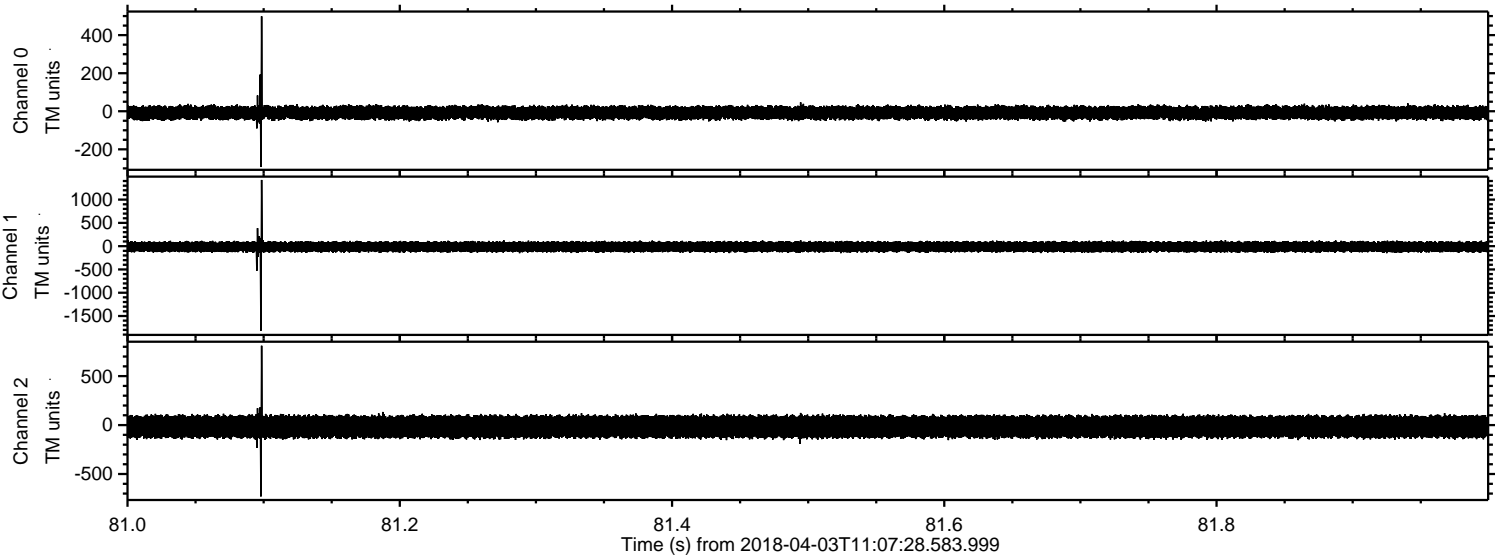


Processed Tue Apr 3 13:16:02 2018 by ELM ver.2012-10-06 from 001\_\_elm20180403\_110727\_\_dat00.bin



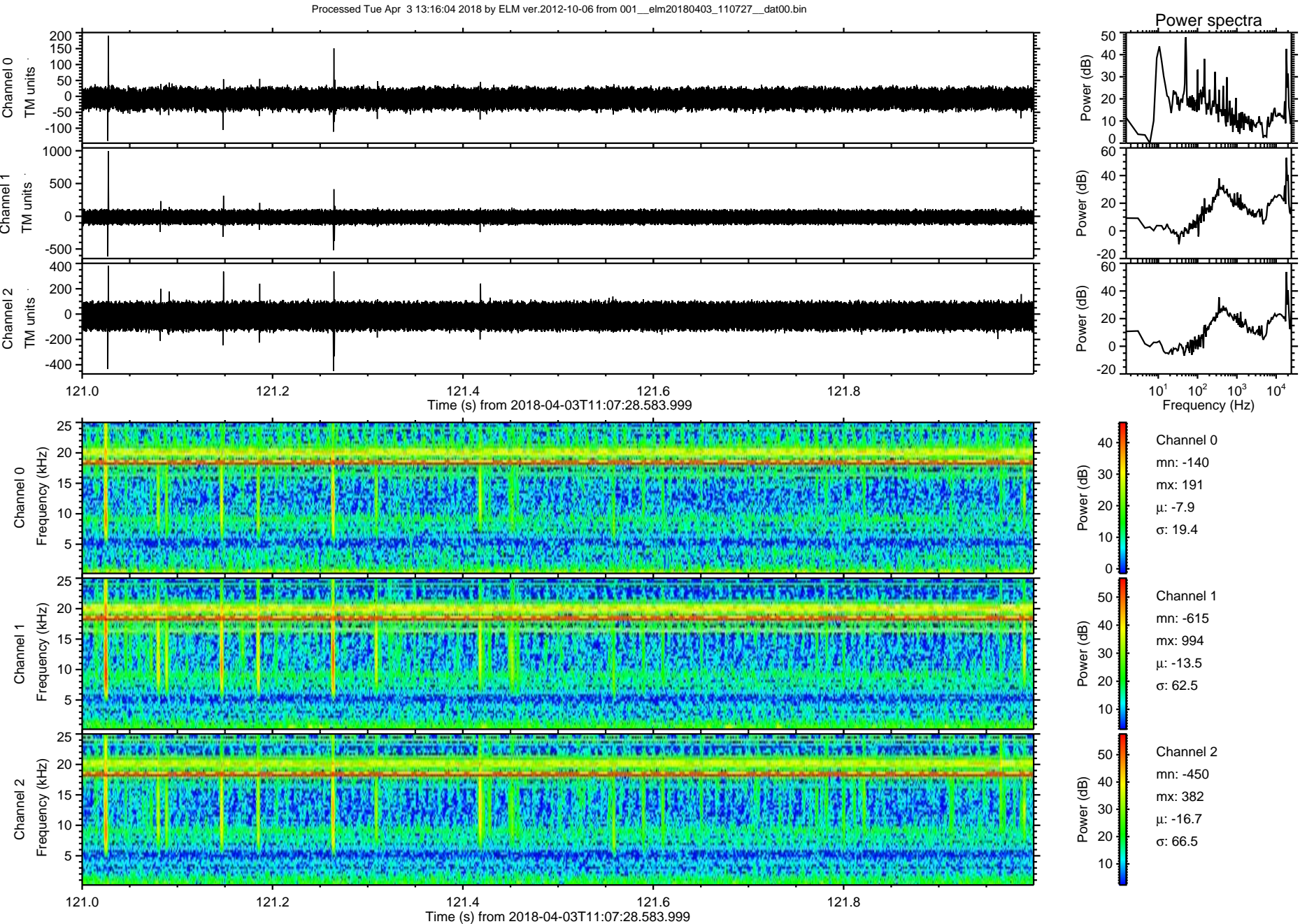


Processed Tue Apr 3 13:16:03 2018 by ELM ver.2012-10-06 from 001\_\_elm20180403\_110727\_\_dat00.bin

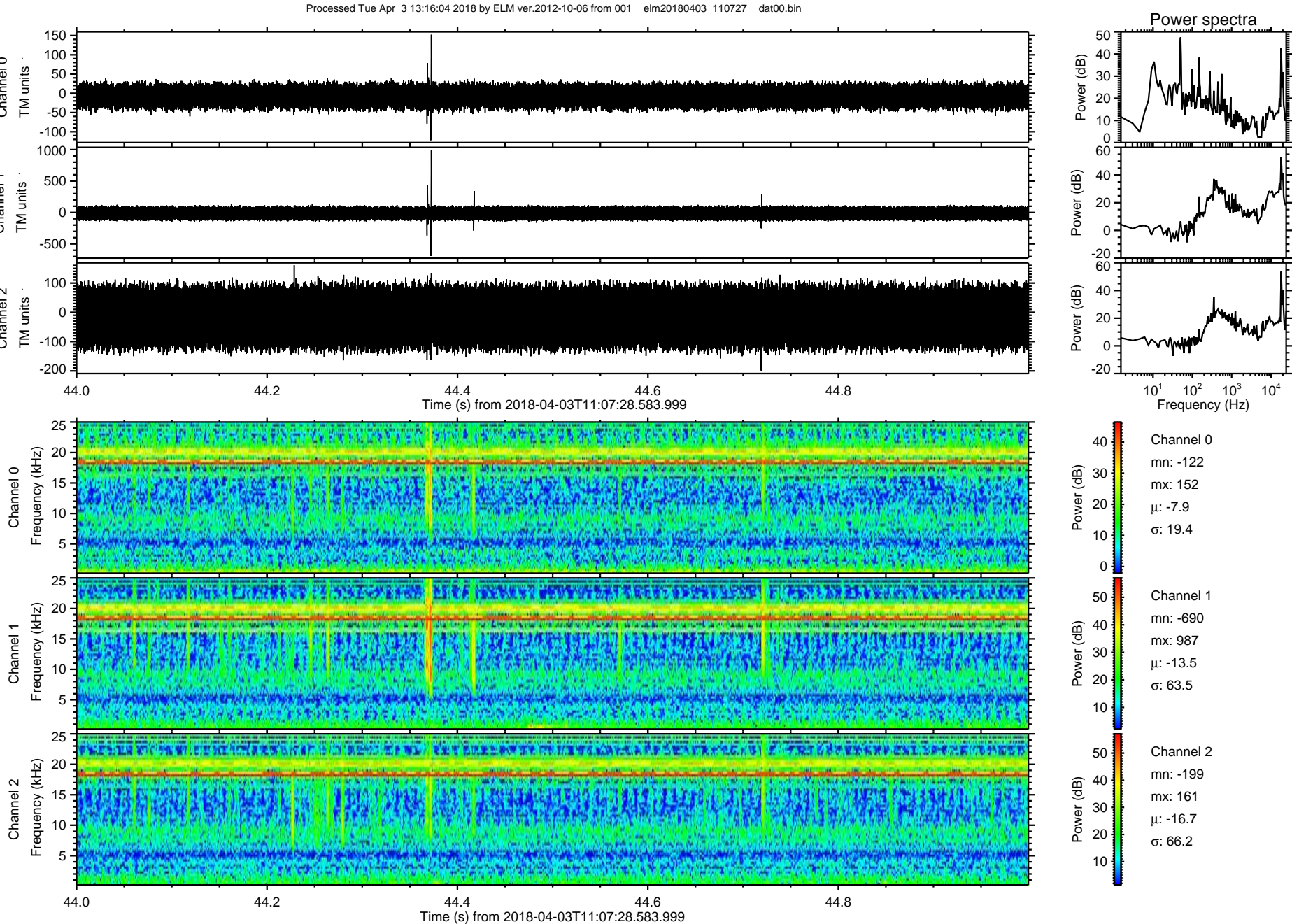




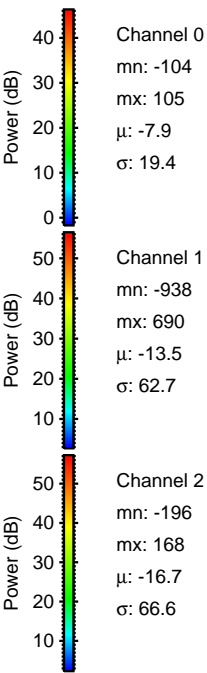
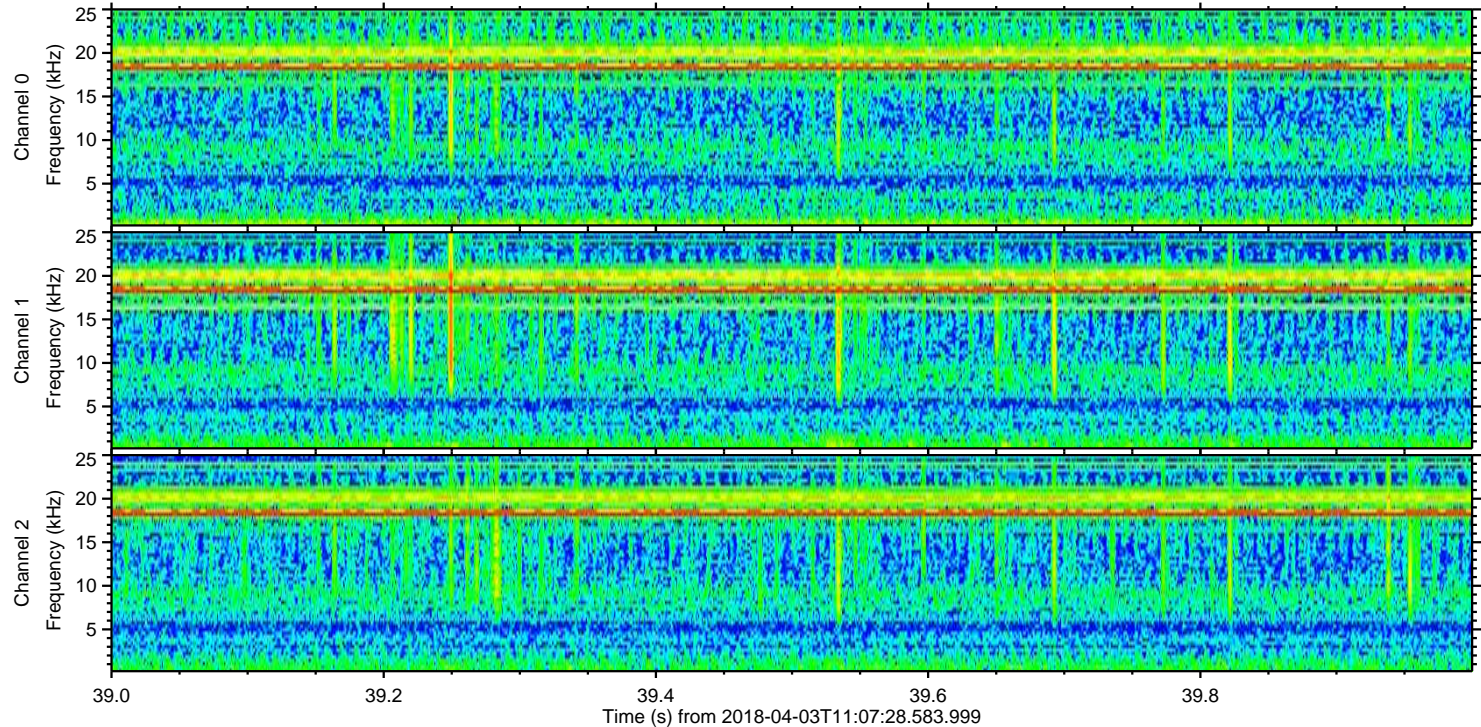
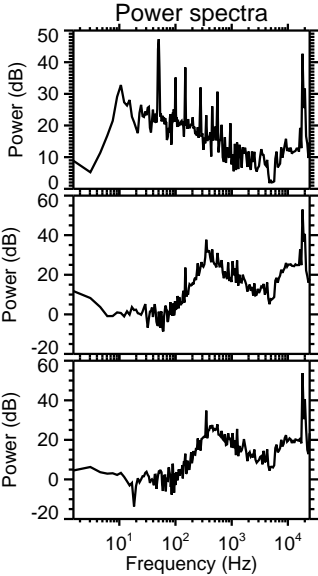
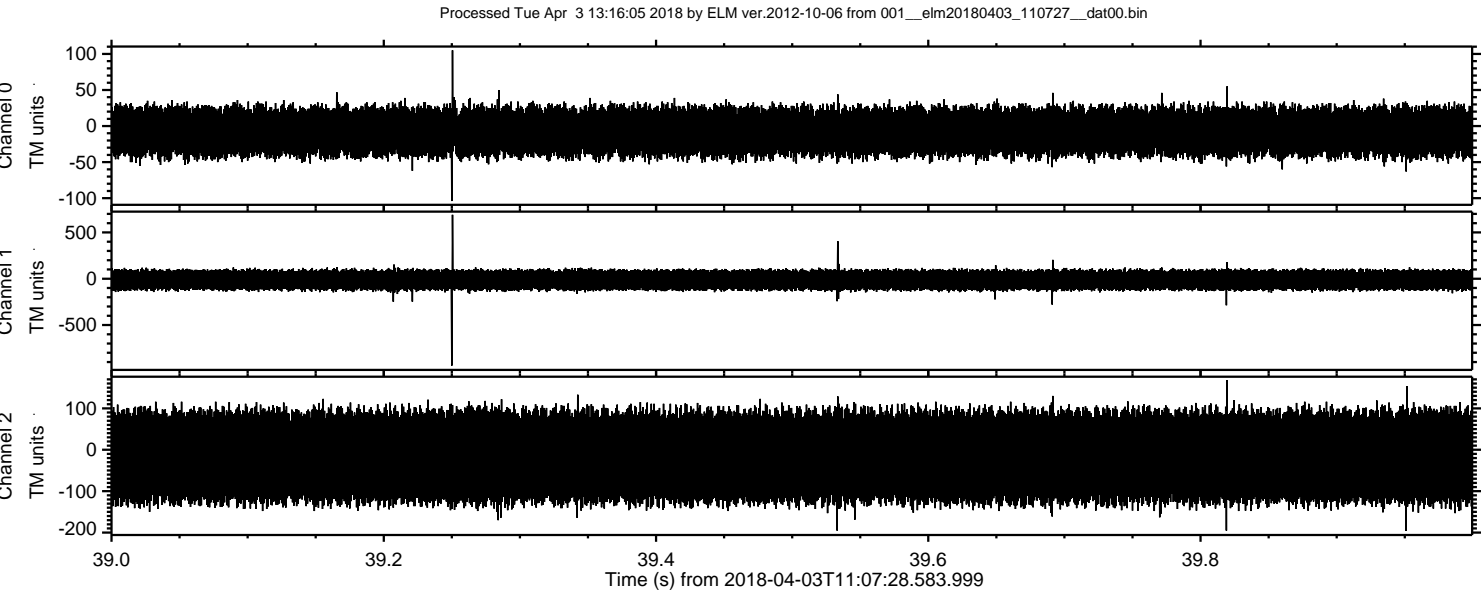
ELMAVAN 3D WAVEFORMS (Measured data sampled at 50 kHz) 51000 packets of 144 samples from 2018-04-03T11:07:28.583.999. Part 122/147













Processed Tue Apr 3 13:16:06 2018 by ELM ver.2012-10-06 from 001\_\_elm20180403\_110727\_\_dat00.bin

