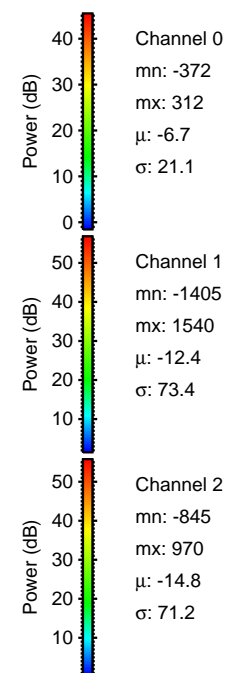
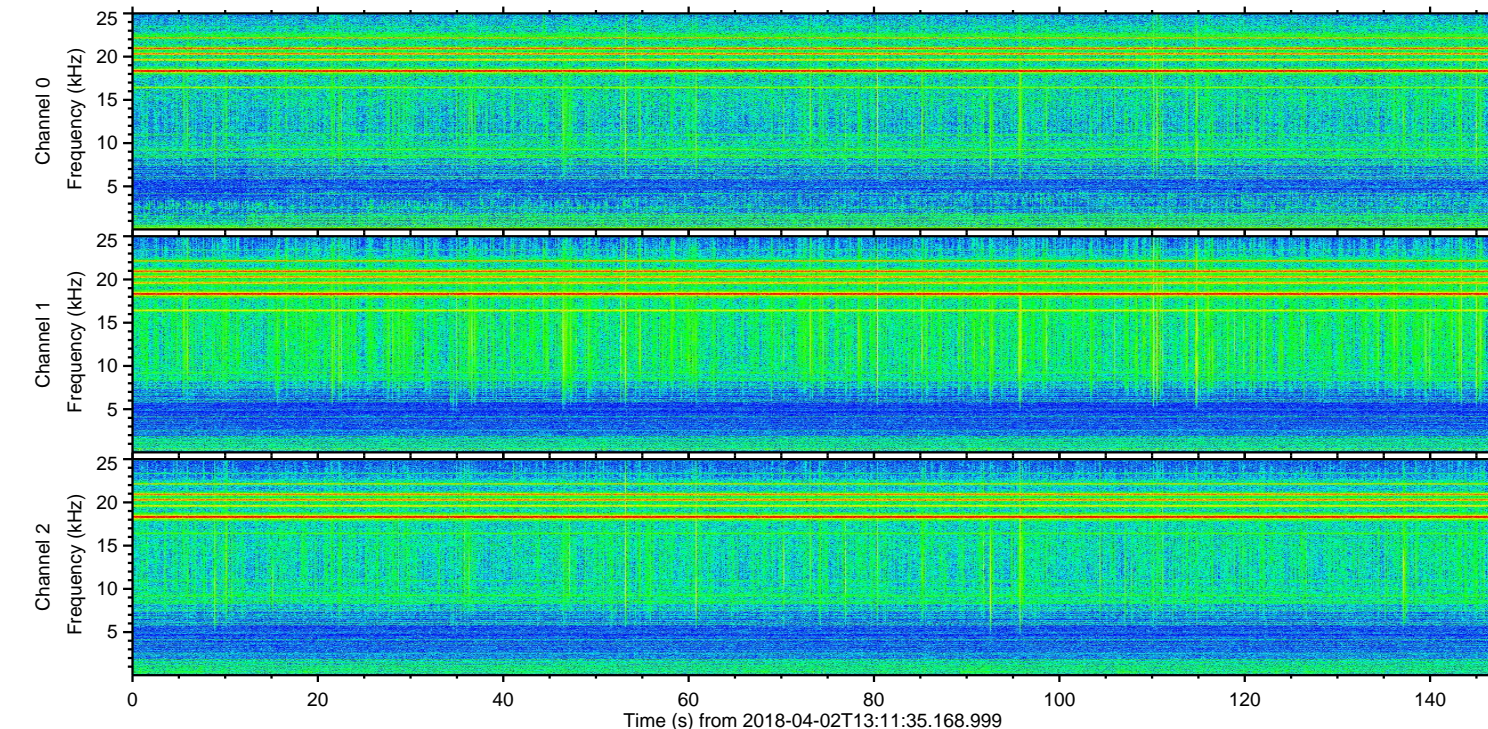
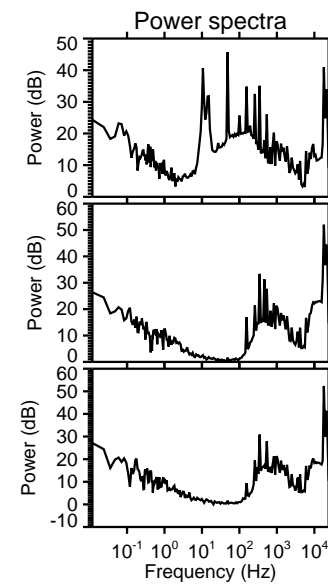
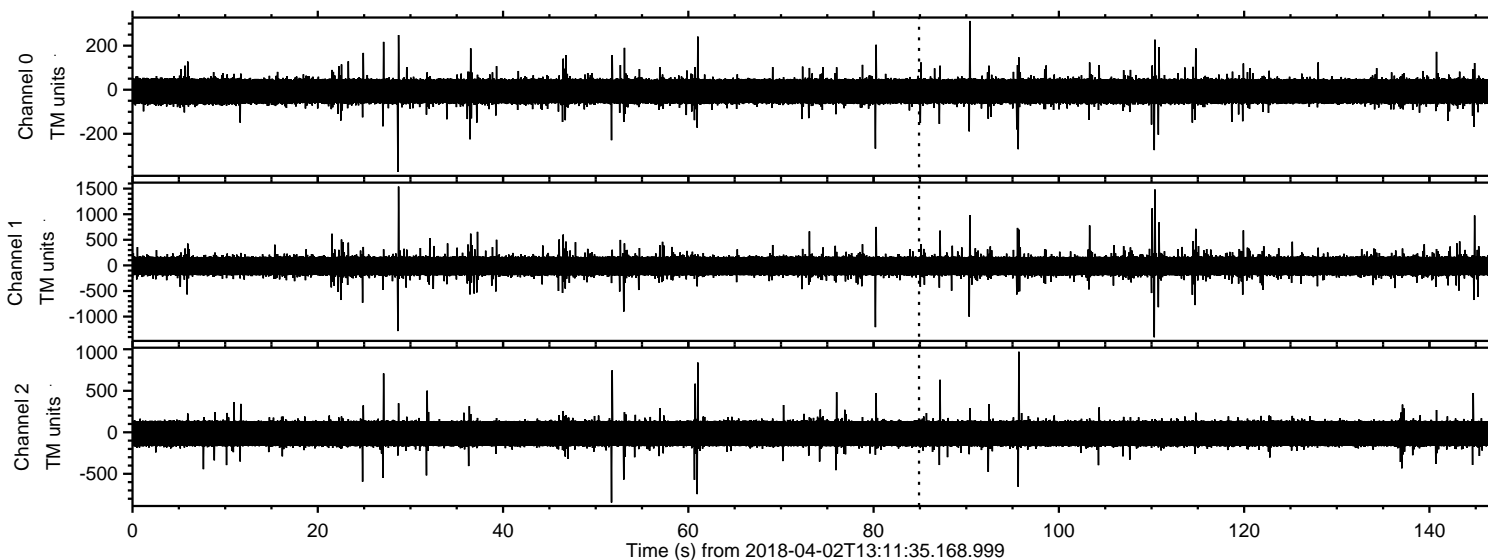
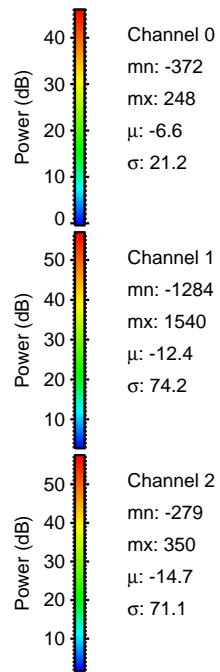
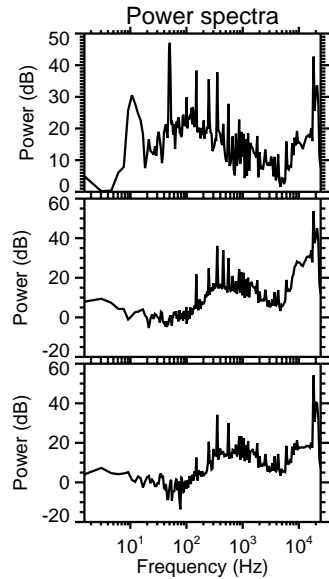
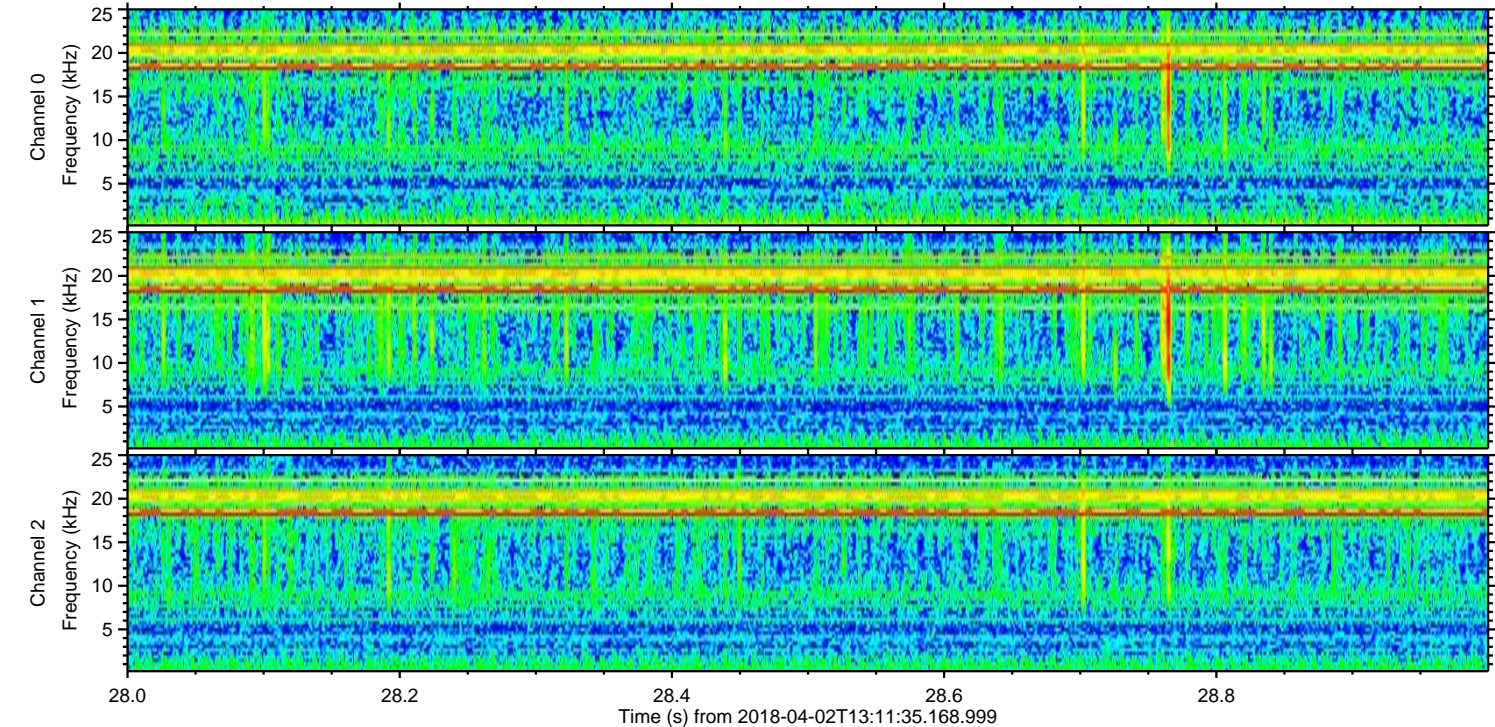
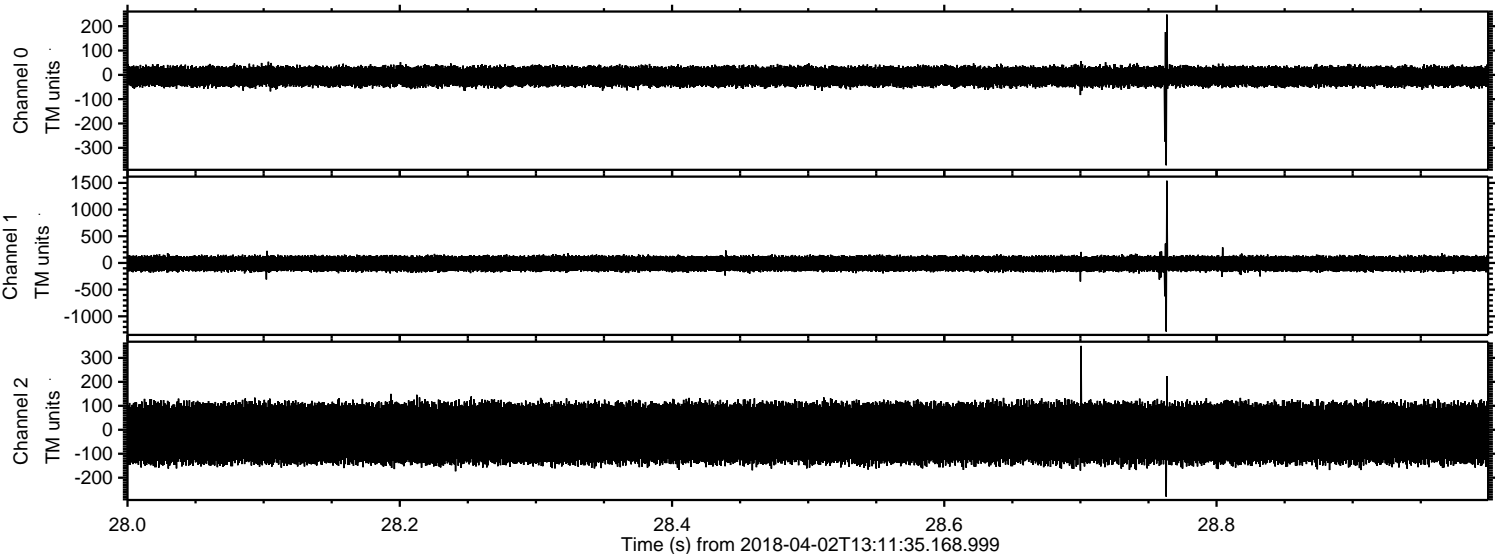


ELMAVAN 3D WAVEFORMS (Measured data sampled at 50 kHz) 50999 packets of 144 samples from 2018-04-02T13:11:35.168.999.

Processed Mon Apr 2 15:19:36 2018 by ELM ver.2012-10-06 from 001__elm20180402_131134__dat00.bin

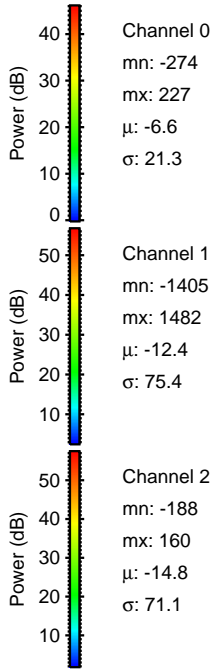
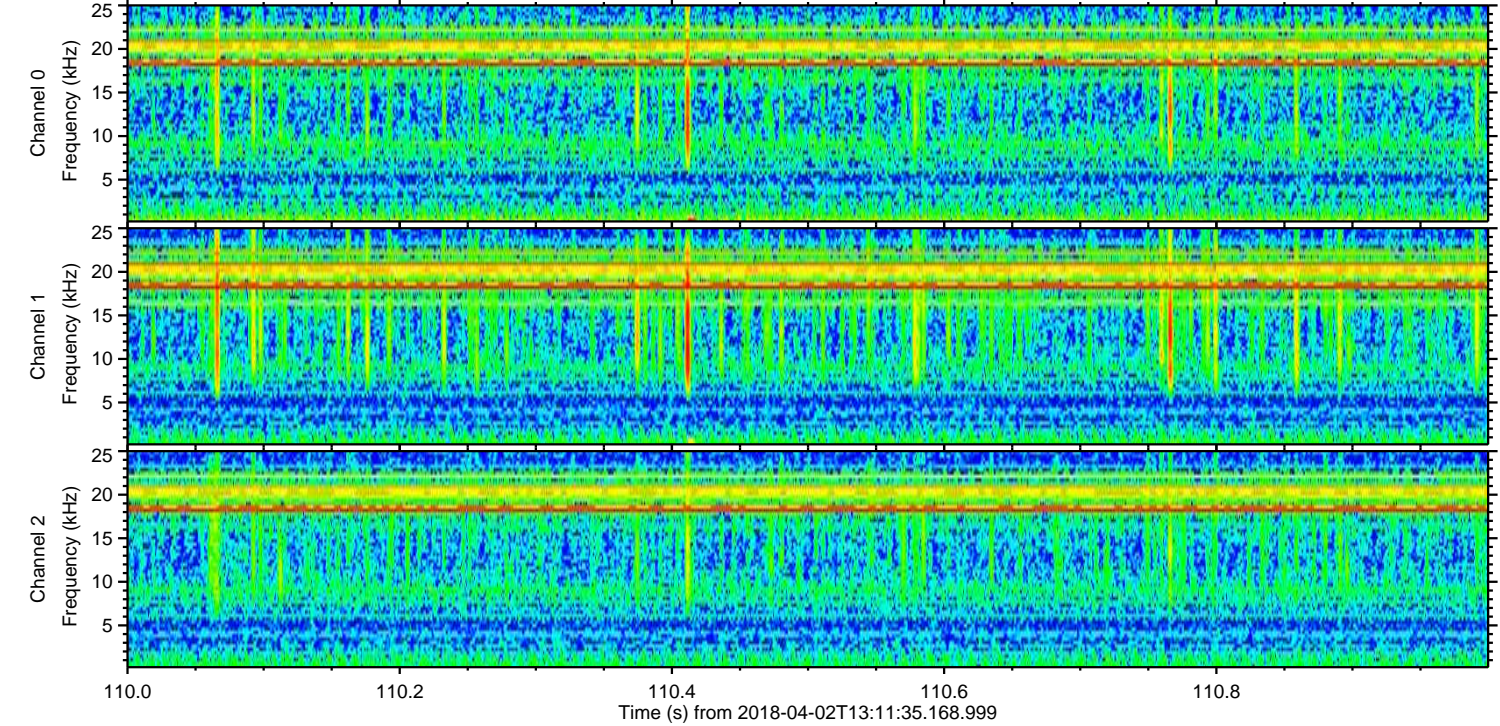
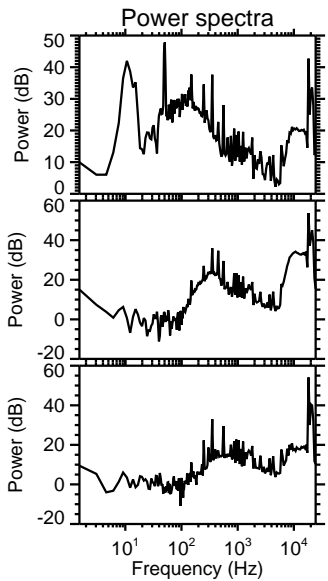
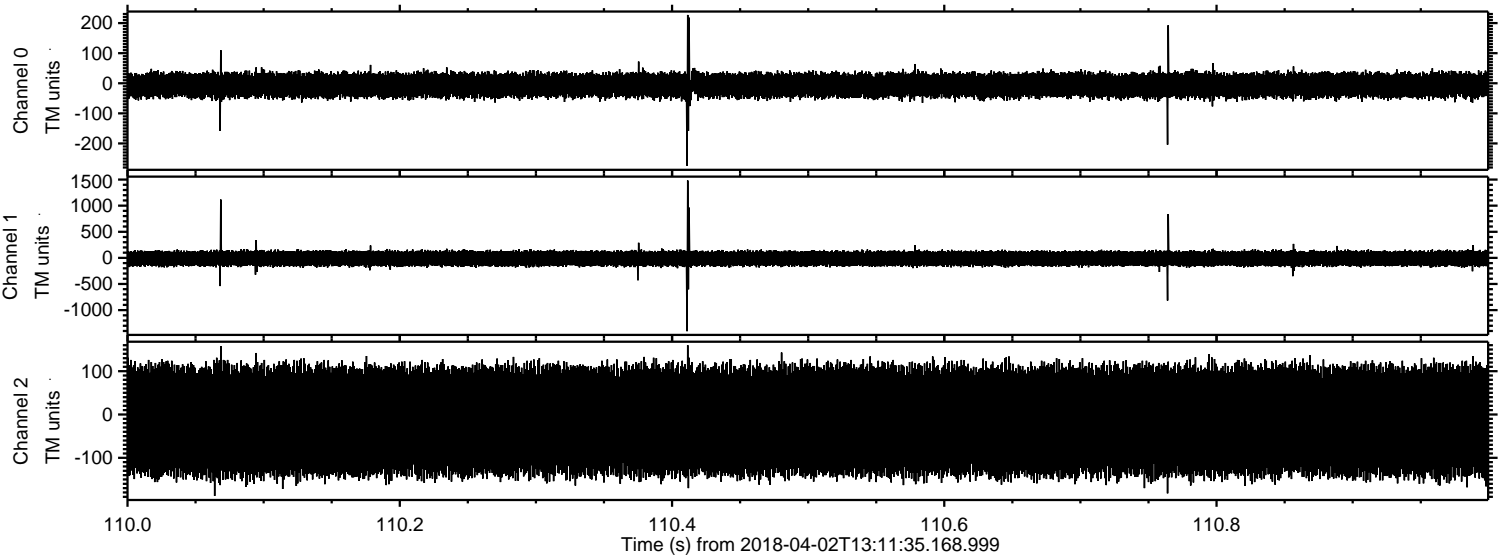


Processed Mon Apr 2 15:19:44 2018 by ELM ver.2012-10-06 from 001__elm20180402_131134__dat00.bin

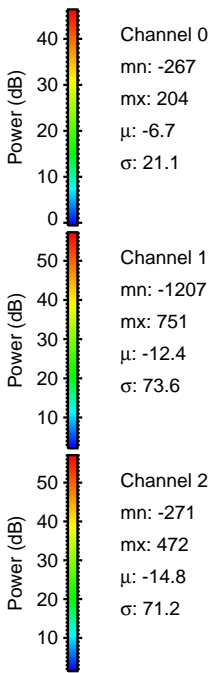
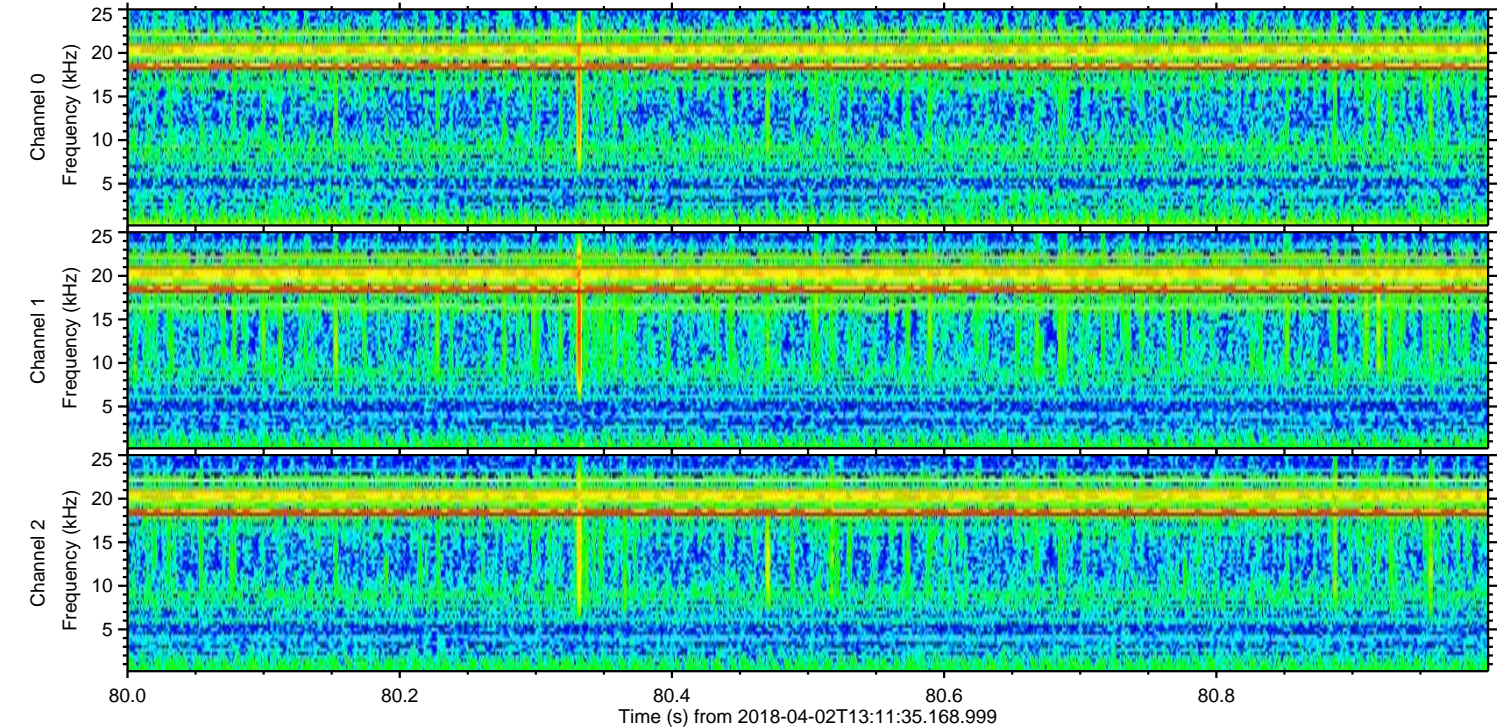
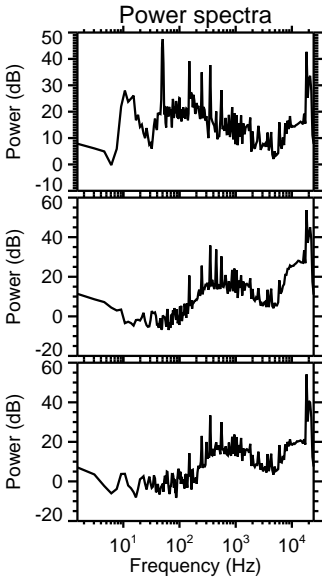
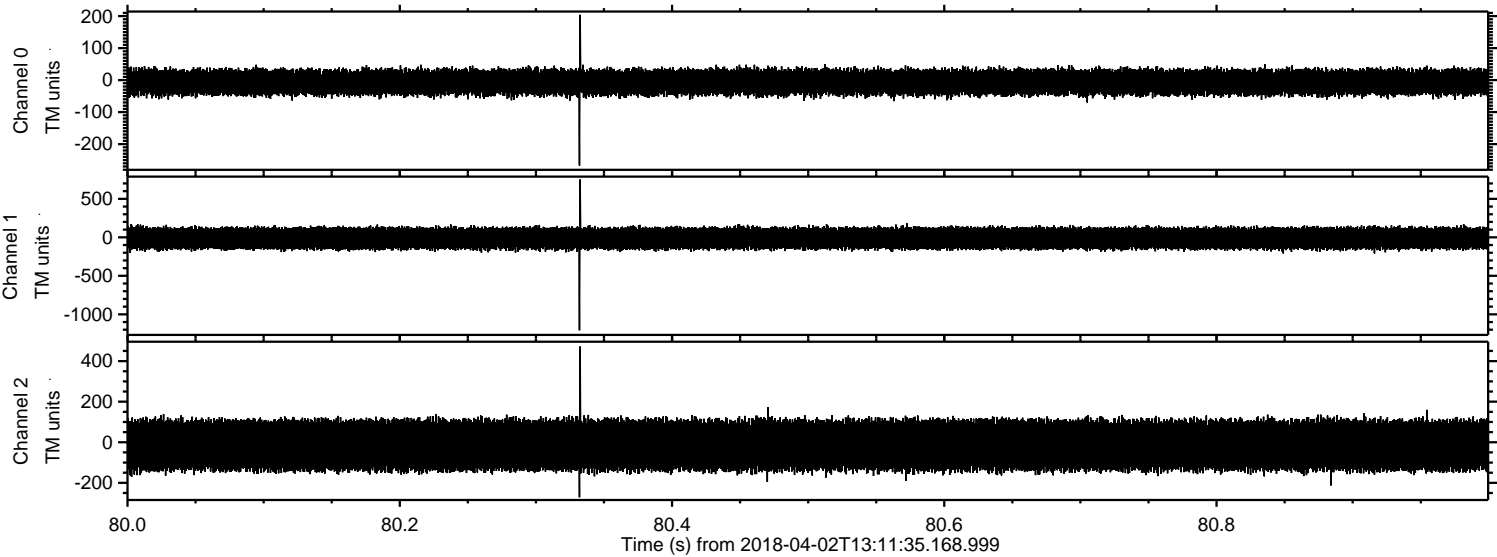


ELMAVAN 3D WAVEFORMS (Measured data sampled at 50 kHz) 50999 packets of 144 samples from 2018-04-02T13:11:35.168.999. Part 111/147

Processed Mon Apr 2 15:19:45 2018 by ELM ver.2012-10-06 from 001__elm20180402_131134__dat00.bin

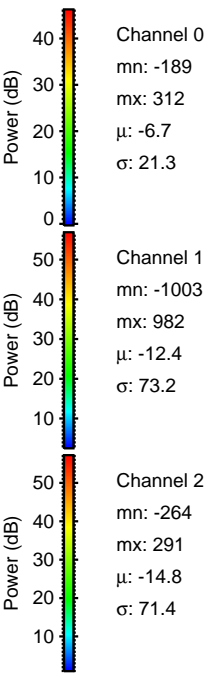
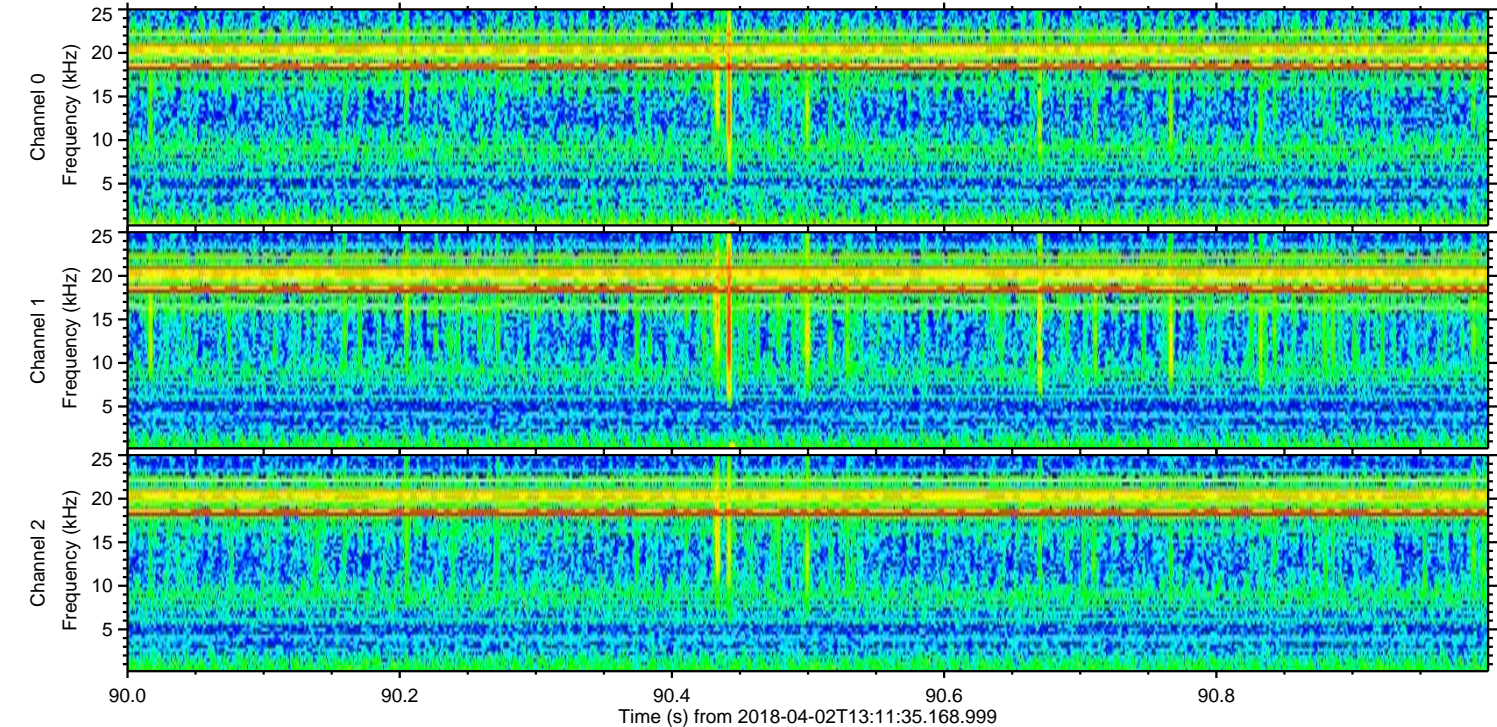
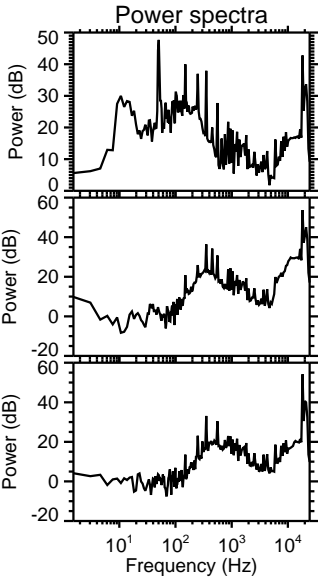
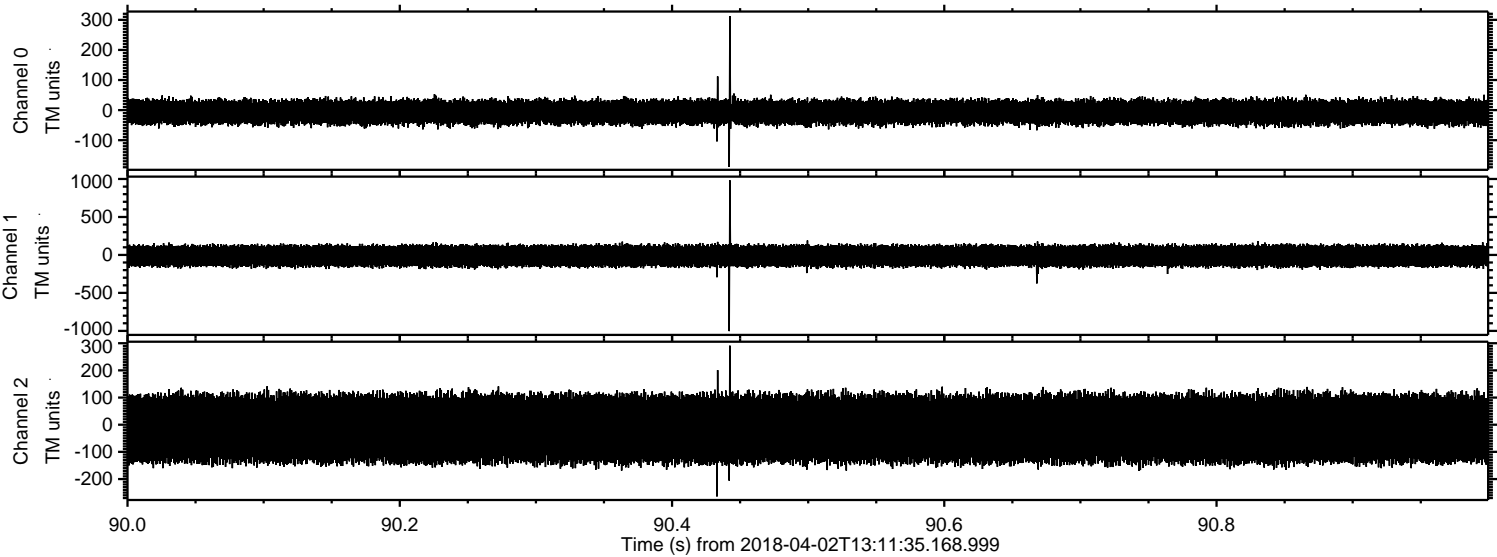


Processed Mon Apr 2 15:19:45 2018 by ELM ver.2012-10-06 from 001__elm20180402_131134__dat00.bin

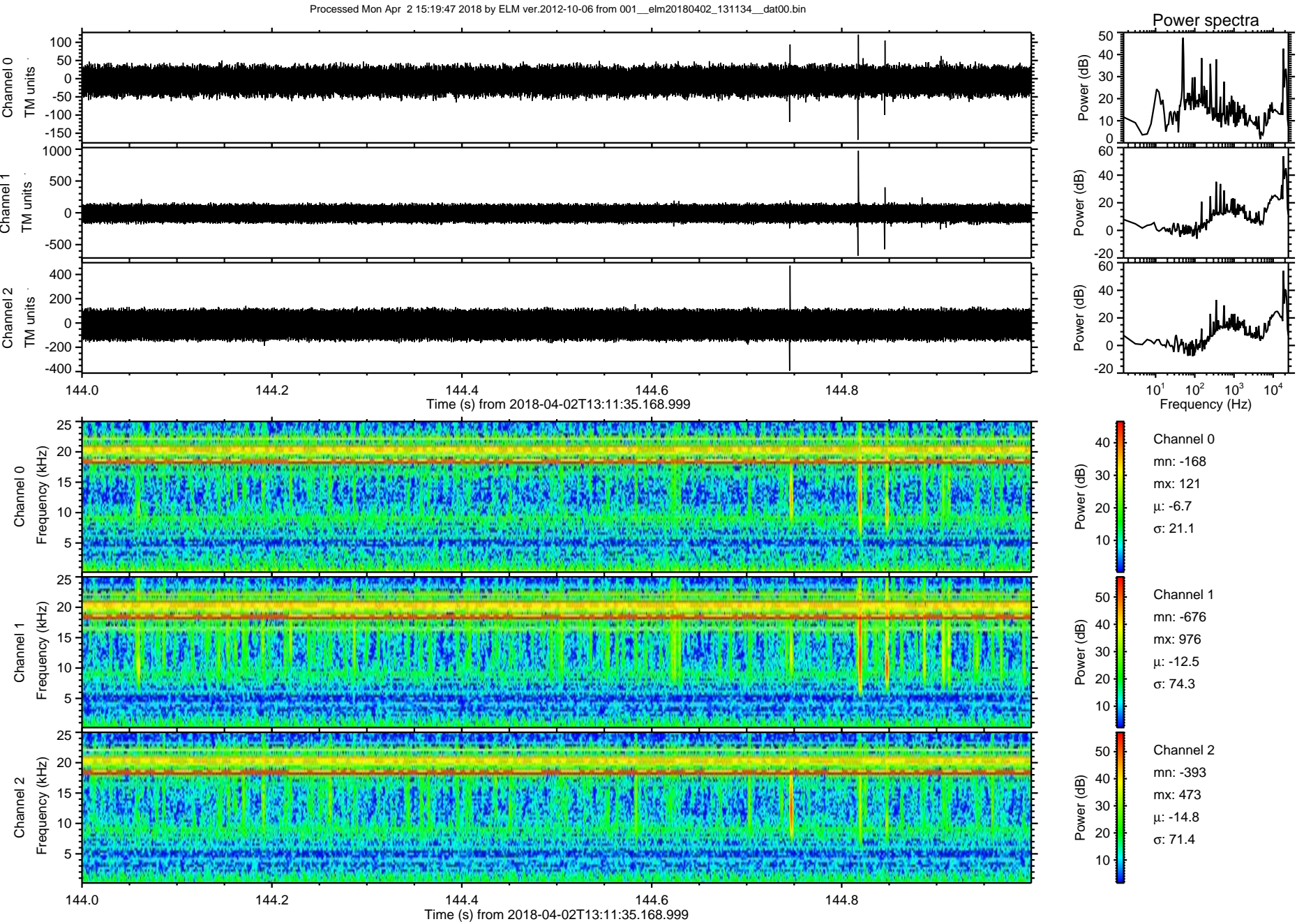


ELMAVAN 3D WAVEFORMS (Measured data sampled at 50 kHz) 50999 packets of 144 samples from 2018-04-02T13:11:35.168.999. Part 91/147

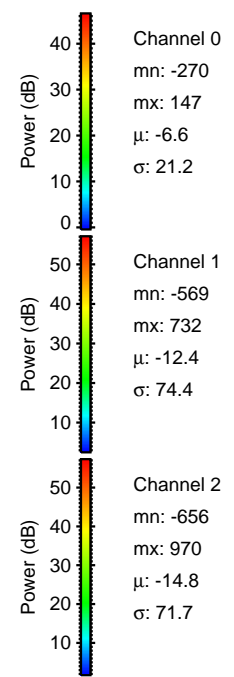
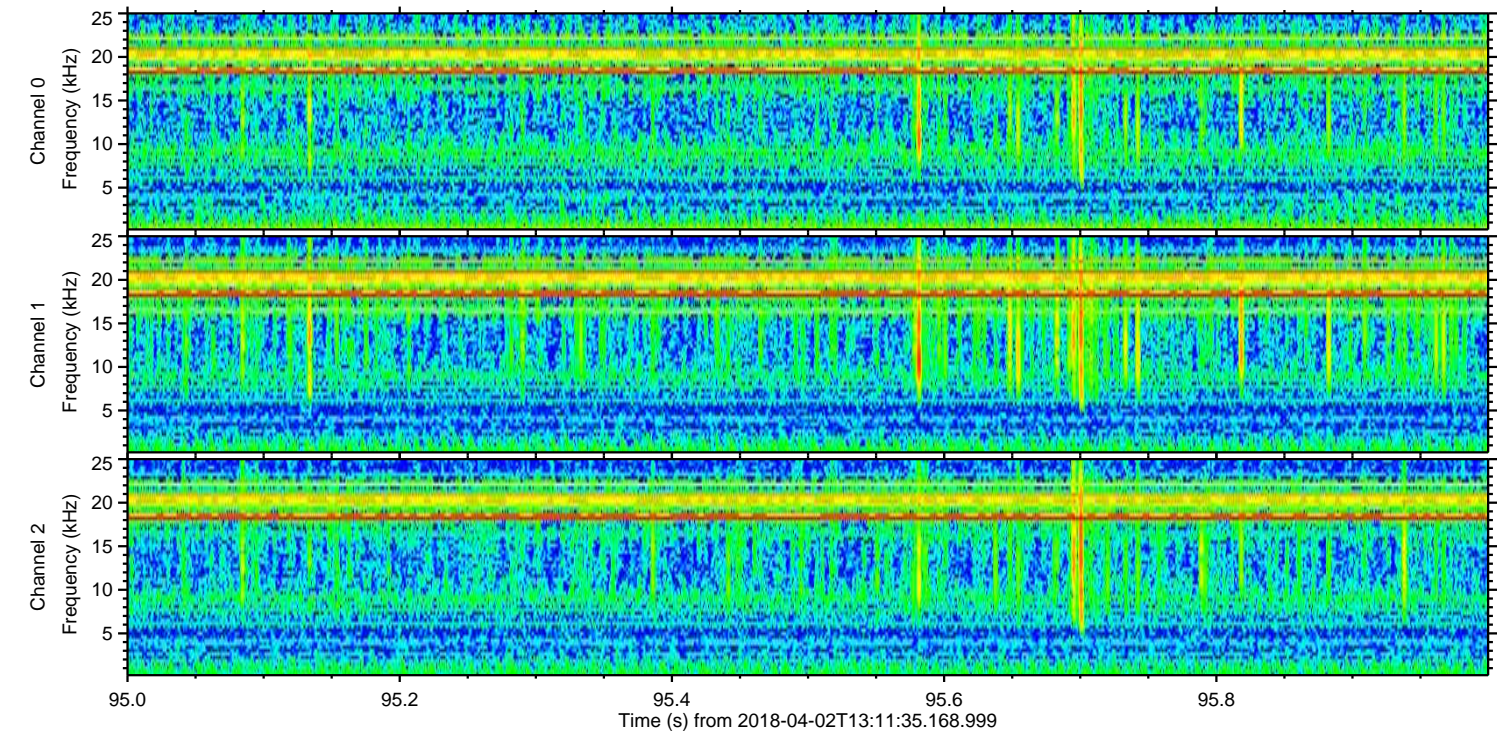
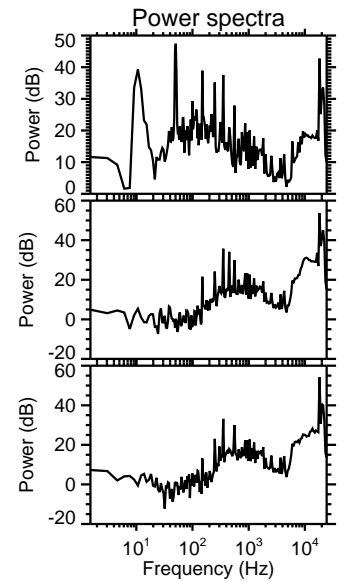
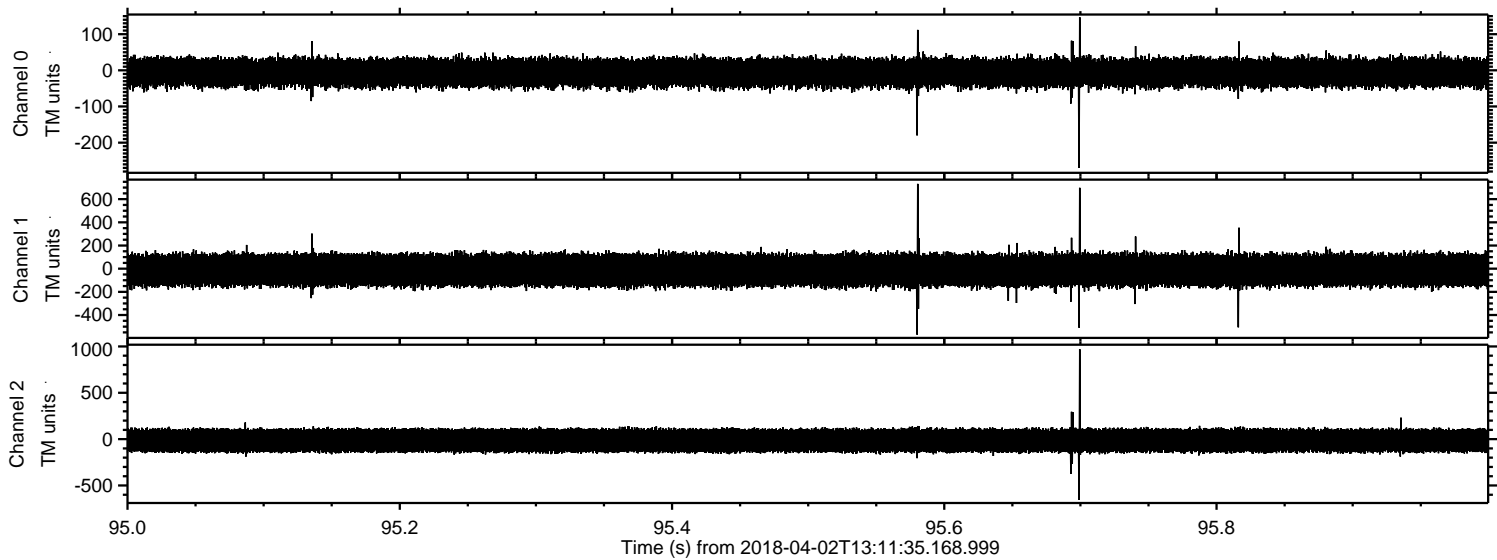
Processed Mon Apr 2 15:19:46 2018 by ELM ver.2012-10-06 from 001__elm20180402_131134__dat00.bin



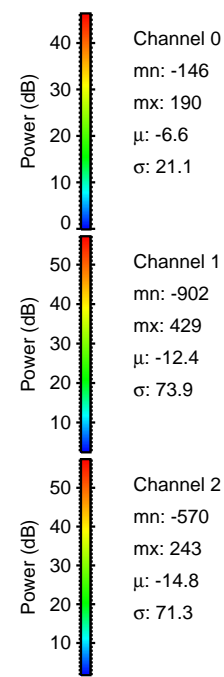
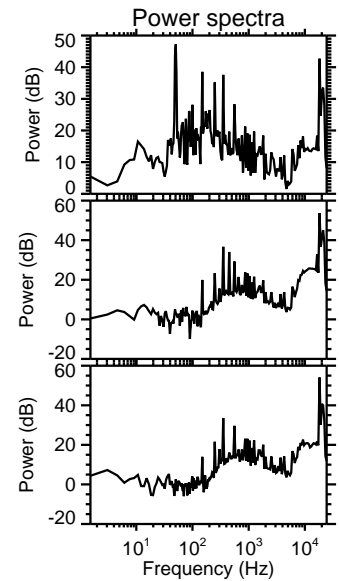
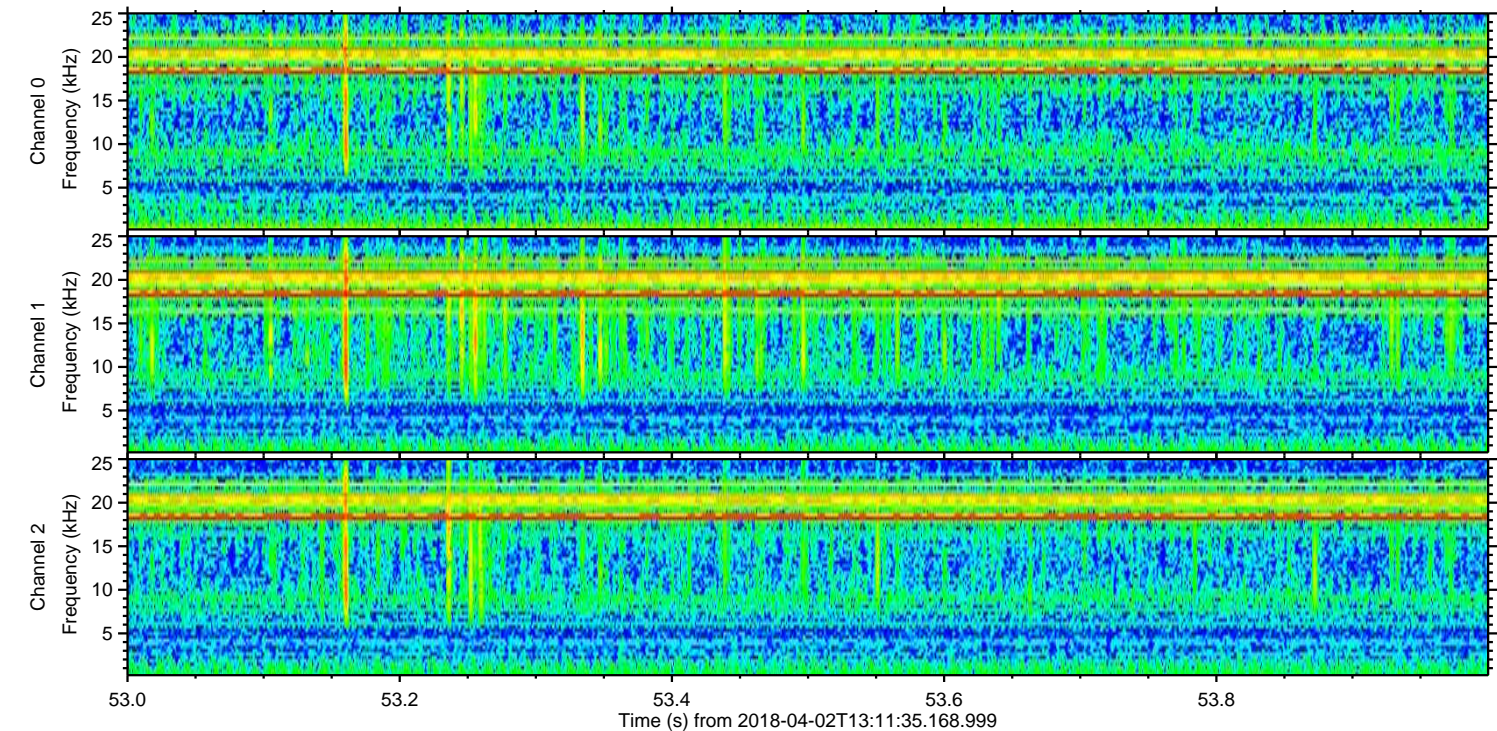
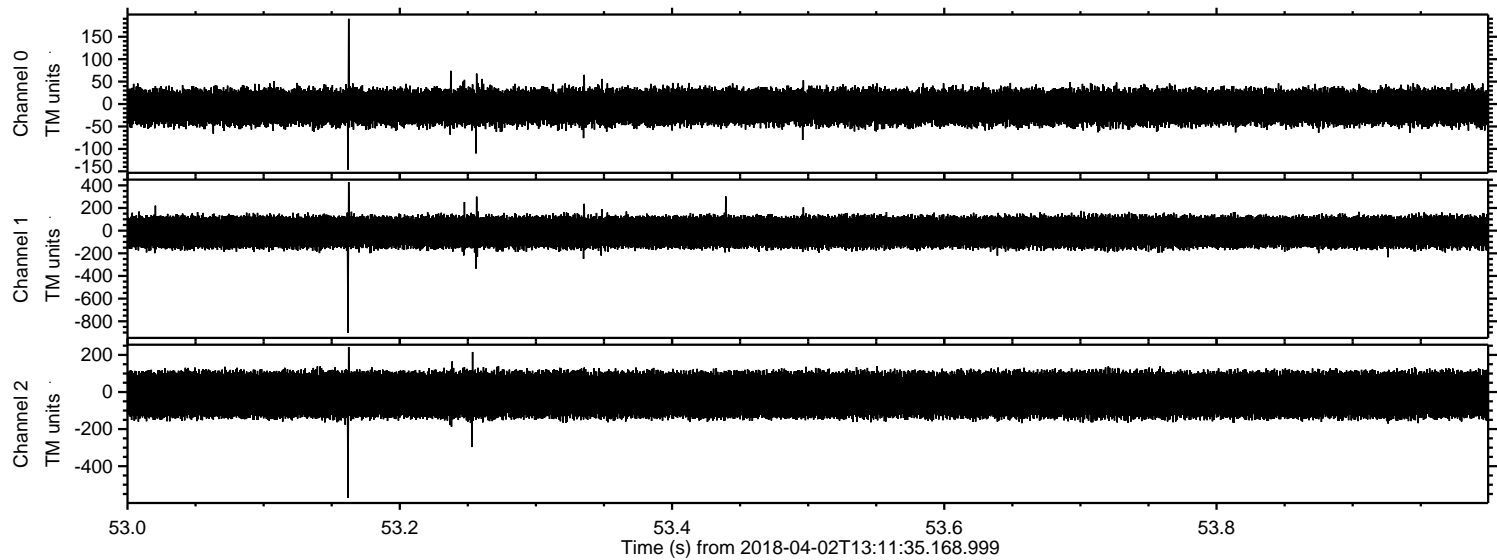
ELMAVAN 3D WAVEFORMS (Measured data sampled at 50 kHz) 50999 packets of 144 samples from 2018-04-02T13:11:35.168.999. Part 145/147



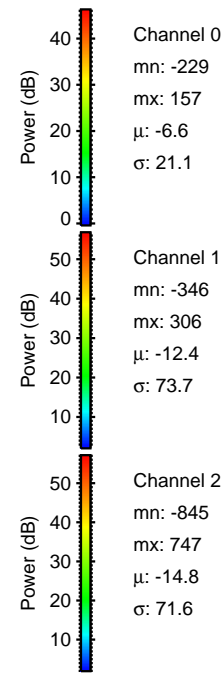
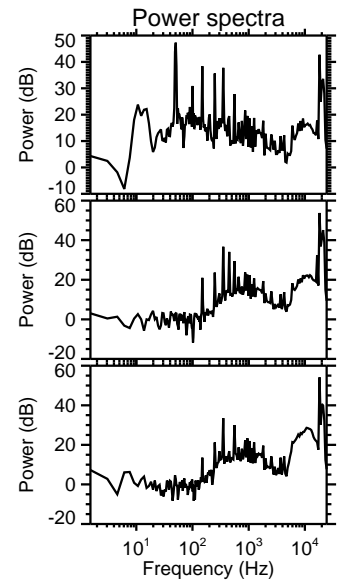
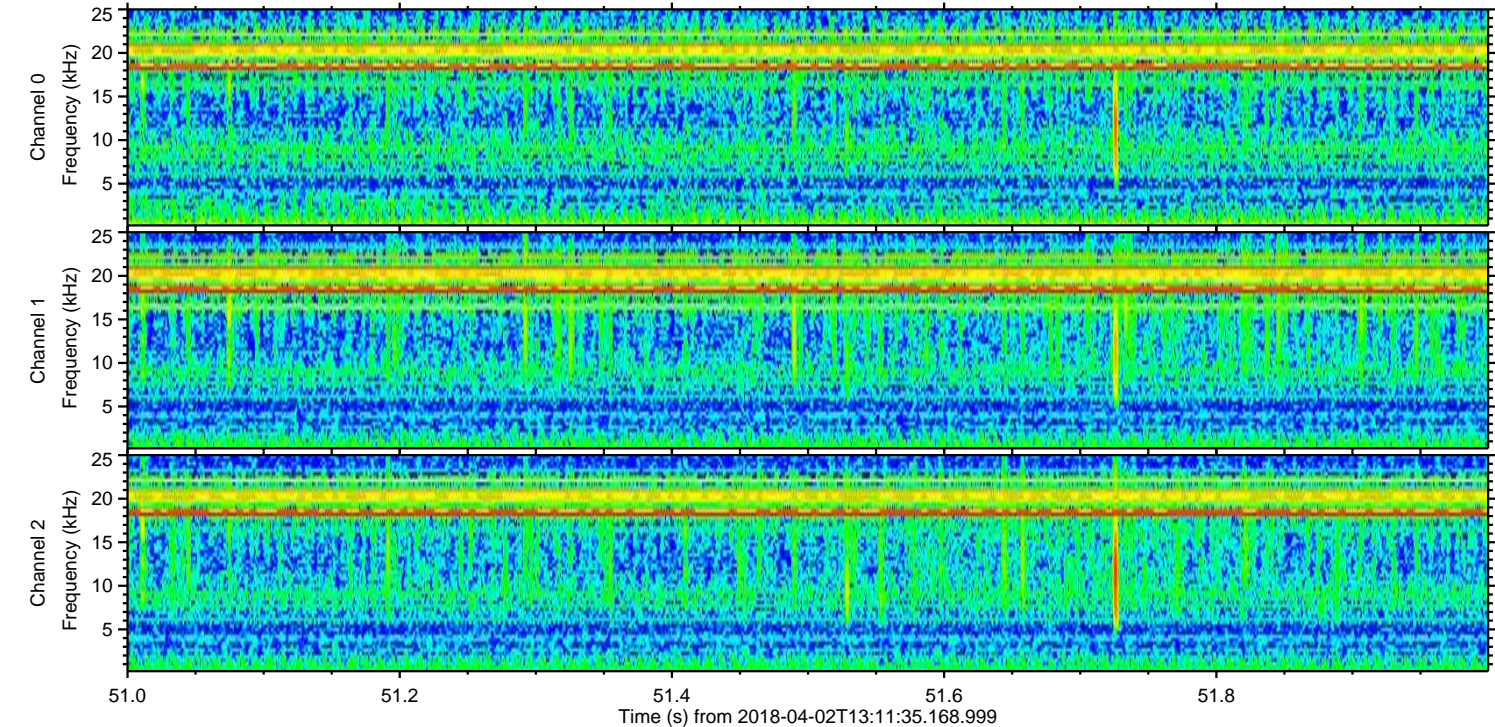
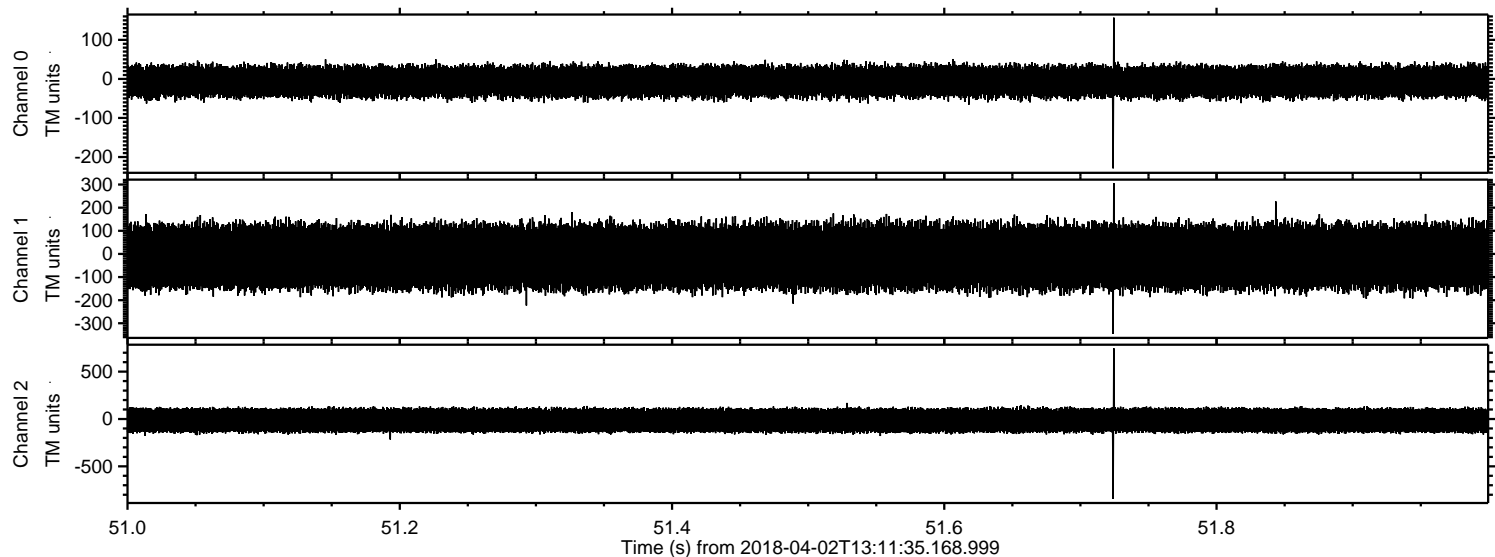
Processed Mon Apr 2 15:19:48 2018 by ELM ver.2012-10-06 from 001__elm20180402_131134__dat00.bin



Processed Mon Apr 2 15:19:48 2018 by ELM ver.2012-10-06 from 001__elm20180402_131134__dat00.bin



Processed Mon Apr 2 15:19:49 2018 by ELM ver.2012-10-06 from 001__elm20180402_131134__dat00.bin

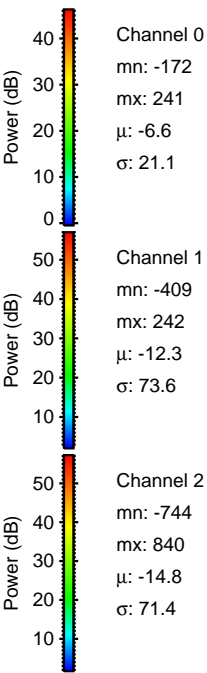
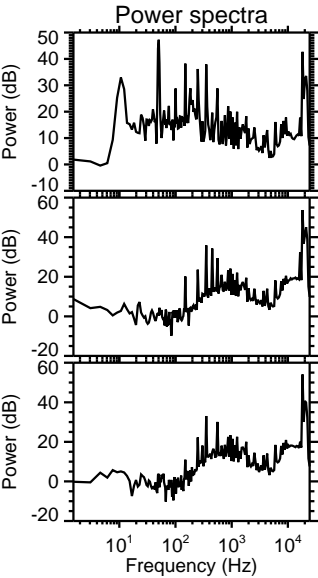
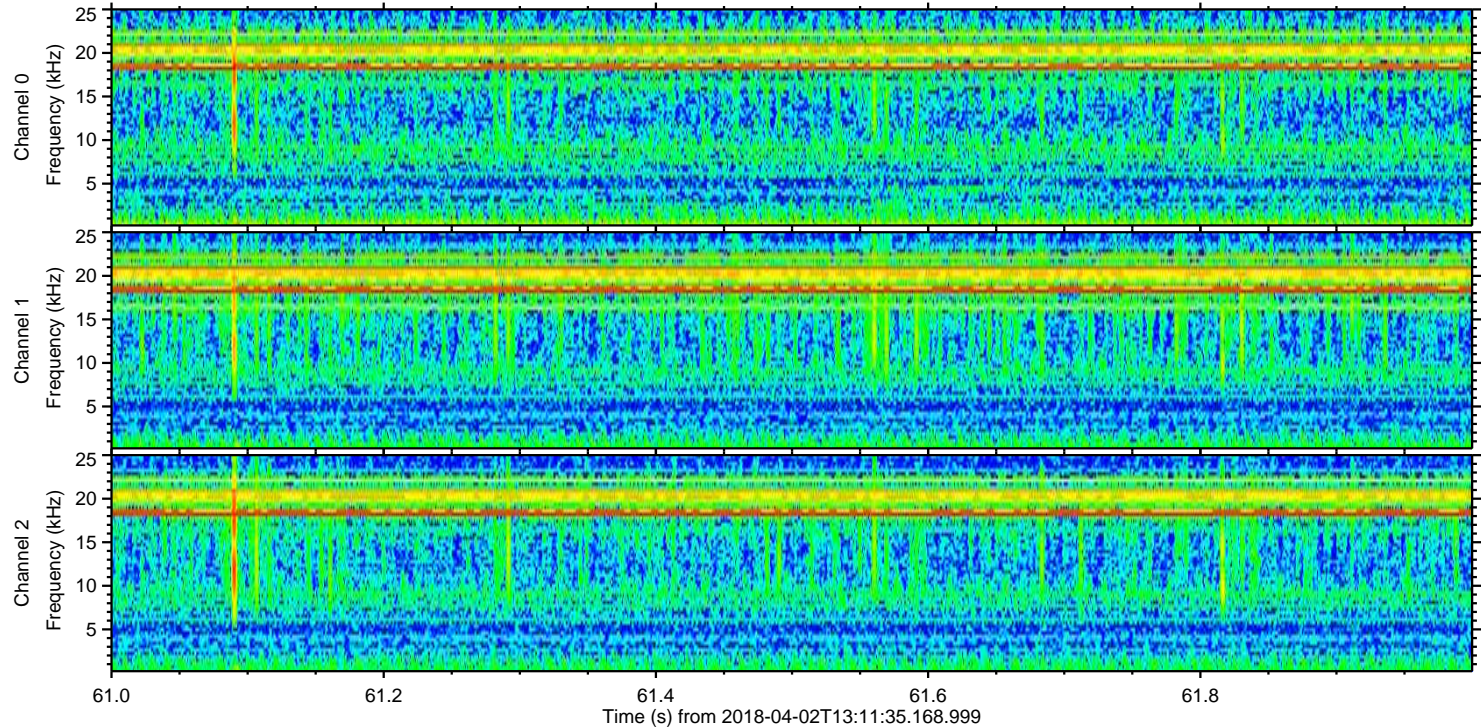
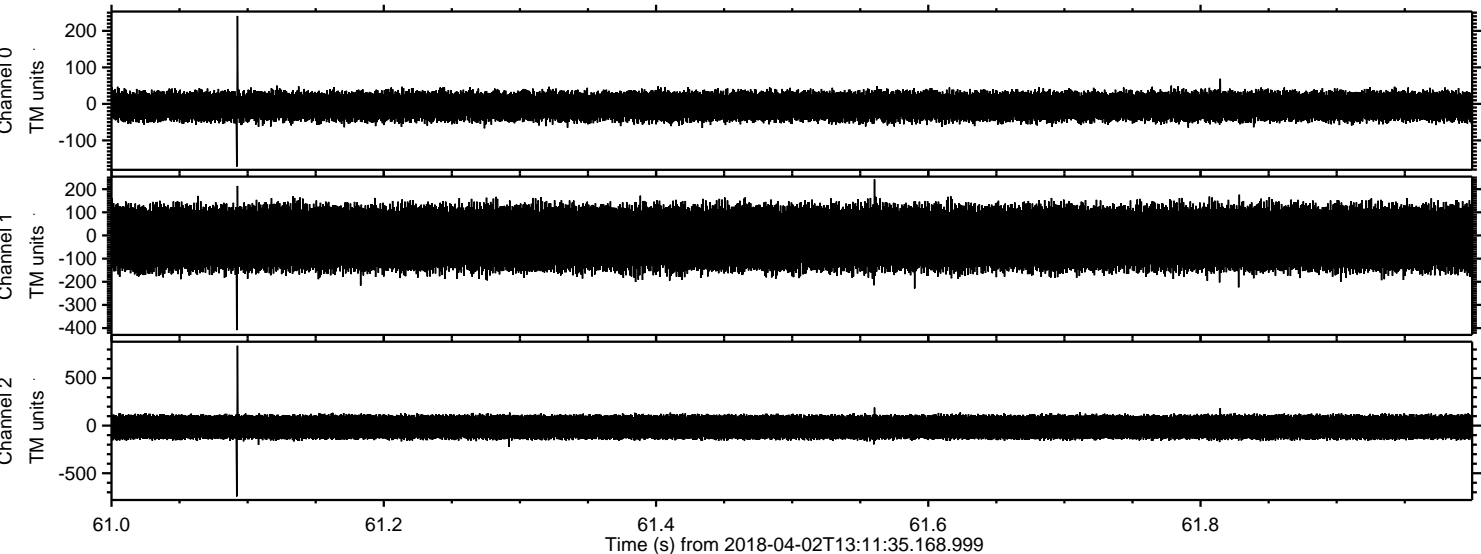


Channel 0
mn: -229
mx: 157
 μ : -6.6
 σ : 21.1

Channel 1
mn: -346
mx: 306
 μ : -12.4
 σ : 73.7

Channel 2
mn: -845
mx: 747
 μ : -14.8
 σ : 71.6

Processed Mon Apr 2 15:19:50 2018 by ELM ver.2012-10-06 from 001__elm20180402_131134__dat00.bin



Channel 0
mn: -172
mx: 241
 μ : -6.6
 σ : 21.1

Channel 1
mn: -409
mx: 242
 μ : -12.3
 σ : 73.6

Channel 2
mn: -744
mx: 840
 μ : -14.8
 σ : 71.4

