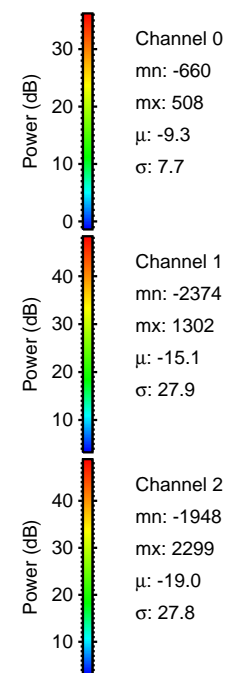
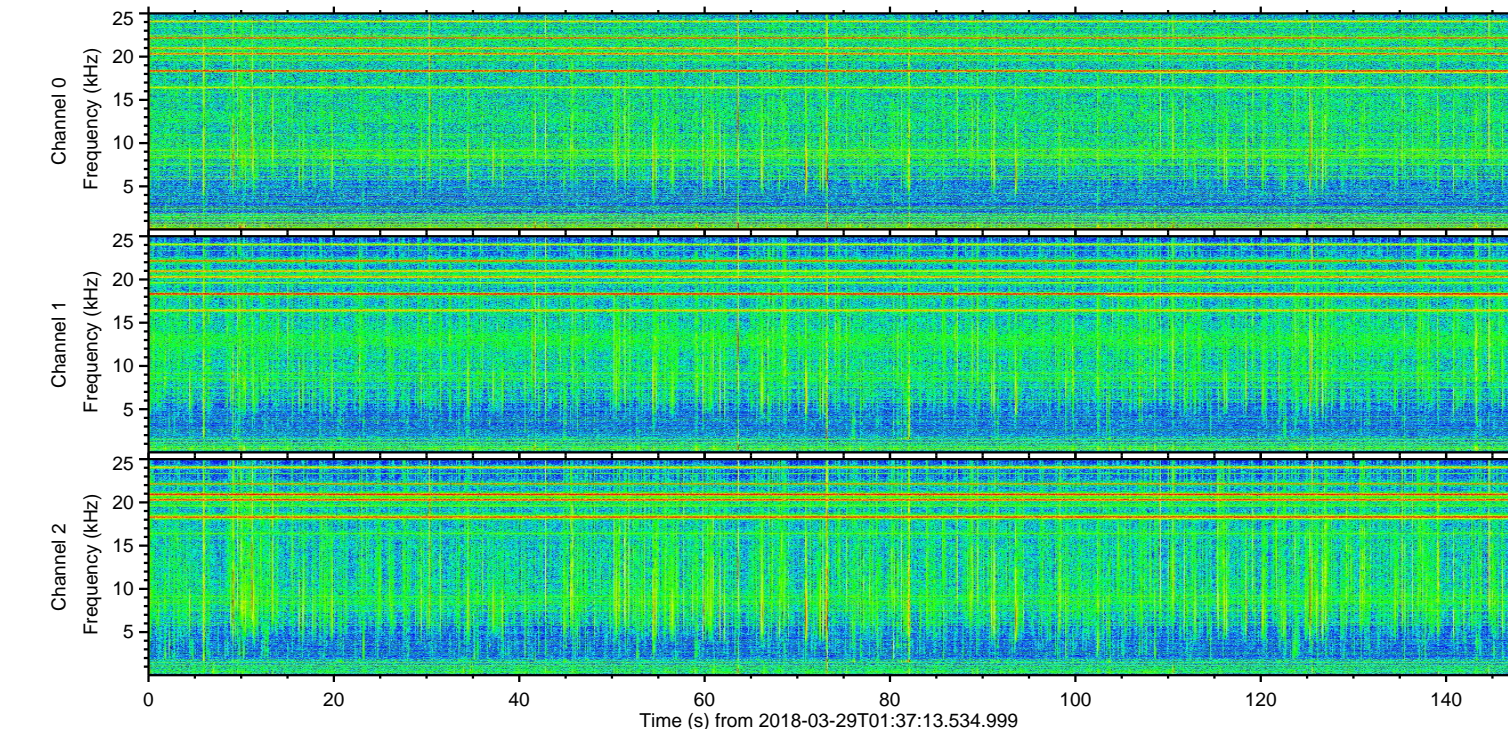
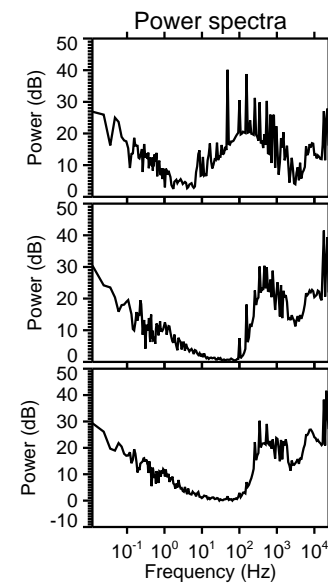
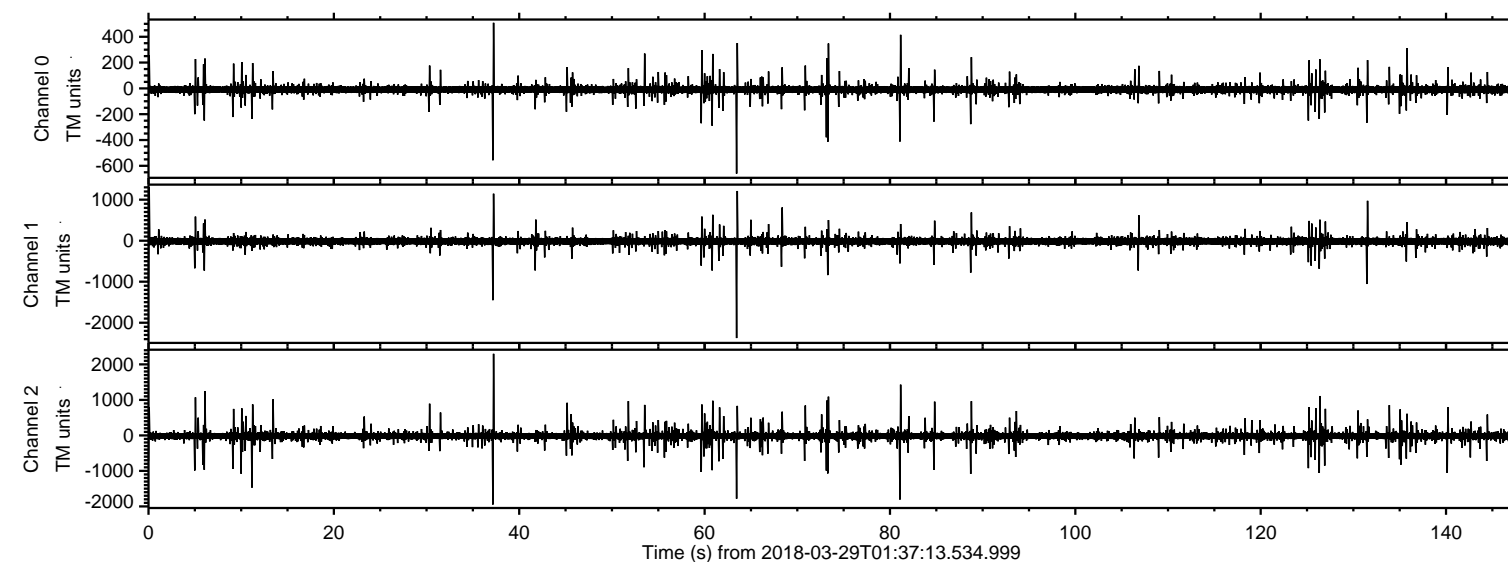
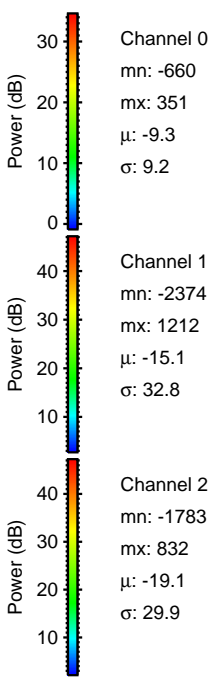
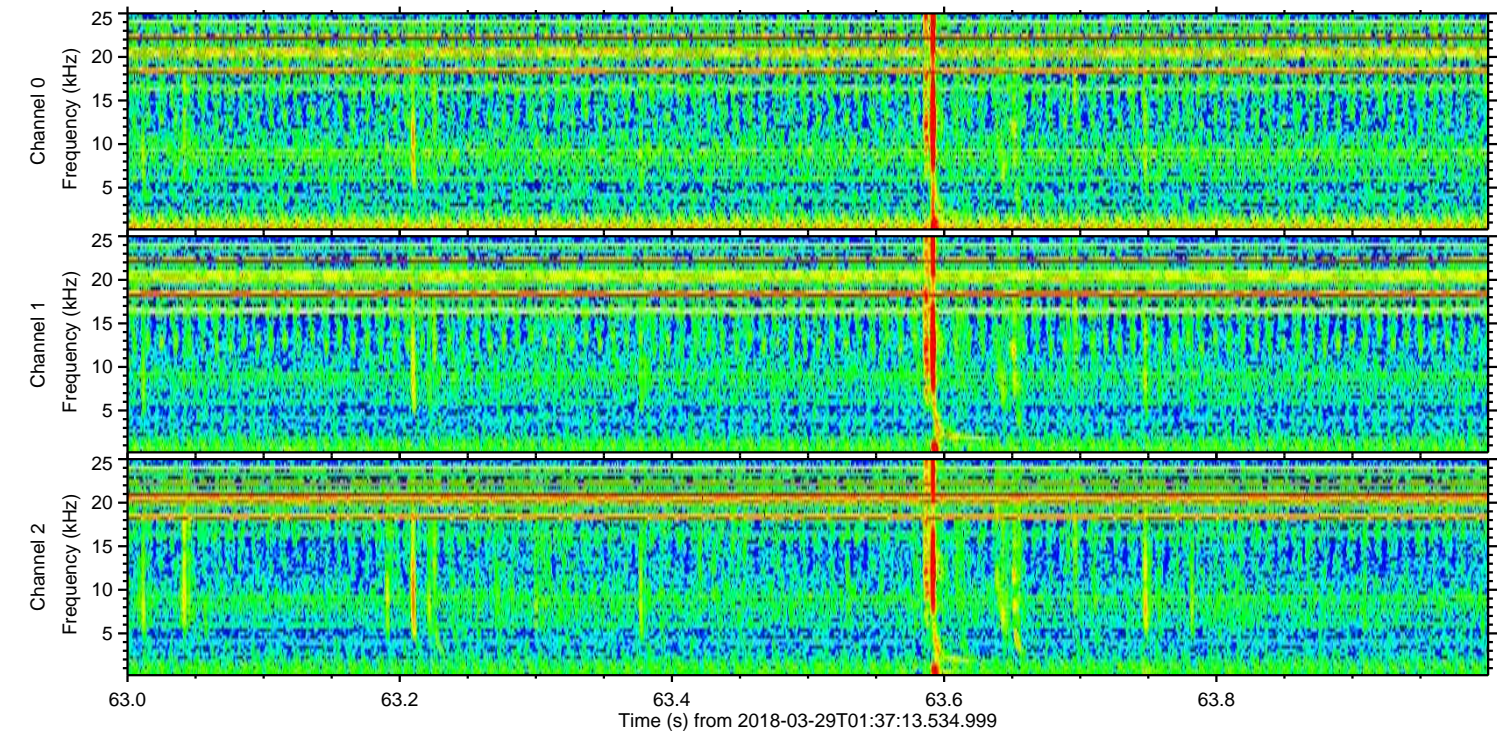
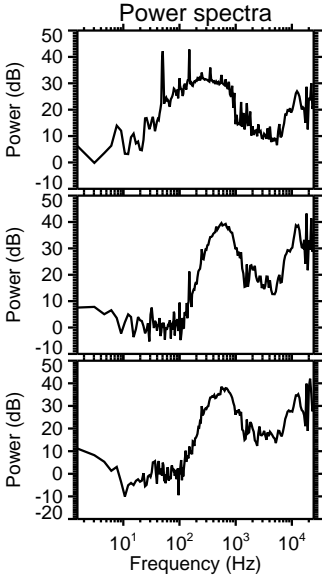
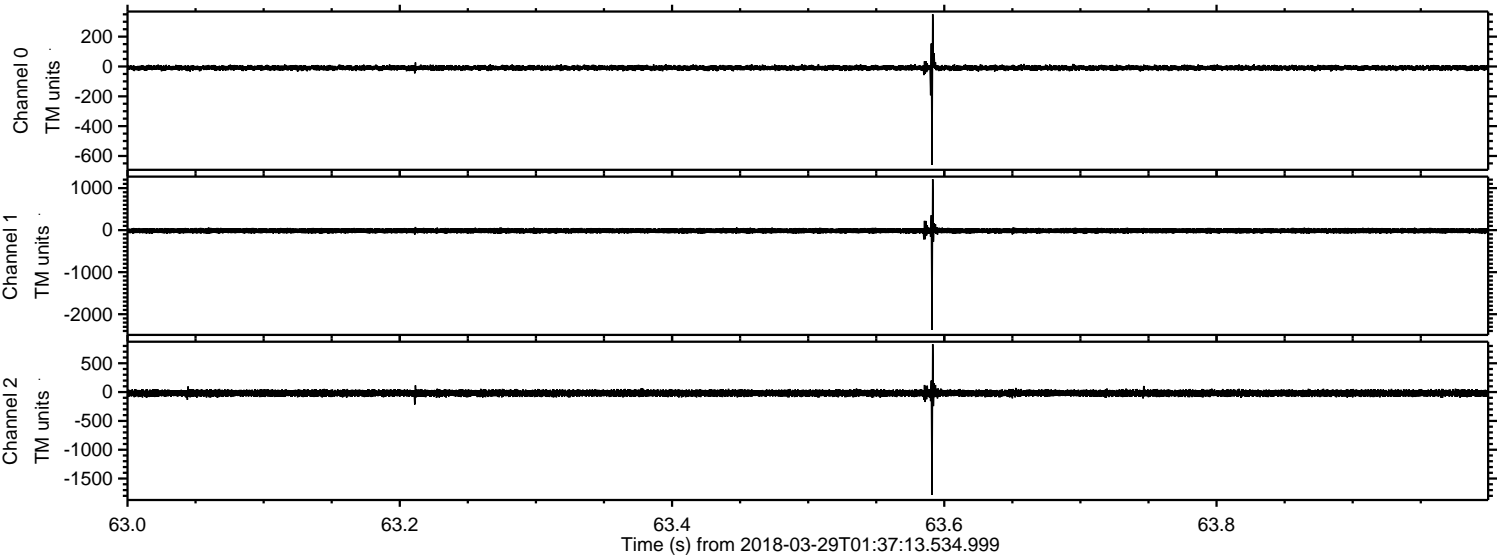


ELMAVAN 3D WAVEFORMS (Measured data sampled at 50 kHz) 51000 packets of 144 samples from 2018-03-29T01:37:13.534.999.

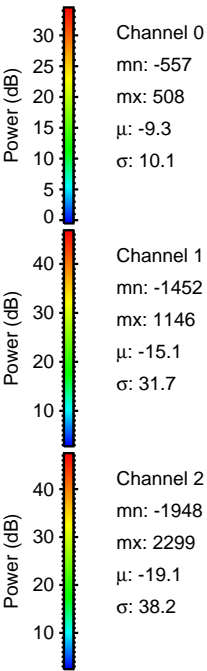
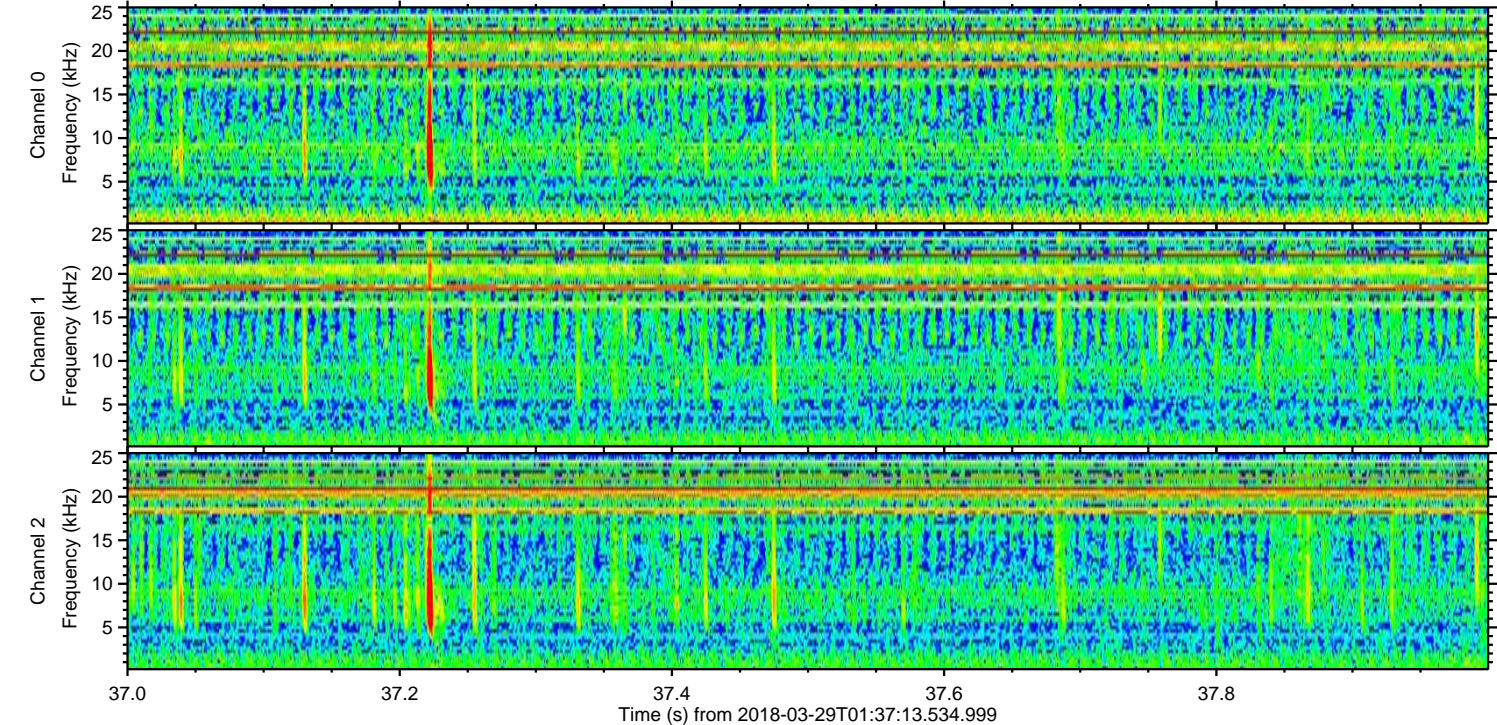
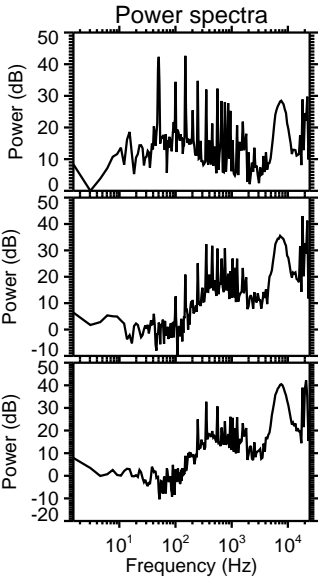
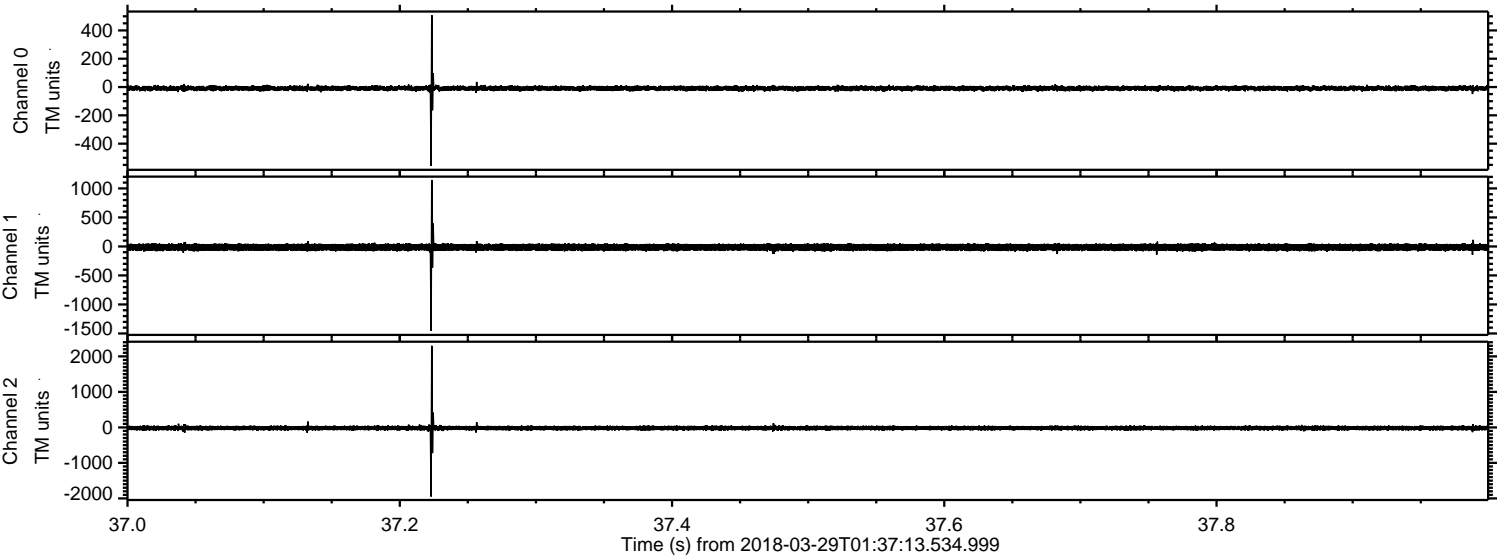
Processed Thu Mar 29 03:45:10 2018 by ELM ver.2012-10-06 from 001__elm20180329_013712__dat00.bin



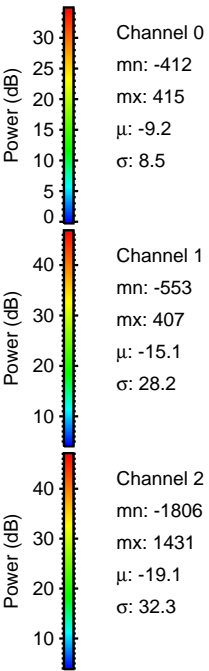
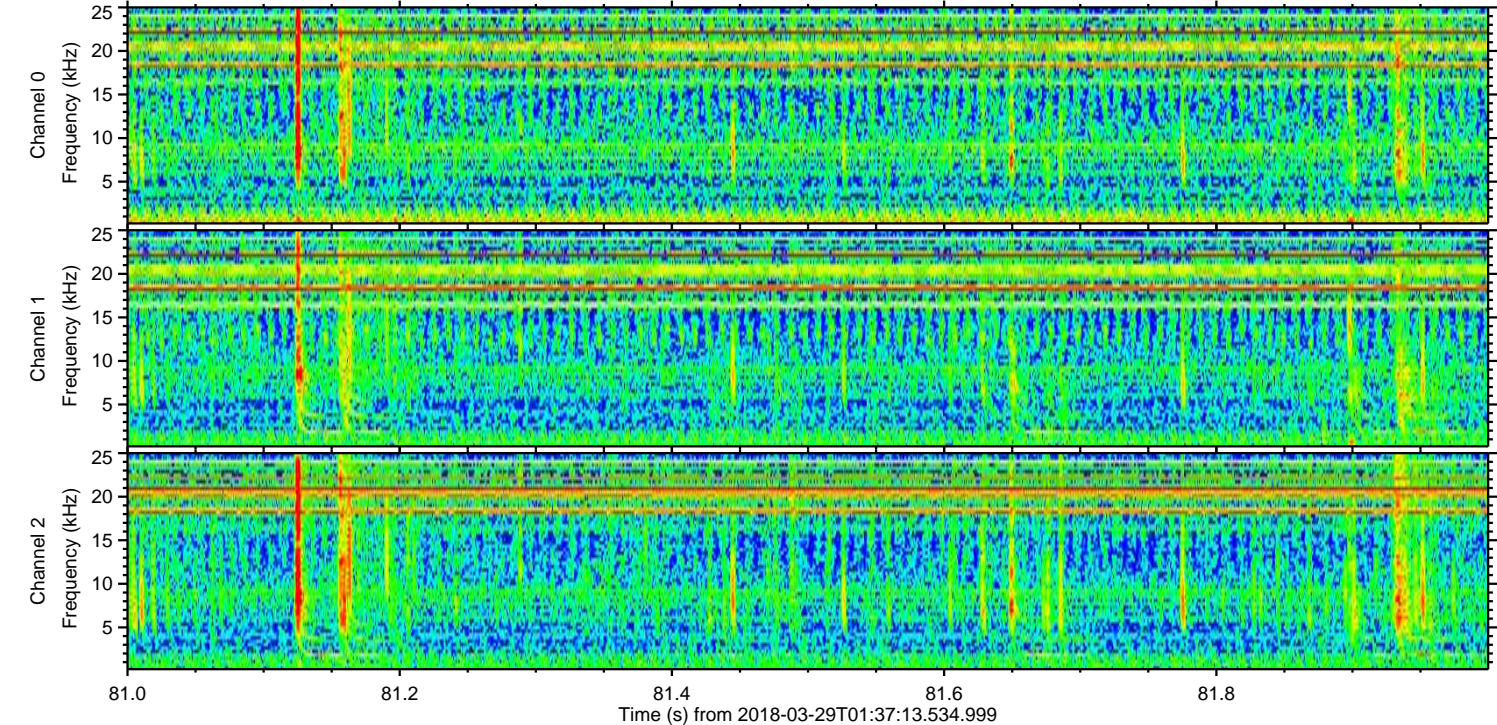
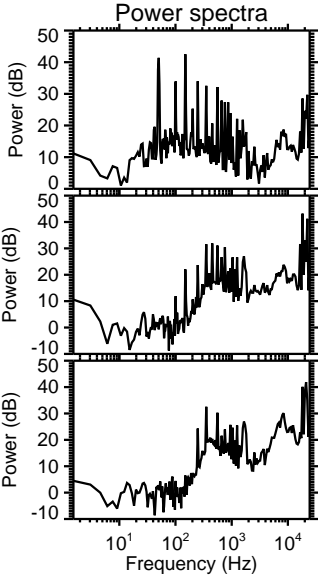
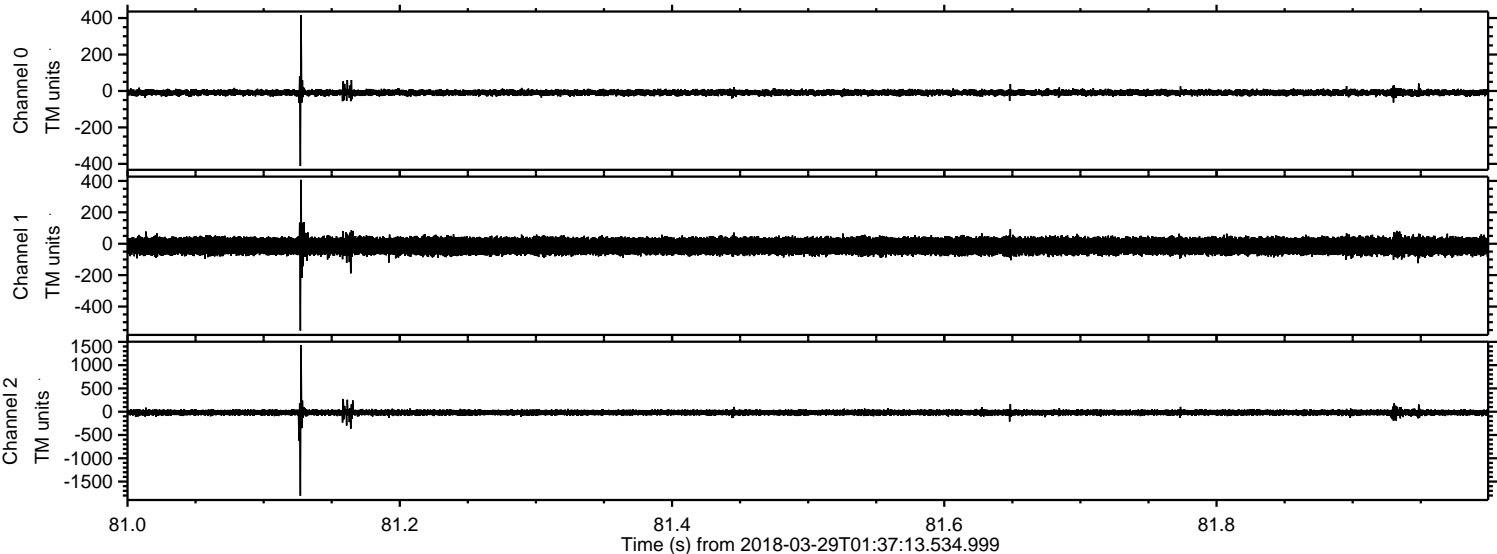
Processed Thu Mar 29 03:45:18 2018 by ELM ver.2012-10-06 from 001__elm20180329_013712__dat00.bin



Processed Thu Mar 29 03:45:19 2018 by ELM ver.2012-10-06 from 001__elm20180329_013712__dat00.bin

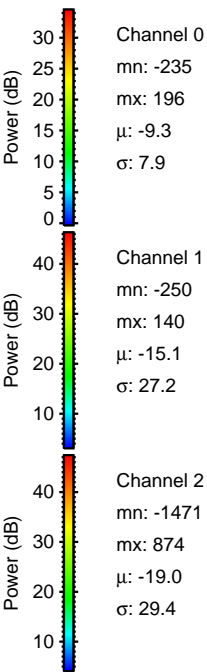
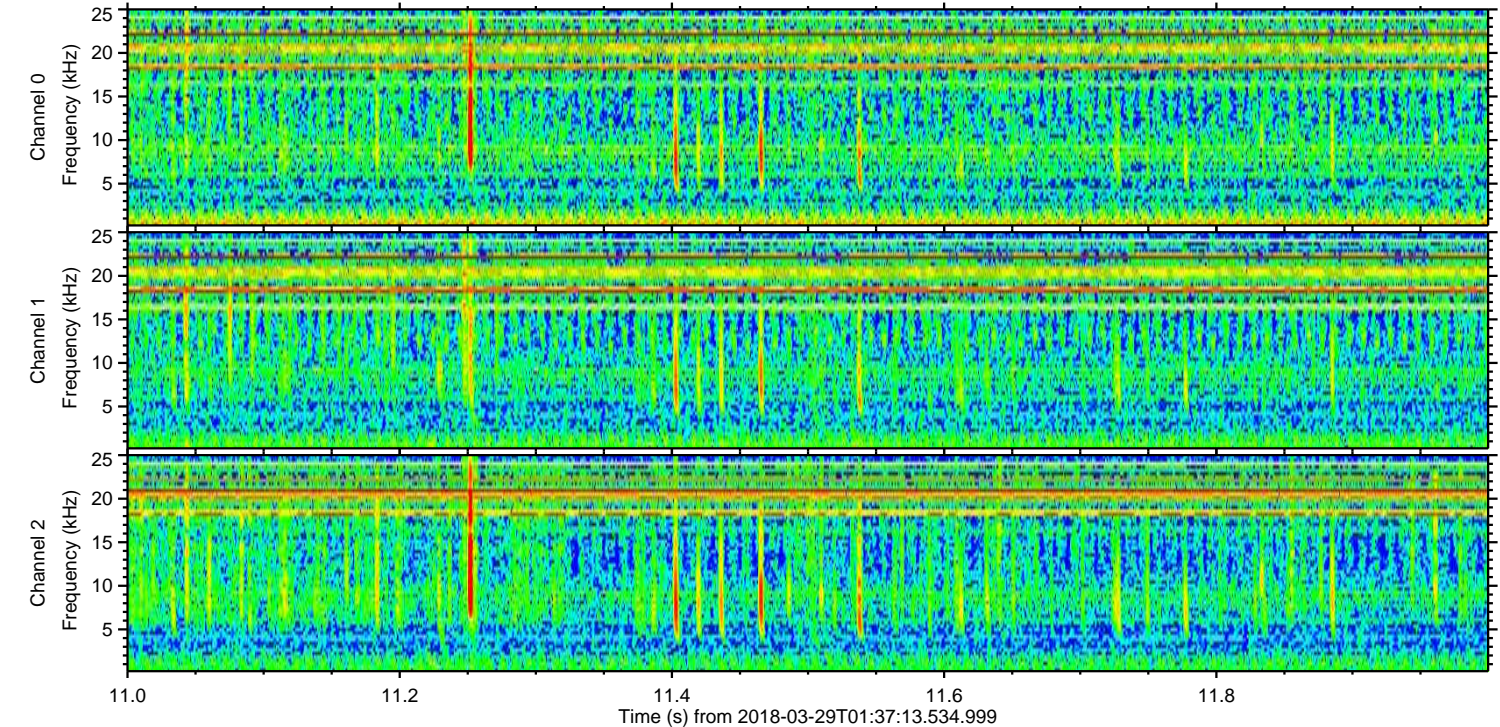
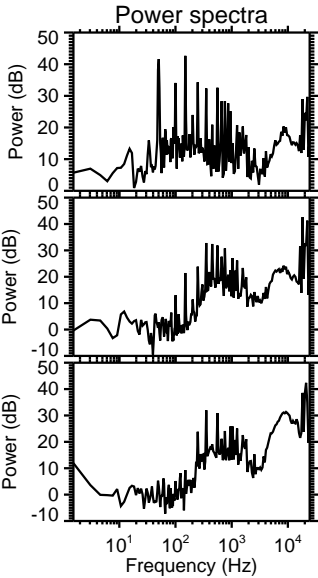
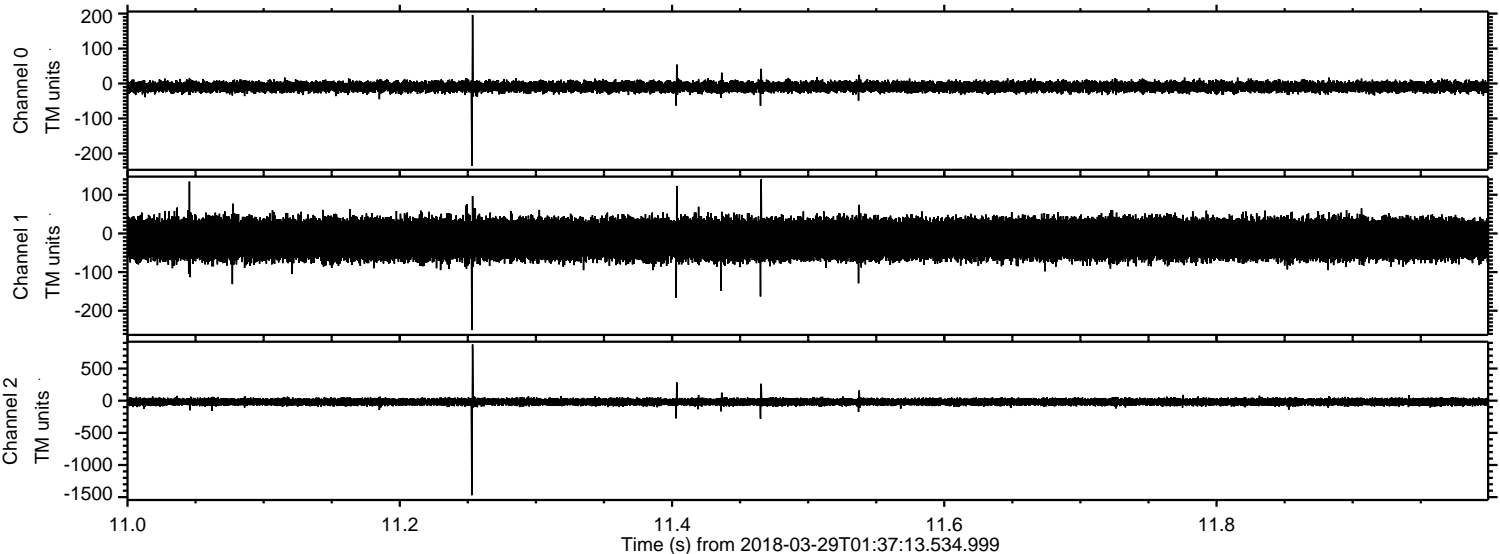


Processed Thu Mar 29 03:45:19 2018 by ELM ver.2012-10-06 from 001__elm20180329_013712__dat00.bin

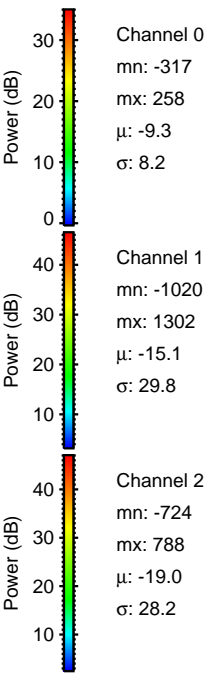
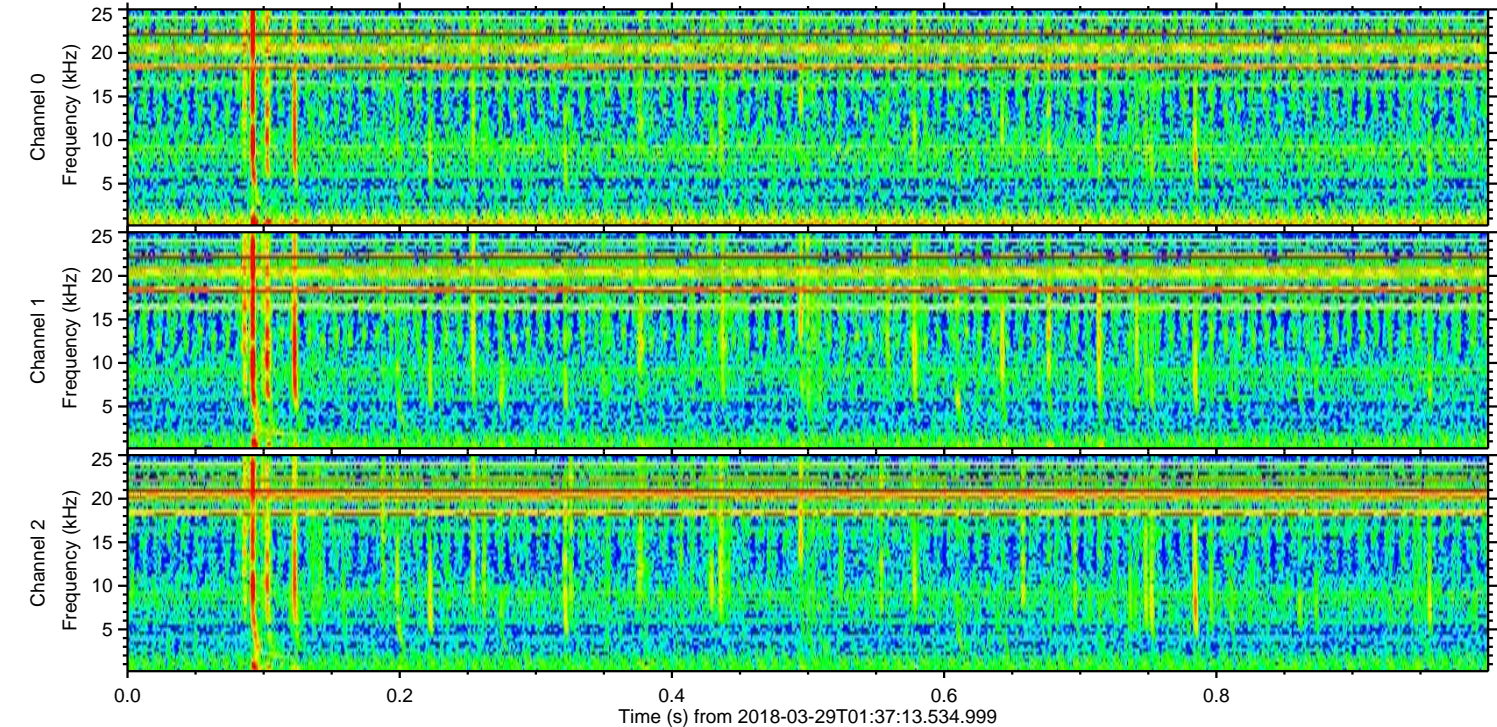
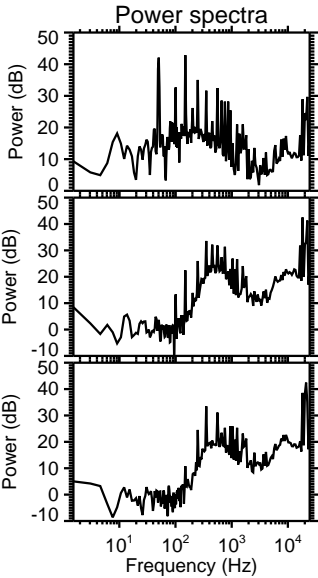
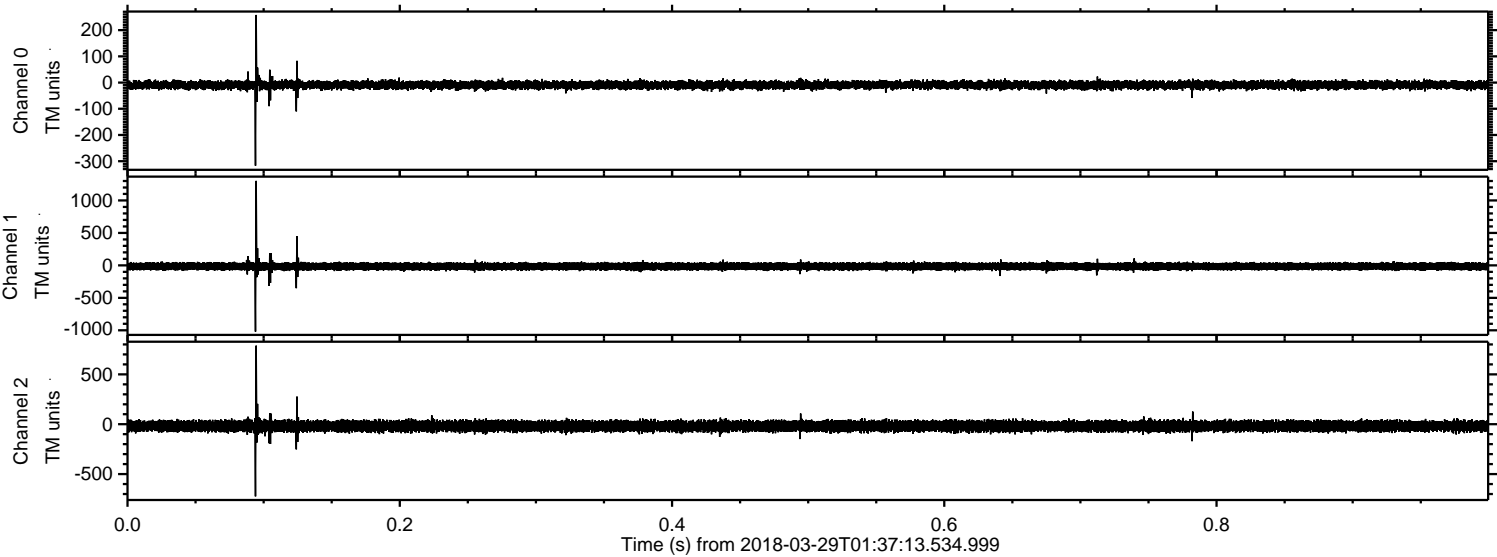


ELMAVAN 3D WAVEFORMS (Measured data sampled at 50 kHz) 51000 packets of 144 samples from 2018-03-29T01:37:13.534.999. Part 12/147

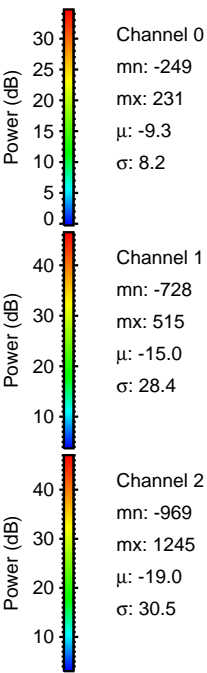
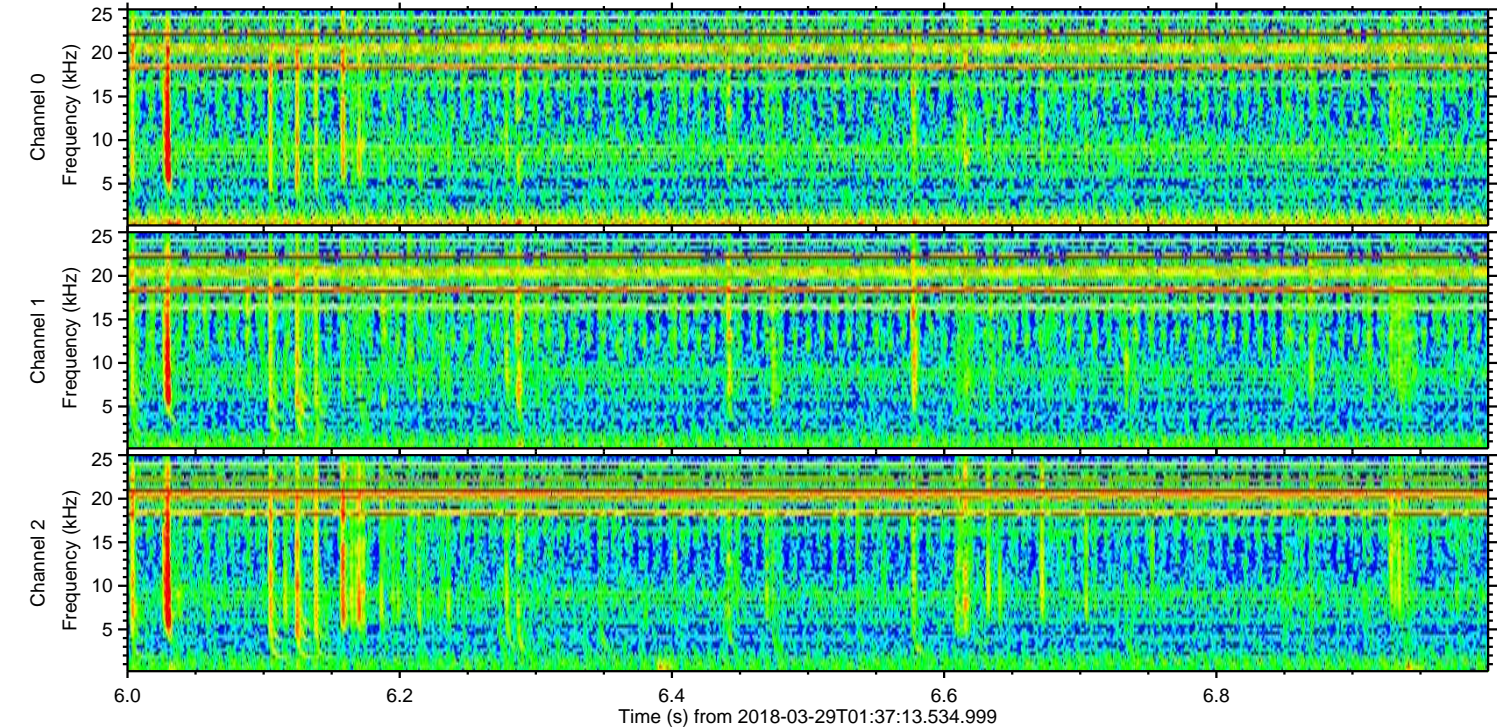
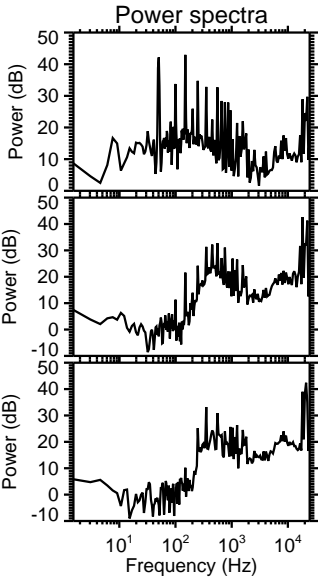
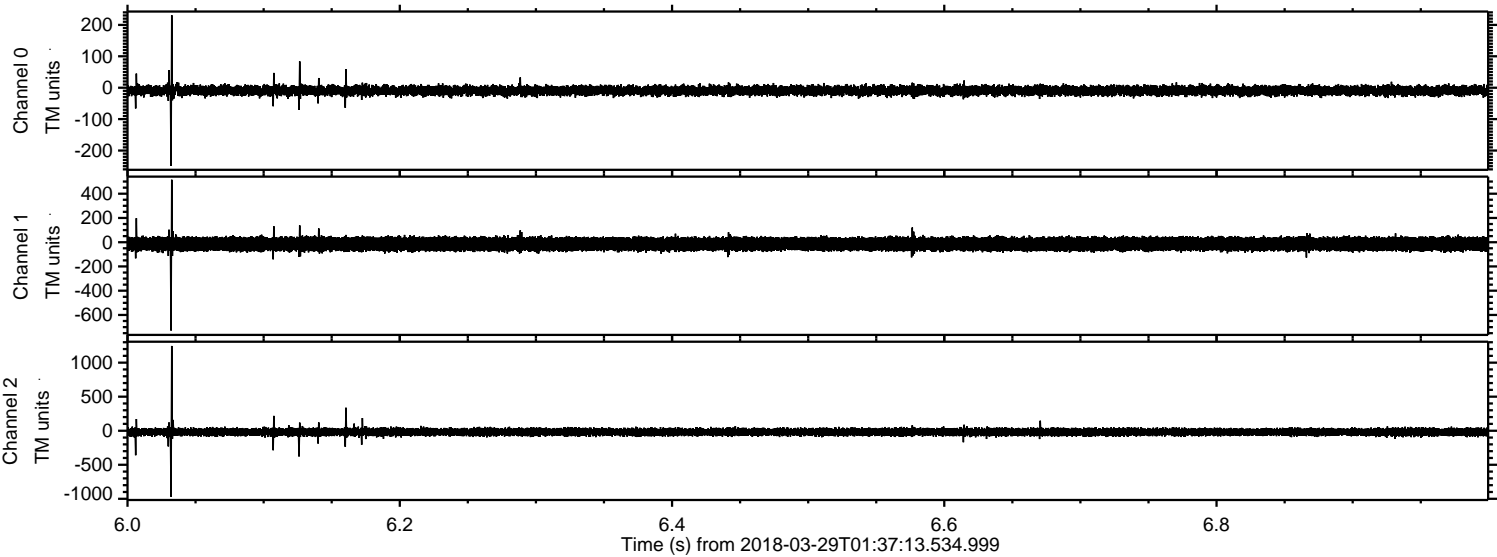
Processed Thu Mar 29 03:45:20 2018 by ELM ver.2012-10-06 from 001__elm20180329_013712__dat00.bin



Processed Thu Mar 29 03:45:21 2018 by ELM ver.2012-10-06 from 001__elm20180329_013712__dat00.bin

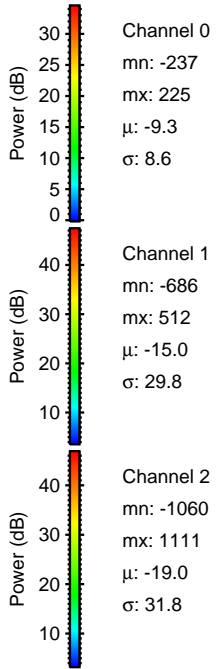
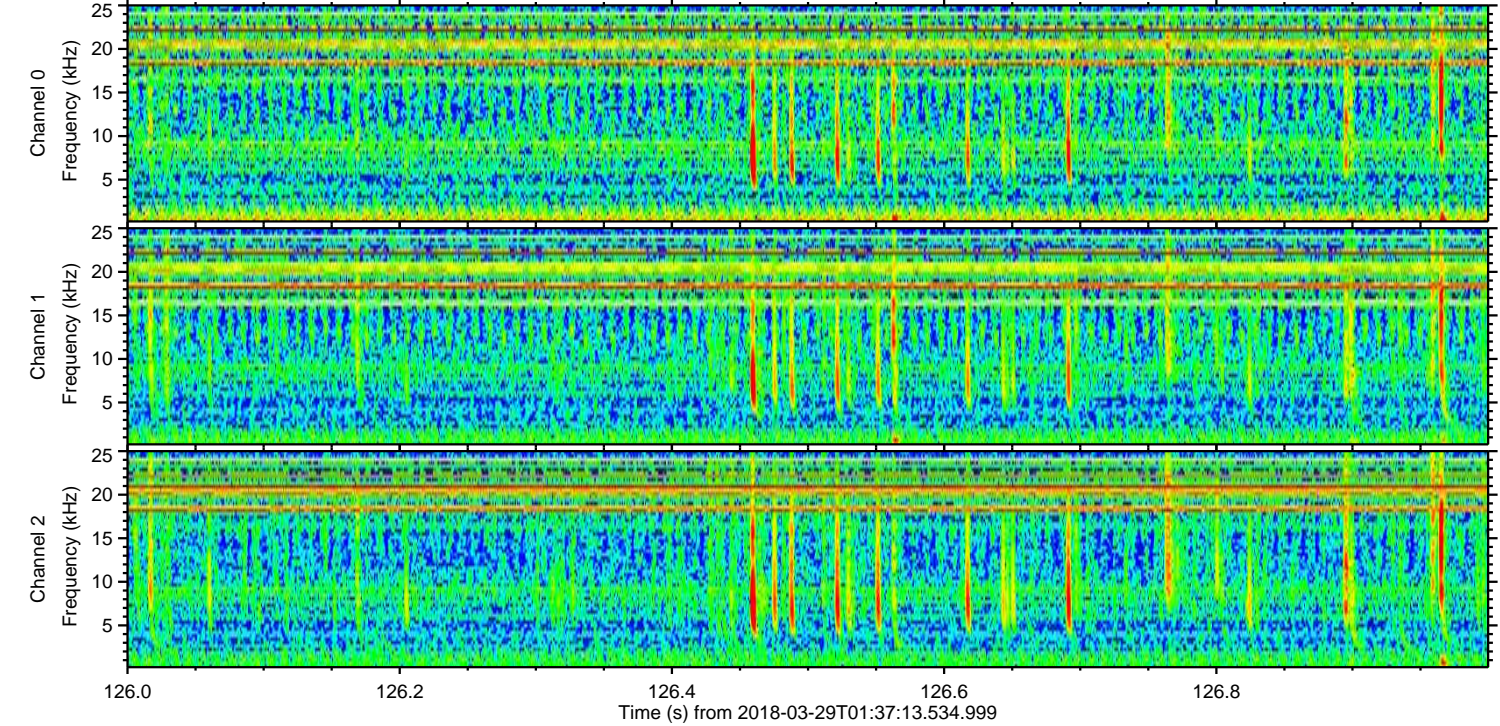
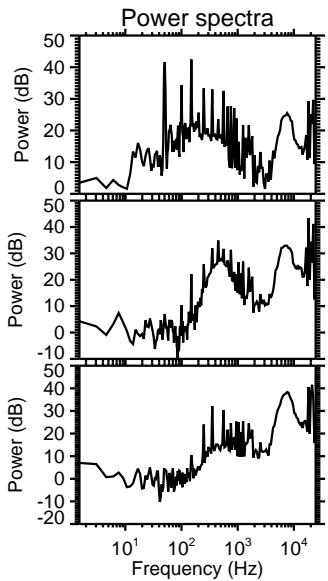
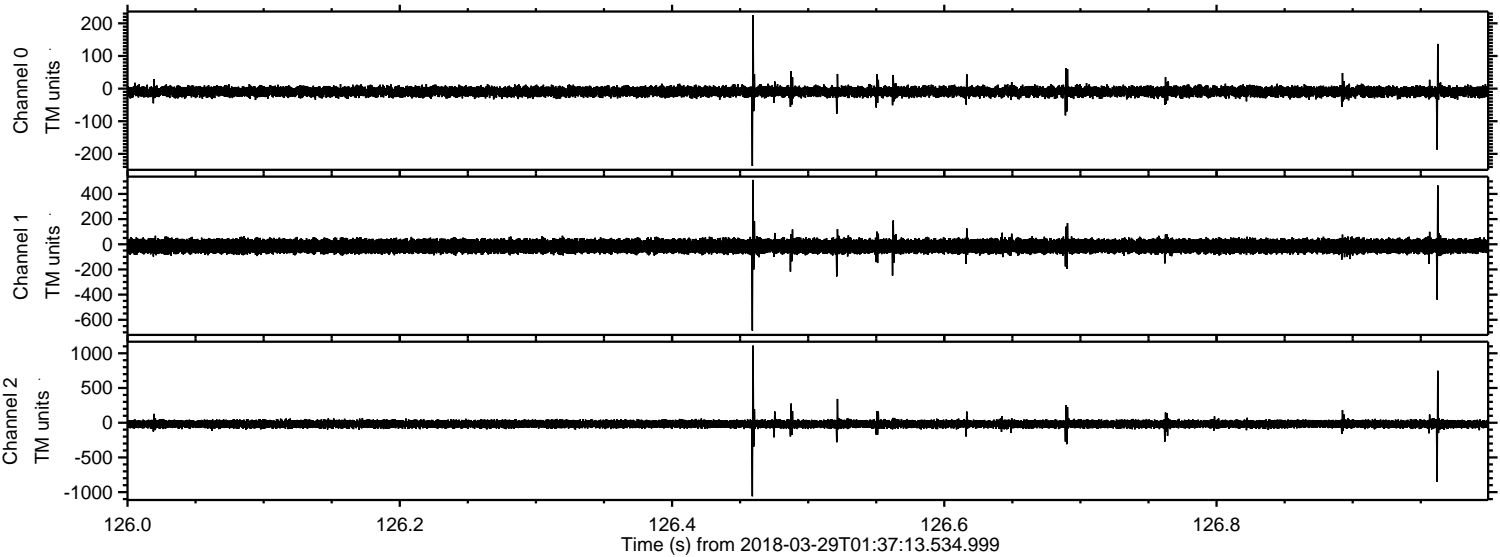


Processed Thu Mar 29 03:45:22 2018 by ELM ver.2012-10-06 from 001__elm20180329_013712__dat00.bin

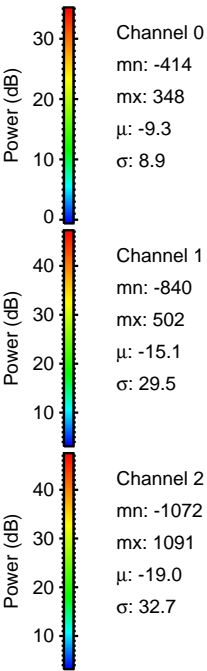
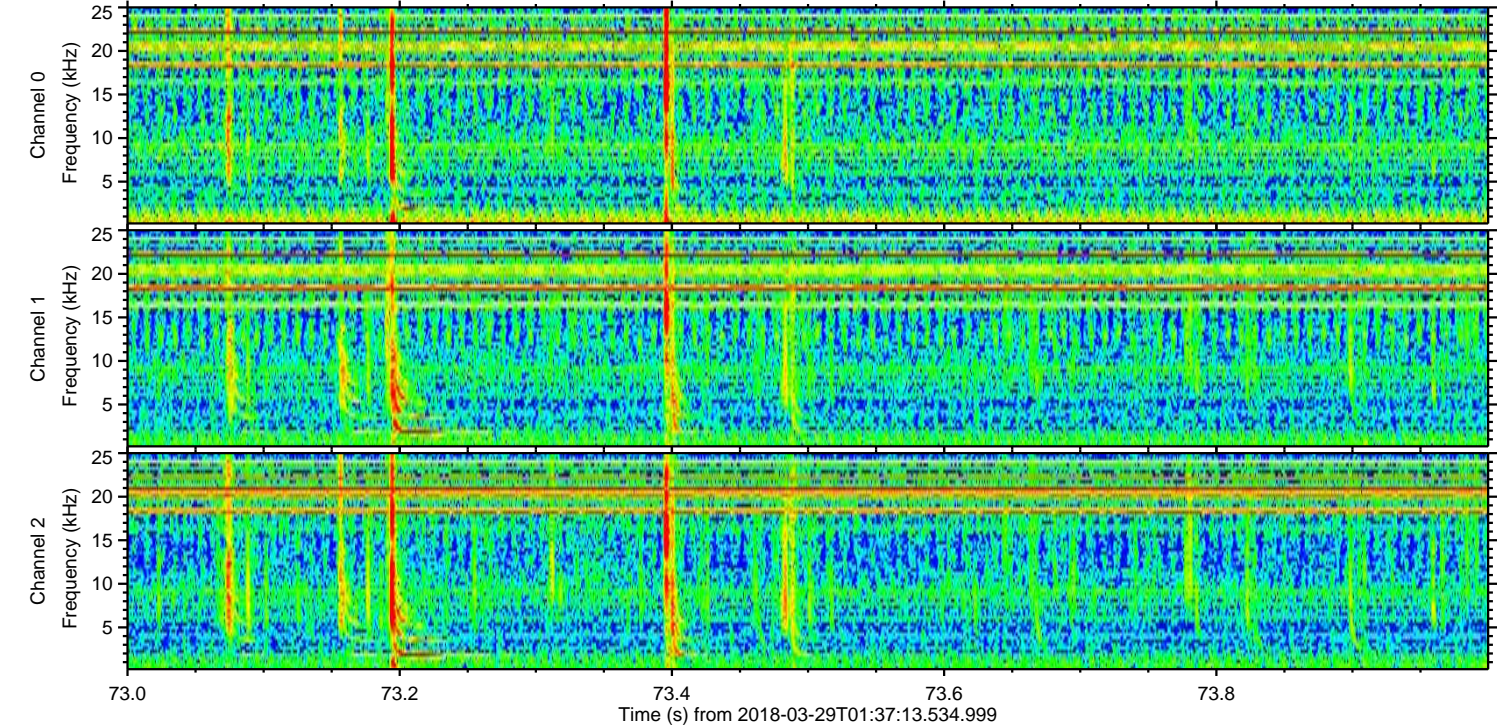
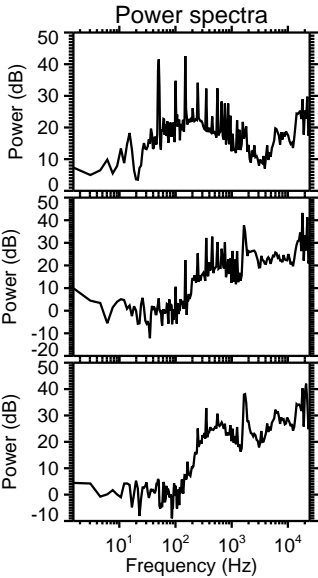
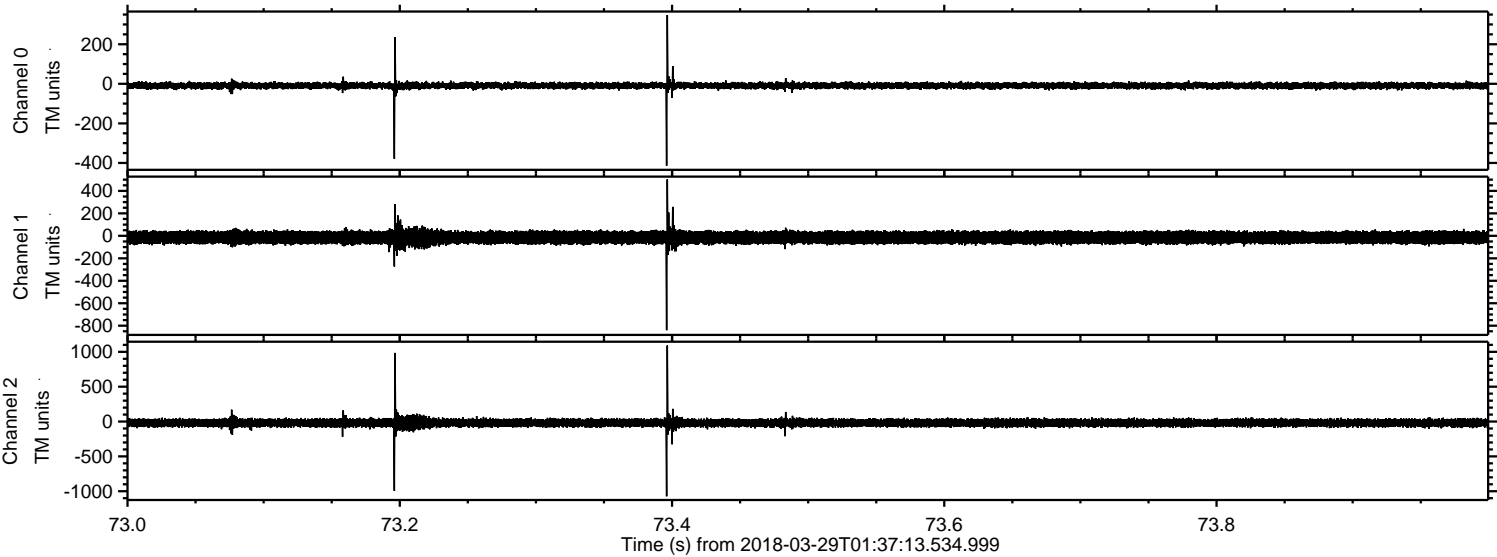


ELMAVAN 3D WAVEFORMS (Measured data sampled at 50 kHz) 51000 packets of 144 samples from 2018-03-29T01:37:13.534.999. Part 127/147

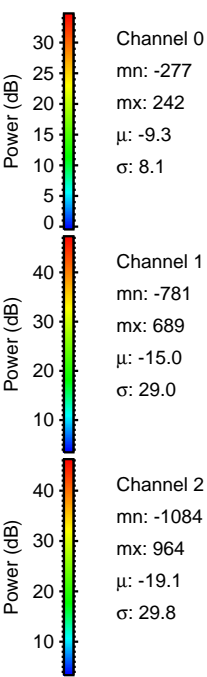
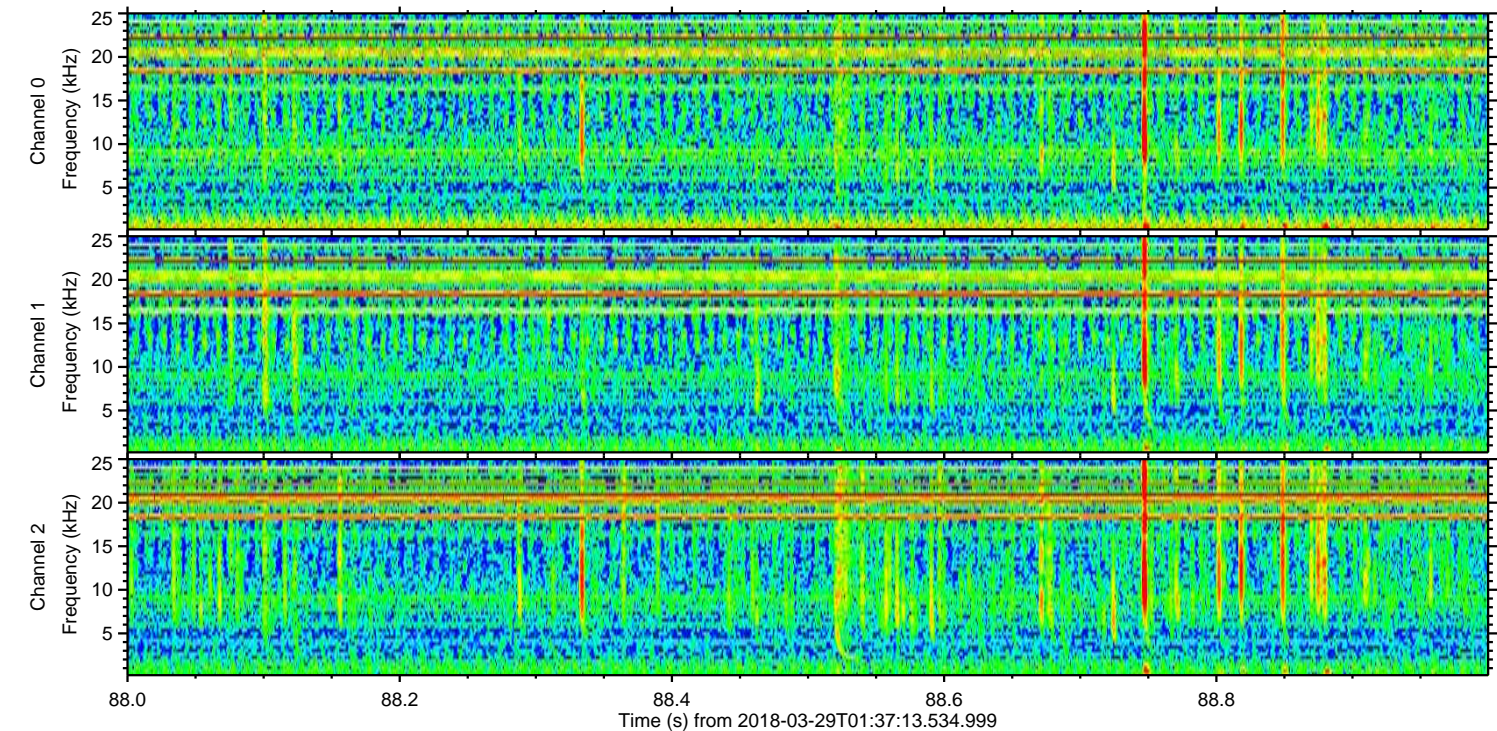
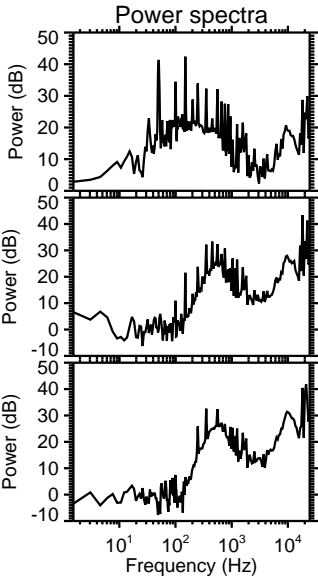
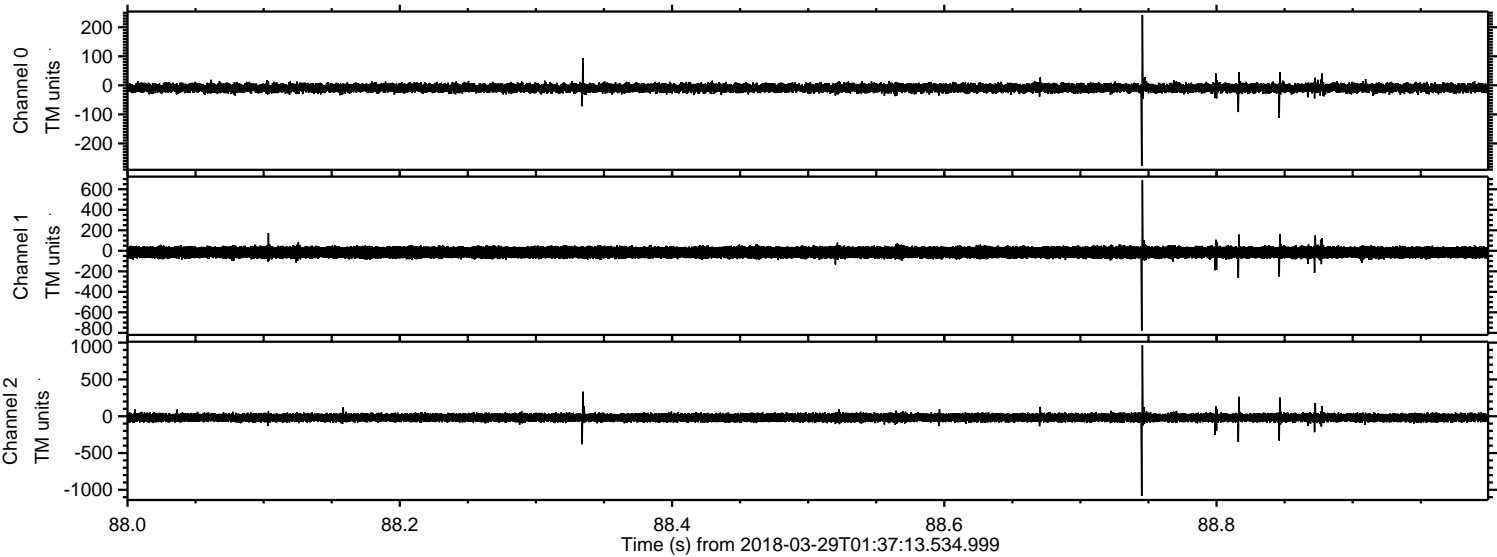
Processed Thu Mar 29 03:45:22 2018 by ELM ver.2012-10-06 from 001__elm20180329_013712__dat00.bin



Processed Thu Mar 29 03:45:23 2018 by ELM ver.2012-10-06 from 001__elm20180329_013712__dat00.bin



Processed Thu Mar 29 03:45:24 2018 by ELM ver.2012-10-06 from 001__elm20180329_013712__dat00.bin



Channel 0
mn: -277
mx: 242
 μ : -9.3
 σ : 8.1

Channel 1
mn: -781
mx: 689
 μ : -15.0
 σ : 29.0

Channel 2
mn: -1084
mx: 964
 μ : -19.1
 σ : 29.8

Processed Thu Mar 29 03:45:25 2018 by ELM ver.2012-10-06 from 001__elm20180329_013712__dat00.bin

