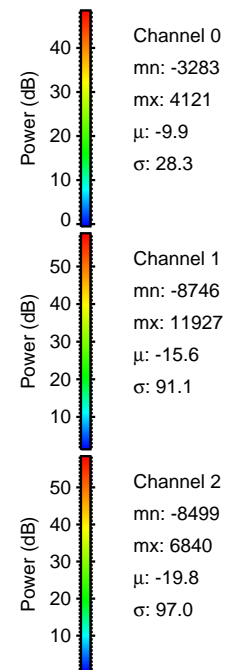
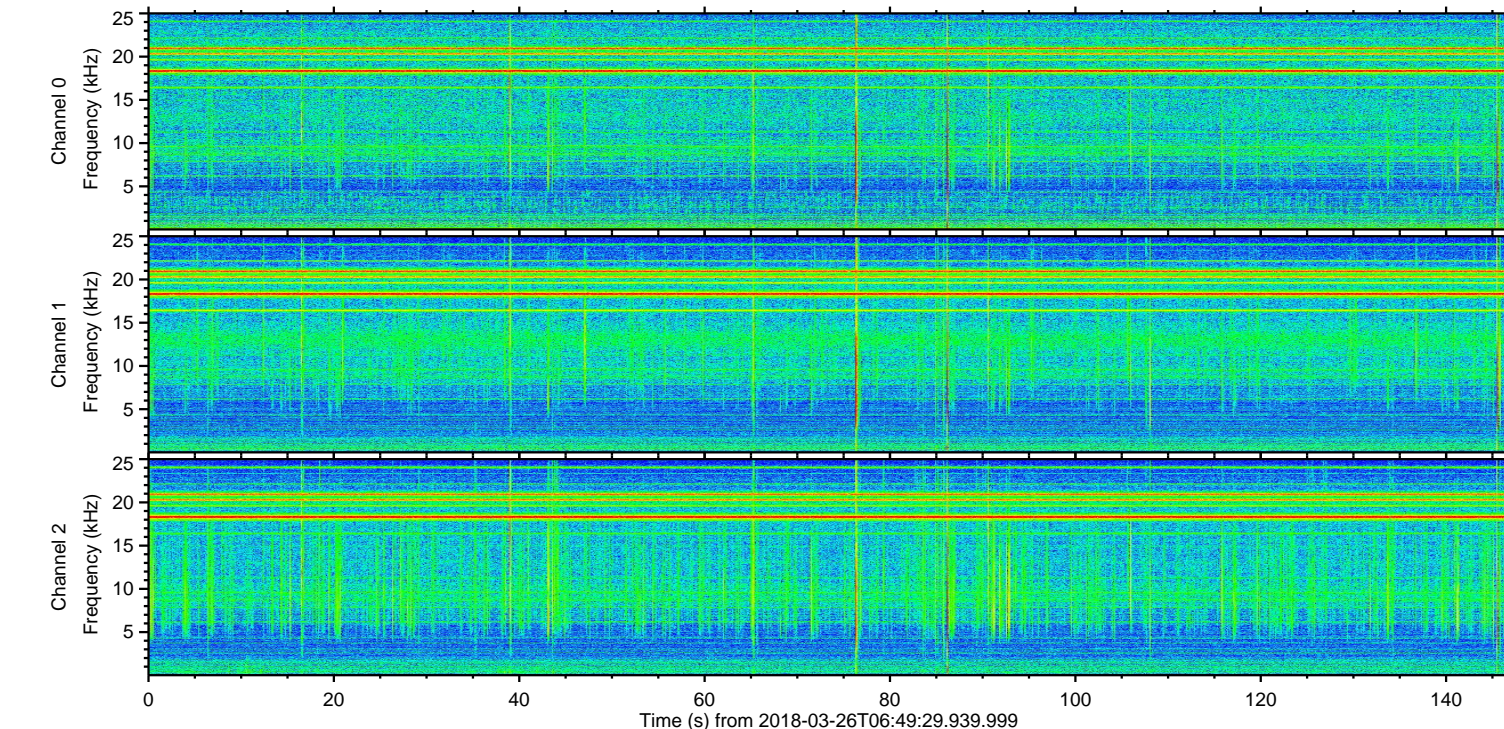
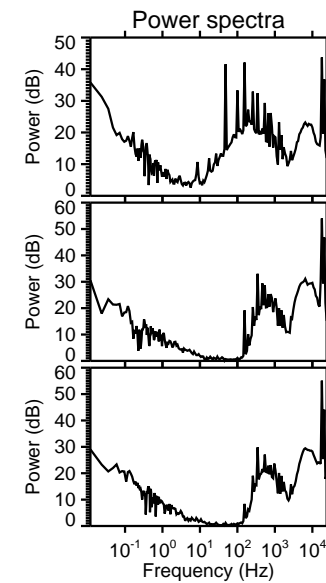
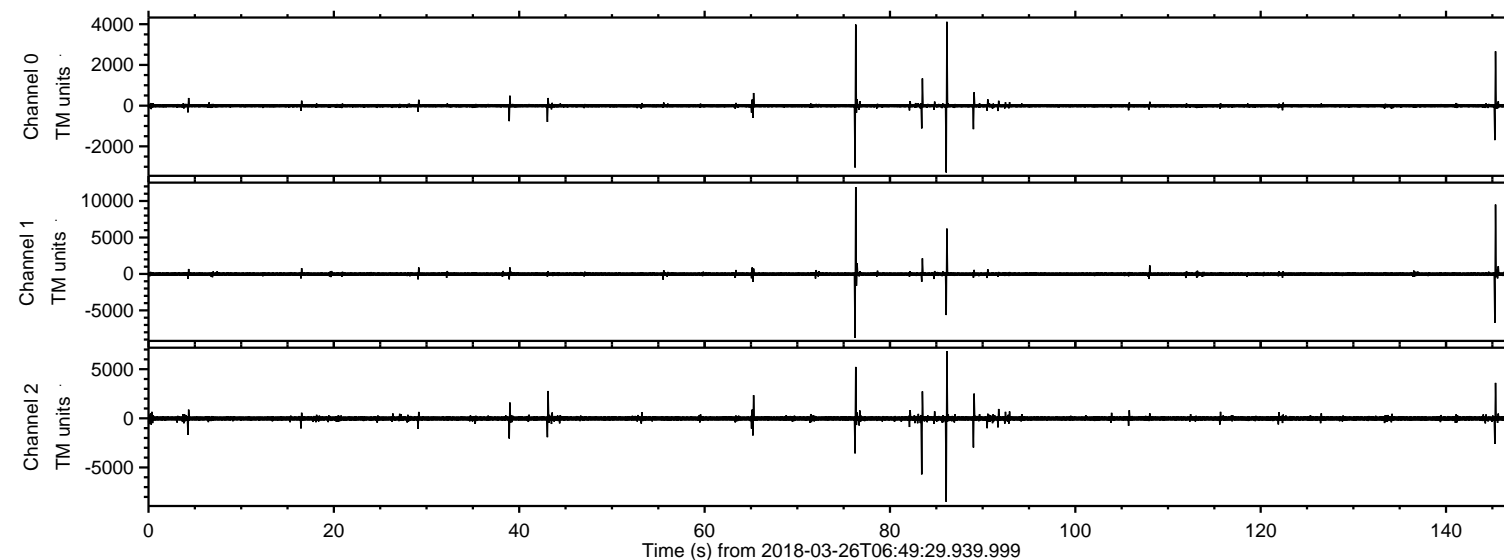


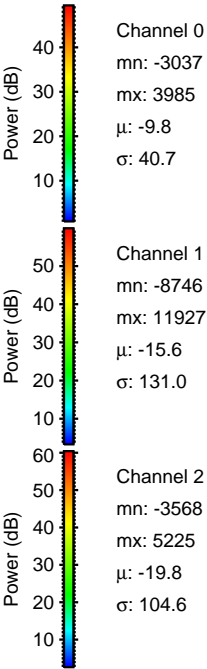
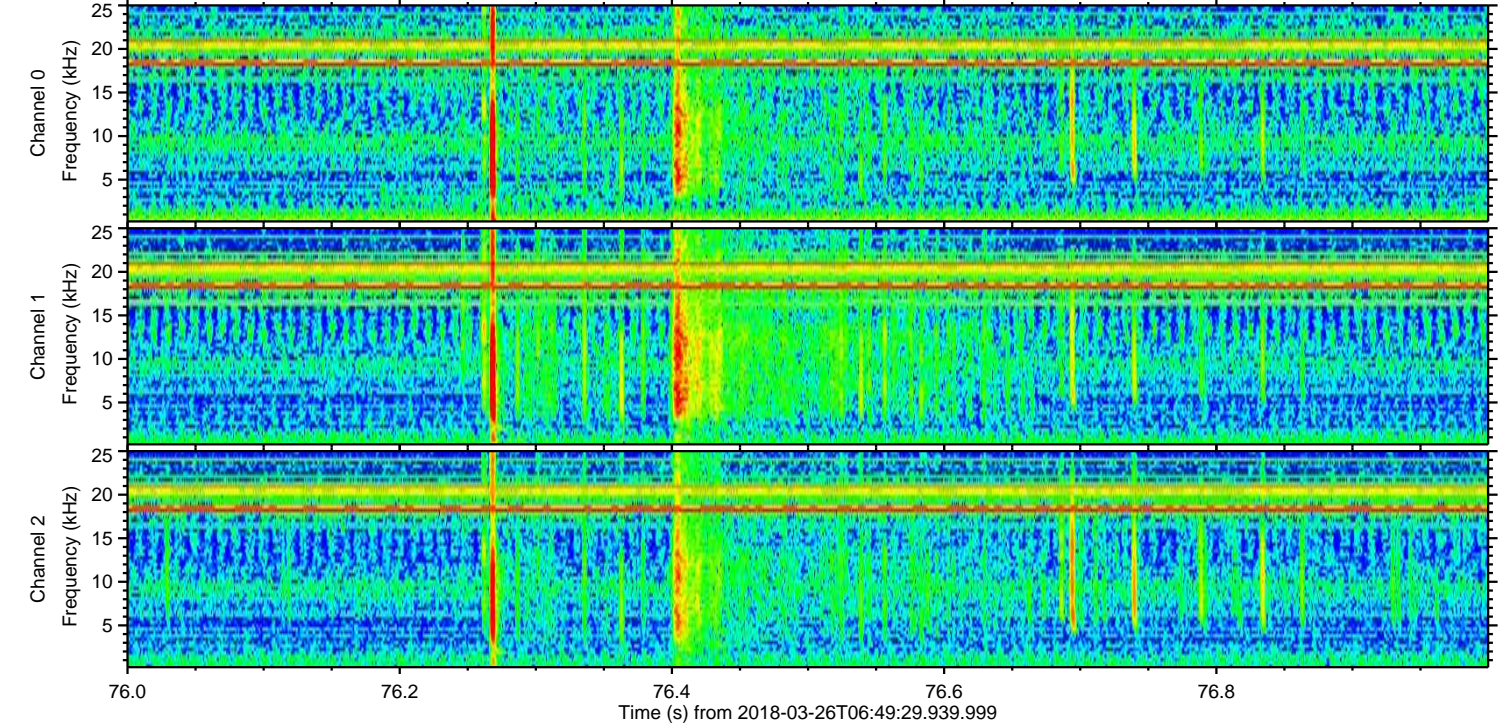
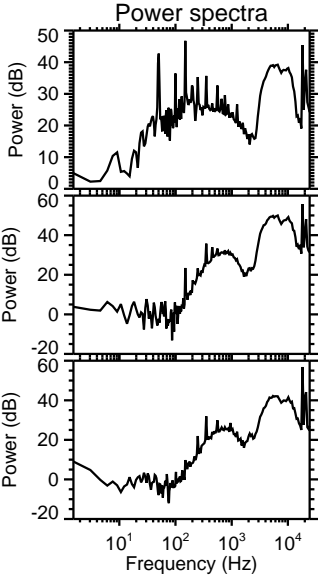
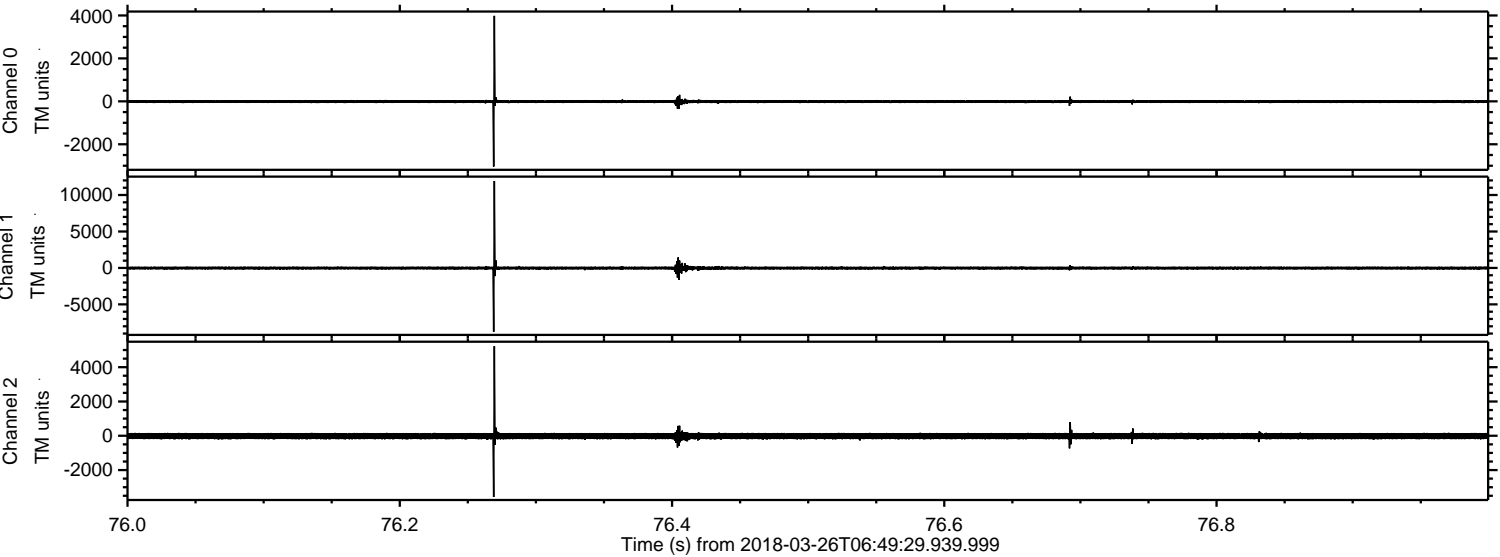
# ELMAVAN 3D WAVEFORMS (Measured data sampled at 50 kHz) 51000 packets of 144 samples from 2018-03-26T06:49:29.939.999.

Processed Mon Mar 26 08:57:33 2018 by ELM ver.2012-10-06 from 001\_\_elm20180326\_064928\_\_dat00.bin





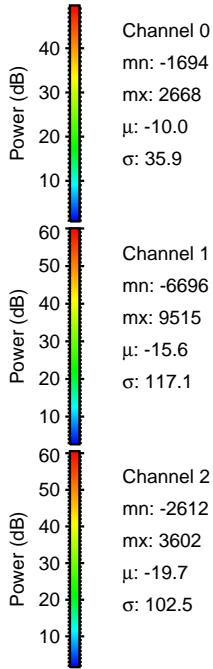
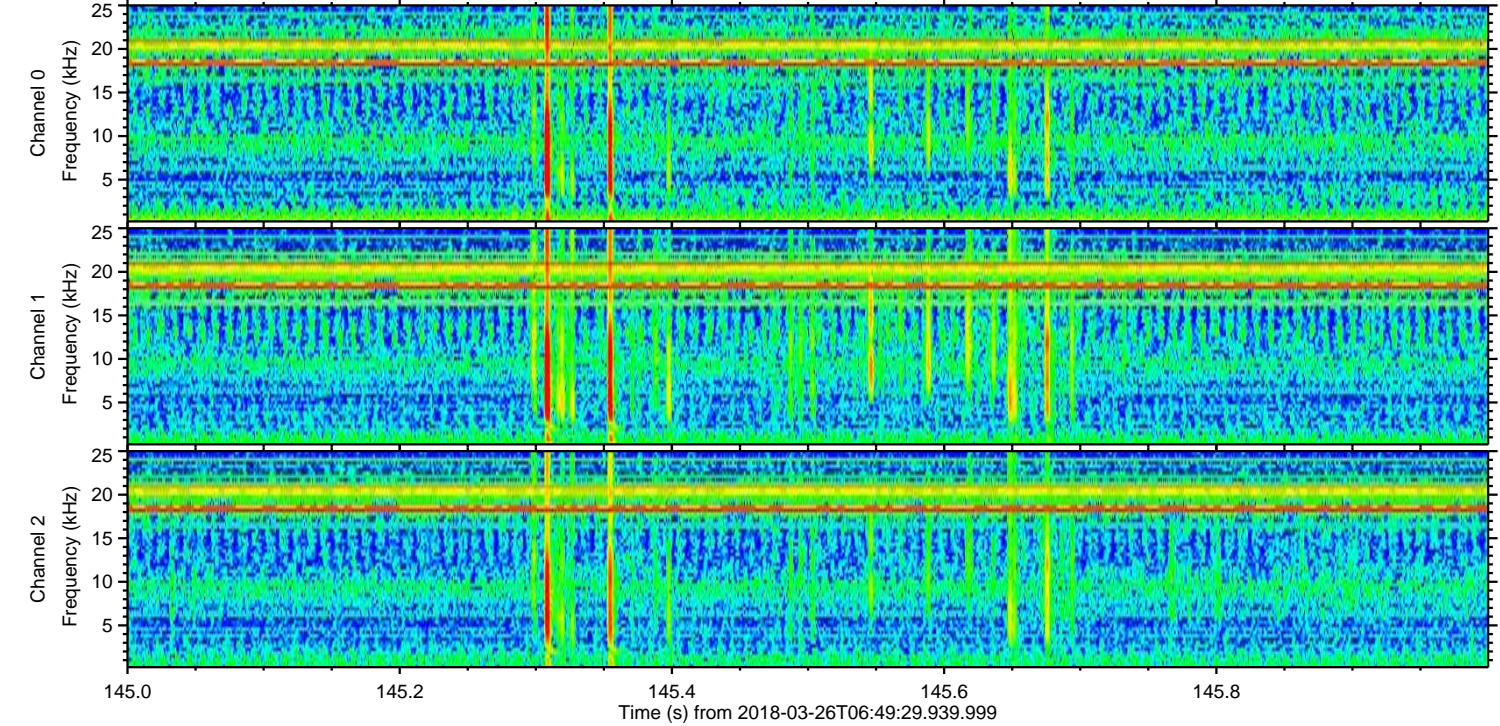
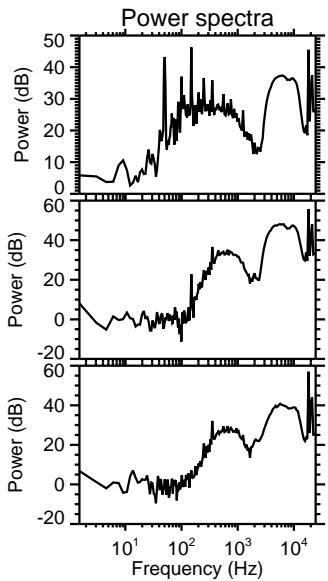
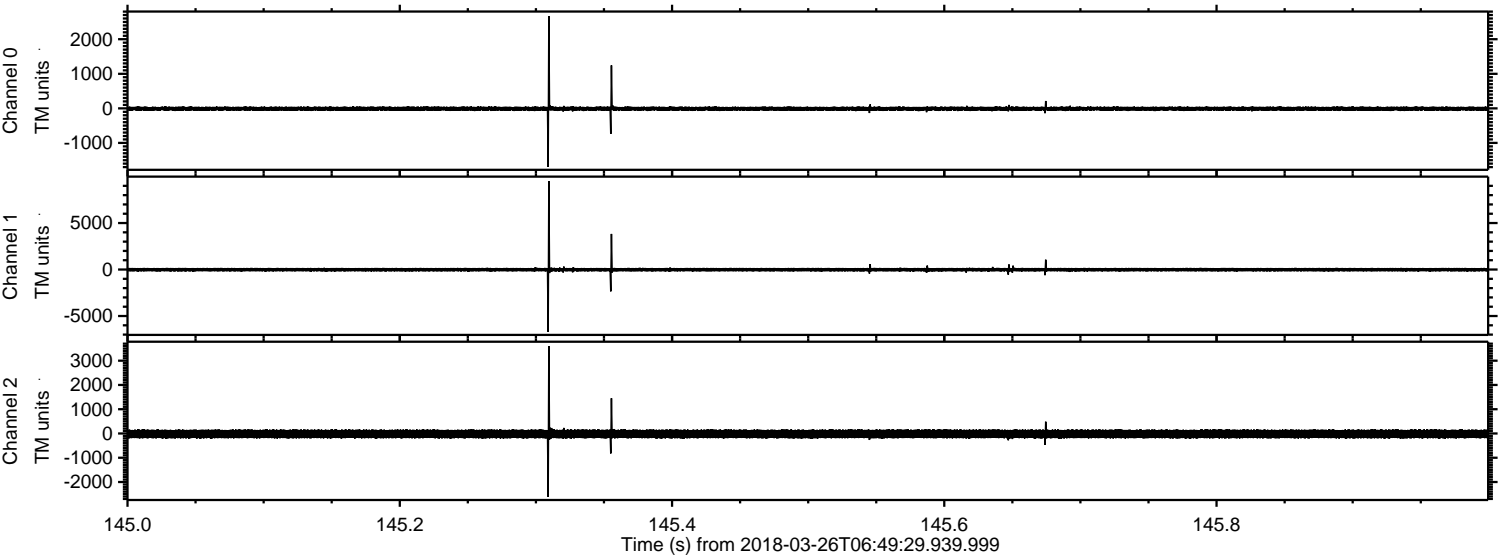
Processed Mon Mar 26 08:57:41 2018 by ELM ver.2012-10-06 from 001\_\_elm20180326\_064928\_\_dat00.bin





ELMAVAN 3D WAVEFORMS (Measured data sampled at 50 kHz) 51000 packets of 144 samples from 2018-03-26T06:49:29.939.999. Part 146/147

Processed Mon Mar 26 08:57:42 2018 by ELM ver.2012-10-06 from 001\_\_elm20180326\_064928\_\_dat00.bin



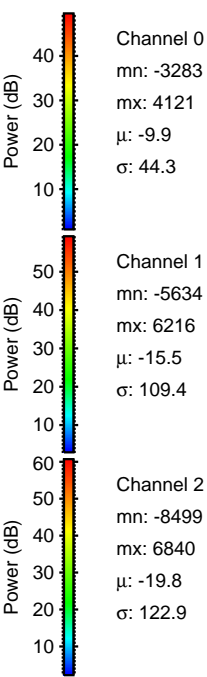
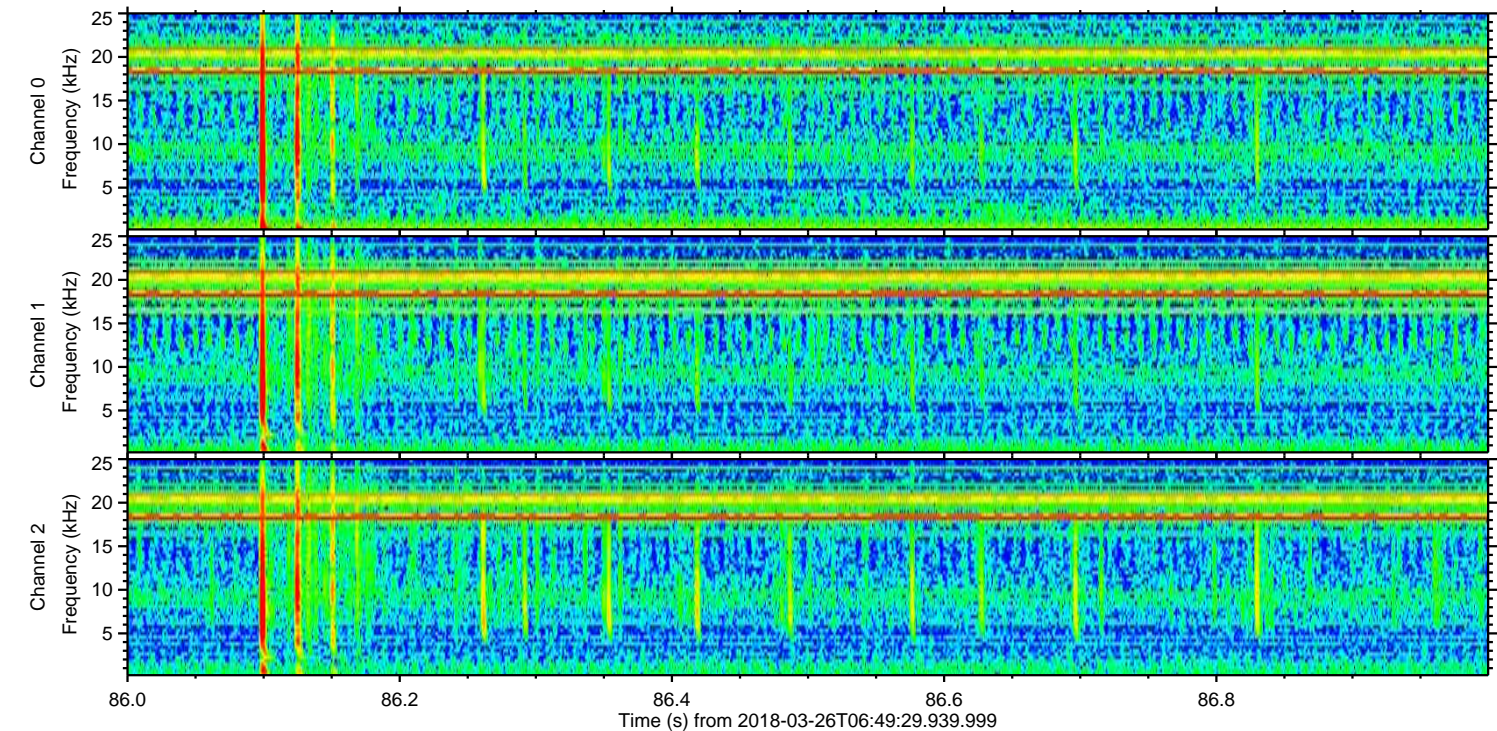
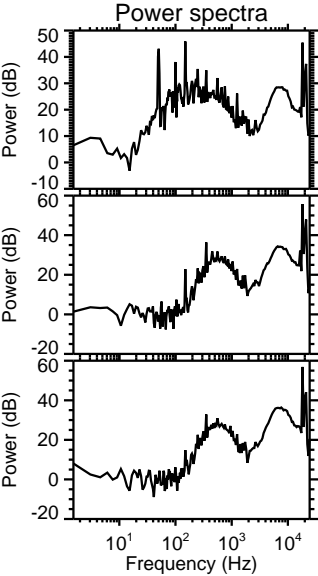
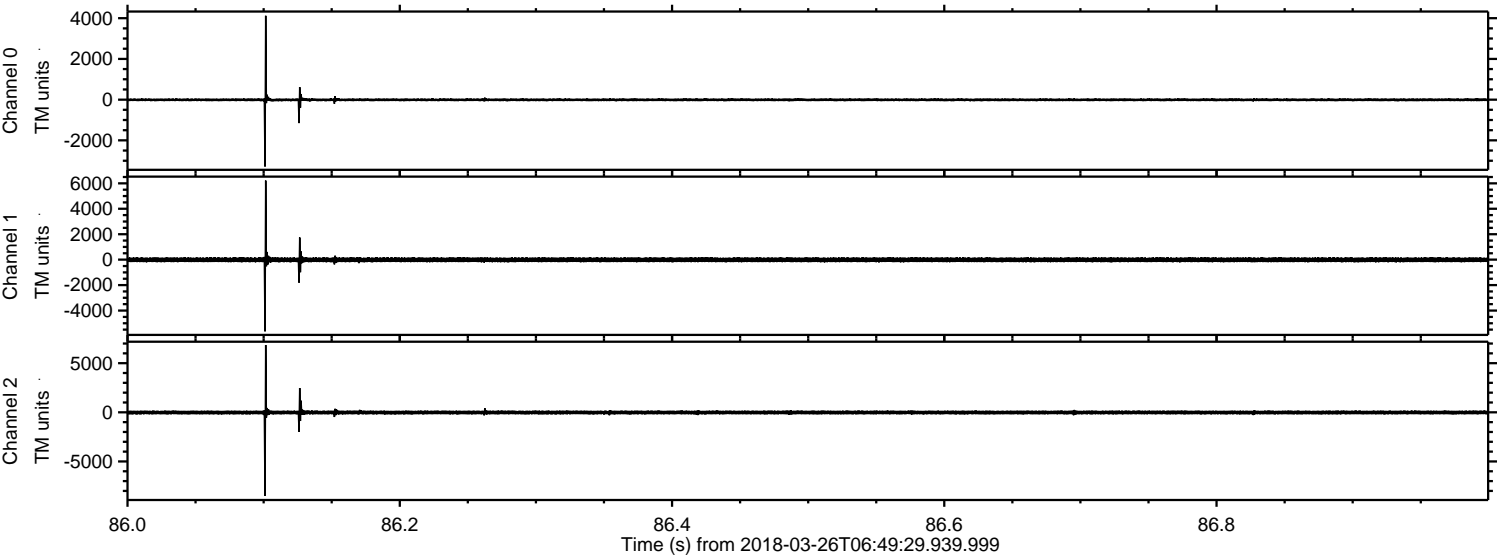
Channel 0  
mn: -1694  
mx: 2668  
 $\mu$ : -10.0  
 $\sigma$ : 35.9

Channel 1  
mn: -6696  
mx: 9515  
 $\mu$ : -15.6  
 $\sigma$ : 117.1

Channel 2  
mn: -2612  
mx: 3602  
 $\mu$ : -19.7  
 $\sigma$ : 102.5

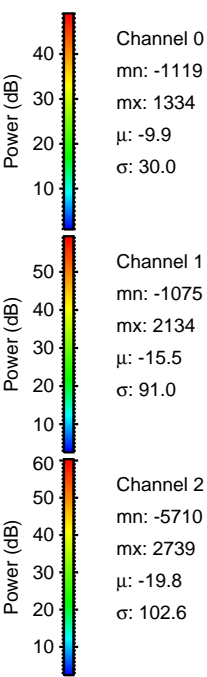
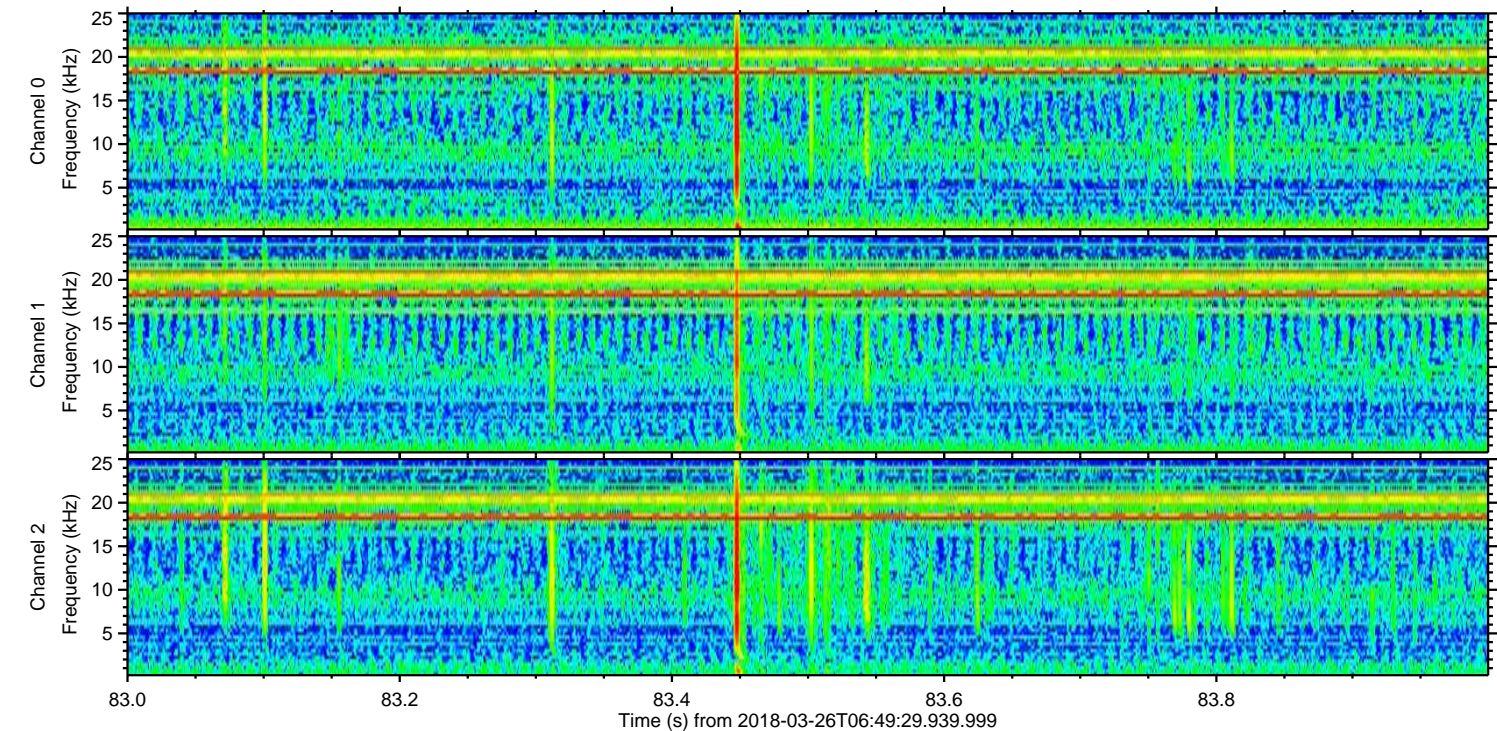
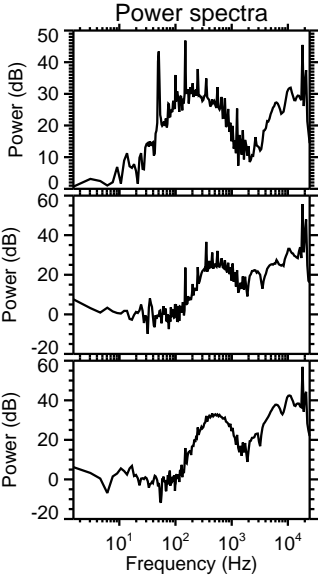
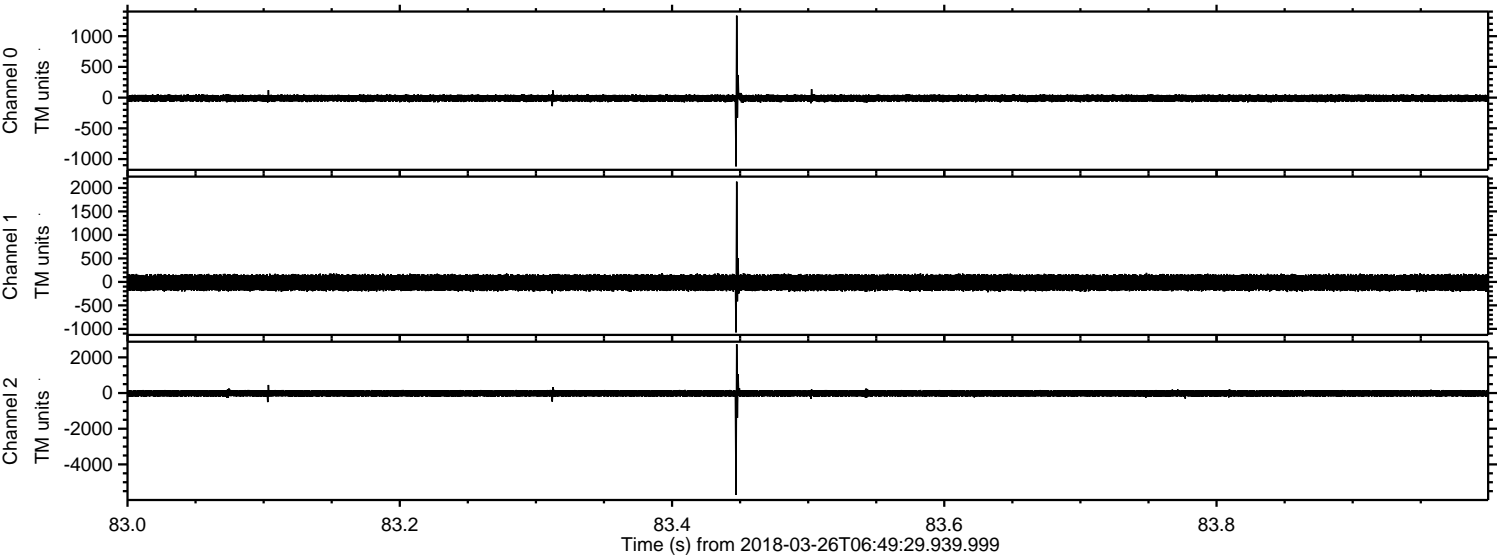


Processed Mon Mar 26 08:57:43 2018 by ELM ver.2012-10-06 from 001\_\_elm20180326\_064928\_\_dat00.bin



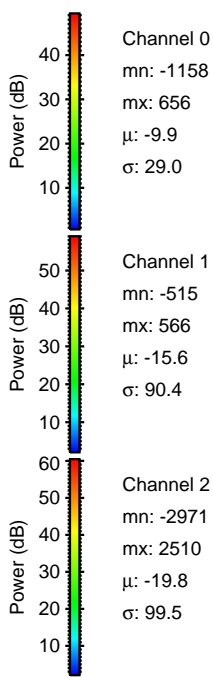
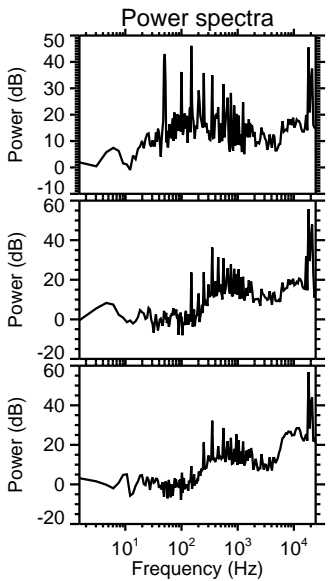
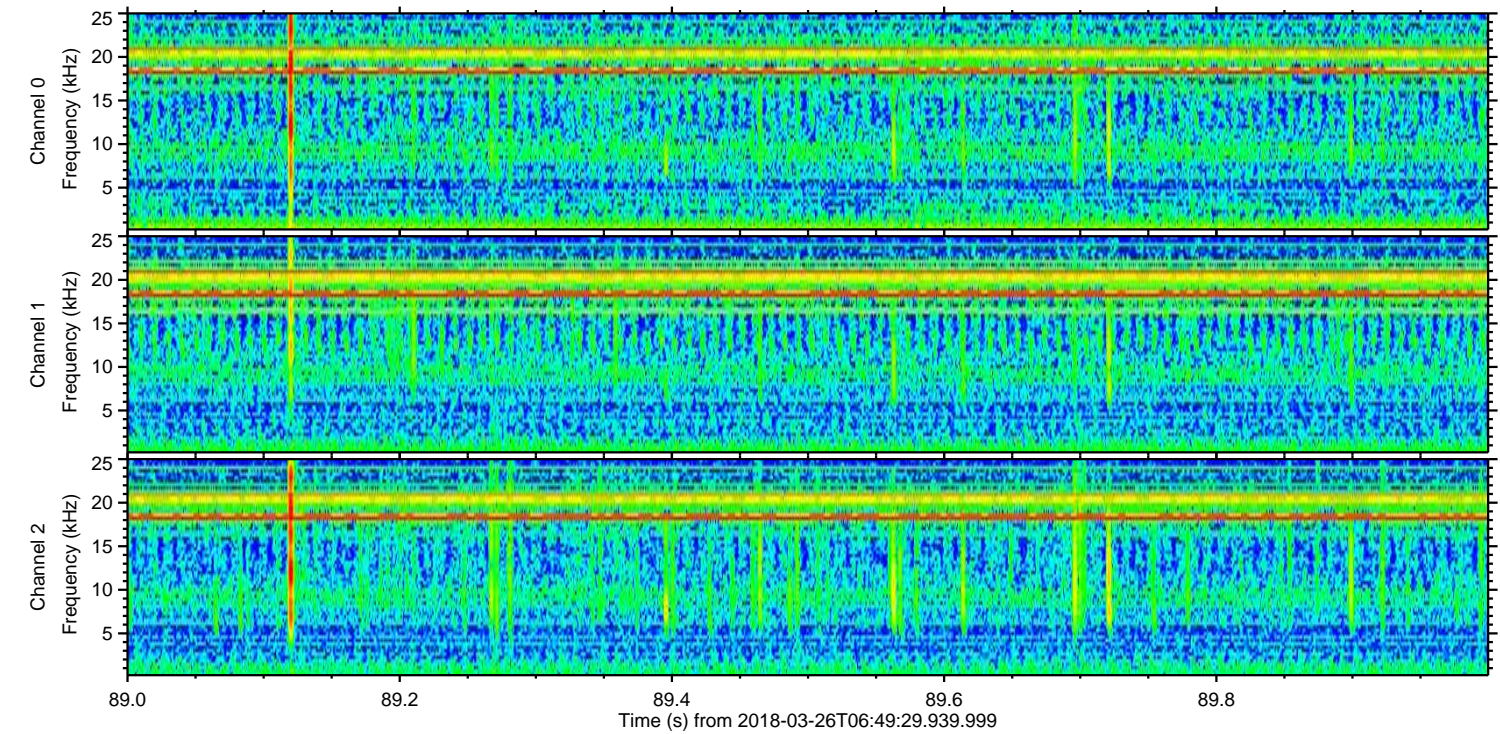
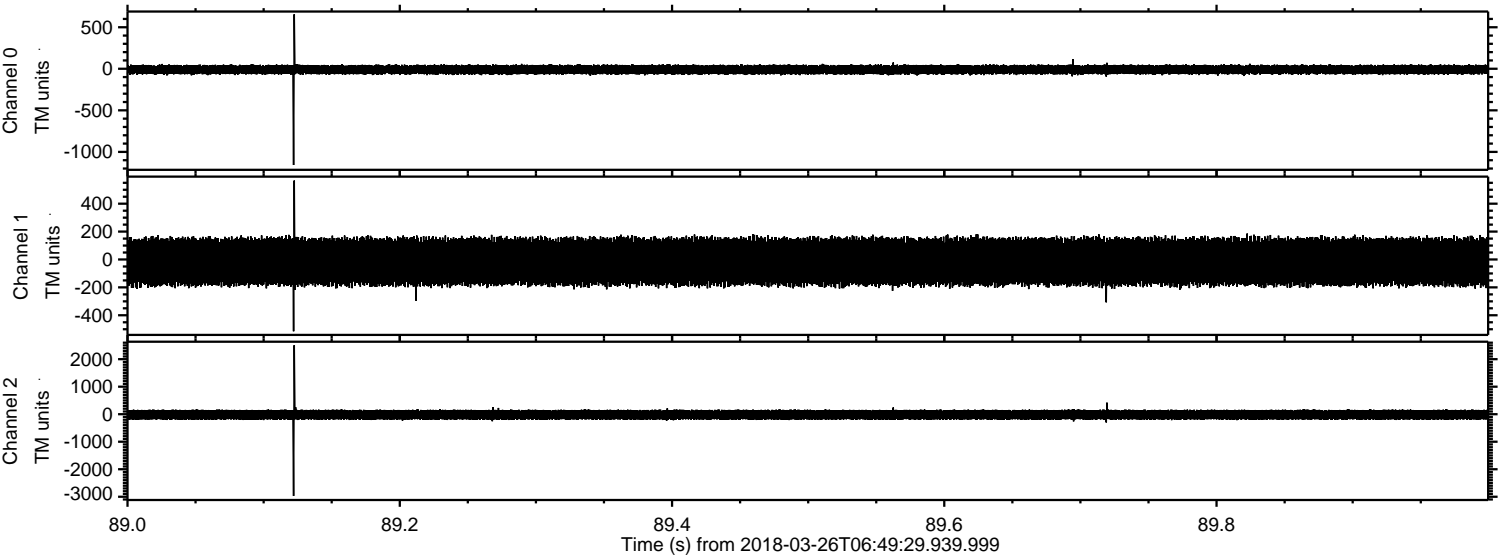


Processed Mon Mar 26 08:57:43 2018 by ELM ver.2012-10-06 from 001\_\_elm20180326\_064928\_\_dat00.bin



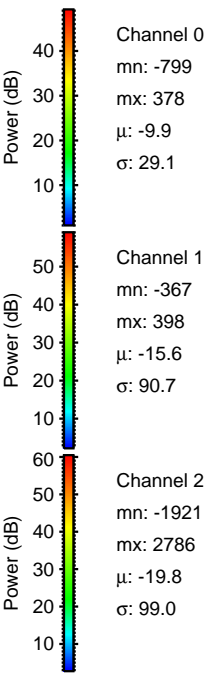
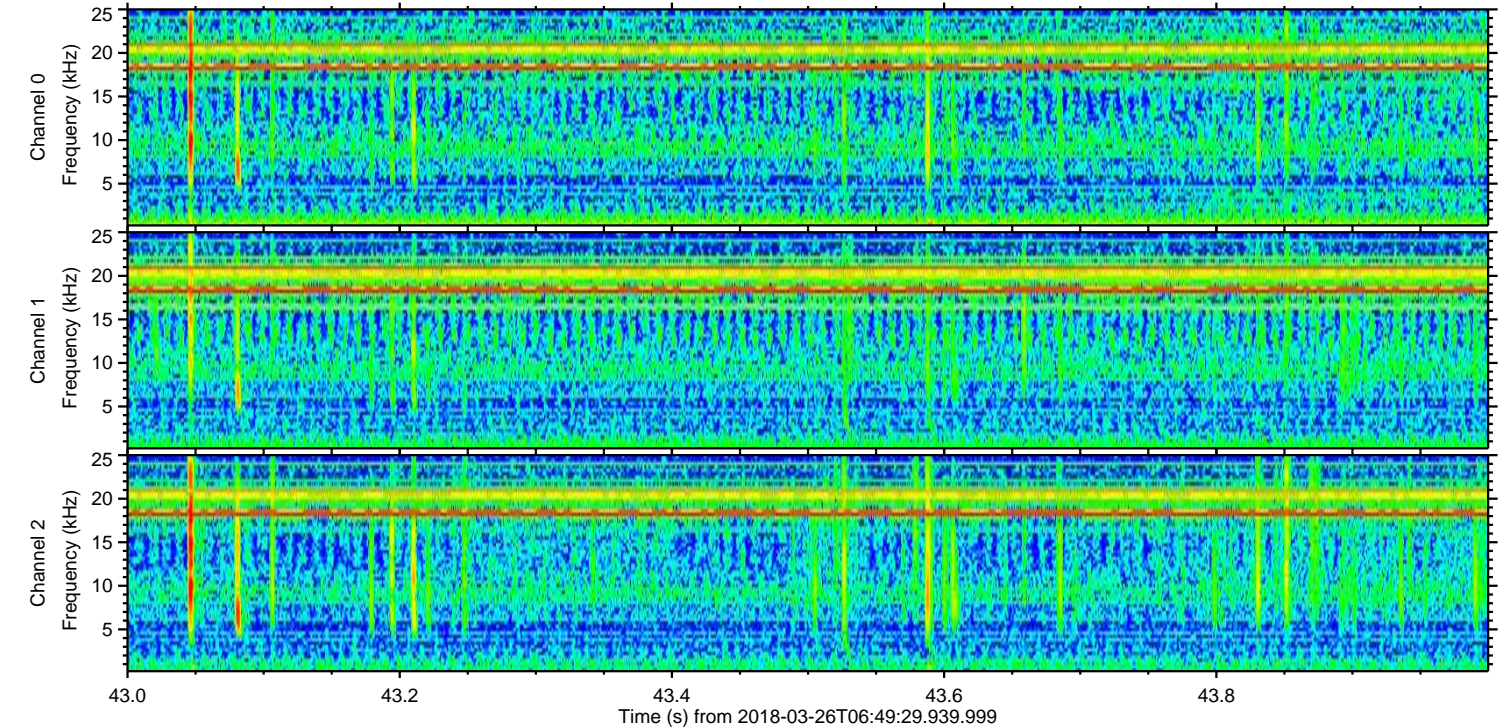
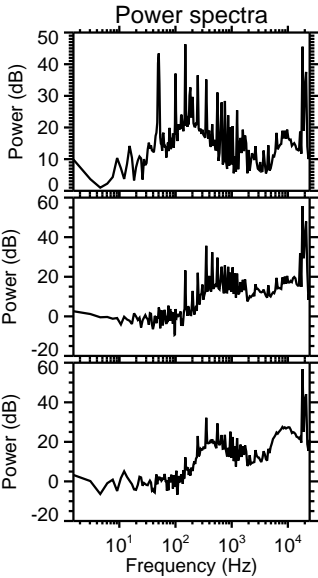
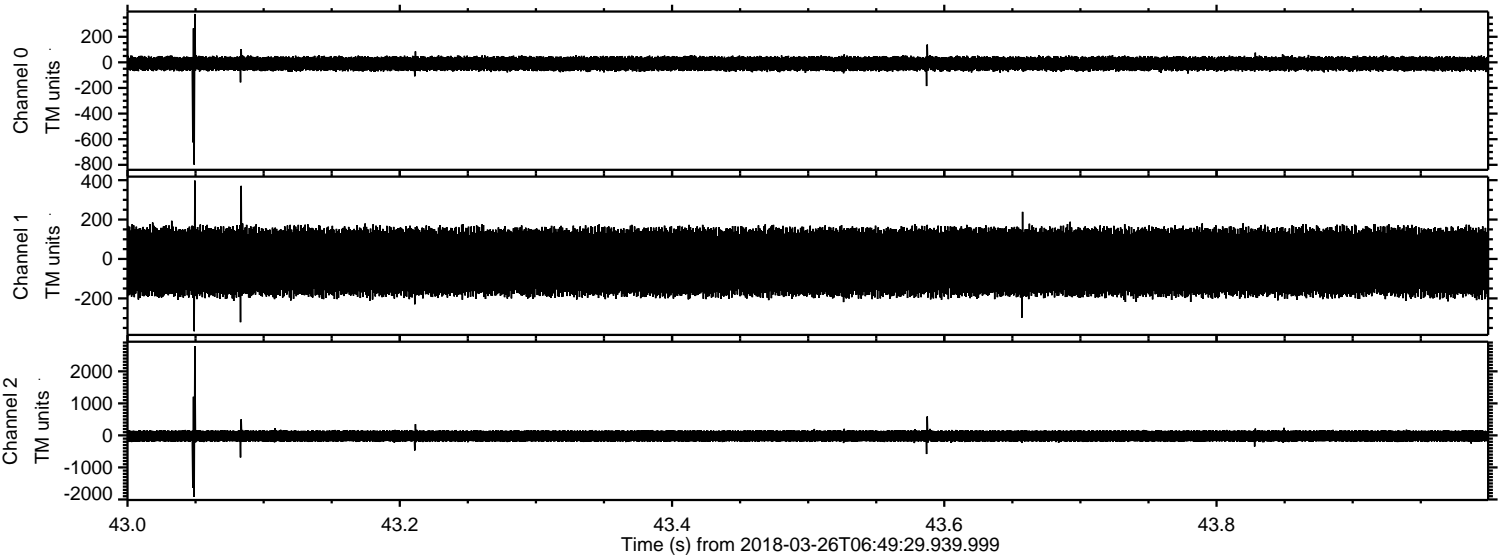


Processed Mon Mar 26 08:57:44 2018 by ELM ver.2012-10-06 from 001\_\_elm20180326\_064928\_\_dat00.bin



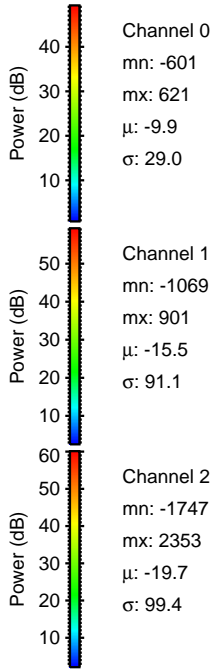
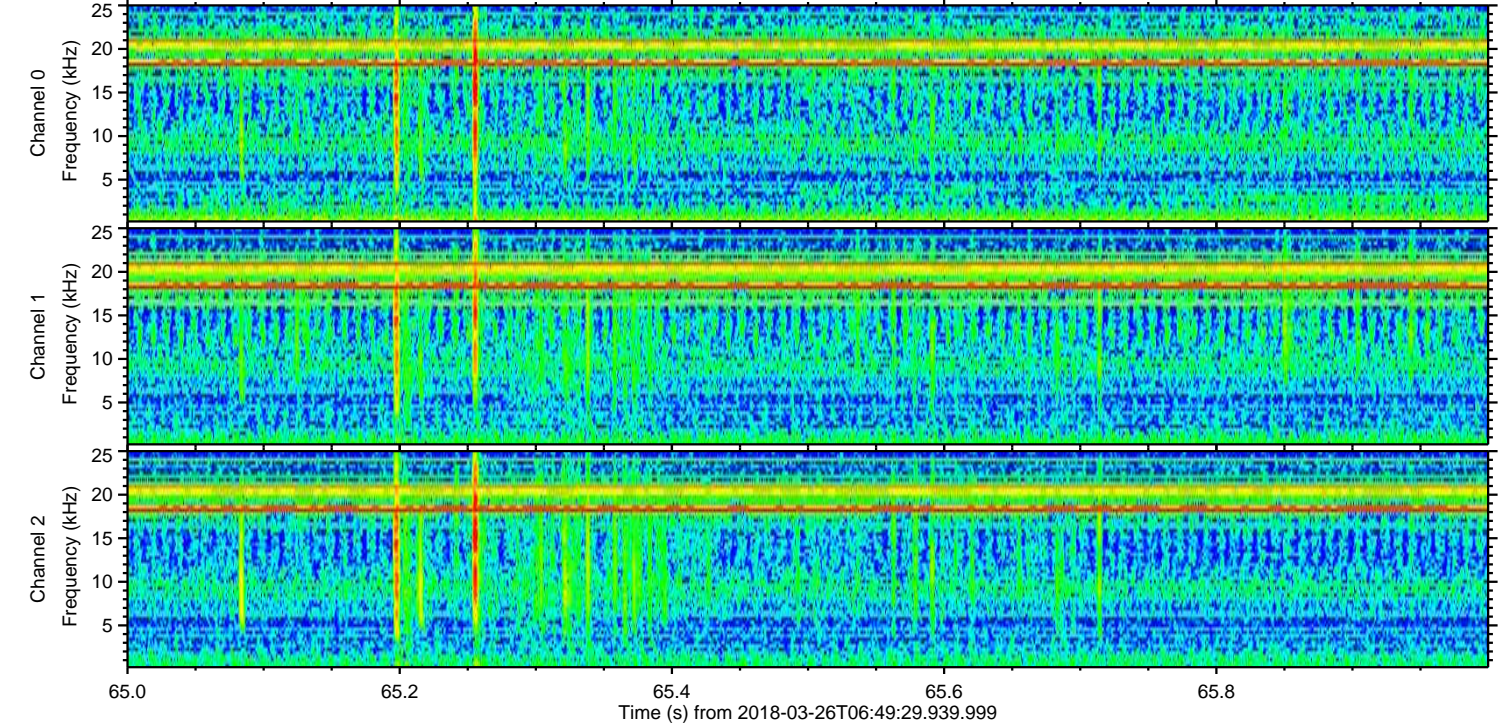
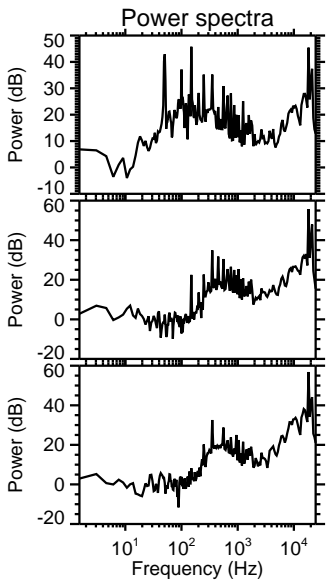
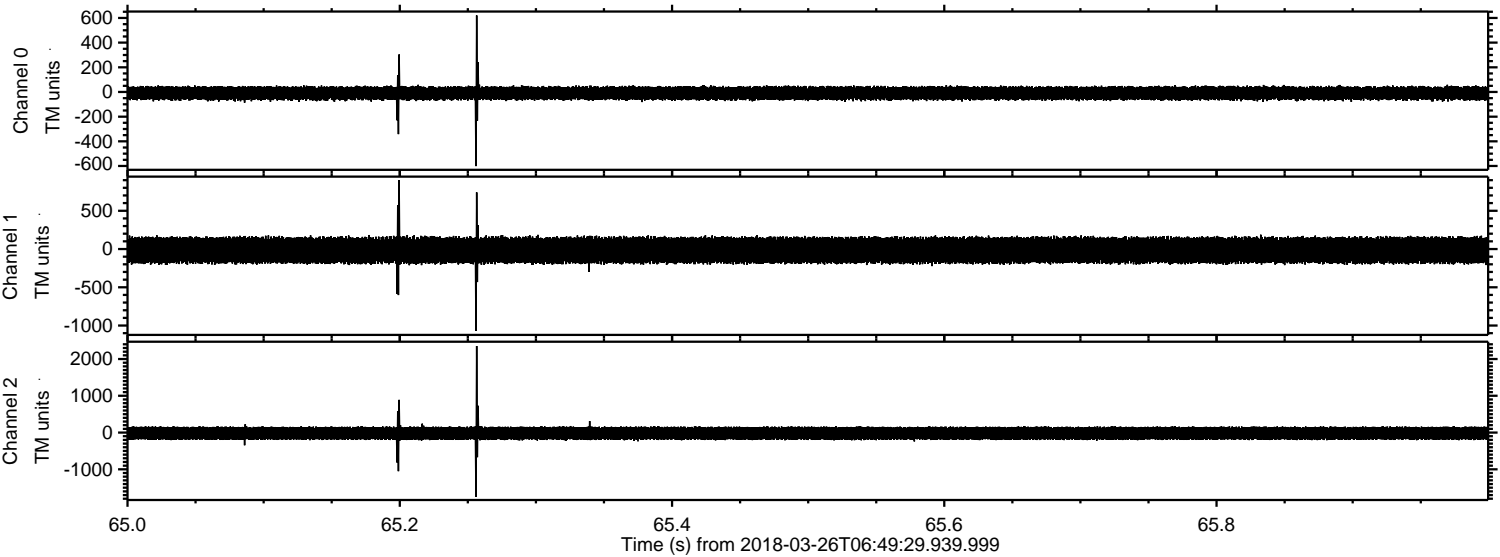


Processed Mon Mar 26 08:57:45 2018 by ELM ver.2012-10-06 from 001\_\_elm20180326\_064928\_\_dat00.bin



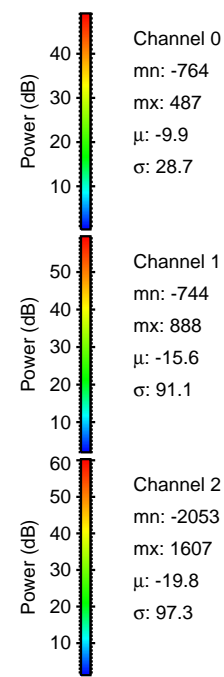
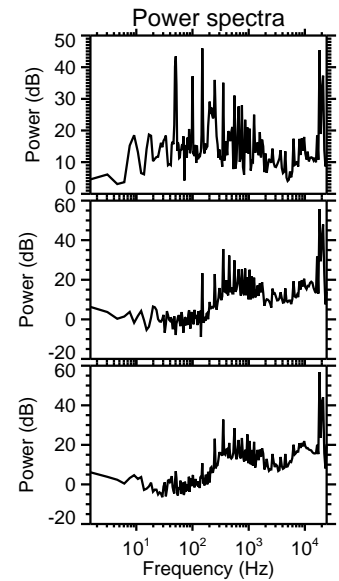
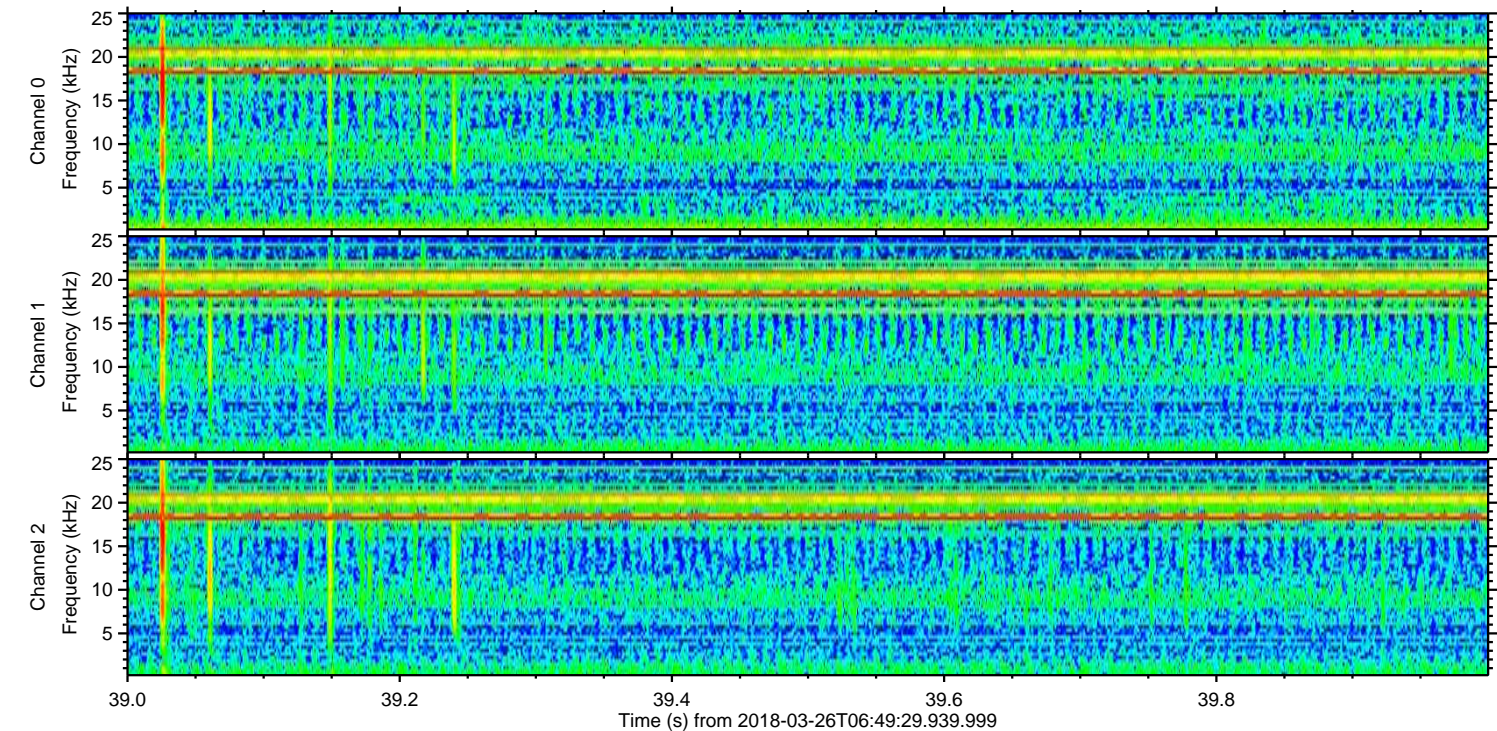
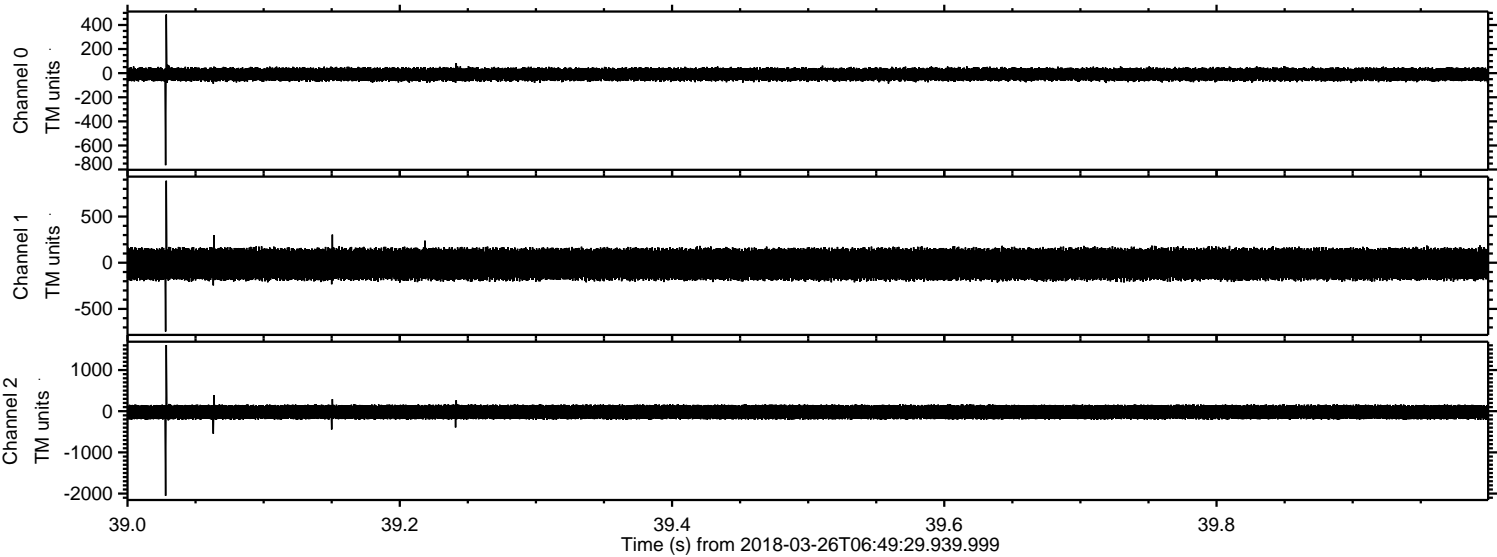


Processed Mon Mar 26 08:57:46 2018 by ELM ver.2012-10-06 from 001\_\_elm20180326\_064928\_\_dat00.bin





Processed Mon Mar 26 08:57:47 2018 by ELM ver.2012-10-06 from 001\_\_elm20180326\_064928\_\_dat00.bin



Channel 0  
mn: -764  
mx: 487  
 $\mu$ : -9.9  
 $\sigma$ : 28.7

Channel 1  
mn: -744  
mx: 888  
 $\mu$ : -15.6  
 $\sigma$ : 91.1

Channel 2  
mn: -2053  
mx: 1607  
 $\mu$ : -19.8  
 $\sigma$ : 97.3



Processed Mon Mar 26 08:57:47 2018 by ELM ver.2012-10-06 from 001\_\_elm20180326\_064928\_\_dat00.bin

