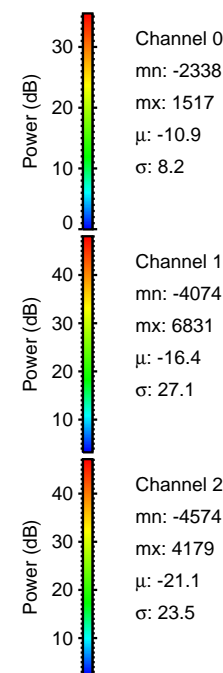
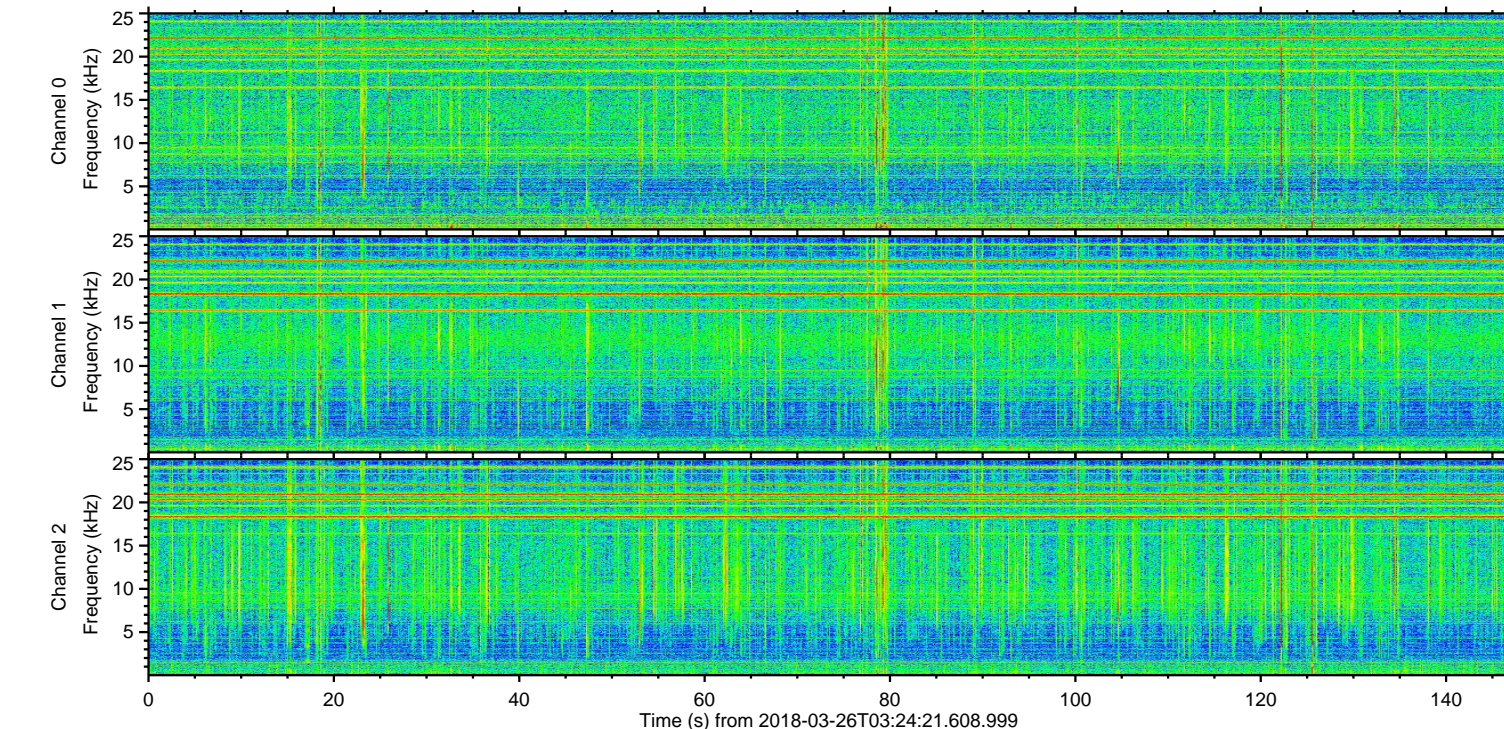
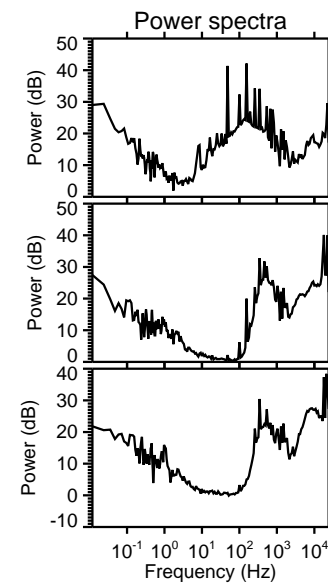
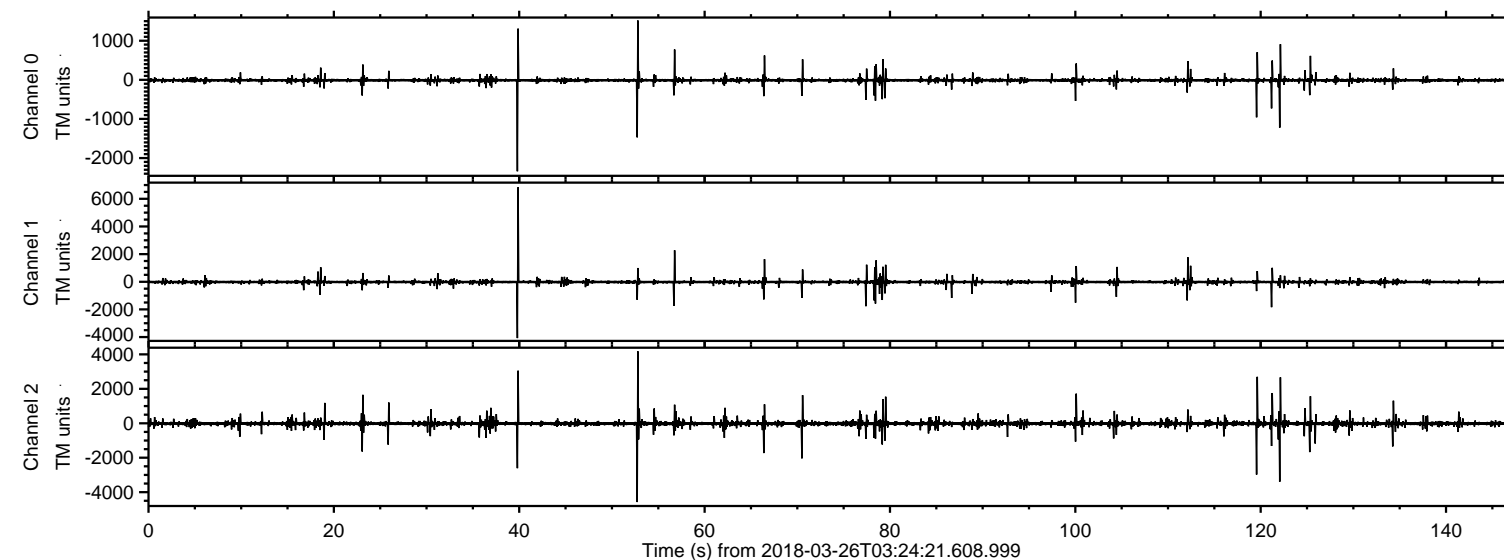
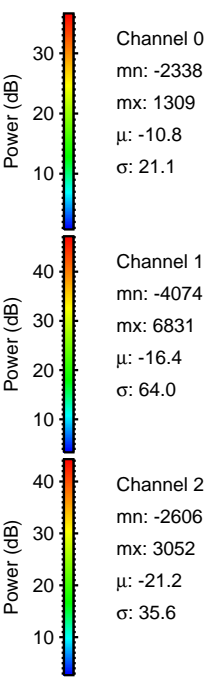
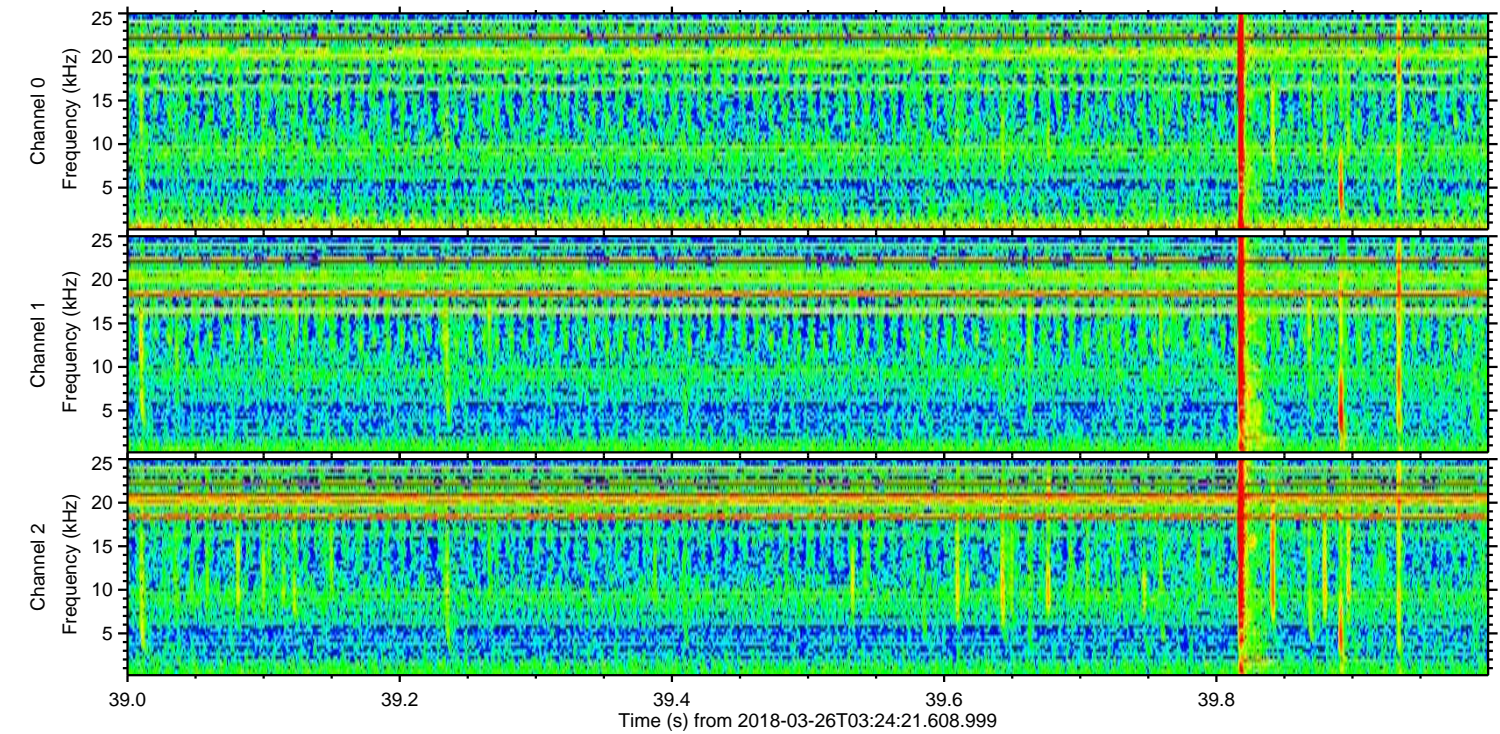
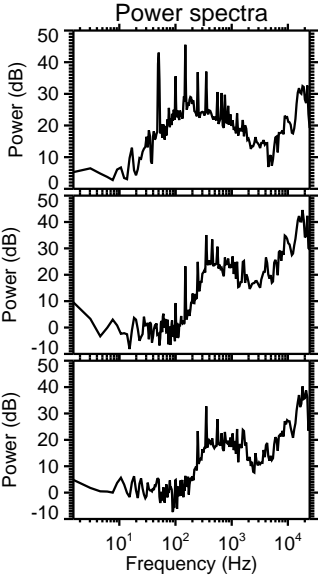
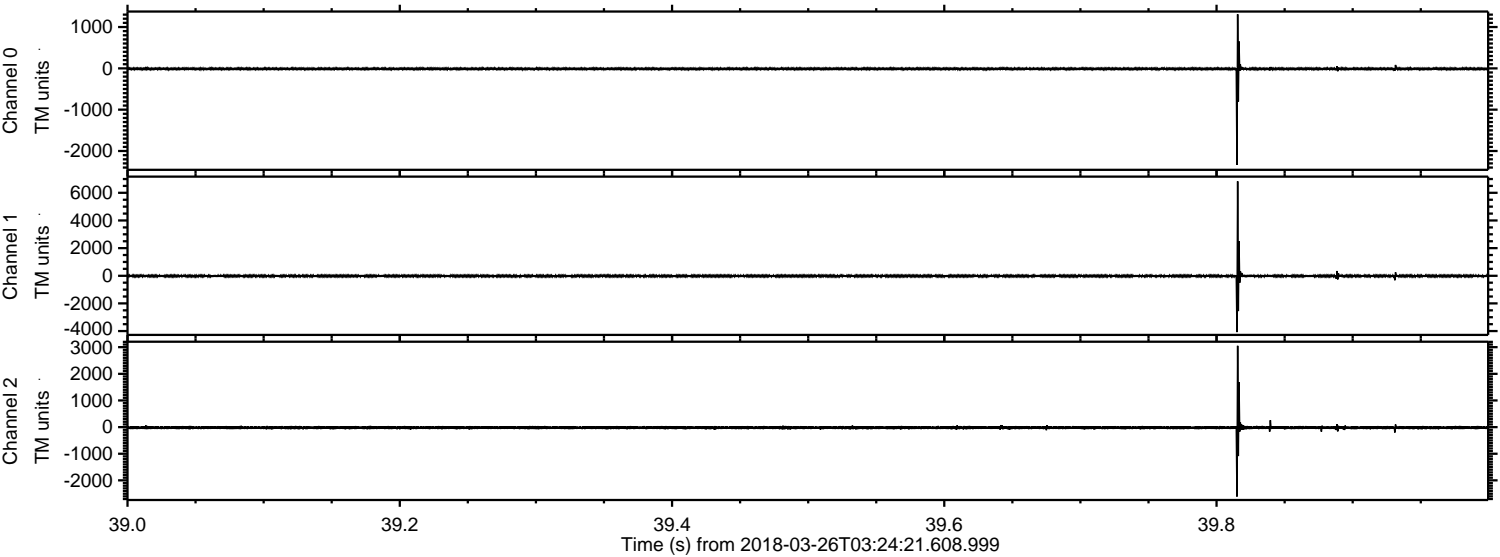


ELMAVAN 3D WAVEFORMS (Measured data sampled at 50 kHz) 51000 packets of 144 samples from 2018-03-26T03:24:21.608.999.

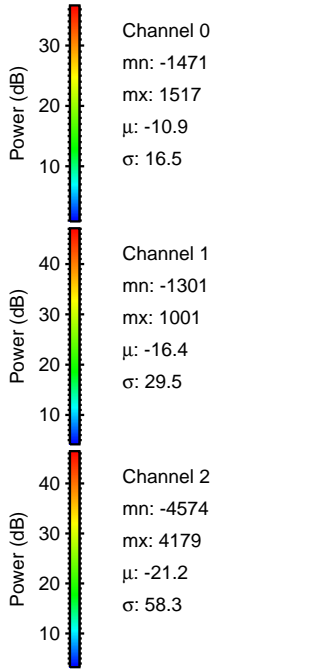
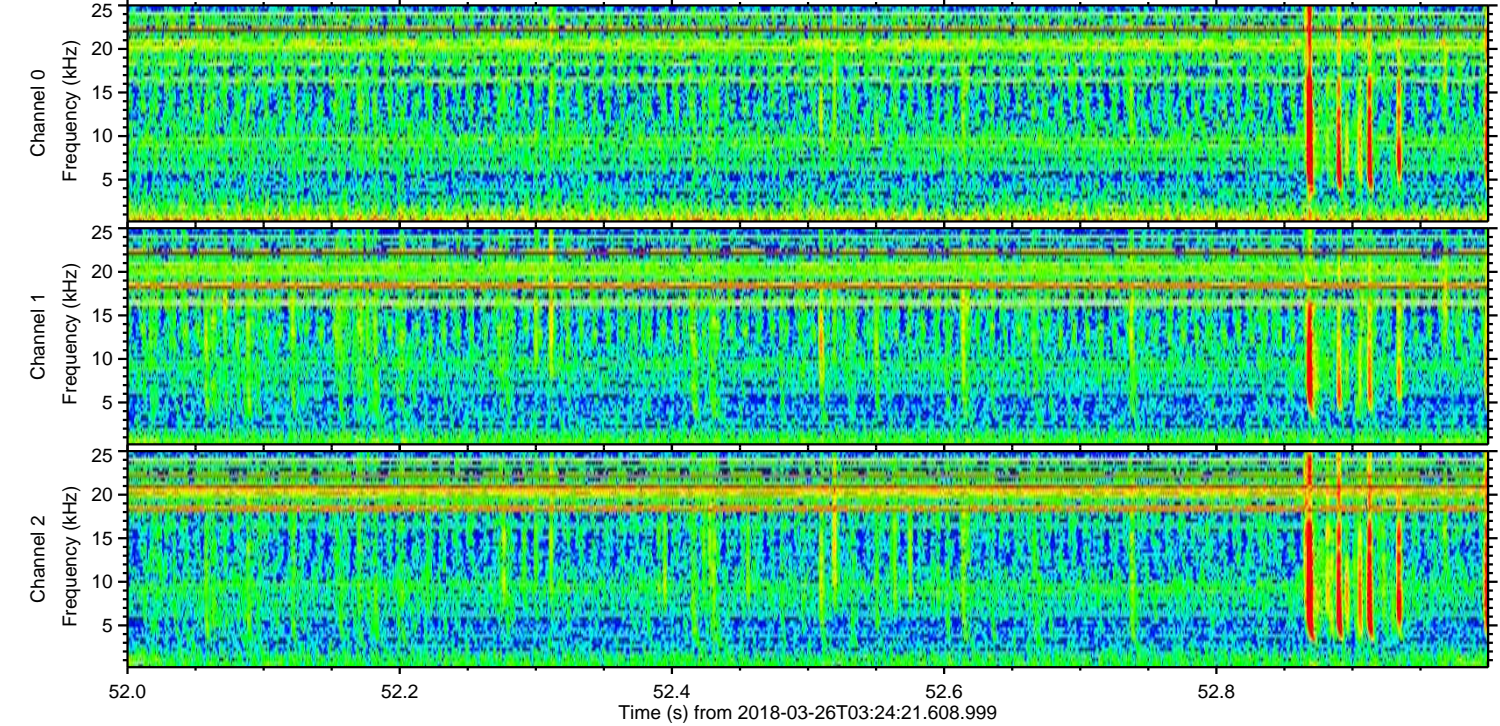
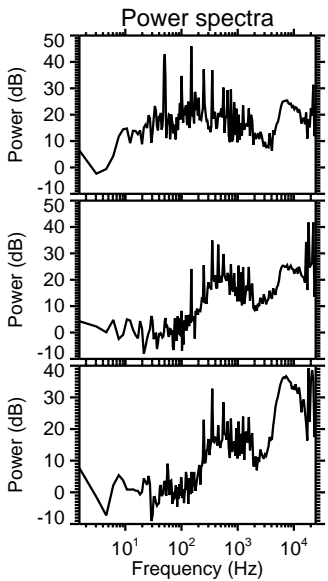
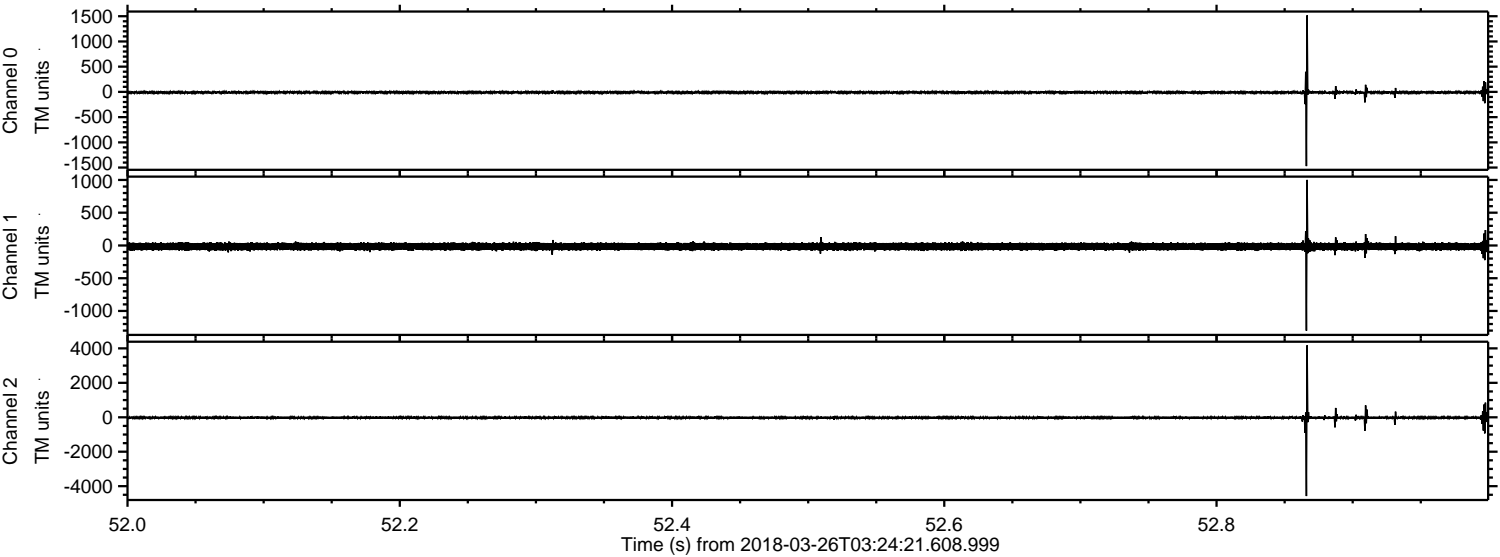
Processed Mon Mar 26 05:32:23 2018 by ELM ver.2012-10-06 from 001__elm20180326_032420__dat00.bin



Processed Mon Mar 26 05:32:31 2018 by ELM ver.2012-10-06 from 001__elm20180326_032420__dat00.bin

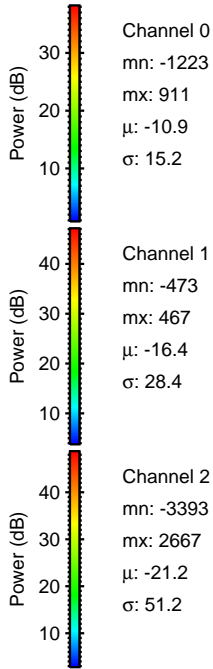
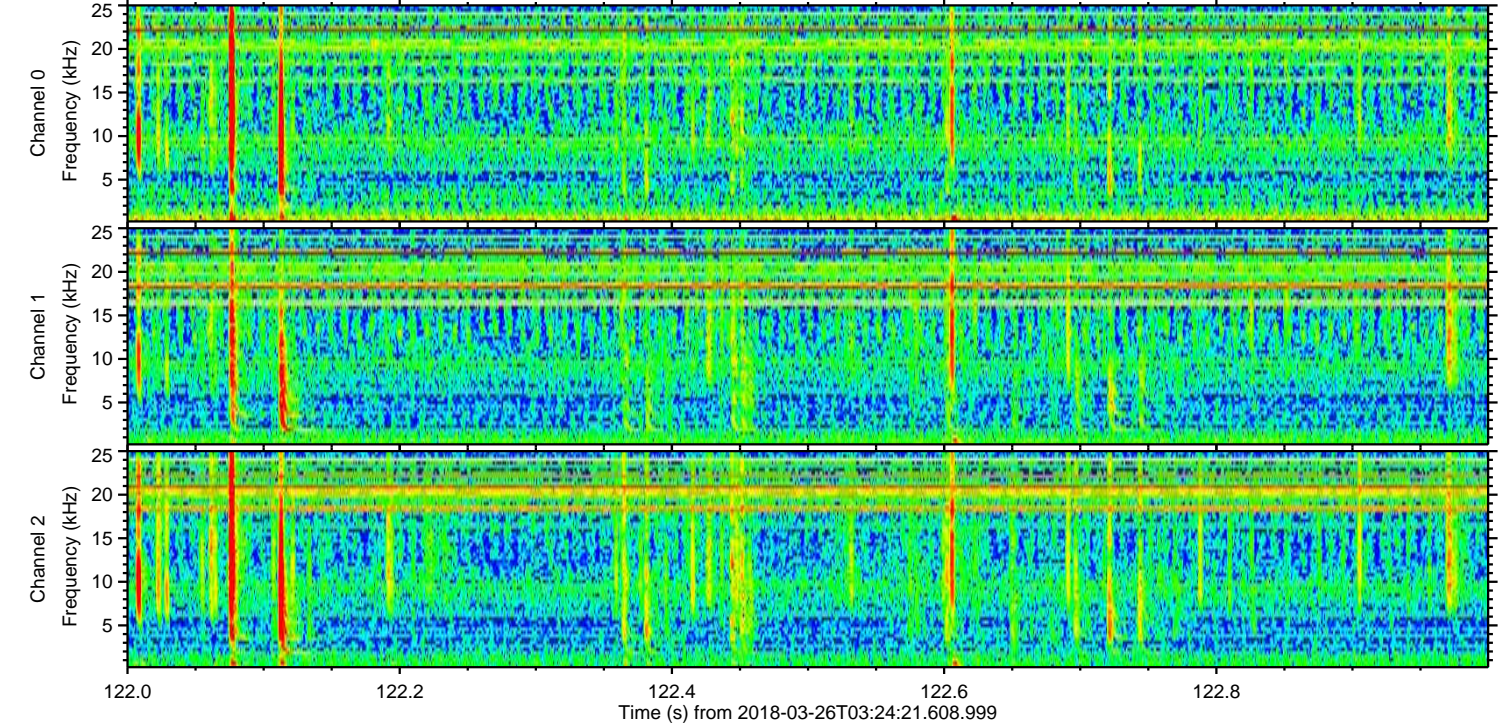
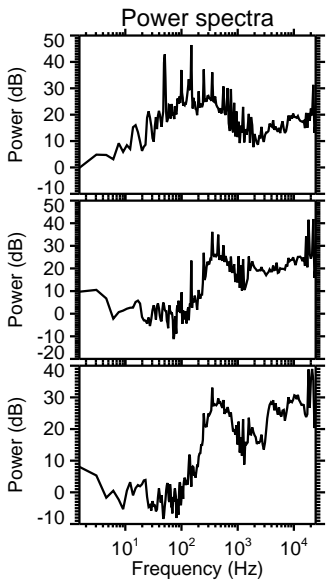
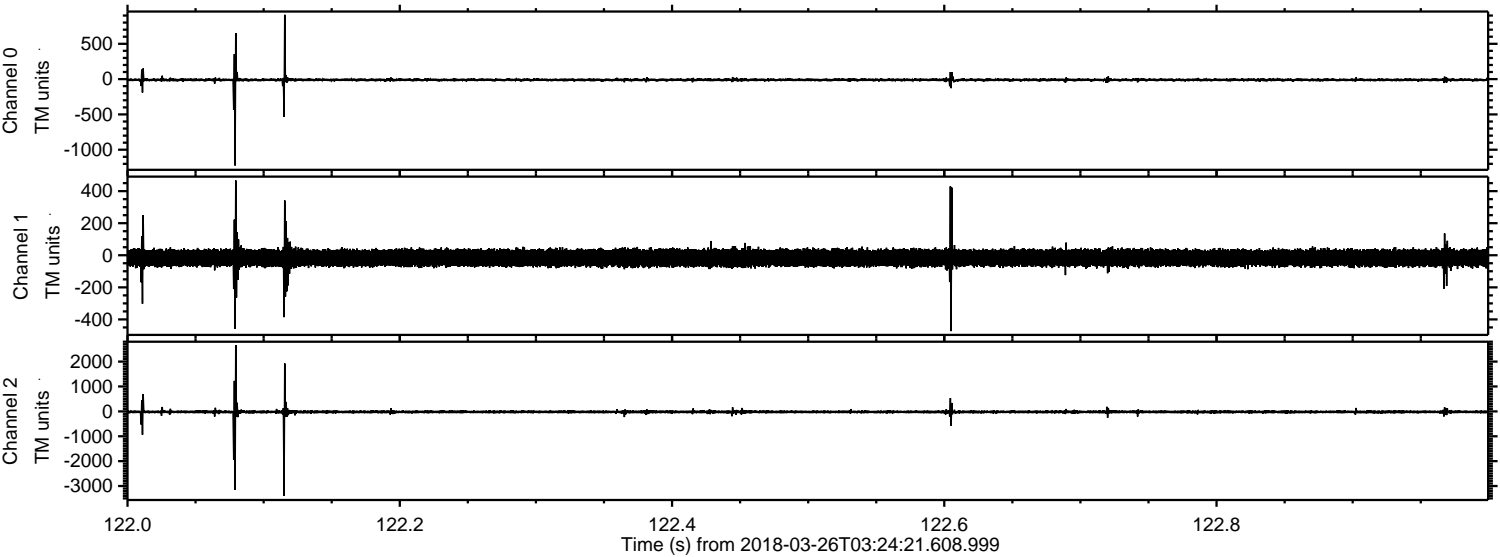


Processed Mon Mar 26 05:32:32 2018 by ELM ver.2012-10-06 from 001__elm20180326_032420__dat00.bin



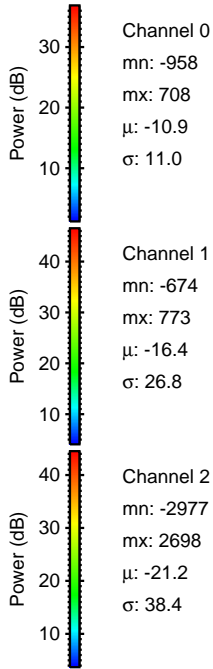
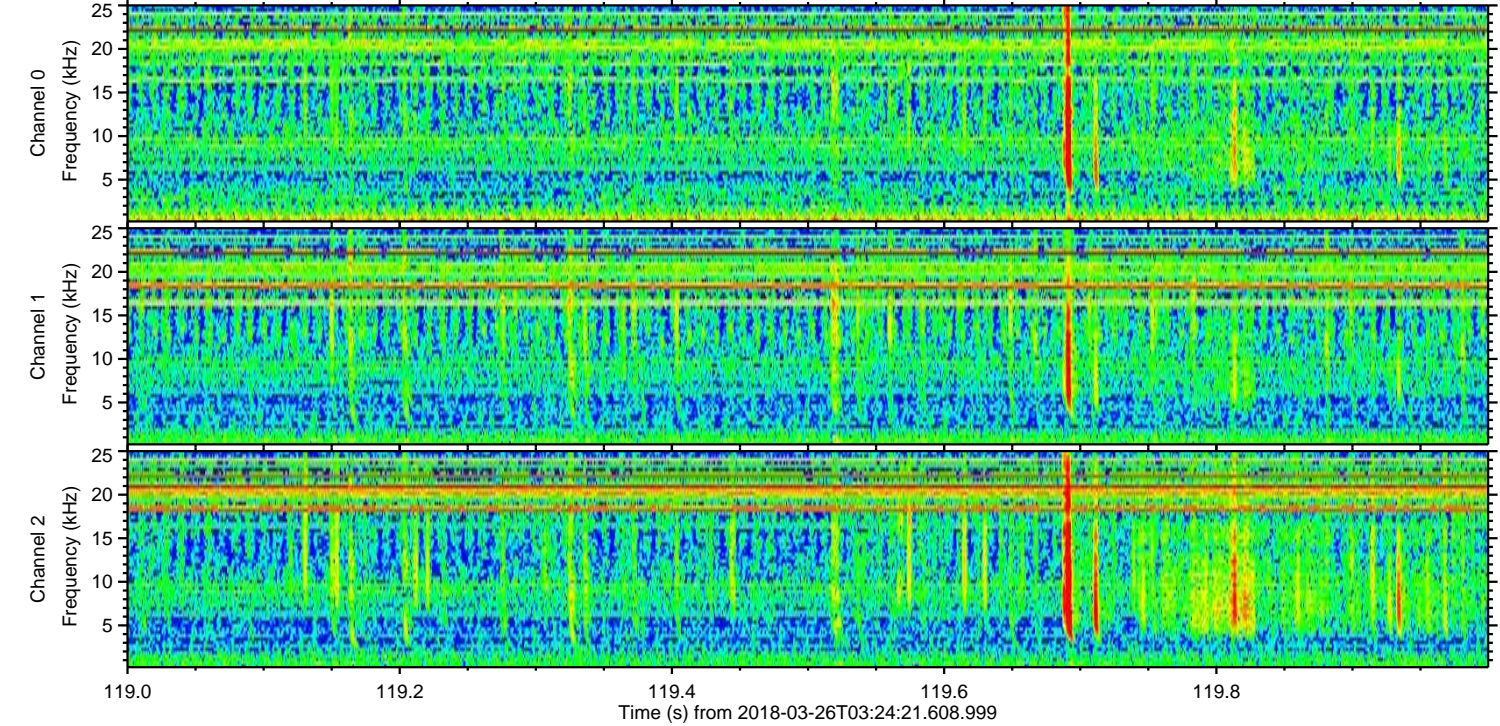
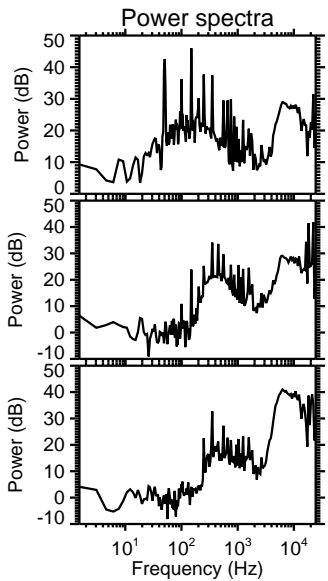
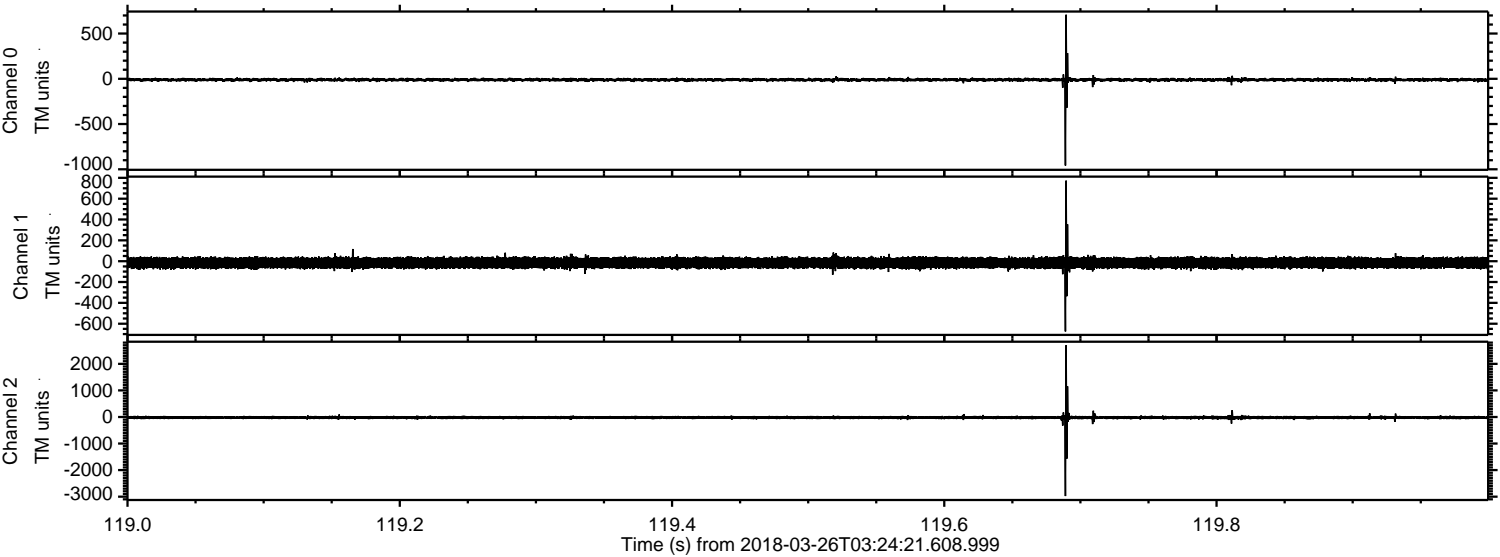
ELMAVAN 3D WAVEFORMS (Measured data sampled at 50 kHz) 51000 packets of 144 samples from 2018-03-26T03:24:21.608.999. Part 123/147

Processed Mon Mar 26 05:32:33 2018 by ELM ver.2012-10-06 from 001__elm20180326_032420__dat00.bin

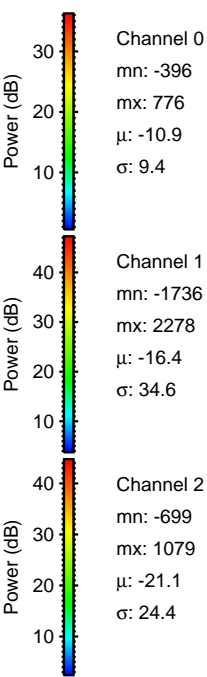
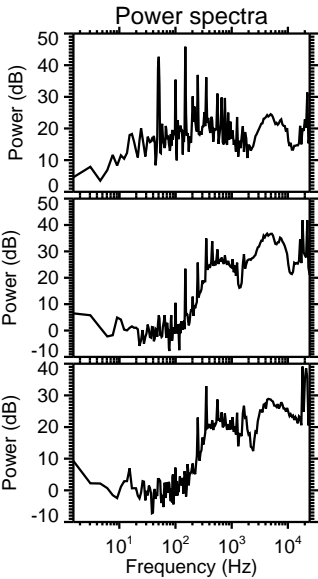
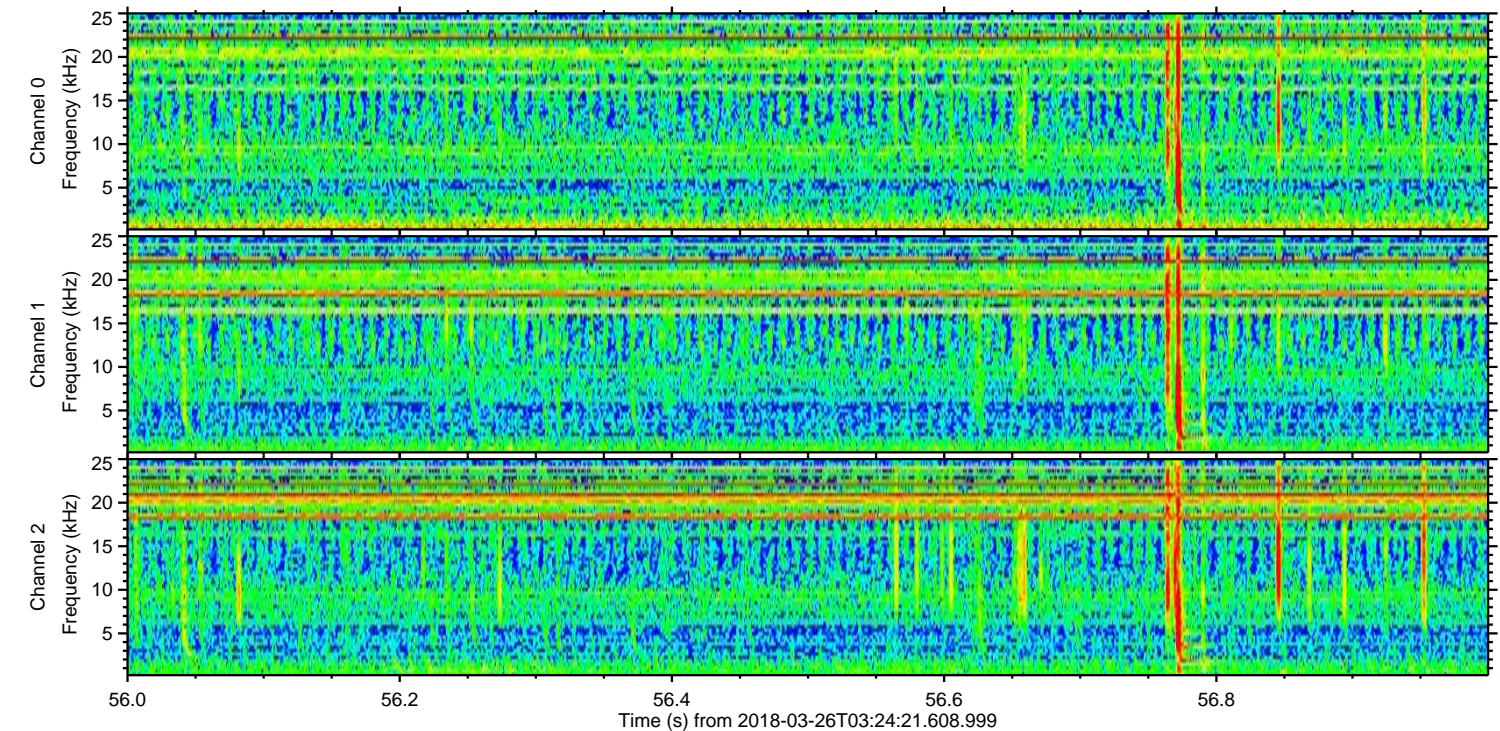
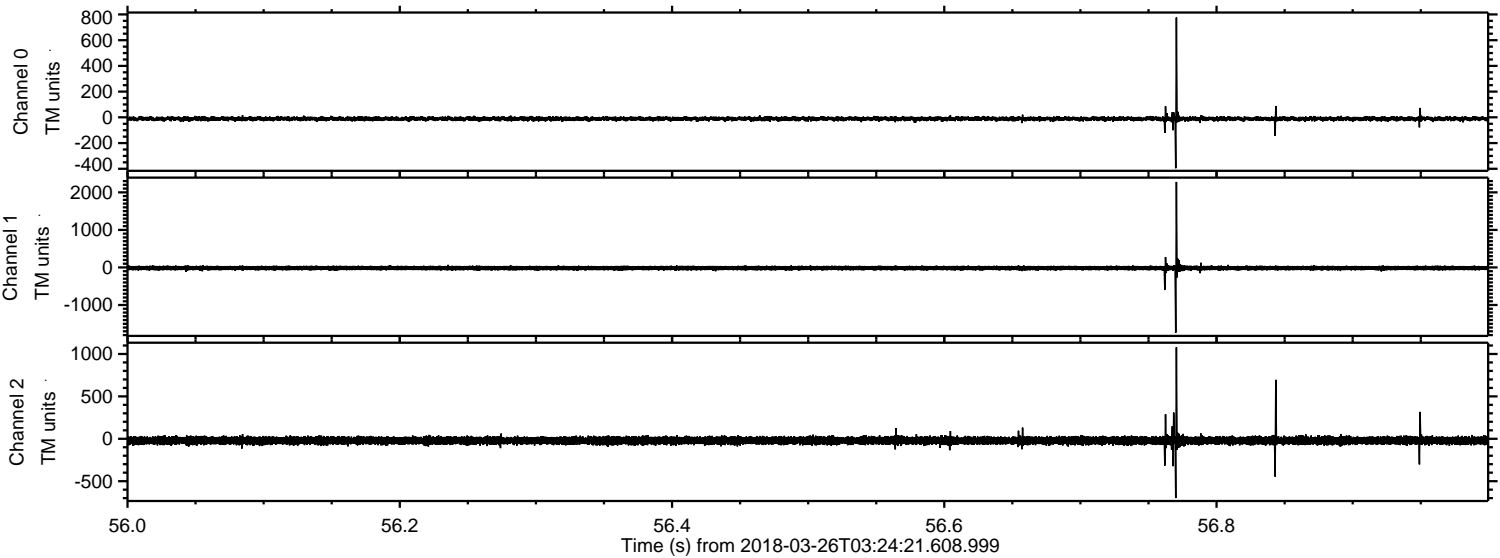


ELMAVAN 3D WAVEFORMS (Measured data sampled at 50 kHz) 51000 packets of 144 samples from 2018-03-26T03:24:21.608.999. Part 120/147

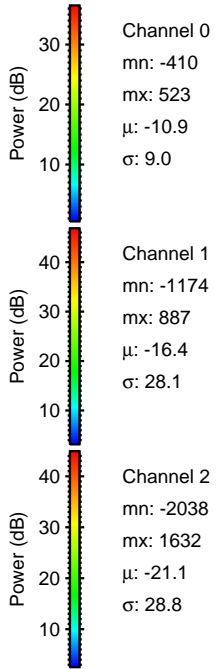
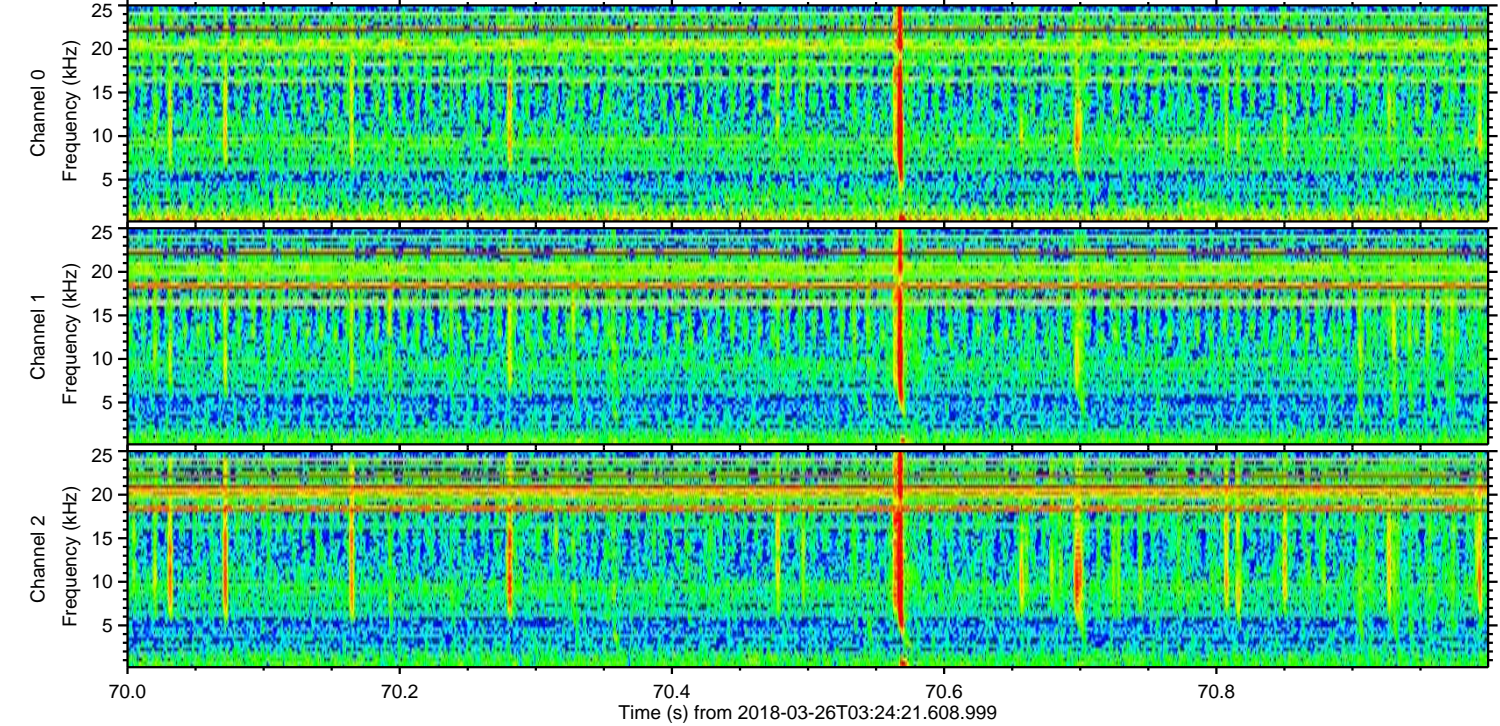
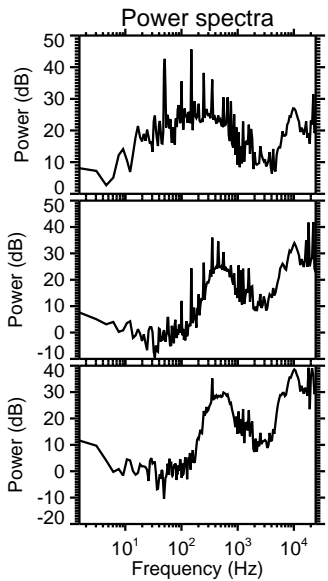
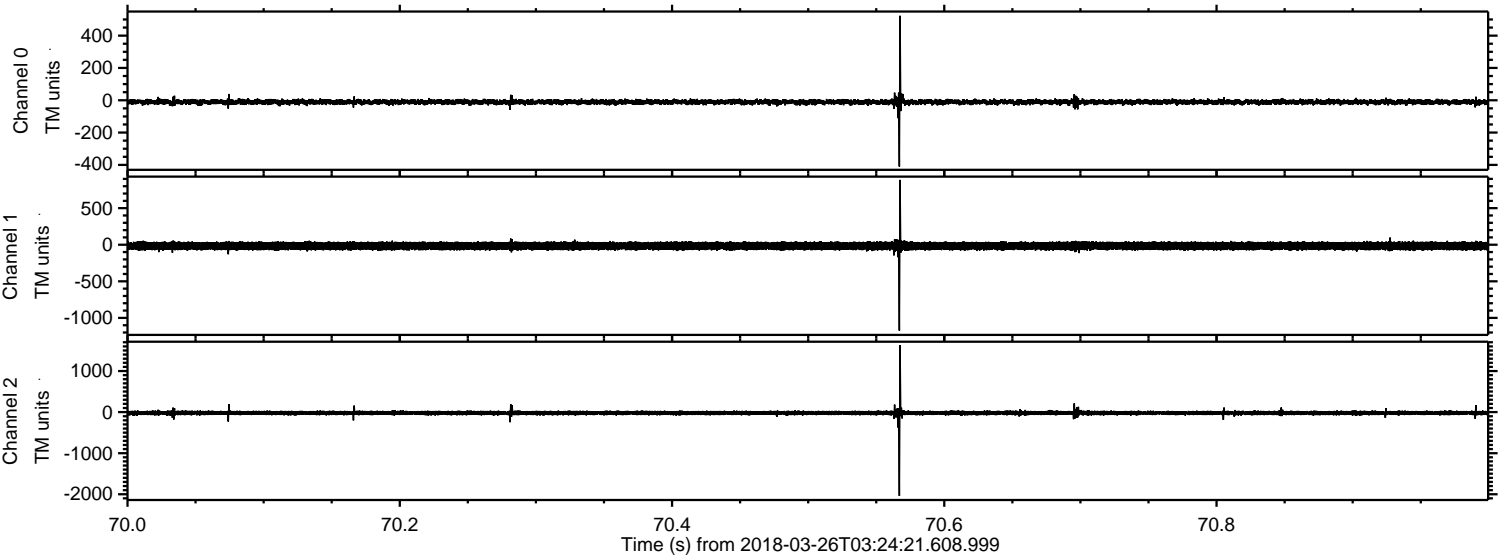
Processed Mon Mar 26 05:32:34 2018 by ELM ver.2012-10-06 from 001__elm20180326_032420__dat00.bin



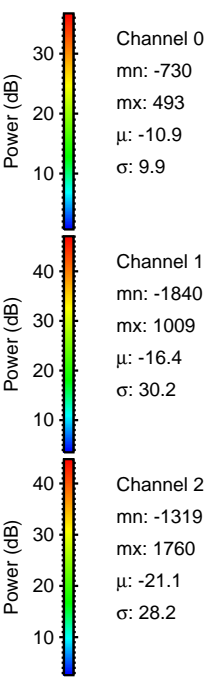
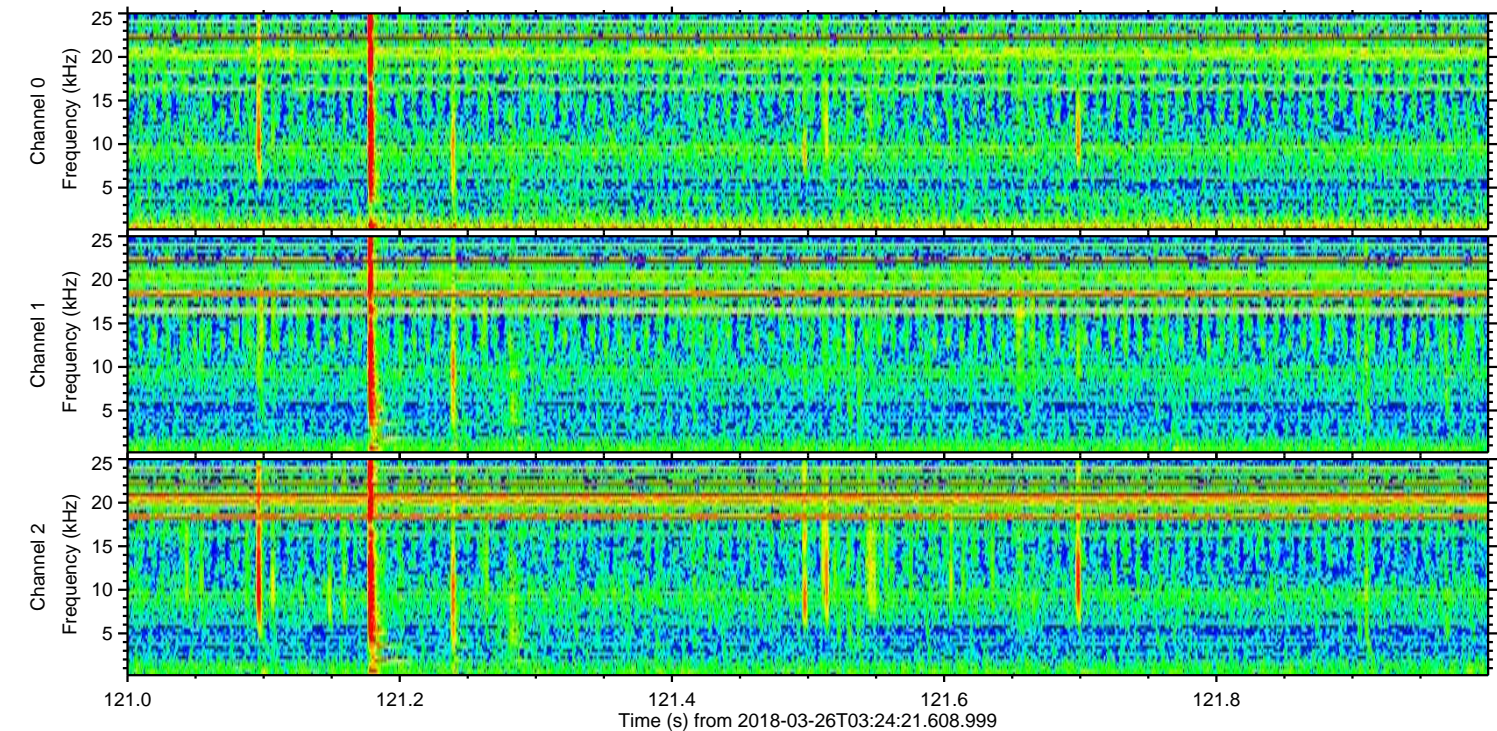
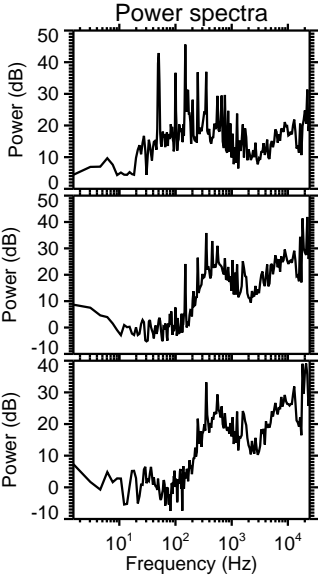
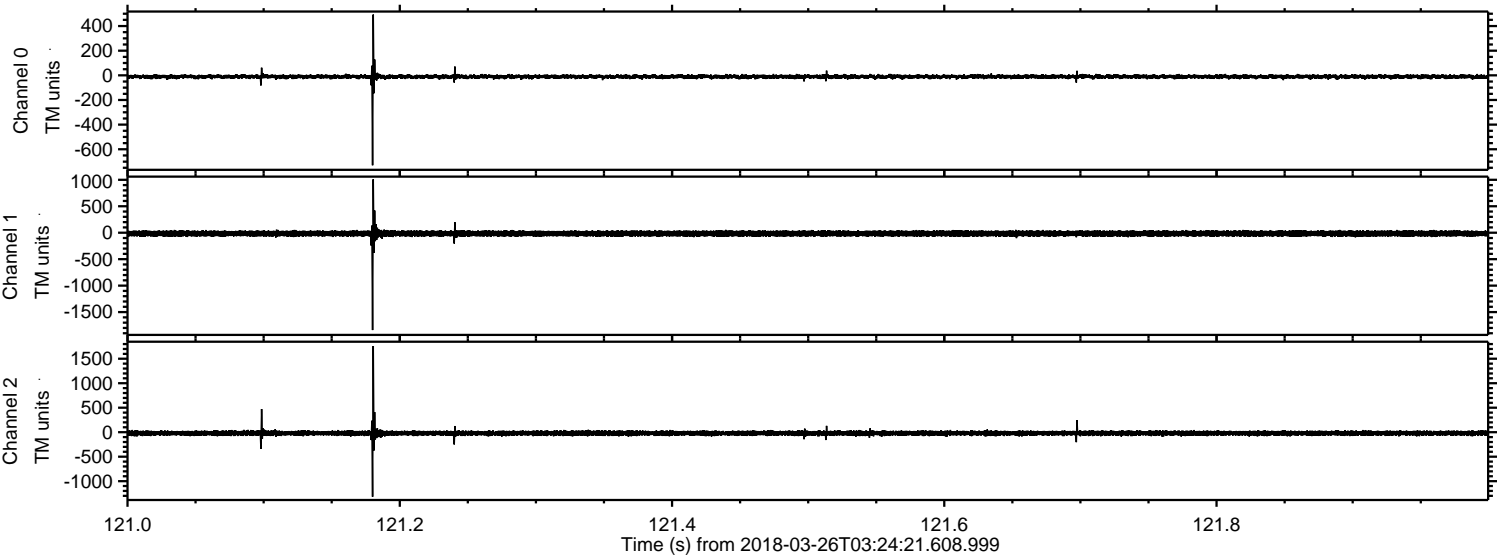
Processed Mon Mar 26 05:32:35 2018 by ELM ver.2012-10-06 from 001__elm20180326_032420__dat00.bin



Processed Mon Mar 26 05:32:36 2018 by ELM ver.2012-10-06 from 001__elm20180326_032420__dat00.bin

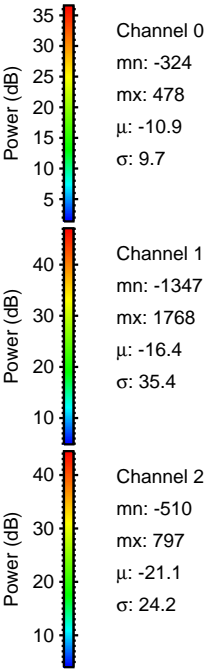
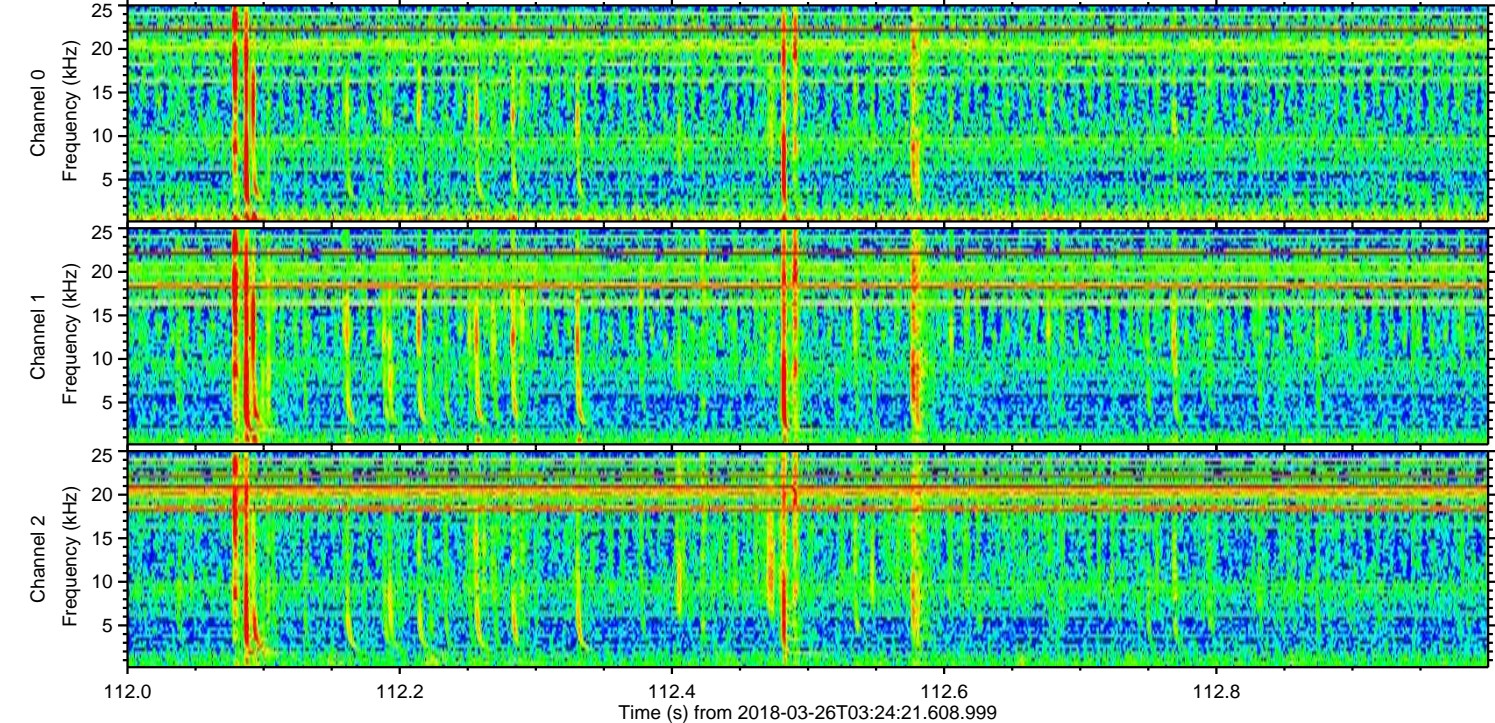
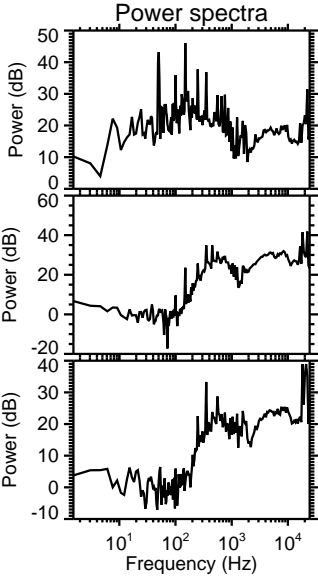
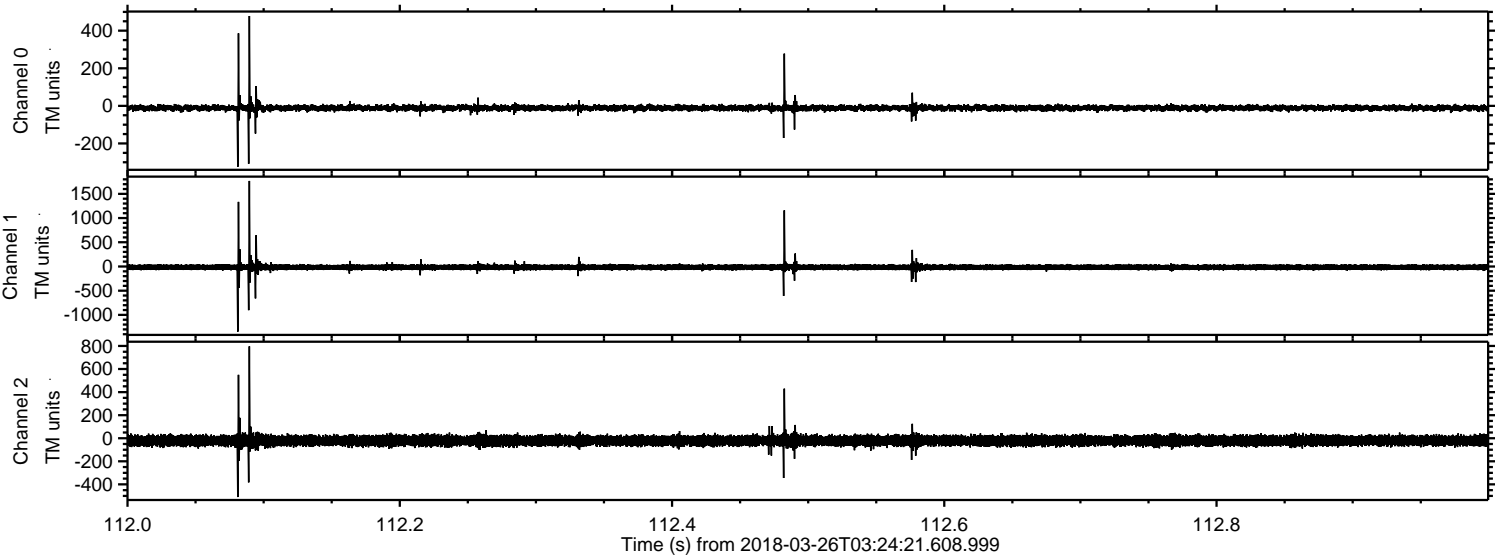


Processed Mon Mar 26 05:32:36 2018 by ELM ver.2012-10-06 from 001__elm20180326_032420__dat00.bin

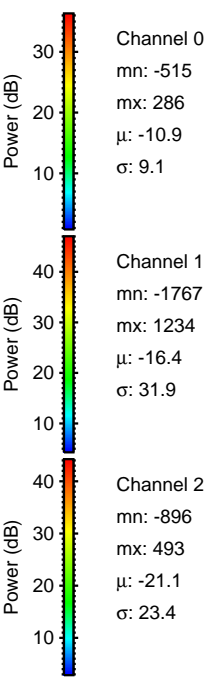
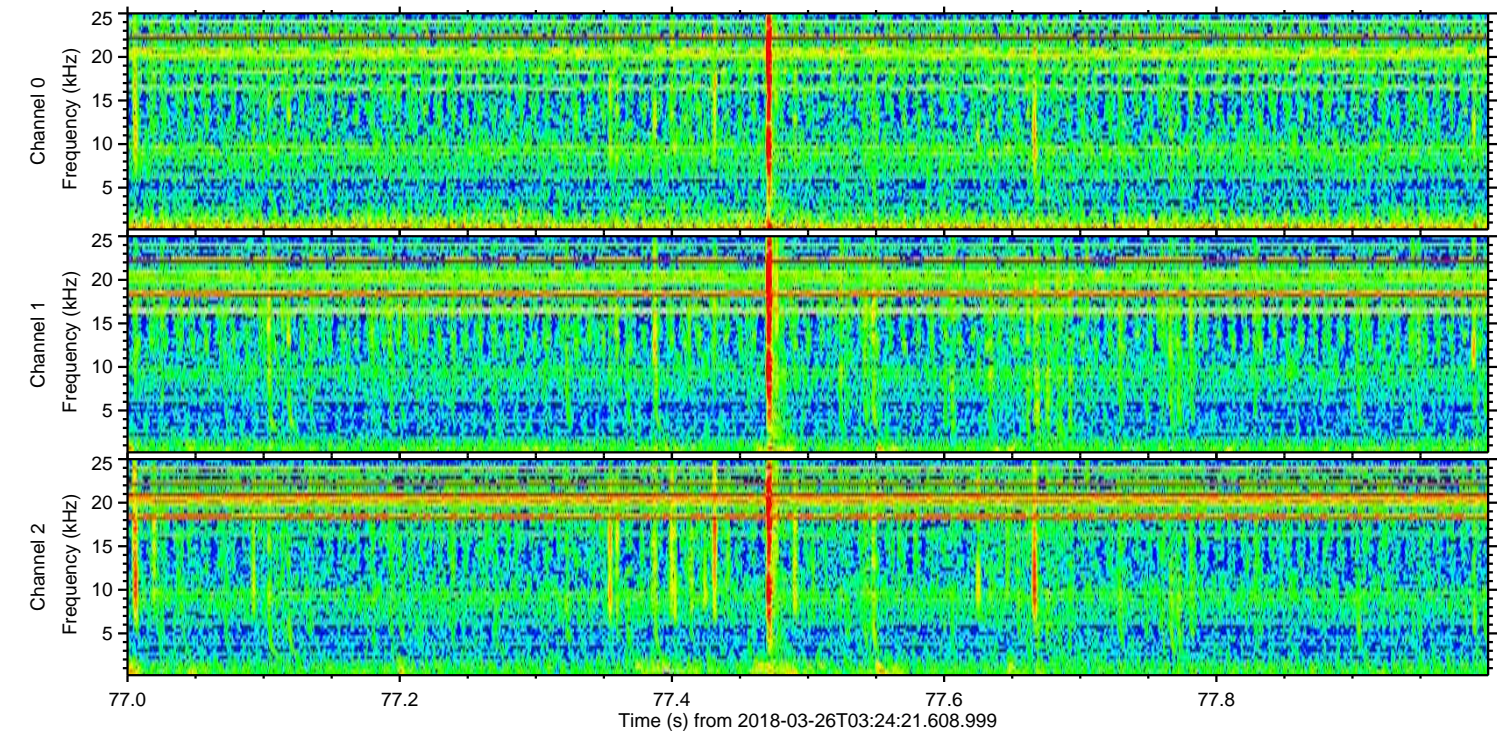
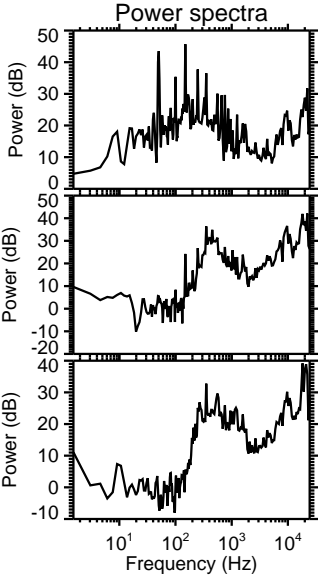
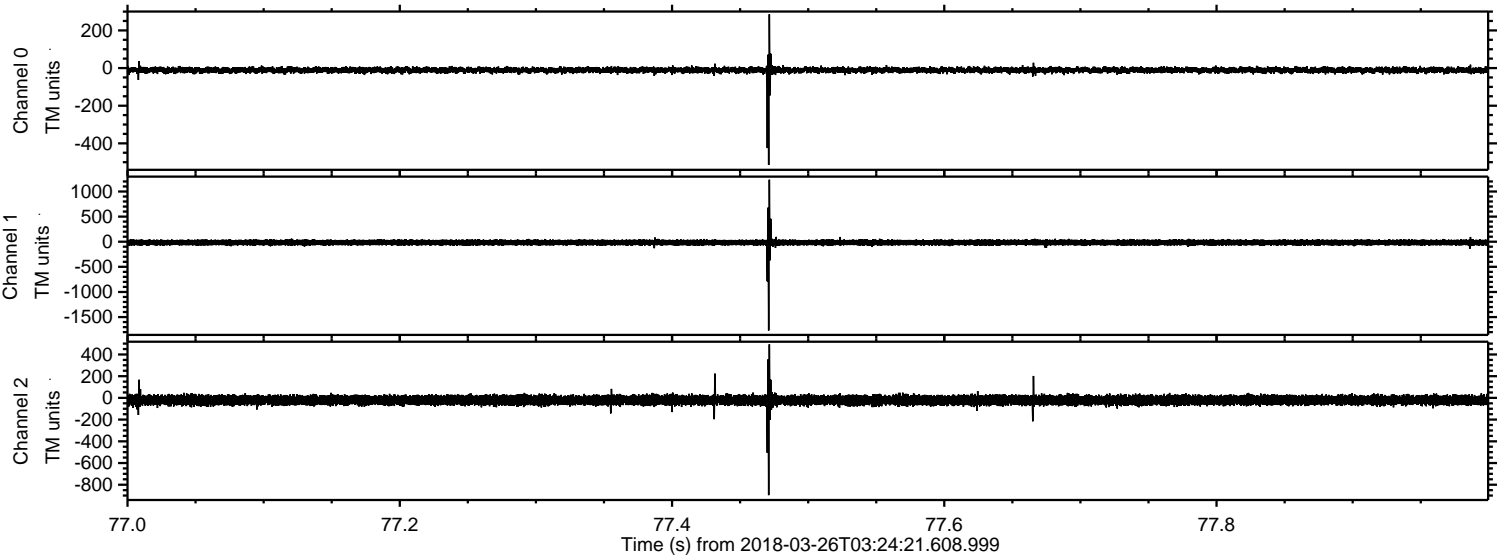


ELMAVAN 3D WAVEFORMS (Measured data sampled at 50 kHz) 51000 packets of 144 samples from 2018-03-26T03:24:21.608.999. Part 113/147

Processed Mon Mar 26 05:32:38 2018 by ELM ver.2012-10-06 from 001__elm20180326_032420__dat00.bin



Processed Mon Mar 26 05:32:38 2018 by ELM ver.2012-10-06 from 001__elm20180326_032420__dat00.bin



Channel 0
mn: -515
mx: 286
 μ : -10.9
 σ : 9.1

Channel 1
mn: -1767
mx: 1234
 μ : -16.4
 σ : 31.9

Channel 2
mn: -896
mx: 493
 μ : -21.1
 σ : 23.4

Processed Mon Mar 26 05:32:39 2018 by ELM ver.2012-10-06 from 001__elm20180326_032420__dat00.bin

