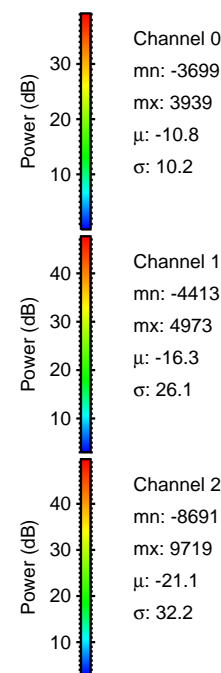
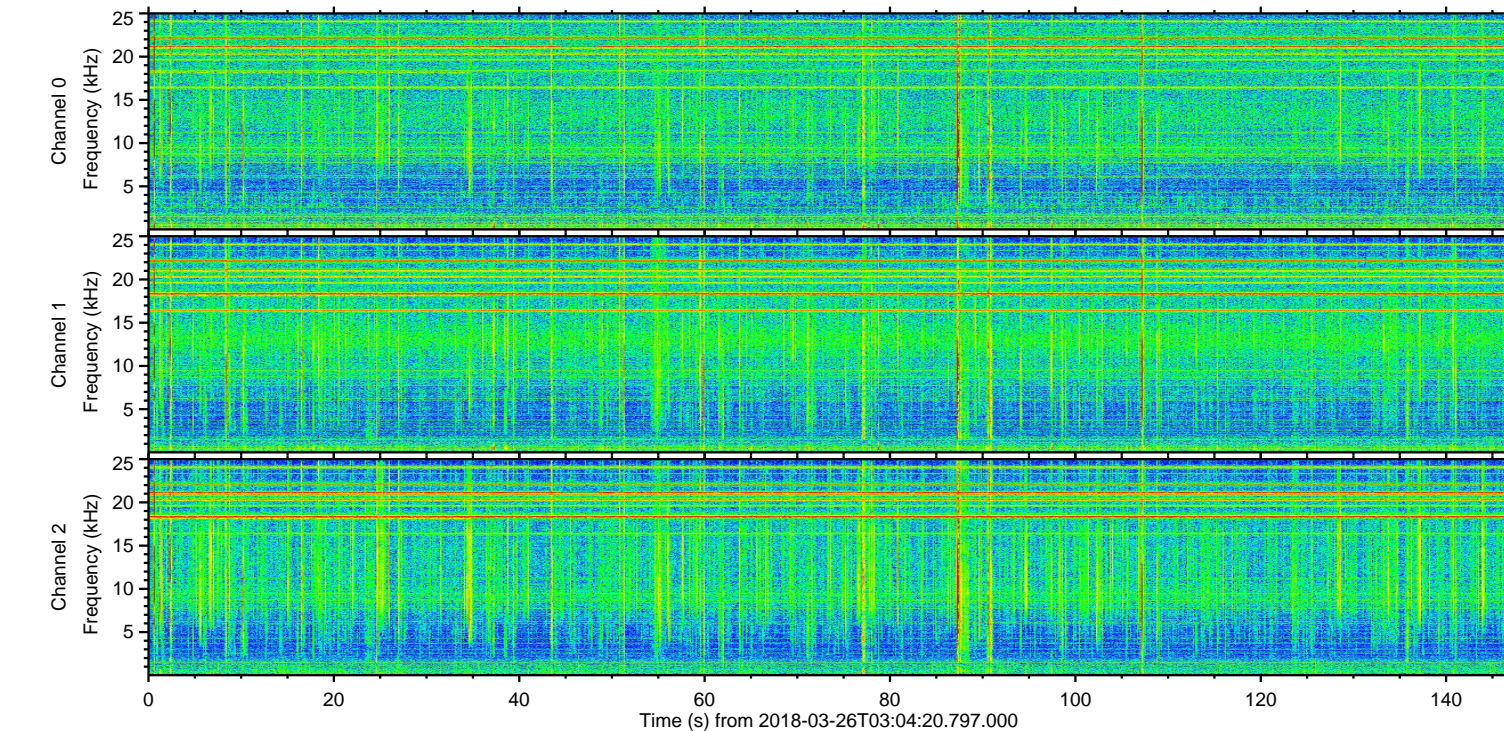
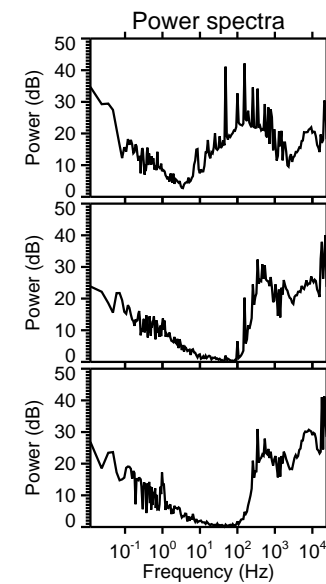
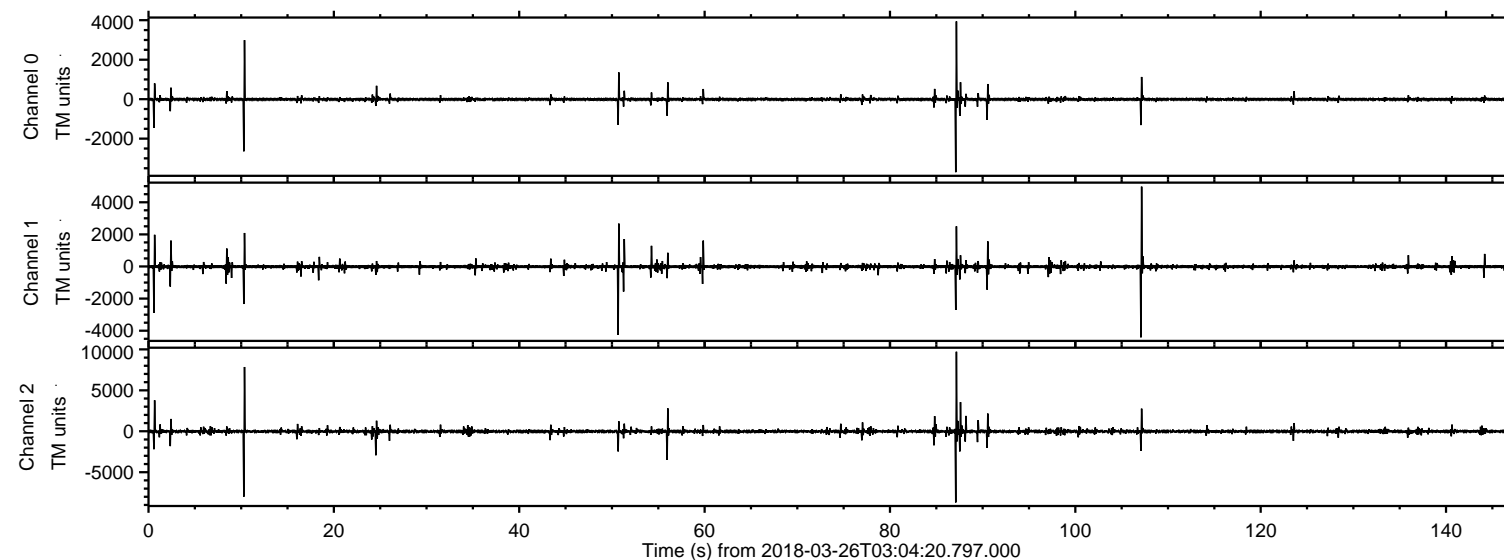
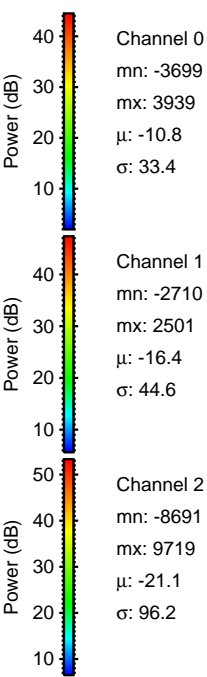
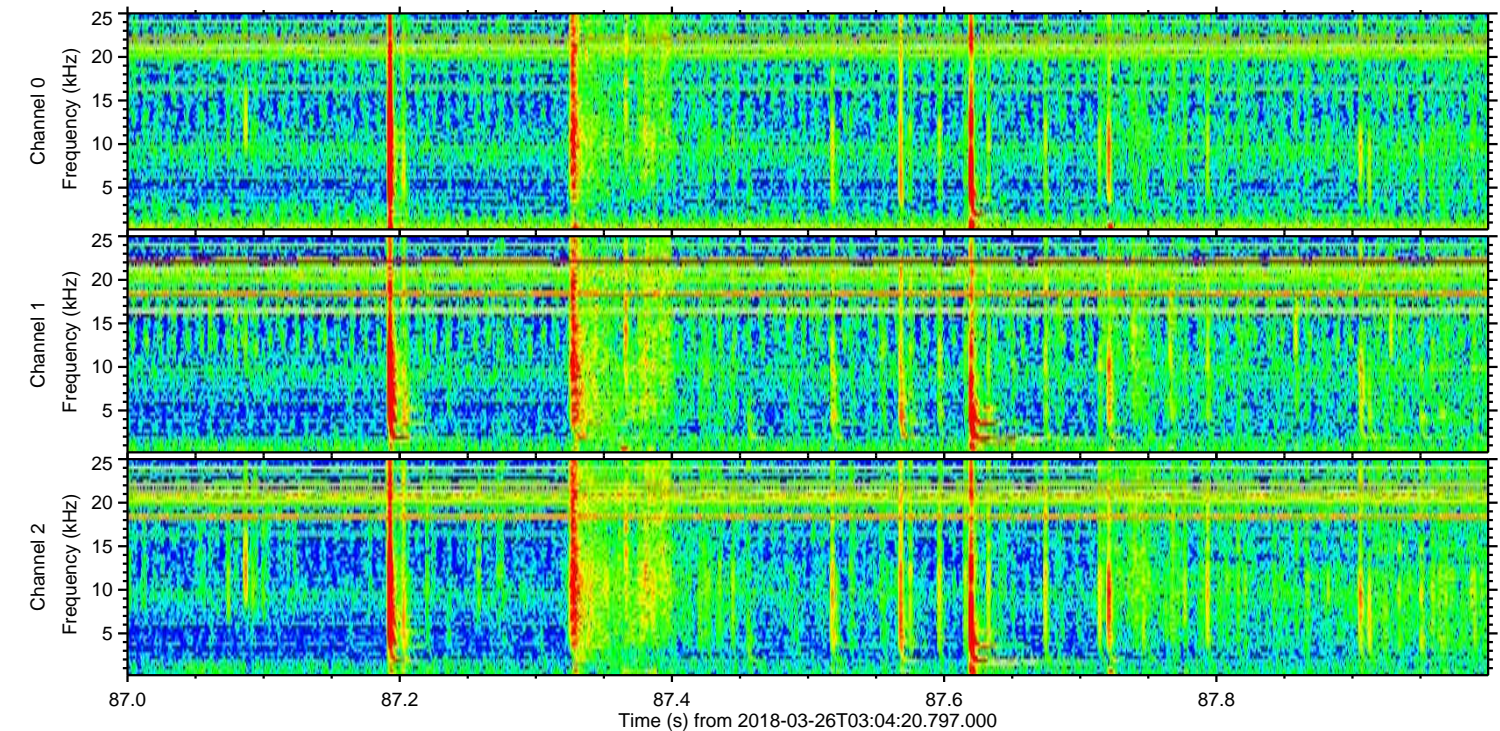
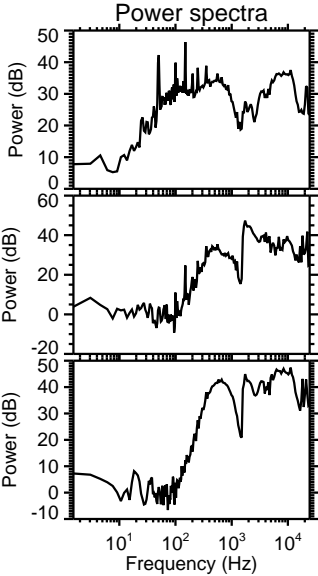
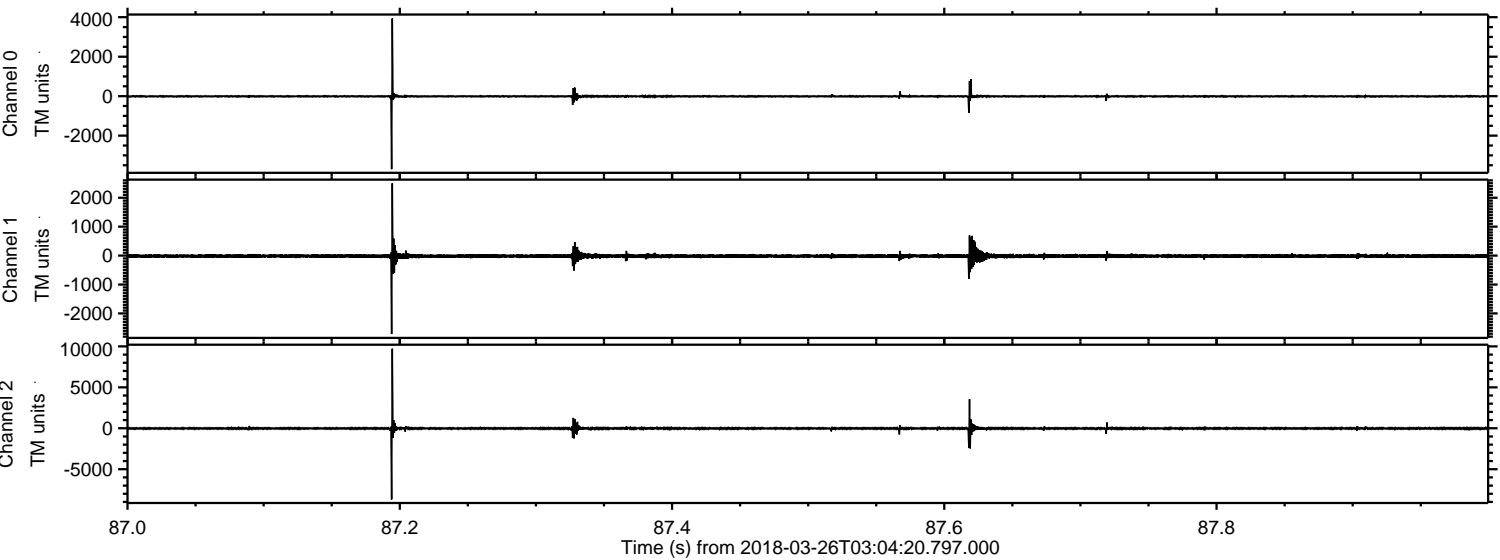


ELMAVAN 3D WAVEFORMS (Measured data sampled at 50 kHz) 51000 packets of 144 samples from 2018-03-26T03:04:20.797.000.

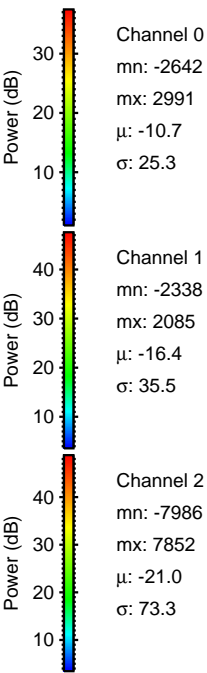
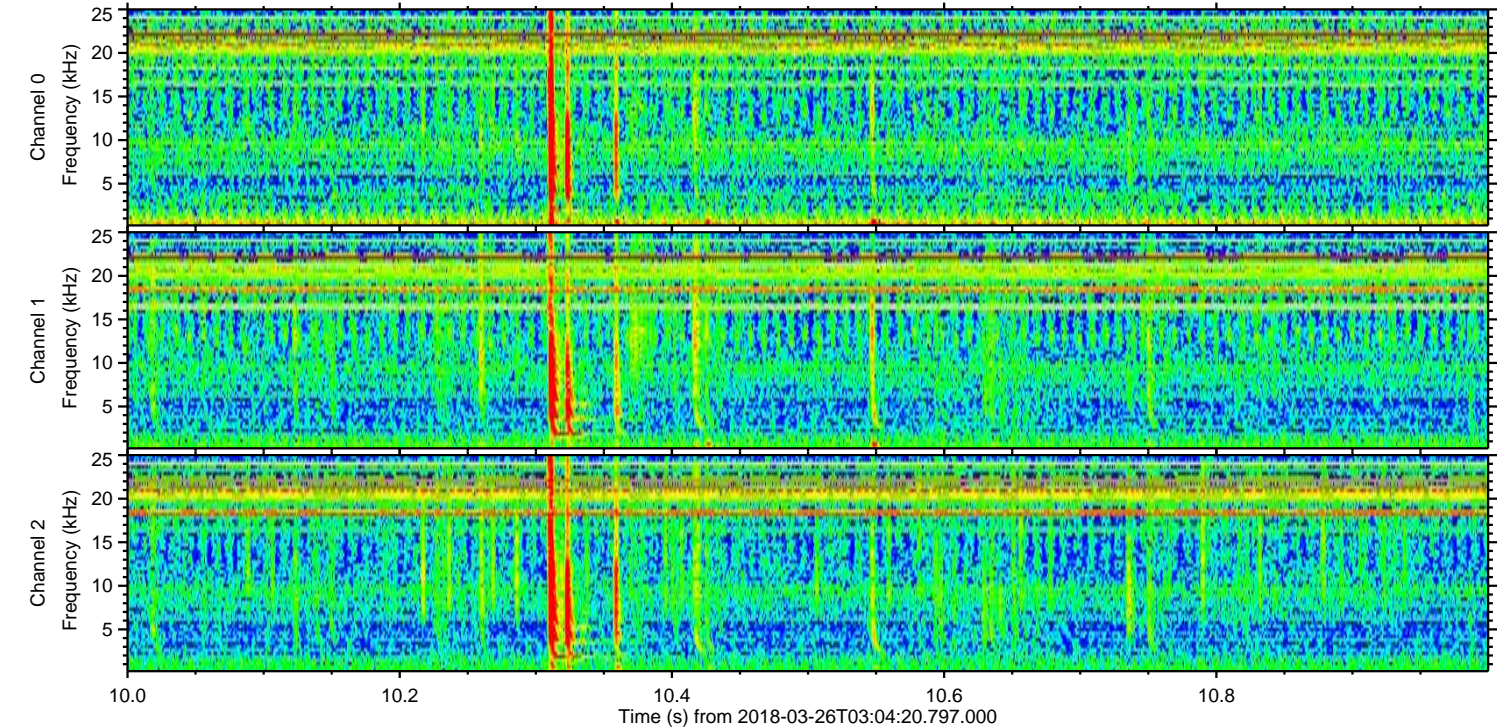
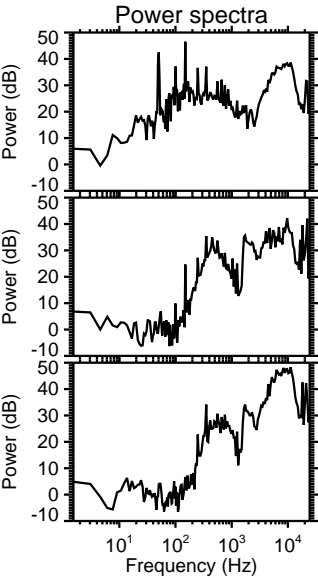
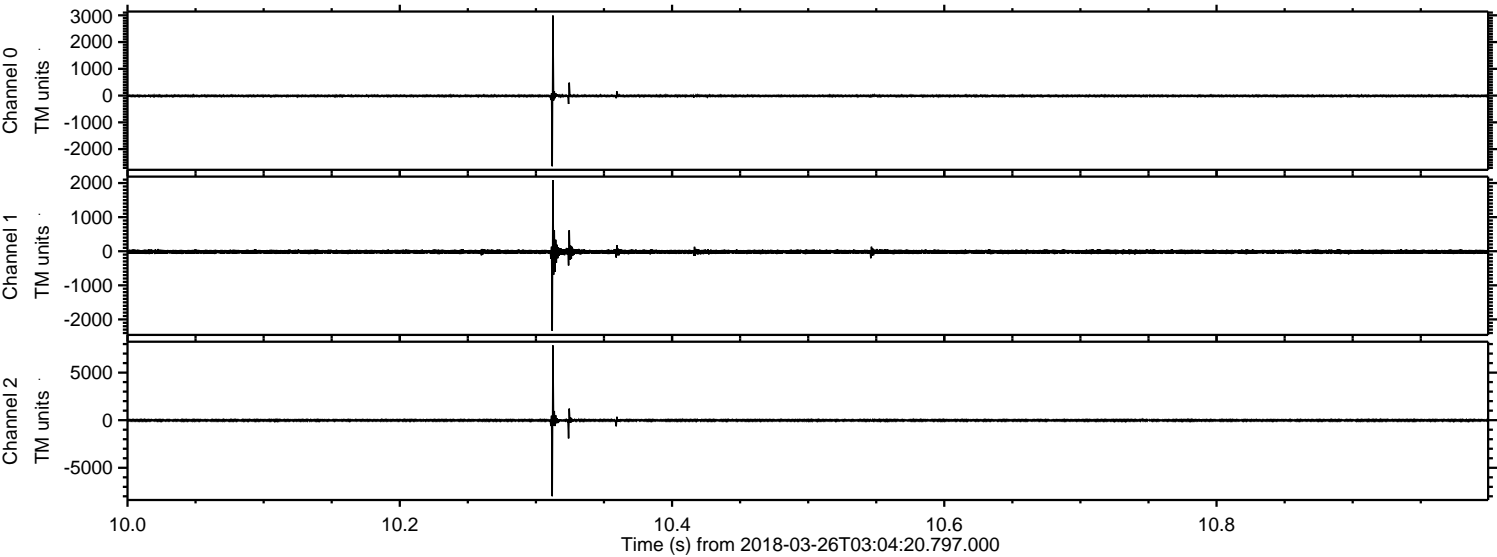
Processed Mon Mar 26 05:12:53 2018 by ELM ver.2012-10-06 from 001__elm20180326_030419__dat00.bin



Processed Mon Mar 26 05:13:02 2018 by ELM ver.2012-10-06 from 001__elm20180326_030419__dat00.bin

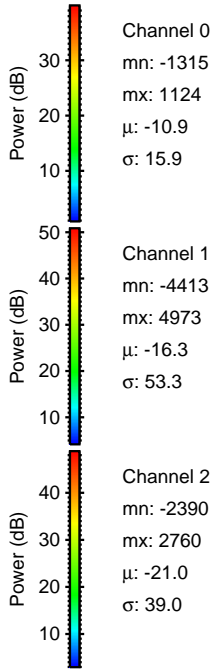
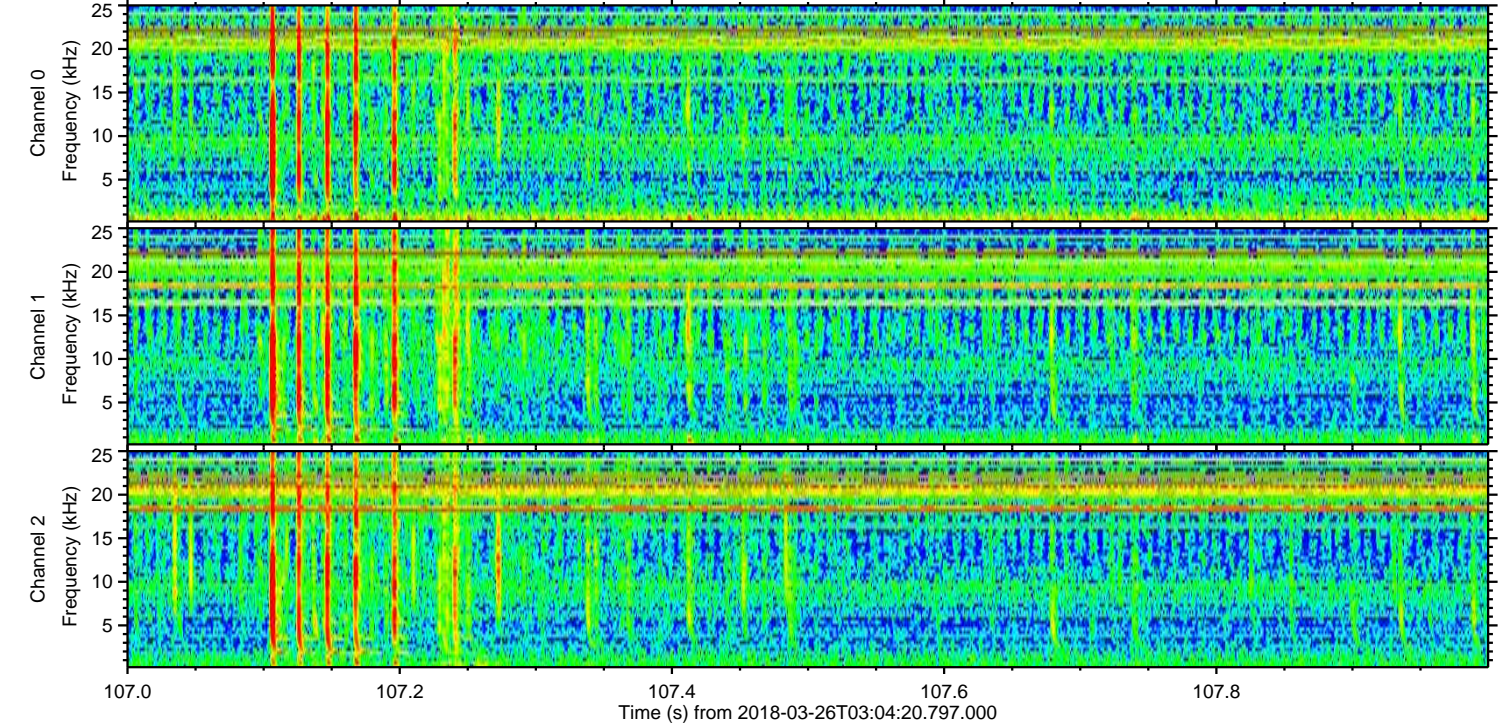
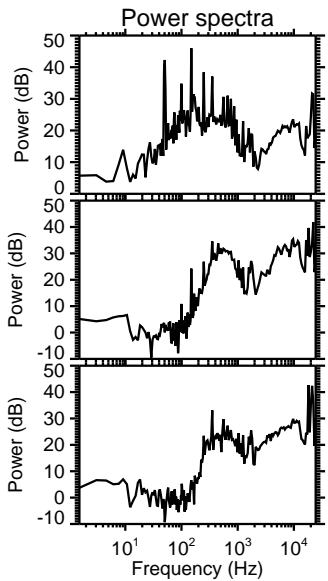
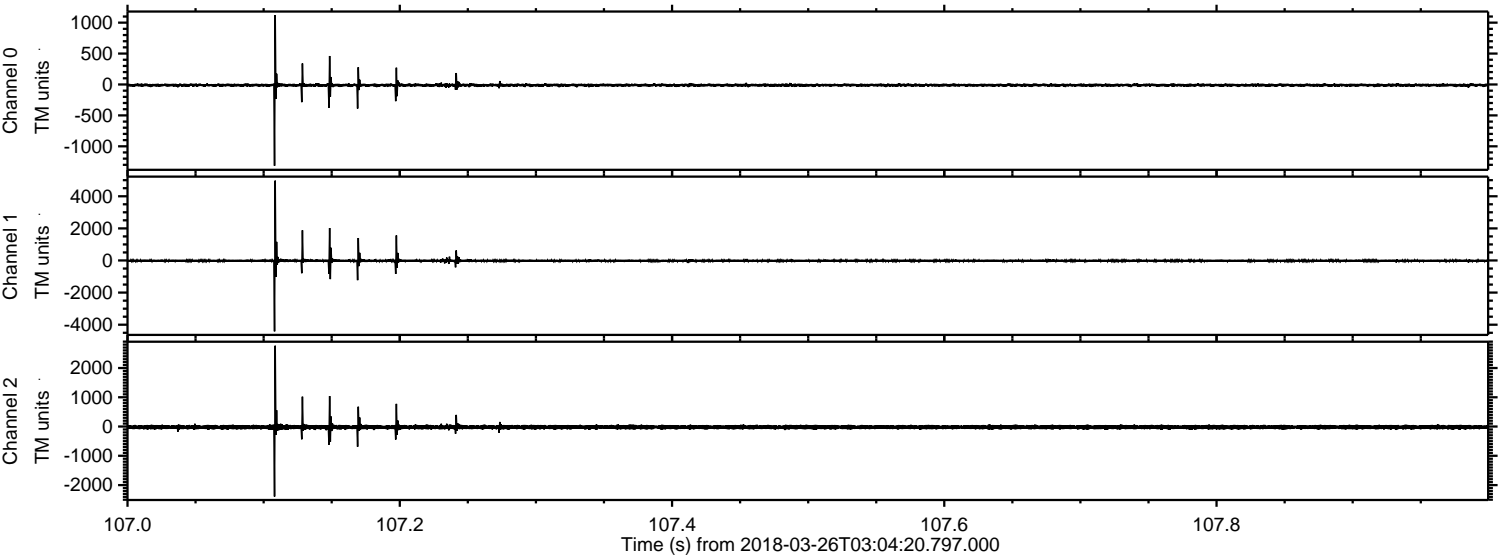


Processed Mon Mar 26 05:13:03 2018 by ELM ver.2012-10-06 from 001__elm20180326_030419__dat00.bin

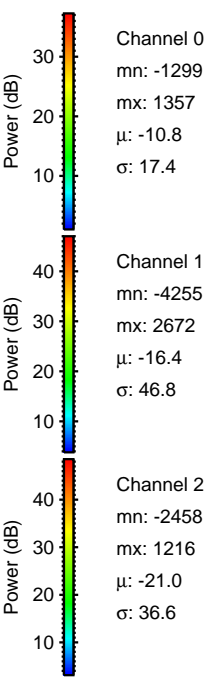
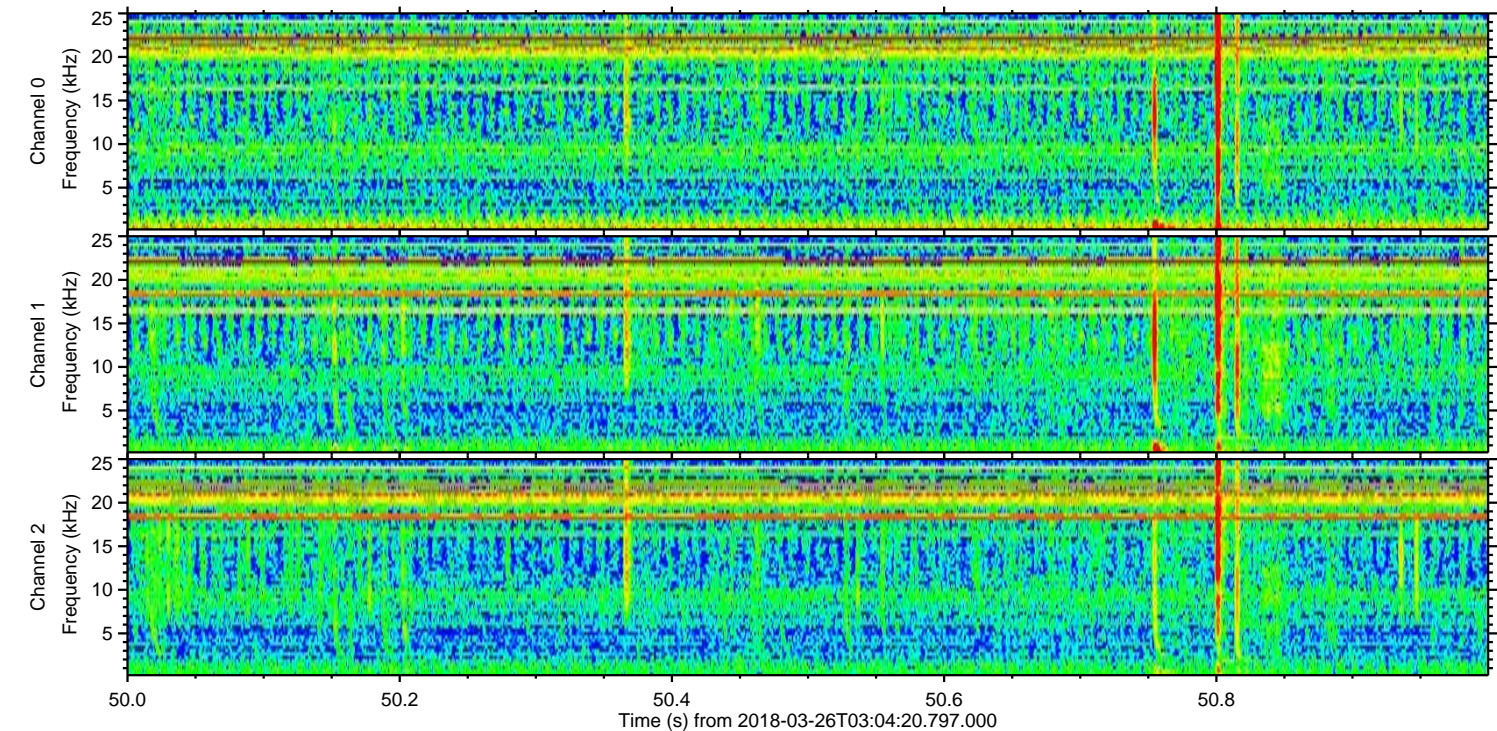
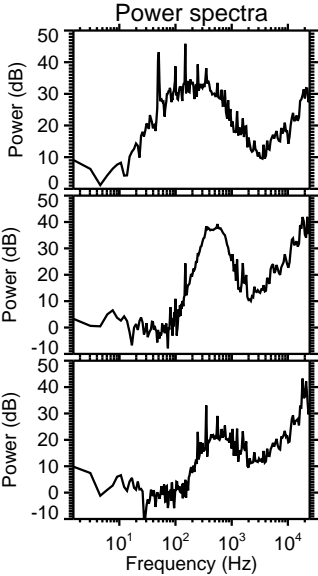
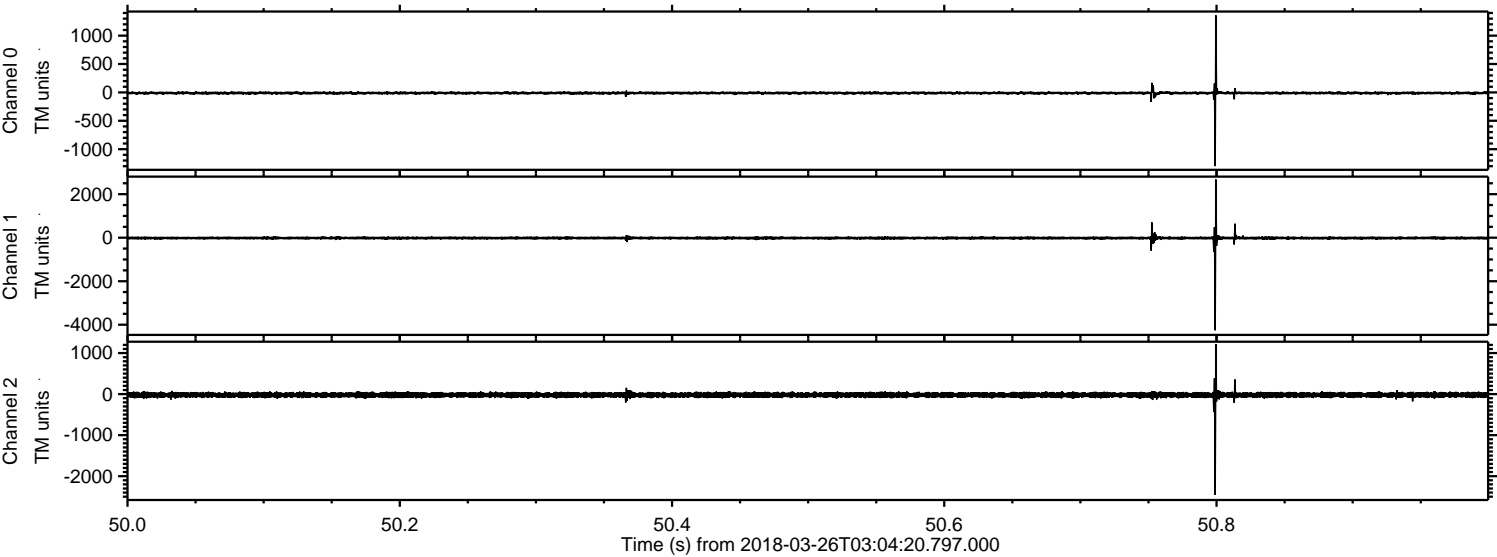


ELMAVAN 3D WAVEFORMS (Measured data sampled at 50 kHz) 51000 packets of 144 samples from 2018-03-26T03:04:20.797.000. Part 108/147

Processed Mon Mar 26 05:13:04 2018 by ELM ver.2012-10-06 from 001__elm20180326_030419__dat00.bin

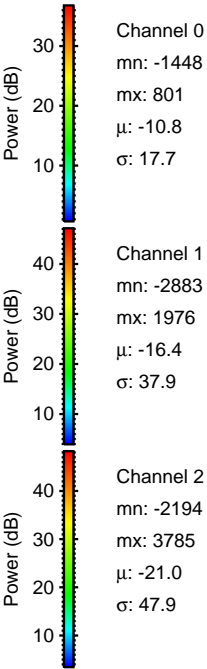
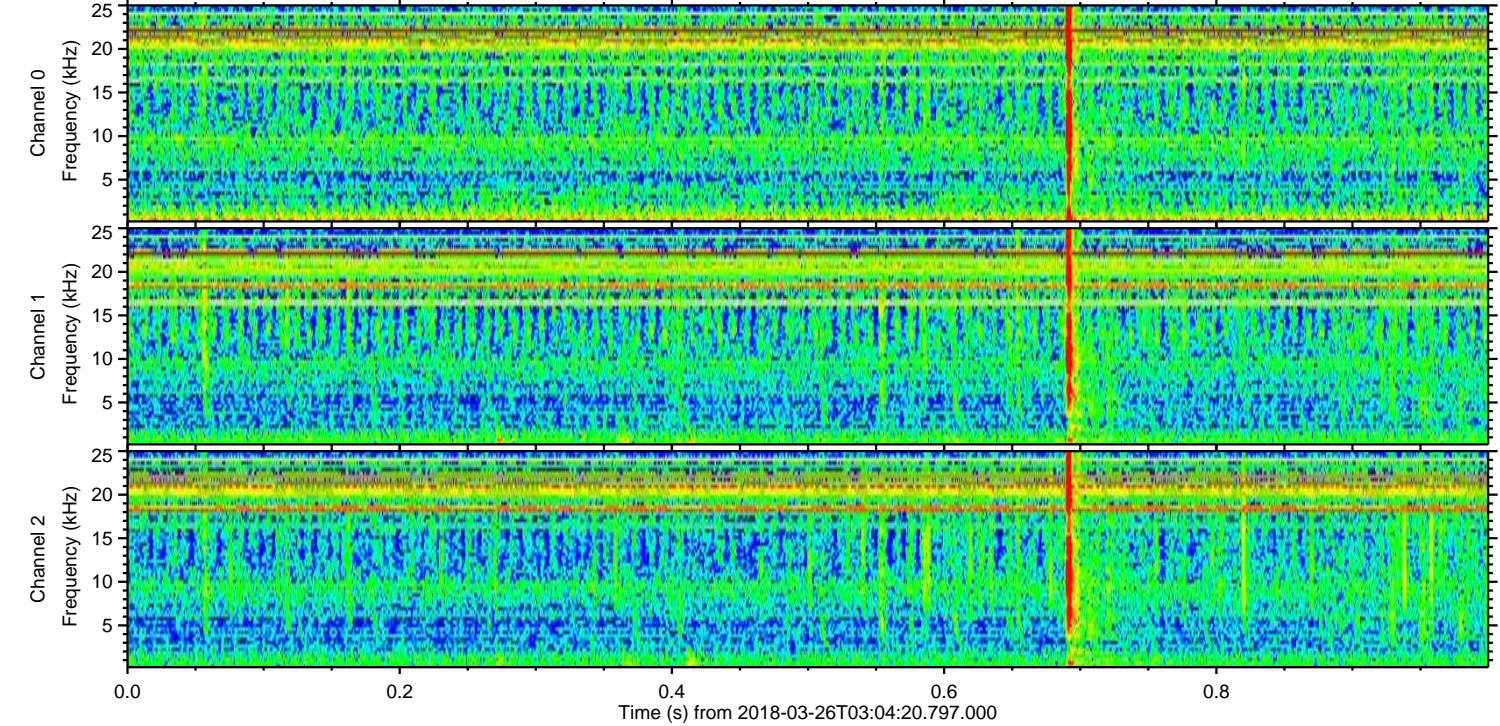
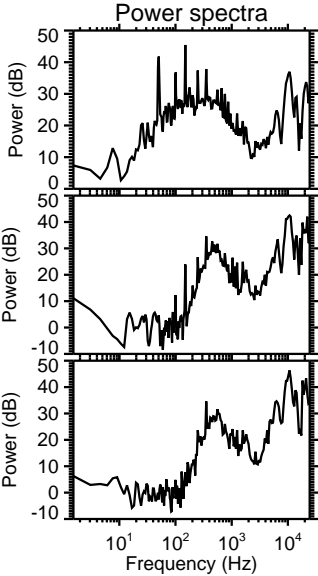
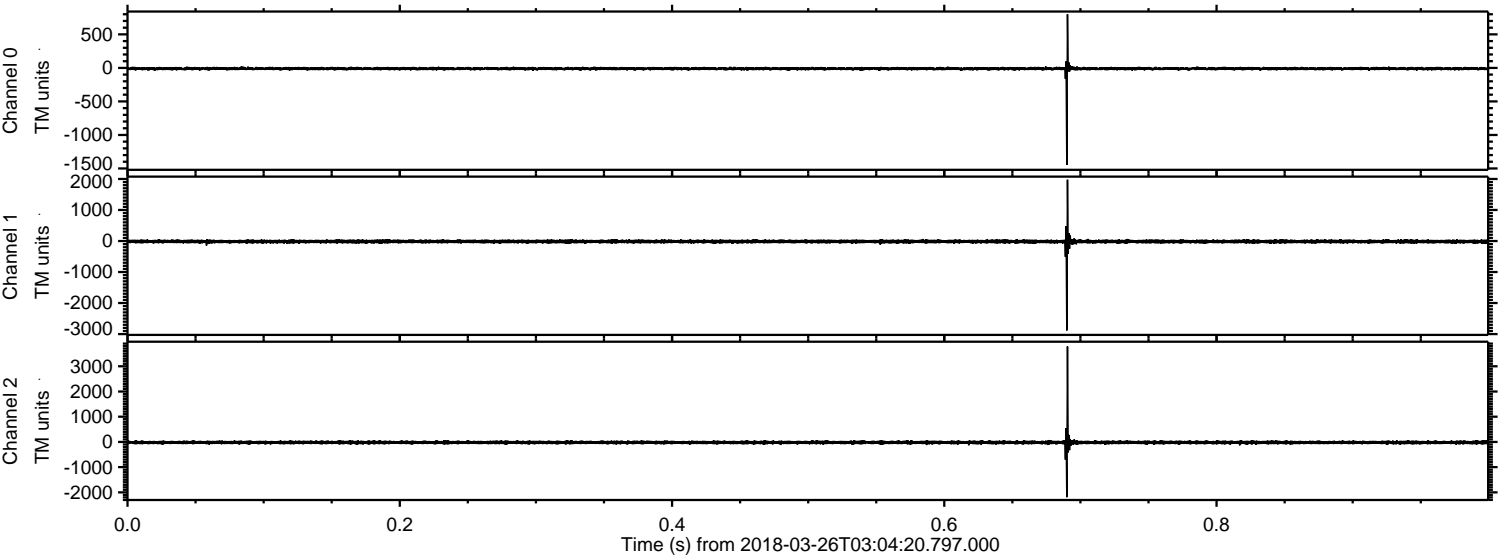


Processed Mon Mar 26 05:13:05 2018 by ELM ver.2012-10-06 from 001__elm20180326_030419__dat00.bin



ELMAVAN 3D WAVEFORMS (Measured data sampled at 50 kHz) 51000 packets of 144 samples from 2018-03-26T03:04:20.797.000. Part 1/147

Processed Mon Mar 26 05:13:06 2018 by ELM ver.2012-10-06 from 001__elm20180326_030419__dat00.bin

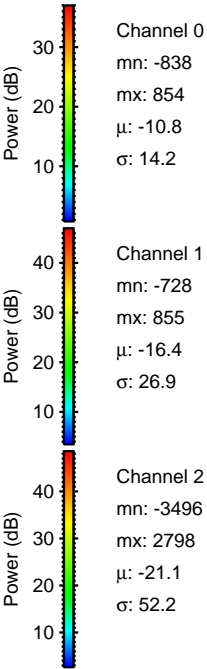
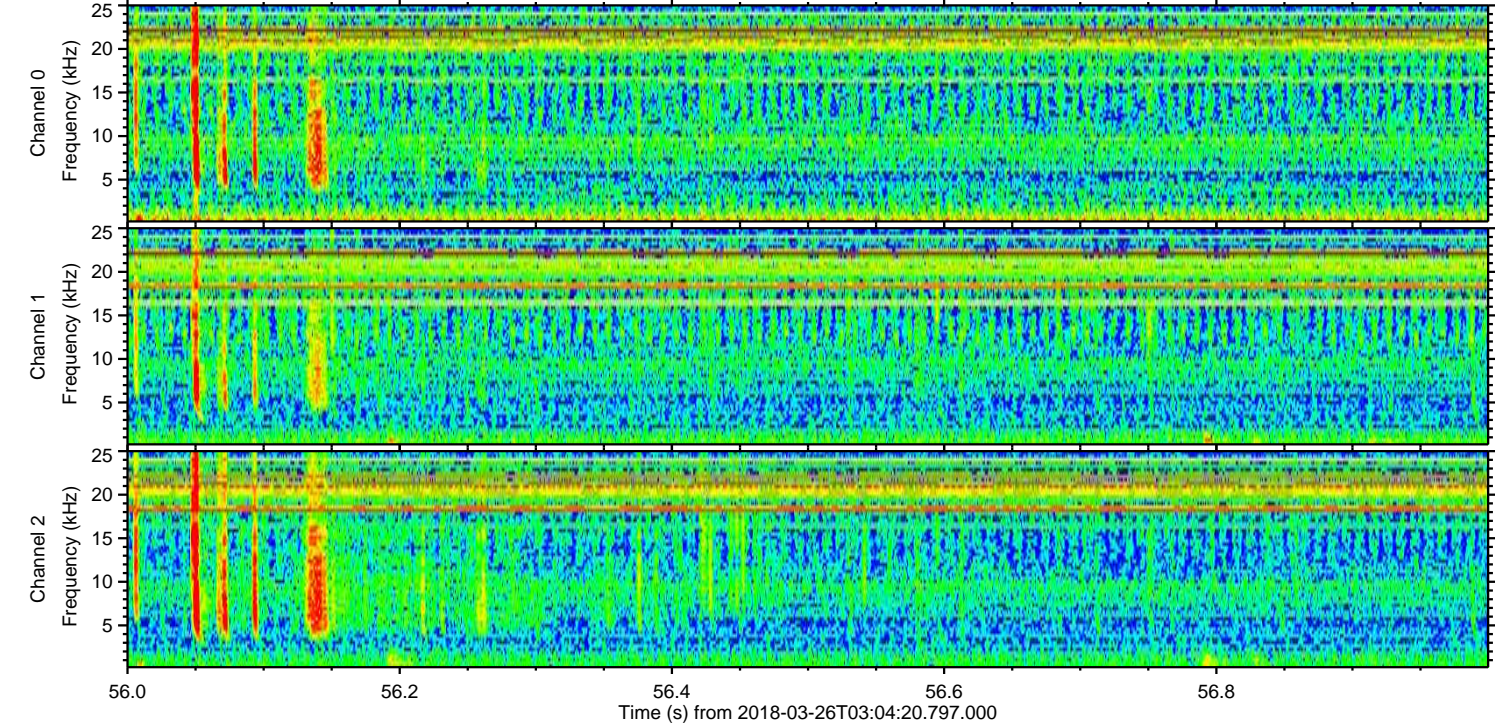
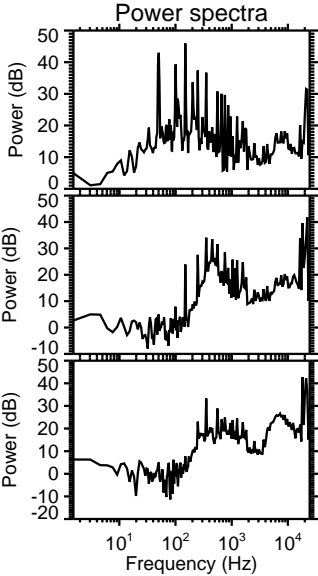
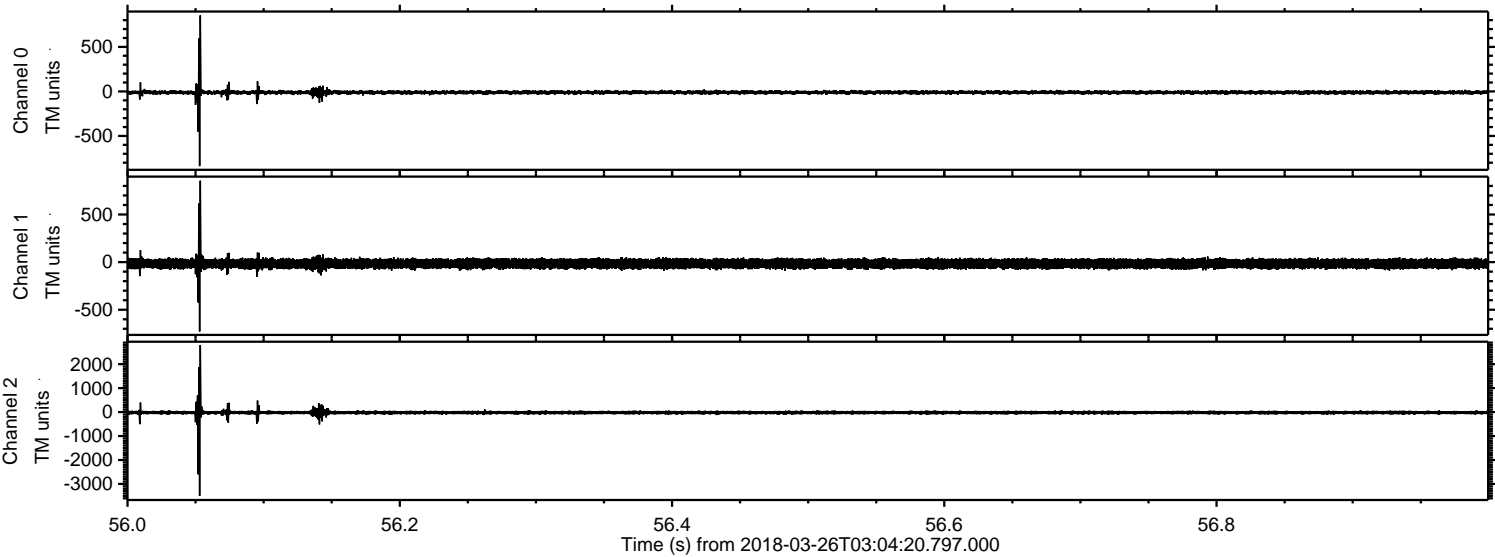


Channel 0
mn: -1448
mx: 801
 μ : -10.8
 σ : 17.7

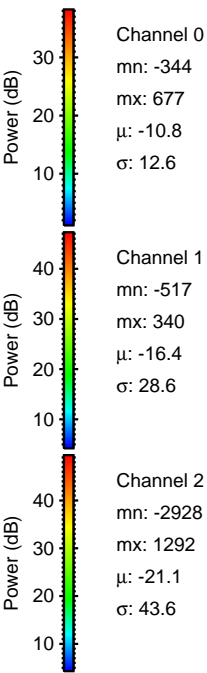
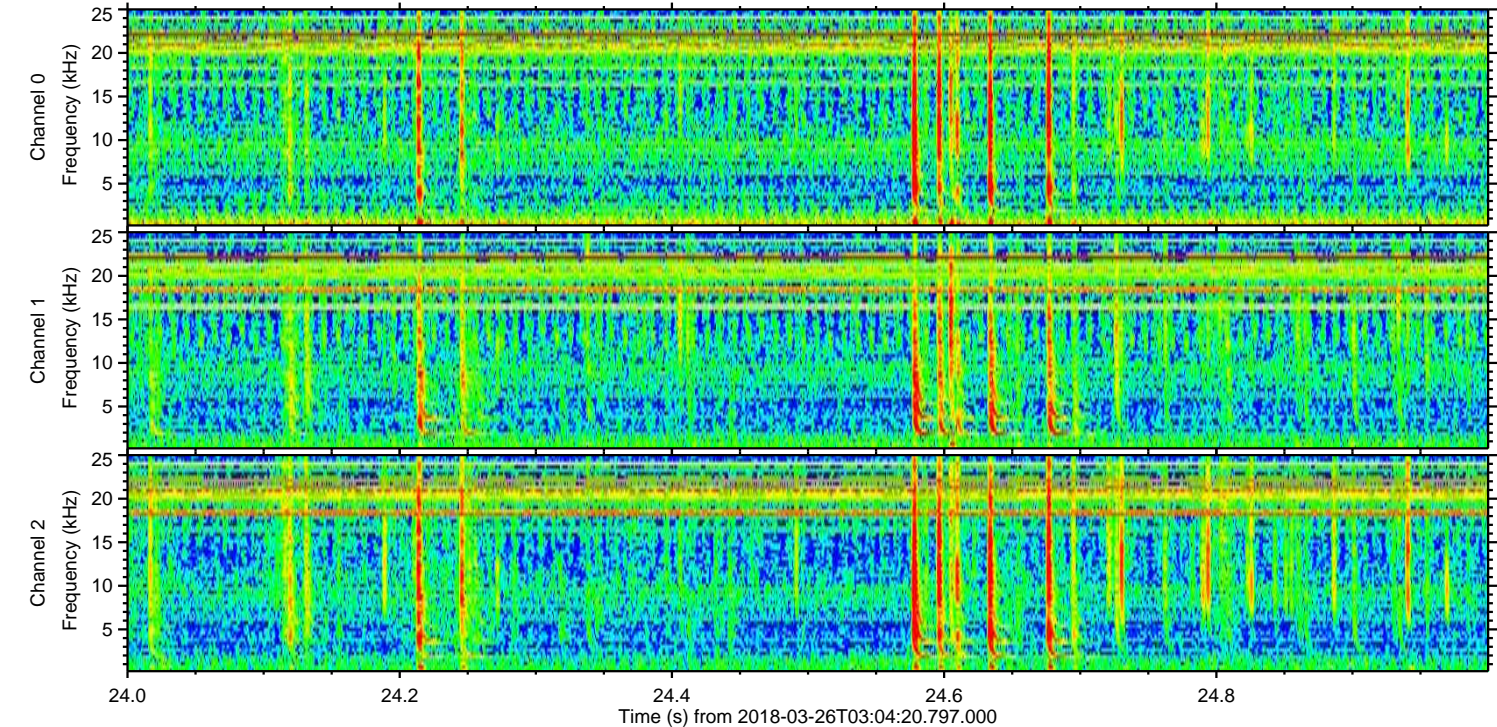
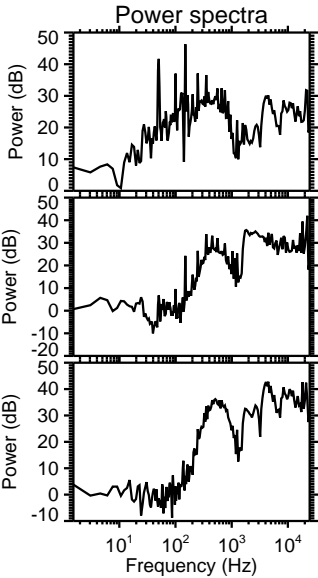
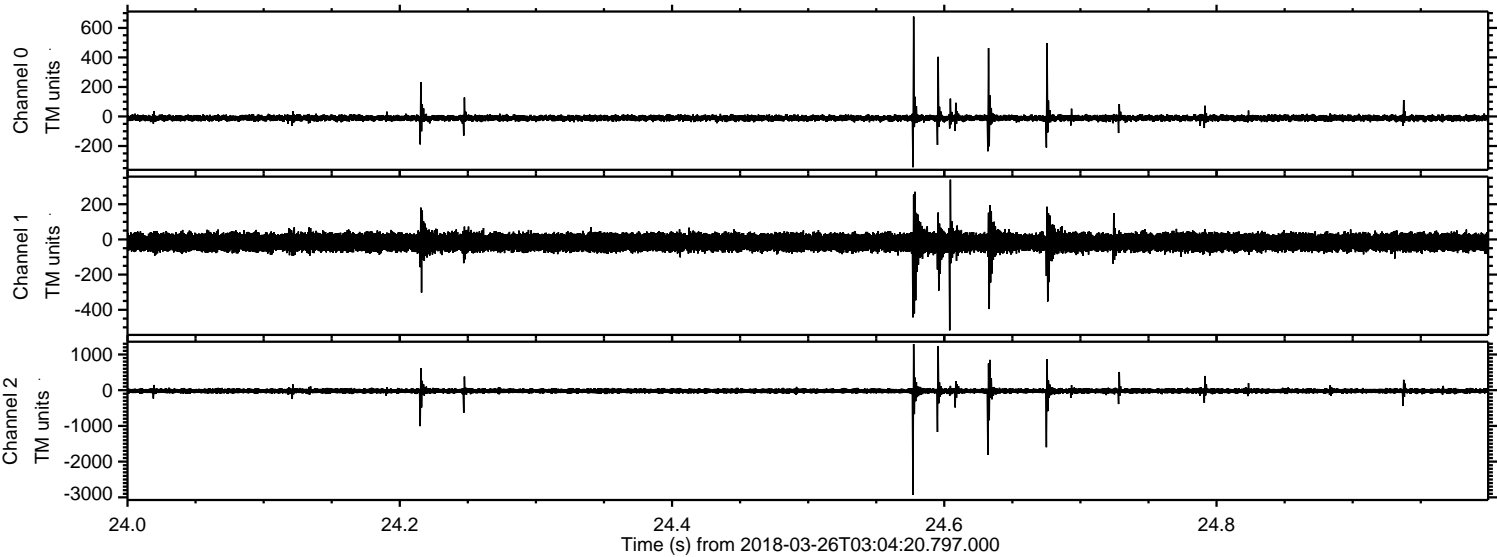
Channel 1
mn: -2883
mx: 1976
 μ : -16.4
 σ : 37.9

Channel 2
mn: -2194
mx: 3785
 μ : -21.0
 σ : 47.9

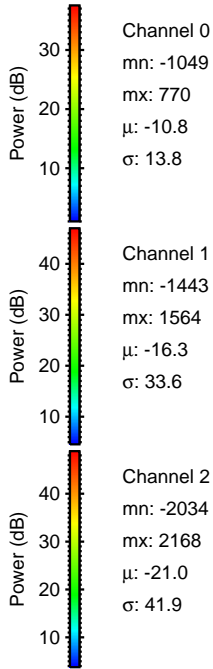
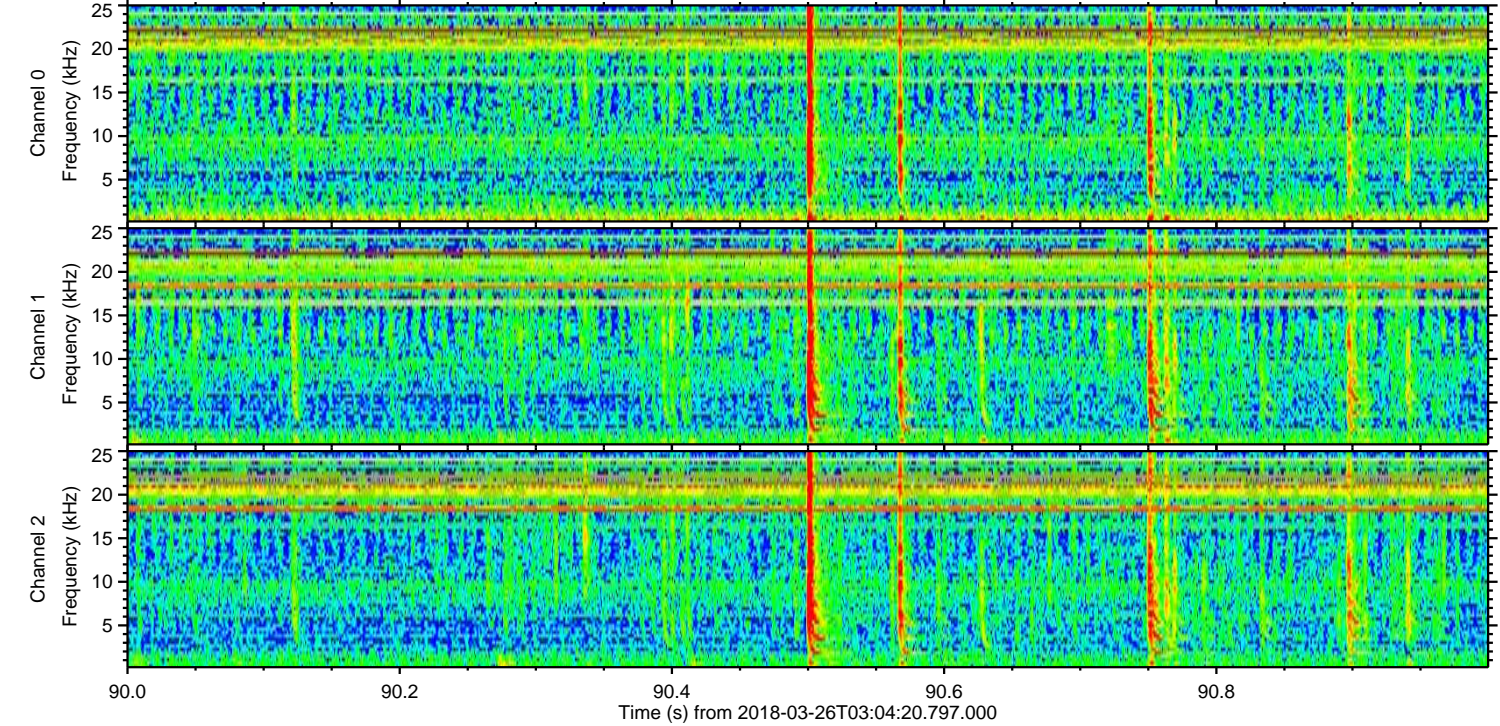
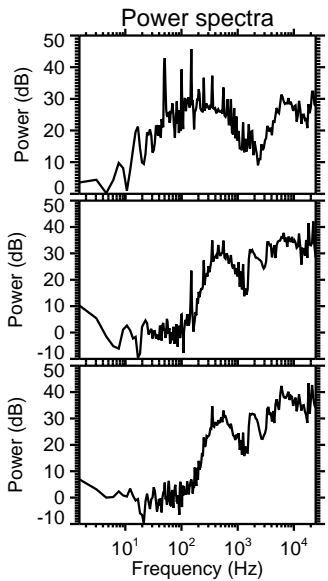
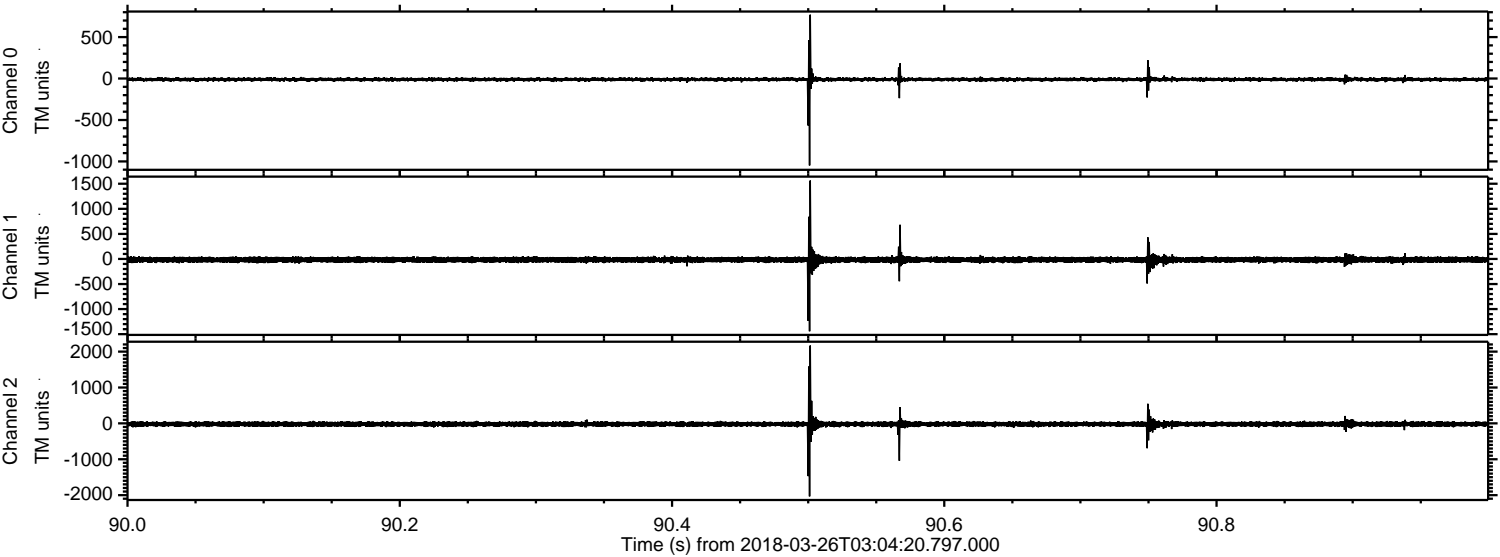
Processed Mon Mar 26 05:13:07 2018 by ELM ver.2012-10-06 from 001__elm20180326_030419__dat00.bin



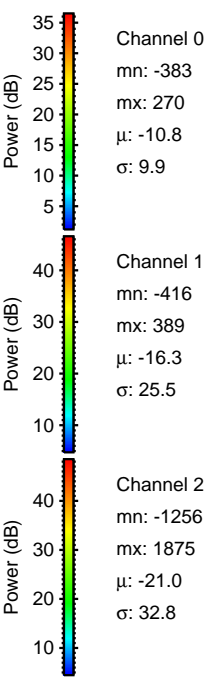
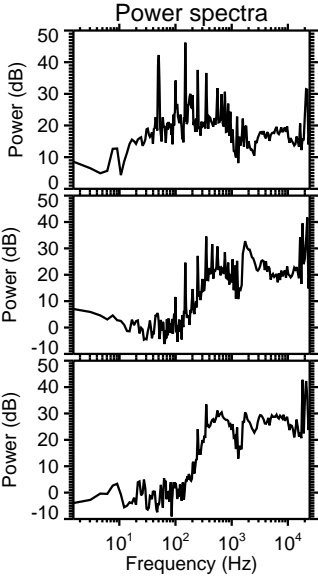
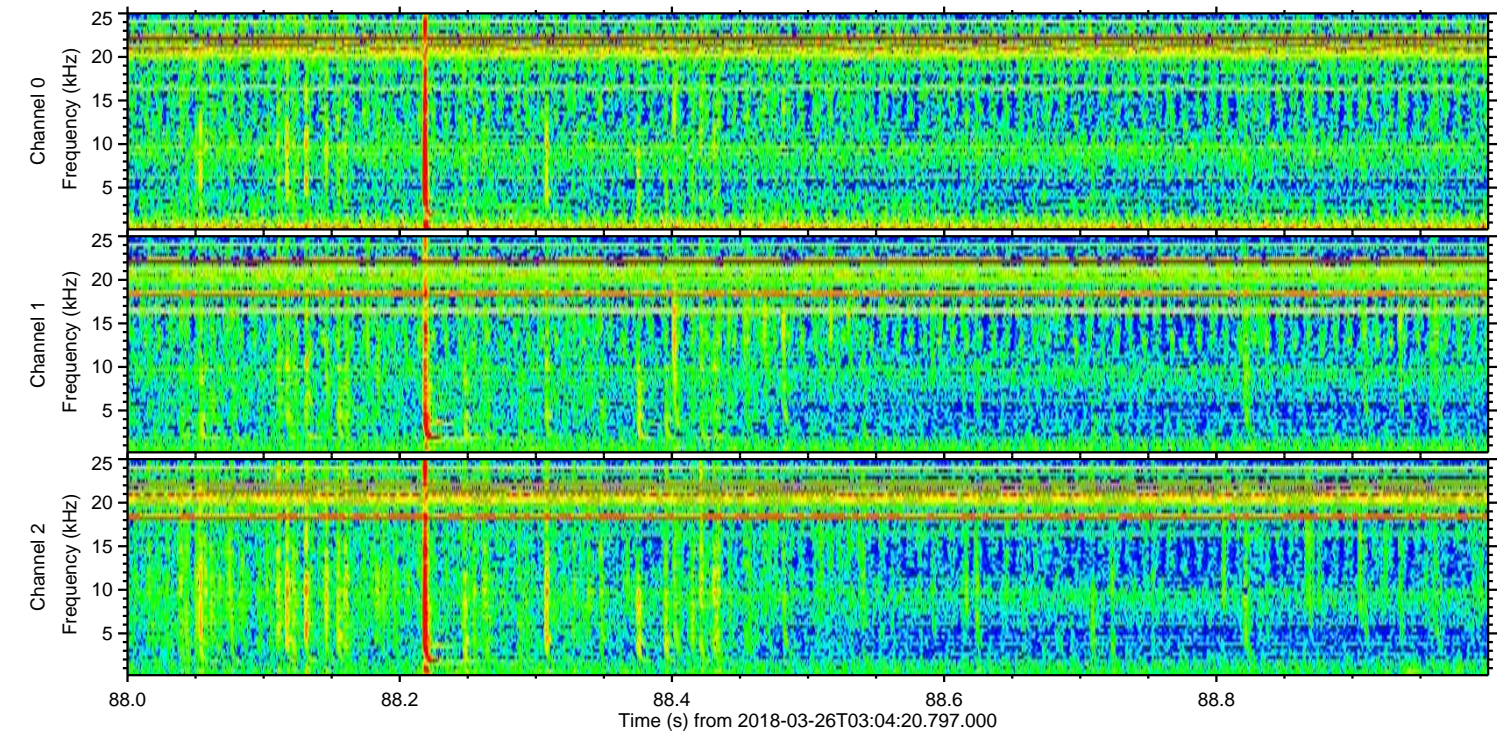
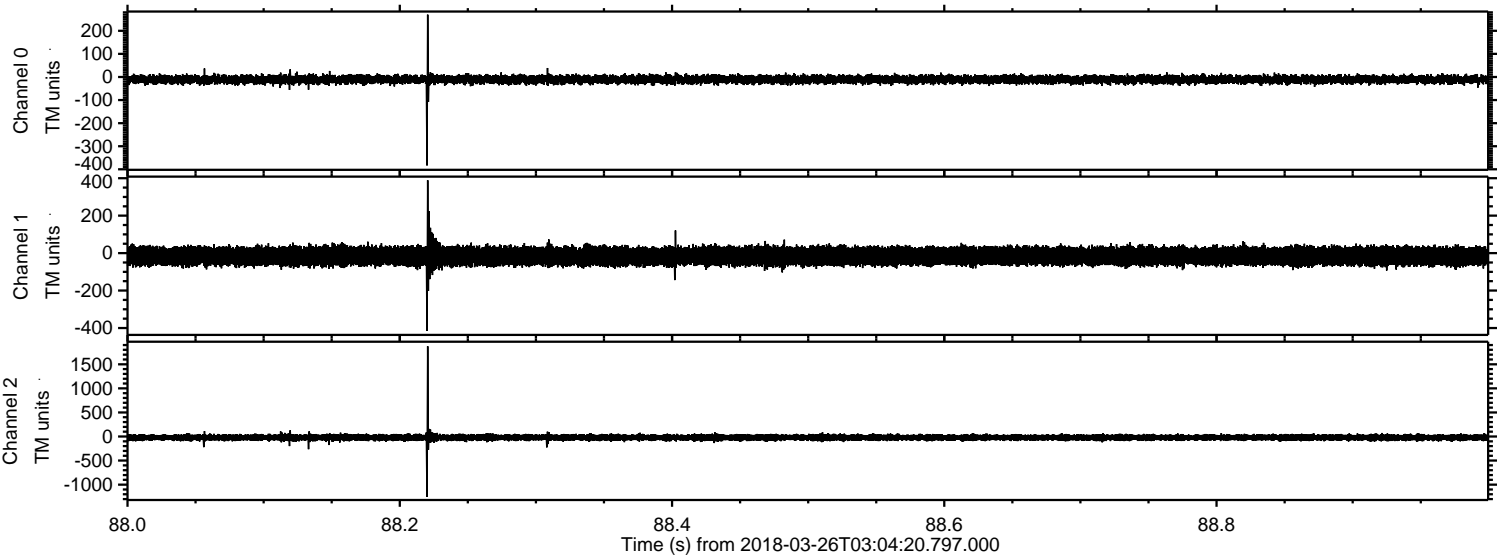
Processed Mon Mar 26 05:13:08 2018 by ELM ver.2012-10-06 from 001__elm20180326_030419__dat00.bin



Processed Mon Mar 26 05:13:09 2018 by ELM ver.2012-10-06 from 001__elm20180326_030419__dat00.bin



Processed Mon Mar 26 05:13:10 2018 by ELM ver.2012-10-06 from 001__elm20180326_030419__dat00.bin



Processed Mon Mar 26 05:13:11 2018 by ELM ver.2012-10-06 from 001__elm20180326_030419__dat00.bin

