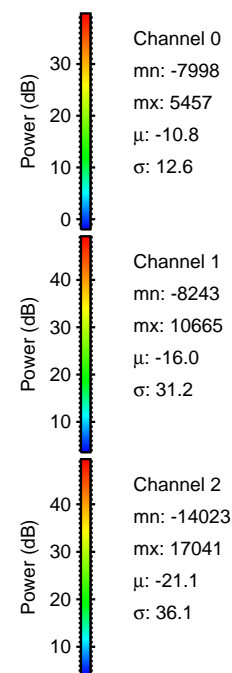
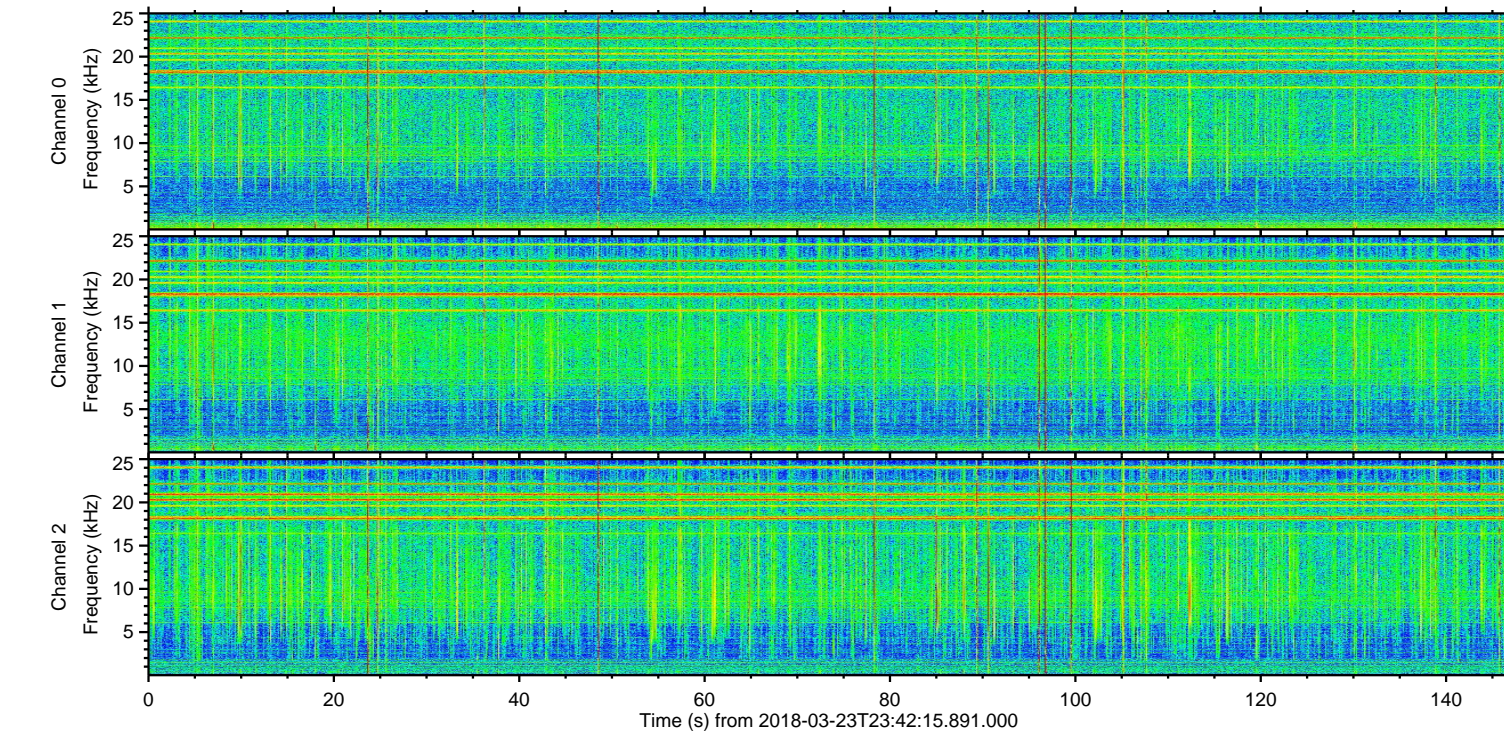
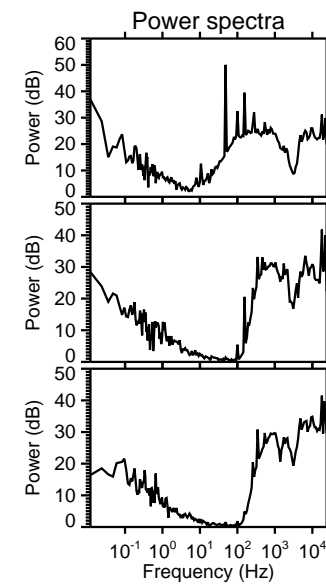
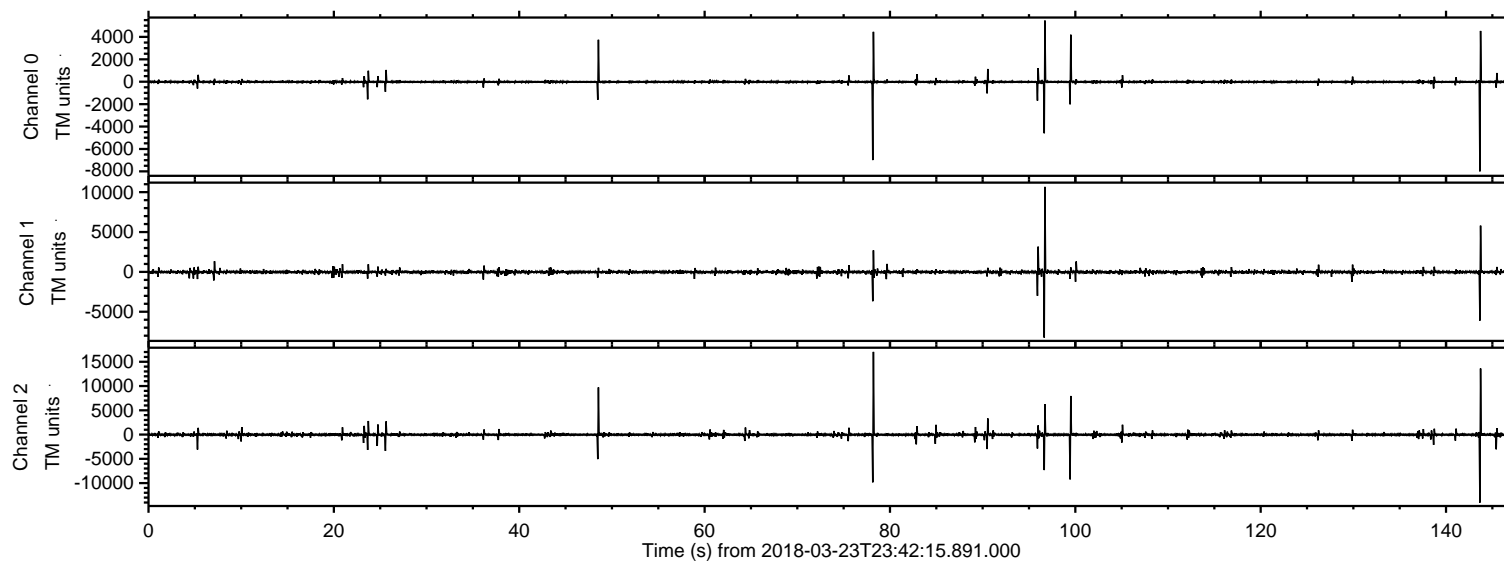
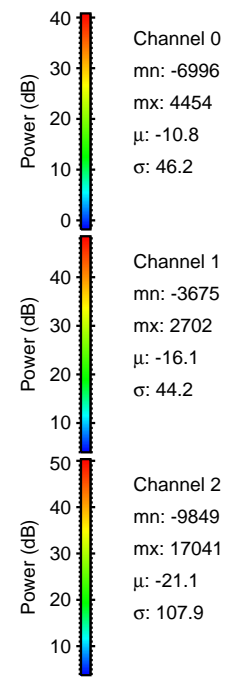
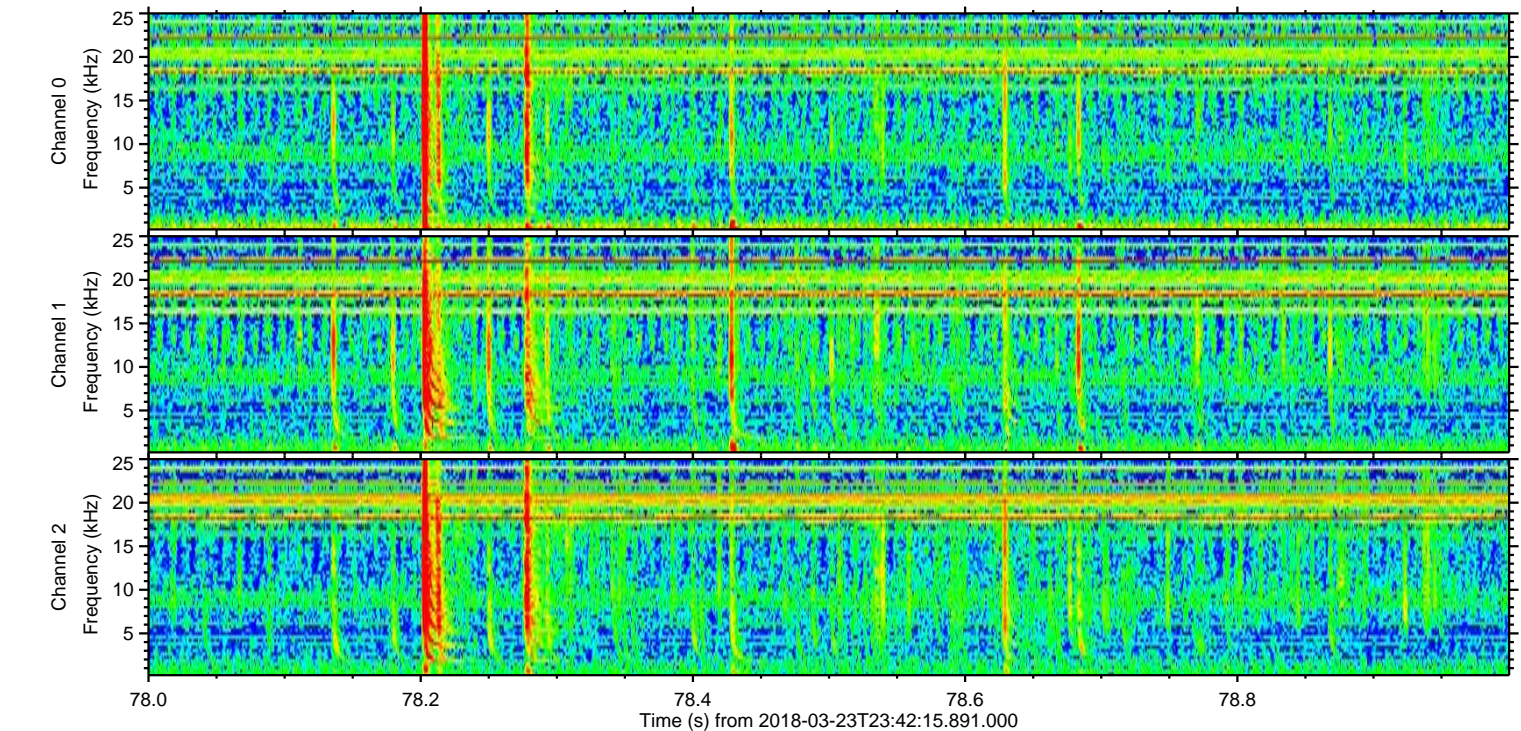
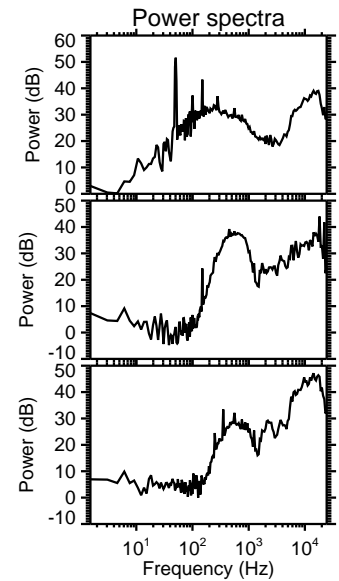
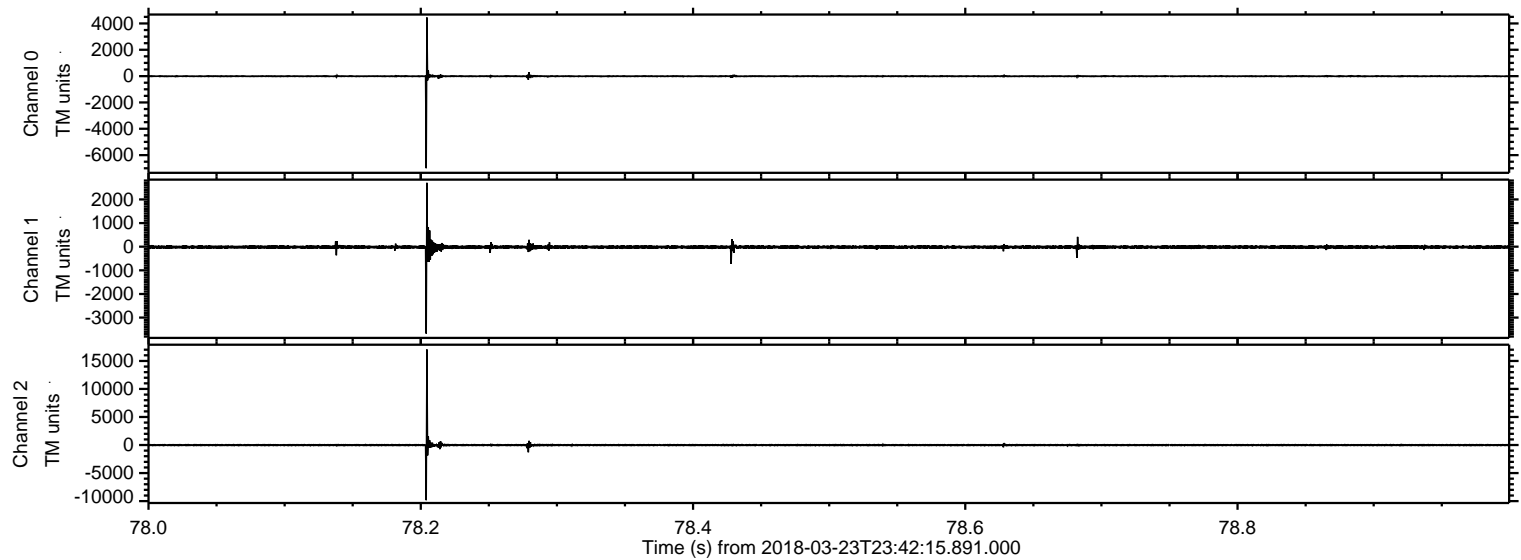


ELMAVAN 3D WAVEFORMS (Measured data sampled at 50 kHz) 51000 packets of 144 samples from 2018-03-23T23:42:15.891.000.

Processed Sat Mar 24 00:50:19 2018 by ELM ver.2012-10-06 from 001__elm20180323_234214__dat00.bin

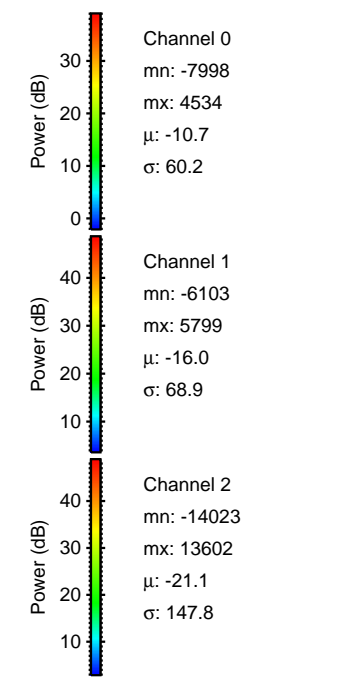
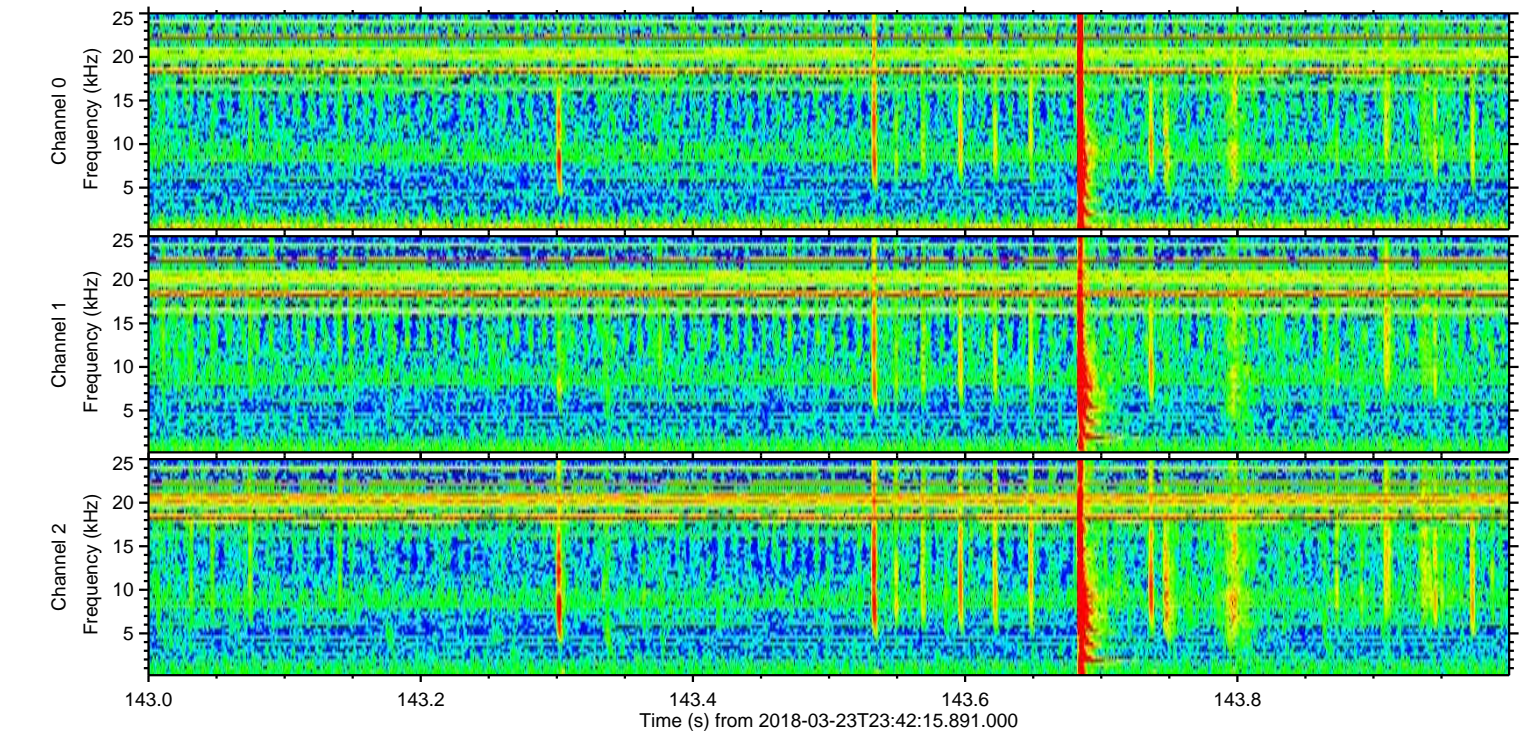
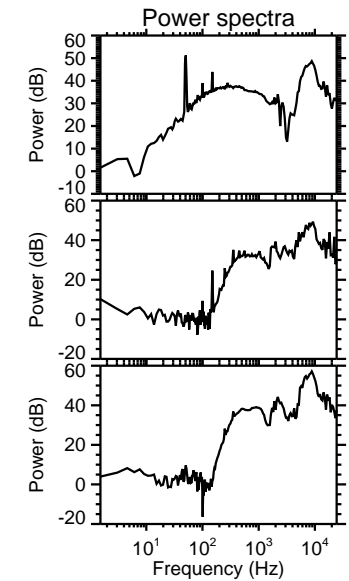
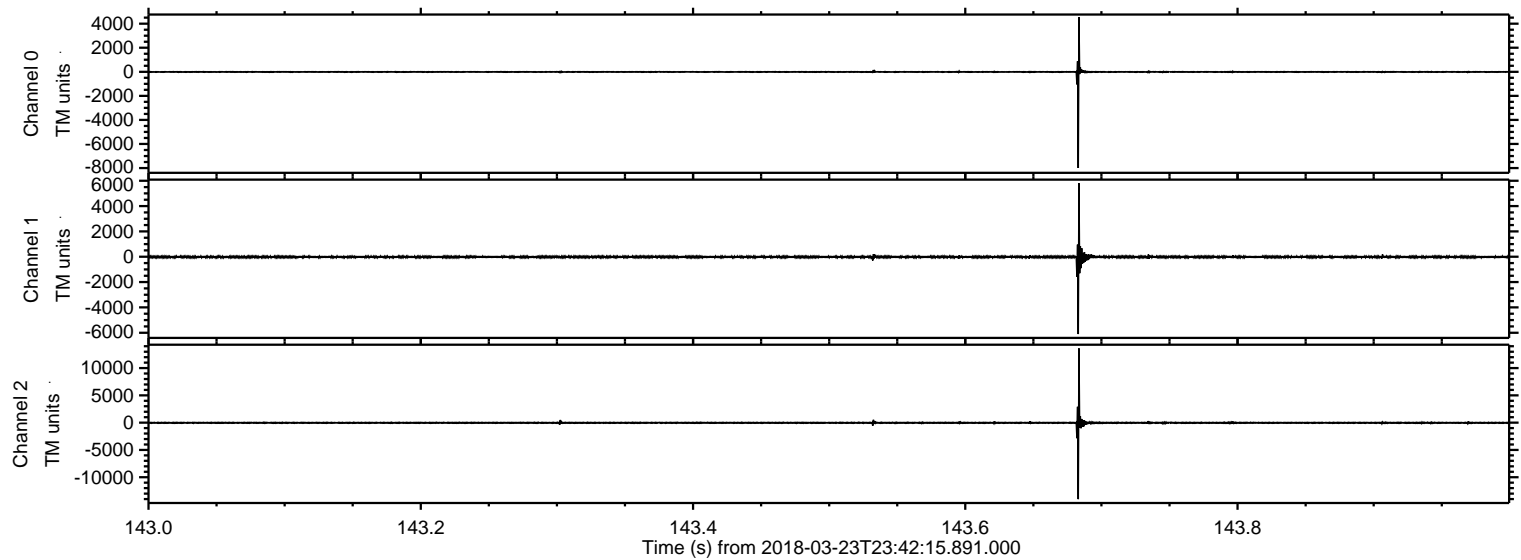


Processed Sat Mar 24 00:50:27 2018 by ELM ver.2012-10-06 from 001__elm20180323_234214__dat00.bin

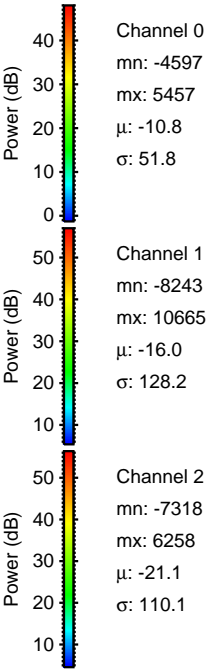
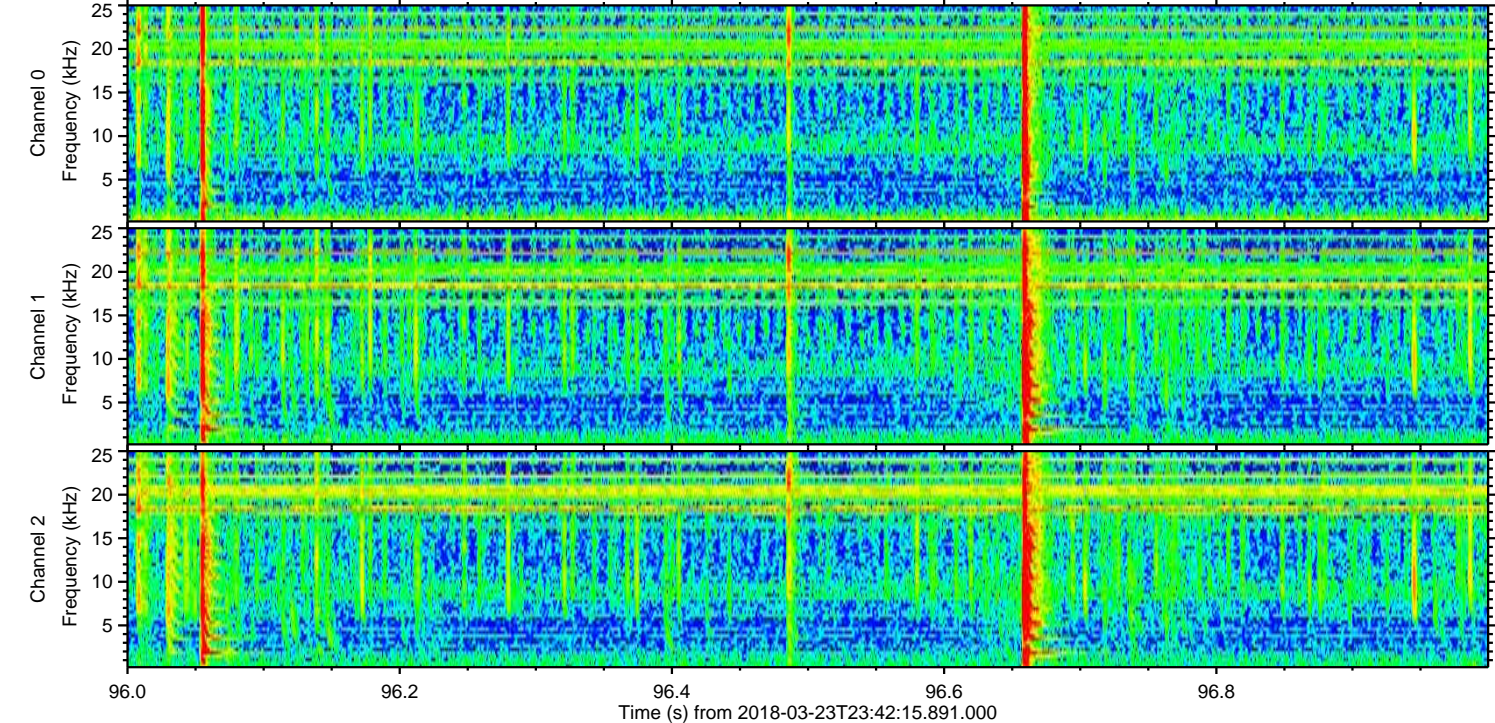
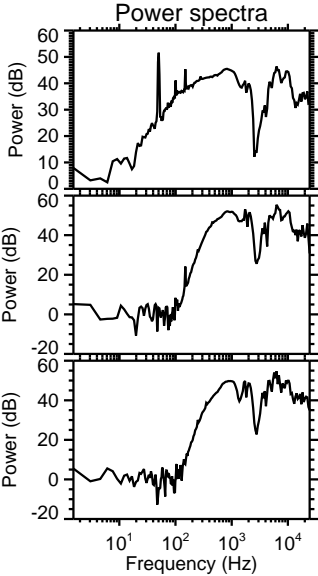
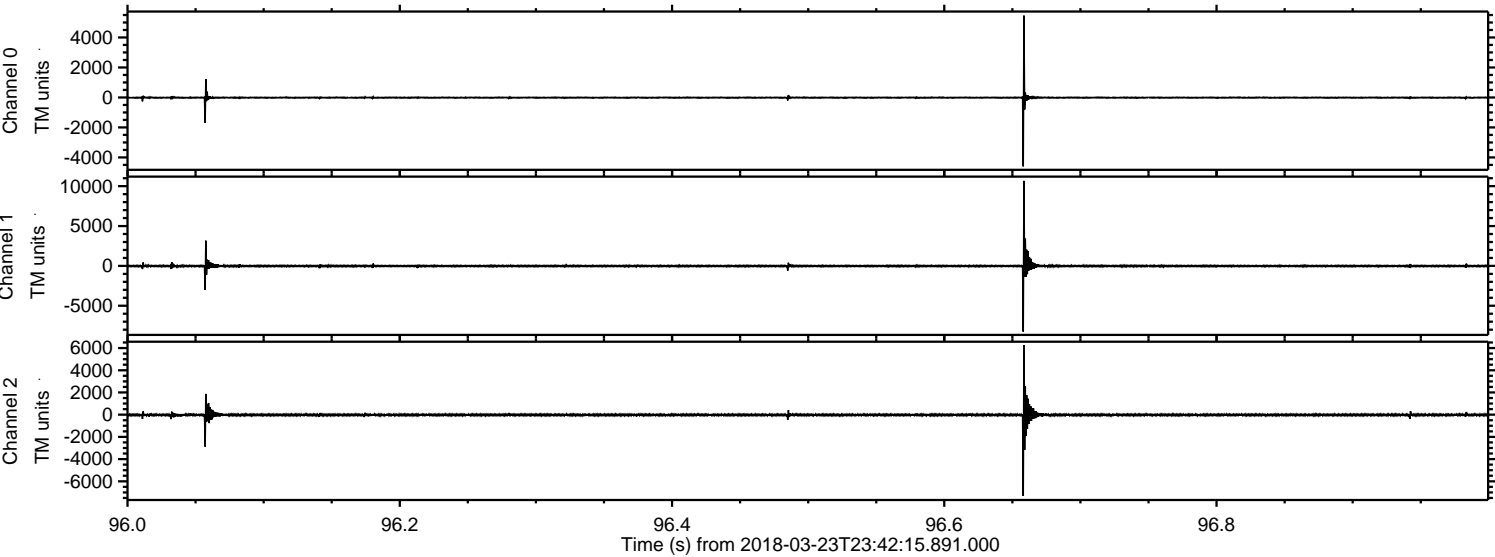


ELMAVAN 3D WAVEFORMS (Measured data sampled at 50 kHz) 51000 packets of 144 samples from 2018-03-23T23:42:15.891.000. Part 144/147

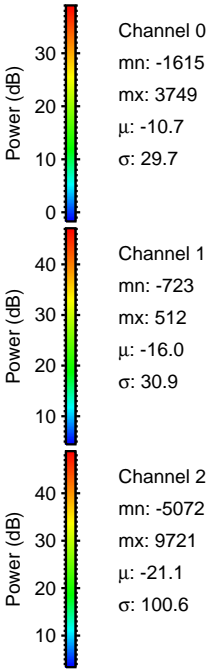
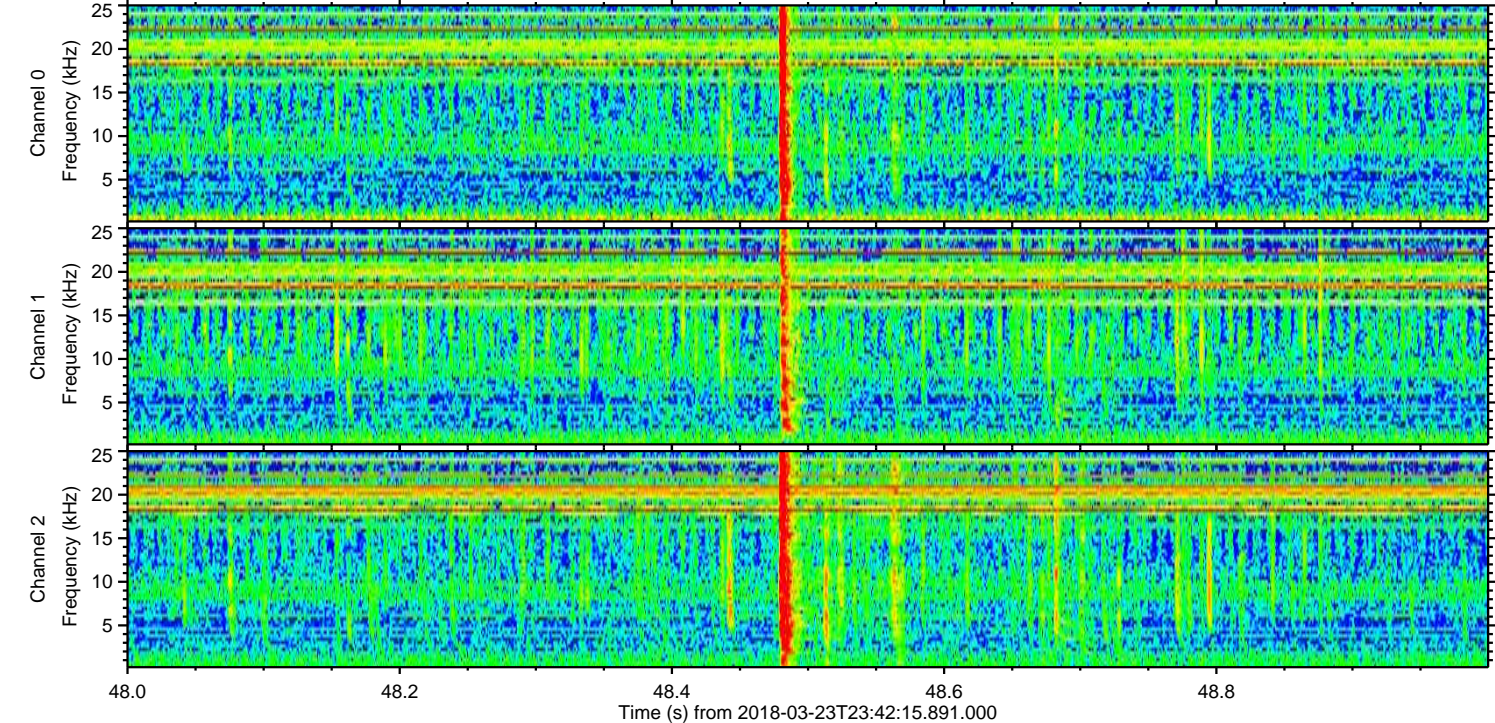
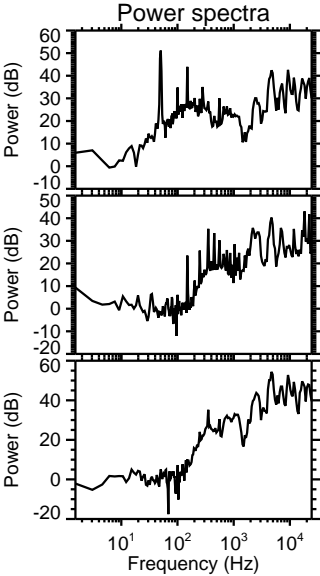
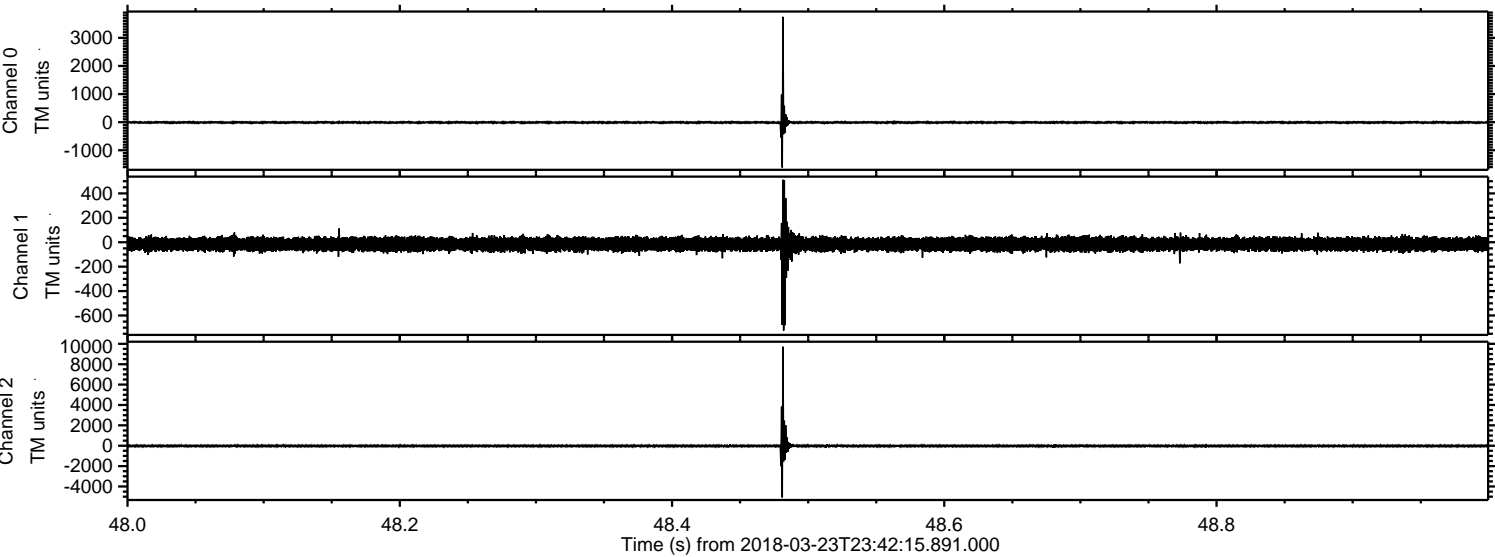
Processed Sat Mar 24 00:50:28 2018 by ELM ver.2012-10-06 from 001__elm20180323_234214__dat00.bin



Processed Sat Mar 24 00:50:28 2018 by ELM ver.2012-10-06 from 001__elm20180323_234214__dat00.bin

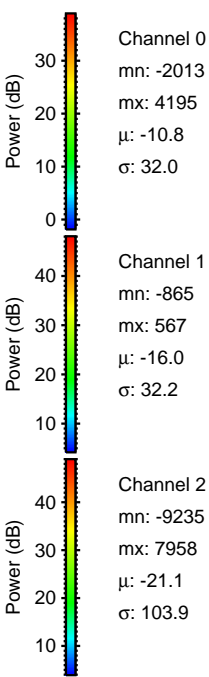
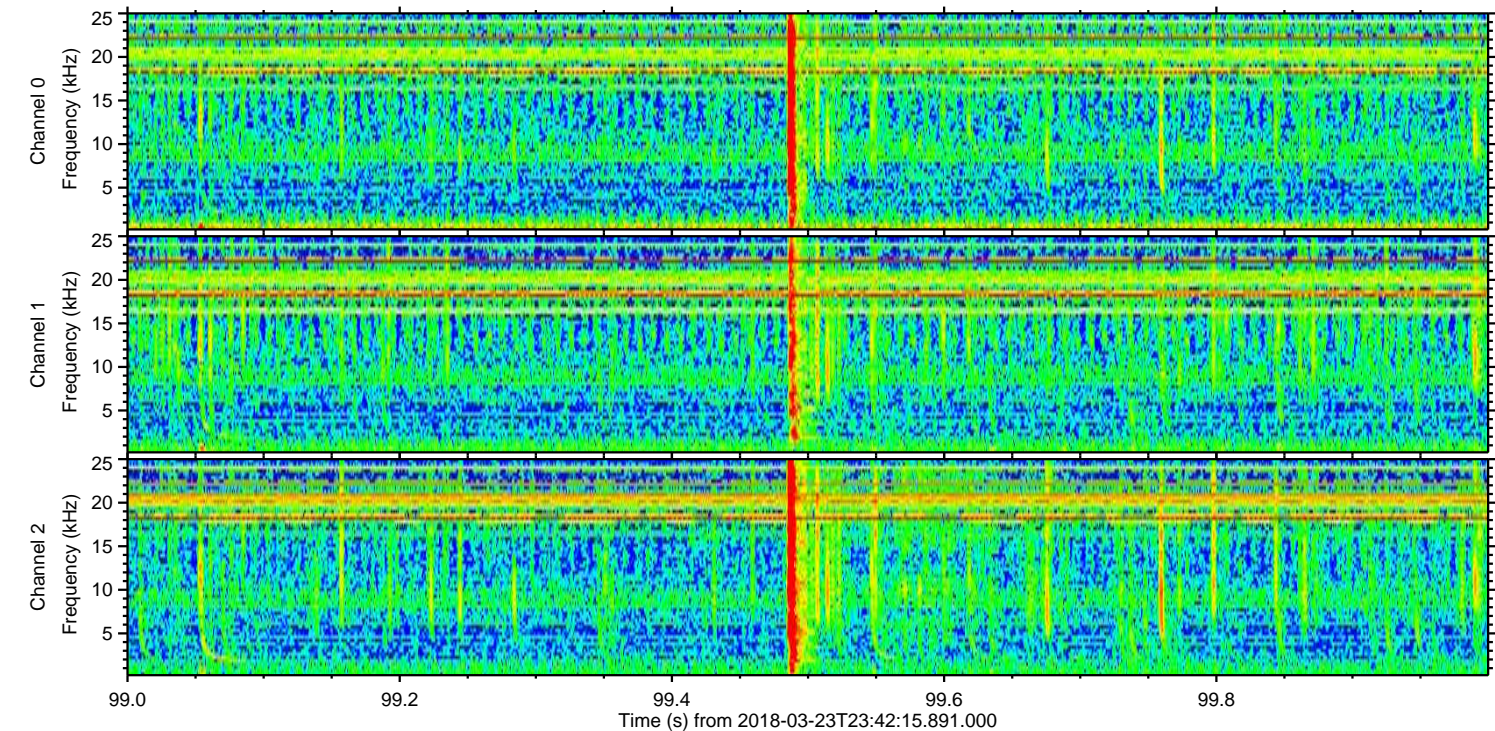
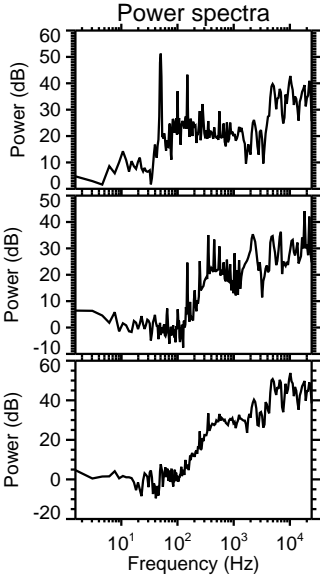
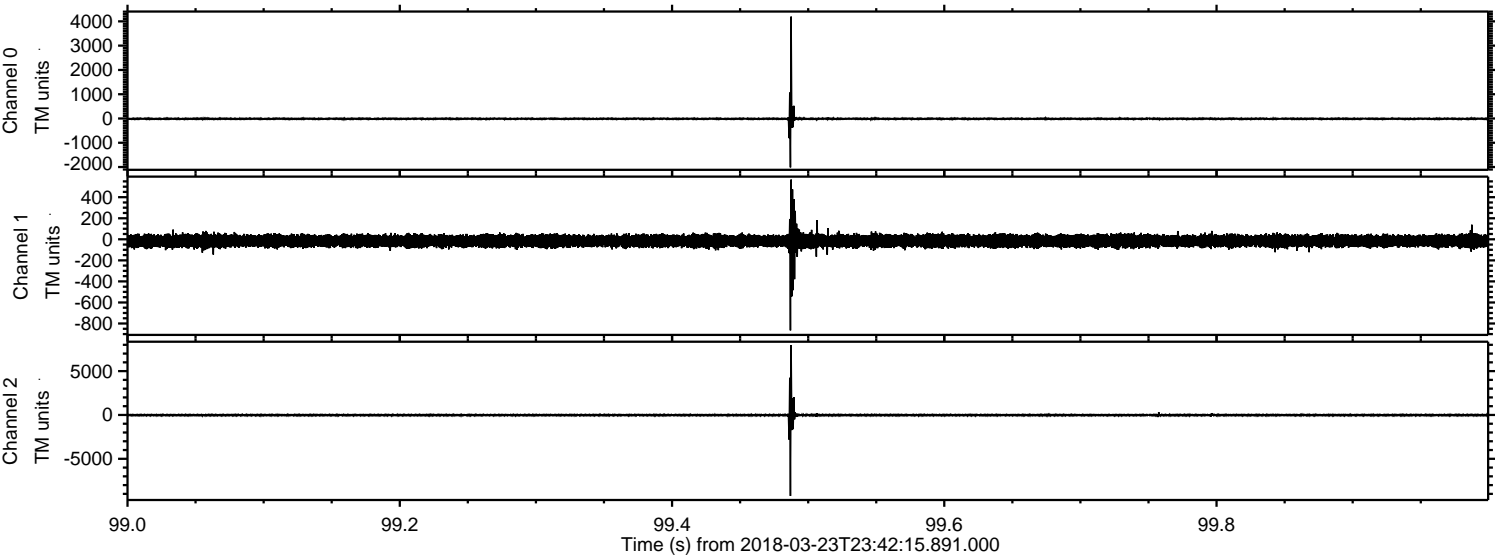


Processed Sat Mar 24 00:50:29 2018 by ELM ver.2012-10-06 from 001__elm20180323_234214__dat00.bin

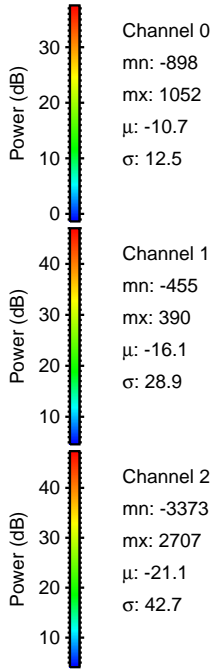
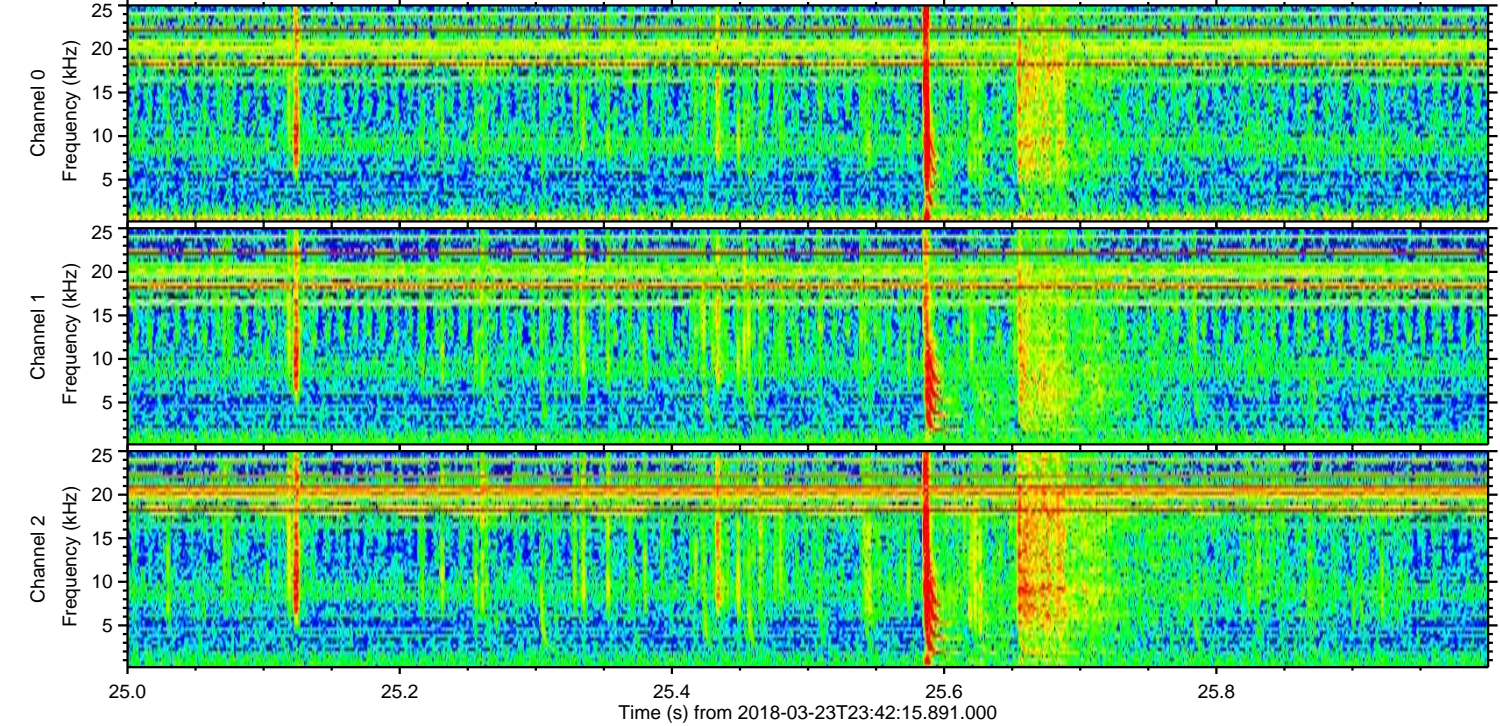
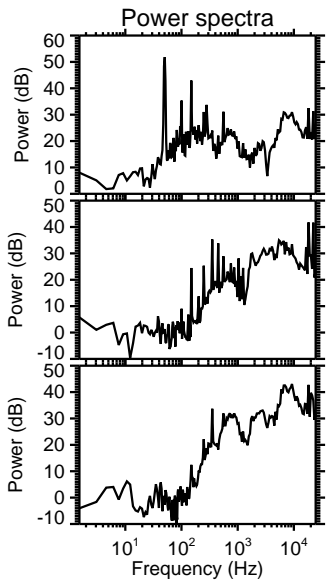
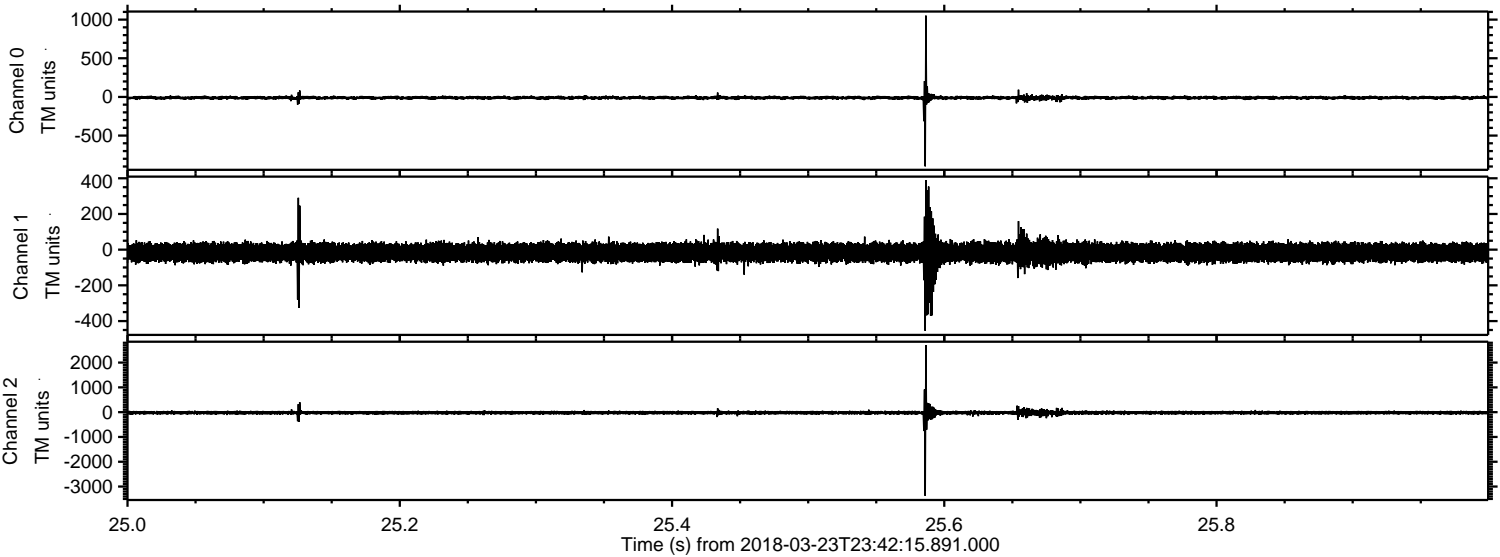


ELMAVAN 3D WAVEFORMS (Measured data sampled at 50 kHz) 51000 packets of 144 samples from 2018-03-23T23:42:15.891.000. Part 100/147

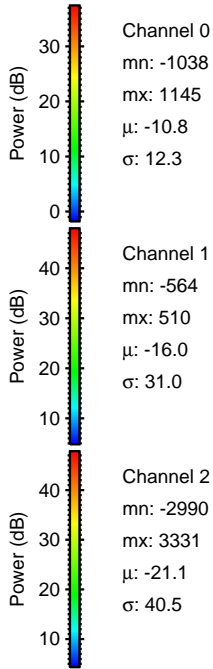
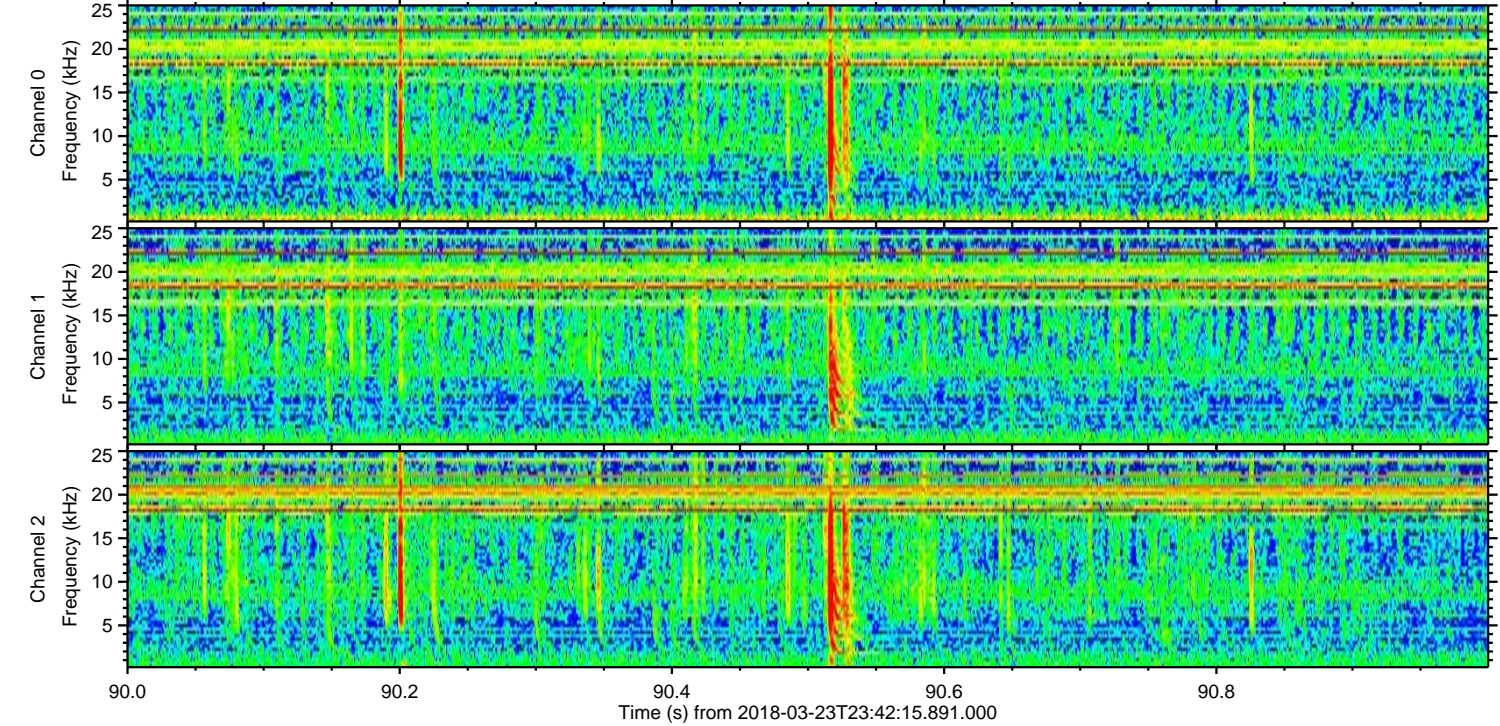
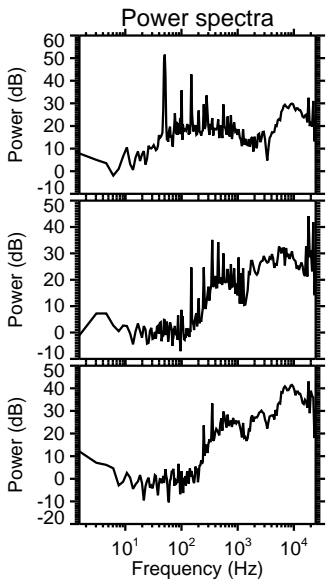
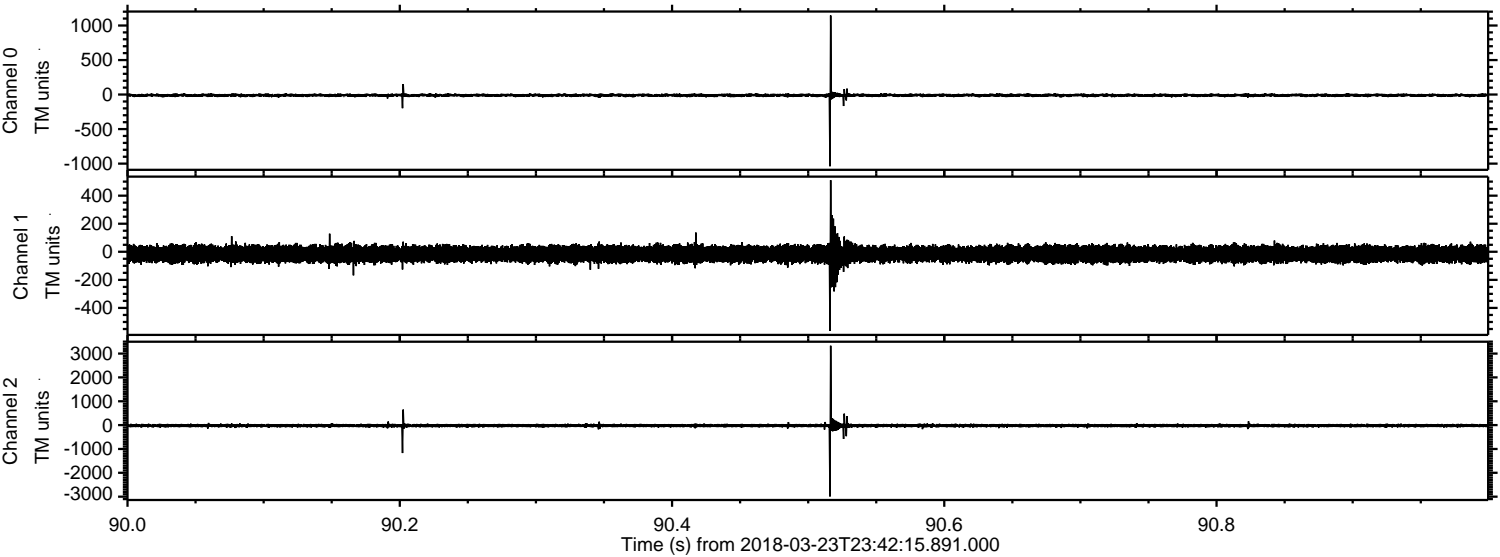
Processed Sat Mar 24 00:50:30 2018 by ELM ver.2012-10-06 from 001__elm20180323_234214__dat00.bin



Processed Sat Mar 24 00:50:31 2018 by ELM ver.2012-10-06 from 001__elm20180323_234214__dat00.bin



Processed Sat Mar 24 00:50:31 2018 by ELM ver.2012-10-06 from 001__elm20180323_234214__dat00.bin

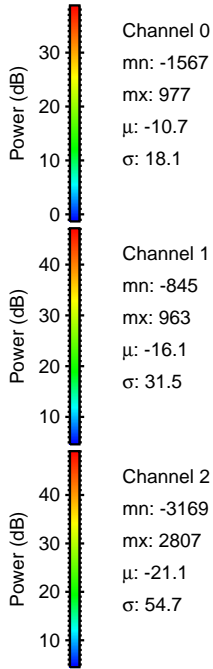
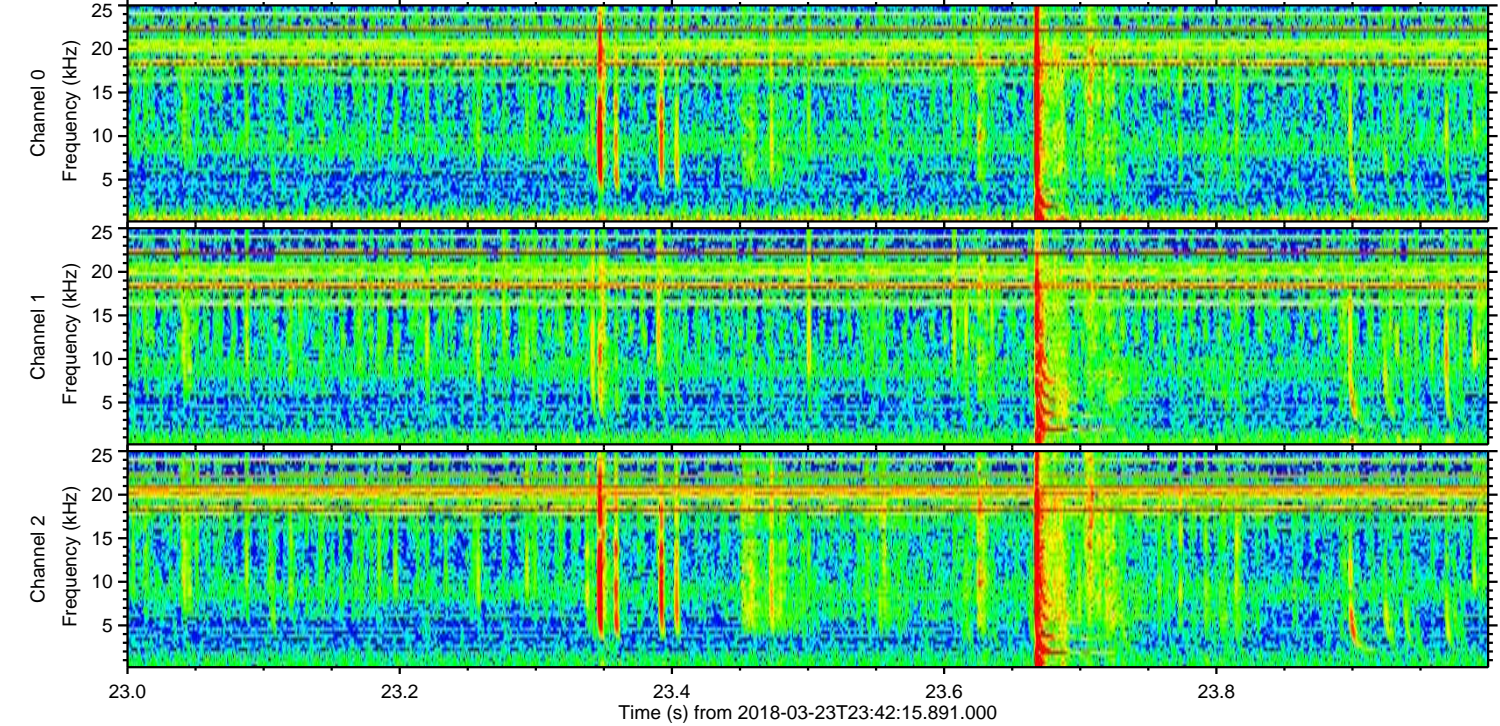
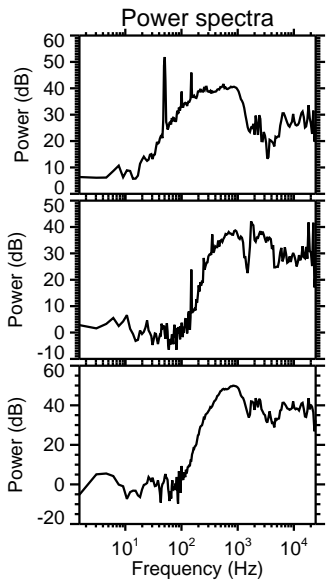
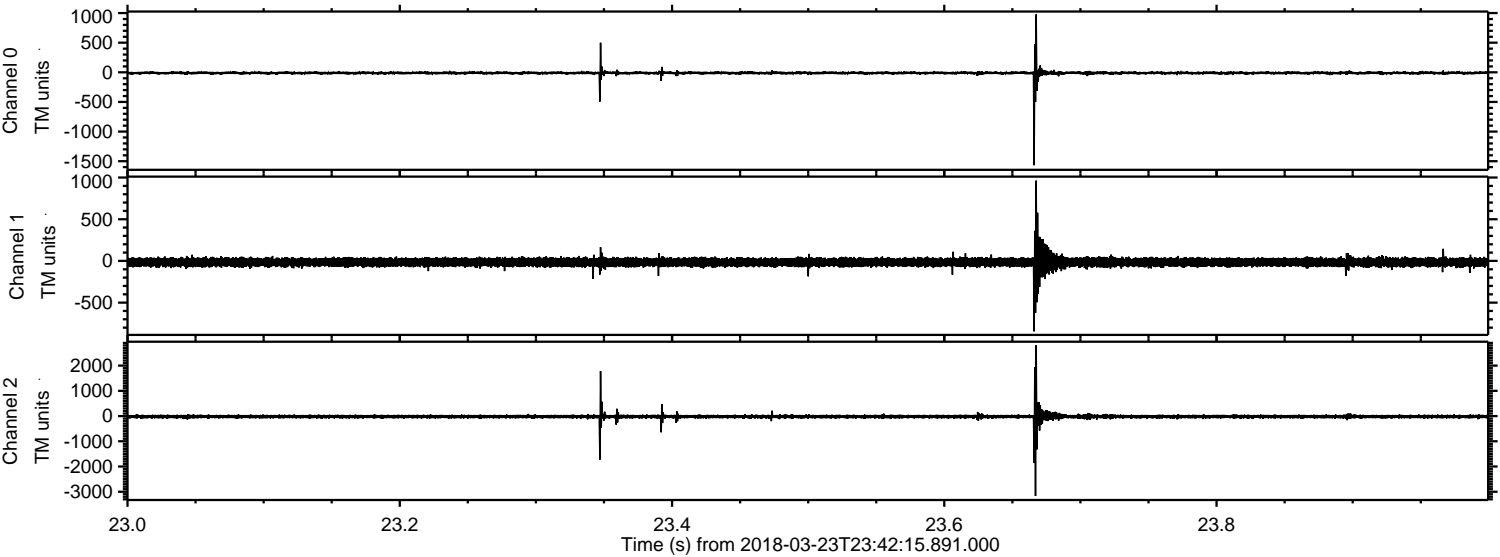


Channel 0
mn: -1038
mx: 1145
 μ : -10.8
 σ : 12.3

Channel 1
mn: -564
mx: 510
 μ : -16.0
 σ : 31.0

Channel 2
mn: -2990
mx: 3331
 μ : -21.1
 σ : 40.5

Processed Sat Mar 24 00:50:32 2018 by ELM ver.2012-10-06 from 001__elm20180323_234214__dat00.bin



Channel 0
mn: -1567
mx: 977
 μ : -10.7
 σ : 18.1

Channel 1
mn: -845
mx: 963
 μ : -16.1
 σ : 31.5

Channel 2
mn: -3169
mx: 2807
 μ : -21.1
 σ : 54.7

Processed Sat Mar 24 00:50:33 2018 by ELM ver.2012-10-06 from 001__elm20180323_234214__dat00.bin

