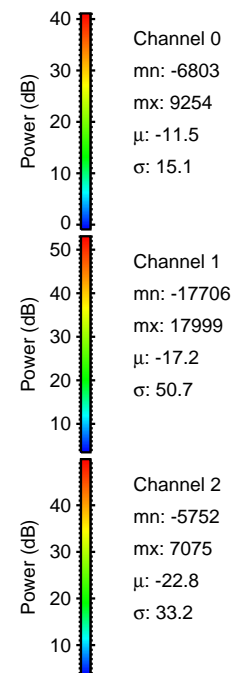
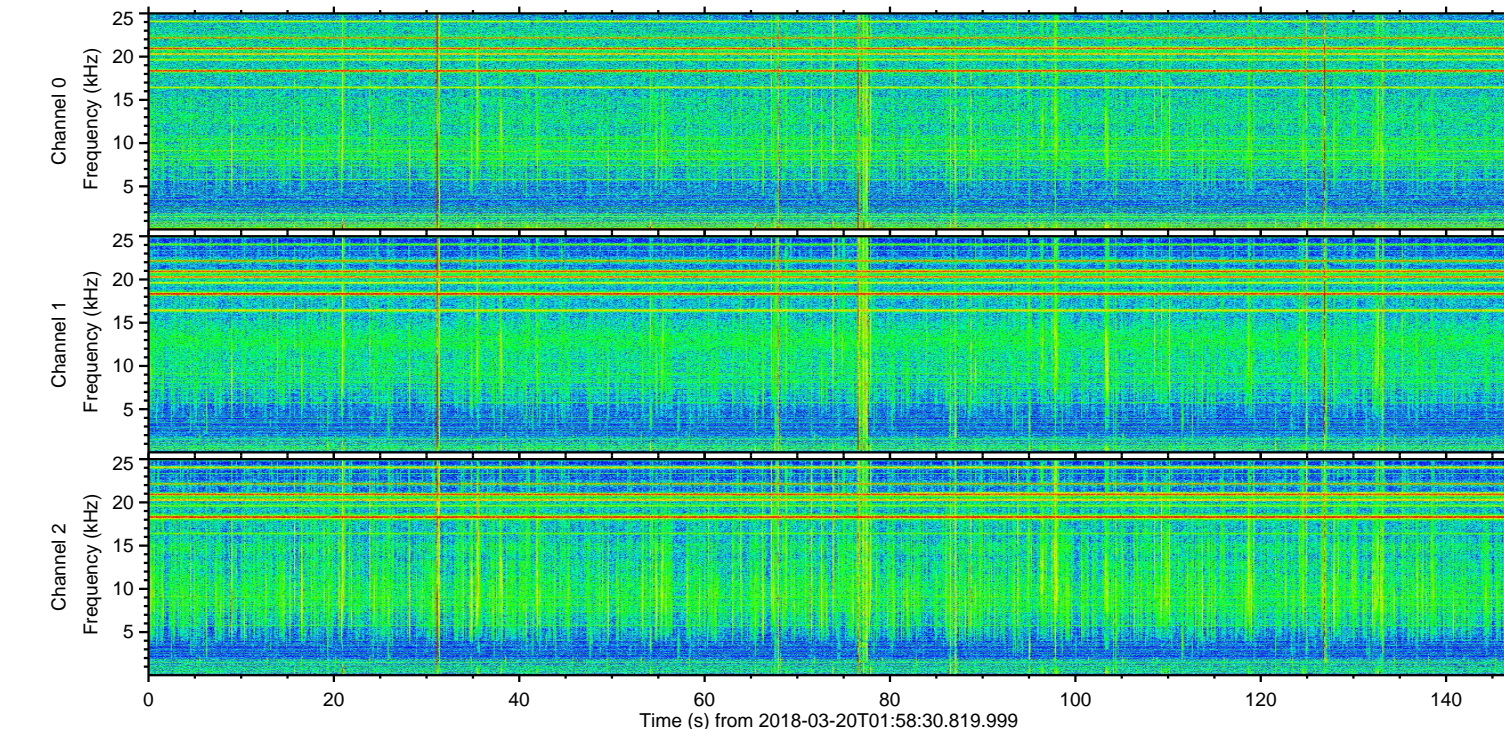
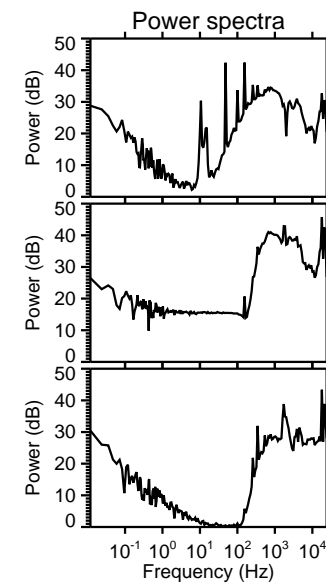
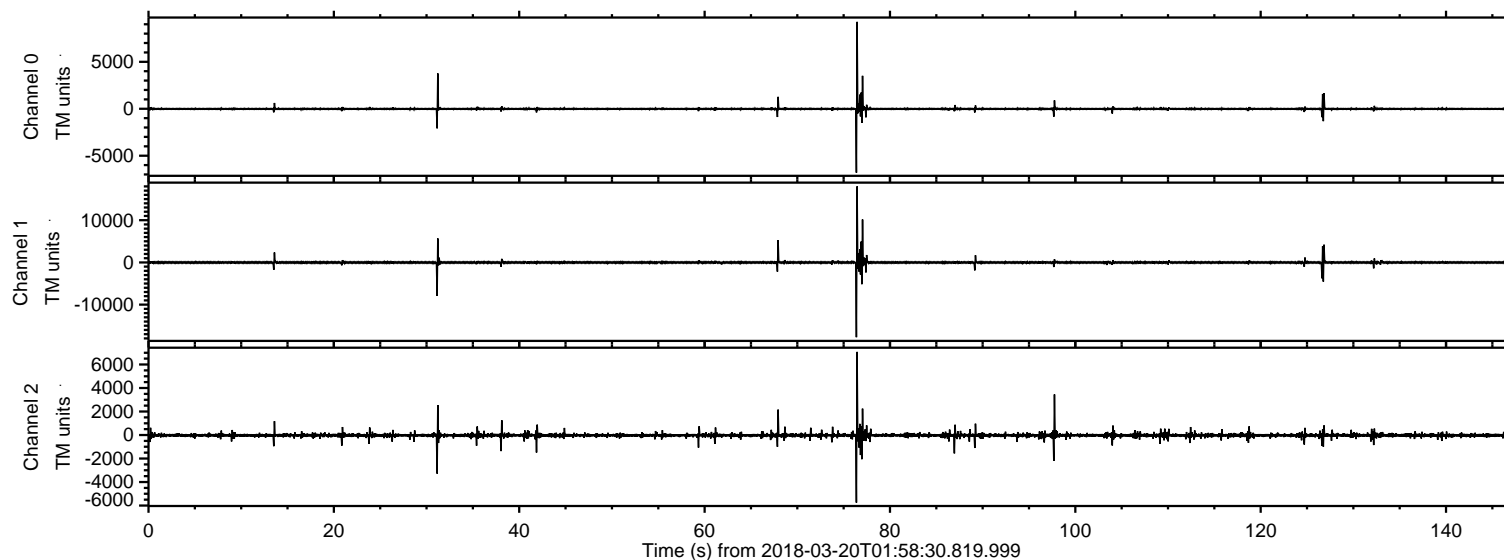


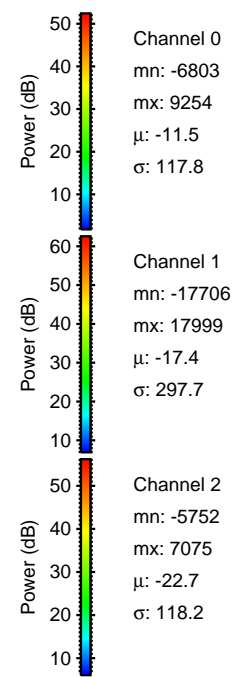
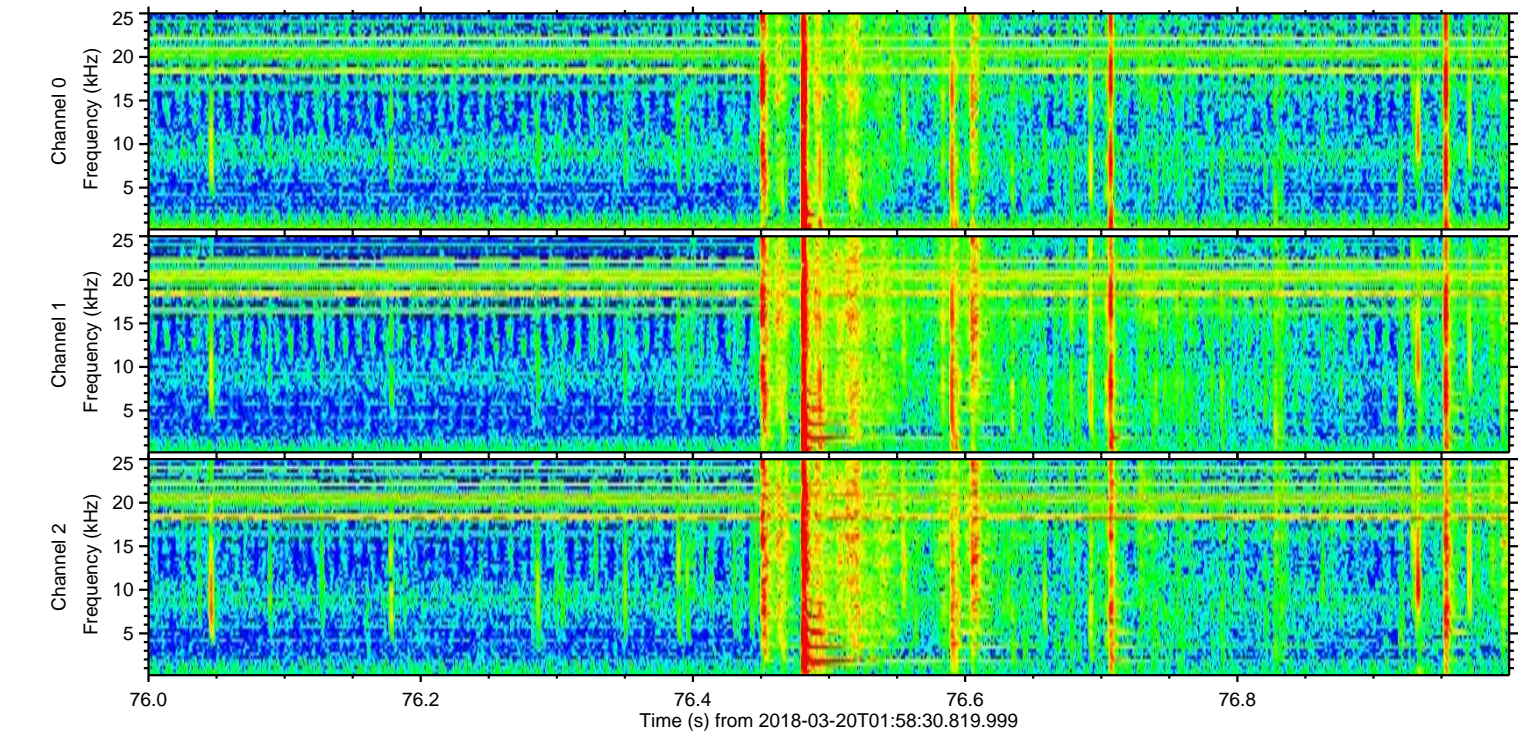
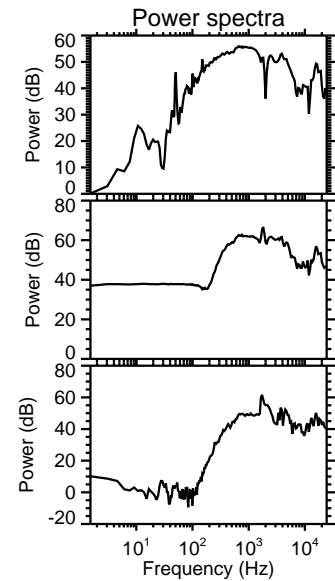
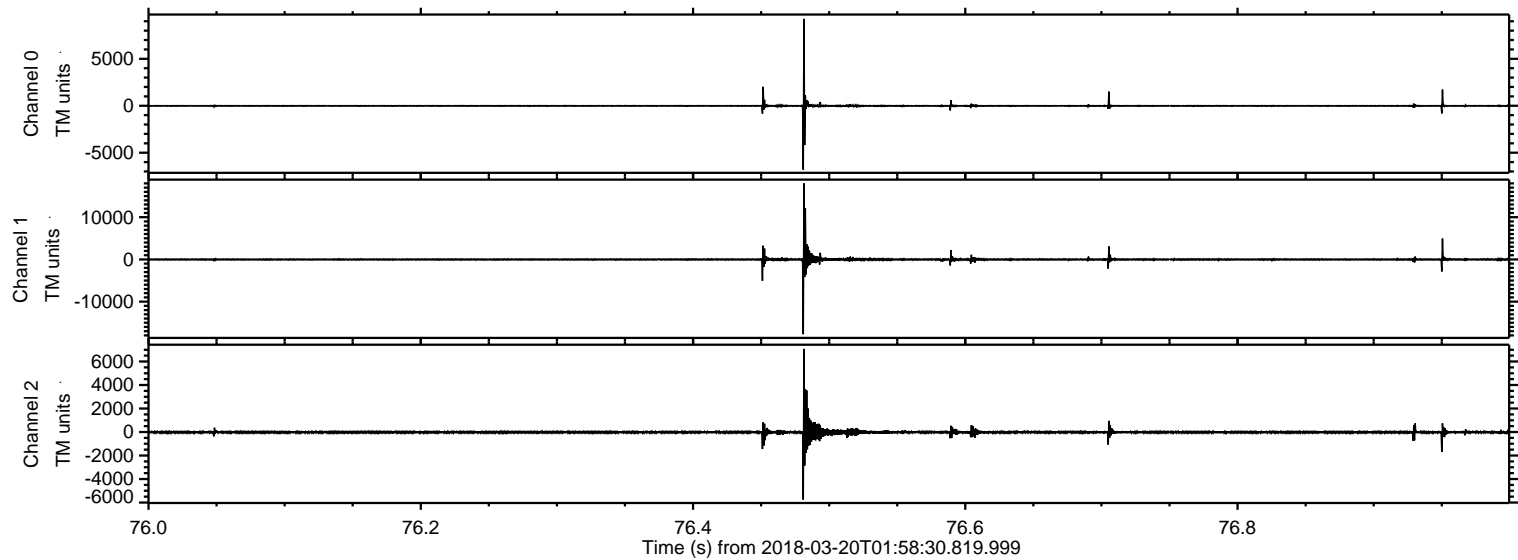
ELMAVAN 3D WAVEFORMS (Measured data sampled at 50 kHz) 51000 packets of 144 samples from 2018-03-20T01:58:30.819.999.

Processed Tue Mar 20 03:06:57 2018 by ELM ver.2012-10-06 from 001__elm20180320_015829__dat00.bin

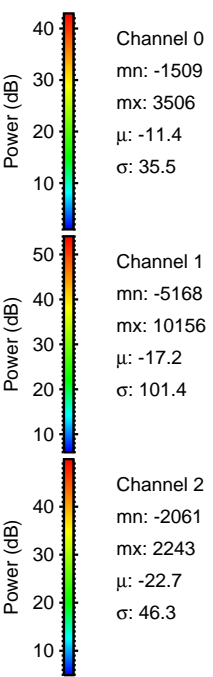
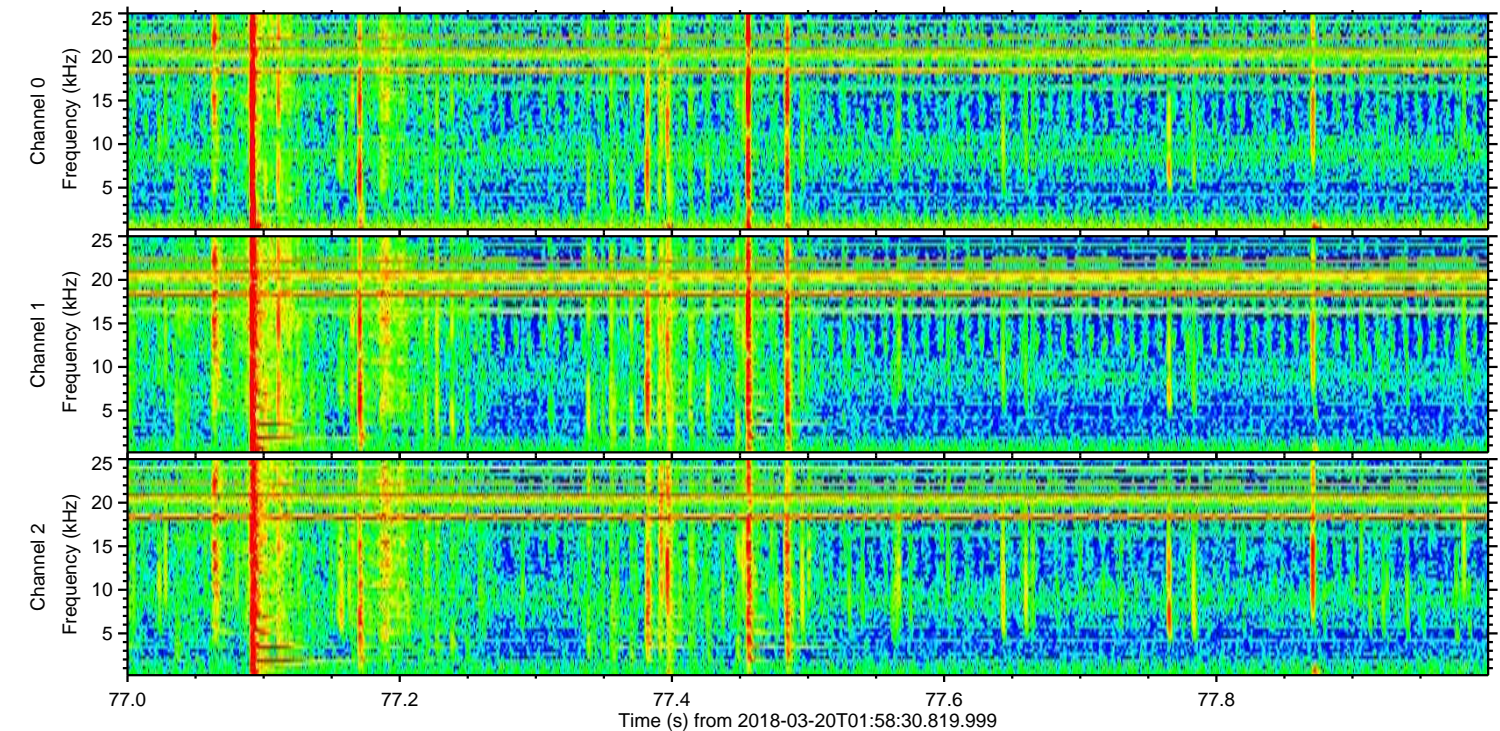
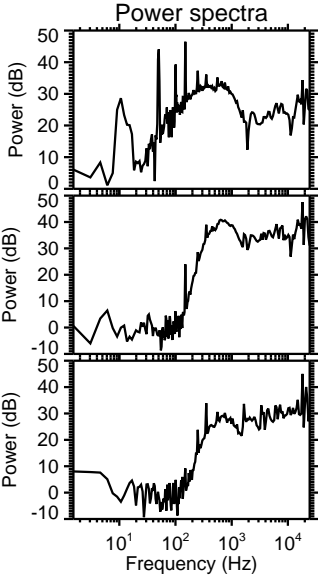
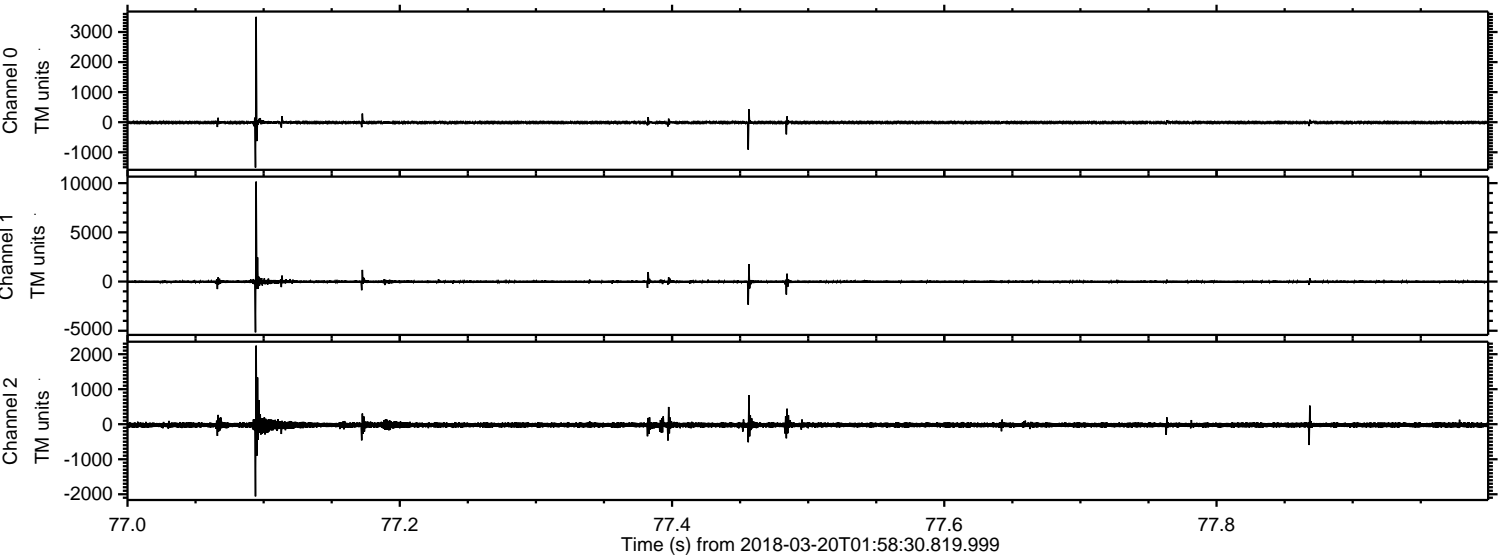


ELMAVAN 3D WAVEFORMS (Measured data sampled at 50 kHz) 51000 packets of 144 samples from 2018-03-20T01:58:30.819.999. Part 77/147

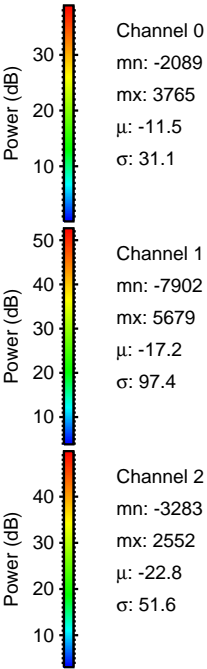
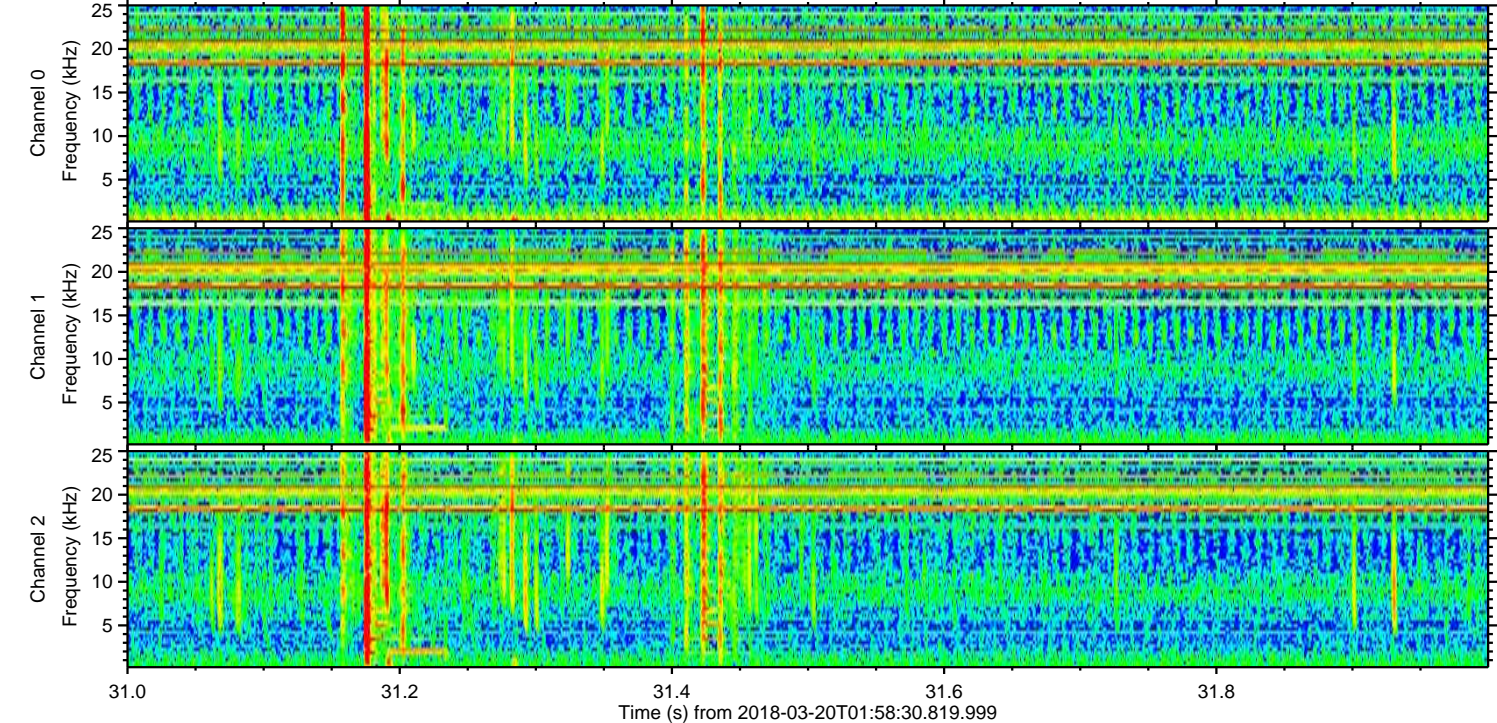
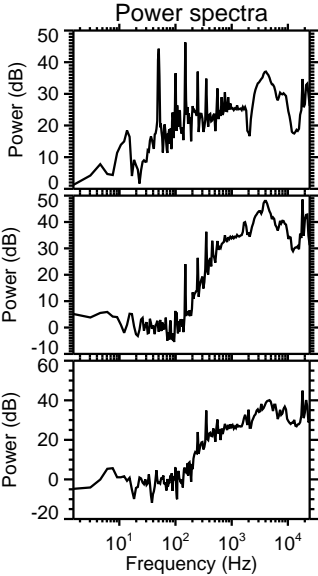
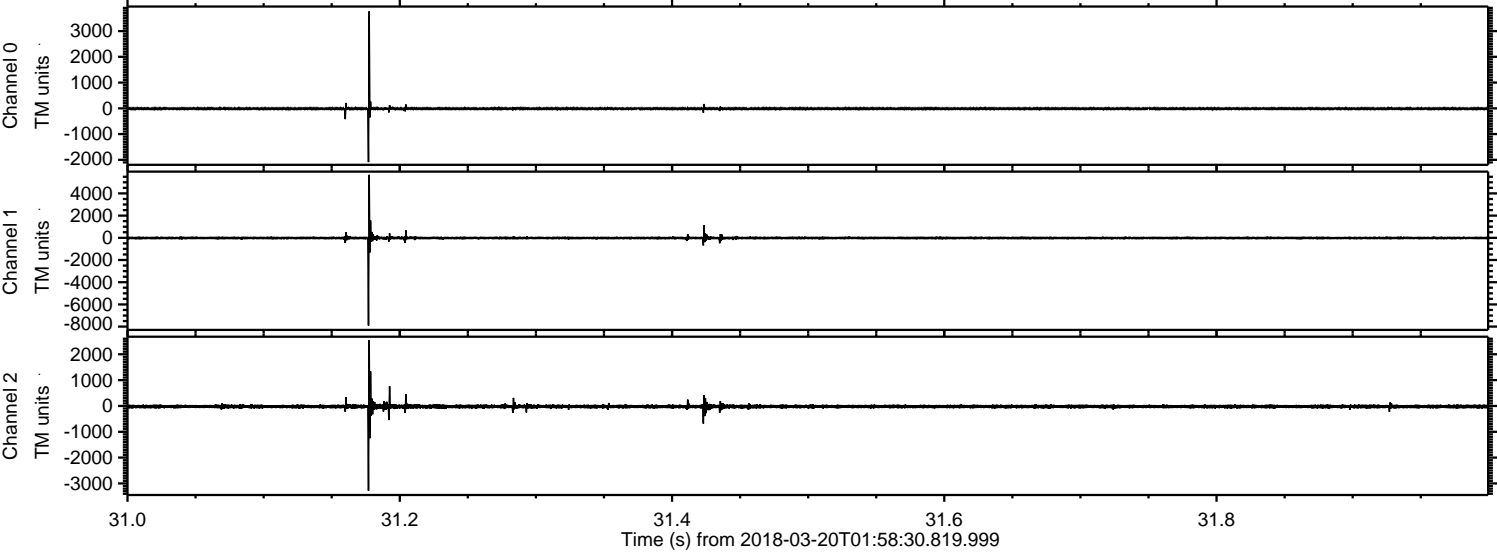
Processed Tue Mar 20 03:07:05 2018 by ELM ver.2012-10-06 from 001__elm20180320_015829__dat00.bin



Processed Tue Mar 20 03:07:06 2018 by ELM ver.2012-10-06 from 001__elm20180320_015829__dat00.bin



Processed Tue Mar 20 03:07:06 2018 by ELM ver.2012-10-06 from 001__elm20180320_015829__dat00.bin

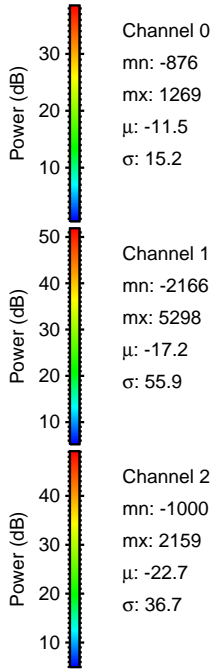
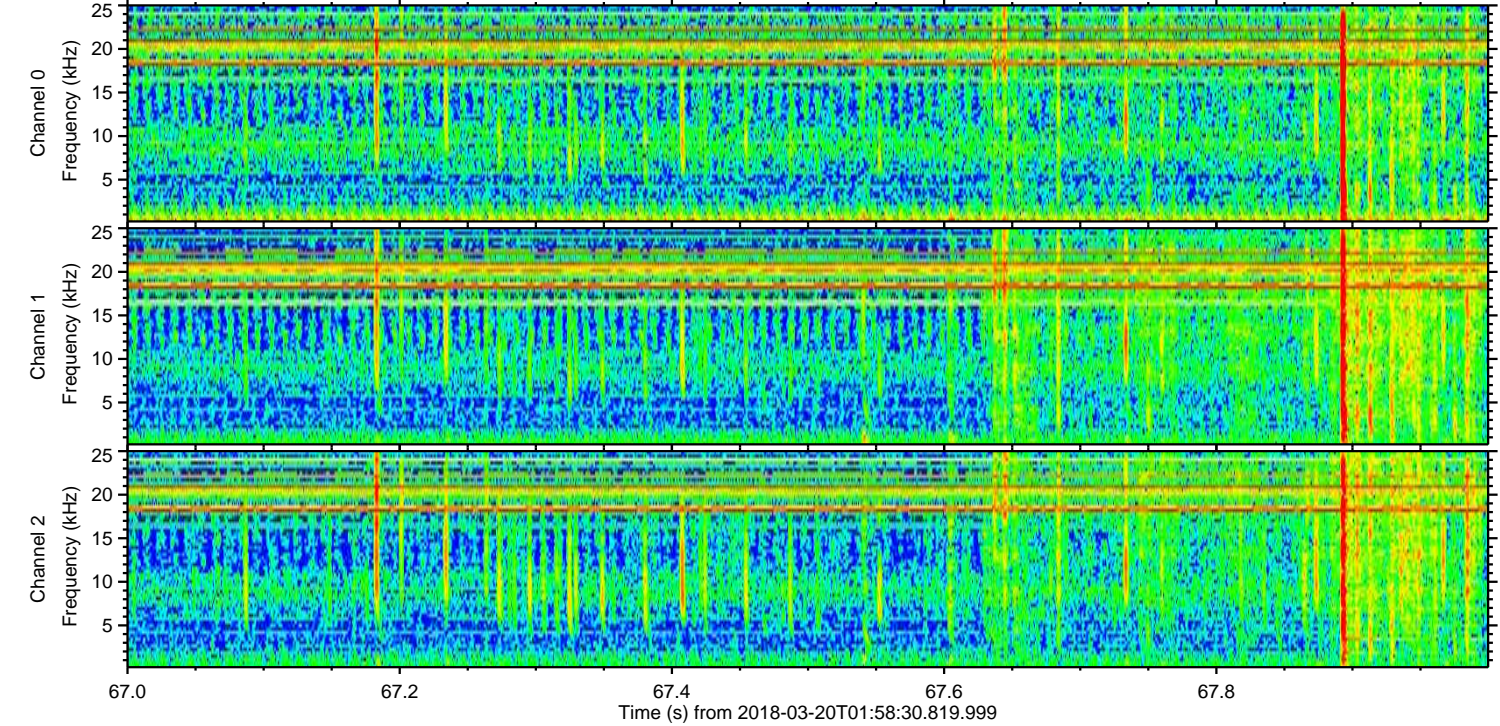
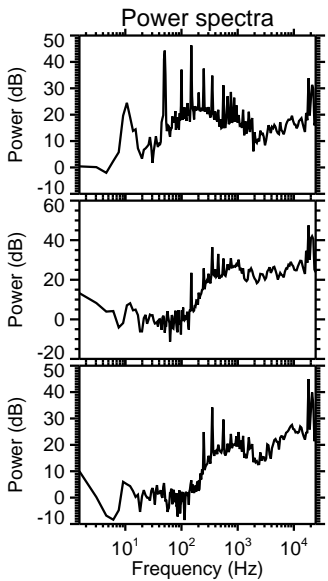
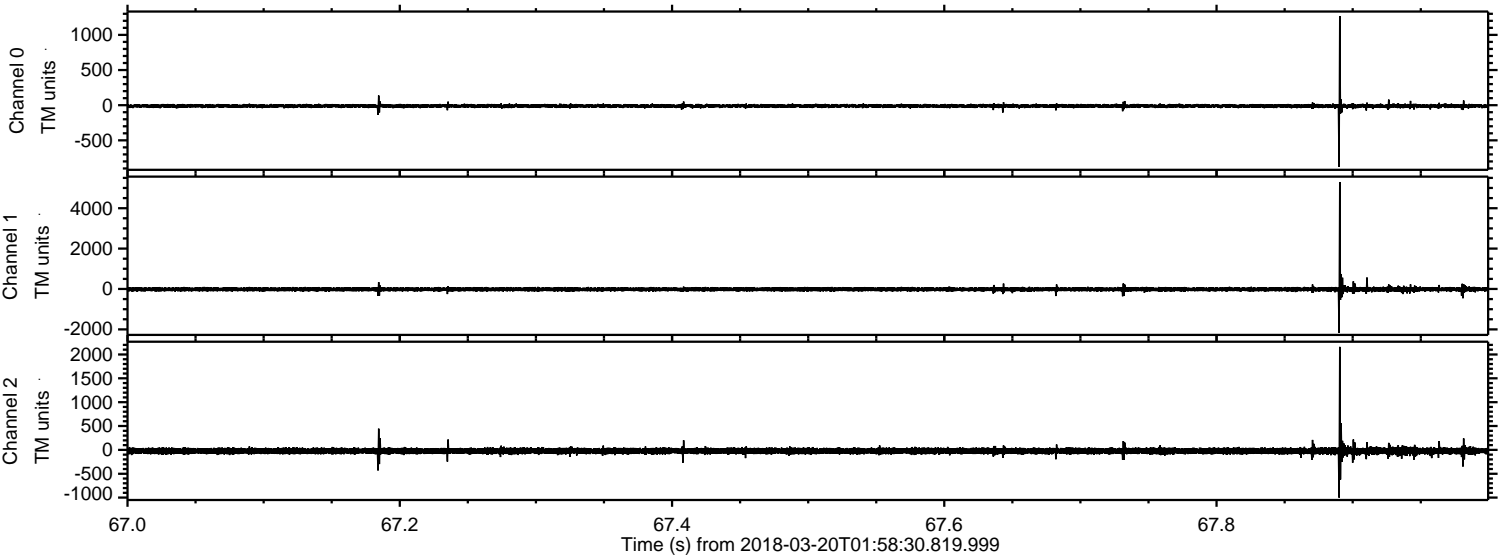


Channel 0
mn: -2089
mx: 3765
 μ : -11.5
 σ : 31.1

Channel 1
mn: -7902
mx: 5679
 μ : -17.2
 σ : 97.4

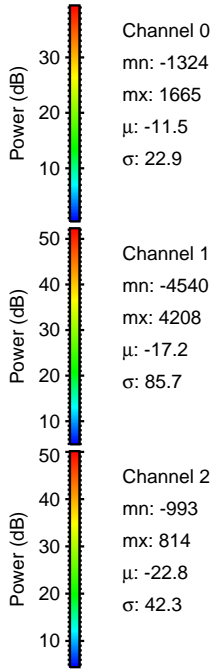
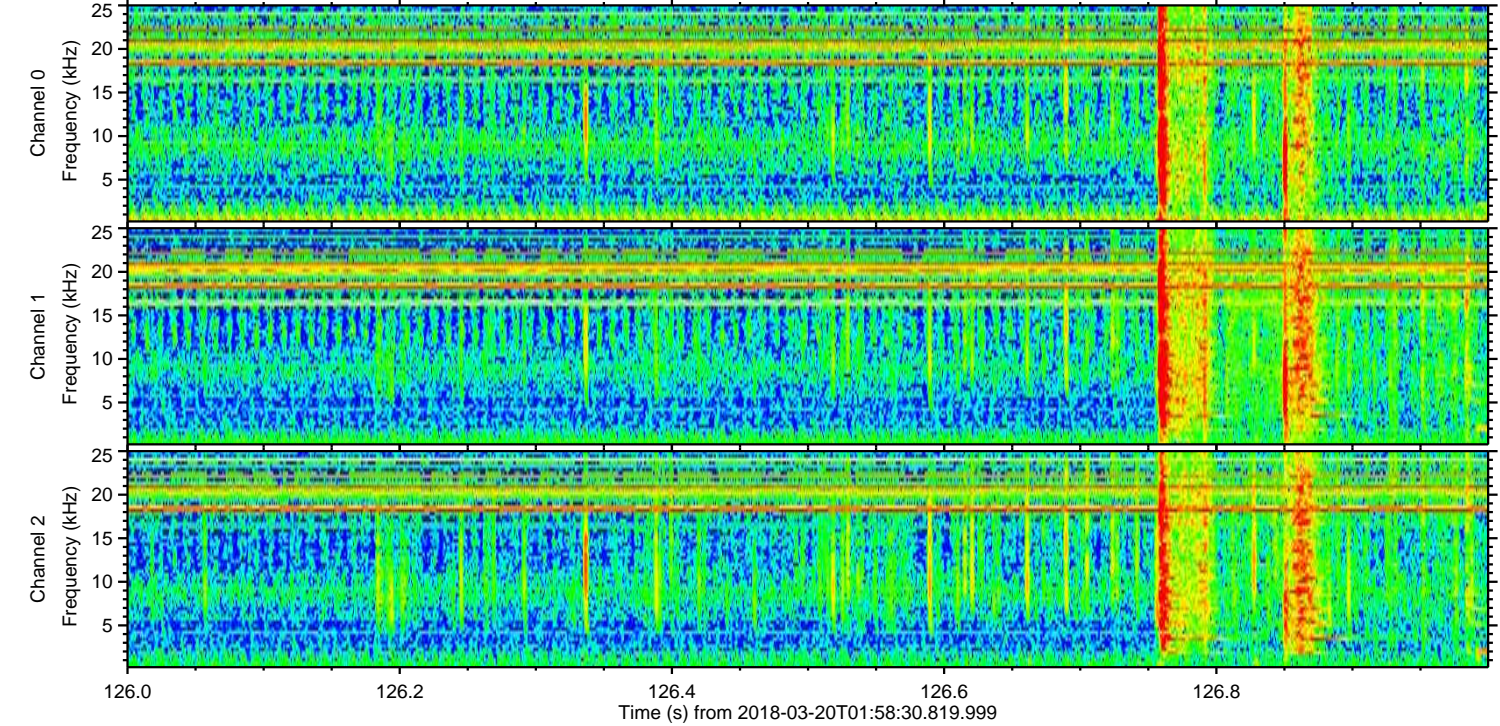
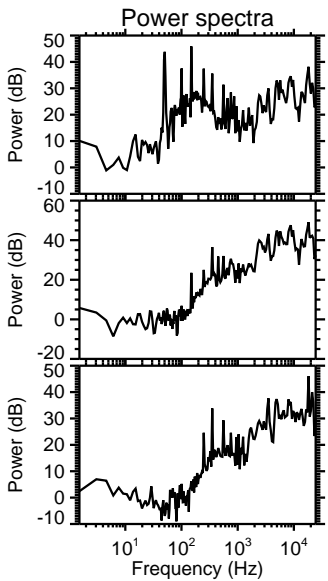
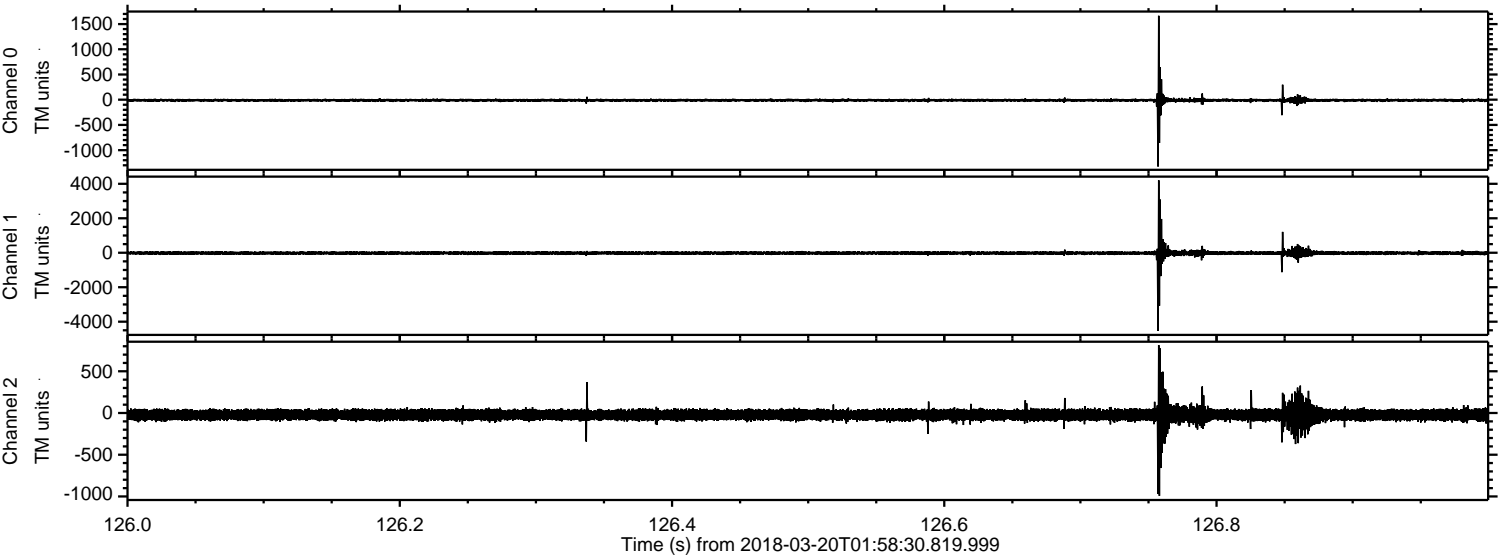
Channel 2
mn: -3283
mx: 2552
 μ : -22.8
 σ : 51.6

Processed Tue Mar 20 03:07:07 2018 by ELM ver.2012-10-06 from 001__elm20180320_015829__dat00.bin

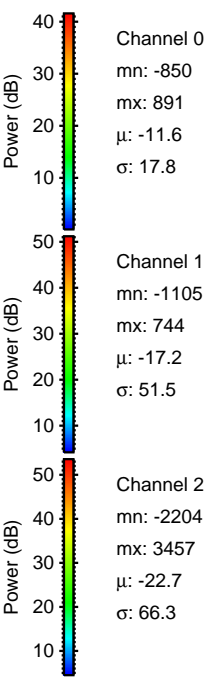
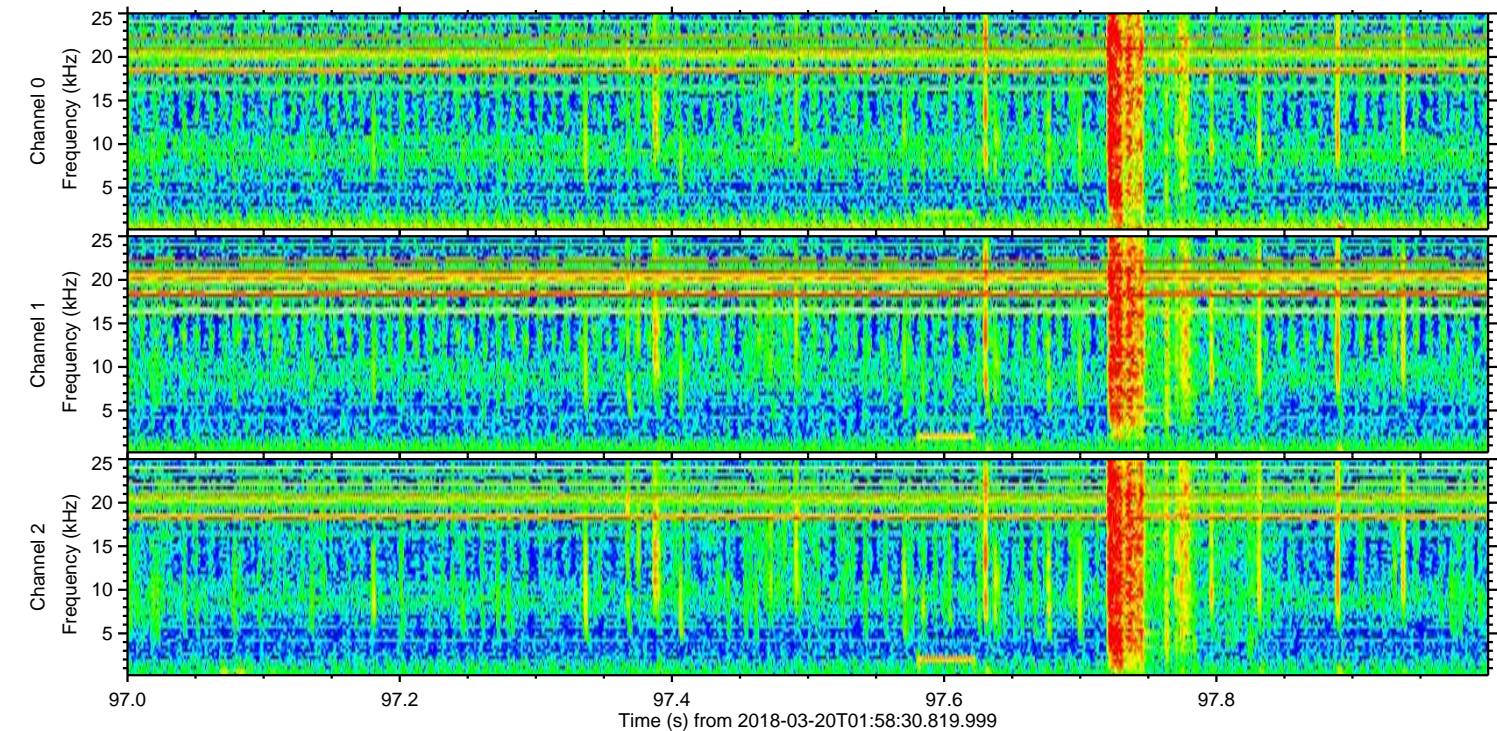
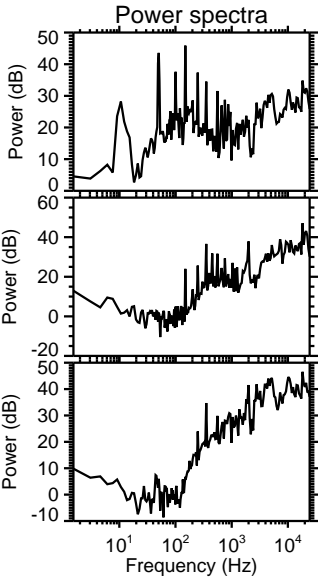
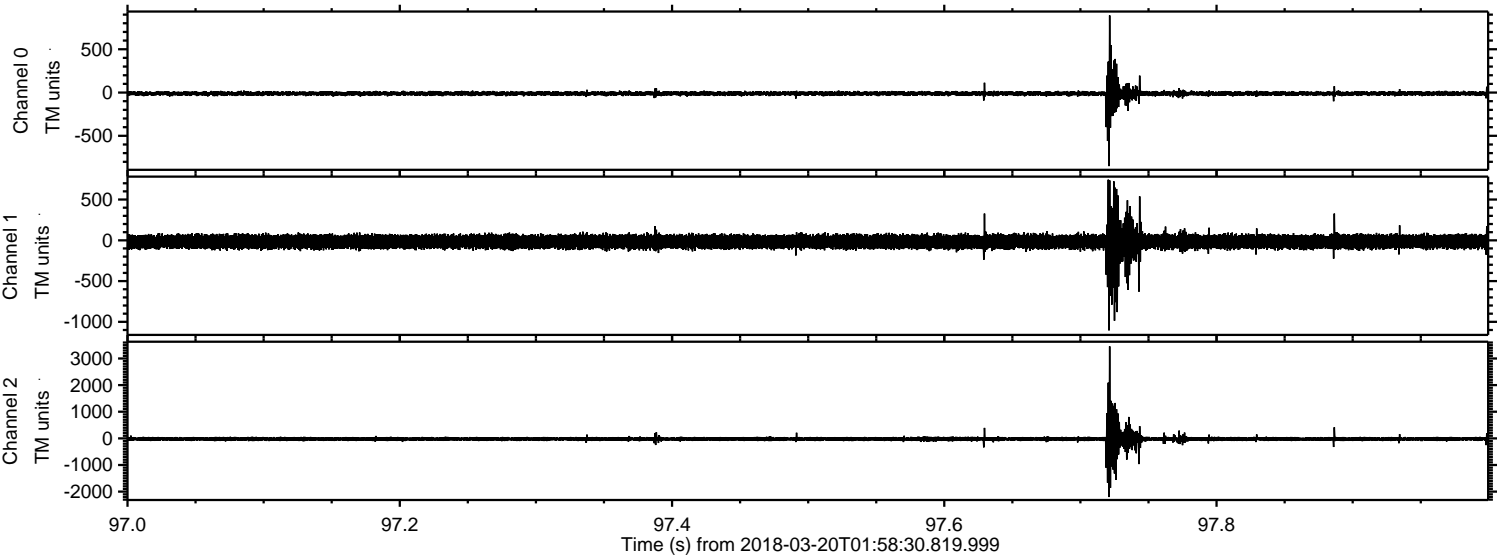


ELMAVAN 3D WAVEFORMS (Measured data sampled at 50 kHz) 51000 packets of 144 samples from 2018-03-20T01:58:30.819.999. Part 127/147

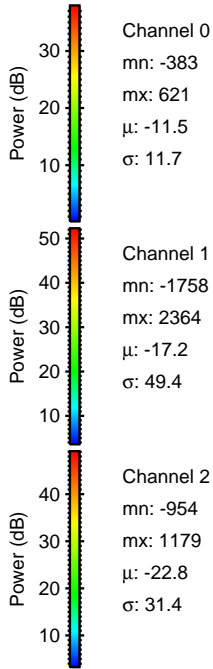
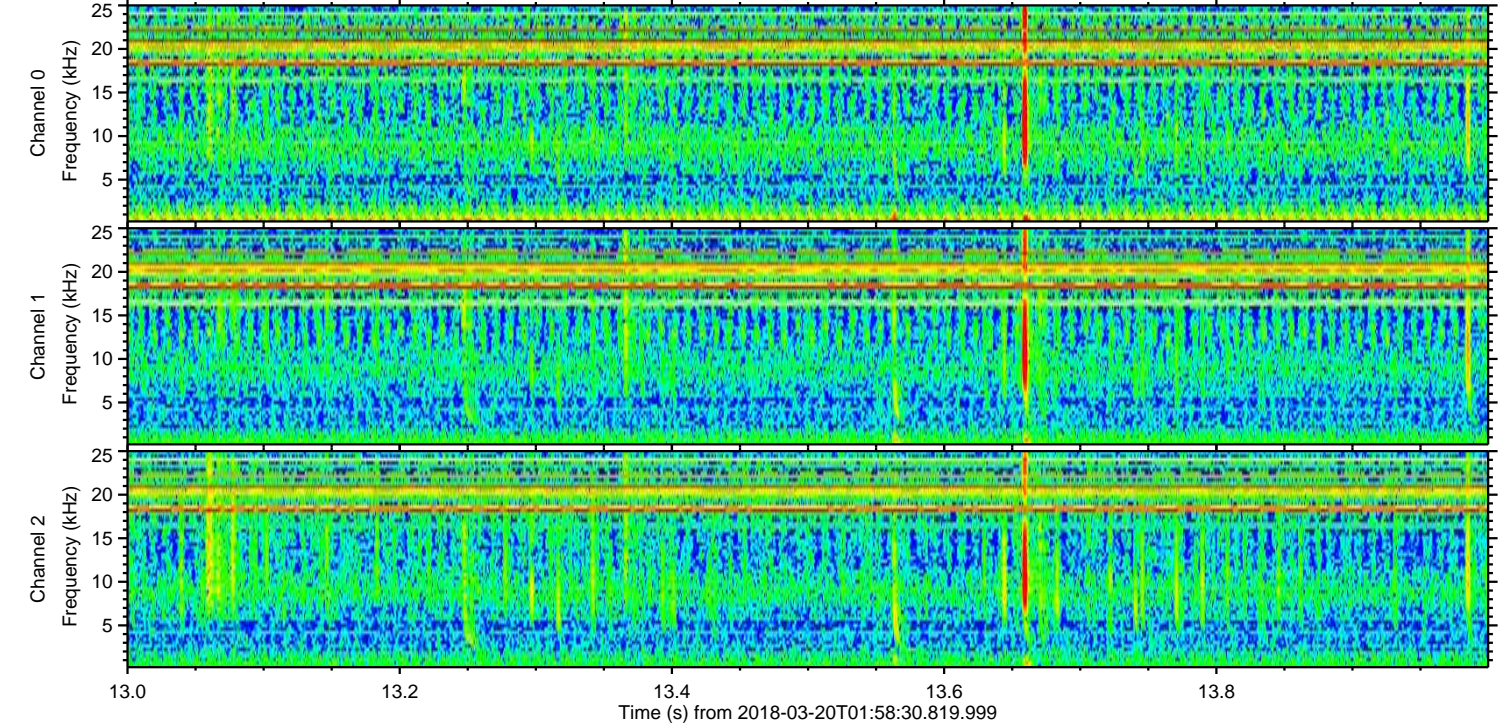
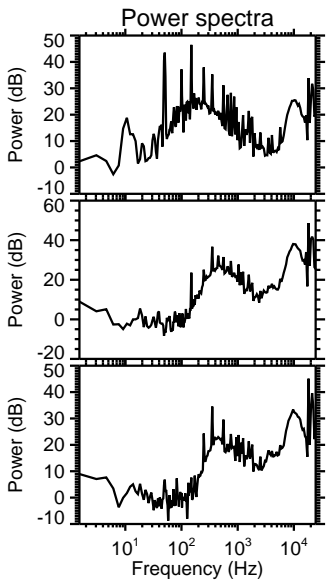
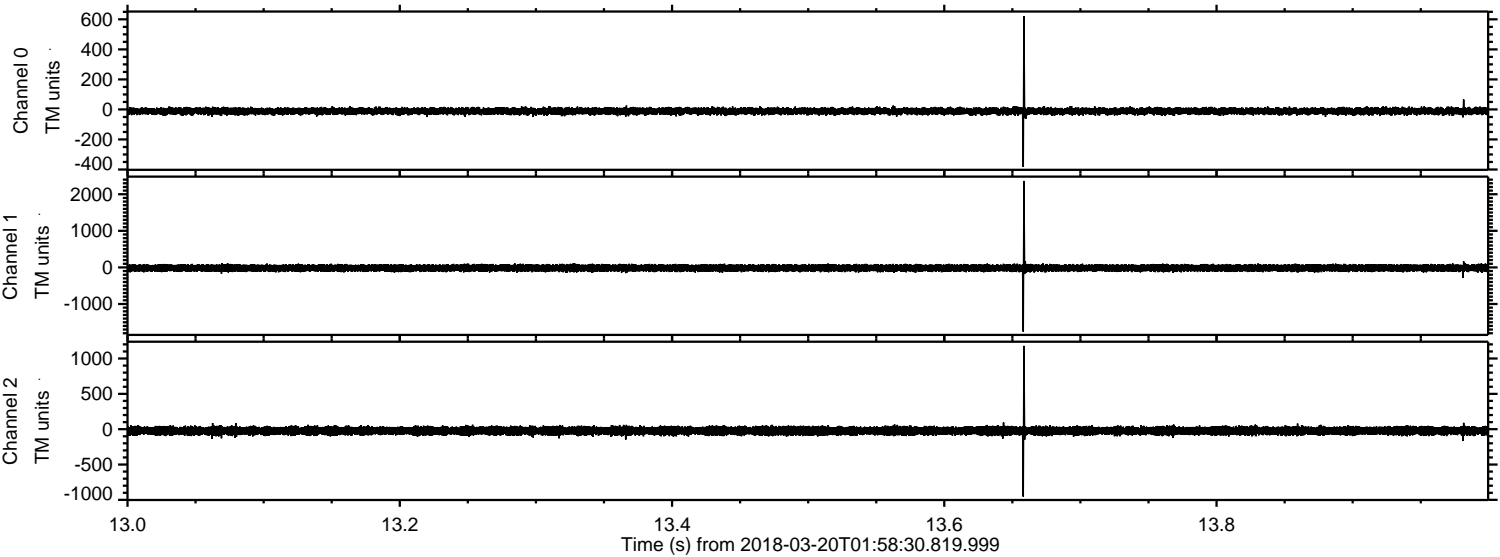
Processed Tue Mar 20 03:07:08 2018 by ELM ver.2012-10-06 from 001__elm20180320_015829__dat00.bin



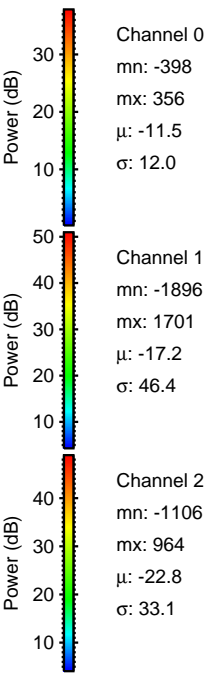
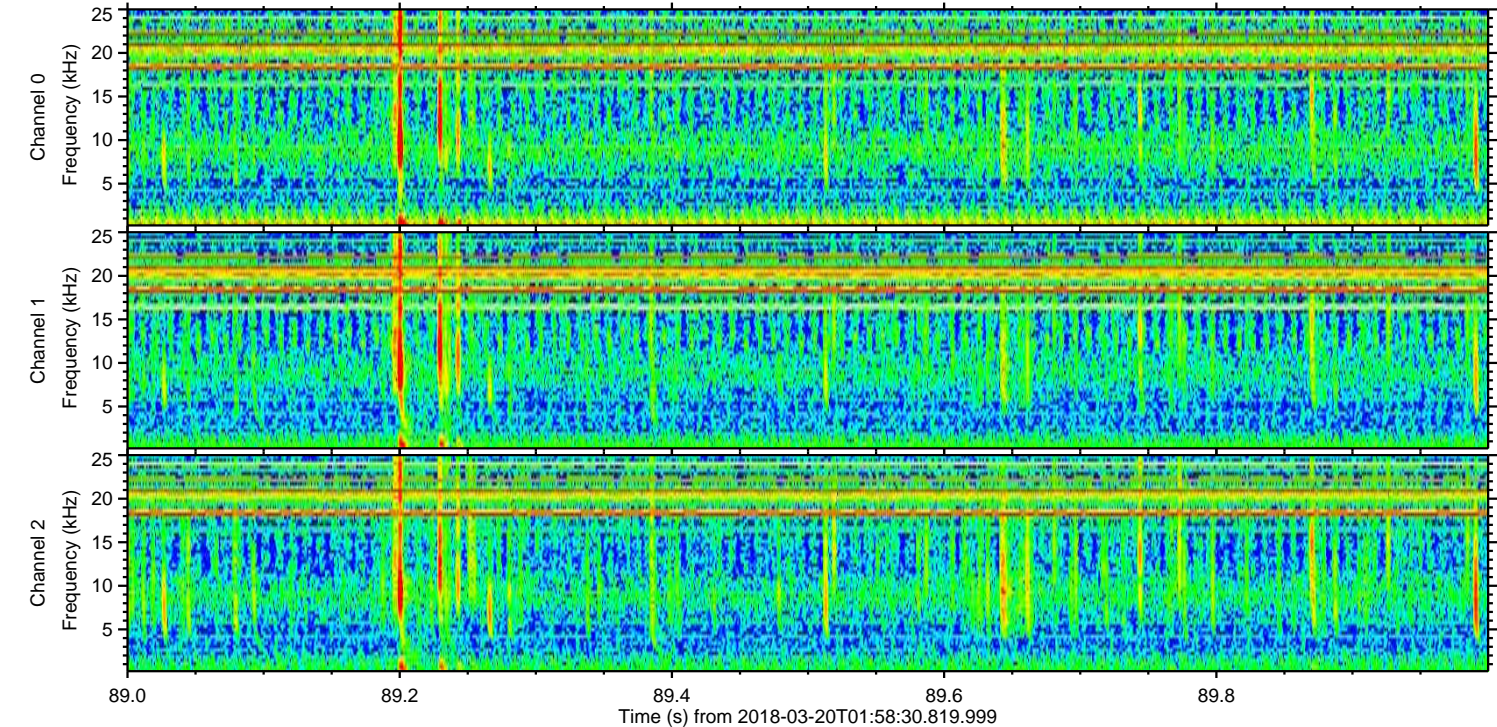
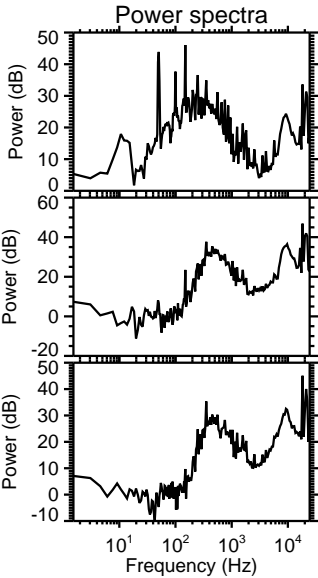
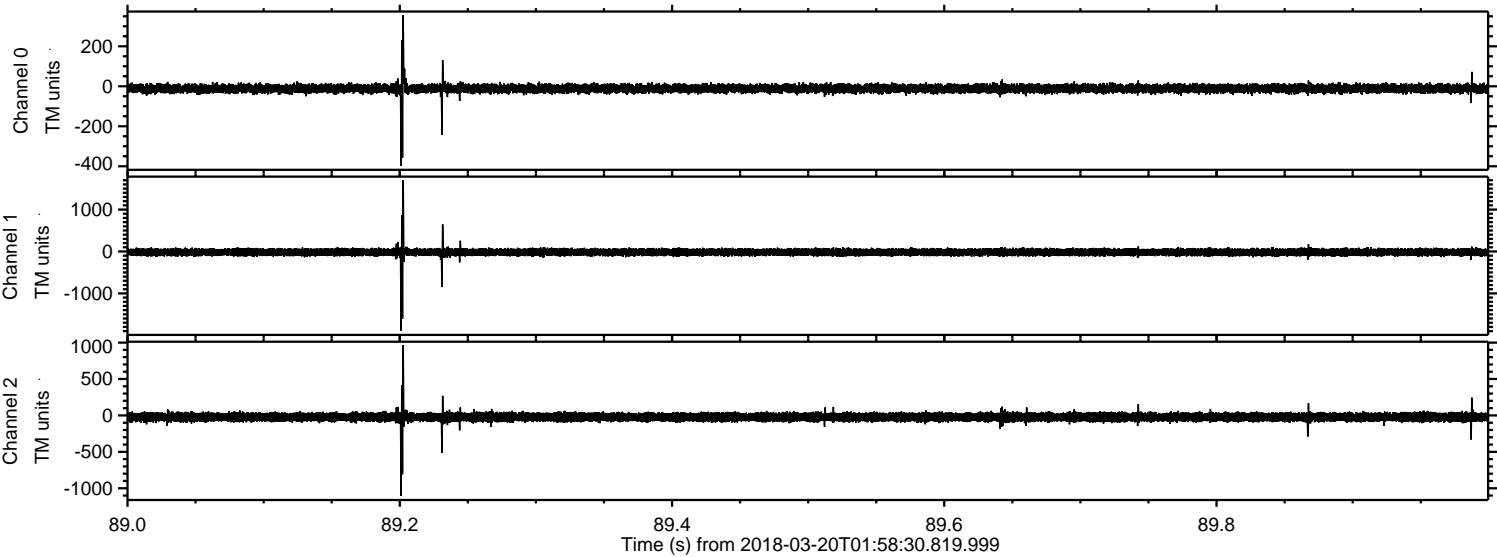
Processed Tue Mar 20 03:07:09 2018 by ELM ver.2012-10-06 from 001__elm20180320_015829__dat00.bin



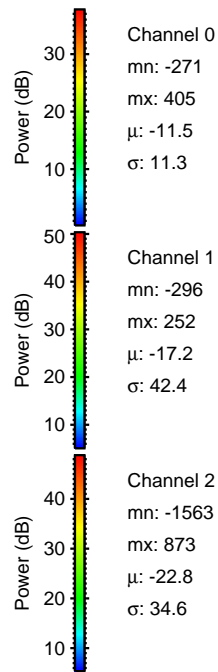
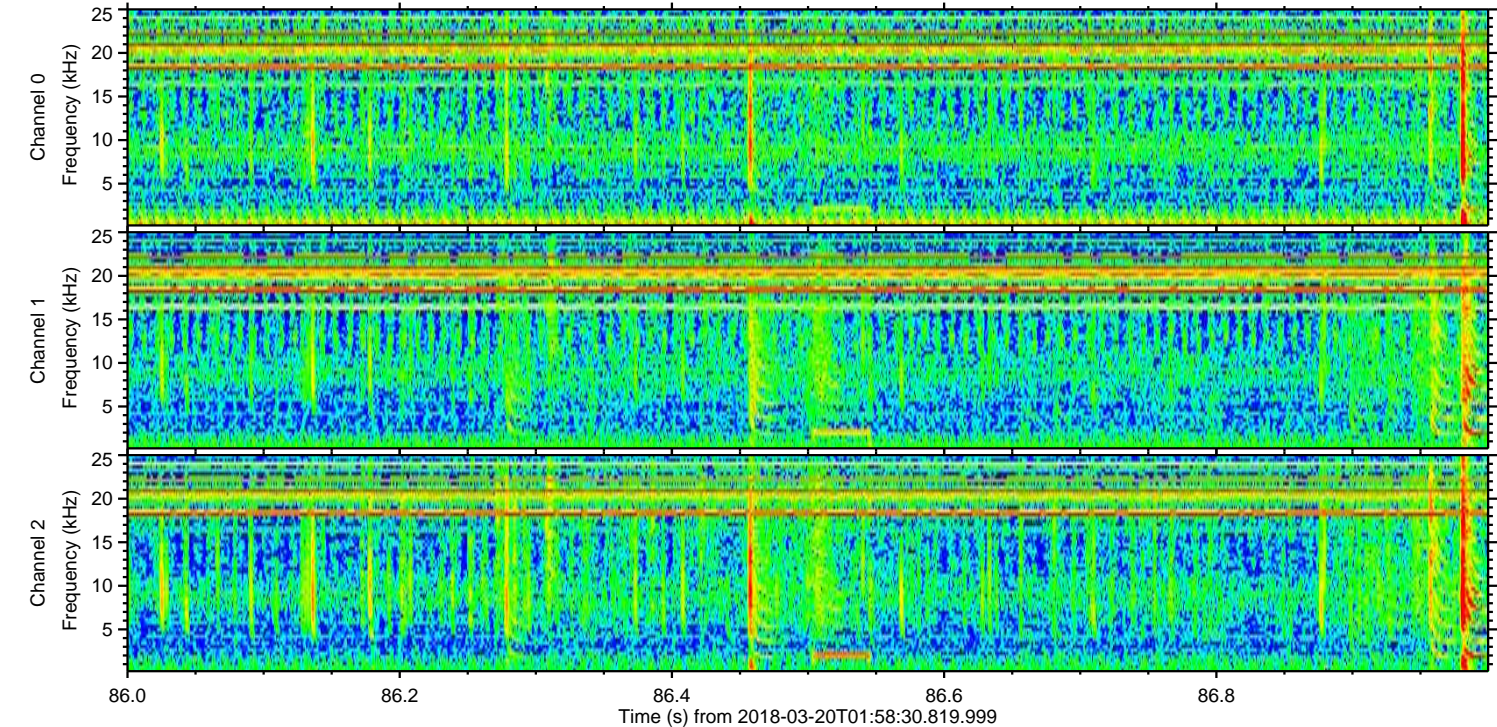
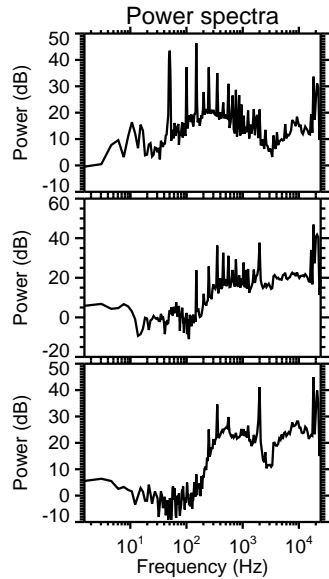
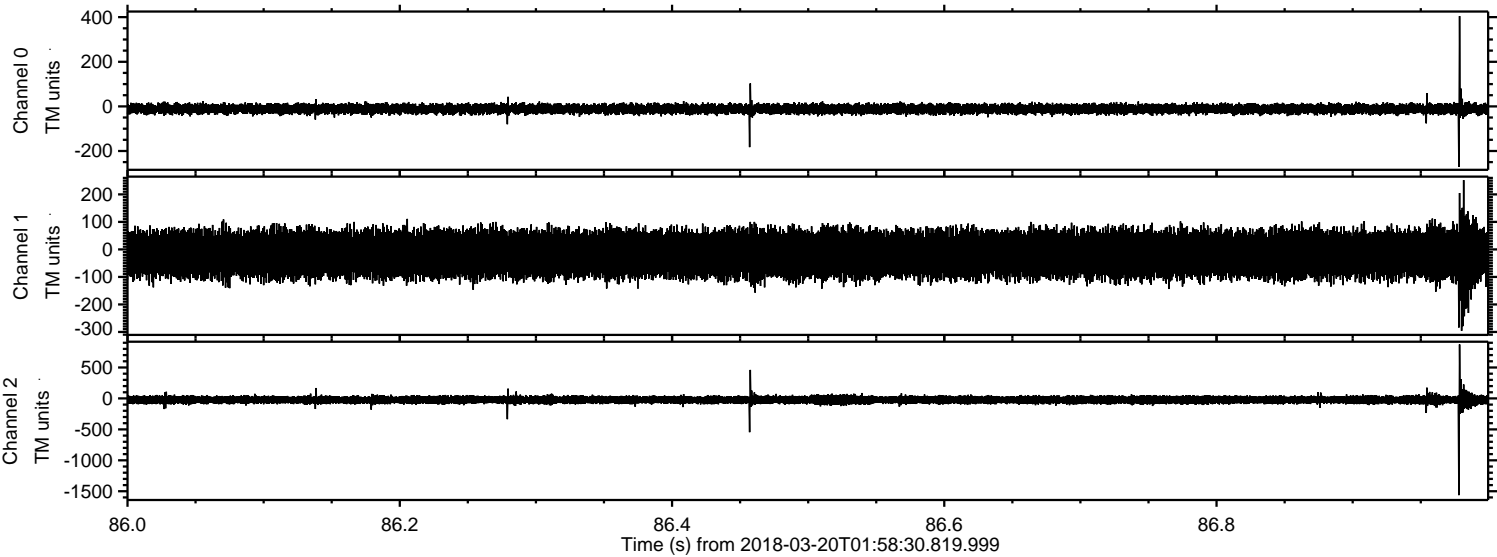
Processed Tue Mar 20 03:07:09 2018 by ELM ver.2012-10-06 from 001__elm20180320_015829__dat00.bin



Processed Tue Mar 20 03:07:10 2018 by ELM ver.2012-10-06 from 001__elm20180320_015829__dat00.bin



Processed Tue Mar 20 03:07:11 2018 by ELM ver.2012-10-06 from 001__elm20180320_015829__dat00.bin



Processed Tue Mar 20 03:07:12 2018 by ELM ver.2012-10-06 from 001__elm20180320_015829__dat00.bin

