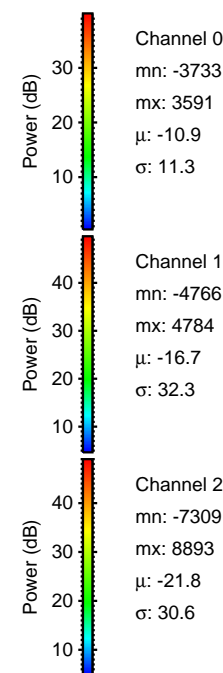
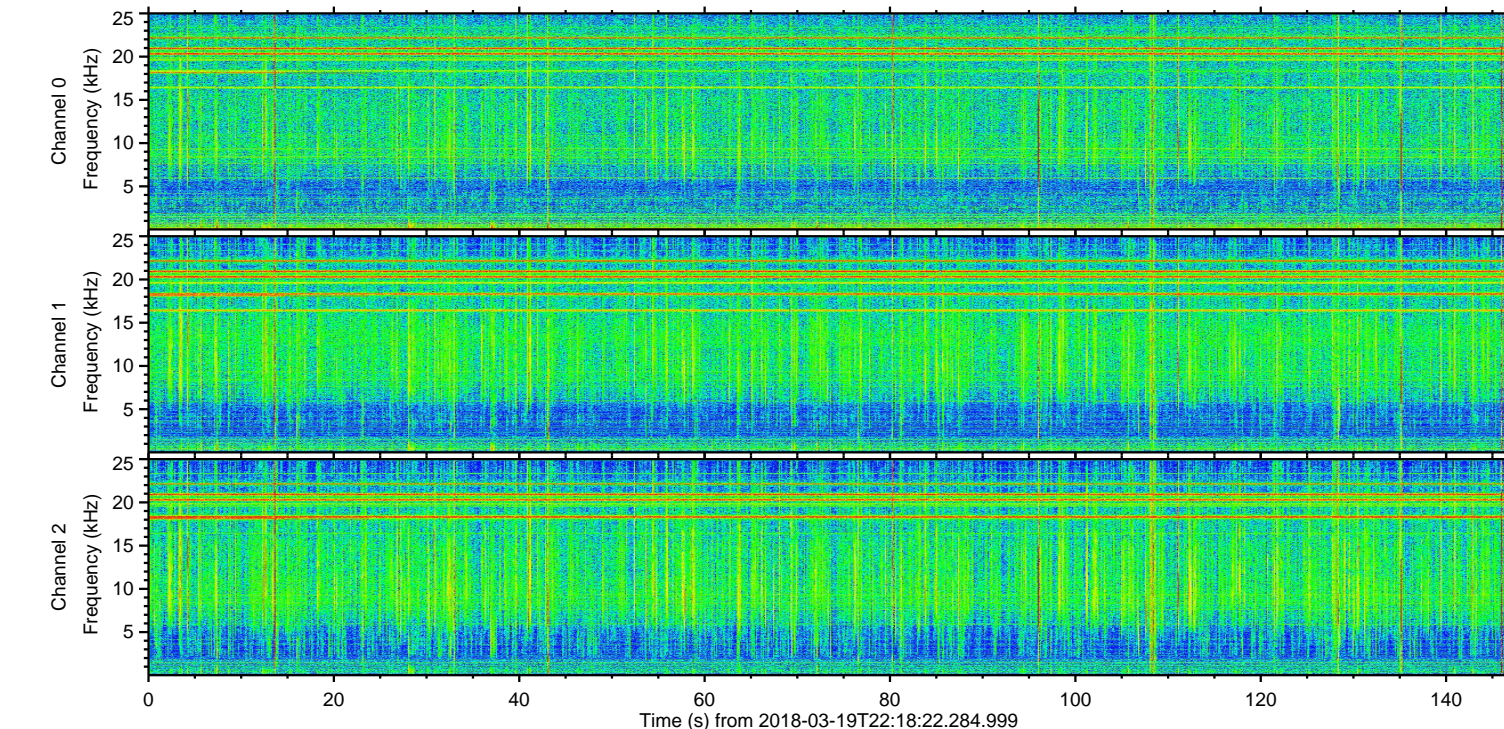
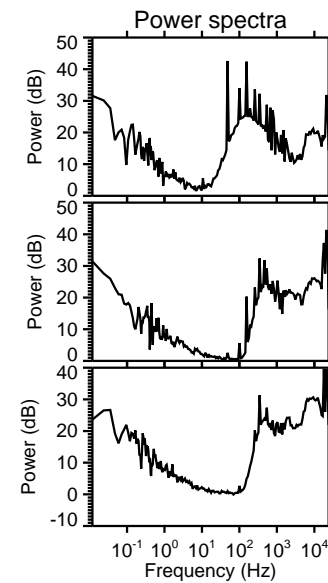
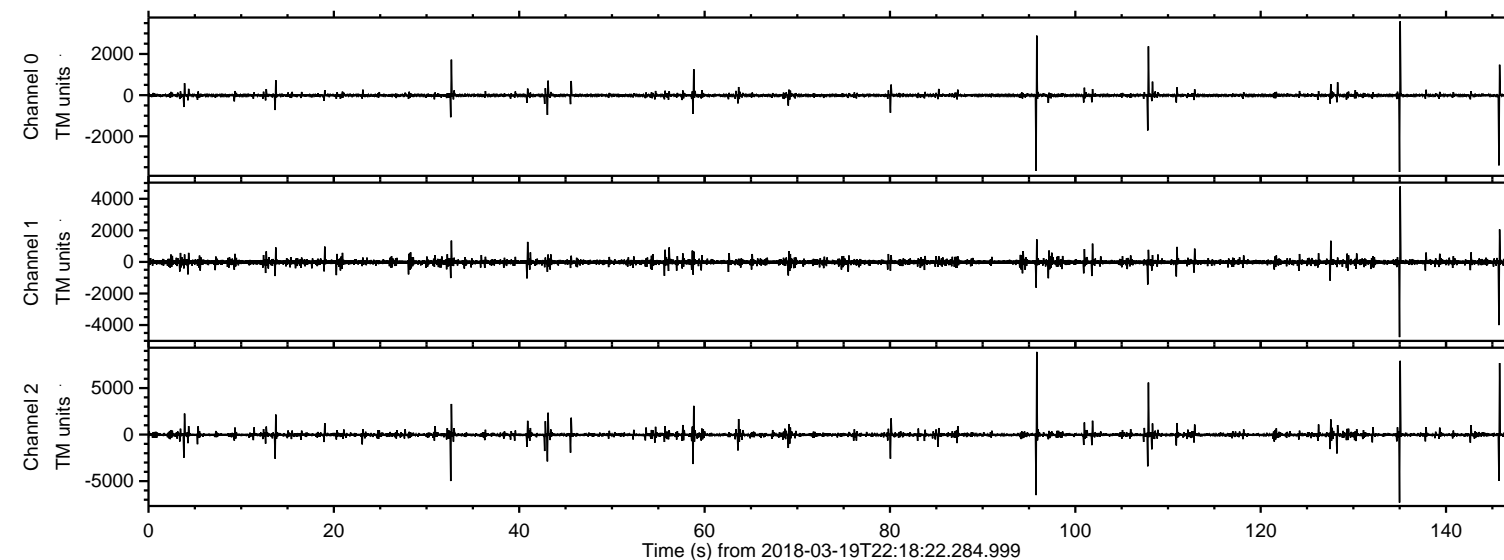
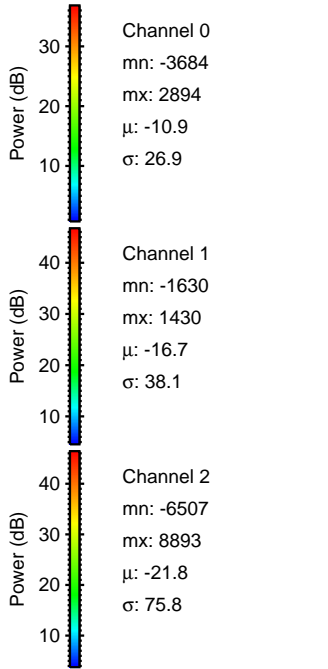
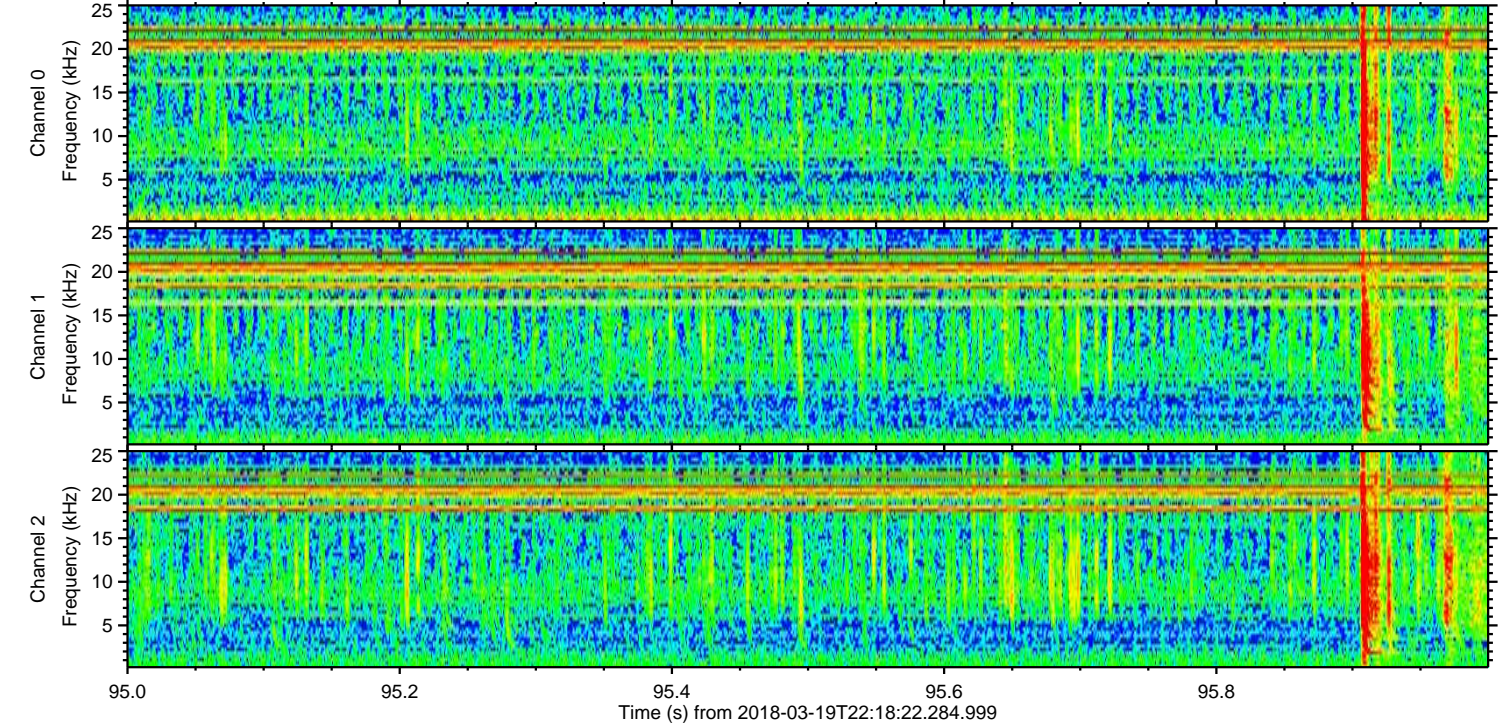
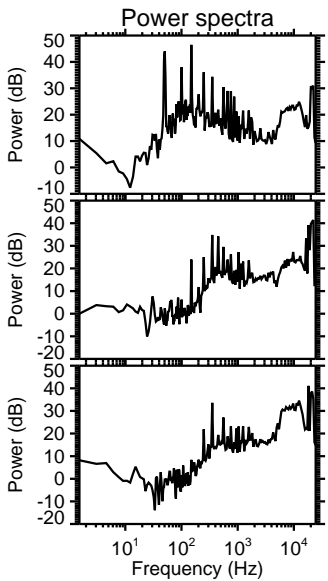
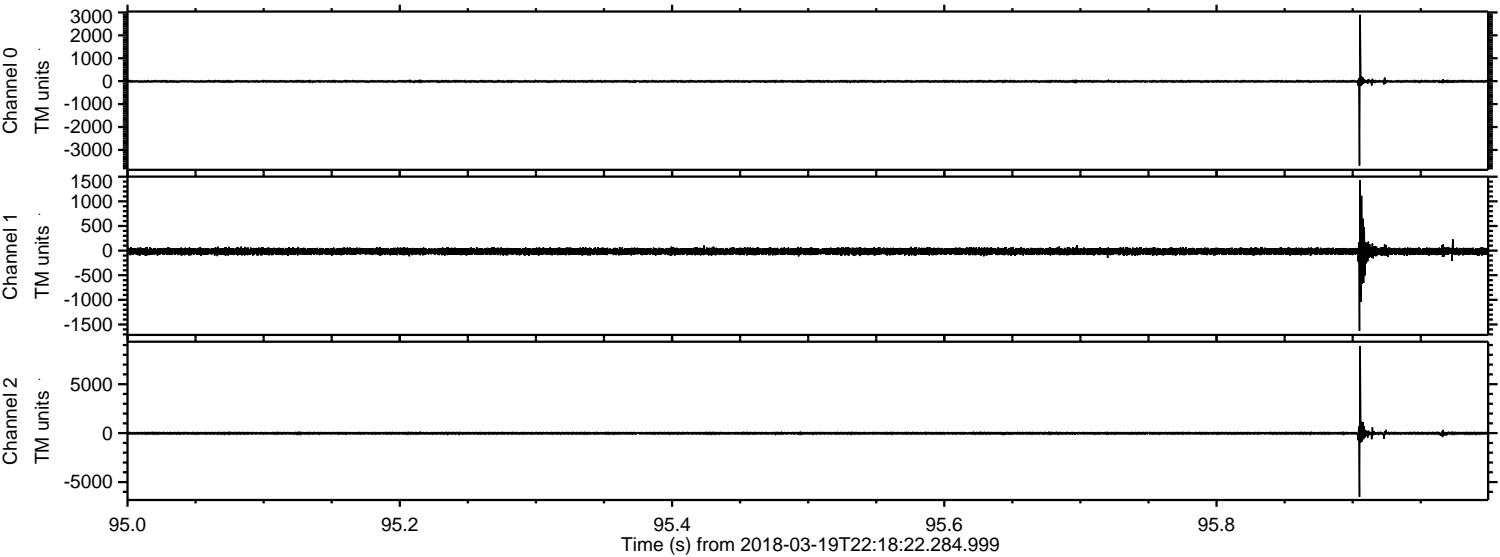


ELMAVAN 3D WAVEFORMS (Measured data sampled at 50 kHz) 51000 packets of 144 samples from 2018-03-19T22:18:22.284.999.

Processed Mon Mar 19 23:29:10 2018 by ELM ver.2012-10-06 from 001__elm20180319_221821__dat00.bin

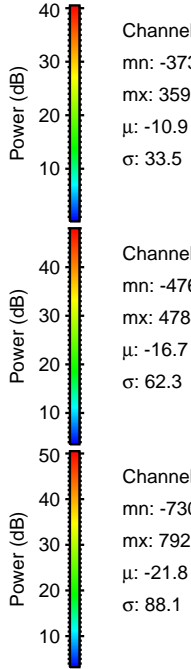
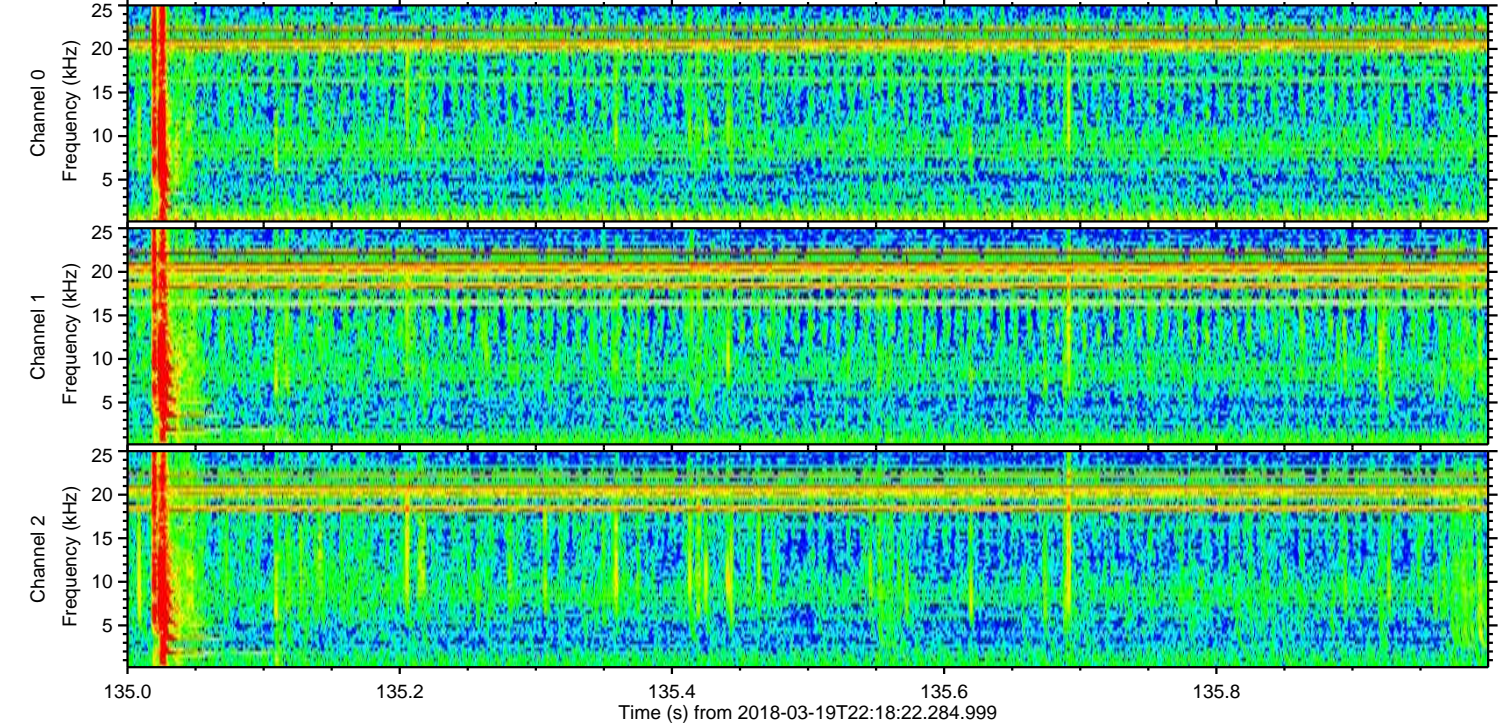
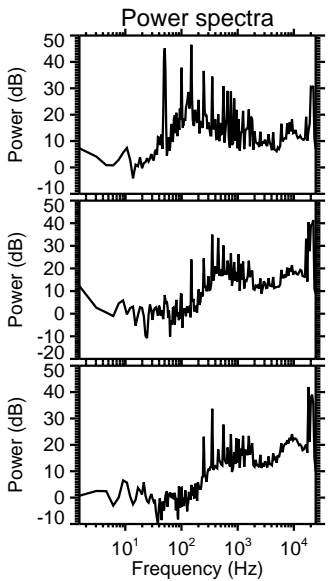
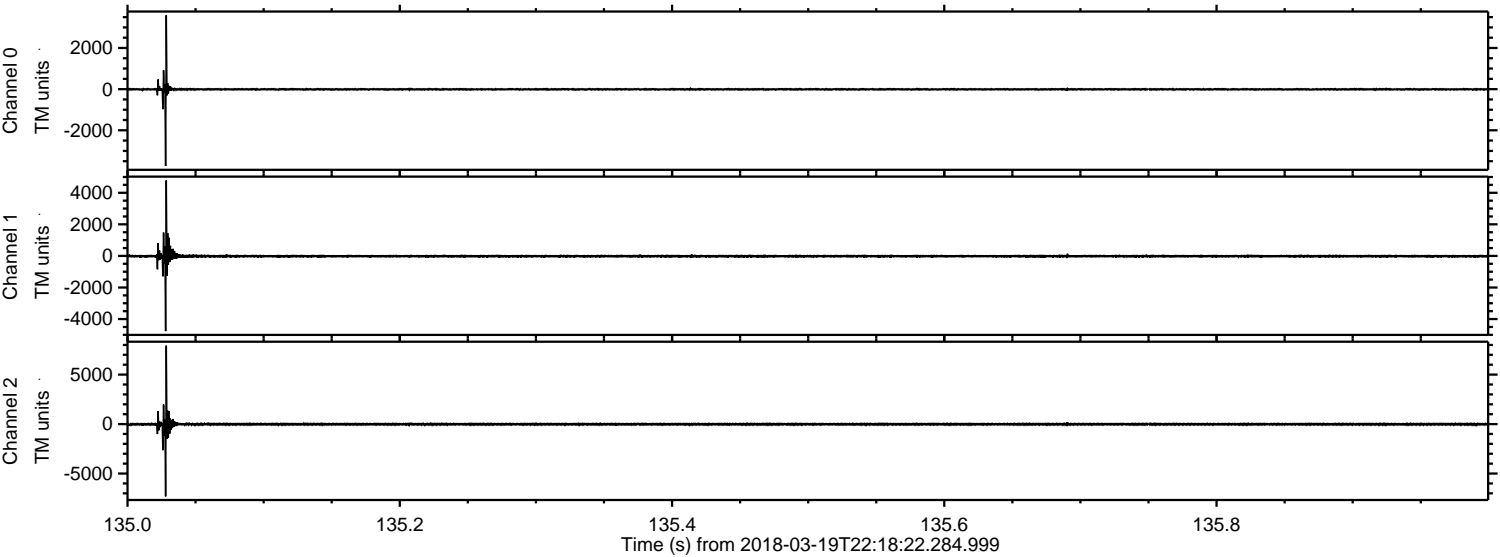


Processed Mon Mar 19 23:29:21 2018 by ELM ver.2012-10-06 from 001__elm20180319_221821__dat00.bin



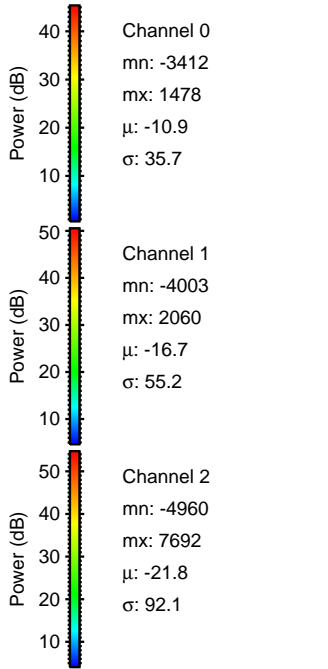
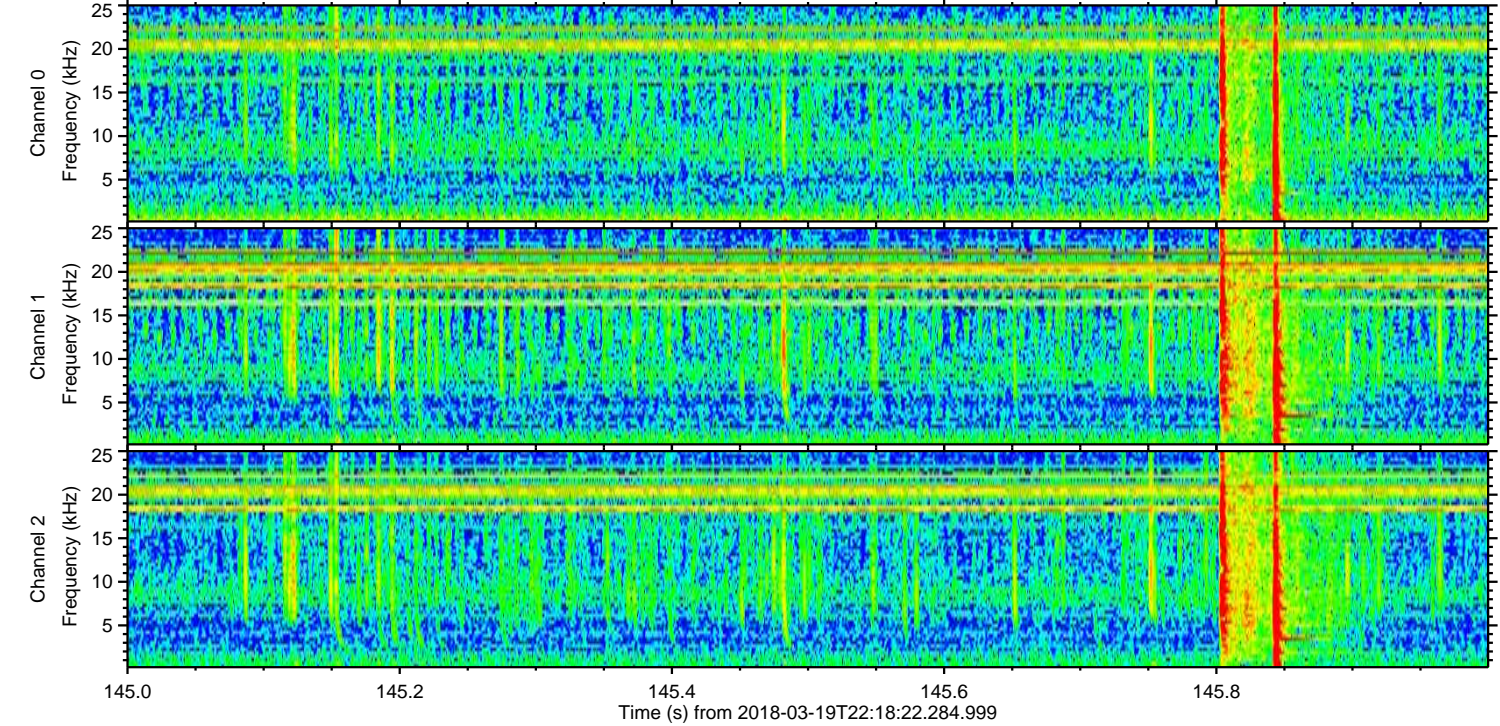
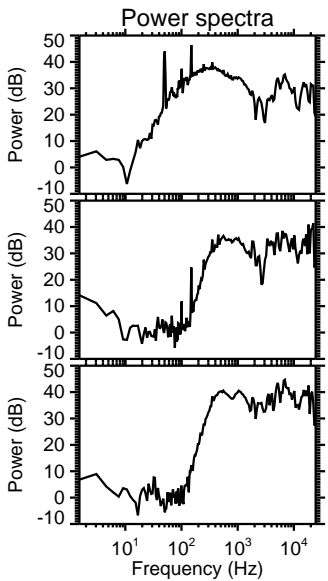
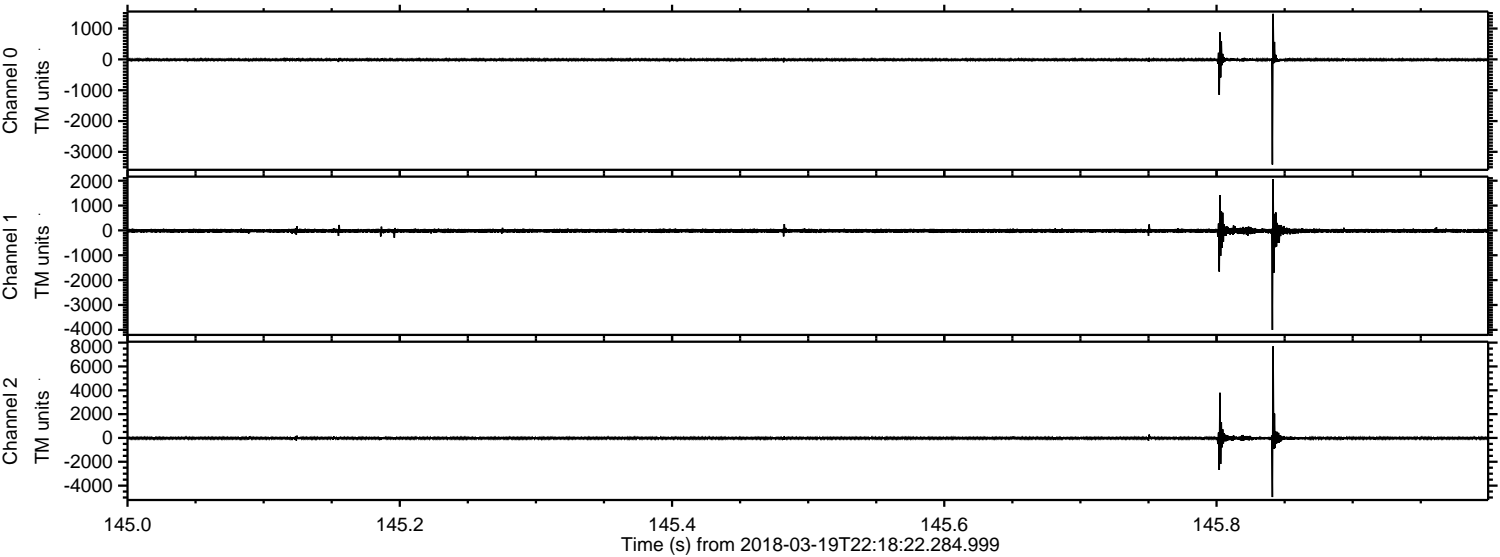
ELMAVAN 3D WAVEFORMS (Measured data sampled at 50 kHz) 51000 packets of 144 samples from 2018-03-19T22:18:22.284.999. Part 136/147

Processed Mon Mar 19 23:29:22 2018 by ELM ver.2012-10-06 from 001__elm20180319_221821__dat00.bin



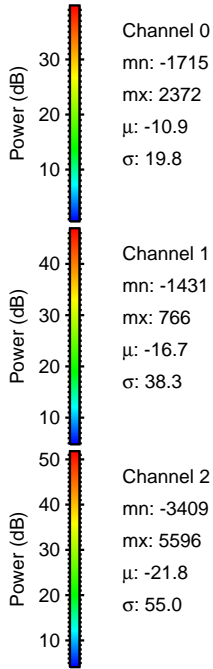
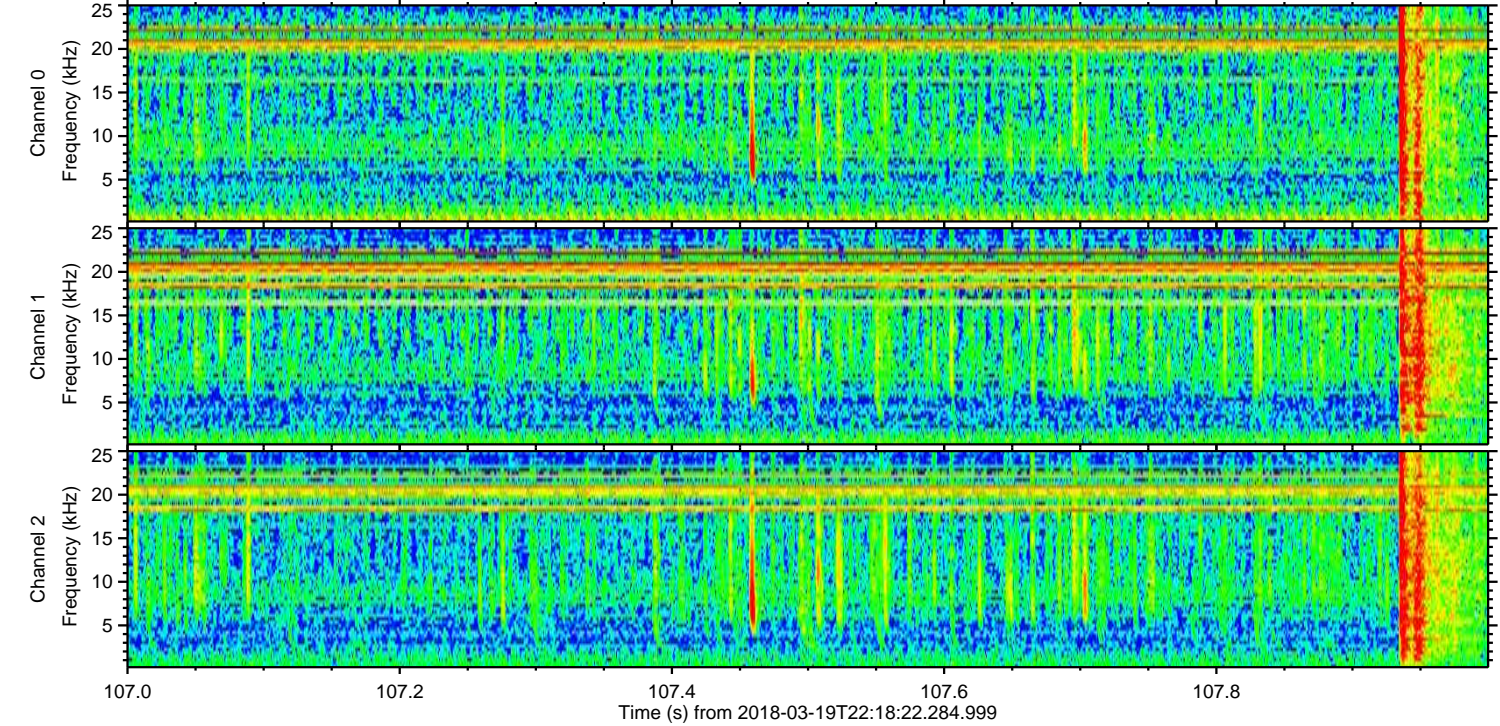
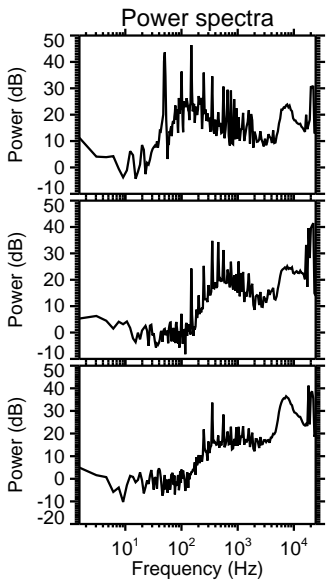
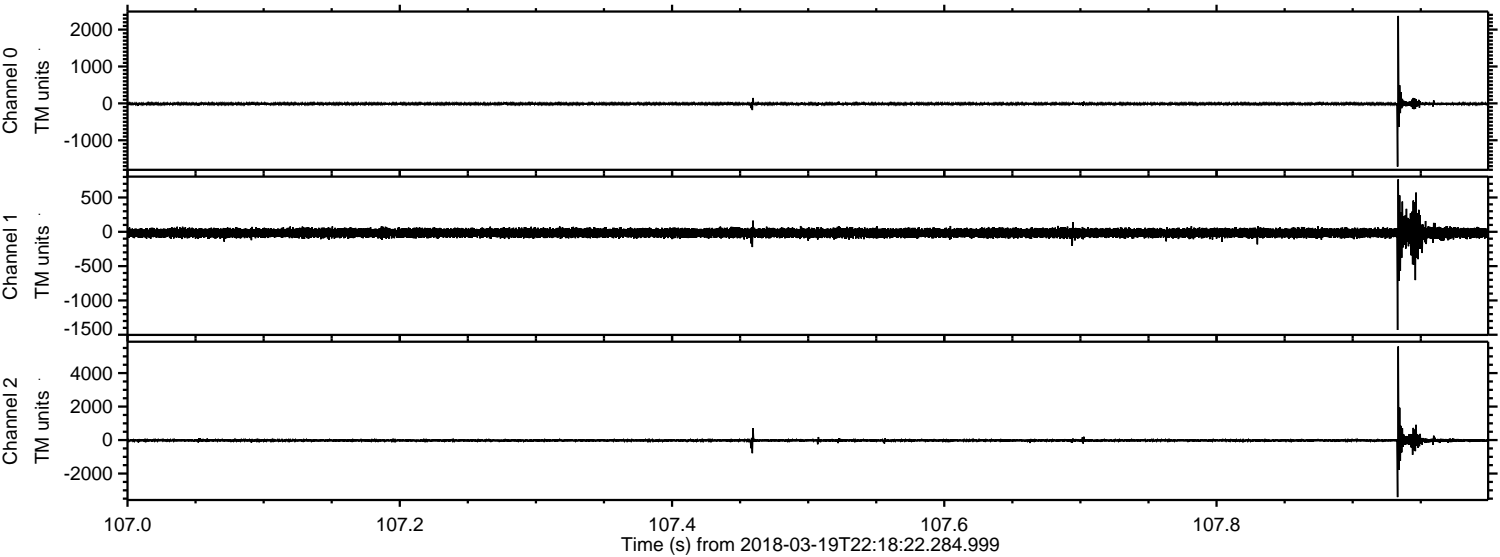
ELMAVAN 3D WAVEFORMS (Measured data sampled at 50 kHz) 51000 packets of 144 samples from 2018-03-19T22:18:22.284.999. Part 146/147

Processed Mon Mar 19 23:29:23 2018 by ELM ver.2012-10-06 from 001__elm20180319_221821__dat00.bin



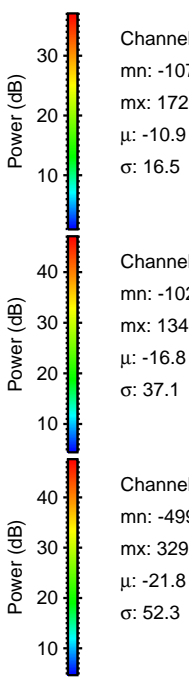
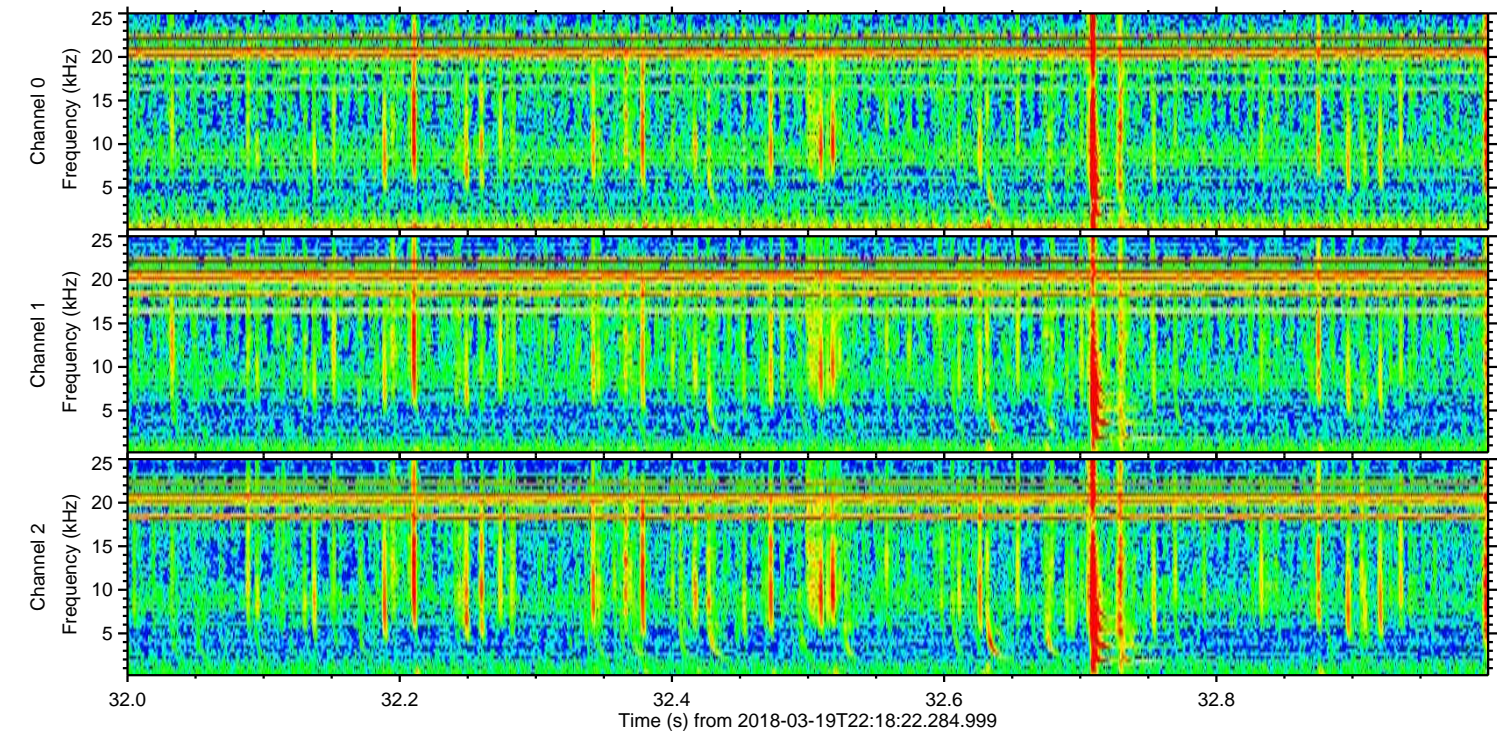
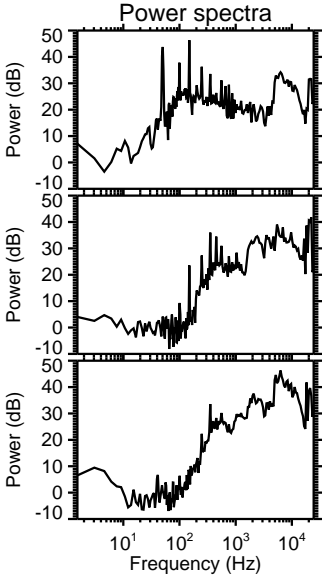
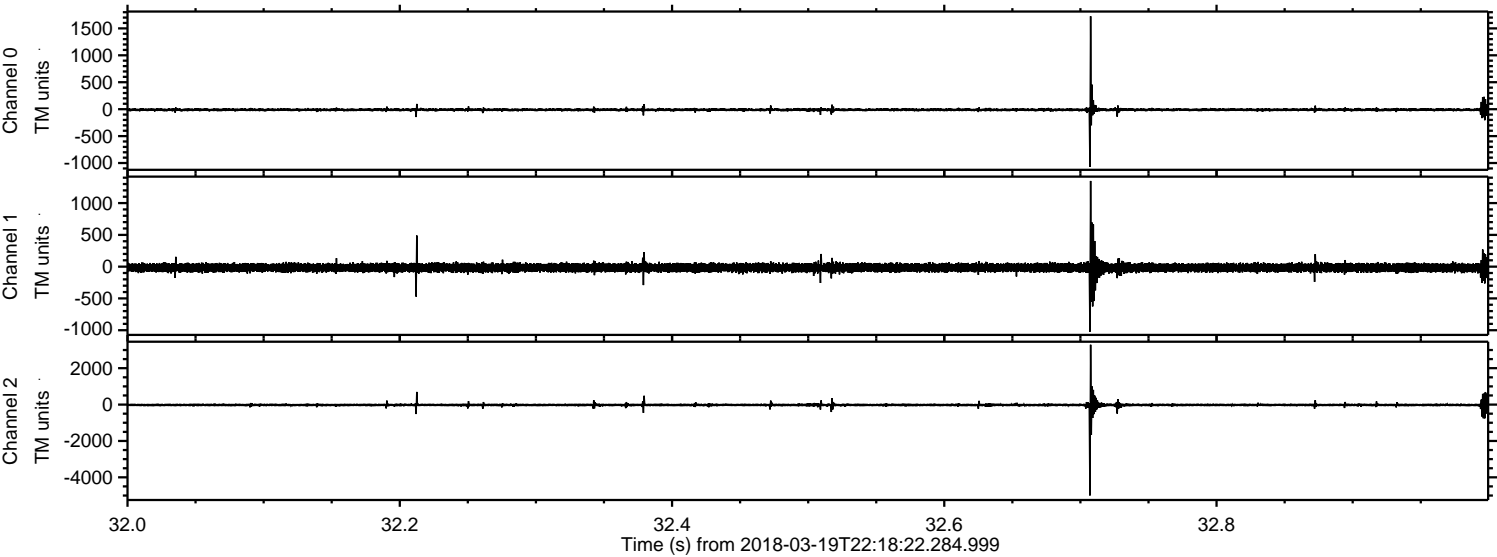
ELMAVAN 3D WAVEFORMS (Measured data sampled at 50 kHz) 51000 packets of 144 samples from 2018-03-19T22:18:22.284.999. Part 108/147

Processed Mon Mar 19 23:29:24 2018 by ELM ver.2012-10-06 from 001__elm20180319_221821__dat00.bin

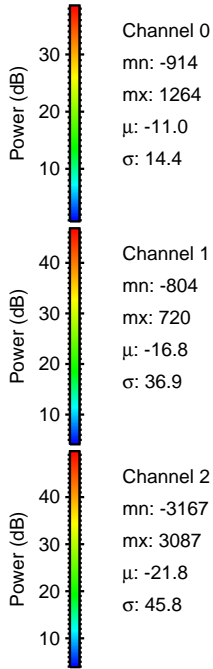
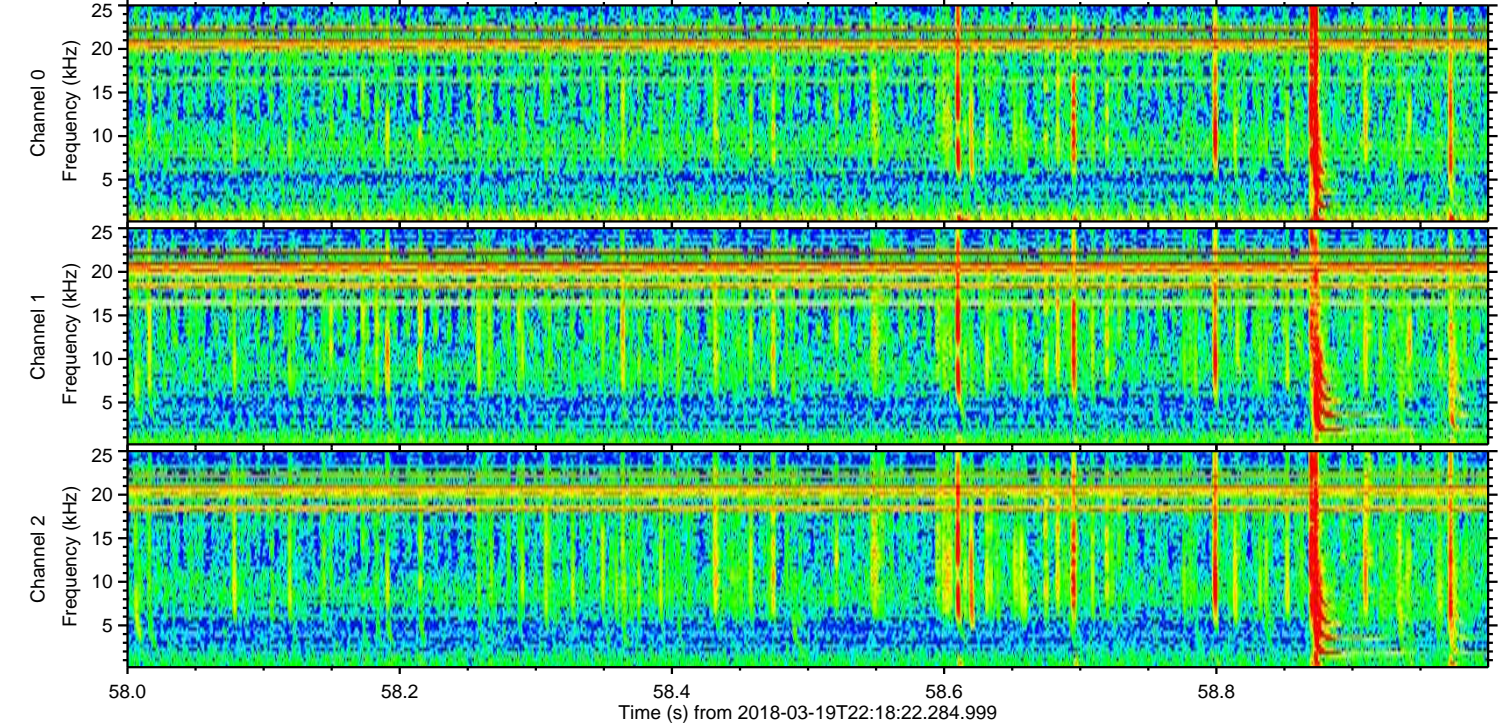
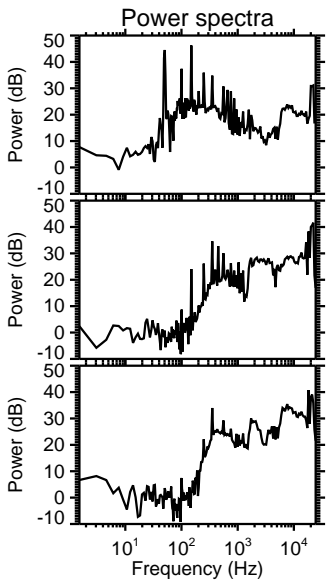
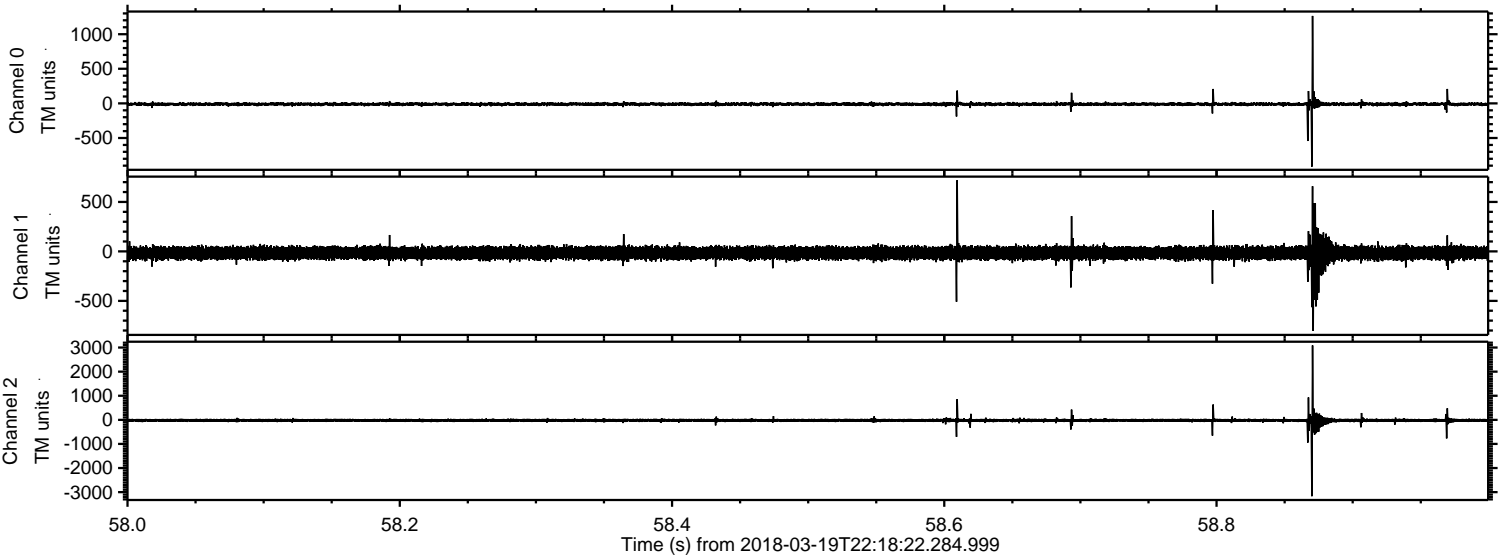


ELMAVAN 3D WAVEFORMS (Measured data sampled at 50 kHz) 51000 packets of 144 samples from 2018-03-19T22:18:22.284.999. Part 33/147

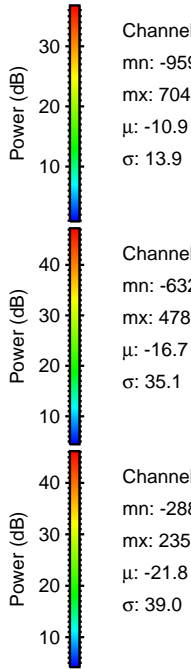
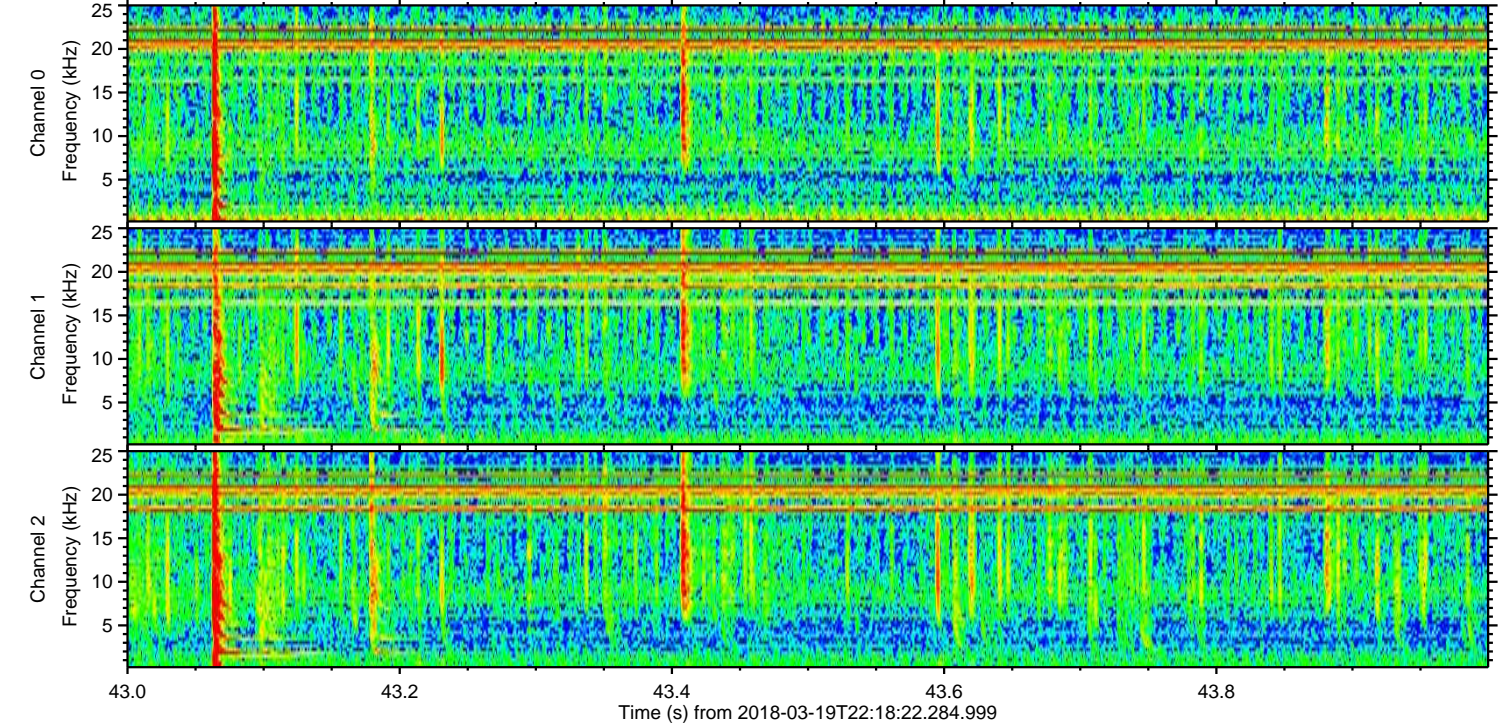
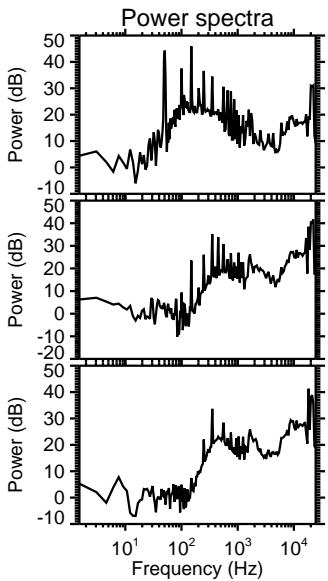
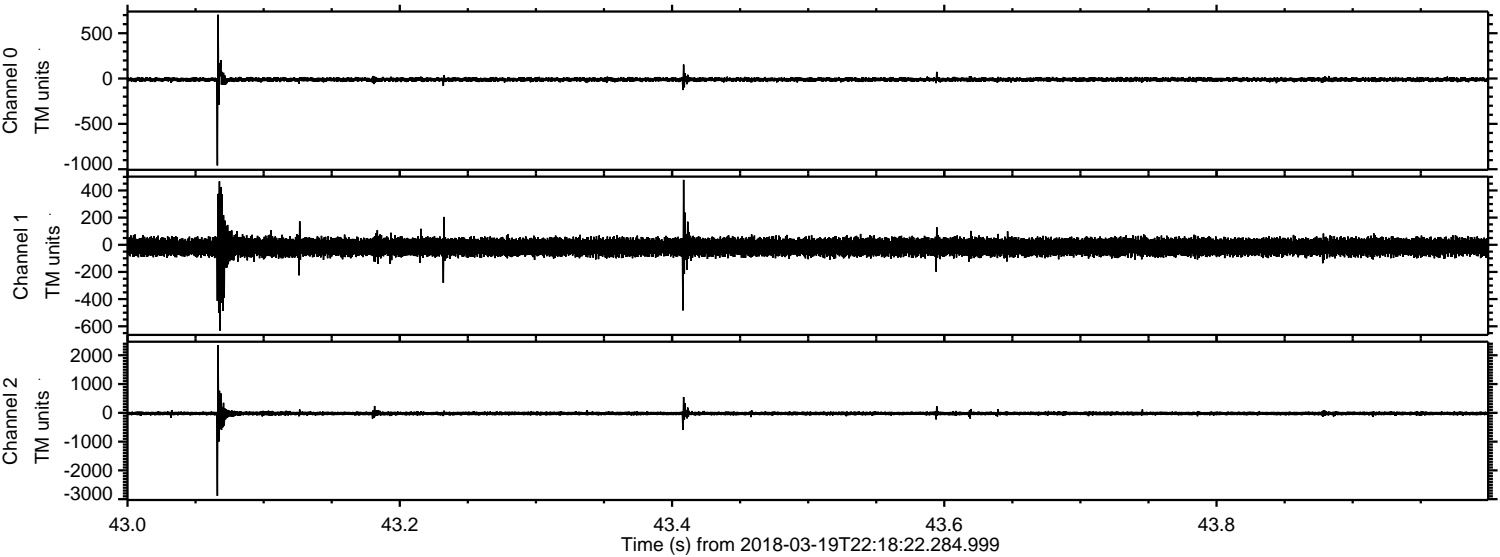
Processed Mon Mar 19 23:29:25 2018 by ELM ver.2012-10-06 from 001__elm20180319_221821__dat00.bin



Processed Mon Mar 19 23:29:26 2018 by ELM ver.2012-10-06 from 001__elm20180319_221821__dat00.bin



Processed Mon Mar 19 23:29:27 2018 by ELM ver.2012-10-06 from 001__elm20180319_221821__dat00.bin

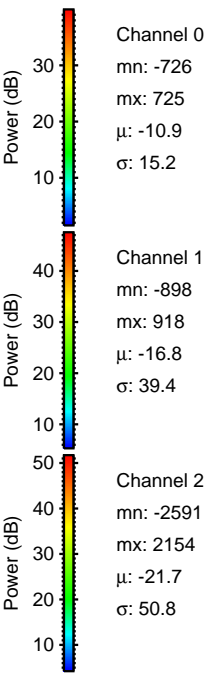
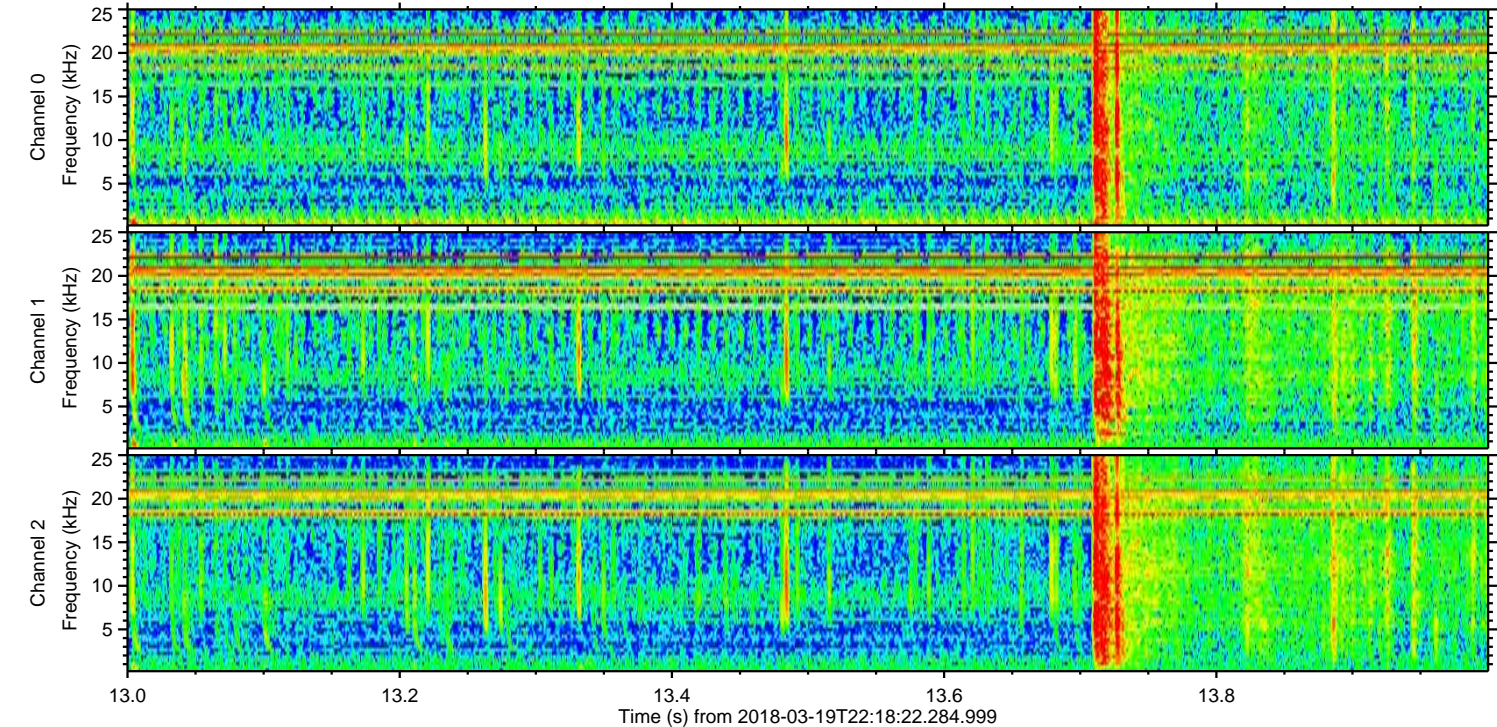
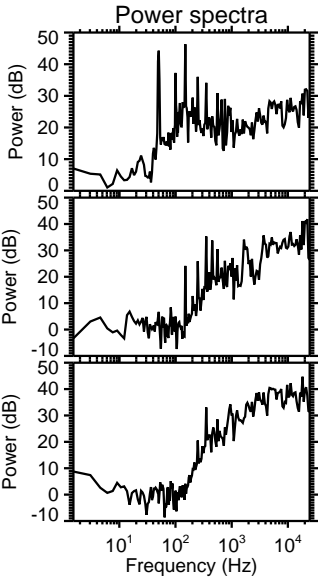
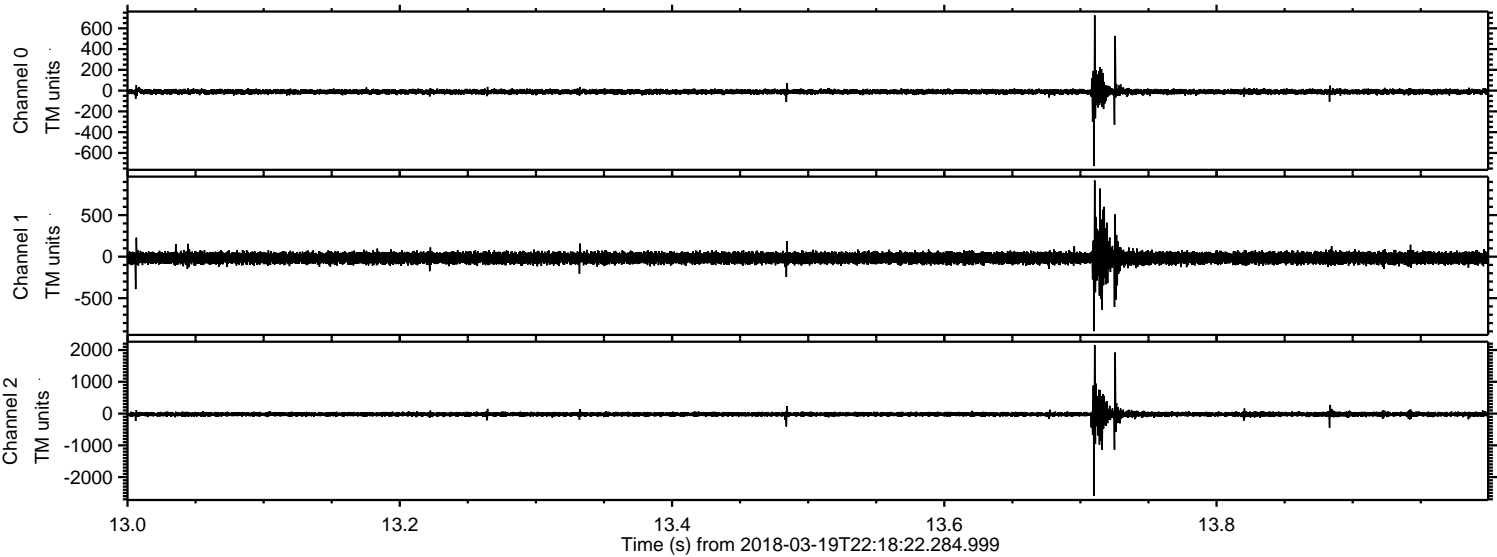


Channel 0
mn: -959
mx: 704
 μ : -10.9
 σ : 13.9

Channel 1
mn: -632
mx: 478
 μ : -16.7
 σ : 35.1

Channel 2
mn: -2884
mx: 2353
 μ : -21.8
 σ : 39.0

Processed Mon Mar 19 23:29:28 2018 by ELM ver.2012-10-06 from 001__elm20180319_221821__dat00.bin



Processed Mon Mar 19 23:29:29 2018 by ELM ver.2012-10-06 from 001__elm20180319_221821__dat00.bin

