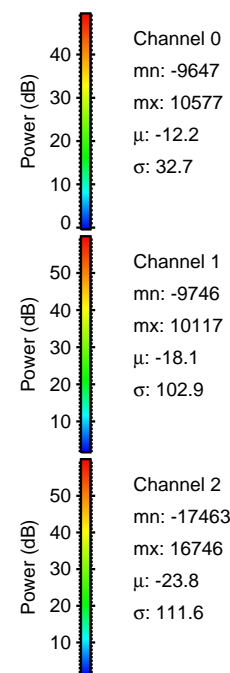
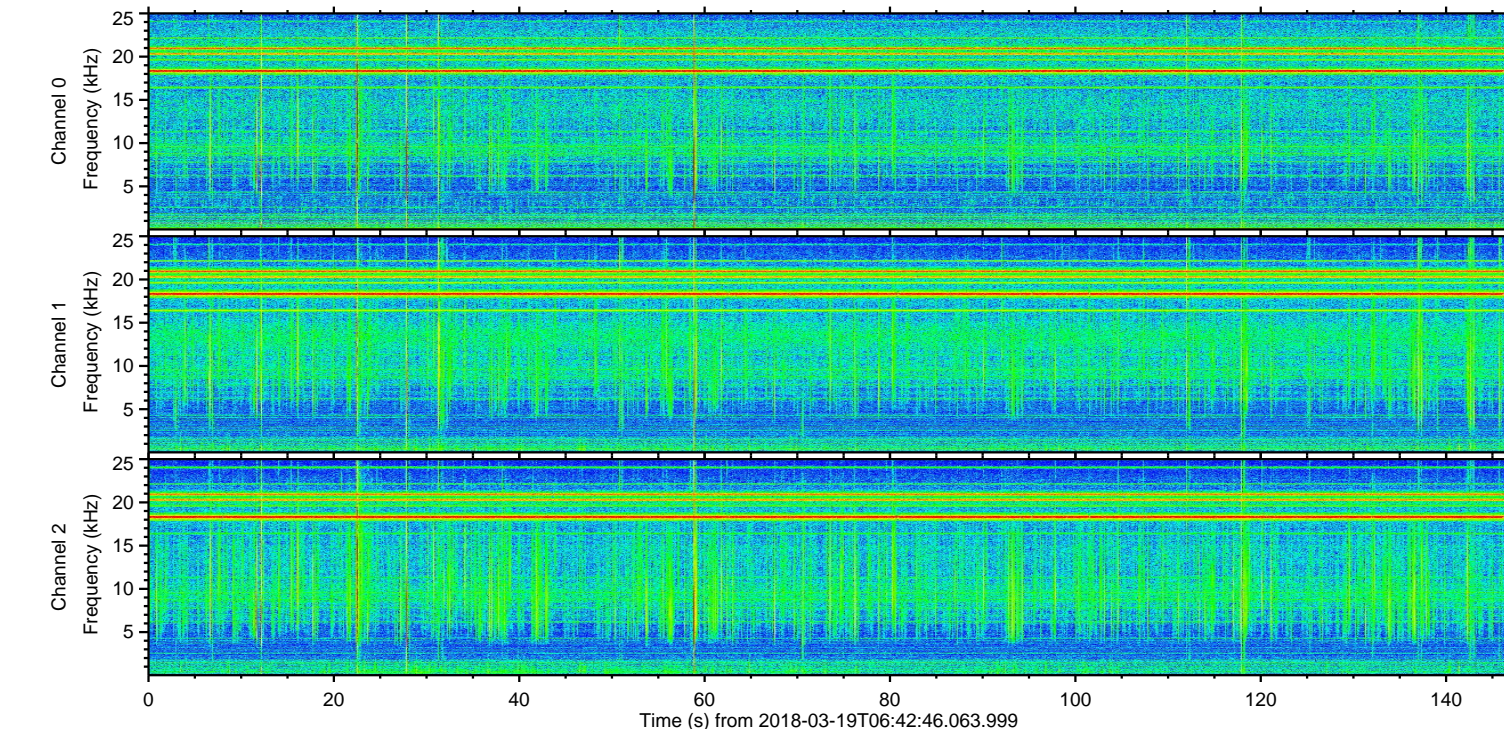
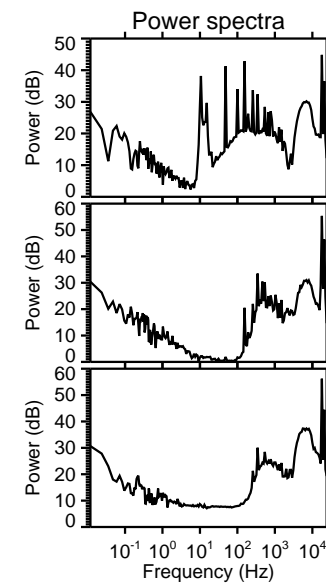
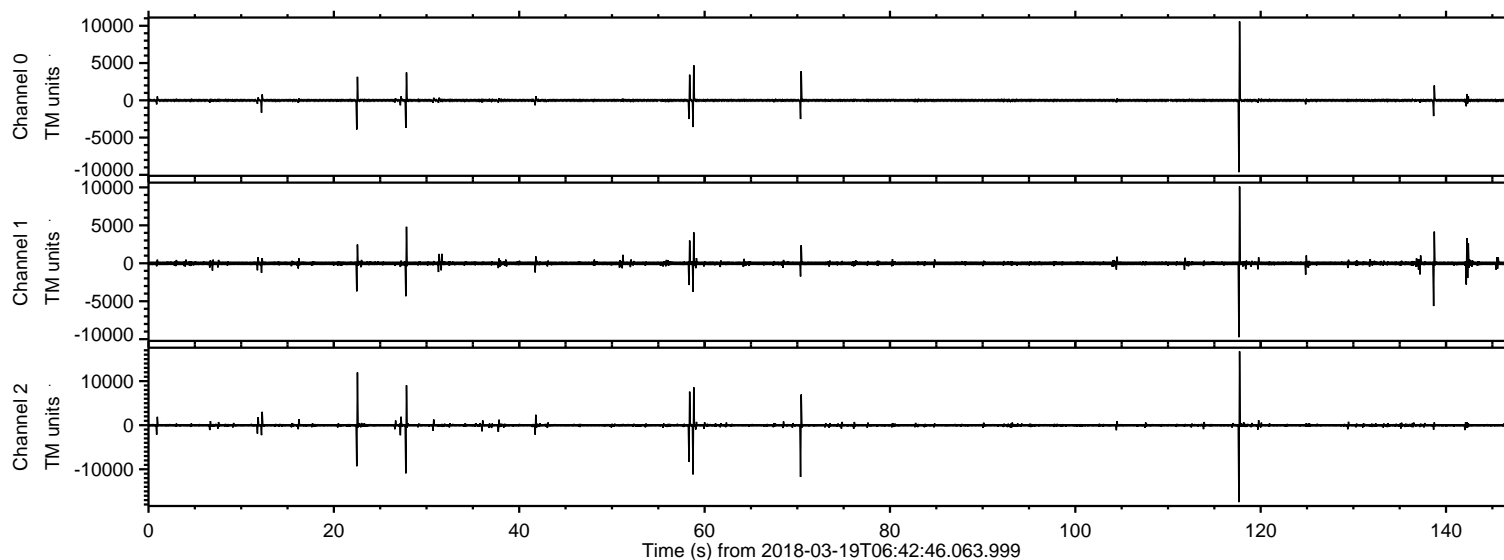


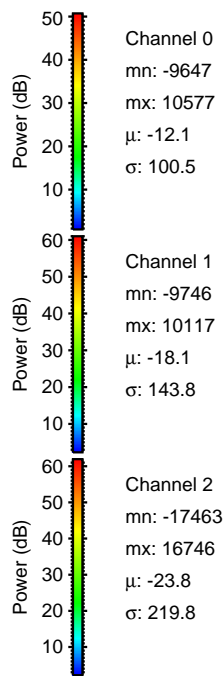
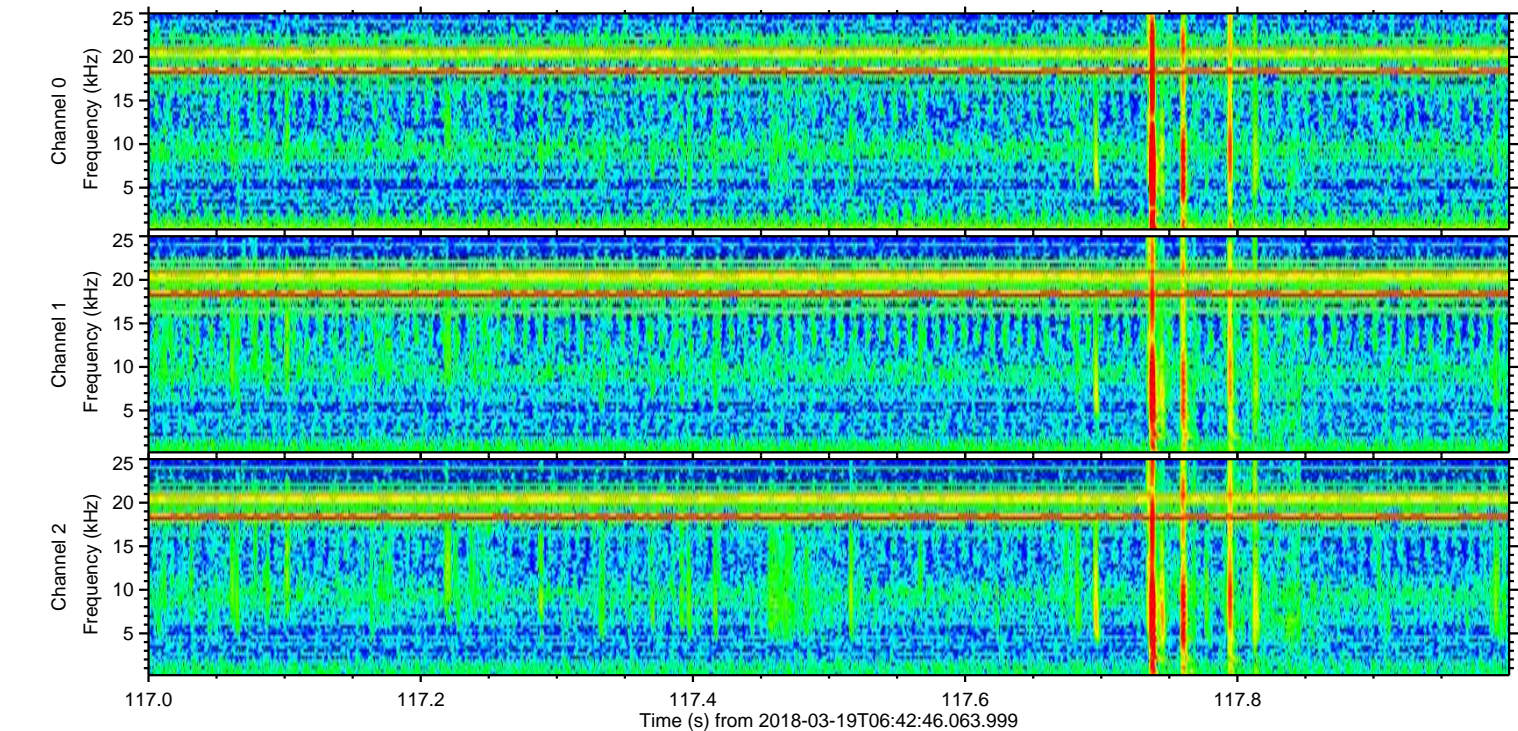
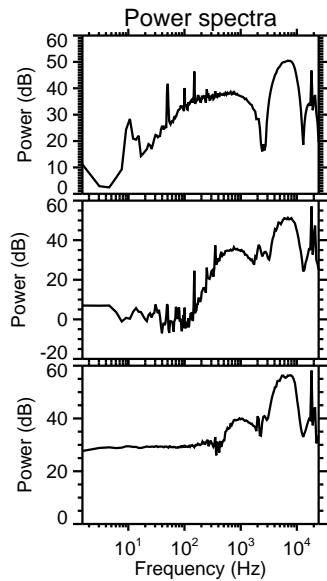
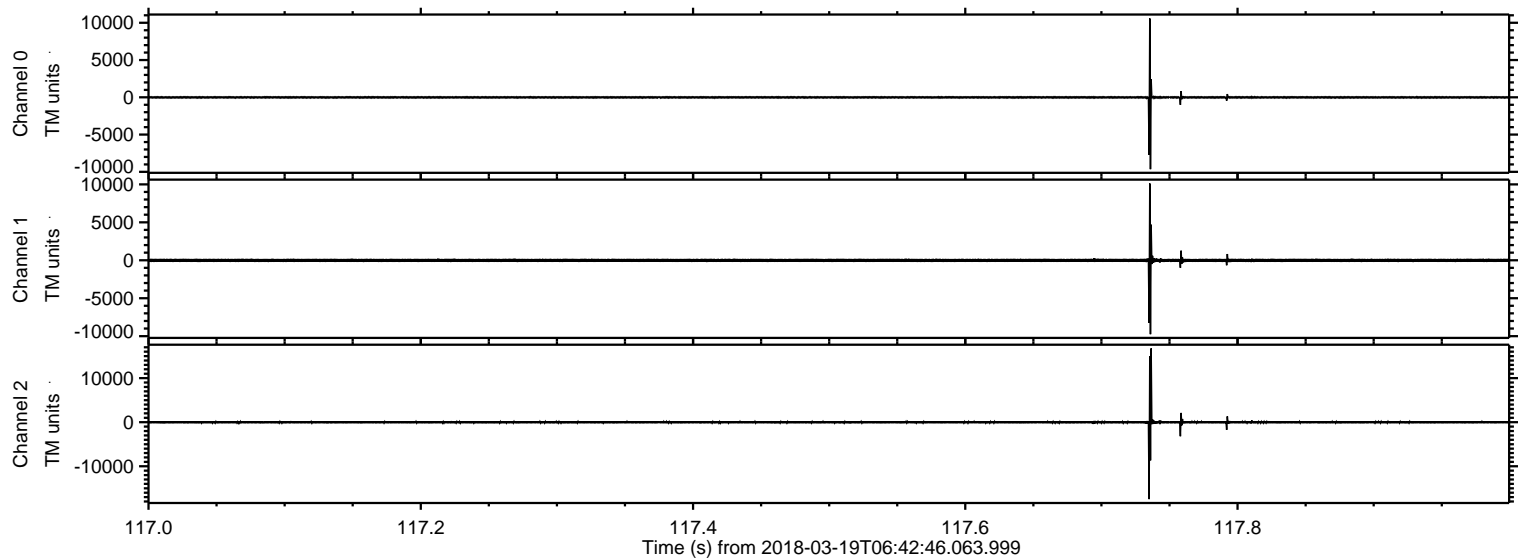
ELMAVAN 3D WAVEFORMS (Measured data sampled at 50 kHz) 51000 packets of 144 samples from 2018-03-19T06:42:46.063.999.

Processed Mon Mar 19 07:51:28 2018 by ELM ver.2012-10-06 from 001__elm20180319_064245__dat00.bin

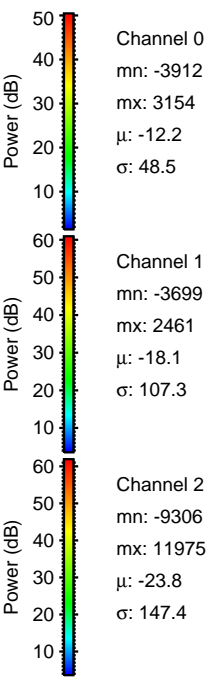
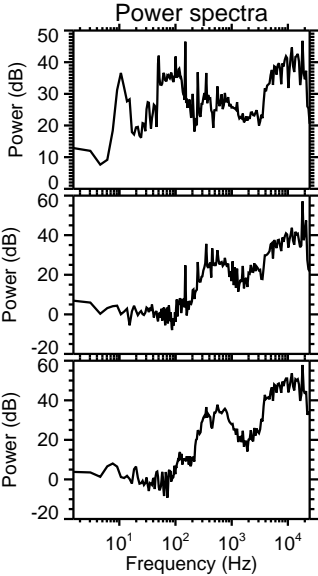
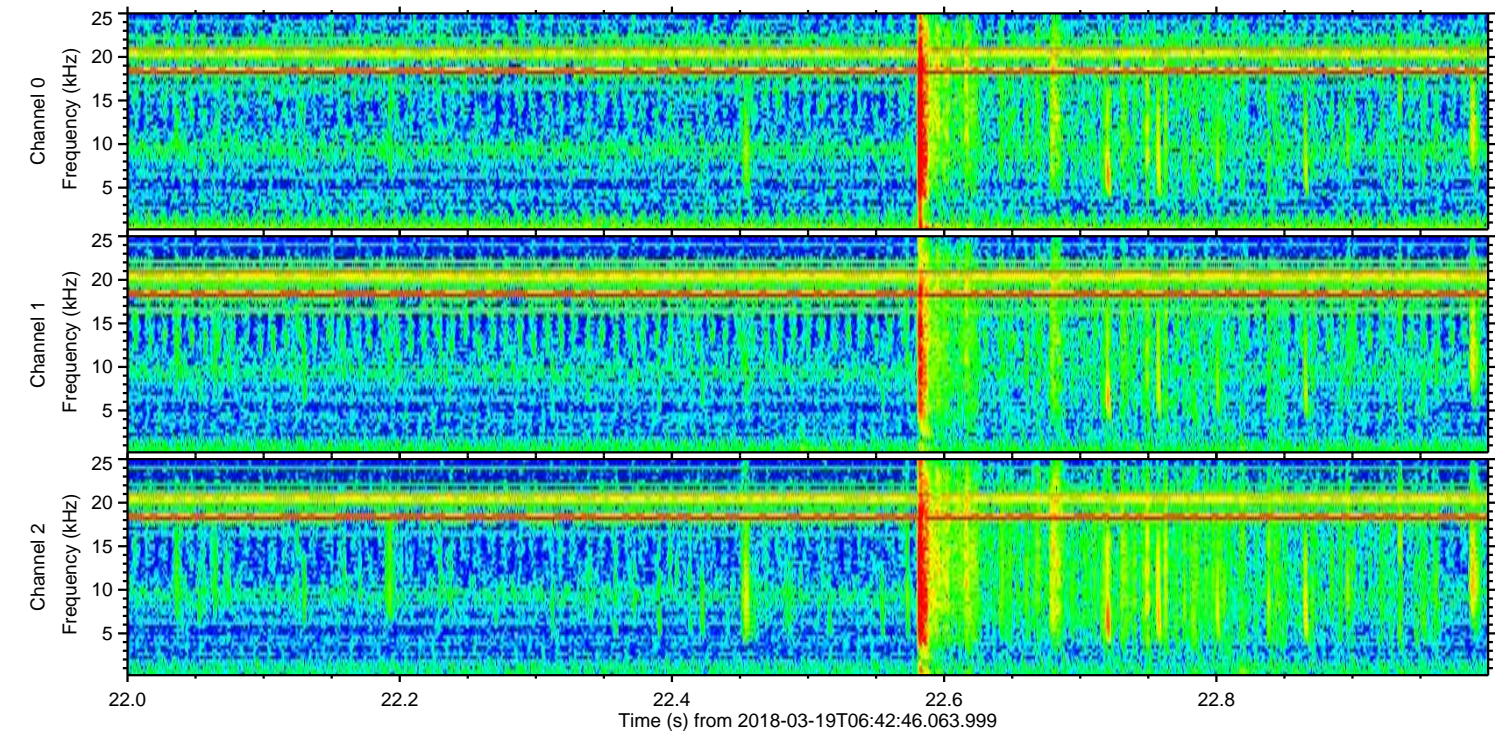
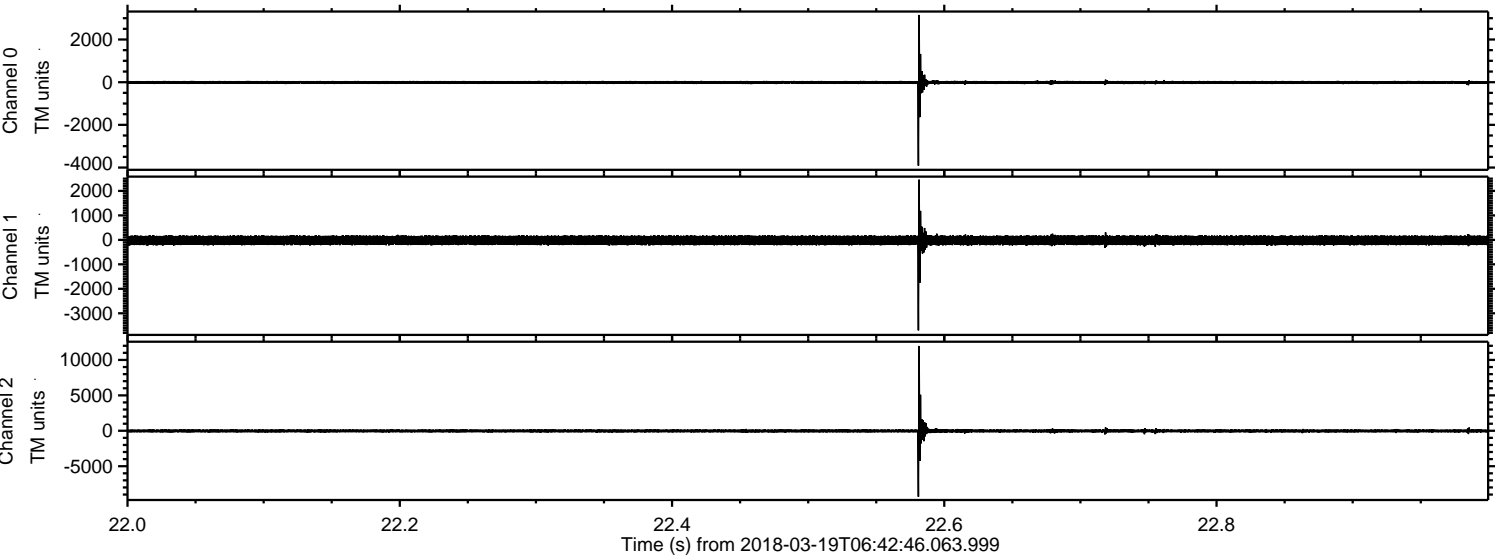


ELMAVAN 3D WAVEFORMS (Measured data sampled at 50 kHz) 51000 packets of 144 samples from 2018-03-19T06:42:46.063.999. Part 118/147

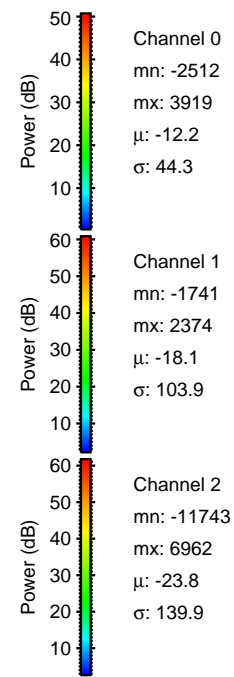
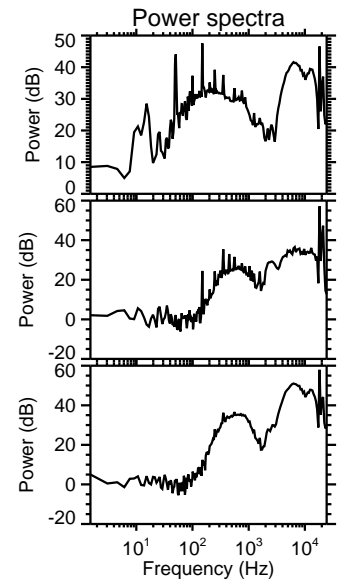
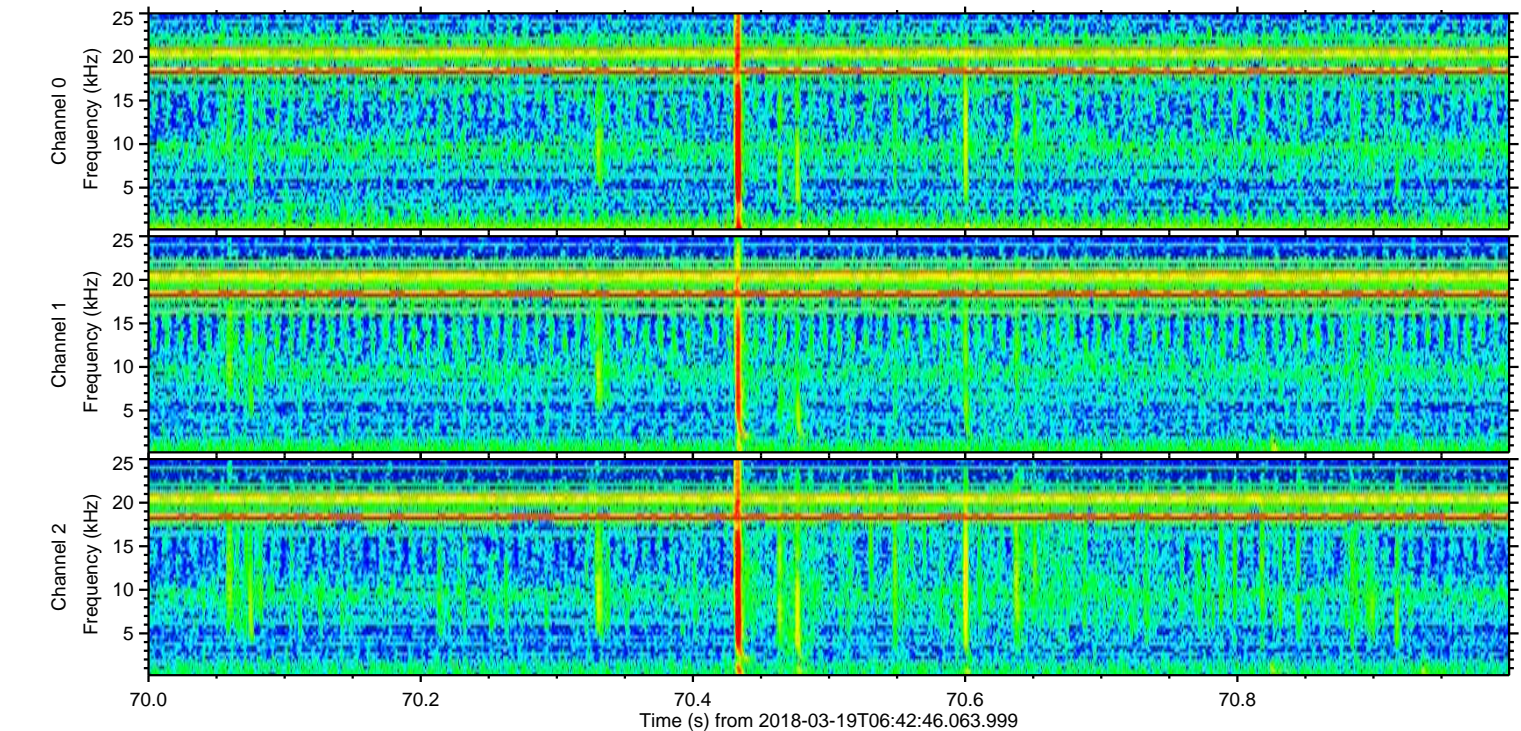
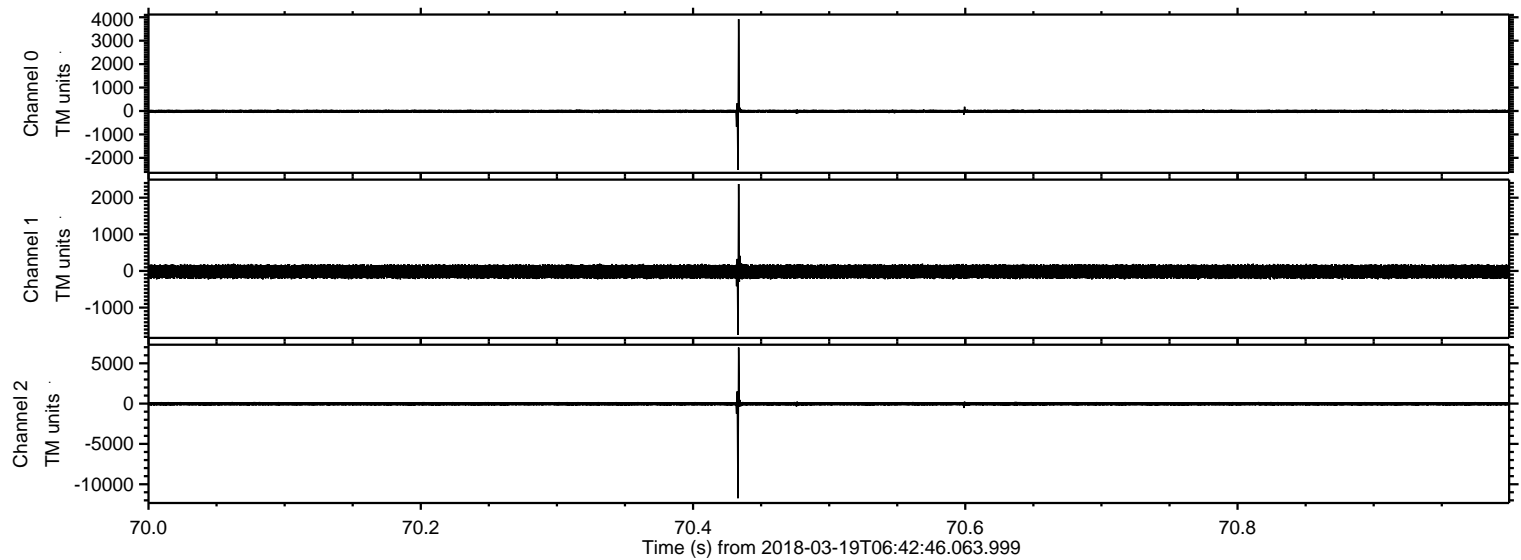
Processed Mon Mar 19 07:51:37 2018 by ELM ver.2012-10-06 from 001__elm20180319_064245__dat00.bin



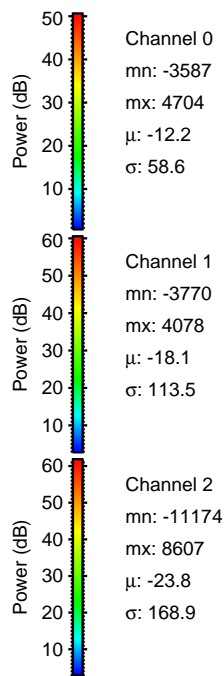
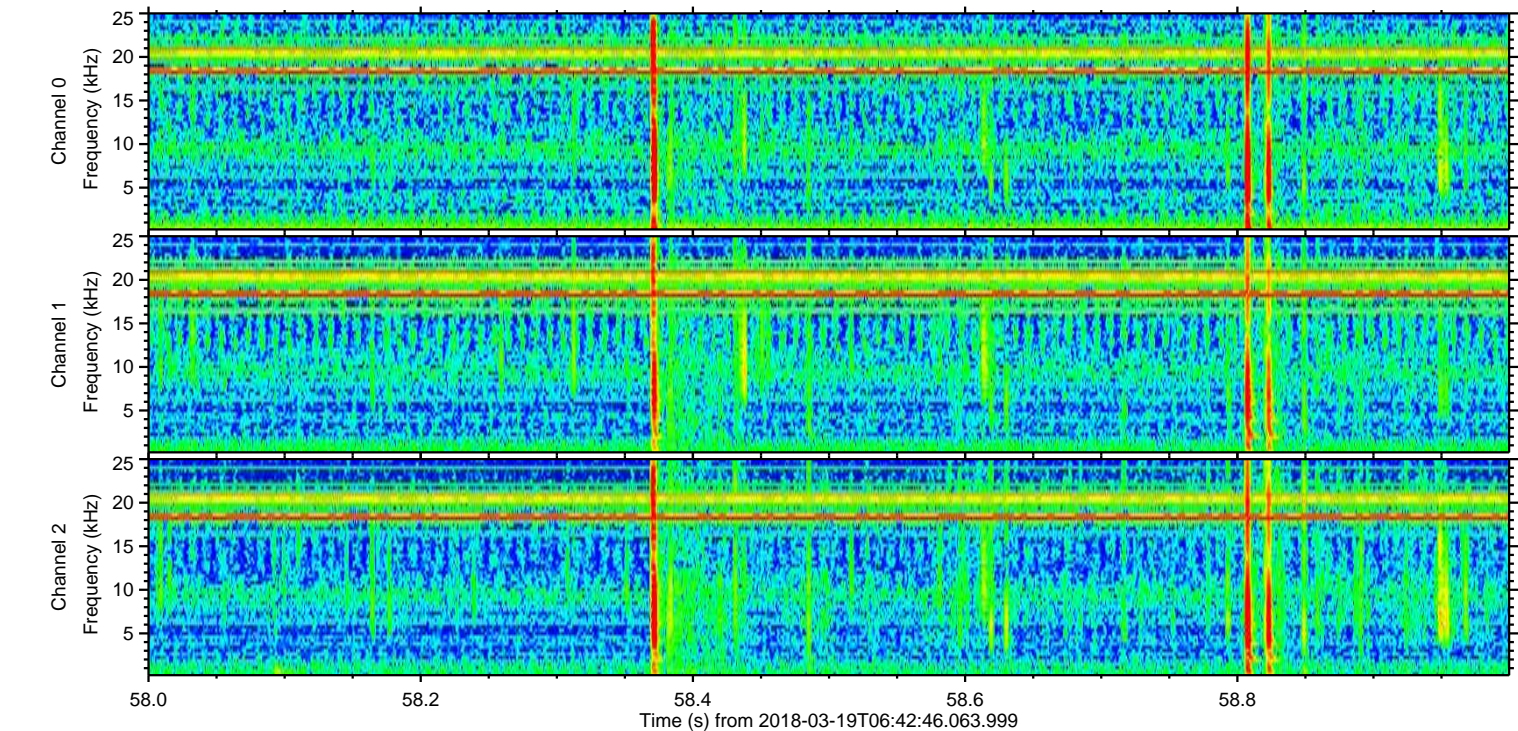
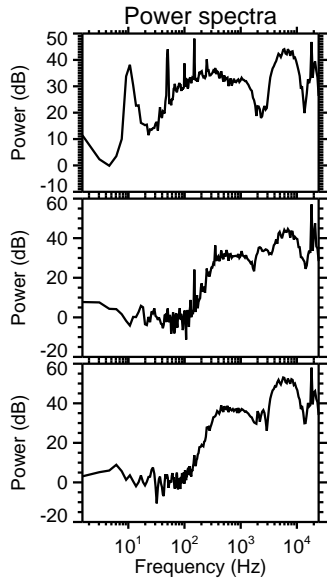
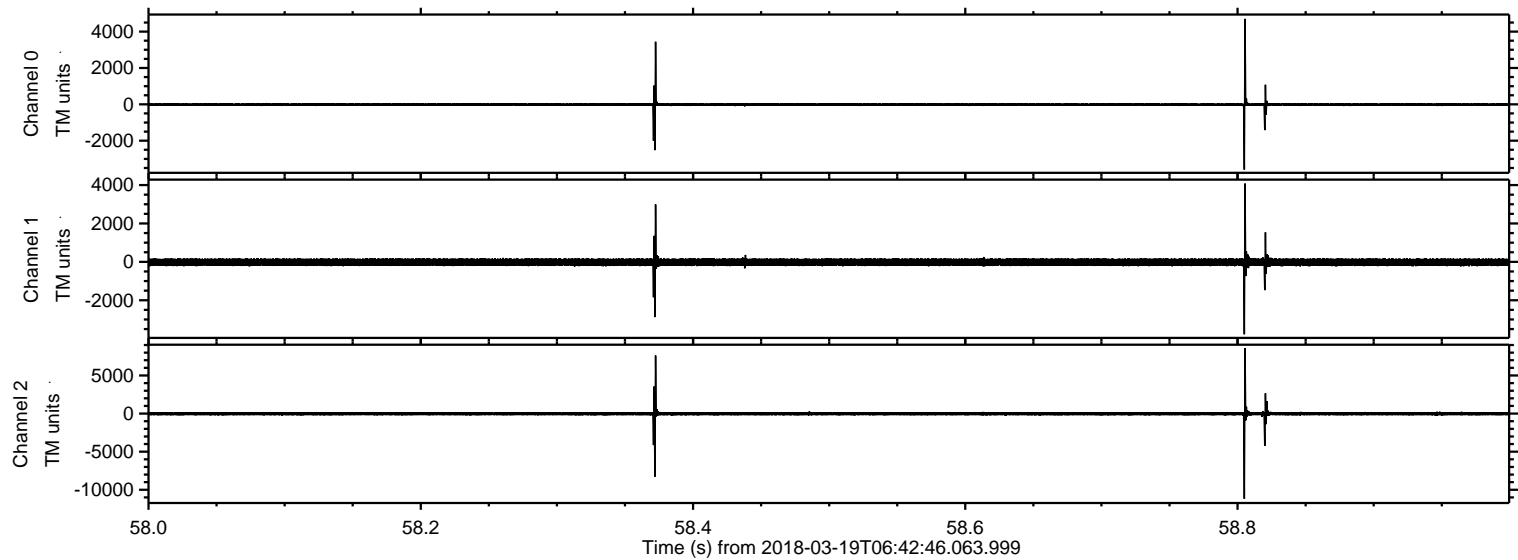
Processed Mon Mar 19 07:51:39 2018 by ELM ver.2012-10-06 from 001__elm20180319_064245__dat00.bin



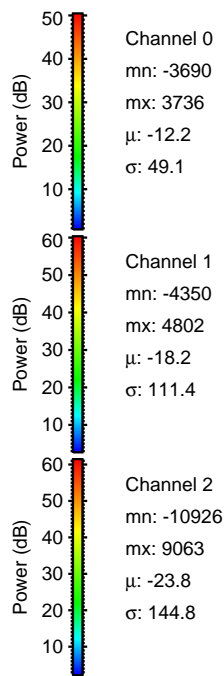
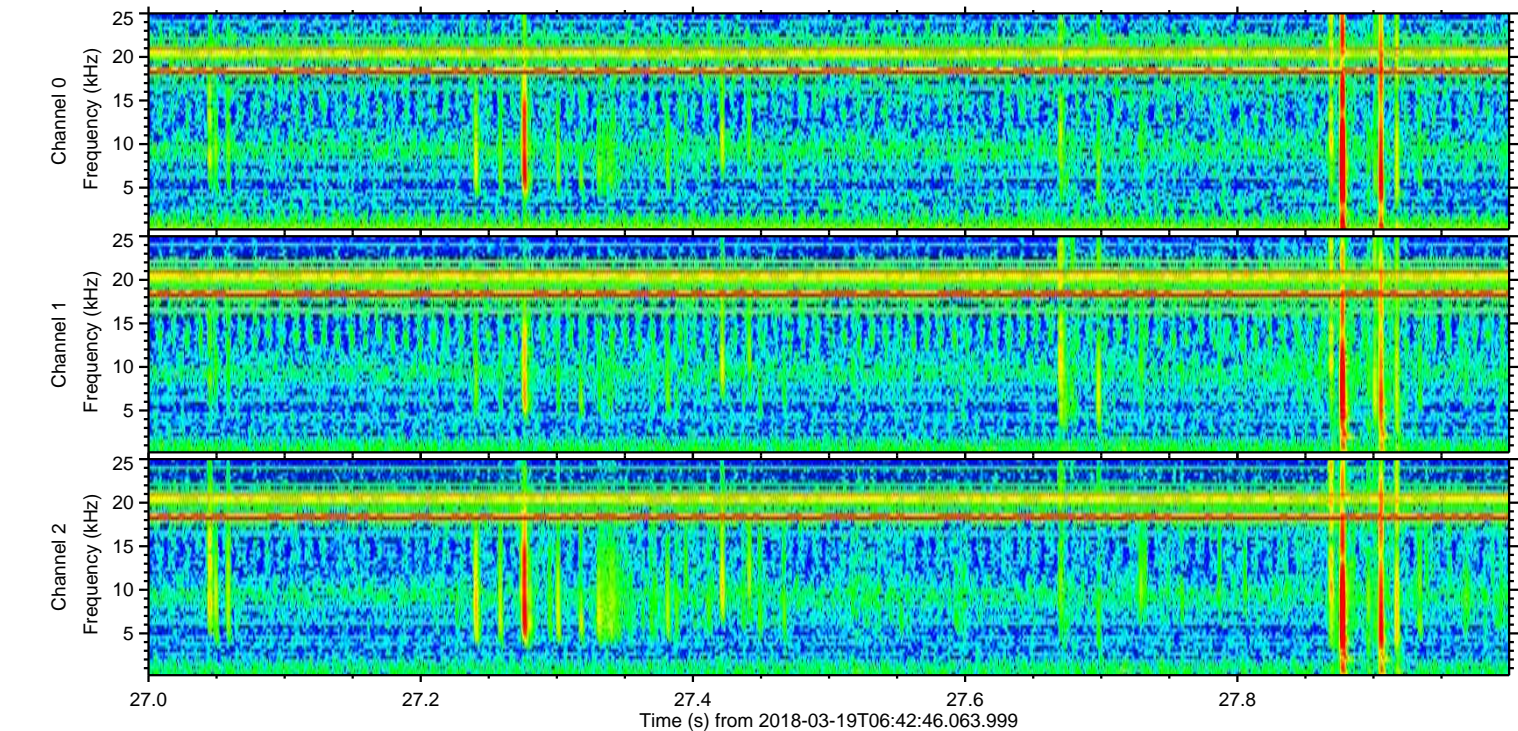
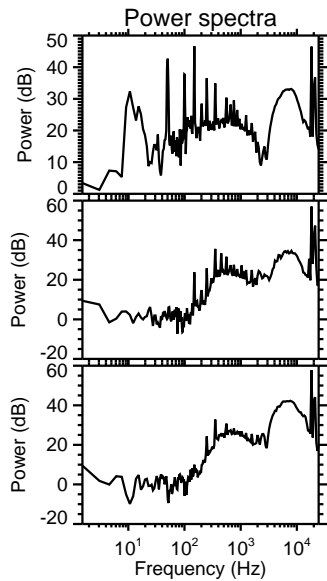
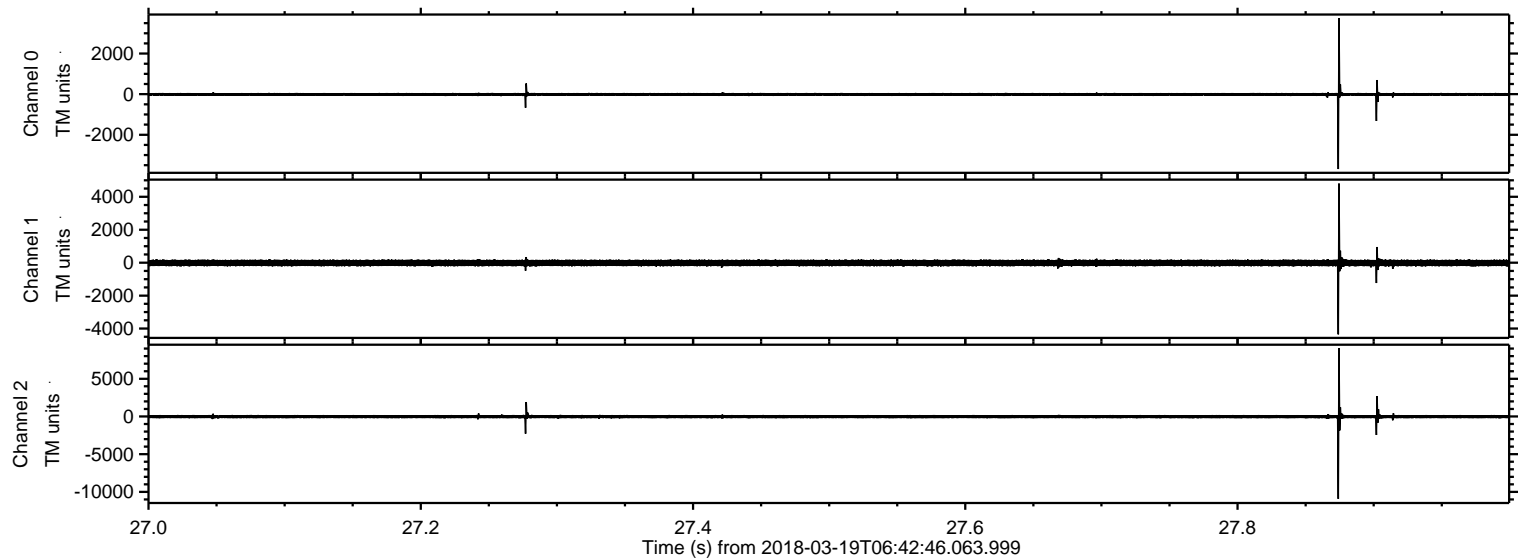
Processed Mon Mar 19 07:51:40 2018 by ELM ver.2012-10-06 from 001__elm20180319_064245__dat00.bin



Processed Mon Mar 19 07:51:40 2018 by ELM ver.2012-10-06 from 001__elm20180319_064245__dat00.bin

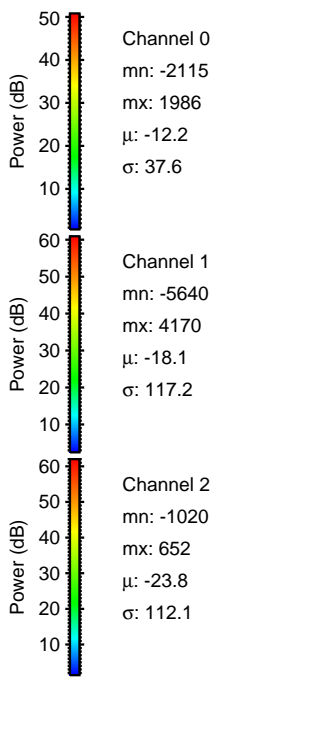
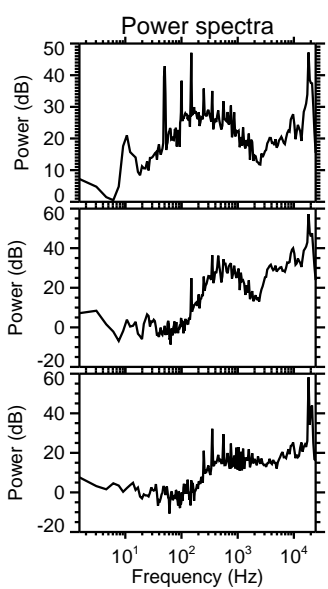
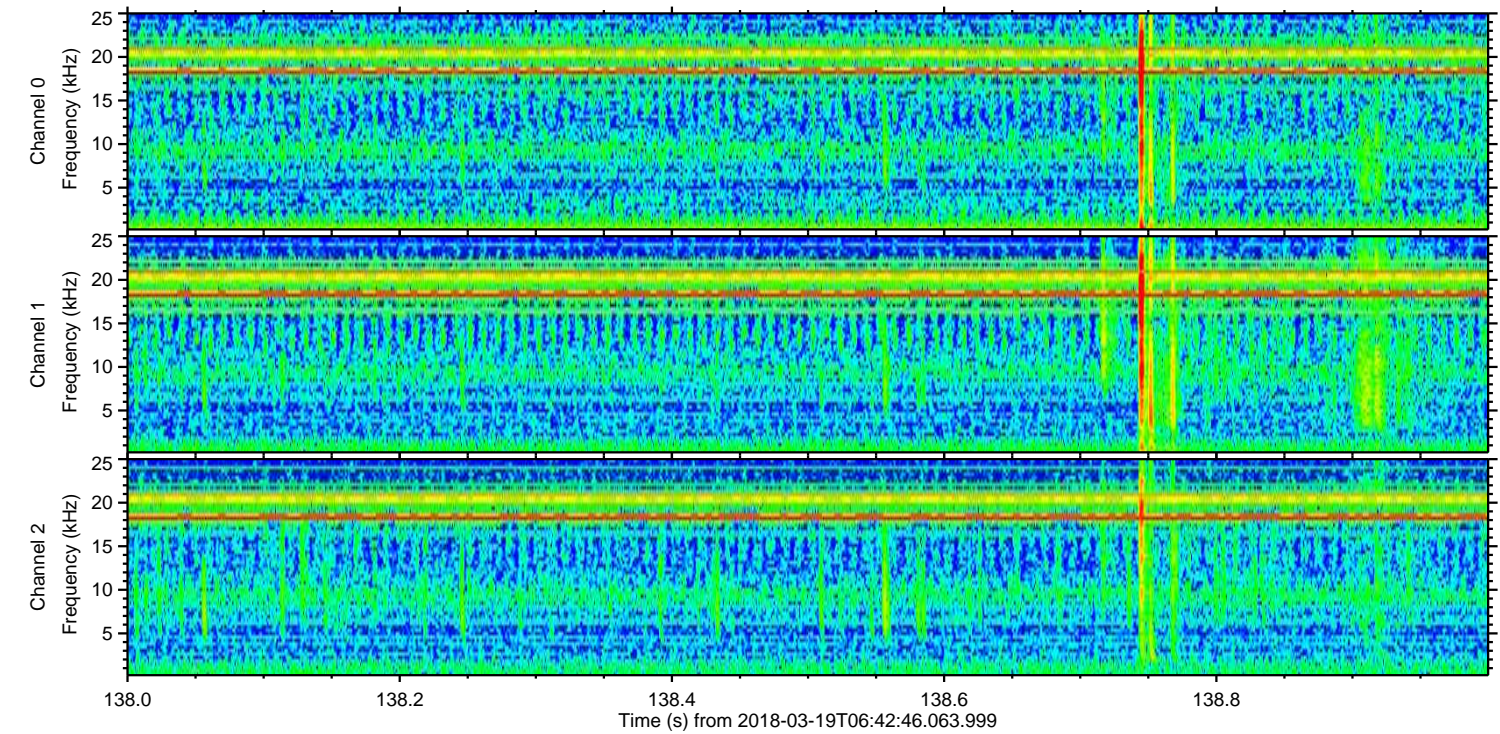
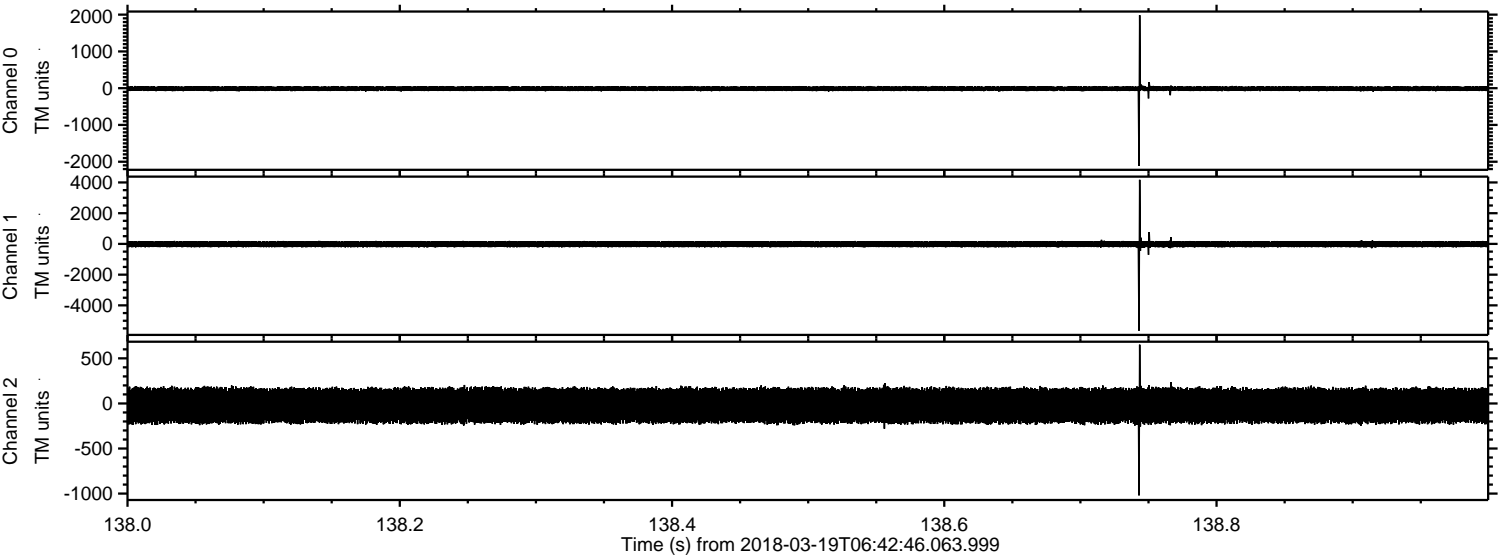


Processed Mon Mar 19 07:51:41 2018 by ELM ver.2012-10-06 from 001__elm20180319_064245__dat00.bin



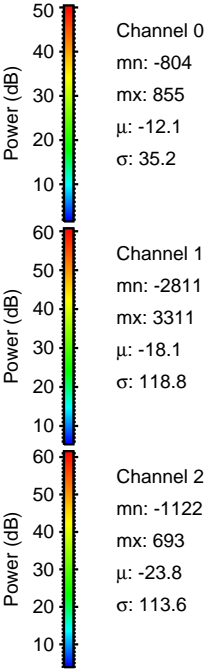
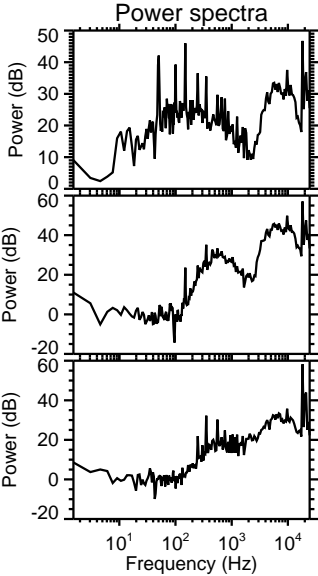
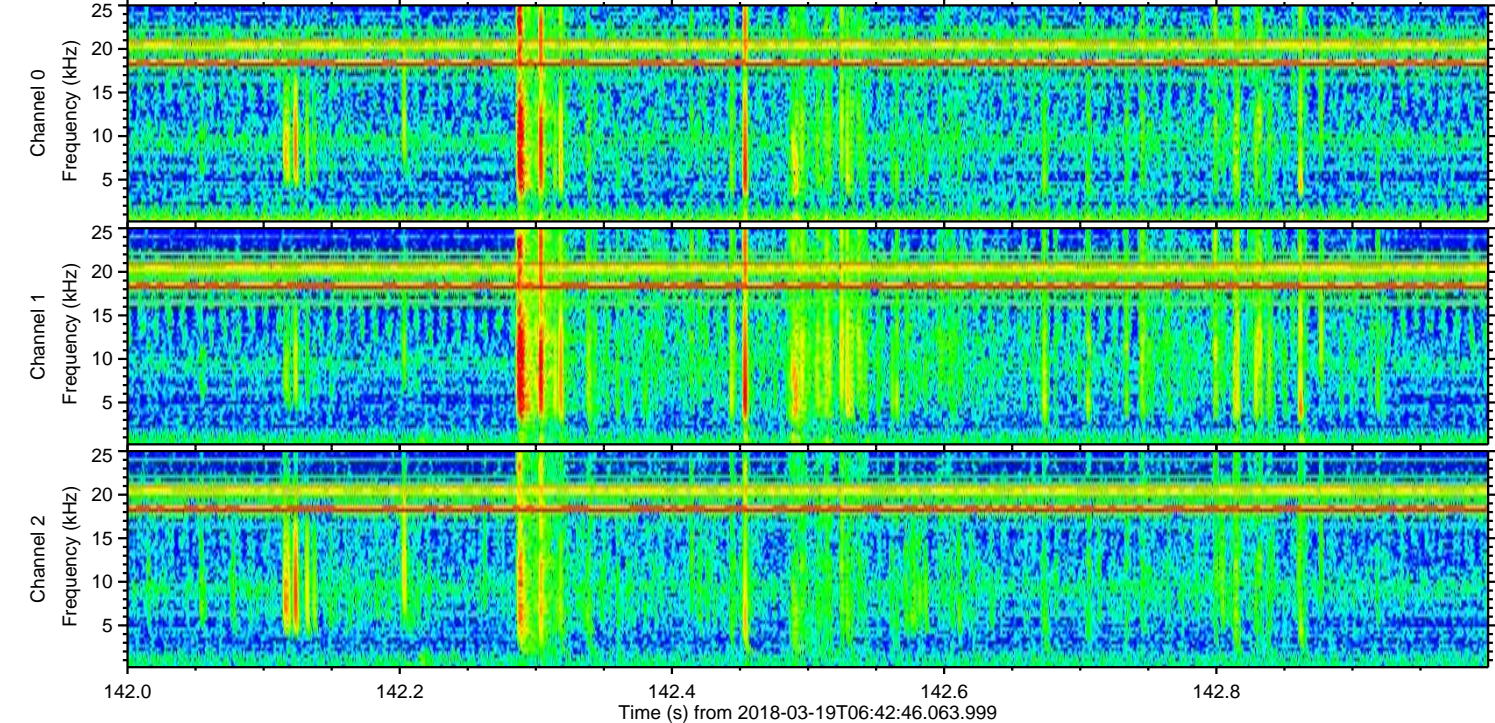
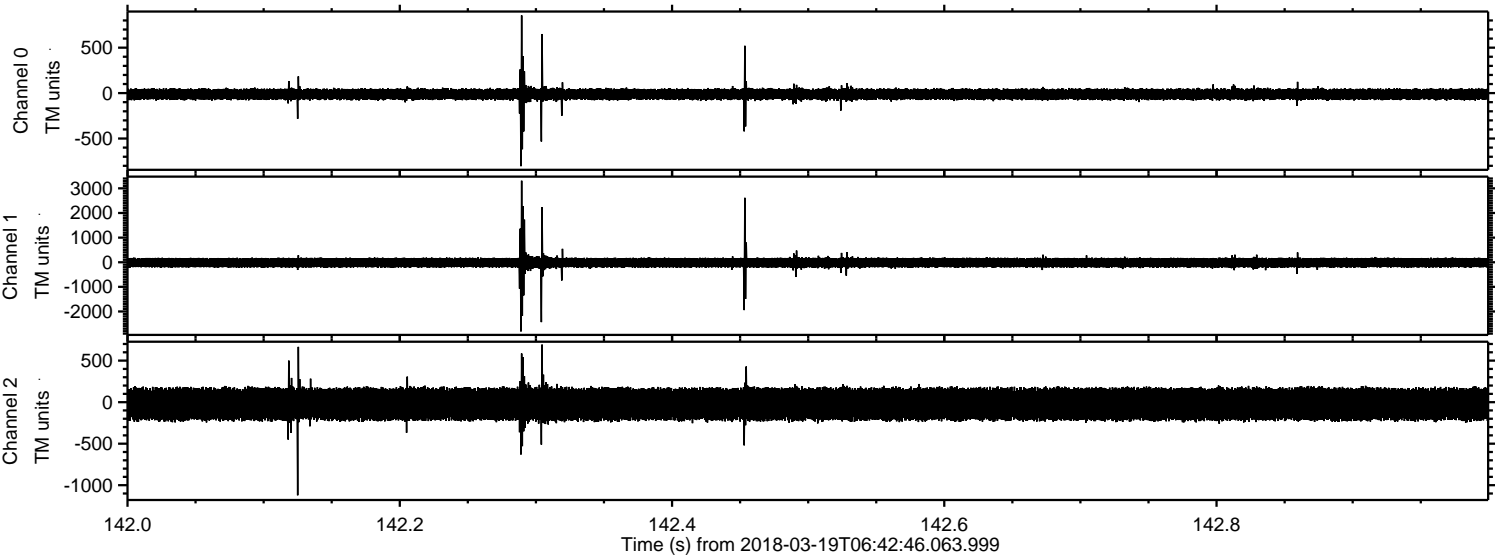
ELMAVAN 3D WAVEFORMS (Measured data sampled at 50 kHz) 51000 packets of 144 samples from 2018-03-19T06:42:46.063.999. Part 139/147

Processed Mon Mar 19 07:51:42 2018 by ELM ver.2012-10-06 from 001__elm20180319_064245__dat00.bin

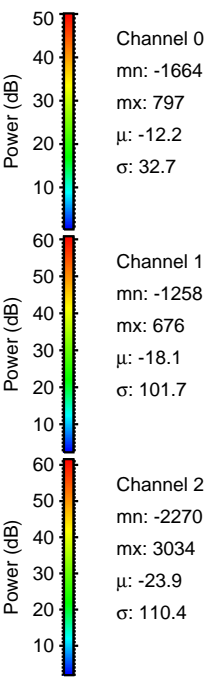
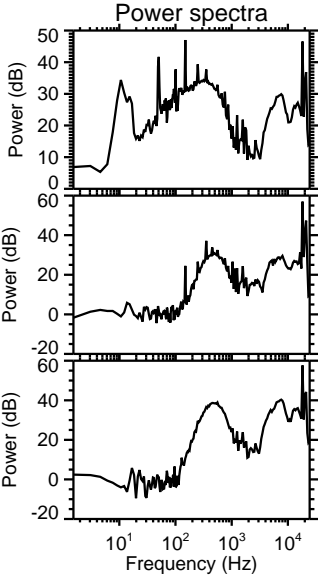
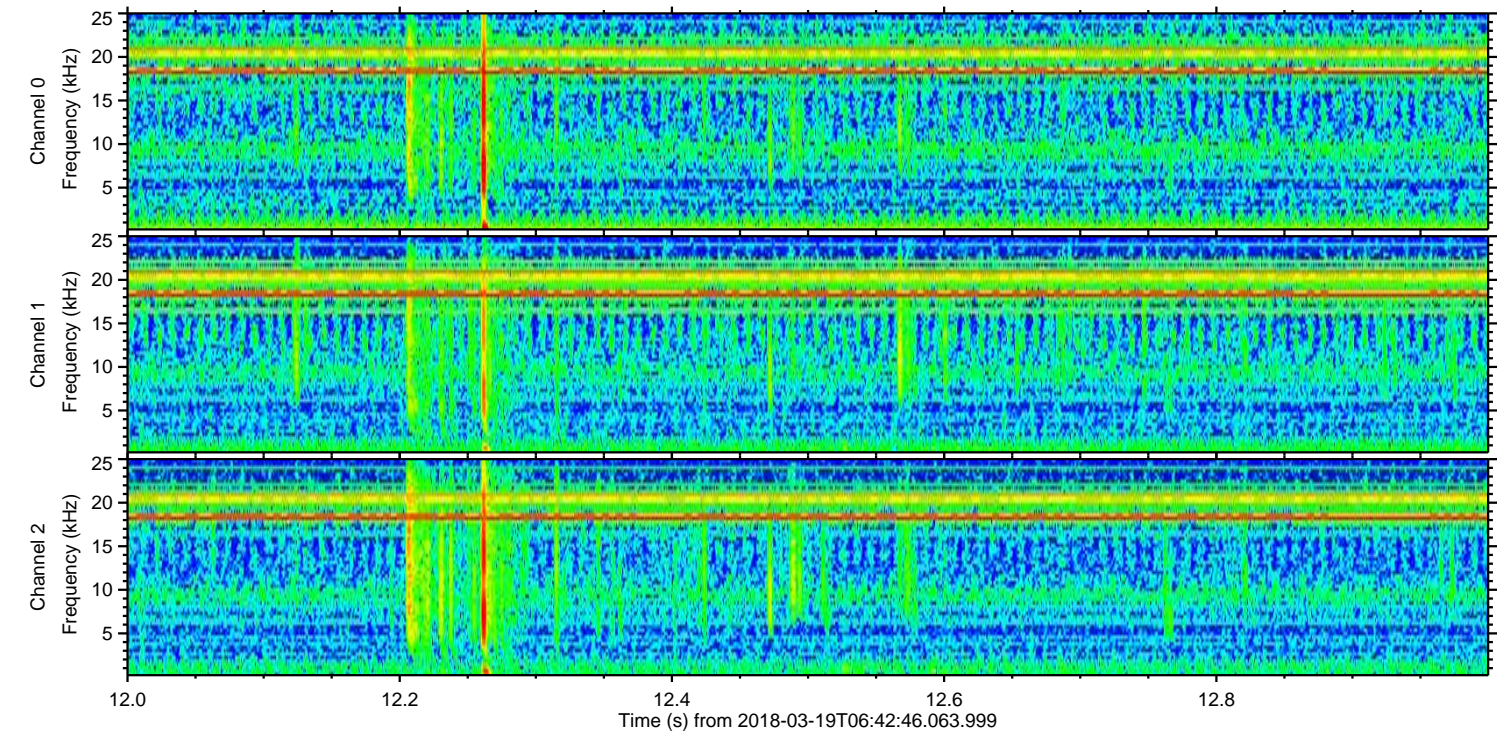
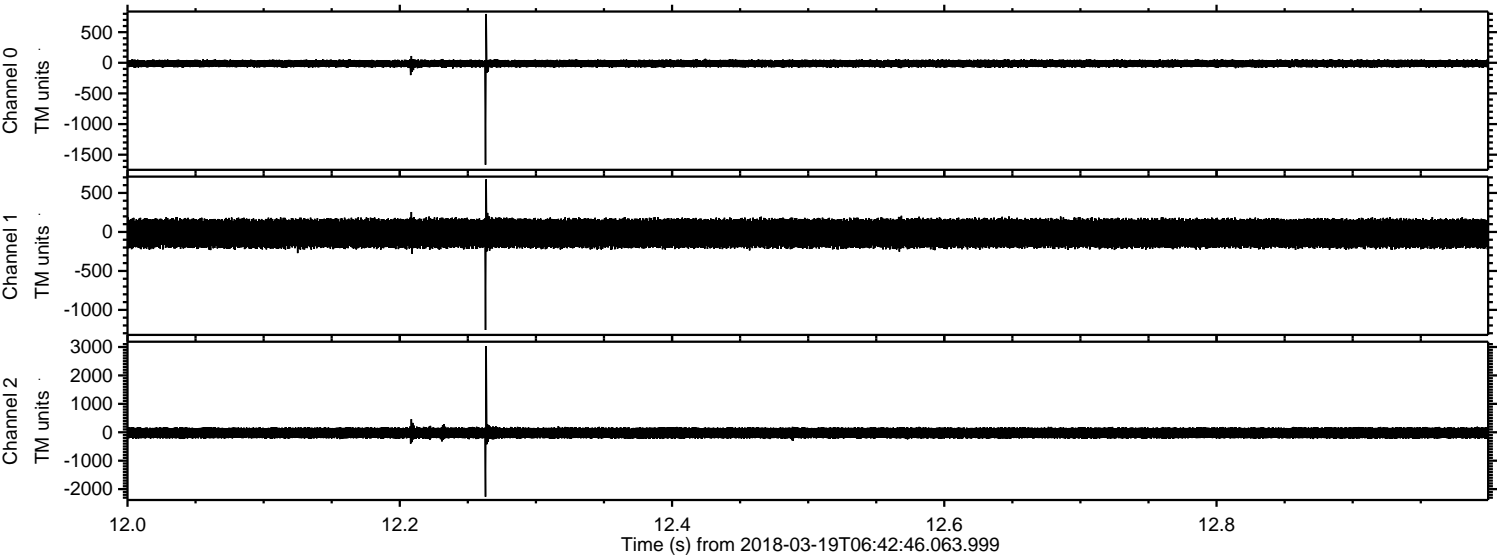


ELMAVAN 3D WAVEFORMS (Measured data sampled at 50 kHz) 51000 packets of 144 samples from 2018-03-19T06:42:46.063.999. Part 143/147

Processed Mon Mar 19 07:51:43 2018 by ELM ver.2012-10-06 from 001__elm20180319_064245__dat00.bin



Processed Mon Mar 19 07:51:44 2018 by ELM ver.2012-10-06 from 001__elm20180319_064245__dat00.bin

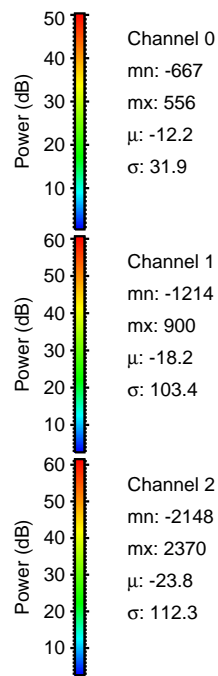
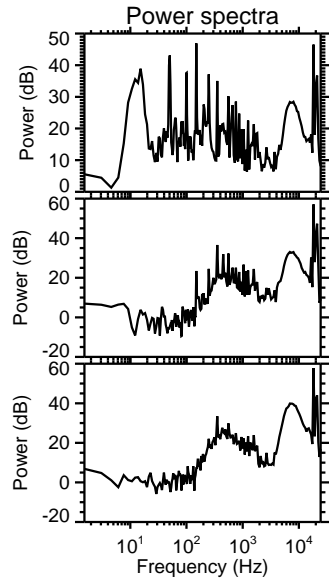
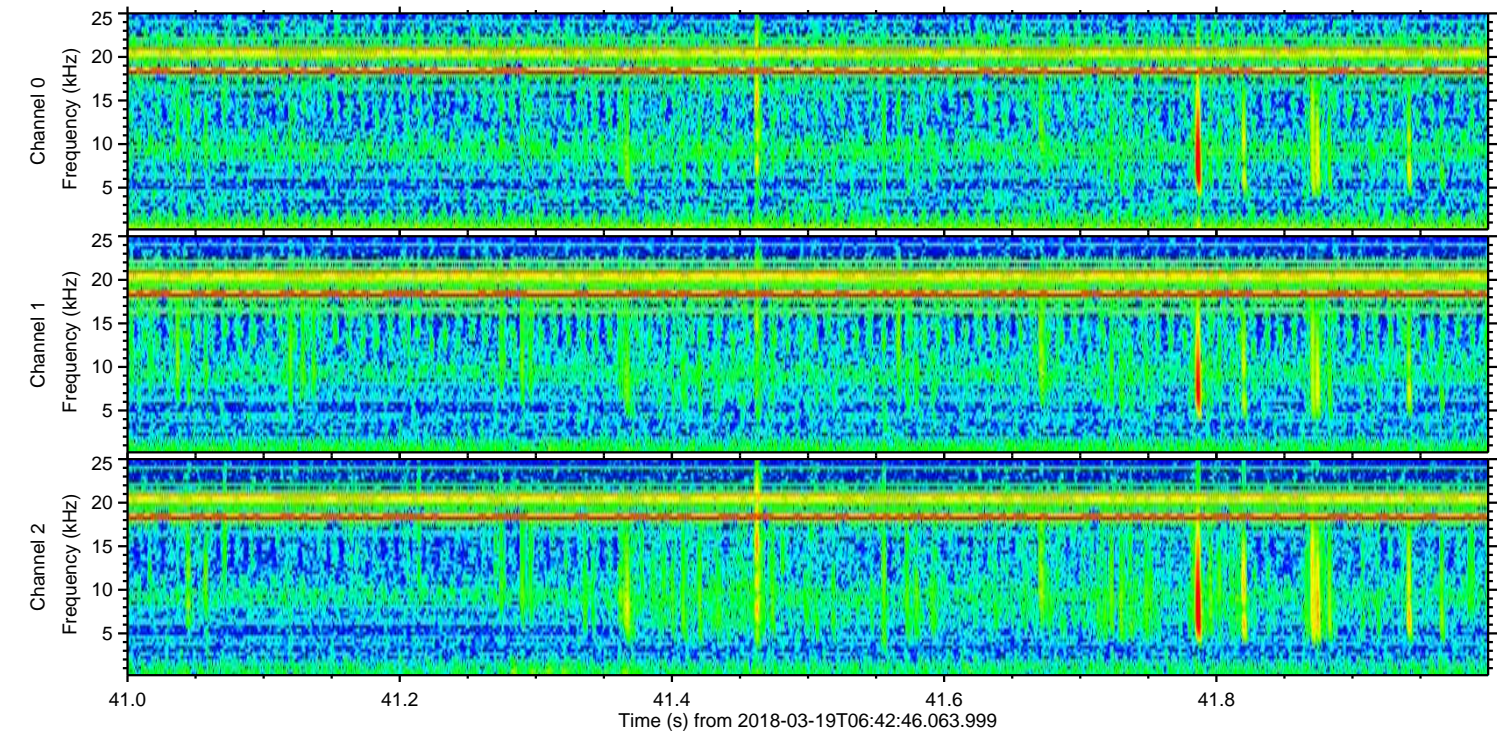
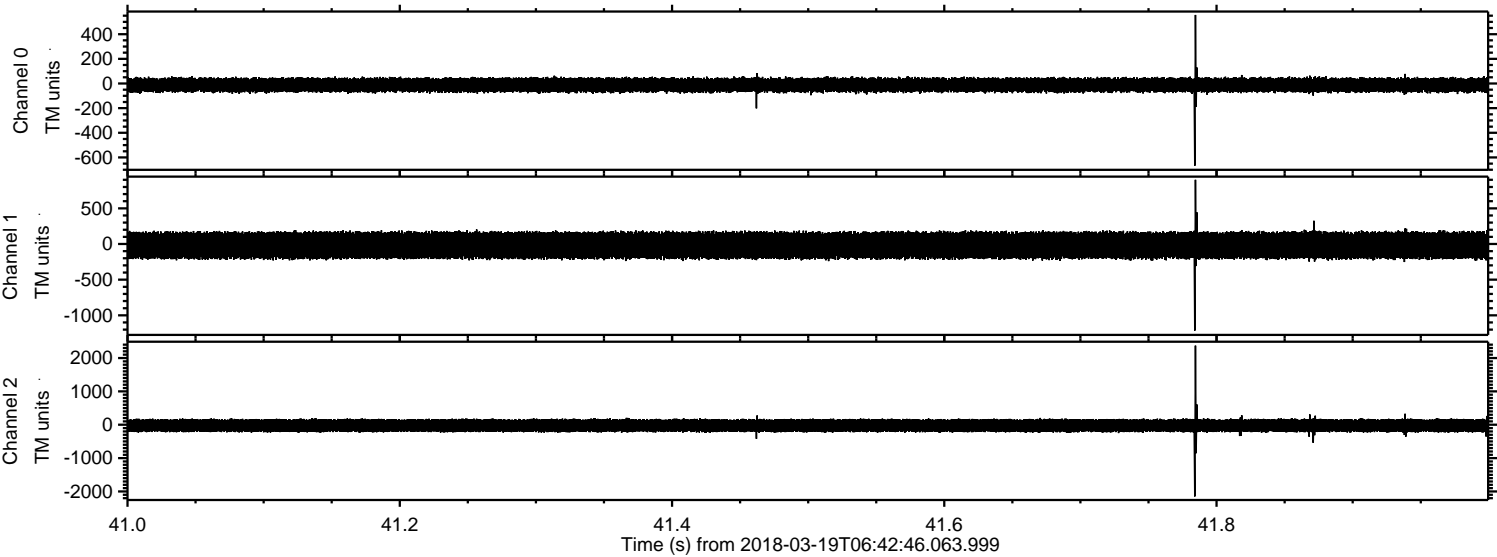


Channel 0
mn: -1664
mx: 797
 μ : -12.2
 σ : 32.7

Channel 1
mn: -1258
mx: 676
 μ : -18.1
 σ : 101.7

Channel 2
mn: -2270
mx: 3034
 μ : -23.9
 σ : 110.4

Processed Mon Mar 19 07:51:45 2018 by ELM ver.2012-10-06 from 001__elm20180319_064245__dat00.bin



Channel 0
mn: -667
mx: 556
 μ : -12.2
 σ : 31.9

Channel 1
mn: -1214
mx: 900
 μ : -18.2
 σ : 103.4

Channel 2
mn: -2148
mx: 2370
 μ : -23.8
 σ : 112.3

