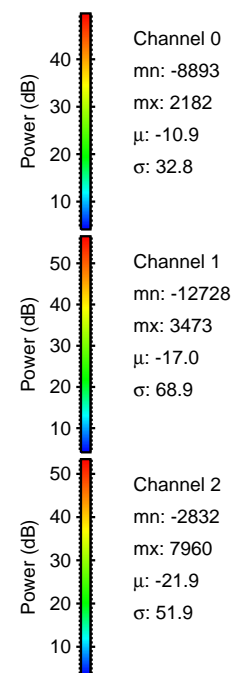
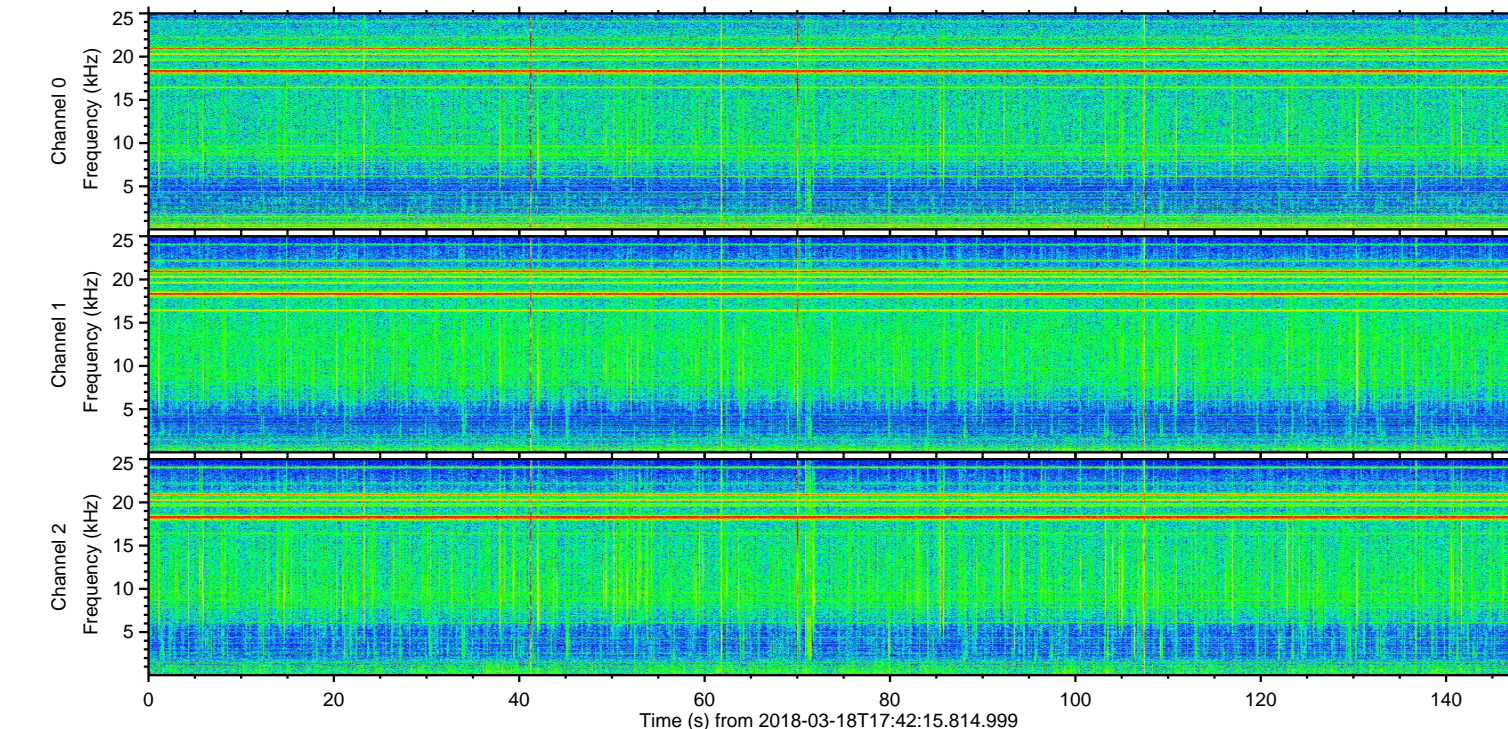
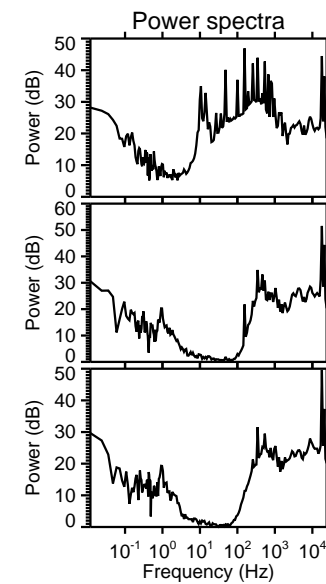
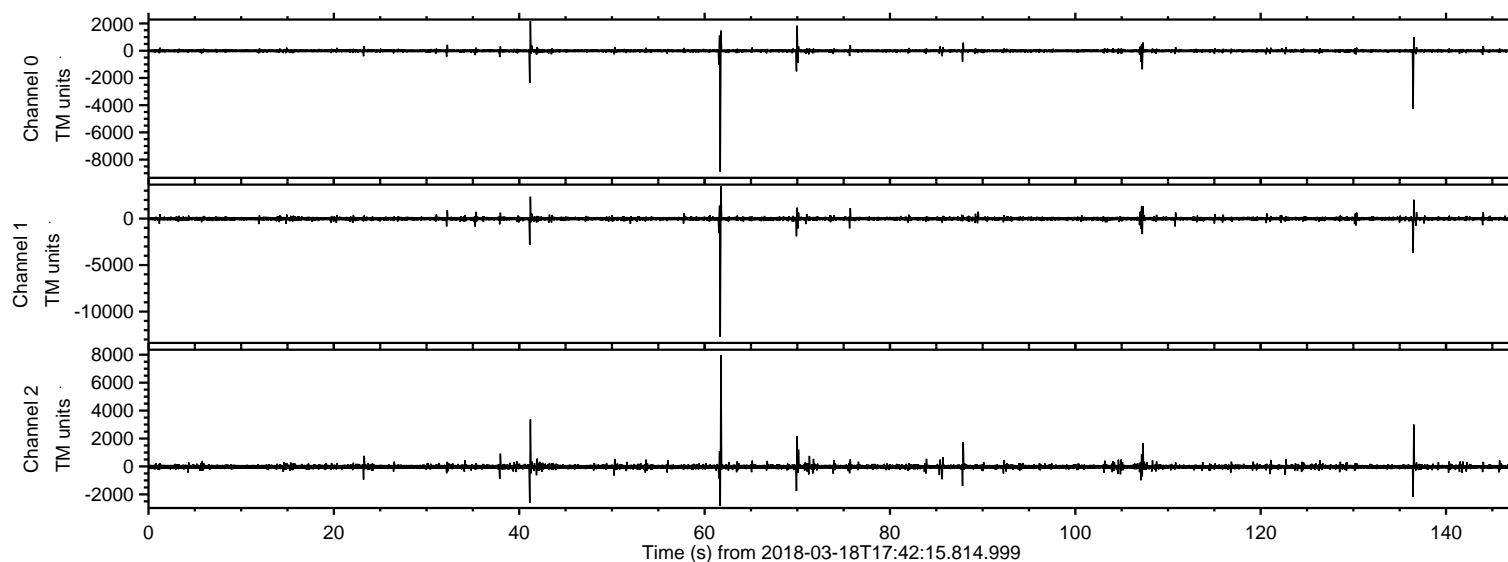
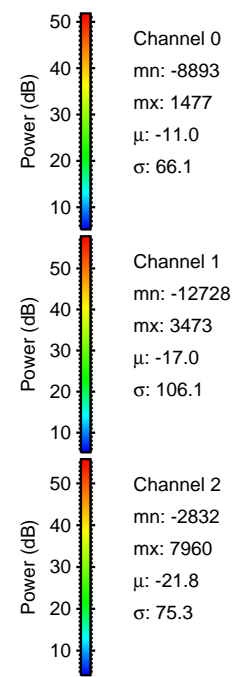
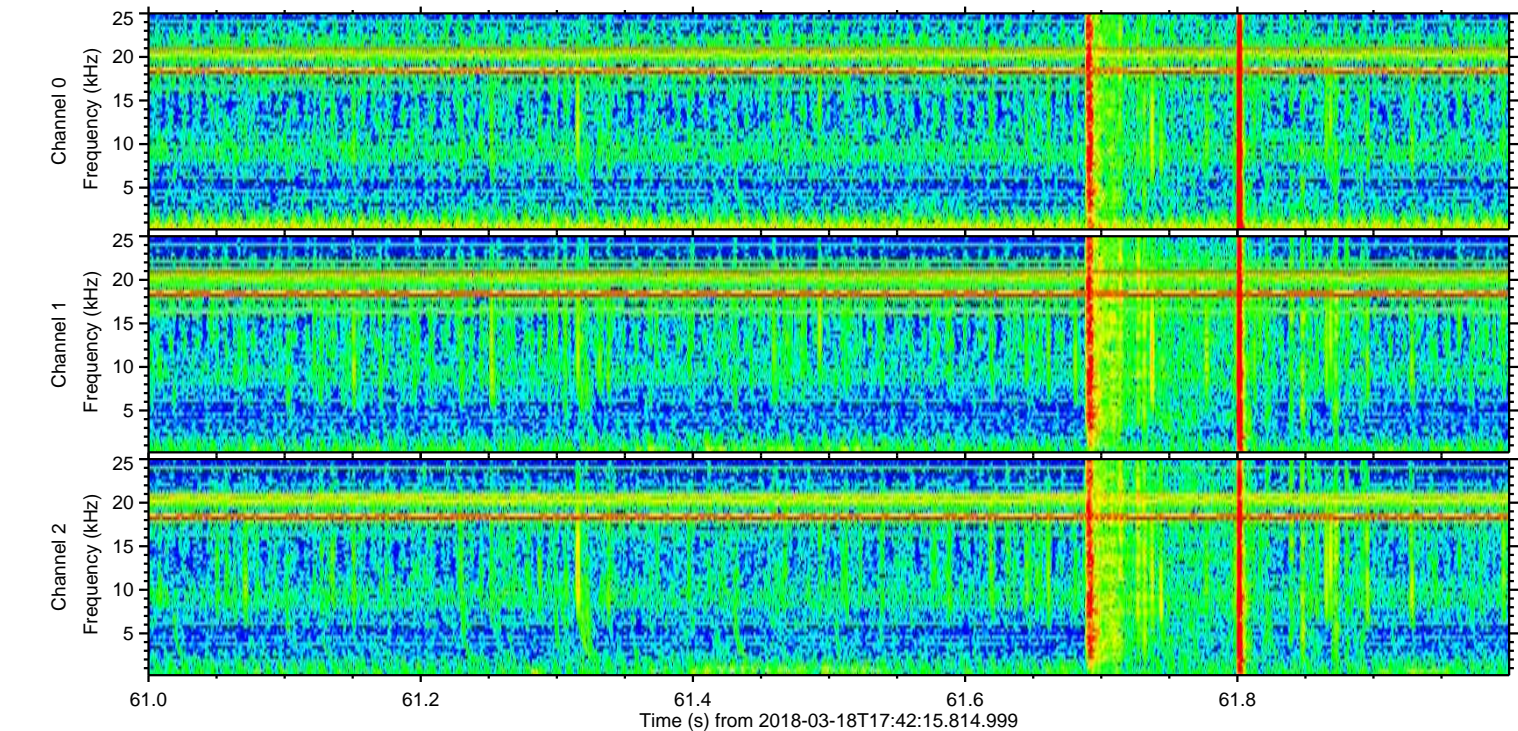
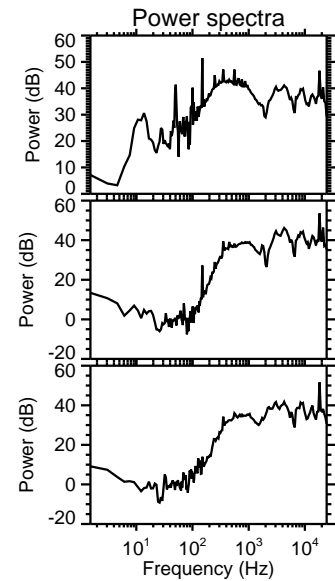
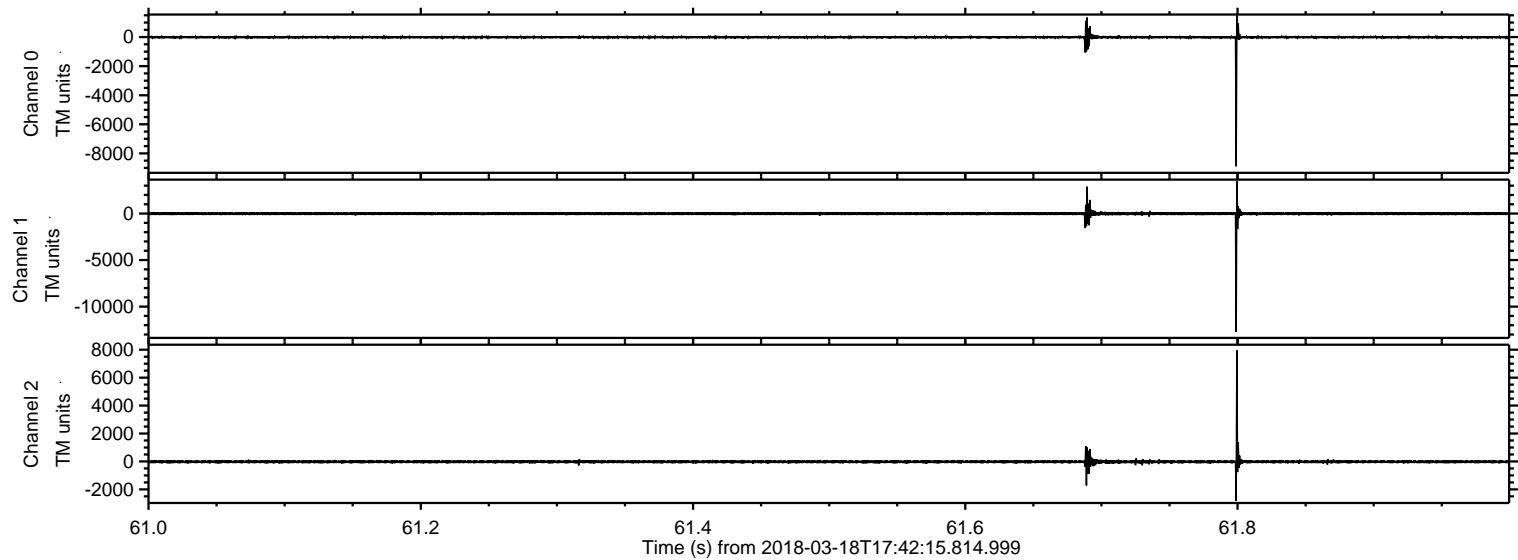


ELMAVAN 3D WAVEFORMS (Measured data sampled at 50 kHz) 51000 packets of 144 samples from 2018-03-18T17:42:15.814.999.

Processed Sun Mar 18 18:50:37 2018 by ELM ver.2012-10-06 from 001__elm20180318_174214__dat00.bin

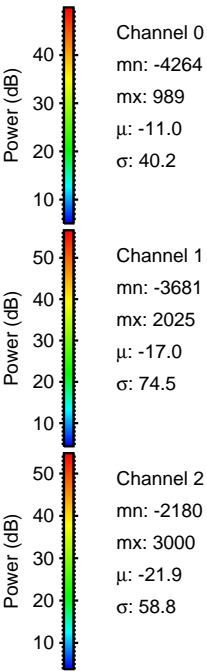
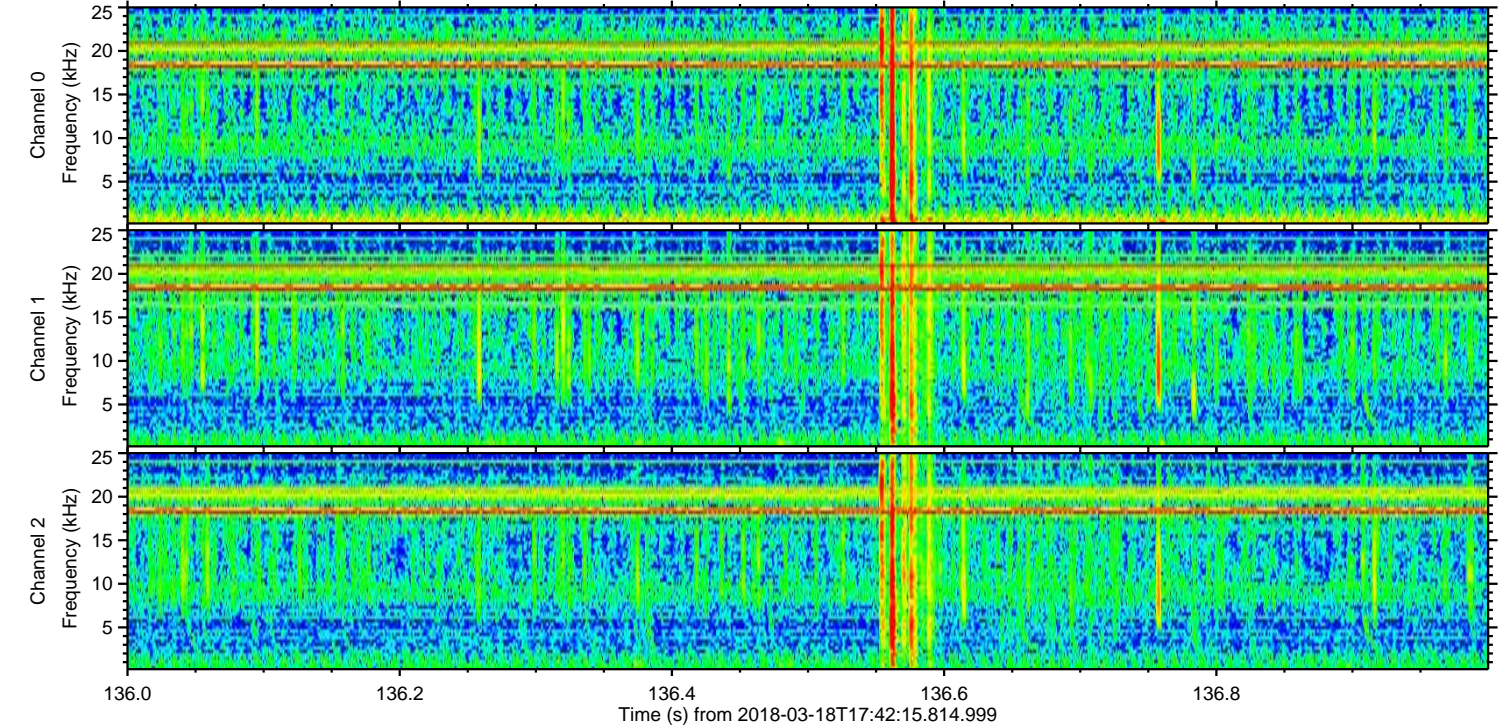
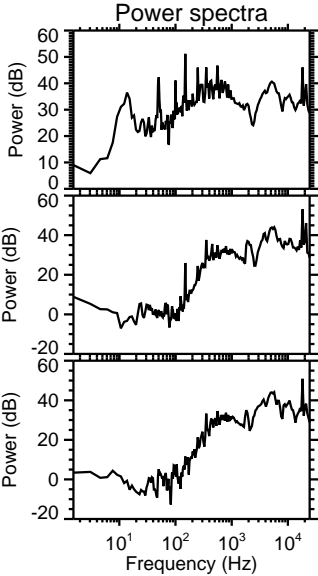
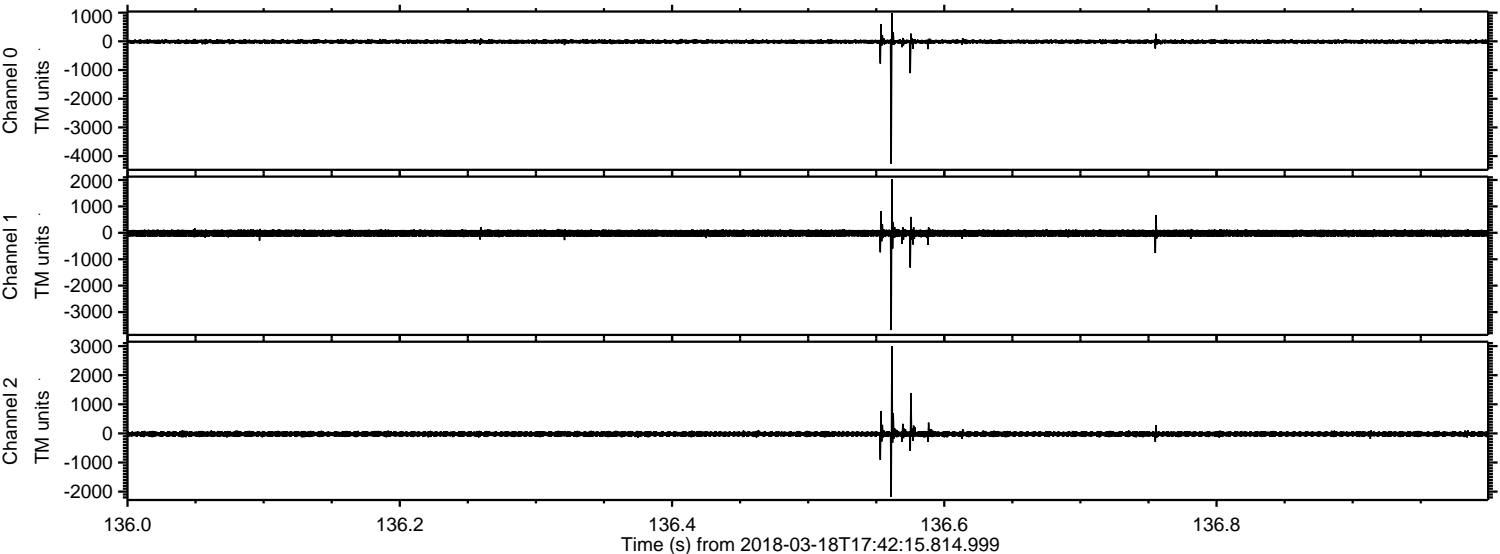


Processed Sun Mar 18 18:50:45 2018 by ELM ver.2012-10-06 from 001__elm20180318_174214__dat00.bin

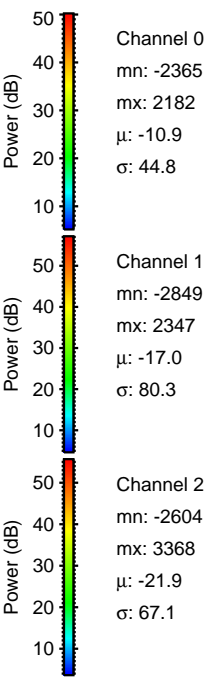
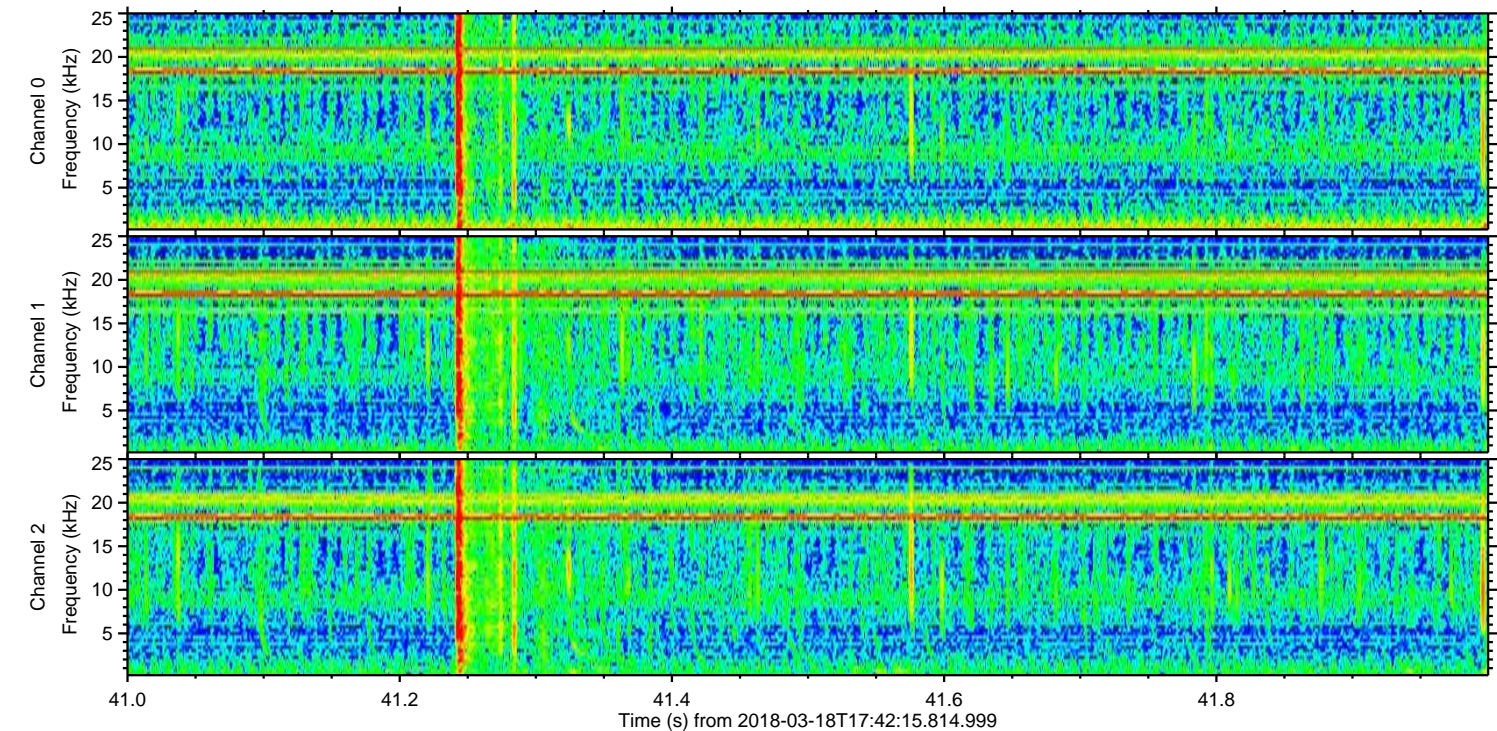
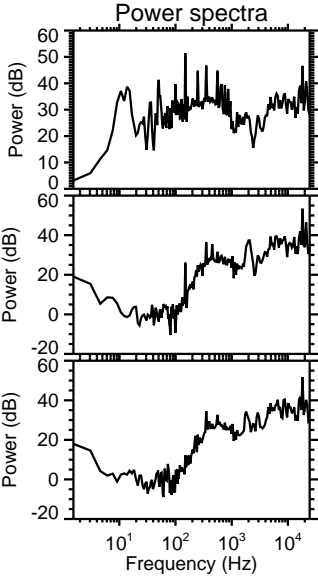
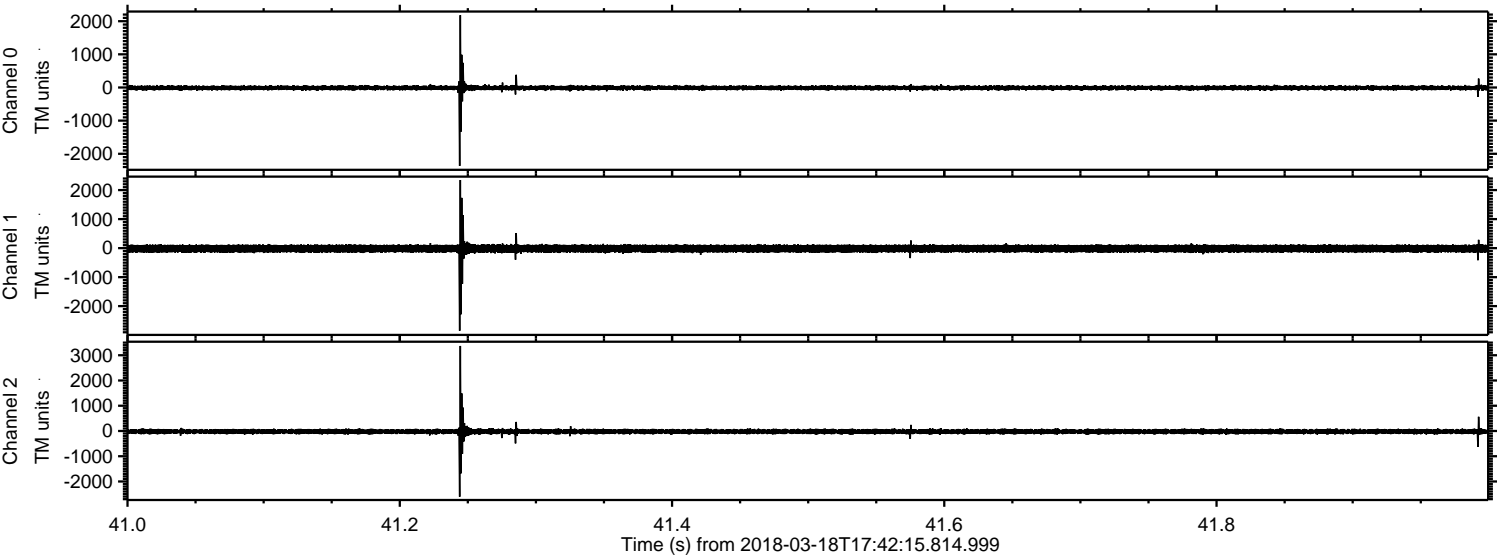


ELMAVAN 3D WAVEFORMS (Measured data sampled at 50 kHz) 51000 packets of 144 samples from 2018-03-18T17:42:15.814.999. Part 137/147

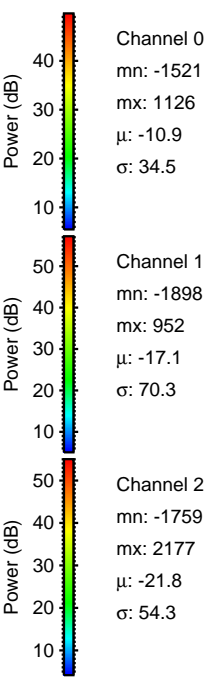
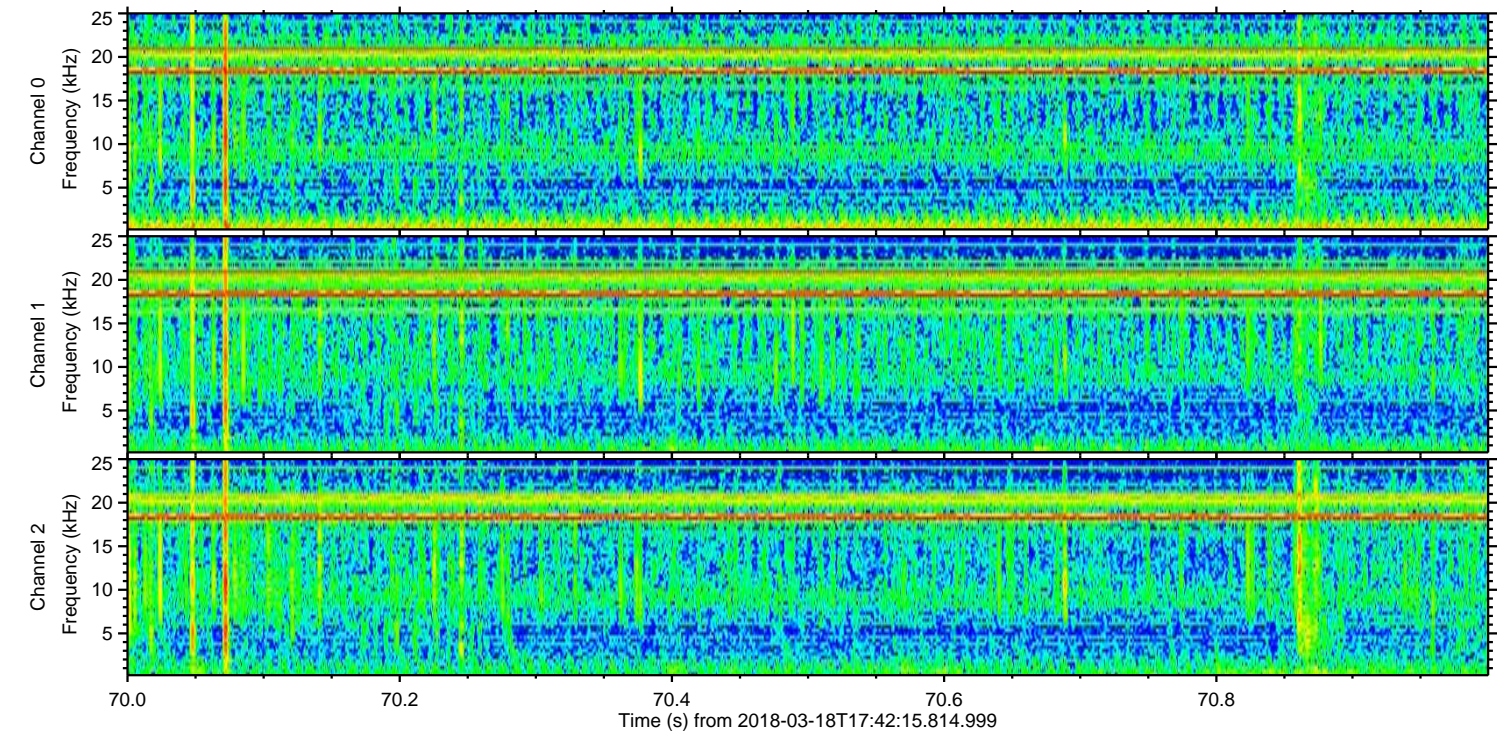
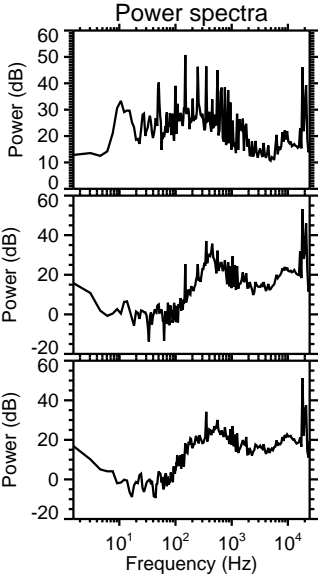
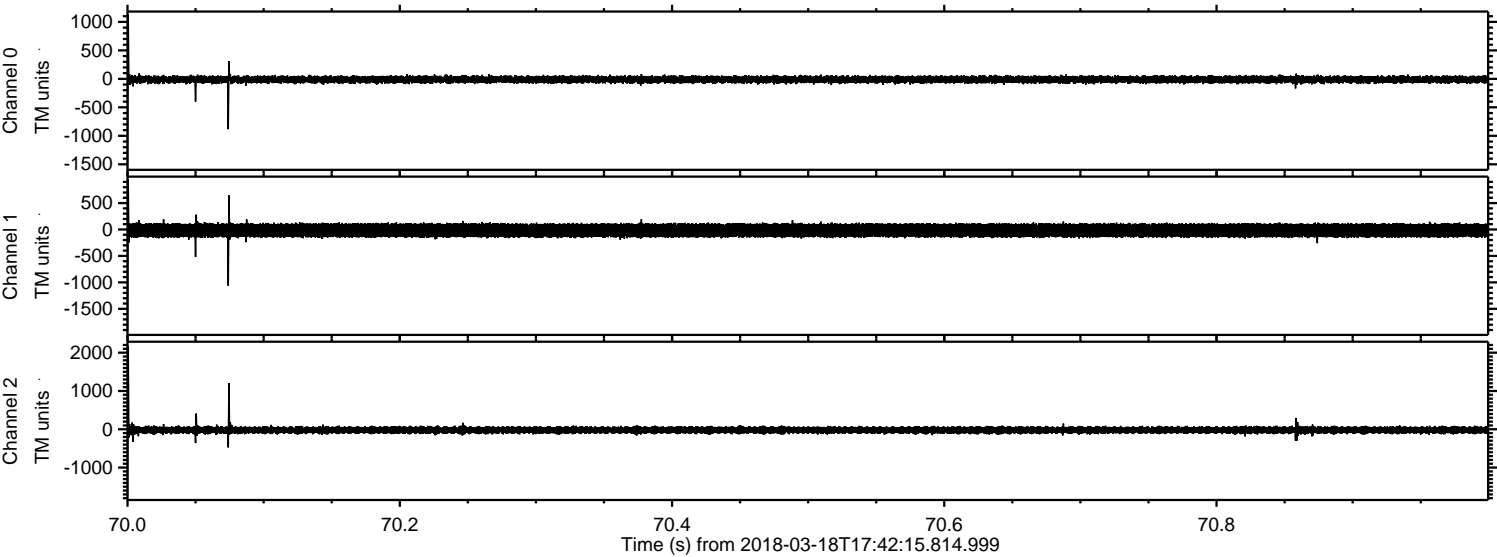
Processed Sun Mar 18 18:50:46 2018 by ELM ver.2012-10-06 from 001__elm20180318_174214__dat00.bin



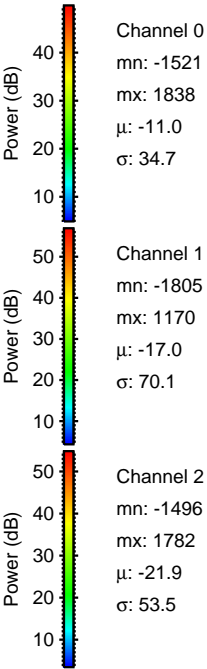
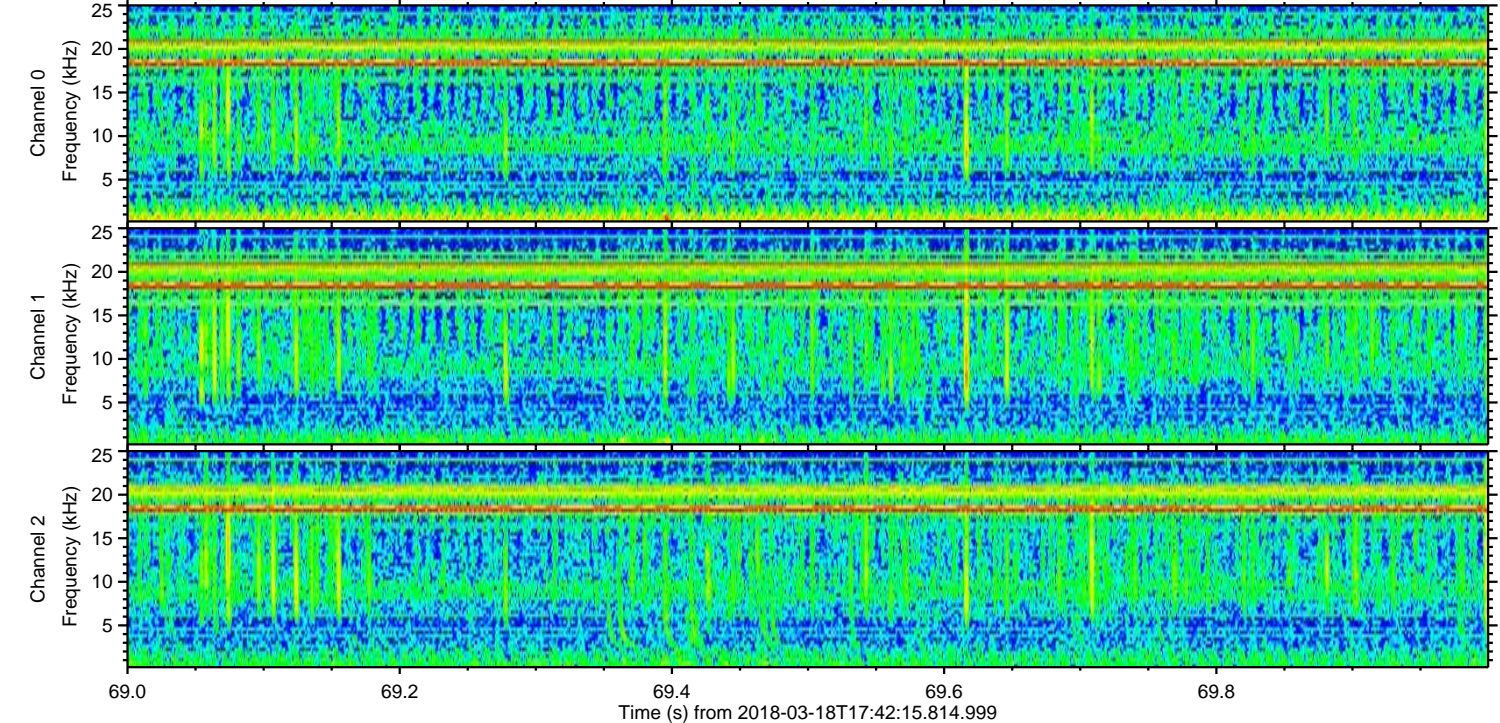
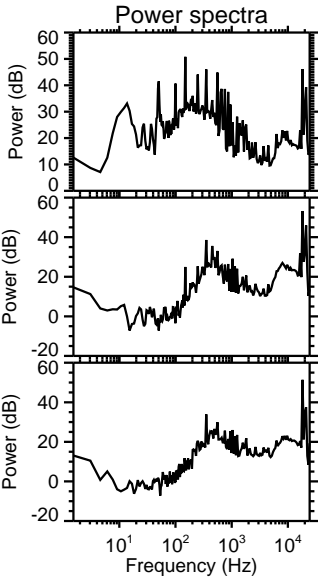
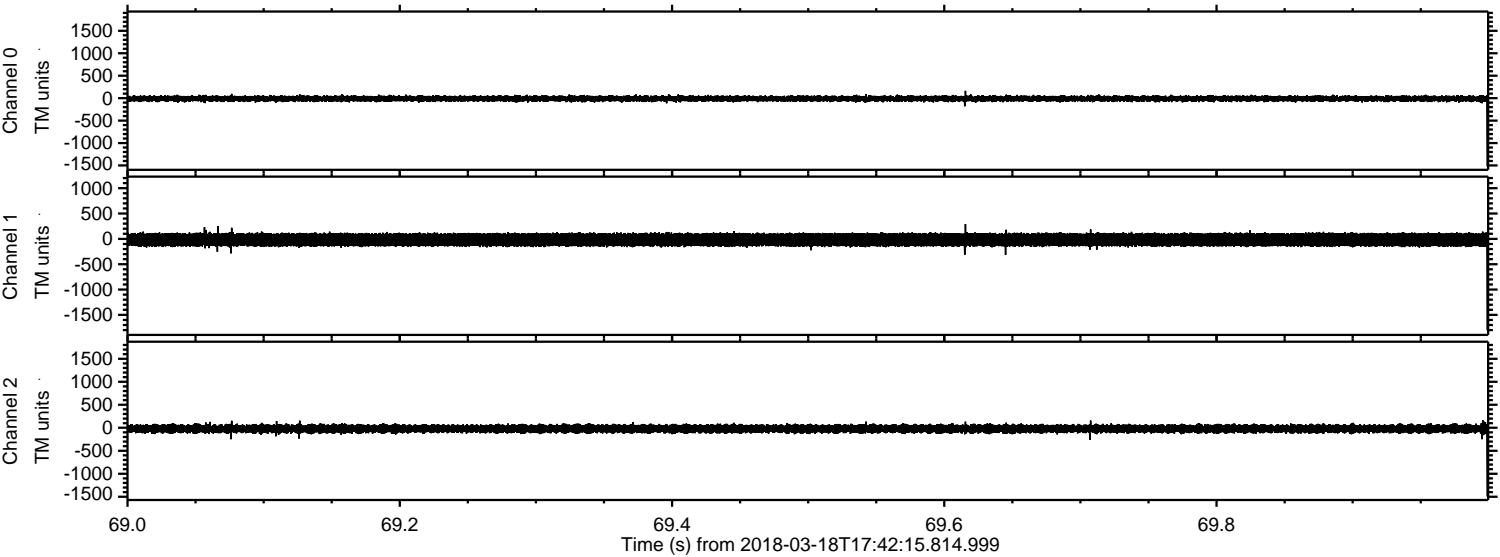
Processed Sun Mar 18 18:50:46 2018 by ELM ver.2012-10-06 from 001__elm20180318_174214__dat00.bin



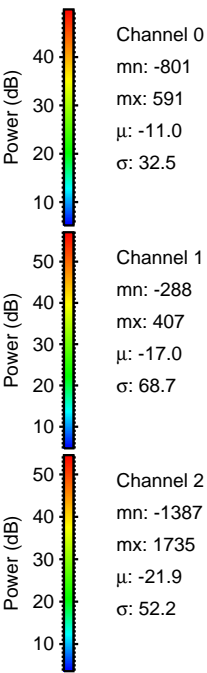
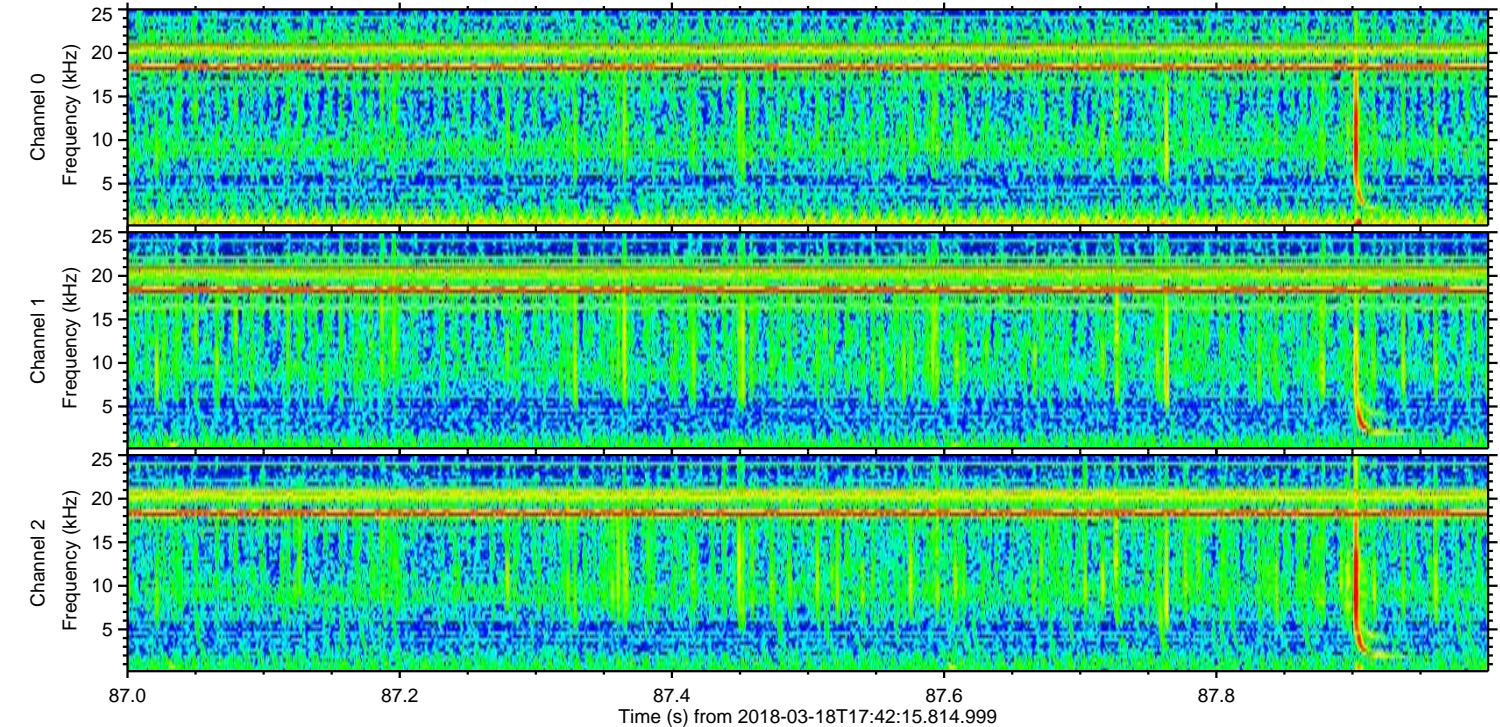
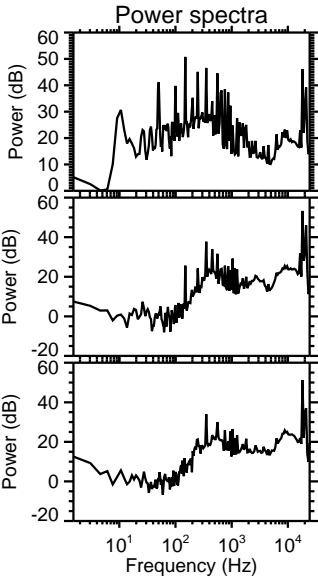
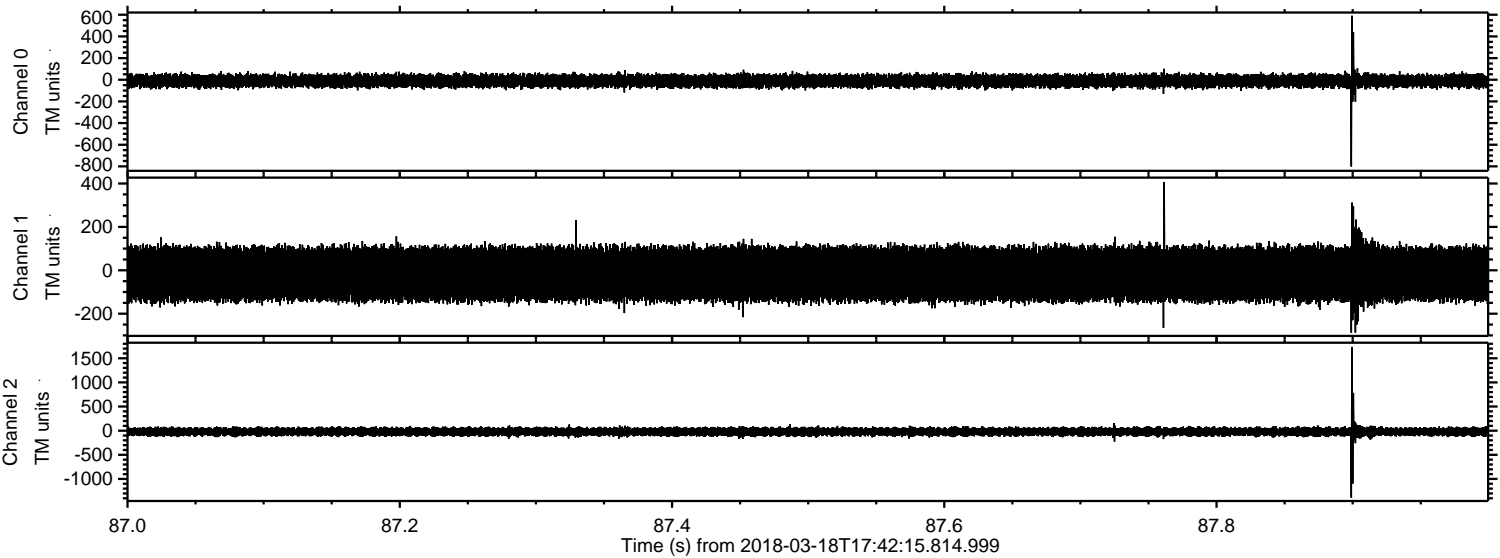
Processed Sun Mar 18 18:50:47 2018 by ELM ver.2012-10-06 from 001__elm20180318_174214__dat00.bin



Processed Sun Mar 18 18:50:48 2018 by ELM ver.2012-10-06 from 001__elm20180318_174214__dat00.bin

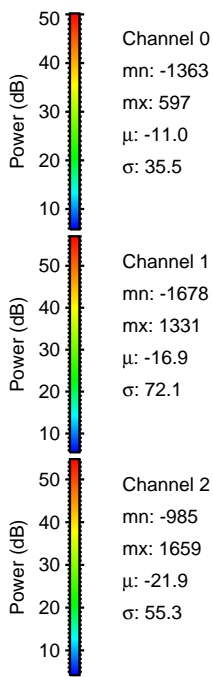
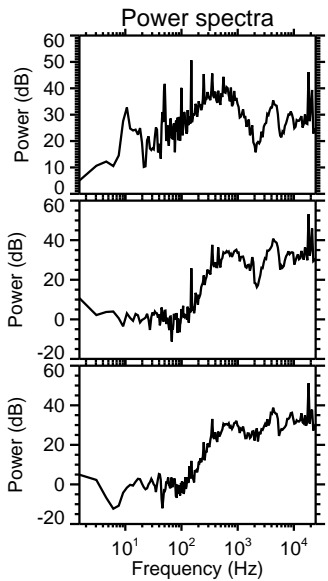
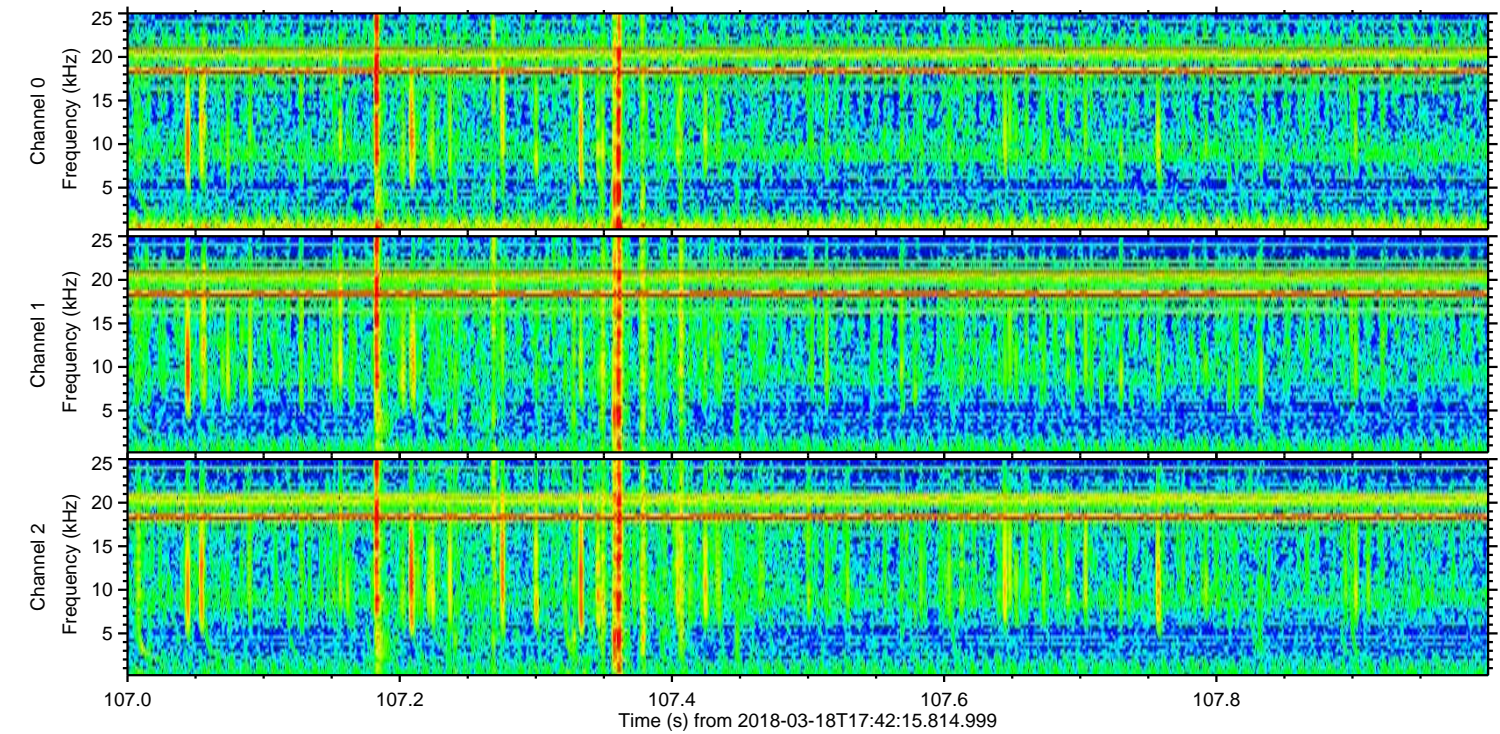
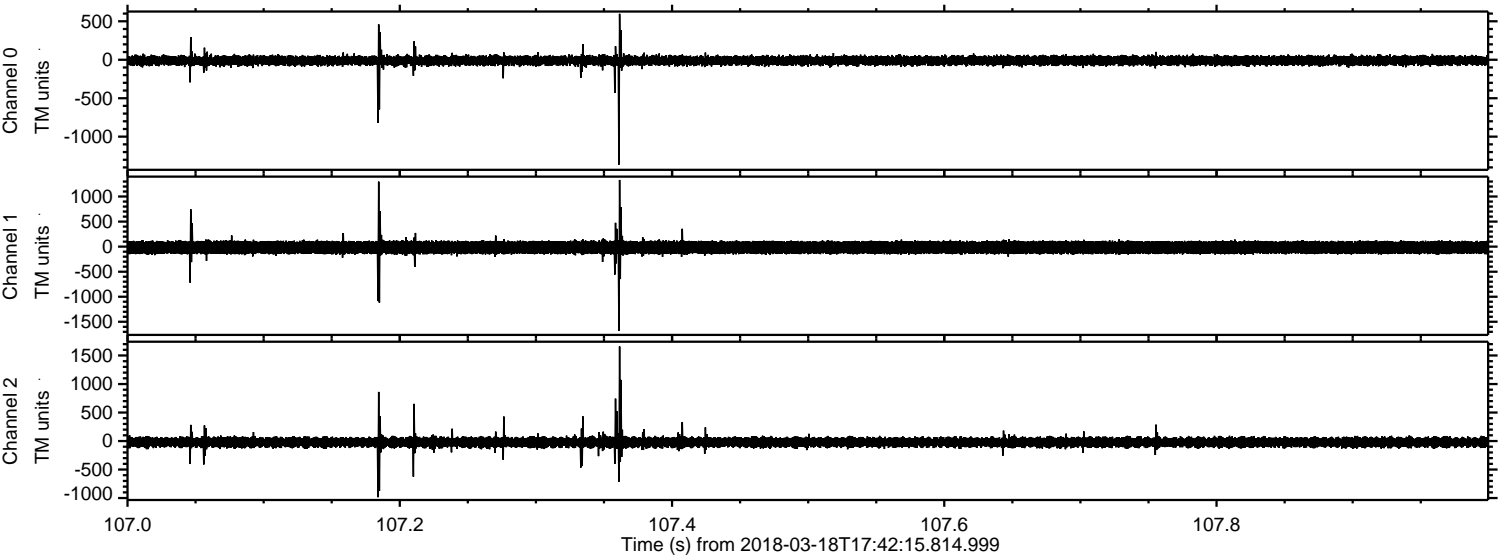


Processed Sun Mar 18 18:50:49 2018 by ELM ver.2012-10-06 from 001__elm20180318_174214__dat00.bin

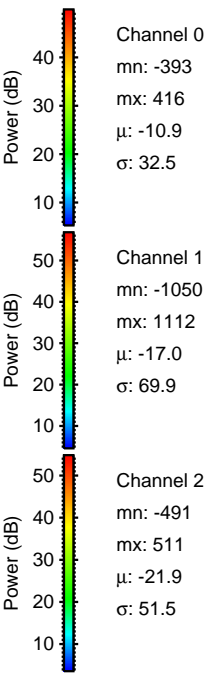
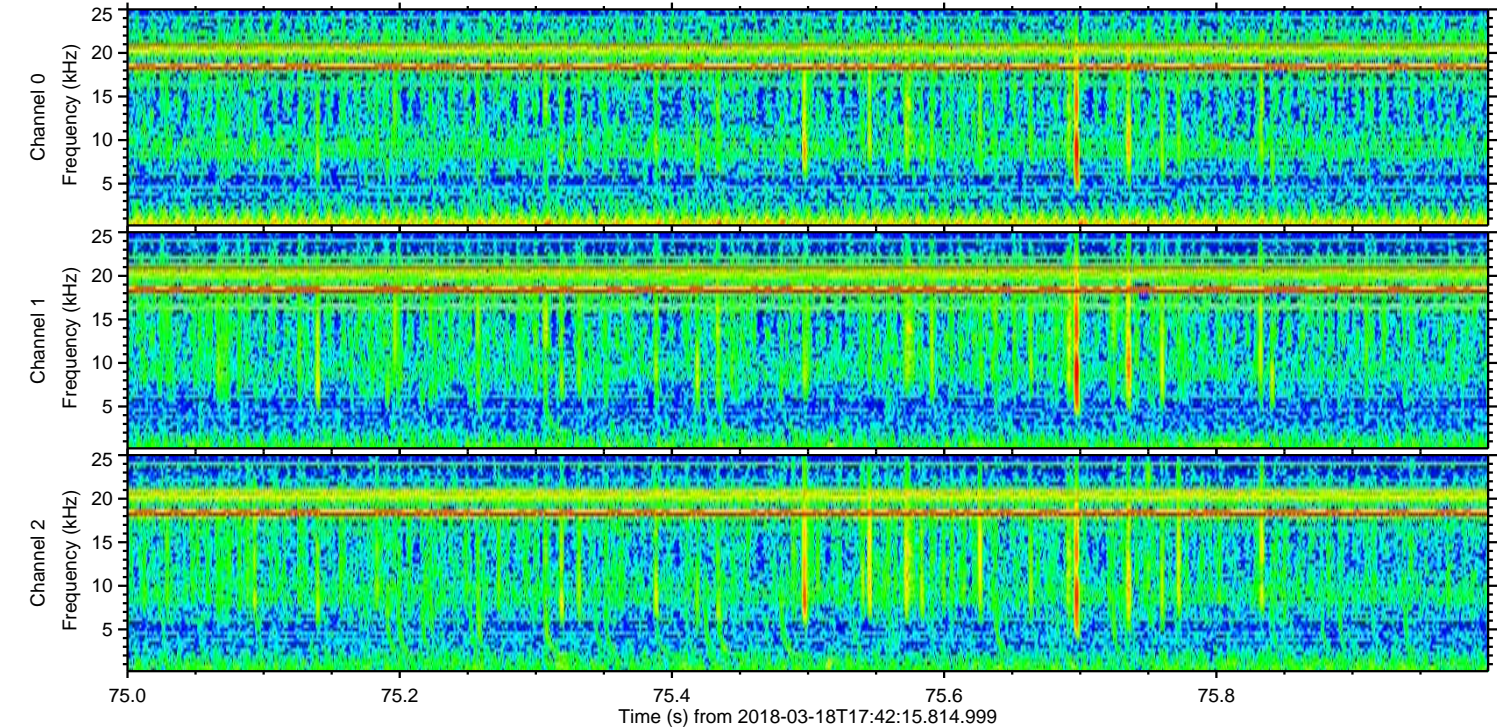
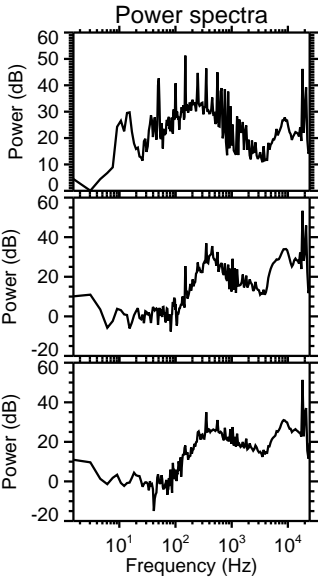
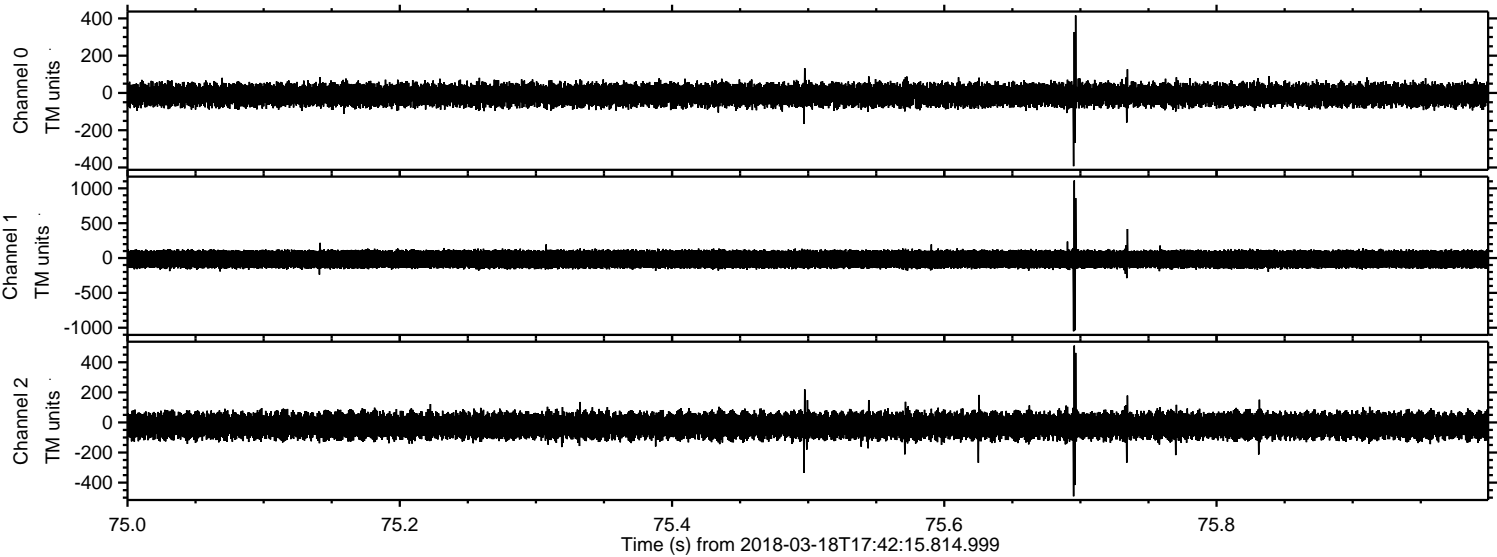


ELMAVAN 3D WAVEFORMS (Measured data sampled at 50 kHz) 51000 packets of 144 samples from 2018-03-18T17:42:15.814.999. Part 108/147

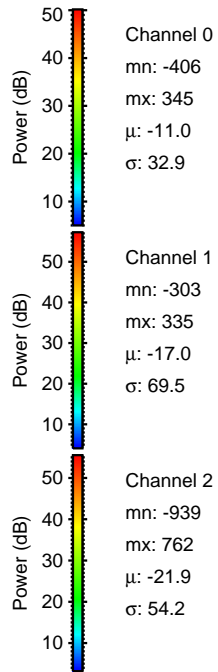
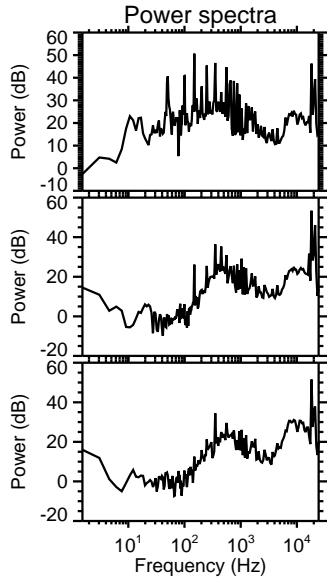
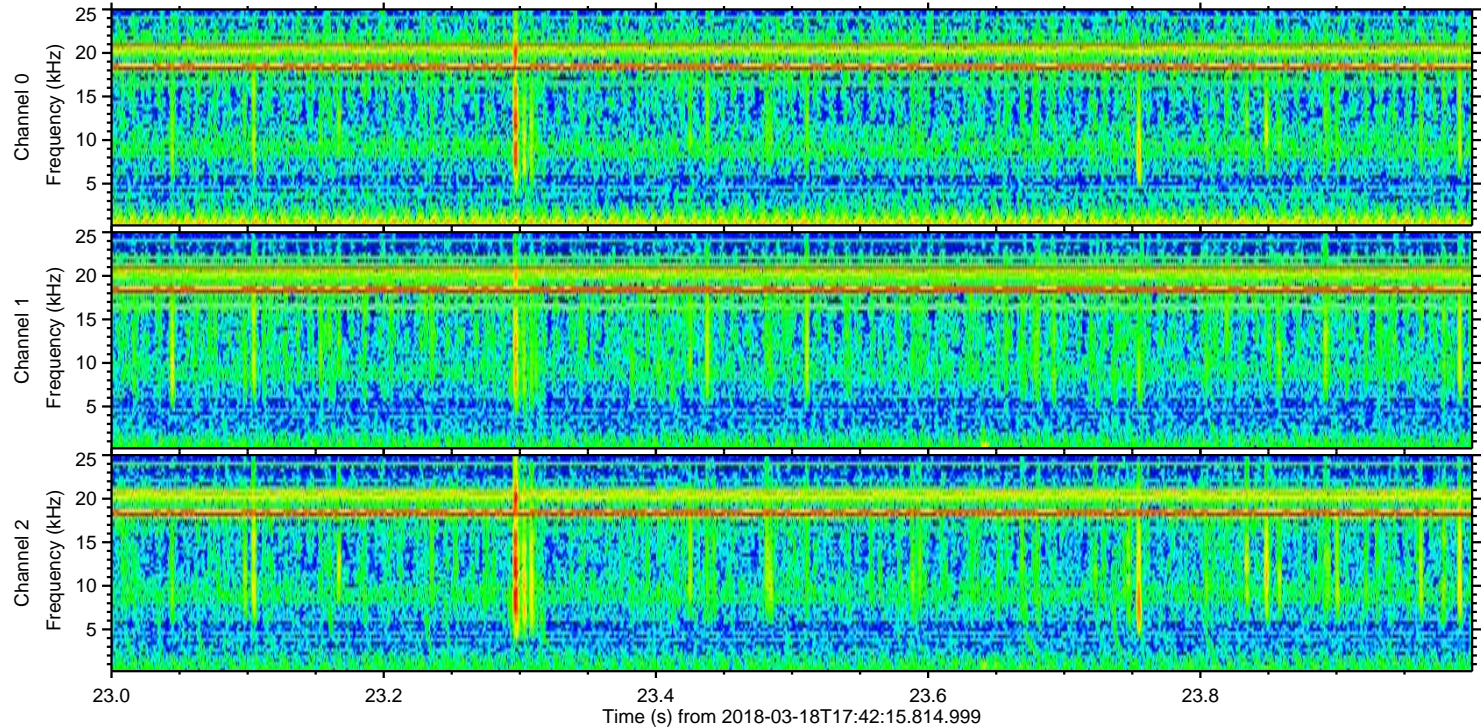
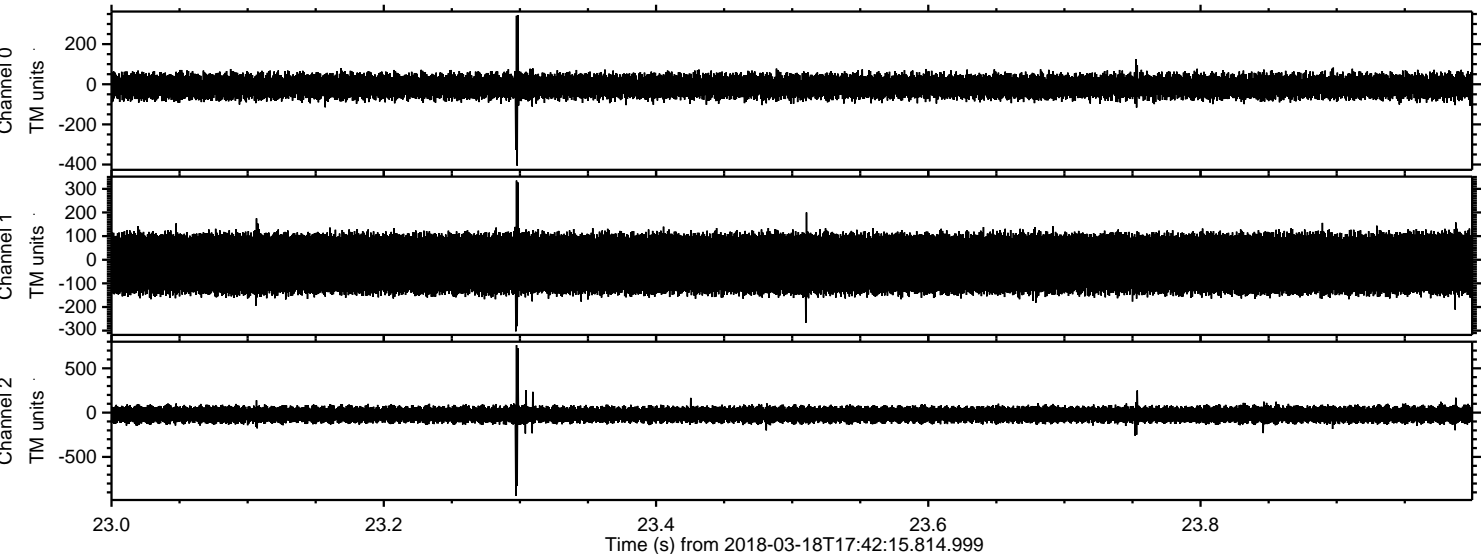
Processed Sun Mar 18 18:50:50 2018 by ELM ver.2012-10-06 from 001__elm20180318_174214__dat00.bin



Processed Sun Mar 18 18:50:50 2018 by ELM ver.2012-10-06 from 001__elm20180318_174214__dat00.bin



Processed Sun Mar 18 18:50:51 2018 by ELM ver.2012-10-06 from 001__elm20180318_174214__dat00.bin



Channel 0
mn: -406
mx: 345
 μ : -11.0
 σ : 32.9

Channel 1
mn: -303
mx: 335
 μ : -17.0
 σ : 69.5

Channel 2
mn: -939
mx: 762
 μ : -21.9
 σ : 54.2

Processed Sun Mar 18 18:50:52 2018 by ELM ver.2012-10-06 from 001__elm20180318_174214__dat00.bin

