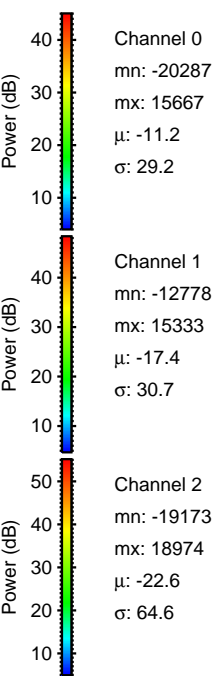
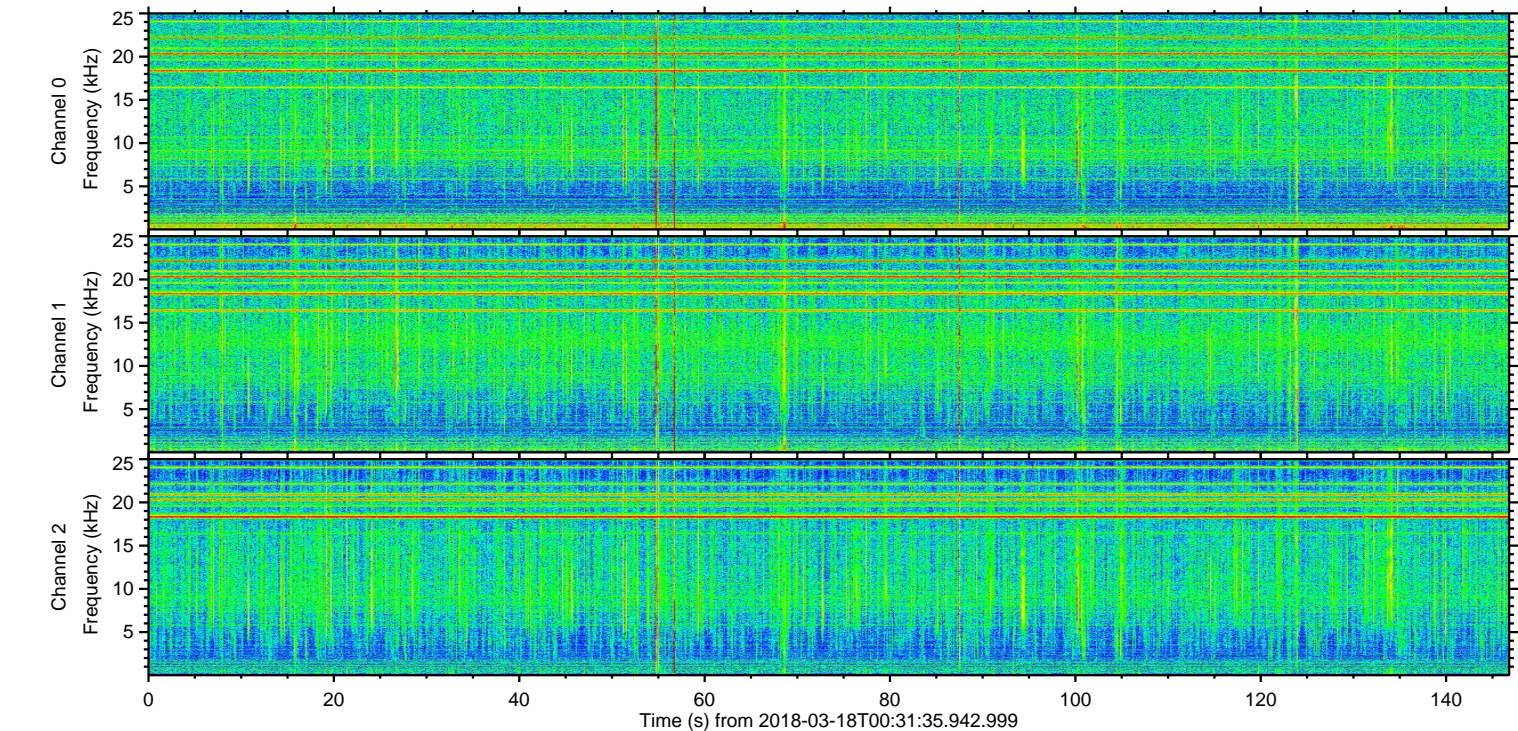
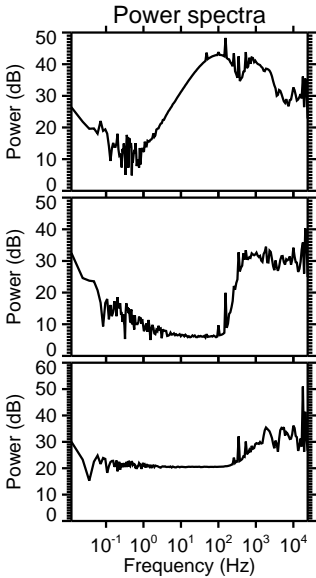
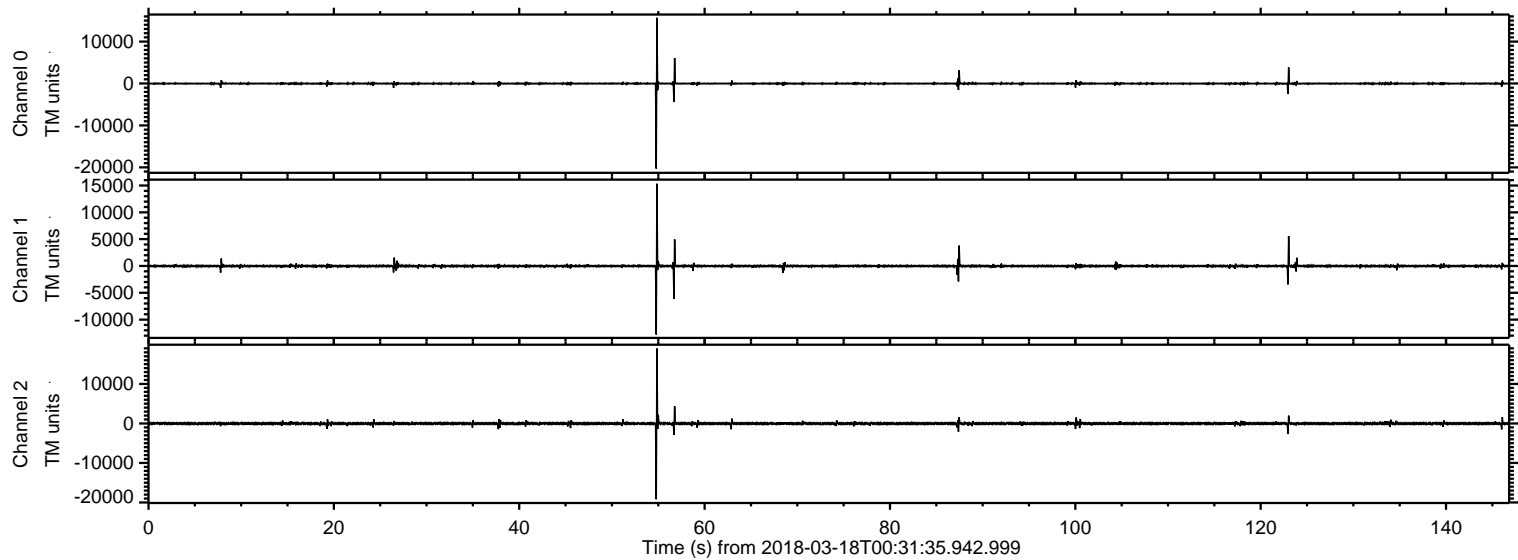
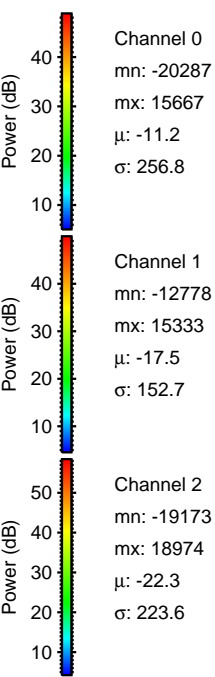
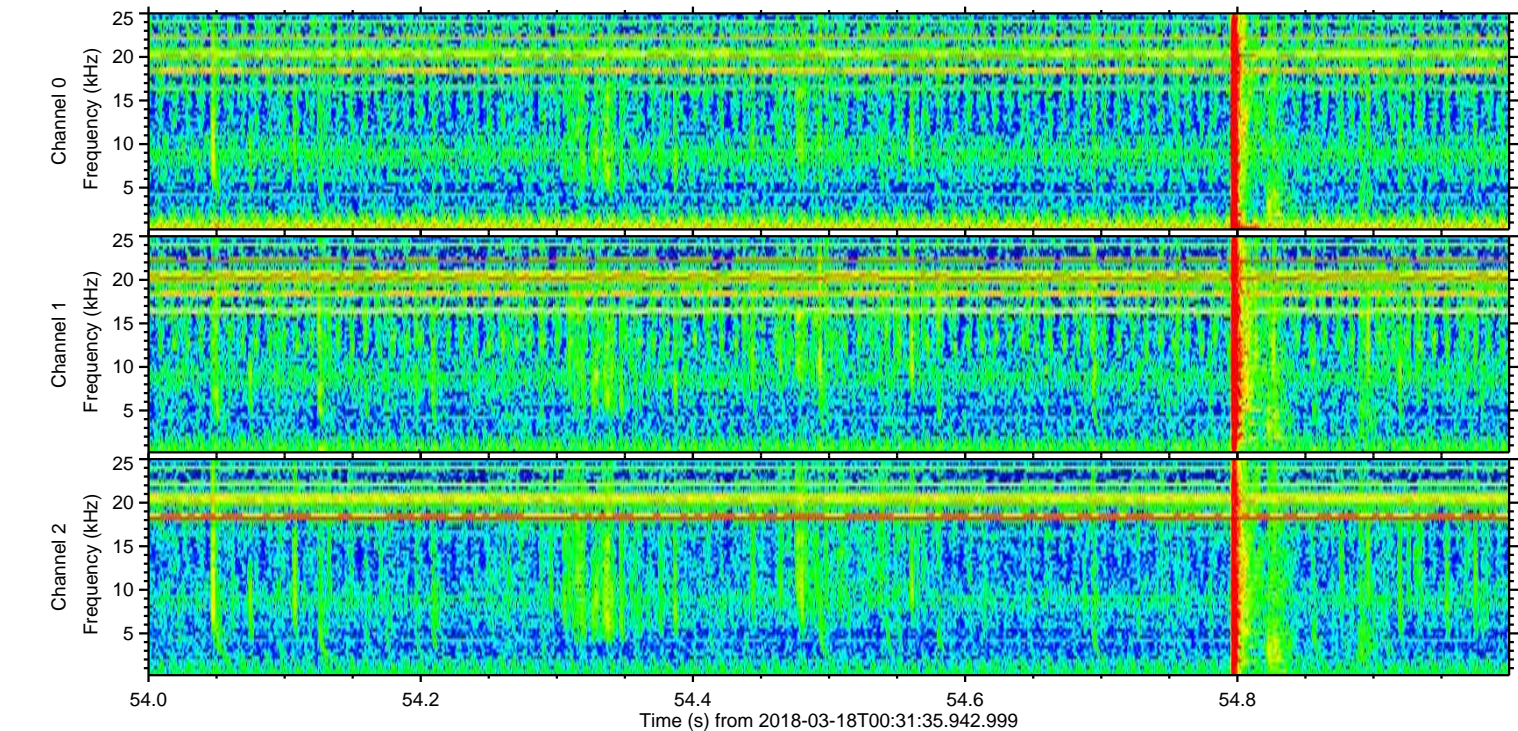
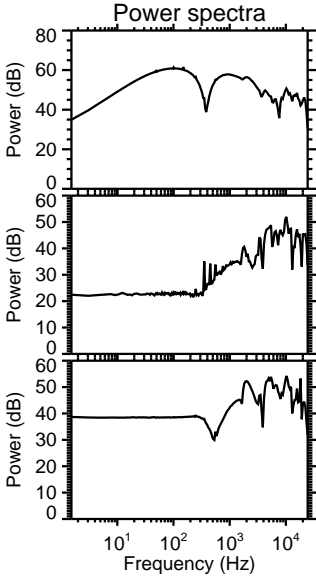
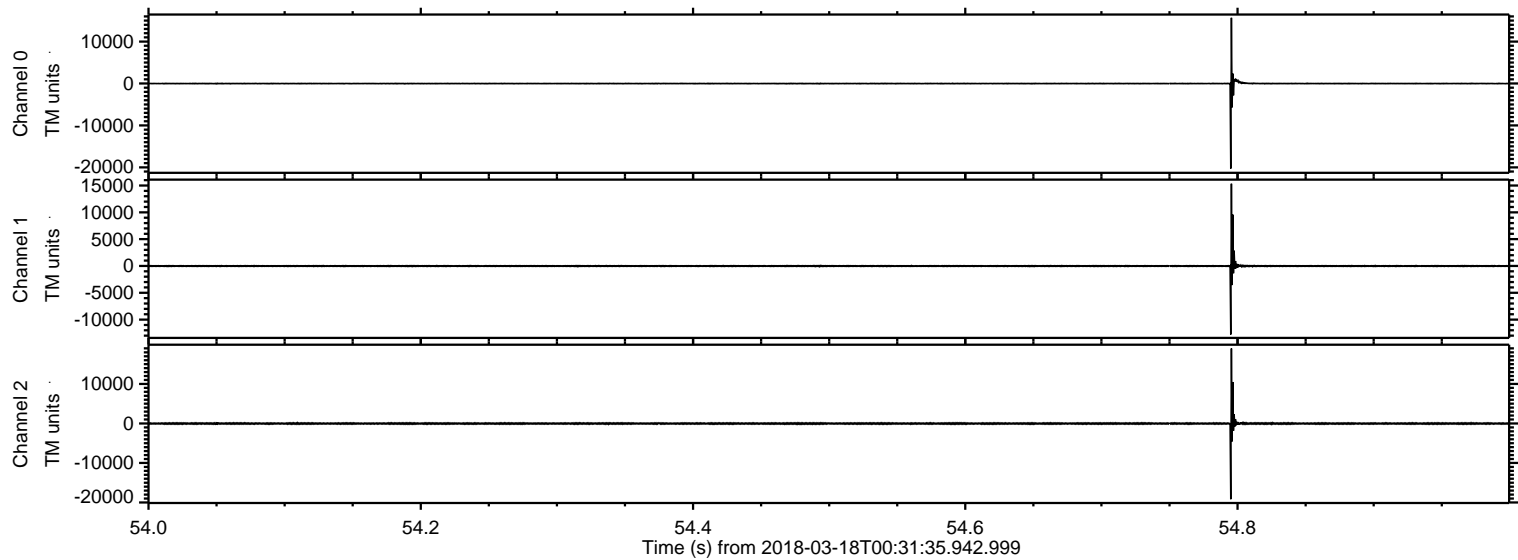


ELMAVAN 3D WAVEFORMS (Measured data sampled at 50 kHz) 51000 packets of 144 samples from 2018-03-18T00:31:35.942.999.

Processed Sun Mar 18 01:39:42 2018 by ELM ver.2012-10-06 from 001__elm20180318_003134__dat00.bin

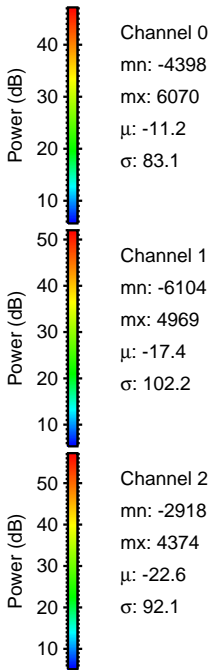
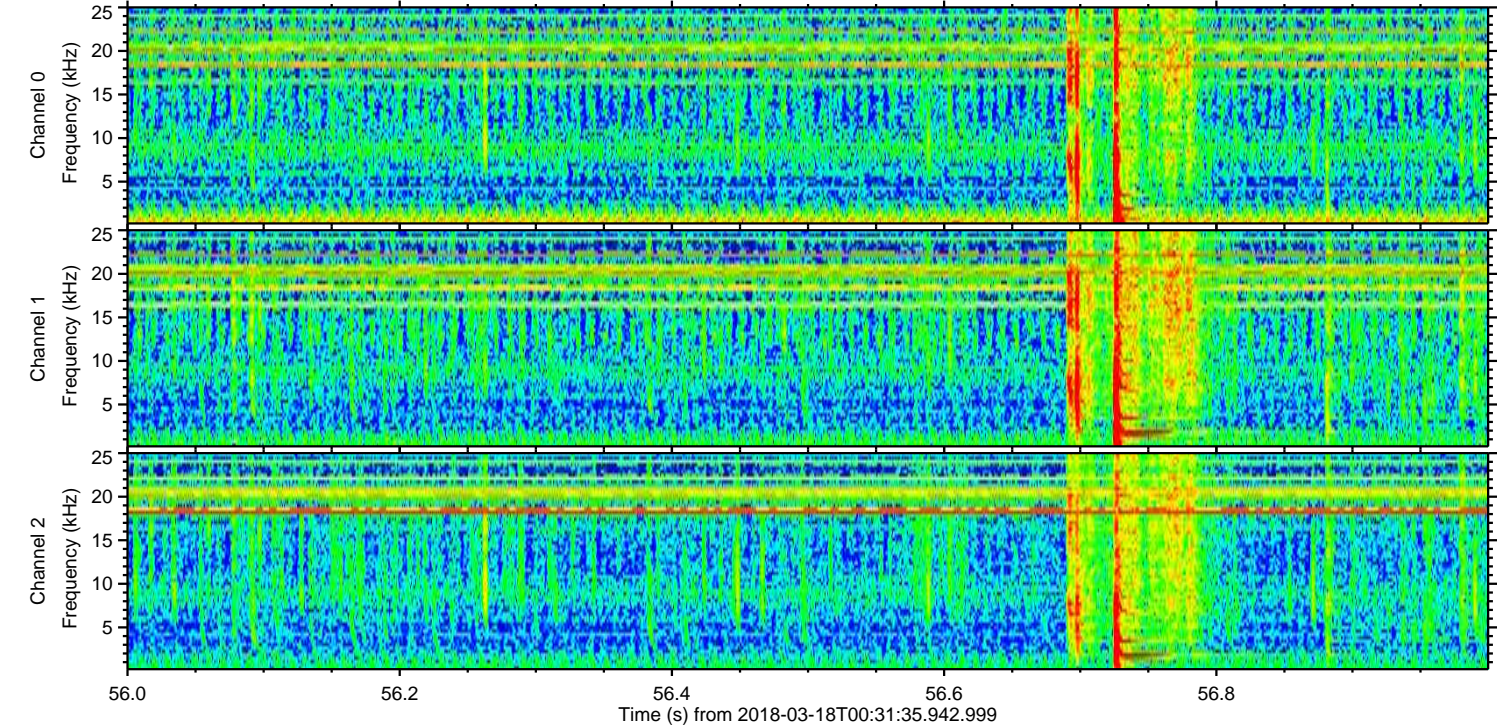
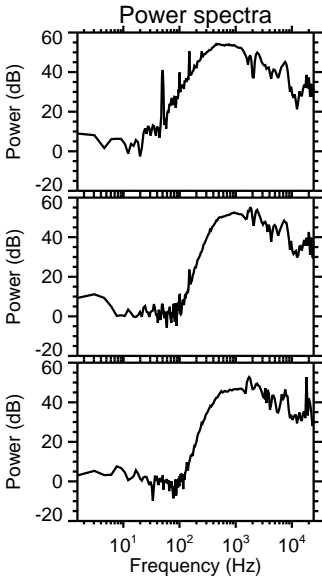
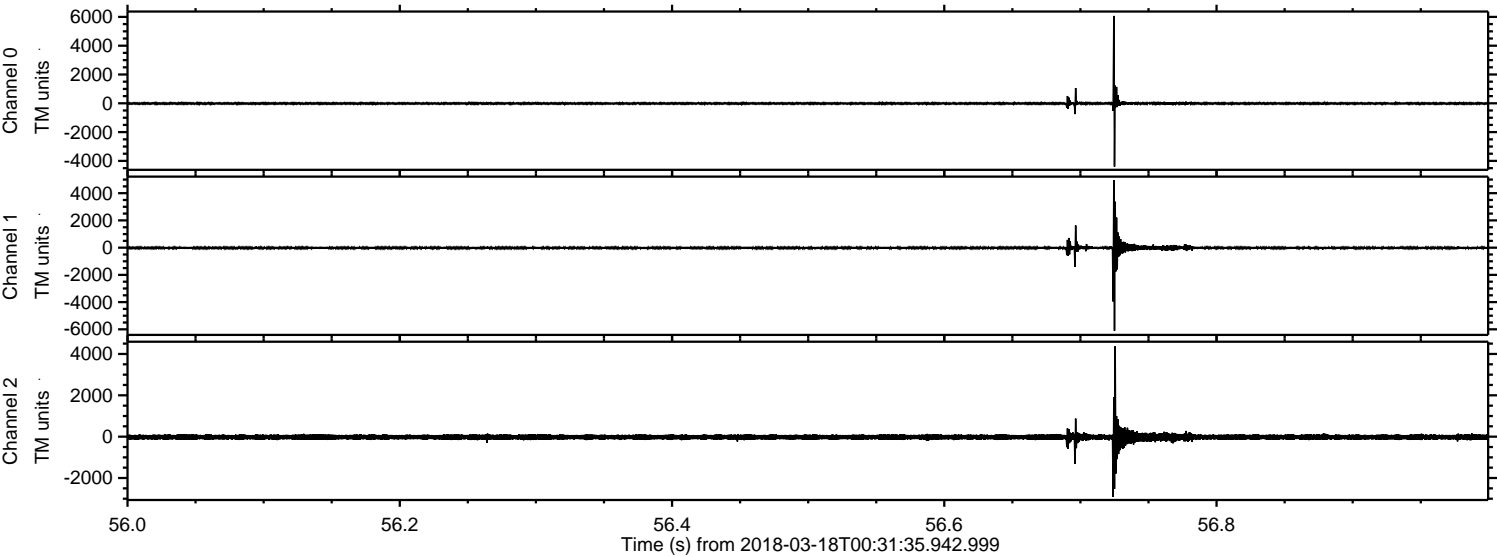


Processed Sun Mar 18 01:39:52 2018 by ELM ver.2012-10-06 from 001__elm20180318_003134__dat00.bin



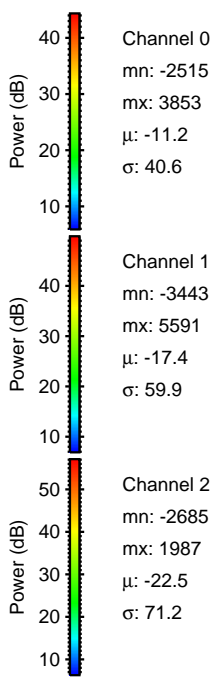
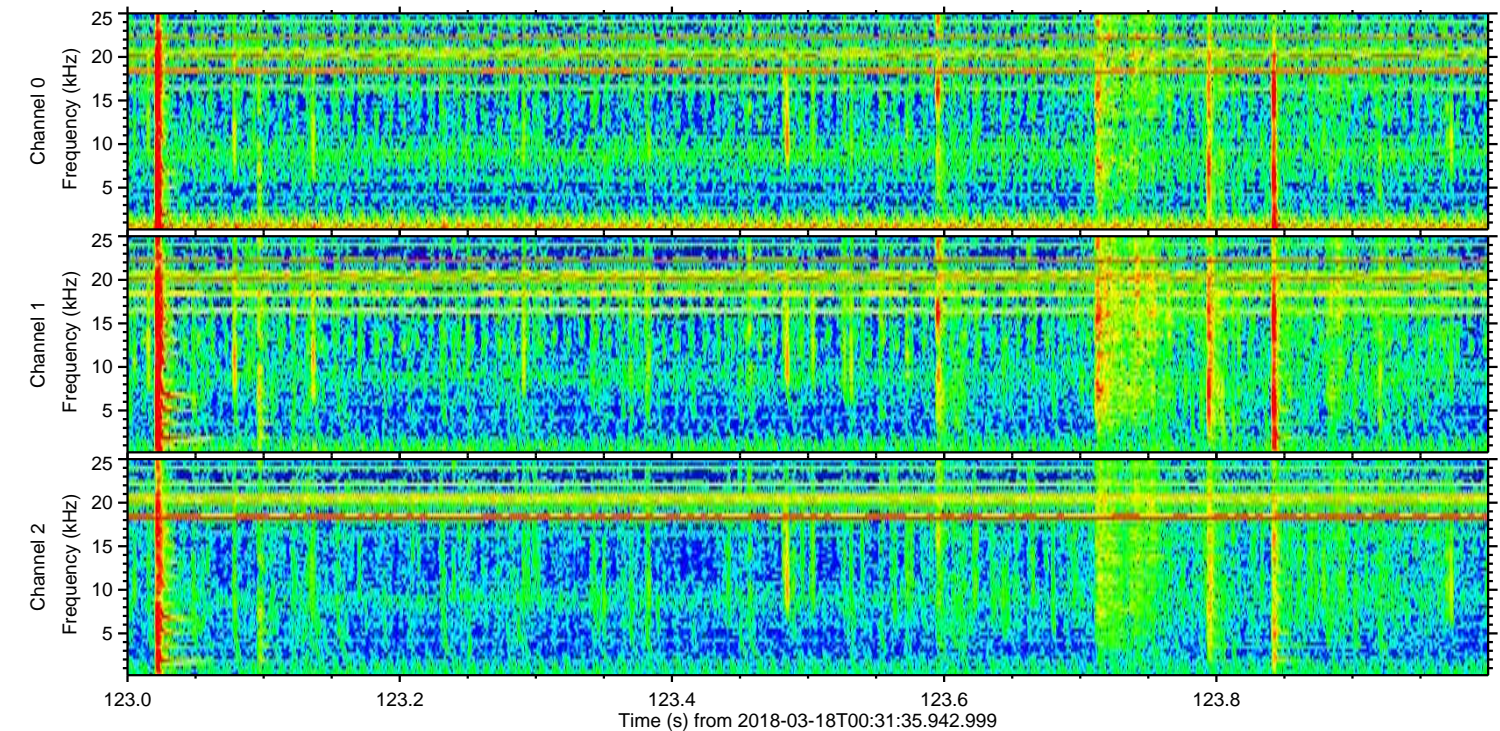
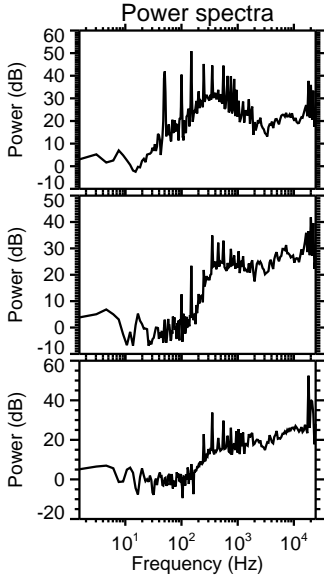
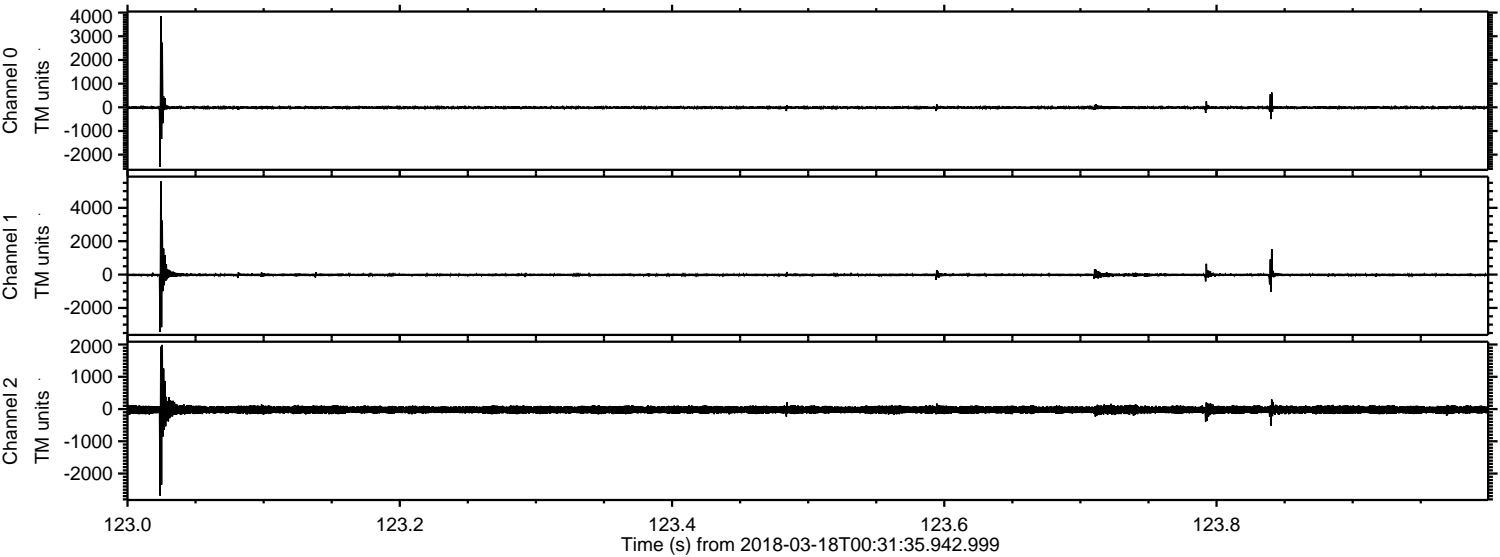
ELMAVAN 3D WAVEFORMS (Measured data sampled at 50 kHz) 51000 packets of 144 samples from 2018-03-18T00:31:35.942.999. Part 57/147

Processed Sun Mar 18 01:39:53 2018 by ELM ver.2012-10-06 from 001__elm20180318_003134__dat00.bin

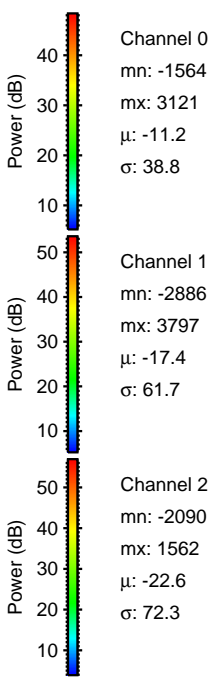
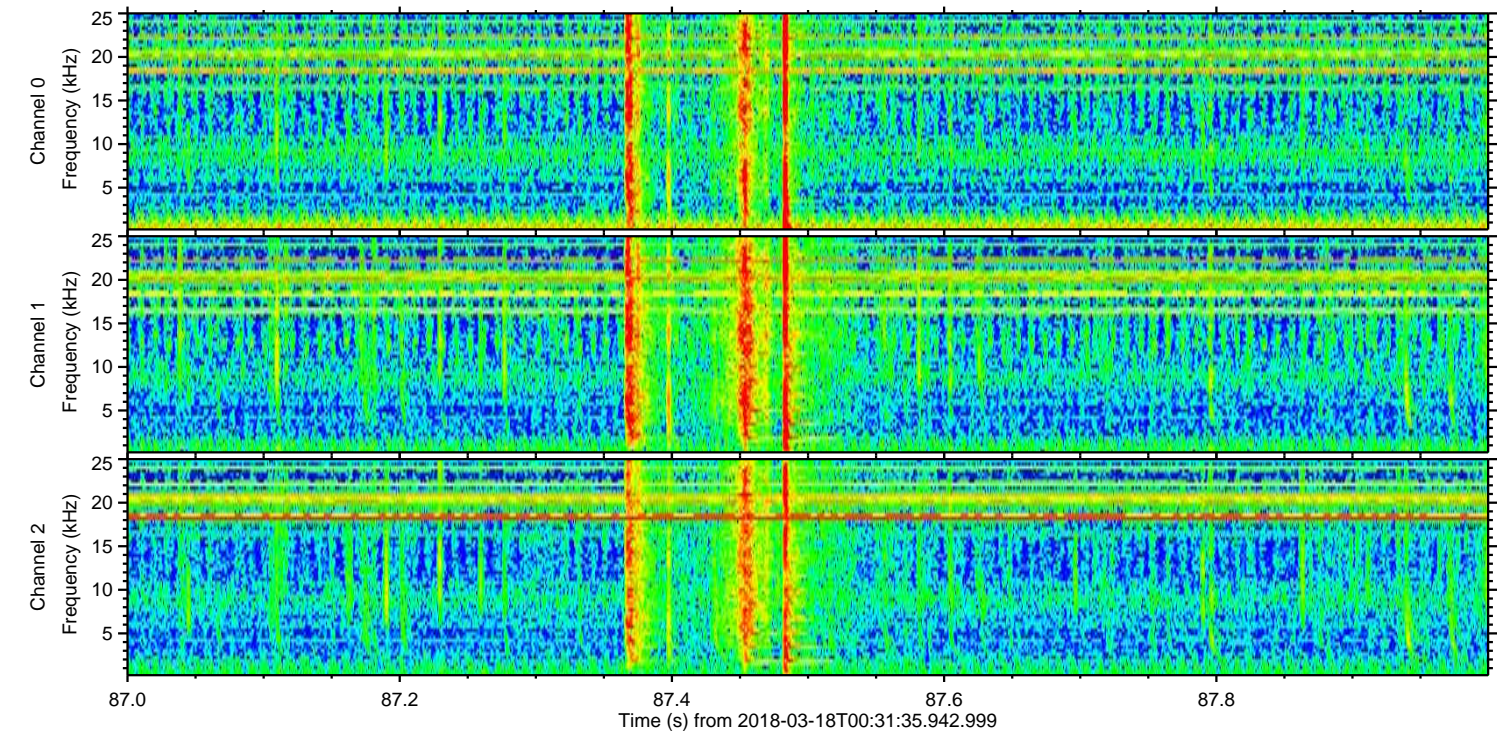
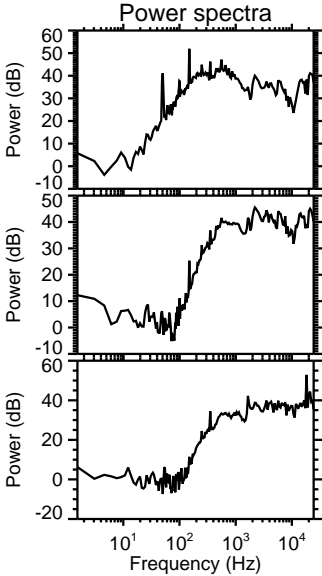
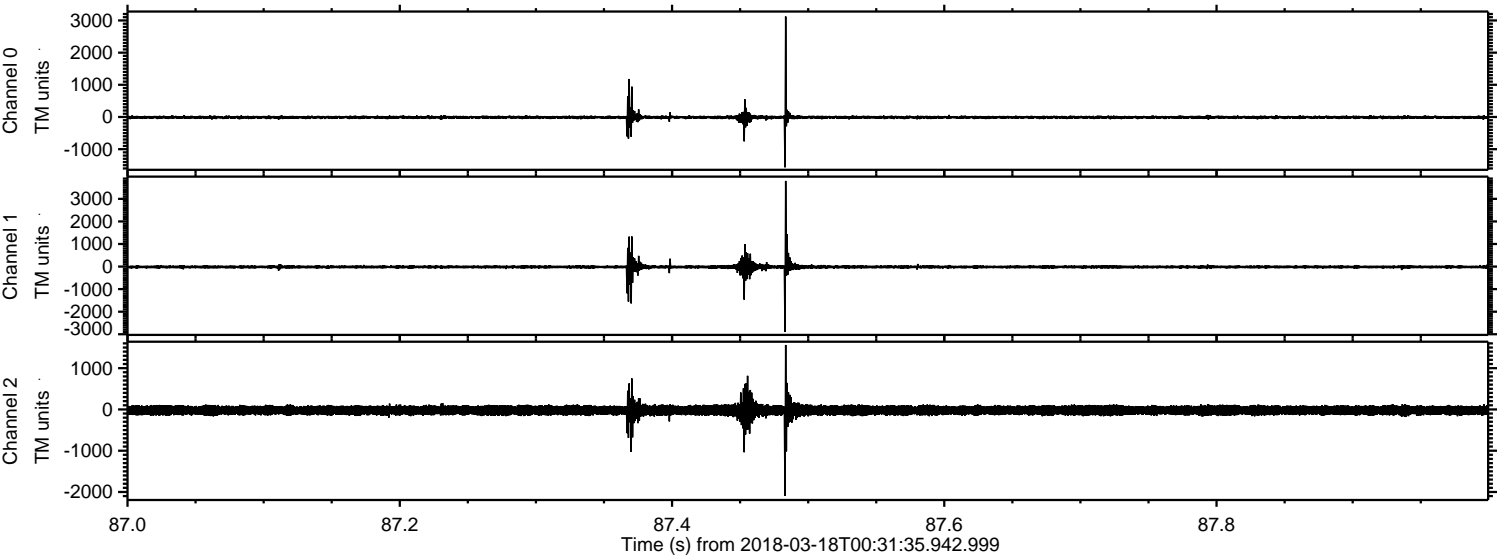


ELMAVAN 3D WAVEFORMS (Measured data sampled at 50 kHz) 51000 packets of 144 samples from 2018-03-18T00:31:35.942.999. Part 124/147

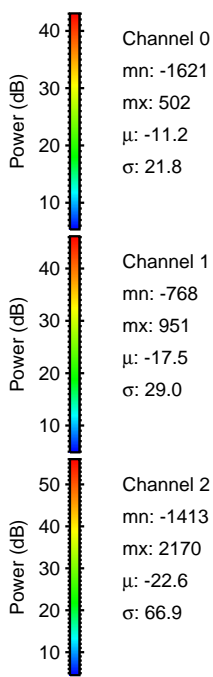
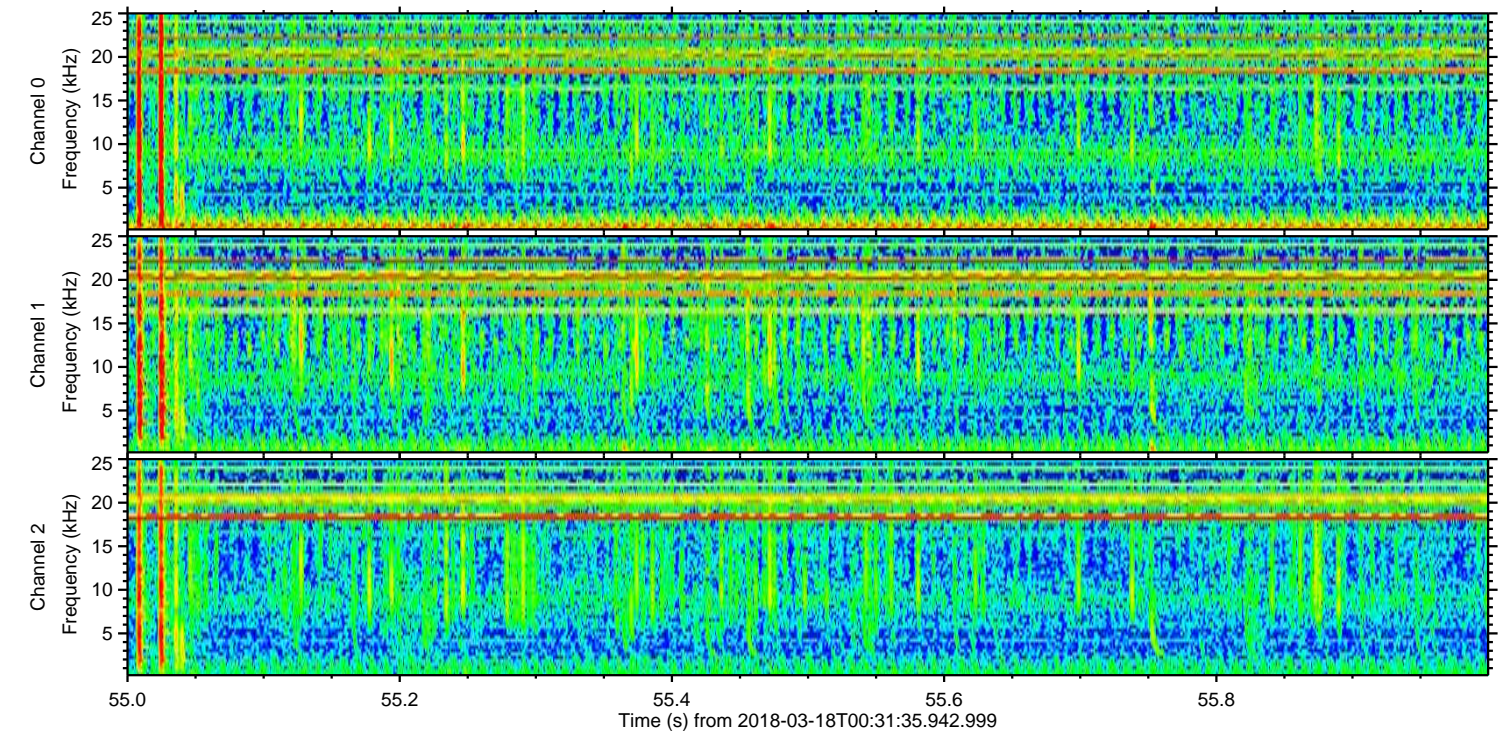
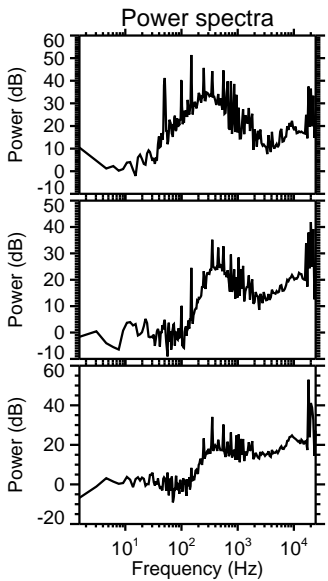
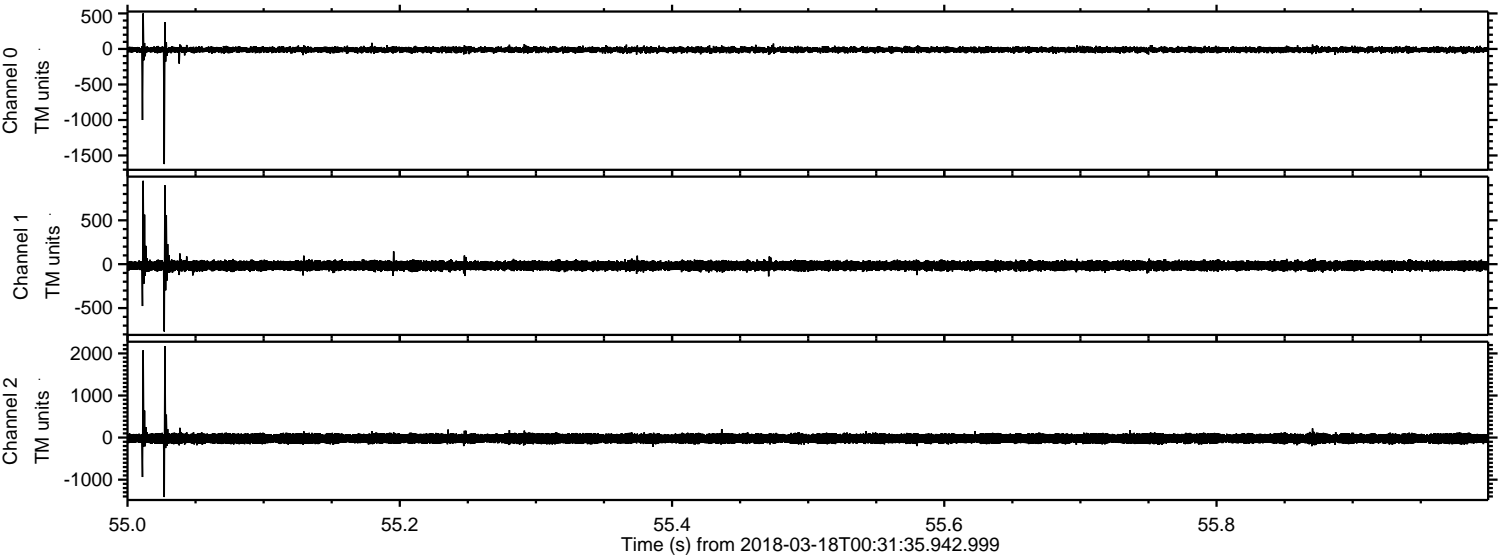
Processed Sun Mar 18 01:39:54 2018 by ELM ver.2012-10-06 from 001__elm20180318_003134__dat00.bin



Processed Sun Mar 18 01:39:55 2018 by ELM ver.2012-10-06 from 001__elm20180318_003134__dat00.bin

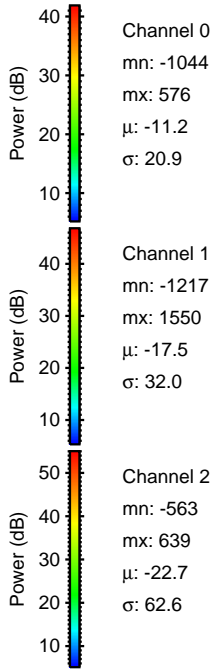
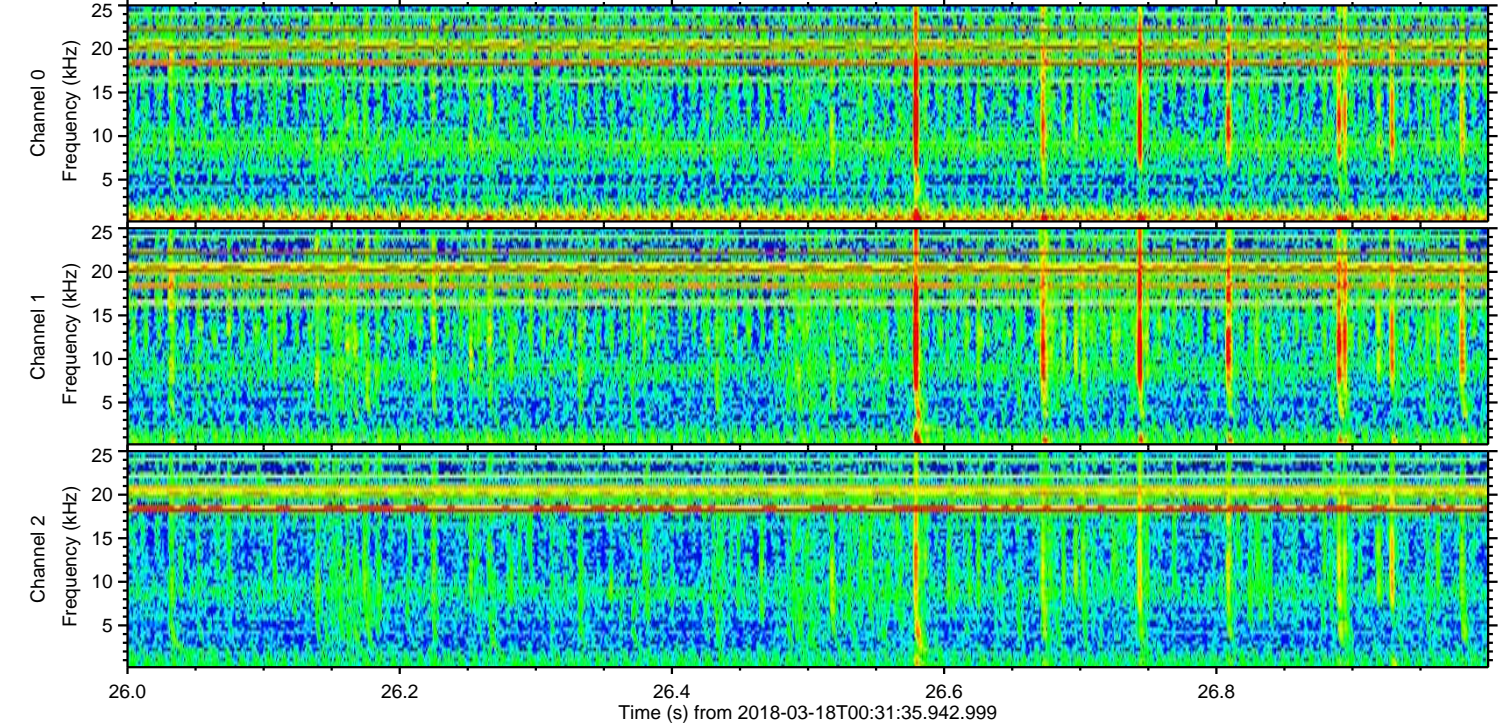
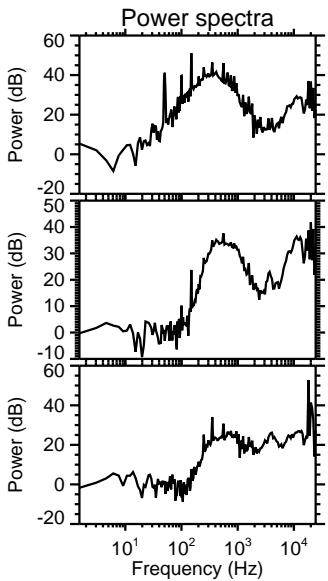
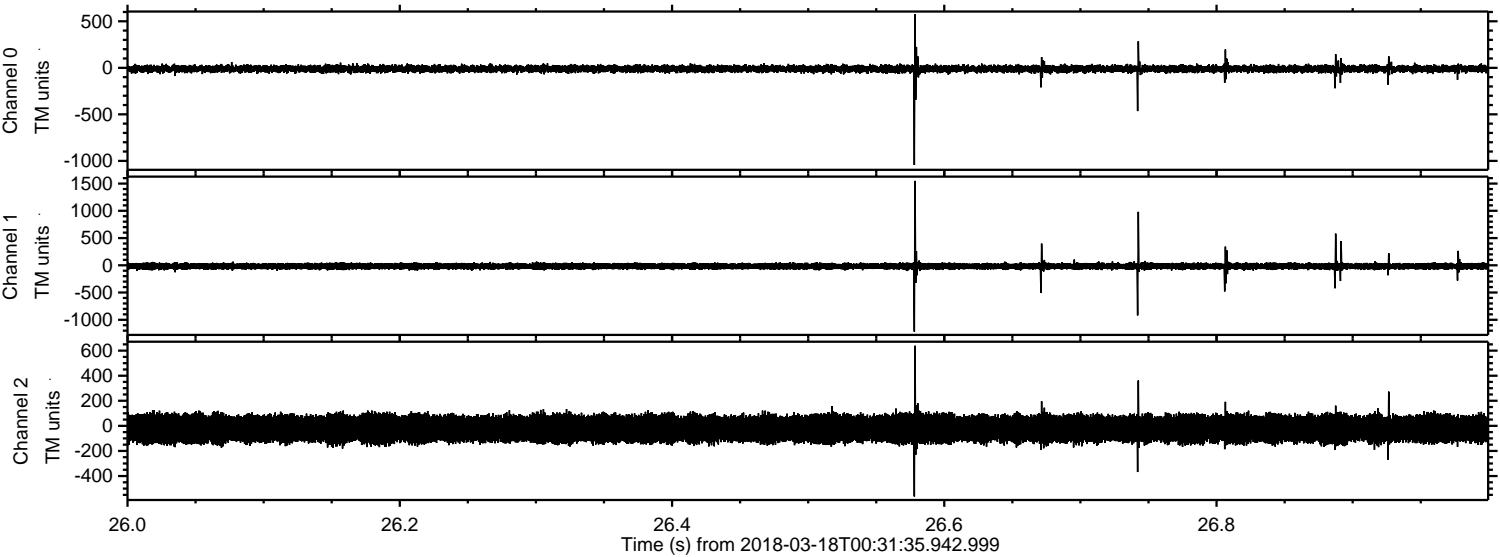


Processed Sun Mar 18 01:39:56 2018 by ELM ver.2012-10-06 from 001__elm20180318_003134__dat00.bin



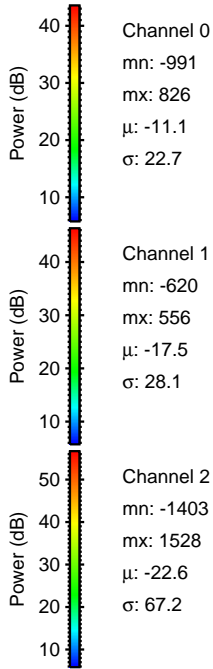
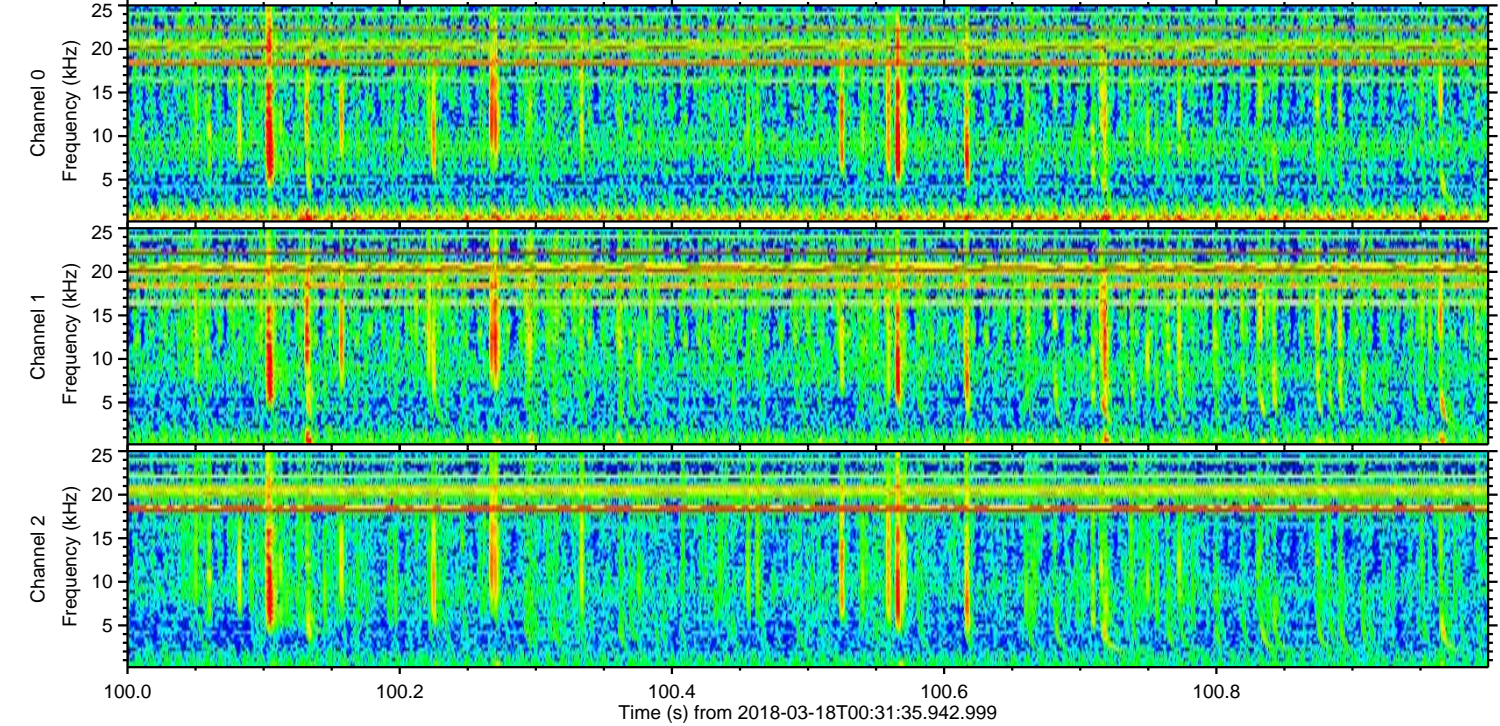
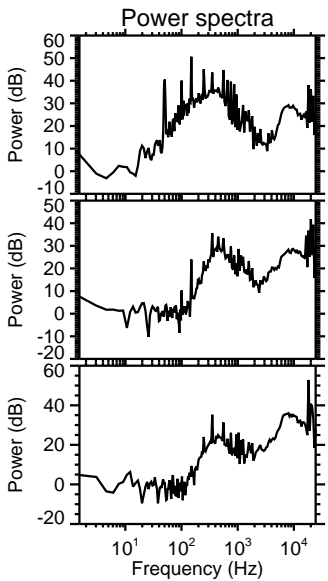
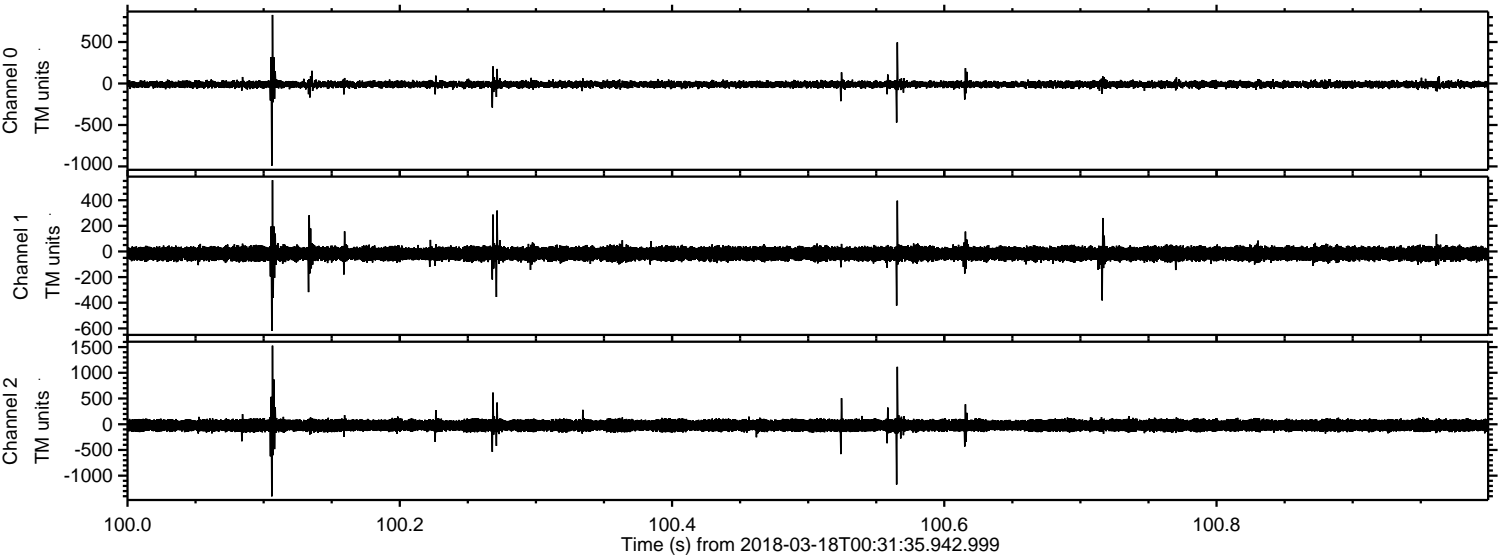
ELMAVAN 3D WAVEFORMS (Measured data sampled at 50 kHz) 51000 packets of 144 samples from 2018-03-18T00:31:35.942.999. Part 27/147

Processed Sun Mar 18 01:39:57 2018 by ELM ver.2012-10-06 from 001__elm20180318_003134__dat00.bin

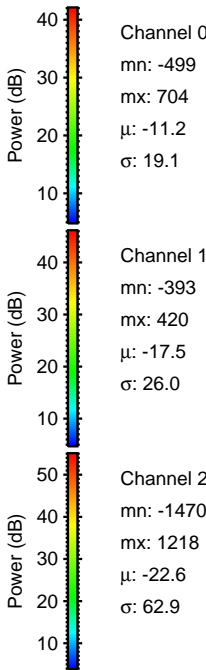
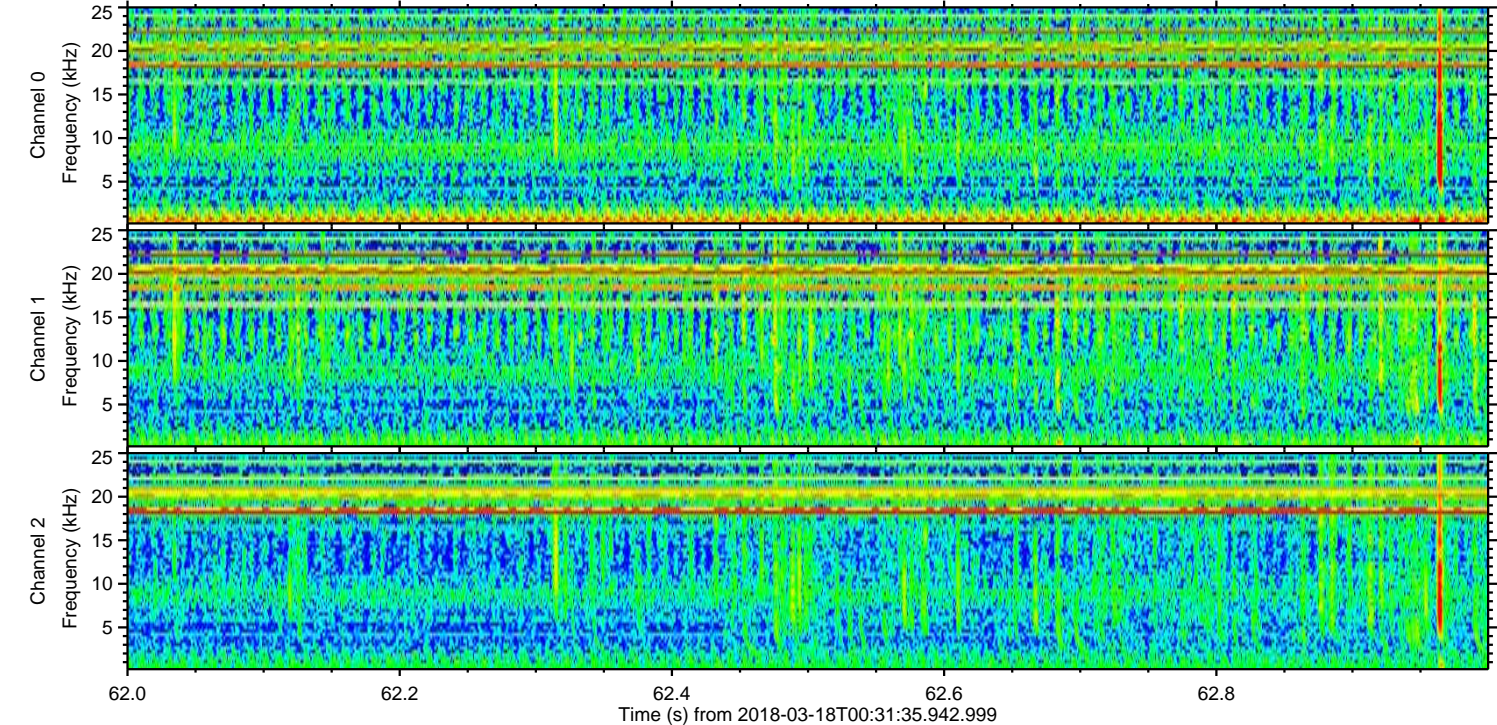
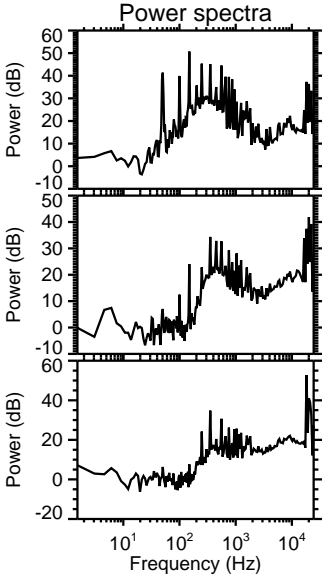
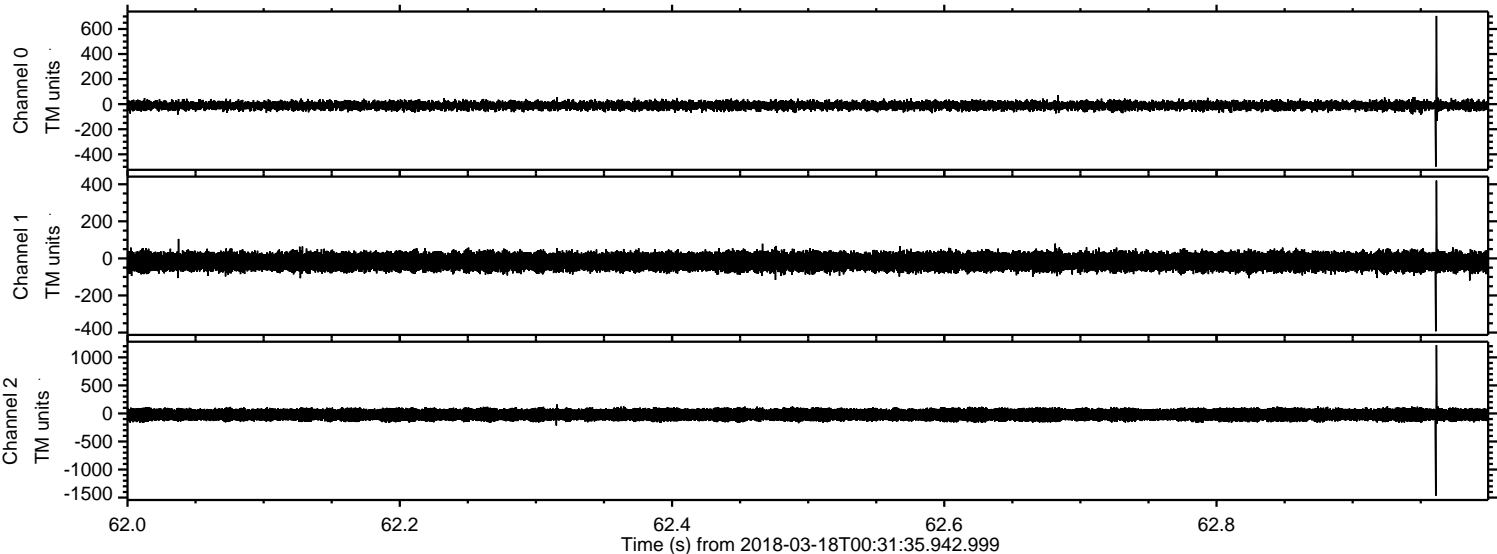


ELMAVAN 3D WAVEFORMS (Measured data sampled at 50 kHz) 51000 packets of 144 samples from 2018-03-18T00:31:35.942.999. Part 101/147

Processed Sun Mar 18 01:39:58 2018 by ELM ver.2012-10-06 from 001__elm20180318_003134__dat00.bin



Processed Sun Mar 18 01:39:59 2018 by ELM ver.2012-10-06 from 001__elm20180318_003134__dat00.bin



Channel 0
mn: -499
mx: 704
 μ : -11.2
 σ : 19.1

Channel 1
mn: -393
mx: 420
 μ : -17.5
 σ : 26.0

Channel 2
mn: -1470
mx: 1218
 μ : -22.6
 σ : 62.9

Processed Sun Mar 18 01:40:00 2018 by ELM ver.2012-10-06 from 001__elm20180318_003134__dat00.bin

