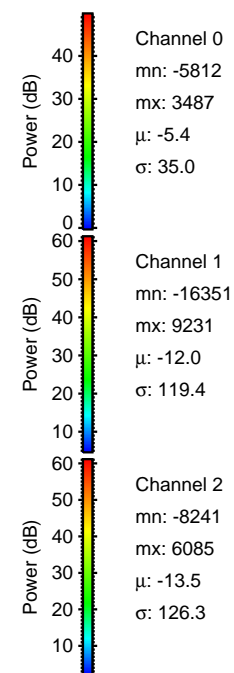
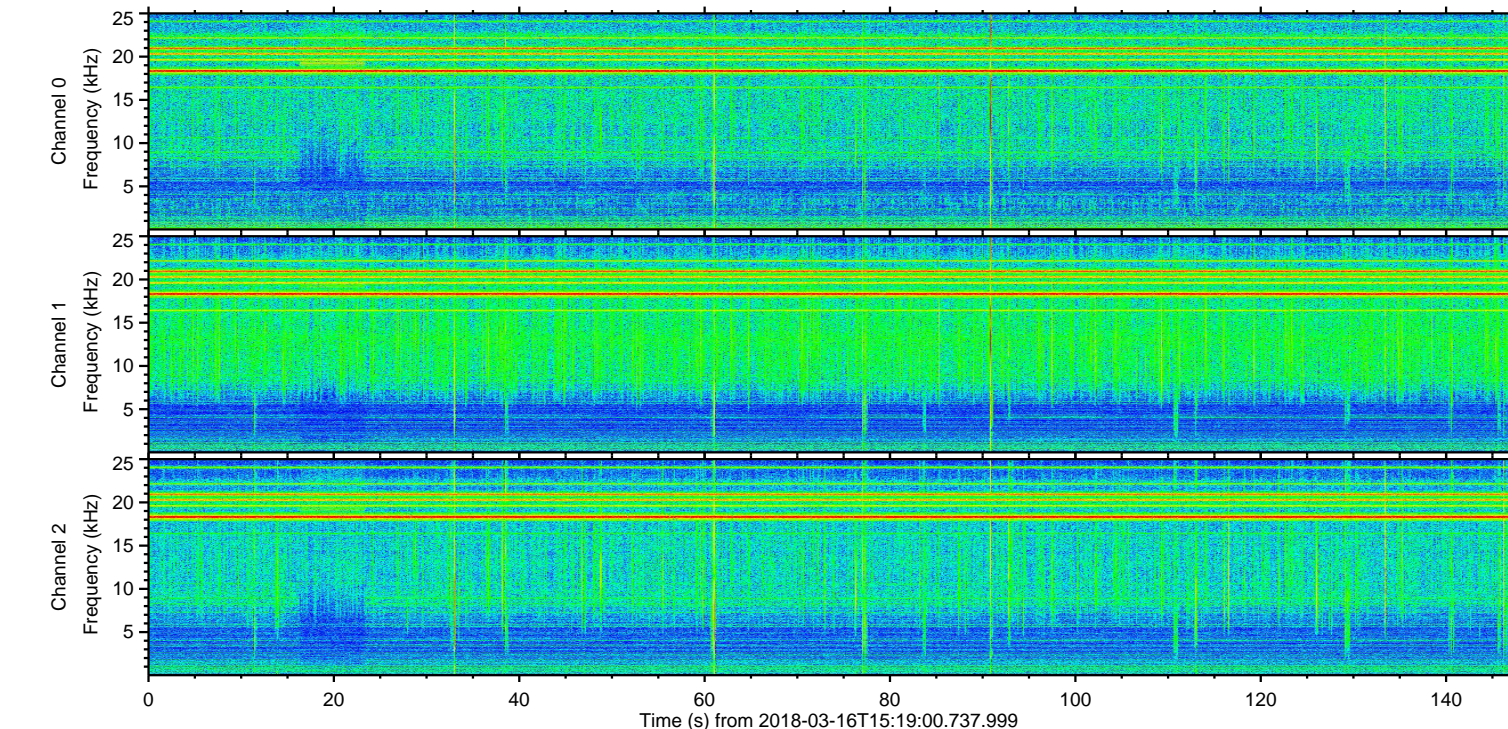
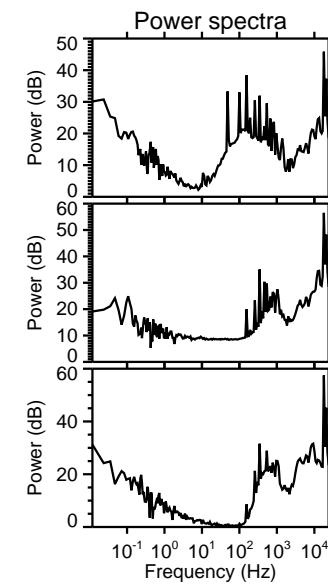
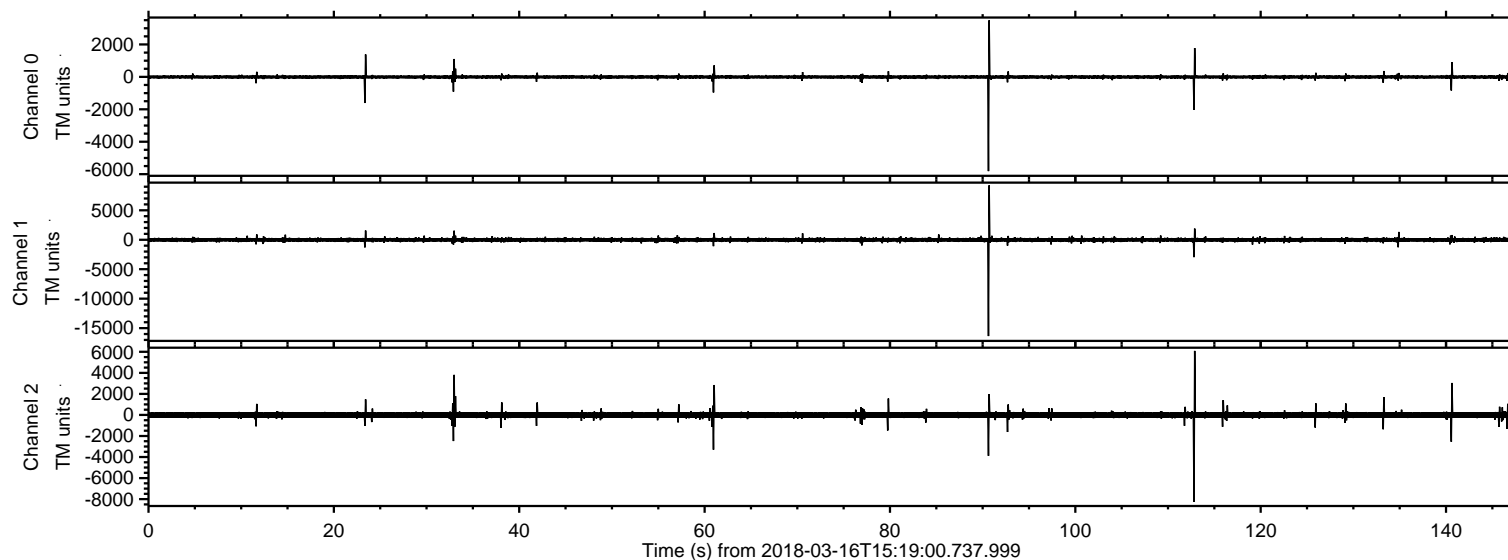
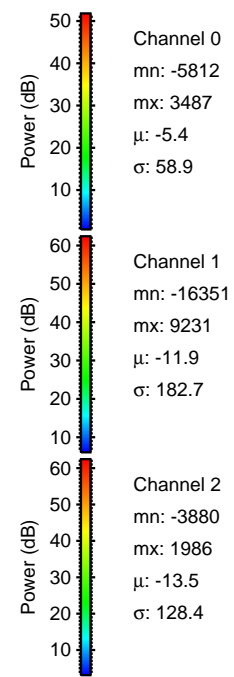
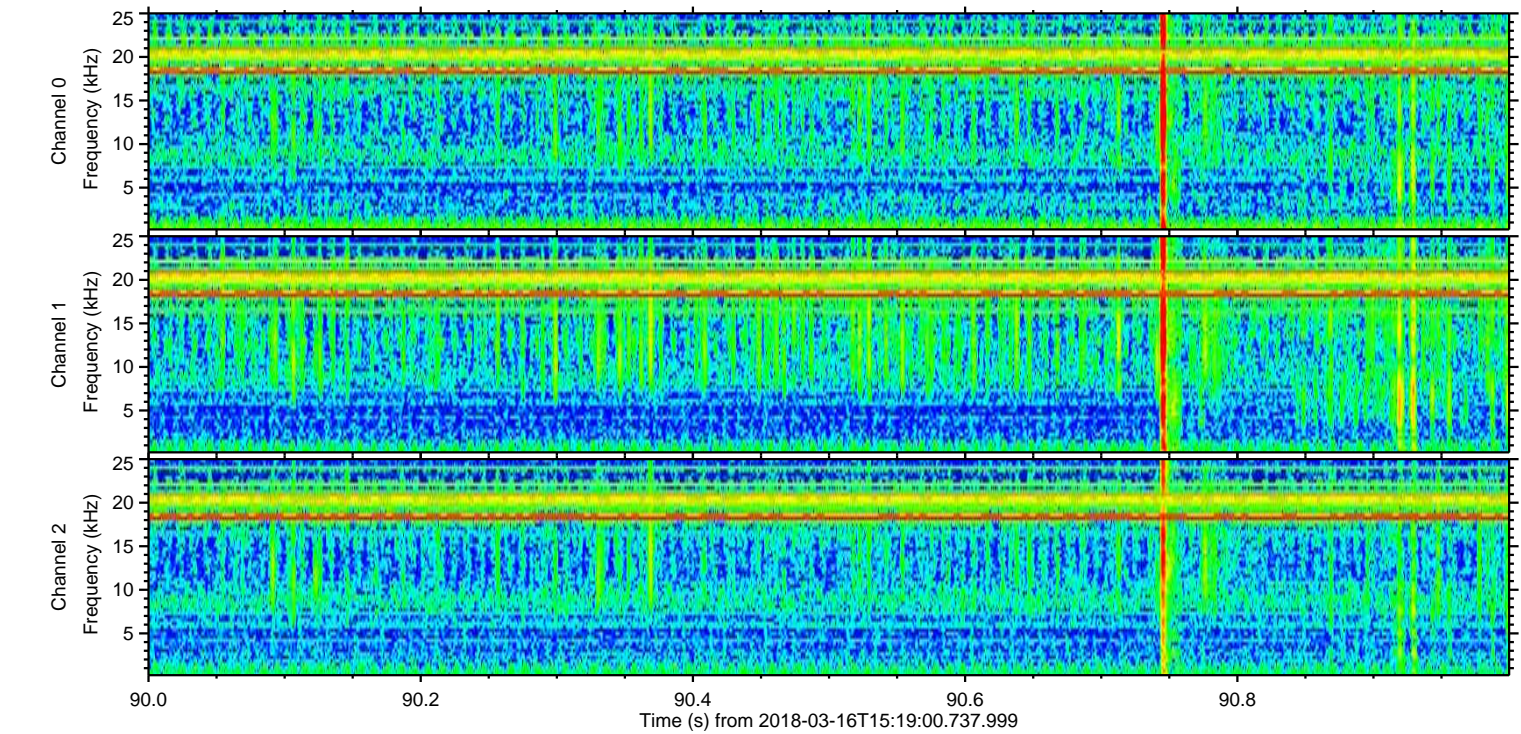
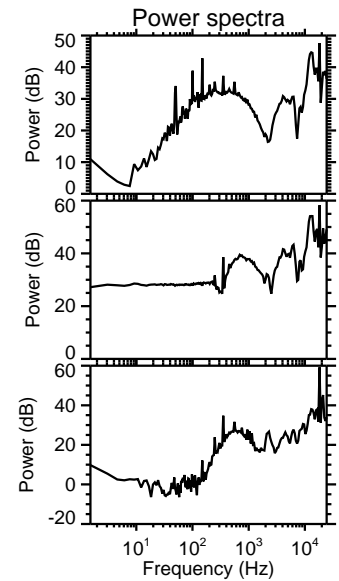
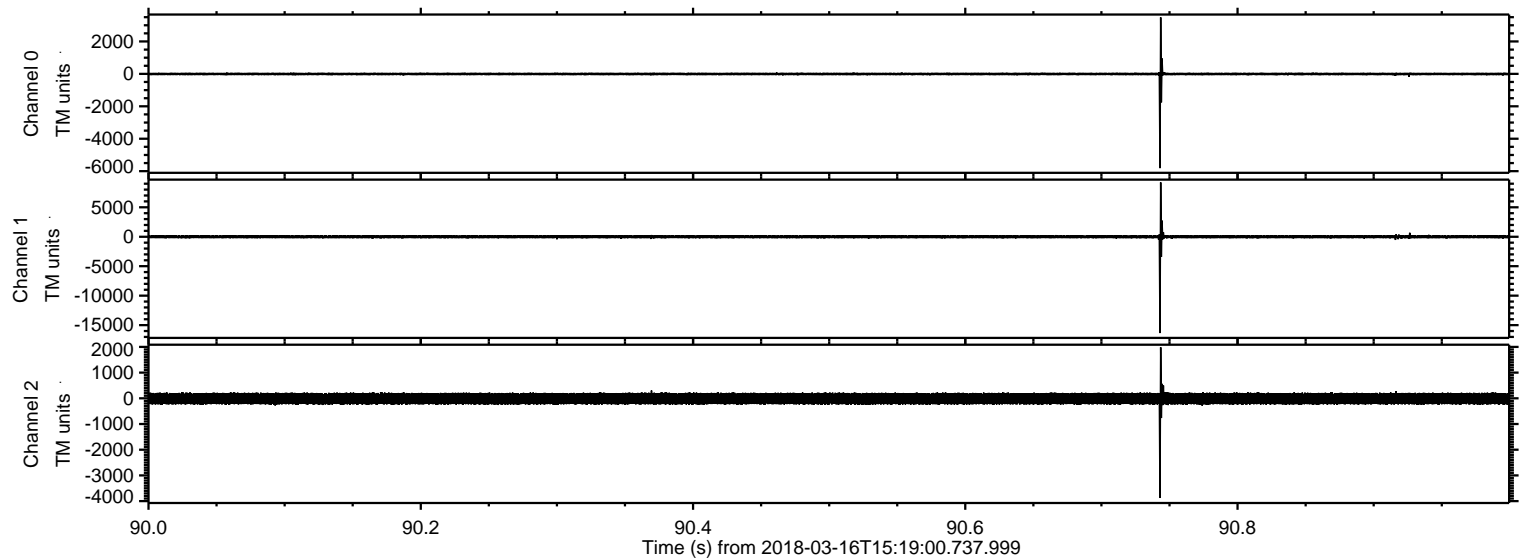


ELMAVAN 3D WAVEFORMS (Measured data sampled at 50 kHz) 51000 packets of 144 samples from 2018-03-16T15:19:00.737.999.

Processed Fri Mar 16 16:27:12 2018 by ELM ver.2012-10-06 from 001__elm20180316_151859__dat00.bin

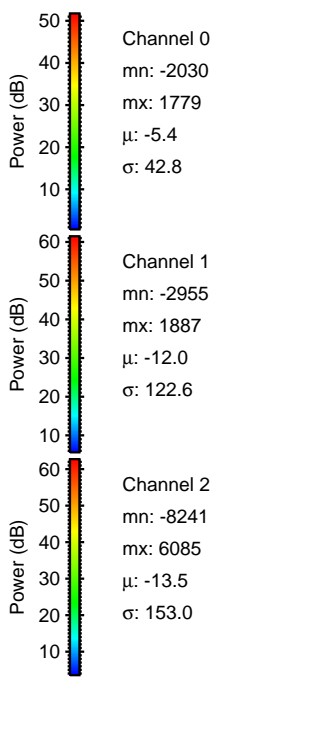
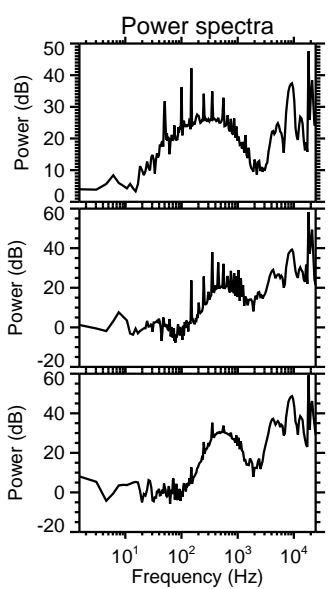
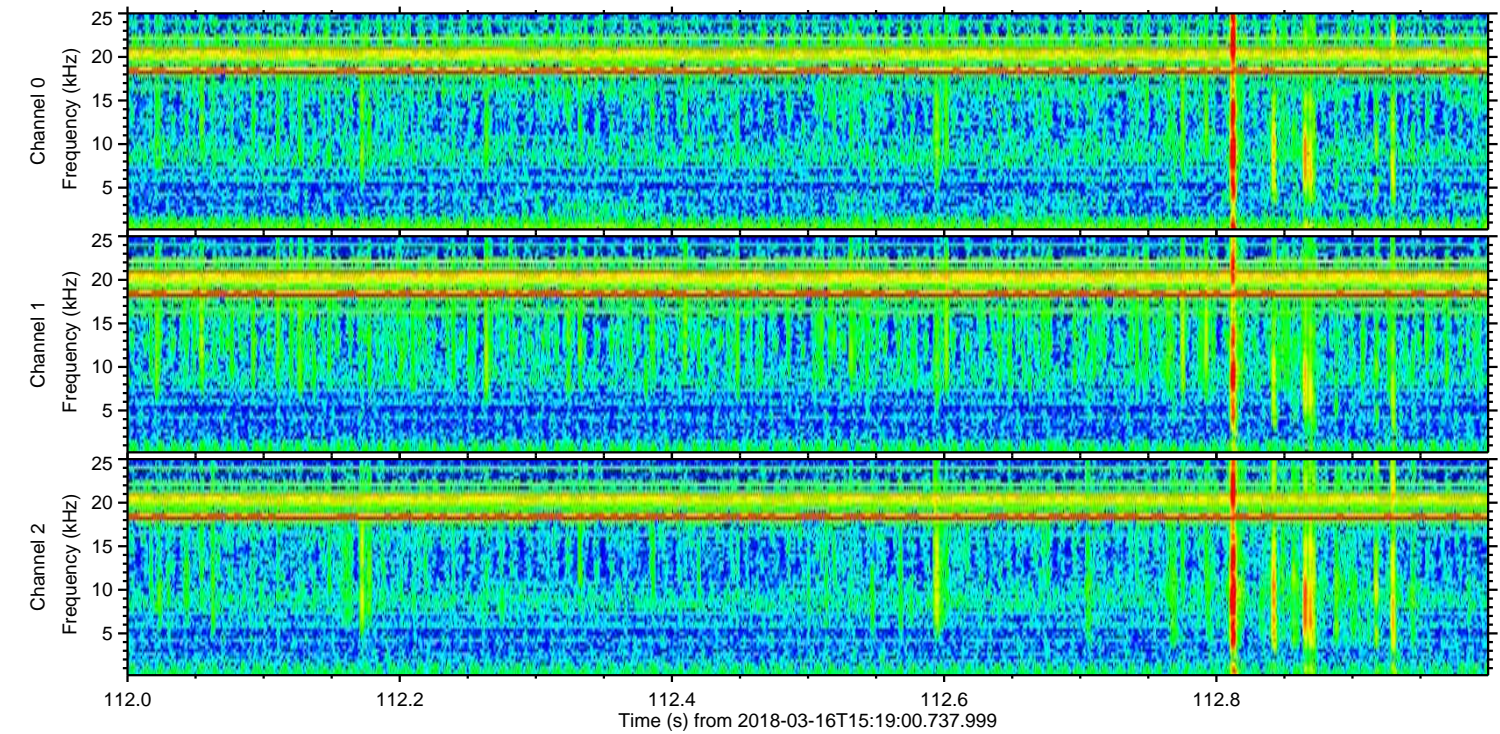
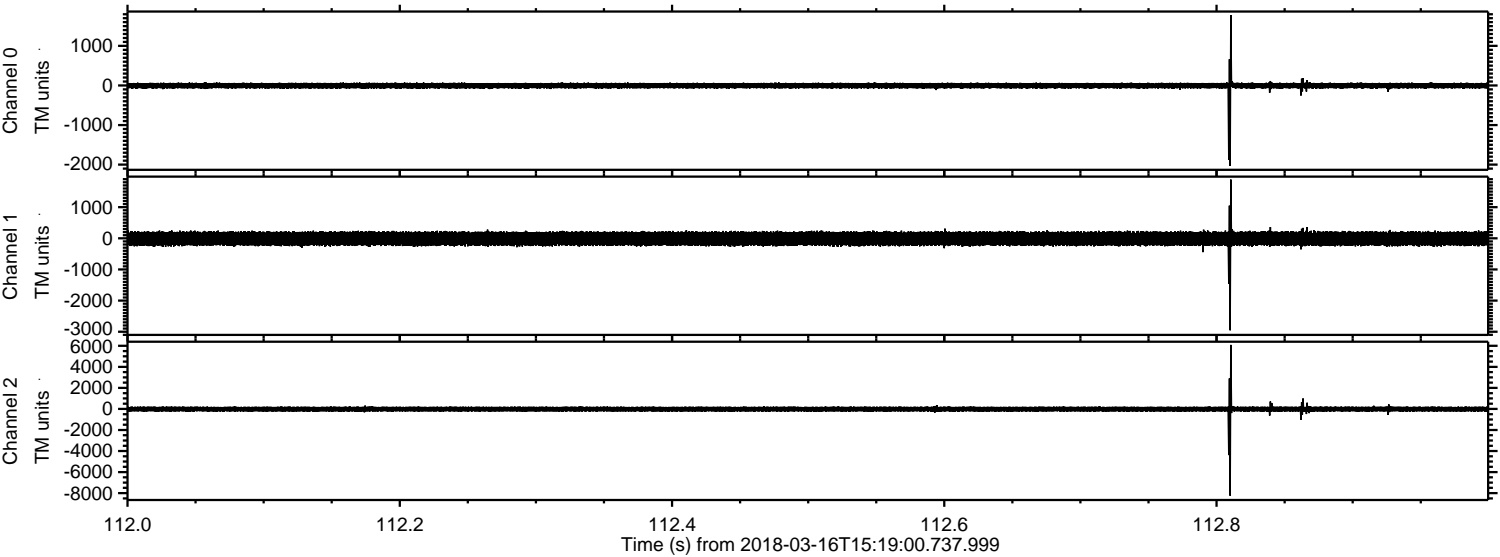


Processed Fri Mar 16 16:27:19 2018 by ELM ver.2012-10-06 from 001__elm20180316_151859__dat00.bin

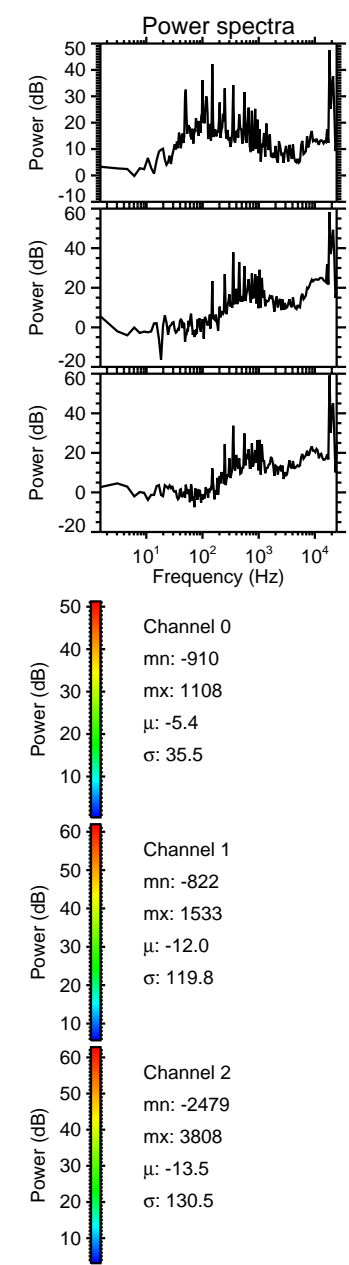
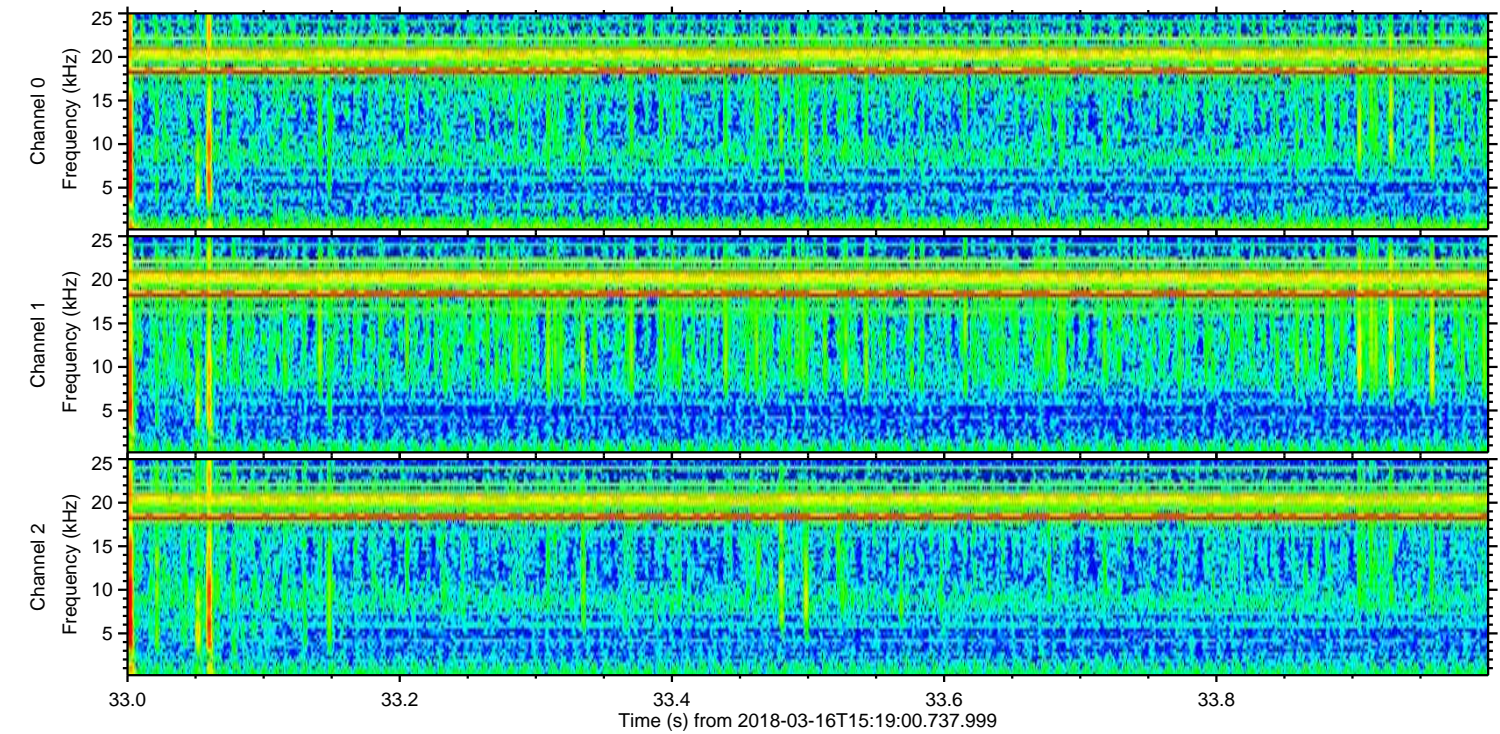
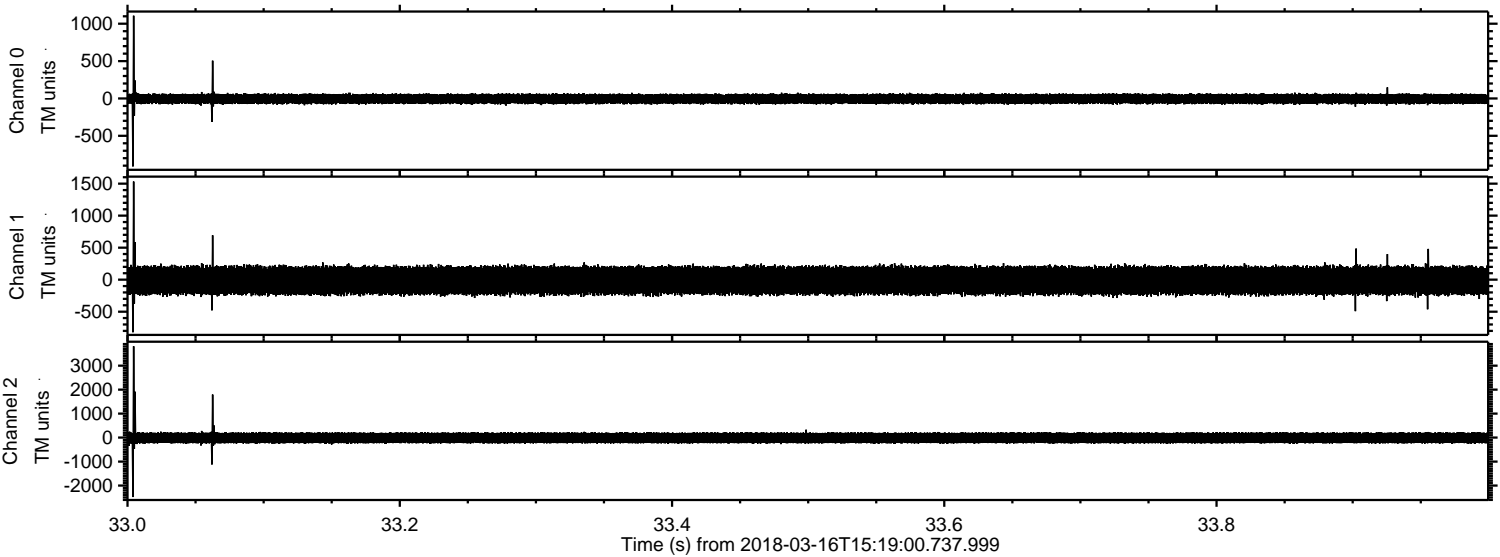


ELMAVAN 3D WAVEFORMS (Measured data sampled at 50 kHz) 51000 packets of 144 samples from 2018-03-16T15:19:00.737.999. Part 113/147

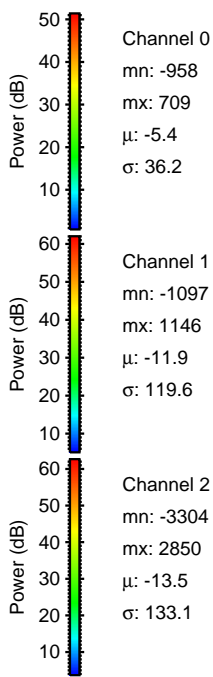
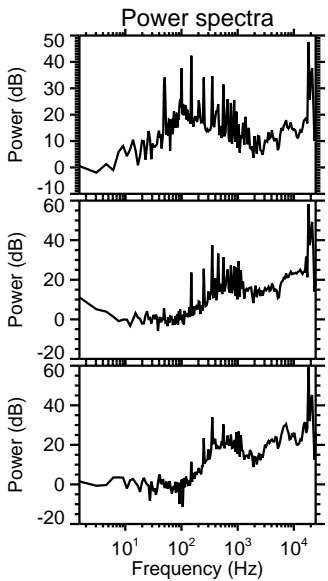
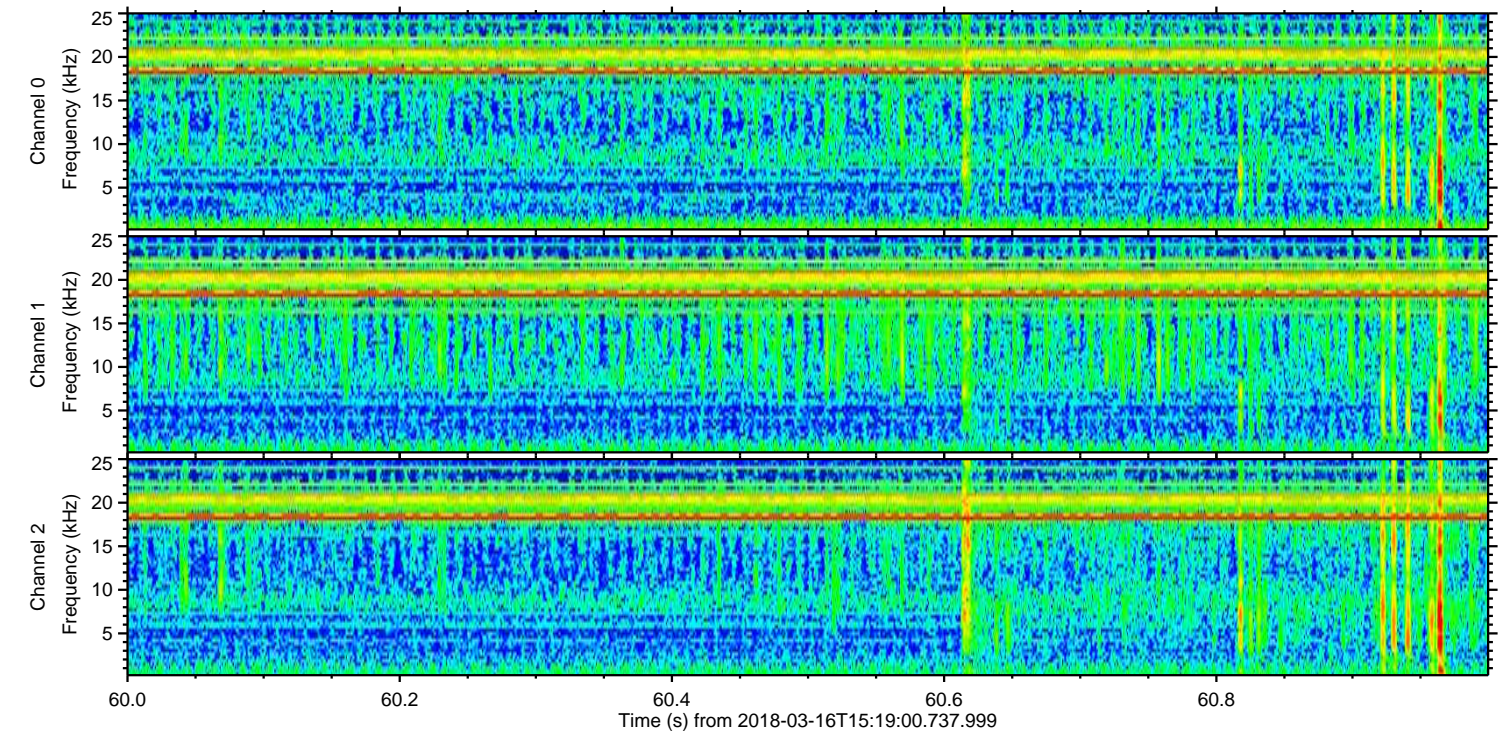
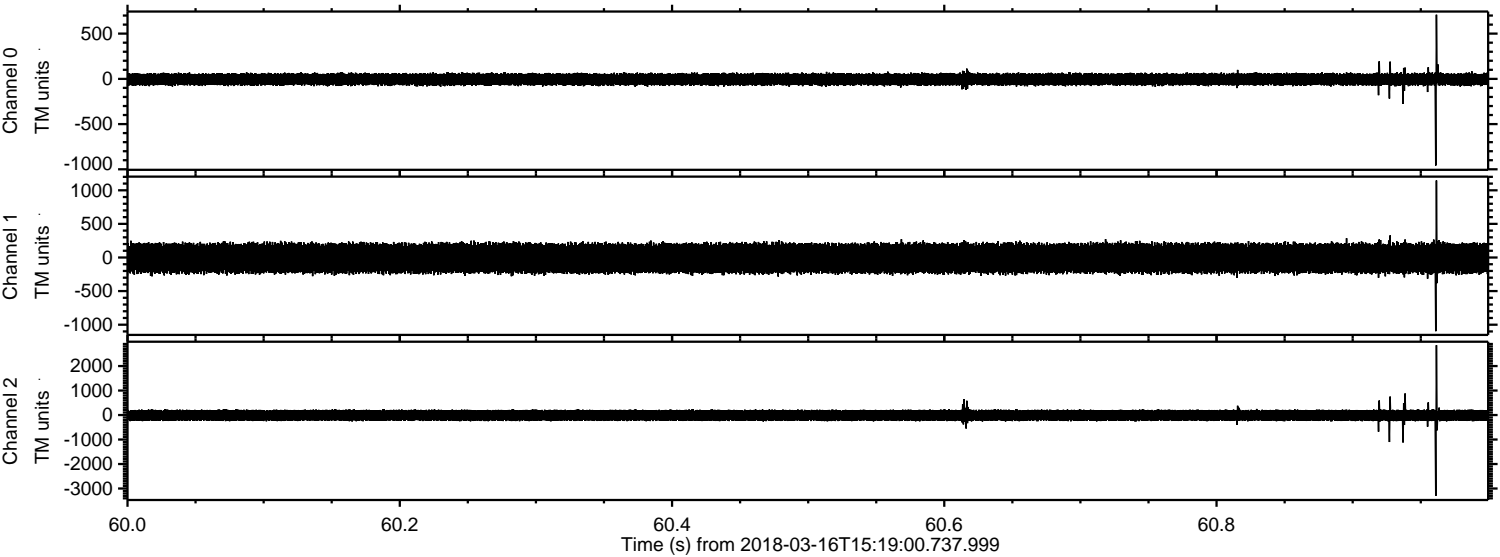
Processed Fri Mar 16 16:27:20 2018 by ELM ver.2012-10-06 from 001__elm20180316_151859__dat00.bin



Processed Fri Mar 16 16:27:21 2018 by ELM ver.2012-10-06 from 001__elm20180316_151859__dat00.bin

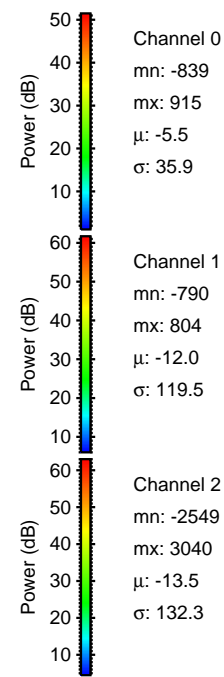
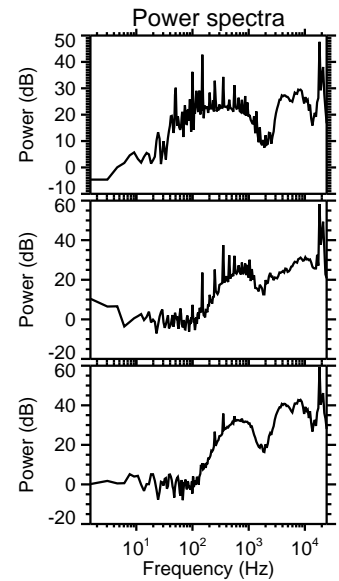
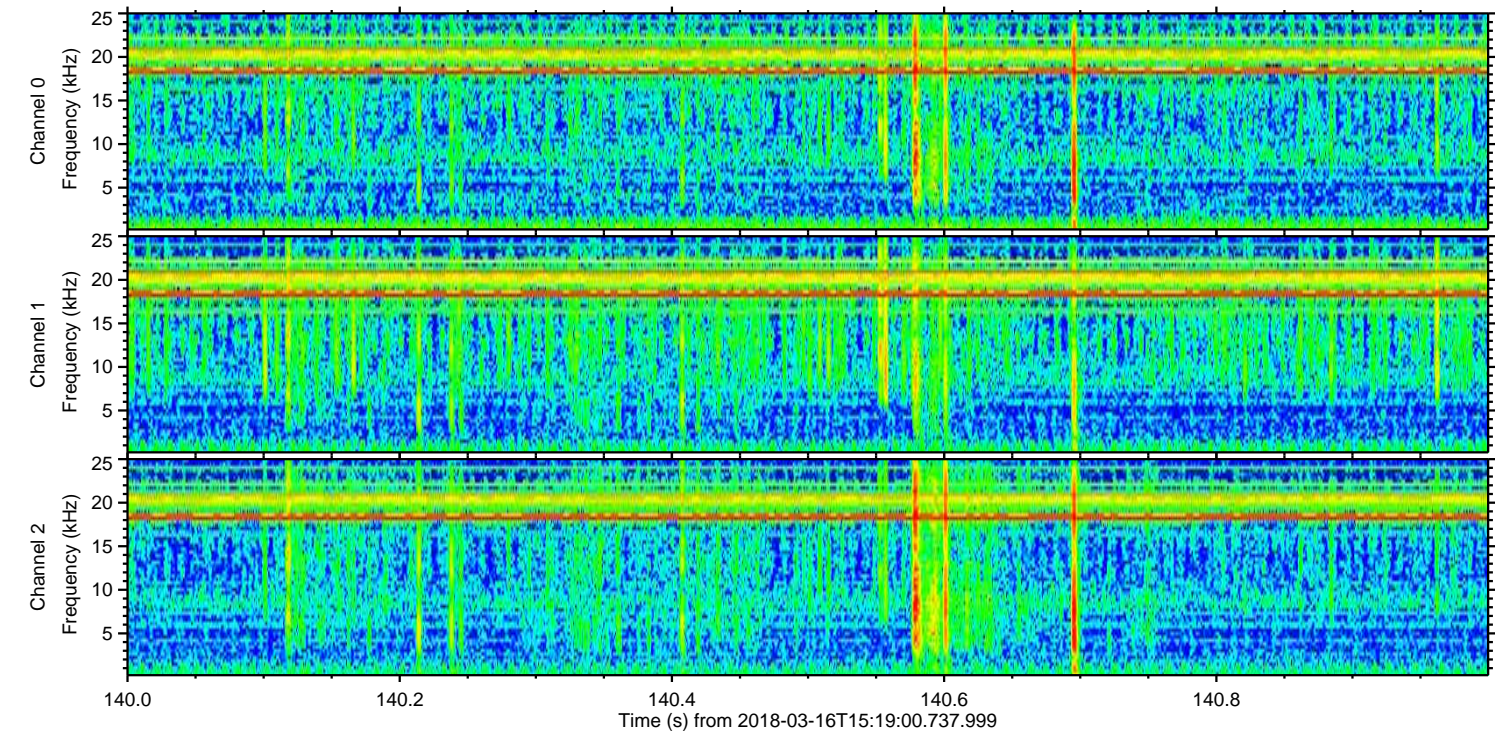
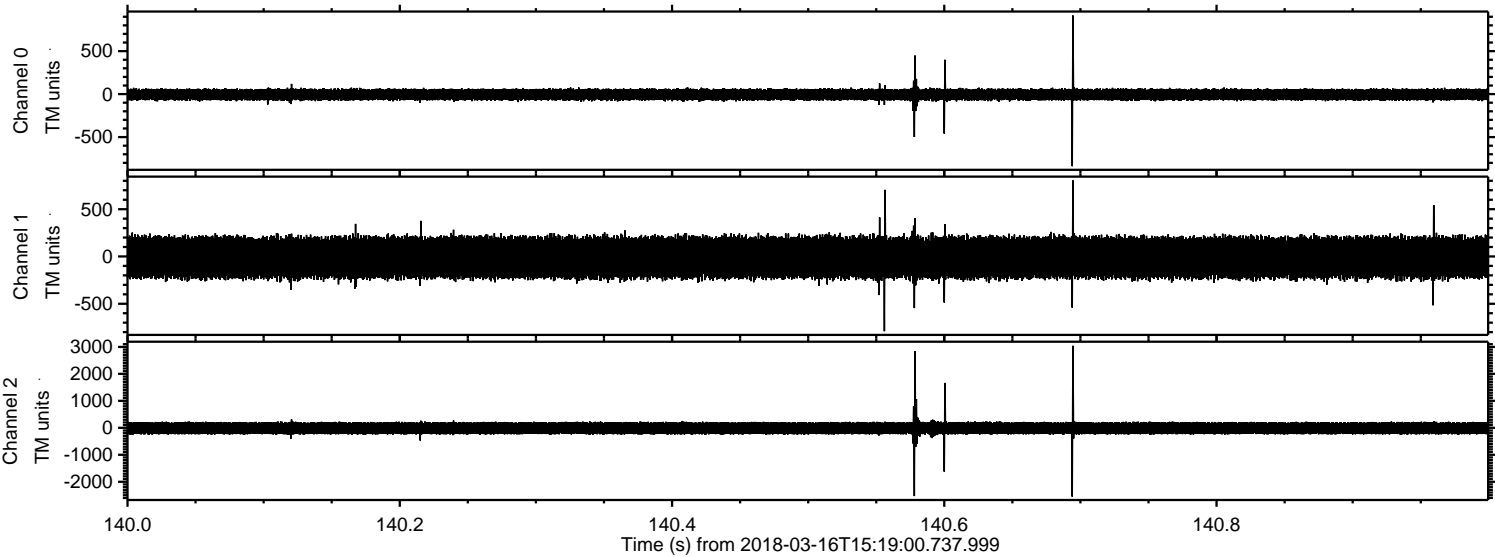


Processed Fri Mar 16 16:27:22 2018 by ELM ver.2012-10-06 from 001__elm20180316_151859__dat00.bin

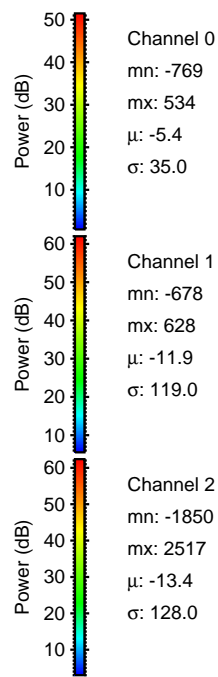
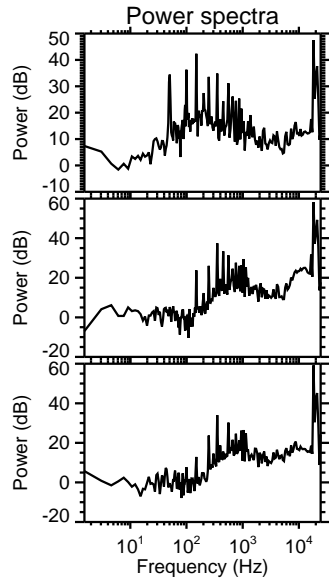
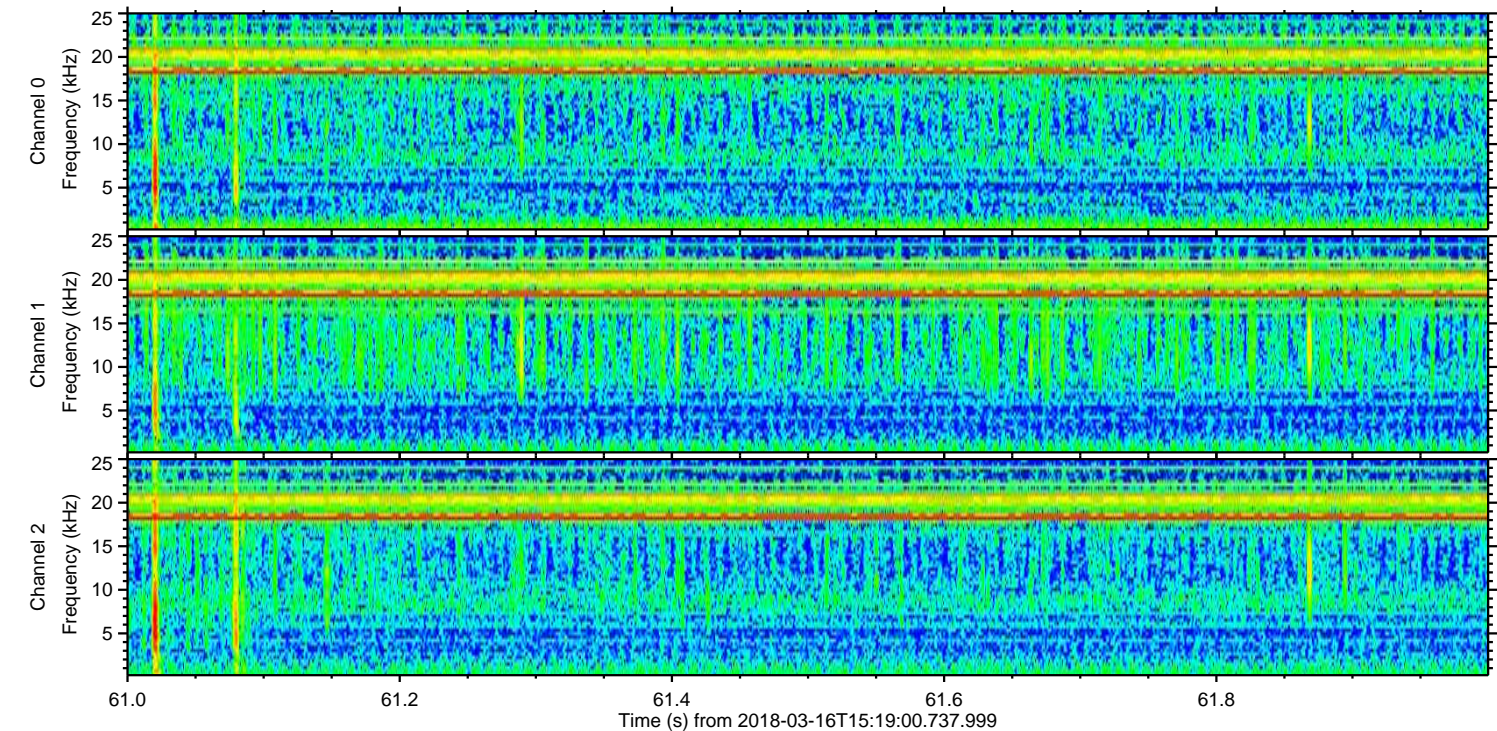
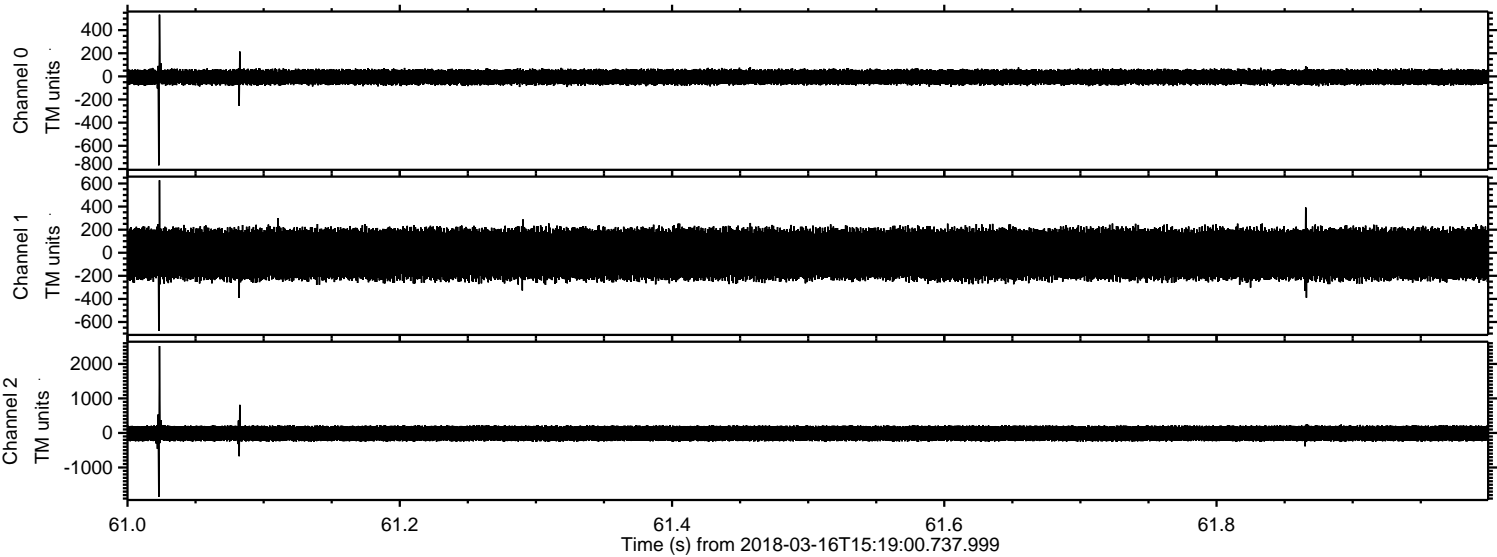


ELMAVAN 3D WAVEFORMS (Measured data sampled at 50 kHz) 51000 packets of 144 samples from 2018-03-16T15:19:00.737.999. Part 141/147

Processed Fri Mar 16 16:27:22 2018 by ELM ver.2012-10-06 from 001__elm20180316_151859__dat00.bin

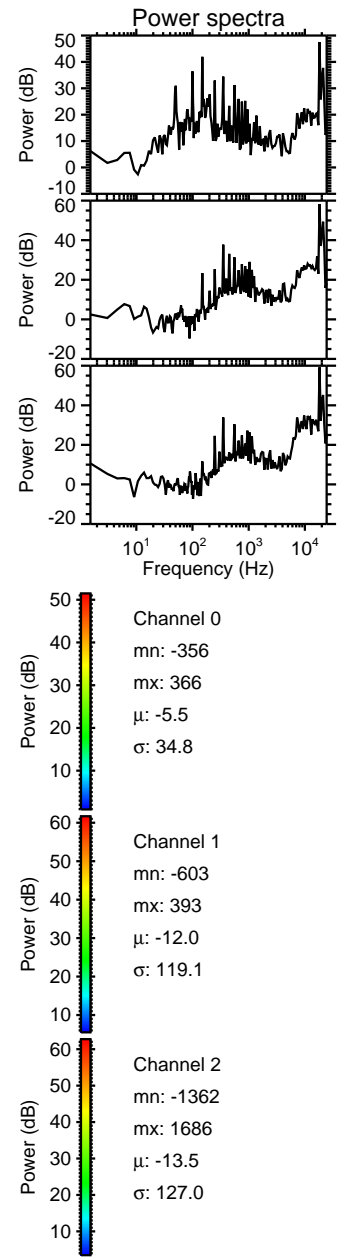
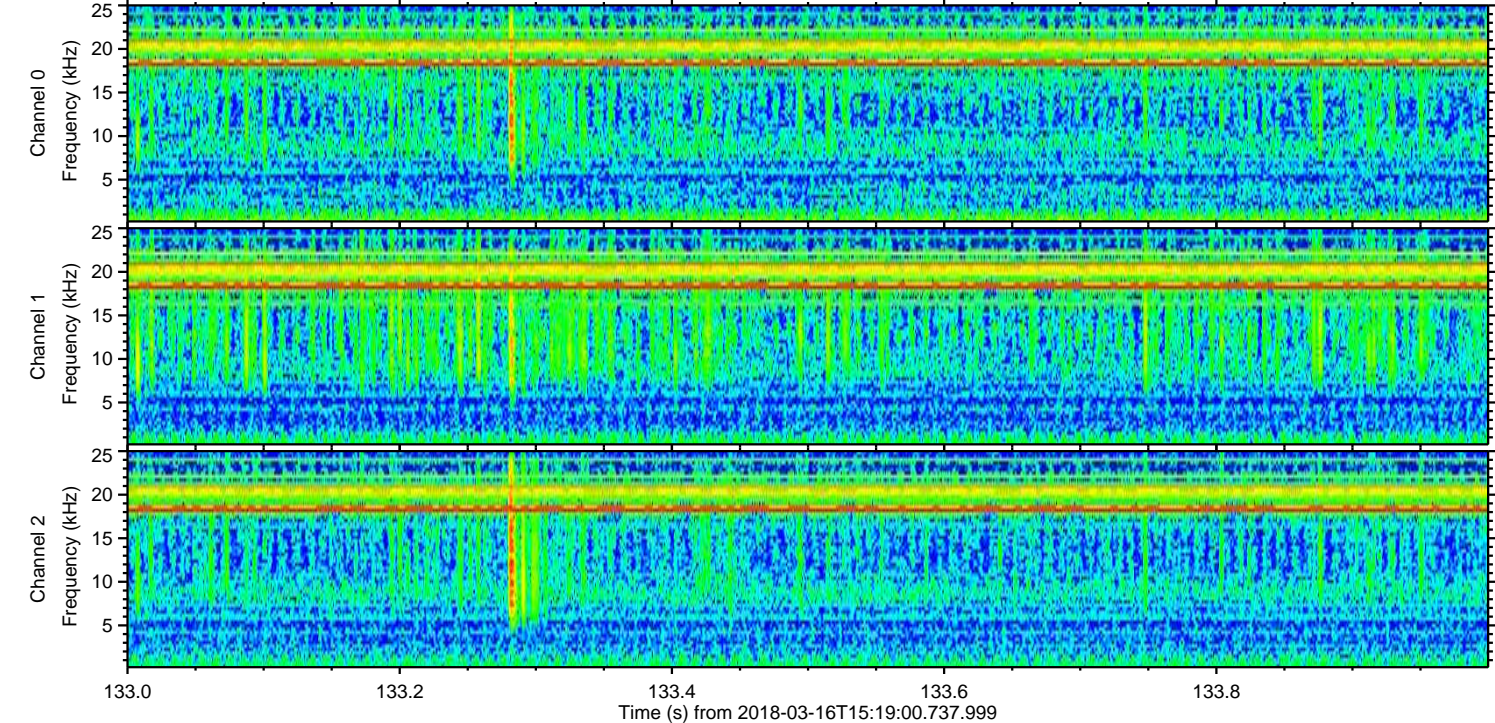
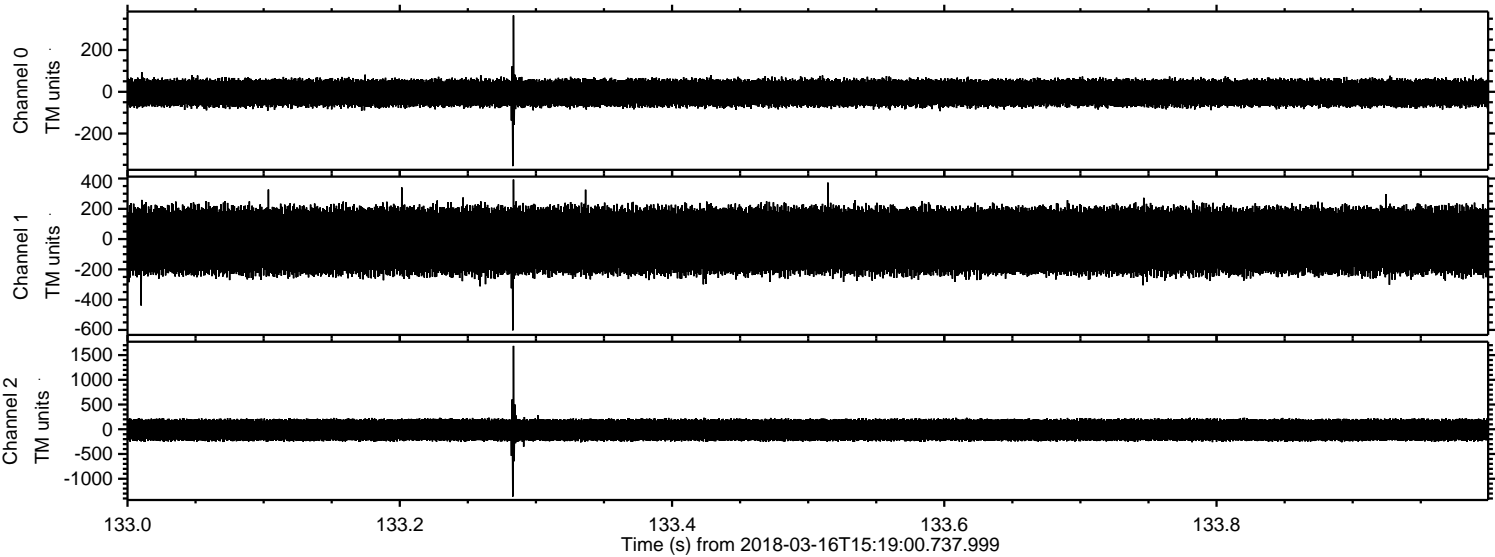


Processed Fri Mar 16 16:27:23 2018 by ELM ver.2012-10-06 from 001__elm20180316_151859__dat00.bin

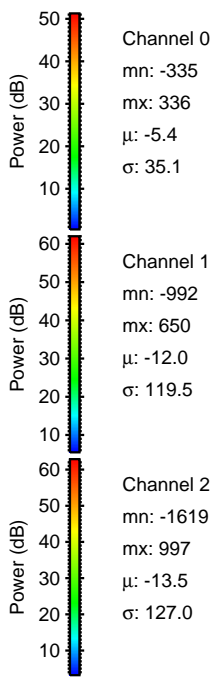
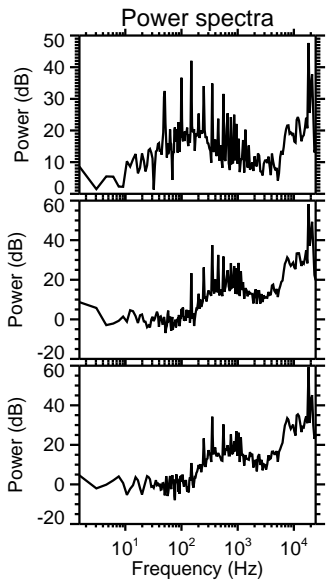
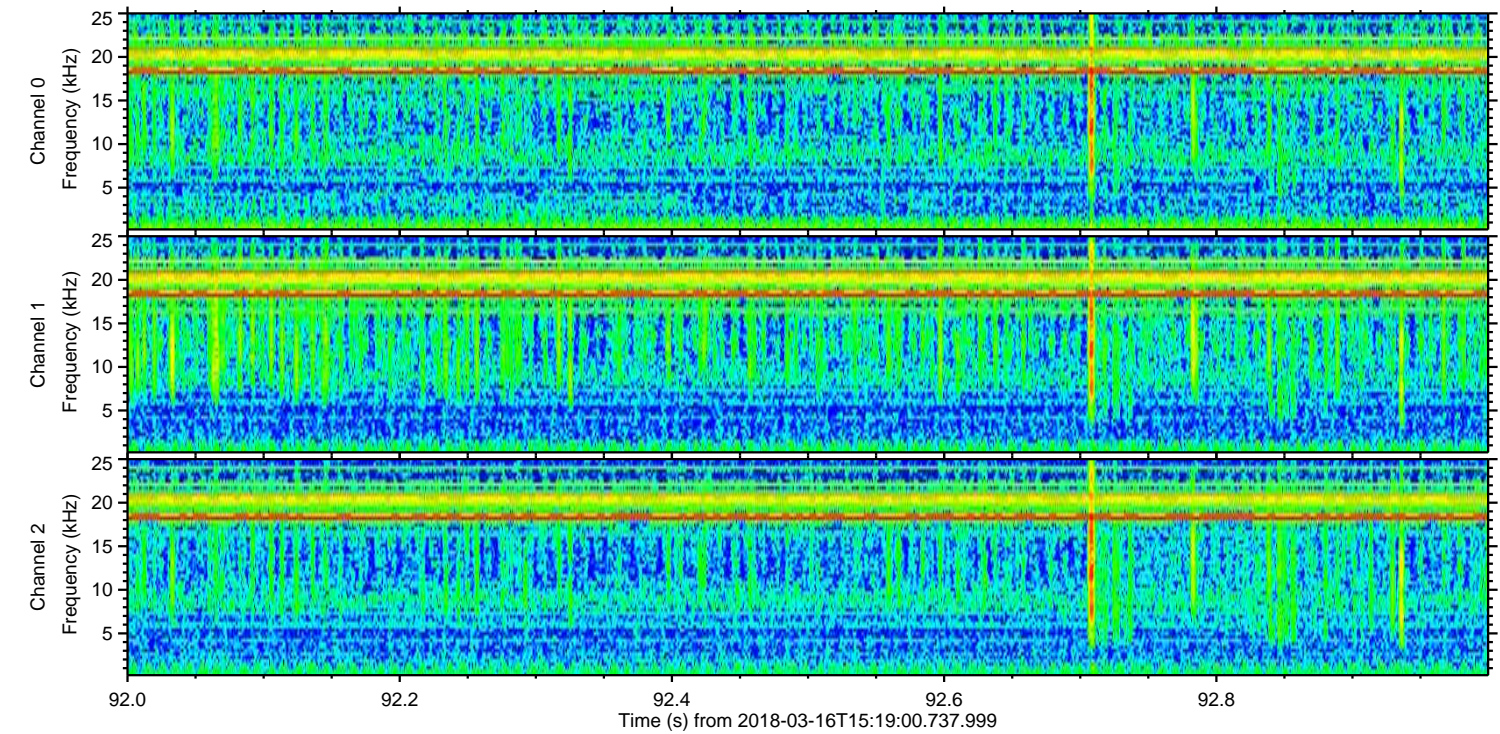
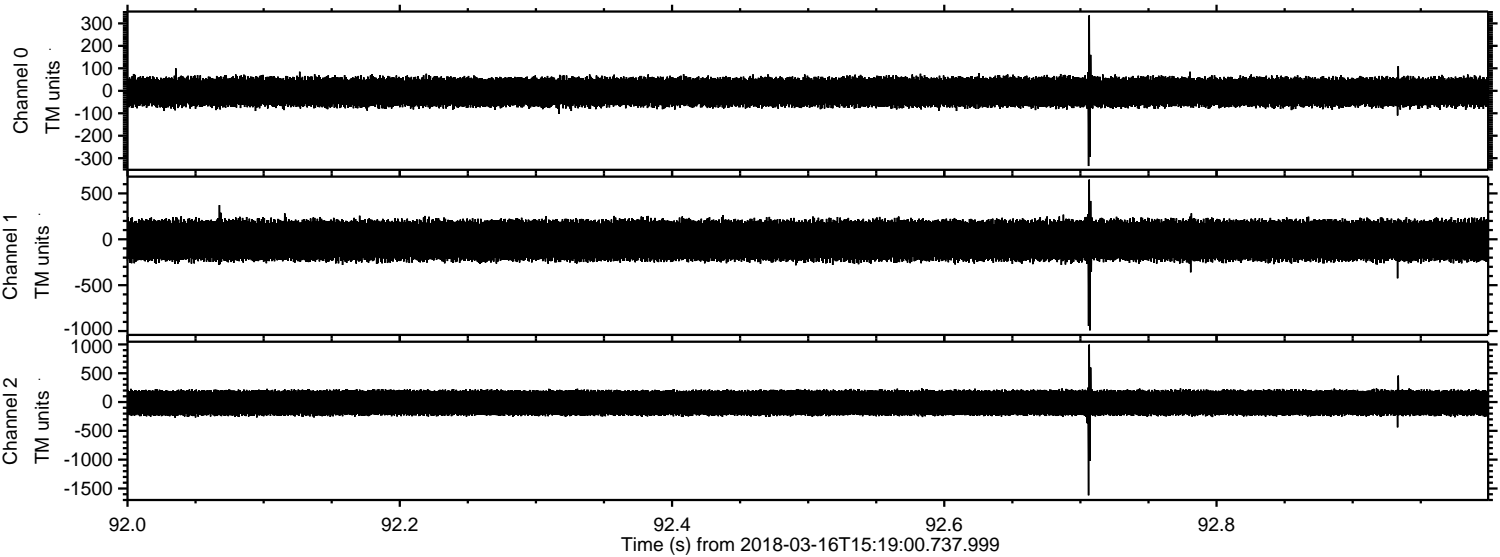


ELMAVAN 3D WAVEFORMS (Measured data sampled at 50 kHz) 51000 packets of 144 samples from 2018-03-16T15:19:00.737.999. Part 134/147

Processed Fri Mar 16 16:27:24 2018 by ELM ver.2012-10-06 from 001__elm20180316_151859__dat00.bin



Processed Fri Mar 16 16:27:25 2018 by ELM ver.2012-10-06 from 001__elm20180316_151859__dat00.bin

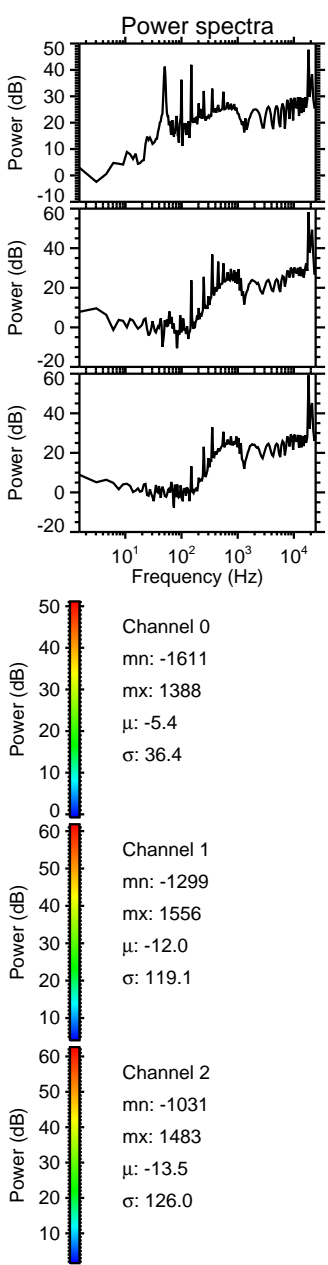
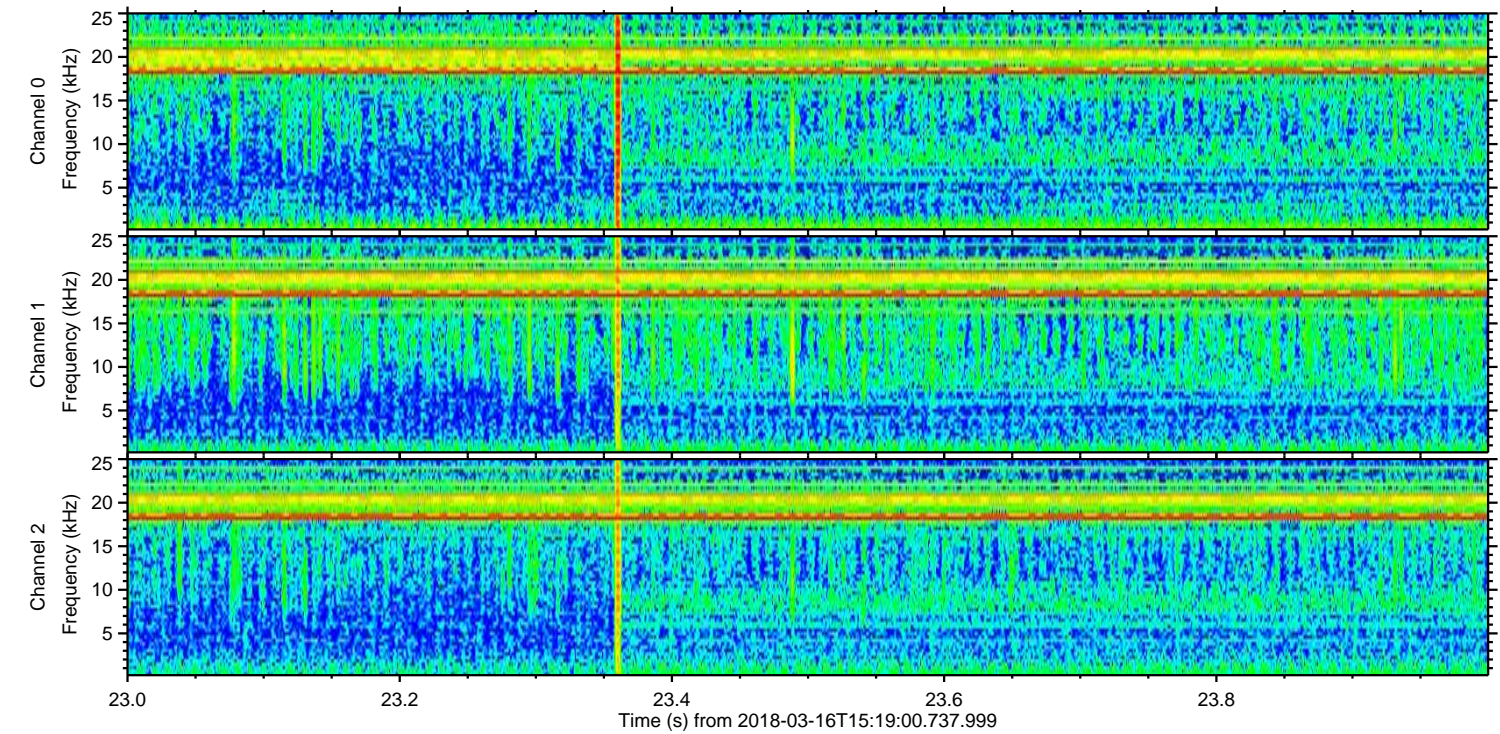
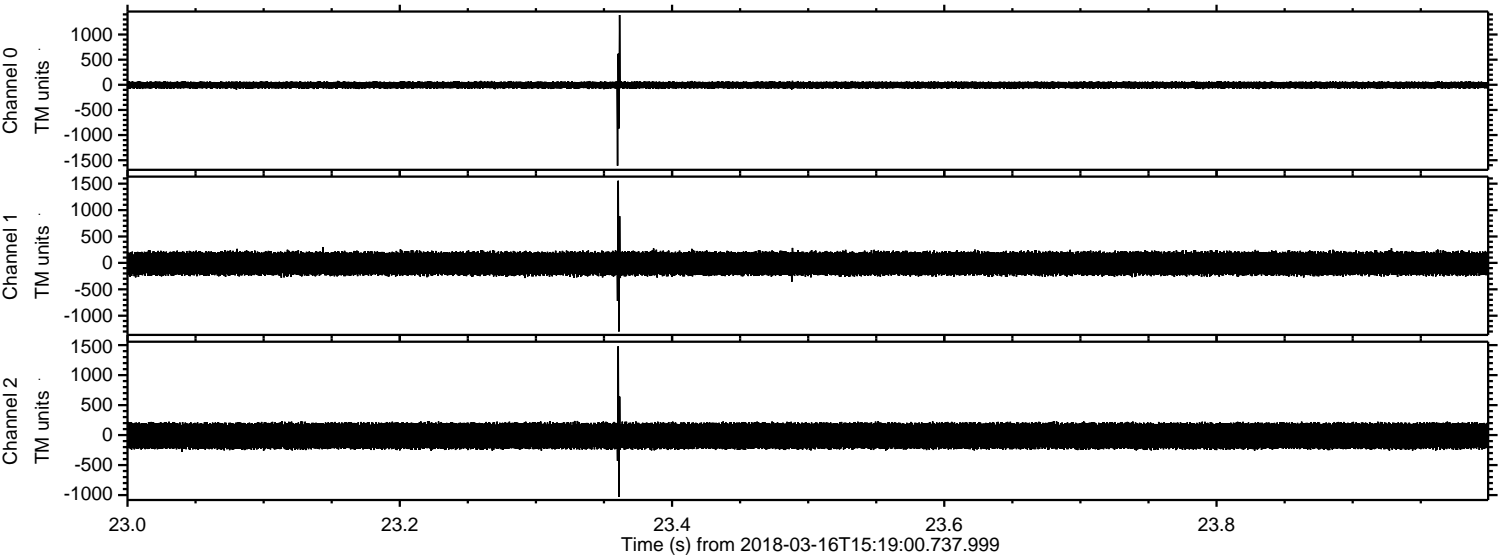


Channel 0
mn: -335
mx: 336
 μ : -5.4
 σ : 35.1

Channel 1
mn: -992
mx: 650
 μ : -12.0
 σ : 119.5

Channel 2
mn: -1619
mx: 997
 μ : -13.5
 σ : 127.0

Processed Fri Mar 16 16:27:26 2018 by ELM ver.2012-10-06 from 001__elm20180316_151859__dat00.bin



Processed Fri Mar 16 16:27:27 2018 by ELM ver.2012-10-06 from 001__elm20180316_151859__dat00.bin

