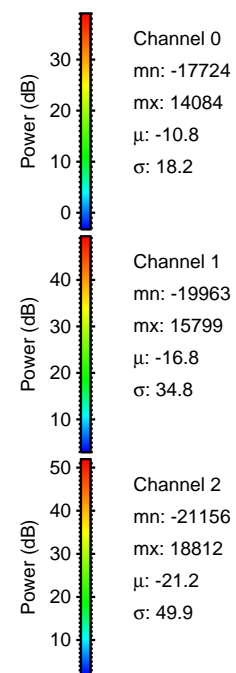
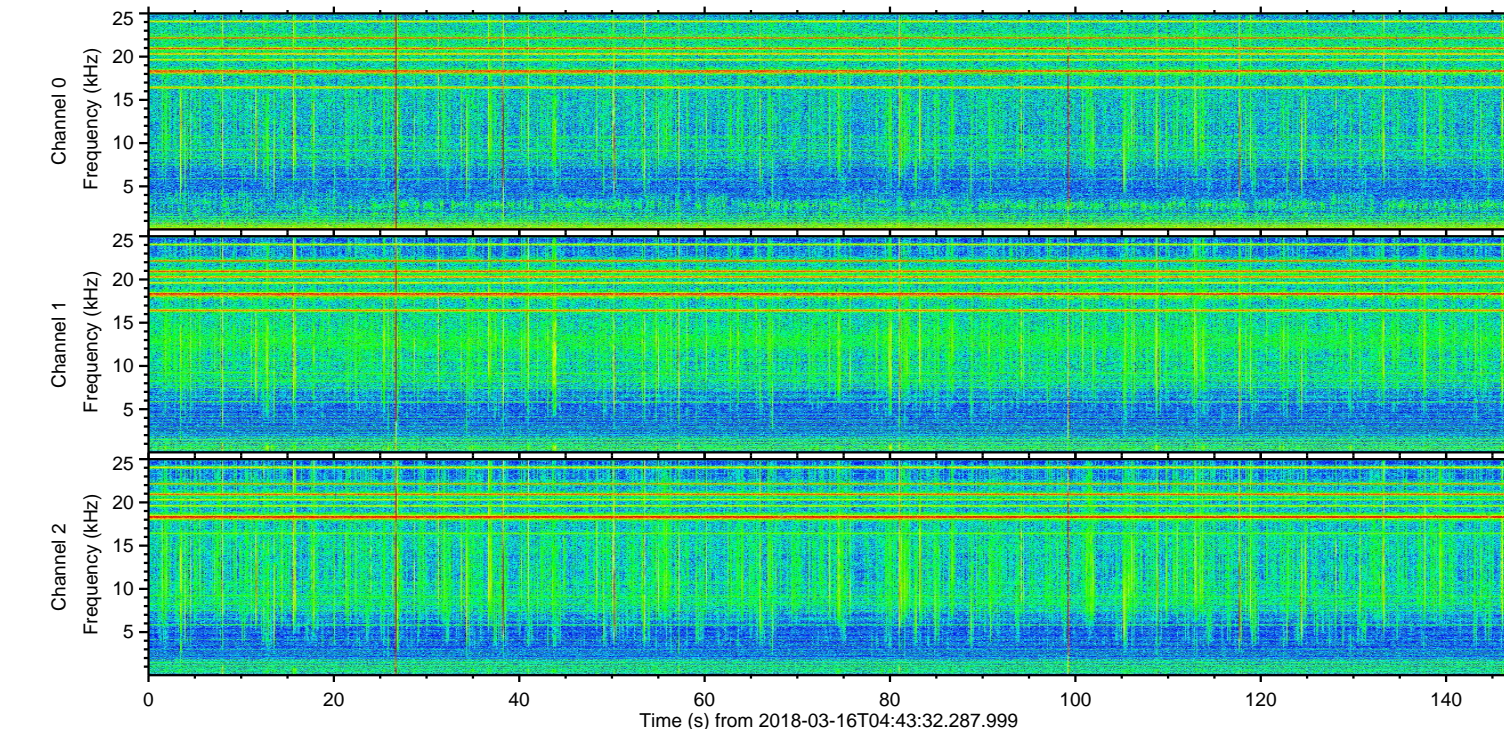
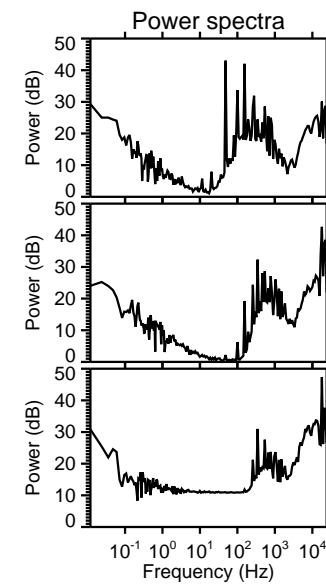
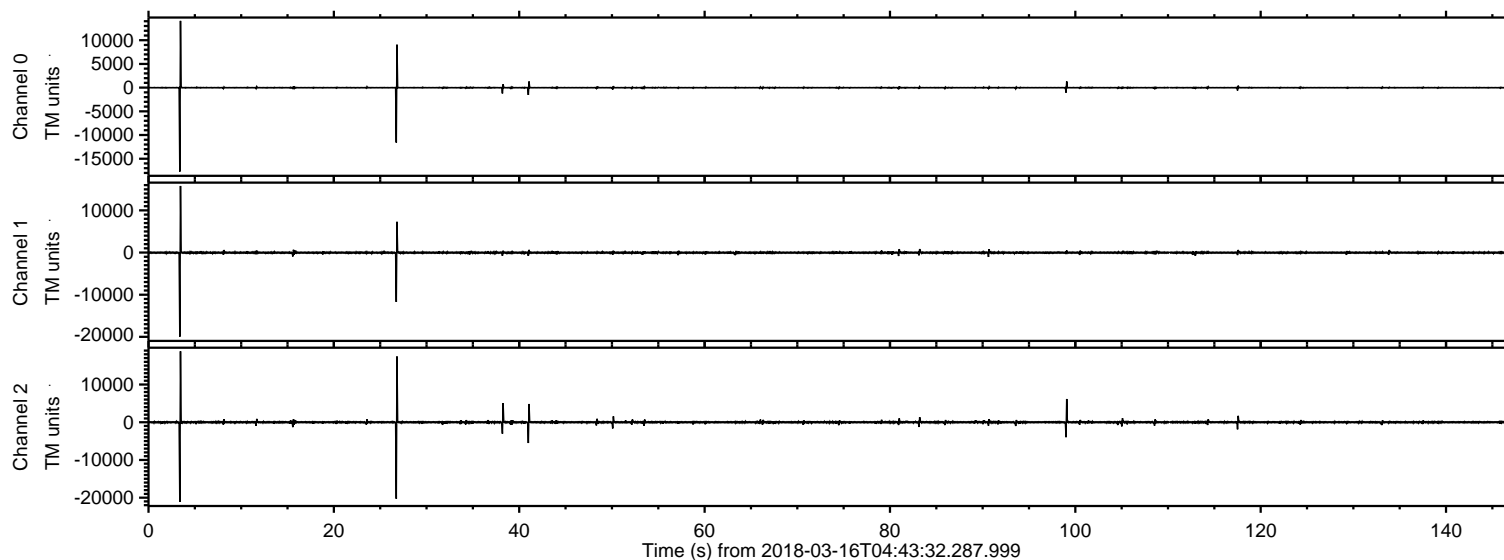
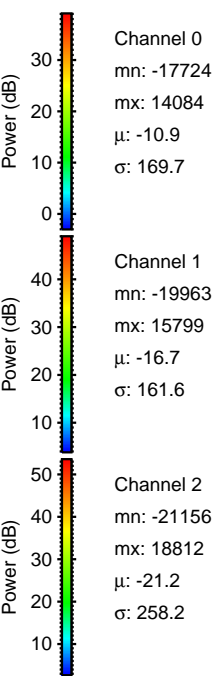
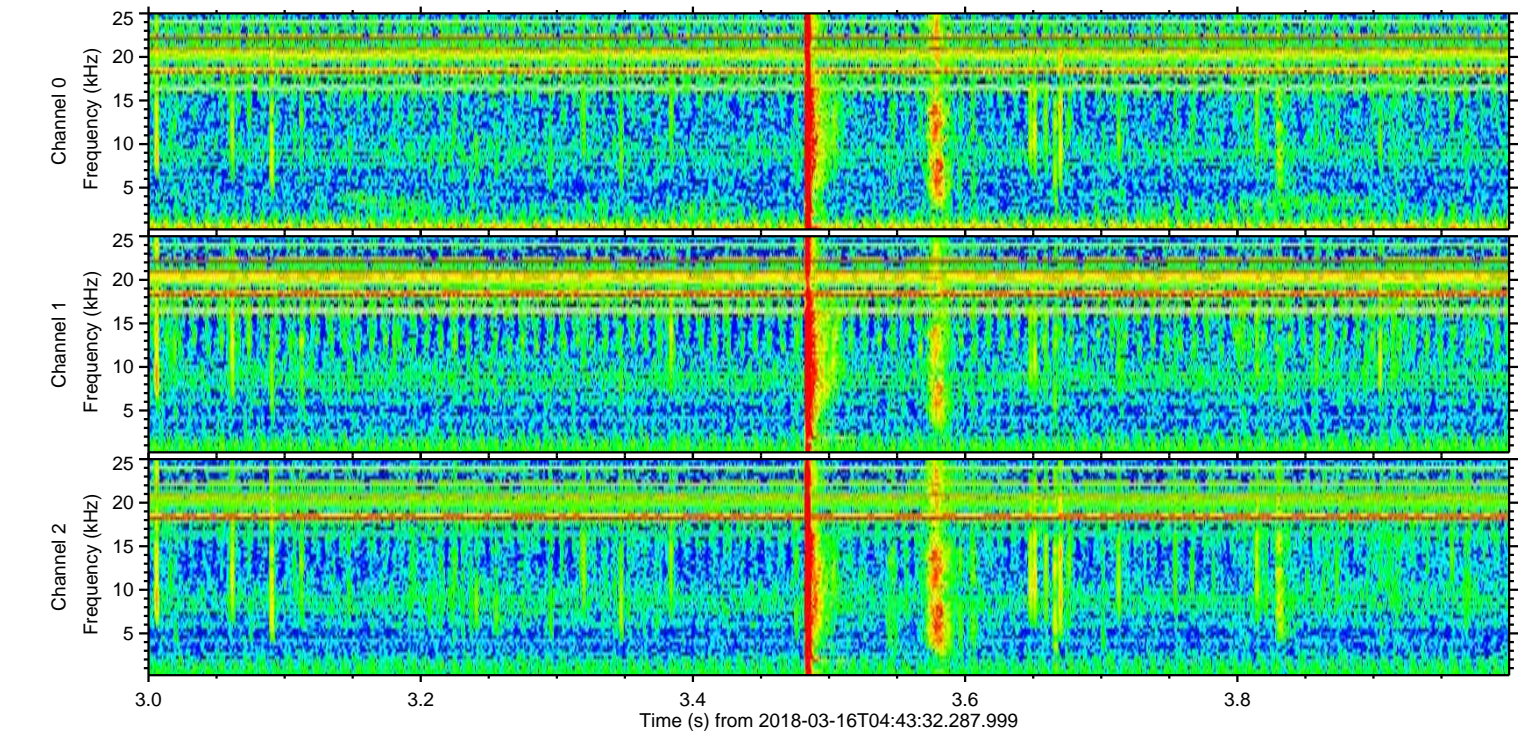
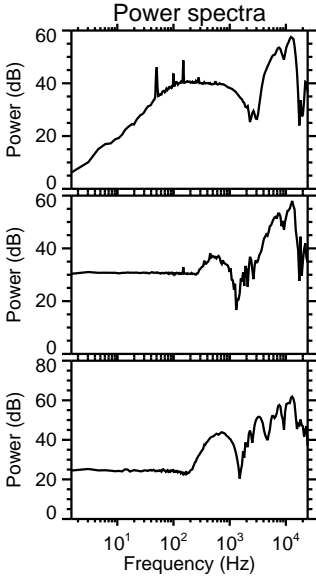
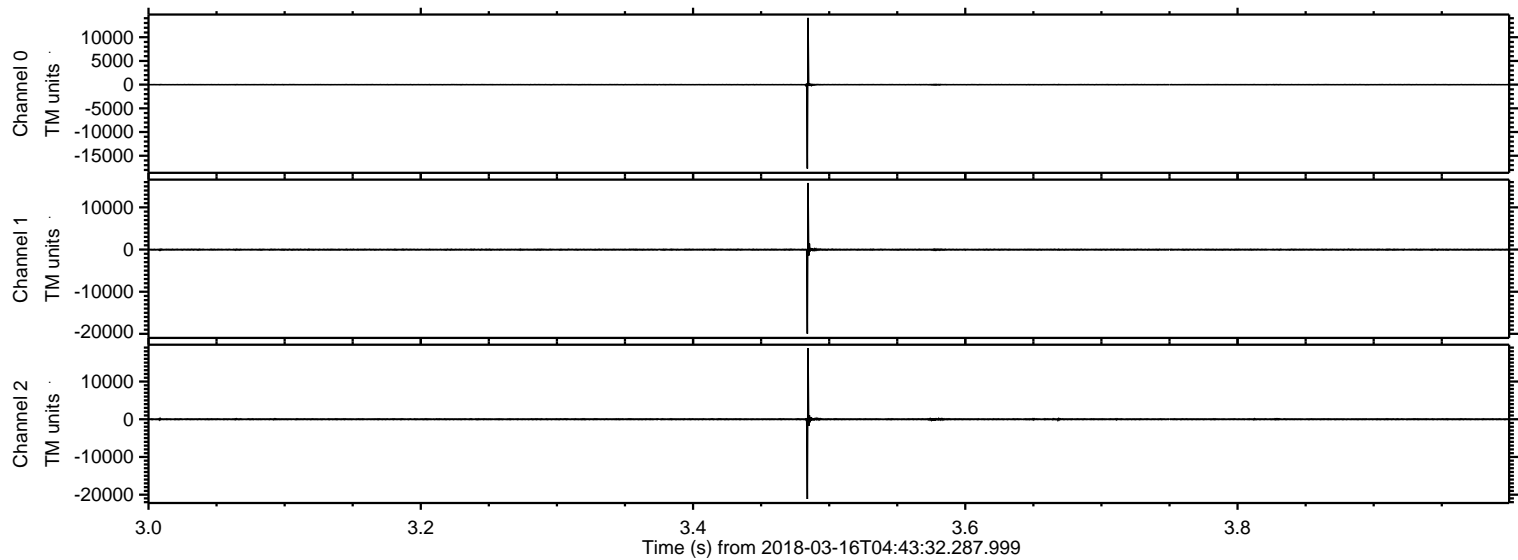


ELMAVAN 3D WAVEFORMS (Measured data sampled at 50 kHz) 51000 packets of 144 samples from 2018-03-16T04:43:32.287.999.

Processed Fri Mar 16 05:51:28 2018 by ELM ver.2012-10-06 from 001__elm20180316_044331__dat00.bin

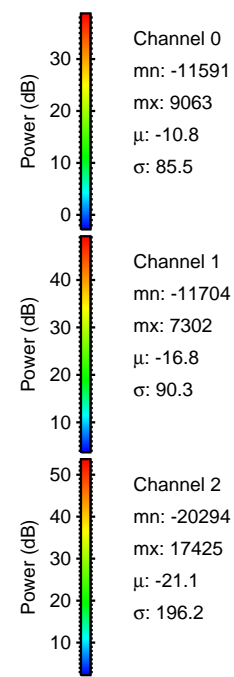
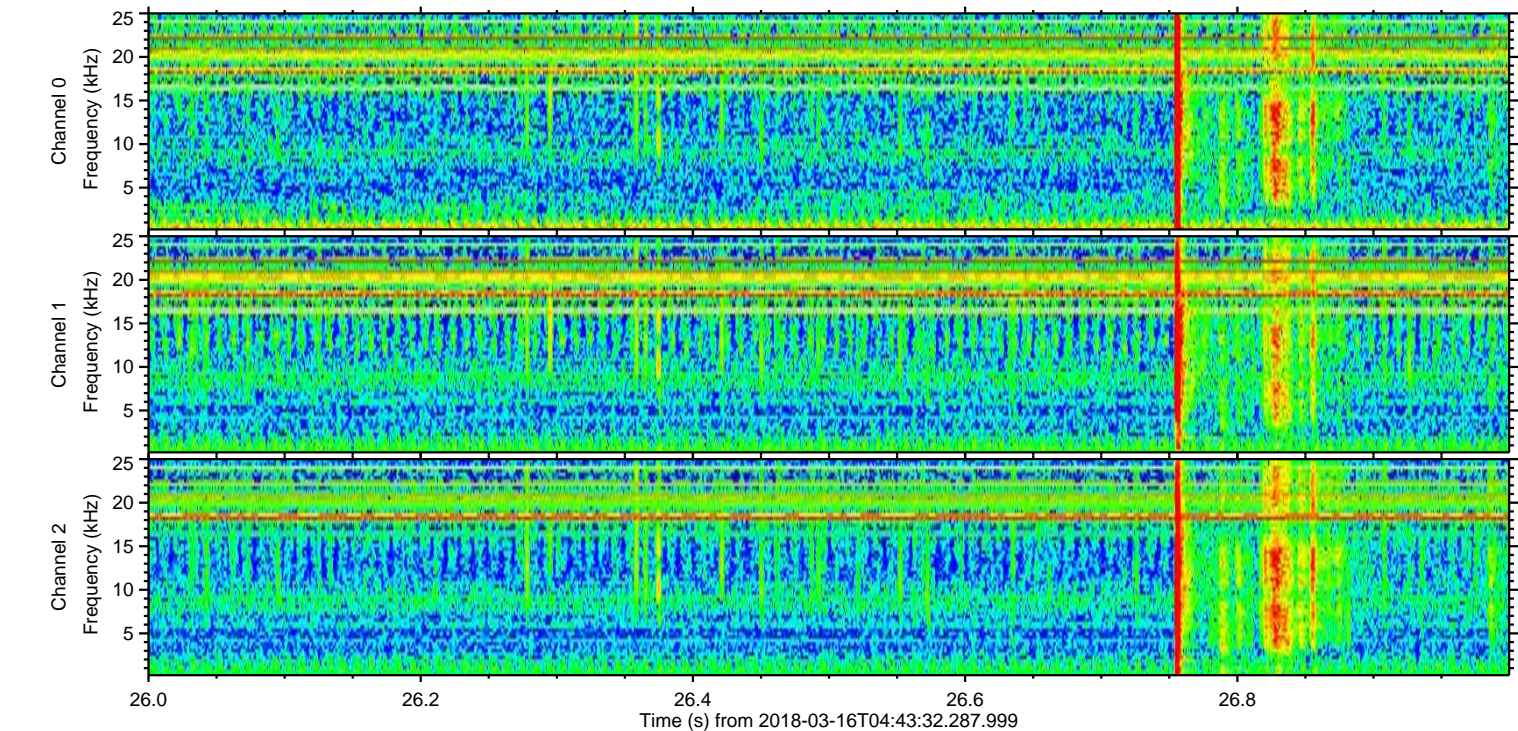
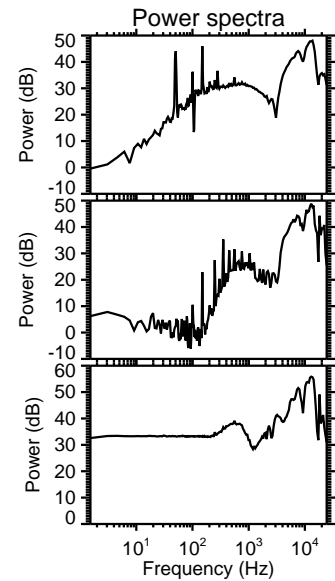
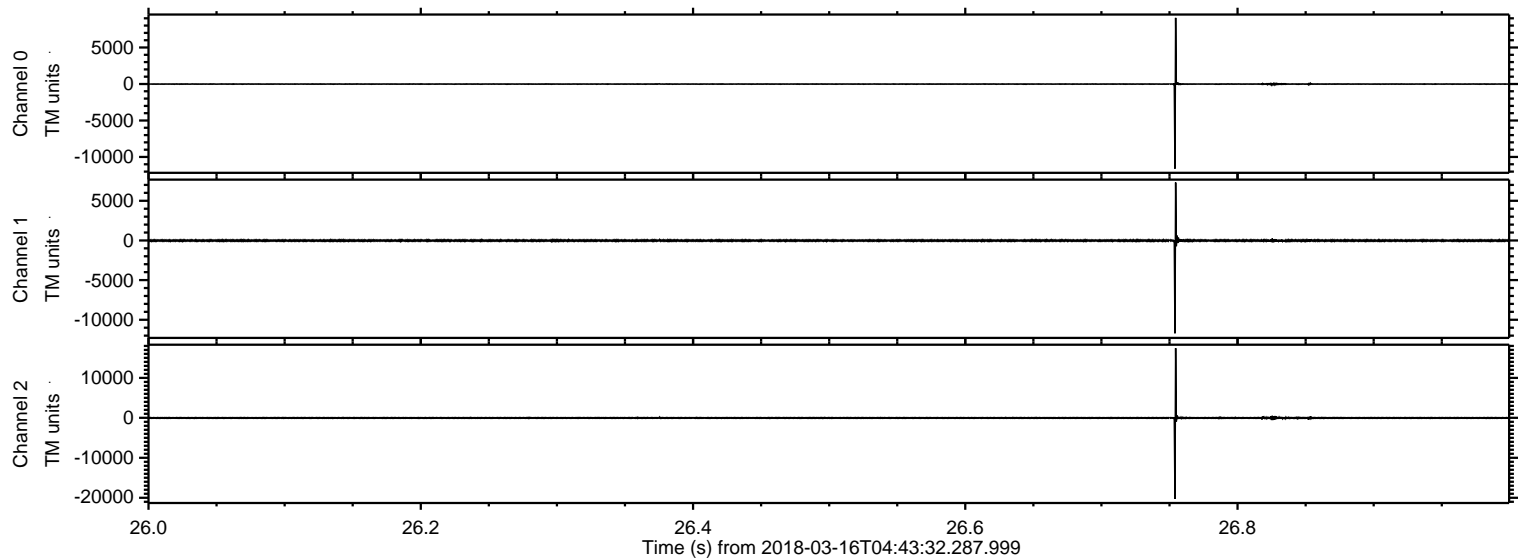


Processed Fri Mar 16 05:51:35 2018 by ELM ver.2012-10-06 from 001__elm20180316_044331__dat00.bin



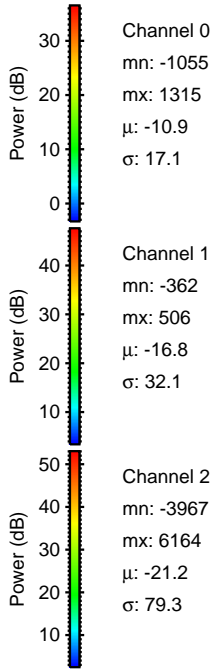
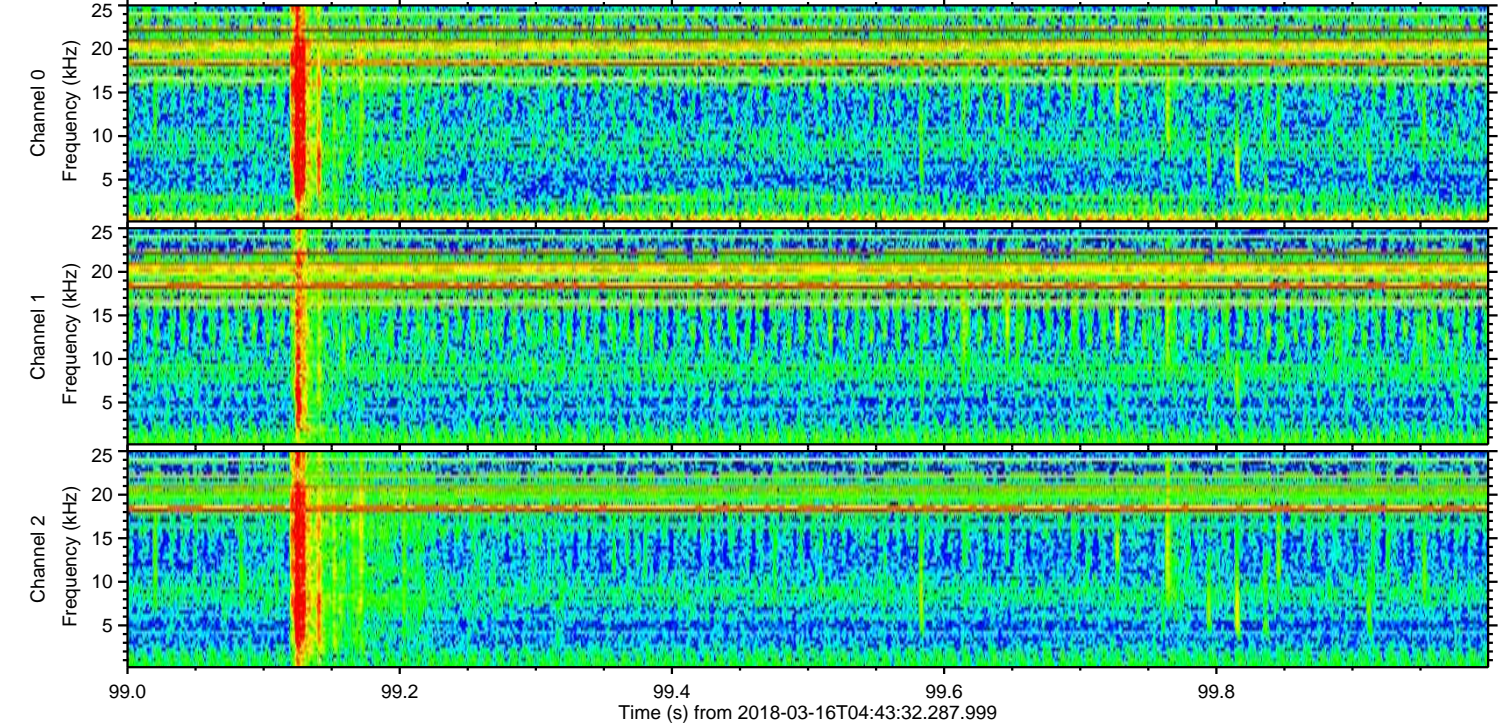
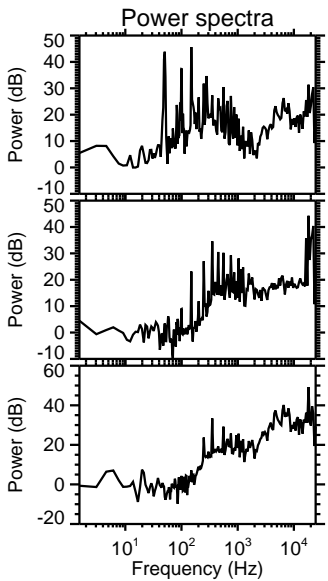
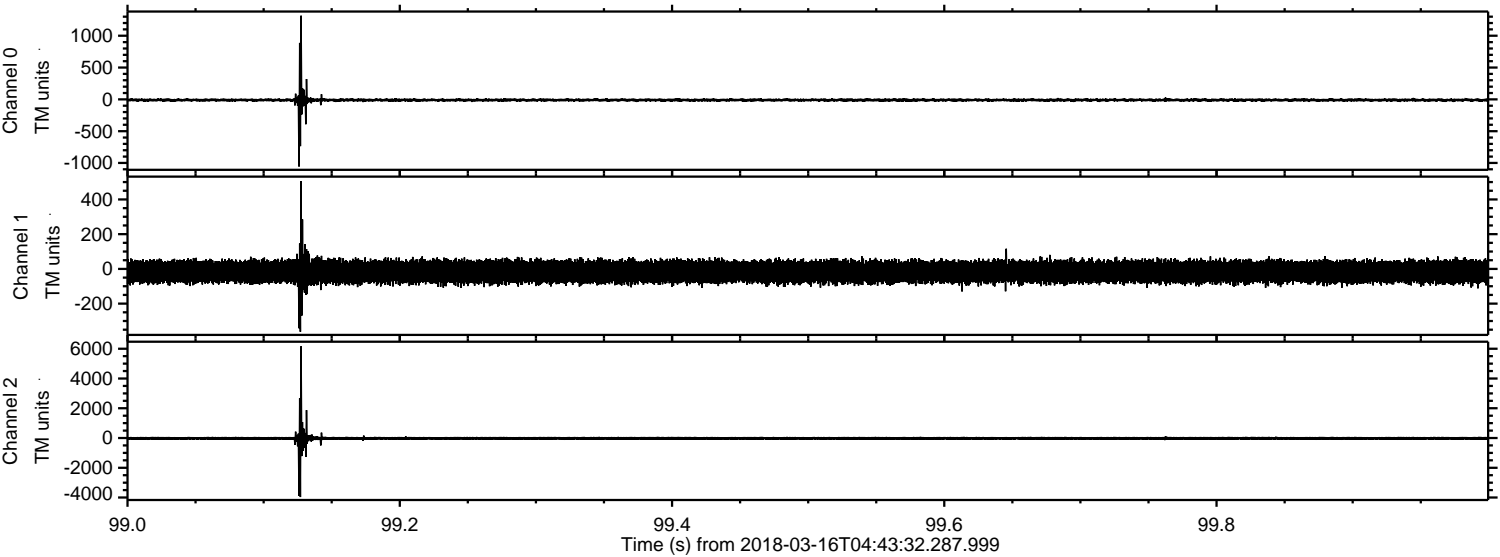
ELMAVAN 3D WAVEFORMS (Measured data sampled at 50 kHz) 51000 packets of 144 samples from 2018-03-16T04:43:32.287.999. Part 27/147

Processed Fri Mar 16 05:51:36 2018 by ELM ver.2012-10-06 from 001__elm20180316_044331__dat00.bin

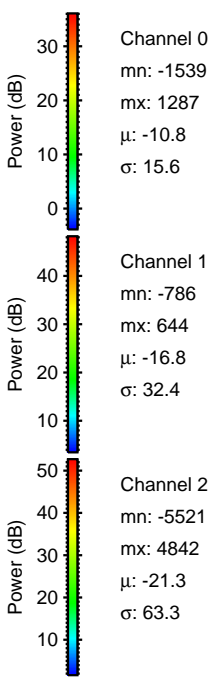
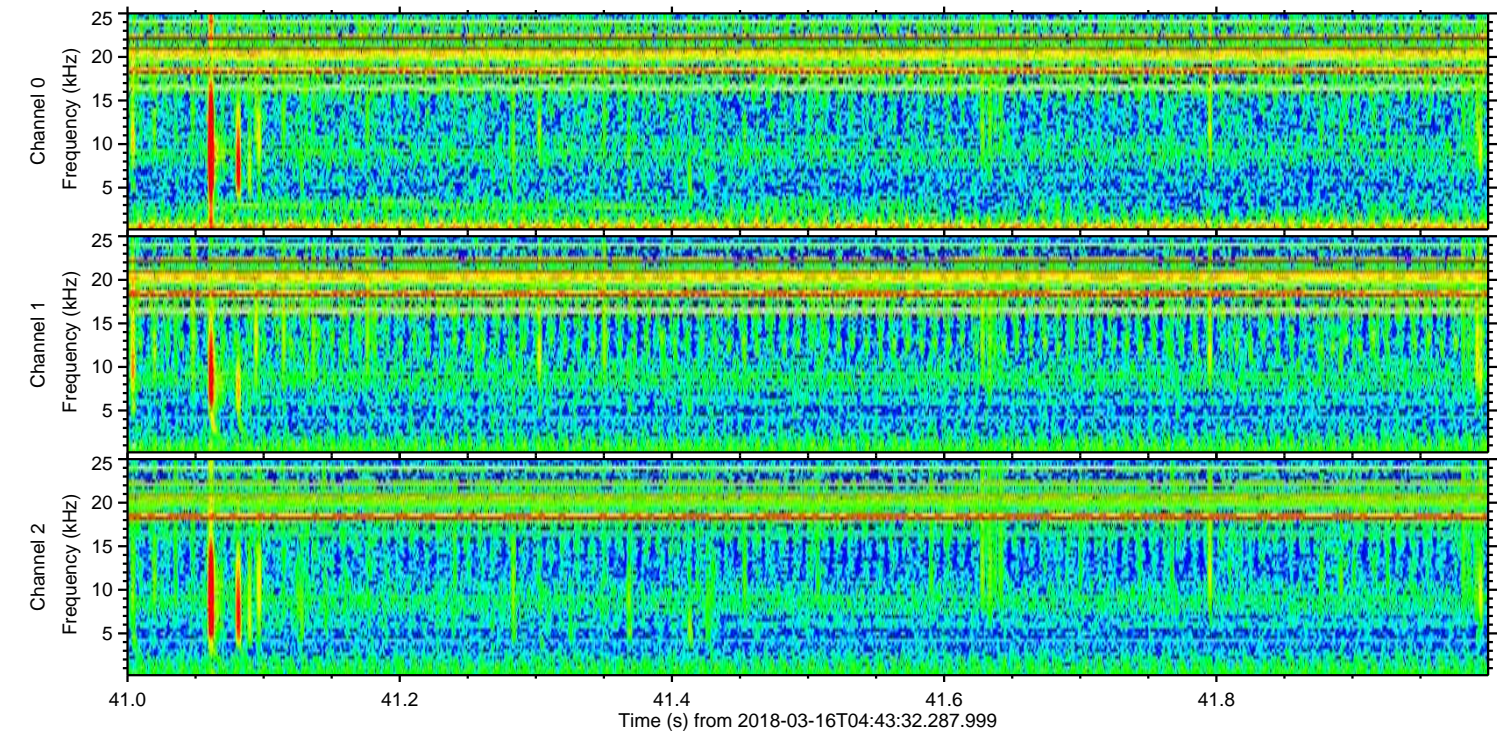
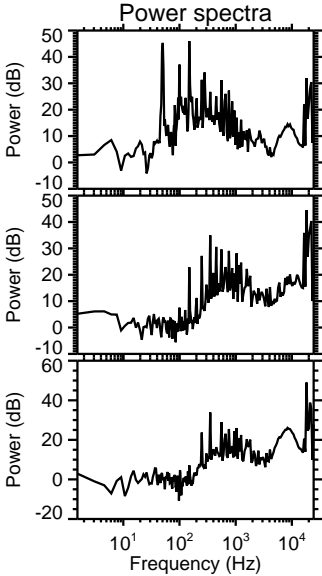
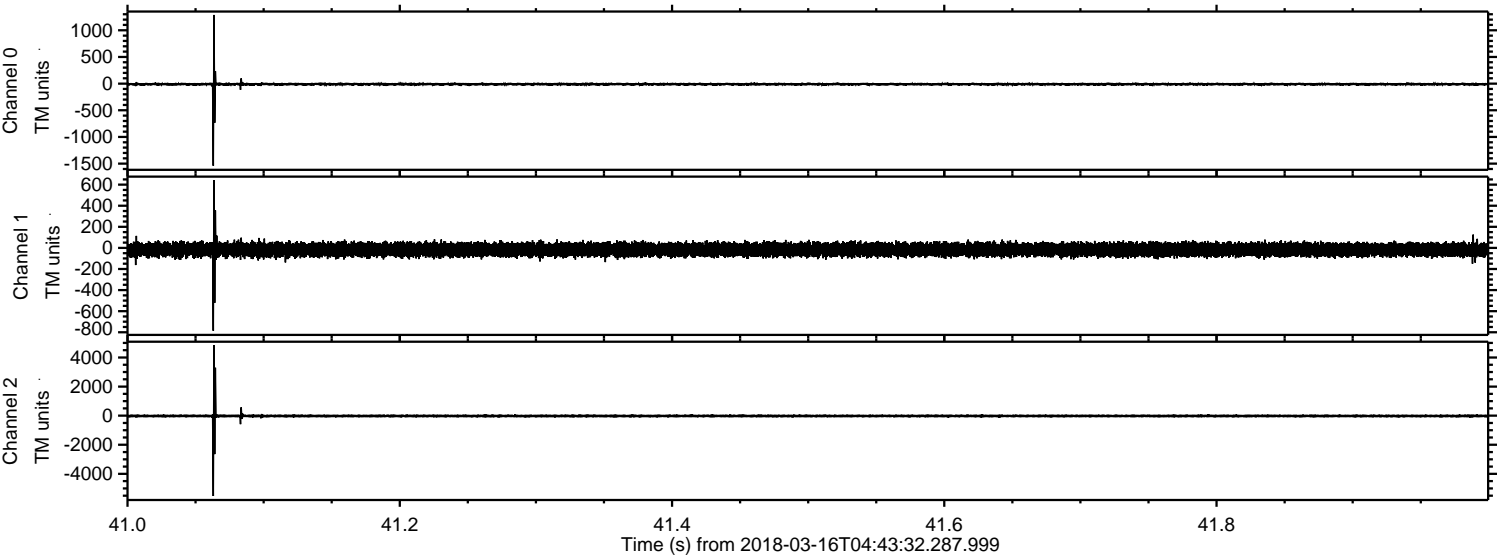


ELMAVAN 3D WAVEFORMS (Measured data sampled at 50 kHz) 51000 packets of 144 samples from 2018-03-16T04:43:32.287.999. Part 100/147

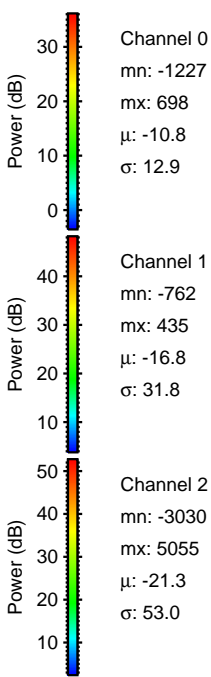
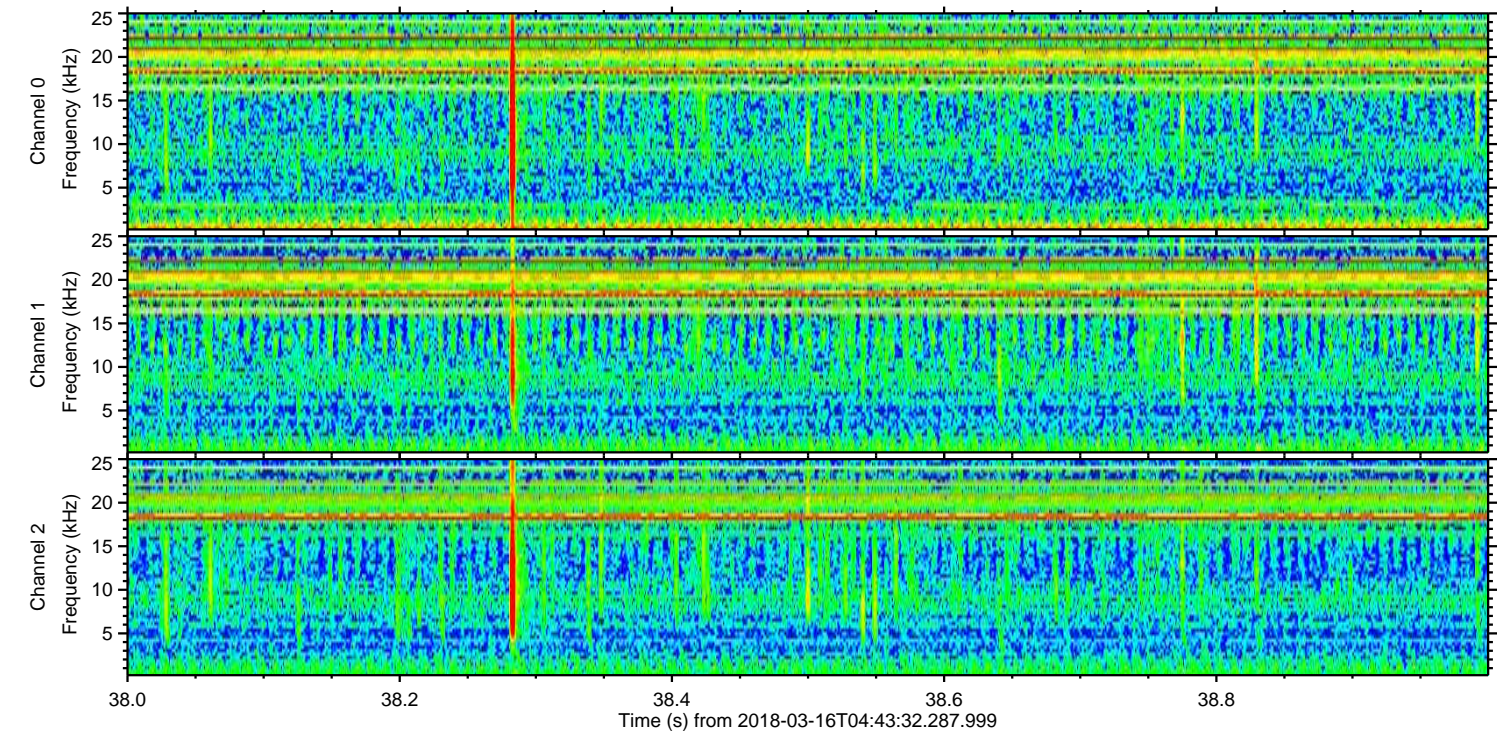
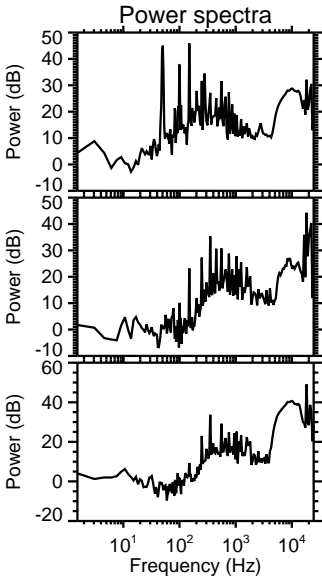
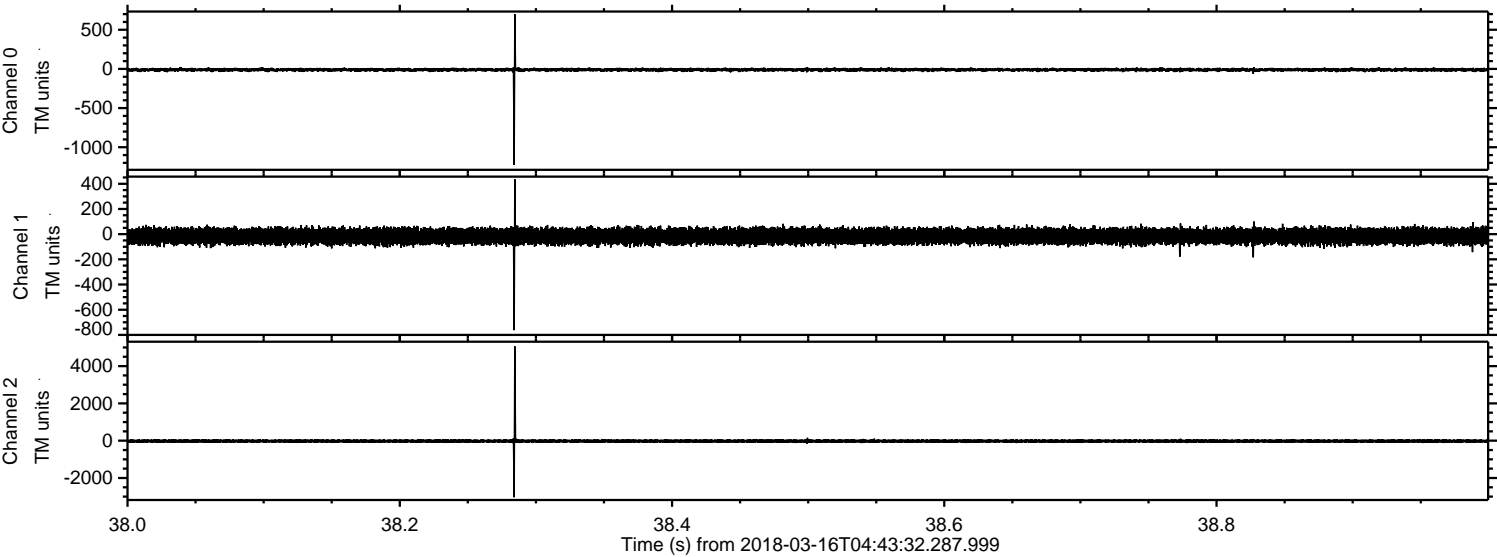
Processed Fri Mar 16 05:51:37 2018 by ELM ver.2012-10-06 from 001__elm20180316_044331__dat00.bin



Processed Fri Mar 16 05:51:38 2018 by ELM ver.2012-10-06 from 001__elm20180316_044331__dat00.bin

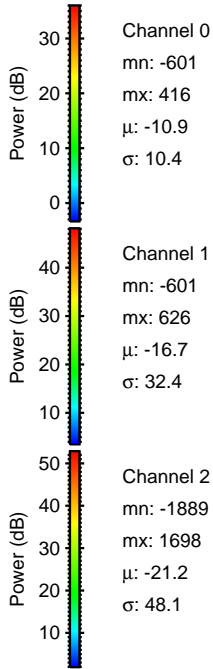
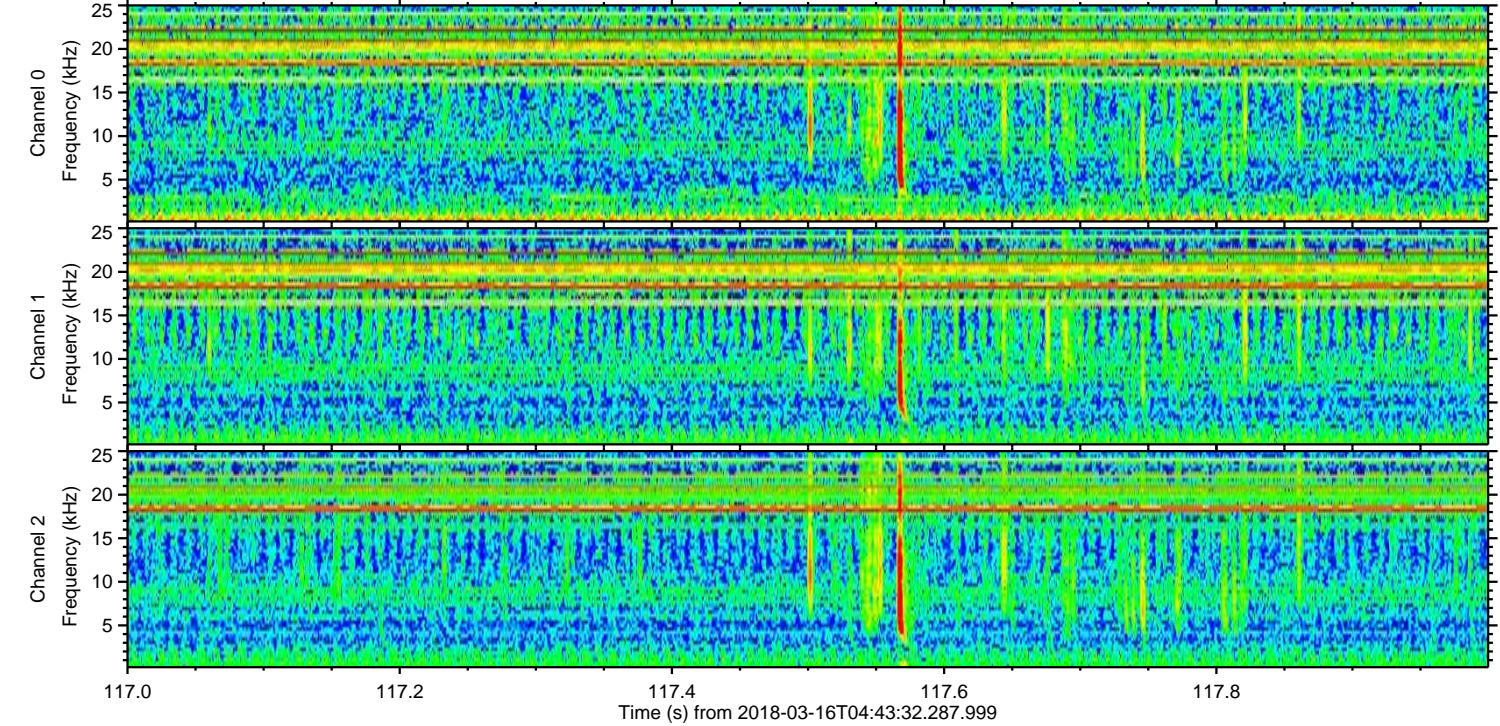
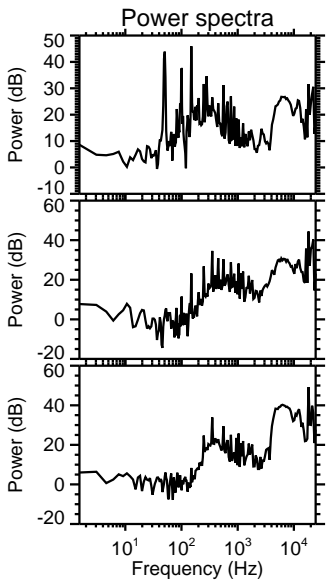
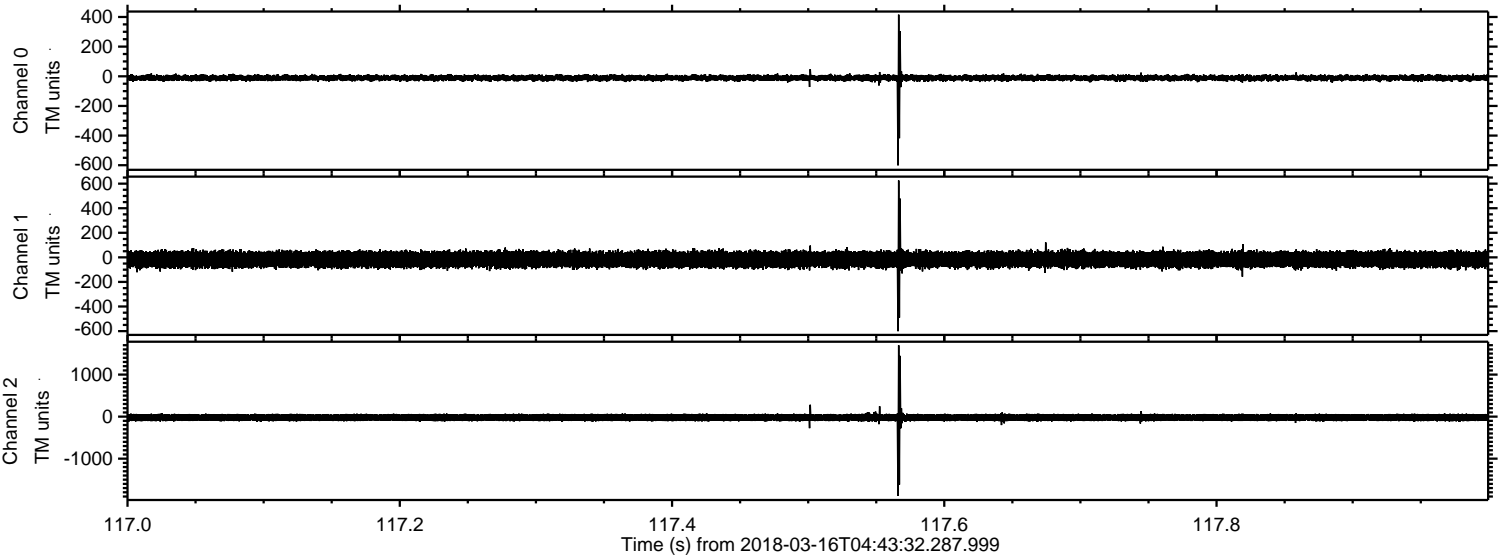


Processed Fri Mar 16 05:51:39 2018 by ELM ver.2012-10-06 from 001__elm20180316_044331__dat00.bin

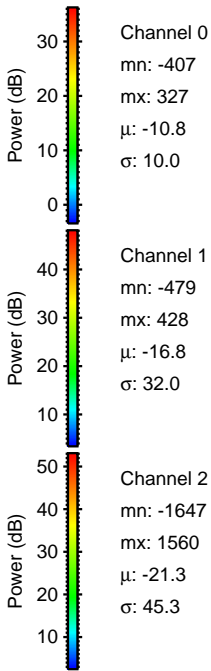
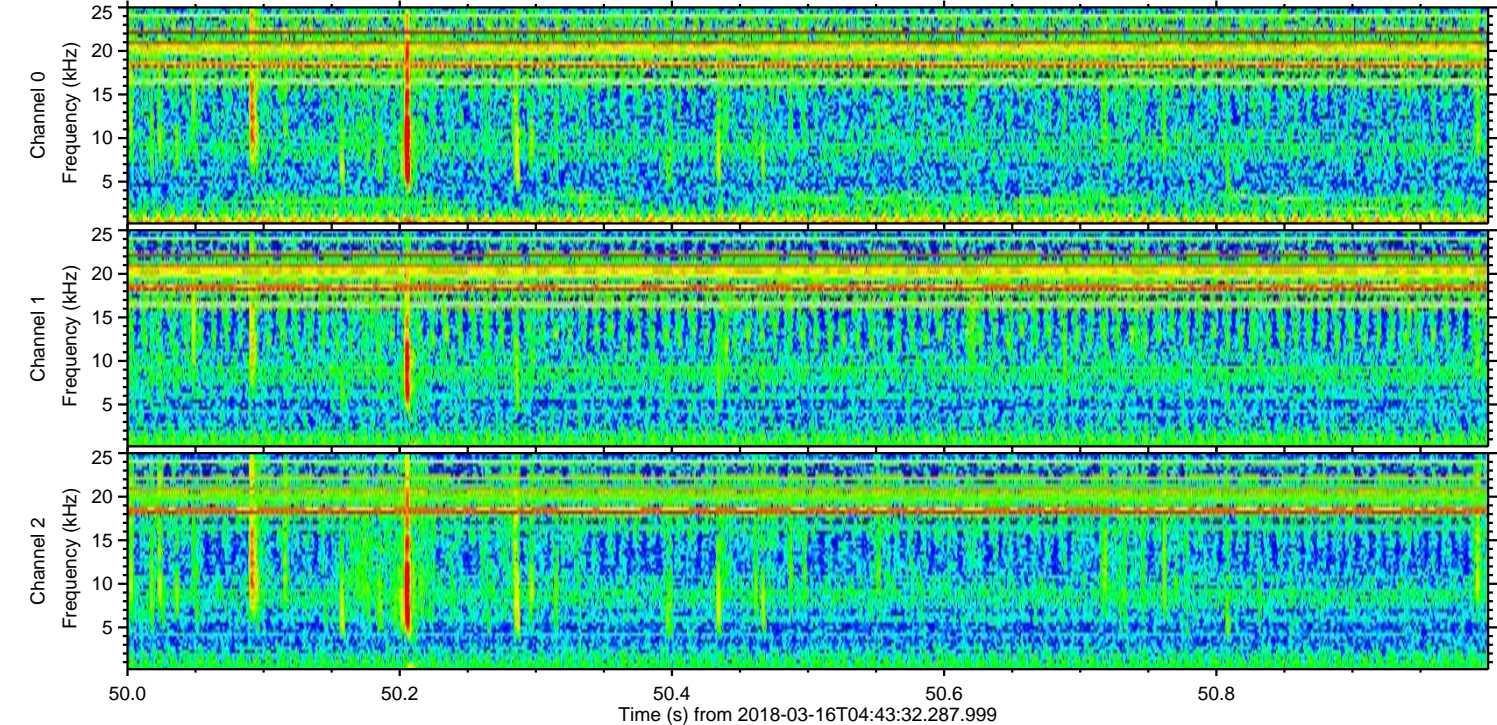
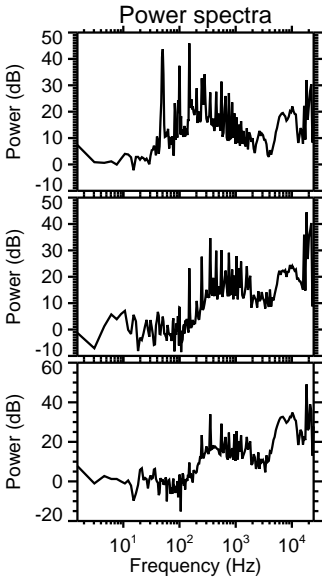
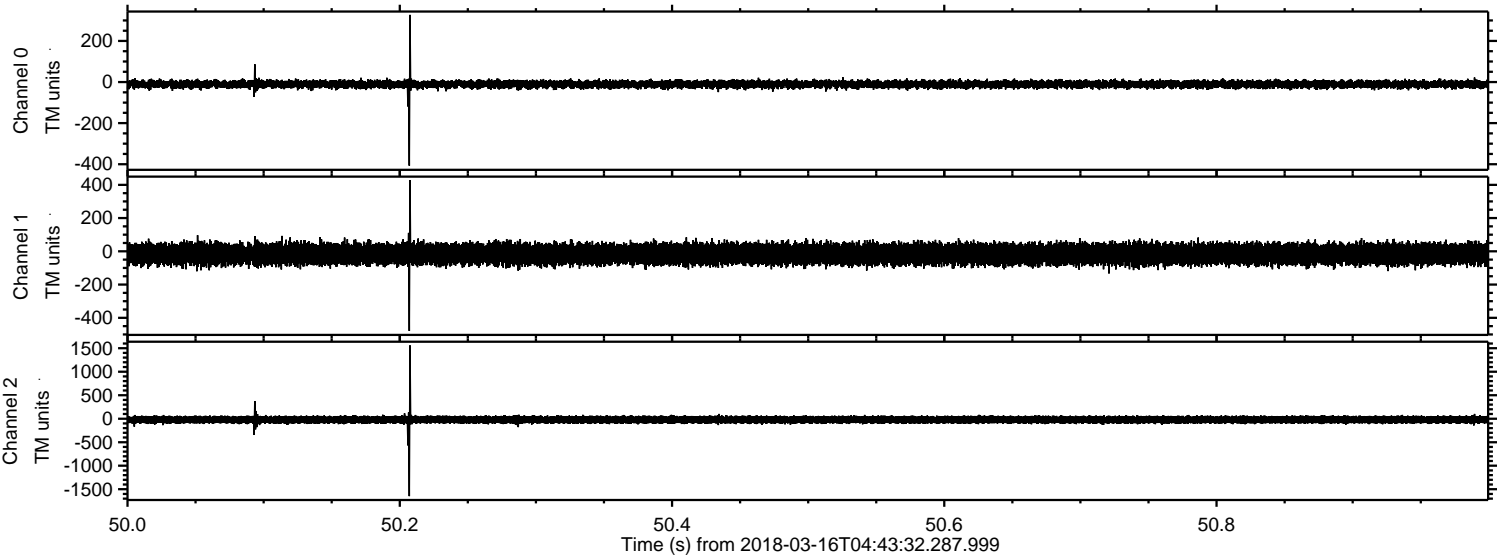


ELMAVAN 3D WAVEFORMS (Measured data sampled at 50 kHz) 51000 packets of 144 samples from 2018-03-16T04:43:32.287.999. Part 118/147

Processed Fri Mar 16 05:51:39 2018 by ELM ver.2012-10-06 from 001__elm20180316_044331__dat00.bin



Processed Fri Mar 16 05:51:40 2018 by ELM ver.2012-10-06 from 001__elm20180316_044331__dat00.bin

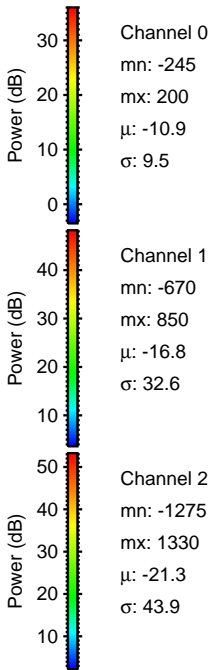
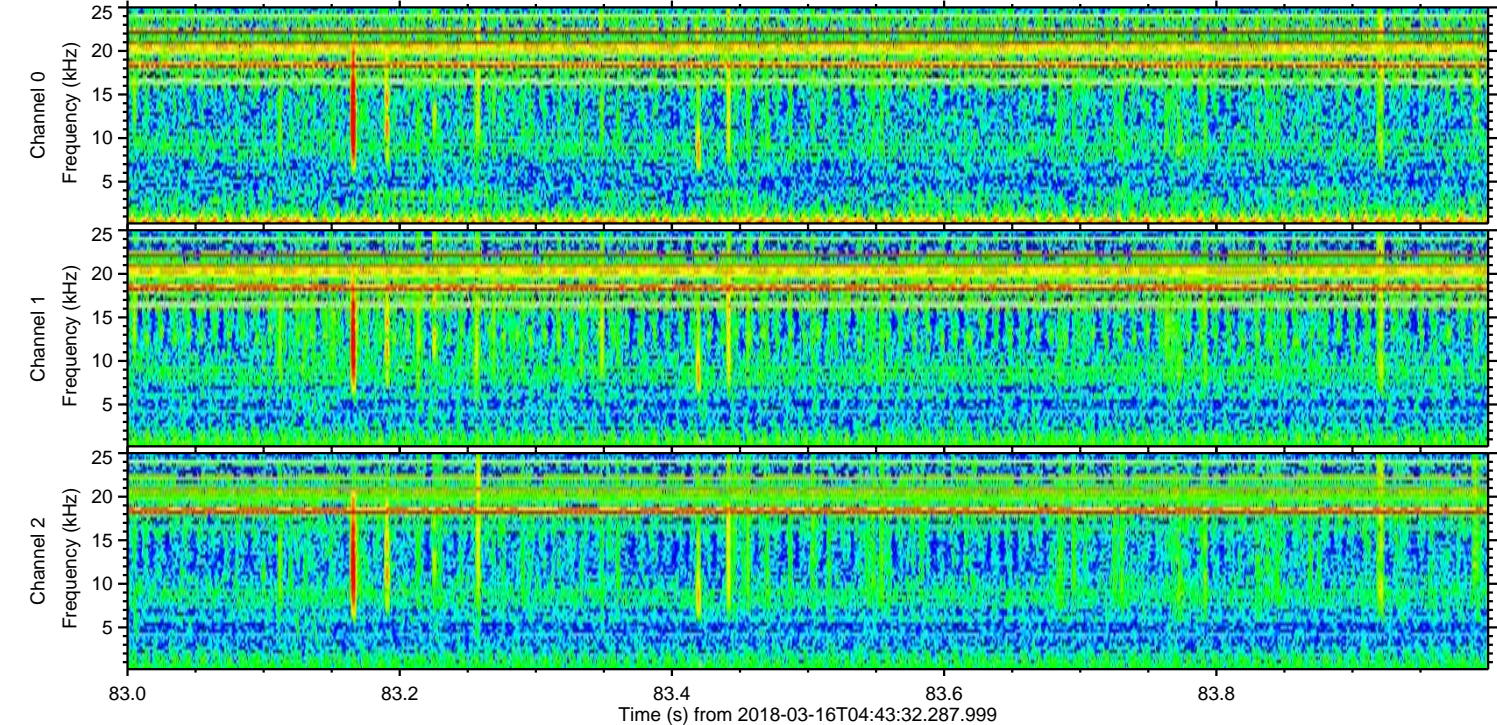
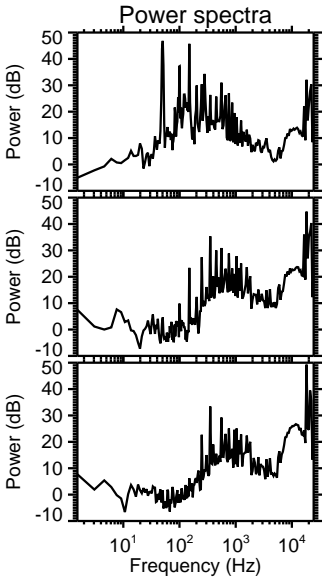
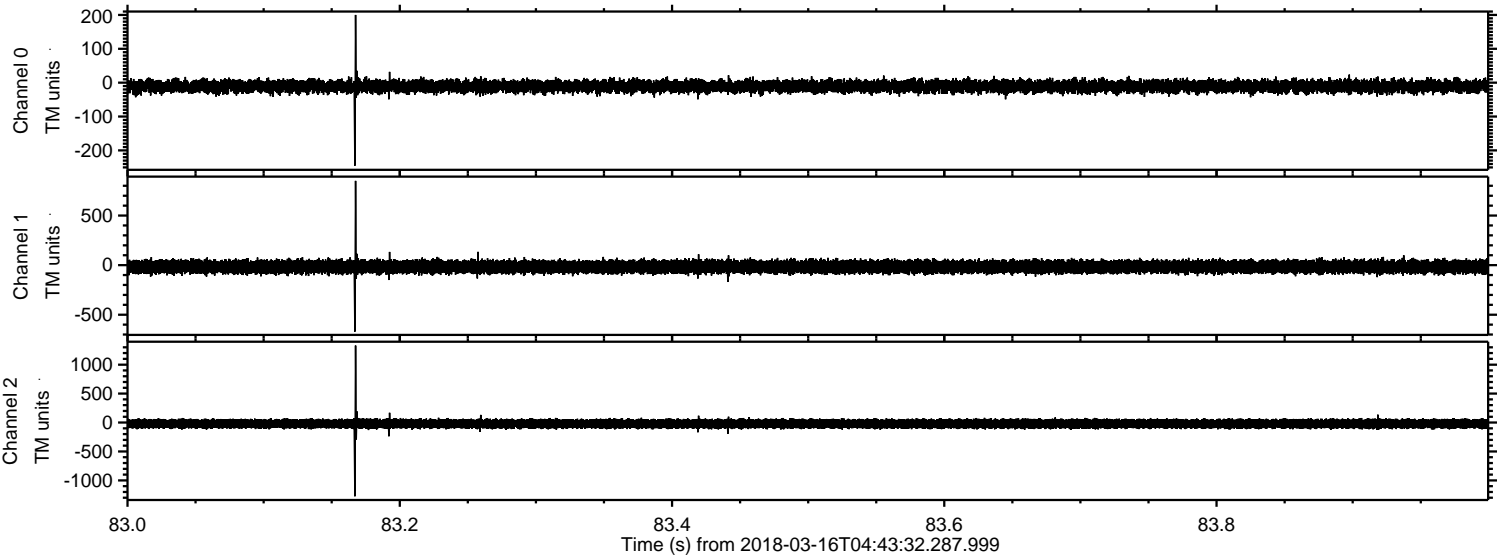


Channel 0
mn: -407
mx: 327
 μ : -10.8
 σ : 10.0

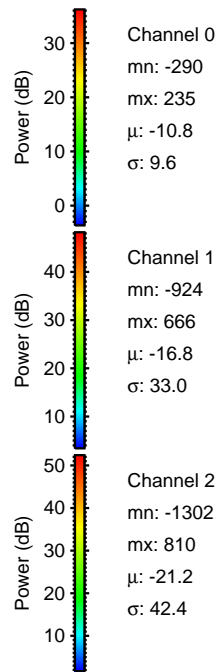
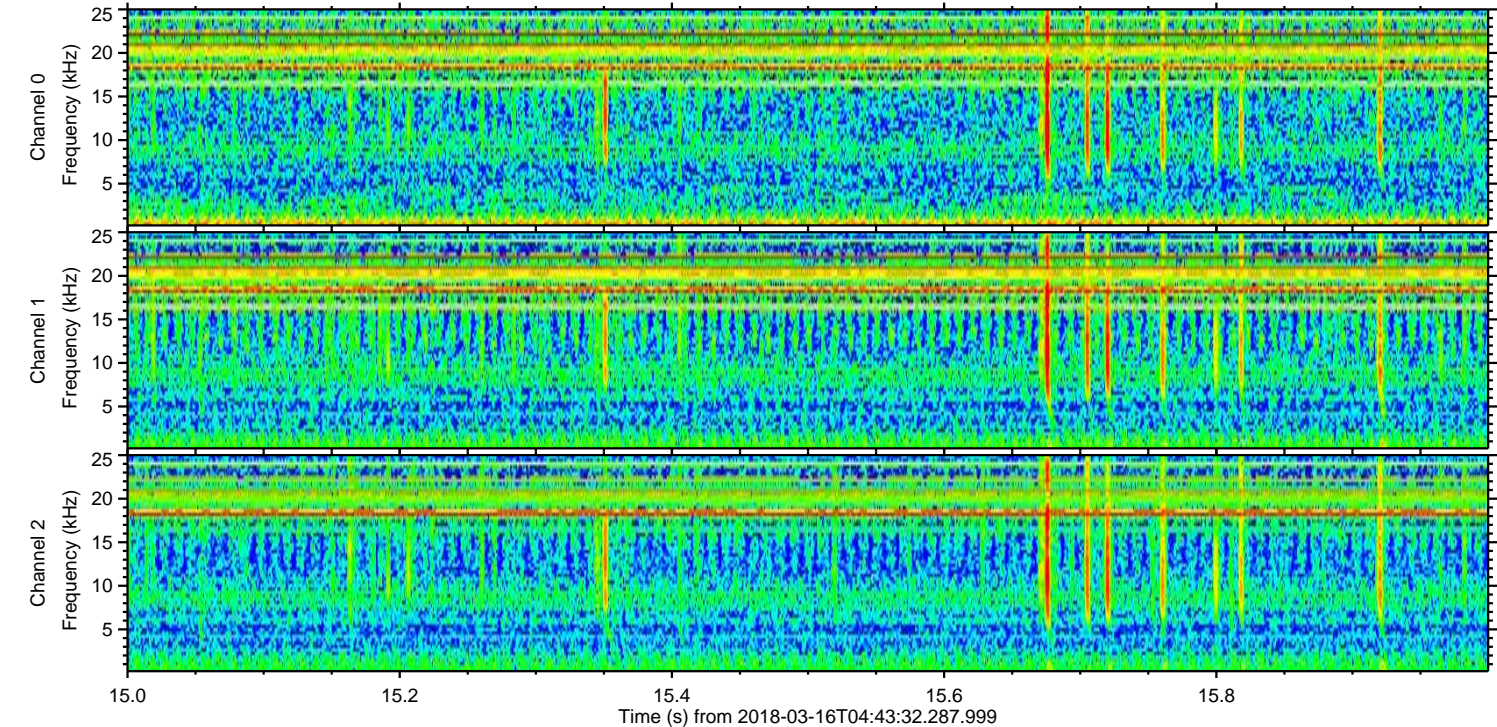
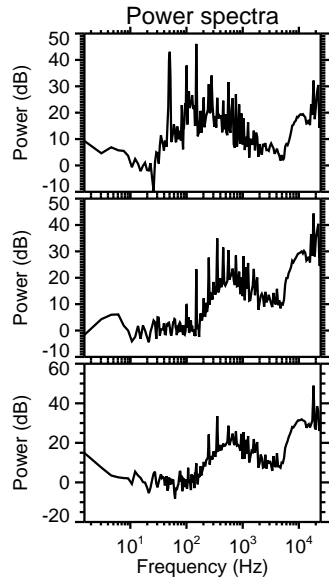
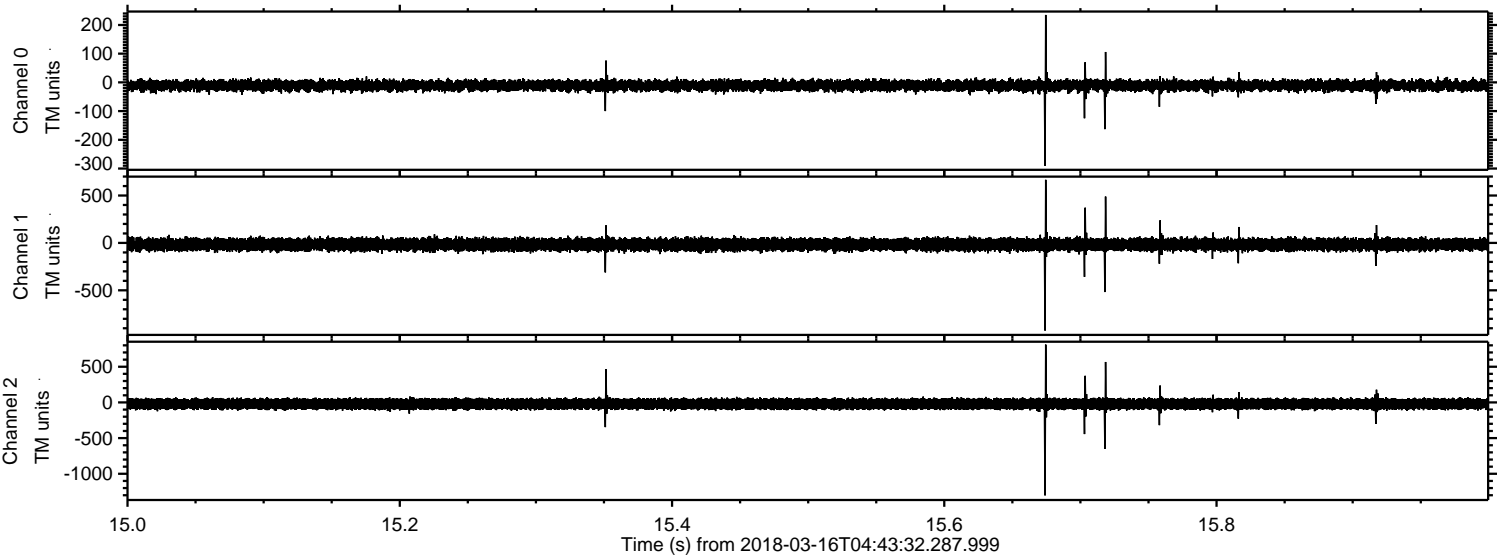
Channel 1
mn: -479
mx: 428
 μ : -16.8
 σ : 32.0

Channel 2
mn: -1647
mx: 1560
 μ : -21.3
 σ : 45.3

Processed Fri Mar 16 05:51:41 2018 by ELM ver.2012-10-06 from 001__elm20180316_044331__dat00.bin



Processed Fri Mar 16 05:51:42 2018 by ELM ver.2012-10-06 from 001__elm20180316_044331__dat00.bin



Processed Fri Mar 16 05:51:42 2018 by ELM ver.2012-10-06 from 001__elm20180316_044331__dat00.bin

