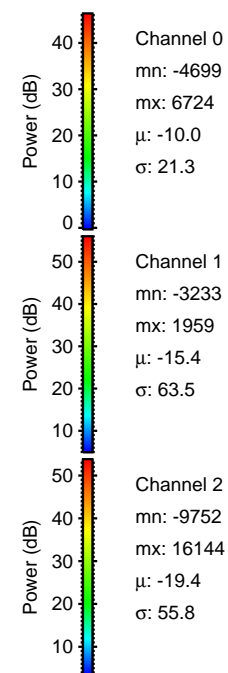
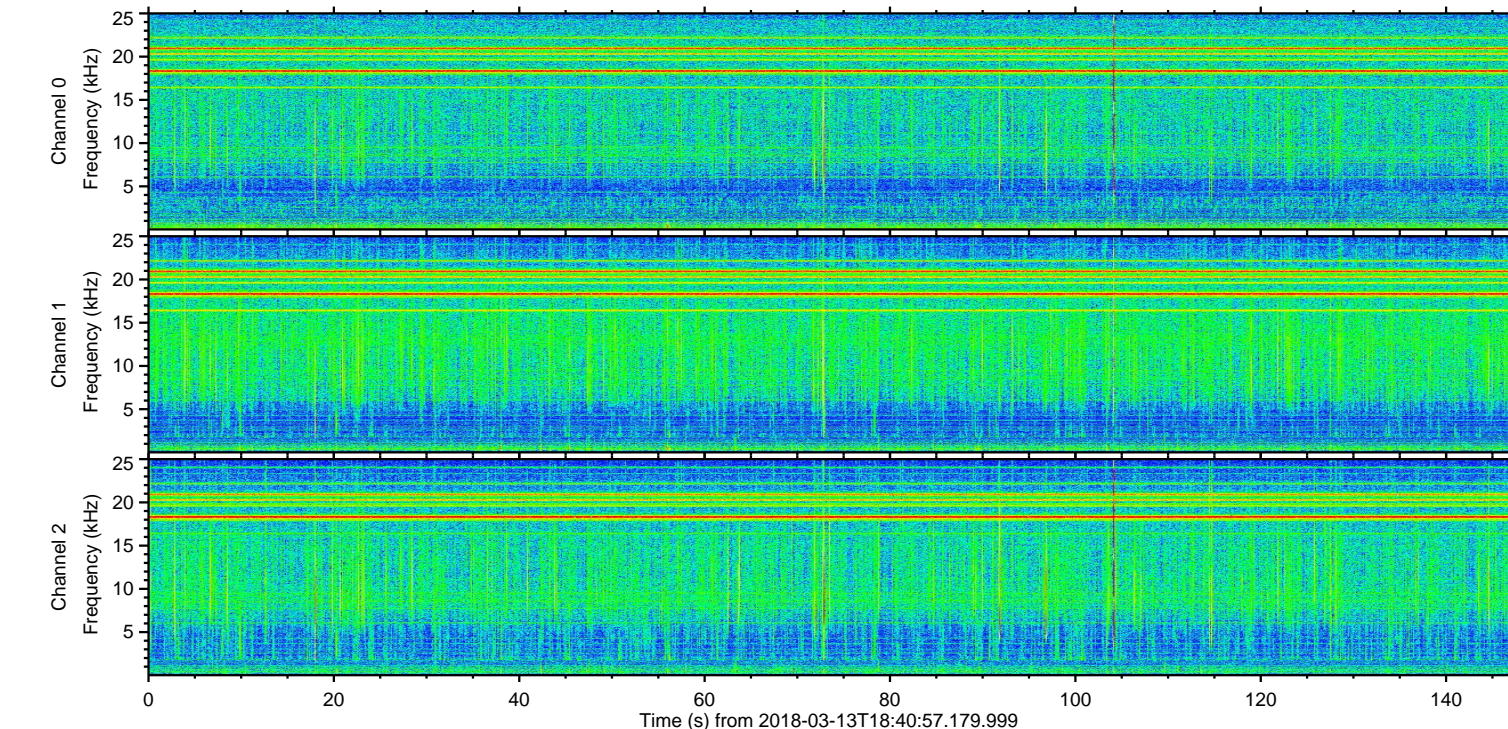
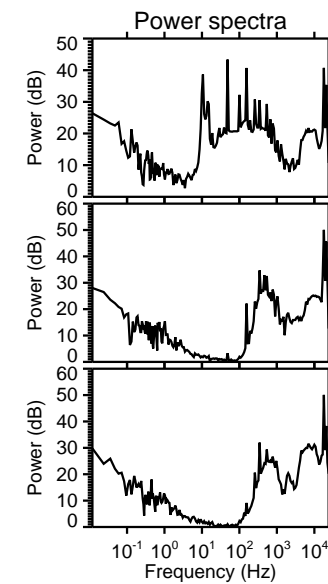
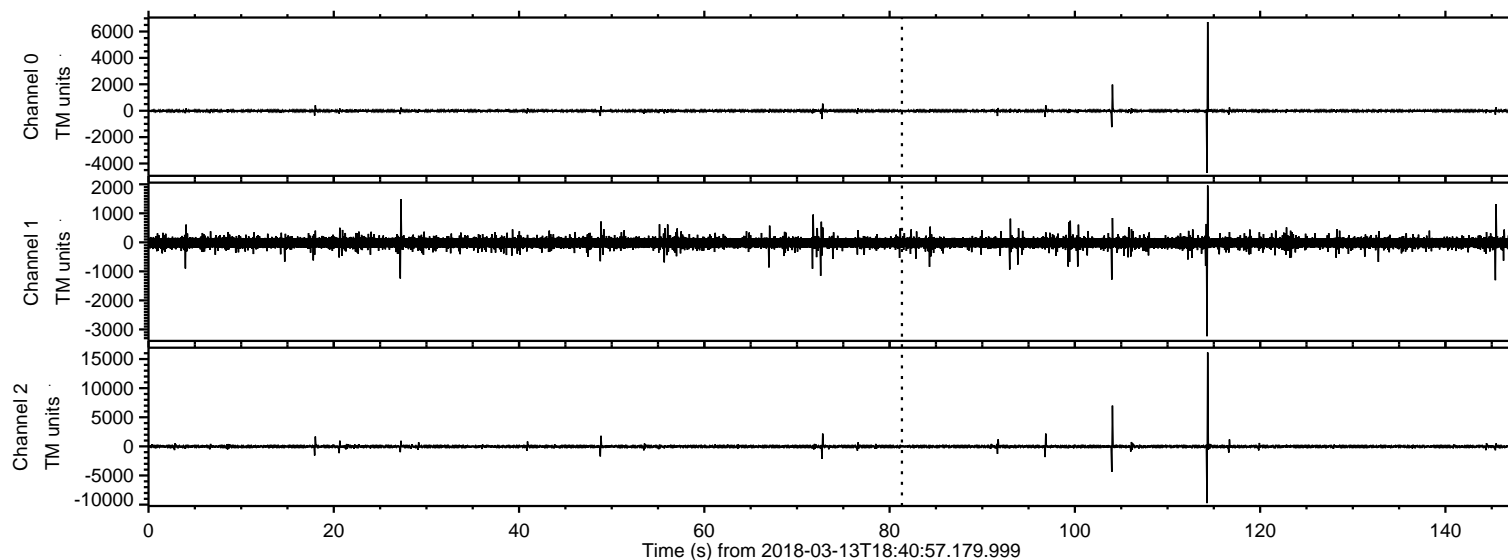


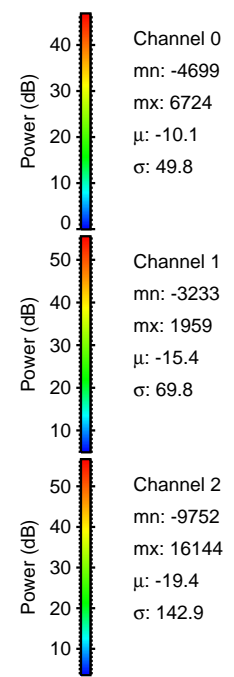
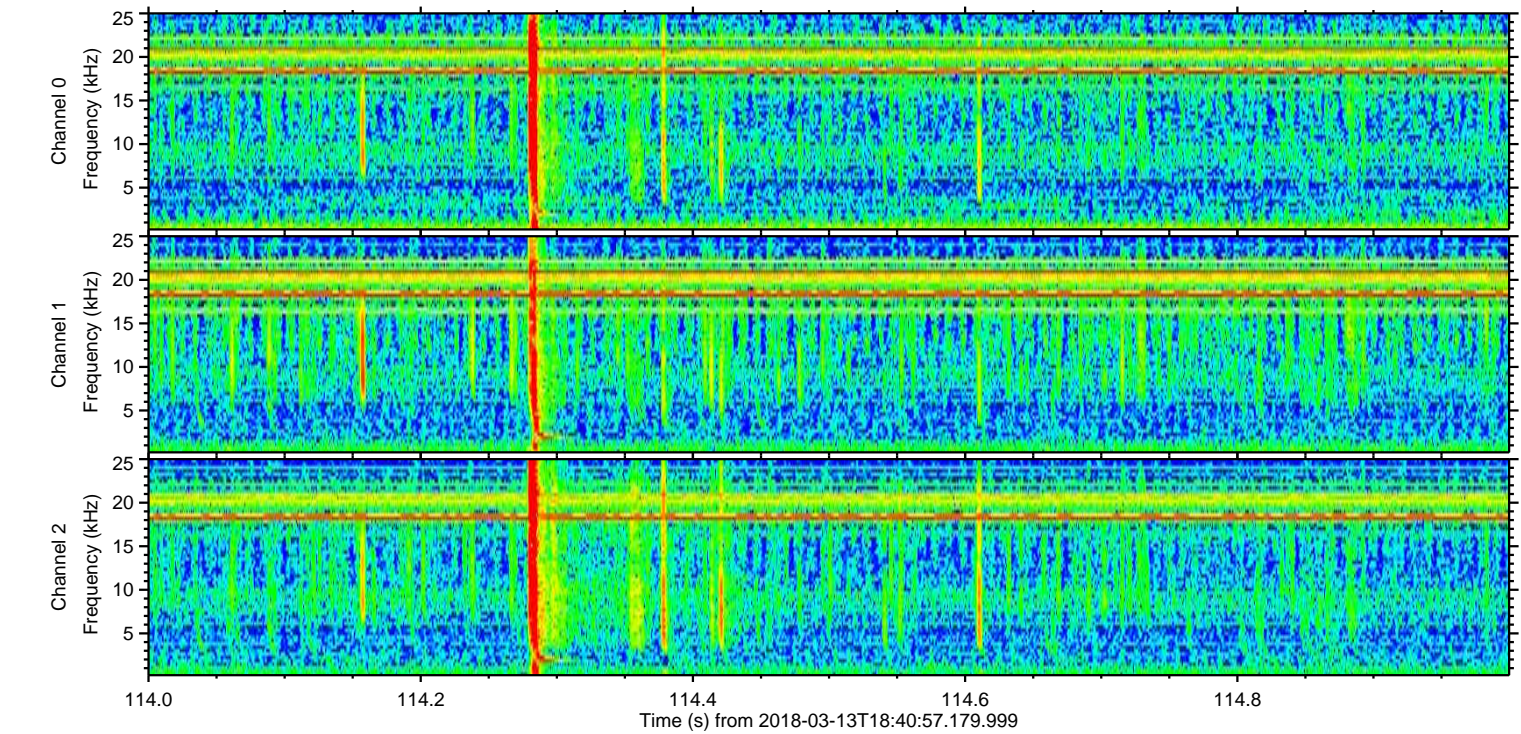
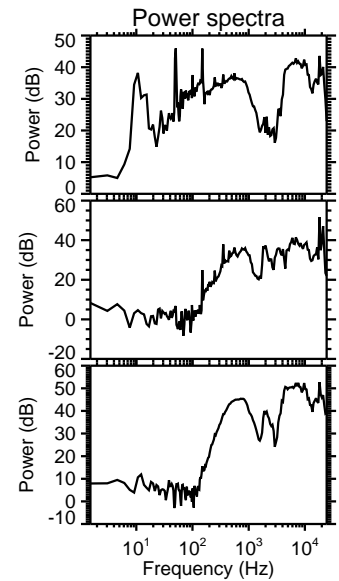
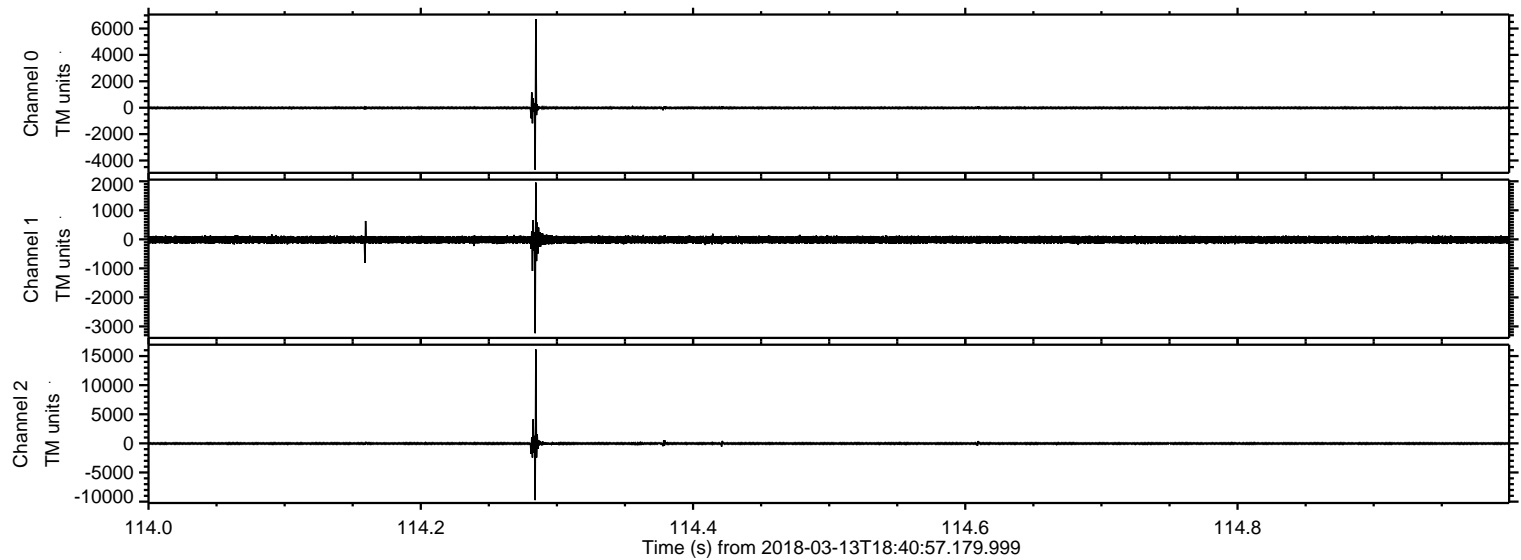
ELMAVAN 3D WAVEFORMS (Measured data sampled at 50 kHz) 50999 packets of 144 samples from 2018-03-13T18:40:57.179.999.

Processed Tue Mar 13 19:48:54 2018 by ELM ver.2012-10-06 from 001__elm20180313_184056__dat00.bin



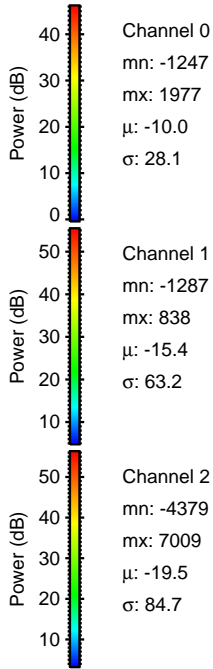
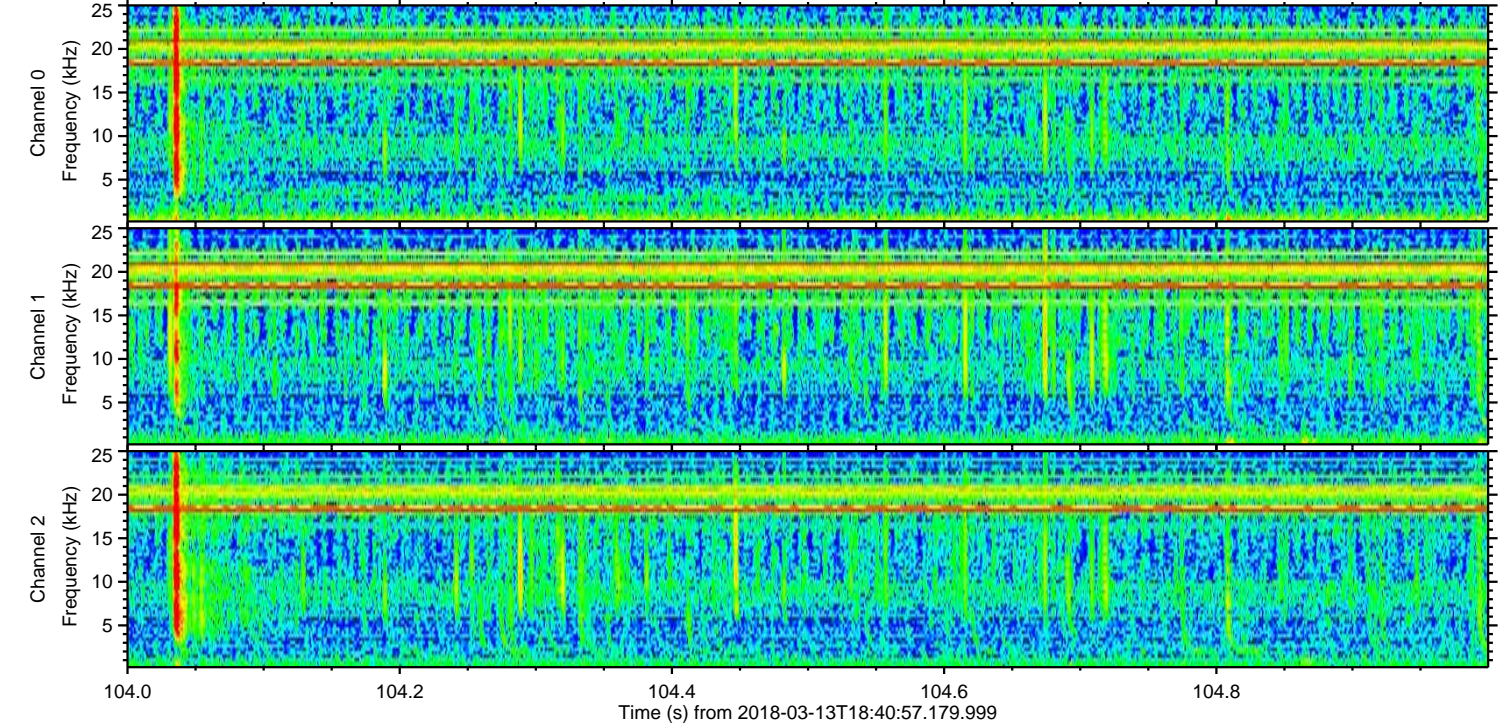
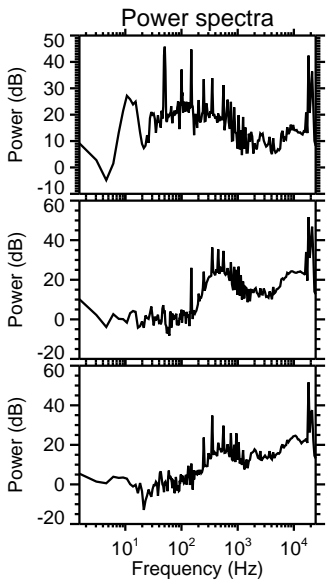
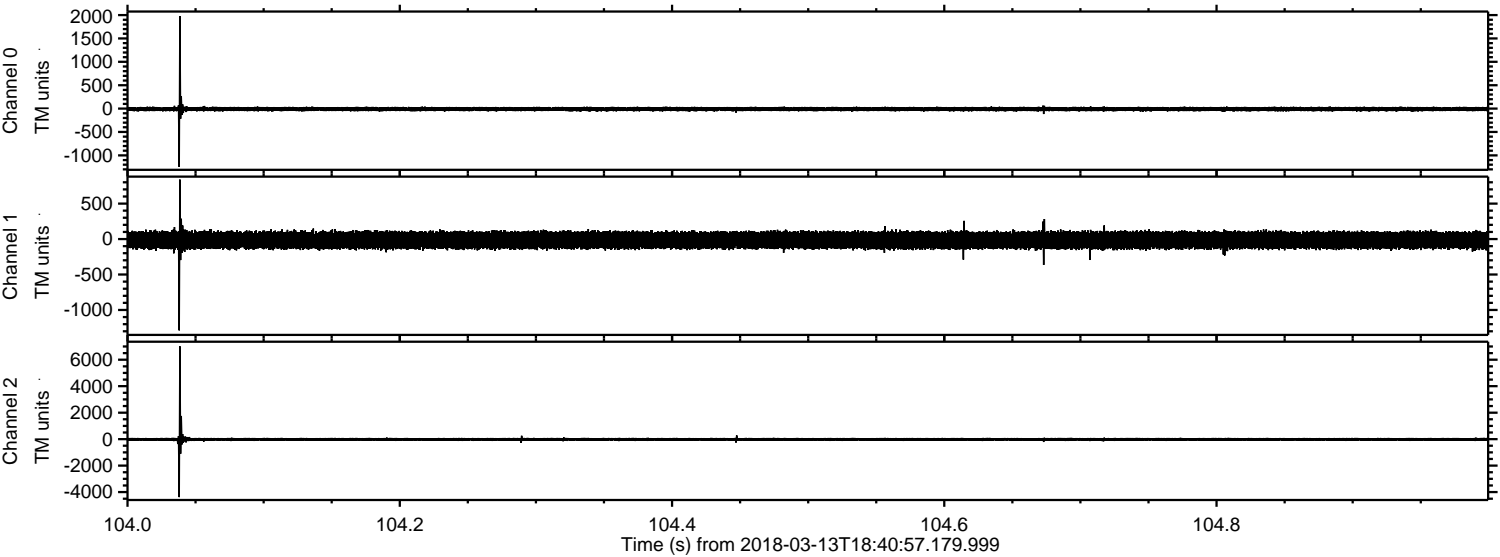
ELMAVAN 3D WAVEFORMS (Measured data sampled at 50 kHz) 50999 packets of 144 samples from 2018-03-13T18:40:57.179.999. Part 115/147

Processed Tue Mar 13 19:49:02 2018 by ELM ver.2012-10-06 from 001__elm20180313_184056__dat00.bin

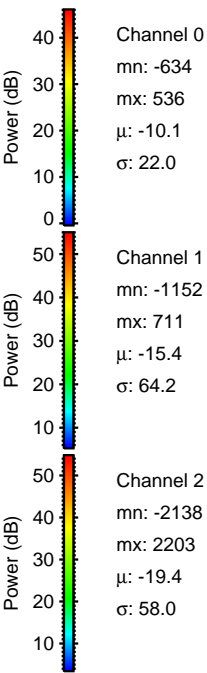
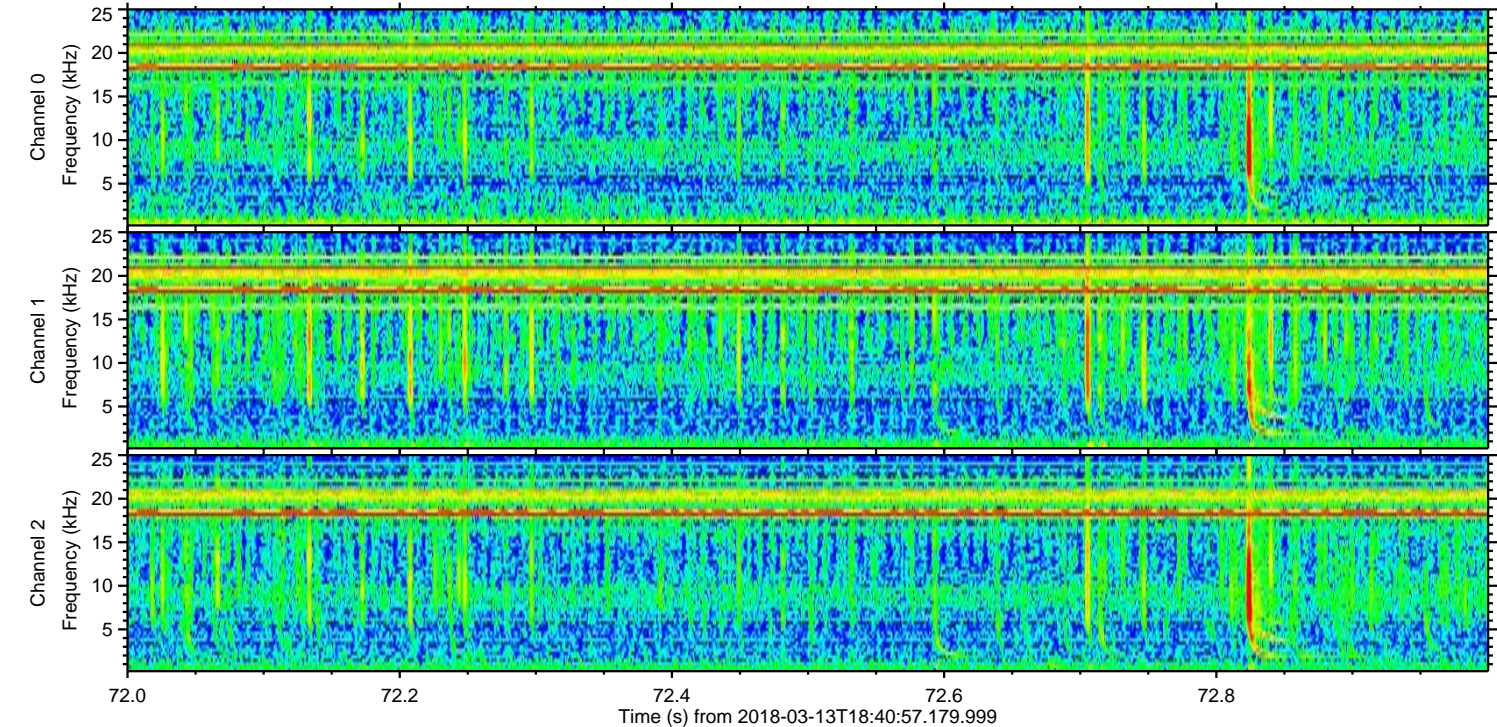
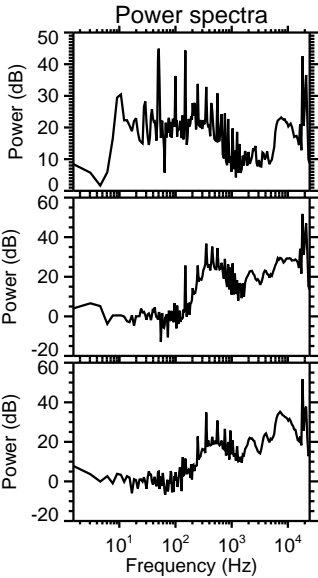
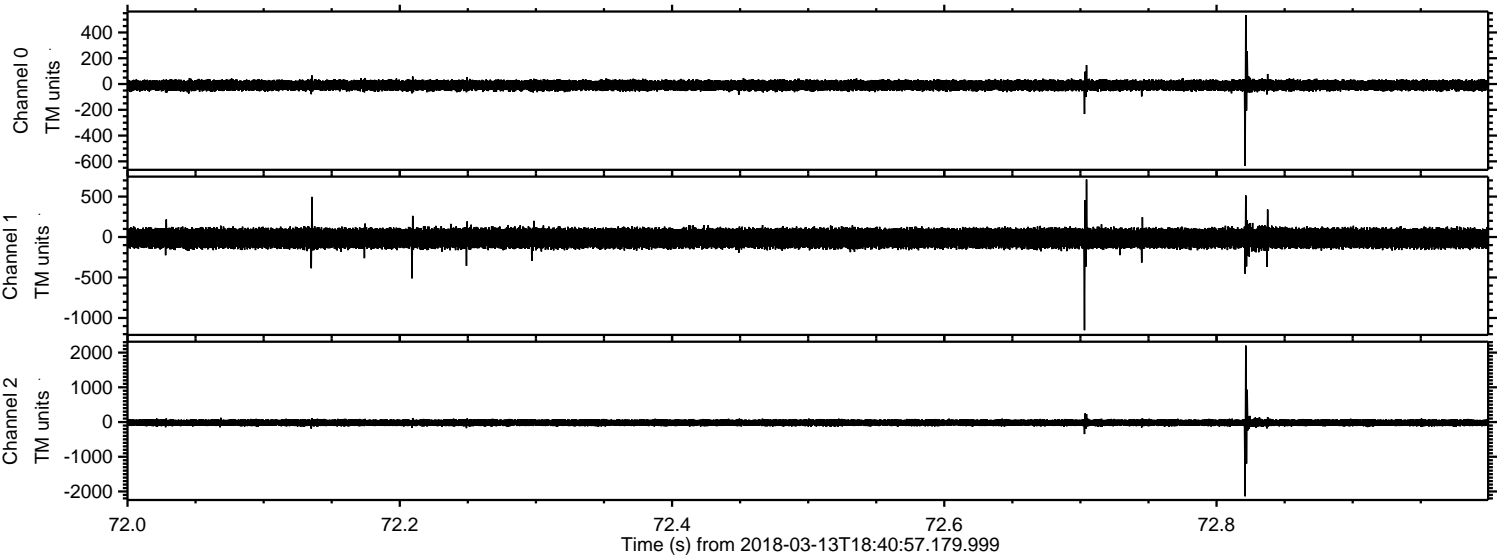


ELMAVAN 3D WAVEFORMS (Measured data sampled at 50 kHz) 50999 packets of 144 samples from 2018-03-13T18:40:57.179.999. Part 105/147

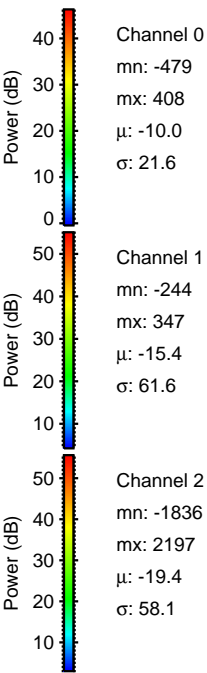
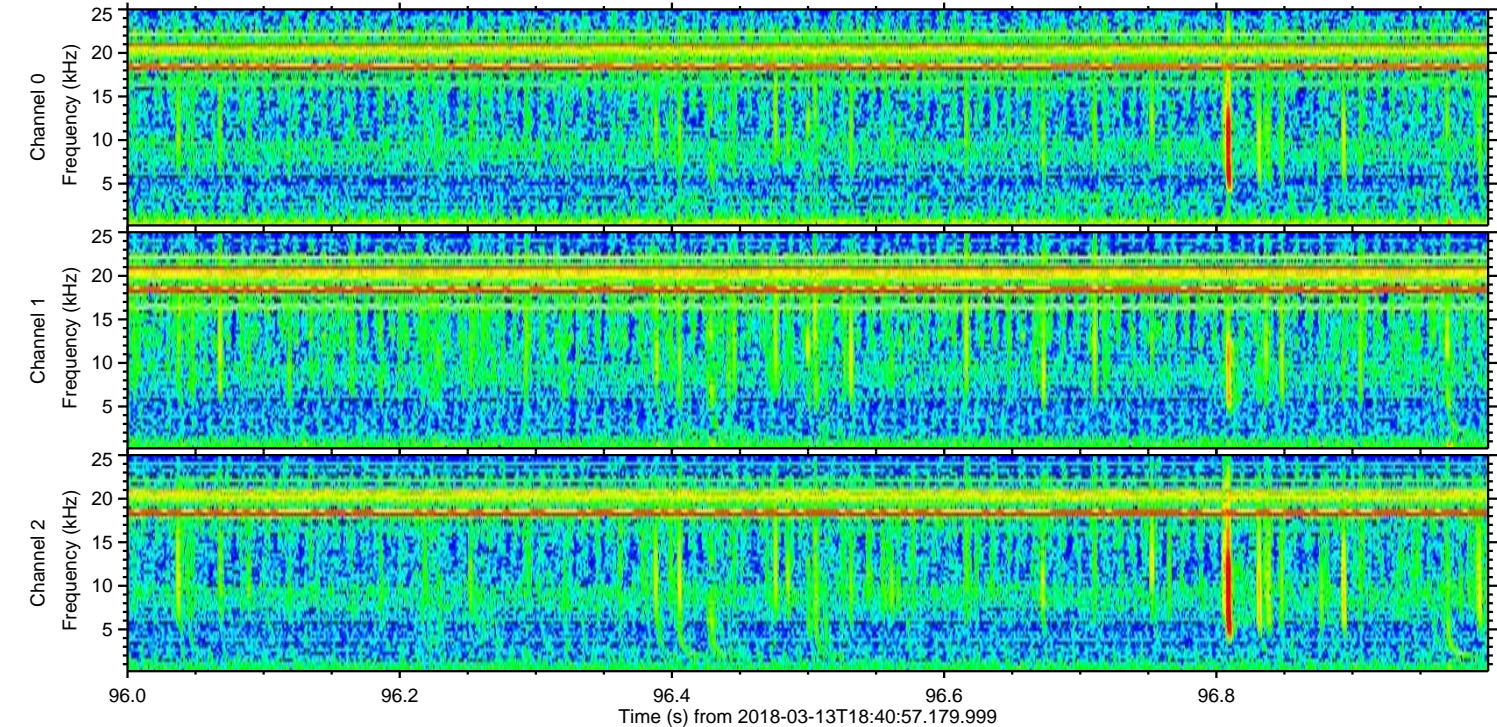
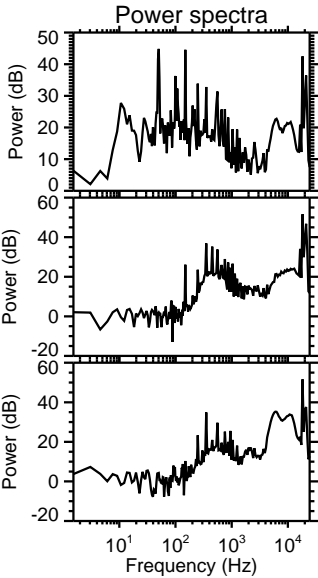
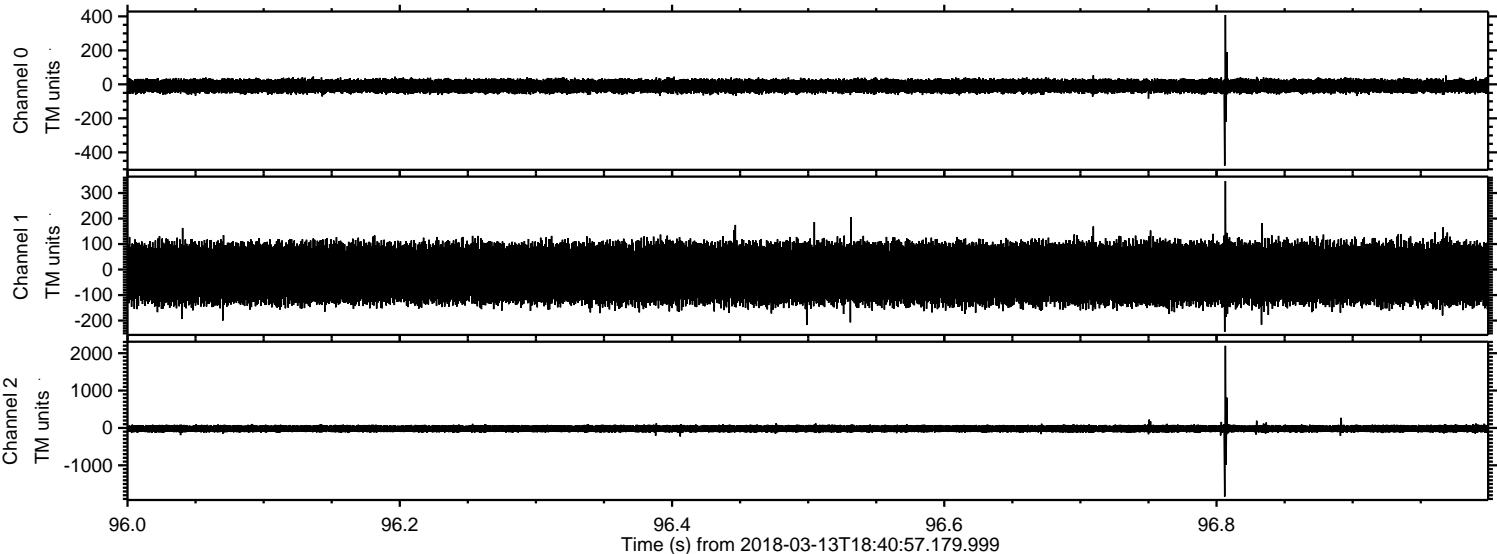
Processed Tue Mar 13 19:49:03 2018 by ELM ver.2012-10-06 from 001__elm20180313_184056__dat00.bin



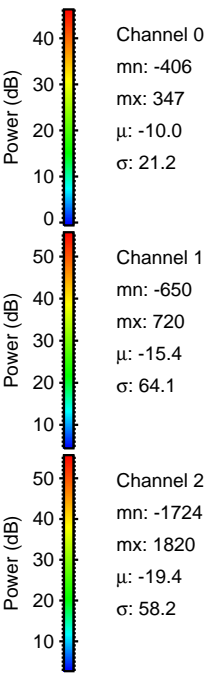
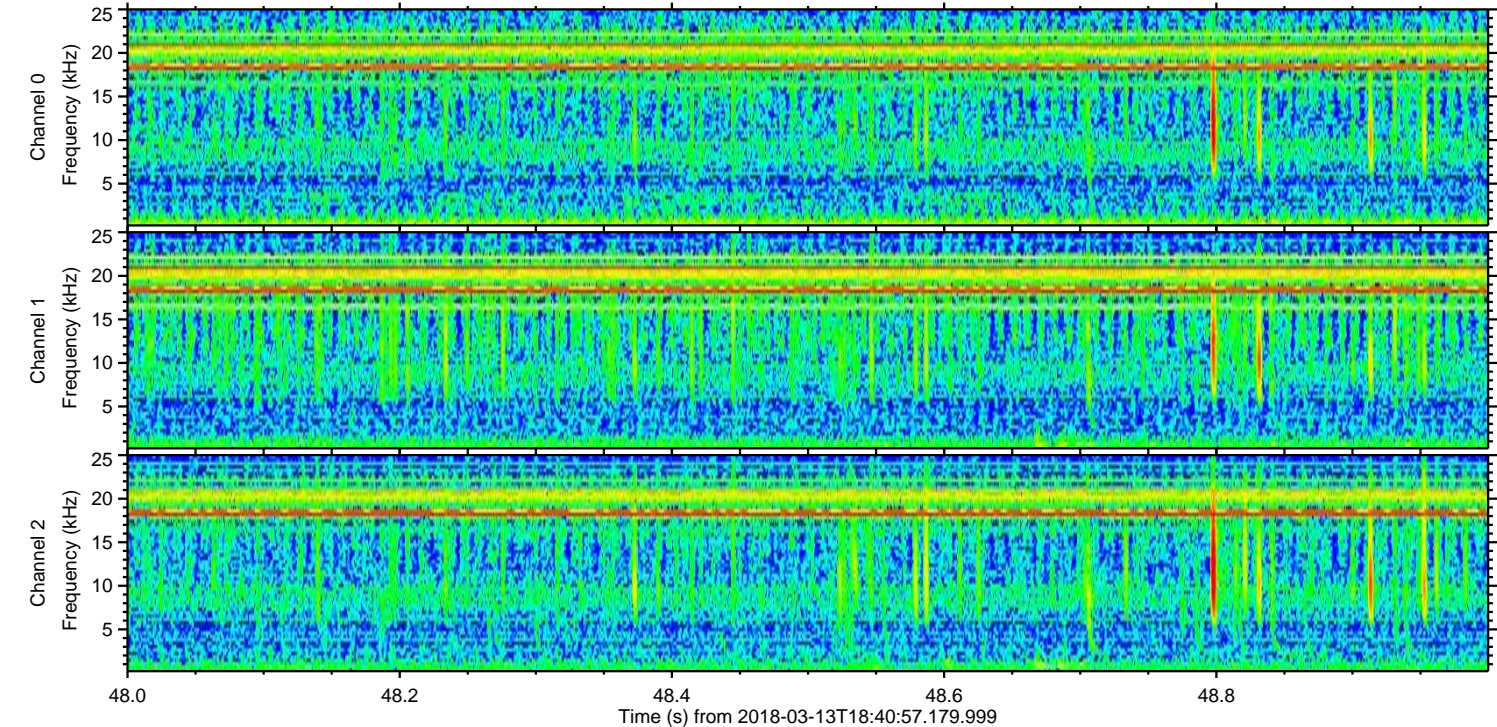
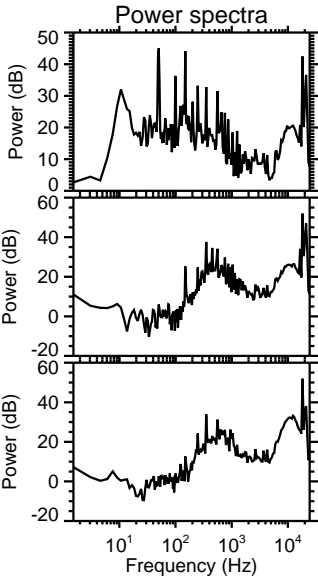
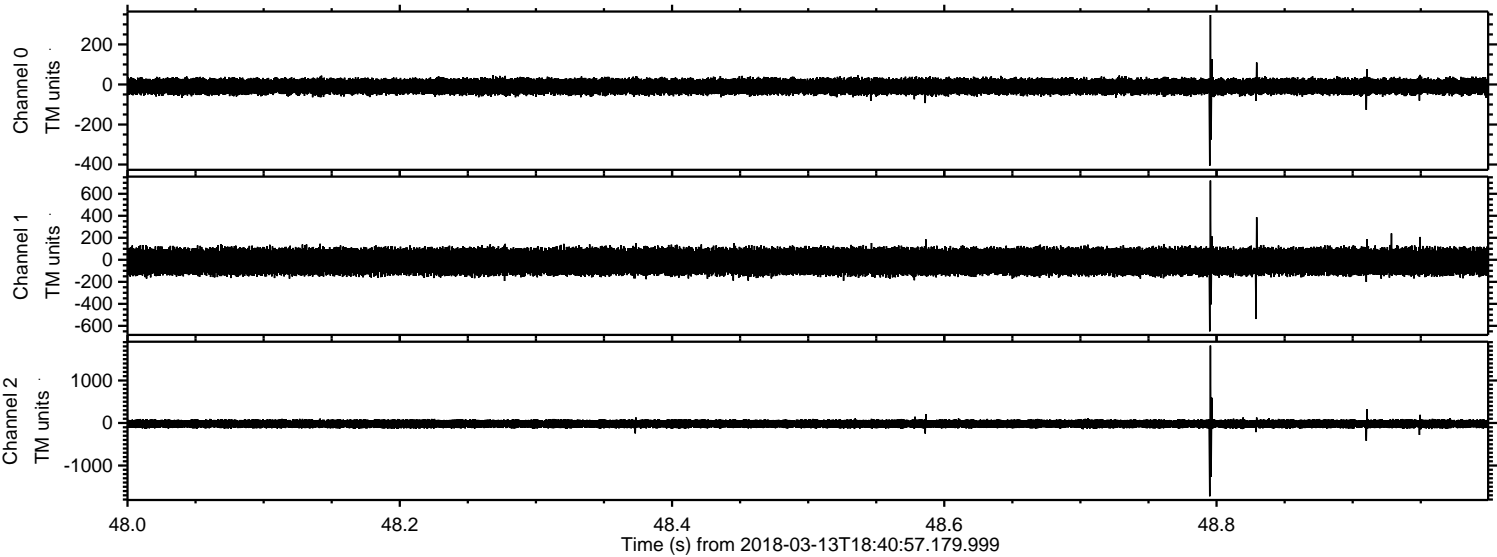
Processed Tue Mar 13 19:49:04 2018 by ELM ver.2012-10-06 from 001__elm20180313_184056__dat00.bin



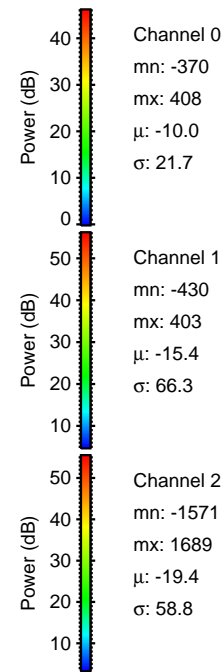
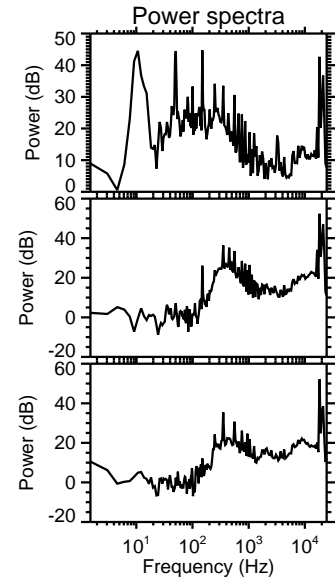
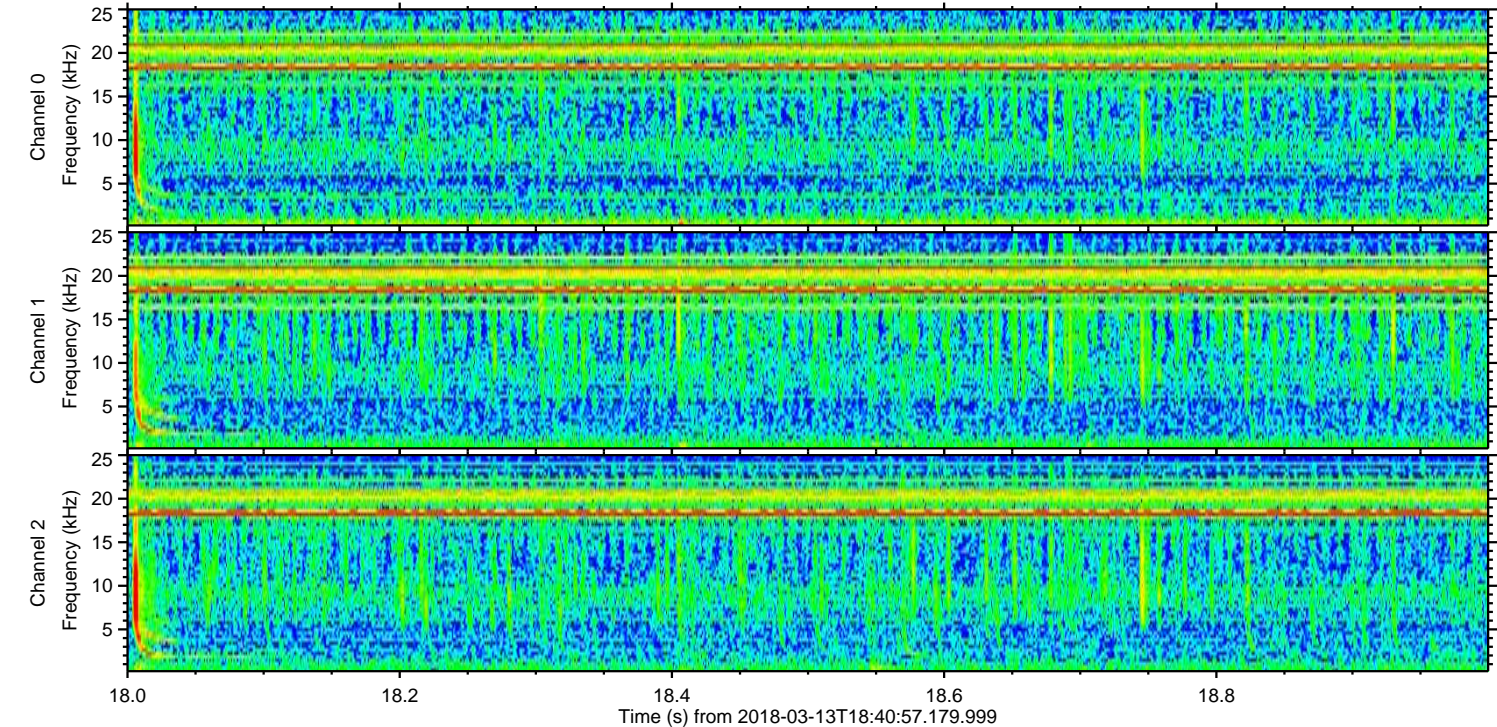
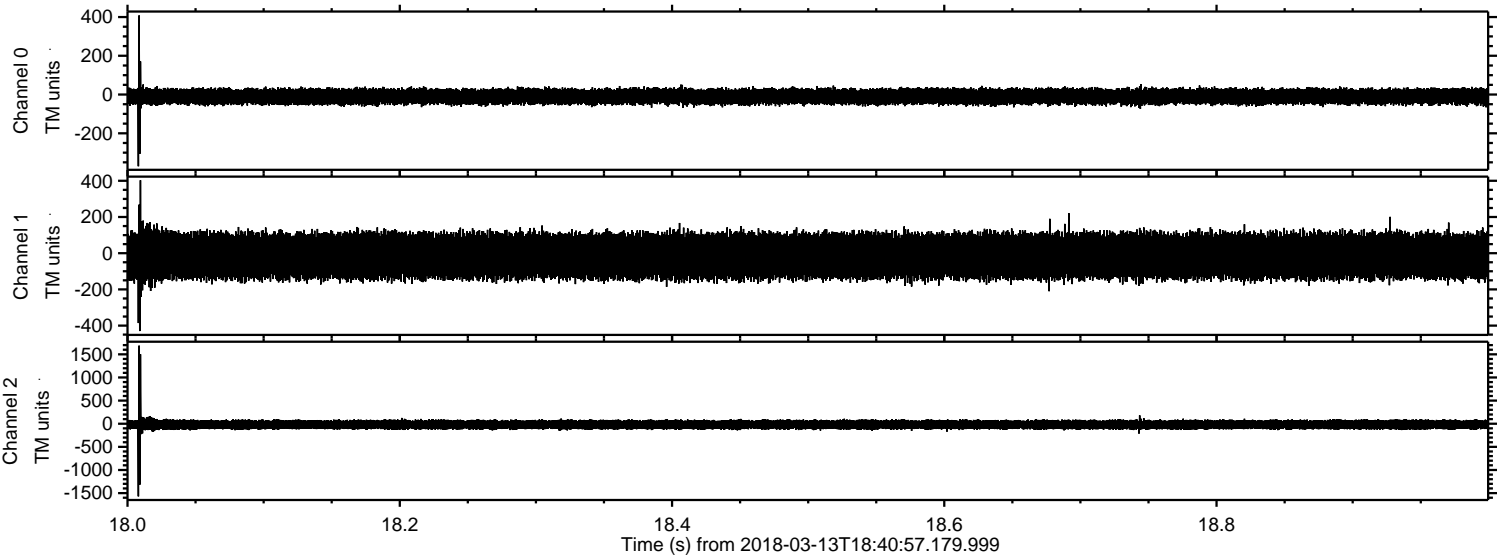
Processed Tue Mar 13 19:49:04 2018 by ELM ver.2012-10-06 from 001__elm20180313_184056__dat00.bin



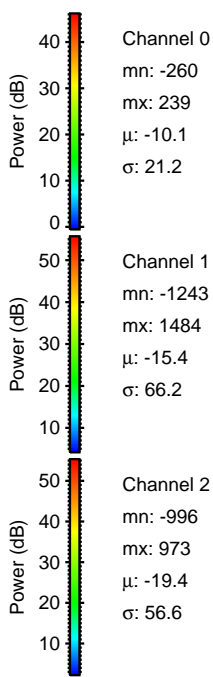
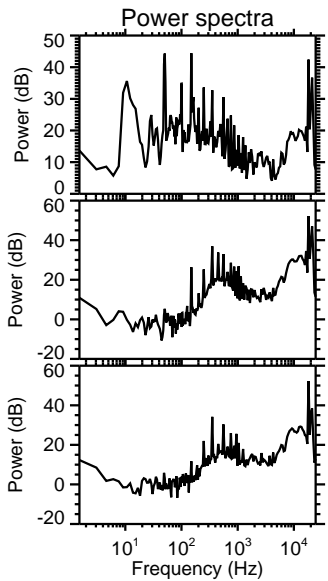
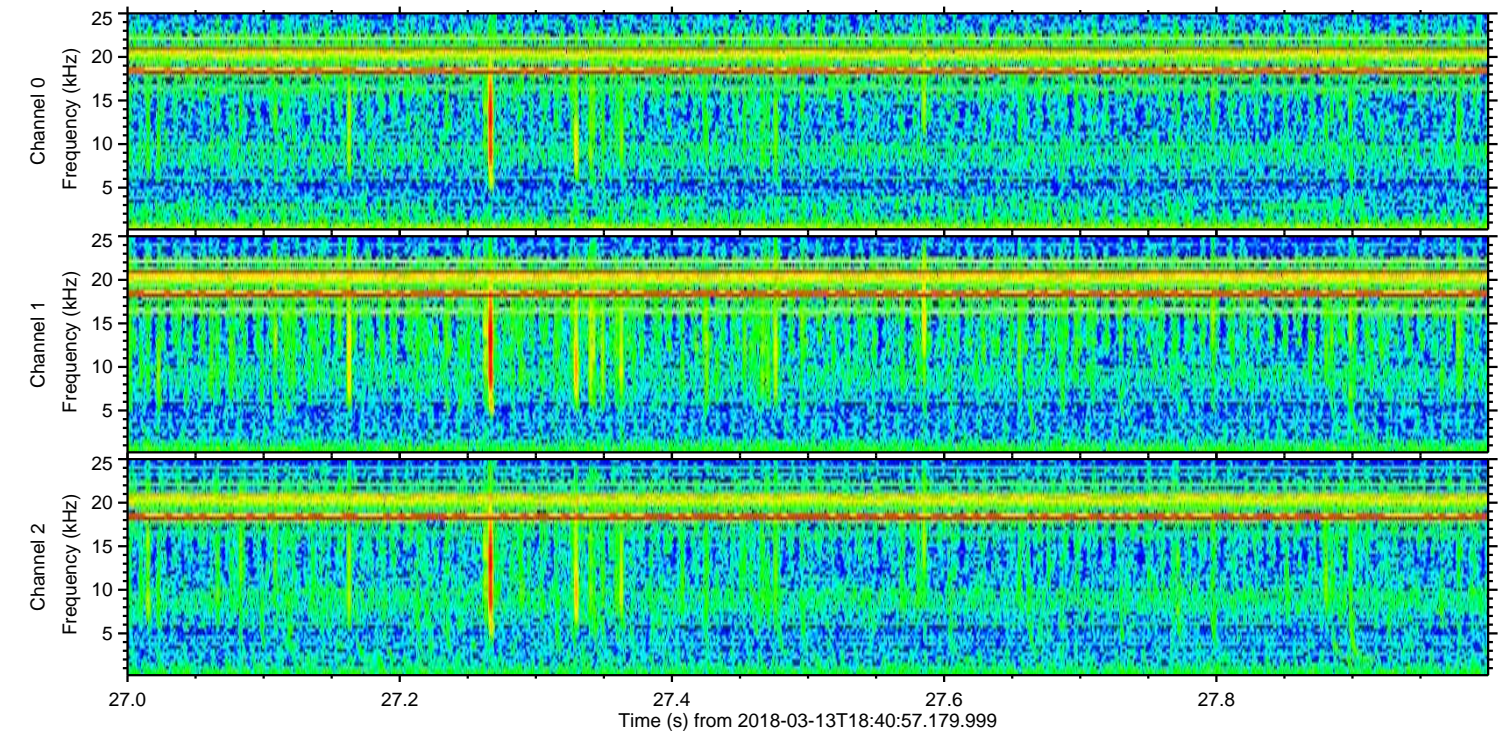
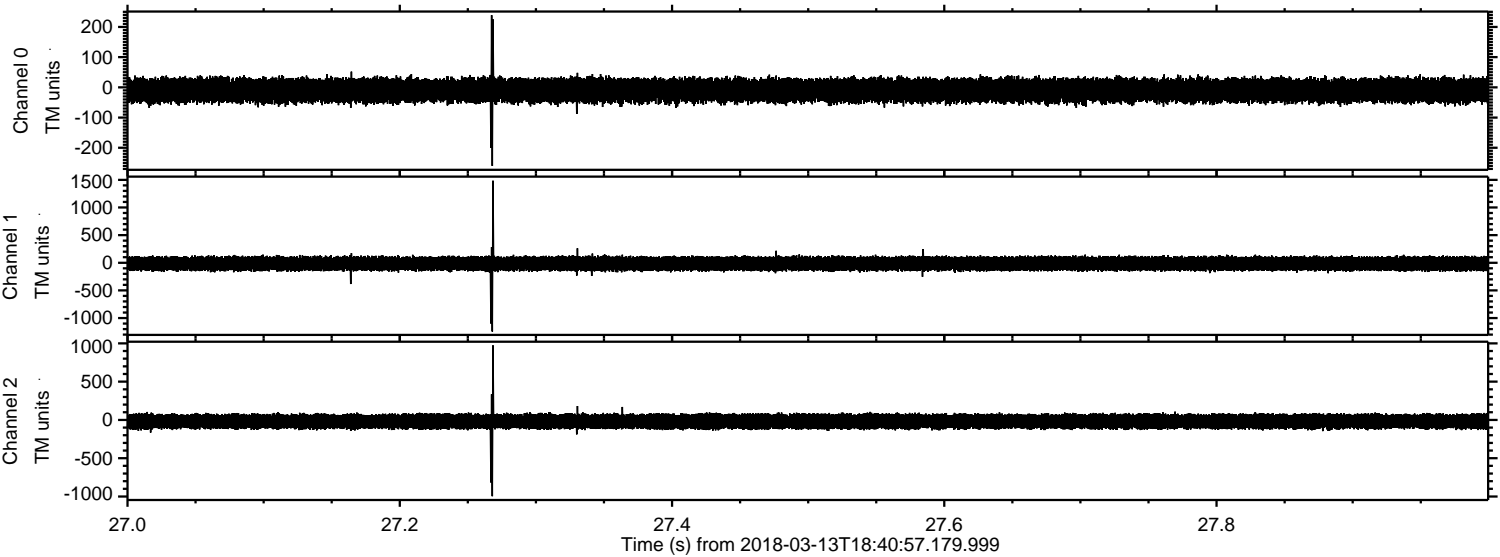
Processed Tue Mar 13 19:49:05 2018 by ELM ver.2012-10-06 from 001__elm20180313_184056__dat00.bin



Processed Tue Mar 13 19:49:06 2018 by ELM ver.2012-10-06 from 001__elm20180313_184056__dat00.bin

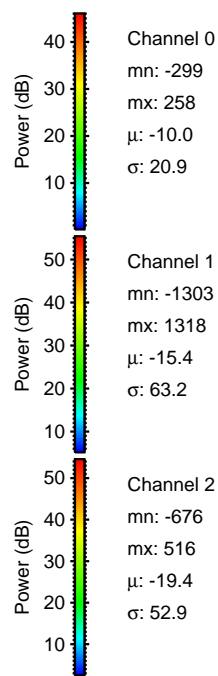
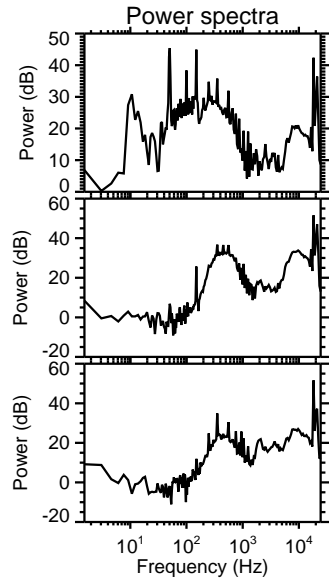
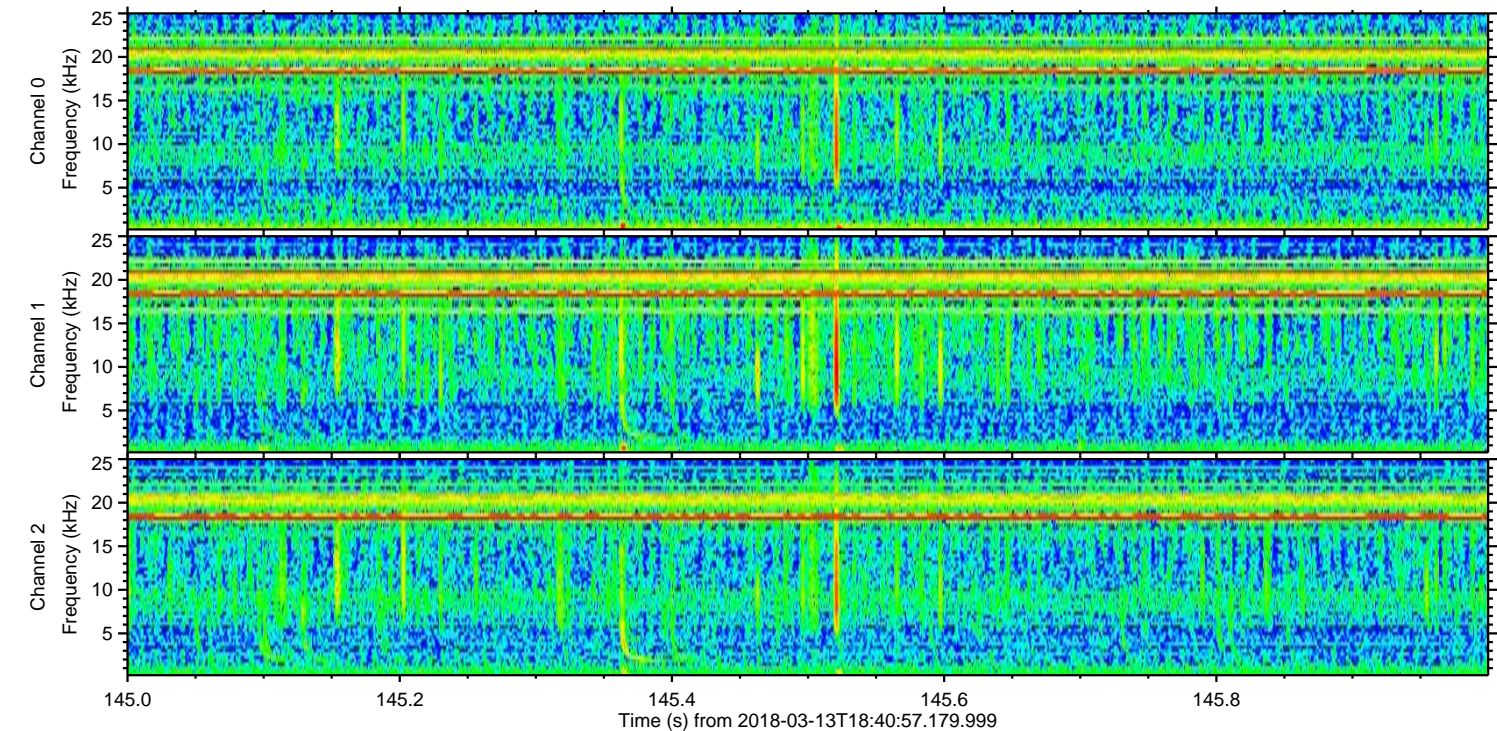
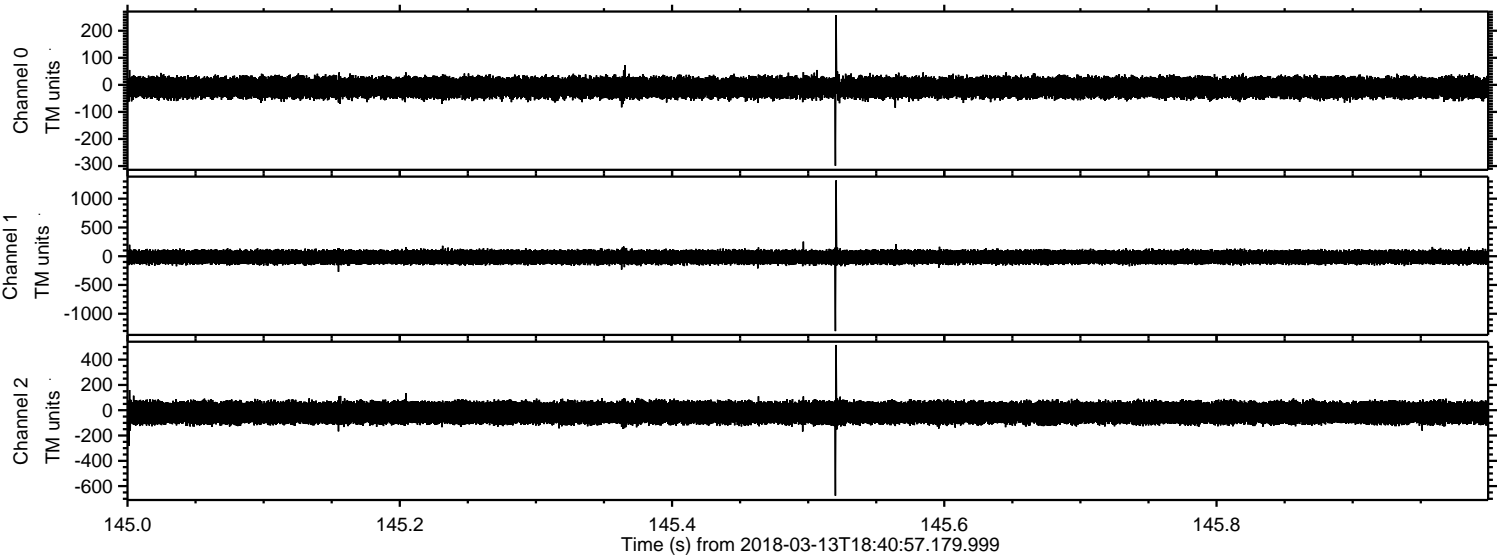


Processed Tue Mar 13 19:49:07 2018 by ELM ver.2012-10-06 from 001__elm20180313_184056__dat00.bin

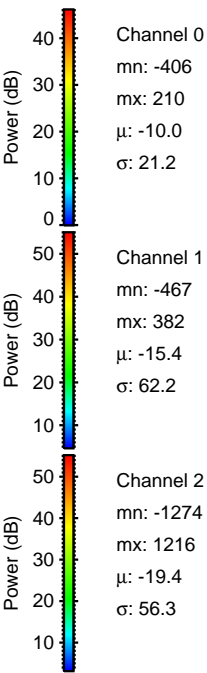
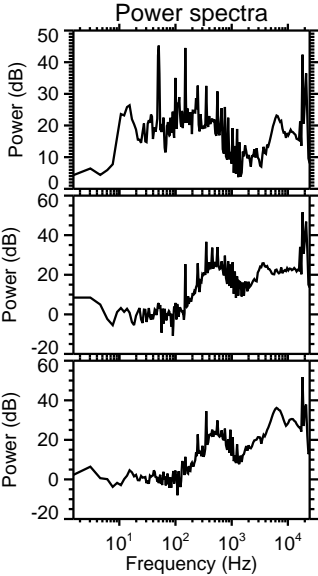
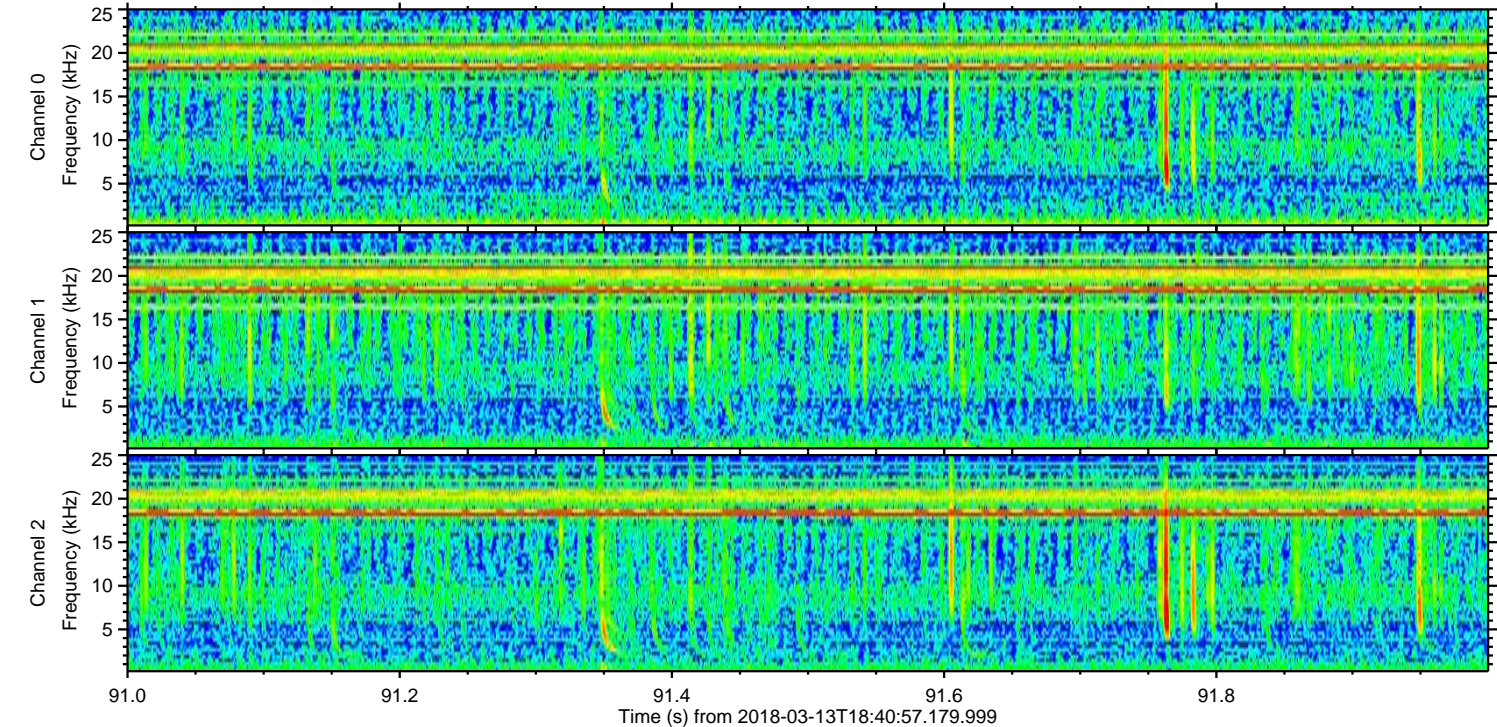
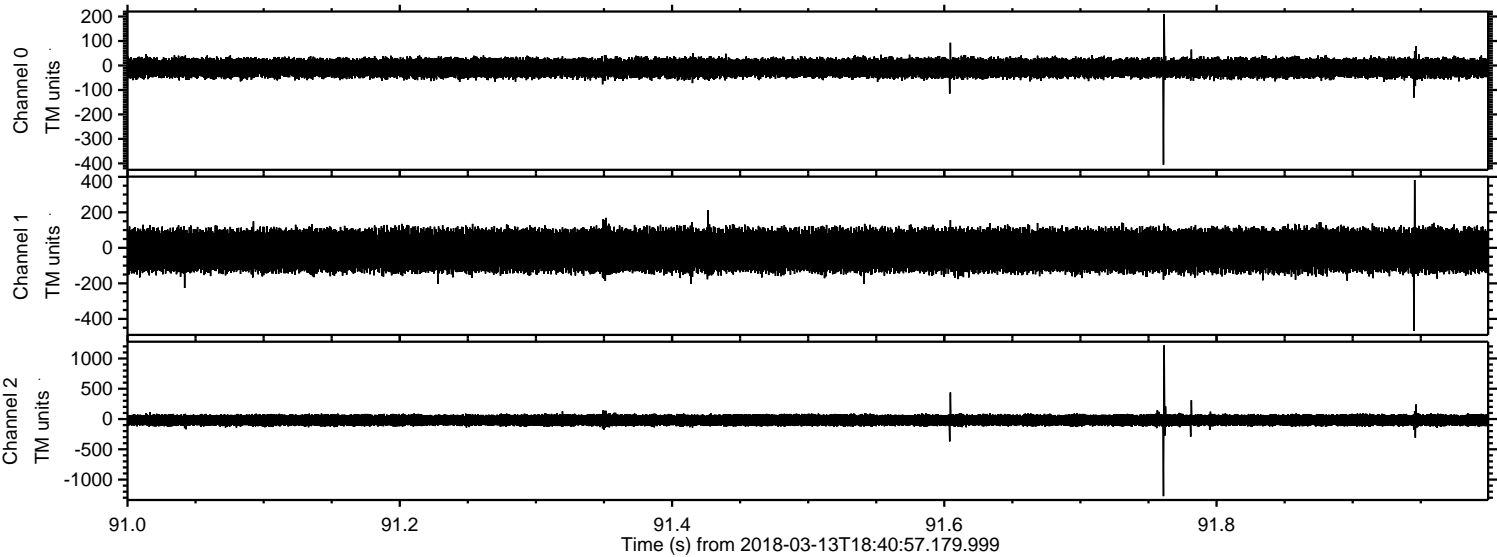


ELMAVAN 3D WAVEFORMS (Measured data sampled at 50 kHz) 50999 packets of 144 samples from 2018-03-13T18:40:57.179.999. Part 146/147

Processed Tue Mar 13 19:49:08 2018 by ELM ver.2012-10-06 from 001__elm20180313_184056__dat00.bin



Processed Tue Mar 13 19:49:08 2018 by ELM ver.2012-10-06 from 001__elm20180313_184056__dat00.bin



Channel 0
mn: -406
mx: 210
 μ : -10.0
 σ : 21.2

Channel 1
mn: -467
mx: 382
 μ : -15.4
 σ : 62.2

Channel 2
mn: -1274
mx: 1216
 μ : -19.4
 σ : 56.3

Processed Tue Mar 13 19:49:09 2018 by ELM ver.2012-10-06 from 001__elm20180313_184056__dat00.bin

