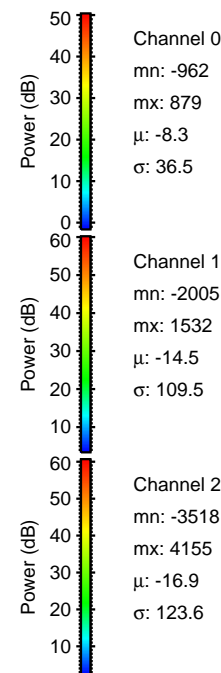
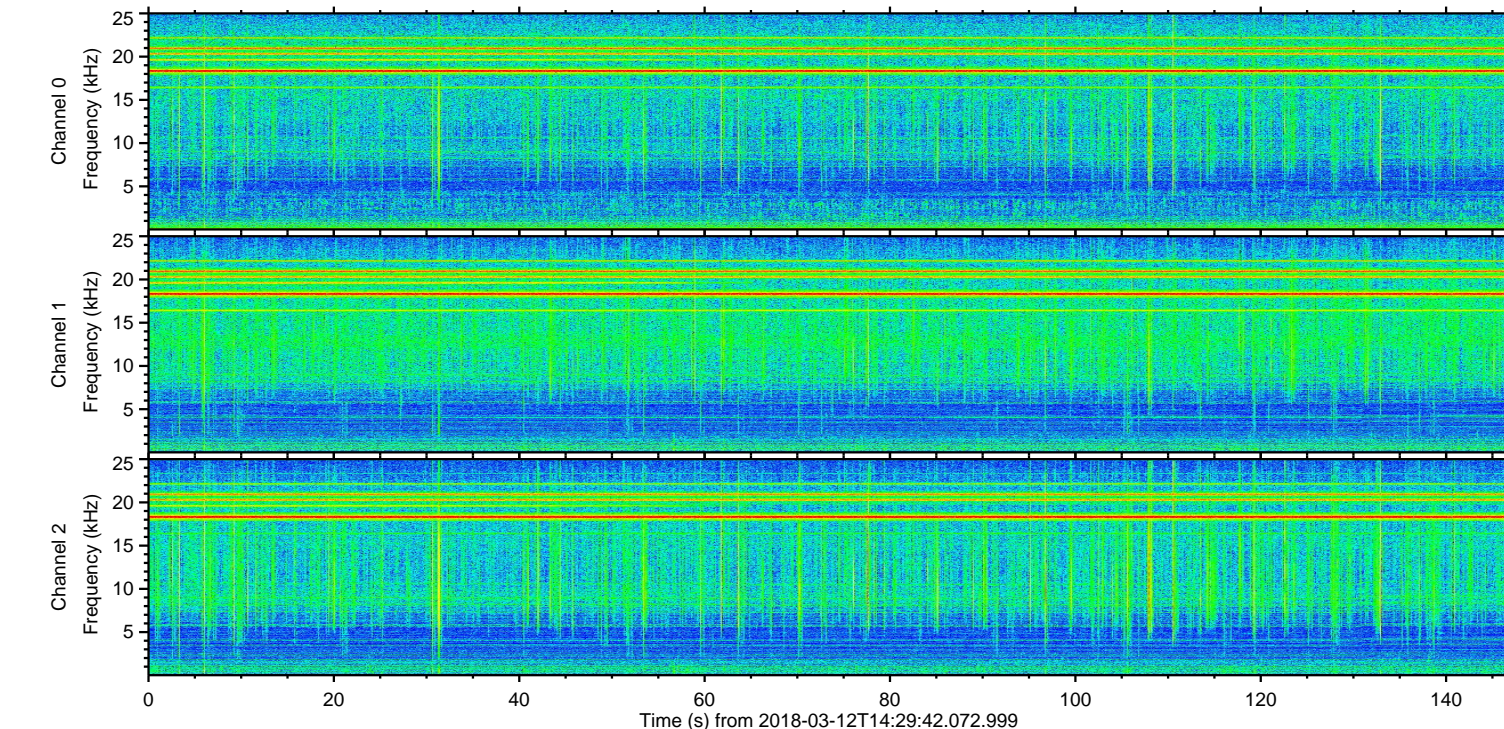
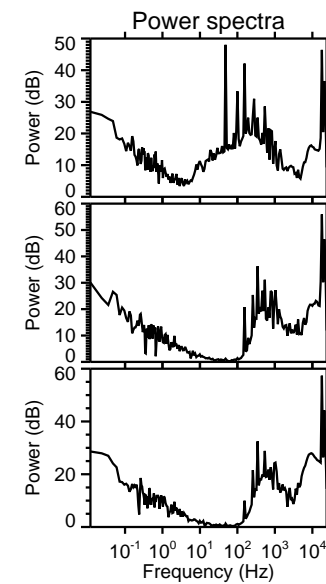
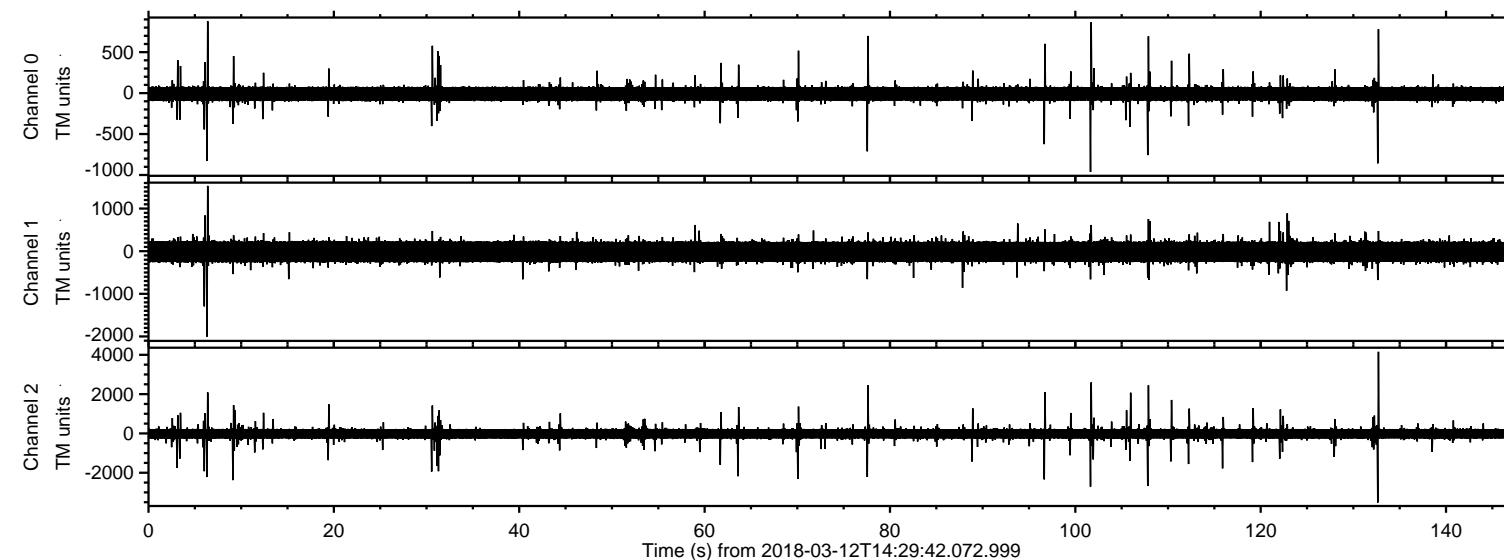


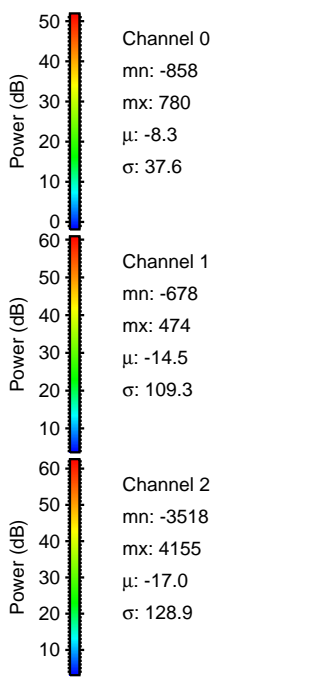
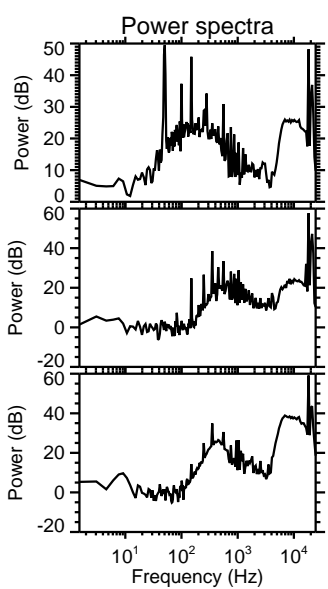
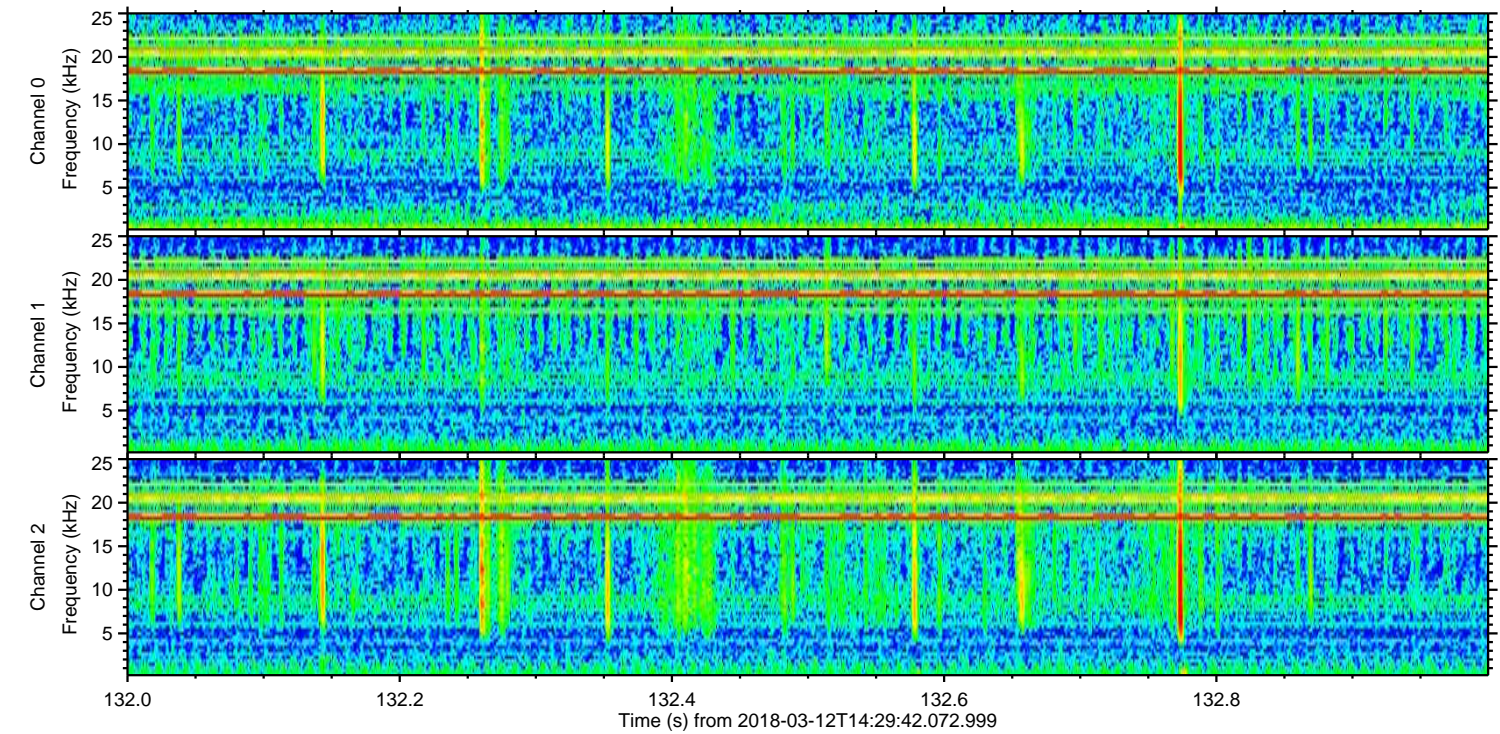
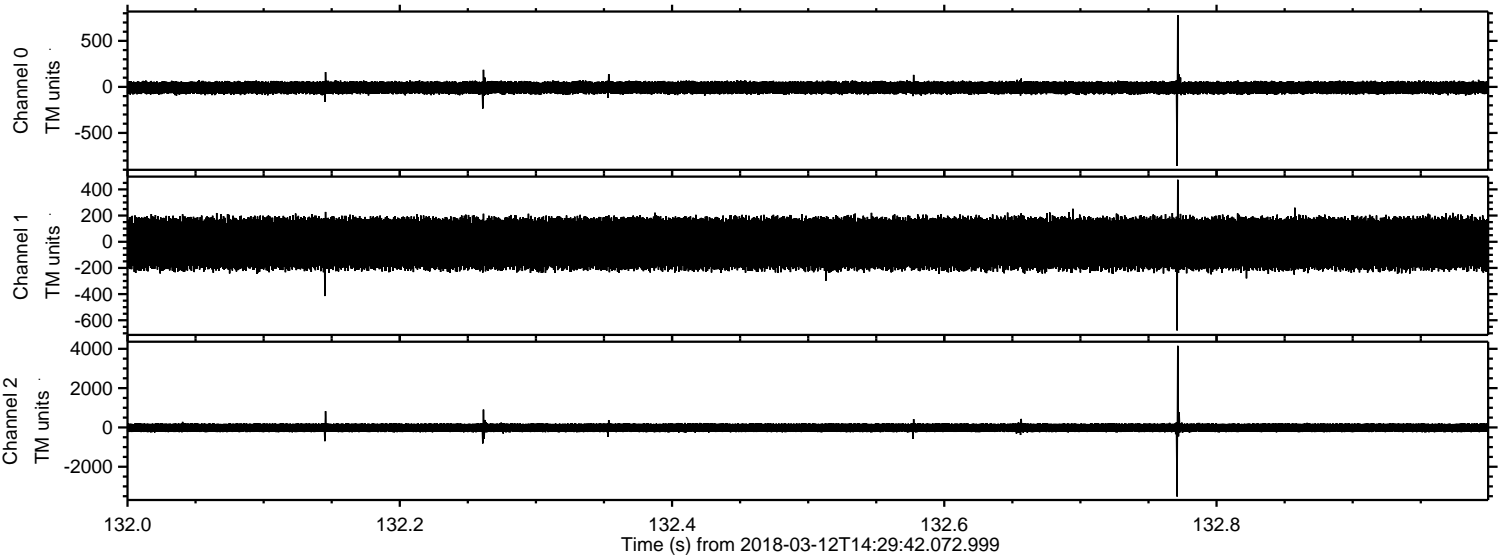
ELMAVAN 3D WAVEFORMS (Measured data sampled at 50 kHz) 51000 packets of 144 samples from 2018-03-12T14:29:42.072.999.

Processed Mon Mar 12 15:37:35 2018 by ELM ver.2012-10-06 from 001__elm20180312_142941__dat00.bin



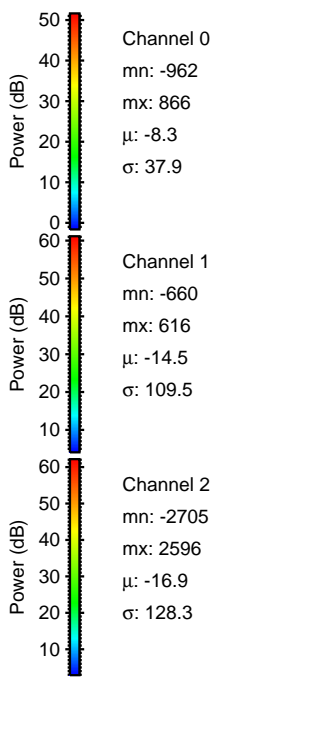
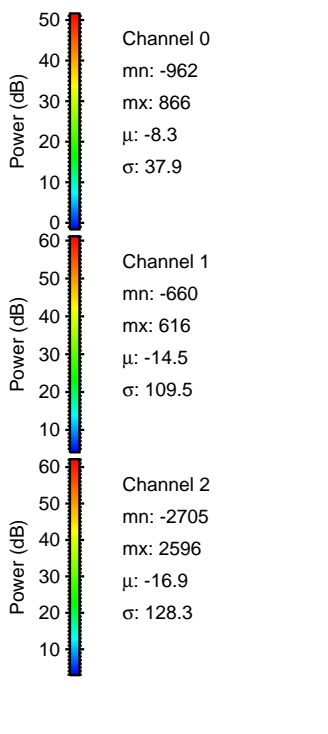
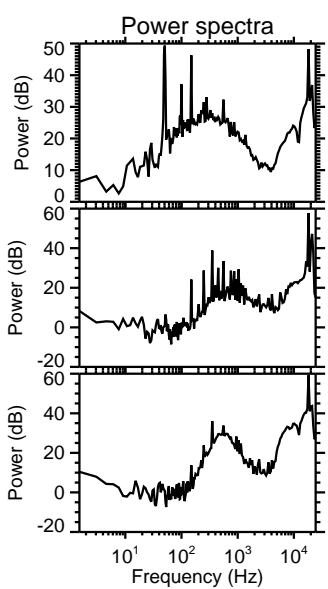
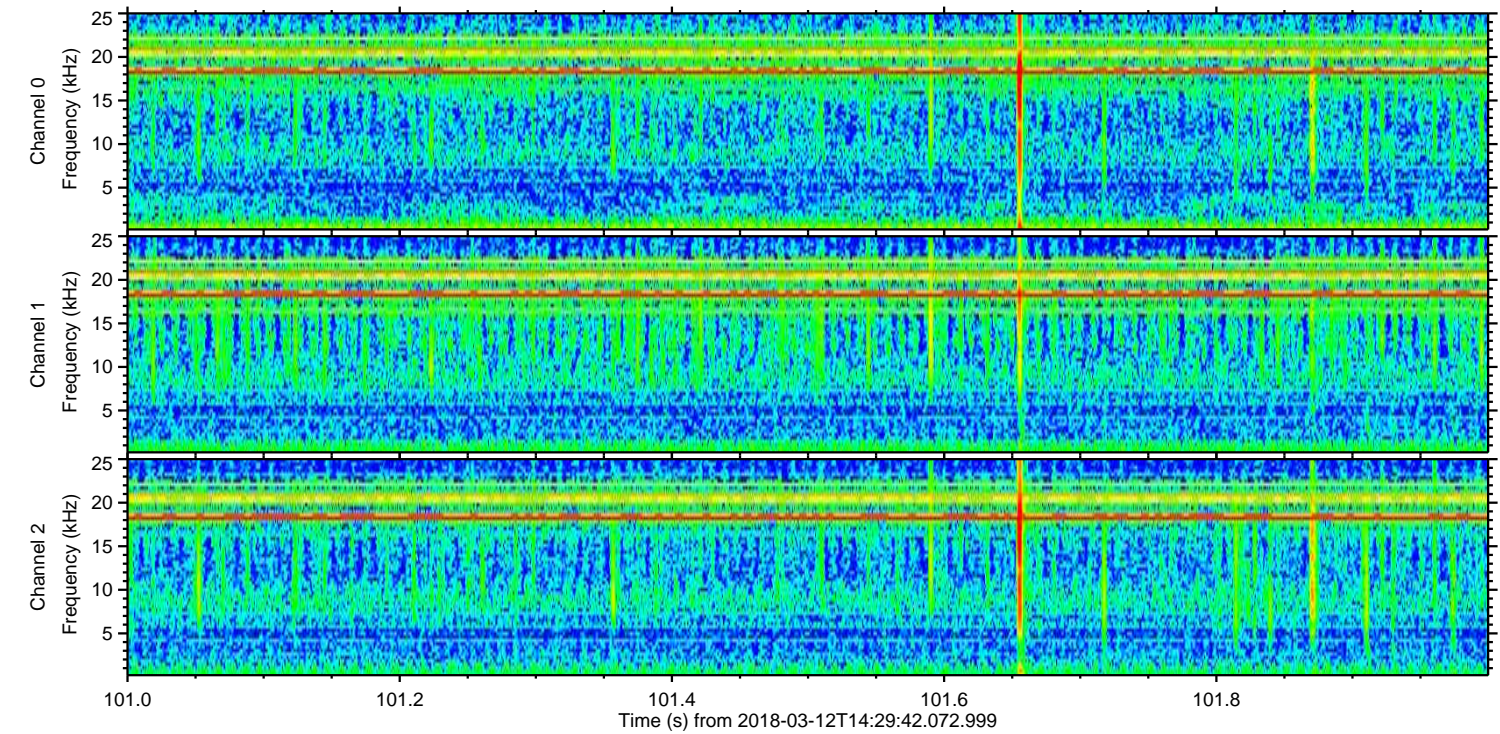
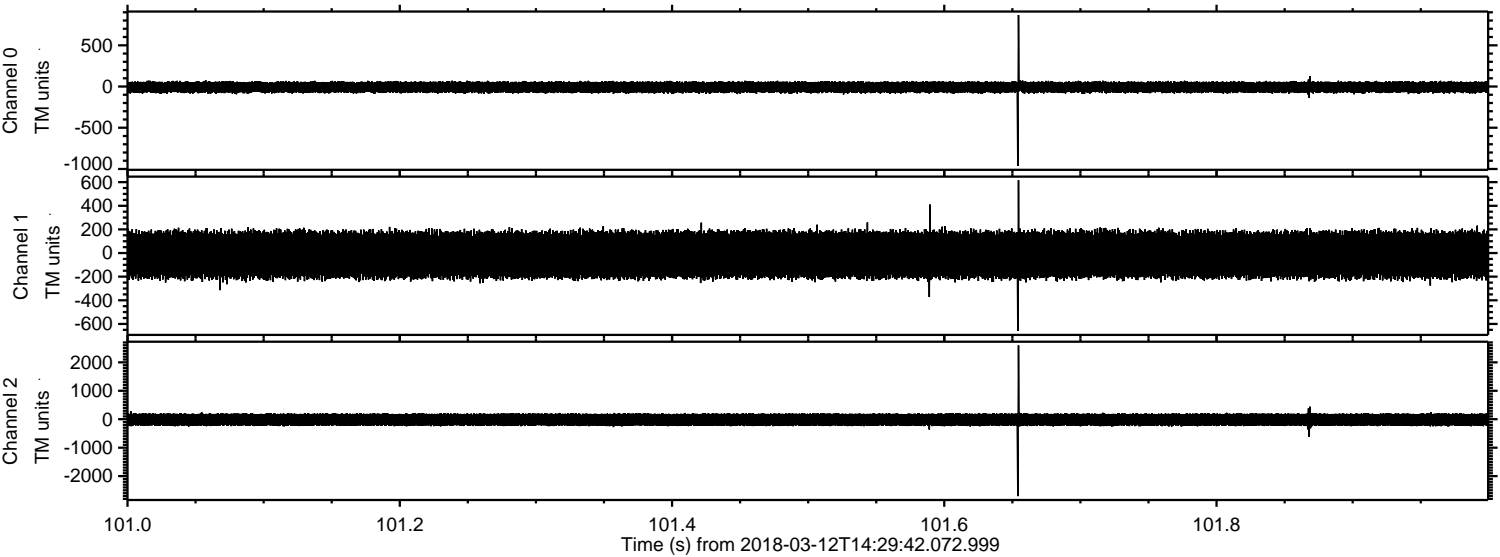
ELMAVAN 3D WAVEFORMS (Measured data sampled at 50 kHz) 51000 packets of 144 samples from 2018-03-12T14:29:42.072.999. Part 133/147

Processed Mon Mar 12 15:37:43 2018 by ELM ver.2012-10-06 from 001__elm20180312_142941__dat00.bin



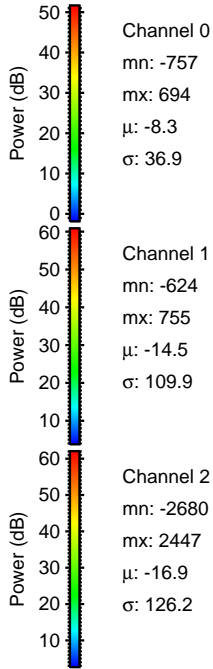
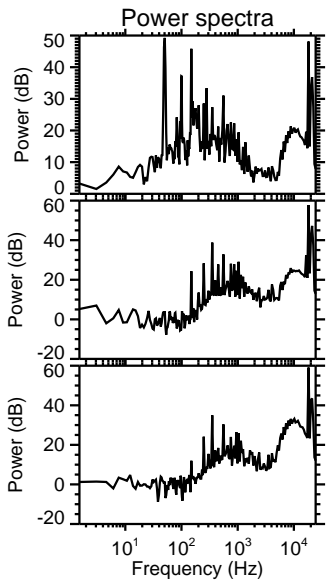
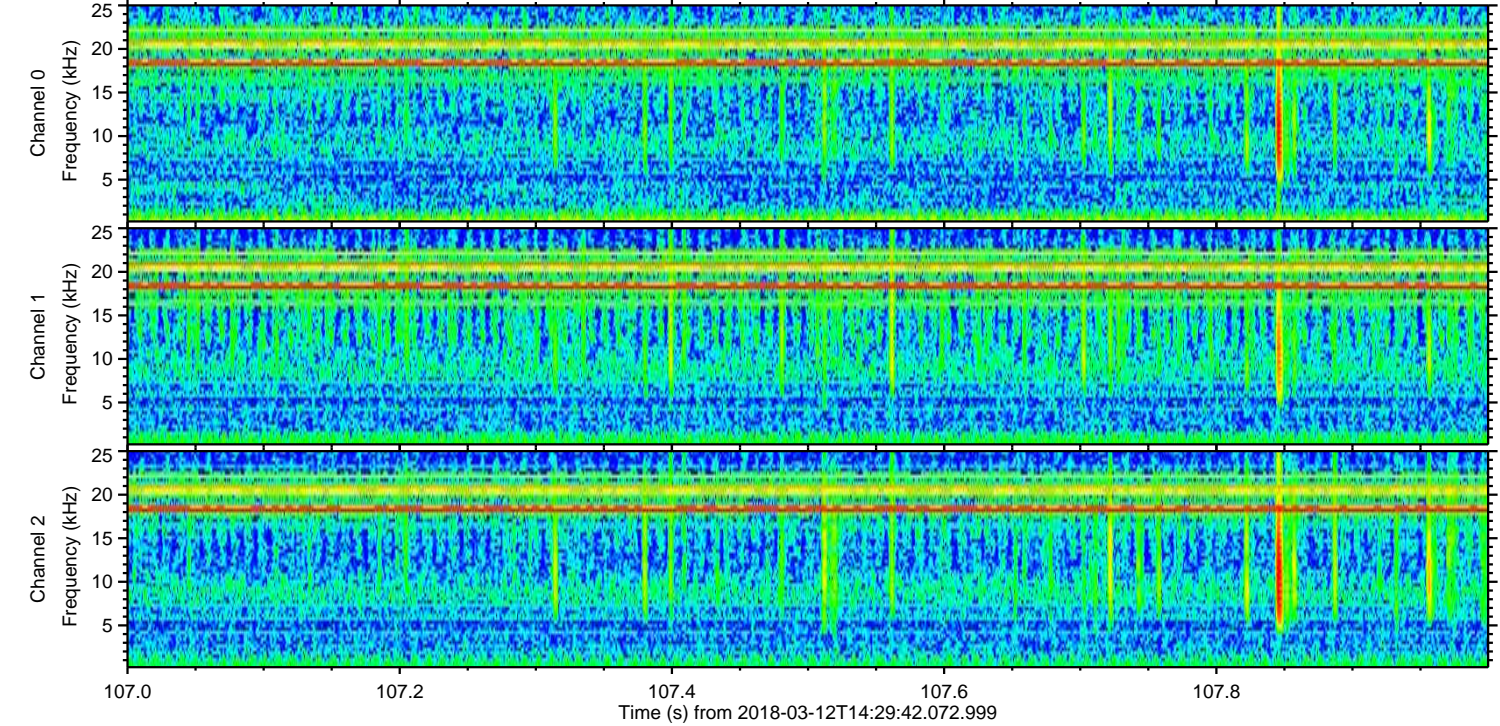
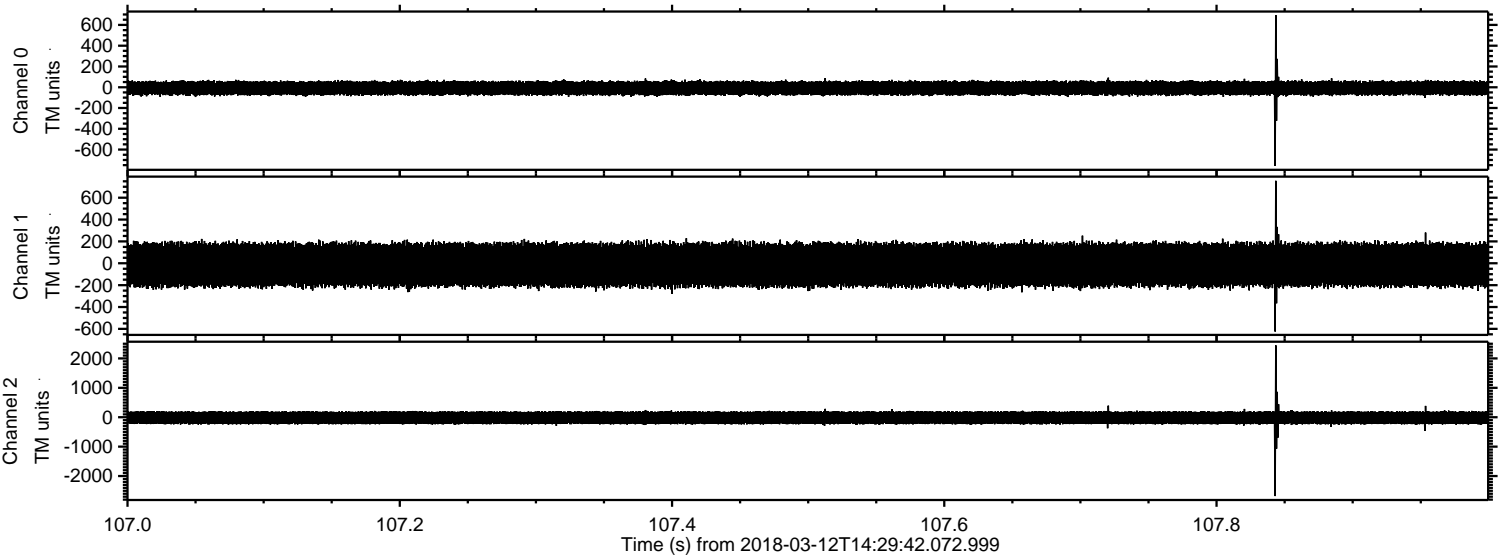
ELMAVAN 3D WAVEFORMS (Measured data sampled at 50 kHz) 51000 packets of 144 samples from 2018-03-12T14:29:42.072.999. Part 102/147

Processed Mon Mar 12 15:37:44 2018 by ELM ver.2012-10-06 from 001__elm20180312_142941__dat00.bin

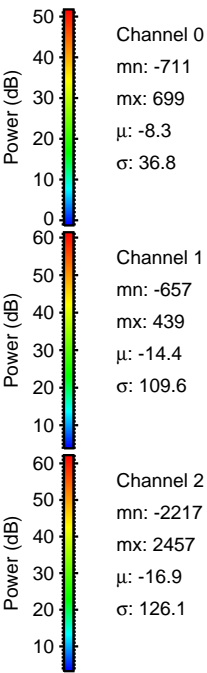
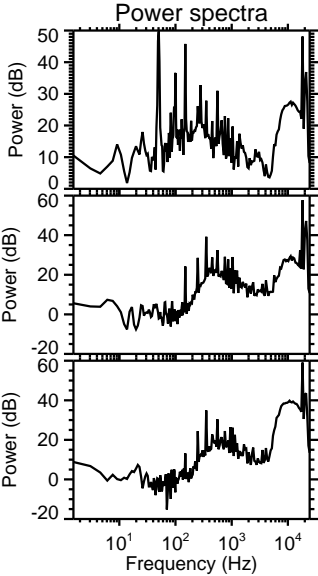
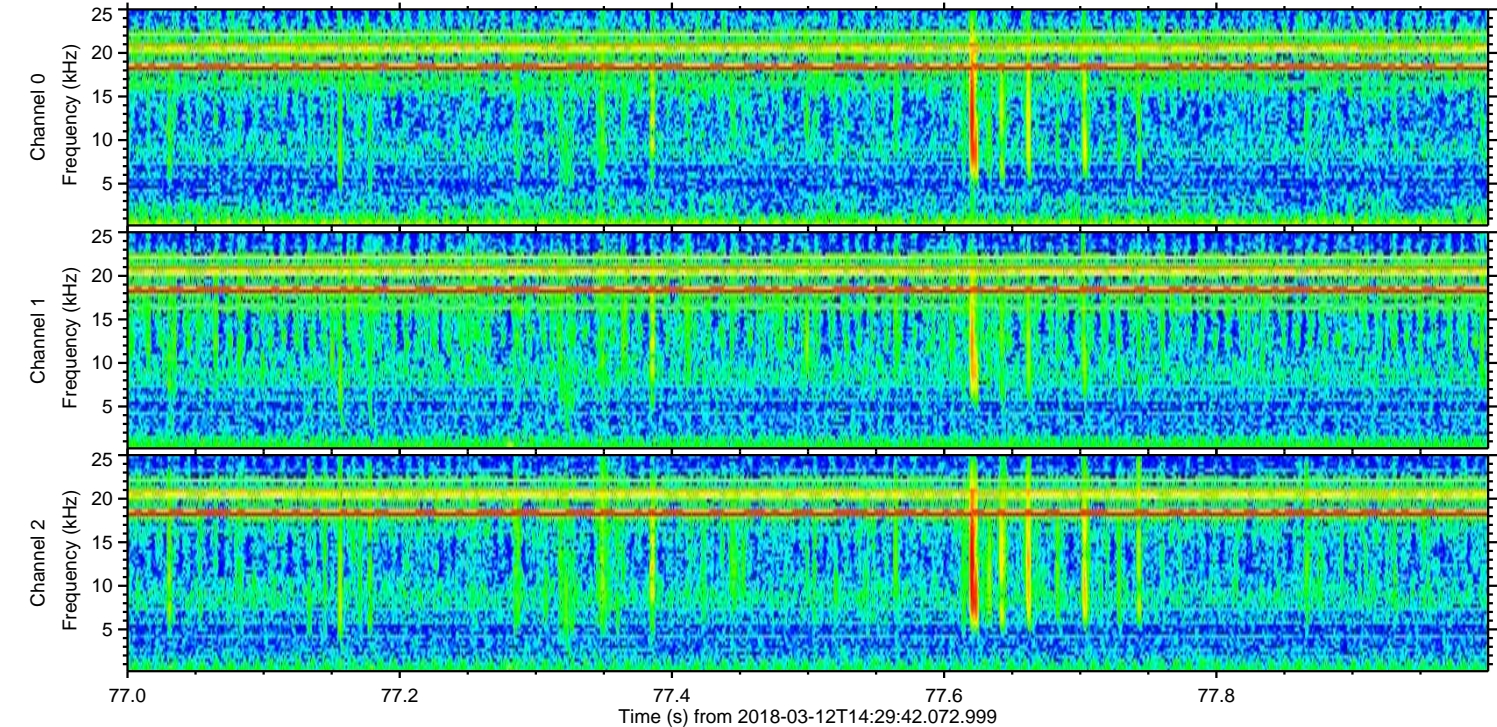
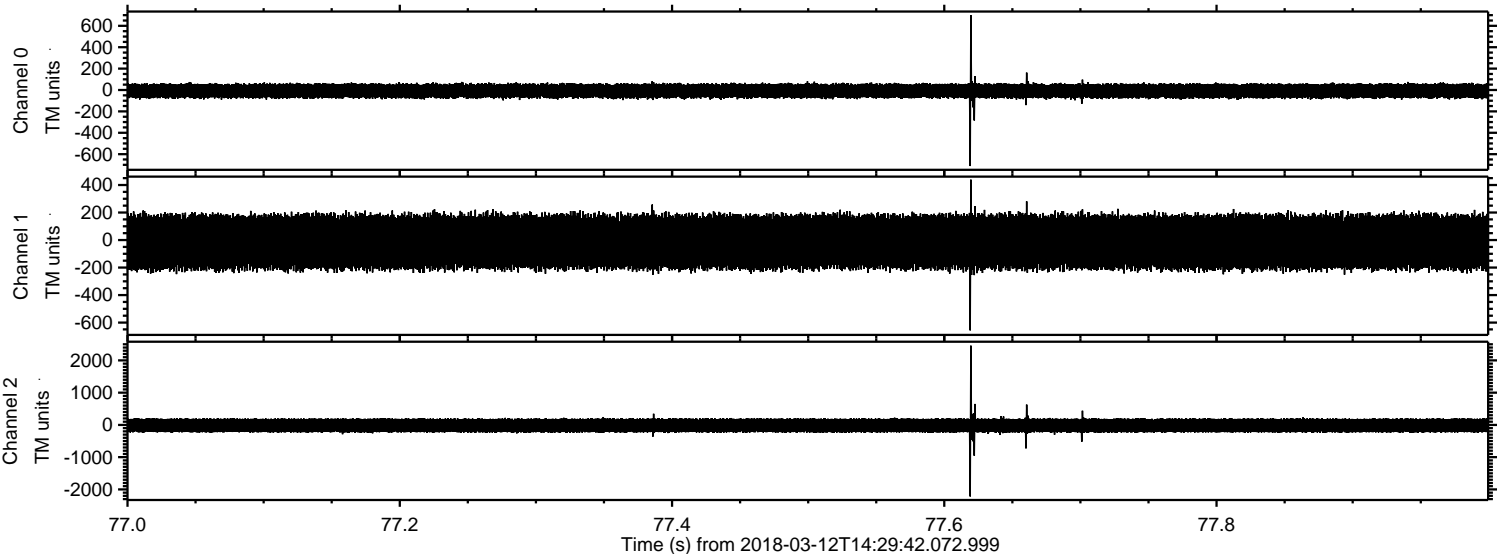


ELMAVAN 3D WAVEFORMS (Measured data sampled at 50 kHz) 51000 packets of 144 samples from 2018-03-12T14:29:42.072.999. Part 108/147

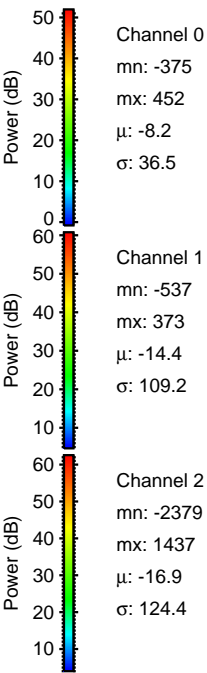
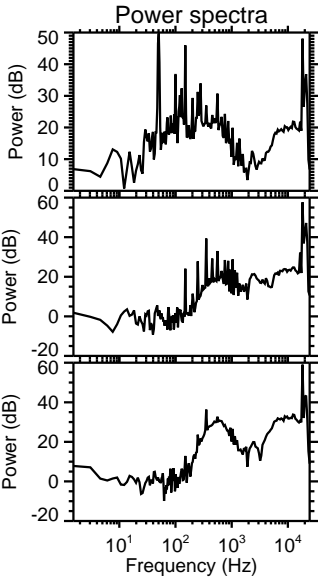
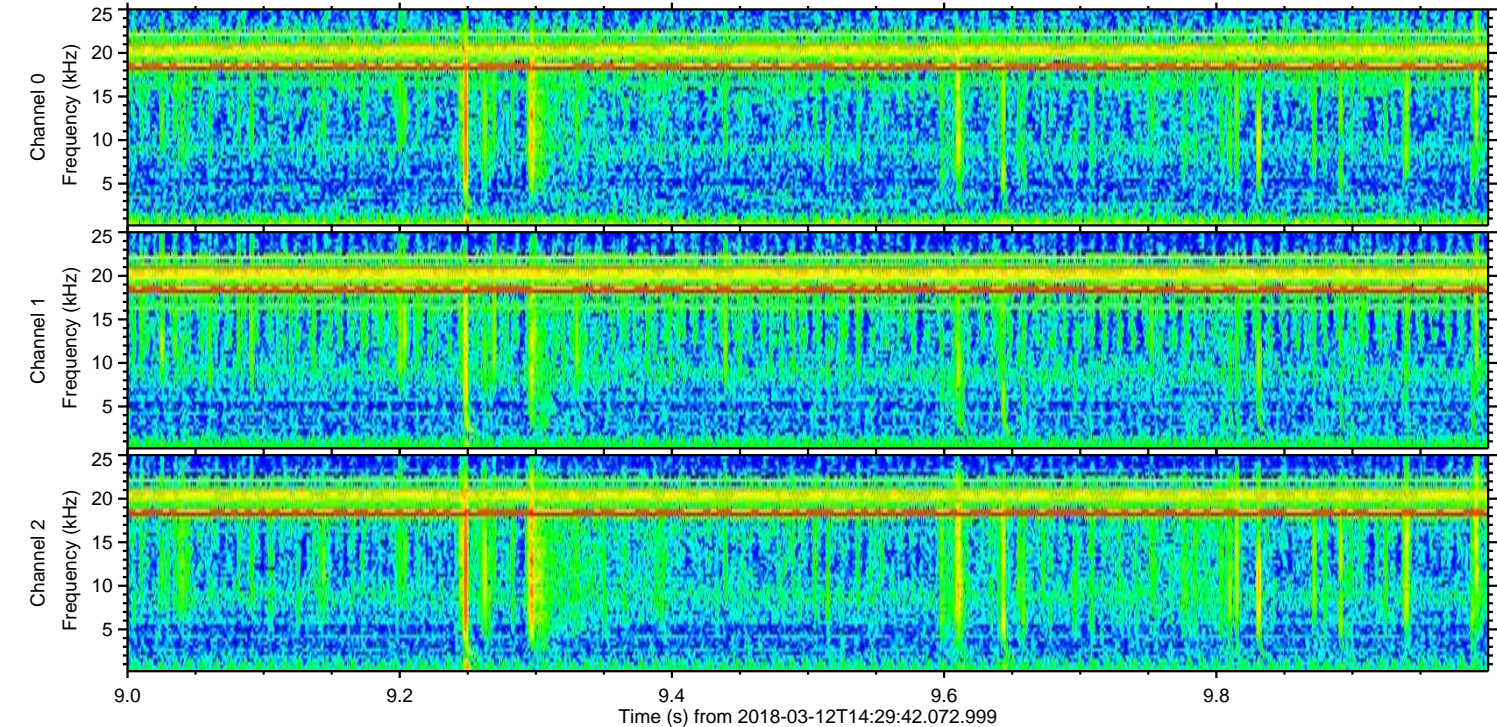
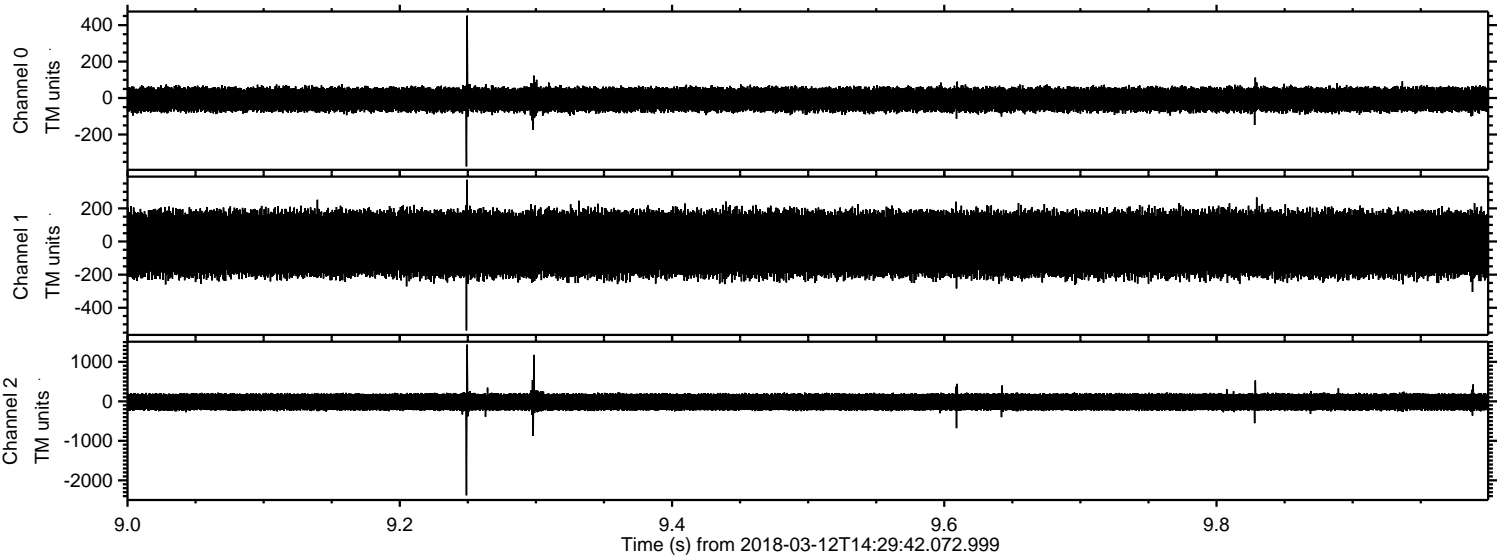
Processed Mon Mar 12 15:37:45 2018 by ELM ver.2012-10-06 from 001__elm20180312_142941__dat00.bin



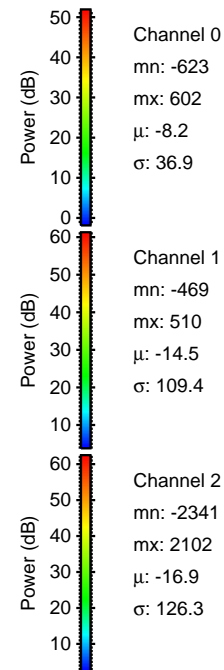
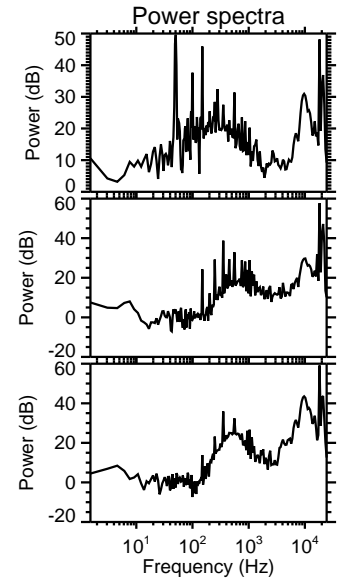
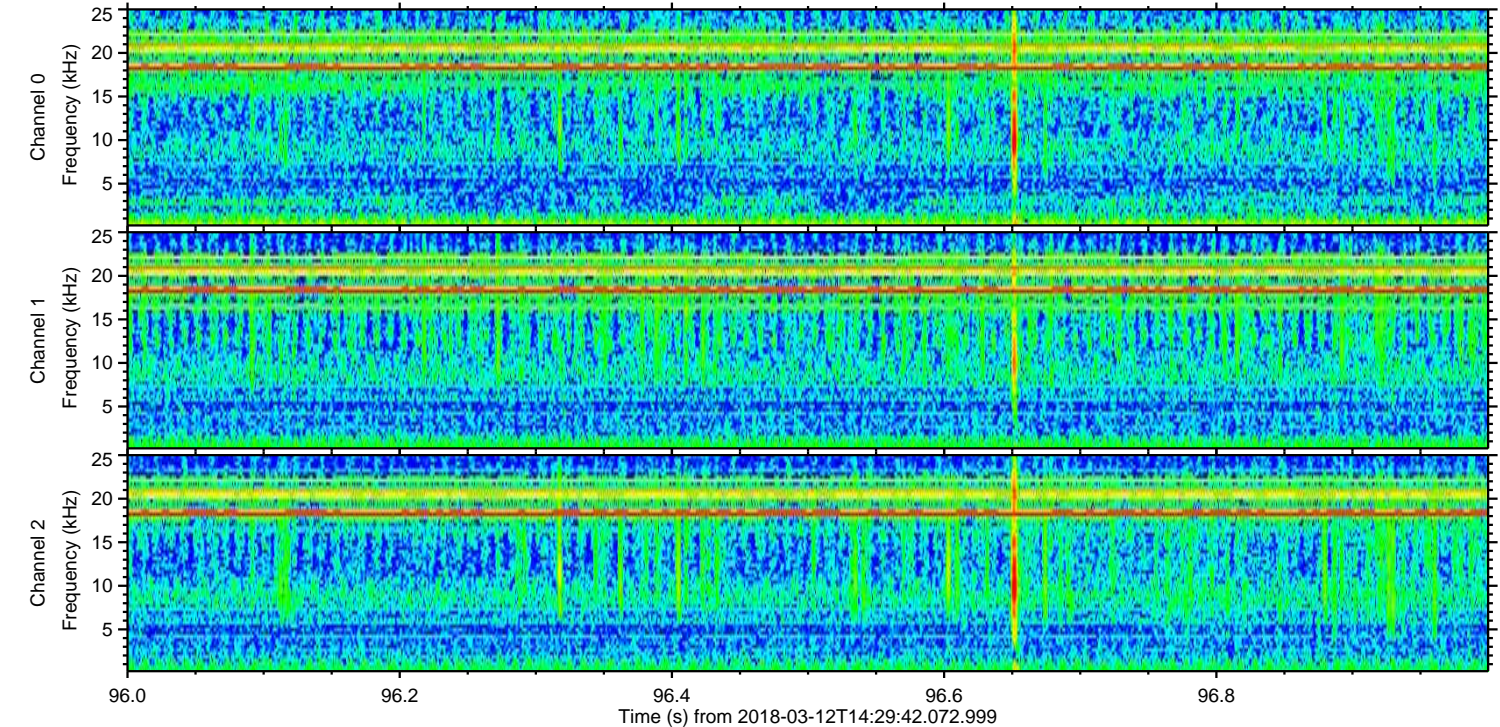
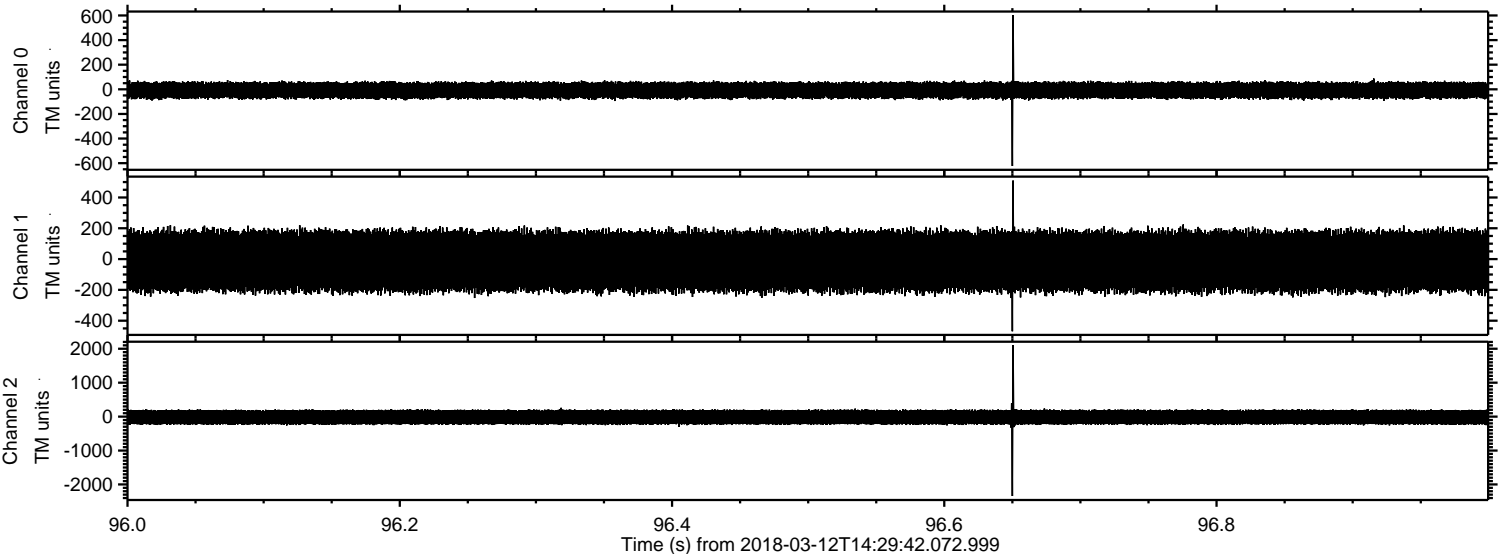
Processed Mon Mar 12 15:37:45 2018 by ELM ver.2012-10-06 from 001__elm20180312_142941__dat00.bin



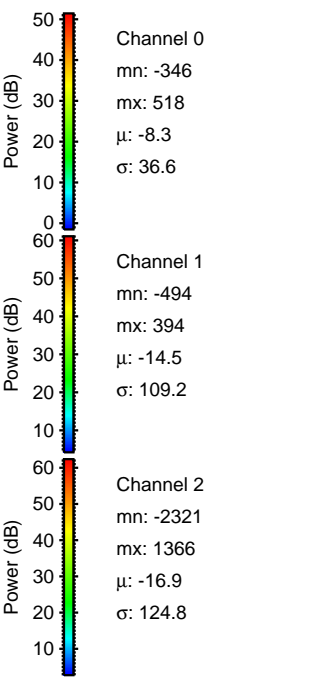
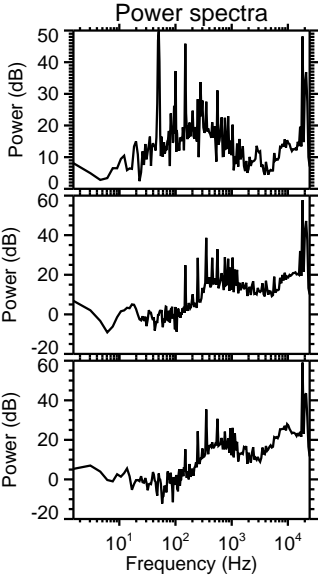
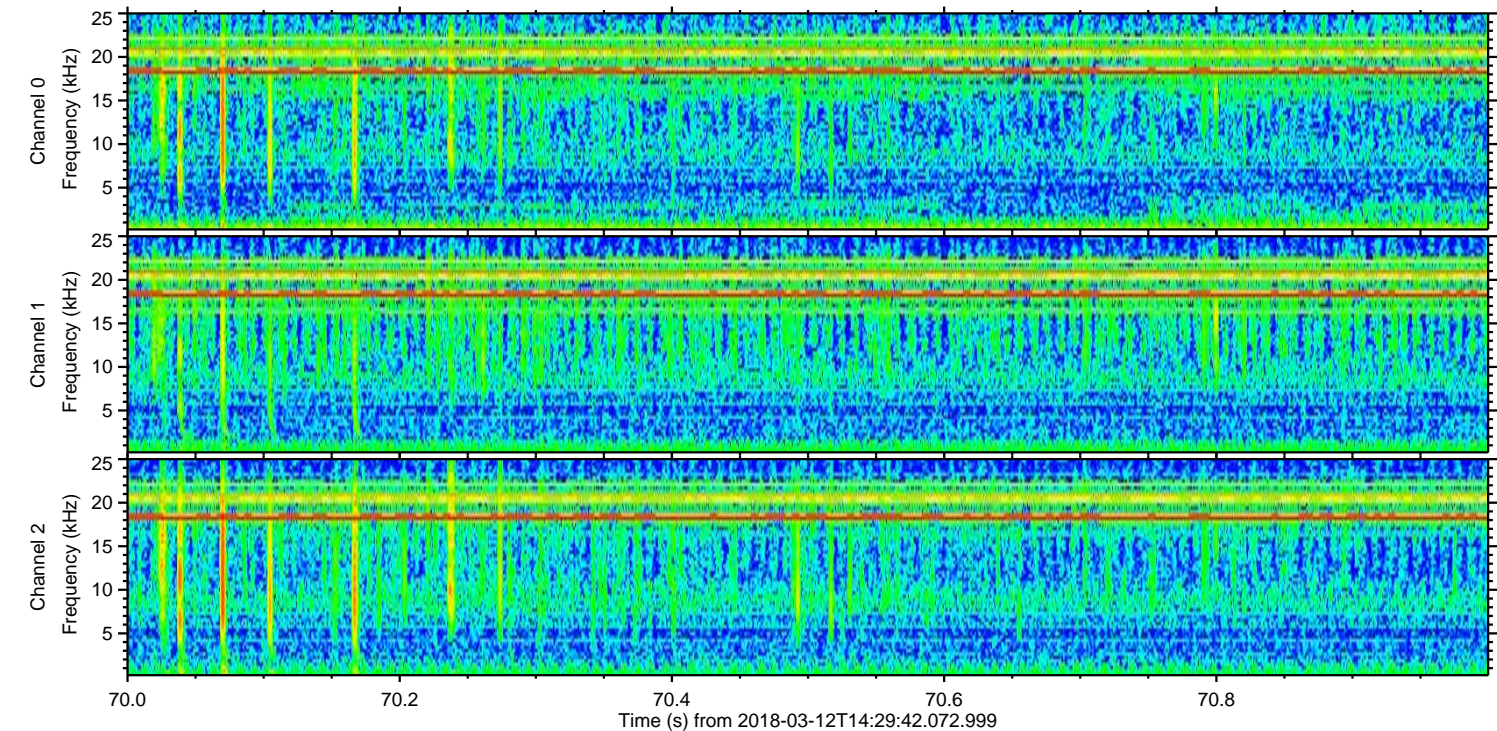
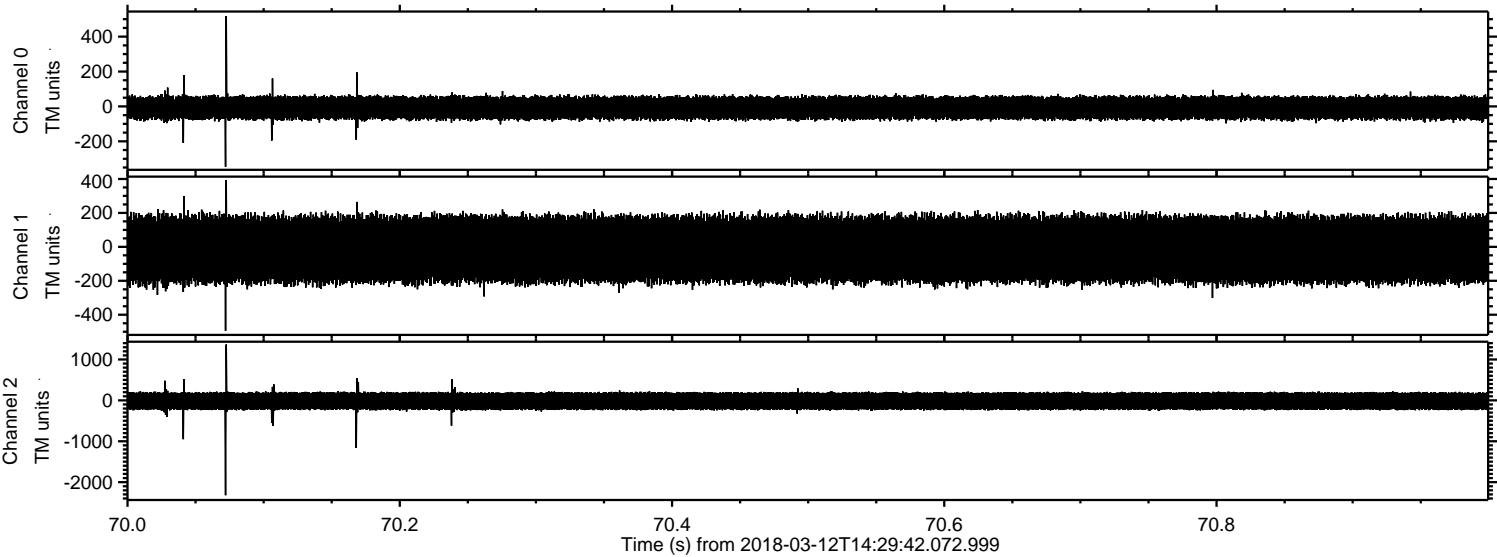
Processed Mon Mar 12 15:37:46 2018 by ELM ver.2012-10-06 from 001__elm20180312_142941__dat00.bin



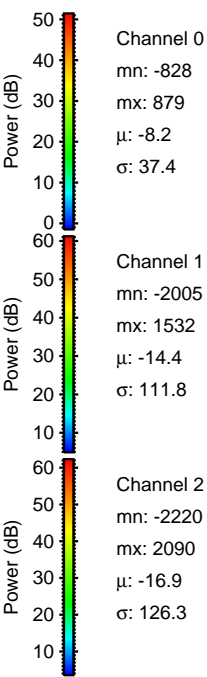
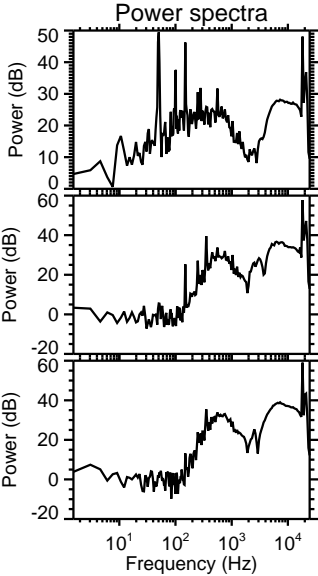
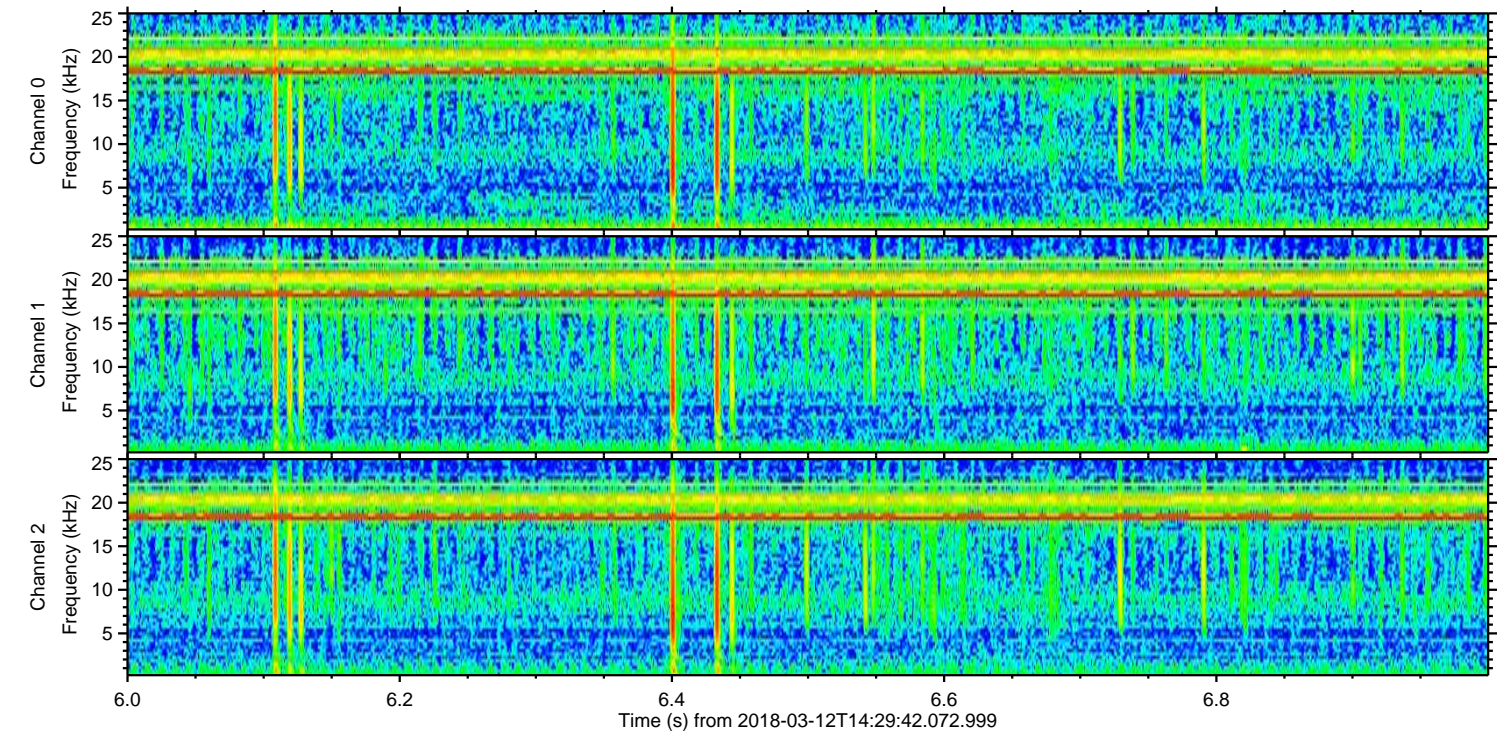
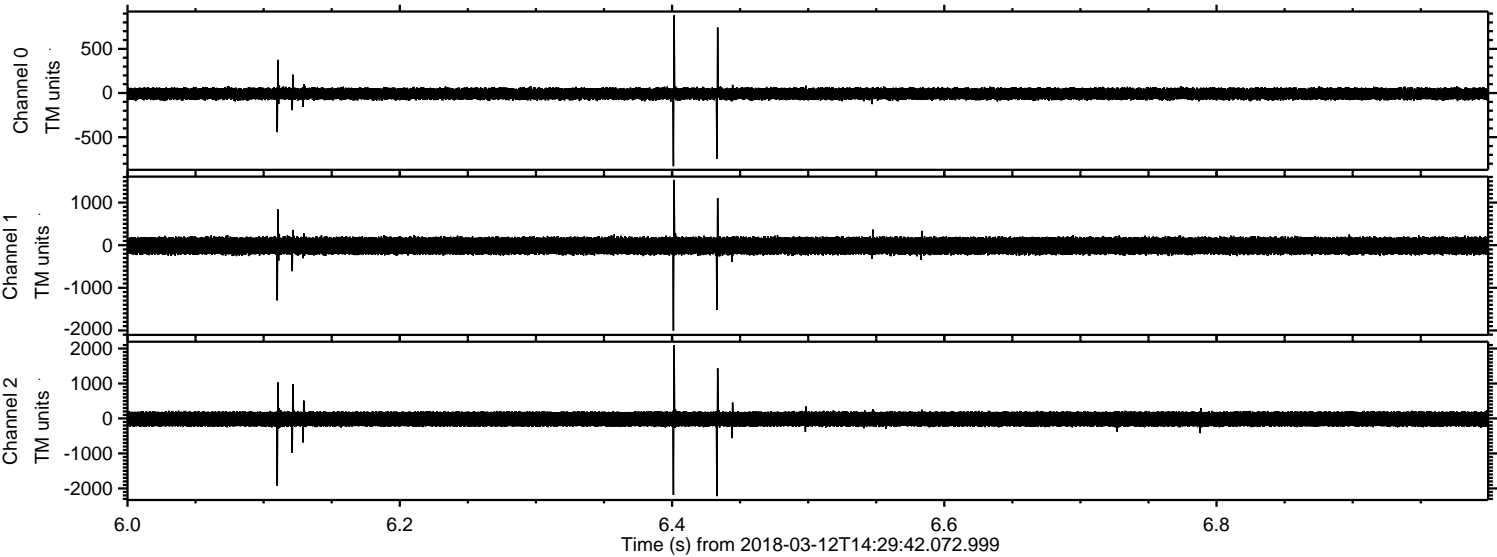
Processed Mon Mar 12 15:37:47 2018 by ELM ver.2012-10-06 from 001__elm20180312_142941__dat00.bin



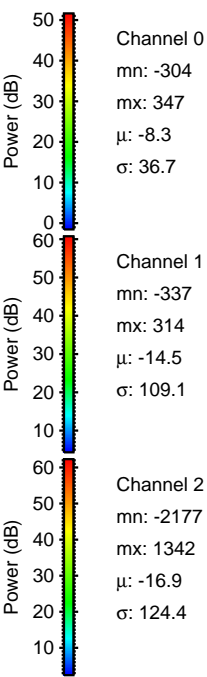
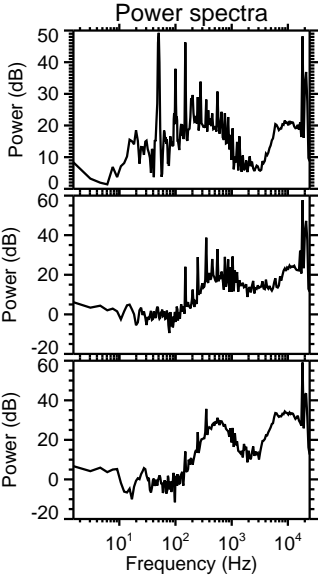
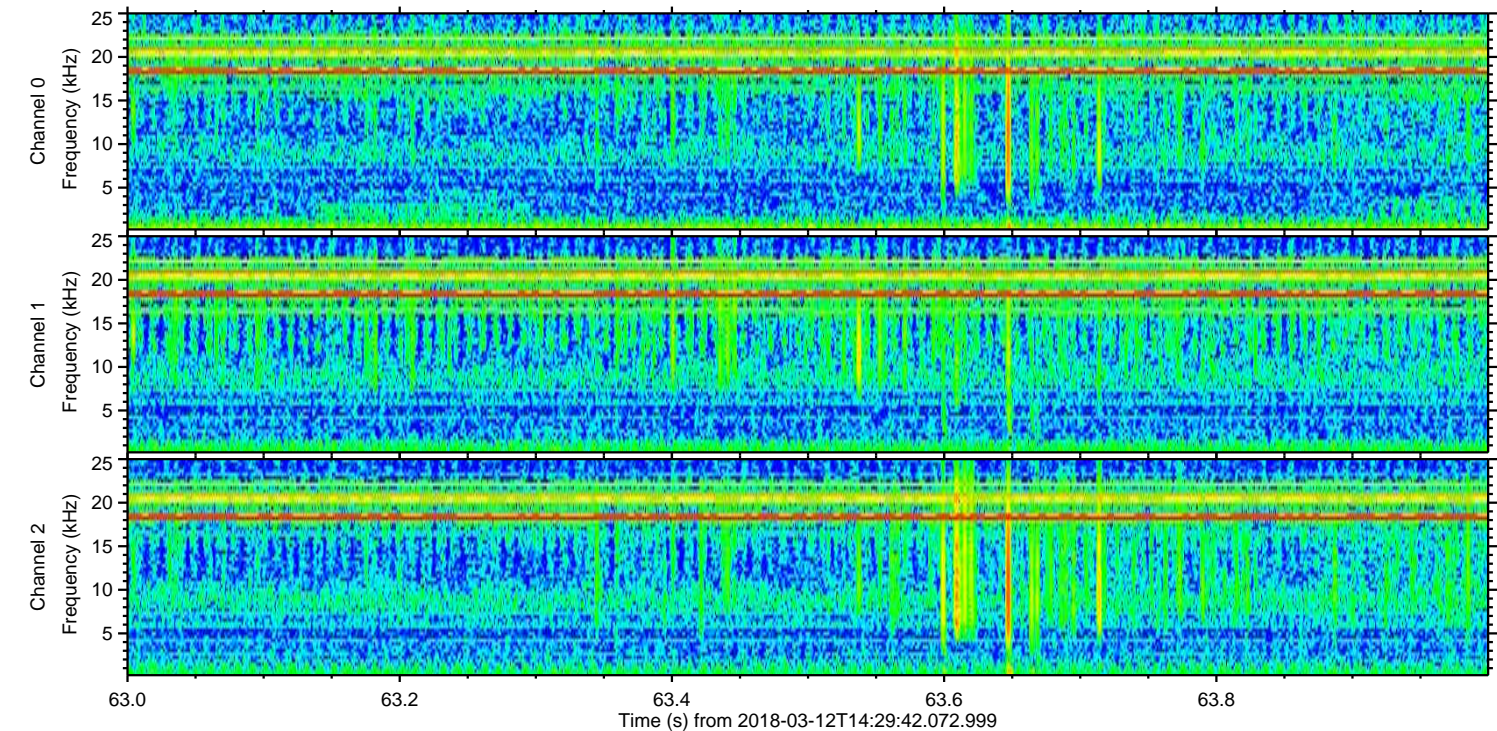
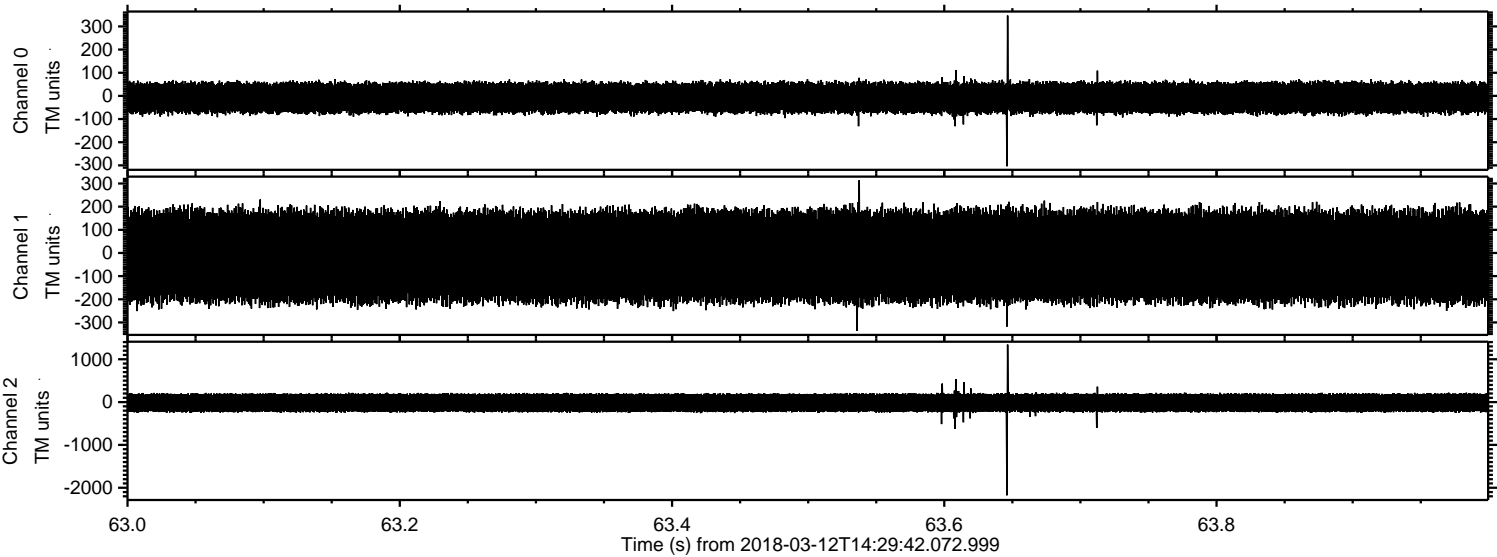
Processed Mon Mar 12 15:37:48 2018 by ELM ver.2012-10-06 from 001__elm20180312_142941__dat00.bin



Processed Mon Mar 12 15:37:49 2018 by ELM ver.2012-10-06 from 001__elm20180312_142941__dat00.bin



Processed Mon Mar 12 15:37:49 2018 by ELM ver.2012-10-06 from 001__elm20180312_142941__dat00.bin



Channel 0
mn: -304
mx: 347
 μ : -8.3
 σ : 36.7

Channel 1
mn: -337
mx: 314
 μ : -14.5
 σ : 109.1

Channel 2
mn: -2177
mx: 1342
 μ : -16.9
 σ : 124.4

Processed Mon Mar 12 15:37:50 2018 by ELM ver.2012-10-06 from 001__elm20180312_142941__dat00.bin

