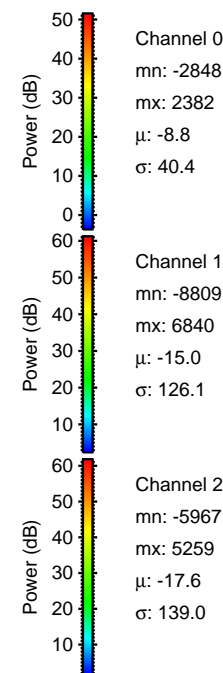
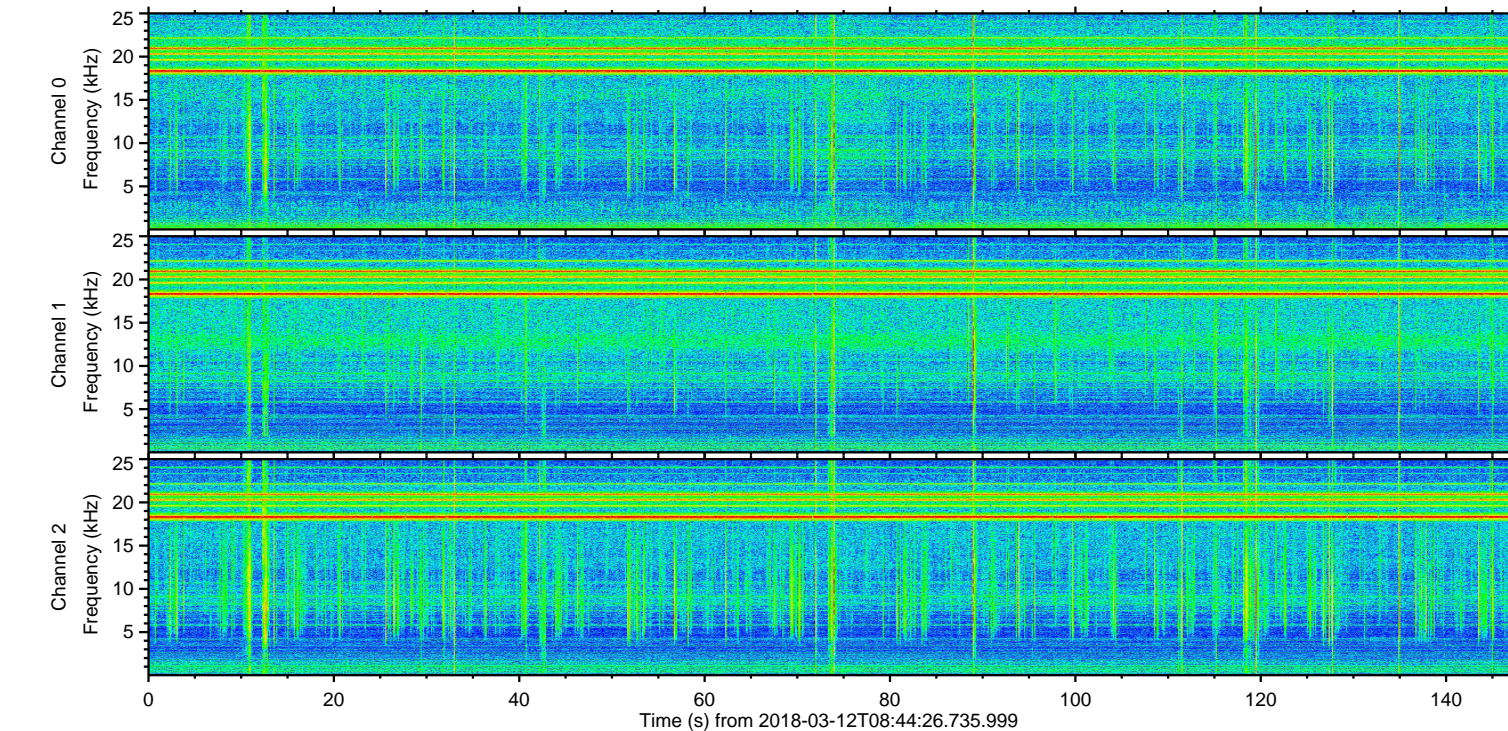
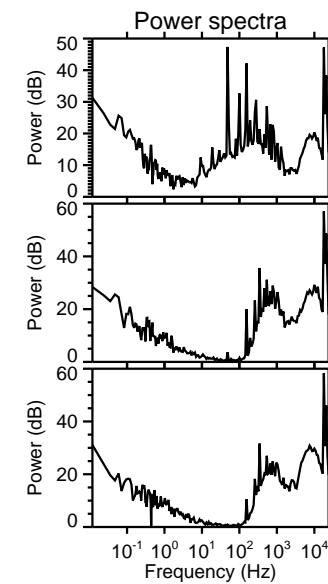
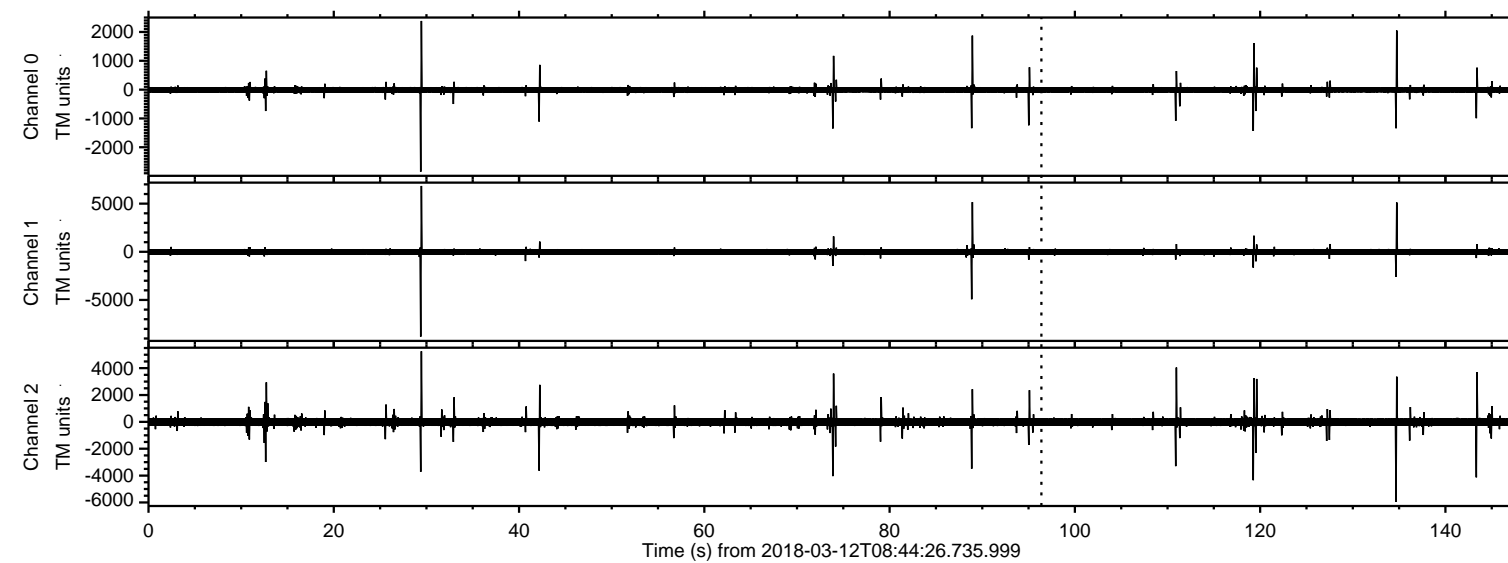
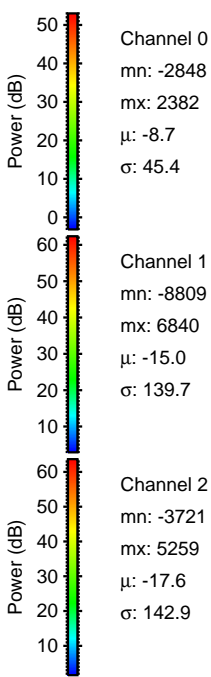
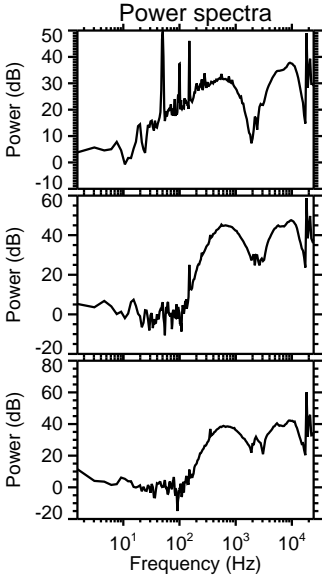
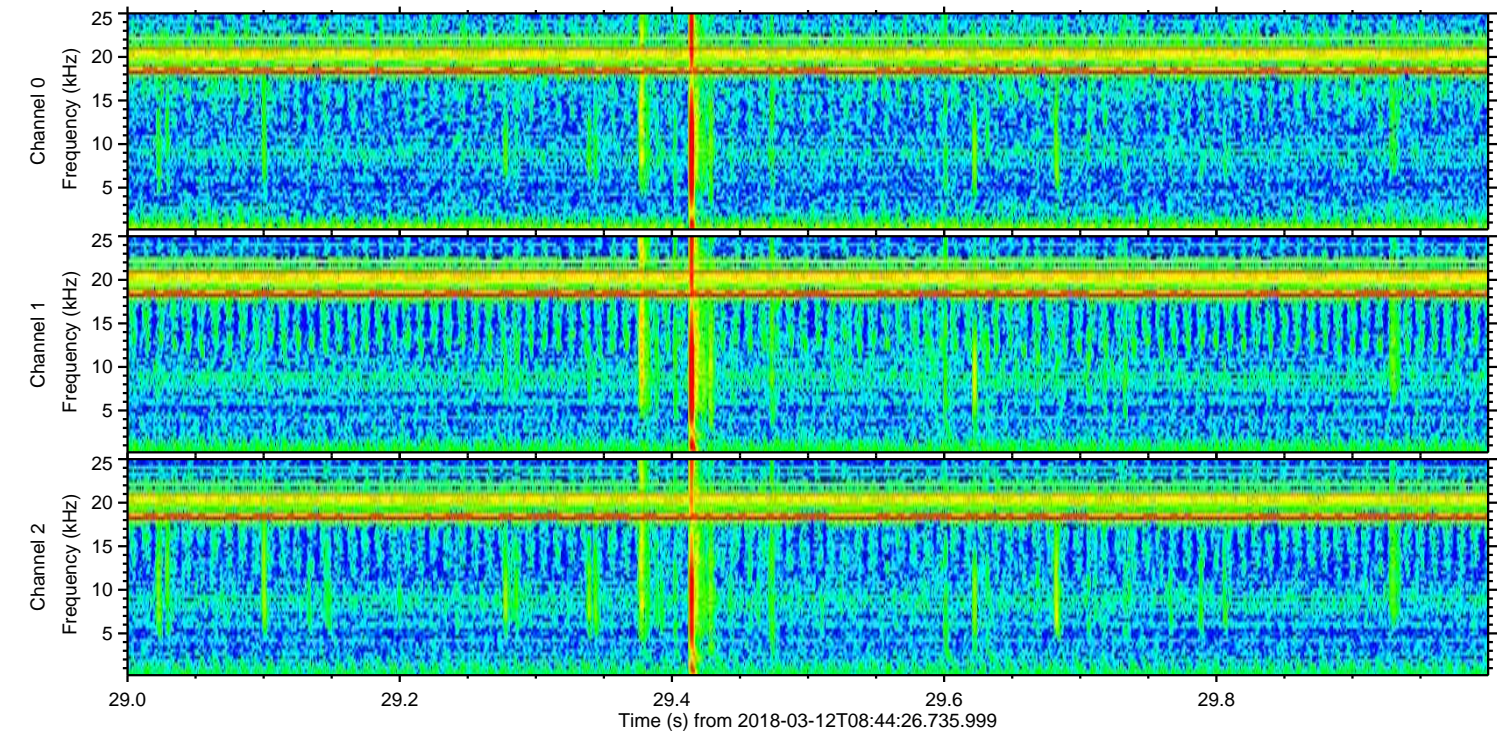
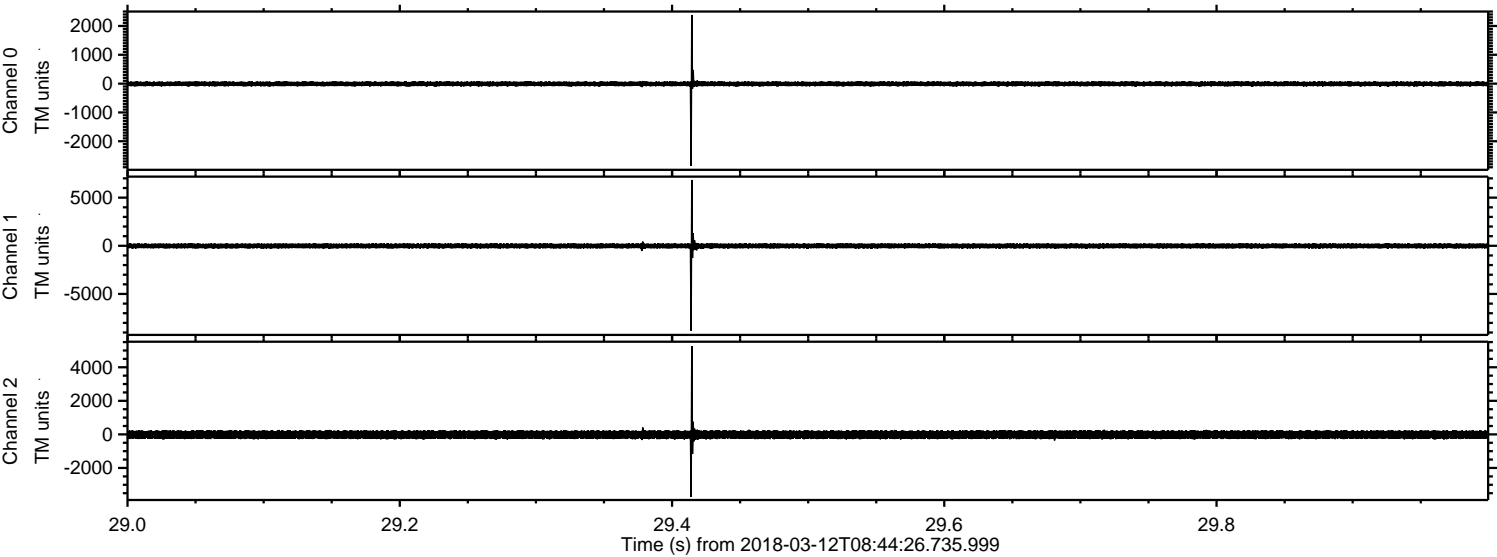


ELMAVAN 3D WAVEFORMS (Measured data sampled at 50 kHz) 50999 packets of 144 samples from 2018-03-12T08:44:26.735.999.

Processed Mon Mar 12 09:52:27 2018 by ELM ver.2012-10-06 from 001__elm20180312_084425__dat00.bin

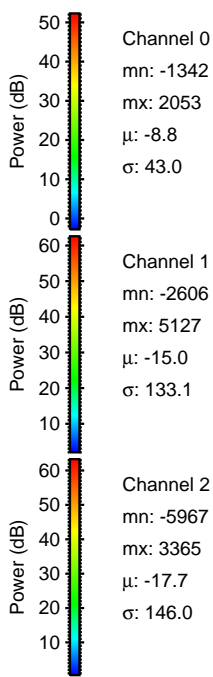
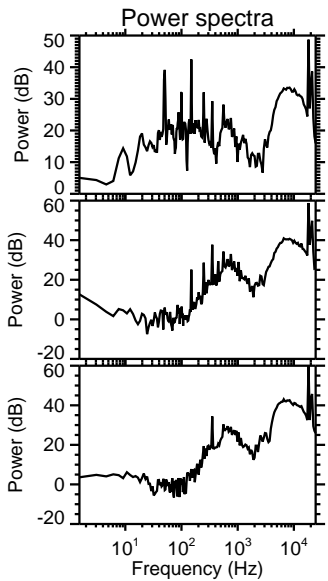
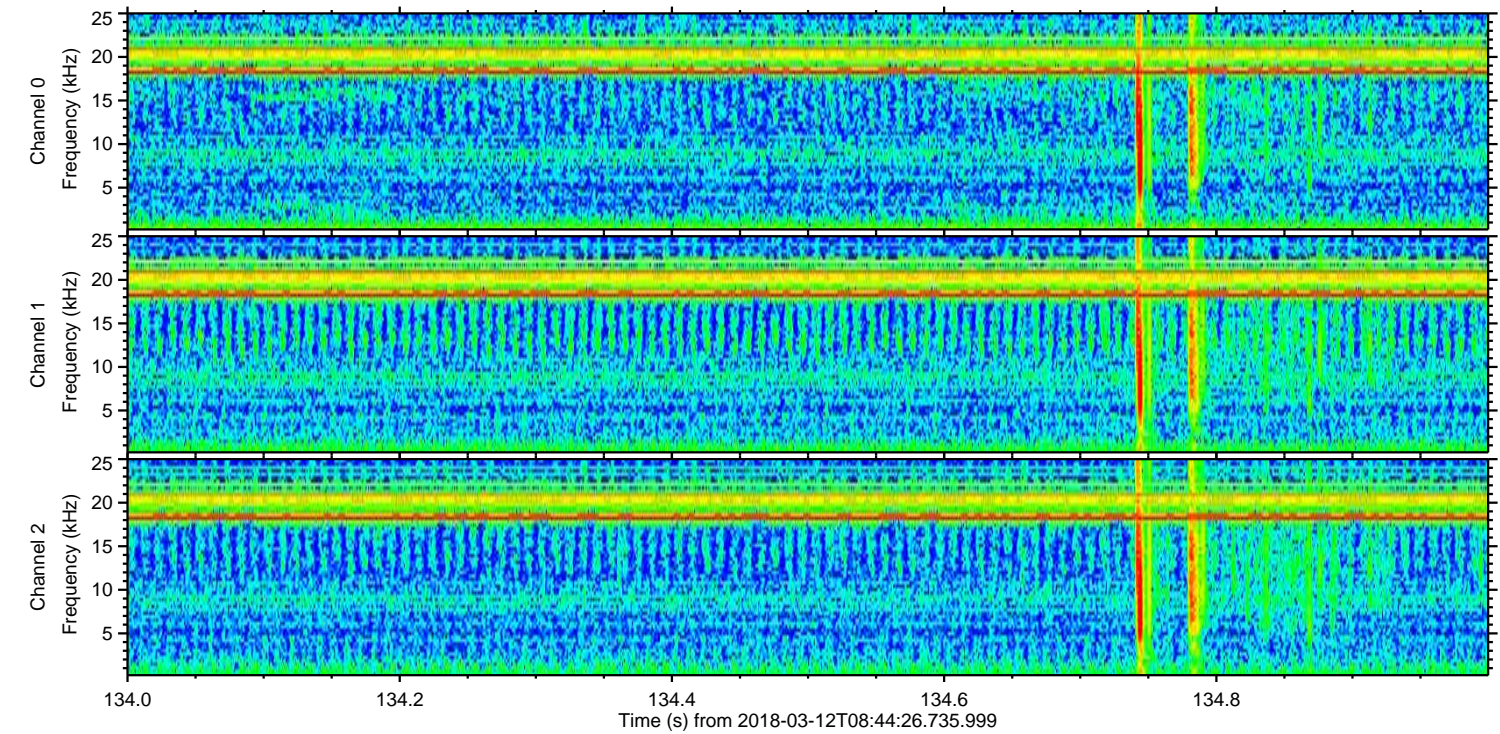
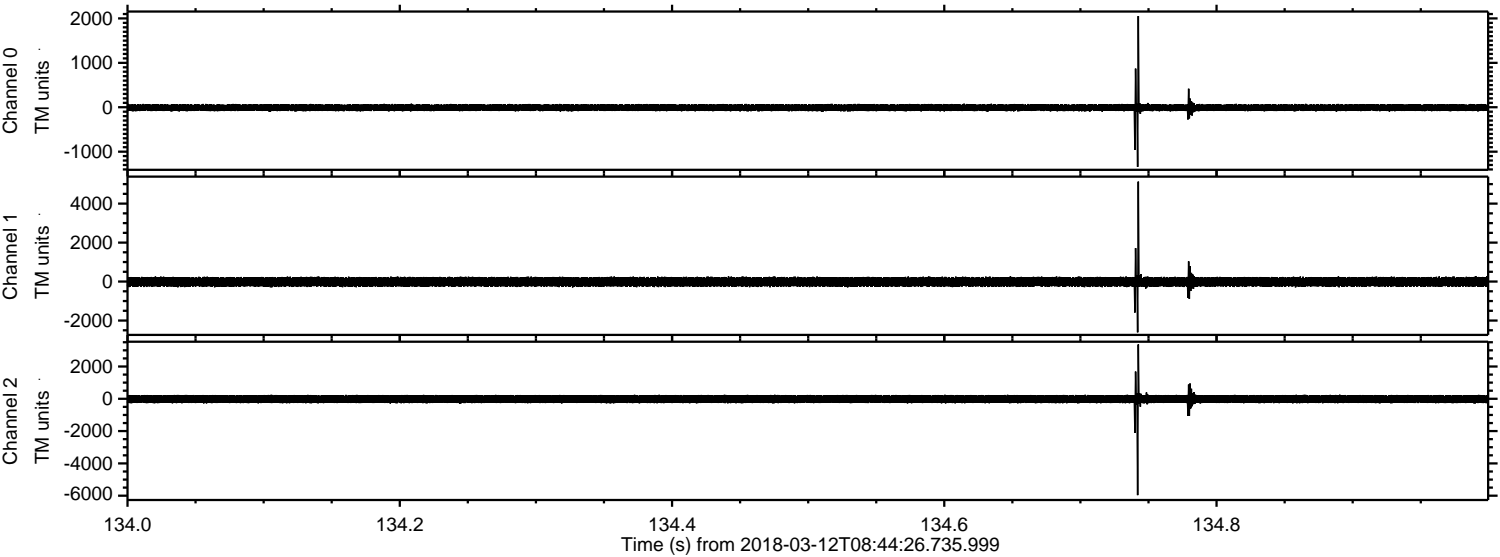


Processed Mon Mar 12 09:52:34 2018 by ELM ver.2012-10-06 from 001__elm20180312_084425__dat00.bin

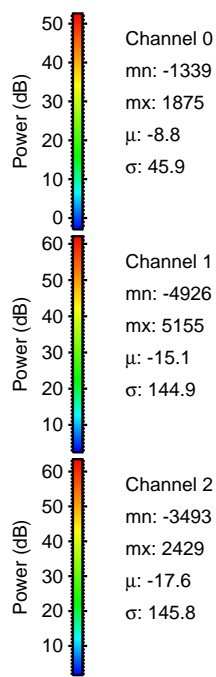
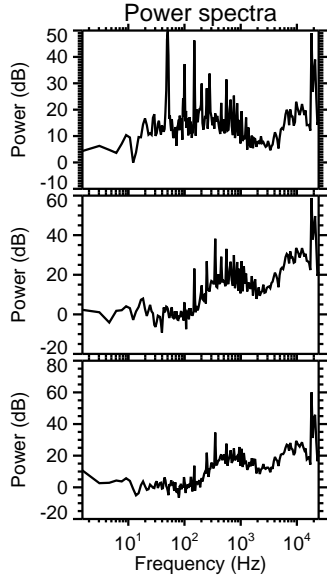
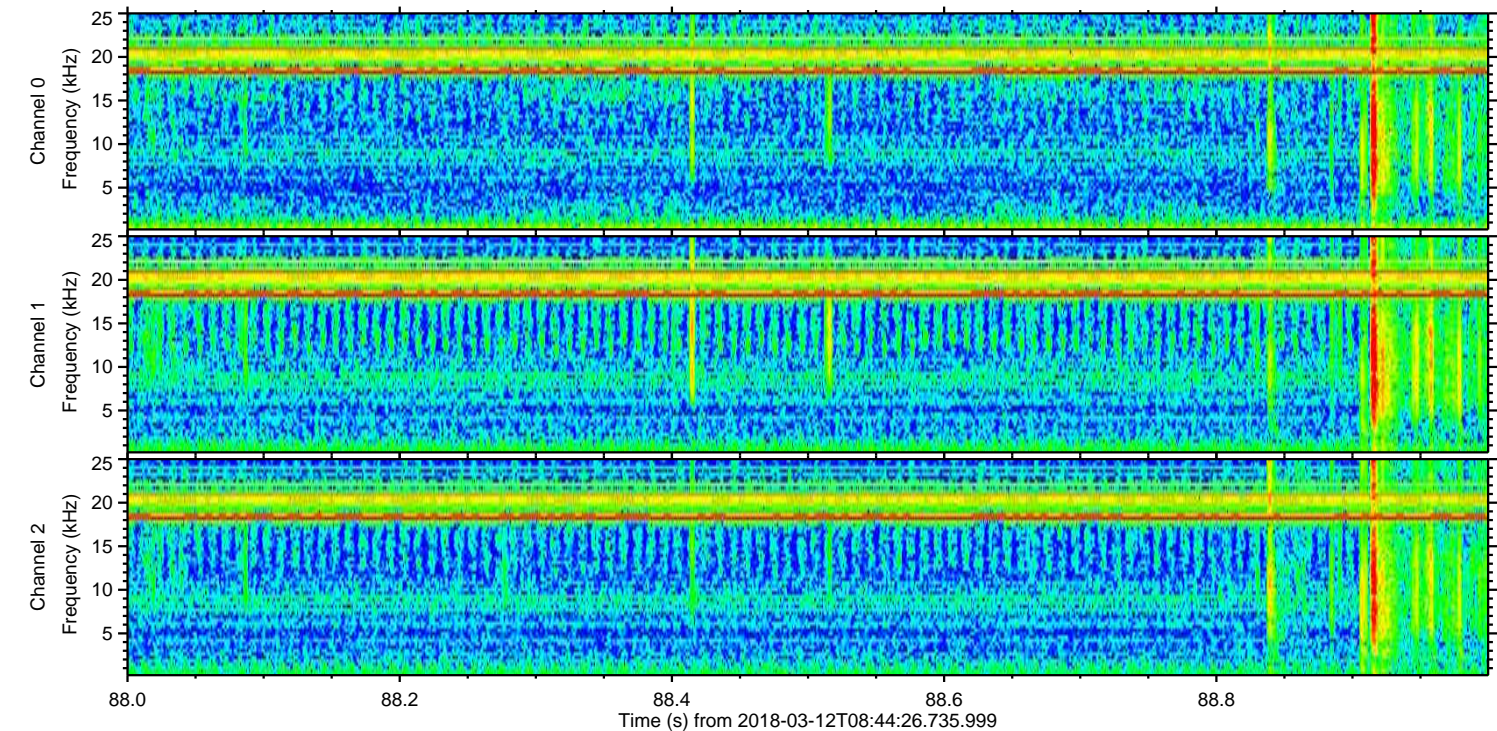
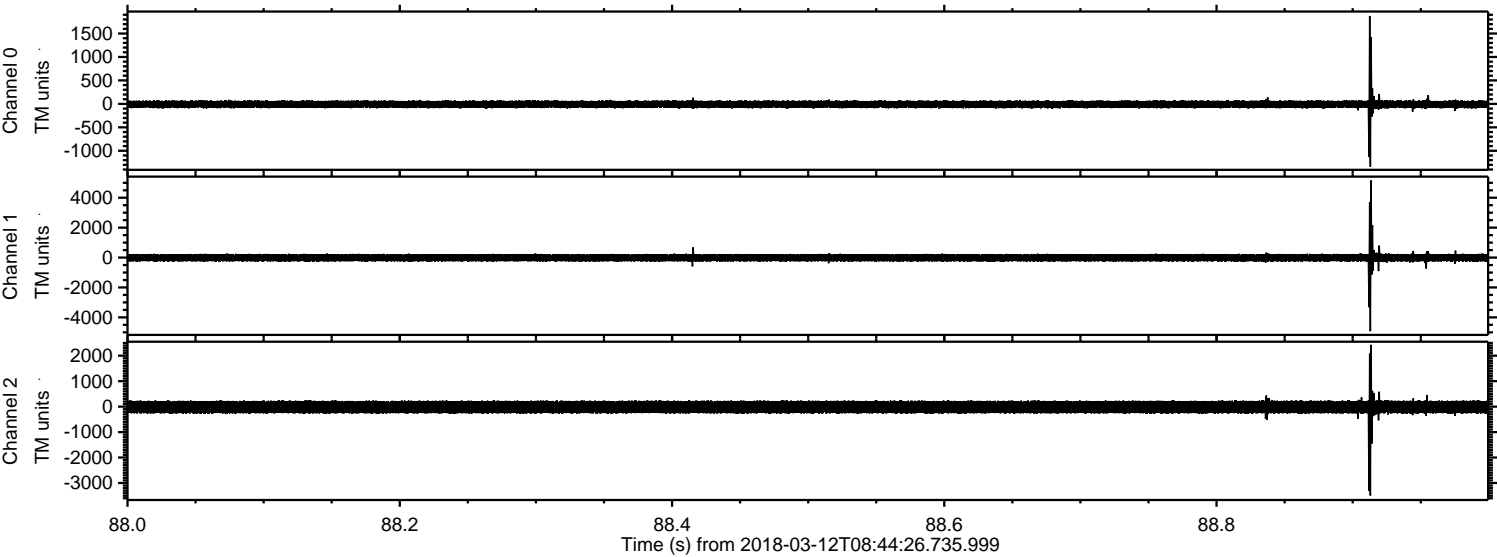


ELMAVAN 3D WAVEFORMS (Measured data sampled at 50 kHz) 50999 packets of 144 samples from 2018-03-12T08:44:26.735.999. Part 135/147

Processed Mon Mar 12 09:52:35 2018 by ELM ver.2012-10-06 from 001__elm20180312_084425__dat00.bin



Processed Mon Mar 12 09:52:36 2018 by ELM ver.2012-10-06 from 001__elm20180312_084425__dat00.bin



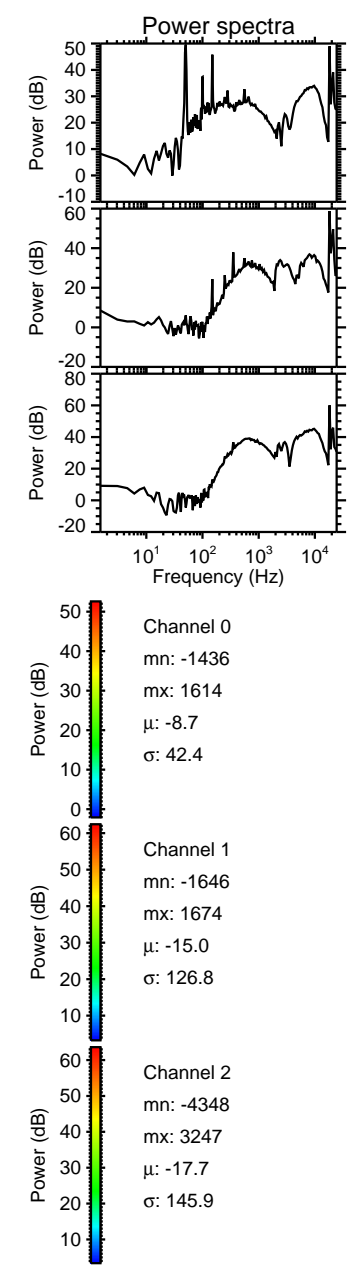
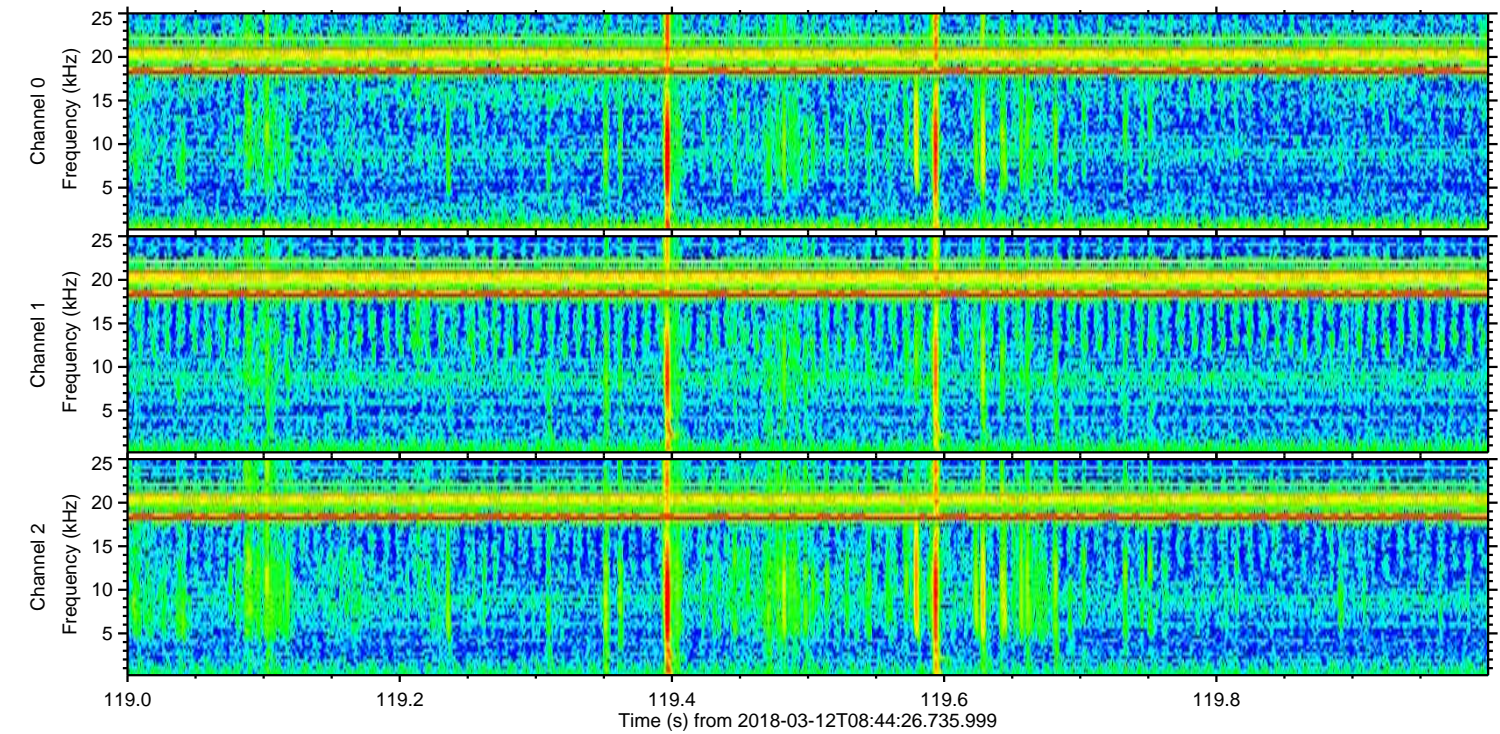
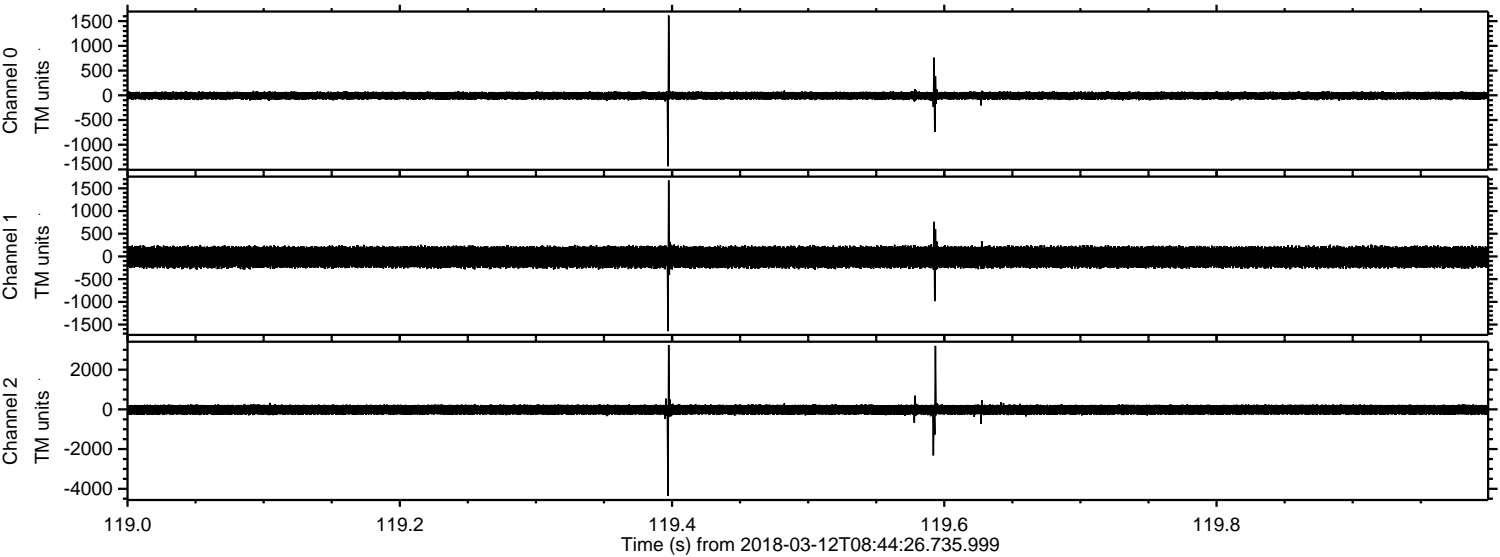
Channel 0
mn: -1339
mx: 1875
 μ : -8.8
 σ : 45.9

Channel 1
mn: -4926
mx: 5155
 μ : -15.1
 σ : 144.9

Channel 2
mn: -3493
mx: 2429
 μ : -17.6
 σ : 145.8

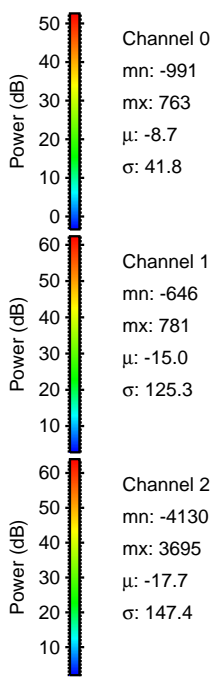
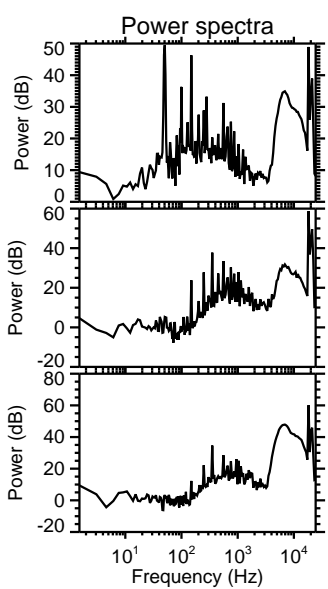
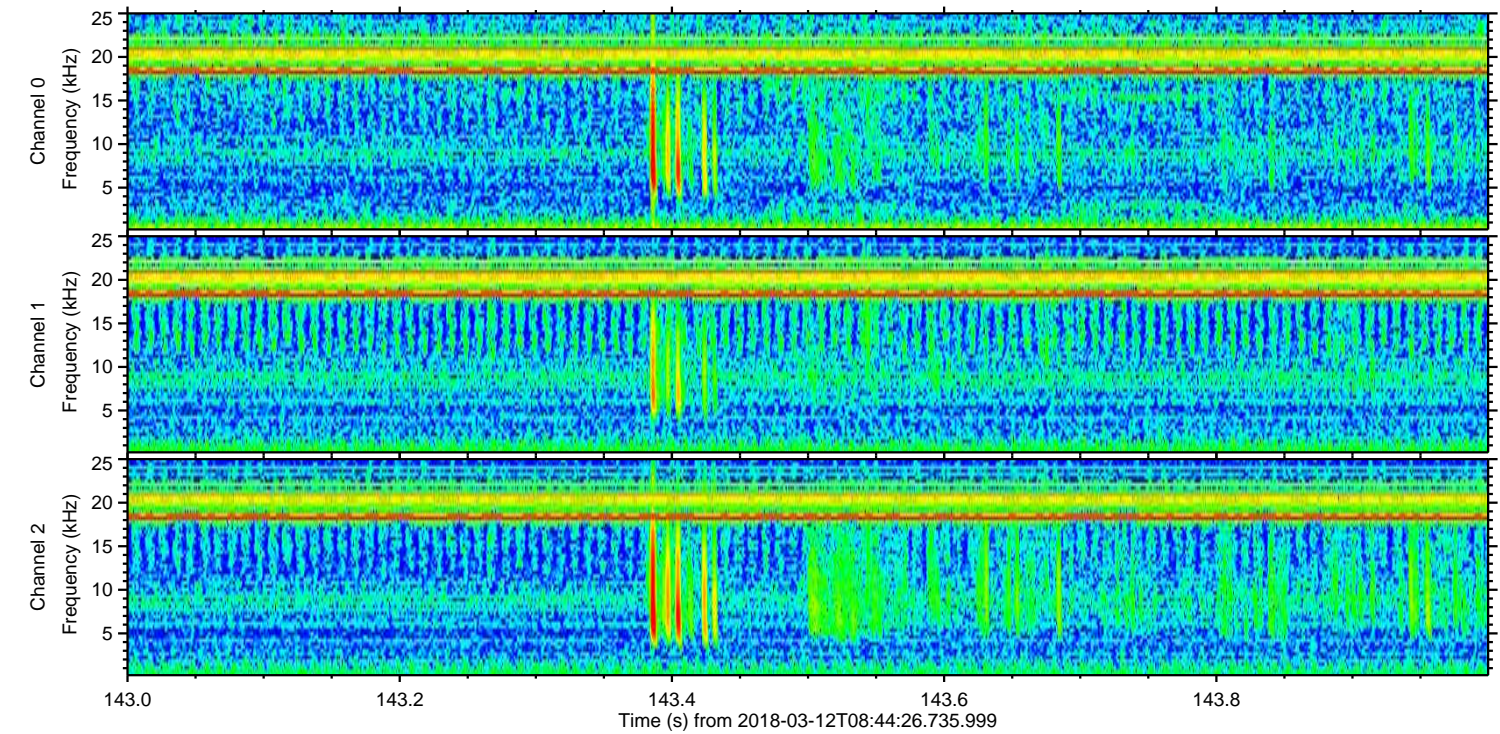
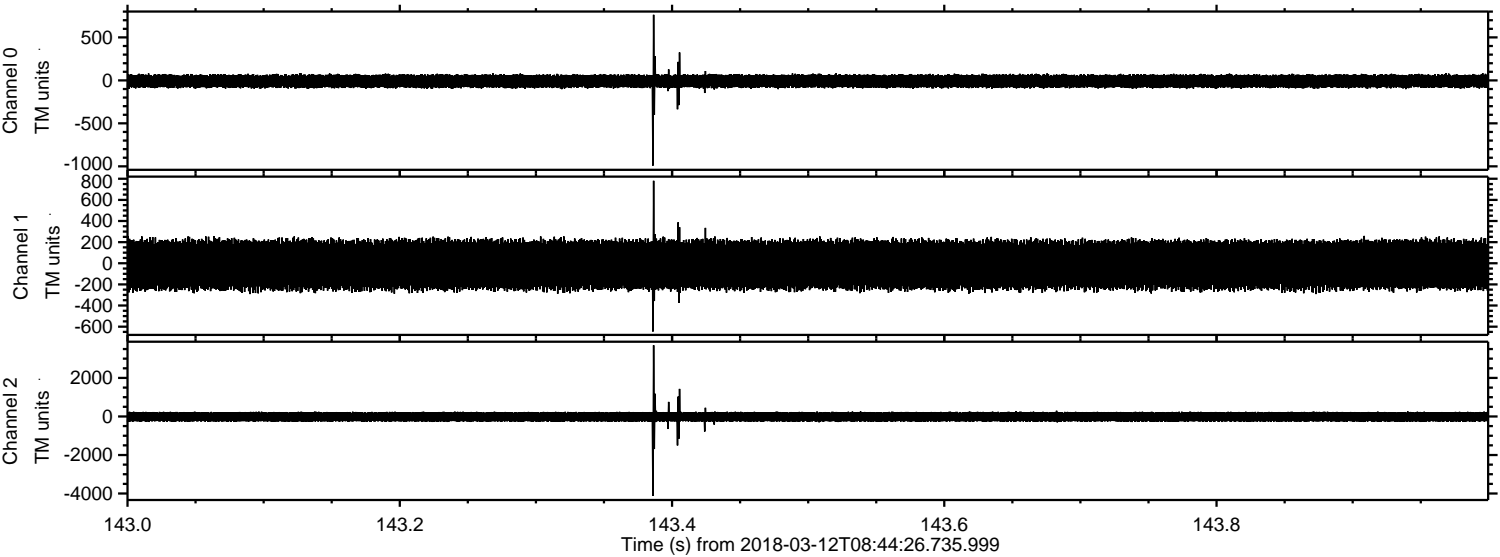
ELMAVAN 3D WAVEFORMS (Measured data sampled at 50 kHz) 50999 packets of 144 samples from 2018-03-12T08:44:26.735.999. Part 120/147

Processed Mon Mar 12 09:52:37 2018 by ELM ver.2012-10-06 from 001__elm20180312_084425__dat00.bin



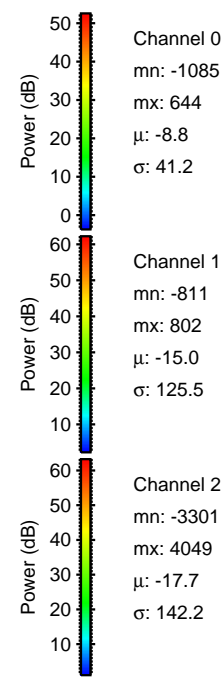
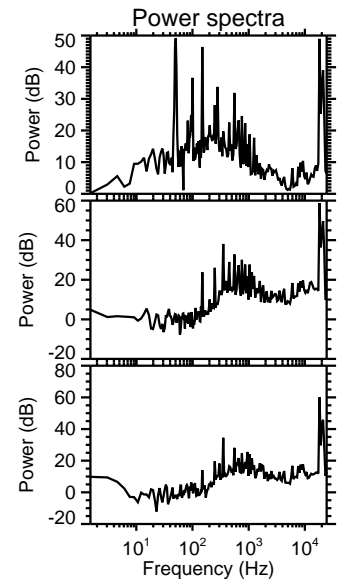
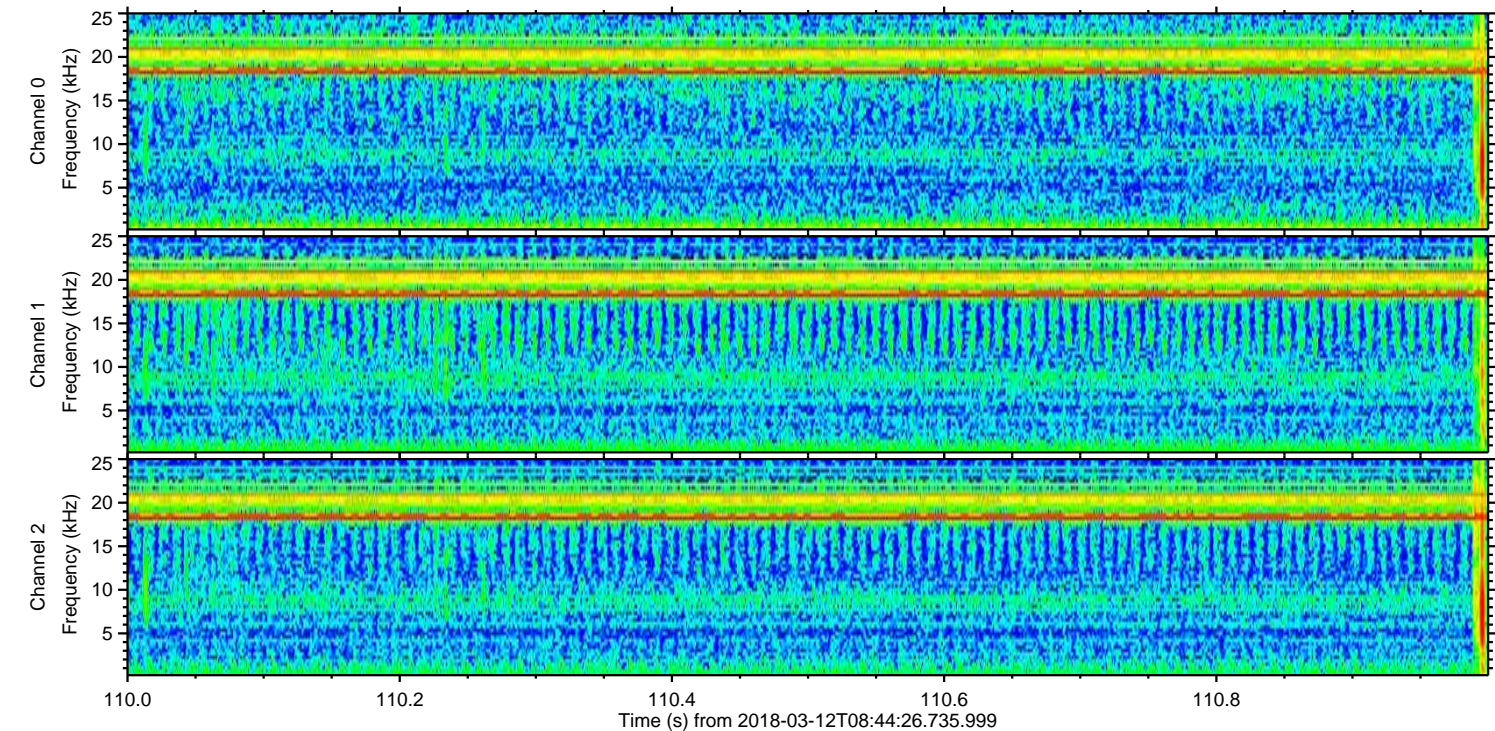
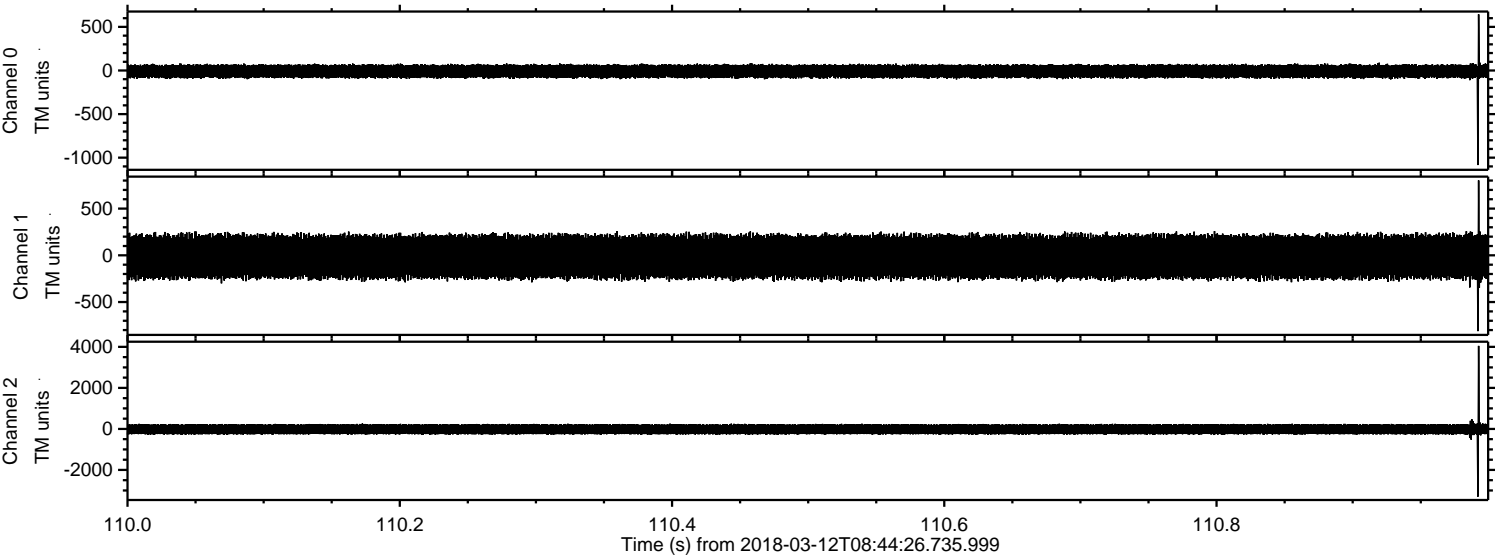
ELMAVAN 3D WAVEFORMS (Measured data sampled at 50 kHz) 50999 packets of 144 samples from 2018-03-12T08:44:26.735.999. Part 144/147

Processed Mon Mar 12 09:52:37 2018 by ELM ver.2012-10-06 from 001__elm20180312_084425__dat00.bin



ELMAVAN 3D WAVEFORMS (Measured data sampled at 50 kHz) 50999 packets of 144 samples from 2018-03-12T08:44:26.735.999. Part 111/147

Processed Mon Mar 12 09:52:38 2018 by ELM ver.2012-10-06 from 001__elm20180312_084425__dat00.bin

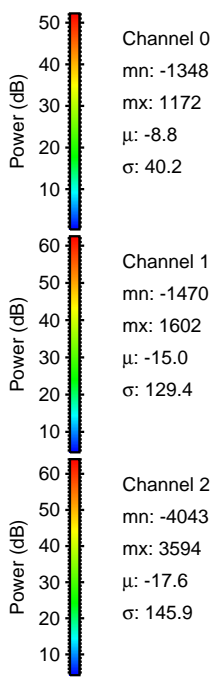
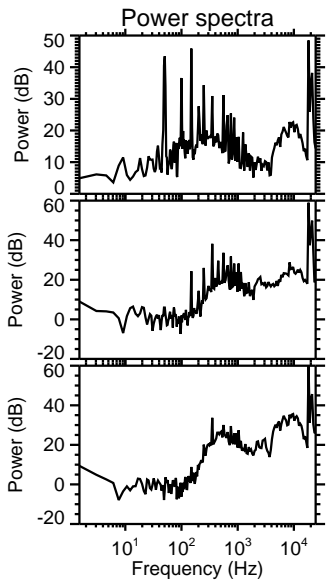
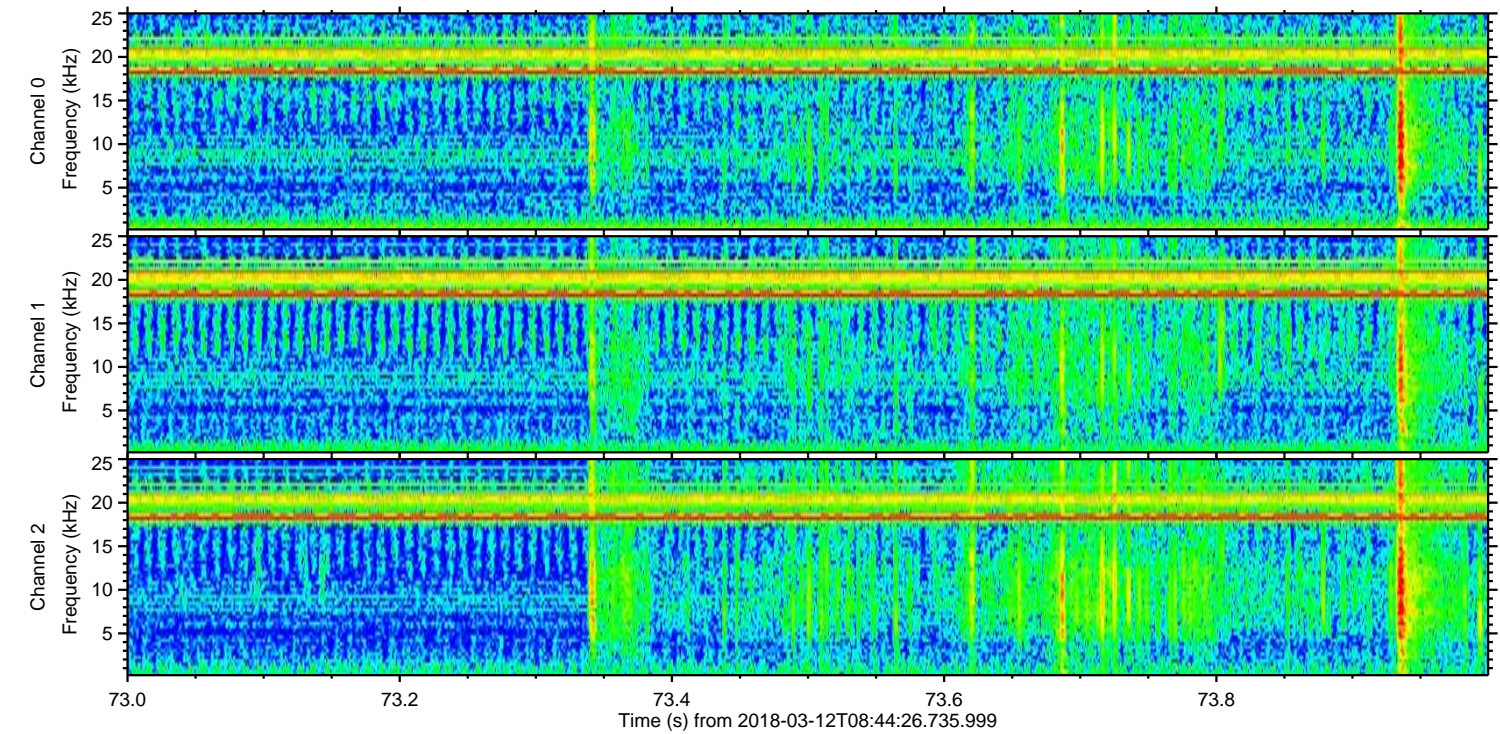
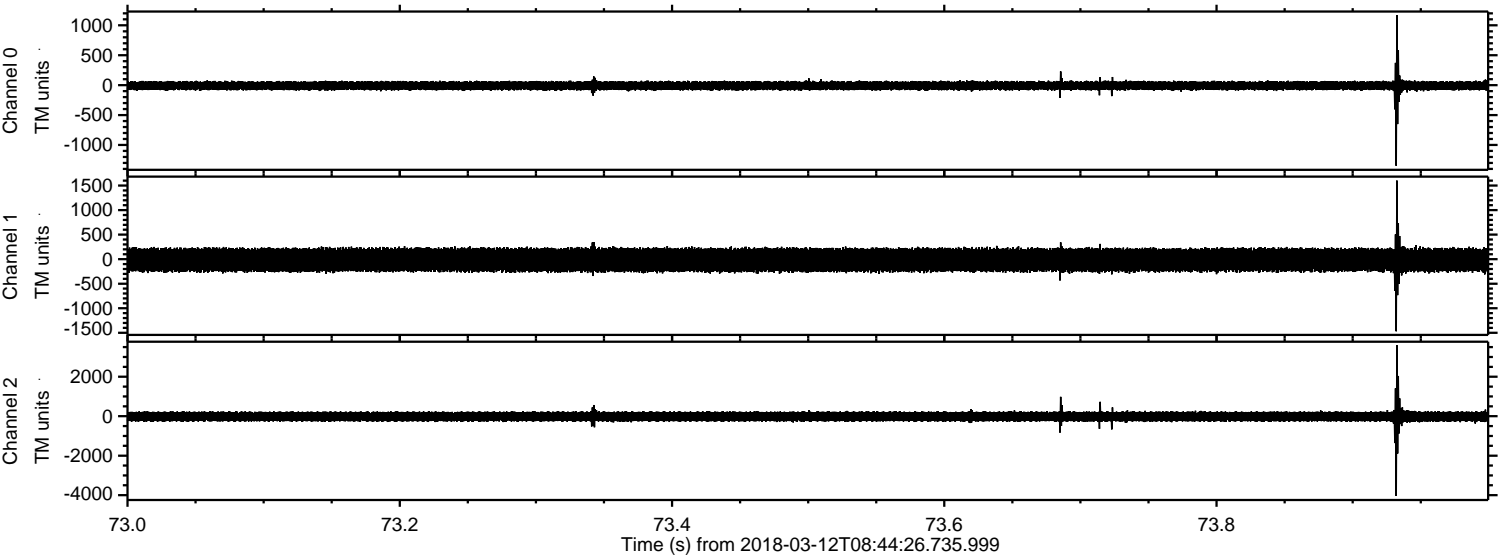


Channel 0
mn: -1085
mx: 644
 μ : -8.8
 σ : 41.2

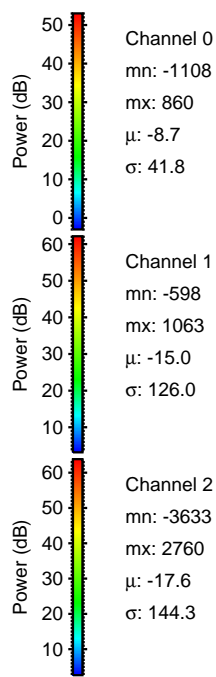
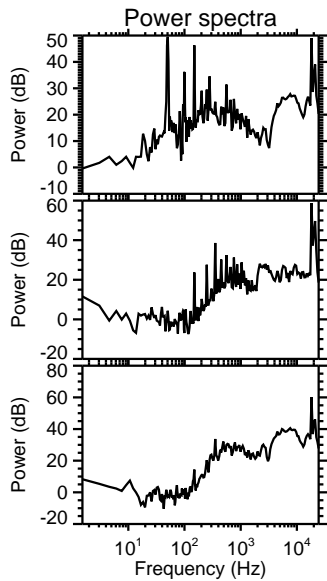
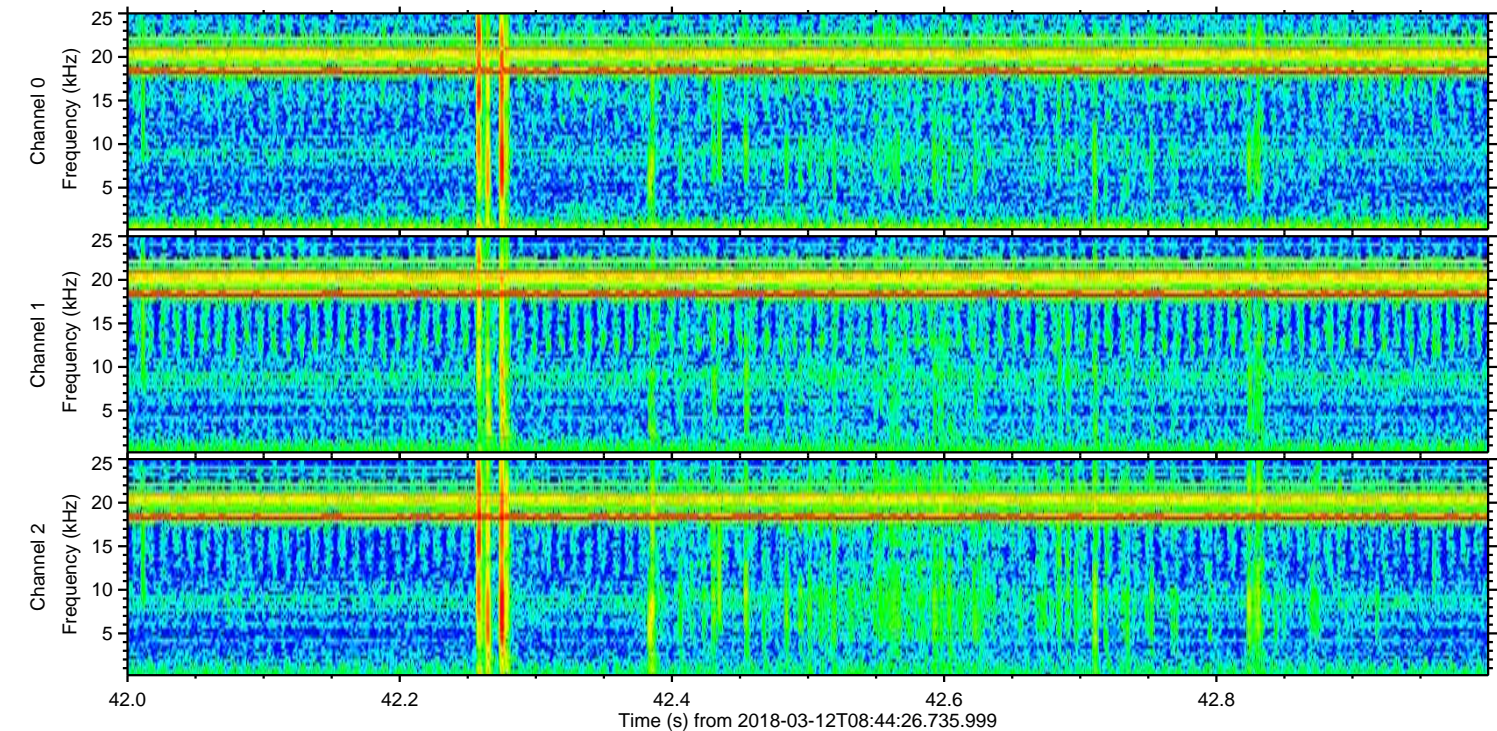
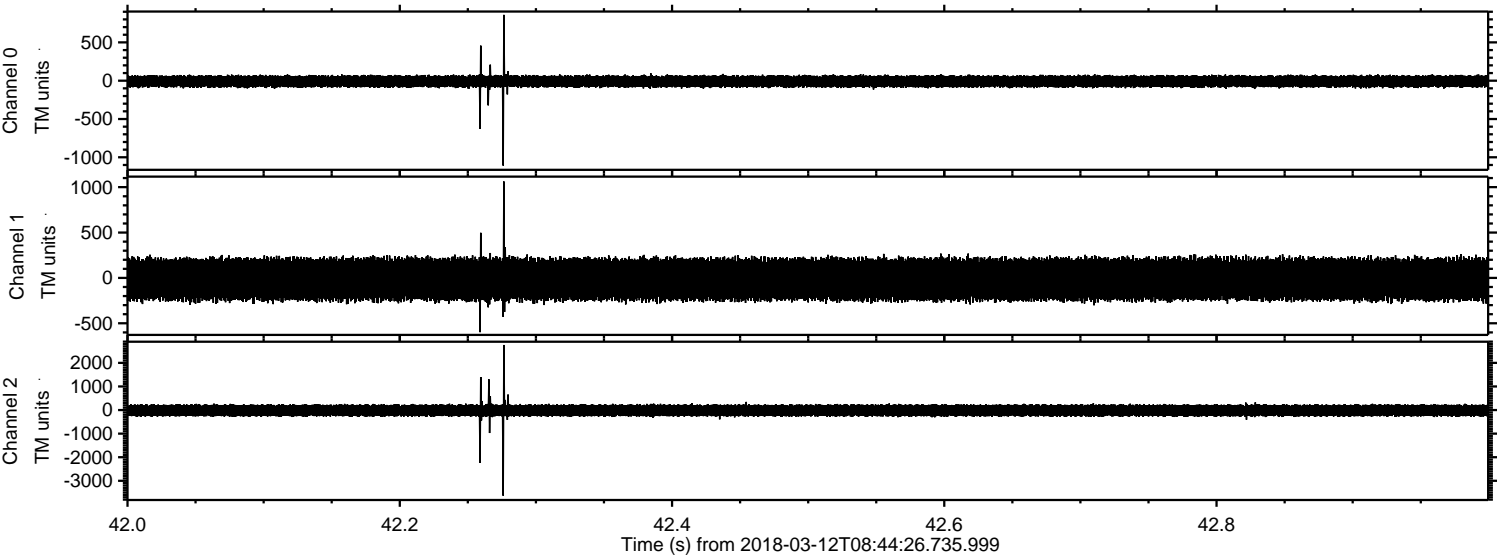
Channel 1
mn: -811
mx: 802
 μ : -15.0
 σ : 125.5

Channel 2
mn: -3301
mx: 4049
 μ : -17.7
 σ : 142.2

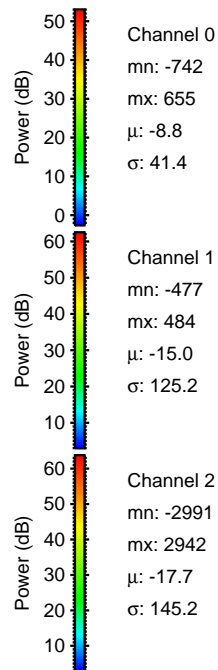
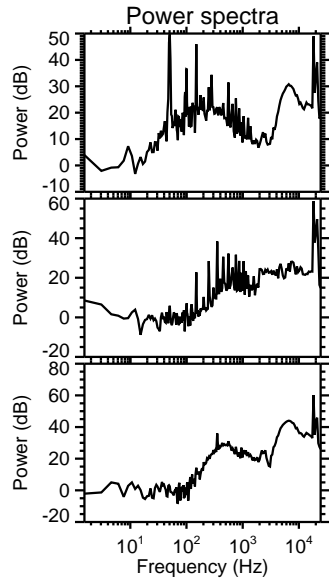
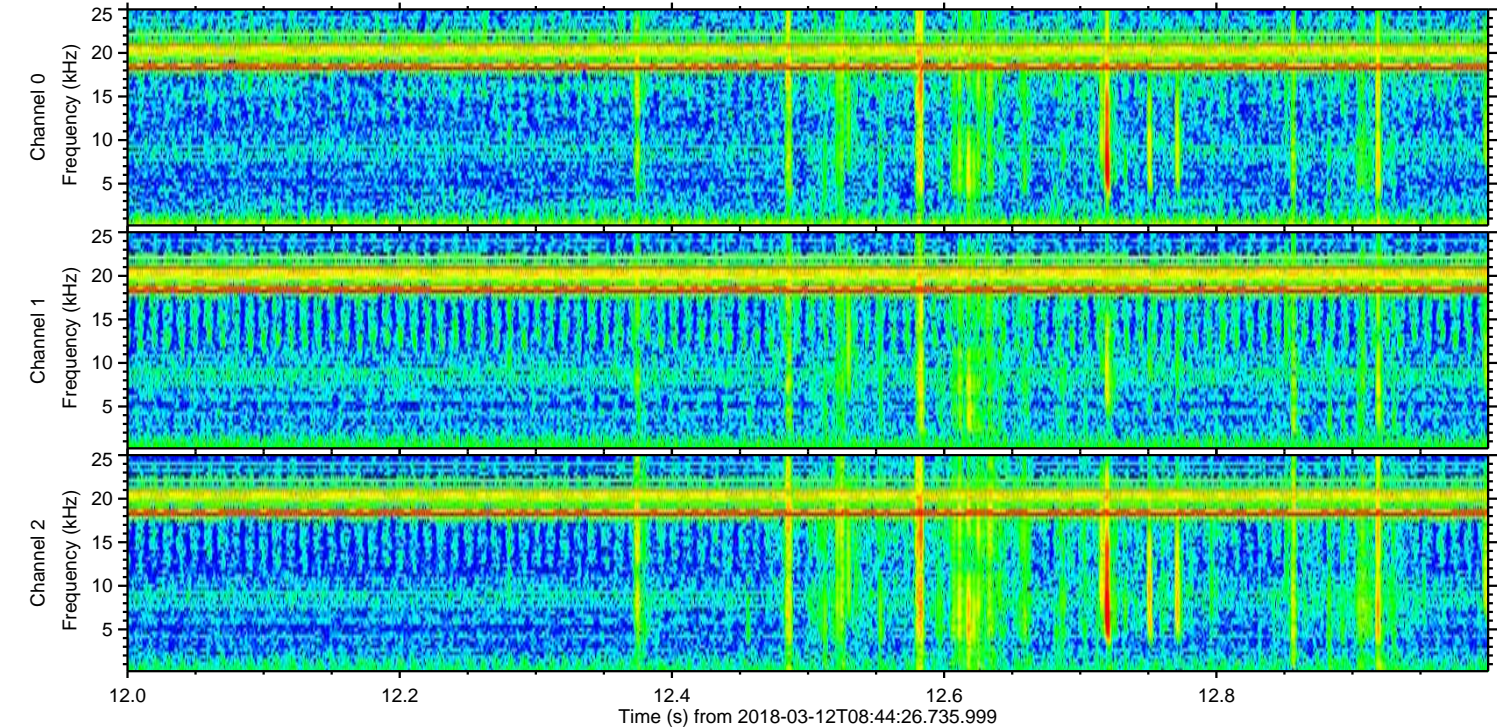
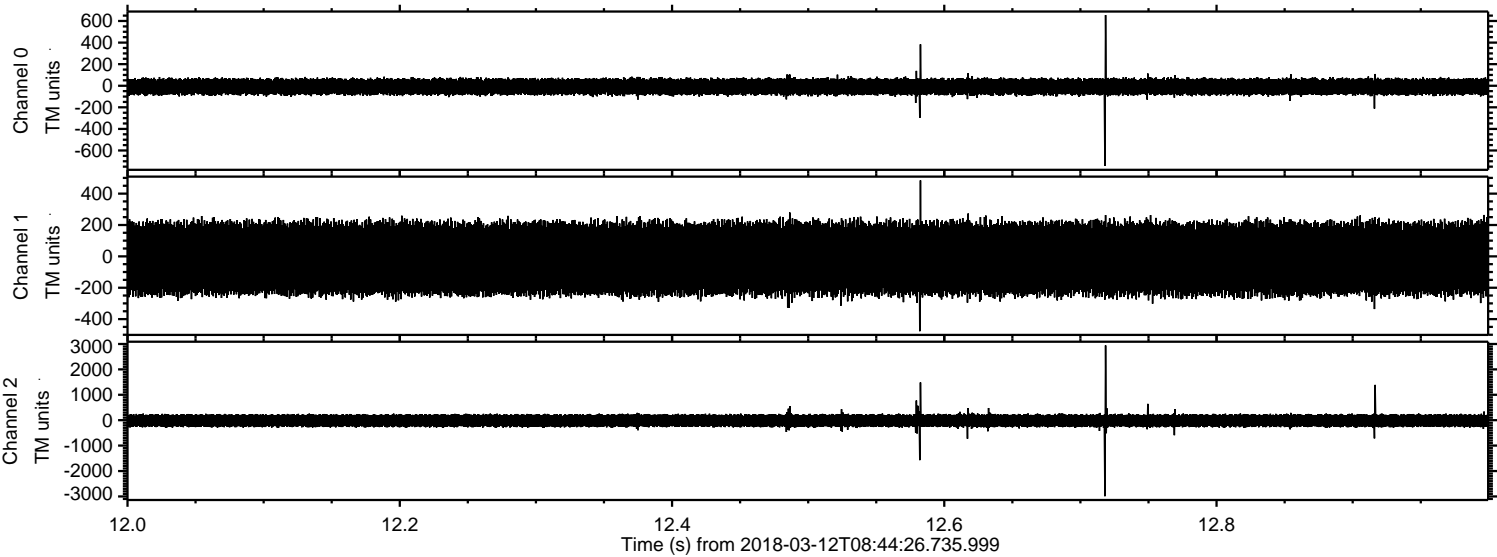
Processed Mon Mar 12 09:52:39 2018 by ELM ver.2012-10-06 from 001__elm20180312_084425__dat00.bin



Processed Mon Mar 12 09:52:40 2018 by ELM ver.2012-10-06 from 001__elm20180312_084425__dat00.bin



Processed Mon Mar 12 09:52:41 2018 by ELM ver.2012-10-06 from 001__elm20180312_084425__dat00.bin



Processed Mon Mar 12 09:52:42 2018 by ELM ver.2012-10-06 from 001__elm20180312_084425__dat00.bin

