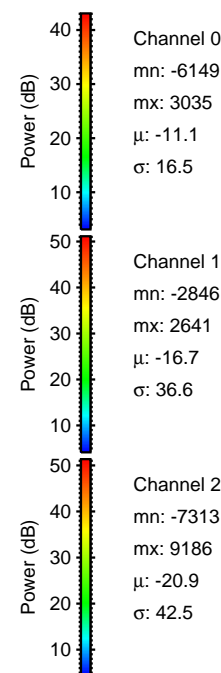
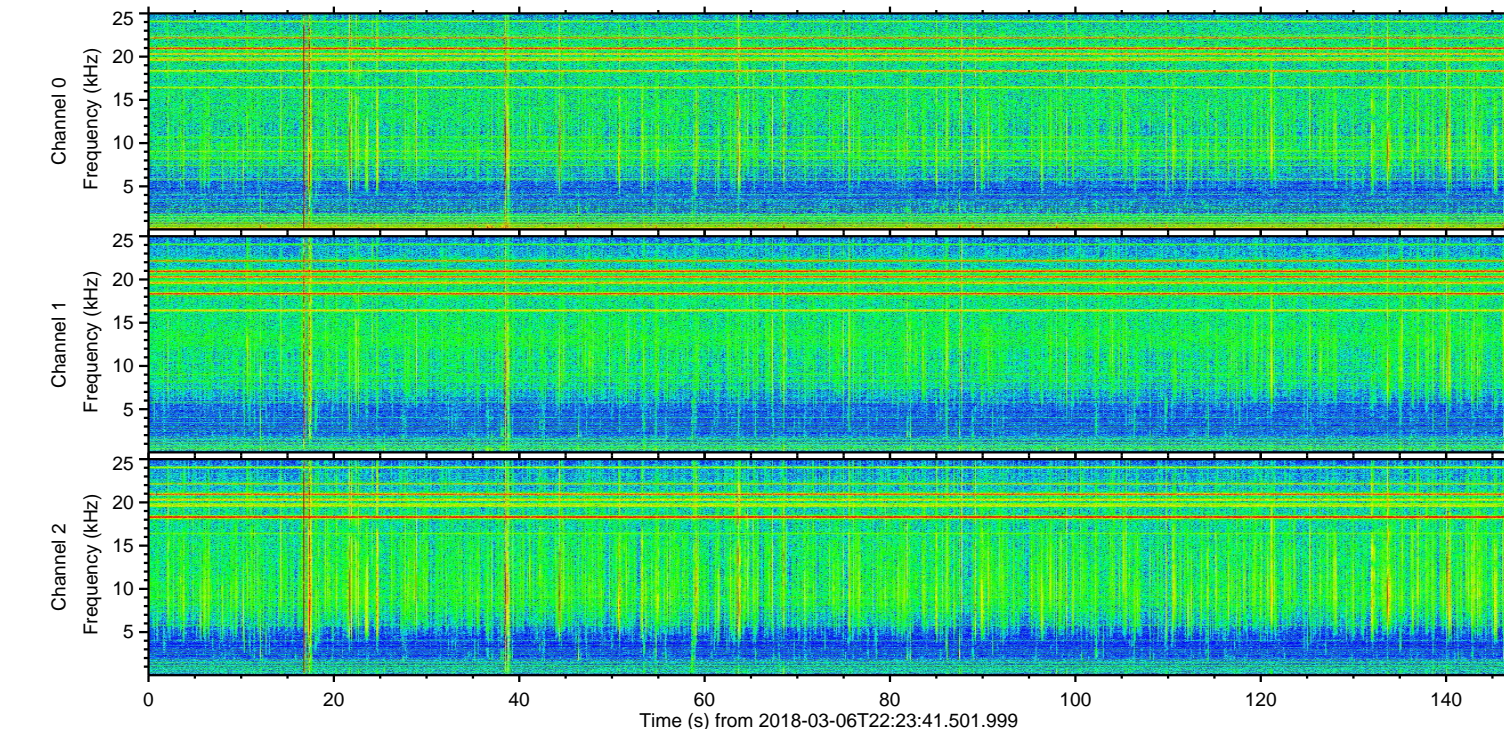
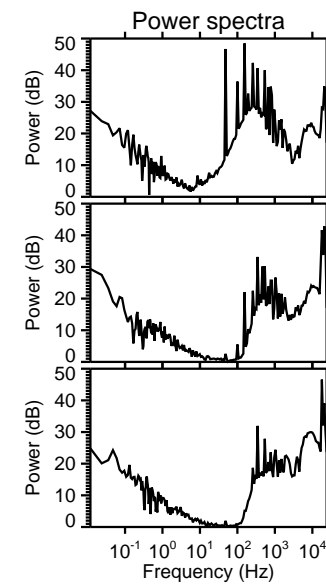
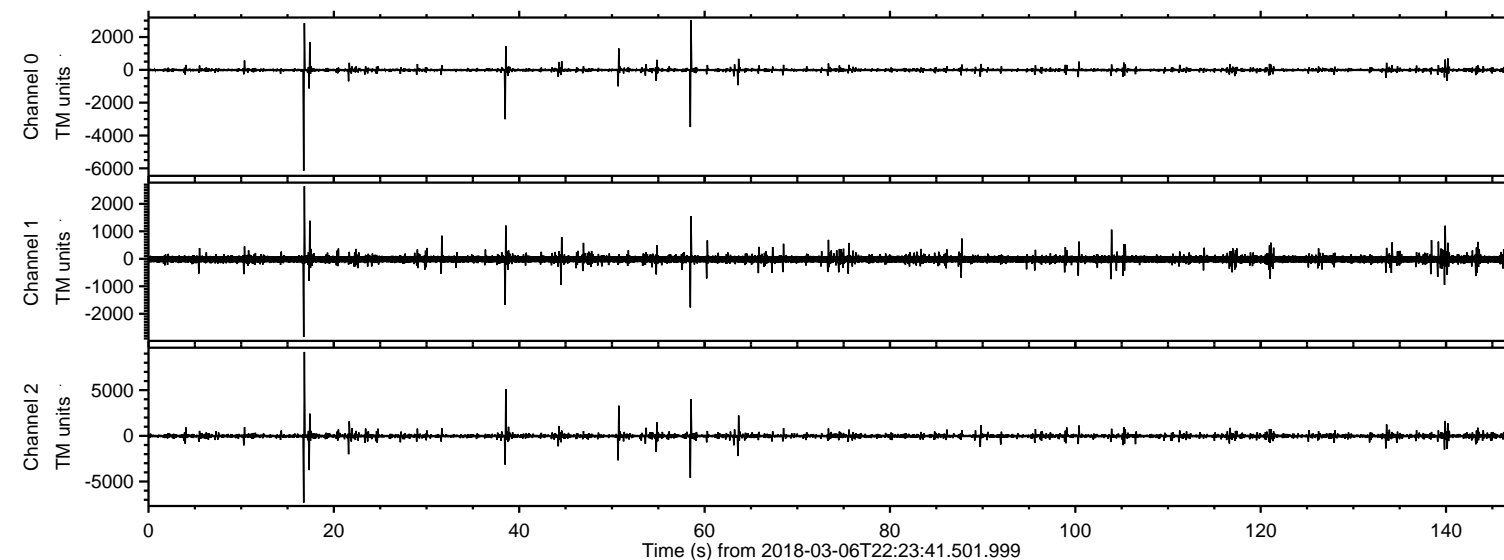
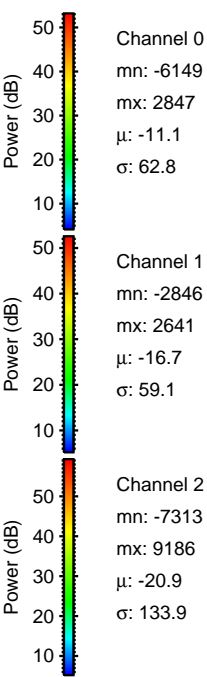
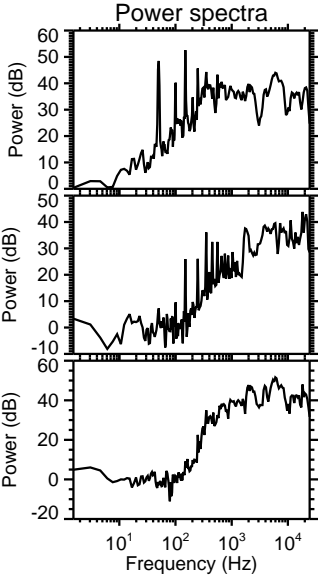
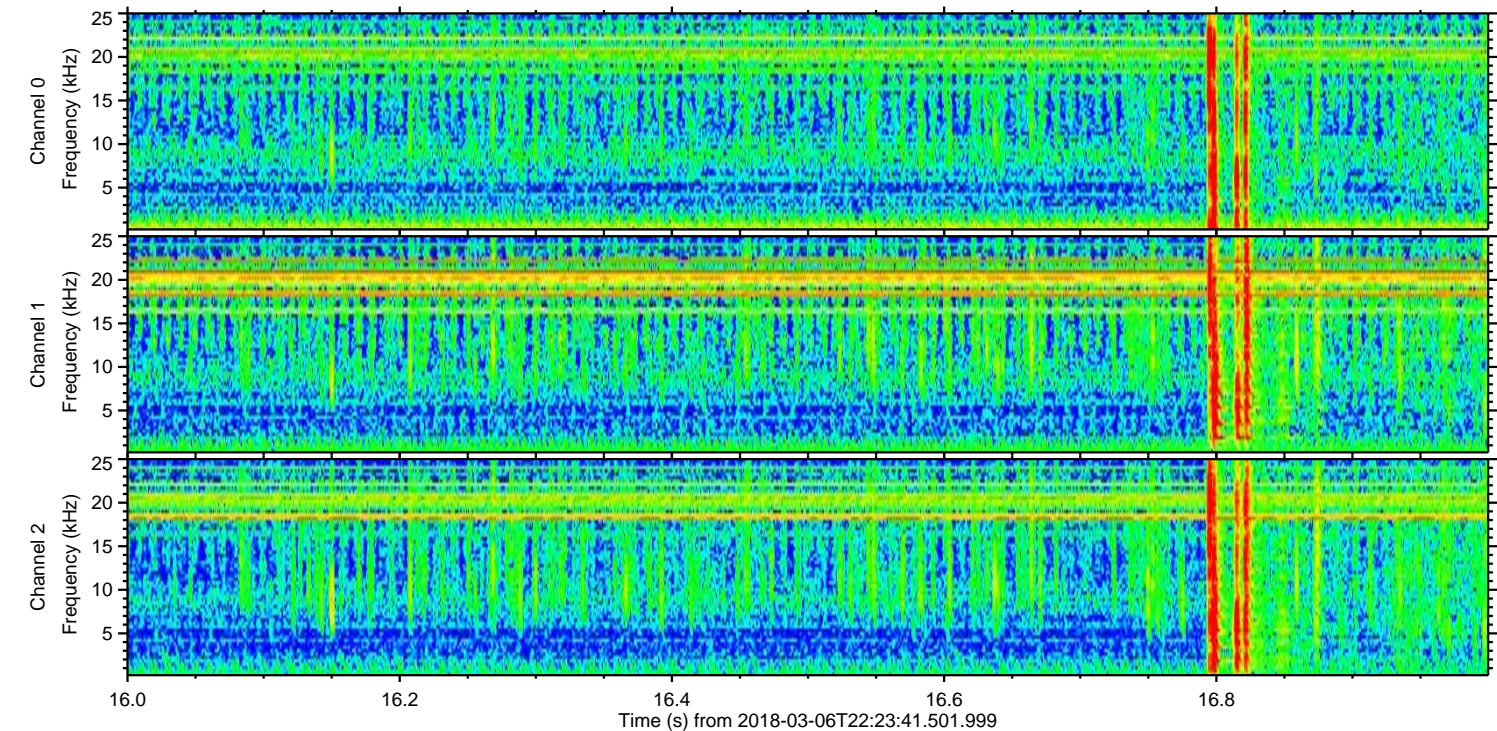
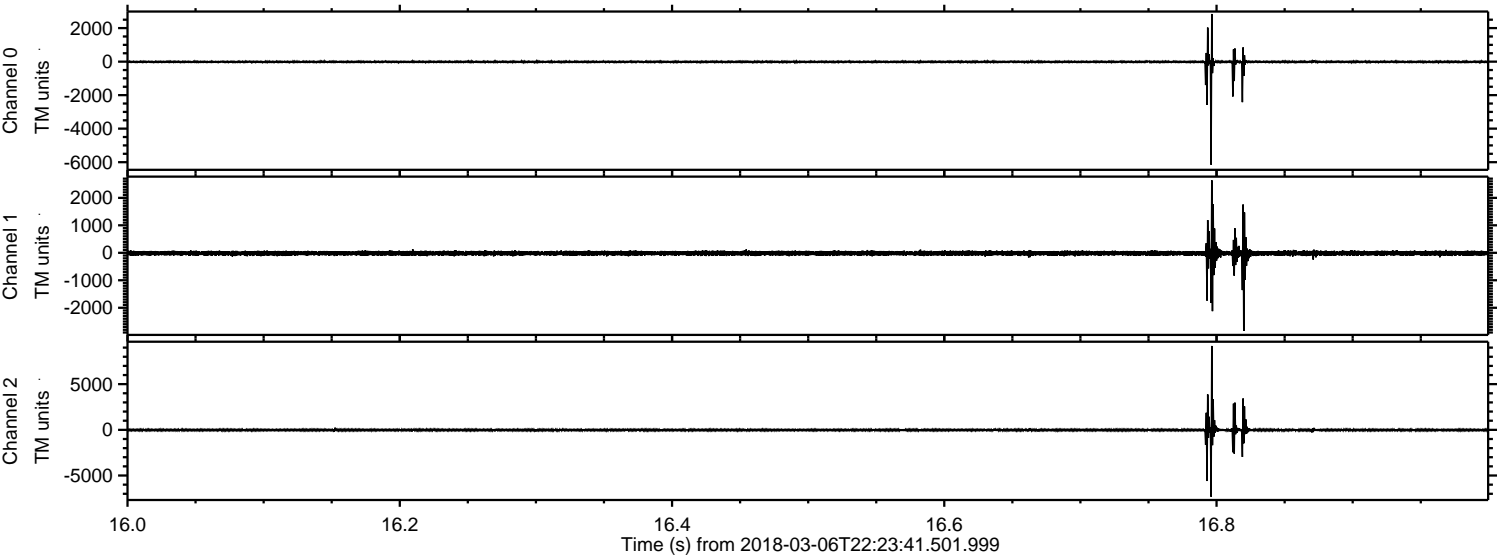


ELMAVAN 3D WAVEFORMS (Measured data sampled at 50 kHz) 51000 packets of 144 samples from 2018-03-06T22:23:41.501.999.

Processed Tue Mar 6 23:31:41 2018 by ELM ver.2012-10-06 from 001__elm20180306_222340__dat00.bin

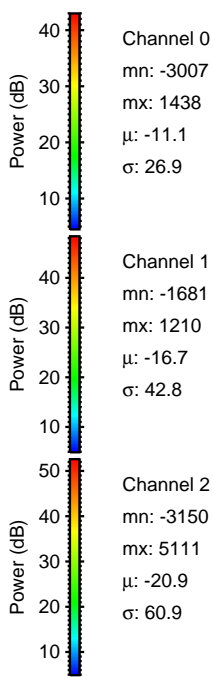
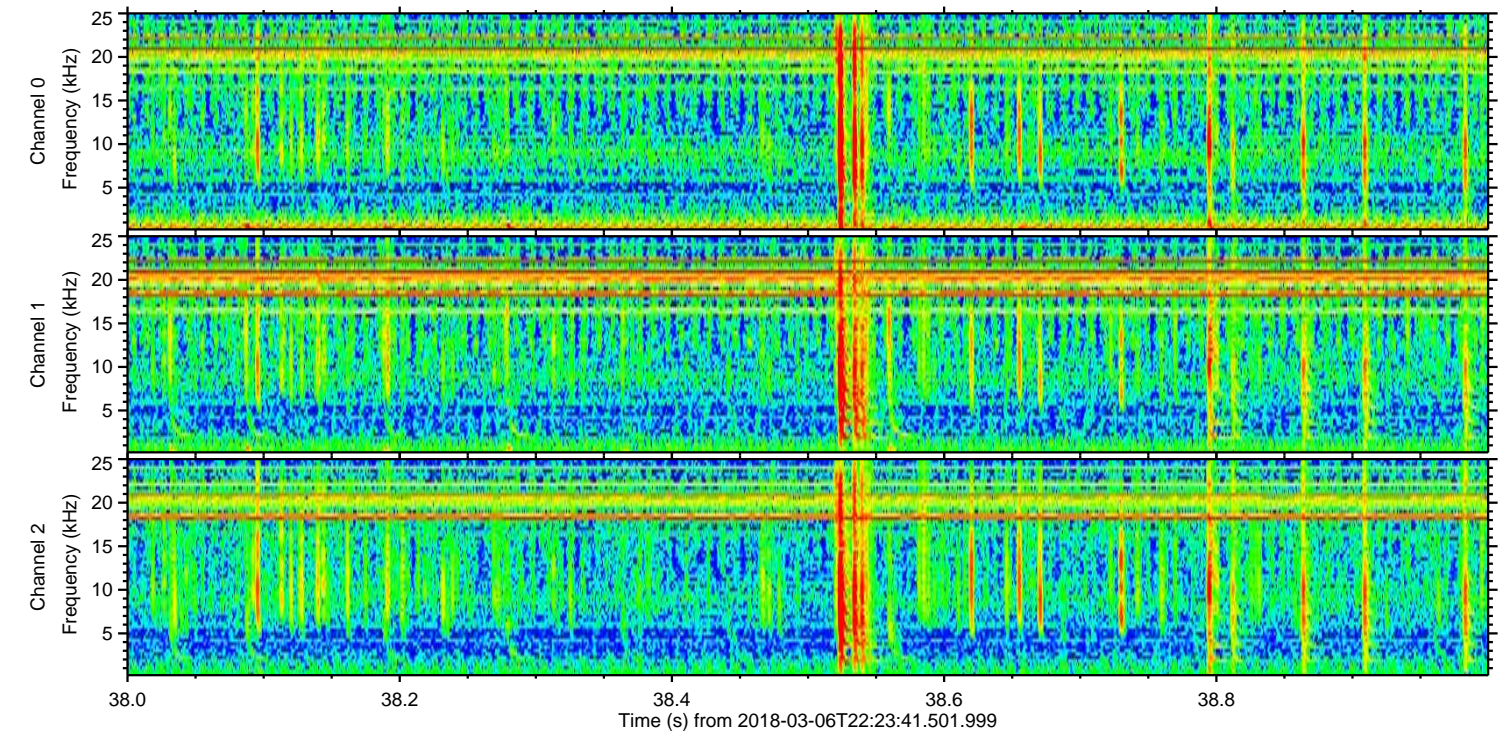
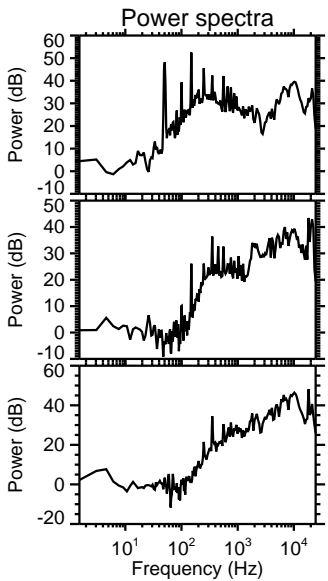
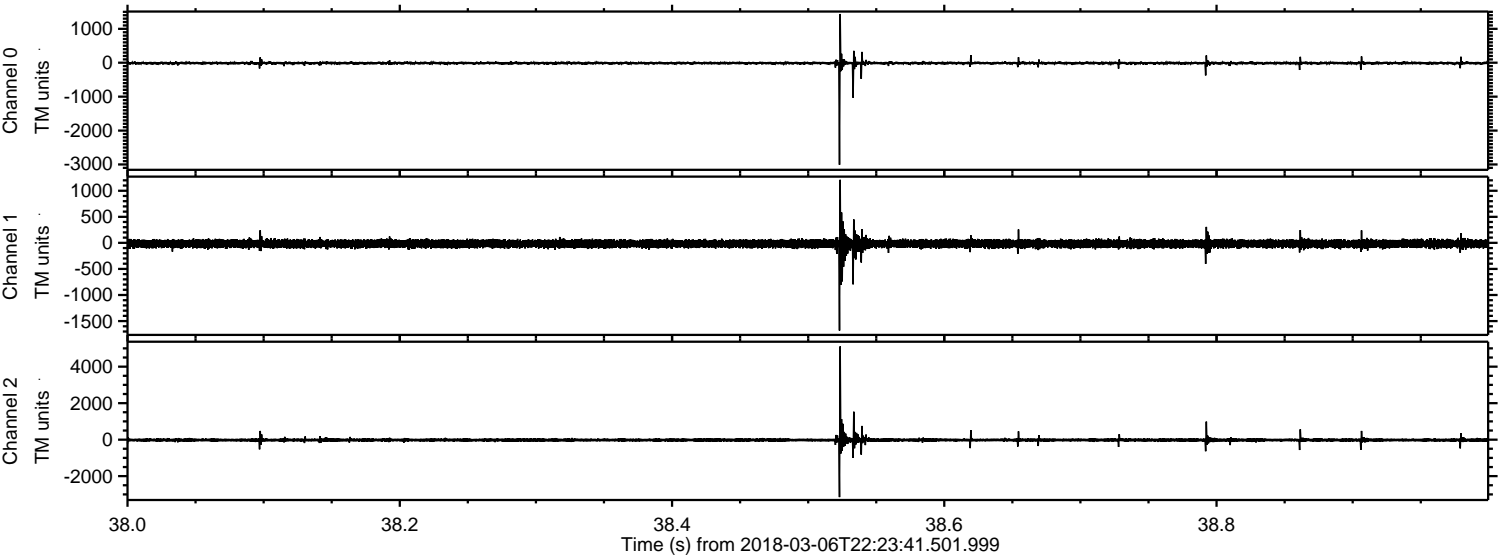


Processed Tue Mar 6 23:31:51 2018 by ELM ver.2012-10-06 from 001__elm20180306_222340__dat00.bin

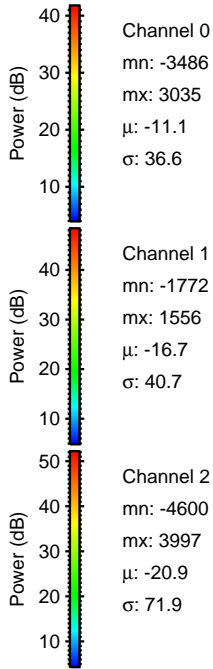
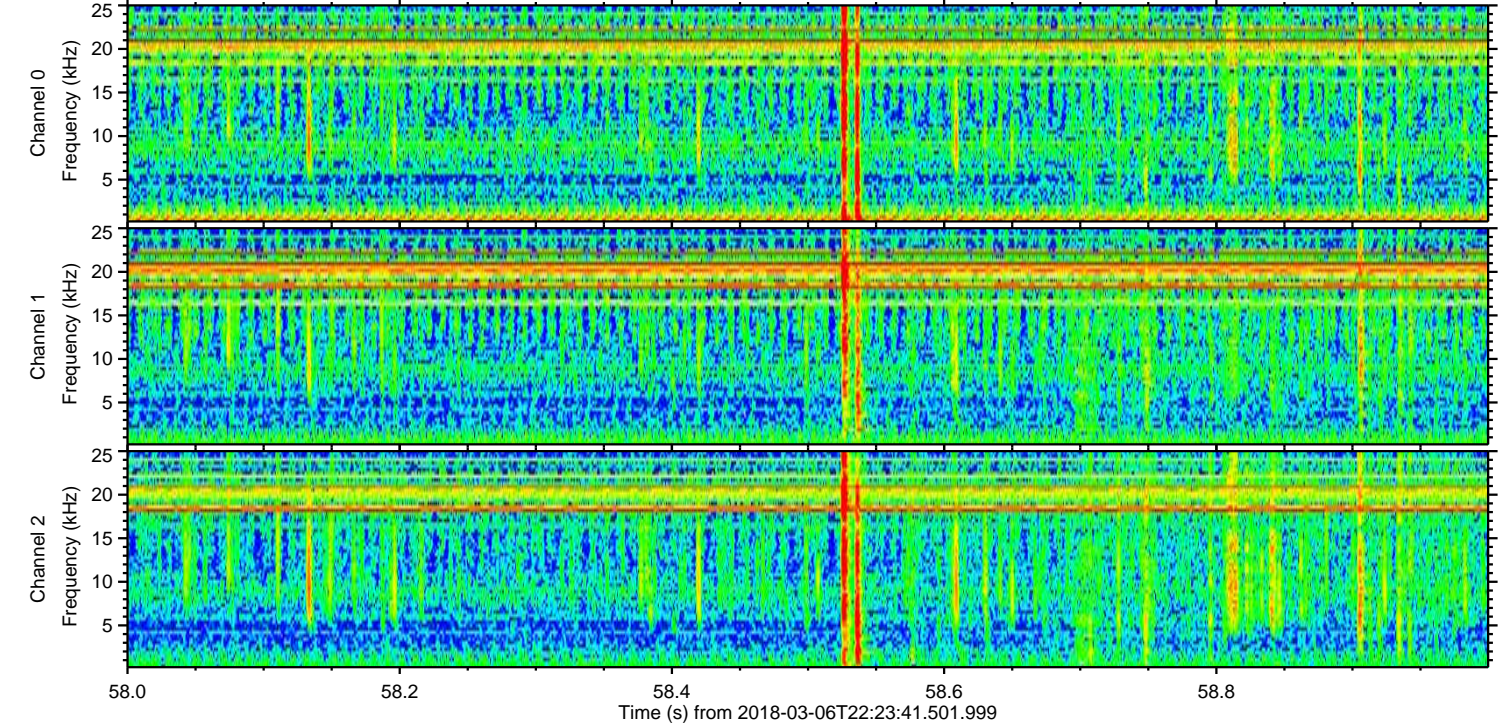
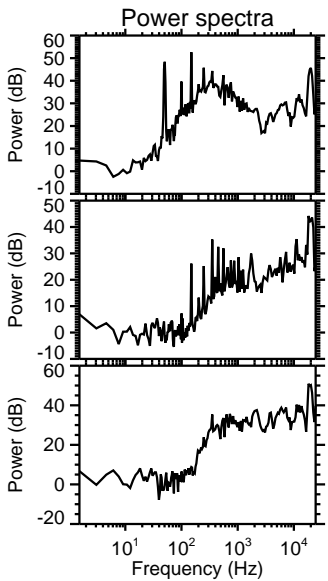
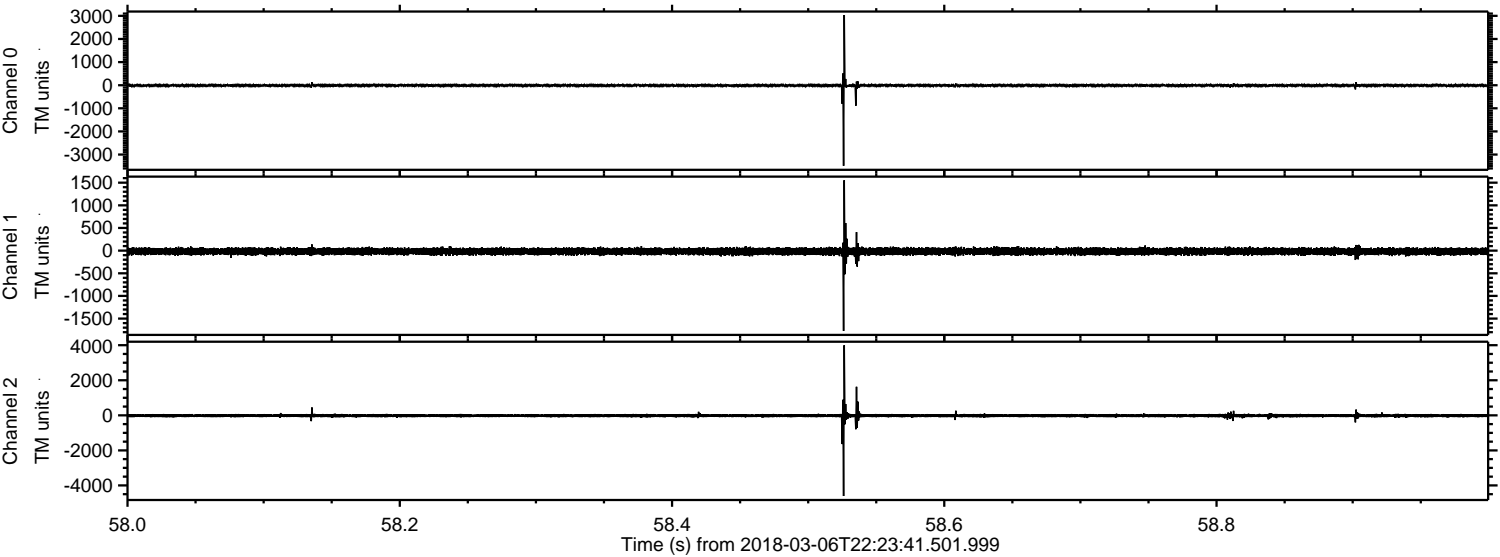


ELMAVAN 3D WAVEFORMS (Measured data sampled at 50 kHz) 51000 packets of 144 samples from 2018-03-06T22:23:41.501.999. Part 39/147

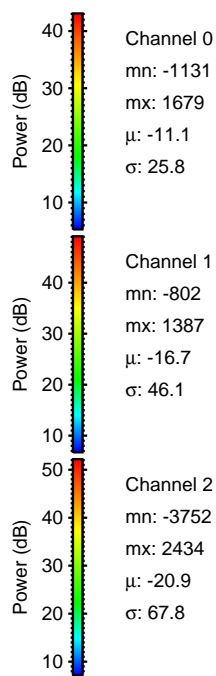
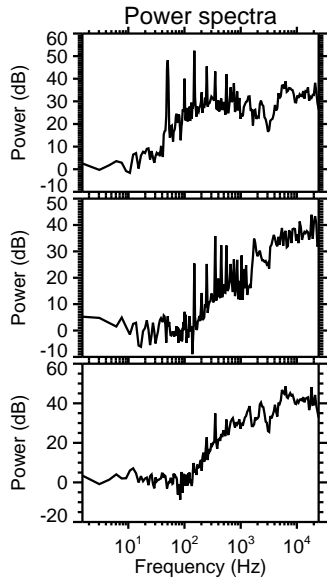
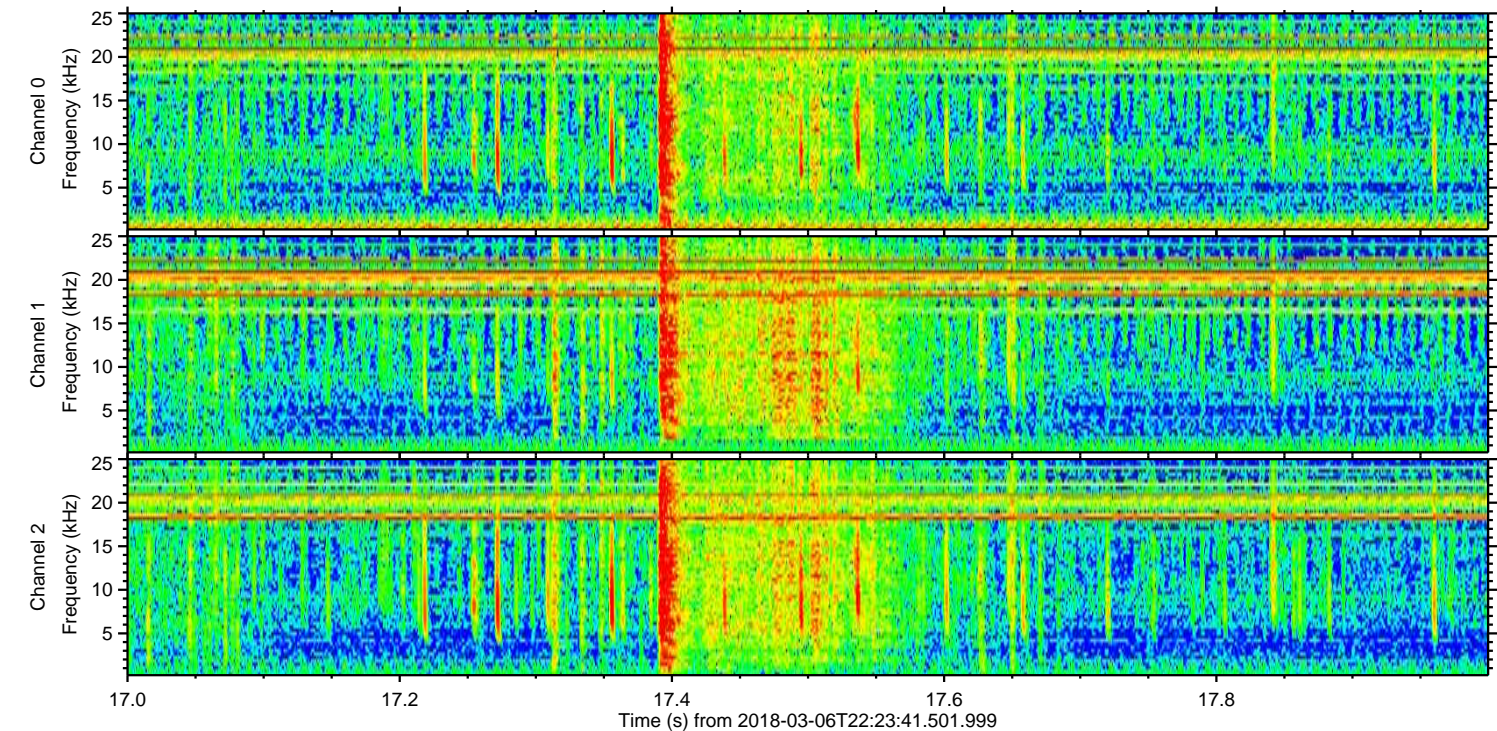
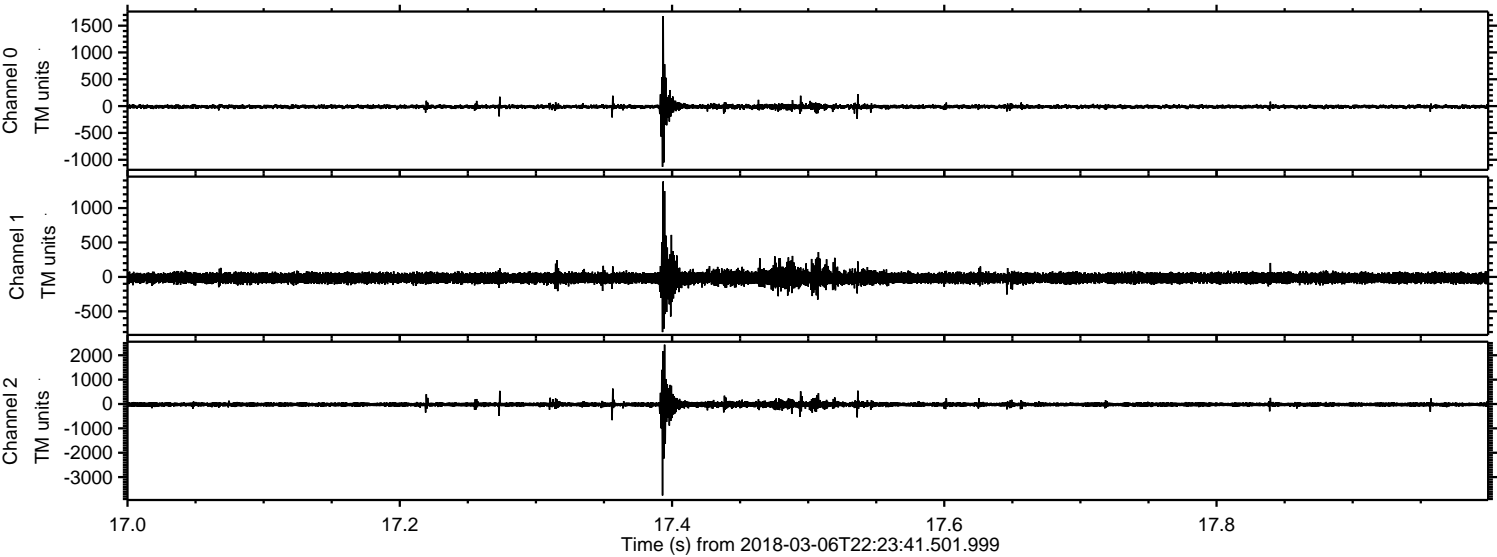
Processed Tue Mar 6 23:31:52 2018 by ELM ver.2012-10-06 from 001__elm20180306_222340__dat00.bin



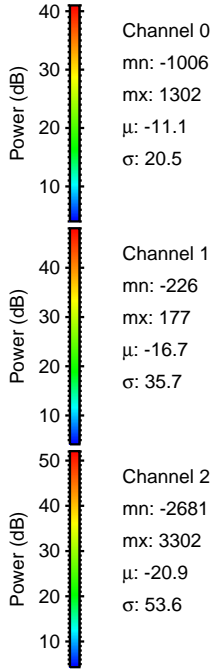
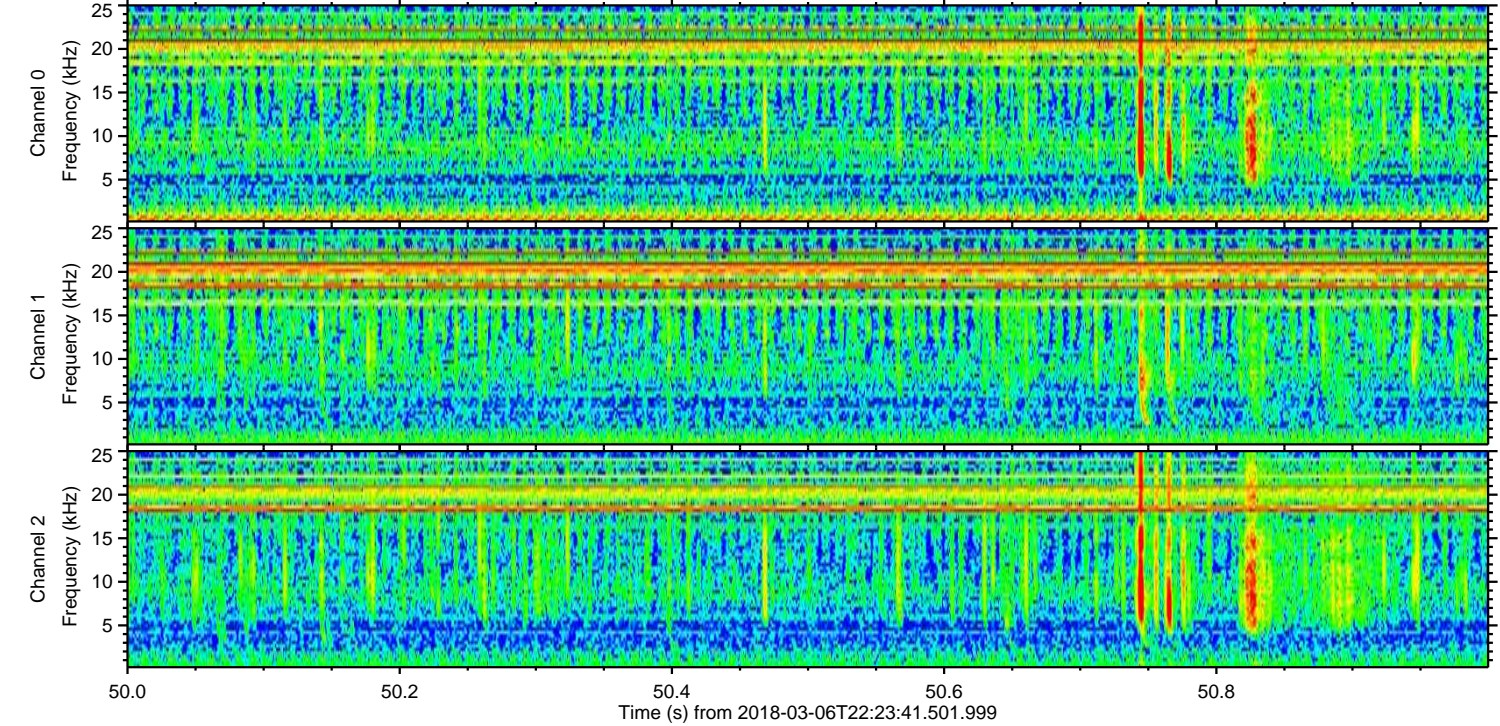
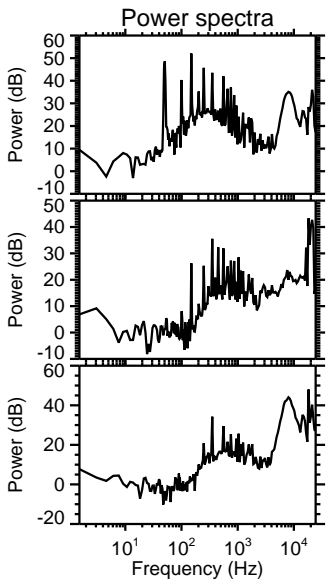
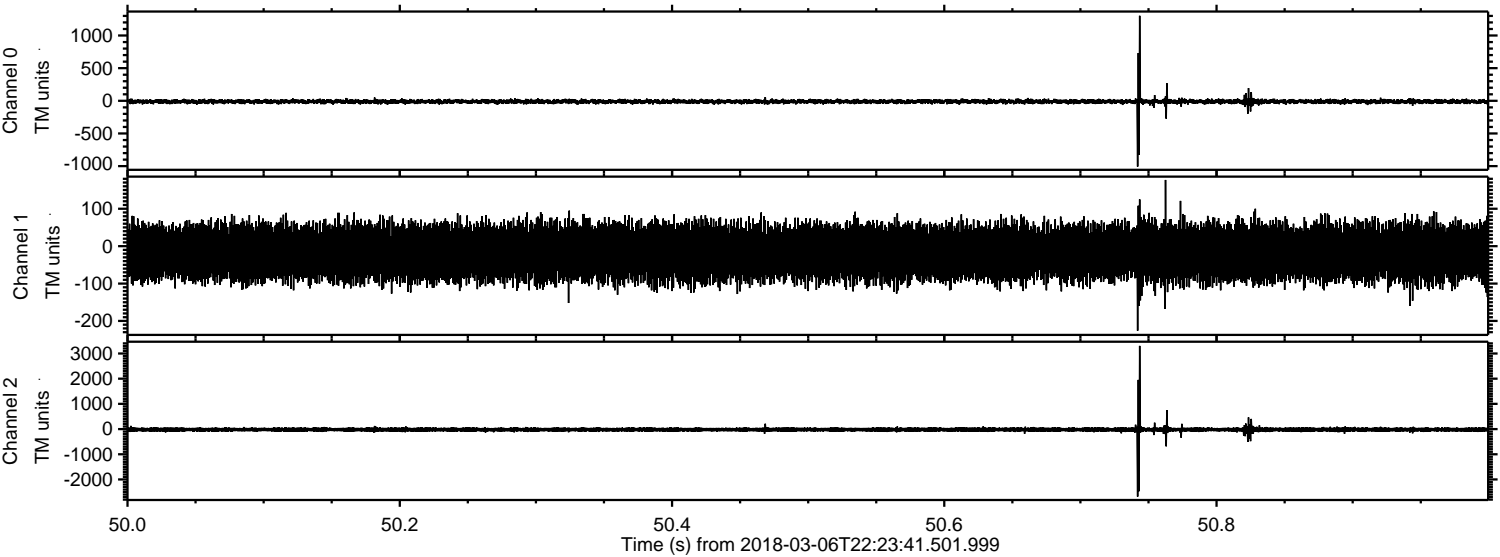
Processed Tue Mar 6 23:31:53 2018 by ELM ver.2012-10-06 from 001__elm20180306_222340__dat00.bin



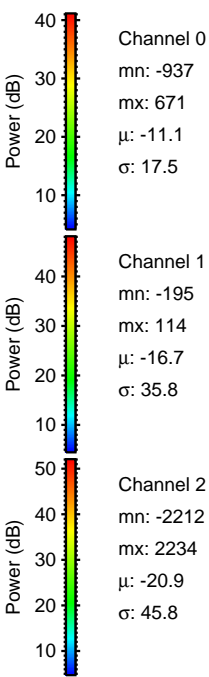
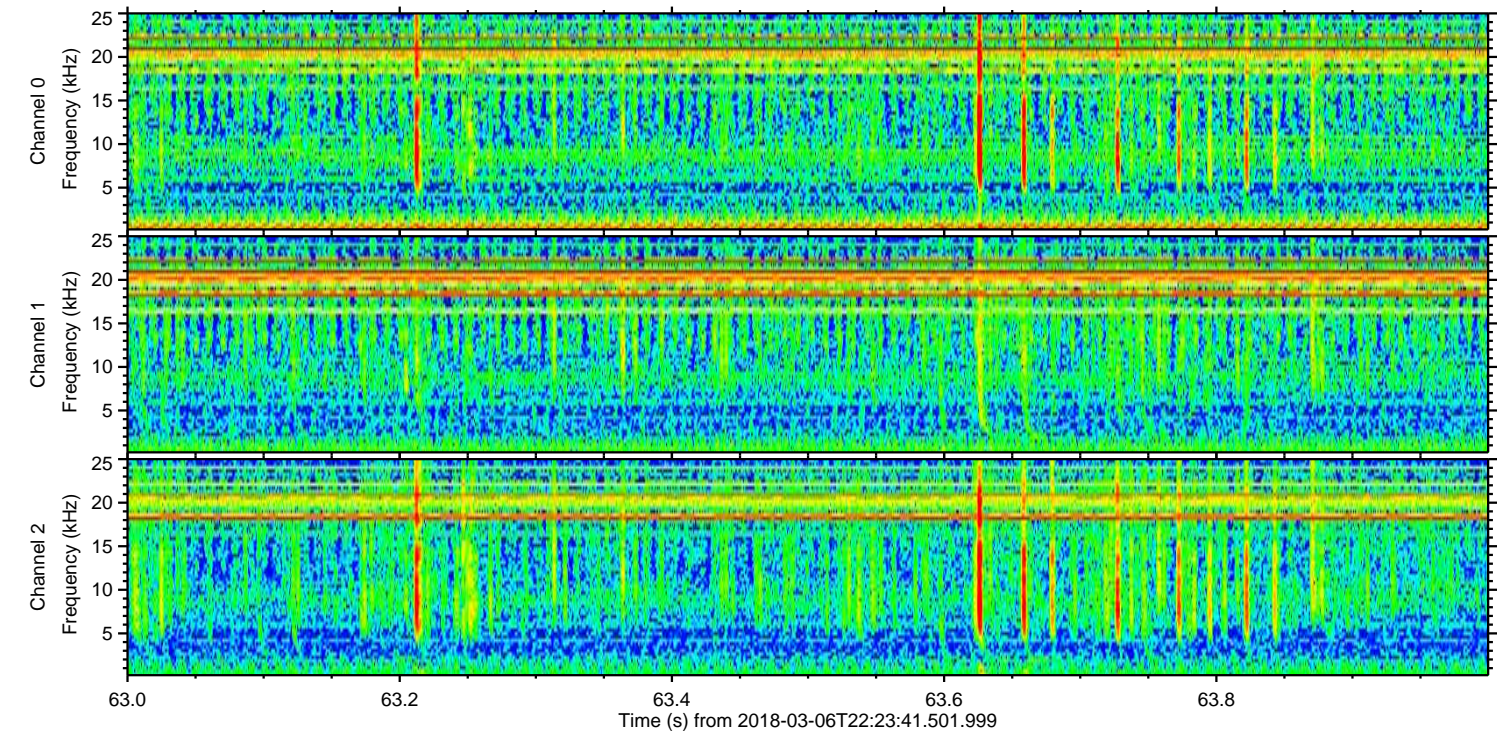
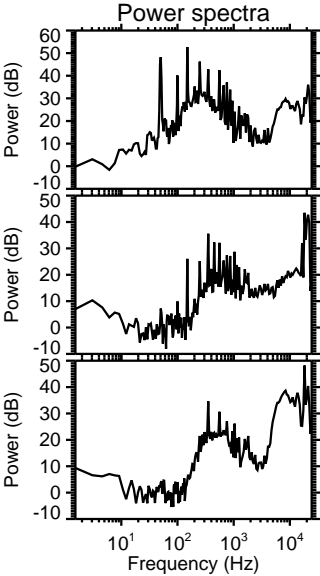
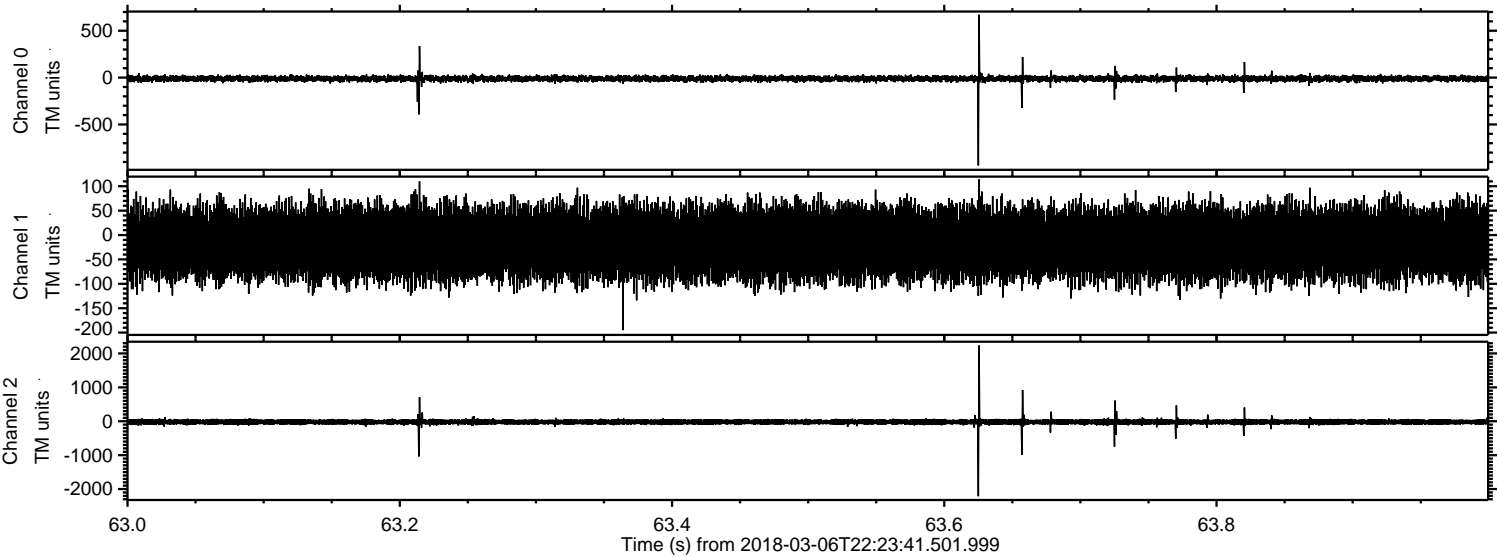
Processed Tue Mar 6 23:31:54 2018 by ELM ver.2012-10-06 from 001__elm20180306_222340__dat00.bin



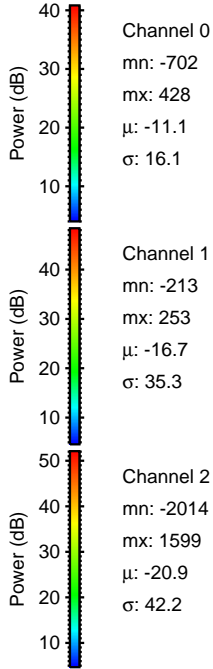
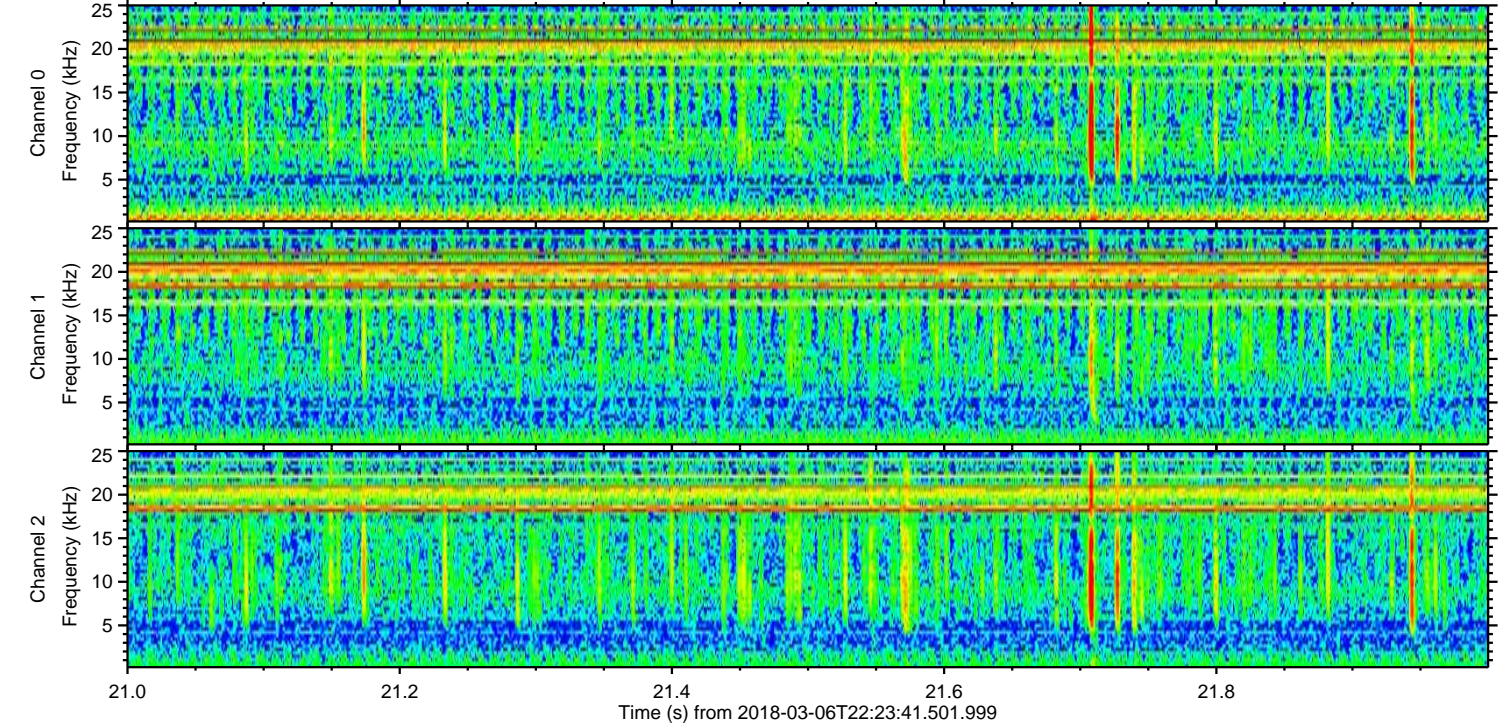
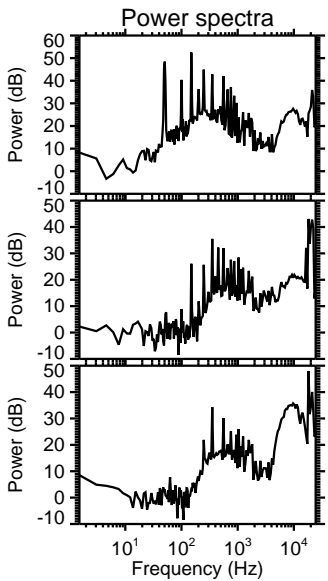
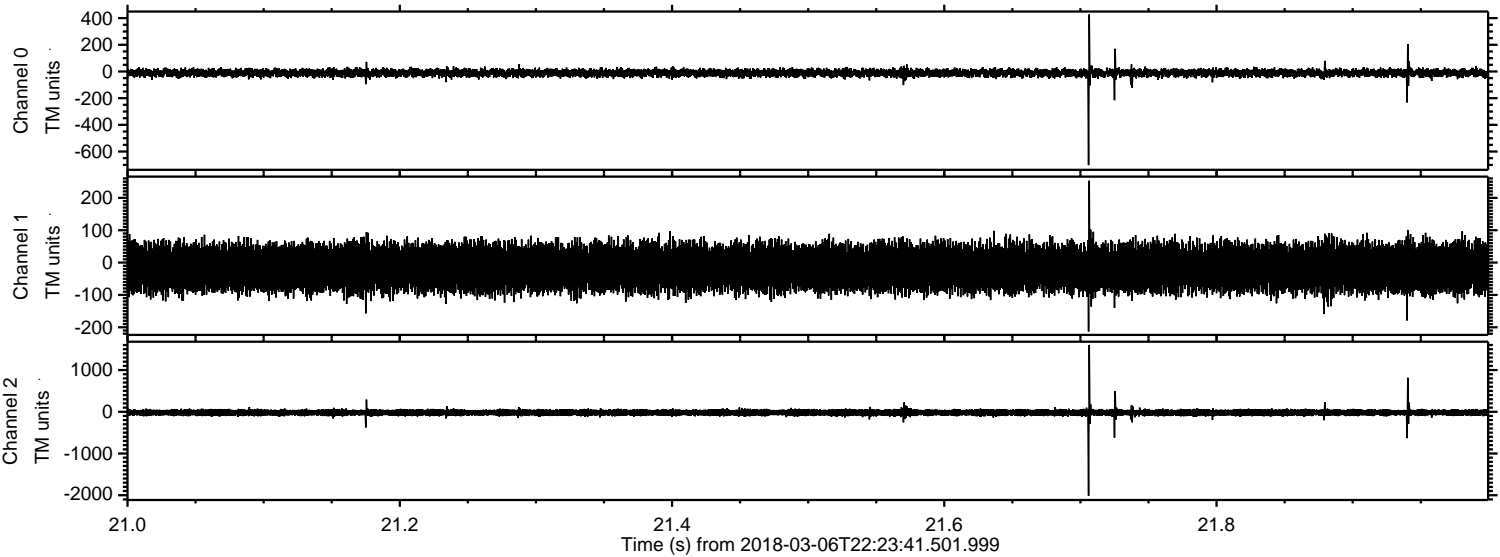
Processed Tue Mar 6 23:31:54 2018 by ELM ver.2012-10-06 from 001__elm20180306_222340__dat00.bin



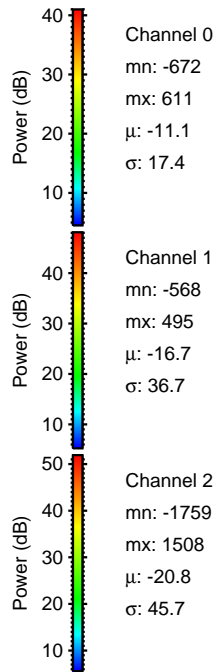
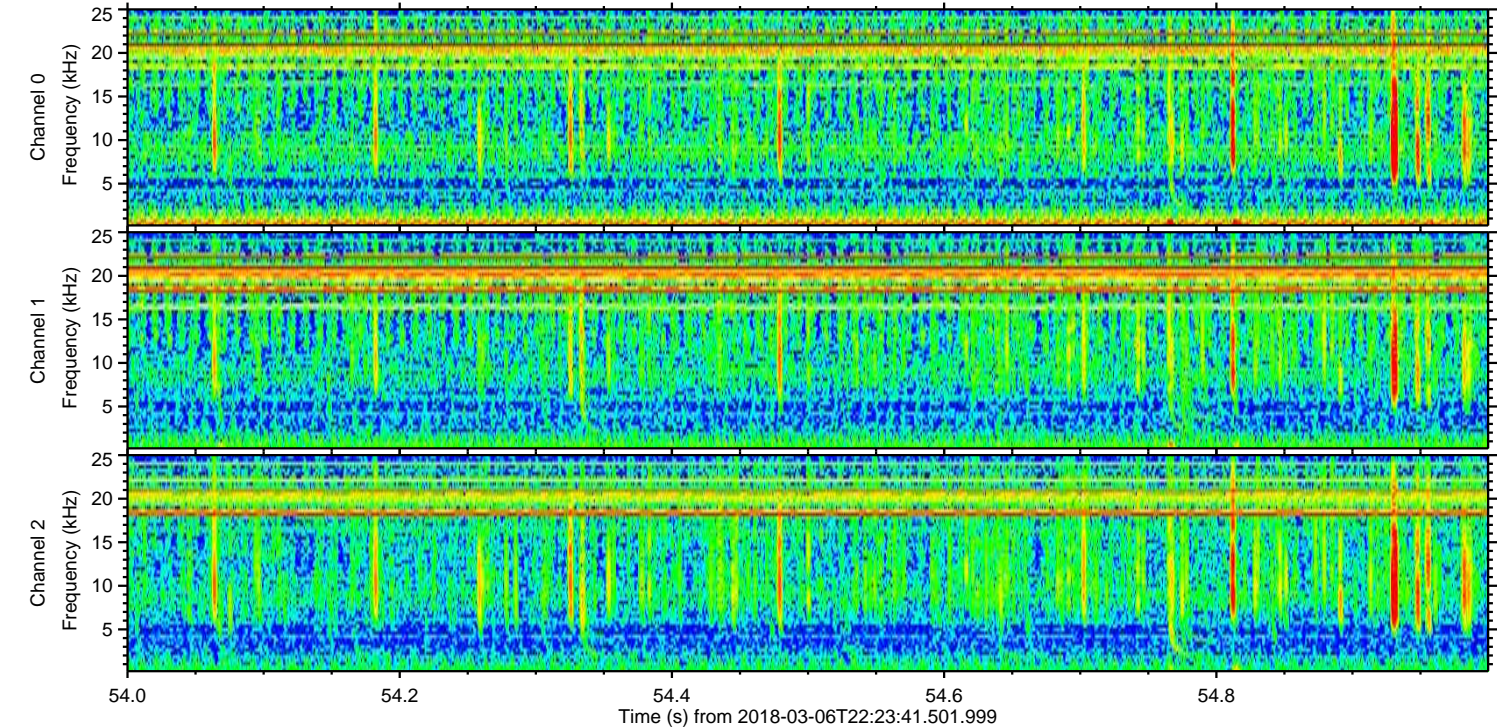
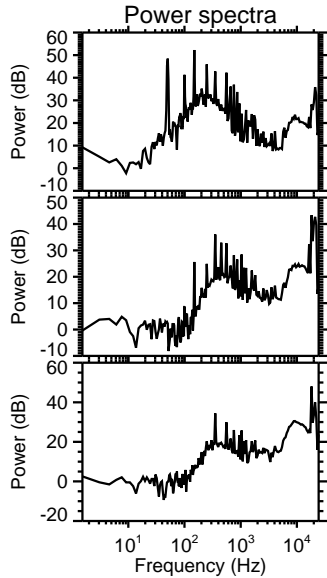
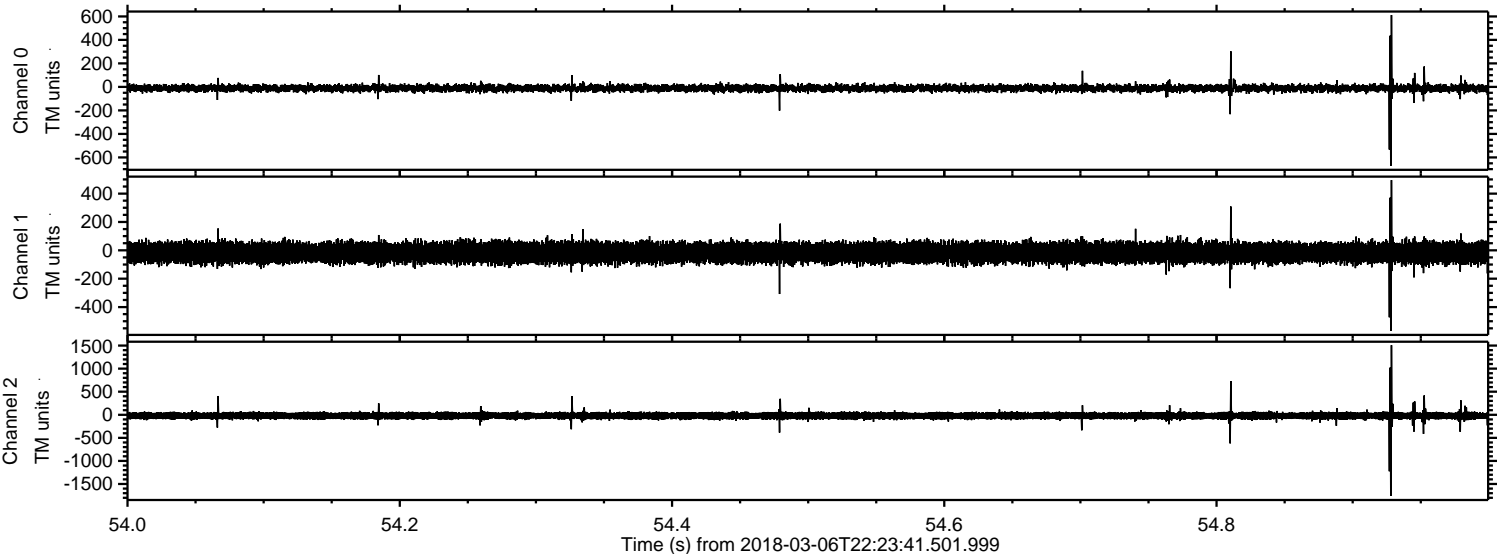
Processed Tue Mar 6 23:31:55 2018 by ELM ver.2012-10-06 from 001__elm20180306_222340__dat00.bin



Processed Tue Mar 6 23:31:56 2018 by ELM ver.2012-10-06 from 001__elm20180306_222340__dat00.bin

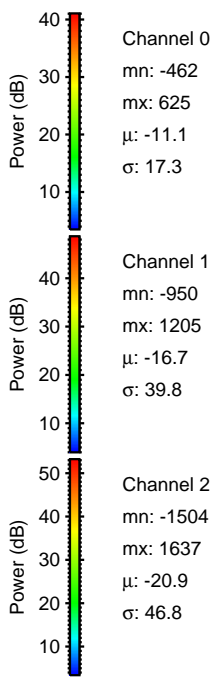
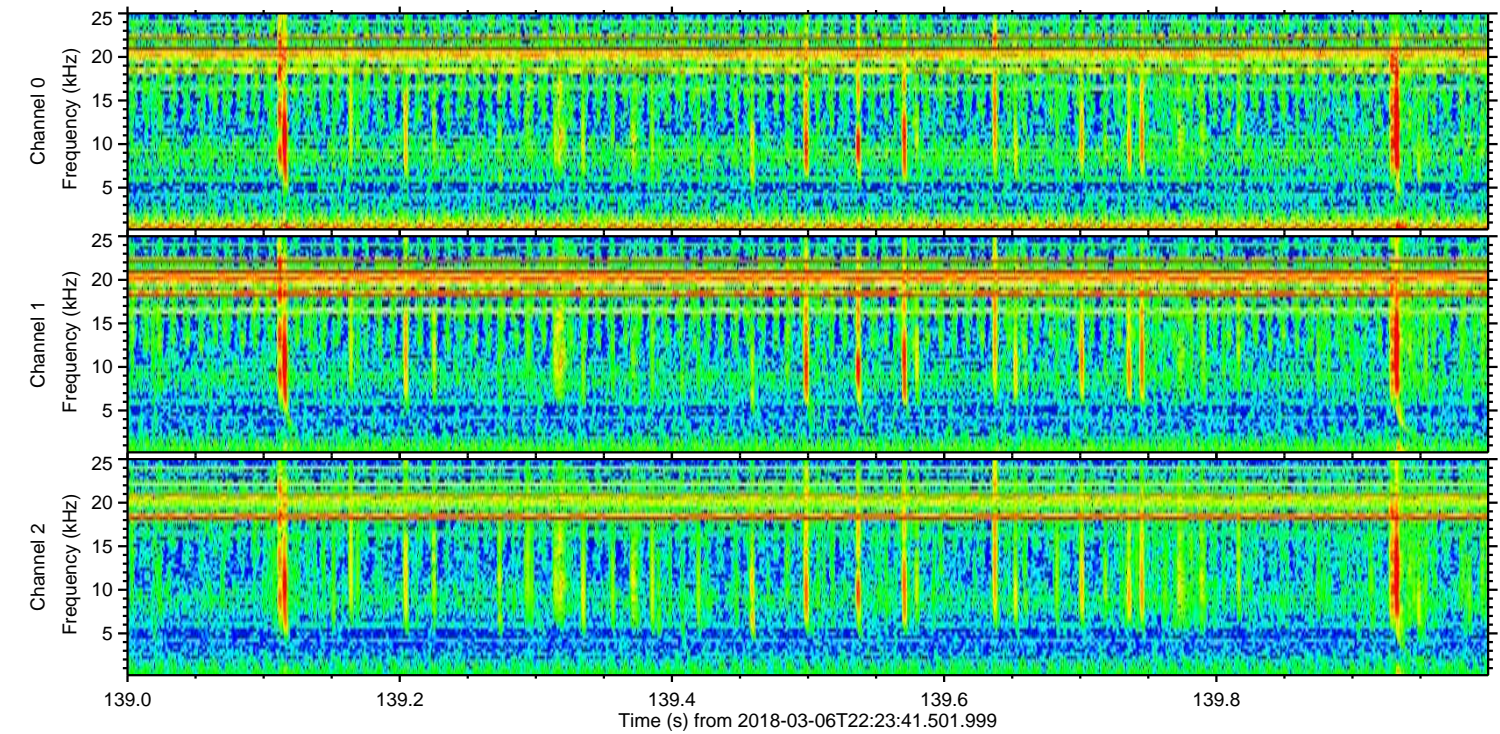
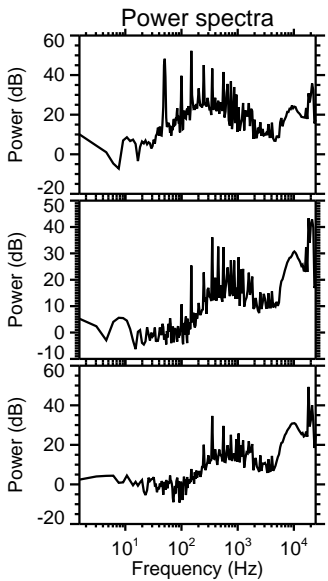
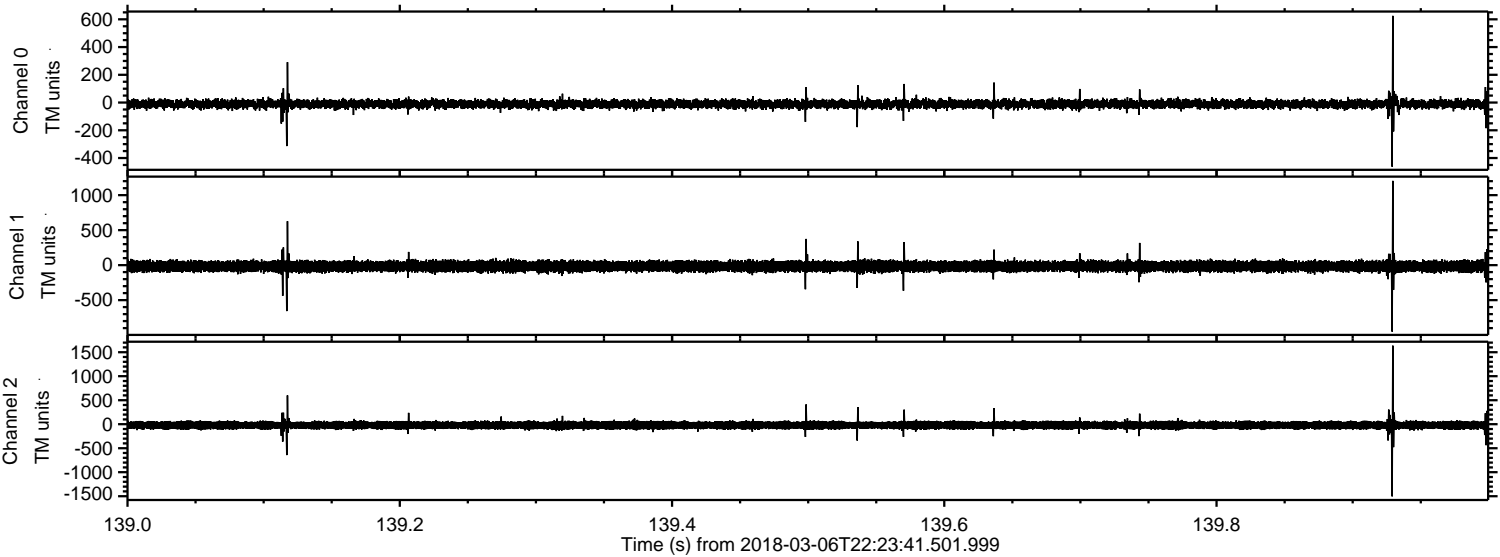


Processed Tue Mar 6 23:31:57 2018 by ELM ver.2012-10-06 from 001__elm20180306_222340__dat00.bin



ELMAVAN 3D WAVEFORMS (Measured data sampled at 50 kHz) 51000 packets of 144 samples from 2018-03-06T22:23:41.501.999. Part 140/147

Processed Tue Mar 6 23:31:58 2018 by ELM ver.2012-10-06 from 001__elm20180306_222340__dat00.bin



Channel 0
mn: -462
mx: 625
 μ : -11.1
 σ : 17.3

Channel 1
mn: -950
mx: 1205
 μ : -16.7
 σ : 39.8

Channel 2
mn: -1504
mx: 1637
 μ : -20.9
 σ : 46.8

Processed Tue Mar 6 23:31:59 2018 by ELM ver.2012-10-06 from 001__elm20180306_222340__dat00.bin

