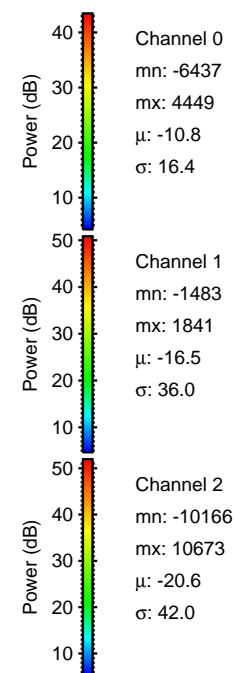
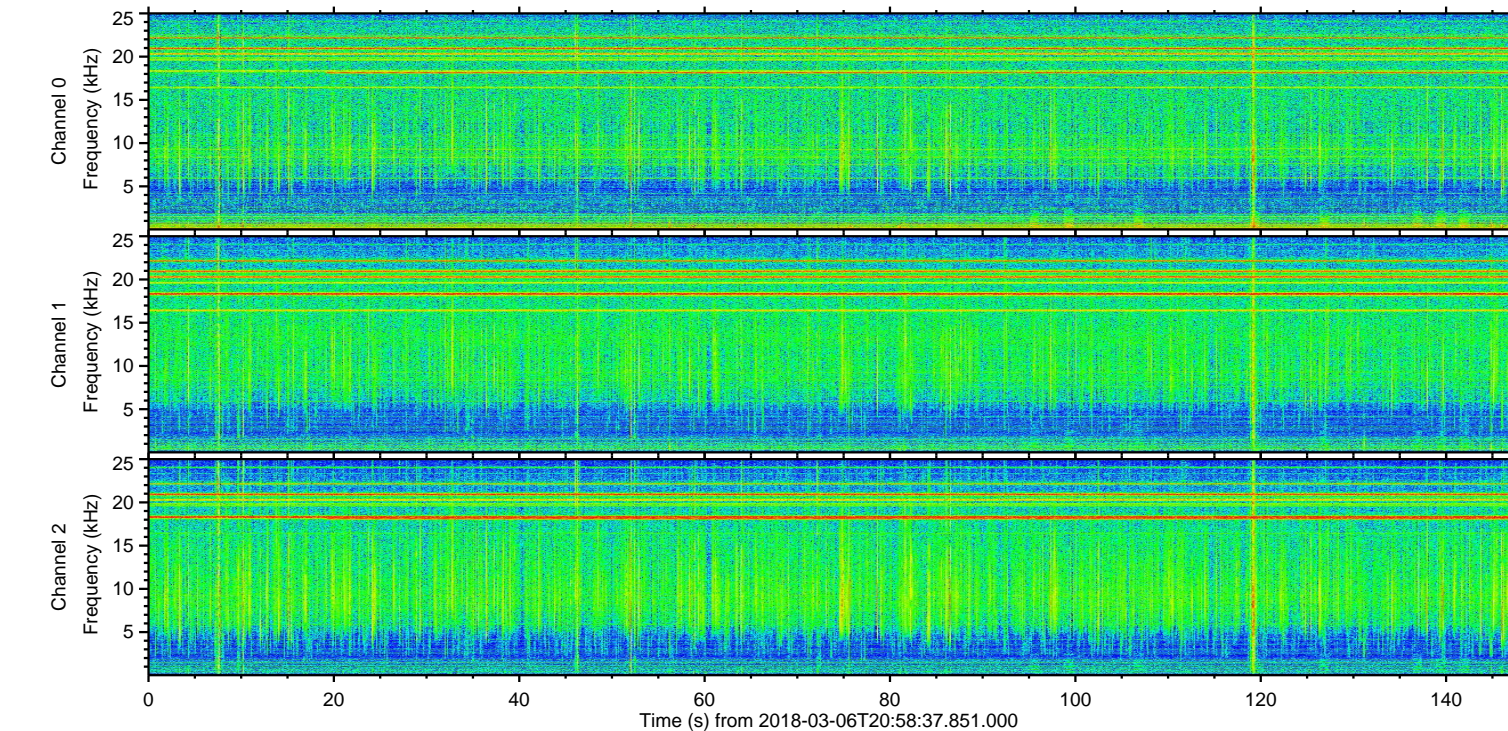
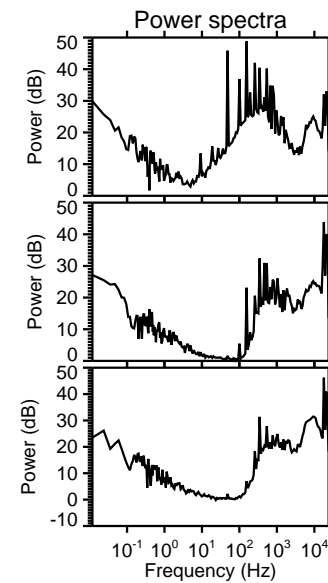
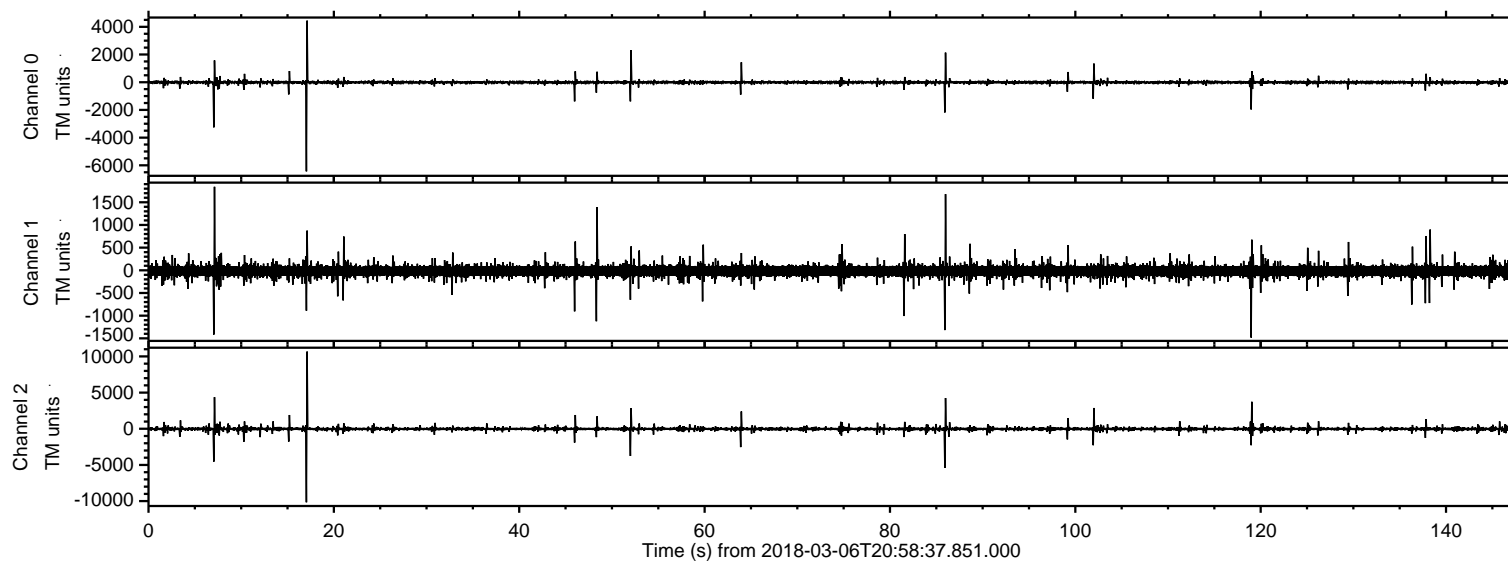
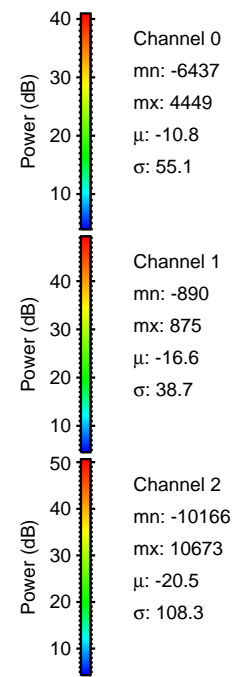
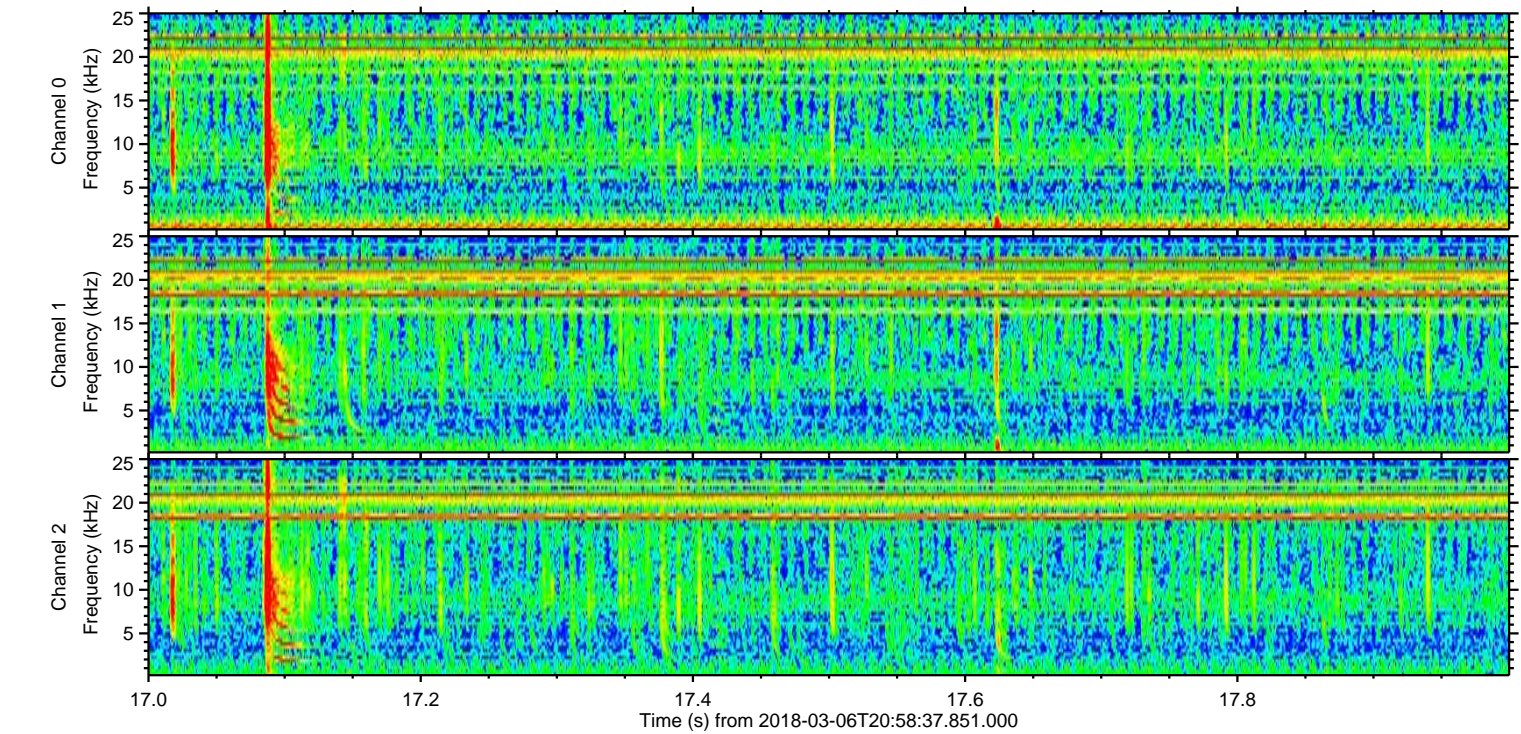
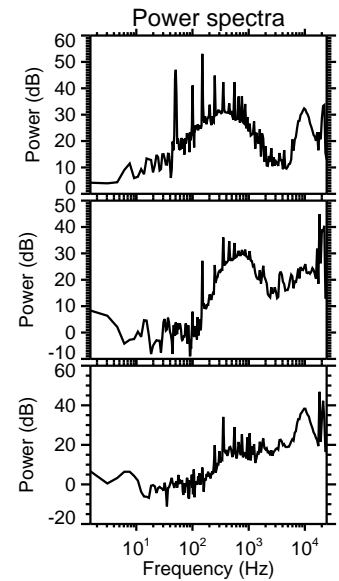
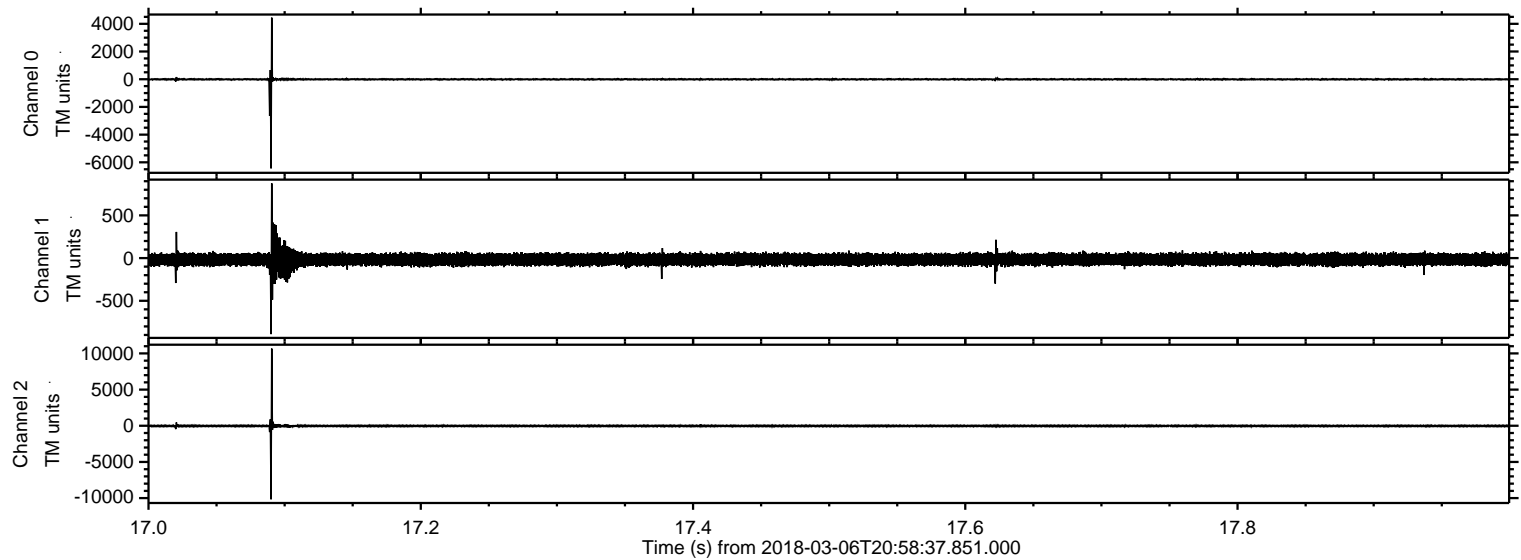


ELMAVAN 3D WAVEFORMS (Measured data sampled at 50 kHz) 51000 packets of 144 samples from 2018-03-06T20:58:37.851.000.

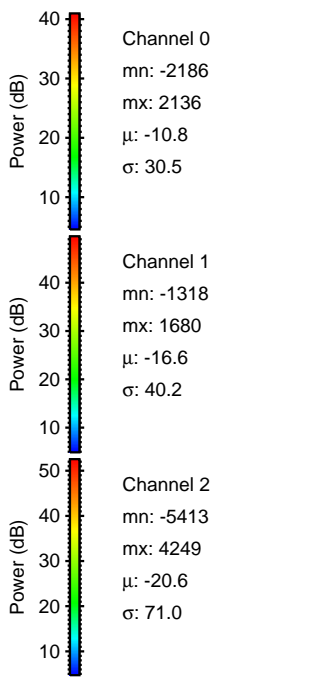
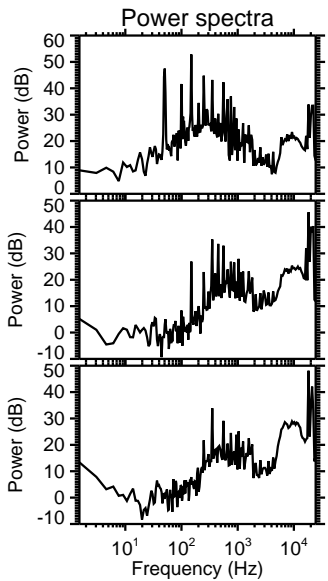
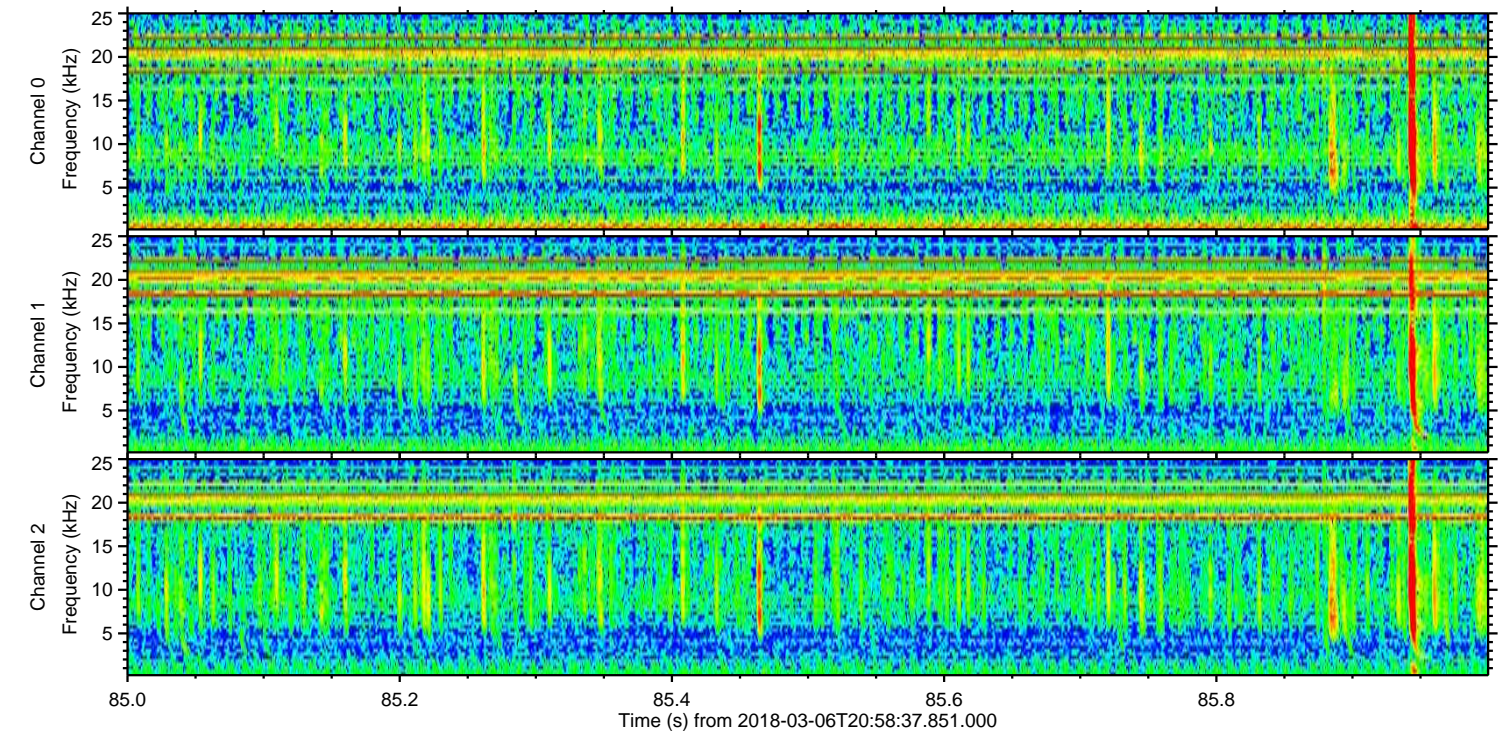
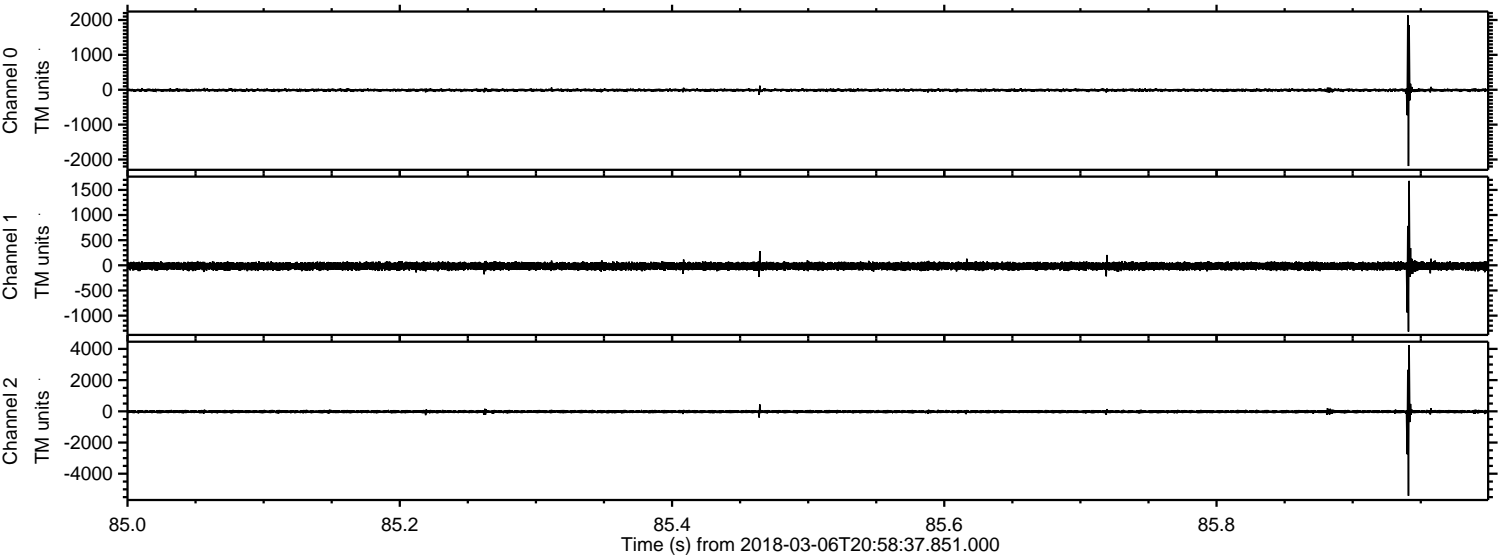
Processed Tue Mar 6 22:07:07 2018 by ELM ver.2012-10-06 from 001__elm20180306_205836__dat00.bin



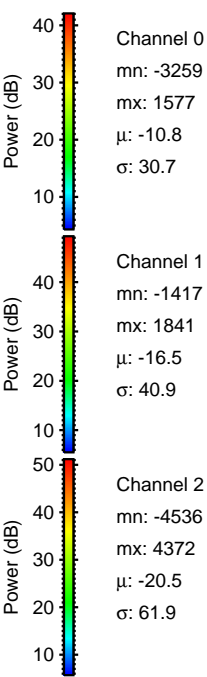
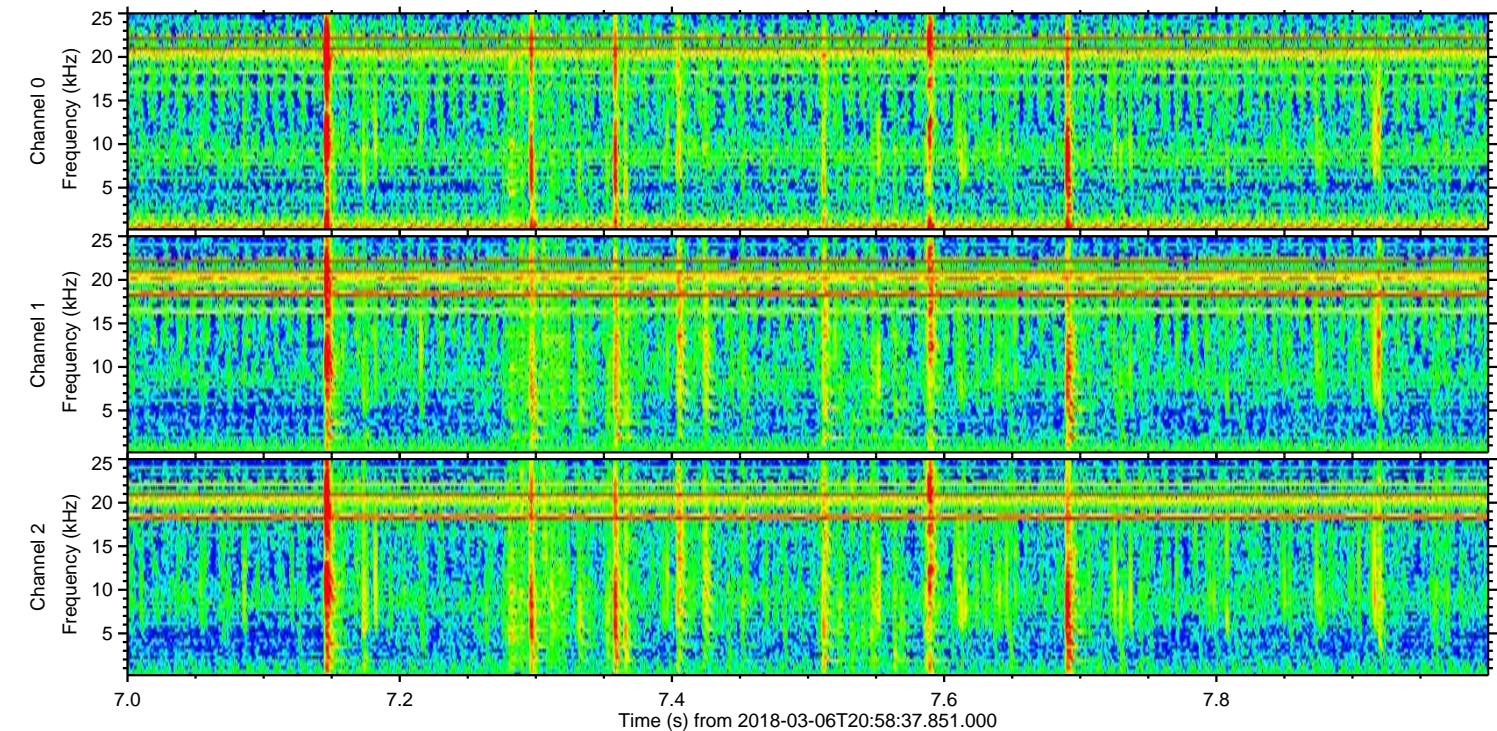
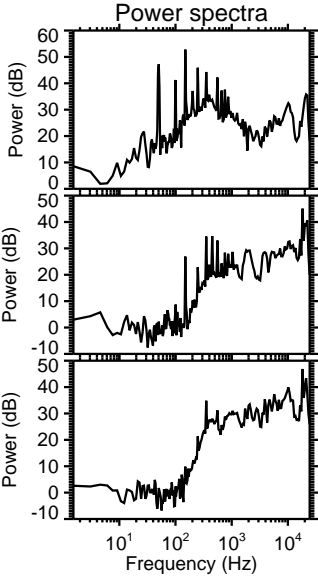
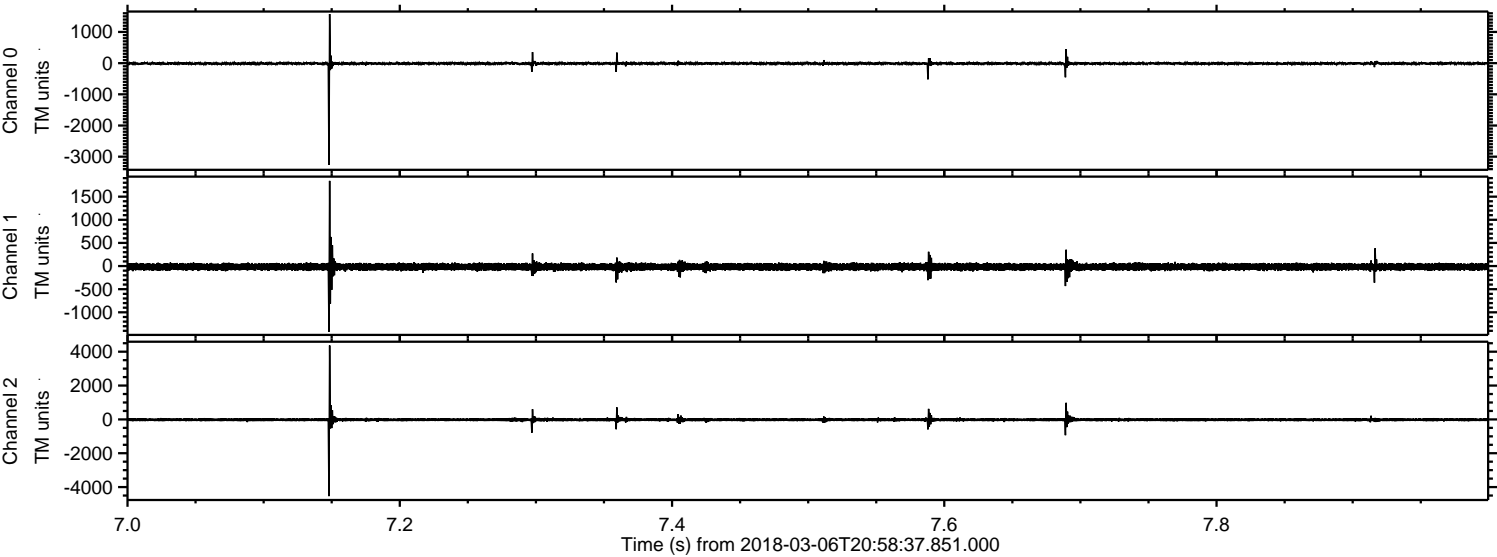
Processed Tue Mar 6 22:07:17 2018 by ELM ver.2012-10-06 from 001__elm20180306_205836__dat00.bin



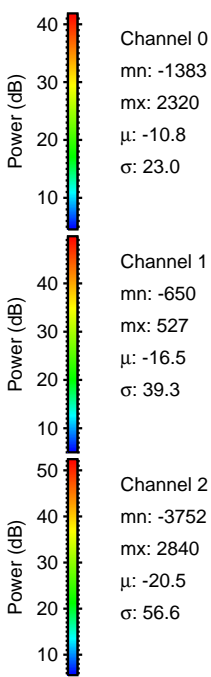
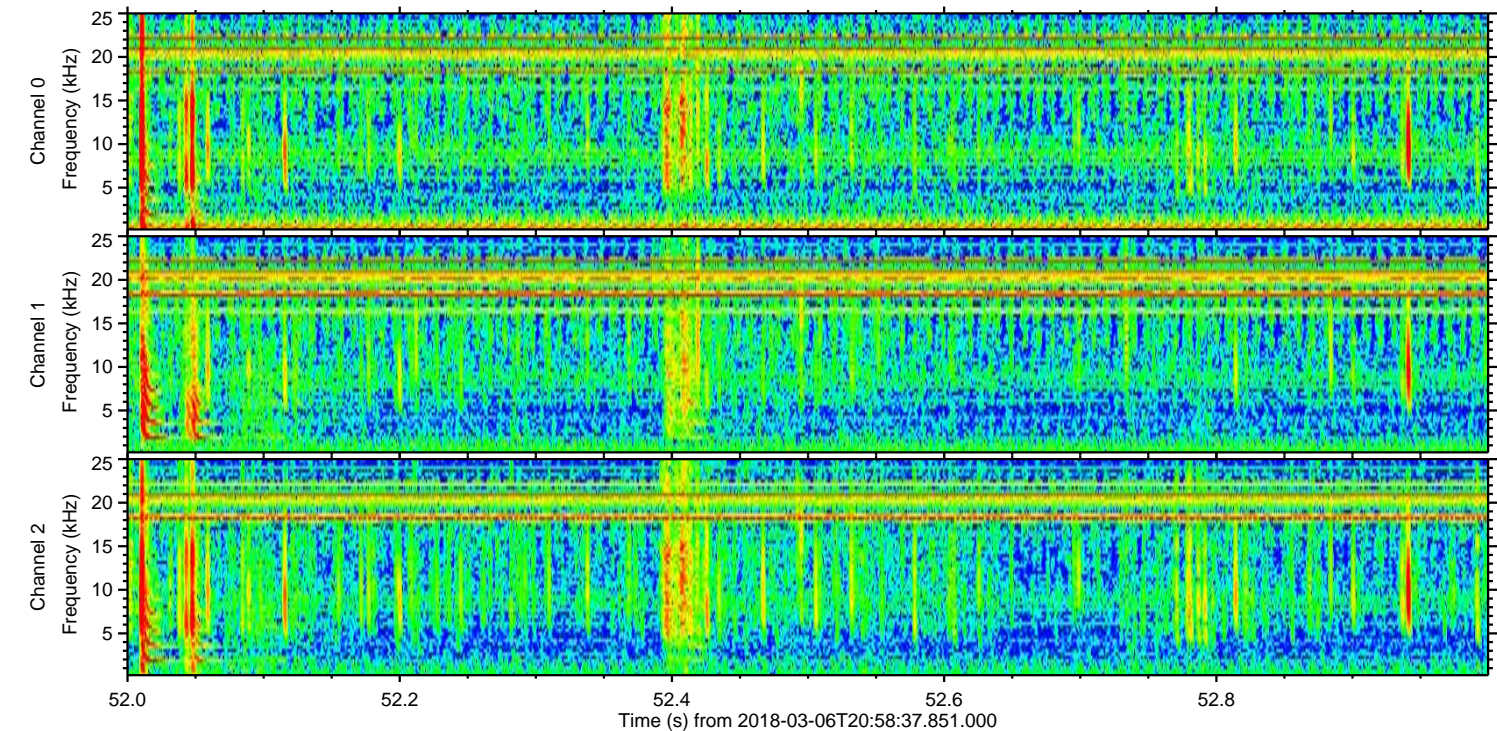
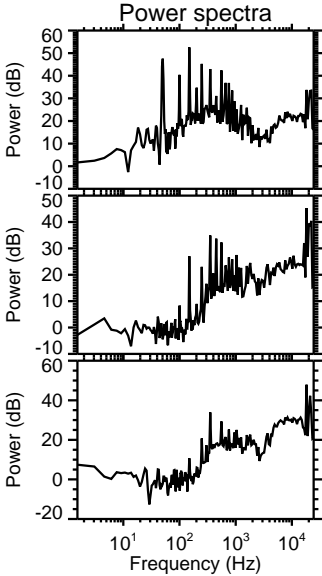
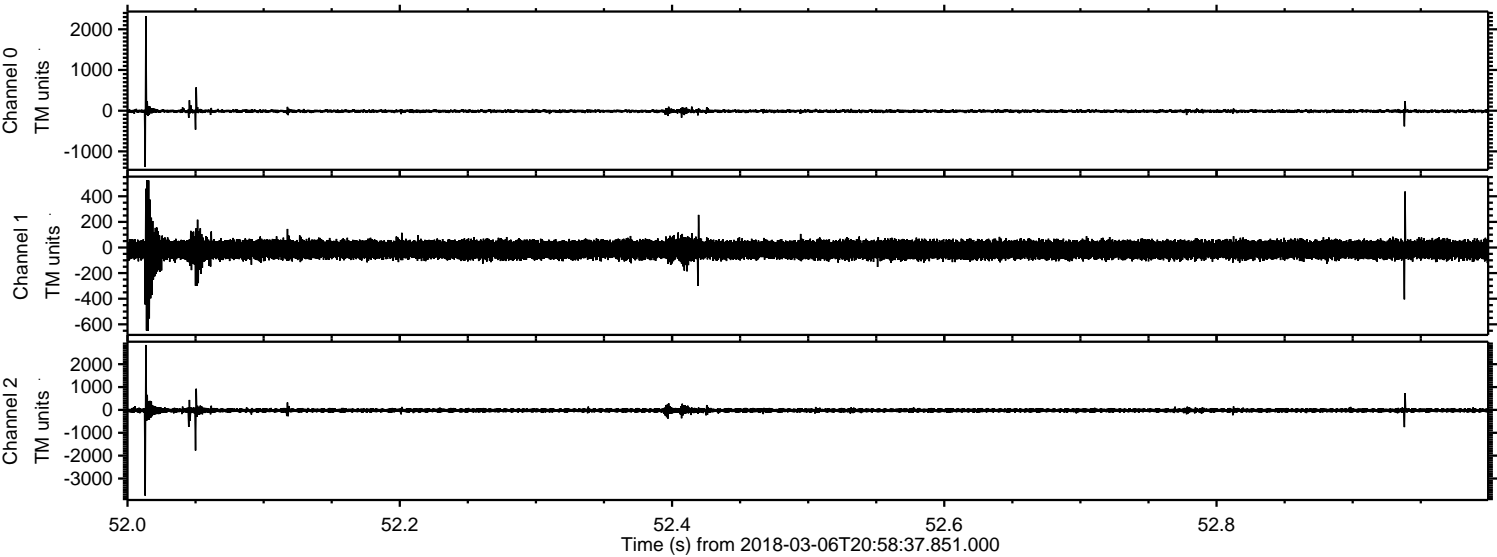
Processed Tue Mar 6 22:07:18 2018 by ELM ver.2012-10-06 from 001__elm20180306_205836__dat00.bin



Processed Tue Mar 6 22:07:19 2018 by ELM ver.2012-10-06 from 001__elm20180306_205836__dat00.bin

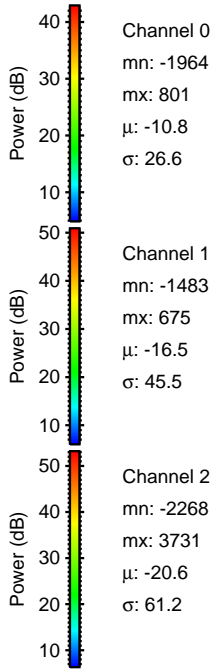
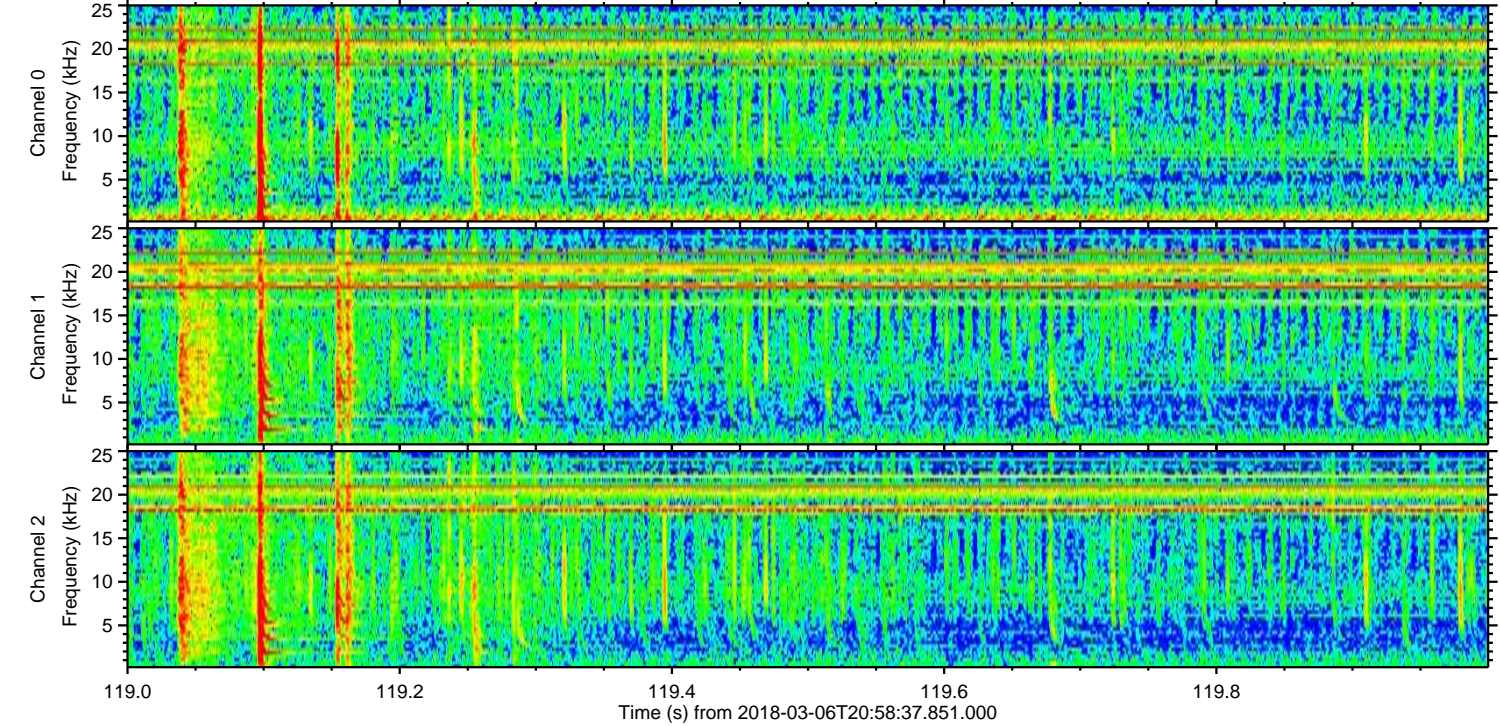
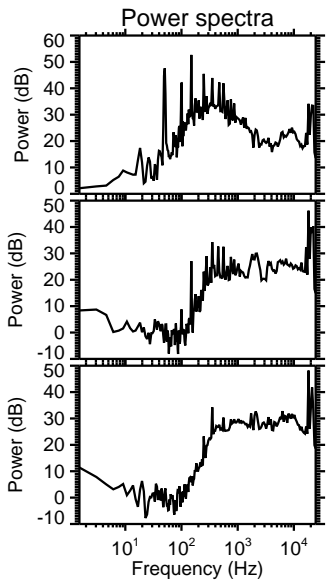
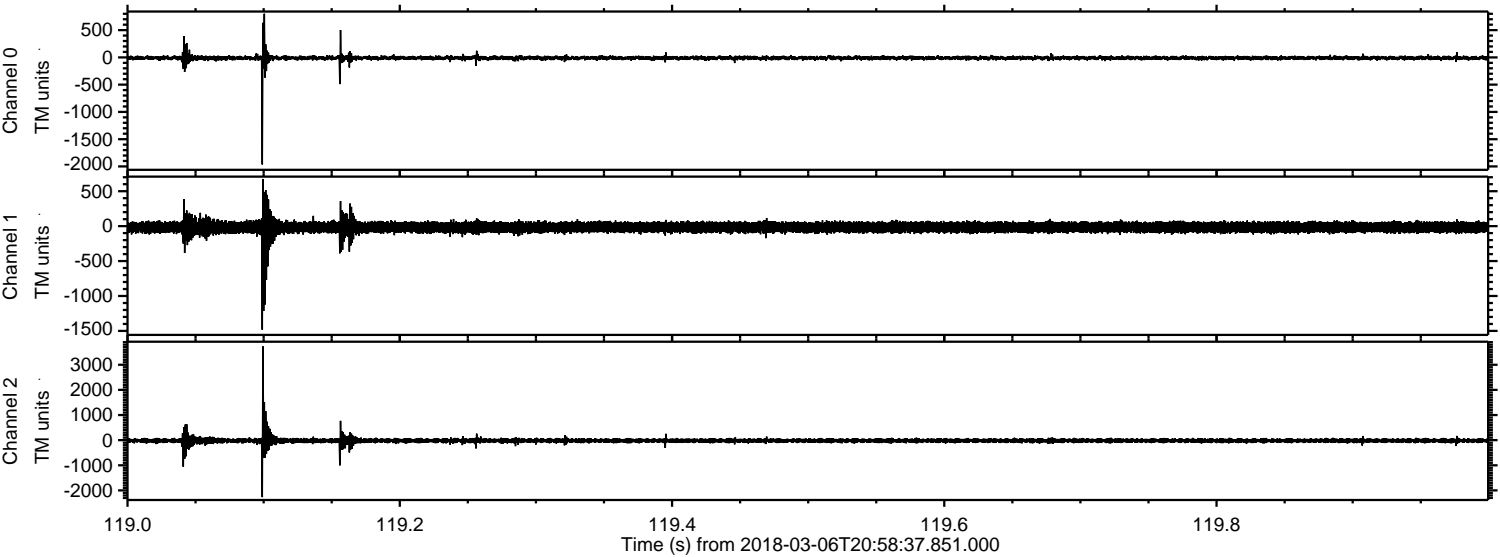


Processed Tue Mar 6 22:07:20 2018 by ELM ver.2012-10-06 from 001__elm20180306_205836__dat00.bin



ELMAVAN 3D WAVEFORMS (Measured data sampled at 50 kHz) 51000 packets of 144 samples from 2018-03-06T20:58:37.851.000. Part 120/147

Processed Tue Mar 6 22:07:21 2018 by ELM ver.2012-10-06 from 001__elm20180306_205836__dat00.bin



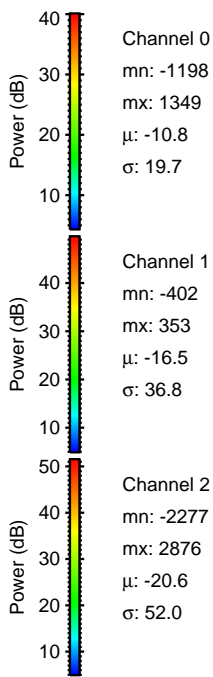
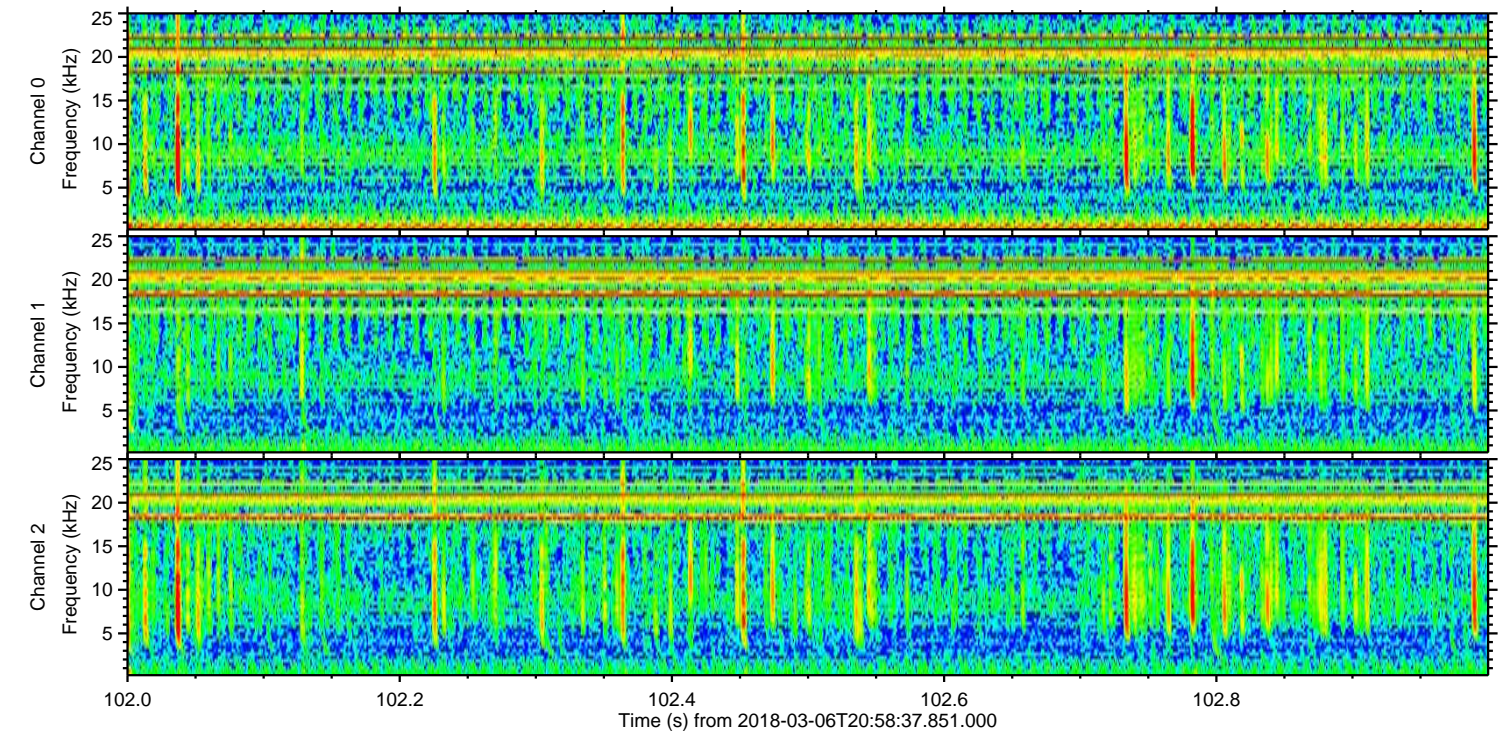
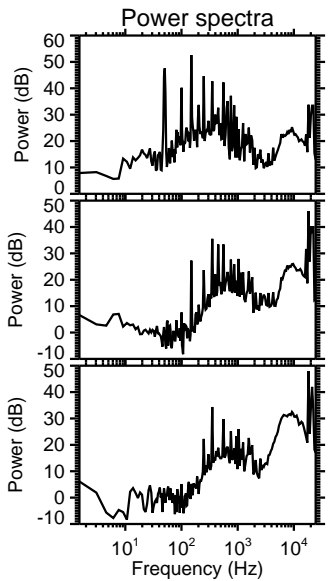
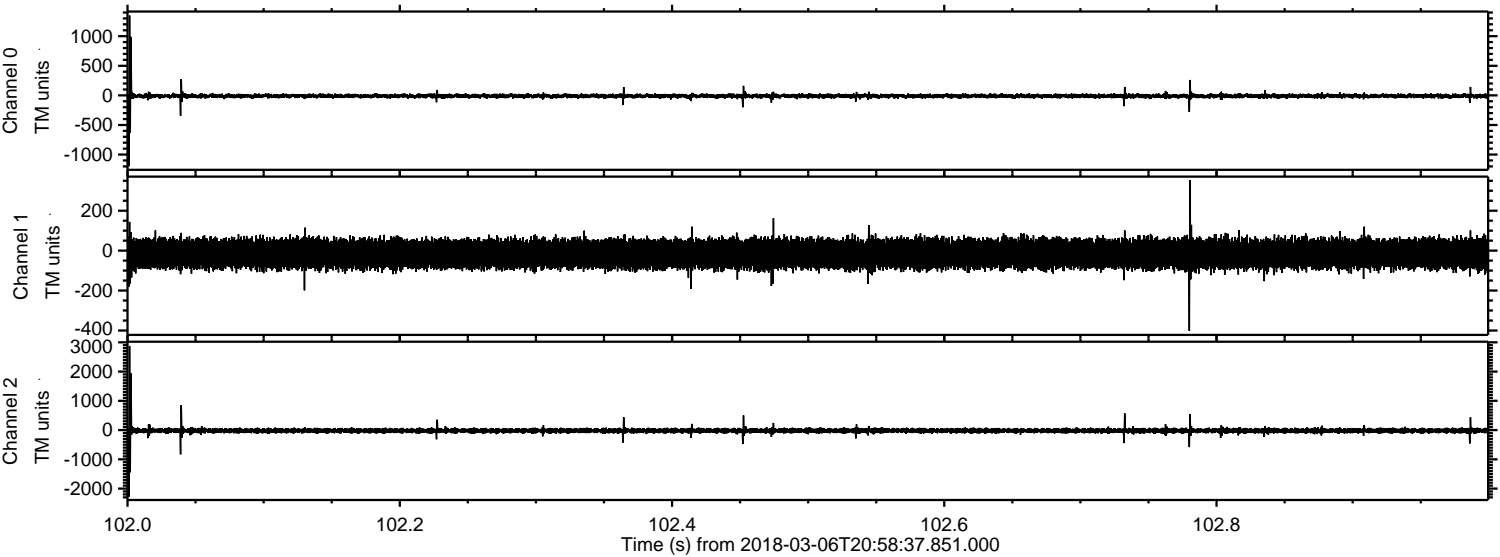
Channel 0
mn: -1964
mx: 801
 μ : -10.8
 σ : 26.6

Channel 1
mn: -1483
mx: 675
 μ : -16.5
 σ : 45.5

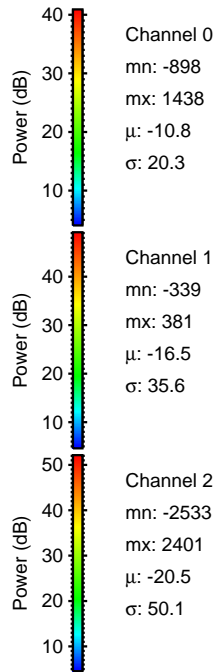
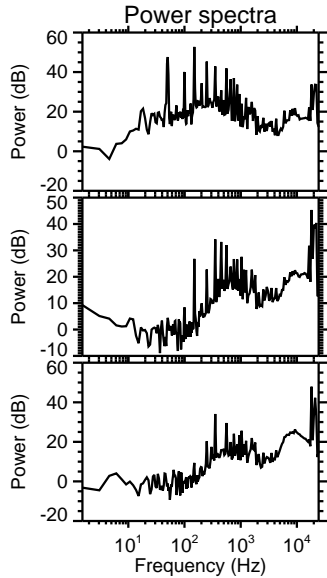
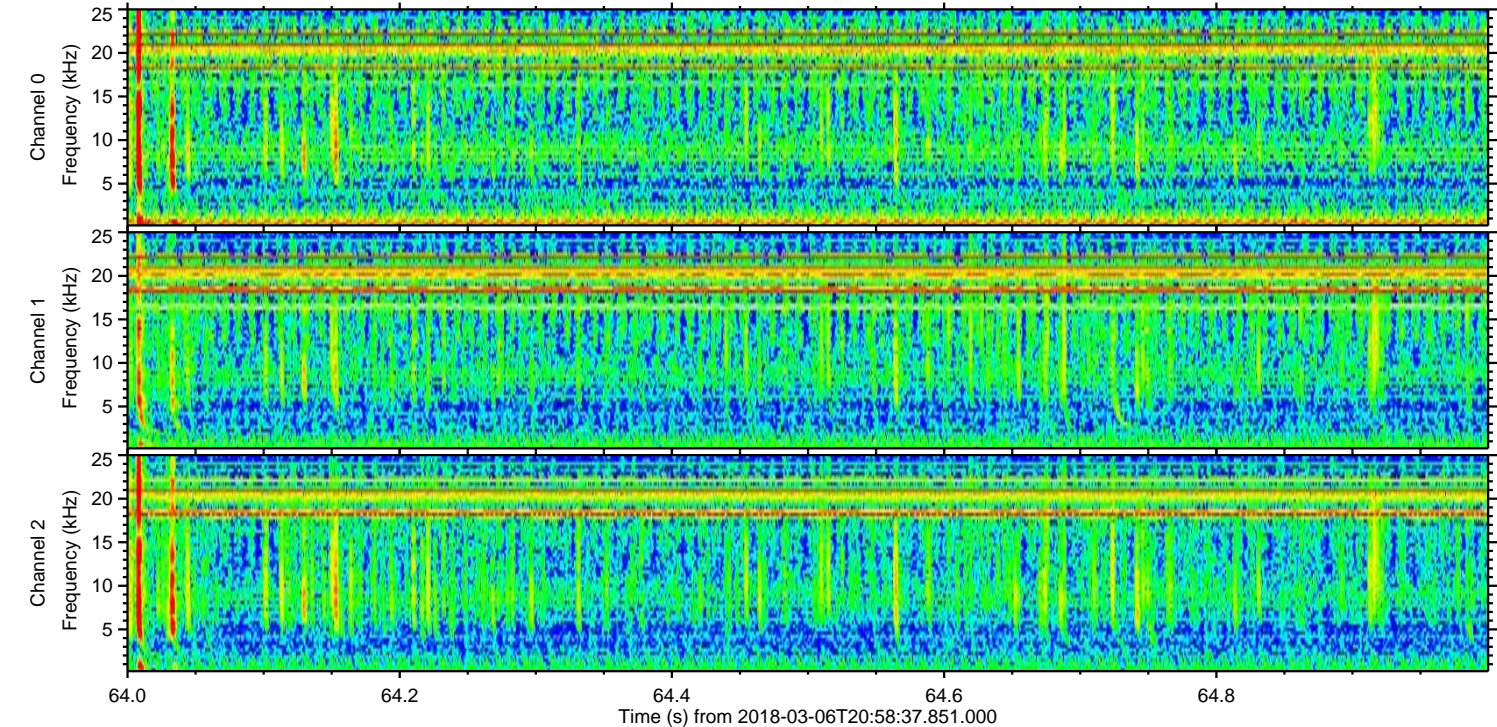
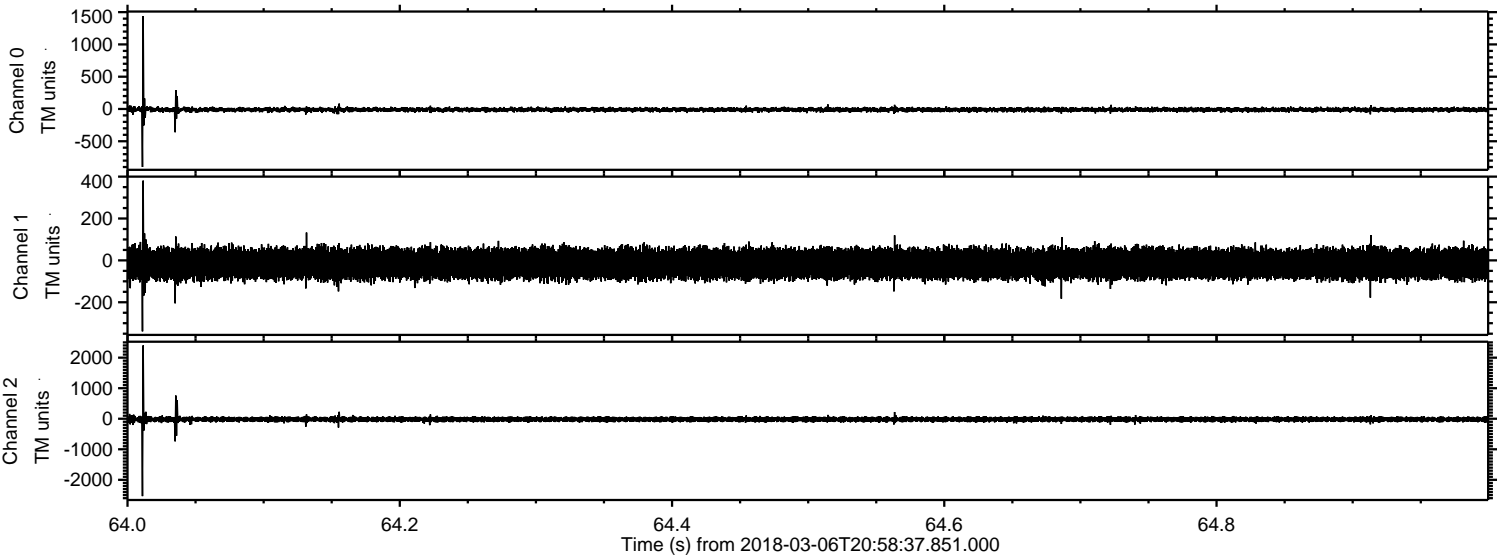
Channel 2
mn: -2268
mx: 3731
 μ : -20.6
 σ : 61.2

ELMAVAN 3D WAVEFORMS (Measured data sampled at 50 kHz) 51000 packets of 144 samples from 2018-03-06T20:58:37.851.000. Part 103/147

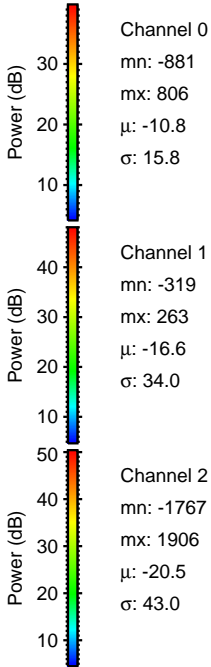
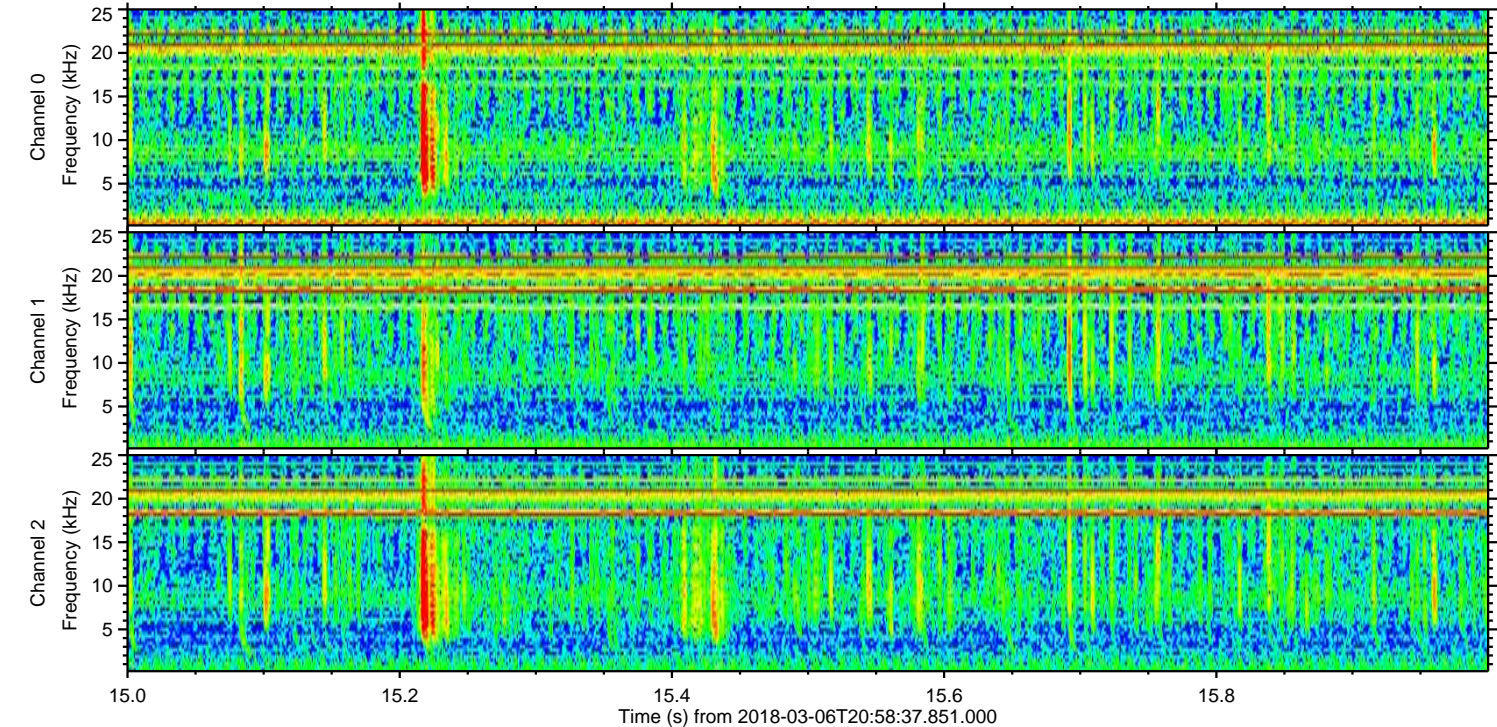
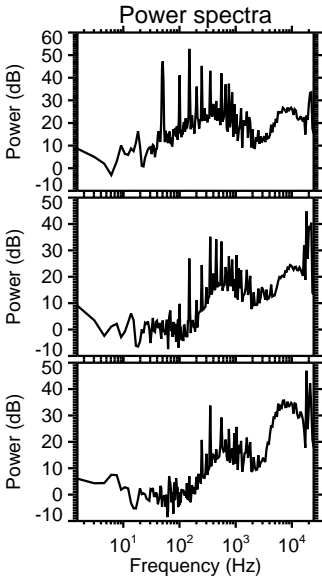
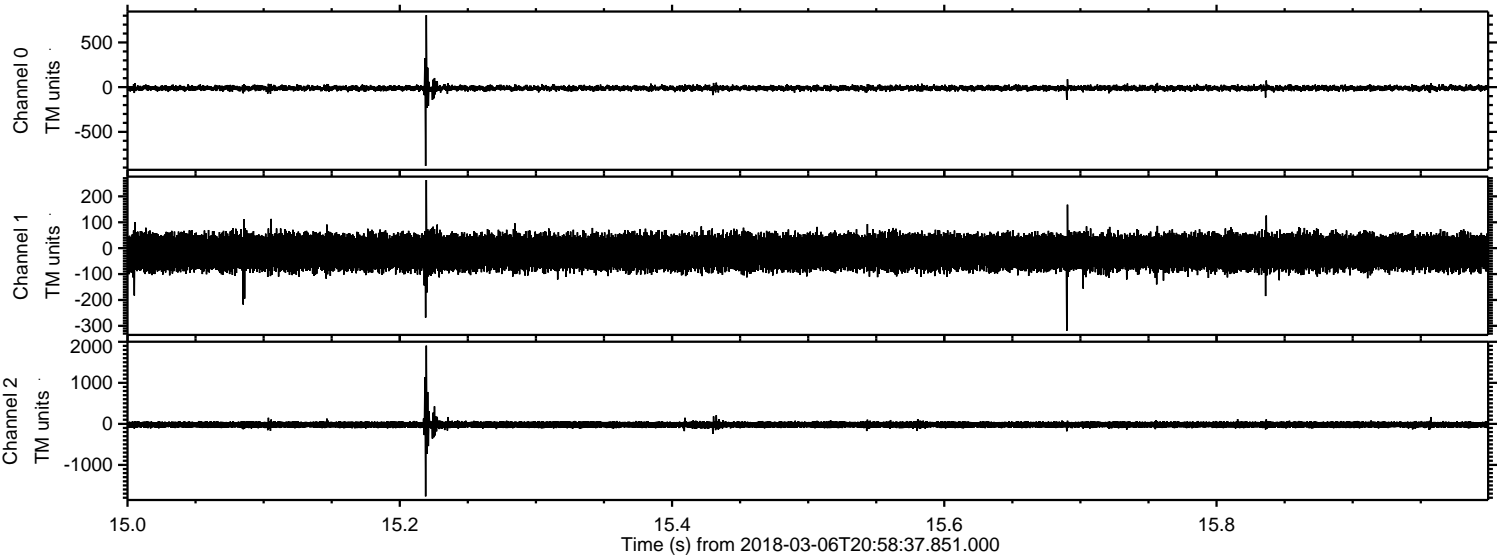
Processed Tue Mar 6 22:07:21 2018 by ELM ver.2012-10-06 from 001__elm20180306_205836__dat00.bin



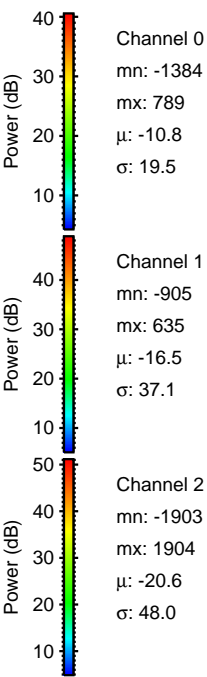
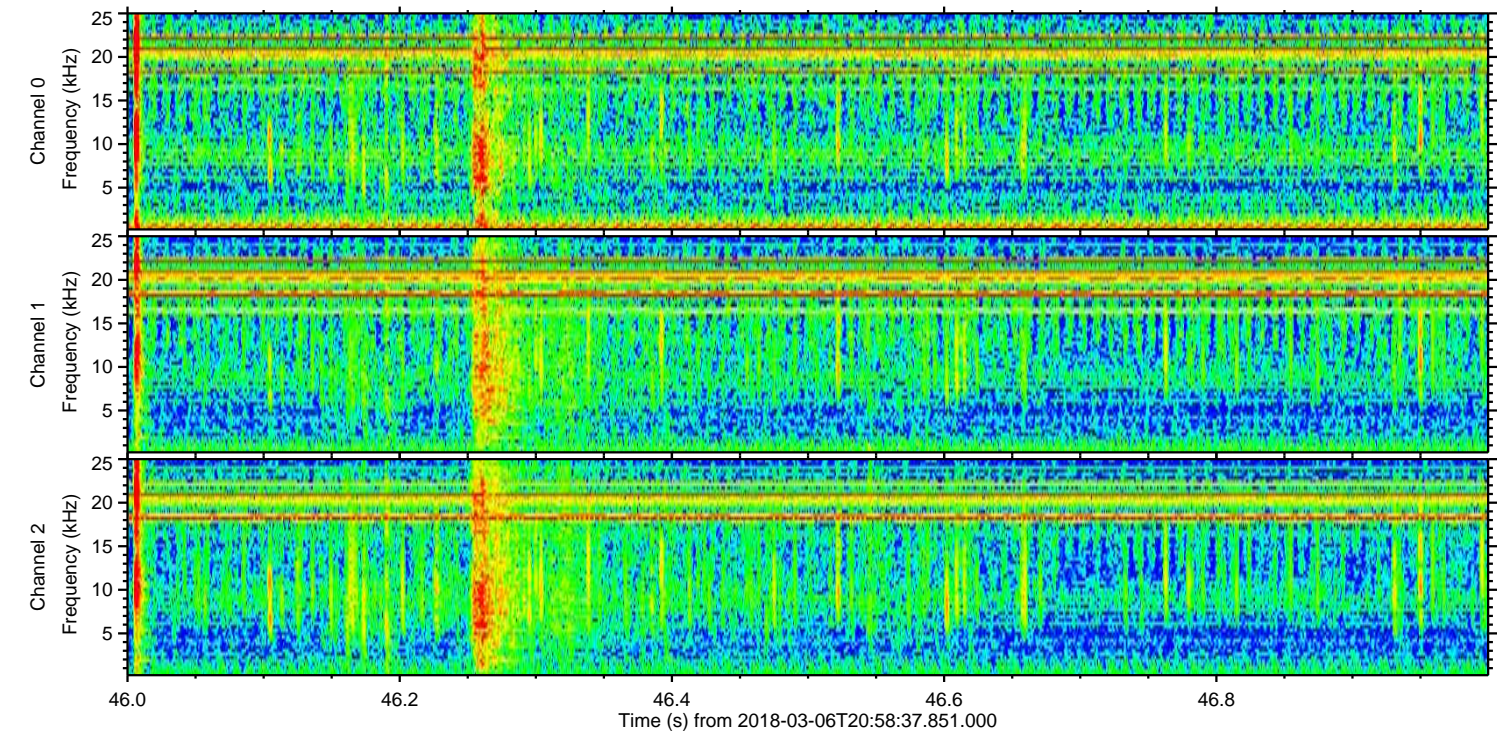
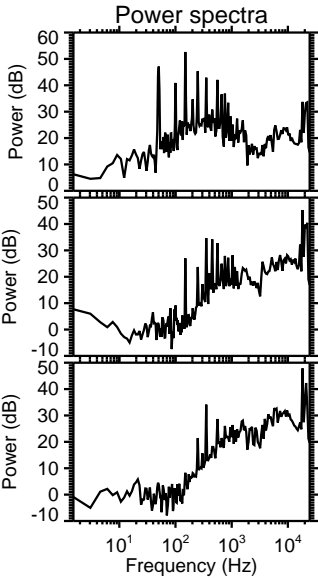
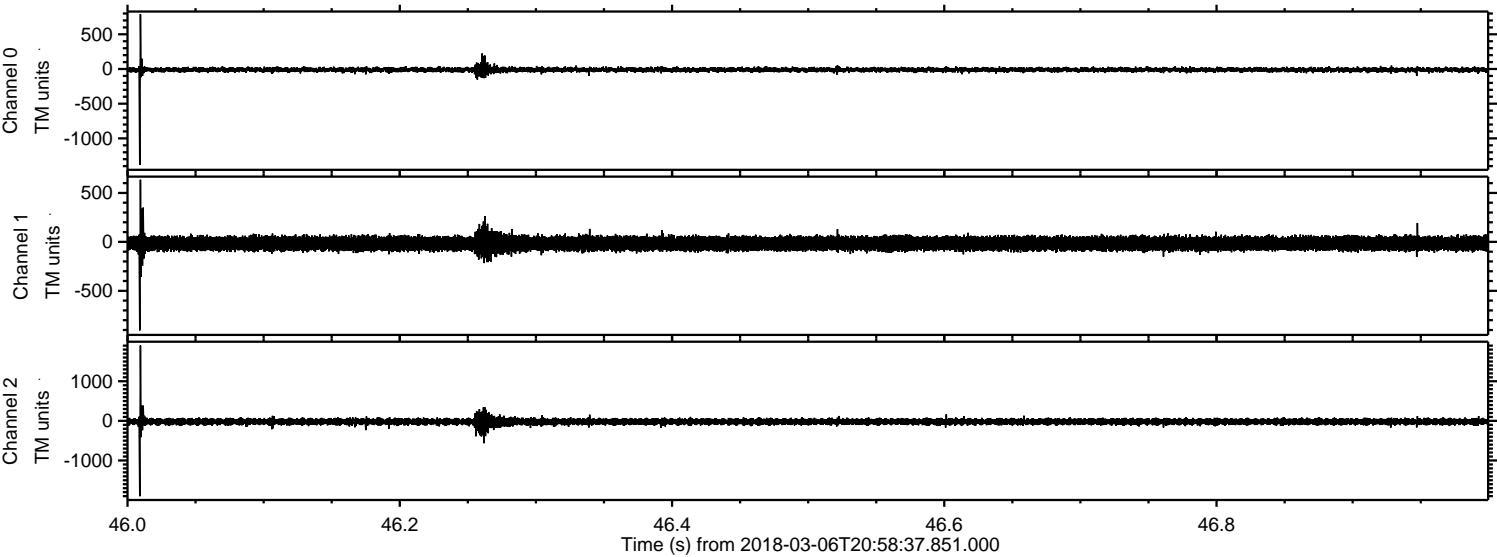
Processed Tue Mar 6 22:07:22 2018 by ELM ver.2012-10-06 from 001__elm20180306_205836__dat00.bin



Processed Tue Mar 6 22:07:23 2018 by ELM ver.2012-10-06 from 001__elm20180306_205836__dat00.bin



Processed Tue Mar 6 22:07:24 2018 by ELM ver.2012-10-06 from 001__elm20180306_205836__dat00.bin



Channel 0
mn: -1384
mx: 789
 μ : -10.8
 σ : 19.5

Channel 1
mn: -905
mx: 635
 μ : -16.5
 σ : 37.1

Channel 2
mn: -1903
mx: 1904
 μ : -20.6
 σ : 48.0

