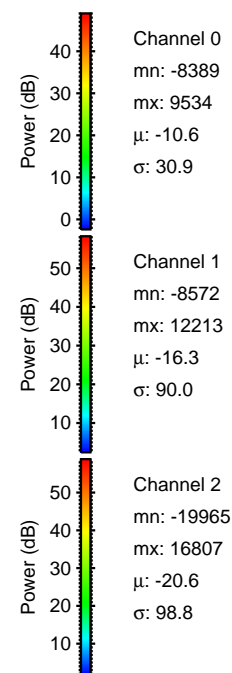
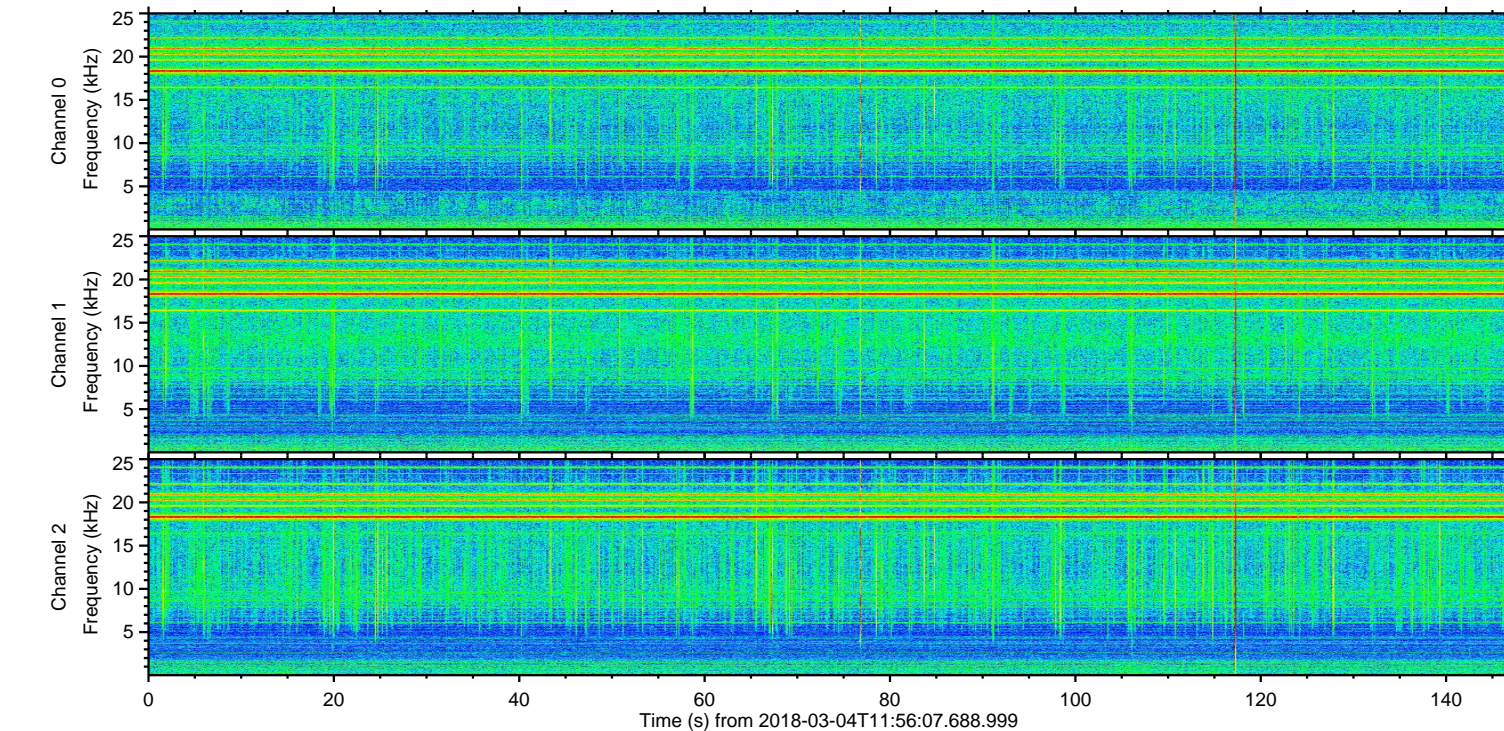
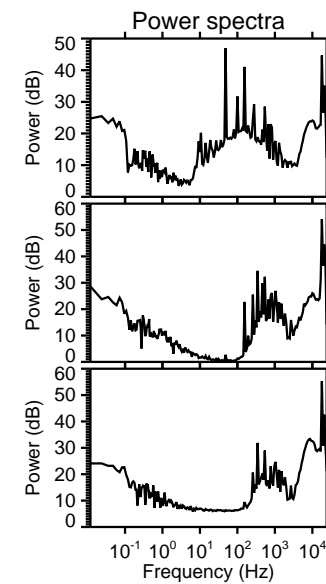
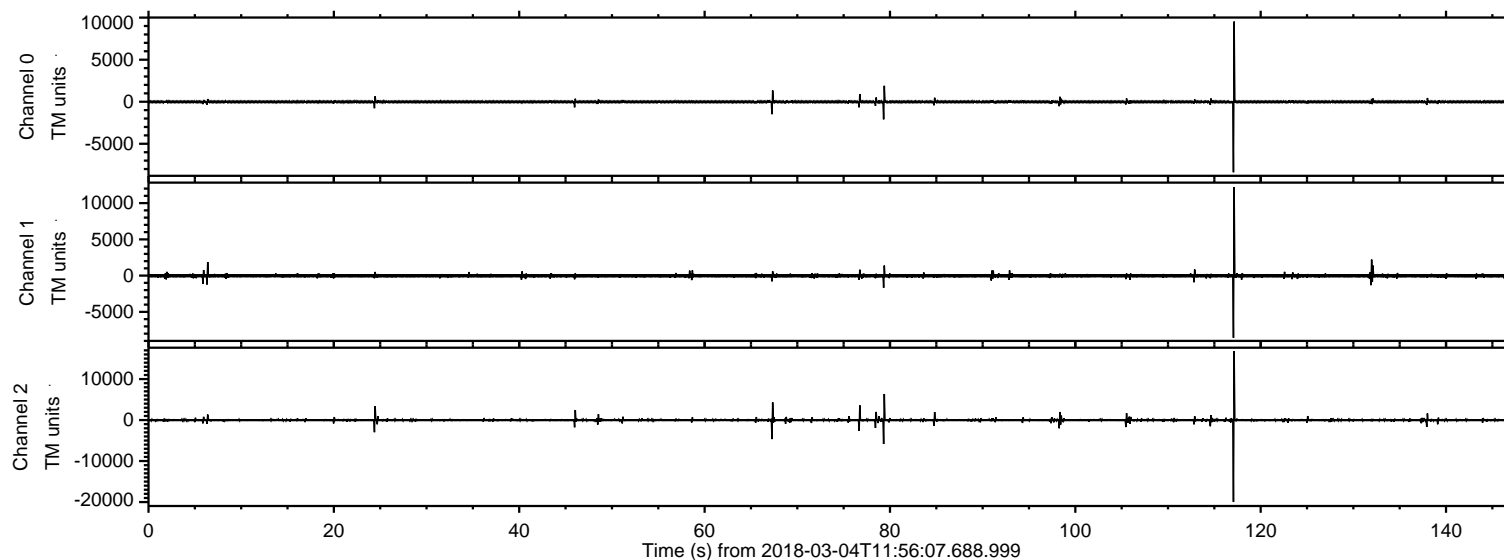


# ELMAVAN 3D WAVEFORMS (Measured data sampled at 50 kHz) 51000 packets of 144 samples from 2018-03-04T11:56:07.688.999.

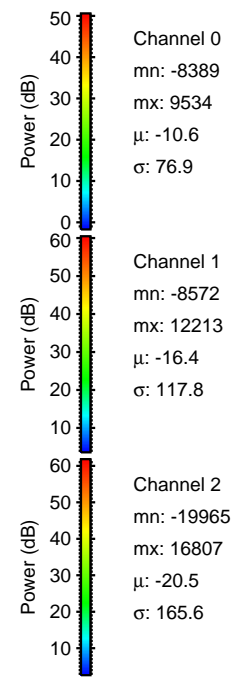
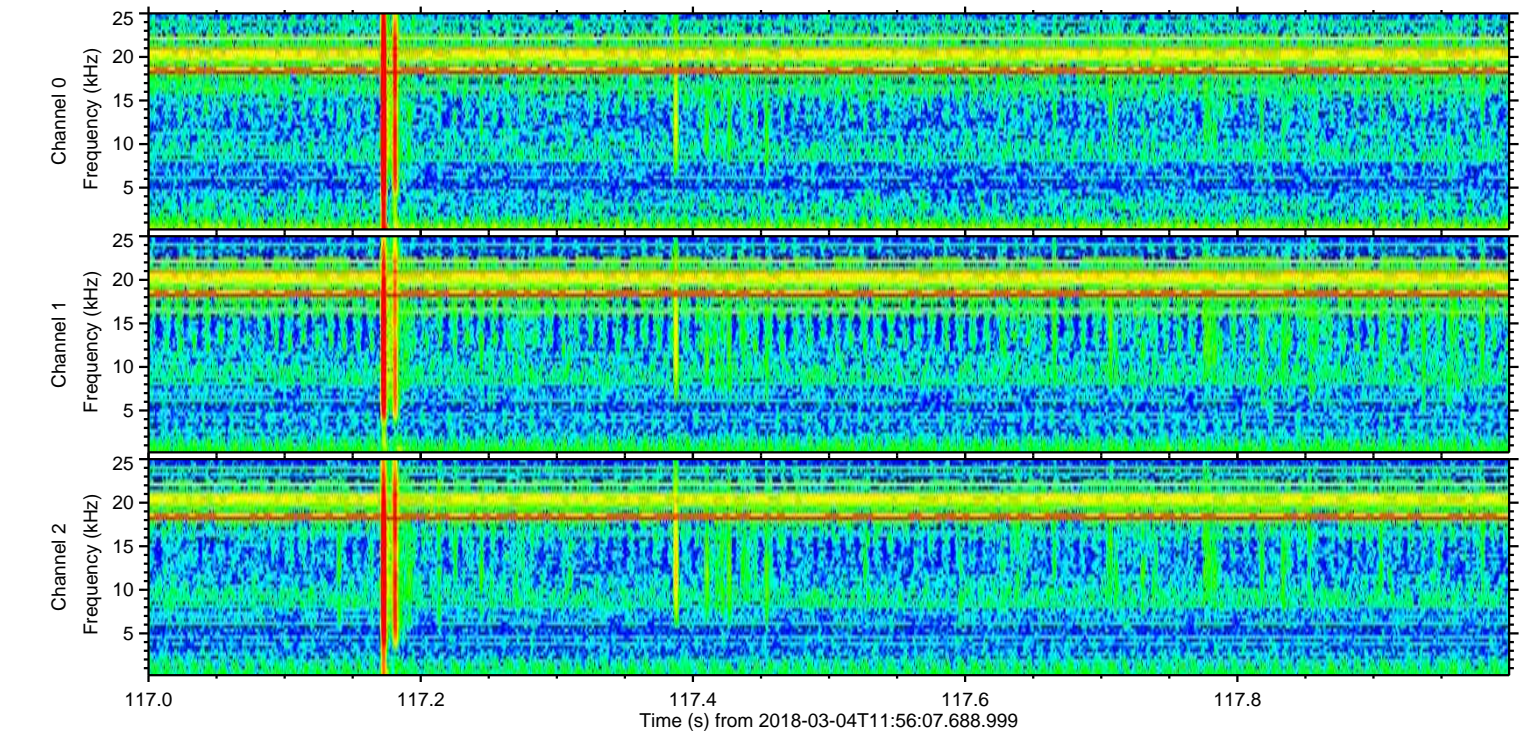
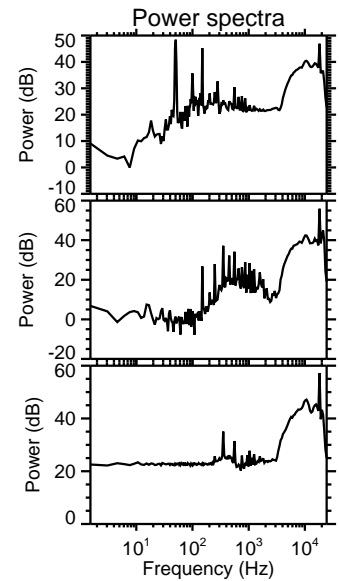
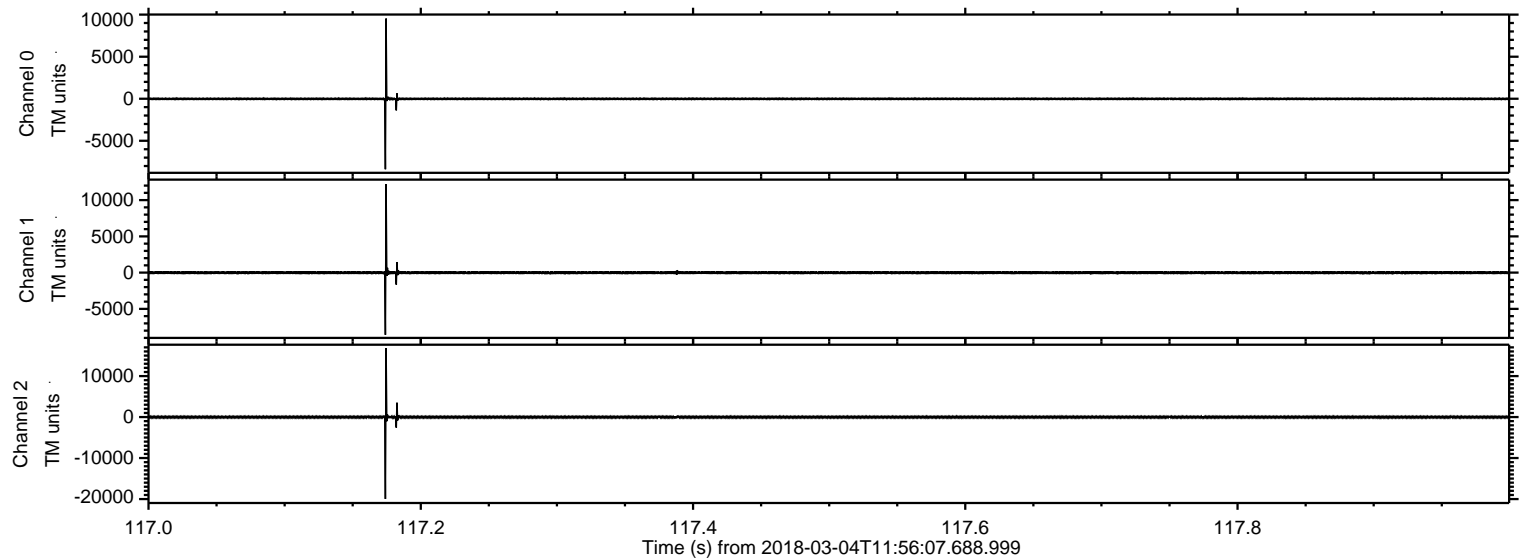
Processed Sun Mar 4 13:03:44 2018 by ELM ver.2012-10-06 from 001\_\_elm20180304\_115606\_\_dat00.bin





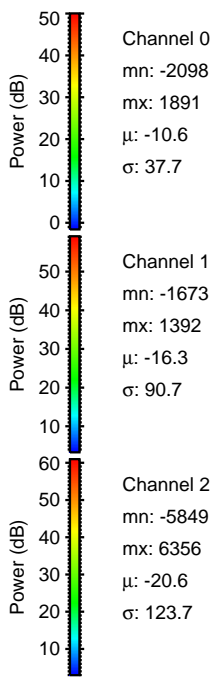
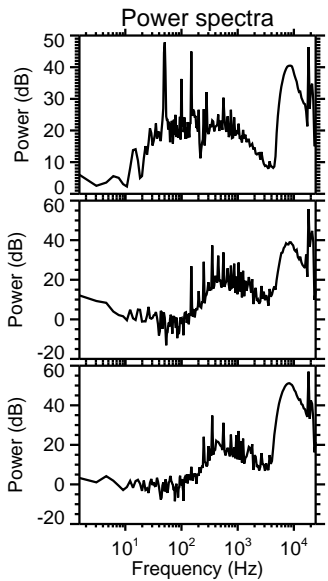
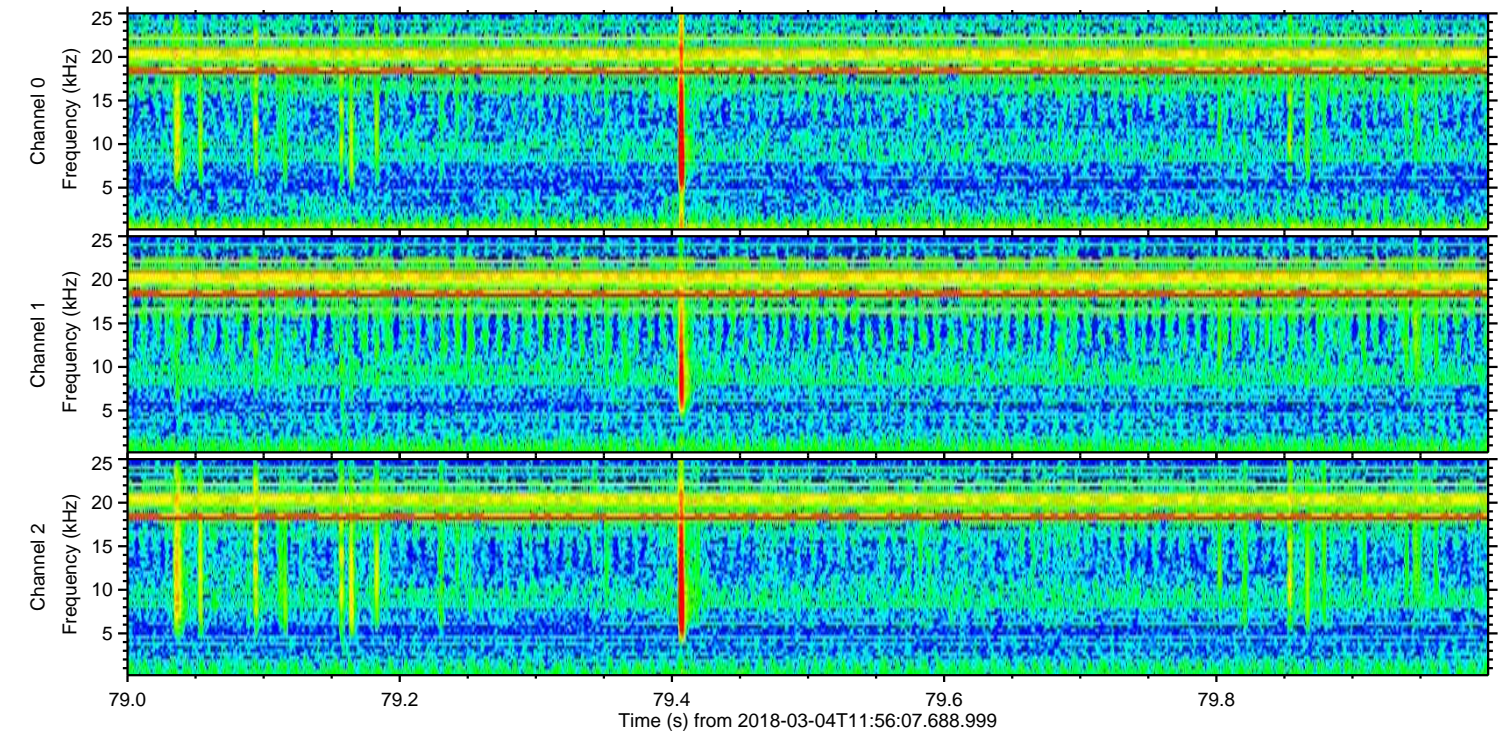
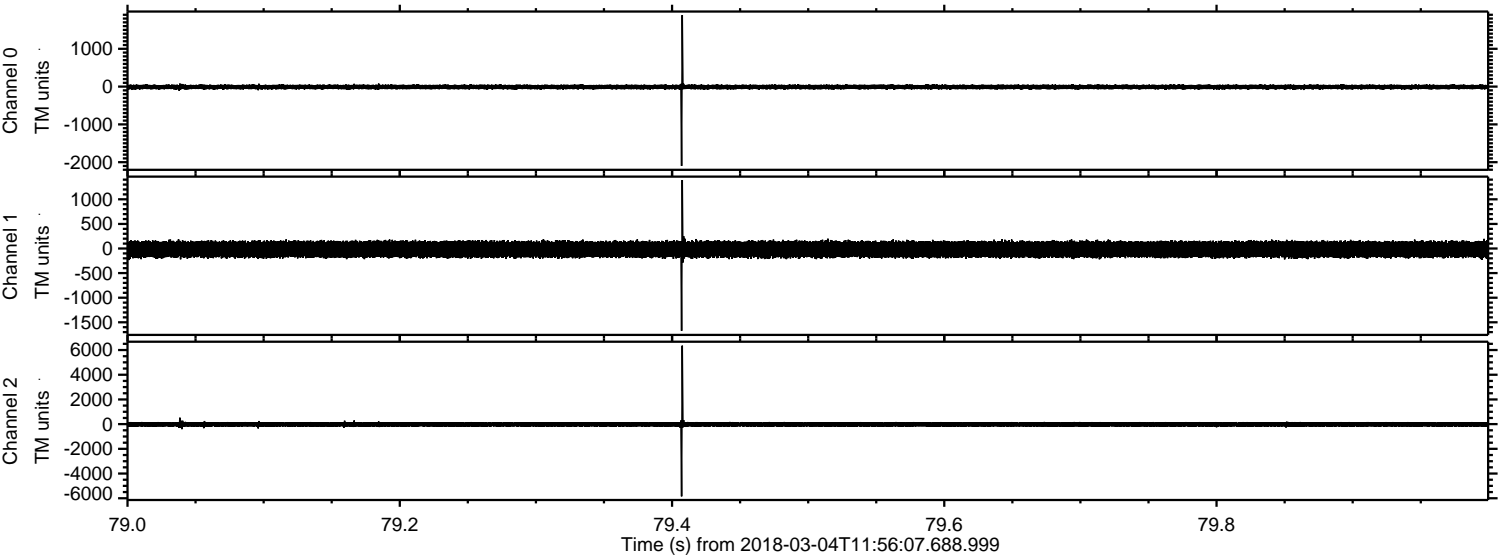
ELMAVAN 3D WAVEFORMS (Measured data sampled at 50 kHz) 51000 packets of 144 samples from 2018-03-04T11:56:07.688.999. Part 118/147

Processed Sun Mar 4 13:03:52 2018 by ELM ver.2012-10-06 from 001\_\_elm20180304\_115606\_\_dat00.bin





Processed Sun Mar 4 13:03:52 2018 by ELM ver.2012-10-06 from 001\_\_elm20180304\_115606\_\_dat00.bin



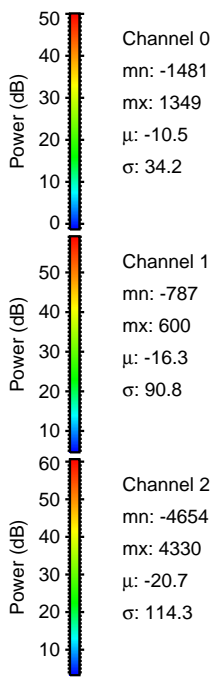
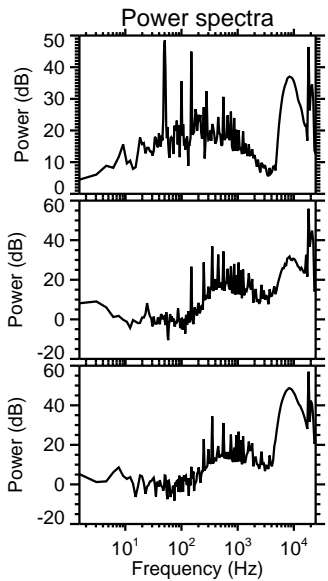
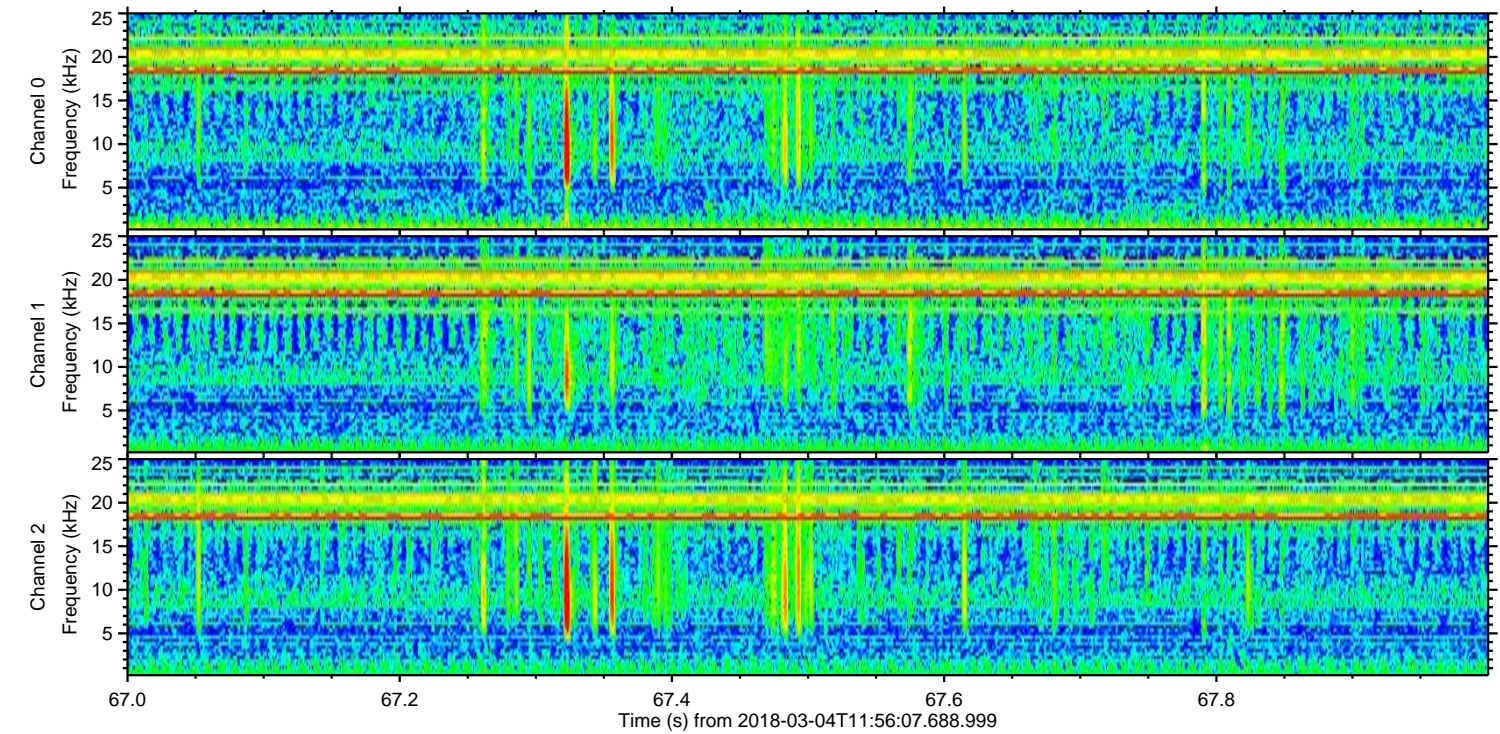
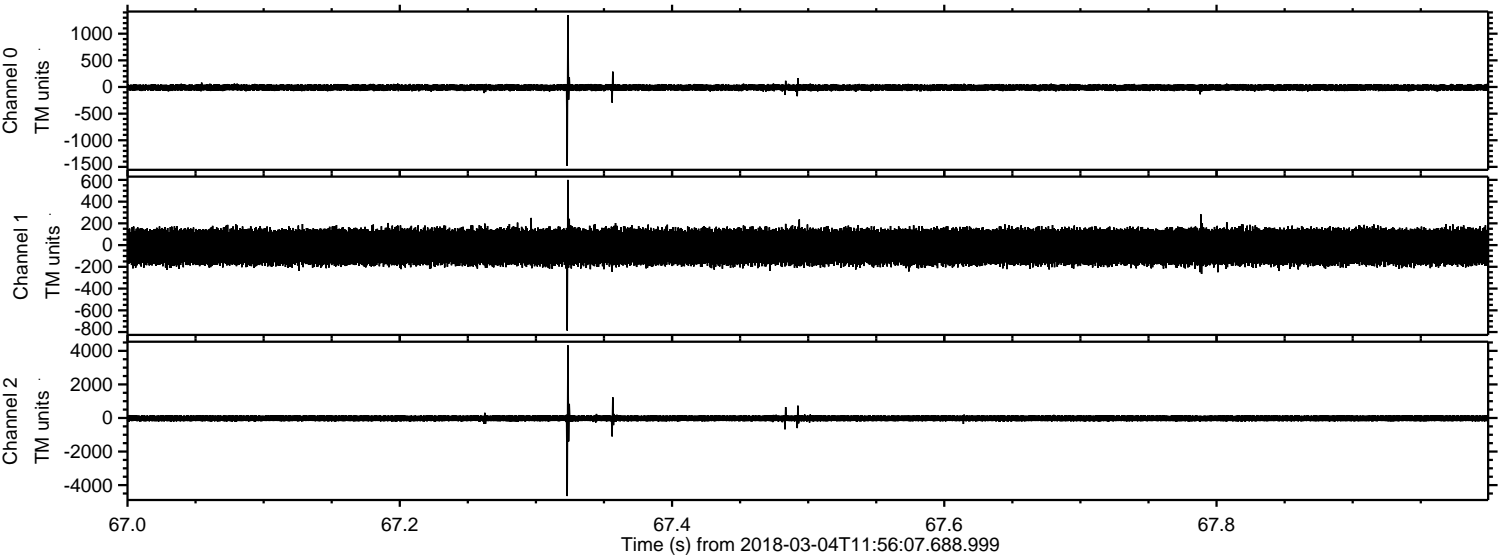
Channel 0  
mn: -2098  
mx: 1891  
 $\mu$ : -10.6  
 $\sigma$ : 37.7

Channel 1  
mn: -1673  
mx: 1392  
 $\mu$ : -16.3  
 $\sigma$ : 90.7

Channel 2  
mn: -5849  
mx: 6356  
 $\mu$ : -20.6  
 $\sigma$ : 123.7

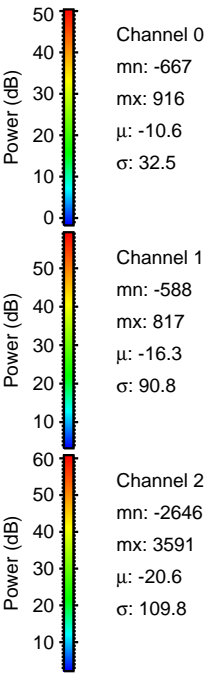
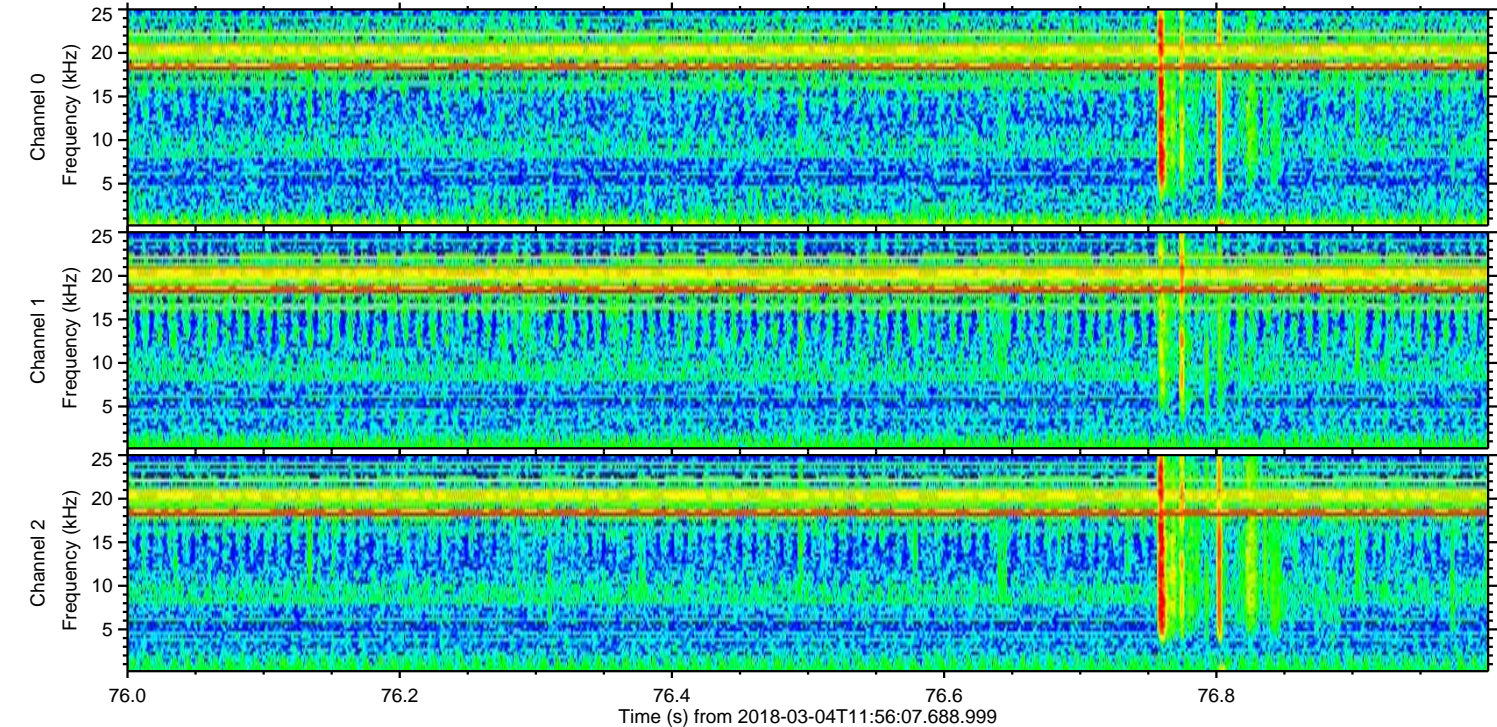
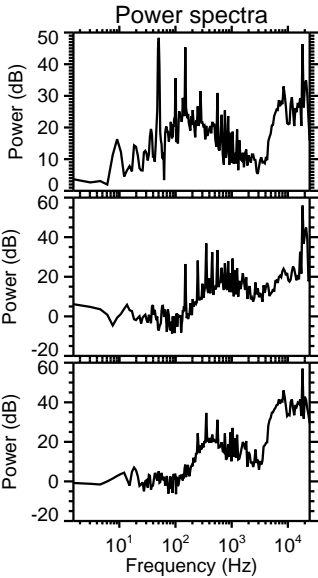
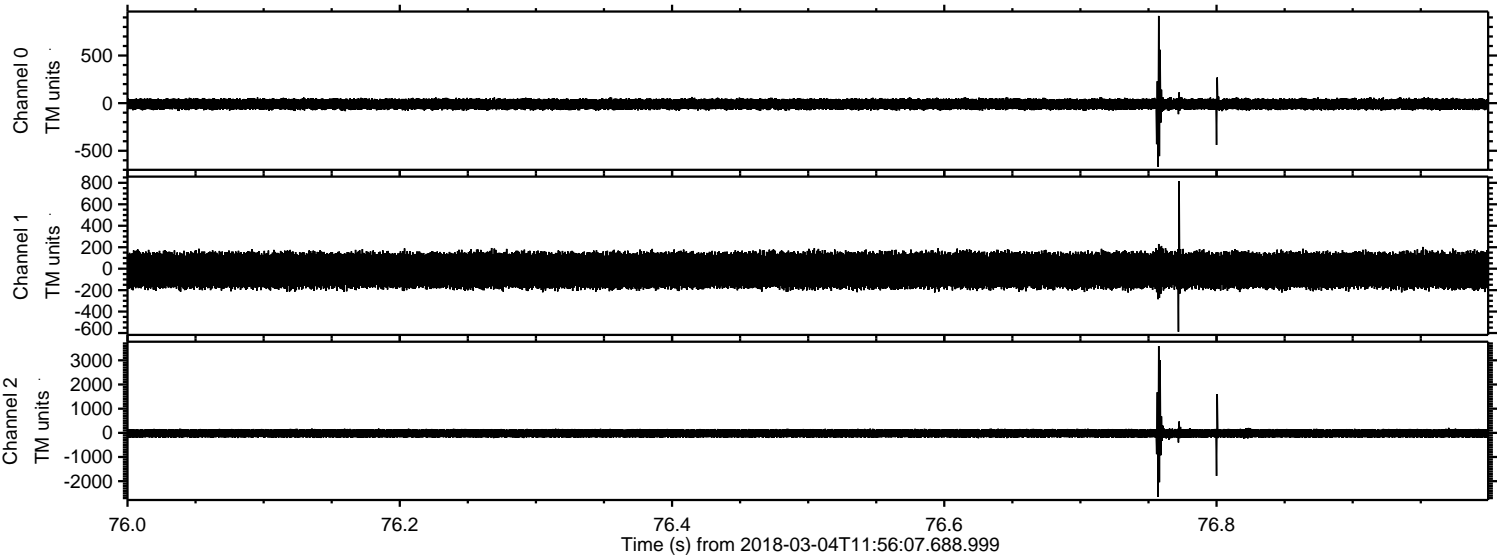


Processed Sun Mar 4 13:03:53 2018 by ELM ver.2012-10-06 from 001\_\_elm20180304\_115606\_\_dat00.bin



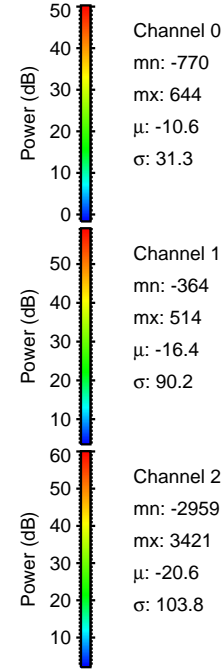
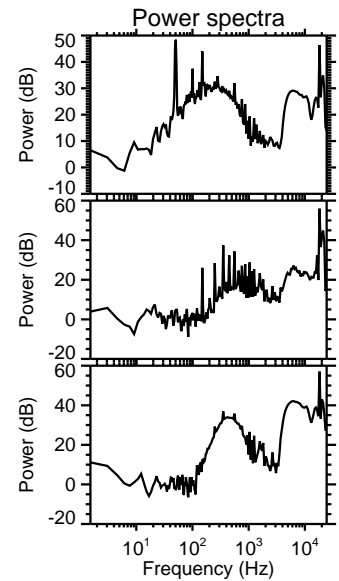
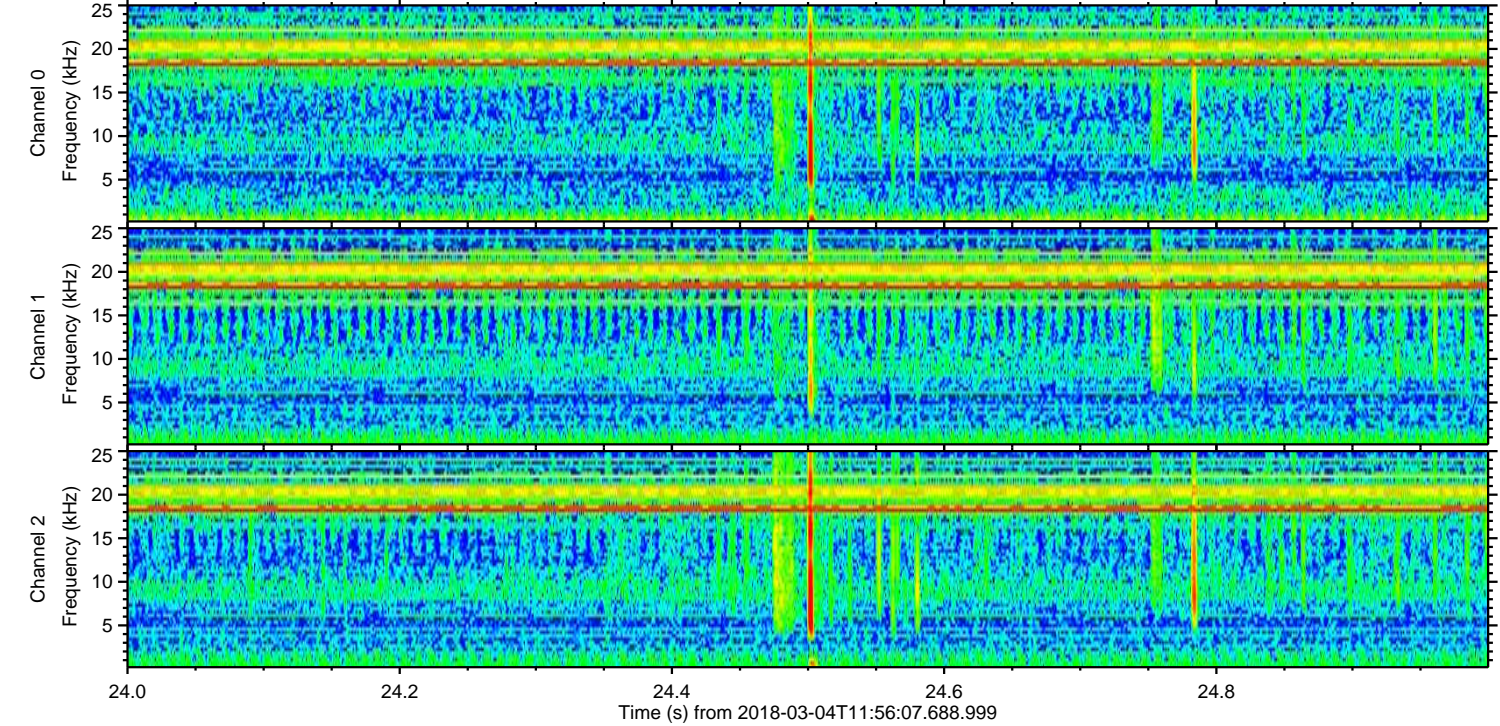
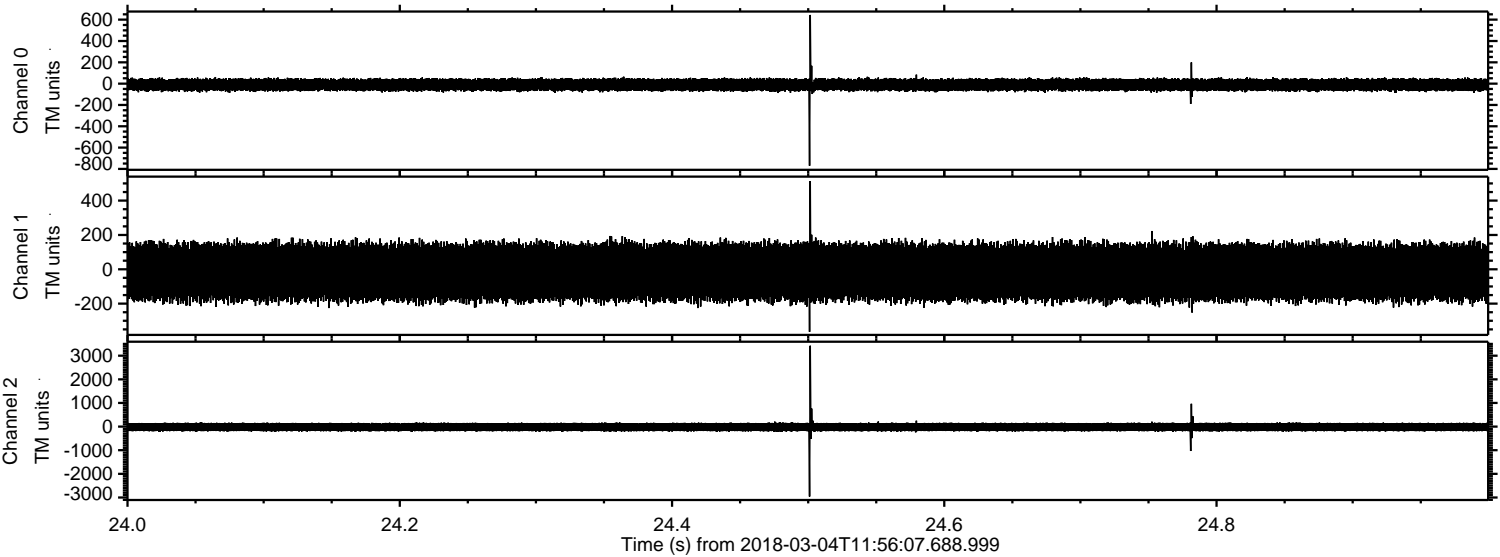


Processed Sun Mar 4 13:03:54 2018 by ELM ver.2012-10-06 from 001\_\_elm20180304\_115606\_\_dat00.bin



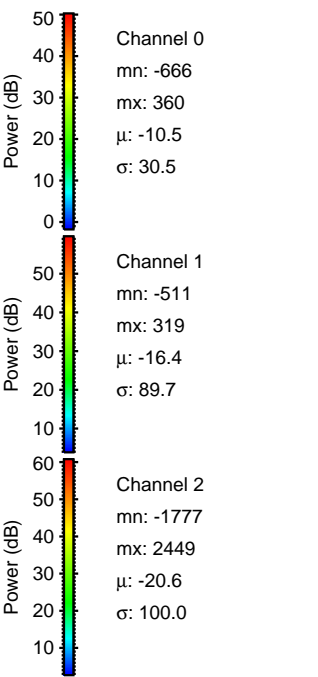
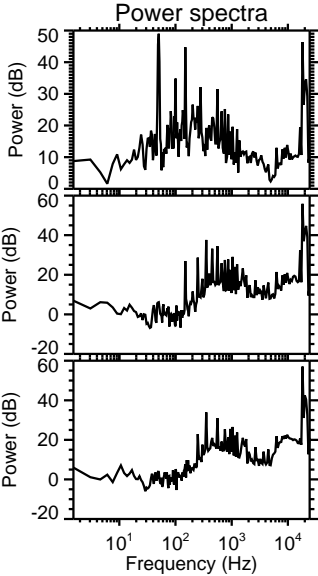
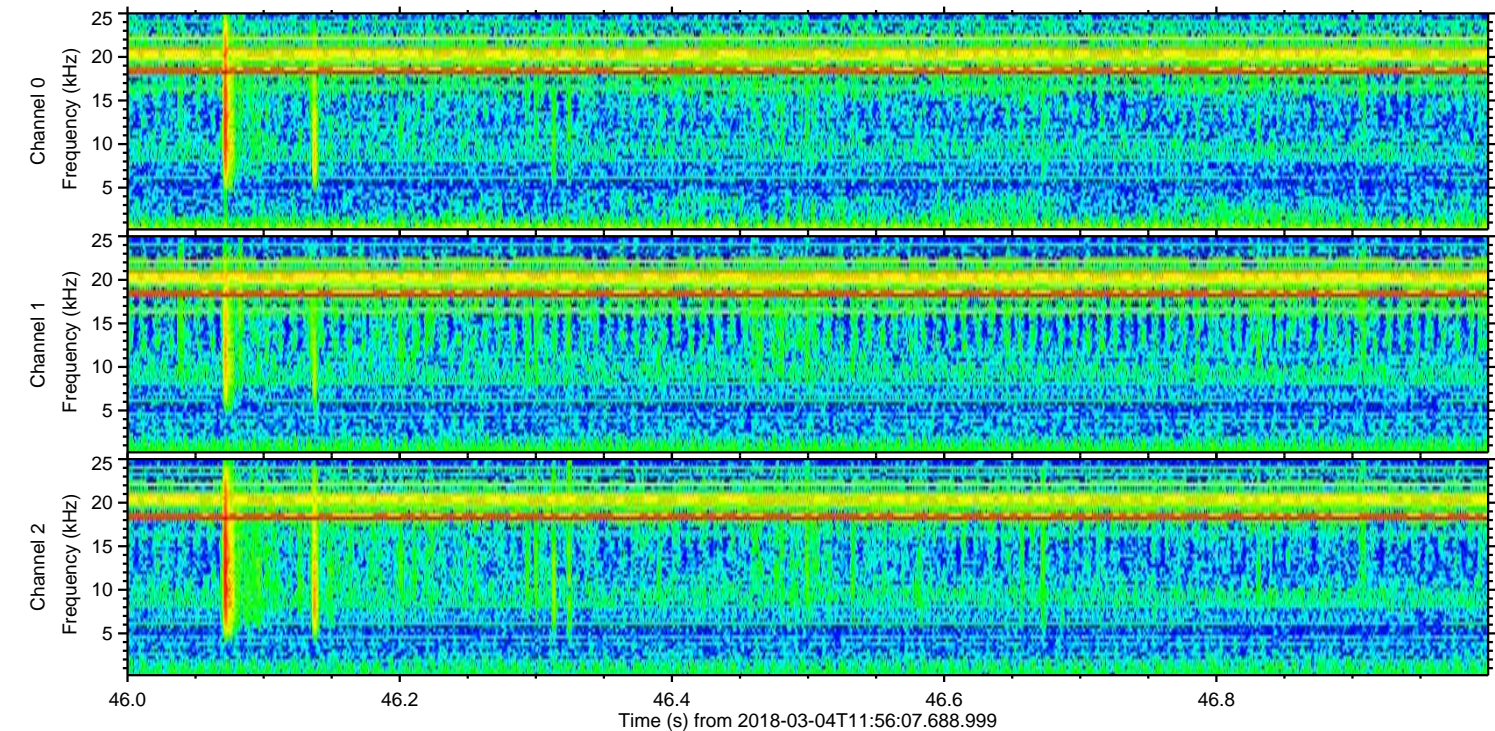
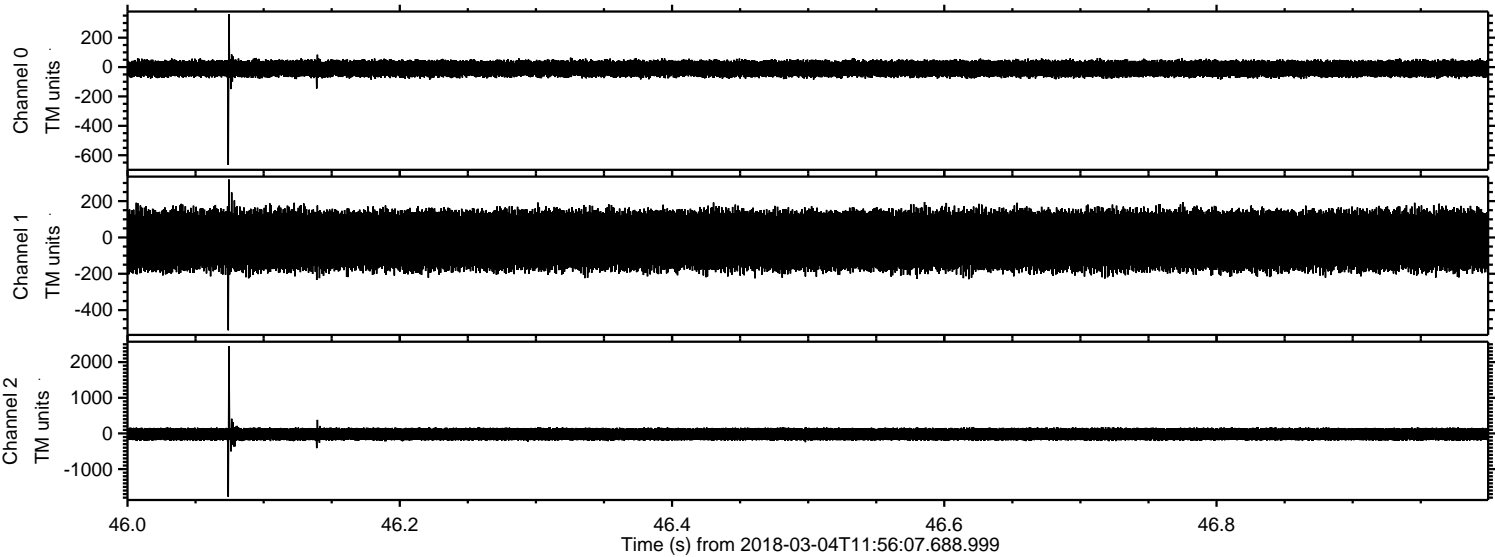


Processed Sun Mar 4 13:03:55 2018 by ELM ver.2012-10-06 from 001\_\_elm20180304\_115606\_\_dat00.bin





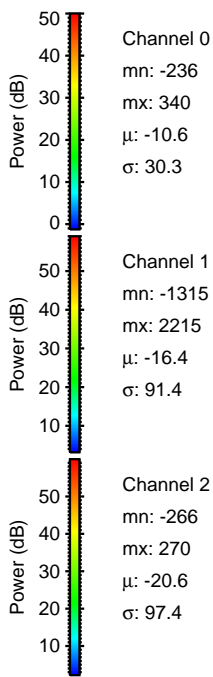
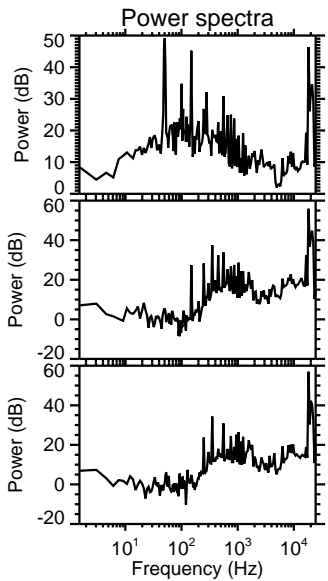
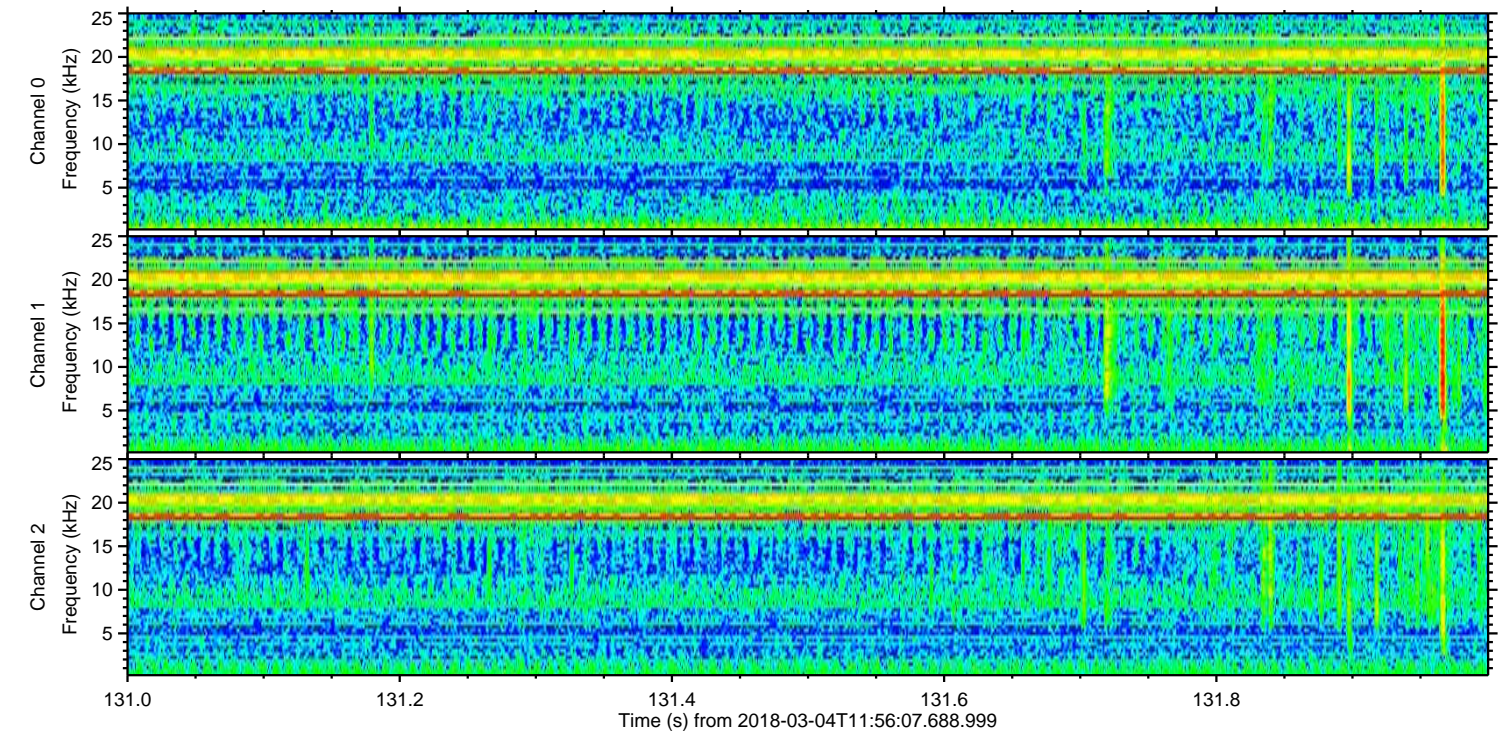
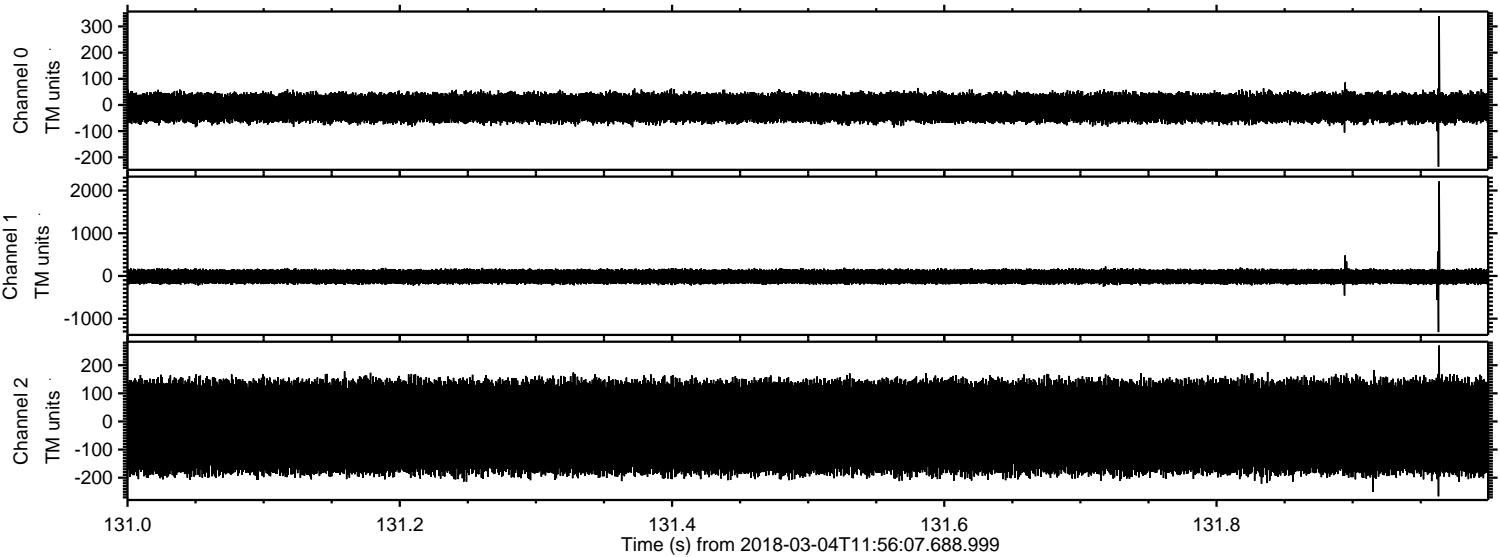
Processed Sun Mar 4 13:03:55 2018 by ELM ver.2012-10-06 from 001\_\_elm20180304\_115606\_\_dat00.bin





ELMAVAN 3D WAVEFORMS (Measured data sampled at 50 kHz) 51000 packets of 144 samples from 2018-03-04T11:56:07.688.999. Part 132/147

Processed Sun Mar 4 13:03:56 2018 by ELM ver.2012-10-06 from 001\_\_elm20180304\_115606\_\_dat00.bin



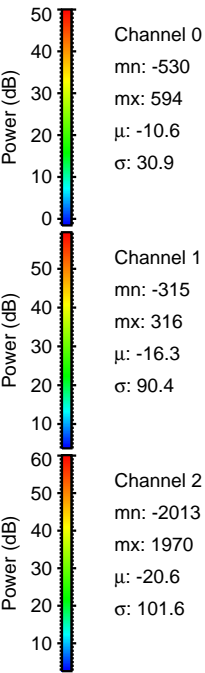
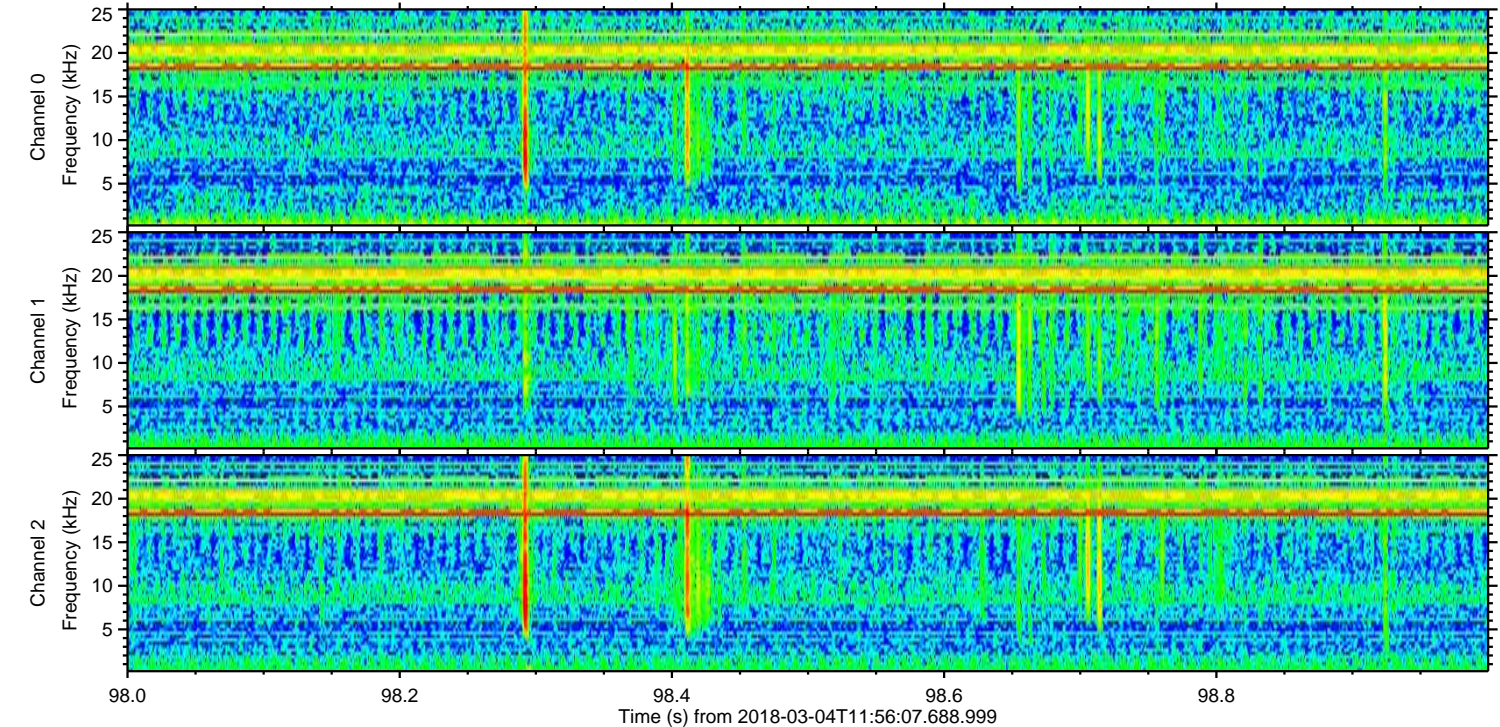
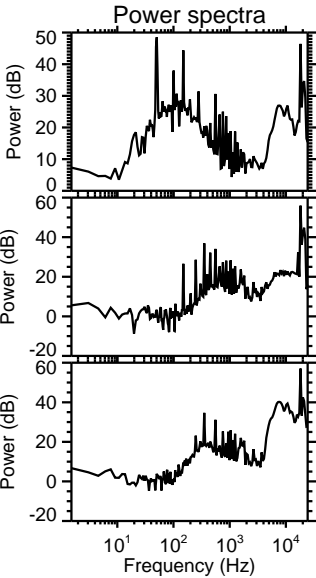
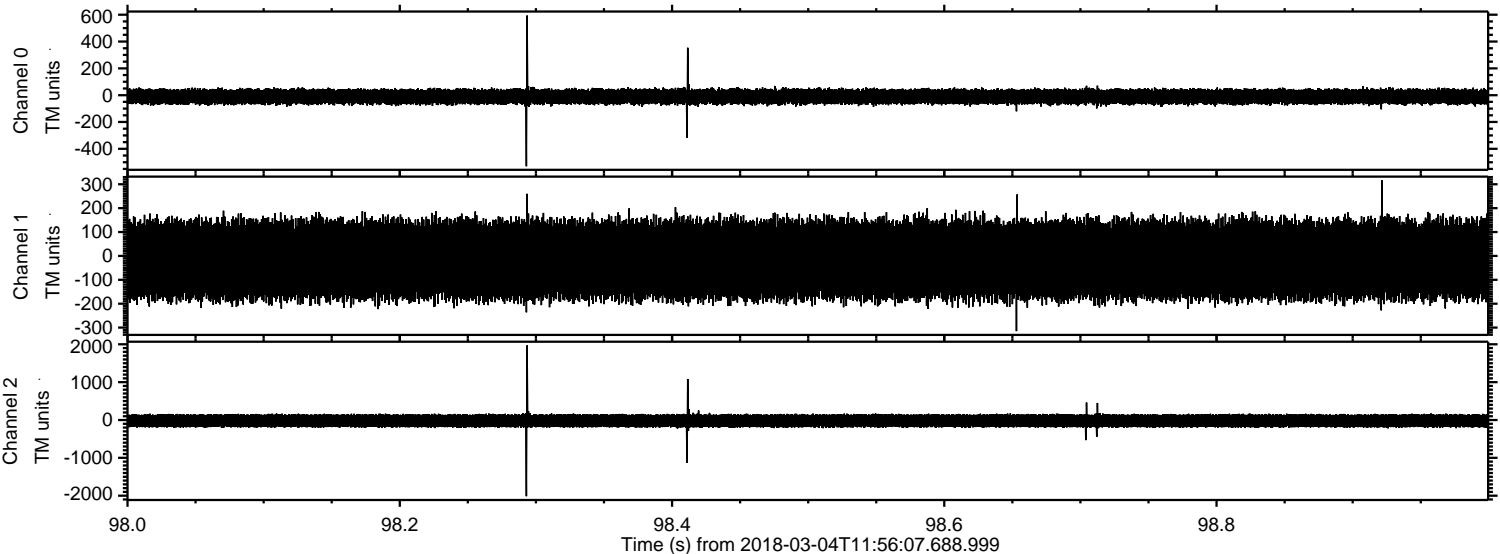
Channel 0  
mn: -236  
mx: 340  
 $\mu$ : -10.6  
 $\sigma$ : 30.3

Channel 1  
mn: -1315  
mx: 2215  
 $\mu$ : -16.4  
 $\sigma$ : 91.4

Channel 2  
mn: -266  
mx: 270  
 $\mu$ : -20.6  
 $\sigma$ : 97.4

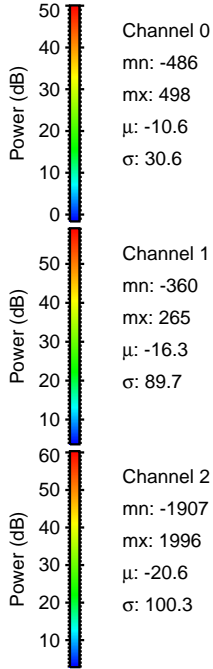
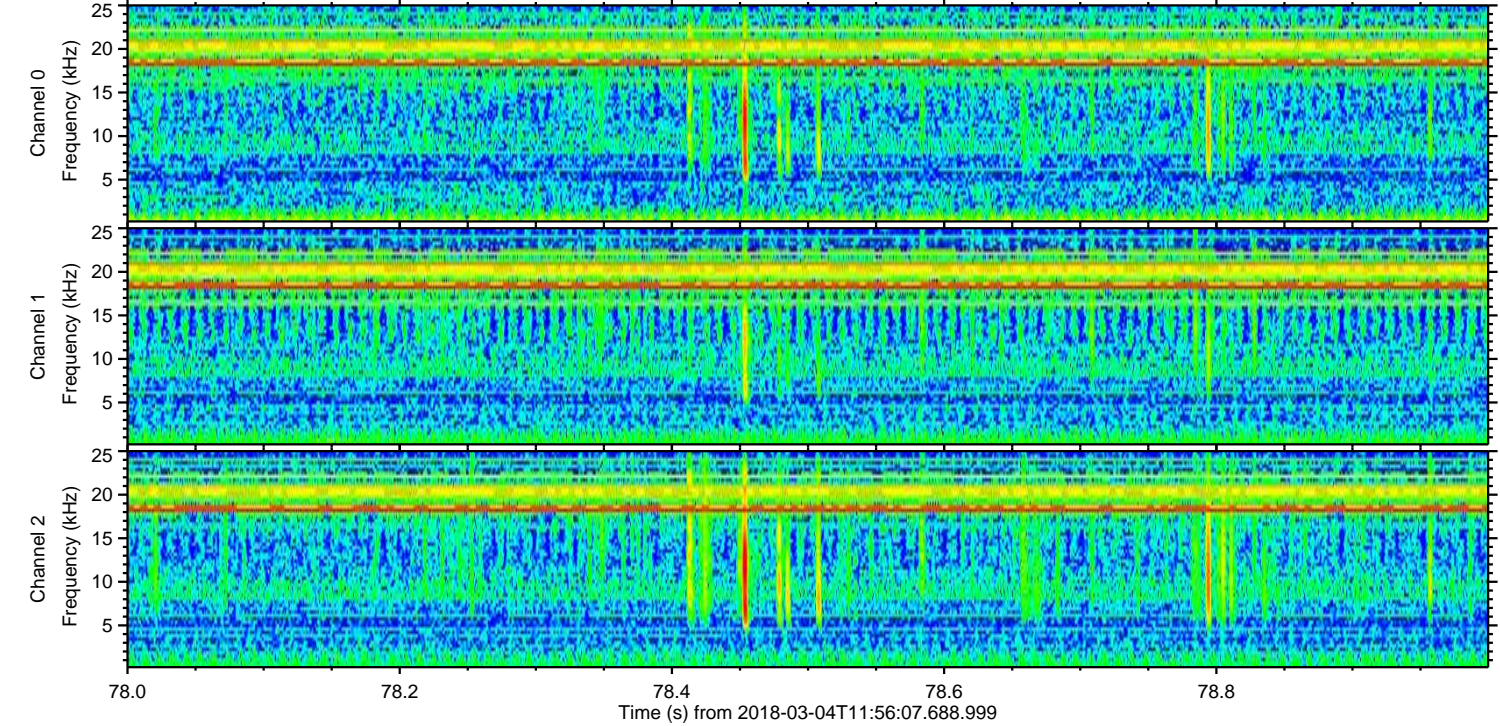
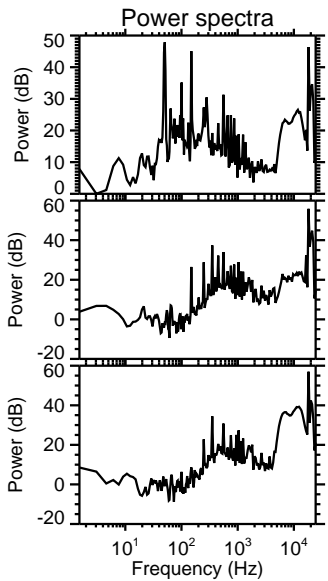
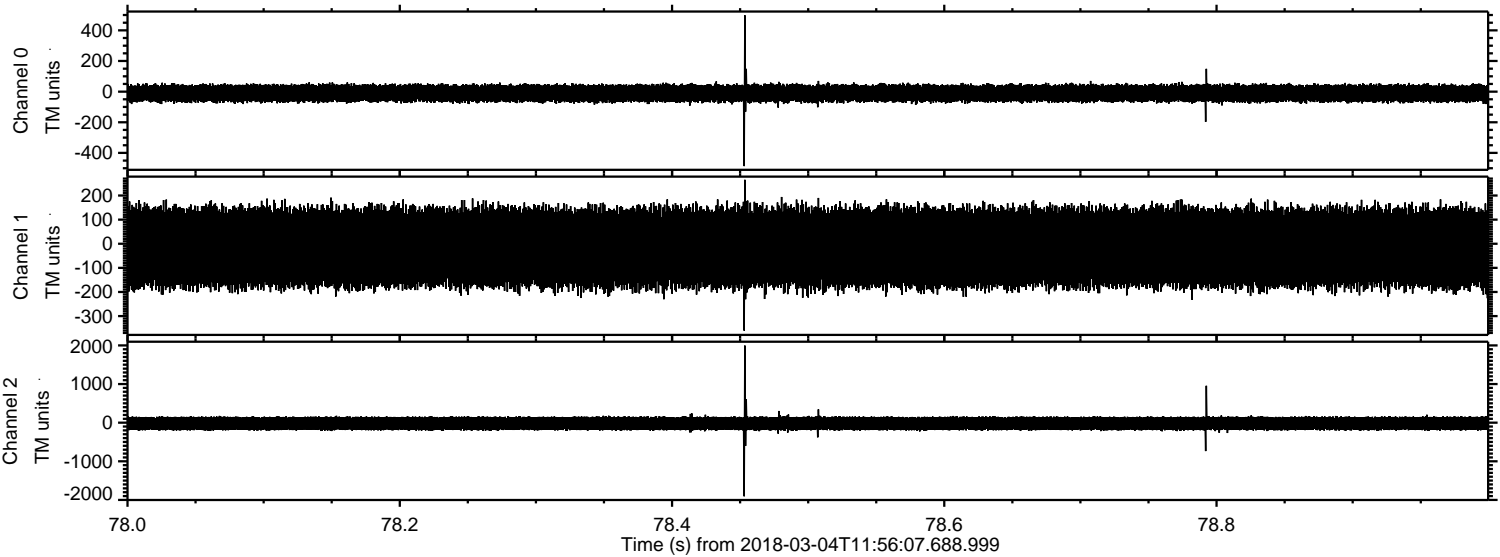


Processed Sun Mar 4 13:03:57 2018 by ELM ver.2012-10-06 from 001\_\_elm20180304\_115606\_\_dat00.bin





Processed Sun Mar 4 13:03:58 2018 by ELM ver.2012-10-06 from 001\_\_elm20180304\_115606\_\_dat00.bin





Processed Sun Mar 4 13:03:58 2018 by ELM ver.2012-10-06 from 001\_\_elm20180304\_115606\_\_dat00.bin

