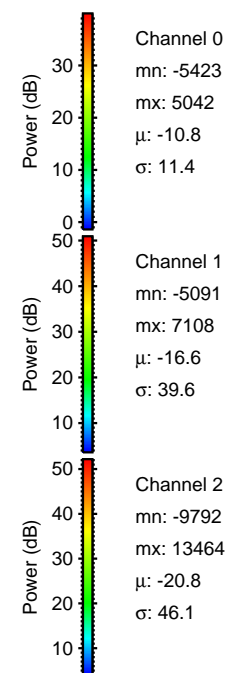
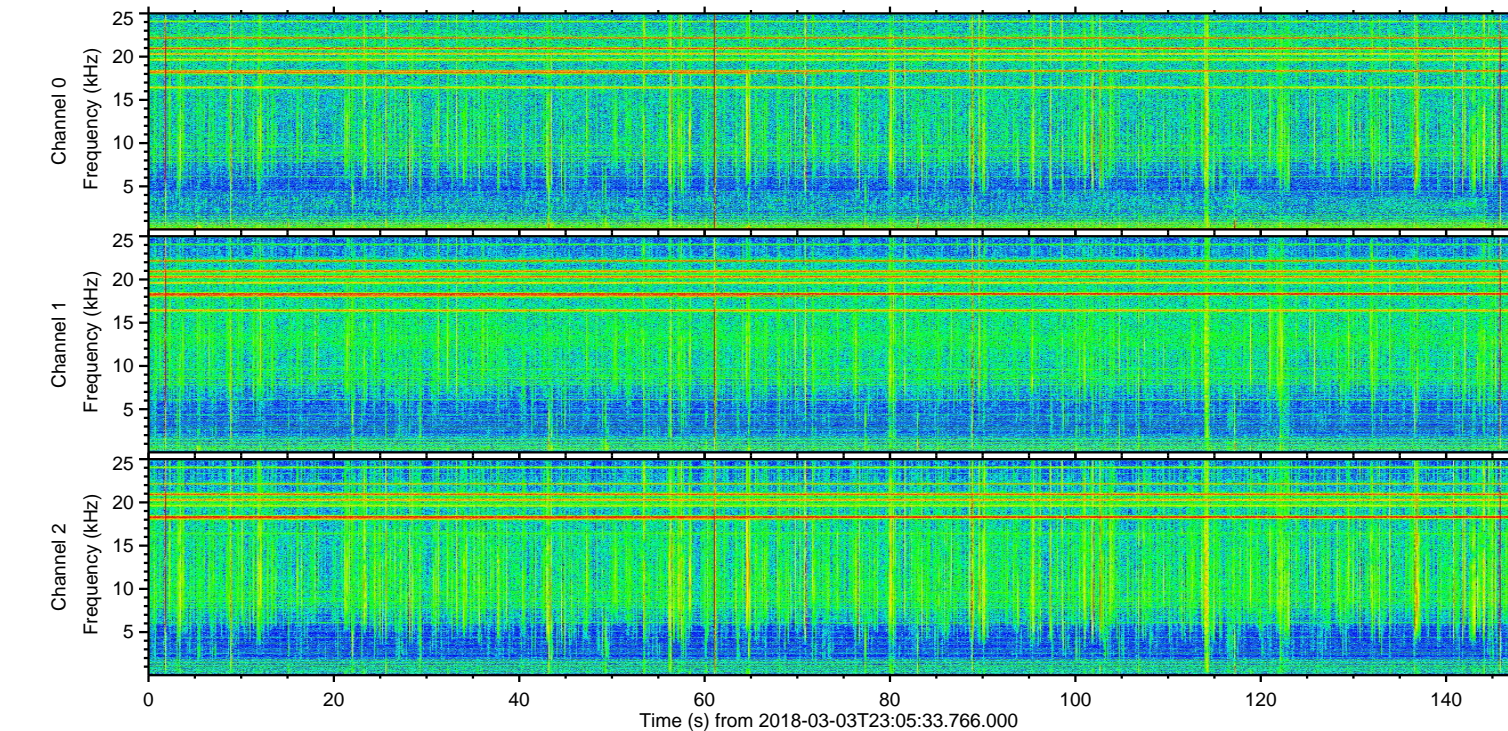
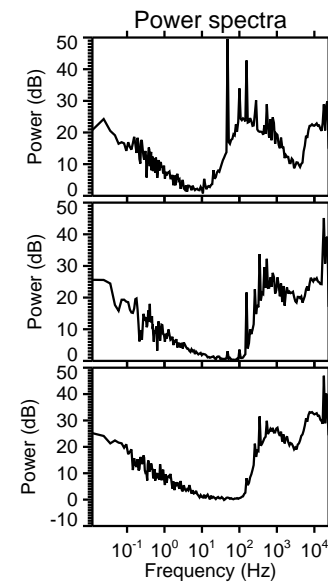
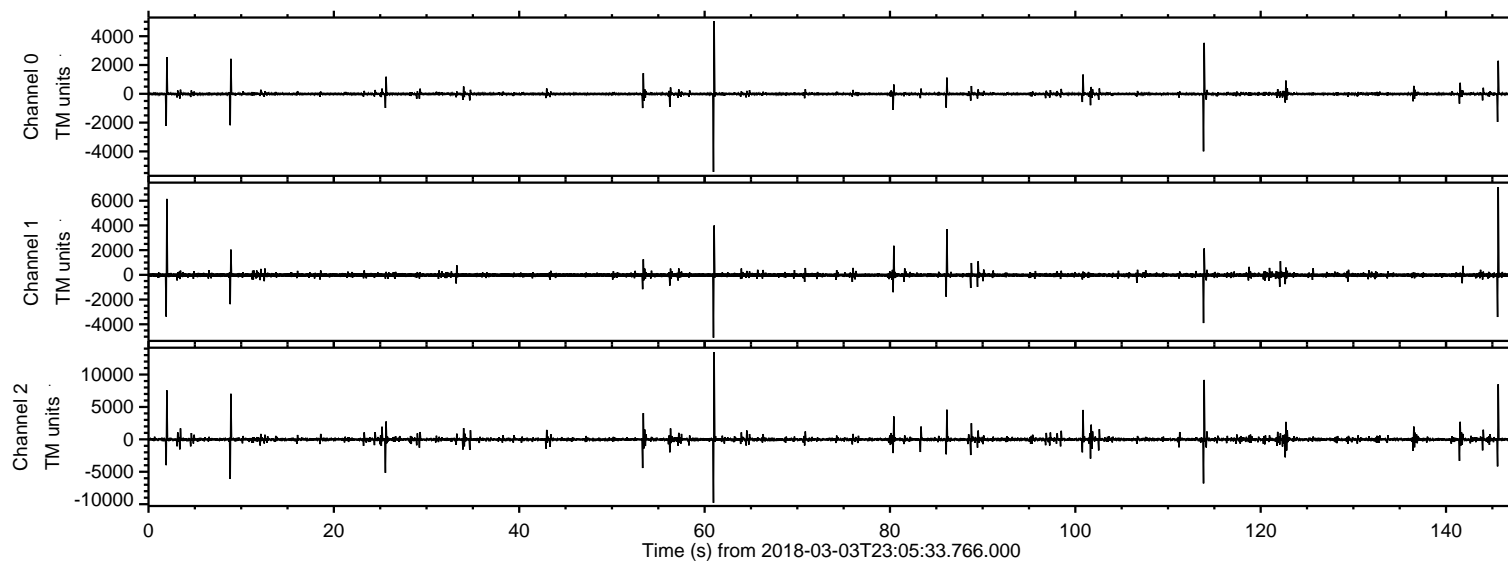
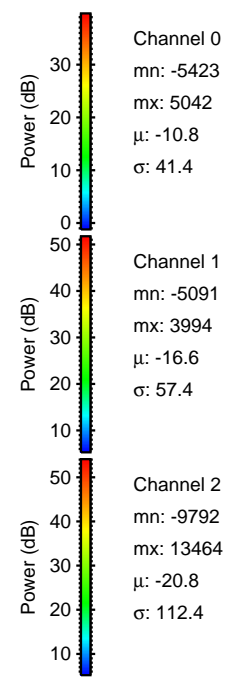
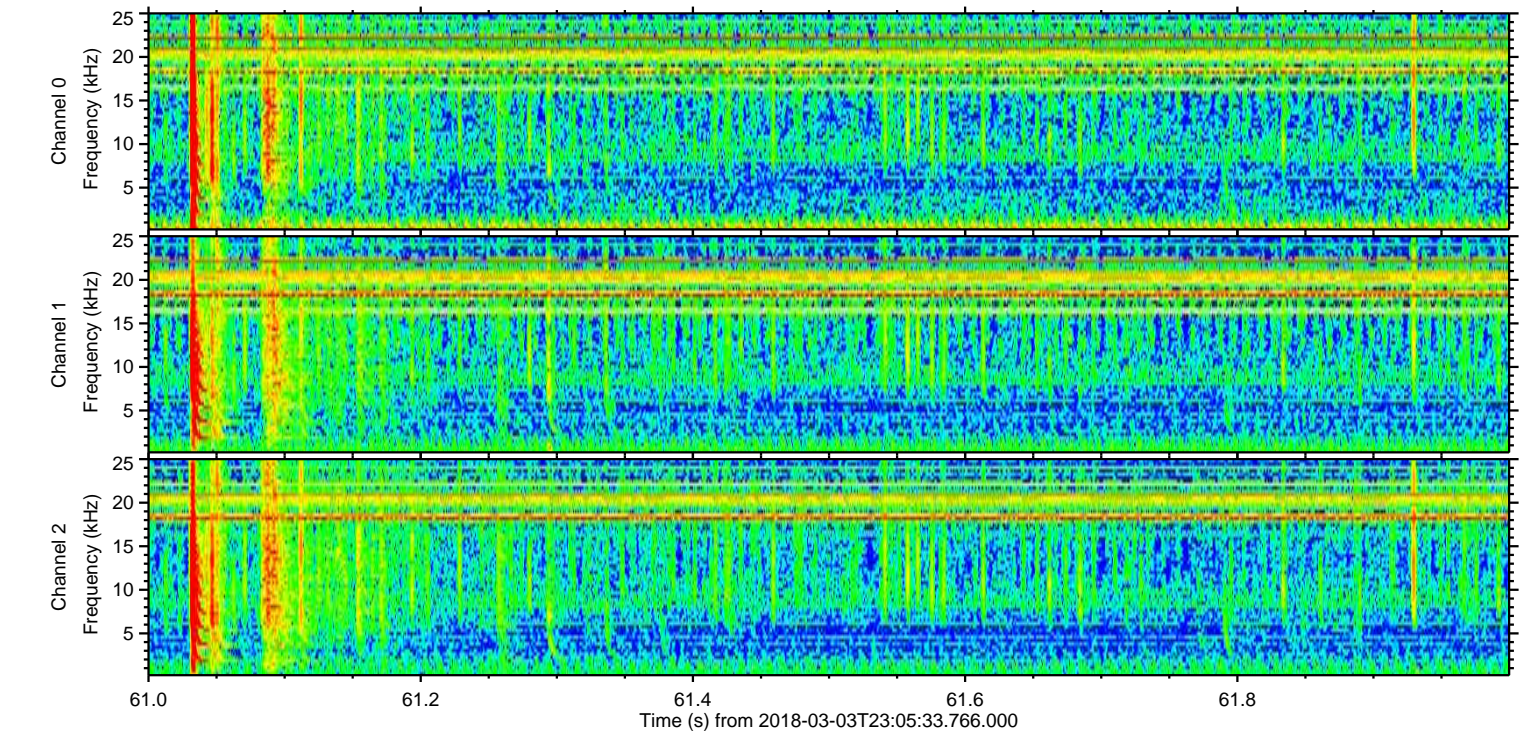
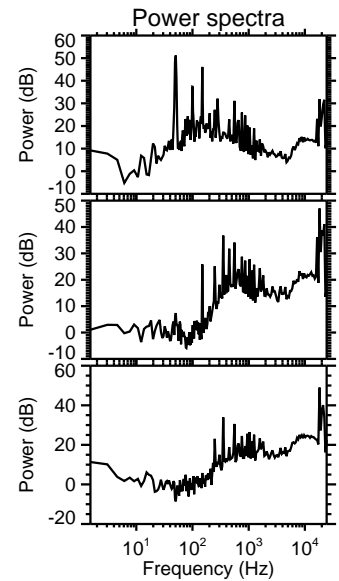
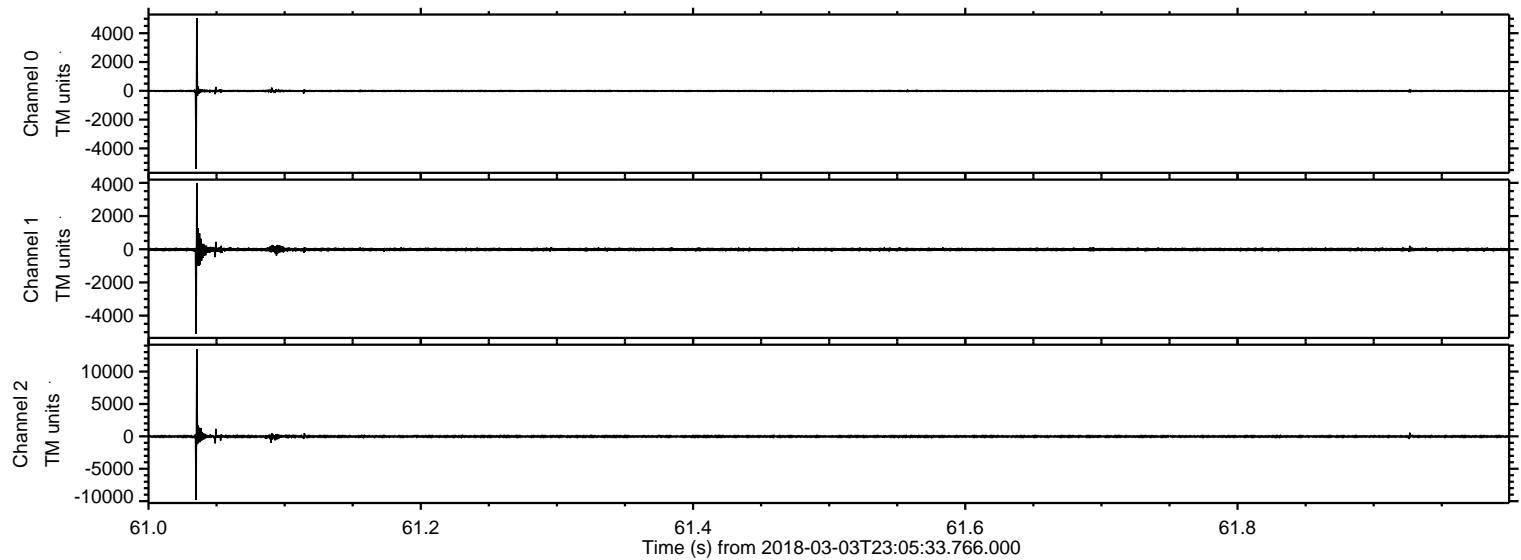


ELMAVAN 3D WAVEFORMS (Measured data sampled at 50 kHz) 51000 packets of 144 samples from 2018-03-03T23:05:33.766.000.

Processed Sun Mar 4 00:13:40 2018 by ELM ver.2012-10-06 from 001__elm20180303_230532__dat00.bin

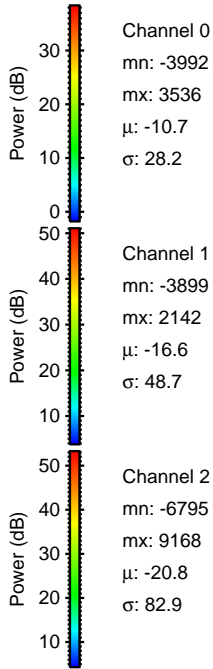
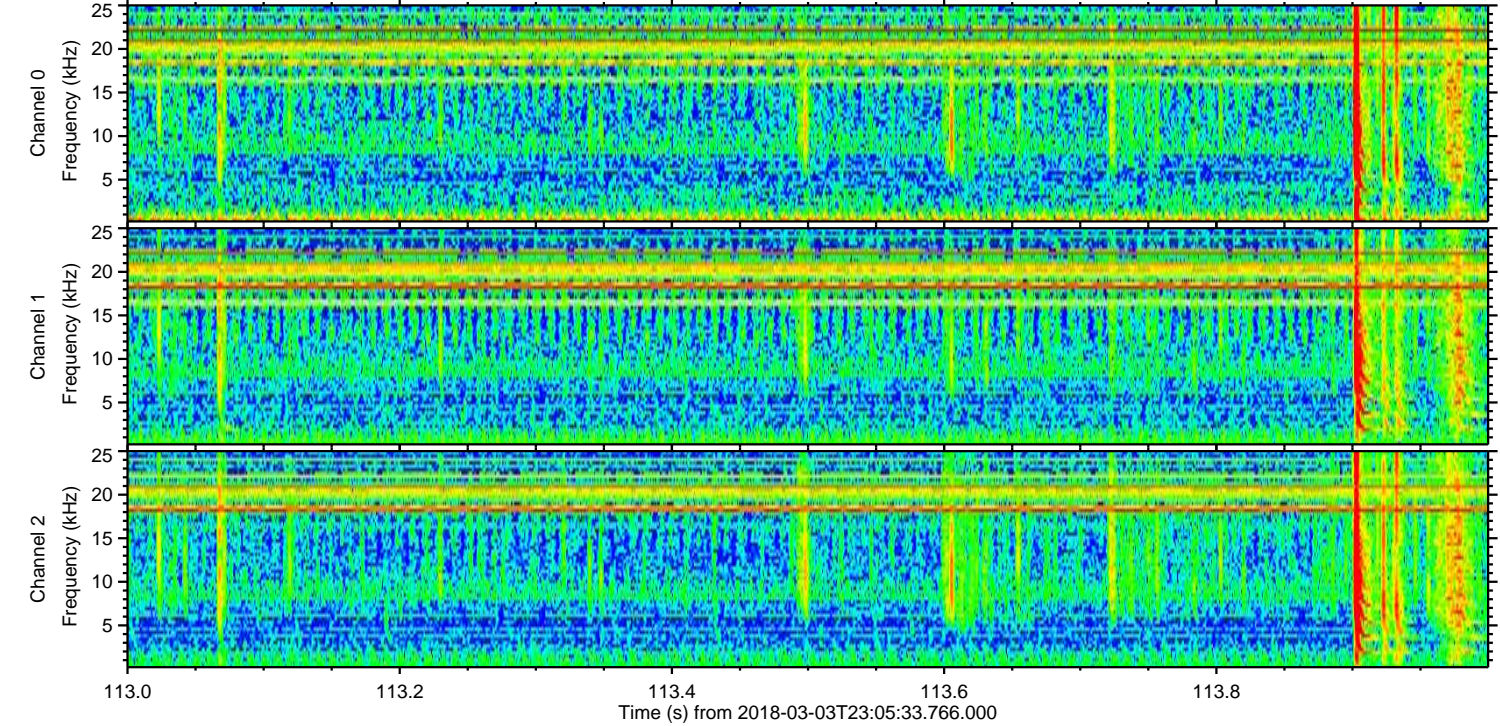
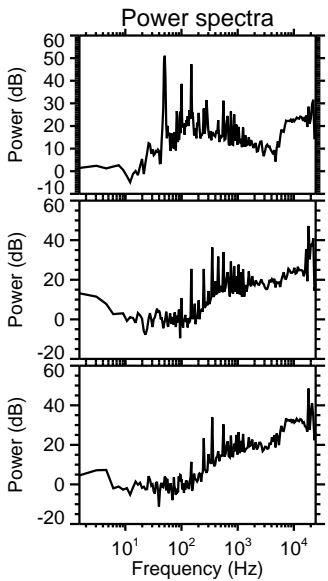
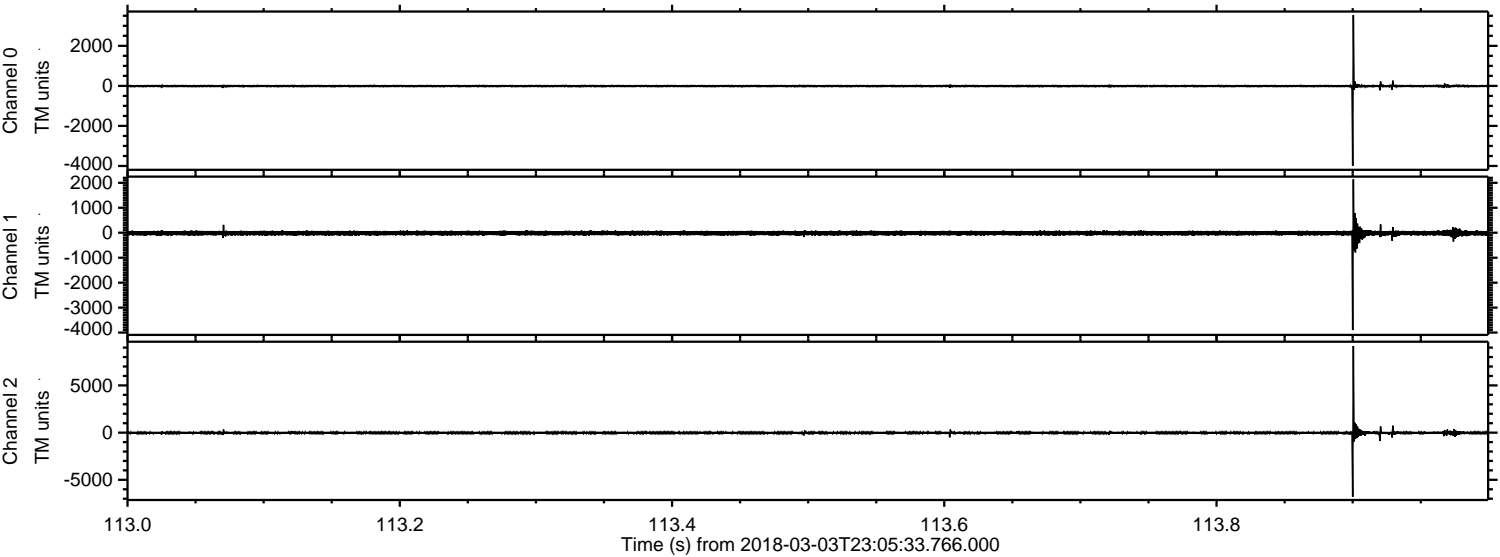


Processed Sun Mar 4 00:13:48 2018 by ELM ver.2012-10-06 from 001__elm20180303_230532__dat00.bin



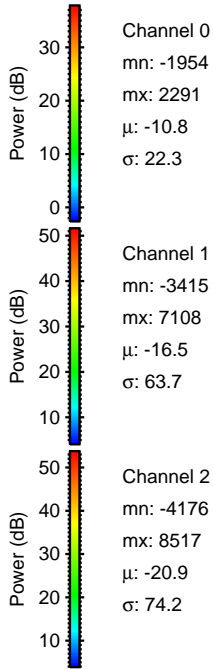
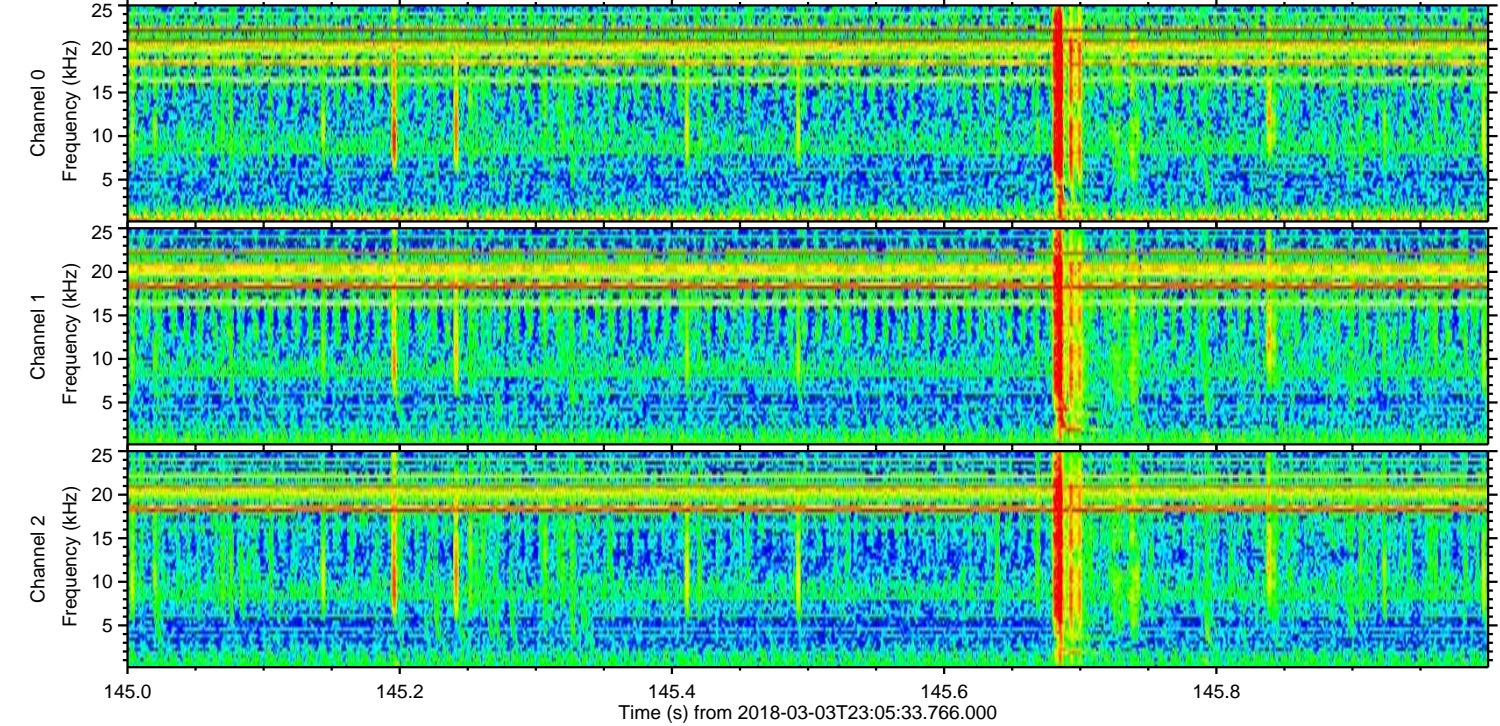
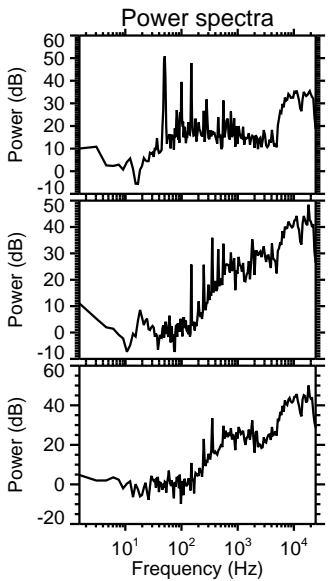
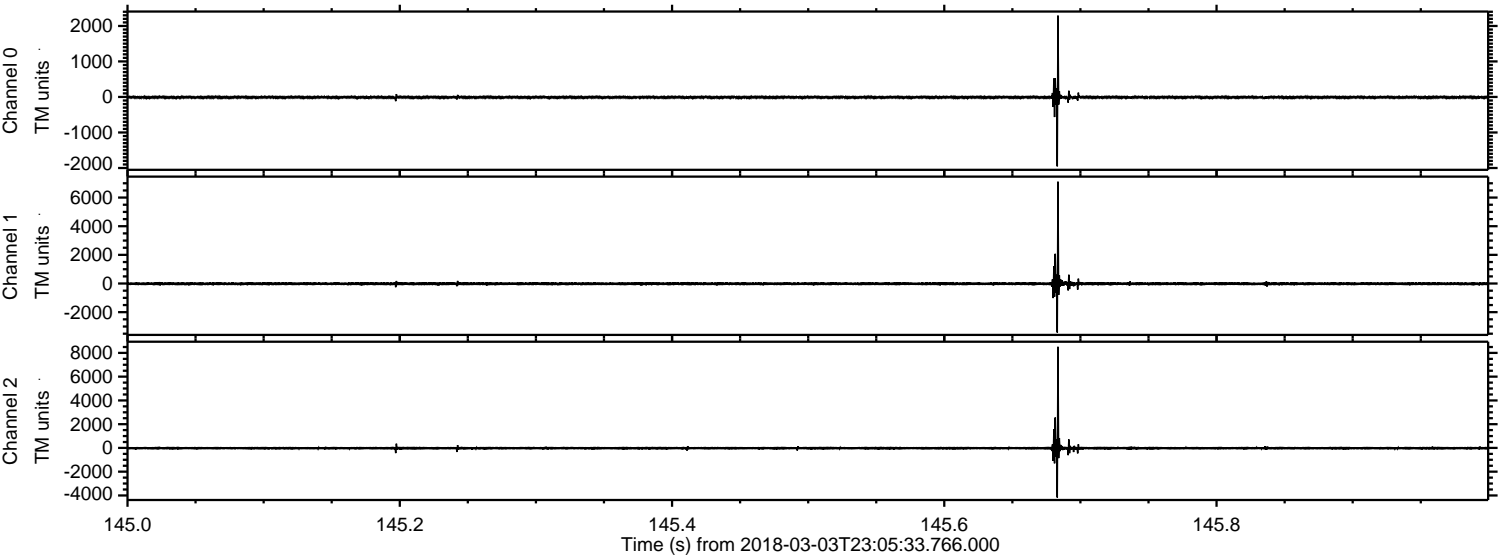
ELMAVAN 3D WAVEFORMS (Measured data sampled at 50 kHz) 51000 packets of 144 samples from 2018-03-03T23:05:33.766.000. Part 114/147

Processed Sun Mar 4 00:13:49 2018 by ELM ver.2012-10-06 from 001__elm20180303_230532__dat00.bin

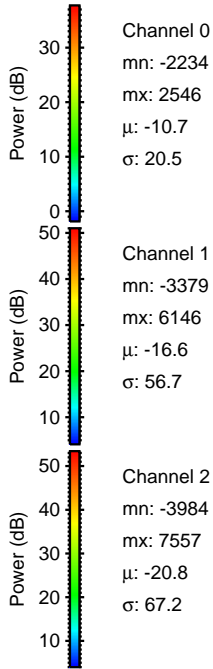
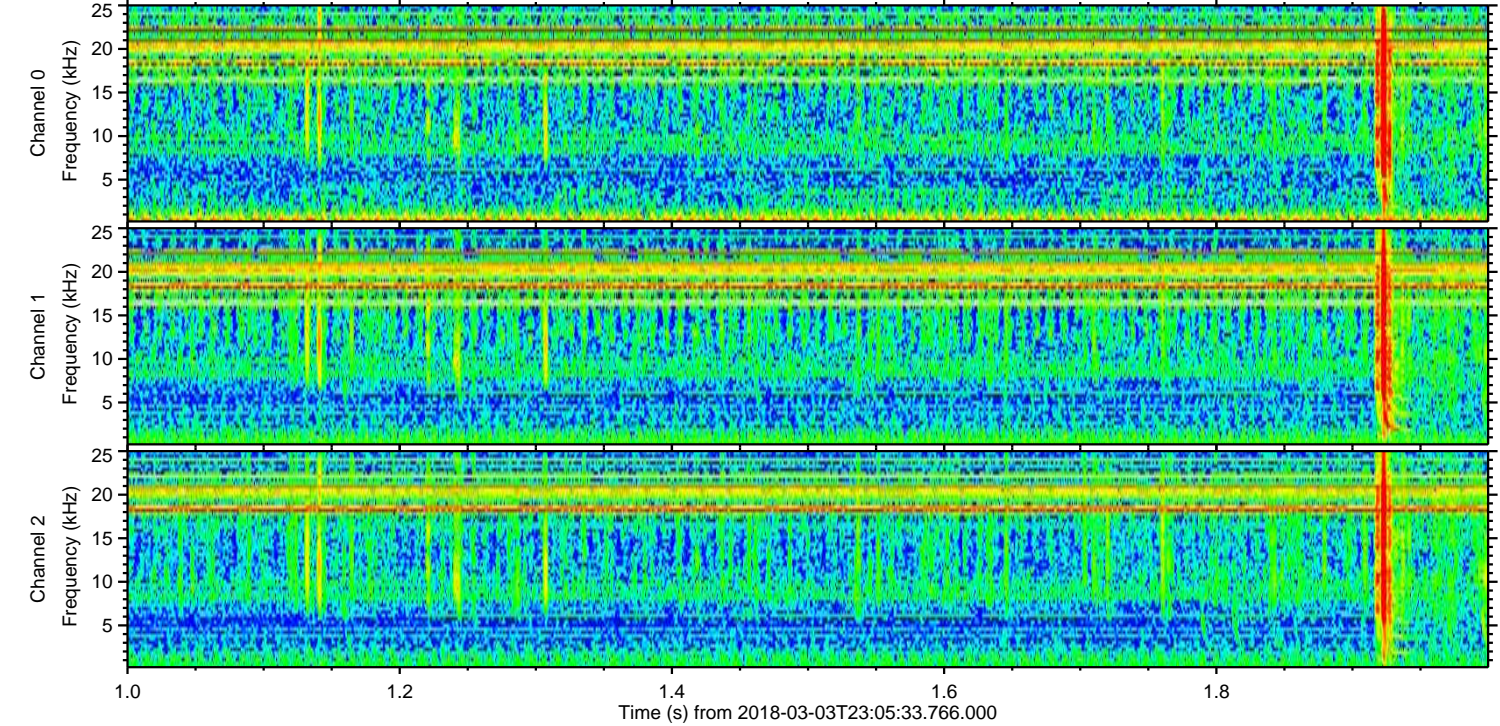
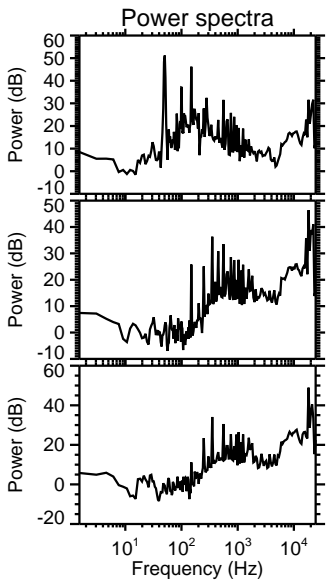
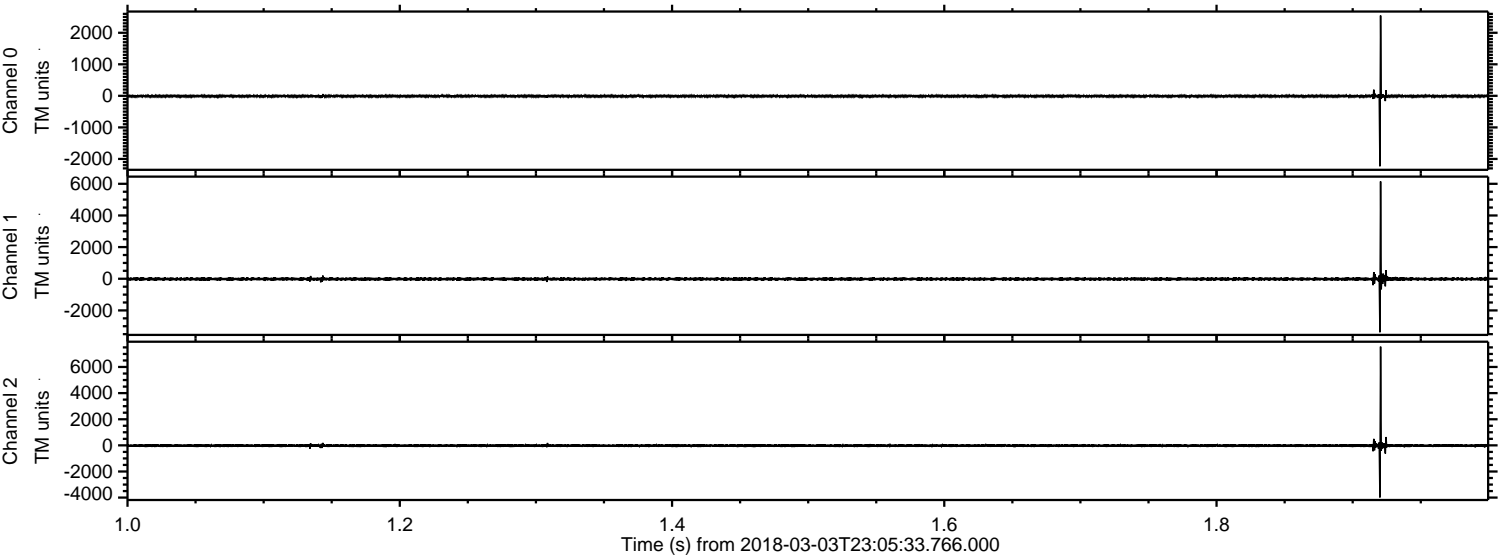


ELMAVAN 3D WAVEFORMS (Measured data sampled at 50 kHz) 51000 packets of 144 samples from 2018-03-03T23:05:33.766.000. Part 146/147

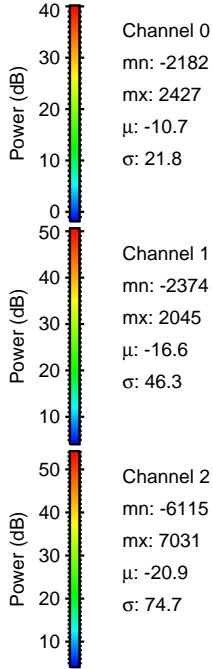
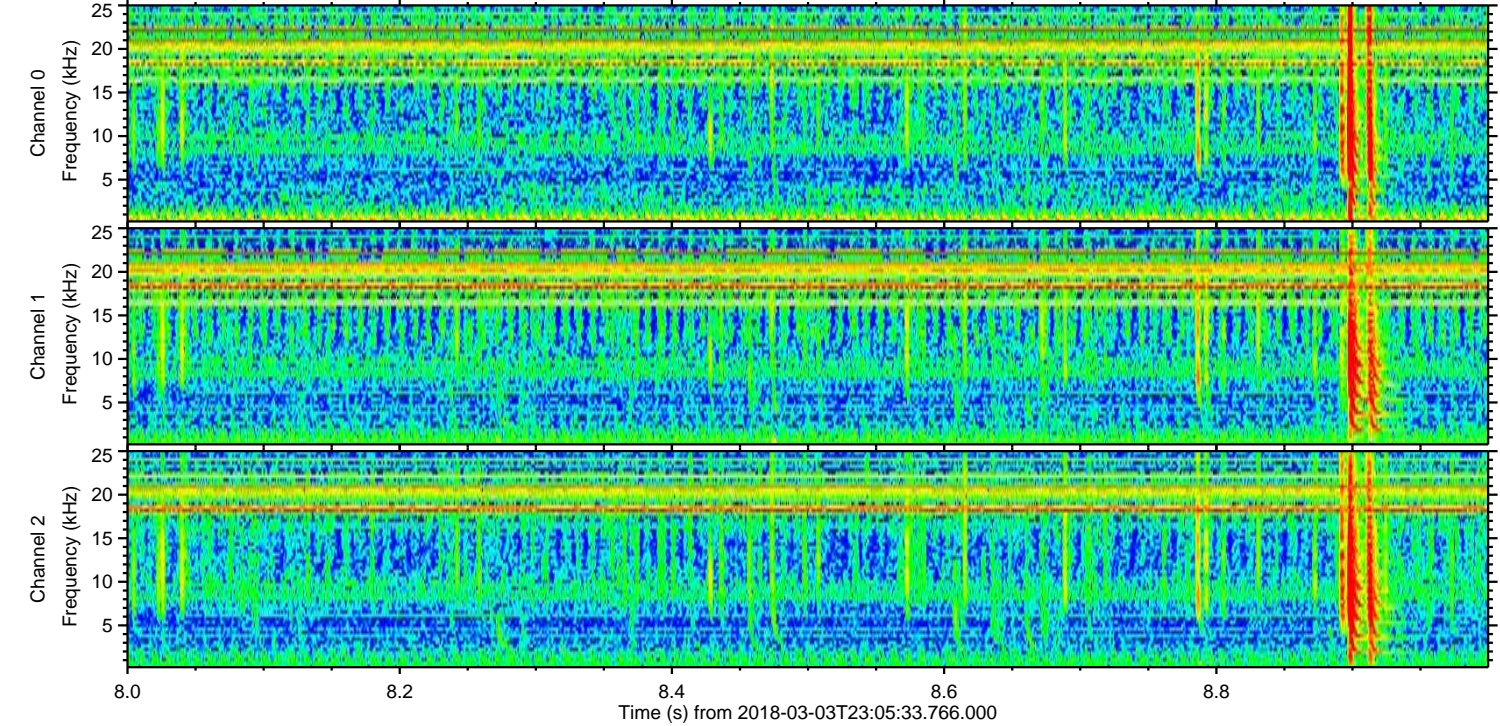
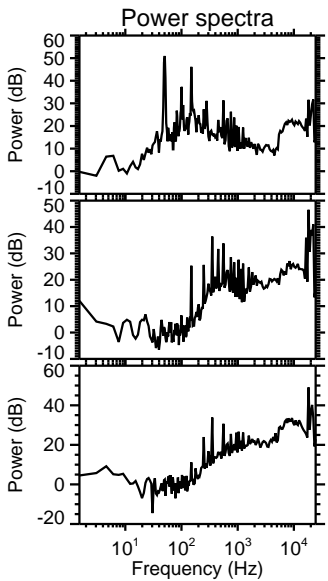
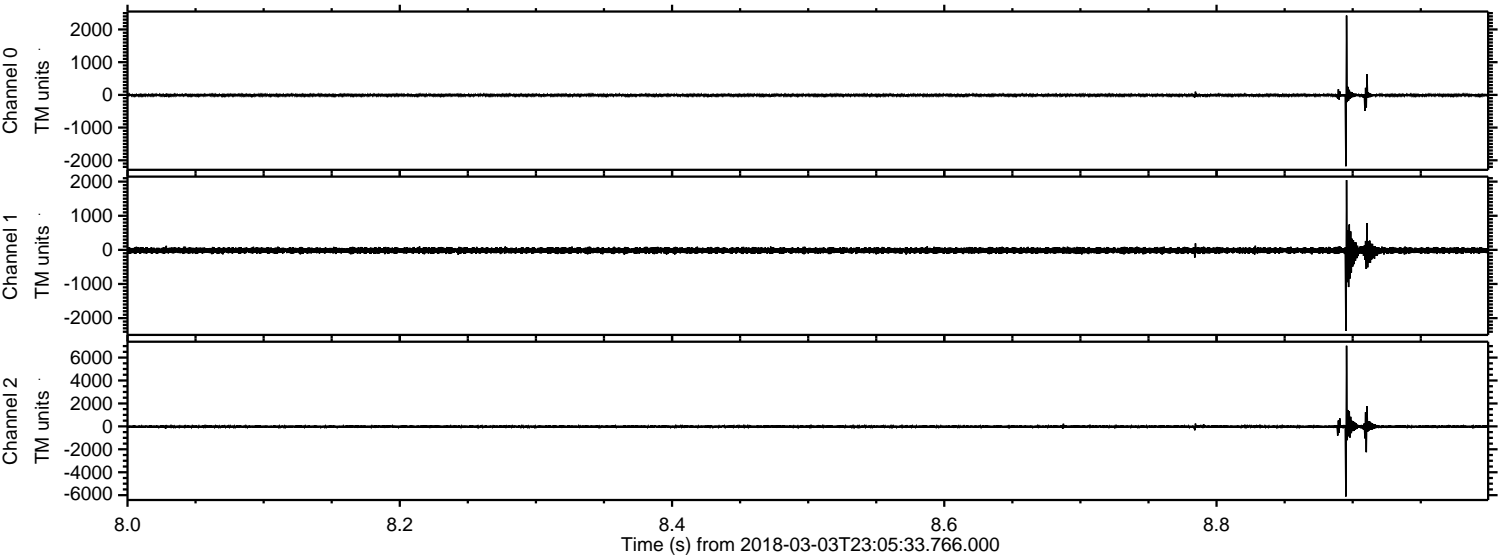
Processed Sun Mar 4 00:13:50 2018 by ELM ver.2012-10-06 from 001__elm20180303_230532__dat00.bin



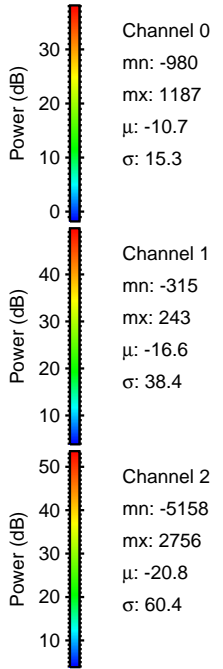
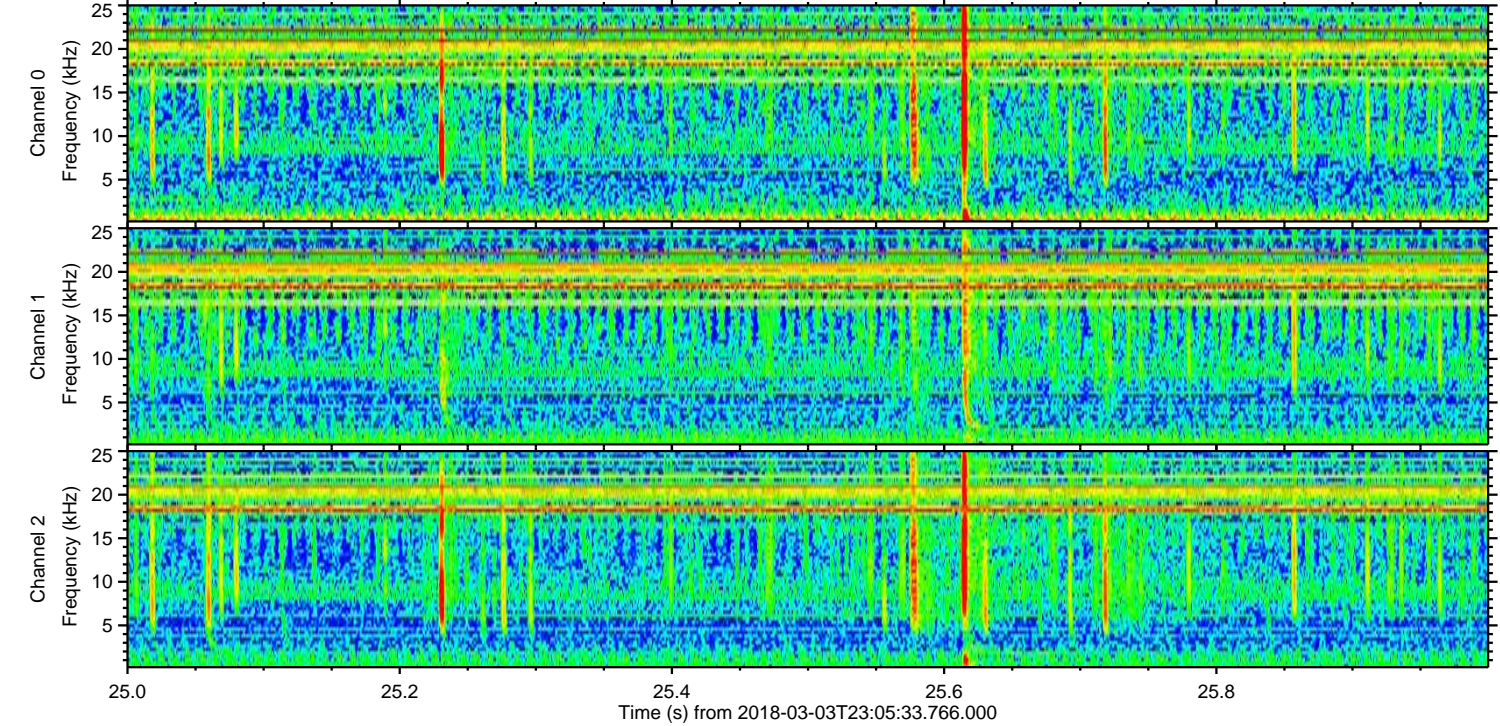
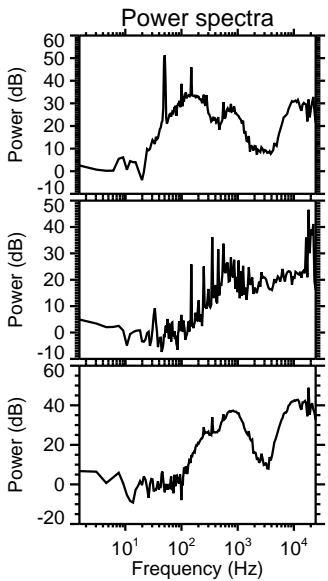
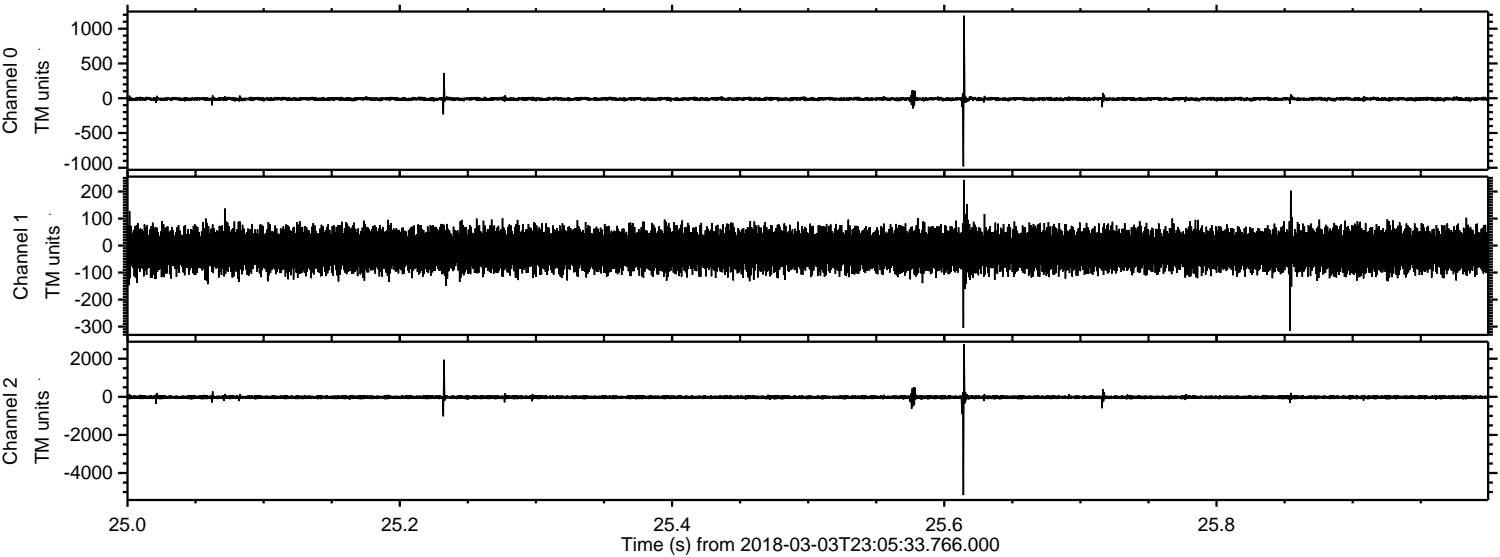
Processed Sun Mar 4 00:13:51 2018 by ELM ver.2012-10-06 from 001__elm20180303_230532__dat00.bin



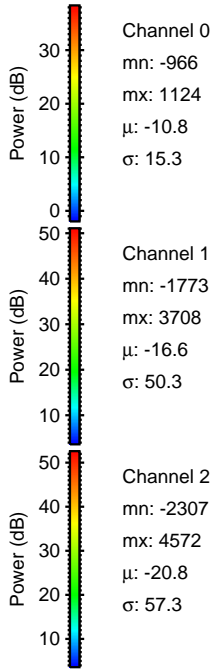
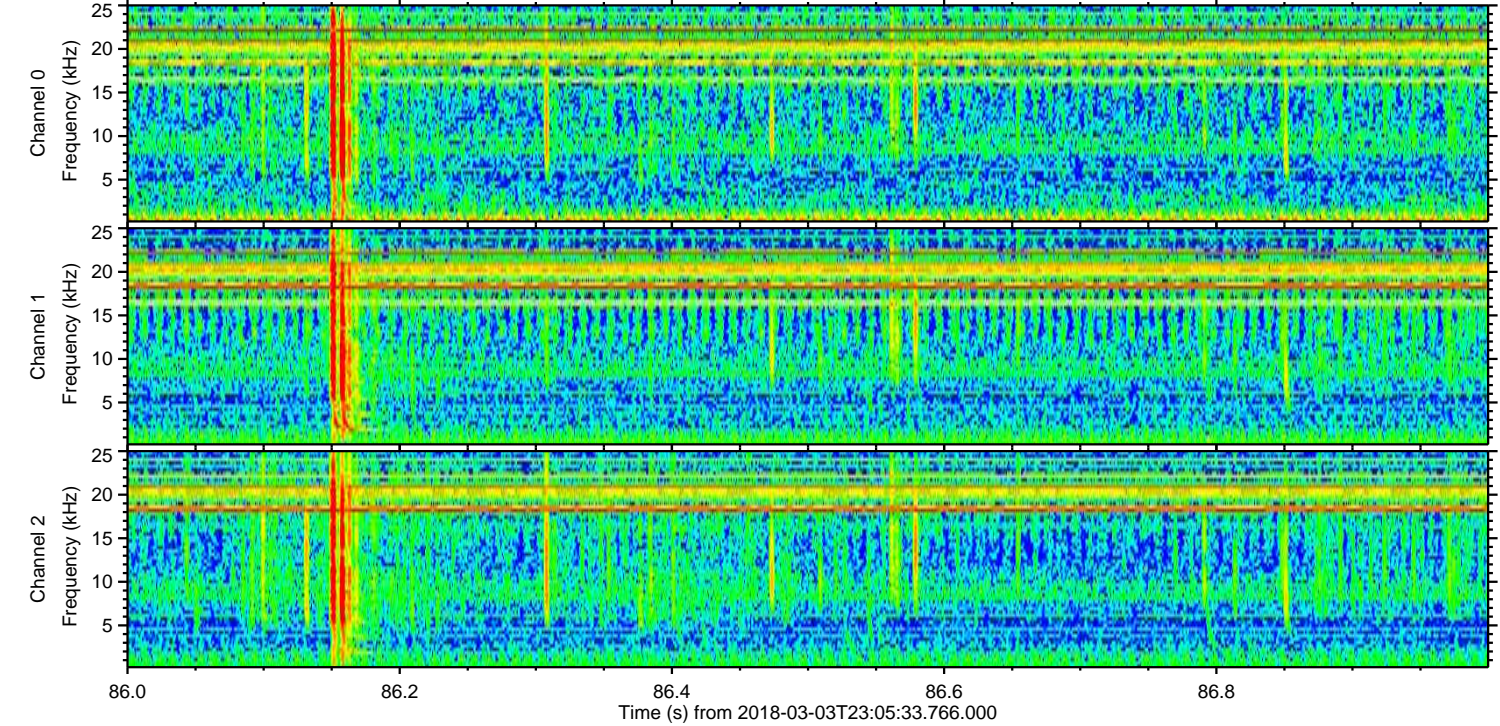
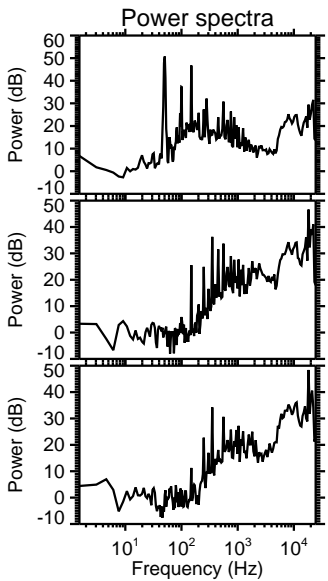
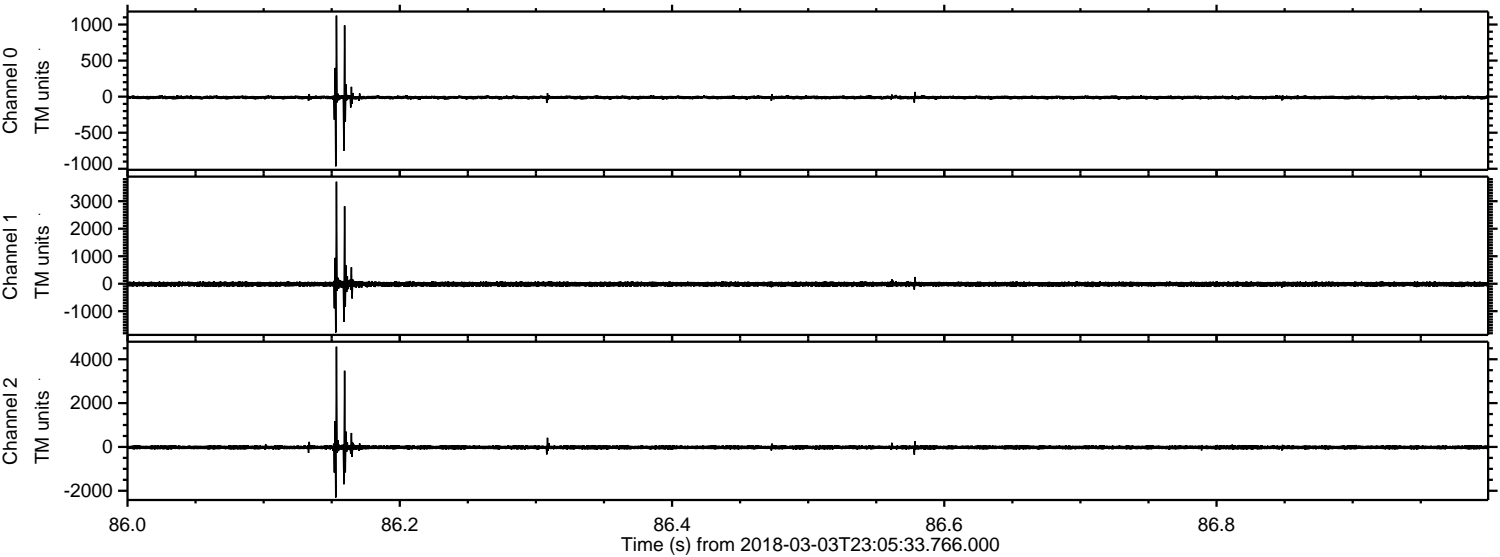
Processed Sun Mar 4 00:13:51 2018 by ELM ver.2012-10-06 from 001__elm20180303_230532__dat00.bin



Processed Sun Mar 4 00:13:52 2018 by ELM ver.2012-10-06 from 001__elm20180303_230532__dat00.bin

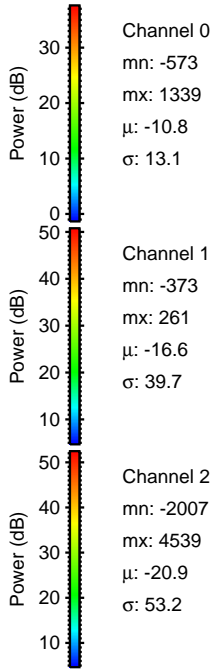
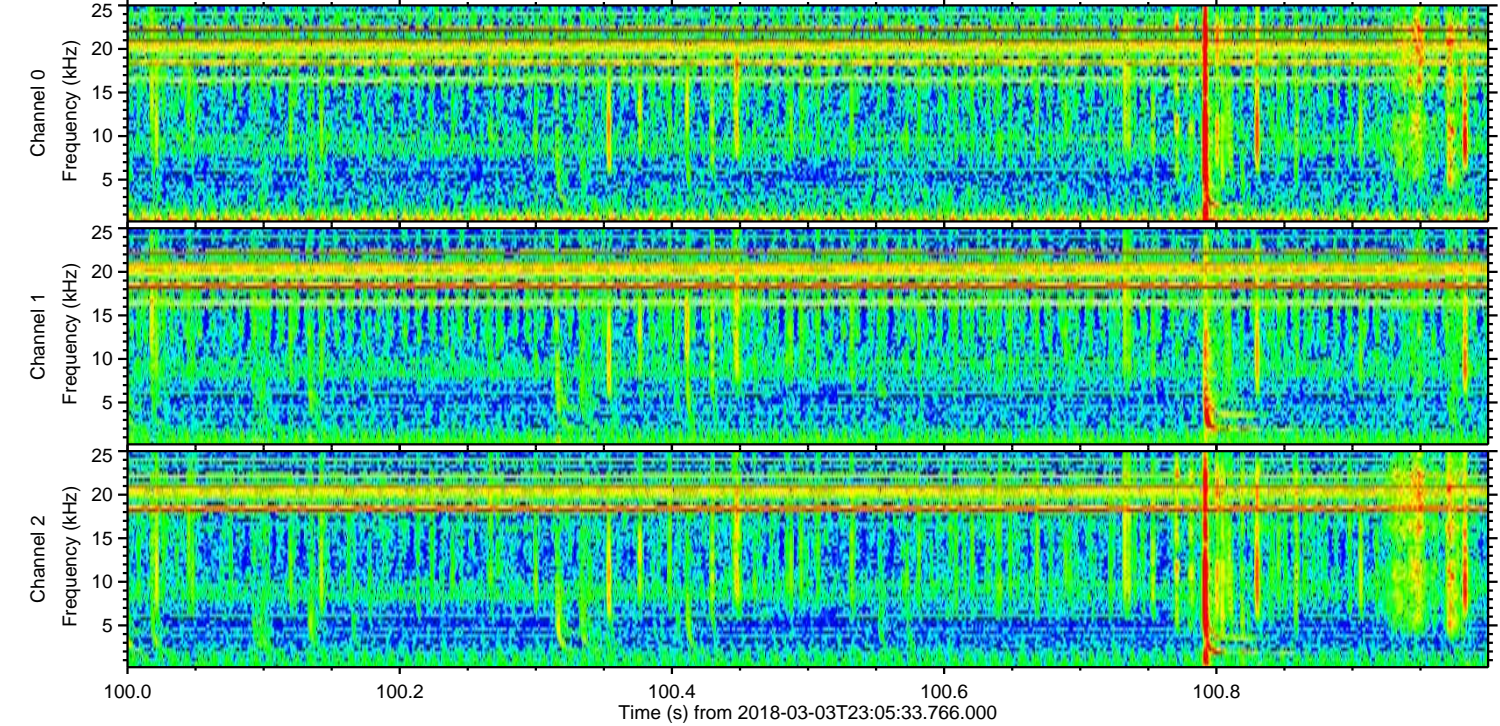
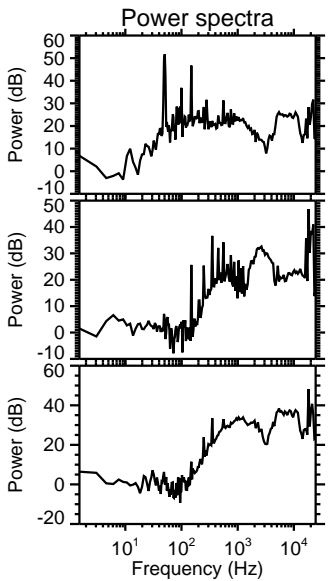
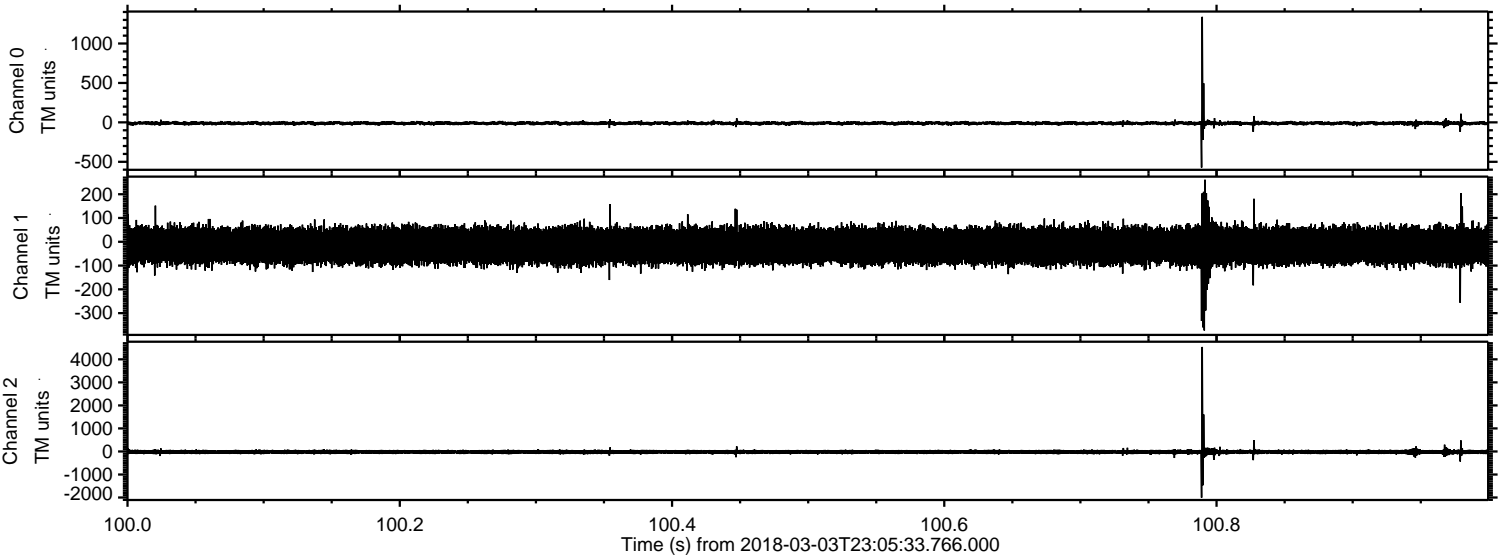


Processed Sun Mar 4 00:13:53 2018 by ELM ver.2012-10-06 from 001__elm20180303_230532__dat00.bin



ELMAVAN 3D WAVEFORMS (Measured data sampled at 50 kHz) 51000 packets of 144 samples from 2018-03-03T23:05:33.766.000. Part 101/147

Processed Sun Mar 4 00:13:54 2018 by ELM ver.2012-10-06 from 001__elm20180303_230532__dat00.bin



Channel 0
mn: -573
mx: 1339
 μ : -10.8
 σ : 13.1

Channel 1
mn: -373
mx: 261
 μ : -16.6
 σ : 39.7

Channel 2
mn: -2007
mx: 4539
 μ : -20.9
 σ : 53.2

Processed Sun Mar 4 00:13:55 2018 by ELM ver.2012-10-06 from 001__elm20180303_230532__dat00.bin

