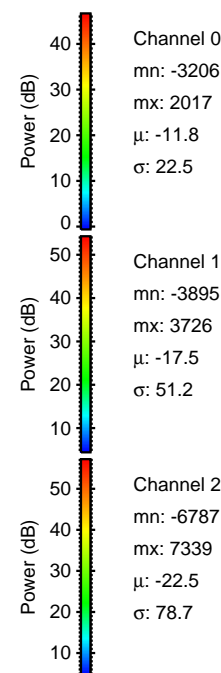
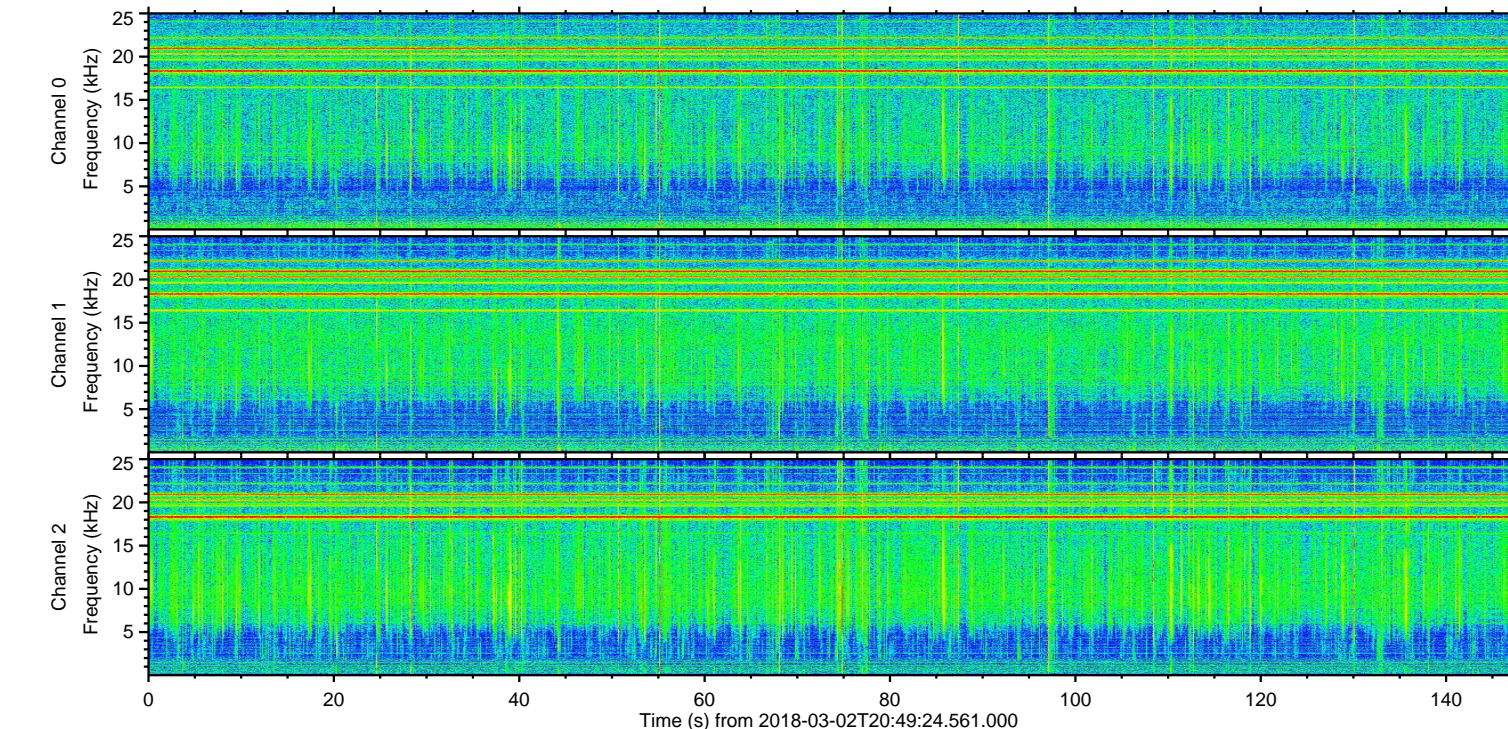
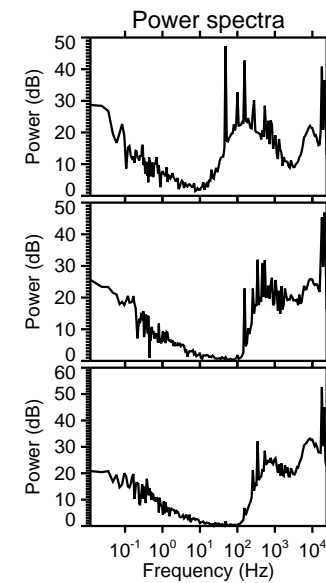
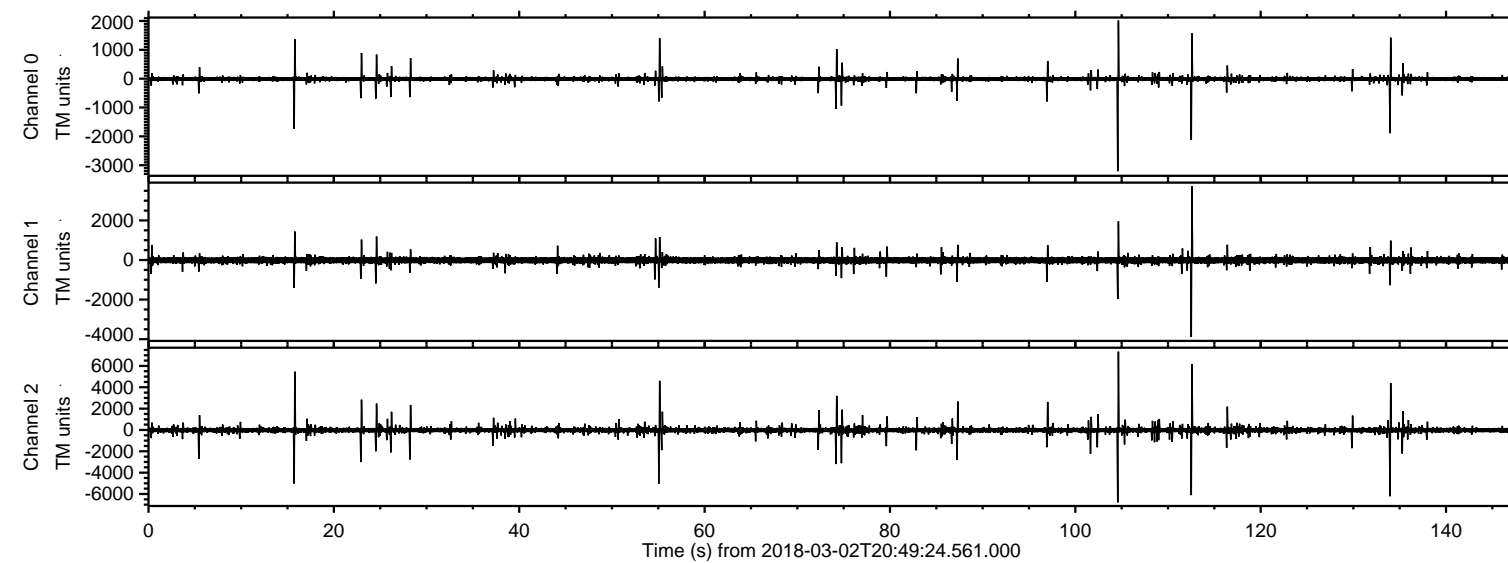


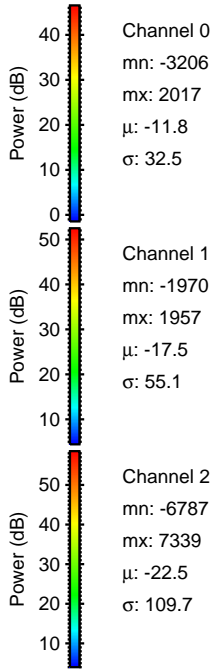
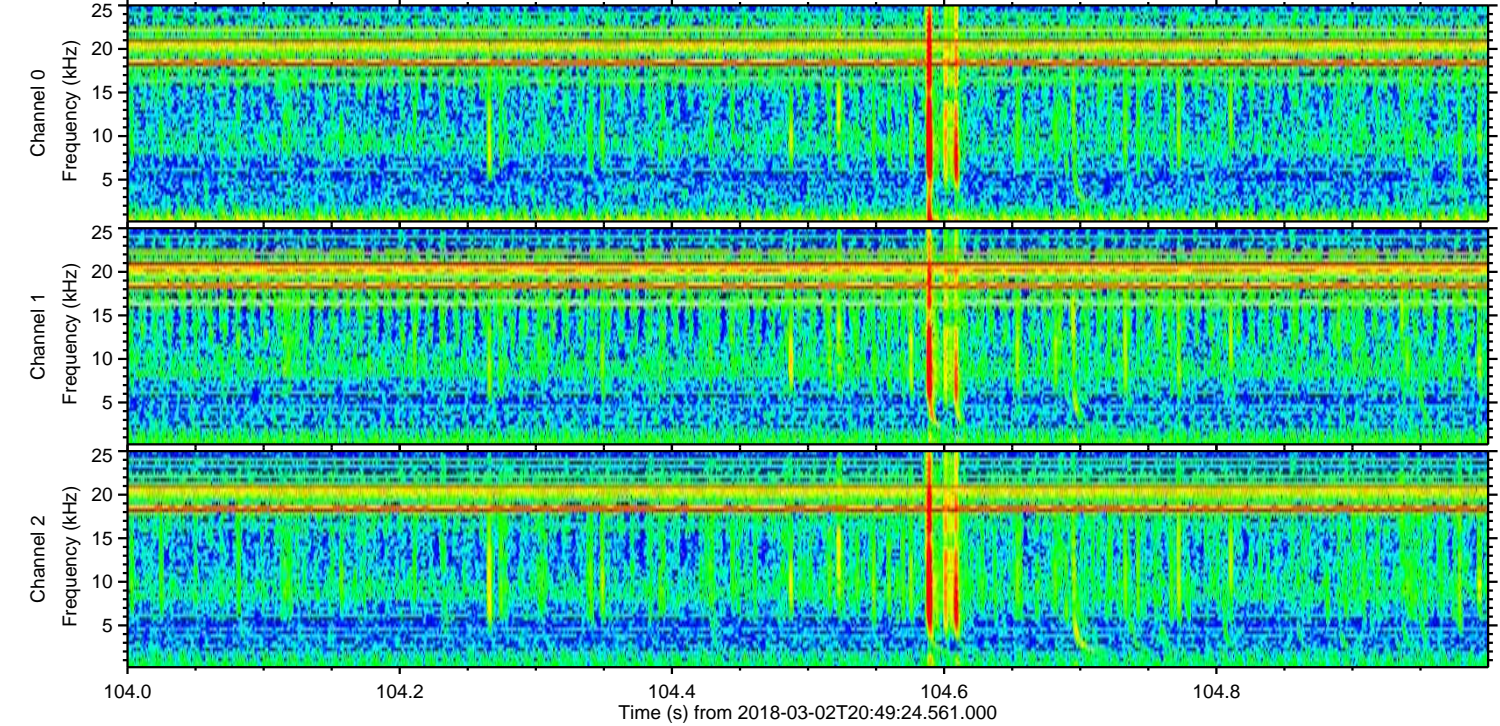
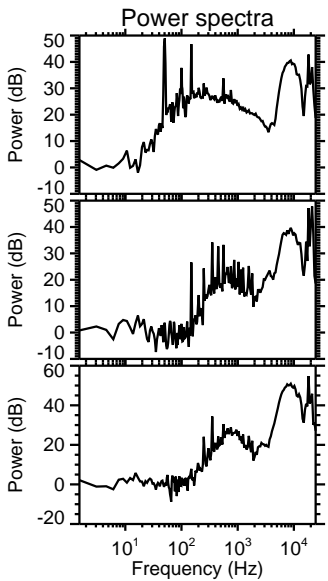
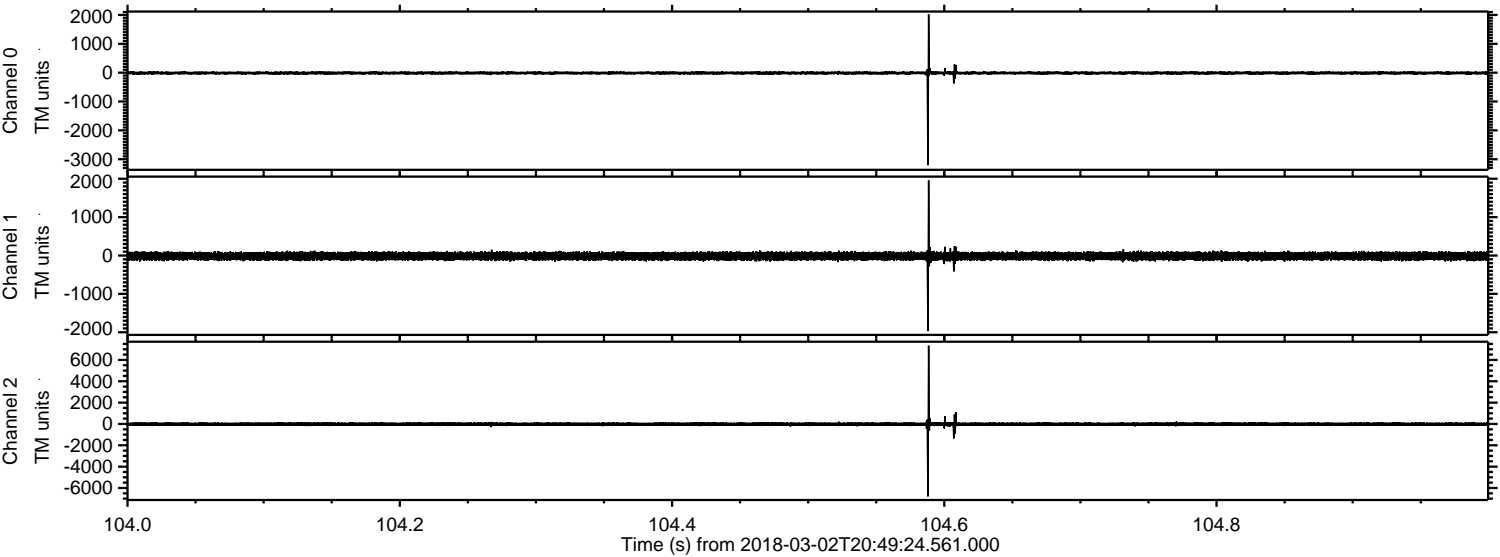
ELMAVAN 3D WAVEFORMS (Measured data sampled at 50 kHz) 51000 packets of 144 samples from 2018-03-02T20:49:24.561.000.

Processed Fri Mar 2 21:57:47 2018 by ELM ver.2012-10-06 from 001__elm20180302_204923__dat00.bin



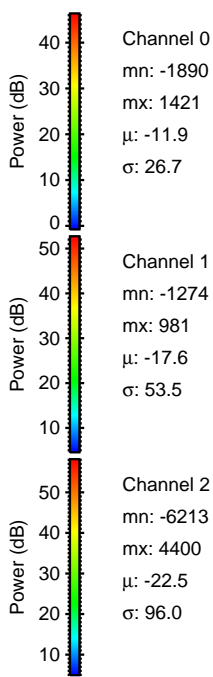
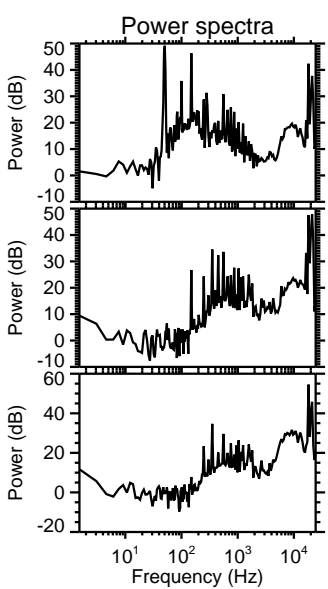
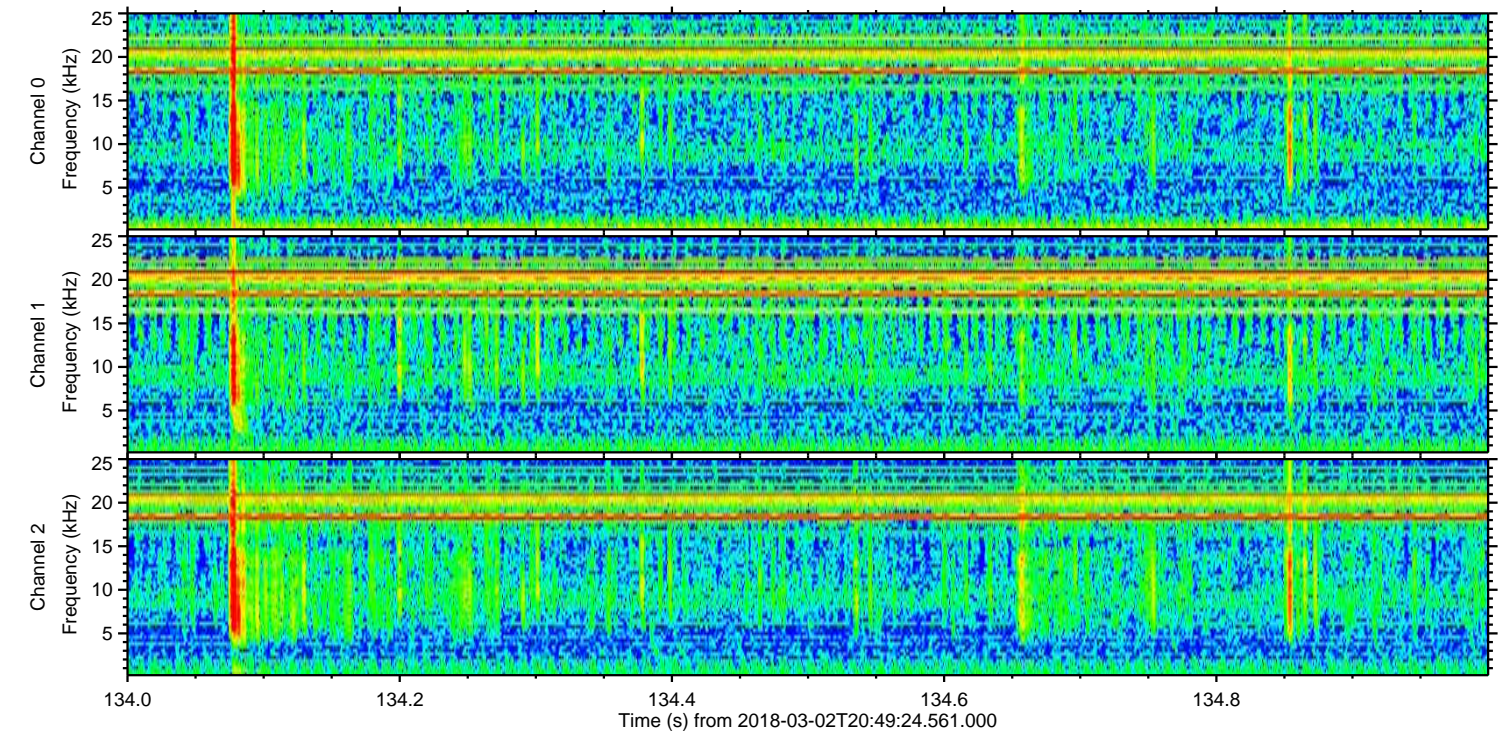
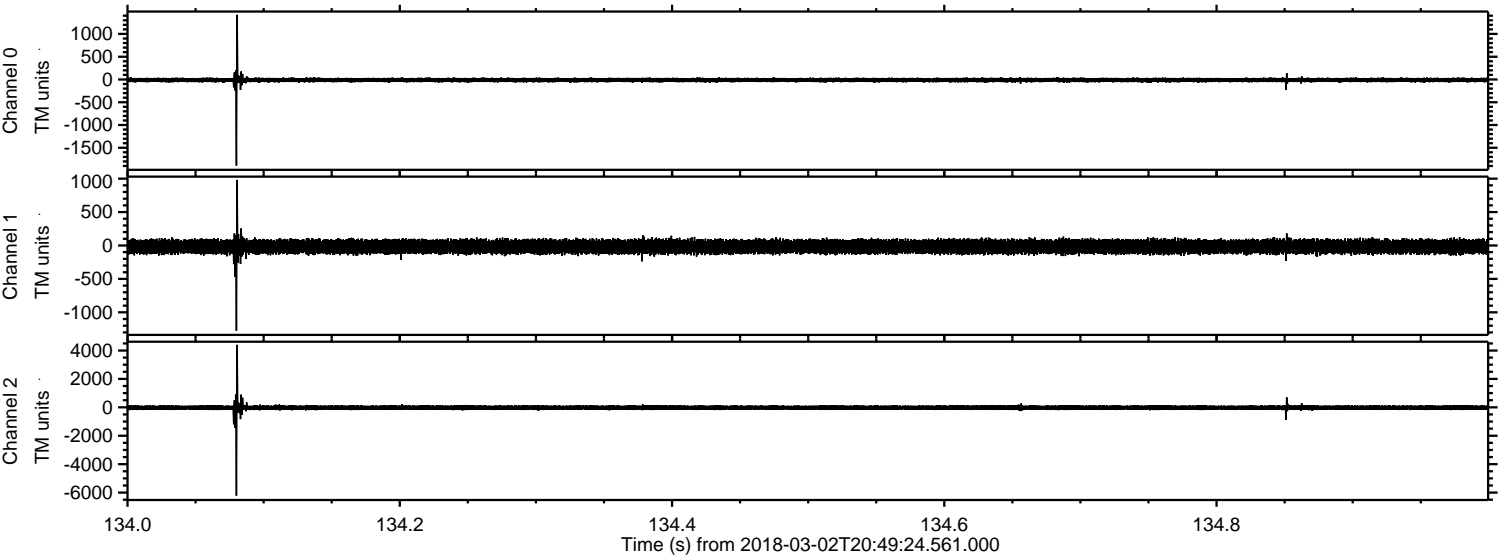
ELMAVAN 3D WAVEFORMS (Measured data sampled at 50 kHz) 51000 packets of 144 samples from 2018-03-02T20:49:24.561.000. Part 105/147

Processed Fri Mar 2 21:57:55 2018 by ELM ver.2012-10-06 from 001__elm20180302_204923__dat00.bin



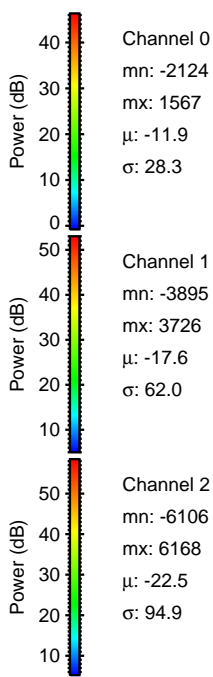
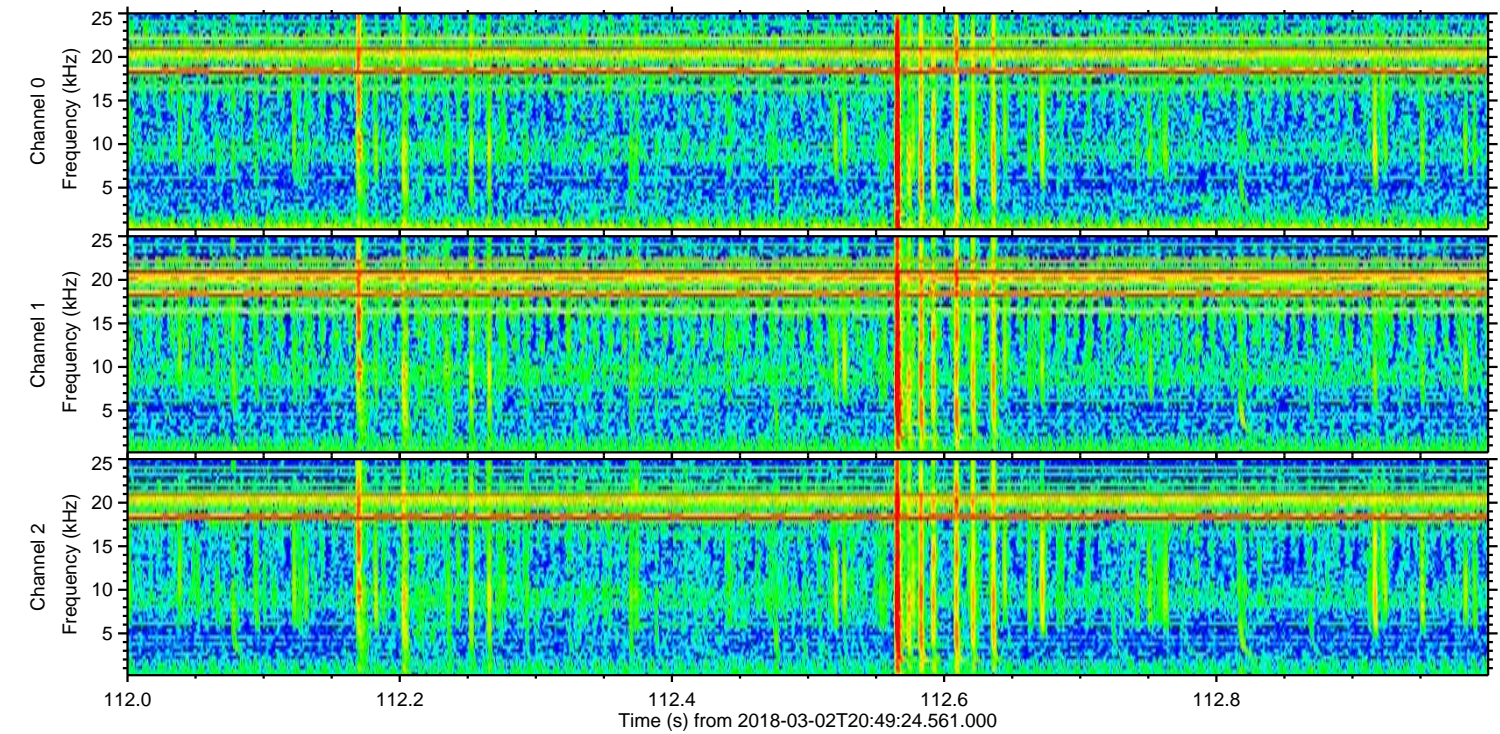
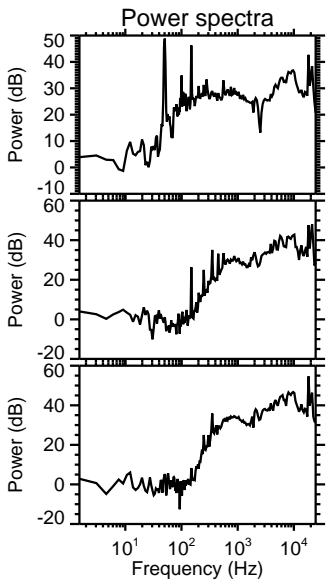
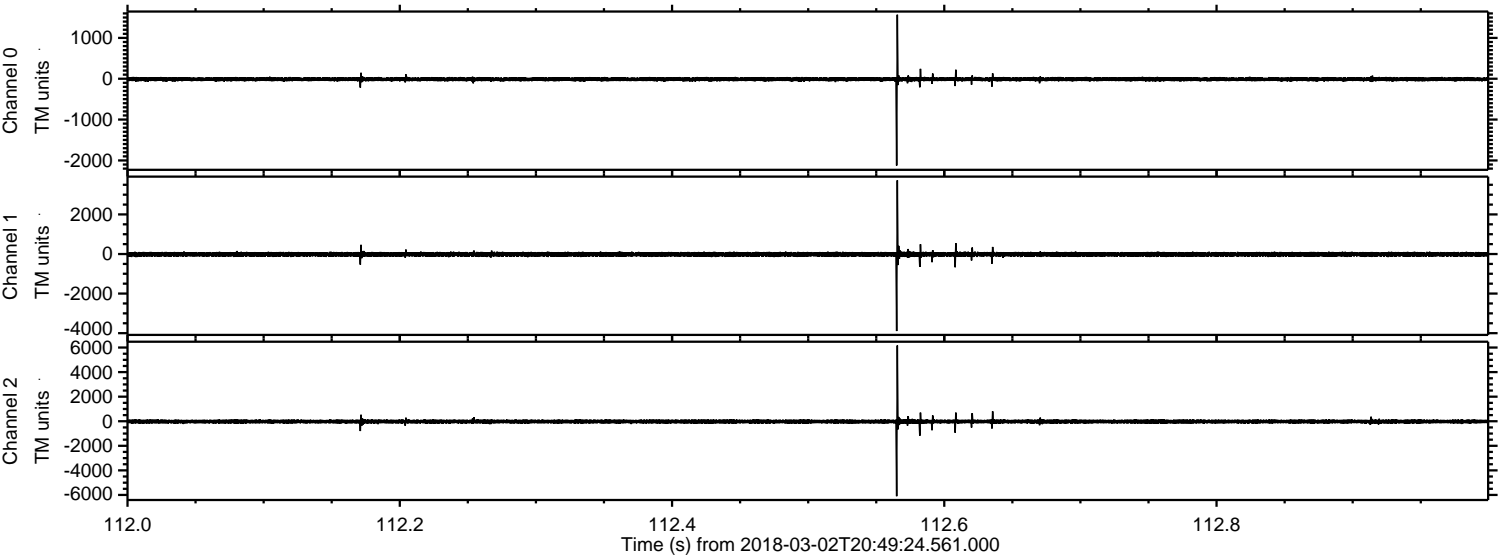
ELMAVAN 3D WAVEFORMS (Measured data sampled at 50 kHz) 51000 packets of 144 samples from 2018-03-02T20:49:24.561.000. Part 135/147

Processed Fri Mar 2 21:57:55 2018 by ELM ver.2012-10-06 from 001__elm20180302_204923__dat00.bin



ELMAVAN 3D WAVEFORMS (Measured data sampled at 50 kHz) 51000 packets of 144 samples from 2018-03-02T20:49:24.561.000. Part 113/147

Processed Fri Mar 2 21:57:56 2018 by ELM ver.2012-10-06 from 001__elm20180302_204923__dat00.bin

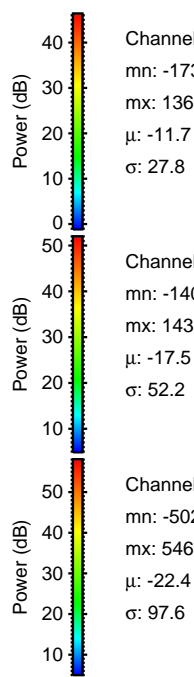
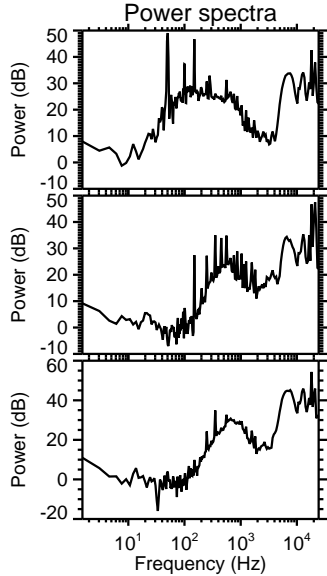
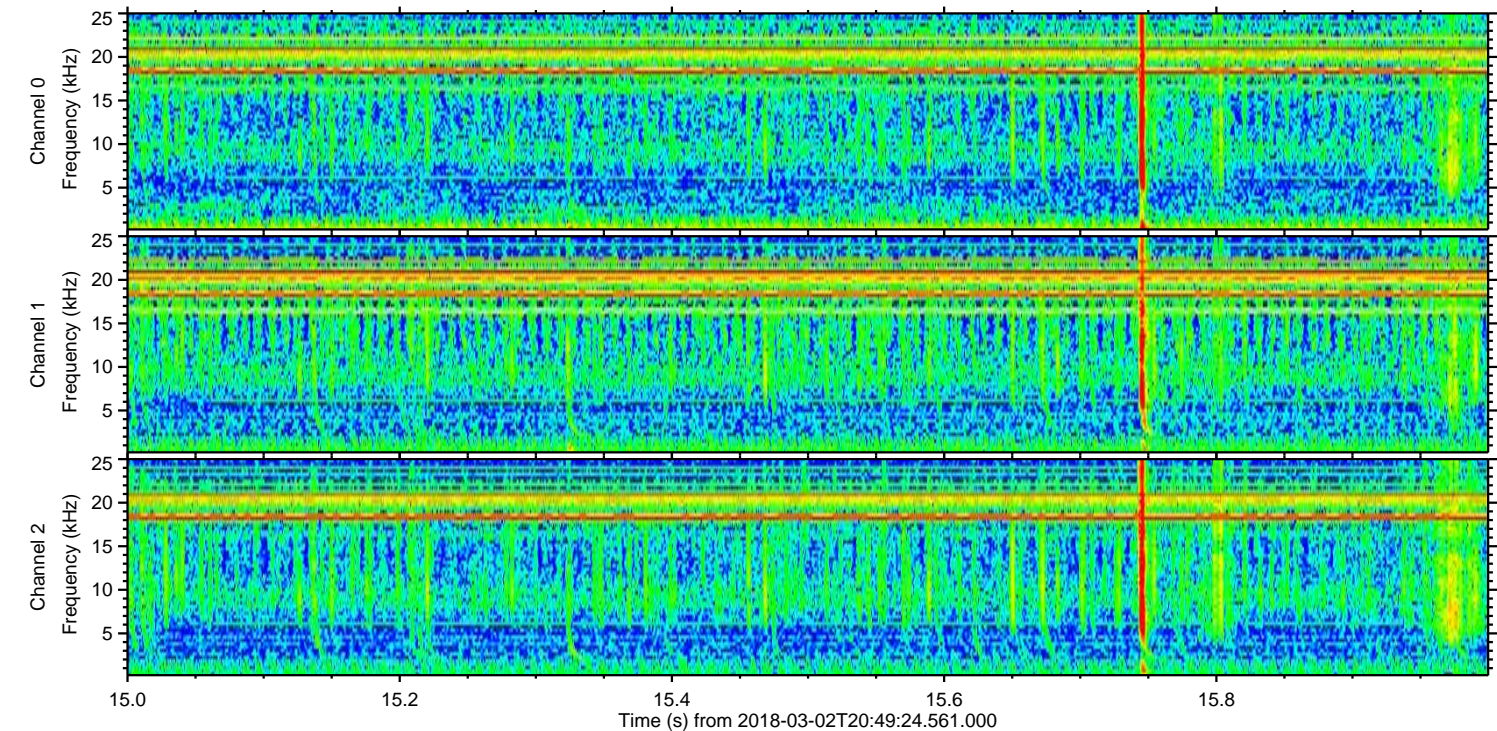
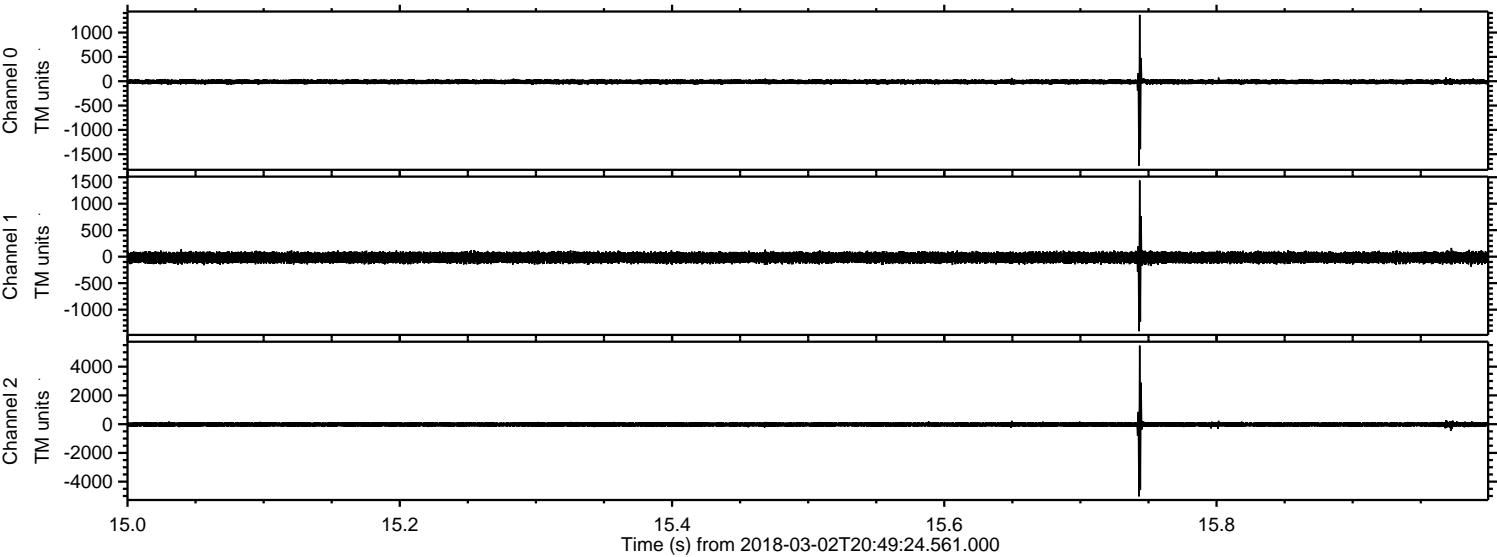


Channel 0
mn: -2124
mx: 1567
 μ : -11.9
 σ : 28.3

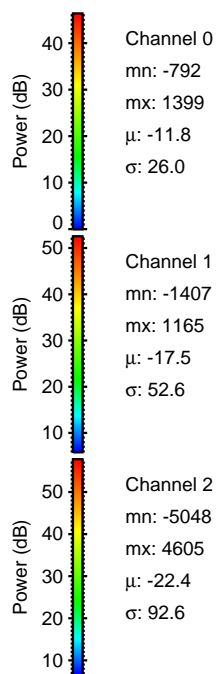
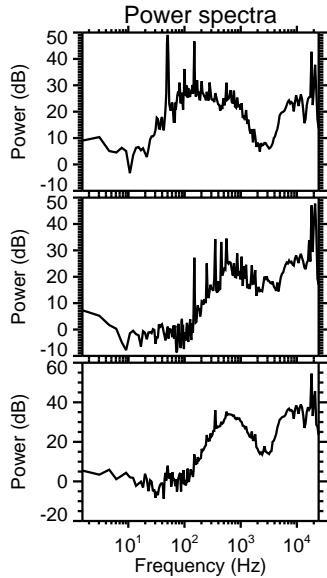
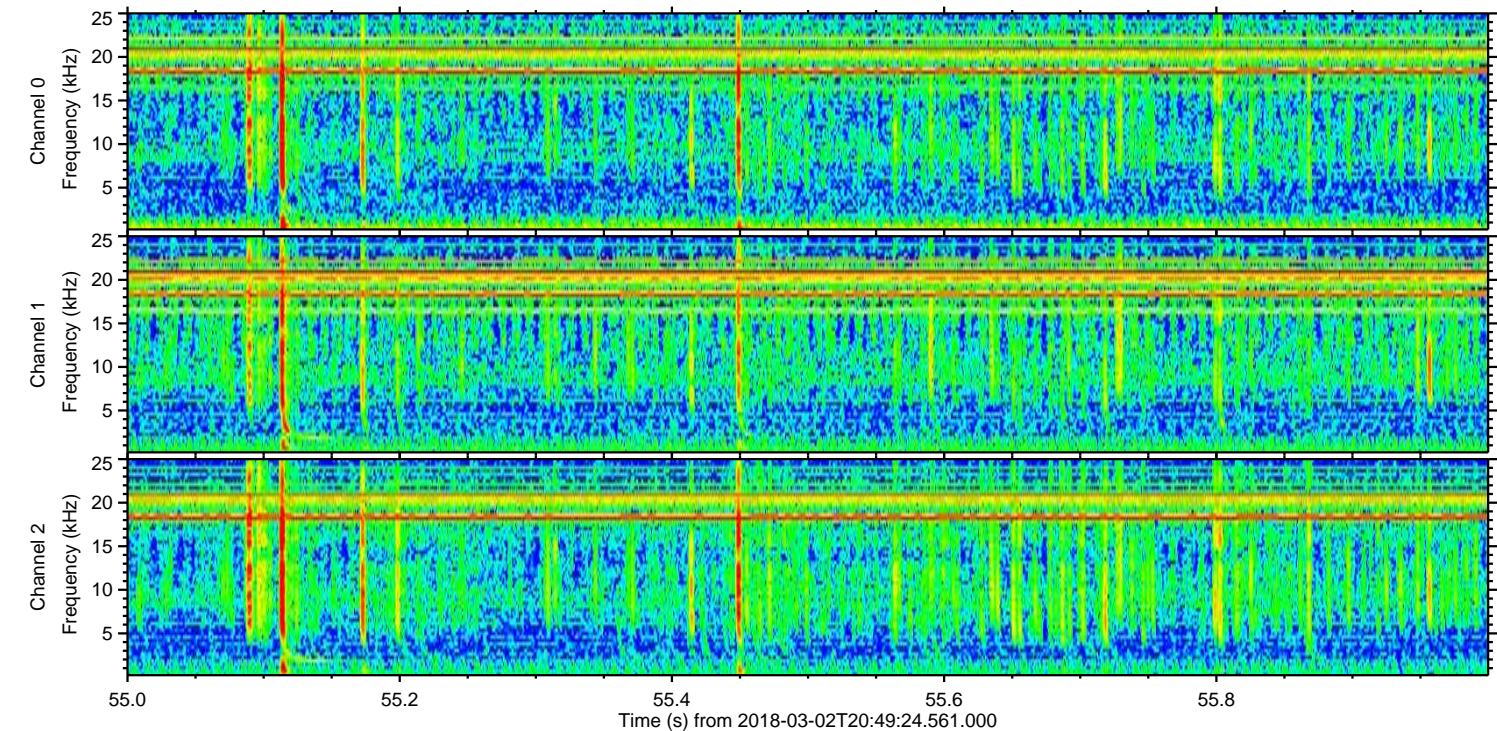
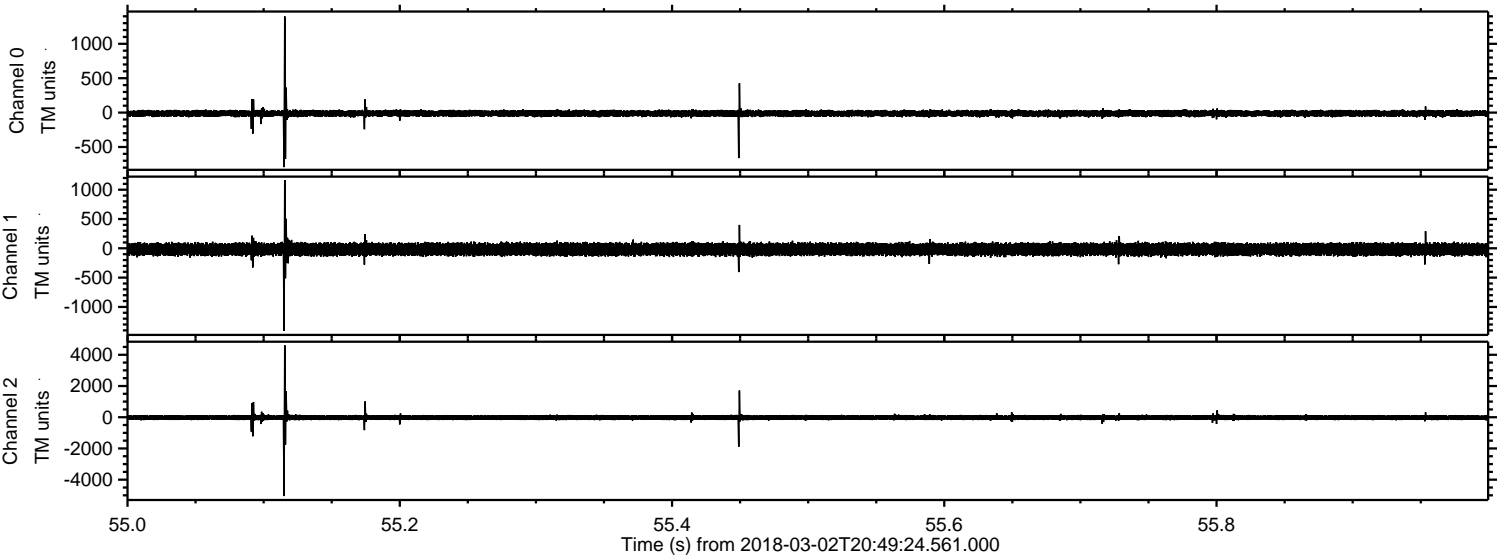
Channel 1
mn: -3895
mx: 3726
 μ : -17.6
 σ : 62.0

Channel 2
mn: -6106
mx: 6168
 μ : -22.5
 σ : 94.9

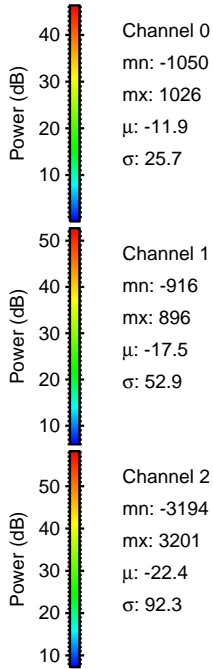
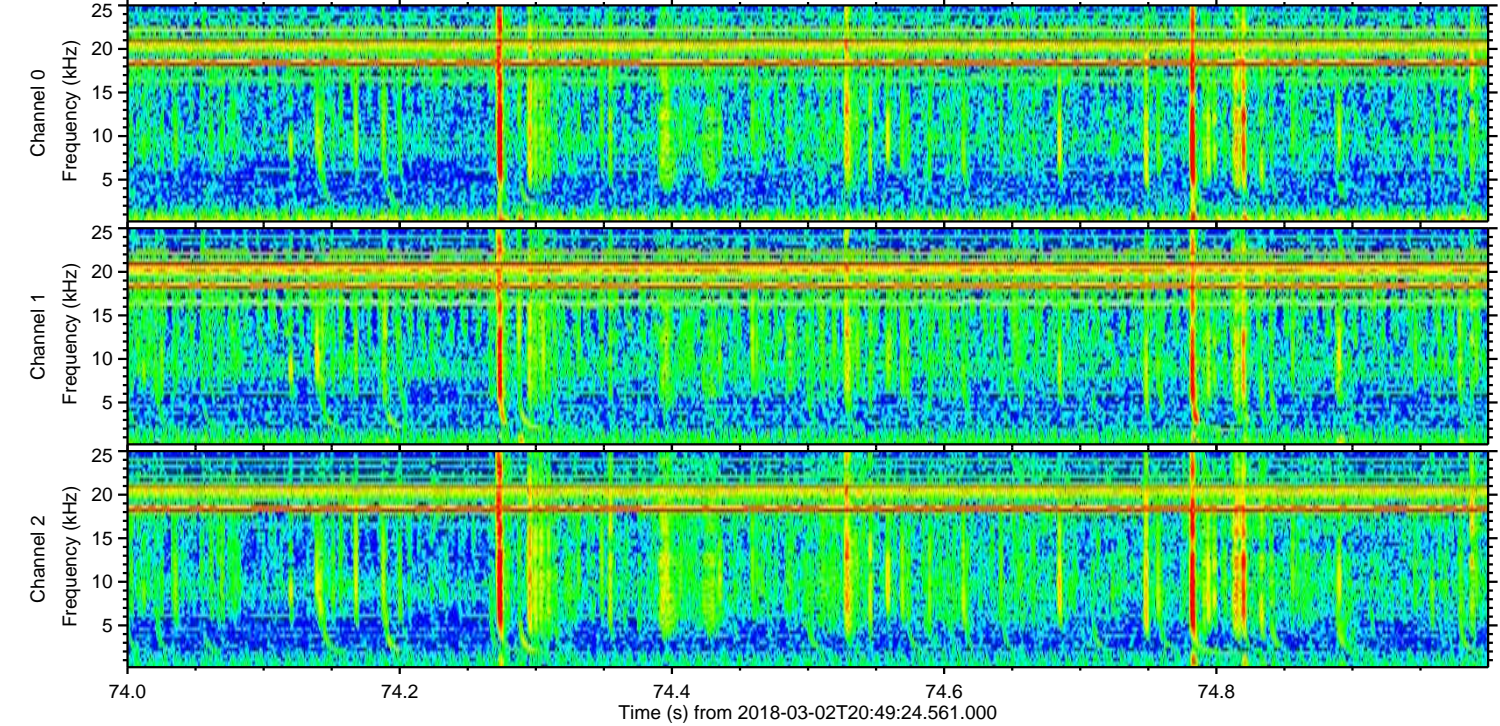
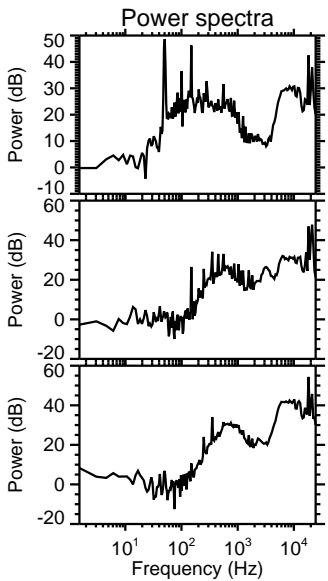
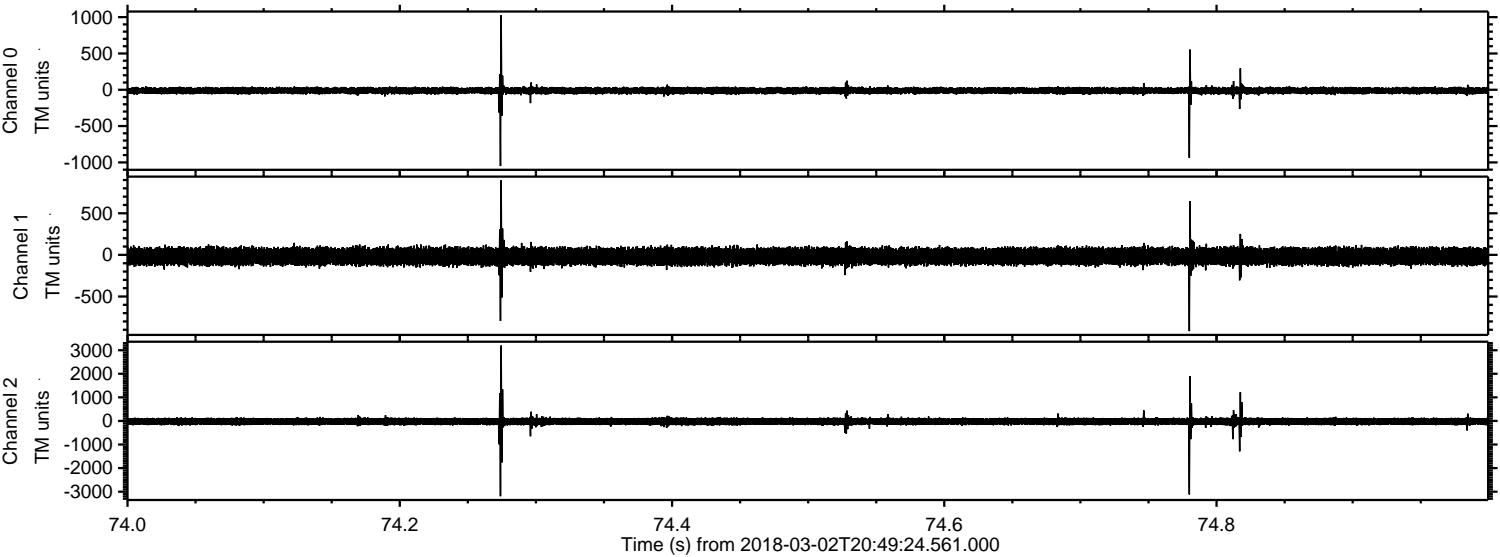
Processed Fri Mar 2 21:57:57 2018 by ELM ver.2012-10-06 from 001__elm20180302_204923__dat00.bin



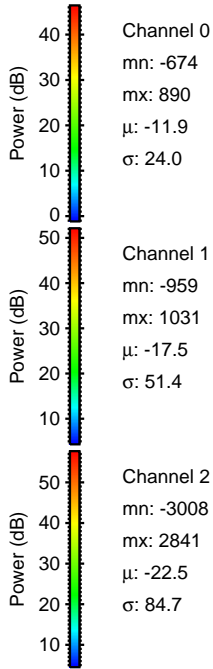
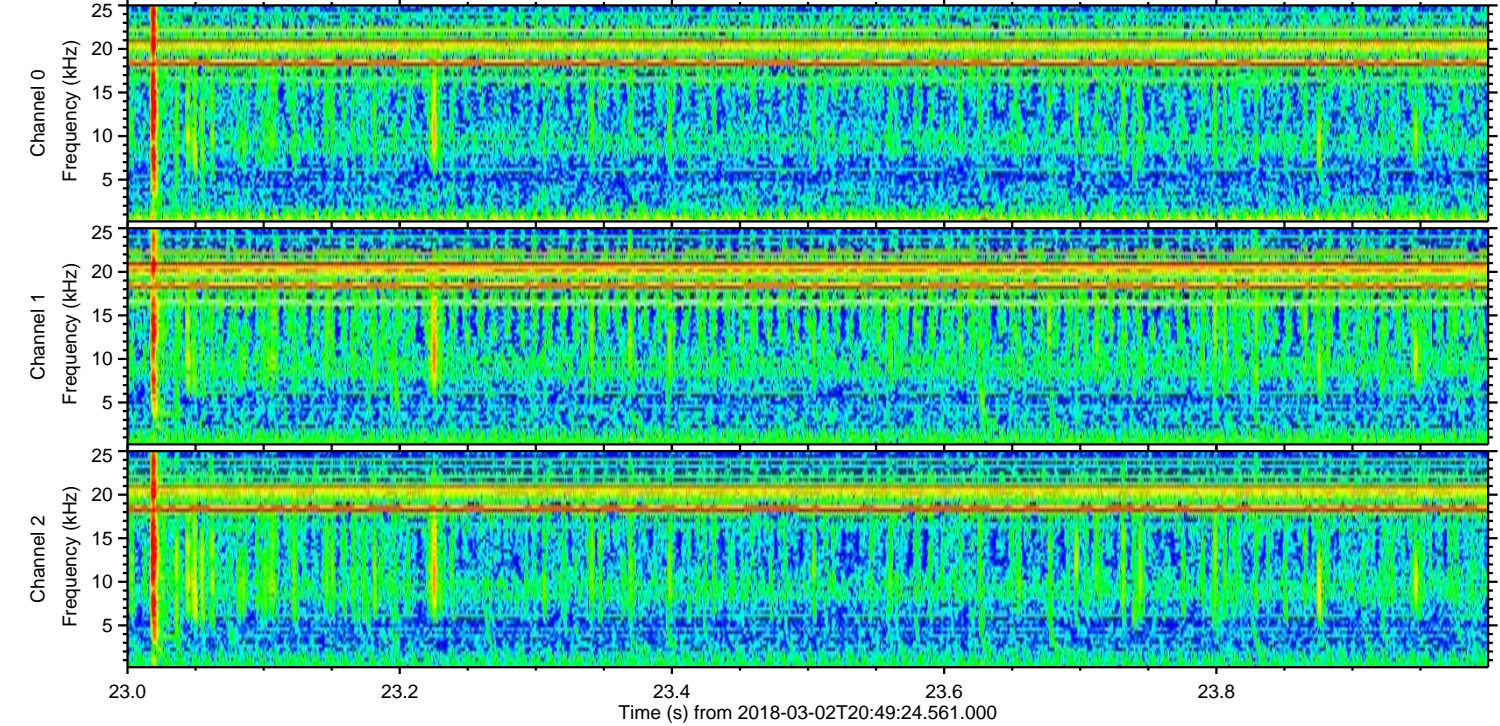
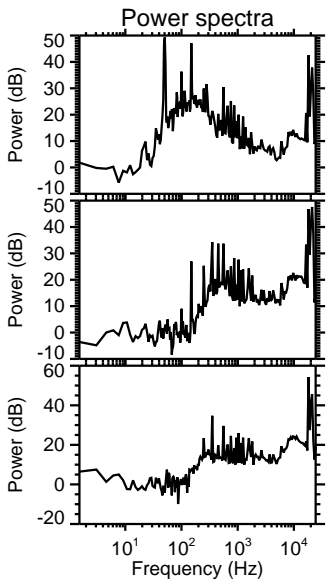
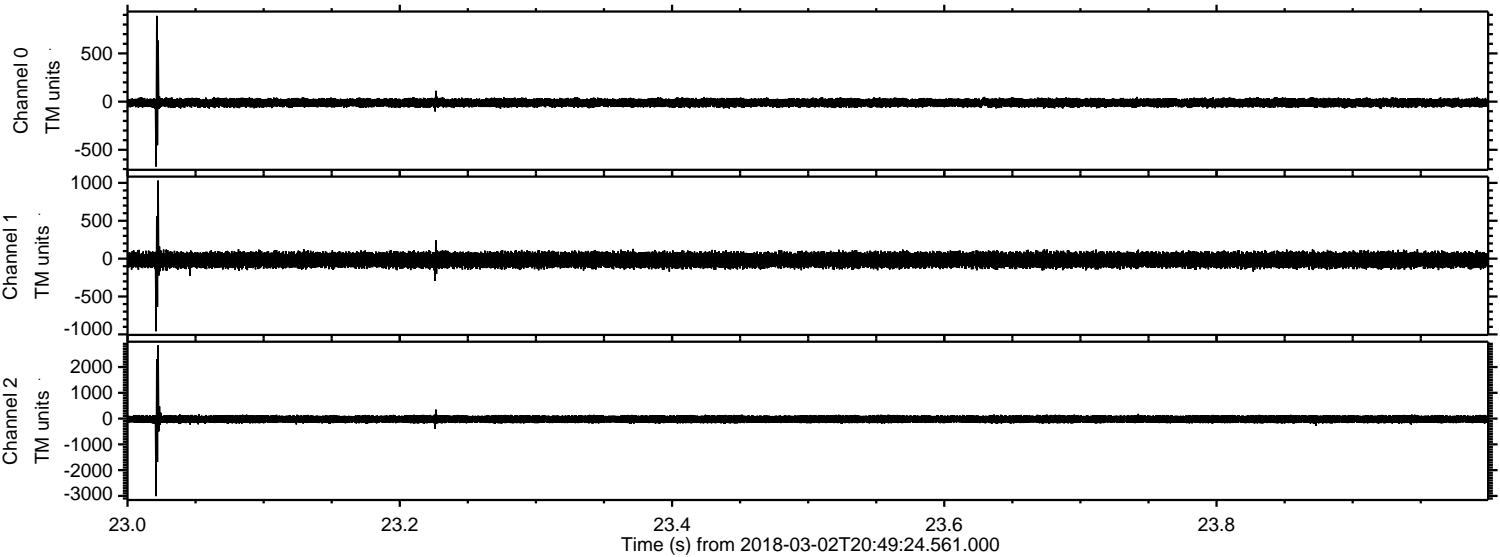
Processed Fri Mar 2 21:57:58 2018 by ELM ver.2012-10-06 from 001__elm20180302_204923__dat00.bin



Processed Fri Mar 2 21:57:59 2018 by ELM ver.2012-10-06 from 001__elm20180302_204923__dat00.bin



Processed Fri Mar 2 21:57:59 2018 by ELM ver.2012-10-06 from 001__elm20180302_204923__dat00.bin

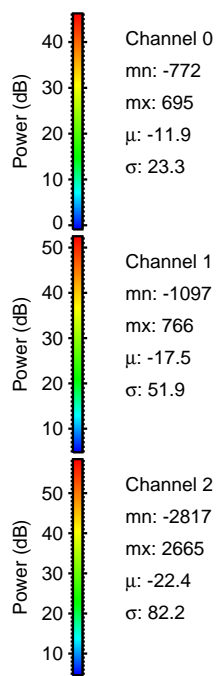
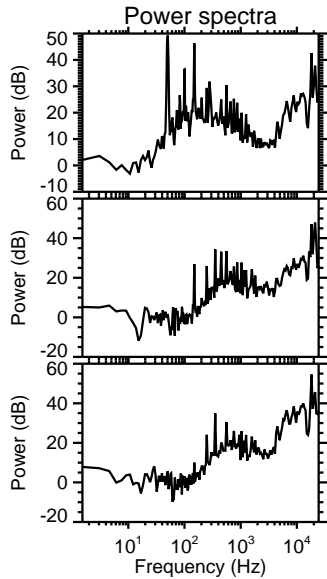
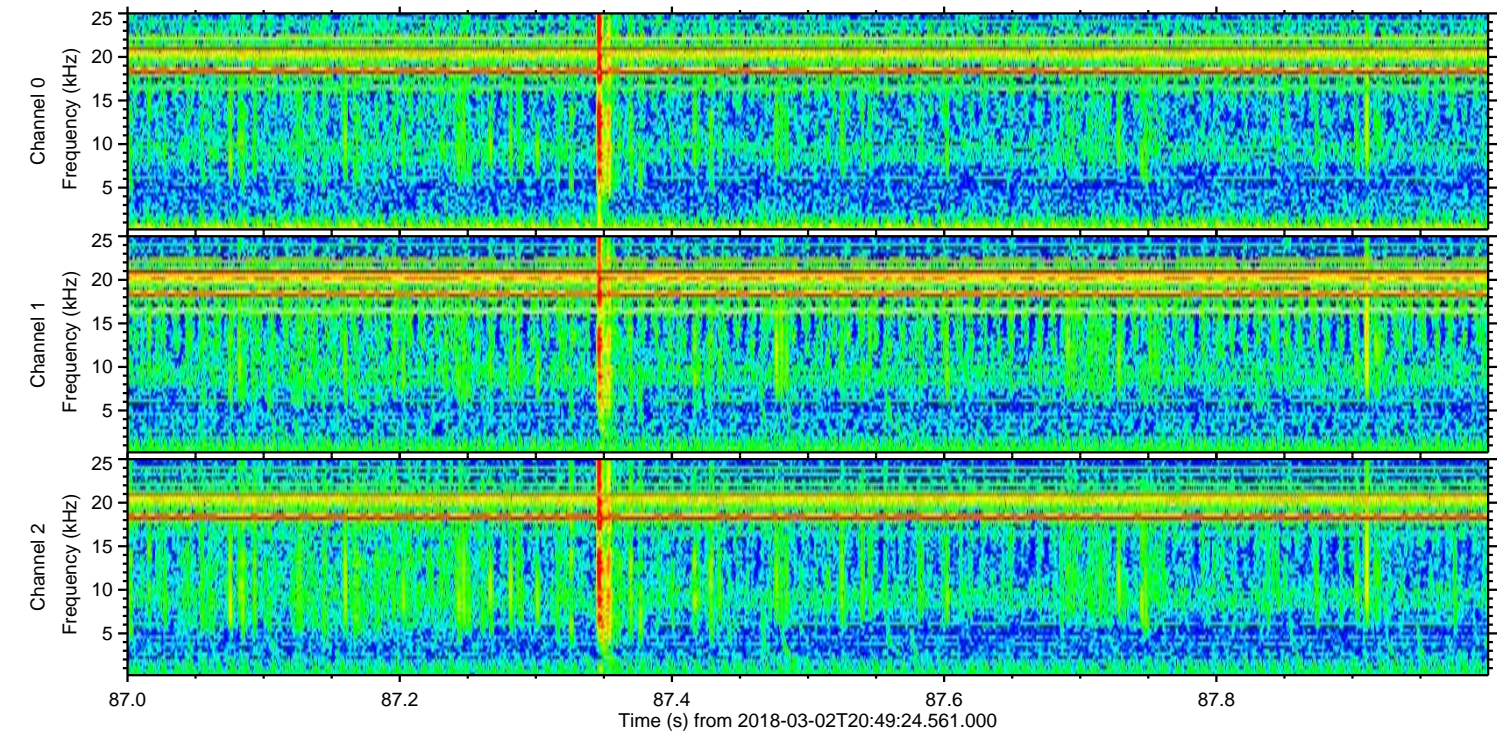
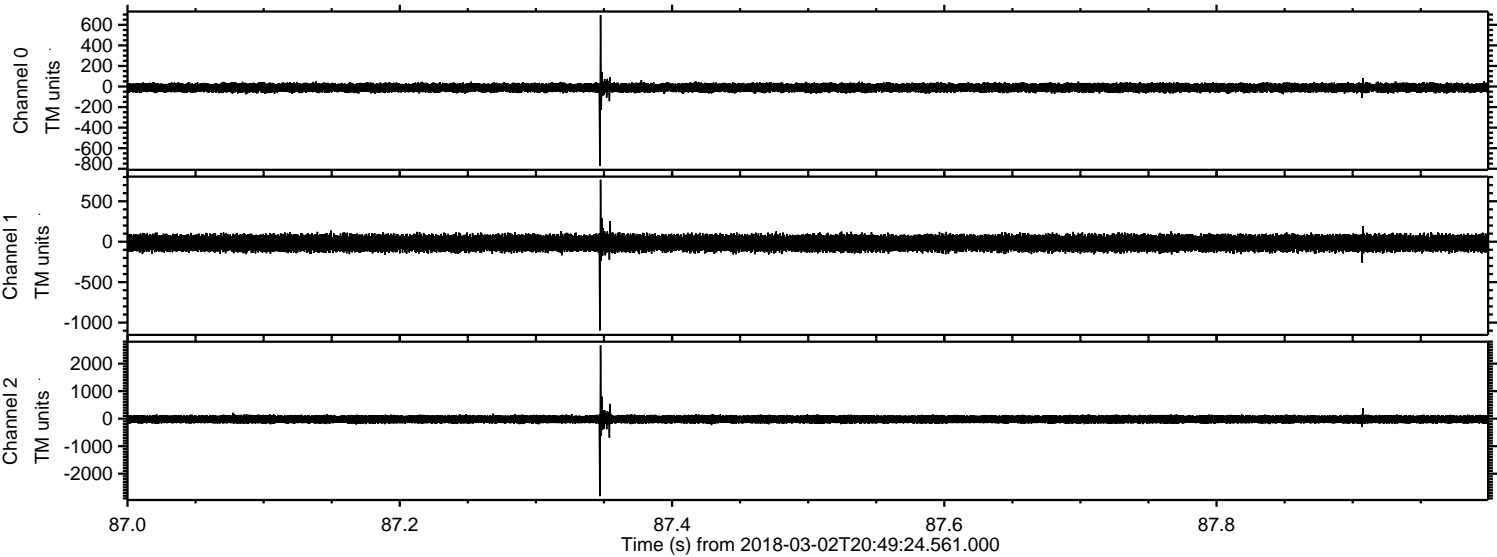


Channel 0
mn: -674
mx: 890
 μ : -11.9
 σ : 24.0

Channel 1
mn: -959
mx: 1031
 μ : -17.5
 σ : 51.4

Channel 2
mn: -3008
mx: 2841
 μ : -22.5
 σ : 84.7

Processed Fri Mar 2 21:58:00 2018 by ELM ver.2012-10-06 from 001__elm20180302_204923__dat00.bin



Processed Fri Mar 2 21:58:01 2018 by ELM ver.2012-10-06 from 001__elm20180302_204923__dat00.bin

