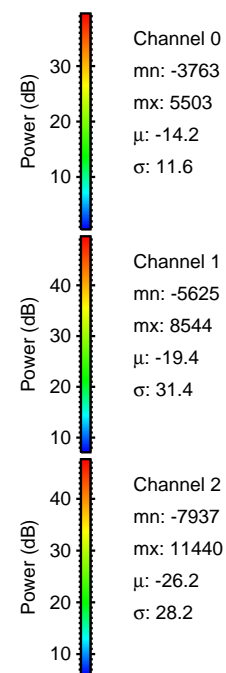
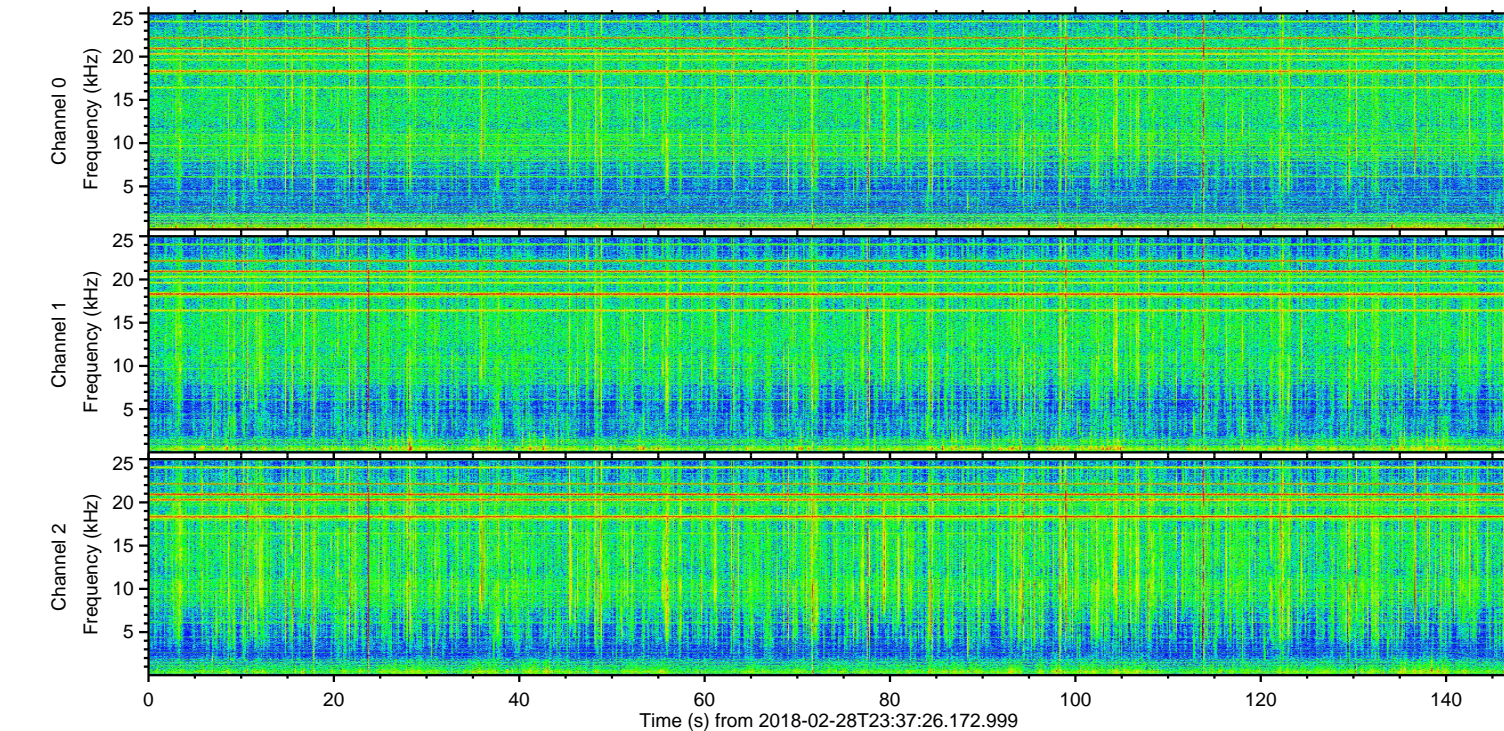
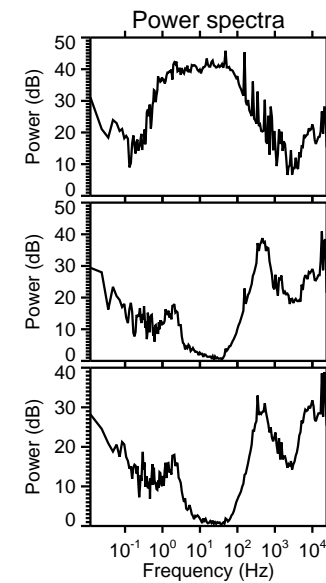
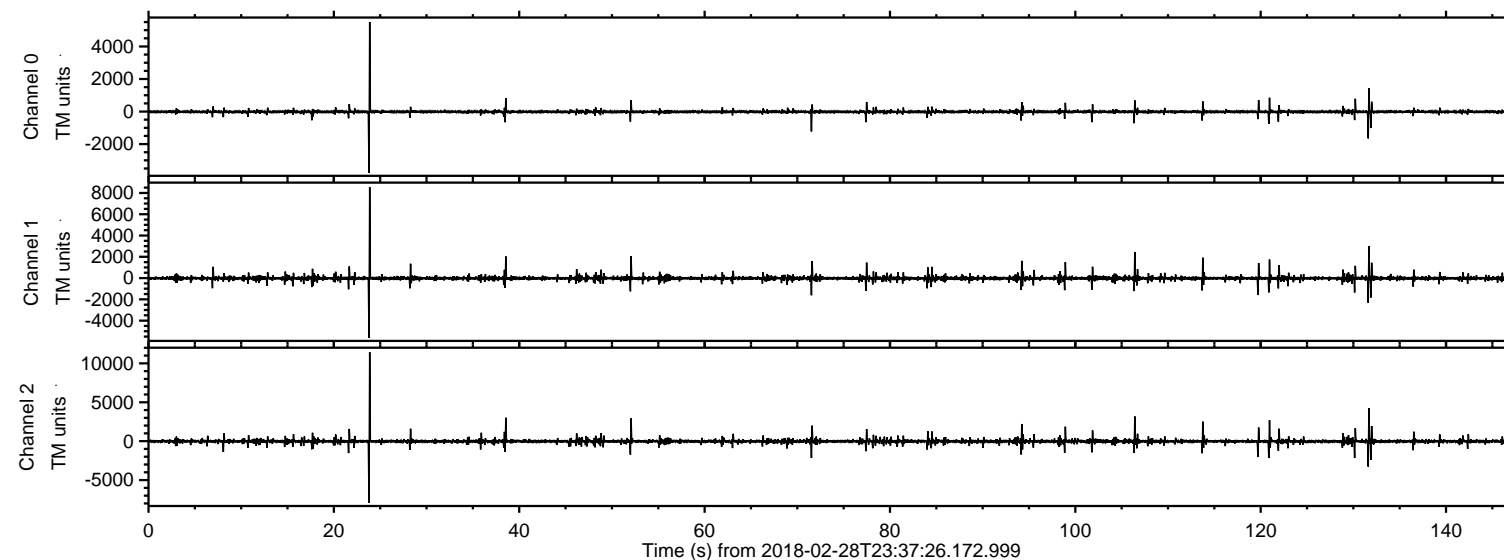
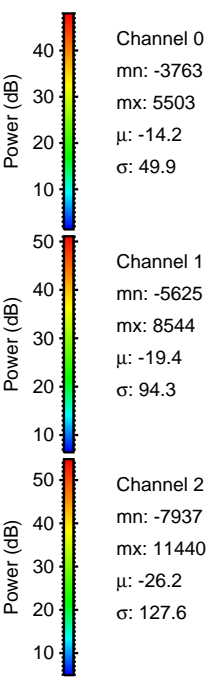
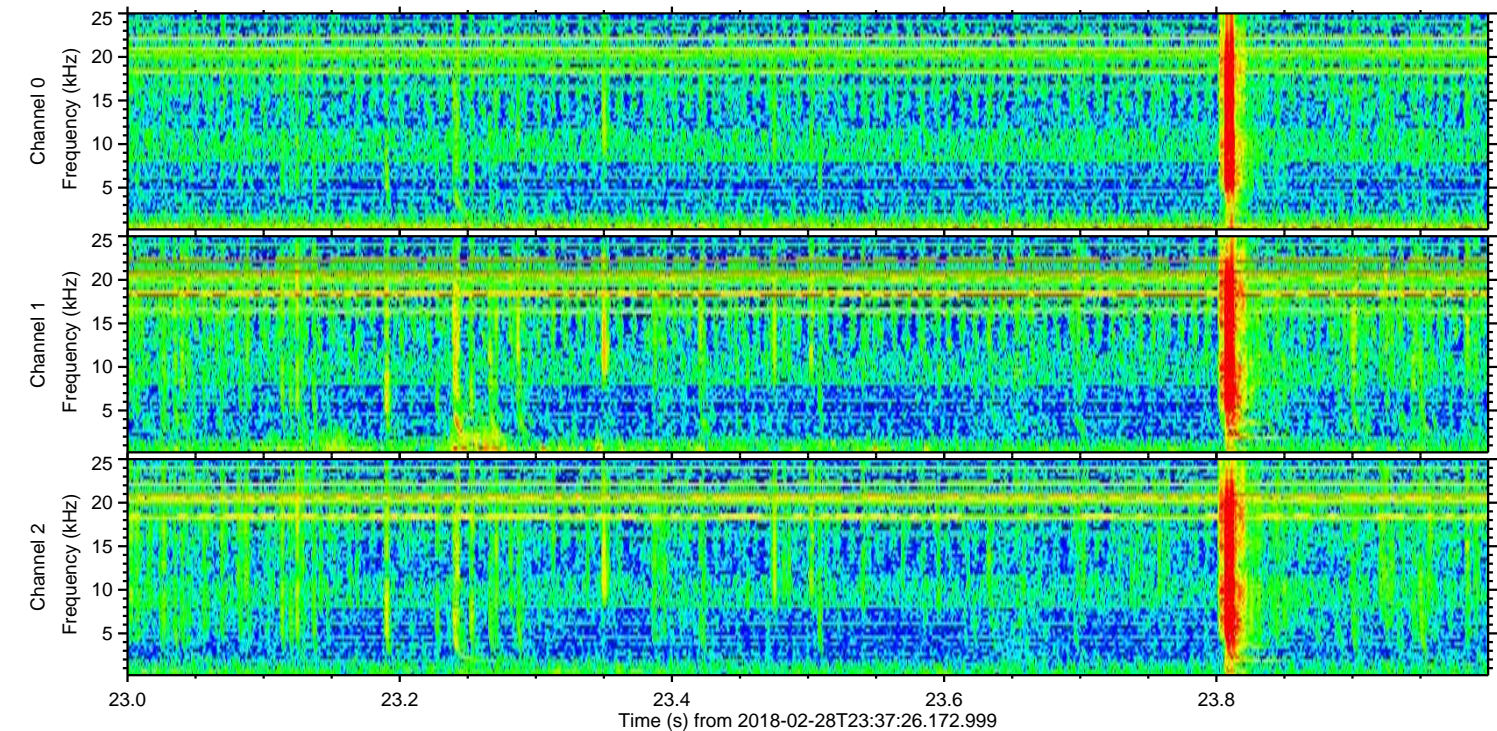
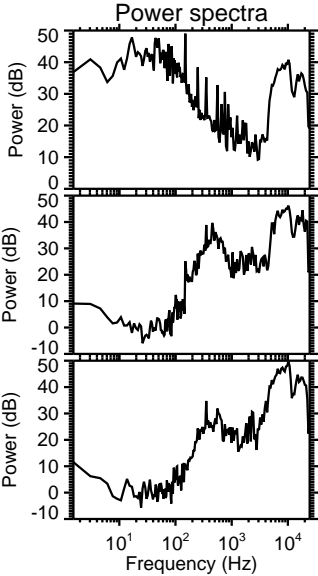
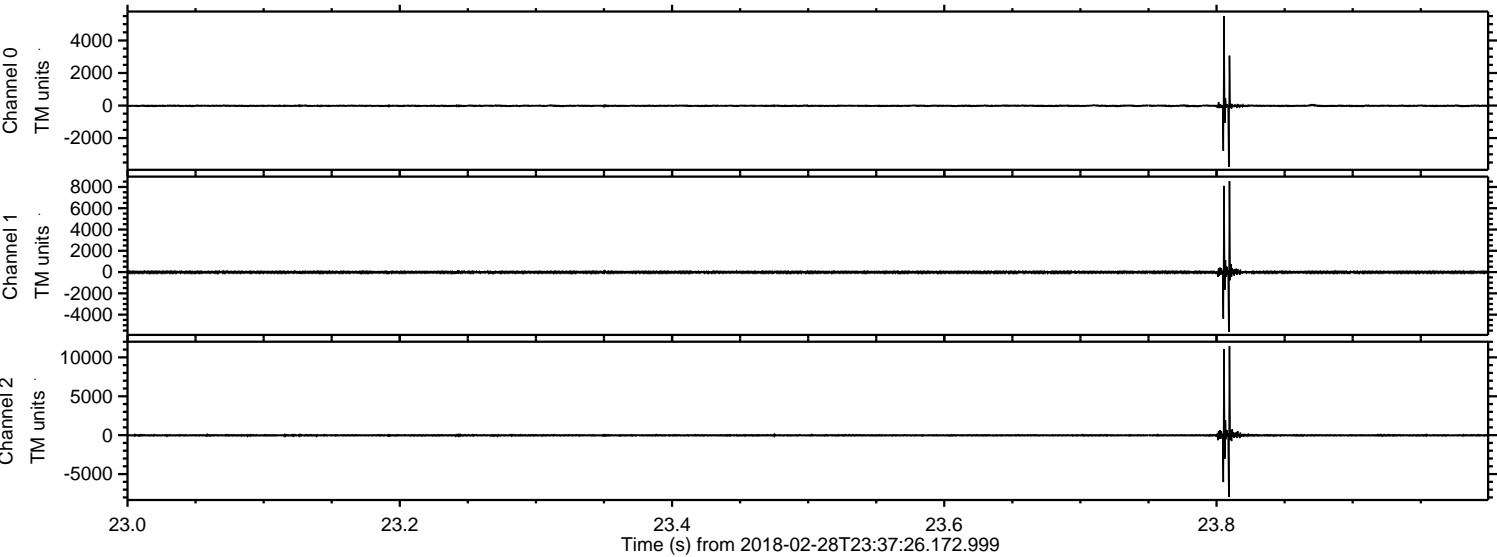


ELMAVAN 3D WAVEFORMS (Measured data sampled at 50 kHz) 51000 packets of 144 samples from 2018-02-28T23:37:26.172.999.

Processed Thu Mar 1 00:45:05 2018 by ELM ver.2012-10-06 from 001__elm20180228_233725__dat00.bin



Processed Thu Mar 1 00:45:13 2018 by ELM ver.2012-10-06 from 001__elm20180228_233725__dat00.bin



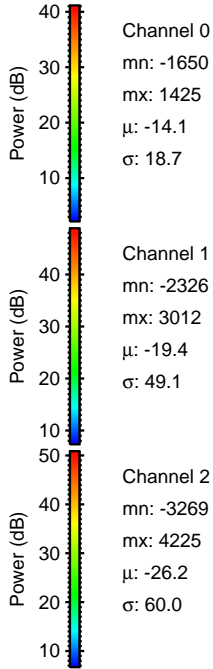
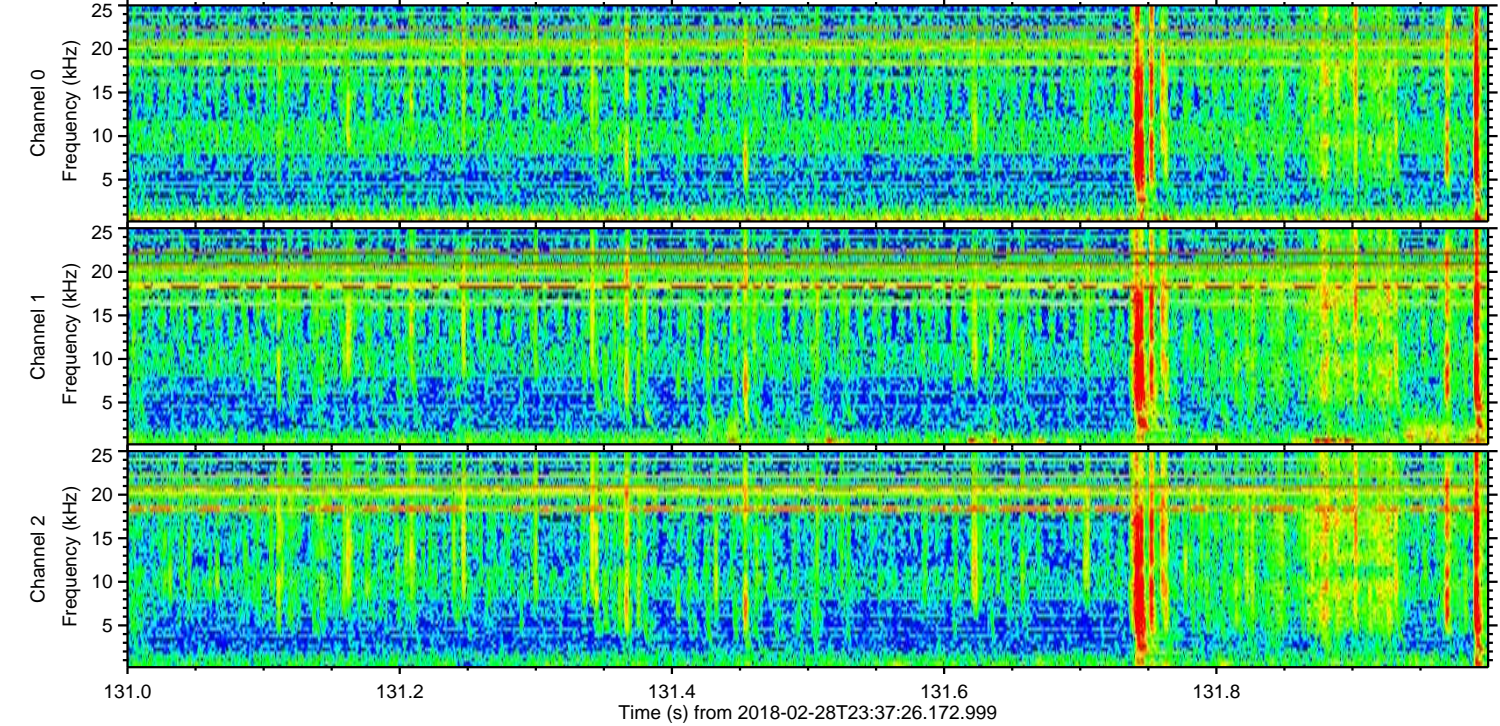
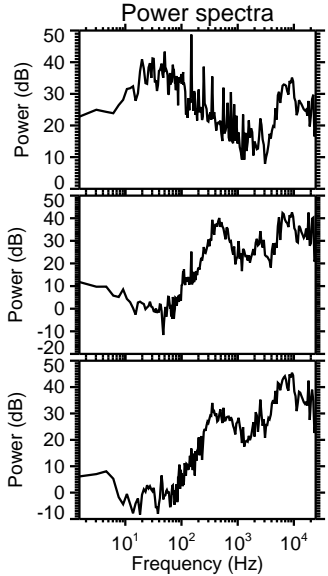
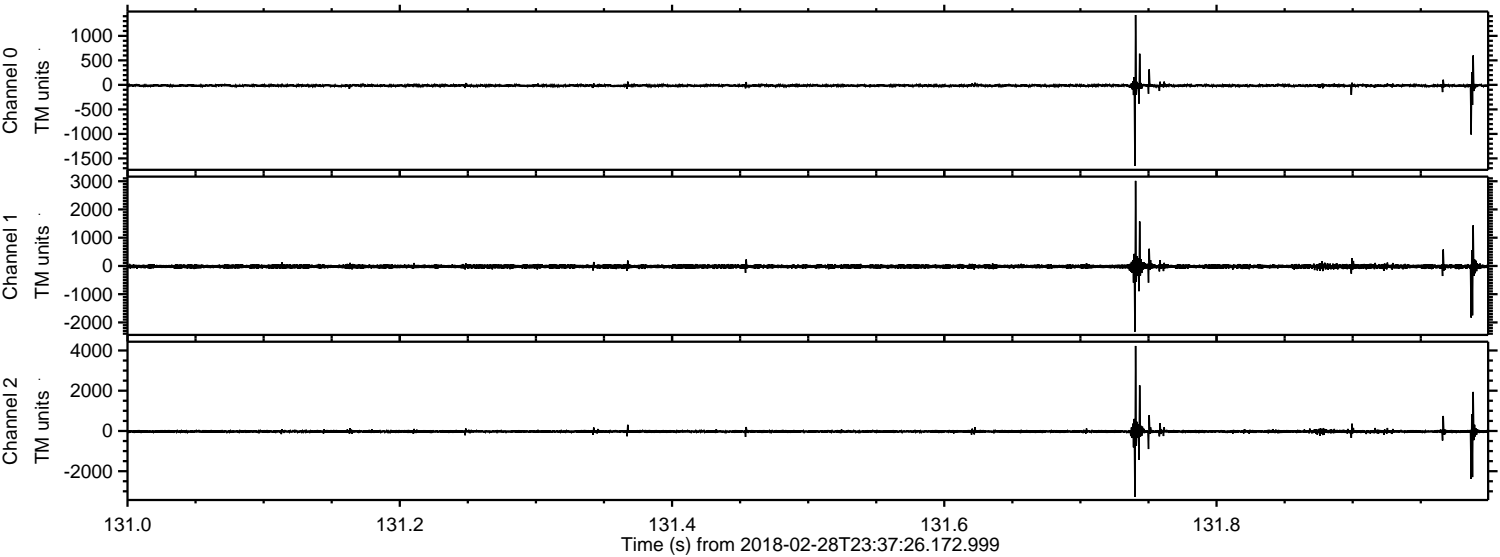
Channel 0
mn: -3763
mx: 5503
 μ : -14.2
 σ : 49.9

Channel 1
mn: -5625
mx: 8544
 μ : -19.4
 σ : 94.3

Channel 2
mn: -7937
mx: 11440
 μ : -26.2
 σ : 127.6

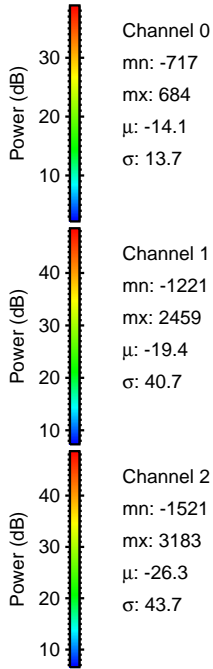
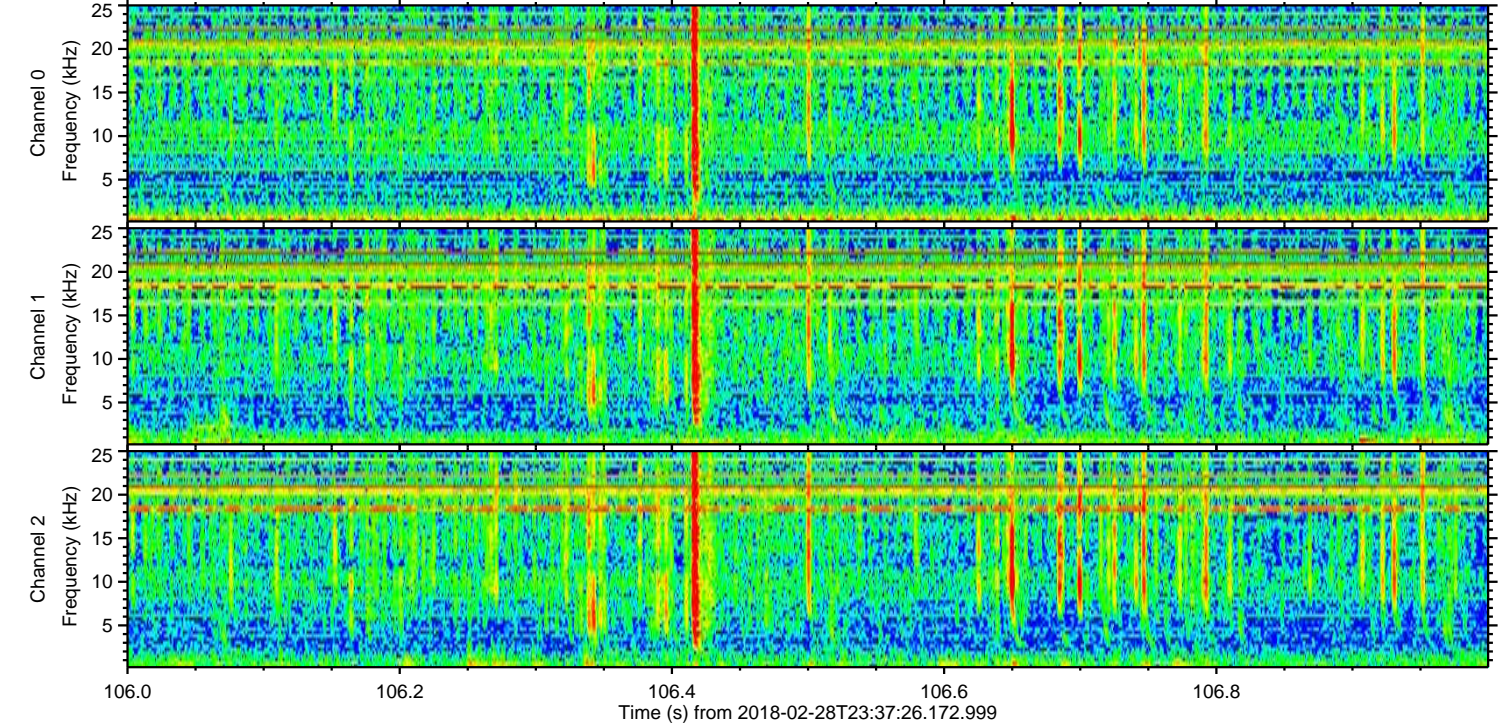
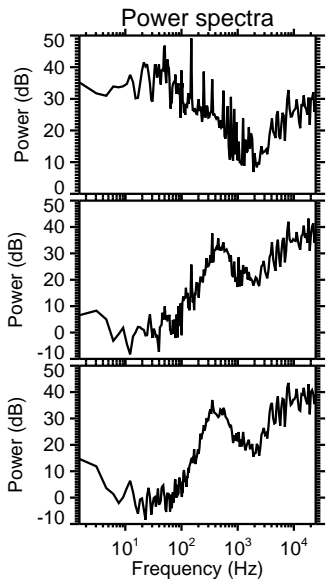
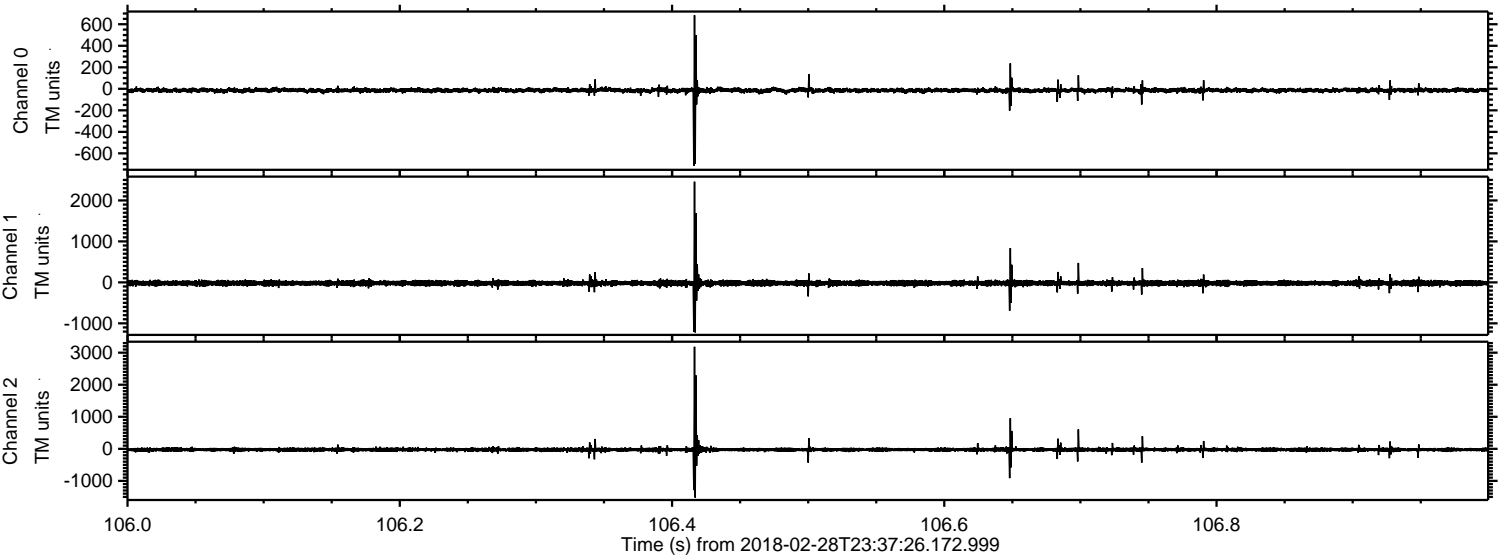
ELMAVAN 3D WAVEFORMS (Measured data sampled at 50 kHz) 51000 packets of 144 samples from 2018-02-28T23:37:26.172.999. Part 132/147

Processed Thu Mar 1 00:45:14 2018 by ELM ver.2012-10-06 from 001__elm20180228_233725__dat00.bin

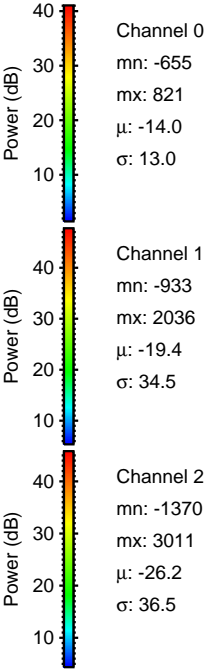
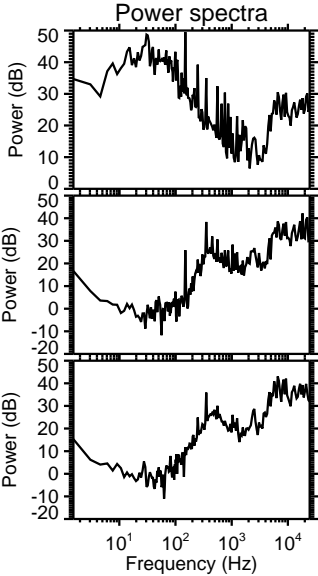
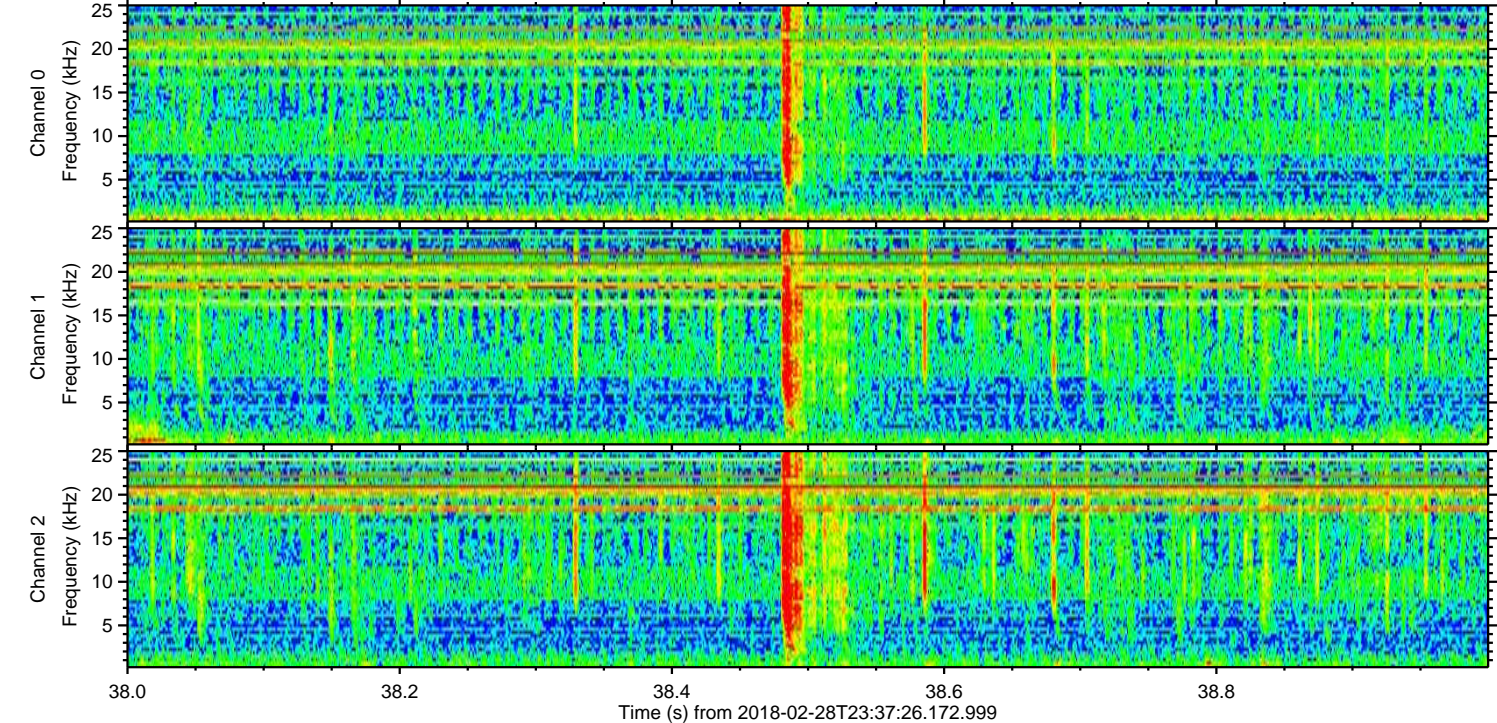
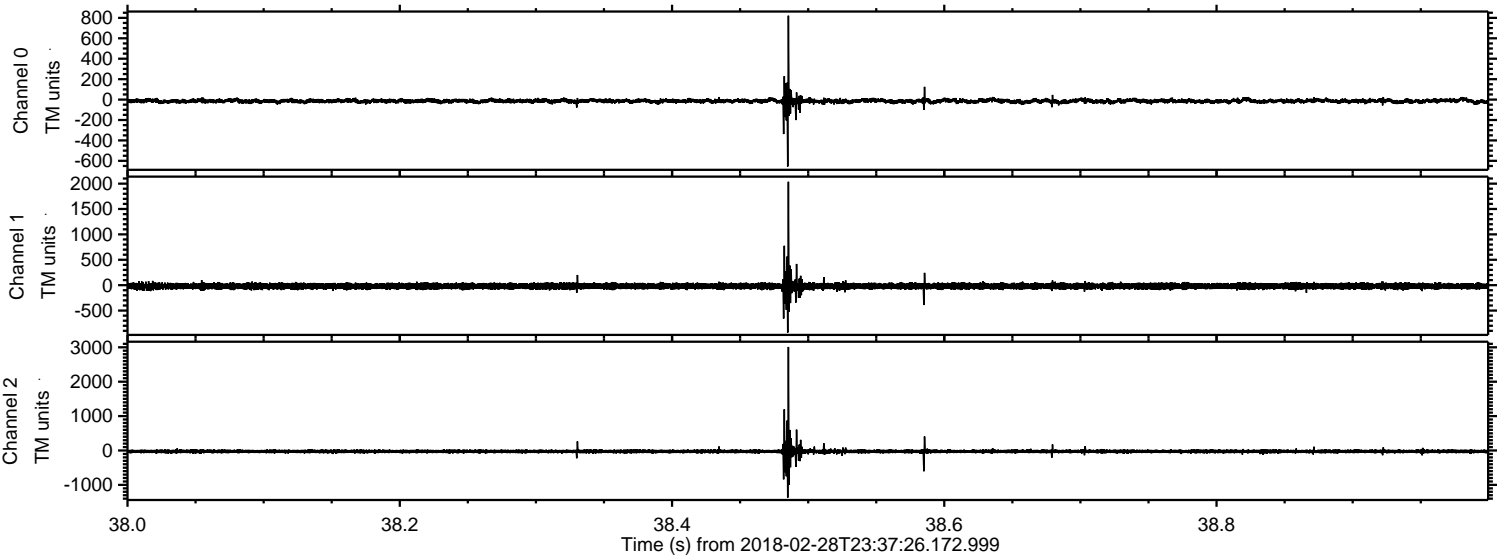


ELMAVAN 3D WAVEFORMS (Measured data sampled at 50 kHz) 51000 packets of 144 samples from 2018-02-28T23:37:26.172.999. Part 107/147

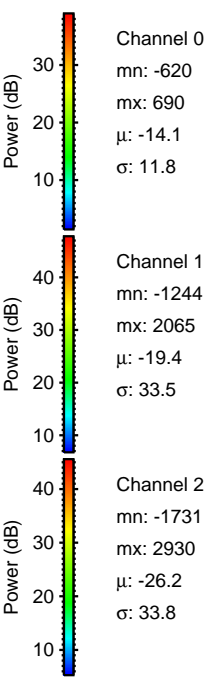
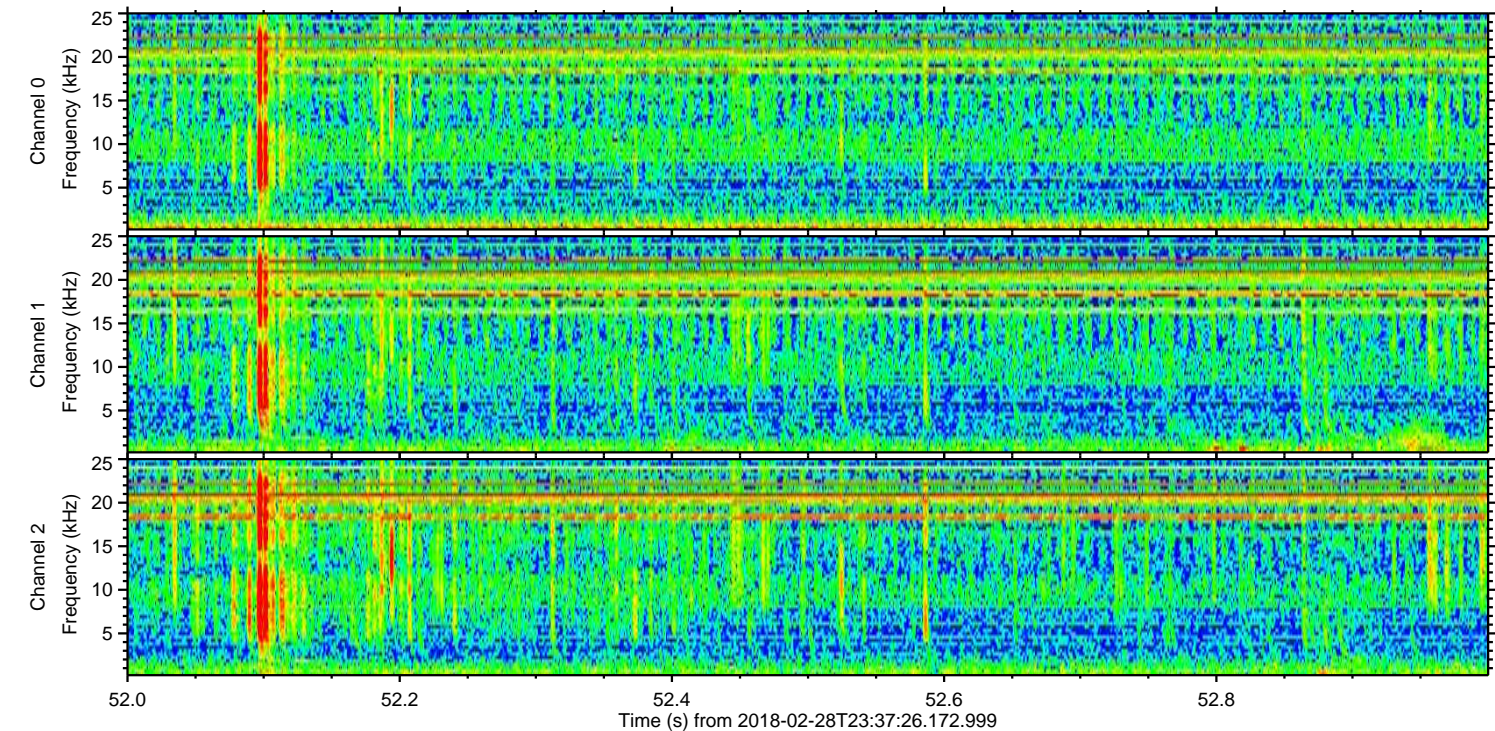
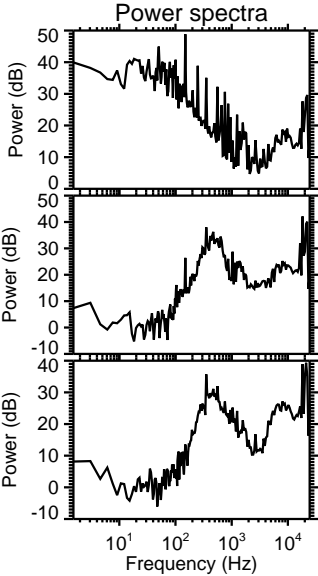
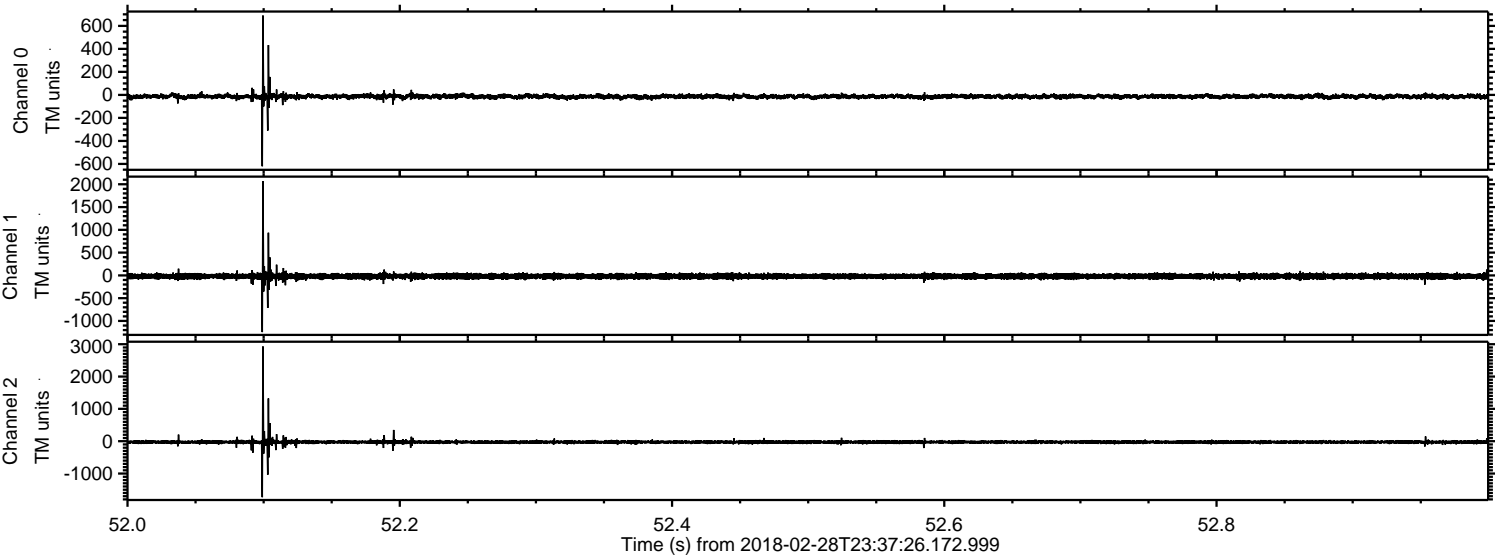
Processed Thu Mar 1 00:45:15 2018 by ELM ver.2012-10-06 from 001__elm20180228_233725__dat00.bin



Processed Thu Mar 1 00:45:15 2018 by ELM ver.2012-10-06 from 001__elm20180228_233725__dat00.bin

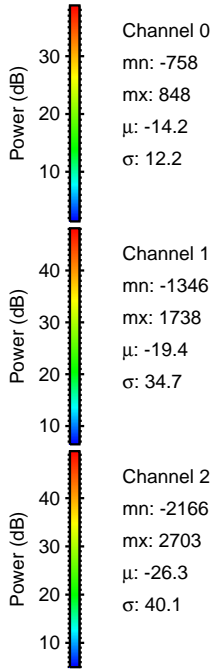
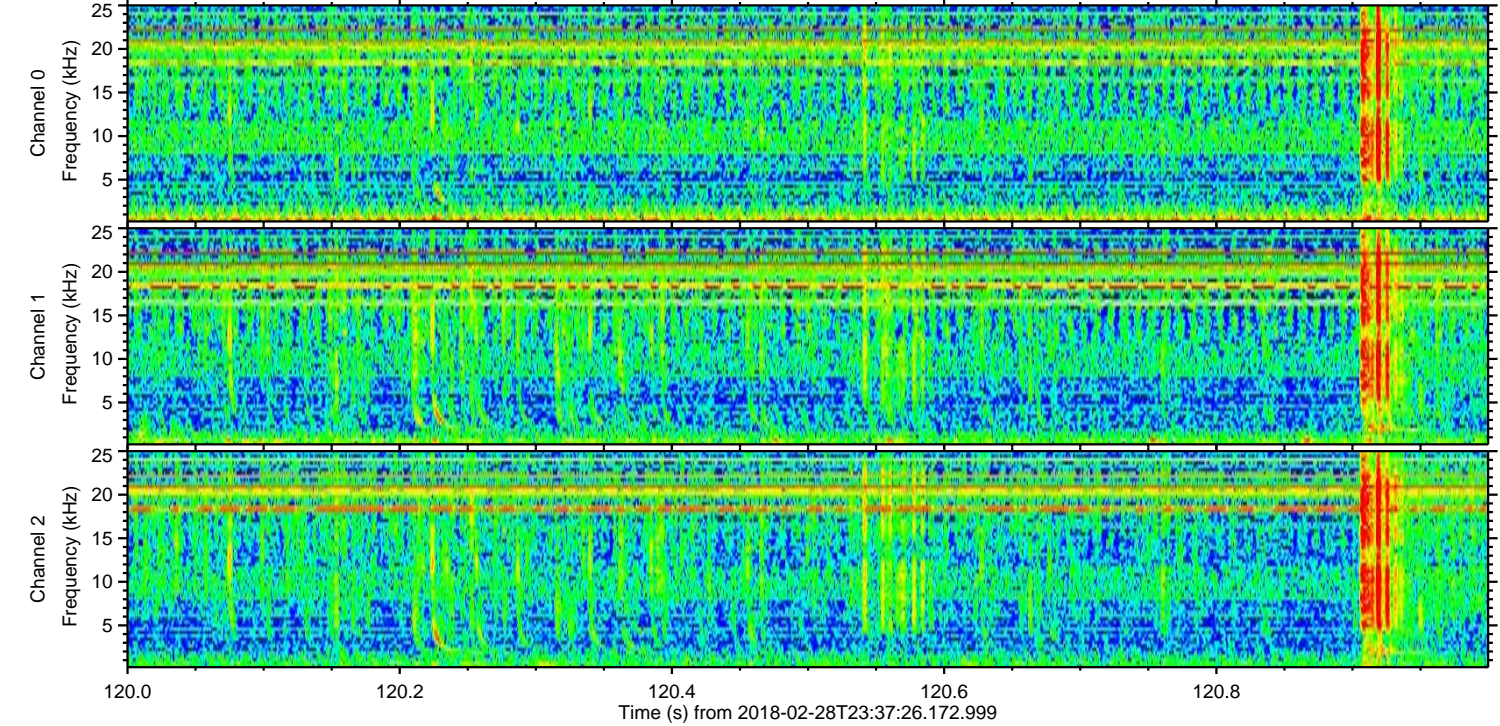
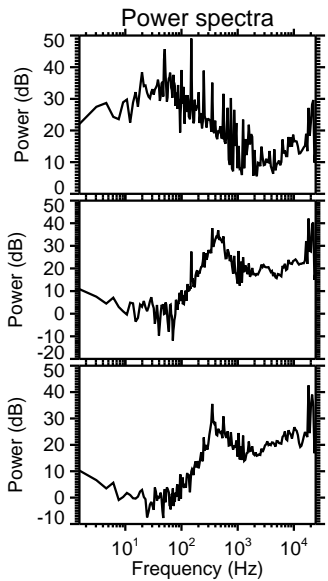
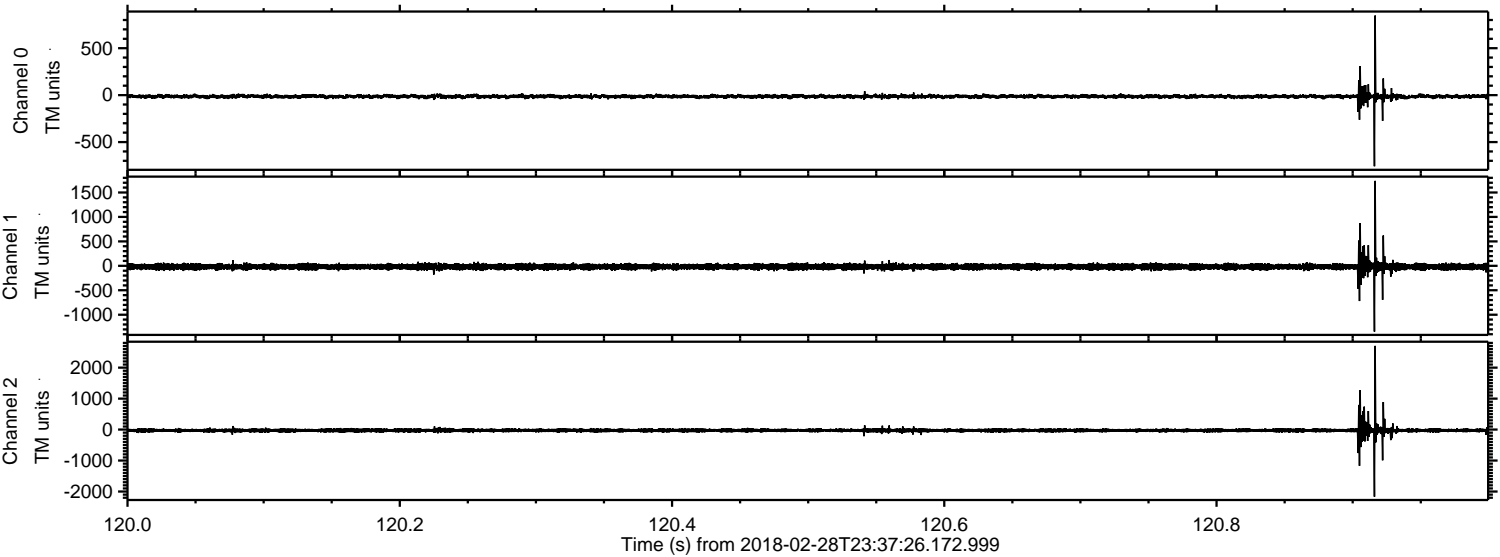


Processed Thu Mar 1 00:45:16 2018 by ELM ver.2012-10-06 from 001__elm20180228_233725__dat00.bin



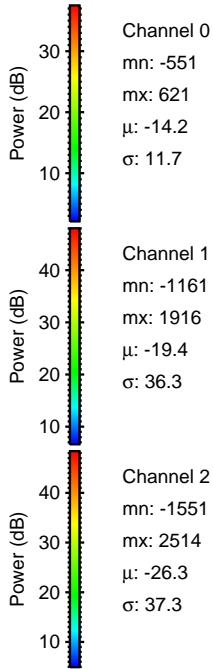
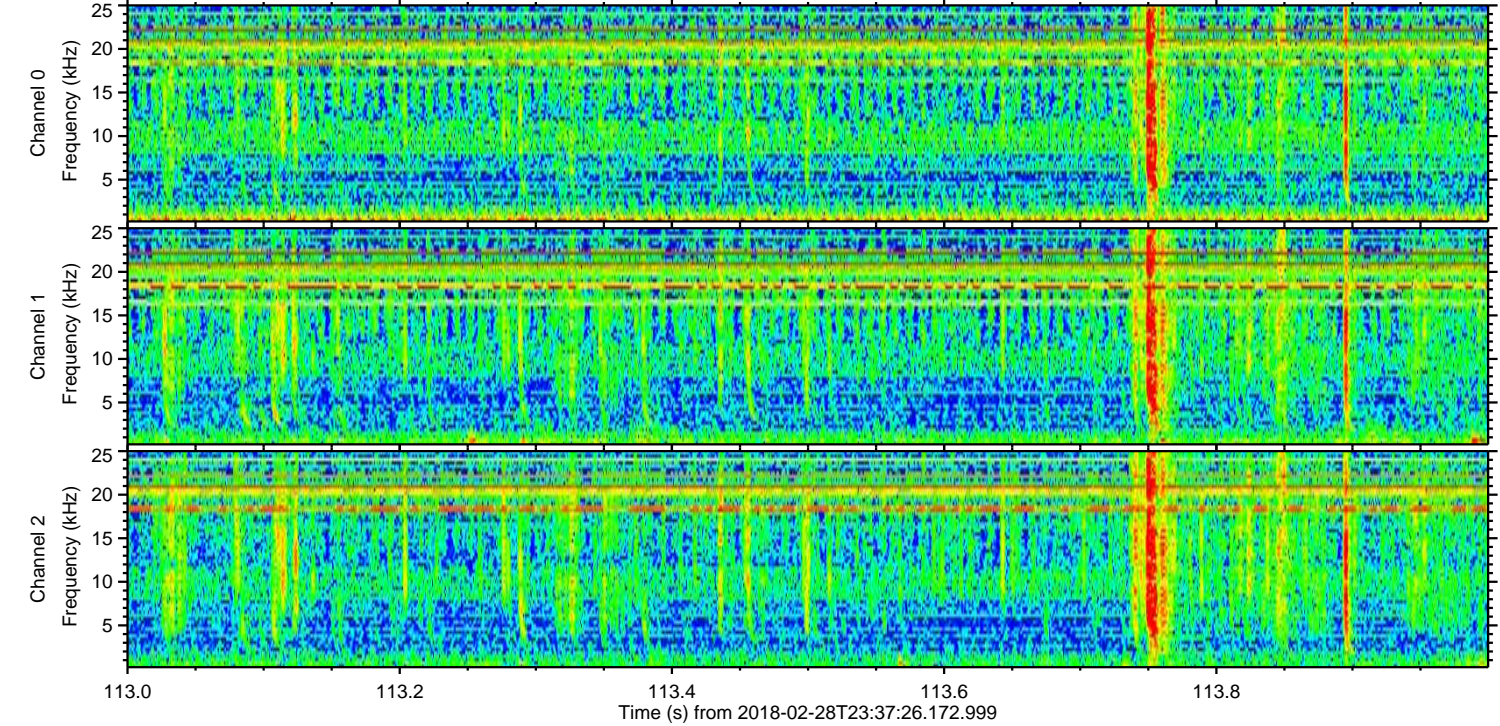
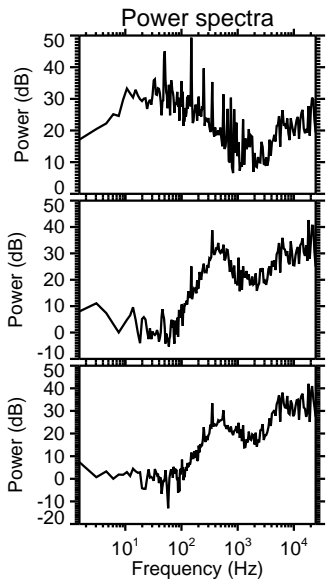
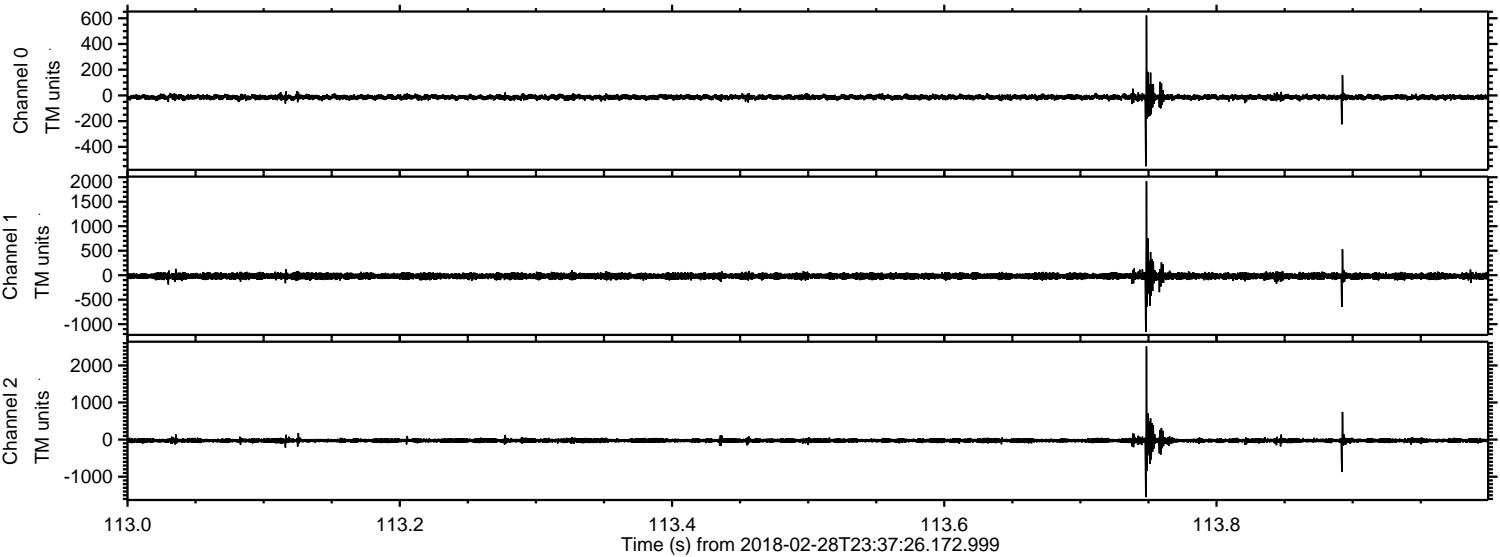
ELMAVAN 3D WAVEFORMS (Measured data sampled at 50 kHz) 51000 packets of 144 samples from 2018-02-28T23:37:26.172.999. Part 121/147

Processed Thu Mar 1 00:45:17 2018 by ELM ver.2012-10-06 from 001__elm20180228_233725__dat00.bin

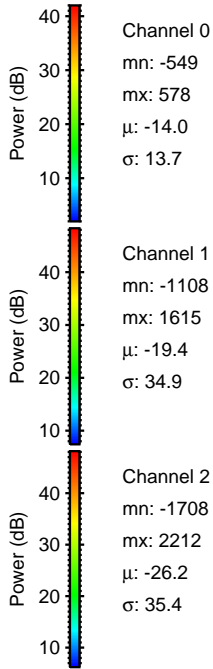
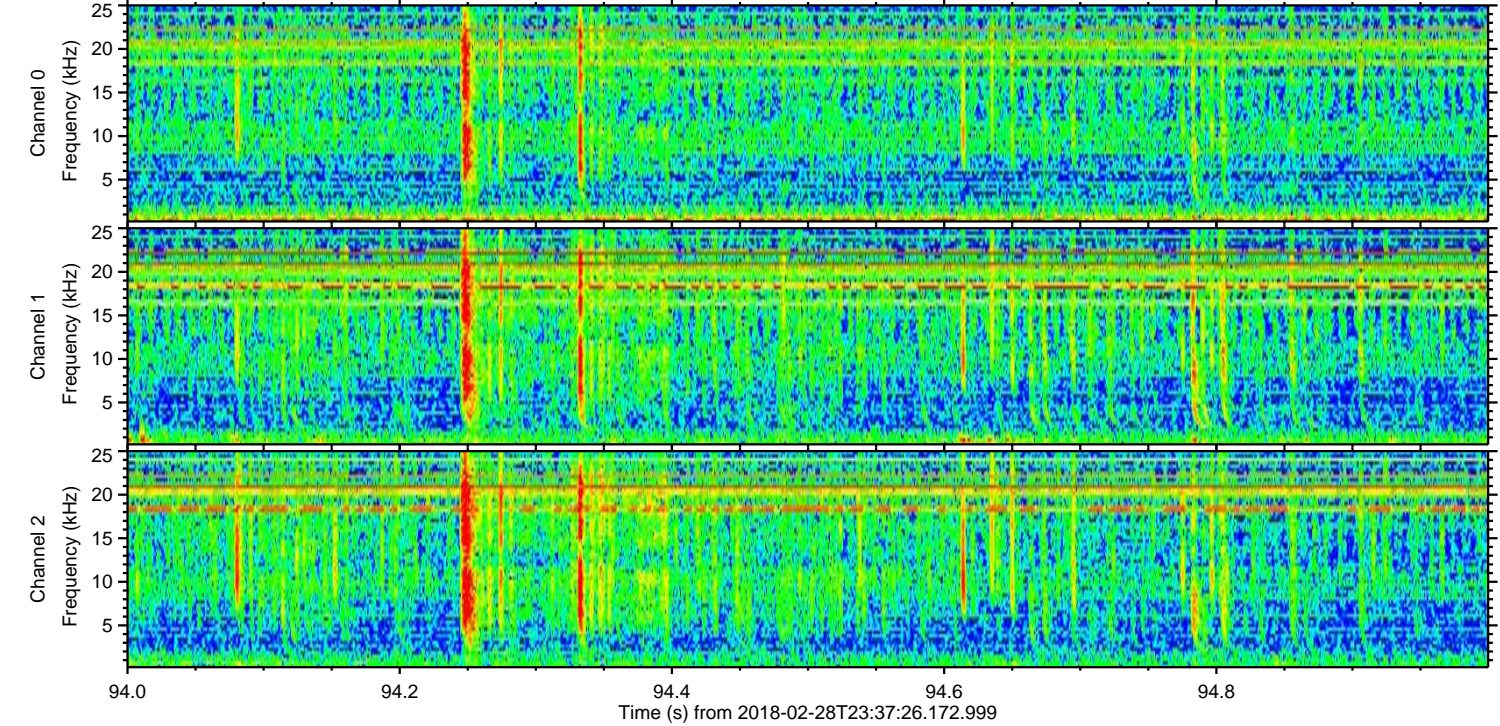
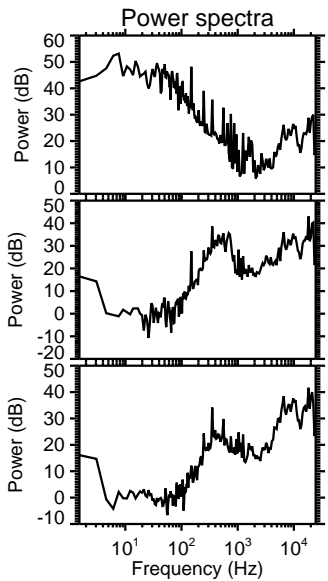
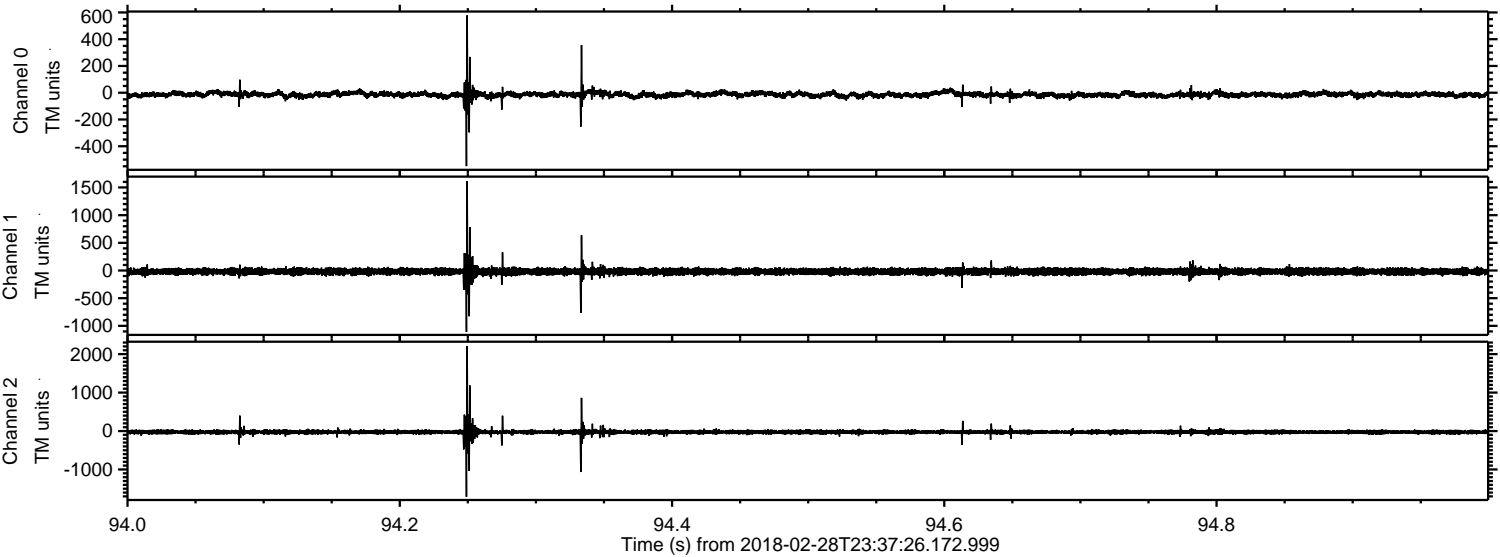


ELMAVAN 3D WAVEFORMS (Measured data sampled at 50 kHz) 51000 packets of 144 samples from 2018-02-28T23:37:26.172.999. Part 114/147

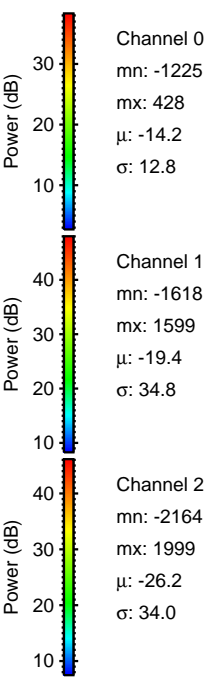
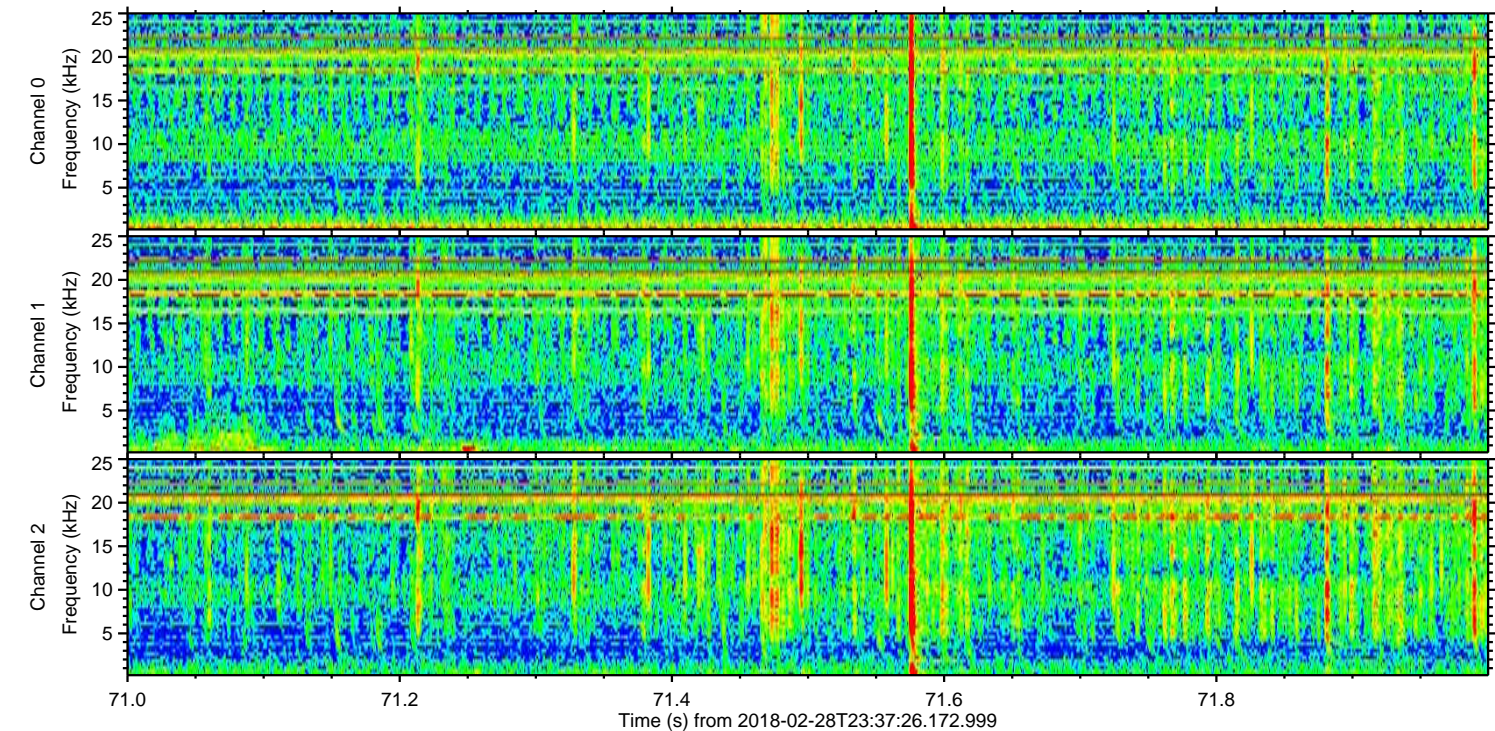
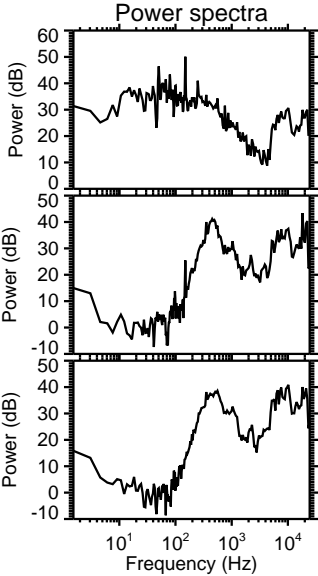
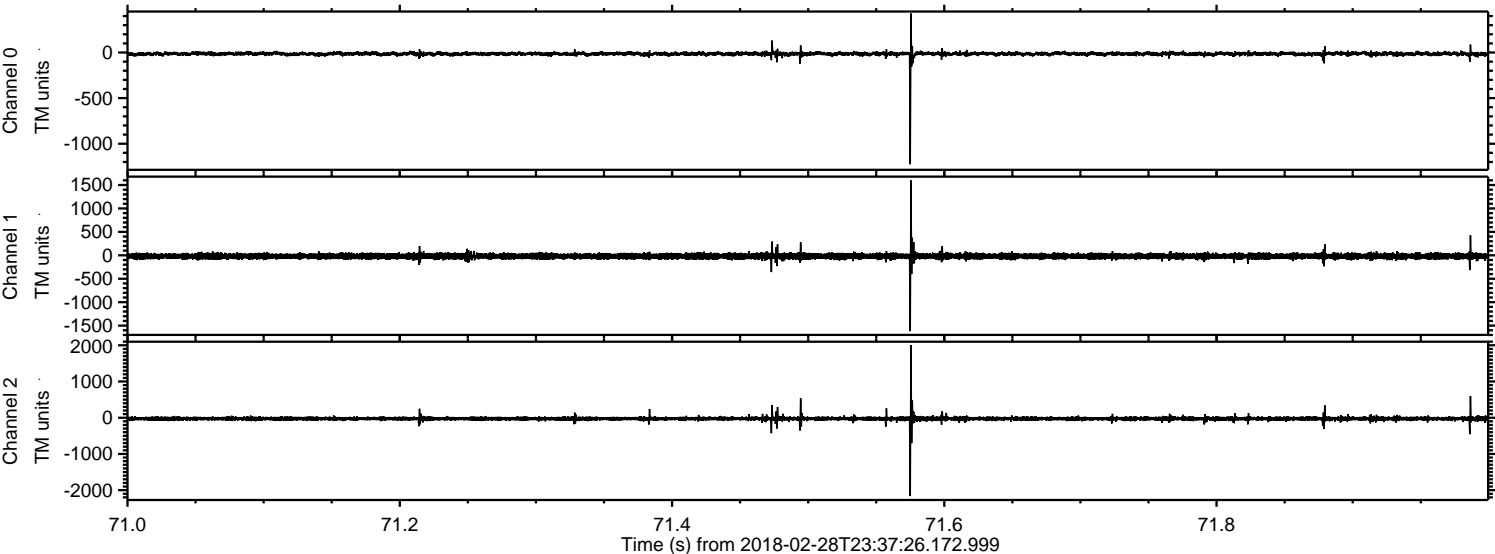
Processed Thu Mar 1 00:45:18 2018 by ELM ver.2012-10-06 from 001__elm20180228_233725__dat00.bin



Processed Thu Mar 1 00:45:19 2018 by ELM ver.2012-10-06 from 001__elm20180228_233725__dat00.bin



Processed Thu Mar 1 00:45:20 2018 by ELM ver.2012-10-06 from 001__elm20180228_233725__dat00.bin



Channel 0
mn: -1225
mx: 428
 μ : -14.2
 σ : 12.8

Channel 1
mn: -1618
mx: 1599
 μ : -19.4
 σ : 34.8

Channel 2
mn: -2164
mx: 1999
 μ : -26.2
 σ : 34.0

