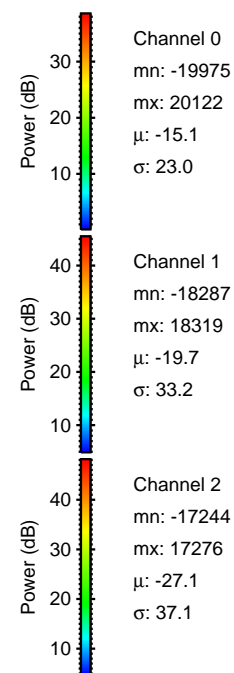
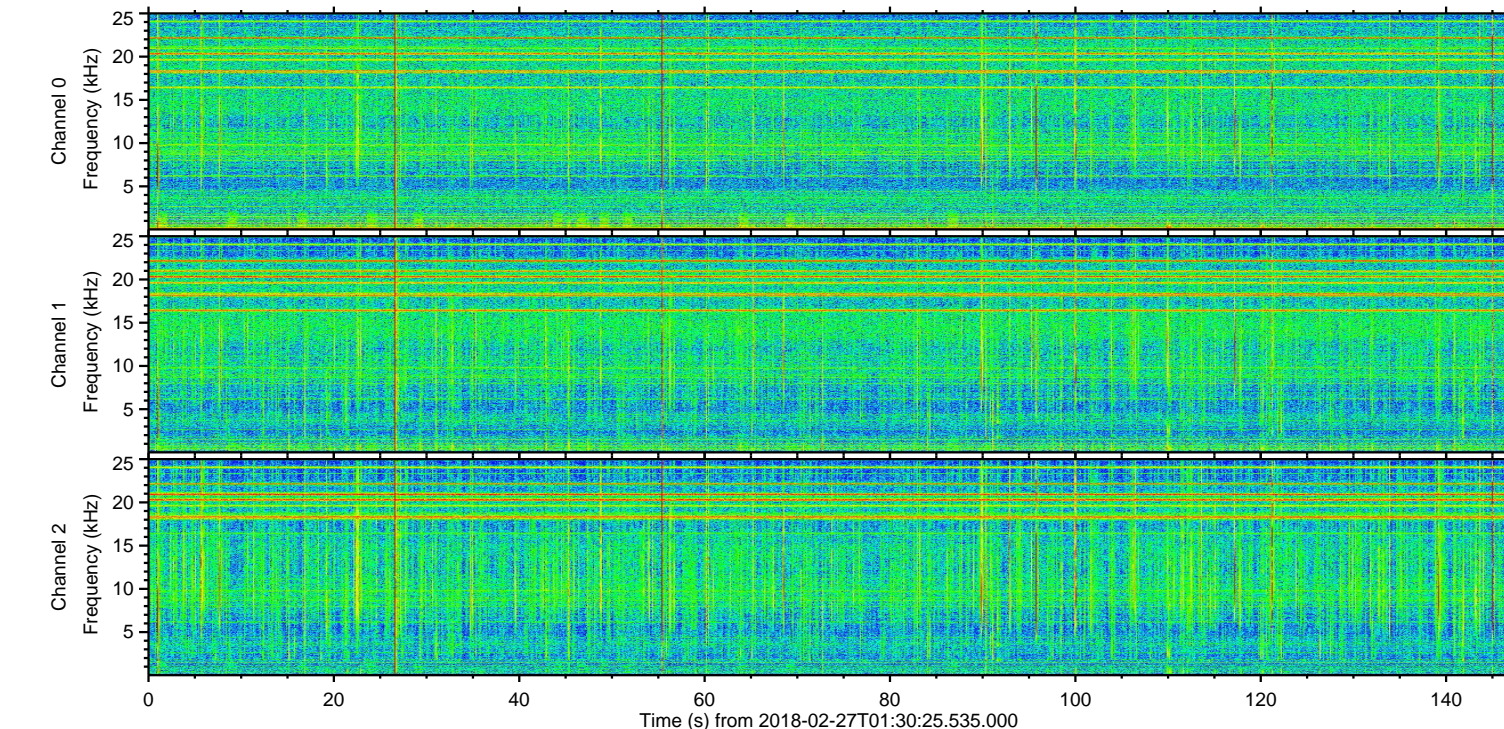
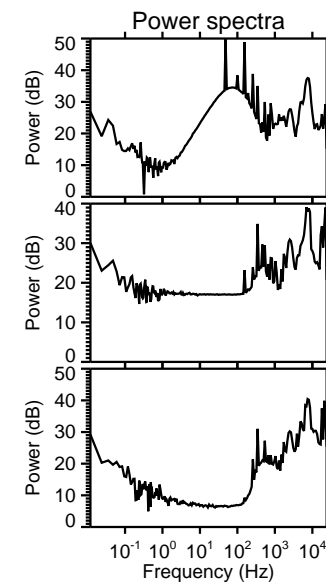
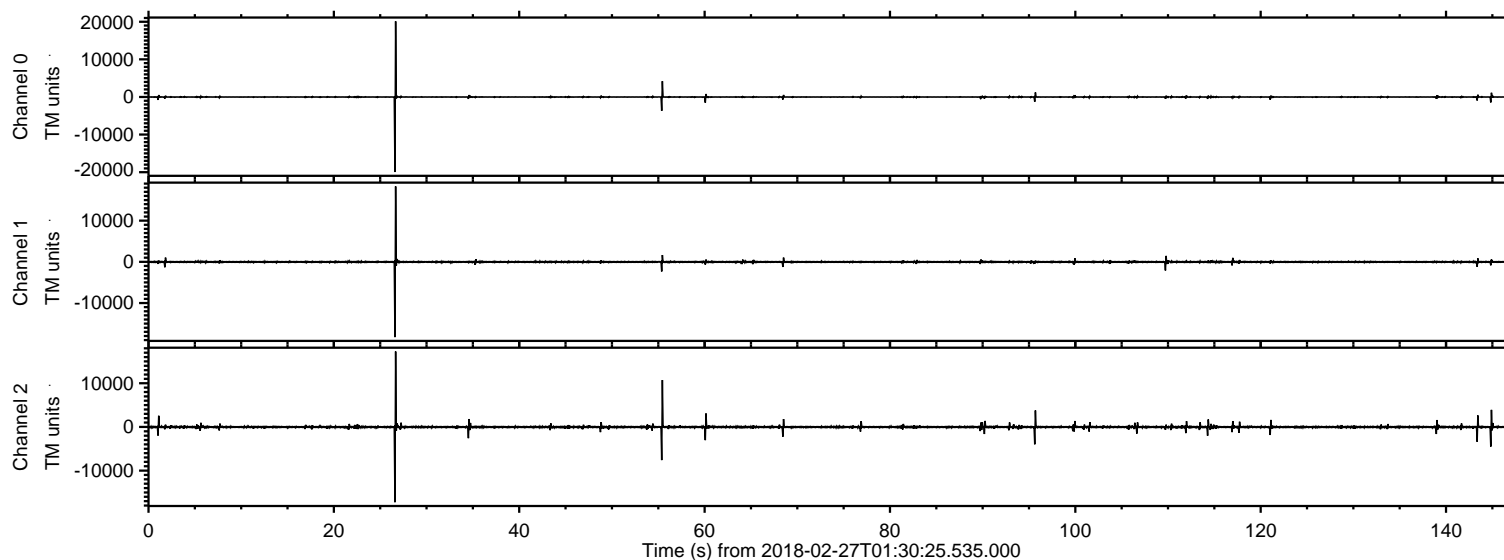


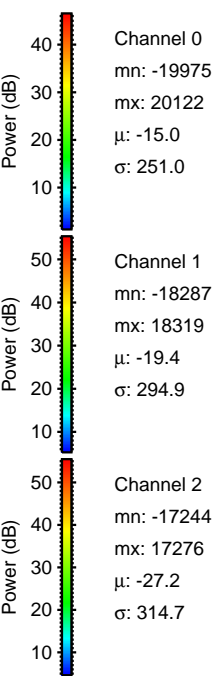
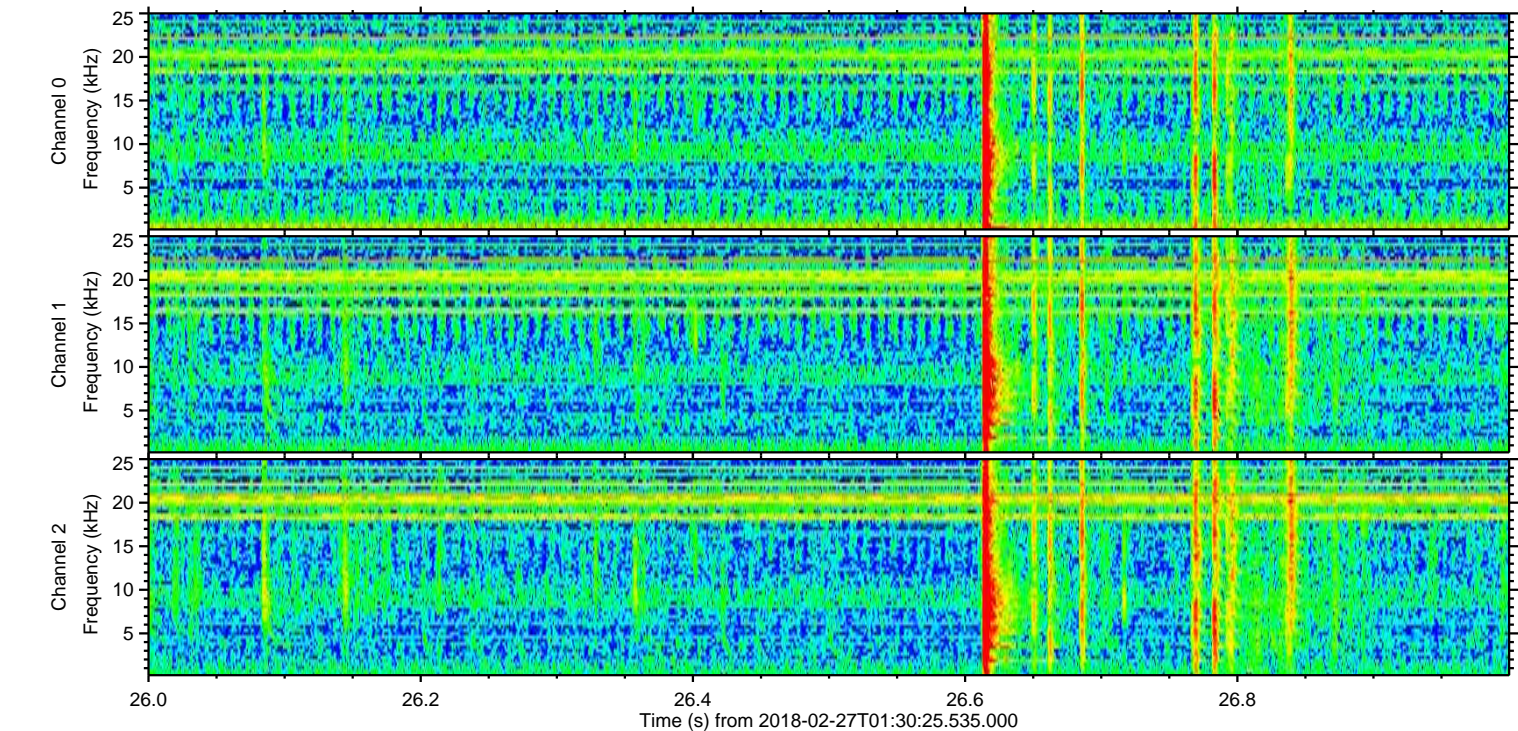
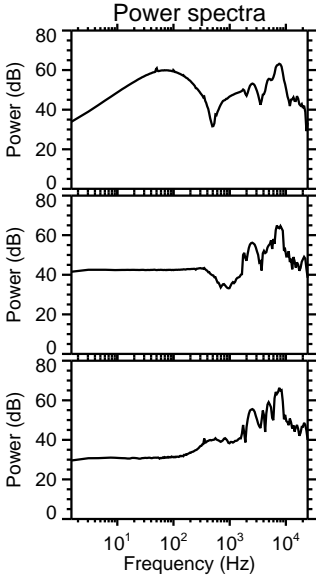
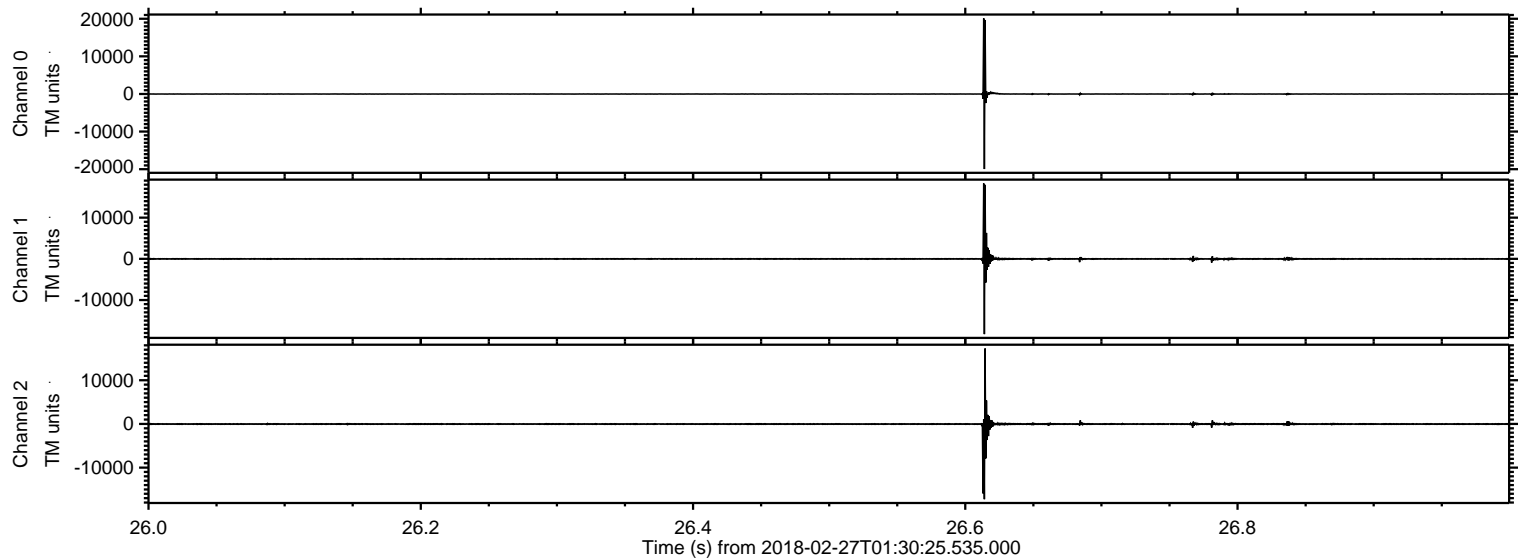
ELMAVAN 3D WAVEFORMS (Measured data sampled at 50 kHz) 51000 packets of 144 samples from 2018-02-27T01:30:25.535.000.

Processed Tue Feb 27 02:37:54 2018 by ELM ver.2012-10-06 from 001__elm20180227_013024__dat00.bin

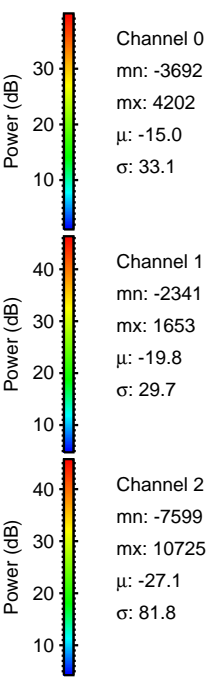
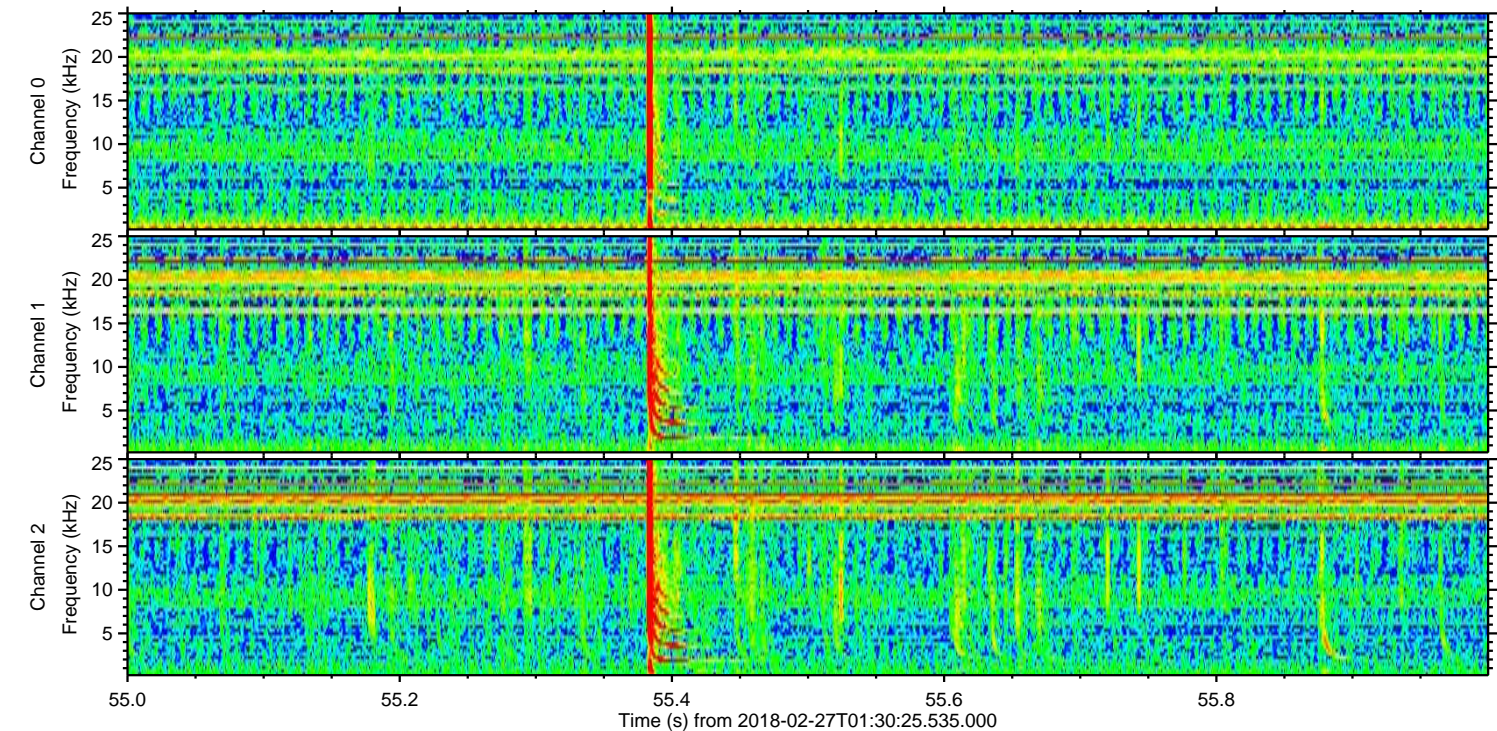
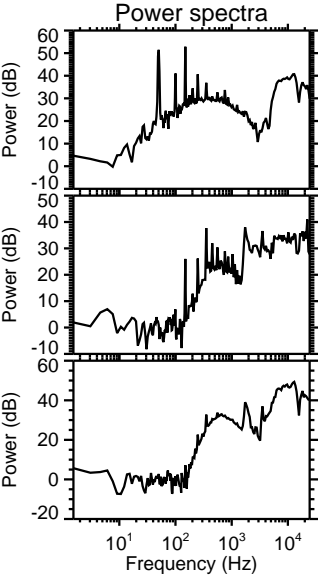
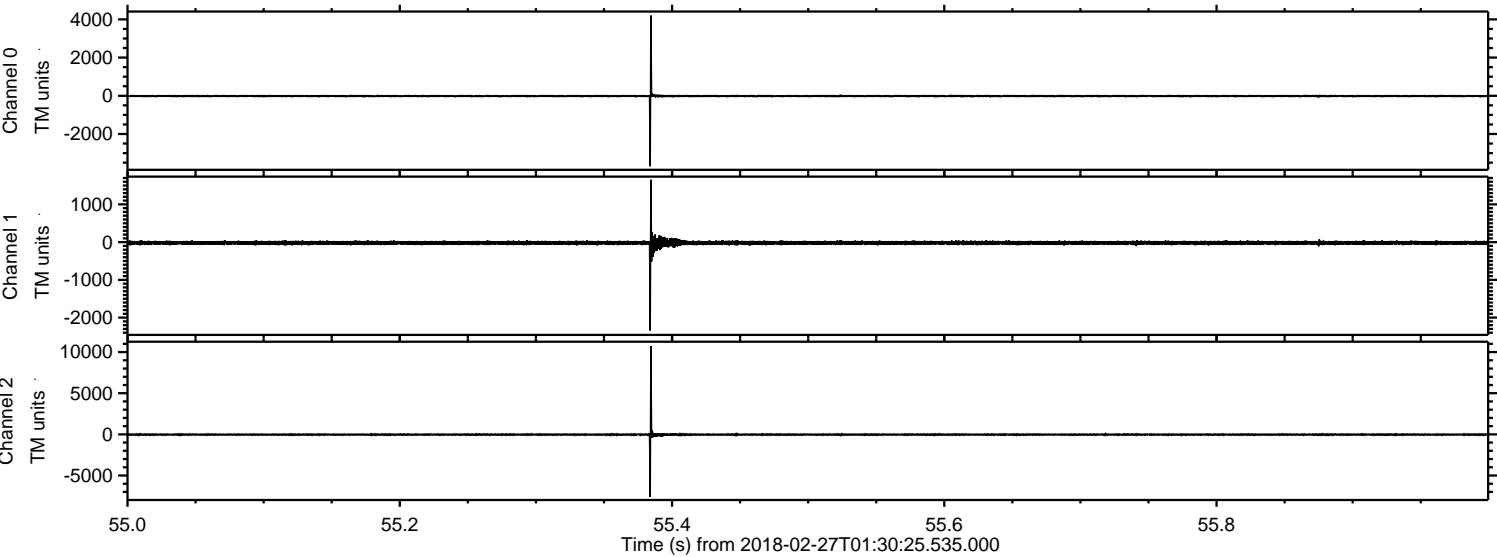


ELMAVAN 3D WAVEFORMS (Measured data sampled at 50 kHz) 51000 packets of 144 samples from 2018-02-27T01:30:25.535.000. Part 27/147

Processed Tue Feb 27 02:38:02 2018 by ELM ver.2012-10-06 from 001__elm20180227_013024__dat00.bin

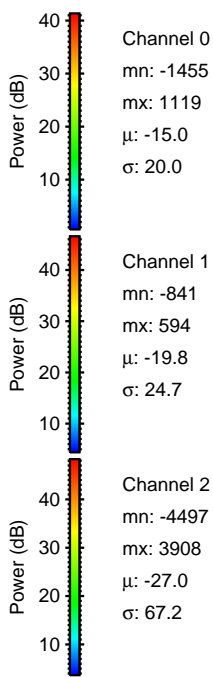
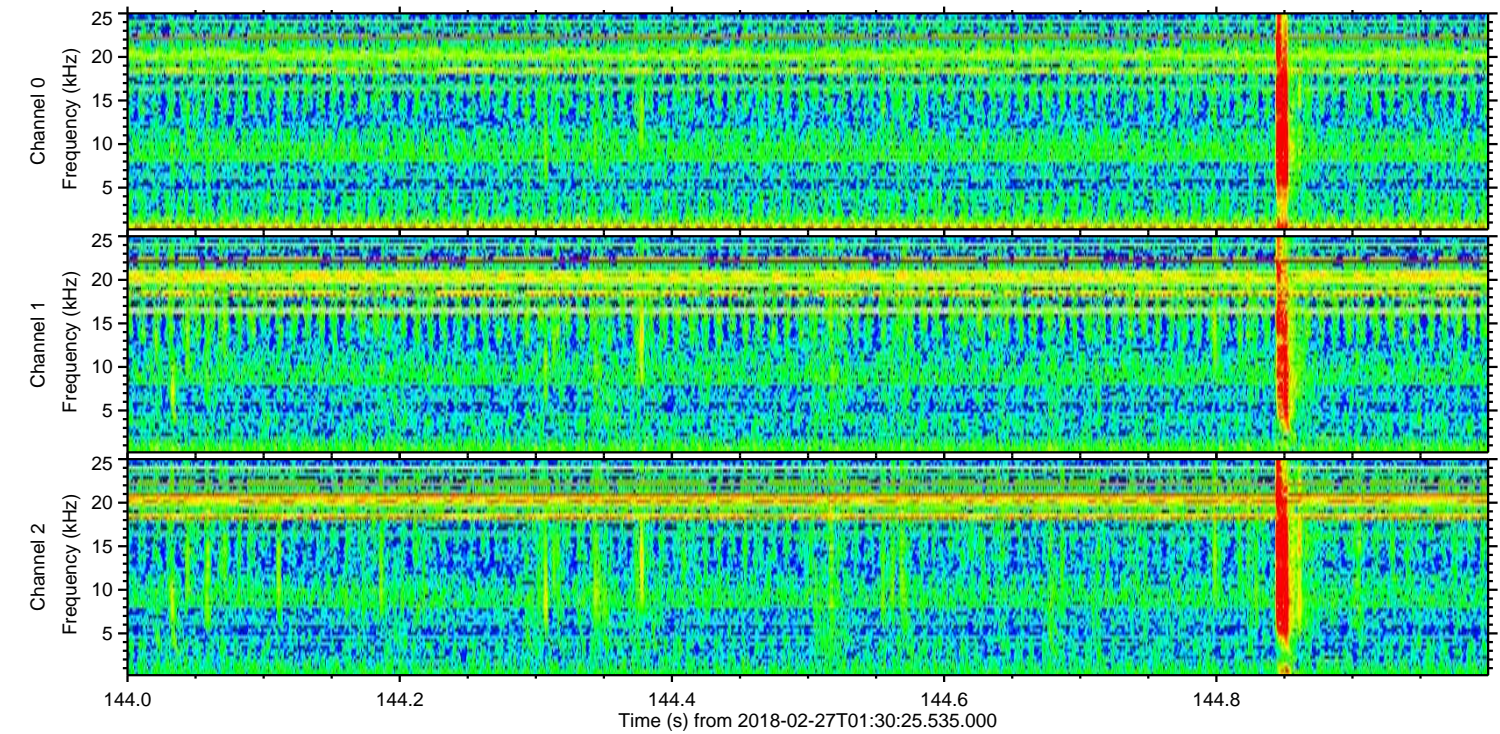
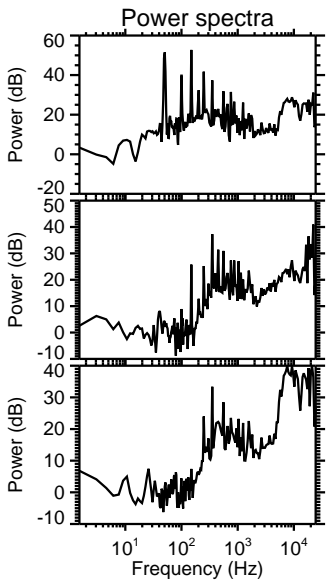
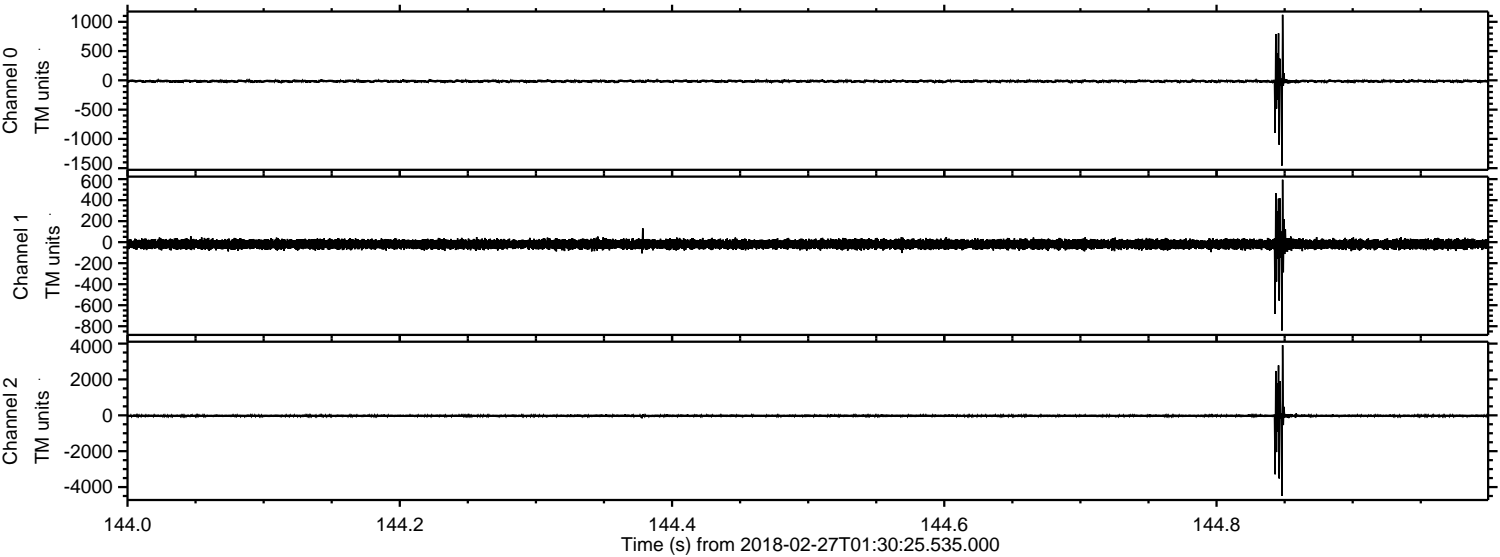


Processed Tue Feb 27 02:38:03 2018 by ELM ver.2012-10-06 from 001__elm20180227_013024__dat00.bin

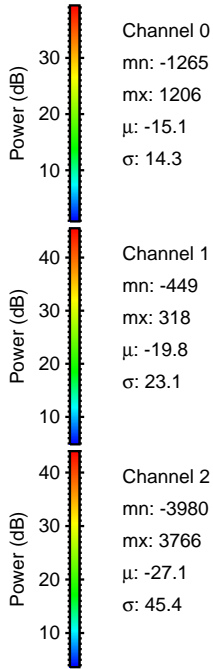
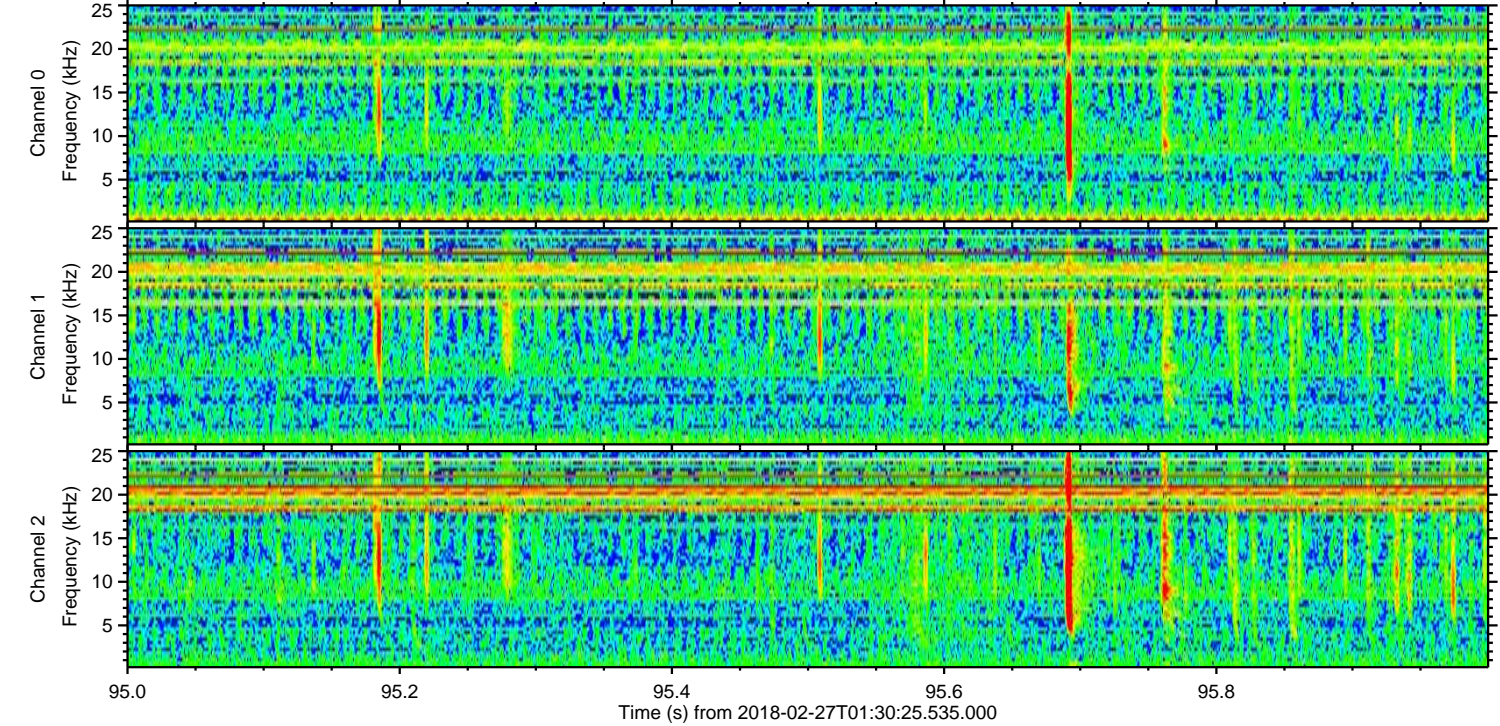
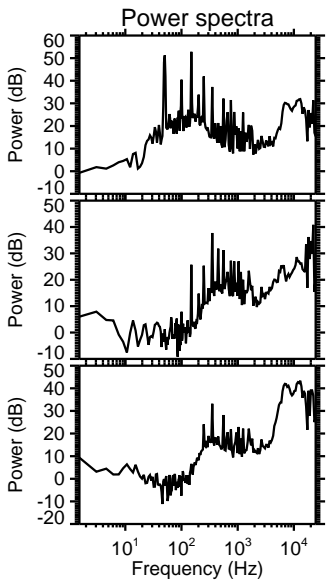
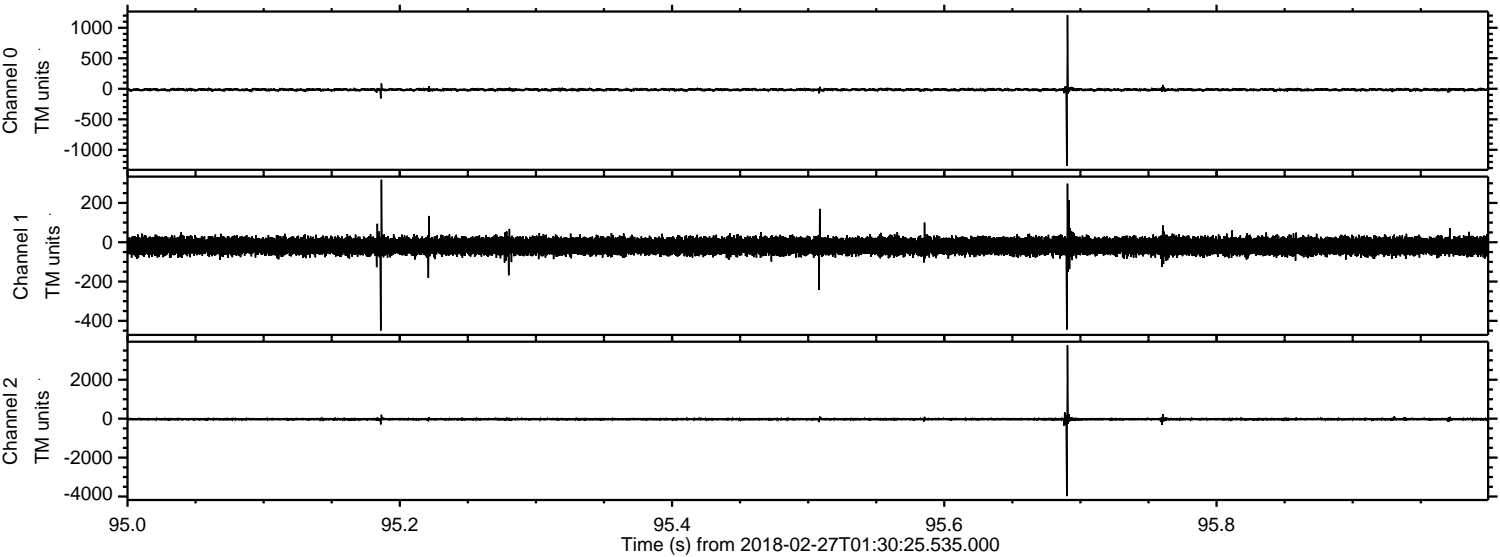


ELMAVAN 3D WAVEFORMS (Measured data sampled at 50 kHz) 51000 packets of 144 samples from 2018-02-27T01:30:25.535.000. Part 145/147

Processed Tue Feb 27 02:38:04 2018 by ELM ver.2012-10-06 from 001__elm20180227_013024__dat00.bin



Processed Tue Feb 27 02:38:04 2018 by ELM ver.2012-10-06 from 001__elm20180227_013024__dat00.bin



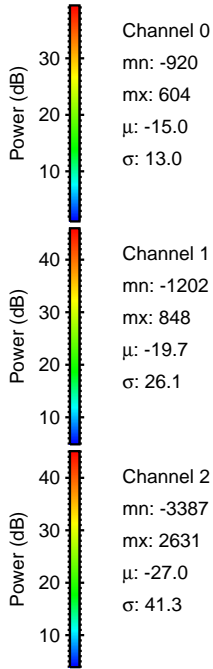
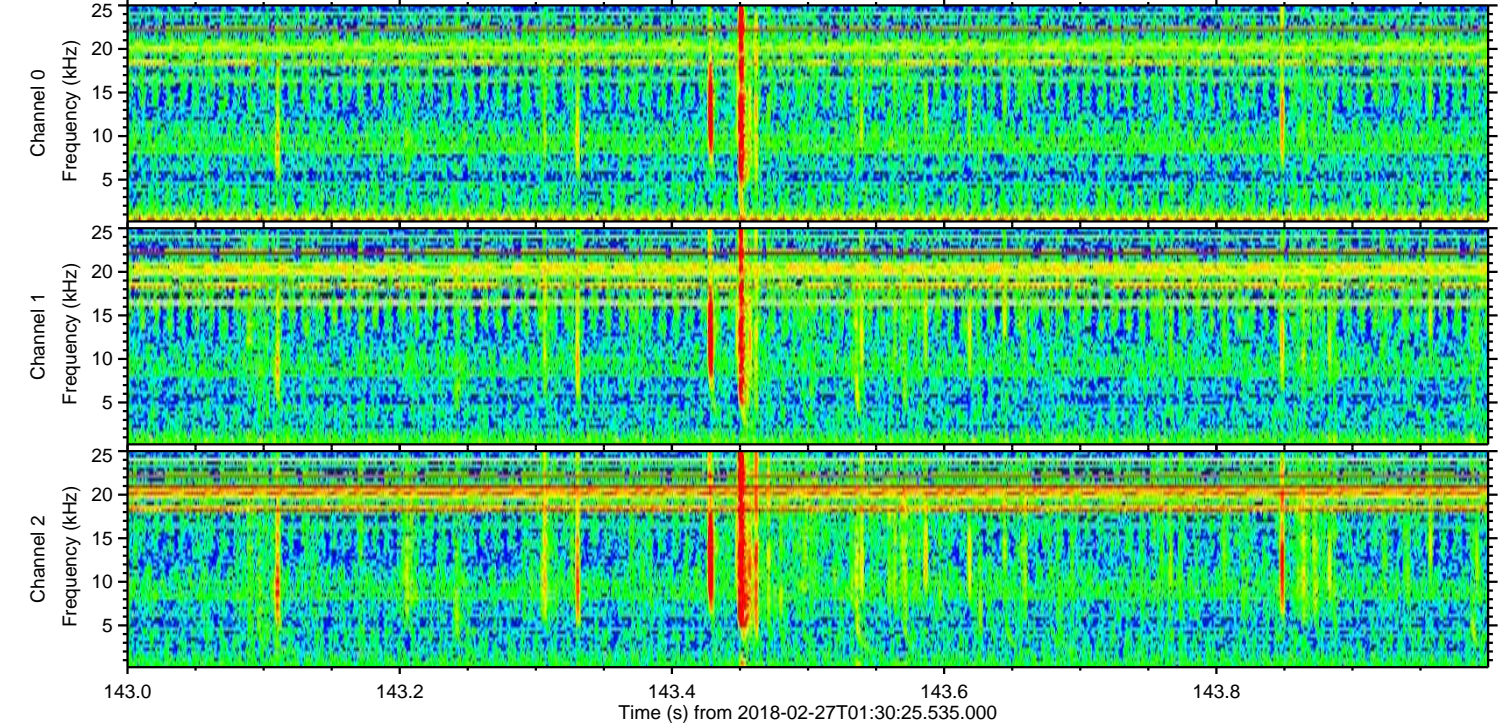
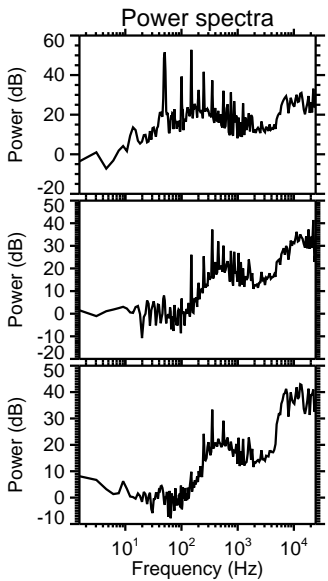
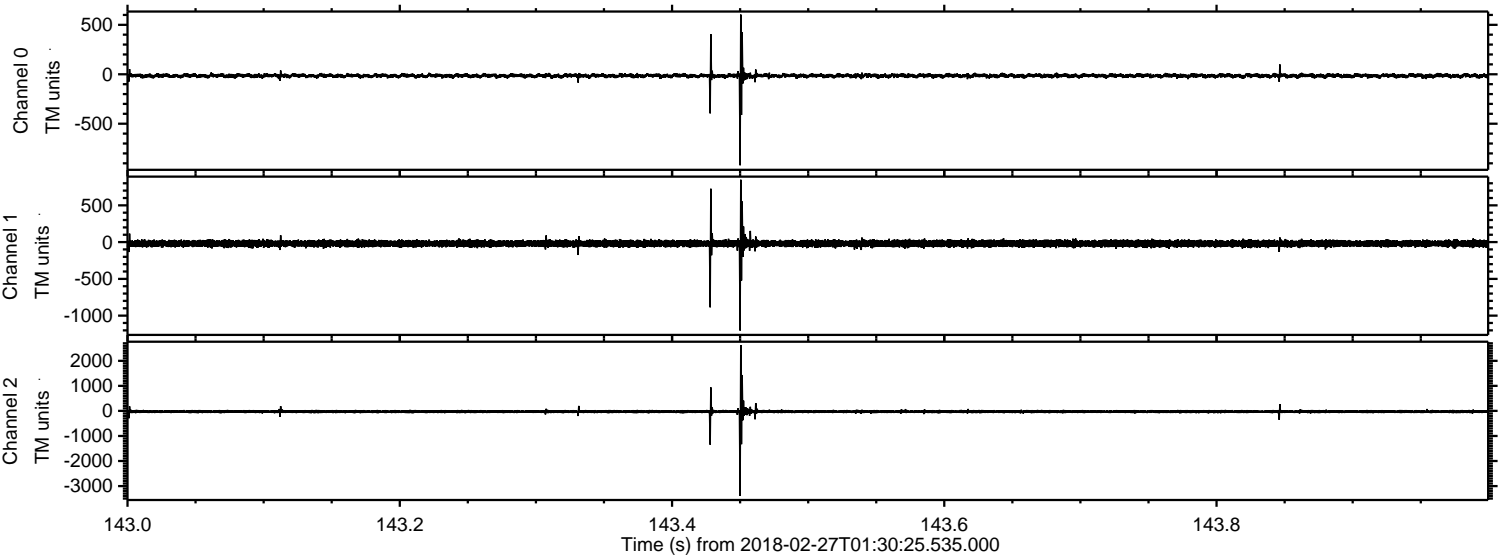
Channel 0
mn: -1265
mx: 1206
 μ : -15.1
 σ : 14.3

Channel 1
mn: -449
mx: 318
 μ : -19.8
 σ : 23.1

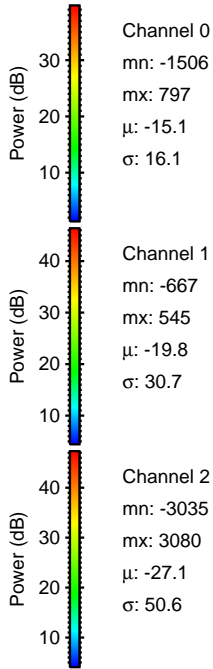
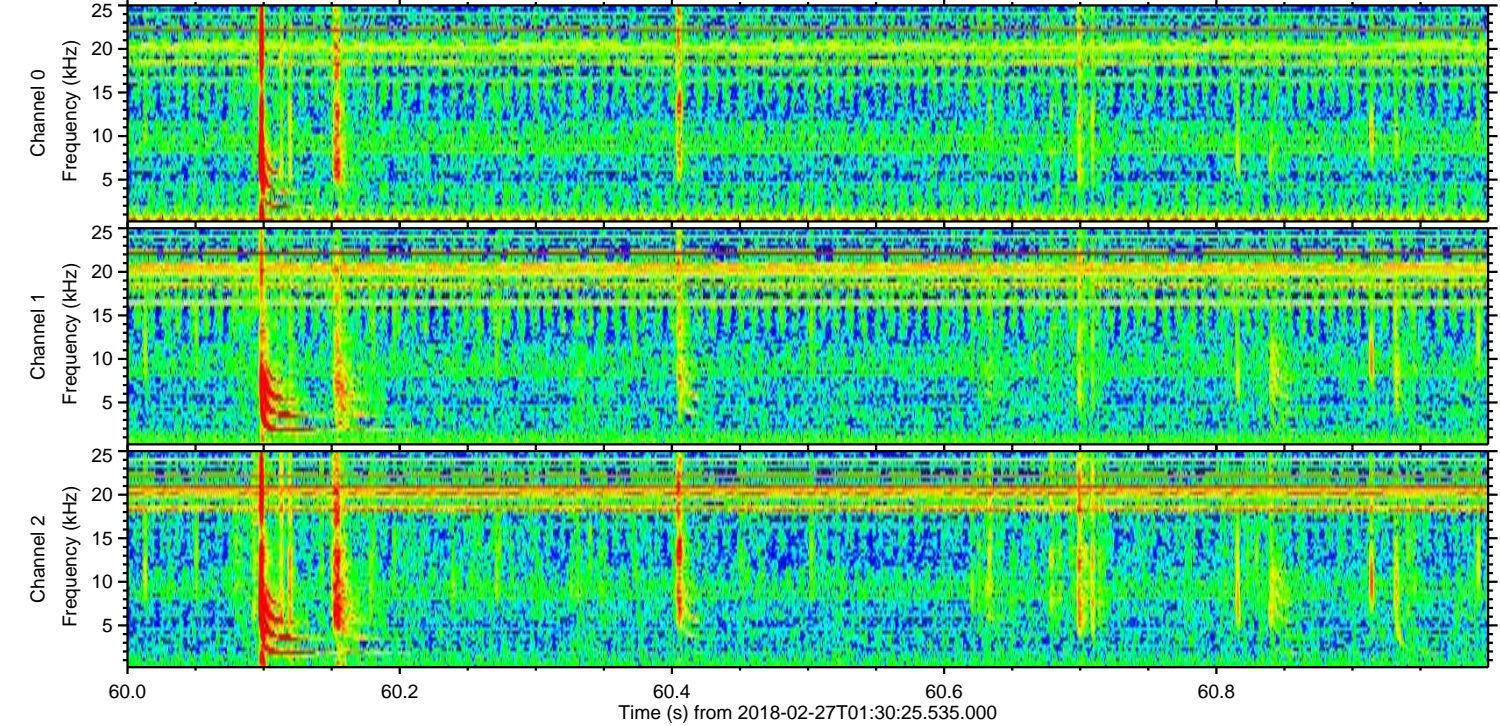
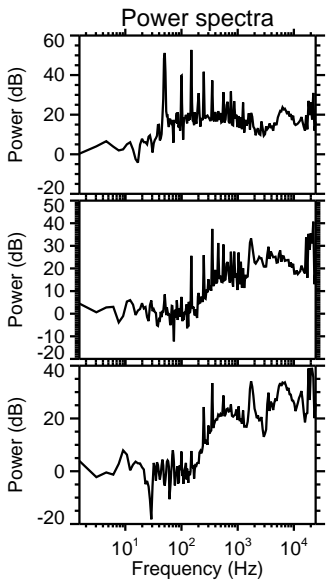
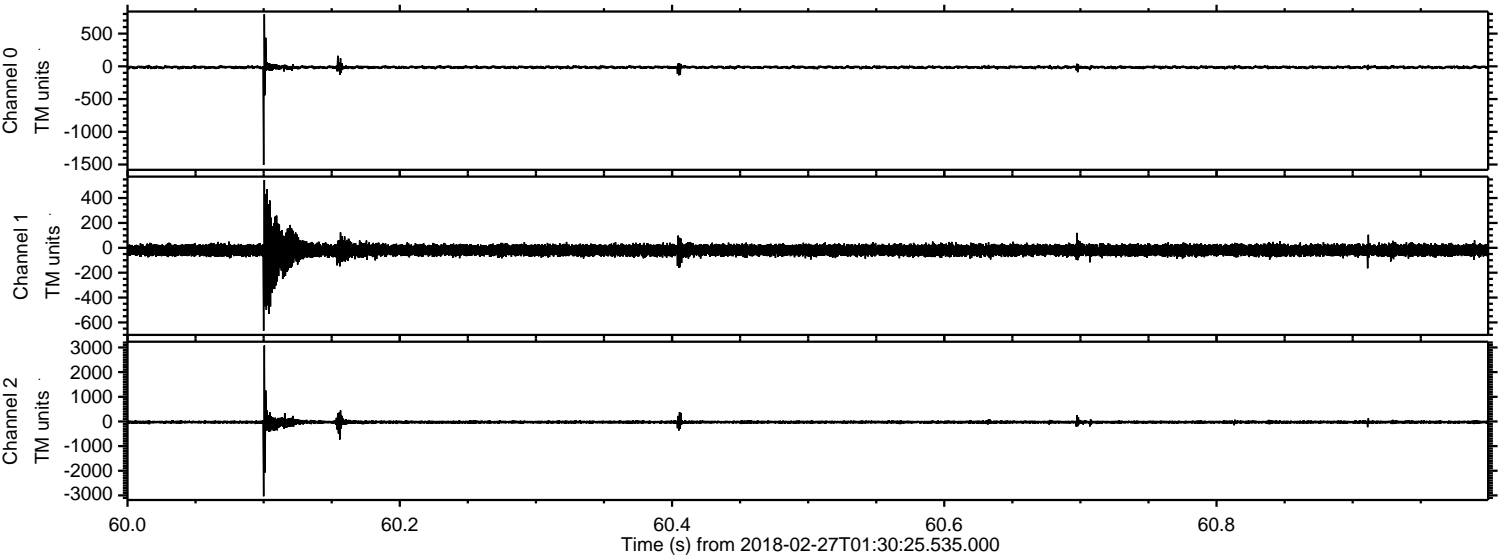
Channel 2
mn: -3980
mx: 3766
 μ : -27.1
 σ : 45.4

ELMAVAN 3D WAVEFORMS (Measured data sampled at 50 kHz) 51000 packets of 144 samples from 2018-02-27T01:30:25.535.000. Part 144/147

Processed Tue Feb 27 02:38:05 2018 by ELM ver.2012-10-06 from 001__elm20180227_013024__dat00.bin



Processed Tue Feb 27 02:38:06 2018 by ELM ver.2012-10-06 from 001__elm20180227_013024__dat00.bin

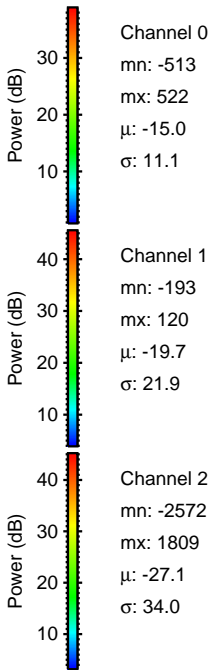
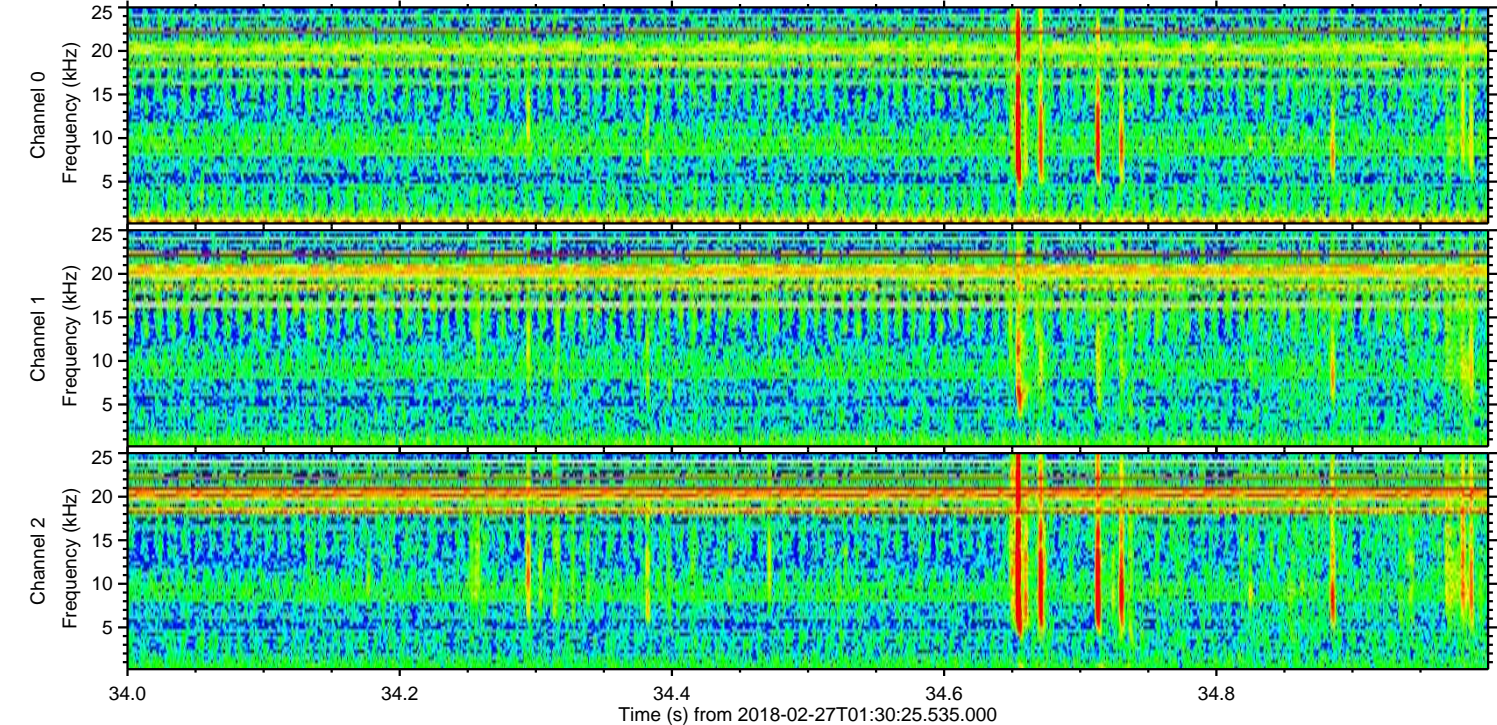
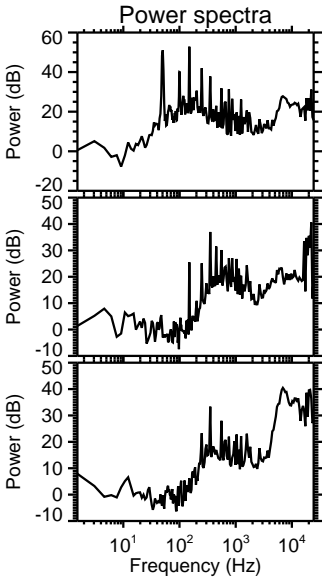
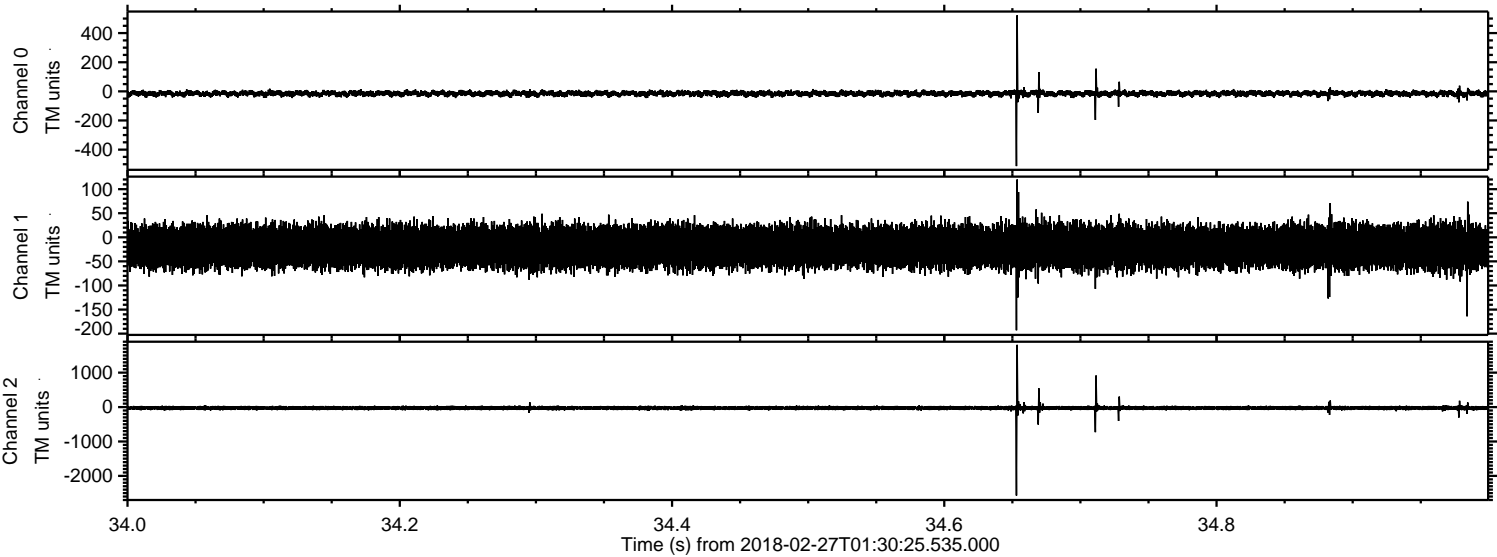


Channel 0
mn: -1506
mx: 797
 μ : -15.1
 σ : 16.1

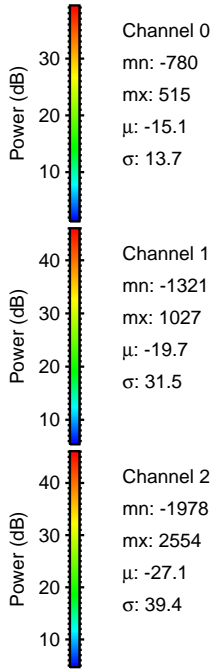
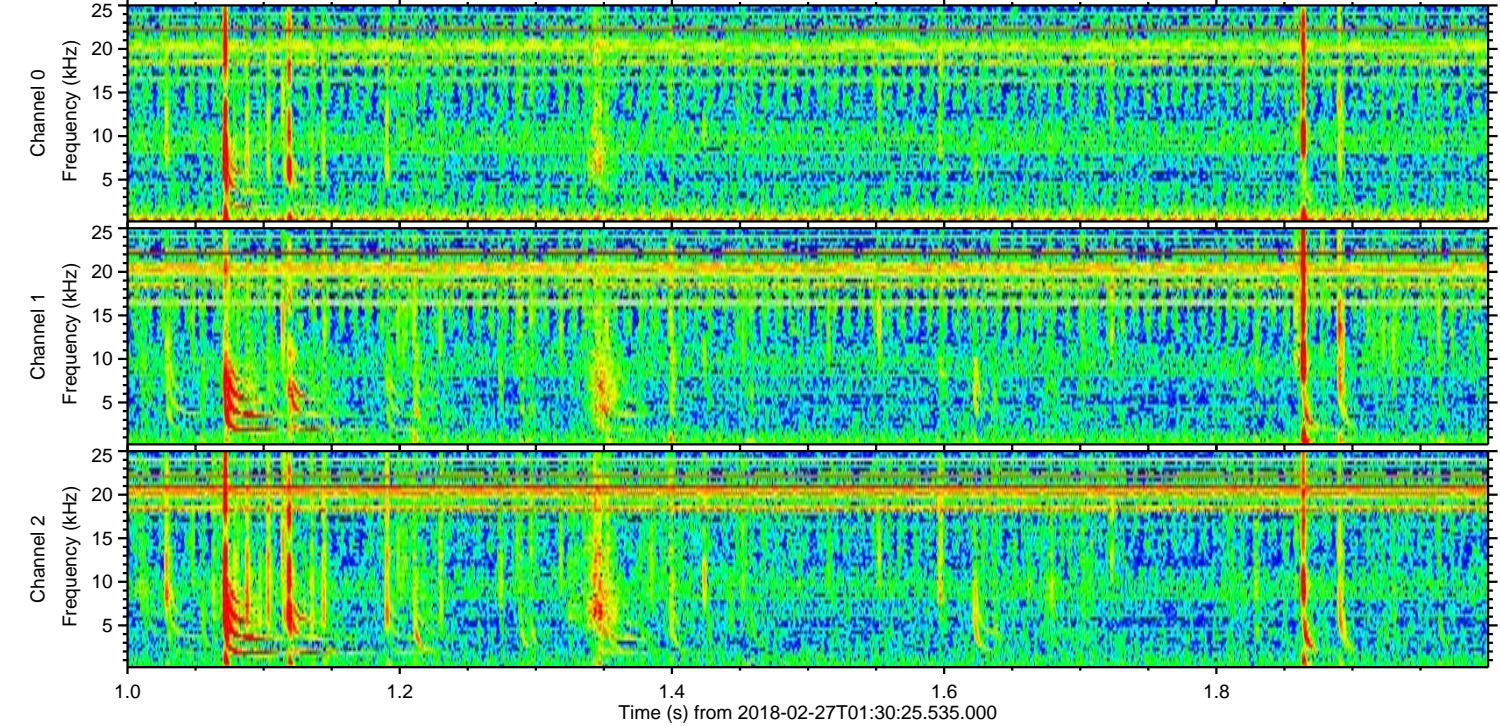
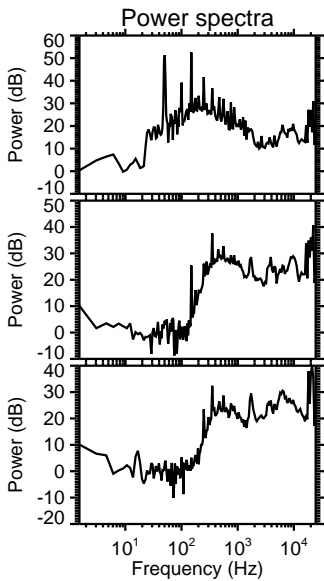
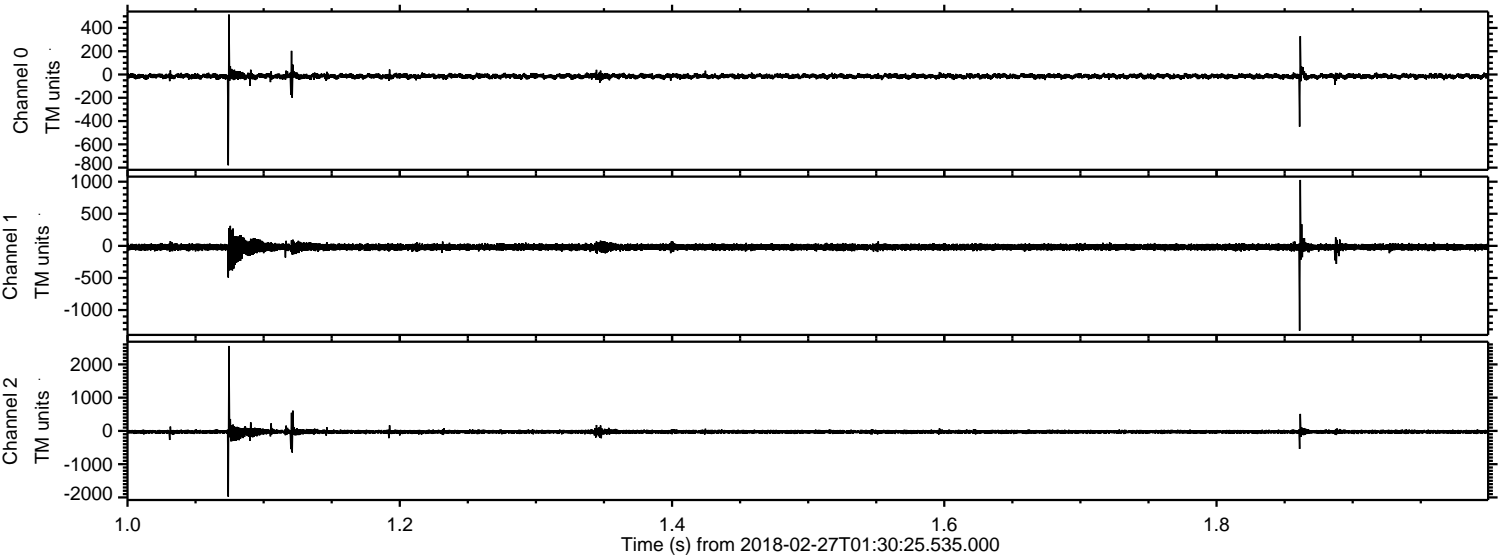
Channel 1
mn: -667
mx: 545
 μ : -19.8
 σ : 30.7

Channel 2
mn: -3035
mx: 3080
 μ : -27.1
 σ : 50.6

Processed Tue Feb 27 02:38:07 2018 by ELM ver.2012-10-06 from 001__elm20180227_013024__dat00.bin



Processed Tue Feb 27 02:38:07 2018 by ELM ver.2012-10-06 from 001__elm20180227_013024__dat00.bin



Processed Tue Feb 27 02:38:08 2018 by ELM ver.2012-10-06 from 001__elm20180227_013024__dat00.bin

