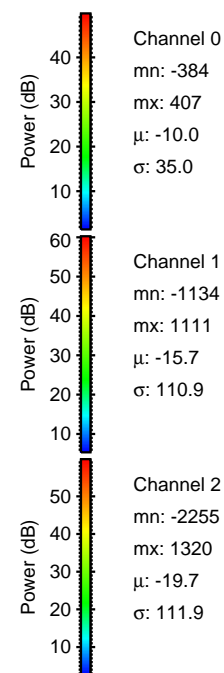
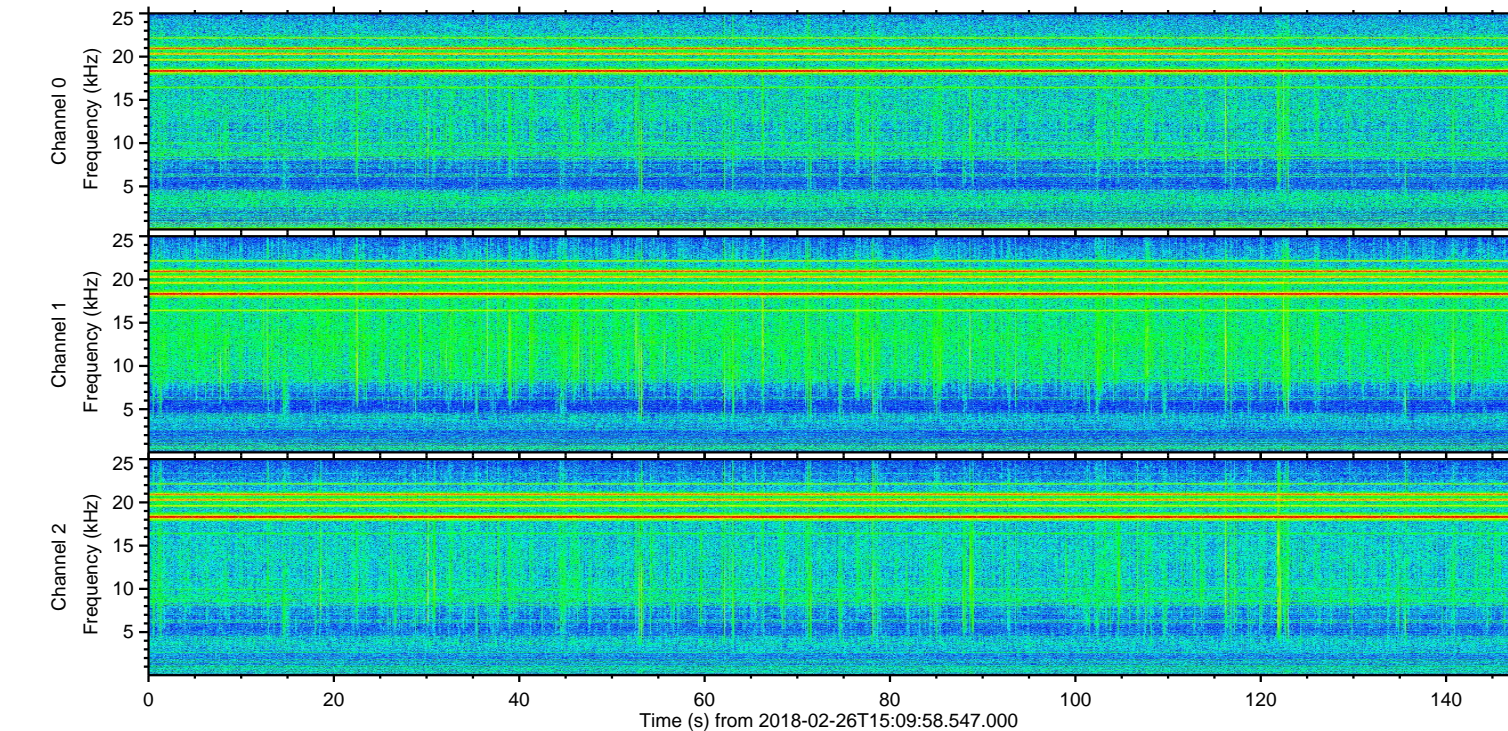
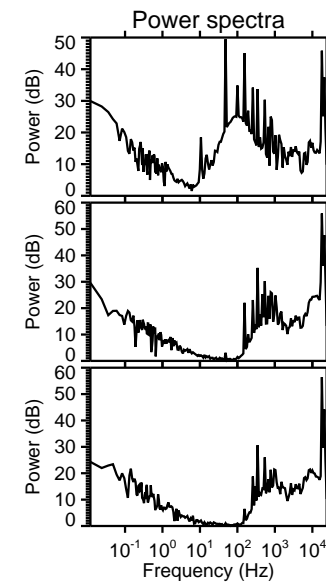
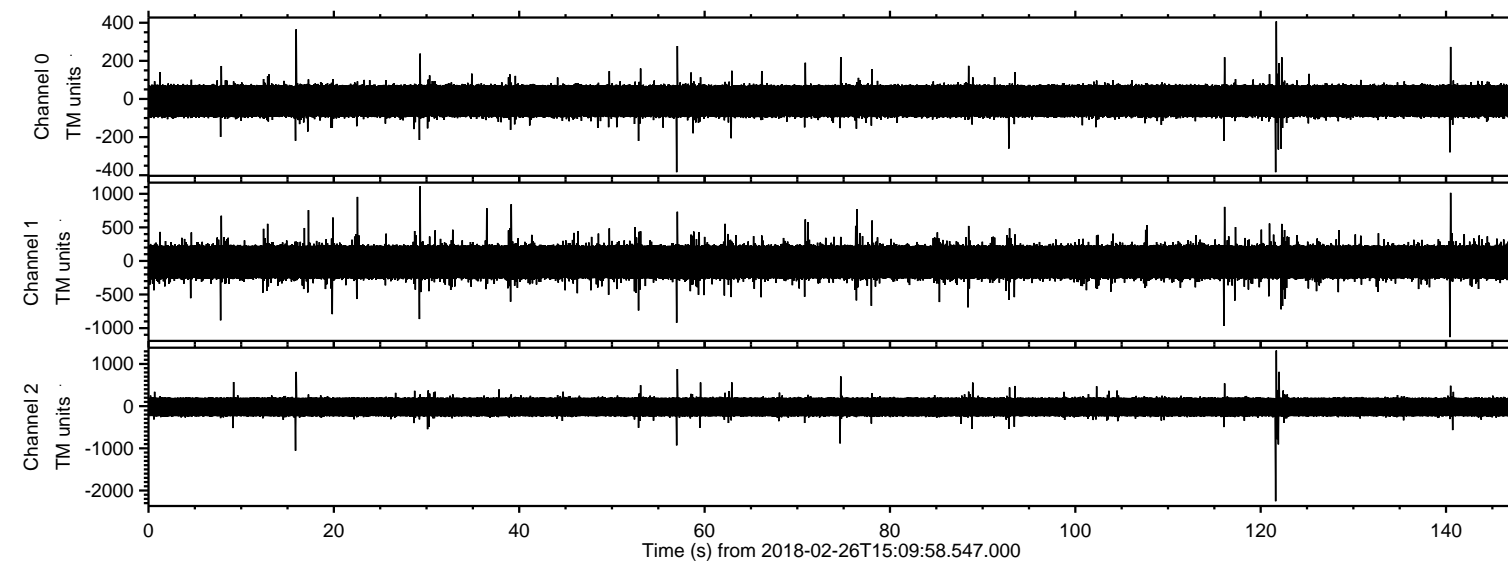


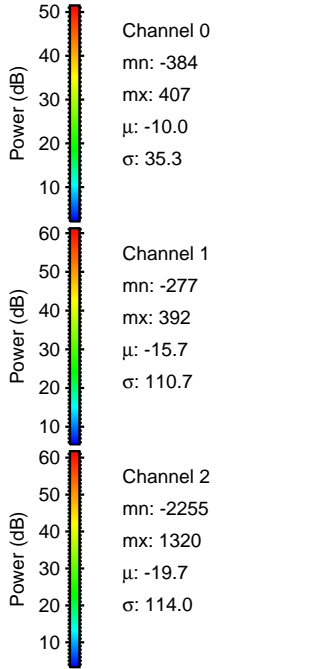
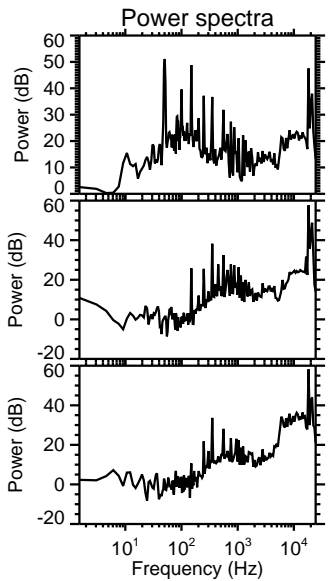
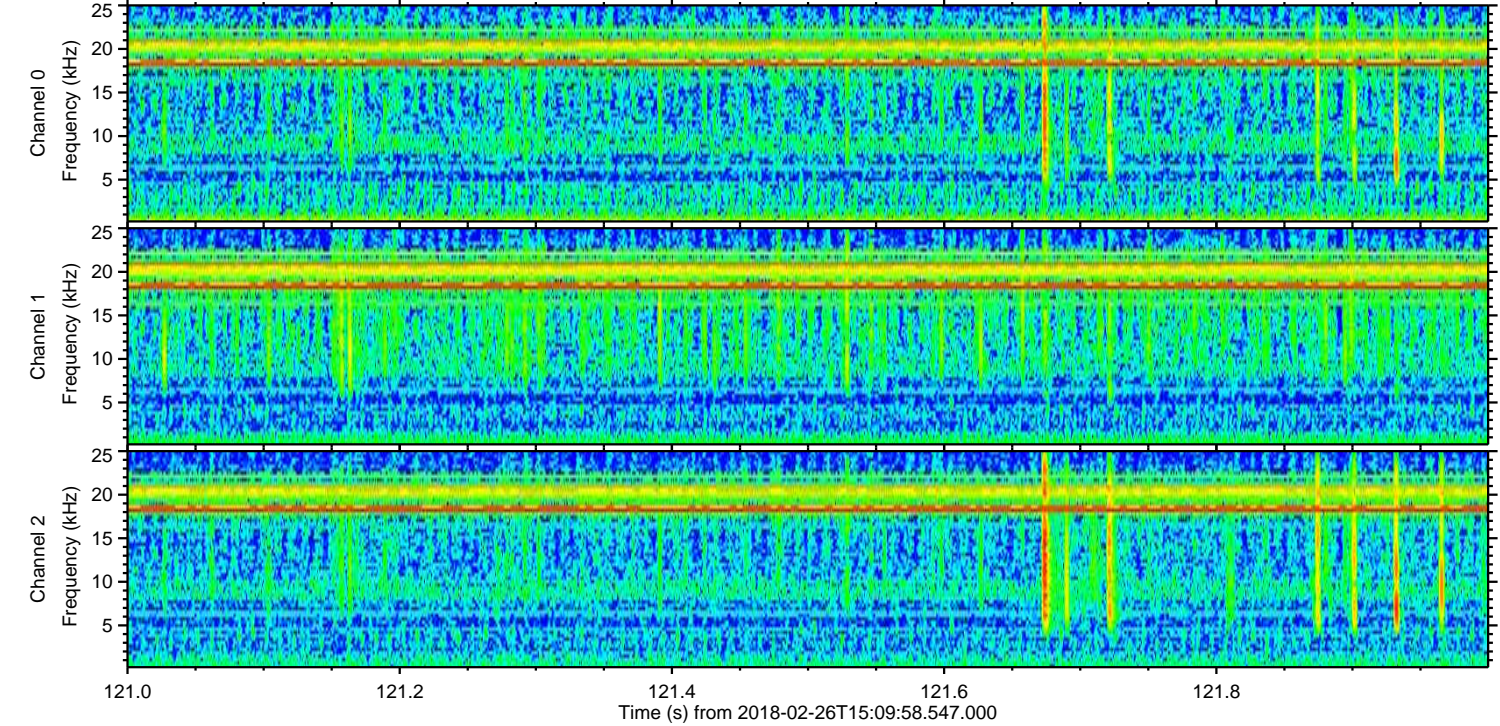
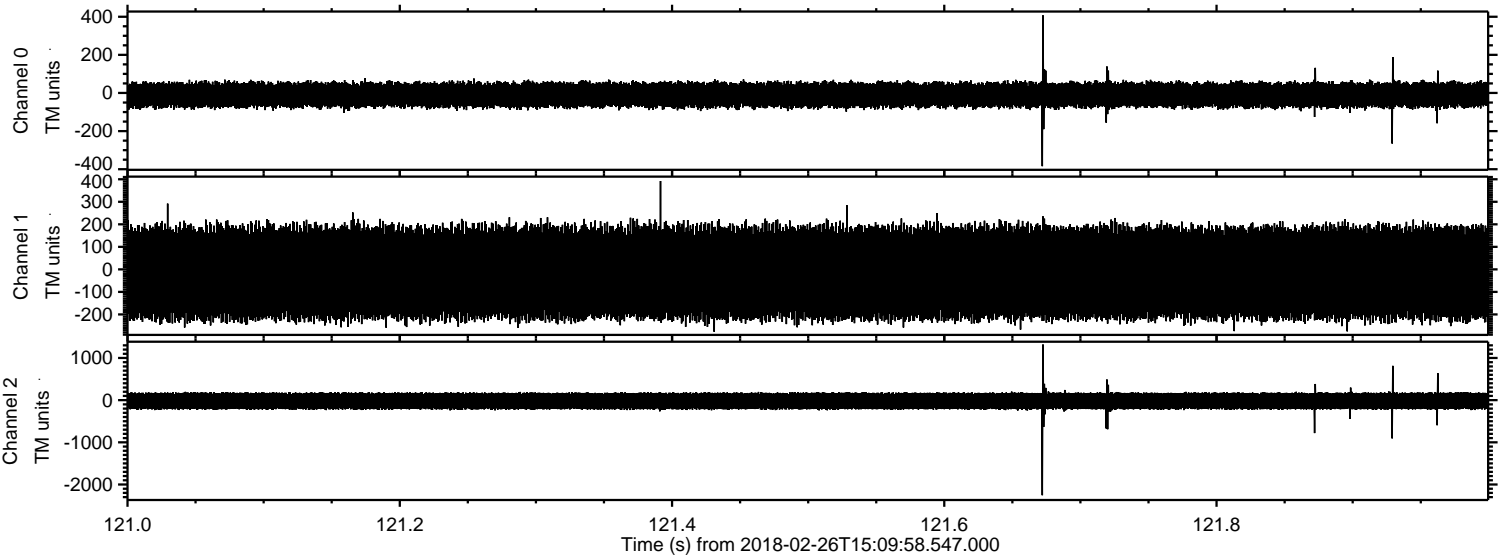
ELMAVAN 3D WAVEFORMS (Measured data sampled at 50 kHz) 51000 packets of 144 samples from 2018-02-26T15:09:58.547.000.

Processed Mon Feb 26 16:20:25 2018 by ELM ver.2012-10-06 from 001__elm20180226_150957__dat00.bin



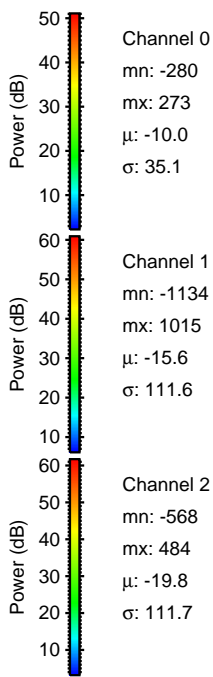
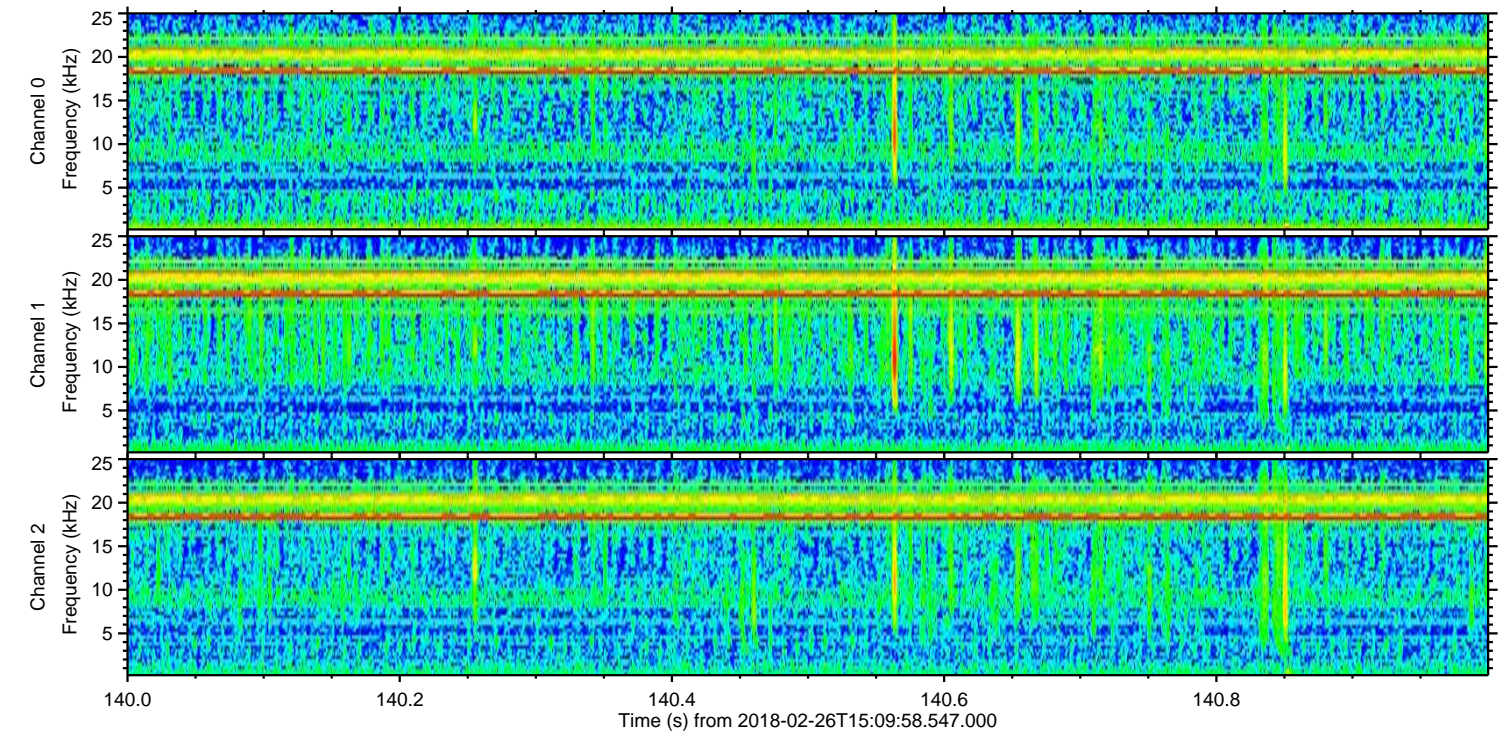
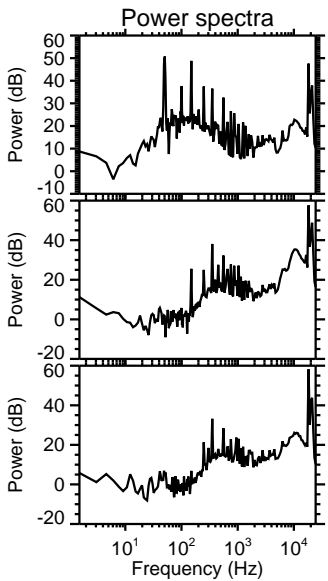
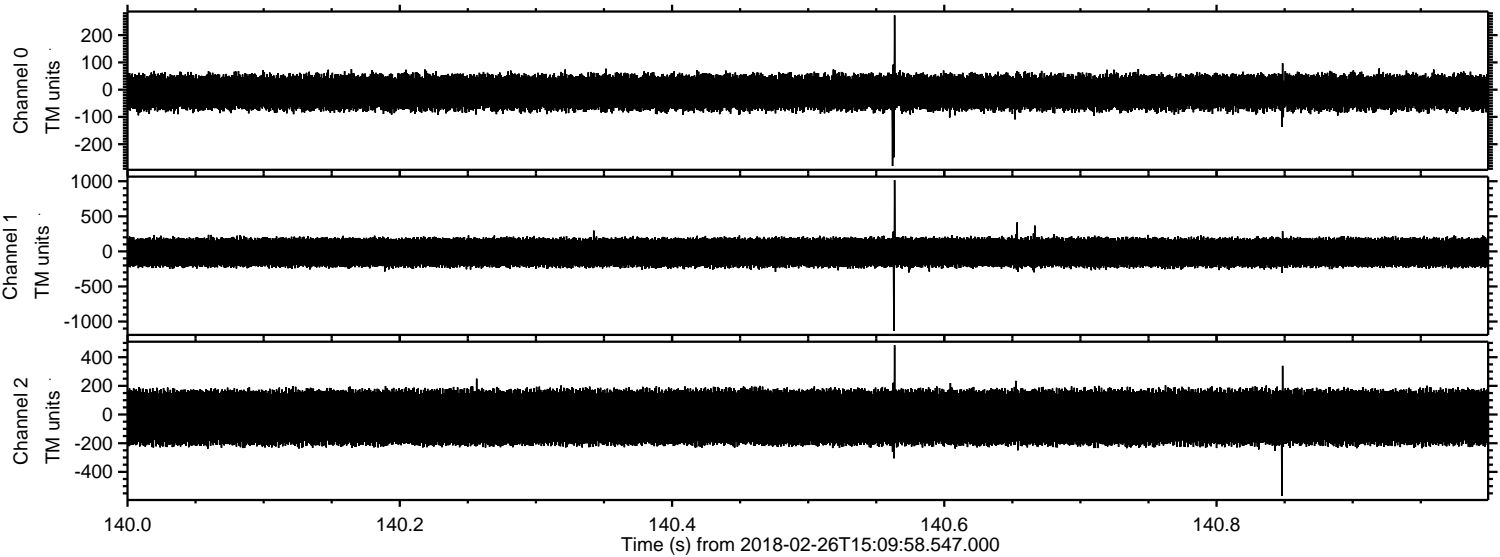
ELMAVAN 3D WAVEFORMS (Measured data sampled at 50 kHz) 51000 packets of 144 samples from 2018-02-26T15:09:58.547.000. Part 122/147

Processed Mon Feb 26 16:20:34 2018 by ELM ver.2012-10-06 from 001__elm20180226_150957__dat00.bin

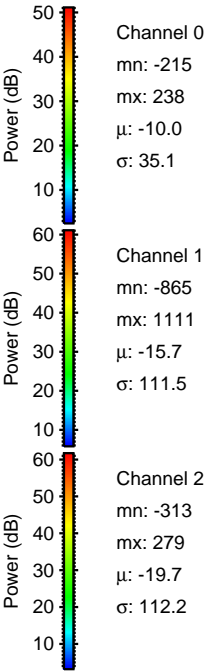
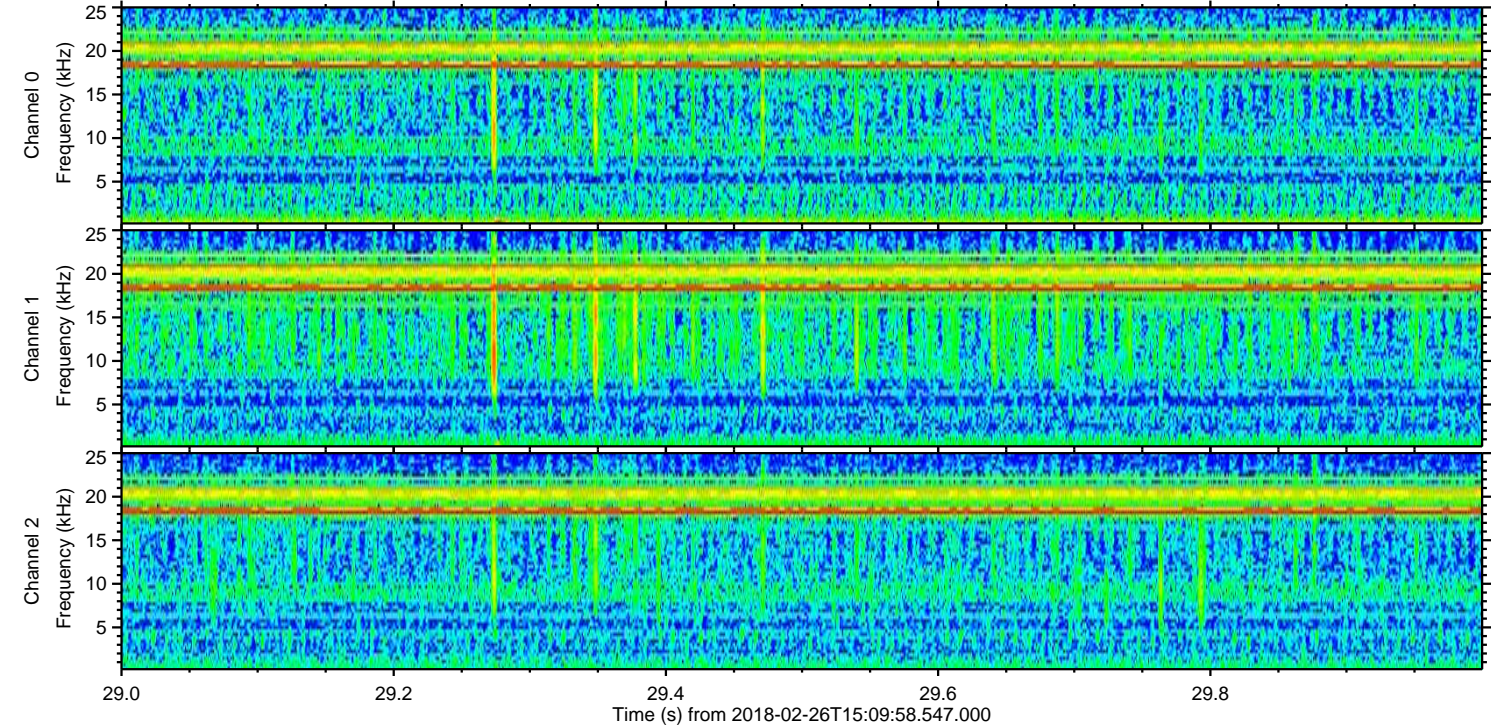
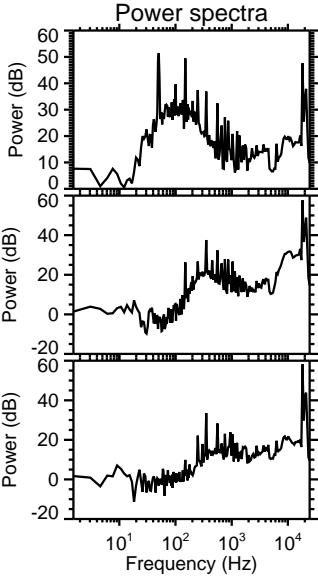
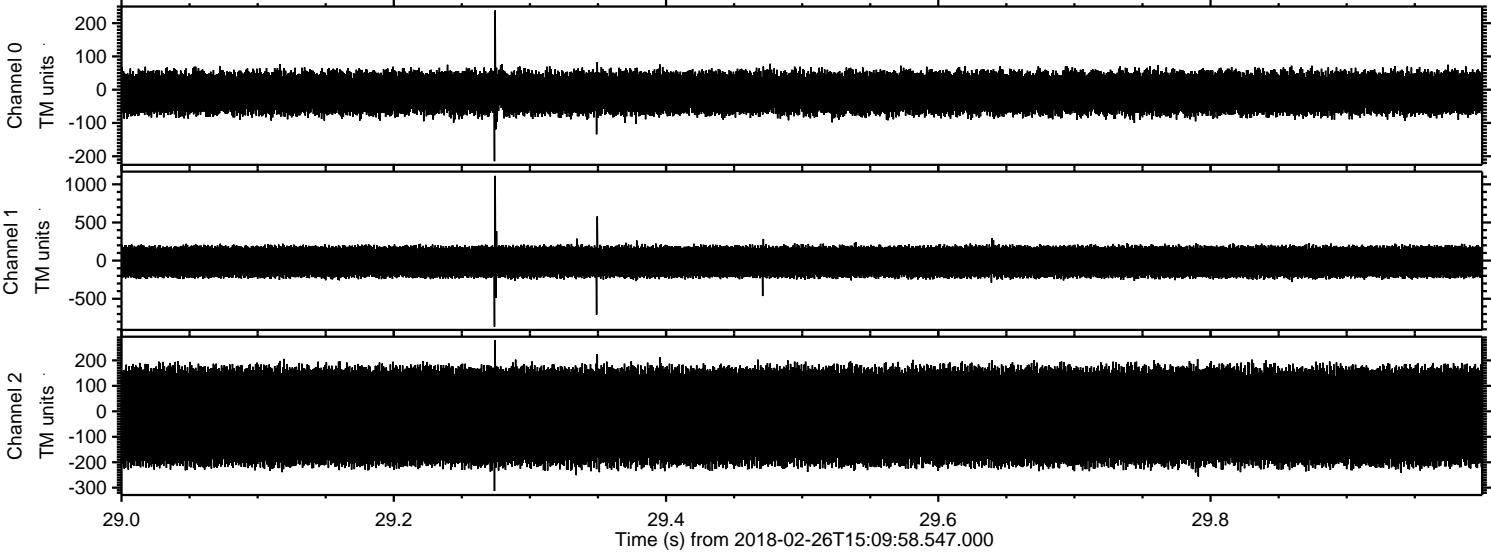


ELMAVAN 3D WAVEFORMS (Measured data sampled at 50 kHz) 51000 packets of 144 samples from 2018-02-26T15:09:58.547.000. Part 141/147

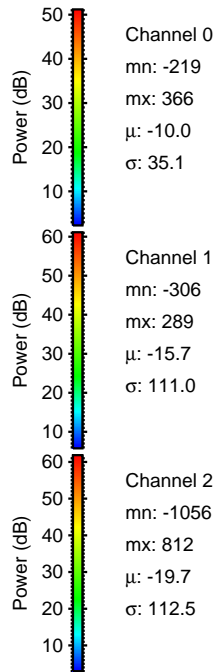
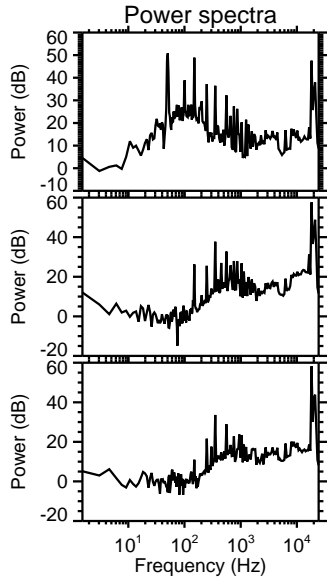
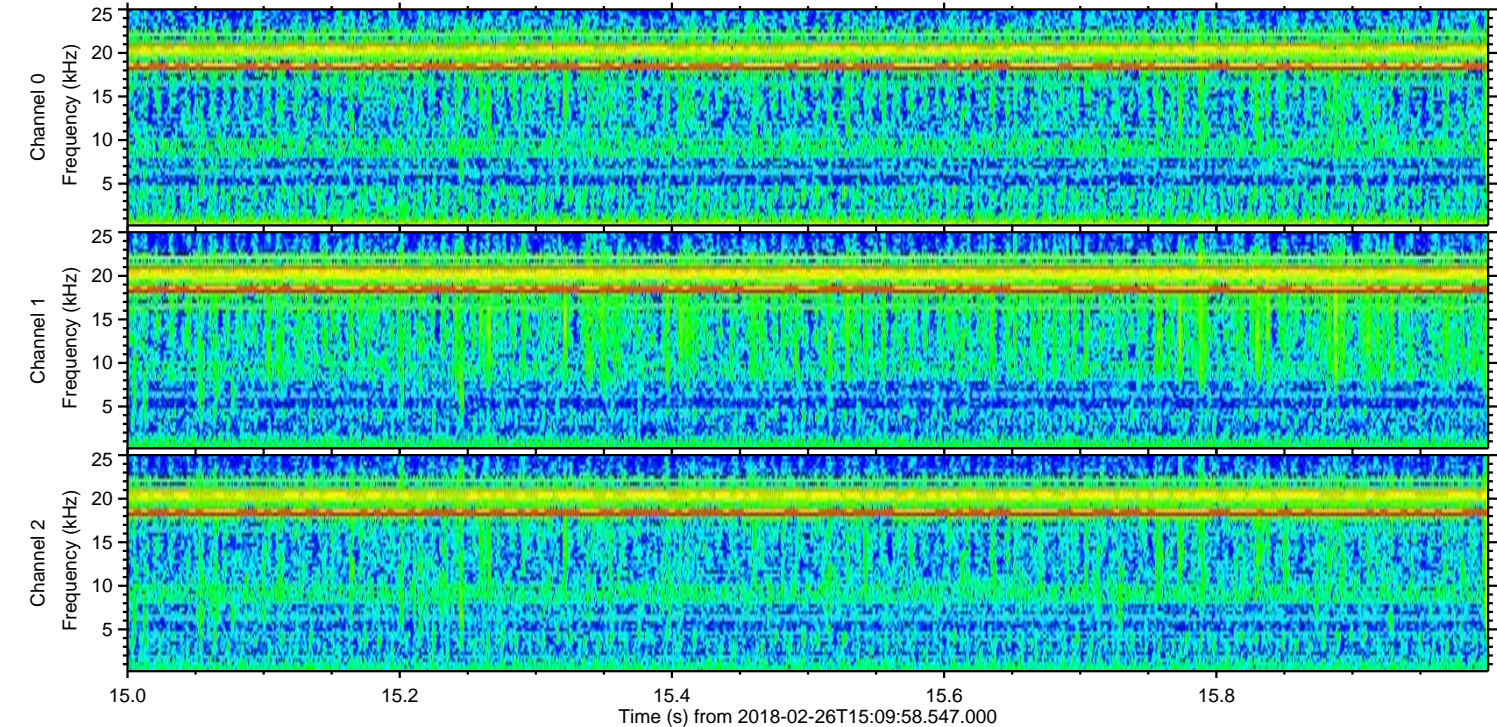
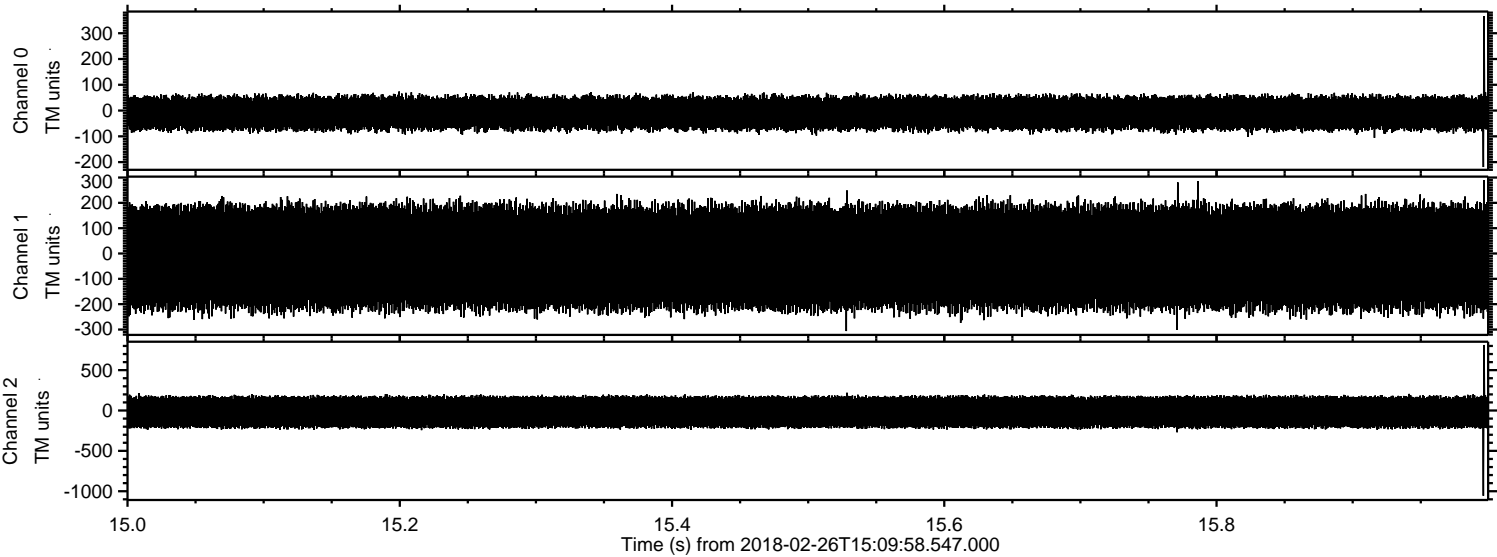
Processed Mon Feb 26 16:20:35 2018 by ELM ver.2012-10-06 from 001__elm20180226_150957__dat00.bin



Processed Mon Feb 26 16:20:36 2018 by ELM ver.2012-10-06 from 001__elm20180226_150957__dat00.bin

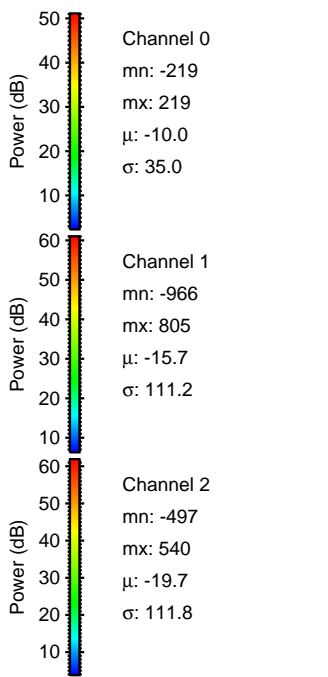
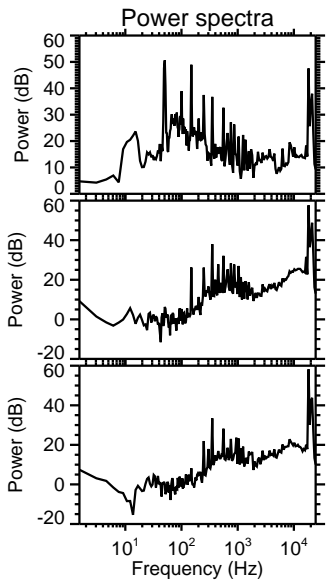
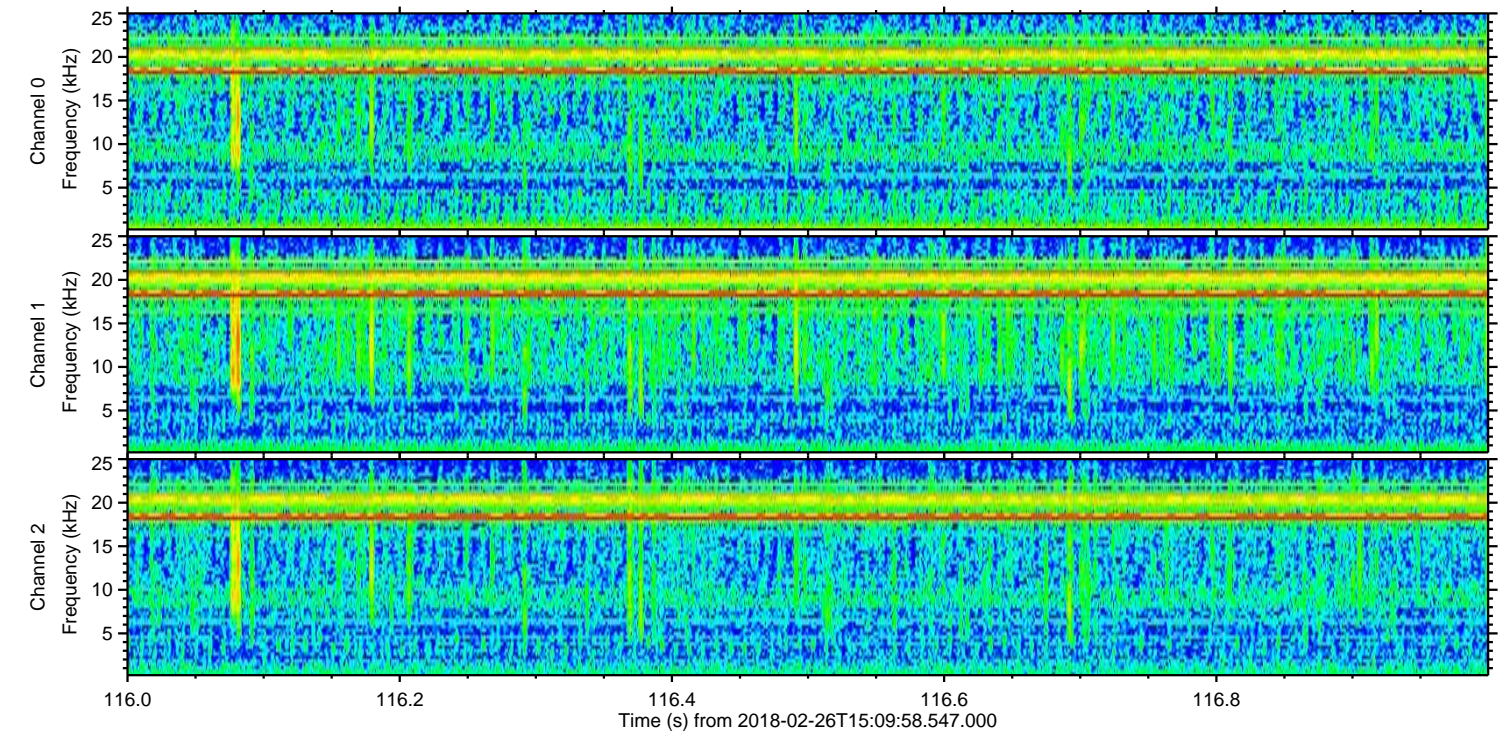
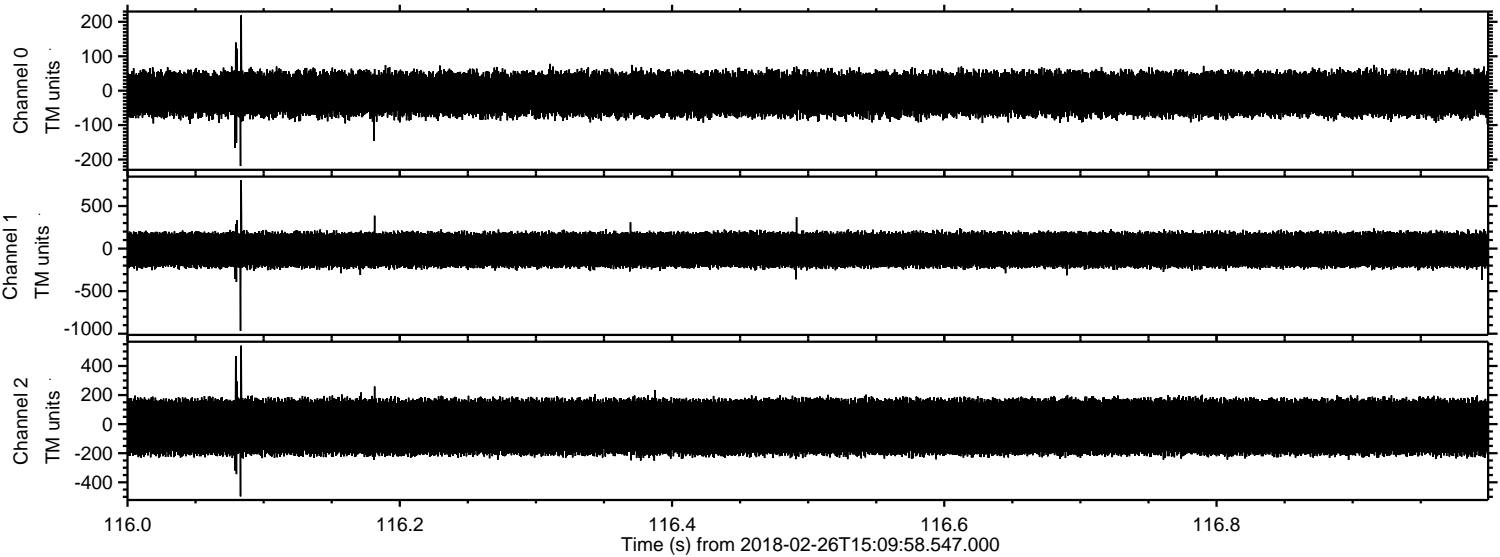


Processed Mon Feb 26 16:20:37 2018 by ELM ver.2012-10-06 from 001__elm20180226_150957__dat00.bin

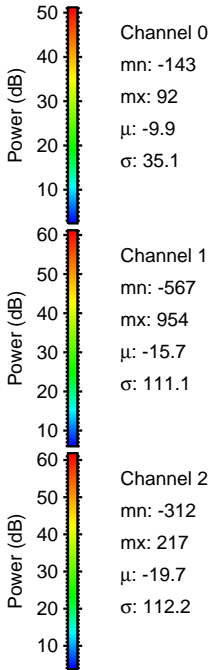
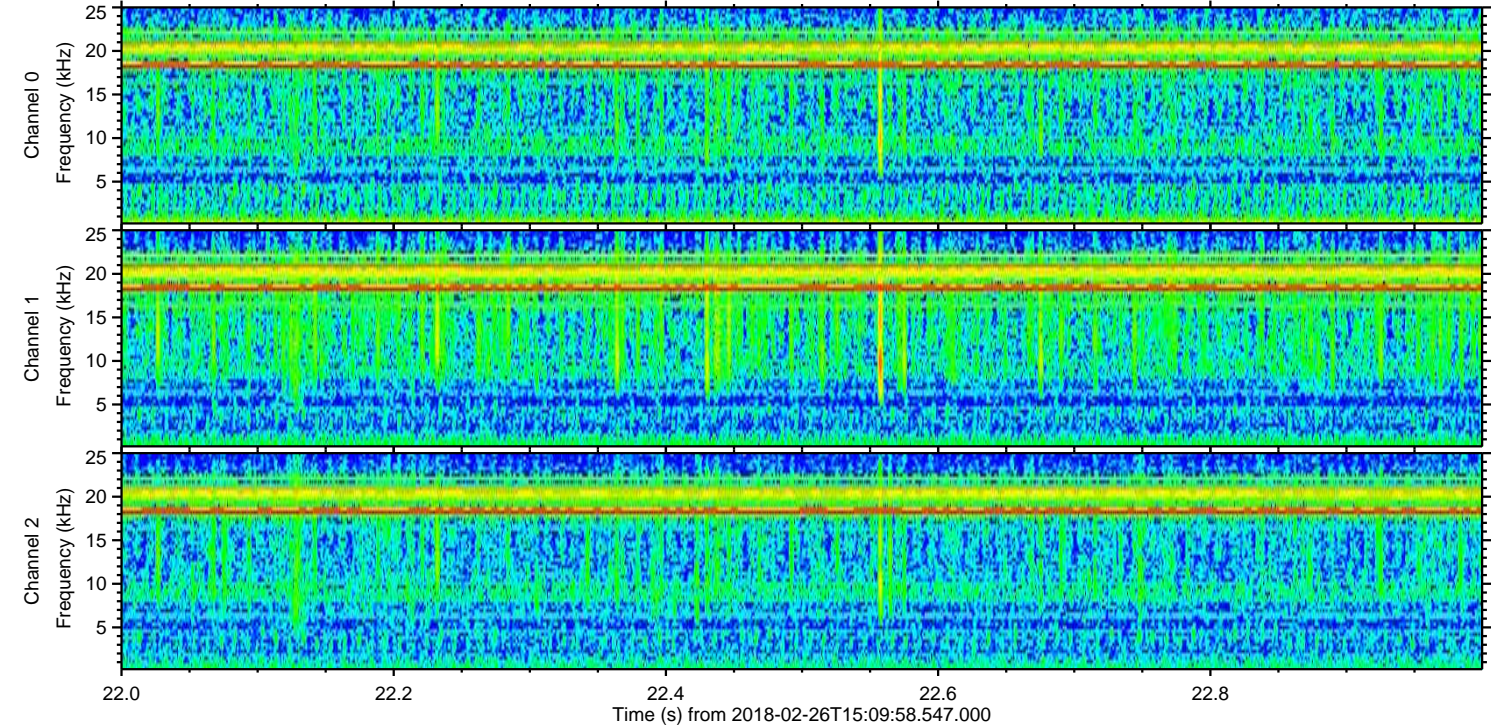
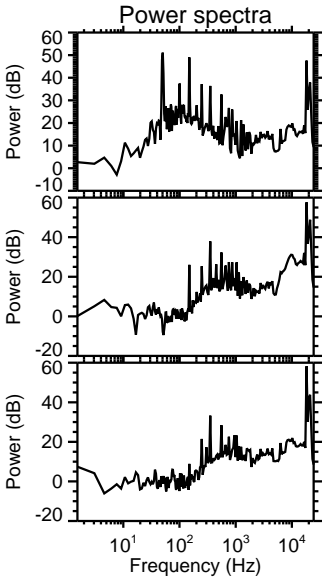
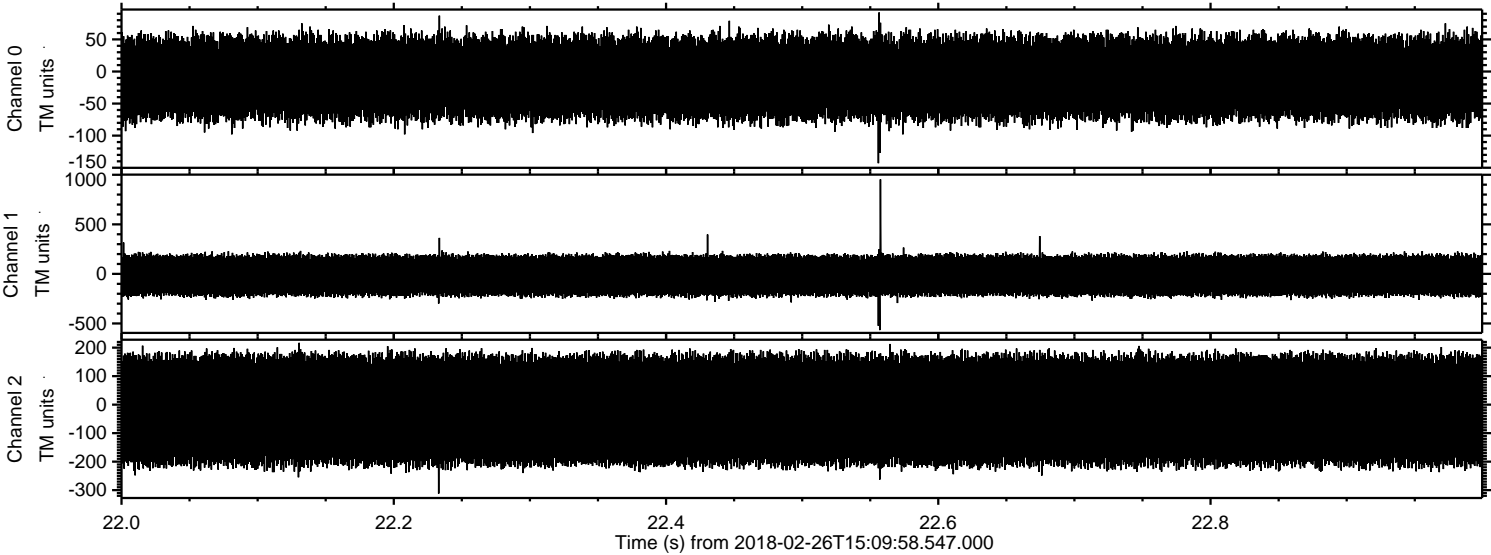


ELMAVAN 3D WAVEFORMS (Measured data sampled at 50 kHz) 51000 packets of 144 samples from 2018-02-26T15:09:58.547.000. Part 117/147

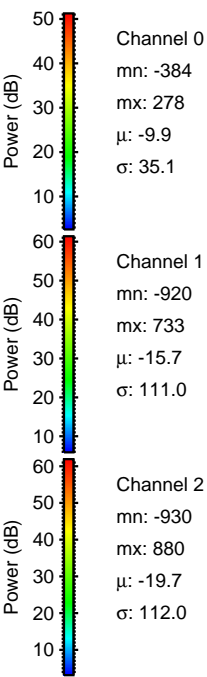
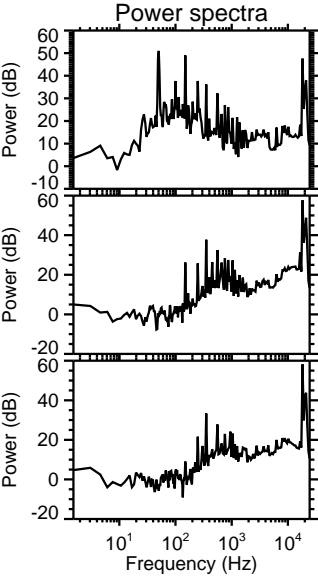
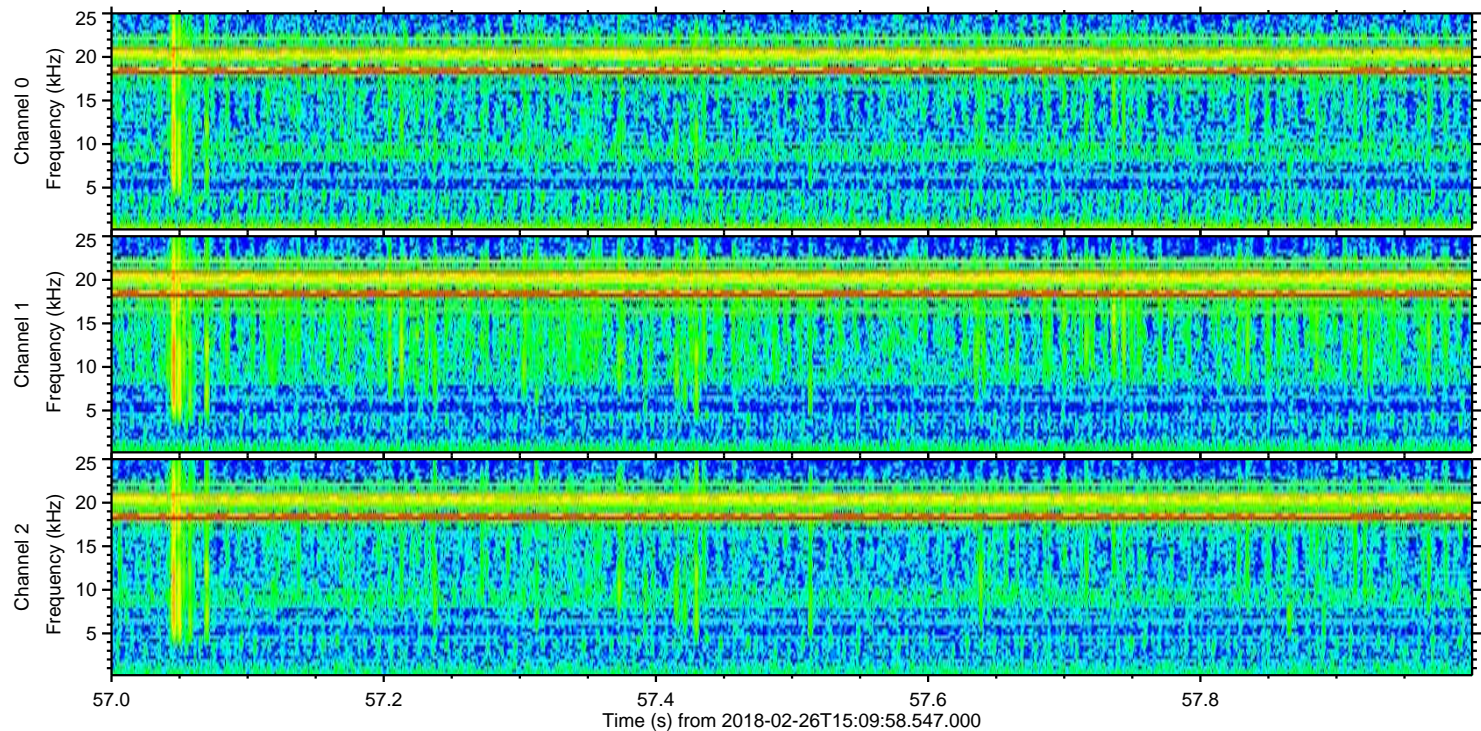
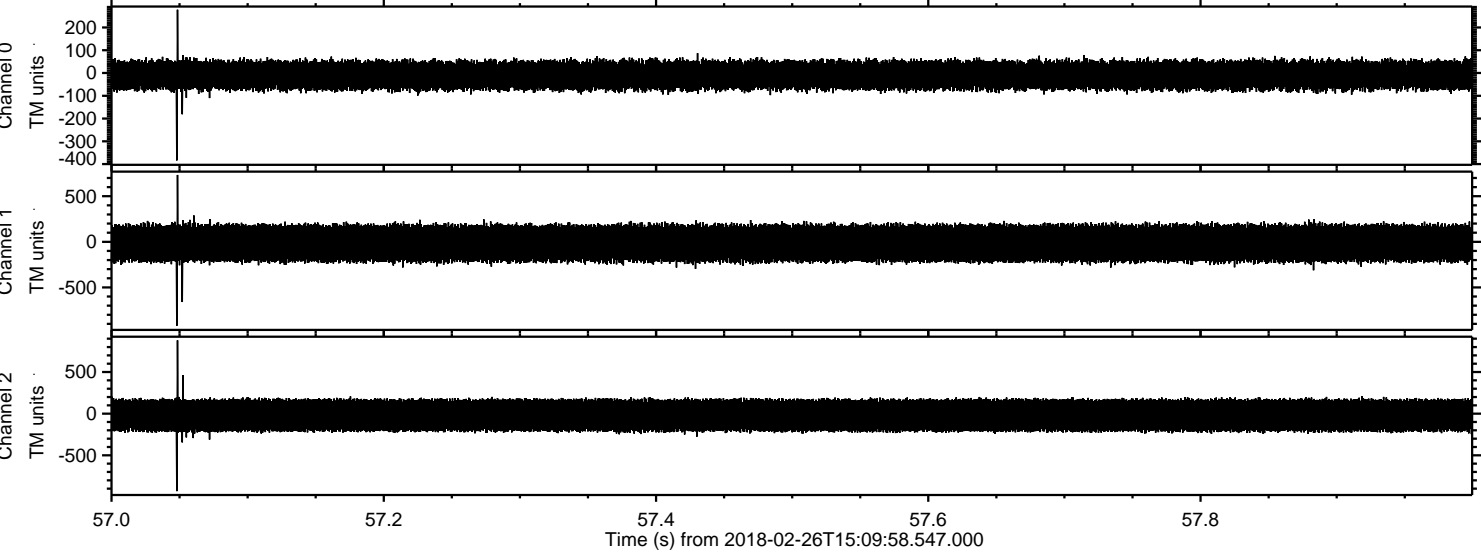
Processed Mon Feb 26 16:20:38 2018 by ELM ver.2012-10-06 from 001__elm20180226_150957__dat00.bin



Processed Mon Feb 26 16:20:39 2018 by ELM ver.2012-10-06 from 001__elm20180226_150957__dat00.bin



Processed Mon Feb 26 16:20:40 2018 by ELM ver.2012-10-06 from 001__elm20180226_150957__dat00.bin

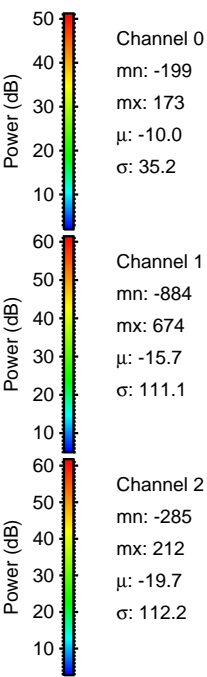
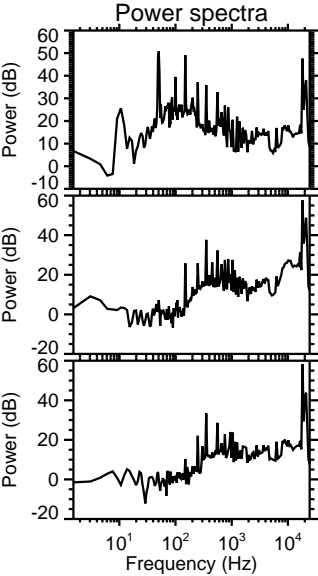
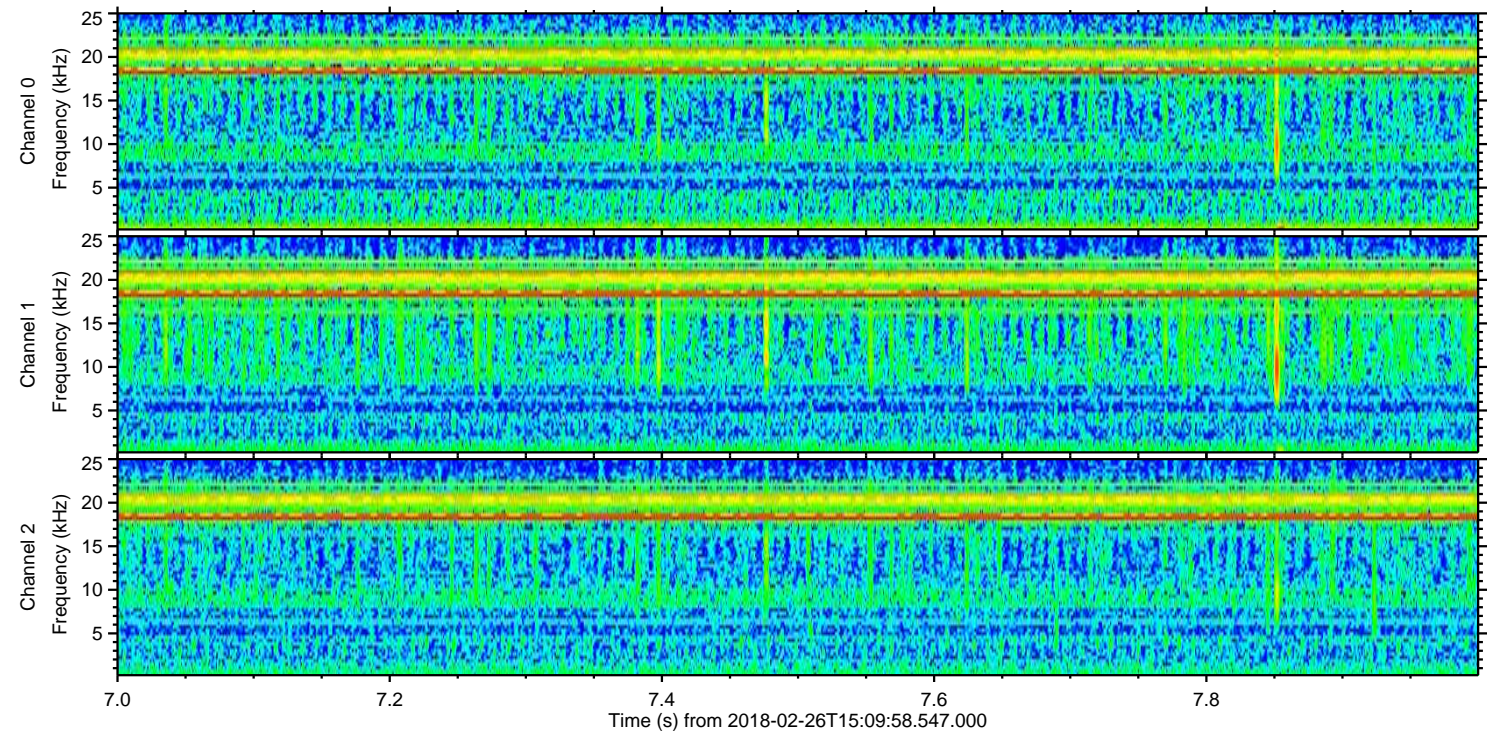
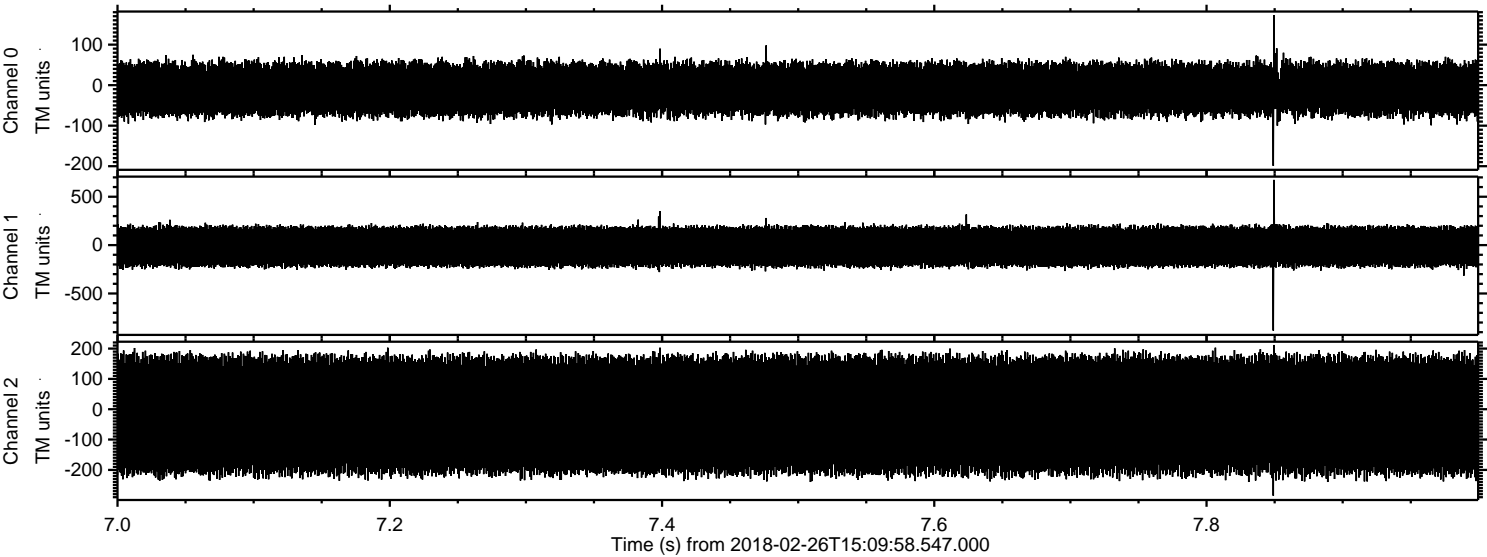


Channel 0
mn: -384
mx: 278
 μ : -9.9
 σ : 35.1

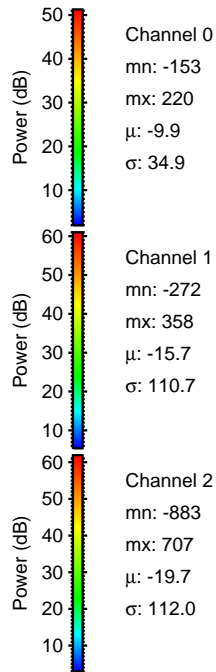
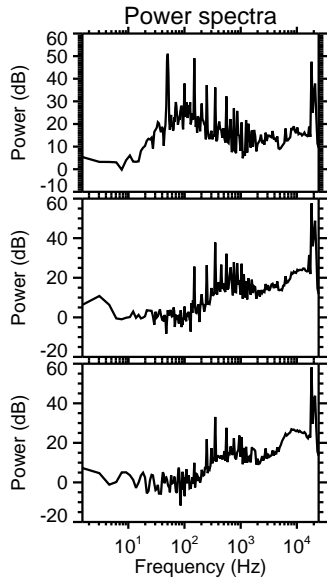
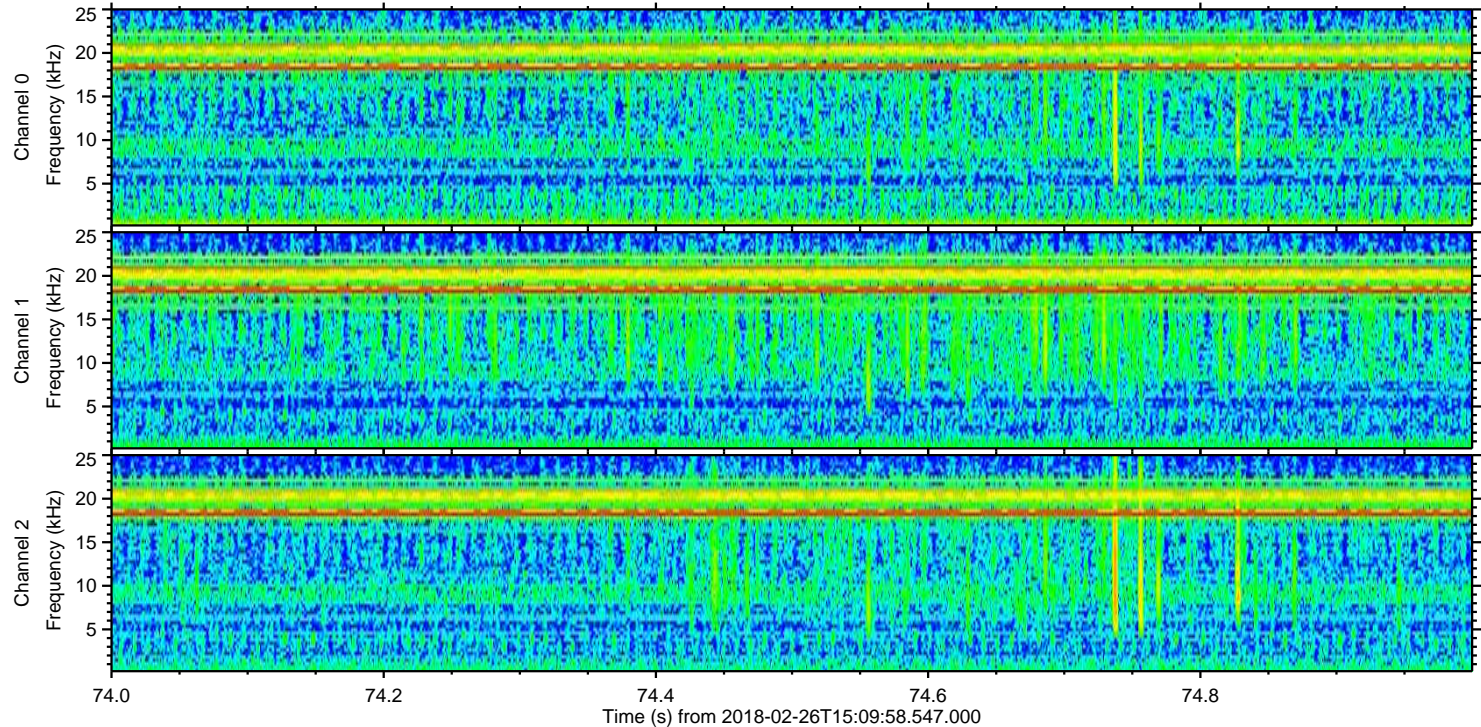
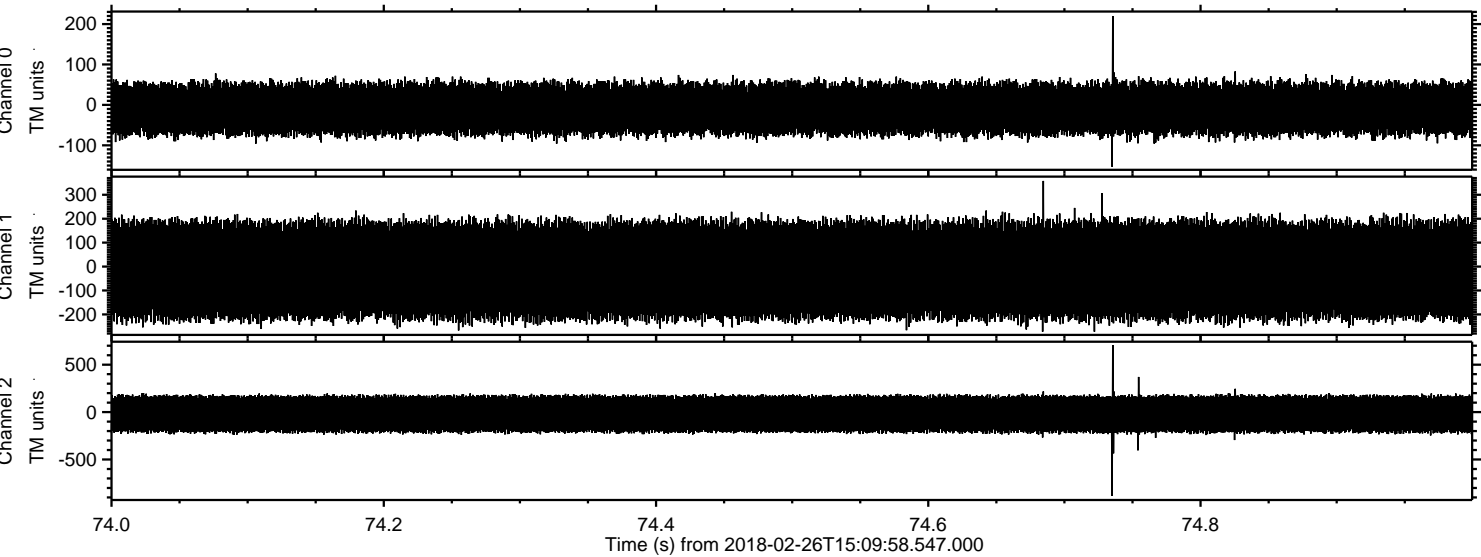
Channel 1
mn: -920
mx: 733
 μ : -15.7
 σ : 111.0

Channel 2
mn: -930
mx: 880
 μ : -19.7
 σ : 112.0

Processed Mon Feb 26 16:20:41 2018 by ELM ver.2012-10-06 from 001__elm20180226_150957__dat00.bin



Processed Mon Feb 26 16:20:41 2018 by ELM ver.2012-10-06 from 001__elm20180226_150957__dat00.bin



Processed Mon Feb 26 16:20:42 2018 by ELM ver.2012-10-06 from 001__elm20180226_150957__dat00.bin

