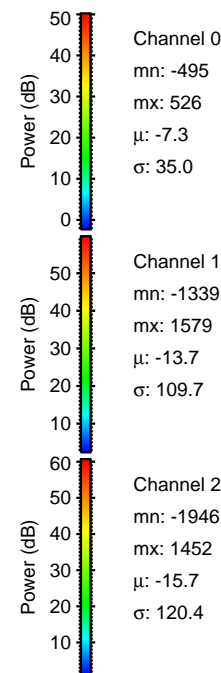
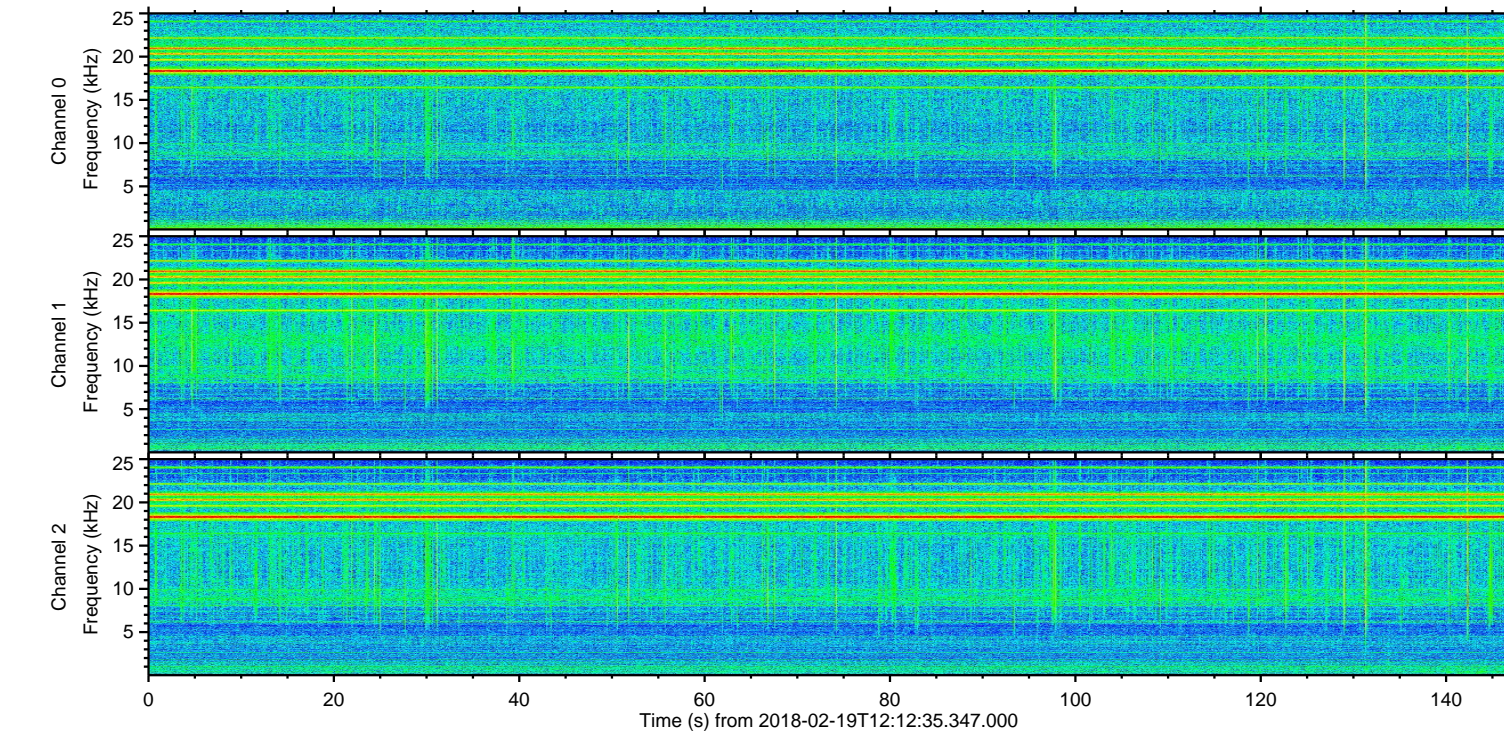
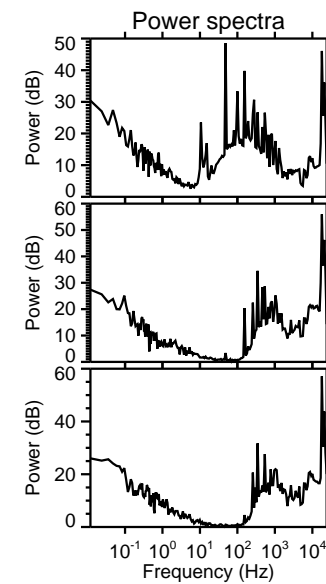
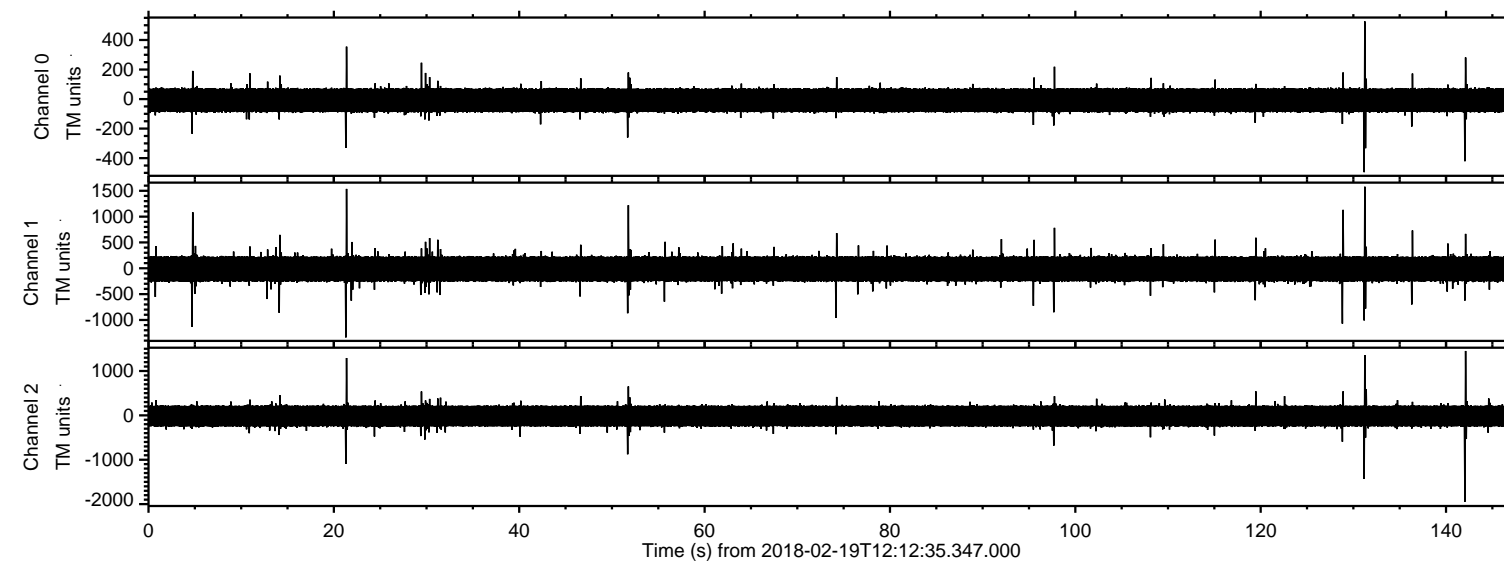


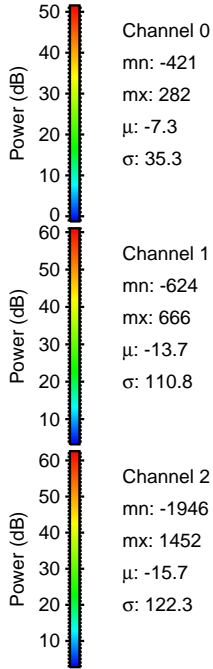
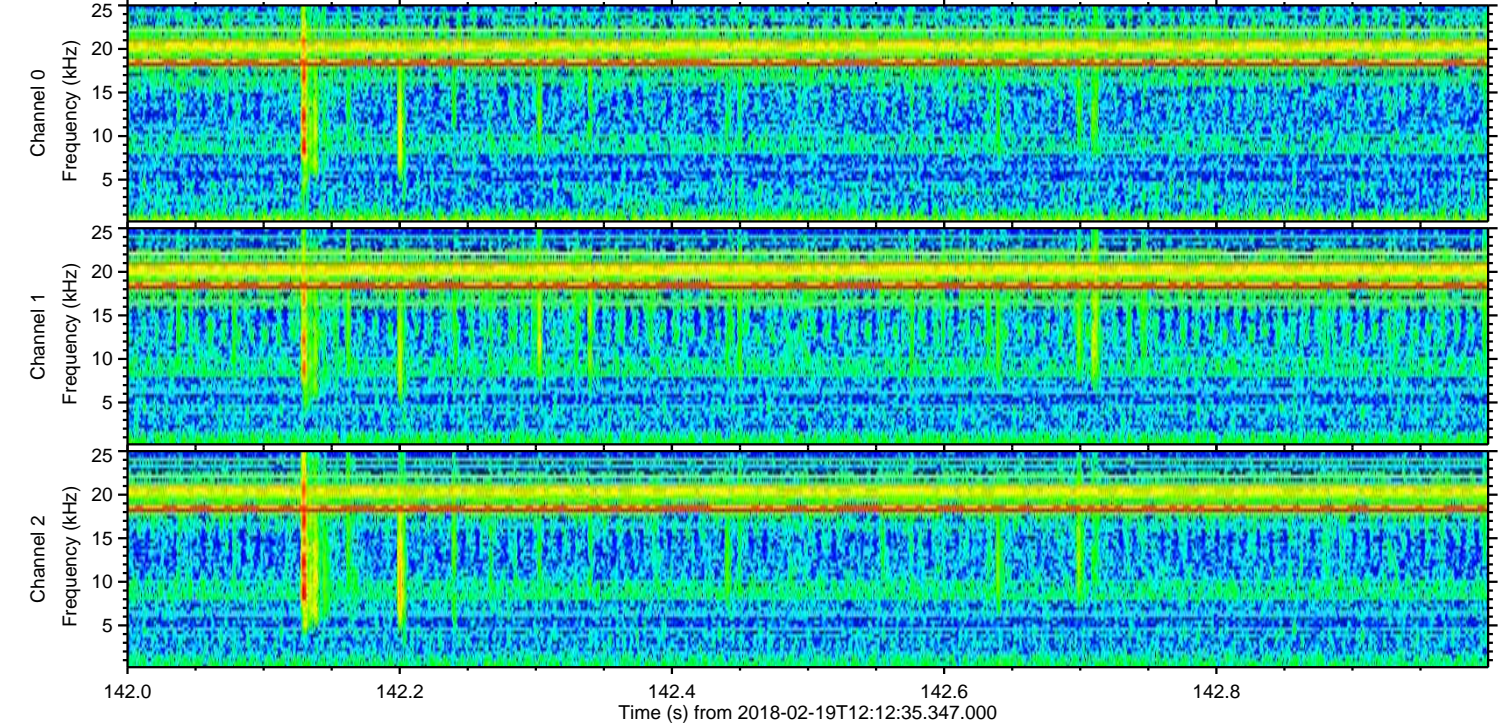
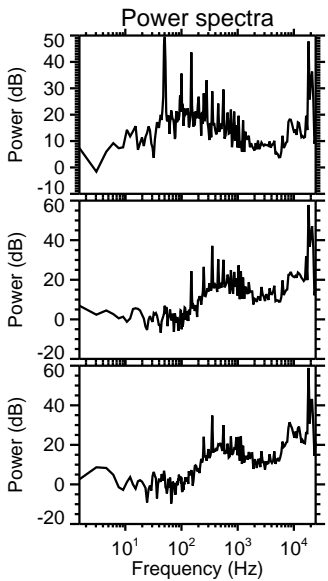
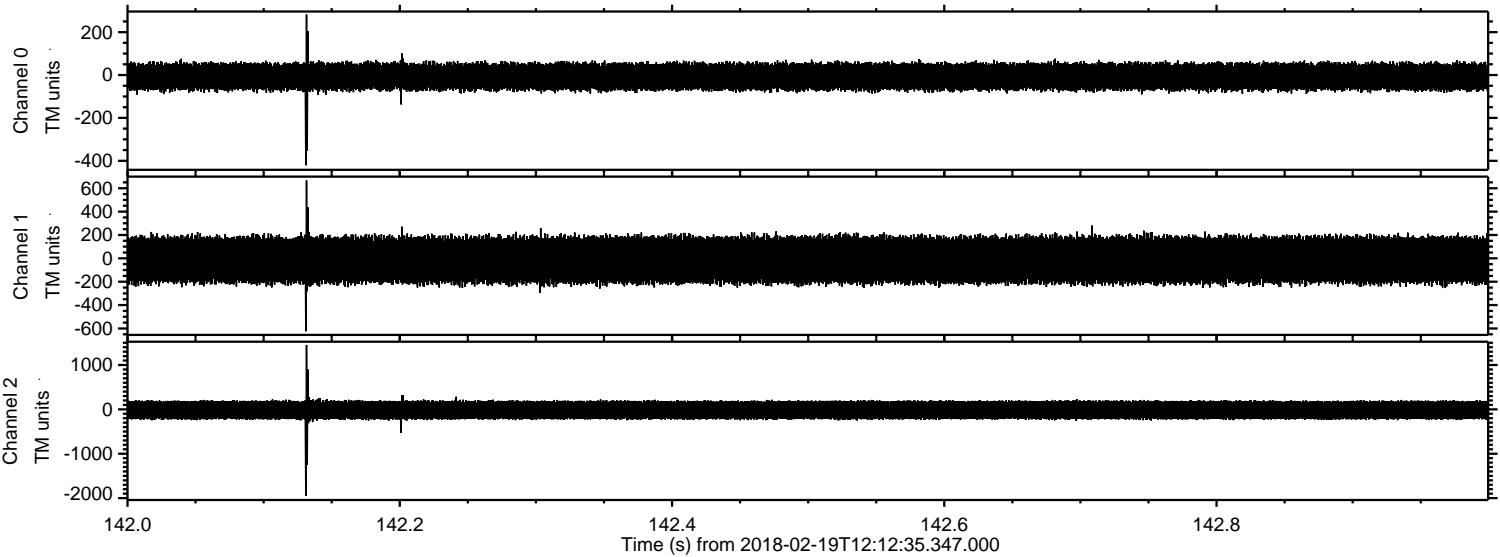
ELMAVAN 3D WAVEFORMS (Measured data sampled at 50 kHz) 51000 packets of 144 samples from 2018-02-19T12:12:35.347.000.

Processed Mon Feb 19 13:20:57 2018 by ELM ver.2012-10-06 from 001__elm20180219_121234__dat00.bin



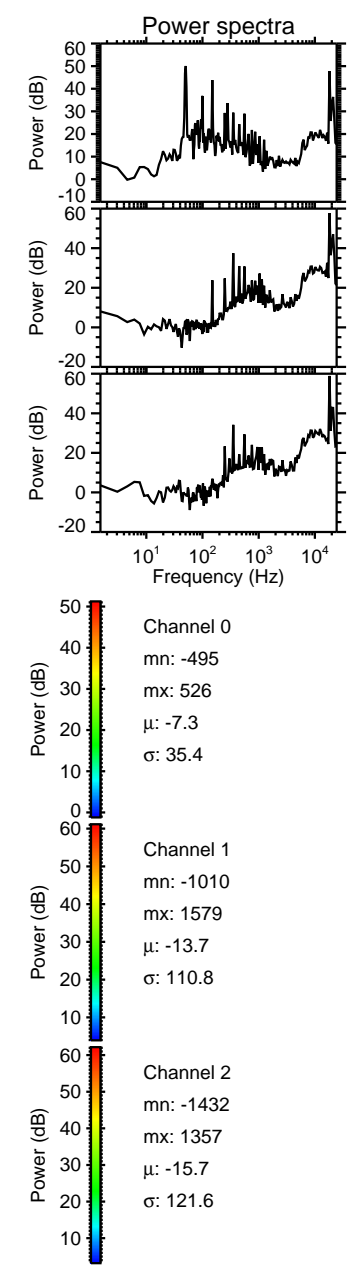
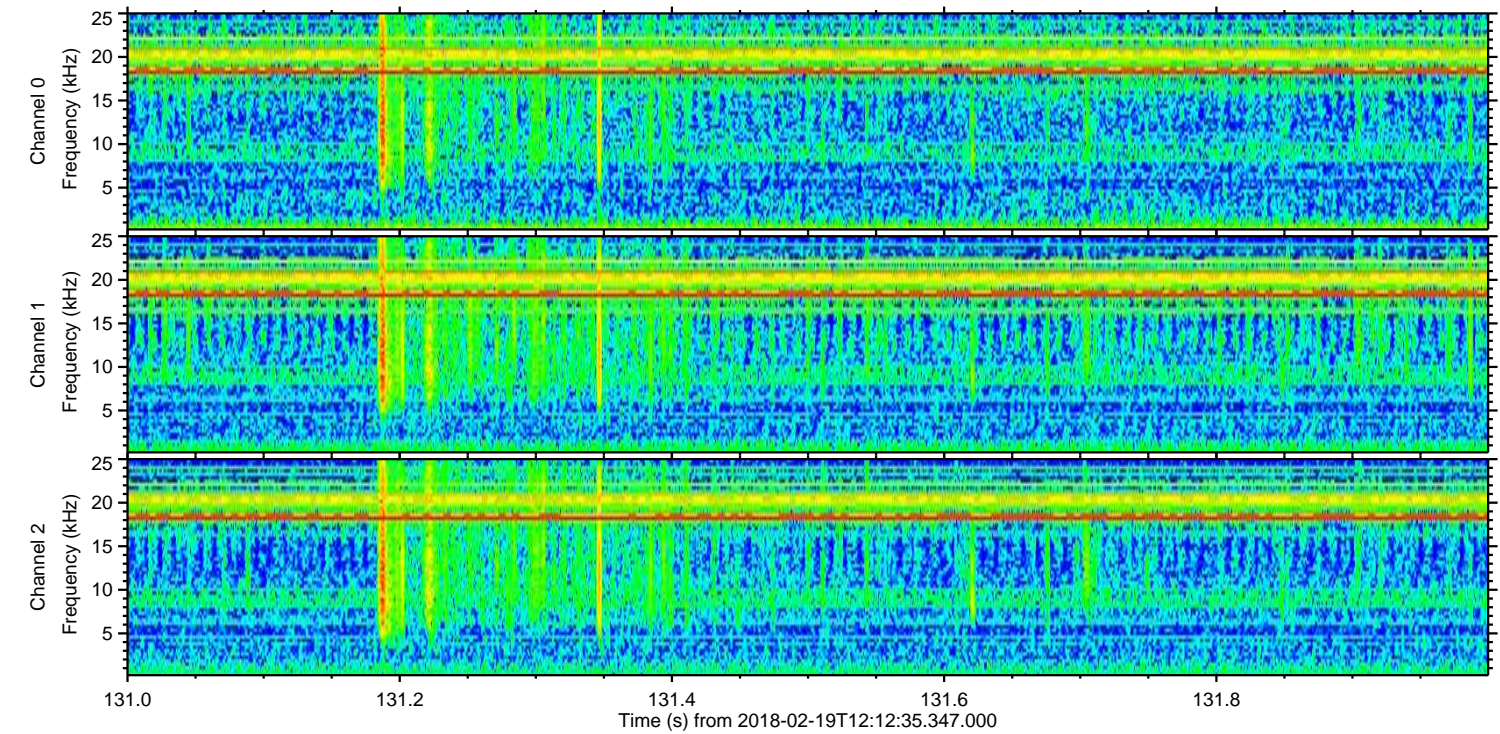
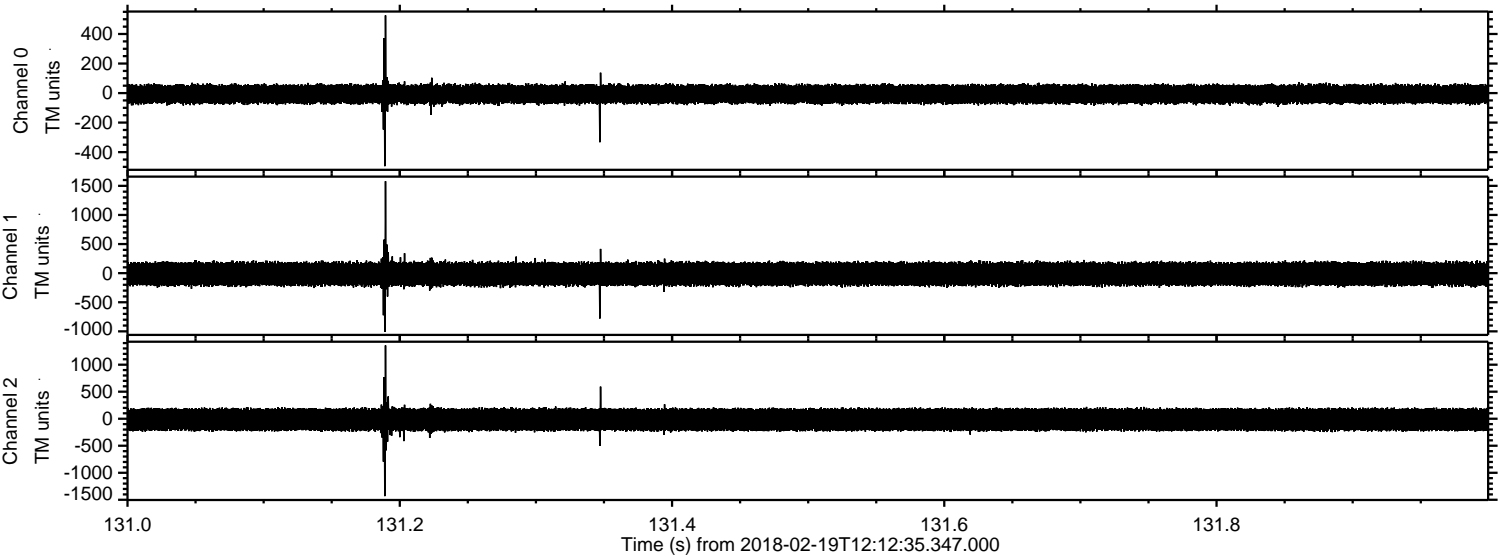
ELMAVAN 3D WAVEFORMS (Measured data sampled at 50 kHz) 51000 packets of 144 samples from 2018-02-19T12:12:35.347.000. Part 143/147

Processed Mon Feb 19 13:21:05 2018 by ELM ver.2012-10-06 from 001__elm20180219_121234__dat00.bin

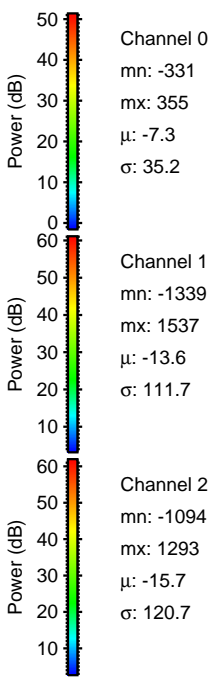
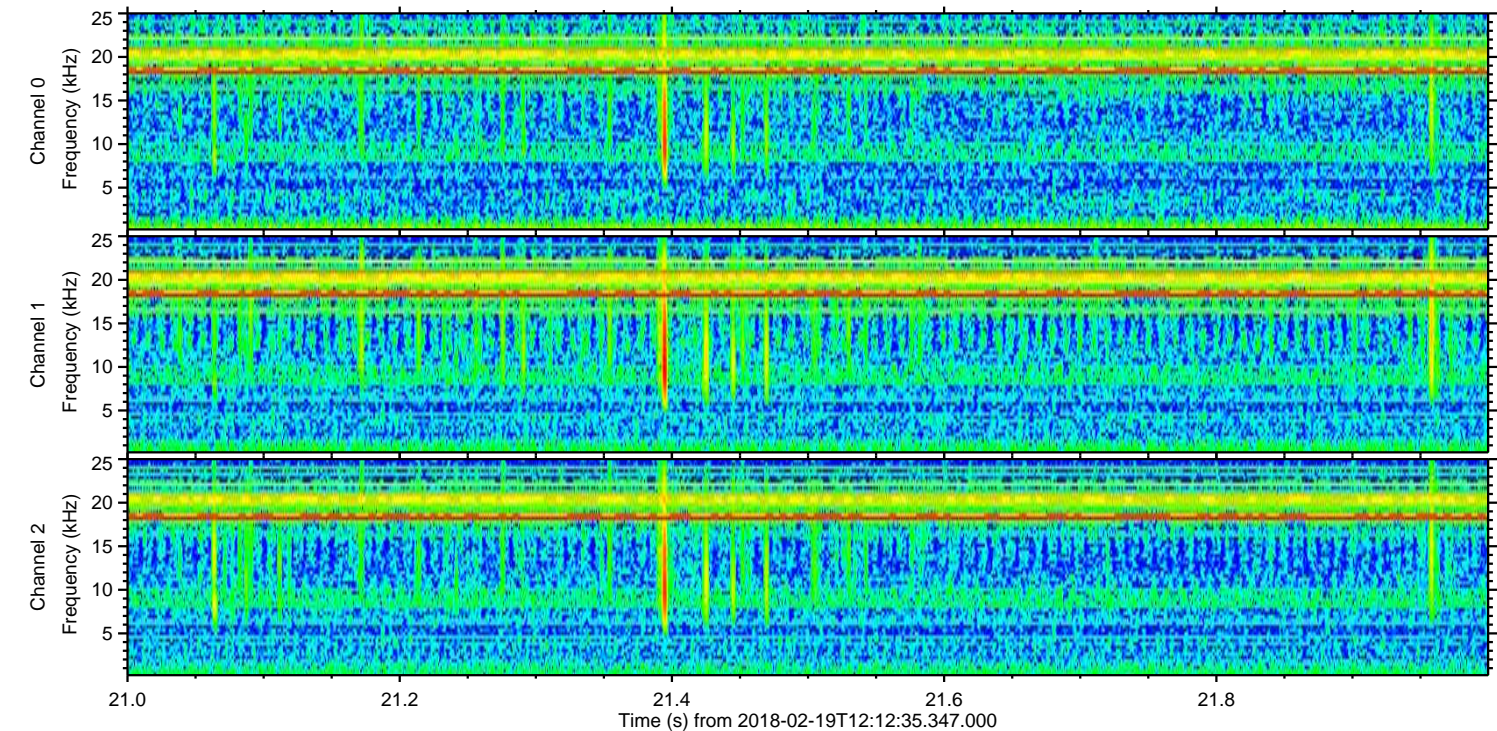
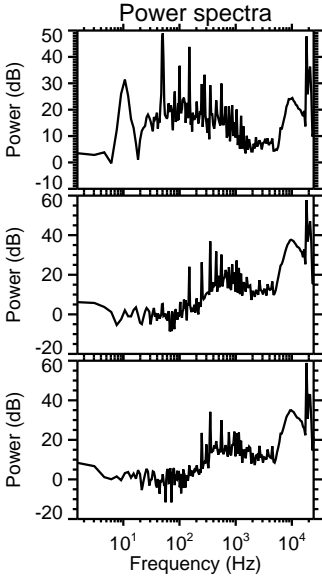
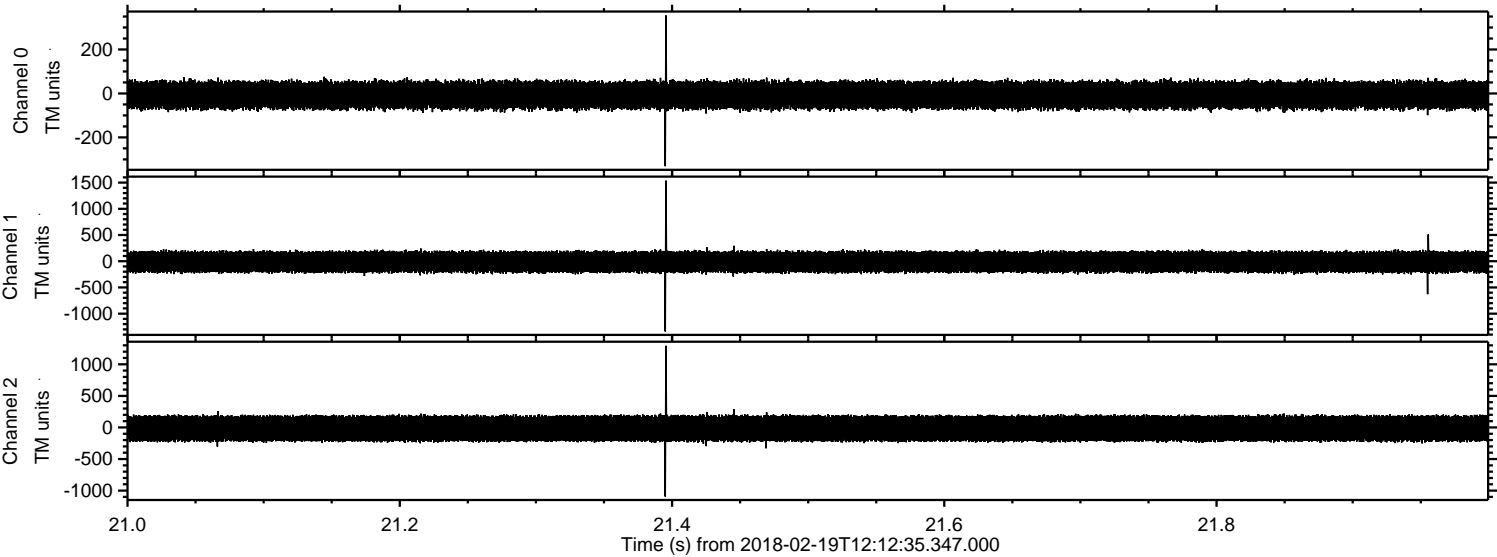


ELMAVAN 3D WAVEFORMS (Measured data sampled at 50 kHz) 51000 packets of 144 samples from 2018-02-19T12:12:35.347.000. Part 132/147

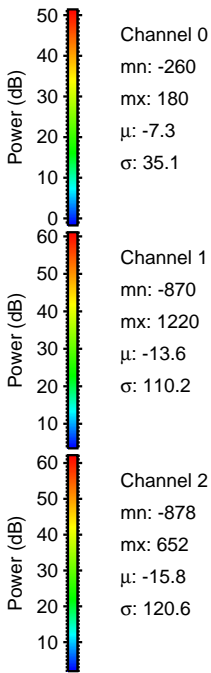
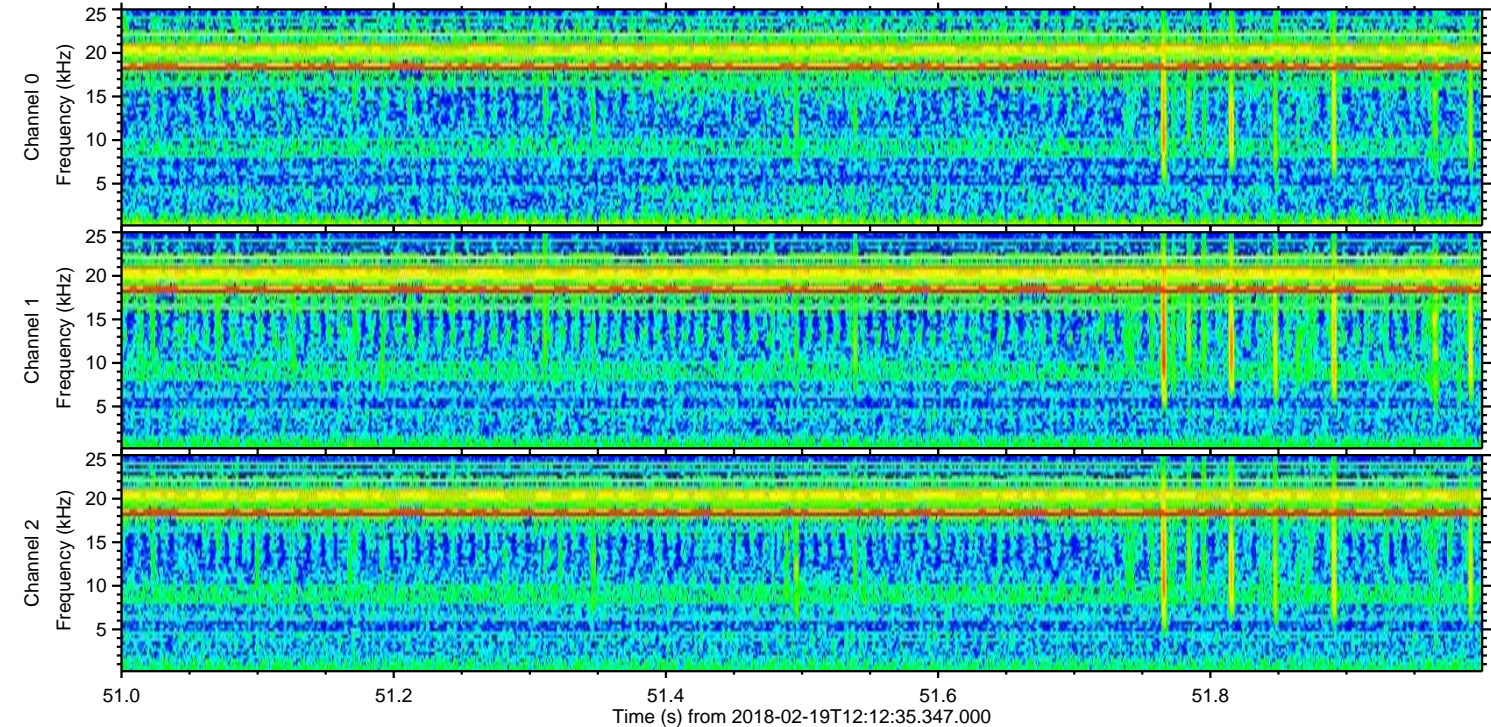
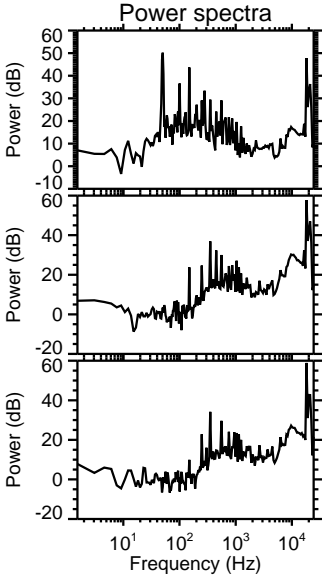
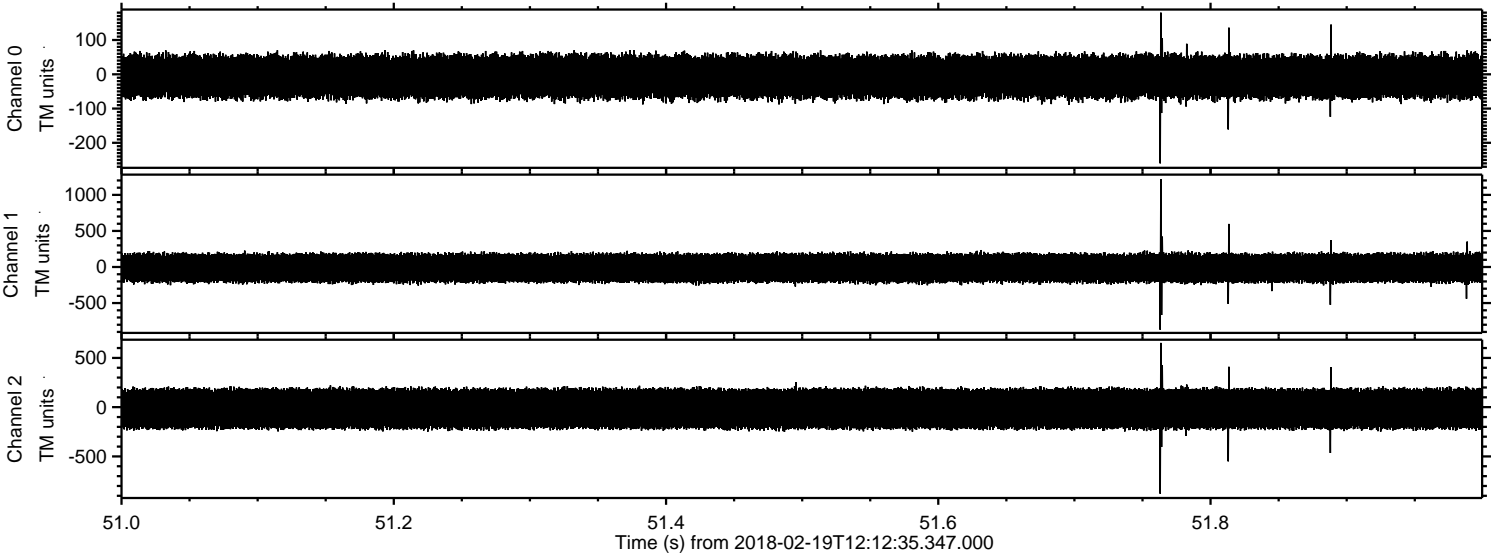
Processed Mon Feb 19 13:21:06 2018 by ELM ver.2012-10-06 from 001__elm20180219_121234__dat00.bin



Processed Mon Feb 19 13:21:06 2018 by ELM ver.2012-10-06 from 001__elm20180219_121234__dat00.bin

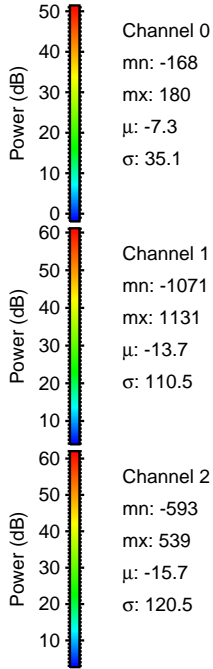
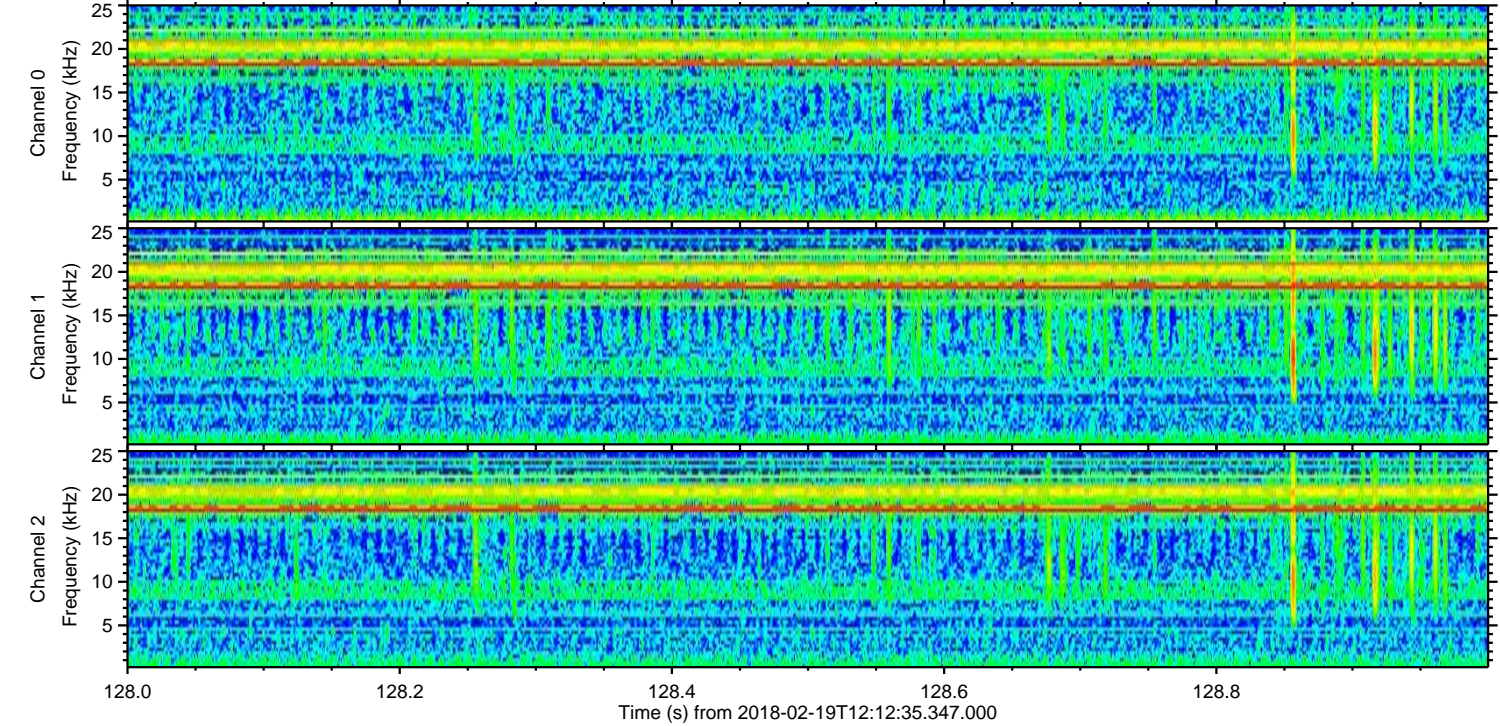
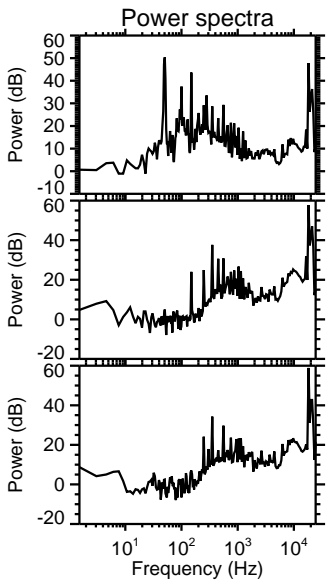
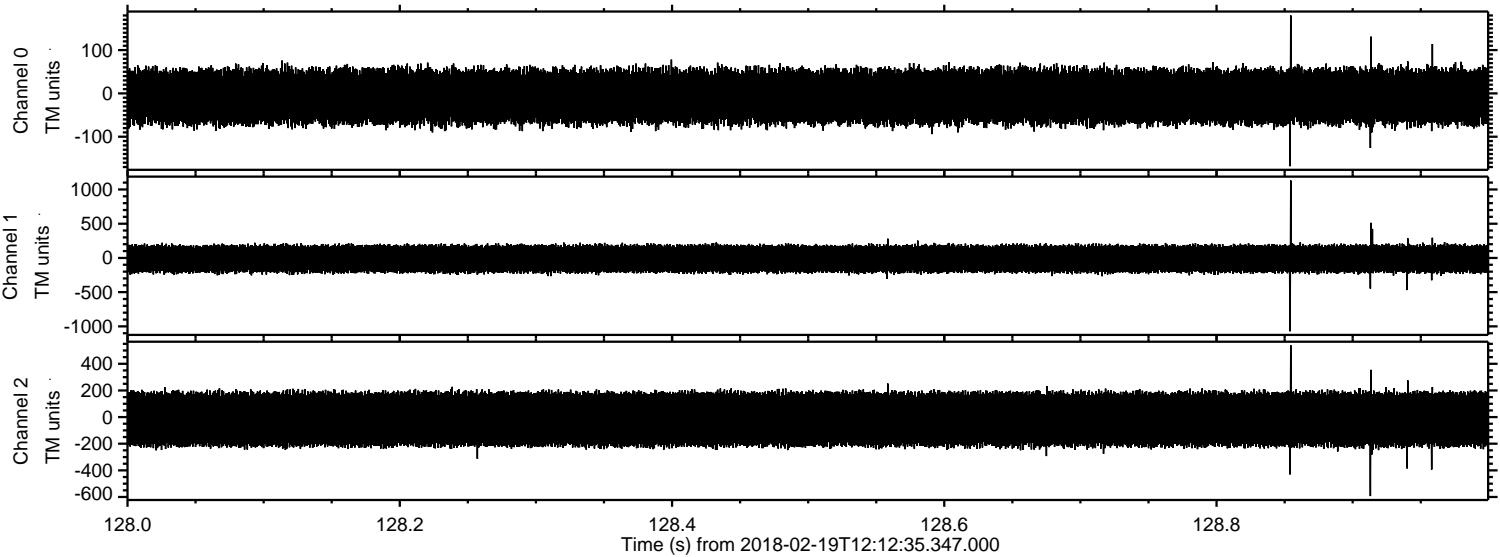


Processed Mon Feb 19 13:21:07 2018 by ELM ver.2012-10-06 from 001__elm20180219_121234__dat00.bin



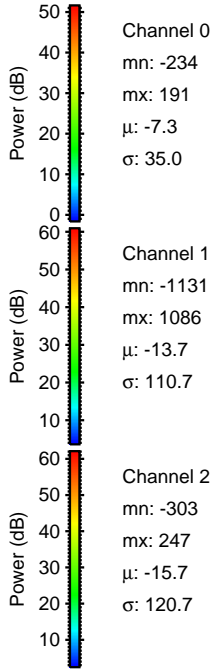
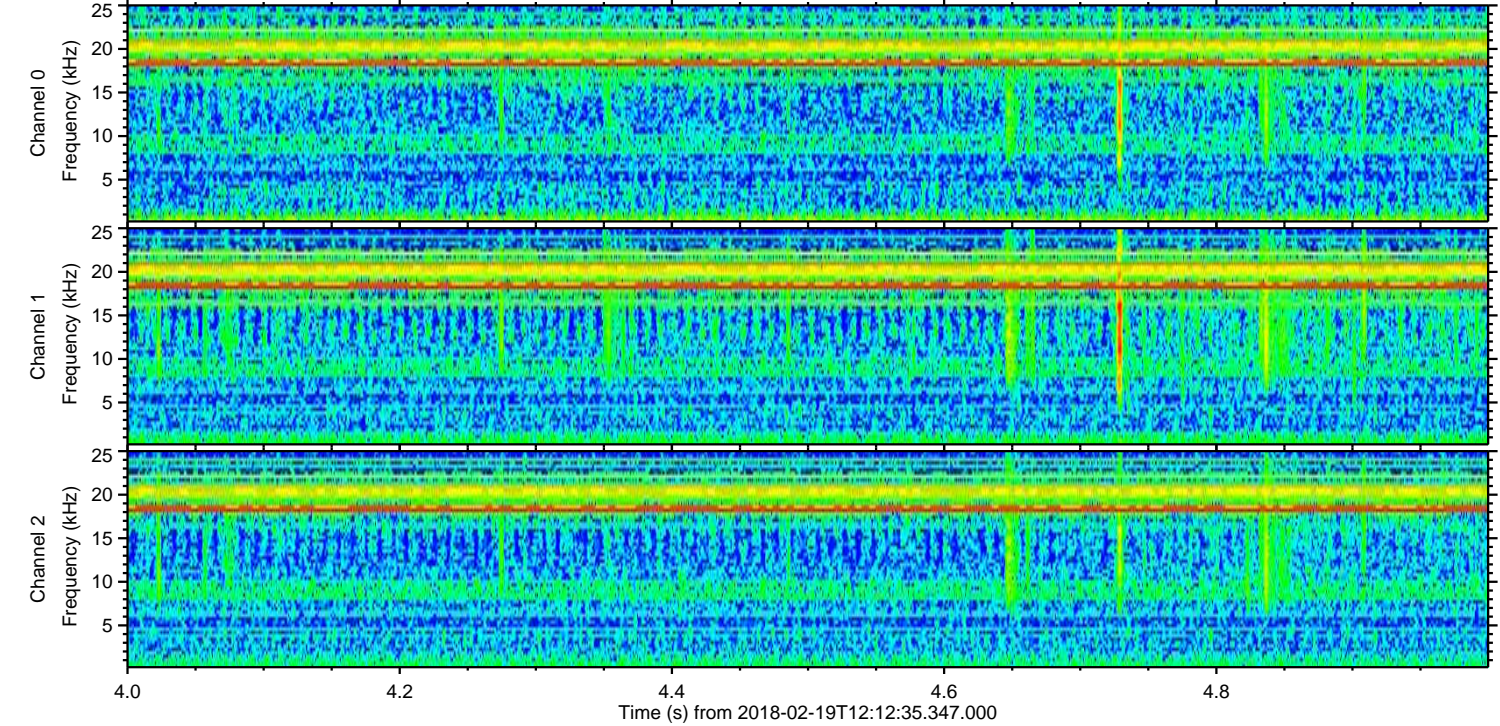
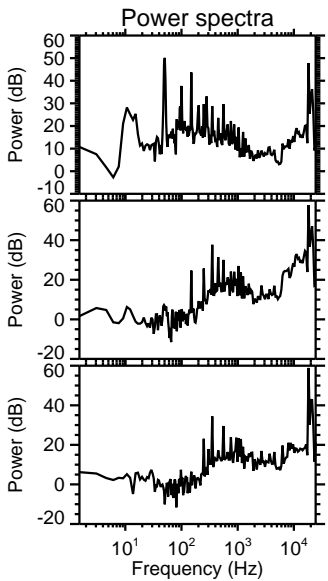
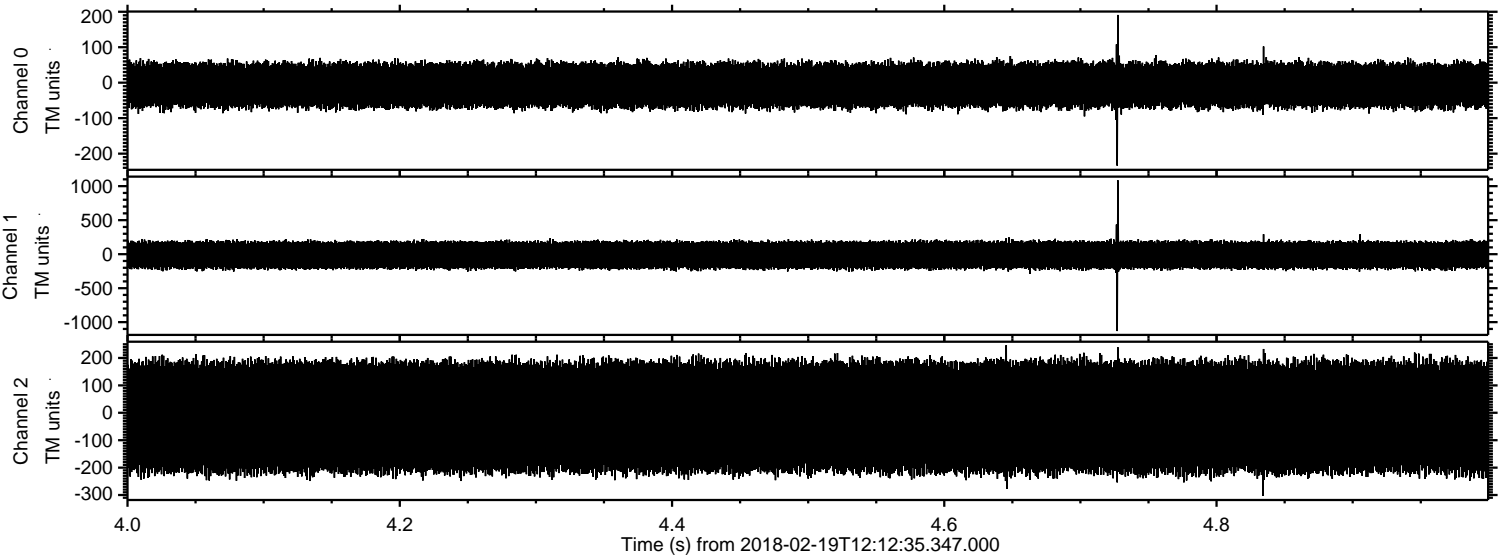
ELMAVAN 3D WAVEFORMS (Measured data sampled at 50 kHz) 51000 packets of 144 samples from 2018-02-19T12:12:35.347.000. Part 129/147

Processed Mon Feb 19 13:21:08 2018 by ELM ver.2012-10-06 from 001__elm20180219_121234__dat00.bin

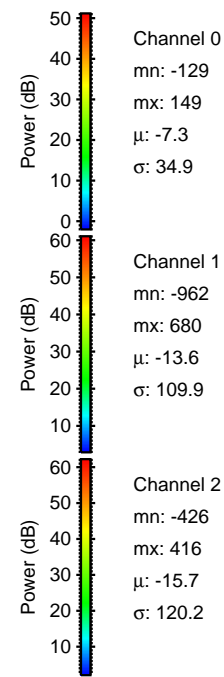
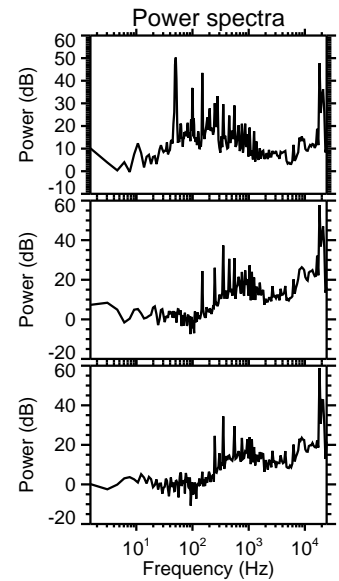
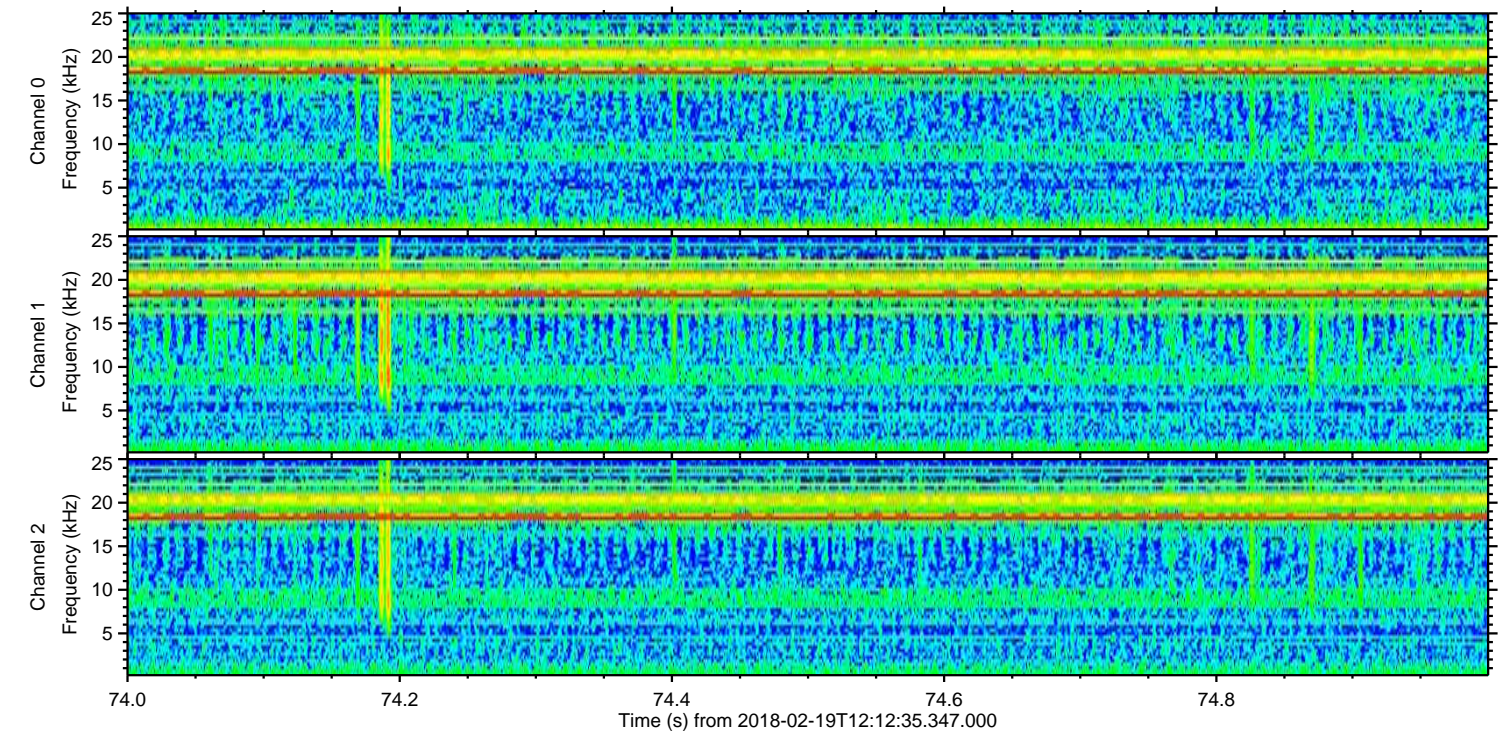
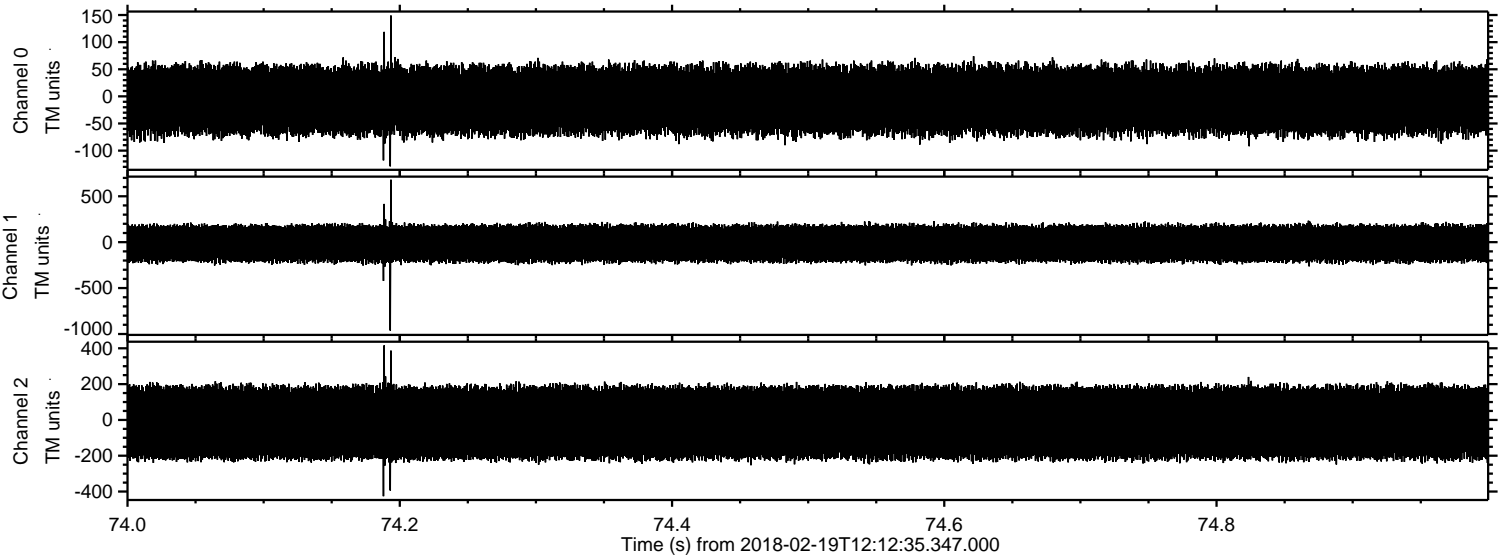


ELMAVAN 3D WAVEFORMS (Measured data sampled at 50 kHz) 51000 packets of 144 samples from 2018-02-19T12:12:35.347.000. Part 5/147

Processed Mon Feb 19 13:21:09 2018 by ELM ver.2012-10-06 from 001__elm20180219_121234__dat00.bin



Processed Mon Feb 19 13:21:09 2018 by ELM ver.2012-10-06 from 001__elm20180219_121234__dat00.bin

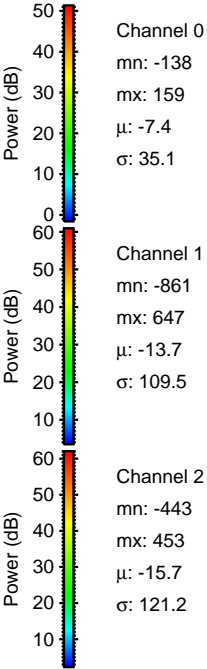
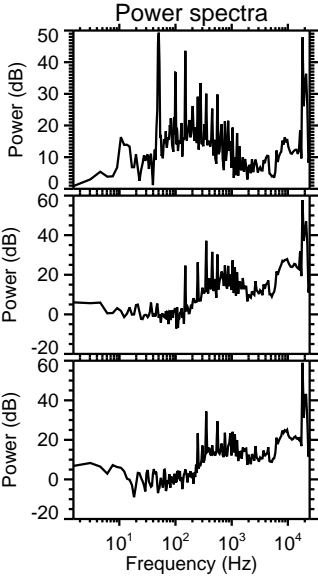
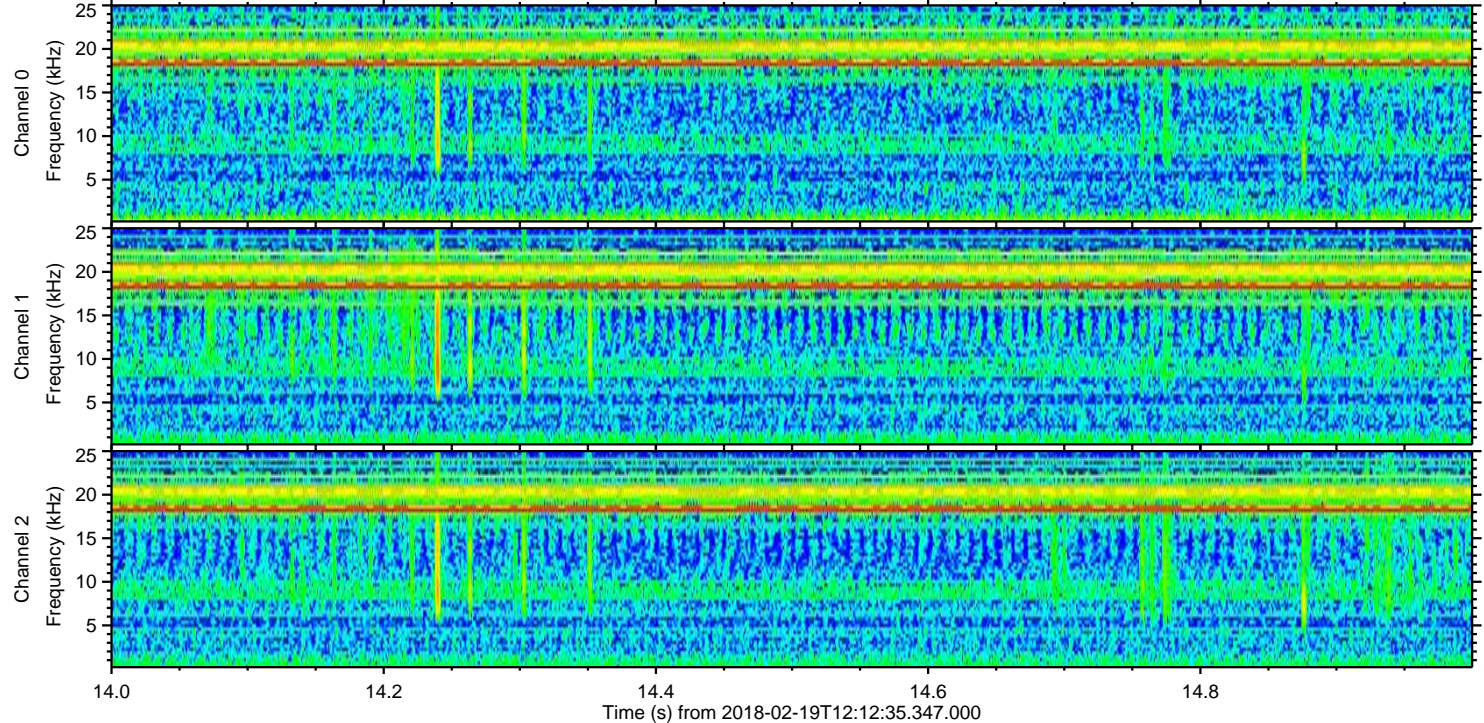
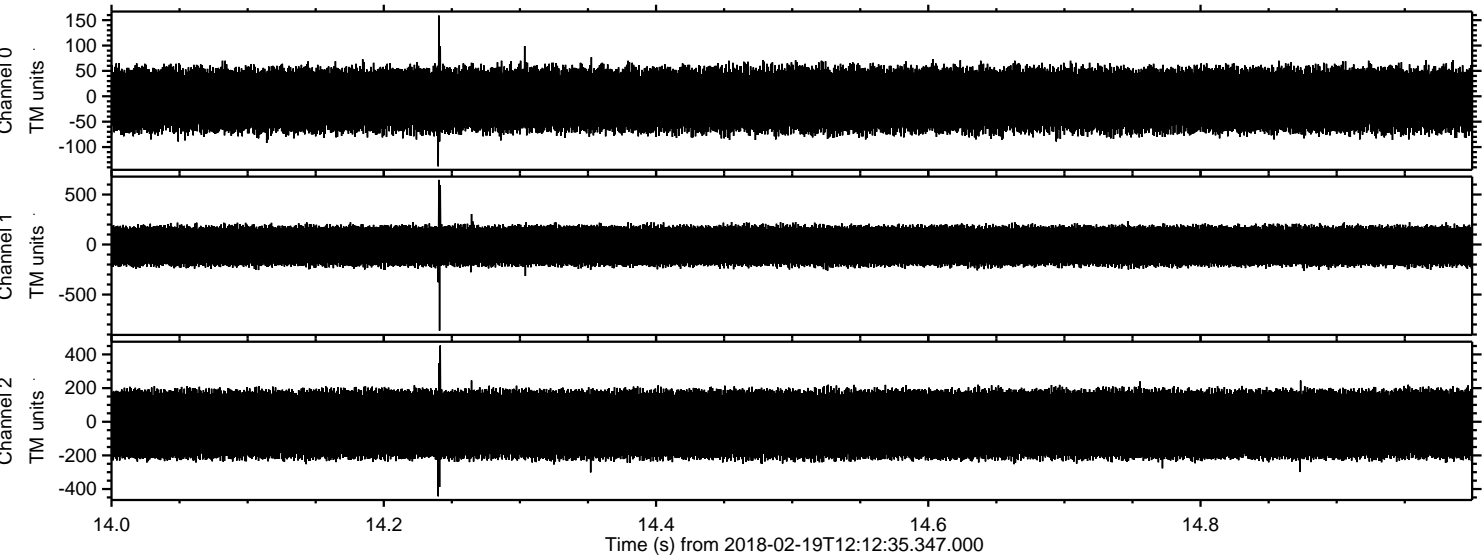


Channel 0
mn: -129
mx: 149
 μ : -7.3
 σ : 34.9

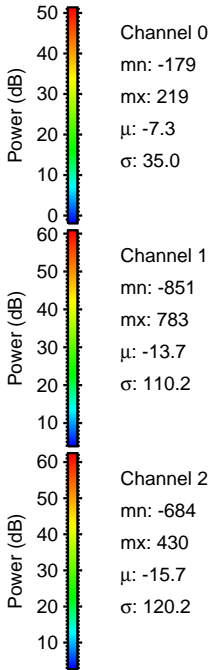
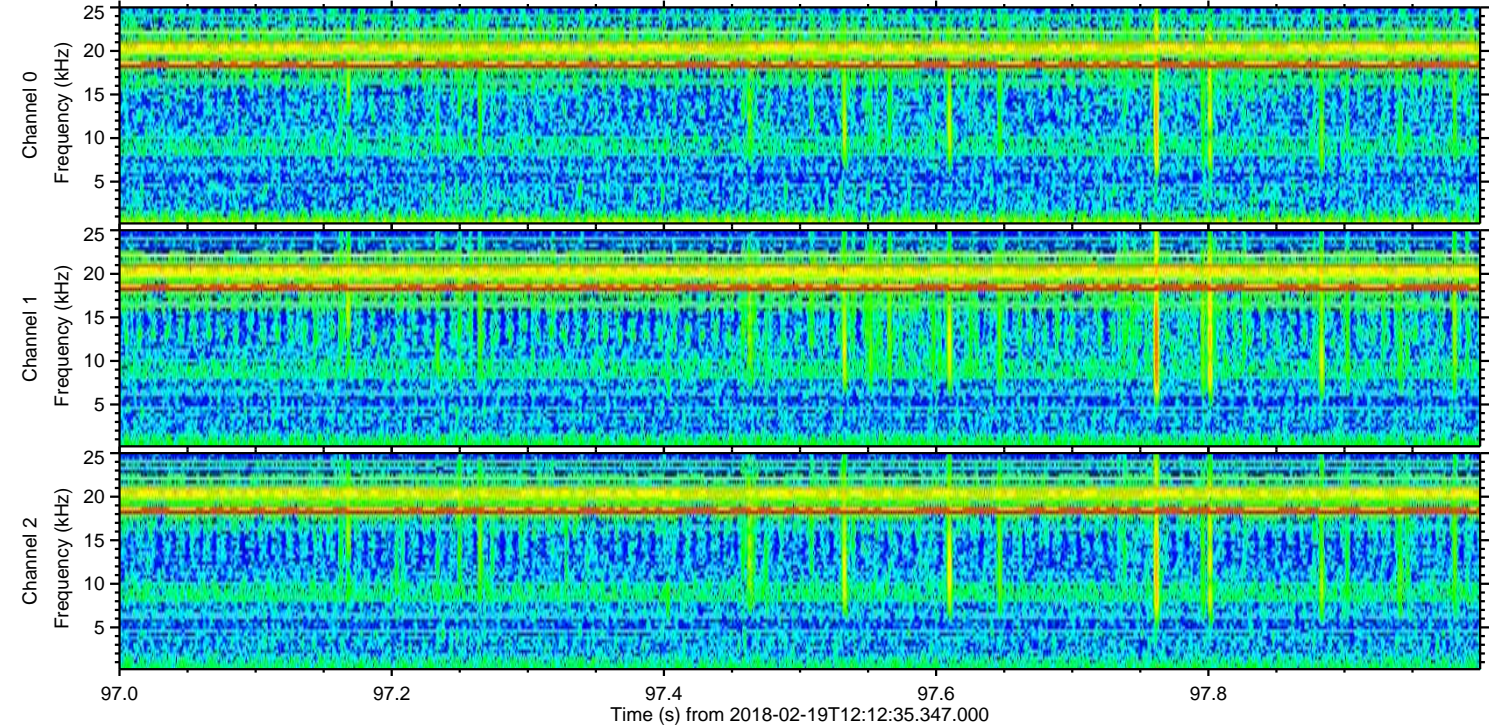
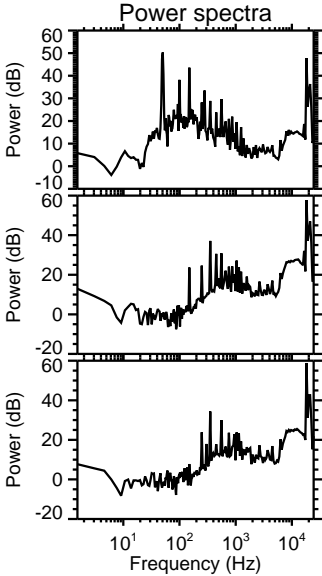
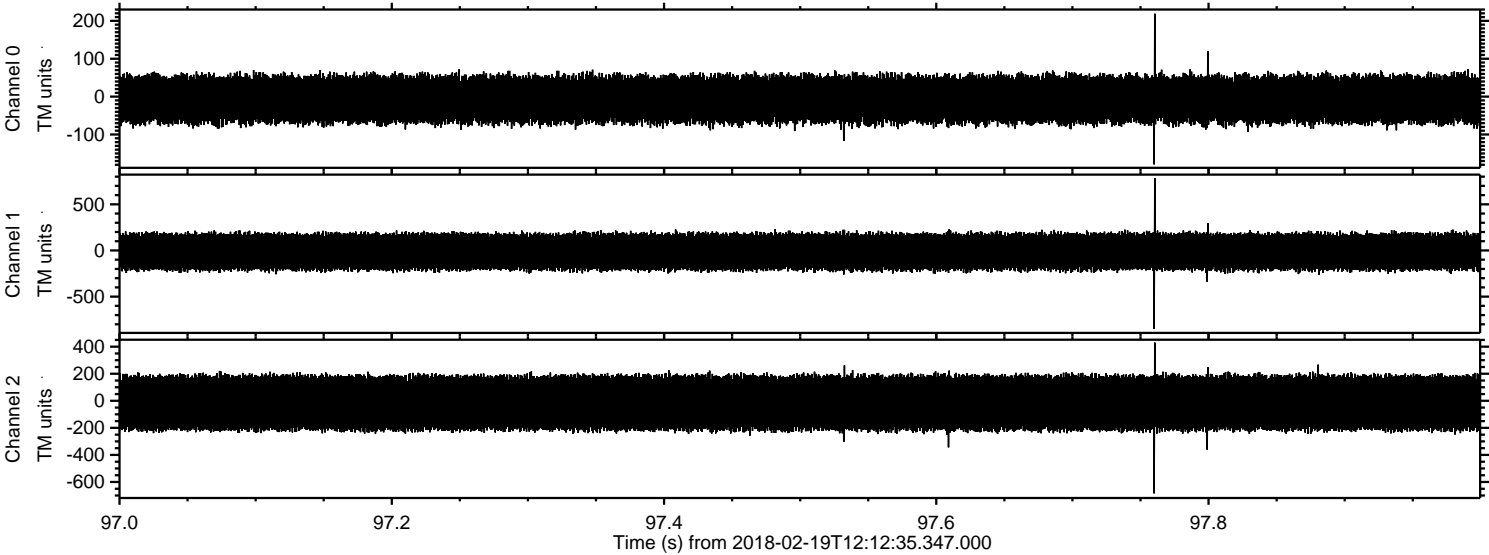
Channel 1
mn: -962
mx: 680
 μ : -13.6
 σ : 109.9

Channel 2
mn: -426
mx: 416
 μ : -15.7
 σ : 120.2

Processed Mon Feb 19 13:21:10 2018 by ELM ver.2012-10-06 from 001__elm20180219_121234__dat00.bin



Processed Mon Feb 19 13:21:11 2018 by ELM ver.2012-10-06 from 001__elm20180219_121234__dat00.bin



Processed Mon Feb 19 13:21:12 2018 by ELM ver.2012-10-06 from 001__elm20180219_121234__dat00.bin

