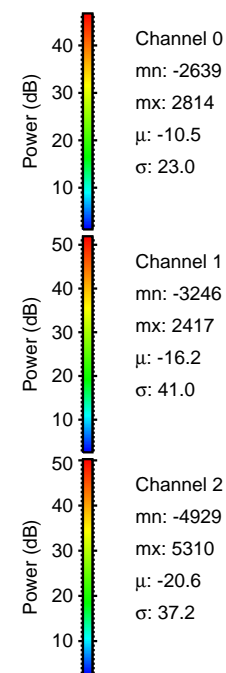
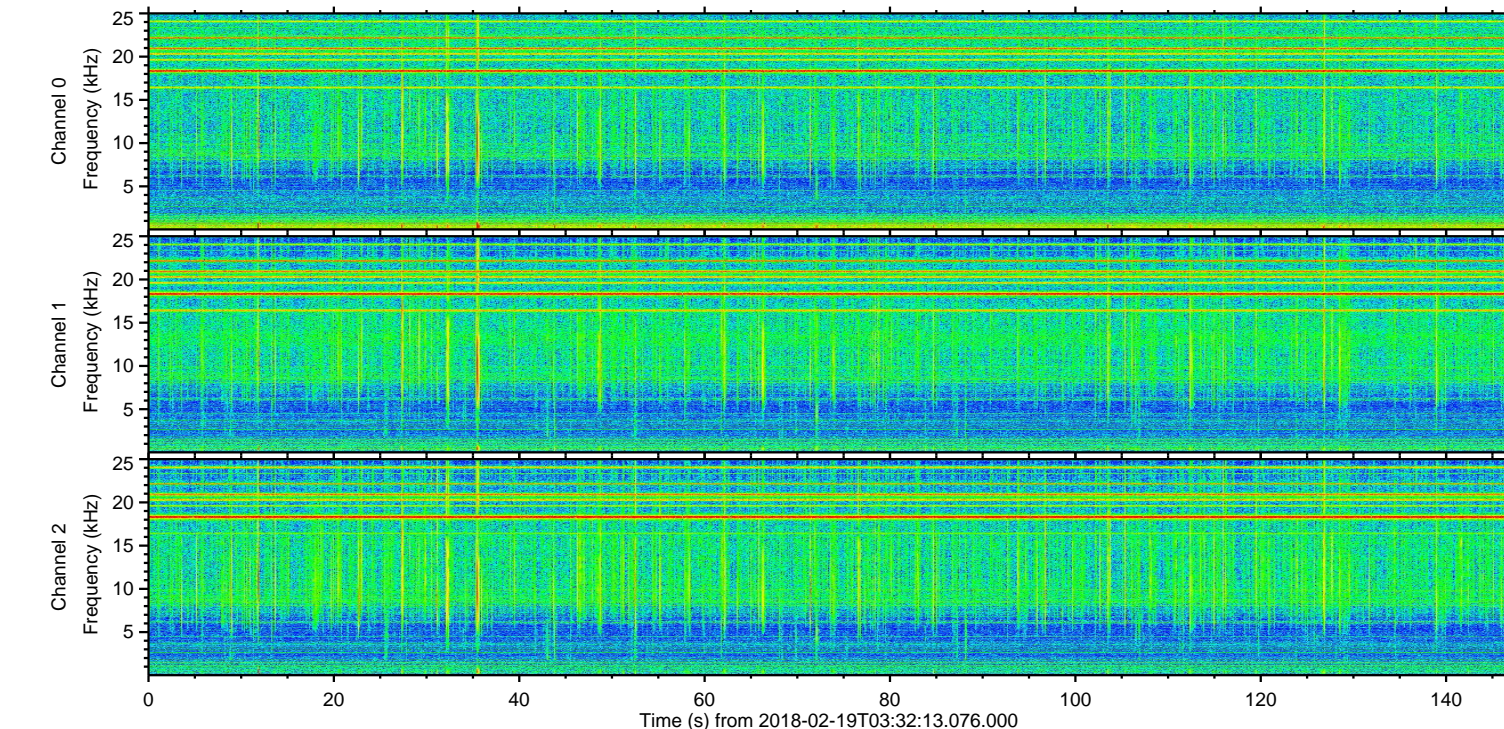
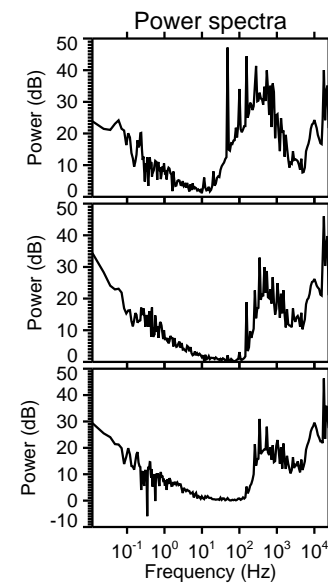
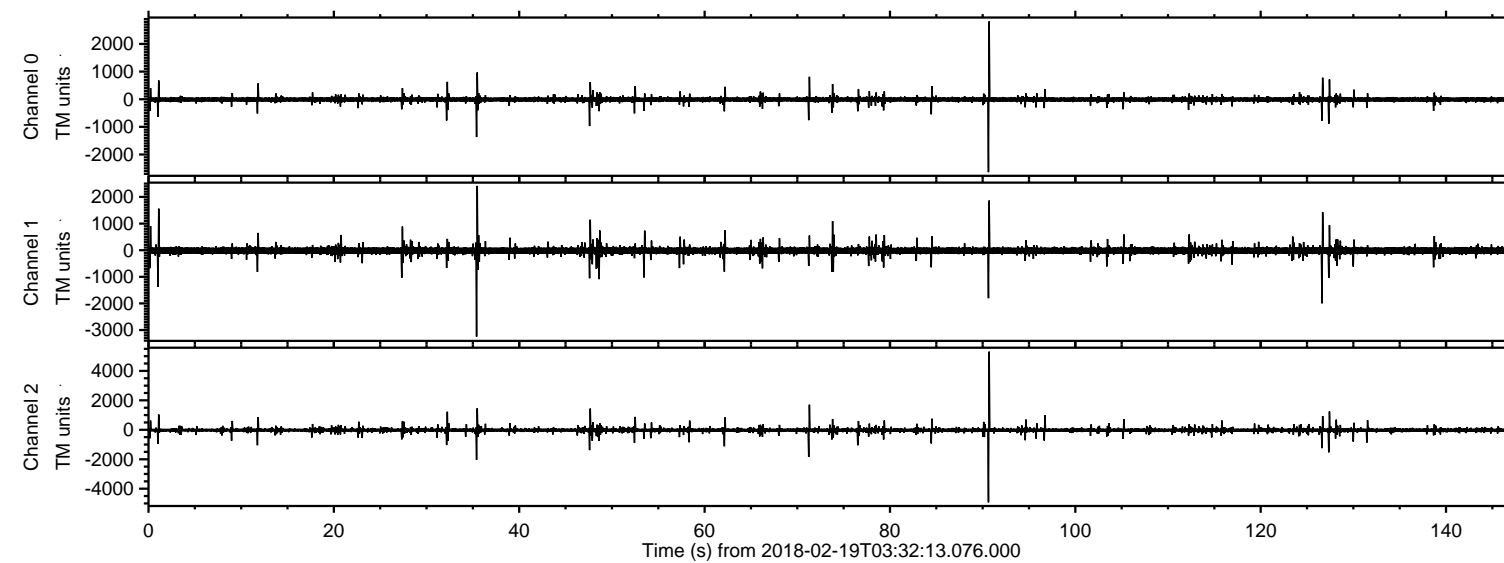


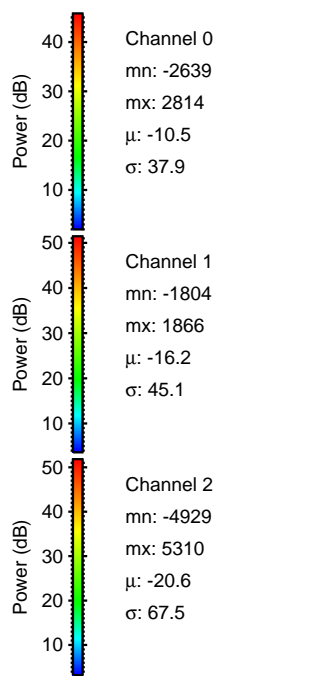
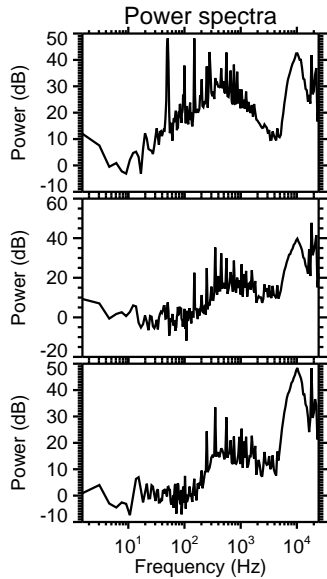
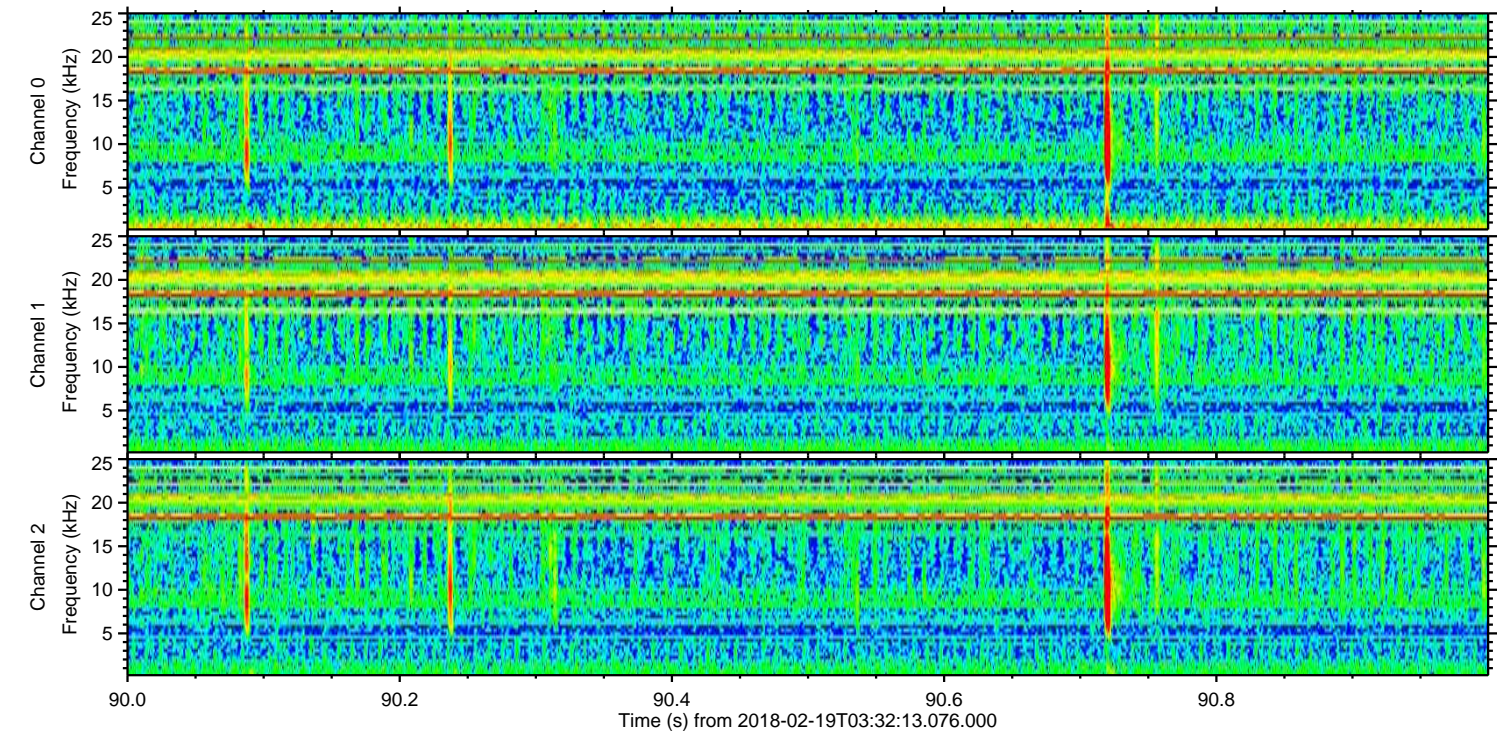
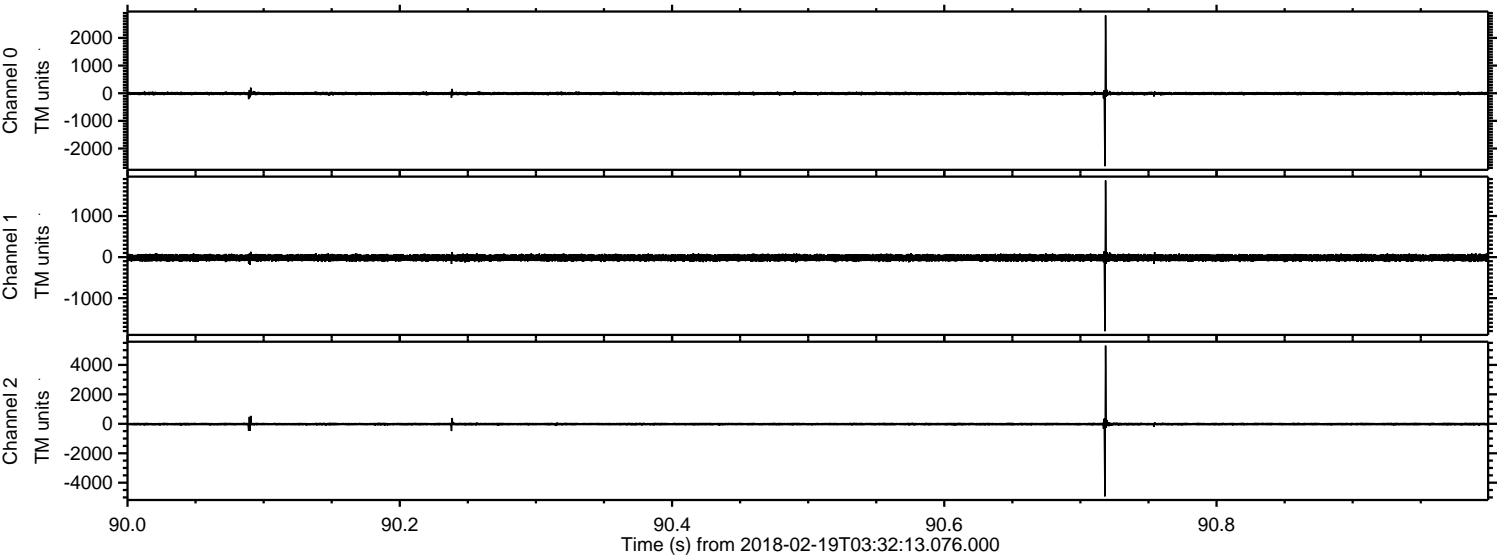
# ELMAVAN 3D WAVEFORMS (Measured data sampled at 50 kHz) 51000 packets of 144 samples from 2018-02-19T03:32:13.076.000.

Processed Mon Feb 19 04:40:39 2018 by ELM ver.2012-10-06 from 001\_\_elm20180219\_033212\_\_dat00.bin



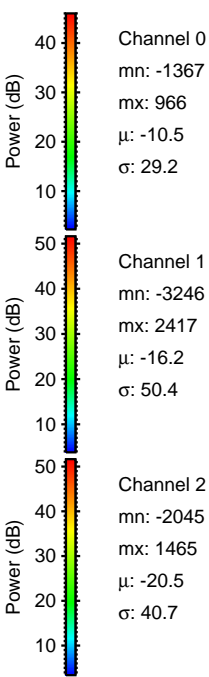
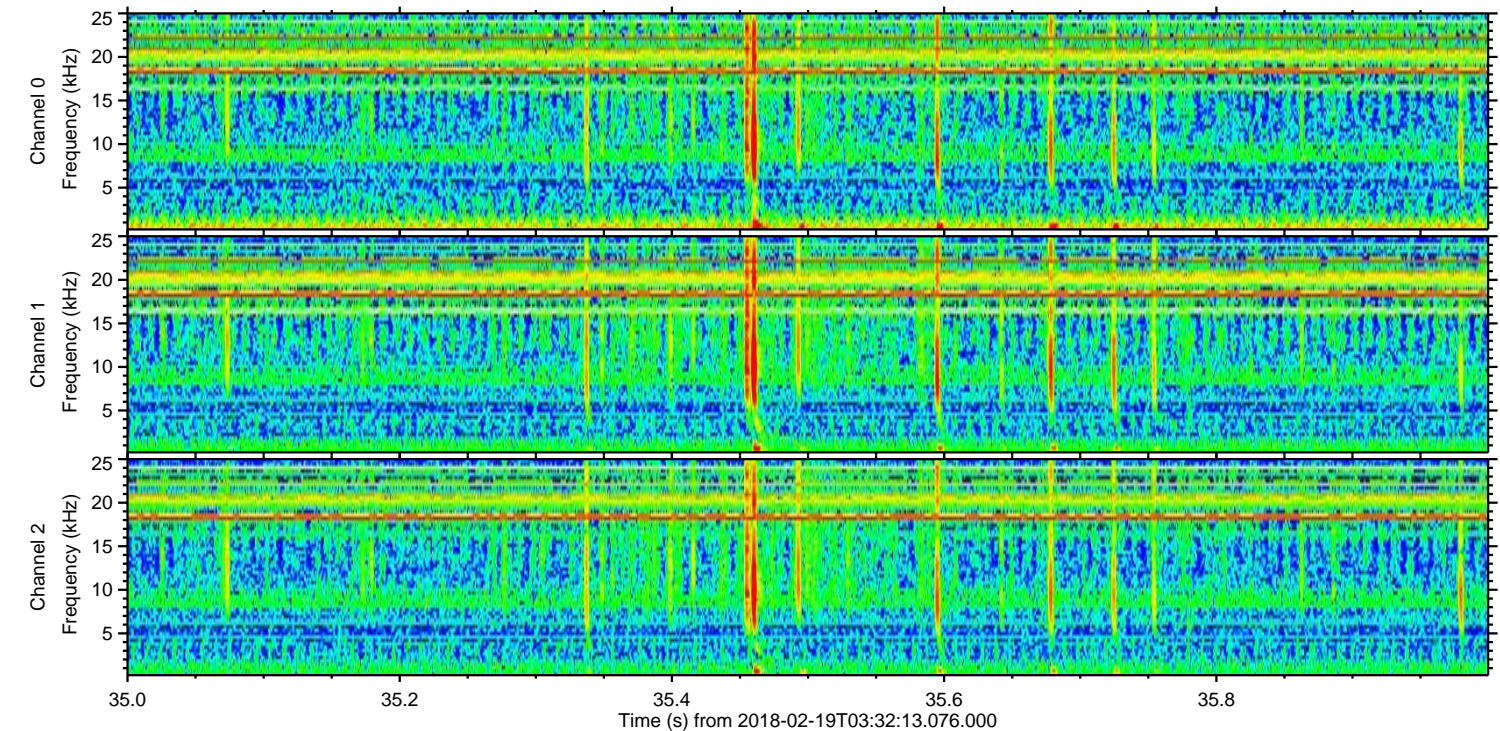
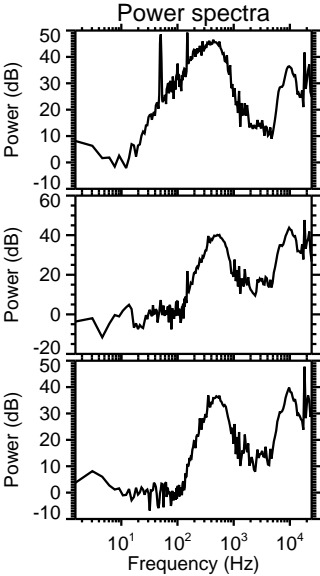
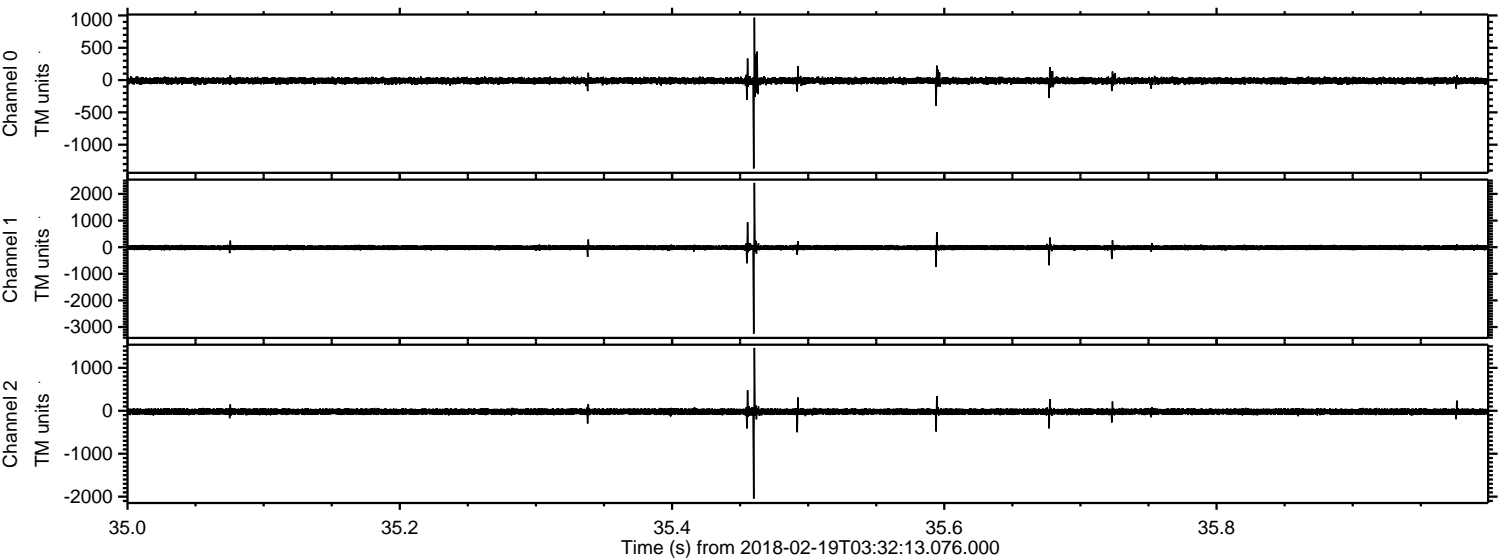


Processed Mon Feb 19 04:40:47 2018 by ELM ver.2012-10-06 from 001\_\_elm20180219\_033212\_\_dat00.bin





Processed Mon Feb 19 04:40:48 2018 by ELM ver.2012-10-06 from 001\_\_elm20180219\_033212\_\_dat00.bin



Channel 0  
mn: -1367  
mx: 966  
 $\mu$ : -10.5  
 $\sigma$ : 29.2

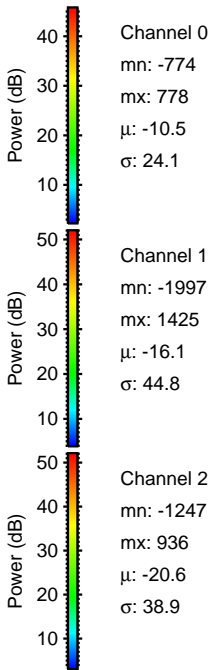
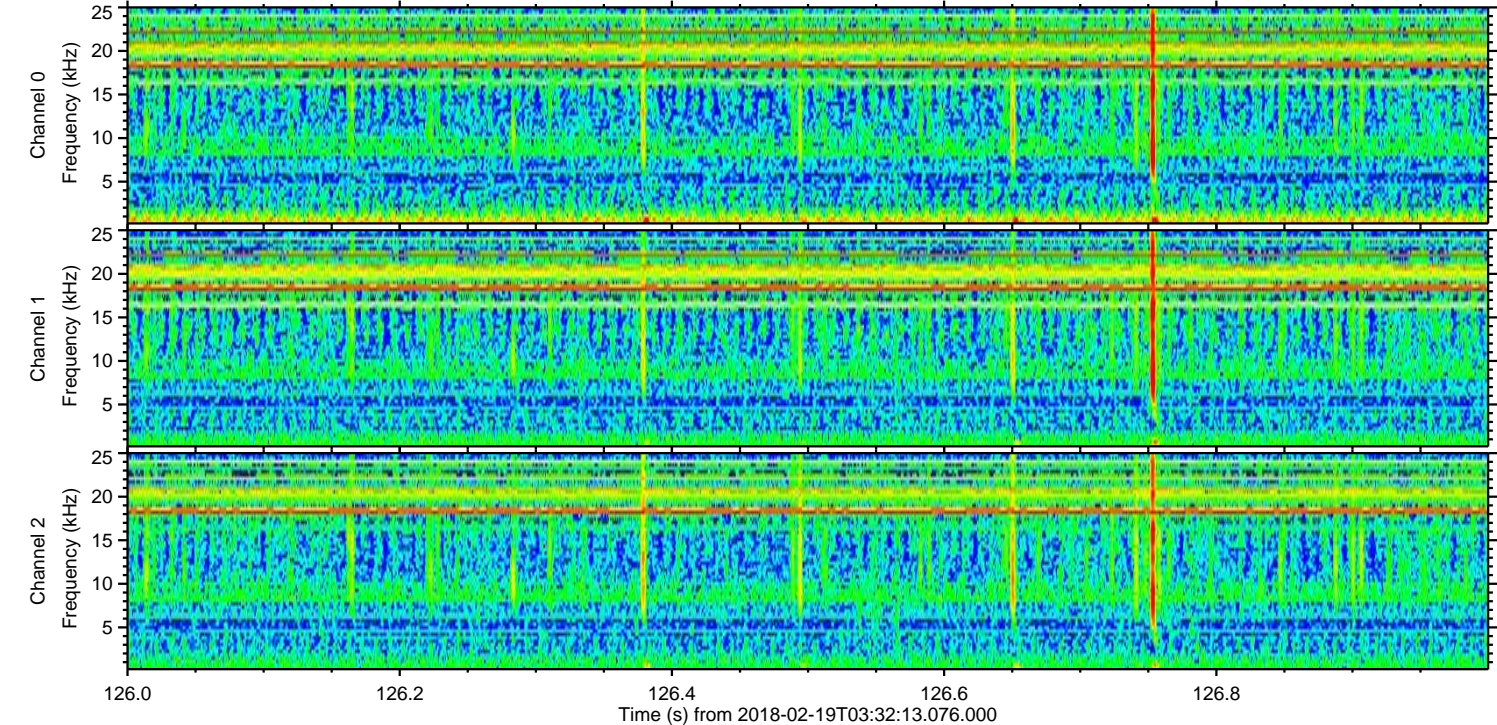
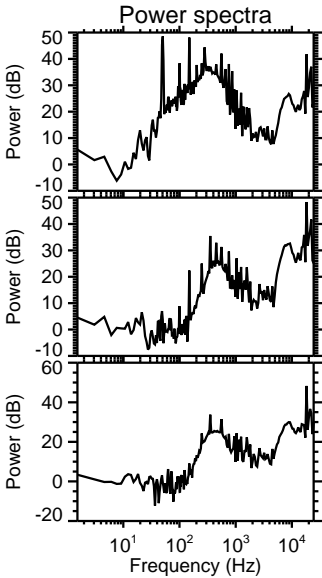
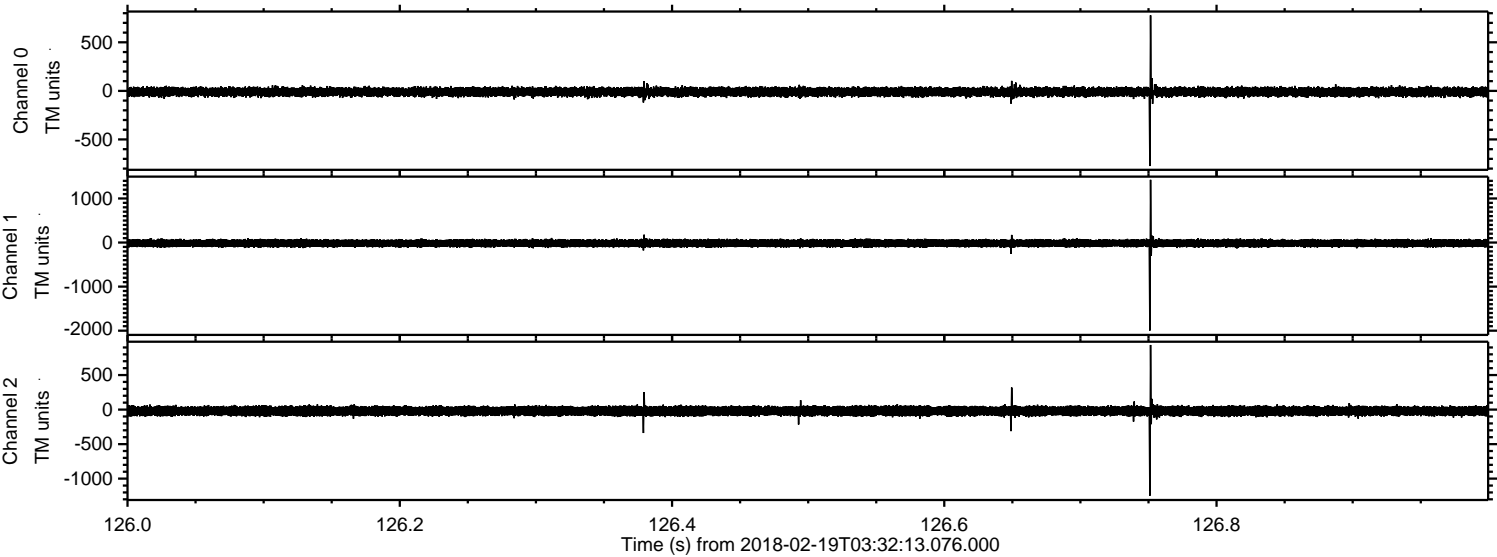
Channel 1  
mn: -3246  
mx: 2417  
 $\mu$ : -16.2  
 $\sigma$ : 50.4

Channel 2  
mn: -2045  
mx: 1465  
 $\mu$ : -20.5  
 $\sigma$ : 40.7



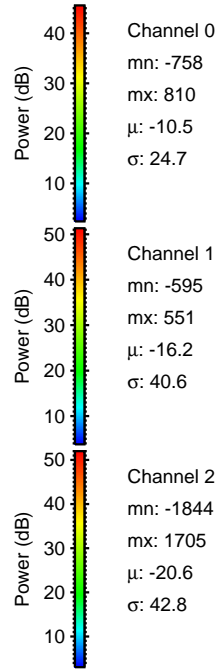
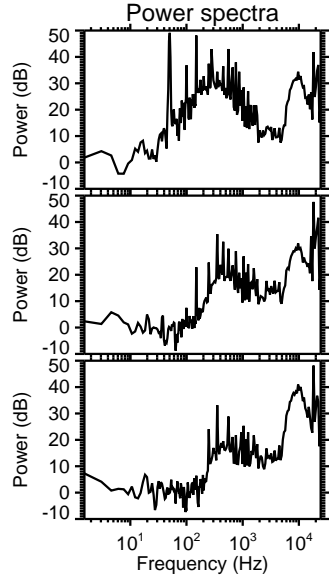
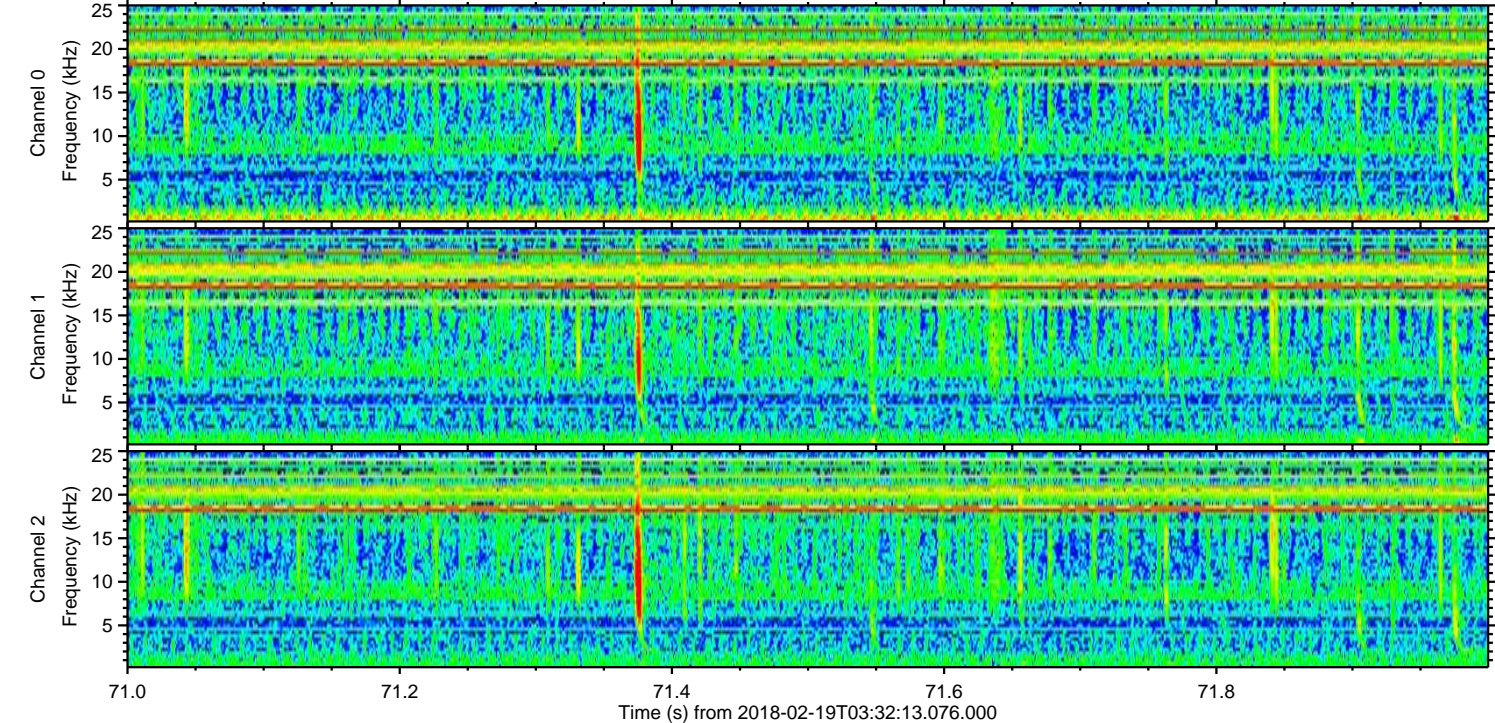
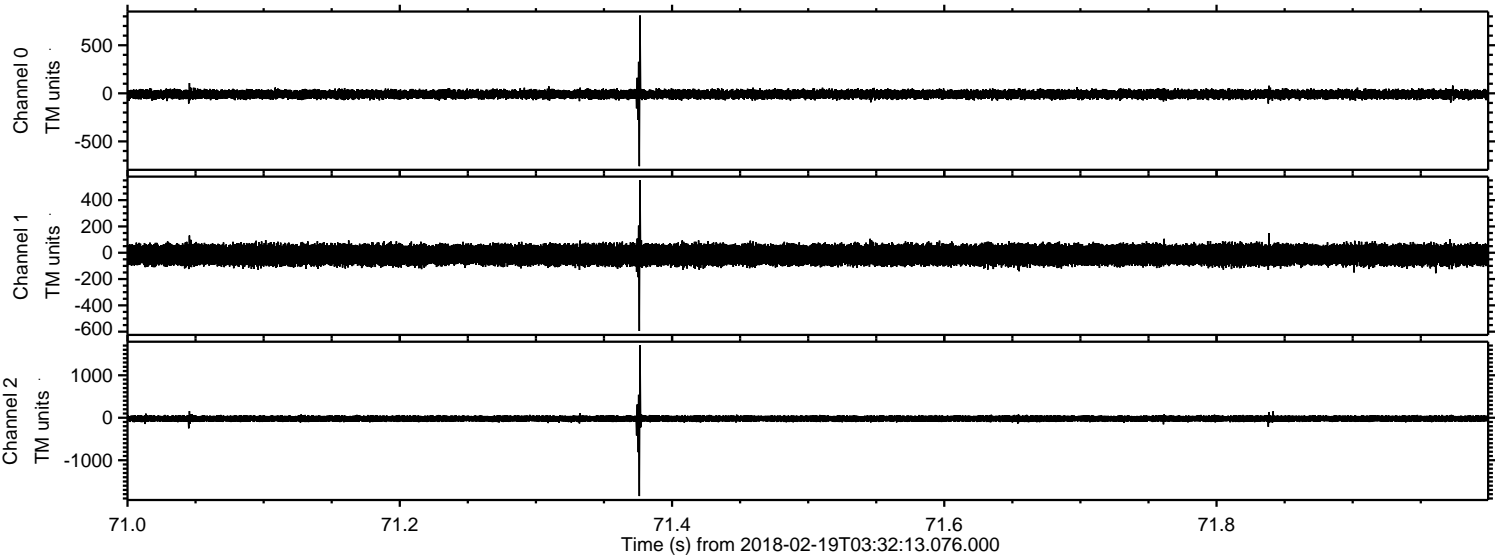
ELMAVAN 3D WAVEFORMS (Measured data sampled at 50 kHz) 51000 packets of 144 samples from 2018-02-19T03:32:13.076.000. Part 127/147

Processed Mon Feb 19 04:40:48 2018 by ELM ver.2012-10-06 from 001\_\_elm20180219\_033212\_\_dat00.bin





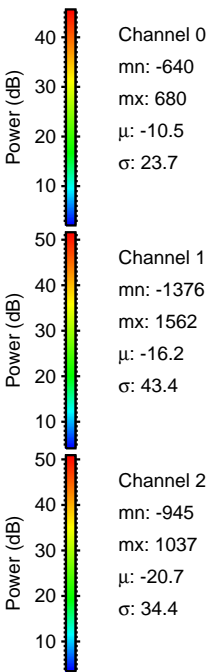
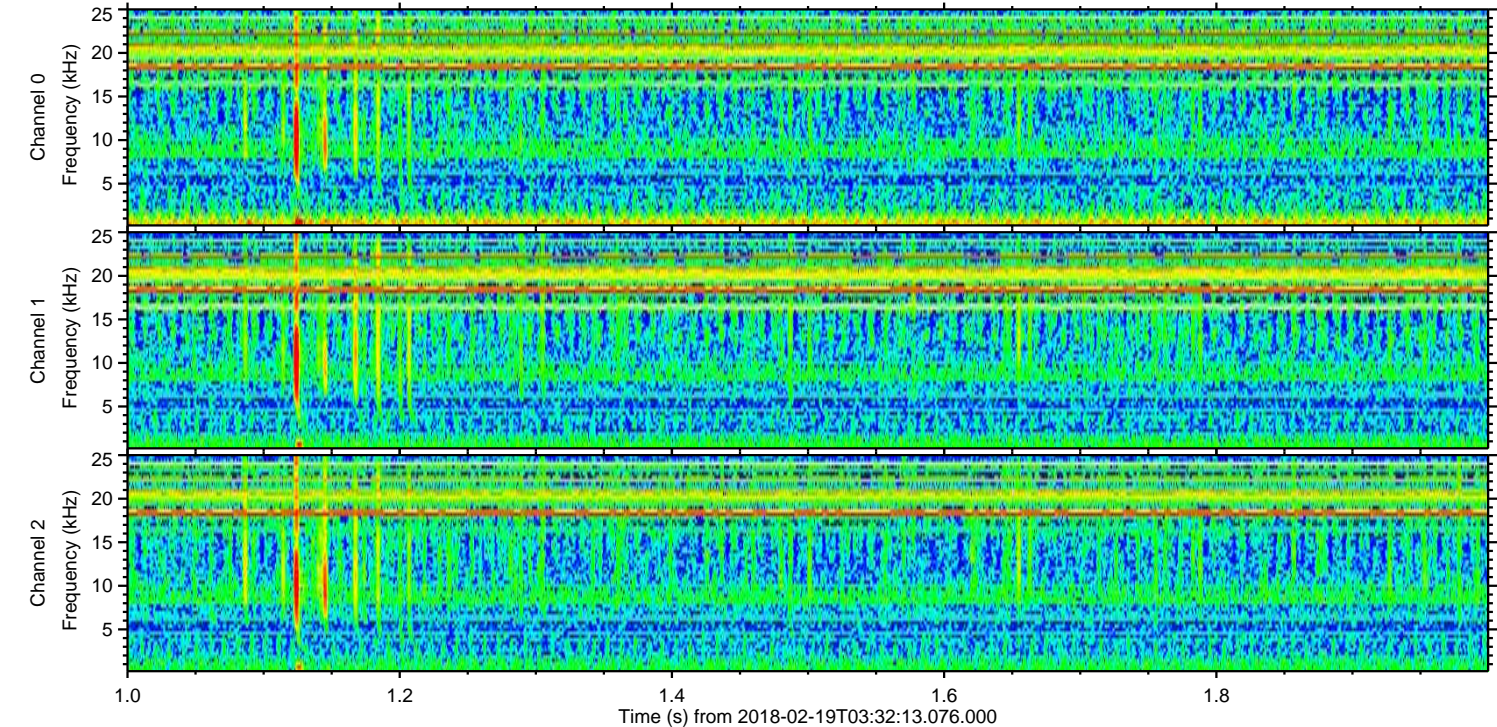
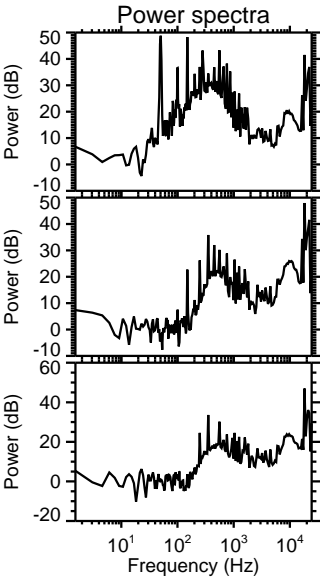
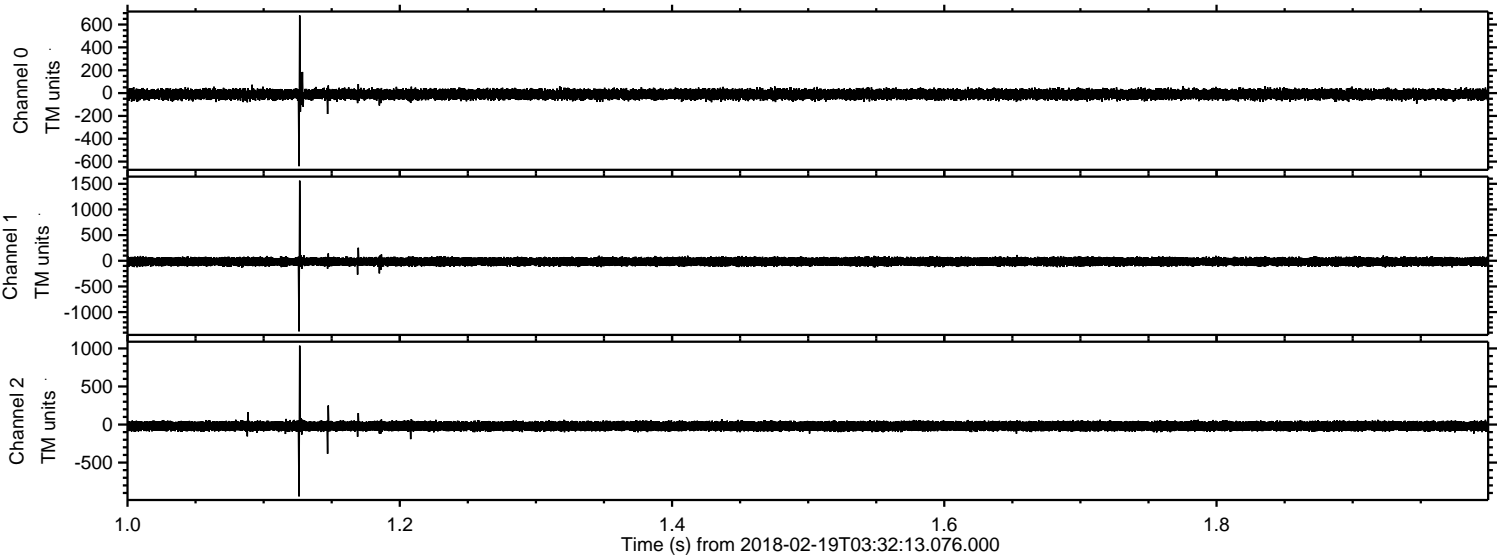
Processed Mon Feb 19 04:40:49 2018 by ELM ver.2012-10-06 from 001\_\_elm20180219\_033212\_\_dat00.bin





ELMAVAN 3D WAVEFORMS (Measured data sampled at 50 kHz) 51000 packets of 144 samples from 2018-02-19T03:32:13.076.000. Part 2/147

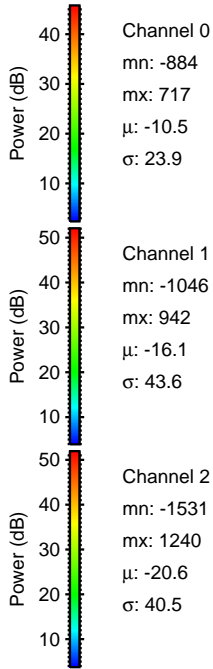
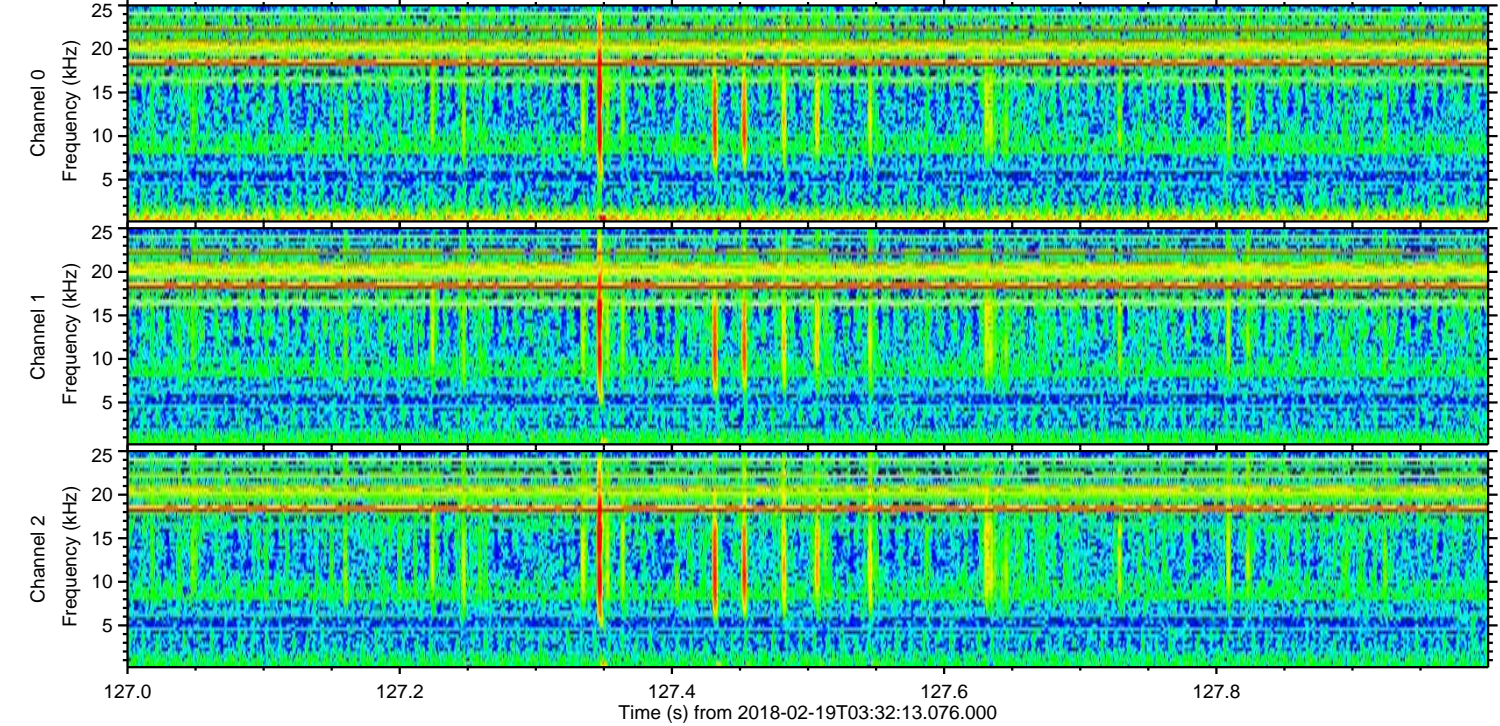
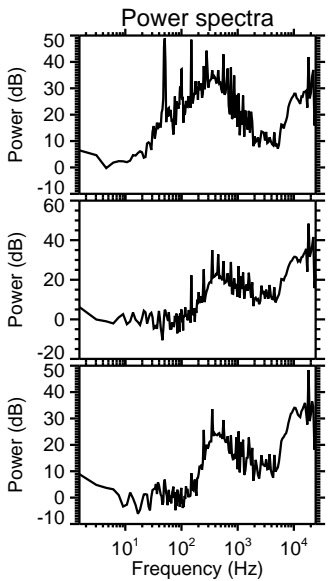
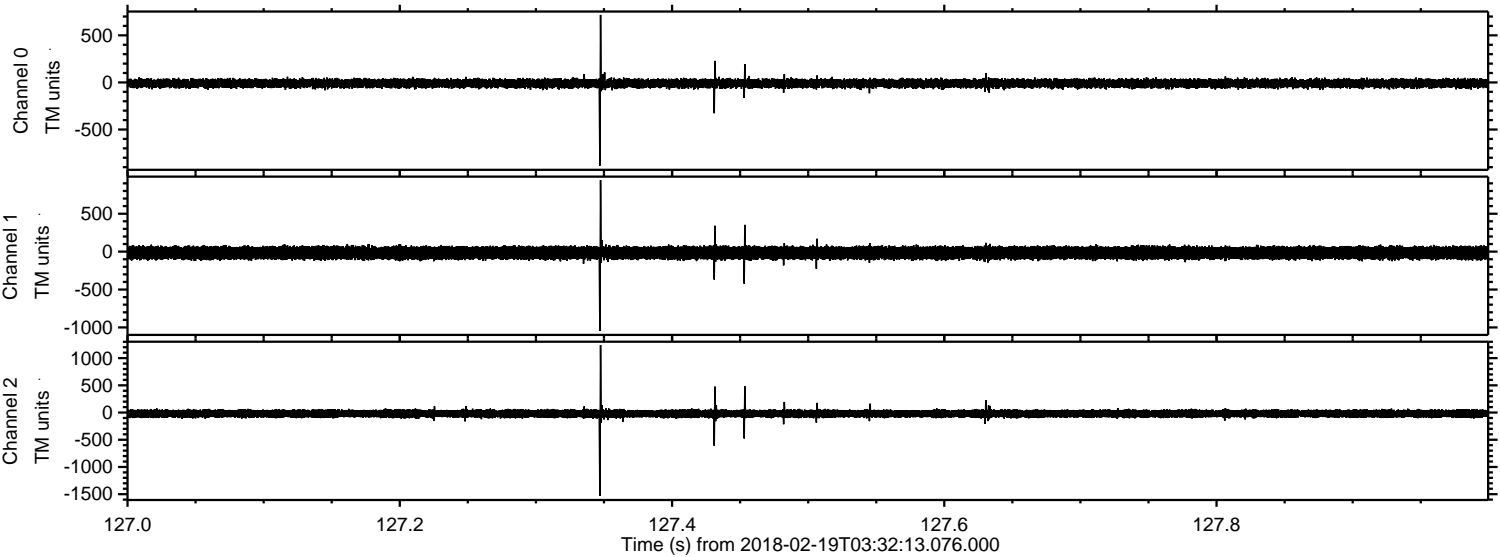
Processed Mon Feb 19 04:40:50 2018 by ELM ver.2012-10-06 from 001\_\_elm20180219\_033212\_\_dat00.bin





ELMAVAN 3D WAVEFORMS (Measured data sampled at 50 kHz) 51000 packets of 144 samples from 2018-02-19T03:32:13.076.000. Part 128/147

Processed Mon Feb 19 04:40:51 2018 by ELM ver.2012-10-06 from 001\_\_elm20180219\_033212\_\_dat00.bin



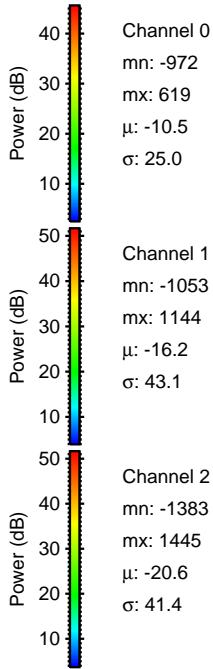
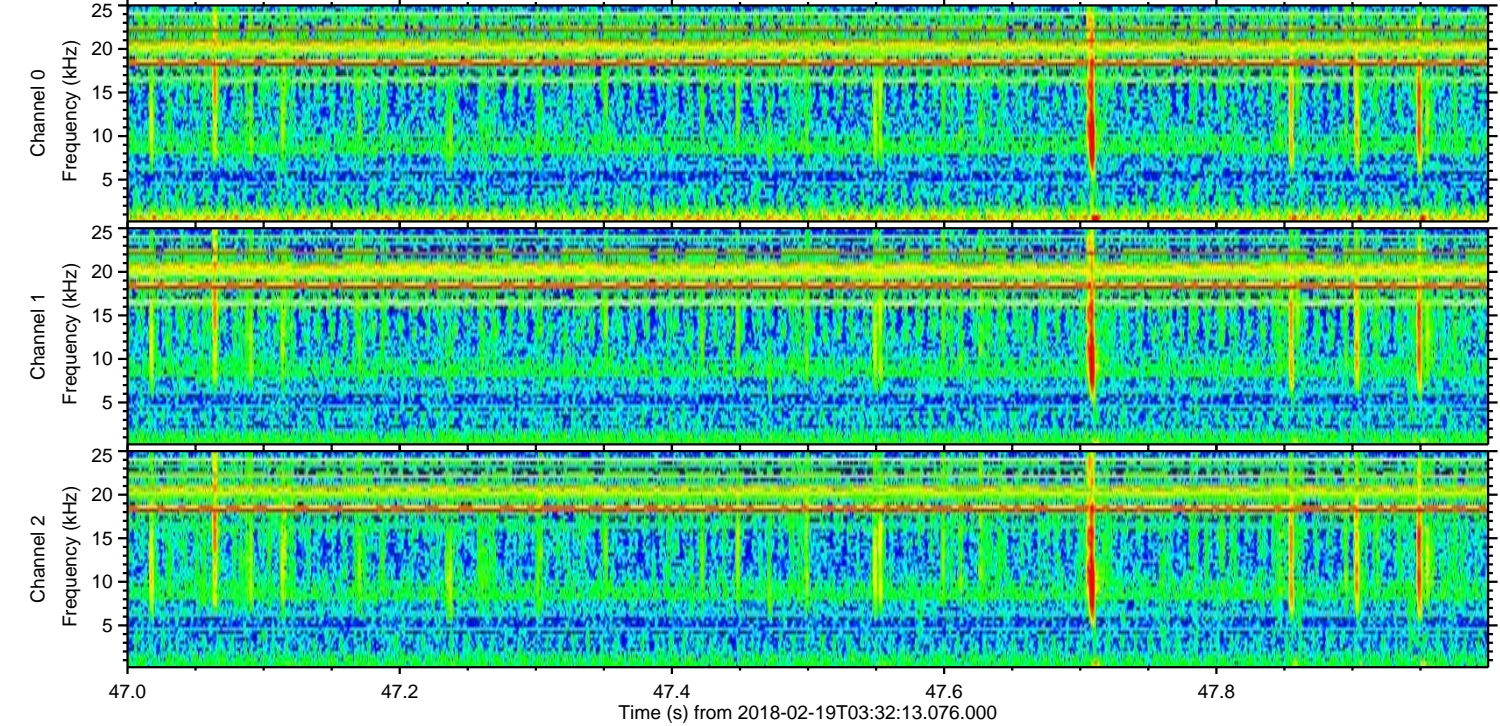
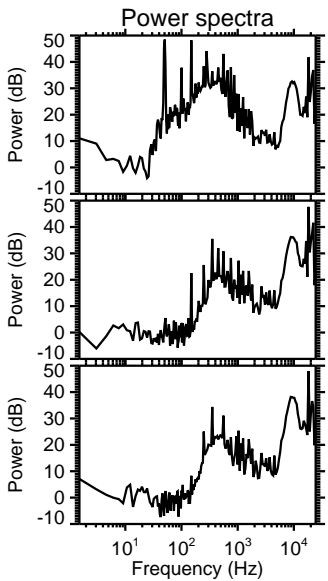
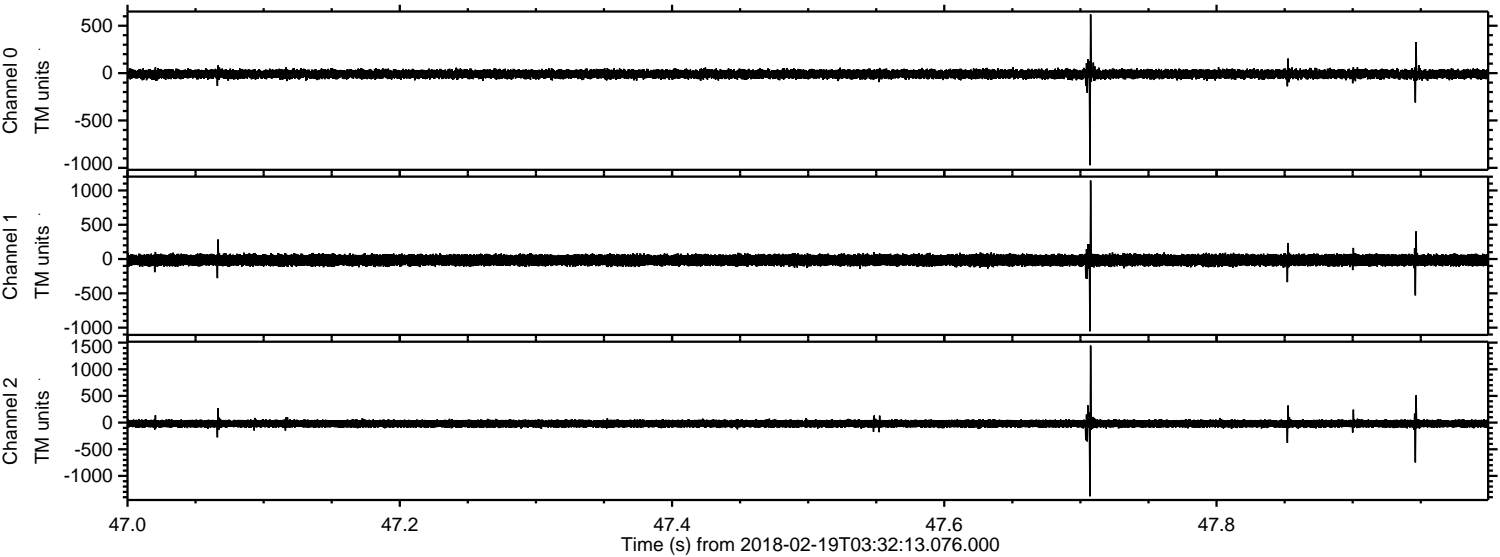
Channel 0  
mn: -884  
mx: 717  
 $\mu$ : -10.5  
 $\sigma$ : 23.9

Channel 1  
mn: -1046  
mx: 942  
 $\mu$ : -16.1  
 $\sigma$ : 43.6

Channel 2  
mn: -1531  
mx: 1240  
 $\mu$ : -20.6  
 $\sigma$ : 40.5

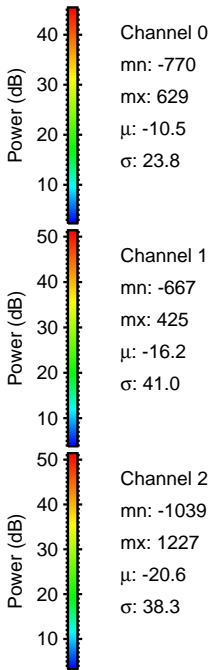
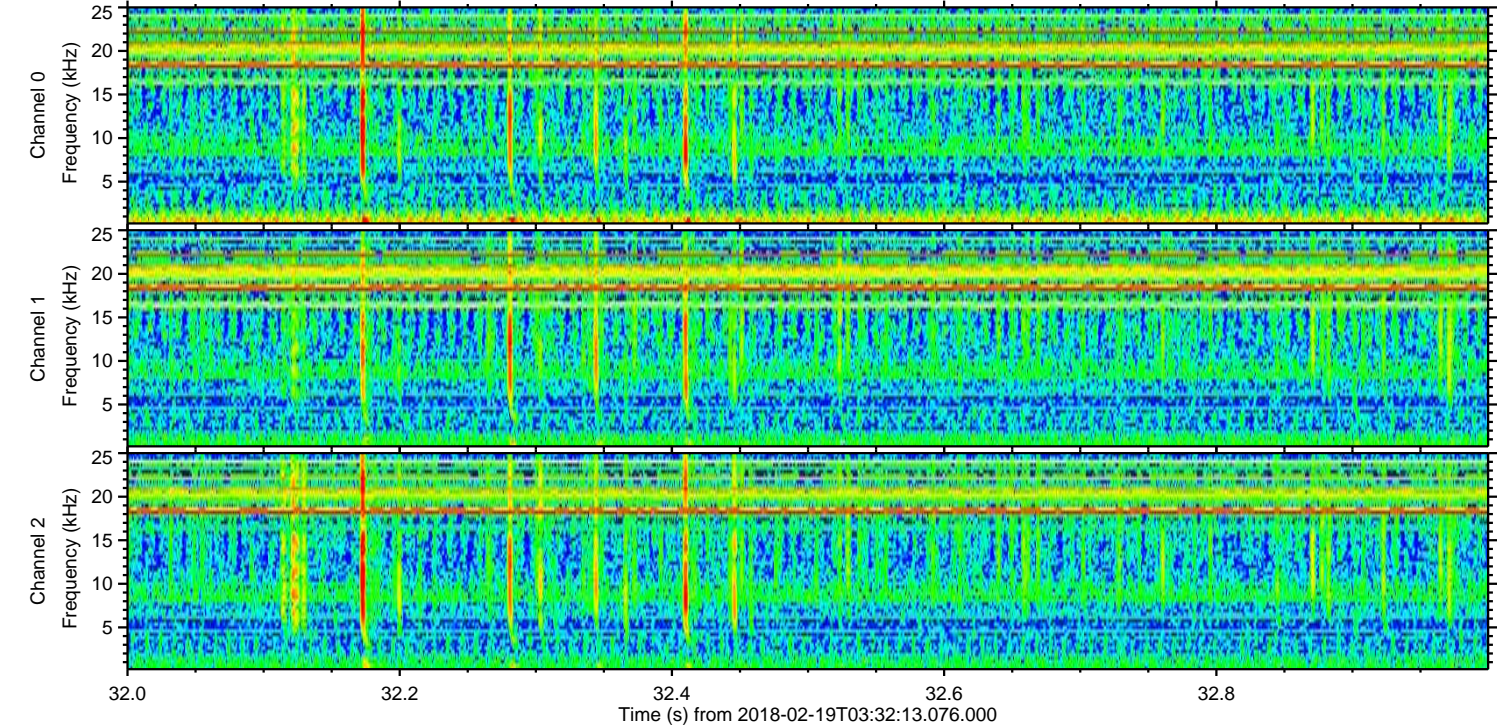
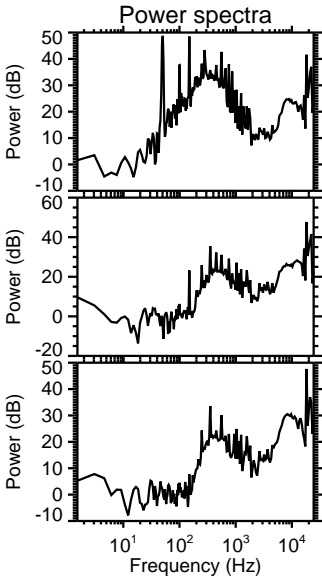
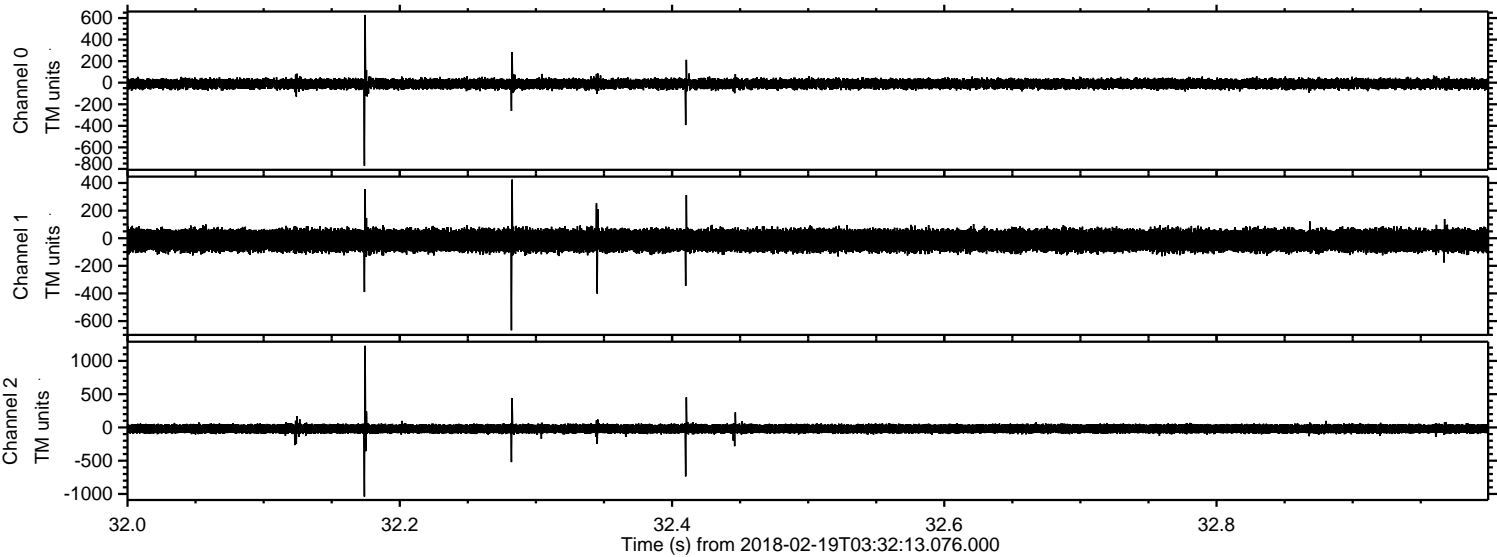


Processed Mon Feb 19 04:40:52 2018 by ELM ver.2012-10-06 from 001\_\_elm20180219\_033212\_\_dat00.bin



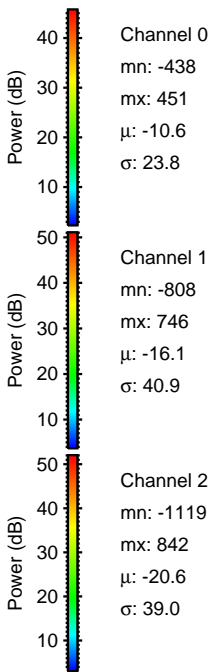
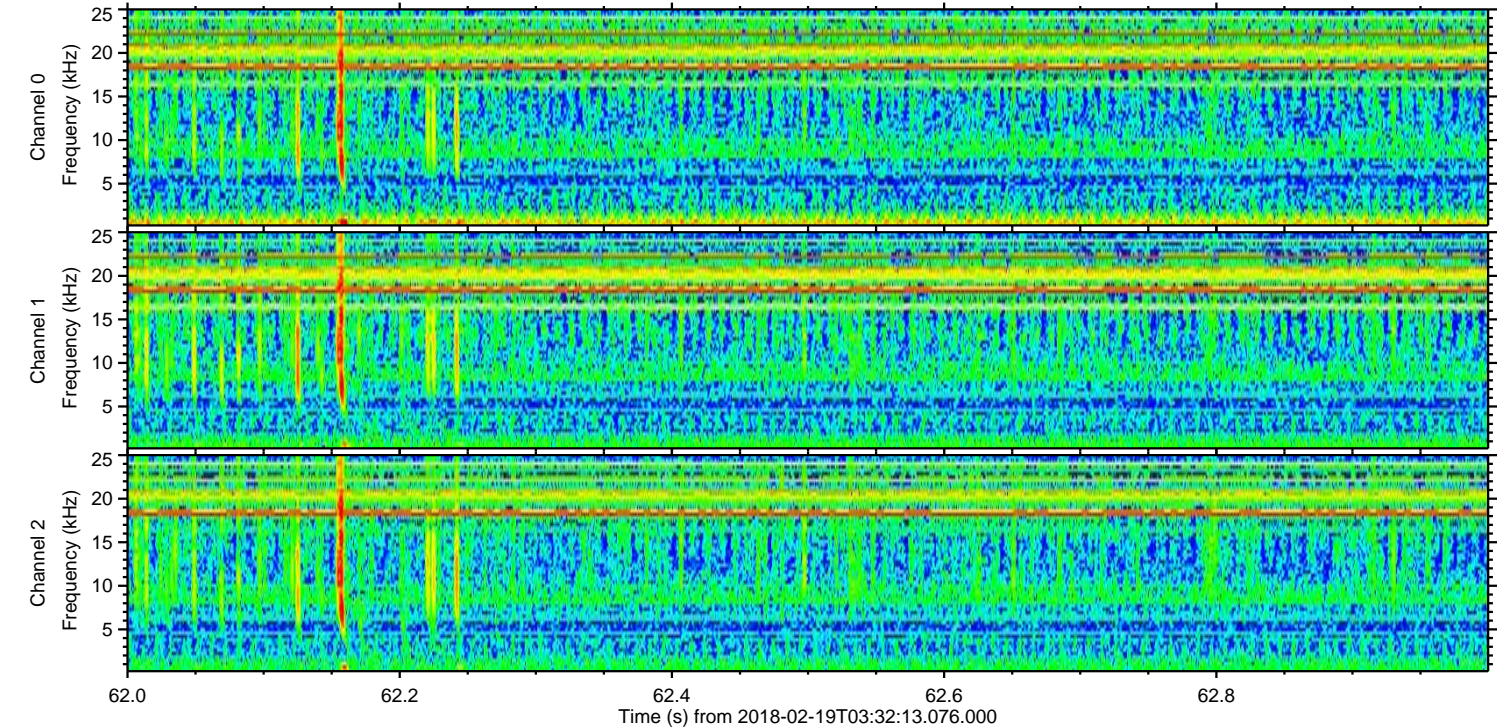
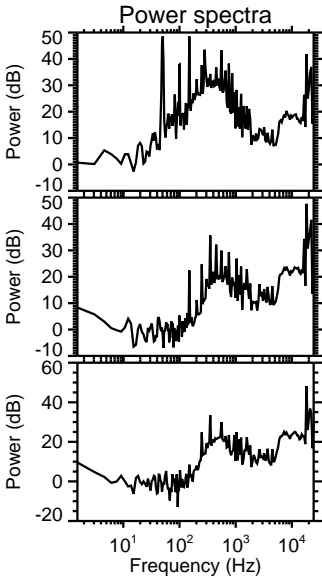
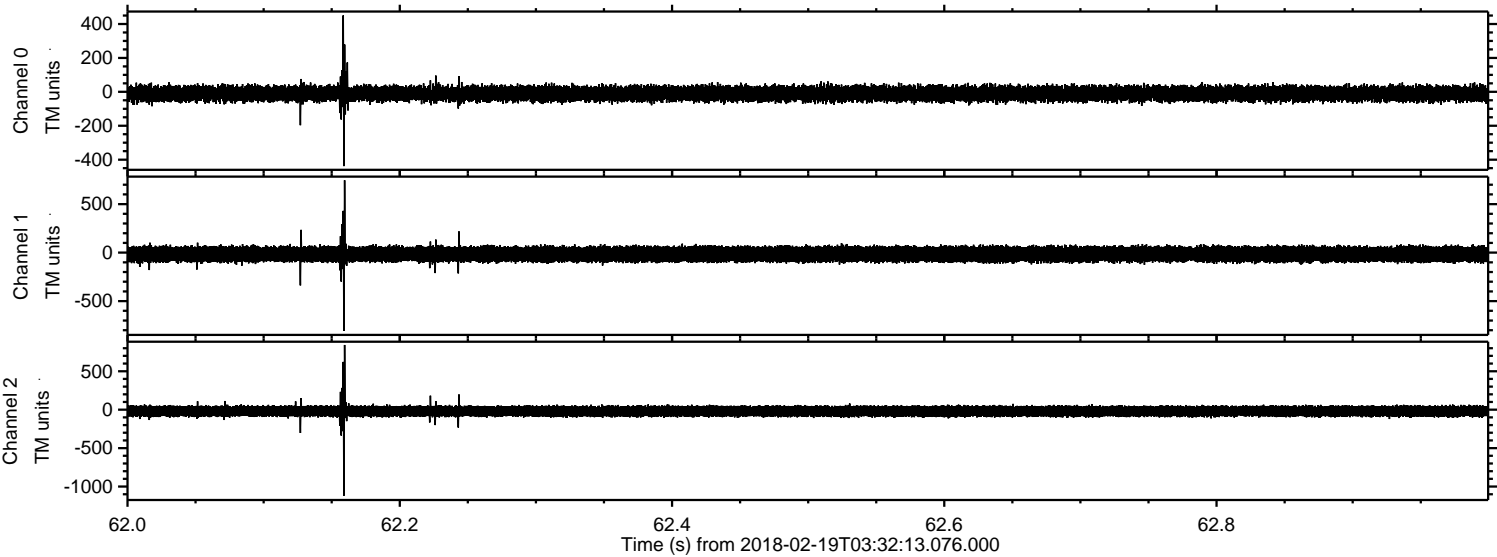


Processed Mon Feb 19 04:40:52 2018 by ELM ver.2012-10-06 from 001\_\_elm20180219\_033212\_\_dat00.bin





Processed Mon Feb 19 04:40:53 2018 by ELM ver.2012-10-06 from 001\_\_elm20180219\_033212\_\_dat00.bin



Channel 0  
mn: -438  
mx: 451  
 $\mu$ : -10.6  
 $\sigma$ : 23.8

Channel 1  
mn: -808  
mx: 746  
 $\mu$ : -16.1  
 $\sigma$ : 40.9

Channel 2  
mn: -1119  
mx: 842  
 $\mu$ : -20.6  
 $\sigma$ : 39.0



Processed Mon Feb 19 04:40:54 2018 by ELM ver.2012-10-06 from 001\_\_elm20180219\_033212\_\_dat00.bin

