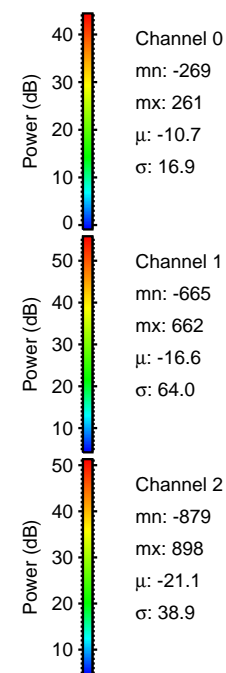
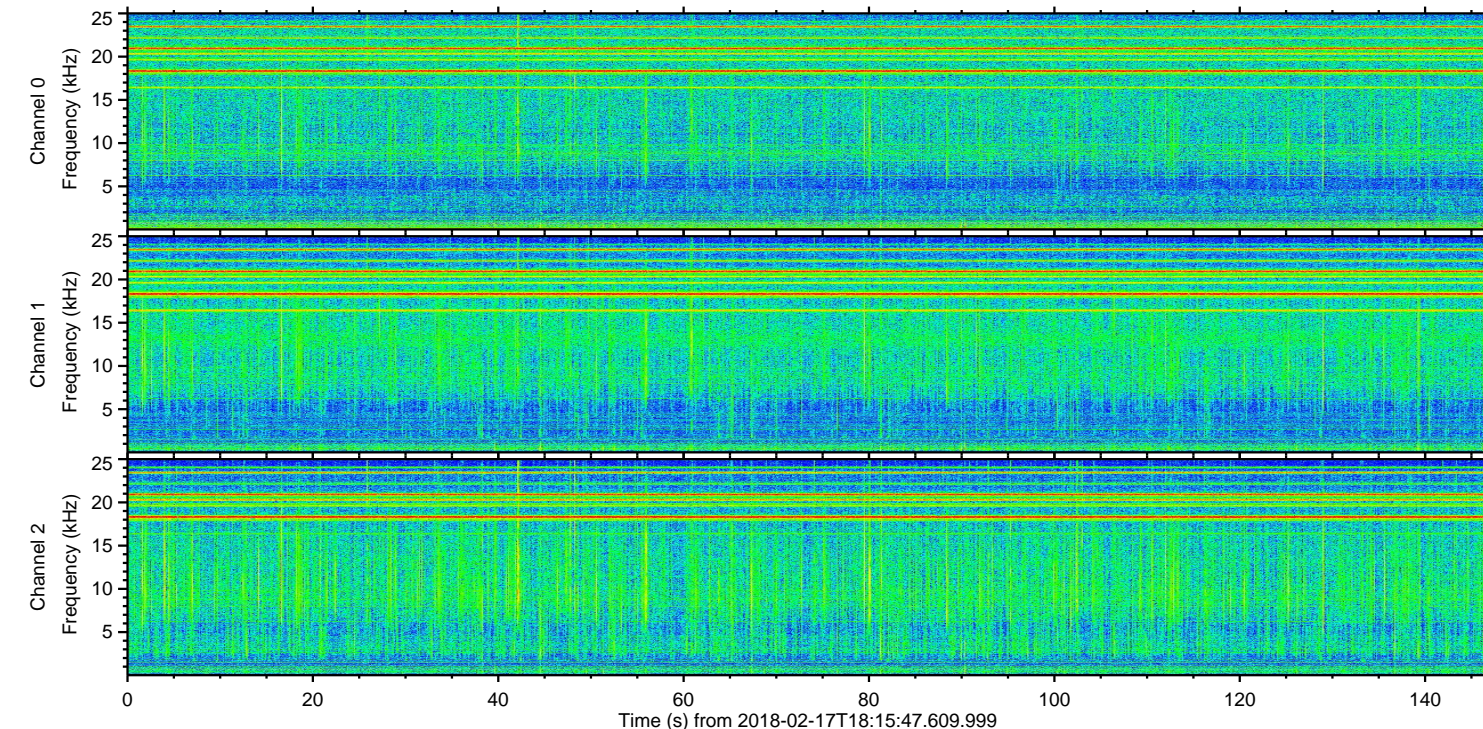
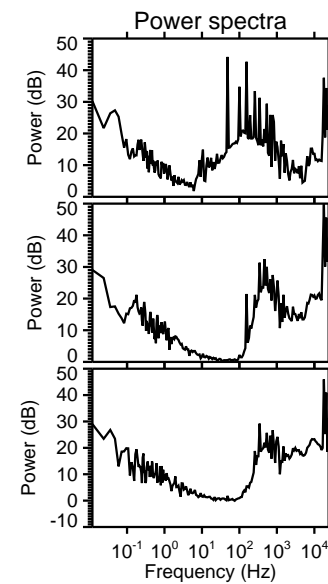
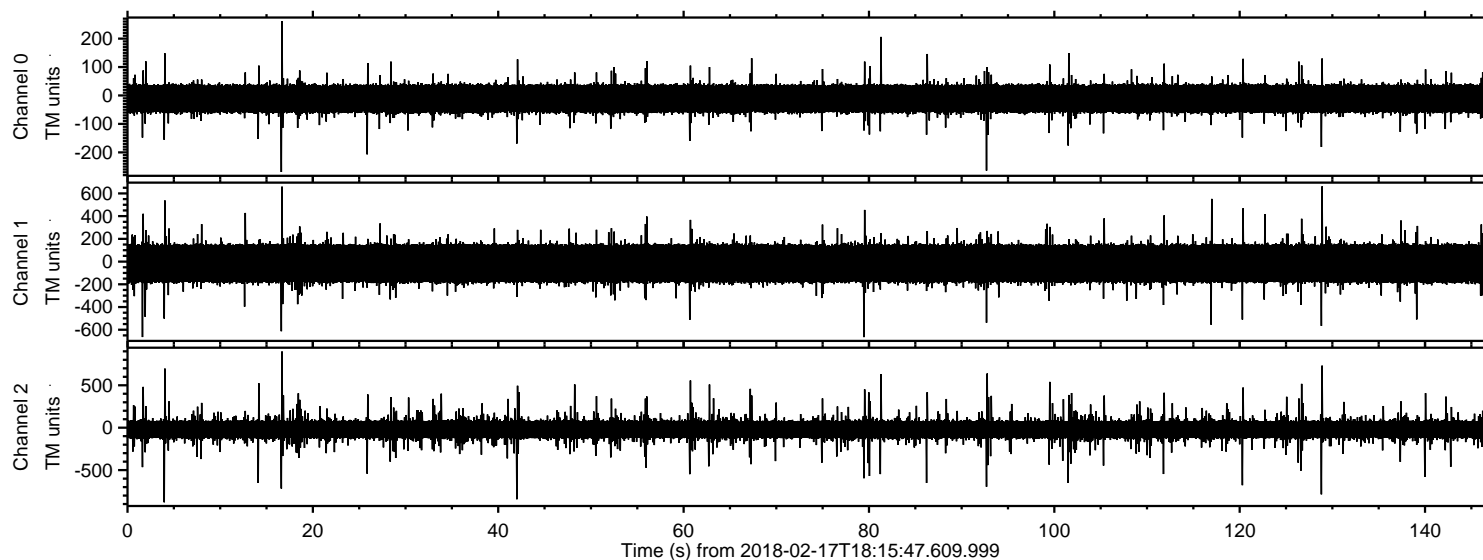


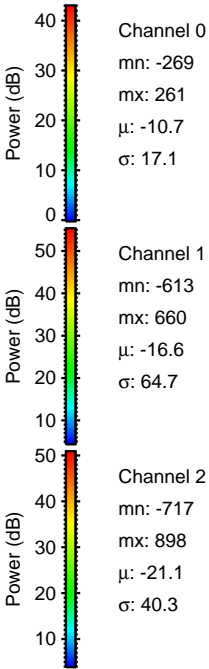
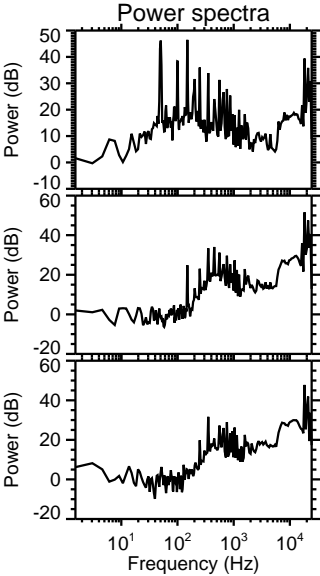
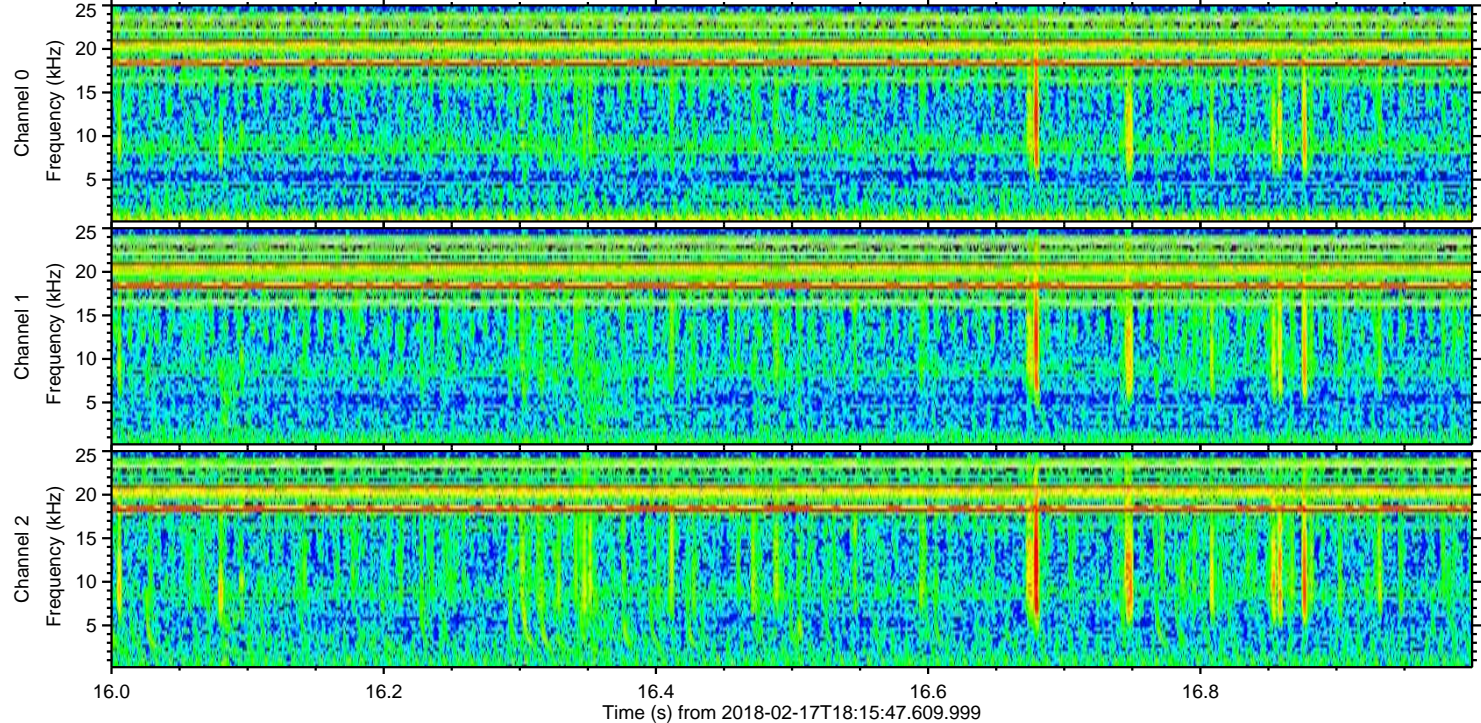
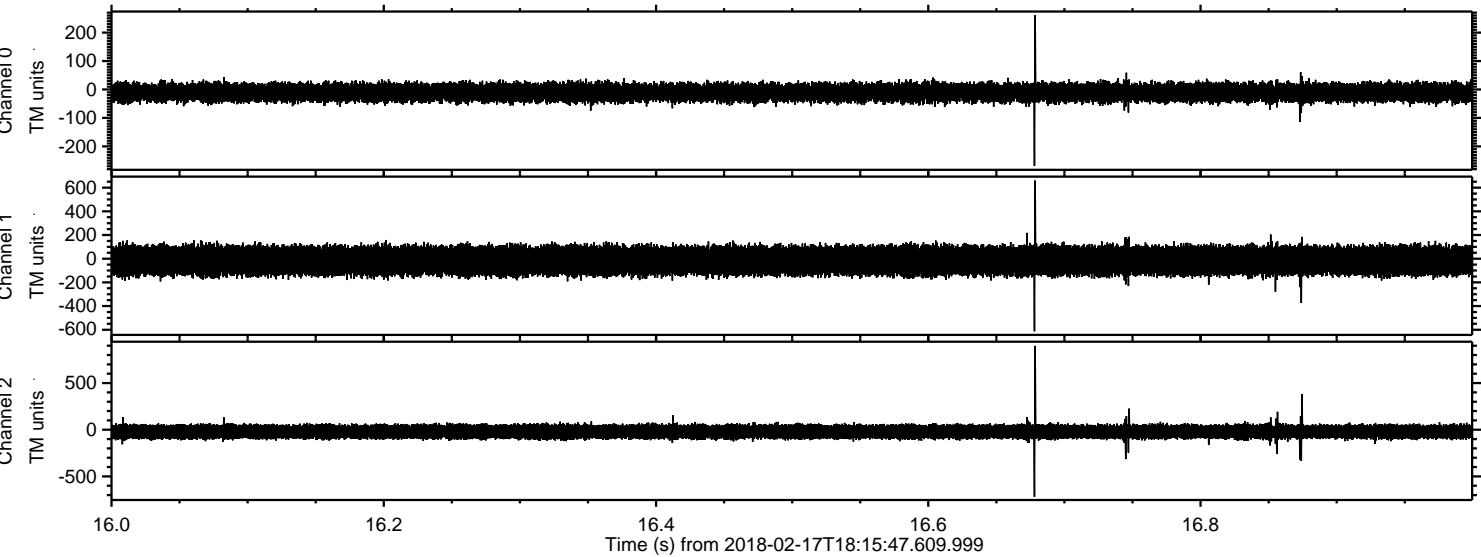
ELMAVAN 3D WAVEFORMS (Measured data sampled at 50 kHz) 51000 packets of 144 samples from 2018-02-17T18:15:47.609.999.

Processed Sat Feb 17 19:24:04 2018 by ELM ver.2012-10-06 from 001__elm20180217_181546__dat00.bin



ELMAVAN 3D WAVEFORMS (Measured data sampled at 50 kHz) 51000 packets of 144 samples from 2018-02-17T18:15:47.609.999. Part 17/147

Processed Sat Feb 17 19:24:15 2018 by ELM ver.2012-10-06 from 001__elm20180217_181546__dat00.bin

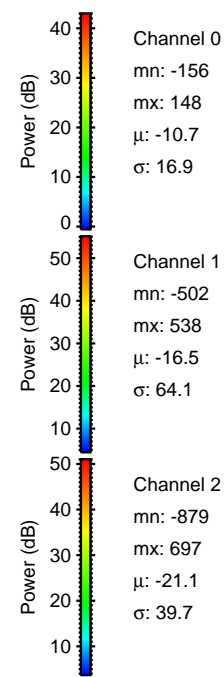
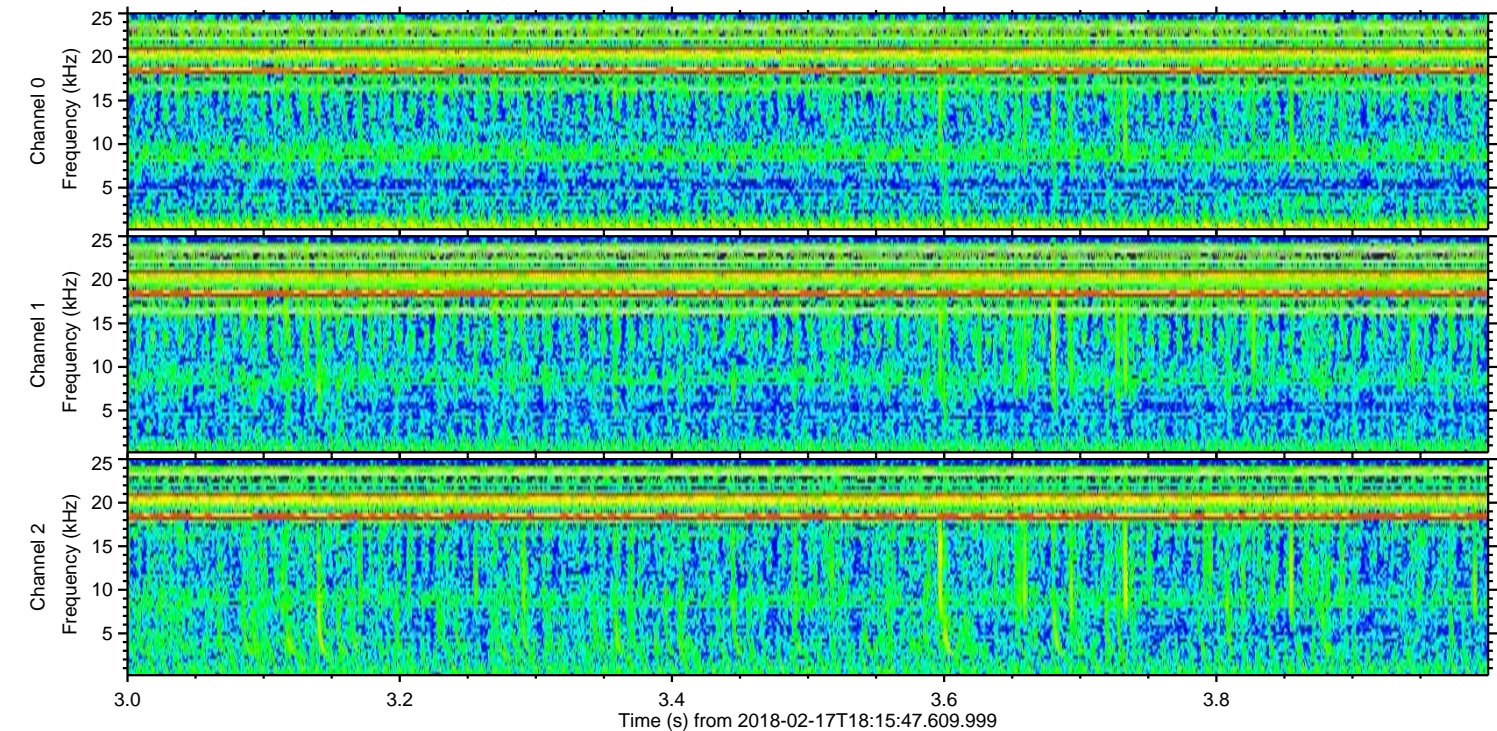
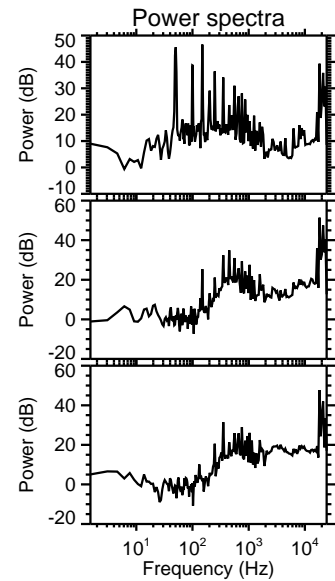
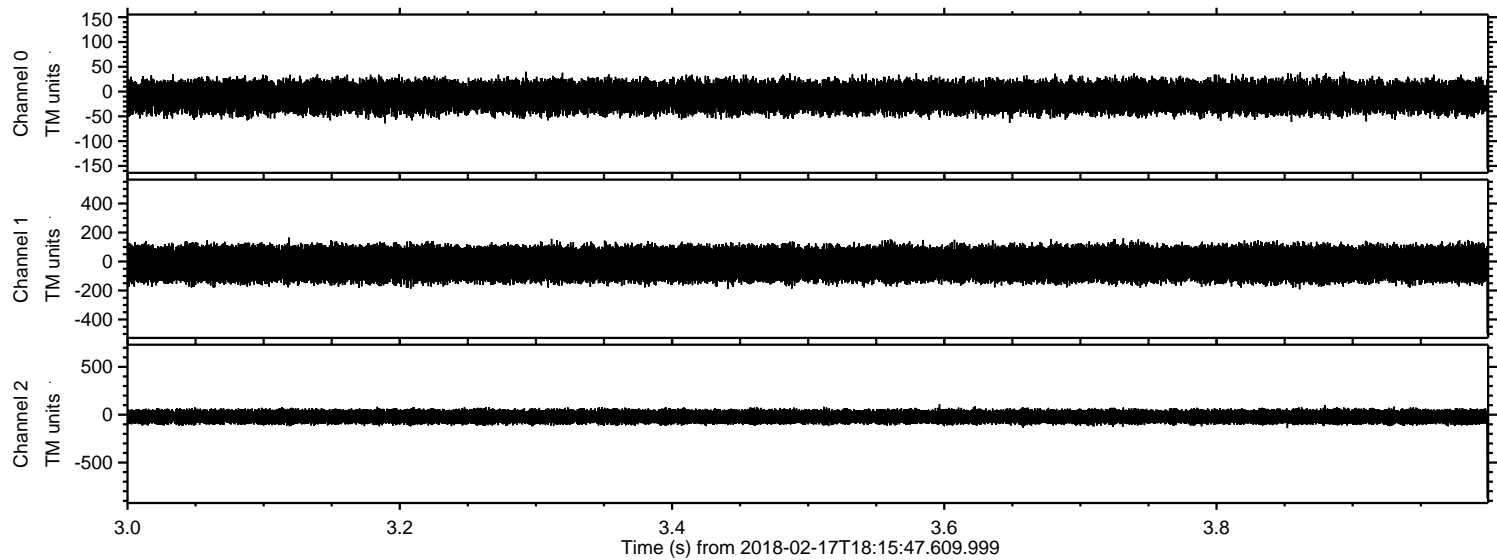


Channel 0
mn: -269
mx: 261
 μ : -10.7
 σ : 17.1

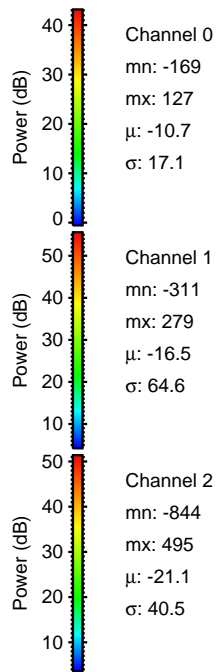
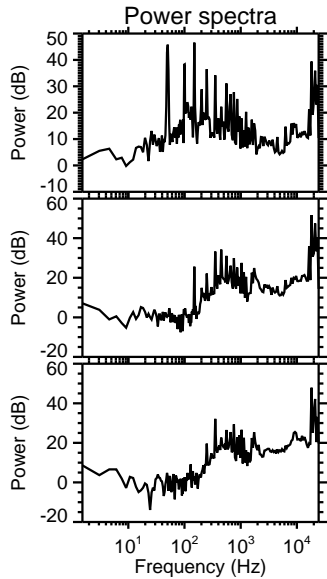
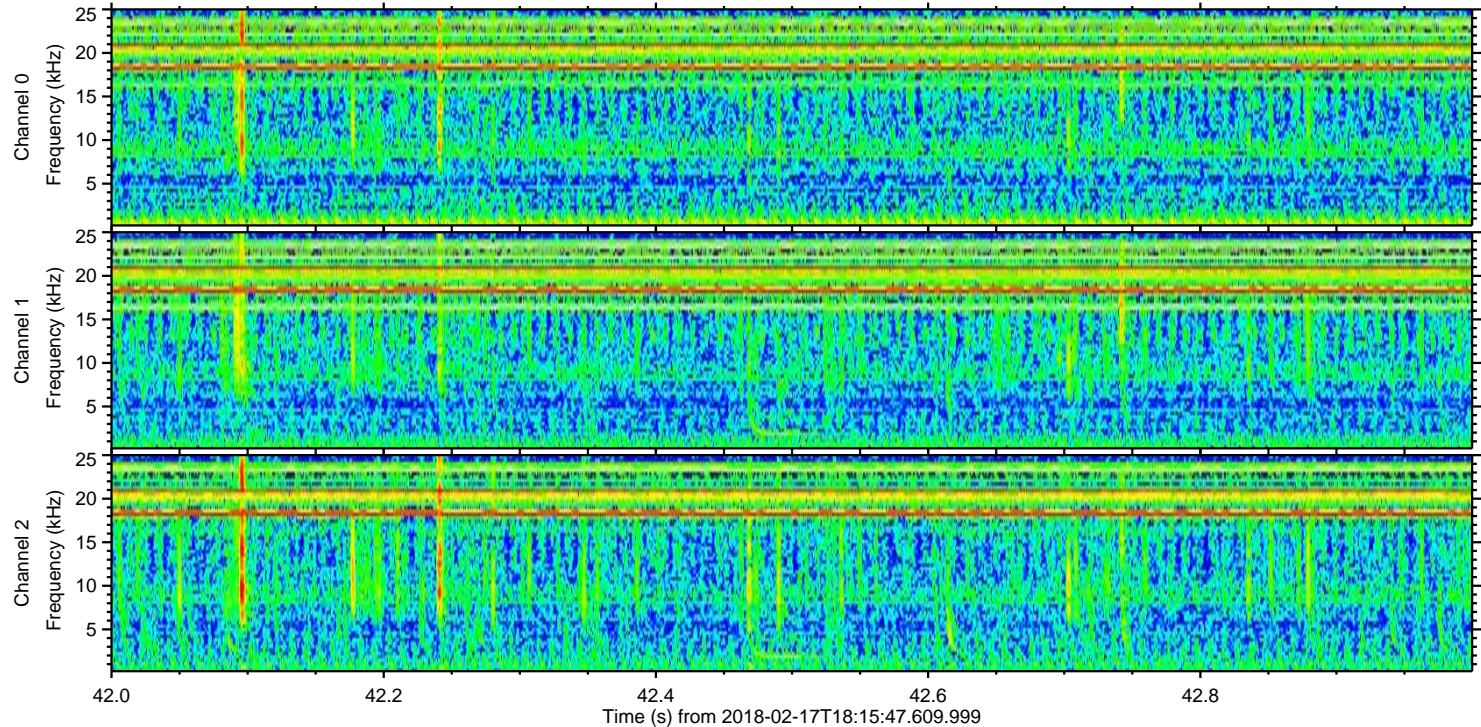
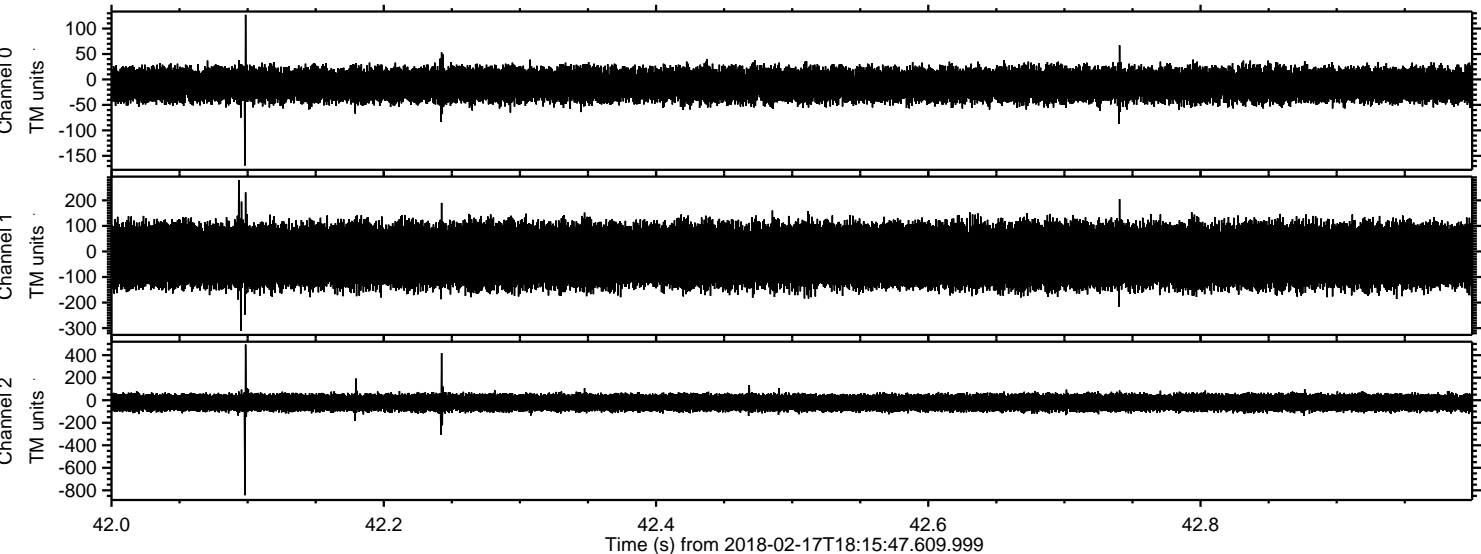
Channel 1
mn: -613
mx: 660
 μ : -16.6
 σ : 64.7

Channel 2
mn: -717
mx: 898
 μ : -21.1
 σ : 40.3

Processed Sat Feb 17 19:24:16 2018 by ELM ver.2012-10-06 from 001__elm20180217_181546__dat00.bin

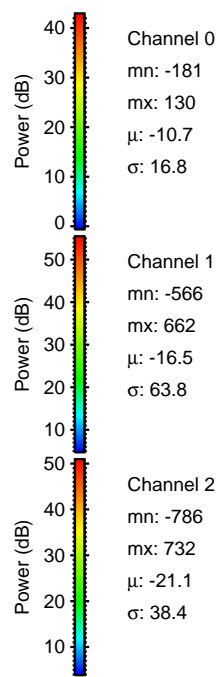
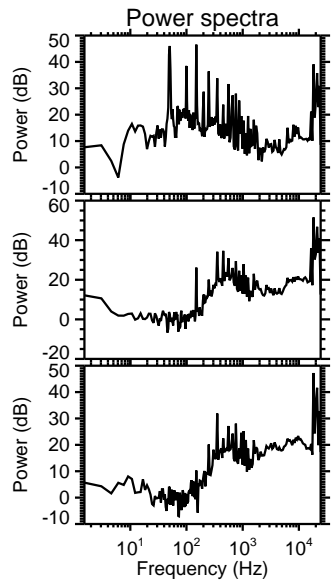
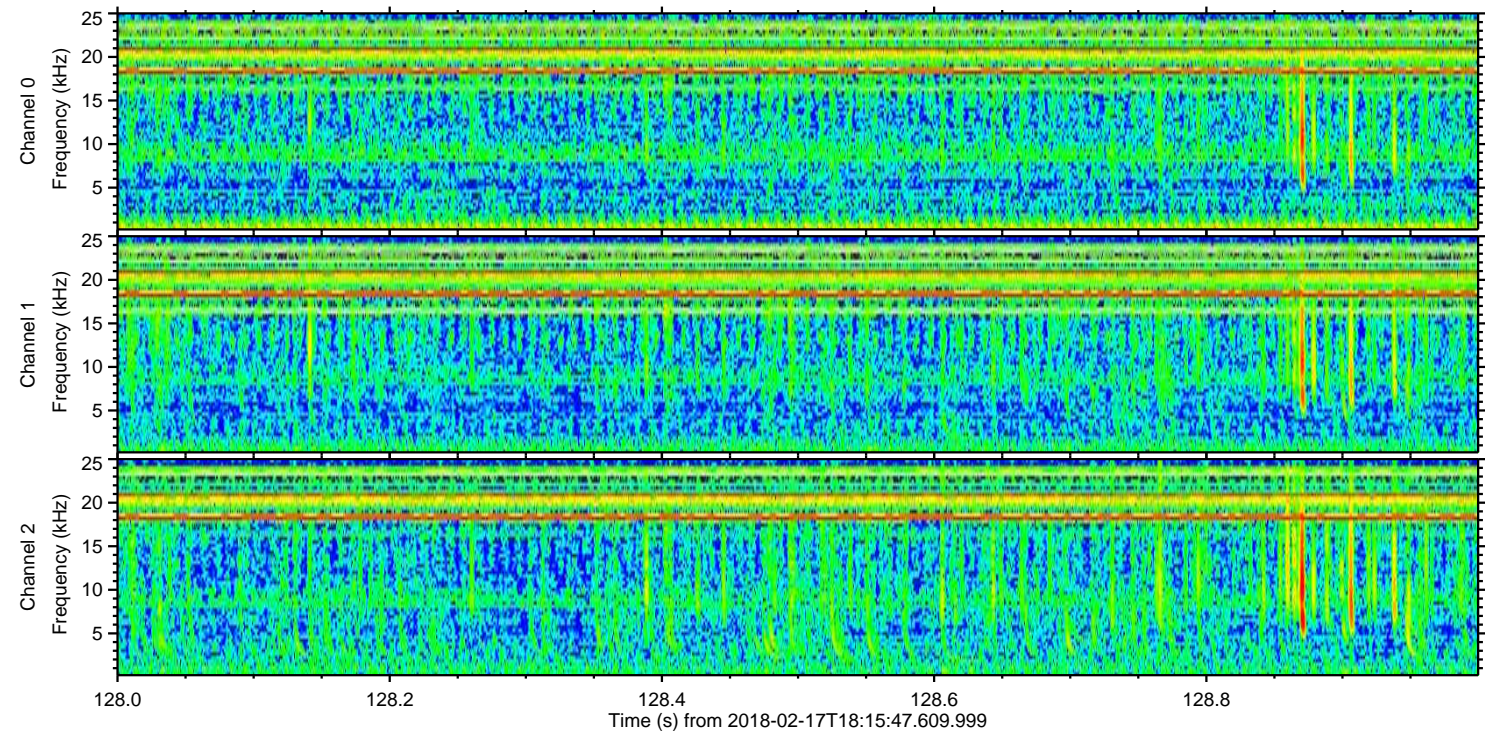
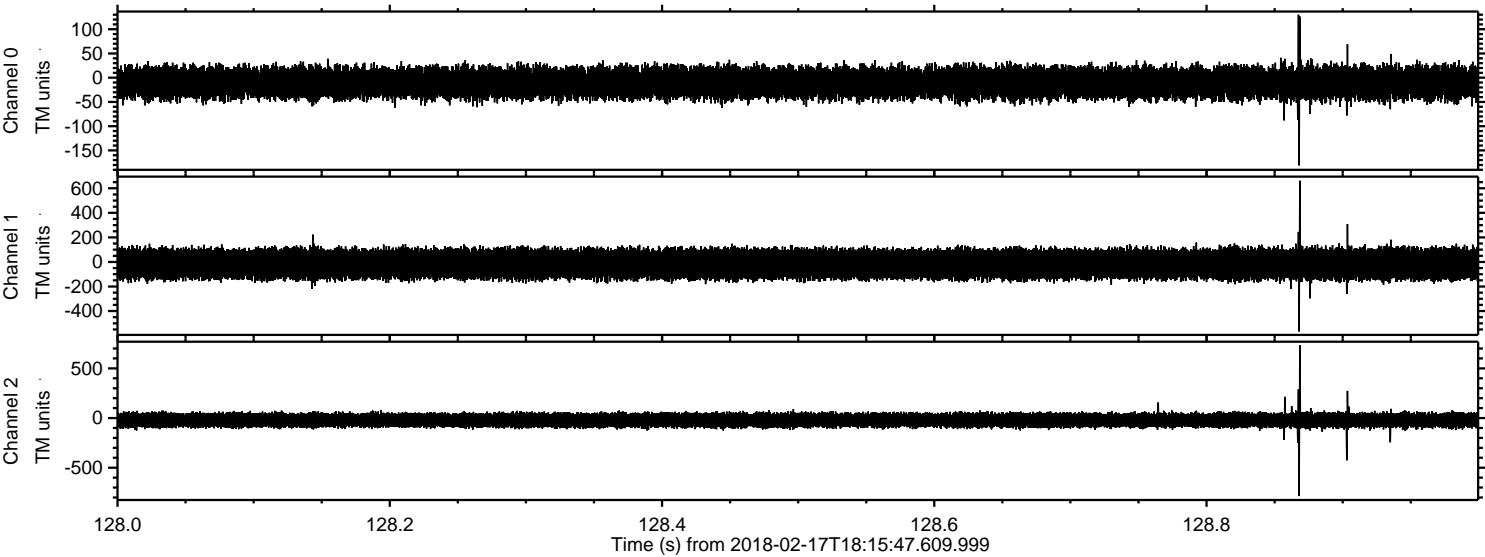


Processed Sat Feb 17 19:24:17 2018 by ELM ver.2012-10-06 from 001__elm20180217_181546__dat00.bin



ELMAVAN 3D WAVEFORMS (Measured data sampled at 50 kHz) 51000 packets of 144 samples from 2018-02-17T18:15:47.609.999. Part 129/147

Processed Sat Feb 17 19:24:18 2018 by ELM ver.2012-10-06 from 001__elm20180217_181546__dat00.bin

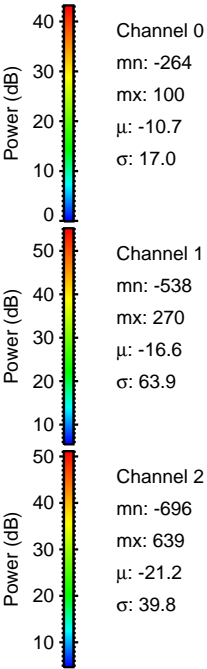
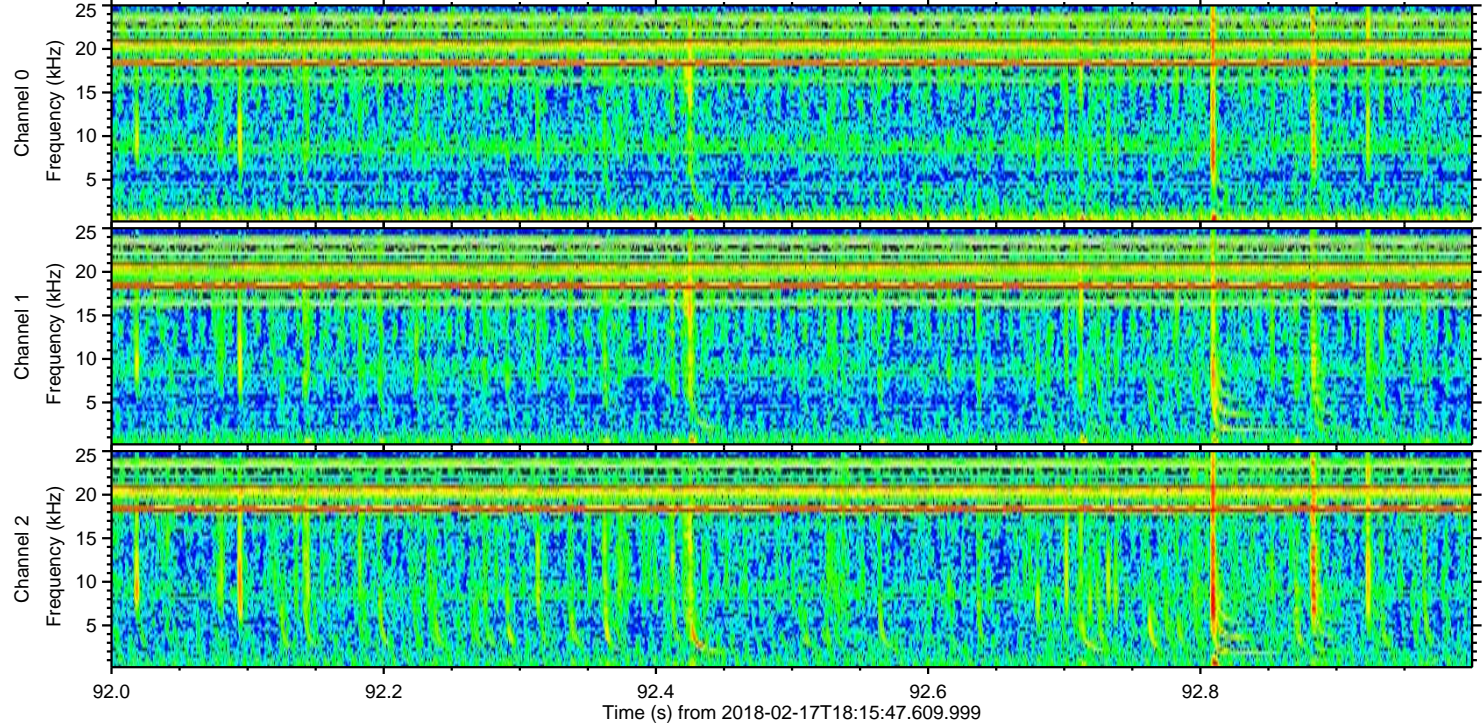
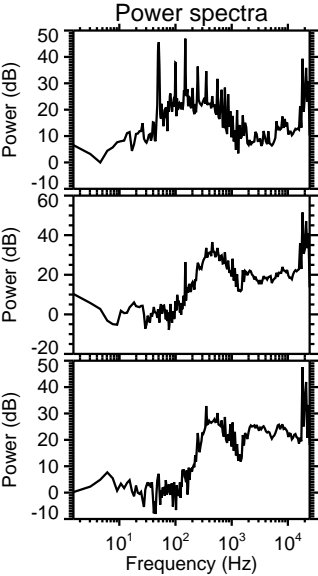
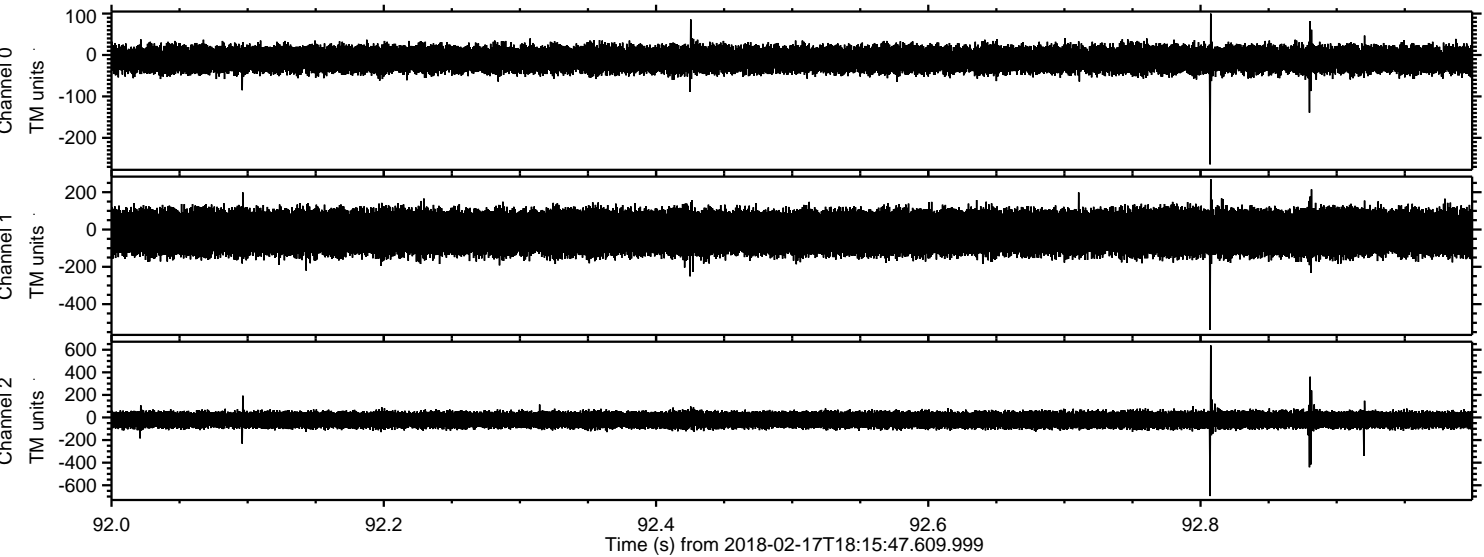


Channel 0
mn: -181
mx: 130
 μ : -10.7
 σ : 16.8

Channel 1
mn: -566
mx: 662
 μ : -16.5
 σ : 63.8

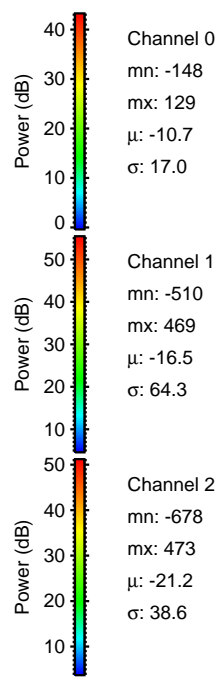
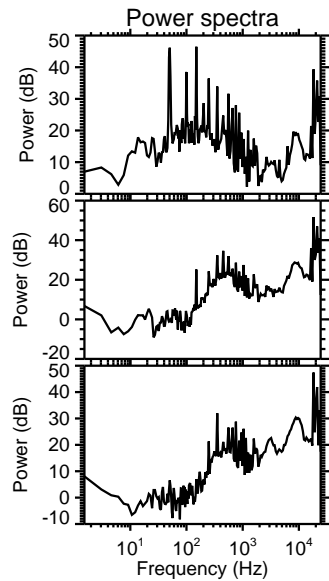
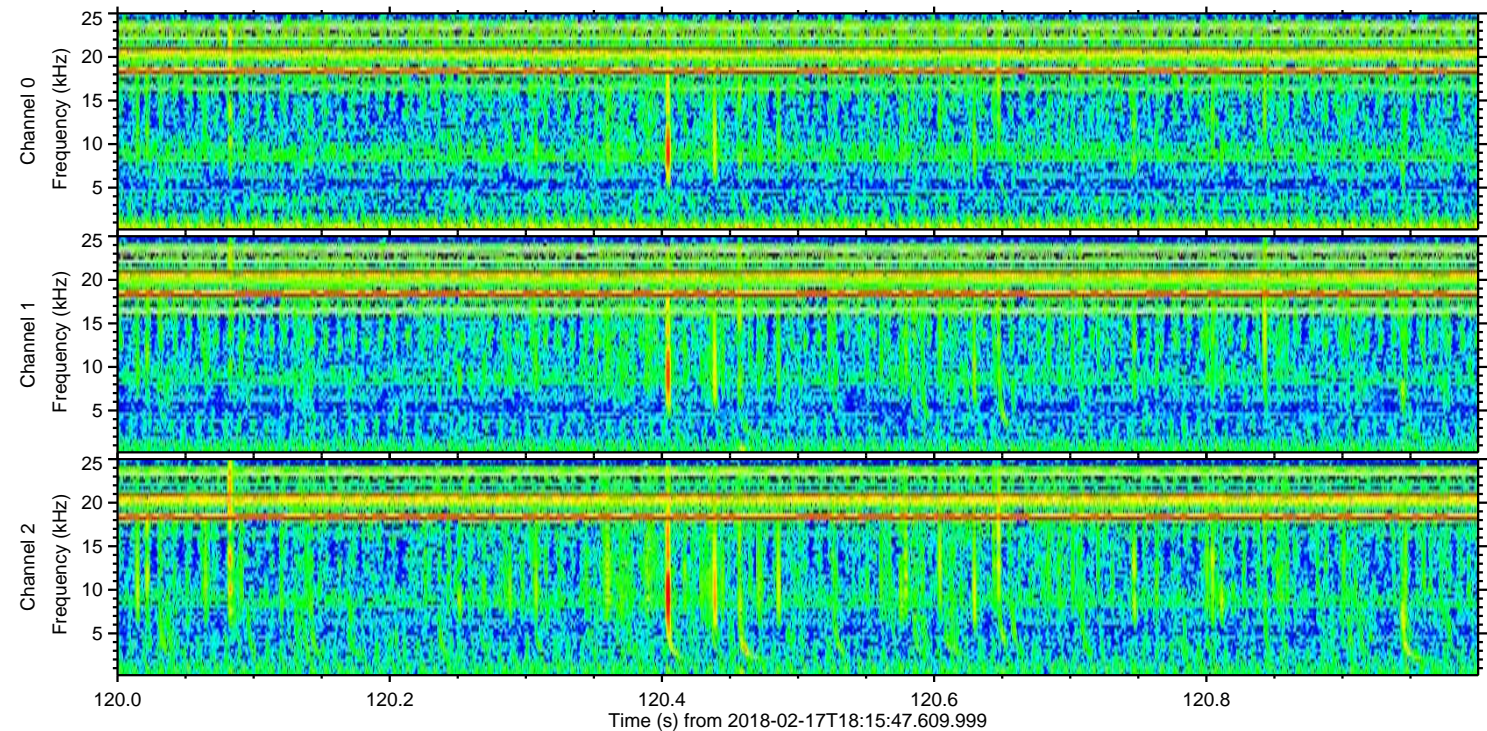
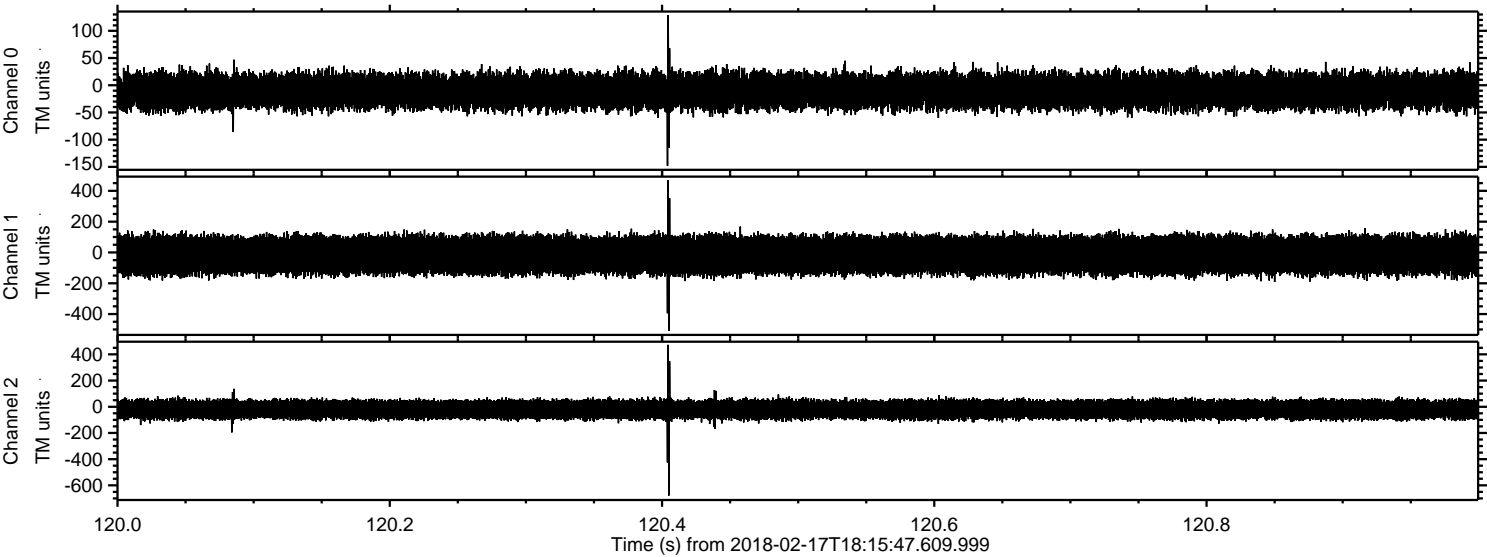
Channel 2
mn: -786
mx: 732
 μ : -21.1
 σ : 38.4

Processed Sat Feb 17 19:24:18 2018 by ELM ver.2012-10-06 from 001__elm20180217_181546__dat00.bin



ELMAVAN 3D WAVEFORMS (Measured data sampled at 50 kHz) 51000 packets of 144 samples from 2018-02-17T18:15:47.609.999. Part 121/147

Processed Sat Feb 17 19:24:19 2018 by ELM ver.2012-10-06 from 001__elm20180217_181546__dat00.bin

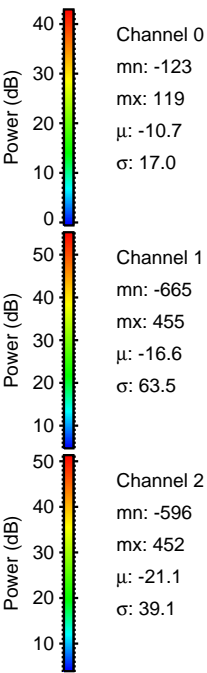
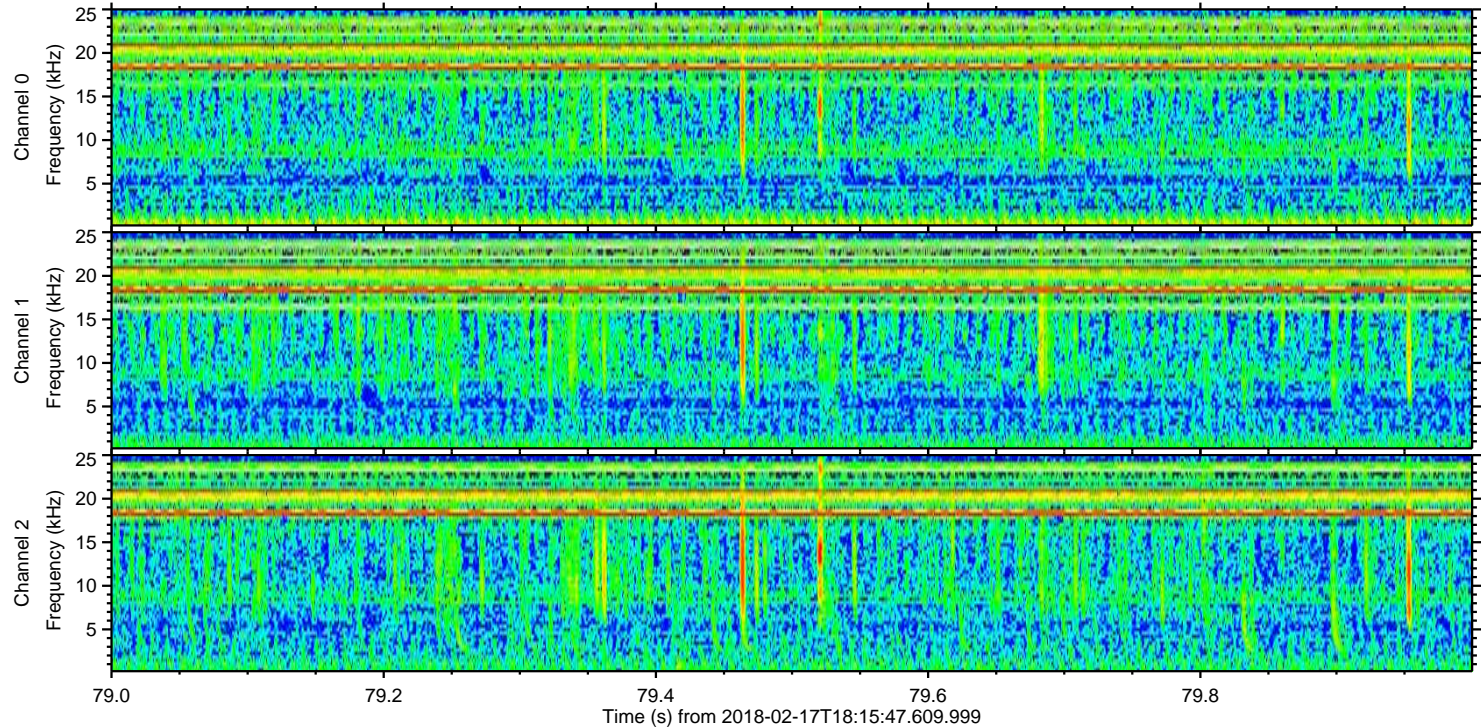
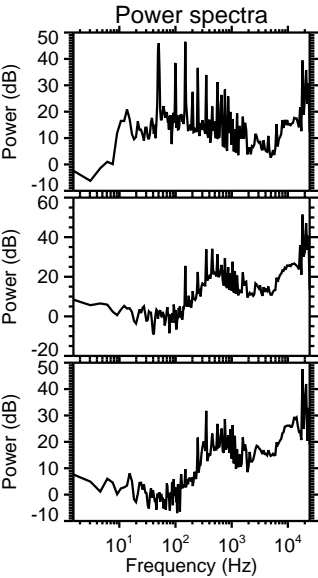
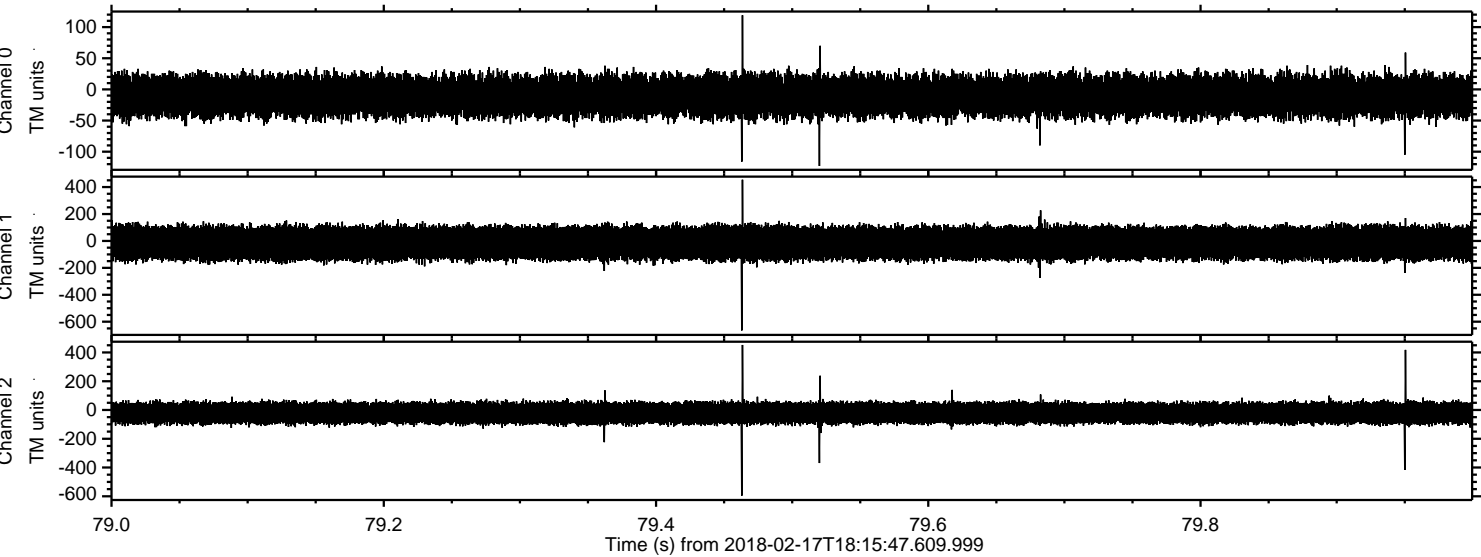


Channel 0
mn: -148
mx: 129
 μ : -10.7
 σ : 17.0

Channel 1
mn: -510
mx: 469
 μ : -16.5
 σ : 64.3

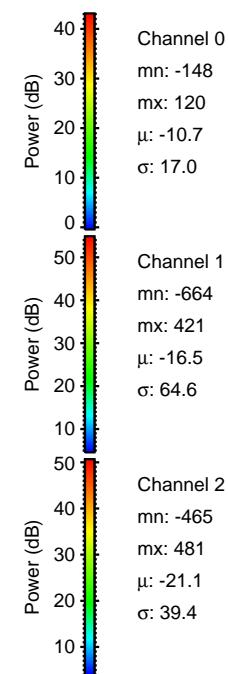
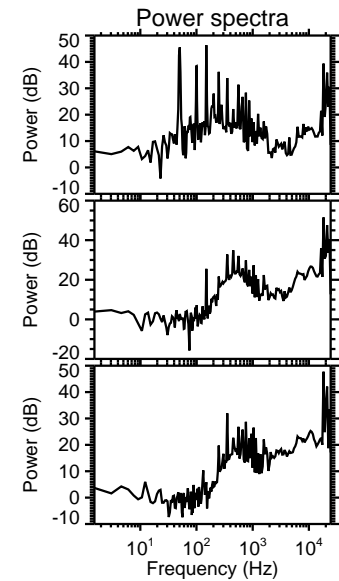
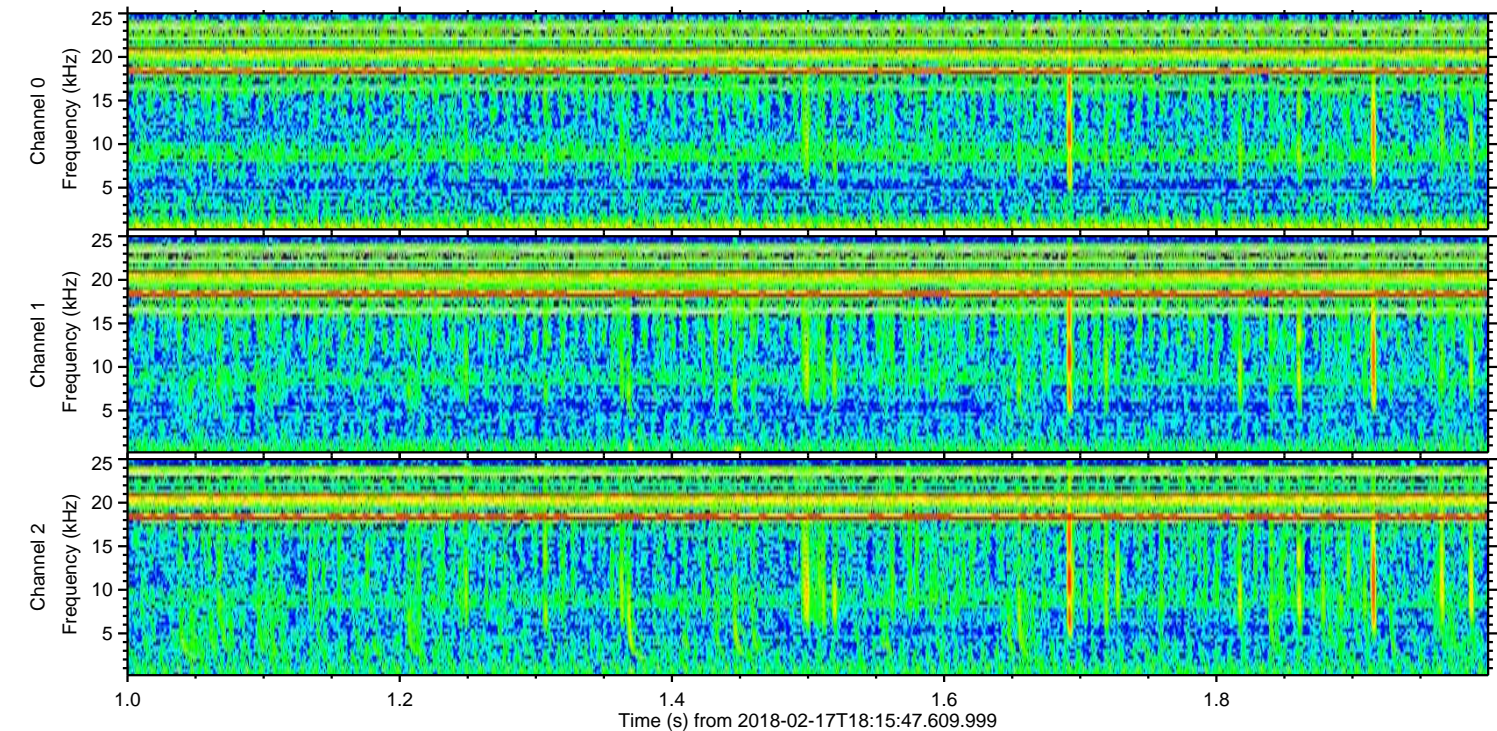
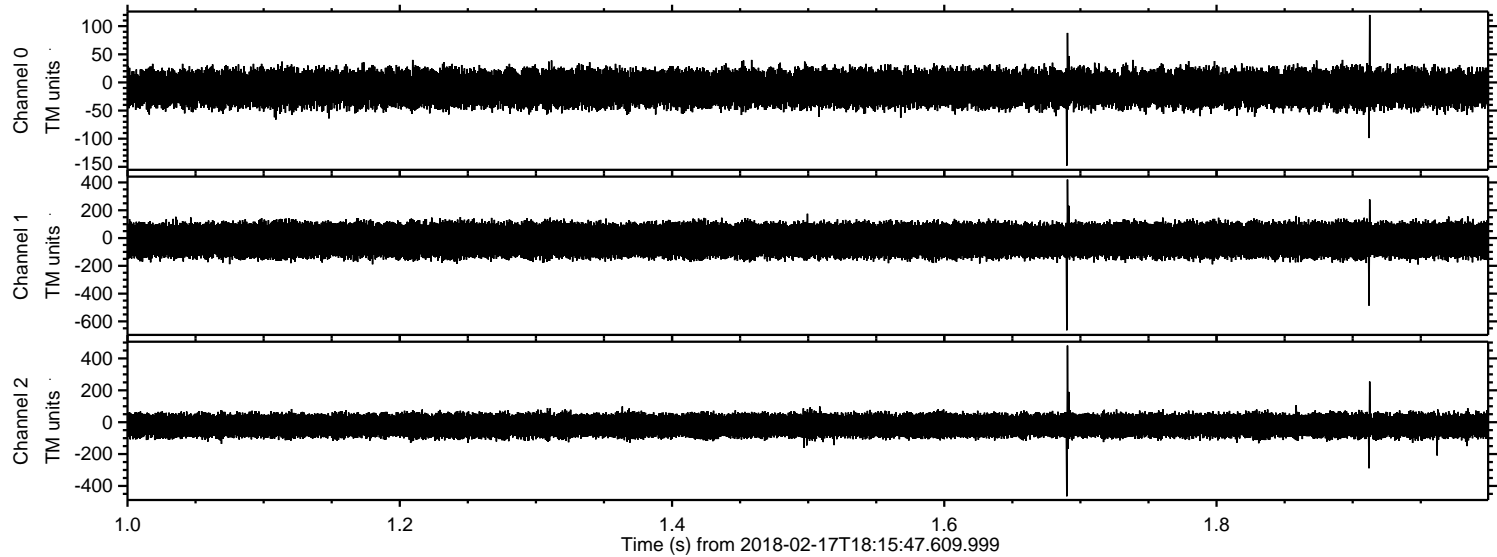
Channel 2
mn: -678
mx: 473
 μ : -21.2
 σ : 38.6

Processed Sat Feb 17 19:24:20 2018 by ELM ver.2012-10-06 from 001__elm20180217_181546__dat00.bin



ELMAVAN 3D WAVEFORMS (Measured data sampled at 50 kHz) 51000 packets of 144 samples from 2018-02-17T18:15:47.609.999. Part 2/147

Processed Sat Feb 17 19:24:21 2018 by ELM ver.2012-10-06 from 001__elm20180217_181546__dat00.bin

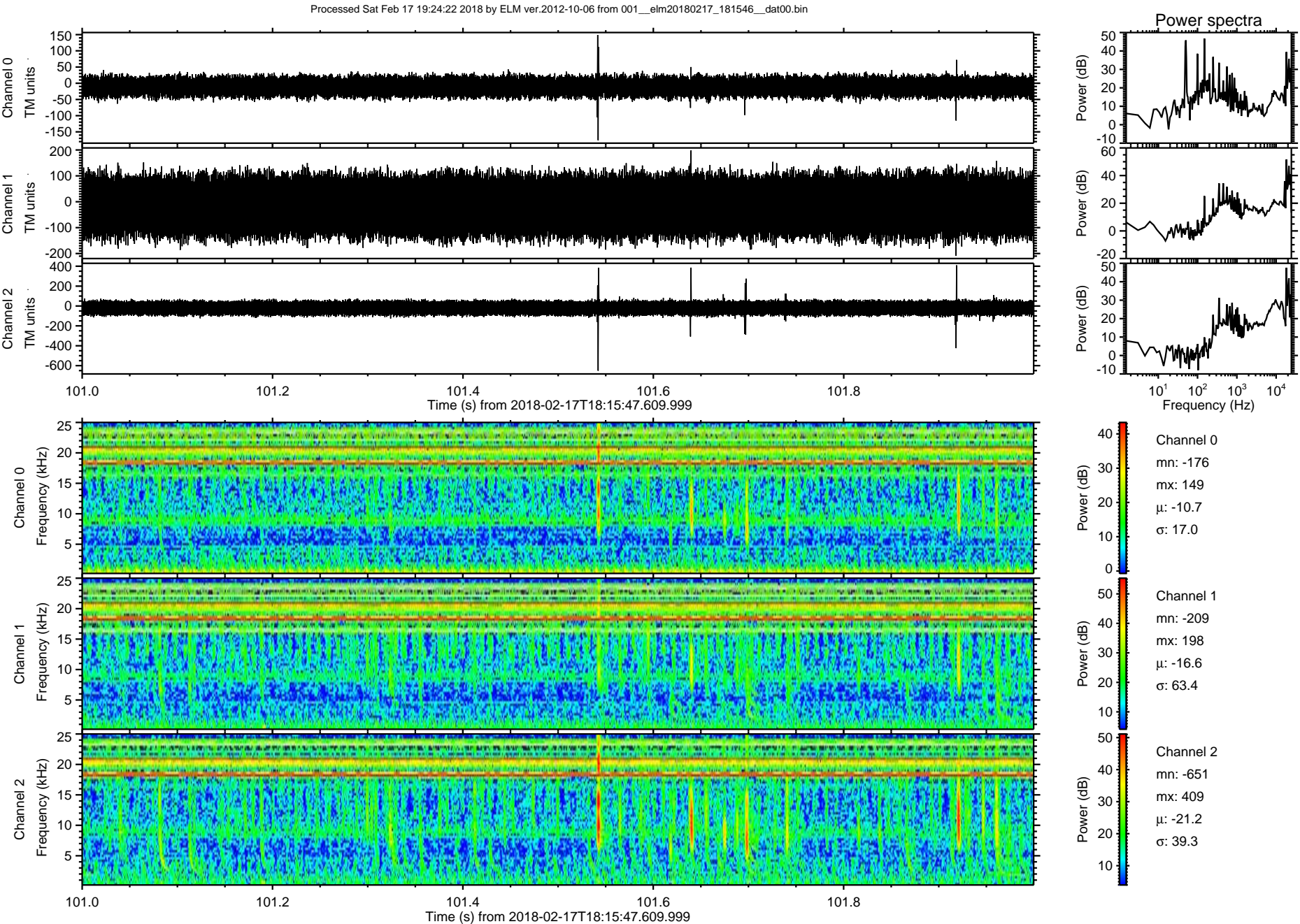


Channel 0
mn: -148
mx: 120
 μ : -10.7
 σ : 17.0

Channel 1
mn: -664
mx: 421
 μ : -16.5
 σ : 64.6

Channel 2
mn: -465
mx: 481
 μ : -21.1
 σ : 39.4

ELMAVAN 3D WAVEFORMS (Measured data sampled at 50 kHz) 51000 packets of 144 samples from 2018-02-17T18:15:47.609.999. Part 102/147



Processed Sat Feb 17 19:24:23 2018 by ELM ver.2012-10-06 from 001__elm20180217_181546__dat00.bin

