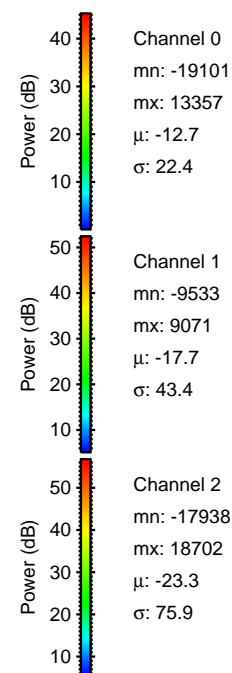
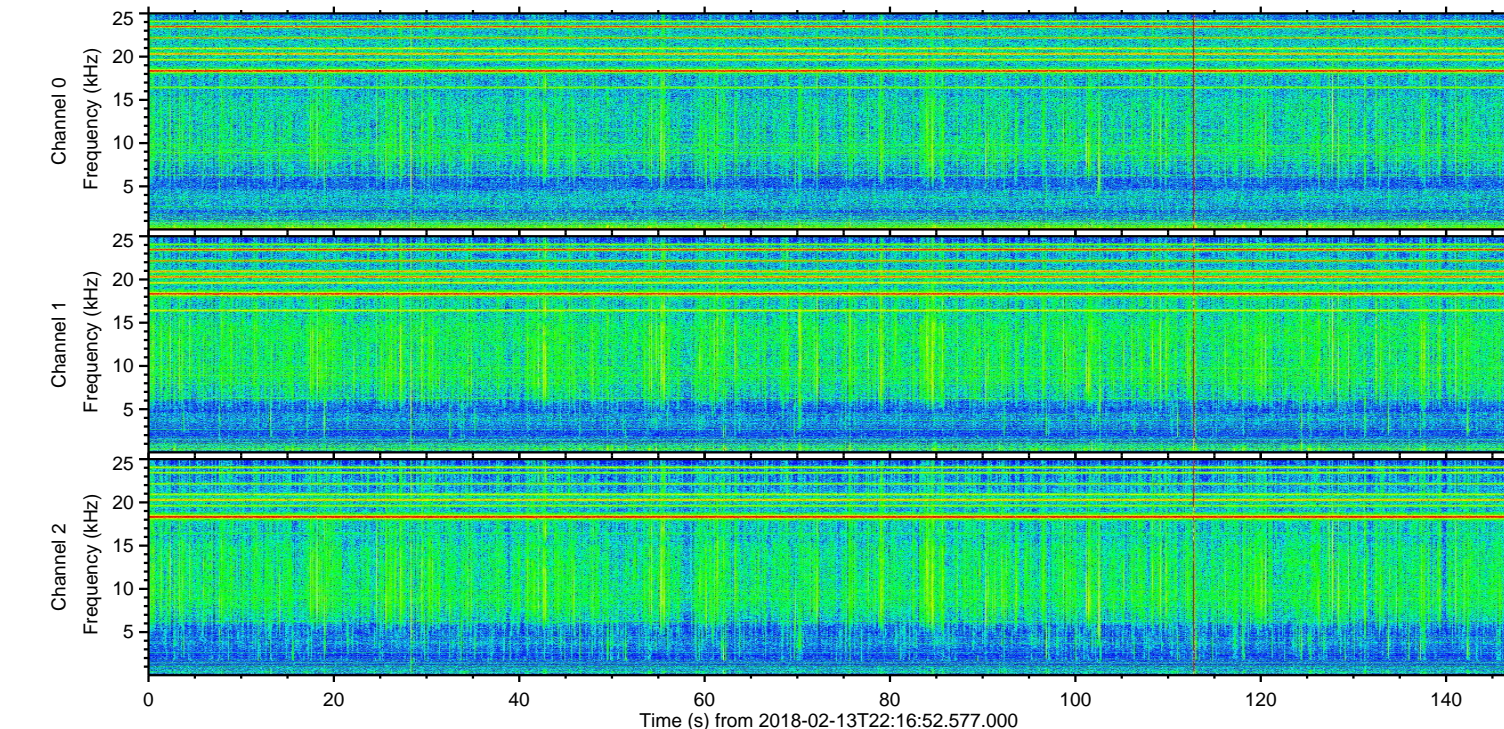
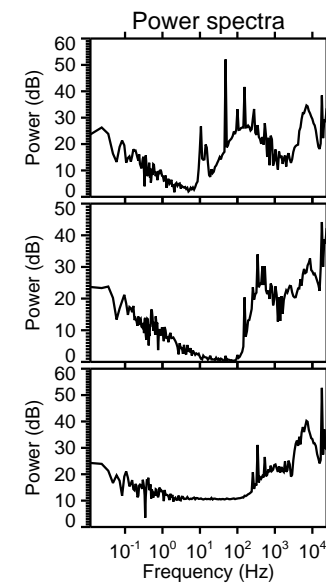
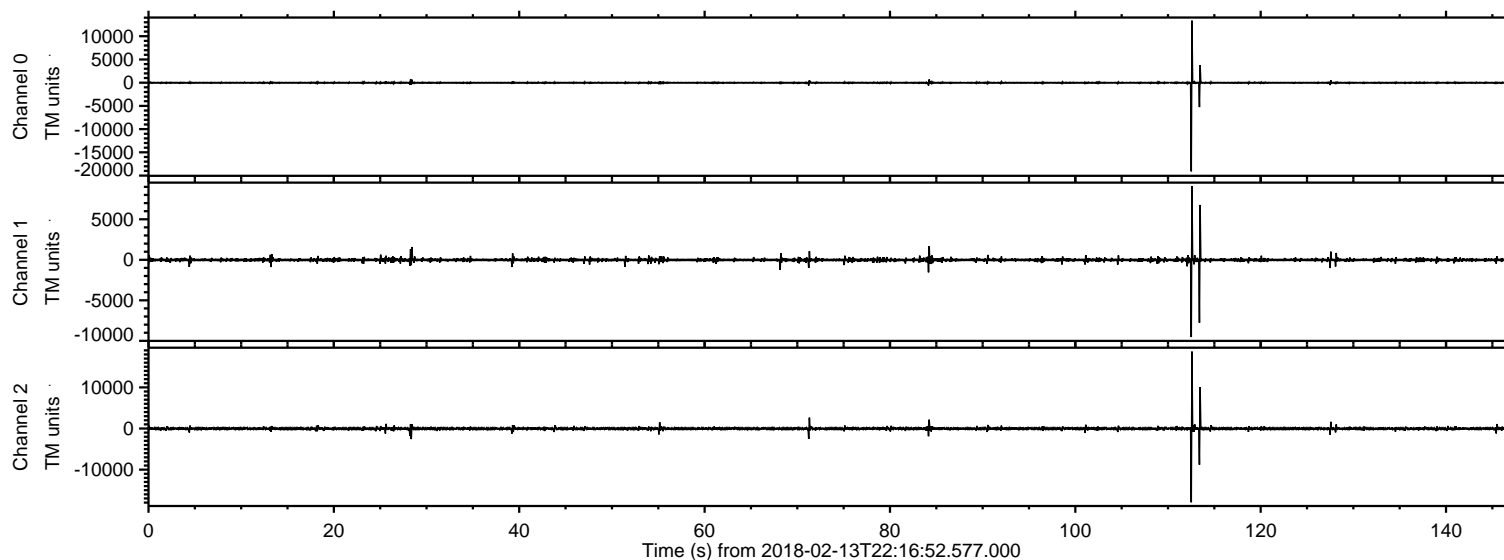


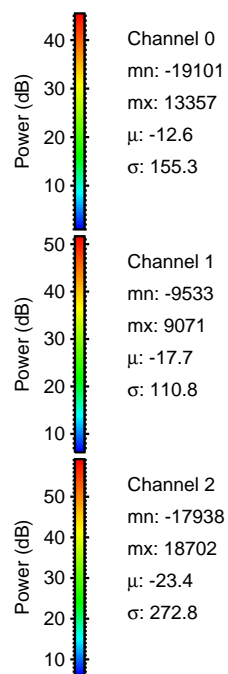
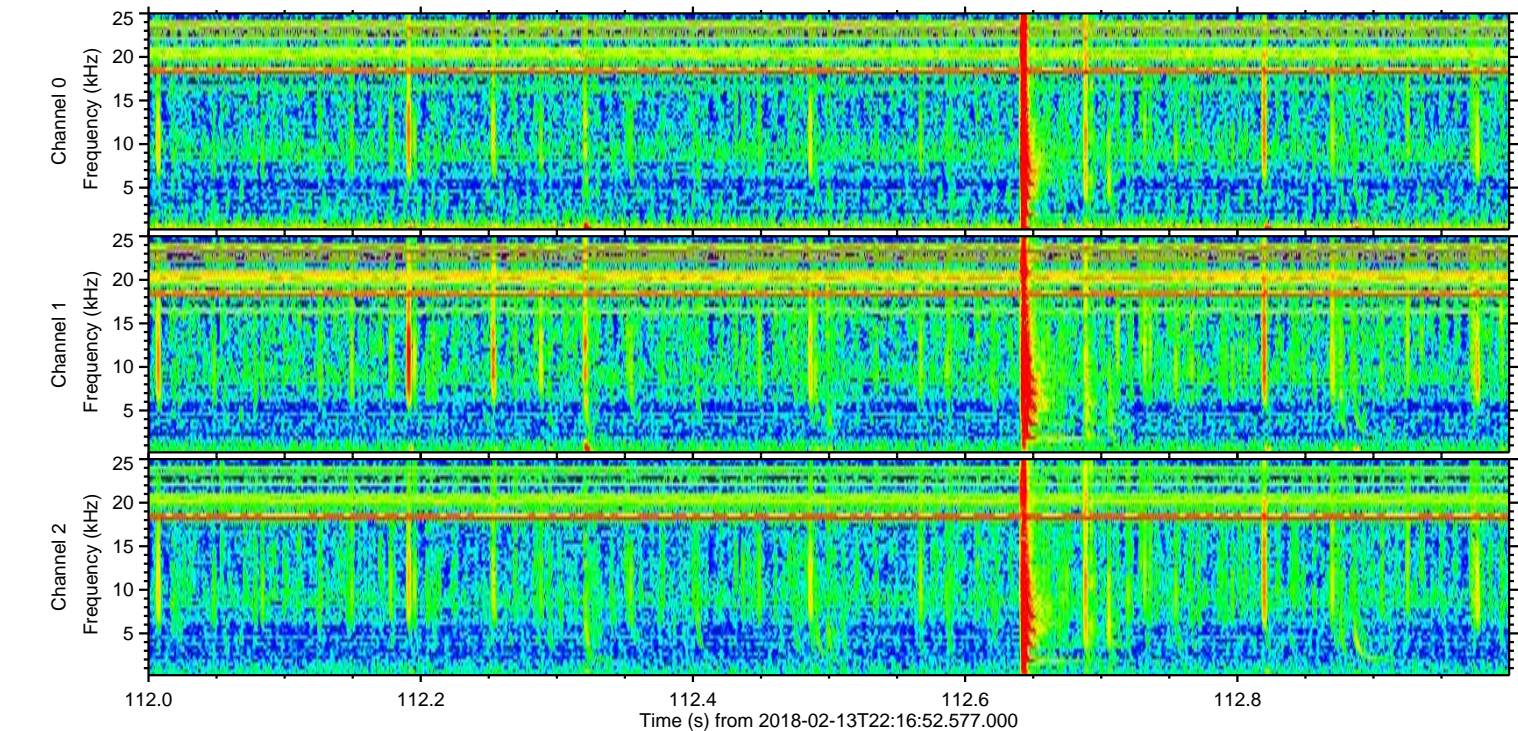
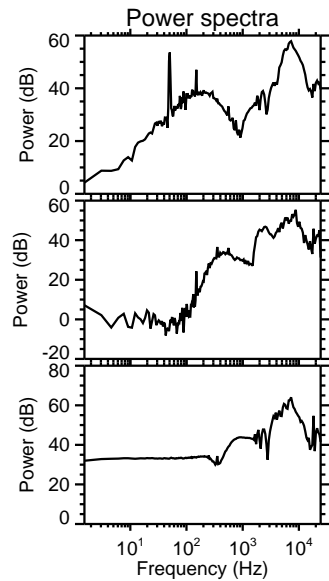
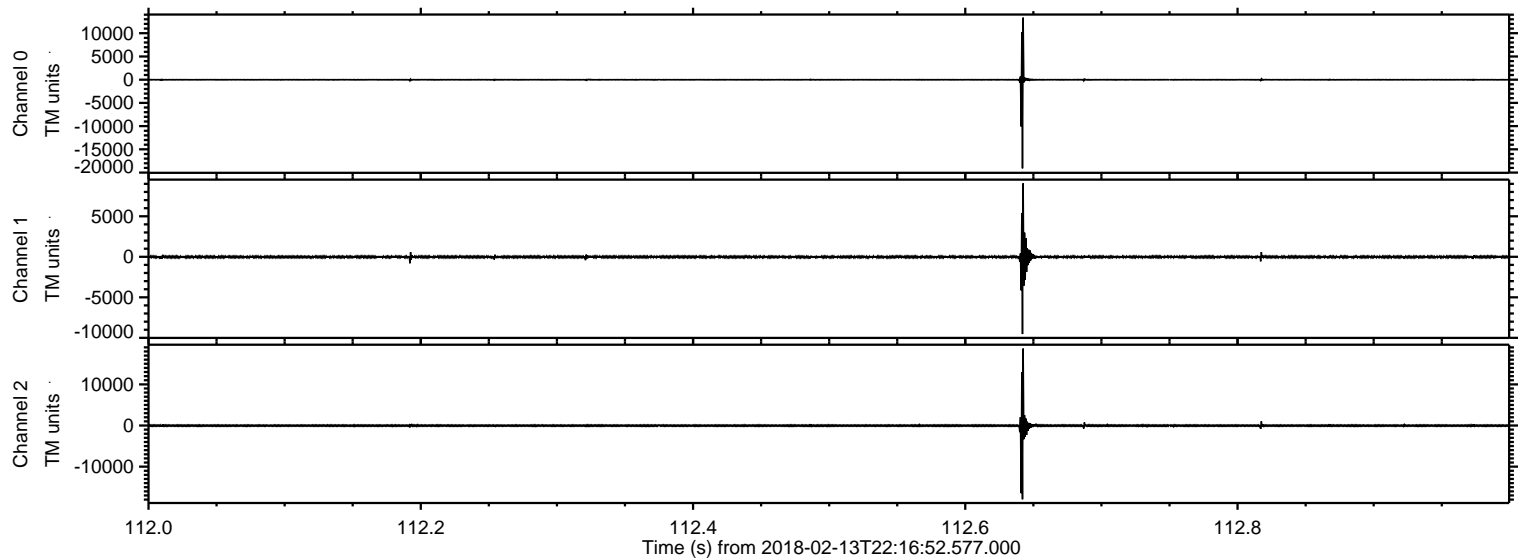
ELMAVAN 3D WAVEFORMS (Measured data sampled at 50 kHz) 51000 packets of 144 samples from 2018-02-13T22:16:52.577.000.

Processed Tue Feb 13 23:25:23 2018 by ELM ver.2012-10-06 from 001__elm20180213_221651__dat00.bin



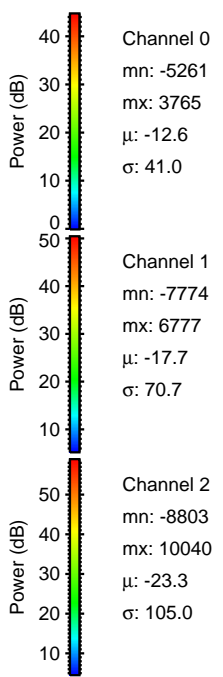
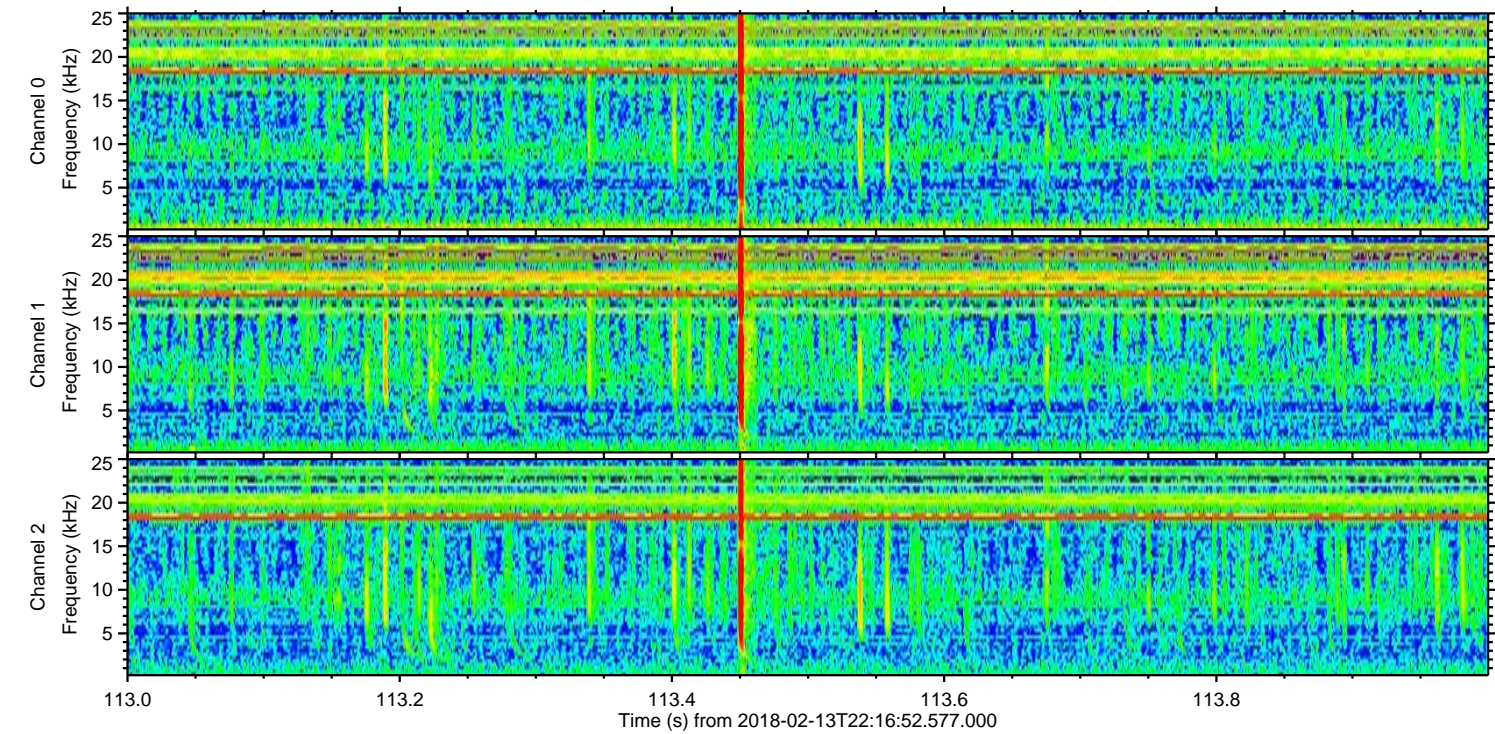
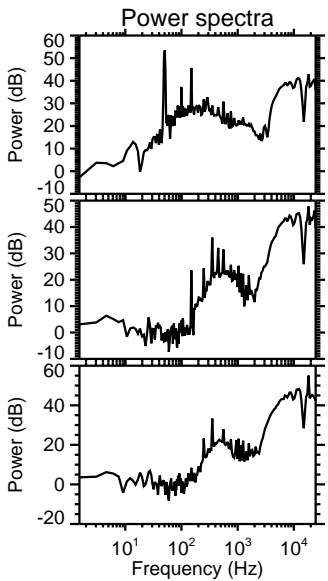
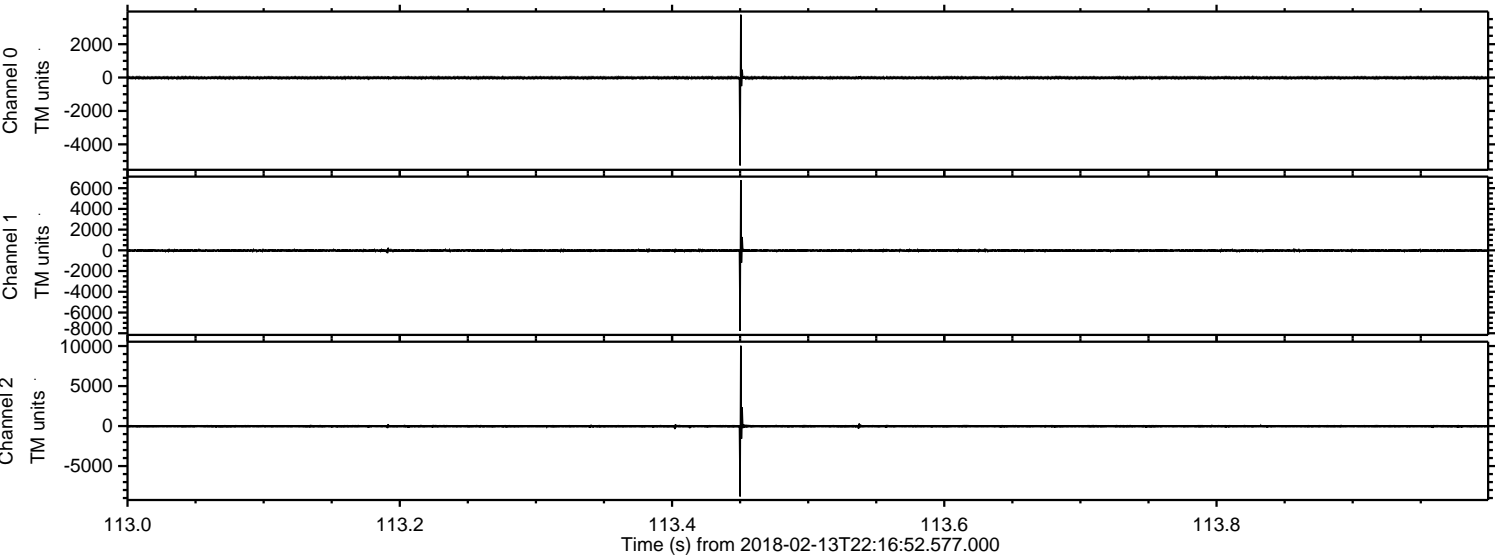
ELMAVAN 3D WAVEFORMS (Measured data sampled at 50 kHz) 51000 packets of 144 samples from 2018-02-13T22:16:52.577.000. Part 113/147

Processed Tue Feb 13 23:25:31 2018 by ELM ver.2012-10-06 from 001__elm20180213_221651__dat00.bin

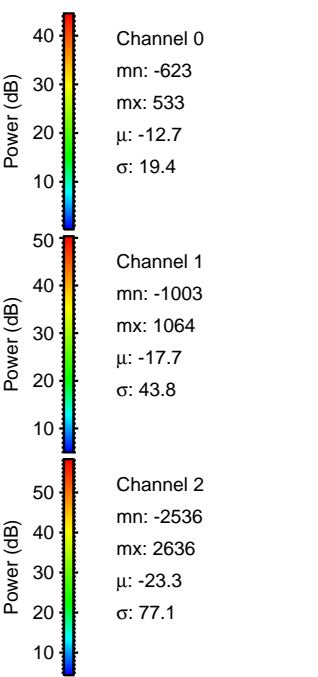
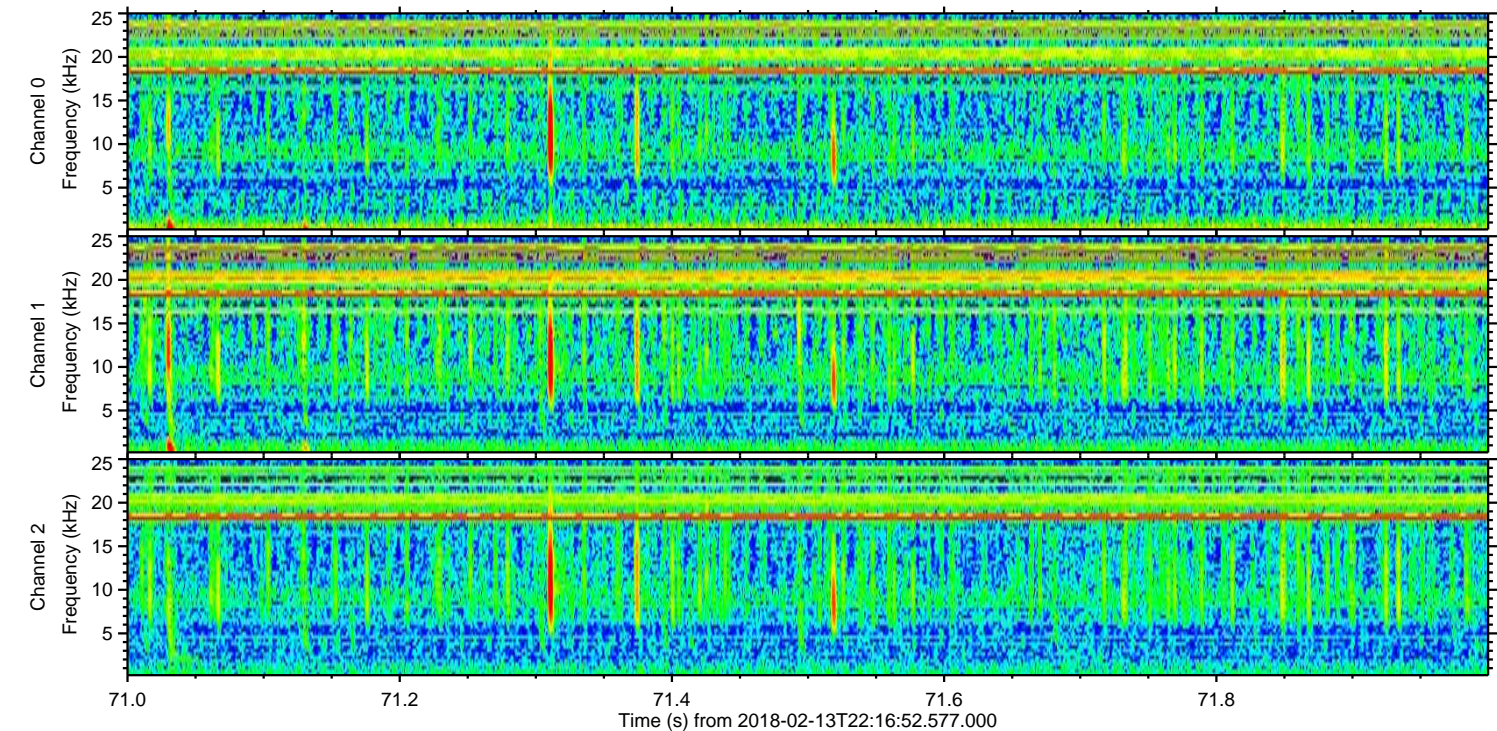
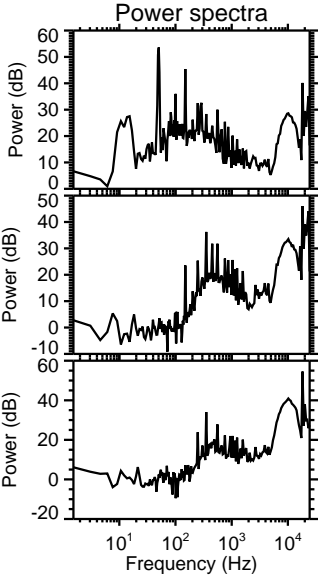
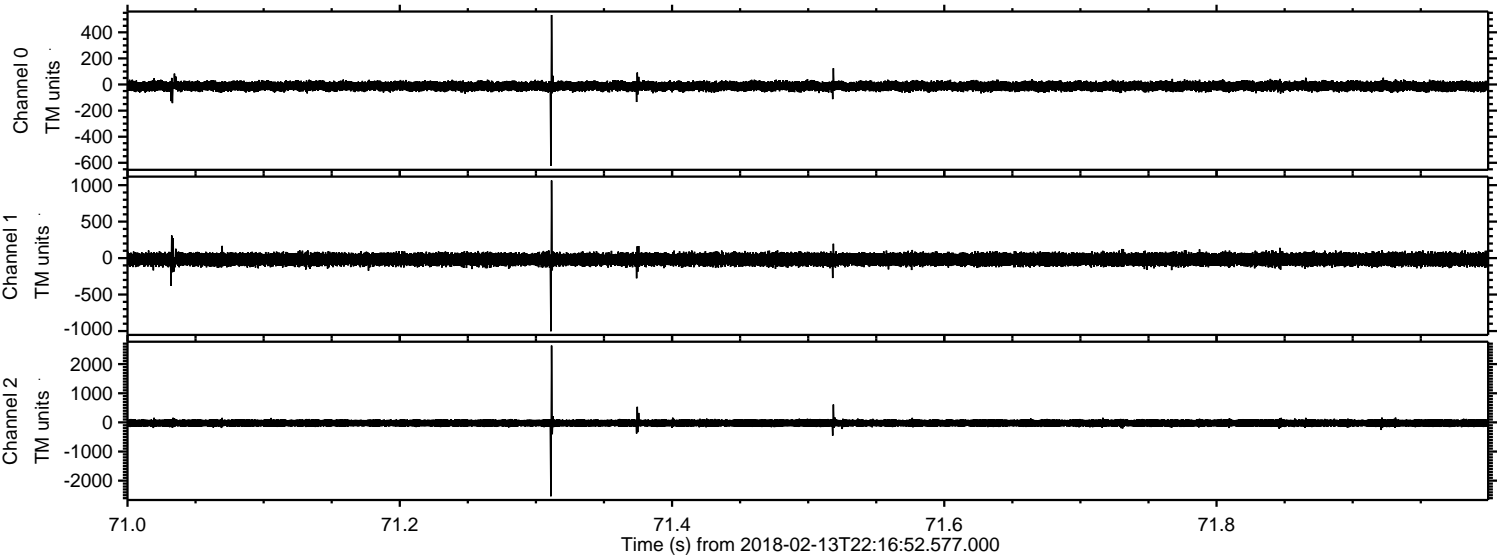


ELMAVAN 3D WAVEFORMS (Measured data sampled at 50 kHz) 51000 packets of 144 samples from 2018-02-13T22:16:52.577.000. Part 114/147

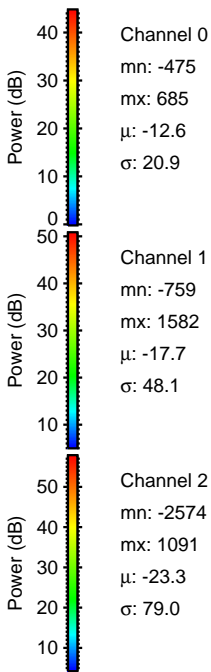
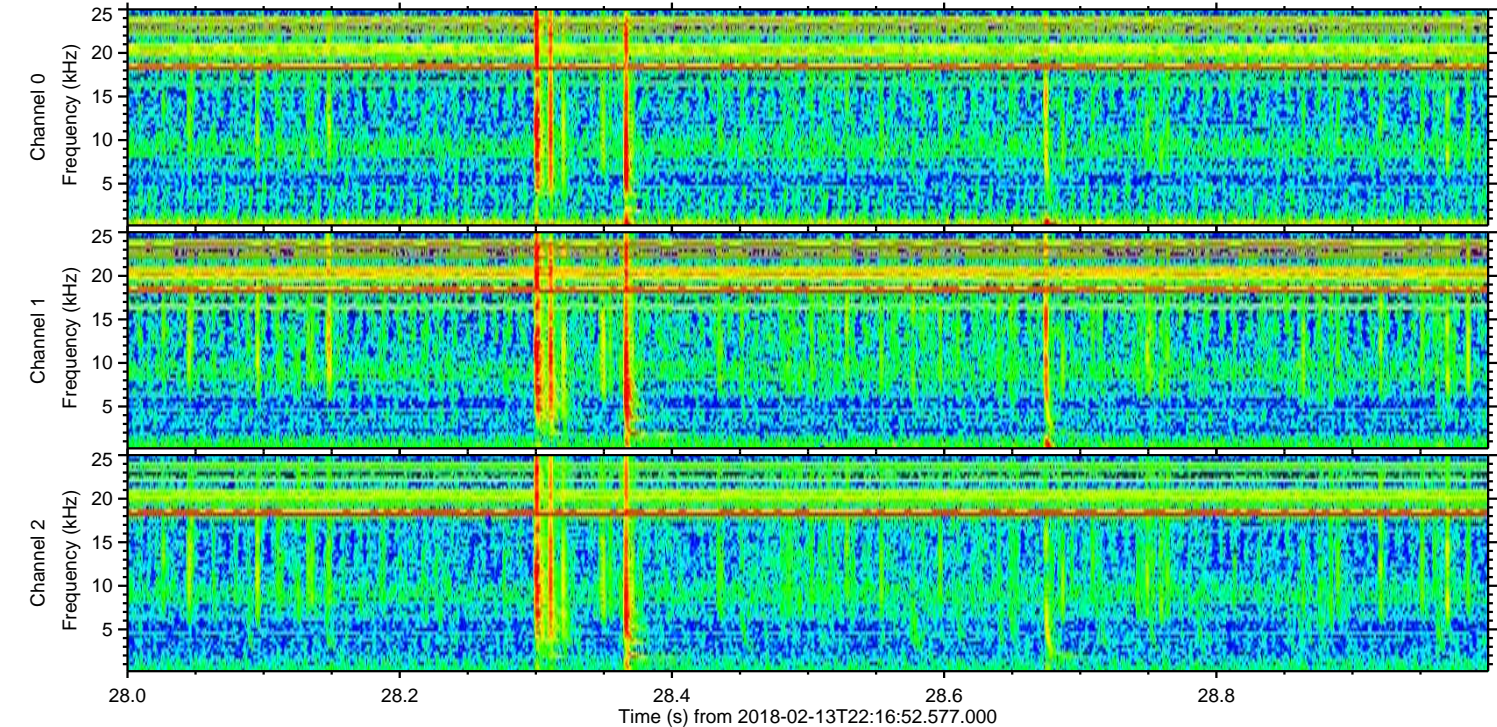
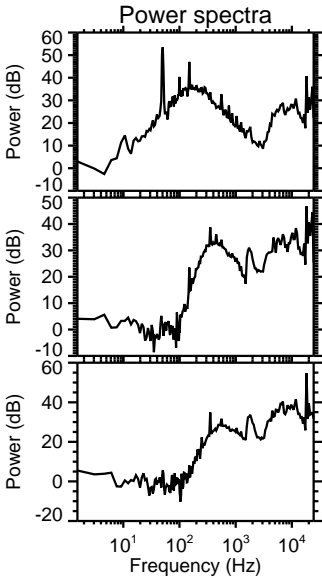
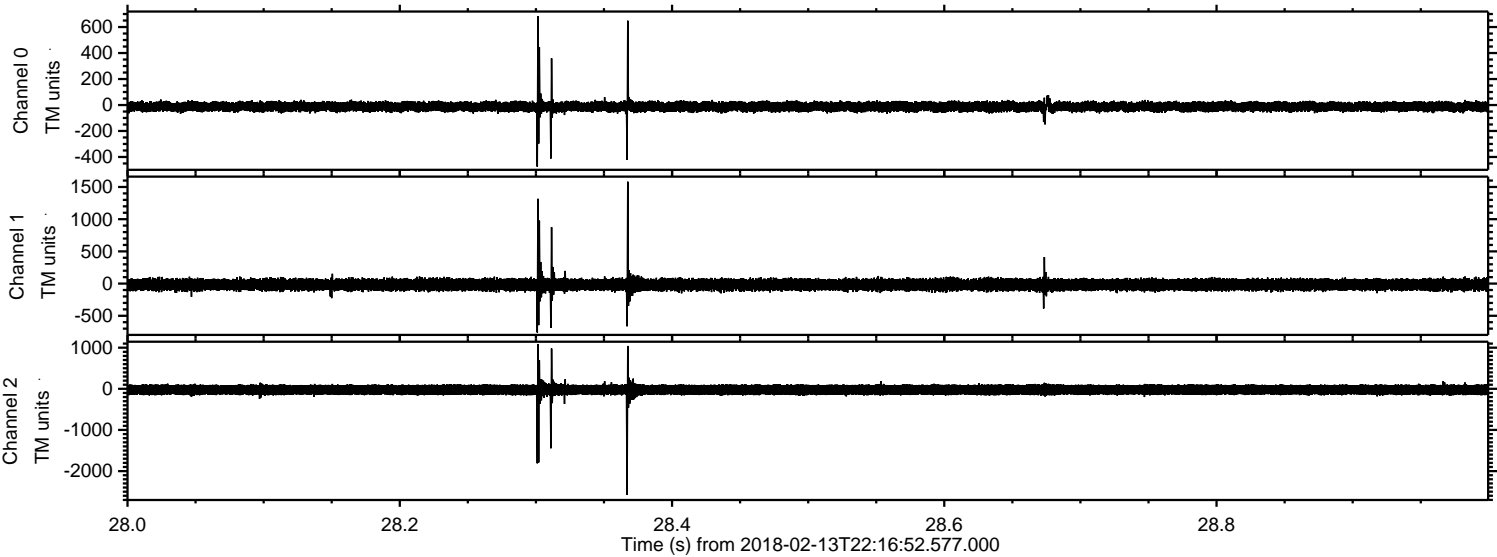
Processed Tue Feb 13 23:25:32 2018 by ELM ver.2012-10-06 from 001__elm20180213_221651__dat00.bin



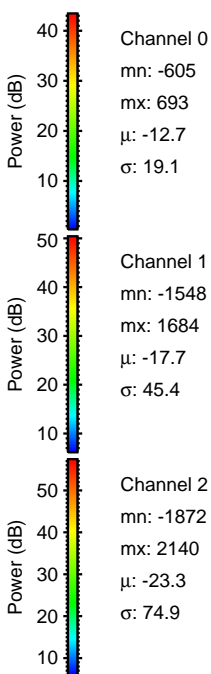
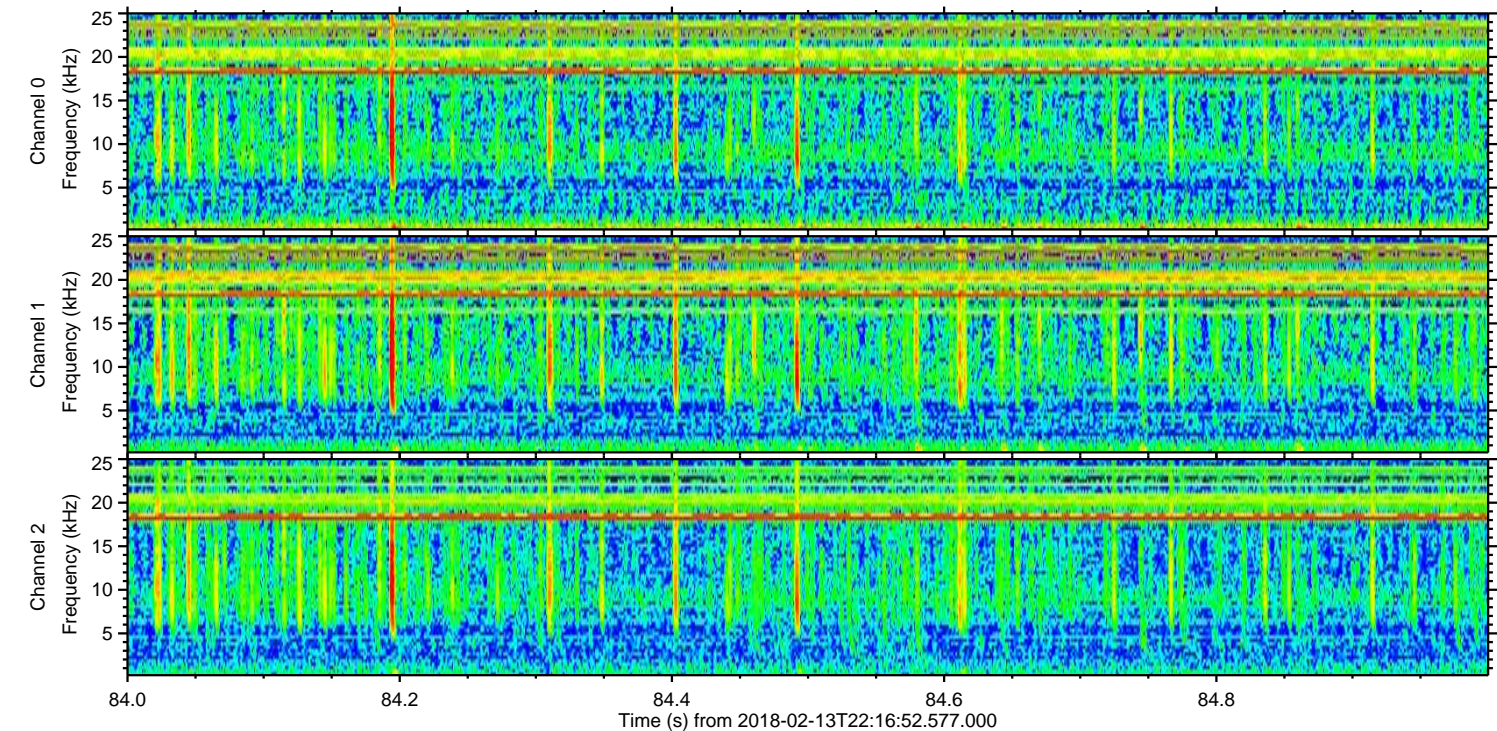
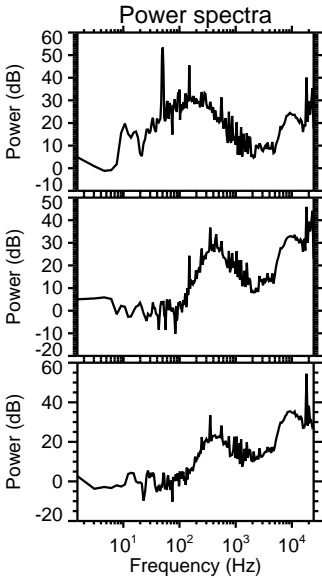
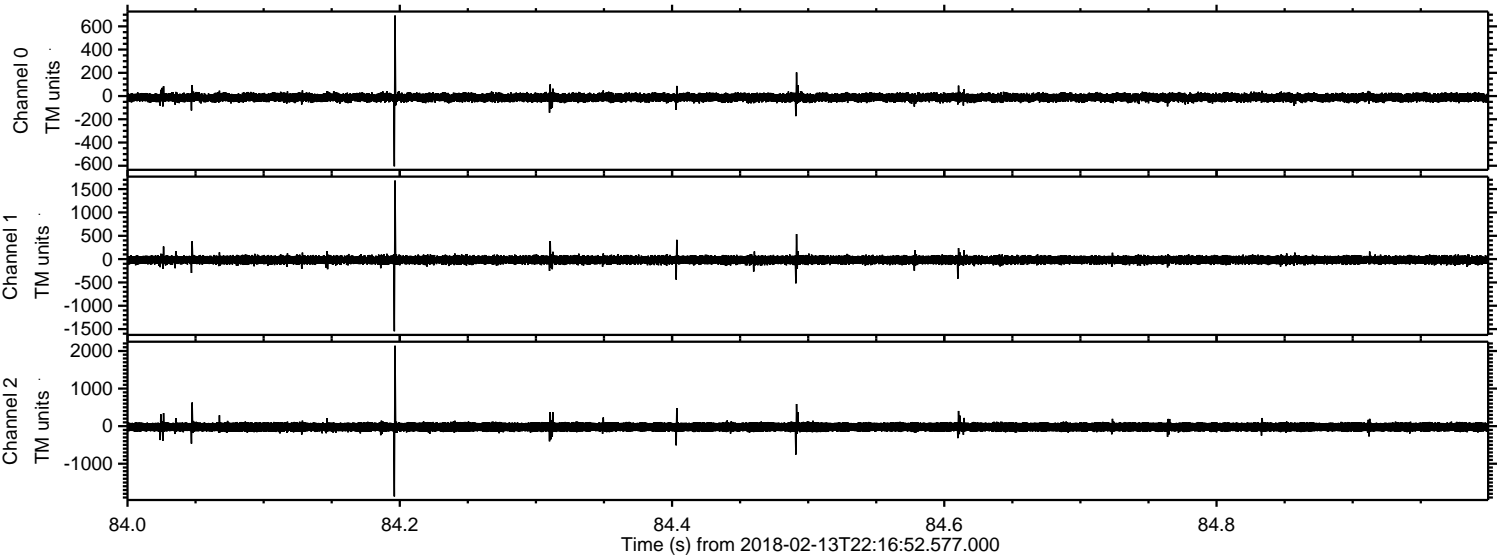
Processed Tue Feb 13 23:25:33 2018 by ELM ver.2012-10-06 from 001__elm20180213_221651__dat00.bin



Processed Tue Feb 13 23:25:34 2018 by ELM ver.2012-10-06 from 001__elm20180213_221651__dat00.bin

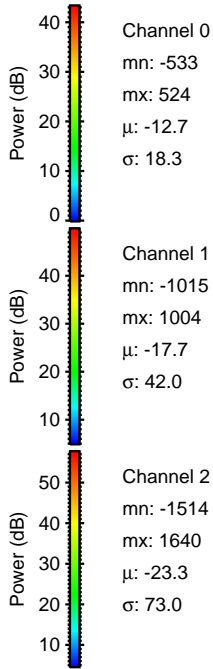
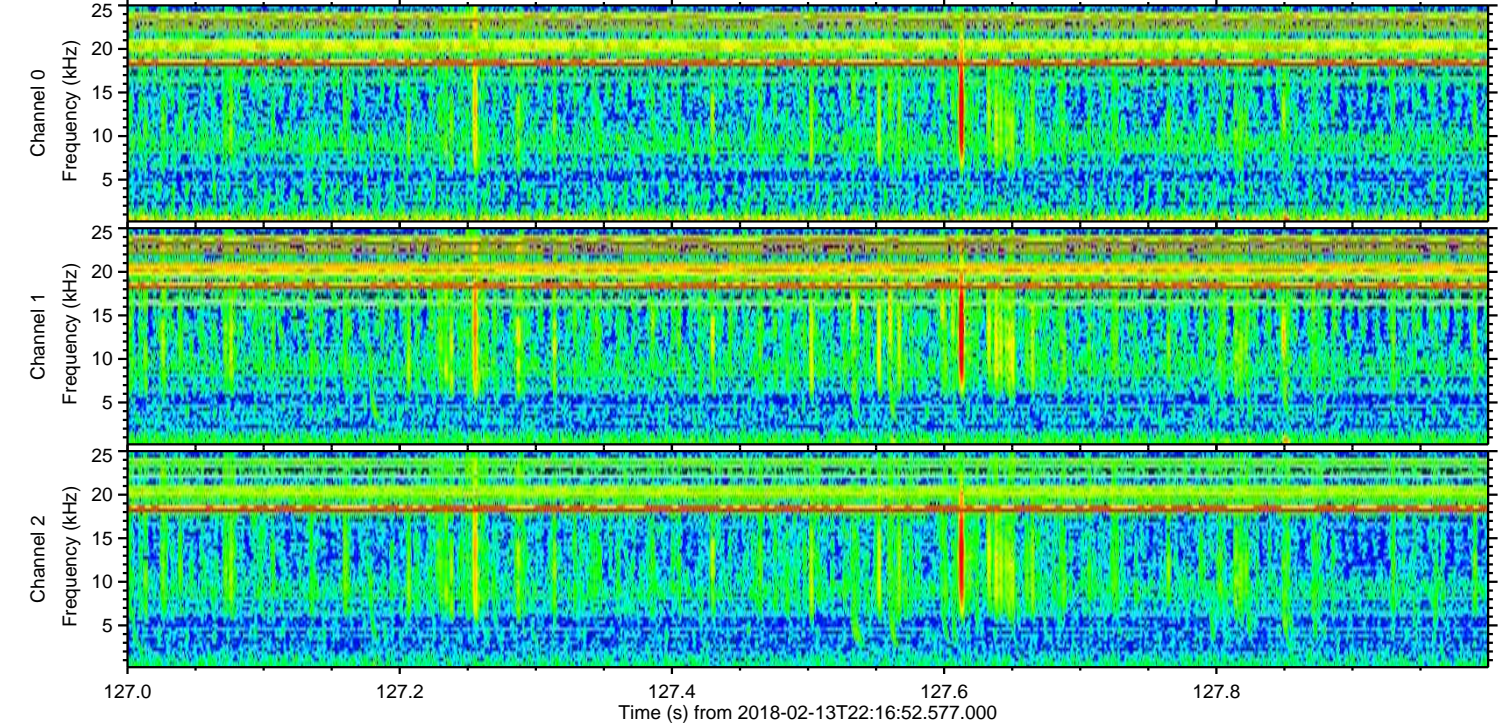
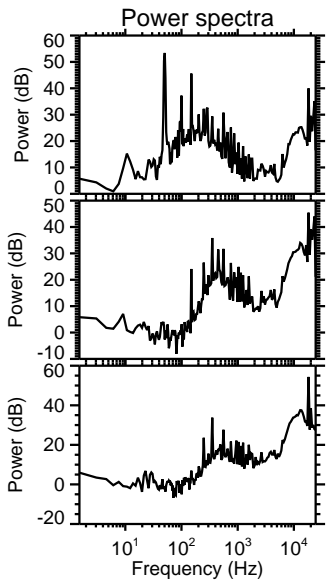
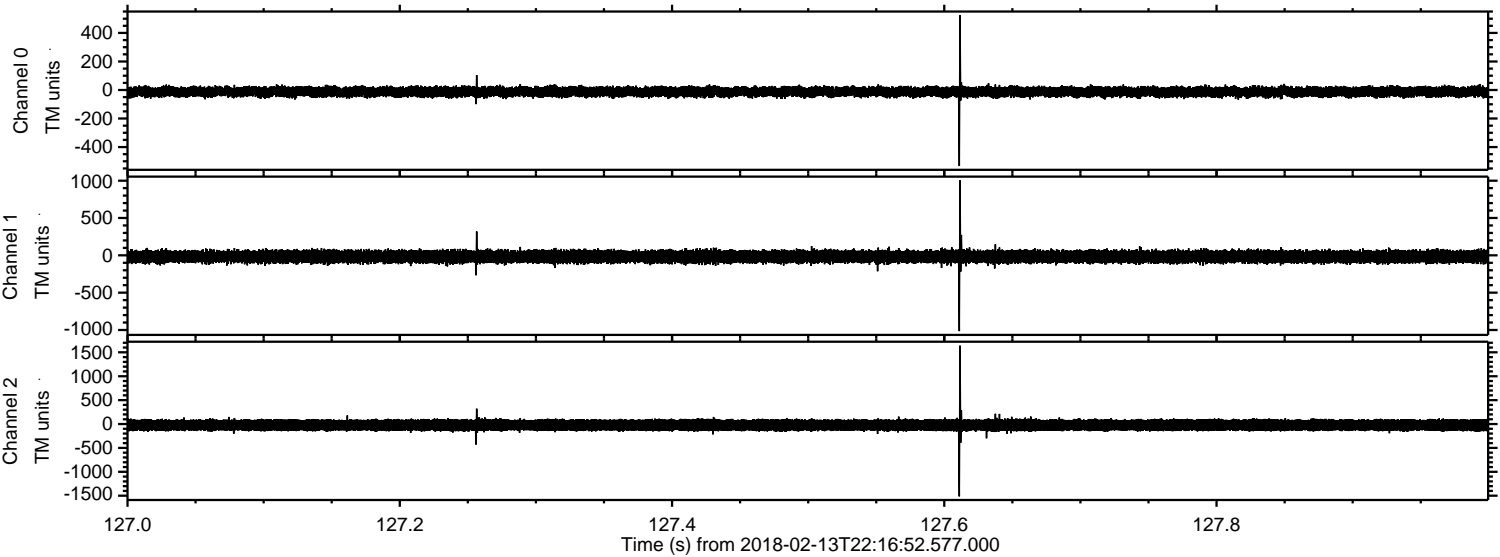


Processed Tue Feb 13 23:25:34 2018 by ELM ver.2012-10-06 from 001__elm20180213_221651__dat00.bin

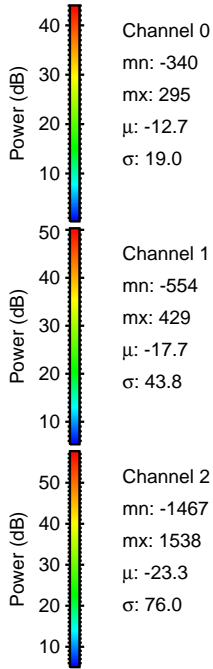
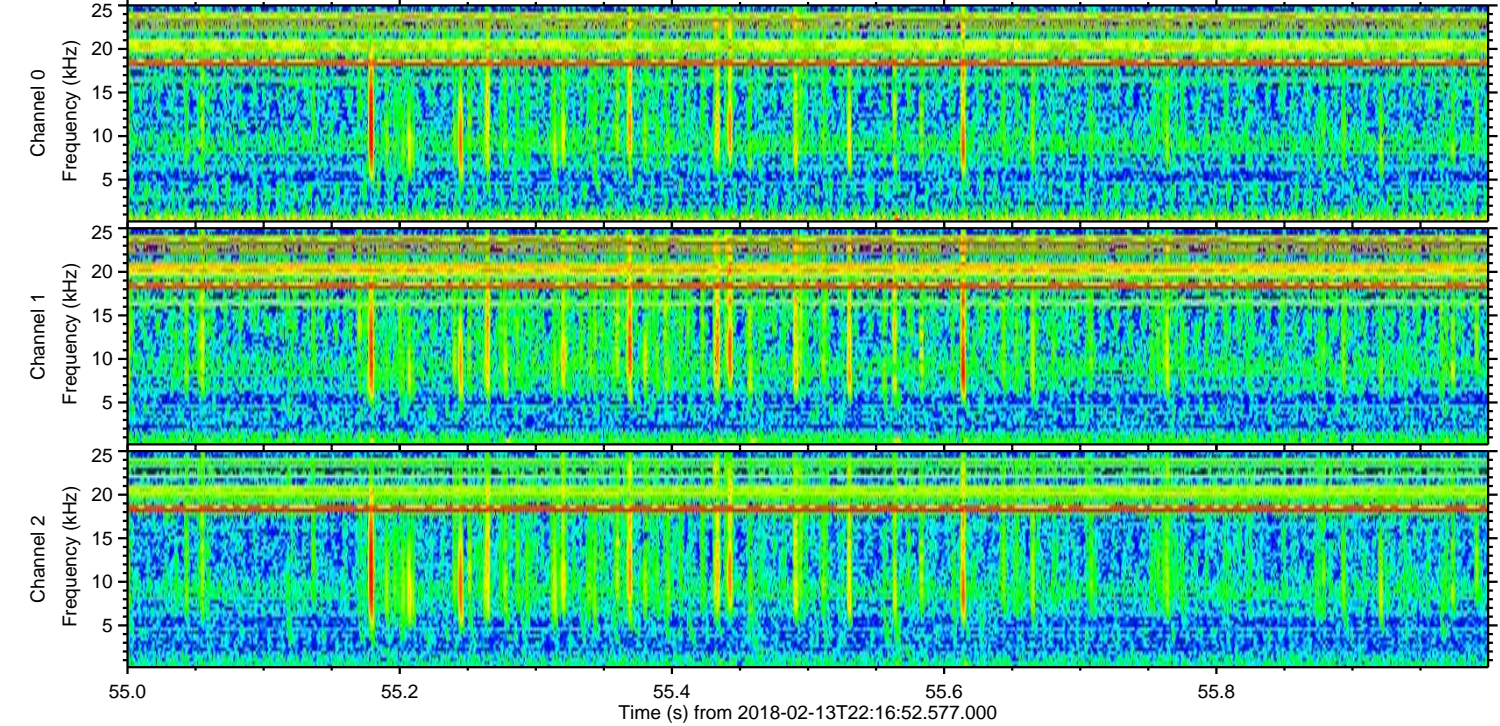
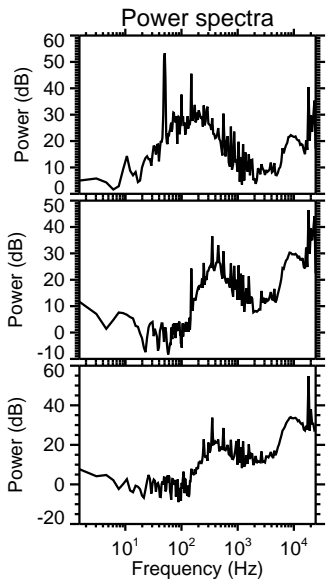
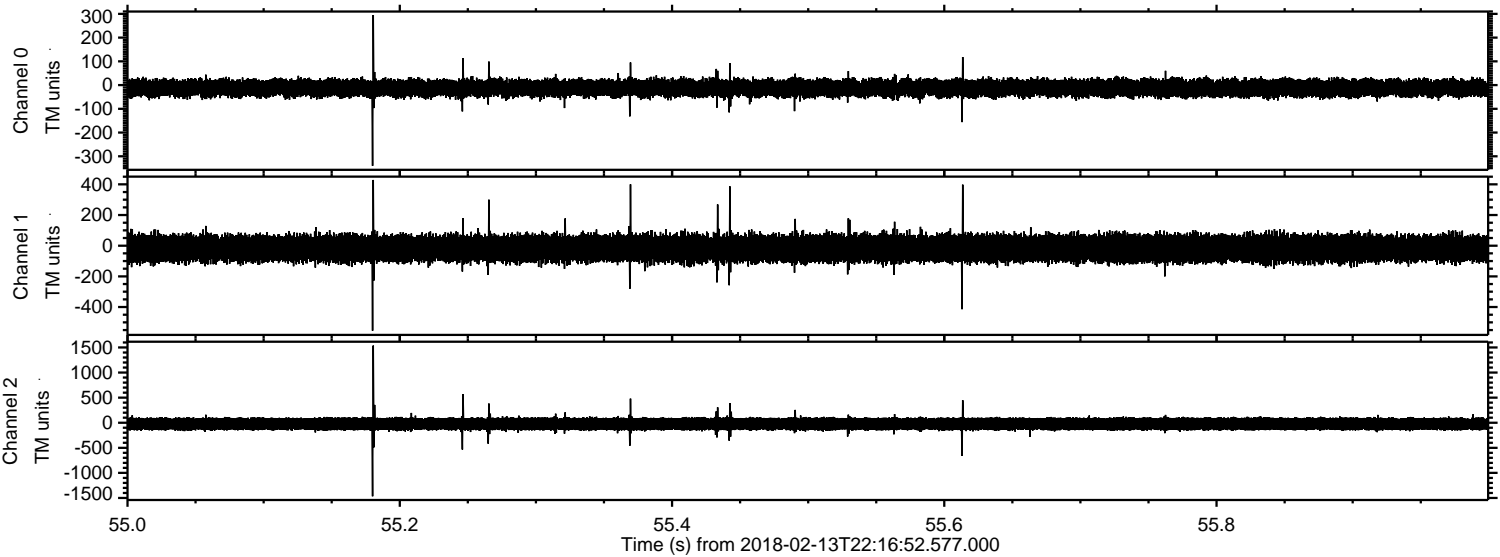


ELMAVAN 3D WAVEFORMS (Measured data sampled at 50 kHz) 51000 packets of 144 samples from 2018-02-13T22:16:52.577.000. Part 128/147

Processed Tue Feb 13 23:25:35 2018 by ELM ver.2012-10-06 from 001__elm20180213_221651__dat00.bin



Processed Tue Feb 13 23:25:36 2018 by ELM ver.2012-10-06 from 001__elm20180213_221651__dat00.bin

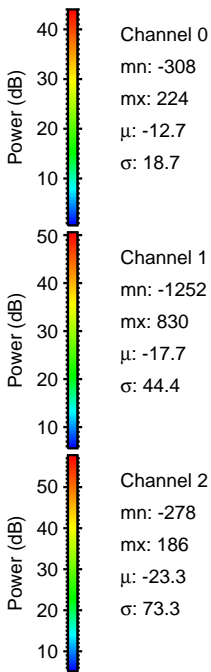
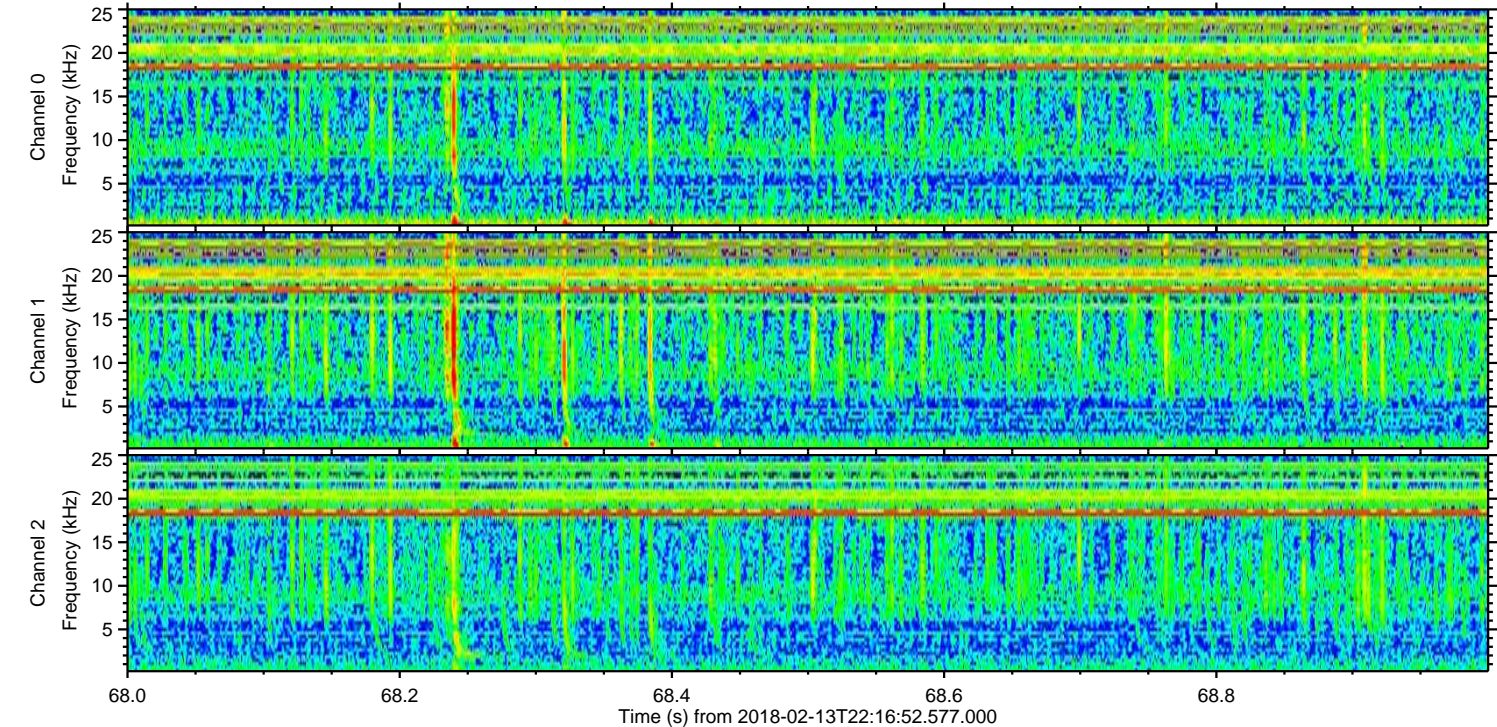
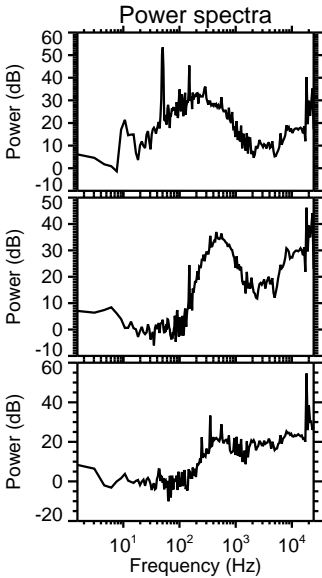
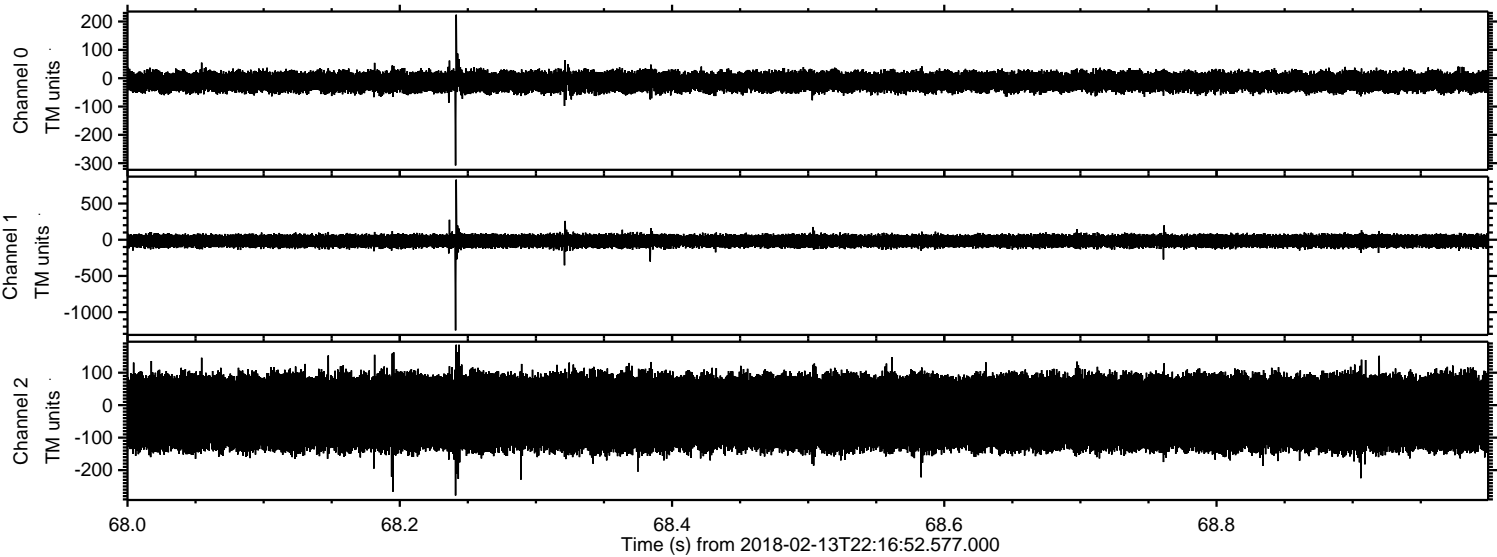


Channel 0
mn: -340
mx: 295
 μ : -12.7
 σ : 19.0

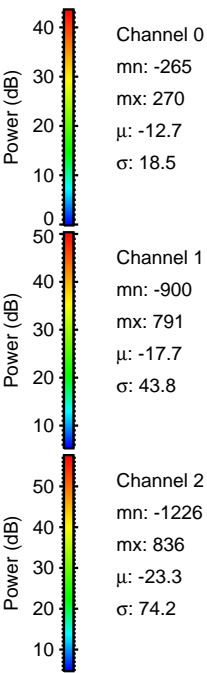
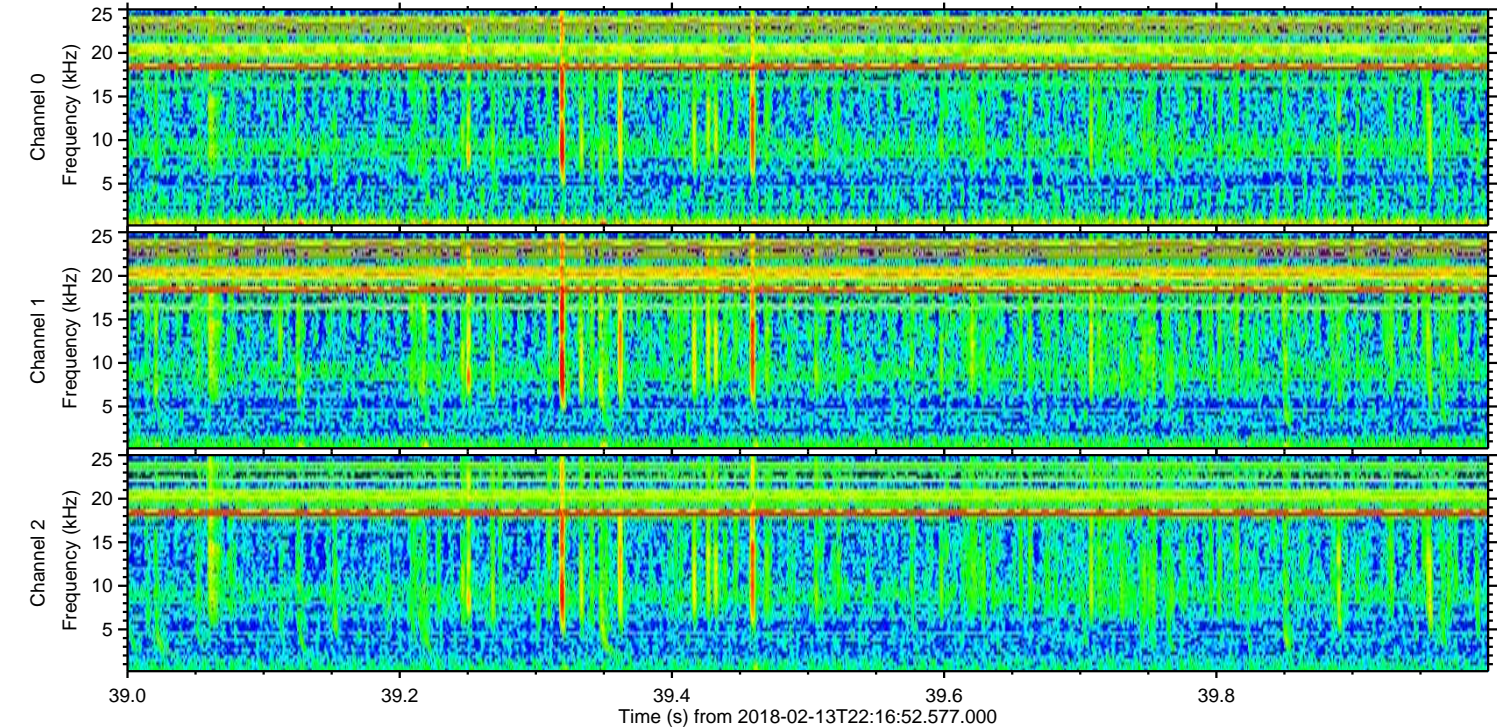
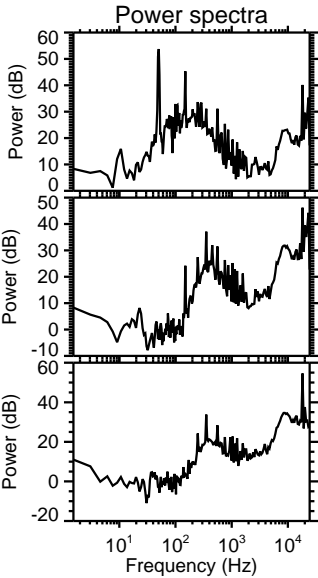
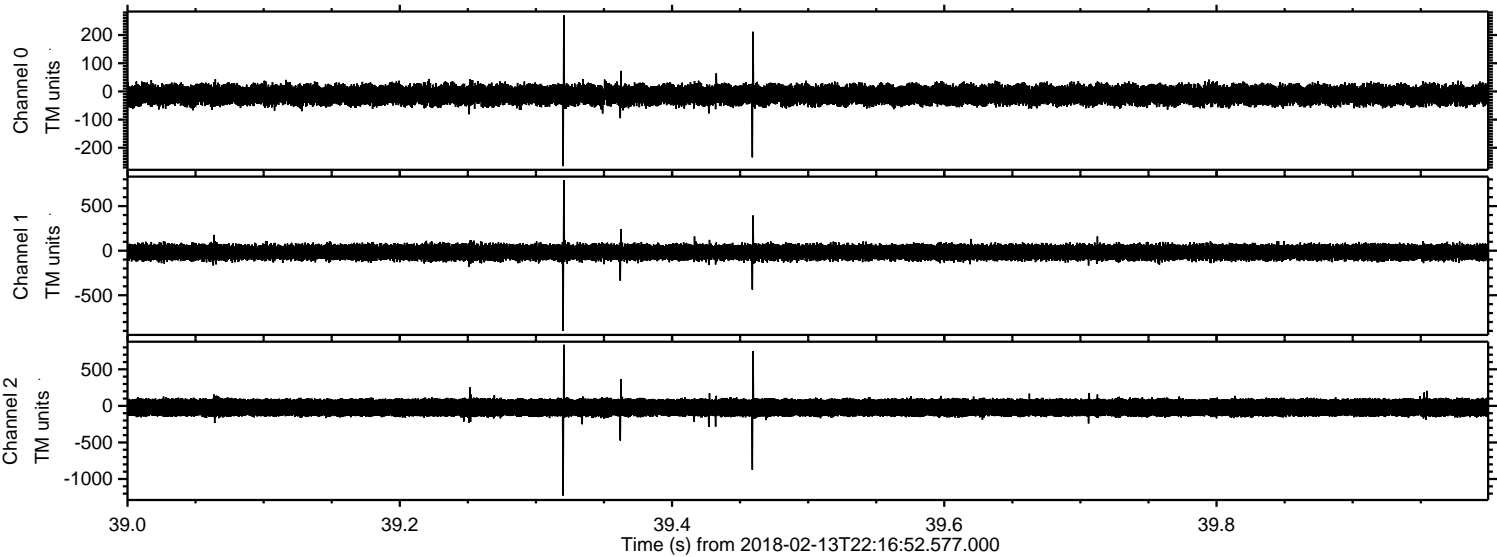
Channel 1
mn: -554
mx: 429
 μ : -17.7
 σ : 43.8

Channel 2
mn: -1467
mx: 1538
 μ : -23.3
 σ : 76.0

Processed Tue Feb 13 23:25:37 2018 by ELM ver.2012-10-06 from 001__elm20180213_221651__dat00.bin



Processed Tue Feb 13 23:25:37 2018 by ELM ver.2012-10-06 from 001__elm20180213_221651__dat00.bin



Processed Tue Feb 13 23:25:38 2018 by ELM ver.2012-10-06 from 001__elm20180213_221651__dat00.bin

