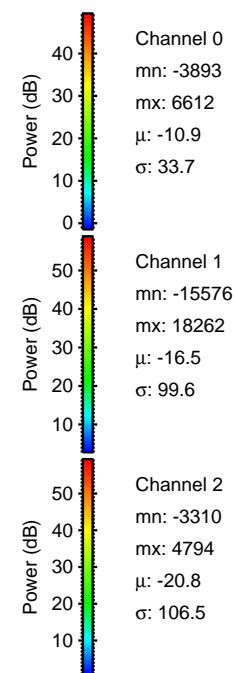
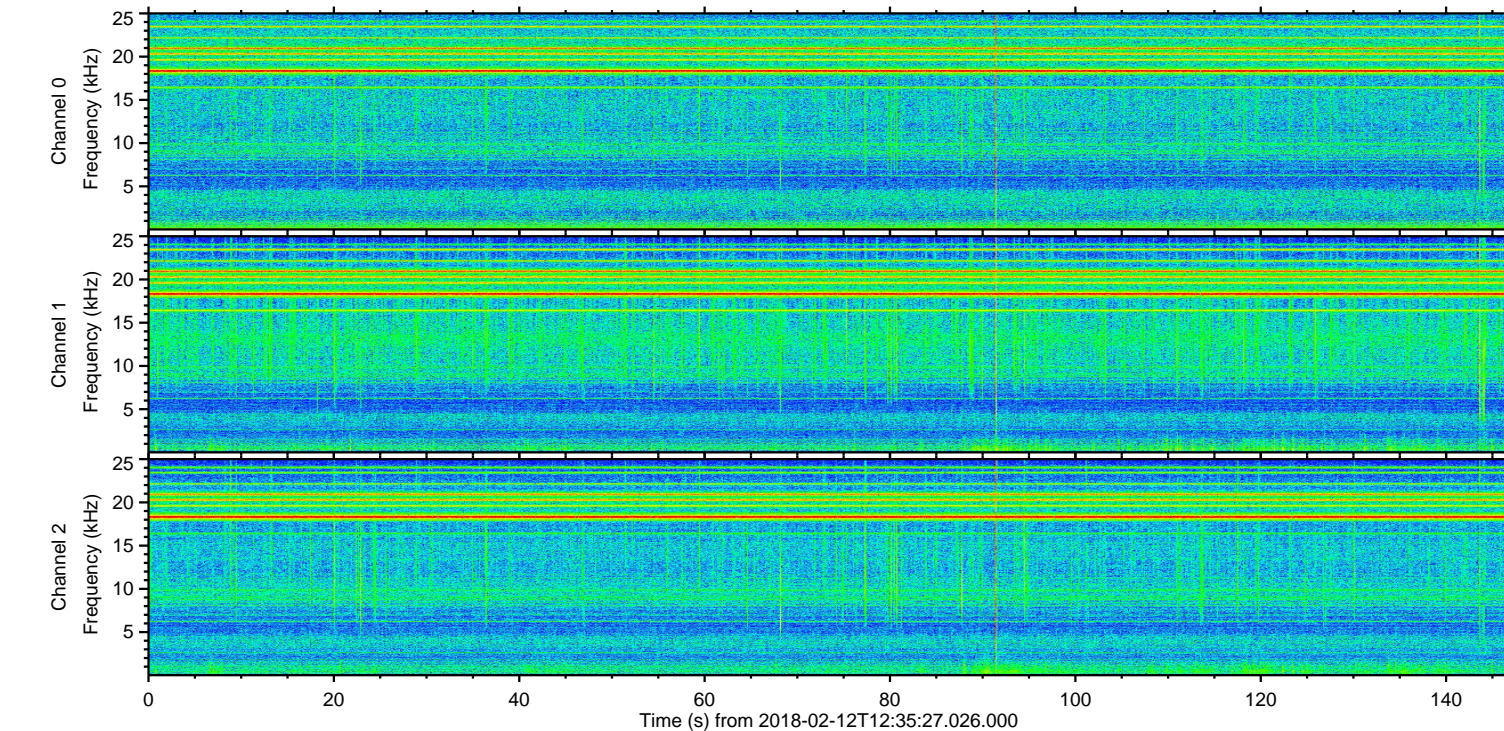
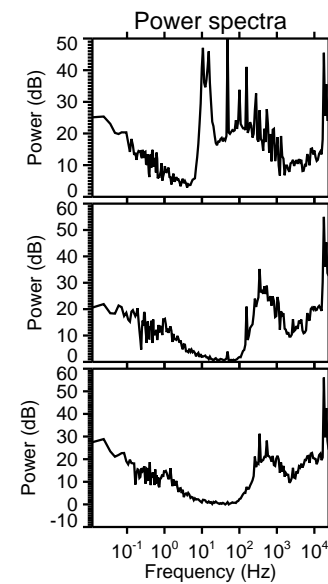
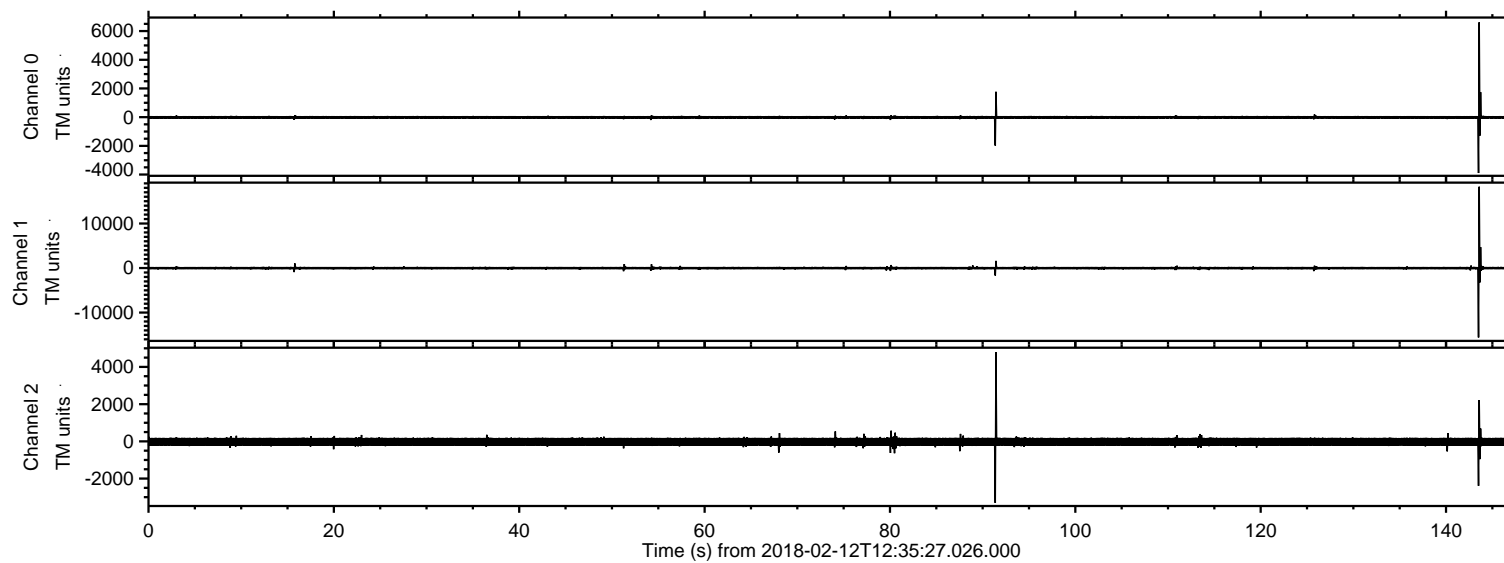


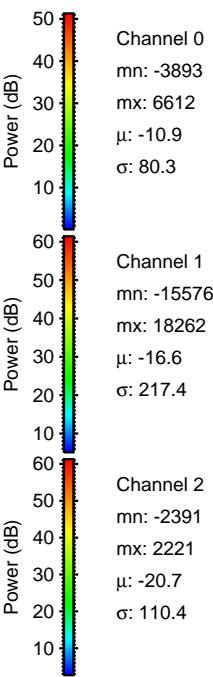
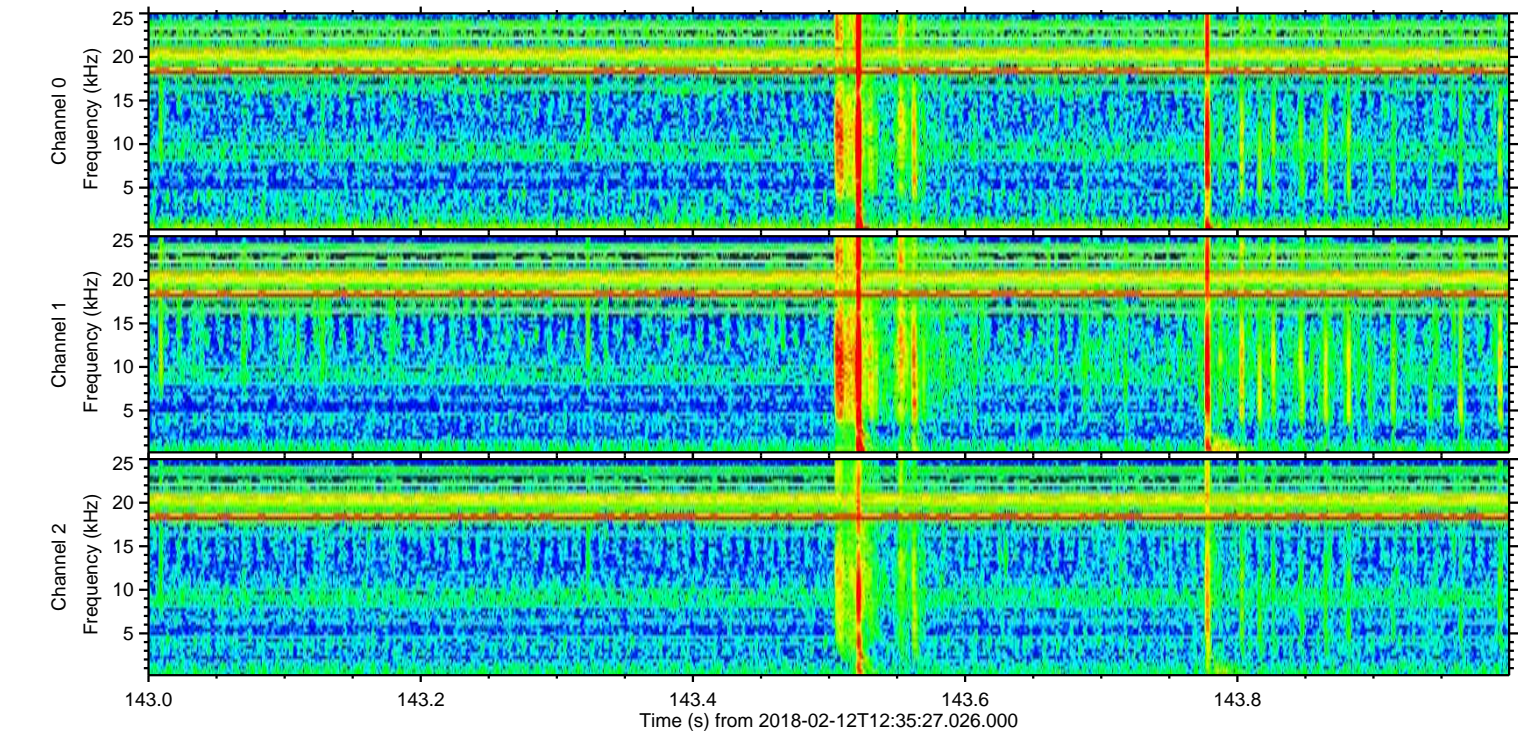
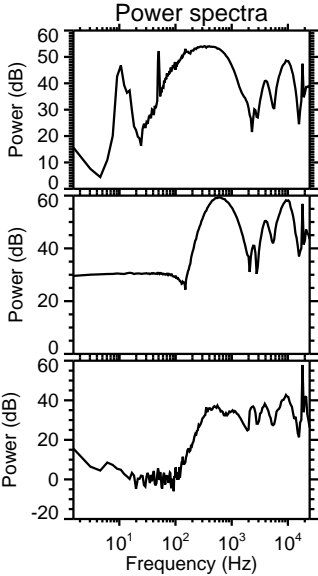
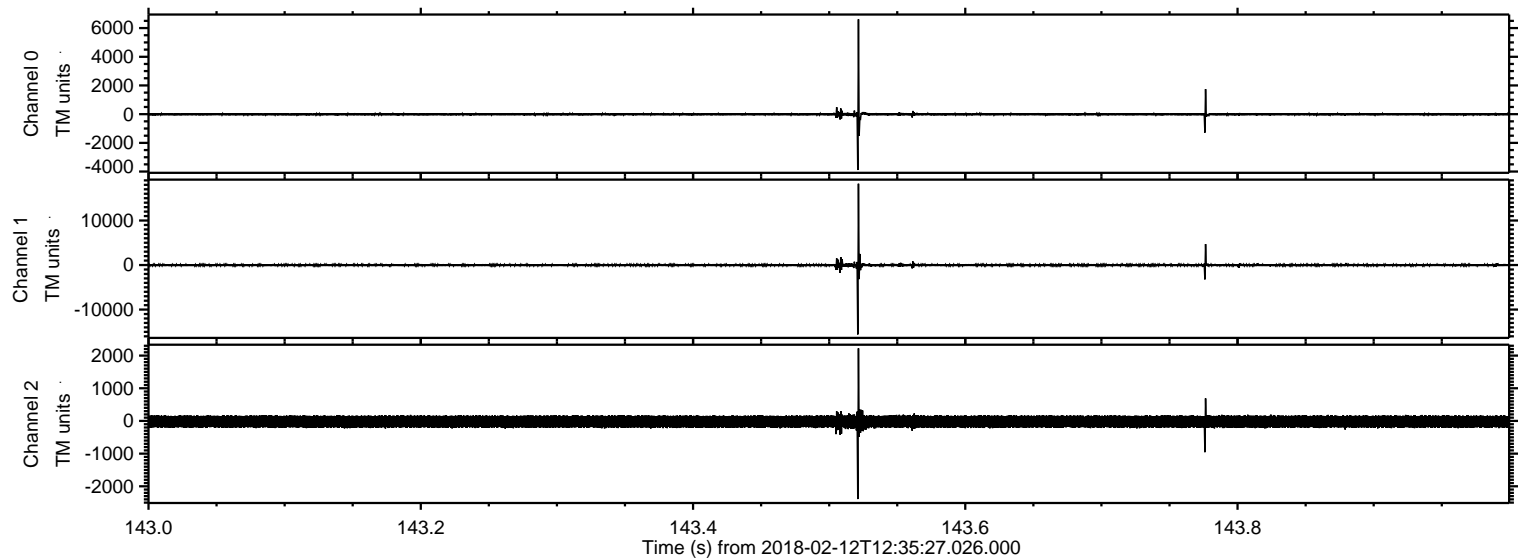
ELMAVAN 3D WAVEFORMS (Measured data sampled at 50 kHz) 51000 packets of 144 samples from 2018-02-12T12:35:27.026.000.

Processed Mon Feb 12 13:43:00 2018 by ELM ver.2012-10-06 from 001__elm20180212_123526__dat00.bin

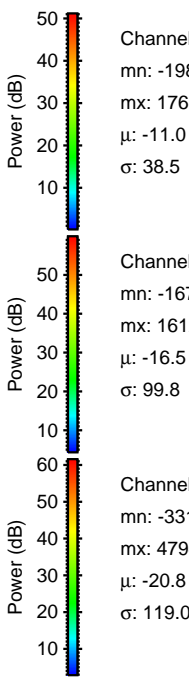
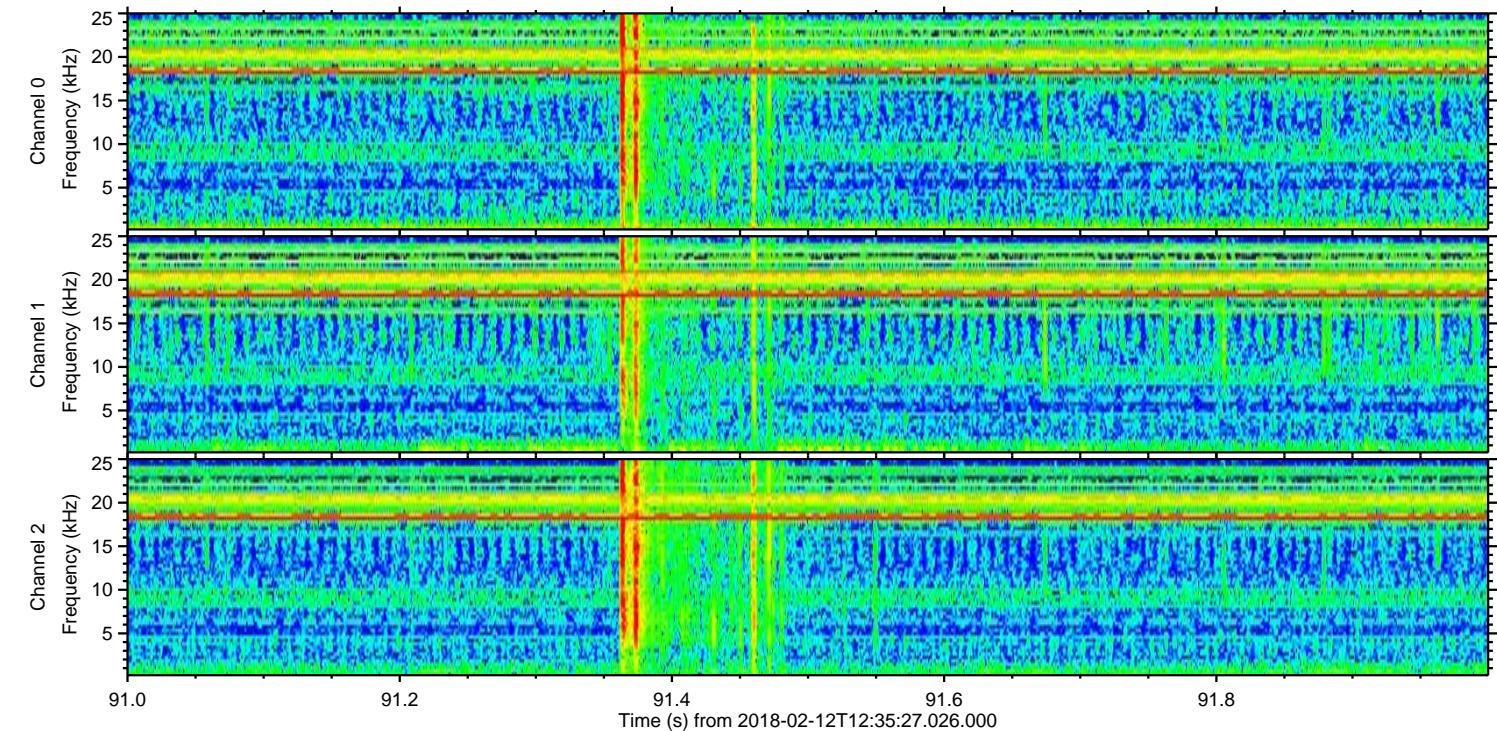
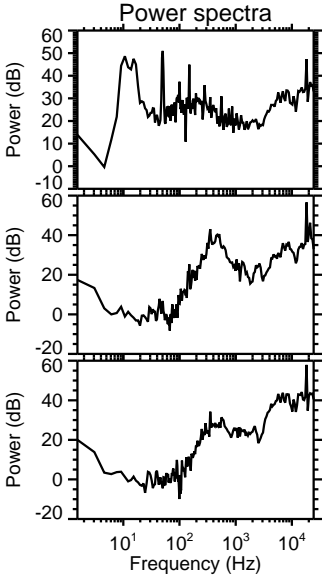
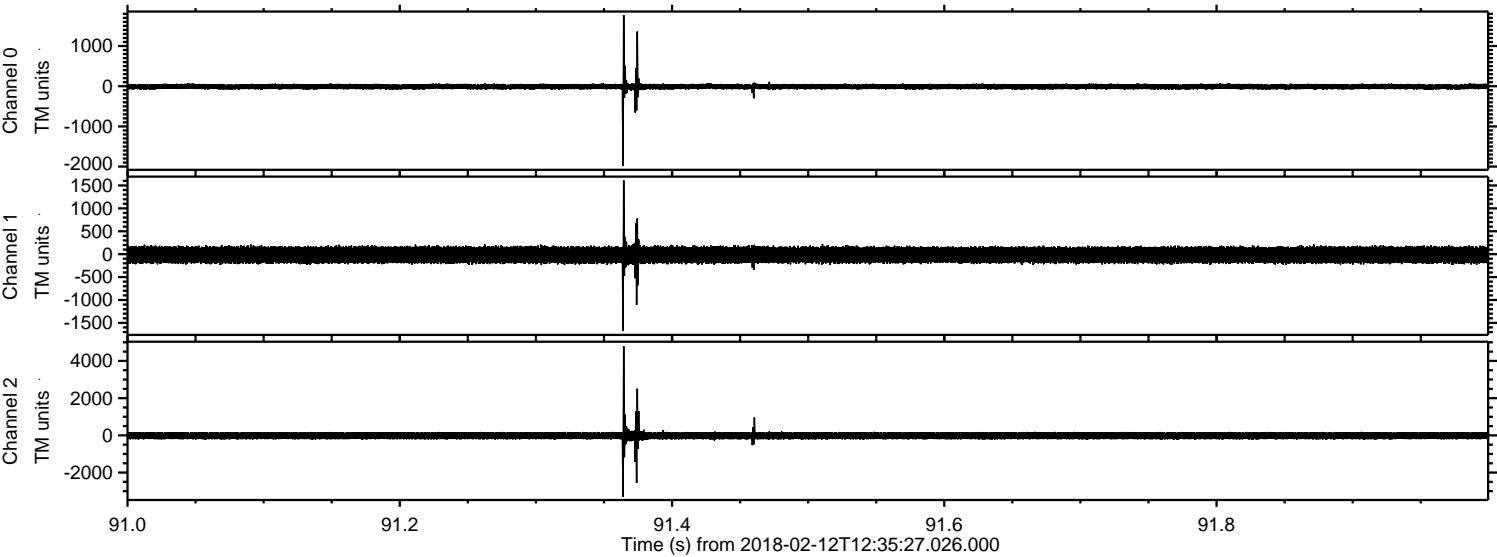


ELMAVAN 3D WAVEFORMS (Measured data sampled at 50 kHz) 51000 packets of 144 samples from 2018-02-12T12:35:27.026.000. Part 144/147

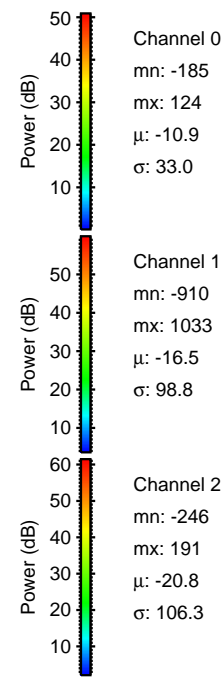
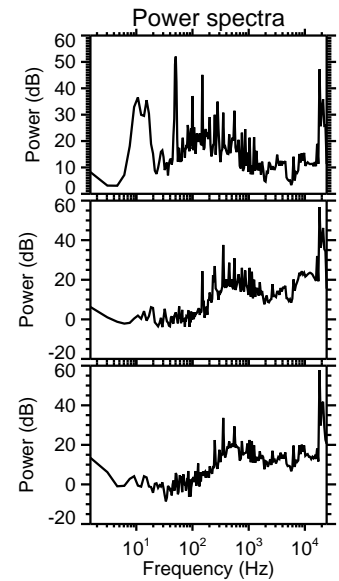
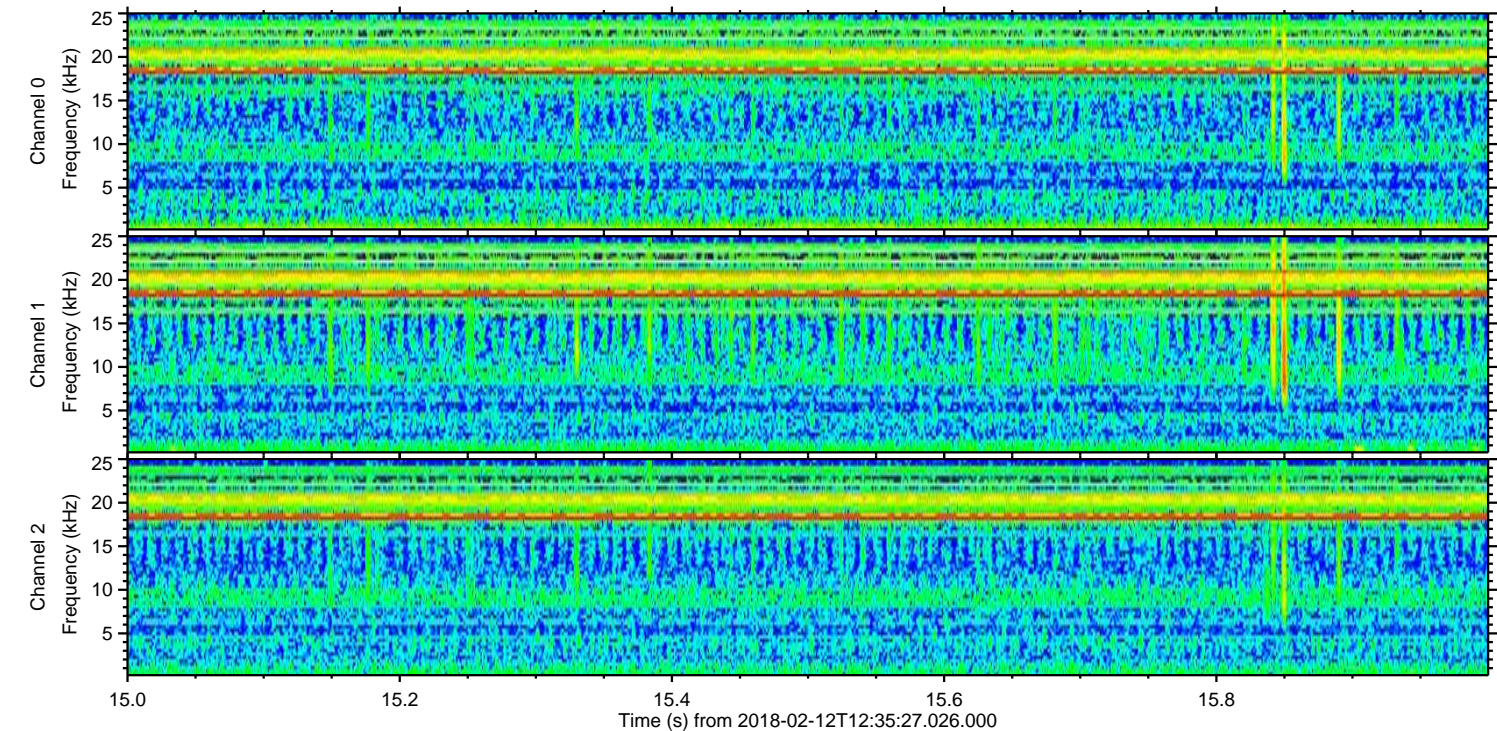
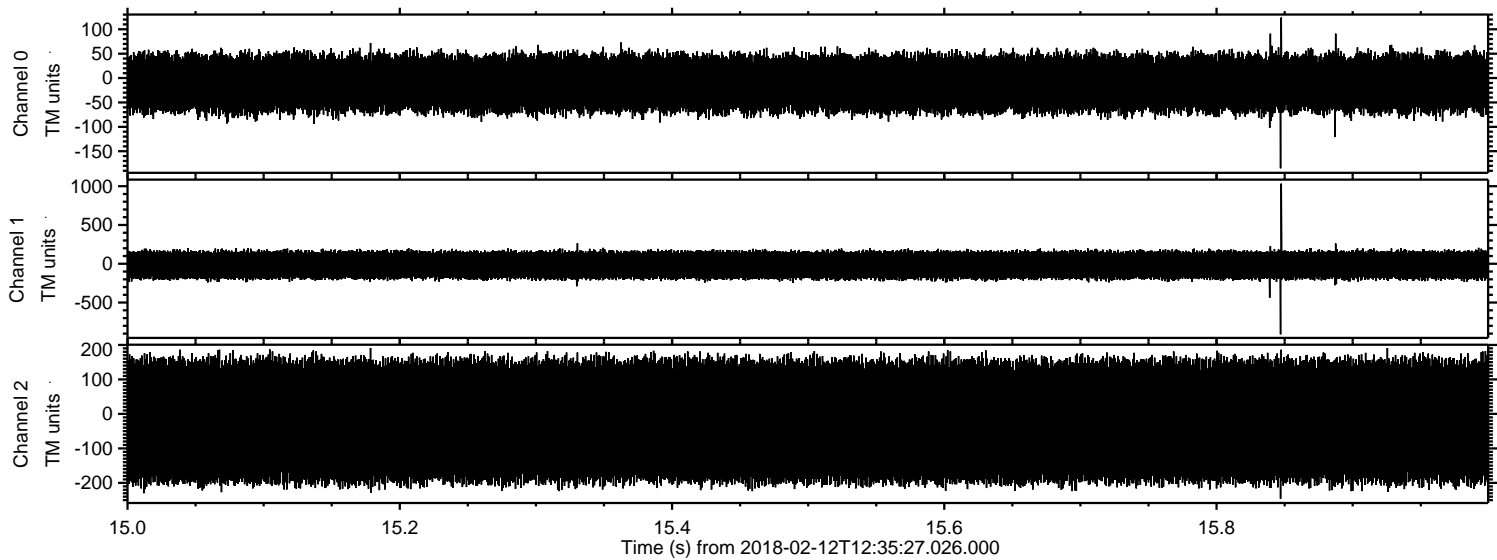
Processed Mon Feb 12 13:43:09 2018 by ELM ver.2012-10-06 from 001__elm20180212_123526__dat00.bin



Processed Mon Feb 12 13:43:09 2018 by ELM ver.2012-10-06 from 001__elm20180212_123526__dat00.bin



Processed Mon Feb 12 13:43:10 2018 by ELM ver.2012-10-06 from 001__elm20180212_123526__dat00.bin

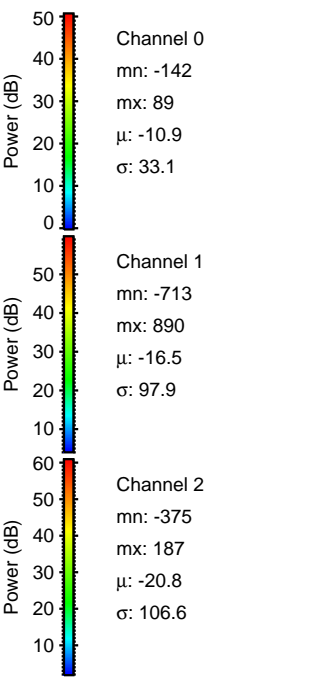
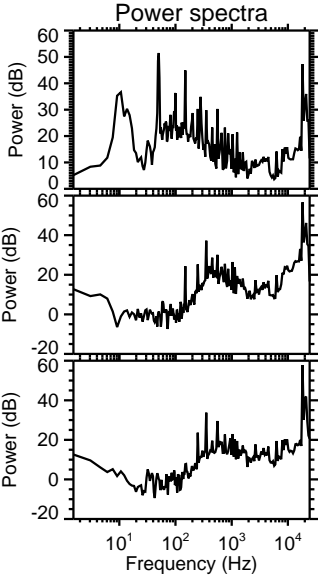
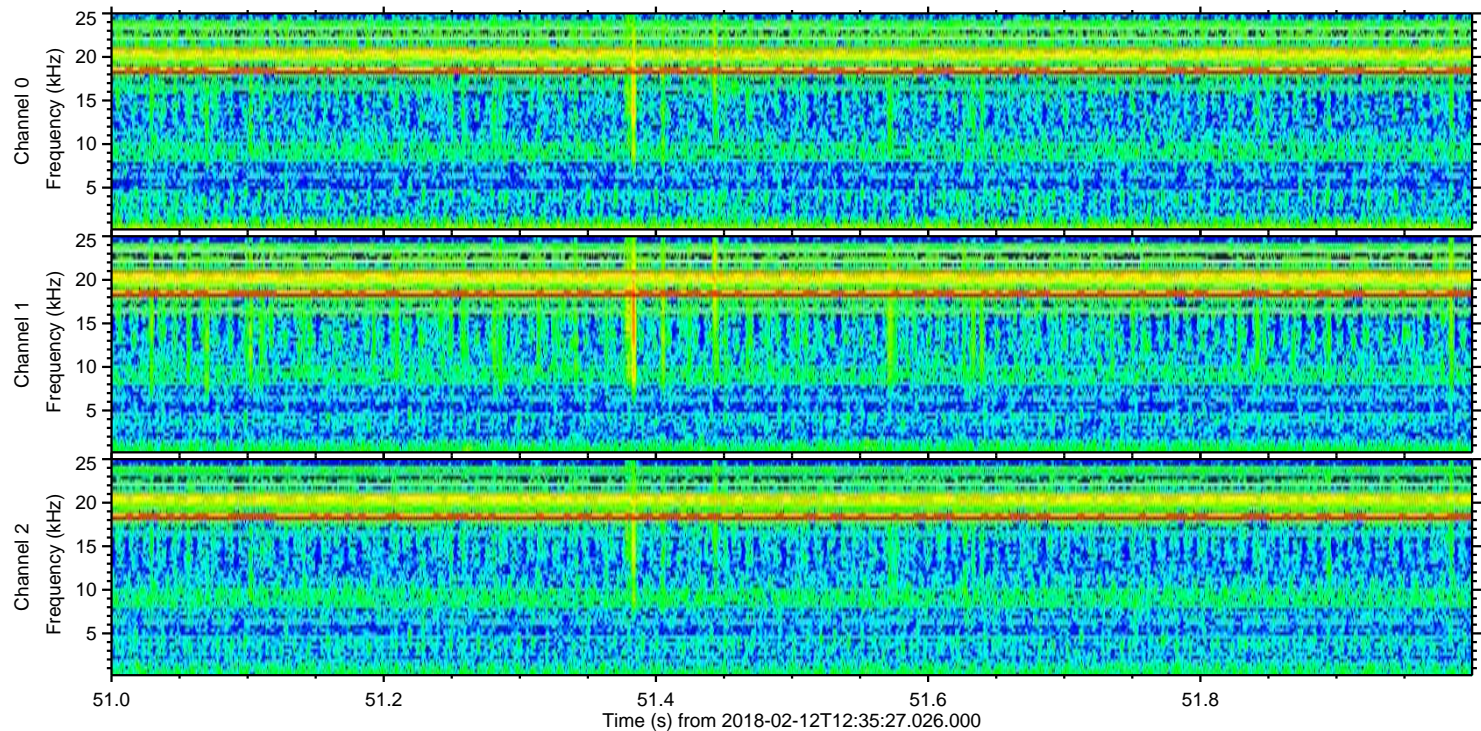
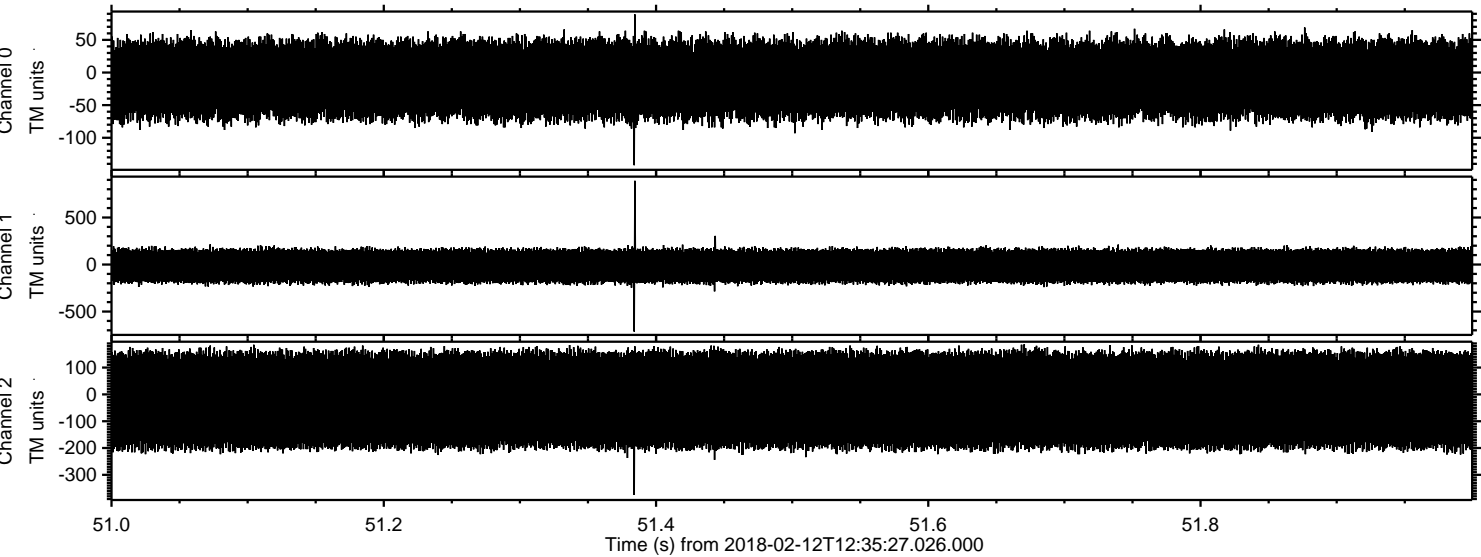


Channel 0
mn: -185
mx: 124
 μ : -10.9
 σ : 33.0

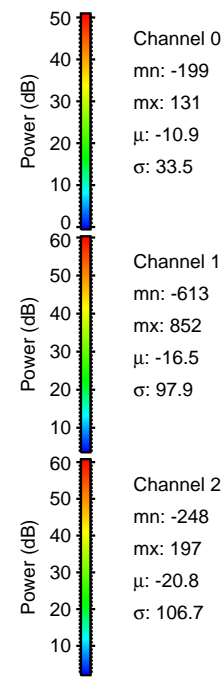
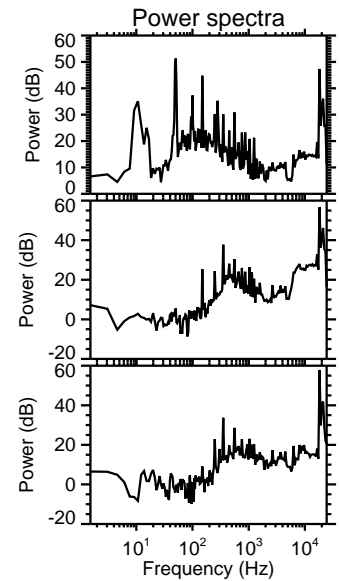
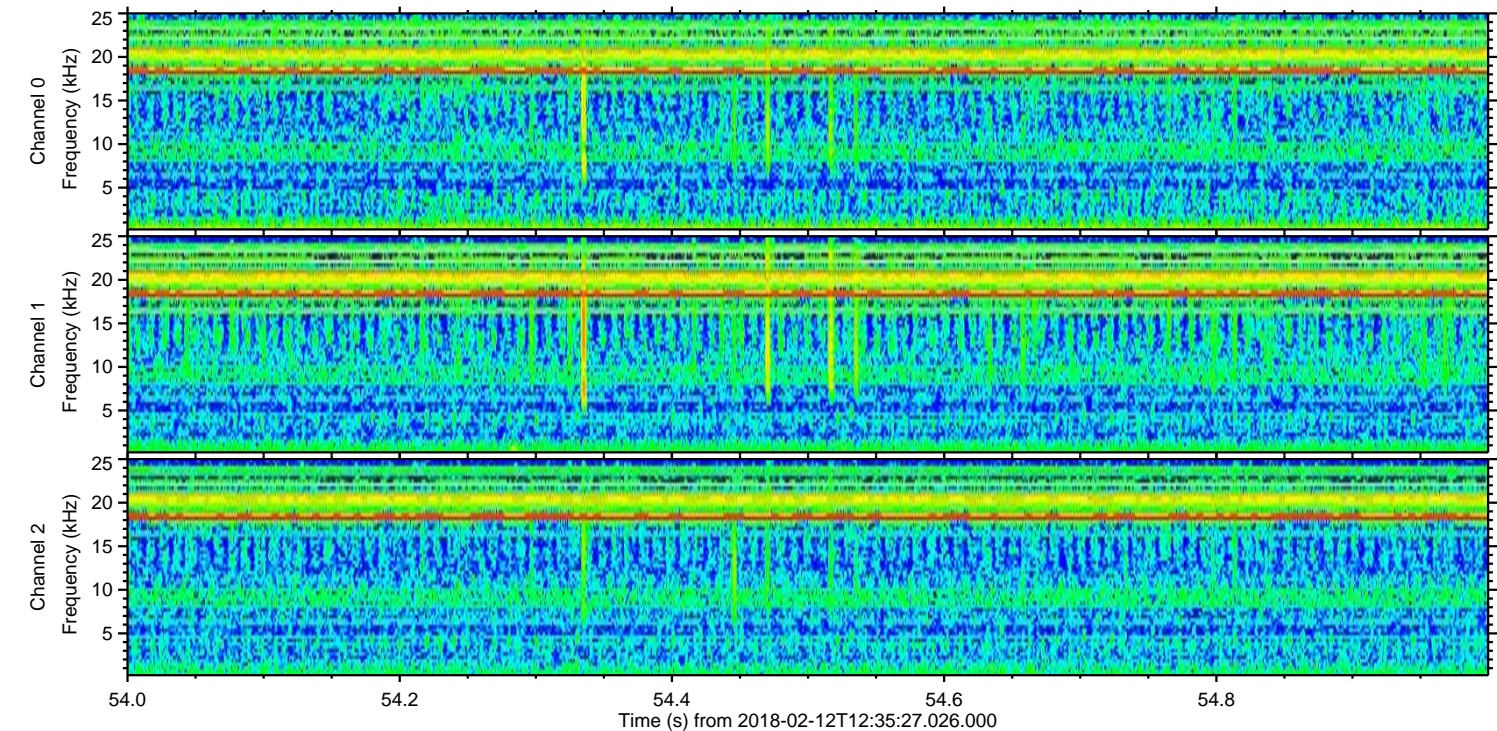
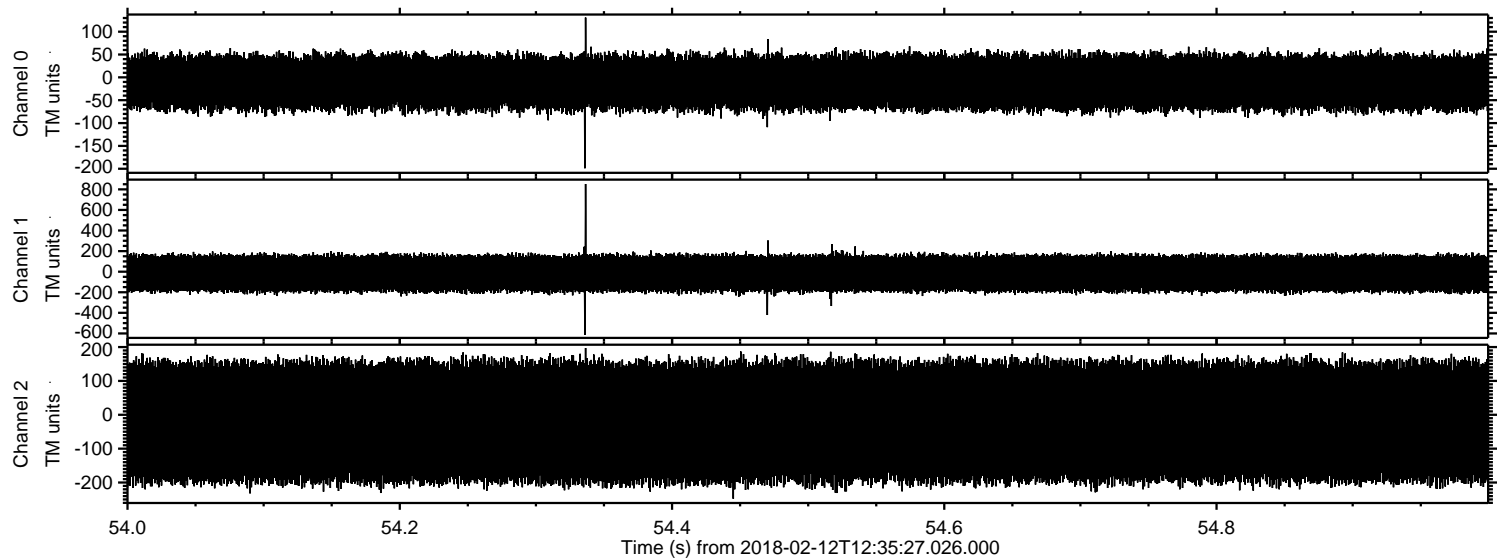
Channel 1
mn: -910
mx: 1033
 μ : -16.5
 σ : 98.8

Channel 2
mn: -246
mx: 191
 μ : -20.8
 σ : 106.3

Processed Mon Feb 12 13:43:11 2018 by ELM ver.2012-10-06 from 001__elm20180212_123526__dat00.bin

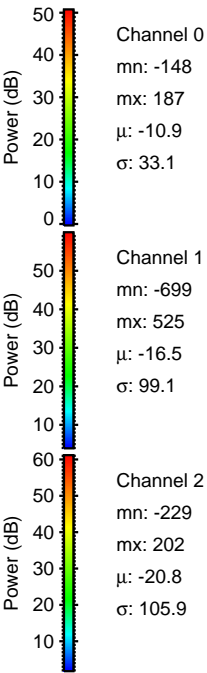
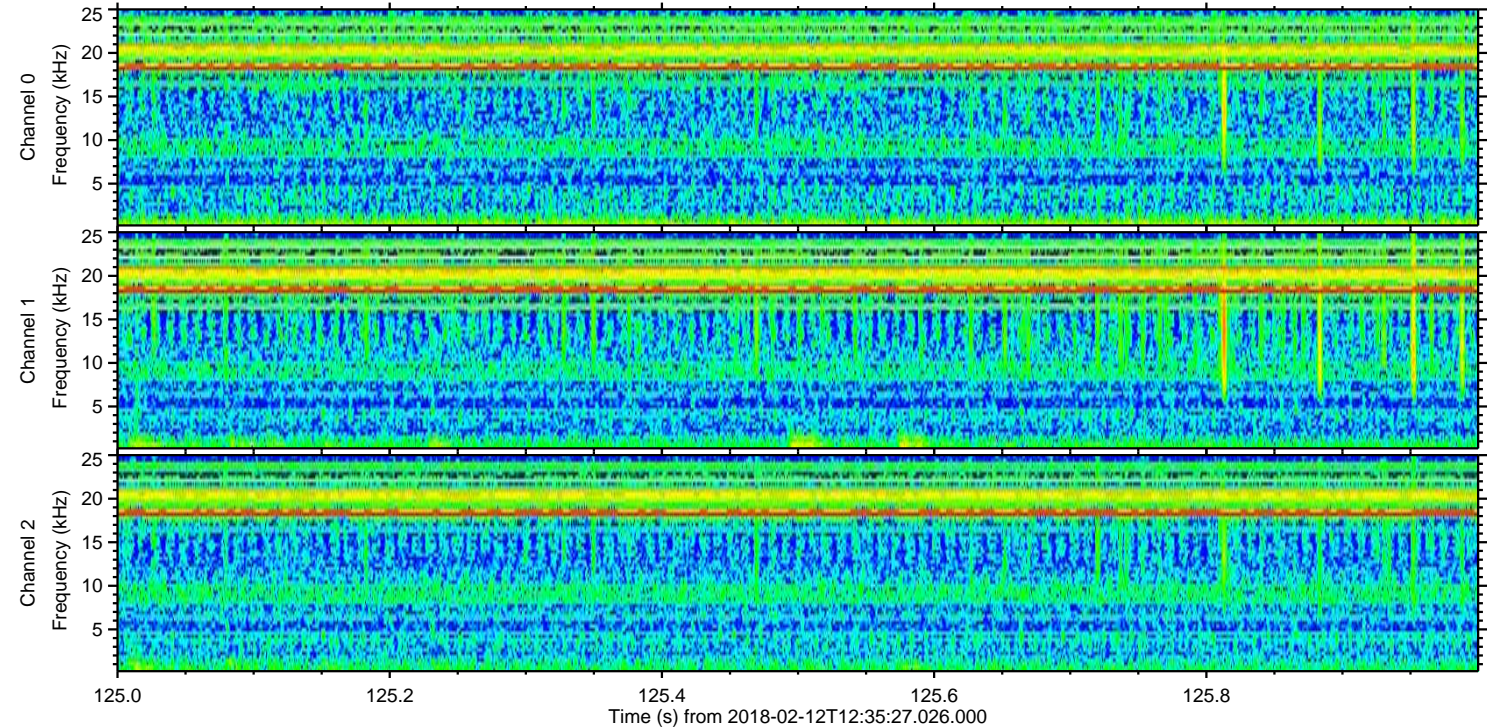
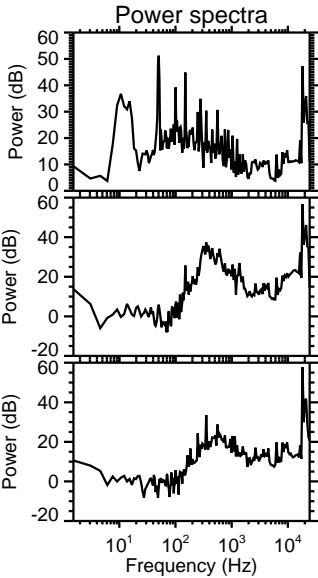
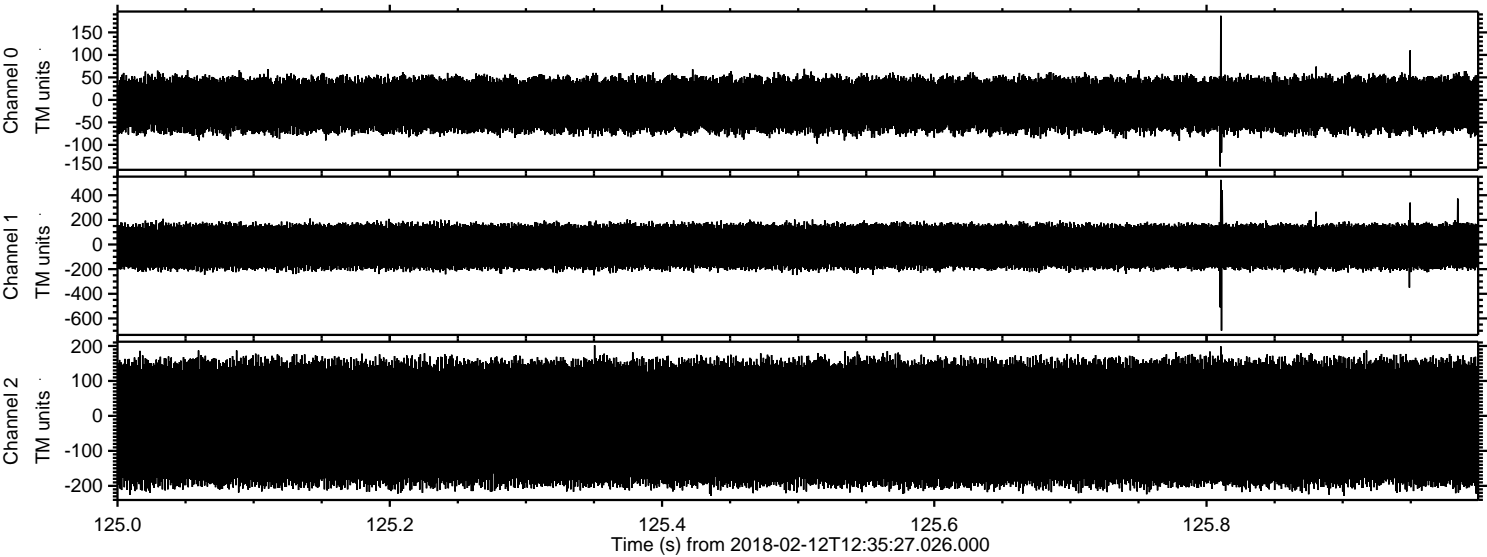


Processed Mon Feb 12 13:43:12 2018 by ELM ver.2012-10-06 from 001__elm20180212_123526__dat00.bin

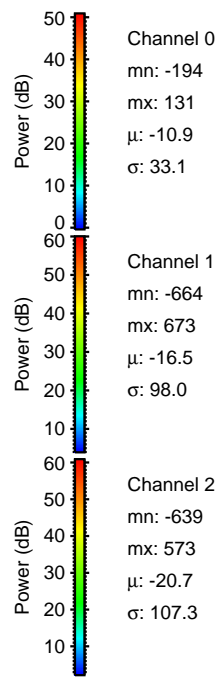
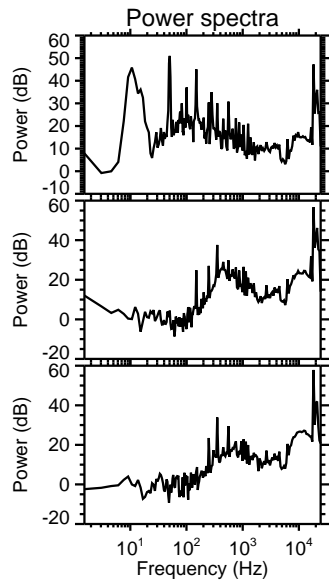
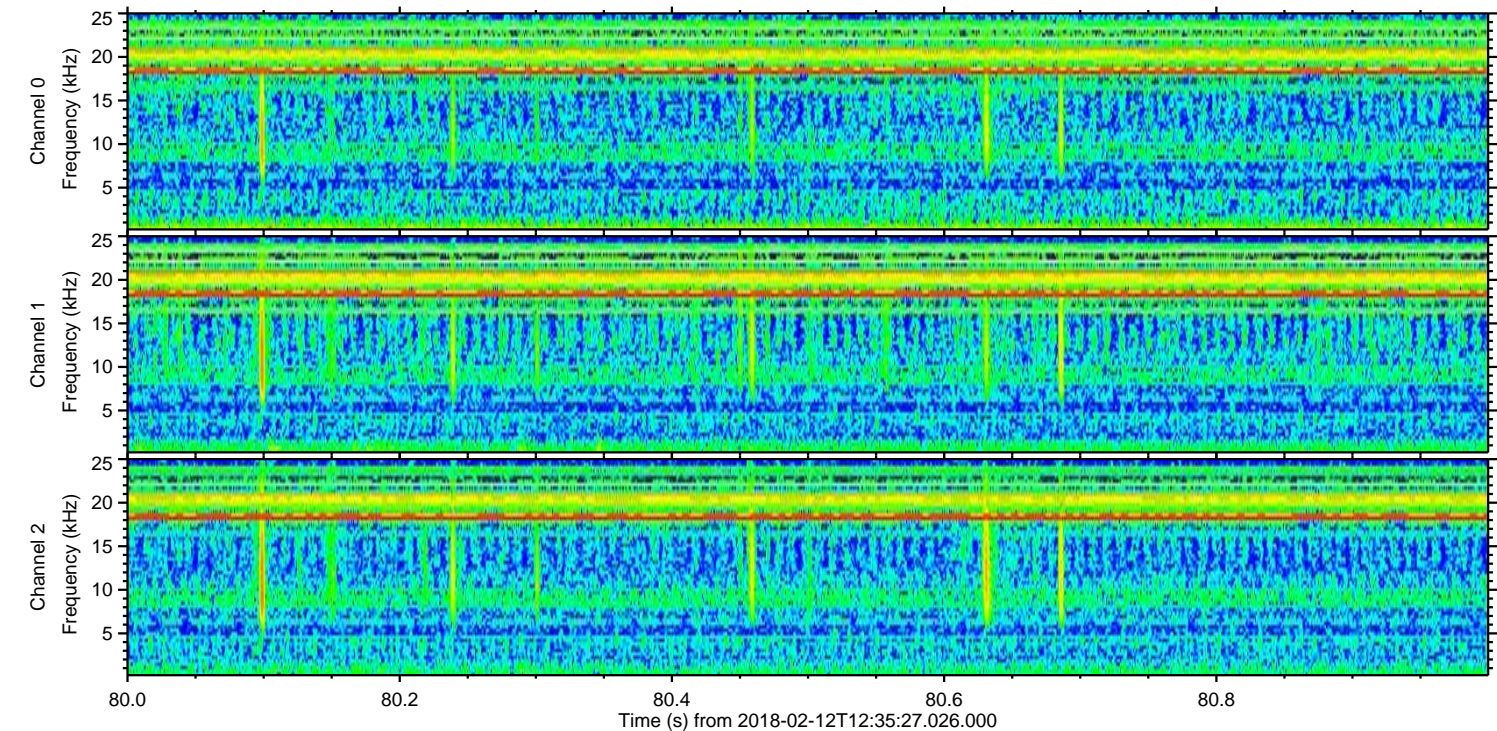
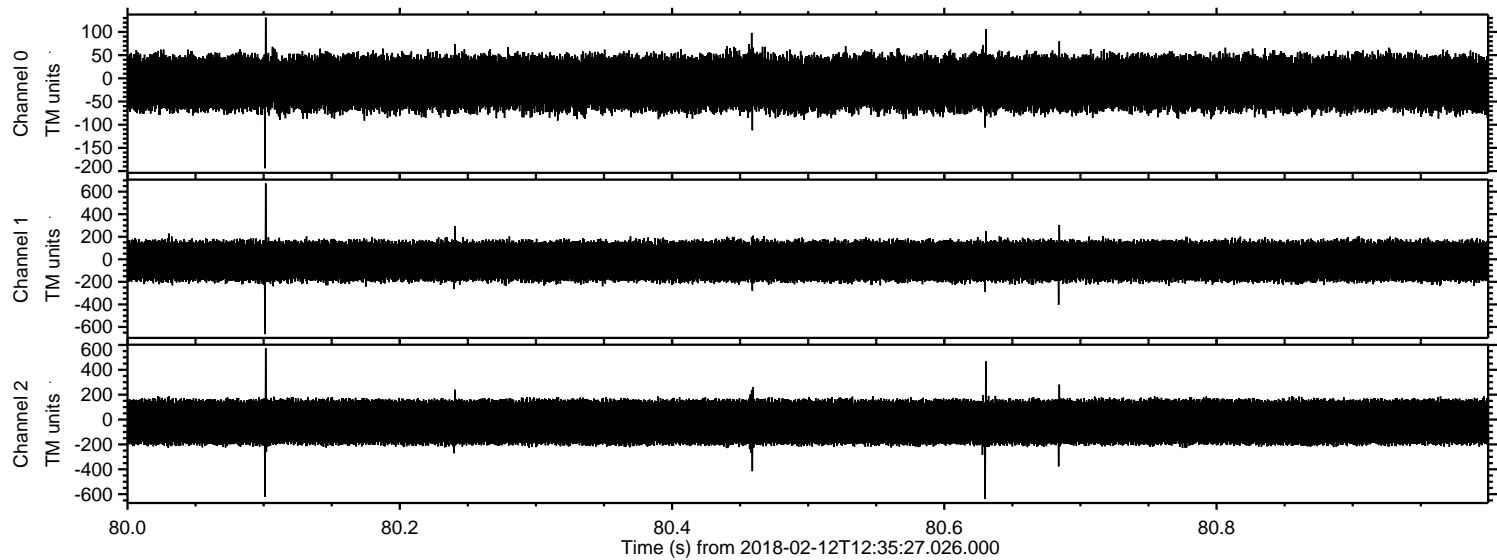


ELMAVAN 3D WAVEFORMS (Measured data sampled at 50 kHz) 51000 packets of 144 samples from 2018-02-12T12:35:27.026.000. Part 126/147

Processed Mon Feb 12 13:43:13 2018 by ELM ver.2012-10-06 from 001__elm20180212_123526__dat00.bin



Processed Mon Feb 12 13:43:13 2018 by ELM ver.2012-10-06 from 001__elm20180212_123526__dat00.bin

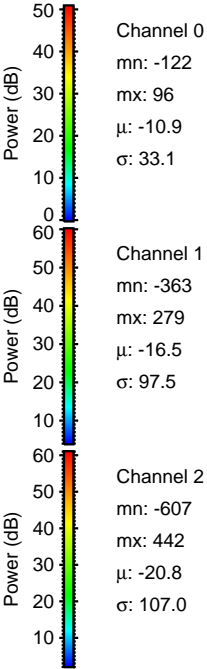
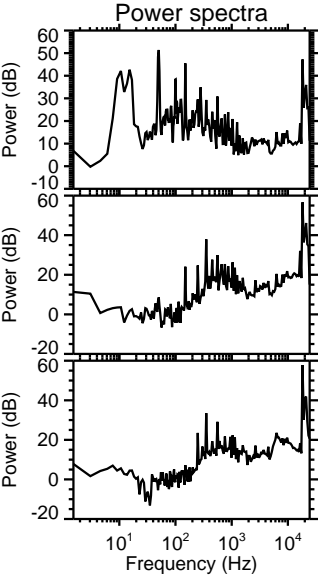
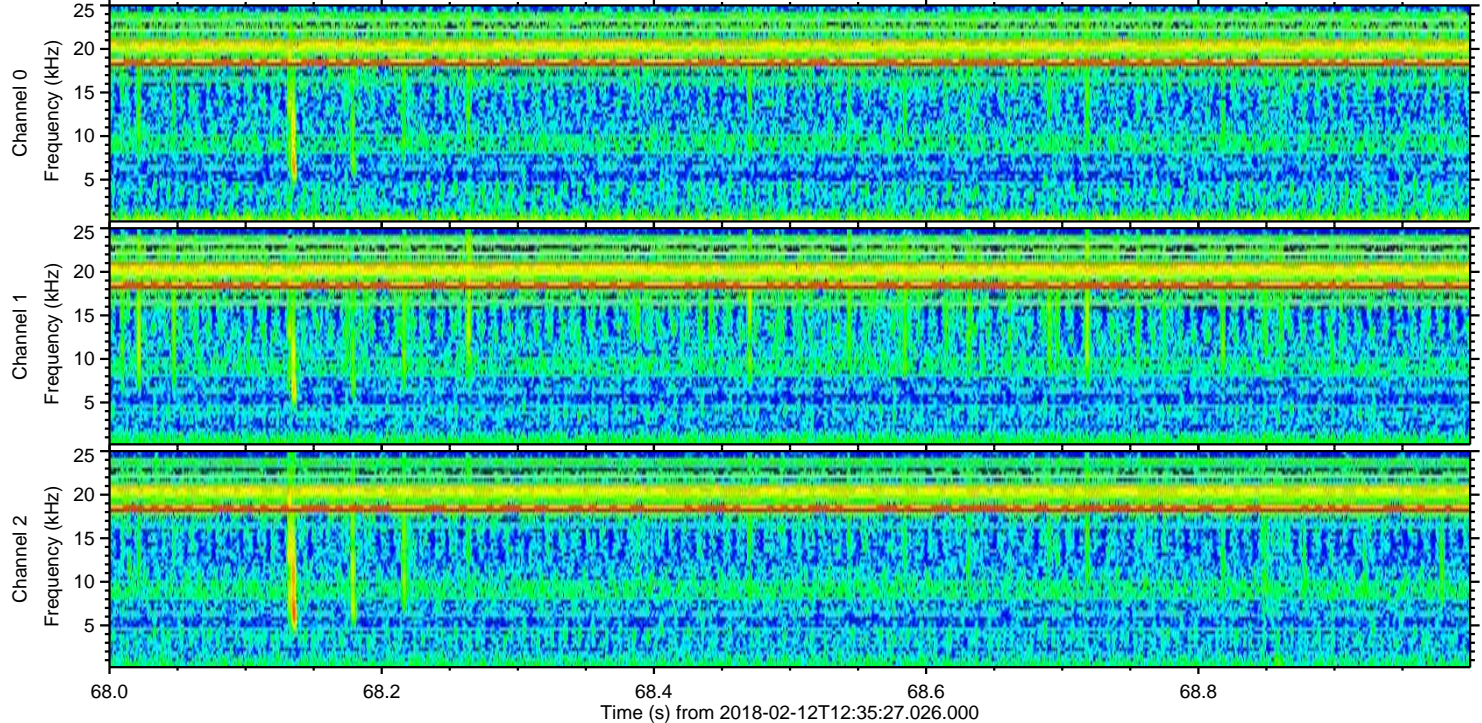
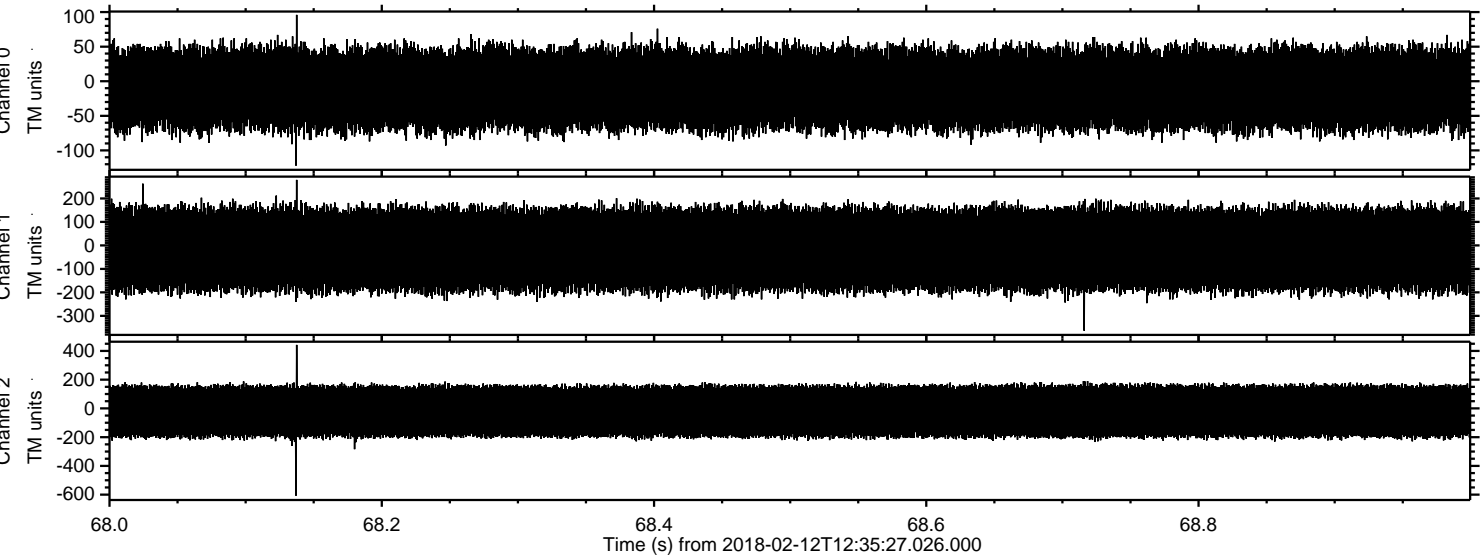


Channel 0
mn: -194
mx: 131
 μ : -10.9
 σ : 33.1

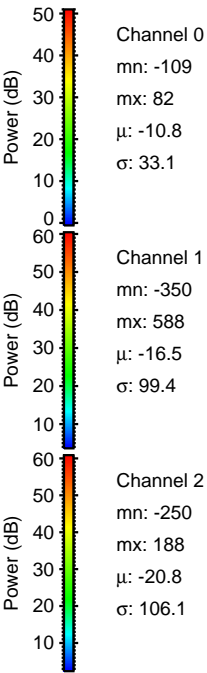
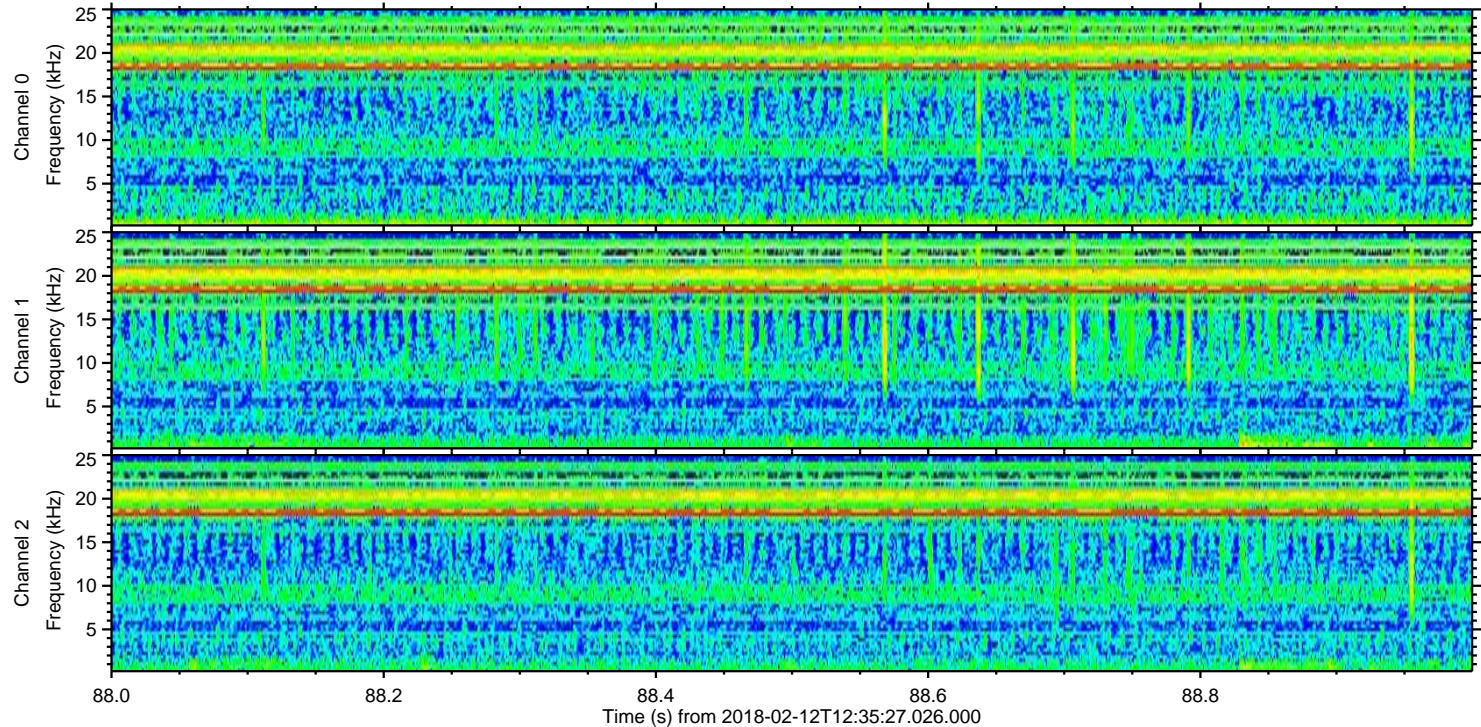
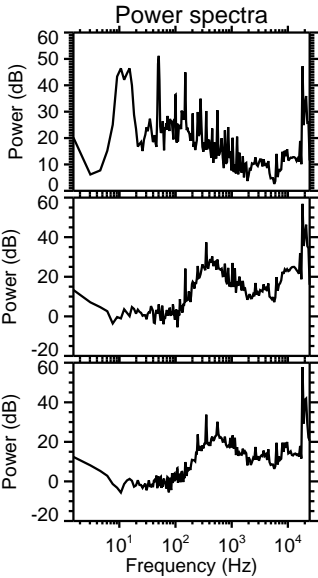
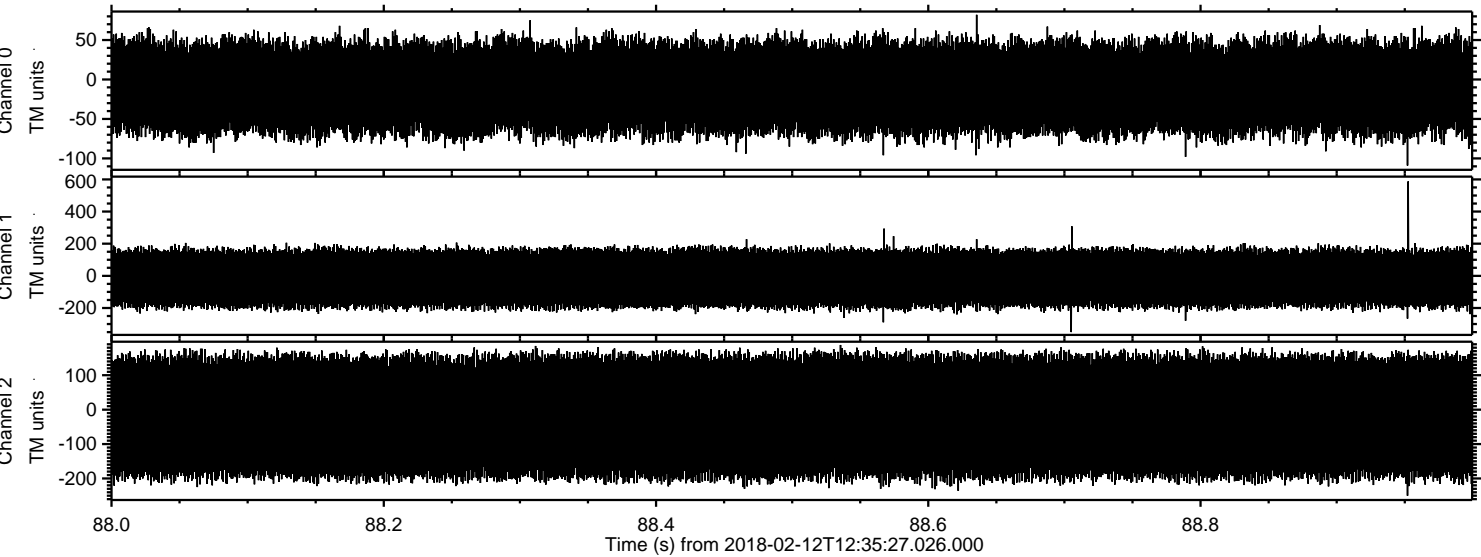
Channel 1
mn: -664
mx: 673
 μ : -16.5
 σ : 98.0

Channel 2
mn: -639
mx: 573
 μ : -20.7
 σ : 107.3

Processed Mon Feb 12 13:43:14 2018 by ELM ver.2012-10-06 from 001__elm20180212_123526__dat00.bin



Processed Mon Feb 12 13:43:15 2018 by ELM ver.2012-10-06 from 001__elm20180212_123526__dat00.bin



Processed Mon Feb 12 13:43:16 2018 by ELM ver.2012-10-06 from 001__elm20180212_123526__dat00.bin

