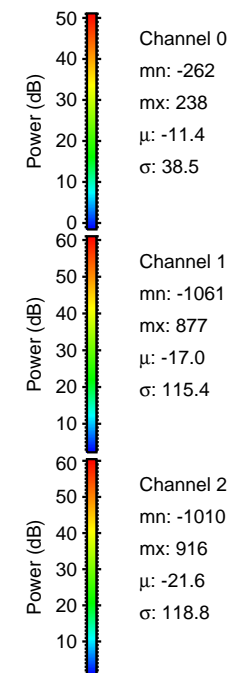
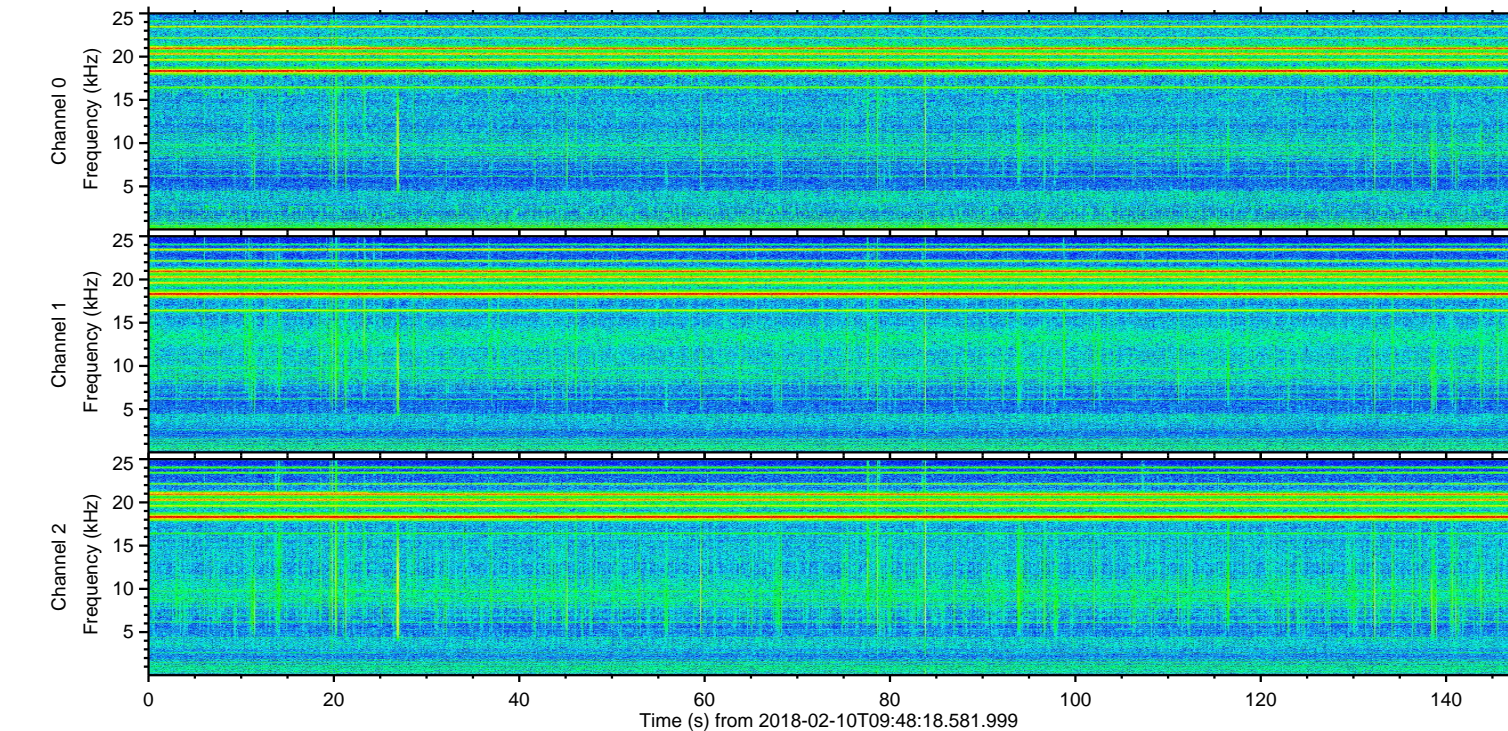
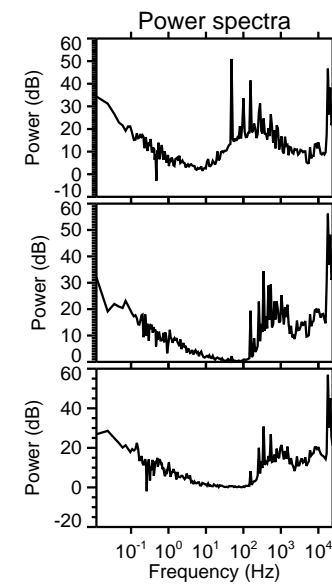
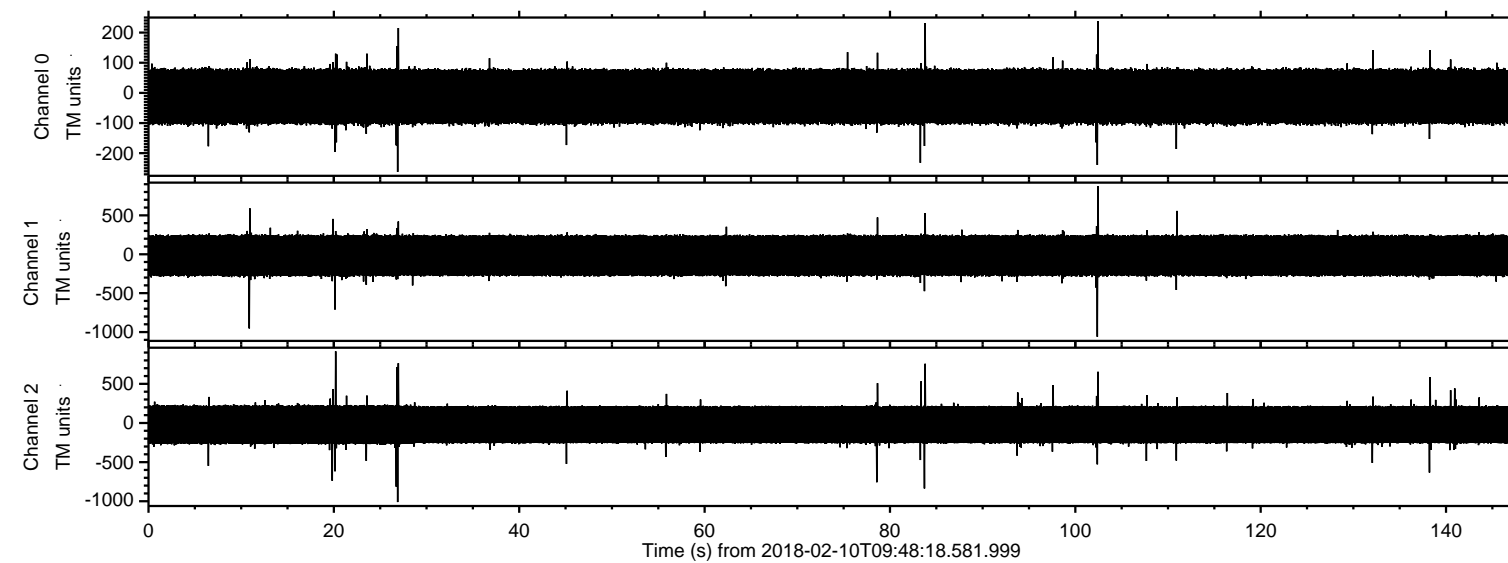


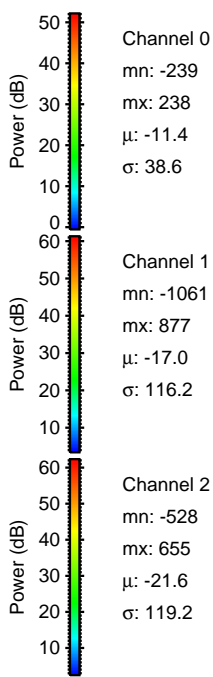
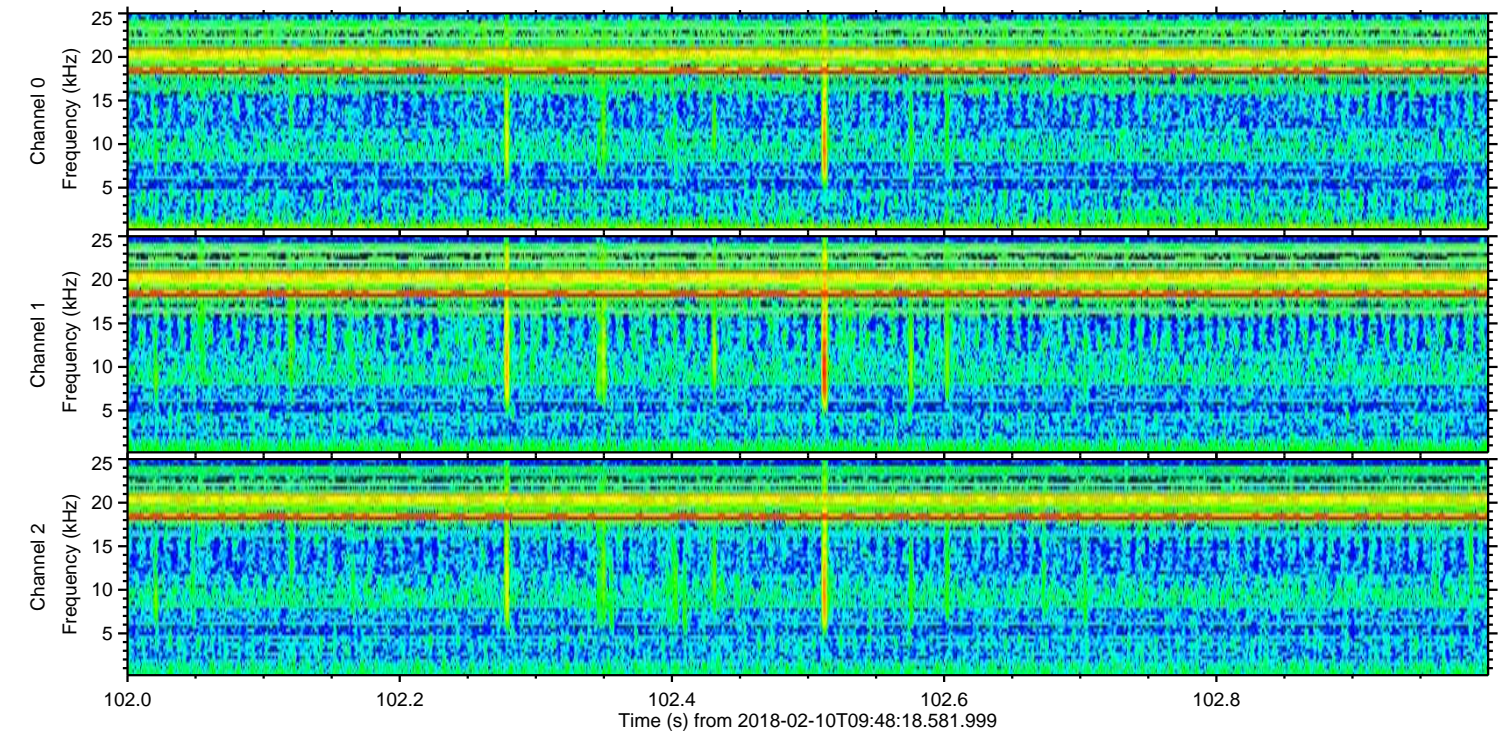
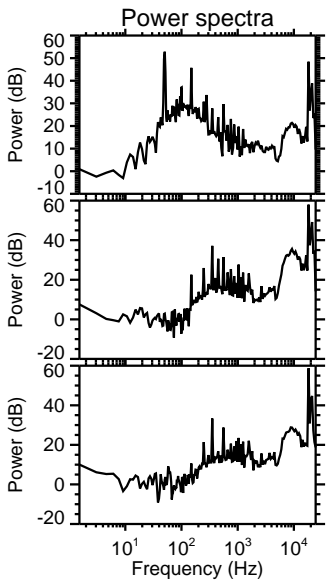
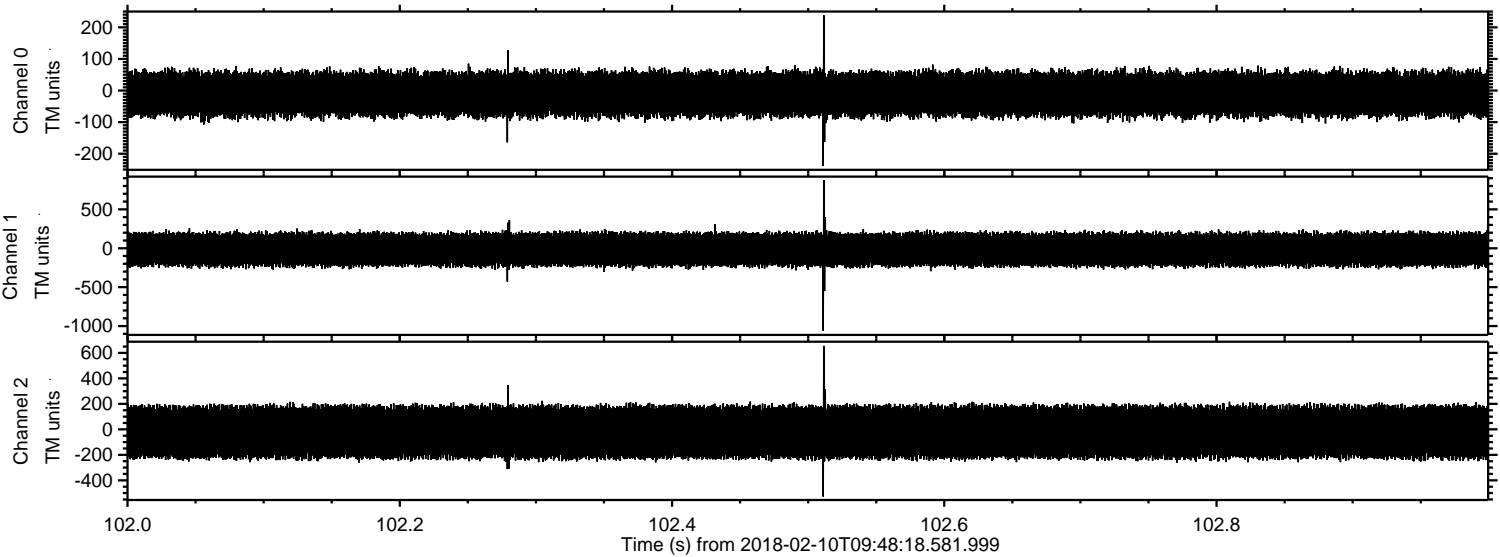
ELMAVAN 3D WAVEFORMS (Measured data sampled at 50 kHz) 51000 packets of 144 samples from 2018-02-10T09:48:18.581.999.

Processed Sat Feb 10 10:56:44 2018 by ELM ver.2012-10-06 from 001__elm20180210_094817__dat00.bin



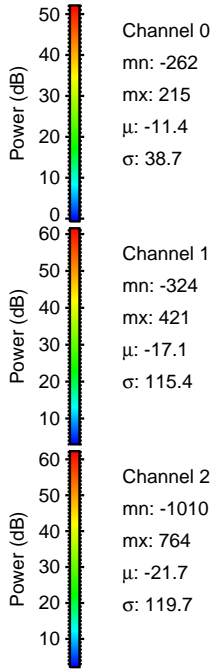
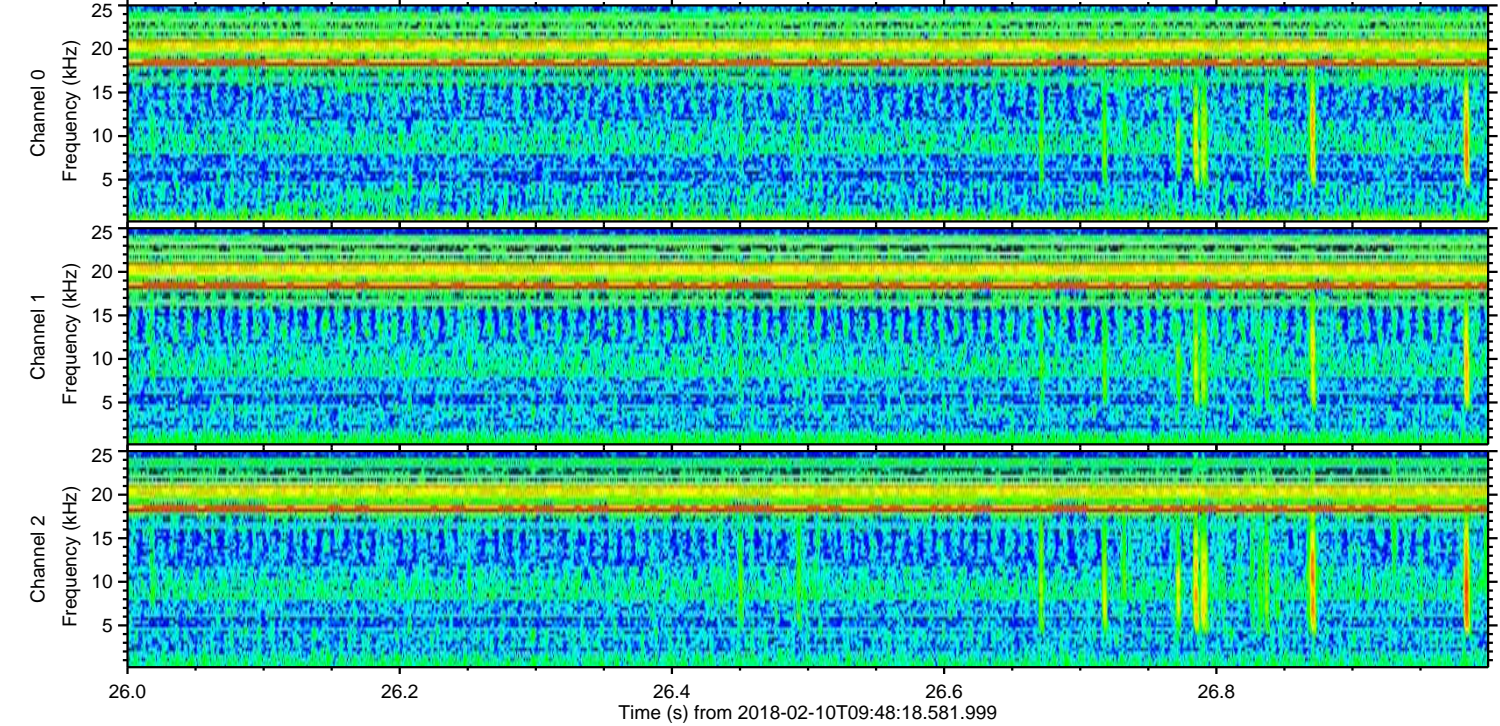
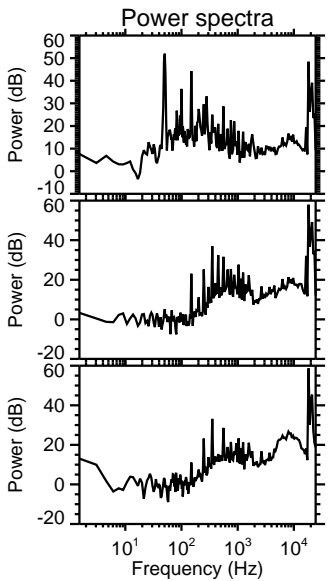
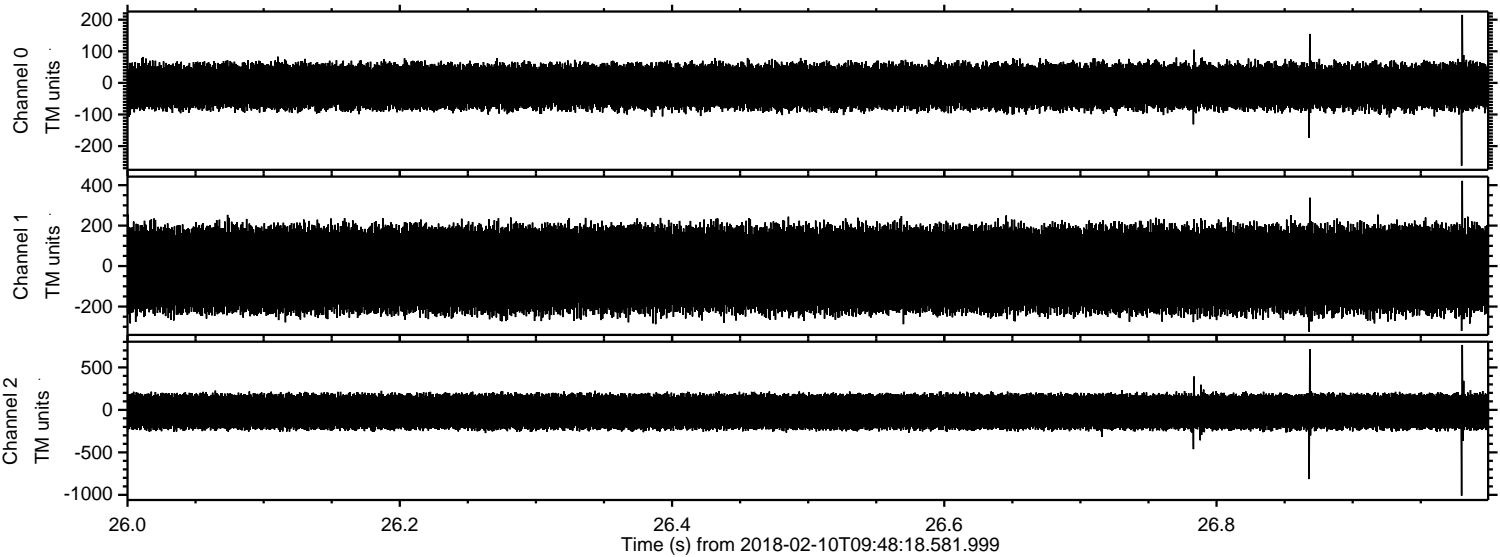
ELMAVAN 3D WAVEFORMS (Measured data sampled at 50 kHz) 51000 packets of 144 samples from 2018-02-10T09:48:18.581.999. Part 103/147

Processed Sat Feb 10 10:56:52 2018 by ELM ver.2012-10-06 from 001__elm20180210_094817__dat00.bin



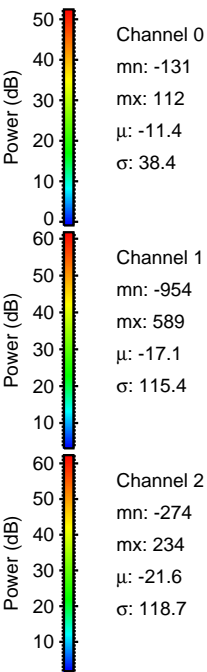
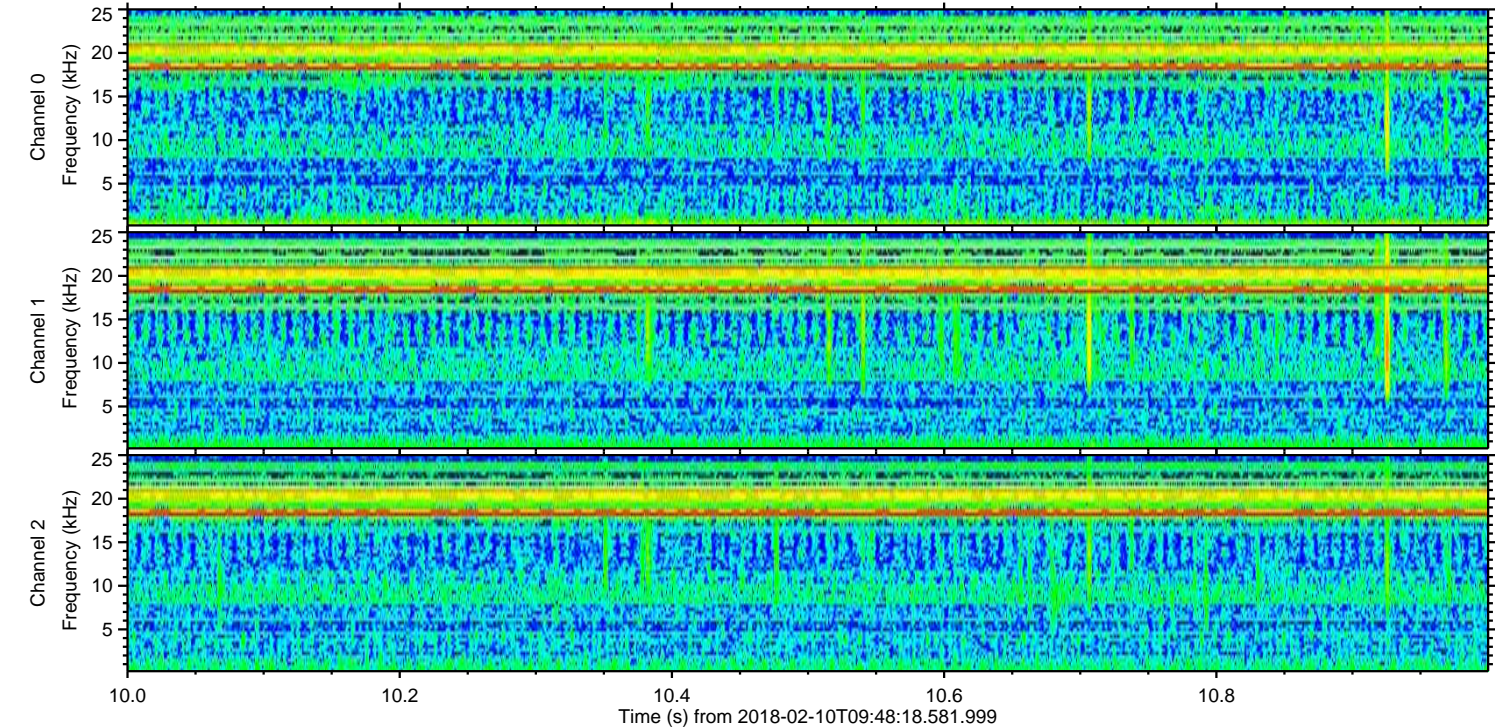
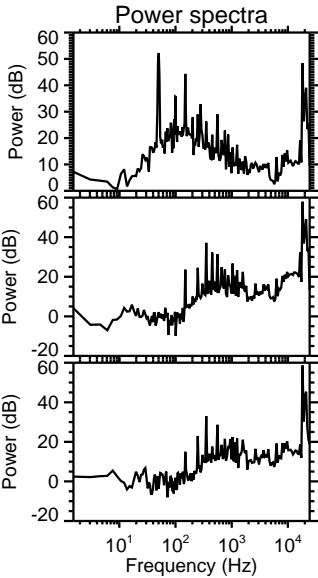
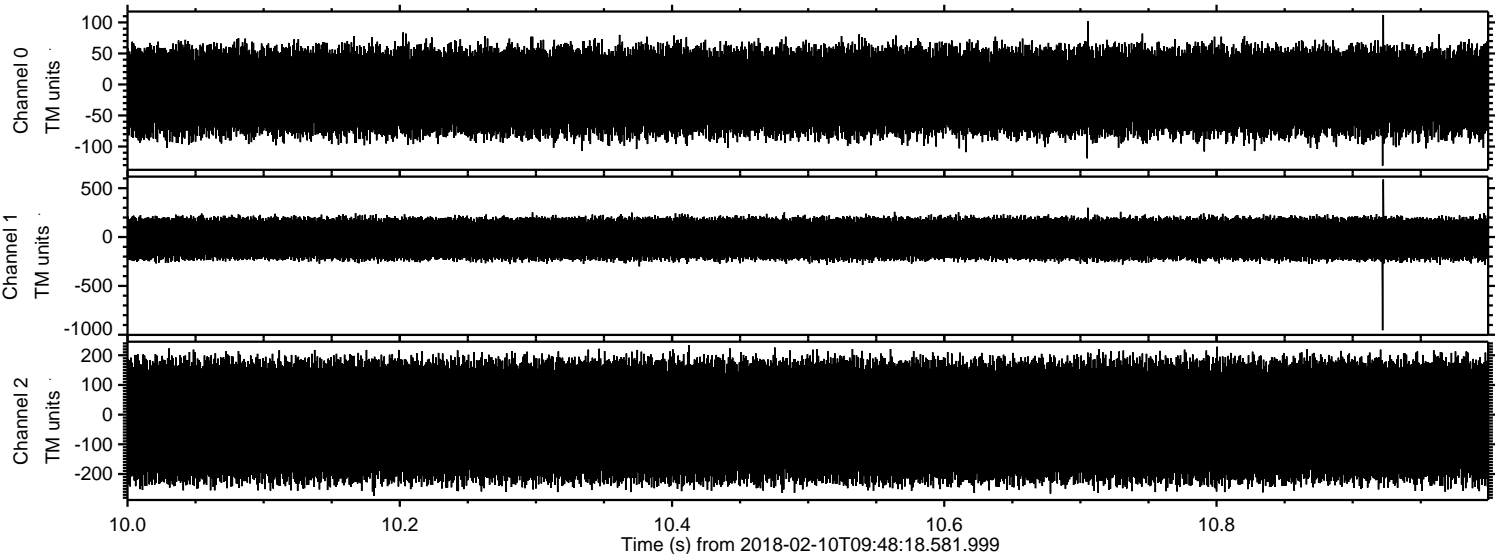
ELMAVAN 3D WAVEFORMS (Measured data sampled at 50 kHz) 51000 packets of 144 samples from 2018-02-10T09:48:18.581.999. Part 27/147

Processed Sat Feb 10 10:56:53 2018 by ELM ver.2012-10-06 from 001__elm20180210_094817__dat00.bin

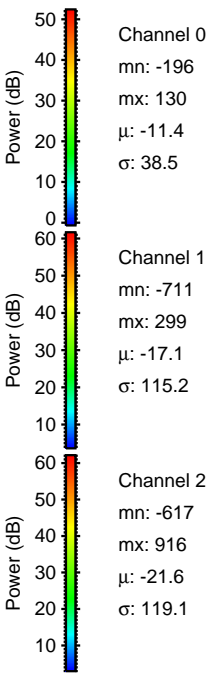
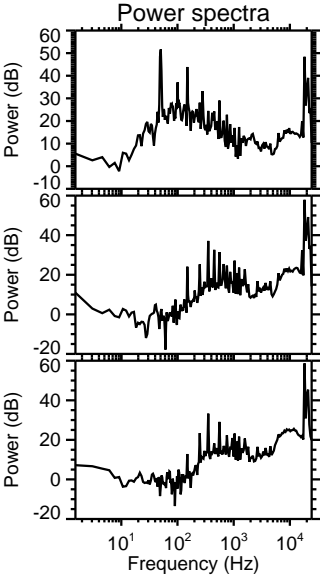
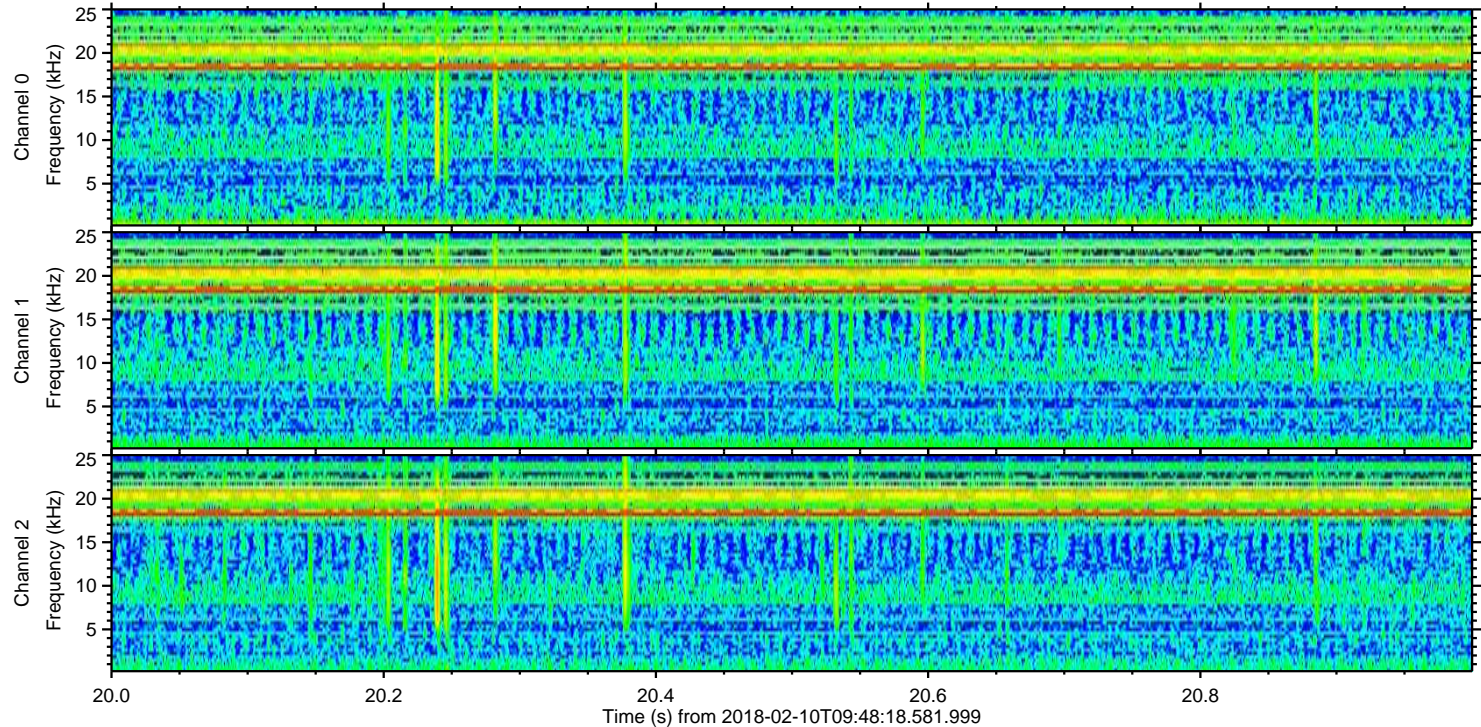
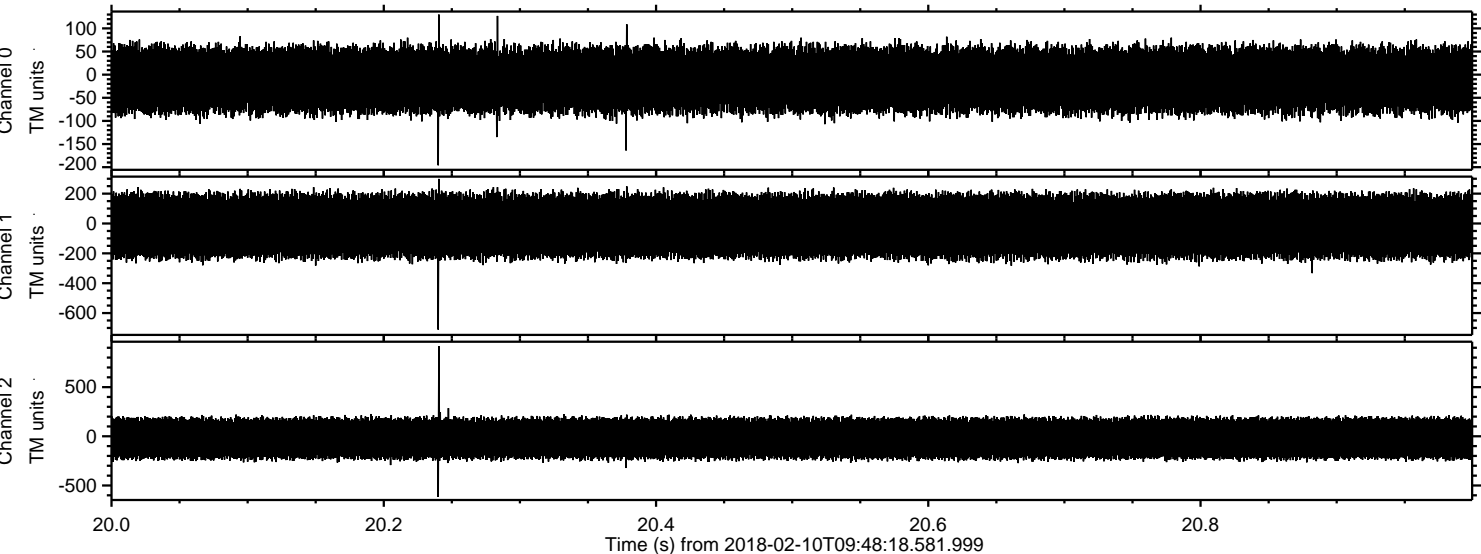


ELMAVAN 3D WAVEFORMS (Measured data sampled at 50 kHz) 51000 packets of 144 samples from 2018-02-10T09:48:18.581.999. Part 11/147

Processed Sat Feb 10 10:56:54 2018 by ELM ver.2012-10-06 from 001__elm20180210_094817__dat00.bin



Processed Sat Feb 10 10:56:55 2018 by ELM ver.2012-10-06 from 001__elm20180210_094817__dat00.bin



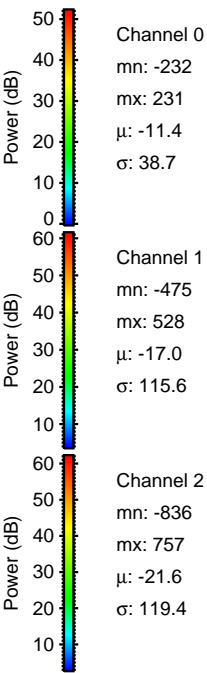
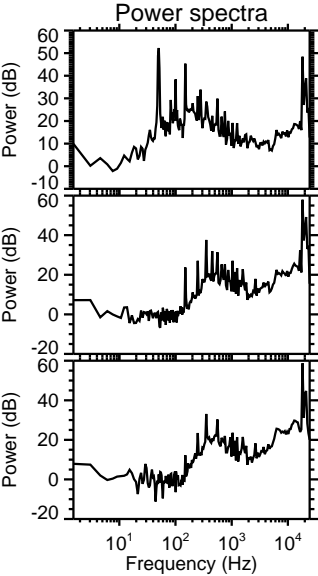
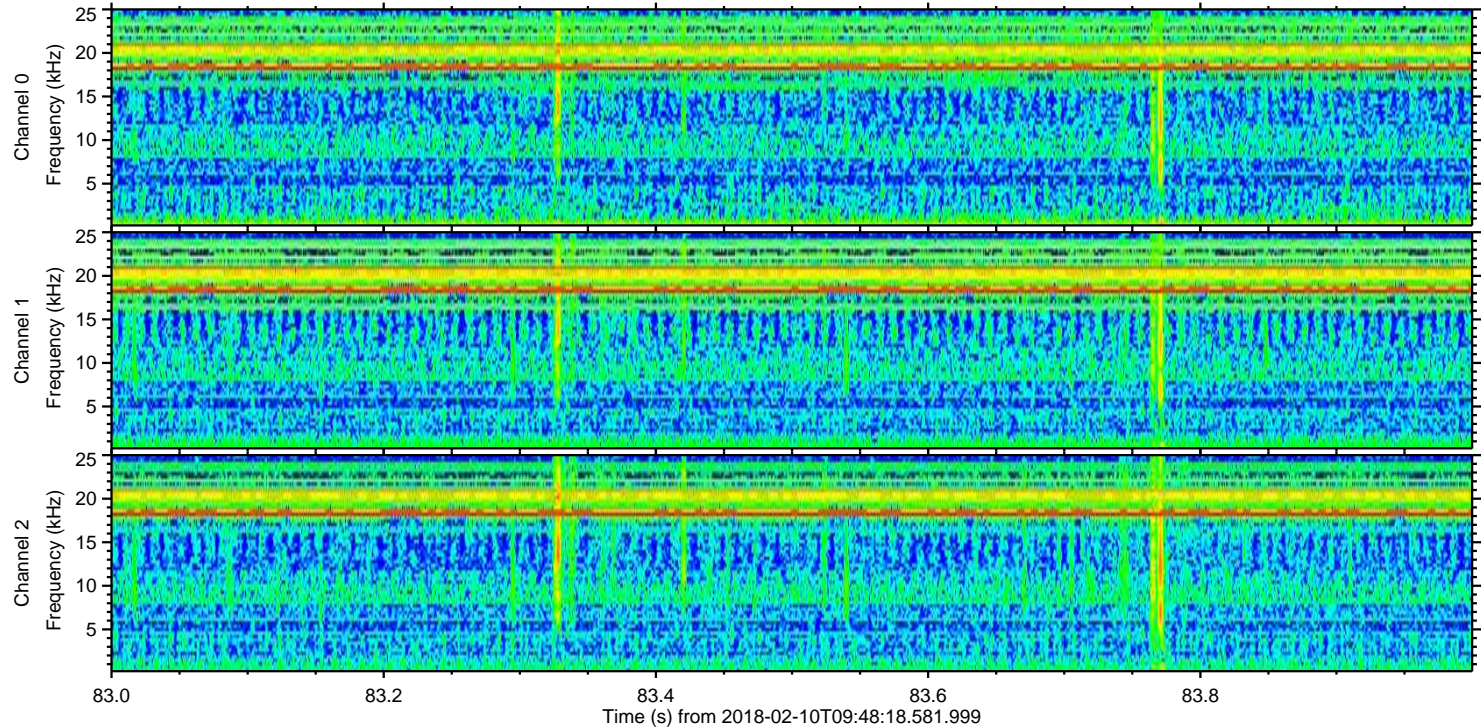
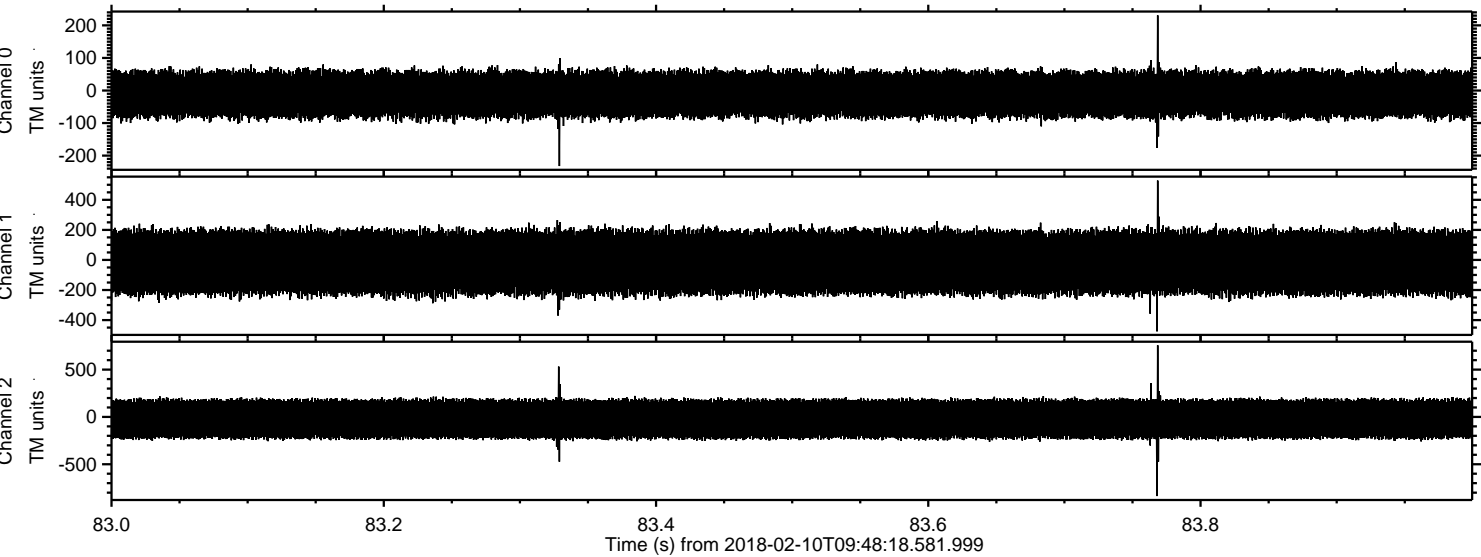
Channel 0
mn: -196
mx: 130
 μ : -11.4
 σ : 38.5

Channel 1
mn: -711
mx: 299
 μ : -17.1
 σ : 115.2

Channel 2
mn: -617
mx: 916
 μ : -21.6
 σ : 119.1

ELMAVAN 3D WAVEFORMS (Measured data sampled at 50 kHz) 51000 packets of 144 samples from 2018-02-10T09:48:18.581.999. Part 84/147

Processed Sat Feb 10 10:56:56 2018 by ELM ver.2012-10-06 from 001__elm20180210_094817__dat00.bin



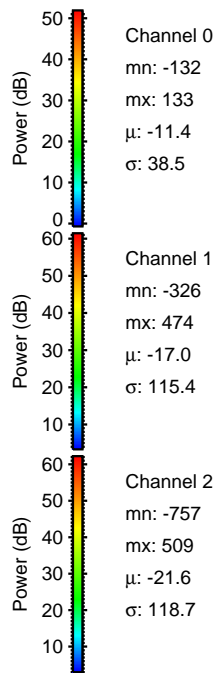
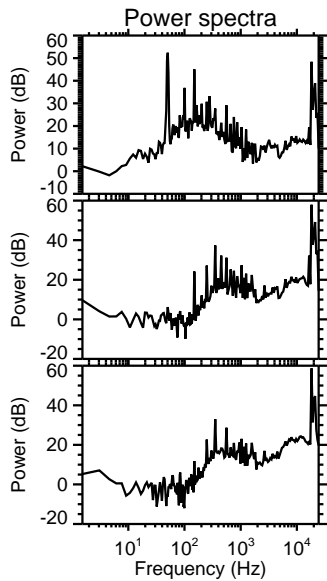
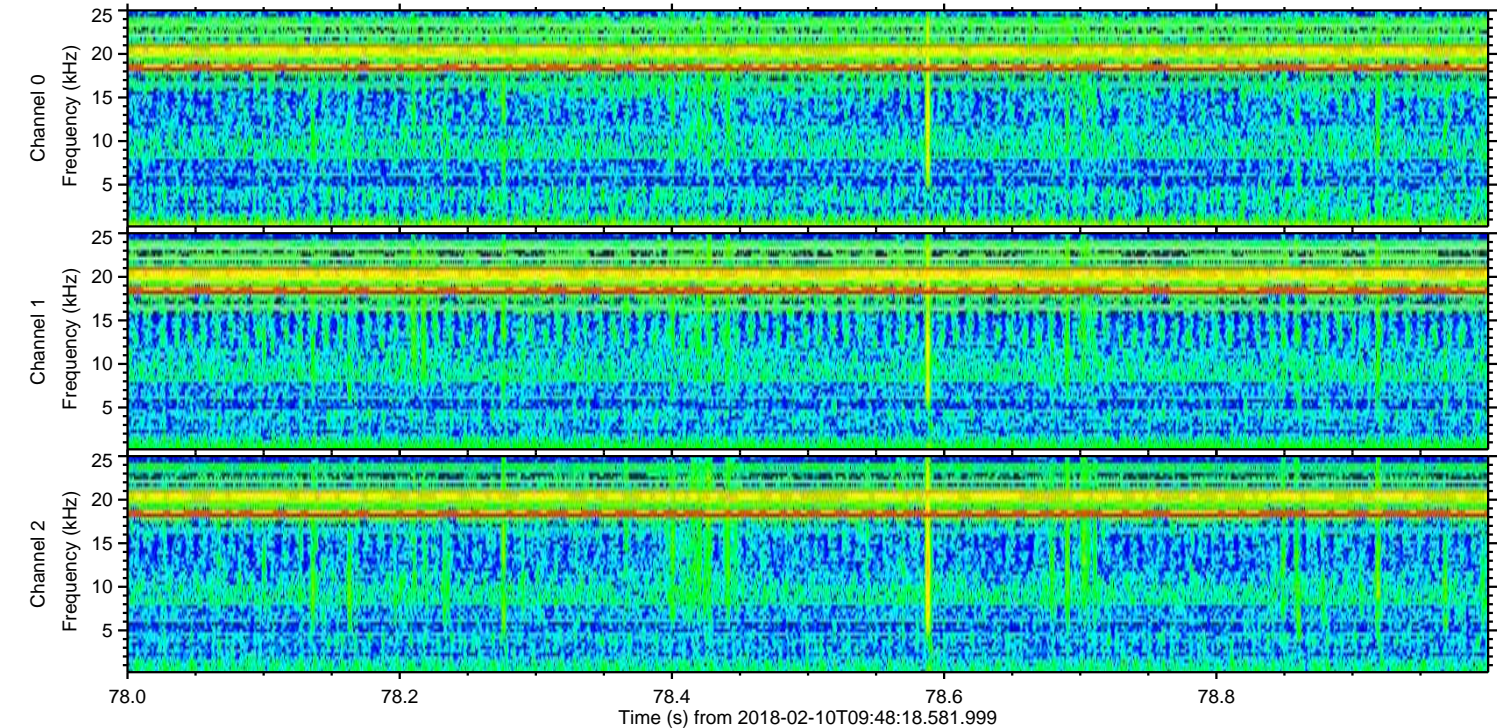
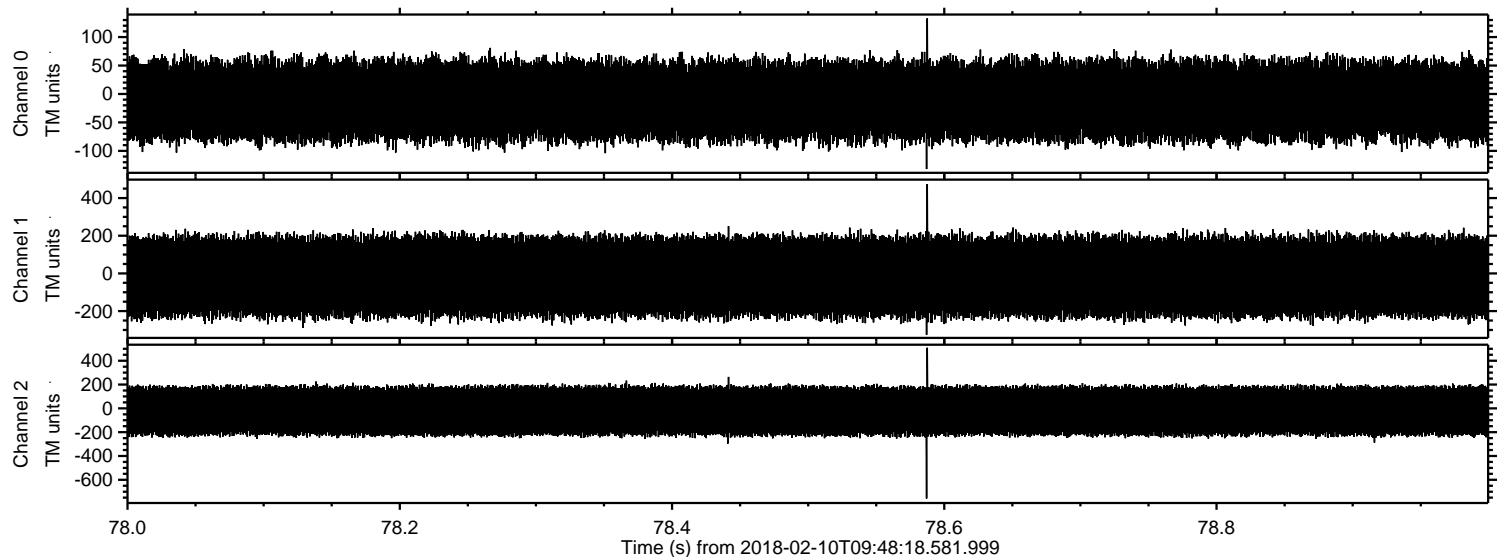
Channel 0
mn: -232
mx: 231
 μ : -11.4
 σ : 38.7

Channel 1
mn: -475
mx: 528
 μ : -17.0
 σ : 115.6

Channel 2
mn: -836
mx: 757
 μ : -21.6
 σ : 119.4

ELMAVAN 3D WAVEFORMS (Measured data sampled at 50 kHz) 51000 packets of 144 samples from 2018-02-10T09:48:18.581.999. Part 79/147

Processed Sat Feb 10 10:56:56 2018 by ELM ver.2012-10-06 from 001__elm20180210_094817__dat00.bin



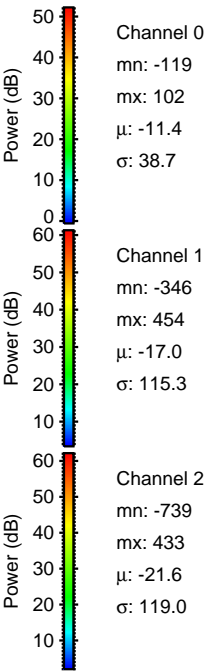
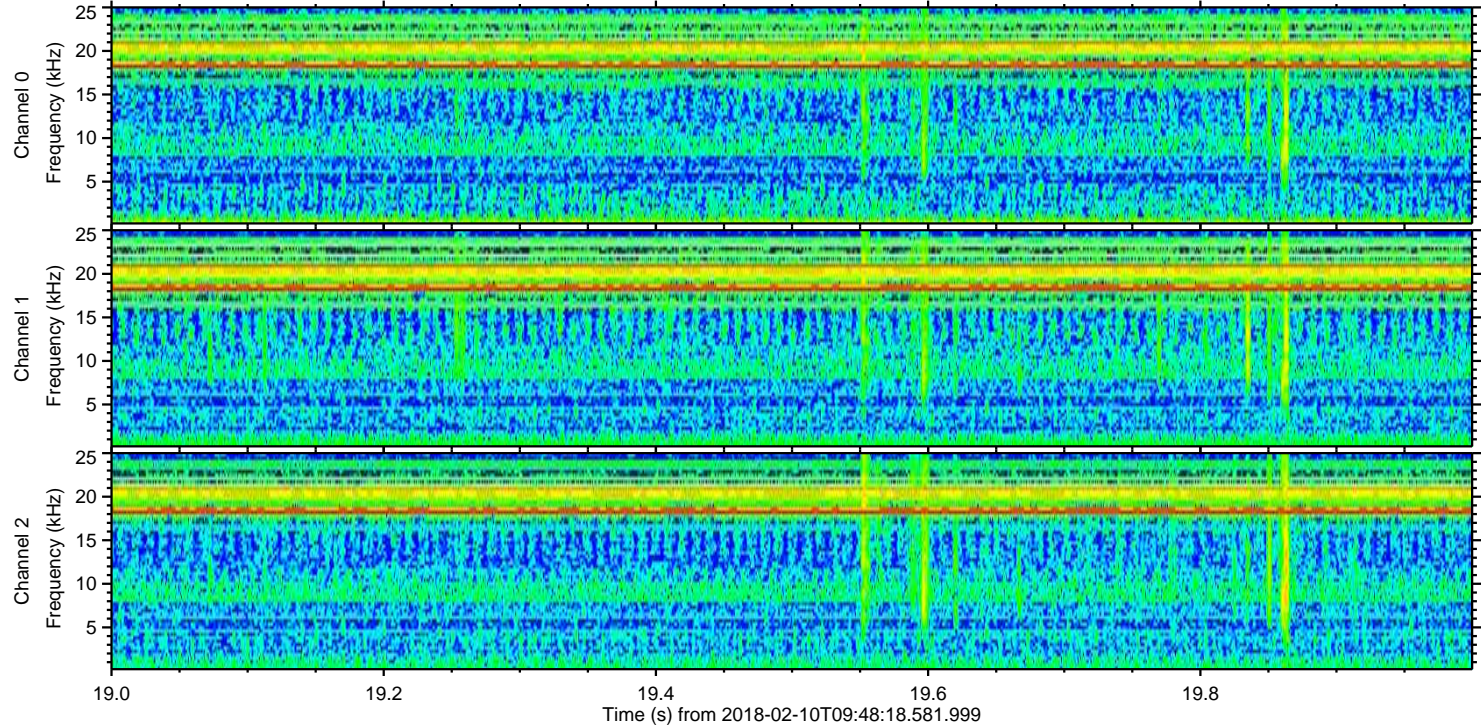
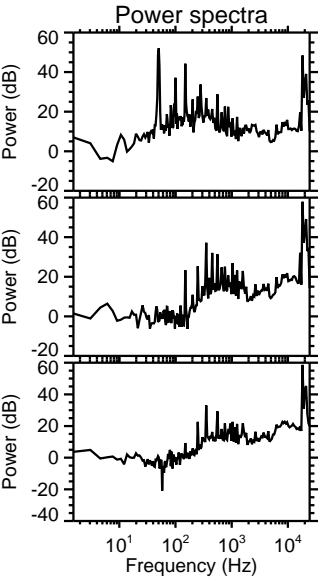
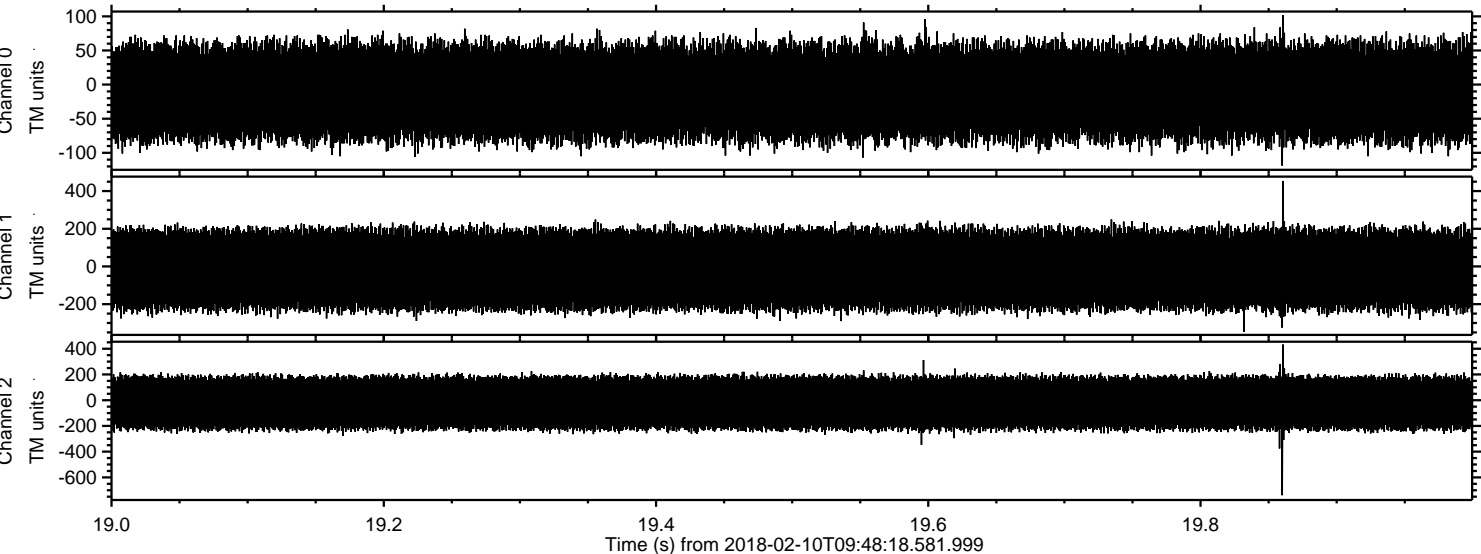
Channel 0
mn: -132
mx: 133
 μ : -11.4
 σ : 38.5

Channel 1
mn: -326
mx: 474
 μ : -17.0
 σ : 115.4

Channel 2
mn: -757
mx: 509
 μ : -21.6
 σ : 118.7

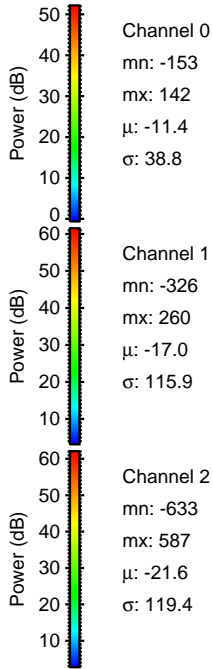
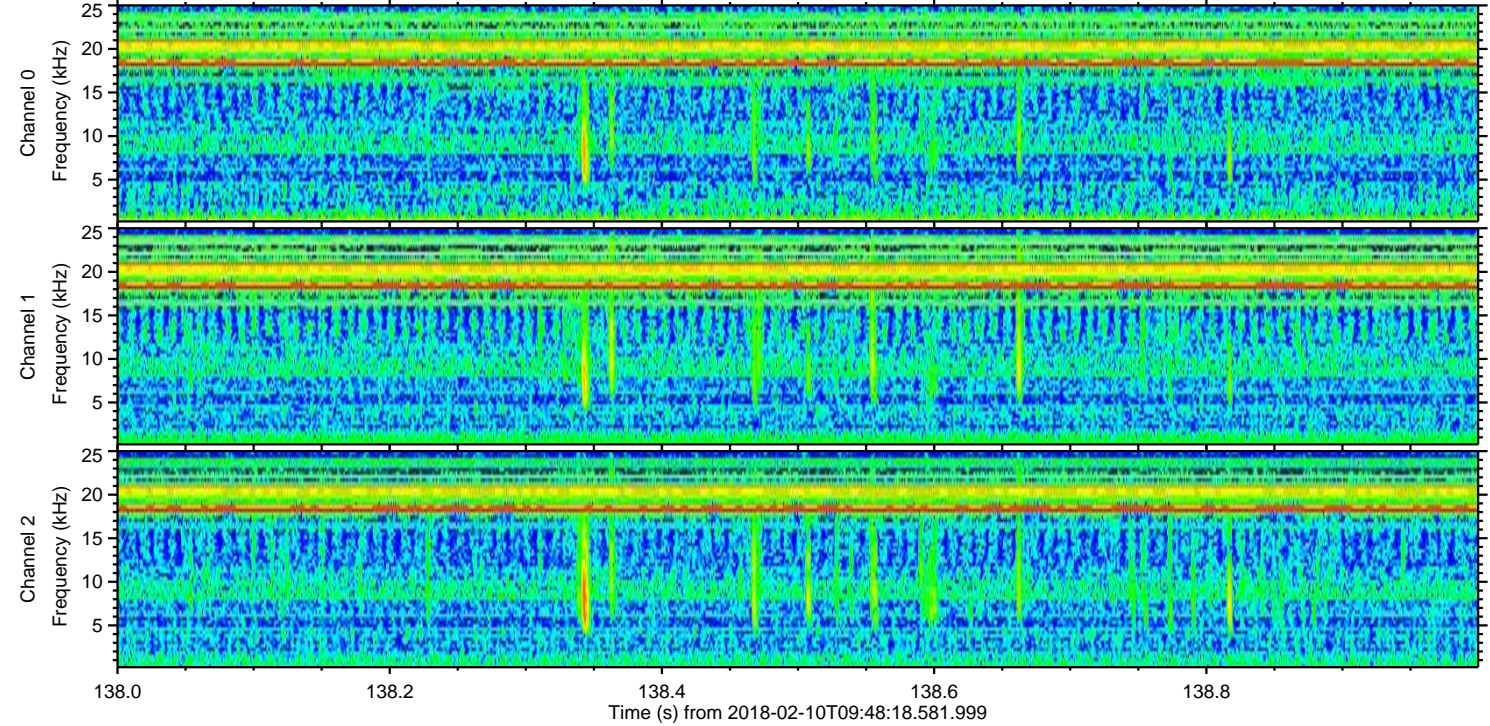
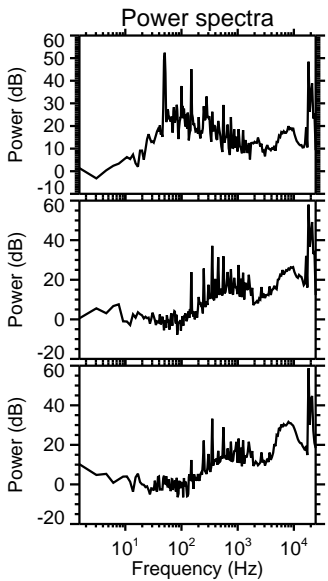
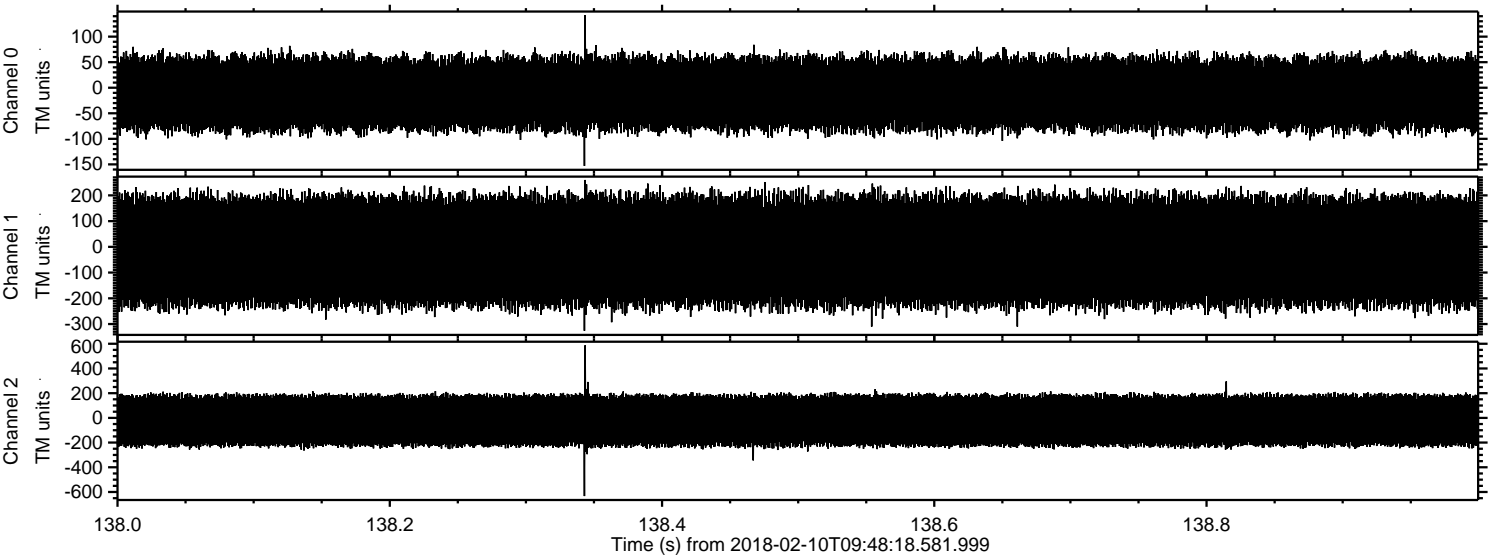
ELMAVAN 3D WAVEFORMS (Measured data sampled at 50 kHz) 51000 packets of 144 samples from 2018-02-10T09:48:18.581.999. Part 20/147

Processed Sat Feb 10 10:56:57 2018 by ELM ver.2012-10-06 from 001__elm20180210_094817__dat00.bin



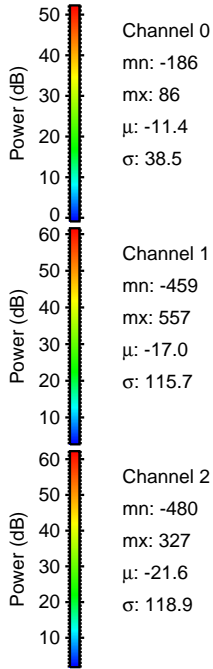
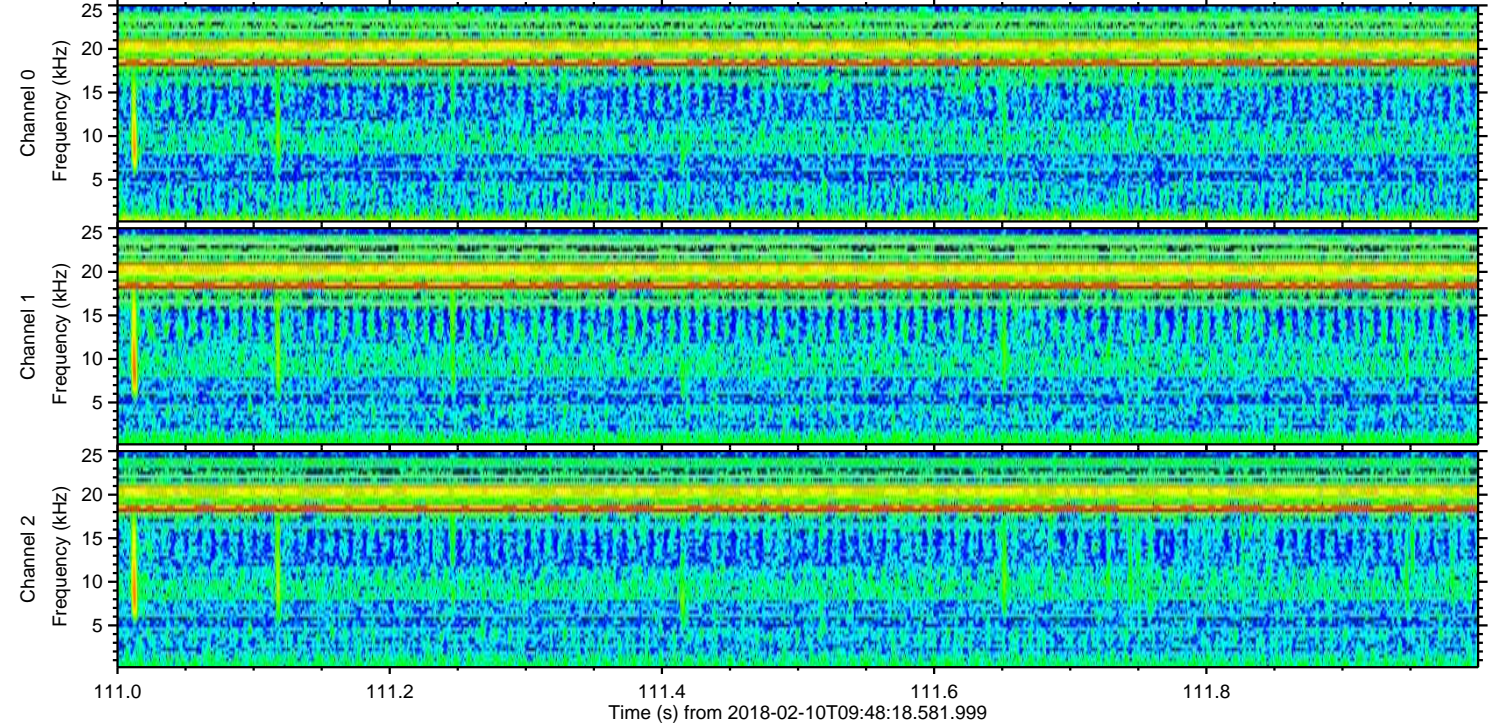
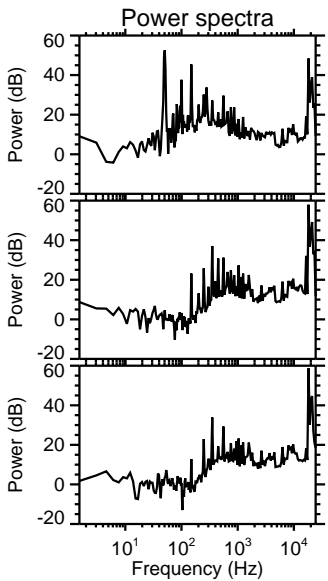
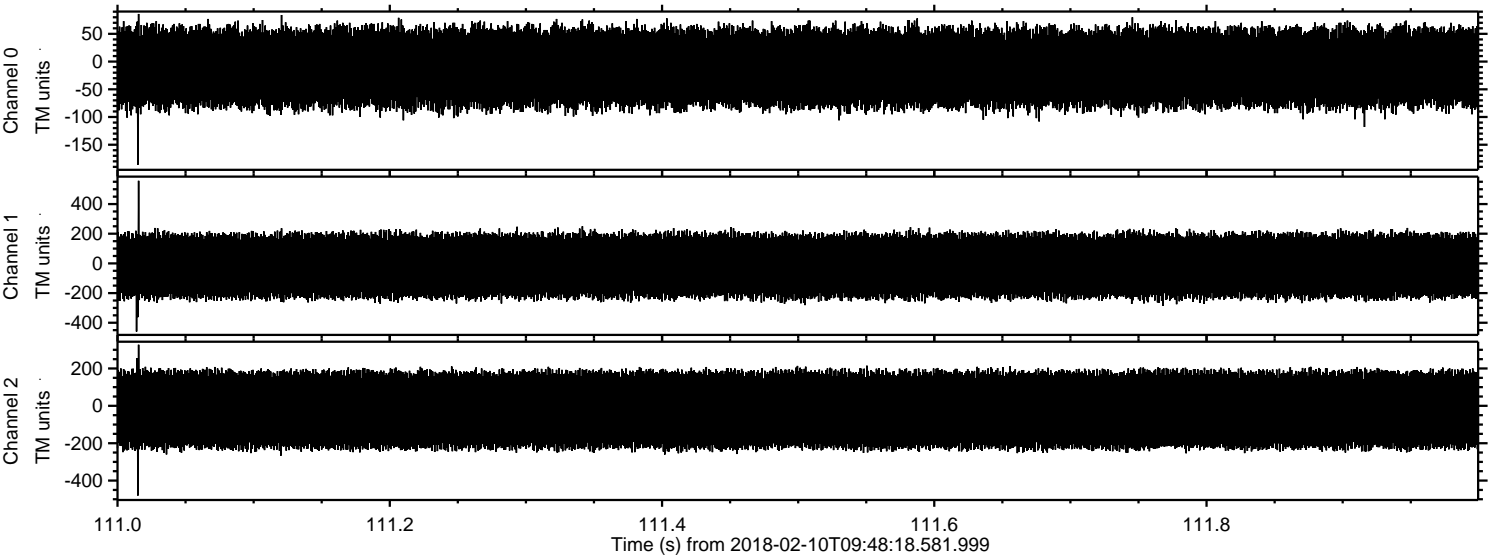
ELMAVAN 3D WAVEFORMS (Measured data sampled at 50 kHz) 51000 packets of 144 samples from 2018-02-10T09:48:18.581.999. Part 139/147

Processed Sat Feb 10 10:56:58 2018 by ELM ver.2012-10-06 from 001__elm20180210_094817__dat00.bin



ELMAVAN 3D WAVEFORMS (Measured data sampled at 50 kHz) 51000 packets of 144 samples from 2018-02-10T09:48:18.581.999. Part 112/147

Processed Sat Feb 10 10:56:59 2018 by ELM ver.2012-10-06 from 001__elm20180210_094817__dat00.bin



Channel 0
mn: -186
mx: 86
 μ : -11.4
 σ : 38.5

Channel 1
mn: -459
mx: 557
 μ : -17.0
 σ : 115.7

Channel 2
mn: -480
mx: 327
 μ : -21.6
 σ : 118.9

ELMAVAN 3D WAVEFORMS (Measured data sampled at 50 kHz) 51000 packets of 144 samples from 2018-02-10T09:48:18.581.999. Part 64/147

Processed Sat Feb 10 10:56:59 2018 by ELM ver.2012-10-06 from 001__elm20180210_094817__dat00.bin

