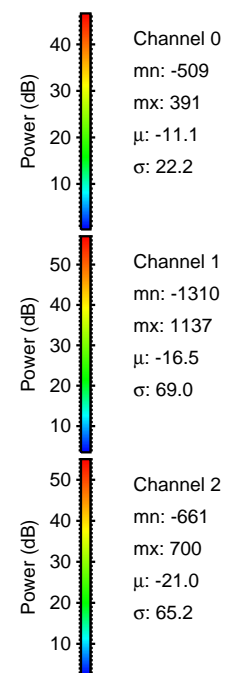
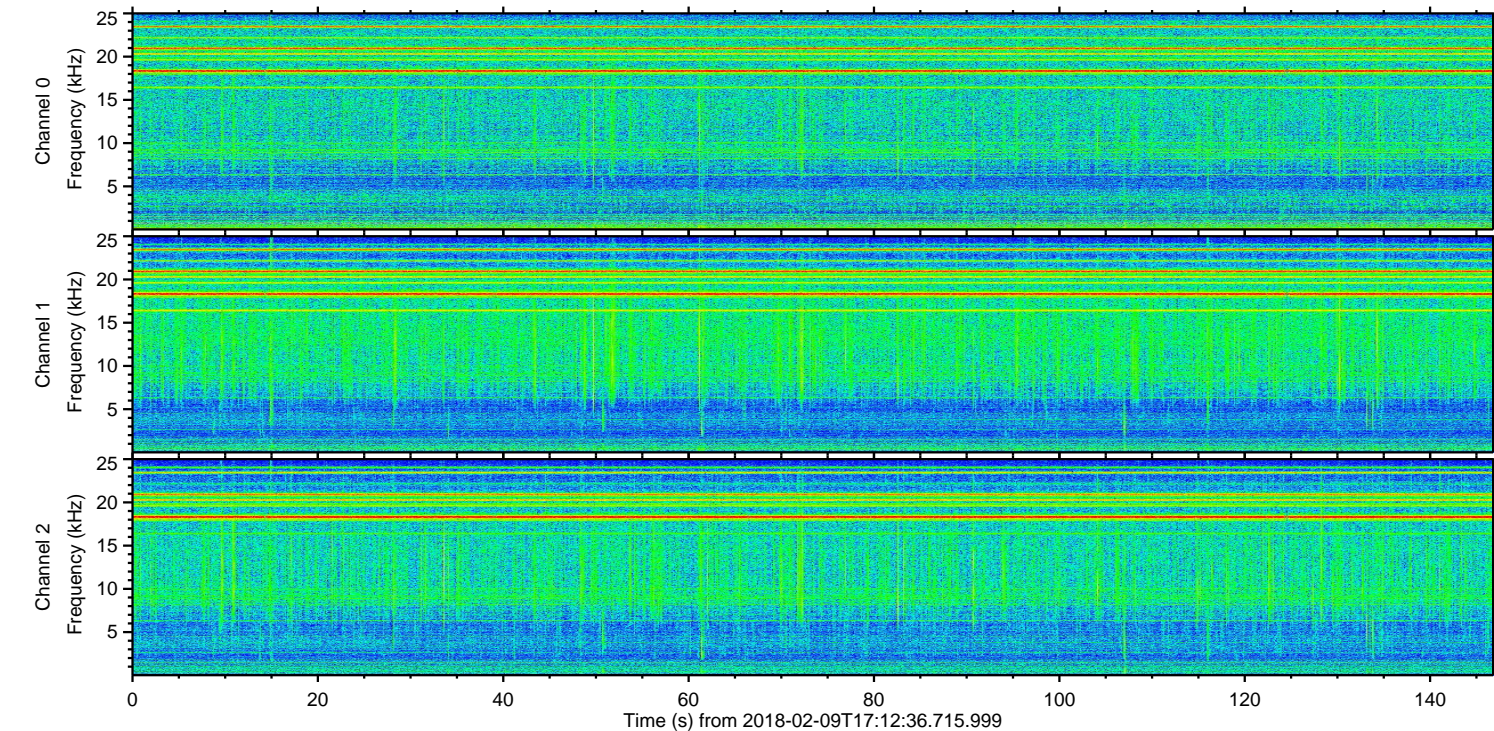
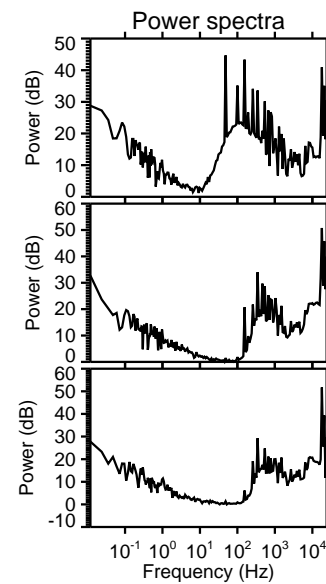
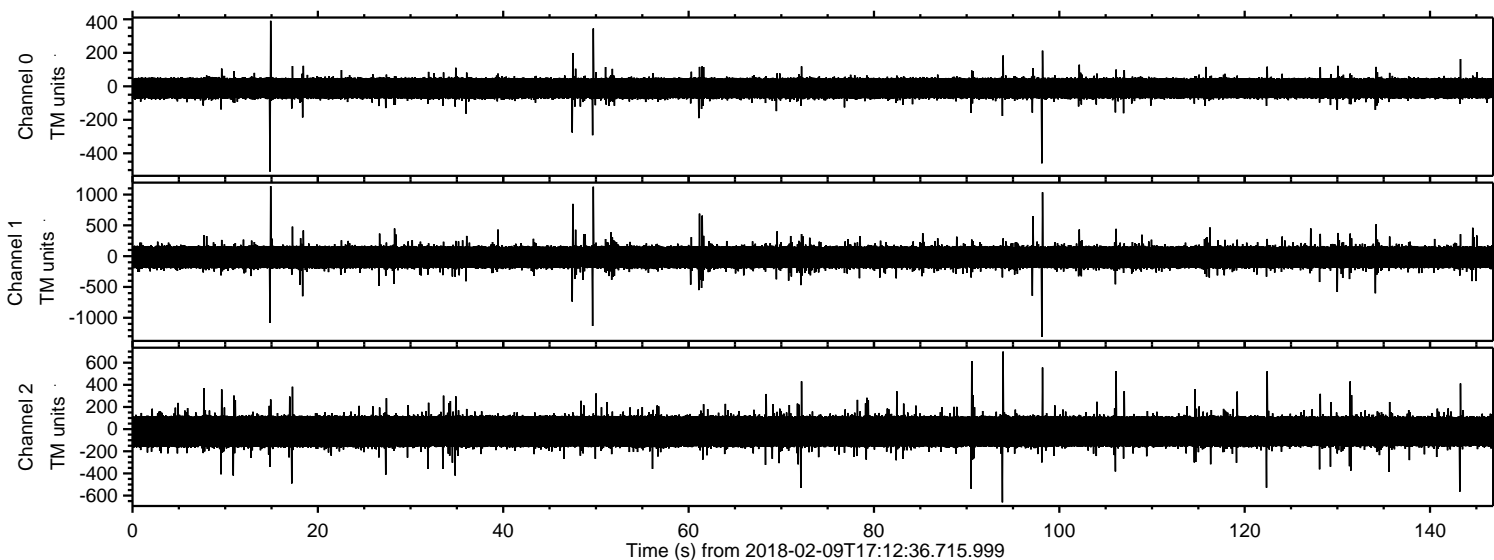
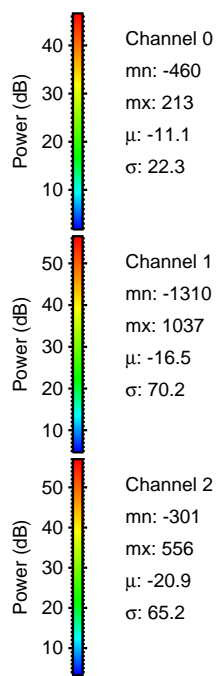
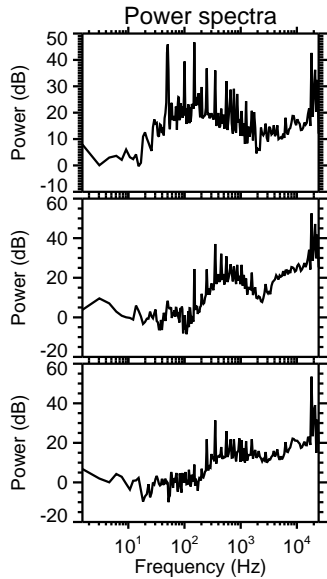
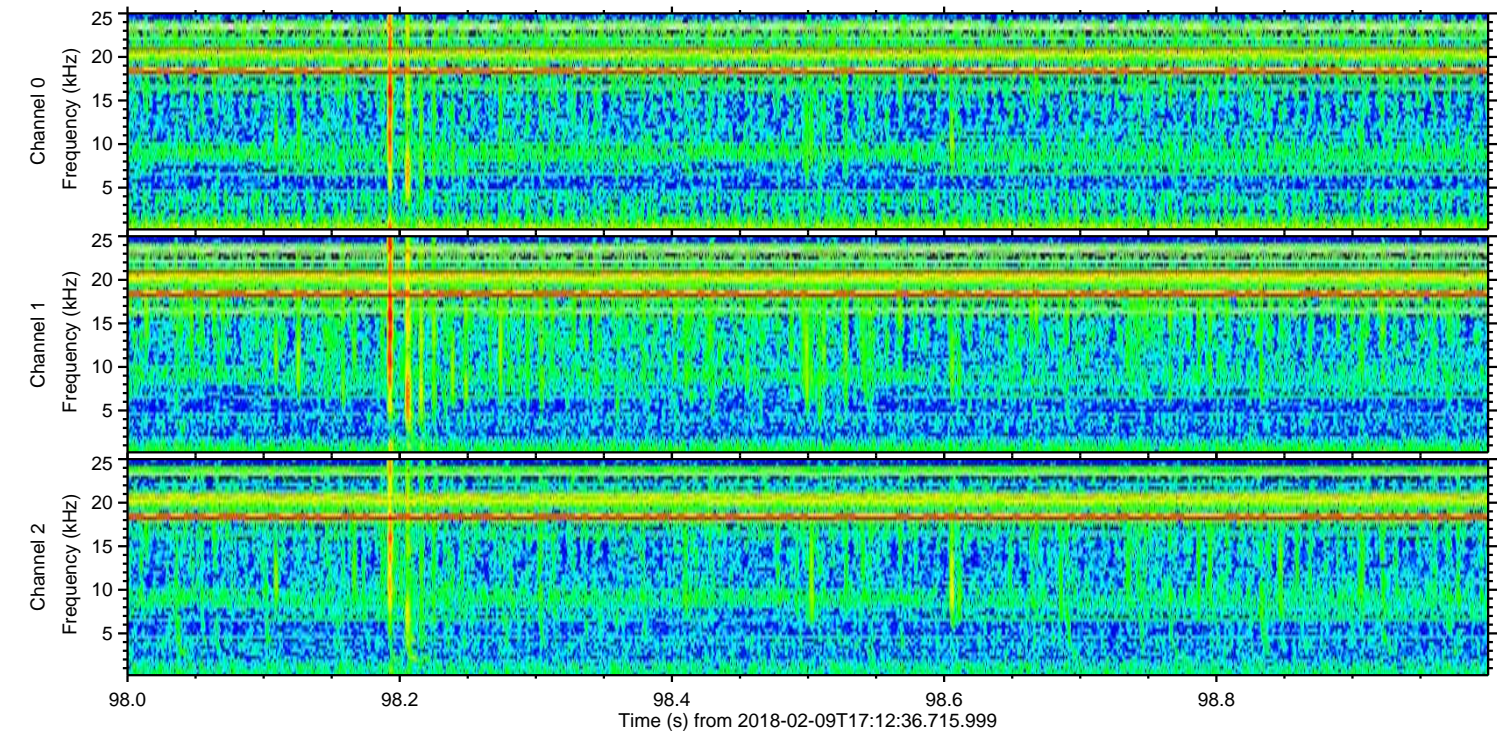
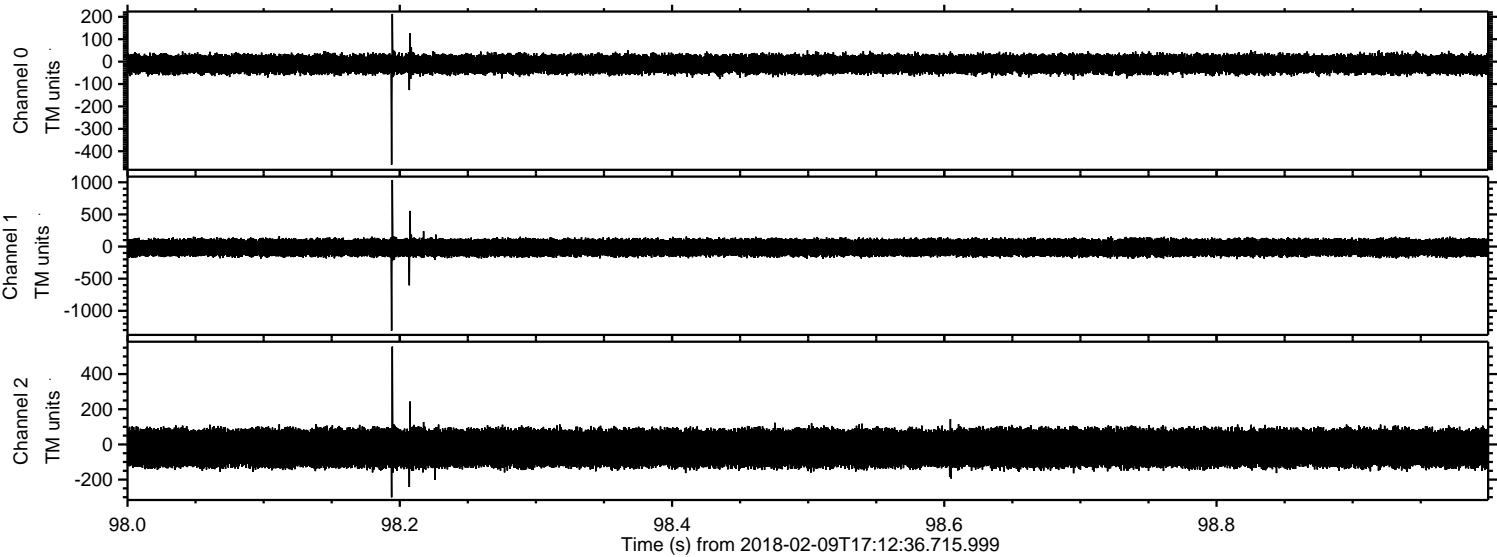


ELMAVAN 3D WAVEFORMS (Measured data sampled at 50 kHz) 51000 packets of 144 samples from 2018-02-09T17:12:36.715.999.

Processed Fri Feb 9 18:20:59 2018 by ELM ver.2012-10-06 from 001__elm20180209_171235__dat00.bin

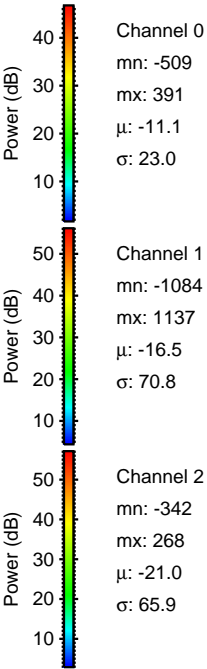
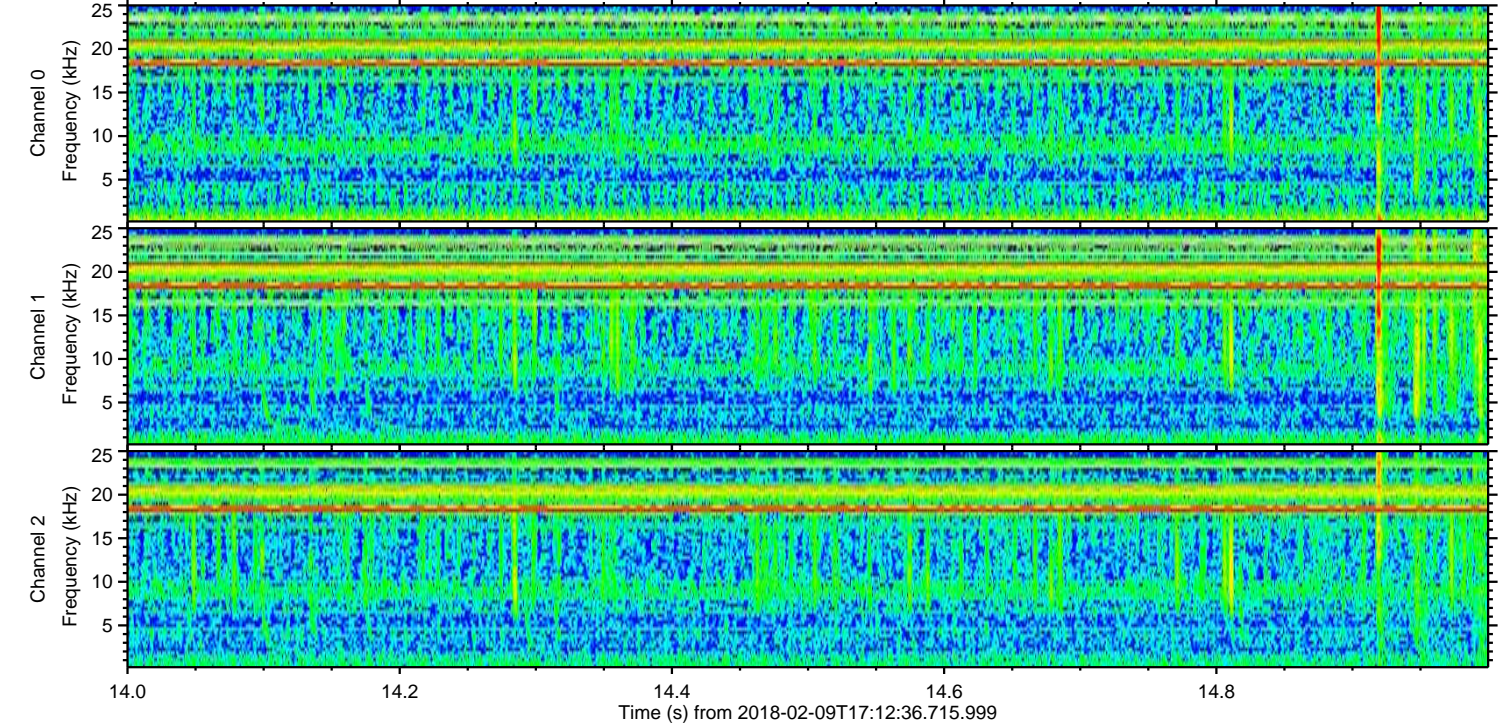
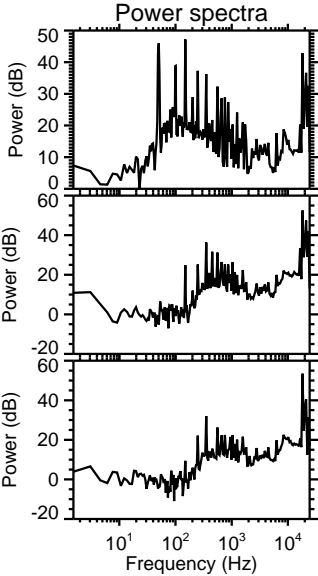
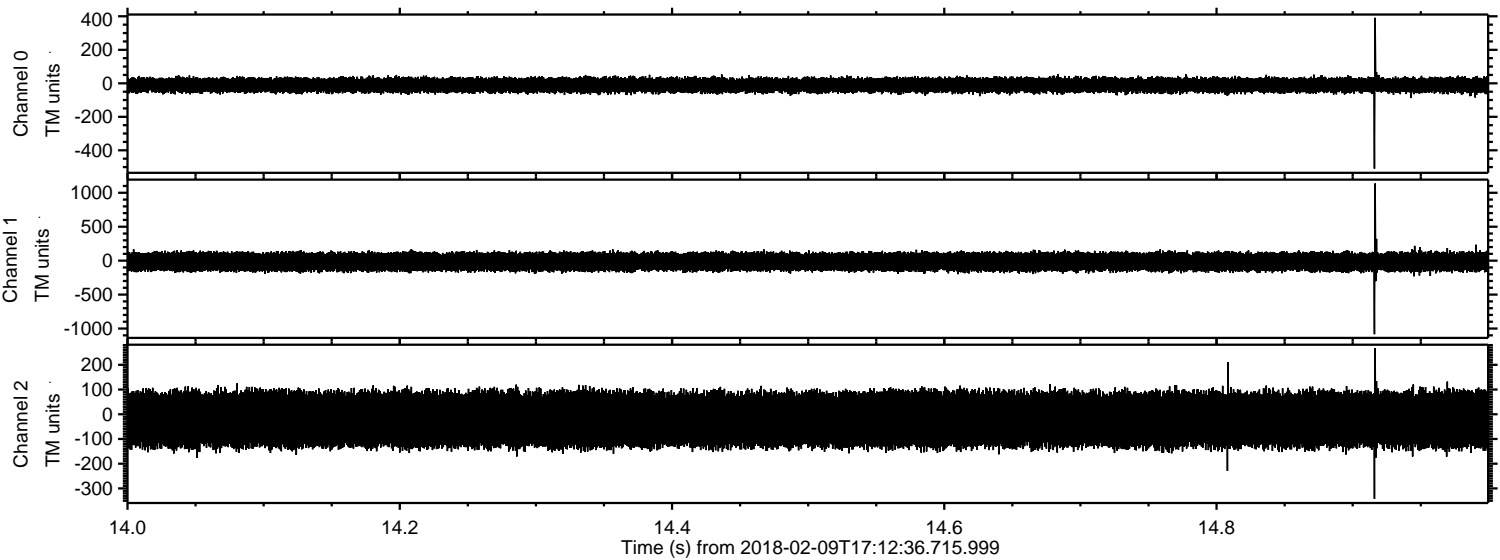


Processed Fri Feb 9 18:21:07 2018 by ELM ver.2012-10-06 from 001__elm20180209_171235__dat00.bin

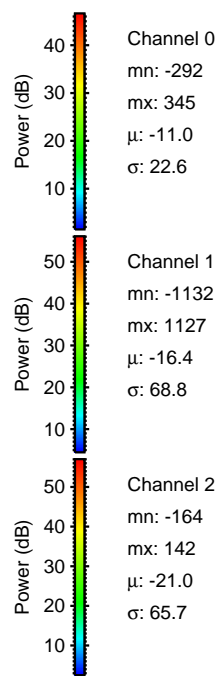
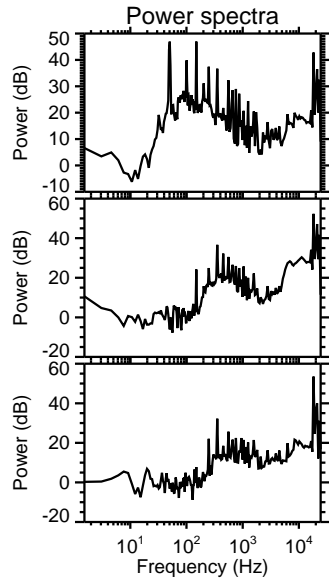
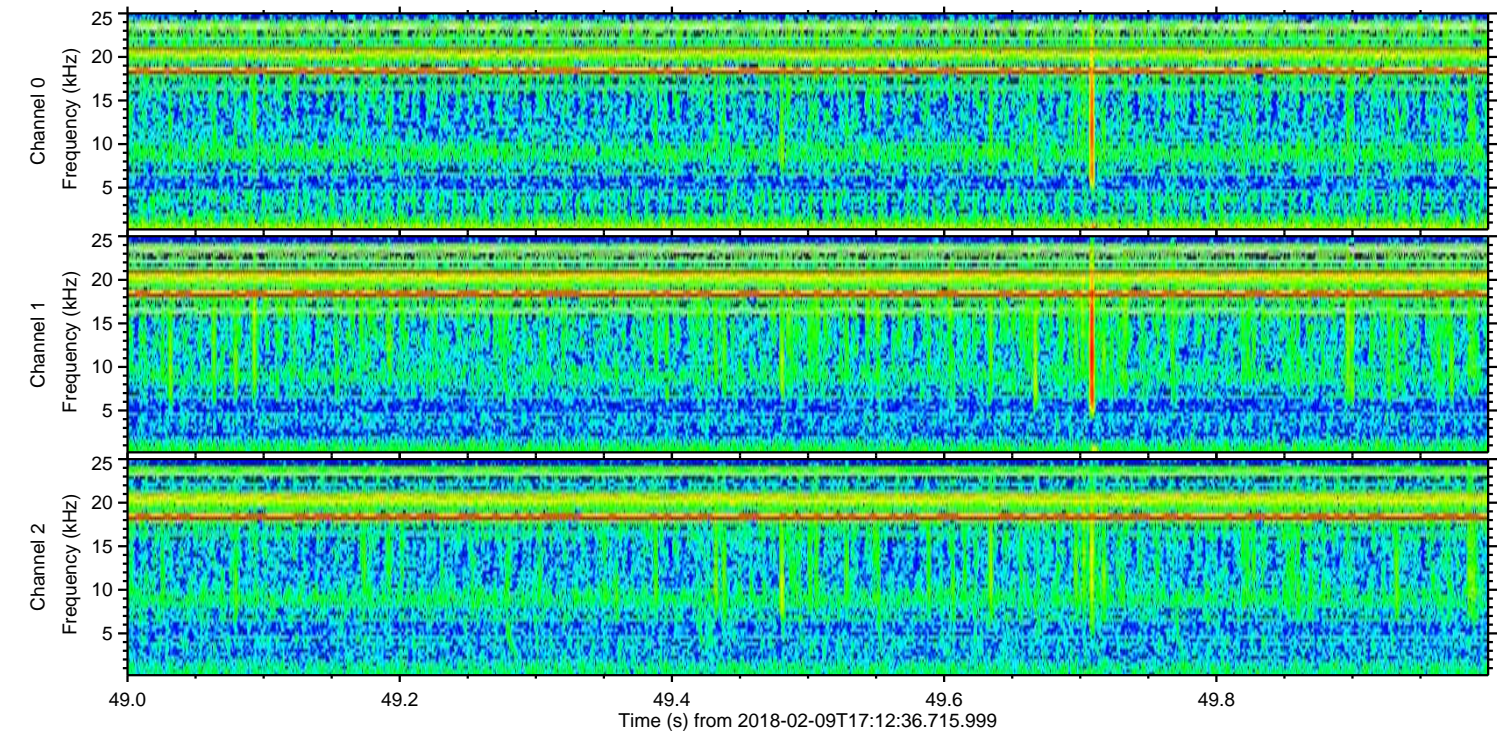
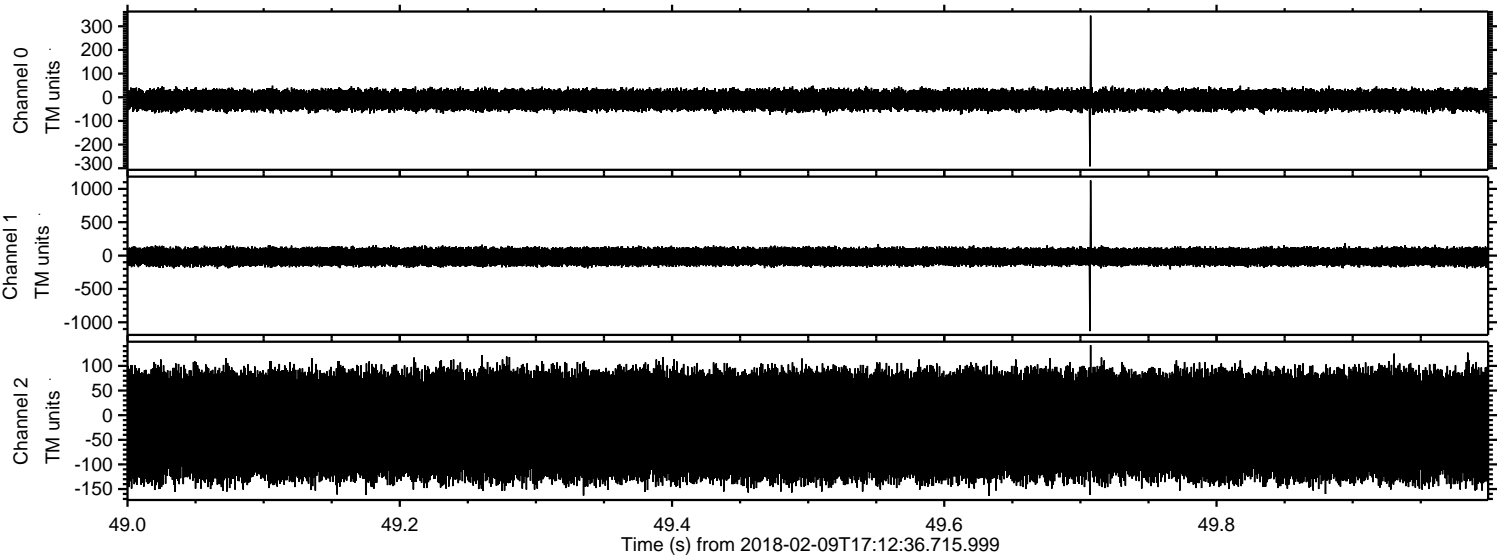


ELMAVAN 3D WAVEFORMS (Measured data sampled at 50 kHz) 51000 packets of 144 samples from 2018-02-09T17:12:36.715.999. Part 15/147

Processed Fri Feb 9 18:21:08 2018 by ELM ver.2012-10-06 from 001__elm20180209_171235__dat00.bin

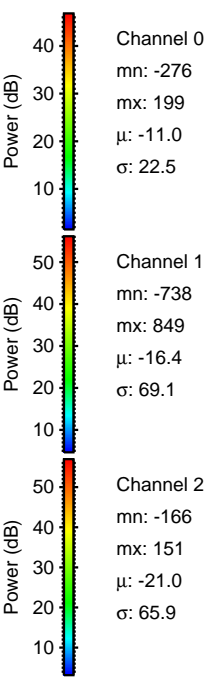
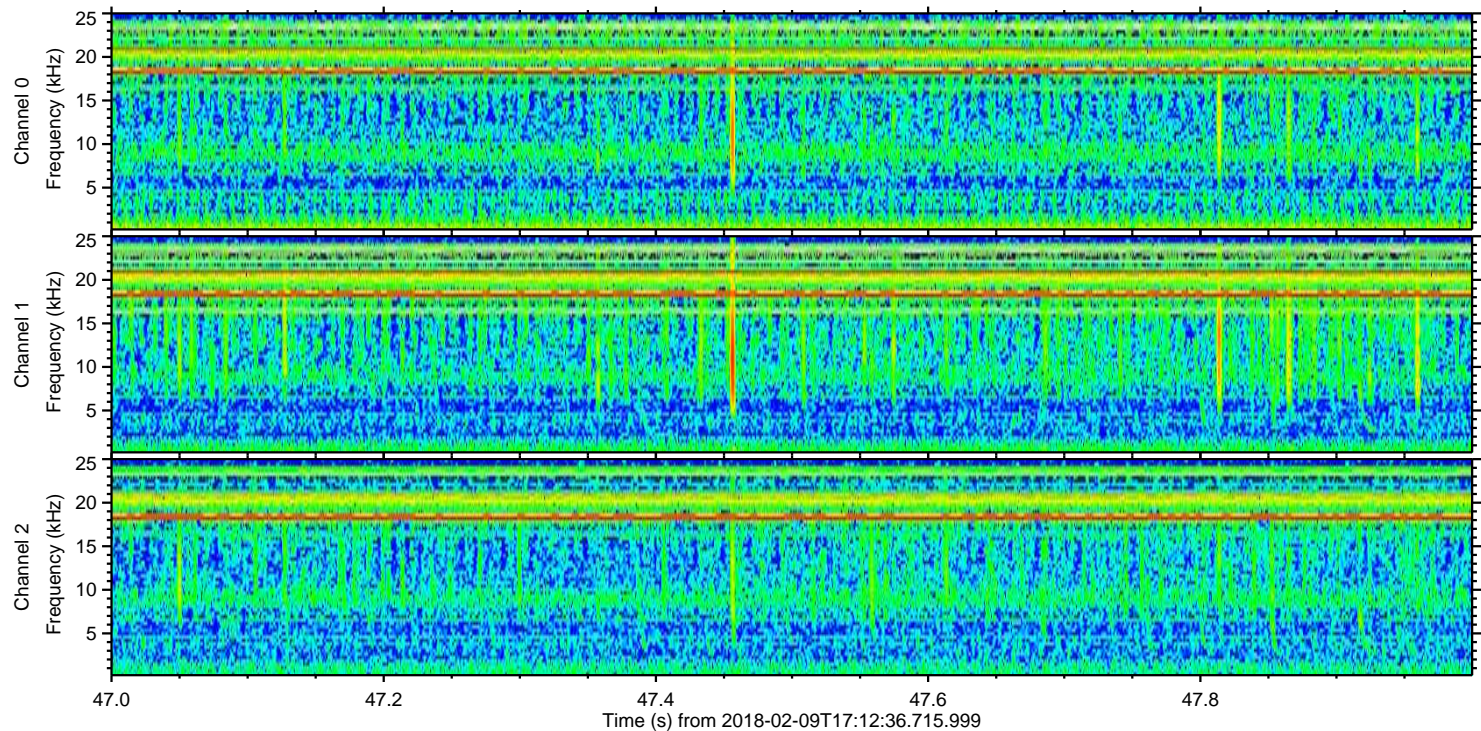
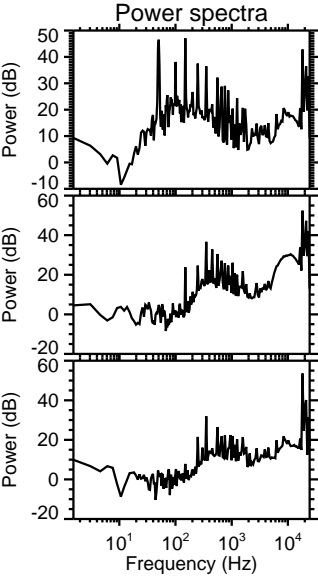
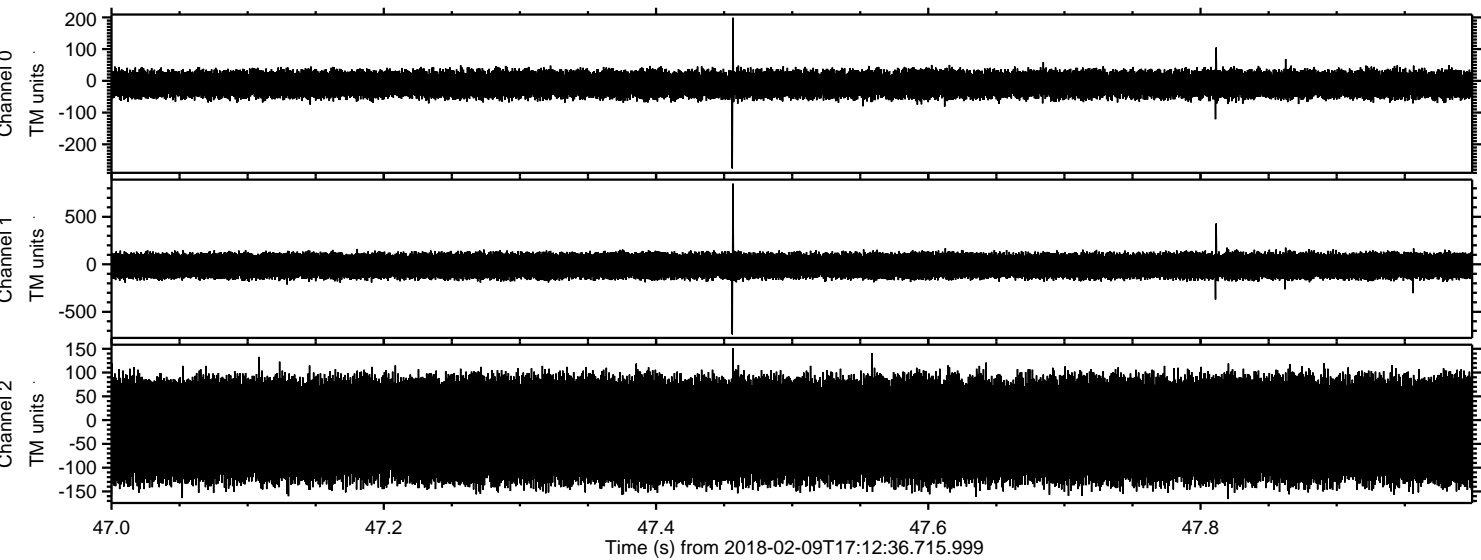


Processed Fri Feb 9 18:21:09 2018 by ELM ver.2012-10-06 from 001__elm20180209_171235__dat00.bin

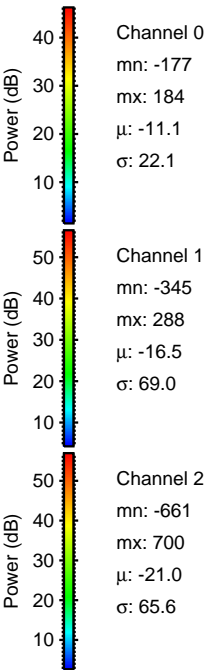
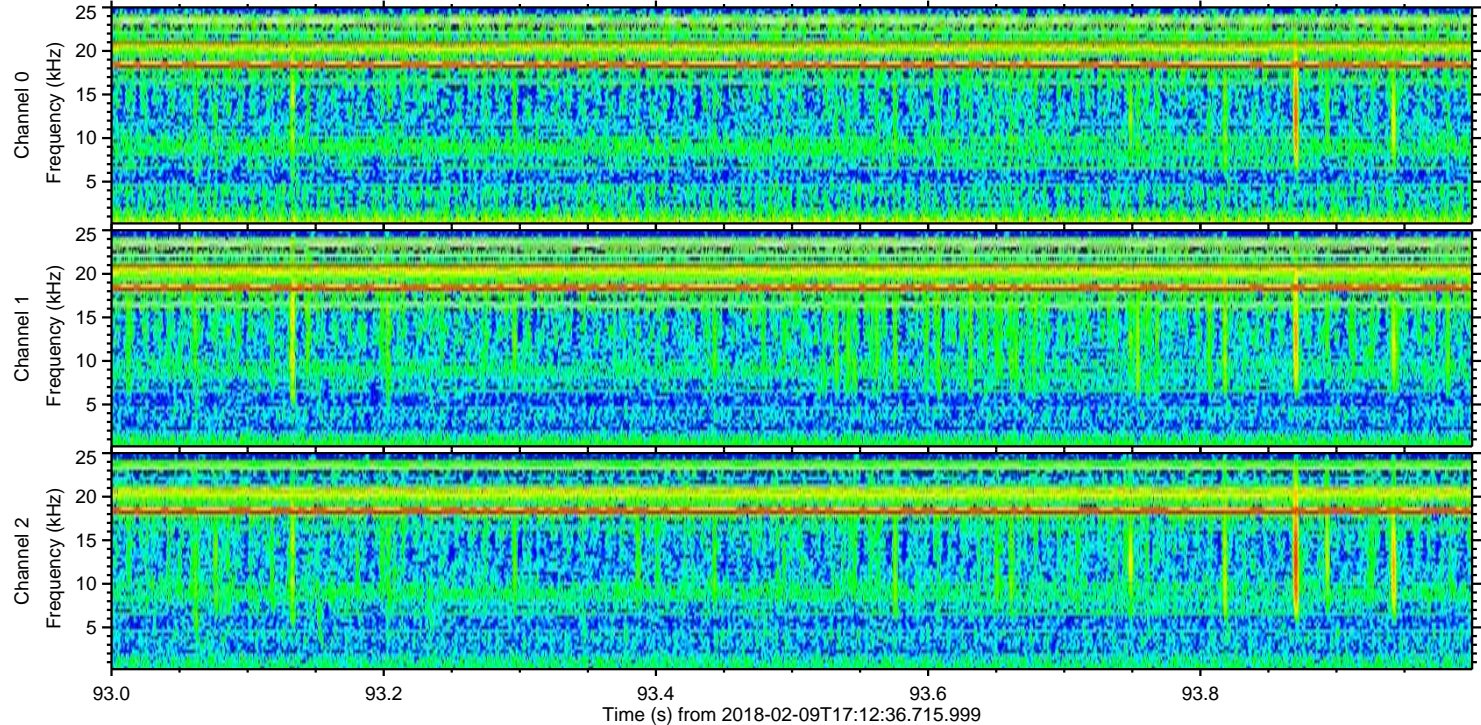
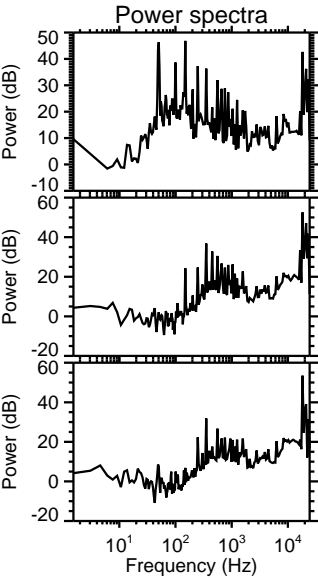
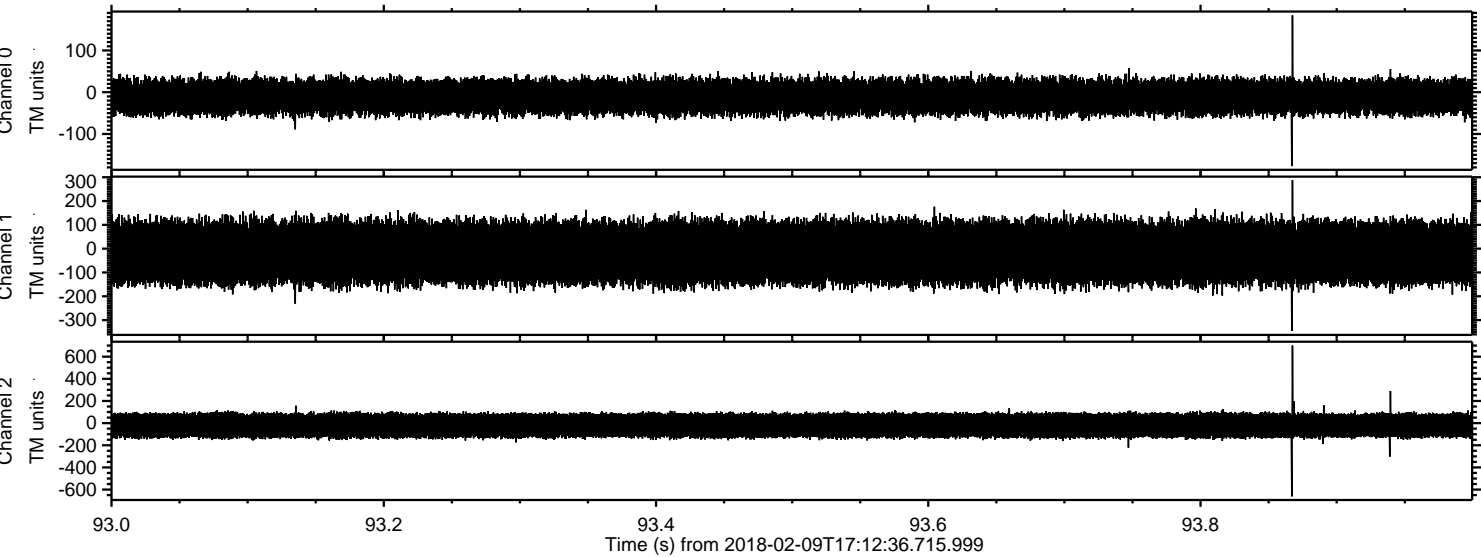


Power spectra

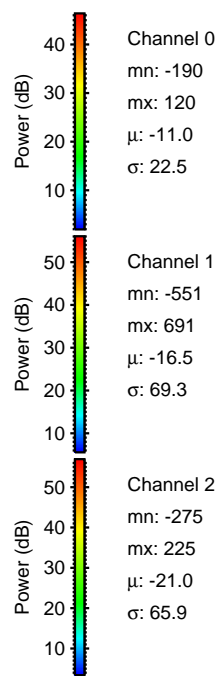
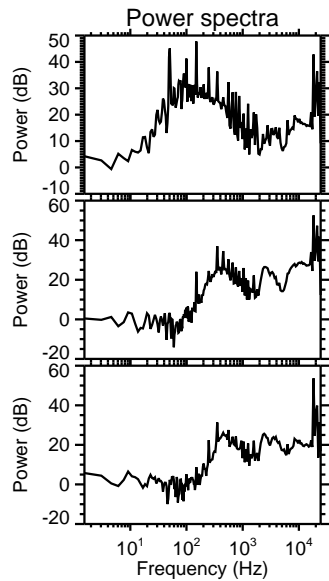
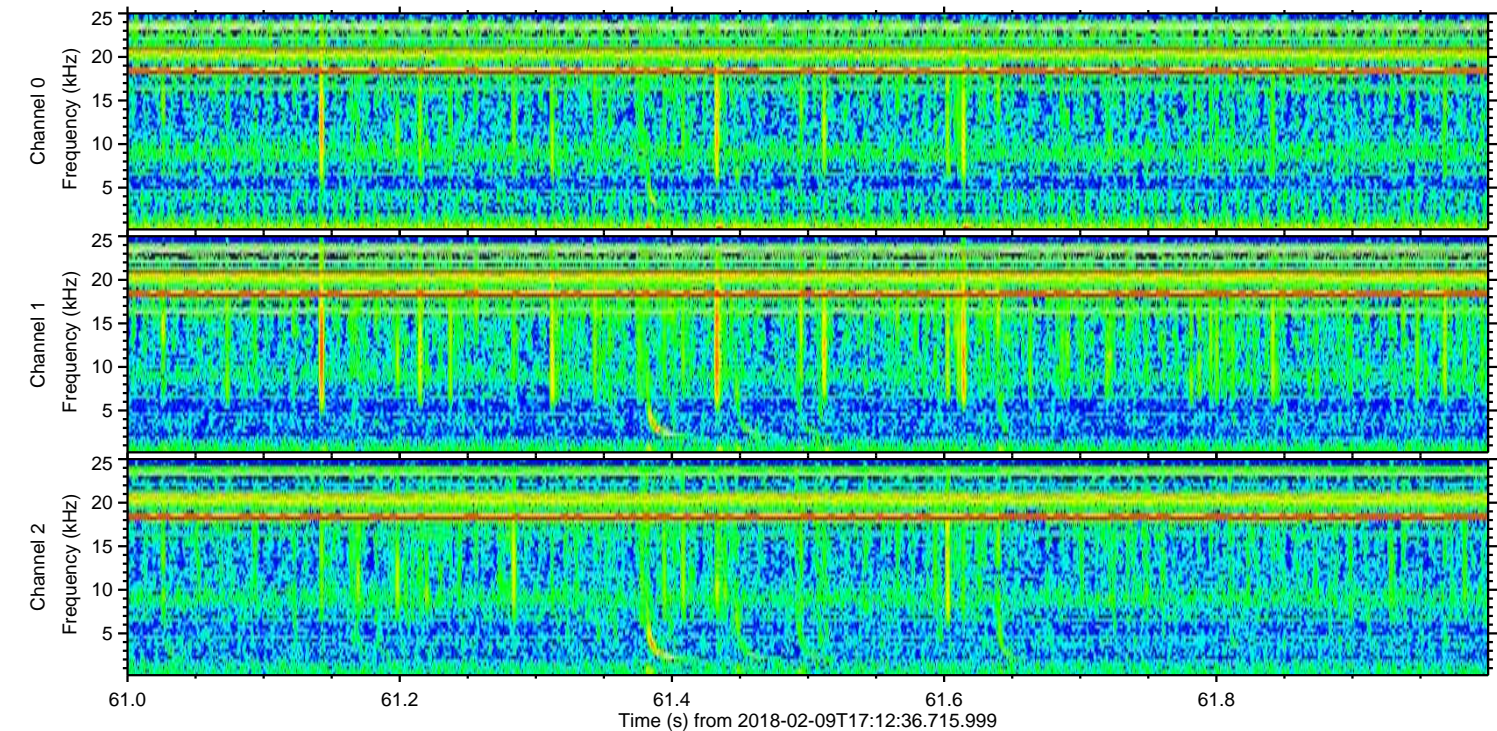
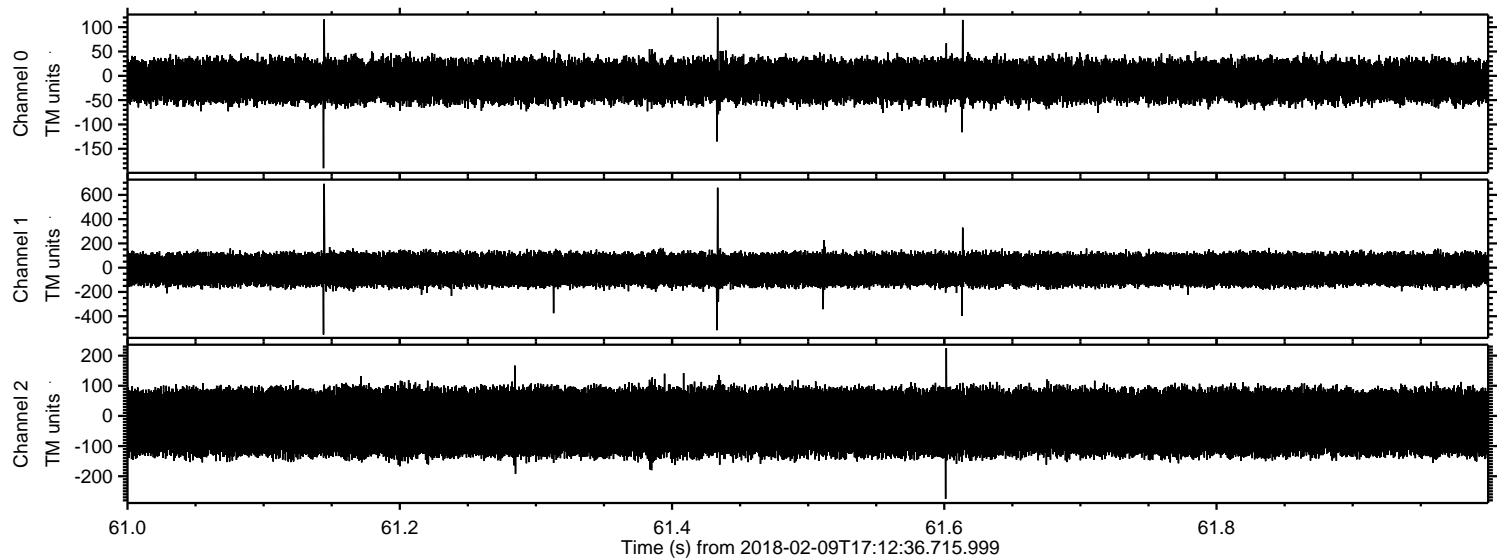
Processed Fri Feb 9 18:21:09 2018 by ELM ver.2012-10-06 from 001__elm20180209_171235__dat00.bin



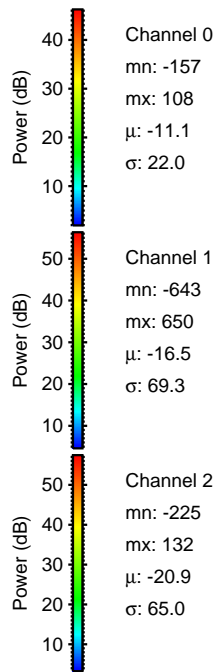
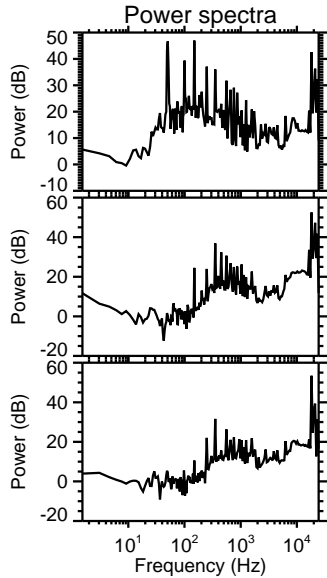
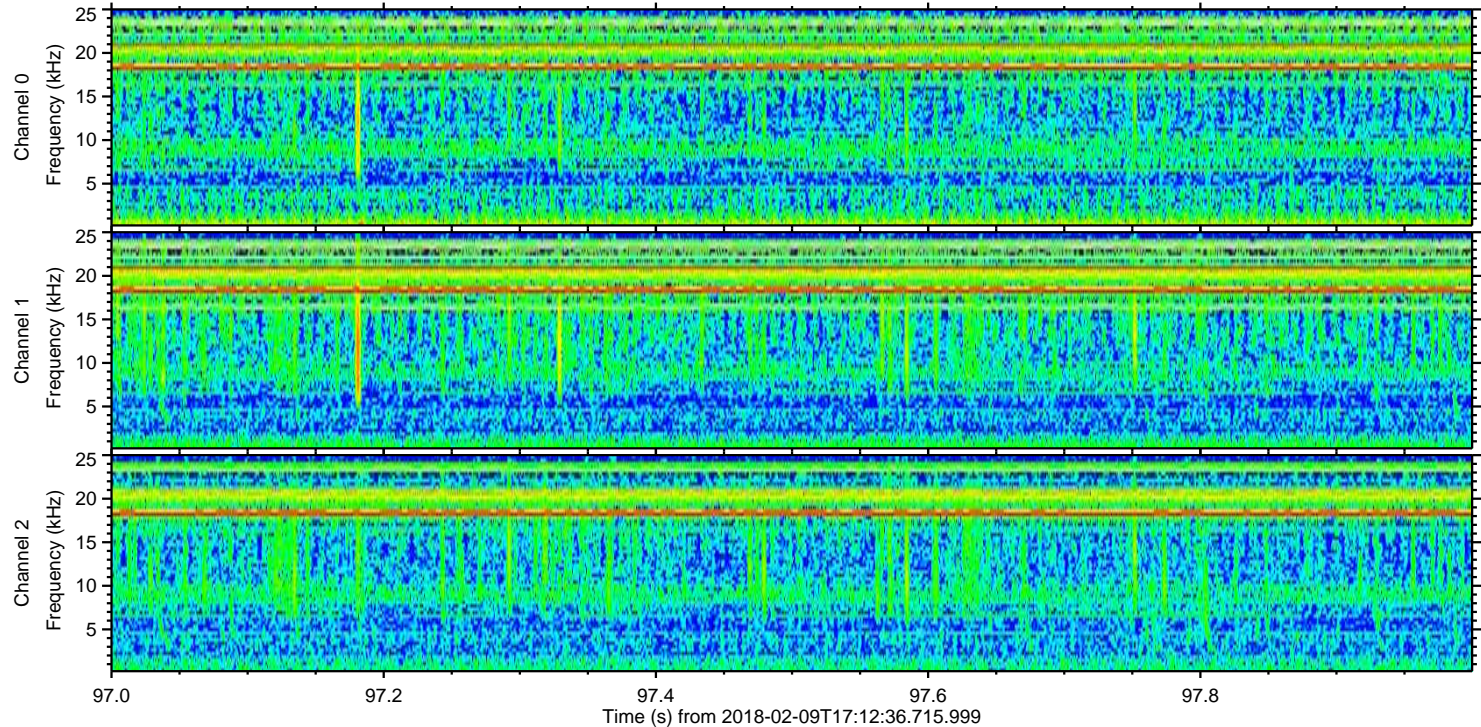
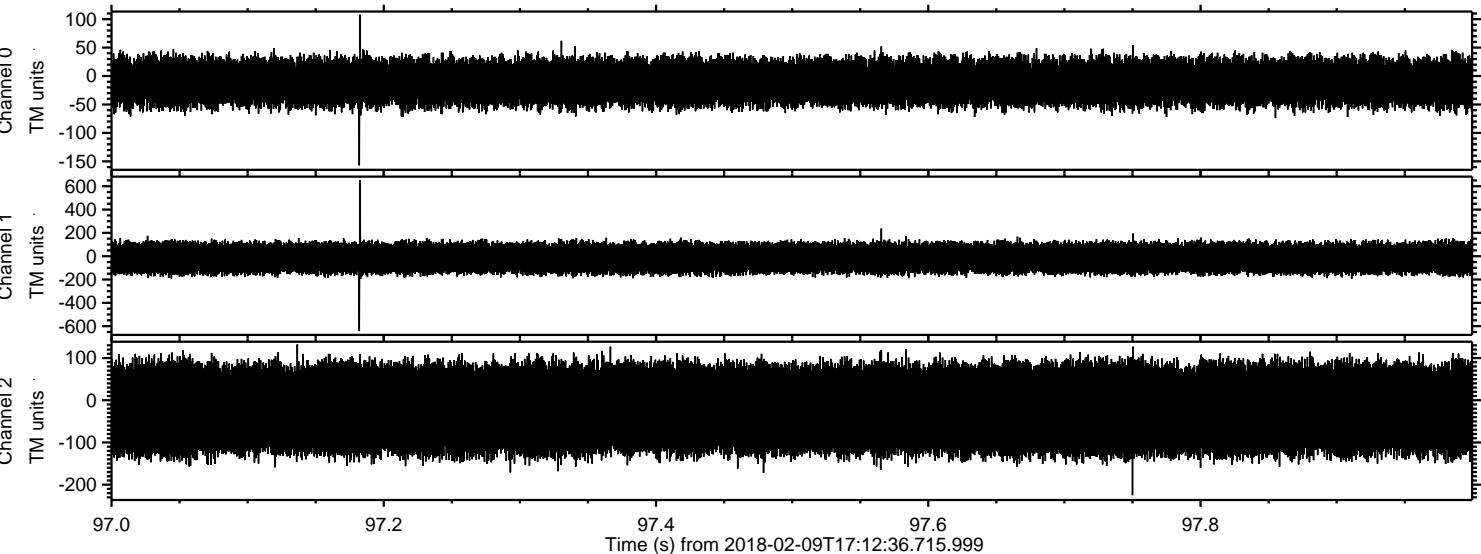
Processed Fri Feb 9 18:21:10 2018 by ELM ver.2012-10-06 from 001__elm20180209_171235__dat00.bin



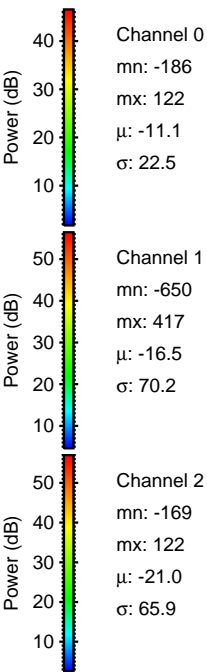
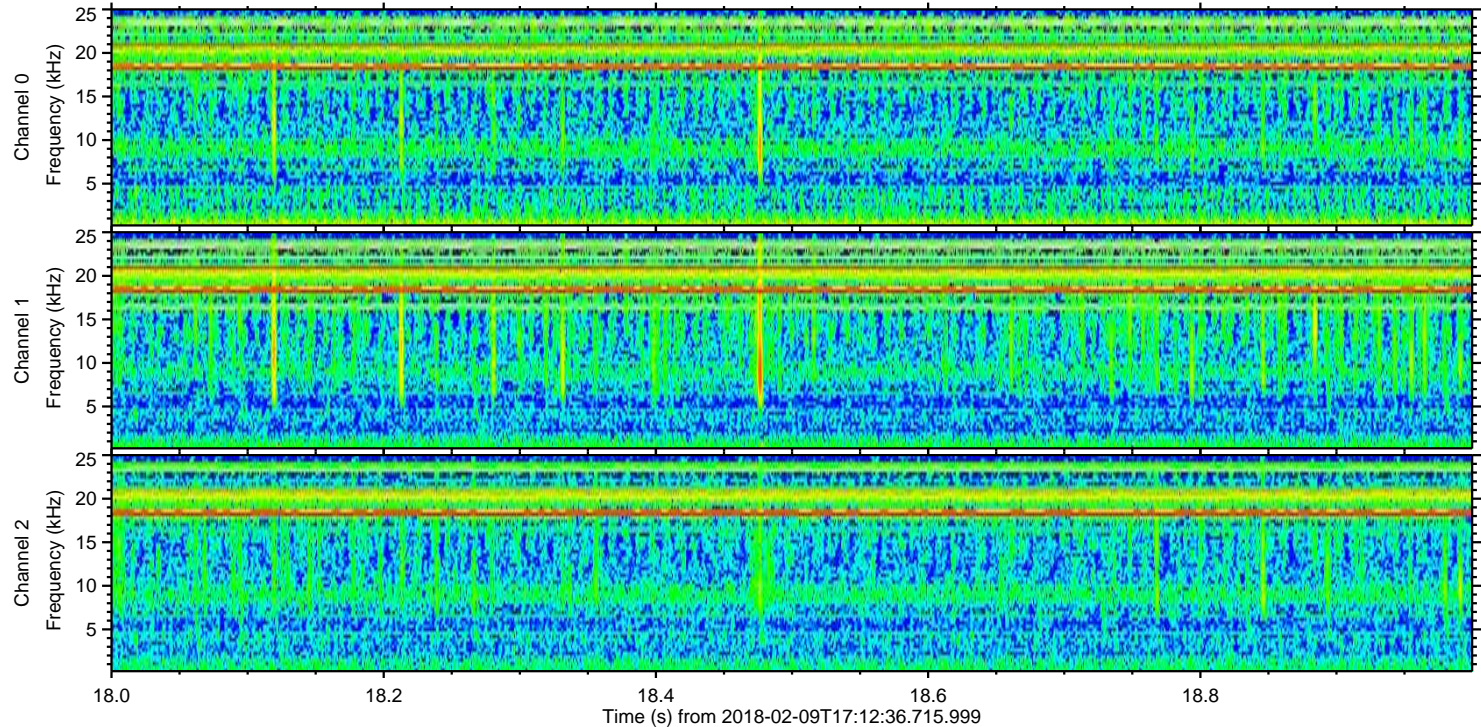
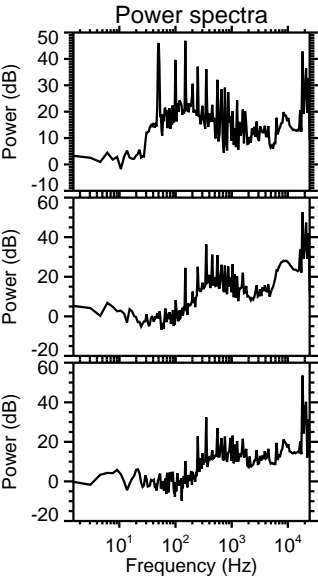
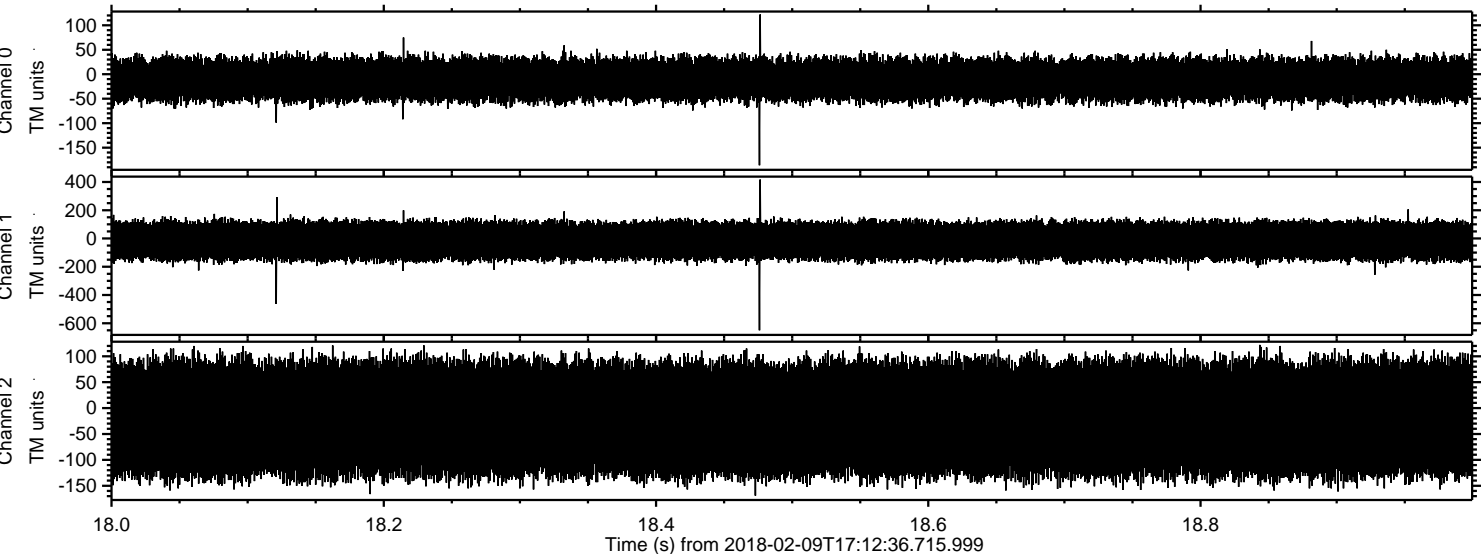
Processed Fri Feb 9 18:21:11 2018 by ELM ver.2012-10-06 from 001__elm20180209_171235__dat00.bin



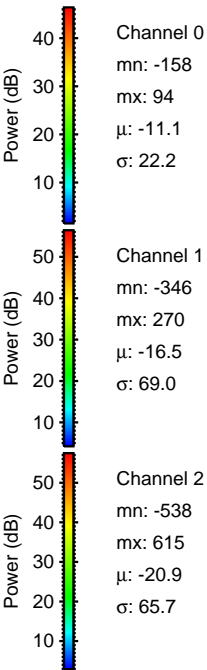
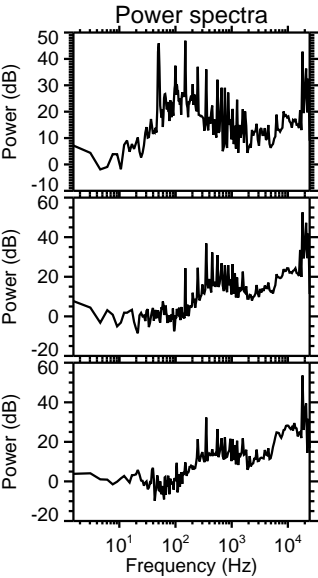
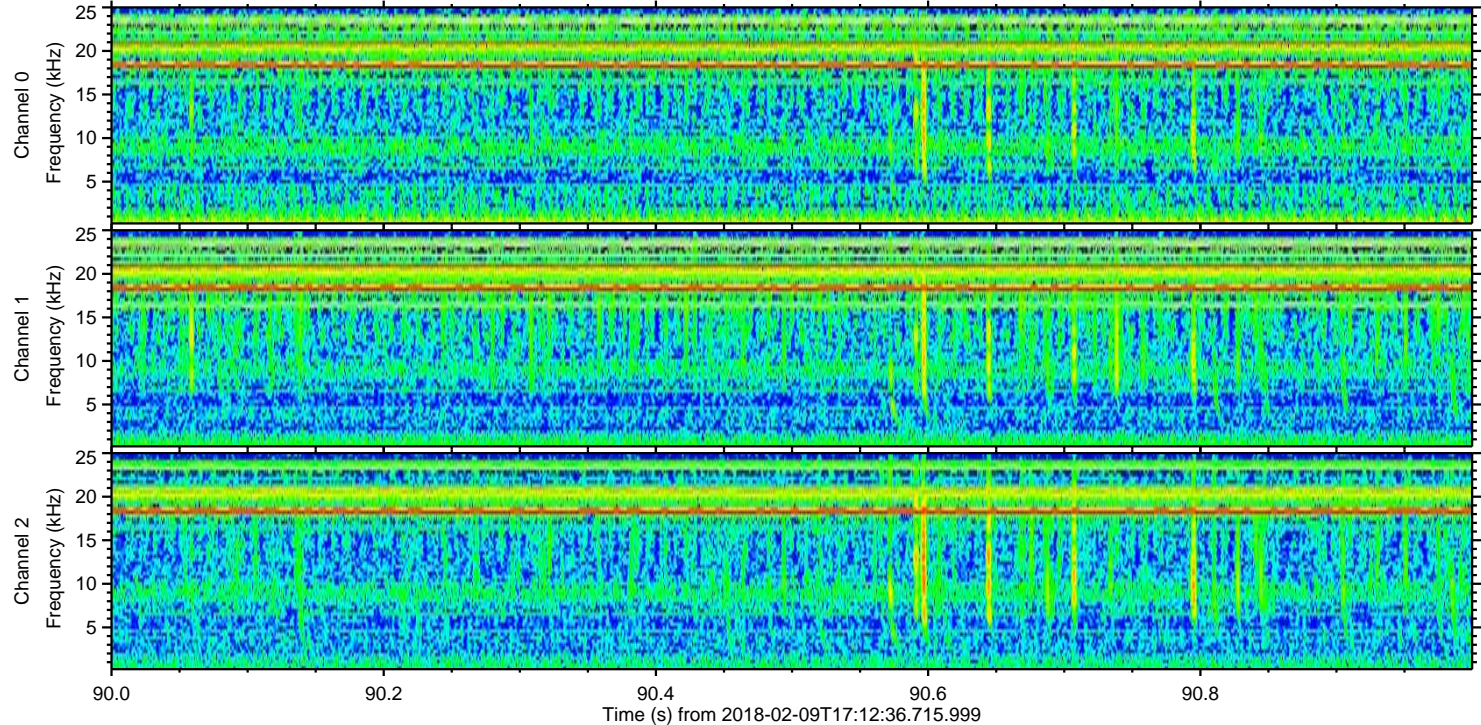
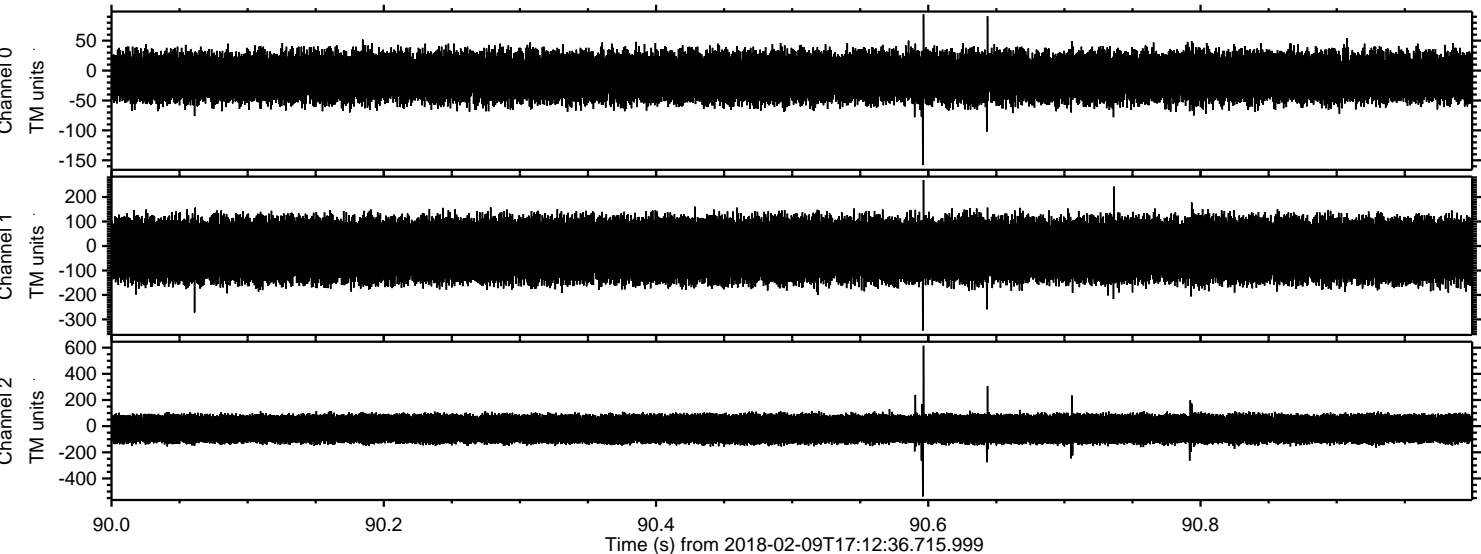
Processed Fri Feb 9 18:21:12 2018 by ELM ver.2012-10-06 from 001__elm20180209_171235__dat00.bin



Processed Fri Feb 9 18:21:12 2018 by ELM ver.2012-10-06 from 001__elm20180209_171235__dat00.bin



Processed Fri Feb 9 18:21:13 2018 by ELM ver.2012-10-06 from 001__elm20180209_171235__dat00.bin



Processed Fri Feb 9 18:21:14 2018 by ELM ver.2012-10-06 from 001__elm20180209_171235__dat00.bin

