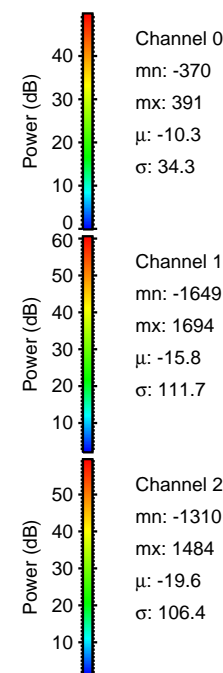
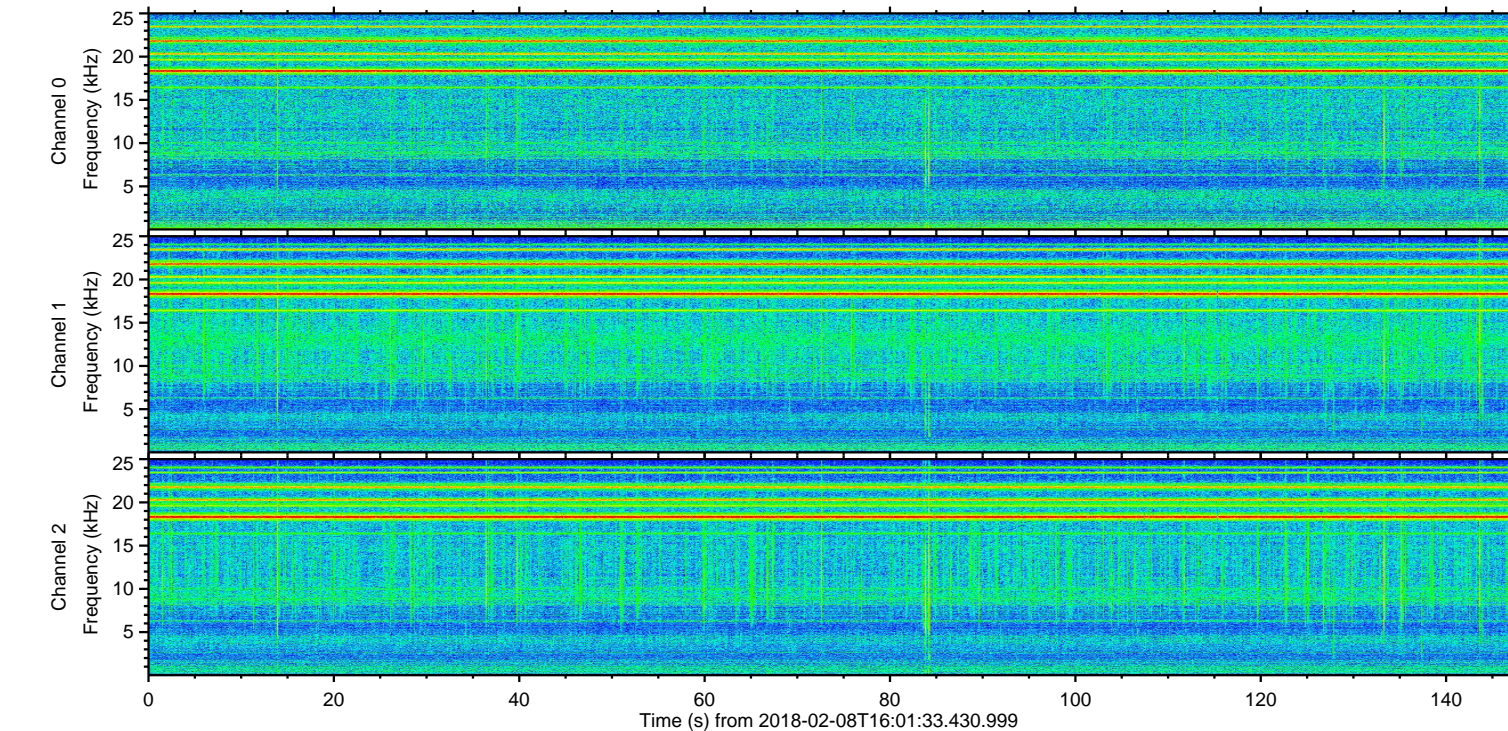
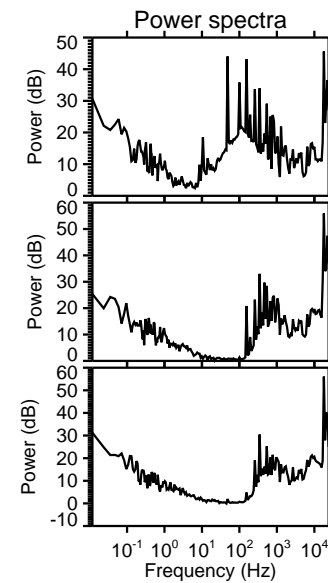
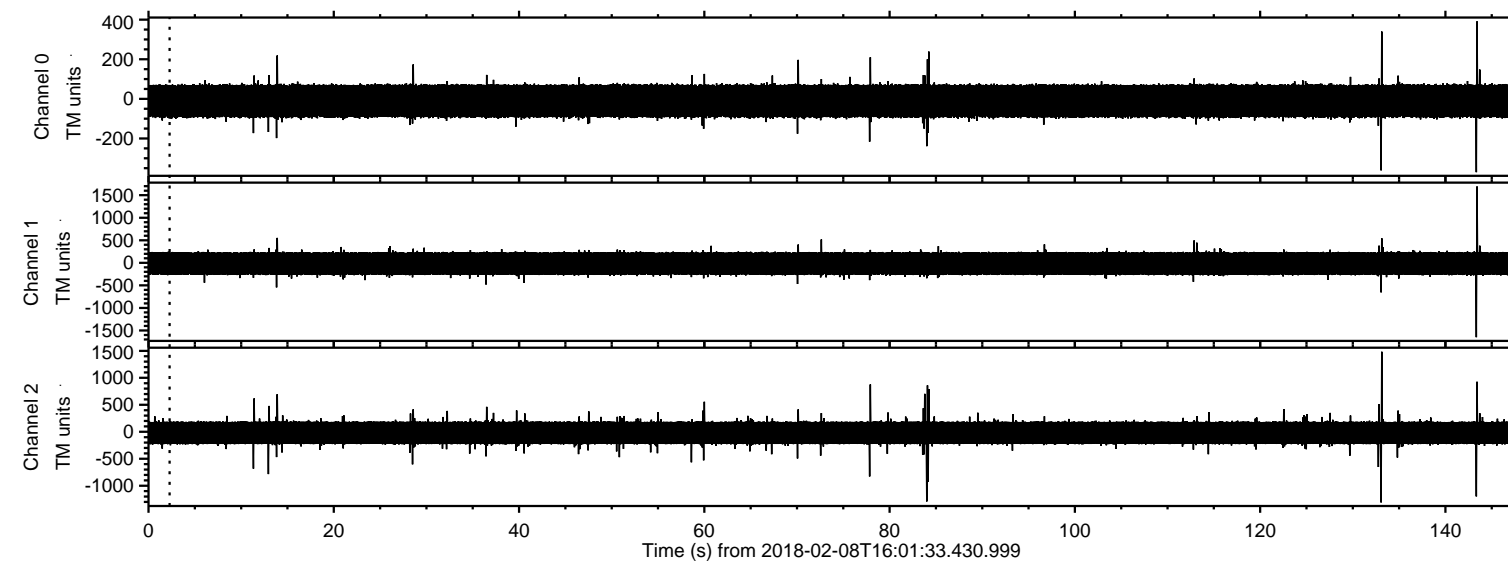


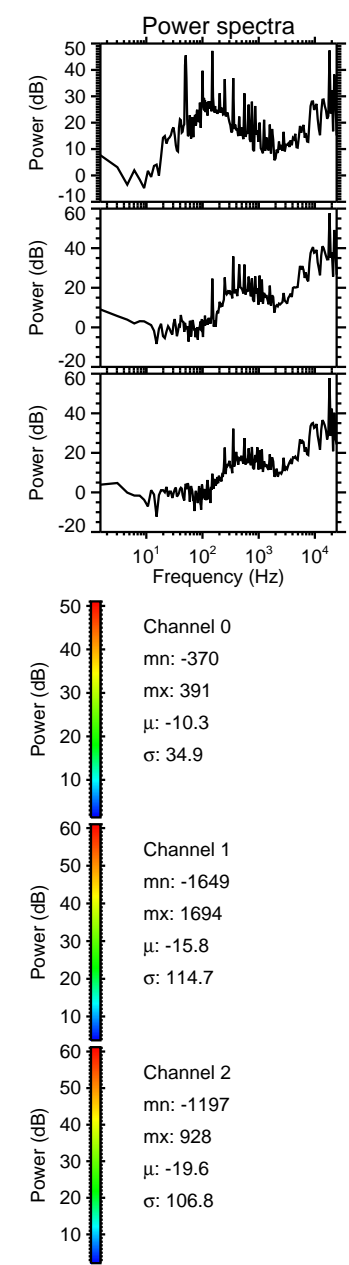
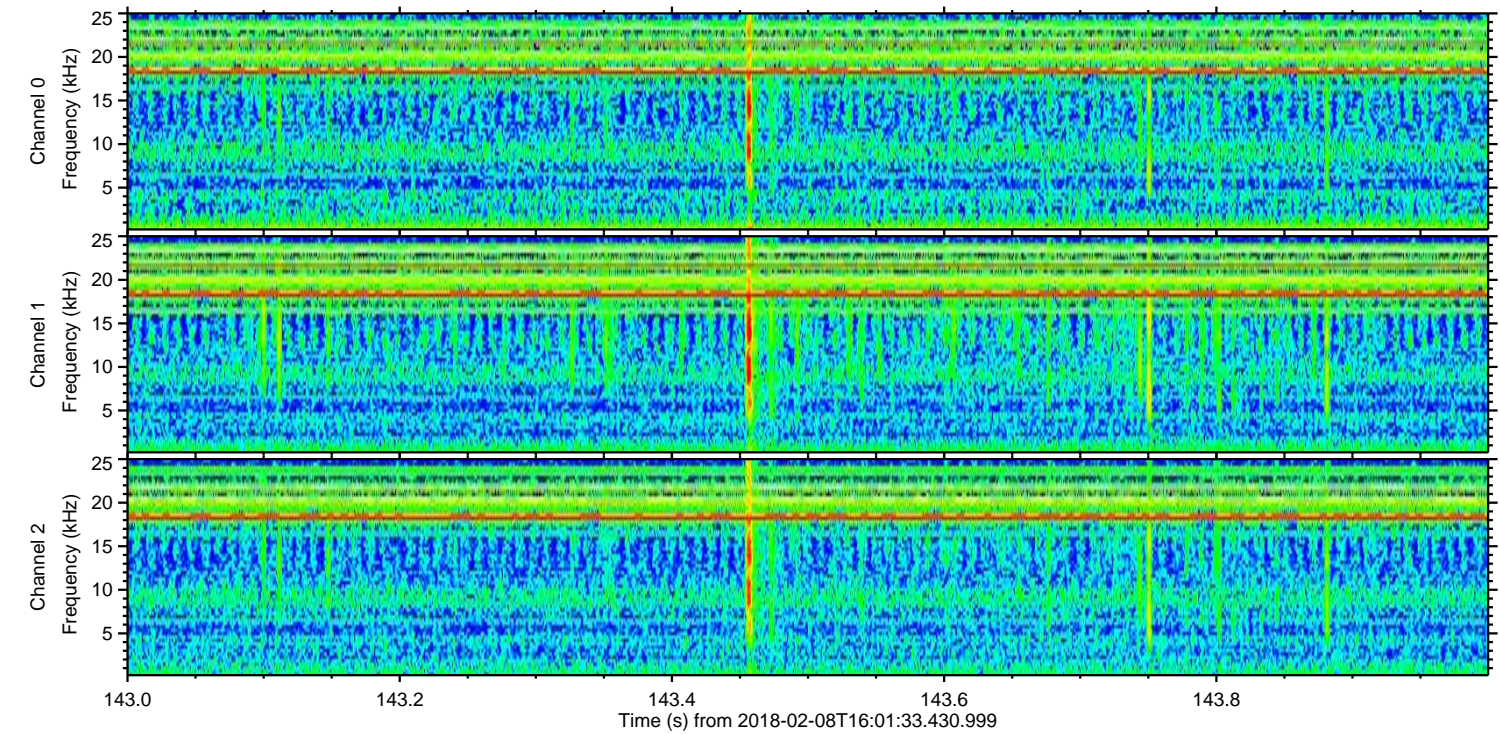
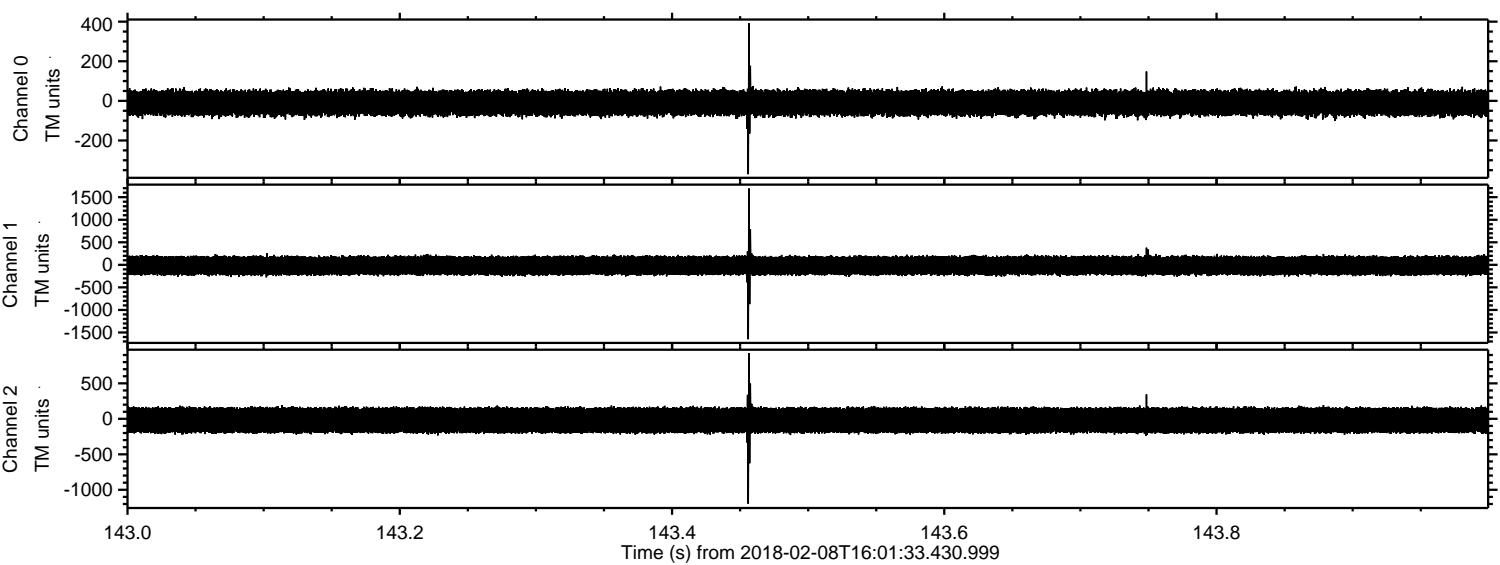
ELMAVAN 3D WAVEFORMS (Measured data sampled at 50 kHz) 50999 packets of 144 samples from 2018-02-08T16:01:33.430.999.

Processed Thu Feb 8 17:10:52 2018 by ELM ver.2012-10-06 from 001__elm20180208_160132__dat00.bin



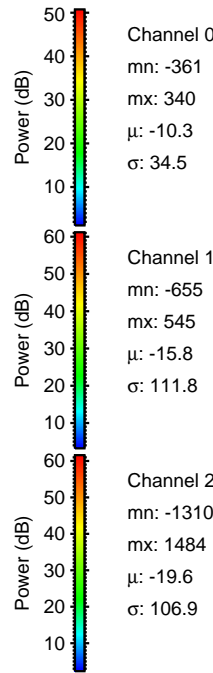
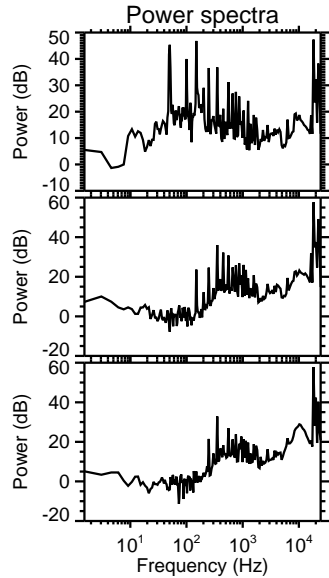
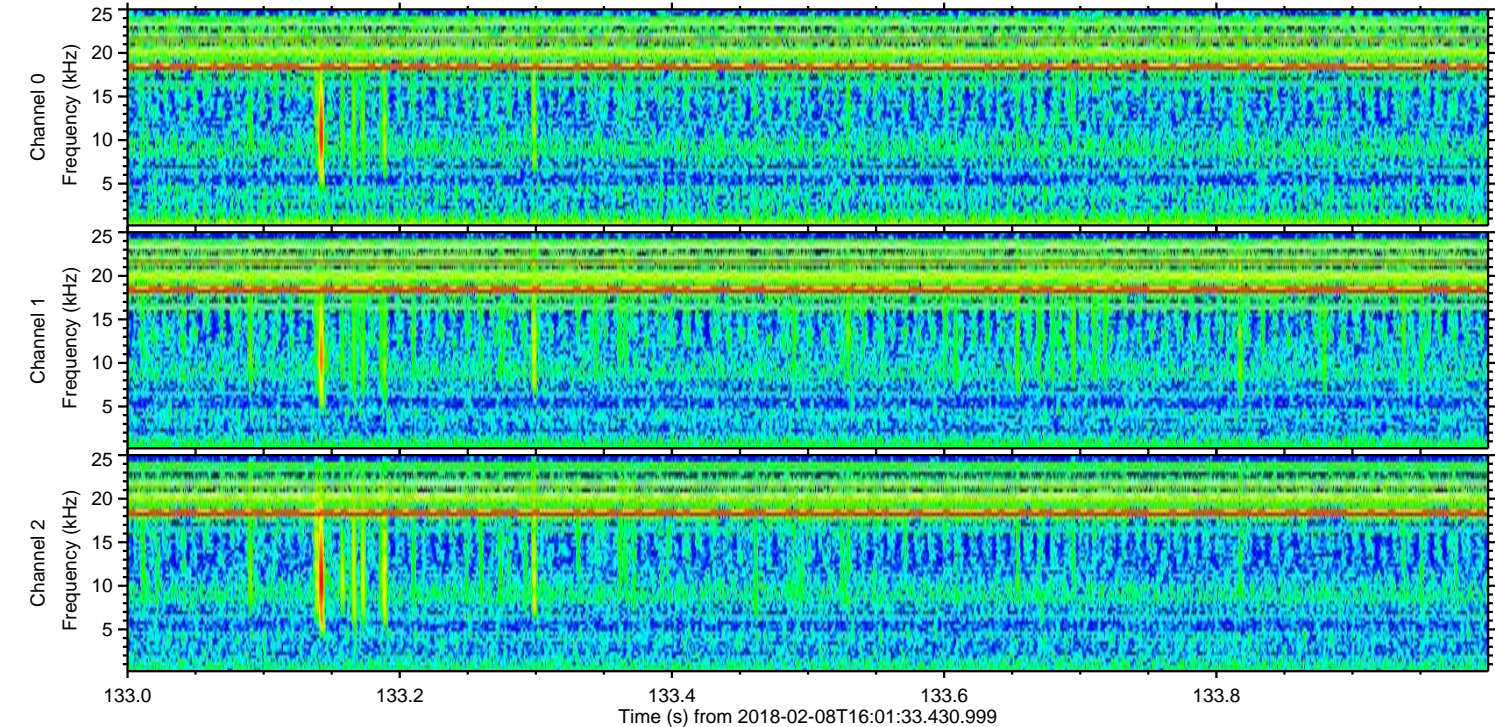
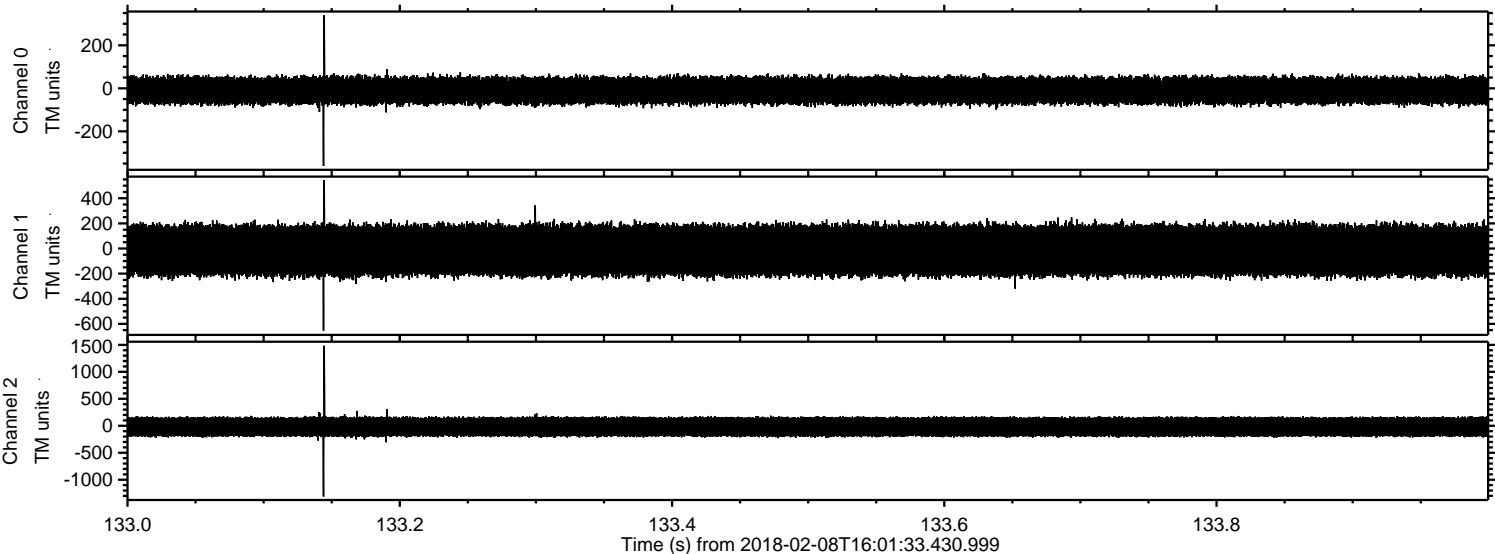
ELMAVAN 3D WAVEFORMS (Measured data sampled at 50 kHz) 50999 packets of 144 samples from 2018-02-08T16:01:33.430.999. Part 144/147

Processed Thu Feb 8 17:11:00 2018 by ELM ver.2012-10-06 from 001__elm20180208_160132__dat00.bin



ELMAVAN 3D WAVEFORMS (Measured data sampled at 50 kHz) 50999 packets of 144 samples from 2018-02-08T16:01:33.430.999. Part 134/147

Processed Thu Feb 8 17:11:01 2018 by ELM ver.2012-10-06 from 001__elm20180208_160132__dat00.bin

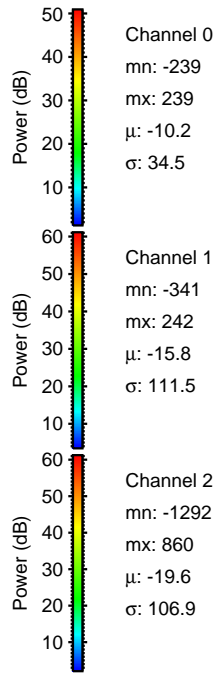
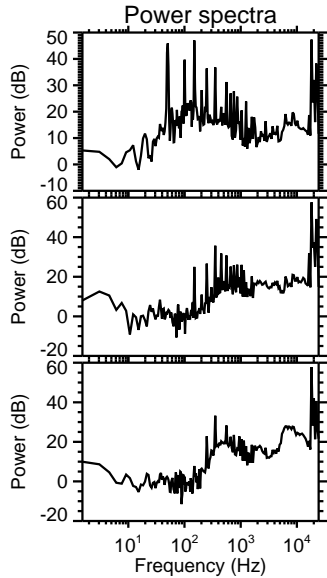
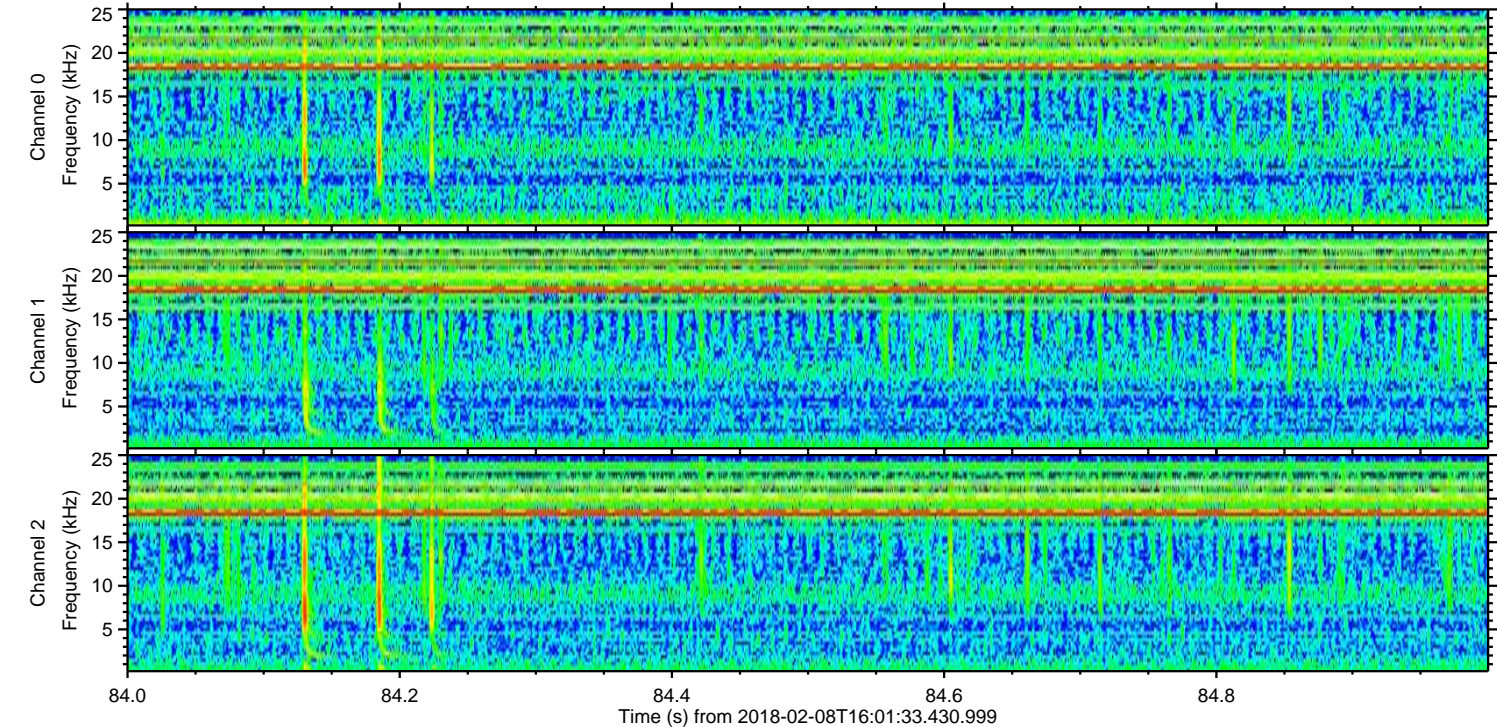
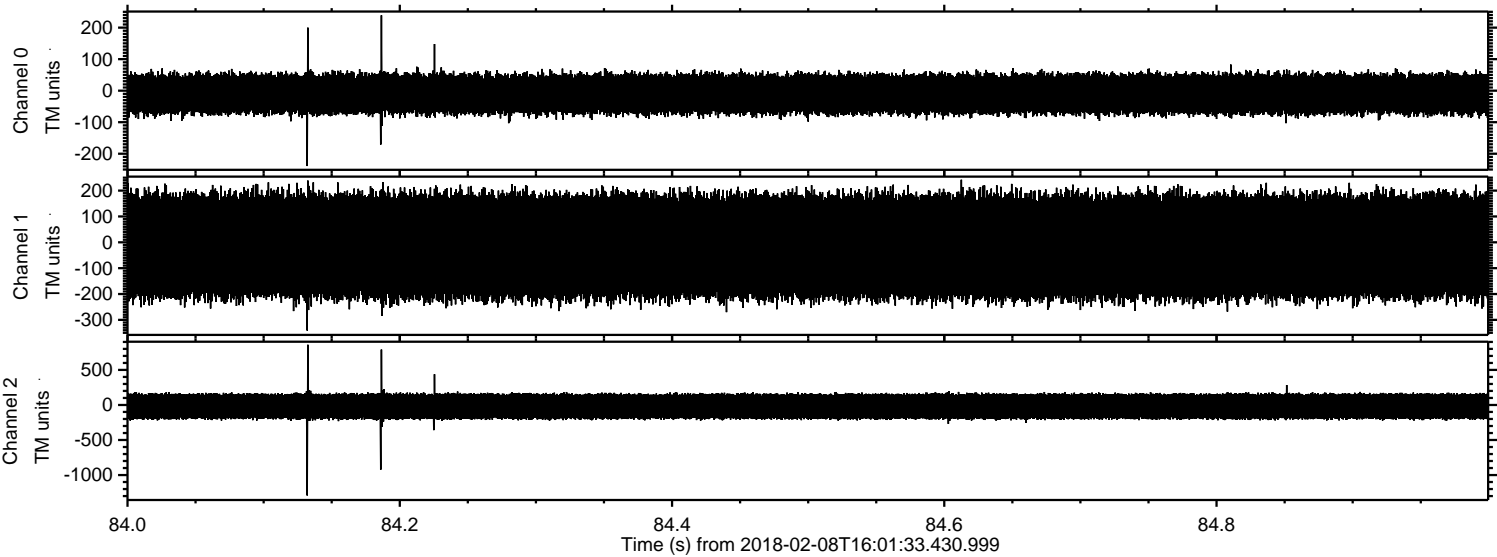


Channel 0
mn: -361
mx: 340
 μ : -10.3
 σ : 34.5

Channel 1
mn: -655
mx: 545
 μ : -15.8
 σ : 111.8

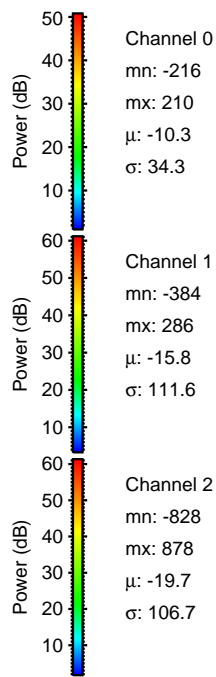
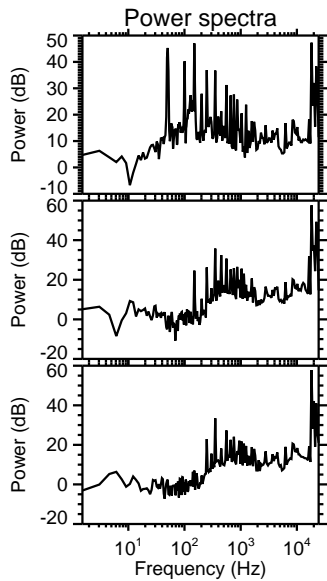
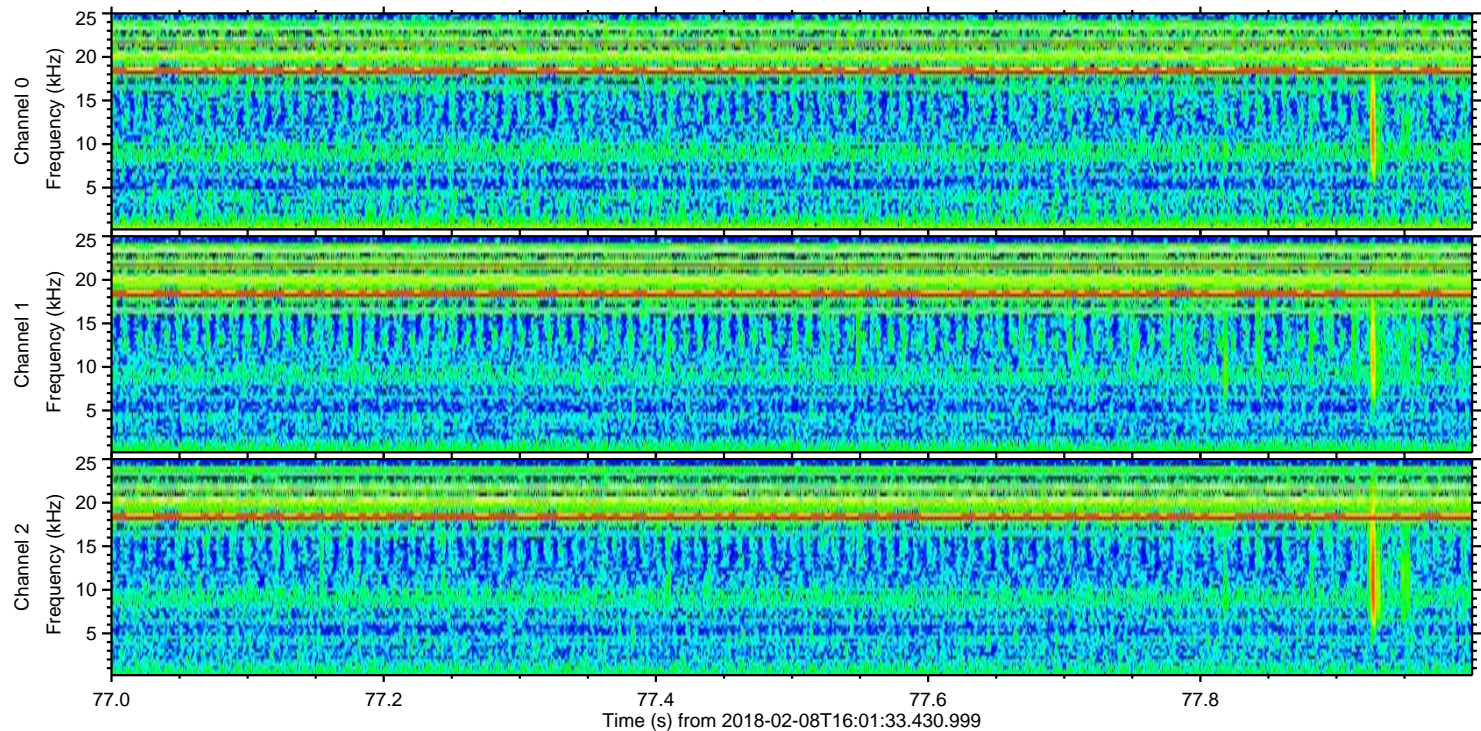
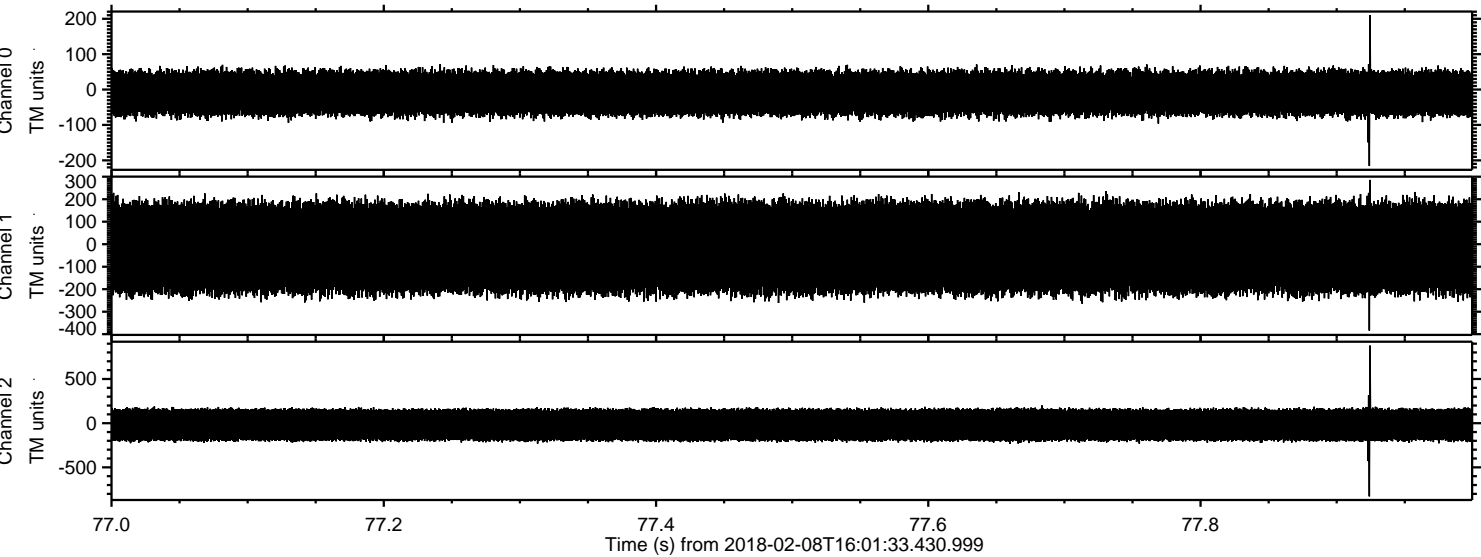
Channel 2
mn: -1310
mx: 1484
 μ : -19.6
 σ : 106.9

Processed Thu Feb 8 17:11:01 2018 by ELM ver.2012-10-06 from 001__elm20180208_160132__dat00.bin



ELMAVAN 3D WAVEFORMS (Measured data sampled at 50 kHz) 50999 packets of 144 samples from 2018-02-08T16:01:33.430.999. Part 78/147

Processed Thu Feb 8 17:11:02 2018 by ELM ver.2012-10-06 from 001__elm20180208_160132__dat00.bin



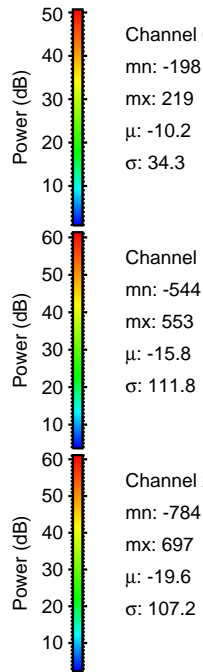
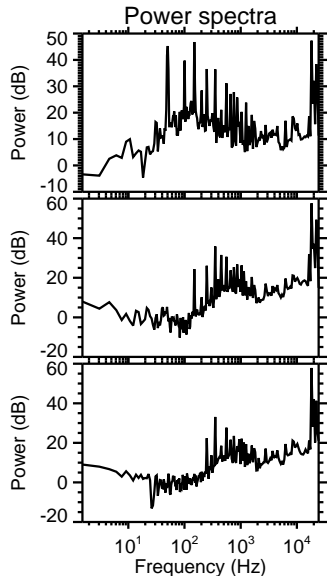
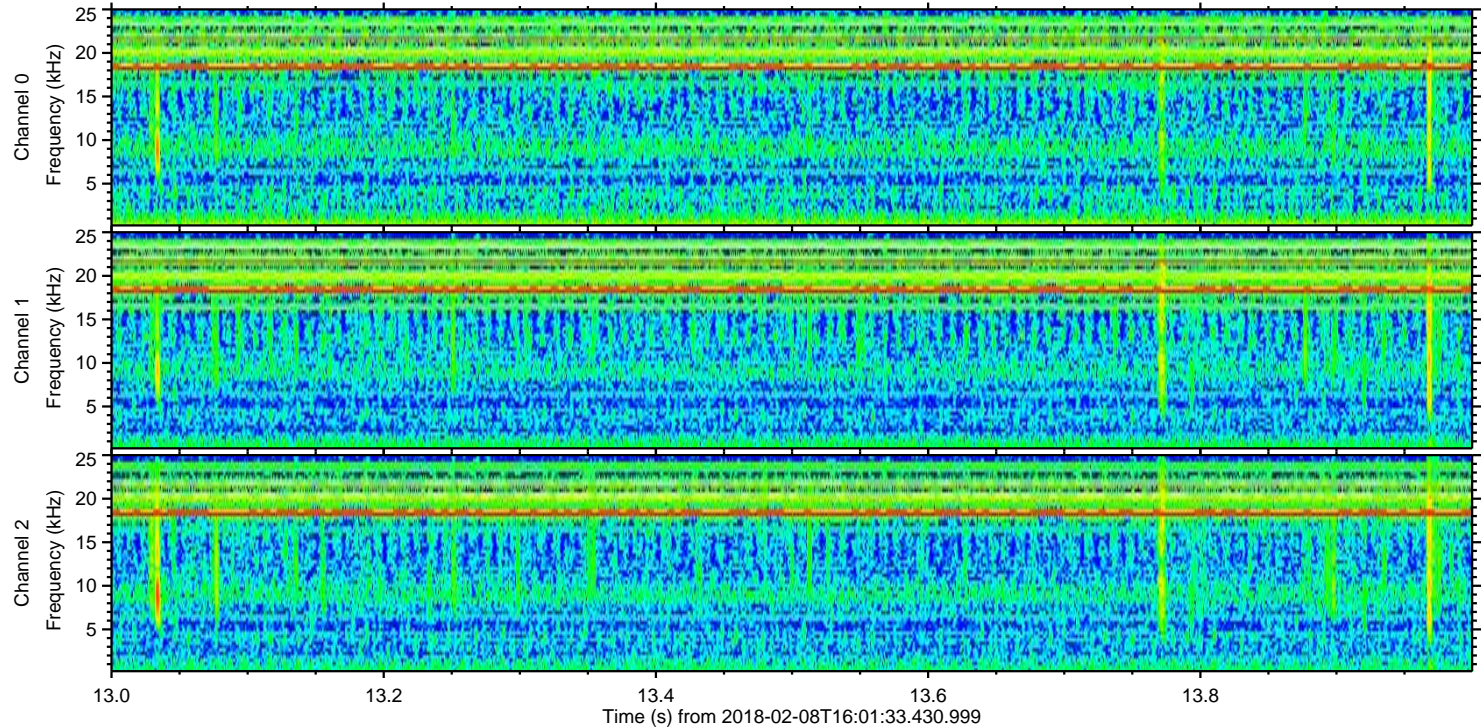
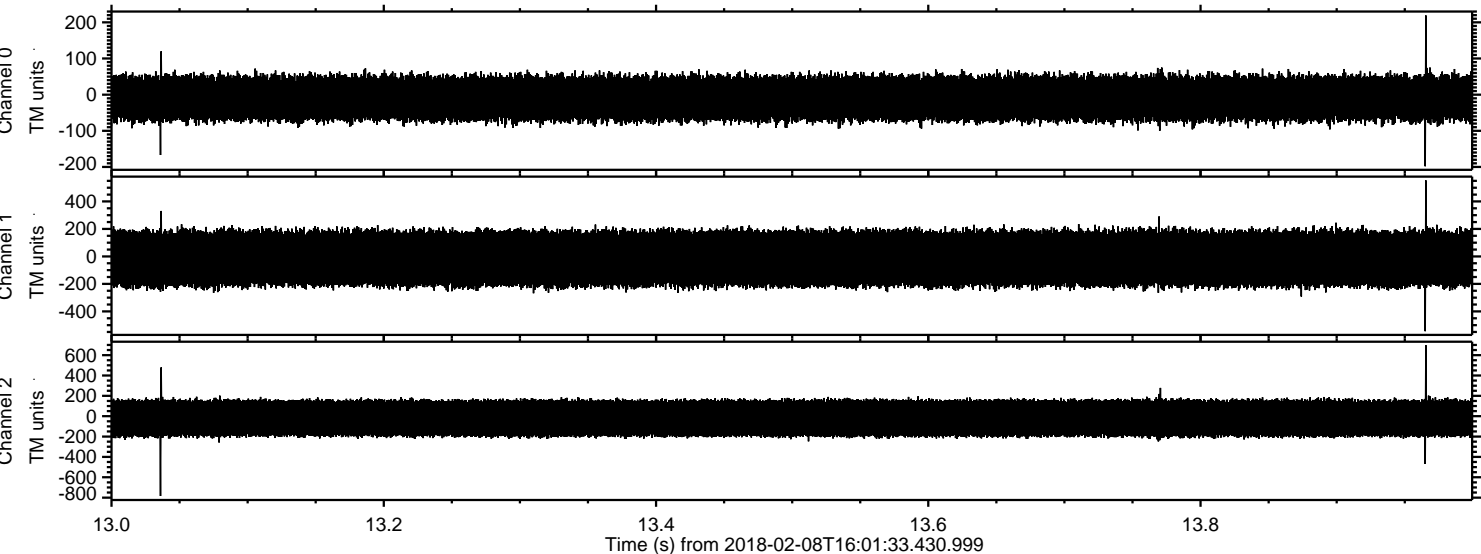
Channel 0
mn: -216
mx: 210
 μ : -10.3
 σ : 34.3

Channel 1
mn: -384
mx: 286
 μ : -15.8
 σ : 111.6

Channel 2
mn: -828
mx: 878
 μ : -19.7
 σ : 106.7

ELMAVAN 3D WAVEFORMS (Measured data sampled at 50 kHz) 50999 packets of 144 samples from 2018-02-08T16:01:33.430.999. Part 14/147

Processed Thu Feb 8 17:11:03 2018 by ELM ver.2012-10-06 from 001__elm20180208_160132__dat00.bin



Channel 0

mn: -198
mx: 219
 μ : -10.2
 σ : 34.3

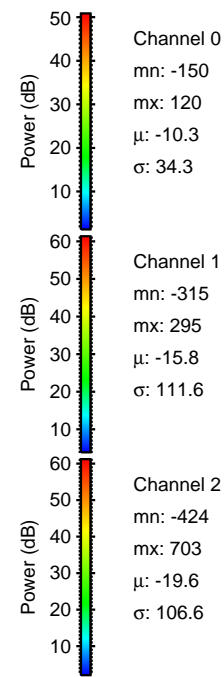
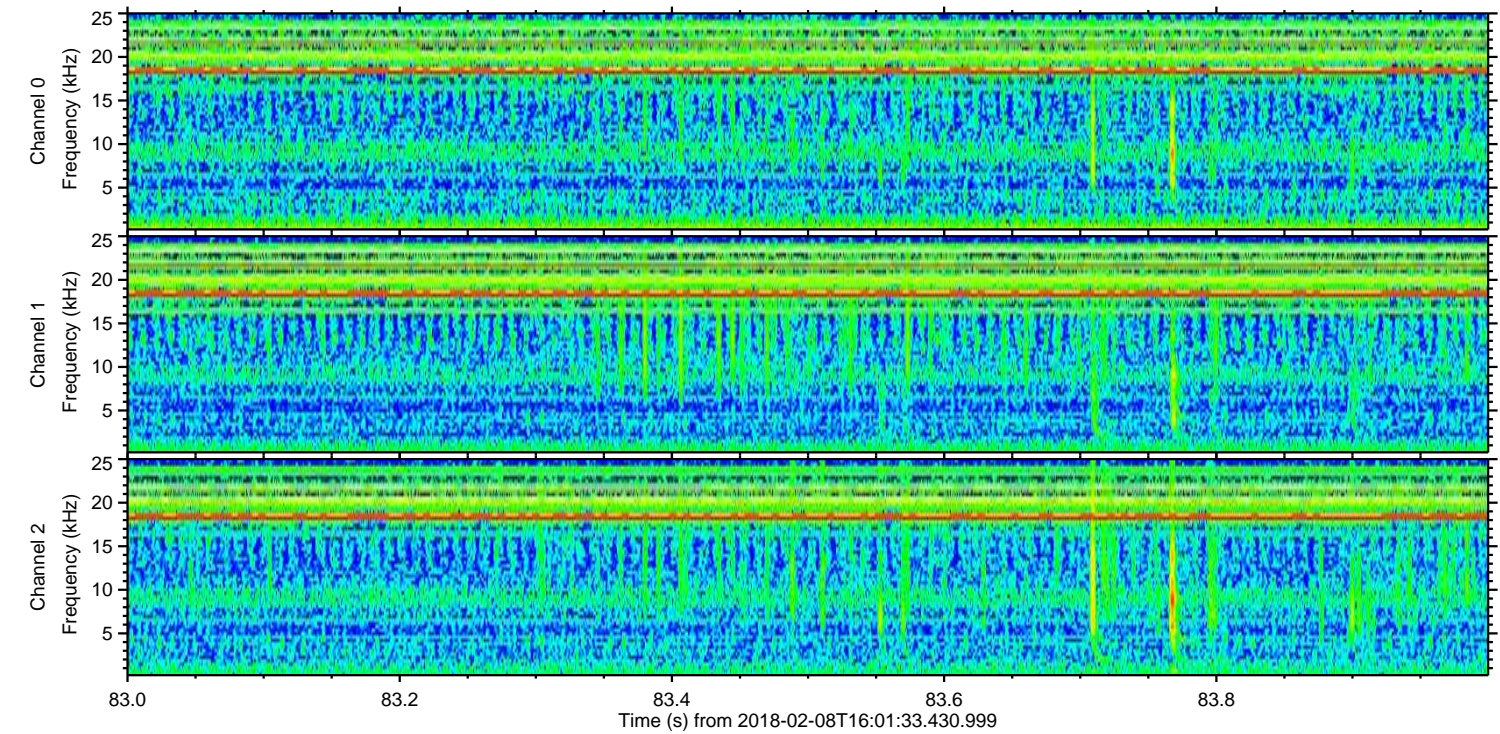
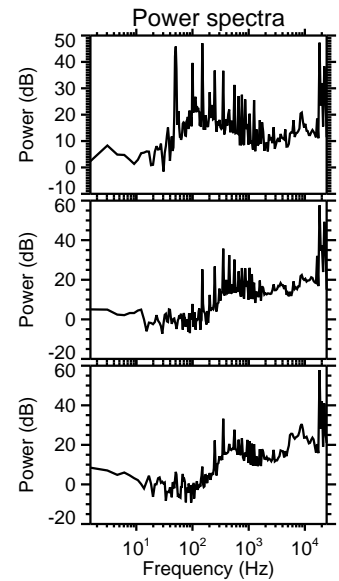
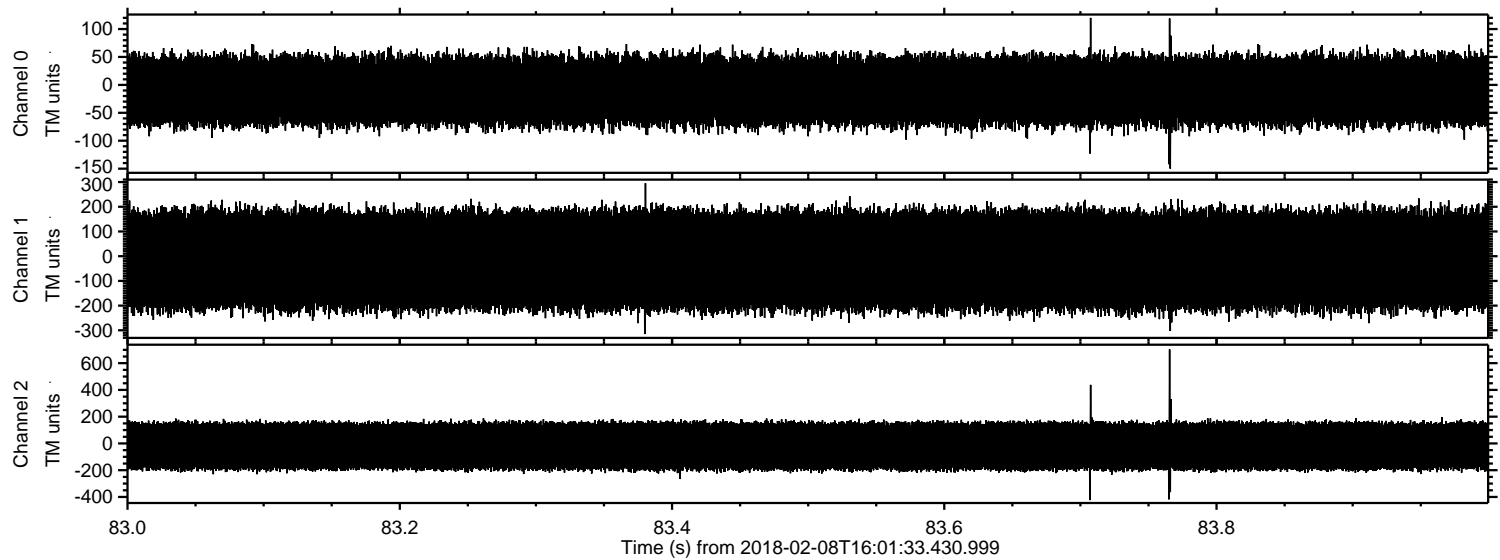
Channel 1

mn: -544
mx: 553
 μ : -15.8
 σ : 111.8

Channel 2

mn: -784
mx: 697
 μ : -19.6
 σ : 107.2

Processed Thu Feb 8 17:11:04 2018 by ELM ver.2012-10-06 from 001__elm20180208_160132__dat00.bin

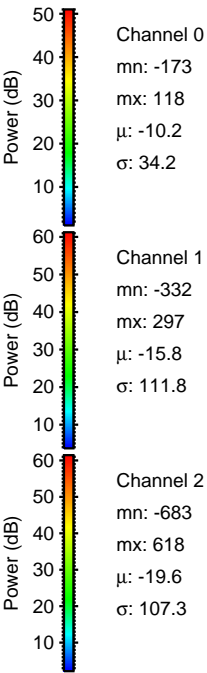
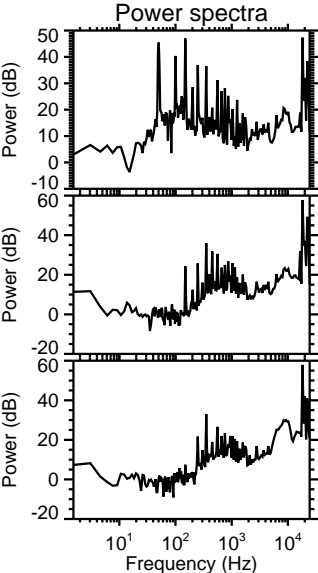
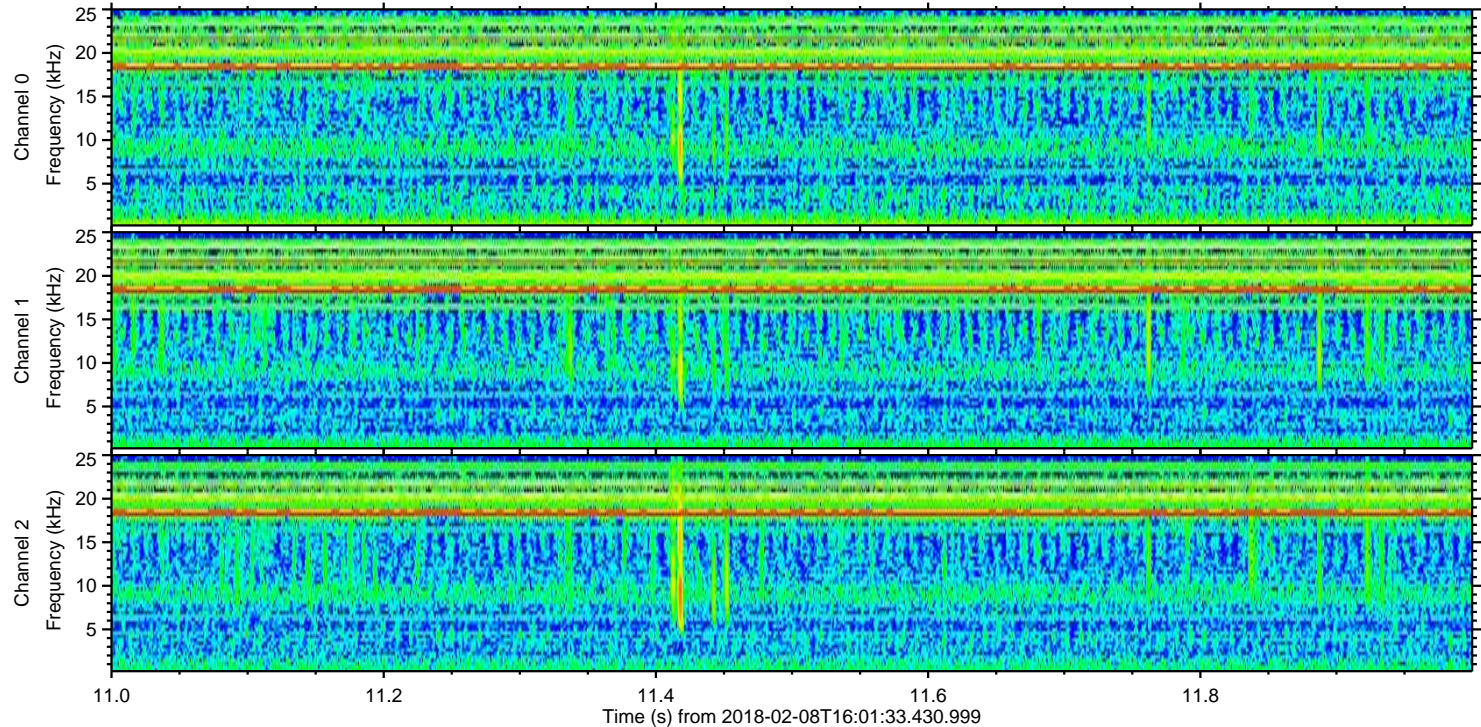
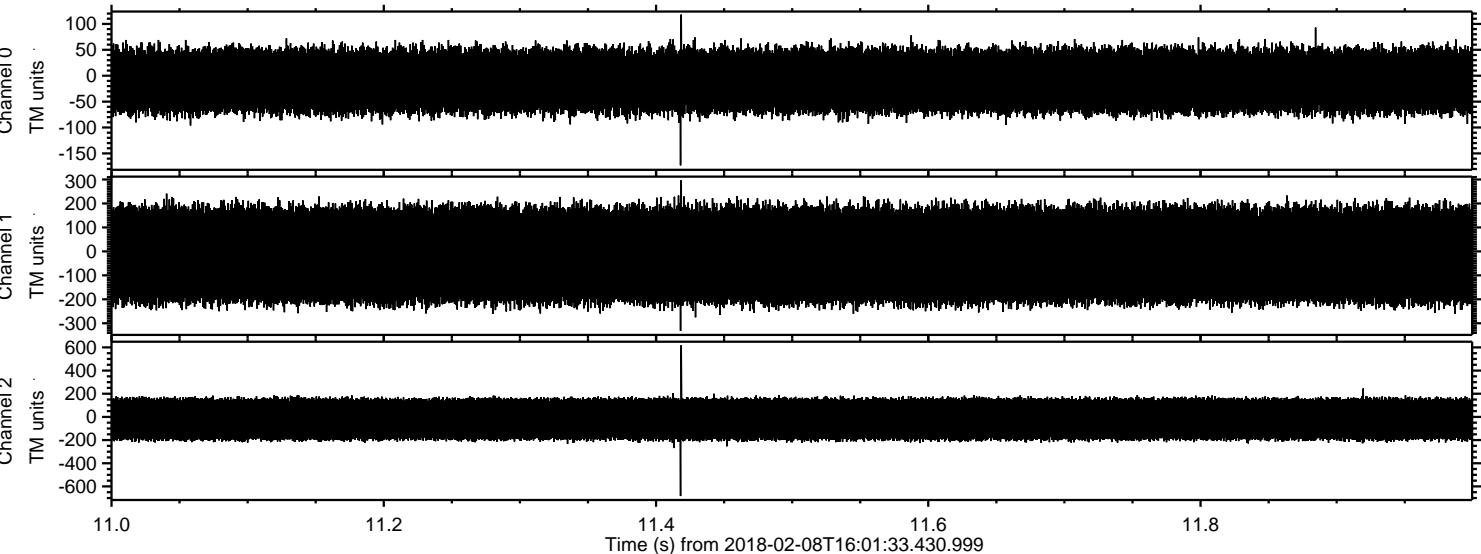


Channel 0
mn: -150
mx: 120
 μ : -10.3
 σ : 34.3

Channel 1
mn: -315
mx: 295
 μ : -15.8
 σ : 111.6

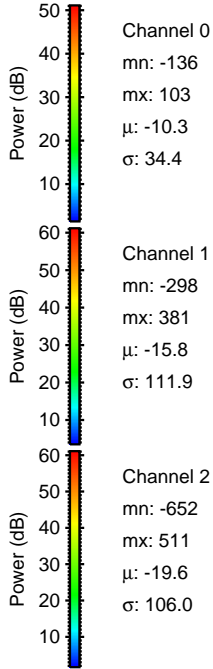
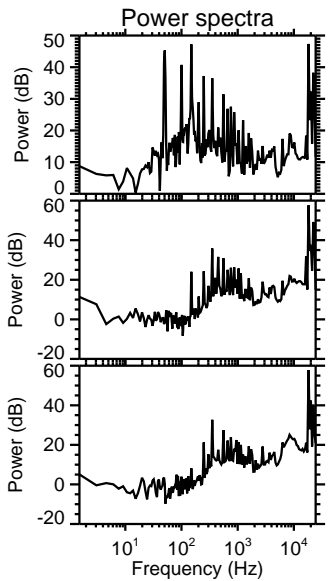
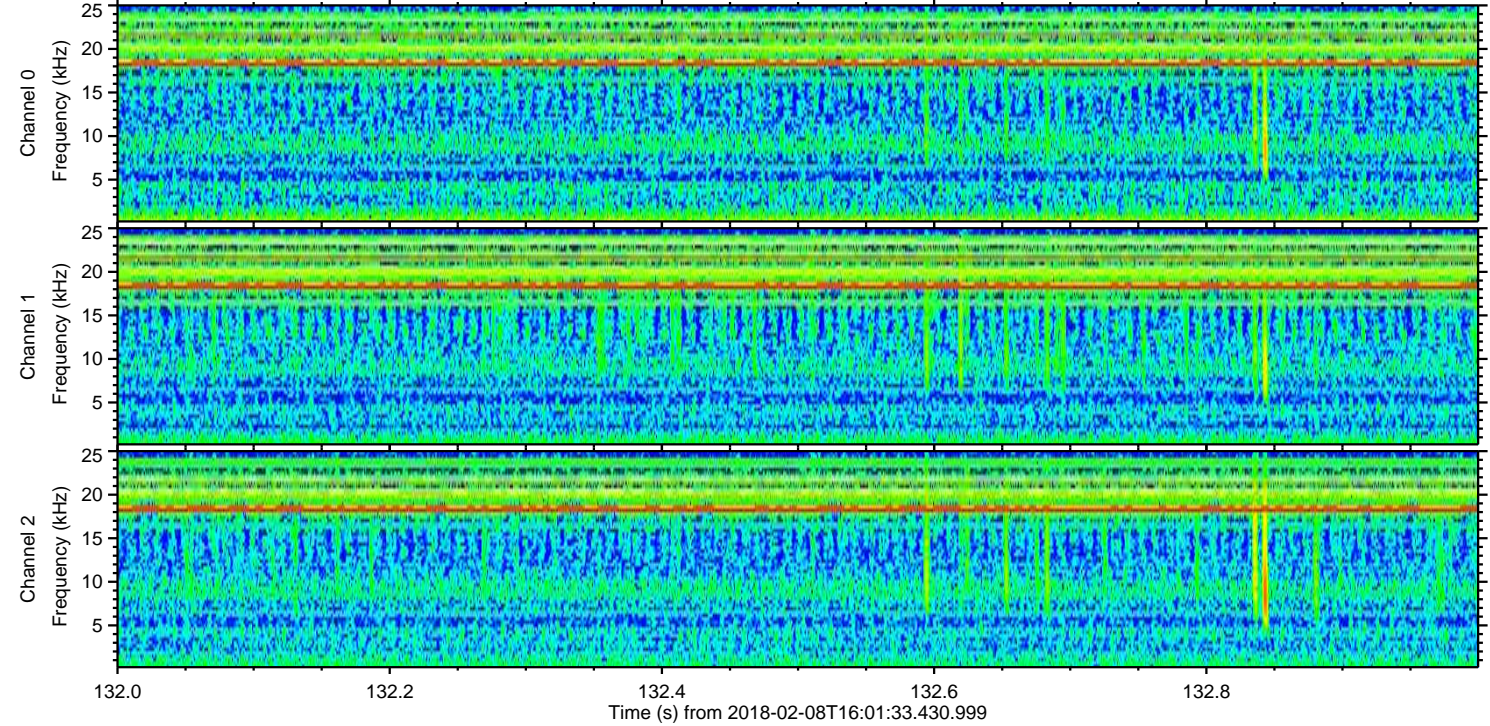
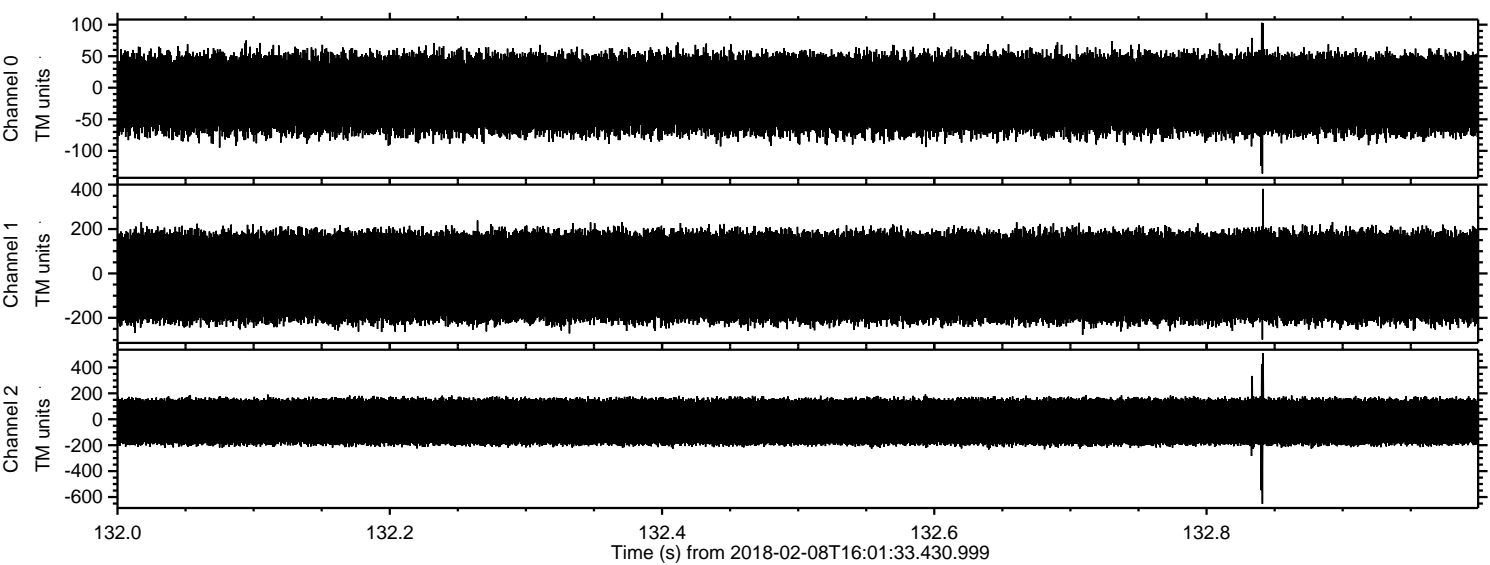
Channel 2
mn: -424
mx: 703
 μ : -19.6
 σ : 106.6

Processed Thu Feb 8 17:11:04 2018 by ELM ver.2012-10-06 from 001__elm20180208_160132__dat00.bin

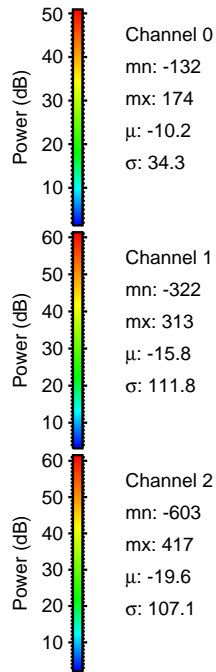
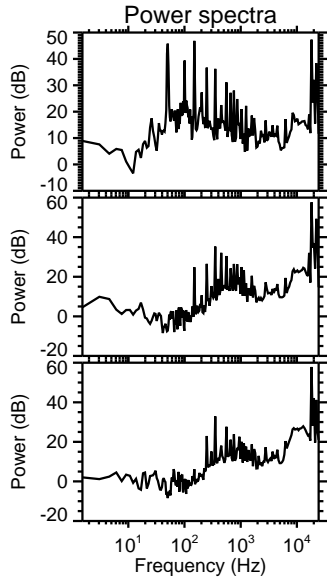
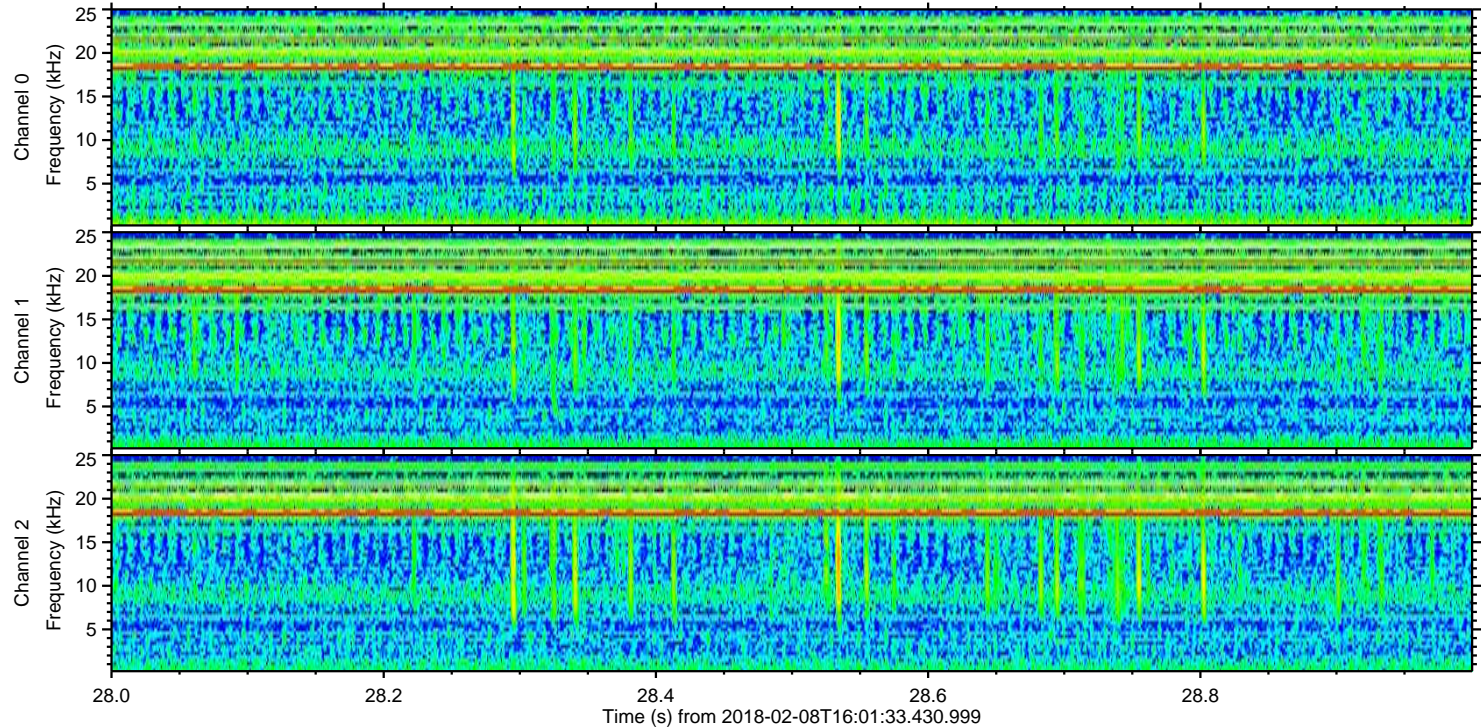
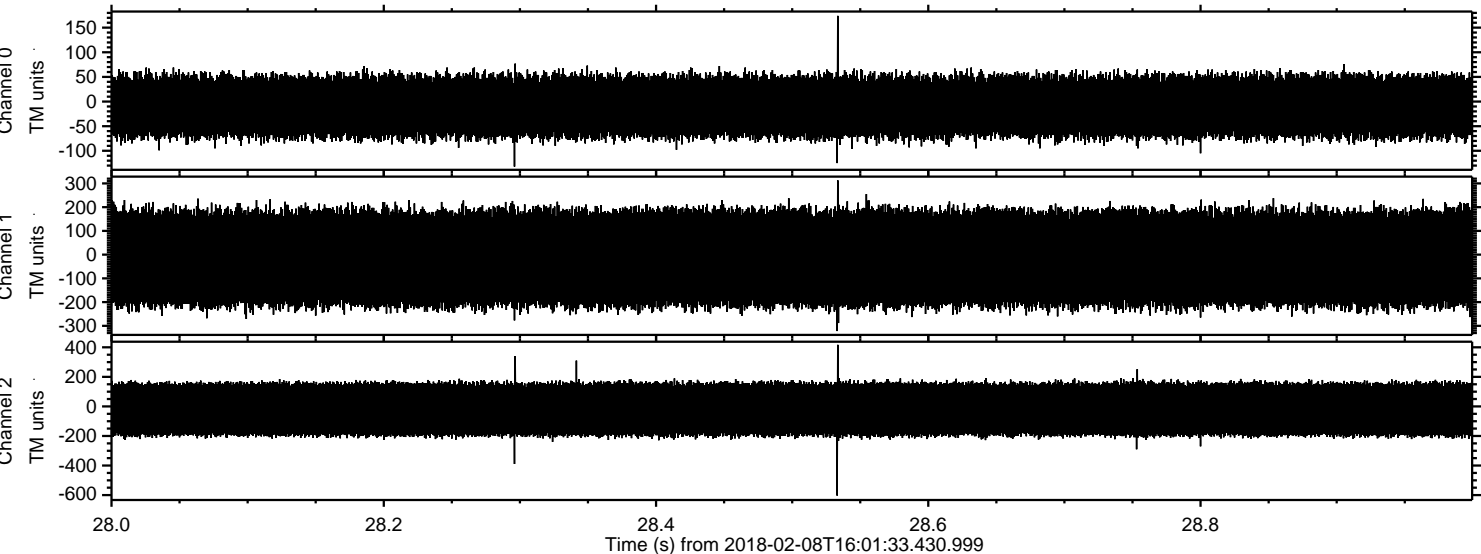


ELMAVAN 3D WAVEFORMS (Measured data sampled at 50 kHz) 50999 packets of 144 samples from 2018-02-08T16:01:33.430.999. Part 133/147

Processed Thu Feb 8 17:11:05 2018 by ELM ver.2012-10-06 from 001__elm20180208_160132__dat00.bin



Processed Thu Feb 8 17:11:06 2018 by ELM ver.2012-10-06 from 001__elm20180208_160132__dat00.bin



Channel 0
mn: -132
mx: 174
 μ : -10.2
 σ : 34.3

Channel 1
mn: -322
mx: 313
 μ : -15.8
 σ : 111.8

Channel 2
mn: -603
mx: 417
 μ : -19.6
 σ : 107.1

Processed Thu Feb 8 17:11:07 2018 by ELM ver.2012-10-06 from 001__elm20180208_160132__dat00.bin

